



CompTIA

Exam Questions N10-007

CompTIA Network+ N10-007

NEW QUESTION 1

- (Exam Topic 1)

Which of the following wireless connection types utilize MIMO on non-overlapping channels? (Choose two.)

- A. 802.11a
- B. 802.11ac
- C. 802.11b
- D. 802.11g
- E. 802.11n

Answer: BE

NEW QUESTION 2

- (Exam Topic 1)

Which of the following DNS record types is an alias?

- A. CNAME
- B. PTR
- C. NS
- D. SRV

Answer: A

NEW QUESTION 3

- (Exam Topic 1)

A technician is troubleshooting a workstation's network connectivity and wants to confirm which switchport corresponds to the wall jack the PC is using.

Which of the following concepts would BEST jack the technician?

- A. Consistent labeling
- B. Change management
- C. Standard work instruction D .Inventory management
- D. Network baseline

Answer: A

NEW QUESTION 4

- (Exam Topic 1)

A company has just refreshed the hardware in its datacenter with new 10G Ethernet switches wishes to set up a new storage area network but must use existing infrastructure. Which of the following storage standards should the technician use?

- A. iSCSI
- B. Fibre Channel
- C. NAS
- D. InfinBand

Answer: C

NEW QUESTION 5

- (Exam Topic 1)

A technician needs to set up a workstation with a private static address. Which of the following IP address would meet this requirement? (Select TWO).

- A. 65.78.90.102
- B. 127.0.0.1
- C. 169.254.90.19
- D. 172.16..1.103
- E. 172.33.47.100
- F. 192.168.1.55

Answer: DE

NEW QUESTION 6

- (Exam Topic 1)

A Chief Information Officer (CIO) is concentrated about an attacker gaining administrative access to the company's network devices. Which of the following is the MOST secure way to prevent this?

- A. ACL allowing only HTTP
- B. ACL allowing only Telnet
- C. Out-of-band modem
- D. Out-of-band console router

Answer: D

NEW QUESTION 7

- (Exam Topic 1)

Employees want the ability to use personal devices on the guest network while working out at the company gym. In order to meet the request, which of the

following policies requires employee adherence?

- A. AUP
- B. SLA
- C. NDA
- D. MOU

Answer: A

NEW QUESTION 8

- (Exam Topic 1)

A new building needs to be joined to an existing network, but management has decided that running fiber is too expensive. Since the buildings are about 1000ft (305m) apart, the IT department has been asked to propose alternatives. Which of the following is the BEST device to add to each building to facilitate the extension of the network while meeting budgetary demands?

- A. Switch
- B. Router
- C. Media converter
- D. PTP wireless

Answer: D

NEW QUESTION 9

- (Exam Topic 1)

A network technician is troubleshooting an issue and has established a theory of probable cause. Which of the following steps should the network technician take NEXT?

- A. Test the possible solution
- B. Question the users
- C. Determine what has changed
- D. Document the theory

Answer: A

NEW QUESTION 10

- (Exam Topic 1)

A network administrator is redesigning network security after an attack. During the attack, an attacker used open cubicle location to attach devices to the network. The administrator wants to be able to monitor future attack in a safe environment and determine the method of attack. Which of the following should the administrator do to best meet this requirement?

- A. Create a VLAN for the unused ports and create a honeypot on the VLAN.
- B. Install a BPDU guard on switchports and enable STP
- C. Create a DMZ for public server and secure a segment for the internal network
- D. Install antivirus software and set an ACL on the servers.

Answer: A

NEW QUESTION 10

- (Exam Topic 1)

Users are reporting Internet connectivity issues. The network administrator wants to determine if the issues are internal to the company network or if there is an issue with the ISP. Which of the following tools should be used to BEST determine where the outage is occurring?

- A. traceroute
- B. ping
- C. nslookup
- D. netstat

Answer: A

NEW QUESTION 11

- (Exam Topic 1)

To replace a defective UPS, the network administrator must take the switch offline. The administrator wants to be able to perform maintenance UPS in the future without affecting the availability of the attached switch. Which of the following would BEST allow this to happen?

- A. Add a redundant power supply to the switch
- B. Implement stacking on the switches in the rack
- C. Add a second UPS into the rack
- D. Install a power converter for the switch

Answer: A

NEW QUESTION 16

- (Exam Topic 1)

A technician must determine if a web page user's visits are connecting to a suspicious website's IP address in the background. Which of the following tools would provide the information on TCP connections?

- A. netstat

- B. tracert
- C. arp
- D. ipconfig
- E. route

Answer: A

NEW QUESTION 21

- (Exam Topic 1)

A technician attempts to replace a switch with a new one of similar model from the same vendor. When the technician moves the fiber and SFP plug, the switch does not completely boot up. Considering that the config files are the same, which of the following is the MOST likely cause of the failure?

- A. Damaged fiber
- B. Corrupted operating system
- C. VLAN mismatch
- D. Bad port

Answer: B

NEW QUESTION 23

- (Exam Topic 1)

A network technician needs to set up an access method for Ann, a manager, to work from home. Ann needs to locally mapped corporate resources to perform her job. Which of the following would provide secure access to the corporate resources?

- A. Utilize an SSH connection to the corporate server.
- B. Use TFTP to transfer files to corporate resources.
- C. Allow RDP through an external firewall.
- D. Connect utilizing client-to-site VPN.

Answer: D

NEW QUESTION 24

- (Exam Topic 1)

In a service provider network, a company has an existing IP address scheme. Company A's network currently uses the following scheme:

```
Subnet 1: 192.168.1.0/26
Subnet 2: 192.168.1.65/26
```

Company b uses the following scheme: Subnet 1: 192.168.1.50/28

The network administrator cannot force the customer to update its IP scheme. Considering this, which of the following is the BEST way for the company to connect these networks?

- A. DMZ
- B. PAT
- C. NAT
- D. VLAN

Answer: C

NEW QUESTION 28

- (Exam Topic 1)

A technician is setting up a public guest network for visitors to access the Internet that must be separate from the corporate network. Which of the following are the BEST steps for the technician to take with minimum overhead configuration? (Choose two.)

- A. Enable SSID broadcasting to identify the guest network
- B. Configure visitor devices to use static IP addresses
- C. Enable two-factor authentication on visitor devices
- D. Configure the access point to use WPA2-AES encryption
- E. Ensure the access point is not running in mixed mode

Answer: AB

NEW QUESTION 29

- (Exam Topic 1)

A technician is assigned to secure a basic wireless network. Which of the following authentication protocol should the technician use to performed this task (select TWO).

- A. RDP
- B. SNMP
- C. WPA2
- D. EAP SSL

Answer: CD

NEW QUESTION 32

- (Exam Topic 1)

A network technician has to integrate three legacy industrial devices into the existing wireless network. The devices only support 802.11b and TKIP. Which of the following should the technician do to connect these devices to the wireless network with the restrictive settings while not affecting the performance of the other

users? (Select Two).

- A. Create a second SSID that uses WPA personal.
- B. Change the encryption to WPA@ personal.
- C. Enable MAC filtering.
- D. Change the encryption to WPA2 Enterprise.

Answer: D

NEW QUESTION 35

- (Exam Topic 1)

A network technician is repurposing a switch that has been in storage for some time. The device has been wiped to factory defaults. Which of the following should be done FIRST to ensure the device has been hardened before configuration?

- A. Generate new keys.
- B. Disable unused ports.
- C. Check for updated firmware.
- D. Configure the default VLAN.

Answer: C

NEW QUESTION 39

- (Exam Topic 1)

802.11 n clients currently have no way to connect to the network. Which of the following devices should be implemented to let the clients connect?

- A. Router
- B. Range extender
- C. VoIP endpoint
- D. Access point

Answer: D

NEW QUESTION 44

- (Exam Topic 1)

Management has requested that services be available within 72 hours of disaster, Budget is a major concern. A contract is signed with a company that has plenty space, and the technician will have the option of putting infrastructure equipment in place. Which of the following BEST describes this business continuity strategy?

- A. Cold site
- B. Differentiate backup
- C. Hot site
- D. Incremental backup
- E. Warm site
- F. Full backup

Answer: A

NEW QUESTION 46

- (Exam Topic 1)

A network technician has unable to make a from a datacenter. The technician attempts to use the cables to connect desktops to the network without success. Which of the following is MOST likely the issue?

- A. The cables have an incorrect pin out
- B. The cables UTP instead of STP.
- C. The cables are 6 instead of Cat 5.
- D. The cables plenum rated.

Answer: D

NEW QUESTION 51

- (Exam Topic 1)

A technician needs to upgrade a SOHO wireless router's firmware. The technician resets the router to factory settings and installs the new firmware. The technician enters the DHCP information and sets the SSID. Which of the following configurations would provide the MOST protection from advance hackers?

- A. Disable the broadcasting of the SSID.
- B. Enable WPA2 authentication for all hosts.
- C. Use private addressing for the DHCP scope.
- D. Install unidirectional antennas.

Answer: B

NEW QUESTION 55

- (Exam Topic 1)

A company recently upgraded all of its printers to networked multifunction devices. Users can print to the new devices, but they would also like the ability to scan and fax files from their computers. Which of the following should the technician update to allow this functionality?

- A. Device software
- B. Printer drivers

- C. Printer firmware
- D. NIC drivers

Answer: C

NEW QUESTION 60

- (Exam Topic 1)

A network technician is implementing a solution on the network to hide the workstation internal IP addresses across a WAN. Which of the following is the technician configuring?

- A. QoS
- B. DMZ
- C. RIP
- D. NAT

Answer: D

NEW QUESTION 64

- (Exam Topic 1)

Two building used to be connected by wireless bridge, but they are upgrading to fiber. Which of the following new devices would be required at the demarcation points?

- A. Wireless access point
- B. Router
- C. Media converter
- D. Firewall

Answer: B

NEW QUESTION 69

- (Exam Topic 1)

Which of the following datacenter security methodologies is MOST likely to remain usable during a network outage?

- A. biometric scanners
- B. door locks
- C. video surveillance
- D. motion detectors

Answer: B

NEW QUESTION 73

- (Exam Topic 1)

A network administrator would like to collect information from several networking devices using SNMP. Which of the following SNMP options should a network administrator use to ensure the data transferred is confidential?

- A. authpriv
- B. SHA
- C. MD5
- D. Authentication passphrase

Answer: A

NEW QUESTION 77

- (Exam Topic 1)

A technician is observing brownout issue at a smaller office. At least once a week, the edge switch power cycles. Which of thy following should the technician do to resolve the issue?

- A. Install a new switch.
- B. Install a UPS.
- C. Replace the switch uplink cable.
- D. Install a new electrical circuit.

Answer: B

NEW QUESTION 81

- (Exam Topic 1)

A technician set up a new SOHO network recently. The installed router has four Ethernet ports; however the customer has seven devices that wired connections. Which of the following should the technician do to BEST meet the customer's requirements?

- A. Install a six-port switch
- B. Configure port forwarding on the router
- C. Install WAPs near the devices.
- D. Configure the switchports as EtherChannel ports.

Answer: A

NEW QUESTION 86

- (Exam Topic 1)

A technician is upgrading the firmware on an older KVM switch. The specifications call for a serial port to connect to the computer on one side, and an Ethernet jack to connect to the switch on the other side. Which of the following connectors does the technician need for this cable? (Choose two.)

- A. RG-9
- B. DB-9
- C. RJ-11
- D. DB-25
- E. RJ-45
- F. BNC

Answer: BE

NEW QUESTION 90

- (Exam Topic 1)

A company has hundreds of nodes on a single subnet and has decided to implement VLANs. Which of the following BEST describes the benefit of this approach?

- A. It segments broadcast domains in the network infrastructure
- B. It provides a faster port to all servers
- C. It provides multiple collision domains on one switchport
- D. It provides multiple broadcast domains within a single collision domain

Answer: A

NEW QUESTION 92

- (Exam Topic 1)

An ISP technician gets a call from a business that just changed equipment but can no longer connect to the Internet. The technician checks the ARP table on the ISP switch, and there is no corresponding MAC address present. Instead, the entry is "Incomplete". Which of the following could cause this condition?

- A. VLAN mismatch
- B. Duplex/Speed mismatch
- C. Duplicate IP address
- D. TX/RX reverse

Answer: B

NEW QUESTION 94

- (Exam Topic 1)

A system administrator receives report from users of odd behavior in regard to recently installed server. While reviewing the server network configuration, the systems administrator does both a forward and a reverse DNS lookup on the host, along with the network adapter configuration.

```
$ host server.company.com
server.company.com has address 129.168.0.100
server.company.com is handled by 100 mail.company.com
$ host 192.168.0.100
100.0.168.192.in-addr.arpa domain name pointer web.company.com
$ host web.company.com
server.company.com has address 129.168.0.50
server.company.com is handled by 100 mail.company.com
$ ifconfig -a
eth0Link encap:Ethernet HWaddr 00:30:48:9D:06:73
Inet addr:192.168.0.100 Bcast:192.168.0.255 Mask:255.255.255.0
UP BROADCAST RUNNING MULTICAST MTU:1500 Metric:1
lo0Link encap:Local Loopback
inet addr:127.0.0.1 Mask:255.0.0.0
UP LOOPBACK RUNNING MTU:16436 Metric:1
```

Which of the following is the problem identified in the output above?

- A. There is no reverse DNS entry for this host.
- B. The server IP address is incorrectly configured.
- C. The DNS lookup entry is incorrectly configured.
- D. The reverse DNS entry is pointing to a different host.

Answer: C

NEW QUESTION 96

- (Exam Topic 1)

A network technician is troubleshooting wireless network issues in a crowded office complex and suspects there is interference from nearby wireless networks. Which of the following should the technician perform to discover possible interference?

- A. Site survey
- B. Vulnerability scanning
- C. Wardriving
- D. Checking logical diagram
- E. Bandwidth test

Answer: A

NEW QUESTION 98

- (Exam Topic 1)

A firewall log reports unencrypted console commands coming in on the WAN interface on the router. Inspection, port 23 is found to berouter. Which of the following should be done to the router?

- A. Block all traffic coming in on that interface.
- B. Use Base64 to obfuscate the console traffic.
- C. Implement a pki to authenticate clients.
- D. Disable the Telnet service on the device.

Answer: A

NEW QUESTION 100

- (Exam Topic 1)

Which of the following BEST describes the BGP routing protocol?

- A. distance vector
- B. hybrid
- C. static
- D. link state

Answer: B

NEW QUESTION 102

- (Exam Topic 1)

Which of the following physical security devices is used to detect unauthorized server room access?

- A. Access badge
- B. Biometrics
- C. Smart card
- D. Video surveillance

Answer: D

NEW QUESTION 105

- (Exam Topic 1)

Which of the following are characteristic of jumbo frames? (Select TWO).

- A. Commonly used on SAN
- B. MTU size greater than 1500
- C. MTU size greater than 10000
- D. Commonly used on IaaS
- E. MTU size greater than 12000

Answer: BD

NEW QUESTION 106

- (Exam Topic 1)

Which of the following can be done to implement network device hardening (Select TWO).

- A. Implement spanning tree
- B. Perform VLAN hopping
- C. Patch and update
- D. Perform backups
- E. Enable port mirroring
- F. Change default admin password

Answer: CF

Explanation:

Network devices come with default credentials, the username and password that enables you to log into the device for configuration. Changing default credentials should be the first step in hardening a new device. As with any other system, avoiding common passwords adds security.

Keep network devices up to date. That means upgrading firmware, patching and updating as necessary to close any security gaps exposed over time.

Services on network devices like routers include common things, like Telnet and HTTP access; and also things you don't normally see, like TCP and UDP small services, debugging and testing tools that primarily use ports 20 and lower. If enabled, these services can be used to launch DoS and other attacks. All modern Cisco devices have these disabled; Cisco's hardening rules insist on disabling unnecessary services.

Using secure protocols hardens network devices. Don't use Telnet to access a managed switch or router, for example, but use SSH so that the communication is encrypted.

Disabling unused ports on network devices enhances port security for access control. This includes standard IP ports and device ports, both physical and virtual for the latter.

NEW QUESTION 111

- (Exam Topic 1)

When enabling jumbo frames on a network device, which of the following parameters is being adjusted?

- A. Speed
- B. Duplex
- C. MTU
- D. TTL

Answer: C

NEW QUESTION 112

- (Exam Topic 1)

The server team has just installed an application across three different servers. They are asking that all requests to the application are spread evenly across the three servers. Which of the following should the network team implement to fulfil the request?

- A. Proxy server
- B. UTM appliance
- C. Content filter
- D. Load balancer

Answer: D

NEW QUESTION 115

- (Exam Topic 1)

Under which of the following layers of the OSI do ATM cells operate?

- A. Data link
- B. Network
- C. Session
- D. Transport
- E. Presentation

Answer: A

NEW QUESTION 120

- (Exam Topic 1)

In which of the following scenarios should a technician use a cross-over cable to provide connectivity?

- A. PC to switch
- B. Switch to AP
- C. Router to switch
- D. Router to modem
- E. PC to PC

Answer: E

NEW QUESTION 121

- (Exam Topic 1)

Which of the following protocols authenticates a PC to the server using a ticket issued to it by the authentication service?

- A. Kerberos
- B. RADIUS
- C. TACACS+
- D. LDAP

Answer: A

NEW QUESTION 123

- (Exam Topic 1)

A network administrator gets a call regarding intermittent network outages across the country. Which of the following should be used to connect to the network so the administrator can troubleshoot this issue from home? (Choose two.)

- A. FTP
- B. SMTP
- C. VPN
- D. SSH
- E. SNMP

Answer: CD

NEW QUESTION 126

- (Exam Topic 1)

A technician is responsible for configuring a new firewall. The hardware team has already installed, powered, and connected the system. Which of the following types of documentation should the technician utilize to complete the task?

- A. Rack diagram
- B. IDF/MDF documentation
- C. Network performance baseline
- D. Logical and physical diagrams

Answer: D

NEW QUESTION 127

- (Exam Topic 1)

A junior technician is setting up a voice control device so the Chief Executive Officer (CEO) will be able to control various things in the office. Of which of the following types of IoT technologies is this an example?

- A. LAN
- B. WAN
- C. SAN
- D. PAN

Answer: D

NEW QUESTION 129

- (Exam Topic 1)

A network administrator is going to be performing a major upgrade to the network. Which of the following should the administrator use in case of a failure?

- A. Baseline report
- B. Vulnerability report
- C. Rollback plan
- D. Business continuity plan

Answer: C

NEW QUESTION 134

- (Exam Topic 1)

Which of the following is the number of broadcast domains that are created when using an unmanaged 12-port switch?

- A. 1
- B. 2
- C. 6
- D. 12

Answer: B

NEW QUESTION 138

- (Exam Topic 1)

The security manager reports that individual systems involved in policy or security violations or incidents cannot be located quickly. The security manager notices the hostnames all appear to be randomly generated characters. Which of the following would BEST assist the security manager in identifying systems involved in security incidents?

- A. Enforce port security to require system authentication
- B. Implement a standardized UNC
- C. Label existing systems with current hostnames
- D. Forward the DHCP logs to the security manager every day

Answer: B

NEW QUESTION 143

- (Exam Topic 1)

Which of the following ports should a network technician open on a firewall to back up the configuration and operating system files of a router to a remote server using the TFTP method possible?

- A. UDP port 22
- B. TCP port 22
- C. TCP port 25
- D. UDP port 53
- E. UDP port 69

Answer: E

NEW QUESTION 145

- (Exam Topic 1)

Which of the following devices should a network administrator configure on the outermost part of the network?

- A. Media converter
- B. Switch
- C. Modem
- D. Firewall

Answer: D

NEW QUESTION 150

- (Exam Topic 1)

A technician is configuring a printer for a client. The technician connects the printer to the network, but is unsure how to determine its switchport. Which of the following should the technician do FIRST to locate the switchport?

- A. Perform a DNS lookup on the server.
- B. Set up an SSH session to the desktop.
- C. Reference the ARP table in the router.
- D. Configure port security on the switch.

Answer: C

NEW QUESTION 154

- (Exam Topic 1)

A firewall administrator is implementing a rule that directs HTTP traffic to an internal server listening on a non-standard socket. Which of the following types of rules is the administrator implementing?

- A. NAT
- B. PAT
- C. STP
- D. SNAT
- E. ARP

Answer: B

NEW QUESTION 157

- (Exam Topic 1)

A contractor is setting up and configuring conference rooms for a convention. The contractor sets up each room in the conference center to allow wired Internet access going to individual tables. The contractor measured the distance between the hotel's patch panel to the jack, and the distance is within Cat 5e specifications. The contractor is concerned that the room will be out of specification if cables are run in each room from the wall jacks. Which of the following actions should the contractor take to ensure the cable runs meet specifications and the network functions properly?

- A. Place a switch at the hotel's patch panel for connecting each room's cables
- B. Place a switch on each table to ensure strong connectivity
- C. Place repeaters between the patch panel and the rooms
- D. place a switch at the wall jack and run the cables in the room from there

Answer: A

NEW QUESTION 162

- (Exam Topic 1)

A network administrator has a monitoring system in place that is currently polling hundreds of network devices at regular intervals. The continuous polling is causing high CPU utilization on the server. Which of the following tasks should the administrator perform to resolve the CPU issue while maintaining full monitoring capabilities?

- A. Remove SNMP polling and configure SNMP traps on each network device
- B. Remove SNMP polling and implement snmpwalk on each network device
- C. Upgrade SNMP to the latest version to mitigate vulnerabilities
- D. Modify SNMP polling to poll only during business hours

Answer: A

NEW QUESTION 166

- (Exam Topic 1)

An employee wishes to use a personal cell phone for work-related purposes, including storage of sensitive company data, during long business trips. Which of the following is needed to protect BOTH the employee and the company?

- A. An NDA ensuring work data stored on the personal phone remains confidential
- B. An AUP covering how a personal phone may be used for work matters
- C. A consent to monitoring policy covering company audits of the personal phone
- D. Real-time remote monitoring of the phone's activity and usage

Answer: D

NEW QUESTION 168

- (Exam Topic 1)

Ann, a network technician, has just installed a fiber switch in a datacenter. To run the fiber cabling, Ann plans the cable route over the top of the rack using the cable trays, down to the switch, coiling up any excess cable. As Ann configures the switch, she notices several messages in the logging buffer stating the receive signal of the SFP is too weak. Which of the following is MOST likely the cause of the errors in the logging buffer?

- A. Bend radius exceeded
- B. Fiber cable mismatch
- C. Fiber type mismatch
- D. Bad fiber switch

Answer: A

NEW QUESTION 172

- (Exam Topic 1)

A technician is trying to determine the IP address of a customer's router. The customer has an IP address of 192.168.1.55/24. Which of the following is the address of the customer's router?

- A. 192.168.0.55
- B. 192.168.1.0
- C. 192.168.1.1
- D. 192.168.5.5
- E. 255.255.255.0

Answer: C

NEW QUESTION 173

- (Exam Topic 1)

A network administrator wants to employ a username and password authentication system for guest WiFi. Which of the following is the BEST option to provide this type of authentication?

- A. port security
- B. MAC filtering
- C. Network access control
- D. Captive portal

Answer: D

NEW QUESTION 178

- (Exam Topic 1)

A technician is replacing a switch at a branch office and discovers the existing backbone cable does not fit in the new switch. The fiber patch panel has circular connections. The new switch has a transceiver that accepts a smaller square adapter of two strands. Which of the following patch cables would the technician need to complete the installation?

- A. LC to SC
- B. SC to ST
- C. LC to ST
- D. ST to ST
- E. SC to SC

Answer: C

NEW QUESTION 181

- (Exam Topic 1)

As part of a transition from a static to a dynamic routing protocol on an organization's internal network, the routing protocol must support IPv4 and VLSM. Based on those requirements, which of the following should the network administrator use? (Choose two.)

- A. OSPF
- B. IS-IS
- C. RIPv1
- D. BGP
- E. VRRP

Answer: AB

NEW QUESTION 182

- (Exam Topic 1)

Which of the following is used to classify network data for the purpose of providing QoS?

- A. STP
- B. VLANs
- C. SIP
- D. DSCP

Answer: D

NEW QUESTION 185

- (Exam Topic 1)

A telecommunications provider has just deployed a new OC-12 circuit at a customer site. While the circuit showed no errors from the provider end to the customer's demarcation point, a network administrator is trying to determine the cause of dropped packets and errors on the circuit. Which of the following should the network administrator do to rule out any problems at Layer 1? (Choose two.)

- A. Use a loopback at the demark and router, and check for a link light
- B. Use an OTDR to validate the cable integrity
- C. Use a pinout tester to validate the cable integrity
- D. Use a multimeter to validate the cable integrity
- E. Check for any devices that may be causing EMI on the cable
- F. Clean the cables to be sure they are free of dust and debris

Answer: AB

NEW QUESTION 186

- (Exam Topic 1)

A network technician is installing a new SOHO branch office that requires the use of a DOCSIS-compatible. The modem needs to be connected to the ISP's network at the demarc. Which of the following cable type should be used?

- A. UTP
- B. Multimode
- C. Coaxial
- D. Serial

Answer: C

NEW QUESTION 191

- (Exam Topic 1)

A technician is setting up a branch office on a point-to-point connection. Which of the following IP network blocks is the MOST efficient use of IP address space for the router connections between the two sites?

- A. /24
- B. /25
- C. /30
- D. /32

Answer: C

NEW QUESTION 196

- (Exam Topic 1)

A building is equipped with light sensors that turn off the fluorescent lights when natural light is above a certain brightness. Users report experiencing network connection issues only during certain hours. The west side of the building experiences connectivity issues in the morning hours and the east side near the end of the day. At night the connectivity issues affect the entire building. Which of the following could be the cause of the connectivity issues?

- A. Light sensors are interfering with the network
- B. EMI from the lights is interfering with the network cables
- C. Network wiring is run perpendicular to electrical conduit
- D. Temperature changes are causing attenuation in copper cabling

Answer: C

NEW QUESTION 197

- (Exam Topic 1)

Which of the following would be the MOST efficient subnet mask for a point-to-point link?

- A. /28
- B. /29
- C. /31
- D. /32

Answer: C

NEW QUESTION 200

- (Exam Topic 1)

Which of the following is a system of notation that uses base 16 rather than base 10?

- A. Hex
- B. Octal
- C. Binary
- D. CIDR

Answer: A

NEW QUESTION 203

- (Exam Topic 1)

A Chief Information Officer (CIO) wants to move some IT services to a cloud service offering. However, the network administrator still wants to be able to control some parts of the cloud service's networking components. Which of the following should be leveraged to complete this task?

- A. IaaS
- B. PaaS
- C. SaaS
- D. DaaS

Answer: B

NEW QUESTION 207

- (Exam Topic 1)

Which of the following WAN technologies provides a guaranteed throughput rate?

- A. DSL
- B. T-1

- C. Cable broadband
- D. Dial-up

Answer: B

NEW QUESTION 211

- (Exam Topic 1)

Joe, an employee at a large regional bank, wants to receive company email on his personal smartphone and table: To authenticate on the mail server, he must first a custom security application on those mobile services. Which of the following policies would BEST enforce this requirement?

- A. Incident response policy
- B. BYOD policy
- C. DLP policy
- D. Remote access policy

Answer: B

NEW QUESTION 216

- (Exam Topic 1)

A technician has been alerted of incoming HTTP traffic on the LAN segment that should not contain any web server's The technician has the IP address of the destination host and wants to determine if the socket for HTTP is open. Which of the following should the technician perform?

- A. Baseline assessment
- B. packet analysis
- C. portscan
- D. Patch-level assessment.

Answer: C

NEW QUESTION 220

- (Exam Topic 1)

A network technician has created a network that consists of a router, a firewall, a switch, and several PCs. Which of the following physical network topologies was created?

- A. Star
- B. Mesh
- C. Ring
- D. Bus

Answer: D

NEW QUESTION 221

- (Exam Topic 1)

A network engineer is designing a new network for a remote site. The remote site consists of ten desktop computers, ten VoIP phones, and two network printers. In addition, two of the desktop computers at the remote site will be used by managers who should be on a separate network from the other eight computers. Which of the following represents the BEST configuration for the remote site?

- A. One router connected to one 24-port switch configured with three VLANs: one for the manager's computers and printer, one for the other computers and printer, and one for the VoIP phones
- B. Two routers with each router connected to a 12-port switch, with a firewall connected to the switch connected to the manager's desktop computers, VoIP phones, and printer
- C. One router connected to one 12-port switch configured for the manager's computers, phones, and printer, and one 12-port switch configured for the other computers, VoIP phones, and printer
- D. One router connected to one 24-port switch configured with two VLANs: one for the manager's computers, VoIP phones, and printer, and one for the other computers, VoIP phones, and printer

Answer: A

NEW QUESTION 226

- (Exam Topic 1)

A technician is diagnosing an issue with a new T1 connection. The router is configured, the cable is connected, but the T1 is down. To verify the configuration of the router, which of the following tools should the technician use?

- A. Loopback adapter
- B. Cable tester
- C. Tone generator
- D. Multimeter

Answer: A

NEW QUESTION 228

- (Exam Topic 1)

A technician is connecting a router directly to a PC using the G1/0/1 interface. Without the use of auto-sensing ports, which of the following cables should be used?

- A. Straight-through
- B. Console
- C. Rollover

D. Crossover

Answer: D

NEW QUESTION 229

- (Exam Topic 1)

A company is allowing its employees to use their personal computers, tables, and IoT devices while at work. However, there are rules and guidelines to which employees must adhere. Which of the following documents applies to these employees?

- A. NDA
- B. SOP
- C. BYOD
- D. SLA

Answer: C

NEW QUESTION 233

- (Exam Topic 1)

Which of the following devices, if implemented, would result in decreased administration time of an 802.11 network running centralized authentication services? (Choose two.)

- A. VPN concentrator
- B. Proxy server
- C. Wireless controller
- D. RADIUS server
- E. Multilayer switch

Answer: CD

NEW QUESTION 235

- (Exam Topic 1)

Users have been experiencing slow network response times, and management has asked the network technician to provide evidence of network improvement. After optimizing the network, which of the following would be required?

- A. IDF/MDF documentation
- B. Change management
- C. Performance baseline
- D. Physical diagram

Answer: C

NEW QUESTION 236

- (Exam Topic 1)

Users in a school lab are reporting slow connections to the servers and the Internet. Other users in the school have no issues. The lab has 25 computers and is connected with a single 1Gb Ethernet connection on Cat 5e wiring to an unmanaged switch. There are also three spare Cat 5e cable runs, which are not in use. The school wants to double the connection speed between the lab and the servers without running new cables. Which of the following would be the BEST solution?

- A. Plug in a second spare cable at each end to double the speed.
- B. Replace the switches with ones that utilize port bonding and use the spare cables.
- C. Replace the switches with 10Gb switches and utilize the existing cabling.
- D. Plug in a second cable and set one port to TX and one port to RX.

Answer: B

NEW QUESTION 241

- (Exam Topic 1)

A network technician has implemented ACLs to limit access to cloud-based file storage. Which of the following security mechanisms has the technician enforced?

- A. DLP
- B. IDS
- C. WAF
- D. WPA
- E. TPM

Answer: C

NEW QUESTION 244

- (Exam Topic 1)

The Chief Executive Officer's (CEO's) tablet cannot connect to the wireless network from the corner office. A network technician verified the tablet can connect to the wireless network in other areas of the building. The distance between the office and the 802.11ac WAP is 150ft (46m), and there are a few cubicles in between. Which of the following is the MOST likely cause of the tablet not connecting?

- A. Absorption
- B. Reflection
- C. Distance
- D. Refraction

E. Attenuation

Answer: C

NEW QUESTION 249

- (Exam Topic 1)

A network technician needs to separate a web server listening on port 80 from the internal LAN and secure the server from the public Internet. The web server should be accessible to the public Internet over port 80 but not the private LAN. Currently, the network is segmented with a network-based firewall using the following IP addressing scheme on each interface:

Zone	Interface	IP Address
Public	eth0	10.0.0.1/24
DMZ	eth1	10.0.1.1/24
Private	eth2	10.0.2.1/24

Which of the following ones should the technician use to place the web server and which of the following firewall rules should the technician configure?

- A. Place the web server in the public zone with an inbound rule from eth0 interface to accept traffic over port 80 designated to the web server
- B. Place the web server in the DMZ with an inbound rule from eth0 interface to eth1 to accept traffic over port 80 designated to the web server
- C. Place the web server in the private zone with an inbound rule from eth2 interface to eth1 to accept traffic over port 80 designated to the web server
- D. Place the web server in the DMZ with an inbound rule from eth1 interface to eth0 to accept traffic over port 80 designated to the web server

Answer: B

NEW QUESTION 253

- (Exam Topic 1)

Which of the following concepts would BEST describe when a company chooses to use a third-party vendor to host and administer critical application?

- A. SaaS
- B. IaaS
- C. PaaS
- D. CASB

Answer: C

NEW QUESTION 255

- (Exam Topic 1)

According to the OSI model, at which of the following layers is data encapsulated into a packet?

- A. Layer 2
- B. Layer 3
- C. Layer 4
- D. Layer 5
- E. Layer 6

Answer: B

NEW QUESTION 260

- (Exam Topic 1)

Which of the following physical security controls is MOST likely to be susceptible to a false positive?

- A. Identification card
- B. Biometric device
- C. Proximity reader
- D. Video camera

Answer: C

NEW QUESTION 261

- (Exam Topic 1)

A second router was installed on a network to be used as a backup for the primary router that works as a gateway. The infrastructure team does not want to change the IP address of the gateway on the devices. Which of the following network components should be used in this scenario?

- A. Loopback IP
- B. Virtual IP
- C. Reserved IP
- D. Public

Answer: B

NEW QUESTION 262

- (Exam Topic 1)

Which of the following will listen on the line to ensure there is no traffic transmitting and implement a back-off timer if a collision occurs?

- A. CSMA/CD
- B. CSMA/CA
- C. MPLS
- D. OSPF

Answer: A

NEW QUESTION 264

- (Exam Topic 1)

A network technician is building a network for a small office. The office currently has cable TV and now requires access to the Internet without adding any cabling other than what is already in place. Which of the following solutions should the technician install to meet these requirements?

- A. DOCSIS modem
- B. Wireless router
- C. DSL modem
- D. Access point

Answer: A

NEW QUESTION 266

- (Exam Topic 1)

A web application is unable to authenticate customers so they can access their bills. The server administrator has tested the LDAP query but is not receiving results. Which of the following is the NEXT step the server administrator should take to correct the problem?

- A. Check port 636 to see if it being blocked.
- B. Change service port 636 to port 389.
- C. Restart the web server.
- D. Verify the browser is using port 443.

Answer: A

NEW QUESTION 271

- (Exam Topic 1)

A technician wants to deploy a network that will require wireless client devices to prompt for a username and password before granting access to be the wireless network. Which of the following must be configured to implement this solution?

- A. EAP-PEAP
- B. CCMP-AES
- C. WPA2-PSK
- D. TKIP-RC4

Answer: A

NEW QUESTION 273

- (Exam Topic 2)

Which of the following uses port 53 by default?

- A. RDP
- B. QoS
- C. DHCP
- D. DNS

Answer: D

NEW QUESTION 275

- (Exam Topic 2)

Lisa, a technician, is asked to not allow FTP traffic on a network. Which of the following ports should be blocked on the firewall to achieve this?

- A. 21
- B. 22
- C. 23
- D. 25

Answer: A

NEW QUESTION 279

- (Exam Topic 2)

Which of the following uses types and codes rather than ports?

- A. EIGRP
- B. ICMP
- C. UDP
- D. IPv6

Answer: B

NEW QUESTION 281

- (Exam Topic 2)

Which of the following is an IPv6 address?

- A. 00:14:38:05:7B:E5
- B. 10.10.1.1
- C. 192.168.1.1
- D. 2001:cdba::3257:9652

Answer: D

NEW QUESTION 286

- (Exam Topic 2)

Jeff, an administrator, has just finished installing a new switch and connected two servers with IPs of 192.168.105.20 and .30. The servers are able to communicate with each other, but are unable to reach the Internet. Jeff sees the following information in the switch configuration:

interface VLAN 105

IP address 192.168.105.5 255.255.255.0

Jeff is able to ping the router at 192.168.105.1 from the switch. Which of the following is the MOST likely cause of the problem?

- A. The subnet mask is incorrect.
- B. A routing loop has occurred.
- C. Jeff used a crossover cable to connect the switch to the gateway.
- D. The server is missing default-gateway information.

Answer: D

NEW QUESTION 288

- (Exam Topic 2)

Which of the following default ports would need to be open on a firewall to allow remote desktop access?

- A. 143
- B. 443
- C. 3389
- D. 8080

Answer: C

NEW QUESTION 291

- (Exam Topic 2)

Which of the following is a secure way to connect to a device?

- A. RSH
- B. TFTP
- C. SNMPv2
- D. SFTP

Answer: D

NEW QUESTION 294

- (Exam Topic 2)

attempting to access a popular website. Which of the following will MOST likely correct the error?

- A. HTTP uses UDP
- B. DNS port 23 needs to be allowed
- C. HTTP needs port 443 allowed
- D. UDP port 53 needs to be allowed

Answer: D

NEW QUESTION 299

- (Exam Topic 2)

Jeff, a network engineer, is troubleshooting an issue where clients are not receiving IP addresses from a new, properly configured DHCP server on another subnet. Statically addressed clients can get onto the same network with no issues. Which of the following is causing the issue?

- A. Incorrect VLAN tagging
- B. Missing helper addresses
- C. Wrong default gateway
- D. Improper routing protocols

Answer: B

NEW QUESTION 300

- (Exam Topic 2)

Which of the following protocols is used to transmit outgoing email?

- A. RDP
- B. NTP

- C. POP3
- D. SMTP

Answer: D

NEW QUESTION 304

- (Exam Topic 2)

In order to reduce spam email, Kim, a network administrator, changes the standard SMTP port from which of the following port numbers to port number 587?

- A. 20
- B. 21
- C. 23
- D. 25

Answer: D

NEW QUESTION 309

- (Exam Topic 2)

Which of the following cables has the MOST twists per inch?

- A. CAT3
- B. CAT5
- C. CAY5e
- D. CAT6

Answer: D

NEW QUESTION 311

- (Exam Topic 2)

Lisa, a network administrator, needs to allow all websites to be accessible by the sales team for business purposes. Which of the following ports need to be enabled on the firewall? (Select TWO).

- A. 23
- B. 25
- C. 53
- D. 80
- E. 443

Answer: DE

NEW QUESTION 316

- (Exam Topic 2)

Which of the following uses eight groups of characters for addressing?

- A. MAC
- B. IPv4
- C. IPv6
- D. DHCP

Answer: C

NEW QUESTION 320

- (Exam Topic 2)

Which of the following defines an IP address that is NOT routed on the Internet?

- A. Multicast
- B. Public
- C. Private
- D. Classful

Answer: C

NEW QUESTION 324

- (Exam Topic 2)

Which of the following operates at OSI layer 2 to forward traffic based on the MAC address?

- A. Switch
- B. Proxy Server
- C. Router
- D. VPN Concetnrator

Answer: A

NEW QUESTION 326

- (Exam Topic 2)

Privilege creep among long-term employees can be mitigated by which of the following procedures?

- A. User permission reviews
- B. Mandatory vacations
- C. Separation of duties
- D. Job function rotation

Answer: A

NEW QUESTION 327

- (Exam Topic 2)

Which of the following protocols would Kurt, a technician, use to synchronize local date and time of a client workstation to that of a server?

- A. RTP
- B. NTP
- C. TFTP
- D. ARP

Answer: B

NEW QUESTION 332

- (Exam Topic 2)

Which of the following protocols are used to connect devices in a secure manner? (Select TWO).

- A. TELNET
- B. SSH
- C. RDP
- D. HTTP
- E. DNS
- F. FTP

Answer: BC

NEW QUESTION 334

- (Exam Topic 2)

A technician is troubleshooting a problem with a network printer. The technician thinks the network printer is out of paper and ink. Which of the following should the technician do NEXT?

- A. Implement the solution
- B. Question users
- C. Test the theory
- D. Escalate the problem

Answer: C

NEW QUESTION 337

- (Exam Topic 2)

Which of the following is characterized by an attacker attempting to map out an organization's staff hierarchy in order to send targeted emails?

- A. Whaling
- B. Impersonation
- C. Privilege escalation
- D. Spear phishing

Answer: A

NEW QUESTION 341

- (Exam Topic 2)

A company would like all HTTP traffic to filter through a proxy server on port 8080. Which of the following port numbers needs to be redirected through the proxy server to accomplish this?

- A. 20
- B. 80
- C. 143
- D. 443

Answer: B

NEW QUESTION 346

- (Exam Topic 2)

Which of the following will allow multiple frequencies to be combined?

- A. WiMAX
- B. MPLS
- C. MIMO
- D. Channel bonding

Answer: D

NEW QUESTION 348

- (Exam Topic 2)

Which of the following wireless standards is capable of ONLY operating on 5.8GHz?

- A. 802.11a
- B. 802.11b
- C. 802.11g
- D. 802.11n

Answer: A

NEW QUESTION 352

- (Exam Topic 2)

Which of the following is the network topology in which computers connect in a closed circle?

- A. Bus
- B. Mesh
- C. Ring
- D. Star

Answer: C

NEW QUESTION 357

- (Exam Topic 2)

An organization recently installed a firewall on the network. Employees must be able to send and receive email from a POP3 server. In which of the following ways should the firewall be configured? (Select TWO).

- A. Allow TCP port 23
- B. Allow TCP port 25
- C. Allow TCP port 110
- D. Allow UDP port 25
- E. Allow UDP port 110

Answer: BC

NEW QUESTION 360

- (Exam Topic 2)

Which of the following is indicative of an FTP bounce?

- A. Arbitrary IP address
- B. Reverse DNS lookups
- C. Same Port Number
- D. File Transfer Success

Answer: A

NEW QUESTION 365

- (Exam Topic 2)

Which of the following access controls enforces permissions based on data labeling at specific levels?

- A. Mandatory access control
- B. Separation of duties access control
- C. Discretionary access control
- D. Role based access control

Answer: A

NEW QUESTION 367

- (Exam Topic 2)

A technician discovers that a malware infection has damaged part of the Windows TCP/IP stack. Which of the following commands can help repair the damage?

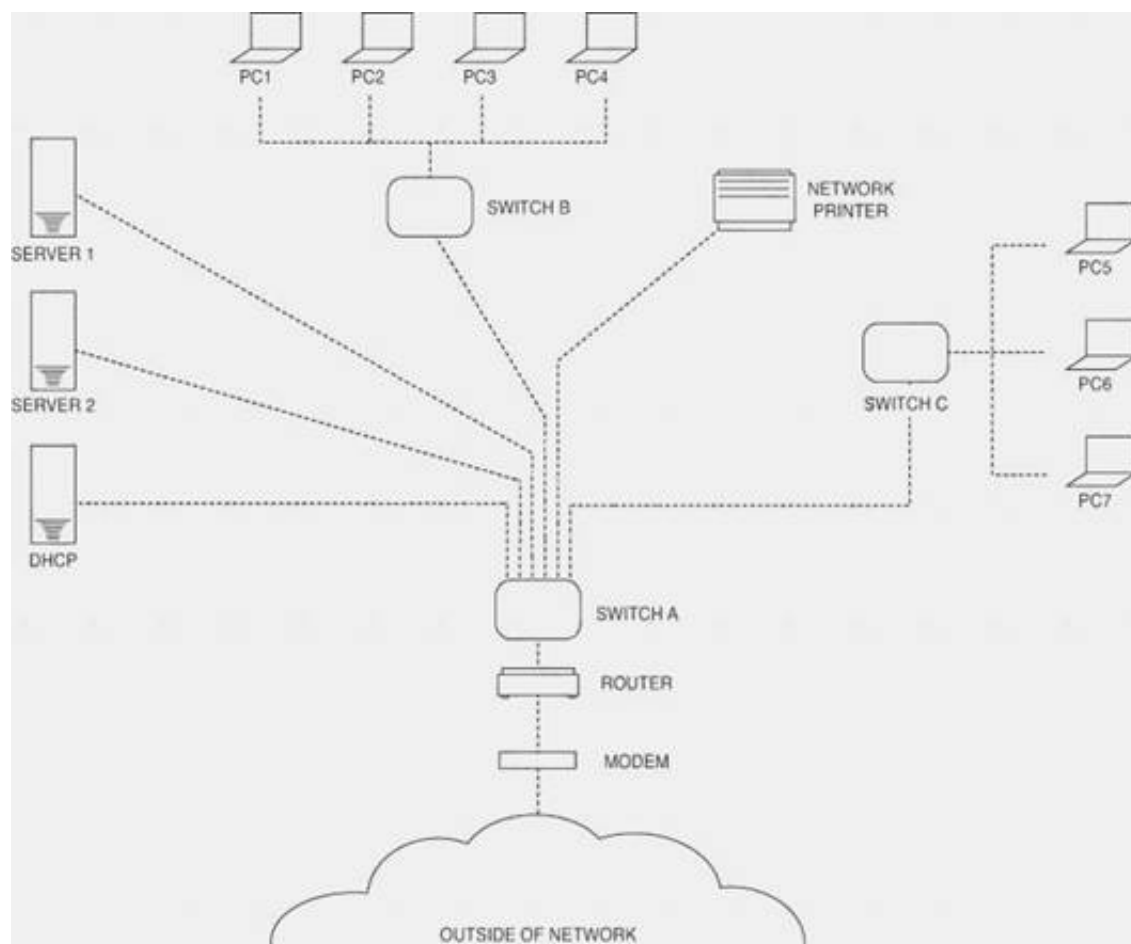
- A. netsh lan
- B. netsh interface
- C. netsh wlan
- D. netsh winsock

Answer: D

NEW QUESTION 370

- (Exam Topic 2)

Please refer to the attached exhibit. Which of the following types of configuration management documentation is represented?



- A. Network security policy
- B. Network baseline
- C. Logical network diagram
- D. Wiring schematic

Answer: C

NEW QUESTION 373

- (Exam Topic 2)

Which of the following standards can operate at both the 2.4GHz and 5GHz frequencies?

- A. 802.11a
- B. 802.11b
- C. 802.11g
- D. 802.11n

Answer: D

NEW QUESTION 377

- (Exam Topic 2)

Which of the following is an invalid MAC address?

- A. AA:CE:58:FD:90:08
- B. 44:98:3E:F8:33:23
- C. 56:AD:BX:89:55:54
- D. 94:9E:FE:EE:8C:DF

Answer: C

NEW QUESTION 378

- (Exam Topic 2)

Which of the following subnet masks would allow for 192.168.0.3 and 192.168.0.240 to be in the same subnet?

- A. 255.255.255.0
- B. 255 255.255.128
- C. 255.255.255.192
- D. 255.255.255.248

Answer: A

NEW QUESTION 381

- (Exam Topic 2)

Which of the following allows a central point to simultaneously address other points without addressing all of them?

- A. Multicast
- B. Subnetting
- C. Unicast
- D. Broadcast

Answer: A

NEW QUESTION 383

- (Exam Topic 2)

Which of the following protocols would be used to send email to an email server?

- A. NTP
- B. FTP
- C. SNMP
- D. SMTP

Answer: D

NEW QUESTION 384

- (Exam Topic 2)

Which of the following specifications would Sara, an administrator, implement as a network access control?

- A. 802.1q
- B. 802.3
- C. 802.11n
- D. 802.1x

Answer: D

NEW QUESTION 385

- (Exam Topic 2)

A VoIP line will MOST likely have which of the following connectors?

- A. RJ-11
- B. DB-25
- C. BNC
- D. RJ-45

Answer: D

NEW QUESTION 388

- (Exam Topic 2)

A username provides which of the following?

- A. Biometrics
- B. Identification
- C. Authorization
- D. Authentication

Answer: B

NEW QUESTION 393

- (Exam Topic 2)

Which of the following is true about an IP address if the first bit is a one and the second bit is a zero?

- A. The address is a Class A address.
- B. The address is a Class B address.
- C. The address is a Class C address.
- D. The address is a Class D address.

Answer: B

NEW QUESTION 394

- (Exam Topic 2)

The Transport Layer of the TCP/IP model corresponds to which of the following layers of the OSI model?

- A. 1
- B. 3
- C. 4
- D. 5

Answer: C

NEW QUESTION 397

- (Exam Topic 2)

Something you have, something you are, and something you know are the three tenets of:

- A. Social engineering
- B. Change management
- C. Remote access
- D. Access control

Answer:

D

NEW QUESTION 400

- (Exam Topic 2)

A network technician needs to address bandwidth issues on the wireless network. There are currently four 802.11n access points. The technician would like to increase the bandwidth. Which of the following would be the BEST solution?

- A. Disable SSID
- B. Channel bonding
- C. MIMO
- D. Increase the signal

Answer: B

NEW QUESTION 405

- (Exam Topic 3)

A national cable company providing TV, telephone, and Internet service to home users over its IP network, has been tracking a large increase of network bandwidth due to P2P file sharing. Which of the following should the company deploy to ensure excellent TV and telephone service?

- A. QoS
- B. Load balancing
- C. High availability
- D. Fiber optics

Answer: A

NEW QUESTION 409

- (Exam Topic 3)

A network administrator notices that all of the company switches are running at capacity on a given day, which is abnormal according to network baselines taken recently. Which tool would BEST allow the administrator to inspect what type of traffic is on the network?

- A. Wire tap
- B. Network sniffer
- C. Load balancing appliance
- D. NIPS

Answer: B

NEW QUESTION 410

- (Exam Topic 3)

A company only wants preapproved laptops to be able to connect to a wireless access point. Which of the following should be configured?

- A. SSID disable
- B. ACL rules
- C. WPA encryption
- D. MAC filtering

Answer: D

NEW QUESTION 412

- (Exam Topic 3)

Zach, a technician, discovers a switch is not communicating with the other switches in a stack. Which of the following is the MOST likely cause?

- A. Both T568A and T568B standards are being used.
- B. STP is disabled.
- C. The cable is not a crossover.
- D. The port is not trunked.

Answer: C

NEW QUESTION 413

- (Exam Topic 3)

Which of the following does the IP address 169.254.222.10 indicate?

- A. No DHCP server connectivity
- B. The DNS server is unavailable
- C. Firewall issue
- D. Duplicate IP addresses are found

Answer: A

NEW QUESTION 415

- (Exam Topic 3)

Jeff, a network technician, is installing a wireless router. Which of the following should Jeff consider to get the BEST signal strength?

- A. WAP placement

- B. PoE devices
- C. MAC filtering
- D. Encryption type

Answer: A

NEW QUESTION 418

- (Exam Topic 3)

A network technician is installing a simple SOHO router with wireless functionality. Which of the following wireless encryption standards would be BEST suited for the HIGHEST level of security?

- A. WPA2
- B. WPA
- C. WEP64
- D. WEP128

Answer: A

NEW QUESTION 423

- (Exam Topic 3)

Which of the following is an example of two factor authentication?

- A. Password, device certificate and PIN
- B. SSL web server certificate and password
- C. User password and administrator password
- D. Password and hardware token OTP

Answer: D

NEW QUESTION 425

- (Exam Topic 3)

Which of the following layers of the OSI model is between the Data Link and Transport layers?

- A. Application
- B. Session
- C. Network
- D. Physical

Answer: C

NEW QUESTION 430

- (Exam Topic 3)

An organization wants to perform maintenance on any of its web servers without affecting the service availability during a scheduled change window. Which of the following network devices would be required to provide this functionality?

- A. Router
- B. Forward proxy
- C. Load balancer
- D. Firewall

Answer: C

NEW QUESTION 434

- (Exam Topic 3)

Zach, a technician, is checking newly installed CAT5e cabling, and suspects that some of the ends were not properly terminated. Which of the following tools will verify this?

- A. Cable tester
- B. Toner probe
- C. OTDR
- D. Loopback plug

Answer: A

NEW QUESTION 439

- (Exam Topic 3)

Which of the following is the correct representation of an IPv6 address?

- A. ::
- B. 0:0:0:0:0:0:0:1
- C. 1:2:3:4:AB:CD:EF
- D. 2001::4860:800f::

Answer: A

NEW QUESTION 443

- (Exam Topic 3)

Lisa, a network technician, needs to introduce a few more cables to the existing patch panel. Which of the following tools would she use?

- A. OTDR
- B. Multimeter
- C. Punch down tool
- D. Temperature monitor

Answer: C

NEW QUESTION 446

- (Exam Topic 3)

A technician needs to verify an Ethernet run is functioning properly. Which of the following tools should be used?

- A. Protocol analyzer
- B. Crimper
- C. Cable tester
- D. Punch down tool

Answer: C

NEW QUESTION 449

- (Exam Topic 3)

An administrator has received a recommendation against deploying WEP as a wireless encryption protection scheme. Which of the following is MOST likely the reason?

- A. WEP's IV is too small.
- B. WEP uses RC4 which is easily accessible and not secure.
- C. WEP uses plain text.
- D. WEP is not well supported.

Answer: A

NEW QUESTION 453

- (Exam Topic 3)

A technician notices that network access is becoming increasingly slow. All of the activity lights, on the only network layer 2 switch, are blinking at steadily increasing rates. Which of the following is the MOST likely cause of the increased traffic?

- A. STP blocking
- B. IP addresses
- C. MTU mismatch
- D. Switching loop

Answer: D

NEW QUESTION 457

- (Exam Topic 3)

A SOHO with ten Wi-Fi equipped laptops needs a new network installed. Which of the following items would be used to setup the office using a new DSL line? (Select TWO).

- A. Router
- B. Wi-Fi Access point
- C. Cable modem
- D. Ten WiMAX adapters
- E. Ten CAT6 patch cables

Answer: AB

NEW QUESTION 459

- (Exam Topic 3)

Which of the following protocols are used for accessing a command line terminal session for management purposes? (Select TWO).

- A. Telnet
- B. FTP
- C. SNMP
- D. SSH
- E. RDP

Answer: AD

NEW QUESTION 460

- (Exam Topic 3)

Zach, a technician, wants to test a laptop's NIC for functionality but has no other networking equipment to attach it to. Which of the following would allow him to test basic functionality of the NIC?

- A. Loopback plug
- B. Protocol analyzer

- C. Smart jack
- D. Coupler

Answer: A

NEW QUESTION 463

- (Exam Topic 3)

Which of the following is networking stand-alone hardware that will permit any WiFi-compliant device to connect to a network?

- A. Wireless hub
- B. Wireless firewall
- C. Wireless access point
- D. Wireless bridge

Answer: C

NEW QUESTION 465

- (Exam Topic 3)

A network technician performs several switch commands to enable various advanced features on the switch in the accounting department. During the configuration changes, several users from this department report connectivity issues. Which of the following logs would the network technician need to analyze to troubleshoot the connectivity issues?

- A. Router logs
- B. History logs
- C. Startup/bootup config logs
- D. Event Viewer logs

Answer: B

NEW QUESTION 466

- (Exam Topic 3)

company wants the public to be able to connect to the wireless network with minimal security, but not be able to connect to the private internal network. Which of the following firewall rules would BEST accomplish this?

- A. Content filtering on the wireless access point
- B. Allow traffic from the wireless access point
- C. Block traffic from the wireless access point
- D. Packet filtering on the wireless access point

Answer: C

NEW QUESTION 467

- (Exam Topic 3)

Which of the following devices can be used to offload outbound web server SSL encryption overhead?

- A. NIPS
- B. Proxy server
- C. Content filter
- D. VPN connectator

Answer: B

NEW QUESTION 470

- (Exam Topic 3)

Lisa, a user, reports increased delays and timeouts when trying to reach several Internet sites. Which of the following would MOST likely be used when investigating the problem at Lisa's workstation?

- A. nslookup
- B. route
- C. nbtstat
- D. arp

Answer: A

NEW QUESTION 475

- (Exam Topic 3)

An 801.11g wireless access point was configured as follows:

- AP encryption forced to WPA2-AES mode only
- MAC address filtering enabled with the following MAC address in the allow list: 00-ab-29-da-c3-40 Which is true about the above configuration?

- A. Any 802.11b/g compatible client can connect to the wireless network if they support TKIP, the MAC address is 00-ab-29-da-c3-40, and the encryption key is known by the client.
- B. An 802.11a compatible client can connect to the wireless network only if its MAC address is 00- ab-29-da-c3-40 and the encryption key is known by the client.
- C. An 802.11n compatible client can connect to the wireless network only if its MAC address is 00- ab-29-da-c3-40 and the encryption key is known by the client.
- D. Any 802.11g compatible client can connect to the wireless network if the encryption key is known by the client.

Answer: C

NEW QUESTION 478

- (Exam Topic 3)

Which of the following technologies allows more than two transceivers with an access point?

- A. MIMO
- B. FIFO
- C. 802.1x
- D. WPA

Answer: A

NEW QUESTION 480

- (Exam Topic 3)

The network optimization process used to allow reasonable use of data, voice, and video on the same network infrastructure is called:

- A. CARP
- B. QoS
- C. Traffic shaping.
- D. Fault tolerance.

Answer: B

NEW QUESTION 482

- (Exam Topic 3)

Lisa, a consultant, is inspecting an office that reports frequent wireless issues. Upon scanning the network broadcasting in the vicinity of the office, seven SSIDs are found. The company's Wi-Fi network and three others all share channel six. Which of the following is MOST likely causing the issue?

- A. Frequency interference
- B. Low signal strength
- C. Standard mismatch
- D. Incorrect channel

Answer: A

NEW QUESTION 485

- (Exam Topic 3)

Kim, a network administrator, should consult which documentation sources FIRST to determine the cause of recent network issues?

- A. Network map
- B. Cable management
- C. Change management
- D. Asset management

Answer: C

NEW QUESTION 487

- (Exam Topic 3)

Two WAPs are positioned with overlapping coverage, but seamless roaming across them is not working. Which of the following should be checked?

- A. WPA should be enabled
- B. PKI should be turned off
- C. WAP SSIDs are matching
- D. WAPs are transmitting on same channel

Answer: C

NEW QUESTION 492

- (Exam Topic 3)

A company decides to deploy customer-facing, touch-scan kiosks. The kiosks appear to have several open service ports that could potentially become compromised. Which of the following is the MOST effective way to protect the kiosks?

- A. Install an IDS to monitor all traffic to and from the kiosks.
- B. Install honeypots on the network to detect and analyze potential kiosk attacks before they occur.
- C. Enable switchport security on the ports to which the kiosks are connected to prevent network –level attacks.
- D. Create a new network segment with ACLs, limiting kiosks' traffic with the internal network.

Answer: D

NEW QUESTION 495

- (Exam Topic 3)

Which of the following protocols is used for remote management of devices?

- A. SNMP
- B. TFTP
- C. Syslog
- D. SMTP

Answer: A

NEW QUESTION 500

- (Exam Topic 3)

There is suspected virus activity on the network. Which of the following would Lisa, a technician, use to study network traffic?

- A. Protocol analyzer
- B. Cable tester
- C. Cable certifier
- D. Environmental monitor

Answer: A

NEW QUESTION 503

- (Exam Topic 3)

A network technician receives a call from a branch office about a problem with its wireless connectivity. The user states the office hosting a large meeting that includes some online training with local businesses. The guest users have all brought devices to connect to the guest network at the branch office. All users are connected to a single WAP and are reporting that connections dropping and network speeds are unusable. Which of the following is the MOST likely cause of this issue?

- A. DHCP exhaustion
- B. Chanel overlapping
- C. Interference
- D. Overcapacity

Answer: C

NEW QUESTION 508

- (Exam Topic 3)

Which of the following will prevent switching loops by selectively shutting down switch ports?

- A. RIP
- B. IGP
- C. STP
- D. VLAN

Answer: C

NEW QUESTION 510

- (Exam Topic 3)

Which of the following is used to create a secure connection between a client and a host?

- A. VLAN
- B. Proxy server
- C. IIS server
- D. VPN

Answer: D

NEW QUESTION 513

- (Exam Topic 3)

At which of the following layers of the OSI model do packets exist?

- A. Network
- B. Session
- C. Data link
- D. Transport

Answer: A

NEW QUESTION 514

- (Exam Topic 3)

The software in a virtualized environment that controls resource allocation and allows multiple operating system guests to run on the same physical platform is known as the:

- A. hypervisor.
- B. LPAR.
- C. broker.
- D. VDI.

Answer: A

NEW QUESTION 519

- (Exam Topic 3)

A junior technician is settings up a voice control device so the Chief Executive Officer (CEO) will able to control various things in the office. Of which of the

following types of the IoT technologies is this an example?

- A. LAN
- B. WAN
- C. SAN
- D. PAN

Answer: B

NEW QUESTION 521

- (Exam Topic 3)

Which of the following technologies allows for redundant links within a Layer 2 segment?

- A. OSPF
- B. RIP
- C. Port Mirroring
- D. Spanning Tree

Answer: D

NEW QUESTION 526

- (Exam Topic 3)

A mobile user is no longer able to access network resources. Jeff, the network technician, is unable to ping the user's workstation. Which of the following commands would MOST likely be used on that workstation to verify its current network settings?

- A. net share
- B. hostname
- C. ipconfig
- D. tracert

Answer: C

NEW QUESTION 531

- (Exam Topic 3)

A technician needs to limit the amount of broadcast traffic on a network and allow different segments to communicate with each other. Which of the following options would satisfy these requirements?

- A. Add a router and enable OSPF.
- B. Add a layer 3 switch and create a VLAN.
- C. Add a bridge between two switches.
- D. Add a firewall and implement proper ACL.

Answer: B

Explanation:

We can limit the amount of broadcast traffic on a switched network by dividing the computers into logical network segments called VLANs.

A virtual local area network (VLAN) is a logical group of computers that appear to be on the same LAN even if they are on separate IP subnets. These logical subnets are configured in the network switches. Each VLAN is a broadcast domain meaning that only computers within the same VLAN will receive broadcast traffic.

To allow different segments (VLAN) to communicate with each other, a router is required to establish a connection between the systems. We can use a network router to route between the VLANs or we can use a 'Layer 3' switch. Unlike layer 2 switches that can only read the contents of the data-link layer protocol header in the packets they process, layer 3 switches can read the (IP) addresses in the network layer protocol header as well.

NEW QUESTION 536

- (Exam Topic 3)

A technician needs to test the length of a newly installed cable run because it is believed that it exceeds the maximum specification length. Which of the following tools should be used?

- A. Cable certifier
- B. Toner probe
- C. Cable tester
- D. Protocol analyzer

Answer: A

NEW QUESTION 540

.....

Thank You for Trying Our Product

We offer two products:

1st - We have Practice Tests Software with Actual Exam Questions

2nd - Questions and Answers in PDF Format

N10-007 Practice Exam Features:

- * N10-007 Questions and Answers Updated Frequently
- * N10-007 Practice Questions Verified by Expert Senior Certified Staff
- * N10-007 Most Realistic Questions that Guarantee you a Pass on Your FirstTry
- * N10-007 Practice Test Questions in Multiple Choice Formats and Updatesfor 1 Year

100% Actual & Verified — Instant Download, Please Click
[Order The N10-007 Practice Test Here](#)