



Cisco

Exam Questions 350-901

Developing Applications using Cisco Core Platforms & APIs

About ExamBible

[Your Partner of IT Exam](#)

Found in 1998

ExamBible is a company specialized on providing high quality IT exam practice study materials, especially Cisco CCNA, CCDA, CCNP, CCIE, Checkpoint CCSE, CompTIA A+, Network+ certification practice exams and so on. We guarantee that the candidates will not only pass any IT exam at the first attempt but also get profound understanding about the certificates they have got. There are so many alike companies in this industry, however, ExamBible has its unique advantages that other companies could not achieve.

Our Advances

* 99.9% Uptime

All examinations will be up to date.

* 24/7 Quality Support

We will provide service round the clock.

* 100% Pass Rate

Our guarantee that you will pass the exam.

* Unique Gurantee

If you do not pass the exam at the first time, we will not only arrange FULL REFUND for you, but also provide you another exam of your claim, ABSOLUTELY FREE!

NEW QUESTION 1

Which two statements are considered best practices according to the 12-factor app methodology for application design? (Choose two.)

- A. Application code writes its event stream to stdout.
- B. Application log streams are archived in multiple replicated databases.
- C. Application log streams are sent to log indexing and analysis systems.
- D. Application code writes its event stream to specific log files.
- E. Log files are aggregated into a single file on individual nodes.

Answer: AD

NEW QUESTION 2

Which two situations are flagged by software tools designed for dependency checking in continuous integration environments, such as OWASP? (Choose two.)

- A. publicly disclosed vulnerabilities related to the included dependencies
- B. mismatches in coding styles and conventions in the included dependencies
- C. incompatible licenses in the included dependencies
- D. test case failures introduced by bugs in the included dependencies
- E. buffer overflows to occur as the result of a combination of the included dependencies

Answer: AE

NEW QUESTION 3

DRAG DROP

Drag and drop the characteristics from the left onto the correct data processing techniques on the right, in the context of GDPR.
Select and Place:

Answer Area

processing of personal data in such a manner that the personal data can no longer be attributed to a specific data subject without the use of additional information	Data anonymization
data stripped of sufficient elements such that the data subject can no longer be identified	
can be re-identified	Data pseudonymization
cannot be re-identified	

- A. Mastered
- B. Not Mastered

Answer: A

Explanation:

Answer Area

processing of personal data in such a manner that the personal data can no longer be attributed to a specific data subject without the use of additional information	Data anonymization
data stripped of sufficient elements such that the data subject can no longer be identified	
can be re-identified	Data pseudonymization
cannot be re-identified	
processing of personal data in such a manner that the personal data can no longer be attributed to a specific data subject without the use of additional information	

NEW QUESTION 4

Which two methods are API security best practices? (Choose two.)

- A. Use tokens after the identity of a client has been established.
- B. Use the same operating system throughout the infrastructure.

- C. Use encryption and signatures to secure data.
- D. Use basic auth credentials over all internal API interactions.
- E. Use cloud hosting services to manage security configuration.

Answer: AC

NEW QUESTION 5

```
import request
import json

meraki_api_key = "<api key>"
url =
"https://api.meraki.com/api/v0/organizations/12345567890/devices"
headers = {
    "X-Cisco-Meraki-API-Key": meraki_api_key,
}
params = {
    "perPage": 3
}
res = requests.get(url, headers=headers, params=params)
formatted_message = """
Meraki Dashboard API Response
-----
Response Status Code : {}
Response Link Header : {}
Response Body         : {}
-----

""".format(res.status_code, res.headers.get('Link'),
json.dumps(res.json(), indent=4))
print(formatted_message)
```

```
<https://n6.meraki.com/api/v0/organizations/1234567890/devices?perPage=
3&startingAfter=0000-0000-0000>; rel=first,
<https://n6.meraki.com/api/v0/organizations/1234567890/devices?perPage=
3&startingAfter=Q2EK-3UBE-RRUY>; rel=next,
<https://n6.meraki.com/api/v0/organizations/1234567890/devices?
endingBefore=zzzz-zzzz-zzzz&perPage=3>; rel=last
```

Refer to the exhibit. Which line of code must be added to this code snippet to allow an application to pull the next set of paginated items?

- A. requests.get(url, links=['next']['url'])
- B. requests.get(url, headers=links['next']['url'])
- C. requests.get(res.links['next']['url'], headers=headers)
- D. requests.get(res.headers.get('Link')['next']['url'], headers=headers)

Answer: C

NEW QUESTION 6

An Etag header is included in the HTTP response for an API resource. What are two benefits of using the value of the Etag for future interactions involving the same API resource? (Choose two.)

- A. caching and optimization of response payloads
- B. creating conditional requests
- C. categorizing and comparing this API resource with others
- D. checking the integrity of the resource
- E. requesting the list of operations authorized for this resource

Answer: AB

NEW QUESTION 7

Refer to the exhibit. An application uses an API to periodically sync a large data set. Based on the HTTP message sequence provided, which statements are true about the caching behavior seen in the scenario? (Choose two.)

- A. The full dataset was transmitted to the client twice.
- B. The dataset changed sometime between message #4 and #5.
- C. A partial dataset was transmitted to the client in message #4.
- D. The dataset did not change during the scenario.
- E. Messages #3 and #5 are equivalent.

Answer: AD

NEW QUESTION 8

Refer to the exhibit. Which set of API requests must be executed by a Webex Teams bot after receiving a webhook callback to process messages in a room and reply with a new message back to the same room?

A. **GET /message&roomId=<ROOM_ID>**

POST /messages

{ "roomId": "<ROOM_ID>", "text": "<MESSAGE>" }

B. **GET /messages&mentionedPeople=me&roomId=<ROOM_ID>**

```
PUT /messages
{ "roomId": "<ROOM_ID>", "text": "<MESSAGE>" }
```

C. **GET /message&roomId=<ROOM_ID>**

```
PUT /messages
{ "roomId": "<ROOM_ID>", "text": "<MESSAGE>" }
```

D. **GET /messages&mentionedPeople=me&roomId=<ROOM_ID>**

```
POST /messages
{ "roomId": "<ROOM_ID>", "text": "<MESSAGE>" }
```

Answer: B

NEW QUESTION 9

The UCS Python SDK includes modules for Service Profile template creation. Which two UCS Service Profile template types are supported? (Choose two.)

- A. initial-template
- B. updating-template
- C. abstract-template
- D. attached-template
- E. base-template

Answer: AB

NEW QUESTION 10

```
import http.client

conn = http.client.HTTPSConnection("dnac.cisco.com")

headers = {
    '__runsync': "true",
    '__timeout': "30",
    '__persistbapioutput': "true",
}

conn.request("□", "/dna/intent/api/v1/□?timestamp=10000", headers=headers)

res = conn.getresponse()
data = res.read()

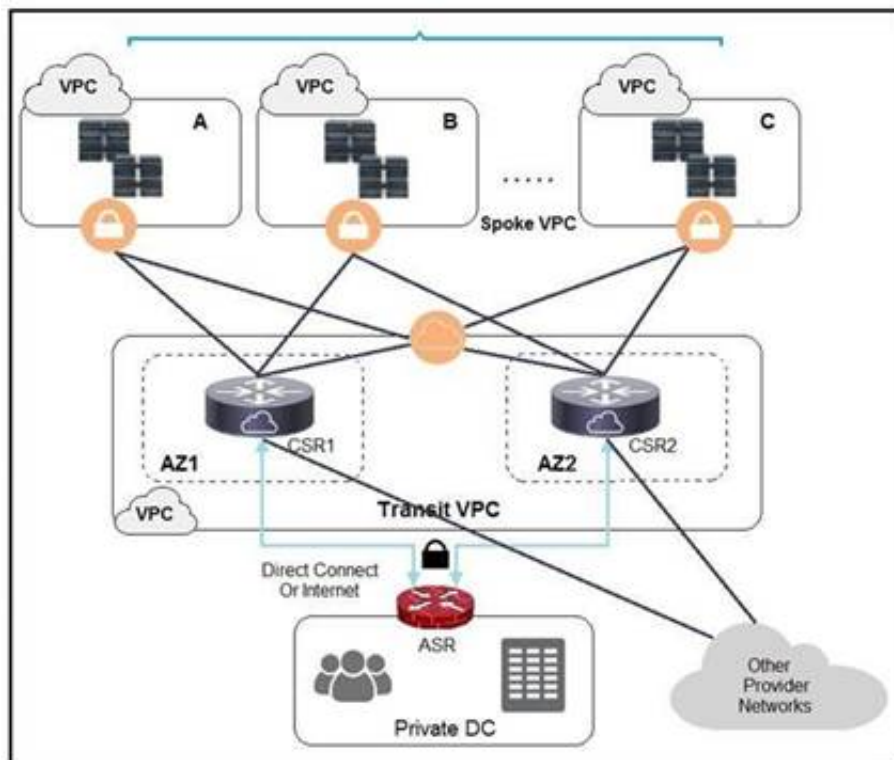
print(data.decode("utf-8"))
```

Refer to the exhibit. Which configuration of method and parameter retrieves the health of a laptop connected to the network from Cisco DNA Center?

- A. PUT; network-health;
- B. GET; client-health;
- C. GET; network-device;
- D. POST; network-device;

Answer: C

NEW QUESTION 10



Refer to the exhibit. A company has extended networking from the data center to the cloud through Transit VPC. Which two statements describe the benefits of this approach? (Choose two.)

- A. Dynamic routing combined with multi-AZ- deployment creates a robust network infrastructure.
- B. VPC virtual gateways provide highly available connections to virtual networks.
- C. Dedicated VPC simplifies load balancing by combining internal and external web services.
- D. VPC virtual gateways provide more secure connections to virtual networks.
- E. Dedicated VPC simplifies routing by not combining this service with other shared services.

Answer: BD

NEW QUESTION 15

Which two principles are included in the codebase tenet of the 12-factor app methodology? (Choose two.)

- A. An application is always tracked in a version control system.
- B. There are multiple codebases per application.
- C. The codebase is the same across all deploys.
- D. There can be a many-to-one correlation between codebase and application.
- E. It is only possible to have one application deployment per codebase.

Answer: AE

NEW QUESTION 17

Which two techniques protect against injection attacks? (Choose two.)

- A. input validation
- B. trim whitespace
- C. limit text areas to 255 characters
- D. string escaping of user free text and data entry
- E. only use dropdown, checkbox, and radio button fields

Answer: AE

NEW QUESTION 18

Which two strategies are used to protect personally identifiable information? (Choose two.)

- A. Encrypt data in transit.
- B. Encrypt hash values of data.
- C. Encrypt data at rest.
- D. Only hash usernames and passwords for efficient lookup.
- E. Only encrypt usernames and passwords for efficient lookup.

Answer: AB

NEW QUESTION 23

Which HTTP status code indicates that a client application is experiencing intentional rate limiting by the server?

- A. 202
- B. 401
- C. 429
- D. 503

Answer: C

NEW QUESTION 25

A heterogeneous network of vendors and device types needs automating for better efficiency and to enable future automated testing. The network consists of switches, routers, firewalls and load balancers from different vendors, however they all support the NETCONF/RESTCONF configuration standards and the YAML models with every feature the business requires. The business is looking for a buy versus build solution because they cannot dedicate engineering resources, and they need configuration diff and rollback functionality from day 1.

Which configuration management for automation tooling is needed for this solution?

- A. Ansible
- B. Ansible and Terraform
- C. NSO
- D. Terraform
- E. Ansible and NSO

Answer: E

NEW QUESTION 27

```
name: VRFs
ios_vrf:
  vrfs: "{{ local_vrfs }}"
  state: present
  purge: yes
```

Refer to the exhibit. The YAML represented is using the ios_vrf module. As part of the Ansible playbook workflow, what is the result when this task is run?

- A. VRFs not defined in the host_vars file are removed from the device.
- B. VRFs not defined in the host_vars file are added to the device, and any other VRFs on the device remain.
- C. VRFs defined in the host_vars file are removed from the device.
- D. VRFs are added to the device from the host_vars file, and any other VRFs on the device are removed.

Answer: D

NEW QUESTION 31

```
- name: Configure Interfaces
  with_items: "{{ interfaces }}"
  netconf_config:
    <<: *host_info
    xml: |
      <config>
        <interfaces xmlns="urn:ietf:params:xml:ns:yang:ietf-interfaces">
          <interface>
            <name>{{ item.interface_type }}{{ item.interface_id }}</name>
            <description>{{ item.description }}</description>
            <type xmlns:ianaift="urn:ietf:params:xml:ns:yang:iana-if-type">ianaift:ethernetCsmacd</type>
            <enabled>true</enabled>
            <ipv4 xmlns="urn:ietf:params:xml:ns:yang:ietf-ip">
              <address>
                <ip>{{ item.ip_address }}</ip>
                <netmask>{{ item.subnet_mask }}</netmask>
              </address>
            </ipv4>
          </interface>
        </interfaces>
      </config>
```

Refer to the exhibit. As part of the Ansible playbook workflow, several new interfaces are being configured using the netconf_config module. The task references the interface variables that are unique per device. In which directory is the YAML file with these variables found?

- A. host_vars directory
- B. home directory
- C. group_vars directory
- D. current working directory

Answer: A

NEW QUESTION 35

.....

Relate Links

100% Pass Your 350-901 Exam with ExamBible Prep Materials

<https://www.exambible.com/350-901-exam/>

Contact us

We are proud of our high-quality customer service, which serves you around the clock 24/7.

Viste - <https://www.exambible.com/>