

Cisco

Exam Questions 350-901

Developing Applications using Cisco Core Platforms & APIs



NEW QUESTION 1

Which two statements are considered best practices according to the 12-factor app methodology for application design? (Choose two.)

- A. Application code writes its event stream to stdout.
- B. Application log streams are archived in multiple replicated databases.
- C. Application log streams are sent to log indexing and analysis systems.
- D. Application code writes its event stream to specific log files.
- E. Log files are aggregated into a single file on individual nodes.

Answer: AD

NEW QUESTION 2

An organization manages a large cloud-deployed application that employs a microservices architecture. No notable issues occur with downtime because the services of this application are redundantly deployed over three or more data center regions. However, several times a week reports are received about application slowness. The container orchestration logs show faults in a variety of containers that cause them to fail and then spin up brand new. Which action must be taken to improve the resiliency design of the application while maintaining current scale?

- A. Update the base image of the containers.
- B. Test the execution of the application with another cloud services platform.
- C. Increase the number of containers running per service.
- D. Add consistent “try/catch(exception)” clauses to the code.

Answer: D

NEW QUESTION 3

An application is hosted on Google Kubernetes Engine. A new JavaScript module is created to work with the existing application. Which task is mandatory to make the code ready to deploy?

- A. Create a Dockerfile for the code base.
- B. Rewrite the code in Python.
- C. Build a wrapper for the code to “containerize” it.
- D. Rebase the code from the upstream git repo.

Answer: D

NEW QUESTION 4

DRAG DROP

Drag and drop the characteristics from the left onto the correct data processing techniques on the right, in the context of GDPR. Select and Place:

Answer Area

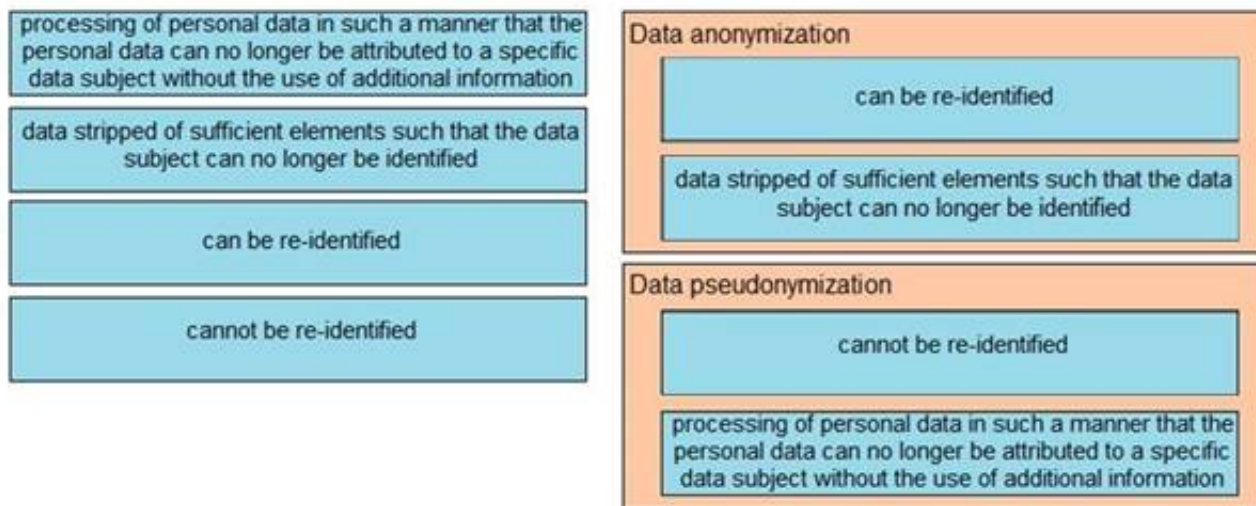
processing of personal data in such a manner that the personal data can no longer be attributed to a specific data subject without the use of additional information	Data anonymization
data stripped of sufficient elements such that the data subject can no longer be identified	
can be re-identified	
cannot be re-identified	Data pseudonymization

- A. Mastered
- B. Not Mastered

Answer: A

Explanation:

Answer Area



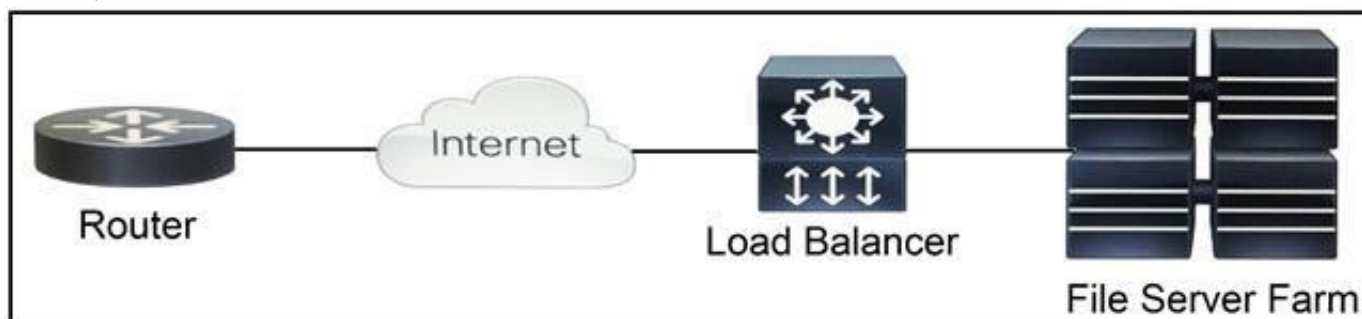
NEW QUESTION 5

Which two data encoding techniques are supported by gRPC? (Choose two.)

- A. XML
- B. JSON
- C. ASCII
- D. ProtoBuf
- E. YAML

Answer: BE

NEW QUESTION 6



Refer to the exhibit. Which two functions are performed by the load balancer when it handles traffic originating from the Internet destined to an application hosted on the file server farm? (Choose two.)

- A. Terminate the TLS over the UDP connection from the router and originate an HTTPS connection to the selected server.
- B. Terminate the TLS over the UDP connection from the router and originate an HTTP connection to the selected server.
- C. Terminate the TLS over the TCP connection from the router and originate an HTTP connection to the selected server.
- D. Terminate the TLS over the TCP connection from the router and originate an HTTPS connection to the selected server.
- E. Terminate the TLS over the SCTP connection from the router and originate an HTTPS connection to the selected server.

Answer: DE

NEW QUESTION 7

Which two methods are API security best practices? (Choose two.)

- A. Use tokens after the identity of a client has been established.
- B. Use the same operating system throughout the infrastructure.
- C. Use encryption and signatures to secure data.
- D. Use basic auth credentials over all internal API interactions.
- E. Use cloud hosting services to manage security configuration.

Answer: AC

NEW QUESTION 8

Refer to the exhibit. The cURL POST request creates an OAuth access token for authentication with FDM API requests. What is the purpose of the file “@token_data” that cURL is handling?

- A. This file is a container to log possible error responses in the request.
- B. This file is given as input to store the access token received from FDM.
- C. This file is used to send authentication related headers.
- D. This file contains raw data that is needed for token authentication.

Answer: B

NEW QUESTION 9

```
import request
import json

meraki_api_key = "<api key>"
url =
"https://api.meraki.com/api/v0/organizations/12345567890/devices"
headers = {
    "X-Cisco-Meraki-API-Key": meraki_api_key,
}
params = {
    "perPage": 3
}
res = requests.get(url, headers=headers, params=params)
formatted_message = """
Meraki Dashboard API Response
-----
Response Status Code : {}
Response Link Header : {}
Response Body        : {}
-----
""".format(res.status_code, res.headers.get('Link'),
json.dumps(res.json(), indent=4))
print(formatted_message)
```

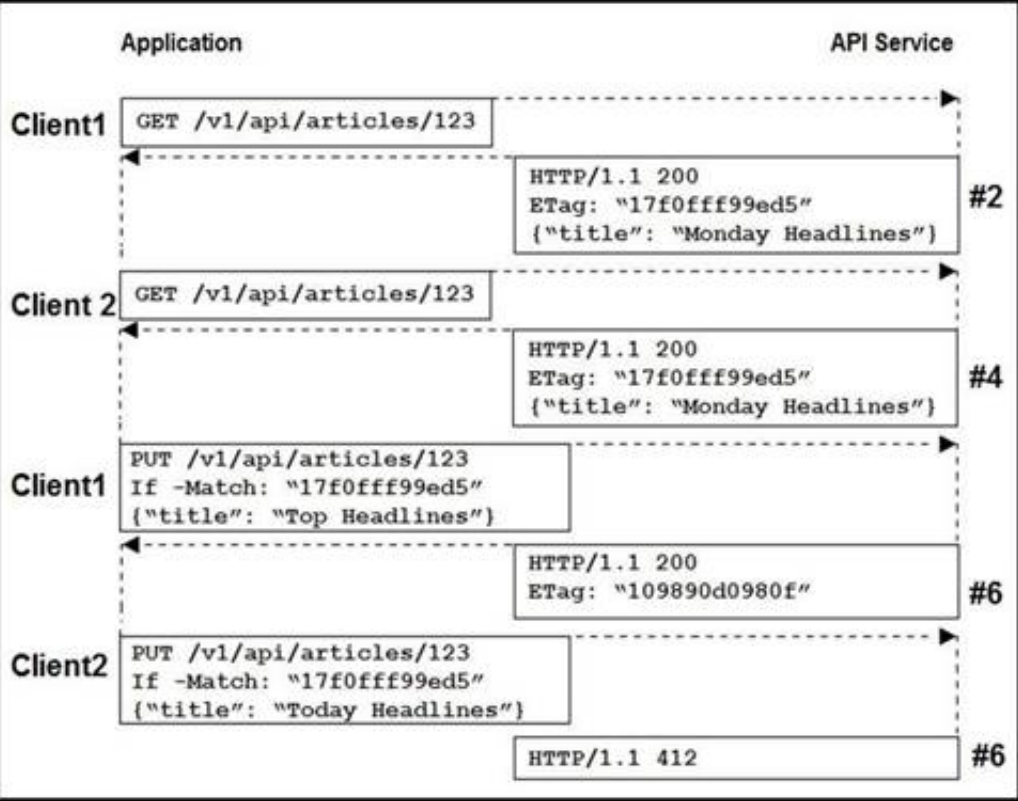
```
<https://n6.meraki.com/api/v0/organizations/1234567890/devices?perPage=
3&startingAfter=0000-0000-0000>; rel=first,
<https://n6.meraki.com/api/v0/organizations/1234567890/devices?perPage=
3&startingAfter=Q2EK-3UBE-RRUY>; rel=next,
<https://n6.meraki.com/api/v0/organizations/1234567890/devices?
endingBefore=zzzz-zzzz-zzzz&perPage=3>; rel=last
```

Refer to the exhibit. Which line of code must be added to this code snippet to allow an application to pull the next set of paginated items?

- A. requests.get(url, links=['next']['url'])
- B. requests.get(url, headers=links['next']['url'])
- C. requests.get(res.links['next']['url'], headers=headers)
- D. requests.get(res.headers.get('Link')['next']['url'], headers=headers)

Answer: C

NEW QUESTION 10



Refer to the exhibit. Two editors are concurrently updating an article's headline from their mobile devices. What results from this scenario based on this REST API sequence?

- A. The article is marked as "Conflicted"
- B. The article headline is "Monday Headlines"
- C. The article headline is "Today Headlines"
- D. The article headline is "Top Headlines"

Answer: B

NEW QUESTION 10

An application uses OAuth to get access to several API resources on behalf of an end user. What are two valid parameters to send to the authorization server as part of the first step of an authorization code grant flow? (Choose two.)

- A. URI to which the authorization server will send the user-agent back when access is granted or denied
- B. list of the API resources that the application is requesting to access
- C. secret that was generated by the authorization server when the application registered as an OAuth integration
- D. list of scopes that correspond to the API resources to which the application is requesting to access

E. name of the application under which the application registered as an OAuth integration

Answer: AC

NEW QUESTION 13

Refer to the exhibit. Which set of API requests must be executed by a Webex Teams bot after receiving a webhook callback to process messages in a room and reply with a new message back to the same room?

A. **GET /message&roomId=<ROOM_ID>**

POST /messages
{ "roomId": "<ROOM_ID>", "text": "<MESSAGE>" }

B. **GET /messages&mentionedPeople=me&roomId=<ROOM_ID>**

PUT /messages
{ "roomId": "<ROOM_ID>", "text": "<MESSAGE>" }

C. **GET /message&roomId=<ROOM_ID>**

PUT /messages
{ "roomId": "<ROOM_ID>", "text": "<MESSAGE>" }

D. **GET /messages&mentionedPeople=me&roomId=<ROOM_ID>**

POST /messages
{ "roomId": "<ROOM_ID>", "text": "<MESSAGE>" }

Answer: B

NEW QUESTION 18

Which snippet presents the correct API call to configure, secure, and enable an SSID using the Meraki API?

A. **curl -X PUT **
**--url 'https://api.meraki.com/api/v0/networks/:networkId/ssids/2' **
**-H 'X-Cisco-Meraki-API-Key: 15da0c6ffff295f16267f88f98694cf29a86ed87' **
**-H 'Accept: application/json' **
**-H 'Content-type: application/json' **
--data-raw '{
"name": "My SSID",
"enabled": false,
"authMode": "psk",
"encryptionMode": "wpa",
"psk": "meraki123",
"wpaEncryptionMode": "WPA1 and WPA2"
}'

B. **curl -X PUT **
**--url 'https://api.meraki.com/api/v0/networks/:networkId/ssids/2' **
**-H 'X-Cisco-Meraki-API-Key: 15da0c6ffff295f16267f88f98694cf29a86ed87' **
**-H 'Accept: application/json' **
**-H 'Content-type: application/json' **
--data-raw '{
"name": "My SSID",
"enabled": true,
"authMode": "psk",
"encryptionMode": "wpa",
"psk": "meraki123",
"wpaEncryptionMode": "WPA1 and WPA2"
}'

C.

- ```
curl -X PUT \
--url 'https://api.meraki.com/api/v0/networks/:networkId/ssids/2' \
-H 'X-Cisco-Meraki-API-Key: 15da0c6ffff295f16267f88f98694cf29a86ed87' \
-H 'Accept: application/json' \
-H 'Content-type: application/json' \
--data-raw '{
 "enabled": true,
 "useVlanTagging": true
}'
```
- D. 

```
curl -X PUT \
--url 'https://api.meraki.com/api/v0/networks/:networkId/ssids/2' \
-H 'X-Cisco-Meraki-API-Key: 15da0c6ffff295f16267f88f98694cf29a86ed87' \
-H 'Accept: application/json' \
-H 'Content-type: application/json' \
--data-raw '{
 "name": "My SSID",
 "enabled": true,
}'
```

**Answer:** B

#### NEW QUESTION 20

The UCS Python SDK includes modules for Service Profile template creation. Which two UCS Service Profile template types are supported? (Choose two.)

- A. initial-template
- B. updating-template
- C. abstract-template
- D. attached-template
- E. base-template

**Answer:** AB

#### NEW QUESTION 23

A container running a Python script is failing when it reaches the integration testing phase of the CI/CD process. The code has been reviewed thoroughly and the build process works on this container and all other containers pass unit and integration testing. What should be verified to resolve the issue?

- A. that the correct port is exposed in the Dockerfile
- B. that the necessary modules and packages are installed on build
- C. that the script is running from the right directory
- D. that the Python version of the container image is correct

**Answer:** B

#### NEW QUESTION 25

```
import http.client

conn = http.client.HTTPSConnection("dnac.cisco.com")

headers = {
 '__runsync': "true",
 '__timeout': "30",
 '__persistbapioutput': "true",
}

conn.request("□", "/dna/intent/api/v1/□?timestamp=10000", headers=headers)

res = conn.getresponse()
data = res.read()

print(data.decode("utf-8"))
```

Refer to the exhibit. Which configuration of method and parameter retrieves the health of a laptop connected to the network from Cisco DNA Center?

- A. PUT; network-health;
- B. GET; client-health;
- C. GET; network-device;
- D. POST; network-device;

**Answer:** C

**NEW QUESTION 30**

On a Cisco Catalyst 9300 Series Switch, the guest shell is being used to create a service within a container. Which change is needed to allow the service to have external access?

- A. Apply ip nat overload on VirtualPortGroup0.
- B. Apply ip nat inside on Interface VirtualPortGroup0.
- C. Apply ip nat outside on Interface VirtualPortGroup0.
- D. Apply ip nat inside on Interface GigabitEthernet1.

**Answer: B**

**NEW QUESTION 31**

Into which two areas are AppDynamics APIs categorized? (Choose two.)

- A. application-centric
- B. analytics-events
- C. database-visibility
- D. platform-side
- E. agent-side

**Answer: DE**

**NEW QUESTION 35**

While developing an application following the 12-factor app methodology, which approach should be used in the application for logging?

- A. Write a log to a file in the application directory.
- B. Write a log to a file in /var/log.
- C. Write the logs buffered to stdout.
- D. Write the logs unbuffered to stdout.

**Answer: D**

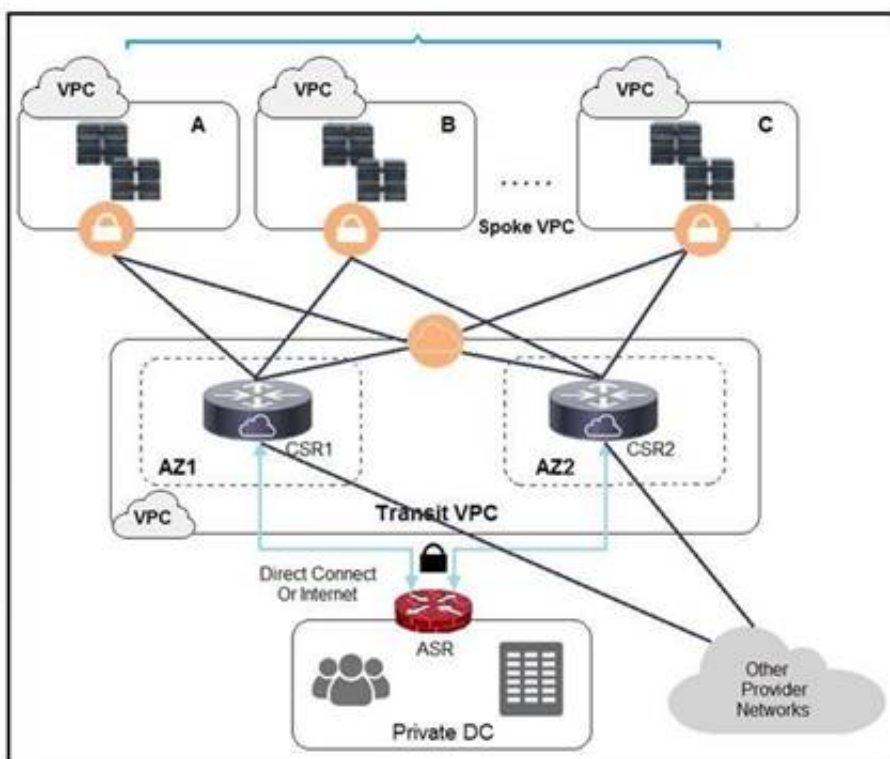
**NEW QUESTION 38**

A web application is susceptible to cross-site scripting. Which two methods allow this issue to be mitigated? (Choose two.)

- A. Use only drop downs.
- B. Limit user input to acceptable characters.
- C. Encrypt user input on the client side.
- D. Use AES encryption to secure the script.
- E. Remove all HTML/XML tags from user input.

**Answer: BD**

**NEW QUESTION 41**



Refer to the exhibit. A company has extended networking from the data center to the cloud through Transit VPC. Which two statements describe the benefits of this approach? (Choose two.)

- A. Dynamic routing combined with multi-AZ- deployment creates a robust network infrastructure.
- B. VPC virtual gateways provide highly available connections to virtual networks.
- C. Dedicated VPC simplifies load balancing by combining internal and external web services.
- D. VPC virtual gateways provide more secure connections to virtual networks.
- E. Dedicated VPC simplifies routing by not combining this service with other shared services.

**Answer: BD**



**NEW QUESTION 45**

Which two principles are included in the codebase tenet of the 12-factor app methodology? (Choose two.)

- A. An application is always tracked in a version control system.
- B. There are multiple codebases per application.
- C. The codebase is the same across all deploys.
- D. There can be a many-to-one correlation between codebase and application.
- E. It is only possible to have one application deployment per codebase.

**Answer:** AE

**NEW QUESTION 50**

Which two strategies are used to protect personally identifiable information? (Choose two.)

- A. Encrypt data in transit.
- B. Encrypt hash values of data.
- C. Encrypt data at rest.
- D. Only hash usernames and passwords for efficient lookup.
- E. Only encrypt usernames and passwords for efficient lookup.

**Answer:** AB

**NEW QUESTION 51**

The response from a server includes the header ETag: W/"7eb8b94419e371767916ef13e0d6e63d". Which statement is true?

- A. The ETag has a Strong validator directive.
- B. The ETag has a Weak validator directive, which is an optional directive.
- C. The ETag has a Weak validator directive, which is a mandatory directive.
- D. The ETag has a Strong validator directive, which it is incorrectly formatted.

**Answer:** B

**NEW QUESTION 53**

```
- name: Configure Interfaces
 with_items: "{{interfaces}}"
 netconf_config:
 <<: *host_info
 xml: |
 <config>
 <interfaces xmlns="urn:ietf:params:xml:ns:yang:ietf-interfaces">
 <interface>
 <name>{{item.interface_type}}{{item.interface_id}}</name>
 <description>{{item.description}}</description>
 <type xmlns:ianaift="urn:ietf:params:xml:ns:yang:iana-if-type">ianaift:ethernetCsmacd</type>
 <enabled>true</enabled>
 <ipv4 xmlns="urn:ietf:params:xml:ns:yang:ietf-ip">
 <address>
 <ip>{{item.ip_address}}</ip>
 <netmask>{{item.subnet_mask}}</netmask>
 </address>
 </ipv4>
 </interface>
 </interfaces>
 </config>
```

Refer to the exhibit. The Ansible playbook is using the netconf\_module to configure an interface using a YANG model. As part of this workflow, which YANG models augment the interface?

- A. ietf-interfaces and ietf-ip
- B. iana-if-type and ietf-interfaces
- C. ietf-ip and openconfig-interface
- D. ietf-ip and iana-if-type

**Answer:** B

**NEW QUESTION 57**

```
name: VRFs
ios_vrf:
 vrf: "{{ local_vrf }}"
 state: present
 purge: yes
```

Refer to the exhibit. The YAML represented is using the ios\_vrf module. As part of the Ansible playbook workflow, what is the result when this task is run?

- A. VRFs not defined in the host\_vars file are removed from the device.
- B. VRFs not defined in the host\_vars file are added to the device, and any other VRFs on the device remain.
- C. VRFs defined in the host\_vars file are removed from the device.



D. VRFs are added to the device from the host\_vars file, and any other VRFs on the device are removed.

**Answer:** D

#### NEW QUESTION 59

.....

## Thank You for Trying Our Product

### We offer two products:

1st - We have Practice Tests Software with Actual Exam Questions

2nd - Questions and Answers in PDF Format

### 350-901 Practice Exam Features:

- \* 350-901 Questions and Answers Updated Frequently
- \* 350-901 Practice Questions Verified by Expert Senior Certified Staff
- \* 350-901 Most Realistic Questions that Guarantee you a Pass on Your First Try
- \* 350-901 Practice Test Questions in Multiple Choice Formats and Updates for 1 Year

**100% Actual & Verified — Instant Download, Please Click**  
**[Order The 350-901 Practice Test Here](#)**