

Exam Questions 010-151

Cisco Certified Technician (CCT) for Data Center

<https://www.2passeasy.com/dumps/010-151/>



NEW QUESTION 1

Which method does FCIP use to enable connectivity of geographically distributed Fibre Channel SANs over IP?

- A. routing
- B. tunneling
- C. handshaking
- D. transporting

Answer: B

NEW QUESTION 2

The Ethernet specification details several different fiber optic media types. What is the wire transmission speed for 100BASE-FX Ethernet?

- A. 10 Mb/s
- B. 100 Mb/s
- C. 1000 Mb/s
- D. 10000 Mb/s

Answer: B

NEW QUESTION 3

Which fiber optic cable type is used most often with a Subscriber connector?

- A. dual-mode
- B. single-mode
- C. straight-mode
- D. multi-mode
- E. subscriber-mode

Answer: B

NEW QUESTION 4

Which type of connection across the network does a SAN allow for multiple servers to access an unlimited amount of storage devices?

- A. any-to-many
- B. many-to-any
- C. any-to-any
- D. any-to-one
- E. one-to-any
- F. one-to-one

Answer: C

NEW QUESTION 5

Which two statements about the Ethernet media are true? (Choose two.)

- A. A twisted-pair cable system has each pair of wires twisted together to reduce electromagnetic interferenc
- B. Compared to multimode fiber, the single-mode fiber is designed for shorter distances with higher cos
- C. 40 Gigabit Ethernet twinax cables deploy Enhanced Quad Small Form Factor Pluggable (QSFP+) connector
- D. The twinax cables can be found in either a shielded twisted-pair or an unshielded twisted-pair variatio

Answer: AC

NEW QUESTION 6

What is the wire transmission speed for 100GBASE-ER4 Ethernet?

- A. 100 Mb/s
- B. 1 Gb/s
- C. 10 Gb/s
- D. 100 Gb/s

Answer: D

NEW QUESTION 7

Which two statements about PCIe are true? (Choose two.)

- A. The PCIe link is built around dedicated unidirectional couples of serial, point-to-point connections known as lane
- B. You can install a PCI Express x8 adapter into an x4 slo
- C. The PCIe standard is a bus-based system in which all the devices share the same bidirectional, 32-bit or 64-bit, parallel signal pat
- D. The PCIe 1.0 standard doubles the transfer rate compared to PCIe 2.0.
- E. A link that is composed of four lanes is called an x4 lin

Answer: AE

NEW QUESTION 8

How do you find the serial number of a Cisco UCS 5108 Blade Server chassis?

- A. Use the Cisco UCS Admi
- B. Use the Cisco UCS Applicatio
- C. Use the Cisco UCS Assistan
- D. Use the Cisco UCS Manage

Answer: D

NEW QUESTION 9

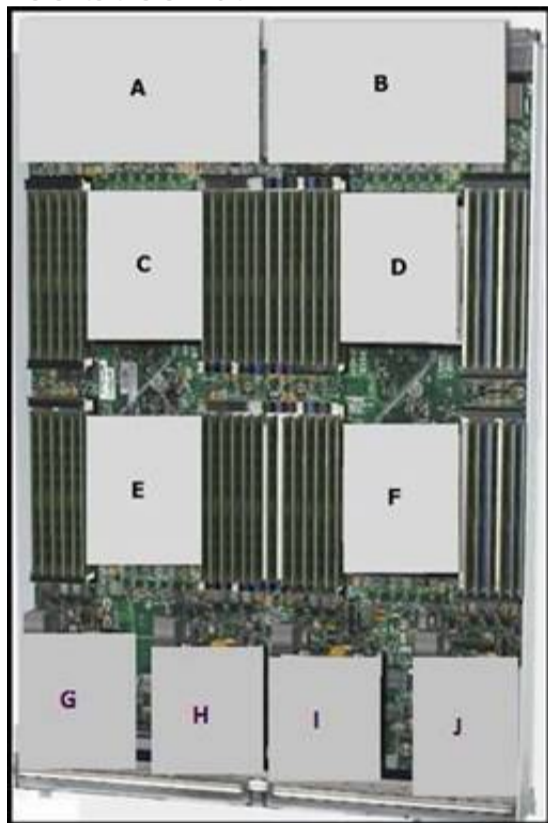
What does the system status LED look like when an over temperature or major alarm occurs on the Cisco UCS 6120XP Fabric Interconnect?

- A. Amber
- B. Red
- C. Blinking amber
- D. Blinking red

Answer: C

NEW QUESTION 10

Refer to the exhibit.



Which item does F represent?

- A. HDD 1
- B. TFP Module
- C. SuperCap Module
- D. CPU 2
- E. CMOS Battery

Answer: D

NEW QUESTION 10

Which two major components does a Cisco Nexus 1000V Series Switch have? (Choose two.)

- A. Virtual Fiber Channel Module
- B. Virtual Ethernet Module
- C. Virtual Supervisor Module
- D. Virtual Memory Controller Module
- E. Virtual Network Module

Answer: BC

NEW QUESTION 13

Which Cisco Nexus 5000 Series model supports 1/10G BASE-T ports?

- A. Cisco Nexus 5548P
- B. Cisco Nexus 5548UP
- C. Cisco Nexus 5596UP
- D. Cisco Nexus 5596T

Answer: D

NEW QUESTION 18

Refer to the exhibit.



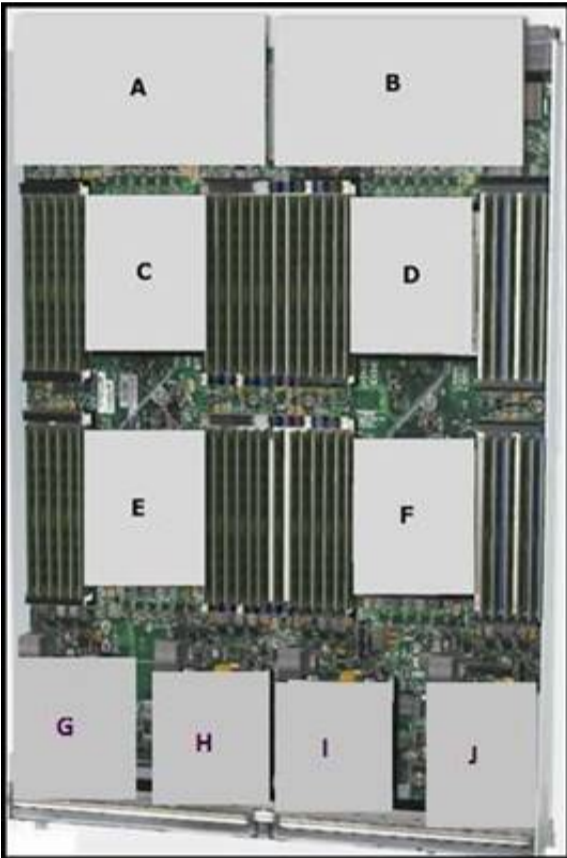
What is the name of this rack-mount server?

- A. Cisco UCS C220 Rack-Mount Server
- B. Cisco UCS C240 Rack-Mount Server
- C. Cisco UCS C420 Rack-Mount Server
- D. Cisco UCS C460 Rack-Mount Server

Answer: C

NEW QUESTION 22

Refer to the exhibit.



Which item does A represent?

- A. Emulex Adapter Card for Cisco UCS B420 M3 Blade Servers
- B. Virtual Interface Card for Cisco UCS B420 M3 Blade Servers
- C. mLOM for Cisco UCS B420 M3 Blade Servers
- D. Virtual Emulex Adapter Card for Cisco UCS B420 M3 Blade Servers
- E. SuperCap module for Cisco UCS B420 M3 Blade Servers

Answer: C

NEW QUESTION 27

Which command-line interface mode is best described by this prompt?
 UCS-switch-A (nxos)#

- A. maintenance mode
- B. EXEC mode
- C. local management mode
- D. global configuration mode
- E. Cisco IOS mode

Answer: B

NEW QUESTION 31

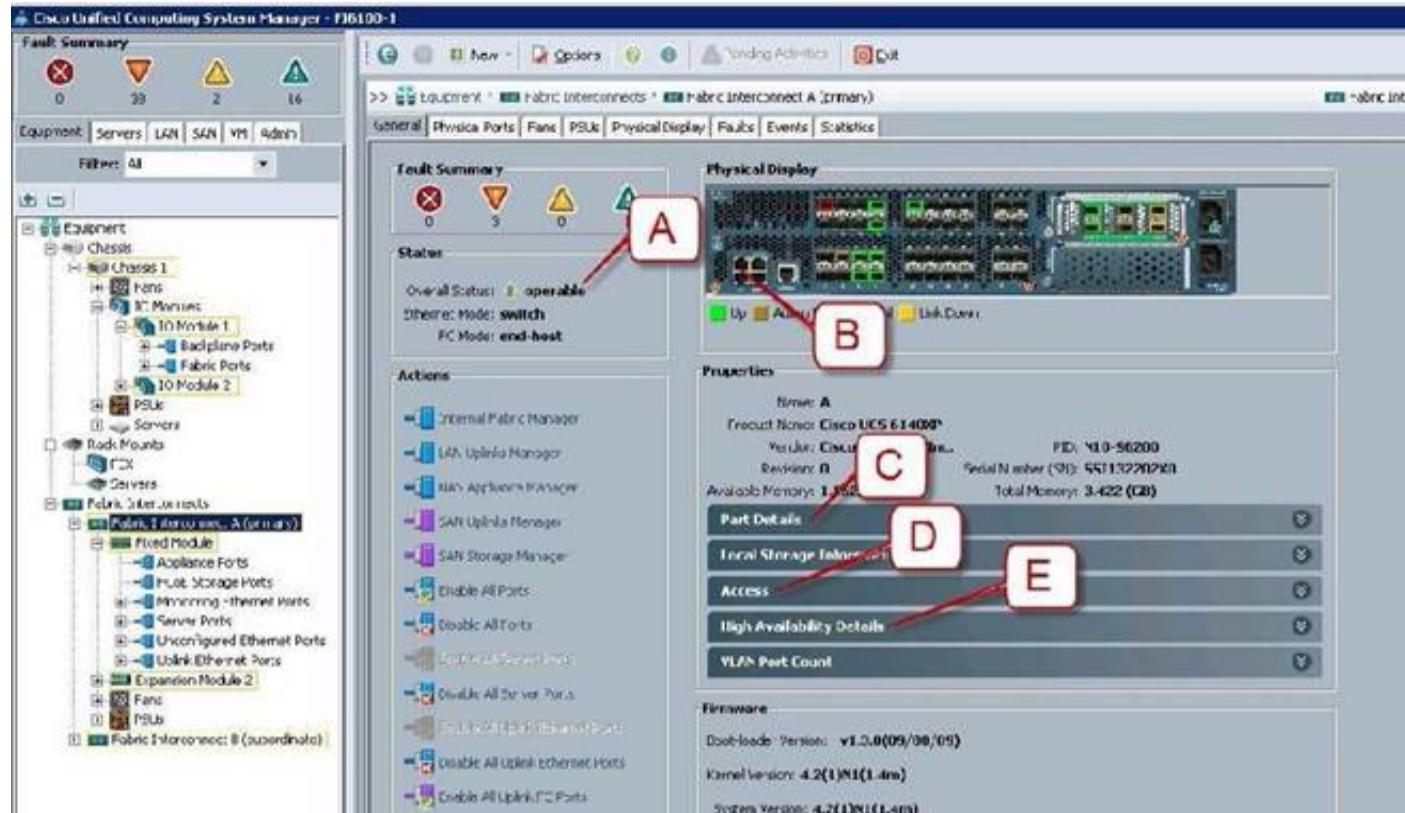
Which command can be used to exit to EXEC mode from this current mode?
 switch(config-if) #

- A. Ctrl-C
- B. Ctrl-L
- C. quit
- D. exit
- E. end

Answer: E

NEW QUESTION 32

Refer to the exhibit.



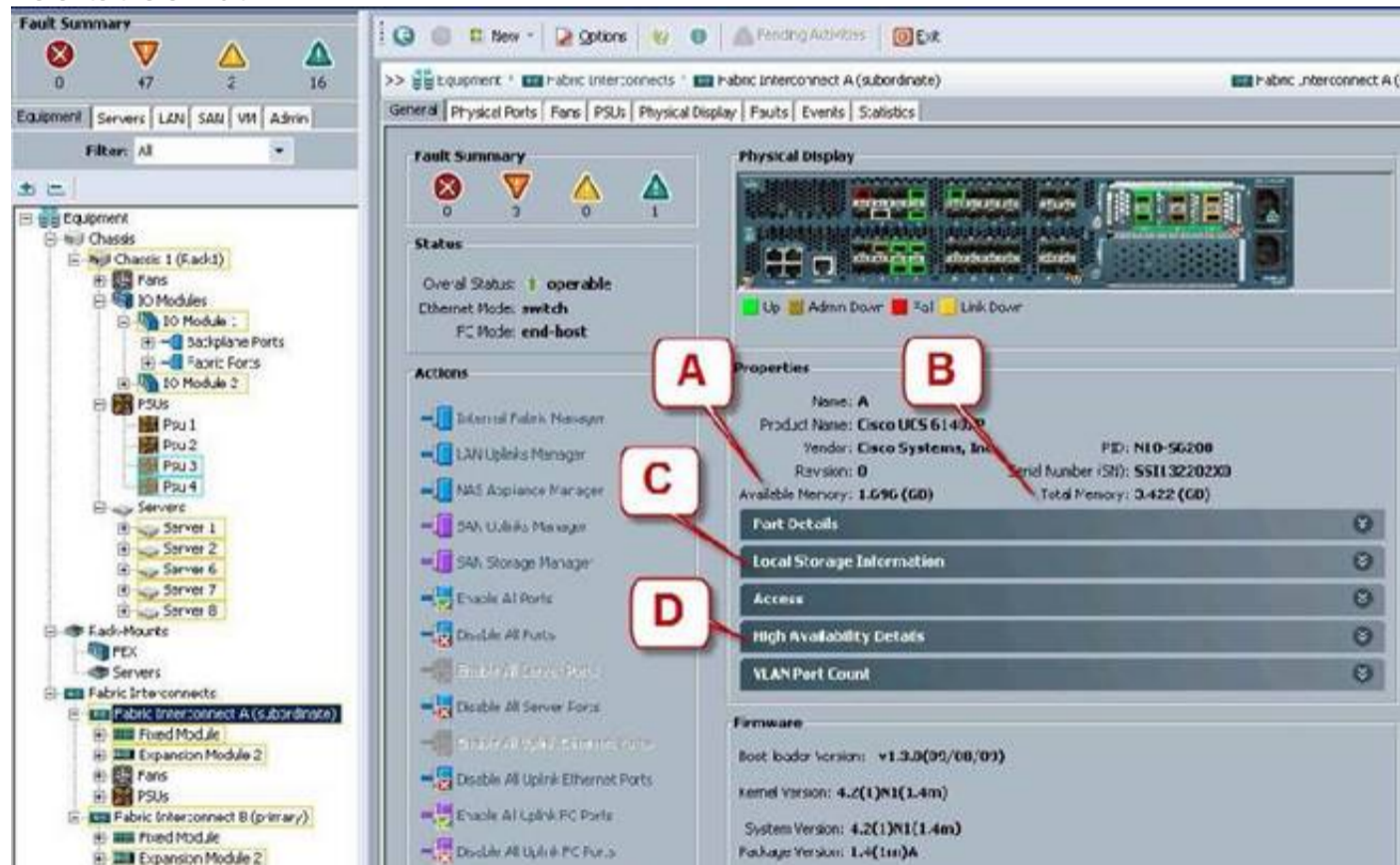
Where is the best place to see whether the system is ready for a Fabric Interconnect failover?

- A. A - Overall Status operable
- B. B - L1 Connection
- C. C - Part Details
- D. D - Access
- E. E - High Availability Details

Answer: E

NEW QUESTION 33

Refer to the exhibit.



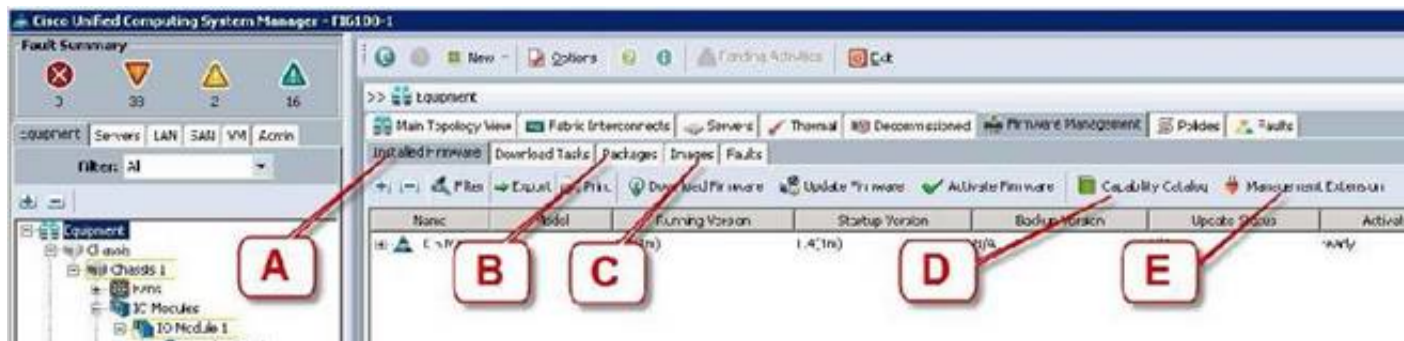
Where is the best place to see bootflash free space?

- A. A - Available Memory
- B. B - Total Memory
- C. C - Local Storage Information
- D. D - High Availability Details

Answer: C

NEW QUESTION 38

Refer to the exhibit.



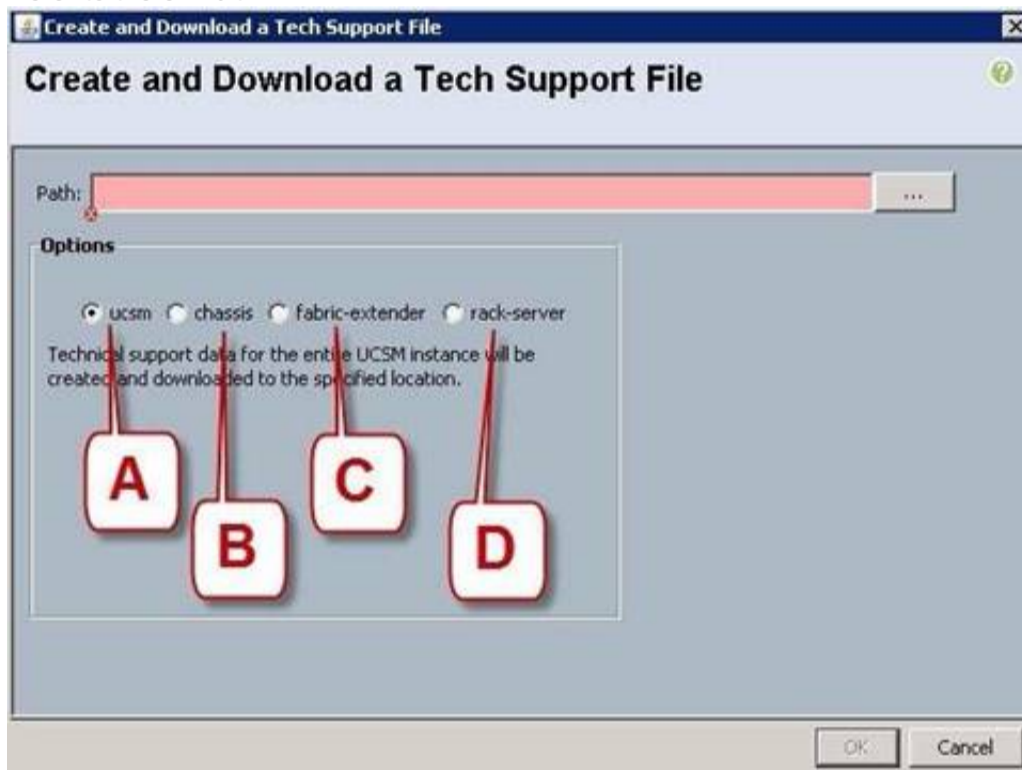
Where is the best place to find the B200 BIOS version used in a specific Cisco UCS Manager version?

- A. A - Installed Firmware
- B. B - Packages
- C. C - Images
- D. D - Capability Catalog
- E. E - Management Extension

Answer: B

NEW QUESTION 42

Refer to the exhibit.



Which option should you select to get the output of the show tech-support detail command for the Cisco UCS B-Series blade?

- A. A - ucsm
- B. B - chassis
- C. C - fabric-extender
- D. D - rack-server

Answer: B

NEW QUESTION 47

Which Cisco NX-OS command displays kernel uptime?

- A. show module
- B. show version
- C. show license
- D. show boot
- E. show interface

Answer: B

NEW QUESTION 49

On the Sensors page from the CIMC view, which four tabs are displayed to view further information? (Choose four.)

- A. Power Supply
- B. Fan
- C. Memory
- D. CPU
- E. LEDs
- F. Temperature

Answer: ABEF

NEW QUESTION 53

If the Overall Status for a Cisco UCS B-Series Blade Server indicates a failure in the Cisco UCS Manager, such as discovery-failed, which statement is true?

- A. The server shuts dow
- B. The server automatically reboots reboot in 3 minute
- C. The endpoints on that server cannot be upgrade
- D. The server is online, but the administrator cannot assign a service profile to that blad

Answer: C

NEW QUESTION 56

Which three statements about powering down a Cisco UCS C-Series Rack-Mount Server to perform maintenance or replacement are true? (Choose three.)

- A. Standby power mode: Power is supplied only to the service processor and the cooling fans, and it is safe to power off the server from this mod
- B. Power status LE
- C. Green indicates that the server is in main power mode and can be safely powered of
- D. Graceful shutdown: Press and release the power butto
- E. The operating system performs a graceful shutdown, and the server goes to standby mode, which is indicated by an amber power status LE
- F. Disconnect the power cords from the power supplies in your server to completely power off the serve
- G. Only an emergency shutdown can be performed using the power button on the server front pane
- H. The Cisco UCS C-Series Rack-Mount Server has only one power mod

Answer: ACD

NEW QUESTION 57

Which three components are hot swappable in a Cisco UCS Blade Server and Chassis? (Choose three.)

- A. Fabric Extender
- B. Power supply
- C. Heat sink
- D. SAS Hard Drive
- E. 2x8GB Kit DIMMs
- F. Mezzanine card

Answer: ABD

NEW QUESTION 59

Which five things should the administrator verify after performing maintenance or replacing a blade server? (Choose five.)

- A. blade server status
- B. hard drive status
- C. host OS boot status
- D. CPU status
- E. mezzanine card status
- F. memory DIMM status
- G. fan and power status

Answer: ABDEF

NEW QUESTION 61

Which three firmware components does the Host Upgrade Utility upgrade? (Choose three.)

- A. Fabric Interconnect firmware
- B. LAN on Motherboard
- C. Cisco UCS Manager
- D. CIMC
- E. System BIOS

Answer: BDE

NEW QUESTION 62

Which two commands allow you to view the state of high availability between the two clustered Fabric Interconnects? (Choose two.)

- A. show cluster state extended
- B. show cluster extended-state
- C. show cluster HA status
- D. show cluster state

Answer: BD

NEW QUESTION 67

On which three devices can the Host Upgrade Utility be performed? (Choose three.)

- A. C420
- B. C230
- C. B230
- D. B210
- E. C210
- F. B460
- G. C240

Answer: AEG

NEW QUESTION 69

Up to what speed can Category 5 UTP cable transmit data?

- A. 10 Mb/s
- B. 100 Mb/s
- C. 1000 Mb/s
- D. 10000 Mb/s

Answer: C

NEW QUESTION 71

Refer to the exhibit.



Which three options are features of the Cisco UCS 6248UP Fabric Interconnect front panel? (Choose three.)

- A. Console port
- B. FCoE port
- C. 10 Gb/s port
- D. Fan module
- E. USB port

Answer: ADE

NEW QUESTION 73

Which two statements about the Cisco Nexus 5596UP switch are true? (Choose two.)

- A. Its power supplies and fan trays are hot-swappable
- B. It supports unified port
- C. It is offered in a one-rack-unit form factor
- D. It has one expansion slot
- E. It supports up to 96 10G BASE-T port

Answer: AB

NEW QUESTION 76

Which type of optics module is supported by a 6-port 40 GE Cisco Nexus 7000 M2 Series I/O module?

- A. CPAK
- B. QSFP+
- C. SFP/SFP+
- D. CFP

Answer: B

NEW QUESTION 79

Refer to the exhibit.



What is the name of this Cisco Nexus 3000 Series Switch?

- A. Cisco Nexus 3132Q
- B. Cisco Nexus 3172PQ
- C. Cisco Nexus 3524
- D. Cisco Nexus 3016

Answer: A

NEW QUESTION 81

DRAG DROP

Drag the password recovery procedures on a Cisco NX-OS switch from the left to the right and place them in order.	
Log in to the switch using the new administrator password.	Step 1
Reset the network administrator password.	Step 2
Load the Cisco NX-OS system software image.	Step 3
Power-cycle the switch.	Step 4
Reset the new password to ensure that it is also the Simple Network Management Protocol (or SNMP) password.	Step 5
To enter the boot prompt mode, press the Ctrl-] key sequence from the console port session when the switch begins the Cisco NX-OS software boot sequence.	Step 6
Save the configuration.	Step 7
Display the bootflash: contents to locate the Cisco NX-OS software image.	Step 8

- A. Mastered
B. Not Mastered

Answer: A

Explanation:

Drag the password recovery procedures on a Cisco NX-OS switch from the left to the right and place them in order.	
Log in to the switch using the new administrator password.	Power-cycle the switch.
Reset the network administrator password.	To enter the boot prompt mode, press the Ctrl-] key sequence from the console port session when the switch begins the Cisco NX-OS software boot sequence.
Load the Cisco NX-OS system software image.	Reset the network administrator password.
Power-cycle the switch.	Display the bootflash: contents to locate the Cisco NX-OS software image.
Reset the new password to ensure that it is also the Simple Network Management Protocol (or SNMP) password.	Load the Cisco NX-OS system software image.
To enter the boot prompt mode, press the Ctrl-] key sequence from the console port session when the switch begins the Cisco NX-OS software boot sequence.	Log in to the switch using the new administrator password.
Save the configuration.	Reset the new password to ensure that it is also the Simple Network Management Protocol (or SNMP) password.
Display the bootflash: contents to locate the Cisco NX-OS software image.	Save the configuration.

NEW QUESTION 86

.....

THANKS FOR TRYING THE DEMO OF OUR PRODUCT

Visit Our Site to Purchase the Full Set of Actual 010-151 Exam Questions With Answers.

We Also Provide Practice Exam Software That Simulates Real Exam Environment And Has Many Self-Assessment Features. Order the 010-151 Product From:

<https://www.2passeasy.com/dumps/010-151/>

Money Back Guarantee

010-151 Practice Exam Features:

- * 010-151 Questions and Answers Updated Frequently
- * 010-151 Practice Questions Verified by Expert Senior Certified Staff
- * 010-151 Most Realistic Questions that Guarantee you a Pass on Your FirstTry
- * 010-151 Practice Test Questions in Multiple Choice Formats and Updatesfor 1 Year