

201 Dumps

TMOS Administration

<https://www.certleader.com/201-dumps.html>



NEW QUESTION 1

A BIG-IP Administrator adds new Pool Members into an existing, highly utilized pool. Soon after, there are reports that the application is failing to load for some users. What pool level setting should the BIG-IP Administrator check?

- A. Availability Requirement
- B. Allow SNAT
- C. Action On Service Down
- D. Slow Ramp Time

Answer: D

Explanation:

Option ABC is a global configuration, has nothing to do with the new pool member, select D after excluding

NEW QUESTION 2

A BIG-IP Administrator notices that one of the servers that runs an application is NOT receiving any traffic. The BIG-IP Administrator examines the configuration status of the application and observes the displayed monitor configuration and affected Pool Member status.



What is the possible cause of this issue?

- A. The Node Health Monitor is NOT responding.
- B. The application is NOT responding with the expected Receive String.
- C. HTTP 1.1 is NOT appropriate for monitoring purposes.
- D. The BIG-IP device is NOT able to reach the Pool.

Answer: A

NEW QUESTION 3

A BIG-IP Administrator defines a device Self IP . The Self IP is NOT reachable from the network. What should the BIG-IP Administrator verify first?

- A. The correct interface has been selected.
- B. The correct VLAN has been selected.
- C. Verify if auto last hop is disabled.
- D. The correct Trunk has been selected.

Answer: B

NEW QUESTION 4

Which three iRule events are likely to be seen in iRules designed to select a pool for load balancing? (Choose three.)

- A. CLIENT_DATA
- B. SERVER_DATA
- C. HTTP_REQUEST
- D. HTTP_RESPONSE
- E. CLIENT_ACCEPTED
- F. SERVER_SELECTED
- G. SERVER_CONNECTED

Answer: ACE

NEW QUESTION 5

A BIG-IP Administrator uses backend servers to host multiple services per server. There are multiple virtual servers and pools defined, referencing the same backend servers.

Which load balancing algorithm is most appropriate to have an equal number of connections on each backend server?

- A. Least Connections (member)
- B. Least Connections (node)
- C. Predictive (member)

D. Predictive (node)

Answer: B

Explanation:

The same set of servers provides multiple services, that is, using different ports to provide different services at the same time. The stem requirement is based on server connection balancing, not server + port, so it is node.

NEW QUESTION 6

Interface 1.2 on a BIG-IP VE has a status of UNINITIALIZED. What is the reason for this status?

- A. Interface 1.2 has been added to a trunk.
- B. Interface 1.2 has NOT been assigned to a VLAN.
- C. Interface 1.2 has been disabled.
- D. No default route has been created.

Answer: B

Explanation:

trunk is a portchannel, you need to add a physical interface.

NEW QUESTION 7

How should a BIG-IP Administrator control the amount of traffic that a newly enabled pool member receives.

- A. set the Slow Ramp Time
- B. set a Connection Limit
- C. set the Priority Group Activation
- D. set a Health Monitor

Answer: A

Explanation:

Slow Ramp Time

Specifies the duration during which the system sends less traffic to a newly-enabled pool member. The amount of traffic is based on the ratio of how long the pool member has been available compared to the slow ramp time, in seconds. Once the pool member has been online for a time greater than the slow ramp time, the pool member receives a full proportion of the incoming traffic. Slow ramp time is particularly useful for the least connections load balancing mode.

Setting this to a nonzero value can cause unexpected Priority Group behavior, such as load balancing to a low-priority member even with enough high-priority servers.

NEW QUESTION 8

A virtual server is defined per the charts. The last five client connections were to members C, D, A, B, B. Given the conditions shown in the above graphic, if a client with IP address 205.12.45.52 opens a connection to the virtual server, which member will be used for the connection.

- A. 172.16.20.1:80
- B. 172.16.20.2:80
- C. 172.16.20.3:80
- D. 172.16.20.4:80
- E. 172.16.20.5:80

Answer: D

NEW QUESTION 9

Some users who connect to a busy Virtual Server have connections reset by the BIG-IP system. Pool member resources are NOT a factor in this behavior. What is a possible cause for this behavior?

- A. The Connection Rate Limit is set too high
- B. The server SSL Profile has NOT been reconfigured.
- C. The Connection Limit is set too low.
- D. The Rewrite Profile has NOT been configured.

Answer: C

Explanation:

The topic explains that the connection reset behavior is caused by the vs configuration rather than the server resource problem. The answers B C are all configuration at the service forwarding level. If there is a problem with the configuration, it is all a problem rather than some users. Answer C's Connection Limit will cause a reset behavior when the connection reaches the threshold.

NEW QUESTION 10

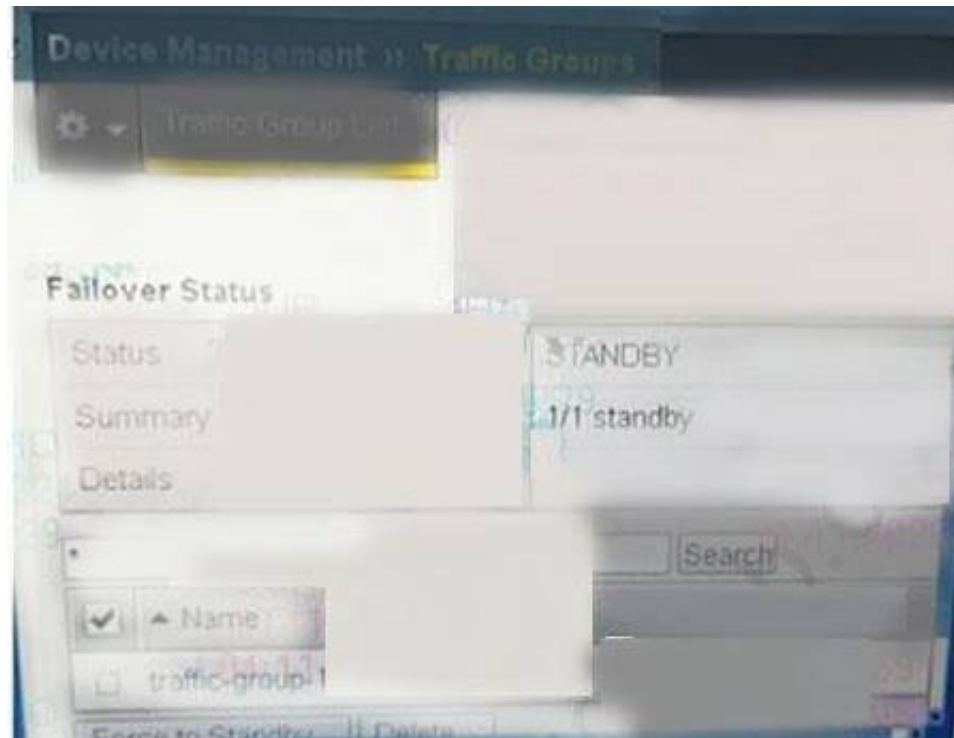
A BIG-IP Administrator sees the following error message in /var/log/ltm diskmonitor: *****; Disk partition shared has less than 30\$ free
Which section of the Configuration Utility should the BIG-IP Administrator access to investigate this error message?

- A. Statistics > Analytics
- B. System > File Management
- C. Statistics > Module Statistics > System
- D. System > Disk Management

Answer: D

NEW QUESTION 10

Refer to the exhibit.



A BIG-IP Administrator needs to fall over the active device. The administrator logs into the Configuration Utility and navigates to Device Management > Traffic Group. However, Force to Standby is greyed out. What is causing this issue?

- A. The BIG-IP Administrator is NOT logged into command line to fail over
- B. The BIG-IP Administrator is on the Standby Device
- C. The BIG-IP Administrator is logged in as root
- D. The BIG-IP Administrator is logged in as administrator

Answer: B

NEW QUESTION 11

Which statement is true concerning a functional iRule?

- A. iRules use a proprietary syntax language.
- B. iRules must contain at least one event declaration.
- C. iRules must contain at least one conditional statement.
- D. iRules must contain at least one pool assignment statement.

Answer: B

NEW QUESTION 12

Which statement is true regarding failover?

- A. Hardware failover is disabled by default.
- B. Hardware failover can be used in conjunction with network failover.
- C. If the hardware failover cable is disconnected, both BIG-IP devices will always assume the active role.
- D. By default, hardware fail over detects voltage across the failover cable and monitors traffic across the internal VLAN.

Answer: B

NEW QUESTION 15

What should the BIG-IP Administrator do to apply and activate a hotfix to a BIG-IP device that is currently running version 11.0.0 on active partition HD1.1?

- A. * 1. confirm that 11.0.0 is installed on inactive partition HD1.2* 2. apply a hotfix to partition HD 1.2* 3. activate partition HD1.2
- B. * 1. reactivate the license on partition HD1.1* 2. apply a hotfix to partition HD1.1
- C. * 1. activate partition HD1.2* 2 confirm version 11.0.0 on partition HD1.2* 3. install a hotfix on partition HD1.2
- D. * 1. set partition HD1.2 active* 2. apply a hotfix to partition HD1.2

Answer: A

NEW QUESTION 17

A configuration change is made on the standby member of a device group.

What is displayed as "Recommended Action" on the Device Management Overview screen?

- A. Force active member of device group to standby
- B. Activate device with the most recent configuration
- C. Synchronize the active member configuration to the group.
- D. Synchronize the standby member configuration to the group

Answer: D

NEW QUESTION 21

When configuring a pool member's monitor, which three association options are available? (Choose three.)

- A. inherit the pool's monitor
- B. inherit the node's monitor
- C. configure a default monitor
- D. assign a monitor to the specific member
- E. do not assign any monitor to the specific member

Answer: ADE

NEW QUESTION 24

Which statement is true concerning the default communication between a redundant pair of BIG-IP devices?

- A. Communication between the systems cannot be effected by port lockdown settings.
- B. Data for both connection and persistence mirroring are shared through the same TCP connection.
- C. Regardless of the configuration, some data is communicated between the systems at regular intervals.
- D. Connection mirroring data is shared through the serial fail over cable unless network failover is enabled.

Answer: B

NEW QUESTION 27

A BIG-IP Administrator suspects that one of the BIG-IP device power supplies is experiencing power outages. Which log file should the BIG-IP Administrator check to verify the suspicion?

- A. /var /log/daemon.log
- B. /var/log/kern.log
- C. /var/log/ltn
- D. /var/log/audit

Answer: C

NEW QUESTION 30

A BIG-IP has a virtual server at 150.150.10.10:80 with SNAT automap configured. This BIG-IP also has a SNAT at 150.150.10.11 set for a source address range of 200.200.1.0 / 255.255.255.0. All other settings are at their default states. If a client with the IP address 200.200.1.1 sends a request to the virtual server, what is the source IP address when the associated packet is sent to the pool member?

- A. 200.200.1.1
- B. 150.150.10.11
- C. Floating self IP address on VLAN where the packet leaves the system
- D. Floating self IP address on VLAN where the packet arrives on the system

Answer: C

NEW QUESTION 34

Refer to the exhibit.

During a planned upgrade lo a BIG-IP HA pair running Active/Standby, an outage to application traffic is reported shortly after the Active unit is forced to Standby Reverting the flower resolves the outage. What should the BIG-IP Administrator modify to avoid an outage during the next for over event?

- A. The Tag voice on the Standby device
- B. The interface on the Active device to 1.1
- C. The Tag value on the Active device
- D. The Interface on the Standby device to 1.1

Answer: A

NEW QUESTION 39

A BIG-IP Administrator is informed that traffic on Interface 1.1 is expected to increase over the maximum bandwidth capacity on the link. There is a single VLAN on the Interface. What should the 8IG-IP Administrator do to increase the total available bandwidth?

- A. Assign two Interfaces to the VLAN
- B. Set the media speed of Interface 1.1 manually
- C. Create a trunk object with two Interfaces
- D. Increase the MTU on the VLAN using Interface 1.1

Answer: C

NEW QUESTION 40

A BIG-IP Administrator configures remote authentication and needs to make sure that users can still login even when the remote authentication server is unavailable.

Which action should the BIG-IP Administrators in the remote authentication configuration to meet this requirement?

- A. Set partition access to "All"
- B. Enable the Fallback to Local option
- C. Configure a remote role grove
- D. Configure a second remote user directory

Answer: B

NEW QUESTION 43

Which statement is true concerning iRule events?

- A. All iRule events relate to HTTP processes.
- B. All client traffic has data that could be used to trigger iRule events.
- C. All iRule events are appropriate at any point in the clientserver communication.
- D. If an iRule references an event that doesn't occur during the client's communication, the client's connection will be terminated prematurely.

Answer: B

NEW QUESTION 47

Which statement is true about the synchronization process, as performed by the Configuration Utility or by typing `b config sync all`?

- A. The process should always be run from the standby system.
- B. The process should always be run from the system with the latest configuration.
- C. The two `/config/bigip.conf` configuration files are synchronized (made identical) each time the process is run.
- D. Multiple files, including `/config/bigip.conf` and `/config/bigip_base.conf`, are synchronized (made identical) each time the process is run.

Answer: C

NEW QUESTION 50

The BIG-IP Administrator generates a `qkview` using `"qkview -SO"` and needs to transfer the output file via SCP. Which directory contains the output file?

- A. `/var/log`
- B. `/var/tmp`
- C. `/var/local`
- D. `/var/config`

Answer: B

NEW QUESTION 53

Refer to the exhibit.

Status	Name	Application	Destination	Service Port	Type	Resources	Partition / Path
	nvfs		10.10.10.0/24	80 (HTTP)	Standard	Edit	Common
	vs_ftp		10.10.10.1	21 (FTP)	Standard	Edit	Common
	vs_http		10.10.10.1	80 (HTTP)	Standard	Edit	Common
	vs_https		10.10.10.1	443 (HTTPS)	Standard	Edit	Common

A user attempts to connect to 10.10.10.1.80 using FTP over SSL with an FTPS client. Which virtual server will match and attempt to process the request?

- A. `vsjutps`
- B. `vs_ftp`
- C. `vs_http`
- D. `nvfs`

Answer: B

NEW QUESTION 54

A BIG-IP Administrator is unable to connect to the management interface via HTTPS. What is a possible reason for this issue?

- A. The port lockdown setting is configured to Allow None.
- B. An incorrect management route is specified.
- C. The IP address of the device used to access the management interface is NOT included in the "P Allow" list in the Configuration Utility.
- D. The IP address of the device used to access the management interface is NOT included in the "httpd Allow" list in the CLI.

Answer: D

NEW QUESTION 59

To increase available bandwidth of an existing Trunk, the BIG-IP Administrator is adding additional interfaces. Which command should the BIG-IP Administrator run from within bosh shell?

- A. `tmsh create /net trunk trunk_A interfaces add {1.3.1.4}`
- B. `tmsh create/sys trunk trunk_A interfaces add {1.3.1.4}`
- C. `tmsh modify/sys trunk trunk^A interfaces add {1.3.1.4}`
- D. `tmsh modify /net trunk trunk_A interfaces add {1.3.1.4}`

Answer: D

NEW QUESTION 64

A BIG-IP device is configured with both an internal external and two Corporate VLANs. The virtual server has SNAT enabled and is set to listen on all VLANs Auto Last Hop is disabled. The Corporate users are on 10.0.0.0/24 and 172.16.0.0/12. The BIG-IP has a Self-IP on the 1.0.0.0.0/24 subnet. Internet users are able to access the virtual server. Only some of the Corporate users are able to connect to the virtual server A BIG-IP Administrator performs a tcpdump on the BIG-IP and verifies that traffic is arriving from users in 10.0.0.0/24. What should the BIG-IP Administrator do to correct this behaviour?

- A. Disable the server on the internal VLAN
- B. Add a static route for the 172.16.0.0/12 subnet
- C. Change the default route to point to the extra firewall
- D. Modify the default route of the servers to point to the BIG-IP device

Answer: B

NEW QUESTION 66

A development team needs to apply a software fix and troubleshoot one of its servers. The BIG-IP Administrator needs to immediately remove all connections from the BIG-IP system to the back end server. The BIG-IP Administrator checks the Virtual Server configuration and finds that a persistence profile is assigned to it. What should the BIG-IP Administrator do to meet this requirement?

- A. Set the pool member to a Forced Offline state and manually delete existing connections through the command line.
- B. Set the pool member to a Forced Offline state.
- C. Set the pool member to a Disabled state.
- D. Set the pool member to a Disabled state and manually delete existing connections through the command line.

Answer: A

NEW QUESTION 67

A BIG-IP Administrator need to ensure that a pool member and down by the monitor the BIG-IP system sends existing connections to another be pool member. Which should the BIG-IP Administrator perform to meet this goal?

- A. Set Action on Service Down sing under the server configuration to reselect.
- B. Reconfigure the pool motor members as UP.
- C. Enable mirroring within the persistence profile.
- D. Set Action Service Down setting under the pool configuration to reselect.

Answer: D

NEW QUESTION 70

How is persistence configured?

- A. Persistence is an option within each pool's definition.
- B. Persistence is a profile type; an appropriate profile is created and associated with virtual server.
- C. Persistence is a global setting; once enabled, loadbalancing choices are superceded by the persistence method that is specified.
- D. Persistence is an option for each pool membe
- E. When a pool is defined, each member's definition includes the option for persistence.

Answer: B

NEW QUESTION 75

The BIG-IP Administrator creates a custom iRule that fails to work as expected. Which F5 online resource should the administrator use to help resolve this issue?

- A. DevCentral
- B. Bug Tracker
- C. University
- D. Health

Answer: A

NEW QUESTION 77

DNS queries from two internal DNS servers are being load balanced to external DNS Servers via a Virtual Server on a BIG-P device. The DNS queries originate from 192.168.101.100 and 192.168.101.200 and target 192.168.21.50

All DNS queries destined for the external DNS Servers fail

Which property change should the BIG-IP Administrator make in the Virtual Server to resolve this issue?

- A. Protocol Profile (Client) to DNS-OPTIMZED
- B. Type to Performance (HTTP)
- C. Protocol to UDP
- D. Source Address to 192.168.101.0/24

Answer: C

NEW QUESTION 80

A BIG-IP Administrator discovers malicious brute-force attempts to access the BIG-IP device on the management interface via SSH. The BIG-IP Administrator needs to restrict SSH access to the management interface.

Where should this be accomplished?

- A. System > Configuration
- B. Network > Interfaces
- C. Network > Self IPs
- D. System > Platform

Answer: D

NEW QUESTION 83

A BIG-IP Administrator needs to restore an encrypted UCS archive from the command line using the TMSH utility. Which TMSH command should the BIG-IP Administrator use to accomplish this?

- A. load/sys ucs <filepath> passphrase <password>
- B. load/sys config file <filepath> passphrase <password>
- C. load/sys config file <filepath>
- D. load/sys ucs <filepath> no-license

Answer: A

NEW QUESTION 87

The BIG-IP appliance fails to boot. The BIG-IP Administrator needs to run the End User Diagnostics (EUD) utility to collect data to send to F5 Support. Where can the BIG-IP Administrator access this utility?

- A. Console Port
- B. Internal VLAN interface
- C. External VLAN interface
- D. Management Port

Answer: A

NEW QUESTION 92

What is the purpose of floating self-IP addresses?

- A. to define an address that grants administrative access to either system at any time
- B. to define an address that allows either system to initiate communication at any time
- C. to define an address that allows network devices to route traffic via a single IP address
- D. to define an address that gives network devices greater flexibility in choosing a path to forward traffic

Answer: C

NEW QUESTION 97

A Standard Virtual Server configured for an application reports poor network performance. This application is accessed mainly from computers on the Internet. What should the BIG-IP Administrator configure on the Virtual Server to achieve better network performance?

- A. Protocol Profile (Client) with f5-tcp-wan and Protocol Profile (Server) with f5-tcp-lan
- B. Protocol Profile (Client) with f5-tcp-lan
- C. Protocol Profile (Client) with f5-tcp-lan and Protocol Profile (Server) with f5-tcp-wan
- D. Protocol Profile (Client) with f5-tcp-optimized

Answer: A

NEW QUESTION 98

Which two can be a part of a virtual server's definition? (Choose two.)

- A. rule(s)
- B. pool(s)
- C. monitor(s)
- D. node address(es)
- E. loadbalancing method(s)

Answer: AB

NEW QUESTION 100

Refer to the exhibit.



A BIG-IP Administrator needs to configure health monitors for a newly configured server pool named Pool_B. Which health monitor settings will ensure that all pool members will be accurately marked as available or unavailable?

- A. HTTPS, HTTP, FTP, and ICMP, with the Availability Requirement of all health monitors
- B. HTTPS, HTTP, FTP, and SSH, with the Availability Requirement of at least one monitor
- C. HTTPS and HTTP with the Availability Requirement of at least one health monitor
- D. HTTPS, HTTP, FTP, and SSH with the Availability Requirement of all health monitors

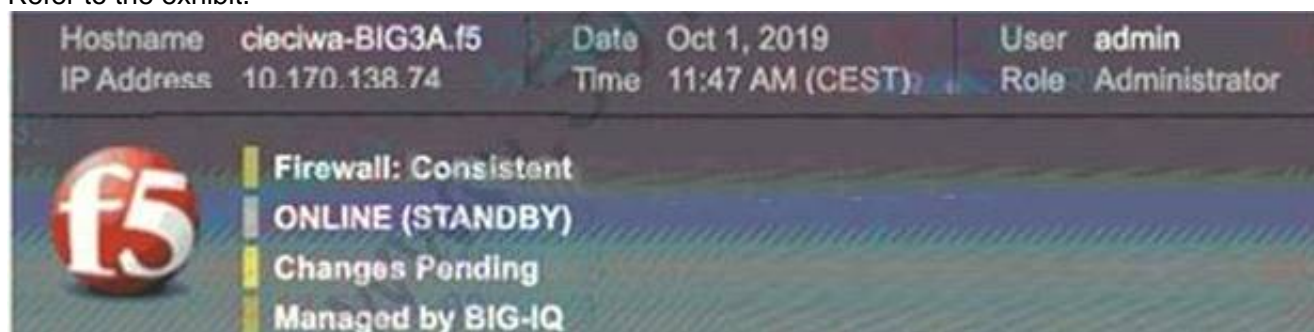
Answer: B

Explanation:

From the port, the four members are HTTP, FTP, HTTPS, and SSH applications. If you want to monitor at the same time, you must configure at least one.

NEW QUESTION 101

Refer to the exhibit.



The BIG-IP Administrator has modified an iRule on one device of an HA pair. The BIG-IP Administrator notices there is NO traffic on the BIG-IP device in which they are logged into.

What should the BIG-IP Administrator do to verify if the iRule works correctly?

- A. Push configuration from this device to the group and start to monitor traffic on this device
- B. Pull configuration to this device to the cluster and start to monitor traffic on this device
- C. Log in to the other device in the cluster, push configuration from it, and start to monitor traffic on that device
- D. Log in to the other device in the cluster, pull configuration to it, and start to monitor traffic on that device

Answer: D

Explanation:

The device in the picture is a standby machine, of course there is no traffic, you need to log in to the host, and then pull the configuration to the host.

NEW QUESTION 103

Assume a client's traffic is being processed only by a NAT; no SNAT or virtual server processing takes place. Also assume that the NAT definition specifies a NAT address and an origin address while all other settings are left at their defaults. If the origin server were to initiate traffic via the BIG-IP, what changes, if any, would take place when the BIG-IP processes such packets?

- A. The BIG-IP would drop the request since the traffic didn't arrive destined to the NAT address.
- B. The source address would not change, but the destination address would be changed to the NAT address.
- C. The source address would be changed to the NAT address and destination address would be left unchanged.
- D. The source address would not change, but the destination address would be changed to a self-IP of the BIG-IP.

Answer: C

NEW QUESTION 107

An LTM device has a virtual server mapped to www.f5.com with a pool assigned. Users report that when browsing, they are periodically required to re-login to /resources/201.1.7.b.2_l.com. The objects are defined as follows:

Virtual server. Destination 192.168.245.100:443 netmask 255.255.255.0 Persistence: SSL session persistence

Profiles: HTTP/TCP

Which persistence method should the BIG-IP Administrator apply to resolve this issue?

- A. Source address affinity
- B. hexadecimal
- C. SIP
- D. Destination address affinity

Answer: A

NEW QUESTION 112

A BIG-IP Administrator wants to add the ASM Module to an HA pair of BIG-IP devices. The BIG-IP Administrator has already installed a new Add-On License on both devices in the HA pair. What should the BIG-IP Administrator do next to use the module?

- A. Provision the new module on both BIG-IP device's
- B. Synchronize both BIG-IP devices
- C. Reboot both BIG-IP devices
- D. Reactivate the Licenses on both BIG IP devices

Answer: A

NEW QUESTION 115

A BIG-IP Administrator finds the following log entry:

tmm tmm[7141]: 011e0002:4: sweeperjipdate: aggressive mode activated. Which action should the BIG-IP Administrator to mitigate this memory issue?

- A. Configure the redundant par to be active-active
- B. Decrease the TCP profile ide Timeout value
- C. increase the TCP profile ide Timeout value
- D. Configure the serve to use Connection Mirroring

Answer: D

NEW QUESTION 117

Monitors can be assigned to which three resources? (Choose three.)

- A. NATs
- B. pools
- C. iRules
- D. nodes
- E. SNATs
- F. pool members
- G. virtual servers

Answer: BDF

NEW QUESTION 118

During a maintenance window, an EUD test was executed and the output displayed on the screen. The BIG-IP Administrator did NOT save the screen output. The BIG-IP device is currently handling business critical traffic. The BIG-IP Administrator needs to minimize impact. What should the BIG-IP Administrator do to provide the EUD results to F5 Support?

- A. Boot the device into EUD then collect output from console
- B. Execute EUD from tmsh and collect output from console
- C. Collect file /var/log/messages
- D. Collect file /shared/log/eud.log

Answer: D

NEW QUESTION 123

A BIG-IP Administrator reviews the log files to determine the cause of a recent problem and finds the following entry.

Mar 27.07.58.48 local/BIG-IP notice mcpd {5140} 010707275 Pool member 172.16.20.1.10029 monitor status down.

What is the cause of this log message?

- A. The pool member has been disabled.
- B. The pool member has been marked as Down by the BIG-IP Administrator.
- C. The monitor attached to the pool member needs a higher timeout value.
- D. The monitor attached to the pool member has failed.

Answer: D

NEW QUESTION 126

A BIG-IP Administrator needs to remove a pool specific health monitor. There is a pool named Best Pool with two members, one named Best pool member and one named Best pool member2. In the Local Traffic section of the administrative GUI, which steps should the BIG-IP Administrator take to remove a pool level monitor?

- A. Pool > Pool List > Best Pool > Members > Health Monitors
- B. Nodes > Node List> Best _pool_member1 > Heath Monitors
- C. Monitors > Monitor Name> Instances
- D. Pool > Pool List> Best Pool > Health Monitors

Answer: D

NEW QUESTION 129

A site wishes to perform source address translation on packets from some clients but not others. The determination is not based on the client's IP address, but on the virtual servers their packets arrive on. What could best accomplish this goal?

- A. A SNAT for all addresses could be defined, and then disable the SNAT processing for select VLANs.
- B. Some virtual servers could be associated with SNAT pools and others not associated with SNAT pools.

- C. The decision to perform source address translation is always based on VLA
- D. Thus, the goal cannot be achieved.
- E. The decision to perform source address translation is always based on a client's address (or network). Thus, this goal cannot be achieved.

Answer: B

NEW QUESTION 132

What is the purpose of MAC masquerading?

- A. to prevent ARP cache errors
- B. to minimize ARP entries on routers
- C. to minimize connection loss due to ARP cache refresh delays
- D. to allow both BIGIP devices to simultaneously use the same MAC address

Answer: C

NEW QUESTION 137

A node is a member of various pools and hosts different web applications. If a web application is unavailable, the BIG-IP appliance needs to mark the pool member down for that application pool. What should a BIG-IP Administrator deploy at the pool level to accomplish this?

- A. A UDP monitor with a custom interval/timeout
- B. A combination of ICMP + TCP monitor
- C. An HTTP monitor with custom send/receive strings
- D. A TCP monitor with a custom interval/timeout

Answer: C

Explanation:

Requiring all traffic to be HTTPS access requires HTTP requests to be redirected directly to HTTPS.

NEW QUESTION 140

A BIG-IP Administrator configures a Virtual Server. Users report that they always receive a TCP RST packet to the BIG-IP system when attempting to connect to it. What is the possible reason for this issue?

- A. The virtual server Type is set to Internal
- B. The virtual server Type is set to Reject
- C. The virtual server Type is set to Drop
- D. The virtual server Type is set to Stateless

Answer: B

NEW QUESTION 141

A BIG-IP Administrator needs to check the memory utilization on a BIG-IP system. Which two methods can the UI IP Administrator use? (Choose two.)

- A. Run the tmsh show/sys memory command
- B. Run the tmsh show/sys traffic command
- C. Go to Statistics > Module Statistics > Traffic Summary in the configuration utility
- D. Go to Statistics > Module Statistics > Memory in the configuration utility
- E. Go to System > Disk Management in the configuration utility

Answer: AD

NEW QUESTION 146

Refer to the exhibit.



A pool member fails the monitor checks for about 30 minutes and then starts passing the monitor checks. New traffic is Not being sent to the pool member. What is the likely reason for this problem?

- A. The pool member is disabled
- B. Monitor Type is TCP Half Open
- C. Manual resume is enabled
- D. Time Until Up is zero

Answer: C

NEW QUESTION 150

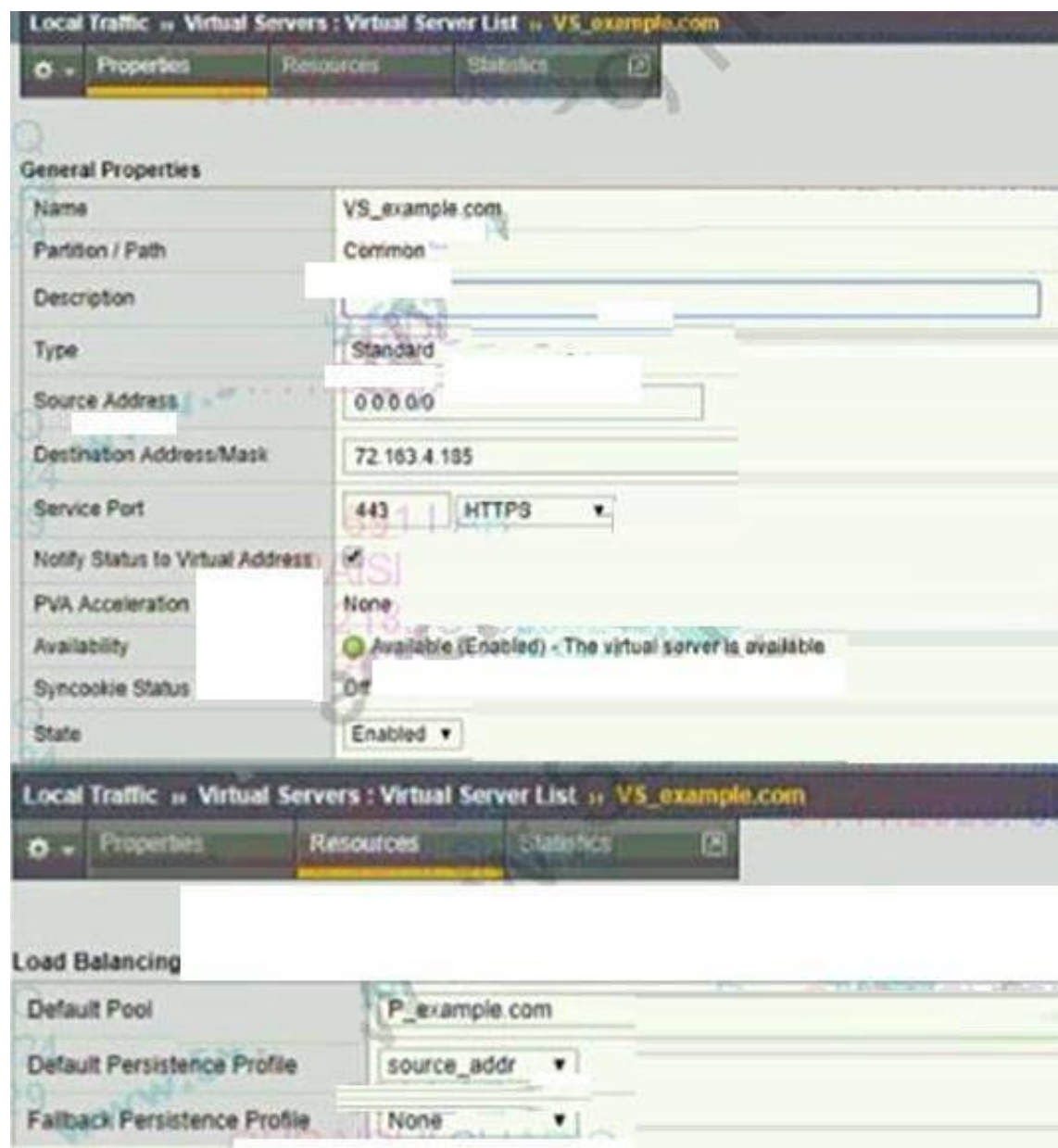
A site needs a virtual server that will use an iRule to parse HTTPS traffic based on HTTP header values. Which two profile types must be associated with such a virtual server? (Choose two.)

- A. TCP
- B. HTTP
- C. HTTPS
- D. ServerSSL

Answer: AB

NEW QUESTION 153

Refer to the exhibit.



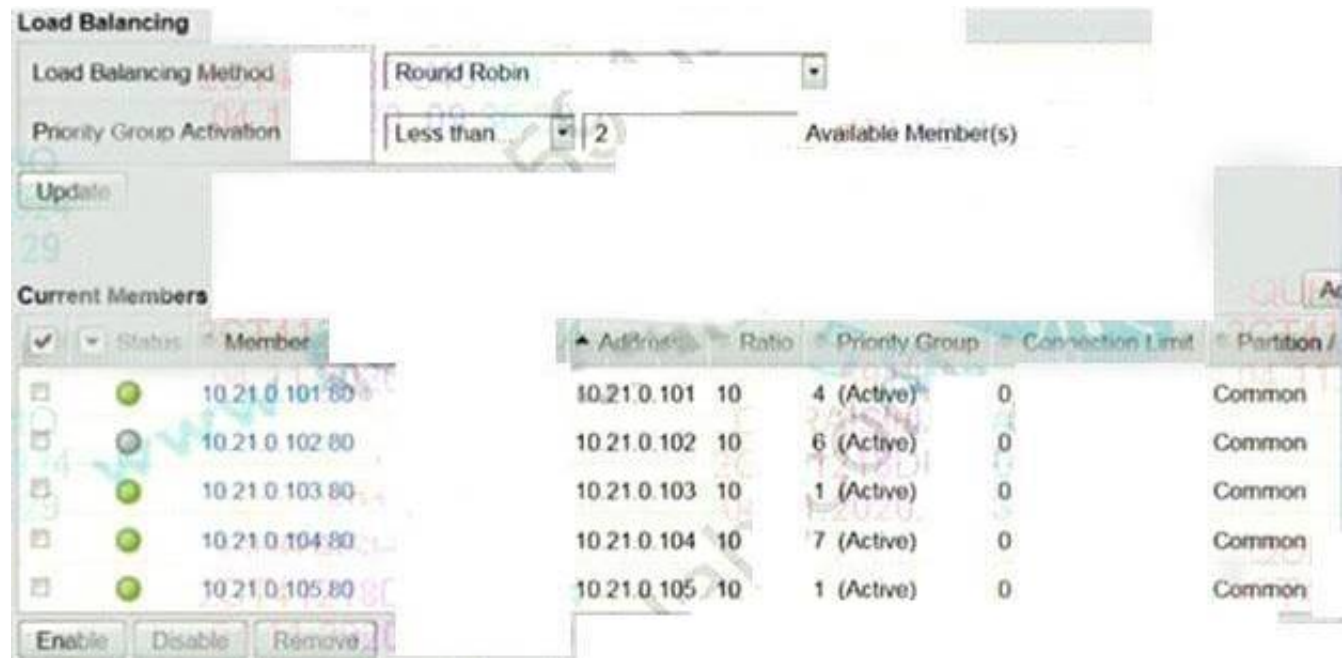
An organization is reporting slow performance accessing their Intranet website, hosted in a public cloud. All employees use a single Proxy Server with the public IP of 104.219.110.168 to connect to the Internet. What should the BIG-IP Administrator of the Intranet website do to fix this issue?

- A. Change Source Address to 104.219.110.168/32
- B. Change Load Balancing Method to Least Connection
- C. Change Fallback Persistence Profile to source_addr
- D. Change Default Persistence Profile to cookie

Answer: D

NEW QUESTION 158

Refer to the exhibit.



Which two pool members are eligible to receive new connections? (Choose two)

- A. 10.21.0.102.80
- B. 10.21.0.104.80
- C. 10.21.0.105.80
- D. 10.21.0.101.80
- E. 10.21.0.103.80

Answer: BD

NEW QUESTION 160

Refer to the exhibit

The BIG-IP Administrator is unable to access the management console via Self-IP 10.10 1.33 and port 443. What is the reason for this problem?

- A. Packet Filter needs to be configured to allow a source
- B. Self IP is configured to allow TCP All
- C. Self IP is configured to allow UDP 443
- D. Packet Filter is configured to allow port 443

Answer: C

NEW QUESTION 163

A BIG-IP device is replaced with an RMA device. The BIG-IP Administrator renews the license and tries to restore the configuration from a previously generated UCS archive on the RMA device. The device configuration is NOT fully loading. What is causing the configuration load to fail?

- A. The Device Group is NOT configured for Full Sync.
- B. The US does NOT contain the full config
- C. The clock is NOT set correctly
- D. The Master Key is NOT restored

Answer: D

NEW QUESTION 165

The BIG-IP Administrator generates QKView using tmsh command "qkview -SO". In which directory does the BIG-IP appliance save the QKView?

- A. /etc/tmp
- B. /var/tmp
- C. /shared/qkview
- D. /var /tmp/qkview

Answer: B

NEW QUESTION 167

An LTM device has a virtual server mapped to www5f.com with a pool assigned. The objects are defined as follows:

Virtual server. Destination 192.168.245.100.443 netmask 255.255.255.0 Persistence: Source address persistence netmask 255.0.0.0 SNAT:AutoMap Profiles: HnP/TCP

How should the BIG-IP Administrator modify the persistence profile so that each unique IP address creates a persistence record?

- A. netmask 0.0.0.0
- B. netmask 255.255.255.255
- C. netmask 255.255.0.0
- D. netmask 255.256.255.0

Answer: B

NEW QUESTION 168

When can a single virtual server be associated with multiple profiles?

- A. Neve
- B. Each virtual server has a maximum of one profile.
- C. Ofte
- D. Profiles work on different layers and combining profiles is common.
- E. Rarel
- F. One combination, using both the TCP and HTTP profile does occur, but it is the exception.
- G. Unlimite
- H. Profiles can work together in any combination to ensure that all traffic types are supported in a given virtual server.

Answer: B

NEW QUESTION 172

Refer to the exhibit.

A user notifies the BIG-IP Administrator that http://remote company.com is NOT accessible. Remote access to company resources must be encrypted. What should the BIG-IP Administrator do to fix the issue?

- A. Change the Listening Port on remote.company.com_vs to Port 80
- B. Add a Pool to the Virtual Server remote.company.com_VS
- C. Add an iRule to remote.company.com_vs to redirect Traffic to HTTPS
- D. Change the Type of the Virtual Server remote.company.com_vs to Forwarding

Answer: C

Explanation:

Requiring all traffic to be HTTPS access requires HTTP requests to be redirected directly to HTTPS.

NEW QUESTION 173

How is MAC masquerading configured?

- A. Specify the desired MAC address for each VLAN for which you want this feature enabled.
- B. Specify the desired MAC address for each selfIP address for which you want this feature enabled.
- C. Specify the desired MAC address for each VLAN on the active system and synchronize the systems.
- D. Specify the desired MAC address for each floating selfIP address for which you want this feature enabled.

Answer: A

NEW QUESTION 174

Refer to the exhibit.



According to the shown Configuration Utility stings What is the setting of the User Directory configuration under the Authentication submenu?

- A. Local
- B. Managed
- C. Remote-TACACS+
- D. Default system configuration

Answer: C

NEW QUESTION 175

Which statement describes a typical purpose of iRules?

- A. iRules can be used to add individual control characters to an HTTP data stream.
- B. iRules can be used to update the timers on monitors as a server load changes.
- C. iRules can examine a server response and remove it from a pool if the response is unexpected.
- D. iRules can be used to look at client requests and server responses to choose a pool member to select for load balancing

Answer: A

NEW QUESTION 178

Assume a virtual server has a ServerSSL profile. What SSL certificates are required on the pool members?

- A. No SSL certificates are required on the pool members.
- B. The pool members.SSL certificates must only exist.
- C. The pool members.SSL certificates must be issued from a certificate authority.
- D. The pool members.SSL certificates must be created within the company hosting the BIGIPs.

Answer: B

NEW QUESTION 180

The incoming client IP address is 195.64.45.52 and the last five connections have been sent to members A, C, E, D and B. Given the virtual server, pool, and persistence definitions and statistics shown in the above graphic, which member will be used for the next connection?

- A. 10.10.20.1:80
- B. 10.10.20.2:80
- C. 10.10.20.3:80
- D. 10.10.20.4:80
- E. 10.10.20.5:80
- F. It cannot be determined with the information given.

Answer: C

NEW QUESTION 183

Refer to the exhibit.



How many nodes are represented on the network map shown?

- A. Four
- B. Three
- C. One
- D. Two

Answer: B

NEW QUESTION 186

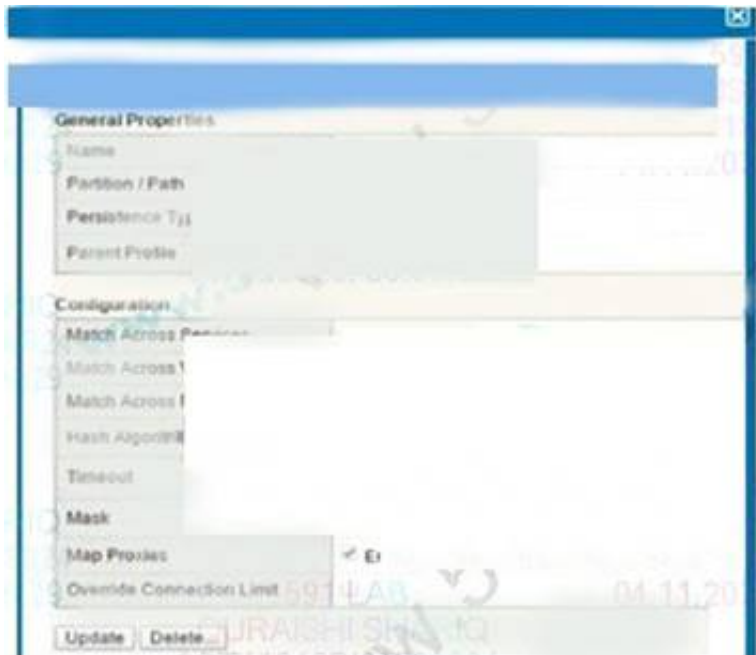
A BIG-IP Administrator uses a device group to share the workload and needs to perform service on a BIG-IP device currently active for a traffic group. The administrator needs to enable the traffic group to run on another BIG-IP device in the device group. What should the administrator do to meet the requirement?

- A. Create a new Traffic Group and then fail to Standby Unit
- B. Select Traffic Group and then select Failover
- C. Select Traffic Group and then select Force to Standby
- D. Select Traffic Group on Primary Unit and then select Demote

Answer: C

NEW QUESTION 188

Refer to the exhibit.



How long will the persistence record remain in the table?

- A. 180 seconds after the last packet
- B. 180 seconds after the initial table entry
- C. 300 seconds after the initial table entry
- D. 300 seconds after the last packet

Answer: D

NEW QUESTION 189

You need to terminate client SSL traffic at the BIG-IP and also to persist client traffic to the same pool member based on a BIG IP supplied cookie. Which four are profiles that would normally be included in the virtual server's definition? (Choose four.)

- A. TCP
- B. HTTP
- C. HTTPS
- D. ClientSSL
- E. ServerSSL
- F. CookieBased Persistence

Answer: ABDF

NEW QUESTION 191

Refer to the exhibit.

```

root@(v1161) (cfg-sync Standalone) (Active) (/Common) (tmsh) # 1
ltm virtual http
  destination
  ip-protocol
  last-modified
  mask 255.255.255.255
  pool LAMP12
  profiles (
    http (
      smpcp-m
      stream
    )
  )
  source 0.0.0.0
  translate-address
  translate-port
  vs-index 10
}
root@(v1161) (cfg-sync Standalone) (Active) (/Common) (tmsh) # 1
ltm pool LAMP12
  members (
    10.1.20.11:http {
      address 10.1.
      session monit
      state up
    }
    10.1.20.12:http {
      address 10.1.
      session monit
      state up
    }
  )
  monitor tcp

```

A BIG-IP Administrator creates a new Virtual Server. The end user is unable to access the page. During troubleshooting, the administrator learns that the connection between the BIG-IP system and server is NOT set up correctly. What should the administrator do to solve this issue?

- A. Disable Address Translation
- B. Set Address Translation to Auto Map, configure a SNAT pool, and have pool members in the same subnet of the servers
- C. Set Address Translation to SNAT and configure a specific translation address
- D. Set Address Translation to SNAT and have self-IP configured in the same subnet of servers

Answer: C

Explanation:

The status of the pool can be seen that the members are all up, indicating that the network from F5 to the server is no problem, so there is no need to configure selfip on the same subnet. The monitor is normal but the access is not normal, you have to consider the problem of snat, you can configure automap or configure snat and specify snat ip.

NEW QUESTION 193

A BIG-IP Administrator needs to have a BIG-IP linked to two upstream switches for resilience of the external network. The network engineer who is going to configure the switch instructs the BIG-IP Administrator to configure interface binding with LACP. Which configuration should the administrator use?

- A. A virtual server with an LACP profile and the switches' management IPs as pool members.
- B. A virtual server with an LACP profile and the interfaces connected to the switches as pool members.
- C. A Trunk listing the allowed VLAN IDs and MAC addresses configured on the switches.
- D. A Trunk containing an interface connected to each switch.

Answer: D

NEW QUESTION 197

Which is an advantage of terminating SSL communication at the BIGIP rather than the ultimate web server?

- A. Terminating SSL at the BIG-IP can eliminate SSL processing at the web servers.
- B. Terminating SSL at IP eliminates BIG all unencrypted traffic from the internal network.
- C. Terminating SSL at the BIG-IP eliminates the need to purchase SSL certificates from a certificate authority.
- D. Terminating SSL at the BIG-IP eliminates the need to use SSL acceleration hardware anywhere in the network.

Answer: A

NEW QUESTION 198

How should a BIG-IP Administrator persistent sessions from being sent to a pool member so that the server administrator can perform maintenance?

- A. force the pool member offline
- B. disable the pool member
- C. add an additional monitor to the pool
- D. disable the virtual server

Answer: A

NEW QUESTION 203

In the BIG-IP Configuration Utility, a user requests a single screen view to determine the status of all Virtual Servers and associated pool members, as well as any iRules in use. Where should the BIG-IP Administrator instruct the user to find this view?

- A. Local Traffic > Monitors
- B. Local Traffic > Virtual Servers
- C. Local Traffic > Network Map
- D. Statistics

Answer: C

Explanation:

Network Map can display vs and its associated pool, pool member, and irule, can be retrieved, and can be quickly linked.

NEW QUESTION 208

A virtual server is listening at 10.10.1.100:80 and has the following iRule associated with it:

```
when HTTP_REQUEST { if { [HTTP::header UserAgent] contains "MSIE" }
```

```
{ pool MSIE_pool }
```

```
else { pool Mozilla_pool }
```

If a user connects to <http://10.10.1.100/foo.html> and their browser does not specify a UserAgent, which pool will receive the request?

- A. MSIE_pool
- B. Mozilla_pool
- C. Non
- D. The request will be dropped.
- E. Unknow
- F. The pool cannot be determined from the information provided.

Answer: B

NEW QUESTION 212

A BIG-IP Administrator is making adjustments to an iRule and needs to identify which of the 235 virtual server configured on the BIG-IP device will be affected.

How should the administrator obtain this information in an effective way?

- A. Local Traffic > Virtual Server
- B. Local traffic Pools
- C. LOCAL Traffic > Network Map
- D. Local traffic > Rules

Answer: C

NEW QUESTION 214

A BIG-IP Administrator is performing maintenance on the active BIG-IP device of an HA pair. The BIG-IP Administrator needs to minimize traffic disruptions.

What should the BIG-IP Administrator do to start the maintenance activity?

- A. Reboot the BIG-IP device.
- B. Move resources to a new Traffic Group.
- C. Force the BIG-IP device to standby.
- D. Disable switch ports of the BIG-IP device.

Answer: C

NEW QUESTION 216

When upgrading a BIG-IP redundant pair, what happens when one system has been updated but the other has not?

- A. Synching should not be performed.
- B. The first system to be updated will assume the Active role.
- C. This is not possible since both systems are updated simultaneously.
- D. The older system will issue SNMP traps indicating a communication error with the partner.

Answer: A

NEW QUESTION 220

The BIG-IP Administrator needs to ensure the correct health monitor is being used for a new HTTP pool named P_example.

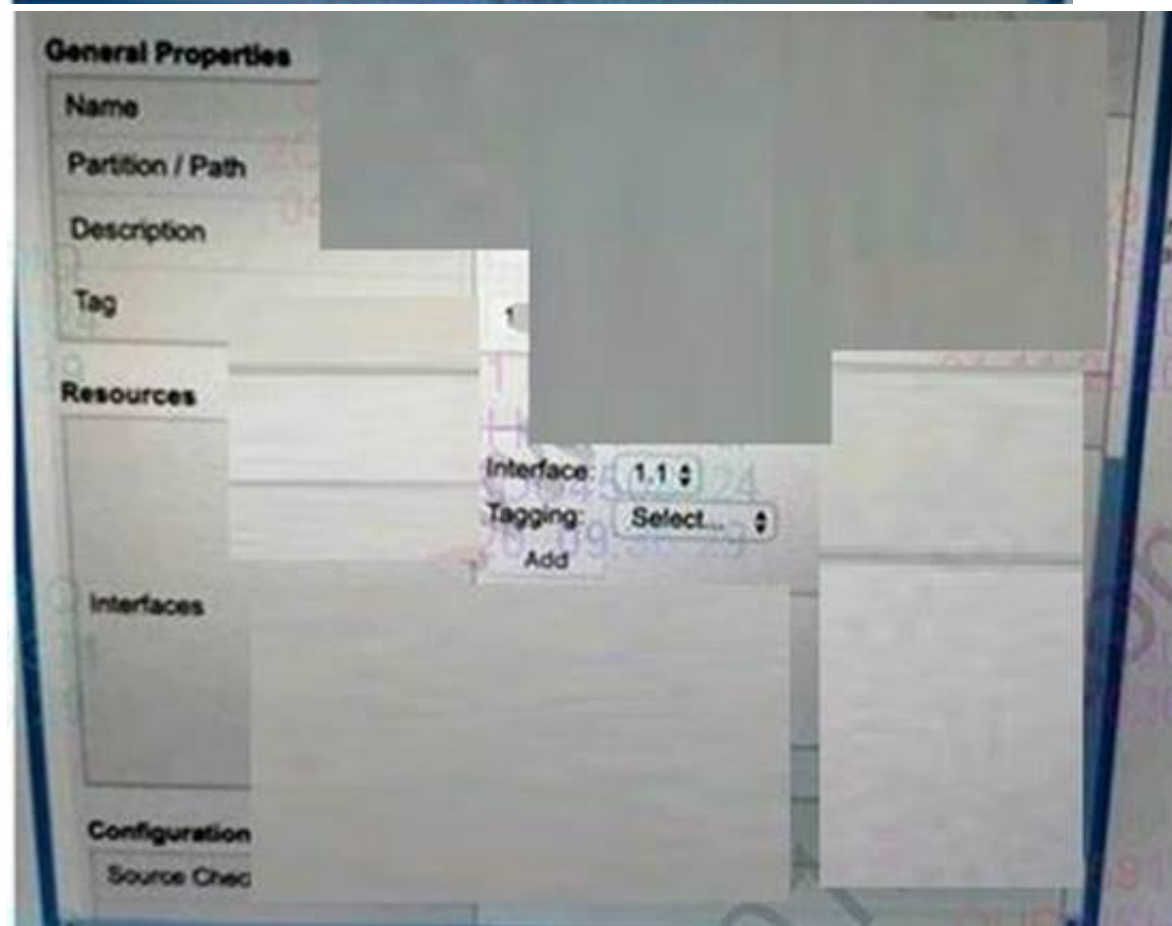
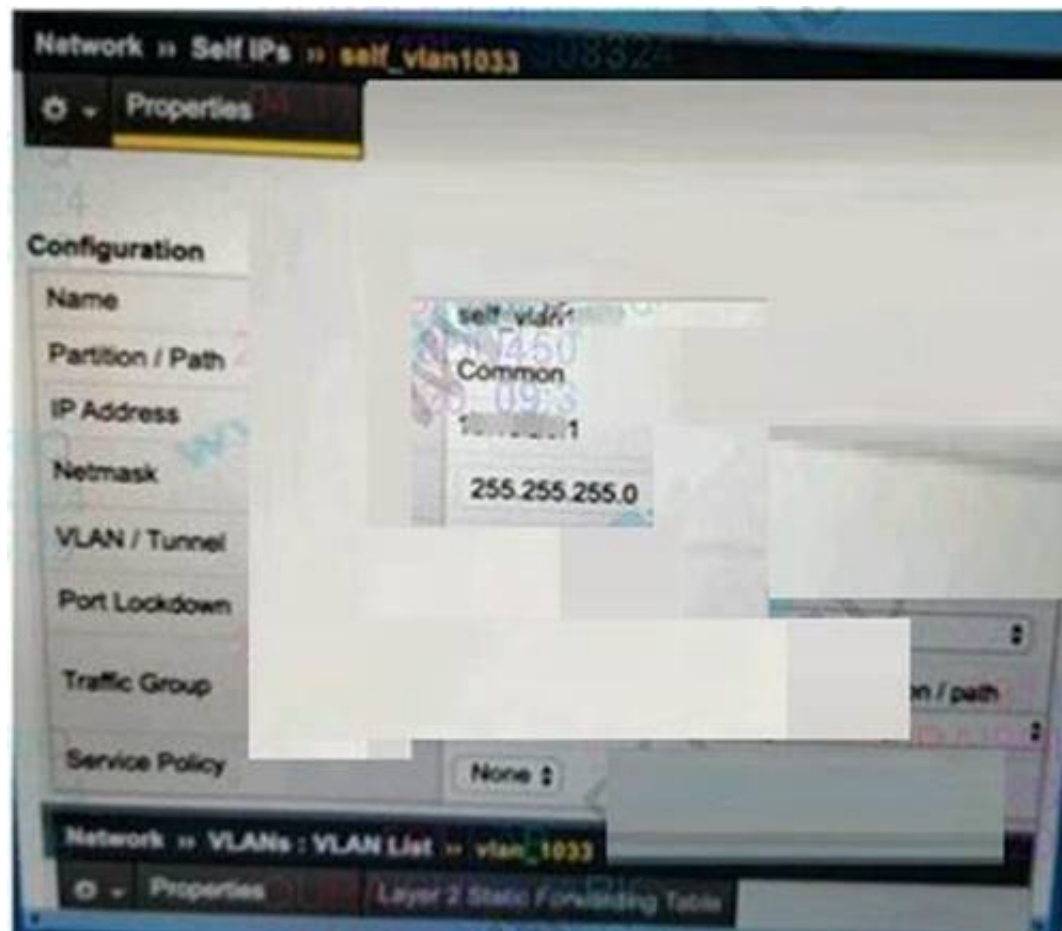
Where should the BIG-IP Administrator validate these settings in the Configuration Utility?

- A. Local Traffic > Nodes > Default Monitor
- B. Local Traffic > Profiles > Services > HTTP > http
- C. Local Traffic > Monitors > http
- D. Local Traffic > Pools > P_example

Answer: D

NEW QUESTION 225

Refer to the exhibit



The network team creates a new VLAN on the switches. The BIG-IP Administrator needs to create a configuration on the BIG-IP device. The BIG-IP Administrator creates a new VLAN and Self IP, but the servers on the new VLAN are NOT reachable from the BIG-IP device. Which action should the BIG-IP Administrators to resolve this issue?

- A. Set Port Lockdown of Set IP to Allow All
- B. Change Auto Last Hop to enabled
- C. Assign a physical interface to the new VLAN
- D. Create a Floating Set IP Address

Answer: C

NEW QUESTION 230

Which type of Virtual Server requires the use of a FastL4 profile?

- A. Performance (Layer 4)
- B. Stateless
- C. Performance (HTTP)
- D. Standard

Answer: A

NEW QUESTION 232

Which parameters are set to the same value when a pair of BIG-IP devices are synchronized?

- A. host names

- B. system clocks
- C. profile definitions
- D. VLAN failsafe settings
- E. MAC masquerade addresses

Answer: C

NEW QUESTION 236

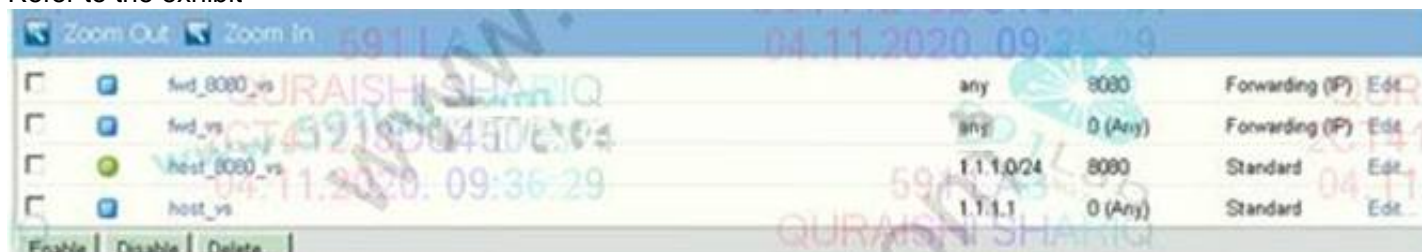
The BIG-IP Administrator configures an HTTP monitor with a specific receive string. The status is marked 'down'. Which tool should the administrator use to identify the problem?

- A. Ping
- B. Health
- C. tcpdump
- D. ifconfig

Answer: C

NEW QUESTION 238

Refer to the exhibit



Virtual Server	Destination	Port	Protocol	Pool	Status
fw_8080_vs	any	8080	Forwarding (IP)	Edt	
fw_vs	any	0 (Any)	Forwarding (IP)	Edt	
host_8080_vs	1.1.1.0/24	8080	Standard	Edt	
host_vs	1.1.1.1	0 (Any)	Standard	Edt	

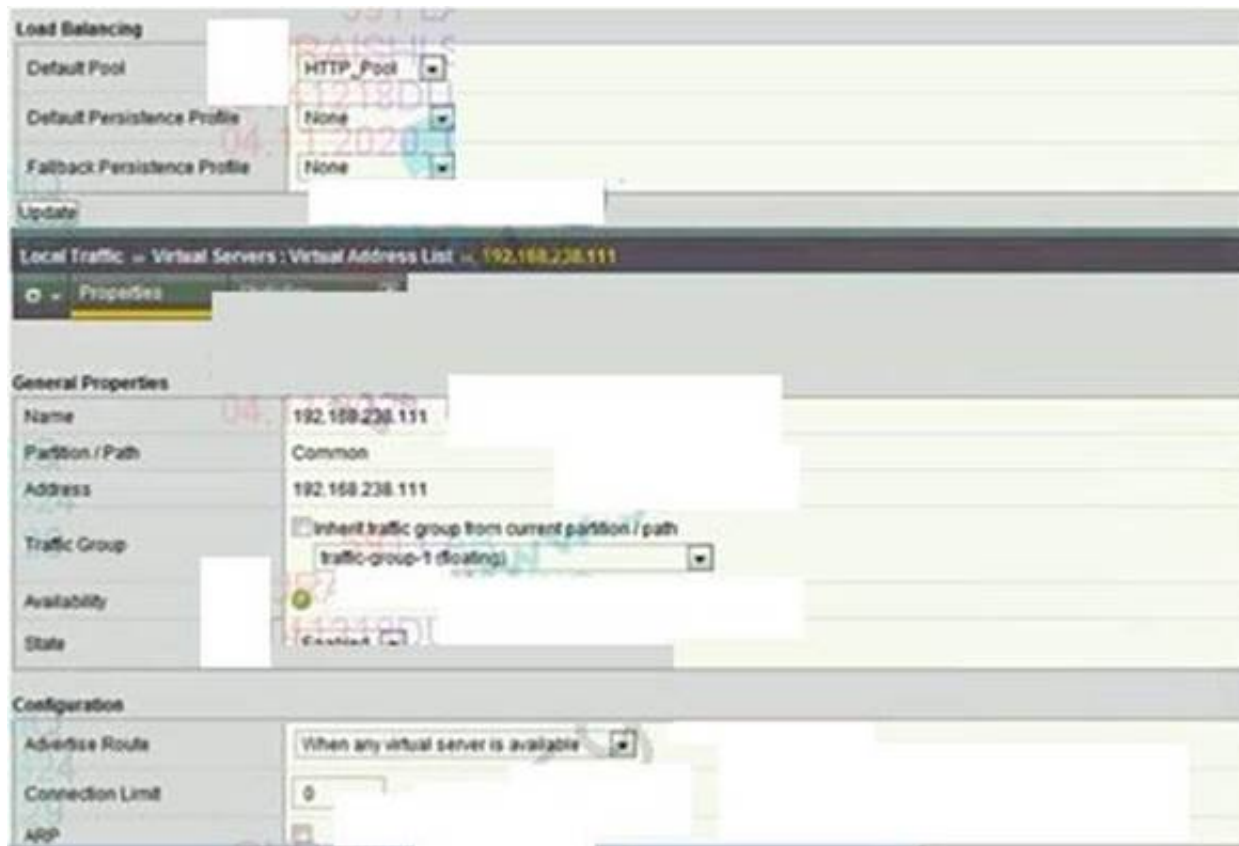
A connection is being established to IP 1.1.1.1 on port 8080. Which virtual server will handle the connection?

- A. fwd_8080_vs
- B. host_vs
- C. host_8080_VS
- D. fwdvs

Answer: B

NEW QUESTION 241

Refer to the exhibit.



Load Balancing

Default Pool: HTTP_Pool

Default Persistence Profile: None

Fallback Persistence Profile: None

Update

Local Traffic > Virtual Servers: Virtual Address List > 192.168.238.111

Properties

General Properties

Name: 192.168.238.111

Partition / Path: Common

Address: 192.168.238.111

Traffic Group: ☐ Inherit traffic group from current partition / path
traffic-group-1 (floating)

Availability: ☒ Enabled

State: ☒ Enabled

Configuration

Advertise Route: When any virtual server is available

Connection Limit: 0

ARP: ☒ Enabled

An LTM device has a virtual server mapped to www.f5.com. Users report that when they connect to /resources/201.1.2h.l_l.com they are unable to receive content. What is the likely cause of the issue?

- A. The pool associated with the virtual server does not have priority group activation enabled.
- B. The virtual address does not have ARP enabled.
- C. The virtual address does not have route advertising enabled.
- D. The pool associated with the virtual server is failing its health check.

Answer: B

NEW QUESTION 246

Assuming other failover settings are at their default state, what would occur if the failover cable were to be disconnected for five seconds and then reconnected?

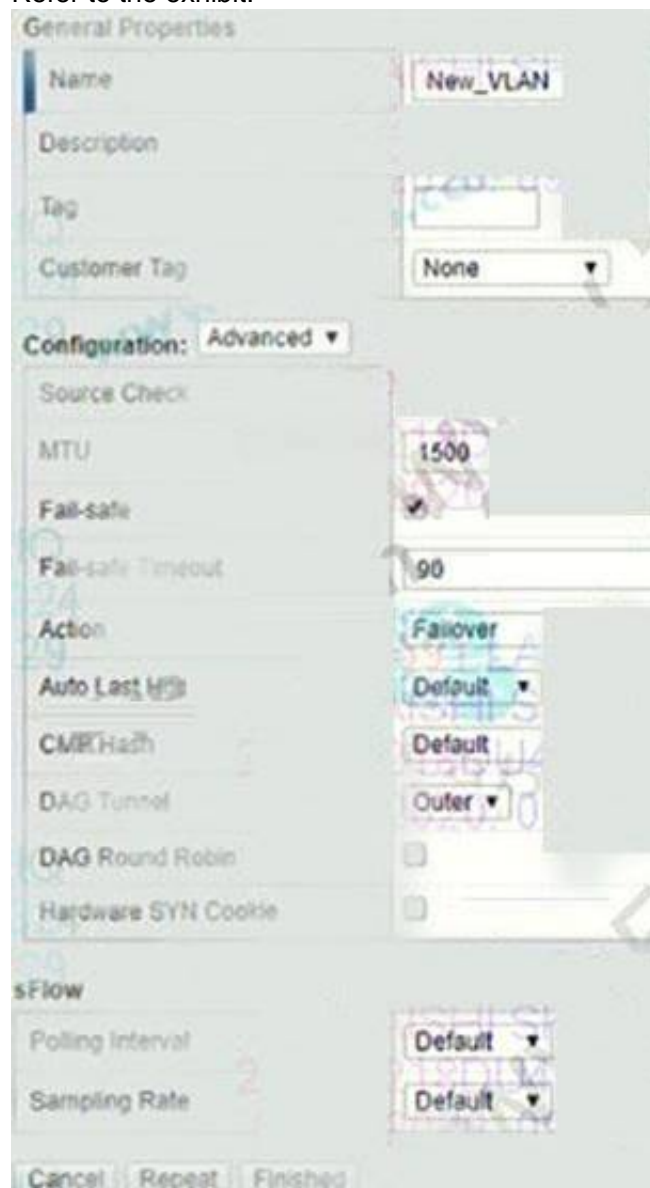
- A. As long as network communication is not lost, no change will occur.
- B. Nothin
- C. Failover due to loss of voltage will not occur if the voltage is lost for less than ten seconds.

- D. When the cable is disconnected, both systems will become activ
- E. When the voltage is restored, unit two will revert to standby mode.
- F. When the cable is disconnected, both systems will become activ
- G. When the voltage is restored, both systems will maintain active mode.

Answer: C

NEW QUESTION 251

Refer to the exhibit.



A BIG-IP Administrator configures a new VLAN on an HA pair of devices that does NOT yet have any traffic. This action causes the assigned traffic group to fail over to the standby device.

Which VLAN setting should be changed to prevent this issue?

- A. Auto Last Hop
- B. Fail-safe
- C. Customer Tag
- D. Source Check

Answer: B

NEW QUESTION 252

Which two statements are true concerning the default communication between a redundant pair of BIG-IP systems? (Choose two.)

- A. Synchronization occurs via a TCP connection using ports 683 and 684.
- B. Connection mirroring data is shared via a TCP connection using port 1028.
- C. Persistence mirroring data is shared via a TCP connection using port 1028.
- D. Connection mirroring data is shared through the serial fail over cable unless network failover is enabled.

Answer: BC

NEW QUESTION 257

Which process or system can be monitored by the BIG-IP system and used as a failover trigger in a redundant pair configuration?

- A. bandwidth utilization
- B. duplicate IP address
- C. CPU utilization percentage
- D. VLAN communication ability

Answer: D

NEW QUESTION 260

For a given Virtual Server, the BIG-IP must perform SSL Offload and negotiate secure communication over TLSv1.2 only. What should the BIG-IP Administrator do to meet this requirement?

- A. Configure a custom SSL Profile (Client) and select no TLSv1 in the options list

- B. Configure a custom SSL Profile (Client) with a custom TLSV1.2 cipher string
- C. Configure a custom SSL Profile (Server) and select no TLSv1 in the options list
- D. Configure a custom SSL Profile (Server) with a custom TLSV1.2 cipher string

Answer: B

Explanation:

no TLSv1 only disables TLS1.0, TLS1.1 is still used and does not meet the requirements.

NEW QUESTION 261

A BIG-IP Administrator must configure the BIG-IP device to send system log messages to a remote syslog server. In addition, the log messages need to be sent over TCP for guaranteed delivery. What should the BIG-IP Administrator configure?

- A. syslog-ng
- B. Request Logging Profile
- C. HSL Logging
- D. Remote Logging

Answer: D

NEW QUESTION 264

A BIG-IP Administrator is creating a new Trunk on the BIG-IP device. What objects should be added to the new Trunk being created?

- A. Interfaces
- B. Network routes
- C. VLANs
- D. IP addresses

Answer: A

Explanation:

trunk is a portchannel, you need to add a physical interface.

NEW QUESTION 267

During a high-demand traffic event, the BIG-IP Administrator needs to limit the number of new connections per second allowed to a Virtual Server. What should the administrator apply to accomplish this task?

- A. An HTTP Compression profile to the Virtual Server
- B. A connection rate limit to the Virtual Server
- C. A connection limit to the Virtual Server
- D. A OneConnect profile to the Virtual Server

Answer: B

NEW QUESTION 269

A BIG-IP Administrator needs to find which modules have been licensed for use on the BIG-IP system. In which section of the Configuration Utility can the BIG-IP Administrator find this information?

- A. System > Services
- B. System > Resource Provisioning
- C. System > Platform
- D. System > Support

Answer: B

NEW QUESTION 272

A BIG-IP Administrator creates a new VLAN on BIG-IP Cluster Member A and attaches an Interface to it. Although the Auto Config Sync is in place, the new VLAN does NOT show up on Cluster Member B. What should the BIG-IP Administrator do to ensure the new VLAN is configured on each Cluster Member?

- A. Configure the new VLAN manually on Cluster Member B.
- B. Reset the Device Trust of the BIG-IP Cluster on either Cluster Member.
- C. Configure a Default Route for the new VLAN on Cluster Member A.
- D. Enable the Interface that is attached to the new VLAN on Cluster Member A.

Answer: A

NEW QUESTION 276

A BIG-IP Administrator wants to add a new Self IP to the BIG-IP device. Which item should be assigned to the new Self IP being configured?

- A. Interface
- B. Route
- C. VLAN
- D. Trunk

Answer: C

NEW QUESTION 279

A custom HTTP monitor is failing to a pool member 10.10.3.75:8080 that serves up www.example.com. A ping works to the pool member address. The SEND string that the monitor is using is: GET/HTTP/I.I/r/n/Host.www.example.com/r/n/Connection Close/r/n/r/n Which CLI tool syntax will show that the web server returns the correct HTTP response?

- A. curlhttp://10.10.10.3.75:8080/www.example.com/index.html
- B. curl-header 'Host:www.example.com' http://10.10.3.75:8080/
- C. tracepath 'http://www.example.com:80
- D. tracepath 10.10.3.75:8080 GET /index

Answer: B

NEW QUESTION 280

An IT support engineer needs to access and modify Virtual Servers in three partitions (Common /Banking and Dev) daily on a BIG-IP device. The company operates a Least Privilege access policy. What level of access does the IT support engineer need to ensure completion of daily roles?

- A. Manager in /common/Banking, and /Dev partitions
- B. Application Editor in /Common, /Banking, and /Dev partitions
- C. Manager in all partitions
- D. Application Editor in all partitions

Answer: A

NEW QUESTION 284

A BIG-IP Administrator has configured a BIG-IP cluster with remote user authentication against dcOI f5trn.com. Only local users can successfully log into the system. Configsync is also failing. Which two tools should the BIG-IP Administrator use to further investigate these issues? (Choose two)

- A. ntpq
- B. pam_timestamp_check
- C. passwd
- D. pwck
- E. dig

Answer: AC

NEW QUESTION 286

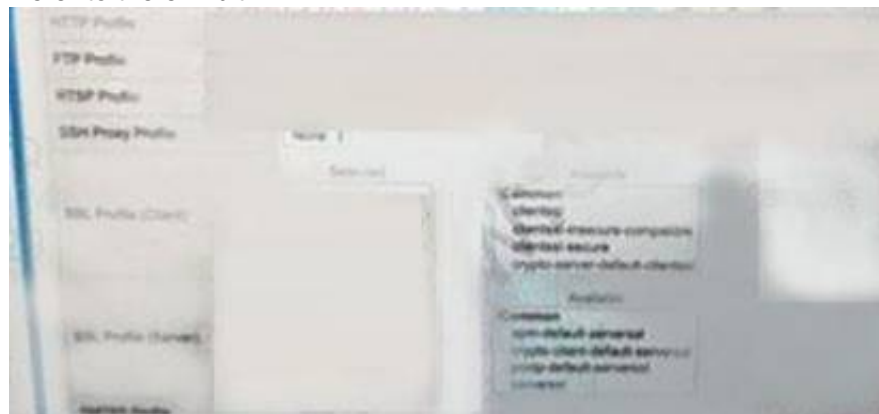
One of the two members of a device group has been decommissioned. The BIG-IP Administrator tries to delete the device group, but is unsuccessful. Prior to removing the device group, which action should be performed?

- A. Disable the device group
- B. Remove all members from the device group
- C. Remove the decommissioned device from the device group
- D. Make sure all members of the device group are in sync

Answer: B

NEW QUESTION 289

Refer to the exhibit.



A BIG-IP Administrator configures a Virtual Server to handle HTTPS traffic. Users report that the application is NOT working. Which actional configuration is regard to resolve this issue?

- A. Configure SSL Profile (Client)
- B. Configure Protocol Profile (Server)
- C. Configure Service Profile HTTP
- D. Configure SSL Profile (Server)

Answer: A

NEW QUESTION 290

Which action will take place when a failover trigger is detected by the active system?

- A. The active device will take the action specified for the failure.
- B. The standby device also detects the failure and assumes the active role.
- C. The active device will wait for all connections to terminate and then failover.
- D. The standby device will begin processing virtual servers that have failed, but the active device will continue servicing the functional virtual servers.

Answer: A

NEW QUESTION 295

A BIG-IP Administrator needs to restore a UCS file to an F5 device using the Configuration Utility. Which section of the Configuration Utility should the BIG-IP Administrator access to perform this task?

- A. Local Traffic > Virtual Servers
- B. Local Traffic > Policies
- C. System > Archives
- D. System > Configuration

Answer: C

NEW QUESTION 300

New Syslog servers have been deployed in an organization. The BIG-IP Administrator must reconfigure the BIG-IP system to send log messages to these servers. In which location in the Configuration Utility can the BIG-IP Administrator make the needed configuration changes to accomplish this?

- A. System > Logs > Configuration
- B. System > Configuration > Local Traffic
- C. System > Logs > Audit
- D. System > Configuration > Device

Answer: A

NEW QUESTION 304

The incoming client IP address is 205.12.45.52. The last five connections have been sent to members C, D, A, B, B. Given the virtual server and pool definitions and the statistics shown in the graphic, which member will be used for the next connection?

- A. 10.10.20.1:80
- B. 10.10.20.2:80
- C. 10.10.20.3:80
- D. 10.10.20.4:80
- E. 10.10.20.5:80

Answer: A

NEW QUESTION 308

A local user account (Users) on the BIG-IP device is assigned the User Manager role. User1 attempts to modify the properties of another account (User2), but the action fails. The BIG-IP Administrator can successfully modify the User2 account.

Assuming the principle of least privilege, what is the correct way to allow User 1 to modify User2 properties?

- A. Move User2 to the same partition as User1
- B. Grant User1 administrative privileges
- C. Move User to the same partition as User2.
- D. Modify the partition access for User 1

Answer: D

NEW QUESTION 312

Which two statements describe differences between the active and standby systems? (Choose two.)

- A. Monitors are performed only by the active system.
- B. Failover triggers only cause changes on the active system.
- C. Virtual server addresses are hosted only by the active system.
- D. Configuration changes can only be made on the active system.
- E. Floating selfIP addresses are hosted only by the active system.

Answer: CE

NEW QUESTION 313

A BIG-IP Administrator needs to determine which pool members in a pool have been manually forced offline and are NOT accepting any new traffic. Which status icon indicates this?

- A)
- B)
- C)
- D)

- A. Option A
- B. Option B
- C. Option C
- D. Option D

Answer: A

NEW QUESTION 316

A BIG-IP Administrator needs to configure the BIG-IP system to perform load balancing for FTP servers running passive mode FTP. How should the administrator configure the Virtual Server to perform this load balancing?

- A. A Standard Virtual Server + FTP profile
- B. A Forwarding Virtual Server
- C. A Performance Layer 4 Virtual Server + FTP profile
- D. A Message Routing Virtual Server

Answer: A

NEW QUESTION 320

Which must be sent to the license server to generate a new license?

- A. the system's dossier
- B. the system's host name
- C. the system's base license
- D. the system's purchase order number

Answer: A

NEW QUESTION 325

A site needs to terminate client HTTPS traffic at the BIG-IP and forward that traffic unencrypted. Which two are profile types that must be associated with such a virtual server? (Choose two.)

- A. TCP
- B. HTTP
- C. HTTPS
- D. ClientSSL
- E. ServerSSL

Answer: AD

NEW QUESTION 330

What is required for a virtual server to support clients whose traffic arrives on the internal VLAN and pool members whose traffic arrives on the external VLAN?

- A. That support is never available.
- B. The virtual server must be enabled for both VLANs.
- C. The virtual server must be enabled on the internal VLAN.
- D. The virtual server must be enabled on the external VLAN.

Answer: C

NEW QUESTION 333

.....

Thank You for Trying Our Product

* 100% Pass or Money Back

All our products come with a 90-day Money Back Guarantee.

* One year free update

You can enjoy free update one year. 24x7 online support.

* Trusted by Millions

We currently serve more than 30,000,000 customers.

* Shop Securely

All transactions are protected by VeriSign!

100% Pass Your 201 Exam with Our Prep Materials Via below:

<https://www.certleader.com/201-dumps.html>