



CompTIA

Exam Questions N10-007

CompTIA Network+ N10-007

About ExamBible

Your Partner of IT Exam

Found in 1998

ExamBible is a company specialized on providing high quality IT exam practice study materials, especially Cisco CCNA, CCDA, CCNP, CCIE, Checkpoint CCSE, CompTIA A+, Network+ certification practice exams and so on. We guarantee that the candidates will not only pass any IT exam at the first attempt but also get profound understanding about the certificates they have got. There are so many alike companies in this industry, however, ExamBible has its unique advantages that other companies could not achieve.

Our Advances

* 99.9% Uptime

All examinations will be up to date.

* 24/7 Quality Support

We will provide service round the clock.

* 100% Pass Rate

Our guarantee that you will pass the exam.

* Unique Gurantee

If you do not pass the exam at the first time, we will not only arrange FULL REFUND for you, but also provide you another exam of your claim, ABSOLUTELY FREE!

NEW QUESTION 1

- (Exam Topic 1)

Which of the following would a company place at the edge of its network if it wants to view and control which Internet applications are being used?

- A. VPN concentrator
- B. NGFW
- C. IDS/IPS
- D. Proxy server

Answer: B

NEW QUESTION 2

- (Exam Topic 1)

A UTM is deployed on the external edge of the main corporate office. The office connects to the WAN port of the edge router. The edge router at the main office connects to the remote offices using GRE IPSec tunnels. A network administrator notices that a worm that was not detected by the UTM has spread from the remote sites into the corporate network. The UTM currently has traffic rules applied that should block the port used by the worm. Which of the following steps would MOST likely correct this issue?

- A. Move the UTM onto the LAN side of the network
- B. Enable TLS inspection on the UTM
- C. Enable stateful inspection on the UTM
- D. Configure the UTM to deny encrypted files from being transferred

Answer: C

NEW QUESTION 3

- (Exam Topic 1)

Which of the following backup techniques is used to capture all the data that has changed since the least full backup?

- A. Incremental
- B. Replica
- C. Different
- D. Snapshot

Answer: C

NEW QUESTION 4

- (Exam Topic 1)

A company has just refreshed the hardware in its datacenter with new 10G Ethernet switches wishes to set up a new storage area network but must use existing infrastructure. Which of the following storage standards should the technician use?

- A. iSCSI
- B. Fibre Channel
- C. NAS
- D. InfinBand

Answer: C

NEW QUESTION 5

- (Exam Topic 1)

A Chief Information Officer (CIO) is concerned about an attacker gaining administrative access to the company's network devices. Which of the following is the MOST secure way to prevent this?

- A. ACL allowing only HTTP
- B. ACL allowing only Telnet
- C. Out-of-band modem
- D. Out-of-band console router

Answer: D

NEW QUESTION 6

- (Exam Topic 1)

Employees want the ability to use personal devices on the guest network while working out at the company gym. In order to meet the request, which of the following policies requires employee adherence?

- A. AUP
- B. SLA
- C. NDA
- D. MOU

Answer: A

NEW QUESTION 7

- (Exam Topic 1)

A network technician is troubleshooting an issue and has established a theory of probable cause. Which of the following steps should the network technician take

NEXT?

- A. Test the possible solution
- B. Question the users
- C. Determine what has changed
- D. Document the theory

Answer: A

NEW QUESTION 8

- (Exam Topic 1)

A technician is installing a new wireless badging system on a hospital network. The requirements of the badging system are for it to have its own SSID and low power levels. The badging system has to cover 99.9% of the hospital. Which of the following is the BEST action to take to meet the system requirements?

- A. Install additional WAPs
- B. Install external antennas
- C. Move the WAPs closer to the more populated area
- D. Change the antenna types

Answer: A

NEW QUESTION 9

- (Exam Topic 1)

An entire enterprise cannot access a specific website. The network technician knows the website was accessible last week. The technician can also ping the website. Which of the following is the technician MOST likely to find upon investigation?

- A. The firewall is misconfigured.
- B. The network is being hit by a zero-day attack.
- C. The SSL certificate is untrusted.
- D. The SSL certificate has expired.

Answer: D

NEW QUESTION 10

- (Exam Topic 1)

Users are reporting Internet connectivity issues. The network administrator wants to determine if the issues are internal to the company network or if there is an issue with the ISP. Which of the following tools should be used to BEST determine where the outage is occurring?

- A. traceroute
- B. ping
- C. nslookup
- D. netstat

Answer: A

NEW QUESTION 10

- (Exam Topic 1)

A technician must determine if a web page user's visits are connecting to a suspicious website's IP address in the background. Which of the following tools would provide the information on TCP connections?

- A. netstat
- B. tracert
- C. arp
- D. ipconfig
- E. route

Answer: A

NEW QUESTION 11

- (Exam Topic 1)

Which of the following protocols are classified as connectionless? (Select TWO)

- A. TFTP
- B. FTP
- C. HTTP
- D. SNMP
- E. SSH
- F. IMAP

Answer: AD

Explanation:

Trivial FTP (TFTP) is a connectionless file transfer program.

NEW QUESTION 16

- (Exam Topic 1)

A technician attempts to replace a switch with a new one of similar model from the same vendor. When the technician moves the fiber and SFP plug, the switch

does not completely boot up. Considering that the config files are the same, which of the following is the MOST likely cause of the failure?

- A. Damaged fiber
- B. Corrupted operating system
- C. VLAN mismatch
- D. Bad port

Answer: B

NEW QUESTION 19

- (Exam Topic 1)

Which of the following should current network performance be compared against to determine network anomalies?

- A. Baseline
- B. Traffic analysis
- C. Packet capture
- D. Logs

Answer: A

NEW QUESTION 20

- (Exam Topic 1)

A technician is troubleshooting network connectivity issue with a remote host. Which of the following tools would BEST between the client and the remote host?

- A. tracer
- B. ping
- C. tcpdump
- D. pathping
- E. netstate
- F. nslookup
- G. route

Answer: EF

NEW QUESTION 22

- (Exam Topic 1)

A technician discovers that multiple switches require a major update. Which of the following policies should be followed?

- A. Change management policy
- B. Remote access policy
- C. Acceptable use policy
- D. Memorandum of understanding

Answer: A

NEW QUESTION 24

- (Exam Topic 1)

A technician is investigating the cause of a network outage. Which of the following documents should be checked to rule out configuration issues?

- A. Change management records
- B. Inventory management
- C. Network log files
- D. Logical diagrams

Answer: A

NEW QUESTION 29

- (Exam Topic 1)

A network engineer planning for wireless connectivity in large office building. Currently, the office building contains both legacy and newer devices. Which of the following wireless network routers should engineer select for the fastest throughput for all wireless devices in the office building?

- A. 802.11ac
- B. 802.11b
- C. 802.11g
- D. 802.11n

Answer: A

Explanation:

<https://www.forbes.com/forbes/welcome/?toURL=https://www.forbes.com/sites/gordonkelly/2014/12/30/802-11>

NEW QUESTION 31

- (Exam Topic 1)

A company dedicates deploy customer –facing, touch-screen kiosks. The kiosks appear to have several open service ports that potentially became compromised. Which of the following is the MOST effective way to protect the kiosk?

- A. Install an IDS to monitor all traffic to and from the kiosk.

- B. install honeypots on the network to detect and analyze potential kiosks attacks before they occur.
- C. Enable switchport security on the ports to which the kiosks are connected to prevent network level attacks.
- D. Create a new segment with ACLs, limiting kiosks traffic with the internal network

Answer: A

NEW QUESTION 35

- (Exam Topic 1)

A network technician is connecting two switches together. Which of the following protocols should the technician use to increase speed and fault tolerance?

- A. SIP
- B. BGP
- C. LACP
- D. LLDP

Answer: C

NEW QUESTION 39

- (Exam Topic 1)

A network technician receives a call from a user who is experiencing network connectivity issues. The network technician questions the user and learns the user brought in a personal wired router to use multiple computers and connect to the network. Which of the following has the user MOST likely introduced to the network?

- A. Rogue DHCP server
- B. Evil twin
- C. VLAN mismatch
- D. Honeypot

Answer: A

NEW QUESTION 40

- (Exam Topic 1)

A company has completed construction of a new datacenter, and the IT staff is now planning to relocate all server and network equipment from the old site to the new site. Which of the following should the IT staff reference to determine the location of the equipment being moved?

- A. Rack diagrams
- B. Network topology
- C. Standard operating procedures
- D. Wiring documentation

Answer: A

NEW QUESTION 43

- (Exam Topic 1)

A network technician has salvaged several Ethernet cables from a datacenter. The technician attempts to use the cables to connect desktops to the network without success. Which of the following is MOST likely the issue?

- A. The cables have an incorrect pin-out.
- B. The cables are UTP instead of STP.
- C. The cables are Cat 6 instead of Cat 5.
- D. The cables are not plenum rated.

Answer: A

NEW QUESTION 48

- (Exam Topic 1)

A technician is setting up a direct connection between two older PCs so they can communicate but not be on the corporate network. The technician does not have access to a spare switch but does have spare Cat 6 cables, RJ-45 plugs, and a crimping tool. The technician cuts off one end of the cable. Which of the following should the technician do to make a crossover cable before crimping the new plug?

- A. Reverse the wires leading to pins 1 and 2
- B. Reverse the wires leading to pins 1 and 3
- C. Reverse the wires leading to pins 2 and 3
- D. Reverse the wires leading to pins 2 and 4

Answer: D

NEW QUESTION 53

- (Exam Topic 1)

A technician is setting up a wireless access point in a coffee shop. The shop is not concerned with security but only wants to allow customers to have access. Which of the following configurations should the technician deploy?

- A. Use a pre-shared key.
- B. Set up EAP.
- C. Configure RADIUS.
- D. Configure MAC filtering.

Answer: A

NEW QUESTION 58

- (Exam Topic 1)

Which of the following protocols authenticates a PC to the server using a ticket issued to it by the authentication service?

- A. Kerberos
- B. RADIUS
- C. TACACS+
- D. LDAP

Answer: A

NEW QUESTION 63

- (Exam Topic 1)

A network administrator gets a call regarding intermittent network outages across the country. Which of the following should be used to connect to the network so the administrator can troubleshoot this issue from home? (Choose two.)

- A. FTP
- B. SMTP
- C. VPN
- D. SSH
- E. SNMP

Answer: CD

NEW QUESTION 67

- (Exam Topic 1)

Which of the following should be performed to verify that unnecessary services are disabled on all switches in an environment?

- A. packet capturing
- B. port scanning
- C. Log scanning
- D. Baseline review

Answer: B

NEW QUESTION 70

- (Exam Topic 1)

Which of the following ports should a network technician open on a firewall to back up the configuration and operating system files of a router to a remote server using the FASTES method possible?

- A. UDP port 22
- B. TCP port 22
- C. TCP port 25
- D. UDP port 53
- E. UDP port 69

Answer: E

NEW QUESTION 71

- (Exam Topic 1)

A network administrator is setting up a web-based application that needs to be continually accessible to the end users. Which of the following concepts would BEST ensure this requirement?

- A. High availability
- B. Snapshots
- C. NIC teaming
- D. Cold site

Answer: A

NEW QUESTION 76

- (Exam Topic 1)

A junior network technician is setting up a new email server on the company network. Which of the following default ports should the technician ensure is open on the firewall so the new email server can relay email?

- A. 23
- B. 25
- C. 110
- D. 143

Answer: B

NEW QUESTION 81

- (Exam Topic 1)

The process of attempting to exploit a weakness in a network after being given permission by the company is known as:

- A. penetration testing
- B. vulnerability scanning
- C. reconnaissance
- D. social engineering

Answer: A

NEW QUESTION 83

- (Exam Topic 1)

The IT manager at a small firm is in the process of renegotiating an SLA with the organization's ISP. As part of the agreement, the organization will agree to a dynamic bandwidth plan to provide 150Mbps of bandwidth.

However, if the ISP determines that a host on the organization's internal network produces malicious traffic, the ISP reserves the right to reduce available bandwidth to 1.5 Mbps. Which of the following policies is being agreed to in the SLA?

- A. Session hijacking
- B. Blocking
- C. Throttling
- D. Data usage limits
- E. Bandwidth quotasf

Answer: C

NEW QUESTION 84

- (Exam Topic 1)

Which of the following WAN technologies utilizes the concept of virtual circuits and point-multipoint connections?

- A. ISDN
- B. MPLS
- C. PRI
- D. Broadband cable
- E. Frame relay

Answer: E

NEW QUESTION 85

- (Exam Topic 1)

A network security technician observes multiple attempts to scan network hosts and devices. All the attempts originate from a single host on the network. Which of the following threats is MOST likely involved?

- A. Smurf attack
- B. Rogue AP
- C. Compromised system
- D. Unintentional DoS

Answer: C

NEW QUESTION 90

- (Exam Topic 1)

Ann, a network technician, has just installed a fiber switch in a datacenter. To run the fiber cabling, Ann plans the cable route over the top of the rack using the cable trays, down to the switch, coiling up any excess cable. As Ann configures the switch, she notices several messages in the logging buffer stating the receive signal of the SFP is too weak. Which of the following is MOST likely the cause of the errors in the logging buffer?

- A. Bend radius exceeded
- B. Fiber cable mismatch
- C. Fiber type mismatch
- D. Bad fiber switch

Answer: A

NEW QUESTION 91

- (Exam Topic 1)

An office user cannot access local network drives but has full access to the Internet. A technician troubleshoots the issue and observes the following output of the ipconfig command:


```
Windows IP Configuration

Ethernet LAN Adapter: 980GTS
Connection-specific DNS Suffix: ...comptia.net
IPv4 Address: .....10.0.5.99
Subnet Mask: .....255.255.255.0
Default Gateway: ...10.0.5.1

Wireless LAN Adapter: FastWifi 99
Connection-specific DNS Suffix: ...guestwireless.local
IPv4 Address: .....172.16.0.5
Subnet Mask: .....255.255.255.0
Default Gateway: ...172.16.0.254
```

Which of the following would MOST likely allow the network drives to be accessed?

- A. Update the WLAN adapter driver
- B. Disable the WLAN adapter
- C. Check the wireless DHCP configuration
- D. Disable the LAN adapter

Answer: B

NEW QUESTION 94

- (Exam Topic 1)

Based on networks 10.8.16.0/22 and 10.8.31.0/21, which of the following is the BEST summarized CIDR notation?

- A. 10.8.0.0/16
- B. 10.8.0.0/19
- C. 10.8.0.0/20
- D. 10.0.0.0/24

Answer: A

NEW QUESTION 99

- (Exam Topic 1)

A network administrator wants to employ a username and password authentication system for guest WiFi. Which of the following is the BEST option to provide this type of authentication?

- A. port security
- B. MAC filtering
- C. Network access control
- D. Captive portal

Answer: D

NEW QUESTION 101

- (Exam Topic 1)

Which of the following is recognized as the SMALLEST network type?

- A. SAN
- B. CAN
- C. PAN
- D. LAN

Answer: C

Explanation:

PAN is definitively the smallest type of network you can currently use and the name comes from Personal Area Network. You've probably used this in the last week without even knowing it.

<http://compinfoapro.com/types-of-network-pan-man-wlan-san-can-dan/>

NEW QUESTION 104

- (Exam Topic 1)

A network engineer is designing a new IDF in an old building. The engineer determines the equipment will fit in a two-post rack, and there is power available for this equipment. Which of the following would be the FIRST issue to remediate?

- A. Air flow and cooling
- B. UPS capability
- C. Circuit labeling
- D. Power redundancy

Answer: A

NEW QUESTION 108

- (Exam Topic 1)

A technician is replacing a failed SOHO router for a customer who has an existing, cable modem, and static IP address. The user has a web server that faces the

Internet so users can visit and leave comments. Which of the following BEST describes the correct configuration for this customer's requirements?

- A. The modern is placed in bridge mode, the router is placed behind the modern, and the web server is placed behind the router.
- B. The router is place in bridge in mode, the modern is placed behind the router, and the web server ids placed behind the modern.
- C. the web server is placed in bridge mode, the router is placed behind the server, and the modern is placed behind the router.
- D. The switch is placed in bridge mode, the modern is placed behind the switch, and the router is placed behind the modern.

Answer: A

NEW QUESTION 112

- (Exam Topic 1)

A network technician is configuring a wireless network at a branch office. Users at this office work with large files and must be able to access their files on the server quickly. Which of the following 802.11 standards provides the MOST bandwidth?

- A. a
- B. ac
- C. g
- D. n

Answer: B

NEW QUESTION 113

- (Exam Topic 1)

A telecommunications provider has just deployed a new OC-12 circuit at a customer site. While the circuit showed no errors from the provider end to the customer's demarcation point, a network administrator is trying to determine the cause of dropped packets and errors on the circuit. Which of the following should the network administrator do to rule out any problems at Layer 1? (Choose two.)

- A. Use a loopback at the demark and router, and check for a link light
- B. Use an OTDR to validate the cable integrity
- C. Use a pinout tester to validate the cable integrity
- D. Use a multimeter to validate the cable integrity
- E. Check for any devices that may be causing EMI on the cable
- F. Clean the cables to be sure they are free of dust and debris

Answer: AB

NEW QUESTION 114

- (Exam Topic 1)

A network technician is installing a new SOHO branch office that requires the use of a DOCSIS-compatible. The modern needs to be connected to the ISP's network at the demark. Which of the following cable type should be used?

- A. UTP
- B. Multimode
- C. Coaxial
- D. Serial

Answer: C

NEW QUESTION 117

- (Exam Topic 1)

A technician is setting up a branch office on a point-to-point connection. Which of the following IP network blocks is the MOST efficient use of IP address space for the router connections between the two sites?

- A. /24
- B. /25
- C. /30
- D. /32

Answer: C

NEW QUESTION 122

- (Exam Topic 1)

Which of the following DNS record types allows IPv6 records to be resolved to DNS names?

- A. PTR
- B. A
- C. AAAA
- D. SRV

Answer: C

NEW QUESTION 124

- (Exam Topic 1)

ACHief Information Officer (CIO) wants to move some IT services to a cloud service offering. However, the network administrator still wants to be able to control some parts of the cloud service's networking components. Which of the following should be leveraged to complete this task?

- A. IaaS

- B. PaaS
- C. SaaS
- D. DaaS

Answer: B

NEW QUESTION 127

- (Exam Topic 1)

A technician replaces a failed router with a spare that has been in inventory for some time. After attempting to enable HTTPS on the spare router, the technician discovers the feature is unavailable. The support office was able to connect to the previous router. Which of the following actions should the technician perform to enable HTTPS access for the support team?

- A. Reboot the router
- B. Enable HTTP on the router
- C. Update the firmware of the spare router
- D. Perform a factory reset on the router

Answer: C

NEW QUESTION 130

- (Exam Topic 1)

A network technician has created a network that consists of a router, a firewall, a switch, and several PCs. Which of the following physical network topologies was created?

- A. Star
- B. Mesh
- C. Ring
- D. Bus

Answer: D

NEW QUESTION 132

- (Exam Topic 1)

A company is allowing its employees to use their personal computers, tables, and IoT devices while at work. However, there are rules and guidelines to which employees must adhere. Which of the following documents applies to these employees?

- A. NDA
- B. SOP
- C. BYOD
- D. SLA

Answer: C

NEW QUESTION 136

- (Exam Topic 1)

A security guard notices an unauthorized individual, who is dressed like technician, has entered a secure area of the hospital with a large group. Which of the following security attacks is taking place?

- A. Evil twin
- B. Social engineering
- C. Insider threat
- D. Phishing

Answer: B

Explanation:

Social engineering attacks aren't considered hacking—at least in the classic sense of the word—although the goals are the same. Social engineering is where people attack an organization through the people in the organization or physically access the organization to get the information they need.

NEW QUESTION 141

- (Exam Topic 1)

Users have been experiencing slow network response times, and management has asked the network technician to provide evidence of network improvement. After optimizing the network, which of the following would be required?

- A. IDF/MDF documentation
- B. Change management
- C. Performance baseline
- D. Physical diagram

Answer: C

NEW QUESTION 142

- (Exam Topic 1)

A user reports that a laptop cannot connect to the Internet despite the fact the wireless Internet was functioning on it yesterday. The user did not modify the laptop in any way, and the wireless Internet is functional on other users' laptops. Which of the following issues should be reviewed to help the user to connect to the wireless network?

- A. Wireless switch toggled off
- B. WAP settings
- C. WLAN IP address out of scope
- D. Wireless controller misconfiguration

Answer: A

NEW QUESTION 143

- (Exam Topic 1)

Users in a school lab are reporting slow connections to the servers and the Internet. Other users in the school have no issues. The lab has 25 computers and is connected with a single 1Gb Ethernet connection on Cat 5e wiring to an unmanaged switch. There are also three spare Cat 5e cable runs, which are not in use. The school wants to double the connection speed between the lab and the servers without running new cables. Which of the following would be the BEST solution?

- A. Plug in a second spare cable at each end to double the speed.
- B. Replace the switches with ones that utilize port bonding and use the spare cables.
- C. Replace the switches with 10Gb switches and utilize the existing cabling.
- D. Plug in a second cable and set one port to TX and one port to RX.

Answer: B

NEW QUESTION 147

- (Exam Topic 1)

A network technician has implemented ACLs to limit access to cloud-based file storage. Which of the following security mechanisms has the technician enforced?

- A. DLP
- B. IDS
- C. WAF
- D. WPA
- E. TPM

Answer: C

NEW QUESTION 148

- (Exam Topic 1)

A computer lab on a campus network was recently reconfigured using recycled network cables. One of the 24 computers in the lab is unable to connect to the network after the upgrade. A network technician successfully uses the cable in question to connect directly to another computer. Which of the following is MOST likely issue with the cable?

- A. The cable is a crossover cable
- B. The cable is rollover cable
- C. The cable has bent pins
- D. The cable is a Cat 5 cable

Answer: A

NEW QUESTION 151

- (Exam Topic 1)

Which of the following concepts would BEST describe when a company chooses to use a third-party vendor to host and administer critical application?

- A. SaaS
- B. IaaS
- C. PaaS
- D. CASB

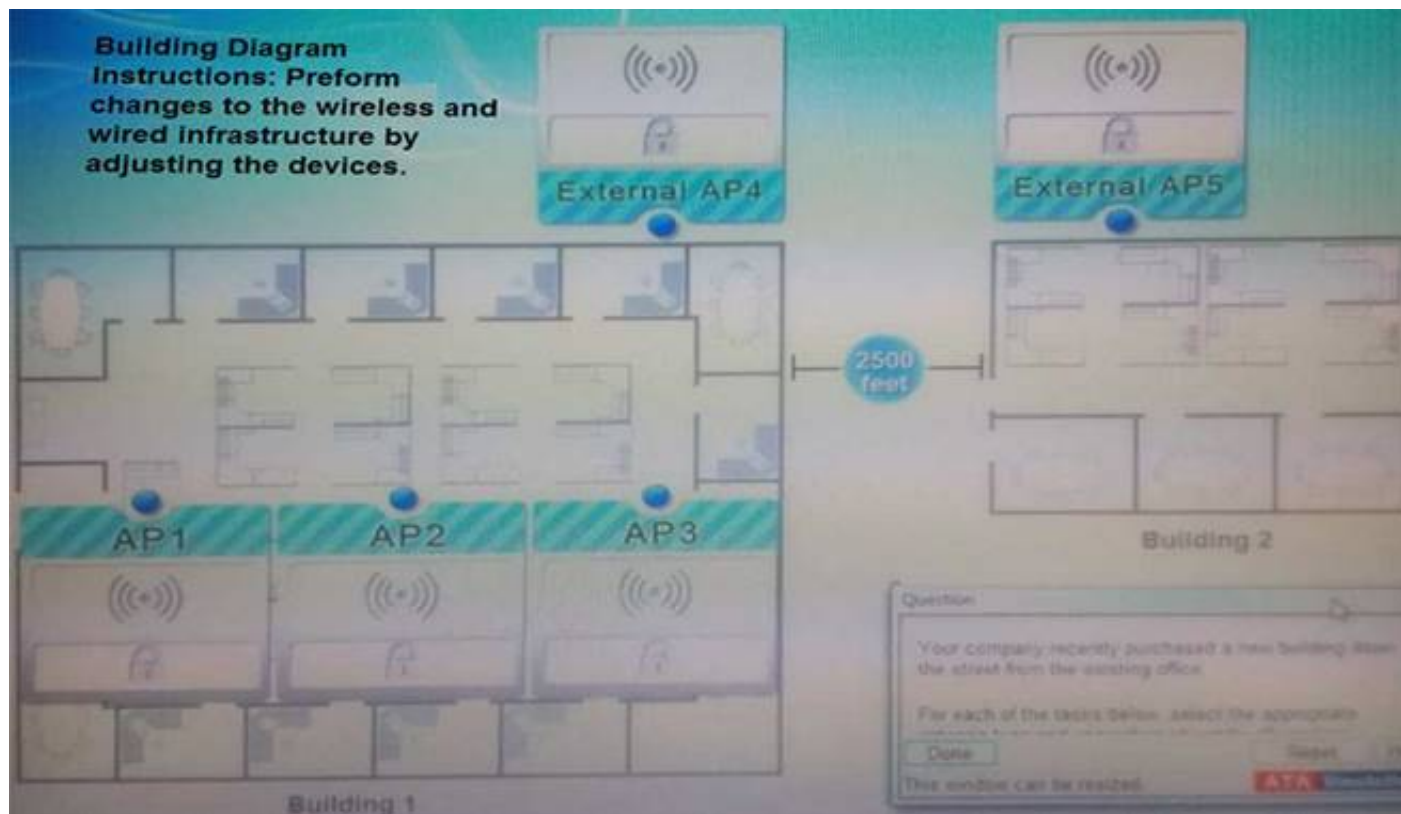
Answer: C

NEW QUESTION 154

- (Exam Topic 1)

Your company recently purchased a new building down the street from the existing office. For each of the tasks below, select the appropriate antenna type and encryption object for all wireless access point (AP).

1. Create an encrypted wireless connection between the two buildings that BEST controls signal propagation, while maximizing security.
2. Restrict the wireless signal generated by the access points (APs) inside Building 1, so that it minimizes broadcast beyond the building.
3. Maximize wireless coverage inside Building 1.
4. Building 1's internal wireless network is for visitors only and must not require any special configuration on the visitor's device to connect.



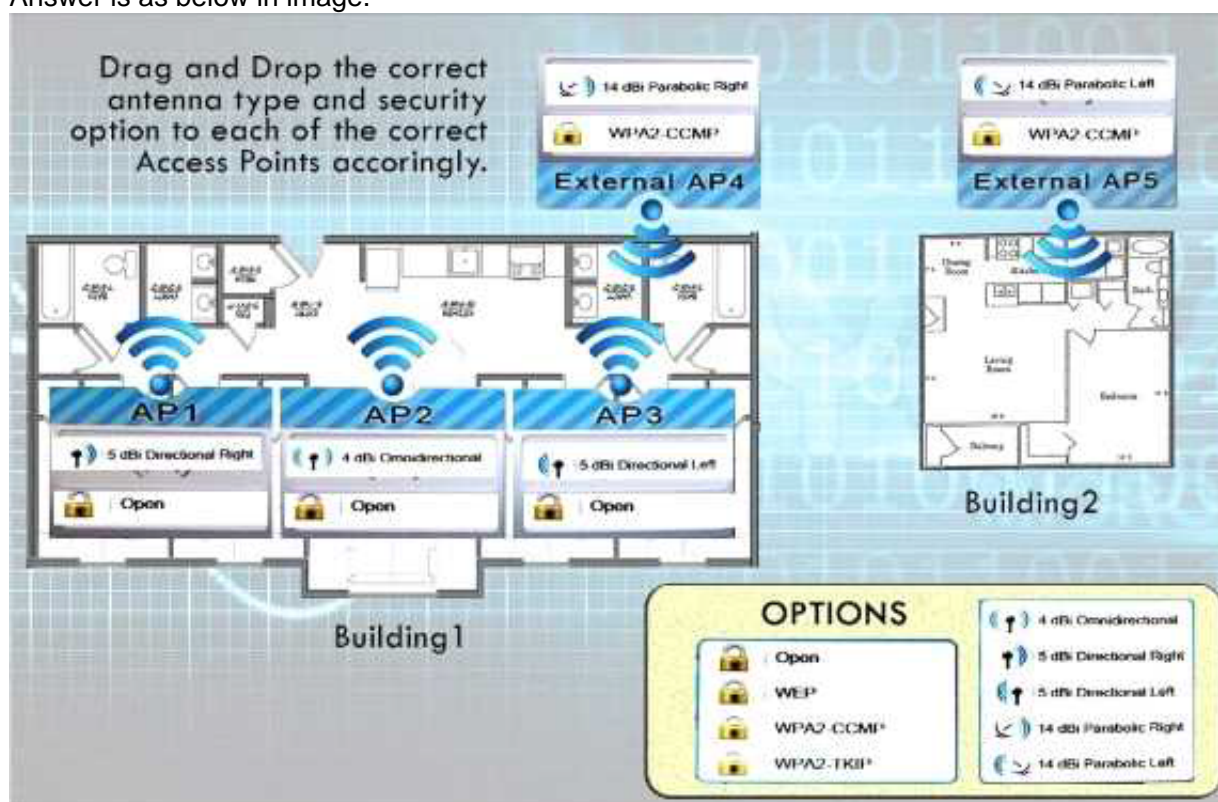
Instructions: When you have completed the simulation, select the Done button to submit.

- A. Mastered
- B. Not Mastered

Answer: A

Explanation:

Answer is as below in image.



NEW QUESTION 156

- (Exam Topic 1)

Which of the following will listen on the line to ensure there is no traffic transmitting and implement a back-off timer if a collision occurs?

- A. CSMA/CD
- B. CSMA/CA
- C. MPLS
- D. OSPF

Answer: A

NEW QUESTION 159

- (Exam Topic 1)

A web application is unable to authenticate customers so they can access their bills. The server administrator has tested the LDAP query but is not receiving results. Which of the following is the NEXT step the server administrator should take to correct the problem?

- A. Check port 636 to see if it being blocked.
- B. Change service port 636 to port 389.
- C. Restart the web server.
- D. Verify the browser is using port 443.

Answer: A

NEW QUESTION 163

- (Exam Topic 2)

Which of the following uses port 53 by default?

- A. RDP
- B. QoS
- C. DHCP
- D. DNS

Answer: D

NEW QUESTION 164

- (Exam Topic 2)

Which of the following cable types have a rated MAXIMUM bandwidth of 100Mbps?

- A. CAT3
- B. CAT5
- C. CAT5e
- D. CAT6

Answer: B

NEW QUESTION 166

- (Exam Topic 2)

A network technician is configuring a wireless network. To avoid interference from other wireless networks in the area, the technician should change which setting?

- A. Channel
- B. SSID
- C. Firewall rule
- D. Encryption

Answer: A

NEW QUESTION 171

- (Exam Topic 2)

Which of the following has a maximum transfer rate of 54Mbps and operates at the 5GHz frequency?

- A. 802.11a
- B. 802.11b
- C. 802.11g
- D. 802.11n

Answer: A

NEW QUESTION 174

- (Exam Topic 2)

A company has installed an access point and configured it to broadcast at 802.11n only. Some users are stating that they cannot connect to this access point.

Which of the following is the MOST likely reason some users cannot connect?

- A. Incorrect channel
- B. Weak encryption
- C. Incompatible NICs
- D. Incorrect SSID

Answer: C

NEW QUESTION 177

- (Exam Topic 2)

Which of the following are network topologies? (Select TWO).

- A. Ethernet
- B. Duplex
- C. Star
- D. Circular
- E. Bus

Answer: CE

NEW QUESTION 178

- (Exam Topic 2)

Which of the following provides the MOST protection against zero day attacks via email attachments?

- A. Anti-spam
- B. Anti-virus
- C. Host-based firewalls
- D. Patch management

Answer: A

NEW QUESTION 180

- (Exam Topic 2)

Which of the following BEST describes how a layer 2 switch functions?

- A. Switches packets within the same subnet based on MAC addresses
- B. Switches packets between different subnets based on IP addresses
- C. Switches packets between different subnets based on MAC addresses
- D. Switches packets between different subnets based on MAC addresses

Answer: A

NEW QUESTION 181

- (Exam Topic 2)

Which of the following protocols is used to transmit outgoing email?

- A. RDP
- B. NTP
- C. POP3
- D. SMTP

Answer: D

NEW QUESTION 182

- (Exam Topic 2)

In order to reduce spam email, Kim, a network administrator, changes the standard SMTP port from which of the following port numbers to port number 587?

- A. 20
- B. 21
- C. 23
- D. 25

Answer: D

NEW QUESTION 187

- (Exam Topic 2)

Lisa, a network administrator, needs to allow all websites to be accessible by the sales team for business purposes. Which of the following ports need to be enabled on the firewall? (Select TWO).

- A. 23
- B. 25
- C. 53
- D. 80
- E. 443

Answer: DE

NEW QUESTION 191

- (Exam Topic 2)

Which of the following uses eight groups of characters for addressing?

- A. MAC
- B. IPv4
- C. IPv6
- D. DHCP

Answer: C

NEW QUESTION 194

- (Exam Topic 2)

A computer on VLAN 10 with the IP address of 192.168.1.45/27 cannot ping a computer on VLAN 20 with the IP address of 192.168.1.65/27. Which configuration change will allow the PING to be successful?

- A. Replace the router with a Layer 2 switch that supports VLANs
- B. Change VLAN 20 computers Default Gateway to 192.168.1.127/27
- C. Change VLAN 10 computers Default Gateway to 192.168.1.32/27
- D. Allow ICMP to pass through the Router

Answer: D

NEW QUESTION 197

- (Exam Topic 2)

Which of the following defines an IP address that is NOT routed on the Internet?

- A. Multicast
- B. Public
- C. Private
- D. Classful

Answer: C

NEW QUESTION 199

- (Exam Topic 2)

Which of the following protocols are used to connect devices in a secure manner? (Select TWO).

- A. TELNET
- B. SSH
- C. RDP
- D. HTTP
- E. DNS
- F. FTP

Answer: BC

NEW QUESTION 201

- (Exam Topic 2)

Which of the following routing protocols relies on hop count as its ONLY metric?

- A. BGP
- B. EIGRP
- C. OSPF
- D. RIP

Answer: D

NEW QUESTION 205

- (Exam Topic 2)

An organization has installed a new firewall. Users need to have access to remote websites and must be able to use SSH to retrieve files from remote locations.

Which of the following actions should be taken on the new firewall? (Select TWO).

- A. Allow UDP port 21 outbound
- B. Allow UDP port 22 outbound
- C. Allow UDP port 80 outbound
- D. Allow TCP port 21 outbound
- E. Allow TCP port 22 outbound
- F. Allow TCP port 80 outbound

Answer: EF

NEW QUESTION 210

- (Exam Topic 2)

Which of the following is indicative of an FTP bounce?

- A. Arbitrary IP address
- B. Reverse DNS lookups
- C. Same Port Number
- D. File Transfer Success

Answer: A

NEW QUESTION 215

- (Exam Topic 2)

Which of the following functions would be used to securely monitor and actively manage external connections?

- A. VPN concentrator
- B. HIDS
- C. Load balancer
- D. Packet shaper

Answer: A

NEW QUESTION 220

- (Exam Topic 2)

Which of the following is the default subnet mask for a Class B address?

- A. 255.0.0.0
- B. 255.255.0.0
- C. 255.255.255.0
- D. 255.255.255.255

Answer: B

NEW QUESTION 222

- (Exam Topic 2)

Which of the following access controls enforces permissions based on data labeling at specific levels?

- A. Mandatory access control
- B. Separation of duties access control
- C. Discretionary access control
- D. Role based access control

Answer: A

NEW QUESTION 225

- (Exam Topic 2)

An administrator is receiving reports from an executive that the executive's wireless access point loses the signal frequently, even though the WAP is on the executive's desk. The office contains four other 802.11n access points. Which of the following would MOST likely correct interference problems in the executive's office?

- A. Turn off SSID broadcasting for the executive's access point
- B. Replace the 802.11n access point in the office with an 802.11a access point.
- C. Change the channel on the access point to channel 11.
- D. Turn off as many lights in the executive's office as possible to reduce interference.

Answer: C

NEW QUESTION 230

- (Exam Topic 2)

A pest control contractor attempts to gain access to the datacenter; however, the manager on duty notes that a pest control inspection was not on the schedule. Which of the following attacks is in progress?

- A. Phishing
- B. Social engineering
- C. Man-in-the-middle
- D. Smurfing

Answer: B

NEW QUESTION 234

- (Exam Topic 2)

Which of the following standards can operate at both the 2.4GHz and 5GHz frequencies?

- A. 802.11a
- B. 802.11b
- C. 802.11g
- D. 802.11n

Answer: D

NEW QUESTION 236

- (Exam Topic 2)

Which of the following subnet masks would allow for 192.168.0.3 and 192.168.0.240 to be in the same subnet?

- A. 255.255.255.0
- B. 255 255.255.128
- C. 255.255.255.192
- D. 255.255.255.248

Answer: A

NEW QUESTION 237

- (Exam Topic 2)

Which of the following MUST be kept synchronized in order for Kerberos to work?

- A. Certificate
- B. Ticket
- C. Time
- D. Token

Answer: C

NEW QUESTION 238

- (Exam Topic 2)

Which of the following allows a technician to gather information about the operating system?

- A. Domain services
- B. Fingerprinting
- C. Countermeasures

D. Reconnaissance

Answer: B

NEW QUESTION 242

- (Exam Topic 2)

A user is unable to print to a network printer. Which of following is the FIRST step that a technician should take to troubleshoot the issue?

- A. Identify the problem.
- B. Establish a plan of action to resolve the problem.
- C. Establish a theory of probable cause.
- D. Implement preventative measures.

Answer: A

NEW QUESTION 246

- (Exam Topic 2)

Which of the following protocols would be used to send email to an email server?

- A. NTP
- B. FTP
- C. SNMP
- D. SMTP

Answer: D

NEW QUESTION 250

- (Exam Topic 2)

Which of the following specifications would Sara, an administrator, implement as a network access control?

- A. 802.1q
- B. 802.3
- C. 802.11n
- D. 802.1x

Answer: D

NEW QUESTION 255

- (Exam Topic 2)

Which of the following ports does DHCP use? (Select TWO).

- A. 22
- B. 23
- C. 67
- D. 68
- E. 69

Answer: CD

NEW QUESTION 257

- (Exam Topic 2)

The Transport Layer of the TCP/IP model corresponds to which of the following layers of the OSI model?

- A. 1
- B. 3
- C. 4
- D. 5

Answer: C

NEW QUESTION 258

- (Exam Topic 2)

Which of the following could be used to stop unknown threats?

- A. DMZ
- B. Signature based IPS
- C. Behavior based IPS
- D. Honeypots

Answer: C

NEW QUESTION 261

- (Exam Topic 2)

Which of the following technologies is required to allow all ports of a single private IP to be publically accessible via a single public IP?

- A. NAT
- B. RIP
- C. PAT
- D. ACL

Answer: C

NEW QUESTION 262

- (Exam Topic 2)

Which of the following commands will display the associated IP address of a network adapter in Windows and Linux environments? (Select TWO).

- A. dig
- B. nslookup
- C. nbstat
- D. ifconfig
- E. ipconfig

Answer: DE

NEW QUESTION 267

- (Exam Topic 2)

A network technician needs to address bandwidth issues on the wireless network. There are currently four 802.11n access points. The technician would like to increase the bandwidth. Which of the following would be the BEST solution?

- A. Disable SSID
- B. Channel bonding
- C. MIMO
- D. Increase the signal

Answer: B

NEW QUESTION 268

- (Exam Topic 3)

A technician is setting up a firewall on the network that would show a public IP address out to the Internet and assign private IP addresses to users inside the network. Which of the following processes should be set up?

- A. Port security
- B. MAC filtering
- C. ACL
- D. NAT

Answer: D

NEW QUESTION 269

- (Exam Topic 3)

Zach, a technician, suspects a duplicate IP address assignment on the network. Which of the following resources can be used to verify this problem?

- A. Network map
- B. Environmental monitor
- C. Placement map
- D. Syslog

Answer: D

NEW QUESTION 273

- (Exam Topic 3)

Which of the following should be implemented in a networked environment carrying teleconferencing packets?

- A. L2TP
- B. SSH
- C. QoS
- D. SNMP

Answer: C

NEW QUESTION 274

- (Exam Topic 3)

Jeff, a network technician, is installing a wireless router. Which of the following should Jeff consider to get the BEST signal strength?

- A. WAP placement
- B. PoE devices
- C. MAC filtering
- D. Encryption type

Answer: A

NEW QUESTION 277

- (Exam Topic 3)

Which of the following DNS records allows for reverse lookup of a domain?

- A. PTR
- B. AAAA
- C. A
- D. MX

Answer: A

NEW QUESTION 278

- (Exam Topic 3)

Which of the following tools can the technician use to analyze TCP/IP packets when trying to determine a connection problem within a subnet?

- A. Wire mapper
- B. Protocol analyzer
- C. Cable tester
- D. SYSLOG server

Answer: B

NEW QUESTION 282

- (Exam Topic 3)

Zach, a technician, is checking newly installed CAT5e cabling, and suspects that some of the ends were not properly terminated. Which of the following tools will verify this?

- A. Cable tester
- B. Toner probe
- C. OTDR
- D. Loopback plug

Answer: A

NEW QUESTION 283

- (Exam Topic 3)

Which of the following is the correct representation of an IPv6 address?

- A. ::
- B. 0:0:0:0:0:0:0:1
- C. 1:2:3:4:AB:CD:EF
- D. 2001::4860:800f::

Answer: A

NEW QUESTION 285

- (Exam Topic 3)

Which of the following methods limits access to a network based on characteristics of the network card?

- A. IP filtering
- B. MAC filtering
- C. Port filtering
- D. Encryption

Answer: B

NEW QUESTION 286

- (Exam Topic 3)

Which of the following 802.11n features allows for the use of multiple simultaneous frequencies in order to increase usable bandwidth?

- A. Channel bonding
- B. MIMO
- C. Spatial reuse
- D. 20MHz channel spacing

Answer: A

NEW QUESTION 287

- (Exam Topic 3)

Which of the following solutions will detect and disable a rogue access point?

- A. Port scan
- B. Packet sniffer
- C. IPS
- D. IDS

Answer:

C

NEW QUESTION 292

- (Exam Topic 3)

Which of the following IP addresses would be classified as private?

- A. 10.100.200.0
- B. 169.253.10.20
- C. 172.168.5.0
- D. 200.100.25.0

Answer: A

NEW QUESTION 294

- (Exam Topic 3)

A Windows server has a problem after booting up. Kim, a technician, should immediately check the:

- A. history logs.
- B. cron logs.
- C. application logs.
- D. system logs.

Answer: D

NEW QUESTION 299

- (Exam Topic 3)

A user is getting very weak signals while trying to connect to the wireless. Which of the following should the user do to help with signal strength?

- A. Call the wireless provider and ask for a T3 circuit.
- B. Move the wireless router to a better location where line of sight is obtained.
- C. Reinstall the operating system to the PC to ensure the newest patches are installed.
- D. Install a hub to ensure there is a clear path for the cables to run.

Answer: B

NEW QUESTION 302

- (Exam Topic 3)

A network technician is troubleshooting intermittent issues with VoIP call quality. A throughput tester can help assess the functionality of which of the following?

- A. LLDP
- B. VLAN tagging
- C. QoS
- D. SIP trunking

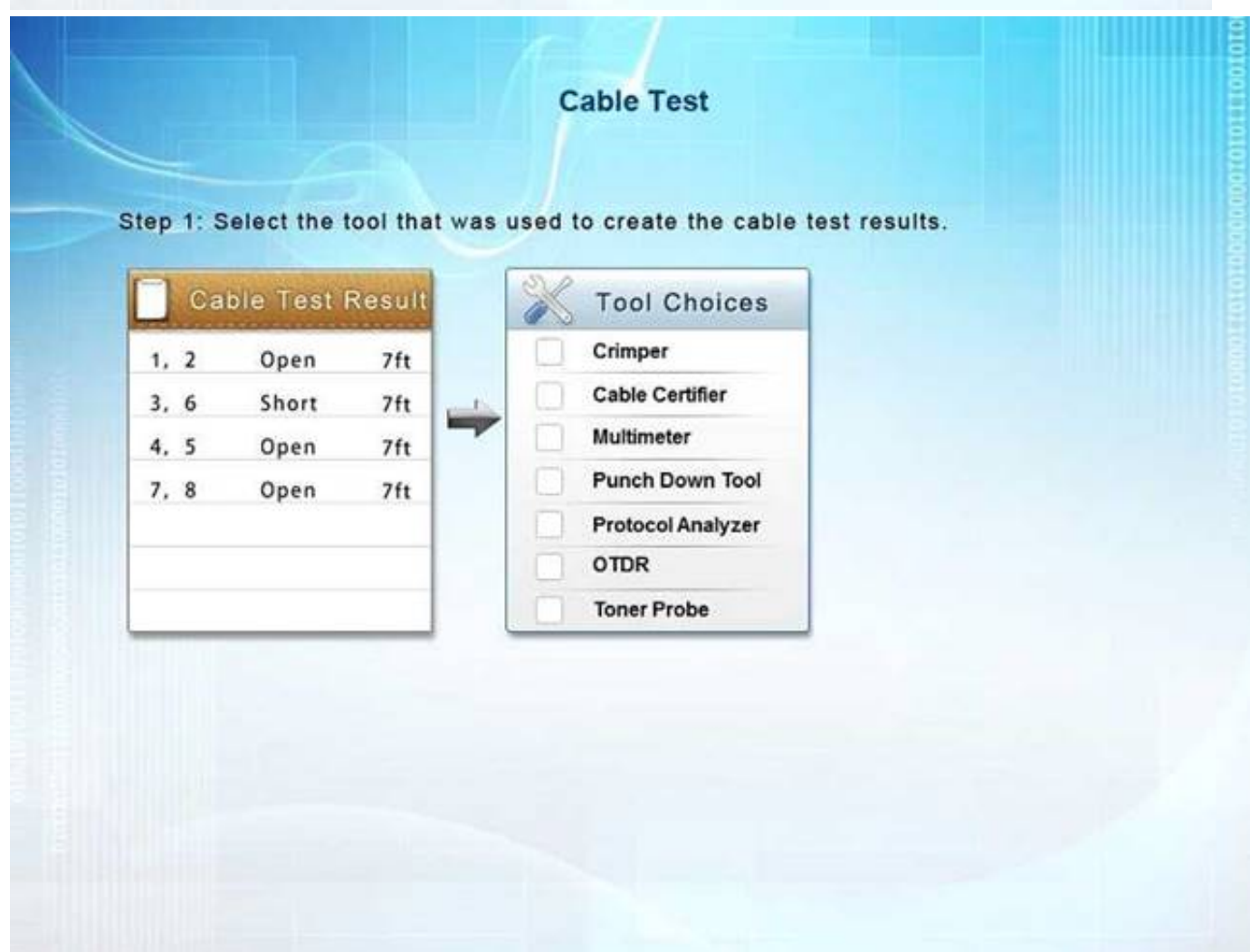
Answer: C

NEW QUESTION 304

- (Exam Topic 3)

You have been tasked with testing a CAT5e cable. A summary of the test results can be found on the screen. Step 1: Select the tool that was used to create the cable test results.

Step 2: Interpret the test results and select the option that explains the results. After you are done with your analysis, click the 'Submit Cable Test Analysis' button.



- A. Mastered
- B. Not Mastered

Answer: A

Explanation:

A Cable Certifier provides "Pass" or "Fail" information in accordance with industry standards but can also show detailed information when a "Fail" occurs. This includes shorts, the wire pairs involved and the distance to the short. When a short is identified, at the full length of the cable it means the cable has not been crimped correctly.

NEW QUESTION 309

- (Exam Topic 3)

A network administrator wants to monitor traffic by deploying MIBs. Which of the follow network monitoring resources would be used?

- A. SCTP
- B. Packet sniffer
- C. DCCP
- D. SNMP

Answer: D

NEW QUESTION 312

- (Exam Topic 3)

company wants the public to be able to connect to the wireless network with minimal security, but not be able to connect to the private internal network. Which of the following firewall rules would BEST accomplish this?

- A. Content filtering on the wireless access point
- B. Allow traffic from the wireless access point
- C. Block traffic from the wireless access point
- D. Packet filtering on the wireless access point

Answer: C

NEW QUESTION 315

- (Exam Topic 3)

Which of the follow creates a secure remote connection at the OSI network layer?

- A. L2TP
- B. SSL
- C. DTLS
- D. IPSec

Answer: D

NEW QUESTION 316

- (Exam Topic 3)

Which of the following technologies allows more than two transceivers with an access point?

- A. MIMO
- B. FIFO
- C. 802.1x
- D. WPA

Answer: A

NEW QUESTION 317

- (Exam Topic 3)

A customer wishes to network several computers throughout a large warehouse containing numerous metal shelves and concrete walls. The computers are at least 175 meters (574 feet) apart. Which of the following media types should be recommended for the customer using only a single switch?

- A. Fiber optic
- B. Wireless
- C. CAT5e
- D. CAT3

Answer: A

NEW QUESTION 318

- (Exam Topic 3)

A user reports a network failure on a computer. The technician determines that the computer and NIC are operating properly. Which of the following tools can the technician use to trace the network cabling back to the punch down block?

- A. Protocol analyzer
- B. Multimeter
- C. Punch down tool
- D. Toner probe

Answer: D

NEW QUESTION 321

- (Exam Topic 3)

Jeff, a customer, has a wireless network and has reported that the network traffic from the wireless access points seems high compared to the limited number of wireless devices used. Jeff believes that other non-employees are using the wireless network to access the Internet. Which of the following could be used to limit the access to the wireless network? (Select TWO).

- A. WPA encryption
- B. Changing wireless channels
- C. MAC filtering
- D. Changing wireless speed standards
- E. SSID disable

Answer: AC

NEW QUESTION 322

- (Exam Topic 3)

A company decides to deploy customer-facing, touch-scan kiosks. The kiosks appear to have several open service ports that could potentially become compromised. Which of the following is the MOST effective way to protect the kiosks?

- A. Install an IDS to monitor all traffic to and from the kiosks.
- B. Install honeypots on the network to detect and analyze potential kiosk attacks before they occur.
- C. Enable switchport security on the ports to which the kiosks are connected to prevent network –level attacks.
- D. Create a new network segment with ACLs, limiting kiosks’ traffic with the internal network.

Answer: D

NEW QUESTION 325

- (Exam Topic 3)

A network technician receives a call from a branch office about a problem with its wireless connectivity. The user states the office hosting a large meeting that includes some online training with local businesses. The guest users have all brought devices to connect to the guest network at the branch office. All users are connected to a single WAP and are reporting that connections dropping and network speeds are unusable. Which of the following is the MOST likely cause of this issue?

- A. DHCP exhaustion
- B. Chanel overlapping
- C. Interference
- D. Overcapacity

Answer: C

NEW QUESTION 328

- (Exam Topic 3)

No link lights on a switch's SFP are functioning, so the network technician re-terminates the end. After testing the cable, the tester is showing a db loss of-9. Which of the following types of cable is MOST likely being tested?

- A. Fiber
- B. CAT3
- C. CAT5e
- D. CAT6a

Answer: A

NEW QUESTION 330

- (Exam Topic 3)

An administrator is troubleshooting analog telephony issues on the punch down block. Which of the following tools would be MOST useful in this scenario?

- A. T1 loopback
- B. Butt set
- C. Multimeter
- D. Protocol analyzer

Answer: B

NEW QUESTION 334

- (Exam Topic 3)

Jeff, a technician, is charged with setting up network monitoring for critical devices in the network. It is important the information be sent securely to the monitoring station. Which of the following protocols will support secure transmission of the data?

- A. SNMP v2
- B. VPN
- C. SYSLOG
- D. SMTP

Answer: A

NEW QUESTION 335

- (Exam Topic 3)

A junior technician is settings up a voice control device so the Chief Executive Officer (CEO) will able to control various things in the office. Of which of the following types of the IoT technologies is this an example?

- A. LAN
- B. WAN
- C. SAN
- D. PAN

Answer: B

NEW QUESTION 339

- (Exam Topic 3)

A mobile user is no longer able to access network resources. Jeff, the network technician, is unable to ping the user's workstation. Which of the following commands would MOST likely be used on that workstation to verify its current network settings?

- A. net share
- B. hostname
- C. ipconfig
- D. tracert

Answer: C

NEW QUESTION 343

- (Exam Topic 3)

Which of the following separates broadcast domains?

- A. Port mirroring
- B. Router
- C. Convergence
- D. Switch

Answer: B

NEW QUESTION 345

- (Exam Topic 3)

Which of the following devices is used to distribute network traffic equally over multiple links?

- A. Content filter
- B. DNS server
- C. Load balancer
- D. Proxy server

Answer: C

NEW QUESTION 347

.....

Relate Links

100% Pass Your N10-007 Exam with ExamBible Prep Materials

<https://www.exambible.com/N10-007-exam/>

Contact us

We are proud of our high-quality customer service, which serves you around the clock 24/7.

Viste - <https://www.exambible.com/>