

Exam Questions 1Z0-071

Oracle Database 12c SQL

<https://www.2passeasy.com/dumps/1Z0-071/>



NEW QUESTION 1

You must write a query that prompts users for column names and conditions every time it is executed. (Choose the best answer.)
 The user must be prompted only once for the table name. Which statement achieves those objectives?

- A. SELECT &col1, '&col2'FROM &tableWHERE &&condition = '&cond';
- B. SELECT &col1, &col2 FROM "&table"WHERE &condition =&cond;
- C. SELECT &col1, &col2 FROM &&tableWHERE &condition = &cond;
- D. SELECT &col1, &col2 FROM &&tableWHERE &condition = &&cond

Answer: C

NEW QUESTION 2

You are designing the structure of a table in which two columns have the specifications:

COMPONENT_ID – must be able to contain a maximum of 12 alphanumeric characters and uniquely identify the row

EXECUTION_DATETIME – contains Century, Year, Month, Day, Hour, Minute, Second to the maximum precision and is used for calculations and comparisons between components.

Which two options define the data types that satisfy these requirements most efficiently?

- A. The EXECUTION_DATETIME must be of INTERVAL DAY TO SECOND data type.
- B. The EXECUTION_DATETIME must be of TIMESTAMP data type.
- C. The EXECUTION_DATETIME must be of DATE data type.
- D. The COMPONENT_ID must be of ROWID data type.
- E. The COMPONENT_ID must be of VARCHAR2 data type.
- F. The COMPONENT_ID column must be of CHAR data type.

Answer: CF

NEW QUESTION 3

Which two statements are true regarding constraints?

- A. A foreign key column cannot contain null values.
- B. A column with the UNIQUE constraint can contain null values.
- C. A constraint is enforced only for INSERT operation on the table.
- D. A constraint can be disabled even if the constraint column contains data.
- E. All constraints can be defined at the column level and at the table level.

Answer: BD

NEW QUESTION 4

View the Exhibit and examine the structure of the CUSTOMERS and CUST_HISTORY tables.

CUSTOMERS		
Name	Null?	Type
-----	-----	-----
CUST_ID	NOT NULL	NUMBER (4)
CUST_NAME		VARCHAR2 (20)
CUST_ADDRESS		VARCHAR2 (30)
CUST_CITY		VARCHAR2 (20)
CUST_HISTORY		
Name	Null?	Type
-----	-----	-----
CUST_ID	NOT NULL	NUMBER (4)
CUST_NAME		VARCHAR2 (20)
CUST_CITY		VARCHAR2 (20)
CHANGE_DATE		DATE

The CUSTOMERS table contains the current location of all currently active customers.

The CUST_HISTORY table stores historical details relating to any changes in the location of all current as well as previous customers who are no longer active with the company.

You need to find those customers who have never changed their address. Which SET operator would you use to get the required output?

- A. INTERSECT
- B. UNION ALL
- C. MINUS
- D. UNION

Answer: C

NEW QUESTION 5

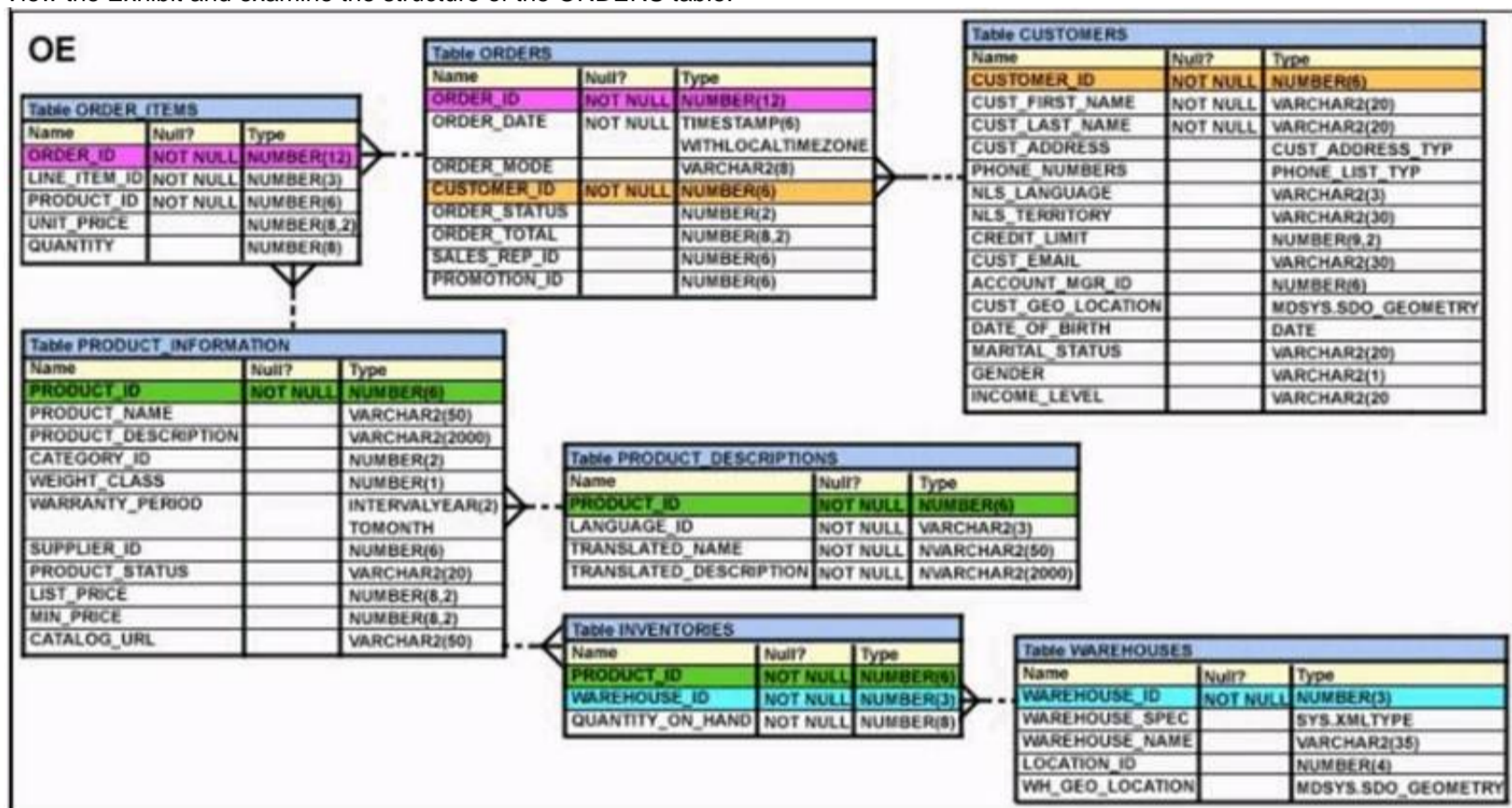
You want to display 5 percent of the rows from the SALES table for products with the lowest AMOUNT_SOLD and also want to include the rows that have the same AMOUNT_SOLD even if this causes the output to exceed 5 percent of the rows.
Which query will provide the required result?

- A. SELECT prod_id, cust_id, amount_soldFROM salesORDER BY amount_soldFETCH FIRST 5 PERCENT ROWS WITH TIES;
- B. SELECT prod_id, cust_id, amount_soldFROM salesORDER BY amount_soldFETCH FIRST 5 PERCENT ROWS ONLY WITH TIES;
- C. SELECT prod_id, cust_id, amount_soldFROM salesORDER BY amount_soldFETCH FIRST 5 PERCENT ROWS WITH TIES ONLY;
- D. SELECT prod_id, cust_id, amount_soldFROM salesORDER BY amount_soldFETCH FIRST 5 PERCENT ROWS ONLY;

Answer: A

NEW QUESTION 6

View the Exhibit and examine the structure of the ORDERS table.



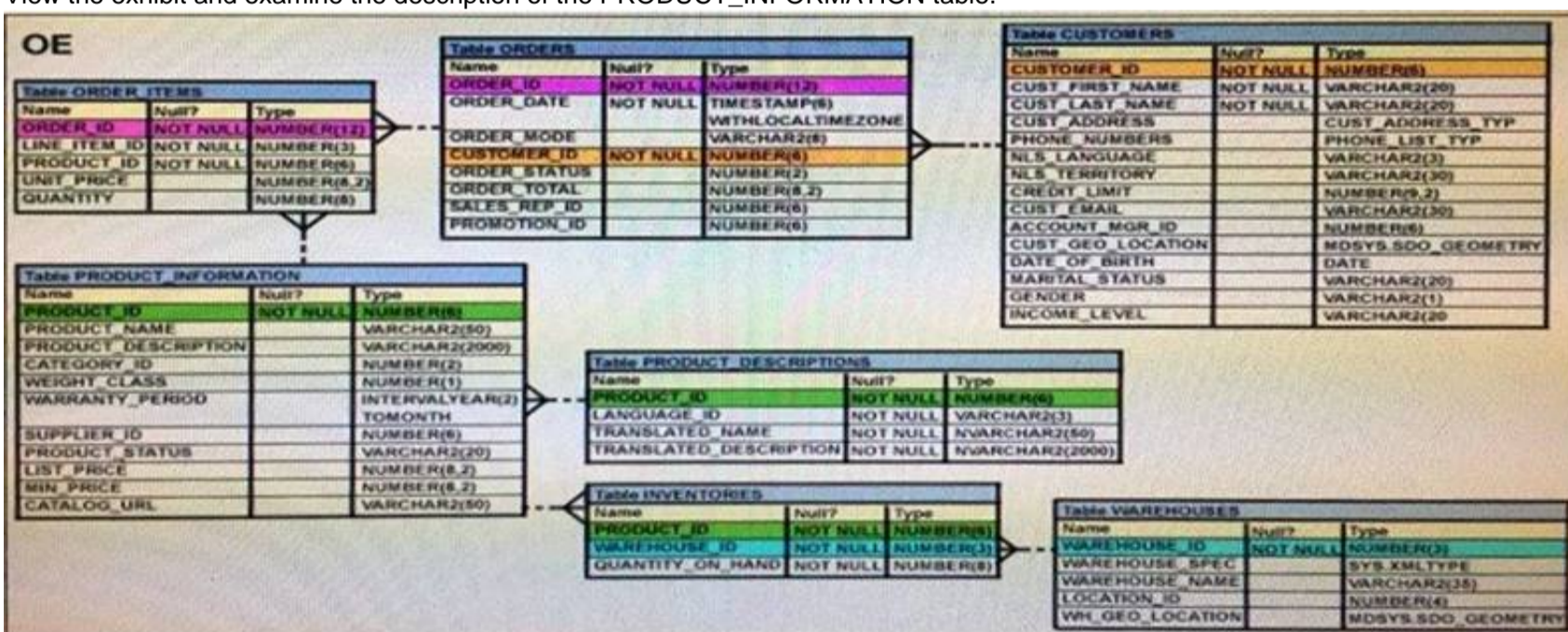
Which UPDATE statement is valid?

- A. UPDATE ordersSET order_date = '12-mar-2007',order_total IS NULLWHERE order_id = 2455;
- B. UPDATE ordersSET order_date = '12-mar-2007',AND order_total = TO_NUMBER(NULL)WHERE order_id = 2455;
- C. UPDATE ordersSET order_date = '12-mar-2007',order_total = NULLWHERE order_id = 2455;
- D. UPDATE ordersSET order_date = TO_DATE('12-mar-2007','dd-mon-yyyy'),SET order_total = TO_NUMBER (NULL)WHERE order_id = 2455;

Answer: C

NEW QUESTION 7

View the exhibit and examine the description of the PRODUCT_INFORMATION table.



Which SQL statement would retrieve from the table the number of products having LIST_PRICE as NULL?

- A. SELECT COUNT (DISTINCT list_price)FROM product_informationWHERE list_price is NULL
- B. SELECT COUNT (NVL(list_price, 0))FROM product_informationWHERE list_price is NULL
- C. SELECT COUNT (list_price)FROM product_informationWHERE list_price != NULL
- D. SELECT COUNT (list_price)FROM product_informationWHERE list_price is NULL

Answer: B

NEW QUESTION 8

Examine the create table statements for the stores and sales tables.

SQL> CREATE TABLE stores(store_id NUMBER(4) CONSTRAINT store_id_pk PRIMARY KEY, store_name VARCHAR2(12), store_address VARCHAR2(20), start_date DATE);

SQL> CREATE TABLE sales(sales_id NUMBER(4) CONSTRAINT sales_id_pk PRIMARY KEY, item_id NUMBER(4), quantity NUMBER(10), sales_date DATE, store_id NUMBER(4), CONSTRAINT store_id_fk FOREIGN KEY(store_id) REFERENCES stores(store_id));

You executed the following statement: SQL> DELETE from stores

WHERE store_id=900;

The statement fails due to the integrity constraint error:

ORA-02292: integrity constraint (HR.STORE_ID_FK) violated

Which three options ensure that the statement will execute successfully?

- A. Disable the primary key in the STORES table.
- B. Use CASCADE keyword with DELETE statement.
- C. DELETE the rows with STORE_ID = 900 from the SALES table and then delete rows from STORES table.
- D. Disable the FOREIGN KEY in SALES table and then delete the rows.
- E. Create the foreign key in the SALES table on SALES_ID column with on DELETE CASCADE option.

Answer: CDE

NEW QUESTION 9

Which statement is true about transactions?

- A. A set of Data Manipulation Language (DML) statements executed in a sequence ending with a SAVEPOINT forms a single transaction.
- B. Each Data Definition Language (DDL) statement executed forms a single transaction.
- C. A set of DDL statements executed in a sequence ending with a COMMIT forms a single transaction.
- D. A combination of DDL and DML statements executed in a sequence ending with a COMMIT forms a single transaction.

Answer: B

Explanation:

References:

<https://docs.oracle.com/database/121/CNCPT/transact.htm#CNCPT038>

NEW QUESTION 10

Which two statements are true regarding the EXISTS operator used in the correlated subqueries? (Choose two.)

- A. The outer query stops evaluating the result set of the inner query when the first value is found.
- B. It is used to test whether the values retrieved by the inner query exist in the result of the outer query.
- C. It is used to test whether the values retrieved by the outer query exist in the result set of the inner query.
- D. The outer query continues evaluating the result set of the inner query until all the values in the result set are processed.

Answer: AC

Explanation:

References:

<http://www.techonthenet.com/oracle/exists.php>

NEW QUESTION 10

View the Exhibit and examine the structure of the PROMOTION table.

Table PROMOTIONS		
Name	Null?	Type
PROMO_ID	NOT NULL	NUMBER(6)
PROMO_NAME	NOT NULL	VARCHAR2(30)
PROMO_SUBCATEGORY	NOT NULL	VARCHAR2(30)
PROMO_SUBCATEGORY_ID	NOT NULL	NUMBER
PROMO_CATEGORY	NOT NULL	VARCHAR2(30)
PROMO_CATEGORY_ID	NOT NULL	NUMBER
PROMO_COST	NOT NULL	NUMBER(10,2)
PROMO_BEGIN_DATE	NOT NULL	DATE
PROMO_END_DATE	NOT NULL	DATE

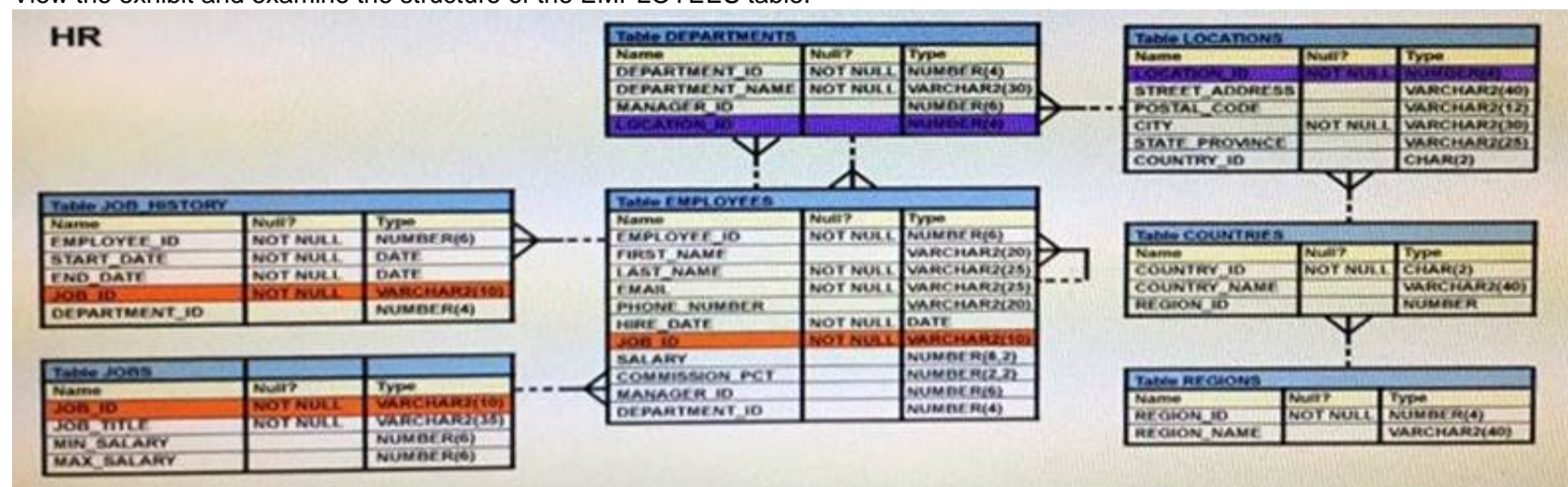
You have to generate a report that displays the promo named start data for all promos that started after that last promo in the 'INTERNET' category.

- A. Select promo_name, promo_being_date FROM promoptions WHERE promo_being_data > ANY (SELECT promo_being-date FROM promotionsWHERE promo_category = 'INTERNET'
- B. SELECT promo_neme, promo_being_date FROM promotions WHERE promo_being_date > All (SELECT promo_being-date FROM promotionsWHERE promo_category ='INTERNET');
- C. SELECT promo-name, promo-being _date FROM promotionsWhere promo_being_data >ALL (SELECT MAX (promo_being-date) FROM promotions) ANDPromo-category ='INTERNET';
- D. SELECT promo-name, promo-being_date FROM promotion WHERE promo-being-date IN (SELECT promo_bijing_date FROM promotionsWHERE promo_category='INTYERNET');

Answer: B

NEW QUESTION 14

View the exhibit and examine the structure of the EMPLOYEES table.



You want to display all employees and their managers having 100 as the MANAGER_ID. You want the output in two columns: the first column would have the LAST_NAME of the managers and the second column would have LAST_NAME of the employees.

Which SQL statement would you execute?

- A. SELECT m.last_name "Manager", e.last_name "Employee" FROM employees m JOIN employees e ON m.employee_id = e.manager_id WHERE m.manager_id = 100;
- B. SELECT m.last_name "Manager", e.last_name "Employee" FROM employees m JOIN employees e ON m.employee_id = e.manager_id WHERE e.manager_id = 100;
- C. SELECT m.last_name "Manager", e.last_name "Employee" FROM employees m JOIN employees e ON e.employee_id = m.manager_id WHERE m.manager_id = 100;
- D. SELECT m.last_name "Manager", e.last_name "Employee" FROM employees m JOIN employees e WHERE m.employee_id = e.manager_id and AND e.manager_id = 100

Answer: B

NEW QUESTION 15

Evaluate the following statement. INSERT ALL

WHEN order_total < 10000 THEN INTO small_orders

WHEN order_total > 10000 AND order_total < 20000 THEN INTO medium_orders

WHEN order_total > 20000 AND order_total < 20000 THEN INTO large_orders

SELECT order_id, order_total, customer_id FROM orders;

Which statement is true regarding the evaluation of rows returned by the subquery in the INSERT statement?

- A. They are evaluated by all the three WHEN clauses regardless of the results of the evaluation of any other WHEN clause.
- B. They are evaluated by the first WHEN clause
- C. If the condition is true, then the row would be evaluated by the subsequent WHEN clauses.
- D. They are evaluated by the first WHEN clause
- E. If the condition is false, then the row would be evaluated by the subsequent WHEN clauses.
- F. The insert statement would give an error because the ELSE clause is not present for support in case none of WHEN clauses are true.

Answer: A

Explanation:

References:

<http://psoug.org/definition/WHEN.htm>

NEW QUESTION 18

When does a transaction complete? (Choose all that apply.)

- A. When a PL/SQL anonymous block is executed
- B. When a DELETE statement is executed
- C. When a data definition language statement is executed
- D. When a TRUNCATE statement is executed after the pending transaction
- E. When a ROLLBACK command is executed

Answer: CDE

NEW QUESTION 22

Which task can be performed by using a single Data Manipulation Language (DML) statement?

- A. adding a column constraint when inserting a row into a table
- B. adding a column with a default value when inserting a row into a table
- C. removing all data only from one single column on which a unique constraint is defined
- D. removing all data only from one single column on which a primary key constraint is defined

Answer: C

NEW QUESTION 23

Which statement is true regarding the default behavior of the ORDER BY clause?

- A. In a character sort, the values are case-sensitive.
- B. NULL values are not considered at all by the sort operation.
- C. Only those columns that are specified in the SELECT list can be used in the ORDER BY clause.
- D. Numeric values are displayed from the maximum to the minimum value if they have decimal positions.

Answer: A

NEW QUESTION 26

You must create a table for a banking application. (Choose the best answer.) One of the columns in the table has these requirements:

- 1: A column to store the duration of a short term loan
- 2: The data should be stored in a format supporting DATE arithmetic with DATE datatypes without using conversion functions.
- 3: The maximum loan period is 30 days.
- 4: Interest must be calculated based on the number of days for which the loan remains unpaid. Which data type would you use?

- A. Date
- B. Number
- C. Timestamp
- D. Interval day to second
- E. Interval year to month

Answer: D

NEW QUESTION 28

Which statements are correct regarding indexes? (Choose all that apply.)

- A. A non-deferrable PRIMARY KEY or UNIQUE KEY constraint in a table automatically attempts to create a unique index.
- B. Indexes should be created on columns that are frequently referenced as part of any expression.
- C. When a table is dropped, the corresponding indexes are automatically dropped.
- D. For each DML operation performed, the corresponding indexes are automatically updated.

Answer: ACD

Explanation:

References:

<http://viralpatel.net/blogs/understanding-primary-keypk-constraint-in-oracle/>

NEW QUESTION 29

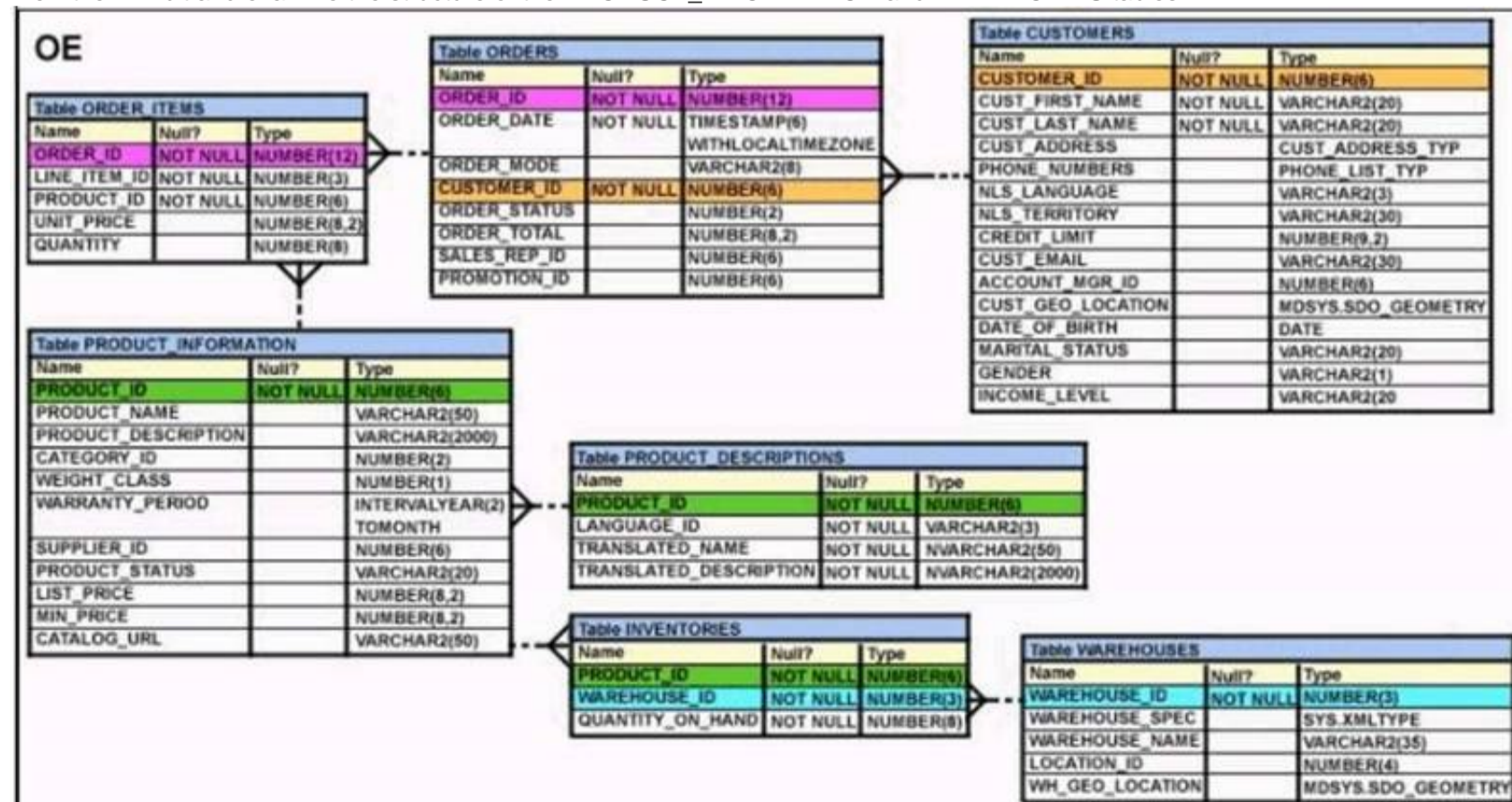
Which two partitioned table maintenance operations support asynchronous Global Index Maintenance in Oracle database 12c?

- A. ALTER TABLE SPLIT PARTITION
- B. ALTER TABLE MERGE PARTITION
- C. ALTER TABLE TRUNCATE PARTITION
- D. ALTER TABLE ADD PARTITION
- E. ALTER TABLE DROP PARTITION
- F. ALTER TABLE MOVE PARTITION

Answer: CE

NEW QUESTION 32

View the Exhibit and examine the structure of the PRODUCT_INFORMATION and INVENTORIES tables.



You have a requirement from the supplies department to give a list containing PRODUCT_ID, SUPPLIER_ID, and QUANTITY_ON_HAND for all the products

wherein QUANTITY_ON_HAND is less than five.

Which two SQL statements can accomplish the task? (Choose two.)

- A. SELECT i.product_id, i.quantity_on_hand, pi.supplier_idFROM product_information pi JOIN inventories iON (pi.product_id=i.product_id)WHERE quantity_on_hand < 5;
- B. SELECT product_id, quantity_on_hand, supplier_idFROM product_informationNATURAL JOIN inventories AND quantity_on_hand < 5;
- C. SELECT i.product_id, i.quantity_on_hand, pi.supplier_idFROM product_information pi JOIN inventories iON (pi.product_id=i.product_id) AND quantity_on_hand < 5;
- D. SELECT i.product_id, i.quantity_on_hand, pi.supplier_idFROM product_information pi JOINinventories iON (pi.product_id=i.product_id)USING (product_id) AND quantity_on_hand < 5;

Answer: AC

NEW QUESTION 35

Which two statements best describe the benefits of using the WITH clause? (Choose two.)

- A. It can improve the performance of a large query by storing the result of a query block having the WITH clause in the session's temporary tablespace.
- B. It enables sessions to reuse the same query block in a SELECT statement, if it occurs more than once in a complex query.
- C. It enables sessions to store a query block permanently in memory and use it to create complex queries.
- D. It enables sessions to store the results of a query permanently.

Answer: AB

NEW QUESTION 39

Evaluate the following SELECT statement and view the exhibit to examine its output:

```
SELECT constraint_name, constraint_type, search_condition, r_constraint_name, delete_rule, status, FROM user_constraints
WHERE table_name = 'ORDERS'; CONSTRAINT_NAME
CON SEARCH_CONDITION R_CONSTRAINT_NAME DELETE_RULE
STATUS ORDER_DATE_NN C
"ORDER_DATE" IS NOT NULL ENABLED ORDER_CUSTOMER_ID_NN C
"CUSTOMER_ID" IS NOT NULL ENABLED ORDER_MODE_LOV C
order_mode in ('direct', 'online') ENABLED
ORDER TOTAL MIN C
order total >= 0 ENABLED ORDER PK
P ENABLED
ORDERS CUSTOMER ID R
CUSTOMERS ID SET NULL ENABLED
ORDERS SALES REP R
EMP EMP ID SET NULL ENABLED
```

Which two statements are true about the output? (Choose two.)

- A. The R_CONSTRAINT_NAME column gives the alternative name for the constraint.
- B. In the second column, 'c' indicates a check constraint.
- C. The STATUS column indicates whether the table is currently in use.
- D. The column DELETE_RULE decides the state of the related rows in the child table when the corresponding row is deleted from the parent table.

Answer: BD

NEW QUESTION 40

View the exhibit and examine the structure of the STORES table. STORES table

NameNull?Type

----- STORE_IDNUMBER NAMEVARCHAR2(100)

ADDRESSVARCHAR2(200) CITYVARCHAR2(100) COUNTRYVARCHAR2(100) START_DATEDATE END_DATEPROPERTY_PRICE

NUMBER
You want to display the NAME of the store along with the ADDRESS, START_DATE, PROPERTY_PRICE, and the projected property price, which is 115% of property price.

The stores displayed must have START_DATE in the range of 36 months starting from 01-Jan-2000 and above.

Which SQL statement would get the desired output?

- A. SELECT name, concat (address|| ' '|| city|| ' ', country) AS full_address,start_date,property_price, property_price*115/100FROM storesWHERE MONTHS_BETWEEN (start_date, '01-JAN-2000')<=36;
- B. SELECT name, concat (address|| ' '|| city|| ' ', country) AS full_address,start_date,property_price, property_price*115/100FROM storesWHERETO_NUMBER(start_date-TO_DATE('01-JAN-2000','DD-MON-RRRR')) <=36;
- C. SELECT name, address||','||city||','||country AS full_address,start_date,property_price, property_price*115/100FROM storesWHERE MONTHS_BETWEEN (start_date, TO_DATE('01-JAN-2000','DD-MON-RRRR')) <=36;
- D. SELECT name, concat (address||','|| city|| ' ', country) AS full_address,start_date,property_price, property_price*115/100FROM storesWHERE MONTHS_BETWEEN (start_date, TO_DATE('01-JAN-2000','DD-MON-RRRR')) <=36;

Answer: D

NEW QUESTION 41

You need to produce a report where each customer's credit limit has been incremented by \$1000. In the output, the customer's last name should have the heading Name and the incremented credit limit should be labeled New Credit Limit. The column headings should have only the first letter of each word in uppercase.

Which statement would accomplish this requirement?

- A. SELECT cust_last_name AS "Name", cust_credit_limit + 1000AS "New Credit Limit"FROM customers;
- B. SELECT cust_last_name AS Name, cust_credit_limit + 1000AS New Credit LimitFROM customers;
- C. SELECT cust_last_name AS Name, cust_credit_limit + 1000"New Credit Limit"FROM customers;
- D. SELECT INITCAP (cust_last_name) "Name", cust_credit_limit + 1000INITCAP ("NEW CREDIT LIMIT")FROM customers;

Answer: A

NEW QUESTION 46

Which two statements are true regarding constraints? (Choose two.)

- A. A constraint is enforced only for an INSERT operation on a table.
- B. A foreign key cannot contain NULL values.
- C. The column with a UNIQUE constraint can store NULLS.
- D. You can have more than one column in a table as part of a primary key.

Answer: CD

NEW QUESTION 50

A non-correlated subquery can be defined as . (Choose the best answer.)

- A. A set of one or more sequential queries in which generally the result of the inner query is used as the search value in the outer query.
- B. A set of sequential queries, all of which must return values from the same table.
- C. A set of sequential queries, all of which must always return a single value.
- D. A SELECT statement that can be embedded in a clause of another SELECT statement only.

Answer: A

NEW QUESTION 51

Examine the structure of the ORDERS table: (Choose the best answer.)

NAME	NULL	TYPE
ORDER_ID	NOT NULL	NUMBER (12)
ORDER_DATE	NOT NULL	TIMESTAMP(6)
CUSTOMERS_ID	NOT NULL	NUMBER(6)
ORDER_STATUS		NUMBER(2)
ORDER_TOTAL		NUMBER(8, 2)

You want to find the total value of all the orders for each year and issue this command:

```
SQL> SELECT TO_CHAR(order_date,'rr'), SUM(order_total) FROM orders GROUP BY TO_CHAR(order_date, 'yyyy');
```

Which statement is true regarding the result?

- A. It executes successfully but does not give the correct output.
- B. It executes successfully but gives the correct output.
- C. It returns an error because the TO_CHAR function is not valid.
- D. It return an error because the datatype conversion in the SELECT list does not match the data type conversion in the GROUP BY clause.

Answer: D

NEW QUESTION 52

Sales data of a company is stored in two tables, SALES1 and SALES2, with some data being duplicated across the tables. You want to display the results from the SALES1 table, which are not present in the SALES2 table.

SALES1 table NameNullType

```
----- SALES_IDNUMBER STORE_IDNUMBER ITEMS_IDNUMBER QUANTITYNUMBER SALES_DATEDATE
```

SALES2 table NameNullType

```
----- SALES_IDNUMBER STORE_IDNUMBER
```

```
ITEMS_IDNUMBER QUANTITYNUMBER SALES_DATEDATE
```

Which set operator generates the required output?

- A. INTERSECT
- B. UNION
- C. PLUS
- D. MINUS
- E. SUBTRACT

Answer: D

Explanation:

References:

https://docs.oracle.com/cd/B19306_01/server.102/b14200/queries004.htm

NEW QUESTION 56

Examine the structure of the MEMBERS table: (Choose the best answer.)

NAME	NULL?	TYPE
MEMBER_ID	NOT NULL	NUMBER(6)
FIRST_NAME		VARCHAR2(50)
LAST_NAME	NOT NULL	VARCHAR2(50)
ADDRESS		VARCHAR2(50)
CITY		VARCHAR2(25)
STATE		VARCHAR2(3)

Examine the SQL statement:

```
SQL > SELECT city, last_name LNAME FROM MEMBERS ORDER BY 1, LNAME DESC;
```

What would be the result execution?

- A. It displays all cities in descending order, within which the last names are further sorted in descending order.
- B. It fails because a column alias cannot be used in the ORDER BY clause.
- C. It fails because a column number and a column alias cannot be used together in the ORDER BY clause.
- D. It displays all cities in ascending order, within which the last names are further sorted in descending order.

Answer: D

NEW QUESTION 57

Which three statements are true regarding single-row functions? (Choose three.)

- A. The data type returned, can be different from the data type of the argument that is referenced.
- B. They can return multiple values of more than one data type.
- C. They can accept only one argument.
- D. They can be nested up to only two levels.
- E. They can be used in SELECT, WHERE, and ORDER BY clauses.
- F. They can accept column names, expressions, variable names, or a user-supplied constants as arguments.

Answer: AEF

NEW QUESTION 62

Which two statements are true about Data Manipulation Language (DML) statements?

- A. An INSERT INTO...VALUES.. statement can add multiple rows per execution to a table.
- B. An UPDATE... SET... statement can modify multiple rows based on multiple conditions on a table.
- C. ADELETE FROM..... statement can remove rows based on only a single condition on a table.
- D. An INSERT INTO... VALUES..... statement can add a single row based on multiple conditions on a table.
- E. ADELETE FROM..... statement can remove multiple rows based on multiple conditions on a table.
- F. An UPDATE.....SET..... statement can modify multiple rows based on only a single condition on a table.

Answer: BE

Explanation:

References:

http://www.techonthenet.com/sql/and_or.php

NEW QUESTION 64

In which three situations does a transaction complete?

- A. when a PL/SQL anonymous block is executed
- B. when a DELETE statement is executed
- C. when a ROLLBACK command is executed
- D. when a data definition language (DDL) statement is executed
- E. when a TRUNCATE statement is executed after the pending transaction

Answer: CDE

Explanation:

References:

https://docs.oracle.com/cd/B19306_01/server.102/b14220/transact.htm

NEW QUESTION 68

Which two statements are true about sequences created in a single instance database? (Choose two.)

- A. When the MAXVALUE limit for the sequence is reached, you can increase the MAXVALUE limit by using the ALTER SEQUENCE statement.
- B. DELETE <sequencename> would remove a sequence from the database.
- C. The numbers generated by a sequence can be used only for one table.
- D. CURRVAL is used to refer to the last sequence number that has been generated.
- E. When a database instance shuts down abnormally, the sequence numbers that have been cached but not used would be available once again when the database instance is restarted.

Answer: AD

Explanation:

References:

http://docs.oracle.com/cd/E11882_01/server.112/e41084/statements_2012.htm#SQLRF00817

https://docs.oracle.com/cd/A84870_01/doc/server.816/a76989/ch26.htm

NEW QUESTION 73

View the Exhibits and examine PRODUCTS and SALES tables. Exhibit 1

Table PRODUCTS		
Name	Null?	Type
PROD_ID	NOT NULL	NUMBER (6)
PROD_NAME	NOT NULL	VARCHAR2 (50)
PROD_DESC	NOT NULL	VARCHAR2 (4000)
PROD_CATEGORY	NOT NULL	VARCHAR2 (50)
PROD_CATEGORY_ID	NOT NULL	NUMBER
PROD_UNIT_OF_MEASURE		VARCHAR2 (20)
SUPPLIER_ID	NOT NULL	NUMBER (6)
PROD_STATUS	NOT NULL	VARCHAR2 (20)
PROD_LIST_PRICE	NOT NULL	NUMBER (8, 2)
PROD_MIN_PRICE	NOT NULL	NUMBER (8, 2)

Exhibit 2

Table SALES		
Name	Null?	Type
PROD_ID	NOT NULL	NUMBER
CUST_ID	NOT NULL	NUMBER
TIME_ID	NOT NULL	DATE
CHANNEL_ID	NOT NULL	NUMBER
PROMO_ID	NOT NULL	NUMBER
QUANTITY_SOLD	NOT NULL	NUMBER (10, 2)

You issue the following query to display product name the number of times the product has been sold:

```
SOL>SELECT p.prod_name, i.item_cnt
      FROM (SELECT prod_id, COUNT(*) item_cnt
            FROM sales
            GROUP BY prod_id) I RIGHT OUTER JOIN products p
      ON i.prod_id = p.prod_id;
```

What happens when the above statement is executed?

- A. The statement executes successfully and produces the required output.
- B. The statement produces an error because a subquery in the FROM clause and outer-joins cannot be used together.
- C. The statement produces an error because the GROUP BY clause cannot be used in a subquery in the FROM clause.
- D. The statement produces an error because ITEM_CNT cannot be displayed in the outer query.

Answer: A

NEW QUESTION 75

Examine the structure of the PROMOTIONS table: (Choose the best answer.)

NAME	NULL?	TYPE
PROMO_ID	NOT NULL	NUMBER(6)
PROMO_NAME	NOT NULL	VARCHAR2(30)
PROMO_CATEGORY	NOT NULL	VARCHAR2(30)
PROMO_COST	NOT NULL	NUMBER(10,2)

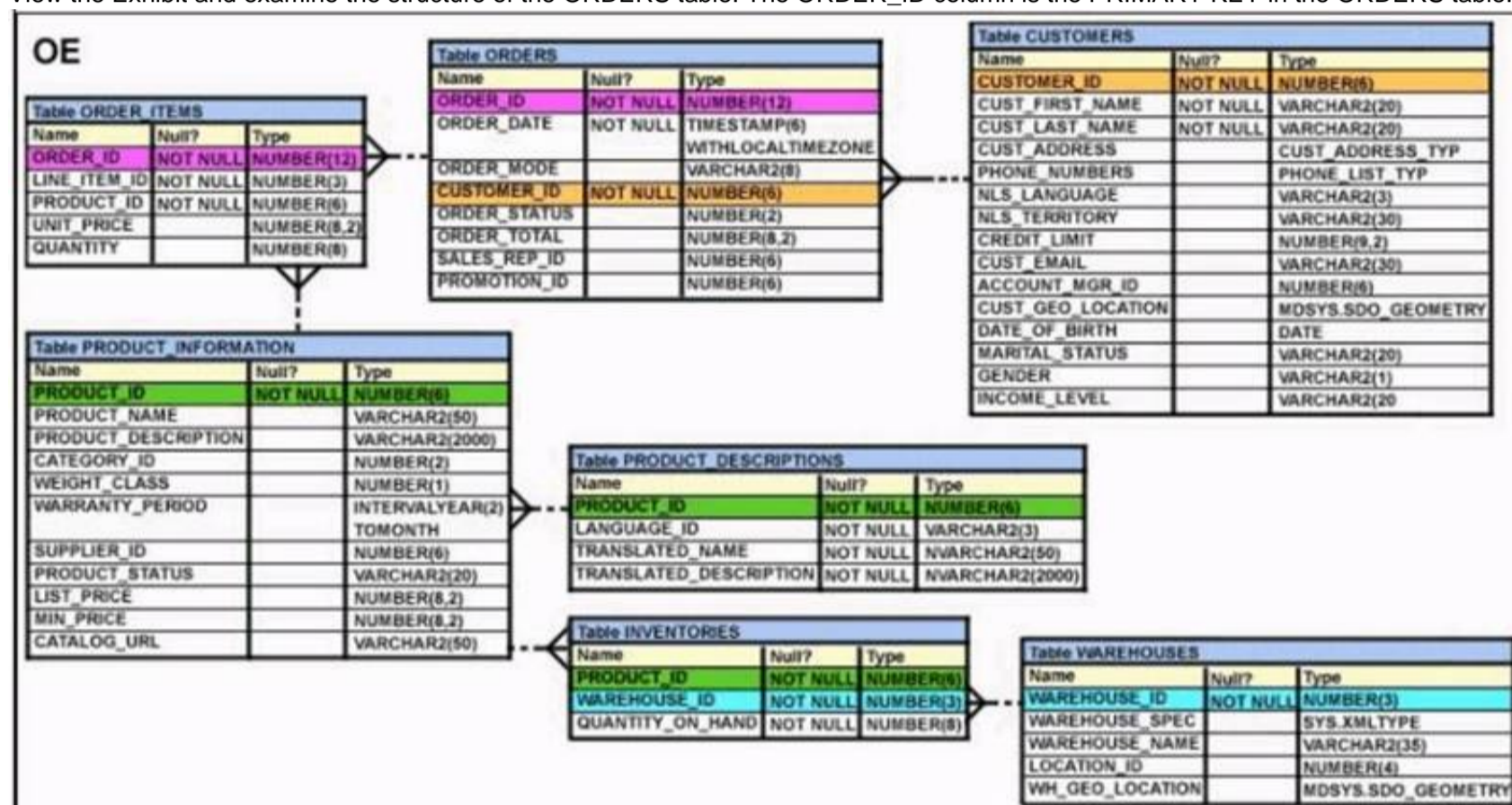
Management requires a report of unique promotion costs in each promotion category. Which query would satisfy this requirement?

- A. SELECT DISTINCT promo_category, promo_cost FROM promotions ORDER BY 1
- B. SELECT promo_category, DISTINCT promo_cost FROM promotions
- C. SELECT DISTINCT promo_cost, promo_category FROM promotions
- D. SELECT DISTINCT promo_cost, DISTINCT promo_category FROM promotions;

Answer: A

NEW QUESTION 78

View the Exhibit and examine the structure of the ORDERS table. The ORDER_ID column is the PRIMARY KEY in the ORDERS table.



Evaluate the following CREATE TABLE command:

```
CREATE TABLE new_orders(ord_id, ord_date DEFAULT SYSDATE, cus_id) AS
SELECT order_id,order_date,customer_id FROM orders;
```

Which statement is true regarding the above command?

- A. The NEW_ODRDERS table would not get created because the DEFAULT value cannot be specified in the column definition.
- B. The NEW_ODRDERS table would get created and only the NOT NULL constraint defined on the specified columns would be passed to the new table.
- C. The NEW_ODRDERS table would not get created because the column names in the CREATE TABLE command and the SELECT clause do not match.
- D. The NEW_ODRDERS table would get created and all the constraints defined on the specified columns in the ORDERS table would be passed to the new table.

Answer: B

NEW QUESTION 83

View the Exhibit and examine the structure of CUSTOMERS table.

Using the CUSTOMERS table, you need to generate a report that shows an increase in the credit limit by 15% for all customers. Customers whose credit limit has not been entered should have the message "Not Available" displayed.

Which SQL statement would produce the required result?

Table CUSTOMERS		
Name	Null?	Type
CUST_ID	NOT NULL	NUMBER
CUST_FIRST_NAME	NOT NULL	VARCHAR2 (20)
CUST_LAST_NAME	NOT NULL	VARCHAR2 (40)
CUST_GENDER	NOT NULL	CHAR (1)
CUST_YEAR_OF_BIRTH	NOT NULL	NUMBER (4)
CUST_MARITAL_STATUS		VARCHAR2 (20)
CUST_STREET_ADDRESS	NOT NULL	VARCHAR2 (40)
CUST_POSTAL_CODE	NOT NULL	VARCHAR2 (10)
CUST_CITY	NOT NULL	VARCHAR2 (30)
CUST_STATE_PROVINCE	NOT NULL	VARCHAR2 (40)
COUNTRY_ID	NOT NULL	NUMBER
CUST_INCOME_LEVEL		VARCHAR2 (30)
CUST_CREDIT_LIMIT		NUMBER
CUST_EMAIL		VARCHAR2 (30)

- A. SELECT NVL (TO CHAR(cust_credit_limit * .15), 'Not Available') "NEW CREDIT"FROM customers;
 B. SELECT TO_CHAR (NVL(cust_credit_limit * .15), 'Not Available') "NEW CREDIT"FROM customers;
 C. SELECT NVL(cust_credit_limit * .15), 'Not Available') "NEW CREDIT"FROM customers;
 D. SELECT NVL(cust_credit_limit), 'Not Available') "NEW CREDIT"FROM customers;

Answer: A

NEW QUESTION 86

The first DROP operation is performed on PRODUCTS table using the following command: DROP TABLE products PURGE;
 Then you performed the FLASHBACK operation by using the following command: FLASHBACK TABLE products TO BEFORE DROP;
 Which statement describes the outcome of the FLASHBACK command?

- A. It recovers only the table structure.
 B. It recovers the table structure, data, and the indexes.
 C. It recovers the table structure and data but not the related indexes.
 D. It is not possible to recover the table structure, data, or the related indexes.

Answer: D

Explanation:

References:
https://docs.oracle.com/cd/B19306_01/server.102/b14200/statements_9003.htm

NEW QUESTION 88

Examine the commands used to create DEPARTMENT_DETAILS and COURSE_DETAILS:

```
SQL>CREATE TABLE DEPARTMENT_DETAILS
(DEPARTMENT_ID NUMBER PRIMARY KEY,
DEPARTMENT_NAME VARCHAR2 (50) ,
HOD VARCHAR2 (50) ) ;
SQL>CREATE TABLE COURSE_DETAILS
(COURSE_ID NUMBER PRIMARY KEY,
COURSE_NAME VARCHAR2 (50) ,
DEPARTMENT_ID NUMBER REFERENCES DEPARTMENT_DETAILS
(DEPARTMENT_ID) ) ;
```

You want to generate a report that shows all course IDs irrespective of whether they have corresponding department IDs or not but no department IDs if they do not have any courses.
 Which SQL statement must you use?

- A. SELECT course_id, department_id, FROM department_details d RIGHT OUTER JOIN course_details c USING (department_id)
 B. SELECT c.course_id, d.department_id FROM course_details c RIGHT OUTER JOIN department_details d ON (c.department_id=d.department_id)
 C. SELECT c.course_id, d.department_id FROM course_details c FULL OUTER JOIN department_details d ON (c.department_id= department_id)
 D. SELECT c.course_id, d.department_id FROM course_details c FULL OUTER JOIN department_details d ON (c.department_id<> department_id)

Answer: C

NEW QUESTION 92

Examine the structure of the SALES table. (Choose two.)

NAME	NULL?	TYPE
PRODUCT_ID	NOT NULL	NUMBER(10)
CUSTOMER_ID	NOT NULL	VARCHAR2(10)
TIME_ID	NOT NULL	DATE
CHANNEL_ID	NOT NULL	NUMBER(5)
PROMO_ID	NOT NULL	NUMBER(5)
QUANTITY_SOLD	NOT NULL	NUMBER(10, 2)
PRICE		NUMBER(10, 2)
AMOUNT_SOLD	NOT NULL	NUMBER(10, 2)

Examine this statement:

SQL > CREATE TABLE sales1 (prod_id, cust_id, quantity_sold, price) AS

SELECT product_id, customer_id, quantity_sold, price FROM sales

WHERE 1 = 2;

Which two statements are true about the SALES1 table?

- A. It will not be created because the column-specified names in the SELECT and CREATE TABLE clauses do not match.
- B. It will have NOT NULL constraints on the selected columns which had those constraints in the SALES table.
- C. It will not be created because of the invalid WHERE clause.
- D. It is created with no rows.
- E. It has PRIMARY KEY and UNIQUE constraints on the selected columns which had those constraints in the SALES table.

Answer: BD

NEW QUESTION 96

View the Exhibit and examine the structure of the ORDER_ITEMS table. (Choose the best answer.)

ORDER_ITEMS				
ORDER_ID	LINE_ITEM_ID	PRODUCT_ID	UNIT_PRICE	QUANTITY
2355	4	2322	19	188
2355	5	2323	17	190
2355	9	2359	226.6	204
2355	1	2289	46	200
2356	5	2308	58	47
2356	6	2311	95	51
2356	1	2264	199.1	38
2356	2	2274	148.5	34
2356	3	2293	98	40
2356	4	2299	72	44
2357	2	2245	462	26
2357	3	2252	788.7	26
2357	4	2257	371.8	29
2357	5	2262	95	29

You must select the ORDER_ID of the order that has the highest total value among all the orders in the ORDER_ITEMS table.

Which query would produce the desired result?

- A. SELECT order_id FROM order_items GROUP BY order_id HAVING SUM(unit_price*quantity) = (SELECT MAX (SUM(unit_price*quantity)) FROM order_items GROUP BY order_id);
- B. SELECT order_id FROM order_items WHERE (unit_price*quantity) = (SELECT MAX (SUM(unit_price*quantity)) FROM order_items) GROUP BY order_id;
- C. SELECT order_id FROM order_items WHERE (unit_price*quantity) = MAX(unit_price*quantity) GROUP BY order_id;
- D. SELECT order_id FROM order_items WHERE (unit_price*quantity) = (SELECT MAX(unit_price*quantity) FROM order_items GROUP BY order_id)

Answer: A

NEW QUESTION 100

View the Exhibit and examine the data in the PRODUCT_INFORMATION table.

PRODUCT_INFORMATION				
PDT_ID	SUP_ID	PDT_STATUS	LIST_PRICE	MIN_PRICE
1797	102094	orderable	349	288
2254	102071	obsolete	453	371
2382	102050	under development	850	731
2459	102099	under development	699	568
3127	102087	orderable	498	444
3353	102071	obsolete	489	413
3354	102066	orderable	543	478

Which two tasks would require subqueries? (Choose two.)

- A. displaying all the products whose minimum list prices are more than average list price of products having the status orderable
- B. displaying the total number of products supplied by supplier 102071 and having product status OBSOLETE
- C. displaying the number of products whose list prices are more than the average list price
- D. displaying all supplier IDs whose average list price is more than 500
- E. displaying the minimum list price for each product status

Answer: AC

NEW QUESTION 105

Evaluate the following query:

```
SELECT INTERVAL '300' MONTH,
INTERVAL '54-2' YEAR TO MONTH,
INTERVAL '11:12:10.1234567' HOUR TO SECOND
FROM dual;
```

Which is the correct output of the above query?

- A. +00-300, +54-02, +00 11:12:10.123457
- B. +00-300, +00-650, +00 11:12:10.123457
- C. +25-00, +54-02, +00 11:12:10.123457
- D. +25-00, +00-650, +00 11:12:10.123457

Answer: C

NEW QUESTION 109

See the Exhibit and examine the structure of the PROMOTIONS table:

Table PROMOTIONS		
Name	Null?	Type
PROMO_ID	NOT NULL	NUMBER(6)
PROMO_NAME	NOT NULL	VARCHAR2(30)
PROMO_SUBCATEGORY	NOT NULL	VARCHAR2(30)
PROMO_SUBCATEGORY_ID	NOT NULL	NUMBER
PROMO_CATEGORY	NOT NULL	VARCHAR2(30)
PROMO_CATEGORY_ID	NOT NULL	NUMBER
PROMO_COST	NOT NULL	NUMBER(10,2)
PROMO_BEGIN_DATE	NOT NULL	DATE
PROMO_END_DATE	NOT NULL	DATE

Using the PROMOTIONS table,
you need to find out the average cost for all promos in the range \$0-2000 and \$2000-5000 in category A.
You issue the following SQL statements:

```
SQL>SELECT AVG(CASE
                WHEN promo_cost BETWEEN 0 AND 2000 AND promo_category='A'
                THEN promo_cost
                ELSE null END) "CAT_2000A",
AVG(CASE
                WHEN promo_cost BETWEEN 2001 AND 5000 AND promo_category='A'
                THEN promo_cost
                ELSE null END) "CAT_5000A"
FROM promotions;
```

What would be the outcome?

- A. It generates an error because multiple conditions cannot be specified for the WHEN clause.
- B. It executes successfully and gives the required result.
- C. It generates an error because CASE cannot be used with group functions.
- D. It generates an error because NULL cannot be specified as a return value.

Answer: B

Explanation:

CASE Expression

Facilitates conditional inquiries by doing the work of an IF-THEN-ELSE statement:

CASE expr WHEN comparison_expr1 THEN return_expr1 [WHEN comparison_expr2 THEN return_expr2

WHEN comparison_exprn THEN return_exprn ELSE else_expr]

END

NEW QUESTION 114

The BOOKS_TRANSACTIONS table exists in your database. SQL>SELECT * FROM books_transactions ORDER BY 3; What is the outcome on execution?

- A. The execution fails unless the numeral 3 in the ORDER BY clause is replaced by a column name.
- B. Rows are displayed in the order that they are stored in the table only for the three rows with the lowest values in the key column.
- C. Rows are displayed in the order that they are stored in the table only for the first three rows.
- D. Rows are displayed sorted in ascending order of the values in the third column in the table.

Answer: D

NEW QUESTION 119

You notice a performance change in your production Oracle 12c database. You want to know which change caused this performance difference. Which method or feature should you use?

- A. Compare Period ADDM report.
- B. AWR Compare Period report.
- C. Active Session History (ASH) report.
- D. Taking a new snapshot and comparing it with a preserved snapshot.

Answer: B

NEW QUESTION 121

Examine the structure of the MEMBERS table: NameNull?Type

----- MEMBER_IDNOT NULLVARCHAR2 (6)

FIRST_NAMEVARCHAR2 (50)

LAST_NAMENOT NULLVARCHAR2 (50)

ADDRESSVARCHAR2 (50)

You execute the SQL statement:

SQL > SELECT member_id, ' ', first_name, ' ', last_name "ID FIRSTNAME LASTNAME " FROM members;

What is the outcome?

- A. It fails because the alias name specified after the column names is invalid.
- B. It fails because the space specified in single quotation marks after the first two column names is invalid.
- C. It executes successfully and displays the column details in a single column with only the alias column heading.
- D. It executes successfully and displays the column details in three separate columns and replaces only the last column heading with the alias.

Answer: D

NEW QUESTION 122

Which three statements are true regarding the WHERE and HAVING clauses in a SQL statement? (Choose three.)

- A. WHERE and HAVING clauses cannot be used together in a SQL statement.
- B. The HAVING clause conditions can have aggregate functions.
- C. The HAVING clause conditions can use aliases for the columns.
- D. The WHERE clause is used to exclude rows before the grouping of data.
- E. The HAVING clause is used to exclude one or more aggregated results after grouping data.

Answer: ABD

NEW QUESTION 125

You issued this command:

CHOOSE THREE

SQL > DROP TABLE employees; Which three statements are true?

- A. Sequences used in the EMPLOYEES table become invalid.
- B. If there is an uncommitted transaction in the session, it is committed.
- C. All indexes and constraints defined on the table being dropped are also dropped.
- D. The space used by the EMPLOYEES table is always reclaimed immediately.
- E. The EMPLOYEES table can be recovered using the ROLLBACK command.
- F. The EMPLOYEES table may be moved to the recycle bin.

Answer: BCF

NEW QUESTION 130

Using the CUSTOMERS table, you need to generate a report that shows 50% of each credit amount in each income level. The report should NOT show any repeated credit amounts in each income level.

Which query would give the required result?

- A. SELECT cust_income_level || ' ' || cust_credit_limit * 0.50 AS "50% Credit Limit" FROM customers.
- B. SELECT DISTINCT cust_income_level || ' ' || cust_credit_limit * 0.50 AS "50% Credit Limit" FROM customers.
- C. SELECT DISTINCT cust_income_level, DISTINCT cust_credit_limit * 0.50 AS "50% Credit Limit" FROM customers.
- D. SELECT cust_income_level, DISTINCT cust_credit_limit * 0.50 AS "50% Credit Limit" FROM customers

Answer: B

NEW QUESTION 134

.....

THANKS FOR TRYING THE DEMO OF OUR PRODUCT

Visit Our Site to Purchase the Full Set of Actual 1Z0-071 Exam Questions With Answers.

We Also Provide Practice Exam Software That Simulates Real Exam Environment And Has Many Self-Assessment Features. Order the 1Z0-071 Product From:

<https://www.2passeasy.com/dumps/1Z0-071/>

Money Back Guarantee

1Z0-071 Practice Exam Features:

- * 1Z0-071 Questions and Answers Updated Frequently
- * 1Z0-071 Practice Questions Verified by Expert Senior Certified Staff
- * 1Z0-071 Most Realistic Questions that Guarantee you a Pass on Your FirstTry
- * 1Z0-071 Practice Test Questions in Multiple Choice Formats and Updatesfor 1 Year