

Fortinet

Exam Questions NSE4

Fortinet Network Security Expert 4 Written Exam (400)



NEW QUESTION 1

Which two statements are correct about a software switch on FortiGate? (Choose two.)

- A. It can be configured only when FortiGate is operating in NAT mode
- B. Can act as a Layer 2 switch as well as a Layer 3 router
- C. All interfaces in the software switch share the same IP address
- D. It can group only physical interfaces

Answer: AC

NEW QUESTION 2

An administrator is configuring an Ipsec between site A and siteB. The Remotes Gateway setting in both sites has been configured as Static IP Address. For site A, the local quick mode selector is 192. 16. 1.0/24 and the remote quick mode selector is 192. 16.2.0/24. How must the administrator configure the local quick mode selector for site B?

- A. 192. 168.3.0/24
- B. 192. 168.2.0/24
- C. 192. 168. 1.0/24
- D. 192. 168.0.0/8

Answer: B

NEW QUESTION 3

Which three criteria can a FortiGate use to look for a matching firewall policy to process traffic? (Choose three.)

- A. Source defined as Internet Services in the firewall policy.
- B. Destination defined as Internet Services in the firewall policy.
- C. Highest to lowest priority defined in the firewall policy.
- D. Services defined in the firewall policy.
- E. Lowest to highest policy ID number.

Answer: ABD

Explanation:

When a packet arrives, how does FortiGate find a matching policy? Each policy has match criteria, which you can define using the following objects:

- Incoming Interface
- Outgoing Interface
- Source: IP address, user, internet services
- Destination: IP address or internet services
- Service: IP protocol and port number
- Schedule: Applies during configured times

NEW QUESTION 4

Which of the following statements is true regarding SSL VPN settings for an SSL VPN portal?

- A. By default, FortiGate uses WINS servers to resolve names.
- B. By default, the SSL VPN portal requires the installation of a client's certificate.
- C. By default, split tunneling is enabled.
- D. By default, the admin GUI and SSL VPN portal use the same HTTPS port.

Answer: D

NEW QUESTION 5

Refer to the exhibit.

```
1: date=2020-08-14 time=06:28:24 logid= "0316013056" type= "utm" subtype= "webfilter"
eventtype= "ftgd_blk" level= "warning" vd= "root" eventtime= 1597343304867252750
policyid=2 sessionid=83212 srcip=10.0.1.10 srcport=53742 srcintf= "port3" srci ntfrole=
"undefined" dstip=159.65.216.232 dstport=443 dstintf= "port1" dstintfrole= "wan" proto=6
service= "HTTPS" hostname= "etp-experiment-1.dummytracker.org" profile= "default"
action= "blocked" reqtype= "direct" url= "https://etp-experiment-1.dumytracker.org/"
sentbyte=517 rcvdbyte=0 direction= "outgoing" msg= "URL belongs to a denied category in
policy" method= "domain" cat=26 catdesc= "Malicious Websites" crscore=30 craction=
4194304 crlevel= "high"
```

Based on the raw log, which two statements are correct? (Choose two.)

- A. Traffic is blocked because Action is set to DENY in the firewall policy.
- B. Traffic belongs to the root VDOM.
- C. This is a security log.
- D. Log severity is set to error on FortiGate.

Answer: AC

NEW QUESTION 6

A team manager has decided that, while some members of the team need access to a particular website, the majority of the team does not Which configuration

option is the most effective way to support this request?


- A. Implement a web filter category override for the specified website
- B. Implement a DNS filter for the specified website.
- C. Implement web filter quotas for the specified website
- D. Implement web filter authentication for the specified website.

Answer: D

NEW QUESTION 7

Refer to the exhibit.

An administrator added a configuration for a new RADIUS server. While configuring, the administrator selected the Include in every user group option.



What is the impact of using the Include in every user group option in a RADIUS configuration?

- A. This option places the RADIUS server, and all users who can authenticate against that server, into every FortiGate user group.
- B. This option places all FortiGate users and groups required to authenticate into the RADIUS server, which, in this case, is FortiAuthenticator.
- C. This option places all users into every RADIUS user group, including groups that are used for the LDAP server on FortiGate.
- D. This option places the RADIUS server, and all users who can authenticate against that server, into every RADIUS group.

Answer: A

NEW QUESTION 8

Which CLI command allows administrators to troubleshoot Layer 2 issues, such as an IP address conflict?

- A. get system status
- B. get system performance status
- C. diagnose sys top
- D. get system arp

Answer: D

Explanation:

"If you suspect that there is an IP address conflict, or that an IP has been assigned to the wrong device, you may need to look at the ARP table."

NEW QUESTION 9

Which two settings can be separately configured per VDOM on a FortiGate device? (Choose two.)

- A. System time
- B. FortiGuard update servers
- C. Operating mode
- D. NGFW mode

Answer: CD

Explanation:

C: "Operating mode is per-VDOM setting. You can combine transparent mode VDOM's with NAT mode VDOMs on the same physical Fortigate.

D: "Inspection-mode selection has moved from VDOM to firewall policy, and the default inspection-mode is flow, so NGFW Mode can be changed from Profile-base (Default) to Policy-base directly in System > Settings from the VDOM" Page 125 of FortiGate_Infrastructure_6.4_Study_Guide

NEW QUESTION 10

An administrator has a requirement to keep an application session from timing out on port 80. What two changes can the administrator make to resolve the issue without affecting any existing services running through FortiGate? (Choose two.)

- A. Create a new firewall policy with the new HTTP service and place it above the existing HTTP policy.
- B. Create a new service object for HTTP service and set the session TTL to never
- C. Set the TTL value to never under config system-ttl
- D. Set the session TTL on the HTTP policy to maximum

Answer: BC

NEW QUESTION 10

By default, FortiGate is configured to use HTTPS when performing live web filtering with FortiGuard servers. Which CLI command will cause FortiGate to use an unreliable protocol to communicate with FortiGuard servers for live web filtering?

- A. set fortiguard-anycast disable
- B. set webfilter-force-off disable
- C. set webfilter-cache disable
- D. set protocol tcp

Answer: A

Explanation:

By default, "fortiguard-anycast" is enabled, and this setting only works with "set protocol https". To use udp (ie. "set protocol udp"), "fortiguard-anycast" must be disabled.

NEW QUESTION 14

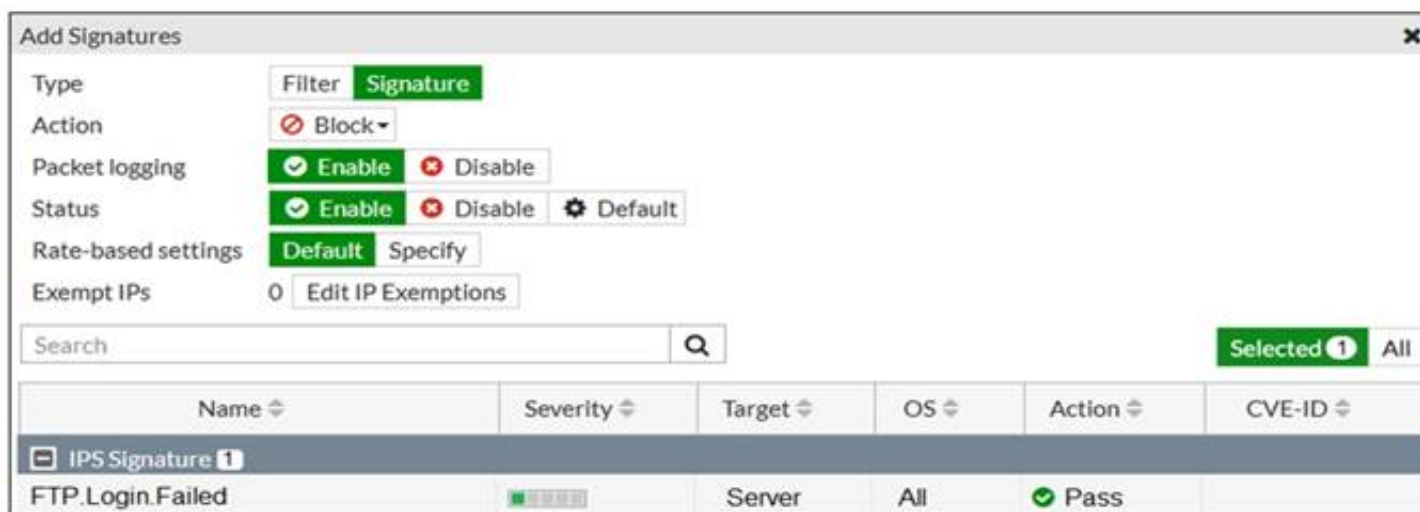
Which statement about video filtering on FortiGate is true?

- A. Video filtering FortiGuard categories are based on web filter FortiGuard categories.
- B. It does not require a separate FortiGuard license.
- C. Full SSL inspection is not required.
- D. It is available only on a proxy-based firewall policy.

Answer: B

NEW QUESTION 15

Refer to the exhibit.



Name	Severity	Target	OS	Action	CVE-ID
FTP.Login.Failed	Server	All		Pass	

Review the Intrusion Prevention System (IPS) profile signature settings. Which statement is correct in adding the FTP.Login.Failed signature to the IPS sensor profile?

- A. The signature setting uses a custom rating threshold.
- B. The signature setting includes a group of other signatures.
- C. Traffic matching the signature will be allowed and logged.
- D. Traffic matching the signature will be silently dropped and logged.

Answer: D

Explanation:

Action is drop, signature default action is listed only in the signature, it would only match if action was set to default.

NEW QUESTION 17

Which two types of traffic are managed only by the management VDOM? (Choose two.)

- A. FortiGuard web filter queries
- B. PKI
- C. Traffic shaping
- D. DNS

Answer: AD

NEW QUESTION 19

Which statement about the IP authentication header (AH) used by IPsec is true?

- A. AH does not provide any data integrity or encryption.
- B. AH does not support perfect forward secrecy.
- C. AH provides data integrity but no encryption.
- D. AH provides strong data integrity but weak encryption.

Answer: C

NEW QUESTION 21

Which feature in the Security Fabric takes one or more actions based on event triggers?

- A. Fabric Connectors
- B. Automation Stitches
- C. Security Rating
- D. Logical Topology

Answer: B

NEW QUESTION 23

Which timeout setting can be responsible for deleting SSL VPN associated sessions?

- A. SSL VPN idle-timeout
- B. SSL VPN http-request-body-timeout
- C. SSL VPN login-timeout
- D. SSL VPN dtls-hello-timeout

Answer: A

NEW QUESTION 24

Which statement regarding the firewall policy authentication timeout is true?

- A. It is an idle timeou
- B. The FortiGate considers a user to be "idle" if it does not see any packets coming from the user's source IP.
- C. It is a hard timeou
- D. The FortiGate removes the temporary policy for a user's source IP address after this timer has expired.
- E. It is an idle timeou
- F. The FortiGate considers a user to be "idle" if it does not see any packets coming from the user's source MAC.
- G. It is a hard timeou
- H. The FortiGate removes the temporary policy for a user's source MAC address afterthis timer has expired.

Answer: A

NEW QUESTION 28

What are two functions of ZTNA? (Choose two.)

- A. ZTNA manages access through the client only.
- B. ZTNA manages access for remote users only.
- C. ZTNA provides a security posture check.
- D. ZTNA provides role-based access.

Answer: CD

NEW QUESTION 33

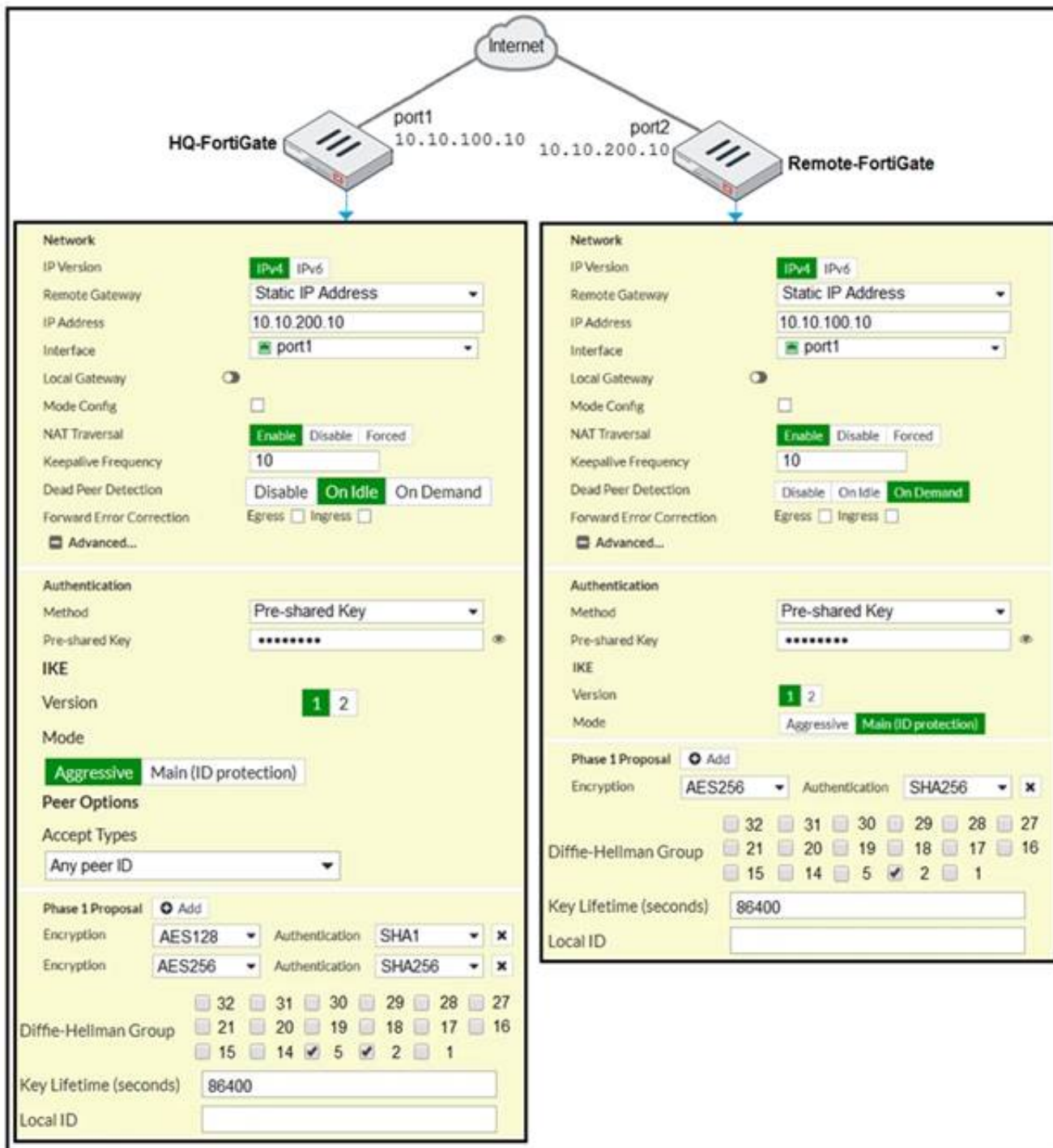
FortiGate is operating in NAT mode and is configured with two virtual LAN (VLAN) subinterfaces added to the same physical interface. In this scenario, which statement about VLAN IDs is true?

- A. The two VLAN subinterfaces can have the same VLAN ID only if they belong to different VDOMs.
- B. The two VLAN subinterfaces must have different VLAN IDs.
- C. The two VLAN subinterfaces can have the same VLAN ID only if they have IP addresses in the same subnet.
- D. The two VLAN subinterfaces can have the same VLAN ID only if they have IP addresses in different subnets.

Answer: CD

NEW QUESTION 36

A network administrator is troubleshooting an IPsec tunnel between two FortiGate devices. The administrator has determined that phase 1 fails to come up. The administrator has also re-entered the pre-shared key on both FortiGate devices to make sure they match.



Based on the phase 1 configuration and the diagram shown in the exhibit, which two configuration changes will bring phase 1 up? (Choose two.)

- A. On HQ-FortiGate, set IKE mode to Main (ID protection).
- B. On both FortiGate devices, set Dead Peer Detection to On Demand.
- C. On HQ-FortiGate, disable Diffie-Hellman group 2.
- D. On Remote-FortiGate, set port2 as Interface.

Answer: AD

NEW QUESTION 41

Refer to the exhibit, which contains a session diagnostic output.

```
session info: proto=17 proto_state=01 duration=254 expire=179 timeout=0 flags=00000000 socktype=0 sockport=0 av_idx=0 use=3
origin-shaper=
reply-shaper=
per_ip_shaper=
class_id=0 ha_id=0 policy_dir=0 tunnel=/ helper=dns-udp vlan_cos=0/255
state=log may_dirty f00 log-start
statistic(bytes/packets/allow_err): org=1420/22/1 reply=5678/22/1 tuples=2
tx speed(Bps/kbps): 5/0 rx speed(Bps/kbps): 22/0
origin->sink: org pre->post, reply pre->post dev=5->3->5 gwy=10.200.1.254/10.0.1.200
hook=post dir=org act=snat 10.0.1.200:2486->208.91.112.53:53(10.200.1.1:62902)
hook=pre dir=reply act=dnat 208.91.112.53:53->10.200.1.1:62902(10.0.1.200:2486)
misc=0 policy_id=3 auth_info=0 chk_client_info=0 vd=0
serial=0001fc1e tos=ff/ff app_list=0 app=0 url_cat=0
rpd_b_link_id= 00000000 rpd_b_svc_id=0 ngfwid=n/a
npu_state=0x040000
```

Which statement is true about the session diagnostic output?

- A. The session is a UDP unidirectional state.
- B. The session is in TCP ESTABLISHED state.
- C. The session is a bidirectional UDP connection.
- D. The session is a bidirectional TCP connection.

Answer: C

Explanation:

<https://kb.fortinet.com/kb/viewContent.do?externalId=FD30042>

NEW QUESTION 43
Refer to the exhibit.

NameCustom_Profile

Comments

0/255

Access Permissions

Access Control	Permissions	Set All ▾
Security Fabric	<div><div>None</div><div>Read</div><div>Read/Write</div></div>	
FortiView	<div><div>None</div><div>Read</div><div>Read/Write</div></div>	
User & Device	<div><div>None</div><div>Read</div><div>Read/Write</div></div>	
Firewall	<div><div>None</div><div>Read</div><div>Read/Write</div><div>Custom</div></div>	
Log & Report	<div><div>None</div><div>Read</div><div>Read/Write</div><div>Custom</div></div>	
Network	<div><div>None</div><div>Read</div><div>Read/Write</div><div>Custom</div></div>	
System	<div><div>None</div><div>Read</div><div>Read/Write</div><div>Custom</div></div>	
Security Profile	<div><div>None</div><div>Read</div><div>Read/Write</div><div>Custom</div></div>	
VPN	<div><div>None</div><div>Read</div><div>Read/Write</div></div>	
WAN Opt & Cache	<div><div>None</div><div>Read</div><div>Read/Write</div></div>	
WiFi & Switch	<div><div>None</div><div>Read</div><div>Read/Write</div></div>	

Permit usage of CLI diagnostic commands

Override Idle Timeout

Based on the administrator profile settings, what permissions must the administrator set to run the diagnose firewall auth list CLI command on FortiGate?

- A. Custom permission for Network
- B. Read/Write permission for Log & Report
- C. CLI diagnostics commands permission
- D. Read/Write permission for Firewall

Answer: C

Explanation:
<https://kb.fortinet.com/kb/documentLink.do?externalID=FD50220>

NEW QUESTION 46
Which three CLI commands can you use to troubleshoot Layer 3 issues if the issue is in neither the physical layer nor the link layer? (Choose three.)

- A. diagnose sys top
- B. execute ping
- C. execute traceroute
- D. diagnose sniffer packet any
- E. get system arp

Answer: BCD

NEW QUESTION 48
Which two statements are correct regarding FortiGate FSSO agentless polling mode? (Choose two.)

- A. FortiGate points the collector agent to use a remote LDAP server.
- B. FortiGate uses the AD server as the collector agent.
- C. FortiGate uses the SMB protocol to read the event viewer logs from the DCs.
- D. FortiGate queries AD by using the LDAP to retrieve user group information.

Answer: CD

Explanation:
Fortigate Infrastructure 7.0 Study Guide P.272-273
<https://kb.fortinet.com/kb/documentLink.do?externalID=FD47732>

NEW QUESTION 53

Consider the topology:

Application on a Windows machine <--(SSL VPN)-->FGT--> Telnet to Linux server.

An administrator is investigating a problem where an application establishes a Telnet session to a Linux server over the SSL VPN through FortiGate and the idle session times out after about 90 minutes. The administrator would like to increase or disable this timeout.

The administrator has already verified that the issue is not caused by the application or Linux server. This issue does not happen when the application establishes a Telnet connection to the Linux server directly on the LAN.

What two changes can the administrator make to resolve the issue without affecting services running through FortiGate? (Choose two.)

- A. Set the maximum session TTL value for the TELNET service object.
- B. Set the session TTL on the SSLVPN policy to maximum, so the idle session timeout will not happen after 90 minutes.
- C. Create a new service object for TELNET and set the maximum session TTL.
- D. Create a new firewall policy and place it above the existing SSLVPN policy for the SSL VPN traffic, and set the new TELNET service object in the policy.

Answer: CD

NEW QUESTION 57

A network administrator has enabled full SSL inspection and web filtering on FortiGate. When visiting any HTTPS websites, the browser reports certificate warning errors. When visiting HTTP websites, the browser does not report errors.

What is the reason for the certificate warning errors?

- A. The browser requires a software update.
- B. FortiGate does not support full SSL inspection when web filtering is enabled.
- C. The CA certificate set on the SSL/SSH inspection profile has not been imported into the browser.
- D. There are network connectivity issues.

Answer: C

NEW QUESTION 60

Examine this output from a debug flow:

```
id=20085 trace_id=1 func=print_pkt_detail line=5363 msg="vd-root received a packet(proto=1,
10.0.1.10:1->10.200.1.254:2048)
from port3. type=8, code=0, id=1, seq=33."
id=20085 trace_id=1 func=init_ip_session_common line=5519 msg="allocate a new session=00000340"
id=20085 trace_id=1 func=vf_ip_route_input_common line=2583 msg="find a route: flag=04000000 gw=10.200.1.254 via
port1"
id=20085 trace_id=1 func=fw_forward_handler line=586 msg="Denied by forward policy check (policy 0)"
```

Why did the FortiGate drop the packet?

- A. The next-hop IP address is unreachable.
- B. It failed the RPF check .
- C. It matched an explicitly configured firewall policy with the action DENY.
- D. It matched the default implicit firewall policy.

Answer: D

Explanation:

<https://kb.fortinet.com/kb/documentLink.do?externalID=13900>

NEW QUESTION 65

On FortiGate, which type of logs record information about traffic directly to and from the FortiGate management IP addresses?

- A. System event logs
- B. Forward traffic logs
- C. Local traffic logs
- D. Security logs

Answer: C

NEW QUESTION 69

The HTTP inspection process in web filtering follows a specific order when multiple features are enabled in the web filter profile. What order must FortiGate use when the web filter profile has features enabled, such as safe search?

- A. DNS-based web filter and proxy-based web filter
- B. Static URL filter, FortiGuard category filter, and advanced filters
- C. Static domain filter, SSL inspection filter, and external connectors filters
- D. FortiGuard category filter and rating filter

Answer: B

NEW QUESTION 73

Which two attributes are required on a certificate so it can be used as a CA certificate on SSL Inspection? (Choose two.)

- A. The keyUsage extension must be set to keyCertSign.

- B. The common name on the subject field must use a wildcard name.
- C. The issuer must be a public CA.
- D. The CA extension must be set to TRUE.

Answer: AD

Explanation:

"In order for FortiGate to act in these roles, its CA certificate must have the basic constraints extension set to cA=True and the value of the keyUsage extension set to keyCertSign."

NEW QUESTION 78

Which scanning technique on FortiGate can be enabled only on the CLI?

- A. Heuristics scan
- B. Trojan scan
- C. Antivirus scan
- D. Ransomware scan

Answer: A

NEW QUESTION 80

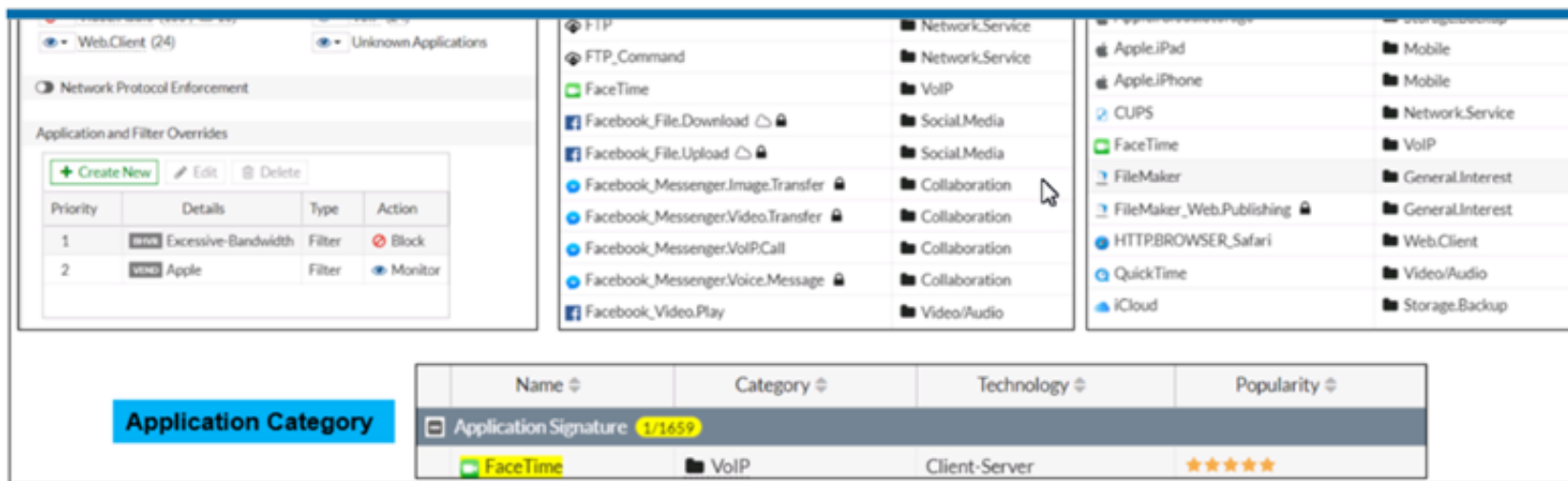
If the Services field is configured in a Virtual IP (VIP), which statement is true when central NAT is used?

- A. The Services field prevents SNAT and DNAT from being combined in the same policy.
- B. The Services field is used when you need to bundle several VIPs into VIP groups.
- C. The Services field removes the requirement to create multiple VIPs for different services.
- D. The Services field prevents multiple sources of traffic from using multiple services to connect to a single computer.

Answer: C

NEW QUESTION 81

Refer to the exhibit to view the application control profile.



Based on the configuration, what will happen to Apple FaceTime?

- A. Apple FaceTime will be blocked, based on the Excessive-Bandwidth filter configuration
- B. Apple FaceTime will be allowed, based on the Apple filter configuration.
- C. Apple FaceTime will be allowed only if the filter in Application and Filter Overrides is set to Learn
- D. Apple FaceTime will be allowed, based on the Categories configuration.

Answer: A

NEW QUESTION 82

Refer to the exhibit.

```
vcluster_nr=1
vcluster_0: start_time=1593701974 (2020-07-02 10:59:34), state/o/chg_time=2 (work)/2
(work)/1593701169 (2020-07-02 10:46:09)
  pingsvr_flip_timeout/expire=3600s/2781s
  'FGVM010000064692': ha_prio/o=1/1, link_failure=0, pingsvr_failure=0, flag=
0x00000000, uptime/reset_cnt=198/0
  'FGVM010000065036': ha_prio/o=0/0, link_failure=0, pingsvr_failure=0, flag=
0x00000001, uptime/reset_cnt=0/1
```

The exhibit displays the output of the CLI command: diagnose sys ha dump-by vcluster. Which two statements are true? (Choose two.)

- A. FortiGate SN FGVM010000065036 HA uptime has been reset.
- B. FortiGate devices are not in sync because one device is down.
- C. FortiGate SN FGVM010000064692 is the primary because of higher HA uptime.
- D. FortiGate SN FGVM010000064692 has the higher HA priority.

Answer: AD

Explanation:

* 1. Override is disable by default - OK

* 2. "If the HA uptime of a device is AT LEAST FIVE MINUTES (300 seconds) MORE than the HA Uptime of the other FortiGate devices, it becomes the primary" The QUESTION NO: here is : HA Uptime of FGVM01000006492 > 5 minutes? NO - 198 seconds < 300 seconds (5 minutes) Page 314 Infra Study Guide.
<https://docs.fortinet.com/document/fortigate/6.0.0/handbook/666653/primary-unit-selection-with-override-disab>

NEW QUESTION 85

An administrator has configured a strict RPF check on FortiGate. Which statement is true about the strict RPF check?

- A. The strict RPF check is run on the first sent and reply packet of any new session.
- B. Strict RPF checks the best route back to the source using the incoming interface.
- C. Strict RPF checks only for the existence of at least one active route back to the source using the incoming interface.
- D. Strict RPF allows packets back to sources with all active routes.

Answer: B

Explanation:

Strict Reverse Path Forwarding (RPF) is a security feature that is used to detect and prevent IP spoofing attacks on a network. It works by checking the routing information for incoming packets to ensure that they are coming from the source address that is indicated in the packet's header. In strict RPF mode, the firewall will check the best route back to the source of the incoming packet using the incoming interface. If the packet's source address does not match the route back to the source, the packet is dropped. This helps to prevent attackers from spoofing their IP address and attempting to access the network.

NEW QUESTION 86

Which statements best describe auto discovery VPN (ADVPN). (Choose two.)

- A. It requires the use of dynamic routing protocols so that spokes can learn the routes to other spokes.
- B. ADVPN is only supported with IKEv2.
- C. Tunnels are negotiated dynamically between spokes.
- D. Every spoke requires a static tunnel to be configured to other spokes so that phase 1 and phase 2 proposals are defined in advance.

Answer: AC

NEW QUESTION 90

Which three options are the remote log storage options you can configure on FortiGate? (Choose three.)

- A. FortiCache
- B. FortiSIEM
- C. FortiAnalyzer
- D. FortiSandbox
- E. FortiCloud

Answer: BCE

NEW QUESTION 93

Refer to the exhibits.

SSL-VPN Settings

Connection Settings ⓘ

Listen on Interface(s)

port1

+

×

Listen on Port

10443

Web mode access will be listening at

https://10.200.1.1:10443

Redirect HTTP to SSL-VPN

☐

Restrict Access

Allow access from any host

Limit access to specific hosts

Idle Logout

☒

Inactive For

300

Seconds

Server Certificate

Fortinet_Factory

▼

Require Client Certificate

☐

Tunnel Mode Client Settings ⓘ

Address Range

Automatically assign addresses

Specify custom IP ranges

Tunnel users will receive IPs in the range of

10.212.134.200 - 10.212.134.210

DNS Server

Same as client system DNS

Specify

Specify WINS Servers

☐

Authentication/Portal Mapping ⓘ

+ Create New

Edit

Delete

Users/Groups ⓘ	Portal ⓘ
sslvpn	tunnel-access
All Other Users/Groups	full-access

Connection status

Connection:

VPN

Server:

https://10.200.1.1:1443/

Status:

Connecting...

Duration:

—

Bytes received:

0

Bytes sent:

0

Stop

The SSL VPN connection fails when a user attempts to connect to it. What should the user do to successfully connect to SSL VPN?

- A. Change the SSL VPN port on the client.
- B. Change the Server IP address.
- C. Change the idle-timeout.
- D. Change the SSL VPN portal to the tunnel.

Answer: A

NEW QUESTION 95

FortiGuard categories can be overridden and defined in different categories. To create a web rating override for example.com home page, the override must be configured using a specific syntax.
Which two syntaxes are correct to configure web rating for the home page? (Choose two.)

- A. www.example.com:443
- B. www.example.com
- C. example.com
- D. www.example.com/index.html

Answer: BC

Explanation:

When using FortiGuard category filtering to allow or block access to a website, one option is to make a web rating override and define the website in a different category. Web ratings are only for host names - no URLs or wildcard characters are allowed.

OK: google.com or www.google.com

NO OK: www.google.com/index.html or google.* FortiGate_Security_6.4 page 384

When using FortiGuard category filtering to allow or block access to a website, one option is to make a web rating override and define the website in a different category. Web ratings are only for host names-- "no URLs or wildcard characters are allowed".

NEW QUESTION 98

Which three statements are true regarding session-based authentication? (Choose three.)

- A. HTTP sessions are treated as a single user.
- B. IP sessions from the same source IP address are treated as a single user.
- C. It can differentiate among multiple clients behind the same source IP address.
- D. It requires more resources.
- E. It is not recommended if multiple users are behind the source NAT

Answer: ACD

NEW QUESTION 103

Which three authentication timeout types are availability for selection on FortiGate? (Choose three.)

- A. hard-timeout
- B. auth-on-demand
- C. soft-timeout
- D. new-session
- E. Idle-timeout

Answer: ADE

Explanation:

<https://kb.fortinet.com/kb/documentLink.do?externalID=FD37221>

NEW QUESTION 107

.....

Thank You for Trying Our Product

We offer two products:

1st - We have Practice Tests Software with Actual Exam Questions

2nd - Questions and Answers in PDF Format

NSE4 Practice Exam Features:

- * NSE4 Questions and Answers Updated Frequently
- * NSE4 Practice Questions Verified by Expert Senior Certified Staff
- * NSE4 Most Realistic Questions that Guarantee you a Pass on Your First Try
- * NSE4 Practice Test Questions in Multiple Choice Formats and Updates for 1 Year

100% Actual & Verified — Instant Download, Please Click
[Order The NSE4 Practice Test Here](#)