

Exam Questions 70-740

Installation, Storage, and Compute with Windows Server 2016

<https://www.2passeasy.com/dumps/70-740/>



NEW QUESTION 1

You have four servers named Server1, Server2, Server3, and Server4 that run Windows Server 2016. Server1 and Server2 have the Hyper-V server role installed. Server1 hosts a virtual machine named VM1. Server2 hosts a virtual machine named VM2. Server3 hosts the disks and the configurations of both virtual machines on an SMB share named VMShare. You use Server4 to manage Hyper-V operations on Server1 and Server2. From Server4, you attempt to perform a live migration of VM1 and VM2, but you receive the following error message: "No credentials are available in the security package". You need to ensure that you can perform the live migration of VM1 and VM2 between Server1 and Server2 while signed in to Server4. What should you do?

- A. From Active Directory Users and Computers, modify the properties of Server4. Configure the delegation settings to trust the computer for delegation of cifs.
- B. From Windows PowerShell on Server3, run the remove-SMBMultiChannelConstraint cmdlet, and then assign Server4 Full Control permissions to VMShare.
- C. From Active Directory Users and Computers, modify the properties of Server1 and Server2. Configure the Delegation settings to trust the computers for delegation of the Microsoft Virtual System Migration Service.
- D. From Active Directory Users and Computers, modify the properties of your user account.
- E. Modify the Account is sensitive and cannot be delegated setting.

Answer: C

Explanation:

References: <https://docs.microsoft.com/en-us/windows-server/virtualization/hyper-v/deploy/set-up-hosts-for-live-migration-without-failover-clustering>

NEW QUESTION 2

Note: This question is part of a series of questions that present the same scenario. Each question in the series contains a unique solution that might meet the stated goals. Some question sets might have more than one correct solution, while others might not have a correct solution.

After you answer a question in this section, you will NOT be able to return to it. As a result, these questions will not appear in the review screen.

You have two servers that run Windows Server 2016.

You have a server named Server1 that runs Windows Server 2016. Server1 has the Hyper-V server role and Docker installed.

You pull the Microsoft/iis Docker image to Server1.

You need to view the available space in the Microsoft/iis Docker image. Solution: You run the following commands.

```
docker run --name container1 --isolation hyperv --d Microsoft/iis docker exec -i container1 cmd.exe dir
```

Does this meet the goal?

- A. Yes
- B. No

Answer: B

NEW QUESTION 3

You have two Hyper V hosts named Server1 and Server2 that run Windows Server 2012 R2. The servers are nodes in a failover cluster named Cluster1.

You perform a rolling upgrade of the cluster nodes to Windows Server 2016.

You need to ensure that you can implement the Virtual Machine Load Balancing feature. Which cmdlet should you use?

- A. Update-ClusterNetWorkNameResource
- B. Set-GusterGroupSet
- C. Update-ClusterFunctionalLevel
- D. Set-CauClosterRole

Answer: C

Explanation:

<https://docs.microsoft.com/en-us/windows-server/failover-clustering/cluster-operating-system-rollingupgrade#cluster-os-rolling-upgrade-process>

NEW QUESTION 4

You have a server named Server 1 that runs Windows Server 2016 Window, Defender is enabled on Server1.

Server1 runs an application named App that stores various types of files in Microsoft OneDrive for Business, Microsoft OneDrive, and Microsoft SharePoint Online.

Appt also Interacts with several local services,

You need to prevent Windows Defender from scanning any files opened by Appl. Should you do on Server1?

- A. Run the Set-ExecutionPolicy cmdlet
- B. Form the Windows Defender settings, configure a file exclusion.
- C. From the Windows Defender settings, configure a process exclusion.
- D. Modify the cloud-based protection settings in Windows Defender.

Answer: B

Explanation:

References:

<https://www.windowcentral.com/how-exclude-files-and-folders-windows-defender-antivirus-scans>

NEW QUESTION 5

You have a server named Server1 that runs Windows Server 2016. Windows Defender is enabled on Server1.

Server1 runs an application named App1 that stores various types of files in Microsoft OneDrive for Business, MicrosoftOneDrive, and Microsoft SharePoint Online. App1 also interacts with several local services.

You need to prevent Windows Defender from scanning any files opened by App1. What should you do on Server1?

- A. From the Windows Defender settings, configure a file exclusion.
- B. Run the New-CiPolicy cmdlet.
- C. Modify the real-time protection settings in Windows Defender.
- D. From the Windows Defender settings, configure a process exclusion.

Answer: A

NEW QUESTION 6

You have a Nano Server named Nano1.

Nano1 is configured to perform real-time protection scans by using Windows Defender.

You need to ensure that all of the files located in D:\App1\Data are excluded from the real-time protection scans.

What should you do?

- A. From the properties of D:\App1\Data folder, modify the permissions.
- B. Run the Set-MpPreference cmdlet and specify the –ExclusionPath parameter.
- C. From a command prompt, run the attrib command and specify the –s parameter.
- D. Run the Get-ChildItem cmdlet and specify the –Exclude parameter.

Answer: B

NEW QUESTION 7

HOTSPOT

Your network contains an Active Directory forest. The forest contains two domain controllers named DC1 and DC2 that run Windows Server 2016. DC1 holds all of the operations master roles.

DC1 experiences a hardware failure.

You plan to use an automated process that will create 1000 user accounts. You need to ensure that the automated process can complete successfully.

Which command should you run? To answer, select the appropriate options in the answer area.

▼

Move-ADDirectoryServerOperatinMasterRole
ntdsutil

-identity "DC2" –OperationMasterRole

▼

PDCEmulator
InfrastructureMaster
RIDMaster
SchemaMaster

▼

Seize pdc
-Force

- A. Mastered
- B. Not Mastered

Answer: A

Explanation:

▼

Move-ADDirectoryServerOperatinMasterRole
ntdsutil

-identity "DC2" –OperationMasterRole

▼

PDCEmulator
InfrastructureMaster
RIDMaster
SchemaMaster

▼

Seize pdc
-Force

NEW QUESTION 8

HOTSPOT

Your network contains an Active Directory domain named contoso.com. The domain contains a DNS server named Server1.

Server1 is configured to use a forwarder named server2.contoso.com that has an IP address of 10.0.0.10.

You need to prevent Server1 from using root hints if the forwarder is unavailable.

What command should you run? To answer, select the appropriate options in the answer area.

▼

Suspend-DnsServerZone
Set-DnsServer
Set-DnsServerForwarder
Set-DnsServerRootHint

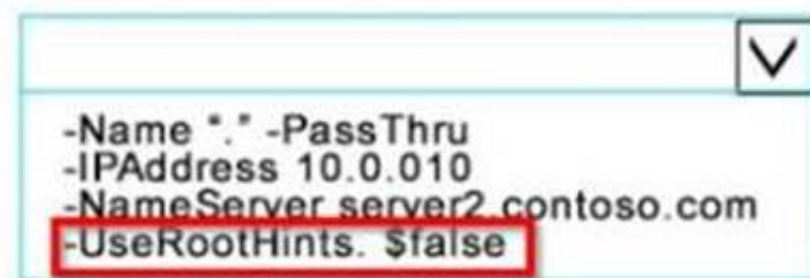
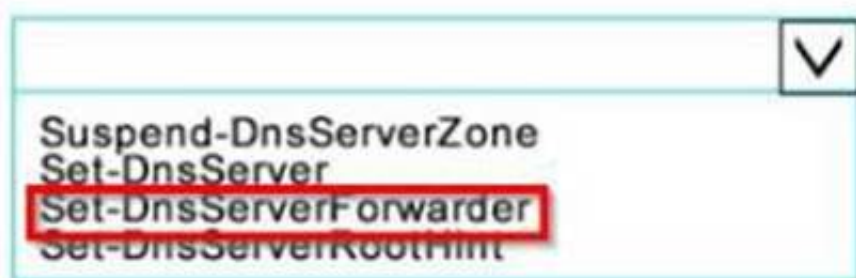
▼

-Name "*" -PassThru
-IPAddress 10.0.0.10
-NameServer server2.contoso.com
-UseRootHints. \$false

- A. Mastered
- B. Not Mastered

Answer: A

Explanation:



NEW QUESTION 9

You have a Nano Server named Nano1.

Which cmdlet should you use to identify whether the DNS Server role is installed on Nano1?

- A. Find-NanoServerPackage
- B. Get-Package
- C. Find-Package
- D. Get-WindowsOptionalFeature

Answer: B

NEW QUESTION 10

You have a server named Served that runs Windows Server 2016. Server1 will be used as a VPN

server. You need to configure Server1 to support VPN Reconnect. Which VPN protocol should you use?

- A. PPTP
- B. L2TP
- C. SSTP
- D. IKEv2

Answer: D

NEW QUESTION 10

You have an Active Directory domain named Contoso.com. The domain contains servers named

Server1 and Server2 that run Windows Server 2016. You install the Remote Access server role on Server1. You install the Network Policy and Access Services server role on Server2. You need to configure Server1 to use Server2 as a RADIUS server.

What should you do?

- A. From Routing and Remote Access, configure the authentication provider.
- B. From the Connection Manager Administration Kit, create a Connection Manager profile.
- C. From Server Manager, create an Access Policy.
- D. From Active Directory Users and Computers, modify the Delegation settings of the Server1 computer account.

Answer: A

NEW QUESTION 15

You have a server that runs Windows Server 2016.

The server contains a storage pool named Pool1. Pool1 contains five physical disks named Disk1, Disk2, Disk3, Disk4, and Disk5.

A virtual disk named VirtualDisk1 is stored in pool1. VirtualDisk1 uses the parity storage layout. Disk3 fails.

You need to remove Disk3 from Pool1.

Which two commands should you run? Each correct answer presents part of the solution.

- A. Update-StoragePool -FriendlyName Pool1
- B. Set-ResiliencySetting -StoragePool Pool1 -PhysicalDiskRedundancyDefault 4
- C. Reset-PhysicalDisk -FriendlyName Disk3
- D. Set-PhysicalDisk -FriendlyName Disk3 -Usage Retired
- E. Remove-PhysicalDisk -FriendlyName Disk3

Answer: BE

NEW QUESTION 20

Your network contains an Active Directory domain named contoso.com. The domain contains two servers named Server1 and Server2 that have the same hardware configuration.

You need to asynchronously replicate volume F: from Server1 to Server2. What should you do?

- A. Run New-SRPartnership and specify the -RephcationMode parameter.
- B. Install the Failover Clustering feature and create a new cluster resource group.
- C. Install the Failover Clustering feature and use Cluster Shared Volumes (CSV).
- D. Run Set-DfsrServiceConfiguration and specify the -RPCPort parameter.

Answer: A

NEW QUESTION 24

HOTSPOT

You have a server named Server1 that runs Windows Server 2016 Server1 has the Windows Application proxy role service installed

You plan to deploy Remote Desktop Gateway (RD Gateway) services. Clients will connect to the RD Gateway services by using various types of devices including Windows, iOS and Android devices.

You need to publish the RD Gateway services through the Web Application Proxy.

Which command should you run? To answer, select the appropriate options in the answer area.

Add-WebApplicationProxyApplication
Set-WebApplicationProxyApplication
Set-WebApplicationProxyConfiguration

-BackendServerURL 'https://rdg.contoso.com/rdg1/'
-ExternalCertificateThumbprint
'1a2b3c4d5e6f1a2b3c4d5e6f1a2b3c4d5e6f1a2b'
-ExternalURL 'https://rdg.contoso.com/rdg1'
-Name 'RDG1'
-ExternalPreAuthentication

ADFS
ADFSforOAuth
ClientCertificate
PassThrough

-ADFSRelyingPartyName 'Default provider'
-BackendServerAuthenticationSPN 'HTTP/RDG1'

- A. Mastered
B. Not Mastered

Answer: A

Explanation:

Add-WebApplicationProxyApplication
Set-WebApplicationProxyApplication
Set-WebApplicationProxyConfiguration

-BackendServerURL 'https://rdg.contoso.com/rdg1/'
-ExternalCertificateThumbprint
'1a2b3c4d5e6f1a2b3c4d5e6f1a2b3c4d5e6f1a2b'
-ExternalURL 'https://rdg.contoso.com/rdg1'
-Name 'RDG1'
-ExternalPreAuthentication

ADFS
ADFSforOAuth
ClientCertificate
PassThrough

-ADFSRelyingPartyName 'Default provider'
-BackendServerAuthenticationSPN 'HTTP/RDG1'

NEW QUESTION 26

Your network contains an Active Directory forest named contoso.com The forest contains a member server named Server1 that runs Windows Server 2016

Server1 is located in the perimeter network You install the Active Directory Federation Services server role on Server1. You create an Active Directory Federation Services (ADFS) farm by using a certificate that has a subject name of sts.contoso.com

You need to enable certificate authentication from the Internet on Server1

Which two inbound TCP ports should you open on the firewall? Each correct answer presents part of the solution

- A. 389
B. 443
C. 3389
D. 8531
E. 49443

Answer: BE

NEW QUESTION 28

HOTSPOT

You have a server named Server1 that runs Windows Server 2016 Server1 has the Web Application Proxy role service installed

You publish an application named App1 by using the Web Application Proxy.

You need to change the URL that users use to connect to App1 when they work remotely. Which command should you run? To answer, select the appropriate options in the answer area

✓

Set-WebApplicationProxySslCertificate
Set- WebApplicationProxyApplication
Set- WebApplicationProxyConfiguration

-ID 874A4543-7983-77A3-1E6D-1163E7419AC1

✓

-ADFSUrl
-BackendServerURL
-ExternalURL

https://SP.Contoso.com

- A. Mastered
- B. Not Mastered

Answer: A

Explanation:

✓

Set-WebApplicationProxySslCertificate
Set- WebApplicationProxyApplication
Set- WebApplicationProxyConfiguration

-ID 874A4543-7983-77A3-1E6D-1163E7419AC1

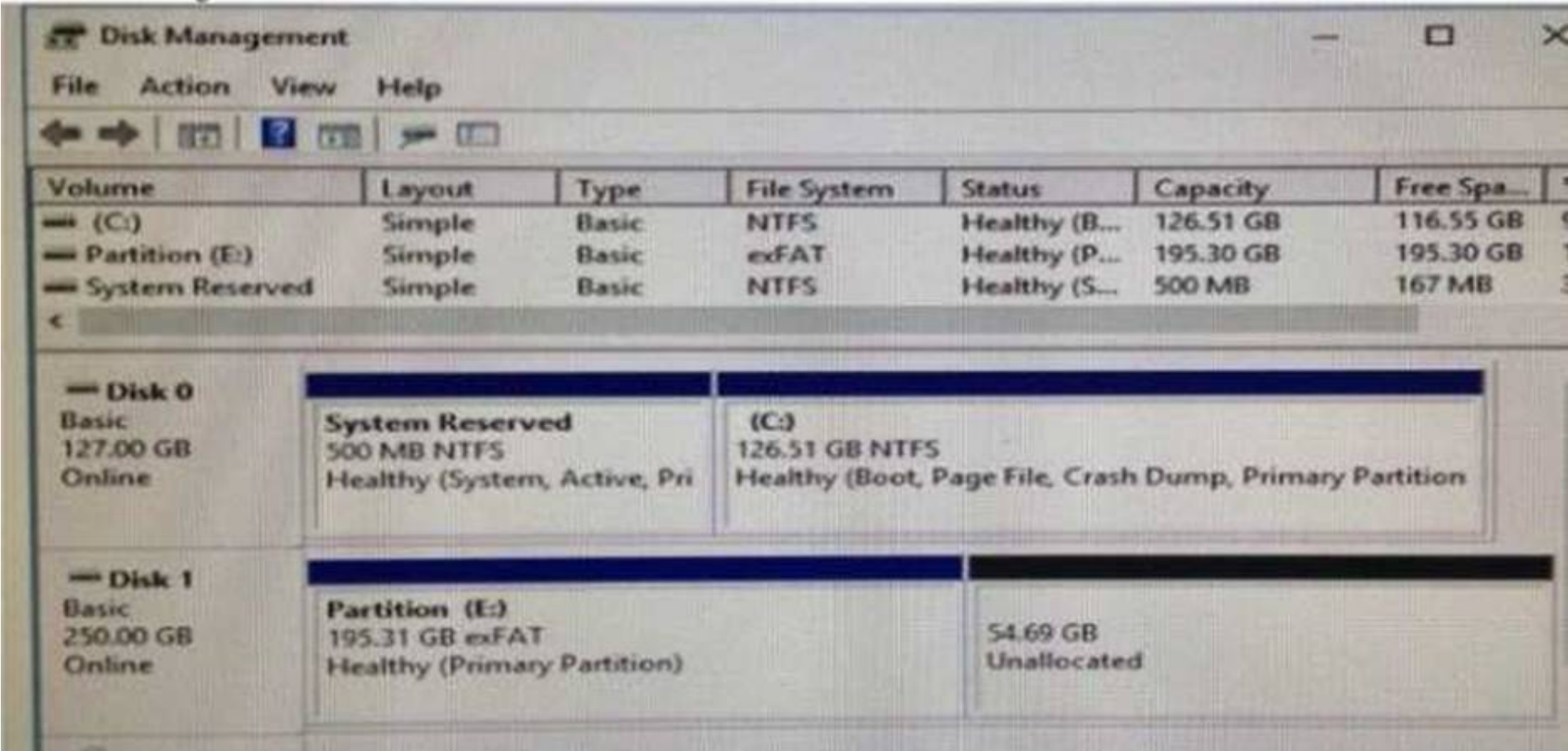
✓

-ADFSUrl
-BackendServerURL
-ExternalURL

https://SP.Contoso.com

NEW QUESTION 29

You have a server named Server 1 that runs Windows Server 2016 The disk configuration for Served is shown in the exhibit



You add Server1 to a cluster
You need to ensure that you can use Disk1 (or Storage Spaces Direct What should you do first?

- A. Delete Partition (E:)
- B. Set Disk1 to offline.
- C. Convert Disk 1 to a dynamic disk
- D. Convert Partition (E:) to ReFS

Answer: A

NEW QUESTION 32

Your company has 10 offices. Each office has a local network that contains several Hyper-V hosts that run Windows Server 2016. All of the offices are connected by high speed, low latency WAN links.

You need to ensure that you can use QoS policies for Live Migration traffic between the offices. Which component should you install?

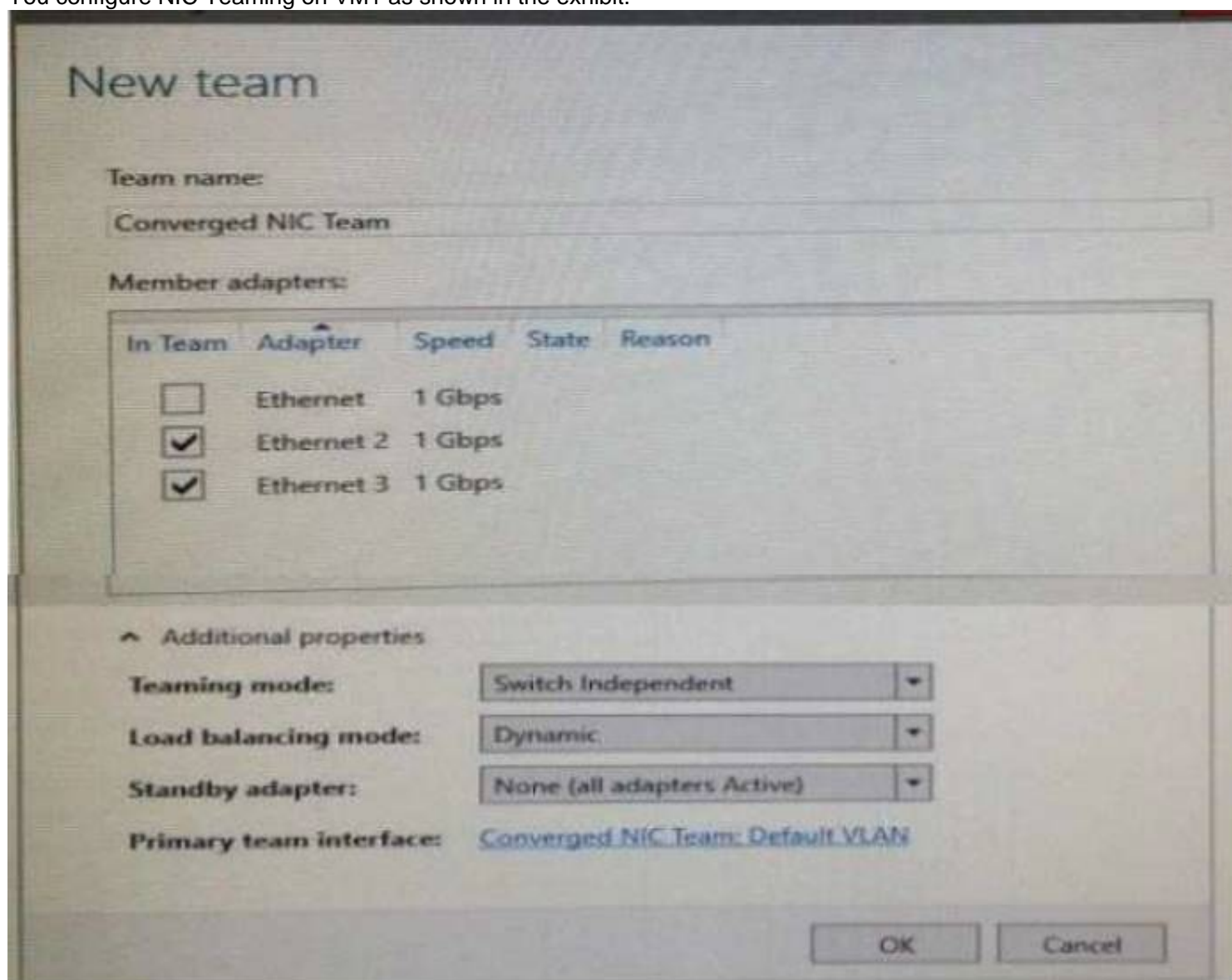
- A. the Multipath I/O feature
- B. the Routing role service
- C. the Network Controller server role
- D. the Canary Network Diagnostics feature
- E. the Data Center Bridging feature

Answer: CE

NEW QUESTION 37

You have a server named Server1 that runs Windows Server 2016. Server1 is a Hyper-V host that hosts a virtual machine named VM1. Server1 has three network adapter cards That connect to a virtual switch named vSwitch1.

You configure NIC Teaming on VM1 as shown in the exhibit.



You need to ensure that VM1 will retain access to the network if a physical adapter card fails on Server1. What should you do?

- A. From Hyper-V Manager on Server1, modify the settings of VM1.
- B. From Windows PowerShell on Server1, run the Set-VmSwitchcmdlet.
- C. From the properties of the NIC team on VM1, add the adapter named Ethernet to the NIC team.
- D. From the properties of the NIC team on VM1, change the load balancing of the NIC team.

Answer: A

NEW QUESTION 42

You have a server named Server1 that runs Windows Server 2016. You need to configure Server1 as a multitenant RAS Gateway. What should you install on Server1?

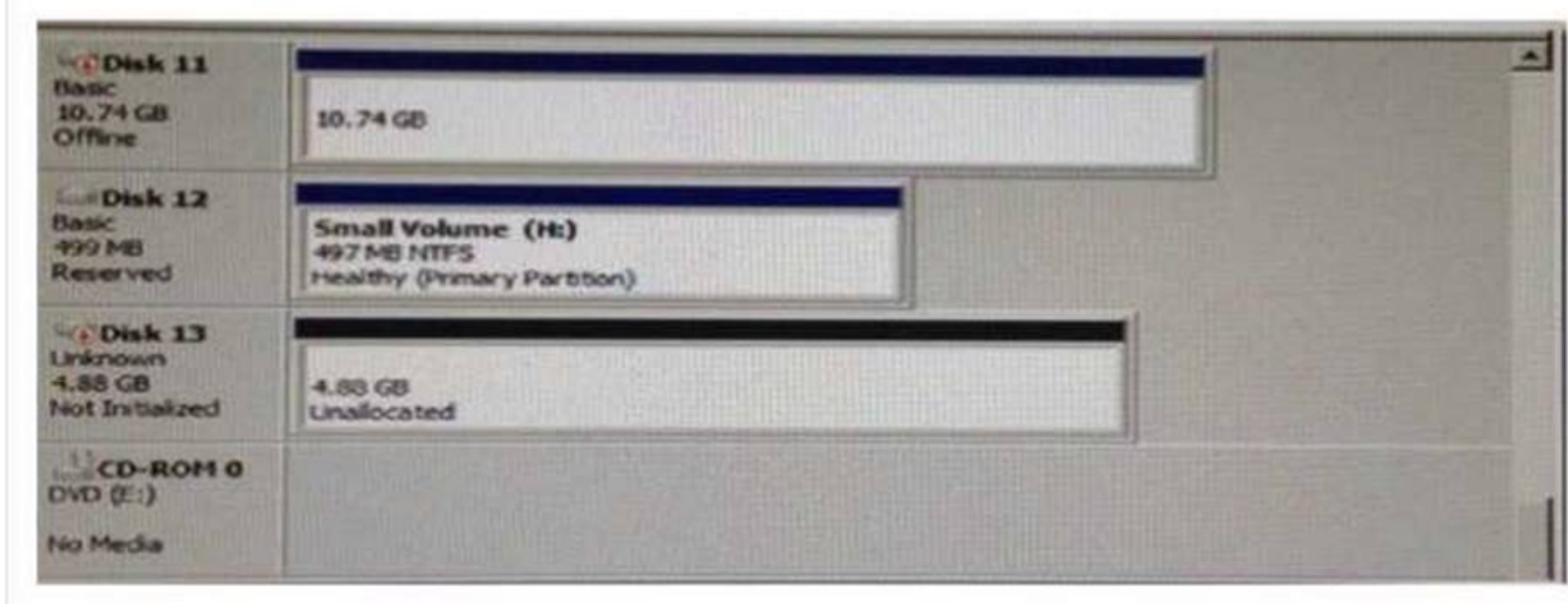
- A. the Network Policy and Access Services server role
- B. the Remote Access server role
- C. the Data Center Bridging feature
- D. the Network Controller server role

Answer: B

NEW QUESTION 47

HOTSPOT

You have a server named Server1 that runs Windows Server 2016 and has the Hyper-V server role installed You open Disk Management on Server1 as shown in the following graphic



You plan to configure Disk13 as a pass-through disk for a generation 1 virtual machine
Use the drop-down menus to select the answer choice that completes each statement based on the information presented in the graphic

The status of Disk 13 must be set to [answer choice.]

▼

Initializing
Offline
Online

If the virtual machine uses Disk 13 as the system partition, Disk 13 must be attached to [answer choice] in Hyper-V Manager.

▼

a Fibre Channel adapter
an IDE controller
a SCSI controller

- A. Mastered
- B. Not Mastered

Answer: A

Explanation:

The status of Disk 13 must be set to [answer choice.]

▼

Initializing
Offline
Online

If the virtual machine uses Disk 13 as the system partition, Disk 13 must be attached to [answer choice] in Hyper-V Manager.

▼

a Fibre Channel adapter
an IDE controller
a SCSI controller

NEW QUESTION 48

HOTSPOT

You have a Hyper-V host that runs Windows Server 2016 The Hyper-V host has a virtual machine named VM1
You have a VHD named VHD1 vhdx that has a generalized image of Windows Server 2016. You plan to create multiple virtual machines that will use the

generalized image
You need to create differencing disks based on VHD1 vhd
What command should you run? To answer, select the appropriate options in the answer area

Add-VMHardDiskDrive

New-VHD

Set-VHD

Set-VMHardDiskDrive

-Path "C:\VHDs\VHD1Diff.VHDX"

-ParentPath

-SourceDisk

"C:\VHDs\VHD1.VHDX" -Differencing

- A. Mastered
- B. Not Mastered

Answer: A

Explanation:

Add-VMHardDiskDrive

New-VHD

Set-VHD

Set-VMHardDiskDrive

-Path "C:\VHDs\VHD1Diff.VHDX"

-ParentPath

-SourceDisk

"C:\VHDs\VHD1.VHDX" -Differencing

NEW QUESTION 49
HOTSPOT

Your network contains an Active Directory domain named contoso.com. The domain contains a member server named Server1 that runs Windows Server 2016. You install IP Address Management (IPAM) on Server1. You select the automatic provisioning method, and then you specify a prefix of IPAM1. You need to configure the environment for automatic IPAM provisioning. Which cmdlet should you run? To answer, select the appropriate options in the answer area.

Add-IpamDiscoveryDomain

Enable-IpamCapability

Invoke-IpamGpoProvisioning

Set-IpamConfiguration

-Domain "Contoso.com"

-AssetTag

-DiscoverDns

-GpoPrefixName

-ProvisioningMethod

"IPAM1"

- A. Mastered
- B. Not Mastered

Answer: A

Explanation:



NEW QUESTION 50

Note: This question is part of a series of questions that use the same similar answer choices An answer choice may be correct for more than one question in the series Each question is independent of the other questions in this series. Information and details provided in a question apply only to that question

You have two servers named Server1 and Server2 that run Windows Server 2016 Server1 and Server2 have the Hyper-V server role installed

An iSCSI SAN connects to the network

You create a LUN on the SAN and configure both servers to connect to the iSCSI target

You create a failover cluster and add Server1 and Server2 to the cluster. You connect both servers to the iSCSI target and format the shared storage

You need to add the shared storage to the cluster The solution must ensure that virtual machines running on both nodes can access the shared storage simultaneously.

Which tool should you use?

- A. the clussvc.exe command
- B. the cluster.exe command
- C. the Computer Management console
- D. the configurehyperv.exe command
- E. the Disk Management console
- F. the Failover Cluster Manager console
- G. the Hyper-V Manager console
- H. the Server Manager Desktop app

Answer: F

NEW QUESTION 51

Note: This question is part of a series of questions that use the same similar answer choices An answer choice may be correct for more than one question in the series Each question is independent of the other questions in this series. Information and details provided in a question apply only to that question

You have a two-node Hyper-V cluster named Cluster1 at a primary location and a stand-alone Hyper- V host named Server1 at a secondary location

A virtual machine named VM1 runs on Cluster1 You configure a Hyper-V Replica of VM1 to Server1 You need to perform a Test Fai lover of VM1. Which tool should you use?

- A. the clussvc.exe command
- B. the cluster.exe command
- C. the Computer Management console
- D. the configurehyperv.exe command
- E. the Disk Management console
- F. the Failover Cluster Manager console
- G. the Hyper-V Manager console
- H. the Server Manager Desktop app

Answer: G

NEW QUESTION 54

Note: This question is part of a series of questions that use the same similar answer choices An answer choice may be correct for more than one question in the series Each question is independent of the other questions in this series. Information and details provided in a question apply only to that question

You have a Hyper-V host named Server1 that runs Windows Server 2016 Server1 has a dynamically expanding virtual hard disk (VHD) file that is 900 GB The VHD contains 400 GB of free space.

You need to reduce the amount of disk space used by the VHD. What should you run?

- A. the Mount-VHD cmdlet
- B. the Diskpart command
- C. the Set-VHD cmdlet
- D. the Set-VM cmdlet
- E. the Set-VMHost cmdlet
- F. the Set-VMProcessor cmdlet
- G. the Install-WindowsFeature cmdlet
- H. the Optimize-VHD cmdlet

Answer: H

NEW QUESTION 59

Note: This question is part of a series of questions that use the same similar answer choices An answer choice may be correct for more than one question in the series Each question is independent of the other questions in this series. Information and details provided in a question apply only to that question

You have a Hyper-V host named Server1 that runs Windows Server 2016 You plan to deploy several shielded virtual machines on Server1

You deploy a Host Guardian on a new server

You need to ensure that Server1 can host shielded virtual machines. What should you run first?

- A. the Mount-VHD cmdlet
- B. the Diskpart command
- C. the Set-VHD cmdlet
- D. the Set-VM cmdlet
- E. the Set-VMHost cmdlet
- F. the Set-VMProcessor cmdlet
- G. the Install-WindowsFeature cmdlet
- H. the Optimize-VHD cmdlet

Answer: G

NEW QUESTION 62

Note: This question is part of a series of questions that use the same similar answer choices An answer choice may be correct for more than one question in the series Each question is independent of the other questions in this series. Information and details provided in a question apply only to that question

You have a Hyper-V host named Server1 that runs Windows Server 2016 Server1 has a virtual machine named VM1 that uses a single VHDX file VM1 is configured shown in the following table

Configuration	Details
Virtual machine generation	V2
Operating system	Windows 8
File system	NTFS
Number of partitions	1
Disk type	Basic
Unallocated disk space	100 GB

You plan to use VM1 as a virtual Machine Template to deploy shielded virtual machines You need to ensure that VM1 can be used to deploy shielded virtual machines What should you run?

- A. the Mount-VHD cmdlet
- B. the Diskpart command
- C. the Set-VHD cmdlet
- D. the Set-VM cmdlet
- E. the Set-VMHost cmdlet
- F. the Set-VMProcessor cmdlet
- G. the Install-WindowsFeature cmdlet
- H. the Optimize-VHD cmdlet

Answer: B

NEW QUESTION 67

In this section, you'll see one or more sets of questions with the same scenario and problem Each question presents a unique solution to the problem, and you must determine whether the solution meets the stated goals. Any of the solutions might solve the problem. It is also possible that none of the solutions solve the problem.

Once you answer a question in this section, you will NOT be able to return to it. As a result, these questions will not appear in the review screen

Note: This question is part of a series of questions that present the same scenario. Each question in the series contains a unique solution. Determine whether the solution meets the stated goals.

Your network contains an Active Directory domain named contoso.com. The domain contains a DNS server named Server1. All client computers run Windows 10. On Server1, you have the following zone configuration

ZoneName	ZoneType	IsAutoCreated	IsDsIntegrated	IsReverseLookupZone	IsSign
_msdcs.contoso.com	Primary	False	True	False	False
adatum.com	Forwarder	False	False	False	False
contoso.com	Primary	False	True	False	False
fabrikam.com	Primary	False	False	False	True
TrustAnchors	Primary	False	True	False	False

You have the following subnets defined on Server1.

Name	IPv4Subnet	IPv6Subnet
Subnet1	{10.0.0.0/24}	
Subnet2	{10.0.1.0/24}	
Subnet3	{192.168.15.0/24}	
Subnet4	{172.16.1.0/24}	

You need to prevent Server1 from resolving queries from DNS clients located on Subnet4 Server1 must resolve queries from all other DNS clients

Solution From the Security setting of each zone on Server1, you modify the permissions Does this meet the goal?

- A. Yes
- B. No

Answer: B

NEW QUESTION 72

In this section, you'll see one or more sets of questions with the same scenario and problem Each

question presents a unique solution to the problem, and you must determine whether the solution meets the stated goals. Any of the solutions might solve the problem. It is also possible that none of the solutions solve the problem.

Once you answer a question in this section, you will NOT be able to return to it. As a result, these questions will not appear in the review screen

Note: This question is part of a series of questions that present the same scenario. Each question in the series contains a unique solution. Determine whether the solution meets the stated goals.

Your network contains an Active Directory domain named contoso.com. The domain contains a DNS server named Server1. All client computers run Windows 10. On Server1, you have the following zone configuration

ZoneName	ZoneType	IsAutoCreated	IsDsIntegrated	IsReverseLookupZone	IsSign
-----	-----	-----	-----	-----	-----
_msdcs.contoso.com	Primary	False	True	False	False
adatum.com	Forwarder	False	False	False	
contoso.com	Primary	False	True	False	False
fabrikam.com	Primary	False	False	False	True
TrustAnchors	Primary	False	True	False	False

You have the following subnets defined on Server1.

Name	IPv4Subnet	IPv6Subnet
----	-----	-----
Subnet1	{10.0.0.0/24}	
Subnet2	{10.0.1.0/24}	
Subnet3	{192.168.15.0/24}	
Subnet4	{172.16.1.0/24}	

You need to prevent Server1 from resolving queries from DNS clients located on Subnet4 Server1

must resolve queries from all other DNS clients

Solution From Windows Firewall with Advanced Security on Server1, you create an inbound rule Does this meet the goal?

- A. Yes
- B. No

Answer: A

NEW QUESTION 75

In this section, you'll see one or more sets of questions with the same scenario and problem Each

question presents a unique solution to the problem, and you must determine whether the solution meets the stated goals. Any of the solutions might solve the problem. It is also possible that none of the solutions solve the problem.

Once you answer a question in this section, you will NOT be able to return to it. As a result, these questions will not appear in the review screen

Note: This question is part of a series of questions that present the same scenario. Each question in the series contains a unique solution. Determine whether the solution meets the stated goals.

Your network contains an Active Directory domain named contoso.com. The domain contains a DNS server named Server1. All client computers run Windows 10. On Server1, you have the following zone configuration

ZoneName	ZoneType	IsAutoCreated	IsDsIntegrated	IsReverseLookupZone	IsSign
-----	-----	-----	-----	-----	-----
_msdcs.contoso.com	Primary	False	True	False	False
adatum.com	Forwarder	False	False	False	
contoso.com	Primary	False	True	False	False
fabrikam.com	Primary	False	False	False	True
TrustAnchors	Primary	False	True	False	False

You have the following subnets defined on Server1.

Name	IPv4Subnet	IPv6Subnet
----	-----	-----
Subnet1	{10.0.0.0/24}	
Subnet2	{10.0.1.0/24}	
Subnet3	{192.168.15.0/24}	
Subnet4	{172.16.1.0/24}	

You need to prevent Server1 from resolving queries from DNS clients located on Subnet4 Server1

must resolve queries from all other DNS clients

Solution From Windows PowerShell on Server1, you run the Export-DnsServerDnsSecPublicKey cmdlet

Does this meet the goal?

- A. Yes
- B. No

Answer: B

NEW QUESTION 80

Note: This question is part of a series of questions that present the same scenario. Each question in the series contains a unique solution that might meet the stated goals. Some question sets might have more than one correct solution, while others might not have a correct solution.

After you answer a question in this section, you will NOT be able to return to it. As a result, these questions will not appear in the review screen.

You have two servers that run Windows Server 2016.

You plan to create a Network load Balancing (NLB) cluster that will contain both servers. You need to configure the network cards on the servers for the planned NLB configuration.

Solution: You configure the network cards to be on the same subnet and to have dynamic IP addresses. You configure the cluster to use multicast.

Does this meet the goal?

A. Yes

B. No

Answer: B

Explanation:

References:

<https://technet.microsoft.com/en-us/windows-server-docs/networking/technologies/network-load-balancing>

NEW QUESTION 85

Note: This question is part of a series of questions that present the same scenario. Each question in the series contains a unique solution that might meet the stated goals. Some question sets might have more than one correct solution, while others might not have a correct solution.

After you answer a question in this section, you will NOT be able to return to it. As a result, these questions will not appear in the review screen.

You have two servers that run Windows Server 2016.

You plan to create a Network Load Balancing (NLB) cluster that will contain both servers. You need to configure the network cards on the servers for the planned NLB configuration.

Solution: You configure the network cards to be on the same subnet and to have static IP addresses. You configure the cluster to use unicast.

Does this meet the goal?

A. Yes

B. No

Answer: A

Explanation:

References:

<https://technet.microsoft.com/en-us/windows-server-docs/networking/technologies/network-load-balancing>

NEW QUESTION 90

Note: This question is part of a series of questions that present the same scenario. Each question in the series contains a unique solution that might meet the stated goals. Some question sets might have more than one correct solution, while others might not have a correct solution.

After you answer a question in this section, you will NOT be able to return to it. As a result, these questions will not appear in the review screen.

You are a server administrator at a company named Contoso, Ltd.

Contoso has a Windows Server 2016 Hyper-V environment configured as shown in the following table.

Hyper-V host name	Configuration	Virtual switch name
Host1	- Uses an Intel processor - Is a member of a SAN named SAN1	Switch1
Host2	- Uses an AMD processor - Has local storage only	Switch2
Host3	- Uses an Intel processor - Is a member of a SAN named SAN1	Switch1
Host4	- Uses an Intel processor - Has local storage only	Switch2

All of the virtual switches are of the external type.

You need to ensure that you can move virtual machines between the hosts without causing the virtual machines to disconnect from the network.

Solution: You implement a Hyper-V Replica between Host2 and Host4. Does this meet the goal?

A. Yes

B. No

Answer: B

NEW QUESTION 91

Note: This question is part of a series of questions that present the same scenario. Each question in the series contains a unique solution that might meet the stated goals. Some question sets might have more than one correct solution, while others might not have a correct solution.

Your network contains an Active Directory forest.

You install Windows Server 2016 on 10 virtual machines.

You need to deploy the Web Server (IIS) server role identically to the virtual machines.

Solution: From a Group Policy object (GPO), you create an application control policy, and then you apply the policy to the virtual machines.

Does this meet the goal?

- A. Yes
- B. No

Answer: B

NEW QUESTION 95

Note: This question is part of a series of questions that present the same scenario. Each question in the series contains a unique solution that might meet the stated goals. Some question sets might have more than one correct solution, while others might not have a correct solution.

You have a server named Server1 that runs Windows Server 2016. Server1 hosts a line-of-business application named App1. App1 has a memory leak that occasionally causes the application to consume an excessive amount of memory.

You need to log an event in the Application event log whenever App1 consumes more than 4 GB of memory.

Solution: You create a system configuration information data collector. Does this meet the goal?

- A. Yes
- B. No

Answer: B

NEW QUESTION 98

You have an Active Directory domain named Contoso.com. The domain contains servers named Server1, Server2, and Server3 that run Windows Server 2016.

Server1 and Server2 are nodes in a Hyper-V cluster named Cluster1. You add a Hyper-V Replica Broker role named Broker1 to Cluster1.

Server3 is a Hyper-V server. A virtual machine named VM1 runs on Server3.

Live Migration is enabled on all three servers and it is configured to use Kerberos authentication only. You need to ensure that you can perform the migration of VM1 to Server2.

What should you do?

- A. Modify the Storage Migration settings on Server3.
- B. Modify the Cluster Permissions for Cluster1.
- C. Add the Server3 computer account to the Replicator group on Server1 and Server2.
- D. Modify the Delegation settings for the Server3 computer account.

Answer: D

Explanation:

References:

[https://technet.microsoft.com/en-us/library/jj134199\(v=ws.11\).aspx#BKMK_Step1](https://technet.microsoft.com/en-us/library/jj134199(v=ws.11).aspx#BKMK_Step1)

NEW QUESTION 100

HOTSPOT

You implement a Windows Server 2016 failover cluster named Cluster1 as a highly available file server.

You run the Get-Cluster cmdlet and receive the following output.

```
AddEvictDelay : 60
AdministrativeAccessPoint : Dns
AutoAssignNodeSite : 0
AutoBalancerMode : 2
AutoBalancerLevel : 1
ClusSvcHangTimeout : 135
ClusSvcRegroupStageTimeout : 5
ClusSvcRegroupTickInMilliseconds : 300
ClusterEnforcedAntiAffinity : 0
ClusterFunctionalLevel : 9
ClusterUpgradeVersion : 7
ClusterGroupWaitDelay : 120
ClusterLogLevel : 3
ClusterLogSize : 300
DatabaseReadWriteMode : 0
DefaultNetworkRole : 3
Description :
Domain : contoso.com
EnableSharedVolumes : Enabled
FixQuorum : 0
Id : ec6121be-f816-426b-b550-72cafb943f1b
Name : cluster1
```


Use the drop-down menus to select the answer choice that completes each statement based on the information presented in the graphic.

Answer Area

You can perform Cluster-Aware Updating (CAU) in [answer choice].

	▼
self-updating mode only	
remote-updating mode only	
remote-updating mode and self-updating mode	

You can use [answer choice] to create a file share in Cluster1.

	▼
DFS Management	
Failover Cluster Manager	
File Server Resource Manager	
Server Manager	

- A. Mastered
- B. Not Mastered

Answer: A

Explanation:

Answer Area

You can perform Cluster-Aware Updating (CAU) in [answer choice].

	▼
self-updating mode only	
remote-updating mode only	
remote-updating mode and self-updating mode	

You can use [answer choice] to create a file share in Cluster1.

	▼
DFS Management	
Failover Cluster Manager	
File Server Resource Manager	
Server Manager	

NEW QUESTION 102

You have a Windows Server 2016 Hyper-V failover cluster that contains two nodes named Node1 and Node2. On Node1, you create a virtual machine named VM01 by using Hyper-V Manager. You need to configure VM01 to move to Node2 automatically if Node1 becomes unavailable. What should you do?

- A. From Failover Cluster manager, run the configure Role actions.
- B. From Hyper-V Manager, click VM01 and click Enable Replication.
- C. From Hyper-V Manager Click Node 1 and the modify the hyper-V settings.
- D. From Windows Powershell, run the Enable-VMReplication cmdlet.

Answer: A

Explanation:

<http://windowsitpro.com/hyper-v/make-vm-highly-available-windows-server-2012>

NEW QUESTION 105

Note This question is part of a series of questions that use the same scenario. For your convenience, the scenario is repeated in each question. Each question presents a different goal and answer choices, but the text of the scenario is exactly the same in each question in this series.

Start of Repeated Scenario:

A company named Contoso, Ltd. has several servers that run Windows Server 2016. Contoso has a Hyper V environment that uses failover clustering and Windows Server Update Services (WSUS). The environment contains several Windows containers and several virtual machines.

The WSUS deployment contains one upstream server that is located on the company's perimeter network and several downstream servers located on the internal network. A firewall separates the upstream server from the downstream servers.

You plan to deploy a human resources application to a new server named HRServer5. HRServer5 contains a FAT32-formatted data volume.

The CIO of Contoso identifies the following requirements for the company's IT department:

- Deploy failover cluster to two new virtual machines.
- Store all application databases by using Encrypted File System (EFS).
- Ensure that each Windows container has a dedicated IP address assigned by a DHCP server
- Produce a report that lists the processor time used by all of the processes on a server named Server 1 for five hour.

Encrypt all communication between the internal network and the perimeter network, including all WSUS communications.

- Automatically load balance the virtual machines hosted in the Hyper-V cluster when processor utilization exceeds 70 percent.

End of Repeated Scenario.

You need to modify the Hyper V cluster to meet the load balancing requirement for the virtual machine. Which command should you run?

- A. (Get-ClusterParameter) AutoBalancrMode=2
- B. (Get-Cluster).AutoBalancrMode=2
- C. (Get-ClusterParameter).AutoBalancerLevel=2
- D. (Get-Cluster).AutoBalancerLevel=2

Answer: D

NEW QUESTION 106

Note This question is part of a series of questions that use the same scenario. For your convenience, the scenario is repeated in each question. Each question presents a different goal and answer choices, but the text of the scenario is exactly the same in each question in this series.

Start of Repeated Scenario:

A company named Contoso, Ltd. has several servers that run Windows Server 2016 Contoso has a Hyper V environment that uses failover clustering and Windows Server Update Services (WSUS). The environment contains several Windows containers and several virtual machines.

The WSUS deployment contains one upstream server that is located on the company's perimeter network and several downstream servers located on the internal network. A firewall separates the upstream server from the downstream servers.

You plan to deploy a human resources application to a new server named HRServer5. HRServer5 contains a FAT32-formatted data volume.

The CIO of Contoso identifies the following requirements for the company's IT department:

- Deploy failover cluster to two new virtual machines.
- Store all application databases by using Encrypted File System (EFS).
- Ensure that each Windows container has a dedicated IP address assigned by a DHCP server
- Produce a report that lists the processor time used by all of the processes on a server named Server 1 for five hour.

Encrypt all communication between the internal network and the perimeter network, including all WSUS communications.

- Automatically load balance the virtual machines hosted in the Hyper-V cluster when processor utilization exceeds 70 percent.

End of Repeated Scenario.

What should you do to prepare the data volume on HRServer5 to store the databases required for the human resources application?

- A. Format the data volume by using ReFS.
- B. Enable Trusted Platform Module (TPM) on HRServer5.
- C. Format the data volume by using NTFS.
- D. Enable BitLocker Drive Encryption (BitLocker) on the data volume.

Answer: C

NEW QUESTION 107

DRAG DROP

You have a network that contains several servers that run Windows Server 2016.

You need to use Desired State Configuration (DSC) to configure the servers to meet the following requirements:

- Install the Web Server server role
- Start the World Wide Web Publishing service.

How should you configure the DSC resources? To answer, drag the appropriate values to the correct locations. Each value may be used once, more than once, or not at all. You may need to drag the split bar between panes or scroll to view content.

Values

Name
Service
WindowsFeature
WindowsProcess
Present
Source
Running
Stopped

Answer Area

Value	WebServerRole
{	
Ensure = "	Value
"	
Name = "Web-Server"	
}	
Value	WorldWideWebPublishing
{	
Name = "W3SVC"	
StartupType = "Automatic"	
State = "	Value
"	
}	

- A. Mastered
 B. Not Mastered

Answer: A

Explanation:

Values

Name
Service
WindowsFeature
WindowsProcess
Present
Source
Running
Stopped

Answer Area

WindowsFeature	WebServerRole
{	
Ensure = "	Present
"	
Name = "Web-Server"	
}	
Service	WorldWideWebPublishing
{	
Name = "W3SVC"	
StartupType = "Automatic"	
State = "	Running
"	
}	

NEW QUESTION 111

You have a server named Server1 that runs Windows Server 2016. You need to install the DNS Server role on Server1. What should you run?

- A. the dns.exe command

- B. the optionalfcaturcs.exe command
- C. the Install-Package cmdlet
- D. the Enable-WindowsOptionalFeature cmdlet

Answer: D

NEW QUESTION 115

You have a server named Server 1 that runs Windows Server 2016.

Server 1 has Internet connectivity. You have a Nano Server image.

You need to download and save a Nano Server package in the Nano Server image. The package is NOT included in the Windows Server 2016 installation media.

Which two cmdlets should you run on Server1?

- A. Set-PackageSource
- B. Install-PackageProvider
- C. Add-AppxProvisionedPackage
- D. Save-NanoServerPackage
- E. Add-WindowsPackage

Answer: BD

NEW QUESTION 116

You have a server named Server 1 that runs Windows Server 2016 and has the Hyper-V server role installed.

On Server1, you plan to create a virtual machine named VM1. You need to ensure that you can start VM1 from the network.

What are two possible ways to achieve the goal? Each correct answer presents a complete solution.

- A. Create a generation 2 virtual machine.
- B. Create a generation 1 virtual machine and run theEnable-NetAdapterPackageDirectcmdlet.
- C. Create a generation 1 virtual machine that has a legacy network adapter.
- D. Create a generation 1 virtual machine and configure a single root I/O virtualization (SRV-IO) interface for the network adapter.

Answer: AC

NEW QUESTION 121



DRAG DROP



Your network contains two Hyper-V servers named Server1 and Server2. Server1 has Windows Server 2012 R2 installed. Server2 has Windows Server 2016 installed.

You perform a live migration of a virtual machine named VM1 from Server1 to Server2. You need to create a production checkpoint for VM1 on Server2.

Which three Windows PowerShell cmdlets should you run in sequence? To answer, move the appropriate Windows PowerShell cmdlets from the list of actions to the answer area and arrange them in the correct order.

Cmdlets	Answer Area
Set-VM	
Update-VMVersion	
Checkpoint-VM	
Set-VMHost	
Stop-VM	

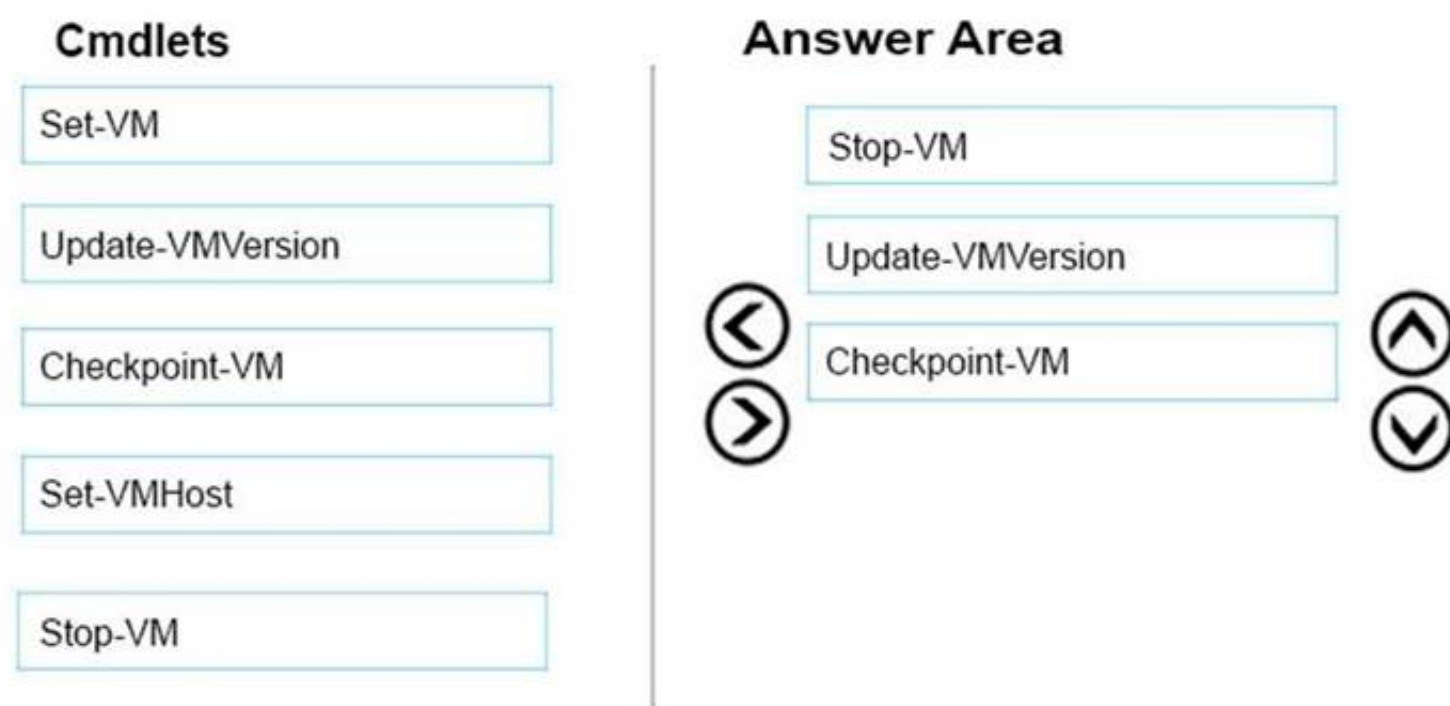



- A. Mastered
- B. Not Mastered

Answer: A

Explanation:



NEW QUESTION 126

Note: This question is part of a series of questions that present the same scenario. Each question in the series contains a unique solution that might meet the stated goals. Some question sets might have more than one correct solution, while others might not have a correct solution.

After you answer a question in this section, you will NOT be able to return to it. As a result, these questions will not appear in the review screen.

You have a server named Server1 that runs Windows Server 2016.

Server1 hosts a line-of-business application named App1. App1 has a memory leak that occasionally causes the application to consume an excessive amount of memory.

You need to log an event in the Application event log whenever App1 consumes more than 4 GB of memory.

Solution: You create a performance counter alert data collector. Does this meet the goal?

- A. Yes
- B. No

Answer: A

NEW QUESTION 129

After you answer a question in this section, you will NOT be able to return to it. As a result, these questions will not appear in the review screen.

You have a server named Server1 that runs Windows Server 2016.

You plan to use Windows Server Backup to back up all of the data on Server1. You create a new volume on Server1.

You need to ensure that the new volume can be used as a backup target. The backup target must support incremental backups.

Solution: You mount the volume to C:\Backup, and you format the volume by using NTFS. Does this meet the goal?

- A. Yes
- B. No

Answer: A

NEW QUESTION 134

After you answer a question in this section, you will NOT be able to return to it. As a result, these questions will not appear in the review screen.

You have a server named Server1 that runs Windows Server 2016.

You plan to use Windows Server Backup to back up all of the data on Server1. You create a new volume on Server1.

You need to ensure that the new volume can be used as a backup target. The backup target must support incremental backups.

Solution: You mount the volume to C:\Backup, and you format the volume by using exFAT. Does this meet the goal?

- A. Yes
- B. No

Answer: B

NEW QUESTION 139

You have a Nano Server that runs Windows Server 2016. The Nano Server runs on a physical machine.

You have not Installed any packages on the server.

You attach a new disk to the server, and you initialize the disk as a GPT disk. You need to create an RefS-formatted volume on the new disk.

What should you do first?

- A. From the physical server, log on to the Nano Server Recovery Console.
- B. Install the Microsoft-Nano'Server-Host-Package package.
- C. Run me Format-Vokime cmdlet and specify the -FileSystem switch.
- D. Install the Microsoft NanoServef-Storage-Package package.

Answer: C

NEW QUESTION 141

You have two servers named Server1 and Server2 that run Windows Server 2016.

You plan to implement Storage Replica to replicate the contents of volumes on Server1 to Server2. You need to ensure that the replication traffic between the servers is limited to a maximum of 100 Mbps.

Which cmdlet should you run?

- A. New-NetQosPolicy
- B. Set-NetworkController
- C. New-NetTransportFilter
- D. New-StorageQosPolicy

Answer: A

Explanation:

References: [https://technet.microsoft.com/en-us/library/hh967471\(v=wps.630\).aspx](https://technet.microsoft.com/en-us/library/hh967471(v=wps.630).aspx)

NEW QUESTION 145

DRAG DROP

You have a Hyper-V host named Server1 that runs Windows Server 2016. Server 1 hosts a virtual machine named VM1 that runs Windows Server 2016. Server1 has a USB 3.0 device attached to a PCI Express (PCIe) bus.

You need to provide VM1 with pass-through access to the USB 3.0 device.

Which three actions should you perform in sequence? To answer, move the appropriate actions from the list of actions to the answer area and arrange them in the correct order.

Actions

On Server1, run the **Dismount-VMHostAssignableDevice** cmdlet.

On Server1, run the **Add-VMAssignableDevice** cmdlet

On Server1, run the **Disable-PnPDevice** cmdlet

On VM1, run the **Enable-PnPDevice** cmdlet

On VM1, ran the **Mount-VMHostAssignable Device** cmdlet

Answer Area

1

2

3

- A. Mastered
- B. Not Mastered

Answer: A

Explanation:

Actions

On Server1, run the **Dismount-VMHostAssignableDevice** cmdlet.

On Server1, run the **Add-VMAssignableDevice** cmdlet

Answer Area

1

On VM1, ran the **Mount-VMHostAssignable Device** cmdlet

2

On VM1, run the **Enable-PnPDevice** cmdlet

3

On Server1, run the **Disable-PnPDevice** cmdlet

NEW QUESTION 148

DRAG DROP

You install a new Nano Server named Nano1. Nano1 is a member of a workgroup and has an IP address of 192.168.1.10.

You have a server named Server1 that runs Windows Server 2016.

From Server1, you need to establish a Windows PowerShell session to Nano1.

How should you complete the PowerShell script? To answer, drag the appropriate cmdlets to the correct targets. Each cmdlet may be used once, more than once, or not at all. You may need to drag the split bar between panes or scroll to view content.

Cmdlets	Answer Area
Enable-PSRemoting	\$ip = "192.168.1.10"
Enter-PSSession	\$user = "Administrator"
Set-Item	WSMan:\localhost\Client\TrustedHosts "192.168.1.10"
Set-ItemProperty	-ComputerName \$ip -Credential \$user
Set-LocalUser	

- A. Mastered
- B. Not Mastered

Answer: A

Explanation:

How to access Nano Server

Because Nano Server does not support a local session, it must be accessed remotely. References: [https://msdn.microsoft.com/en-us/library/mt708805\(v=vs.85\).aspx](https://msdn.microsoft.com/en-us/library/mt708805(v=vs.85).aspx)

NEW QUESTION 153

Your network contains an Active Directory domain. The domain contains two Hyper-V hosts. You plan to perform live migrations between the hosts.

You need to ensure that the live migration traffic is authenticated by using Kerberos. What should you do first?

- A. From Server Manager, install the Host Guardian Service server role on a domain controller.
- B. From Active Directory Users and Computers, add the computer accounts for both servers to the Cryptographic Operators group.
- C. From Active Directory Users and Computers, modify the Delegation properties of the computer accounts for both servers.
- D. From Server Manager, install the Host Guardian Service server role on both servers.

Answer: C

Explanation:

If you have decided to use Kerberos to authenticate live migration traffic, configure constrained delegation before you proceed to the rest of the steps. To configure constrained delegation

NEW QUESTION 158

Note: This question is part of a series of questions that use the same or similar answer choices. An answer choice may be correct for more than one question in the series. Each question is independent of the other questions in this series. Information and details provided in a question apply only to that question.

You have two servers named Server1 and Server2 that run Windows Server 2016. Server1 and Server2 have the Hyper-V server role installed.

An iSCSI SAN connects to the network.

You create a LUN on the SAN and configure both servers to connect to the iSCSI target.

You create a failover cluster and add Server1 and Server2 to the cluster. You connect both servers to the iSCSI target and format the shared storage.

You need to add the shared storage to the cluster. The solution must ensure that virtual machines running on both nodes can access the shared storage simultaneously.

Which tool should you use?

- A. the clussvc.exe command
- B. the cluster.exe command
- C. the Computer Management snap-in
- D. the configurehyperv.exe command
- E. the Disk Management snap-in
- F. the Failover Cluster Manager snap-in
- G. the Hyper-V Manager snap-in
- H. the Server Manager app

Answer: F

Explanation:

References:

[https://technet.microsoft.com/en-us/library/jj612868\(v=ws.11\).aspx](https://technet.microsoft.com/en-us/library/jj612868(v=ws.11).aspx)

NEW QUESTION 160

DRAG DROP

Your network contains an Active Directory domain. The domain contains two domain controllers named DC1 and DC2. DC2 is a virtual machine that is hosted on a

Hyper-V host named HyperV1. DC1 holds the PDC emulator operations master role.

You need to create a new domain controller named DC3 by using domain controller cloning.

Which five actions should you perform in sequence before you can import the cloned virtual machine? To answer, move the appropriate actions from the list of actions to the answer area and arrange them in the correct order.

NOTE: More than one order of answer choices is correct. You will receive credit for any of the correct orders you select.

Actions

Stop DC2.

Run the **New-ADDCCloneConfigFile** cmdlet.

Modify the group membership of DC3.

Export DC2.

Run the **Get-ADDCCloningExcludedApplicationList** cmdlet.

Modify the group membership of DC2.

Answer Area



- A. Mastered
- B. Not Mastered

Answer: A

Explanation:

Actions

Stop DC2.

Run the **New-ADDCCloneConfigFile** cmdlet.

Modify the group membership of DC3.

Export DC2.

Run the **Get-ADDCCloningExcludedApplicationList** cmdlet.

Modify the group membership of DC2.

Answer Area

Modify the group membership of DC2.

Run the **Get-ADDCCloningExcludedApplicationList** cmdlet.



Run the **New-ADDCCloneConfigFile** cmdlet.



Stop DC2.

Export DC2.

NEW QUESTION 162**HOTSPOT**

Your network contains an Active Directory forest named contoso.com. You need to add a new domain named fabrikam.com to the forest. What command should you run? To answer, select the appropriate options in the answer area.

Answer Area

<div><div>▼</div><div>Install-ADDSDomain Install-ADDSDomainController Install-ADDSEForest</div></div>	-DomainType	<div><div>▼</div><div>TreeDomain ChildDomain</div></div>
<div><code>-InstallDns:\$true -NewDomainName fabrikam.com -ParentDomainName contoso.com</code></div>		

- A. Mastered
- B. Not Mastered

Answer: A

Explanation:

Answer Area

<div><div>▼</div><div>Install-ADDSDomain Install-ADDSDomainController Install-ADDSEForest</div></div>	-DomainType	<div><div>▼</div><div>TreeDomain ChildDomain</div></div>
<div><code>-InstallDns:\$true -NewDomainName fabrikam.com -ParentDomainName contoso.com</code></div>		

Explanation:

References:

[https://technet.microsoft.com/en-us/library/hh974722\(v=wps.630\).aspx](https://technet.microsoft.com/en-us/library/hh974722(v=wps.630).aspx)

NEW QUESTION 167

You have a server named Server1.

You enable BitLocker Drive Encryption (BitLocker) on Server1.

You need to change the password for the Trusted Platform Module (TPM) chip. What should you run on Server1?

- A. Initialize-Tpm
- B. Import-TpmOwnerAuth
- C. repair-bde.exe
- D. bdehdcfg.exe

Answer: B

NEW QUESTION 172

You have two servers named Server1 and Server2. A firewall exists between Server1 and Server2. Both servers run Windows Server Update Services (WSUS). Server1 downloads updates from Microsoft update.

Server2 must synchronize updates from Server1. Which port should to open on the firewall?

- A. 80
- B. 443
- C. 3389
- D. 8530

Answer: D

NEW QUESTION 177**HOTSPOT**

Your network contains an Active Directory domain named contoso.com. The domain contains two servers named Server1 and Server2 that run Windows Server 2016.

Server1 has Microsoft System Center 2016 Virtual Machine Manager (VMM) installed. Server2 has IP Address Management (IPAM) installed.

You create a domain user named User1.

You need to integrate IPAM and VMM. VMM must use the account of User1 to manage IPAM. The solution must use the principle of least privilege.

What should you do on each server? To answer, select the appropriate options in the answer area.

Answer Area

On Server1:

Create a Run as Account that uses User1
Add User1 to the Fabric Administrator user role
Add User1 to the Remote Management Users group

On Server2:

Add User1 to IPAM Administrator Role
Add User1 to IPAM ASM Administrator Role
Add User1 to IPAM MSM Administrator Role

- A. Mastered
- B. Not Mastered

Answer: A

Explanation:

On Server1: Create a Run As Account that uses User1.
On Server2: Add User1 to IPAM ASM Administrator Role. [https://technet.microsoft.com/en-us/library/dn783349\(v=ws.11\).aspx](https://technet.microsoft.com/en-us/library/dn783349(v=ws.11).aspx) [https://technet.microsoft.com/en-us/library/jj878348\(v=ws.11\).aspx](https://technet.microsoft.com/en-us/library/jj878348(v=ws.11).aspx)

NEW QUESTION 181

DRAG DROP

Your network contains an Active Directory domain named contoso.com. The domain contains a server named Server1 that runs Windows Server 2016. You install IP Address Management (IPAM) on Server1. You need to manually start discovery of the servers that IPAM can manage in contoso.com. Which three cmdlets should you run in sequence? To answer, move the appropriate cmdlets from the list of cmdlets to the answer area and arrange them in the correct order.

Cmdlets

Add-IpamAddress

Add-IpamDiscoveryDomain

Add-IpamSubnet

Update-IpamServer

Invoke-IpamServerProvisioning

Start-ScheduledTask

Answer Area

<

>

↑

↓

- A. Mastered
- B. Not Mastered

Answer: A

Explanation:

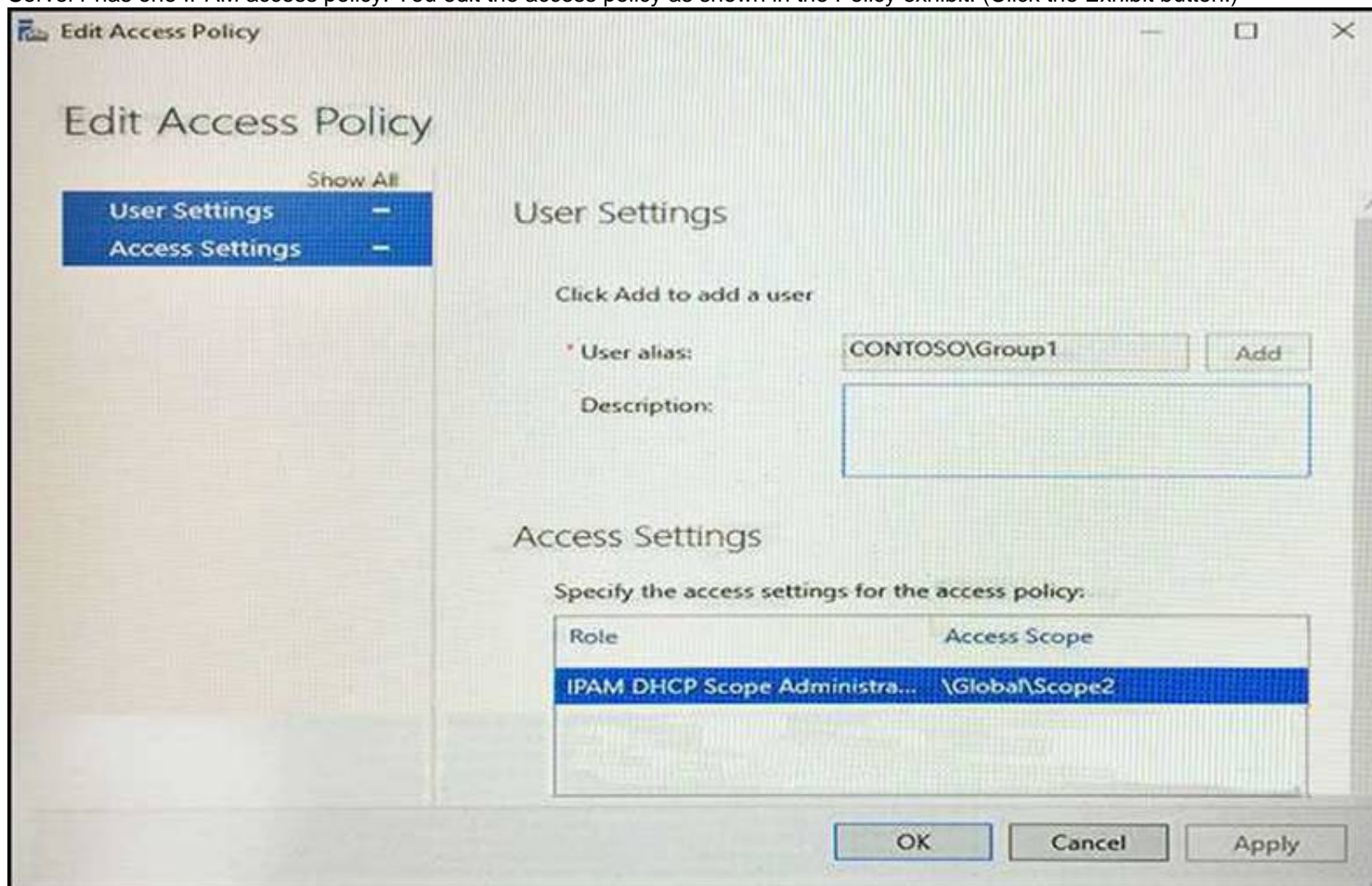
<https://technet.microsoft.com/itpro/powershell/windows/ipam/add-ipamdiscoverydomain> <https://technet.microsoft.com/itpro/powershell/windows/ipam/add-ipamserverinventory> <https://technet.microsoft.com/itpro/powershell/windows/ipam/invoke-ipamserverprovisioning>

NEW QUESTION 185

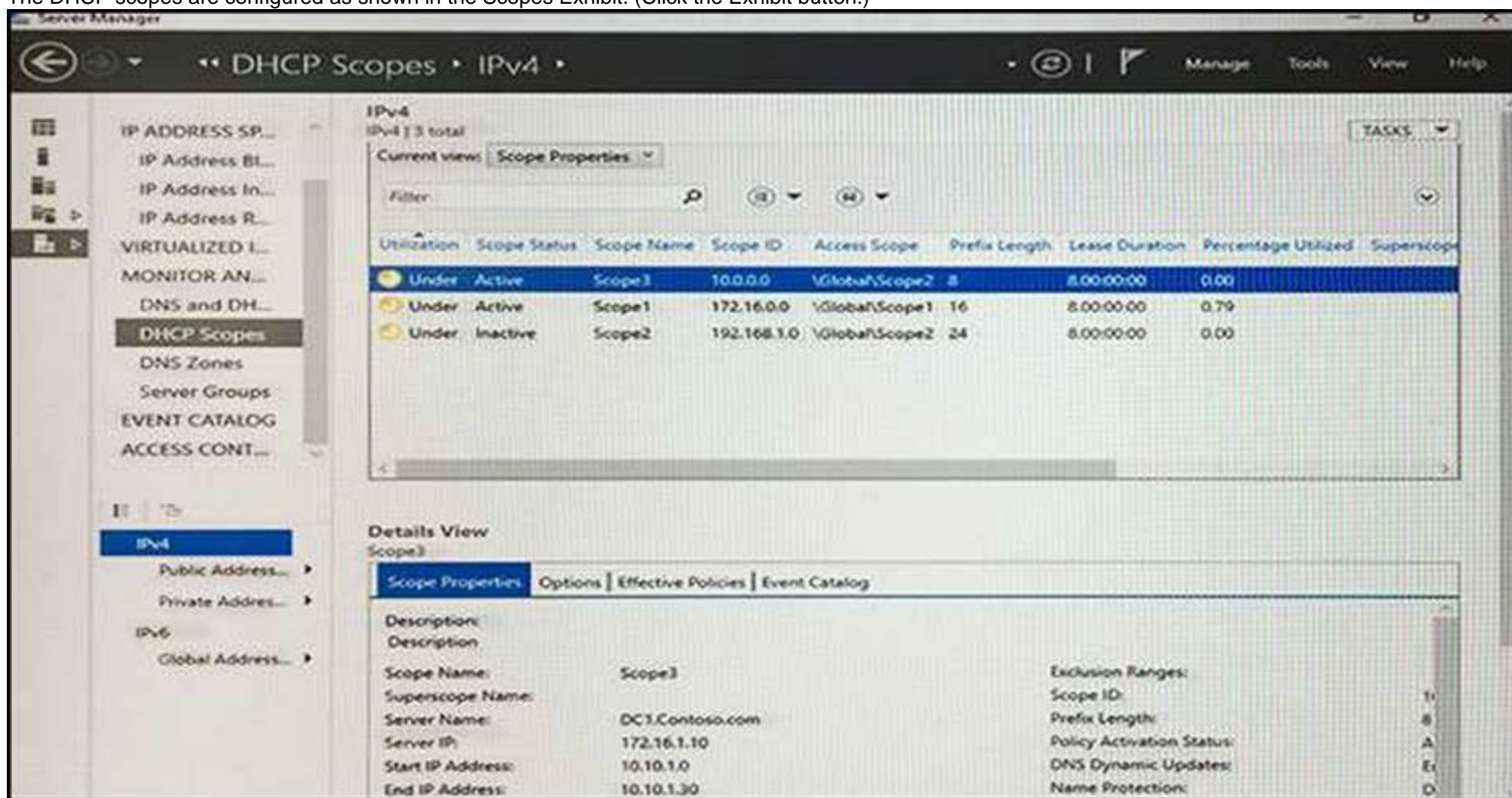
HOTSPOT

You network contains an Active Directory named contoso.com. The domain contains two servers named Server1 and Server2 that run Windows Server 2016.

Server1 has IP Address Management (IPAM) installed. Server2 has the DHCP Server role installed. The IPAM server retrieves data from Server2. The domain has two users named User1 and User2 and a group named Group1. User1 is the only member of Group1. Server1 has one IPAM access policy. You edit the access policy as shown in the Policy exhibit. (Click the Exhibit button.)



The DHCP scopes are configured as shown in the Scopes Exhibit. (Click the Exhibit button.)



For each of the following statements, select Yes if the statement is true. Otherwise, select No.

Answer Area

Statements	Yes	No
User1 can modify the description of Scope1.	<input type="radio"/>	<input type="radio"/>
User2 can modify the description of Scope1.	<input type="radio"/>	<input type="radio"/>
User1 can modify the description of Scope2.	<input type="radio"/>	<input type="radio"/>

- A. Mastered
- B. Not Mastered

Answer: A

Explanation:

https://technet.microsoft.com/en-us/library/dn268500(v=ws.11).aspx

NEW QUESTION 188

HOTSPOT

Your network contains an Active Directory domain named contoso.com. The domain contains three servers named Server1, Server2, and Server3 that run Windows Server 2016.

Server1 has IP Address Management (IPAM) installed. Server2 and Server3 have the DHCP Server role installed and have several DHCP scopes configured. The IPAM server retrieves data from Server2 and Server3.

A domain user named User1 is a member of the groups shown in the following table.

Server name	Group
Server2	DHCP Administrators
Server3	DHCP Users

On Server1, you create a security policy for User1. The policy grants the IPAM DHCP Scope Administrator Role with the \Global access scope to the user. Which actions can User1 perform? To answer, select the appropriate options in the answer area.

Answer Area

From Server Manager on Server1, User1 can modify the description of the DHCP scopes:	<div><div></div><div>On Server2 only</div><div>On Server3 only</div><div>On both Server2 and Server3</div></div>
From Server Manager on Server1, User1 can create a new DHCP scope:	<div><div></div><div>On Server2 only</div><div>On Server3 only</div><div>On both Server2 and Server3</div></div>

- A. Mastered
- B. Not Mastered

Answer: A

Explanation:

https://technet.microsoft.com/en-us/library/dn268500(v=ws.11).aspx

NEW QUESTION 192

A company named Contoso, Ltd has five Hyper-V hosts that are configured as shown In the following table.

Hyper-V host name	Configuration
Server1	Windows Sever 2012 R2 and an Intel Xeon E7 processor
Server2	Windows Sever 2012 R2 and an Intel i7 processor
Server3	Windows Sever 2016 and an Intel i7 processor
Server4	Windows Sever 2016 and an AMD Opteron processor
Server5	Windows Sever 2012 R2 and an Intel Xeon E7 processor

What are two valid live migration scenarios for virtual machines in your environment? Each correct answer presents a complete solution.

- A. from Server4 to Server5
- B. from Server1 to Server5
- C. from Server3 to Server4
- D. from Server2 to Server3

Answer: BD

NEW QUESTION 194

You have a Hyper-V host named Server1 that runs Windows Server 2016. Server1 hosts a virtual machine named VM1. VM1 is in a workgroup. VM1 is currently in a running state.

You need to create 10 copies of VM1 on Server1 in the least amount of time possible. Which cmdlets should you use?

- A. Stop-VM, and then Import-VM
- B. Export-VM, and then Import-VM
- C. Checkpoint-VM, and then New-VM
- D. Copy-VMFile, and then New-VM

Answer: B

NEW QUESTION 198

Note: This question is part of a series of questions that use the same scenario. For your convenience, the scenario is repeated in each question. Each question presents a different goal and answer choices, but the text of the scenario is exactly the same in each question in this series.

Start of repeated scenario

Your network contains an Active Directory domain named contoso.com. The functional level of the forest and the domain is Windows Server 2008 R2. All servers in the domain run Windows Server 2016 Standard. The domain contains 300 client computers that run either Windows 8.1 or Windows 10.

The domain contains nine servers that are configured as shown in the following table.

Server name	Configuration	Planned changes
Server1	Domain controller	None
Server2	File server	Run Failover Clustering and Storage Spaces Direct
Server3	File server	Run Failover Clustering and Storage Spaces Direct
Server4	Hyper-V host	Run shielded virtual machines
Server5	Hyper-V host	None
Server6	Member server	Run Active Directory Federation Services (AD FS)
VM1	Virtual machine hosted on Server 5	None
VM2	Virtual machine hosted on Server 5	None
VM3	Virtual machine hosted on Server 5	None

The virtual machines are configured as follows:

Each virtual machine has one virtual network adapter.

VM1 and VM2 are part of a Network Load Balancing (NLB) cluster.

All of the servers on the network can communicate with all of the virtual machines. End of repeated scenario.

You plan to implement nested virtual machines on VM1.

Which two features will you be prevented from using for VM1?

- A. NUMA spanning
- B. live migration
- C. Dynamic Memory
- D. Smart Pathing

Answer: BC

Explanation:

References:

<https://blogs.technet.microsoft.com/virtualization/2015/10/13/windows-insider-preview-nested-virtualization/>

NEW QUESTION 203

Your IT company is constantly changing, with new users coming and going throughout the year. One of your common tasks requires the deletion of user accounts for employees who have left the company. Which command can be used to delete user accounts?

- A. LDIFDE
- B. Dsmmod
- C. Dspromo
- D. Netsh

Answer: A

NEW QUESTION 205

The Host Guardian Service supports two different deployments of a Guarded fabric (attestation modes). The statement below describes which mode? Guarded hosts that can run Shielded VMs are approved based on their identity, measured boot sequence and code integrity policies so that you can ensure that these hosts are only running approved code.

- A. Admin-trusted attestation
- B. TPM-trusted attestation

Answer: B

Explanation:

TPM-trusted attestation offers the strongest possible protections but also requires more configuration steps. Host hardware and firmware must include TPM 2.0 and UEFI 2.3.1 with secure boot enabled.

TPM trusted attestation is the mode Microsoft recommend that you use because it offers stronger assurances but it requires that your Hyper-V hosts have TPM 2.0.

NEW QUESTION 209

HOTSPOT

You have a four-node Hyper-V cluster named Cluster1. A virtual machine named VM1 runs on Cluster1. VM1 has a network adapter that connects to a virtual switch named Network1. You need to prevent a network disconnection on VM1 from causing VM1 to move to another cluster node. What command should you run? To answer, select the appropriate options in the answer area.

Answer Area

```
Remove-ClusterVMMonitoredItem -VirtualMachine VM1
Set-VM -VMName VM1
Set-VMNetworkAdapter -VMName VM1
Set-VMSwitch -Name Network1
```

```
EventSource Network
-lovInterruptModeration Off
-lovWeight 1
-NotMonitoredInCluster $true
-RouterGuard Off
```

- A. Mastered
- B. Not Mastered

Answer: A

Explanation:

Answer Area

```
Remove-ClusterVMMonitoredItem -VirtualMachine VM1
Set-VM -VMName VM1
Set-VMNetworkAdapter -VMName VM1
Set-VMSwitch -Name Network1
```

```
EventSource Network
-lovInterruptModeration Off
-lovWeight 1
-NotMonitoredInCluster $true
-RouterGuard Off
```

NEW QUESTION 214

You have Hyper-V virtual machines that run 50 web servers, 10 Microsoft SQL Server servers, 10 file servers, and eight domain controllers. You need to implement a backup strategy that meets the following requirements:

- *Backs up all servers
 - *Centralizes backup management
 - *Performs application-level backups
 - *Provides the ability to perform bare metal recovery
- What should you use?

- A. Microsoft Azure VM Backup
- B. Microsoft Azure Backup Agent
- C. Windows Server Backup

D. Microsoft Azure Backup Server

Answer: D

NEW QUESTION 219

You have a Hyper-V failover cluster that contains three nodes. Virtual machines are distributed evenly across the cluster nodes.

You need to ensure that if a node loses connectivity from the other nodes, the virtual machines on the node will be transitioned to one of the remaining nodes after one minute.

Which settings should you modify?

- A. QuarantineDuration and QuarantineThreshold
- B. SameSubnetDelay and CrossSubnetDelay
- C. QuorumArbitrationTimeMax and RequestReplyTimeout
- D. ResiliencyPeriod and ResiliencyLevel

Answer: C

Explanation:

References: [https://msdn.microsoft.com/en-us/library/aa369123\(v=vs.85\).aspx](https://msdn.microsoft.com/en-us/library/aa369123(v=vs.85).aspx) [https://msdn.microsoft.com/en-us/library/bb394696\(v=vs.85\).aspx](https://msdn.microsoft.com/en-us/library/bb394696(v=vs.85).aspx)

NEW QUESTION 222

You have a server named Server1 that runs Windows Server 2016.

On Server1, you use the Basic template to create a new Data Collector Set named CollectorSet1. You need to configure CollectorSet1 to generate performance alerts.

What should you do before you start CollectorSet1?

- A. Modify the performance counter data collector of CollectorSet1.
- B. Add a new data collector to CollectorSet1.
- C. Modify the configuration data collector of CollectorSet1.
- D. Add a new task to CollectorSet1.

Answer: A

Explanation:

[https://technet.microsoft.com/en-us/library/cc722414\(v=ws.11\).aspx](https://technet.microsoft.com/en-us/library/cc722414(v=ws.11).aspx)

NEW QUESTION 224

Note: This question is part of a series of questions that present the same scenario. Each question in the series contains a unique solution that might meet the stated goals. Some question sets might

have more than one correct solution, while others might not have a correct solution. Your network contains an Active Directory forest

You install Windows Server 2016 on 10 virtual machines.

You need to deploy the Web Server (IIS) server role identically to the virtual machines.

Solution: From Windows System Image Manager, you create an answer file, you copy the file to C:\Sysprep on each virtual machine, and then you run the Apply-Image cmdlet.

Does this meet the goal?

- A. Yes
- B. No

Answer: B

NEW QUESTION 227

You have three Hyper-V hosts named Server1, Server2, and Server3 that run Windows Server 2016. The servers are nodes in a failover cluster.

The failover cluster contains two virtual machines named VM1 and VM2. The roles for VM1 and VM2 have the following configurations.


```
PS C:\> Get-ClusterGroup vm1,vm2 | fl *
```

```
AntiAffinityClassNames      : {}
AutoFailbackType            : 0
ColdStartSetting            : 0
Cluster                     : Cluster1
DefaultOwner                : 1
Description                  :
GroupType                   : VirtualMachine
FailoverPeriod              : 6
FailoverThreshold           : 4294967295
FailbackWindowEnd           : 4294967295
FailbackWindowStart         : 4294967295
IsCoreGroup                 : False
Name                        : vm1
OwnerNode                   : Server1
PersistentState             : 1
PreferredSite               : {}
Priority                    : 0
ReliliencyPeriod            : 429467295
State                       : Online
StatusInformation           : 0
Id                          : d02c87d1-8alc-4ffb-b87d-adf059416f25
```

```
AntiAffinityClassNames      : {}
AutoFailbackType            : 0
ColdStartSetting            : 0
Cluster                     : Cluster1
DefaultOwner                : 1
Description                  :
GroupType                   : VirtualMachine
FailoverPeriod              : 6
FailoverThreshold           : 4294967295
FailbackWindowEnd           : 4294967295
FailbackWindowStart         : 4294967295
IsCoreGroup                 : False
Name                        : vm2
OwnerNode                   : Server1
PersistentState             : 1
PreferredSite               : {}
Priority                    : 3000
ResiliencyPeriod            : 4294967295
State                       : Online
StatusInformation           : 0
Id                          : ab38e657-bfcf-463d-a88b-d4e99aff4ef1
```

All of the nodes in the failover cluster have sufficient resources to run VM1 and VM2 concurrently. VM1 and VM2 fail over to Server3. What is the state of each virtual machine after the failover?

- A. Both VM1 and VM2 are stopped.
- B. Both VM1 and VM2 are running.
- C. VM1 is stopped and VM2 is running.
- D. VM1 is stopped and VM2 is paused.

Answer: C

Explanation:

References:

[https://msdn.microsoft.com/en-us/library/jj151956\(v=vs.85\).aspx](https://msdn.microsoft.com/en-us/library/jj151956(v=vs.85).aspx)

NEW QUESTION 228

HOTSPOT
You have a Windows Server 2016 failover cluster that has a cluster network named ClusterNetwork1. You need to ensure that ClusterNetwork1 is enabled for cluster communication only.
What command should you run? To answer, select the appropriate options in the answer area.

Answer Area

(

▼

Get-ClusterNetwork
Get-ClusterResource
Set-ClusterParameter
Update-ClusterIPResource

ClusterNetwork1).

▼

ID
Metric
Role
State

=1

- A. Mastered
- B. Not Mastered

Answer: A

Explanation:

Answer Area

(

▼

Get-ClusterNetwork
Get-ClusterResource
Set-ClusterParameter
Update-ClusterIPResource

ClusterNetwork1).

▼

ID
Metric
Role
State

=1

NEW QUESTION 233

HOTSPOT
You plan to deploy three servers named Server1, Server2, and Server3 that will run Windows Server 2016. The servers will have the following disk configurations:
Server1 will have a C: drive of 2 TB.
Server2 will have two disks. The C: drive will be 2 TB. The D: drive will be 1TB. D: must support file system-based compression.
Server3 will have two disks. The C: drive will be 2 TB. The D: drive will be 1TB and must support file- system based quotas.
Which file system can you use for each drive? To answer, select the appropriate options in the answer area.

Answer Area

C: on all servers:

▼

NTFS only
ReFS only
Either NTFS or ReFS

D: on Server2:

▼

NTFS only
ReFS only
Either NTFS or ReFS

D: on Server3:

▼

NTFS only
ReFS only
Either NTFS or ReFS

- A. Mastered
- B. Not Mastered

Answer: A

Explanation:

Answer Area

C: on all servers:

	▼
NTFS only	
ReFS only	
Either NTFS or ReFS	

D: on Server2:

	▼
NTFS only	
ReFS only	
Either NTFS or ReFS	

D: on Server3:

	▼
NTFS only	
ReFS only	
Either NTFS or ReFS	

NEW QUESTION 238

You have two servers named Server1 and Server2 that run Windows Server 2016. Server1 contains a volume named Volume1. You implement a Storage Replica that replicates the contents of Volume1 from Server1 to Server2. Server1 fails. From Server2, you need to ensure that you can access the contents of Volume1. What should you run?

- A. Update-StoragePool
- B. Set-SRPartnership
- C. vssadmin revert shadow
- D. Clear-FileStorageTier

Answer: B

Explanation:

References:

<https://docs.microsoft.com/en-us/windows-server/storage/storage-replica/server-to-server-storage-replication>

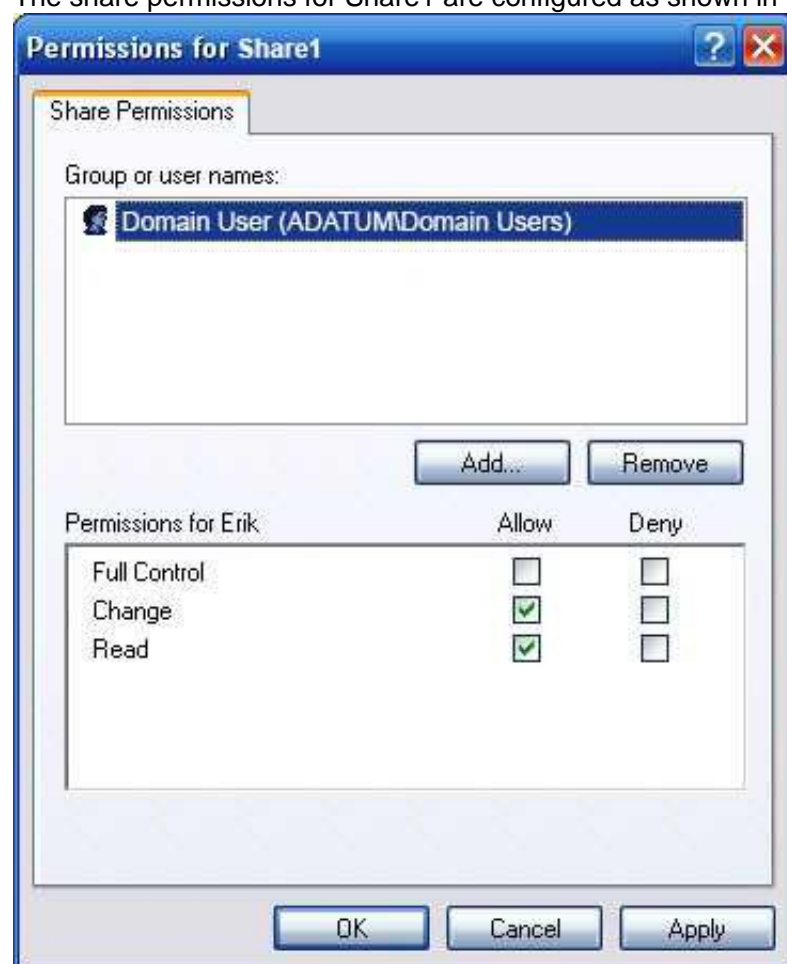
NEW QUESTION 239

HOTSPOT

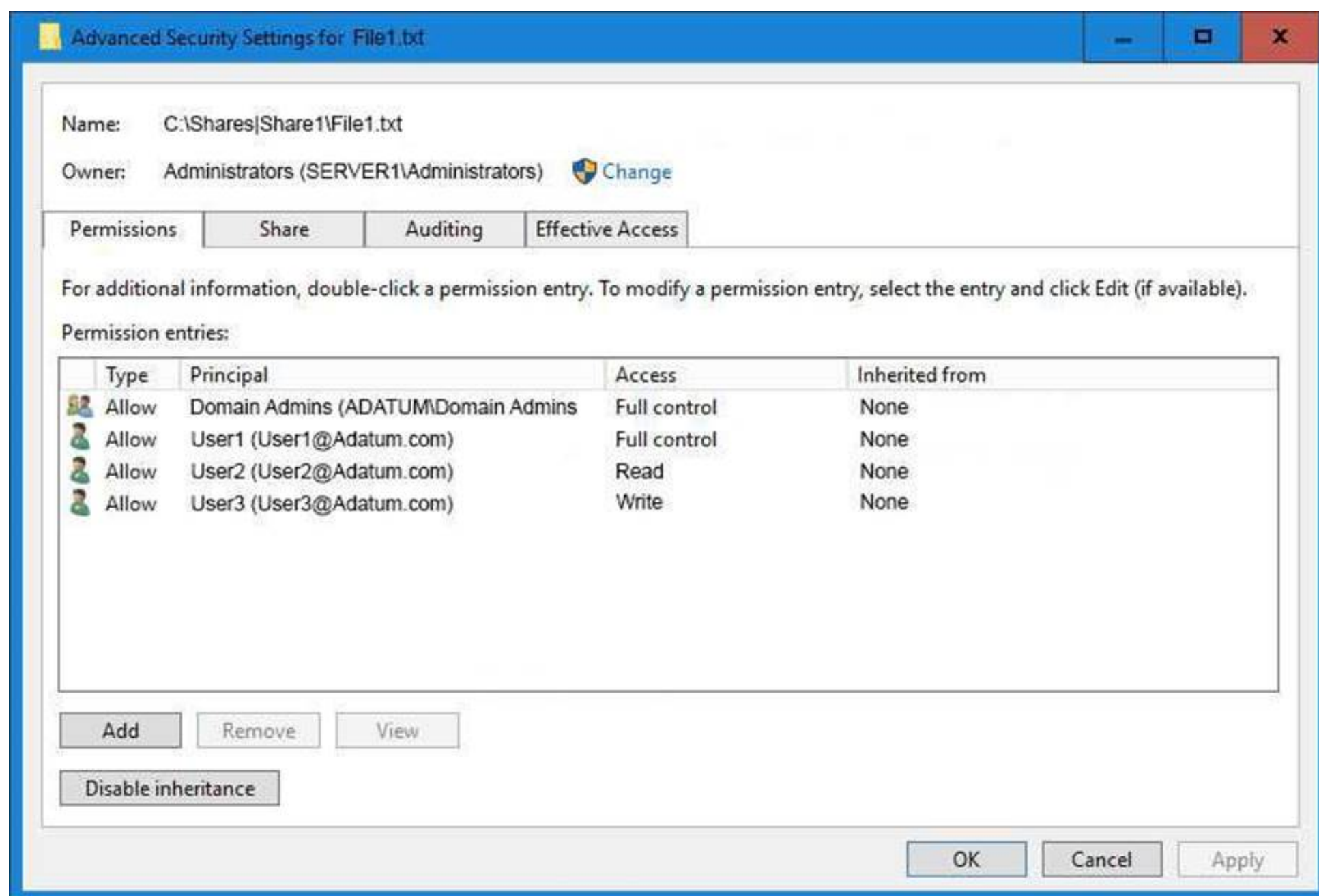
Your network contains an Active Directory domain named Adatum.com. The domain contains two servers named Server1 and Server2 that run Windows Server 2016. The domain contains three users named User1, User2, and User3. Server1 has a share named Share1 that has the following configurations.


```
PresetPathAcl      : System.Security.AccessControl.DirectorySecurity
ShareState         : Online
AvailabilityType   : NonClustered
ShareType          : FileSystemDirectory
FolderEnumerationMode : AccessBased
CachingMode        : Manual
SmbInstance        : Default
CATimeout          : 0
ConcurrentUserLimit : 0
ContinuouslyAvailable : False
CurrentUsers        : 0
Description         :
EncryptData         : False
Name               : Share1
Path               : C:\Shares\Share1
Scoped              : False
ScopeName           : *
SecurityDescriptor : O:BAG:DUD:(A;OICI;FA;;;WD)
ShadowCopy          : False
Special             : False
Temporary          : False
Volume             : \\?\Volume{d80578cf-0000-0000-0000-501f00000000}\
PSComputerName     :
CimClass            : ROOT\Microsoft\Windows\SMB:MSFT_SmsShare
CimInstanceProperties : {AvailabilityType, CachingMode, CATimeout, ConcurrentUserLimit...}
CimSystemProperties : Microsoft.Management.Infrastructure.CimSystemProperties
```

The share permissions for Share1 are configured as shown in the Share1 exhibit. (Click the Exhibit button.)



Share1 contains a file named File1.txt. The Advanced Security Settings for File1.txt are configured as shown in the File1.txt exhibit. (Click the Exhibit button.)



For each of the following statement, select Yes if the statement is true. Otherwise, select No.

Answer Area

Statement	Yes	No
When User1 navigates to \\Server1\Share1\, the user can take ownership of File1.txt.	<input type="radio"/>	<input type="radio"/>
When User2 navigates to \\Server1\Share1\, the user will see File1.txt	<input type="radio"/>	<input type="radio"/>
When User3 navigates to \\Server1\Share1\, the user will see File1.txt	<input type="radio"/>	<input type="radio"/>

- A. Mastered
- B. Not Mastered

Answer: A

Explanation:

Answer Area

Statement	Yes	No
When User1 navigates to \\Server1\Share1\, the user can take ownership of File1.txt.	<input type="radio"/>	<input checked="" type="radio"/>
When User2 navigates to \\Server1\Share1\, the user will see File1.txt	<input checked="" type="radio"/>	<input type="radio"/>
When User3 navigates to \\Server1\Share1\, the user will see File1.txt	<input checked="" type="radio"/>	<input type="radio"/>

NEW QUESTION 241

Note: This question is part of a series of questions that present the same scenario. Each question in the series contains a unique solution that might meet the stated goals. Some question sets might have more than one correct solution, while others might not have a correct solution.
 After you answer a question in this section, you will NOT be able to return to it. As a result, these questions will not appear in the review screen.
 You network contains an Active Directory domain named contoso.com.
 You need to create a Nano Server image named Nano1 that will be used as a virtualization host. The Windows Server 2016 source files are located in drive D.
 Solution: You run the following cmdlet.
 New-NanoServerImage -Edition Datacenter -DeploymentType Host -Package Microsoft- NanoServer-Compute-Package -MediaPath 'D:\' -TargetPath C:\Nano1\Nano1.wim -ComputerName Nano1 -DomainName Contoso.com
 Does this meet the goal?

- A. Yes
- B. No

Answer: A

NEW QUESTION 246

Note: This question is part of a series of questions that present the same scenario. Each question in the series contains a unique solution that might meet the stated goals. Some question sets might have more than one correct solution, while others might not have a correct solution.
 After you answer a question in this section, you will NOT be able to return to it. As a result, these questions will not appear in the review screen.
 You network contains an Active Directory domain named contoso.com.
 You need to create a Nano Server image named Nano1 that will be used as a virtualization host. The Windows Server 2016 source files are located in drive D.
 Solution: You run the following cmdlet.

```
New-NanoServerImage -Edition Datacenter -DeploymentType Host -Package
Microsoft-NanoServer-SCVMM-Package -MediaPath 'D:\' -TargetPath
C:\Nano1\Nano1.wim -ComputerName Nano1 -DomainName Contoso.com
```

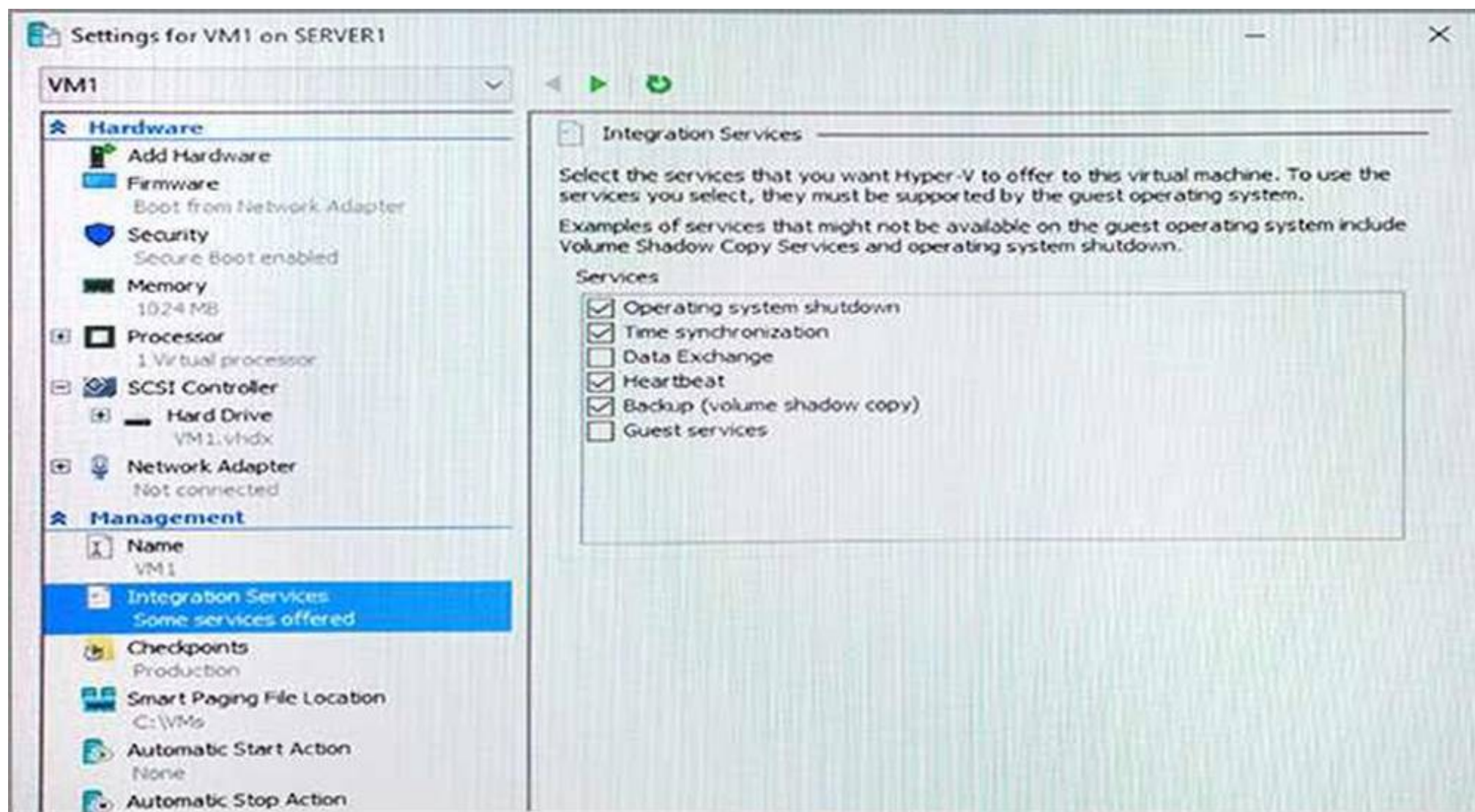
Does this meet the goal?

- A. Yes
- B. No

Answer: B

NEW QUESTION 247

Note: This question is part of a series of questions that present the same scenario. Each question in the series contains a unique solution that might meet the stated goals. Some question sets might have more than one correct solution, while others might not have a correct solution.
 After you answer a question in this section, you will NOT be able to return to it. As a result, these questions will not appear in the review screen.
 You have a Hyper-V host named Server1 that hosts a virtual machine named VM1. Server1 and VM1 run Windows Server 2016.
 The settings for VM1 are configured as shown in the exhibit. (Click the Exhibit button.)



You need to ensure that you can use the Copy-VMFile cmdlet on Server1 to copy files from VM1. Solution: You connect VM1 to an internal virtual switch. Does this meet the goal?

- A. Yes
- B. No

Answer: B

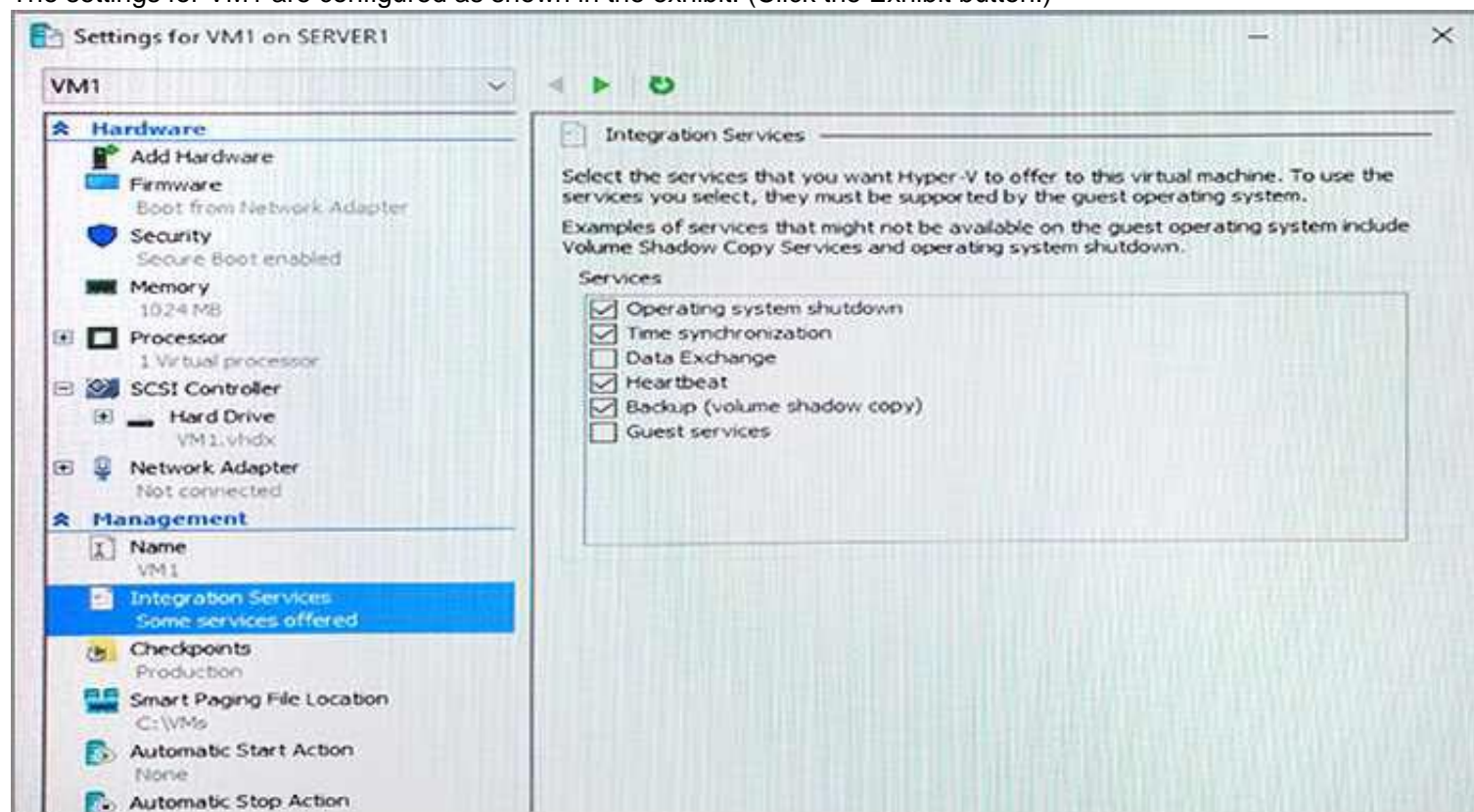
NEW QUESTION 252

Note: This question is part of a series of questions that present the same scenario. Each question in the series contains a unique solution that might meet the stated goals. Some question sets might have more than one correct solution, while others might not have a correct solution.

After you answer a question in this section, you will NOT be able to return to it. As a result, these questions will not appear in the review screen.

You have a Hyper-V host named Server1 that hosts a virtual machine named VM1. Server1 and VM1 run Windows Server 2016.

The settings for VM1 are configured as shown in the exhibit. (Click the Exhibit button.)



You need to ensure that you can use the Copy-VMFile cmdlet on Server1 to copy files from VM1.

Solution: You start the Hyper-V Guest Service Interface service on VM1. Does this meet the goal?

- A. Yes
- B. No

Answer: A

Explanation:

References:

[https://technet.microsoft.com/en-us/library/dn798297\(v=ws.11\).aspx](https://technet.microsoft.com/en-us/library/dn798297(v=ws.11).aspx)

NEW QUESTION 255

Note: This question is part of a series of questions that present the same scenario. Each question in the series contains a unique solution that might meet the stated goals. Some question sets might have more than one correct solution, while others might not have a correct solution.

After you answer a question in this section, you will NOT be able to return to it. As a result, these questions will not appear in the review screen.

You have a server named Server 1 that runs Windows Server 2016.

You plan to use Windows Server Backup to back up all of the data on Server 1. You create a new volume on Server 1.

You need to ensure that the new volume can be used as a backup target. The backup target must support incremental backups.

Solution: You assign a drive letter to the volume, and you format the volume by using ex FAT. Does this meet the goal?

A. Yes

B. No

Answer: B

NEW QUESTION 260

Note: This question is part of a series of questions that present the same scenario. Each question in the series contains a unique solution that might meet the stated goals. Some question sets might have more than one correct solution, while others might not have a correct solution.

After you answer a question in this section, you will NOT be able to return to it. As a result, these questions will not appear in the review screen.

You have a server named Server 1 that runs Windows Server 2016.

You plan to use Windows Server Backup to back up all of the data on Server 1. You create a new volume on Server 1.

You need to ensure that the new volume can be used as a backup target. The backup target must support incremental backups.

Solution: You mount the volume to C:\backup. and you format the volume by using FAT32. Does this meet the goal?

A. Yes

B. No

Answer: B

NEW QUESTION 263

Note: This question is part of a Series of questions that use the same or similar answer choices. An answer choice may be correct for more than one question in the series. Each question is Independent of the other questions in this series. Information and details provided in a question apply only to that question.

You have two servers named Server 1 and Server 2 that run Windows Server 2016. Server 1 and server 2 have the Hyper-V server role installed and are nodes in a failover Cluster.

On Server 1, an administrator creates a virtual machine named VM1. You need to configure VM1 for high availability.

Which tool should you use?

A. the clussvc.exe command

B. the cluster.exe command

C. the Computer Management snap-in

D. the configurehyperv.exe command

E. the Disk Management snap-in

F. the Failover Cluster Manager snap-in

G. the Hyper V Manager snap-in

H. the Server Manager app

Answer: F

NEW QUESTION 265

Your network contains an Active Directory domain named contoso.com. All servers run Windows

Server 2016. As a domain administrator, you log on to a server named Server2 and open Windows PowerShell. You need to establish an interactive PowerShell session to a server named Server 1. Which command should you run?

A. Enable-PSRemoting Server 1

B. Enter-PSSession -ComputerName Server 1

C. New-PSSession -Name Server 1

D. Set-PSSession Configuration -AccessMode Remote -Name Server 1

Answer: B

NEW QUESTION 268

DRAG DROP

On a new server, you install Windows Server 2016, and then you install the Hyper-V server role.

You need to ensure that you can deploy Windows containers that use an image of the Server Core installation of Windows Server.

Which four commands should you use in sequence? To answer, move the appropriate commands from the list of commands to the answer area and arrange them in the correct order.

Commands

```
Install-Package -Name docker -ProviderName  
DockerMsftProvider
```

```
Restart-Computer -Force
```

```
docker pull docker/windows-x64
```

```
Set-VMProcessor -ExposeVirtualizationExtensions  
$true
```

```
Install-Module -name DockerMsftProvider  
Repository PSGallery -Force-
```

```
docker pull Microsoft/windowsservercore
```

```
Install-Package -Name Microsoft/dotnet  
framework-docker -ProviderName-  
DockerMsftProvider
```

```
Install-WindowsFeature Hyper-V
```

Answer Area

1

2

3

4

⏪

⏩

⏪

⏩

- A. Mastered
- B. Not Mastered

Answer: A

Explanation:

References: <https://docs.microsoft.com/en-us/virtualization/windowscontainers/deploy-containers/deploy-containers-on-server>

NEW QUESTION 269

HOTSPOT

You have a server named Server1 that runs Windows Server 2016.
On Server1, you have a custom image of Windows Server 2016 Standard in a file named Image1.wim. The image is mounted to C:\Folder1.
You discover corrupted files in the WinSxS folder of the mounted image.
From the Windows Server 2016 installation media, you mount an image of Windows Server 2016 Standard from Install.wim to C:\Folder2.
You need to repair the corrupted image.
Which command should you run? To answer, select the appropriate options in the answer area. NOTE: Each correct selection is worth one point.

Answer Area

Dism /Cleanup-Image /Image:

C:\Folder1

C:\Folder1\image1.wim

C:\Folder2\install.wim:1

C:\Folder2\Windows

/CheckIntegrity

/RestoreHealth

/ScanHealth

/StartComponentCleanup

/Source:

C:\Folder1

C:\Folder1\image1.wim

C:\Folder2\install.wim:1

C:\Folder2\Windows

- A. Mastered
- B. Not Mastered

Answer: A

Explanation:

References: <https://docs.microsoft.com/en-us/windows-hardware/manufacture/desktop/repair-a-windows-image>

NEW QUESTION 270

You have a Scale-Out File Server that has a share named Share 1. Share1 contains a virtual disk trie named Disk1.vhd. You plan to create a guest failovcr cluster. You need to ensure thai you can use the virtual disk as a shared virtual disk for the guest failove* Cluster. Which cmdlet should you use?

- A. Oplimize-VHD
- B. Convert-VHD
- C. Set-VHO
- D. Optimtze-VHDSet

Answer: A

NEW QUESTION 275

Note: This question is part of a series questions that present the same scenario, Each question in the series contains a unique solution that might meet the stated goals. Some question sets might have more than one correct solution, white others might not have a correct solution. After you answer a question in this section, you will NOT be able to return to it. As a result, these questions will not appear in the review screen. You have a server named Server I that runs Windows Server 2016. Server I is a Docker Host. You are creating a Docker file lo build 3 Docker image. You need to add a file named File1.txt from Server to, C:\folder1\ in the Docker image. What are two possible commands that you can use to achieve the goal/ Each correct answer presents a complete solution. NOTE: Each correct selection is worth one point.

- A. COPY file1.txt c:/folder1/
- B. copy-item file1.txt folder1\file1.txt
- C. ROBOCOPY file.txt \folder1\
- D. XCOPY file1.txt c:\folder1\
- E. ADD file1.txt /folder1/

Answer: AE

NEW QUESTION 280

You have two servers named Server1 and Server 2 that run Windows Server 2016. Server 1 and Server 2 are nodes in a Network Load Balancing (NLB) cluster. The Web Sever server role is installed on each node. Users report that when they submit web form data, sometimes the data is not stored, and they must full in the form again. You need to resolve the issue. The solution must ensure that connections are load balanced between Server 1 Server 2.

What should you do in the NLB cluster?

- A. Modify the existing port rules.
- B. Modify the Cluster operation mode.
- C. Add the Microsoft Load Balancing/Failover Provider service to all of the network adapters.
- D. Add an IP address.

Answer: B

NEW QUESTION 285

HOTSPOT

You deploy a new Hyper-V host named Server1 that runs Windows Server 2016. You implement receive side scaling (RSS) on Server1.

The chipset on Server1 does not support NetDMA.

All of the equipment on your network supports 10-Gbps connectivity. On Server1, you deploy a virtual machine named VM1.

You configure VM1 to aggregate all of the Windows and non-Windows log files for all of the servers on the network.

VM1 has four virtual processors.

You discover that VM1 drops packets.

Which two options should you run? To answer, select the appropriate options in the answer area.

Answer Area

First action:

Enable TCP Chimney Offload on Server1.
Enable single root I/O virtualization (SR-IOV) on VM1.
Enable virtual machine queue (VMQ) on Server1 and VM1.

Second action:

Enable virtual TCP Chimney Offload on VM1.
Enable virtual Receive-side Scalling (vRSS) on VM1.
Enable single root I/O virtualization (SR-IOV) on Server1.

- A. Mastered
- B. Not Mastered

Answer: A

Explanation:

Answer Area

First action:

Enable TCP Chimney Offload on Server1.
Enable single root I/O virtualization (SR-IOV) on VM1.
Enable virtual machine queue (VMQ) on Server1 and VM1.

Second action:

Enable virtual TCP Chimney Offload on VM1.
Enable virtual Receive-side Scalling (vRSS) on VM1.
Enable single root I/O virtualization (SR-IOV) on Server1.

NEW QUESTION 287

HOTSPOT

You have a server named Server1 that runs Windows Servers 2016. Server1 has a storage array that contains multiple storage enclosures. The storage hardware supports enclosure awareness.

You need to implement Storage Spaces on Server1. Storage Spaces must remain available if two enclosures fail. The solution must minimize the number of enclosures required and must provide the fastest possible write performance.

Which configurations should you use? To answer, select the appropriate options in the answer area. NOTE: Each correct selection is worth one point.

Answer Area

Resiliency type:

Dual parity

Single parity

Three-way mirror

Two-way mirror

Number of enclosures:

3

4

5

6

- A. Mastered
- B. Not Mastered

Answer: A

Explanation:
References: <https://docs.microsoft.com/en-us/windows-server/storage/storage-spaces/storage-spaces-fault-tolerance#summary>

NEW QUESTION 292
HOTSPOT

You have a server named Server1 that runs Windows Server 2016. You create a storage pool named Pool1. Pool1 contains three disks.

You need to create a two-way mirror storage space from the disks in Pool1.

Which command should you run? To answer, select the appropriate options in the answer area. NOTE: Each correct selection is worth one point.

Answer Area

New-StorageSunsystemVirtualDisk

New-VHD

New-VirtualDisk

New-Volume

-StoragePoolFirendlyName Pool1 -FirendlyName Space1-

-UseMaximumSize -ResiliencySettingName Mirror

-NumberOfDataCopies

1

2

3

-NumberOfColumns-

1

2

3

- A. Mastered
- B. Not Mastered

Answer: A

Explanation:
References: <https://charbelnemnom.com/2014/09/step-by-step-how-to-create-a-two-way-mirrored-storage-space-via-powershell-storagespaces-powershell/>

NEW QUESTION 296

NOTE: This Question is a part of a series of questions that use the same or similar answer choices. An answer choice may be correct for more than one question in the series Each question is independent of the other questions in this series. Information and details provided in a question apply only to that question.

You have a Hyper –V host named server 1 that runs Windows Server 2016 and a two-node scale-out file server cluster named Cluster1.

You need to migrate the storage on VM1 to Cluster1. Which tool should you use?

- A. the clussvc.exe command
- B. the Cluster.exe command
- C. the Computer Management snap-in
- D. the configure hyperv.exe command
- E. the Disk Management snap-in
- F. the Failover Cluster Manager snap-in
- G. the Hyper-V Manager snap-in
- H. the Server Manger app

Answer: G

NEW QUESTION 301

You have a server named Server1 that runs Windows Server 2016.

Server1 has four SCSI disks and a storage pool named Pool1 that contains three disks. You create a virtual disk named Disk 1 that uses a mirrored layout.

You create a partition named Partition1 that uses all of the available space on Disk 1. You need to extend Partition1.

What should you do first?

- A. From Windows PowerShell, run the Resize-Partition cmdlet.
- B. From Disk Management, modify the properties of Partition1.
- C. From the Storage Pools page in Server Manager, extend a virtual disk.
- D. From Disk Management, extend a volume.

Answer: C

Explanation:

References: <https://charbelnemnom.com/2015/03/step-by-step-how-to-extend-and-resize-a-two-way-mirrored-storage-tiered-space-storagespaces-ws2012r2/>

NEW QUESTION 305

HOTSPOT

You have a Windows Server 2016 failover cluster named Cluster1. You need to implement Cloud Witness for Cluster 1.

What should you do? To answer, select the appropriate options in the answer area. NOTE: Each correct selection is worth one point.

Answer Area

In Microsoft Azure, create:

An availability set
An integration account
A public IP address
A Recovery Services vault
A storage account

On Cluster1, run:

Add-ClusterResource
Add-ClusterResourceType
Set-ClusterParameter
Set-ClusterQuorum

- A. Mastered
- B. Not Mastered

Answer: A

Explanation:

References:

<https://www.vembu.com/blog/deploying-a-azure-cloud-witness-for-a-failover-cluster-in-windows-server-2016/>

<https://docs.microsoft.com/en-us/powershell/module/failoverclusters/set-clusterquorum?view=win10-ps>

NEW QUESTION 306

You have a server named Server1 that runs Windows Server 2016.

The server has an application named App1. App1 writes entries to the Application event log when errors are encountered. The events have IDs of either 111 or 112.

You need to restart the service whenever either of these events is logged. What should you do?

- A. From Windows PowerShell, run the Write-EventLog cmdlet and specify the -EventID parameter and the -Source parameter.
- B. From Event Viewer, create a custom view that has a filter for the event IDs.
- C. From Event Viewer, create a subscription that has a filter for the event IDs.
- D. From Task Scheduler, use Create Task to create one task that includes triggers for both event IDs.
- E. From Windows PowerShell, run the Get-SMSEvent cmdlet and pipe the output to the Start-NetEventSession cmdlet.
- F. From Performance Monitor, add an Event Trace Session data collector that uses the Microsoft-Windows-Eventlog provider.

Answer: D

NEW QUESTION 310

HOTSPOT

You have a server named Server1 that runs Windows Server 2016.

On Server1, you plan to create a new volume named Volume1. Volume1 will contain image files.

You need to identify which file system and which cluster size to configure for Volume1. The solution must ensure that the image files will be compressed by using file system compression.

Which file system and cluster size should you identify? To answer, select the appropriate options in the answer area.

NOTE: Each correct selection is worth one point.

Answer Area

File system:

	▼
exFAT	
FAT32	
NTFS	
ReFS	

Cluster size:

	▼
4K	
8K	
64K	

- A. Mastered
- B. Not Mastered

Answer: A

Explanation:

Answer Area

File system:

▼

exFAT

FAT32

NTFS

ReFS

Cluster size:

▼

4K

8K

64K

NEW QUESTION 314

Note: This question is part of a series of questions that present the same scenario. Each question in the series contains a unique solution that might meet the stated goals. Some question sets might have more than one correct solution, while others might not have a correct solution.

After you answer a question in this section, you will NOT be able to return to it. As a result, these questions will not appear in the review screen.

You network contains an Active Directory forest named contoso.com. The forest contains a child domain named eu.contoso.com.

You plan to implement live migration between two Hyper-V hosts that run Windows Server 2016. The hosts are configured as shown in the following table.

Host name	Configuration
Host1	<ul style="list-style-type: none"> Is a member of the contoso.com domain Uses an Intel Xeon processor released in 2012 Has an external virtual switch named Switch1 Hosts a virtual machine named VM1 that connects to Switch1
Host2	<ul style="list-style-type: none"> Is a member of the eu.contoso.com domain Uses an Intel Xeon processor released in 2016 Has an external virtual switch named Switch1

You need to ensure that you can perform a live migration of VM1 from Host1 to Host2.

Solution: You shut down VM1, configure the processor compatibility settings, and then start VM1. Does meet the goal?

A. Yes

B. No

Answer: A

NEW QUESTION 315

Note: This question is part of a series of questions that present the same scenario. Each question in the series contains a unique solution that might meet the stated goals. Some question sets might have more than one correct solution, while others might not have a correct solution.

After you answer a question in this section, you will NOT be able to return to it. As a result, these questions will not appear in the review screen.

Your network contains an Active Directory forest.

You install Windows Server 2016 on 10 virtual machines.

You need to deploy the Web Server (IIS) server role identically to the virtual machines.

Solution: You use Windows PowerShell Desired State Configuration (DSC) to create a default configuration, and then you apply the configuration to the virtual machines.

Does this meet the goal?

A. Yes

B. No

Answer: A

Explanation:

References:

<https://www.simple-talk.com/sysadmin/powershell/powershell-desired-state-configuration-the-basics/>

NEW QUESTION 317

DRAG DROP

Your network contains an Active Directory domain named contoso.com. The domain contains a server named Server1 that runs Windows Server 2016.

Server1 allows inbound connectivity from all computers in the contoso.com domain. Server1 has an IP address of 192.168.0.10.

Server1 hosts a Windows container named Container1. Container1 hosts a website that is accessible on port 80.

You need to ensure that you can use the Docker client to manage Container1 from any computer in the domain.

Which three cmdlets should you run in sequence? To answer, move the appropriate cmdlets from the list of cmdlets to the answer area and arrange them in the correct order.

Actions	Answer Area
Restart-Service docker	<div> <div>➤</div> <div>➤</div> <div>⬅</div> <div>⬅</div> </div> <div> <div>⬆</div> <div>⬆</div> <div>⬆</div> <div>⬆</div> </div>
New-ContainerNetwork- Name nat1 – Mode NAT- SubnetPrefix 192.168.0.0/24 – GatewatAddress 192.168.0.10	
Add-Content 'c:\programdata\docker\config\daemon.json' '{"hosts": ["tcp://127.0.0.1:80", "npipe://"] }'	
Add-Content 'c:\programdata\docker\config\daemon.json' '{"hosts": ["tcp://0.0.0.0:2375", "npipe://"] }']	
New-Item-Type File c:\programData\docker\confing\daemon.json	

- A. Mastered
- B. Not Mastered

Answer: A

Explanation:

References:

<https://glennsarti.github.io/blog/getting-started-with-windows-containers/> <https://docs.microsoft.com/en-us/virtualization/windowscontainers/manage-containers/container-networking>

NEW QUESTION 318

You have Nano Server image named Disk1.vhdx. You mount Disk1.vhdx.

You need to add a folder that contains several files to the image. Which tool or cmdlet you should use?

- A. File Explore.
- B. Add-Windows Image
- C. Nano Server Image Builder
- D. Dism

Answer: D

NEW QUESTION 322

You have a server named Server1 that runs Windows Server 2016 You install the Docker daemon on

Server1 You need to configure the Docker daemon to accept connections only on TCP port 64500. What should you do?

- A. Run theNew-NetFirewallRulecmdlet
- B. Run theSet-ServiceWindows PowerShell cmdlet.
- C. Run the sc config command.
- D. Run the sc control command.

Answer: C

NEW QUESTION 326

Note: This question is part of a series of questions that present the same scenario. Each question in the series contains a unique solution that might meet the stated goals. Some question sets might have more than one correct solution, while others might not have a correct solution.

After you answer a question in this section, you will NOT be able to return to it. As a result, these questions will not appear in the review screen.

You network contains an Active Directory forest named contoso.com. The forest contains a child domain named eu.contoso.com.

You plan to implement live migration between two Hyper-V hosts that run Windows Server 2016. The hosts are configured as shown in the following table.

Host name	Configuration
Host1	<ul style="list-style-type: none"> Is a member of the contoso.com domain Uses an Intel Xeon processor released in 2012 Has an external virtual switch named Switch1 Hosts a virtual machine named VM1 that connects to Switch1
Host2	<ul style="list-style-type: none"> Is a member of the eu.contoso.com domain Uses an Intel Xeon processor released in 2016 Has an external virtual switch named Switch1

You need to ensure that you can perform a live migration of VM1 from Host1 to Host2.

Solution: You replace the processor in Host1 with a processor that is identical to the processor in Host2.

Does meet the goal?

- A. Yes
B. No

Answer: B

NEW QUESTION 327

HOTSPOT

You have a Hyper-V host named Server1 that runs Windows Server 2016 datacenter. Server1 is activated.

On Server1, you deploy a virtual machine named VM1 that has a Server Core installation of Windows Server 2016 Standard.

You need to activate VM1 by using Automatic Virtual Machine Activation (AVMA).

Which command should you run? To answer, select the appropriate options in the answer area. NOTE: Each correct selection is worth one point.

Answer Area

▼

reg.exe
regsvr32.exe
setup.exe
Set-VM
Set-WindowsProductKey
slmgr.vbs

▼

/ipk
/pkey
/rearm
/unattend:PID=
-ProductKey

C3RCX-M6NRP-6CXC9-TW2F2-4RHYD

- A. Mastered
B. Not Mastered

Answer: A

Explanation:

References: <https://blogs.technet.microsoft.com/askcore/2013/11/13/activating-virtual-machines-via-automatic-virtual-machine-activation-in-windows-server-2012-r2/>

NEW QUESTION 331

You have a server named Server1 that runs Windows Server 2016. Server1 has two network adapters that support single root I/O virtualization (SR-IOV). The network adapters are from two different vendors.

You plan to install the Hyper-V server role on Server1, and then to create a virtual machine named VM1 that runs Windows Server 2016. VM1 will use SR-IOV.

You need to ensure that VM1 can use both network adapters for load balancing and failover. What should you do?

- A. On Server1, create two virtual switches without embedded teamin
B. On VM1, create one NIC team.
C. On Server1, create one virtual switch without embedded teamin
D. On VM1, create one NIC team.
E. On Server1, create one NIC tea
F. On VM1, create one NIC team.
G. On Server1, create one virtual switch that has embedded teamin
H. On VM1, create two NIC teams.

Answer: A

NEW QUESTION 333

You have a server named Server1 that runs Windows Server 2016. The server has an application named App1. App1 writes entries to the Application event log when errors are encountered. The events have IDs of either 111 or 112. You need to restart the service whenever either of these events is logged. What should you do?

- A. From Windows PowerShell, run the Get-SMSEvent cmdlet and pipe the output to the Start- NetEventSession cmdlet.
- B. From Event Viewer, create a subscription that has a filter for the event IDs.
- C. From Event Viewer, use the Create Basic Task Wizard for each event ID.
- D. From Windows PowerShell, run the Get-Event cmdlet and pipe the output to the Start-NetEventSession cmdlet.

Answer: C

NEW QUESTION 335

You have a server named VM1. VM1 is a virtual machine on a Hyper-V host that runs Windows Server 2016. You need to create a checkpoint that includes the virtual machine memory state of VM1. What command should you run? To answer, select the appropriate options in the answer area.

▼

Checkpoint-VM

Get-VMSnapshot

Set-VM

-Name VM1 -CheckpointType

▼

Production

ProductionOnly

Standard

▼

Checkpoint-VM

Export-VMSnapshot

Get-VHDSnapshot

-Name VM1 -SnapshotName Snapshot1

- A. Mastered
- B. Not Mastered

Answer: A

Explanation:
References:
<https://docs.microsoft.com/en-us/virtualization/hyper-v-on-windows/user-guide/checkpoints>

NEW QUESTION 340

You have a Network Load Balancing (NLB) cluster that contains two nodes named Server1 and Server2. The nodes run Windows Server 2016. The NLB cluster has the following configuration.

ClusterName	:						
IPAddress	:	172.16.4.1					
Name	:						
ClusterIPAddress	:	172.16.4.1					
ClusterNetworkMask	:	255.255.0.0					
ClusterMacAddress	:	02-bf-ac-10-04-01					
OperationMode	:	UNICAST					
BdaReverseHash	:	False					
BdaTeamActive	:	False					
BdaTeamId	:						
BdaTeamMaster	:	False					
IPAddress	State	Start	End	Protocol	Mode	Affinity	Timeout
-----	-----	-----	-----	-----	-----	-----	-----
All	Enabled	0	65535	Both	Multiple	Single	0

You deploy the Web Server (IIS) server role identically to both servers.

You need to configure NLB to load balance requests between the web servers. HTTP requests must be stateless. HTTPS requests must be stateful. What should you do? Each correct answer presents part of the solution.

- A. Modify the Cluster operation mode.
- B. Suspend the cluster.
- C. Drainstop the cluster.
- D. Add a new port rule.
- E. Edit the existing port rule.

Answer: CD

Explanation:

References:
<https://www.ntweekly.com/2017/09/04/failover-nlb-cluster-host-member/> <https://docs.microsoft.com/en-us/windows-server/networking/technologies/network-load-balancing>

NEW QUESTION 341

Your network contains an Active Directory domain named contoso.com. The domain contains two servers named Server1 and Server2 that run Windows Server 2016. Server1 and Server2 have multiple local disks attached. You need to create a storage pool by using Storage Spaces Direct. Which three actions should you perform in sequence? To answer, move the appropriate actions from the list of actions to the answer area and arrange them in the correct order.

Actions

From Server1, run the **New-SpacesPool** cmdlet.

On Server1 and Server2, install the Failover Clustering feature.

From Server1, run the **New-StorageFileServer** cmdlet.

From Server1, run the **New-Cluster** cmdlet.

On Server1 and Server2, install the Storage Replica feature.

From Server1, run the **Enable-ClusterStorageSpacesDirect** cmdlet.

On Server1 and Server2, install the File Server role service.

Answer Area

⏪

⏩

⏴

⏵

- A. Mastered
- B. Not Mastered

Answer: A

Explanation:

References:
<https://docs.microsoft.com/en-us/windows-server/storage/storage-spaces/deploy-storage-spaces-direct>

NEW QUESTION 343

You have a Hyper-V host named Server1 that runs Windows Server 2016. Server1 hosts a virtual machine named VM1 that runs Windows Server 2012. VM1 has the following configuration.

```
C:\>Get-VM VM1 | fl Version, HardDrives, DynamicMemoryEnabled, Generation, MemoryStartup
```

```
Version           : 5.0
HardDrives        :{(Hard drive on IDE controller number 0 at location 0)}
DynamicMemoryEnabled :False
Generation        :1
MemoryStartup     :536870912
```

```
C:\>Get-VMIntegrationService VM1
```

VMName	Name	Enabled	PrimaryStatusDescription	SecondaryStatusDescription
VM1	Guest Service Interface	False	OK	
VM1	Heartbeat	False	OK	
VM1	Key-Value Pair Exchange	False	OK	
VM1	Shutdown	False	OK	
VM1	Time Synchronization	False	OK	
VM1	VSS	False	OK	

You discover that when you back up Server1, VM1 temporarily pauses.

You need to ensure that you can back up Server1 without causing downtime on VM1. What should you do?

- A. Increase the memory on VM1
- B. Connect the hard disk drive of VM1 to an SCSI controller
- C. Update the virtual machine version of VM1
- D. Upgrade VM1 to Windows Server 2016
- E. Enable the VSS integration service on VM1

Answer: E

Explanation:

References:

<https://www.starwindsoftware.com/blog/hyper-v-backup-challenges-windows-server-2016-needs-to-address>

NEW QUESTION 347

.....

THANKS FOR TRYING THE DEMO OF OUR PRODUCT

Visit Our Site to Purchase the Full Set of Actual 70-740 Exam Questions With Answers.

We Also Provide Practice Exam Software That Simulates Real Exam Environment And Has Many Self-Assessment Features. Order the 70-740 Product From:

<https://www.2passeasy.com/dumps/70-740/>

Money Back Guarantee

70-740 Practice Exam Features:

- * 70-740 Questions and Answers Updated Frequently
- * 70-740 Practice Questions Verified by Expert Senior Certified Staff
- * 70-740 Most Realistic Questions that Guarantee you a Pass on Your FirstTry
- * 70-740 Practice Test Questions in Multiple Choice Formats and Updatesfor 1 Year