



# Fortinet

## Exam Questions NSE4

Fortinet Network Security Expert 4 Written Exam (400)

## About ExamBible

*[Your Partner of IT Exam](#)*

## Found in 1998

ExamBible is a company specialized on providing high quality IT exam practice study materials, especially Cisco CCNA, CCDA, CCNP, CCIE, Checkpoint CCSE, CompTIA A+, Network+ certification practice exams and so on. We guarantee that the candidates will not only pass any IT exam at the first attempt but also get profound understanding about the certificates they have got. There are so many alike companies in this industry, however, ExamBible has its unique advantages that other companies could not achieve.

## Our Advances

### \* 99.9% Uptime

All examinations will be up to date.

### \* 24/7 Quality Support

We will provide service round the clock.

### \* 100% Pass Rate

Our guarantee that you will pass the exam.

### \* Unique Gurantee

If you do not pass the exam at the first time, we will not only arrange FULL REFUND for you, but also provide you another exam of your claim, ABSOLUTELY FREE!

#### NEW QUESTION 1

What is the effect of enabling auto-negotiate on the phase 2 configuration of an IPsec tunnel?

- A. FortiGate automatically negotiates different local and remote addresses with the remote peer.
- B. FortiGate automatically negotiates a new security association after the existing security association expires.
- C. FortiGate automatically negotiates different encryption and authentication algorithms with the remote peer.
- D. FortiGate automatically brings up the IPsec tunnel and keeps it up, regardless of activity on the IPsec tunnel.

**Answer:** D

**Explanation:**

<https://kb.fortinet.com/kb/documentLink.do?externalID=12069>

#### NEW QUESTION 2

An administrator needs to increase network bandwidth and provide redundancy.  
What interface type must the administrator select to bind multiple FortiGate interfaces?

- A. VLAN interface
- B. Software Switch interface
- C. Aggregate interface
- D. Redundant interface

**Answer:** C

#### NEW QUESTION 3

Which two types of traffic are managed only by the management VDOM? (Choose two.)

- A. FortiGuard web filter queries
- B. PKI
- C. Traffic shaping
- D. DNS

**Answer:** AD

#### NEW QUESTION 4

An administrator does not want to report the logon events of service accounts to FortiGate. What setting on the collector agent is required to achieve this?

- A. Add the support of NTLM authentication.
- B. Add user accounts to Active Directory (AD).
- C. Add user accounts to the FortiGate group filter.
- D. Add user accounts to the Ignore User List.

**Answer:** D

#### NEW QUESTION 5

Which three criteria can a FortiGate use to look for a matching firewall policy to process traffic? (Choose three.)

- A. Source defined as Internet Services in the firewall policy.
- B. Destination defined as Internet Services in the firewall policy.
- C. Highest to lowest priority defined in the firewall policy.
- D. Services defined in the firewall policy.
- E. Lowest to highest policy ID number.

**Answer:** ABD

**Explanation:**

When a packet arrives, how does FortiGate find a matching policy? Each policy has match criteria, which you can define using the following objects:

- Incoming Interface
- Outgoing Interface
- Source: IP address, user, internet services
- Destination: IP address or internet services
- Service: IP protocol and port number
- Schedule: Applies during configured times

#### NEW QUESTION 6

Which of the following statements is true regarding SSL VPN settings for an SSL VPN portal?

- A. By default, FortiGate uses WINS servers to resolve names.
- B. By default, the SSL VPN portal requires the installation of a client's certificate.
- C. By default, split tunneling is enabled.
- D. By default, the admin GUI and SSL VPN portal use the same HTTPS port.

**Answer:** D

#### NEW QUESTION 7

Which two protocol options are available on the CLI but not on the GUI when configuring an SD-WAN Performance SLA? (Choose two.)

- A. DNS
- B. ping
- C. udp-echo
- D. TWAMP

**Answer:** CD

#### NEW QUESTION 8

Refer to the exhibit.

```
1: date=2020-08-14 time=06:28:24 logid= "0316013056" type= "utm" subtype= "webfilter"
eventtype= "ftgd_blk" level= "warning" vd= "root" eventtime= 1597343304867252750
policyid=2 sessionid=83212 srcip=10.0.1.10 srcport=53742 srcintf= "port3" srcintfrole=
"undefined" dstip=159.65.216.232 dstport=443 dstintf= "port1" dstintfrole= "wan" proto=6
service= "HTTPS" hostname= "etp-experiment-1.dummytracker.org" profile= "default"
action= "blocked" rectype= "direct" url= "https://etp-experiment-1.dummytracker.org/"
sentbyte=517 rcvdbyte=0 direction= "outgoing" msg= "URL belongs to a denied category in
policy" method= "domain" cat=26 catdesc= "Malicious Websites" crscore=30 craction=
4194304 crlevel= "high"
```

Based on the raw log, which two statements are correct? (Choose two.)

- A. Traffic is blocked because Action is set to DENY in the firewall policy.
- B. Traffic belongs to the root VDOM.
- C. This is a security log.
- D. Log severity is set to error on FortiGate.

**Answer:** AC

#### NEW QUESTION 9

A team manager has decided that, while some members of the team need access to a particular website, the majority of the team does not. Which configuration option is the most effective way to support this request?

- A. Implement a web filter category override for the specified website.
- B. Implement a DNS filter for the specified website.
- C. Implement web filter quotas for the specified website.
- D. Implement web filter authentication for the specified website.

**Answer:** D

#### NEW QUESTION 10

You have enabled logging on your FortiGate device for Event logs and all Security logs, and you have set up logging to use the FortiGate local disk. What is the default behavior when the local disk is full?

- A. Logs are overwritten and the only warning is issued when log disk usage reaches the threshold of 95%.
- B. No new log is recorded until you manually clear logs from the local disk.
- C. Logs are overwritten and the first warning is issued when log disk usage reaches the threshold of 75%.
- D. No new log is recorded after the warning is issued when log disk usage reaches the threshold of 95%.

**Answer:** C

#### NEW QUESTION 10

Refer to the exhibit.

**Outgoing interfaces**

☐ **Manual**  
Manually assign outgoing interfaces.

☒ **Best Quality**  
The interface with the best measured performance is selected.

☐ **Lowest Cost (SLA)**  
The interface that meets SLA targets is selected. When there is a tie, the interface with the lowest assigned cost is selected.

☐ **Maximize Bandwidth (SLA)**  
Traffic is load balanced among interfaces that meet SLA targets.

**Interface preference**

port1	X
port2	X
port3	X
port4	X

**Measured SLA** SLA\_1

**Quality criteria** Latency

**Status** Enable Disable

```
NGFW-1 # diagnose sys virtual-wan-link health-check
Health Check(DC_PBX_SLA):
Seq(1 port1): state(alive), packet-loss(0.000%) latency(21.566), jitter(2.685) sla_map=0x
Seq(2 port2): state(alive), packet-loss(0.000%) latency(54.349), jitter(4.287) sla_map=0x
Seq(3 port3): state(alive), packet-loss(0.100%) latency(32.683), jitter(5.685) sla_map=0x
Seq(4 port4): state(alive), packet-loss(2.010%) latency(48.881), jitter(4.287) sla_map=0x
```

The exhibit contains the configuration for an SD-WAN Performance SLA, as well as the output of diagnose sys virtual-wan-link health-check . Which interface will be selected as an outgoing interface?

- A. port2
- B. port4
- C. port3
- D. port1

**Answer: D**

**Explanation:**

Port 1 shows the lowest latency.

**NEW QUESTION 12**

Which CLI command allows administrators to troubleshoot Layer 2 issues, such as an IP address conflict?

- A. get system status
- B. get system performance status
- C. diagnose sys top
- D. get system arp

**Answer: D**

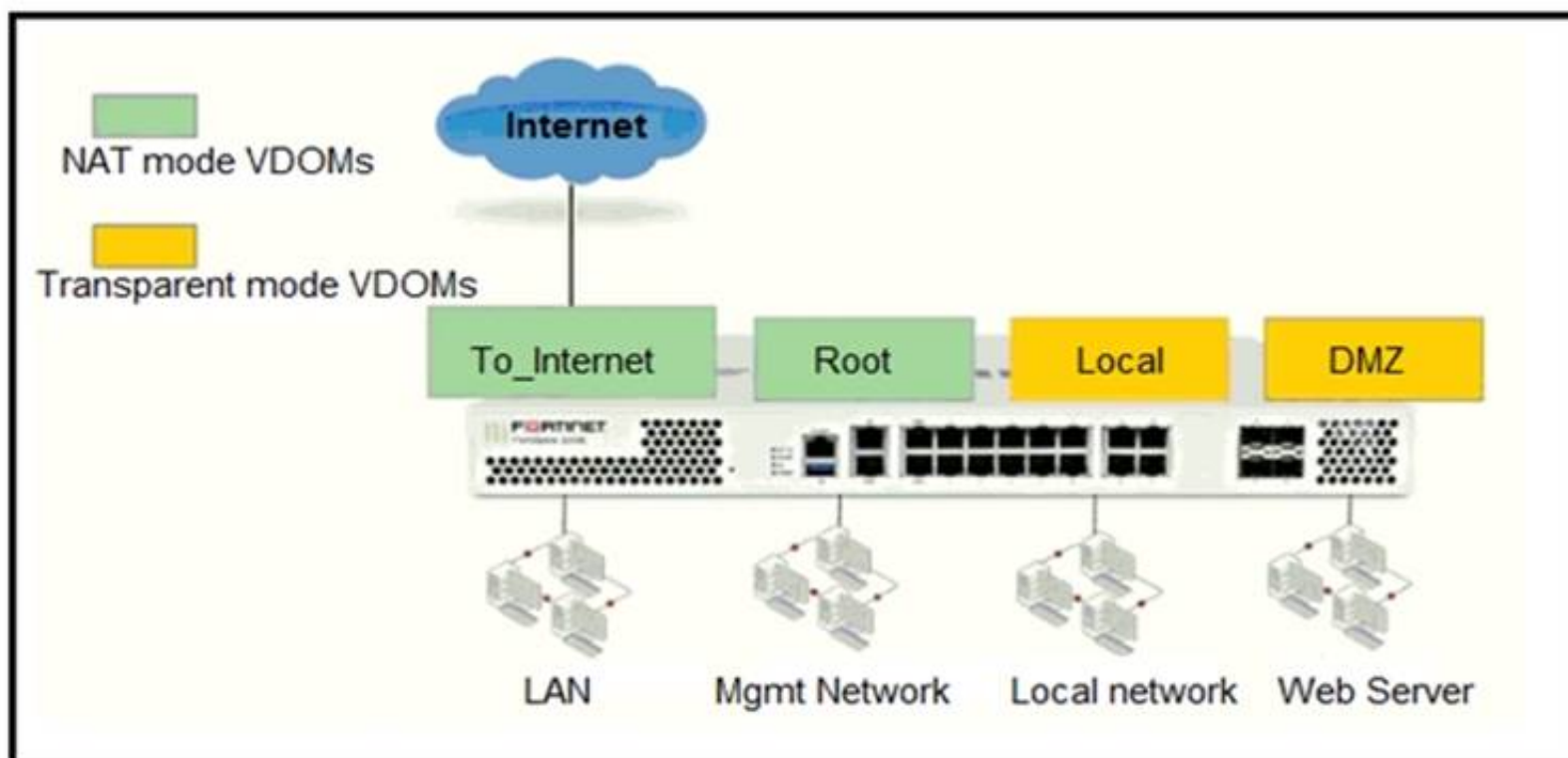
**Explanation:**

"If you suspect that there is an IP address conflict, or that an IP has been assigned to the wrong device, you may need to look at the ARP table."

**NEW QUESTION 15**

Refer to the exhibit.





The Root and To\_Internet VDOMs are configured in NAT mode. The DMZ and Local VDOMs are configured in transparent mode. The Root VDOM is the management VDOM. The To\_Internet VDOM allows LAN users to access the internet. The To\_Internet VDOM is the only VDOM with internet access and is directly connected to ISP modem .  
 With this configuration, which statement is true?

- A. Inter-VDOM links are required to allow traffic between the Local and Root VDOMs.
- B. A static route is required on the To\_Internet VDOM to allow LAN users to access the internet.
- C. Inter-VDOM links are required to allow traffic between the Local and DMZ VDOMs.
- D. Inter-VDOM links are not required between the Root and To\_Internet VDOMs because the Root VDOM is used only as a management VDOM.

**Answer: A**

#### NEW QUESTION 18

Refer to the exhibits.

The exhibits show a network diagram and firewall configurations.

An administrator created a Deny policy with default settings to deny Webserver access for Remote-User2. Remote-User1 must be able to access the Webserver. Remote-User2 must not be able to access the Webserver.

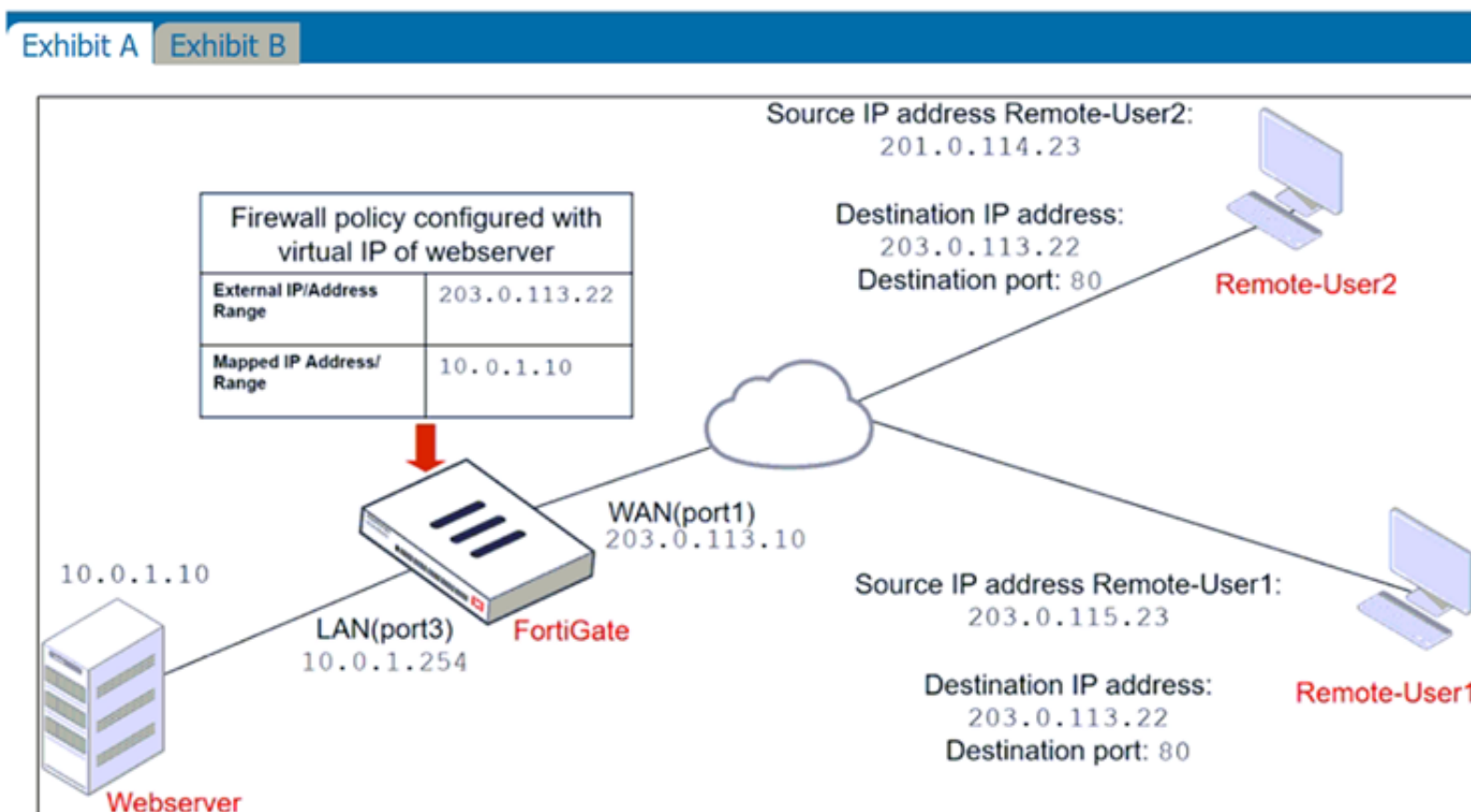


Exhibit A Exhibit B

Edit Address

Name

Deny\_IP

Color

Change

Type

Subnet

IP/Netmask

201.0.114.23/32

Interface

WAN (port1)

Static route configuration

☐

Comments

Deny web server access. 23/255

Firewall address object

Firewall policies

ID	Name	Source	Destination	Schedule	Service	Action
WAN (port1) → LAN (port3) 2						
4	Deny	Deny_IP	all	always	ALL	DENY
3	Allow_access	all	Webserver	always	ALL	ACCEPT

In this scenario, which two changes can the administrator make to deny Webserver access for Remote-User2? (Choose two.)

- A. Disable match-vip in the Deny policy.
- B. Set the Destination address as Deny\_IP in the Allow-access policy.
- C. Enable match vip in the Deny policy.
- D. Set the Destination address as Web\_server in the Deny policy.

**Answer:** CD

**Explanation:**

<https://community.fortinet.com/t5/FortiGate/Technical-Tip-Firewall-does-not-block-incoming-WAN-to-LAN/ta>

#### NEW QUESTION 20

Which two types of traffic are managed only by the management VDOM? (Choose two.)

- A. FortiGuard web filter queries
- B. PKI
- C. Traffic shaping
- D. DNS

**Answer:** AD

#### NEW QUESTION 25

An administrator has a requirement to keep an application session from timing out on port 80. What two changes can the administrator make to resolve the issue without affecting any existing services running through FortiGate? (Choose two.)

- A. Create a new firewall policy with the new HTTP service and place it above the existing HTTP policy.
- B. Create a new service object for HTTP service and set the session TTL to never
- C. Set the TTL value to never under config system-ttl
- D. Set the session TTL on the HTTP policy to maximum

**Answer:** BC

#### NEW QUESTION 26

An administrator is configuring an IPsec VPN between site A and site B. The Remote Gateway setting in both sites has been configured as Static IP Address. For site A, the local quick mode selector is 192. 168.1.0/24 and the remote quick mode selector is 192. 168.2.0/24. Which subnet must the administrator configure for the local quick mode selector for site B?

- A. 192. 168. 1.0/24
- B. 192. 168.0.0/24
- C. 192. 168.2.0/24
- D. 192. 168.3.0/24

**Answer:** C

**Explanation:**

For an IPsec VPN between site A and site B, the administrator has configured the local quick mode selector for site A as 192.168.1.0/24 and the remote quick mode selector as 192.168.2.0/24. This means that the VPN will allow traffic to and from the 192.168.1.0/24 subnet at site A to reach the 192.168.2.0/24 subnet at site B.

To complete the configuration, the administrator must configure the local quick mode selector for site B. To do this, the administrator must use the same subnet as the remote quick mode selector for site A, which is 192.168.2.0/24. This will allow traffic to and from the 192.168.2.0/24 subnet at site B to reach the 192.168.1.0/24 subnet at site A.

Therefore, the administrator must configure the local quick mode selector for site B as 192.168.2.0/24.

**NEW QUESTION 31**

Which statement about video filtering on FortiGate is true?

- A. Video filtering FortiGuard categories are based on web filter FortiGuard categories.
- B. It does not require a separate FortiGuard license.
- C. Full SSL inspection is not required.
- D. It is available only on a proxy-based firewall policy.

**Answer: B**

**NEW QUESTION 32**

An administrator configures FortiGuard servers as DNS servers on FortiGate using default settings. What is true about the DNS connection to a FortiGuard server?

- A. It uses UDP 8888.
- B. It uses UDP 53.
- C. It uses DNS over HTTPS.
- D. It uses DNS over TLS.

**Answer: B**

**NEW QUESTION 36**

Which statement about the IP authentication header (AH) used by IPsec is true?

- A. AH does not provide any data integrity or encryption.
- B. AH does not support perfect forward secrecy.
- C. AH provides data integrity but no encryption.
- D. AH provides strong data integrity but weak encryption.

**Answer: C**

**NEW QUESTION 37**

Which feature in the Security Fabric takes one or more actions based on event triggers?

- A. Fabric Connectors
- B. Automation Stitches
- C. Security Rating
- D. Logical Topology

**Answer: B**

**NEW QUESTION 38**

Which of the following are valid actions for FortiGuard category based filter in a web filter profile in proxy-based inspection mode? (Choose two.)

- A. Warning
- B. Exempt
- C. Allow
- D. Learn

**Answer: AC**

**NEW QUESTION 40**

Which timeout setting can be responsible for deleting SSL VPN associated sessions?

- A. SSL VPN idle-timeout
- B. SSL VPN http-request-body-timeout
- C. SSL VPN login-timeout
- D. SSL VPN dtls-hello-timeout

**Answer: A**

**NEW QUESTION 44**

Refer to the exhibit.





A network administrator is troubleshooting an IPsec tunnel between two FortiGate devices. The administrator has determined that phase 1 status is up. but phase 2 fails to come up.

Based on the phase 2 configuration shown in the exhibit, what configuration change will bring phase 2 up?

- A. On HQ-FortiGate, enable Auto-negotiate.
- B. On Remote-FortiGate, set Seconds to 43200.
- C. On HQ-FortiGate, enable Diffie-Hellman Group 2.
- D. On HQ-FortiGate, set Encryption to AES256.

**Answer: D**

#### NEW QUESTION 48

What are two functions of ZTNA? (Choose two.)

- A. ZTNA manages access through the client only.
- B. ZTNA manages access for remote users only.
- C. ZTNA provides a security posture check.
- D. ZTNA provides role-based access.

**Answer: CD**

#### NEW QUESTION 49

Which two statements are true about the FGCP protocol? (Choose two.)

- A. FGCP elects the primary FortiGate device.
- B. FGCP is not used when FortiGate is in transparent mode.
- C. FGCP runs only over the heartbeat links.
- D. FGCP is used to discover FortiGate devices in different HA groups.

**Answer: AC**

#### Explanation:

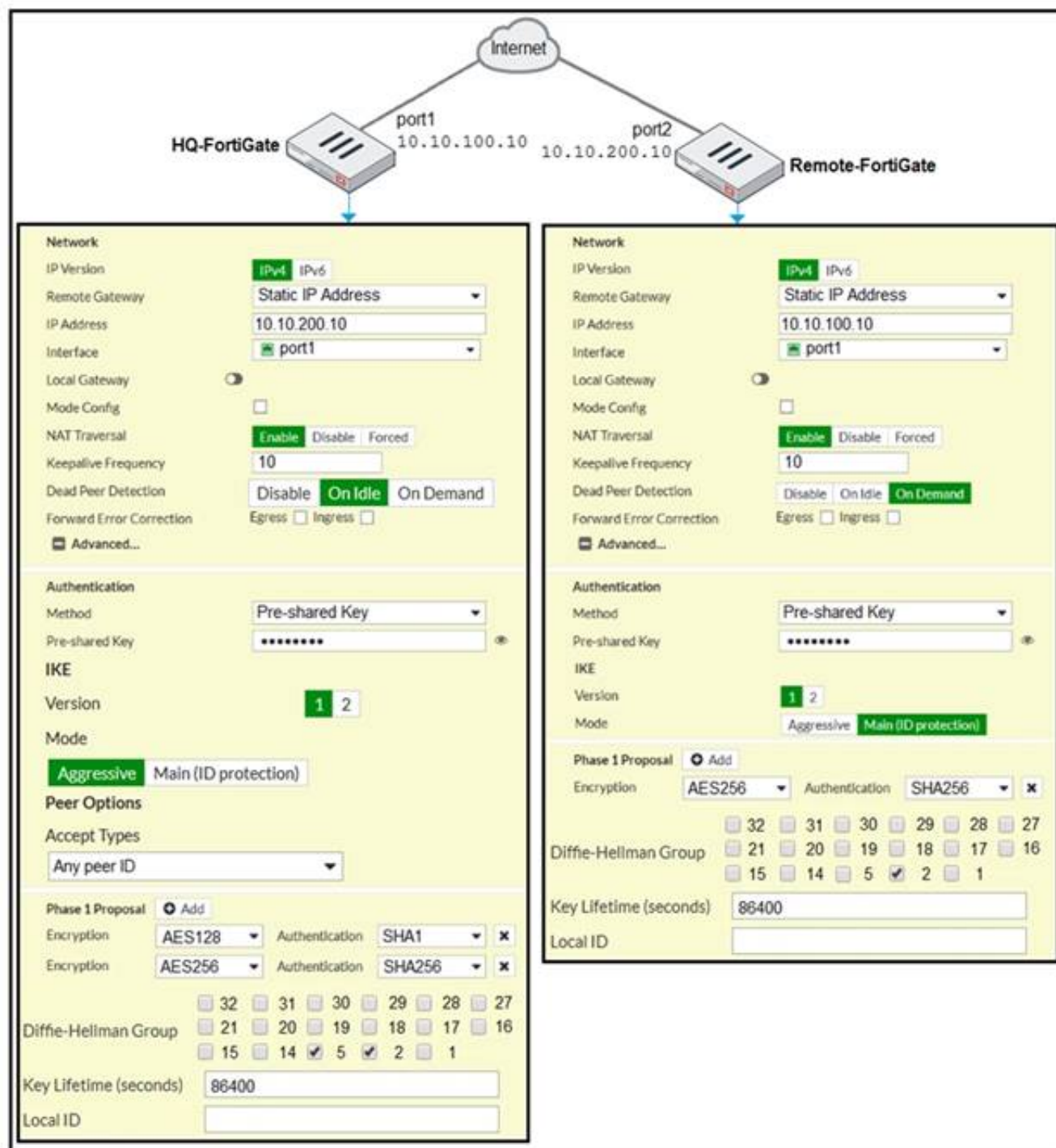
The FGCP (FortiGate Clustering Protocol) is a protocol that is used to manage high availability (HA) clusters of FortiGate devices. It performs several functions, including the following:

FGCP elects the primary FortiGate device: In an HA cluster, FGCP is used to determine which FortiGate device will be the primary device, responsible for handling traffic and making decisions about what to allow or block. FGCP uses a variety of factors, such as the device's priority, to determine which device should be the primary.

FGCP runs only over the heartbeat links: FGCP communicates between FortiGate devices in the HA cluster using the heartbeat links. These are dedicated links that are used to exchange status and control information between the devices. FGCP does not run over other types of links, such as data links.

#### NEW QUESTION 52

A network administrator is troubleshooting an IPsec tunnel between two FortiGate devices. The administrator has determined that phase 1 fails to come up. The administrator has also re-entered the pre-shared key on both FortiGate devices to make sure they match.



Based on the phase 1 configuration and the diagram shown in the exhibit, which two configuration changes will bring phase 1 up? (Choose two.)

- A. On HQ-FortiGate, set IKE mode to Main (ID protection).
- B. On both FortiGate devices, set Dead Peer Detection to On Demand.
- C. On HQ-FortiGate, disable Diffie-Hellman group 2.
- D. On Remote-FortiGate, set port2 as Interface.

**Answer: AD**

#### NEW QUESTION 54

What is the limitation of using a URL list and application control on the same firewall policy, in NGFW policy-based mode?

- A. It limits the scanning of application traffic to the DNS protocol only.
- B. It limits the scanning of application traffic to use parent signatures only.
- C. It limits the scanning of application traffic to the browser-based technology category only.
- D. It limits the scanning of application traffic to the application category only.

**Answer: D**

#### Explanation:

<https://docs.fortinet.com/document/fortigate/5.6.0/cookbook/38324/ngfw-policy-based-mode>

In policy-based mode on a next-generation firewall (NGFW), you can use a URL list and application control in the same firewall policy to control traffic to and from specific websites or applications. However, there is a limitation to consider when using these features together:

It limits the scanning of application traffic to the application category only: The URL list and application control both rely on the firewall to inspect traffic and make decisions about what to allow or block. However, the URL list is limited to inspecting traffic at the URL level, while the application control can inspect traffic at a deeper level, such as at the application layer. This means that the application control is more comprehensive and can provide more granular control over specific applications, while the URL list is limited to controlling traffic at the URL level.

#### NEW QUESTION 56

Which certificate value can FortiGate use to determine the relationship between the issuer and the certificate?

- A. Subject Key Identifier value
- B. SMMIE Capabilities value
- C. Subject value
- D. Subject Alternative Name value

**Answer: A**

NEW QUESTION 59

How does FortiGate act when using SSL VPN in web mode?

- A. FortiGate acts as an FDS server.
- B. FortiGate acts as an HTTP reverse proxy.
- C. FortiGate acts as DNS server.
- D. FortiGate acts as router.

Answer: B

NEW QUESTION 62

Refer to the exhibits.  
Exhibit A shows a network diagram. Exhibit B shows the firewall policy configuration and a VIP object configuration.  
The WAN (port1) interface has the IP address 10.200.1.1/24. The LAN (port3) interface has the IP address 10.0.1.254/24.

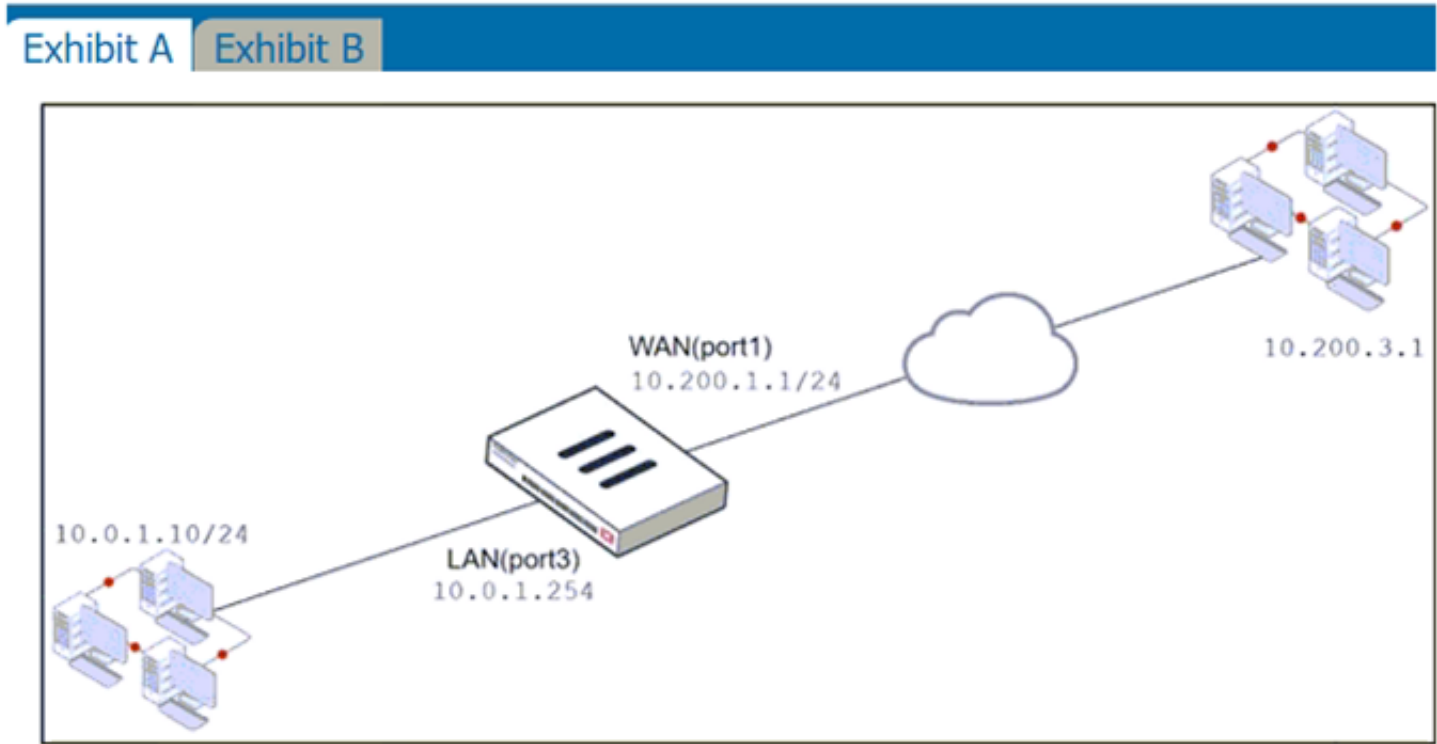


Exhibit B

Name	From	To	Source	Destination	Schedule	Service	Action	NAT
WebServer	WAN (port1)	LAN (port3)	all	VIP	always	ALL	ACCEPT	Enabled

Edit Virtual IP

VIP type: IPv4

Name: VIP

Comments: Write a comment... 0/255

Color: Change

Network

Interface: WAN (port1)

Type: Static NAT

External IP address/range: 10.200.1.10

Map to

IPv4 address/range: 10.0.1.10

Optional Filters: ☐

Port Forwarding: ☒

Protocol: ☒ TCP ☐ UDP ☐ SCTP ☐ ICMP

Port Mapping Type: ☒ One to one ☐ Many to many

External service port: 10443

Map to IPv4 port: 443

If the host 10.200.3.1 sends a TCP SYN packet on port 10443 to 10.200.1.10, what will the source address, destination address, and destination port of the packet be, after FortiGate forwards the packet to the destination?

- A. 10.0.1.254, 10.0.1.10, and 443, respectively
- B. 10.0.1.254, 10.0.1.10, and 10443, respectively
- C. 10.200.3.1, 10.0.1.10, and 443, respectively

Answer: C



NEW QUESTION 63

Refer to the exhibit.

	Name	Type	IP/Netmask	VLAN ID
Physical Interface 14				
	port1	Physical Interface	10.200.1.1/255.255.255.0	
	port1-vlan10	VLAN	10.1.10.1/255.255.255.0	10
	port1-vlan1	VLAN	10.200.5.1/255.255.255.0	1
	port10	Physical Interface	10.0.11.1/255.255.255.0	
	port2	Physical Interface	10.200.2.1/255.255.255.0	
	port2-vlan10	VLAN	10.0.10.1/255.255.255.0	10
	port2-vlan1	VLAN	10.0.5.1/255.255.255.0	1

Given the interfaces shown in the exhibit. which two statements are true? (Choose two.)

- A. Traffic between port2 and port2-vlan1 is allowed by default.
- B. port1-vlan10 and port2-vlan10 are part of the same broadcast domain.
- C. port1 is a native VLAN.
- D. port1-vlan and port2-vlan1 can be assigned in the same VDOM or to different VDOMs.

Answer: CD

Explanation:

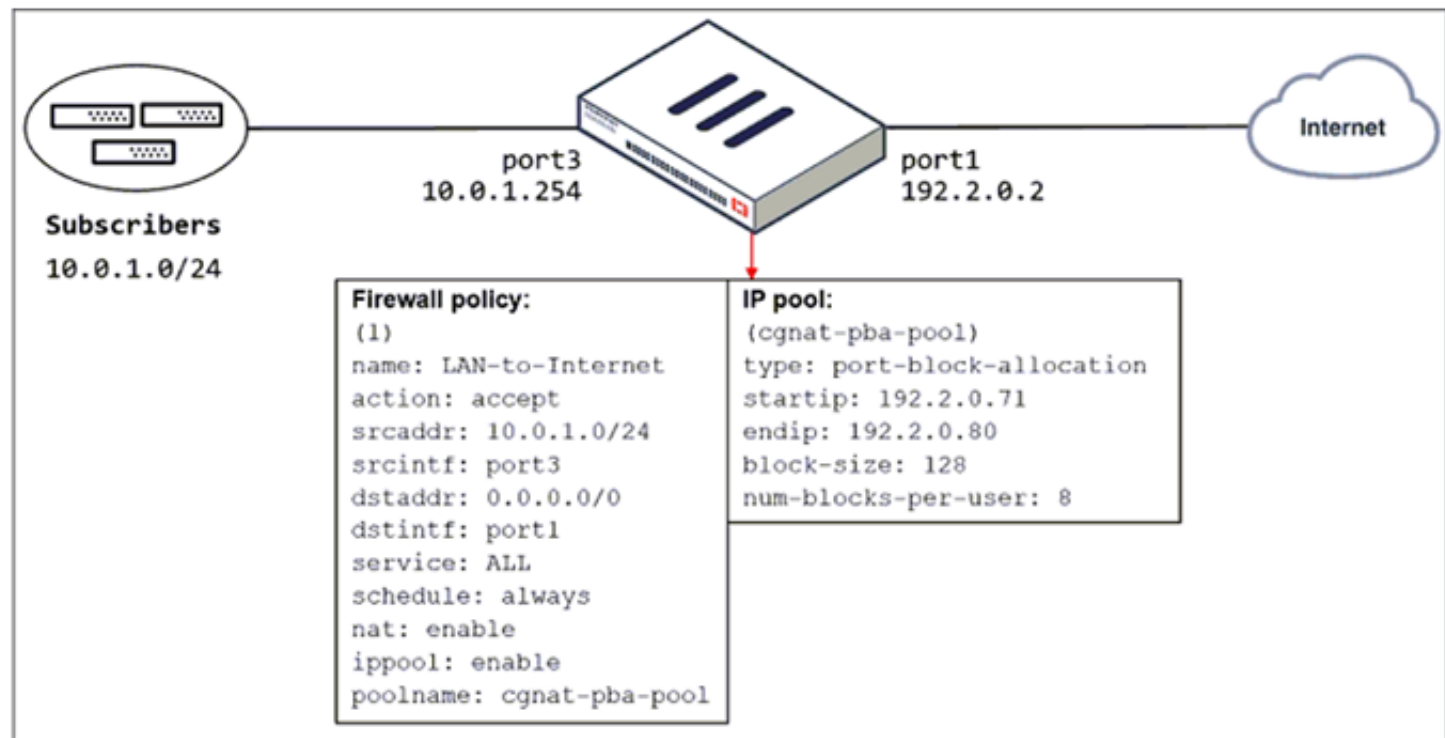
<https://community.fortinet.com/t5/FortiGate/Technical-Tip-rules-about-VLAN-configuration-and-VDOM-interf>

<https://kb.fortinet.com/kb/viewContent.do?externalId=FD30883>

NEW QUESTION 64

Refer to the exhibit.

The exhibit shows a diagram of a FortiGate device connected to the network and the firewall policy and IP pool configuration on the FortiGate device.



Which two actions does FortiGate take on internet traffic sourced from the subscribers? (Choose two.)

- A. FortiGate allocates port blocks per user, based on the configured range of internal IP addresses.
- B. FortiGate allocates port blocks on a first-come, first-served basis.
- C. FortiGate generates a system event log for every port block allocation made per user.
- D. FortiGate allocates 128 port blocks per user.

Answer: AD

NEW QUESTION 67

An administrator observes that the port1 interface cannot be configured with an IP address. What can be the reasons for that? (Choose three.)

- A. The interface has been configured for one-arm sniffer.
- B. The interface is a member of a virtual wire pair.
- C. The operation mode is transparent.
- D. The interface is a member of a zone.
- E. Captive portal is enabled in the interface.

Answer: ABC

Explanation:

[https://help.fortinet.com/fos50hlp/54/Content/FortiOS/fortigate-whats-new-54/Top\\_VirtualWirePair.htm](https://help.fortinet.com/fos50hlp/54/Content/FortiOS/fortigate-whats-new-54/Top_VirtualWirePair.htm)

#### NEW QUESTION 71

Which three CLI commands can you use to troubleshoot Layer 3 issues if the issue is in neither the physical layer nor the link layer? (Choose three.)

- A. diagnose sys top
- B. execute ping
- C. execute traceroute
- D. diagnose sniffer packet any
- E. get system arp

**Answer:** BCD

#### NEW QUESTION 74

Which of the following statements about central NAT are true? (Choose two.)

- A. IP tool references must be removed from existing firewall policies before enabling central NAT .
- B. Central NAT can be enabled or disabled from the CLI only.
- C. Source NAT, using central NAT, requires at least one central SNAT policy.
- D. Destination NAT, using central NAT, requires a VIP object as the destination address in a firewall.

**Answer:** AB

#### NEW QUESTION 76

Which two statements are correct regarding FortiGate FSSO agentless polling mode? (Choose two.)

- A. FortiGate points the collector agent to use a remote LDAP server.
- B. FortiGate uses the AD server as the collector agent.
- C. FortiGate uses the SMB protocol to read the event viewer logs from the DCs.
- D. FortiGate queries AD by using the LDAP to retrieve user group information.

**Answer:** CD

#### Explanation:

Fortigate Infrastructure 7.0 Study Guide P.272-273

<https://kb.fortinet.com/kb/documentLink.do?externalID=FD47732>

#### NEW QUESTION 79

An administrator has configured two-factor authentication to strengthen SSL VPN access. Which additional best practice can an administrator implement?

- A. Configure Source IP Pools.
- B. Configure split tunneling in tunnel mode.
- C. Configure different SSL VPN realms.
- D. Configure host check .

**Answer:** D

#### NEW QUESTION 81

Which of the following are purposes of NAT traversal in IPsec? (Choose two.)

- A. To detect intermediary NAT devices in the tunnel path.
- B. To dynamically change phase 1 negotiation mode aggressive mode.
- C. To encapsulation ESP packets in UDP packets using port 4500.
- D. To force a new DH exchange with each phase 2 rekey.

**Answer:** AC

#### NEW QUESTION 83

Consider the topology:

Application on a Windows machine <--(SSL VPN)-->FGT--> Telnet to Linux server.

An administrator is investigating a problem where an application establishes a Telnet session to a Linux server over the SSL VPN through FortiGate and the idle session times out after about 90 minutes. The administrator would like to increase or disable this timeout.

The administrator has already verified that the issue is not caused by the application or Linux server. This issue does not happen when the application establishes a Telnet connection to the Linux server directly on the LAN.

What two changes can the administrator make to resolve the issue without affecting services running through FortiGate? (Choose two.)

- A. Set the maximum session TTL value for the TELNET service object.
- B. Set the session TTL on the SSLVPN policy to maximum, so the idle session timeout will not happen after 90 minutes.
- C. Create a new service object for TELNET and set the maximum session TTL.
- D. Create a new firewall policy and place it above the existing SSLVPN policy for the SSL VPN traffic, and set the new TELNET service object in the policy.

**Answer:** CD

#### NEW QUESTION 85

A network administrator has enabled full SSL inspection and web filtering on FortiGate. When visiting any HTTPS websites, the browser reports certificate warning



errors. When visiting HTTP websites, the browser does not report errors.  
What is the reason for the certificate warning errors?

- A. The browser requires a software update.
- B. FortiGate does not support full SSL inspection when web filtering is enabled.
- C. The CA certificate set on the SSL/SSH inspection profile has not been imported into the browser.
- D. There are network connectivity issues.

**Answer:** C

#### NEW QUESTION 86

Which statement correctly describes NetAPI polling mode for the FSSO collector agent?

- A. The collector agent uses a Windows API to query DCs for user logins.
- B. NetAPI polling can increase bandwidth usage in large networks.
- C. The collector agent must search security event logs.
- D. The NetSession Enum function is used to track user logouts.

**Answer:** D

#### Explanation:

FortiGate\_Infrastructure\_7.0 page 270: "NetAPI: polls temporary sessions created on the DC when a user logs in or logs out and calls the NetSessionEnum function in Windows."

#### NEW QUESTION 91

Examine this output from a debug flow:

```
id=20085 trace_id=1 func=print_pkt_detail line=5363 msg="vd-root received a packet(proto=1,
10.0.1.10:1->10.200.1.254:2048)
from port3. type=8, code=0, id=1, seq=33."
id=20085 trace_id=1 func=init_ip_session_common line=5519 msg="allocate a new session=00000340"
id=20085 trace_id=1 func=vf_ip_route_input_common line=2583 msg="find a route: flag=04000000 gw=10.200.1.254 via
port1"
id=20085 trace_id=1 func=fw_forward_handler line=586 msg="Denied by forward policy check (policy 0)"
```

Why did the FortiGate drop the packet?

- A. The next-hop IP address is unreachable.
- B. It failed the RPF check .
- C. It matched an explicitly configured firewall policy with the action DENY.
- D. It matched the default implicit firewall policy.

**Answer:** D

#### Explanation:

<https://kb.fortinet.com/kb/documentLink.do?externalID=13900>

#### NEW QUESTION 96

A network administrator has enabled SSL certificate inspection and antivirus on FortiGate. When downloading an EICAR test file through HTTP, FortiGate detects the virus and blocks the file. When downloading the same file through HTTPS, FortiGate does not detect the virus and the file can be downloaded.

What is the reason for the failed virus detection by FortiGate?

- A. The website is exempted from SSL inspection.
- B. The EICAR test file exceeds the protocol options oversize limit.
- C. The selected SSL inspection profile has certificate inspection enabled.
- D. The browser does not trust the FortiGate self-signed CA certificate.

**Answer:** AD

#### Explanation:

https traffic requires SSL decryption. Check the ssh inspection profile

#### NEW QUESTION 98

Refer to the exhibit.

A network administrator is troubleshooting an IPsec tunnel between two FortiGate devices. The administrator has determined that phase 1 status is up, but phase 2 fails to come up.



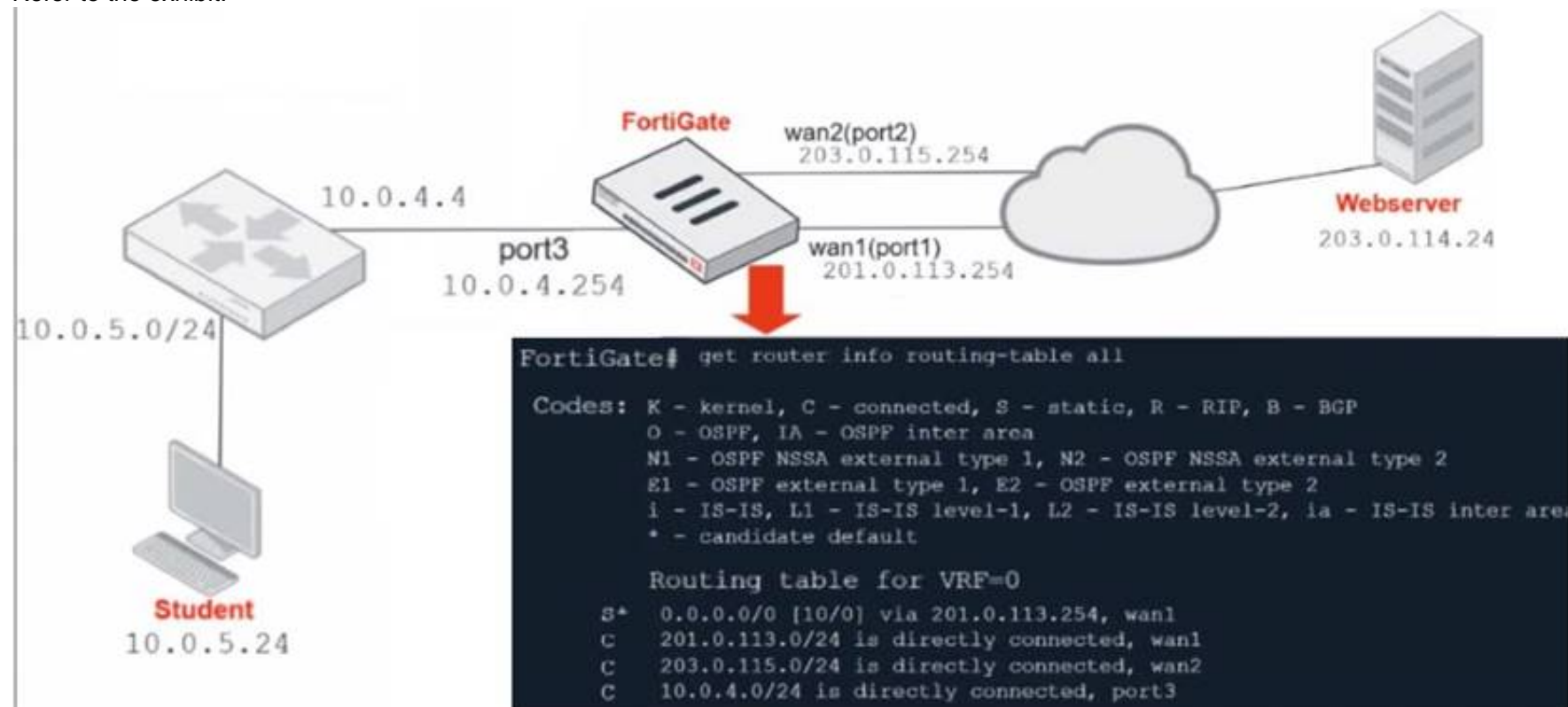
Based on the phase 2 configuration shown in the exhibit, which configuration change will bring phase 2 up?

- A. On Remote-FortiGate, set Seconds to 43200.
- B. On HQ-FortiGate, set Encryption to AES256.
- C. On HQ-FortiGate, enable Diffie-Hellman Group 2.
- D. On HQ-FortiGate, enable Auto-negotiate.

**Answer: B**

#### NEW QUESTION 102

Refer to the exhibit.



Which contains a network diagram and routing table output. The Student is unable to access Webserver.

What is the cause of the problem and what is the solution for the problem?

- A. The first packet sent from Student failed the RPF check.This issue can be resolved by adding a static route to 10.0.4.0/24 through wan1.
- B. The first reply packet for Student failed the RPF check.This issue can be resolved by adding a static route to 10.0.4.0/24 through wan1.
- C. The first reply packet for Student failed the RPF check .This issue can be resolved by adding a static route to 203.0. 114.24/32 through port3.
- D. The first packet sent from Student failed the RPF check.This issue can be resolved by adding a static route to 203.0. 114.24/32 through port3.

**Answer: D**

#### NEW QUESTION 106

The HTTP inspection process in web filtering follows a specific order when multiple features are enabled in the web filter profile. What order must FortiGate use when the web filter profile has features enabled, such as safe search?

- A. DNS-based web filter and proxy-based web filter
- B. Static URL filter, FortiGuard category filter, and advanced filters
- C. Static domain filter, SSL inspection filter, and external connectors filters
- D. FortiGuard category filter and rating filter

**Answer:** B

#### NEW QUESTION 111

Which two protocols are used to enable administrator access of a FortiGate device? (Choose two.)

- A. SSH
- B. HTTPS
- C. FTM
- D. FortiTelemetry

**Answer:** AB

#### NEW QUESTION 113

Refer to the exhibit.

The exhibit shows the output of a diagnose command.

```
# diagnose firewall proute list
list route policy info(vf=root):
id=2130903041(0x7f030001) vwl_service=1(Critical-DIA) vwl_mbr_seq=1 2 dscp_tag=0xff 0xff
flags=0x0 tos=0x00 tos_mask=0x00 protocol=0 sport=0-65535 iif=0 dport=1-65535 path(2)
oif=3(port1) oif=4(port2)
source(1): 10.0.1.0-10.0.1.255
destination wildcard(1): 0.0.0.0/0.0.0.0
internet service(3): GoToMeeting(4294836966,0,0,0, 16354)
Microsoft.Office.365.Portal(4294837474,0,0,0, 41468) Salesforce(4294837976,0,0,0, 16920)
hit_count=0 last_used=2022-02-23 05:46:43
```

What does the output reveal about the policy route?

- A. It is an ISDB route in policy route.
- B. It is a regular policy route.
- C. It is an ISDB policy route with an SDWAN rule.
- D. It is an SDWAN rule in policy route.

**Answer:** C

#### NEW QUESTION 118

Which two attributes are required on a certificate so it can be used as a CA certificate on SSL Inspection? (Choose two.)

- A. The keyUsage extension must be set to keyCertSign.
- B. The common name on the subject field must use a wildcard name.
- C. The issuer must be a public CA.
- D. The CA extension must be set to TRUE.

**Answer:** AD

#### Explanation:

"In order for FortiGate to act in these roles, its CA certificate must have the basic constraints extension set to cA=True and the value of the keyUsage extension set to keyCertSign."

#### NEW QUESTION 123

In which two ways can RPF checking be disabled? (Choose two )

- A. Enable anti-replay in firewall policy.
- B. Disable the RPF check at the FortiGate interface level for the source check
- C. Enable asymmetric routing.
- D. Disable strict-arc-check under system settings.

**Answer:** CD

#### NEW QUESTION 124

Which CLI command will display sessions both from client to the proxy and from the proxy to the servers?

- A. diagnose wad session list
- B. diagnose wad session list | grep hook-pre&&hook-out
- C. diagnose wad session list | grep hook=pre&&hook=out
- D. diagnose wad session list | grep "hook=pre"&"hook=out"

**Answer:** A

#### NEW QUESTION 125



Refer to the exhibit.

```
FGT1 # get router info routing-table database
Codes: K - kernel, C - connected, S - static, R - RIP, B - BGP
       O - OSPF, IA - OSPF inter area
       N1 - OSPF NSSA external type 1, N2 - OSPF NSSA external type 2
       E1 - OSPF external type 1, E2 - OSPF external type 2
       i - IS-IS, L1 - IS-IS level-1, L2 - IS-IS level-2, ia - IS-IS inter area
       > - selected route, * - FIB route, p - stale info

S      *> 0.0.0.0/0 [10/0] via 172.20.121.2, port1, [20/0]
        *>                [10/0] via 10.0.0.2, port2, [30/0]
S      0.0.0.0/0 [20/0] via 192.168.15.2, port3, [10/0]
C      *> 10.0.0.0/24 is directly connected, port2
S      172.13.24.0/24 [10.0] is directly connected, port4
C      *> 172.20.121.0/24 is directly connected, port1
S      *> 192.167.1.0/24 [10/0] via 10.0.0.2, port2
C      *> 192.168.15.0/24 is directly connected, port3
```

Given the routing database shown in the exhibit, which two statements are correct? (Choose two.)

- A. The port3 default route has the highest distance.
- B. The port3 default route has the lowest metric.
- C. There will be eight routes active in the routing table.
- D. The port1 and port2 default routes are active in the routing table.

Answer: AD

NEW QUESTION 128

Refer to exhibit.

An administrator configured the web filtering profile shown in the exhibit to block access to all social networking sites except Twitter. However, when users try to access twitter.com, they are redirected to a FortiGuard web filtering block page.

Name: Allow\_Twitter

Comments: Write a comment... 0/255

Feature set: Flow-based Proxy-based

☒ FortiGuard Category Based Filter

Allow

Monitor

Block

Warning

Authenticate

Name	Action
Medicine	Allow
News and Media	Allow
Social Networking	Block
Political Organizations	Allow
Reference	Allow
Global Religion	Allow
Shopping	Allow
Society and Lifestyles	Allow
Sports	Allow

Static URL Filter

Block invalid URLs

URL Filter

Create New Edit Delete Search

URL	Type	Action	Status
twitter.com	Wildcard	Allow	Enable

Block malicious URLs discovered by FortiSandbox

Content Filter

Based on the exhibit, which configuration change can the administrator make to allow Twitter while blocking all other social networking sites?

- A. On the FortiGuard Category Based Filter configuration, set Action to Warning for Social Networking
- B. On the Static URL Filter configuration, set Type to Simple
- C. On the Static URL Filter configuration, set Action to Exempt.
- D. On the Static URL Filter configuration, set Action to Monitor.

Answer: C

NEW QUESTION 129

Refer to the exhibit.

```
vcluster_nr=1
vcluster_0: start_time=1593701974(2020-07-02 10:59:34), state/o/chg_time=2(work)/2
(work)/1593701169(2020-07-02 10:46:09)
  pingsvr_flip_timeout/expire=3600s/2781s
  'FGVM010000064692': ha_prio/o=1/1, link_failure=0, pingsvr_failure=0, flag=
0x00000000, uptime/reset_cnt=198/0
  'FGVM010000065036': ha_prio/o=0/0, link_failure=0, pingsvr_failure=0, flag=
0x00000001, uptime/reset_cnt=0/1
```

The exhibit displays the output of the CLI command: diagnose sys ha dump-by vcluster. Which two statements are true? (Choose two.)

- A. FortiGate SN FGVM010000065036 HA uptime has been reset.
- B. FortiGate devices are not in sync because one device is down.
- C. FortiGate SN FGVM010000064692 is the primary because of higher HA uptime.
- D. FortiGate SN FGVM010000064692 has the higher HA priority.

**Answer:** AD

**Explanation:**

\* 1. Override is disable by default - OK

\* 2. "If the HA uptime of a device is AT LEAST FIVE MINUTES (300 seconds) MORE than the HA Uptime of the other FortiGate devices, it becomes the primary" The QUESTION NO: here is : HA Uptime of FGVM01000006492 > 5 minutes? NO - 198 seconds < 300 seconds (5 minutes) Page 314 Infra Study Guide.  
<https://docs.fortinet.com/document/fortigate/6.0.0/handbook/666653/primary-unit-selection-with-override-disab>

**NEW QUESTION 134**

Which statements best describe auto discovery VPN (ADVPN). (Choose two.)

- A. It requires the use of dynamic routing protocols so that spokes can learn the routes to other spokes.
- B. ADVPN is only supported with IKEv2.
- C. Tunnels are negotiated dynamically between spokes.
- D. Every spoke requires a static tunnel to be configured to other spokes so that phase 1 and phase 2 proposals are defined in advance.

**Answer:** AC

**NEW QUESTION 138**

Refer to the exhibits.

**Exhibit A** **Exhibit B**

```
# get system performance status
CPU states: 0% user 0% system 0% nice 100% idle 0% iowait 0% irq 0% softirq
CPU0 states: 0% user 0% system 0% nice 100% idle 0% iowait 0% irq 0% softirq
Memory: 2061108k total, 1854997k used (90%), 106111k free (5.1%), 100000k freeable (4.8%)
Average network usage: 83 / 0 kbps in 1 minute, 81 / 0 kbps in 10 minutes, 81 / 0 kbps in 30
minutes
Average sessions: 5 sessions in 1 minute, 3 sessions in 10 minutes, 3 sessions in 30 minutes
Average session setup rate: 0 sessions per second in last 1 minute, 0 sessions per second in last
10 minutes, 0 sessions per second in last 30 minutes
Virus caught: 0 total in 1 minute
IPS attacks blocked: 0 total in 1 minute
Uptime: 10 days, 3 hours, 28 minutes
```

**Exhibit A** **Exhibit B**

```
config system global
  set memory-use-threshold-red 88
  set memory-use-threshold-extreme 95
  set memory-use-threshold-green 82
end
```

Exhibit A shows system performance output. Exhibit B shows a FortiGate configured with the default configuration of high memory usage thresholds. Based on the system performance output, which two statements are correct? (Choose two.)

- A. Administrators can access FortiGate only through the console port.
- B. FortiGate has entered conserve mode.
- C. FortiGate will start sending all files to FortiSandbox for inspection.
- D. Administrators cannot change the configuration.

**Answer:** BD

**NEW QUESTION 140**

An administrator wants to configure Dead Peer Detection (DPD) on IPSEC VPN for detecting dead tunnels. The requirement is that FortiGate sends DPD probes only when no traffic is observed in the tunnel.

Which DPD mode on FortiGate will meet the above requirement?



- A. Disabled
- B. On Demand
- C. Enabled
- D. On Idle

**Answer:** D

#### NEW QUESTION 144

When configuring a firewall virtual wire pair policy, which following statement is true?

- A. Any number of virtual wire pairs can be included, as long as the policy traffic direction is the same.
- B. Only a single virtual wire pair can be included in each policy.
- C. Any number of virtual wire pairs can be included in each policy, regardless of the policy traffic direction settings.
- D. Exactly two virtual wire pairs need to be included in each policy.

**Answer:** A

#### NEW QUESTION 146

Which statement describes a characteristic of automation stitches?

- A. They can have one or more triggers.
- B. They can be run only on devices in the Security Fabric.
- C. They can run multiple actions simultaneously.
- D. They can be created on any device in the fabric.

**Answer:** C

#### NEW QUESTION 151

When a firewall policy is created, which attribute is added to the policy to support recording logs to a FortiAnalyzer or a FortiManager and improves functionality when a FortiGate is integrated with these devices?

- A. Log ID
- B. Universally Unique Identifier
- C. Policy ID
- D. Sequence ID

**Answer:** B

#### NEW QUESTION 153

Which three options are the remote log storage options you can configure on FortiGate? (Choose three.)

- A. FortiCache
- B. FortiSIEM
- C. FortiAnalyzer
- D. FortiSandbox
- E. FortiCloud

**Answer:** BCE

#### NEW QUESTION 157

Which statement is correct regarding the use of application control for inspecting web applications?

- A. Application control can identify child and parent applications, and perform different actions on them.
- B. Application control signatures are organized in a nonhierarchical structure.
- C. Application control does not require SSL inspection to identify web applications.
- D. Application control does not display a replacement message for a blocked web application.

**Answer:** A

#### Explanation:

Application control is a feature that allows FortiGate to inspect and control the use of specific web applications on the network. When application control is enabled, FortiGate can identify child and parent applications, and can perform different actions on them based on the configuration.

#### NEW QUESTION 158

FortiGuard categories can be overridden and defined in different categories. To create a web rating override for example.com home page, the override must be configured using a specific syntax.

Which two syntaxes are correct to configure web rating for the home page? (Choose two.)

- A. www.example.com:443
- B. www.example.com
- C. example.com
- D. www.example.com/index.html

**Answer:** BC

#### Explanation:

When using FortiGuard category filtering to allow or block access to a website, one option is to make a web rating override and define the website in a different category. Web ratings are only for host names - no URLs or wildcard characters are allowed.

OK: google.com or www.google.com

NO OK: www.google.com/index.html or google.\* FortiGate\_Security\_6.4 page 384

When using FortiGuard category filtering to allow or block access to a website, one option is to make a web rating override and define the website in a different category. Web ratings are only for host names-- "no URLs or wildcard characters are allowed".

#### NEW QUESTION 163

Which statement about the policy ID number of a firewall policy is true?

- A. It is required to modify a firewall policy using the CLI.
- B. It represents the number of objects used in the firewall policy.
- C. It changes when firewall policies are reordered.
- D. It defines the order in which rules are processed.

**Answer: A**

#### NEW QUESTION 167

Refer to the exhibit.



The screenshot shows the configuration for an SLA named 'SLA1'. The 'Protocol' is set to 'Ping'. The 'Server' field contains two entries: '4.2.2.2' and '4.2.2.1', each with a delete icon (X). The 'Participants' field is set to 'All SD-WAN Members' with a 'Specify' button. Below this, there are two entries: 'port1' and 'port2', each with a delete icon (X) and a plus sign (+) below them. At the bottom, there is a toggle switch for 'Enable probe packets' which is currently turned off.

An administrator has configured a performance SLA on FortiGate, which failed to generate any traffic. Why is FortiGate not sending probes to 4.2.2.2 and 4.2.2.1 servers? (Choose two.)

- A. The Detection Mode setting is not set to Passive.
- B. Administrator didn't configure a gateway for the SD-WAN members, or configured gateway is not valid.
- C. The configured participants are not SD-WAN members.
- D. The Enable probe packets setting is not enabled.

**Answer: BD**

#### NEW QUESTION 172

Which statement is correct regarding the inspection of some of the services available by web applications embedded in third-party websites? A. The security actions applied on the web applications will also be explicitly applied on the third-party websites.

- A. The application signature database inspects traffic only from the original web application server.
- B. FortiGuard maintains only one signature of each web application that is unique.
- C. FortiGate can inspect sub-application traffic regardless where it was originate

**Answer: D**

#### NEW QUESTION 173

.....

## Relate Links

**100% Pass Your NSE4 Exam with Exambible Prep Materials**

<https://www.exambible.com/NSE4-exam/>

## Contact us

We are proud of our high-quality customer service, which serves you around the clock 24/7.

Viste - <https://www.exambible.com/>