

AD0-E104 Dumps

Adobe Experience Manager Architect

<https://www.certleader.com/AD0-E104-dumps.html>



NEW QUESTION 1

A client states they will have approximately 1 million page views per month with approximately 30% of the traffic being Authenticated/Secure content. The Architect is recommending two Publish servers and a single Dispatcher.

What is the purpose of the Dispatcher in this scenario?

- A. Serves as document repository and caching mechanism
- B. Serves as Load Balancer and caching mechanism for non-secure content
- C. Serves as Load Balancer only
- D. Caches Authenticated/Secure content and serves as Load Balancer

Answer: D

NEW QUESTION 2

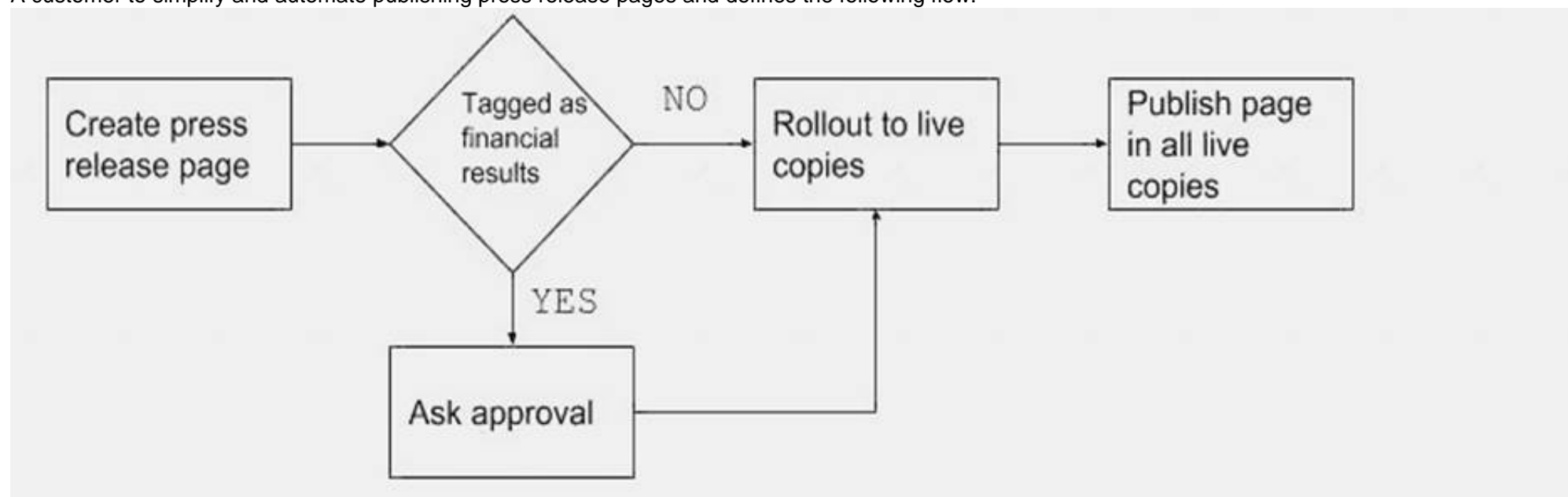
Which two elements of Adobe Experience Cloud are utilized in integrating AEM with other Adobe solutions? (Choose two.)

- A. Experience Cloud Core Service
- B. Adobe Target
- C. Adobe Primetime
- D. Adobe Mobile SDK
- E. Adobe Creative Cloud

Answer: BE

NEW QUESTION 3

A customer to simplify and automate publishing press release pages and defines the following flow:



What should the Architect recommend?

- A. Configure MSM with the "Activate on Blueprint activation" option
- B. Create a custom workflow launches
- C. Advise the customer to use Launches
- D. Implement a Sling event listener that triggers on page creation

Answer: B

NEW QUESTION 4

A customer is reporting spikes in traffic to the dispatcher and is concerned about Denial of Service (DoS) attacks. Which two actions should the Architect take to prevent this from happening? (Choose two.)

Restrict the clients that can invalidate the cache

- A. Only allow access and caching of expected mime types
- B. Use mod_rewrite module to perform URL validations
- C. Prevent clickjacking by specifying the X-FRAME-OPTIONS header
- D. Disallow access to any administrative URL

Answer: CD

NEW QUESTION 5

A customer has a large MSM setup with more than 30 languages and 150 websites:

The content authors are frequently updating the master content. MSM is configured with the "Push on modify" rollout configuration so that any changes are immediately pushed to all live copies. The customer is complaining that they encounter performance issues on the AEM Author.

What should the Architect do?

- A. Configure MSM to use "Standard rollout config" with the "On Modification" trigger
- B. Configure MSM to use "Push on modify (shallow)"
- C. Configure MSM to use "Standard rollout config"
- D. Remove the referencesUpdate action from the "Push on modify"

Answer: C

NEW QUESTION 6

An Architect is creating an index to optimize data retrieval from AEM. The Architect implements a Property index instead of a Lucene index. What is an advantage of the Property index?

- A. Property indexes support uniqueness constraints
- B. Property indexes offer more features than Lucene indexes
- C. Lucene indexes are not supported after AEM version 6.3
- D. Property indexes are faster than Lucene indexes

Answer: A

NEW QUESTION 7

A customer is migrating a large number of assets into the DAM. Some of these assets have special file formats. Which two actions should be taken prior to the migration? (Choose two.)

- A. Disable the workflows
- B. Install the ImageMagick plugin to handle various file formats
- C. Extend the metadata schema
- D. Enable the DAM Update Asset workflow
- E. Configure the taxonomy

Answer: AB

NEW QUESTION 8

Why must Service Users be created?

- A. To allow mapping OSGi services to users
- B. To allow administration access to users
- C. To restrict mapping OSGi services to groups
- D. To restrict mapping OSGi services to admins

Answer: D

NEW QUESTION 9

If a bundle property is configured with a default value in the declaration, via an OSGiConfig node, and via the Felix console. Which will your bundle use?

- A. The declaration-time default.
- B. The Felix console configuration.
- C. The OSGiConfig node configuration.
- D. The bundle will fail to start due to a conflict.

Answer: B

NEW QUESTION 10

An author makes changes to a page. The old version still appears on the site. The Author needs to troubleshoot by bypassing the Dispatcher and accessing the AEM page directly through the Publish instance. What should the author do?

- A. Modify the AEM Job Processing OSGI configuration
- B. Adjust the allowedClients of the dispatcher
- C. Use CURL to do a manual dispatcher flush
- D. Add a query parameter to the page URL

Answer: D

NEW QUESTION 10

A customer's article search page queries using a XPath expression from a very large number of article pages on AEM. The page takes a long time to respond regardless of the number of results. What is causing this issue?

- A. XPath expression based queries
- B. Dispatcher cache is not properly configured
- C. Rendering logic is not optimized for large results
- D. Indexing is not configured

Answer: D

NEW QUESTION 13

A customer wants to re-use the same content across multiple pages and channels but with variations in the layout. Which capability should the Architect recommend?

- A. Content Fragments
- B. Content Services
- C. Experience Fragments
- D. Static Templates

Answer: B

NEW QUESTION 18

Which two security aspects should be configured in a dispatcher.any? (Choose two.)

- A. SQL Injection
- B. Cross Site Request Forgery (CSRF)
- C. Clickjacking
- D. Cross Site Scripting (XSS)
- E. Denial of Service (DoS)

Answer: BE

NEW QUESTION 20

A customer's implementation leverages Content Services. The JSON response is not accessible via the dispatcher. Which two configurations should the Architect verify? (Choose two.)

- A. Modify ACLs through User Management
- B. Modify URL re-write rules on the dispatcher
- C. Allow JSON content type headers in dispatcher configuration
- D. Allow JSON extension in dispatcher configuration
- E. Modify Allow/Deny rules on the dispatcher

Answer: DE

NEW QUESTION 22

A client wants to implement AEM so that all US customers experience the same page load performance. The client only has a single datacenter in Texas. Which implementation strategy should the Architect recommend?

- A. Additional AEM Dispatchers in the Texas datacenter
- B. Adaptive Design in
- C. Responsive Design
- D. Content Delivery Network

Answer: D

NEW QUESTION 25

A university offers the same program with courses across multiple campuses and wants to set up their DAM structure that promotes re-use and sharing between the instructors. The Architect needs to define the top-level folders in the DAM hierarchy be within /content/dam/ < top-level folder > What should the top-level folder be named?

- A. Program Name
- B. Campus Name
- C. Course Name
- D. Instructor Name

Answer: B

NEW QUESTION 30

A customer recently launched a new marketing campaign with large number of dynamic pages. The environment has a typical 1:1 deployment using two publish and two dispatchers.

The customer experiences performance degradation due to several factors: Dynamic marketing campaign pages

- Significant number of additional components on each dynamic page
- Increased concurrent traffic to the site

What should an Architect recommend to improve performance?

- A. Add additional Publish instances
- B. Add additional dispatchers
- C. Increase Publish server disk capacity
- D. Configure dispatcher caching

Answer: A

NEW QUESTION 32

In which two formats is AEM able to export Experience Fragments to Adobe Target? (Choose two.)

- A. HTML
- B. CSV
- C. XML
- D. JavaScript
- E. JSON

Answer: AE

NEW QUESTION 34

An AEM-managed services customer wants to configure their GITHUB repository to be used with a continuous integration (CI) tool Which solution should be used?

- A. Adobe Launch
- B. Adobe IO
- C. Cloud Manager
- D. Package Manager

Answer: C

NEW QUESTION 37

A node in the JCR has no dedicated access control list. How should permissions be determined for this node?

- A. CRX applies default user/group permissions to the node
- B. CRX ascends the tree until a node with ACLs is found and applies user/group permissions
- C. CRX ascends the tree and aggregates all permissions to a node
- D. CRX descends the tree until a node with permissions is found and applies user/group permissions

Answer: D

NEW QUESTION 39

A product company has many authors who constantly add/remove products on an author instance and publish them. These products display on a product catalog page. End users report that the catalog page does not always show the latest products. The catalog page does not use any REST APIs or JavaScript. The page needs to be cached. What should the Architect do to resolve this issue?

- A. Use Sling Dynamic Include with Server Side Include (SSI)
- B. Configure a shorter TTL for the page on dispatcher
- C. Configure a shorter max-age value for Cache-Control header
- D. Set statfileslevel property to 1 in dispatcher configuration

Answer: A

NEW QUESTION 44

A large retail customer is building their ecommerce platform on AEM. Several third-party vendors sell products through their site. Those vendors need to review and verify the content close to production before the content goes live and the customer wants to provide them a restricted environment. Which approach should the Architect recommend?

- A. Add a Publish (preview) Server and provide access
- B. Give third-party vendors access to the Author Server
- C. Use the Preview Capabilities of AEM Author Server
- D. Export content as PDF and share with the vendors

Answer: C

NEW QUESTION 48

A customer wants to use translations, however certain content on pages must not be translated. What should the Architect recommend to meet the requirement?

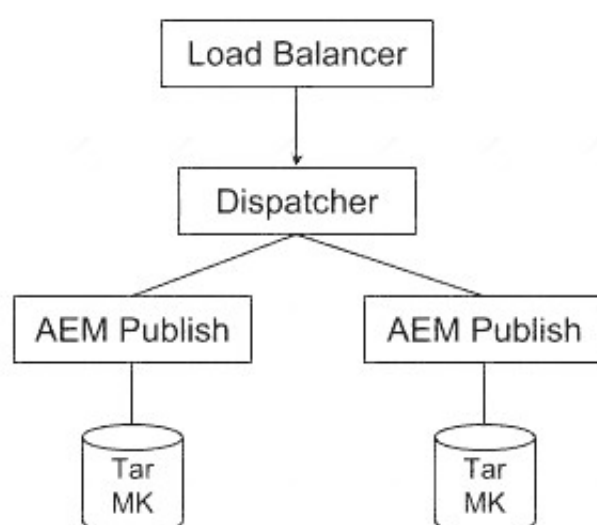
- A. Add a translate property to the content component on the page and set it to false
- B. Add the page path and properties, uncheck Translate box in Translation Configurations
- C. Add the page path and node type, uncheck Translate box in Translation Configurations
- D. Add a resource Type reference in Translation Configurations

Answer: B

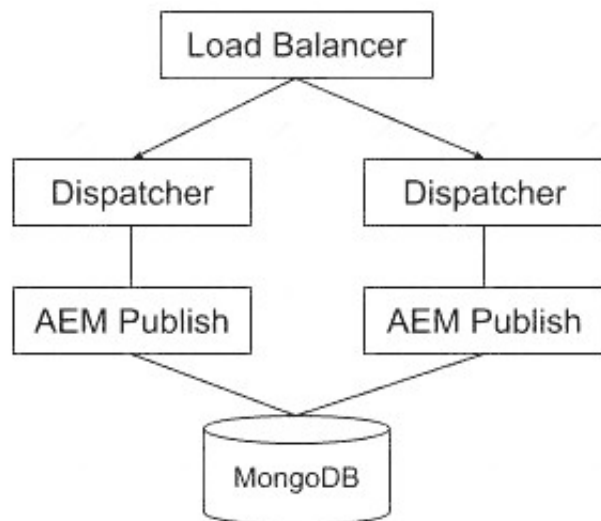
NEW QUESTION 49

Which architecture should the Architect recommend for performance and failover?

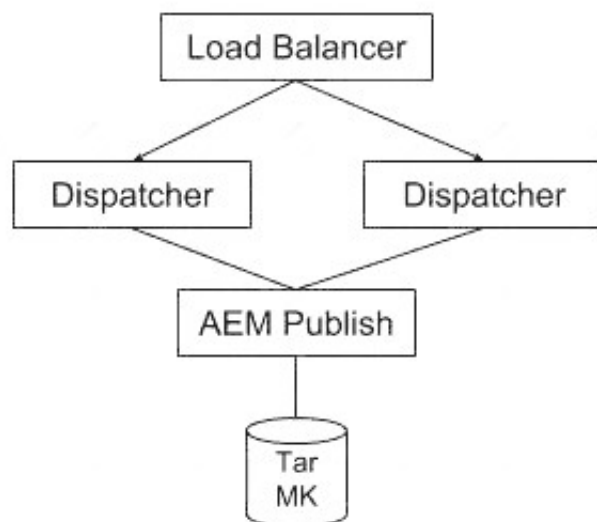
A)



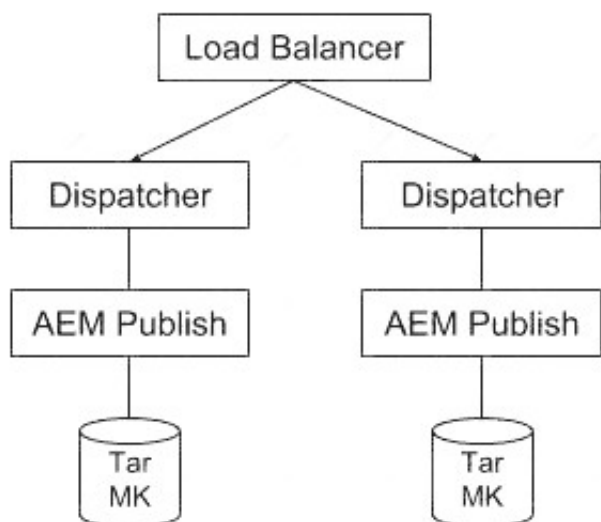
B)



C)



D)



- A. Option A
- B. Option B
- C. Option C
- D. Option D

Answer: D

NEW QUESTION 50

An AEM client also licenses Adobe Audience Manager and wants to provide content authors with the ability to create targeted experiences based on Audience Manager segments.

What should the Architect do to meet this requirement?

- A. Import Audience Manager segments via the OSGi bundle
- B. Configure the Adobe Target cloud configuration
- C. Apply the Audience Manager pixel in the AEM template header
- D. Enable the Experience Cloud ID Service

Answer: B

NEW QUESTION 53

A customer wants an image to be automatically tagged every time an image is uploaded to the DAM. What should an architect recommend?

- A. Enable smart tagging in the DAM Upload Asset offloading workflow
- B. Run the DAM Smart Tag workflow
- C. Configure enhanced Smart Tagging
- D. Configure smart tagging in the DAM Update Asset workflow

Answer: D

NEW QUESTION 56

.....

Thank You for Trying Our Product

* 100% Pass or Money Back

All our products come with a 90-day Money Back Guarantee.

* One year free update

You can enjoy free update one year. 24x7 online support.

* Trusted by Millions

We currently serve more than 30,000,000 customers.

* Shop Securely

All transactions are protected by VeriSign!

100% Pass Your AD0-E104 Exam with Our Prep Materials Via below:

<https://www.certleader.com/AD0-E104-dumps.html>