

Cisco

Exam Questions 010-151

Cisco Certified Technician (CCT) for Data Center



NEW QUESTION 1

Which method is a TCP/IP-based protocol for establishing and managing connections between IP-based storage devices, hosts, and clients?

- A. FCIP
- B. iFCP
- C. iSCSI
- D. FCoE

Answer: C

NEW QUESTION 2

Which type of connection across the network does a SAN allow for multiple servers to access an unlimited amount of storage devices?

- A. any-to-many
- B. many-to-any
- C. any-to-any
- D. any-to-one
- E. one-to-any
- F. one-to-one

Answer: C

NEW QUESTION 3

Which three statements about FCoE are true? (Choose three.)

- A. Allows Fibre Channel and Ethernet networks to share a single, integrated infrastructure
- B. Encapsulates Fibre Channel frames into Ethernet frames, which allows them to run alongside traditional IP traffic
- C. Increases capital costs due to the difficulty to manage
- D. Consolidates I/O traffic in the data center

Answer: ABD

NEW QUESTION 4

Where do you find the model number of a Cisco MDS 9200 Series chassis?

- A. on the top front of the chassis next to the serial number
- B. on the bottom front of the chassis next to the Cisco logo
- C. on the top front of the chassis next to the Cisco logo
- D. on the bottom front of the chassis next to the serial number

Answer: C

NEW QUESTION 5

How do you find the serial number of a Cisco UCS 5108 Blade Server chassis?

- A. Use the Cisco UCS Admin
- B. Use the Cisco UCS Application
- C. Use the Cisco UCS Assistant
- D. Use the Cisco UCS Manager

Answer: D

NEW QUESTION 6

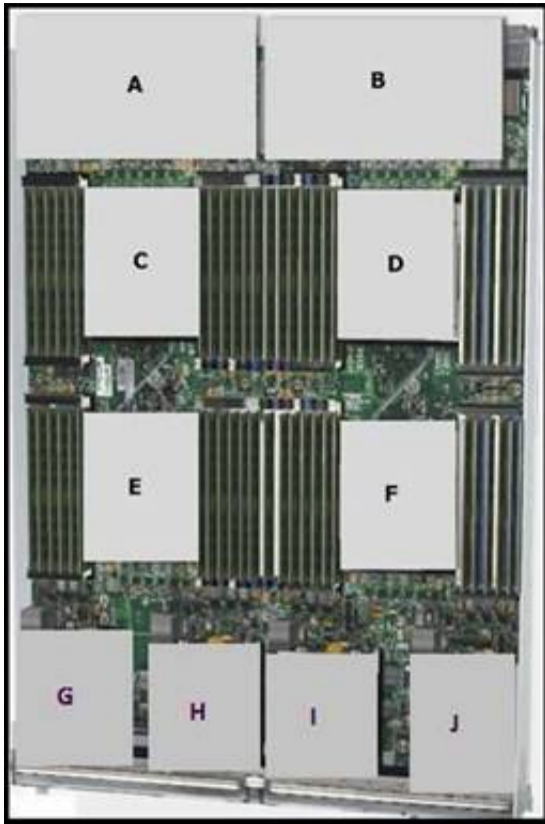
What does the system status LED look like when an over temperature or major alarm occurs on the Cisco UCS 6120XP Fabric Interconnect?

- A. Amber
- B. Red
- C. Blinking amber
- D. Blinking red

Answer: C

NEW QUESTION 7

Refer to the exhibit.



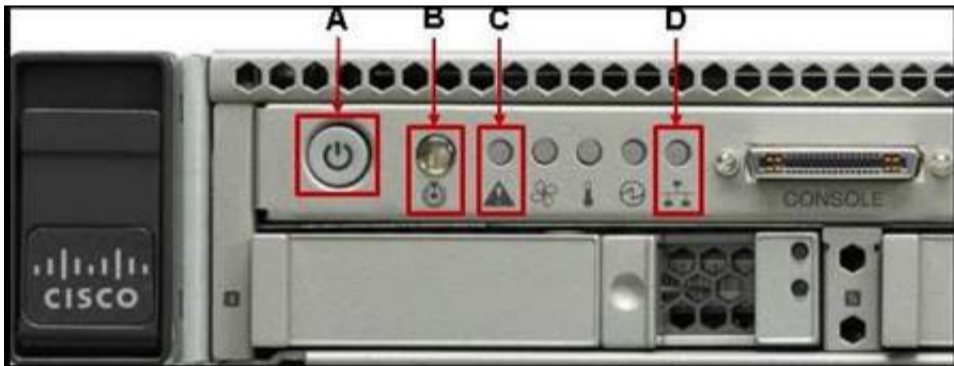
Which item does F represent?

- A. HDD 1
- B. TFP Module
- C. SuperCap Module
- D. CPU 2
- E. CMOS Battery

Answer: D

NEW QUESTION 8

Refer to the exhibit.



Which statement correctly identifies the front panel LEDs on the Cisco UCS C220 Server?

- A. A is power button and power status LED; B is identification button and LED; C is system status LED; D is network link activity LED
- B. A is network link activity LED; B is system status LED; C is power button and power status LED; D is identification button and LED
- C. A is system status LED; B is network link activity LED; C is power button and power status LED; D is identification button and LED
- D. A is network link activity LED; B is system status LED; C is identification button and LED; D is power button and power status LED

Answer: A

NEW QUESTION 9

Which two major components does a Cisco Nexus 1000V Series Switch have? (Choose two.)

- A. Virtual Fiber Channel Module
- B. Virtual Ethernet Module
- C. Virtual Supervisor Module
- D. Virtual Memory Controller Module
- E. Virtual Network Module

Answer: BC

NEW QUESTION 10

Which Cisco MDS model supports the most Fibre Channel ports per chassis?

- A. MDS 9513
- B. MDS 9509
- C. MDS 9506
- D. MDS 9250i

Answer: A

NEW QUESTION 10

Refer to the exhibit.



Which Cisco MDS chassis supports the 48-Port 16-Gbps Fibre Channel Switching Module?

- A. MDS 9509
- B. MDS 9513
- C. MDS 9710
- D. MDS 9506

Answer: C

NEW QUESTION 15

Which type of optics module is supported by a 12-port 100 GE Cisco Nexus 7700 F3 Series I/O module?

- A. CPAK
- B. QSFP+
- C. SFP/SFP+
- D. CFP

Answer: A

NEW QUESTION 19

Which command can be used to exit to EXEC mode from this current mode?
 switch(config-if) #

- A. Ctrl-C
- B. Ctrl-L
- C. quit
- D. exit
- E. end

Answer: E

NEW QUESTION 20

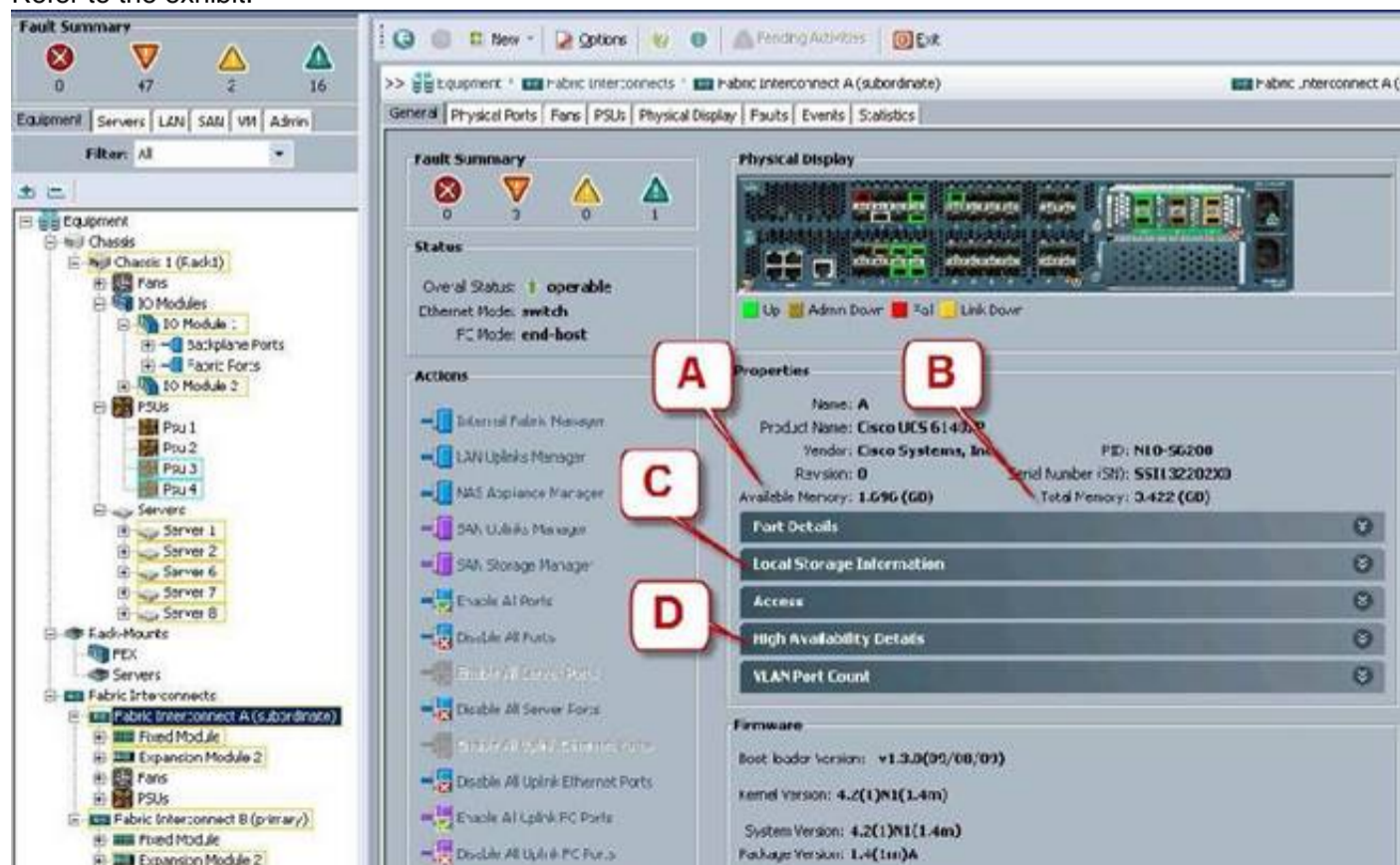
Which command saves the active configuration to NVRAM?

- A. copy startup-config running-config
- B. copy active-config backup-config
- C. copy running-config startup-config
- D. copy backup-config active-config

Answer: C

NEW QUESTION 23

Refer to the exhibit.



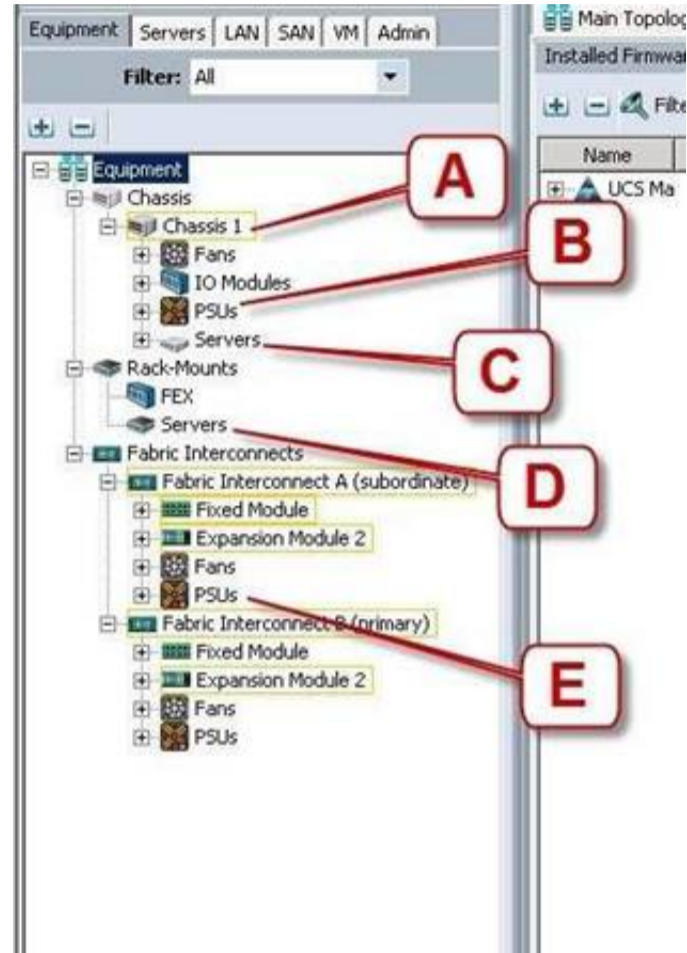
Where is the best place to see bootflash free space?

- A. A - Available Memory
- B. B - Total Memory
- C. C - Local Storage Information
- D. D - High Availability Details

Answer: C

NEW QUESTION 27

Refer to the exhibit.



Where is the best place to see the power supply status of the blade server enclosure?

- A. A - Chassis 1
- B. B - Chassis 1 - PSUs
- C. C - Chassis1 - Servers
- D. D - Rack-Mounts - Servers
- E. E - Fabric Interconnects A - PSUs

Answer: B

NEW QUESTION 30

To do a password recovery on a Cisco NX-OS Switch, which option shows the correct syntax to display the bootflash contents at the switch(boot)#?

- A. display bootflash:
- B. show bootflash:
- C. dir bootflash:
- D. find bootflash:

Answer: C

NEW QUESTION 32

Which two commands display the version of Cisco NX-OS code that the device is currently running on? (Choose two.)

- A. show version
- B. show module
- C. show interface
- D. show boot
- E. show license

Answer: AB

NEW QUESTION 36

When the Cisco UCS Manager is used to verify the B- or C-Series device, which two types of Overall Status are acceptable and do not indicate a failure? (Choose two.)

- A. Online
- B. OK
- C. Unassociated
- D. Active

Answer: BC

NEW QUESTION 39

Which three statements about powering down a Cisco UCS C-Series Rack-Mount Server to perform maintenance or replacement are true? (Choose three.)

- A. Standby power mode: Power is supplied only to the service processor and the cooling fans, and it is safe to power off the server from this mod
- B. Power status LE
- C. Green indicates that the server is in main power mode and can be safely powered of
- D. Graceful shutdown: Press and release the power butto
- E. The operating system performs a graceful shutdown, and the server goes to standby mode, which is indicated by an amber power status LE
- F. Disconnect the power cords from the power supplies in your server to completely power off the serve
- G. Only an emergency shutdown can be performed using the power button on the server front pane
- H. The Cisco UCS C-Series Rack-Mount Server has only one power mod

Answer: ACD

NEW QUESTION 44

Which three components are hot swappable in a Cisco UCS Blade Server and Chassis? (Choose three.)

- A. Fabric Extender
- B. Power supply
- C. Heat sink
- D. SAS Hard Drive
- E. 2x8GB Kit DIMMs
- F. Mezzanine card

Answer: ABD

NEW QUESTION 49

Which two statements about DIMM replacement in Cisco UCS Servers are true? (Choose two.)

- A. In blade servers, DIMMs can be installed in either 1, 2, 4, or 8 DIMMs per channe
- B. Rack-mount and blade servers have memory fault LEDs that indicate which DIMM requires attentio
- C. In servers that require pairs of DIMMs, the pairs must be identical (manufacturer, size, part #, and so on).
- D. If the memory in a server is not fully populated, you can install DIMMs in any open slo

Answer: AC

NEW QUESTION 50

After installation or replacement of a Cisco UCS C-Series Rack-Mount Server, the host does not boot. Which four options should be verified? (Choose four.)

- A. Verify the power source to the equipmen
- B. Check for loose HDD cable
- C. Reseat the DIMMs, CPU, and PCI card
- D. Verify that power supplies are receiving powe
- E. Reseat the mezzanine card connecto
- F. Check the CPU sockets for bent pin
- G. Check the Cisco IMC for fan fault

Answer: ACDF

NEW QUESTION 52

Which two remote file system methods are used in the training material to transfer firmware to the Fabric Interconnect? (Choose two.)

- A. FTPS
- B. FTP
- C. TFTP
- D. RSH

Answer: BC

NEW QUESTION 57

On which three devices can the Host Upgrade Utility be performed? (Choose three.)

- A. C420
- B. C230
- C. B230
- D. B210
- E. C210
- F. B460
- G. C240

Answer: AEG

NEW QUESTION 61

Up to what speed can Category 5 UTP cable transmit data?

- A. 10 Mb/s
- B. 100 Mb/s
- C. 1000 Mb/s
- D. 10000 Mb/s

Answer: C

NEW QUESTION 66

Refer to the exhibit.



What is the name of this Cisco Nexus 3000 Series Switch?

- A. Cisco Nexus 3132Q
- B. Cisco Nexus 3172PQ
- C. Cisco Nexus 3524
- D. Cisco Nexus 3016

Answer: A

NEW QUESTION 69

What is the maximum number of supervisor modules that the Cisco MDS 9710 Switch supports?

- A. 1
- B. 2
- C. 4
- D. 6
- E. 8

Answer: B

NEW QUESTION 71

Which device provides analysis of Fibre Channel traffic without any network disruption?

- A. Cisco MDS 9000 Data Analyzer Adapter
- B. Cisco MDS 9000 Port Analyzer Adapter
- C. Cisco MDS 9000 Channel Analyzer Device
- D. Cisco MDS 9000 Channel Analyzer Adapter

Answer: B

NEW QUESTION 76

Which three steps do you perform to troubleshoot when a rack server powers on with no video? (Choose three.)

- A. Check that the front I/O dongle is properly seated
- B. Check the front I/O cable connection to the motherboard
- C. Check for memory subsystem failure
- D. Verify the power source to equipment
- E. Reseat the DIMMs, CPU, and PCI card

Answer: ABC

NEW QUESTION 79

.....

Thank You for Trying Our Product

We offer two products:

1st - We have Practice Tests Software with Actual Exam Questions

2nd - Questions and Answers in PDF Format

010-151 Practice Exam Features:

- * 010-151 Questions and Answers Updated Frequently
- * 010-151 Practice Questions Verified by Expert Senior Certified Staff
- * 010-151 Most Realistic Questions that Guarantee you a Pass on Your First Try
- * 010-151 Practice Test Questions in Multiple Choice Formats and Updates for 1 Year

100% Actual & Verified — Instant Download, Please Click
[Order The 010-151 Practice Test Here](#)