



Microsoft

Exam Questions 70-740

Installation, Storage, and Compute with Windows Server 2016

NEW QUESTION 1

You have a server that runs Windows Server 2016 Standard.

You create a new three-way mirror storage space. You format the storage space by using ReFS.

Which two features can you use on the new storage space? Each correct answer presents a complete solution.

- A. file and folder permissions
- B. disk quotas
- C. Encrypting File System (EFS)
- D. long file names
- E. Data Deduplication

Answer: AE

NEW QUESTION 2

You have four servers named Server1, Server2, Server3, and Server4 that run Windows Server 2016.

Server1 and Server2 have the Hyper-V server role installed. Server1 hosts a virtual machine named VM1. Server2 hosts a virtual machine named VM2. Server3 hosts the disks and the configurations of both virtual machines on an SMB share named VMShare.

You use Server4 to manage Hyper-V operations on Server1 and Server2.

From Server4, you attempt to perform a live migration of VM1 and VM2, but you receive the following error message: "No credentials are available in the security package".

You need to ensure that you can perform the live migration of VM1 and VM2 between Server1 and Server2 while signed in to Server4.

What should you do?

- A. From Active Directory Users and Computers, modify the properties of Server4. Configure the delegation settings to trust the computer for delegation of cifs.
- B. From Windows PowerShell on Server3, run the remove-SMBMultiChannelConstraint cmdlet, and then assign Server4 Full Control permissions to VMShare.
- C. From Active Directory Users and Computers, modify the properties of Server1 and Server2. Configure the Delegation settings to trust the computers for delegation of the Microsoft Virtual System Migration Service.
- D. From Active Directory Users and Computers, modify the properties of your user account
- E. Modify the Account is sensitive and cannot be delegated setting.

Answer: C

Explanation:

References: <https://docs.microsoft.com/en-us/windows-server/virtualization/hyper-v/deploy/set-up-hosts-for-live-migration-without-failover-clustering>

NEW QUESTION 3

Note: This question is part of a series of questions that present the same scenario. Each question in the series contains a unique solution that might meet the stated goals. Some question sets might have more than one correct solution, while others might not have a correct solution.

After you answer a question in this section, you will NOT be able to return to it. As a result, these questions will not appear in the review screen.

You have two servers that run Windows Server 2016.

You plan to create a Network Load Balancing (NLB) cluster that will contain both servers. You need to configure the network cards on the servers for the planned NLB configuration.

Solution: You configure the network cards to be on a separate subnet and to have static IP addresses. You configure the cluster to use unicast.

Does this meet the goal?

- A. Yes
- B. No

Answer: B

Explanation:

References: <https://technet.microsoft.com/en-us/windows-server-docs/networking/technologies/network-load-balancing>

NEW QUESTION 4

You have two Hyper V hosts named Server1 and Server2 that run Windows Server 2012 R2. The servers are nodes in a failover cluster named Cluster1.

You perform a rolling upgrade of the cluster nodes to Windows Server 2016.

You need to ensure that you can implement the Virtual Machine Load Balancing feature. Which cmdlet should you use?

- A. Update-ClusterNetWorkNameResource
- B. Set-GusterGroupSet
- C. Update-ClusterFunctionalLevel
- D. Set-CauClosterRole

Answer: C

Explanation:

<https://docs.microsoft.com/en-us/windows-server/failover-clustering/cluster-operating-system-rollingupgrade#cluster-os-rolling-upgrade-process>

NEW QUESTION 5

You have a Windows Server 2016 failover Cluster named Cluster 1 that contains four nodes named Server1 Server2, Server3, and Serve4.

You need to configure Cluster to use directly attached storage to store several virtual machines. You run the Enable-ClusterStorageSpacesDirect cmdlet on Server1.

What should you do next?

- A. Run the Enable-ClusterStorageSpacesDirect cmdlet on the other three nodes.
- B. Create volumes.
- C. Create storage pool.

D. Add-ClustcrResource mdlet on all of the nodes.

Answer: B

Explanation:

References:

<https://medium.com/beyond-the-helpdesk/setting-up-and-configuring-storage-spaces-direct-in-windows-server-2016-4d2be85a8f7d>

NEW QUESTION 6

You plan to deploy three servers that will run Windows Server 2016. The servers will be configured as shown in the following table.

Server name	Hard disk configuration
Server1	Disk1: 250-GB, NTFS-formatted Disk2: 4-TB, ReFS-formatted
Server2	Disk1: 1-TB, NTFS-formatted Disk2: 2-TB, NTFS-formatted Disk3: 500-GB, exFAT-formatted
Server3	Disk1: 8-TB, NTFS-formatted Disk2: 2-TB, ReFS-formatted Disk3: 1-TB, ReFS-formatted

You need to ensure that you can use all of the available space on each disk. What is one of the disks that you must initialize as a GPT disk?

- A. Disk2 on Server3
- B. Disk1 on Server2
- C. Disk3 on Server2
- D. Disk1 on Sever3

Answer: D

NEW QUESTION 7

You have a server named Server1 that runs Windows Server 2016. Windows Defender is enabled on Server1.

Server1 runs an application named App1 that stores various types of files in Microsoft OneDrive for Business, MicrosoftOneDrive, and Microsoft SharePoint Online. App1 also interacts with several local services.

You need to prevent Windows Defender from scanning any files opened by App1. What should you do on Server1?

- A. From the Windows Defender settings, configure a file exclusion.
- B. Run the New-CiPolicy cmdlet.
- C. Modify the real-time protection settings in Windows Defender.
- D. From the Windows Defender settings, configure a process exclusion.

Answer: A

NEW QUESTION 8

HOTSPOT

Your network contains an Active Directory forest The forest contains two domain controllers named DC1 and DC2 that run Windows Server 2016. DC1 holds all of the operations master roles.

DC1 experiences a hardware failure

You plan to use an automated process that will create 1000 user accounts You need to ensure that the automated process can complete successfully

Which command should you run? To answer, select the appropriate options in the answer area

▼

Move-ADDirectoryServerOperatinMasterRole
ntdsutil

-identity "DC2" -OperationMasterRole

▼

PDCEmulator
InfrastructureMaster
RIDMaster
SchemaMaster

▼

Seize pdc
-Force

- A. Mastered
- B. Not Mastered

Answer: A

Explanation:

▼

Move-ADDirectoryServerOperatinMasterRole
ntdsutil

-identity "DC2" -OperationMasterRole

▼

PDCEmulator
InfrastructureMaster
RIDMaster
SchemaMaster

▼

Seize pdc
-Force

NEW QUESTION 9

HOTSPOT

Your network contains an Active Directory forest. The forest contains one domain named contoso.com. The domain contains two domain controllers named DC1 and DC2. DC1 holds all of the operations master roles.

During normal network operations, you run the following commands on DC2:

Move-ADDirectoryServerOperationMasterRole -Identity "DC2" -OperationMasterRole PDCEmulator
Move-ADDirectoryServerOperationMasterRole -Identity "DC2" -OperationMasterRole RIDMaster
DC1 fails.

You remove DC1 from the network, and then you run the following command:

Move-ADDirectoryServerOperationMasterRole -Identity "DC2" -OperationMasterRole SchemaMaster
For each of the following statements, select Yes if the statement is true. Otherwise, select No.

Statements	Yes	No
DC2 holds the schema master operations role.	<input type="radio"/>	<input type="radio"/>
DC2 holds the PDC emulator master operations role.	<input type="radio"/>	<input type="radio"/>
Currently, you can add additional domains to the forest.	<input type="radio"/>	<input type="radio"/>

- A. Mastered
- B. Not Mastered

Answer: A

Explanation:

Statements	Yes	No
DC2 holds the schema master operations role.	<input type="radio"/>	<input checked="" type="radio"/>
DC2 holds the PDC emulator master operations role.	<input checked="" type="radio"/>	<input type="radio"/>
Currently, you can add additional domains to the forest.	<input type="radio"/>	<input checked="" type="radio"/>

NEW QUESTION 10

DRAG DROP

You install a new Nano Server named Nano1. Nano1 is a member of a workgroup and has an IP address of 192.1698.1.10.

You have a server named Server1 that runs Windows Server 2016.

From Server1, you need to establish a Windows PowerShell session to Nano1.

How should you complete the PowerShell script? To answer, drag the appropriate cmdlets to the correct targets. Each cmdlet may be used once, more than once, or not at all. You may need to drag the split bar between panes or scroll to view content.

Enable-PSRemoting

Enter-PSSession

Set-Item

Set-ItemProperty

Set-LocalUser

\$ip = "192.168.1.10"

\$user = "Administrator"

WSMan:\localhost\Client\TrustedHosts
"192.168.1.10"

-ComputerName \$ip -Credential \$user

- A. Mastered
 B. Not Mastered

Answer: A

Explanation:

Enable-PSRemoting

Enter-PSSession

Set-Item

Set-ItemProperty

Set-LocalUser

\$ip = "192.168.1.10"

\$user = "Administrator"

Set-Item WSMan:\localhost\Client\TrustedHosts
"192.168.1.10"

Enter-PSSession -ComputerName \$ip -Credential \$user

NEW QUESTION 10

You deploy a Hyper-V server named Served in an isolated test environment The test environment is prevented from accessing the Internet Server1 runs the Datacenter edition of Windows Server 2016. You plan to deploy the following guest virtual machines on the server

Quantity	Operating system	Domain member
10	Windows Server 2012 R2	Yes
4	Windows Server 2016	No
5	Windows Server 2016	Yes

Which activation model should you use for the virtual machines'?

- A. Multiple Activation Key (MAK)
 B. Automatic Virtual Machine Activation (AVMA)
 C. Original Equipment Manufacturer (OEM) key
 D. Key Management Service (KMS)

Answer: B

NEW QUESTION 15

DRAG DROP

You are deploying DirectAccess to a server named DA1. Da1 will be located behind a firewall and will have a single network adapter The intermediary network will be IPv4.

You need to configure firewall to support DirectAccess.

Which firewall rules should you create for each type of traffic? To answer, drag the appropriate ports and protocols to the correct traffic types. Each port and protocol may be used once, more than once, or not at all. You may need to drag the split bar between panes or scroll to view content

Ports and Protocols

IP protocol ID 1

TCP 443

IP Protocol ID 41

UDP 3544

Answer Area

Teredo traffic:

6to4 traffic:

IP-HTTPS:

- A. Mastered
- B. Not Mastered

Answer: A

Explanation:

Ports and Protocols

IP protocol ID 1

TCP 443

IP Protocol ID 41

UDP 3544

Answer Area

Teredo traffic:UDP 3544

6to4 traffic:IP Protocol ID 41

IP-HTTPS:TCP 443

NEW QUESTION 20

You have a Nano Server named Nano1.
You deploy several containers to Nano1 that use an image named Image1. You need to deploy a new container to Nano1 that uses Image1.
What should you run?

- A. the Install-NanoServerPackage cmdlet
- B. theInstall-WindowsFeaturecmdlet
- C. the docker load command
- D. the docker run command

Answer: D

NEW QUESTION 22

DRAG DROP
You have a server named Server1 that runs Windows Server 2016.
You plan to deploy Internet Information Services (US) in a Windows container. You need to prepare Server1 for the planned deployment.
Which three actions should you perform in sequence? To answer, move the appropriate actions from the list of actions to the answer area and arrange them in the correct order

Actions

Install the Hyper-V server role.

Install the Base Container Images.

Install the Container feature.

Install the Web Server role.

Install Docker.

Answer Area

1.

2.

3.

>

<

^

v

- A. Mastered
- B. Not Mastered

Answer: A

Explanation:

Answer Area

1.

Install the Container feature.

2.

Install Docker.

3.

Install the Base Container Images.

NEW QUESTION 24

You have an Active Directory domain named Contoso.com. The domain contains servers named Server1 and Server2 that run Windows Server 2016. You install the Remote Access server role on Server1. You install the Network Policy and Access Services server role on Server2. You need to configure Server1 to use Server2 as a RADIUS server. What should you do?

- A. From Routing and Remote Access, configure the authentication provider.
- B. From the Connection Manager Administration Kit, create a Connection Manager profile.
- C. From Server Manager, create an Access Policy.
- D. From Active Directory Users and Computers, modify the Delegation settings of the Server1 computer account.

Answer: A

NEW QUESTION 29

HOTSPOT

You have a server that runs Windows Server 2016.
 You run the commands shown in the following output.

```
PS G:\> Get-DedupVolume | fl

Volume                : G:
VolumeId              : \\?\Volume{2efa2f6e-db4a-4bb1-aal5-31ae8b073dl6}\
Enabled               : True
UsageType             : Default
DataAccessEnabled     : True
Capacity              : 923.87 GB
FreeSpace             : 393.98 GB
UsedSpace             : 529.89 GB
UnoptimizedSize       : 1008.7 GB
SavedSpace            : 478.82 GB
SavingRate            : 47 %
MinimumFileAgeDays    : 3
MinimumFileSize       : 32768
NoCompress            : False
ExcludeFolder         :
ExcludeFileType       :
ExcludeFileTypeDefault : {edb, jrs}
NoCompressionFileType : {asf, mov, wma, wmv...}
ChunkRedundancyThreshold : 100
Verify               : False
OptimizeInUseFiles    : False
OptimizePartialFiles  : False

PS G:\> Get-Date
Tuesday, June 21, 2016 5:29:58 PM

PS G:\DC01> dir | select Mode,LastWriteTime,Length,Name | ft -AutoSize

Mode                LastWriteTime         Length      Name
-----
d-----           2/18/2015 11:54:56 AM              Snapshots
d-----           2/18/2015 12:11:42 PM          Virtual Machines
-a---           6/21/2016  5:27:40 PM    51539608064    DC01.vhd
-a---           6/18/2016  7:00:00 AM      12400      Readme.txt
-a---           1/5/2015   7:00:00 AM    3939235840    Software.iso
```

For each of the following statements, select Yes if the statement is true. Otherwise, select No.

Answer Area

Statements	Yes	No
DC01.vhd will be processed by deduplication.	<input type="radio"/>	<input type="radio"/>
Readme.txt will be processed by deduplication.	<input type="radio"/>	<input type="radio"/>
Software.iso will be processed by deduplication.	<input type="radio"/>	<input type="radio"/>

- A. Mastered
- B. Not Mastered

Answer: A

Explanation:

Answer Area

Statements	Yes	No
DC01.vhd will be processed by deduplication.	<input type="radio"/>	<input checked="" type="radio"/>
Readme.txt will be processed by deduplication.	<input type="radio"/>	<input checked="" type="radio"/>
Software.iso will be processed by deduplication.	<input checked="" type="radio"/>	<input type="radio"/>

NEW QUESTION 33

DRAG DROP

You have a server that runs Windows Server 2016 You install three additional physical disks named Disk1. Disk2. and Disk3 You plan to use these physical disks to store data

You need to create a volume to store data The solution must prevent data loss in the event of a single disk failure

Which three actions should you perform in sequence? To answer, move the appropriate actions from the list of actions to the answer area and arrange them in the correct order

Create a Virtual Disk.

Create a Storage Pool.

Create a new Storage Tier.

Create a Volume.

Assign a Storage Tier to a virtual disk.

Create a Virtual Disk Clone.

>

<

- A. Mastered
- B. Not Mastered

Answer: A

Explanation:

Create a Storage Pool.

Create a Virtual Disk.

Create a Volume.

NEW QUESTION 37

Your network contains an Active Directory domain named contoso.com. The domain contains two servers named Server1 and Server2 that have the same hardware configuration
You need to asynchronously replicate volume F: from Server1 to Server2. What should you do?

- A. RunNew-SRPartnershipand specify the -RephcationModeparameter.
- B. install the Failover Clustering feature and create a new cluster resource group.
- C. Install the Failover Clustering feature and use Cluster Shared Volumes (CSV).
- D. RunSet-DfsrServiceConfigurationand specify the -RPCPortparameter

Answer: A

NEW QUESTION 41

HOTSPOT

You have a server named Server1 that runs Windows Server 2016 Server1 has the Windows Application proxy role service installed
You plan to deploy Remote Desktop Gateway (RD Gateway) services. Clients will connect to the RD Gateway services by using various types of devices including Windows, iOS and Android devices.
You need to publish the RD Gateway services through the Web Application Proxy.
Which command should you run? To answer, select the appropriate options in the answer area.

Add-WebApplicationProxyApplication
Set-WebApplicationProxyApplication
Set-WebApplicationProxyConfiguration

-BackendServerURL 'https://rdg.contoso.com/rdg1/'
-ExternalCertificateThumbprint
'1a2b3c4d5e6f1a2b3c4d5e6f1a2b3c4d5e6f1a2b'

-ExternalURL 'https://rdg.contoso.com/rdg1'
-Name 'RDG1'

-ExternalPreAuthentication
-ADFSRelyingPartyName 'Default provider'

-BackendServerAuthenticationSPN 'HTTP/RDG1'

- A. Mastered
- B. Not Mastered

Answer: A

Explanation:

▼

Add-WebApplicationProxyApplication
Set-WebApplicationProxyApplication
Set-WebApplicationProxyConfiguration

-BackendServerURL 'https://rdg.contoso.com/rdg1/'

-ExternalCertificateThumbprint

'1a2b3c4d5e6f1a2b3c4d5e6f1a2b3c4d5e6f1a2b'

-ExternalURL 'https://rdg.contoso.com/rdg1'

-Name 'RDG1'

-ExternalPreAuthentication

ADFS

ADFSforOAuth

ClientCertificate

PassThrough

-ADFSRelyingPartyName 'Default provider'

-BackendServerAuthenticationSPN 'HTTP/RDG1'

NEW QUESTION 44

HOTSPOT

Your network contains an Active Directory domain named contoso.com. The domain contains four servers named Server1, Server2, Server3, and Server4 that run Windows Server 2016.

Server1 and Server2 are nodes in Hyper-V cluster named Cluster1. You have a highly available virtual machine named VM1.

Server1 is the owner node of VM1. Server3 and Server4 are nodes of a scale-out file server named Cluster2.

The storage on Server1 is configured as shown in the following table.

Location	Type
C:\ClusterStorage\Volume1	iSCSI Cluster Shared Volumes (CSV)
D:\	A locally attached disk
E:\	An iSCSI LUN
\\Cluster2\Share1	A file share on Cluster2

You need to move the virtual disk of VM1 to a different location. What should you do? To answer, select the appropriate options in the answer area.

Tool you should move the virtual disk of VM1:

▼

Disk Management
Failover Cluster Manager
Hyper-V Manager
Server Manager

Location to which you should move the virtual disk of VM1:

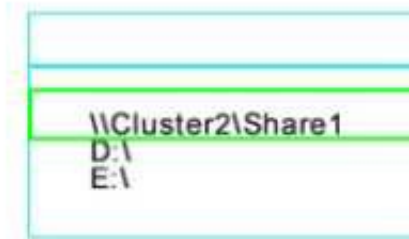
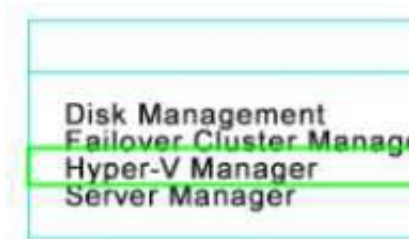
▼

\\Cluster2\Share1
D:\
E:\

- A. Mastered
- B. Not Mastered

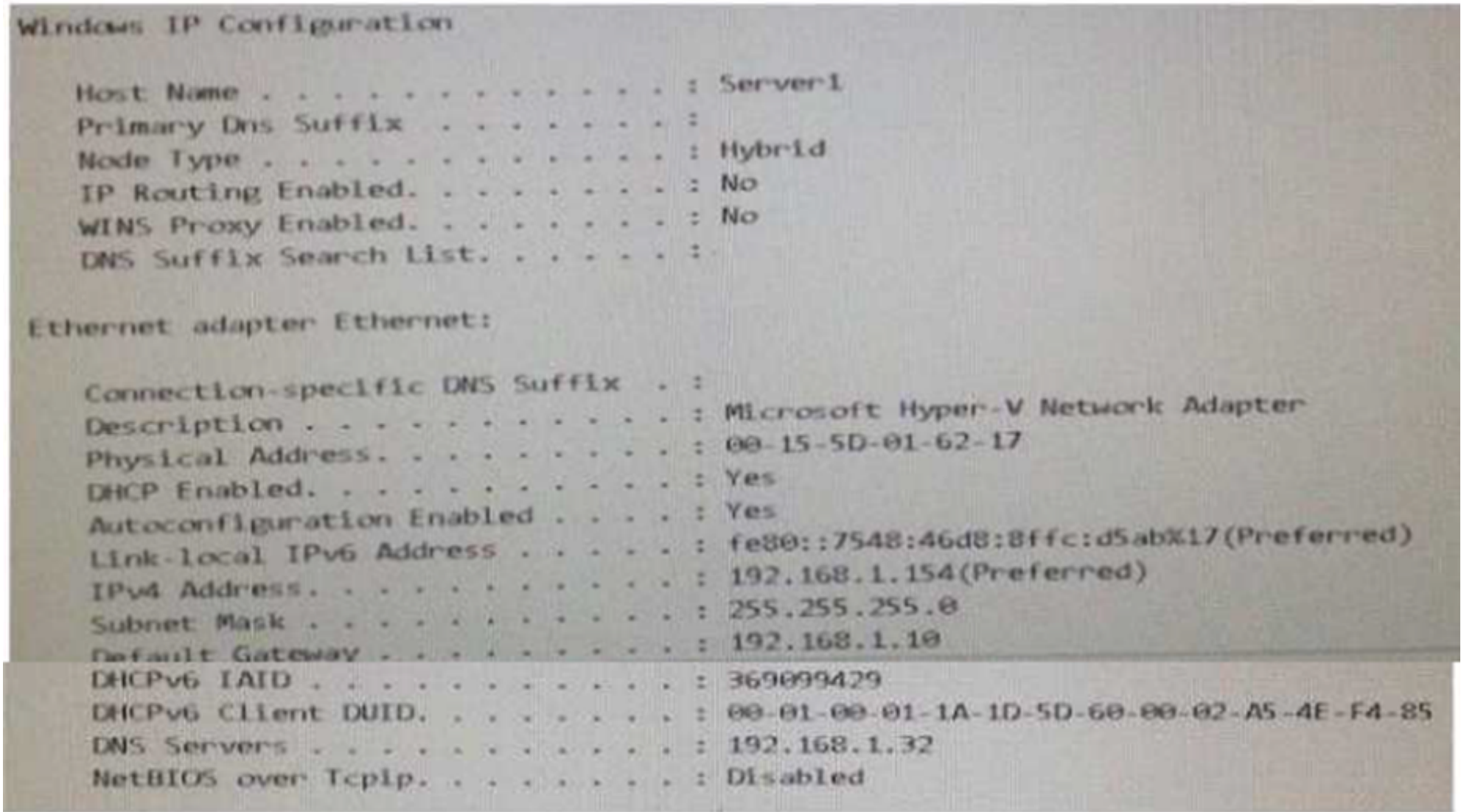
Answer: A

Explanation:



NEW QUESTION 48

You are configuring a Windows Server 2016 failover cluster in a workgroup.
Before installing one of the nodes, you run the ipconfig /all command and receive the following output



You need to ensure that Server 1 can be added as a node in the cluster What should you do1?

- A. Assign a static IP address
- B. Change the Node Type to Broadcast
- C. Configure a DNS suffix
- D. Enable NetBIOS over TCP/IP

Answer: C

NEW QUESTION 51

HOTSPOT

Your network contains an Active Directory forest named contoso.com. The forest contains an Active Directory Federation Services (AD FS) farm.
You install Windows Server 2016 on a server named Server2
You need to configure Server2 as a node in the federation server farm
Which cmdlets should you run? To answer, select the appropriate options in the answer area

First cmdlet to run:

▼

Install-AdfsFarm
Install-Package
Install-WindowsFeature

Second cmdlet to run:

▼

Install-AdfsFarm
New-AdfsOrganization
Set-AdfsFarmInformation
Set-AdfsProperties

- A. Mastered
- B. Not Mastered

Answer: A

Explanation:

First cmdlet to run:

▼

Install-AdfsFarm
Install-Package
Install-WindowsFeature

Second cmdlet to run:

▼

Install-AdfsFarm
New-AdfsOrganization
Set-AdfsFarmInformation
Set-AdfsProperties

NEW QUESTION 52

DRAG DROP

You have a server named Server1 that runs Windows Server 2016.

You need to deploy the first node cluster of a Network Controller cluster

Which four cmdlets should you run in sequence? To answer, move the appropriate cmdlets from the list of cmdlets to the answer area and arrange them in the correct order

Actions

Install-WindowsFeature

New-NetworkControllerNodeObject

Enable-NetworkControllerNode

Install-NetworkController

Install-NetworkControllerCluster

Answer Area

1.

2.

3.

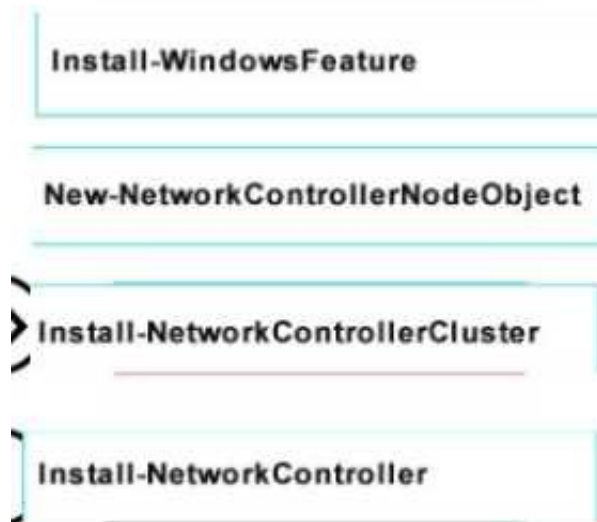
4.

- A. Mastered

B. Not Mastered

Answer: A

Explanation:



NEW QUESTION 56

Your company has 10 offices. Each office has a local network that contains several Hyper-V hosts that run Windows Server 2016. All of the offices are connected by high speed, low latency WAN links.

You need to ensure that you can use QoS policies for Live Migration traffic between the offices. Which component should you install?

- A. the Multipath I/O feature
- B. the Routing role service
- C. the Network Controller server role
- D. the Canary Network Diagnostics feature
- E. the Data Center Bridging feature

Answer: CE

NEW QUESTION 61

HOTSPOT

You have a server named Server1 that runs Windows Server 2016 Server1 is a Hyper-V host

You have two network adapter cards on Server1 that are Remote Direct Memory Access (RDMA) - capable.

You need to aggregate the bandwidth of the network adapter cards for a virtual machine on Server1. The solution must ensure that the virtual machine can use the RDMA capabilities of the network adapter cards

Which command should you run first? To answer, select the appropriate options in the answer area.



- A. Mastered
- B. Not Mastered

Answer: A

Explanation:



NEW QUESTION 63

You have a server named Server1 that runs Windows Server 2016 You need to configure Server1 as a multitenant RAS Gateway. What should you install on Server1?

- A. the Network Policy and Access Services server role
- B. the Remote Access server role
- C. the Data Center Bridging feature
- D. the Network Controller server role

Answer: B

NEW QUESTION 68

DRAG DROP

You have a physical server named Server1 that runs Windows Server 2016 Server1 is a Hyper-V host On Server1, you create a virtual machine named VM1 that runs Windows Server 2016.

You plan to install the Hyper-V server role on VM1.

You need to ensure that you can configure VM1 to host virtual machines

How should you complete the Windows PowerShell script? To answer, drag the appropriate values to the correct targets. Each value may be used once, more than once, or not at all. You may need to drag the split bar between panes or scroll to view content.

Values

\$false

\$null

\$true

Set-VMProcessor -VMName VMHOST1 -ExposeVirtualizationExtensions

-Count 2

Set-VMMemory VMHOST1 -DynamicMemoryEnabled

Get-VMNetworkAdapter -VMName VMHOST1 | Set-VMNetworkAdapter -MacAddressSpoofing on

- A. Mastered
- B. Not Mastered

Answer: A

Explanation:

Values

\$false

\$null

\$true

Set-VMProcessor -VMName VMHOST1 -ExposeVirtualizationExtensions

\$true

-Count 2

Set-VMMemory VMHOST1 -DynamicMemoryEnabled

\$false

Get-VMNetworkAdapter -VMName VMHOST1 | Set-VMNetworkAdapter -MacAddressSpoofing on

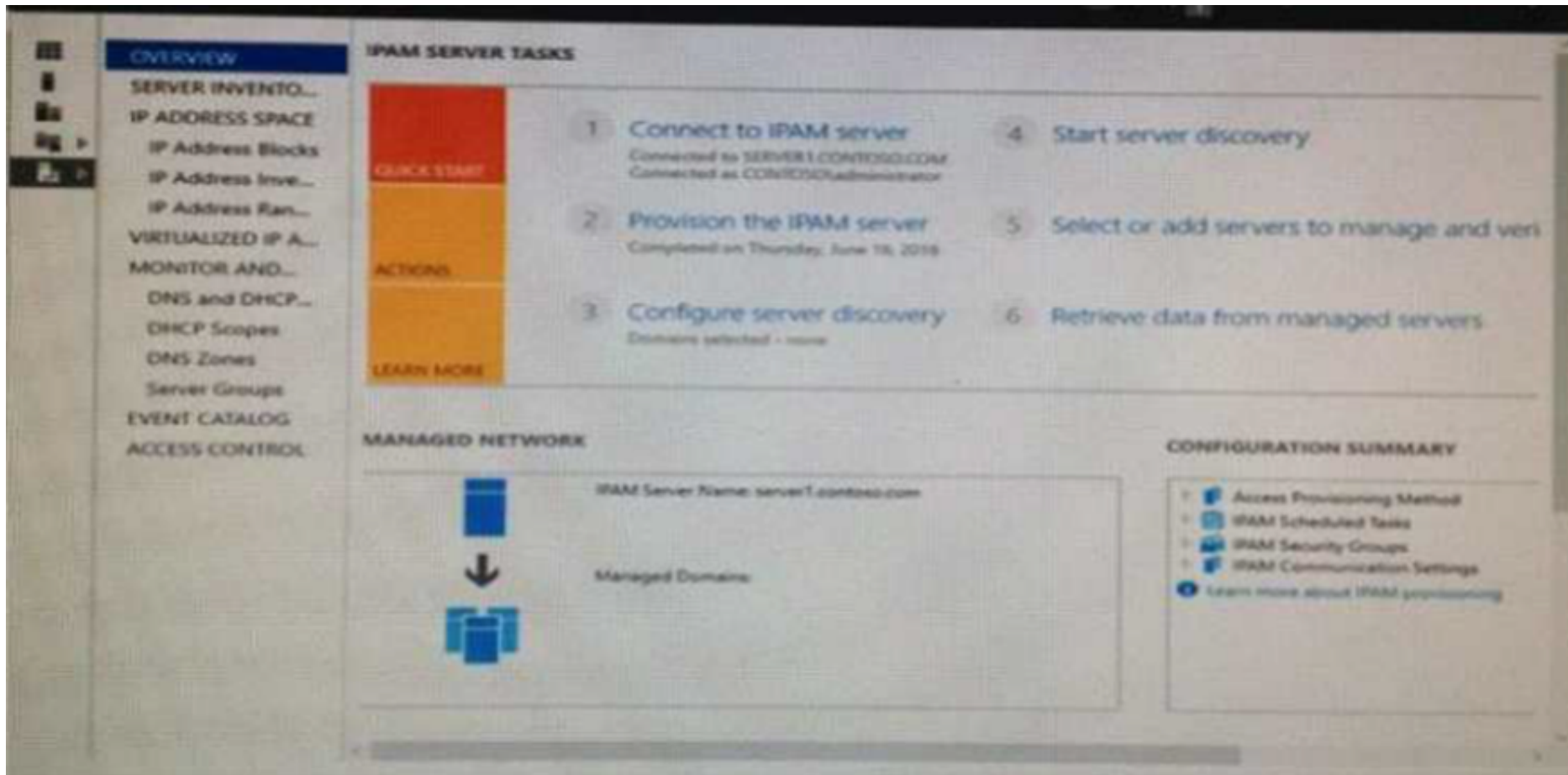
NEW QUESTION 69

HOTSPOT

Your company has a testing environment that contains an Active Directory domain named contoso.com The domain contains a server named Server1 that runs Windows Server 2016. Server1 has IP Address Management (IPAM) installed IPAM has the following configuration.

Version	: 6.3.0.1
Port	: 4885
ProvisioningMethod	: Automatic
GpoPrefix	: IPAM
HMACKey	: System.Security.SecureString

The IPAM Overview page from Server Manager is shown in the IPAM Overview exhibit.



The group policy configurations are shown in the GPO exhibit.



For each of the following statements, select Yes if the statement is true Otherwise, select No

Statements	Yes	No
If a DNS server is added to contoso.com, the server will be discovered by IPAM automatically.	<input type="radio"/>	<input type="radio"/>
If you manually add a DHCP server named Server3 to IPAM and set the Manageability status to Managed, the IPAM_DHCP Group Policy will apply to Server3.	<input type="radio"/>	<input type="radio"/>
If you click Start server discovery, the domain controllers in contoso.com will be discovered by IPAM.	<input type="radio"/>	<input type="radio"/>

- A. Mastered
- B. Not Mastered

Answer: A

Explanation:

Statements	Yes	No
If a DNS server is added to contoso.com, the server will be discovered by IPAM automatically.	<input type="radio"/>	<input checked="" type="radio"/>
If you manually add a DHCP server named Server3 to IPAM and set the Manageability status to Managed, the IPAM_DHCP Group Policy will apply to Server3.	<input checked="" type="radio"/>	<input type="radio"/>
If you click Start server discovery, the domain controllers in contoso.com will be discovered by IPAM.	<input type="radio"/>	<input checked="" type="radio"/>

NEW QUESTION 73

You need to modify the GPO prefix by IPAM. What should you do?

- A. Run theSet-IpamConfigurationcmdlet
- B. ClickProvision the IPAM serverin Server Manager.
- C. ClickConfigure server discoveryin Server Manage
- D. Run theInvoke-IpamGpoProvisioningcmdlet

Answer: A

NEW QUESTION 76

HOTSPOT

Your network contains an Active Directory domain named contoso.com. The domain contains a domain controller named Server1 and a member server named Server2.

Server1 has the DNS Server role installed Server2 has IP Address Management IPAM installed The IPAM server retrieves zones from Server1 as shown in the following table

Zone name	Dynamic update setting	Access scope
Adatum.com	Secure	\Global
Fabrikam.com	None	\Global\Scope1

The IPAM server has one access policy configured as shown in the exhibit.



For each of the following statements, select Yes, if the statement is true. Otherwise, select No.

Answer Area

Statements	Yes	No
User1 can add a host (A) record) to adatum.com.	<input type="radio"/>	<input type="radio"/>
User1 can add a host (A) record to fabrikam.com.	<input type="radio"/>	<input type="radio"/>
User1 can delete the fabrikam.com zone.	<input type="radio"/>	<input type="radio"/>

- A. Mastered
- B. Not Mastered

Answer: A

Explanation:

Statements	Yes	No
User1 can add a host (A) record) to adatum.com.	<input type="radio"/>	<input checked="" type="radio"/>
User1 can add a host (A) record to fabrikam.com.	<input type="radio"/>	<input checked="" type="radio"/>
User1 can delete the fabrikam.com zone.	<input checked="" type="radio"/>	<input type="radio"/>

NEW QUESTION 79

HOTSPOT

Your network contains an Active Directory domain named contoso.com. The domain contains a member server named Server1 that runs Windows Server 2016. You install IP Address Management (IPAM) on Server1. You select the automatic provisioning method, and then you specify a prefix of IPAM1. You need to configure the environment for automatic IPAM provisioning. Which cmdlet should you run? To answer, select the appropriate options in the answer area.

☒

Add-IpamDiscoveryDomain
Enable-IpamCapability
Invoke-IpamGpoProvisioning
Set-IpamConfiguration

-Domain "Contoso.com"

☒

-AssetTag
-DisciverDns
-GpoPrefixName
-ProvisioningMethod

"IPAM1"

- A. Mastered
- B. Not Mastered

Answer: A

Explanation:

▼

Add-IpamDiscoveryDomain
Enable-IpamCapability
Invoke-IpamGpoProvisioning
Set-IpamConfiguration

-Domain "Contoso.com"

▼

-AssetTag
-DisciverDns
-GpoPrefixName
-ProvisioningMethod

"IPAM1"

NEW QUESTION 84

DRAG DROP

Your network contains an Active Directory domain named contoso.com. The domain contains two servers named Server1 and Server2 that run Windows Server 2016. Server1 has IP Address Management (IPAM) installed. Server2 has Microsoft System Center 2016 Virtual Machine Manager (VMM) installed. You need to integrate IPAM and VMM. Which types of objects should you create on each server? To answer, drag the appropriate object types to the correct servers. Each object type may be used once, more than once, or not at all. You may need to drag the split bar between panes or scroll to view content.

Access policy

Run As Account

User Role

Network Service

Service Template

Server1:

Object

Server2:

Object

Object

- A. Mastered
- B. Not Mastered

Answer: A

Explanation:

Serve

Access policy

Serve

Run As Account

Network Service

NEW QUESTION 87

HOTSPOT

Your network contains an Active Directory domain named contoso.com. The domain contains four servers named Server1, Server2, Server3, and Server4 that run Windows Server 2016. Server1 has IP Address Management (IPAM) installed. Server2, Server3, and Server4 have the DHCP Server role installed. IPAM manages Server2, Server3, and Server4. A domain user named User1 is a member of the groups shown in the following table.

Server name	Group
Server1	IPAM Users
Server2	DHCP Administrators
Server3	DHCP Users
Server4	Users

Which actions can User1 perform? To answer, select the appropriate options in the answer area.

Actions	Yes	No
Use the DHCP console on Server1 to create a DHCP scope on Server2.	<input type="radio"/>	<input type="radio"/>
Use the DHCP console on Server1 to create a DHCP scope on Server3.	<input type="radio"/>	<input type="radio"/>
Use the IPAM node of Server Manager on Server1 to create a DHCP scope on Server4.	<input type="radio"/>	<input type="radio"/>

- A. Mastered
- B. Not Mastered

Answer: A

Explanation:

Actions	Yes	No
Use the DHCP console on Server1 to create a DHCP scope on Server2.	<input checked="" type="radio"/>	<input type="radio"/>
Use the DHCP console on Server1 to create a DHCP scope on Server3.	<input type="radio"/>	<input checked="" type="radio"/>
Use the IPAM node of Server Manager on Server1 to create a DHCP scope on Server4.	<input type="radio"/>	<input checked="" type="radio"/>

NEW QUESTION 89

Note: This question is part of a series of questions that use the same similar answer choices An answer choice may be correct for more than one question in the series Each question is independent of the other questions in this series. Information and details provided in a question apply only to that question

You have a Hyper-V host named Server1 that runs Windows Server 2016 and a two-node scale-out file server cluster named Cluster1

A virtual machine named VM1 runs on Server1

You need to migrate the storage on VM1 to Cluster1 Which tool should you use?

- A. the clussvc.exe command
- B. the cluster.exe command
- C. the Computer Management console
- D. the configurehyperv.exe command
- E. the Disk Management console
- F. the Failover Cluster Manager console
- G. the Hyper-V Manager console
- H. the Server Manager Desktop app

Answer: G

NEW QUESTION 93

Note: This question is part of a series of questions that use the same similar answer choices An answer choice may be correct for more than one question in the series Each question is independent of the other questions in this series. Information and details provided in a question apply only to that question
You have a two-node Hyper-V cluster named Cluster1 As virtual machine named VM1 runs on Cluster1
You need to configure monitoring of VM1 The solution must move VM1 to a different node if the Print Spooler service on VM1 stops unexpectedly
Which tool should you use?

- A. the clussvc.exe command
- B. the cluster.exe command
- C. the Computer Management console
- D. the configurehyperv.exe command
- E. the Disk Management console
- F. the Failover Cluster Manager console
- G. the Hyper-V Manager console
- H. the Server Manager Desktop app

Answer: F

NEW QUESTION 95

Note: This question is part of a series of questions that use the same similar answer choices An answer choice may be correct for more than one question in the series Each question is independent of the other questions in this series. Information and details provided in a question apply only to that question
You have two servers named Server1 and Server2 that run Windows Server 2016 Server1 and Server2 have the Hyper-V server role installed
An iSCSI SAN connects to the network
You create a LUN on the SAN and configure both servers to connect to the iSCSI target
You create a failover cluster and add Server1 and Server2 to the cluster. You connect both servers to the iSCSI target and format the shared storage
You need to add the shared storage to the cluster The solution must ensure that virtual machines running on both nodes can access the shared storage simultaneously.
Which tool should you use?

- A. the clussvc.exe command
- B. the cluster.exe command
- C. the Computer Management console
- D. the configurehyperv.exe command
- E. the Disk Management console
- F. the Failover Cluster Manager console
- G. the Hyper-V Manager console
- H. the Server Manager Desktop app

Answer: F

NEW QUESTION 98

Note: This question is part of a series of questions that use the same similar answer choices An answer choice may be correct for more than one question in the series Each question is independent of the other questions in this series. Information and details provided in a question apply only to that question
You have a Hyper-V host named Server1 that runs Windows Server 2016 You plan to deploy several shielded virtual machines on Server1
You deploy a Host Guardian on a new server
You need to ensure that Server1 can host shielded virtual machines. What should you run first?

- A. the Mount-VHD cmdlet
- B. the Diskpart command
- C. the Set-VHD cmdlet
- D. the Set-VM cmdlet
- E. the Set-VMHost cmdlet
- F. the Set-VMProcessor cmdlet
- G. the Install-WindowsFeature cmdlet
- H. the Optimize-VHD cmdlet

Answer: G

NEW QUESTION 100

In this section, you'll see one or more sets of questions with the same scenario and problem Each question presents a unique solution to the problem, and you must determine whether the solution meets the stated goals. Any of the solutions might solve the problem. It is also possible that none of the solutions solve the problem.
Once you answer a question in this section, you will NOT be able to return to it. As a result, these questions will not appear in the review screen
Note: This question is part of a series of questions that present the same scenario. Each question in the series contains a unique solution. Determine whether the solution meets the stated goals.
Your network contains an Active Directory domain named contoso.com. The domain contains a DNS server named Server1. All client computers run Windows 10.
On Server1, you have the following zone configuration

ZoneName	ZoneType	IsAutoCreated	IsDsIntegrated	IsReverseLookupZone	IsSign
-----	-----	-----	-----	-----	-----
_msdcs.contoso.com	Primary	False	True	False	False
adatum.com	Forwarder	False	False	False	
contoso.com	Primary	False	True	False	False
fabrikam.com	Primary	False	False	False	True
TrustAnchors	Primary	False	True	False	False

You have the following subnets defined on Server1.

Name	IPv4Subnet	IPv6Subnet
-----	-----	-----
Subnet1	{10.0.0.0/24}	
Subnet2	{10.0.1.0/24}	
Subnet3	{192.168.15.0/24}	
Subnet4	{172.16.1.0/24}	

You need to prevent Server1 from resolving queries from DNS clients located on Subnet4 Server1 must resolve queries from all other DNS clients Solution From a Group Policy object (GPO) in the domain, you modify the Network List Manager Policies Does this meet the goal?

- A. Yes
- B. No

Answer: B

NEW QUESTION 104

In this section, you'll see one or more sets of questions with the same scenario and problem Each question presents a unique solution to the problem, and you must determine whether the solution meets the stated goals. Any of the solutions might solve the problem. It is also possible that none of the solutions solve the problem. Once you answer a question in this section, you will NOT be able to return to it. As a result, these questions will not appear in the review screen Note: This question is part of a series of questions that present the same scenario. Each question in the series contains a unique solution. Determine whether the solution meets the stated goals. Your network contains an Active Directory domain named contoso.com. The domain contains a DNS server named Server1. All client computers run Windows 10. On Server1, you have the following zone configuration

ZoneName	ZoneType	IsAutoCreated	IsDsIntegrated	IsReverseLookupZone	IsSign
-----	-----	-----	-----	-----	-----
_msdcs.contoso.com	Primary	False	True	False	False
adatum.com	Forwarder	False	False	False	
contoso.com	Primary	False	True	False	False
fabrikam.com	Primary	False	False	False	True
TrustAnchors	Primary	False	True	False	False

You have the following subnets defined on Server1.

Name	IPv4Subnet	IPv6Subnet
-----	-----	-----
Subnet1	{10.0.0.0/24}	
Subnet2	{10.0.1.0/24}	
Subnet3	{192.168.15.0/24}	
Subnet4	{172.16.1.0/24}	

You need to prevent Server1 from resolving queries from DNS clients located on Subnet4 Server1 must resolve queries from all other DNS clients Solution From the Security setting of each zone on Server1, you modify the permissions Does this meet the goal?

- A. Yes
- B. No

Answer: B

NEW QUESTION 107

In this section, you'll see one or more sets of questions with the same scenario and problem Each question presents a unique solution to the problem, and you must determine whether the solution meets the stated goals. Any of the solutions might solve the problem. It is also possible that none of the solutions solve the problem. Once you answer a question in this section, you will NOT be able to return to it. As a result, these questions will not appear in the review screen Note: This question is part of a series of questions that present the same scenario. Each question in the series contains a unique solution. Determine whether the solution meets the stated goals. Your network contains an Active Directory domain named contoso.com. The domain contains a DNS server named Server1. All client computers run Windows 10.

On Server1, you have the following zone configuration

ZoneName	ZoneType	IsAutoCreated	IsDsIntegrated	IsReverseLookupZone	IsSign
-----	-----	-----	-----	-----	-----
_msdcs.contoso.com	Primary	False	True	False	False
adatum.com	Forwarder	False	False	False	
contoso.com	Primary	False	True	False	False
fabrikam.com	Primary	False	False	False	True
TrustAnchors	Primary	False	True	False	False

You have the following subnets defined on Server1.

Name	IPV4Subnet	IPV6Subnet
----	-----	-----
Subnet1	{10.0.0.0/24}	
Subnet2	{10.0.1.0/24}	
Subnet3	{192.168.15.0/24}	
Subnet4	{172.16.1.0/24}	

You need to prevent Server1 from resolving queries from DNS clients located on Subnet4 Server1 must resolve queries from all other DNS clients
Solution From Windows PowerShell on Server1, you run the Export-DnsServerDnsSecPublicKey cmdlet
Does this meet the goal?

- A. Yes
- B. No

Answer: B

NEW QUESTION 109

In this section, you'll see one or more sets of questions with the same scenario and problem Each question presents a unique solution to the problem, and you must determine whether the solution meets the stated goals Any of the solutions might solve the problem. It is also possible that none of the solutions solve the problem.
Once you answer a question in this section, you will NOT be able to return to it As a result. these questions will not appear in the review screen
Note This question is part of a series of questions that present the same scenario Each question in the series contains a unique solution Determine whether the solution meets the stated goals.
Your network contains an Active Directory forest named contoso.com. The forest contains a member server named Server1 that runs Windows Server 2016 All domain controllers run Windows Server 2012 R2
Contoso com has the following configuration

```
PS C:\> (Get-ADForest). ForestMode
Windows2008R2Forest

PS C:\> (Get-ADDomain). DomainMode
Windows2008R2Domain
PS C:\>
```

You plan to deploy an Active Directory Federation Services (AD FS) farm on Server1 and to configure device registration You need to configure Active Directory to support the planned deployment. Solution You raise the forest functional level to Windows Server 2012R2.
Does this meet the goal?

- A. Yes
- B. No

Answer: A

NEW QUESTION 112

Note: This question is part of a series of questions that present the same scenario. Each question in the series contains a unique solution that might meet the stated goals. Some question sets might have more than one correct solution, while others might not have a correct solution.
After you answer a question in this section, yon will NOT be able to return to it. As a result, these questions will not appear in the review screen.
You have two servers that run Windows Server 2016.
You plan to create a Network Load Balancing (NLB) cluster that will contain both servers. You need to configure the network cards on the servers for the planned NLB configuration.
Solution: You configure the network cards to be on the same subnet and to have static IP addresses. You configure the cluster to use unicast.
Does this meet the goal?

- A. Yes
- B. No

Answer: A

Explanation:

References:

<https://technet.microsoft.com/en-us/windows-server-docs/networking/technologies/network-load-balancing>

NEW QUESTION 117

Note: This question is part of a series of questions that present the same scenario. Each question in the series contains a unique solution that might meet the stated goals. Some question sets might have more than one correct solution, while others might not have a correct solution.

After you answer a question in this section, you will NOT be able to return to it. As a result, these questions will not appear in the review screen.

You are a server administrator at a company named Contoso, Ltd.

Contoso has a Windows Server 2016 Hyper-V environment configured as shown in the following table.

Hyper-V host name	Configuration	Virtual switch name
Host1	- Uses an Intel processor - Is a member of a SAN named SAN1	Switch1
Host2	- Uses an AMD processor - Has local storage only	Switch2
Host3	- Uses an Intel processor - Is a member of a SAN named SAN1	Switch1
Host4	- Uses an Intel processor - Has local storage only	Switch2

All of the virtual switches are of the external type.

You need to ensure that you can move virtual machines between the hosts without causing the virtual machines to disconnect from the network.

Solution: You implement live migration by using Host3 and Host4. Does this meet the goal?

A. Yes

B. No

Answer: A

NEW QUESTION 118

Note This question is part of a series of questions that present the same scenario. Each question in the series contains a unique solution that might meet the stated goals. Some question sets might have more than one correct solution, while others might not have a correct solution.

After you answer a question in this section, you will NOT be able to return to it. As a result, these questions will not appear in the review screen.

You are a server administrator at a company named Contoso, Ltd.

Contoso has a Windows Server 2016 Hyper-V environment configured as shown in the following table.

Hyper-V host name	Configuration	Virtual switch name
Host1	- Uses an Intel processor - Is a member of a SAN named SAN1	Switch1
Host2	- Uses an AMD processor - Has local storage only	Switch2
Host3	- Uses an Intel processor - Is a member of a SAN named SAN1	Switch1
Host4	- Uses an Intel processor - Has local storage only	Switch2

All of the virtual switches are of the external type.

You need to ensure that you can move virtual machines between the hosts without causing the virtual machines to disconnect from the network.

Solution: You implement live migration by using Host1 and Host2. Does this meet the goal?

A. Yes

B. No

Answer: B

NEW QUESTION 119

Note: This question is part of a series of questions that present the same scenario. Each question in the series contains a unique solution that might meet the stated goals. Some question sets might have more than one correct solution, while others might not have

a correct solution.
 After you answer a question in this section, you will NOT be able to return to it. As a result, these questions will not appear in the review screen.
 You are a server administrator at a company named Contoso, Ltd.
 Contoso has a Windows Server 2016 Hyper-V environment configured as shown in the following table.

Hyper-V host name	Configuration	Virtual switch name
Host1	- Uses an Intel processor - Is a member of a SAN named SAN1	Switch1
Host2	- Uses an AMD processor - Has local storage only	Switch2
Host3	- Uses an Intel processor - Is a member of a SAN named SAN1	Switch1
Host4	- Uses an Intel processor - Has local storage only	Switch2

All of the virtual switches are of the external type.
 You need to ensure that you can move virtual machines between the hosts without causing the virtual machines to disconnect from the network.
 Solution: You implement a Hyper-V Replica between Host2 and Host4. Does this meet the goal?

- A. Yes
- B. No

Answer: B

NEW QUESTION 122

Note: This question is part of a series of questions that present the same scenario. Each question in the series contains a unique solution that might meet the stated goals. Some question sets might have more than one correct solution, while others might not have a correct solution.
 Your network contains an Active Directory forest
 You install Windows Server 2016 on 10 virtual machines.
 You need to deploy the Web Server (IIS) server role identically to the virtual machines.
 Solution: From a Group policy object (GPO), you create an application control policy, and then you apply the policy to the virtual machines.
 Does this meet the goal?

- A. Yes
- B. No

Answer: B

NEW QUESTION 126

Note: This question is part of a series of questions that present the same scenario. Each question in the series contains a unique solution that might meet the stated goals. Some question sets might have more than one correct solution, while others might not have a correct solution.
 You have a server named Server1 that runs Windows Server 2016. Server1 hosts a line-of-business application named App1. App1 has a memory leak that occasionally causes the application to consume an excessive amount of memory.
 You need to log an event in the Application event log whenever App1 consume more than 4 GB of memory.
 Solution: You create a system configuration information data collector. Does this meet the goal?

- A. Yes
- B. No

Answer: B

NEW QUESTION 128

HOTSPOT
 You have a server named Server1 that runs Windows Server 2016 server.
 Server1 has the Docker daemon configured and has a container named Container1.
 You need to mount the folder C:\Folder1 on Server1 to C:\ContainerFolder in Container1.
 Which command should you run? To answer, select the appropriate options in the answer area.

Answer Area

▼	▼	▼	▼
Copy-ContainerFile	-Name Container1 -Path	C:\Folder1:C:\ContainerFolder	Container1
Docker	run -it -v	%windir%\ContainerFolder	Server1
Set-Service			

- A. Mastered
- B. Not Mastered

Answer: A

Explanation:

Answer Area



NEW QUESTION 132

Note This question is part of a series of questions that use the same scenario. For your convenience, the scenario is repeated in each question. Each question presents a different goal and answer choices, but the text of the scenario is exactly the same in each question in this series.

Start of Repeated Scenario:

A company named Contoso, Ltd. has several servers that run Windows Server 2016 Contoso has a Hyper V environment that uses failover clustering and Windows Server Update Services (WSUS). The environment contains several Windows containers and several virtual machines.

The WSUS deployment contains one upstream server that is located on the company's perimeter network and several downstream servers located on the internal network, A firewall separates the upstream server from the downstream servers.

You plan to deploy a human resources application to a new server named HRServer5. HRServer5 contains a FAT32-formatted data volume.

The CIO of Contoso identifies the following requirements for the company's IT department:

- Deploy failover cluster to two new virtual machines.
 - Store all application databases by using Encrypted File System (EFS).
 - Ensure that each Windows container has a dedicated IP address assigned by a DHCP server
 - Produce a report that lists the processor time used by all of the processes on a server named Server 1 for five hour.
- Encrypt all communication between the internal network and the perimeter network, including all WSUS communications.
- Automatically load balance the virtual machines hosted in the Hyper-V cluster when processor utilization exceeds 70 percent.

End of Repeated Scenario.

You need to modify the Hyper V cluster to meet the load balancing requirement for the virtual machine. Which command should you run?

- A. (Get-ClusterParameter) AutoBalancrMode=2
- B. (Get-Cluster).AutoBalancrMode=2
- C. (Get-ClusterParameter).AutoBalancerLevel=2
- D. (Get-Cluster).AutoBalancerLevel=2

Answer: D

NEW QUESTION 134

Note This question is part of a series of questions that use the same scenario. For your convenience, the scenario is repeated in each question. Each question presents a different goal and answer choices, but the text of the scenario is exactly the same in each question in this series.

Start of Repeated Scenario:

A company named Contoso, Ltd. has several servers that run Windows Server 2016 Contoso has a Hyper V environment that uses failover clustering and Windows Server Update Services (WSUS). The environment contains several Windows containers and several virtual machines.

The WSUS deployment contains one upstream server that is located on the company's perimeter network and several downstream servers located on the internal network, A firewall separates the upstream server from the downstream servers.

You plan to deploy a human resources application to a new server named HRServer5. HRServer5 contains a FAT32-formatted data volume.

The CIO of Contoso identifies the following requirements for the company's IT department:

- Deploy failover cluster to two new virtual machines.
 - Store all application databases by using Encrypted File System (EFS).
 - Ensure that each Windows container has a dedicated IP address assigned by a DHCP server
 - Produce a report that lists the processor time used by all of the processes on a server named Server 1 for five hour.
- Encrypt all communication between the internal network and the perimeter network, including all WSUS communications.
- Automatically load balance the virtual machines hosted in the Hyper-V cluster when processor utilization exceeds 70 percent.

End of Repeated Scenario.

What should you do to prepare the data volume on HRServer5 to store the databases required for the human resources application?

- A. Format the data volume by using ReFS.
- B. Enable Trusted Platform Module (TPM) on HRServer5.
- C. Format the data volume by using NTFS.
- D. Enable BitLocker Drive Encryption (BitLocker) on the data volume.

Answer: C

NEW QUESTION 139

Your network contains a new Active Directory domain named contoso.com.

You have a security policy that states that new servers should run Nano Server whenever possible. Which server role can be deployed on a Nano Server?

- A. Active Directory Domain Services
- B. DHCP Server
- C. Network Policy and Access Services

D. DNSServer / Web Server (IIS)

Answer: D

NEW QUESTION 142

DRAG DROP

You have a network that contains several servers that run Windows Server 2016.

You need to use Desired State Configuration (DSC) to configure the servers to meet the following requirements:

- Install the Web Server server role
- Start the World Wide Web Publishing service.

How should you configure the DSC resources? To answer, drag the appropriate values to the correct locations. Each value may be used once, more than once, or not at all. You may need to drag the split bar between panes or scroll to view content.

Values

Name

Service

WindowsFeature

WindowsProcess

Present

Source

Running

Stopped

Answer Area

Value

WebServerRole

{

Ensure = "

Value

"

Name = "Web-Server"

}

Value

WorldWideWebPublishing

{

Name = "W3SVC"

StartupType = "Automatic"

State = "

Value

"

}

- A. Mastered
B. Not Mastered

Answer: A

Explanation:

Values

Name

Service

WindowsFeature

WindowsProcess

Present

Source

Running

Stopped

Answer Area

```
WindowsFeature WebServerRole

{
    Ensure = "Present"
    Name = "Web-Server"
}

Service WorldWideWebPublishing

{
    Name = "W3SVC"
    StartupType = "Automatic"
    State = "Running"
}
```

NEW QUESTION 144

You have a server named Server1 that runs Windows Server 2016. You need to install the DNS Server role on Server1. What should you run?

- A. the dns.exe command
- B. the optionalfeature.exe command
- C. the Install-Package cmdlet
- D. the Enable-WindowsOptionalFeature cmdlet

Answer: D

NEW QUESTION 147

Note: This question is part of a series of questions that present the same scenario. Each question in the series contains a unique solution that might meet the stated goals. Some question sets might have more than one correct solution, while others might not have a correct solution.

After you answer a question in this section, you will NOT be able to return to it. As a result, these questions will not appear in the review screen.

You have a server named Server1 that runs Windows Server 2016.

Server1 hosts a line-of-business application named App1. App1 has a memory leak that occasionally causes the application to consume an excessive amount of memory.

You need to log an event in the Application event log whenever App1 consumes more than 4 GB of memory.

Solution: You create a performance counter alert data collector. Does this meet the goal?

- A. Yes
- B. No

Answer: A

NEW QUESTION 150

After you answer a question in this section, you will NOT be able to return to it. As a result, these questions will not appear in the review screen.

You have a server named Server1 that runs Windows Server 2016.

You plan to use Windows Server Backup to back up all of the data on Server1. You create a new volume on Server1.

You need to ensure that the new volume can be used as a backup target. The backup target must support incremental backups.

Solution: You mount the volume to C:\Backup, and you format the volume by using exFAT. Does this meet the goal?

- A. Yes
- B. No

Answer: B

NEW QUESTION 153

Your network contains an Active Directory domain. The domain contains a new file server named

Server1 that runs a Server Core installation of Windows Server 2016.

Server1 has an ReFS-formatted volume D: and NTFS-formatted volume E: The volumes do not contain any data.

You install the Data Deduplication role service on Server1.

You need to implement Data Deduplication for volumes on D: and E:.

Solution: From Windows PowerShell, you run Format-Volume E: -FileSystem ReFS and Enable- DeDupVolume -Volume D:,E:.

Does this meet the goal?

A. Yes

B. No

Answer: A

Explanation:

References: <https://docs.microsoft.com/en-us/windows-server/storage/data-deduplication/understand>

NEW QUESTION 156

Your network contains an Active Directory domain. The domain contains a new file server named Server1 that runs a Server Core installation of Windows Server 2016.

Server1 has an ReFS-formatted volume D: and NTFS-formatted volume E: The volumes do not contain any data.

You install the Data Deduplication role service on Server1.

You need to implement Data Deduplication for volumes on D: and E:.

Solution: From Windows PowerShell, you run Enable-DeDupVolume -Volume D:,E:. Does this meet the goal?

A. Yes

B. No

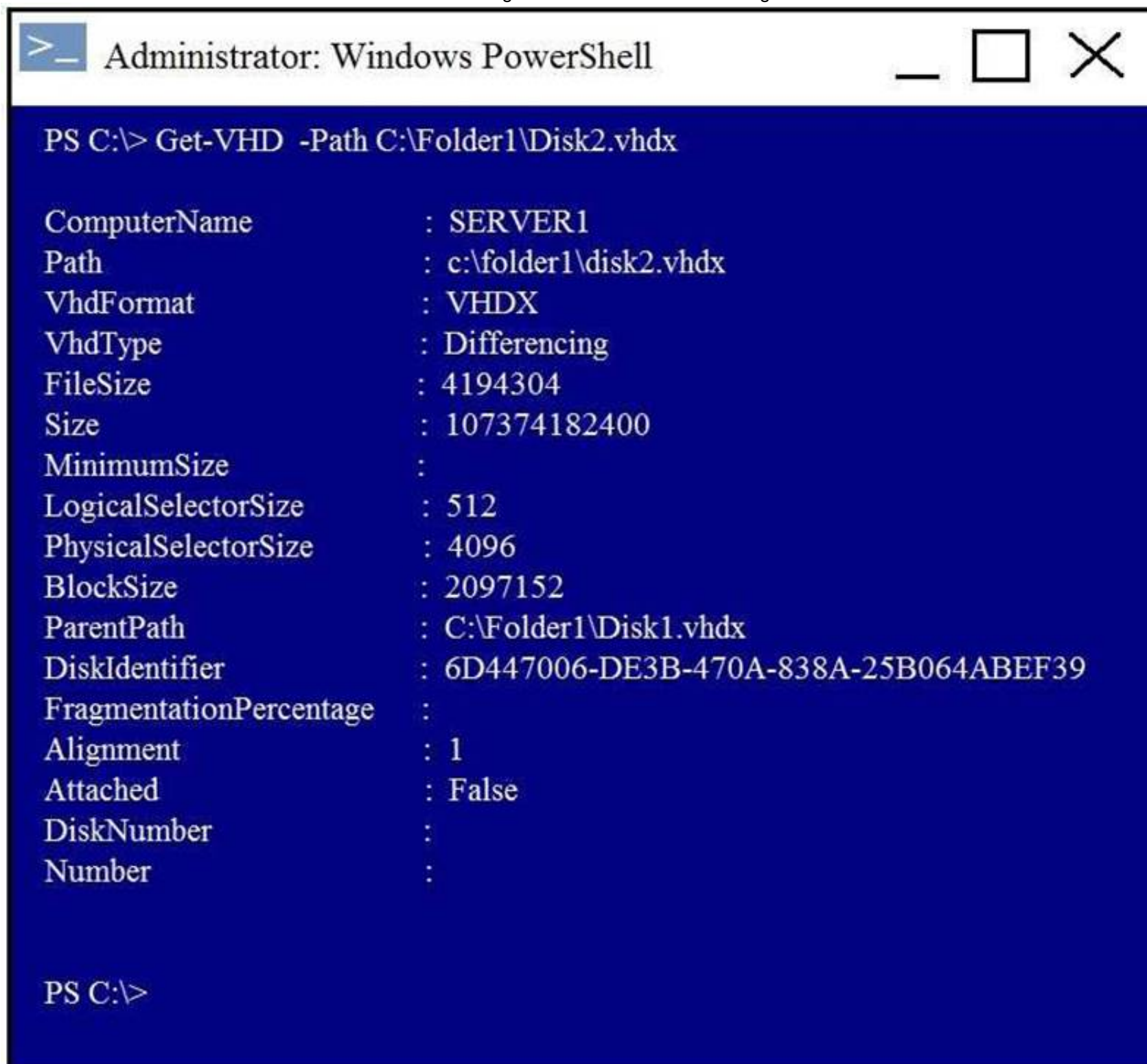
Answer: B

NEW QUESTION 158

HOTSPOT

You have a Hyper-V host named Server1 that runs Windows Server 2016. Server1 has a virtual disk file named Disk1.vhdx that contains an installation of Windows Server 2016.

You create a virtual disk file named Disk2.vhdx that is configured as shown in the following exhibit.



```
>_ Administrator: Windows PowerShell

PS C:\> Get-VHD -Path C:\Folder1\Disk2.vhdx

ComputerName      : SERVER1
Path               : c:\folder1\disk2.vhdx
VhdFormat         : VHDX
VhdType           : Differencing
FileSize          : 4194304
Size              : 107374182400
MinimumSize       :
LogicalSelectorSize : 512
PhysicalSelectorSize : 4096
BlockSize         : 2097152
ParentPath        : C:\Folder1\Disk1.vhdx
DiskIdentifier     : 6D447006-DE3B-470A-838A-25B064ABEF39
FragmentationPercentage :
Alignment         : 1
Attached          : False
DiskNumber        :
Number            :
```

Use the drop-down menus to select the answer choice that completes each statement based on the information presented in the graphic.

Answer Area

When you move Disk1.vhdx to C:\Folder2, you will be able to use Disk2.vhdx only after you run [answer choice].

▼
Merge-VHD
Optimize-VHD
Optimize-VHDSets
Set-VHD
Test-VHD

Before you can copy files directly into Disk2.vhdx, you must first run [answer choice].

▼
Merge-VHD
Mount-VHD
Optimize-VHD
Resize-VHD
Set-VHD

- A. Mastered
- B. Not Mastered

Answer: A

Explanation:

Answer Area

When you move Disk1.vhdx to C:\Folder2, you will be able to use Disk2.vhdx only after you run [answer choice].

▼
Merge-VHD
Optimize-VHD
Optimize-VHDSets
Set-VHD
Test-VHD

Before you can copy files directly into Disk2.vhdx, you must first run [answer choice].

▼
Merge-VHD
Mount-VHD
Optimize-VHD
Resize-VHD
Set-VHD

NEW QUESTION 161

You have a Nano Server that runs Windows Server 2016. The Nano Server runs on a physical machine. You have not Installed any packages on the server. You attach a new disk to the server, and you initialize the disk as a GPT disk. You need to create an RefS-formatted volume on the new disk. What should you do first?

- A. From the physical server, log on to the Nano Server Recovery Console.
- B. Install the Microsoft-Nano'Server-Host-Package package.
- C. Run me Format-Vokime cmdlet and specify the -FileSystem switch.
- D. Install the Microsoft NanoServef-Storage-Package package.

Answer: C

NEW QUESTION 166

You have a server named Server1 that runs Windows Server 2016.
 The disks on Server1 are configured as shown in the following table.

Volume	Type	File System	Capacity
C:	Attached locally	NTFS	150 GB
D:	Attached locally	exFAT	100 GB
E:	Attached locally	NTFS	20 GB
F:	Attached locally	ReFS	1 TB
G:	iSCSI LUN	NTFS	2 TB

Windows Server 2016 is installed in C:\Windows.

On which two volumes can you enable data deduplication? Each correct answer presents a complete solution.

- A. C:
- B. D:
- C. E:
- D. F:
- E. G:

Answer: CE

NEW QUESTION 170

DRAG DROP

You install a new Nano Server named Nano1. Nano1 is a member of a workgroup and has an IP address of 192.168.1.10.

You have a server named Server1 that runs Windows Server 2016.

From Server1, you need to establish a Windows PowerShell session to Nano1.

How should you complete the PowerShell script? To answer, drag the appropriate cmdlets to the correct targets. Each cmdlet may be used once, more than once, or not at all. You may need to drag the split bar between panes or scroll to view content.

Cmdlets

Enable-PSRemoting
 Enter-PSSession
 Set-Item
 Set-ItemProperty
 Set-LocalUser

Answer Area

\$ip = "192.168.1.10"

\$user = "Administrator"

Cmdlet WSMAN:\localhost\Client\TrustedHosts "192.168.1.10"

Cmdlet -ComputerName \$ip -Credential \$user

- A. Mastered
- B. Not Mastered

Answer: A

Explanation:

How to access Nano Server

Because Nano Server does not support a local session, it must be accessed remotely. References: [https://msdn.microsoft.com/en-us/library/mt708805\(v=vs.85\).aspx](https://msdn.microsoft.com/en-us/library/mt708805(v=vs.85).aspx)

NEW QUESTION 173

DRAG DROP

You are preparing an image of Windows Server 2016.

The image is missing the driver for a network adapter that is required in your environment. You need to ensure that the image contains the network adapter driver. Which three cmdlets should you use in sequence? To answer, move the appropriate cmdlets from the list of cmdlets to the answer area and arrange them in the correct order.

Cmdlets

- Mount-WindowsImage
- Add-WindowsDriver
- Get-WindowsImage
- Save-WindowsImage
- Add-WindowsFeature
- Dismount-WindowsImage
- Optimize-WindowsImage

Answer Area

- 1
- 2
- 3

- A. Mastered
- B. Not Mastered

Answer: A

Explanation:

Cmdlets

- Mount-WindowsImage
- Get-WindowsImage
- Save-WindowsImage
- Add-WindowsFeature

Answer Area

- 1 Add-WindowsDriver
- 2 Optimize-WindowsImage
- 3 Dismount-WindowsImage

NEW QUESTION 174

Your network contains an Active Directory domain named contoso.com. The domain contains two servers, Server and Server2 that run Windows Server 2016. Each server has an operating system disk and four data disks. All of the disks are locally attached SATA disks. Data disk, is initialized as an MBR disk, and has a single NTFS volume. You plan to implement Storage Spaces Direct by using the data disks on Server1 and Server2. You need to prepare the data disks for the Storage Spaces Direct implementation. What should you do?

- A. Convert the data disks to dynamic disks.

- B. Format the volumes on the data disks as exFAT.
- C. Initialize the data disks as GPT disks and create an ReFS volume on each disk.
- D. Delete the volumes from the data disks.

Answer: D

NEW QUESTION 177

Note: This question is part of a series of questions that use the same or similar answer choices. An answer choice may be correct for more than one question in the series. Each question is independent of the other questions in this series. Information and details provided in a question apply only to that question.
You have two servers named Server1 and Server2 that run Windows Server 2016. Server1 and Server2 have the Hyper-V server role installed and are nodes in a failover cluster.
On Server1, an administrator creates a virtual machine named VM1. You need to configure VM1 for high availability.
Which tool should you use?

- A. the clussvc.exe command
- B. the cluster.exe command
- C. the Computer Management snap-in
- D. the configurehyperv.exe command
- E. the Disk Management snap-in
- F. the Failover Cluster Manager snap-in
- G. the Hyper-V Manager snap-in
- H. the Server Manager app

Answer: F

Explanation:

References:
<http://windowsitpro.com/hyper-v/make-vm-highly-available-windows-server-2012>

NEW QUESTION 180

DRAG DROP

Your network contains an Active Directory domain. The domain contains two domain controllers named DC1 and DC2. DC2 is a virtual machine that is hosted on a Hyper-V host named HyperV1. DC1 holds the PDC emulator operations master role.
You need to create a new domain controller named DC3 by using domain controller cloning.
Which five actions should you perform in sequence before you can import the cloned virtual machine? To answer, move the appropriate actions from the list of actions to the answer area and arrange them in the correct order.
NOTE: More than one order of answer choices is correct. You will receive credit for any of the correct orders you select.

Actions

- Stop DC2.
- Run the **New-ADDCCloneConfigFile** cmdlet.
- Modify the group membership of DC3.
- Export DC2.
- Run the **Get-ADDCCloningExcludedApplicationList** cmdlet.
- Modify the group membership of DC2.

Answer Area



- A. Mastered
- B. Not Mastered

Answer: A

Explanation:

Actions

- Stop DC2.
- Run the **New-ADDCCloneConfigFile** cmdlet.
- Modify the group membership of DC3.
- Export DC2.
- Run the **Get-ADDCCloningExcludedApplicationList** cmdlet.
- Modify the group membership of DC2.

Answer Area

- Modify the group membership of DC2.
- Run the **Get-ADDCCloningExcludedApplicationList** cmdlet.
- Run the **New-ADDCCloneConfigFile** cmdlet.
- Stop DC2.
- Export DC2.

NEW QUESTION 182

HOTSPOT

Your company has a main office and a branch office. The two offices connect to each other by using a WAN link. Your network contains an Active Directory forest named contoso.com. The forest contains a domain controller named DC1. All of the domain controllers are located in the main office. You install a read-only domain controller (RODC) named RODC1 in the branch office. You create a user account for a new user named User1. You add User1 to the Allowed RODC Password Replication Group. User1 starts work on Monday. You are notified that the WAN link will be down for maintenance on Monday. You need to ensure that User1 can log on in the branch office site on Monday. Which command should you run? To answer, select the appropriate options in the answer area.

Answer Area

clonepr	/prp
ldifde	/replicate
repadmin	/rodcpwdrepl
replmon	/syncall

rodcl.fabrikam.com dc1.fabrikam.com "cn=user1,ou=users,dc=fabrikam,DC=com"

- A. Mastered
- B. Not Mastered

Answer: A

Explanation:

References:
[https://technet.microsoft.com/en-us/library/cc742095\(v=ws.11\).aspx](https://technet.microsoft.com/en-us/library/cc742095(v=ws.11).aspx)

NEW QUESTION 186

HOTSPOT

Your network contains an Active Directory forest named contoso.com. You need to add a new domain named fabrikam.com to the forest. What command should you run? To answer, select the appropriate options in the answer area.

Answer Area

▼

Install-ADDSDomain

Install-ADDSDomainControler

Install-ADDSDForest

-DomainType

▼

TreeDomain

ChildDomain

-InstallDns:Strue -NewDomainName fabrikam.com -ParentDomainName contoso.com

- A. Mastered
- B. Not Mastered

Answer: A

Explanation:

Answer Area

▼

Install-ADDSDomain

Install-ADDSDomainControler

Install-ADDSDForest

-DomainType

▼

TreeDomain

ChildDomain

-InstallDns:Strue -NewDomainName fabrikam.com -ParentDomainName contoso.com

Explanation:
References:
[https://technet.microsoft.com/en-us/library/hh974722\(v=wps.630\).aspx](https://technet.microsoft.com/en-us/library/hh974722(v=wps.630).aspx)

NEW QUESTION 187

HOTSPOT

Your network contains an Active Directory forest. The forest contains one domain named contoso.com. The domain contains two domain controllers named DC1 and DC2. DC1 holds all of the operations master roles.
During normal network operations, you run the following commands on DC2:

```
Move-ADDirectoryServerOperationMasterRole -Identity "DC2" - OperationMasterRole PDCEmulator  
  
Move-ADDirectoryServerOperationMasterRole -Identity "DC2" - OperationMasterRole RIDMaster
```

DC1 fails.
You remove DC1 from the network, and then you run the following command:

```
Move-ADDirectoryServerOperationMasterRole -Identity "DC2" - OperationMasterRole SchemaMaster
```

For each of the following statements, select Yes if the statement if true. Otherwise, select No.

Answer Area

Statements	Yes	No
DC2 holds the schema master operations role.	<input type="radio"/>	<input type="radio"/>
DC2 holds the PDC emulator master operations role.	<input type="radio"/>	<input type="radio"/>
Currently, you can add additional domains to the forest.	<input type="radio"/>	<input type="radio"/>

- A. Mastered
- B. Not Mastered

Answer: A

Explanation:

Answer Area

Statements	Yes	No
DC2 holds the schema master operations role.	<input type="radio"/>	<input checked="" type="radio"/>
DC2 holds the PDC emulator master operations role.	<input checked="" type="radio"/>	<input type="radio"/>
Currently, you can add additional domains to the forest.	<input type="radio"/>	<input checked="" type="radio"/>

NEW QUESTION 188

You have a Hyper-V host named Server1 that runs Windows Server 2016. The host has two virtual machines (VMs) named VM1 and VM2. On the Hyper-V host, you create two virtual disks named Disk1 and Disk2. You plan to create a test environment for Storage Spaces Direct. You need to configure the VMs to connect to the virtual disks. What should you use?

- A. An iSCSI target
- B. A virtual SCSI controller
- C. A virtual fibre channel adapter
- D. A virtual IDE controller

Answer: B

Explanation:

References: <https://blogs.msdn.microsoft.com/clustering/2015/05/27/testing-storage-spaces-direct-using-windows-server-2016-virtual-machines/>

NEW QUESTION 191

Note: This question is part of a series of questions that present the same scenario. Each question in the series contains a unique solution that might meet the stated goals. Some question sets might have more than one correct solution, while others might not have a correct solution. After you answer a question in this section, you will NOT be able to return to it. As a result, these questions will not appear in the review screen. Your network contains an Active Directory forest named contoso.com. You need to identify which server is the schema master. Solution: You open Active Directory Users and Computers, right-click contoso.com in the console tree, and then click Operations Master. Does this meet the goal?

- A. Yes
- B. No

Answer: B

Explanation:

This solution only shows the domain FSMO roles, not the forest FSMO roles. References: <https://blogs.technet.microsoft.com/mempson/2007/11/08/how-to-find-out-who-has-your-fsmo-roles/>

NEW QUESTION 192

Note: This question is part of a series of questions that present the same scenario. Each question in the series contains a unique solution that might meet the stated goals. Some question sets might have more than one correct solution, while others might not have a correct solution. After your answer a question in this section, you will NOT be able to return to it. As a result, these questions will not appear in the review screen. Your network contains an Active Directory forest named contoso.com. You need to identify which server is the schema master. Solution: From a command prompt, you run netdom query fsmo. Does this meet the goal?

- A. Yes
- B. No

Answer: A

Explanation:

References: <https://blogs.technet.microsoft.com/mempson/2007/11/08/how-to-find-out-who-has-your-fsmo-roles/>

NEW QUESTION 194

You have two servers named Server1 and Server2. A firewall exists between Server1 and Server2. Both servers run Windows Server Update Services (WSUS). Server1 downloads updates from Microsoft update. Server2 must synchronize updates from Server1. Which port should to open on the firewall?

- A. 80
- B. 443
- C. 3389
- D. 8530

Answer: D

NEW QUESTION 197

Active Directory Recycle Bin is enabled. You discover that a support technician accidentally removed 100 users from an Active Directory group named Group1 an hour ago. You need to restore the membership of Group1. What should you do?

- A. Perform tombstone reanimation.
- B. Export and import data by using Dsain.
- C. Perform a non-authoritative restore.
- D. Recover the items by using Active Directory Recycle Bin.

Answer: B

Explanation:

A group has been modified. Nothing has been deleted. Therefore, answers A and D will not work. Answer C would work if it was an authoritative restore, but not a non-authoritative restore. The solution is to recover an earlier copy of the group from a backup or active directory snapshot by using DSadmin.

NEW QUESTION 201

You have a server named Server1 that runs Windows Server 2016 and is configured as a domain controller.

You install the DNS Server server role on Server1.

You plan to store a DNS zone in a custom Active Directory partition. You need to create a new Active Directory partition for the zone. What should you use?

- A. Set-DnsServer
- B. Active Directory Sites and Services
- C. Dns.exe
- D. Dnscmd.exe

Answer: D

Explanation:

[https://technet.microsoft.com/en-us/library/ee649181\(v=ws.10\).aspx](https://technet.microsoft.com/en-us/library/ee649181(v=ws.10).aspx)

NEW QUESTION 206

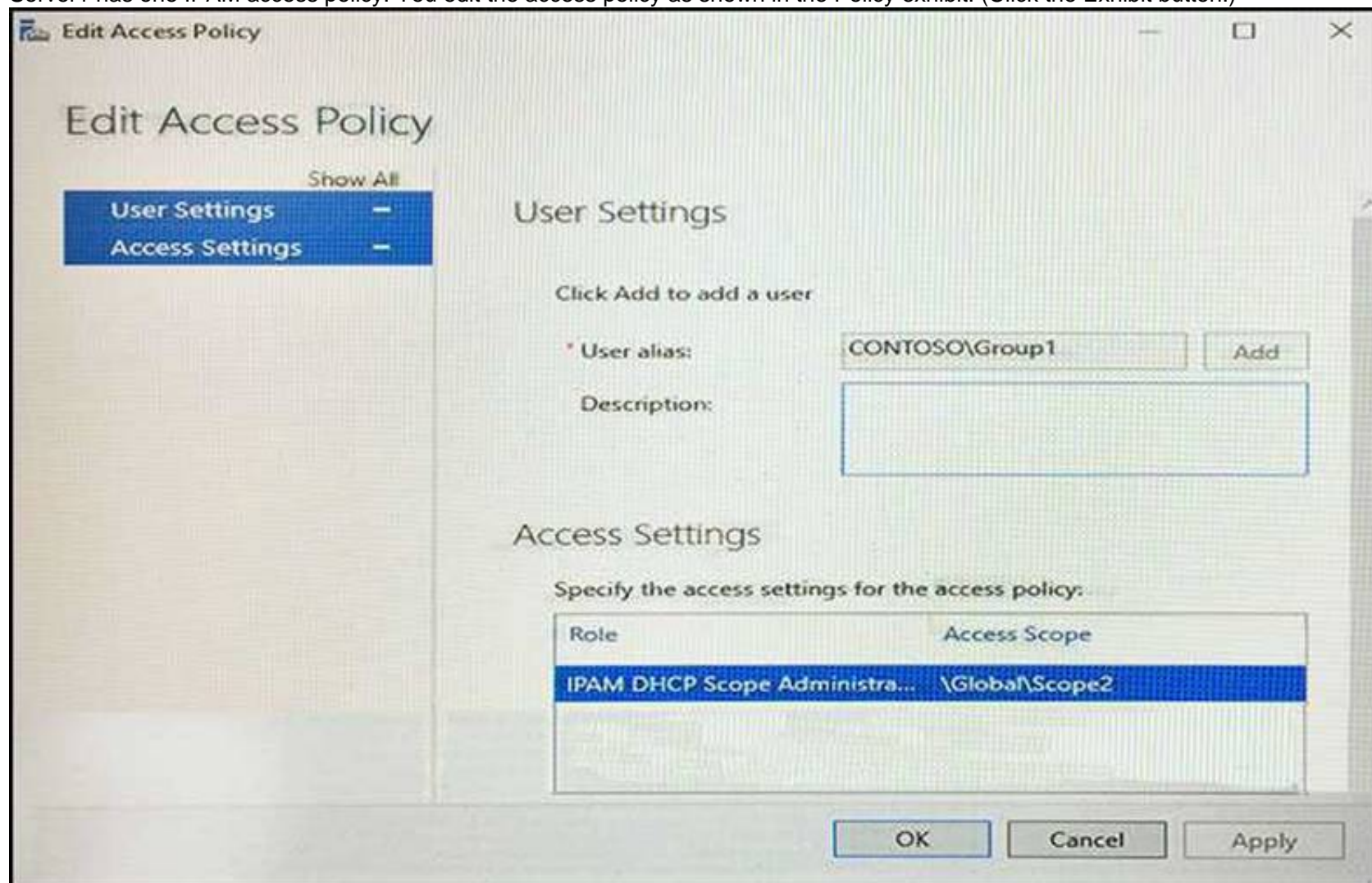
HOTSPOT

You network contains an Active Directory named contoso.com. The domain contains two servers named Server1 and Server2 that run Windows Server 2016.

Server1 has IP Address Management (IPAM) installed. Server2 has the DHCP Server role installed. The IPAM server retrieves data from Server2.

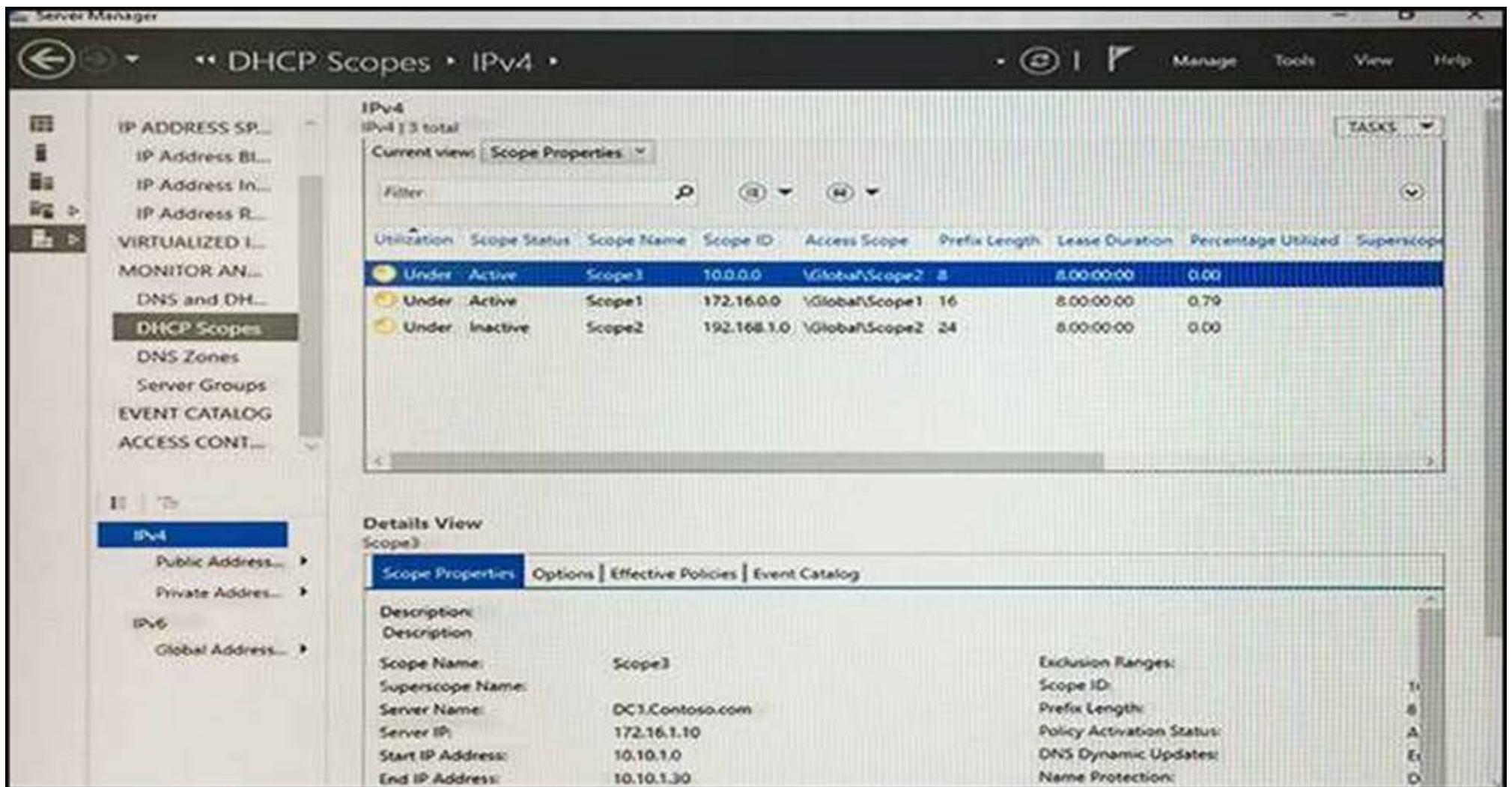
The domain has two users named User1 and User2 and a group named Group1. User1 is the only member of Group1.

Server1 has one IPAM access policy. You edit the access policy as shown in the Policy exhibit. (Click the Exhibit button.)



Role	Access Scope
IPAM DHCP Scope Administra...	\Global\Scope2

The DHCP scopes are configured as shown in the Scopes Exhibit. (Click the Exhibit button.)



For each of the following statements, select Yes if the statement is true. Otherwise, select No.

Answer Area

Statements

Yes

No

User1 can modify the description of Scope1.

☐
☐

User2 can modify the description of Scope1.

☐
☐

User1 can modify the description of Scope2.

☐
☐

- A. Mastered
 B. Not Mastered

Answer: A

Explanation:

[https://technet.microsoft.com/en-us/library/dn268500\(v=ws.11\).aspx](https://technet.microsoft.com/en-us/library/dn268500(v=ws.11).aspx)

NEW QUESTION 207

HOTSPOT

Your network contains an Active Directory domain named contoso.com. The domain contains three servers named Server1, Server2, and Server3 that run Windows Server 2016.

Server1 has IP Address Management (IPAM) installed. Server2 and Server3 have the DHCP Server role installed and have several DHCP scopes configured. The IPAM server retrieves data from Server2 and Server3.

A domain user named User1 is a member of the groups shown in the following table.

Server name	Group
Server2	DHCP Administrators
Server3	DHCP Users

On Server1, you create a security policy for User1. The policy grants the IPAM DHCP Scope Administrator Role with the \Global access scope to the user. Which actions can User1 perform? To answer, select the appropriate options in the answer area.

Answer Area

From Server Manager on Server1, User1 can modify the description of the DHCP scopes:

On Server2 only
On Server3 only
On both Server2 and Server3

From Server Manager on Server1, User1 can create a new DHCP scope:

On Server2 only
On Server3 only
On both Server2 and Server3

- A. Mastered
- B. Not Mastered

Answer: A

Explanation:

[https://technet.microsoft.com/en-us/library/dn268500\(v=ws.11\).aspx](https://technet.microsoft.com/en-us/library/dn268500(v=ws.11).aspx)

NEW QUESTION 209

You have a server named Server1 that runs Windows Server 2016. Server1 is a Hyper-V host that hosts a virtual machine named VM1. Server1 has three network adapter cards that are connected to virtual switches named vSwitch1, vSwitch2 and vSwitch3. You configure NIC Teaming on VM1 as shown in the exhibit. (Click the Exhibit button.)

NIC Teaming

New team

Team name:
VM1 NIC Team

Member adapters:

In Team	Adapter	Speed	State	Reason
<input type="checkbox"/>	Ethernet	10 Gbps		
<input checked="" type="checkbox"/>	Ethernet 2	10 Gbps		
<input checked="" type="checkbox"/>	Ethernet 3	10 Gbps		

Additional properties

Teaming mode: Switch Independent

You need to ensure that VM1 will retain access to the network if a physical network adapter card fails on Server1. What should you do?

- A. From Windows PowerShell on VM1, run the Set-VmNetworkAdapterTeamMapping cmdlet.
- B. From Hyper-V Manager on Server1, modify the settings on VM1.
- C. From Windows PowerShell on Server1, run the Set-VmNetworkAdapterFailoverConfiguration cmdlet.
- D. From the properties of the NIC team on VM1, add the adapter named Ethernet to the NIC team.

Answer: D

Explanation:

<https://technet.microsoft.com/en-us/windows-server-docs/networking/technologies/nic-teaming/nic-teaming>

NEW QUESTION 214

A company named Contoso, Ltd has five Hyper-V hosts that are configured as shown In the following table.

Hyper-V host name	Configuration
Server1	Windows Sever 2012 R2 and an Intel Xeon E7 processor
Server2	Windows Sever 2012 R2 and an Intel i7 processor
Server3	Windows Sever 2016 and an Intel i7 processor
Server4	Windows Sever 2016 and an AMD Opteron processor
Server5	Windows Sever 2012 R2 and an Intel Xeon E7 processor

What are two valid live migration scenarios for virtual machines in your environment? Each correct answer presents a complete solution.

- A. from Server4 to Server5
- B. from Server1 to Server5
- C. from Server3 to Server4
- D. from Server2 to Server3

Answer: BD

NEW QUESTION 216

You have a Hyper-V host named Server1 that runs Windows Server 2016. Server1 hosts a virtual machine named VM1. VM1 is in a workgroup. VM1 is currently in a running state.

You need to create 10 copies of VM1 on Server1 in the least amount of time possible. Which cmdlets should you use?

- A. Stop-VM, and then Import-VM
- B. Export-VM, and then Import-VM
- C. Checkpoint-VM, and then New-VM
- D. Copy-VMFile, and then New-VM

Answer: B

NEW QUESTION 219

Note: This question is part of a series of questions that use the same scenario. For your convenience, the scenario is repeated in each question. Each question presents a different goal and answer choices, but the text of the scenario is exactly the same in each question in this series.

Start of repeated scenario

Your network contains an Active Directory domain named contoso.com. The functional level of the forest and the domain is Windows Server 2008 R2. All servers in the domain run Windows Server 2016 Standard. The domain contains 300 client computers that run either Windows 8.1 or Windows 10.

The domain contains nine servers that are configured as shown in the following table.

Server name	Configuration	Planned changes
Server1	Domain controller	None
Server2	File server	Run Failover Clustering and Storage Spaces Direct
Server3	File server	Run Failover Clustering and Storage Spaces Direct
Server4	Hyper-V host	Run shielded virtual machines
Server5	Hyper-V host	None
Server6	Member server	Run Active Directory Federation Services (AD FS)
VM1	Virtual machine hosted on Server 5	None
VM2	Virtual machine hosted on Server 5	None
VM3	Virtual machine hosted on Server 5	None

The virtual machines are configured as follows:

Each virtual machine has one virtual network adapter.

VM1 and VM2 are part of a Network Load Balancing (NLB) cluster.

All of the servers on the network can communicate with all of the virtual machines. End of repeated scenario.

You plan to implement nested virtual machines on VM1.

Which two features will you be prevented from using for VM1?

- A. NUMA spanning
- B. live migration
- C. Dynamic Memory
- D. Smart Pathing

Answer: BC

Explanation:

References:

<https://blogs.technet.microsoft.com/virtualization/2015/10/13/windows-insider-preview-nested-virtualization/>

NEW QUESTION 224

Note: This question is part of a series of questions that use the same scenario. For your convenience, the scenario is repeated in each question. Each question presents a different goal and answer choices, but the text of the scenario is exactly the same in each question in this series.

Start of repeated scenario

Your network contains an Active Directory domain named contoso.com. The functional level of the forest and the domain is Windows Server 2008 R2. All servers in the domain run Windows Server 2016 Standard. The domain contains 300 client computers that run either Windows 8.1 or Windows 10.

The domain contains nine servers that are configured as shown in the following table.

Server name	Configuration	Planned changes
Server1	Domain controller	None
Server2	File server	Run Failover Clustering and Storage Spaces Direct
Server3	File server	Run Failover Clustering and Storage Spaces Direct
Server4	Hyper-V host	Run shielded virtual machines
Server5	Hyper-V host	None
Server6	Member server	Run Active Directory Federation Services (AD FS)
VM1	Virtual machine hosted on Server 5	None
VM2	Virtual machine hosted on Server 5	None
VM3	Virtual machine hosted on Server 5	None

The virtual machines are configured as follows:

- Each virtual machine has one virtual network adapter.
- VM1 and VM2 are part of a Network Load Balancing (NLB) cluster.
- All of the servers on the network can communicate with all of the virtual machines. End of repeated scenario.

You create a new NLB cluster that contains VM3.

You need to ensure that VM2 can remain in the original cluster and be added to the new cluster. What should you do first?

- A. Add a new virtual network adapter to VM2.
- B. Install the Web Application Proxy server role on VM2 and VM3.
- C. Modify the default port rule.
- D. Change the cluster operation mode.

Answer: A

NEW QUESTION 225

HOTSPOT

You have four Hyper-V hosts named Server1, Server2, Server3 and Server4 that run Windows Server 2016. The hosts are nodes in a failover cluster.

The failover cluster is configured to balance virtual machines when a node is more than 80 percent loaded.

You need to configure the failover cluster to balance the virtual machines when the load of a node is more than five percent higher than the average for the nodes.

Which command should you run? To answer, select the appropriate options in the answer area.

Answer Area

▼

Get-Cluster
Get-ClusterNode
Get-ClusterParameter
Get-ClusterResource

▼

AutoBalanceLevel=3
AutoBalancedMode=1
DynamicQuorum=1
MininumPreemptorPriority=5

- A. Mastered
- B. Not Mastered

Answer: A

Explanation:

Answer Area

▼

Get-Cluster

Get-ClusterNode

Get-ClusterParameter

Get-ClusterResource

▼

AutoBalanceLevel=3

AutoBalancedMode=1

DynamicQuorum=1

MininumPreemptorPriority=5

NEW QUESTION 230

HOTSPOT

You have four Hyper-V hosts named Server1, Server2, Server3 and Server4 that run Windows Server 2016. The hosts are nodes in a failover cluster. A virtual machine named VM1 is running in the failover cluster. The role for VM1 is configured as shown in the following exhibit.

```

PS C:\> Get-ClusterGroup vm1 | fl

AntiAffinityClassNames : {}
AutoFailbackType       : 1
ColdStartSetting       : 0
Cluster                : Cluster1
DefaultOwner           : 1
Description             :
GroupType              : VirtualMachine
FailoverPeriod         : 1
FailoverThreshold      : 2
FailbackWindowEnd      : 6
FailbackWindowStart    : 20
IsCoreGroup            : False
Name                   : vm1
OwnerNode              : Server1
PersistentState        : 1
PreferredSite          : {}
Priority                : 2000
ResiliencyPeriod       : 4294967295
State                  : Online
StatusInformation      : 0
Id                     : 5304f522-4fbf-4d06-8fb6-c6b0e2c289e7
  
```

Use the drop-down menus to select the answer choice that completes each statement based on the information presented in the graphic.

Answer Area

If VM1 fails three time in one hour, VM1 will [answer choice].

▼

fail over to a different node

remain in a failed state

restart on the same node

If VM1 fails over to a different node at 14:00, VM1 will fail back to the preferred node [answer choice].

▼

as soon as possible

automatically at 20:00

if the current node is highly loaded

only when triggered manually

- A. Mastered
- B. Not Mastered

Answer: A

Explanation:

References:

[https://msdn.microsoft.com/en-us/library/aa369665\(v=vs.85\).aspx](https://msdn.microsoft.com/en-us/library/aa369665(v=vs.85).aspx)

NEW QUESTION 231

DRAG DROP

You have a file server named Server1 that runs Windows Server 2016.

You need to create a report that lists all of the share permissions assigned to the security principals on Server1.

How should you complete the command? To answer, drag the appropriate cmdlets to the correct targets. Each cmdlet may be used once, more than once, or not at all. You may need to drag the split bar between panes or scroll to view content.

Cmdlets

Get-Acl

Get-SmbClientConfiguration

Get-SmbShare

Set-SmbPathAcl

Get-Credential

Get-SmbDelegation

Get-SmbShareAccess

Answer Area

Cmdlet

Cmdlet

- A. Mastered
- B. Not Mastered

Answer: A

Explanation:

Cmdlets

Get-Acl

Get-SmbClientConfiguration

Get-SmbShare

Set-SmbPathAcl

Get-Credential

Get-SmbDelegation

Get-SmbShareAccess

Answer Area

Get-SmbShare

Get-SmbShareAccess

NEW QUESTION 232

You want to capture the state, data, and hardware configuration of a running virtual machine.

Which checkpoint can be very useful if you need to recreate a specific state or condition of a running virtual machine so that you can troubleshoot a problem?

- A. Production
- B. Standard

Answer: B

Explanation:

Standard checkpoints capture the state, data, and hardware configuration of a running virtual machine and are intended for use in development and test scenarios.

NEW QUESTION 235

With Nano Server some packages are installed directly with their own Windows PowerShell switches (such as -Compute); others you install by passing package names to the -Packages parameter, which you can combine in a comma-separated list. You want to add IIS to your Nano Server, which command should you use?

- A. -Compute
- B. -Packages
- C. -Containers
- D. -Storage

Answer: B

Explanation:

IIS is added by using -Packages Microsoft-NanoServer-IIS-Package.

NEW QUESTION 237

Virtual Network Manager (available from the Hyper-V Manager snap-in) offers three types of virtual networks that you can use to define various networking topologies for virtual machines and the virtualization server. Which type of virtual network is isolated from all external network traffic on the virtualization server, as well any network traffic between the management operating system and the external network.

- A. Private virtual network
- B. Internal virtual network

Answer: A

NEW QUESTION 242

For Windows Server 2016, Nano Server is distributed on the physical media, where you will find a NanoServer folder; this contains a .wim image and a subfolder called Packages. It is these package files that you use to add server roles and features to the VHD image, which you then boot to. Assume that several variables have been configured already, which PowerShell command would you use to create a Nano Server which had the Hyper-V role, clustering, OEM Drivers and antimalware?

- A. New-NanoServerImage -MediaPath \$mediapath -BasePath \$basepath -TargetPath \$targetpath - ComputerName \$computername -OEMDrivers -Clustering -Defender -Compute
- B. New-NanoServerImage -MediaPath \$mediapath -BasePath \$basepath -TargetPath \$targetpath - ComputerName \$computername -OEMDrivers -Clustering -Storage -EnableRemoteManagementPort
- C. New-NanoServerImage -MediaPath \$mediapath -BasePath \$basepath -TargetPath \$targetpath - ComputerName \$computername -OEMDrivers -Defender -Containers - EnableRemoteManagementPort
- D. New-NanoServerImage -MediaPath \$mediapath -BasePath \$basepath -TargetPath \$targetpath - ComputerName \$computername -Defender -Storage -Compute - EnableRemoteManagementPort

Answer: A

NEW QUESTION 247

Which terminology is being described below? Time synchronization is critical for the proper operation of many Windows services and line- ofbusiness applications. The uses the Network Time Protocol (NTP) to synchronize computer clocks on the network so that an accurate clock value, or time stamp, can be assigned to network validation requests and resource access requests.

- A. Network Services Shell (Netsh)
- B. Listsvc
- C. Fixmbr
- D. Windows Time service (W32time)

Answer: D

Explanation:

The correct answer is Windows Time service (W32time)

NEW QUESTION 252

You plan to install a Nano Server on a physical server named Nano1. Nano1 will host several virtual machines that will use live migration. Which package should you install on Nano1?

- A. Microsoft-NanoServer-SecureStartup-Package
- B. Microsoft-NanoServer-ShieldedVM-Package
- C. Microsoft-NanoServer-Compute-Package
- D. Microsoft-NanoServer-FailoverCluster-Package
- E. Microsoft-NanoServer-Storage -Package

Answer: C

NEW QUESTION 257

HOTSPOT

You have four servers named Server1, Server2, Server3, and Server4 that run Windows Server 2016. Server1 and Server2 are nodes in a failover cluster named FC1. Server3 and Server4 are nodes in a failover cluster named FC2. You add the cluster roles shown in the following table.

Role name	Type	Failover cluster	Owner node
FS1(\FS1)	File server	FC1	Server1
FS2(\FS2)	Scale-Out File Server	FC2	Server3

You add a file share named Share1 to FS1. You add a file share named Share2 to FS2.

Which UNC paths can you use to access each share? To answer, select the appropriate options in the answer area.

NOTE: Each correct selection is worth one point.

Answer Area

UNC path to access Share1:

▼

\\FS1\Share1 only

\\Server1\Share1 only

\\Server2\Share1 only

\\Server1\Share1 and \\Server2\Share1 only

\\Server1\Share1, \\Server2\Share1. and \\FS1\Share1

UNC path to access Share2:

▼

\\FS2\Share2 only

\\Server3\Share2 only

\\Server4\Share2 only

\\Server3\Share2 and \\Server4\Share2 only

\\Server1\Share2, \\Server4\Share2. and \\FS2\Share2

- A. Mastered
- B. Not Mastered

Answer: A

Explanation:

References:

<https://blogs.technet.microsoft.com/canitpro/2013/12/10/step-by-step-scale-out-file-shares-and-continuously-available-file-services/>

<https://robertsmit.wordpress.com/2018/02/21/clustering-fileserver-data-deduplication-on-windows-2016-step-by-step-sofs-winserv-refs-windowsserver2016-dedupe/>

NEW QUESTION 262

You have a server named Server1 that runs Windows Server 2016. Server1 has the Containers feature installed.

You create a text file that contains the commands that will be used to automate the creation of new containers.

You need to ensure that the commands in the text file are used when you create new containers. What should you name the file?

- A. Bootstrap.ini
- B. Config.ini
- C. Dockerfile
- D. Unattend.txt

Answer: C

NEW QUESTION 265

You have Hyper-V virtual machines that run 50 web servers, 10 Microsoft SQL Server servers. 10 file servers, and eight domain controllers.

You need to implement a backup strategy that meets the following requirements:

- *Backs up all servers
- *Centralizes backup management
- *Performs application-level backups
- *Provides the ability to perform bare metal recovery What should you use?

- A. Microsoft Azure VM Backup
- B. Microsoft Azure Backup Agent
- C. Windows Server Backup
- D. Microsoft Azure Backup Server

Answer: D

NEW QUESTION 266

You have a Windows Server 2016 failover cluster that contains two servers named Server1 and Server2.

The Cluster Service on Server1 fails.

You need to identify the cause of the failure. What should you do?

- A. From Windows PowerShell, run the Get-ClusterNode cmdlet.
- B. From Event Viewer, review the Application event log.
- C. From Windows PowerShell, run the Get-ClusterLog cmdlet.
- D. From Event Viewer, review the System event log.

Answer: C

Explanation:

References: <https://blogs.msdn.microsoft.com/clustering/2015/05/14/windows-server-2016-failover-cluster-troubleshooting-enhancements-cluster-log/>

NEW QUESTION 268

You have a Hyper-V host that runs Windows Server 2016.

You need to identify the amount of processor resources consumed by Hyper-V and virtual machines. Which counter should you use from Performance Monitor?

- A. \Hyper-V Hypervisor\Logical Processor
- B. \Hyper-V Hypervisor Root Virtual Processor(_Total)\% Guest Run Time
- C. \Hyper-V Hypervisor Virtual Processor(_Total)\% Hypervisor Run Time
- D. \Hyper-V Hypervisor Virtual Processor(_Total)\% Total Run Time
- E. \Hyper-V Hypervisor Logical Processor(_Total)\% Total Run Time

Answer: A

Explanation:

References:

[https://msdn.microsoft.com/en-us/library/cc768535\(v=bts.10\).aspx](https://msdn.microsoft.com/en-us/library/cc768535(v=bts.10).aspx)

NEW QUESTION 270

You have a server named Server1 that runs Windows Server 2016.

On Server1, you use the Basic template to create a new Data Collector Set named CollectorSet1. You need to configure CollectorSet1 to generate performance alerts.

What should you do before you start CollectorSet1?

- A. Modify the performance counter data collector of CollectorSet1.
- B. Add a new data collector to CollectorSet1.
- C. Modify the configuration data collector of CollectorSet1.
- D. Add a new task to CollectorSet1.

Answer: A

Explanation:

[https://technet.microsoft.com/en-us/library/cc722414\(v=ws.11\).aspx](https://technet.microsoft.com/en-us/library/cc722414(v=ws.11).aspx)

NEW QUESTION 275

You have a server named Server1 that runs Windows Server 2016. Server1 is a member of contoso.com. Server1 has the Hyper-V role installed. Virtual machines on Server1 are connected to an external switch named Switch1.

You create a virtual machine named VM1 on Server1 by running the following cmdlets.

```
Add-VM VM1
Add-VMHardDiskDrive -VMName VM1 -ControllerType IDE -Path c:\VMs\Disk1.vhd
Add-VMNetworkAdapter -VMName VM1
```

You need to ensure that you can install the operating system on VM1 by using Windows Deployment Services.

What should you do?

- A. Modify the SwitchType parameter of Switch1.
- B. Modify the DefaultFlowMinimumBandwidthWeight parameter of Switch1.
- C. Add a SCSI controller to VM1.
- D. Add a legacy network adapter to VM1.

Answer: D

NEW QUESTION 278

You have a Hyper-V host named Server1 that runs Windows Server 2016. Server1 hosts a virtual machine named VM1 that runs Windows Server 2016. You install the Hyper-V server role on VM1.

You need to ensure that the virtual machines hosted on VM1 can communicate with the virtual machines hosted on Server1.

What should you do?

- A. On Server1, run the Set-VmNetworkAdapterIsolation cmdlet and specify the -MultiTenantStack Off parameter.
- B. On VM1, run the Set-VMNetworkAdapter cmdlet and specify the -MacAddressSpoofing Off parameter.
- C. On VM1, run the Set-VmNetworkAdapterIsolation cmdlet and specify the -MultiTenantStack On parameter.
- D. On Server1, run the Set-VMNetworkAdapter cmdlet and specify the -MacAddressSpoofing On parameter.

Answer: C

Explanation:

References: <https://docs.microsoft.com/en-us/powershell/module/hyper-v/set-vmnetworkadapterisolation?view=win10-ps>

NEW QUESTION 280

You have two Hyper-V hosts named Server1 and Server2 that run Windows Server 2016. The hosts are nodes in failover cluster. You have a virtual machine named VM1. VM1 connects to a virtual switch named vSwitch1. You discover that VM1 automatically live migrates when vSwitch temporarily disconnects. You need to prevent VM1 from being live migrated when vSwitch1 temporarily disconnects. What should you do?

- A. Run the Set-VMNetworkAdapter cmdlet and set StormLimit to 0.
- B. From the network adapter setting of VM1, disable the Heartbeat integration service.
- C. Run the Set-VMNetworkAdapter cmdlet and set IsManagementOS to False.
- D. From the network adapter setting of VM1, disable the Protected network setting.

Answer: D

NEW QUESTION 284

DRAG DROP

You have a server named Server1 that runs Windows Server 2016. On Server1, you create a Nano Server image named Disk1.vhdx. You need to start Server1 by using Disk1.vhdx.

Which three actions should you perform in sequence? To answer, move the appropriate actions from the list of actions to the answer area and arrange them in the correct order.

Actions

Restart Server1.

Run the bcdboot.exe command.

Run the bootcfg.exe command.

Run the Edit-NanoServerImage cmdlet.

Mark a partition as active.

Mount Disk1.vhdx.

Answer Area

<

>

↑

↓

- A. Mastered
- B. Not Mastered

Answer: A

Explanation:

Actions

Restart Server1.

Run the bcdboot.exe command.

Run the bootcfg.exe command.

Run the Edit-NanoServerImage cmdlet.

Mark a partition as active.

Mount Disk1.vhdx.

Answer Area

<

>

Mount Disk1.vhdx.

Run the bootcfg.exe command.

Restart Server1.

↑

↓

NEW QUESTION 286

Note: This question is part of a series of questions that use the same or similar answer choices. An answer choice may be correct for more than one question in the series. Each question is independent of the other questions in this series. Information and details provided in a question apply only to that question.

You have a Hyper-V host named Server1 that runs Windows Server 2016. Server1 has a virtual machine that uses a virtual hard disk (VHD) named disk1.vhdx. You receive the following warning message from Event Viewer: "One or more virtual hard disks have a physical sector size that is smaller than the physical sector size of the storage on which the virtual hard disk file is located."

You need to resolve the problem that causes the warning message. What should you run?

- A. the Mount-VHD cmdlet
- B. the Diskpart command
- C. the Set-VHD cmdlet
- D. the Set-VM cmdlet
- E. the Set-VMHost cmdlet
- F. the Set-VMProcessor cmdlet
- G. the Install-WindowsFeature cmdlet
- H. the Optimize-VHD cmdlet

Answer: C

Explanation:

References:

[https://technet.microsoft.com/en-us/library/hh848561\(v=wps.630\).aspx](https://technet.microsoft.com/en-us/library/hh848561(v=wps.630).aspx)

NEW QUESTION 287

HOTSPOT

You are deploying Network Load Balancing (NLB) to three web servers named Server1, Server2, and Server3. The web servers have the following IP addresses:

Server1: 192.168.2.101
Server2: 192.168.2.102 Server3:192.168.2.103
The IP address used by NLB is 192.168.2.120.

Which IP address or addresses will be configured on each server? To answer, select the appropriate options in the answer area.

Answer Area

Server1:

	▼
192.168.2.101 only	
192.168.2.120 only	
192.168.2.101 and 192.168.2.120 only	
192.168.2.101, 192.168.2.102, and 192.168.2.103 only	
192.168.2.101, 192.168.2.102, 192.168.2.103 and 192.168.2.120	

Server2:

	▼
192.168.2.102 only	
192.168.2.120 only	
192.168.2.102 and 192.168.2.120 only	
192.168.2.101, 192.168.2.102, and 192.168.2.103 only	
192.168.2.101, 192.168.2.102, 192.168.2.103 and 192.168.2.120	

Server3:

	▼
192.168.2.103 only	
192.168.2.120 only	
192.168.2.103 and 192.168.2.120 only	
192.168.2.101, 192.168.2.102, and 192.168.2.103 only	
192.168.2.101, 192.168.2.102, 192.168.2.103 and 192.168.2.120	

- A. Mastered
- B. Not Mastered

Answer: A

Explanation:

Answer Area

Server1:	<div>▼</div> <div>192.168.2.101 only</div> <div>192.168.2.120 only</div> <div>192.168.2.101 and 192.168.2.120 only</div> <div>192.168.2.101, 192.168.2.102, and 192.168.2.103 only</div> <div>192.168.2.101, 192.168.2.102, 192.168.2.103 and 192.168.2.120</div>
Server2:	<div>▼</div> <div>192.168.2.102 only</div> <div>192.168.2.120 only</div> <div>192.168.2.102 and 192.168.2.120 only</div> <div>192.168.2.101, 192.168.2.102, and 192.168.2.103 only</div> <div>192.168.2.101, 192.168.2.102, 192.168.2.103 and 192.168.2.120</div>
Server3:	<div>▼</div> <div>192.168.2.103 only</div> <div>192.168.2.120 only</div> <div>192.168.2.103 and 192.168.2.120 only</div> <div>192.168.2.101, 192.168.2.102, and 192.168.2.103 only</div> <div>192.168.2.101, 192.168.2.102, 192.168.2.103 and 192.168.2.120</div>

NEW QUESTION 289

HOTSPOT

You plan to deploy three servers named Server1, Server2, and Server3 that will run Windows Server 2016. The servers will have the following disk configurations:

Server1 will have a C: drive of 2 TB.

Server2 will have two disks. The C: drive will be 2 TB. The D: drive will be 1TB. D: must support file system-based compression.

Server3 will have two disks. The C: drive will be 2 TB. The D: drive will be 1TB and must support file- system based quotas.

Which file system can you use for each drive? To answer, select the appropriate options in the answer area.

Answer Area

C: on all servers:	<div>▼</div> <div>NTFS only</div> <div>ReFS only</div> <div>Either NTFS or ReFS</div>
D: on Server2:	<div>▼</div> <div>NTFS only</div> <div>ReFS only</div> <div>Either NTFS or ReFS</div>
D: on Server3:	<div>▼</div> <div>NTFS only</div> <div>ReFS only</div> <div>Either NTFS or ReFS</div>

- A. Mastered
- B. Not Mastered

Answer: A

Explanation:

Answer Area

C: on all servers:

	▼
NTFS only	
ReFS only	
Either NTFS or ReFS	

D: on Server2:

	▼
NTFS only	
ReFS only	
Either NTFS or ReFS	

D: on Server3:

	▼
NTFS only	
ReFS only	
Either NTFS or ReFS	

NEW QUESTION 290

You have two servers named Server1 and Server2 that run Windows Server 2016. Server1 contains a volume named Volume1. You implement a Storage Replica that replicates the contents of Volume1 from Server1 to Server2. Server1 fails. From Server2, you need to ensure that you can access the contents of Volume1. What should you run?

- A. Update-StoragePool
- B. Set-SRPartnership
- C. vssadmin revert shadow
- D. Clear-FileStorageTier

Answer: B

Explanation:

References:

<https://docs.microsoft.com/en-us/windows-server/storage/storage-replica/server-to-server-storage-replication>

NEW QUESTION 294

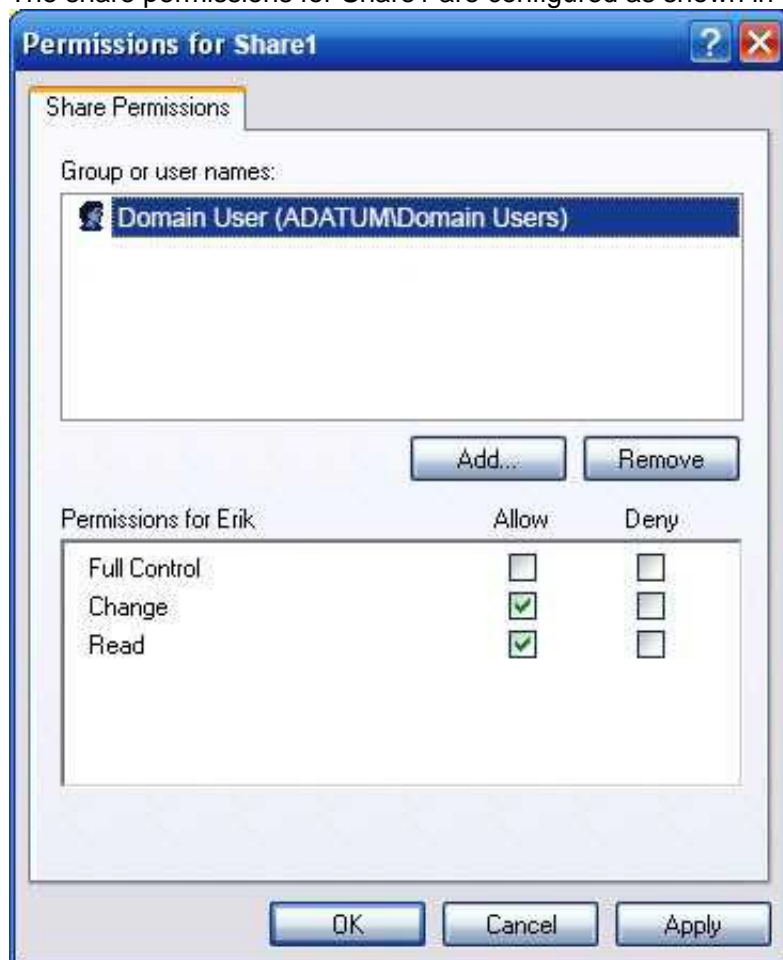
HOTSPOT

Your network contains an Active Directory domain named Adatum.com. The domain contains two servers named Server1 and Server2 that run Windows Server 2016. The domain contains three users named User1, User2, and User3. Server1 has a share named Share1 that has the following configurations.

```

PresetPathAcl      : System.Security.AccessControl.DirectorySecurity
ShareState         : Online
AvailabilityType   : NonClustered
ShareType          : FileSystemDirectory
FolderEnumerationMode : AccessBased
CachingMode        : Manual
SmbInstance        : Default
CATimeout          : 0
ConcurrentUserLimit : 0
ContinuouslyAvailable : False
CurrentUsers        : 0
Description         :
EncryptData         : False
Name               : Share1
Path               : C:\Shares\Share1
Scoped              : False
ScopeName           : *
SecurityDescriptor : O:BAG:DUD:(A;OICI;FA;;;WD)
ShadowCopy          : False
Special             : False
Temporary          : False
Volume             : \\?\Volume{d80578cf-0000-0000-0000-501f00000000}\
PSComputerName     :
CimClass            : ROOT\Microsoft\Windows\SMB:MSFT_SmsShare
CimInstanceProperties : {AvailabilityType, CachingMode, CATimeout, ConcurrentUserLimit...}
CimSystemProperties : Microsoft.Management.Infrastructure.CimSystemProperties
    
```

The share permissions for Share1 are configured as shown in the Share1 exhibit. (Click the Exhibit button.)



Share1 contains a file named File1.txt. The Advanced Security Settings for File1.txt are configured as shown in the File1.txt exhibit. (Click the Exhibit button.)

Advanced Security Settings for File1.txt

Name: C:\Shares\Share1\File1.txt

Owner: Administrators (SERVER1\Administrators)

Permissions | Share | Auditing | Effective Access

For additional information, double-click a permission entry. To modify a permission entry, select the entry and click Edit (if available).

Permission entries:

Type	Principal	Access	Inherited from
Allow	Domain Admins (ADATUM\Domain Admins)	Full control	None
Allow	User1 (User1@Adatum.com)	Full control	None
Allow	User2 (User2@Adatum.com)	Read	None
Allow	User3 (User3@Adatum.com)	Write	None

Add Remove View

Disable inheritance

OK Cancel Apply

For each of the following statement, select Yes if the statement is true. Otherwise, select No.

Answer Area

Statement	Yes	No
When User1 navigates to \\Server1\Share1\, the user can take ownership of File1.txt.	<input type="radio"/>	<input type="radio"/>
When User2 navigates to \\Server1\Share1\, the user will see File1.txt	<input type="radio"/>	<input type="radio"/>
When User3 navigates to \\Server1\Share1\, the user will see File1.txt	<input type="radio"/>	<input type="radio"/>

- A. Mastered
- B. Not Mastered

Answer: A

Explanation:

Answer Area

Statement	Yes	No
When User1 navigates to \\Server1\Share1\, the user can take ownership of File1.txt.	<input type="radio"/>	<input checked="" type="radio"/>
When User2 navigates to \\Server1\Share1\, the user will see File1.txt	<input checked="" type="radio"/>	<input type="radio"/>
When User3 navigates to \\Server1\Share1\, the user will see File1.txt	<input checked="" type="radio"/>	<input type="radio"/>

NEW QUESTION 296

You have a server named Server1 that runs Windows Server 2016. The Docker daemon runs on Server1. You need to ensure that members of a security group named Docker Administrators can administer Docker. What should you do?

- A. Run the sc privscommand.
- B. Edit the Daemon.json file.
- C. Add Docker Administrators to the local Administrators group.
- D. Edit the Configuration.json file.

Answer: C

NEW QUESTION 298

HOTSPOT

Note: This question is part of a series of questions that use the same scenario. For your convenience, the scenario is repeated in each question. Each question presents a different goal and answer choices, but the text of the scenario is exactly the same in each question in this series.

Your network contains an Active Directory domain named contoso.com. The functional level of the forest and the domain is Windows Server 2008 R2. All servers in the domain run Windows Server 2016 Standard. The domain contains 300 client computers that run either Windows 8.1 or Windows 10.

The domain contains nine servers that are configured as shown in the following table.

Name	Configuration	Planned changes
Server1	Domain controller	None
Server2	File server	Run Failover Clustering and Storage Spaces Direct
Server3	File server	Run Failover Clustering and Storage Spaces Direct
Server4	Hyper-V host	Run shielded virtual machines
Server5	Hyper-V host	None
Server6	Member server	Run Active Directory Federation Services (AD FS)
VM1	Virtual machine hosted on Server5	None
VM2	Virtual machine hosted on Server5	None
VM3	Virtual machine hosted on Server5	None

The virtual machines are configured as follows:

Each virtual machine has one virtual network adapter.

VM1 and VM2 are part of a Network Load Balancing (NLB) cluster.

All of the servers on the network can communicate with all of the virtual machines. For VM1 and VM2, you plan to use live migration between Server4 and Server5. You need to ensure that when the virtual machines migrate, they maintain connectivity to the network.

Which virtual switch names and connection types should you use on each server? To answer, select the appropriate options in the answer area.

Answer Area

Virtual switch connection type on Server4:

▼
External network
Internal network
Private network

Virtual switch connection type on Server5:

▼
External network
Internal network
Private network

Virtual switch name on Server4:

▼
External on Server4
Network switch
Server4

Virtual switch name on Server5:

▼
External on Server5
Network switch
Server5

- A. Mastered
- B. Not Mastered

Answer: A

Explanation:

Answer Area

Virtual switch connection type on Server4:

▼
External network
Internal network
Private network

Virtual switch connection type on Server5:

▼
External network
Internal network
Private network

Virtual switch name on Server4:

▼
External on Server4
Network switch
Server4

Virtual switch name on Server5:

▼
External on Server5
Network switch
Server5

Note: This question is part of a series of questions that present the same scenario. Each question in the series contains a unique solution that might meet the stated goals. Some question sets might have more than one correct solution, while others might not have a correct solution.
 After you answer a question in this section, you will NOT be able to return to it. As a result, these questions will not appear in the review screen.
 You network contains an Active Directory domain named contoso.com.
 You need to create a Nano Server image named Nano1 that will be used as a virtualization host. The Windows Server 2016 source files are located in drive D.
 Solution: You run the following cmdlet.
 New-NanoServerImage -Edition Datacenter -DeploymentType Host -Package Microsoft- NanoServer-Compute-Package -MediaPath 'D:\' -TargetPath C:\Nano1\Nano1.wim -ComputerName Nano1 -DomainName Contoso.com
 Does this meet the goal?

- A. Yes
- B. No

Answer: A

NEW QUESTION 308

Note: This question is part of a series of questions that present the same scenario. Each question in the series contains a unique solution that might meet the stated goals. Some question sets might have more than one correct solution, while others might not have a correct solution.
 After you answer a question in this section, you will NOT be able to return to it. As a result, these questions will not appear in the review screen.
 You network contains an Active Directory domain named contoso.com.
 You need to create a Nano Server image named Nano1 that will be used as a virtualization host. The Windows Server 2016 source files are located in drive D.
 Solution: You run the following cmdlet.

```
New-NanoServerImage -Edition Datacenter -DeploymentType Host -Compute
-MediaPath 'D:\' -TargetPath C:\Nano1\Nano1.wim -ComputerName Nano1
-DomainName Contoso.com
```

Does this meet the goal?

- A. Yes
- B. No

Answer: A

NEW QUESTION 311

Note: This question is part of a series of questions that present the same scenario. Each question in the series contains a unique solution that might meet the stated goals. Some question sets might have more than one correct solution, while others might not have a correct solution.
 After you answer a question in this section, you will NOT be able to return to it. As a result, these questions will not appear in the review screen.
 You are a server administrator at a company named Contoso, Ltd.
 Contoso has a Windows Server 2016 Hyper-V environment configured as shown in the following table.

Hyper-V host name	Configuration	Virtual switch name
Host1	- Uses an Intel processor - Is a member of a SAN named SAN1	Switch1
Host2	- Uses an AMD processor - Has local storage only	Switch2
Host3	- Uses an Intel processor - Is a member of a SAN named SAN1	Switch1
Host4	- Uses an Intel processor - Has local storage only	Switch2

All of the virtual switches are of the external type.
 You need to ensure that you can move virtual machines between the hosts without causing the virtual machines to disconnect from the network.
 Solution: You implement live migration by using Host1 and Host3. Does this meet the goal?

- A. Yes
- B. No

Answer: A

NEW QUESTION 312

Note: This question is part of a series of questions that present the same scenario. Each question in the series contains a unique solution that might meet the stated goals. Some question sets might have more than one correct solution, while others might not have a correct solution.
 After you answer a question in this section, you will NOT be able to return to it. As a result, these questions will not appear in the review screen.
 You are a server administrator at a company named Contoso, Ltd.
 Contoso has a Windows Server 2016 Hyper-V environment configured as shown in the following table.

Hyper-V host name	Configuration	Virtual switch name
Host1	- Uses an Intel processor - Is a member of a SAN named SAN1	Switch1
Host2	- Uses an AMD processor - Has local storage only	Switch2
Host3	- Uses an Intel processor - Is a member of a SAN named SAN1	Switch1
Host4	- Uses an Intel processor - Has local storage only	Switch2

All of the virtual switches are of the external type.

You need to ensure that you can move virtual machines between the hosts without causing the virtual machines to disconnect from the network.

Solution: You implement live migration by using Host2 and Host4. Does this meet the goal?

- A. Yes
- B. No

Answer: A

NEW QUESTION 315

Note: This question is part of a series of questions that present the same scenario. Each question in the series contains a unique solution that might meet the stated goals. Some question sets might have more than one correct solution, while others might not have a correct solution.

After you answer a question in this section, you will NOT be able to return to it. As a result, these questions will not appear in the review screen.

You have a server named Server 1 that runs Windows Server 2016.

You plan to use Windows Server Backup to back up all of the data on Server 1. You create a new volume on Server 1.

You need to ensure that the new volume can be used as a backup target. The backup target must support incremental backups.

Solution: You assign a drive letter to the volume, and you format the volume by using ex FAT. Does this meet the goal?

- A. Yes
- B. No

Answer: B

NEW QUESTION 320

Note: This question is part of a Series of questions that use the same or similar answer choices. An answer choice may be correct for more than one question in the series. Each question is Independent of the other questions in this series. Information and details provided in a question apply only to that question.

You have two servers named Server 1 and Server 2 that run Windows Server 2016. Server 1 and server 2 have the Hyper-V server role installed and are nodes in a failover Cluster.

On Server 1, an administrator creates a virtual machine named VM1. You need to configure VM1 for high availability.

Which tool should you use?

- A. the clussvc.exe command
- B. the cluster.exe command
- C. the Computer Management snap-in
- D. the configurehyperv.exe command
- E. the Disk Management map-in
- F. the Failover Cluster Manager snap-in
- G. the Hyper V Manage map id
- H. the Server Manager app

Answer: F

NEW QUESTION 322

HOTSPOT

You have a server named Server1 that runs Windows Server 2016.

On Server1, you have a custom image of Windows Server 2016 Standard in a file named Image1.wim. The image is mounted to C:\Folder1.

You discover corrupted files in the WinSxS folder of the mounted image.

From the Windows Server 2016 installation media, you mount an image of Windows Server 2016 Standard from Install.wim to C:\Folder2.

You need to repair the corrupted image.

Which command should you run? To answer, select the appropriate options in the answer area. NOTE: Each correct selection is worth one point.

Answer Area

Dism /Cleanup-Image /Image:

C:\Folder1	/CheckIntegrity
C:\Folder1\image1.wim	/RestoreHealth
C:\Folder2\install.wim:1	/ScanHealth
C:\Folder2\Windows	/StartComponentCleanup

/Source:

C:\Folder1
C:\Folder1\image1.wim
C:\Folder2\install.wim:1
C:\Folder2\Windows

- A. Mastered
- B. Not Mastered

Answer: A

Explanation:

References: <https://docs.microsoft.com/en-us/windows-hardware/manufacture/desktop/repair-a-windows-image>

NEW QUESTION 323

Your network contains three Hyper-V hosts. You add all of the hosts to a cluster.
You need to create highly available storage spaces that connect to directly attached storage on the hosts.
Which cmdlet should you use?

- A. Enable-CluslerStorageSpacesDircct
- B. Update-CluslerVirtualMachineConfiguration
- C. Add-CluslerDisk
- D. Set-Storage Pool

Answer: A

NEW QUESTION 326

Your network contains an Active Directory domain.
The domain contains two Hyper-V hosts.
You plan to perform live migrations between the hosts.
You need to ensure that the live migration traffic is authenticated by using Kerberos. What should you do first?

- A. From Server Manager, install the Host Guardian Service server role on a domain controller.
- B. From Active Directory Users and Computers, add the computer accounts for both servers to the Cryptographic Operators group.
- C. From Active Directory Users and Computers, modify the Delegation properties of the computer accounts for both servers.
- D. From Server Manager, install the Host Guardian Service server role on both servers.

Answer: C

Explanation:

If you have decided to use Kerberos to authenticate live migration traffic, configure constrained delegation before you proceed to the rest of the steps.

NEW QUESTION 331

You have a server named Server1 that is an iSCSI target. You have a server named Server2 that runs Windows Server 2016. Server2 has an iSCSI disk named Disk1 that is hosted on Server1. Disk1 contains one volume that is assigned a drive letter of E.
You need to increase the size of Disk1. What should you do?

- A. Run the Resize-IscsiVirtualDisk cmdlet and specify the -ComputerName Server2 parameter.
- B. Run the Resize-IscsiVirtualDisk cmdlet and specify the -ComputerName Server1 parameter.
- C. Run the Resize-Partition cmdlet and specify the -ComputerName Server1 parameter.
- D. Run the Resize- Partition cmdlet and specify the -ComputerName Server2 parameter.

Answer: B

Explanation:

The Resize-IscsiVirtualDisk cmdlet resizes a virtual disk either by expanding or compacting an existing virtual disk. The -ComputerName parameter specifies the computer name, or IP address, of the remote computer, if this cmdlet is run on a remote computer. If you do not specify a value for this parameter, the cmdlet uses the local computer.

NEW QUESTION 336

Your network contains an Active Directory domain named adatum.com The domain contains Network load Balancing (NLB) cluster as shown in the exhibit. (Click the Exhibit button.) Which hosts will respond to requests sent to nlb.adatum.com?

Network Load Balancing Manager

FileClusterHostOptionsHelp

Network Load Balancing Cluster

NLB.Adatum.com (192.168.10.50)

SERVER1 (Ethernet 2)

SERVER2 (Ethernet 2)

SERVER3 (Ethernet 2)

Host configuration information for hosts in cluster NLB.Adatum.com

Host (interface)	Status	Dedicated IP...	Dedic
SERVER1 (Ethernet 2)	Suspended	192.168.10.1	255.255
SERVER2 (Ethernet 2)	Converged	192.168.10.2	255.255
SERVER3 (Ethernet 2)	Stopped	192.168.10.3	255.255

Log En...	Date	Time	Cluster	Host	Description
0040	7/8/2017	2:07:53 AM	192.168.10...	SERVER2	End configuration change
00401	7/8/2017	2:07:53 AM	192.168.10...	SERVER1	Update 6 succeeded [double click
0042	7/8/2017	2:07:53 AM	192.168.10...	SERVER1	End configuration change

- A. Server1 only
- B. Server2 only
- C. Server1 an Server2 only
- D. Server1 ,Server2

Answer: B

NEW QUESTION 337

HOTSPOT

You deploy a new Hyper-V host named Server1 that runs Windows Server 2016. You implement receive side scaling (RSS) on Server1. The chipset on Server1 does not support NetDMA. All of the equipment on your network supports 10-Gbps connectivity. On Server1, you deploy a virtual machine named VM1. You configure VM1 to aggregate all of the Windows and non-Windows log files for all of the servers on the network. VM1 has four virtual processors. You discover that VM1 drops packets. Which two options should you run? To answer, select the appropriate options in the answer area.

Answer Area

First action:

	▼
Enable TCP Chimney Offload on Server1.	
Enable single root I/O virtualization (SR-IOV) on VM1.	
Enable virtual machine queue (VMQ) on Server1 and VM1.	

Second action:

	▼
Enable virtual TCP Chimney Offload on VM1.	
Enable virtual Receive-side Scalling (vRSS) on VM1.	
Enable single root I/O virtualization (SR-IOV) on Server1.	

- A. Mastered
- B. Not Mastered

Answer: A

Explanation:

Answer Area

First action:

	▼
Enable TCP Chimney Offload on Server1.	
Enable single root I/O virtualization (SR-IOV) on VM1.	
Enable virtual machine queue (VMQ) on Server1 and VM1.	

Second action:

	▼
Enable virtual TCP Chimney Offload on VM1.	
Enable virtual Receive-side Scalling (vRSS) on VM1.	
Enable single root I/O virtualization (SR-IOV) on Server1.	

NEW QUESTION 338

You have a server named Server1 that runs Windows Server 2016. The Docker daemon run on Server1.
 You need to ensure that members of a security group named Docker Administrators administer Docker.
 What should you do?

- A. Run the Set-Service cmdlet.
- B. Run the sc config command.
- C. Modify the Security settings of Docker
- D. Modify the Security settings of Docker.exe.

Answer: B

Explanation:

<https://docs.microsoft.com/en-us/virtualization/windowscontainers/manage-docker/configure-docker-daemon>

NEW QUESTION 339

HOTSPOT

You have a server named Server1 that runs Windows Server 2016. You mount an image of Windows Server 2016 to C:\Folder1\
 You need to disable support for SMB 1.0 in the image.

Which command should you run? To answer, select the appropriate options in the answer area. NOTE: Each correct selection is worth one point.

Answer Area

<div>▼</div> <div>dism.exe msconfig.exe sconfig.cmd setup.exe</div>	/Image:	<div>▼</div> <div>C:\Folder1 C:\Folder1\Windows C:\Folder1\Windows\WinSxS C:\Windows C:\Windows\WinSxs</div>	/Disable-Feature /FeatureName:SMB1Protocol
---	---------	--	--

- A. Mastered
- B. Not Mastered

Answer: A

Explanation:

References: <https://docs.microsoft.com/en-us/windows-hardware/manufacture/desktop/enable-or-disable-windows-features-using-dism>

NEW QUESTION 340

You have a Windows Server 2016 failover cluster 1 that contains four nodes named Server1, Server2, Server3, Server4. Cluster1 hosts 40 virtual machines that are distributed evenly across the nodes. Server1 and Server2 are located in a data center in Madrid. Server3 and Server4 are located in a data center in Barcelona.

You need to ensure that when you pause a node in the other data center.

Which two actions should you perform? Each correct answer present part of the solution.

- A. Run the New-Cluster Fault Domain cmdlet.
- B. Run the Add-Cluster Group cmdlet.
- C. Configure a file share witness for each data center.
- D. Run the Set-Cluster Fault Domain cmdlet.
- E. Create an Active Directory site for each data center.
- F. Change the quorum configuration of the cluster to Node Majority.

Answer: BD

NEW QUESTION 343

You have a Hyper-V host named Server1 that runs Windows Server 2016. Server1 has an external virtual switch named Switch1. Server1 hosts a virtual machine named VM1 that runs Windows Server 2016. VM1 has one network adapter. The network adapter connects to Switch1.

You need to limit the maximum network bandwidth available to VM1 to 100 Mbps. The solution must limit the bandwidth for VM1 only.

Which cmdlet should you run?

- A. Set-NetAdapter
- B. Set-VMNetworkAdapter
- C. Set-VM
- D. Set-NetAdapterVmq
- E. Set-NetworkSwitchPortProperty

Answer: B

Explanation:

The Set-VMNetworkAdapterVlan cmdlet configures virtual LAN settings for the traffic through a virtual network adapter.

NEW QUESTION 346

NOTE: This Question is a part of a series of questions that use the same or similar answer choices. An answer choice may be correct for more than one question in the series. Each question is independent of the other questions in this series. Information and details provided in a question apply only to that question.

You have a Hyper-V host named server 1 that runs Windows Server 2016 and a two-node scale-out file server cluster named Cluster1.

You need to migrate the storage on VM1 to Cluster1. Which tool should you use?

- A. the clussvc.exe command
- B. the Cluster.exe command
- C. the Computer Management snap-in
- D. the configure hyperv.exe command
- E. the Disk Management snap-in
- F. the Failover Cluster Manager snap-in
- G. the Hyper-V Manager snap-in
- H. the Server Manager app

Answer: G

NEW QUESTION 351

You have a server named Server1 that runs Windows Server 2016.

Server1 has four SCSI disks and a storage pool named Pool1 that contains three disks. You create a virtual disk named Disk 1 that uses a mirrored layout.

You create a partition named Partition1 that uses all of the available space on Disk 1. You need to extend Partition1.

What should you do first?

- A. From Windows PowerShell, run the Resize-Partition cmdlet.
- B. From Disk Management, modify the properties of Partition1.
- C. From the Storage Pools page in Server Manager, extend a virtual disk.
- D. From Disk Management, extend a volume.

Answer: C

Explanation:

References: <https://charbelnemnom.com/2015/03/step-by-step-how-to-extend-and-resize-a-two-way-mirrored-storage-tiered-space-storagespaces-ws2012r2/>

NEW QUESTION 353

HOTSPOT

Your network contains an Active Directory domain named contoso.com. The domain contains three clusters named FC1, FC2, and FC3. The domain contains servers that run Windows Server 2016. The servers are configured as shown in the following table.

Server name	CPU	Memory	Cluster
Server1	Intel Xeon E3	128 GB	FC1
Server2	Intel Xeon E3	128 GB	FC1
Server3	Intel Xeon E3	64 GB	FC2
Server4	Intel Xeon E3	64 GB	FC2
Server5	AMD Opteron	256 GB	FC3
Server6	AMD Opteron	256 GB	FC3

Server1 hosts a highly available virtual machine named VM1.
You are creating a maintenance plan for the servers, and you are evaluating how to move VM1 to the different clusters.
You need to identify the fastest method to move VM1 to FC2 and FC3.
Which method should you identify for each cluster? To answer, select the appropriate options in the answer area.
NOTE: Each correct selection is worth one point.

Answer Area

Fastest method to move VM1 to FC2:

Export and import

Live migration

Quick migration

Fastest method to move VM1 to FC3:

Export and import

Live migration

Quick migration

- A. Mastered
- B. Not Mastered

Answer: A

Explanation:

References: <https://www.petri.com/move-virtual-machine-between-hyper-v-hosts>

NEW QUESTION 357


HOTSPOT

You have a Windows Server 2016 failover cluster named Cluster1. You need to implement Cloud Witness for Cluster 1.


What should you do? To answer, select the appropriate options in the answer area. NOTE: Each correct selection is worth one point.

Answer Area

In Microsoft Azure, create:


An availability set
An integration account
A public IP address
A Recovery Services vault
A storage account

On Cluster1, run:


Add-ClusterResource
Add-ClusterResourceType
Set-ClusterParameter
Set-ClusterQuorum

- A. Mastered
- B. Not Mastered

Answer: A

Explanation:

References:

<https://www.vembu.com/blog/deploying-a-azure-cloud-witness-for-a-failover-cluster-in-windows-server-2016/>
<https://docs.microsoft.com/en-us/powershell/module/failoverclusters/set-clusterquorum?view=win10-ps>

NEW QUESTION 361

You have a server named Server1 that runs Windows Server 2016.

The server has an application named App1. App1 writes entries to the Application event log when errors are encountered. The events have IDs of either 111 or 112.

You need to restart the service whenever either of these events is logged. What should you do?

- A. From Windows PowerShell, run the Write-EventLog cmdlet and specify the-EventID parameter and the -Source parameter.
- B. From Event Viewer, create a custom view that has a filter for the event IDs.
- C. From Event Viewer, create a subscription that has a filter for the event IDs.
- D. From Task Scheduler, use Create Task to create one task that includes triggers for both event IDs.
- E. From Windows PowerShell, run the Get-SMSEvent cmdlet and pipe the output to the Start-NetEventSession cmdlet.
- F. From Performance Monitor, add an Event Trace Session data collector that uses the Microsoft-Windows-Eventlog provider.

Answer: D

NEW QUESTION 363

You have a file server named Server1 that runs Windows Server 2016. Object access auditing is configured on Server1.

You need to filter the Security event log to show all log entries that relate to a user named User1. What should you do?

- A. Right-click the Security log, and then click Filter Current Log... On the Filter tab, type a value in the User box.
- B. Right-click the Security log, and then click Filter Current Log... On the Filter tab, select a value from the Event sources box.
- C. Right-click the Security log, and then click Create Custom View... On the Filter tab, type a value in the User box.
- D. Right-click the Security log, and then click Filter Current Log... On the XML tab, modify the QueryList entry and set an EventData tag.

Answer: A

Explanation:

Right clicking the event log name and selecting the "Filter Current Log" will display various options for filtering the event log.

These options are:

References: <https://blogs.technet.microsoft.com/rmilne/2014/08/06/quick-tip-event-viewer-filtering/>

NEW QUESTION 366

DRAG DROP

You have a server named Server1 that runs Windows Server 2016. Server1 has the Hyper-V server role installed and hosts a virtual machine named VM1. Server1 has an NVMe storage device. Currently, the device is assigned to VM1 through a Discrete Device Assignment. You need to make the storage device available to Server1. Which four actions should you perform in sequence? To answer, move the appropriate actions from the list of actions to the answer area and arrange them in the correct order.

Actions

Answer Area

Run the Remove-VMAssignableDevice cmdlet.

Run the Mount-VMHostAssignableDevice cmdlet.

Stop VM1.

Enable the device in Device Manager.

Disable the device in Device Manager.

- A. Mastered
 B. Not Mastered

Answer: A

Explanation:

If you want to return the device back to its original state, you will need to stop the VM and issue the following cmdlets:

Remove-VMAssignableDevice Mount-VMHostAssignableDevice

You can then re-enable the device in device manager.

References: <https://docs.microsoft.com/en-us/windows-server/virtualization/hyper-v/deploy/deploying-storage-devices-using-dda#removing-a-device-and-returning-it-to-the-host>

NEW QUESTION 367

Note: This question is part of a series of questions that present the same scenario. Each question in the series contains a unique solution that might meet the stated goals. Some question sets might have more than one correct solution, while others might not have a correct solution.

After you answer a question in this section, you will NOT be able to return to it. As a result, these questions will not appear in the review screen.

Your network contains an Active Directory forest named contoso.com. The forest contains a child domain named eu.contoso.com.

You plan to implement live migration between two Hyper-V hosts that run Windows Server 2016. The hosts are configured as shown in the following table.

Host name	Configuration
Host1	<ul style="list-style-type: none"> Is a member of the contoso.com domain Uses an Intel Xeon processor released in 2012 Has an external virtual switch named Switch1 Hosts a virtual machine named VM1 that connects to Switch1
Host2	<ul style="list-style-type: none"> Is a member of the eu.contoso.com domain Uses an Intel Xeon processor released in 2016 Has an external virtual switch named Switch1

You need to ensure that you can perform a live migration of VM1 from Host1 to Host2. Solution: You move Host2 to the contoso.com domain. Does meet the goal?

- A. Yes
- B. No

Answer: B

NEW QUESTION 371

Note: This question is part of a series of questions that present the same scenario. Each question in the series contains a unique solution that might meet the stated goals. Some question sets might have more than one correct solution, while others might not have a correct solution.

After you answer a question in this section, you will NOT be able to return to it. As a result, these questions will not appear in the review screen.

You have an Exchange Server 2016 organization.

Some users access the mailbox on their mobile device by using Exchange ActiveSync.

You need to prevent the users from synchronizing more than one month of email or calendar data to their device.

Solution: You deploy an Allow/Block/Quarantine policy. Does this meet the goal?

- A. Yes
- B. No

Answer: B

NEW QUESTION 372

You have two servers named Server1 and Server2 that run Windows Server 2016.

You plan to implement Storage Replica to replicate the contents of volumes on Server1 to Server2. You need to ensure that the replication traffic between the servers is limited to a maximum of 100

Mbps.

Which cmdlet should you run?

- A. New-NetQosPolicy
- B. Set-NetworkController
- C. New-NetTransportFilter
- D. New-StorageQosPolicy
- E. Set-NetTCPSetting
- F. Set-NetUDPSetting

Answer: A

Explanation:

References: <https://docs.microsoft.com/en-us/powershell/module/netqos/new-netqospolicy?view=win10-ps>

NEW QUESTION 373

DRAG DROP

Your network contains an Active Directory domain named contoso.com. The domain contains a server named Server1 that runs Windows Server 2016.

Server1 allows inbound connectivity from all computers in the contoso.com domain. Server1 has an IP address of 192.168.0.10.

Server1 hosts a Windows container named Container1. Container1 hosts a website that is accessible on port 80.

You need to ensure that you can use the Docker client to manage Container1 from any computer in the domain.

Which three cmdlets should you run in sequence? To answer, move the appropriate cmdlets from the list of cmdlets to the answer area and arrange them in the correct order.

Actions

Answer Area

Restart-Service docker

New-ContainerNetwork- Name nat1 –
Mode NAT- SubnetPrefix 192.168.0.0/24 –
GatewayAddress 192.168.0.10

Add-Content
'c:\programdata\docker\config\daemon.json'
'{"hosts": ["tcp://127.0.0.1:80", "npip: //"]}'

Add-Content
'c:\programdata\docker\config\daemon.json'
'{"hosts": ["tcp://0.0.0.0:2375", "npip: //"]}'

New-Item-Type File
c:\programData\docker\confing\daemon.json



- A. Mastered
- B. Not Mastered

Answer: A

Explanation:

References:

<https://glennsarti.github.io/blog/getting-started-with-windows-containers/> <https://docs.microsoft.com/en-us/virtualization/windowscontainers/manage-containers/container-networking>

NEW QUESTION 375

Note: This question is part of a series of questions that use the same scenario. For your convenience, the scenario is repeated in each question. Each question presents a different goal and answer choices, but the text of the scenario is exactly the same in each question in this series.

A company named Contoso, Ltd. has several servers that run Windows Server 2016. Contoso has a Hyper-V environment that uses failover clustering and Windows Server Update Services (WSUS). The environment contains several Windows containers and several virtual machines.

The WSUS deployment contains one upstream server that is located on the company's perimeter network and several downstream servers located on the internal network. A firewall separates the upstream server from the downstream servers.

You plan to deploy a human resources application to a new server named HRServer5. HRServer5 contains a FAT32-formatted data volume.

The CIO of Contoso identifies the following requirements for the company's IT department:

Deploy a failover cluster to two new virtual machines.

Store all application databases by using Encrypted File System (EFS).

Ensure that each Windows container has a dedicated IP address assigned by a DHCP server.

Produce a report that lists the processor time used by all of the processes on a server named Server1 for five hours.

Encrypt all communication between the internal network and the perimeter network, including all WSUS communications.

Automatically load balance the virtual machines hosted in the Hyper-V cluster when processor utilization exceeds 70 percent.

Which networking mode should you configure for the Windows containers?

- A. 12tunnel
- B. 12bridge
- C. network address translation (NAT)
- D. transparent

Answer: C

Explanation:

References: <https://blogs.technet.microsoft.com/virtualization/2016/05/05/windows-container-networking/>

NEW QUESTION 380

HOTSPOT

You have a Hyper-V host named Server1 that runs Windows Server 2016 datacenter. Server1 is activated.

On Server1, you deploy a virtual machine named VM1 that has a Server Core installation of Windows Server 2016 Standard.

You need to activate VM1 by using Automatic Virtual Machine Activation (AVMA).

Which command should you run? To answer, select the appropriate options in the answer area. NOTE: Each correct selection is worth one point.

Answer Area

reg.exe
regsvr32.exe
setup.exe
Set-VM
Set-WindowsProductKey
slmgr.vbs

/ipk
/pkey
/rearm
/unattend:PID=
-ProductKey

C3RCX-M6NRP-6CXC9-TW2F2-4RHYD

- A. Mastered
- B. Not Mastered

Answer: A

Explanation:

References: <https://blogs.technet.microsoft.com/askcore/2013/11/13/activating-virtual-machines-via-automatic-virtual-machine-activation-in-windows-server-2012-r2/>

NEW QUESTION 385

You have a server named Server1 that runs Windows Server 2016.

The server has an application named App1. App1 writes entries to the Application event log when errors are encountered. The events have IDs of either 111 or 112.

You need to restart the service whenever either of these events is logged. What should you do?

- A. From Windows PowerShell, run the Get-SMSEvent cmdlet and pipe the output to the Start- NetEventSession cmdlet.
- B. From Event Viewer, create a subscription that has a filter for the event IDs.
- C. From Event Viewer, use the Create Basic Task Wizard for each event ID.
- D. From Windows PowerShell, run the Get-Event cmdlet and pipe the output to the Start-NetEventSession cmdlet.

Answer: C

NEW QUESTION 387

You have a server named Server1 that runs Windows Server 2016.
You need to install the DNS Server role on Server1. What should you run?

- A. the Install-Package cmdlet
- B. the Add-WindowsPackage cmdlet
- C. the Add-WindowsFeature cmdlet
- D. the setup.exe command

Answer: C

NEW QUESTION 389

Your network contains an Active Directory domain named contoso.com. The domain contains two servers named Server1 and Server2 that run Windows Server 2016. Server1 and Server2 have multiple local disks attached.
You need to create a storage pool by using Storage Spaces Direct.
Which three actions should you perform in sequence? To answer, move the appropriate actions from the list of actions to the answer area and arrange them in the correct order.

Actions

From Server1, run the **New-SpacesPool** cmdlet.

On Server1 and Server2, install the Failover Clustering feature.

From Server1, run the **New-StorageFileServer** cmdlet.

From Server1, run the **New-Cluster** cmdlet.

On Server1 and Server2, install the Storage Replica feature.

From Server1, run the **Enable-ClusterStorageSpacesDirect** cmdlet.

On Server1 and Server2, install the File Server role service.

Answer Area

⬅

➡

⬆

⬇

- A. Mastered
- B. Not Mastered

Answer: A

Explanation:

References:
<https://docs.microsoft.com/en-us/windows-server/storage/storage-spaces/deploy-storage-spaces-direct>

NEW QUESTION 394

You have a Hyper-V host named Server1 that runs Windows Server 2016. Server1 hosts a virtual machine named VM1 that runs Windows Server 2012. VM1 has the following configuration.

Guaranteed success with Our exam guides

visit - <https://www.certshared.com>


```
C:\>Get-VM VM1 | fl Version, HardDrives, DynamicMemoryEnabled, Generation, MemoryStartup
```

```
Version           : 5.0
HardDrives        :{(Hard drive on IDE controller number 0 at location 0)}
DynamicMemoryEnabled :False
Generation        :1
MemoryStartup     : 536870912
```

```
C:\>Get-VMIntegrationService VM1
```

VMName	Name	Enabled	PrimaryStatusDescription	SecondaryStatusDescription
VM1	Guest Service Interface	False	OK	
VM1	Heartbeat	False	OK	
VM1	Key-Value Pair Exchange	False	OK	
VM1	Shutdown	False	OK	
VM1	Time Synchronization	False	OK	
VM1	VSS	False	OK	

You discover that when you back up Server1, VM1 temporarily pauses.

You need to ensure that you can back up Server1 without causing downtime on VM1. What should you do?

- A. Increase the memory on VM1
- B. Connect the hard disk drive of VM1 to an SCSI controller
- C. Update the virtual machine version of VM1
- D. Upgrade VM1 to Windows Server 2016
- E. Enable the VSS integration service on VM1

Answer: E

Explanation:

References:

<https://www.starwindsoftware.com/blog/hyper-v-backup-challenges-windows-server-2016-needs-to-address>

NEW QUESTION 397

.....

Thank You for Trying Our Product

We offer two products:

1st - We have Practice Tests Software with Actual Exam Questions

2nd - Questions and Answers in PDF Format

70-740 Practice Exam Features:

- * 70-740 Questions and Answers Updated Frequently
- * 70-740 Practice Questions Verified by Expert Senior Certified Staff
- * 70-740 Most Realistic Questions that Guarantee you a Pass on Your First Try
- * 70-740 Practice Test Questions in Multiple Choice Formats and Updates for 1 Year

100% Actual & Verified — Instant Download, Please Click
[Order The 70-740 Practice Test Here](#)