

# Microsoft

## Exam Questions 70-740

Installation, Storage, and Compute with Windows Server 2016



**NEW QUESTION 1**

You have four servers named Server1, Server2, Server3, and Server4 that run Windows Server 2016.

Server1 and Server2 have the Hyper-V server role installed. Server1 hosts a virtual machine named VM1. Server2 hosts a virtual machine named VM2. Server3 hosts the disks and the configurations of both virtual machines on an SMB share named VMShare.

You use Server4 to manage Hyper-V operations on Server1 and Server2.

From Server4, you attempt to perform a live migration of VM1 and VM2, but you receive the following error message: "No credentials are available in the security package".

You need to ensure that you can perform the live migration of VM1 and VM2 between Server1 and Server2 while signed in to Server4.

What should you do?

- A. From Active Directory Users and Computers, modify the properties of Server4. Configure the delegation settings to trust the computer for delegation of cifs.
- B. From Windows PowerShell on Server3, run the remove-SMBMultiChannelConstraint cmdlet, and then assign Server4 Full Control permissions to VMShare.
- C. From Active Directory Users and Computers, modify the properties of Server1 and Server2. Configure the Delegation settings to trust the computers for delegation of the Microsoft Virtual System Migration Service.
- D. From Active Directory Users and Computers, modify the properties of your user account.
- E. Modify the Account is sensitive and cannot be delegated setting.

**Answer:** C

**Explanation:**

References: <https://docs.microsoft.com/en-us/windows-server/virtualization/hyper-v/deploy/set-up-hosts-for-live-migration-without-failover-clustering>

**NEW QUESTION 2**

Note: This question is part of a series of questions that present the same scenario. Each question in the series contains a unique solution that might meet the stated goals. Some question sets might have more than one correct solution, while others might not have a correct solution.

After you answer a question in this section, you will NOT be able to return to it. As a result, these questions will not appear in the review screen.

You have a server named Server1 that runs Windows Server 2016. Server1 has the Hyper-V server role and Docker installed.

You pull the Microsoft/iis Docker image to Server1.

You need to view the available space in the Microsoft/iis Docker image. Solution: You run the command `docker run -d Microsoft/iis`.

You open Disk Management on Server1. Does this meet the goal?

- A. Yes
- B. No

**Answer:** B

**NEW QUESTION 3**

Note: This question is part of a series of questions that present the same scenario. Each question in the series contains a unique solution that might meet the stated goals. Some question sets might have more than one correct solution, while others might not have a correct solution.

After you answer a question in this section, you will NOT be able to return to it. As a result, these questions will not appear in the review screen.

You have two servers that run Windows Server 2016.

You have a server named Server1 that runs Windows Server 2016. Server1 has the Hyper-V server role and Docker installed.

You pull the Microsoft/iis Docker image to Server1.

You need to view the available space in the Microsoft/iis Docker image. Solution: You run the following commands.

```
docker run --name container1 --d Microsoft/iis docker exec -i container1 cmd.exe
```

```
dir
```

Does this meet the goal?

- A. Yes
- B. No

**Answer:** A

**Explanation:**

References: [https://docs.docker.com/engine/reference/commandline/container\\_exec/#options](https://docs.docker.com/engine/reference/commandline/container_exec/#options) <https://www.windows-commandline.com/get-file-size-directory-size-command/>

**NEW QUESTION 4**

You have a server named Server 1 that runs Windows Server 2016. Windows Defender is enabled on Server1.

Server1 runs an application named App that stores various types of files in Microsoft OneDrive for Business, Microsoft OneDrive, and Microsoft SharePoint Online.

App also interacts with several local services.

You need to prevent Windows Defender from scanning any files opened by App. Should you do on Server1?

- A. Run the Set-ExecutionPolicy cmdlet
- B. From the Windows Defender settings, configure a file exclusion.
- C. From the Windows Defender settings, configure a process exclusion.
- D. Modify the cloud-based protection settings in Windows Defender.

**Answer:** B

**Explanation:**

References:

<https://www.windowscentral.com/how-exclude-files-and-folders-windows-defender-antivirus-scans>

**NEW QUESTION 5**

DRAG DROP

Your network contains an Active Directory domain named adatim.com. The domain contains four member servers that run Windows Server 2016.

On each server, you locally attach three disks and install the Failover Clustering feature. You need to create a volume that uses all the disks. The volume must be highly available.  
Which three cmdlets should you run in sequence? To answer, move the appropriate cmdlets from the list of cmdlets to the answer area and arrange them in the correct order.

**Cmdlets**

New-Cluster

Initialize-Disk

Enable-VMReplication

Enable-ClusterS2D

New-Volume

New-Partition

**Answer Area**

- A. Mastered
- B. Not Mastered

Answer: A

Explanation:

**Answer Area**

NEW QUESTION 6

You have a Hyper-V server named Server1 that runs Windows Server 2012 R2. Server1 hosts a virtual machine named VM1 that runs Windows Server 2016. VM1 connects to an external virtual switch named Switch1. You can ping VM1 from Server1. You upgrade Server1 to Windows Server 2016. You need to ensure that you can connect to VM1 by using PowerShell Direct. What should you do?

- A. Configure the firewall rules on Server1.
- B. Enable the Hyper-V extensible switch extensions on Server1.
- C. Upgrade the configuration version of VM1.
- D. Configure the firewall rules on VM1.

Answer: C

NEW QUESTION 7

You deploy a Hyper-V server named Served in an isolated test environment The test environment is prevented from accessing the Internet Server1 runs the Datacenter edition of Windows Server 2016. You plan to deploy the following guest virtual machines on the server

Quantity	Operating system	Domain member
10	Windows Server 2012 R2	Yes
4	Windows Server 2016	No
5	Windows Server 2016	Yes

Which activation model should you use for the virtual machines'?

- A. Multiple Activation Key (MAK)
- B. Automatic Virtual Machine Activation (AVMA)
- C. Original Equipment Manufacturer (OEM) key
- D. Key Management Service (KMS)

Answer: B

NEW QUESTION 8

#### HOTSPOT

Your network contains an Active Directory domain named contoso.com. The domain contains a DNS server named Server1. You enable Response Rate Limiting on Server1. You need to prevent Response Rate Limiting from applying to hosts that reside on the network of 10.0.0.0/24. Which cmdlets should you run? To answer, select the appropriate options in the answer area

First cmdlet to run:

Add-DnsServerClientSubnet  
Enable-DnsServerPolicy  
Set-DnsServerResponseRateLimiting  
Set-DnsServerResponseRateLimitingExceptionlist

Second cmdlet to run:

Add- DnsServerResponseRateLimitingExceptionlist  
Add-DnsServerQueryResolutionPolicy  
Add-DnsServerZoneScope  
Set-DnsServerDsSetting

- A. Mastered
- B. Not Mastered

Answer: A

Explanation:

First cmdlet to run:

Add-DnsServerClientSubnet  
Enable-DnsServerPolicy  
Set-DnsServerResponseRateLimiting  
Set-DnsServerResponseRateLimitingExceptionlist

Second cmdlet to run:

Add- DnsServerResponseRateLimitingExceptionlist  
Add-DnsServerQueryResolutionPolicy  
Add-DnsServerZoneScope  
Set-DnsServerDsSetting

#### NEW QUESTION 9

You have a Nano Server named Nano1. You deploy several containers to Nano1 that use an image named Image1. You need to deploy a new container to Nano1 that uses Image1. What should you run?

- A. the Install-NanoServerPackage cmdlet
- B. theInstall-WindowsFeaturecmdlet
- C. the docker load command
- D. the docker run command



Answer: D

NEW QUESTION 10

HOTSPOT

You have a server that runs Windows Server 2016.  
You run the commands shown in the following output.

```
PS G:\> Get-DedupVolume | fl

Volume                : G:
VolumeId               : \\?\Volume{2efa2f6e-db4a-4bb1-aal5-31ae8b073dl6}\
Enabled                : True
UsageType              : Default
DataAccessEnabled      : True
Capacity               : 923.87 GB
FreeSpace              : 393.98 GB
UsedSpace              : 529.89 GB
UnoptimizedSize        : 1008.7 GB
SavedSpace              : 478.82 GB
SavingRate              : 47 %
MinimumFileAgeDays     : 3
MinimumFileSize        : 32768
NoCompress              : False
ExcludeFolder           :
ExcludeFileType        :
ExcludeFileTypeDefault : {edb, jrs}
NoCompressionFileType  : {asf, mov, wma, wmv...}
ChunkRedundancyThreshold : 100
Verify                 : False
OptimizeInUseFiles      : False
OptimizePartialFiles    : False

PS G:\> Get-Date
Tuesday, June 21, 2016 5:29:58 PM

PS G:\DC01> dir | select Mode,LastWriteTime,Length,Name | ft -AutoSize

Mode                LastWriteTime         Length      Name
----                -
d-----          2/18/2015 11:54:56 AM              Snapshots
d-----          2/18/2015 12:11:42 PM              Virtual Machines
-a----          6/21/2016  5:27:40 PM    51539608064    DC01.vhd
-a----          6/18/2016  7:00:00 AM     12400         Readme.txt
-a----          1/5/2015   7:00:00 AM    3939235840    Software.iso
```

For each of the following statements, select Yes if the statement is true. Otherwise, select No.

Answer Area

Statements	Yes	No
DC01.vhd will be processed by deduplication.	<input type="radio"/>	<input type="radio"/>
Readme.txt will be processed by deduplication.	<input type="radio"/>	<input type="radio"/>
Software.iso will be processed by deduplication.	<input type="radio"/>	<input type="radio"/>

- A. Mastered
- B. Not Mastered

Answer: A

Explanation:

# Answer Area

Statements	Yes	No
DC01.vhd will be processed by deduplication.	<input type="radio"/>	<input checked="" type="radio"/>
Readme.txt will be processed by deduplication.	<input type="radio"/>	<input checked="" type="radio"/>
Software.iso will be processed by deduplication.	<input checked="" type="radio"/>	<input type="radio"/>

NEW QUESTION 10

DRAG DROP

You have a server that runs Windows Server 2016 You install three additional physical disks named Disk1. Disk2. and Disk3 You plan to use these physical disks to store data

You need to create a volume to store data The solution must prevent data loss in the event of a single disk failure

Which three actions should you perform in sequence? To answer, move the appropriate actions from the list of actions to the answer area and arrange them in the correct order

Create a Virtual Disk.

Create a Storage Pool.

Create a new Storage Tier.

Create a Volume.

Assign a Storage Tier to a virtual disk.

Create a Virtual Disk Clone.

>

<

- A. Mastered
- B. Not Mastered

Answer: A

Explanation:

Create a Storage Pool.

Create a Virtual Disk.

Create a Volume.

**NEW QUESTION 14**

You are configuring a Windows Server 2016 failover cluster in a workgroup.  
Before installing one of the nodes, you run the ipconfig /all command and receive the following output

```
Windows IP Configuration

Host Name . . . . . : Server1
Primary Dns Suffix . . . . . :
Node Type . . . . . : Hybrid
IP Routing Enabled. . . . . : No
WINS Proxy Enabled. . . . . : No
DNS Suffix Search List. . . . . :

Ethernet adapter Ethernet:

Connection-specific DNS Suffix . :
Description . . . . . : Microsoft Hyper-V Network Adapter
Physical Address. . . . . : 00-15-5D-01-62-17
DHCP Enabled. . . . . : Yes
Autoconfiguration Enabled . . . . : Yes
Link-local IPv6 Address . . . . . : fe80::7548:46d8:8ffc:d5ab%17(Preferred)
IPv4 Address. . . . . : 192.168.1.154(Preferred)
Subnet Mask . . . . . : 255.255.255.0
Default Gateway . . . . . : 192.168.1.10
DHCPv6 IAID . . . . . : 369099429
DHCPv6 Client DUID. . . . . : 00-01-00-01-1A-1D-5D-60-00-02-A5-4E-F4-85
DNS Servers . . . . . : 192.168.1.32
NetBIOS over Tcpip. . . . . : Disabled
```

You need to ensure that Server 1 can be added as a node in the cluster. What should you do?

- A. Assign a static IP address
- B. Change the Node Type to Broadcast
- C. Configure a DNS suffix
- D. Enable NetBIOS over TCP/IP

Answer: C

**NEW QUESTION 17**

**HOTSPOT**

You have a machine named VM1 that runs Windows Server 2016. VM1 is a Remote Desktop Services (RDS) server. You need to ensure that only TCP port 3389 can be used to connect to VM1 over the network. Which command should you run on the Hyper-V host? To answer, select the appropriate options in the answer area.



▼

Add-VmNetworkAdapterAcl  
Add-VmNetworkAdapterExtendedAcl  
Set-VmNetworkAdapter  
Set-VmNetworkAdapterRoutingDomain  
Mapping

-VMName VM1 -Direction

▼

Inbound  
Outbound

- A. Mastered
- B. Not Mastered

Answer: A

Explanation:

▼

Add-VmNetworkAdapterAcl  
Add-VmNetworkAdapterExtendedAcl  
Set-VmNetworkAdapter  
Set-VmNetworkAdapterRoutingDomain  
Mapping

-VMName VM1 -Direction

▼

Inbound  
Outbound

-Action Allow -LocalPort 3389 -Protocol TCP -Weight 10

NEW QUESTION 19

DRAG DROP

You have a physical server named Server1 that runs Windows Server 2016. Server1 is a Hyper-V host. On Server1, you create a virtual machine named VM1 that runs Windows Server 2016. You plan to install the Hyper-V server role on VM1. You need to ensure that you can configure VM1 to host virtual machines. How should you complete the Windows PowerShell script? To answer, drag the appropriate values to the correct targets. Each value may be used once, more than once, or not at all. You may need to drag the split bar between panes or scroll to view content.

Values

\$false

\$null

\$true

Set-VMProcessor -VMName VMHOST1 -ExposeVirtualizationExtensions

-Count 2

Set-VMemory VMHOST1 -DynamicMemoryEnabled

Get-VMNetworkAdapter -VMName VMHOST1 | Set-VMNetworkAdapter -MacAddressSpoofing on

- A. Mastered
- B. Not Mastered

Answer: A

Explanation:

Answer Area

Values

\$false

\$null

\$true

Set-VMProcessor -VMName VMHOST1 -ExposeVirtualizationExtensions

\$true

-Count 2

Set-VMemory VMHOST1 -DynamicMemoryEnabled

\$false

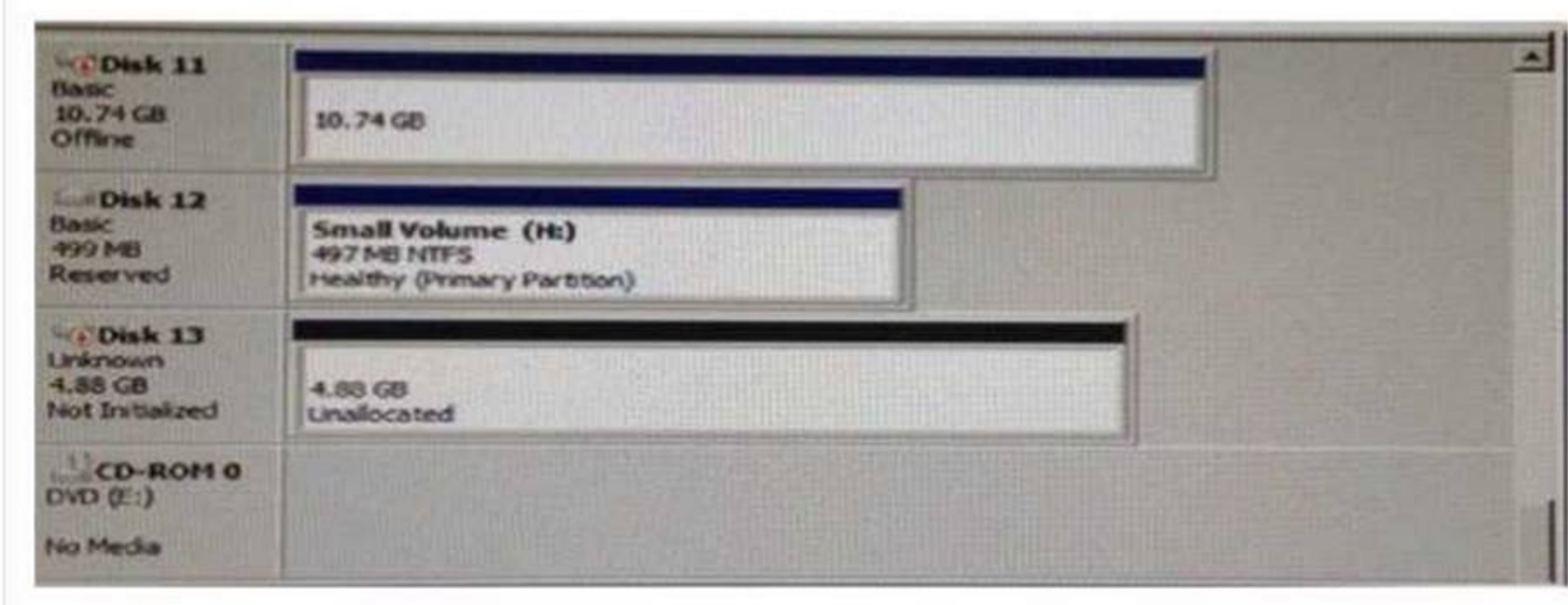
Get-VMNetworkAdapter -VMName VMHOST1 | Set-VMNetworkAdapter -MacAddressSpoofing on



NEW QUESTION 20

HOTSPOT

You have a server named Server1 that runs Windows Server 2016 and has the Hyper-V server role installed. You open Disk Management on Server1 as shown in the following graphic.



You plan to configure Disk13 as a pass-through disk for a generation 1 virtual machine. Use the drop-down menus to select the answer choice that completes each statement based on the information presented in the graphic.

The status of Disk 13 must be set to [answer choice.]

▼

Initializing  
Offline  
Online

If the virtual machine uses Disk 13 as the system partition, Disk 13 must be attached to [answer choice] in Hyper-V Manager.

▼

a Fibre Channel adapter  
an IDE controller  
a SCSI controller

- A. Mastered
- B. Not Mastered

Answer: A

Explanation:

The status of Disk 13 must be set to [answer choice.]

▼

Initializing  
Offline  
Online

If the virtual machine uses Disk 13 as the system partition, Disk 13 must be attached to [answer choice] in Hyper-V Manager.

▼

a Fibre Channel adapter  
an IDE controller  
a SCSI controller

NEW QUESTION 21

Note: This question is part of a series of questions that use the same similar answer choices. An

answer choice may be correct for more than one question in the series Each question is independent of the other questions in this series. Information and details provided in a question apply only to that question  
You have three servers named Server1, Server2. Server3 that run Windows Server 2016 Server1 and Server2 have the Hyper-V server role installed Server3 has the iSCSI Target Server role service installed.

Server name	Components installed
Server1	Hyper-V server role
Server2	Hyper-V server role
Server3	iSCSI Target Server role service

You need to create a Hyper-V cluster Which tool should you use first?

- A. the clussvc.exe command
- B. the cluster.exe command
- C. the Computer Management console
- D. the configurehyperv.exe command
- E. the Disk Management console
- F. the Failover Cluster Manager console
- G. the Hyper-V Manager console
- H. the Server Manager Desktop app

**Answer:** H

#### NEW QUESTION 24

Note: This question is part of a series of questions that use the same similar answer choices An answer choice may be correct for more than one question in the series Each question is independent of the other questions in this series. Information and details provided in a question apply only to that question  
You have two servers named Server1 and Server2 that run Windows Server 2016 Server1 and Server2 have the Hyper-V server role installed  
An iSCSI SAN connects to the network  
You create a LUN on the SAN and configure both servers to connect to the iSCSI target  
You create a failover cluster and add Server1 and Server2 to the cluster. You connect both servers to the iSCSI target and format the shared storage  
You need to add the shared storage to the cluster The solution must ensure that virtual machines running on both nodes can access the shared storage simultaneously.  
Which tool should you use?

- A. the clussvc.exe command
- B. the cluster.exe command
- C. the Computer Management console
- D. the configurehyperv.exe command
- E. the Disk Management console
- F. the Failover Cluster Manager console
- G. the Hyper-V Manager console
- H. the Server Manager Desktop app

**Answer:** F

#### NEW QUESTION 29

Note: This question is part of a series of questions that use the same similar answer choices An answer choice may be correct for more than one question in the series Each question is independent of the other questions in this series. Information and details provided in a question apply only to that question  
You have a two-node Hyper-V cluster named Cluster1 at a primary location and a stand-alone Hyper- V host named Server1 at a secondary location  
A virtual machine named VM1 runs on Cluster1 You configure a Hyper-V Replica of VM1 to Server1 You need to perform a Test Fai lover of VM1. Which tool should you use?

- A. the clussvc.exe command
- B. the cluster.exe command
- C. the Computer Management console
- D. the configurehyperv.exe command
- E. the Disk Management console
- F. the Failover Cluster Manager console
- G. the Hyper-V Manager console
- H. the Server Manager Desktop app

**Answer:** G

#### NEW QUESTION 31

In this section, you'll see one or more sets of questions with the same scenario and problem Each question presents a unique solution to the problem, and you must determine whether the solution meets the stated goals Any of the solutions might solve the problem. It is also possible that none of the solutions solve the problem.  
Once you answer a question in this section, you will NOT be able to return to it As a result. these questions will not appear in the review screen  
Note This question is part of a series of questions that present the same scenario Each question in the series contains a unique solution Determine whether the solution meets the stated goals.  
Your network contains an Active Directory forest named contoso.com. The forest contains a member server named Server1 that runs Windows Server 2016 All domain controllers run Windows Server 2012 R2  
Contoso com has the following configuration

```
PS C:\> (Get-ADForest). ForestMode
Windows2008R2Forest

PS C:\> (Get-ADDomain). DomainMode
Windows2008R2Domain
PS C:\>
```

You plan to deploy an Active Directory Federation Services (AD FS) farm on Server1 and to configure device registration You need to configure Active Directory to support the planned deployment. Solution You raise the domain functional level to Windows Server 2012R2. Does this meet the goal?

- A. Yes
- B. No

Answer: B

NEW QUESTION 36

In this section, you'll see one or more sets of questions with the same scenario and problem Each question presents a unique solution to the problem, and you must determine whether the solution meets the stated goals. Any of the solutions might solve the problem. It is also possible that none of the solutions solve the problem. Once you answer a question in this section, you will NOT be able to return to it. As a result, these questions will not appear in the review screen Note: This question is part of a series of questions that present the same scenario. Each question in the series contains a unique solution. Determine whether the solution meets the stated goals. Your network contains an Active Directory domain named contoso.com. The domain contains a DNS server named Server1. All client computers run Windows 10. On Server1, you have the following zone configuration

ZoneName	ZoneType	IsAutoCreated	IsDsIntegrated	IsReverseLookupZone	IsSign
-----	-----	-----	-----	-----	-----
_msdcs.contoso.com	Primary	False	True	False	False
adatum.com	Forwarder	False	False	False	
contoso.com	Primary	False	True	False	False
fabrikam.com	Primary	False	False	False	True
TrustAnchors	Primary	False	True	False	False

You have the following subnets defined on Server1.

Name	IPV4Subnet	IPV6Subnet
----	-----	-----
Subnet1	{10.0.0.0/24}	
Subnet2	{10.0.1.0/24}	
Subnet3	{192.168.15.0/24}	
Subnet4	{172.16.1.0/24}	

You need to prevent Server1 from resolving queries from DNS clients located on Subnet4 Server1 must resolve queries from all other DNS clients Solution From a Group Policy object (GPO) in the domain, you modify the Network List Manager Policies Does this meet the goal?

- A. Yes
- B. No

Answer: B

NEW QUESTION 39

In this section, you'll see one or more sets of questions with the same scenario and problem Each question presents a unique solution to the problem, and you must determine whether the solution meets the stated goals. Any of the solutions might solve the problem. It is also possible that none of the solutions solve the problem. Once you answer a question in this section, you will NOT be able to return to it. As a result, these questions will not appear in the review screen Note: This question is part of a series of questions that present the same scenario. Each question in the series contains a unique solution. Determine whether the solution meets the stated goals. Your network contains an Active Directory domain named contoso.com. The domain contains a DNS server named Server1. All client computers run Windows 10. On Server1, you have the following zone configuration



ZoneName	ZoneType	IsAutoCreated	IsDsIntegrated	IsReverseLookupZone	IsSign
-----	-----	-----	-----	-----	-----
_msdcs.contoso.com	Primary	False	True	False	False
adatum.com	Forwarder	False	False	False	
contoso.com	Primary	False	True	False	False
fabrikam.com	Primary	False	False	False	True
TrustAnchors	Primary	False	True	False	False

You have the following subnets defined on Server1.

Name	IPv4Subnet	IPv6Subnet
-----	-----	-----
Subnet1	{10.0.0.0/24}	
Subnet2	{10.0.1.0/24}	
Subnet3	{192.168.15.0/24}	
Subnet4	{172.16.1.0/24}	

You need to prevent Server1 from resolving queries from DNS clients located on Subnet4 Server1 must resolve queries from all other DNS clients  
Solution From the Security setting of each zone on Server1, you modify the permissions Does this meet the goal?

- A. Yes
- B. No

Answer: B

NEW QUESTION 43

In this section, you'll see one or more sets of questions with the same scenario and problem Each question presents a unique solution to the problem, and you must determine whether the solution meets the stated goals. Any of the solutions might solve the problem. It is also possible that none of the solutions solve the problem.  
Once you answer a question in this section, you will NOT be able to return to it. As a result, these questions will not appear in the review screen  
Note: This question is part of a series of questions that present the same scenario. Each question in the series contains a unique solution. Determine whether the solution meets the stated goals.  
Your network contains an Active Directory domain named contoso.com. The domain contains a DNS server named Server1. All client computers run Windows 10. On Server1, you have the following zone configuration

ZoneName	ZoneType	IsAutoCreated	IsDsIntegrated	IsReverseLookupZone	IsSign
-----	-----	-----	-----	-----	-----
_msdcs.contoso.com	Primary	False	True	False	False
adatum.com	Forwarder	False	False	False	
contoso.com	Primary	False	True	False	False
fabrikam.com	Primary	False	False	False	True
TrustAnchors	Primary	False	True	False	False

You have the following subnets defined on Server1.

Name	IPv4Subnet	IPv6Subnet
-----	-----	-----
Subnet1	{10.0.0.0/24}	
Subnet2	{10.0.1.0/24}	
Subnet3	{192.168.15.0/24}	
Subnet4	{172.16.1.0/24}	

You need to prevent Server1 from resolving queries from DNS clients located on Subnet4 Server1 must resolve queries from all other DNS clients  
Solution From Windows Firewall with Advanced Security on Server1, you create an inbound rule Does this meet the goal?

- A. Yes
- B. No

Answer: A

NEW QUESTION 48

In this section, you'll see one or more sets of questions with the same scenario and problem Each question presents a unique solution to the problem, and you must determine whether the solution meets the stated goals. Any of the solutions might solve the problem. It is also possible that none of the solutions solve the problem.  
Once you answer a question in this section, you will NOT be able to return to it. As a result, these questions will not appear in the review screen  
Note: This question is part of a series of questions that present the same scenario. Each question in the series contains a unique solution. Determine whether the solution meets the stated goals.  
Your network contains an Active Directory domain named contoso.com. The domain contains a DNS server named Server1. All client computers run Windows 10.



On Server1, you have the following zone configuration

ZoneName	ZoneType	IsAutoCreated	IsDsIntegrated	IsReverseLookupZone	IsSign
-----	-----	-----	-----	-----	-----
_msdcs.contoso.com	Primary	False	True	False	False
adatum.com	Forwarder	False	False	False	
contoso.com	Primary	False	True	False	False
fabrikam.com	Primary	False	False	False	True
TrustAnchors	Primary	False	True	False	False

You have the following subnets defined on Server1.

Name	IPv4Subnet	IPv6Subnet
----	-----	-----
Subnet1	{10.0.0.0/24}	
Subnet2	{10.0.1.0/24}	
Subnet3	{192.168.15.0/24}	
Subnet4	{172.16.1.0/24}	

You need to prevent Server1 from resolving queries from DNS clients located on Subnet4 Server1 must resolve queries from all other DNS clients  
 Solution From Windows PowerShell on Setver1, you run the Add-DnsServerTrustAnchor cmdtel Does this meet the goal?

- A. Yes
- B. No

Answer: A

**NEW QUESTION 49**

In this section, you'll see one or more sets of questions with the same scenario and problem Each question presents a unique solution to the problem, and you must determine whether the solution meets the stated goals. Any of the solutions might solve the problem. It is also possible that none of the solutions solve the problem.  
 Once you answer a question in this section, you will NOT be able to return to it. As a result, these questions will not appear in the review screen  
 Note: This question is part of a series of questions that present the same scenario. Each question in the series contains a unique solution. Determine whether the solution meets the stated goals.  
 Your network contains an Active Directory domain named contoso.com. The domain contains a DNS server named Server1. All client computers run Windows 10. On Server1, you have the following zone configuration

ZoneName	ZoneType	IsAutoCreated	IsDsIntegrated	IsReverseLookupZone	IsSign
-----	-----	-----	-----	-----	-----
_msdcs.contoso.com	Primary	False	True	False	False
adatum.com	Forwarder	False	False	False	
contoso.com	Primary	False	True	False	False
fabrikam.com	Primary	False	False	False	True
TrustAnchors	Primary	False	True	False	False

You have the following subnets defined on Server1.

Name	IPv4Subnet	IPv6Subnet
----	-----	-----
Subnet1	{10.0.0.0/24}	
Subnet2	{10.0.1.0/24}	
Subnet3	{192.168.15.0/24}	
Subnet4	{172.16.1.0/24}	

You need to prevent Server1 from resolving queries from DNS clients located on Subnet4 Server1 must resolve queries from all other DNS clients  
 Solution From Windows PowerShell on Server1, you run the Export-DnsServerDnsSecPublicKey cmdlet Does this meet the goal?

- A. Yes
- B. No

Answer: B

**NEW QUESTION 52**

In this section, you'll see one or more sets of questions with the same scenario and problem Each question presents a unique solution to the problem, and you must determine whether the solution meets the stated goals Any of the solutions might solve the problem. It is also possible that none of the solutions solve the problem.  
 Once you answer a question in this section, you will NOT be able to return to it As a result. these questions will not appear in the review screen  
 Note This question is part of a series of questions that present the same scenario Each question in the series contains a unique solution Determine whether the

solution meets the stated goals.

Your network contains an Active Directory forest named contoso.com. The forest contains a member server named Server1 that runs Windows Server 2016 All domain controllers run Windows Server 2012 R2

Contoso com has the following configuration

```
PS C:\> (Get-ADForest). ForestMode
Windows2008R2Forest

PS C:\> (Get-ADDomain). DomainMode
Windows2008R2Domain
PS C:\>
```

You plan to deploy an Active Directory Federation Services (AD FS) farm on Server1 and to configure device registration You need to configure Active Directory to support the planned deployment. Solution You raise the forest functional level to Windows Server 2012R2.

Does this meet the goal?

- A. Yes
- B. No

**Answer: A**

#### NEW QUESTION 56

Note This question is part of a series of questions that present the same scenario. Each question in the series contains a unique solution that might meet the stated goals. Some question sets might have more than one correct solution, while others might not have a correct solution.

After you answer a question in this section, you will NOT be able to return to it. As a result, these questions will not appear in the review screen.

You are a server administrator at a company named Contoso, Ltd.

Contoso has a Windows Server 2016 Hyper-V environment configured as shown in the following table.

Hyper-V host name	Configuration	Virtual switch name
Host1	- Uses an Intel processor - Is a member of a SAN named SAN1	Switch1
Host2	- Uses an AMD processor - Has local storage only	Switch2
Host3	- Uses an Intel processor - Is a member of a SAN named SAN1	Switch1
Host4	- Uses an Intel processor - Has local storage only	Switch2

All of the virtual switches are of the external type.

You need to ensure that you can move virtual machines between the hosts without causing the virtual machines to disconnect from the network.

Solution: You implement live migration by using Host1 and Host2. Does this meet the goal?

- A. Yes
- B. No

**Answer: B**

#### NEW QUESTION 59

Note: This question is part of a series of questions that present the same scenario. Each question in the series contains a unique solution that might meet the stated goals. Some question sets might have more than one correct solution, white others might not have a correct solution.

Your network contains an Active Directory forest

You install Windows Server 2016 on 10 virtual machines.

You need to deploy the Web Server (IIS) server role identically to the virtual machines.

Solution: From a Group policy object (GPO), you create an application control policy, and then you apply the policy to the virtual machines.

Does this meet the goal?

- A. Yes
- B. No

**Answer: B**

#### NEW QUESTION 60

Note: This question is part of a series of questions that present the same scenario. Each question in the series contains a unique solution that might meet the stated goals. Some question sets might have more than one correct solution, white others might not have a correct solution.

Your network contains an Active Directory forest

You install Windows Server 2016 on 10 virtual machines.

You need to deploy the Web Server (IIS) server role identically to the virtual machines.

Solution: You create a software installation package, and then you publish the package to the virtual machines by using a Group Policy object (GPO)

Does this meet the goal?

- A. Yes
- B. No

**Answer: B**

#### NEW QUESTION 65

Note: This question is part of a series of questions that present the same scenario. Each question in the series contains a unique solution that might meet the stated goals. Some question sets might have more than one correct solution, while others might not have a correct solution.

You have a server named Server1 that runs Windows Server 2016. Server1 hosts a line-of-business application named App1. App1 has a memory leak that occasionally causes the application to consume an excessive amount of memory.

You need to log an event in the Application event log whenever App1 consume more than 4 GB of memory.

Solution: You create a system configuration information data collector. Does this meet the goal?

- A. Yes
- B. No

**Answer: B**

#### NEW QUESTION 68

You have four servers named Server1, Server2, Server3, and Server4 that run Windows Server 2016. Each server has a single 4-TB SATA hard disk.

To each server you attach a new 4-TB SATA hard disk.

You need to create a new storage cluster that uses Storage Spaces Direct. The storage pool must contain all of the new disks.

Which command should you run before you enable Storage Space Direct?

- A. Add-ClusterSharedVolume –Name “Disk 1” –Cluster Cluster1
- B. New-Cluster –Name Cluster1 –Node ‘Server1’, ‘Server2’, ‘Server3’, ‘Server4’ -NoStorage
- C. Get-ClusterAvailableDisk –Cluster Cluster1 | Add-ClusterDisk
- D. New-ClusterStorageEnclosure –id 1 –name Cluster1 –type jbod –ConnectionString “Server1,Server2,Server3,Server4”

**Answer: B**

#### NEW QUESTION 72

DRAG DROP

Note: This question is part of a series of questions that use the same scenario. For your convenience, the scenario is repeated in each question. Each question presents a different goal and answer choices, but the text of the scenario is exactly the same in each question in this series.

Your network contains an Active Directory domain named contoso.com. The functional level of the forest and the domain is Windows Server 2008 R2. All servers in the domain run Windows Server 2016 Standard. The domain contains 300 client computers that run either Windows 8.1 or Windows 10.

The domain contains nine servers that are configured as shown in the following table.

Name	Configuration	Planned changes
Server1	Domain controller	None
Server2	File server	Run Failover Clustering and Storage Spaces Direct
Server3	File server	Run Failover Clustering and Storage Spaces Direct
Server4	Hyper-V host	Run shielded virtual machines
Server5	Hyper-V host	None
Server6	Member server	Run Active Directory Federation Services (AD FS)
VM1	Virtual machine hosted on Server5	None
VM2	Virtual machine hosted on Server5	None
VM3	Virtual machine hosted on Server5	None

The virtual machines are configured as follows:

- Each virtual machine has one virtual network adapter.
- VM1 and VM2 are part of a Network Load Balancing (NLB) cluster.
- All of the servers on the network can communicate with all of the virtual machines.

You need to install the correct edition of Windows Server 2016 to support the planned changes for Server2, Server3, Server4, and Server5.

Which edition or editions should you choose for each server? To answer, drag the appropriate editions to the correct servers. Each edition may be used once, more than once, or not at all. You may need to drag the split bar between panes or scroll to view content.



Editions

Standard only

Standard or Datacenter

Datacenter only

Server2:

Edition

Server3:

Edition

Server4:

Edition

Server6:

Edition

- A. Mastered  
B. Not Mastered

Answer: A

Explanation:

Editions

Standard only

Standard or Datacenter

Datacenter only

Server2:

Datacenter only

Server3:

Datacenter only

Server4:

Datacenter only

Server6:

Standard or Datacenter

NEW QUESTION 75

Note This question is part of a series of questions that use the same scenario. For your convenience, the scenario is repeated in each question. Each question presents a different goal and answer choices, but the text of the scenario is exactly the same in each question in this series.

Start of Repeated Scenario:

Your network contains an Active Directory domain named contoso.com The functional level of the forest and the domain is Windows Server 2008 R2 All servers in the domain run Windows Server 2016 Standard. The domain contains 300 client computers that run either Windows 8.1 or Windows 10.

The domain contains nine servers that are configured as shown in the following table.

Name	Configuration	Planned changes
Server1	Domain controller	None
Server2	File server	Run Failover Clustering and Storage Spaces Direct
Server3	File server	Run Failover Clustering and Storage Spaces Direct
Server4	Hyper-V host	Run shielded virtual machines
Server5	Hyper-V host	None
Server6	Member server	Run Active Directory Federation Services (AD FS)
VM1	Virtual machine hosted on Server5	None
VM2	Virtual machine hosted on Server5	None
VM3	Virtual machine hosted on Server5	None

The virtual machines are configured as follows:

- Each virtual machine has one virtual network adapter
- VM1 and VM2 are part of a Network Load Balancing (NLB) cluster.
- All of the servers on the network can communicate with all of the virtual machines. End of repeated Scenario.

On server4, you plan to provision a new volume that will be used to create large, fixed-size VHDX files.

Which type of file system should you use the new volume to minimize the amount of time required to create the VHDX files?

- A. ReFS  
B. NTFS  
C. CVFS  
D. exFAT

Answer: A



#### NEW QUESTION 76

Note This question is part of a series of questions that use the same scenario. For your convenience, the scenario is repeated in each question. Each question presents a different goal and answer choices, but the text of the scenario is exactly the same in each question in this series.

Start of Repeated Scenario:

A company named Contoso, Ltd. has several servers that run Windows Server 2016. Contoso has a Hyper V environment that uses failover clustering and Windows Server Update Services (WSUS). The environment contains several Windows containers and several virtual machines.

The WSUS deployment contains one upstream server that is located on the company's perimeter network and several downstream servers located on the internal network. A firewall separates the upstream server from the downstream servers.

You plan to deploy a human resources application to a new server named HRServer5. HRServer5 contains a FAT32-formatted data volume.

The CIO of Contoso identifies the following requirements for the company's IT department:

- Deploy failover cluster to two new virtual machines.
  - Store all application databases by using Encrypted File System (EFS).
  - Ensure that each Windows container has a dedicated IP address assigned by a DHCP server
  - Produce a report that lists the processor time used by all of the processes on a server named Server 1 for five hour.
- Encrypt all communication between the internal network and the perimeter network, including all WSUS communications.
- Automatically load balance the virtual machines hosted in the Hyper-V cluster when processor utilization exceeds 70 percent.

End of Repeated Scenario.

You need to modify the Hyper V cluster to meet the load balancing requirement for the virtual machine. Which command should you run?

- A. (Get-ClusterParameter) AutoBalaneCrMode=2
- B. (Get-Cluster).AutoBalaneCrMode=2
- C. (Get-ClusterParameter).AutoBalancerLevel=2
- D. (Get-Cluster).AutoBalancerLevel=2

**Answer: D**

#### NEW QUESTION 80

HOTSPOT

Note: This question is part of a series of questions that use the same scenario. For your convenience, the scenario is repeated in each question. Each question presents a different goal and answer choices, but the text of the scenario is exactly the same in each question in this series.

A company named Contoso, Ltd. has several servers that run Windows Server 2016. Contoso has a Hyper-V environment that uses failover clustering and Windows Server Update Services (WSUS). The environment contains several Windows containers and several virtual machines.

The WSUS deployment contains one upstream server that is located on the company's perimeter network and several downstream servers located on the internal network. A firewall separates the upstream server from the downstream servers.

You plan to deploy a human resources application to a new server named HRServer5. HRServer5 contains a FAT32-formatted data volume.

The CIO of Contoso identifies the following requirements for the company's IT department:

- Deploy a failover cluster to two new virtual machines.
- Store all application databases by using Encrypted File System (EFS).
- Ensure that each Windows container has a dedicated IP address assigned by a DHCP server.
- Produce a report that lists the processor time used by all of the processes on a server named Server1 for five hours.
- Encrypt all communication between the internal network and the perimeter network, including all WSUS communications.
- Automatically load balance the virtual machines hosted in the Hyper-V cluster when processor utilization exceeds 70 percent.

You need to create a Data Collector Set to meet the requirement for the processor time report.

What command should you run to create the Data Collector Set? To answer, select the appropriate options in the answer area.

#### Answer Area

<div>▼</div> <div>create</div> <div> <div>lodctr</div> <div>logman</div> <div>perform</div> <div>tracertpt</div> </div>		<div>▼</div> <div>perf_log -c "\Process(_Total)\% Processor Time" -max 10 -rf 05:00</div> <div> <div>alert</div> <div>config</div> <div>counter</div> <div>trace</div> </div>
---	--	---

- A. Mastered
- B. Not Mastered

**Answer: A**

**Explanation:**

#### Answer Area

<div>▼</div> <div>create</div> <div> <div>lodctr</div> <div><b>logman</b></div> <div>perform</div> <div>tracertpt</div> </div>		<div>▼</div> <div>perf_log -c "\Process(_Total)\% Processor Time" -max 10 -rf 05:00</div> <div> <div>alert</div> <div>config</div> <div><b>counter</b></div> <div>trace</div> </div>
--	--	--

#### NEW QUESTION 83

Your network contains a new Active Directory domain named contoso.com.

You have a security policy that states that new servers should run Nano Server whenever possible. Which server role can be deployed on a Nano Server?

- A. Active Directory Domain Services
- B. DHCP Server
- C. Network Policy and Access Services

D. DNSServer / Web Server (IIS)

**Answer:** D

**NEW QUESTION 86**

You have a server named Server1 that runs Windows Server 2016. You need to install the DNS Server role on Server1. What should you run?

- A. the dns.exe command
- B. the optionalfcaturcs.exe command
- C. the Install-Package cmdlet
- D. the Enable-WindowsOptionalFeature cmdlet

**Answer:** D

**NEW QUESTION 88**

You have a server named Server 1 thai runs Windows Server 2016. Server 1 has Internet connectivity You have a Nano Server image. You need to download and save a Nano Server package in the Nano Server image. The package is NOT included in the Windows Server 2016 installation media. Which two cmdlets should you run on Server1.

- A. Set-PackageSource
- B. Install-PackageProvider
- C. Add-AppxProvisionedPackage
- D. Save-NanoServerPackage
- E. Add-WindowsPackage

**Answer:** BD

**NEW QUESTION 91**

You have a Hyper-V host that runs Windows Server 2016. The host contains a virtual machine named VM1. VM1 has resource metering enabled. You need to use resource metering to track the amount of network traffic that VM1 sends to the 10.0.0.0/8 network. Which cmdlet should you run?

- A. Add-VMNetworkAdapteiAd
- B. Set-VMNetworkAdapter
- C. New-VMResourcePool
- D. Set-VMNetworkAdapterRoutingDomamMapping

**Answer:** A

**NEW QUESTION 93**

DRAG DROP  
Your network contains two Hyper-V servers named Server1 and Server2. Server1 has Windows Server 2012 R2 installed. Server2 has Windows Server 2016 installed.  
You perform a live migration of a virtual machine named VM1 from Server1 to Server2. You need to create a production checkpoint for VM1 on Server2.  
Which three Windows PowerShell cmdlets should you run in sequence? To answer, move the appropriate Windows PowerShell cmdlets from the list of actions to the answer area and arrange them in the correct order.

Cmdlets

Set-VM

Update-VMVersion

Checkpoint-VM

Set-VMHost

Stop-VM

Answer Area

<

>

↑

↓

- A. Mastered
- B. Not Mastered

**Answer:** A

**Explanation:**

### Cmdlets

Set-VM

Update-VMVersion

Checkpoint-VM

Set-VMHost

Stop-VM

### Answer Area

Stop-VM

Update-VMVersion

Checkpoint-VM

NEW QUESTION 96  
DRAG DROP

You are planning the configuration of a virtual network switch for a Hyper-V environment. The environment will contain the following Hyper-V hosts:

- A server named Server1 will have 10 virtual machines that must be able to communicate with each other. The virtual machines must be prevented from communicating with Server1 and all other servers on the corporate network.
- A two-node failover cluster named Cluster1 will have 20 virtual machines. The virtual machines will run on both nodes. Hyper-V hosts on the corporate network must be able to connect to the virtual machines.

Which type of virtual switch should you select for each Hyper-V host? To answer, drag the appropriate virtual switch types to the correct hosts. Each virtual switch type must be used once, more than once, or not at all. You may need to drag the split bar between panes or scroll to view content.

### Virtual Switch Types

External

Internal

Private

### Answer Area

10 virtual machines on Server1:

20 virtual machines on Cluster1:

- A. Mastered
- B. Not Mastered

Answer: A

Explanation:

### Virtual Switch Types

External

Internal

Private

### Answer Area

10 virtual machines on Server1: Private

20 virtual machines on Cluster1: External

NEW QUESTION 99

You have a Hyper-V host named Server1 that runs Windows Server 2016. Server1 contains four virtual machines that are configured as shown in the following table.

Virtual machine name	Configuration
VM1	A shielded virtual machine that runs Windows Server 2012 R2
VM2	A shielded virtual machine that runs Windows Server 2016
VM3	A virtual machine that runs Windows Server 2012 R2 and has Secure Boot enabled
VM4	A virtual machine that runs Windows Server 2016 and has all of its drivers protected by using BitLocker Drive Encryption (BitLocker)

To which machine or machines can you connect by using Virtual Machine Connection from Hyper-V Manager?

- A. VM1, VM2, VM3 and VM4
- B. VM4 only
- C. VM1 and VM2 only
- D. VM3 and VM4 only
- E. VM2 only

**Answer:** D

#### NEW QUESTION 104

Note: This question is part of a series of questions that present the same scenario. Each question in the series contains a unique solution that might meet the stated goals. Some question sets might have more than one correct solution, while others might not have a correct solution.

After you answer a question in this section, you will NOT be able to return to it. As a result, these questions will not appear in the review screen.

You have a server named Server1 that runs Windows Server 2016.

Server1 hosts a line-of-business application named App1. App1 has a memory leak that occasionally causes the application to consume an excessive amount of memory.

You need to log an event in the Application event log whenever App1 consumes more than 4 GB of memory.

Solution: You create a performance counter alert data collector. Does this meet the goal?

- A. Yes
- B. No

**Answer:** A

#### NEW QUESTION 108

After you answer a question in this section, you will NOT be able to return to it. As a result, these questions will not appear in the review screen.

You have a server named Server1 that runs Windows Server 2016.

You plan to use Windows Server Backup to back up all of the data on Server1. You create a new volume on Server1.

You need to ensure that the new volume can be used as a backup target. The backup target must support incremental backups.

Solution: You mount the volume to C:\Backup, and you format the volume by using FAT32. Does this meet the goal?

- A. Yes
- B. No

**Answer:** A

#### NEW QUESTION 112

Your network contains an Active Directory domain. The domain contains a new file server named Server1 that runs a Server Core installation of Windows Server 2016.

Server1 has an ReFS-formatted volume D: and NTFS-formatted volume E: The volumes do not contain any data.

You install the Data Deduplication role service on Server1.

You need to implement Data Deduplication for volumes on D: and E:.

Solution: From Windows PowerShell, you run Enable-DeDupVolume -Volume D:,E:.. Does this meet the goal?

- A. Yes
- B. No

**Answer:** B

#### NEW QUESTION 114

HOTSPOT

You deploy a new Hyper-V host named Server1 that runs Windows Server 2016. You implement receive side scaling (RSS) on Server1.

The chipset on Server1 does not support NetDMA.

All of the equipment on your network supports 10-Gbps connectivity. On Server1, you deploy a virtual machine named VM1.

You configure VM1 to aggregate all of the Windows and non-Windows tog files for all of the servers on the network.

VM1 has four virtual processors.

You discover that VM1 drops packets.

Which two options should you run? To answer, select the appropriate options in the answer area.



Answer Area

First action:

Enable TCP Chimney Offload on Server1.

Enable single root I/O virtualization (SR-IOV) on VM1.

Enable virtual machine queue (VMQ) on Server1 and VM1.

Second action:

Enable virtual TCP Chimney Offload on VM1.

Enable virtual Receive-side Scalling (vRSS) on VM1.

Enable single root I/O virtualization (SR-IOV) on Server1.

- A. Mastered
- B. Not Mastered

Answer: A

Explanation:

Answer Area

First action:

Enable TCP Chimney Offload on Server1.

Enable single root I/O virtualization (SR-IOV) on VM1.

Enable virtual machine queue (VMQ) on Server1 and VM1.

Second action:

Enable virtual TCP Chimney Offload on VM1.

Enable virtual Receive-side Scalling (vRSS) on VM1.

Enable single root I/O virtualization (SR-IOV) on Server1.

NEW QUESTION 116

You have a Nano Server that runs Windows Server 2016. The Nano Server runs on a physical machine. You have not Installed any packages on the server. You attach a new disk to the server, and you initialize the disk as a GPT disk. You need to create an RefS-formatted volume on the new disk. What should you do first?

- A. From the physical server, log on to the Nano Server Recovery Console.
- B. Install the Microsoft-Nano'Server-Host-Package package.
- C. Run me Format-Vokime cmdlet and specify the -FileSystem switch.
- D. Install the Microsoft NanoServef-Storage-Package package.

Answer: C

NEW QUESTION 118

You have a Hyper-V host named Server1 that runs Windows Server 2016. Server1 hosts a virtual machine. You need to provide VM1 with direct access to a graphics processing unit (GPU) on Server1. What should you do first?

- A. On VM1, install the QUzlity Windows Audio Video Experience (qWave) feature.
- B. Dismount the display adapter on Server1.
- C. In the settings of VM1, add a RemoteFX 3D Video Adapter.
- D. Disable the display adapter device on Server1.

Answer: D

**Explanation:**

Before the physical device is allowed to be passed through to the VM, the device must be disabled on the host system. The physical device must be accessible/available exclusively to the VM only. References:

Introduction to Windows Server 2016 Hyper-V DiscreteDevice Assignment, page 5 <https://lenovopress.com/lp0088.pdf>

**NEW QUESTION 122**

**DRAG DROP**

You are preparing an image of Windows Server 2016.

The image is missing the driver for a network adapter that is required in your environment. You need to ensure that the image contains the network adapter driver. Which three cmdlets should you use in sequence? To answer, move the appropriate cmdlets from the list of cmdlets to the answer area and arrange them in the correct order.

**Cmdlets**

- Mount-WindowsImage
- Add-WindowsDriver
- Get-WindowsImage
- Save-WindowsImage
- Add-WindowsFeature
- Dismount-WindowsImage
- Optimize-WindowsImage

**Answer Area**

- 1
- 2
- 3

- A. Mastered  
B. Not Mastered

**Answer:** A

**Explanation:**

**Cmdlets**

- Mount-WindowsImage
- Get-WindowsImage
- Save-WindowsImage
- Add-WindowsFeature

**Answer Area**

- 1 Add-WindowsDriver
- 2 Optimize-WindowsImage
- 3 Dismount-WindowsImage



#### NEW QUESTION 124

Your network contains an Active Directory domain. The domain contains two Hyper-V hosts. You plan to perform live migrations between the hosts. You need to ensure that the live migration traffic is authenticated by using Kerberos. What should you do first?

- A. From Server Manager, install the Host Guardian Service server role on a domain controller.
- B. From Active Directory Users and Computers, add the computer accounts for both servers to the Cryptographic Operators group.
- C. From Active Directory Users and Computers, modify the Delegation properties of the computer accounts for both servers.
- D. From Server Manager, install the Host Guardian Service server role on both servers.

**Answer:** C

#### Explanation:

If you have decided to use Kerberos to authenticate live migration traffic, configure constrained delegation before you proceed to the rest of the steps. To configure constrained delegation

#### NEW QUESTION 126

##### HOTSPOT

You have a Hyper-V host named Server1 that runs Windows Server 2016.

You deploy a virtual machine named VM1 to Server1. VM1 runs Windows Server 2016. You need to ensure that you can install the Hyper-V server role on VM1. Which command should you run? To answer, select the appropriate options in the answer area.

### Answer Area

```
Enable-VMIntegrationService
Set-VM
Set-VM BIOS
Set-VM Firmware
Set-VM Host
Set-VM Processor
```

```
SERVER1 - EnableEnhancedSessionMode $true
SERVER1 - EnableSecureBoot on
SERVER1 - ExposeVirtualizationExtensions $true
VM1 - EnableEnhancedSessionMode $true
VM1 - EnableSecureBoot on
VM1 - ExposeVirtualizationExtensions $true
```

- A. Mastered
- B. Not Mastered

**Answer:** A

#### Explanation:

References:

<https://docs.microsoft.com/en-us/virtualization/hyper-v-on-windows/user-guide/nested-virtualization>

#### NEW QUESTION 130

You create a Nano server image named Nano1.vhdx by using the New-NanoServerImage cmdlet. You attach Nano1.vhdx to a Generation 1 virtual machine named Nano1.

When you start Nano1, you get the following error message: "Boot failure. Reboot and select proper Boot device or Insert Boot Media in selected Boot device" You need to successfully start Nano server. What should you do?

- A. Attach Nano1.vhdx to a SCSI controller.
- B. Recreate Nano1 as a Generation 2 virtual machine.
- C. Increase the memory of Nano1 to 512 Mb.
- D. Modify the BIOS settings of Nano1.

**Answer:** B

#### Explanation:

A Generation 1 VM cannot boot from a vhdx disk; only a Generation 2 VM can boot from an vhdx disk.

#### NEW QUESTION 133

##### HOTSPOT

Your network contains an Active Directory forest. The forest contains one domain named contoso.com. The domain contains two domain controllers named DC1 and DC2. DC1 holds all of the operations master roles.

During normal network operations, you run the following commands on DC2:

```
Move-ADDirectoryServerOperationMasterRole -Identity "DC2" - OperationMasterRole PDCEmulator

Move-ADDirectoryServerOperationMasterRole -Identity "DC2" - OperationMasterRole RIDMaster
```

DC1 fails.

You remove DC1 from the network, and then you run the following command:

```
Move-ADDirectoryServerOperationMasterRole -Identity "DC2" - OperationMasterRole SchemaMaster
```

For each of the following statements, select Yes if the statement if true. Otherwise, select No.

Answer Area

Statements	Yes	No
DC2 holds the schema master operations role.	<input type="radio"/>	<input type="radio"/>
DC2 holds the PDC emulator master operations role.	<input type="radio"/>	<input type="radio"/>
Currently, you can add additional domains to the forest.	<input type="radio"/>	<input type="radio"/>

- A. Mastered
- B. Not Mastered

Answer: A

Explanation:

Answer Area

Statements	Yes	No
DC2 holds the schema master operations role.	<input type="radio"/>	<input checked="" type="radio"/>
DC2 holds the PDC emulator master operations role.	<input checked="" type="radio"/>	<input type="radio"/>
Currently, you can add additional domains to the forest.	<input type="radio"/>	<input checked="" type="radio"/>

NEW QUESTION 135

You have a Hyper-V host named Server1 that runs Windows Server 2016. The host has two virtual machines (VMs) named VM1 and VM2. On the Hyper-V host, you create two virtual disks named Disk1 and Disk2. You plan to create a test environment for Storage Spaces Direct. You need to configure the VMs to connect to the virtual disks. What should you use?

- A. An iSCSI target
- B. A virtual SCSI controller
- C. A virtual fibre channel adapter
- D. A virtual IDE controller

Answer: B

Explanation:

References:  
<https://blogs.msdn.microsoft.com/clustering/2015/05/27/testing-storage-spaces-direct-using-windows-server-2016-virtual-machines/>

NEW QUESTION 140

You have a server named Server1 that runs Windows Server 2016. You need to configure Server1 as a Web Application Proxy. Which server role or role service should you install on Server1?

- A. Web Server (IIS)
- B. Network Policy and Access Services
- C. Direct Access and VPN (RAS)
- D. Active Directory Federation Services
- E. Remote Access

Answer: E

NEW QUESTION 143

Your Network contains one Active Directory domain named contoso.com. You pilot DirectAccess on the network. During the pilot deployment, you enable DirectAccess only for a group Contoso\Test Computers. Once the pilot is complete, you need to enable DirectAccess for



all the client computers in the domain.  
What should you do?

- A. From Windows PowerShell, run the Set-DAClient cmdlet.
- B. From Windows PowerShell, run the Set-DirectAccess cmdlet.
- C. From Active Directory Users and Computers, modify the membership of the Windows Authorization Access Group.
- D. From Group Policy Management, modify the security filtering of an object named Direct Access Client Setting Group Policy.

**Answer:** D

**NEW QUESTION 148**

You have a server named Server1.  
You enable BitLocker Drive Encryption (BitLocker) on Server1.  
You need to change the password for the Trusted Platform Module (TPM) chip. What should you run on Server1?

- A. Initialize-Tpm
- B. Import-TpmOwnerAuth
- C. repair-bde.exe
- D. bdehdcfg.exe

**Answer:** B

**NEW QUESTION 149**

You have two servers named Server1 and Server2. A firewall exists between Server1 and Server2. Both servers run Windows Server Update Services (WSUS).  
Server1 downloads updates from Microsoft update.  
Server2 must synchronize updates from Server1. Which port should to open on the firewall?

- A. 80
- B. 443
- C. 3389
- D. 8530

**Answer:** D

**NEW QUESTION 150**

DRAG DROP  
Your network contains an Active Directory domain named contoso.com. The domain contains a server named Server1 that runs Windows Server 2016.  
You install IP Address Management (IPAM) on Server1.  
You need to manually start discovery of the servers that IPAM can manage in contoso.com.  
Which three cmdlets should you run in sequence? To answer, move the appropriate cmdlets from the list of cmdlets to the answer area and arrange them in the correct order.

**Cmdlets**

- Add-IpamAddress
- Add-IpamDiscoveryDomain
- Add-IpamSubnet
- Update-IpamServer
- Invoke-IpamServerProvisioning
- Start-ScheduledTask

**Answer Area**



- A. Mastered
- B. Not Mastered

**Answer:** A

**Explanation:**

<https://technet.microsoft.com/itpro/powershell/windows/ipam/add-ipamdiscoverydomain> <https://technet.microsoft.com/itpro/powershell/windows/ipam/add-ipamserverinventory> <https://technet.microsoft.com/itpro/powershell/windows/ipam/invoke-ipamserverprovisioning>

**NEW QUESTION 152**

You have a server named Server1 that runs Windows Server 2016. Server1 is a Hyper-V host that hosts a virtual machine named VM1. Server1 has three network adapter cards that are connected to virtual switches named vSwitch1, vSwitch2 and vSwitch3. You configure NIC Teaming on VM1 as shown in the exhibit. (Click the Exhibit button.)

You need to ensure that VM1 will retain access to the network if a physical network adapter card fails on Server1. What should you do?

- A. From Windows PowerShell on VM1, run the Set-VmNetworkAdapterTeamMapping cmdlet.
- B. From Hyper-V Manager on Server1, modify the settings on VM1.
- C. From Windows PowerShell on Server1, run the Set-VmNetworkAdapterFailoverConfiguration cmdlet.
- D. From the properties of the NIC team on VM1, add the adapter named Ethernet to the NIC team.

**Answer: D**

**Explanation:**

<https://technet.microsoft.com/en-us/windows-server-docs/networking/technologies/nic-teaming/nic-teaming>

**NEW QUESTION 155**

A company named Contoso, Ltd has five Hyper-V hosts that are configured as shown in the following table.

Hyper-V host name	Configuration
Server1	Windows Sever 2012 R2 and an Intel Xeon E7 processor
Server2	Windows Sever 2012 R2 and an Intel i7 processor
Server3	Windows Sever 2016 and an Intel i7 processor
Server4	Windows Sever 2016 and an AMD Opteron processor
Server5	Windows Sever 2012 R2 and an Intel Xeon E7 processor

What are two valid live migration scenarios for virtual machines in your environment? Each correct answer presents a complete solution.

- A. from Server4 to Server5
- B. from Server1 to Server5
- C. from Server3 to Server4
- D. from Server2 to Server3

**Answer: BD**

**NEW QUESTION 160**

You have a Hyper-V host named Server1 that runs Windows Server 2016. Server1 hosts a virtual machine named VM1. VM1 is in a workgroup. VM1 is currently in a running state. You need to create 10 copies of VM1 on Server1 in the least amount of time possible. Which cmdlets should you use?

- A. Stop-VM, and then Import-VM
- B. Export-VM, and then Import-VM

- C. Checkpoint-VM, and then New-VM
- D. Copy-VMFile, and then New-VM

**Answer:** B

**NEW QUESTION 164**

You deploy two servers that run Windows Server 2016. You install the Failover Clustering feature on both servers. You need to create a workgroup cluster. What should you do?

- A. Configure both of the server to be in a workgroup named Workgrou
- B. Configure the Cluster Service to log on as Network Servic
- C. Run the New-Cluster cmdlet and specify an administrative access point of None.
- D. Create matching local administrative accounts on both of the server
- E. Assign the same primary DNS suffix to both of the server
- F. Run the New-Cluster cmdlet and specify an administrative access point of DNS.
- G. Configure both of the server to be in a workgroup named Workgrou
- H. Configure the Cluster Service to log on as Network Servic
- I. Run the New-Cluster cmdlet and specify an administrative access point of DNS.
- J. Create matching local administrative accounts on both of the server
- K. Assign the same primary DNS suffix to both of the server
- L. Run the New-Cluster cmdlet and specify an administrative access point of None

**Answer:** B

**Explanation:**

References:  
<https://rlevchenko.com/2015/09/07/workgroup-and-multi-domain-clusters-in-windows-server-2016/>

**NEW QUESTION 168**

Note: This question is part of a series of questions that use the same scenario. For your convenience, the scenario is repeated in each question. Each question presents a different goal and answer choices, but the text of the scenario is exactly the same in each question in this series.

Start of repeated scenario

Your network contains an Active Directory domain named contoso.com. The functional level of the forest and the domain is Windows Server 2008 R2. All servers in the domain run Windows Server 2016 Standard. The domain contains 300 client computers that run either Windows 8.1 or Windows 10. The domain contains nine servers that are configured as shown in the following table.

Server name	Configuration	Planned changes
Server1	Domain controller	None
Server2	File server	Run Failover Clustering and Storage Spaces Direct
Server3	File server	Run Failover Clustering and Storage Spaces Direct
Server4	Hyper-V host	Run shielded virtual machines
Server5	Hyper-V host	None
Server6	Member server	Run Active Directory Federation Services (AD FS)
VM1	Virtual machine hosted on Server 5	None
VM2	Virtual machine hosted on Server 5	None
VM3	Virtual machine hosted on Server 5	None

The virtual machines are configured as follows:  
Each virtual machine has one virtual network adapter.  
VM1 and VM2 are part of a Network Load Balancing (NLB) cluster.  
All of the servers on the network can communicate with all of the virtual machines. End of repeated scenario.  
You plan to implement nested virtual machines on VM1.  
Which two features will you be prevented from using for VM1?

- A. NUMA spanning
- B. live migration
- C. Dynamic Memory
- D. Smart Pathing

**Answer:** BC

**Explanation:**

References:  
<https://blogs.technet.microsoft.com/virtualization/2015/10/13/windows-insider-preview-nested-virtualization/>

**NEW QUESTION 171**

Note: This question is part of a series of questions that use the same scenario. For your convenience, the scenario is repeated in each question. Each question presents a different goal and answer choices, but the text of the scenario is exactly the same in each question in this series.



Start of repeated scenario  
Your network contains an Active Directory domain named contoso.com. The functional level of the forest and the domain is Windows Server 2008 R2. All servers in the domain run Windows Server 2016 Standard. The domain contains 300 client computers that run either Windows 8.1 or Windows 10. The domain contains nine servers that are configured as shown in the following table.

Server name	Configuration	Planned changes
Server1	Domain controller	None
Server2	File server	Run Failover Clustering and Storage Spaces Direct
Server3	File server	Run Failover Clustering and Storage Spaces Direct
Server4	Hyper-V host	Run shielded virtual machines
Server5	Hyper-V host	None
Server6	Member server	Run Active Directory Federation Services (AD FS)
VM1	Virtual machine hosted on Server 5	None
VM2	Virtual machine hosted on Server 5	None
VM3	Virtual machine hosted on Server 5	None

The virtual machines are configured as follows:

- Each virtual machine has one virtual network adapter.
- VM1 and VM2 are part of a Network Load Balancing (NLB) cluster.
- All of the servers on the network can communicate with all of the virtual machines. End of repeated scenario.

You create a new NLB cluster that contains VM3.  
You need to ensure that VM2 can remain in the original cluster and be added to the new cluster. What should you do first?

- A. Add a new virtual network adapter to VM2.
- B. Install the Web Application Proxy server role on VM2 and VM3.
- C. Modify the default port rule.
- D. Change the cluster operation mode.

**Answer:** A

**NEW QUESTION 173**  
DRAG DROP

You have a file server named Server1 that runs Windows Server 2016.  
You need to create a report that lists all of the share permissions assigned to the security principals on Server1.  
How should you complete the command? To answer, drag the appropriate cmdlets to the correct targets. Each cmdlet may be used once, more than once, or not at all. You may need to drag the split bar between panes or scroll to view content.

### Cmdlets

Get-Acl

Get-SmbClientConfiguration

Get-SmbShare

Set-SmbPathAcl

Get-Credential

Get-SmbDelegation

Get-SmbShareAccess

### Answer Area

Cmdlet

|

Cmdlet

- A. Mastered
- B. Not Mastered

**Answer:** A

**Explanation:**

## Cmdlets

## Answer Area

- Get-Acl
- Get-SmbClientConfiguration
- Get-SmbShare
- Set-SmbPathAcl
- Get-Credential
- Get-SmbDelegation
- Get-SmbShareAccess

Get-SmbShare | Get-SmbShareAccess

### NEW QUESTION 174

Which container type is described below:

Provides application isolation through process and namespace isolation technology.

This container shares a kernel with the container host and all containers running on the host.

- A. Hyper-V Container
- B. Windows Server Container

**Answer:** B

### NEW QUESTION 179

You have just finished installing Windows Server 2016 on a new server.

Your colleague has informed you that its essential that you must activate Windows Server. Which of the following command line tools can be used to Activate Windows Server?

- A. Netdom C:\windows\system32\slmgr.vbs -ato
- B. Netsh C:\windows\system32\slmgr.vbs -ato
- C. Ocsetup C:\windows\system32\slmgr.vbs -ato
- D. Cscript C:\windows\system32\slmgr.vbs -ato

**Answer:** D

#### Explanation:

The correct answer is Cscript C:\windows\system32\slmgr.vbs -ato

### NEW QUESTION 184

The Host Guardian Service supports two different deployments of a Guarded fabric (attestation modes). The statement below describes which mode?

Guarded hosts that can run Shielded VMs are approved based on their identity, measured boot sequence and code integrity policies so that you can ensure that these hosts are only running approved code.

- A. Admin-trusted attestation
- B. TPM-trusted attestation

**Answer:** B

#### Explanation:

TPM-trusted attestation offers the strongest possible protections but also requires more configuration steps. Host hardware and firmware must include TPM 2.0 and UEFI 2.3.1 with secure boot enabled.

TPM trusted attestation is the mode Microsoft recommend that you use because it offers stronger assurances but it requires that your Hyper-V hosts have TPM 2.0.

### NEW QUESTION 185

For Windows Server 2016, Nano Server is distributed on the physical media, where you will find a

NanoServer folder; this contains a .wim image and a subfolder called Packages. It is these package files that you use to add server roles and features to the VHD image, which you then boot to.

Assume that several variables have been configured already, which PowerShell command would you use to create a Nano Server which had the Hyper-V role, clustering, OEM Drivers and antimalware?

- A. New-NanoServerImage -MediaPath \$mediapath -BasePath \$basepath -TargetPath \$targetpath - ComputerName \$computername -OEMDrivers -Clustering -Defender -Compute
- B. New-NanoServerImage -MediaPath \$mediapath -BasePath \$basepath -TargetPath \$targetpath - ComputerName \$computername -OEMDrivers -Clustering

-Storage -EnableRemoteManagementPort  
C. New-NanoServerImage -MediaPath \$mediapath -BasePath \$basepath -TargetPath \$targetpath - ComputerName \$computername -OEMDrivers -Defender  
-Containers - EnableRemoteManagementPort  
D. New-NanoServerImage -MediaPath \$mediapath -BasePath \$basepath -TargetPath \$targetpath - ComputerName \$computername -Defender -Storage  
-Compute - EnableRemoteManagementPort

**Answer:** A

**NEW QUESTION 188**

You want to boot a Linux Operating System with the Secure Boot option enabled in a virtual machine. This will be the first time you boot the OS. What must you do?

- A. Set the -BootOrder to HardDiskDrive
- B. Configure the virtual machine to use the Microsoft UEFI Certificate Authority
- C. You can't enable Secure Boot with Linux
- D. Set -EnableSecureBoot without specifying a template

**Answer:** B

**Explanation:**

Linux operating systems running on newer generation virtual machines can boot with the Secure Boot option enabled. Before you boot the virtual machine for the first time, you must configure the virtual machine to use the Microsoft UEFI Certificate Authority. You can do this from Hyper-V Manager, Virtual Machine Manager, or an elevated Windows Powershell session.

**NEW QUESTION 193**

Which terminology is being described below?

Time synchronization is critical for the proper operation of many Windows services and line- ofbusiness applications. The uses the Network Time Protocol (NTP) to synchronize computer clocks on the network so that an accurate clock value, or time stamp, can be assigned to network validation requests and resource access requests.

- A. Network Services Shell (Netsh)
- B. Listsvc
- C. Fixmbr
- D. Windows Time service (W32time)

**Answer:** D

**Explanation:**

The correct answer is Windows Time service (W32time)

**NEW QUESTION 196**

You have two Hyper-V hosts named Server1 and Server2 that run Windows Server 2016. Server1 hosts a virtual machine named VM1 that is in a Running state. On Server1, you export VM1 and then you import VM1 on Server2. What is the current state of VM1 on Server2?

- A. Paused
- B. Off
- C. Saved
- D. Running

**Answer:** C

**Explanation:**

References: <https://blog.workinghardinit.work/2016/06/16/live-export-a-running-virtual-machine-or-a-checkpoint/>

**NEW QUESTION 198**

HOTSPOT

You have four servers named Server1, Server2, Server3, and Server4 that run Windows Server 2016. Server1 and Server2 are nodes in a failover cluster named FC1. Server3 and Server4 are nodes in a failover cluster named FC2.

You add the cluster roles shown in the following table.

Role name	Type	Failover cluster	Owner node
FS1(\FS1)	File server	FC1	Server1
FS2(\FS2)	Scale-Out File Server	FC2	Server3

You add a file share named Share1 to FS1. You add a file share named Share2 to FS2. Which UNC paths can you use to access each share? To answer, select the appropriate options in the answer area.  
NOTE: Each correct selection is worth one point.



## Answer Area

UNC path to access Share1:

▼

\\FS1\Share1 only

\\Server1\Share1 only

\\Server2\Share1 only

\\Server1\Share1 and \\Server2\Share1 only

\\Server1\Share1, \\Server2\Share1. and \\FS1\Share1

UNC path to access Share2:

▼

\\FS2\Share2 only

\\Server3\Share2 only

\\Server4\Share2 only

\\Server3\Share2 and \\Server4\Share2 only

\\Server1\Share2, \\Server4\Share2. and \\FS2\Share2

- A. Mastered
- B. Not Mastered

**Answer:** A

**Explanation:**

References:

<https://blogs.technet.microsoft.com/canitpro/2013/12/10/step-by-step-scale-out-file-shares-and-continuously-available-file-services/>  
<https://robertsmit.wordpress.com/2018/02/21/clustering-fileserver-data-deduplication-on-windows-2016-step-by-step-sofs-winserv-refs-windowsserver2016-dedupe/>

### NEW QUESTION 203

You have a server named Server1 that runs Windows Server 2016. Server1 has the Containers feature installed. You create a text file that contains the commands that will be used to automate the creation of new containers. You need to ensure that the commands in the text file are used when you create new containers. What should you name the file?

- A. Bootstrap.ini
- B. Config.ini
- C. Dockerfile
- D. Unattend.txt

**Answer:** C

### NEW QUESTION 208

You have a container host named Server1 that runs Windows Server 2016. You need to start a Hyper-V container on Server1. Which parameter should you use with the docker run command?

- A. --runtime
- B. --entrypoint
- C. --privileged
- D. --isolation
- E. --expose

**Answer:** D

**Explanation:**

<https://docs.microsoft.com/en-us/virtualization/windowscontainers/deploy-containers/system-requirements>

### NEW QUESTION 212

You have a Hyper-V failover cluster that contains three nodes. Virtual machines are distributed evenly across the cluster nodes. You need to ensure that if a node loses connectivity from the other nodes, the virtual machines on the node will be transitioned to one of the remaining nodes after one minute. Which settings should you modify?

- A. QuarantineDuration and QuarantineThreshold
- B. SameSubnetDelay and CrossSubnetDelay
- C. QuorumArbitrationTimeMax and RequestReplyTimeout
- D. ResiliencyPeriod and ResiliencyLevel

**Answer:** C

**Explanation:**

References: [https://msdn.microsoft.com/en-us/library/aa369123\(v=vs.85\).aspx](https://msdn.microsoft.com/en-us/library/aa369123(v=vs.85).aspx) [https://msdn.microsoft.com/en-us/library/bb394696\(v=vs.85\).aspx](https://msdn.microsoft.com/en-us/library/bb394696(v=vs.85).aspx)

#### NEW QUESTION 217

You have a Windows Server 2016 failover cluster that contains two servers named Server1 and Server2.

The Cluster Service on Server1 fails.

You need to identify the cause of the failure. What should you do?

- A. From Windows PowerShell, run the Get-ClusterNode cmdlet.
- B. From Event Viewer, review the Application event log.
- C. From Windows PowerShell, run the Get-ClusterLog cmdlet.
- D. From Event Viewer, review the System event log.

**Answer:** C

**Explanation:**

References: <https://blogs.msdn.microsoft.com/clustering/2015/05/14/windows-server-2016-failover-cluster-troubleshooting-enhancements-cluster-log/>

#### NEW QUESTION 220

Note: This question is part of a series of questions that present the same scenario. Each question in the series contains a unique solution that might meet the stated goals. Some question sets might

have more than one correct solution, while others might not have a correct solution. Your network contains an Active Directory forest

You install Windows Server 2016 on 10 virtual machines.

You need to deploy the Web Server (IIS) server role identically to the virtual machines.

Solution: From Windows System Image Manager, you create an answer file, you copy the file to C:\Sysprep on each virtual machine, and then you run the Apply-Image cmdlet.

Does this meet the goal?

- A. Yes
- B. No

**Answer:** B

#### NEW QUESTION 223

You have two Hyper-V hosts named Server1 and Server2 that run Windows Server 2016. Server1

hosts a virtual machine named VM1 that is in a Running state.

On Server1, you export VM1 and then you import VM1 on Server2. What is the current state of VM1 on Server2?

- A. Off
- B. Running
- C. Paused
- D. Saved

**Answer:** B

#### NEW QUESTION 228

You have two servers named Server1 and Server2 that run Windows Server 2016. Server1 contains a volume named Volume1.

You implement a Storage Replica that replicates the contents of Volume1 from Server1 to Server2. Server1 fails.

From Server2, you need to ensure that you can access the contents of Volume1. What should you run?

- A. Update-StoragePool
- B. Set-SRPartnership
- C. vssadmin revert shadow
- D. Clear-FileStorageTier

**Answer:** B

**Explanation:**

References:

<https://docs.microsoft.com/en-us/windows-server/storage/storage-replica/server-to-server-storage-replication>

#### NEW QUESTION 233

HOTSPOT

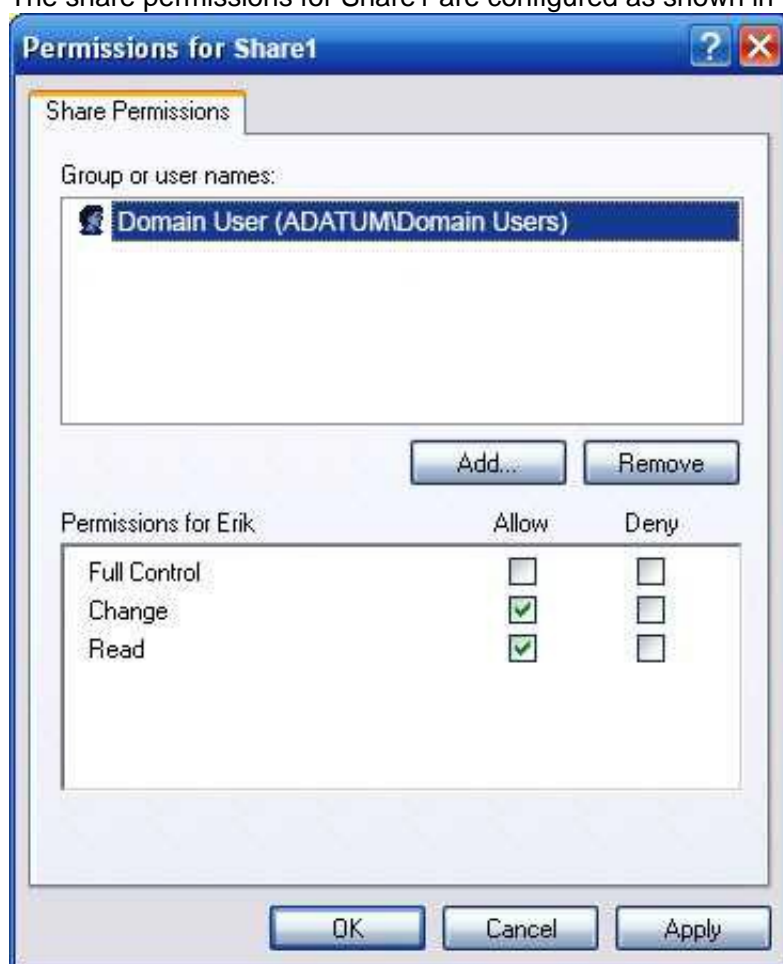
Your network contains an Active Directory domain named Adatum.com. The domain contains two servers named Server1 and Server2 that run Windows Server 2016. The domain contains three users named User1, User2, and User3.

Server1 has a share named Share1 that has the following configurations.

```

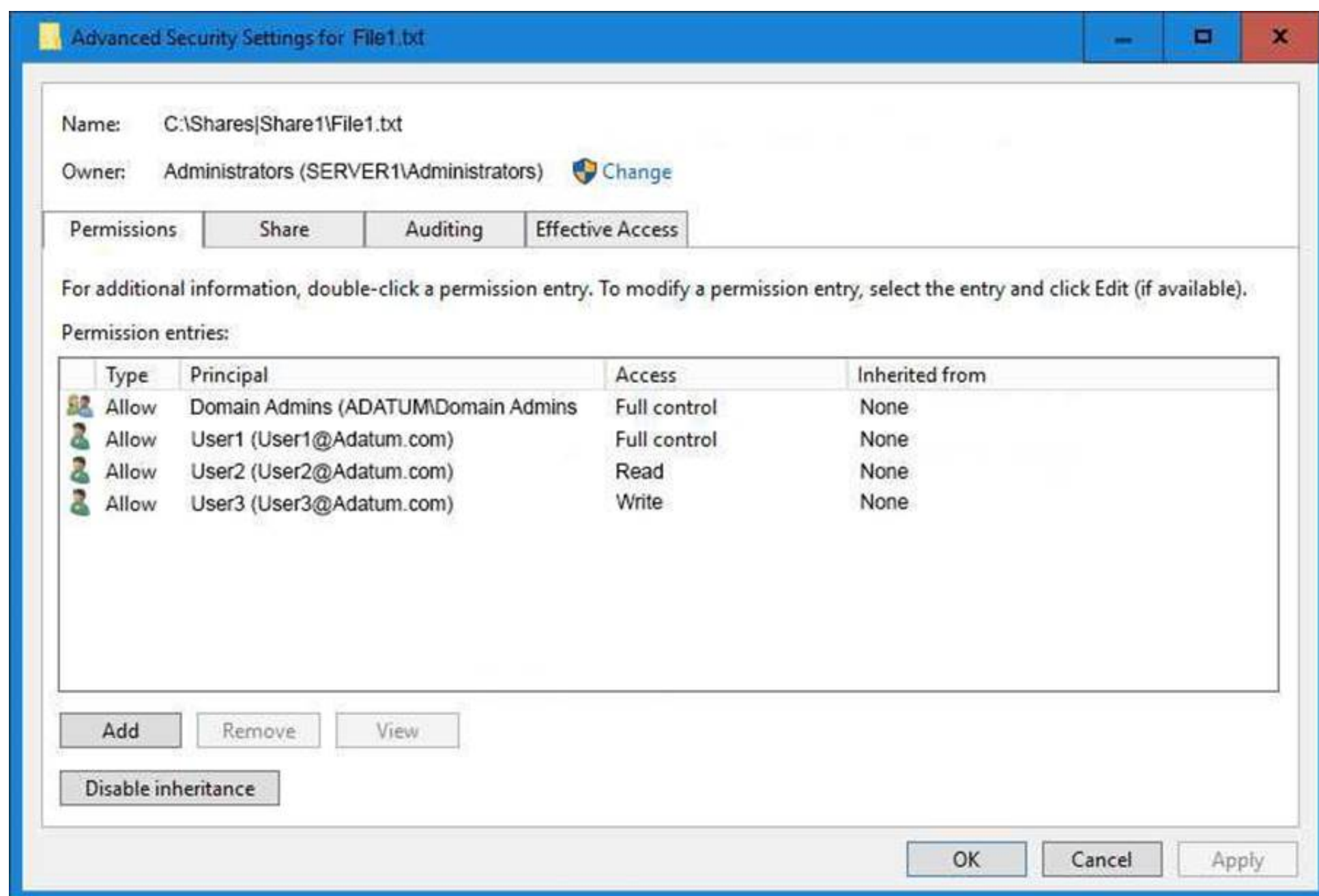
PresetPathAcl      : System.Security.AccessControl.DirectorySecurity
ShareState         : Online
AvailabilityType   : NonClustered
ShareType          : FileSystemDirectory
FolderEnumerationMode : AccessBased
CachingMode        : Manual
SmbInstance        : Default
CATimeout          : 0
ConcurrentUserLimit : 0
ContinuouslyAvailable : False
CurrentUsers        : 0
Description         :
EncryptData         : False
Name               : Share1
Path               : C:\Shares\Share1
Scoped             : False
ScopeName          : *
SecurityDescriptor : O:BAG:DUD:(A;OICI;FA;;;WD)
ShadowCopy         : False
Special            : False
Temporary          : False
Volume             : \\?\Volume{d80578cf-0000-0000-0000-501f00000000}\
PSComputerName     :
CimClass           : ROOT\Microsoft\Windows\SMB:MSFT_SmsShare
CimInstanceProperties : {AvailabilityType, CachingMode, CATimeout, ConcurrentUserLimit...}
CimSystemProperties : Microsoft.Management.Infrastructure.CimSystemProperties
  
```

The share permissions for Share1 are configured as shown in the Share1 exhibit. (Click the Exhibit button.)



Share1 contains a file named File1.txt. The Advanced Security Settings for File1.txt are configured as shown in the File1.txt exhibit. (Click the Exhibit button.)





For each of the following statement, select Yes if the statement is true. Otherwise, select No.

## Answer Area

Statement	Yes	No
When User1 navigates to \\Server1\Share1\, the user can take ownership of File1.txt.	<input type="radio"/>	<input type="radio"/>
When User2 navigates to \\Server1\Share1\, the user will see File1.txt	<input type="radio"/>	<input type="radio"/>
When User3 navigates to \\Server1\Share1\, the user will see File1.txt	<input type="radio"/>	<input type="radio"/>

- A. Mastered
- B. Not Mastered

**Answer:** A

**Explanation:**

## Answer Area

Statement	Yes	No
When User1 navigates to \\Server1\Share1\, the user can take ownership of File1.txt.	<input type="radio"/>	<input checked="" type="radio"/>
When User2 navigates to \\Server1\Share1\, the user will see File1.txt	<input checked="" type="radio"/>	<input type="radio"/>
When User3 navigates to \\Server1\Share1\, the user will see File1.txt	<input checked="" type="radio"/>	<input type="radio"/>

### NEW QUESTION 234

#### HOTSPOT

Note: This question is part of a series of questions that use the same scenario. For your convenience, the scenario is repeated in each question. Each question presents a different goal and answer choices, but the text of the scenario is exactly the same in each question in this series.

Your network contains an Active Directory domain named contoso.com. The functional level of the forest and the domain is Windows Server 2008 R2. All servers in the domain run Windows Server 2016 Standard. The domain contains 300 client computers that run either Windows 8.1 or Windows 10.

The domain contains nine servers that are configured as shown in the following table.

Name	Configuration	Planned changes
Server1	Domain controller	None
Server2	File server	Run Failover Clustering and Storage Spaces Direct
Server3	File server	Run Failover Clustering and Storage Spaces Direct
Server4	Hyper-V host	Run shielded virtual machines
Server5	Hyper-V host	None
Server6	Member server	Run Active Directory Federation Services (AD FS)
VM1	Virtual machine hosted on Server5	None
VM2	Virtual machine hosted on Server5	None
VM3	Virtual machine hosted on Server5	None

The virtual machines are configured as follows:

Each virtual machine has one virtual network adapter.

VM1 and VM2 are part of a Network Load Balancing (NLB) cluster.

All of the servers on the network can communicate with all of the virtual machines. For VM1 and VM2, you plan to use live migration between Server4 and Server5.

You need to ensure that when the virtual machines migrate, they maintain connectivity to the network.

Which virtual switch names and connection types should you use on each server? To answer, select the appropriate options in the answer area.

## Answer Area

Virtual switch connection type on Server4:

▼
External network
Internal network
Private network

Virtual switch connection type on Server5:

▼
External network
Internal network
Private network

Virtual switch name on Server4:

▼
External on Server4
Network switch
Server4

Virtual switch name on Server5:

▼
External on Server5
Network switch
Server5

- A. Mastered
- B. Not Mastered

Answer: A

Explanation:

## Answer Area

Virtual switch connection type on Server4:

▼
External network
Internal network
Private network

Virtual switch connection type on Server5:

▼
External network
Internal network
Private network

Virtual switch name on Server4:

▼
External on Server4
Network switch
Server4

Virtual switch name on Server5:

▼
External on Server5
Network switch
Server5



Note: This question is part of a series of questions that present the same scenario. Each question in the series contains a unique solution that might meet the stated goals. Some question sets might have more than one correct solution, while others might not have a correct solution.  
After you answer a question in this section, you will NOT be able to return to it. As a result, these questions will not appear in the review screen.  
You network contains an Active Directory domain named contoso.com.  
You need to create a Nano Server image named Nano1 that will be used as a virtualization host. The Windows Server 2016 source files are located in drive D.  
Solution: You run the following cmdlet.

```
New-NanoServerImage -Edition Datacenter -DeploymentType Host -Compute  
-MediaPath 'D:\' -TargetPath C:\Nano1\Nano1.wim -ComputerName Nano1  
-DomainName Contoso.com
```

Does this meet the goal?

- A. Yes
- B. No

**Answer: A**

#### NEW QUESTION 244

Note: This question is part of a series of questions that present the same scenario. Each question in the series contains a unique solution that might meet the stated goals. Some question sets might have more than one correct solution, while others might not have a correct solution.  
After you answer a question in this section, you will NOT be able to return to it. As a result, these questions will not appear in the review screen.  
You are a server administrator at a company named Contoso, Ltd.  
Contoso has a Windows Server 2016 Hyper-V environment configured as shown in the following table.

Hyper-V host name	Configuration	Virtual switch name
Host1	- Uses an Intel processor - Is a member of a SAN named SAN1	Switch1
Host2	- Uses an AMD processor - Has local storage only	Switch2
Host3	- Uses an Intel processor - Is a member of a SAN named SAN1	Switch1
Host4	- Uses an Intel processor - Has local storage only	Switch2

All of the virtual switches are of the external type.  
You need to ensure that you can move virtual machines between the hosts without causing the virtual machines to disconnect from the network.  
Solution: You implement live migration by using Host2 and Host4. Does this meet the goal?

- A. Yes
- B. No

**Answer: A**

#### NEW QUESTION 247

Note: This question is part of a series of questions that present the same scenario. Each question in the series contains a unique solution that might meet the stated goals. Some question sets might have more than one correct solution, while others might not have a correct solution.  
After you answer a question in this section, you will NOT be able to return to it. As a result, these questions will not appear in the review screen.  
After you answer a question in this section, you will NOT be able to return to it. As a result, these questions will not appear in the review screen.  
Your network contains an Active Directory domain. The domain contains a new file server named Server1 that runs a Server Core installation of Windows Server 2016.  
Server1 has an ReFS-formatted volume D: and an NTFS-formatted volume E:. the volumes do not contain any data.  
You Install the Data Deduplication role service on Server1.  
You need to implement Data Deduplication for volumes on D: and E:.  
Solution; From Windows PowerShell. you run Format-Volume D: -FileSystem NTFS and Enable- DeDupVolume-Volume D:,E:.  
Does this meet the goal?

- A. Yes
- B. No

**Answer: A**

#### NEW QUESTION 251

DRAG DROP  
On a new server, you install Windows Server 2016, and then you install the Hyper-V server role.  
You need to ensure that you can deploy Windows containers that use an image of the Server Core installation of Windows Server.  
Which four commands should you use in sequence? To answer, move the appropriate commands from the list of commands to the answer area and arrange them in the correct order.

Commands

Install-Package -Name docker -ProviderName DockerMsftProvider

Restart-Computer -Force

docker pull docker/windows-x64

Set-VMProcessor -ExposeVirtualizationExtensions \$true

Install-Module -name DockerMsftProvider Repository PSGallery -Force-

docker pull Microsoft/windowsservercore

Install-Package -Name Microsoft/dotnet framework-docker -ProviderName- DockerMsftProvider

Install-WindowsFeature Hyper-V

Answer Area

1

2

3

4

- A. Mastered  
B. Not Mastered

Answer: A

Explanation:

References: <https://docs.microsoft.com/en-us/virtualization/windowscontainers/deploy-containers/deploy-containers-on-server>

NEW QUESTION 253

Note This question is part of a series of questions that use the same scenario. For your convenience, the scenario is repeated in each question. Each question presents a different goal and answer choices, but the text of the scenario is exactly the same in each question in this series.

Start of Repeated Scenario:

A company named Contoso, Ltd. has several servers that run Windows Server 2016 Contoso has a Hyper V environment that uses failover clustering and Windows Server Update Services (WSUS). The environment contains several Windows containers and several virtual machines. The WSUS deployment contains one upstream server that is located on the company's perimeter network and several downstream servers located on the internal network, A firewall separates the upstream server from the downstream servers.

You plan to deploy a human resources application to a new server named HRServer5. HRServer5 contains a FAT32-formatted data volume.

The CIO of Contoso identifies the following requirements for the company's IT department:

- Deploy failover cluster to two new virtual machines.
- Store all application databases by using Encrypted File System (EFS).
- Ensure that each Windows container has a dedicated IP address assigned by a DHCP server
- Produce a report that lists the processor time used by all of the processes on a server named Server 1 for five hour.

Encrypt all communication between the internal network and the perimeter network, including all WSUS communications.

- Automatically load balance the virtual machines hosted in the Hyper-V cluster when processor utilization exceeds 70 percent.

End of Repeated Scenario.

You need to modify the Hyper V cluster to meet the load balancing requirement for the virtual machine. Which command should you run?

- A. network address translation (NAT)  
B. I2bridge  
C. I2tunnel  
D. transparent

Answer: A

NEW QUESTION 257

You have a Scale-Out File Server that has a share named Share 1. Share1 contains a virtual disk trie named Disk1.vhd. You plan to create a guest failovcr cluster. You need to ensure thai you can use the virtual disk as a shared virtual disk for the guest failove\* Cluster. Which cmdlet should you use?

- A. Optimize-VHD

- B. Convert-VHD
- C. Set-VHO
- D. Optimize-VHDSets

**Answer:** A

#### NEW QUESTION 261

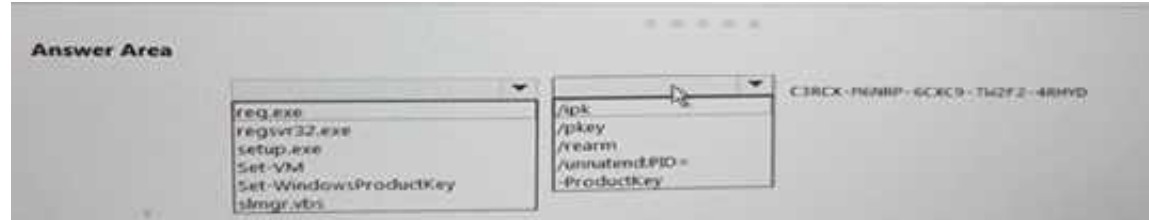
##### HOTSPOT

You have a Hyper-V host named Server1 that runs Windows Server 2016 Datacenter. Server1 is activated.

On Server 1, you deploy a virtual machine named VM1 that has a Server Core installation of Windows Server 2016 Standard.

You need to activate VM1 by using Automatic Virtual Machine Activation (AVMA).

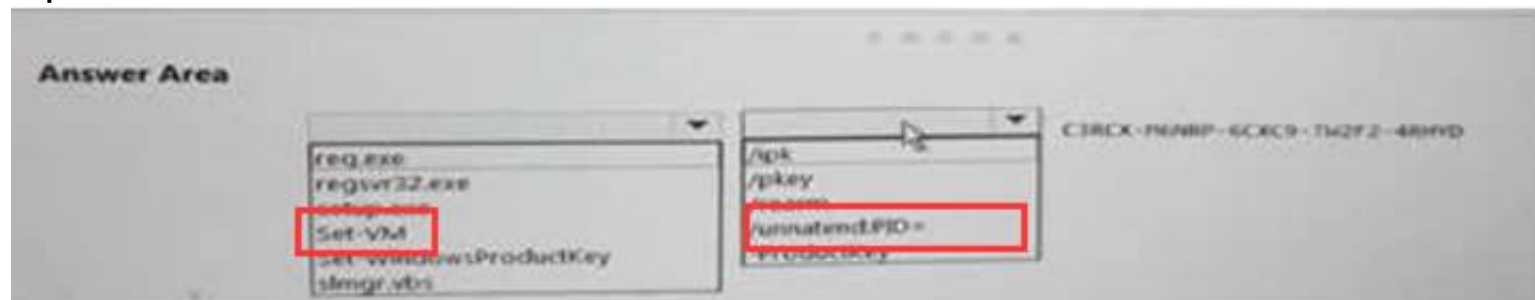
Which command should you run? To answer, select the appropriate options in the answer area. NOTE: Each correct selection is worth one point.



- A. Mastered
- B. Not Mastered

**Answer:** A

##### Explanation:



#### NEW QUESTION 262

Your network contains three Hyper-V hosts. You add all of the hosts to a cluster.

You need to create highly available storage spaces that connect to directly attached storage on the hosts.

Which cmdlet should you use?

- A. Enable-ClusterStorageSpacesDirect
- B. Update-ClusterVirtualMachineConfiguration
- C. Add-ClusterDisk
- D. Set-Storage Pool

**Answer:** A

#### NEW QUESTION 264

You have a Windows Server 2016 failover cluster named Ousted that contains three nodes named

Server 1, Server 2, and Server 3. Each node hosts several virtual machines. The virtual machines are configured to fail over to another node in Ousted if the hosting node fails.

You need to ensure that if the Cluster service fails on one of the nodes, the virtual machine of that node will fail over immediately.

Which setting should you configure?

- A. failureConditionLevel
- B. QuarantineDuration
- C. Resiliency Period
- D. ResiliencyLevel

**Answer:** B

#### NEW QUESTION 266

##### DRAG DROP

You have a server named Server1 that runs Windows Server 2016.

You open a command prompt on Server1 and run the following commands.



```
C:\>diskpart
```

```
Microsoft DiskPart version 10.0.14393.0
```

```
Copyright (c) 1999-2013 Microsoft Corporation.  
On computer: SERVER1
```

```
DISKPART> list disk
```

```
Disk ### Status Size Free Dyn Gpt
```

```
-----
```

```
Disk 0 Online 127 GB 0 B
```

```
Disk 1 Online 1800 GB 0 B
```

```
DISKPART> select disk 1
```

```
Disk 1 is now the selected disk.
```

```
DISKPART> list partition
```

```
Partition ### Type Size Offset
```

```
-----
```

```
Partition 1 Primary 1799 GB 1024 KB
```

You back up the data on Disk 1.

You plan to convert Disk 1 to a GPT disk, and then to restore the data to Disk 1.

Which four DiskPart commands should you run in sequence before you restore the data? To answer, move the appropriate commands from the list of commands to the answer area and arrange them in the correct order.

### Commands

### Answer Area

convert dynamic

select disk 1

format fs=ntfs

create partition logical

create partition primary

convert gpt

clean



- A. Mastered
- B. Not Mastered

**Answer:** A

**Explanation:**

References: <https://www.remsoftware.com/info/convert-gpt-mbr-without-data-loss> <https://docs.microsoft.com/en-us/windows-server/administration/windows-commands/create-partition-primary>

**NEW QUESTION 267**

**HOTSPOT**

You have a server named Server1 that runs Windows Servers 2016. Server1 has a storage array that contains multiple storage enclosures. The storage hardware supports enclosure awareness. You need to implement Storage Spaces on Server1. Storage Spaces must remain available if two enclosures fail. The solution must minimize the number of enclosures required and must provide the fastest possible write performance. Which configurations should you use? To answer, select the appropriate options in the answer area. NOTE: Each correct selection is worth one point.

**Answer Area**

Resiliency type:

Dual parity

Single parity

Three-way mirror

Two-way mirror

Number of enclosures:

3

4

5

6

- A. Mastered
- B. Not Mastered

**Answer:** A

**Explanation:**

References: <https://docs.microsoft.com/en-us/windows-server/storage/storage-spaces/storage-spaces-fault-tolerance#summary>

**NEW QUESTION 268**

**HOTSPOT**

You have a server named Server1 that runs Windows Server 2016. You create a storage pool named Pool1. Pool1 contains three disks. You need to create a two-way mirror storage space from the disks in Pool1. Which command should you run? To answer, select the appropriate options in the answer area. NOTE: Each correct selection is worth one point.

**Answer Area**

New-StorageSunsystemVirtualDisk

New-VHD

New-VirtualDisk

New-Volume

-StoragePoolFirendlyName Pool1 -FirendlyName Spacel-

-UseMaximumSize -ResiliencySettingName Mirror

-NumberOfDataCopies

1

2

3

-NumberOfColumns-

1

2

3

- A. Mastered
- B. Not Mastered

**Answer:** A

**Explanation:**

References: <https://charbelnemnom.com/2014/09/step-by-step-how-to-create-a-two-way-mirrored-storage-space-via-powershell-storagespaces-powershell/>

**NEW QUESTION 270**

NOTE: This Question is a part of a series of questions that use the same or similar answer choices. An answer choice may be correct for more than one question in the series Each question is independent of the other questions in this series. Information and details provided in a question apply only to that question.  
You have a Hyper –V host named server 1 that runs Windows Server 2016 and a two-node scale-out file server cluster named Cluster1.  
You need to migrate the storage on VM1 to Cluster1. Which tool should you use?

- A. the clussvc.exe command
- B. the Cluster.exe command
- C. the Computer Management snap-in
- D. the configure hyperv.exe command
- E. the Disk Management snap-in
- F. the Failover Cluster Manager snap-in
- G. the Hyper-V Manager snap-in
- H. the Server Manger app

**Answer:** G

**NEW QUESTION 271**

**HOTSPOT**

Your network contains an Active Directory domain named contoso.com. The domain contains three clusters named FC1, FC2, and FC3.  
The domain contains servers that run Windows Server 2016. The servers are configured as shown in the following table.

Server name	CPU	Memory	Cluster
Server1	Intel Xeon E3	128 GB	FC1
Server2	Intel Xeon E3	128 GB	FC1
Server3	Intel Xeon E3	64 GB	FC2
Server4	Intel Xeon E3	64 GB	FC2
Server5	AMD Opteron	256 GB	FC3
Server6	AMD Opteron	256 GB	FC3

Server1 hosts a highly available virtual machine named VM1.  
You are creating a maintenance plan for the servers, and you are evaluating how to move VM1 to the different clusters.  
You need to identify the fastest method to move VM1 to FC2 and FC3.  
Which method should you identify for each cluster? To answer, select the appropriate options in the answer area.  
NOTE: Each correct selection is worth one point.

**Answer Area**

**Fastest method to move VM1 to FC2:**

Export and import

Live migration

Quick migration

**Fastest method to move VM1 to FC3:**

Export and import

Live migration

Quick migration

- A. Mastered
- B. Not Mastered



**Answer:** A

**Explanation:**

References: <https://www.petri.com/move-virtual-machine-between-hyper-v-hosts>


**NEW QUESTION 273**

**HOTSPOT**


You have a Windows Server 2016 failover cluster named Cluster1. You need to implement Cloud Witness for Cluster 1. What should you do? To answer, select the appropriate options in the answer area. NOTE: Each correct selection is worth one point.

**Answer Area**

**In Microsoft Azure, create:**


<b>An availability set</b>
<b>An integration account</b>
<b>A public IP address</b>
<b>A Recovery Services vault</b>
<b>A storage account</b>

**On Cluster1, run:**


<b>Add-ClusterResource</b>
<b>Add-ClusterResourceType</b>
<b>Set-ClusterParameter</b>
<b>Set-ClusterQuorum</b>

- A. Mastered
- B. Not Mastered

**Answer:** A

**Explanation:**

References:  
<https://www.vembu.com/blog/deploying-a-azure-cloud-witness-for-a-failover-cluster-in-windows-server-2016/>  
<https://docs.microsoft.com/en-us/powershell/module/failoverclusters/set-clusterquorum?view=win10-ps>

**NEW QUESTION 278**

You have a file server named Server1 that runs Windows Server 2016. Object access auditing is configured on Server1. You need to filter the Security event log to show all log entries that relate to a user named User1. What should you do?

- A. Right-click the Security log, and then click Filter Current Log... On the Filter tab, type a value in the User box.
- B. Right-click the Security log, and then click Filter Current Log... On the Filter tab, select a value from the Event sources box.
- C. Right-click the Security log, and then click Create Custom View... On the Filter tab, type a value in the User box.
- D. Right-click the Security log, and then click Filter Current Log... On the XML tab, modify the QueryList entry and set an EventData tag.

**Answer:** A

**Explanation:**

Right clicking the event log name and selecting the "Filter Current Log" will display various options for filtering the event log. These options are:  
References: <https://blogs.technet.microsoft.com/rmilne/2014/08/06/quick-tip-event-viewer-filtering/>

**NEW QUESTION 279**

Note: This question is part of a series of questions that present the same scenario. Each question in the series contains a unique solution that might meet the stated goals. Some question sets might have more than one correct solution, while others might not have a correct solution. After you answer a question in this section, you will NOT be able to return to it. As a result, these questions will not appear in the review screen. You network contains an Active Directory forest named contoso.com. The forest contains a child domain named eu.contoso.com. You plan to implement live migration between two Hyper-V hosts that run Windows Server 2016. The hosts are configured as shown in the following table.

Host name	Configuration
Host1	<ul style="list-style-type: none"> <li>Is a member of the contoso.com domain</li> <li>Uses an Intel Xeon processor released in 2012</li> <li>Has an external virtual switch named Switch1</li> <li>Hosts a virtual machine named VM1 that connects to Switch1</li> </ul>
Host2	<ul style="list-style-type: none"> <li>Is a member of the eu.contoso.com domain</li> <li>Uses an Intel Xeon processor released in 2016</li> <li>Has an external virtual switch named Switch1</li> </ul>

You need to ensure that you can perform a live migration of VM1 from Host1 to Host2.

Solution: You shut down VM1, configure the processor compatibility settings, and then start VM1. Does meet the goal?

- A. Yes  
B. No

**Answer: A**

#### NEW QUESTION 282

Note: This question is part of a series of questions that present the same scenario. Each question in the series contains a unique solution that might meet the stated goals. Some question sets might have more than one correct solution, while others might not have a correct solution.

After you answer a question in this section, you will NOT be able to return to it. As a result, these questions will not appear in the review screen.

You network contains an Active Directory forest named contoso.com. The forest contains a child domain named eu.contoso.com.

You plan to implement live migration between two Hyper-V hosts that run Windows Server 2016. The hosts are configured as shown in the following table.

Host name	Configuration
Host1	<ul style="list-style-type: none"> <li>Is a member of the contoso.com domain</li> <li>Uses an Intel Xeon processor released in 2012</li> <li>Has an external virtual switch named Switch1</li> <li>Hosts a virtual machine named VM1 that connects to Switch1</li> </ul>
Host2	<ul style="list-style-type: none"> <li>Is a member of the eu.contoso.com domain</li> <li>Uses an Intel Xeon processor released in 2016</li> <li>Has an external virtual switch named Switch1</li> </ul>

You need to ensure that you can perform a live migration of VM1 from Host1 to Host2. Solution: You move Host2 to the contoso.com domain. Does meet the goal?

- A. Yes  
B. No

**Answer: B**

#### NEW QUESTION 287

Note: This question is part of a series of questions that present the same scenario. Each question in the series contains a unique solution that might meet the stated goals. Some question sets might have more than one correct solution, while others might not have a correct solution.

After you answer a question in this section, you will NOT be able to return to it. As a result, these questions will not appear in the review screen.

You have an Exchange Server 2016 organization.

Some users access the mailbox on their mobile device by using Exchange ActiveSync.

You need to prevent the users from synchronizing more than one month of email or calendar data to their device.

Solution: You deploy an Allow/Block/Quarantine policy. Does this meet the goal?

- A. Yes  
B. No

**Answer: B**

#### NEW QUESTION 290

You have two servers named Server1 and Server2 that run Windows Server 2016.

You plan to implement Storage Replica to replicate the contents of volumes on Server1 to Server2. You need to ensure that the replication traffic between the servers is limited to a maximum of 100

Mbps.

Which cmdlet should you run?

- A. New-NetQosPolicy
- B. Set-NetworkController
- C. New-NetTransportFilter
- D. New-StorageQosPolicy
- E. Set-NetTCPSetting
- F. Set-NetUDPSetting

**Answer:** A

**Explanation:**

References: <https://docs.microsoft.com/en-us/powershell/module/netqos/new-netqospolicy?view=win10-ps>

#### NEW QUESTION 294

Note: This question is part of a series of questions that present the same scenario. Each question in the series contains a unique solution that might meet the stated goals. Some question sets might have more than one correct solution, while others might not have a correct solution.

After you answer a question in this section, you will NOT be able to return to it. As a result, these questions will not appear in the review screen.

Your network contains an Active Directory forest.

You install Windows Server 2016 on 10 virtual machines.

You need to deploy the Web Server (IIS) server role identically to the virtual machines.

Solution: You use Windows PowerShell Desired State Configuration (DSC) to create a default configuration, and then you apply the configuration to the virtual machines.

Does this meet the goal?

- A. Yes
- B. No

**Answer:** A

**Explanation:**

References:

<https://www.simple-talk.com/sysadmin/powershell/powershell-desired-state-configuration-the-basics/>

#### NEW QUESTION 297

DRAG DROP

Your network contains an Active Directory domain named contoso.com. The domain contains a server named Server1 that runs Windows Server 2016.

Server1 allows inbound connectivity from all computers in the contoso.com domain. Server1 has an IP address of 192.168.0.10.

Server1 hosts a Windows container named Container1. Container1 hosts a website that is accessible on port 80.

You need to ensure that you can use the Docker client to manage Container1 from any computer in the domain.

Which three cmdlets should you run in sequence? To answer, move the appropriate cmdlets from the list of cmdlets to the answer area and arrange them in the correct order.

#### Actions

#### Answer Area

Restart-Service docker

New-ContainerNetwork- Name nat1 – Mode NAT- SubnetPrefix 192.168.0.0/24 – GatewatAddress 192.168.0.10

Add-Content 'c:\programdata\docker\config\daemon.json' '{"hosts": [{"tcp://127.0.0.1:80", "npip: //"} ]}'

Add-Content 'c:\programdata\docker\config\daemon.json' '{"hosts": [{"tcp://0.0.0.0:2375", "npip: //"} ]}'

New-Item-Type File c:\programData\docker\confinf\daemon.json



A. Mastered



B. Not Mastered

**Answer:** A

**Explanation:**

References:

<https://glennsarti.github.io/blog/getting-started-with-windows-containers/> <https://docs.microsoft.com/en-us/virtualization/windowscontainers/manage-containers/container-networking>

**NEW QUESTION 301**

You have a server named Server1 that runs Windows Server 2016. You install the Docker daemon on Server1. You need to configure the Docker daemon to accept connections only on TCP port 64500. What should you do?

- A. Run the `New-NetFirewallRule` cmdlet.
- B. Run the `Set-ServiceWindows PowerShell` cmdlet.
- C. Run the `sc config` command.
- D. Run the `sc control` command.

**Answer:** C

**NEW QUESTION 306**

HOTSPOT

You have a Hyper-V host named Server1 that runs Windows Server 2016 datacenter. Server1 is activated.

On Server1, you deploy a virtual machine named VM1 that has a Server Core installation of Windows Server 2016 Standard.

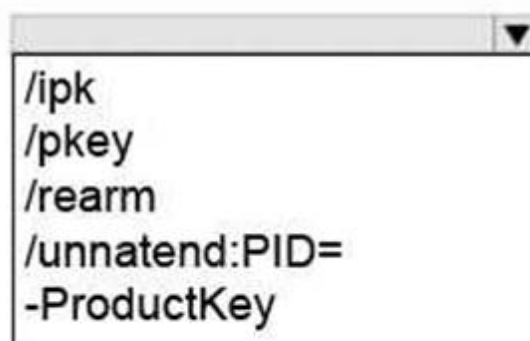
You need to activate VM1 by using Automatic Virtual Machine Activation (AVMA).

Which command should you run? To answer, select the appropriate options in the answer area. NOTE: Each correct selection is worth one point.

**Answer Area**



```
reg.exe
regsvr32.exe
setup.exe
Set-VM
Set-WindowsProductKey
slmgr.vbs
```



```
/ipk
/pkey
/rearm
/unattend:PID=
-ProductKey
```

C3RCX-M6NRP-6CXC9-TW2F2-4RHYD

- A. Mastered
- B. Not Mastered

**Answer:** A

**Explanation:**

References: <https://blogs.technet.microsoft.com/askcore/2013/11/13/activating-virtual-machines-via-automatic-virtual-machine-activation-in-windows-server-2012-r2/>

**NEW QUESTION 309**

You have a server named Server1 that runs Windows Server 2016.

You need to install the DNS Server role on Server1. What should you run?

- A. the `Install-Package` cmdlet
- B. the `Add-WindowsPackage` cmdlet
- C. the `Add-WindowsFeature` cmdlet
- D. the `setup.exe` command

**Answer:** C

**NEW QUESTION 314**

You have a server named VM1. VM1 is a virtual machine on a Hyper-V host that runs Windows Server 2016. You need to create a checkpoint that includes the virtual machine memory state of VM1.

What command should you run? To answer, select the appropriate options in the answer area.

▼

Checkpoint-VM  
Get-VMSnapshot  
Set-VM

-Name VM1 -CheckpointType

▼

Production  
ProductionOnly  
Standard

▼

Checkpoint-VM  
Export-VMSnapshot  
Get-VHDSnapshot

-Name VM1 -SnapshotName Snapshot1

- A. Mastered
- B. Not Mastered

Answer: A

Explanation:  
References:  
<https://docs.microsoft.com/en-us/virtualization/hyper-v-on-windows/user-guide/checkpoints>

NEW QUESTION 317

You have a Network Load Balancing (NLB) cluster that contains two nodes named Server1 and Server2. The nodes run Windows Server 2016. The NLB cluster has the following configuration.

ClusterName	:						
IPAddress	:	172.16.4.1					
Name	:						
ClusterIPAddress	:	172.16.4.1					
ClusterNetworkMask	:	255.255.0.0					
ClusterMacAddress	:	02-bf-ac-10-04-01					
OperationMode	:	UNICAST					
BdaReverseHash	:	False					
BdaTeamActive	:	False					
BdaTeamId	:						
BdaTeamMaster	:	False					

IPAddress	State	Start	End	Protocol	Mode	Affinity	Timeout
-----	-----	-----	-----	-----	-----	-----	-----
All	Enabled	0	65535	Both	Multiple	Single	0

You deploy the Web Server (IIS) server role identically to both servers. You need to configure NLB to load balance requests between the web servers. HTTP requests must be stateless. HTTPS requests must be stateful. What should you do? Each correct answer presents part of the solution.

- A. Modify the Cluster operation mode.
- B. Suspend the cluster.
- C. Drainstop the cluster.
- D. Add a new port rule.
- E. Edit the existing port rule.

Answer: CD

Explanation:  
References:  
<https://www.ntweekly.com/2017/09/04/failover-nlb-cluster-host-member/> <https://docs.microsoft.com/en-us/windows-server/networking/technologies/network-load-balancing>

NEW QUESTION 321

.....

## Thank You for Trying Our Product

### We offer two products:

1st - We have Practice Tests Software with Actual Exam Questions

2nd - Questions and Answers in PDF Format

### 70-740 Practice Exam Features:

- \* 70-740 Questions and Answers Updated Frequently
- \* 70-740 Practice Questions Verified by Expert Senior Certified Staff
- \* 70-740 Most Realistic Questions that Guarantee you a Pass on Your First Try
- \* 70-740 Practice Test Questions in Multiple Choice Formats and Updates for 1 Year

**100% Actual & Verified — Instant Download, Please Click**  
**[Order The 70-740 Practice Test Here](#)**