

Exam Questions 010-151

Cisco Certified Technician (CCT) for Data Center

<https://www.2passeasy.com/dumps/010-151/>



NEW QUESTION 1

The Ethernet specification details several different fiber optic media types. What is the wire transmission speed for 100BASE-FX Ethernet?

- A. 10 Mb/s
- B. 100 Mb/s
- C. 1000 Mb/s
- D. 10000 Mb/s

Answer: B

NEW QUESTION 2

Which fiber optic cable type is used most often with a Subscriber connector?

- A. dual-mode
- B. single-mode
- C. straight-mode
- D. multi-mode
- E. subscriber-mode

Answer: B

NEW QUESTION 3

Which two statements about the Ethernet media are true? (Choose two.)

- A. A twisted-pair cable system has each pair of wires twisted together to reduce electromagnetic interferenc
- B. Compared to multimode fiber, the single-mode fiber is designed for shorter distances with higher cos
- C. 40 Gigabit Ethernet twinax cables deploy Enhanced Quad Small Form Factor Pluggable (QSFP+) connector
- D. The twinax cables can be found in either a shielded twisted-pair or an unshielded twisted-pair variatio

Answer: AC

NEW QUESTION 4

Where do you find the model number of a Cisco MDS 9200 Series chassis?

- A. on the top front of the chassis next to the serial number
- B. on the bottom front of the chassis next to the Cisco logo
- C. on the top front of the chassis next to the Cisco logo
- D. on the bottom front of the chassis next to the serial number

Answer: C

NEW QUESTION 5

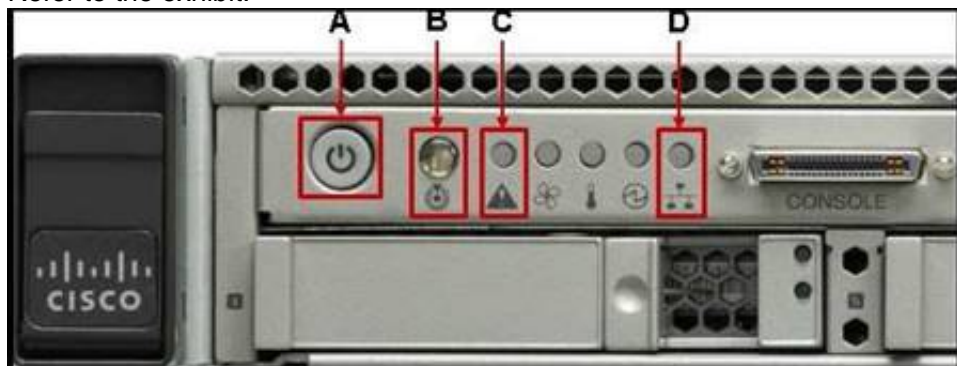
What does the system status LED look like when an over temperature or major alarm occurs on the Cisco UCS 6120XP Fabric Interconnect?

- A. Amber
- B. Red
- C. Blinking amber
- D. Blinking red

Answer: C

NEW QUESTION 6

Refer to the exhibit.



Which statement correctly identifies the front panel LEDs on the Cisco UCS C220 Server?

- A. A is power button and power status LED; B is identification button and LED; C is system status LED; D is network link activity LE
- B. A is network link activity LED; B is system status LED; C is power button and power status LED; D is identification button and LE
- C. A is system status LED; B is network link activity LED; C is power button and power status LED; D is identification button and LE
- D. A is network link activity LED; B is system status LED; C is identification button and LED; D is power button and power status LE

Answer: A

NEW QUESTION 7

Which supervisor module is supported by a Cisco Nexus 7700 Series Switch?

- A. first-generation supervisor module
- B. second-generation supervisor module (Sup2)
- C. second-generation supervisor enhanced module (Sup2E)
- D. third-generation supervisor enhanced module (Sup3E)

Answer: C

NEW QUESTION 8

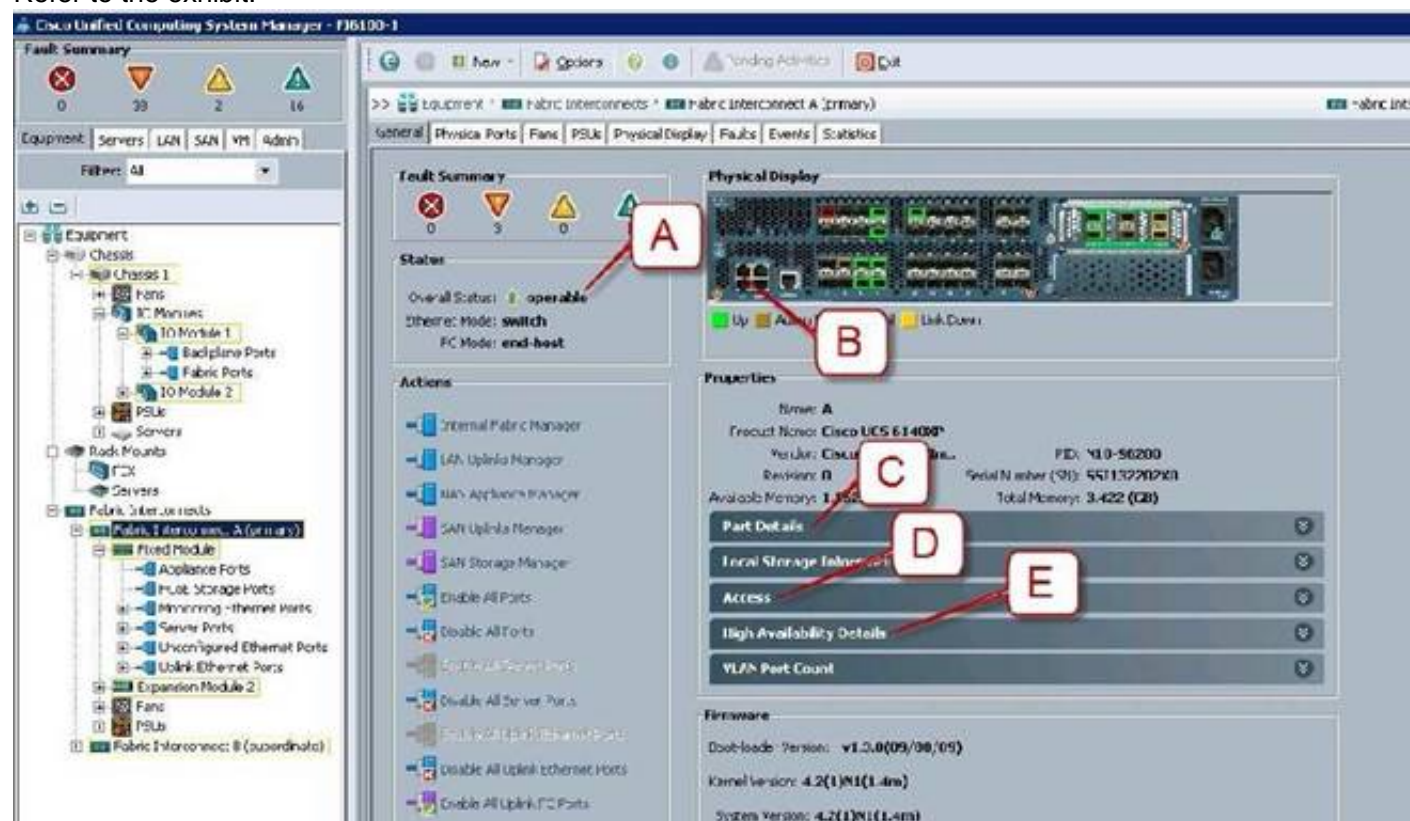
Which command-line interface mode is best described by this prompt?
 UCS-switch-A (nxos)#

- A. maintenance mode
- B. EXEC mode
- C. local management mode
- D. global configuration mode
- E. Cisco IOS mode

Answer: B

NEW QUESTION 9

Refer to the exhibit.



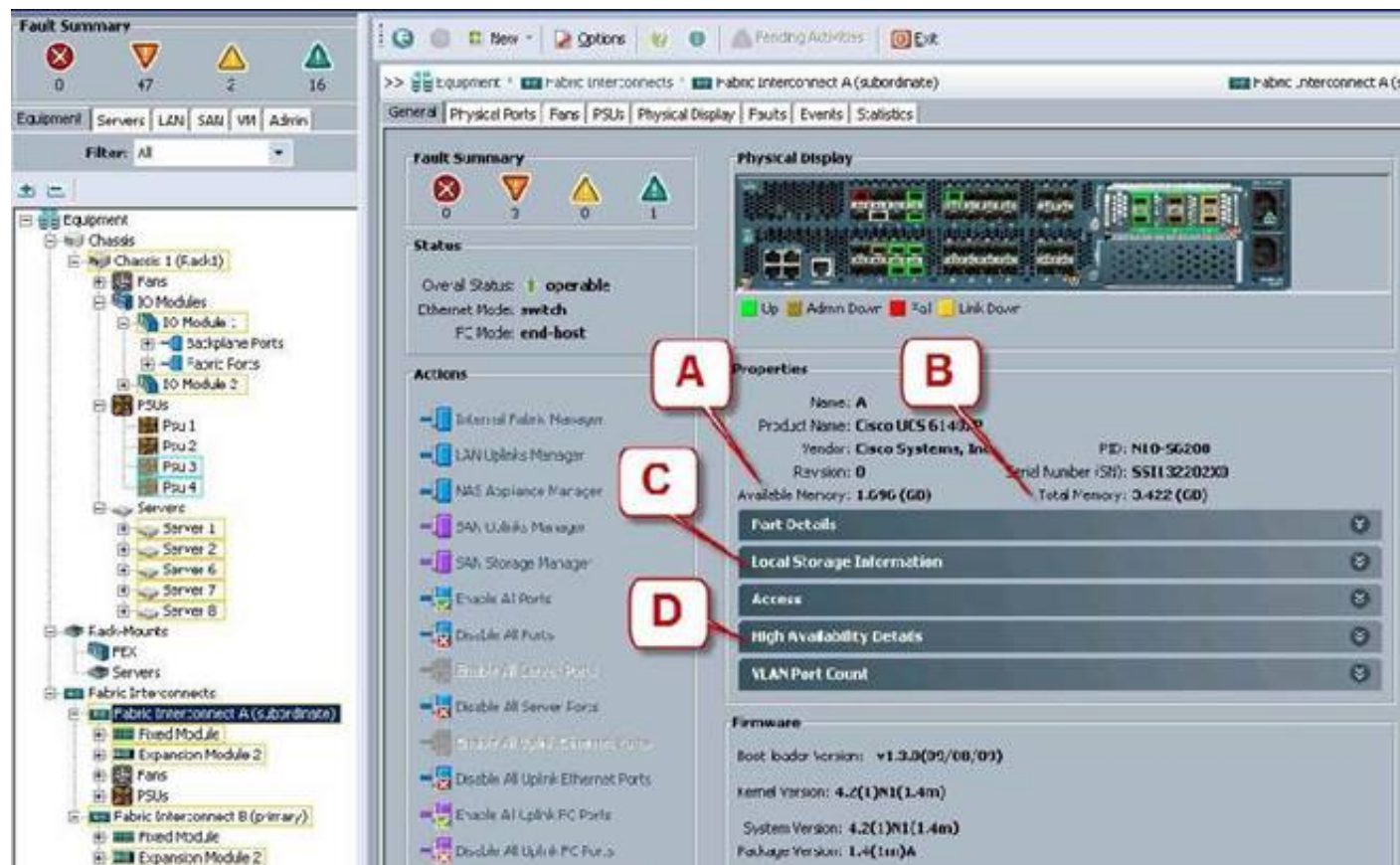
Where is the best place to see whether the system is ready for a Fabric Interconnect failover?

- A. A - Overall Status operable
- B. B - L1 Connection
- C. C - Part Details
- D. D - Access
- E. E - High Availability Details

Answer: E

NEW QUESTION 10

Refer to the exhibit.



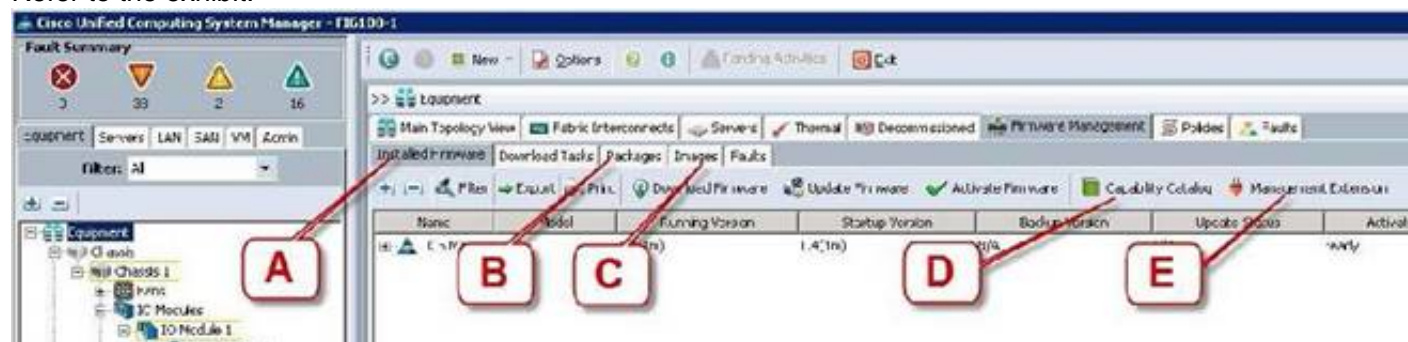
Where is the best place to see bootflash free space?

- A. A - Available Memory
- B. B - Total Memory
- C. C - Local Storage Information
- D. D - High Availability Details

Answer: C

NEW QUESTION 10

Refer to the exhibit.



Where is the best place to find the B200 BIOS version used in a specific Cisco UCS Manager version?

- A. A - Installed Firmware
- B. B - Packages
- C. C - Images
- D. D - Capability Catalog
- E. E - Management Extension

Answer: B

NEW QUESTION 15

Which Cisco NX-OS command displays kernel uptime?

- A. show module
- B. show version
- C. show license
- D. show boot
- E. show interface

Answer: B

NEW QUESTION 19

On the Sensors page from the CIMC view, which four tabs are displayed to view further information? (Choose four.)

- A. Power Supply
- B. Fan
- C. Memory
- D. CPU
- E. LEDs
- F. Temperature

Answer: AB EF

NEW QUESTION 20

What is the correct path to verify the Overall Status of Chassis 1 | Server 3?

- A. Equipment Tab > Chassis > Chassis 1 > Servers > Server 3 Status tab
- B. Equipment Tab > Chassis > Chassis 1 > Servers > Server 3 General tab
- C. Equipment Tab > Chassis > Chassis 1 > Servers > Server 3 FSM tab
- D. Servers Tab > Chassis > Server 3 General tab
- E. Status Tab > Chassis > Chassis 1 > Servers > Server 3
- F. Admin Tab > Chassis > Chassis 1 > Servers > Server 3 General tab

Answer: B

NEW QUESTION 22

Which three statements about powering down a Cisco UCS C-Series Rack-Mount Server to perform maintenance or replacement are true? (Choose three.)

- A. Standby power mode: Power is supplied only to the service processor and the cooling fans, and it is safe to power off the server from this mod
- B. Power status LE
- C. Green indicates that the server is in main power mode and can be safely powered of
- D. Graceful shutdown: Press and release the power butto
- E. The operating system performs a graceful shutdown, and the server goes to standby mode, which is indicated by an amber power status LE
- F. Disconnect the power cords from the power supplies in your server to completely power off the serve
- G. Only an emergency shutdown can be performed using the power button on the server front pane
- H. The Cisco UCS C-Series Rack-Mount Server has only one power mod

Answer: ACD

NEW QUESTION 23

Which three troubleshooting procedures do you perform when there is no power to a Cisco UCS B250 M2 Blade Server? (Choose three.)

- A. Decommission and acknowledge the blad
- B. Check the back of the blade to ensure that there is no damage to the connection that goes into chassi
- C. Reseat the memory DIMM
- D. Check the CPU sockets for bent pin
- E. Reseat the blade in the same slot in the chassi
- F. Move the blade to another slot in the chassi

Answer: BEF

NEW QUESTION 25

On which three devices can the Host Upgrade Utility be performed? (Choose three.)

- A. C420
- B. C230
- C. B230
- D. B210
- E. C210
- F. B460
- G. C240

Answer: AEG

NEW QUESTION 28

Up to what speed can Category 5e UTP cable transmit data?

- A. 10 Mb/s
- B. 100 Mb/s
- C. 1000 Mb/s
- D. 10000 Mb/s

Answer: C

NEW QUESTION 32

Which two Cisco Nexus switches provide the foundation of the Cisco Application Centric Infrastructure? (Choose two.)

- A. Cisco Nexus 7718 switch
- B. Cisco Nexus 9508 switch
- C. Cisco Nexus 7710 switch
- D. Cisco Nexus 93128TX switch
- E. Cisco Nexus 6004 switch

Answer: BD

NEW QUESTION 36

Which type of optics module is supported by a 6-port 40 GE Cisco Nexus 7000 M2 Series I/O module?

- A. CPAK
- B. QSFP+

- C. SFP/SFP+
- D. CFP

Answer: B

NEW QUESTION 41

How many 10GBASE-T port licenses are preinstalled on a Cisco Nexus 3064-32T?

- A. 16
- B. 32
- C. 48
- D. 64

Answer: B

NEW QUESTION 44

Refer to the exhibit.



What is the name of this Cisco Nexus 3000 Series Switch?

- A. Cisco Nexus 3132Q
- B. Cisco Nexus 3172PQ
- C. Cisco Nexus 3524
- D. Cisco Nexus 3016

Answer: A

NEW QUESTION 45

DRAG DROP

Drag the password recovery procedures on a Cisco NX-OS switch from the left to the right and place them in order.	
Log in to the switch using the new administrator password.	Step 1
Reset the network administrator password.	Step 2
Load the Cisco NX-OS system software image.	Step 3
Power-cycle the switch.	Step 4
Reset the new password to ensure that is it is also the Simple Network Management Protocol (or SNMP) password.	Step 5
To enter the boot prompt mode, press the Ctrl-] key sequence from the console port session when the switch begins the Cisco NX-OS software boot sequence.	Step 6
Save the configuration.	Step 7
Display the bootflash: contents to locate the Cisco NX-OS software image.	Step 8

- A. Mastered
- B. Not Mastered

Answer: A

Explanation:

Drag the password recovery procedures on a Cisco NX-OS switch from the left to the right and place them in order.	
Log in to the switch using the new administrator password.	Power-cycle the switch.
Reset the network administrator password.	To enter the boot prompt mode, press the Ctrl-] key sequence from the console port session when the switch begins the Cisco NX-OS software boot sequence.
Load the Cisco NX-OS system software image.	Reset the network administrator password.
Power-cycle the switch.	Display the bootflash: contents to locate the Cisco NX-OS software image.
Reset the new password to ensure that is it is also the Simple Network Management Protocol (or SNMP) password.	Load the Cisco NX-OS system software image.
To enter the boot prompt mode, press the Ctrl-] key sequence from the console port session when the switch begins the Cisco NX-OS software boot sequence.	Log in to the switch using the new administrator password.
Save the configuration.	Reset the new password to ensure that is it is also the Simple Network Management Protocol (or SNMP) password.
Display the bootflash: contents to locate the Cisco NX-OS software image.	Save the configuration.

NEW QUESTION 46

.....

THANKS FOR TRYING THE DEMO OF OUR PRODUCT

Visit Our Site to Purchase the Full Set of Actual 010-151 Exam Questions With Answers.

We Also Provide Practice Exam Software That Simulates Real Exam Environment And Has Many Self-Assessment Features. Order the 010-151 Product From:

<https://www.2passeasy.com/dumps/010-151/>

Money Back Guarantee

010-151 Practice Exam Features:

- * 010-151 Questions and Answers Updated Frequently
- * 010-151 Practice Questions Verified by Expert Senior Certified Staff
- * 010-151 Most Realistic Questions that Guarantee you a Pass on Your FirstTry
- * 010-151 Practice Test Questions in Multiple Choice Formats and Updatesfor 1 Year