

Microsoft

Exam Questions 70-740

Installation, Storage, and Compute with Windows Server 2016



NEW QUESTION 1

Note: This question is part of a series of questions that present the same scenario. Each question in the series contains a unique solution that might meet the stated goals. Some question sets might have more than one correct solution, while others might not have a correct solution.

After you answer a question in this section, you will NOT be able to return to it. As a result, these questions will not appear in the review screen.

You have two servers that run Windows Server 2016.

You have a server named Server1 that runs Windows Server 2016. Server1 has the Hyper-V server role and Docker installed.

You pull the Microsoft/iis Docker image to Server1.

You need to view the available space in the Microsoft/iis Docker image. Solution: You run the following commands.

```
docker run --name container1 --isolation hyperv --d Microsoft/iis docker exec -i container1 cmd.exe dir
```

Does this meet the goal?

- A. Yes
- B. No

Answer: B

NEW QUESTION 2

You have a server named Server1 that runs Windows Server 2016 and has the File and Storage Services server role installed. Server1 has an ReFS-formatted volume named Volume1 that is 512 GB. Volume1 is mounted as C:\App1\temp. You need to ensure that you can enable deduplication of Volume1. What should you do?

- A. Initialize the physical disk that contains Volume1.
- B. Install a Windows feature.
- C. Format Volume1.
- D. Unmount Volume1.

Answer: B

NEW QUESTION 3

You have a server named Server1 that runs Windows Server 2016. Windows Defender is enabled on Server1.

Server1 runs an application named App1 that stores various types of files in Microsoft OneDrive for Business, MicrosoftOneDrive, and Microsoft SharePoint Online. App1 also interacts with several local services.

You need to prevent Windows Defender from scanning any files opened by App1. What should you do on Server1?

- A. From the Windows Defender settings, configure a file exclusion.
- B. Run the New-CiPolicy cmdlet.
- C. Modify the real-time protection settings in Windows Defender.
- D. From the Windows Defender settings, configure a process exclusion.

Answer: A

NEW QUESTION 4

You have a Nano Server named Nano1.

Nano1 is configured to perform real-time protection scans by using Windows Defender.

You need to ensure that all of the files located in D:\App1\Data are excluded from the real-time protection scans.

What should you do?

- A. From the properties of D:\App1\Data folder, modify the permissions.
- B. Run the Set-MpPreference cmdlet and specify the –ExclusionPath parameter.
- C. From a command prompt, run the attrib command and specify the –s parameter.
- D. Run the Get-ChildItem cmdlet and specify the –Exclude parameter.

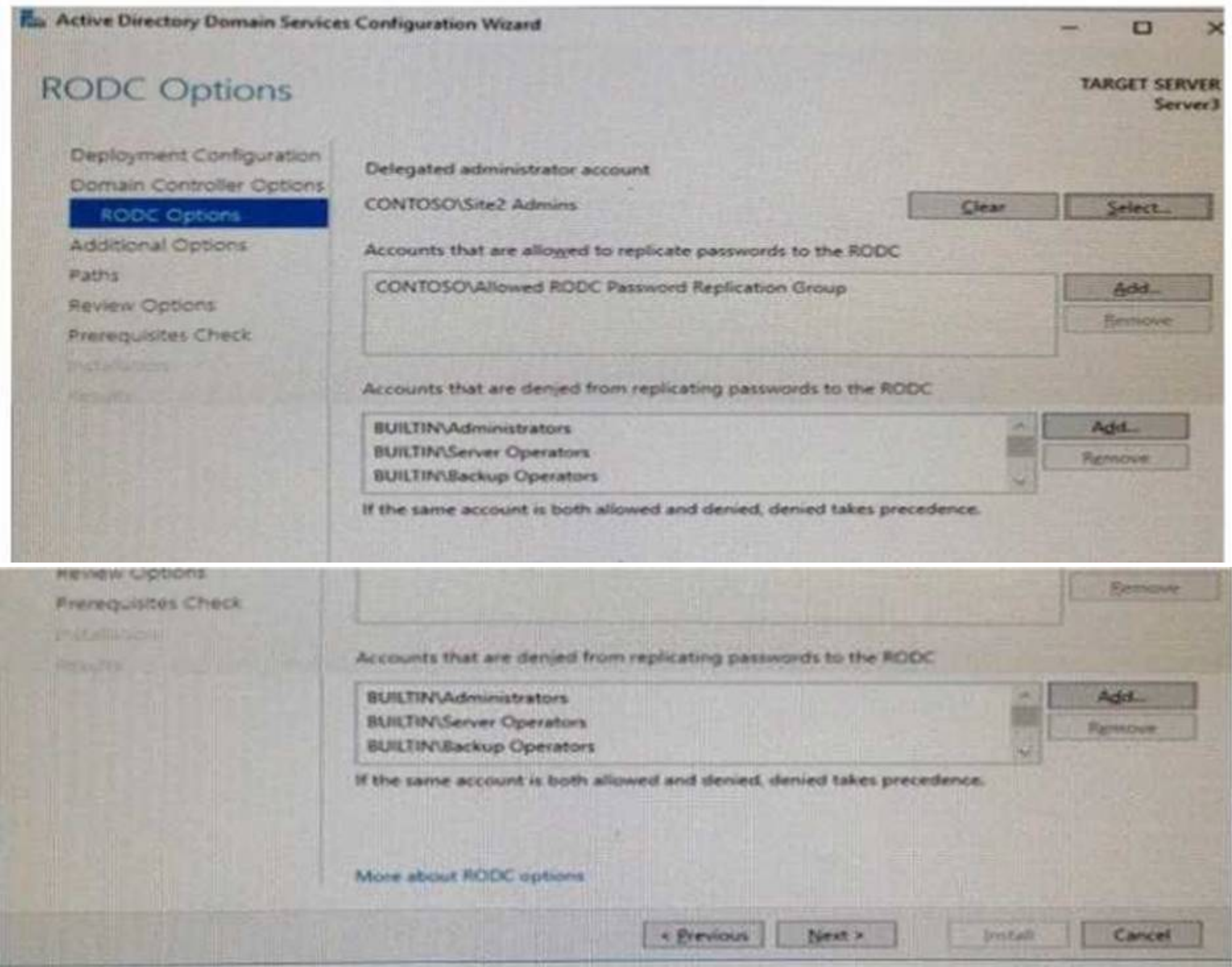
Answer: B

NEW QUESTION 5

HOTSPOT

Your network contains an Active Directory forest. The forest contains two sites named Site1 and Site2. Site1 contains 10 domain controllers. Site1 and Site2 connect to each other by using a WAN link.

You run the Active Directory Domain Services Configuration Wizard as shown in the following graphic.



Server3 is the only server in Site2
 Use the drop-down menus to select the answer choice that completes each statement based on the information graphic.

<p>Members of the Site2 Admins group will be able to [answer choice] on Server 3.</p>	<div style="text-align: right;">▼</div> <p>make updates to SYSVOL content manage the password replication policy stop and start Active Directory Domain Services (AD DS)</p>
<p>If the WAN link fails, users who are members of the Allowed RODC Password Replication Group [answer choice] in Site2.</p>	<div style="text-align: right;">▼</div> <p>will be prevented from logging on will log on with reduced security rights can log on if they have previously logged on</p>

- A. Mastered
- B. Not Mastered

Answer: A

Explanation:

Members of the Site2 Admins group will be able to [answer choice] on Server 3.

☐

make updates to SYSVOL content
manage the password replication policy
stop and start Active Directory Domain Services (AD DS)

If the WAN link fails, users who are members of the Allowed RODC Password Replication Group [answer choice] in Site2.

☐

will be prevented from logging on
will log on with reduced security rights
can log on if they have previously logged on

NEW QUESTION 6

DRAG DROP

You are deploying DirectAccess to a server named DA1. Da1 will be located behind a firewall and will have a single network adapter The intermediary network will be IPv4.

You need to configure firewall to support DirectAccess.

Which firewall rules should you create for each type of traffic? To answer, drag the appropriate ports and protocols to the correct traffic types. Each port and protocol may be used once, more than once, or not at all. You may need to drag the split bar between panes or scroll to view content

Ports and Protocols		Answer Area	
IP protocol ID 1	IP Protocol ID 41	Teredo traffic:	<input type="text"/>
TCP 443	UDP 3544	6to4 traffic:	<input type="text"/>
		IP-HTTPS:	<input type="text"/>

- A. Mastered
- B. Not Mastered

Answer: A

Explanation:

Ports and Protocols		Answer Area	
IP protocol ID 1	IP Protocol ID 41	Teredo traffic:	UDP 3544
TCP 443	UDP 3544	6to4 traffic:	IP Protocol ID 41
		IP-HTTPS:	TCP 443

NEW QUESTION 7

You have a server named Server1 that runs Windows Server 2016 You install the Docker daemon on Server1 You need to configure the Docker daemon to accept connections only on TCP port 64500. What should you do?

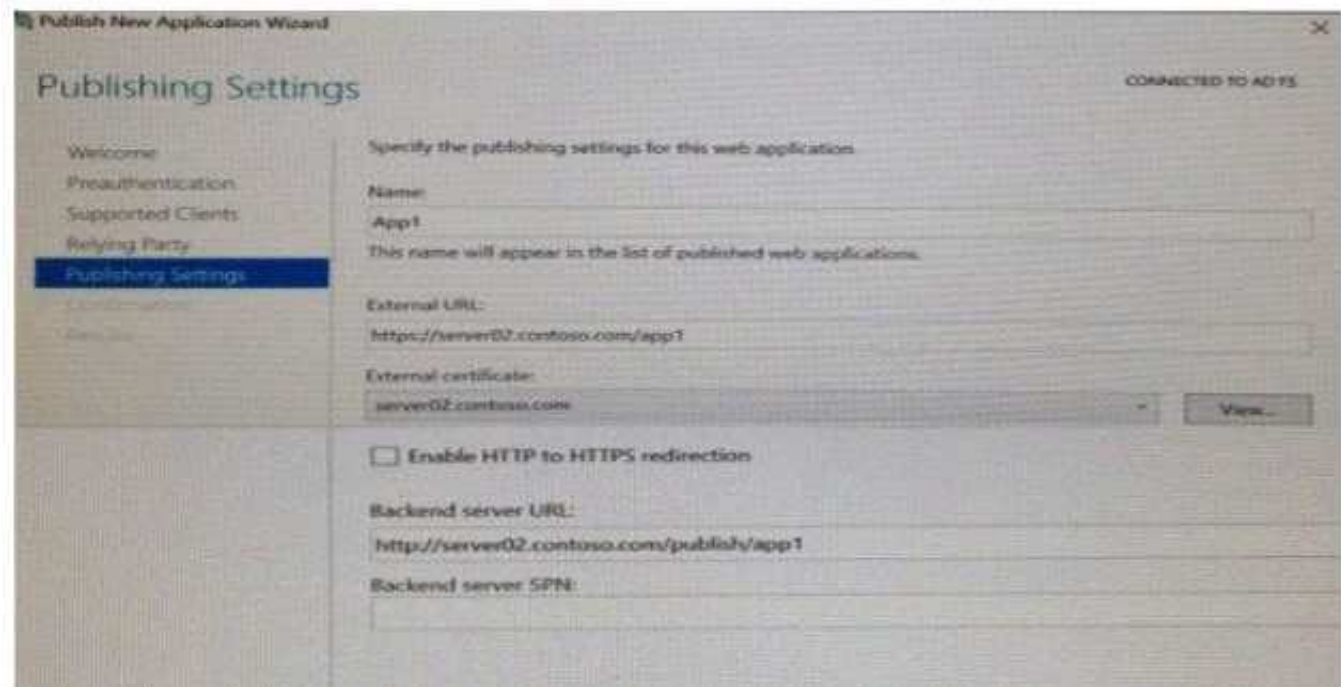
- A. Run theNew-NetFirewallRulecmdlet
- B. Run theSet-ServiceWindows PowerShell cmdlet.
- C. Edit the daemon.json file.
- D. Edit the configuration json file

Answer: C

NEW QUESTION 8

HOTSPOT

You have a server named Served that runs Windows Server 2016. Server1 has the Windows Application Proxy role service installed. You are publishing an application named App1 that will use Integrated Windows authentication as shown in the following graphic.



Use the drop-down menus to select the answer choice that completes each statement based on the information presented in the graphic

Before you can complete the wizard, you must [answer choice]

change the external certificate
configure the Backend server SPN
select Enable HTTP to HTTPS redirection

To ensure that users can access App1 externally, you must
change the External URL to [answer choice.]

https://app1.contoso.com/app1
https://server02.contoso.com/app1
https://server02.contoso.com/publish/app1

- A. Mastered
- B. Not Mastered

Answer: A

Explanation:

Before you can complete the wizard, you must [answer choice]

change the external certificate
configure the Backend server SPN
select Enable HTTP to HTTPS redirection

To ensure that users can access App1 externally, you must
change the External URL to [answer choice.]

https://app1.contoso.com/app1
https://server02.contoso.com/app1
https://server02.contoso.com/publish/app1

NEW QUESTION 9

Your company has 10 offices. Each office has a local network that contains several Hyper-V hosts that run Windows Server 2016. All of the offices are connected by high speed, low latency WAN links.

- A. the Multipath I/O feature
- B. the Routing role service
- C. the Network Controller server role
- D. the Canary Network Diagnostics feature
- E. the Data Center Bridging feature

You have a server named Server1 that runs Windows Server 2016. Server1 is a Hyper-V host that hosts a virtual machine named VM1. Server1 has three network adapter cards That connect to a virtual switch named vSwitch1.
You configure NIC Teaming on VM1 as shown in the exhibit.

You need to ensure that VM1 will retain access to the network if a physical adapter card fails on Server1. What should you do?

- Answer: A**

Which command should you run first? To answer, select the appropriate options in the answer area.

visit - <https://www.surepassexam.com>



NEW QUESTION 11

You need to ensure that VM1 and VM2 can communicate with each other only. The solution must prevent VM1 and VM2 from communicating with Server1. Which cmdlet should you use?

- A. Set-NetNeighbor
- B. Remove-VMSwitchTeamMember
- C. Set-VMSwitch
- D. Enable-VMSwitchExtension

Answer: C

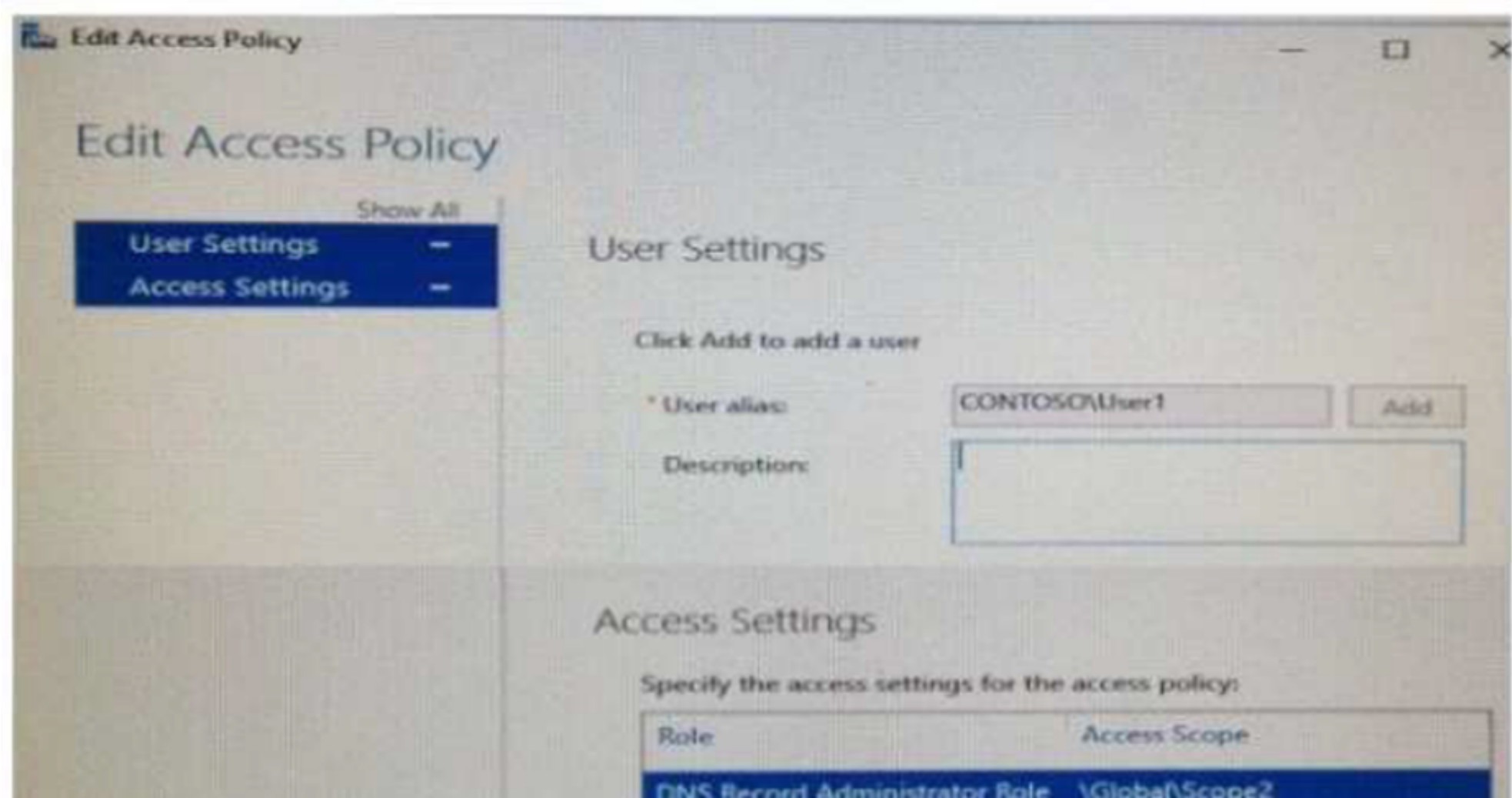
NEW QUESTION 12

HOTSPOT

Your network contains an Active Directory domain named contoso.com. The domain contains a domain controller named Server1 and a member server named Server2. Server1 has the DNS Server role installed Server2 has IP Address Management IPAM installed The IPAM server retrieves zones from Server1 as shown in the following table

Zone name	Dynamic update setting	Access scope
Adatum.com	Secure	\Global
Fabrikam.com	None	\Global\Scope1

The IPAM server has one access policy configured as shown in the exhibit.



For each of the following statements, select Yes, if the statement is true. Otherwise, select No.

Answer Area

Statements	Yes	No
User1 can add a host (A) record) to adatum.com.	<input type="radio"/>	<input type="radio"/>
User1 can add a host (A) record to fabrikam.com.	<input type="radio"/>	<input type="radio"/>
User1 can delete the fabrikam.com zone.	<input type="radio"/>	<input type="radio"/>

- A. Mastered
- B. Not Mastered

Answer: A

Explanation:

Statements	Yes	No
User1 can add a host (A) record) to adatum.com.	<input type="radio"/>	<input checked="" type="radio"/>
User1 can add a host (A) record to fabrikam.com.	<input type="radio"/>	<input checked="" type="radio"/>
User1 can delete the fabrikam.com zone.	<input checked="" type="radio"/>	<input type="radio"/>

NEW QUESTION 13

HOTSPOT

Your network contains an Active Directory domain named contoso.com. The domain contains a member server named Server1 that runs Windows Server 2016. You install IP Address Management (IPAM) on Server1. You select the automatic provisioning method, and then you specify a prefix of IPAM1. You need to configure the environment for automatic IPAM provisioning. Which cmdlet should you run? To answer, select the appropriate options in the answer area.

☒

Add-IpamDiscoveryDomain
Enable-IpamCapability
Invoke-IpamGpoProvisioning
Set-IpamConfiguration

-Domain "Contoso.com"

☒

-AssetTag
-DisciverDns
-GpoPrefixName
-ProvisioningMethod

"IPAM1"

- A. Mastered
- B. Not Mastered

Answer: A

Explanation:



NEW QUESTION 18

Note: This question is part of a series of questions that use the same similar answer choices An answer choice may be correct for more than one question in the series Each question is independent of the other questions in this series. Information and details provided in a question apply only to that question
You have a Hyper-V host named Server1 that runs Windows Server 2016 Server1 has a dynamically expanding virtual hard disk (VHD) file that is 900 GB The VHD contains 400 GB of free space.
You need to reduce the amount of disk space used by the VHD. What should you run?

- A. the Mount-VHD cmdlet
- B. the Diskpart command
- C. the Set-VHD cmdlet
- D. the Set-VM cmdlet
- E. the Set-VMHost cmdlet
- F. the Set-VMProcessor cmdlet
- G. the Install-WindowsFeature cmdlet
- H. the Optimize-VHD cmdlet

Answer: H

NEW QUESTION 22

In this section, you'll see one or more sets of questions with the same scenario and problem Each question presents a unique solution to the problem, and you must determine whether the solution meets the stated goals Any of the solutions might solve the problem. It is also possible that none of the solutions solve the problem.
Once you answer a question in this section, you will NOT be able to return to it As a result. these questions will not appear in the review screen
Note This question is part of a series of questions that present the same scenario Each question in the series contains a unique solution Determine whether the solution meets the stated goals.
Your network contains an Active Directory forest named contoso.com. The forest contains a member server named Server1 that runs Windows Server 2016 All domain controllers run Windows Server 2012 R2
Contoso com has the following configuration



You plan to deploy an Active Directory Federation Services (AD FS) farm on Server1 and to configure device registration You need to configure Active Directory to support the planned deployment. Solution You raise the domain functional level to Windows Server 2012R2.
Does this meet the goal?

- A. Yes
- B. No

Answer: B

NEW QUESTION 25

Note: This question is part of a series of questions that present the same scenario. Each question in the series contains a unique solution that might meet the stated goals. Some question sets might have more than one correct solution, while others might not have a correct solution.
After you answer a question in this section, you will NOT be able to return to it. As a result, these questions will not appear in the review screen.
You are a server administrator at a company named Contoso, Ltd.
Contoso has a Windows Server 2016 Hyper-V environment configured as shown in the following table.

Hyper-V host name	Configuration	Virtual switch name
Host1	- Uses an Intel processor - Is a member of a SAN named SAN1	Switch1
Host2	- Uses an AMD processor - Has local storage only	Switch2
Host3	- Uses an Intel processor - Is a member of a SAN named SAN1	Switch1
Host4	- Uses an Intel processor - Has local storage only	Switch2

All of the virtual switches are of the external type.

You need to ensure that you can move virtual machines between the hosts without causing the virtual machines to disconnect from the network.

Solution: You implement live migration by using Host3 and Host4. Does this meet the goal?

- A. Yes
- B. No

Answer: A

NEW QUESTION 27

Note: This question is part of a series of questions that present the same scenario. Each question in the series contains a unique solution that might meet the stated goals. Some question sets might have more than one correct solution, while others might not have a correct solution.

Your network contains an Active Directory forest

You install Windows Server 2016 on 10 virtual machines.

You need to deploy the Web Server (IIS) server role identically to the virtual machines.

Solution: You use Windows PowerShell Desired State Configuration (DSC) to create a default configuration and then you apply the configuration the virtual

- A. Yes
- B. No

Answer: A

Explanation:

References:

<https://www.simple-talk.com/sysadmin/powershell/powershell-desired-state-configuration-the-basics/>

NEW QUESTION 29

HOTSPOT

You implement a Windows Server 2016 failover cluster named Cluster1 as a highly available file server.

You run the Get-Cluster cmdlet and receive the following output.

AddEvictDelay	: 60
AdministrativeAccessPoint	: Dns
AutoAssignNodeSite	: 0
AutoBalancerMode	: 2
AutoBalancerLevel	: 1
ClusSvcHangTimeout	: 135
ClusSvcRegroupStageTimeout	: 5
ClusSvcRegroupTickInMilliseconds	: 300
ClusterEnforcedAntiAffinity	: 0
ClusterFunctionalLevel	: 9
ClusterUpgradeVersion	: 7
ClusterGroupWaitDelay	: 120
ClusterLogLevel	: 3
ClusterLogSize	: 300
DatabaseReadWriteMode	: 0
DefaultNetworkRole	: 3
Description	:
Domain	: contoso.com
EnableSharedVolumes	: Enabled
FixQuorum	: 0
Id	: ec6121be-f816-426b-b550-72cafb943f1b
Name	: cluster1

Use the drop-down menus to select the answer choice that completes each statement based on the

information presented in the graphic.

Answer Area

You can perform Cluster-Aware Updating (CAU) in [answer choice].

self-updating mode only
remote-updating mode only
remote-updating mode and self-updating mode

You can use [answer choice] to create a file share in Cluster1.

DFS Management
Failover Cluster Manager
File Server Resource Manager
Server Manager

- A. Mastered
- B. Not Mastered

Answer: A

Explanation:

Answer Area

You can perform Cluster-Aware Updating (CAU) in [answer choice].

self-updating mode only
remote-updating mode only
remote-updating mode and self-updating mode

You can use [answer choice] to create a file share in Cluster1.

DFS Management
Failover Cluster Manager
File Server Resource Manager
Server Manager

NEW QUESTION 33

You have four servers named Server1, Server2, Server3, and Server4 that run Windows Server 2016. Each server has a single 4-TB SATA hard disk. To each server you attach a new 4-TB SATA hard disk. You need to create a new storage cluster that uses Storage Spaces Direct. The storage pool must contain all of the new disks. Which command should you run before you enable Storage Space Direct?

- A. Add-ClusterSharedVolume -Name "Disk 1" -Cluster Cluster1
- B. New-Cluster -Name Cluster1 -Node 'Server1', 'Server2', 'Server3', 'Server4' -NoStorage
- C. Get-ClusterAvailableDisk -Cluster Cluster1 | Add-ClusterDisk
- D. New-ClusterStorageEnclosure -id 1 -name Cluster1 -type jbod -ConnectionString "Server1,Server2,Server3,Server4"

Answer: B

NEW QUESTION 37

Note This question is part of a series of questions that use the same scenario. For your convenience, the scenario is repeated in each question. Each question presents a different goal and answer choices, but the text of the scenario is exactly the same in each question in this series.
Start of Repeated Scenario:
Your network contains an Active Directory domain named contoso.com The functional level of the forest and the domain is Windows Server 2008 R2 All servers in the domain run Windows Server 2016 Standard. The domain contains 300 client computers that run either Windows 8.1 or Windows 10. The domain contains nine servers that are configured as shown in the following table.

Name	Configuration	Planned changes
Server1	Domain controller	None
Server2	File server	Run Failover Clustering and Storage Spaces Direct
Server3	File server	Run Failover Clustering and Storage Spaces Direct
Server4	Hyper-V host	Run shielded virtual machines
Server5	Hyper-V host	None
Server6	Member server	Run Active Directory Federation Services (AD FS)
VM1	Virtual machine hosted on Server5	None
VM2	Virtual machine hosted on Server5	None
VM3	Virtual machine hosted on Server5	None

The virtual machines are configured as follows:

- Each virtual machine has one virtual network adapter
- VM1 and VM2 are part of a Network Load Balancing (NLB) cluster.
- All of the servers on the network can communicate with all of the virtual machines. End of repeated Scenario.

On server4, you plan to provision a new volume that will be used to create large, fixed-size VHDX files.

Which type of file system should you use the new volume to minimize the amount of time required to create the VHDX files?

- A. ReFS
- B. NTFS
- C. CVFS
- D. exFAT

Answer: A

NEW QUESTION 39

HOTSPOT

Note: This question is part of a series of questions that use the same scenario. For your convenience, the scenario is repeated in each question. Each question presents a different goal and answer choices, but the text of the scenario is exactly the same in each question in this series.

A company named Contoso, Ltd. has several servers that run Windows Server 2016. Contoso has a Hyper-V environment that uses failover clustering and Windows Server Update Services (WSUS). The environment contains several Windows containers and several virtual machines.

The WSUS deployment contains one upstream server that is located on the company's perimeter network and several downstream servers located on the internal network. A firewall separates the upstream server from the downstream servers.

You plan to deploy a human resources application to a new server named HRServer5. HRServer5 contains a FAT32-formatted data volume.

The CIO of Contoso identifies the following requirements for the company's IT department:

- Deploy a failover cluster to two new virtual machines.
- Store all application databases by using Encrypted File System (EFS).
- Ensure that each Windows container has a dedicated IP address assigned by a DHCP server.
- Produce a report that lists the processor time used by all of the processes on a server named Server1 for five hours.
- Encrypt all communication between the internal network and the perimeter network, including all WSUS communications.
- Automatically load balance the virtual machines hosted in the Hyper-V cluster when processor utilization exceeds 70 percent.

You need to create a Data Collector Set to meet the requirement for the processor time report.

What command should you run to create the Data Collector Set? To answer, select the appropriate options in the answer area.

Answer Area

▼

lodctr
logman
perform
tracert

create

▼

alert
config
counter
trace

perf_log -c "\Process(_Total)\% Processor Time" -max 10 -rf 05:00

- A. Mastered
- B. Not Mastered

Answer: A

Explanation:

Answer Area

▼

lodctr
logman
perform
tracert

create

▼

alert
config
counter
trace

perf_log -c "\Process(_Total)\% Processor Time" -max 10 -rf 05:00

NEW QUESTION 40

DRAG DROP

Your network contains two Hyper-V servers named Server1 and Server2. Server1 has Windows Server 2012 R2 installed. Server2 has Windows Server 2016

installed.
You perform a live migration of a virtual machine named VM1 from Server1 to Server2. You need to create a production checkpoint for VM1 on Server2.
Which three Windows PowerShell cmdlets should you run in sequence? To answer, move the appropriate Windows PowerShell cmdlets from the list of actions to the answer area and arrange them in the correct order.

Cmdlets

Set-VM

Update-VMVersion

Checkpoint-VM

Set-VMHost

Stop-VM

Answer Area

<

>

^

v

- A. Mastered
- B. Not Mastered

Answer: A

Explanation:

Cmdlets

Set-VM

Update-VMVersion

Checkpoint-VM

Set-VMHost

Stop-VM

Answer Area

Stop-VM

Update-VMVersion

Checkpoint-VM

<

>

^

v

NEW QUESTION 41

Your network contains an Active Directory domain. The domain contains a new file server named Server1 that runs a Server Core installation of Windows Server 2016.
Server1 has an ReFS-formatted volume D: and NTFS-formatted volume E: The volumes do not contain any data.
You install the Data Deduplication role service on Server1.
You need to implement Data Deduplication for volumes on D: and E:.
Solution: From Windows PowerShell, you run Format-Volume D: -FileSystem EXFat and Enable- DeDupVolume -Volume D:,E:.
Does this meet the goal?

- A. Yes
- B. No

Answer: A

NEW QUESTION 46

You have a server named Server1 that runs Windows Server 2016.
The disks on Server1 are configured as shown in the following table.

Volume	Type	File System	Capacity
C:	Attached locally	NTFS	150 GB
D:	Attached locally	exFAT	100 GB
E:	Attached locally	NTFS	20 GB
F:	Attached locally	ReFS	1 TB
G:	iSCSI LUN	NTFS	2 TB

Windows Server 2016 is installed in C:\Windows.
On which two volumes can you enable data deduplication? Each correct answer presents a complete solution.

- A. C:
- B. D:
- C. E:
- D. F:
- E. G:

Answer: CE

NEW QUESTION 50

You have two servers named Server1 and Server2 that run Windows Server 2016.
You plan to implement Storage Replica to replicate the contents of volumes on Server1 to Server2. You need to ensure that the replication traffic between the servers is limited to a maximum of 100 Mbps.
Which cmdlet should you run?

- A. New-NetQosPolicy
- B. Set-NetworkController
- C. New-NetTransportFilter
- D. New-StorageQosPolicy

Answer: A

Explanation:

References: [https://technet.microsoft.com/en-us/library/hh967471\(v=wps.630\).aspx](https://technet.microsoft.com/en-us/library/hh967471(v=wps.630).aspx)

NEW QUESTION 55

DRAG DROP
You are preparing an image of Windows Server 2016.
The image is missing the driver foe a network adapter that is required in your environment. You need to ensure that the image contains the network adapter driver.
Which three cmdlets should you use in sequence? To answer, move the appropriate cmdlets from the list of cmdlets to the answer area and arrange them m the correct order.

Cmdlets

Mount-WindowsImage

Add-WindowsDriver

Get-WindowsImage

Save-WindowsImage

Add-WindowsFeature

Dismount-WindowsImage

Optimize-WindowsImage

Answer Area

1

2

3

- A. Mastered
- B. Not Mastered

Passing Certification Exams Made Easy

visit - <https://www.surepassexam.com>

Answer: A

Explanation:

Cmdlets

Mount-WindowsImage

Get-WindowsImage

Save-WindowsImage

Add-WindowsFeature

Answer Area

1 Add-WindowsDriver

2 Optimize-WindowsImage

3 Dismount-WindowsImage

NEW QUESTION 56

You have two Hyper-V hosts named Server1 and Server2 that run Windows Server 2016. Server1 and Server2 are connected to the same network. On Server1 and Server2, you create an external network switch named Switch1. You have the virtual machines shown in the following table.

Virtual machine name	IP address	Subnet mask	Hyper-V host
VM1	192.168.1.16	255.255.255.0	Server1
VM2	192.168.1.32	255.255.255.0	Server2
VM3	192.168.1.48	255.255.255.0	Server2

All three virtual machines are connected to Switch1.
 You need to prevent applications in VM3 from being able to capture network traffic from VM1 or VM2. The solution must ensure that VM1 retains network connectivity.
 What should you do?

- A. On Server2, configure the VLAN ID setting of Switch1.
- B. On Server2, create an external switch and connect VM3 to the switch.
- C. Modify the subnet mask of VM1 and VM2.
- D. Configure network virtualization for VM1 and VM2.

Answer: D

NEW QUESTION 58

HOTSPOT

You have a server named Server1 that runs Windows Server 2016. Server1 is a Hyper-V host. You run the commands shown in the following graphic:



Use the drop-down menus to select the answer choice that completes each statement based on the information presented in the graphic.

Answer Area

After running the commands, TEAM1 contains [answer choice] network adapters.

	▼
one	
two	
three	

If you run **Add-VmSwitchTeamMember -VmSwitchName TEAM1 -NetAdapterName "NIC4"**, TEAM1 will contain [answer choice] network adapters.

	▼
one	
two	
three	
four	

- A. Mastered
- B. Not Mastered

Answer: A

Explanation:

Answer Area

After running the commands, TEAM1 contains [answer choice] network adapters.

	▼
one	
two	
three	

If you run **Add-VmSwitchTeamMember -VmSwitchName TEAM1 -NetAdapterName "NIC4"**, TEAM1 will contain [answer choice] network adapters.

	▼
one	
two	
three	
four	

NEW QUESTION 62

DRAG DROP

Your network contains an Active Directory domain. The domain contains two domain controllers named DC1 and DC2. DC2 is a virtual machine that is hosted on a Hyper-V host named HyperV1. DC1 holds the PDC emulator operations master role.

You need to create a new domain controller named DC3 by using domain controller cloning.

Which five actions should you perform in sequence before you can import the cloned virtual machine? To answer, move the appropriate actions from the list of actions to the answer area and arrange them in the correct order.

NOTE: More than one order of answer choices is correct. You will receive credit for any of the correct orders you select.

Actions

Stop DC2.

Run the **New-ADDCCloneConfigFile** cmdlet.

Modify the group membership of DC3.

Export DC2.

Run the **Get-ADDCCloningExcludedApplicationList** cmdlet.

Modify the group membership of DC2.

Answer Area

⬅

➡

⬆

⬇

- A. Mastered
- B. Not Mastered

Answer: A

Explanation:

Actions

Stop DC2.

Run the **New-ADDCCloneConfigFile** cmdlet.

Modify the group membership of DC3.

Export DC2.

Run the **Get-ADDCCloningExcludedApplicationList** cmdlet.

Modify the group membership of DC2.

Answer Area

Modify the group membership of DC2.

Run the **Get-ADDCCloningExcludedApplicationList** cmdlet.

⬅

➡

⬆

⬇

Run the **New-ADDCCloneConfigFile** cmdlet.

Stop DC2.

Export DC2.

NEW QUESTION 65

HOTSPOT

Your network contains an Active Directory forest named contoso.com. You need to add a new domain named fabrikam.com to the forest. What command should you run? To answer, select the appropriate options in the answer area.

Answer Area

▼	-DomainType	▼
Install-ADDSDomain		TreeDomain
Install-ADDSDomainController		ChildDomain
Install-ADDSTForest		

-InstallDns:Strue -NewDomainName fabrikam.com -ParentDomainName contoso.com

- A. Mastered
- B. Not Mastered

Answer: A

Explanation:

Answer Area

▼	-DomainType	▼
Install-ADDSDomain		TreeDomain
Install-ADDSDomainController		ChildDomain
Install-ADDSTForest		

-InstallDns:Strue -NewDomainName fabrikam.com -ParentDomainName contoso.com

Explanation:
 References:
[https://technet.microsoft.com/en-us/library/hh974722\(v=wps.630\).aspx](https://technet.microsoft.com/en-us/library/hh974722(v=wps.630).aspx)

NEW QUESTION 66

Active Directory Recycle Bin is enabled. You discover that a support technician accidentally removed 100 users from an Active Directory group named Group1 an hour ago. You need to restore the membership of Group1. What should you do?

- A. Perform tombstone reanimation.
- B. Export and import data by using Dsamain.
- C. Perform a non-authoritative restore.
- D. Recover the items by using Active Directory Recycle Bin.

Answer: B

Explanation:

A group has been modified. Nothing has been deleted. Therefore, answers A and D will not work. Answer C would work if it was an authoritative restore, but not a non-authoritative restore.
 The solution is to recover an earlier copy of the group from a backup or active directory snapshot by using DSadmain.

NEW QUESTION 69

DRAG DROP

You have a Hyper-V host named Server1 that runs Windows Server 2016.

The installation source files for Windows Server 2016 are located in D:\Source. You need to create a Nano Server image.

Which cmdlets should you run? To answer, drag the appropriate cmdlets to the correct targets. Each cmdlet may be used once, more than once, or not at all. You may need to drag the split bat between panes or scroll to view content.

Cmdlets

Add-WindowsImage

Import-Module

Install-Module

New-NanoServerImage

New-WindowsCustomImage

Answer Area

First cmdlet to run:

cmdlet

Second cmdlet to run:

cmdlet

- A. Mastered
- B. Not Mastered

Answer: A

Explanation:

Step 1: Import Module
Import-Module .\NanoServerImageGenerator.psm1 Step 2: New New-NanoServerImage
Create Nano Server Image VHDX
New-NanoServerImage -MediaPath .\Files -BasePath.\Base -TargetPath .\Images\NanoVMGA.vhdx References: <https://technet.microsoft.com/en-us/windows-server-docs/get-started/deploy-nano-server>

NEW QUESTION 72

HOTSPOT
Your network contains an Active Directory domain named contoso.com. The domain contains two servers named Server1 and Server2 that run Windows Server 2016.
Server1 has Microsoft System Center 2016 Virtual Machine Manager (VMM) installed. Server2 has IP Address Management (IPAM) installed.
You create a domain user named User1.
You need to integrate IPAM and VMM. VMM must use the account of User1 to manage IPAM. The solution must use the principle of least privilege.
What should you do on each server? To answer, select the appropriate options in the answer area.

Answer Area

On Server1:

Create a Run as Account that uses User1

Add User1 to the Fabric Administrator user role

Add User1 to the Remote Management Users group

On Server2:

Add User1 to IPAM Administrator Role

Add User1 to IPAM ASM Administrator Role

Add User1 to IPAM MSM Administrator Role

- A. Mastered
- B. Not Mastered

Answer: A

Explanation:

On Server1: Create a Run As Account that uses User1.
On Server2: Add User1 to IPAM ASM Administrator Role. [https://technet.microsoft.com/en-us/library/dn783349\(v=ws.11\).aspx](https://technet.microsoft.com/en-us/library/dn783349(v=ws.11).aspx) [https://technet.microsoft.com/en-us/library/jj878348\(v=ws.11\).aspx](https://technet.microsoft.com/en-us/library/jj878348(v=ws.11).aspx)

NEW QUESTION 74

DRAG DROP
Your network contains an Active Directory domain named contoso.com. The domain contains a server named Server1 that runs Windows Server 2016.

You install IP Address Management (IPAM) on Server1.
You need to manually start discovery of the servers that IPAM can manage in contoso.com.
Which three cmdlets should you run in sequence? To answer, move the appropriate cmdlets from the list of cmdlets to the answer area and arrange them in the correct order.

Cmdlets

Add-IpamAddress

Add-IpamDiscoveryDomain

Add-IpamSubnet

Update-IpamServer

Invoke-IpamServerProvisioning

Start-ScheduledTask

Answer Area

⬅️

➡️

⬆️

⬆️

- A. Mastered
- B. Not Mastered

Answer: A

Explanation:

<https://technet.microsoft.com/itpro/powershell/windows/ipam/add-ipamdiscoverydomain> <https://technet.microsoft.com/itpro/powershell/windows/ipam/add-ipamserverinventory> <https://technet.microsoft.com/itpro/powershell/windows/ipam/invoke-ipamserverprovisioning>

NEW QUESTION 75

You have a server named Server1 that runs Windows Server 2016. Server1 is a Hyper-V host that hosts a virtual machine named VM1. Server1 has three network adapter cards that are connected to virtual switches named vSwitch1, vSwitch2 and vSwitch3. You configure NIC Teaming on VM1 as shown in the exhibit. (Click the Exhibit button.)

NIC Teaming

New team

Team name:

VM1 NIC Team

Member adapters:

In Team	Adapter	Speed	State	Reason
<input type="checkbox"/>	Ethernet	10 Gbps		
<input checked="" type="checkbox"/>	Ethernet 2	10 Gbps		
<input checked="" type="checkbox"/>	Ethernet 3	10 Gbps		

⬆️ Additional properties

Teaming mode:

Switch Independent

You need to ensure that VM1 will retain access to the network if a physical network adapter card fails on Server1.

What should you do?

- A. From Windows PowerShell on VM1, run the Set-VmNetworkAdapterTeamMapping cmdlet.
- B. From Hyper-V Manager on Server1, modify the settings on VM1.
- C. From Windows PowerShell on Server1, run the Set-VmNetworkAdapterFailoverConfiguration cmdlet.
- D. From the properties of the NIC team on VM1, add the adapter named Ethernet to the NIC team.

Answer: D

Explanation:

<https://technet.microsoft.com/en-us/windows-server-docs/networking/technologies/nic-teaming/nic-teaming>

NEW QUESTION 77

HOTSPOT

You have a Windows Server 2016 failover cluster that contains two servers named Server1 and Server2.

You need to apply patches to Server1.

Which two commands should you run before you apply the patches? To answer, select the appropriate options in the answer area.

Answer Area

First command:

▼

Invoke-Command Server2 { Start-ClusterGroup }

Invoke-Command Server2 { Start-ClusterResource }

Move-ClusterGroup -Node Server2

Set-ClusterOwnerNode -Owner Server2

Set-ClusterParameter -Name Owner -Value Server2

Second command:

▼

Stop-ClusterGroup

Stop-ClusterResource

Suspend-ClusterNode

Suspend-ClusterResource

- A. Mastered
- B. Not Mastered

Answer: A

Explanation:

Answer Area

First command:

▼

Invoke-Command Server2 { Start-ClusterGroup }

Invoke-Command Server2 { Start-ClusterResource }

Move-ClusterGroup -Node Server2

Set-ClusterOwnerNode -Owner Server2

Set-ClusterParameter -Name Owner -Value Server2

Second command:

▼

Stop-ClusterGroup

Stop-ClusterResource

Suspend-ClusterNode

Suspend-ClusterResource

NEW QUESTION 80

You want to capture the state, data, and hardware configuration of a running virtual machine.

Which checkpoint can be very useful if you need to recreate a specific state or condition of a running virtual machine so that you can troubleshoot a problem?

- A. Production
- B. Standard

Answer: B

Explanation:

Standard checkpoints capture the state, data, and hardware configuration of a running virtual machine and are intended for use in development and test scenarios.

NEW QUESTION 83

Your IT company is constantly changing, with new users coming and going throughout the year.

One of your common tasks requires the deletion of user accounts for employees who have left the company.

Which command can be used to delete user accounts?

- A. LDIFDE
- B. Dsmmod
- C. Dspromo
- D. Netsh

Answer: A

NEW QUESTION 86

Nano Server is foundational to the modern datacenter and is useful in two core scenarios: As a private cloud infrastructure it's particularly useful for clustered Hyper-V, clustered storage and core networking services scenarios; or as an application platform it's highly optimized for modern distributed and cloud-based apps which leverage containers and micro service architectures.

Is the following statement TRUE or FALSE?

A local interface with UI support is available for offline management of Nano Servers?

- A. TRUE
- B. FALSE

Answer: B

Explanation:

A local interface with UI support is NOT available for Nano servers. You must administer them remotely using PowerShell.

NEW QUESTION 88

You have decided to install Windows Server 2016 by choosing the Service Core Installation option. If you want to install, configure or uninstall server roles remotely, what tool would you use?

- A. Any of these
- B. Windows PowerShell
- C. Remote Server Administration Tools (RSAT)
- D. Server Manager

Answer: A

NEW QUESTION 93

Which terminology is being described below?

Time synchronization is critical for the proper operation of many Windows services and line-of-business applications. The uses the Network Time Protocol (NTP) to synchronize computer clocks on the network so that an accurate clock value, or time stamp, can be assigned to network validation requests and resource access requests.

- A. Network Services Shell (Netsh)
- B. Listsvc
- C. Fixmbr
- D. Windows Time service (W32time)

Answer: D

Explanation:

The correct answer is Windows Time service (W32time)

NEW QUESTION 94

You have two servers that run Windows Server 2016. The servers are configured as shown in the following table.

Server name	Workgroup	DNS suffix
Server1	Workgroup1	<i>None</i>
Server2	Workgroup2	Contoso.com

You need to create a failover cluster that contains both servers.

Which two commands should you run? Each correct answer presents part of the solution. NOTE: Each correct selection is worth one point.

- A. wmic ComputerSystem Set Workgroup= "Workgroup2"
- B. New-Cluster-Name Cluster1- Node Server1, Server2- AdministrativeAccessPoint DNS
- C. New-Cluster-Name Cluster1- Node Server1, Server2- AdministrativeAccessPoint ActiveDirectoryAndDns
- D. New-Cluster-Name Cluster1- Node Server1, Server2- AdministrativeAccessPoint None
- E. netdom computername Server1/MakePrimary:server1.contoso.com

Answer: AB

NEW QUESTION 95

You have a server named Server1 that runs Windows Server 2016. Server1 has the Containers feature installed.

You create a text file that contains the commands that will be used to automate the creation of new containers.

You need to ensure that the commands in the text file are used when you create new containers. What should you name the file?

- A. Bootstrap.ini
- B. Config.ini
- C. Dockerfile
- D. Unattend.txt

Answer: C

NEW QUESTION 100

You have Hyper-V virtual machines that run 50 web servers, 10 Microsoft SQL Server servers. 10 file servers, and eight domain controllers.

You need to implement a backup strategy that meets the following requirements:

- *Backs up all servers
 - *Centralizes backup management
 - *Performs application-level backups
 - *Provides the ability to perform bare metal recovery
- What should you use?

- A. Microsoft Azure VM Backup
- B. Microsoft Azure Backup Agent
- C. Windows Server Backup
- D. Microsoft Azure Backup Server

Answer: D

NEW QUESTION 105

You have a Hyper-V host that runs Windows Server 2016.

You need to identify the amount of processor resources consumed by Hyper-V and virtual machines. Which counter should you use from Performance Monitor?

- A. \Hyper-V Hypervisor\Logical Processor
- B. \Hyper-V Hypervisor Root Virtual Processor(_Total)\% Guest Run Time
- C. \Hyper-V Hypervisor Virtual Processor(_Total)\% Hypervisor Run Time
- D. \Hyper-V Hypervisor Virtual Processor(_Total)\% Total Run Time
- E. \Hyper-V Hypervisor Logical Processor(_Total)\% Total Run Time

Answer: A

Explanation:

References:

[https://msdn.microsoft.com/en-us/library/cc768535\(v=bts.10\).aspx](https://msdn.microsoft.com/en-us/library/cc768535(v=bts.10).aspx)

NEW QUESTION 109

Note: This question is part of a series of questions that present the same scenario. Each question in the series contains a unique solution that might meet the stated goals. Some question sets might

have more than one correct solution, while others might not have a correct solution. Your network contains an Active Directory forest

You install Windows Server 2016 on 10 virtual machines.

You need to deploy the Web Server (IIS) server role identically to the virtual machines.

Solution: From Windows System Image Manager, you create an answer file, you copy the file to C:\Sysprep on each virtual machine, and then you run the Apply-Image cmdlet.

Does this meet the goal?

- A. Yes
- B. No

Answer: B

NEW QUESTION 112

You have two Hyper-V hosts named Server1 and Server2 that run Windows Server 2016. Server1 hosts a virtual machine named VM1 that is in a Running state.
 On Server1, you export VM1 and then you import VM1 on Server2. What is the current state of VM1 on Server2?

- A. Off
- B. Running
- C. Paused
- D. Saved

Answer: B

NEW QUESTION 114

HOTSPOT

Note: This question is part of a series of questions that use the same scenario. For your convenience, the scenario is repeated in each question. Each question presents a different goal and answer choices, but the text of the scenario is exactly the same in each question in this series.
 Your network contains an Active Directory domain named contoso.com. The functional level of the forest and the domain is Windows Server 2008 R2. All servers in the domain run Windows Server 2016 Standard. The domain contains 300 client computers that run either Windows 8.1 or Windows 10.
 The domain contains nine servers that are configured as shown in the following table.

Name	Configuration	Planned changes
Server1	Domain controller	<i>None</i>
Server2	File server	Run Failover Clustering and Storage Spaces Direct
Server3	File server	Run Failover Clustering and Storage Spaces Direct
Server4	Hyper-V host	Run shielded virtual machines
Server5	Hyper-V host	<i>None</i>
Server6	Member server	Run Active Directory Federation Services (AD FS)
VM1	Virtual machine hosted on Server5	<i>None</i>
VM2	Virtual machine hosted on Server5	<i>None</i>
VM3	Virtual machine hosted on Server5	<i>None</i>

The virtual machines are configured as follows:
 Each virtual machine has one virtual network adapter.
 VM1 and VM2 are part of a Network Load Balancing (NLB) cluster.
 All of the servers on the network can communicate with all of the virtual machines. For VM1 and VM2, you plan to use live migration between Server4 and Server5.
 You need to ensure that when the virtual machines migrate, they maintain connectivity to the network.
 Which virtual switch names and connection types should you use on each server? To answer, select the appropriate options in the answer area.

Answer Area

Virtual switch connection type on Server4:

▼

External network

Internal network

Private network

Virtual switch connection type on Server5:

▼

External network

Internal network

Private network

Virtual switch name on Server4:

▼

External on Server4

Network switch

Server4

Virtual switch name on Server5:

▼

External on Server5

Network switch

Server5

- A. Mastered
- B. Not Mastered

Answer: A

Explanation:

Answer Area

Virtual switch connection type on Server4:

▼

External network

Internal network

Private network

Virtual switch connection type on Server5:

▼

External network

Internal network

Private network

Virtual switch name on Server4:

▼

External on Server4

Network switch

Server4

Virtual switch name on Server5:

▼

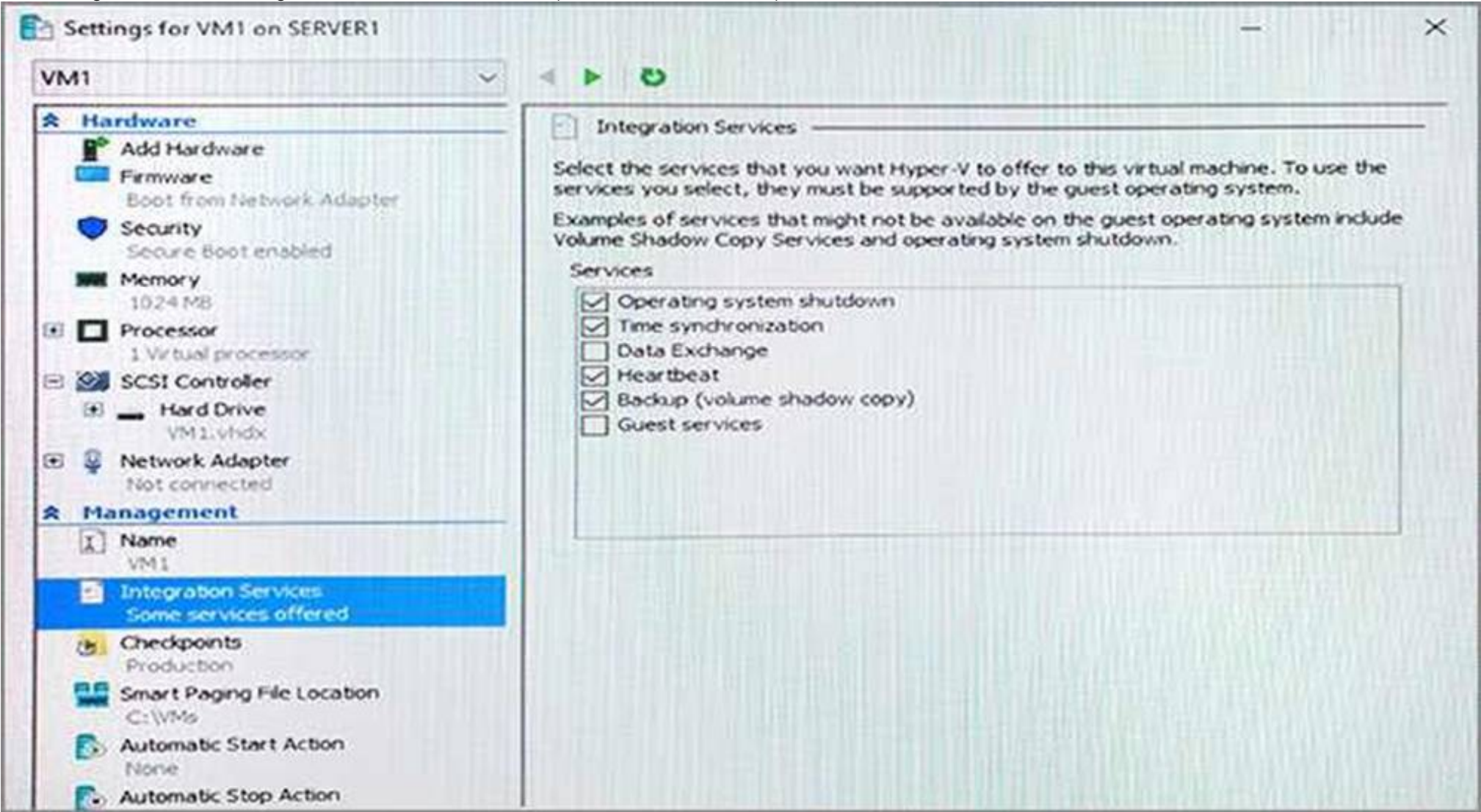
External on Server5

Network switch

Server5

NEW QUESTION 116

Note: This question is part of a series of questions that present the same scenario. Each question in the series contains a unique solution that might meet the stated goals. Some question sets might have more than one correct solution, while others might not have a correct solution. After you answer a question in this section, you will NOT be able to return to it. As a result, these questions will not appear in the review screen. You have a Hyper-V host named Server1 that hosts a virtual machine named VM1. Server1 and VM1 run Windows Server 2016. The settings for VM1 are configured as shown in the exhibit. (Click the Exhibit button.)



You need to ensure that you can use the Copy-VMFile cmdlet on Server1 to copy files from VM1. Solution: You enable the Data Exchange integration service for VM1. Does this meet the goal?

- A. Yes
B. No

Answer: B

Explanation:

References:

[https://technet.microsoft.com/en-us/library/dn798297\(v=ws.11\).aspx](https://technet.microsoft.com/en-us/library/dn798297(v=ws.11).aspx)

NEW QUESTION 120

Note: This question is part of a series of questions that present the same scenario. Each question in the series contains a unique solution that might meet the stated goals. Some question sets might have more than one correct solution, while others might not have a correct solution.

After you answer a question in this section, you will NOT be able to return to it. As a result, these questions will not appear in the review screen.

You have a server named Server1 that runs Windows Server 2016.

Server1 hosts a line-of-business application named App1. App1 has a memory leak that occasionally causes the application to consume an excessive amount of memory.

You need to log an event in the Application event log whenever App1 consumes more than 4 GB of memory.

Solution: You create an event trace data collector. Does this meet the goal?

- A. Yes
B. No

Answer: B

NEW QUESTION 123

Note: This question is part of a series of questions that present the same scenario. Each question in the series contains a unique solution that might meet the stated goals. Some question sets might have more than one correct solution, while others might not have a correct solution.

After you answer a question in this section, you will NOT be able to return to it. As a result, these questions will not appear in the review screen.

You are a server administrator at a company named Contoso, Ltd.

Contoso has a Windows Server 2016 Hyper-V environment configured as shown in the following table.

Hyper-V host name	Configuration	Virtual switch name
Host1	- Uses an Intel processor - Is a member of a SAN named SAN1	Switch1
Host2	- Uses an AMD processor - Has local storage only	Switch2
Host3	- Uses an Intel processor - Is a member of a SAN named SAN1	Switch1
Host4	- Uses an Intel processor - Has local storage only	Switch2

All of the virtual switches are of the external type.

You need to ensure that you can move virtual machines between the hosts without causing the virtual machines to disconnect from the network.

Solution: You implement live migration by using Host1 and Host3. Does this meet the goal?

- A. Yes
B. No

Answer: A

NEW QUESTION 126

Note: This question is part of a Series of questions that use the same or similar answer choices. An answer choice may be correct for more than one question In the series. Each question Is Independent of the other questions in this series. Information and details provided in a question apply only to that question.

You have two servers named Server 1 and Server 2 that run Windows Server 2016. Server 1 and server 2 have the Hyper-V server role installed and are nodes in a failover Cluster.

On Server 1, an administrator creates a virtual machine named VM1. You need to configure VM1 for high availability.

Which tool should you use?

- A. the clussvc.exe command
B. the cluster.exe command
C. the Computer Management snap in
D. the configurehyperv.exe command
E. the Disk Management map-in
F. the Failover Cluster Manager snap in
G. the Hyper V Manage map id
H. the Server Manager app

Answer: F

NEW QUESTION 128

HOTSPOT

You have two Hyper-V hosts named Server1 and Server2 that run Windows Server 2016. Server1 and Server2 connect to the same network. Server1 and Server2 have virtual switches configured as shown in the following table.

Switch name	Host	Type	VLAN ID
Switch1	Server1	External	2
Switch2	Server2	External	4
Switch3	Server2	Internal	<i>Not applicable</i>

You have nine virtual machines configured as shown in the following table.

Virtual machine name	Connected to	VLAN ID
VM1	Switch1	2
VM2	Switch1	<i>Not applicable</i>
VM3	Switch1	4
VM4	Switch2	2
VM5	Switch2	<i>Not applicable</i>
VM6	Switch2	4
VM7	Switch3	2
VM8	Switch3	<i>Not applicable</i>
VM9	Switch3	4

All of the virtual machines are configured to have IP addresses from the same network segment. The firewall on each of the virtual machines is configured to allow network connectivity.

To which virtual machines can you connect from VM1 and VM2? To answer, select the appropriate options in the answer area.

Answer Area

Virtual machines to which you can connect from VM1:

▼

VM4 only

VM4 and VM7

VM2, VM4, and VM5

None

Virtual machines to which you can connect from VM2:

▼

VM5 only

VM1 and VM3

VM5 and VM8

VM5, VM7, VM8, and VM9

None

- A. Mastered
- B. Not Mastered

Answer: A

Explanation:

Answer Area

Virtual machines to which you can connect from VM1:

	▼
VM4 only	
VM4 and VM7	
VM2, VM4, and VM5	
None	

Virtual machines to which you can connect from VM2:

	▼
VM5 only	
VM1 and VM3	
VM5 and VM8	
VM5, VM7, VM8, and VM9	
None	

NEW QUESTION 130

You have a Scale-Out File Server that has a share named Share 1. Share1 contains a virtual disk trie named Disk1.vhd. You plan to create a guest failover cluster. You need to ensure that you can use the virtual disk as a shared virtual disk for the guest failover* Cluster. Which cmdlet should you use?

- A. Optimize-VHD
- B. Convert-VHD
- C. Set-VHO
- D. Optimize-VHDSets

Answer: A

NEW QUESTION 132

You have a Windows Server 2016 fail over cluster named that contains four nodes named Server 1, Server2, Server3, and Server4. Cluster1 hosts 40 virtual machines that are distributed evenly across the nodes. Server 1 and Server2 are located in a data center in Madrid. Server1 and Server4 are located in a data center in Barcelona. You need to ensure that when you pause a node, the clustered virtual machines will always attempt to move automatically to another node in the same data center before attempting to move to a node in the other data center. Which two actions should you perform? Each correct answer presents part of the solution.

- A. Run the New-ClusterFaultDomain cmdlet.
- B. Configure a file share witness for each data center.
- C. Create an Active Directory site for each data center.
- D. Run the Set-Cluster FaultDomain cmdlet.
- E. Run the Add-ClusterGroup cmdlet.
- F. Change the quorum configuration of the cluster to Node Majority.

Answer: CE

NEW QUESTION 136

DRAG DROP

You have a server named Server1 that runs Windows Server 2016. You open a command prompt on Server1 and run the following commands.

```
C:\>diskpart
```

```
Microsoft DiskPart version 10.0.14393.0
```

```
Copyright (c) 1999-2013 Microsoft Corporation.  
On computer: SERVER1
```

```
DISKPART> list disk
```

```
Disk ### Status Size Free Dyn Gpt
```

```
-----  
Disk 0 Online 127 GB 0 B
```

```
Disk 1 Online 1800 GB 0 B
```

```
DISKPART> select disk 1
```

```
Disk 1 is now the selected disk.
```

```
DISKPART> list partition
```

```
Partition ### Type Size Offset
```

```
-----  
Partition 1 Primary 1799 GB 1024 KB
```

You back up the data on Disk 1.

You plan to convert Disk 1 to a GPT disk, and then to restore the data to Disk 1.

Which four DiskPart commands should you run in sequence before you restore the data? To answer, move the appropriate commands from the list of commands to the answer area and arrange them in the correct order.

Commands

Answer Area

convert dynamic

select disk 1

format fs=ntfs

create partition logical

create partition primary

convert gpt

clean



- A. Mastered
- B. Not Mastered

Answer: A

Explanation:

References: <https://www.remsoftware.com/info/convert-gpt-mbr-without-data-loss> <https://docs.microsoft.com/en-us/windows-server/administration/windows-commands/create-partition-primary>

NEW QUESTION 139

You have a server named Server1 that is an iSCSI target. You have a server named Server2 that runs Windows Server 2016. Server2 has an iSCSI disk named Disk1 that is hosted on Server1. Disk1 contains one volume that is assigned a drive letter of E. You need to increase the size of Disk1. What should you do?

- A. Run the Resize-IscsiVirtualDisk cmdlet and specify the -ComputerName Server2 parameter.
- B. Run the Resize-IscsiVirtualDisk cmdlet and specify the -ComputerName Server1 parameter.
- C. Run the Resize-Partition cmdlet and specify the -ComputerName Server1 parameter.
- D. Run the Resize-Partition cmdlet and specify the -ComputerName Server2 parameter.

Answer: B

Explanation:

The Resize-IscsiVirtualDisk cmdlet resizes a virtual disk either by expanding or compacting an existing virtual disk. The -ComputerName parameter specifies the computer name, or IP address, of the remote computer, if this cmdlet is run on a remote computer. If you do not specify a value for this parameter, the cmdlet uses the local computer.

NEW QUESTION 144

You have a server named Server1 that runs Windows Server 2016. The Docker daemon run on Server1. You need to ensure that members of a security group named Docker Administrators administer Docker. What should you do?

- A. Run the Set-Service cmdlet.
- B. Run the sc config command.
- C. Modify the Security settings of Docker
- D. Modify the Security settings of Docker.exe.

Answer: B

Explanation:

<https://docs.microsoft.com/en-us/virtualization/windowscontainers/manage-docker/configure-docker-daemon>

NEW QUESTION 146

HOTSPOT

You have a server named Server1 that runs Windows Servers 2016. Server1 has a storage array that contains multiple storage enclosures. The storage hardware supports enclosure awareness.

You need to implement Storage Spaces on Server1. Storage Spaces must remain available if two enclosures fail. The solution must minimize the number of enclosures required and must provide the fastest possible write performance.

Which configurations should you use? To answer, select the appropriate options in the answer area. NOTE: Each correct selection is worth one point.

Answer Area

Resiliency type:	<div><div></div><div>Dual parity</div><div>Single parity</div><div>Three-way mirror</div><div>Two-way mirror</div></div>
Number of enclosures:	<div><div></div><div>3</div><div>4</div><div>5</div><div>6</div></div>

- A. Mastered
- B. Not Mastered

Answer: A

Explanation:

References: <https://docs.microsoft.com/en-us/windows-server/storage/storage-spaces/storage-spaces-fault-tolerance#summary>

NEW QUESTION 151

HOTSPOT

You have a server named Server1 that runs Windows Server 2016. You create a storage pool named Pool1. Pool1 contains three disks. You need to create a two-way mirror storage space from the disks in Pool1.

Which command should you run? To answer, select the appropriate options in the answer area. NOTE: Each correct selection is worth one point.

Answer Area

New-StorageSunsystemVirtualDisk
New-VHD
New-VirtualDisk
New-Volume

-StoragePoolFirendlyName Pool1 -FirendlyName Space1-
-UseMaximumSize -ResiliencySettingName Mirror

-NumberofDataCopies

1
2
3

-NumberOfColumns-

1
2
3

- A. Mastered
- B. Not Mastered

Answer: A

Explanation:

References: <https://charbelnemnom.com/2014/09/step-by-step-how-to-create-a-two-way-mirrored-storage-space-via-powershell-storagespaces-powershell/>

NEW QUESTION 154

DRAG DROP

Your network contains an Active Directory domain named contoso.com. The domain has two clusters named FC1 and FC2. The domain contains servers that run Windows Server 2016. The Servers are configured as shown in the following table.

Server name	Processor	Memory	Cluster
Server1	Intel Xeon E3	128 GB	FC1
Server2	Intel Xeon E3	128 GB	FC1
Server3	Intel Xeon E3	256 GB	FC2
Server4	Intel Xeon E3	256 GB	FC2

Server1 hosts a highly available virtual machine named VM1. You need to move VM1 from Server1 to Server3 by using live migration. Which three actions should you perform in sequence? To answer, move the appropriate actions from the list of actions to the answer area and arrange them in the correct order.

Actions

Answer Area

Add the Virtual Machine role

Add the Hyper-V Replica Broker role to FC1 and FC2

Remove VM1 from FC1

Perform live migration from Failover Cluster Manager

Perform live migration from Hyper-V Manager



- A. Mastered
- B. Not Mastered

Answer: A

Explanation:

References: <http://www.checkyourlogs.net/?p=16401>

NEW QUESTION 156

NOTE: This Question is a part of a series of questions that use the same or similar answer choices. An answer choice may be correct for more than one question in the series. Each question is independent of the other questions in this series. Information and details provided in a question apply only to that question.

You have a Hyper-V host named server 1 that runs Windows Server 2016 and a two-node scale-out file server cluster named Cluster1.

You need to migrate the storage on VM1 to Cluster1. Which tool should you use?

- A. the clussvc.exe command
- B. the Cluster.exe command
- C. the Computer Management snap-in
- D. the configure hyperv.exe command
- E. the Disk Management snap-in
- F. the Failover Cluster Manager snap-in
- G. the Hyper-V Manager snap-in
- H. the Server Manager app

Answer: G

NEW QUESTION 159

You have a server named Server1 that runs Windows Server 2016.

Server1 has four SCSI disks and a storage pool named Pool1 that contains three disks. You create a virtual disk named Disk 1 that uses a mirrored layout.

You create a partition named Partition1 that uses all of the available space on Disk 1. You need to extend Partition1.

What should you do first?

- A. From Windows PowerShell, run the Resize-Partition cmdlet.
- B. From Disk Management, modify the properties of Partition1.
- C. From the Storage Pools page in Server Manager, extend a virtual disk.
- D. From Disk Management, extend a volume.

Answer: C

Explanation:

References: <https://charbelnemnom.com/2015/03/step-by-step-how-to-extend-and-resize-a-two-way-mirrored-storage-tiered-space-storagespaces-ws2012r2/>

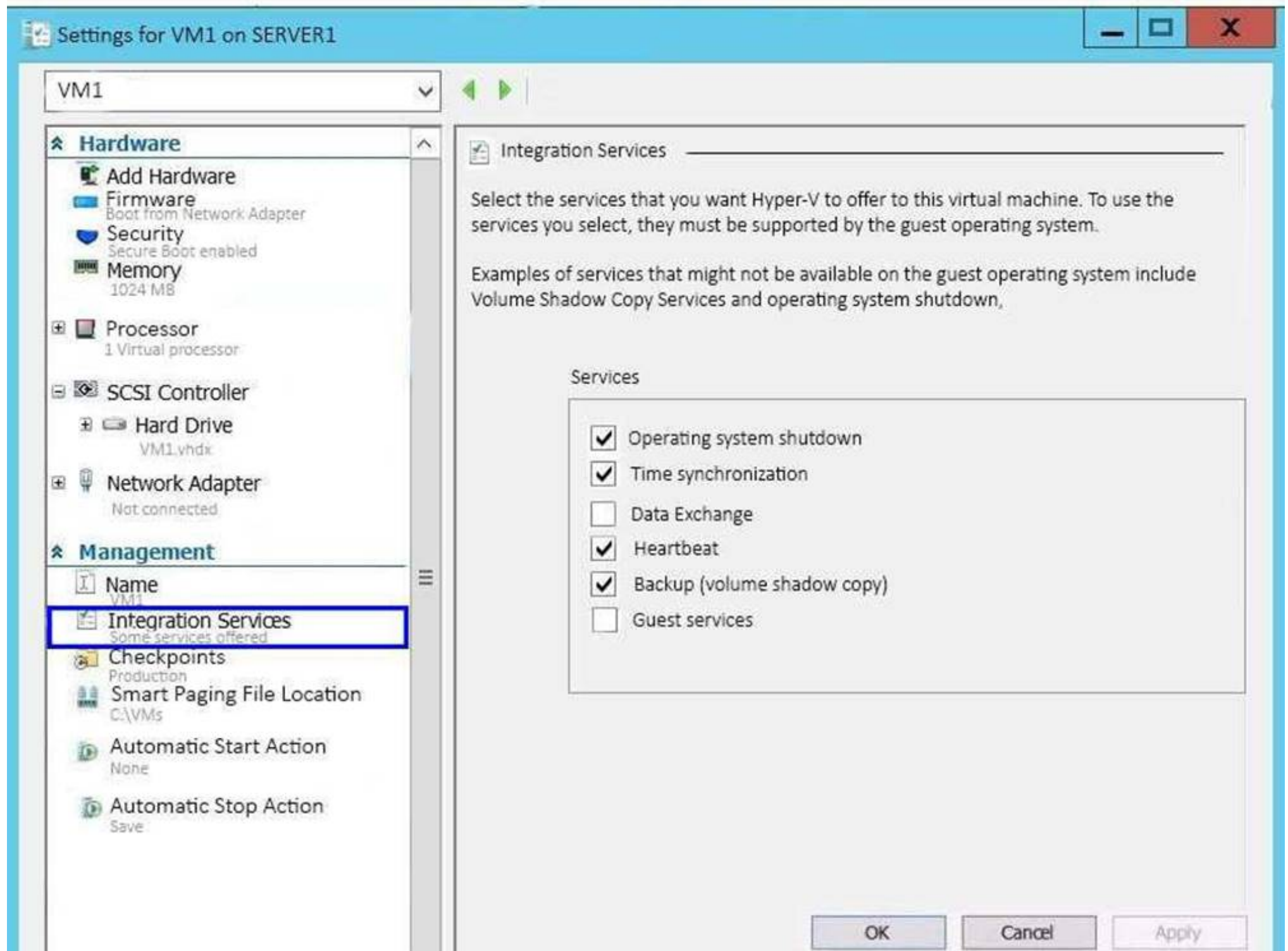
NEW QUESTION 162

Note: This question is part of a series of questions that present the same scenario. Each question in the series contains a unique solution that might meet the stated goals. Some question sets might have more than one correct solution, while others might not have a correct solution.

After you answer a question in this section, you will NOT be able to return to it. As a result, these questions will not appear in the review screen.

You have a Hyper-V host named Server1 that hosts a virtual machine named VM1. Server1 and VM1 run Windows Server 2016.

The settings for VM1 are configured as shown in the exhibit. (Click the Exhibit button.)



You need to ensure that you can use the Copy-VMFile cmdlet on Server1 to copy files from VM1. Solution: You enable the Guest services integration service for VM1.

Does this meet the goal?

- A. Yes
- B. No

Answer: A

Explanation:

References: [https://technet.microsoft.com/en-us/library/dn798297\(v=ws.11\).aspx](https://technet.microsoft.com/en-us/library/dn798297(v=ws.11).aspx)

NEW QUESTION 166

You have a file server named Server1 that runs Windows Server 2016. Object access auditing is configured on Server1. You need to filter the Security event log to show all log entries that relate to a user named User1. What should you do?

- A. Right-click the Security log, and then click Filter Current Log... On the Filter tab, type a value in the User box.
- B. Right-click the Security log, and then click Filter Current Log... On the Filter tab, select a value from the Event sources box.
- C. Right-click the Security log, and then click Create Custom View... On the Filter tab, type a value in the User box.
- D. Right-click the Security log, and then click Filter Current Log... On the XML tab, modify the QueryList entry and set an EventData tag.

Answer: A

Explanation:

Right clicking the event log name and selecting the "Filter Current Log" will display various options for filtering the event log.

These options are:

References: <https://blogs.technet.microsoft.com/rmilne/2014/08/06/quick-tip-event-viewer-filtering/>

NEW QUESTION 167

DRAG DROP

You have a server named Server1 that runs Windows Server 2016. Server1 has the Hyper-V server role installed and hosts a virtual machine named VM1. Server1 has an NVMe storage device. Currently, the device is assigned to VM1 through a Discrete Device Assignment.

You need to make the storage device available to Server1.

Which four actions should you perform in sequence? To answer, move the appropriate actions from the list of actions to the answer area and arrange them in the correct order.

Actions

Answer Area

Run the Remove-VMAssignableDevice cmdlet.

Run the Mount-VMHostAssignableDevice cmdlet.

Stop VM1.

Enable the device in Device Manager.

Disable the device in Device Manager.

- A. Mastered
 B. Not Mastered

Answer: A

Explanation:

If you want to return the device back to its original state, you will need to stop the VM and issue the following cmdlets:

Remove-VMAssignableDevice Mount-VMHostAssignableDevice

You can then re-enable the device in device manager.

References: <https://docs.microsoft.com/en-us/windows-server/virtualization/hyper-v/deploy/deploying-storage-devices-using-dda#removing-a-device-and-returning-it-to-the-host>

NEW QUESTION 172

Note: This question is part of a series of questions that present the same scenario. Each question in the series contains a unique solution that might meet the stated goals. Some question sets might have more than one correct solution, while others might not have a correct solution.

After you answer a question in this section, you will NOT be able to return to it. As a result, these questions will not appear in the review screen.

Your network contains an Active Directory forest named contoso.com. The forest contains a child domain named eu.contoso.com.

You plan to implement live migration between two Hyper-V hosts that run Windows Server 2016. The hosts are configured as shown in the following table.

Host name	Configuration
Host1	<ul style="list-style-type: none"> Is a member of the contoso.com domain Uses an Intel Xeon processor released in 2012 Has an external virtual switch named Switch1 Hosts a virtual machine named VM1 that connects to Switch1
Host2	<ul style="list-style-type: none"> Is a member of the eu.contoso.com domain Uses an Intel Xeon processor released in 2016 Has an external virtual switch named Switch1

You need to ensure that you can perform a live migration of VM1 from Host1 to Host2.

Solution: You shut down VM1, configure the processor compatibility settings, and then start VM1. Does meet the goal?

- A. Yes
 B. No

Answer: A

NEW QUESTION 175

Note: This question is part of a series of questions that present the same scenario. Each question in the series contains a unique solution that might meet the stated goals. Some question sets might have more than one correct solution, while others might not have a correct solution.

After you answer a question in this section, you will NOT be able to return to it. As a result, these questions will not appear in the review screen.
You network contains an Active Directory forest named contoso.com. The forest contains a child domain named eu.contoso.com.
You plan to implement live migration between two Hyper-V hosts that run Windows Server 2016. The hosts are configured as shown in the following table.

Host name	Configuration
Host1	<ul style="list-style-type: none">Is a member of the contoso.com domainUses an Intel Xeon processor released in 2012Has an external virtual switch named Switch1Hosts a virtual machine named VM1 that connects to Switch1
Host2	<ul style="list-style-type: none">Is a member of the eu.contoso.com domainUses an Intel Xeon processor released in 2016Has an external virtual switch named Switch1

You need to ensure that you can perform a live migration of VM1 from Host1 to Host2.
Solution: You replace the processor in Host1 with a processor that is identical to the processor in Host2.
Does meet the goal?

- A. Yes
- B. No

Answer: B

NEW QUESTION 178

.....

Thank You for Trying Our Product

We offer two products:

1st - We have Practice Tests Software with Actual Exam Questions

2nd - Questions and Answers in PDF Format

70-740 Practice Exam Features:

- * 70-740 Questions and Answers Updated Frequently
- * 70-740 Practice Questions Verified by Expert Senior Certified Staff
- * 70-740 Most Realistic Questions that Guarantee you a Pass on Your First Try
- * 70-740 Practice Test Questions in Multiple Choice Formats and Updates for 1 Year

100% Actual & Verified — Instant Download, Please Click
[Order The 70-740 Practice Test Here](#)