

# HP

## Exam Questions HPE0-J68

HPE Storage Solutions



**NEW QUESTION 1**

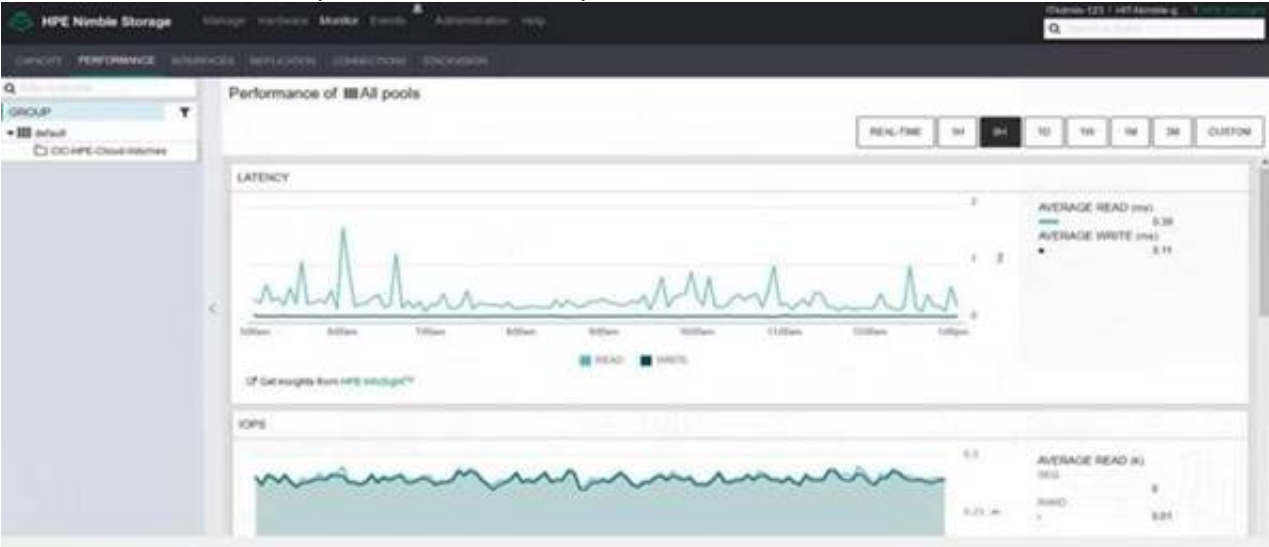
- (Exam Topic 1)  
 Which tool is used to configure an HPE MSA 2052?

- A. InfoSight
- B. SMU
- C. CMC
- D. SSMC

**Answer: A**

**NEW QUESTION 2**

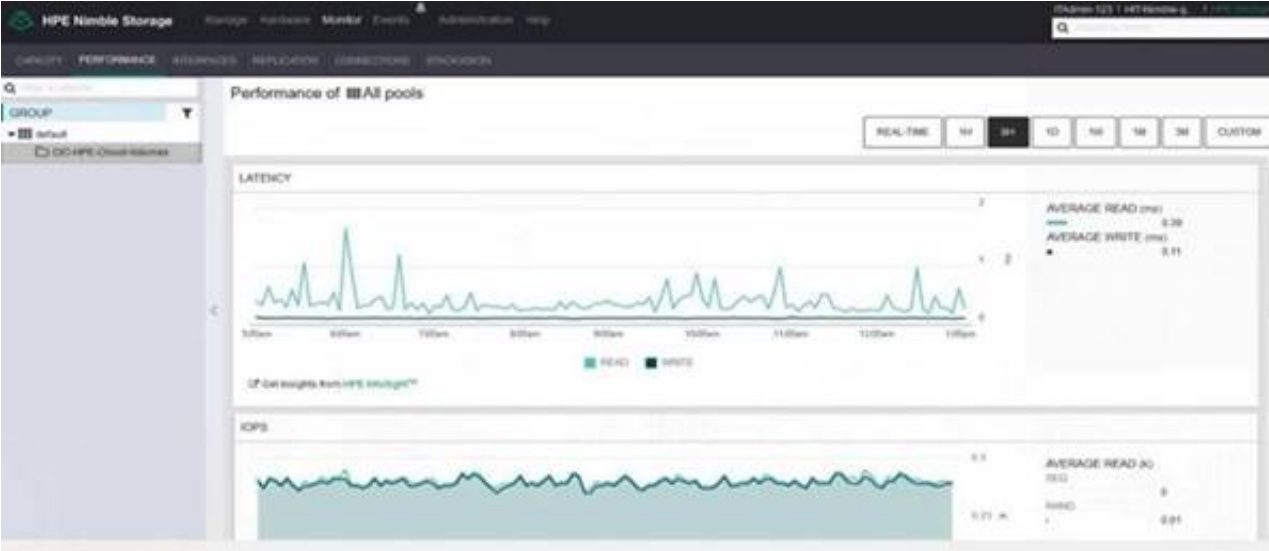
- (Exam Topic 1)  
 You are handing over the installed array to customer. The customer wants to review the amount of HDDs and SSDs in the system. Click the relevant menu option where the front panel of the head shelf can be visualized.



- A. Mastered
- B. Not Mastered

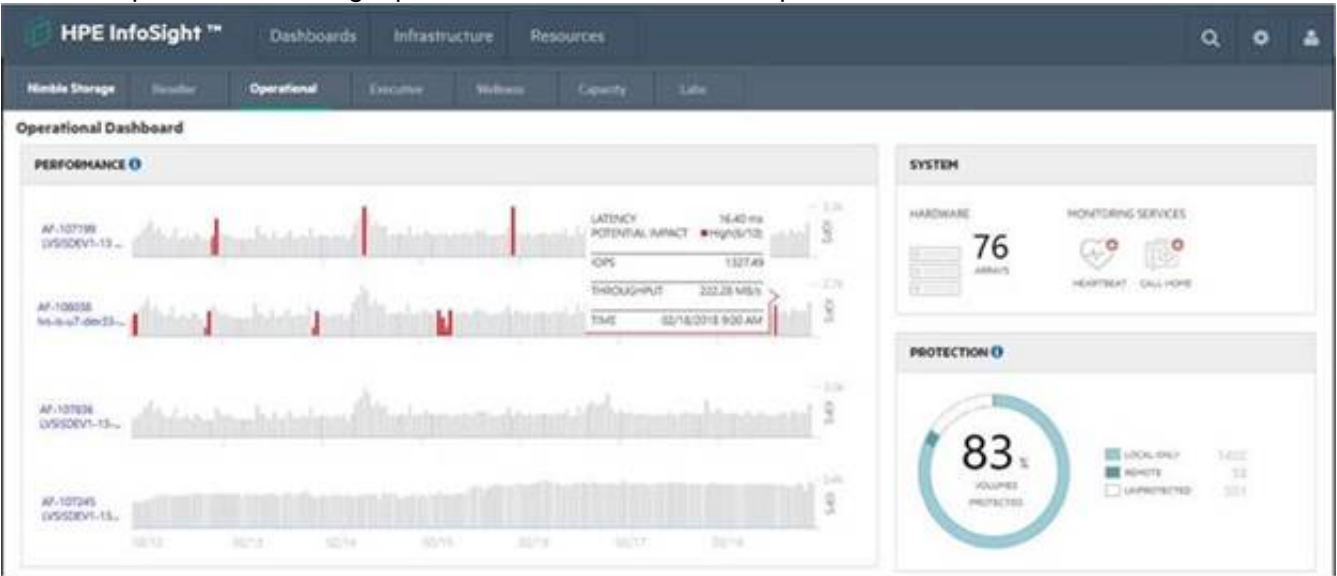
**Answer: A**

**Explanation:**



**NEW QUESTION 3**

- (Exam Topic 1)  
 A customer has a Nimble HF40 and needs to create a support ticket. Click the option in the InfoSight portal where the customer can perform this task.

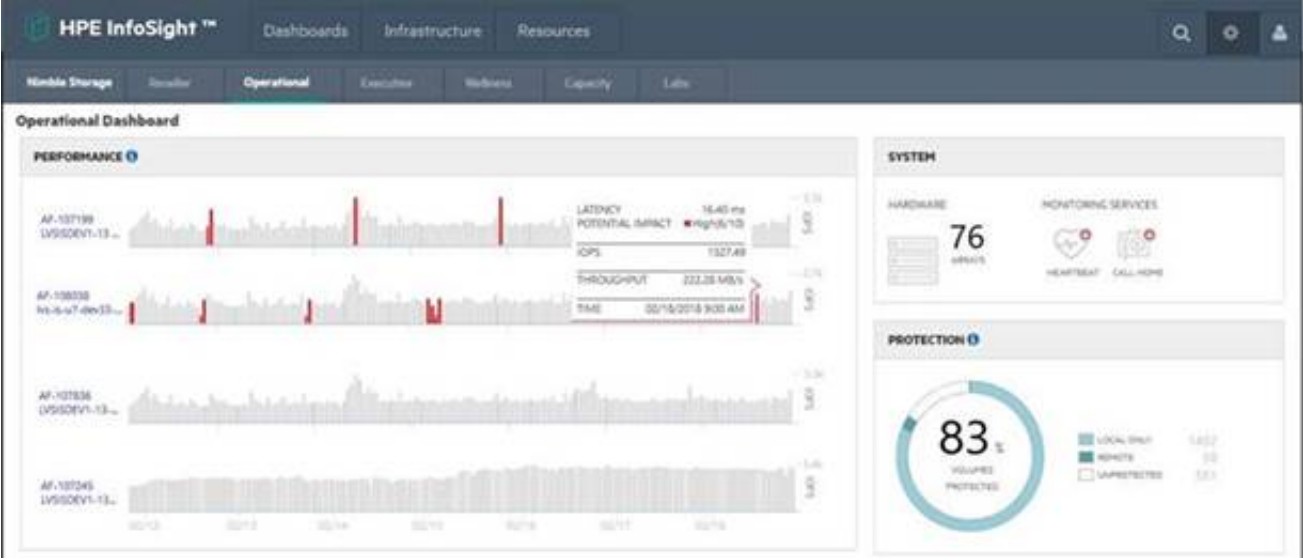


- A. Mastered
- B. Not Mastered

Answer: A

Explanation:

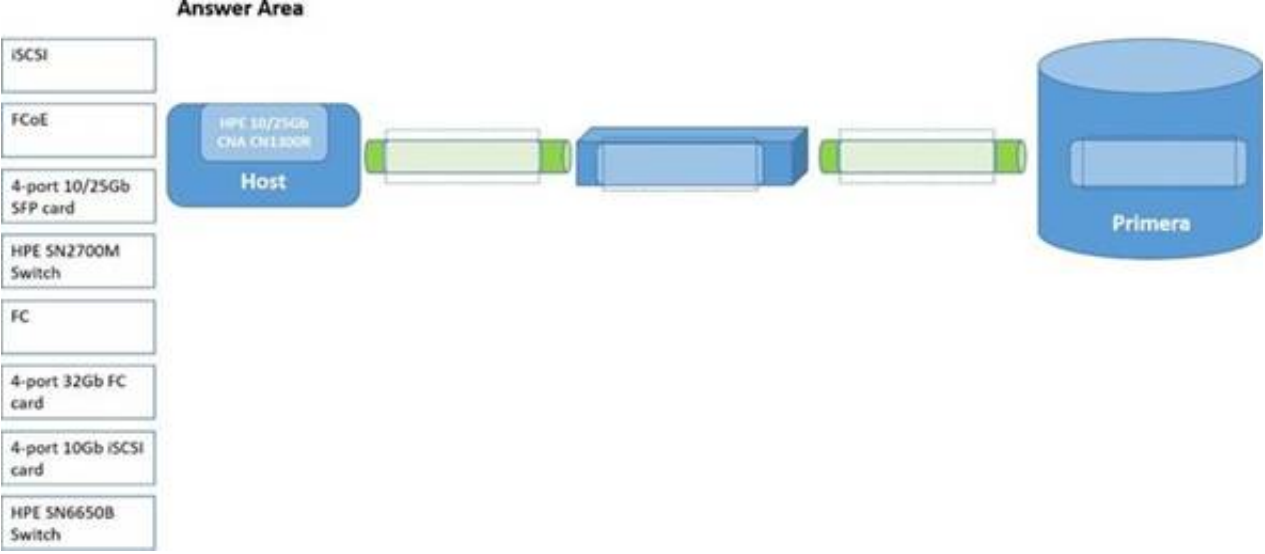
Graphical user interface, website, timeline Description automatically generated



NEW QUESTION 4

- (Exam Topic 1)

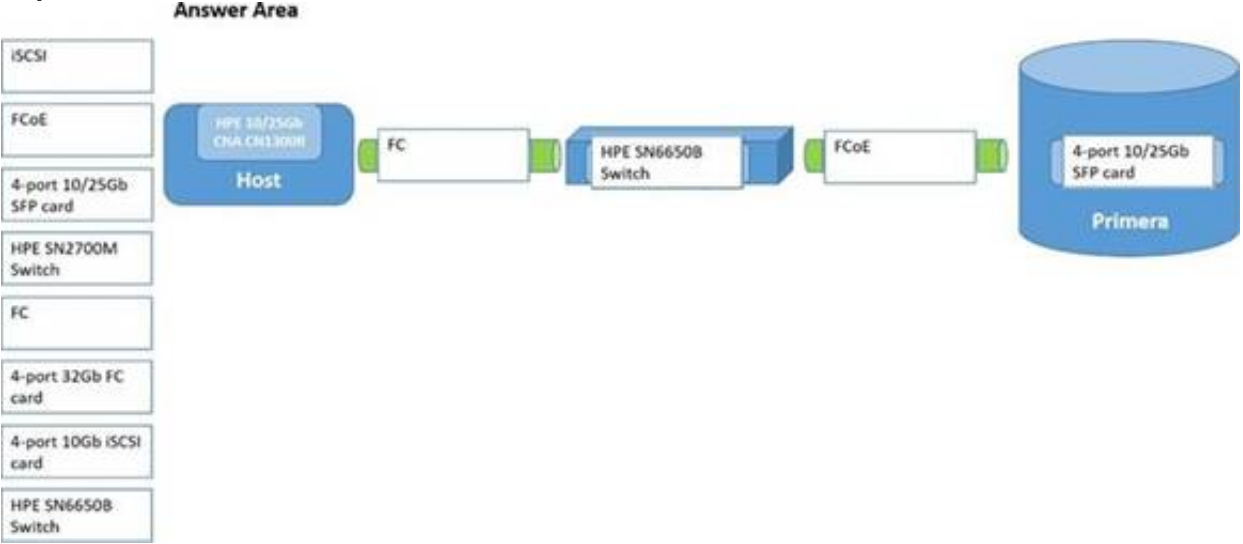
A customer wants to implement a new storage network, but wants to retain the ability to connect with legacy fiber channel-based components. Drag the appropriate component to each box on the diagram to design a new storage network.



- A. Mastered
- B. Not Mastered

Answer: A

Explanation:



NEW QUESTION 5

- (Exam Topic 1)

Match the feature to the appropriate C-Series DCNM license type.

**Answer Area**

|                        |  |  |
|------------------------|--|--|
| SAN Essentials Edition |  | Bundled at no charge with the C-series switches                                |
| Advanced Edition       |  | Provides configuration, real-time monitoring, and troubleshooting capabilities |
|                        |  | Switch/server-based license  |
|                        |  | Historical performance monitoring for network traffic hotspot analysis         |

- A. Mastered
- B. Not Mastered

**Answer:** A

**Explanation:**  
Graphical user interface, application Description automatically generated

**NEW QUESTION 6**

- (Exam Topic 1)  
A small company has recently purchased an MSA and two B-series SN3000B switches. In an effort save money, they installed the solution themselves. They call you complaining they can now see the multiple volumes on the MSA after creating just a single volume.  
What should you advise them to do?

- A. Enable Smart SAN on the MSA 2052
- B. Set volume's tier affinity to Performance
- C. Enable zoning on the SN3000B switches
- D. Enable MPIO on their host

**Answer:** D

**NEW QUESTION 7**

- (Exam Topic 1)  
You are designing a new enterprise array solution. The customer is interested in a caching tier that provides extremely low-latency and persistent storage at the same time. They also need to support more than 500GB.  
Which technology should you recommend?

- A. DRAM
- B. SRAM
- C. NVMe SCM
- D. NAND SSD

**Answer:** D

**NEW QUESTION 8**

- (Exam Topic 1)  
What is the purpose of WWN in FC SAN? (Choose two.)

- A. Identification of zone members
- B. Identification of entities denied access to a volume
- C. Identification of entities via Storage Name Server (SNS)
- D. Load balanced frame delivery
- E. Forward translation of DNS entries

**Answer:** CE

**NEW QUESTION 9**

- (Exam Topic 1)  
A customer is deploying a new StoreOnce VSA solution.  
How can the necessary storage capacity be added to the VSA? (Choose two.)

- A. Verify sufficient capacity LTUs are available
- B. Add a new virtual hard disk to the virtual machine
- C. The Cloud bank container needs to be configured once the VSA boots
- D. The Cloud bank container needs to be configured from the vCenter client

**Answer:** BD

**NEW QUESTION 10**

- (Exam Topic 1)

You are designing a new HPE 3PAR StoreServ solution.

Which HPE tool allows editing the Customer Intent Document and adding specific instructions for packing?

- A. One Config Advanced
- B. SAF Collect
- C. NinjaSTARS
- D. Storage Sizing Tool

**Answer:** A

#### NEW QUESTION 10

- (Exam Topic 1)

You are installing an HPE 3PAR StoreServ solution and need to integrate the array with the 3rd party monitoring application customer is using.

Which technology can be configured at 3PAR to support forwarding events from the array to the customer's monitoring application?

- A. IPMI
- B. NTP
- C. SNMPv3
- D. DMI

**Answer:** C

#### NEW QUESTION 14

- (Exam Topic 1)

A customer successfully implemented an HPE Primera solution.

Which tool can be used to verify achieved savings from deduplication and compression in the customer solution?

- A. NinjaSTARS
- B. 3PAR Service Processor
- C. NinjaCrawler
- D. StoreServ System Management Console

**Answer:** D

#### NEW QUESTION 16

- (Exam Topic 1)

Which actions can be done within InfoSight Cross-Stack Analytics for VMware and Hyper-V? (Choose two.)

- A. View replication policies
- B. Find noisy neighbors
- C. Locate inactive VMs
- D. Modify administrative privileges
- E. Review backup schedules

**Answer:** BC

#### NEW QUESTION 18

- (Exam Topic 1)

Which protocol can be used for accessing StoreOnce VTL target from Veeam?

- A. FC
- B. NFSv4
- C. iSCSI
- D. SMBv3

**Answer:** C

#### NEW QUESTION 23

- (Exam Topic 1)

Refer to the exhibit.





You are designing a new Primera solution and demonstrating performance numbers to the customer. The customer reviews the configuration and requests a change to the configuration that will increase Random Write IOPS. Which action will satisfy the customer request?

- A. Add more disks of smaller capacity
- B. Upgrade the HPE Primera base model
- C. Change to larger SSDs
- D. Add more FC Ports

Answer: C

NEW QUESTION 24

- (Exam Topic 1)

A customer runs their core application on an aging HPE 3PAR StoreServ 20000 Storage array. The application requires 100% availability. Which HPE storage solution should you recommend?

- A. Nimble
- B. Nimble dHCI
- C. Primera
- D. MSA

Answer: C

NEW QUESTION 29

- (Exam Topic 1)

Which feature allows HPE Primera, HPE Nimble, and HPE XP arrays to work with third-party management tools?

- A. REST API
- B. Data Protection Manager (DPM)
- C. StoreServe Management Console (SSMC)
- D. Service Processor

Answer: A

NEW QUESTION 32

- (Exam Topic 1)

Select the correct initiation option for each HPE Primera function.

| Answer Area    |  |                                   |
|----------------|--|-----------------------------------|
| User Initiated |  | Stripe data across drives         |
| Autonomic      |  | Create Virtual Volumes            |
|                |  | Create Common Provisioning Groups |
|                |  | Create RAID-6 Virtual Volumes     |
|                |  | Optional Performance Management   |
|                |  | Export LUNs                       |

- A. Mastered
- B. Not Mastered

**Answer:** A

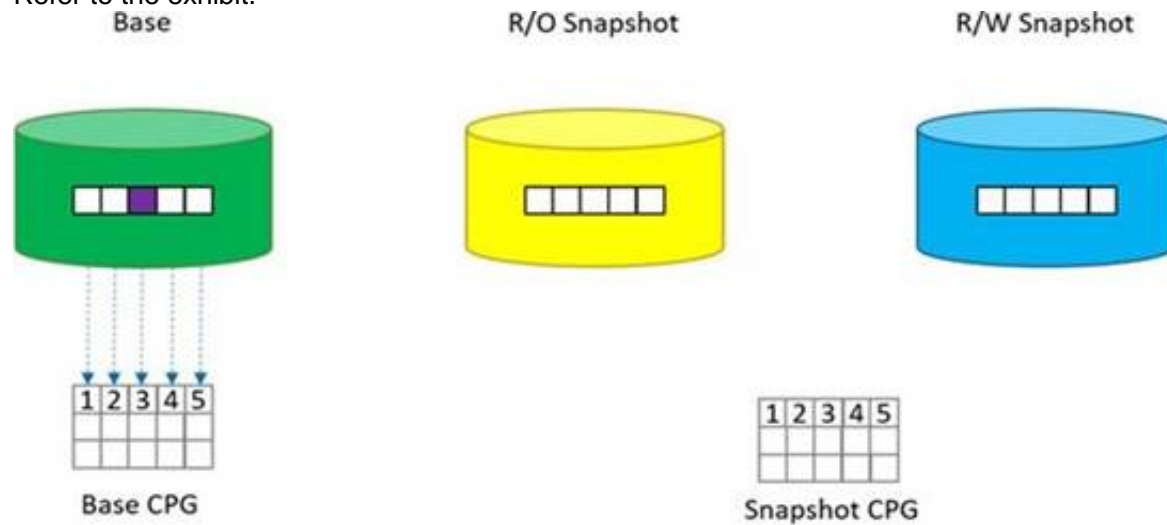
**Explanation:**

Graphical user interface, application Description automatically generated

**NEW QUESTION 35**

- (Exam Topic 1)

Refer to the exhibit.



You create two snapshots of a thin provisioned base volume in an HPE Primera. One snapshot is read only and the other is read-write. A write occurs at the location shown in in the diagram.

Place the actions on the left into the order they are taken on the right.

**Action**

**Order**

Copy block to snapshot CPG

Redirect the snapshots

Update the block with new data

- A. Mastered
- B. Not Mastered

**Answer:** A

**Explanation:**

A picture containing diagram Description automatically generated

**NEW QUESTION 38**

- (Exam Topic 1)

A customer wants to make a full copy replica of a database to use for performance testing. Which technology should they use to create the copy?

- A. deduplication
- B. snapshot
- C. clone
- D. synthetic full

**Answer:** B

**NEW QUESTION 41**

- (Exam Topic 1)

A customer has a VMware environment running vSphere 6.5. They are running DL380 Gen10 servers with HPE 82Q adapters connected through a HPE SN3000B switch to a Nimble HF40. They plan to upgrade the hypervisor.

What should they use to identify the latest firmware and compatibility information?

- A. SAN Health Diagnostics
- B. SPOCK
- C. OneView
- D. SAN Design Reference Guide

**Answer:** B

**NEW QUESTION 43**

- (Exam Topic 1)

A customer purchased a StoreOnce 3620 earlier in the year and has decided to add a 10GBase- adapter to it, which the customer sourced elsewhere and installed themselves. They complain that the new adapter is not configurable.

What is the most likely reason for this issue?

- A. The StoreOnce software requires updating
- B. Secure boot must be enabled in the BIOS to securely enable HBAs
- C. The customer failed to install a License to Use (LTU) for it
- D. The StoreOnce needs to connect to InfoSight to validate the adapter authenticity

**Answer:** A

#### NEW QUESTION 44

- (Exam Topic 2)

A customer want to implement a virtualized environment and want to provide independent storage access to individual virtual servers. Which feature need to enabled on the B-series FC switches to support this solution?

- A. FCIP
- B. NPIV
- C. ALPA
- D. RSCN

**Answer:** B

#### NEW QUESTION 49

- (Exam Topic 2)

Which storage principle would benefits of customer who has several departments in their organization with different storage needs?

- A. Autonomic Management
- B. Federated storage
- C. Scale out storage
- D. Multi-tenancy

**Answer:** D

#### NEW QUESTION 54

- (Exam Topic 2)

Which storage sizing tool, designed for HPE 3PAR StoreServ, can be used to determine whether customers qualify for the Get Thin Guarantee Program?

- A. NinjaProtected
- B. NinjaStars
- C. NinjaCrawler
- D. StoreVista

**Answer:** A

#### Explanation:

By performing a free NinjaProtected backup assessment, HPE and its partners can demonstrate how customers can reduce the amount of backup data they need to store by 95%—guaranteed (HPE StoreOnce Get Protected Guarantee Program)

#### NEW QUESTION 59

- (Exam Topic 2)

A customer wants to implement a management and monitoring tool for an HPE B-series SAN switch environment. You plan to recommend the HPE SAN Network Advisor.

Which information about the customer's environment will help you to decide which edition to recommend?

- A. FCIP support
- B. Amount of used fabrics
- C. FCoE support
- D. Fabric OS version

**Answer:** B

#### Explanation:

– SAN Network Advisor is available in three types of bundles:• No-charge SAN Professional: Up to 300 switch ports, 2 fabrics, B-series Fabric OS only.• For-charge SAN Professional Plus: Up to 2560 switch ports and 36 fabrics.• For-charge SAN Enterprise: Up to 15000 switch ports and 100 fabrics. This bundle is required for B-series DC SANBackbone Director, SN8000B 8-Slot SAN Director and FICON management.

#### NEW QUESTION 61

- (Exam Topic 2)

How does HPE StoreVirtual DSM for windows enhanced Microsoft windows native MPIO?

- A. It automatically create an I/O path to each storage system in the cluster
- B. It automatically adjusts transfer block
- C. It automatically combines HPE thin provisioning and volume migration technology
- D. It automatically adjusts the availability bandwidth between the switch and the array

**Answer:** A

#### NEW QUESTION 62



- (Exam Topic 2)

Which SAN topology offers the highest centralized data access performance?

- A. Meshed
- B. Cascaded
- C. Core-Edge
- D. Ring

**Answer:** C

#### NEW QUESTION 63

- (Exam Topic 2)

A customer has deployed an HPE 3PAR StoreServ 8400 with two nodes and three additional disk enclosure .They want to expand the solution with two additional nodes and three additional disk enclosure ..What must you do to expand the customers solution?

- A. The new disks must be imported before the new nodes can be added
- B. The existing nodes need to be take Offline
- C. The system should be updated to the latest supported OS before the hardware expansion
- D. The new nodes and enclosure must be placed in an adjacent racks

**Answer:** C

#### NEW QUESTION 66

- (Exam Topic 2)

What advantage does the Unified API that is part of HPE's composable strategy provide?

- A. infrastructure lifecycle managed with standard programming code
- B. single portal for managing servers, networking, and storage
- C. write-back capability and instant cable warmth
- D. dedicated object storage platform

**Answer:** B

#### Explanation:

Unified API provides a single interface to discover, search, inventory, configure, provision, update, and diagnose the Composable Infrastructure. A single line of code enables full infrastructure programmability and can provision the infrastructure required for an application.

#### NEW QUESTION 69

- (Exam Topic 2)

A customer has a large deployment of HPE Synergy compute modules, HPE 3PAR StoreServ arrays, and HPE StoreOnce system in a single data center. They are concerned about the risk of data loss due to site disaster and seeks cost-effective offsite Disaster Recovery protection without the need to deploy a secondary site.

Which HPE solution should you recommend?

- A. HPE StoreOnce VSA
- B. HPE StoreOnce CloudBank
- C. HPE StoreOnce RMC
- D. HPE StoreOnce Catalyst

**Answer:** D

#### NEW QUESTION 72

- (Exam Topic 2)

A customer is evaluating an HPE 3PAR StoreServ system in a proof-of-concept project. The customer wants to receive emails about important storage system events and alerts.

What feature do you need to configure?

- A. HPE OneView integration
- B. Secure Service Agent
- C. Real-time Alert Processing
- D. Local Notification Service

**Answer:** D

#### NEW QUESTION 77

- (Exam Topic 2)

Which management interface uses four basic commands (Create ,read, update ad delete )to enable administrators to define ad radically simply management processes?

- A. Rest API
- B. WMI
- C. SMI-S
- D. WEBEM

**Answer:** A

#### NEW QUESTION 78

- (Exam Topic 2)

A customer is a cloud service provider with infrastructure powered by HPE 3PAR Storeserv 9000. The customer is concerned about their ability to ensure the quality of service and protect their tenants from unpredictable bursts of I/O from other tenants. What should you recommend to your customer?

- A. Use priority optimization to enable service level for workloads
- B. Use virtual domain to automatically set multi-tenant policies
- C. Use dynamic optimization to automatically manage quality of service
- D. Use adaptive optimization to optimize service level automatically

**Answer:** A

#### NEW QUESTION 80

- (Exam Topic 2)

Which storage feature is supported by both the HPE StoreVirtual and the HPE 3PAR StoreServ storage, and is a key differentiator of HPE storage solutions in the industry?

- A. Network RAID
- B. Peer Motion
- C. virtual Copy
- D. Dynamic Optimization

**Answer:** B

#### NEW QUESTION 82

- (Exam Topic 2)

Which storage protocol is supported by virtual connect Flex-10?

- A. FCoE
- B. FC
- C. iSCSI
- D. FCIP

**Answer:** C

#### NEW QUESTION 83

- (Exam Topic 2)

Which 3PAR storeServ feature allows the host to continue I/O uninterrupted during a firmware update?

- A. Persistent Memory
- B. Persistent port (96)
- C. Peer persistence
- D. Persistent Cache

**Answer:** B

#### NEW QUESTION 85

- (Exam Topic 2)

A customer has a 3PAR storeserv with FC and SSD drives who would like to improve the performance for random reads. Which 3PAR Storeserve feature would provide better read performance?

- A. Adaptive Flash Cache
- B. Deduplication
- C. Smart Cache
- D. Express Layout

**Answer:** A

#### NEW QUESTION 90

- (Exam Topic 2)

A customer uses Recovery manager central for VMware (RMC-V). They need the ability to perform granular recovery of application items directly from backups... Which solution integrates with RMC-V to provide the desired requirements?

- A. Veeam Backup & Replication
- B. Netbackup
- C. StoreOnce cloudbank
- D. CommVault

**Answer:** A

#### NEW QUESTION 93

- (Exam Topic 2)

Which software feature should an HPE 3PAR Storeserv 8000 customer use to optimize data protection and recovery, including rapid online recovery for his VMware environment? (select two)

- A. HPE 3PAR Virtual Copy software
- B. HPE 3PAR Remote copy software
- C. HPE 3PAR Security software suite
- D. HPE 3PAR File persona Software suite

E. HPE StoreOnce recovery manager central for VMware

**Answer:** AE

**NEW QUESTION 96**

- (Exam Topic 2)

A customer has a large deployment of HPE Synergy compute modules, HPE 3PAR StoreServ storage, and HPE StoreOnce systems in a single data center. They are concerned about the risk of data loss due to site disaster.

What is the reason to propose HPE CloudBank?

- A. To easily move workloads to AWS or Azure in the event of site disaster.
- B. To improve RPO/RTO objectives by automating snapshot-based integrating between 3PAR and StoreOnce.
- C. To regularly send backups to the cloud for the purposes of DR protection.
- D. To leverage 3PAR snapshots and utilize StoreOnce recovery capabilities to minimize data loss and downtime.

**Answer:** C

**NEW QUESTION 98**

- (Exam Topic 2)

While demonstrating an HPE 3PAR StoreServ 9450 array, the customer asks you to demonstrate the File Persona features.

Which objects do you need to create to demonstrate these features? (Choose two.)

- A. File share
- B. Storage container
- C. Host
- D. Remote copy group
- E. Virtual file server

**Answer:** AE

**NEW QUESTION 103**

- (Exam Topic 2)

A customer asks for an integrated solution for their remote office with All-Flash storage and ease of management. Application-aware replication to their main office is an important requirement. Which HPE solution component should you discuss with the customer first?

- A. HPE SimpliVity 380
- B. HPE MSA 2052 Storage
- C. HPE Nimble CS1000 system
- D. HPE 3PAR StoreServ 8200

**Answer:** A

**NEW QUESTION 105**

- (Exam Topic 2)

What performance benefit is provided by using the HPE StoreVirtual DSM for Microsoft MPIO instead of the standard MPIO?

- A. The HPE DSM increases availability and reduces latency and throughput.
- B. The storage system, which holds a copy of the requested data, services the read I/Os.
- C. The iSCSI connections are blocked to non-critical nodes in the cluster by default.
- D. The storage system, which receives a copy of the data, does not service the write I/O.

**Answer:** B

**NEW QUESTION 108**

- (Exam Topic 2)

Users are complaining about poor performance with their Data Warehouse application. What is an effective solution to increase their performance at minimal cost?

- A. HPE 3PAR Adaptive Flash Cache
- B. HPE 3PAR Priority Optimization
- C. HPE 3PAR Dynamic Optimization
- D. HPE 3PAR Adaptive Optimization

**Answer:** B

**NEW QUESTION 113**

- (Exam Topic 2)

A customer wants to expand his cascaded B-series based SAN but is concerned about latencies within the SAN backend. You recommend changing the topology to a full mesh.

Which switch feature will ensure that the latencies in the backend are at the lowest possible level?

- A. LACP
- B. NPIV
- C. FSPF
- D. VSF

**Answer:** C

#### NEW QUESTION 115

- (Exam Topic 2)

A customer has a SAN infrastructure with the HPE C-class blade Enclosure ,and a mix of proliant G7,gen8 and Ge9 server .They require a new storage platform ... How can you confirm the storage array will be supported in the existing environment?

- A. Check recommended firmware levels in the HP SAN design reference guide to ensure firmware compatibility
- B. Document existing server and SAN information ,and consult SPOCK to ensure firmware compatibility
- C. Design and array with the latest firmware ,and recommend that the customer engage HPE point Next to upgrade the existing hardware
- D. Design an array with older version of the firmware to ensure compatibility

**Answer:** B

#### NEW QUESTION 116

- (Exam Topic 2)

What can move data directly from a snapshot to backup storage independent of backup server software?

- A. SSMC
- B. Virtual Lock
- C. CLI
- D. Express Protect

**Answer:** D

#### Explanation:

The Express Protect feature offers data protection by facilitating Express Protect of snapshots from HPE 3PAR StoreServ to HPE StoreOnce.

#### NEW QUESTION 121

- (Exam Topic 2)

A customer needs to be manually map out preferred paths within a multi-switch fabric, based on application ,priority ,and topology, while allowing failover to a non-preferred path if the preferred path fails, Which B-series FC switch functionality should be used to provide this?

- A. Quality of services
- B. Enhanced group management
- C. Frame filtering
- D. Traffic isolation Zones

**Answer:** D

#### NEW QUESTION 124

- (Exam Topic 2)

A customer has mission-critical applications that intermittently experience heavy disk I/O. The storage speed has the most impact on the application's performance. The customer does not want to dedicate SSD disks to these applications because additional performance is only needed periodically, and moving the volumes between tiers takes too long.

Which HPE StoreVirtual VSA feature can address this customer's challenge?

- A. Storage virtualization
- B. Space Reclamation
- C. Thin Provisioning
- D. Adaptive Optimization

**Answer:** D

#### NEW QUESTION 125

- (Exam Topic 2)

You are advising a customer on a new backup strategy to deploy HPE StoreOnce. What should you recommend to ensure the best storage utilization and performance?

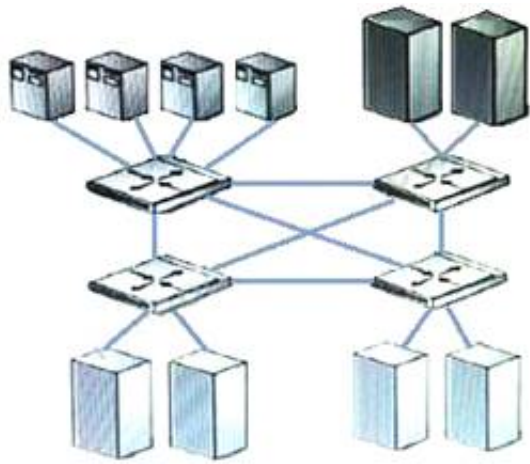
- A. consolidate activity windows for housekeeping tasks
- B. size solution for a single backup device
- C. combine management and backup Ethernet traffic
- D. use separate backup targets for different data types

**Answer:** A

#### NEW QUESTION 128

- (Exam Topic 2)

Exhibit:



Which fabric design is shown?

- A. meshed
- B. single fabric
- C. cascaded
- D. core-edge

**Answer:** A

#### NEW QUESTION 130

- (Exam Topic 2)

During a proof-of-concept you need to implement an inter-switch-link (ISL) between two HPE SN6000B switches. Which port mode must be set enable communication between the switches?

- A. N\_PORT
- B. FL\_PORT (WRONG)
- C. F\_PORT
- D. E\_PORT (Correct)

**Answer:** D

#### NEW QUESTION 134

- (Exam Topic 2)

A customer is looking for a centralized file-sharing solution that can provide print services in addition to 15TB of storage. Which solution component should you recommend?

- A. FC switch
- B. NAS
- C. FC-based array
- D. Disk enclosure with integrated SAS switch

**Answer:** B

#### NEW QUESTION 138

- (Exam Topic 2)

What owns the physical drives in an HPE 3PAR StoreServ Express Layout?

- A. a logical disk
- B. a chunklet
- C. a single node
- D. a node pair

**Answer:** D

#### NEW QUESTION 139

- (Exam Topic 2)

When using a HPE 3 PAR Storeserv array to enable a user to apply array-based data services to specific application and VM's. What is the benefit of implementing VM-level gradually of Volts?

- A. Data sprawls eliminated by performing the migration functions at the array level using 3PAR HPE Dynamic Optimization
- B. Efficiency is maintained by reclaiming space from deleted or migrated VMs using capabilities built into the storage ASIC
- C. Performing is accelerated by detecting and moving the most frequently –accessed VMs into the fast class tier
- D. Performance is accelerated by leveraging the deduplication capabilities built into the storage ASIC

**Answer:** B

#### NEW QUESTION 142

- (Exam Topic 2)

You are planning a single-site Nimble solution with iSCSI connectivity. Two 10GbE SFP+ dual port NICS are included in the configuration. You designed an intelligent Resilient Framework (IRF) stack with HPE FlexFabric 5900CP switches.

Which statements is correct when discussing the IRF limits for this configuration?

- A. When connecting an iSCSI storage to an IRF stack, a minimum of four 10GbE ports must be used per switch.
- B. A maximum of two switches can be used in an IRF stack when connecting storage.



- C. In an IRF stack with storage connectivity, the 40GbE ports cannot be used.
- D. The used IRF ports for iSCSI traffic have to be configured as 10GbE converged ports.

**Answer:** B

#### NEW QUESTION 147

- (Exam Topic 2)

You are planning an upgrade to a customer's existing HPE 3PAR StoreServ 8200 to include 4-port 16Gb FC adapters. The servers are zoned to see the storage via four paths. The customer is concerned about storage availability during the upgrade. Which statement is correct about performing this upgrade?

- A. When NPIV is enabled, the HPE 3PAR Port persistence will show all four paths to the servers.
- B. The MPIO service will do a failover, and the servers will continue to have access via two paths.
- C. Windows servers require host explorer is installed to ensure MPIO is unaffected.
- D. As long as MEM driver is installed on VMware vSphere, no path failures are seen.

**Answer:** A

#### NEW QUESTION 148

- (Exam Topic 2)

A customer is concerned about the business risks of non-compliance for long-term data protection, retention, immutability, and encryption on petabytes of data consisting of millions of objects in a global namespace across multiple geographic locations. Which products should you recommend to the customer to address their concern? (Choose two.)

- A. HPE StoreOnce Systems
- B. HPE Complete Veeam
- C. HPE Complete iTernity iCAS
- D. HPE Scalify RING on HPE Apollo Servers
- E. HPE 3PAR StoreServ 9000

**Answer:** AC

#### NEW QUESTION 153

- (Exam Topic 2)

A customer is interested in integrating their HPE 3PAR StoreServ arrays into their OneView environment to support automated volume provisioning. What must you install to enable the integration?

- A. HPE SAN Network Advisor Enterprise
- B. HPE SAN Network Advisor Professional
- C. 3PAR Host Explorer
- D. OneView Global Dashboard

**Answer:** A

#### NEW QUESTION 154

- (Exam Topic 2)

A customer need a new storage system for visual desktop infrastructure environment to reduce the time required to provision new desktop. Which HPE solution should you recommended to fulfill this customers requirements?

- A. Snapclones on HPE MSA 2040
- B. SmartClone on HPE store virtual VSA(54)
- C. Storage pool on HPE store Easy
- D. Virtual Copy on HPE 3Par storeServ

**Answer:** B

#### NEW QUESTION 155

- (Exam Topic 2)

A large organization is experiencing exponential data growth of object storage due to recent mergers and acquisition .They need an on-premise solution to optimize cost at petabyte scale Which components should you recommend for a software-defined solution ?(select two)

- A. HPE Appolo 4510 server
- B. HPE Complete –Scalability RING
- C. HPE Synergy 660 Gen10 compute modules
- D. HPE complete –CTERA
- E. HPE 3PAR Storeserv 9450c

**Answer:** AB

#### NEW QUESTION 160

- (Exam Topic 2)

Which protocols are currently used in the front end by HPE 3PAR StoreServ systems? (Choose two.)

- A. iSCSI
- B. Infiniband
- C. SAS
- D. NVMe

E. FC

**Answer:** AE

**NEW QUESTION 163**

- (Exam Topic 2)

A customer need to update the local sever at each of their branches keep up with the increasing demand for High-performance storage. The customer cannot afford to move to SAN at each state. Which HPE storage technology can increase performance for this customer?

- A. Smart Path
- B. SmartCache
- C. Adaptive Flash Cache
- D. Persistent Cache

**Answer:** B

**NEW QUESTION 167**

- (Exam Topic 2)

Where does HPE 3PAR StoreServ Data-at-Rest Encryption occur?

- A. ASIC
- B. physical disk
- C. processor
- D. host

**Answer:** B

**NEW QUESTION 169**

- (Exam Topic 2)

A customer has an HPE 3PAR StoreServ 8200 with eight 3.84 TB SSD's configured with RAID5 7+1. They plan to add four more 3.84 TB SSD's. What needs to be changed on the configuration once the new SSD's are installed?

- A. Reconfigure the cpg setsize as RAID6 6+2 and wait for tunesys to complete.
- B. Change the availability level from cage to magazine.
- C. Adjust the cpg growth value to match amount of SSD's.
- D. Change the cpg setsize to RAID5 5+1 and run tunesys.

**Answer:** D

**NEW QUESTION 173**

- (Exam Topic 2)

A customer has a new Nimble CS3000 21T storage systems and is facing latency issues for his 2TB ERP database. What would be a design approach to solve this issue ?

- A. Perform controller upgrade to a Nimbel CS3000 storage systems
- B. Add additional SSd drives as cache to the system and PIN the volume
- C. Enable storage tiering on the system and map the volume to the new tier
- D. Change RAID of the drives to RAID -1and setup quality of services for the volume

**Answer:** B

**NEW QUESTION 177**

- (Exam Topic 2)

An HPE 3PAR StoreServ 9000 All-Flash Array customer plans to deploy a secondary array 20 km away from their primary array to enable storage replication over a dark fibre. Their existing environment consists of one HPE Synergy Frame 12000, HPE SN6000B Fibre Channel Switches, HPE FlexFabric 5700 Switch Series, and HPE StoreOnce Systems.

Which HPE license is required to meet the customer's technical requirements?

- A. Intelligent Resilient Framework licenses
- B. HPE StoreOnce Replication
- C. Extended Fabric
- D. HPE 3PAR Remote Copy

**Answer:** D

**NEW QUESTION 182**

- (Exam Topic 2)

Which HPE storage solutions offer a two-tier backup solution for hybrid cloud with optimal recovery time? (Choose two.)

- A. Simplivity 380
- B. Nimble SF series
- C. 3PAR 8000 series
- D. StoreOnce with Catalyst
- E. Nimble CS series

**Answer:** AD

#### NEW QUESTION 183

- (Exam Topic 2)

Which statement is true when defining object storage ?

- A. It is most suited for sharing files and characterized by volumes
- B. It is most suited for unstructured data and characterized by file share protocols like NFS
- C. It is most suited for unstructured data and characterized by containers or buckets
- D. suited for database It is most and characterized by containers or buckets

**Answer:** C

#### NEW QUESTION 186

- (Exam Topic 2)

What is used to migrate data between nodes in an HPE StoreVirtual VSA environment?

- A. Network RAID
- B. Peer Motion
- C. SmartClone
- D. Remote Copy

**Answer:** B

#### Explanation:

Integrated with HPE Recovery Manager Central for seamless data movement to StoreOnce Backup appliances and StoreOnce VSA, and bidirectional replication with 3PAR StoreServ arrays (Peer Copy).

#### NEW QUESTION 190

- (Exam Topic 2)

A customer need to server 40TB via file protocols including SMB and FTP to a board range of client operating system in one location .security protocol dictate that data must be encrypted with FIPS 140-2 compliance. Which HPE storage solution you recommend?

- A. HPE MSA 2052 storage with HPE StoreEasy 3850 Gateway
- B. HPE 3PAR 8200 using self-encrypting drive with 3PAR file persona
- C. HPE StoreOnce 5500with data in fight encryption .
- D. HPE XP7 storage with encryption ready disk adapters

**Answer:** B

#### NEW QUESTION 194

- (Exam Topic 2)

You have just completed a performance analysis of an HPE 3PAR StoreServ 8400 disk array with different tiers at a customer's site. After reviewing the performance metrics, you determine that they should install a new tier of SSD drives.

Which actions should you recommend they take to fully optimize the array? (Choose two.)

- A. Configure Adaptive Flash Cache.
- B. Configure scheduled tunesys tasks.
- C. Rebalance all flash drives between nodes 0 and 2.
- D. Configure Adaptive Optimization.
- E. Configure dedicated drives to enable Adaptive Flash Cache.

**Answer:** BD

#### NEW QUESTION 195

- (Exam Topic 2)

A customer migrate their infrastructure from a 3rd party storage to a Nimble environment. During an architecture workshop, you discuss VMvision with the customer and the system engineer. Which statement is correct when implementing performance monitoring using VMVision?

- A. Nibmle service processor collects relevant per VM performance data and send them using SSL port 443 to VMvision
- B. VMvision is an agentless integration into infosight and needs only the Vcenter server appliance credentials to connec
- C. (page 112)
- D. VMware vSphere storage API's array integration (VAAI)has to be configured to combine storage and VM performance metrics
- E. SNMP trap service has to be configured to send traps to infosight and integrate performance data using VMvision.

**Answer:** C

#### NEW QUESTION 199

- (Exam Topic 2)

Which statement is correct when comparing functionalities of the AF and HF series in the Nimble storage portfolio? (Choose Two)

- A. Zero Copy Clones are a unique feature of All-Flash arrays within the Nimble Portfolio.
- B. >99.9999% availability is measured and guaranteed for AF and HF series arrays.
- C. HF series has a dedicated read cache and AF series does not have a dedicated reach cache.
- D. HF series supports storage snapshots and replication using Veeam Backup & Replication, HF and AF series support storage snapshots only

**Answer:** BC

#### NEW QUESTION 204

- (Exam Topic 2)

A customer with restricted budget has an existing HPE 3PAR storeserver 8200 using 10kfast class and near line drives because of the implementation of new application .the workload has shifted to be read intensive therefore ,they want to increase the read I/O performance What should they add to their environment ?

- A. A tier with 15k fast class 600 GB drive for new CPG, configure AO policy to advantage of new resources
- B. Two 400 GB SSD drives and enable adaptive flash cache (page 173) eed to check
- C. A tier with 15k fast class drive and implement thin provisioned deduplicated virtual volumes
- D. A tier of SSD and implement thin provisioned virtual volume

**Answer: B**

#### NEW QUESTION 208

.....

## Thank You for Trying Our Product

### We offer two products:

1st - We have Practice Tests Software with Actual Exam Questions

2nd - Questions and Answers in PDF Format

### HPE0-J68 Practice Exam Features:

- \* HPE0-J68 Questions and Answers Updated Frequently
- \* HPE0-J68 Practice Questions Verified by Expert Senior Certified Staff
- \* HPE0-J68 Most Realistic Questions that Guarantee you a Pass on Your FirstTry
- \* HPE0-J68 Practice Test Questions in Multiple Choice Formats and Updatesfor 1 Year

**100% Actual & Verified — Instant Download, Please Click**  
**[Order The HPE0-J68 Practice Test Here](#)**