

Exam Questions CAPM

Certified Associate in Project Management (PMI-100)

<https://www.2passeasy.com/dumps/CAPM/>



NEW QUESTION 1

- (Exam Topic 3)

An output of the Create WBS process is:

- A. Scope baseline.
- B. Project scope statement.
- C. Organizational process assets.
- D. Requirements traceability matrix.

Answer: A

NEW QUESTION 2

- (Exam Topic 3)

Which of the following is TRUE about most project life cycles?

- A. Staffing level is highest at the start.
- B. The stakeholders' influence is highest at the start.
- C. The level of uncertainty is lowest at the start.
- D. The cost of changes is highest at the start.

Answer: B

NEW QUESTION 3

- (Exam Topic 3)

At which point of the project is the uncertainty the highest and the risk of failing the greatest?

- A. Final phase of the project
- B. Start of the project
- C. End of the project
- D. Midpoint of the project

Answer: B

NEW QUESTION 4

- (Exam Topic 3)

What type of reward can hurt team cohesiveness?

- A. Sole-sum
- B. Win-lose
- C. Lose-win
- D. Partial-sum

Answer: B

NEW QUESTION 5

- (Exam Topic 3)

Managing ongoing production of goods and services to ensure business continues efficiently describes which type of management?

- A. Portfolio
- B. Project
- C. Program
- D. Operations

Answer: D

NEW QUESTION 6

- (Exam Topic 3)

Which document includes the project scope, major deliverables, assumptions, and constraints?

- A. Project charter
- B. Project scope statement
- C. Scope management plan
- D. Project document updates

Answer: B

NEW QUESTION 7

- (Exam Topic 3)

Identifying major deliverables, deciding if adequate cost estimates can be developed, and identifying tangible components of each deliverable are all part of which of the following?

- A. Work breakdown structure
- B. Organizational breakdown structure
- C. Resource breakdown structure
- D. Bill of materials

Answer: A

NEW QUESTION 8

- (Exam Topic 3)

Organizational planning impacts projects by means of project prioritization based on risk, funding, and an organizations:

- A. Budget plan
- B. Resource plan
- C. Scope plan
- D. Strategic plan

Answer: D

NEW QUESTION 9

- (Exam Topic 3)

The scope management plan is a subsidiary of which project document?

- A. Schedule management plan
- B. Project management plan
- C. Quality management plan
- D. Resource management plan

Answer: B

NEW QUESTION 10

- (Exam Topic 3)

The approaches, tools, and data sources that will be used to perform risk management on a project are determined by the:

- A. Methodology
- B. Risk category
- C. Risk attitude
- D. Assumption analysis

Answer: A

NEW QUESTION 10

- (Exam Topic 3)

Which of the following is contained within the communications management plan?

- A. An organizational chart
- B. Glossary of common terminology
- C. Organizational process assets
- D. Enterprise environmental factors

Answer: B

NEW QUESTION 15

- (Exam Topic 3)

Which of the following is a narrative description of products, services, or results to be delivered by a project?

- A. Project statement of work
- B. Business case
- C. Accepted deliverable
- D. Work performance information

Answer: A

NEW QUESTION 19

- (Exam Topic 3)

Which process is included in the Project Integration Management Knowledge Area?

- A. Manage Project Team
- B. Collect Requirements
- C. Sequence Activities
- D. Direct and Manage Project Work

Answer: D

NEW QUESTION 20

- (Exam Topic 3)

Most experienced project managers know that:

- A. every project requires the use of all processes in the PMBOK® Guide.
- B. there is no single way to manage a project.

- C. project management techniques are risk free.
- D. there is only one way to manage projects successfully.

Answer: B

NEW QUESTION 21

- (Exam Topic 3)

While implementing an approved change, a critical defect was introduced. Removing the defect will delay the product delivery. What is the MOST appropriate approach to managing this situation?

- A. Utilize the change control process.
- B. Crash the schedule to fix the defect.
- C. Leave the defect in and work around it.
- D. Fast-track the remaining development.

Answer: A

NEW QUESTION 22

- (Exam Topic 3)

The most commonly used type of precedence relationship in the precedence diagramming method (PDM) is:

- A. start-to-start (SS)
- B. start-to-finish (SF)
- C. finish-to-start (FS)
- D. finish-to-finish (FF)

Answer: C

NEW QUESTION 25

- (Exam Topic 3)

Which process involves documenting the actions necessary to define, prepare, integrate, and coordinate all subsidiary plans?

- A. Collect Requirements
- B. Direct and Manage Project Execution
- C. Monitor and Control Project Work
- D. Develop Project Management Plan

Answer: D

NEW QUESTION 30

- (Exam Topic 3)

When an activity cannot be estimated with a reasonable degree of confidence, the work within the activity is decomposed into more detail using which type of estimating?

- A. Bottom-up
- B. Parametric
- C. Analogous
- D. Three-point

Answer: A

NEW QUESTION 33

- (Exam Topic 3)

Which of the following is an output of the Monitor and Control Project Work process?

- A. Change requests
- B. Performance reports
- C. Organizational process assets
- D. Project management plan

Answer: A

NEW QUESTION 34

- (Exam Topic 3)

An input of the Control Schedule process is the:

- A. resource calendar.
- B. activity list.
- C. risk management plan.
- D. organizational process assets.

Answer: D

NEW QUESTION 39

- (Exam Topic 3)

A change log for communications can be used to communicate to the appropriate stakeholders that there are changes:

- A. To the project management plan.
- B. To the risk register.
- C. In the scope verification processes.
- D. And their impact to the project in terms of time, cost, and risk.

Answer: D

NEW QUESTION 43

- (Exam Topic 3)

Which of the following is a tool and technique for Estimate Activity Durations?

- A. Parametric estimating
- B. Monte Carlo analysis
- C. Alternatives analysis
- D. Bottom-up estimating

Answer: A

NEW QUESTION 45

- (Exam Topic 3)

What is one of the objectives of Project Risk Management?

- A. Decrease the probability and impact of an event on project objectives.
- B. Distinguish between a project risk and a project issue so that a risk mitigation plan can be put in place.
- C. Increase the probability and impact of positive events.
- D. Removal of project risk.

Answer: C

NEW QUESTION 49

- (Exam Topic 3)

The individual or group that provides resources and support for a project and is accountable for success is the:

- A. sponsor
- B. customer
- C. business partners
- D. functional managers

Answer: A

NEW QUESTION 52

- (Exam Topic 3)

The creation of an internet site to engage stakeholders on a project is an example of which type of communication?

- A. Push
- B. Pull
- C. Interactive
- D. Iterative

Answer: B

NEW QUESTION 53

- (Exam Topic 3)

The scope of a project cannot be defined without some basic understanding of how to create the specified:

- A. objectives
- B. schedule
- C. product
- D. approach

Answer: C

NEW QUESTION 58

- (Exam Topic 3)

An output of Control Schedule is:

- A. A project schedule network diagram
- B. A schedule management plan
- C. Schedule data
- D. Schedule forecasts

Answer: D

NEW QUESTION 60

- (Exam Topic 3)

The integrative nature of project management requires which Process Group to interact with the other Process Groups?

- A. Planning
- B. Executing
- C. Monitoring and Controlling
- D. Project Management

Answer: C

NEW QUESTION 63

- (Exam Topic 3)

Which tool and technique identifies inefficient and ineffective policies, processes, and procedures?

- A. Scope audits
- B. Scope reviews
- C. Quality audits
- D. Control chart

Answer: C

NEW QUESTION 67

- (Exam Topic 3)

Which process includes prioritizing risks for subsequent further analysis or action by assessing and combining their probability of occurrence and impact?

- A. Perform Qualitative Risk Analysis
- B. Perform Quantitative Risk Analysis
- C. Plan Risk Management
- D. Plan Risk Responses

Answer: A

NEW QUESTION 68

- (Exam Topic 3)

The links between the processes in the Process Groups are often:

- A. Intuitive
- B. Iterative
- C. Measured
- D. Monitored

Answer: B

NEW QUESTION 72

- (Exam Topic 3)

The process of identifying and documenting the specific actions to be performed to produce the project deliverables is known as:

- A. Define Activities.
- B. Sequence Activities.
- C. Define Scope.
- D. Control Schedule.

Answer: A

NEW QUESTION 77

- (Exam Topic 3)

What type of planning is used where the work to be accomplished in the near term is planned in detail, while work in the future is planned at a higher level?

- A. Finish-to-start planning
- B. Rolling wave planning
- C. Short term planning
- D. Dependency determination

Answer: B

NEW QUESTION 78

- (Exam Topic 3)

Information collected on the status of project activities being performed to accomplish the project work is known as what?

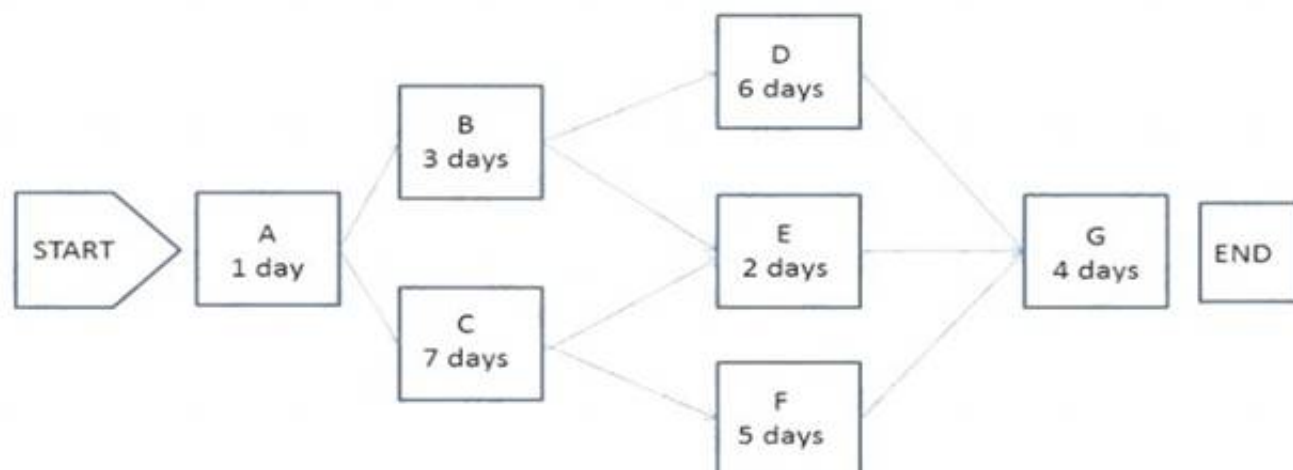
- A. Project management information system
- B. Work performance information
- C. Work breakdown structure
- D. Variance analysis

Answer: B

NEW QUESTION 79

- (Exam Topic 2)

The following is a network diagram for a project.



The total float for the project is how many days?

- A. 3
- B. 5
- C. 7
- D. 9

Answer: A

NEW QUESTION 83

- (Exam Topic 2)

At the completion of a project, a report is prepared that details the outcome of the research conducted on a global trend during the project. Which item did this project create?

- A. Result
- B. Product
- C. Service
- D. Improvement

Answer: A

NEW QUESTION 84

- (Exam Topic 2)

Which Control Stakeholder Engagement tool or technique allows the project manager to consolidate and facilitate distribution of reports?

- A. Information management systems
- B. Work performance reports
- C. Stakeholder analysis
- D. Data gathering and representation

Answer: A

NEW QUESTION 85

- (Exam Topic 2)

A disadvantage associated with virtual teams is that they:

- A. Require communication technology that is not readily available.
- B. Create difficulties when including people with disabilities.
- C. Often cannot accommodate teams that work different hours or shifts.
- D. Create the possibility for misunderstandings to arise.

Answer: D

NEW QUESTION 88

- (Exam Topic 2)

During which process does the project team receive bids and proposals?

- A. Conduct Procurements
- B. Plan Procurements
- C. Estimate Costs
- D. Control Budget

Answer: A

NEW QUESTION 89

- (Exam Topic 2)

Technical capability, past performance, and intellectual property rights are examples of:

- A. performance measurement criteria
- B. source selection criteria

- C. product acceptance criteria
- D. phase exit criteria

Answer: B

NEW QUESTION 94

- (Exam Topic 2)

Perform Integrated Change Control is the process of:

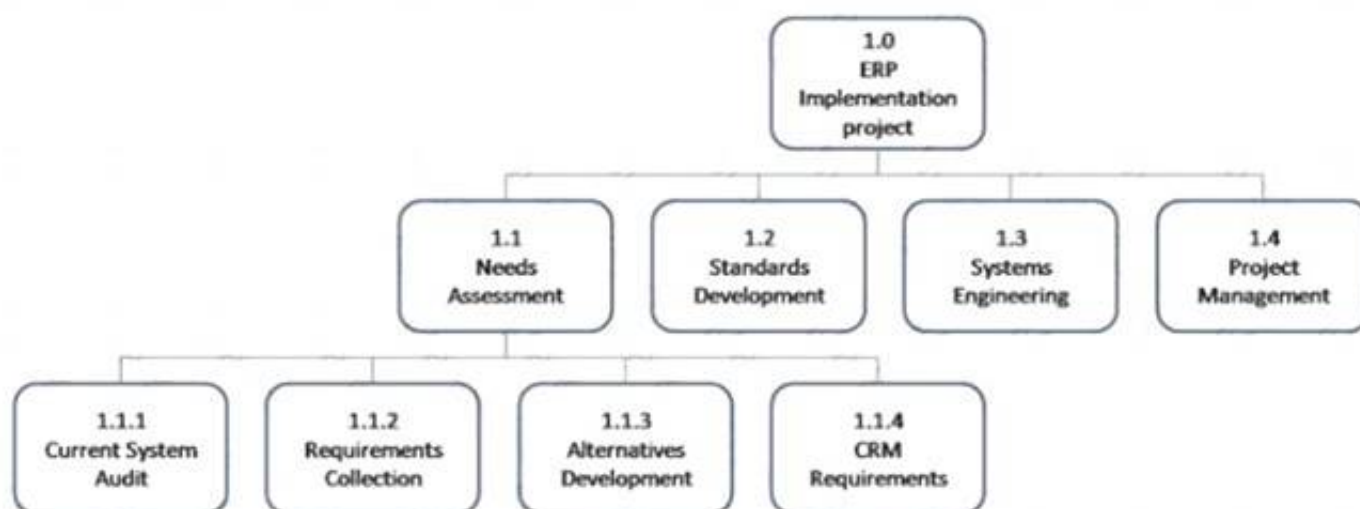
- A. Reviewing, approving, and managing all change requests
- B. Facilitating change management, manuals, or automation tools
- C. Comparing actual results with planned results in order to expand or change a project
- D. Documenting changes according to the change control system by the change control board

Answer: A

NEW QUESTION 99

- (Exam Topic 2)

Which type of graphic is displayed below?



- A. Work breakdown structure
- B. Context diagram
- C. Control chart
- D. Pareto diagram

Answer: A

NEW QUESTION 103

- (Exam Topic 2)

Tools and techniques used in Direct and Manage Project Work include:

- A. Process analysis and expert judgment
- B. Analytical techniques and a project management information system
- C. Performance reviews and meetings
- D. Expert judgment and meetings

Answer: D

NEW QUESTION 104

- (Exam Topic 2)

Which is an enterprise environmental factor?

- A. Marketplace conditions
- B. Policies and procedures
- C. Project files from previous projects
- D. Lessons learned from previous projects

Answer: A

NEW QUESTION 109

- (Exam Topic 2)

Every project creates a unique product, service, or result that may be:

- A. tangible
- B. targeted
- C. organized
- D. variable

Answer: A

NEW QUESTION 110

- (Exam Topic 2)

The zero duration of milestones in project planning occurs because milestones:

- A. Are unpredictable and challenge the Plan Schedule Management process.
- B. Occur at random times in the project plans.
- C. Represent a moment in time such as a significant project point or event.
- D. Represent both significant and insignificant points in the project and are difficult to anticipate.

Answer: C

NEW QUESTION 115

- (Exam Topic 2)

Completion of the product scope is measured against the product:

- A. prototypes
- B. requirements
- C. analyses
- D. benchmarks

Answer: B

NEW QUESTION 116

- (Exam Topic 2)

When painting a bedroom, preparing the walls can be done while the paint is being chosen. This is an example of a:

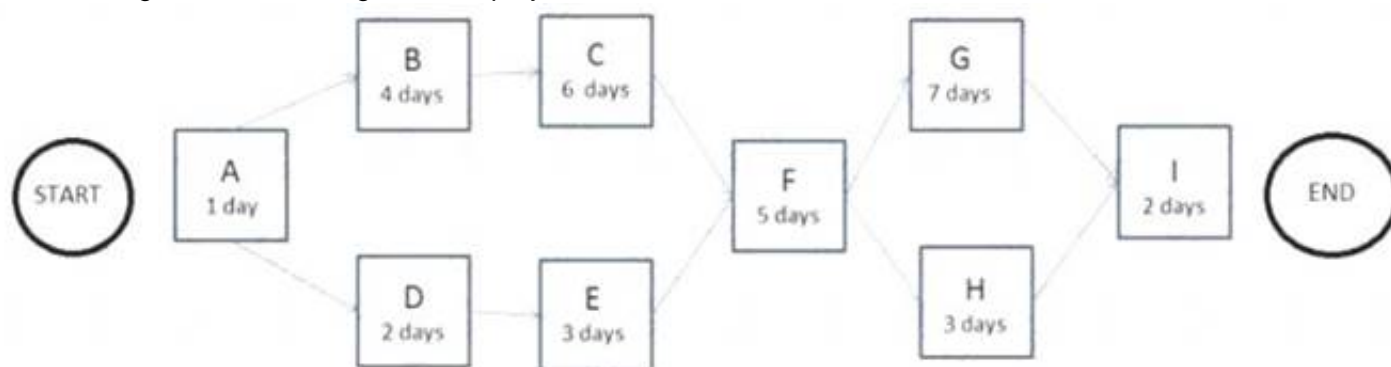
- A. lead
- B. lag
- C. mandatory dependency
- D. internal dependency

Answer: A

NEW QUESTION 119

- (Exam Topic 2)

The following is a network diagram for a project.



How many possible paths are identified for this project?

- A. 3
- B. 4
- C. 6
- D. 7

Answer: B

NEW QUESTION 124

- (Exam Topic 2)

Progressively elaborating high-level information into detailed plans is performed by the:

- A. project management office
- B. portfolio manager
- C. program manager
- D. project manager

Answer: D

NEW QUESTION 127

- (Exam Topic 2)

One of the key benefits of the Plan Human Resource Management process is that it:

- A. outlines team selection guidelines and team member responsibilities.
- B. establishes project roles and responsibilities.
- C. improves teamwork, interpersonal skills, and competencies.
- D. provides an accurate appraisal of team member performance.

Answer: B

NEW QUESTION 132

- (Exam Topic 2)

Which Perform Quality Assurance tool or technique is used to identify a problem, discover the underlying causes that lead to it, and develop preventative actions?

- A. Inspection
- B. Quality audits
- C. Design of experiments
- D. Root cause analysis

Answer: D

NEW QUESTION 137

- (Exam Topic 2)

Success is measured by benefits realization for a:

- A. strategic plan
- B. project
- C. portfolio
- D. program

Answer: C

NEW QUESTION 138

- (Exam Topic 2)

Which element does a project charter contain?

- A. Management reserves
- B. Work breakdown structure
- C. Stakeholder list
- D. Stakeholder register

Answer: C

NEW QUESTION 143

- (Exam Topic 2)

A risk that arises as a direct result of implementing a risk response is called a:

- A. contingent risk
- B. residual risk
- C. potential risk
- D. secondary risk

Answer: D

NEW QUESTION 144

- (Exam Topic 2)

Stakeholders can be identified in later stages of the project because the Identify Stakeholders process should be:

- A. Continuous
- B. Discrete
- C. Regulated
- D. Arbitrary

Answer: A

NEW QUESTION 149

- (Exam Topic 2)

Which project document is updated in the Control Stakeholder Engagement process?

- A. Project reports
- B. Issue log
- C. Lessons learned documentation
- D. Work performance information

Answer: B

NEW QUESTION 151

- (Exam Topic 2)

Which tool or technique is required in order to determine the project budget?

- A. Cost of quality
- B. Historical relationships
- C. Project management software
- D. Forecasting

Answer:

B

NEW QUESTION 154

- (Exam Topic 2)

The primary benefit of the Plan Schedule Management process is that it:

- A. provides guidance to identify time or schedule challenges within the project.
- B. tightly links processes to create a seamless project schedule.
- C. guides how the project schedule will be managed throughout the project.
- D. creates an overview of all activities broken down into manageable subsections.

Answer: C

NEW QUESTION 156

- (Exam Topic 2)

Which stakeholder approves a project's result?

- A. Customer
- B. Sponsor
- C. Seller
- D. Functional manager

Answer: A

NEW QUESTION 157

- (Exam Topic 2)

Which basic quality tool explains a change in the dependent variable in relationship to a change observed in the corresponding independent variable?

- A. Cause-and-effect diagram
- B. Histogram
- C. Control chart
- D. Scatter diagram

Answer: D

NEW QUESTION 160

- (Exam Topic 1)

Which conflict resolution technique searches for solutions that bring some degree of satisfaction to all parties in order to temporarily or partially resolve the conflict?

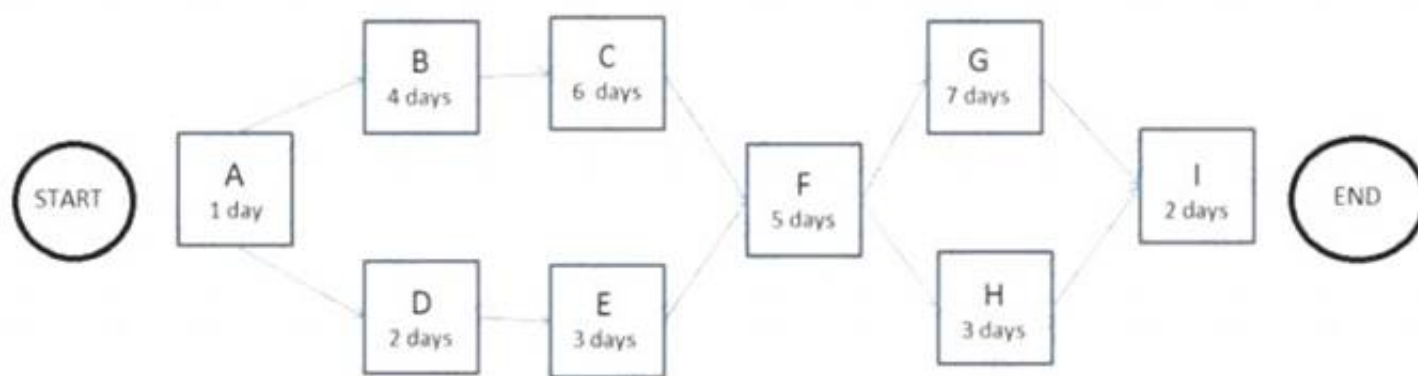
- A. Force/direct
- B. Withdraw/avoid
- C. Compromise/reconcile
- D. Collaborate/problem solve

Answer: C

NEW QUESTION 162

- (Exam Topic 2)

The following is a network diagram for a project.



What is the critical path for the project?

- A. A-B-C-F-G-I
- B. A-B-C-F-H-I
- C. A-D-E-F-G-I
- D. A-D-E-F-H-I

Answer: A

NEW QUESTION 166

- (Exam Topic 1)

Which input to the Manage Stakeholder Engagement process is used to document changes that occur during the project?

- A. Issue log
- B. Change log
- C. Expert judgment

D. Change requests

Answer: B

NEW QUESTION 171

- (Exam Topic 1)

An input to the Plan Stakeholder Management process is:

- A. The project charter.
- B. The stakeholder analysis.
- C. A communication management plan.
- D. A stakeholder register.

Answer: D

NEW QUESTION 174

- (Exam Topic 1)

The Perform Quality Assurance process occurs in which Process Group?

- A. Executing
- B. Monitoring and Controlling
- C. Initiating
- D. Planning

Answer: A

NEW QUESTION 179

- (Exam Topic 1)

A key benefit of the Manage Communications process is that it enables:

- A. The best use of communication methods.
- B. An efficient and effective communication flow.
- C. Project costs to be reduced.
- D. The best use of communication technology.

Answer: B

NEW QUESTION 184

- (Exam Topic 1)

Status of deliverables, implementation status for change requests, and forecasted estimates to complete are examples of:

- A. Earned value management.
- B. Enterprise environmental factors.
- C. Organizational process assets.
- D. Work performance information.

Answer: D

NEW QUESTION 185

- (Exam Topic 1)

Which item is an example of personnel assessment?

- A. Resource calendar
- B. Tight matrix
- C. Team-building activity
- D. Focus group

Answer: D

NEW QUESTION 189

- (Exam Topic 1)

The definition of when and how often the risk management processes will be performed throughout the project life cycle is included in which risk management plan component?

- A. Timing
- B. Methodology
- C. Risk categories
- D. Budgeting

Answer: A

NEW QUESTION 191

- (Exam Topic 1)

An effective technique for resolving conflict that incorporates multiple viewpoints from differing perspectives to achieve consensus and commitment is:

- A. smooth/accommodate.
- B. force/direct,
- C. collaborate/problem solve,
- D. compromise/reconcile.

Answer: C

NEW QUESTION 196

- (Exam Topic 1)

A project manager managing a cross-cultural virtual project team across several time zones should be concerned about the impacts of which communication technology factor?

- A. Urgent information need
- B. Sensitivity of information
- C. Project environment
- D. Ease of use

Answer: C

NEW QUESTION 198

- (Exam Topic 1)

A logical relationship in which a successor activity cannot start until a predecessor activity has finished is known as:

- A. Start-to-start (SS).
- B. Start-to-finish (SF).
- C. Finish-to-start (FS).
- D. Finish-to-finish (FF).

Answer: C

NEW QUESTION 203

- (Exam Topic 1)

Which Define Activities output extends the description of the activity by identifying the multiple components associated with each activity?

- A. Project document updates
- B. Activity list
- C. Activity attributes
- D. Project calendars

Answer: C

NEW QUESTION 204

- (Exam Topic 1)

Which process develops options and actions to enhance opportunities and reduce threats to project objectives?

- A. Identify Risks
- B. Control Risks
- C. Plan Risk Management
- D. Plan Risk Responses

Answer: D

NEW QUESTION 207

- (Exam Topic 1)

Which Collect Requirements output links the product requirements to the deliverables that satisfy them?

- A. Requirements documentation
- B. Requirements traceability matrix
- C. Project management plan updates
- D. Project documents updates

Answer: B

NEW QUESTION 212

- (Exam Topic 1)

Organizational theory is a tool used in which Project Human Resource Management process?

- A. Manage Project Team
- B. Acquire Project Team
- C. Develop Project Team
- D. Plan Human Resource Management

Answer: D

NEW QUESTION 214

- (Exam Topic 1)

Market conditions and published commercial information are examples of which input to the Estimate Costs process?

- A. Scope baseline
- B. Organizational process assets
- C. Enterprise environmental factors
- D. Risk register

Answer: C

NEW QUESTION 215

- (Exam Topic 1)

In the Plan Stakeholder Management process, expert judgment is used to:

- A. Provide information needed to plan appropriate ways to engage project stakeholders.
- B. Ensure comprehensive identification and listing of new stakeholders.
- C. Analyze the information needed to develop the project scope statement.
- D. Decide the level of engagement of the stakeholders at each required stage.

Answer: D

NEW QUESTION 220

- (Exam Topic 1)

Which Process Group and Knowledge Area include the Sequence Activities process?

- A. Executing Process Group and Project Time Management
- B. Executing Process Group and Project Cost Management
- C. Planning Process Group and Project Time Management
- D. Planning Process Group and Project Cost Management

Answer: C

NEW QUESTION 221

- (Exam Topic 1)

Which process identifies whether the needs of a project can best be met by acquiring products, services, or results outside of the organization?

- A. Plan Procurement Management
- B. Control Procurements
- C. Collect Requirements
- D. Plan Cost Management

Answer: A

NEW QUESTION 222

- (Exam Topic 1)

Which process involves defining, preparing, and coordinating all subsidiary plans and integrating them into a comprehensive plan?

- A. Direct and Manage Project Work
- B. Develop Project Management Plan
- C. Plan Quality Management
- D. Monitor and Control Project Work

Answer: B

NEW QUESTION 224

- (Exam Topic 1)

Stakeholder satisfaction should be managed as a key project:

- A. Benefit
- B. Initiative
- C. Objective
- D. Process

Answer: C

NEW QUESTION 226

- (Exam Topic 1)

An output of the Create WBS process is:

- A. Scope baseline.
- B. Change requests.
- C. Accepted deliverables.
- D. Variance analysis.

Answer: A

NEW QUESTION 227

- (Exam Topic 1)

A regression line is used to estimate:

- A. Whether or not a process is stable or has predictable performance.
- B. How a change to the independent variable influences the value of the dependent variable.
- C. The upper and lower specification limits on a control chart.
- D. The central tendency, dispersion, and shape of a statistical distribution.

Answer: B

NEW QUESTION 229

- (Exam Topic 1)

The process of prioritizing risks for further analysis or action is known as:

- A. Plan Risk Management.
- B. Plan Risk Responses.
- C. Perform Qualitative Risk Analysis.
- D. Perform Quantitative Risk Analysis.

Answer: C

NEW QUESTION 233

- (Exam Topic 1)

External organizations that have a special relationship with the enterprise and provide specialized expertise are called:

- A. Customers.
- B. Business partners.
- C. Sellers.
- D. Functional managers.

Answer: B

NEW QUESTION 238

- (Exam Topic 1)

Which Knowledge Areas include processes from the Closing Process Group?

- A. Project Quality Management and Project Time Management
- B. Project Scope Management and Project Risk Management
- C. Project Stakeholder Management and Project Cost Management
- D. Project Integration Management and Project Procurement Management

Answer: D

NEW QUESTION 243

- (Exam Topic 1)

Conditions that are not under the control of the project team that influence, direct, or constrain a project are called:

- A. Enterprise environmental factors
- B. Work performance reports
- C. Organizational process assets
- D. Context diagrams

Answer: A

NEW QUESTION 245

- (Exam Topic 1)

Which stakeholder classification model groups stakeholders based on their level of authority and their active involvement in the project?

- A. Power/influence grid
- B. Power/interest grid
- C. Influence/impact grid
- D. Salience model

Answer: A

NEW QUESTION 249

- (Exam Topic 1)

An output of the Validate Scope process is:

- A. A requirements traceability matrix.
- B. The scope management plan.
- C. Work performance reports.
- D. Change requests.

Answer: D

NEW QUESTION 254

- (Exam Topic 1)

Regression analysis, failure mode and effect analysis (FMEA), fault tree analysis (FTA), and trend analysis are examples of which tool or technique?

- A. Expert judgment
- B. Forecasting methods
- C. Earned value management
- D. Analytical techniques

Answer: D

NEW QUESTION 256

- (Exam Topic 1)

Which type of contract gives both the seller and the buyer flexibility to deviate from performance with financial incentives?

- A. Cost Plus Incentive Fee (CPIF)
- B. Fixed Price Incentive Fee (FPIF)
- C. Cost Plus Award Fee (CPAF)
- D. Time and Material (T&M)

Answer: B

NEW QUESTION 259

- (Exam Topic 1)

An input to Develop Project Charter is a/an:

- A. Business case.
- B. Activity list.
- C. Project management plan.
- D. Cost forecast.

Answer: A

NEW QUESTION 261

- (Exam Topic 1)

The process of confirming human resource availability and obtaining the team necessary to complete project activities is known as:

- A. Plan Human Resource Management.
- B. Acquire Project Team.
- C. Manage Project Team.
- D. Develop Project Team.

Answer: B

NEW QUESTION 263

- (Exam Topic 1)

Scope, schedule, and cost parameters are integrated in the:

- A. Performance measurement baseline.
- B. Analysis of project forecasts,
- C. Summary of changes approved in a period,
- D. Analysis of past performance.

Answer: A

NEW QUESTION 266

- (Exam Topic 1)

An input to Close Project or Phase is:

- A. Accepted deliverables,
- B. Final products or services,
- C. Document updates,
- D. Work performance information.

Answer: A

NEW QUESTION 271

- (Exam Topic 6)

How can a project manager maintain the engagement of stakeholders in a project with a high degree of change?

- A. Monitor project stakeholder relationships using engaging strategies and plans
- B. Send all project documents to stakeholders each time they are modified
- C. Schedule monthly meetings with the stakeholders, including team members
- D. Engage only with the project sponsors

Answer:

C

NEW QUESTION 273

- (Exam Topic 6)

What should a project manager use to determine how much money is needed to complete a project?

- A. Earned value management (EVM)
- B. Estimate at completion (EAC)
- C. Earned value analysis (EVA)
- D. Budget at completion (BAG)

Answer: B

NEW QUESTION 276

- (Exam Topic 6)

Why is tailoring in a project necessary?

- A. Requirements keep changing.
- B. An artifact must be produced.
- C. A tool or technique is required.
- D. Each project is unique.

Answer: D

Explanation:

Each project is unique, and the members of the project team should select the appropriate tools, techniques, inputs, and outputs from the PMBOK Guide.

NEW QUESTION 278

- (Exam Topic 6)

A project team is discussing an upcoming planned product launch of a highly visible technologically advanced artificial intelligence tool. The team is debating the aspect of iterative and hybrid approaches. Which aspect of tailoring would this best represent?

- A. Life cycle approaches
- B. Resource availability
- C. Project dimensions
- D. Technology support

Answer: D

NEW QUESTION 281

- (Exam Topic 6)

A project manager is addressing risks and potential concerns related to stakeholder management, and is clarifying and resolving previously identified issues. In which process is the project manager engaged?

- A. Identify Stakeholders
- B. Plan Stakeholder Engagement
- C. Manage Stakeholder Engagement
- D. Monitor Stakeholder Engagement

Answer: B

NEW QUESTION 283

- (Exam Topic 6)

Which term refers to the work performed to deliver results with specified features and functions?

- A. Project scope
- B. Product scope
- C. Change request
- D. Acceptance criteria

Answer: A

NEW QUESTION 288

- (Exam Topic 6)

Which conflict resolution technique produces the most lasting results?

- A. Withdraw/avoid
- B. Smooth/accommodate
- C. Compromise/reconcile
- D. Collaborate/problem solve

Answer: C

NEW QUESTION 289

- (Exam Topic 5)

What happens to a stakeholder's project influence over time?

- A. Increases
- B. Decreases
- C. Stays the same
- D. Has no bearing

Answer: B

NEW QUESTION 291

- (Exam Topic 5)

Which type of diagram includes groups of information and shows relationships between factors, causes, and objectives?

- A. Affinity
- B. Scatter
- C. Fishbone
- D. Matrix

Answer: D

NEW QUESTION 294

- (Exam Topic 5)

In Plan Risk Management, which of the management plans determines who will be available to share information on various risks and responses at different times and locations?

- A. Schedule
- B. Quality
- C. Communications
- D. Cost

Answer: C

NEW QUESTION 299

- (Exam Topic 5)

Which input will be used when tasked with developing the human resource plan?

- A. Project management plan
- B. Activity resource requirements
- C. Resource calendar
- D. Project staff assignments

Answer: B

NEW QUESTION 301

- (Exam Topic 5)

Which of the following is an output of Close Procurements?

- A. Accepted deliverables
- B. Organizational process assets updates
- C. Managing stakeholder expectations
- D. Performance reports

Answer: B

NEW QUESTION 306

- (Exam Topic 5)

During project selection, which factor is most important?

- A. Types of constraints
- B. Internal business needs
- C. Budget
- D. Schedule

Answer: B

NEW QUESTION 309

- (Exam Topic 5)

When a permitting agency takes longer than planned to issue a permit, this can be described as a risk:

- A. event.
- B. response,
- C. perception.
- D. impact.

Answer: A

NEW QUESTION 312

- (Exam Topic 5)

Which characteristics do effective project managers possess?

- A. Project management knowledge, performance skills, and personal effectiveness
- B. Preparedness, project management knowledge, and personality characteristics
- C. General management, preparedness, and project management knowledge
- D. Assertiveness, collaboration, and performance skills

Answer: A

NEW QUESTION 313

- (Exam Topic 5)

Inputs to the Plan Risk Management process include the:

- A. cost management plan.
- B. risk management plan,
- C. activity list,
- D. risk register.

Answer: A

NEW QUESTION 314

- (Exam Topic 5)

Which process is responsible for monitoring the status of the project and product scope and managing changes to the scope baseline?

- A. Variance Analysis
- B. Define Scope
- C. Verify Scope
- D. Control Scope

Answer: D

NEW QUESTION 319

- (Exam Topic 5)

Projects are separated into phases or subprojects; these phases include:

- A. feasibility study, concept development, design, and prototype.
- B. initiate, plan, execute, and monitor.
- C. Develop Charter, Define Activities, Manage Stakeholder Expectations, and Report Performance.
- D. Identify Stakeholders, develop concept, build, and test.

Answer: A

NEW QUESTION 321

- (Exam Topic 5)

Who determines which dependencies are mandatory during the Sequence Activities process?

- A. Project manager
- B. External stakeholders
- C. Internal stakeholders
- D. Project team

Answer: D

NEW QUESTION 322

- (Exam Topic 5)

The item that provides more detailed descriptions of the components in the work breakdown structure (WBS) is called a WBS:

- A. dictionary.
- B. chart.
- C. report.
- D. register.

Answer: A

NEW QUESTION 325

- (Exam Topic 5)

In the basic communication model, which term refers to the method that is used to convey the message?

- A. Decode
- B. Encode
- C. Medium
- D. Noise

Answer: C

NEW QUESTION 330

- (Exam Topic 5)

Who is responsible for initiating a project?

- A. Project sponsor
- B. Project manager
- C. Program manager
- D. Project management office (PMO)

Answer: A

NEW QUESTION 331

- (Exam Topic 5)

What is project management?

- A. A logical grouping of project management inputs, outputs, tools, and techniques
- B. Applying knowledge, skills, tools, and techniques to project activities to meet the project requirements
- C. Launching a process that can result in the authorization of a new project
- D. A formal, approved document that defines how the project is executed, monitored, and controlled

Answer: B

NEW QUESTION 333

- (Exam Topic 5)

The completion of the project scope is measured against the:

- A. requirements documentation.
- B. project scope statement.
- C. project management plan.
- D. work performance measurements.

Answer: C

NEW QUESTION 337

- (Exam Topic 5)

The project budget is set at \$150,000. The project duration is planned to be one year. At the completion of Week 16 of the project, the following information is collected: Actual cost = \$50,000, Plan cost = \$45,000, Earned value = \$40,000. What is the cost performance index?

- A. 0.8
- B. 0.89
- C. 1.13
- D. 1.25

Answer: A

NEW QUESTION 340

- (Exam Topic 5)

Which of the following can be used as an input for Define Scope?

- A. Product analysis
- B. Project charter
- C. Scope baseline
- D. Project scope statement

Answer: B

NEW QUESTION 341

- (Exam Topic 4)

In a construction project schedule, what is the logical relationship between the delivery of the concrete materials and the pouring of concrete?

- A. Start-to-start (SS)
- B. Start-to-finish (SF)
- C. Finish-to-finish (FF)
- D. Finish-to-start (FS)

Answer: D

NEW QUESTION 343

- (Exam Topic 4)

What is the schedule performance index (SPI) using the following data? BAC = \$100,000 PV = \$50,000 AC = \$80,000 EV = \$40,000

- A. 1
- B. 0.4
- C. 0.5
- D. 0.8

Answer: D

NEW QUESTION 346

- (Exam Topic 4)

What risk technique is used to quantify the probability and impact of risks on project objectives?

- A. Expert judgment
- B. Risk registry
- C. Risk response planning
- D. Interviewing

Answer: D

NEW QUESTION 349

- (Exam Topic 4)

Which of the following is a set of interrelated actions and activities performed to achieve a prespecified product, result, or service?

- A. Portfolio
- B. Process
- C. Project
- D. Program

Answer: B

NEW QUESTION 353

- (Exam Topic 4)

Which of the following characteristics are found in a functional organizational structure?

- A. Little or no project manager authority, little or no resource availability, and the functional manager controls the project budget
- B. Limited project manager authority, limited resource availability, and a part-time project manager's role
- C. Low to moderate project manager authority, low to moderate resource availability, and a full-time project manager's role
- D. High to almost total project manager authority, high to almost total resource availability, and full-time project management administrative staff

Answer: A

NEW QUESTION 356

- (Exam Topic 4)

A tool and technique used during the Perform Qualitative Risk Analysis process is:

- A. risk data quality assessment.
- B. variance and trend analysis.
- C. data gathering and representation techniques.
- D. risk audits.

Answer: A

NEW QUESTION 360

- (Exam Topic 4)

Which of the following processes audits the quality requirements and the results from quality control measures to ensure appropriate quality standards and operational definitions are used?

- A. Perform Quality Control
- B. Quality Metrics
- C. Perform Quality Assurance
- D. Plan Quality

Answer: C

NEW QUESTION 364

- (Exam Topic 4)

A tool or technique in Perform Quality Control that a project manager would use is:

- A. quality audits.
- B. process analysis.
- C. benchmarking.
- D. inspection.

Answer: D

NEW QUESTION 365

- (Exam Topic 4)

Which of the following project documents is an input to the Control Scope process?

- A. Vendor risk assessment diagram
- B. Risk register

- C. Requirements traceability matrix
- D. Area of responsibility summary

Answer: C

NEW QUESTION 369

- (Exam Topic 4)

The project scope statement and resource calendars are inputs to which Project Time Management process?

- A. Sequence Activities
- B. Estimate Activity Resources
- C. Develop Schedule
- D. Control Schedule

Answer: C

NEW QUESTION 374

- (Exam Topic 4)

Which category of contracts are sellers legally obligated to complete, with possible financial damages if the project objectives are not met?

- A. Cost-reimbursable contracts
- B. Time and Material contracts (T&M)
- C. Fixed-price contracts
- D. Cost Plus Fixed Fee Contracts (CPFF)

Answer: C

NEW QUESTION 376

- (Exam Topic 4)

A weighting system is a tool for which area of Conduct Procurements?

- A. Plan contracting
- B. Requesting seller responses
- C. Selecting seller's
- D. Planning purchase and acquisition

Answer: C

NEW QUESTION 378

- (Exam Topic 4)

Project contracts generally fall into which of the following three broad categories?

- A. Fixed-price, cost reimbursable, time and materials
- B. Make-or-buy, margin analysis, fixed-price
- C. Time and materials, fixed-price, margin analysis
- D. Make-or-buy, lump-sum, cost-plus-incentive

Answer: A

NEW QUESTION 379

- (Exam Topic 4)

What provides information regarding the ways people, teams, and organizational units behave?

- A. Organizational chart
- B. Organizational theory
- C. Organizational structure
- D. Organizational behavior

Answer: B

NEW QUESTION 381

- (Exam Topic 4)

Which of the following documents allows the project manager to assess risks that may require near term action?

- A. Probability and impact matrix
- B. Contingency analysis report
- C. Risk urgency assessment
- D. Rolling wave plan

Answer: C

NEW QUESTION 382

- (Exam Topic 4)

Co-location is a tool and technique of:

- A. Develop Human Resource Plan.
- B. Manage Project Team.
- C. Develop Project Team.
- D. Acquire Project Team.

Answer: C

NEW QUESTION 384

- (Exam Topic 4)

Which of the following is an input to the Direct and Manage Project Execution process?

- A. Approved change requests
- B. Approved contract documentation
- C. Work performance information
- D. Rejected change requests

Answer: A

NEW QUESTION 385

- (Exam Topic 4)

In a weak matrix, the project managers role is:

- A. part-time
- B. full-time
- C. occasional
- D. unlimited

Answer: A

NEW QUESTION 388

- (Exam Topic 4)

Lessons learned documentation is gathered during which of the following Project Management Process Groups?

- A. Planning
- B. Executing
- C. Closing
- D. Initiating

Answer: C

NEW QUESTION 390

- (Exam Topic 4)

A method to manage stakeholder expectations in the scope statement is to clearly:

- A. state the guiding principles of the organization.
- B. identify alternatives to generate different approaches.
- C. state what is out of scope.
- D. outline the results of the Delphi technique.

Answer: C

NEW QUESTION 394

- (Exam Topic 4)

Control charts, flowcharting, histograms, Pareto charts, and scatter diagrams are tools and techniques of which process?

- A. Perform Quality Control
- B. Perform Quality Assurance
- C. Plan Quality
- D. Report Performance

Answer: C

NEW QUESTION 398

- (Exam Topic 4)

Which characteristic do projects and operational work share in common?

- A. Performed by systems
- B. Constrained by limited resources
- C. Repetitiveness
- D. Uniqueness

Answer: B

NEW QUESTION 399

- (Exam Topic 4)

The Project Management Process Group in which performance is observed and measured regularly from project initiation through completion is:

- A. Executing.
- B. Initiating,
- C. Monitoring and Controlling.
- D. Planning.

Answer: C

NEW QUESTION 403

- (Exam Topic 4)

One of the tools and techniques of the Manage Project Team process is:

- A. organization charts.
- B. ground rules.
- C. organizational theory,
- D. conflict management.

Answer: D

NEW QUESTION 404

- (Exam Topic 4)

Which of the following is a tool and technique used in the Develop Schedule process?

- A. Three-point estimates
- B. Resource leveling
- C. Precedence diagramming method
- D. Bottom-up estimating

Answer: B

NEW QUESTION 406

- (Exam Topic 4)

In which Process Group are lessons learned documented?

- A. Planning
- B. Closing
- C. Executing
- D. Initiating

Answer: B

NEW QUESTION 411

- (Exam Topic 4)

Managing procurement relationships and monitoring contract performance are part of which process?

- A. Conduct Procurements
- B. Plan Procurements
- C. Administer Procurements
- D. Close Procurements

Answer: C

NEW QUESTION 414

- (Exam Topic 4)

Which process determines the risks that might affect the project?

- A. Perform Qualitative Risk Analysis
- B. Identify Risks
- C. Plan Risk Management
- D. Perform Quantitative Risk Analysis

Answer: B

NEW QUESTION 419

- (Exam Topic 4)

Ensuring that both parties meet contractual obligations and that their own legal rights are protected is a function of:

- A. Conduct Procurements.
- B. Close Procurements.
- C. Administer Procurements,
- D. Plan Procurements.

Answer: C

NEW QUESTION 423

- (Exam Topic 4)

Which cost estimate technique includes contingencies to account for cost uncertainty?

- A. Vendor bid analysis
- B. Three-point estimates
- C. Parametric estimating
- D. Reserve analysis

Answer: D

NEW QUESTION 428

- (Exam Topic 4)

Tools and techniques used for Plan Communications include the communication:

- A. requirements analysis, communication technology, communication models, and communication methods.
- B. methods, stakeholder register, communication technology, and communication models.
- C. requirements, communication technology, communication requirements analysis, and communication methods.
- D. management plan, communication technology, communication models, and communication requirements analysis.

Answer: A

NEW QUESTION 432

- (Exam Topic 4)

Another name for an Ishikawa diagram is:

- A. cause and effect diagram.
- B. control chart.
- C. flowchart.
- D. histogram.

Answer: A

NEW QUESTION 435

- (Exam Topic 4)

In which domain of project management would a Pareto chart provide useful information?

- A. Project Scope Management
- B. Project Time Management
- C. Project Communications Management
- D. Project Quality Management

Answer: D

NEW QUESTION 438

- (Exam Topic 4)

In which type of organizational structure are staff members grouped by specialty?

- A. Functional
- B. Projectized
- C. Matrix
- D. Balanced

Answer: A

NEW QUESTION 439

- (Exam Topic 4)

Types of internal failure costs include:

- A. inspections.
- B. equipment and training.
- C. lost business.
- D. reworking and scrapping.

Answer: D

NEW QUESTION 441

- (Exam Topic 4)

Which of the following factors is lowest at the start of the project?

- A. Cost of changes
- B. Stakeholder influences
- C. Risk
- D. Uncertainty

Answer: A

NEW QUESTION 443

- (Exam Topic 4)

Which tool or technique is used in Close Procurements?

- A. Contract plan
- B. Procurement plan
- C. Closure process
- D. Procurement audits

Answer: D

NEW QUESTION 447

- (Exam Topic 6)

Match the project manager's sphere of influence with the associated primary role.

Project Manager's Sphere of Influence		Project Manager's Primary Role
Professional discipline		Use informal and formal networks for communication among the sponsor, team, and stakeholders.
The industry		Advocate the project's value in interactions with other project managers to effectively gain the required resources and funding.
The project		Apply and transfer knowledge continuously to related professions.
The organization		Keep abreast of emerging technology developments and the changing market.

- A. Mastered
- B. Not Mastered

Answer: A

Explanation:

Project Manager's Sphere of Influence		Project Manager's Primary Role
Professional discipline	The project	Use informal and formal networks for communication among the sponsor, team, and stakeholders.
The industry	Professional discipline	Advocate the project's value in interactions with other project managers to effectively gain the required resources and funding.
The project	The industry	Apply and transfer knowledge continuously to related professions.
The organization	The organization	Keep abreast of emerging technology developments and the changing market.

NEW QUESTION 450

- (Exam Topic 6)

What is the project manager's responsibility in Project Integration Management?

- A. Ensuring that requirements-related work is clarified in the project management plan
- B. Investing sufficient effort in acquiring, managing, motivating, and empowering the project team
- C. Combining the results in all other knowledge areas, and overseeing the project as a whole
- D. Developing a strategy to ensure effective stakeholder communication

Answer: A

NEW QUESTION 454

- (Exam Topic 6)

A project manager is preparing to meet with three crucial project stakeholders on a new project. Which tools and techniques can the project manager use to capture stakeholder interest?

- A. Review stakeholder register and meeting
- B. Data analysis and communication skills
- C. Data gathering and data analysis
- D. Communication skills and cultural awareness

Answer: D

NEW QUESTION 458

- (Exam Topic 6)

How should a project manager plan communications for a project which has uncertain requirements?

- A. Include stakeholders in project meetings and reviews, use frequent checkpoints, and co-locate team members only.
- B. Invite customers to sprint planning and retrospective meetings, update the team quickly and on a daily basis, and use official communication channels.
- C. Adopt social networking to engage stakeholders, issue frequent and short messages, and use informal communication channels.
- D. Adopt a strong change control board process, establish focal points for main subjects, and promote formal and transparent communication.

Answer: B

NEW QUESTION 460

- (Exam Topic 6)

The Agile principle "welcome changing requirements, even late in development" relates to which agile manifesto?

- A. Working software over comprehensive documentation
- B. Individuals and interactions over processes and tools
- C. Customer collaboration over contract negotiation
- D. Responding to change over following a plan

Answer: D

NEW QUESTION 464

- (Exam Topic 6)

Which of the following describes the similarities of the process groups and project life cycle?

- A. The life cycle involves three project management process groups.
- B. Both provide a basic framework to manage the project.
- C. Each project must have a life cycle and all processes in the five process groups.
- D. The project life cycle is managed by executing the processes within the five process groups.

Answer: C

NEW QUESTION 465

- (Exam Topic 6)

Which of the following best corresponds to the organizational process assets (OPAs) that affect the project?

- A. Policies and lessons learned from other projects
- B. Information technology software and employee capability
- C. Resource availability and employee capability
- D. Marketplace conditions and legal restrictions

Answer: A

NEW QUESTION 467

- (Exam Topic 6)

A project manager is launching an information system to provide a lessons learned database. This action is necessary for recipients to access content at their own discretion. Which communication method is described?

- A. Push communication
- B. Pull communication
- C. Interactive communication
- D. Stakeholder communication

Answer: B

NEW QUESTION 471

- (Exam Topic 6)

Which statement is related to the project manager's sphere of influence at the organizational level?

- A. A project manager interacts with other project managers to detect common interests and impacts between their projects.

- B. A project manager facilitates communication between the suppliers and contractors on the project.
- C. A project manager considers the current industry trends and evaluates how they can impact or be applied to the project.
- D. A project manager may inform other professionals about the value of project management.

Answer: A

NEW QUESTION 476

- (Exam Topic 6)

What is the difference between verified and accepted deliverables?

- A. Accepted deliverables have been completed and checked for correctness; verified deliverables have been formally approved by the customer or authorized stakeholder.
- B. Accepted deliverables have been inspected by the quality team; verified deliverables are outputs from the Validate Scope process.
- C. Accepted deliverables have been formally signed off and approved by the authorized stakeholder; verified deliverables have been completed and checked for correctness.
- D. Accepted deliverables have been formally accepted by the project manager; verified deliverables are the outputs from the Control Quality process.

Answer: D

NEW QUESTION 479

- (Exam Topic 6)

The project manager is working in the processes of Project Resource Management. Which process is the project manager developing if they are using parametric estimation?

- A. Plan Resource Management
- B. Estimate Activity Resources
- C. Estimate Costs
- D. Acquire Resources

Answer: B

NEW QUESTION 481

- (Exam Topic 6)

A project manager is formalizing acceptance of the completed project deliverables. What is an input to this process?

- A. Verified deliverables
- B. Validated deliverables
- C. Accepted deliverables
- D. Completed change requests

Answer: A

NEW QUESTION 485

- (Exam Topic 6)

A project manager has to share a status report with a new stakeholder and is trying to determine the level of detail to include in the report. Which document best details the information the project manager needs to make this decision?

- A. Organizational process assets
- B. Change management plan
- C. Communications management plan
- D. Resource management plan

Answer: C

NEW QUESTION 486

- (Exam Topic 6)

What tool should a project manager use to efficiently manage project resources?

- A. List of project resources
- B. Resource breakdown structure
- C. Resources detailed in the project scope
- D. Resource requirements

Answer: C

NEW QUESTION 490

- (Exam Topic 6)

The project manager is explaining to others the essential business aspects of the project. To which skill category does this ability belong?

- A. Technical project management skills
- B. Time management skills
- C. Strategic and business management skills
- D. Leadership skills

Answer: C

NEW QUESTION 492

- (Exam Topic 6)

Which of the following lists represents the outputs of the Monitor Communications process?

- A. Project communications, project management plan updates, project documents updates, and organizational process assets updates
- B. Work performance information, change requests, project management plan updates, and project documents updates
- C. Communications management plan, project management plan updates, work performance report, and project documents update
- D. Stakeholder engagement plan, change requests, project management plan updates, and project documents updates

Answer: B

NEW QUESTION 497

- (Exam Topic 6)

A project is in progress and about to move to a different phase, according to the plan. This will be a good opportunity for the project manager to:

- A. create the project management plan.
- B. identify the project objectives.
- C. review and update stakeholder engagement.
- D. create the schedule baseline.

Answer: C

NEW QUESTION 500

- (Exam Topic 6)

When should Project Risk Management be conducted?

- A. Project Planning
- B. Monitoring and Controlling
- C. Quality Planning
- D. Throughout the project lifecycle

Answer: C

NEW QUESTION 504

- (Exam Topic 6)

When project requirements are documented in user stories then prioritized and refined just prior to construction, which approach is being used for scheduling?

- A. Iterative scheduling with backlog
- B. On-demand scheduling
- C. Life cycle scheduling with backlog
- D. Defining Iterative activities

Answer: A

NEW QUESTION 508

- (Exam Topic 6)

Which is the order of steps in the Procurement Management process?

- A. Identifying and planning procurement requirements, obtaining quotes or proposals, negotiating with vendors, contracting with selected vendors, and controlling procurements
- B. Identifying and planning procurement requirements, negotiating with vendors, contracting with selected vendors, obtaining quotes or proposals, and controlling procurements
- C. Controlling procurements, identifying and planning procurement requirements, obtaining quotes or proposals, negotiating with vendors, and contracting with selected vendors
- D. Obtaining quotes or proposals, identifying and planning procurement requirements, negotiating with vendors, contracting with selected vendors, and controlling procurements

Answer: A

NEW QUESTION 511

- (Exam Topic 6)

What are the inputs of the Estimate Costs process?

- A. Project management plan, work performance data, enterprise environmental factors, and organizational process assets
- B. Project management plan, project documents, enterprise environmental factors, and organizational process assets
- C. Cost baseline, enterprise environmental factors, benefits management plan, and organizational process assets
- D. Project management plan, enterprise environmental factors, basis of estimates, and organizational process assets

Answer: C

NEW QUESTION 514

- (Exam Topic 6)

How can a project manager determine if the project activities comply with organizational and project policies, processes, and procedures?

- A. Look at the quality metrics.
- B. Validate the scope.
- C. Review the quality checklist.

D. Conduct a quality audit.

Answer: D

NEW QUESTION 515

- (Exam Topic 6)

A project has an estimated duration of 10 months with a total budget of US\$220,000. At the end of the fifth month, it is estimated that at completion, the project will incur US\$250,000. If the actual cost (AC) calculated is US\$150,000, what is the earned value (EV) of the project?

- A. US\$30,000
- B. US\$120,000
- C. US\$370,000
- D. US\$400,000

Answer: D

NEW QUESTION 516

- (Exam Topic 6)

If you are using an Ishikawa diagram to determine the root cause of problems, which process are you engaged in?

- A. Plan Quality Management
- B. Control Quality
- C. Risk Management
- D. Plan Scope Management

Answer: B

NEW QUESTION 517

- (Exam Topic 6)

Which of the following are components of the technical project management skill?

- A. Ability to explain business aspects of the project, business strategy, goals and objectives, and business value.
- B. Ability to deal with people, to be collaborative, and to apply persuasion and negotiation.
- C. Ability to focus on relationships with people, inspire trust, and implement decisions and actions that support the business strategy.
- D. Ability to plan and prioritize, gather the right artifacts available for each project, and focus on critical success factors.

Answer: D

NEW QUESTION 519

- (Exam Topic 6)

Which of the following can a project manager use to represent defined team member roles in a group of tasks?

- A. Work breakdown structure (WBS)
- B. Responsibility assignment matrix (RAM)
- C. Organizational breakdown structure (OBS)
- D. Resource breakdown structure (RBS)

Answer: B

NEW QUESTION 521

- (Exam Topic 6)

Which of the following technology platforms is most effective for sharing information when managing virtual project teams?

- A. Video conferencing
- B. Audio conferencing
- C. Shared portal
- D. Email/chat

Answer: D

NEW QUESTION 524

- (Exam Topic 6)

Why is tailoring required in a project?

- A. Because a one-size-fits-all approach avoids complications and saves time.
- B. Because every project is unique and not every tool, technique, input, or output identified in the PMBOK Guide is required.
- C. Because tailoring allows us to identify the techniques, procedures, and system practices used by those in the project.
- D. Project managers should apply every process in the PMBOK Guide to the project, so tailoring is not required.

Answer: C

NEW QUESTION 525

- (Exam Topic 6)

In a project using agile methodology, who may perform the quality control activities?

- A. A group of quality experts at specific times during the project
- B. The project manager only
- C. All team members throughout the project life cycle
- D. Selected stakeholders at specific times during the project

Answer: C

NEW QUESTION 530

- (Exam Topic 6)

Analyzing activity sequences, durations, resource requirements, and schedule constraints for project execution and monitoring and controlling relates to which process?

- A. Develop Schedule
- B. Control Schedule
- C. Estimate Activity Durations
- D. Define Activities

Answer: A

NEW QUESTION 534

- (Exam Topic 6)

Which set of competencies should a project manager have?

- A. Leadership, strategic and business management, and technical project management
- B. Expertise in the Industry, leadership and business management, and bilingual skills
- C. Technical project management, expertise in every role, and PMP certification
- D. Expertise in every detail on project activities
- E. PMP certification, and leadership

Answer: A

NEW QUESTION 536

- (Exam Topic 6)

What process is included in Project Schedule Management?

- A. Estimate Activity Durations
- B. Create Work Breakdown Structure (WBS)
- C. Direct and Manage Project Work
- D. Estimate Activity Resources

Answer: A

NEW QUESTION 540

- (Exam Topic 6)

During which process of Project Cost Management does a project manager produce the cost baseline?

- A. Estimate Costs
- B. Control Schedule
- C. Determine Budget
- D. Develop Project Charter

Answer: C

NEW QUESTION 544

- (Exam Topic 6)

What does an S-curve from a Monte Carlo analysis show?

- A. Cumulative probability distribution representing probability of achieving a particular outcome
- B. Individual project risks or uncertainties that have the most potential impact on outcome
- C. Best alternative out of the possible solutions, incorporating associated risks and opportunities
- D. Diagram for all project uncertainties and their influence over a period of time

Answer: A

NEW QUESTION 549

.....

THANKS FOR TRYING THE DEMO OF OUR PRODUCT

Visit Our Site to Purchase the Full Set of Actual CAPM Exam Questions With Answers.

We Also Provide Practice Exam Software That Simulates Real Exam Environment And Has Many Self-Assessment Features. Order the CAPM Product From:

<https://www.2passeasy.com/dumps/CAPM/>

Money Back Guarantee

CAPM Practice Exam Features:

- * CAPM Questions and Answers Updated Frequently
- * CAPM Practice Questions Verified by Expert Senior Certified Staff
- * CAPM Most Realistic Questions that Guarantee you a Pass on Your FirstTry
- * CAPM Practice Test Questions in Multiple Choice Formats and Updatesfor 1 Year