



Snowflake

Exam Questions SnowPro-Core

SnowPro Core Certification Exam

About Exambible

Your Partner of IT Exam

Found in 1998

Exambible is a company specialized on providing high quality IT exam practice study materials, especially Cisco CCNA, CCDA, CCNP, CCIE, Checkpoint CCSE, CompTIA A+, Network+ certification practice exams and so on. We guarantee that the candidates will not only pass any IT exam at the first attempt but also get profound understanding about the certificates they have got. There are so many alike companies in this industry, however, Exambible has its unique advantages that other companies could not achieve.

Our Advances

* 99.9% Uptime

All examinations will be up to date.

* 24/7 Quality Support

We will provide service round the clock.

* 100% Pass Rate

Our guarantee that you will pass the exam.

* Unique Gurantee

If you do not pass the exam at the first time, we will not only arrange FULL REFUND for you, but also provide you another exam of your claim, ABSOLUTELY FREE!

NEW QUESTION 1

- (Exam Topic 1)

Which of the following statements would be used to export/unload data from Snowflake?

- A. COPY INTO @stage
- B. EXPORT TO @stage
- C. INSERT INTO @stage
- D. EXPORT_TO_STAGE(stage = > @Wage, select = > 'select * from t1');

Answer: A

Explanation:

Reference: <https://docs.snowflake.com/en/user-guide/data-unload-considerations.html>

NEW QUESTION 2

- (Exam Topic 1)

Which interfaces can be used to create and/or manage Virtual Warehouses?

- A. The Snowflake Web Interface (UI)
- B. SQL commands
- C. Data integration tools
- D. All of the above

Answer: D

Explanation:

Reference: <https://docs.snowflake.com/en/user-guide/warehouses.html>

NEW QUESTION 3

- (Exam Topic 1)

Which of the following are options when creating a Virtual Warehouse?

- A. Auto-suspend
- B. Auto-resume
- C. Local SSD size
- D. User count

Answer: AB

NEW QUESTION 4

- (Exam Topic 1)

True or False: Snowflake charges a premium for storing semi-structured data.

- A. True
- B. False

Answer: B

Explanation:

Reference:

<https://snowflakecommunity.force.com/s/question/0D50Z00008ckwNuSAI/does-snowflakecharges- premium-for-storing-semi-structured-data>

NEW QUESTION 5

- (Exam Topic 1)

Which of the following statements is true of Snowflake micro-partitioning?

- A. Micro-partitioning has been known to introduce data skew
- B. Micro-partitioning: requires a partitioning schema to be defined up front
- C. Micro-partitioning is transparently completed using the ordering that occurs when the data is inserted/loaded
- D. Micro-partitioning can be disabled within a Snowflake account

Answer: C

Explanation:

Reference: <https://docs.snowflake.com/en/user-guide/tables-clustering-micropartitions.html>

NEW QUESTION 6

- (Exam Topic 1)

What is the most granular object that the Time Travel retention period can be defined on? Select one.

- A. Account
- B. Database
- C. Schema
- D. Table

Answer: D

Explanation:

Reference: <https://docs.snowflake.com/en/user-guide/data-time-travel.html#data-retention-period>

NEW QUESTION 7

- (Exam Topic 1)

True or False: When active, a pipe requires a dedicated Virtual Warehouse to execute.

- A. True
- B. False

Answer: B

NEW QUESTION 8

- (Exam Topic 1)

Which of the following are true of multi-cluster Warehouses? Select all that apply below.

- A. A multi-cluster Warehouse can add clusters automatically based on query activity
- B. A multi-cluster Warehouse can automatically turn itself off after a period of inactivity
- C. A multi-cluster Warehouse can scale down when query activity slows
- D. A multi-cluster Warehouse can automatically turn itself on when a query is executed against it

Answer: ABCD

NEW QUESTION 9

- (Exam Topic 1)

True or False: Snowflake bills for a minimum of five minutes each time a Virtual Warehouse is started.

- A. True
- B. False

Answer: B

Explanation:

Reference: <https://docs.snowflake.com/en/user-guide/credits.html>

NEW QUESTION 10

- (Exam Topic 1)

Which of the following best describes where Snowflake's metadata is stored?

- A. Within the data files
- B. Inside the Virtual Warehouses
- C. In the Cloud Services Layer
- D. within the drivers

Answer: C

NEW QUESTION 10

- (Exam Topic 1)

A deterministic query is run at 8am, takes 5 minutes, and the results are cached. Which of the following statements are true?

Choose 2 answers

- A. The exact query will ALWAYS return the precomputed result set for the RESULT_CACHE_ACTIVE = time period
- B. The same exact query will return the precomputed results if the underlying data hasn't changed and the results were last accessed within the previous 24 hour period
- C. The same exact query will return the precomputed results even if the underlying data has changed as long as the results were last accessed within the previous 24 hour period
- D. The "24 hour" on the precomputed results gets renewed every time the exact query is executed

Answer: BD

Explanation:

The results cache will only be used if it's the same query AND the same role executing the query

NEW QUESTION 14

- (Exam Topic 1)

True or False: When a new Snowflake object is created, it is automatically owned by the user who created it.

- A. True
- B. False

Answer: A

Explanation:

Reference: <https://docs.snowflake.com/en/user-guide/security-access-control-overview.html>

NEW QUESTION 19

- (Exam Topic 1)

Which of the following connectors allow Multi-Factor Authentication (MFA) authorization when connecting? (Choose all that apply.)

- A. JDBC
- B. SnowSQL
- C. Snowflake Web Interface (UI)
- D. ODBC
- E. PythonD18912E1457D5D1DDCBD40AB3BF70D5D

Answer: ABCDE

Explanation:

Reference: <https://docs.snowflake.com/en/user-guide/security-mfa.html>

NEW QUESTION 23

- (Exam Topic 1)

Which type of table corresponds to a single Snowflake session?

- A. Temporary
- B. Transient
- C. Provisional
- D. Permanent

Answer: A

Explanation:

Snowflake supports creating temporary tables for storing non-permanent, transitory data (e.g. ETL data, session-specific data). Temporary tables only exist within the session in which they were created and persist only for the remainder of the session.
<https://docs.snowflake.com/en/user-guide/tables-temp-transient.html#:~:text=Snowflake%20supports%20creatin>

NEW QUESTION 27

- (Exam Topic 1)

Why would a customer size a Virtual Warehouse from an X-Small to a Medium?

- A. To accommodate more queries
- B. To accommodate more users
- C. To accommodate fluctuations in workload
- D. To accommodate a more complex workload

Answer: D

Explanation:

Reference: <https://docs.snowflake.com/en/user-guide/warehouses-considerations.html>

NEW QUESTION 32

- (Exam Topic 1)

Credit Consumption by the Compute Layer (Virtual Warehouses) is based on: (Choose two.)

- A. Number of users
- B. Warehouse size
- C. Amount of data processed
- D. # of clusters for the Warehouse

Answer: BD

Explanation:

<https://docs.snowflake.com/en/user-guide/credits.html#virtual-warehouse-credit-usage> "Snowflake credits are charged based on the number of virtual warehouses you use, how long they run, and their size."

NEW QUESTION 33

- (Exam Topic 1)

True or False: All Snowflake table types include fail-safe storage.

- A. True
- B. False

Answer: B

NEW QUESTION 35

- (Exam Topic 1)

True or False: A single database can exist in more than one Snowflake account.

- A. True
- B. False

Answer: B

Explanation:

Reference: <https://docs.snowflake.com/en/sql-reference/ddl-database.html>

NEW QUESTION 38

- (Exam Topic 1)

Which of the following statements are true of Snowflake data loading? Choose 3 answers

- A. VARIANT "nut" values are not the same as SQL Null values
- B. It is recommended to do frequent, single row DMLS
- C. It is recommended to validate the data before loading into the Snowflake target table
- D. It is recommended to use staging tables to manage MERGE statements

Answer: ACD

NEW QUESTION 42

- (Exam Topic 1)

Which of the following statements are true of VALIDATION_MODE in Snowflake? (Choose two.)

- A. The validation_mode option is used when creating an Internal Stage
- B. validation_mode=return_all_errors is a parameter of the copy command
- C. The validation_mode option will validate data to be loaded by the copy statement while completing the load and will return the rows that could not be loaded without error
- D. The validation_mode option will validate data to be loaded by the copy statement without completing the load and will return possible errors

Answer: BD

Explanation:

Reference: <https://docs.snowflake.com/en/user-guide/data-load-bulk-ts.html>

NEW QUESTION 44

- (Exam Topic 1)

Which of the following is true of Snowpipe via REST API? Choose 2 answers

- A. you can only use it on internal Stages
- B. All COPY INTO options are available fluting pipe creation
- C. Snowflake automatically manages the compute required to execute the Pipe's copy into commands
- D. Snowpipe keeps track of which files it has loaded

Answer: CD

Explanation:

<https://docs.snowflake.com/en/sql-reference/sql/create-pipe.html#usage-notes>

NEW QUESTION 49

- (Exam Topic 1)

Which object allows you to limit the number of credits consumed within a Snowflake account? Select one.

- A. Account usage Tracking
- B. Resource Monitor
- C. Warehouse Limit Parameter
- D. Credit Consumption Tracker

Answer: B

Explanation:

The time travel data retention can be overwritten at the table level "When creating a table, schema, or database, the account default can be overridden using the DATA_RETENTION_TIME_IN_DAYS parameter in the command."

NEW QUESTION 54

- (Exam Topic 1)

True or False: Some queries can be answered through the metadata cache and do not require an active Virtual Warehouse.

- A. True
- B. False

Answer: A

Explanation:

Some aggregate queries are answered thru micro partitions metadata only not requiring any VW spin ups.

NEW QUESTION 56

- (Exam Topic 1)

Which statement best describes " clustering"?

- A. Clustering represents the way data is grouped together and stored within snowflake's micro-partitions
- B. The database administrator must define the clustering methodology for each Snowflake table.
- C. The clustering key must be included on the COPV command when loading data into Snowflake.
- D. Clustering can be disabled within a Snowflake account.

Answer: A

Explanation:

Reference: <https://docs.snowflake.com/en/user-guide/tables-clustering-micropartitions.html>

NEW QUESTION 57

- (Exam Topic 1)

True or False: During data unloading, only JSON and CSV files can be compressed.

- A. True
- B. False

Answer: B

Explanation:

Reference: <https://docs.snowflake.com/en/sql-reference/sql/create-file-format.html>

NEW QUESTION 58

- (Exam Topic 1)

True or False: Data in Fail-safe can be deleted by a user or the Snowflake team before it expires.

- A. True
- B. False

Answer: B

Explanation:

Reference: <https://blog.knoldus.com/ksnow-time-travel-and-fail-safe-in-snowflake/>

NEW QUESTION 63

- (Exam Topic 1)

Which of the following statements is true of zero-copy cloning?

- A. Zero-copy clones objects inherit
- B. All zero-copy clone objects inherit the privileges of their original objects
- C. Zero-copy coning is licensed as an additional Snowflake feature
- D. At the instance/instance a clone is created, all micro-partitions in the original table and the clone are fully shared.

Answer: D

Explanation:

Reference: <https://community.snowflake.com/s/question/0D50Z00009D8VOd/zero-copy-cloning-base-data>

NEW QUESTION 68

- (Exam Topic 1)

A role is created and owns 2 tables. This role is then dropped. Who will now own the two tables?

- A. The tables are now orphaned
- B. The user that deleted the role
- C. SYSADMIN
- D. The assumed role that dropped the role

Answer: D

Explanation:

Reference: <https://docs.snowflake.com/en/sql-reference/sql/drop-role.html>

NEW QUESTION 73

- (Exam Topic 1)

Which of the following are valid Snowflake Virtual Warehouse Scaling Policies? (Choose two.)

- A. Custom
- B. Economy
- C. Optimized
- D. Standard

Answer: BD

Explanation:

Reference: <https://community.snowflake.com/s/article/Snowflake-Visualizing-Warehouse-Performance>

NEW QUESTION 77

- (Exam Topic 1)

Which item in the Data Warehouse migration process does not apply in Snowflake? (Select two)

- A. Migrate Users
- B. Migrate Schemas
- C. Migrate Indexes
- D. Build the Data pipeline

Answer: CD

NEW QUESTION 80

- (Exam Topic 1)

What are the three layers that make up Snowflake's architecture? Choose 3 answer

- A. Compute
- B. Tri-Secret Secure
- C. Storage
- D. Cloud Services

Answer: ACD

Explanation:

Reference: <https://docs.snowflake.com/en/user-guide/intro-key-concepts.html>

NEW QUESTION 84

- (Exam Topic 1)

True or False: Users are able to see the result sets of queries executed by other users that share their same role.

- A. True
- B. False

Answer: B

Explanation:

Reference: <https://docs.snowflake.com/en/user-guide/security-access-control-considerations.html>

NEW QUESTION 89

- (Exam Topic 1)

True or False: An active warehouse is required to run a COPY INTO statement.

- A. True
- B. False

Answer: A

NEW QUESTION 92

- (Exam Topic 1)

Which of the following are common use cases for zero-copy cloning? Choose 3 answers

- A. Quick provisioning of Dev and Test/QA environments
- B. Data backups
- C. Point in time snapshots
- D. Performance optimization

Answer: ABC

Explanation:

Reference: <https://community.snowflake.com/s/question/0D50Z00009C3VIMSAV/zero-copy-cloning>

NEW QUESTION 94

- (Exam Topic 1)

When can a Virtual Warehouse start running queries?

- A. 12am-5am
- B. Only during administrator defined time slots
- C. When its provisioning is complete
- D. After replication

Answer: C

Explanation:

<https://docs.snowflake.com/en/user-guide/warehouses-overview.html>

NEW QUESTION 95

- (Exam Topic 1)

The PUT command: (Choose two.)

- A. Automatically creates a File Format object
- B. Automatically uses the last Stage created
- C. Automatically compresses files using Gzip
- D. Automatically encrypts files

Answer: CD

Explanation:

Reference: <https://docs.snowflake.com/en/sql-reference/sql/put.html>

NEW QUESTION 96

- (Exam Topic 1)

When scaling out by adding clusters to a multi-cluster warehouse, you are primarily scaling for improved:

- A. Concurrency
- B. Performance

Answer: A

Explanation:

Reference: <https://docs.snowflake.com/en/user-guide/warehouses-multiclust.html>

NEW QUESTION 98

- (Exam Topic 1)

Select the different types of Internal Stages: (Choose three.)

- A. Named Stage
- B. User Stage
- C. Table Stage
- D. Schema Stage

Answer: ABC

Explanation:

Reference: <https://dwgeek.com/type-of-snowflake-stages-how-to-create-and-use.html/#Snowflake-Internal- Named-Stage>

NEW QUESTION 103

- (Exam Topic 1)

True or False: It is possible to query data from an Internal or named External stage without loading the data into Snowflake.

- A. True
- B. False

Answer: A

NEW QUESTION 108

- (Exam Topic 1)

True or False: Reader Accounts incur no additional Compute costs to the Data Provider since they are simply reading the shared data without making changes.

- A. True
- B. False

Answer: B

Explanation:

Reference: <https://interworks.com/blog/bdu/2020/02/05/zero-to-snowflake-secure-data-sharing/>

NEW QUESTION 111

- (Exam Topic 1)

On which of the following cloud platforms can a Snowflake account be hosted? (Choose three.)

- A. Amazon Web Services
- B. Private Virtual Cloud
- C. Oracle Cloud
- D. Microsoft Azure Cloud
- E. Google Cloud Platform
- F. Alibaba Cloud

Answer: ADE

NEW QUESTION 112

- (Exam Topic 1)

Increasing the size of a Virtual Warehouse from an X-Small to an X-Large is an example of:

- A. Scaling rhythmically
- B. Scaling max
- C. Scaling out
- D. Scaling up

Answer: D

NEW QUESTION 114

- (Exam Topic 1)

If auto-suspend is enable for a Virtual Warehouse, he Warehouse is automatically suspended when:

- A. All Snowflake sessions using the warehouse are terminated.
- B. The last query using the warehouse completes.
- C. There are no users loaned into Snowflake.
- D. The Warehouse is inactive for a specified period of time.

Answer: D

Explanation:

Reference: <https://docs.snowflake.com/en/user-guide/warehouses-overview.html>

NEW QUESTION 116

- (Exam Topic 1)

What parameter controls if the Virtual warehouse starts immediately after the CREATE WAREHOUSE statement? Select one.

- A. INITIALLY_SUSPENDED = TRUE/FALSE
- B. START_AFTCR_CREATE = TRUE/FALSE
- C. START_TTIME = 60 // (seconds from now)
- D. START.TIME = CURRENT.DATE()

Answer: A

NEW QUESTION 117

- (Exam Topic 1)

To run a Multi-Cluster Warehouse in auto-scale mode, a user would:

- A. Configure the Maximum Clusters setting to “Auto-Scale”
- B. Set the Warehouse type to “Auto”
- C. Set the Minimum Clusters and Maximum Clusters settings to the same value
- D. Set the Minimum Clusters and Maximum Clusters settings to the different values

Answer: D

Explanation:

Reference: https://help.pentaho.com/Documentation/9.1/Products/Modify_Snowflake_warehouse

NEW QUESTION 120

- (Exam Topic 1)

Snowflake provides two mechanisms to reduce data storage costs for short-lived tables. These mechanisms are:

Choose 2 answers

- A. Temporary Tables
- B. Transient Tables
- C. Provisional Tables
- D. Permanent Tables

Answer: AB

Explanation:

Reference: <https://docs.snowflake.com/en/user-guide/tables-storage-considerations.html>

NEW QUESTION 125

- (Exam Topic 1)

Which of the following are options when creating a virtual Warehouse? Choose 2 answers

- A. Auto-drop
- B. Auto resize
- C. Auto-resume
- D. Auto-suspend

Answer: CD

Explanation:

Reference: https://help.pentaho.com/Documentation/9.1/Products/Create_Snowflake_warehouse Reference: <https://www.analytics.today/blog/what-is-a-snowflake-virtual-warehouse>

NEW QUESTION 130

- (Exam Topic 1)

Which of the following objects can be cloned? (Choose four.)

- A. Tables
- B. Named File Formats
- C. Schemas
- D. Shares
- E. Databases
- F. Users

Answer: ABCE

Explanation:

Which Objects Can Be Cloned?

Data Containment Objects. Databases. Schemas. Tables. Streams.

Data Configuration and Transformation Objects. Stages. File Formats. Sequences. Tasks

NEW QUESTION 134

- (Exam Topic 1)

What is the minimum Snowflake edition that provides multi-cluster warehouses and up to 90 days of Time Travel?

- A. Standard
- B. Premier
- C. Enterprise
- D. Business Critical Edition

Answer: C

Explanation:

Reference: <https://docs.snowflake.com/en/user-guide/intro-editions.html>

NEW QUESTION 135

- (Exam Topic 1)

Which of the following terms best describes Snowflake's database architecture?

- A. Columnar shared nothing
- B. Shared disk
- C. Multi-cluster, shared data
- D. Cloud-native shared memory

Answer: C

Explanation:

<https://www.snowflake.com/product/architecture/>

Built from the ground up for the cloud, Snowflake's unique multi-cluster shared data architecture delivers the performance, scale, elasticity, and concurrency today's organizations require.

NEW QUESTION 140

- (Exam Topic 1)

True or False: When you create a custom role, it is a practice to immediately grant that role to ACCOUNTADMIN.

- A. True
- B. False

Answer: B

NEW QUESTION 145

- (Exam Topic 1)

True or False: Snowpipe via RFST API can only reference External Stages as source.

- A. True
- B. False

Answer: B

Explanation:

Reference: <https://community.snowflake.com/s/article/Making-Transient-table-by-Default>

NEW QUESTION 150

- (Exam Topic 1)

Which of the following statements describes a benefit of Snowflake's separation of compute and storage? (Choose all that apply.)

- A. Growth of storage and compute are tightly coupled together
- B. Storage expands without the requirement to add more compute
- C. Compute can be scaled up or down without the requirement to add more storage

D. Multiple compute clusters can access stored data without contention

Answer: BCD

Explanation:

Reference:

<https://towardsdatascience.com/why-you-are-throwing-money-away-if-your-cloud-data-warehouse-doesnt-separate-storage-and-compute-65d2dffd450f>

NEW QUESTION 151

- (Exam Topic 1)

What is the minimum duration charged when starting a virtual warehouse?

- A. 1 second
- B. 1 minute
- C. 1 hour
- D. 1 day

Answer: B

NEW QUESTION 153

- (Exam Topic 1)

True or False: A table in Snowflake can only be queried using the Virtual Warehouse that was used to load the data.

- A. True
- B. False

Answer: B

NEW QUESTION 155

- (Exam Topic 1)

True or False: A Virtual Warehouse consumes Snowflake credits even when inactive.

- A. True
- B. False

Answer: B

Explanation:

Reference: <https://docs.snowflake.com/en/user-guide/warehouses-multiclust.html>

NEW QUESTION 159

- (Exam Topic 1)

What are the three things customers want most from their enterprise data warehouse solution? Choose 3 answers

- A. On-premise availability
- B. Simplicity
- C. Open source based
- D. Concurrency
- E. Performance

Answer: BDE

NEW QUESTION 162

- (Exam Topic 1)

Which of the following statements are true of Virtual Warehouses? (Choose all that apply.)

- A. Customers can change the size of the Warehouse after creation
- B. A Warehouse can be resized while running
- C. A Warehouse can be configured to suspend after a period of inactivity
- D. A Warehouse can be configured to auto-resume when new queries are submitted

Answer: ABCD

Explanation:

Reference: <https://docs.snowflake.com/en/user-guide/warehouses-multiclust.html>

NEW QUESTION 163

- (Exam Topic 1)

True or False: Snowflake's data warehouse was built from the ground up for the cloud in lieu of using an existing database or a platform, like Hadoop, as a base.

- A. True
- B. False

Answer: B

Explanation:

Reference: <https://docs.snowflake.com/en/user-guide/intro-key-concepts.html>

NEW QUESTION 167

- (Exam Topic 1)

What command is used to load files into an Internal Stage within Snowflake? Select one.

- A. PUT
- B. COPY INTO
- C. TRANSFER
- D. INSERT

Answer: A

Explanation:

You must specify an internal stage in the PUT command when uploading files to Snowflake. You must specify the same stage in the COPY INTO <table> command when loading data into a table from the staged files.

NEW QUESTION 171

- (Exam Topic 1)

True or False: Multi_Factor Authentication (MFA) in Snowflake is only supported in conjunction with single Sign-on (sso).

- A. True
- B. False

Answer: B

Explanation:

Reference: <https://docs.snowflake.com/en/user-guide/admin-security-fed-auth-use.html>

NEW QUESTION 175

- (Exam Topic 1)

Which of the following are main sections of the top navigation of the Snowflake web Interface (UI)?

- A. Database
- B. Tables
- C. Warehouses
- D. Worksheets

Answer: ACD

Explanation:

Reference: <https://docs.snowflake.com/en/user-guide/snowflake-manager.html>

NEW QUESTION 178

- (Exam Topic 2)

How often are encryption keys automatically rotated by Snowflake?

- A. 30 Days
- B. 60 Days
- C. 90 Days
- D. 365 Days

Answer: A

Explanation:

All Snowflake-managed keys are automatically rotated by Snowflake when they are more than 30 days old. Active keys are retired, and new keys are created. When Snowflake determines the retired key is no longer needed, the key is automatically destroyed.

<https://docs.snowflake.com/en/user-guide/security-encryption-manage.html#:~:text=All%20Snowflake%2Dman>

NEW QUESTION 179

- (Exam Topic 2)

Which Snowflake technique can be used to improve the performance of a query?

- A. Clustering
- B. Indexing
- C. Fragmenting
- D. Using INDEX HINTS

Answer: A

Explanation:

<https://docs.snowflake.com/en/user-guide/tables-clustering-keys.html>

NEW QUESTION 183

- (Exam Topic 2)

True or False: Reader Accounts are able to extract data from shared data objects for use outside of Snowflake.

- A. True
- B. False

Answer: A

NEW QUESTION 187

- (Exam Topic 2)

Which of the following are valid methods for authenticating users for access into Snowflake? (Select THREE)

- A. SCIM
- B. Federated authentication
- C. TLS 1.2
- D. Key-pair authentication
- E. OAuth
- F. OCSP authentication

Answer: BDE

NEW QUESTION 192

- (Exam Topic 2)

In which scenarios would a user have to pay Cloud Services costs? (Select TWO).

- A. Compute Credits = 50 Credits Cloud Services = 10
- B. Compute Credits = 80 Credits Cloud Services = 5
- C. Compute Credits = 10 Credits Cloud Services = 9
- D. Compute Credits = 120 Credits Cloud Services = 10
- E. Compute Credits = 200 Credits Cloud Services = 26

Answer: BD

NEW QUESTION 194

- (Exam Topic 2)

What happens when an external or an internal stage is dropped? (Select TWO).

- A. When dropping an external stage, the files are not removed and only the stage is dropped
- B. When dropping an external stage, both the stage and the files within the stage are removed
- C. When dropping an internal stage, the files are deleted with the stage and the files are recoverable
- D. When dropping an internal stage, the files are deleted with the stage and the files are not recoverable
- E. When dropping an internal stage, only selected files are deleted with the stage and are not recoverable

Answer: AC

NEW QUESTION 198

- (Exam Topic 2)

True or False: A Virtual Warehouse can be resized while suspended.

- A. True
- B. False

Answer: A

Explanation:

Reference:

<https://docs.snowflake.com/en/user-guide/warehouses-tasks.html#effects-of-resizing-a-suspended-warehouse>

NEW QUESTION 200

- (Exam Topic 2)

Which copy INTO command outputs the data into one file?

- A. SINGLE=TRUE
- B. MAX_FILE_NUMBER=1
- C. FILE_NUMBER=1
- D. MULTIPLE=FAISE

Answer: A

NEW QUESTION 202

- (Exam Topic 2)

What is the purpose of an External Function?

- A. To call code that executes outside of Snowflake
- B. To run a function in another Snowflake database
- C. To share data in Snowflake with external parties
- D. To ingest data from on-premises data sources

Answer: A

Explanation:

<https://docs.snowflake.com/en/sql-reference/external-functions.html>

NEW QUESTION 204

- (Exam Topic 2)

Which of the following conditions must be met in order to return results from the results cache? (Select TWO).

- A. The user has the appropriate privileges on the objects associated with the query
- B. Micro-partitions have been reclustered since the query was last run
- C. The new query is run using the same virtual warehouse as the previous query
- D. The query includes a User Defined Function (UDF)
- E. The query has been run within 24 hours of the previously-run query

Answer: AE

NEW QUESTION 206

- (Exam Topic 2)

How long is Snowpipe data load history retained?

- A. As configured in the create pipe settings
- B. Until the pipe is dropped
- C. 64 days
- D. 14 days

Answer: C

Explanation:

Bulk data load

Stored in the metadata of the target table for 64 days. Available upon completion of the COPY statement as the statement output.

<https://docs.snowflake.com/en/user-guide/data-load-snowpipe-intro.html#:~:text=Load%20History,-Bulk%20da>

NEW QUESTION 210

- (Exam Topic 2)

Which of the following describes external functions in Snowflake?

- A. They are a type of User-defined Function (UDF).
- B. They contain their own SQL code.
- C. They call code that is stored inside of Snowflake.
- D. They can return multiple rows for each row received

Answer: A

Explanation:

External functions are user-defined functions that are stored and executed outside of Snowflake.

External functions make it easier to access external API services such as geocoders, machine learning models, and other custom code running outside of Snowflake. This feature eliminates the need to export and reimport data when using third-party services, significantly simplifying your data pipelines.

<https://docs.snowflake.com/en/sql-reference/external-functions.html#:~:text=External%20functions%20are%20>

NEW QUESTION 212

- (Exam Topic 2)

Which semi-structured file formats are supported when unloading data from a table? (Select TWO).

- A. ORC
- B. XML
- C. Avro
- D. Parquet
- E. JSON

Answer: DE

Explanation:

Semi-structured JSON, Parquet

<https://docs.snowflake.com/en/user-guide/data-unload-prepare.html#:~:text=Supported%20File%20Formats,-Th>

NEW QUESTION 217

- (Exam Topic 2)

Which stage type can be altered and dropped?

- A. Database stage
- B. External stage
- C. Table stage
- D. User stage

Answer: C

Explanation:

<https://docs.snowflake.com/en/user-guide/data-load-local-file-system-create-stage.html#table-stages>

NEW QUESTION 218

- (Exam Topic 2)

A user unloaded a Snowflake table called mytable to an internal stage called mystage. Which command can be used to view the list of files that has been uploaded to the staged?

- A. list @mytable;
- B. list @%raytable;
- C. list @ %m.ystage;
- D. list @mystage;

Answer: D

NEW QUESTION 223

- (Exam Topic 2)

Which command can be used to load data into an internal stage?

- A. LOAD
- B. copy
- C. GET
- D. PUT

Answer: D

Explanation:

<https://medium.com/@divyanshsaxenaofficial/snowflake-loading-unloading-of-data-part-1-internal-stages-7121>

NEW QUESTION 225

- (Exam Topic 2)

A user has unloaded data from Snowflake to a stage

Which SQL command should be used to validate which data was loaded into the stage?

- A. list @file__stage
- B. show @file__stage
- C. view @file__stage
- D. verify @file__stage

Answer: A

NEW QUESTION 228

- (Exam Topic 2)

Which Snowflake object enables loading data from files as soon as they are available in a cloud storage location?

- A. Pipe
- B. External stage
- C. Task
- D. Stream

Answer: A

Explanation:

Snowpipe enables loading data from files as soon as they're available in a stage. This means you can load data from files in micro-batches, making it available to users within minutes, rather than manually executing COPY statements on a schedule to load larger batches.

<https://docs.snowflake.com/en/user-guide/data-load-snowpipe-intro.html>

NEW QUESTION 230

- (Exam Topic 2)

What happens when a virtual warehouse is resized?

- A. When increasing the size of an active warehouse the compute resource for all running and queued queries on the warehouse are affected
- B. When reducing the size of a warehouse the compute resources are removed only when they are no longer being used to execute any current statements.
- C. The warehouse will be suspended while the new compute resource is provisioned and will resume automatically once provisioning is complete.
- D. Users who are trying to use the warehouse will receive an error message until the resizing is complete

Answer: B

NEW QUESTION 233

- (Exam Topic 2)

What SQL command would be used to view all roles that were granted to user.1?

- A. show grants to user USER1;
- B. show grants of user USER1;
- C. describe user USER1;
- D. show grants on user USER1;

Answer: A

NEW QUESTION 236

- (Exam Topic 2)

What are the default Time Travel and Fail-safe retention periods for transient tables?

- A. Time Travel - 1 da
- B. Fail-safe - 1 day
- C. Time Travel - 0 day
- D. Fail-safe - 1 day
- E. Time Travel - 1 da
- F. Fail-safe - 0 days
- G. Transient tables are retained in neither Fail-safe nor Time Travel

Answer: C

Explanation:

<https://docs.snowflake.com/en/user-guide/data-cdp-storage-costs.html#:~:text=Temporary%20and%20Transient>

NEW QUESTION 238

- (Exam Topic 2)

Which command can be used to stage local files from which Snowflake interface?

- A. SnowSQL
- B. Snowflake classic web interface (UI)
- C. Snowsight
- D. .NET driver

Answer: A

Explanation:

<https://docs.snowflake.com/en/user-guide/snowsql-use.html>

NEW QUESTION 242

- (Exam Topic 2)

Query compilation occurs in which architecture layer of the Snowflake Cloud Data Platform?

- A. Compute layer
- B. Storage layer
- C. Cloud infrastructure layer
- D. Cloud services layer

Answer: A

Explanation:

For query execution, Snowflake uses the Virtual Warehouse. The query processing layer is separated from the disk storage layer in the Snowflake data architecture. You can use the data from the storage layer to run queries in this layer

<https://www.projectpro.io/article/snowflake-architecture-what-does-snowflake-do/556#:~:text=Query%20Proce>

NEW QUESTION 244

- (Exam Topic 2)

The Information Schema and Account Usage Share provide storage information for which of the following objects? (Choose three.)

- A. Users
- B. Tables
- C. Databases
- D. Internal Stages

Answer: ABC

NEW QUESTION 246

- (Exam Topic 2)

True or False: Fail-safe can be disabled within a Snowflake account.

- A. True
- B. False

Answer: B

Explanation:

Reference: <https://docs.snowflake.com/en/user-guide/data-failsafe.html>

Separate and distinct from Time Travel, Fail-safe ensures historical data is protected in the event of a system failure or other catastrophic event, e.g. a hardware failure or security breach. Fail safe feature cannot be enabled or disabled from the user end .

NEW QUESTION 247

- (Exam Topic 2)

What is the default character set used when loading CSV files into Snowflake?

- A. UTF-8
- B. UTF-16
- C. ISO S859-1
- D. ANSI_X3.A

Answer: A

Explanation:

[https://docs.snowflake.com/en/user-guide/intro-summary-loading.html#:~:text=For%20delimited%20files%20\(](https://docs.snowflake.com/en/user-guide/intro-summary-loading.html#:~:text=For%20delimited%20files%20(For delimited files (CSV, TSV, etc.), the default character set is UTF-8. To use any other characters sets, you must explicitly specify the encoding to use for loading. For the list of supported character sets, see Supported Character Sets for Delimited Files (in this topic).) For delimited files (CSV, TSV, etc.), the default character set is UTF-8. To use any other characters sets, you must explicitly specify the encoding to use for loading. For the list of supported character sets, see Supported Character Sets for Delimited Files (in this topic).

NEW QUESTION 248

- (Exam Topic 2)

Which account _____ usage views are used to evaluate the details of dynamic data masking? (Select TWO)

- A. ROLES
- B. POLICY_REFERENCES
- C. QUERY_HISTORY
- D. RESOURCE_MONITOR
- E. ACCESS_HISTORY

Answer: BC

Explanation:

<https://docs.snowflake.com/en/user-guide/security-column-ddm-intro.html#:~:text=DESCRIBE%20MASKING>

NEW QUESTION 249

- (Exam Topic 2)

Which of the following compute resources or features are managed by Snowflake? (Select TWO).

- A. Execute a COPY command
- B. Updating data
- C. Snowpipe
- D. AUTOMATIC__CLUSTERING
- E. Scaling up a warehouse

Answer: AD

NEW QUESTION 252

- (Exam Topic 2)

What can be used to view warehouse usage over time? (Select Two).

- A. The load HISTORY view
- B. The Query history view
- C. The show warehouses command
- D. The WAREHOUSE_METERING HISTORY View
- E. The billing and usage tab in the Snowflake web UI

Answer: DE

NEW QUESTION 255

- (Exam Topic 2)

Which of the following Snowflake capabilities are available in all Snowflake editions? (Select TWO)

- A. Customer-managed encryption keys through Tri-Secret Secure
- B. Automatic encryption of all data
- C. Up to 90 days of data recovery through Time Travel
- D. Object-level access control
- E. Column-level security to apply data masking policies to tables and views

Answer: BD

Explanation:

<https://docs.snowflake.com/en/user-guide/intro-editions.html>

NEW QUESTION 256

- (Exam Topic 2)

Which is the MINIMUM required Snowflake edition that a user must have if they want to use AWS/Azure Privatelink or Google Cloud Private Service Connect?

- A. Standard
- B. Premium
- C. Enterprise
- D. Business Critical

Answer:

D

Explanation:

<https://docs.snowflake.com/en/user-guide/privatelink-azure.html>

NEW QUESTION 260

- (Exam Topic 2)

Which cache type is used to cache data output from SQL queries?

- A. Metadata cache
- B. Result cache
- C. Remote cache
- D. Local file cache

Answer: B

Explanation:

<https://community.snowflake.com/s/article/Caching-in-Snowflake-Data-Warehouse>

NEW QUESTION 262

- (Exam Topic 2)

A user is loading JSON documents composed of a huge array containing multiple records into Snowflake. The user enables the strip outer_array file format option. What does the STRIP_OUTER_ARRAY file format do?

- A. It removes the last element of the outer array.
- B. It removes the outer array structure and loads the records into separate table rows.
- C. It removes the trailing spaces in the last element of the outer array and loads the records into separate table columns.
- D. It removes the NULL elements from the JSON object eliminating invalid data and enables the ability to load the records.

Answer: B

Explanation:

Data Size Limitations

The VARIANT data type imposes a 16 MB size limit on individual rows.

For some semi-structured data formats (e.g. JSON), data sets are frequently a simple concatenation of multiple documents. The JSON output from some software is composed of a single huge array containing multiple records. There is no need to separate the documents with line breaks or commas, though both are supported.

If the data exceeds 16 MB, enable the STRIP_OUTER_ARRAY file format option for the COPY INTO

<table> command to remove the outer array structure and load the records into separate table rows:

copy into <table> from @~/<file>.json

file_format = (type = 'JSON' strip_outer_array = true); <https://docs.snowflake.com/en/user-guide/semistructured-considerations.html>

NEW QUESTION 263

- (Exam Topic 2)

True or False: A 4X-Large Warehouse may, at times, take longer to provision than a X-Small Warehouse.

- A. True
- B. False

Answer: A

Explanation:

You can experiment the same with snowflake UI.

NEW QUESTION 265

- (Exam Topic 2)

What is the minimum Snowflake edition required to create a materialized view?

- A. Standard Edition
- B. Enterprise Edition
- C. Business Critical Edition
- D. Virtual Private Snowflake Edition

Answer: B

Explanation:

Materialized views require Enterprise Edition. To inquire about upgrading, please contact Snowflake Support

[https://docs.snowflake.com/en/sql-reference/sql/create-materialized-view.html#:~:text=Materialized%20views%](https://docs.snowflake.com/en/sql-reference/sql/create-materialized-view.html#:~:text=Materialized%20views%20)

NEW QUESTION 270

- (Exam Topic 2)

User-level network policies can be created by which of the following roles? (Select TWO).

- A. ROLEADMIN
- B. ACCOUNTADMIN
- C. SYSADMIN
- D. SECURITYADMIN

E. USERADMIN

Answer: DE

Explanation:

By default, Snowflake allows users to connect to the service from any computer or device IP address. A security administrator (or higher) can create a network policy to allow or deny access to a single IP address or a list of addresses. Network policies currently support only Internet Protocol version 4 (i.e. IPv4) addresses. An administrator with sufficient permissions can create any number of network policies. [https://docs.snowflake.com/en/user-guide/network-policies.html#:~:text=A%20security%20administrator%20\(o](https://docs.snowflake.com/en/user-guide/network-policies.html#:~:text=A%20security%20administrator%20(o)

NEW QUESTION 272

- (Exam Topic 2)

Which Snowflake partner specializes in data catalog solutions?

- A. Alation
- B. DataRobot
- C. dbt
- D. Tableau

Answer: A

Explanation:

Alation provides Data Cataloging functionality. They state they are the 'One Place to Find, Understand, & Govern Data Across an Enterprise'. <https://docs.snowflake.com/en/user-guide/ecosystem-all.html>

NEW QUESTION 276

- (Exam Topic 2)

Which data type can be used to store geospatial data in Snowflake?

- A. Variant
- B. Object
- C. Geometry
- D. Geography

Answer: D

Explanation:

<https://docs.snowflake.com/en/sql-reference/data-types-geospatial.html#:~:text=have%20SRID%3D4326.-,Geos>

NEW QUESTION 281

- (Exam Topic 2)

What is a key feature of Snowflake architecture?

- A. Zero-copy cloning creates a mirror copy of a database that updates with the original
- B. Software updates are automatically applied on a quarterly basis
- C. Snowflake eliminates resource contention with its virtual warehouse implementation
- D. Multi-cluster warehouses allow users to run a query that spans across multiple clusters
- E. Snowflake automatically sorts DATE columns during ingest for fast retrieval by date

Answer: D

NEW QUESTION 286

- (Exam Topic 2)

What is the default File Format used in the COPY command if one is not specified?

- A. CSV
- B. JSON
- C. Parquet
- D. XML

Answer: A

Explanation:

Reference: <https://docs.snowflake.com/en/sql-reference/sql/copy-into-location.html>

NEW QUESTION 291

- (Exam Topic 2)

A virtual warehouse's auto-suspend and auto-resume settings apply to which of the following?

- A. The primary cluster in the virtual warehouse
- B. The entire virtual warehouse
- C. The database in which the virtual warehouse resides
- D. The Queries currently being run on the virtual warehouse

Answer: B

Explanation:

<https://docs.snowflake.com/en/user-guide/warehouses-overview.html#:~:text=Similarly%2C%20auto%2Dresum>

NEW QUESTION 292

- (Exam Topic 2)

Which of the following describes how multiple Snowflake accounts in a single organization relate to various cloud providers?

- A. Each Snowflake account can be hosted in a different cloud vendor and region.
- B. Each Snowflake account must be hosted in a different cloud vendor and region
- C. All Snowflake accounts must be hosted in the same cloud vendor and region
- D. Each Snowflake account can be hosted in a different cloud vendor, but must be in the same region.

Answer: B

Explanation:

<https://docs.snowflake.com/en/user-guide/intro-regions.html>

NEW QUESTION 296

- (Exam Topic 2)

What is a best practice after creating a custom role?

- A. Create the custom role using the SYSADMIN role.
- B. Assign the custom role to the SYSADMIN role
- C. Assign the custom role to the PUBLIC role
- D. Add__CUSTOM to all custom role names

Answer: B

Explanation:

When creating roles that will serve as the owners of securable objects in the system, Snowflake recommends creating a hierarchy of custom roles, with the top-most custom role assigned to the system role SYSADMIN. This role structure allows system administrators to manage all objects in the account, such as warehouses and database objects, while restricting management of users and roles to the USERADMIN role.

NEW QUESTION 300

- (Exam Topic 2)

Which Snowflake feature is used for both querying and restoring data?

- A. Cluster keys
- B. Time Travel
- C. Fail-safe
- D. Cloning

Answer: B

Explanation:

<https://docs.snowflake.com/en/user-guide/data-availability.html#:~:text=Snowflake%20provides%20powerful%>

NEW QUESTION 303

- (Exam Topic 2)

Which feature is only available in the Enterprise or higher editions of Snowflake?

- A. Column-level security
- B. SOC 2 type II certification
- C. Multi-factor Authentication (MFA)
- D. Object-level access control

Answer: A

Explanation:

<https://docs.snowflake.com/en/user-guide/intro-editions.html>

NEW QUESTION 305

- (Exam Topic 2)

Which data types does Snowflake support when querying semi-structured data? (Select TWO)

- A. VARIANT
- B. ARRAY
- C. VARCHAR
- D. XML
- E. BLOB

Answer: AB

Explanation:

<https://docs.snowflake.com/en/user-guide/semistructured-intro.html#label-loading-semi-structured-data>

A VARIANT stores semi-structured data in Snowflake. It can store a value of any other type, including OBJECT and ARRAY.

The maximum length of a VARIANT is 16 MB.

A Snowflake ARRAY is similar to an array in many other programming languages. An ARRAY contains 0 or more pieces of data. Each element is accessed by

specifying its position in the array.

NEW QUESTION 306

- (Exam Topic 2)

What are ways to create and manage data shares in Snowflake? (Select TWO)

- A. Through the Snowflake web interface (UI)
- B. Through the DATA_SHARE=TRUE parameter
- C. Through SQL commands
- D. Through the enable share=true parameter
- E. Using the CREATE SHARE AS SELECT * TABLE command

Answer: CD

NEW QUESTION 308

- (Exam Topic 3)

Which methods can be used to delete staged files from a Snowflake stage? (Choose two.)

- A. Use the DROP <file> command after the load completes.
- B. Specify the TEMPORARY option when creating the file format.
- C. Specify the PURGE copy option in the COPY INTO <table> command.
- D. Use the REMOVE command after the load completes.
- E. Use the DELETE LOAD HISTORY command after the load completes.

Answer: CD

NEW QUESTION 312

- (Exam Topic 3)

Which of the following features, associated with Continuous Data Protection (CDP), require additional Snowflake-provided data storage? (Choose two.)

- A. Tri-Secret Secure
- B. Time Travel
- C. Fail-safe
- D. Data encryption
- E. External stages

Answer: BC

NEW QUESTION 317

- (Exam Topic 3)

Which of the following are handled by the cloud services layer of the Snowflake architecture? (Choose two.)

- A. Query execution
- B. Data loading
- C. Time Travel data
- D. Security
- E. Authentication and access control

Answer: BD

NEW QUESTION 322

- (Exam Topic 3)

When cloning a database, what is cloned with the database? (Choose two.)

- A. Privileges on the database
- B. Existing child objects within the database
- C. Future child objects within the database
- D. Privileges on the schemas within the database
- E. Only schemas and tables within the database

Answer: BE

NEW QUESTION 326

- (Exam Topic 3)

What is the recommended compressed file size range for continuous data loads using Snowpipe?

- A. 8-16 MB
- B. 16-24 MB
- C. 10-99 MB
- D. 100-250 MB

Answer: B

NEW QUESTION 327

- (Exam Topic 3)

A user created a new worksheet within the Snowsight UI and wants to share this with teammates How can this worksheet be shared?

- A. Create a zero-copy clone of the worksheet and grant permissions to teammates
- B. Create a private Data Exchange so that any teammate can use the worksheet
- C. Share the worksheet with teammates within Snowsight
- D. Create a database and grant all permissions to teammates

Answer: C

NEW QUESTION 330

- (Exam Topic 3)

A single user of a virtual warehouse has set the warehouse to auto-resume and auto-suspend after 10 minutes. The warehouse is currently suspended and the user performs the following actions:

- * 1. Runs a query that takes 3 minutes to complete
- * 2. Leaves for 15 minutes
- * 3. Returns and runs a query that takes 10 seconds to complete
- * 4. Manually suspends the warehouse as soon as the last query was completed

When the user returns, how much billable compute time will have been consumed?

- A. 4 minutes
- B. 10 minutes
- C. 14 minutes
- D. 24 minutes

Answer: C

NEW QUESTION 334

- (Exam Topic 3)

What is the minimum Snowflake edition that has column-level security enabled?

- A. Standard
- B. Enterprise
- C. Business Critical
- D. Virtual Private Snowflake

Answer: B

NEW QUESTION 337

- (Exam Topic 3)

Snowflake supports the use of external stages with which cloud platforms? (Choose three.)

- A. Amazon Web Services
- B. Docker
- C. IBM Cloud
- D. Microsoft Azure Cloud
- E. Google Cloud Platform
- F. Oracle Cloud

Answer: BDE

NEW QUESTION 339

- (Exam Topic 3)

Which of the following is the Snowflake Account_Usage.Metering_History view used for?

- A. Gathering the hourly credit usage for an account
- B. Compiling an account's average cloud services cost over the previous month
- C. Summarizing the throughput of Snowpipe costs for an account
- D. Calculating the funds left on an account's contract

Answer: A

NEW QUESTION 341

- (Exam Topic 3)

What is the MINIMUM Snowflake edition required to use the periodic rekeying of micro-partitions?

- A. Enterprise
- B. Business Critical
- C. Standard
- D. Virtual Private Snowflake

Answer: B

Explanation:

Reference: <https://docs.snowflake.com/en/user-guide/intro-editions.html#business-critical-edition>

NEW QUESTION 346

- (Exam Topic 3)

What effect does WAIT_FOR_COMPLETION = TRUE have when running an ALTER WAREHOUSE command and changing the warehouse size?

- A. The warehouse size does not change until all queries currently running in the warehouse have completed.
- B. The warehouse size does not change until all queries currently in the warehouse queue have completed.
- C. The warehouse size does not change until the warehouse is suspended and restarted.
- D. It does not return from the command until the warehouse has finished changing its size.

Answer: D

NEW QUESTION 350

- (Exam Topic 3)

Which statements are true concerning Snowflake's underlying cloud infrastructure? (Select THREE),

- A. Snowflake data and services are deployed in a single availability zone within a cloud provider's region.
- B. Snowflake data and services are available in a single cloud provider and a single region, the use of multiple cloud providers is not supported.
- C. Snowflake can be deployed in a customer's private cloud using the customer's own compute and storage resources for Snowflake compute and storage
- D. Snowflake uses the core compute and storage services of each cloud provider for its own compute and storage
- E. All three layers of Snowflake's architecture (storage, compute, and cloud services) are deployed and managed entirely on a selected cloud platform
- F. Snowflake data and services are deployed in at least three availability zones within a cloud provider's region

Answer: DEF

NEW QUESTION 355

- (Exam Topic 3)

Where can a user find and review the failed logins of a specific user for the past 30 days?

- A. The USERS view in ACCOUNT_USAGE
- B. The LOGIN_HISTORY view in ACCOUNT_USAGE
- C. The ACCESS_HISTORY view in ACCOUNT_USAGE
- D. The SESSIONS view in ACCOUNT_USAGE

Answer: B

NEW QUESTION 359

- (Exam Topic 3)

Which statement MOST accurately describes clustering in Snowflake?

- A. The database ACCOUNTADMIN must define the clustering methodology for each Snowflake table.
- B. Clustering is the way data is grouped together and stored within Snowflake micro-partitions.
- C. The clustering key must be included in the COPY command when loading data into Snowflake.
- D. Clustering can be disabled within a Snowflake account.

Answer: B

NEW QUESTION 360

- (Exam Topic 3)

What is the MINIMUM edition of Snowflake that is required to use a SCIM security integration?

- A. Business Critical Edition
- B. Standard Edition
- C. Virtual Private Snowflake (VPS)
- D. Enterprise Edition

Answer: D

NEW QUESTION 361

- (Exam Topic 3)

If a Snowflake user decides a table should be clustered, what should be used as the cluster key?

- A. The columns that are queried in the select clause.
- B. The columns with very high cardinality.
- C. The columns with many different values.
- D. The columns most actively used in the select filters.

Answer: D

NEW QUESTION 363

- (Exam Topic 3)

The Snowflake Search Optimization Services supports improved performance of which kind of query?

- A. Queries against large tables where frequent DML occurs
- B. Queries against tables larger than 1 TB
- C. Selective point lookup queries
- D. Queries against a subset of columns in a table

Answer: C

Explanation:

Reference:

[https://docs.snowflake.com/en/user-guide/search-optimization-service.html#:~:text=The%20search%20optimiza%20point,OBJECT%2C%20and%20ARRAY%20columns\)](https://docs.snowflake.com/en/user-guide/search-optimization-service.html#:~:text=The%20search%20optimiza%20point,OBJECT%2C%20and%20ARRAY%20columns))

NEW QUESTION 367

- (Exam Topic 3)

If 3 size Small virtual warehouse is made up of two servers, how many servers make up a Large warehouse?

- A. 4
- B. 8
- C. 16
- D. 32

Answer: B

Explanation:

Size specifies the amount of compute resources available per cluster in a warehouse. Snowflake supports the following warehouse sizes:

Warehouse Size	Credits / Hour	Credits / Second	Notes
X-Small	1	0.0003	Default size for warehouses created using <code>CREATE WAREHOUSE</code> .
Small	2	0.0006	
Medium	4	0.0011	
Large	8	0.0022	
X-Large	16	0.0044	Default for warehouses created in the web interface.
2X-Large	32	0.0089	
3X-Large	64	0.0178	
4X-Large	128	0.0356	
5X-Large	256	0.0711	Preview feature.
6X-Large	512	0.1422	Preview feature.

<https://docs.snowflake.com/en/user-guide/warehouses-overview.html>

NEW QUESTION 371

- (Exam Topic 3)

Query parsing and compilation occurs in which architecture layer of the Snowflake Cloud Data Platform?

- A. Cloud services layer
- B. Compute layer
- C. Storage layer
- D. Cloud agnostic layer

Answer: B

Explanation:

Reference: <https://www.projectpro.io/article/snowflake-architecture-what-does-snowflake-do/556>

NEW QUESTION 373

- (Exam Topic 3)

Which command should be used to download files from a Snowflake stage to a local folder on a client's machine?

- A. PUT
- B. GET
- C. COPY
- D. SELECT

Answer: B

Explanation:

Reference: <https://docs.snowflake.com/en/sql-reference/sql/get.html>

NEW QUESTION 378

- (Exam Topic 3)

How many resource monitors can be assigned at the account level?

- A. 1
- B. 2
- C. 3
- D. 4

Answer: A

NEW QUESTION 383

- (Exam Topic 3)

Which Snowflake objects can be shared with other Snowflake accounts? (Choose three.)

- A. Schemas
- B. Roles
- C. Secure Views
- D. Stored Procedures
- E. Tables
- F. Secure User-Defined Functions (UDFs)

Answer: ABF

NEW QUESTION 386

- (Exam Topic 3)

When publishing a Snowflake Data Marketplace listing into a remote region what should be taken into consideration? (Choose two.)

- A. There is no need to have a Snowflake account in the target region, a share will be created for each user.
- B. The listing is replicated into all selected regions automatically, the data is not.
- C. The user must have the ORGADMIN role available in at least one account to link accounts for replication.
- D. Shares attached to listings in remote regions can be viewed from any account in an organization.
- E. For a standard listing the user can wait until the first customer requests the data before replicating it to the target region.

Answer: AC

NEW QUESTION 388

- (Exam Topic 3)

What actions will prevent leveraging of the ResultSet cache? (Choose two.)

- A. Removing a column from the query SELECT list
- B. Stopping the virtual warehouse that the query is running against
- C. Clustering of the data used by the query
- D. Executing the RESULTS_SCAN() table function
- E. Changing a column that is not in the cached query

Answer: AD

NEW QUESTION 392

- (Exam Topic 3)

Which statement describes pruning?

- A. The filtering or disregarding of micro-partitions that are not needed to return a query.
- B. The return of micro-partitions values that overlap with each other to reduce a query's runtime.
- C. A service that is handled by the Snowflake Cloud Services layer to optimize caching.
- D. The ability to allow the result of a query to be accessed as if it were a table.

Answer: A

NEW QUESTION 397

- (Exam Topic 3)

What is cached during a query on a virtual warehouse?

- A. All columns in a micro-partition
- B. Any columns accessed during the query
- C. The columns in the result set of the query
- D. All rows accessed during the query

Answer: B

NEW QUESTION 398

- (Exam Topic 3)

Which of the following is a data tokenization integration partner?

- A. Protegrity
- B. Tableau
- C. DBeaver
- D. SAP

Answer: A

NEW QUESTION 401

- (Exam Topic 3)

Which of the following are characteristics of Snowflake virtual warehouses? (Choose two.)

- A. Auto-resume applies only to the last warehouse that was started in a multi-cluster warehouse.
- B. The ability to auto-suspend a warehouse is only available in the Enterprise edition or above.
- C. SnowSQL supports both a configuration file and a command line option for specifying a default warehouse.
- D. A user cannot specify a default warehouse when using the ODBC driver.
- E. The default virtual warehouse size can be changed at any time.

Answer: A

NEW QUESTION 405

- (Exam Topic 3)

A company needs to allow some users to see Personally Identifiable Information (PII) while limiting other users from seeing the full value of the PII. Which Snowflake feature will support this?

- A. Row access policies
- B. Data masking policies
- C. Data encryption
- D. Role based access control

Answer: B

NEW QUESTION 410

- (Exam Topic 3)

Which statement describes how Snowflake supports reader accounts?

- A. A reader account can consume data from the provider account that created it and combine it with its own data.
- B. A consumer needs to become a licensed Snowflake customer as data sharing is only supported between Snowflake accounts.
- C. The users in a reader account can query data that has been shared with the reader account and can perform DML tasks.
- D. The SHOW MANAGED ACCOUNTS command will view all the reader accounts that have been created for an account.

Answer: C

NEW QUESTION 411

- (Exam Topic 3)

Which SQL command can be used to see the CREATE definition of a masking policy?

- A. SHOW MASKING POLICIES
- B. DESCRIBE MASKING POLICY
- C. GET_DDL
- D. LIST MASKING POLICIES

Answer: C

NEW QUESTION 416

- (Exam Topic 3)

A user has unloaded data from a Snowflake table to an external stage.

Which command can be used to verify if data has been uploaded to the external stage named my_stage?

- A. view @my_stage
- B. list @my_stage
- C. show @my_stage
- D. display @my_stage

Answer: B

NEW QUESTION 418

- (Exam Topic 3)

What is a responsibility of Snowflake's virtual warehouses?

- A. Infrastructure management
- B. Metadata management
- C. Query execution
- D. Query parsing and optimization
- E. Permanent storage of micro-partitions

Answer: C

Explanation:

Reference:

<https://docs.snowflake.com/en/user-guide/warehouses.html#:~:text=A%20warehouse%20provides%20the%20re>

NEW QUESTION 423

- (Exam Topic 3)

What is an advantage of using an explain plan instead of the query profiler to evaluate the performance of a query?

- A. The explain plan output is available graphically.
- B. An explain plan can be used to conduct performance analysis without executing a query.
- C. An explain plan will handle queries with temporary tables and the query profiler will not.

D. An explain plan's output will display automatic data skew optimization information.

Answer: B

NEW QUESTION 426

- (Exam Topic 3)

A user has a standard multi-cluster warehouse auto-scaling policy in place. Which condition will trigger a cluster to shut-down?

- A. When after 2-3 consecutive checks the system determines that the load on the most-loaded cluster could be redistributed.
- B. When after 5-6 consecutive checks the system determines that the load on the most-loaded cluster could be redistributed.
- C. When after 5-6 consecutive checks the system determines that the load on the least-loaded cluster could be redistributed.
- D. When after 2-3 consecutive checks the system determines that the load on the least-loaded cluster could be redistributed.

Answer: D

NEW QUESTION 429

- (Exam Topic 3)

What are common issues found by using the Query Profile? (Choose two.)

- A. Identifying queries that will likely run very slowly before executing them
- B. Locating queries that consume a high amount of credits
- C. Identifying logical issues with the queries
- D. Identifying inefficient micro-partition pruning
- E. Data spilling to a local or remote disk

Answer: AD

NEW QUESTION 434

- (Exam Topic 3)

Which statements reflect key functionalities of a Snowflake Data Exchange? (Choose two.)

- A. If an account is enrolled with a Data Exchange, it will lose its access to the Snowflake Marketplace.
- B. A Data Exchange allows groups of accounts to share data privately among the accounts.
- C. A Data Exchange allows accounts to share data with third, non-Snowflake parties.
- D. Data Exchange functionality is available by default in accounts using the Enterprise edition or higher.
- E. The sharing of data in a Data Exchange is bidirectiona
- F. An account can be a provider for some datasets and a consumer for others.

Answer: B

NEW QUESTION 437

- (Exam Topic 3)

A running virtual warehouse is suspended.

What is the MINIMUM amount of time that the warehouse will incur charges for when it is restarted?

- A. 1 second
- B. 60 seconds
- C. 5 minutes
- D. 60 minutes

Answer: B

NEW QUESTION 439

- (Exam Topic 3)

Which minimum Snowflake edition allows for a dedicated metadata store?

- A. Standard
- B. Enterprise
- C. Business Critical
- D. Virtual Private Snowflake

Answer: D

Explanation:

Reference: <https://docs.snowflake.com/en/user-guide/intro-editions.html>

NEW QUESTION 440

- (Exam Topic 3)

How are serverless features billed?

- A. Per second multiplied by an automatic sizing for the job
- B. Per minute multiplied by an automatic sizing for the job, with a minimum of one minute
- C. Per second multiplied by the size, as determined by the SERVERLESS_FEATURES_SIZE account parameter
- D. Serverless features are not billed, unless the total cost for the month exceeds 10% of the warehouse credits, on the account

Answer: D

NEW QUESTION 444

- (Exam Topic 3)

Which privilege must be granted to a share to allow secure views the ability to reference data in multiple databases?

- A. CREATE_SHARE on the account
- B. SHARE on databases and schemas
- C. SELECT on tables used by the secure view
- D. REFERENCE_USAGE on databases

Answer: C

NEW QUESTION 447

- (Exam Topic 3)

What is the minimum Snowflake edition required to use Dynamic Data Masking?

- A. Standard
- B. Enterprise
- C. Business Critical
- D. Virtual Private Snowflake (VPC)

Answer: D

NEW QUESTION 449

- (Exam Topic 3)

Users are responsible for data storage costs until what occurs?

- A. Data expires from Time Travel
- B. Data expires from Fail-safe
- C. Data is deleted from a table
- D. Data is truncated from a table

Answer: B

NEW QUESTION 452

- (Exam Topic 3)

Which privilege is required for a role to be able to resume a suspended warehouse if auto-resume is not enabled?

- A. USAGE
- B. OPERATE
- C. MONITOR
- D. MODIFY

Answer: B

Explanation:

Reference:

<https://community.snowflake.com/s/question/0D50Z00008yHYdqSAG/auto-resume-operate-warehouse-privileg>

NEW QUESTION 454

- (Exam Topic 3)

By default, which Snowflake role is required to create a share?

- A. ORGADMIN
- B. SECURITYADMIN
- C. SHAREADMIN
- D. ACCOUNTADMIN

Answer: C

NEW QUESTION 456

- (Exam Topic 3)

What are best practice recommendations for using the ACCOUNTADMIN system-defined role in Snowflake? (Choose two.)

- A. Ensure all ACCOUNTADMIN roles use Multi-factor Authentication (MFA).
- B. All users granted ACCOUNTADMIN role must be owned by the ACCOUNTADMIN role.
- C. The ACCOUNTADMIN role must be granted to only one user.
- D. Assign the ACCOUNTADMIN role to at least two users, but as few as possible.
- E. All users granted ACCOUNTADMIN role must also be granted SECURITYADMIN role.

Answer: AD

NEW QUESTION 460

- (Exam Topic 3)

What affects whether the query results cache can be used?

- A. If the query contains a deterministic function
- B. If the virtual warehouse has been suspended
- C. If the referenced data in the table has changed
- D. If multiple users are using the same virtual warehouse

Answer: B

NEW QUESTION 464

- (Exam Topic 3)

Files have been uploaded to a Snowflake internal stage. The files now need to be deleted. Which SQL command should be used to delete the files?

- A. PURGE
- B. MODIFY
- C. REMOVE
- D. DELETE

Answer: D

Explanation:

Reference:

<https://www.simplilearn.com/tutorials/sql-tutorial/delete-in-sql#:~:text=The%20Delete%20command%20in%20>

NEW QUESTION 469

- (Exam Topic 3)

Which data types are supported by Snowflake when using semi-structured data? (Choose two.)

- A. VARIANT
- B. VARRAY
- C. STRUCT
- D. ARRAY
- E. QUEUE

Answer: AD

NEW QUESTION 472

- (Exam Topic 3)

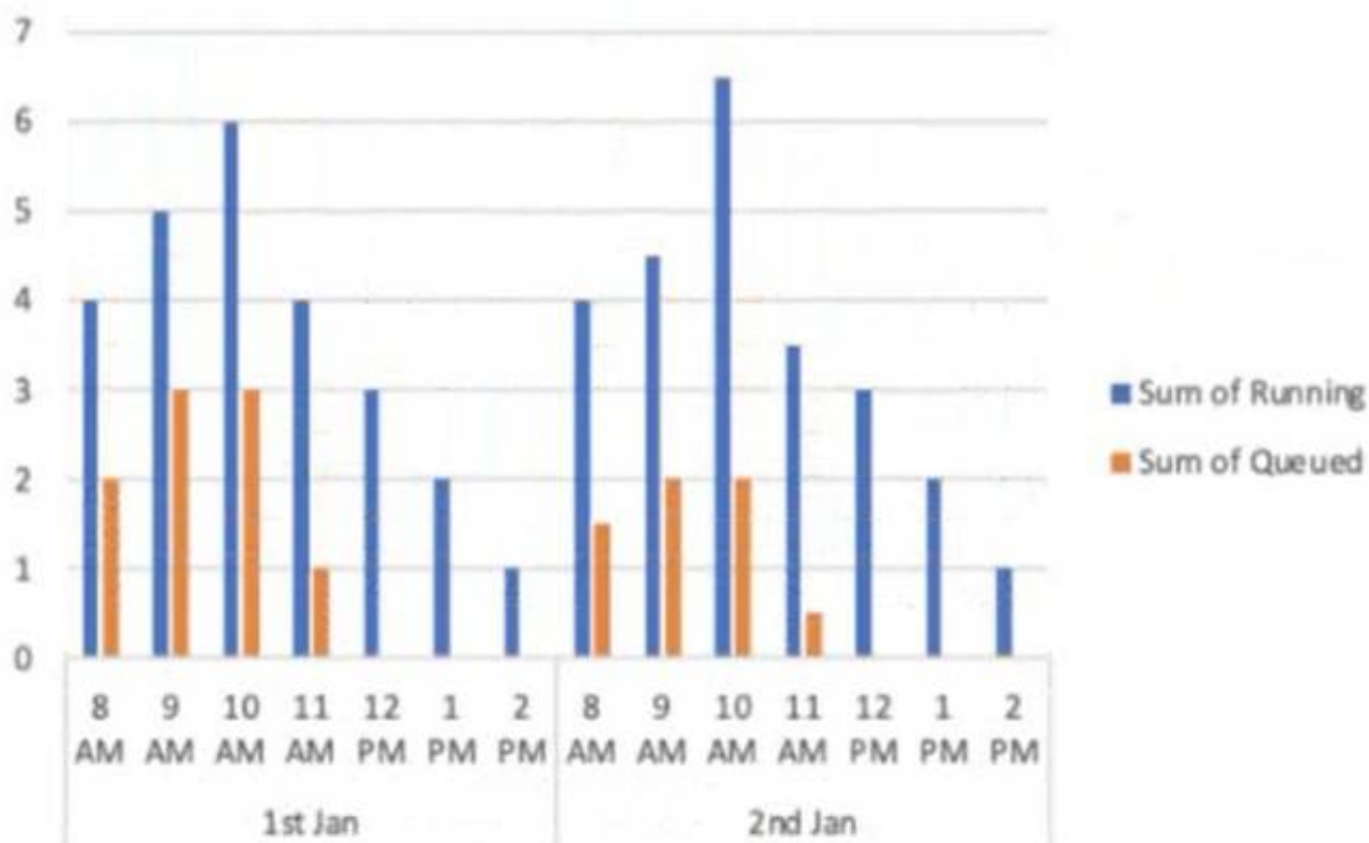
A virtual warehouse is created using the following command:

Create warehouse my_WH with warehouse_size = MEDIUM min_cluster_count = 1

max_cluster_count = 1

auto_suspend = 60 auto_resume = true;

The image below is a graphical representation of the warehouse utilization across two days.



What action should be taken to address this situation?

- A. Increase the warehouse size from Medium to 2XL.
- B. Increase the value for the parameter MAX_CONCURRENCY_LEVEL.
- C. Configure the warehouse to a multi-cluster warehouse.
- D. Lower the value of the parameter STATEMENT_QUEUED_TIMEOUT_IN_SECONDS.

Answer: B

NEW QUESTION 473

- (Exam Topic 3)

What is true about sharing data in Snowflake? (Choose two.)

- A. The Data Consumer pays for data storage as well as for data computing.
- B. The shared data is copied into the Data Consumer account, so the Consumer can modify it without impacting the base data of the Provider.
- C. A Snowflake account can both provide and consume shared data.
- D. The Provider is charged for compute resources used by the Data Consumer to query the shared data.
- E. The Data Consumer pays only for compute resources to query the shared data.

Answer: BC

NEW QUESTION 475

- (Exam Topic 3)

Which statement is true about running tasks in Snowflake?

- A. A task can be called using a CALL statement to run a set of predefined SQL commands.
- B. A task allows a user to execute a single SQL statement/command using a predefined schedule.
- C. A task allows a user to execute a set of SQL commands on a predefined schedule.
- D. A task can be executed using a SELECT statement to run a predefined SQL command.

Answer: C

NEW QUESTION 476

- (Exam Topic 3)

Why does Snowflake recommend file sizes of 100-250 MB compressed when loading data?

- A. Optimizes the virtual warehouse size and multi-cluster setting to economy mode
- B. Allows a user to import the files in a sequential order
- C. Increases the latency staging and accuracy when loading the data
- D. Allows optimization of parallel operations

Answer: D

NEW QUESTION 477

- (Exam Topic 3)

True or False: Snowpipe via REST API can only reference External Stages as source.

- A. True
- B. False

Answer: B

Explanation:

Reference: <https://community.snowflake.com/s/article/Making-Transient-table-by-Default>

NEW QUESTION 479

- (Exam Topic 3)

Which of the following objects can be directly restored using the UNDROP command? (Choose two.)

- A. Schema
- B. View
- C. Internal stage
- D. Table
- E. User
- F. Role

Answer: AD

NEW QUESTION 481

- (Exam Topic 3)

Which file formats are supported for unloading data from Snowflake? (Choose two.)

- A. Avro
- B. JSON
- C. ORC
- D. XML
- E. Delimited (CSV, TSV, etc.)

Answer: CE

Explanation:

Reference:

[https://docs.snowflake.com/en/user-guide/data-unload-prepare.html#:~:text=Supported%20File%20Formats,-Th%20comma%20\(i.e.%20CSV\).&text=File%20format%20options%20specify%20the,the%20format%20of%20th](https://docs.snowflake.com/en/user-guide/data-unload-prepare.html#:~:text=Supported%20File%20Formats,-Th%20comma%20(i.e.%20CSV).&text=File%20format%20options%20specify%20the,the%20format%20of%20th)

NEW QUESTION 483

- (Exam Topic 3)

Network policies can be set at which Snowflake levels? (Choose two.)

- A. Role
- B. Schema
- C. User
- D. Database
- E. Account
- F. Tables

Answer: CE

Explanation:

Reference: <https://docs.snowflake.com/en/user-guide/network-policies.html#creating-network-policies>

NEW QUESTION 486

- (Exam Topic 3)

What are advantages clones have over tables created with CREATE TABLE AS SELECT statement? (Choose two.)

- A. The clone always stays in sync with the original table.
- B. The clone has better query performance.
- C. The clone is created almost instantly.
- D. The clone will have time travel history from the original table.
- E. The clone saves space by not duplicating storage.

Answer: CE

NEW QUESTION 488

- (Exam Topic 3)

Which of the following are best practices for loading data into Snowflake? (Choose three.)

- A. Aim to produce data files that are between 100 MB and 250 MB in size, compressed.
- B. Load data from files in a cloud storage service in a different region or cloud platform from the service or region containing the Snowflake account, to save on cost.
- C. Enclose fields that contain delimiter characters in single or double quotes.
- D. Split large files into a greater number of smaller files to distribute the load among the compute resources in an active warehouse.
- E. When planning which warehouse(s) to use for data loading, start with the largest warehouse possible.
- F. Partition the staged data into large folders with random paths, allowing Snowflake to determine the bestway to load each file.

Answer: BCE

NEW QUESTION 490

- (Exam Topic 3)

How would a user run a multi-cluster warehouse in maximized mode?

- A. Configure the maximum clusters setting to "Maximum."
- B. Turn on the additional clusters manually after starting the warehouse.
- C. Set the minimum Clusters and maximum Clusters settings to the same value.
- D. Set the minimum clusters and maximum clusters settings to different values.

Answer: D

NEW QUESTION 495

- (Exam Topic 3)

Which Snowflake layer is always leveraged when accessing a query from the result cache?

- A. Metadata
- B. Data Storage
- C. Compute
- D. Cloud Services

Answer: D

NEW QUESTION 496

- (Exam Topic 3)

Which command sets the Virtual Warehouse for a session?

- A. COPY WAREHOUSE FROM <<config file>>;
- B. SET WAREHOUSE = <<warehouse name>>;
- C. USE WAREHOUSE <<warehouse name>>;
- D. USE VIRTUAL_WAREHOUSE <<warehouse name>>;

Answer: C

Explanation:

Reference: <https://docs.snowflake.com/en/user-guide/warehouses-tasks.html>

NEW QUESTION 497

- (Exam Topic 3)

What happens to historical data when the retention period for an object ends?

- A. The data is cloned into a historical object.
- B. The data moves to Fail-safe
- C. Time Travel on the historical data is dropped.
- D. The object containing the historical data is dropped.

Answer: D

NEW QUESTION 499

- (Exam Topic 3)

The Snowflake Cloud Data Platform is described as having which of the following architectures?

- A. Shared-disk
- B. Shared-nothing
- C. Multi-cluster shared data
- D. Serverless query engine

Answer: C

NEW QUESTION 500

- (Exam Topic 3)

The Snowflake cloud services layer is responsible for which tasks? (Choose two.)

- A. Local disk caching
- B. Authentication and access control
- C. Metadata management
- D. Query processing
- E. Database storage

Answer: CD

NEW QUESTION 504

- (Exam Topic 3)

Which parameter can be used to instruct a COPY command to verify data files instead of loading them into a specified table?

- A. STRIP_NULL_VALUES
- B. SKIP_BYTE_ORDER_MARK
- C. REPLACE_INVALID_CHARACTERS
- D. VALIDATION_MODE

Answer: D

Explanation:

<https://docs.snowflake.com/en/sql-reference/sql/copy-into-table.html>

VALIDATION_MODE = RETURN_ROWS | RETURN_ERRORS | RETURN_ALL_ERRORS

String (constant) that instructs the COPY command to validate the data files instead of loading them into the

specified table; i.e. the COPY command tests the files for errors but does not load them. The command validates the data to be loaded and returns results based on the validation option specified:

NEW QUESTION 509

- (Exam Topic 3)

What occurs when a pipe is recreated using the CREATE OR REPLACE PIPE command?

- A. The Pipe load history is reset to empty.
- B. The REFRESH command is executed.
- C. The stage will be purged.
- D. The destination table is truncated.

Answer: B

NEW QUESTION 512

- (Exam Topic 3)

A table needs to be loaded. The input data is in JSON format and is a concatenation of multiple JSON documents. The file size is 3 GB. A warehouse size small is being used. The following COPY INTO command was executed:

COPY INTO SAMPLE FROM @~/SAMPLE.JSON (TYPE=JSON)

The load failed with this error:

Max LOB size (16777216) exceeded, actual size of parsed column is 17894470. How can this issue be resolved?

- A. Compress the file and load the compressed file.
- B. Split the file into multiple files in the recommended size range (100 MB - 250 MB).
- C. Use a larger-sized warehouse.
- D. Set STRIP_OUTER_ARRAY=TRUE in the COPY INTO command.

Answer: A

NEW QUESTION 516

- (Exam Topic 3)

How does Snowflake Fail-safe protect data in a permanent table?

- A. Fail-safe makes data available up to 1 day, recoverable by user operations.
- B. Fail-safe makes data available for 7 days, recoverable by user operations.
- C. Fail-safe makes data available for 7 days, recoverable only by Snowflake Support.
- D. Fail-safe makes data available up to 1 day, recoverable only by Snowflake Support.

Answer: C

NEW QUESTION 521

- (Exam Topic 3)

In a Snowflake role hierarchy, what is the top-level role?

- A. SYSADMIN
- B. ORGADMIN
- C. ACCOUNTADMIN
- D. SECURITYADMIN

Answer: B

NEW QUESTION 522

- (Exam Topic 3)

What are the correct parameters for time travel and fail-safe in the Snowflake Enterprise Edition?

- A. Default Time Travel Retention is set to 0 days.Maximum Time Travel Retention is 30 day
- B. Fail Safe retention time is 1 day.
- C. Default Time Travel Retention is set to 1 day.Maximum Time Travel Retention is 365 day
- D. Fail Safe retention time is 7 days.
- E. Default Time Travel Retention is set to 0 days.Maximum Time Travel Retention is 90 day
- F. Fail Safe retention time is 7 days.
- G. Default Time Travel Retention is set to 1 day.Maximum Time Travel Retention is 90 day
- H. Fail Safe retention time is 7 days.
- I. Default Time Travel Retention is set to 7 days.Maximum Time Travel Retention is 1 da
- J. Fail Safe retention time is 90 days.
- K. Default Time Travel Retention is set to 90 days.Maximum Time Travel Retention is 7 day
- L. Fail Safe retention time is 356 days.

Answer: D

NEW QUESTION 526

- (Exam Topic 3)

What is the minimum Snowflake edition required for row level security?

- A. Standard
- B. Enterprise
- C. Business Critical
- D. Virtual Private Snowflake

Answer: B

NEW QUESTION 531

- (Exam Topic 3)

When should a multi-cluster warehouse be used in auto-scaling mode?

- A. When it is unknown how much compute power is needed
- B. If the select statement contains a large number of temporary tables or Common Table Expressions (CTEs)
- C. If the runtime of the executed query is very slow
- D. When a large number of concurrent queries are run on the same warehouse

Answer: D

NEW QUESTION 535

- (Exam Topic 3)

What impacts the credit consumption of maintaining a materialized view? (Choose two.)

- A. Whether or not it is also a secure view
- B. How often the underlying base table is queried
- C. How often the base table changes
- D. Whether the materialized view has a cluster key defined
- E. How often the materialized view is queried

Answer: DE

NEW QUESTION 538

- (Exam Topic 3)

Which Snowflake tool would be BEST to troubleshoot network connectivity?

- A. SnowCLI
- B. SnowUI
- C. SnowSQL
- D. SnowCD

Answer: D

Explanation:

[https://docs.snowflake.com/en/user-guide/snowcd.html#:~:text=SnowCD%20\(i.e.%20Snowflake%20Connectivi](https://docs.snowflake.com/en/user-guide/snowcd.html#:~:text=SnowCD%20(i.e.%20Snowflake%20Connectivi)

NEW QUESTION 542

- (Exam Topic 3)

When cloning a database containing stored procedures and regular views, that have fully qualified table references, which of the following will occur?

- A. The cloned views and the stored procedures will reference the cloned tables in the cloned database.
- B. An error will occur, as views with qualified references cannot be cloned.
- C. An error will occur, as stored objects cannot be cloned.
- D. The stored procedures and views will refer to tables in the source database.

Answer: D

NEW QUESTION 543

- (Exam Topic 3)

What file formats does Snowflake support for loading semi-structured data? (Choose three.)

- A. TSV
- B. JSON
- C. PDF
- D. Avro
- E. Parquet
- F. JPEG

Answer: BDE

NEW QUESTION 546

- (Exam Topic 3)

What types of data listings are available in the Snowflake Data Marketplace? (Choose two.)

- A. Reader
- B. Consumer
- C. Vendor
- D. Standard
- E. Personalized

Answer: DE

NEW QUESTION 549

- (Exam Topic 3)

Which of the following statements describes a schema in Snowflake?

- A. A logical grouping of objects that belongs to a single database
- B. A logical grouping of objects that belongs to multiple databases
- C. A named Snowflake object that includes all the information required to share a database
- D. A uniquely identified Snowflake account within a business entity

Answer: A

NEW QUESTION 552

- (Exam Topic 3)

What features that are part of the Continuous Data Protection (CDP) feature set in Snowflake do not require additional configuration? (Choose two.)

- A. Row level access policies
- B. Data masking policies
- C. Data encryption
- D. Time Travel
- E. External tokenization

Answer: CD

NEW QUESTION 557

- (Exam Topic 3)

Which of the following describes the Snowflake Cloud Services layer?

- A. Coordinates activities in the Snowflake account
- B. Executes queries submitted by the Snowflake account users

- C. Manages quotas on the Snowflake account storage
- D. Manages the virtual warehouse cache to speed up queries

Answer: A

NEW QUESTION 558

- (Exam Topic 3)

Data storage for individual tables can be monitored using which commands and/or objects? (Choose two.)

- A. SHOW STORAGE BY TABLE;
- B. SHOW TABLES;
- C. Information Schema -> TABLE_HISTORY
- D. Information Schema -> TABLE_FUNCTION
- E. Information Schema -> TABLE_STORAGE_METRICS

Answer: AE

NEW QUESTION 560

- (Exam Topic 3)

Which of the following features are available with the Snowflake Enterprise edition? (Choose two.)

- A. Database replication and failover
- B. Automated index management
- C. Customer managed keys (Tri-secret secure)
- D. Extended time travel
- E. Native support for geospatial data

Answer: AD

NEW QUESTION 561

- (Exam Topic 3)

Using variables in Snowflake is denoted by using which SQL character?

- A. @
- B. &
- C. \$
- D. #

Answer: C

NEW QUESTION 565

.....

Relate Links

100% Pass Your SnowPro-Core Exam with ExamBible Prep Materials

<https://www.exambible.com/SnowPro-Core-exam/>

Contact us

We are proud of our high-quality customer service, which serves you around the clock 24/7.

Viste - <https://www.exambible.com/>