

Fortinet

Exam Questions NSE4_FGT-7.2

Fortinet NSE 4 - FortiOS 7.2



NEW QUESTION 1

In consolidated firewall policies, IPv4 and IPv6 policies are combined in a single consolidated policy. Instead of separate policies. Which three statements are true about consolidated IPv4 and IPv6 policy configuration? (Choose three.)

- A. The IP version of the sources and destinations in a firewall policy must be different.
- B. The Incoming Interface
- C. Outgoing Interface
- D. Schedule, and Service fields can be shared with both IPv4 and IPv6.
- E. The policy table in the GUI can be filtered to display policies with IPv4, IPv6 or IPv4 and IPv6 sources and destinations.
- F. The IP version of the sources and destinations in a policy must match.
- G. The policy table in the GUI will be consolidated to display policies with IPv4 and IPv6 sources and destinations.

Answer: BDE

NEW QUESTION 2

Refer to the exhibit.

```
STUDENT # get system session list
PROTO  EXPIRE  SOURCE          SOURCE-NAT      DESTINATION      DESTINATION-NAT
tcp     3598    10.0.1.10:2706  10.200.1.6:2706 10.200.1.254:80 -
tcp     3598    10.0.1.10:2704  10.200.1.6:2704 10.200.1.254:80 -
tcp     3596    10.0.1.10:2702  10.200.1.6:2702 10.200.1.254:80 -
tcp     3599    10.0.1.10:2700  10.200.1.6:2700 10.200.1.254:443 -
tcp     3599    10.0.1.10:2698  10.200.1.6:2698 10.200.1.254:80 -
tcp     3598    10.0.1.10:2696  10.200.1.6:2696 10.200.1.254:443 -
udp     174     10.0.1.10:2694  -                10.0.1.254:53  -
udp     173     10.0.1.10:2690  -                10.0.1.254:53  -
```

Which contains a session list output. Based on the information shown in the exhibit, which statement is true?

- A. Destination NAT is disabled in the firewall policy.
- B. One-to-one NAT IP pool is used in the firewall policy.
- C. Overload NAT IP pool is used in the firewall policy.
- D. Port block allocation IP pool is used in the firewall policy.

Answer: B

Explanation:

FortiGate_Security_6.4 page 155 . In one-to-one, PAT is not required.

NEW QUESTION 3

An employee needs to connect to the office through a high-latency internet connection. Which SSL VPN setting should the administrator adjust to prevent SSL VPN negotiation failure?

- A. idle-timeout
- B. login-timeout
- C. udp-idle-timer
- D. session-ttl

Answer: B

Explanation:

FortiGate Infrastructure 7.2 Study Guide (p.222):

"When connected to SSL VPN over high latency connections, FortiGate can time out the client before the client can finish the negotiation process, such as DNS lookup and time to enter a token. Two new CLI commands under config vpn ssl settings have been added to address this. The first command allows you to set up the login timeout, replacing the previous hard timeout value. The second command allows you to set up the maximum DTLS hello timeout for SSL VPN connections."

NEW QUESTION 4

Which three CLI commands can you use to troubleshoot Layer 3 issues if the issue is in neither the physical layer nor the link layer? (Choose three.)

- A. diagnose sys top
- B. execute ping
- C. execute traceroute
- D. diagnose sniffer packet any
- E. get system arp

Answer: BCD

NEW QUESTION 5

What are two benefits of flow-based inspection compared to proxy-based inspection? (Choose two.)

- A. FortiGate uses fewer resources.
- B. FortiGate performs a more exhaustive inspection on traffic.
- C. FortiGate adds less latency to traffic.
- D. FortiGate allocates two sessions per connection.

Answer: AC

NEW QUESTION 6

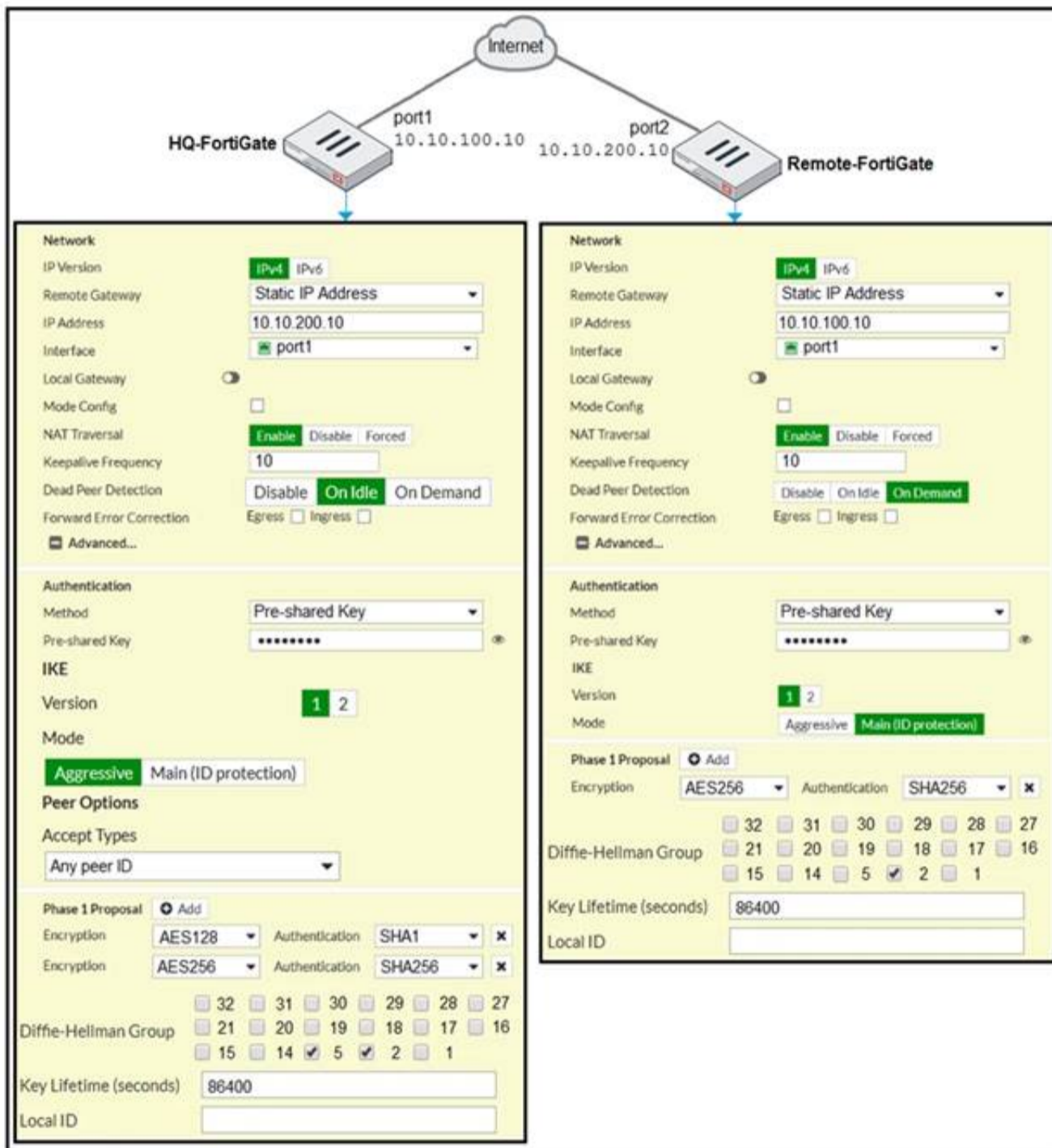
Which two actions can you perform only from the root FortiGate in a Security Fabric? (Choose two.)

- A. Shut down/reboot a downstream FortiGate device.
- B. Disable FortiAnalyzer logging for a downstream FortiGate device.
- C. Log in to a downstream FortiSwitch device.
- D. Ban or unban compromised hosts.

Answer: AB

NEW QUESTION 7

A network administrator is troubleshooting an IPsec tunnel between two FortiGate devices. The administrator has determined that phase 1 fails to come up. The administrator has also re-entered the pre-shared key on both FortiGate devices to make sure they match.



Based on the phase 1 configuration and the diagram shown in the exhibit, which two configuration changes will bring phase 1 up? (Choose two.)

- A. On HQ-FortiGate, set IKE mode to Main (ID protection).
- B. On both FortiGate devices, set Dead Peer Detection to On Demand.
- C. On HQ-FortiGate, disable Diffie-Helman group 2.
- D. On Remote-FortiGate, set port2 as Interface.

Answer: AD

Explanation:

"In IKEv1, there are two possible modes in which the IKE SA negotiation can take place: main, and aggressive mode. Settings on both ends must agree; otherwise, phase 1 negotiation fails and both IPsec peers are not able to establish a secure channel."

NEW QUESTION 8

Which two types of traffic are managed only by the management VDOM? (Choose two.)

- A. FortiGuard web filter queries
- B. PKI

- C. Traffic shaping
- D. DNS

Answer: AD

NEW QUESTION 9

Which statement about the deployment of the Security Fabric in a multi-VDOM environment is true?

- A. VDOMs without ports with connected devices are not displayed in the topology.
- B. Downstream devices can connect to the upstream device from any of their VDOMs.
- C. Security rating reports can be run individually for each configured VDOM.
- D. Each VDOM in the environment can be part of a different Security Fabric.

Answer: A

Explanation:

FortiGate Security 7.2 Study Guide (p.436): "When you configure FortiGate devices in multi-vdom mode and add them to the Security Fabric, each VDOM with its assigned ports is displayed when one or more devices are detected. Only the ports with discovered and connected devices appear in the Security Fabric view and, because of this, you must enable Device Detection on ports you want to have displayed in the Security Fabric. VDOMs without ports with connected devices are not displayed. All VDOMs configured must be part of a single Security Fabric."

NEW QUESTION 10

Refer to the exhibits.

SSL-VPN Settings

Connection Settings ⓘ

Listen on Interface(s)

port1

+

×

Listen on Port

10443

Web mode access will be listening at

<https://10.200.1.1:10443>

Redirect HTTP to SSL-VPN

☐

Restrict Access

Allow access from any host

Limit access to specific hosts

Idle Logout

☒

Inactive For

300

Seconds

Server Certificate

Fortinet_Factory

▼

Require Client Certificate

☐

Tunnel Mode Client Settings ⓘ

Address Range

Automatically assign addresses

Specify custom IP ranges

Tunnel users will receive IPs in the range of 10.212.134.200 - 10.212.134.210

DNS Server

Same as client system DNS

Specify

Specify WINS Servers

☐

Authentication/Portal Mapping ⓘ

+ Create New

✎ Edit

🗑 Delete

Users/Groups ⓘ	Portal ⓘ
👤 sslvpn	tunnel-access
All Other Users/Groups	full-access



The SSL VPN connection fails when a user attempts to connect to it. What should the user do to successfully connect to SSL VPN?

- A. Change the SSL VPN port on the client.
- B. Change the Server IP address.
- C. Change the idle-timeout.
- D. Change the SSL VPN portal to the tunnel.

Answer: A

NEW QUESTION 10

FortiGate is operating in NAT mode and is configured with two virtual LAN (VLAN) subinterfaces added to the same physical interface. In this scenario, what are two requirements for the VLAN ID? (Choose two.)

- A. The two VLAN subinterfaces can have the same VLAN ID, only if they have IP addresses in the same subnet.
- B. The two VLAN subinterfaces can have the same VLAN ID, only if they belong to different VDOMs.
- C. The two VLAN subinterfaces must have different VLAN IDs.
- D. The two VLAN subinterfaces can have the same VLAN ID, only if they have IP addresses in different subnets.

Answer: BC

Explanation:

<https://community.fortinet.com/t5/FortiGate/Technical-Note-How-to-use-vmac-vlan-to-share-the-same-VLAN/t> When FortiGate is operating in NAT mode, it means that it uses network address translation (NAT) to modify the source or destination IP addresses of the traffic passing through it¹. NAT mode allows FortiGate to hide the IP addresses of the internal network from the external network, and to conserve IP addresses by using a single public IP address for multiple private IP addresses¹.

A virtual LAN (VLAN) subinterface is a logical interface that allows traffic from different VLANs to enter and exit the FortiGate unit². A VLAN subinterface is created by adding a VLAN ID to a physical interface or an aggregate interface². A VLAN ID is a numerical identifier that distinguishes one VLAN from another².

In this scenario, there are two requirements for the VLAN ID of the VLAN subinterfaces added to the same physical interface:

➤ The two VLAN subinterfaces must have different VLAN IDs. This is because the VLAN ID is used to tag the traffic with the appropriate VLAN information, and to separate the traffic into different VLANs². If the two VLAN subinterfaces have the same VLAN ID, they will not be able to distinguish the traffic from each other, and they will not be able to forward the traffic to the correct destination.

➤ The two VLAN subinterfaces can have the same VLAN ID, only if they belong to different VDOMs. This is because VDOMs are virtual instances of FortiGate that can have their own interfaces, policies, and routing tables³. Each VDOM operates independently from other VDOMs, and can have its own VLAN subinterfaces with different or identical VLAN IDs³. However, this requires inter-VDOM links to allow traffic between different VDOMs³.

NEW QUESTION 15

Which scanning technique on FortiGate can be enabled only on the CLI?

- A. Heuristics scan
- B. Trojan scan
- C. Antivirus scan
- D. Ransomware scan

Answer: A

NEW QUESTION 19

What are two characteristics of FortiGate HA cluster virtual IP addresses? (Choose two.)

- A. Virtual IP addresses are used to distinguish between cluster members.
- B. Heartbeat interfaces have virtual IP addresses that are manually assigned.
- C. The primary device in the cluster is always assigned IP address 169.254.0.1.
- D. A change in the virtual IP address happens when a FortiGate device joins or leaves the cluster.

Answer: AD

Explanation:

Fortigate Infrastructure 7.2 Study Guide page 301 FortiGate Infrastructure 7.2 Study Guide (p.301):

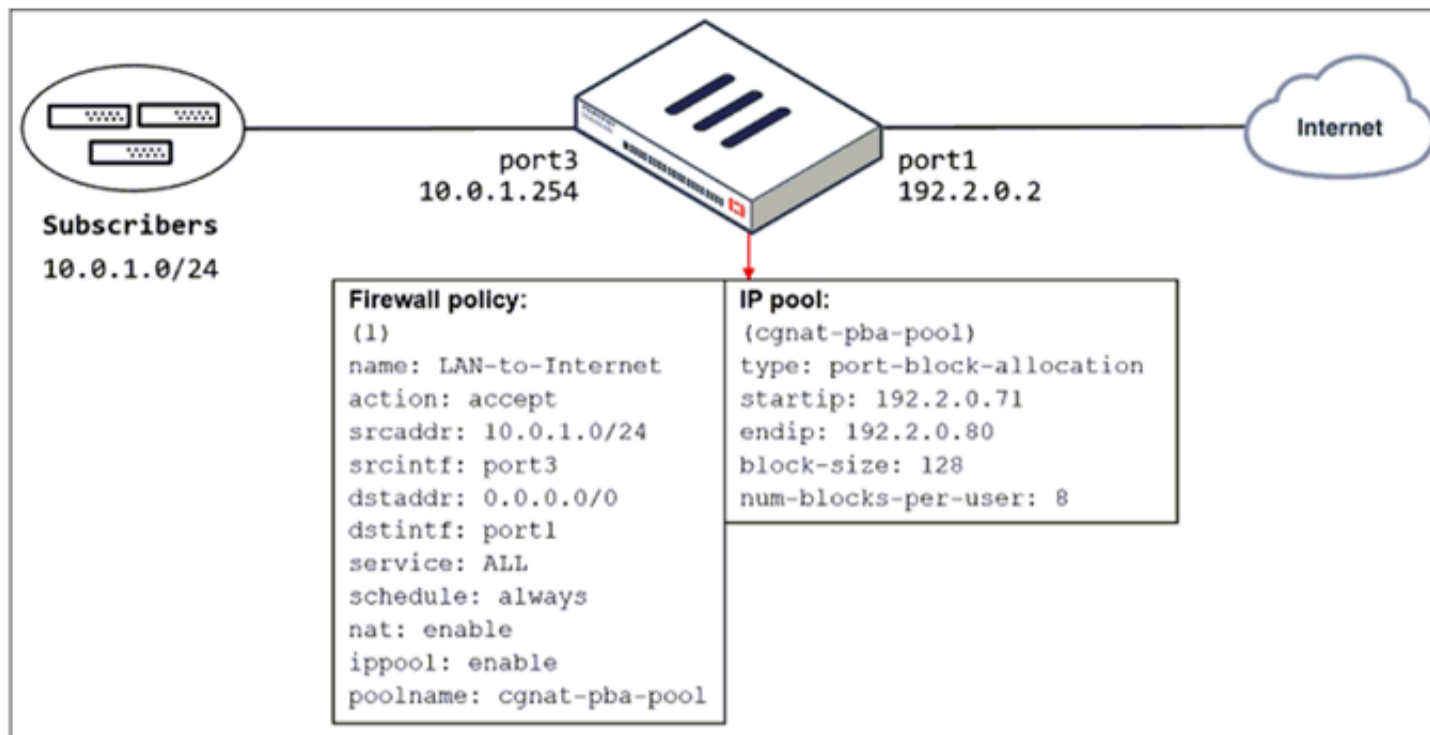
"FGCP automatically assigns the heartbeat IP addresses based on the serial number of each device. The IP address 169.254.0.1 is assigned to the device with the highest serial number."

"A change in the heartbeat IP addresses may happen when a FortiGate device joins or leaves the cluster." "The HA cluster uses the heartbeat IP addresses to distinguish the cluster members and synchronize data." <https://networkinterview.com/fortigate-ha-high-availability/>

NEW QUESTION 23

Refer to the exhibit.

The exhibit shows a diagram of a FortiGate device connected to the network and the firewall policy and IP pool configuration on the FortiGate device.



Which two actions does FortiGate take on internet traffic sourced from the subscribers? (Choose two.)

- A. FortiGate allocates port blocks per user, based on the configured range of internal IP addresses.
- B. FortiGate allocates port blocks on a first-come, first-served basis.
- C. FortiGate generates a system event log for every port block allocation made per user.
- D. FortiGate allocates 128 port blocks per user.

Answer: BC

Explanation:

FortiGate Security 7.2 Study Guide (p.109): "FortiGate allocates port blocks on a first-come, first-served basis." "For logging purposes, when FortiGate allocates a port block to a host, it generates a system event log to inform the administrator."

NEW QUESTION 26

A network administrator has enabled SSL certificate inspection and antivirus on FortiGate. When downloading an EICAR test file through HTTP, FortiGate detects the virus and blocks the file. When downloading the same file through HTTPS, FortiGate does not detect the virus and the file can be downloaded.

What is the reason for the failed virus detection by FortiGate?

- A. The website is exempted from SSL inspection.
- B. The EICAR test file exceeds the protocol options oversize limit.
- C. The selected SSL inspection profile has certificate inspection enabled.
- D. The browser does not trust the FortiGate self-signed CA certificate.

Answer: AC

Explanation:

SSL Inspection Profile, on the Inspection method there are 2 options to choose from, SSL Certificate Inspection or Full SSL Inspection. FG SEC 7.2 Studi Guide: Full SSL Inspection level is the only choice that allows antivirus to be effective.

NEW QUESTION 30

An administrator is configuring an Ipsec between site A and siteB. The Remotes Gateway setting in both sites has been configured as Static IP Address. For site A, the local quick mode selector is 192. 16. 1.0/24 and the remote quick mode selector is 192. 16.2.0/24. How must the administrator configure the local quick mode selector for site B?

- A. 192. 168.3.0/24
- B. 192. 168.2.0/24
- C. 192. 168. 1.0/24
- D. 192. 168.0.0/8

Answer: B

NEW QUESTION 31

On FortiGate, which type of logs record information about traffic directly to and from the FortiGate management IP addresses?

- A. System event logs
- B. Forward traffic logs
- C. Local traffic logs
- D. Security logs

Answer: C

NEW QUESTION 32

Which two statements are true about the Security Fabric rating? (Choose two.)

- A. It provides executive summaries of the four largest areas of security focus.
- B. Many of the security issues can be fixed immediately by clicking Apply where available.
- C. The Security Fabric rating must be run on the root FortiGate device in the Security Fabric.
- D. The Security Fabric rating is a free service that comes bundled with all FortiGate devices.


Answer: BC

NEW QUESTION 34

Refer to the exhibits.

Exhibit AExhibit B

Upstream Internet



Local-FortiGate
Fabric Root

ISFW

Edit Address

NameNet_Add_1

ColorChange

TypeSubnet

IP/Netmask1.1.1.0 255.255.255.0

Interfaceany

Fabric synchronization

Static route configuration

CommentsWrite a comment...

0/255

Exhibit AExhibit B

Local-FortiGate # show full-configuration system csf
config system csf
 set status enable
 set upstream ''
 set upstream-port 8013
 set group-name "fortinet"
 set group-password ENC Y9ynT+64RpCTpVdgSmoQH242mYSIzNNzLNvgzMXjyN
9hSjIJE3KYJlo3XxygldvNxPI8T5xctBUSzy7rgIcHcA/qHrByXSXfPEeHC6ufkqlPJr
W6GypwDUB5O3VFgPbASFYyteQesmwoJtGe84BLqa+hUcgunLD1z/97sBp+PLt5nrA==
 set accept-auth-by-cert enable
 set log-unification enable
 set authorization-request-type serial
 set fabric-workers 2
 set downstream-access disable
 set configuration-sync default
 set fabric-object-unification default
 set saml-configuration-sync default

ISFW # show full-configuration system csf
config system csf
 set status enable
 set upstream "10.0.1.254"
 set upstream-port 8013
 set group-name ''
 set accept-auth-by-cert enable
 set log-unification enable
 set authorization-request-type serial
 set fabric-workers 2
 set downstream-access disable
 set configuration-sync default
 set saml-configuration-sync local
end

ISFW #

An administrator creates a new address object on the root FortiGate (Local-FortiGate) in the security fabric. After synchronization, this object is not available on the downstream FortiGate (ISFW).
What must the administrator do to synchronize the address object?

- A. Change the csf setting on ISFW (downstream) to set configuration-sync local.
- B. Change the csf setting on ISFW (downstream) to set authorization-request-type certificate.
- C. Change the csf setting on both devices to set downstream-access enable.
- D. Change the csf setting on Local-FortiGate (root) to set fabric-object-unification default.

Answer: C

NEW QUESTION 36

An administrator wants to configure Dead Peer Detection (DPD) on IPSEC VPN for detecting dead tunnels. The requirement is that FortiGate sends DPD probes only when no traffic is observed in the tunnel.
Which DPD mode on FortiGate will meet the above requirement?

- A. Disabled
- B. On Demand
- C. Enabled
- D. On Idle

Answer: D

NEW QUESTION 37

Refer to exhibit.

An administrator configured the web filtering profile shown in the exhibit to block access to all social networking sites except Twitter. However, when users try to access twitter.com, they are redirected to a FortiGuard web filtering block page.

Name

Allow_Twitter

Comments

Write a comment...

0/255

Feature set

Flow-based

Proxy-based

FortiGuard Category Based Filter

Allow

Monitor

Block

Warning

Authenticate

Name	Action
Medicine	Allow
News and Media	Allow
Social Networking	Block
Political Organizations	Allow
Reference	Allow
Global Religion	Allow
Shopping	Allow
Society and Lifestyles	Allow
Sports	Allow

Static URL Filter

Block invalid URLs

URL Filter

+ Create New

Edit

Delete

Search

URL	Type	Action	Status
twitter.com	Wildcard	Allow	Enable

Block malicious URLs discovered by FortiSandbox

Content Filter

Based on the exhibit, which configuration change can the administrator make to allow Twitter while blocking all other social networking sites?

- A. On the FortiGuard Category Based Filter configuration, set Action to Warning for Social Networking
- B. On the Static URL Filter configuration, set Type to Simple
- C. On the Static URL Filter configuration, set Action to Exempt.
- D. On the Static URL Filter configuration, set Action to Monitor.

Answer: C

NEW QUESTION 38

By default, FortiGate is configured to use HTTPS when performing live web filtering with FortiGuard servers. Which CLI command will cause FortiGate to use an unreliable protocol to communicate with FortiGuard servers for live web filtering?

- A. set fortiguard-anycast disable
- B. set webfilter-force-off disable
- C. set webfilter-cache disable
- D. set protocol tcp

Answer: A

Explanation:

y default, "fortiguard-anycast" is enabled, and this setting only works with "set protocol https". To use udp (ie. "set protocol udp"), "fortiguard-anycast" must be disabled.

NEW QUESTION 43

Which CLI command will display sessions both from client to the proxy and from the proxy to the servers?

- A. diagnose wad session list
- B. diagnose wad session list | grep hook-pre&&hook-out
- C. diagnose wad session list | grep hook=pre&&hook=out
- D. diagnose wad session list | grep "hook=pre"&"hook=out"

Answer: A

NEW QUESTION 46

View the exhibit.

Destination: Subnet Named Address Internet Service 172.13.24.0/255.255.255.0 Interface: TunnelB Administrative Distance: 5 Comments: Status: Enabled Disabled Advanced Options Priority: 30	Destination: Subnet Named Address Internet Service 172.13.24.0/255.255.255.0 Interface: TunnelA Administrative Distance: 10 Comments: Status: Enabled Disabled Advanced Options Priority: 0
--	--

Which of the following statements are correct? (Choose two.)

- A. This setup requires at least two firewall policies with the action set to IPsec.
- B. Dead peer detection must be disabled to support this type of IPsec setup.
- C. The TunnelB route is the primary route for reaching the remote sit
- D. The TunnelA route is used only if the TunnelB VPN is down.
- E. This is a redundant IPsec setup.

Answer: CD

Explanation:

<https://docs.fortinet.com/document/fortigate/6.2.4/cookbook/632796/ospf-with-ipsec-vpn-for-network-redundan>

NEW QUESTION 48

Which statement regarding the firewall policy authentication timeout is true?

- A. It is an idle timeou
- B. The FortiGate considers a user to be "idle" if it does not see any packets coming from the user's source IP.
- C. It is a hard timeou
- D. The FortiGate removes the temporary policy for a user's source IP address after this timer has expired.
- E. It is an idle timeou
- F. The FortiGate considers a user to be "idle" if it does not see any packets coming from the user's source MAC.
- G. It is a hard timeou
- H. The FortiGate removes the temporary policy for a user's source MAC address after this timer has expired.

Answer: A

NEW QUESTION 52

Which of the following are valid actions for FortiGuard category based filter in a web filter profile ui proxy-based inspection mode? (Choose two.)

- A. Warning
- B. Exempt
- C. Allow
- D. Learn

Answer: AC

NEW QUESTION 55

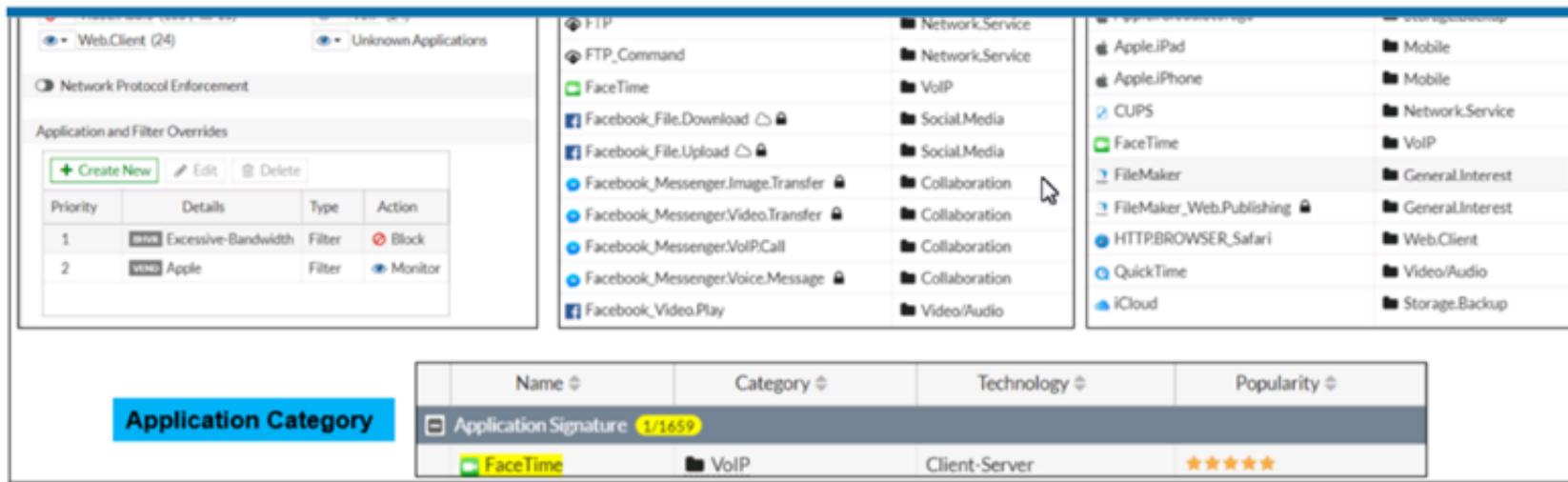
FortiGate is operating in NAT mode and is configured with two virtual LAN (VLAN) subinterfaces added to the same physical interface. In this scenario, which statement about VLAN IDs is true?

- A. The two VLAN subinterfaces can have the same VLAN ID only if they belong to different VDOMs.
- B. The two VLAN subinterfaces must have different VLAN IDs.
- C. The two VLAN subinterfaces can have the same VLAN ID only if they have IP addresses in the same subnet.
- D. The two VLAN subinterfaces can have the same VLAN ID only if they have IP addresses in different subnets.

Answer: CD

NEW QUESTION 59

Refer to the exhibit to view the application control profile.



Based on the configuration, what will happen to Apple FaceTime?

- A. Apple FaceTime will be blocked, based on the Excessive-Bandwidth filter configuration
- B. Apple FaceTime will be allowed, based on the Apple filter configuration.
- C. Apple FaceTime will be allowed only if the filter in Application and Filter Overrides is set to Learn
- D. Apple FaceTime will be allowed, based on the Categories configuration.

Answer: A

NEW QUESTION 62

FortiGate is configured as a policy-based next-generation firewall (NGFW) and is applying web filtering and application control directly on the security policy. Which two other security profiles can you apply to the security policy? (Choose two.)

- A. Antivirus scanning
- B. File filter
- C. DNS filter
- D. Intrusion prevention

Answer: AD

NEW QUESTION 66

Refer to the exhibit.

An administrator added a configuration for a new RADIUS server. While configuring, the administrator selected the Include in every user group option.



What is the impact of using the Include in every user group option in a RADIUS configuration?

- A. This option places the RADIUS server, and all users who can authenticate against that server, into every FortiGate user group.
- B. This option places all FortiGate users and groups required to authenticate into the RADIUS server, which, in this case, is FortiAuthenticator.
- C. This option places all users into every RADIUS user group, including groups that are used for the LDAP server on FortiGate.
- D. This option places the RADIUS server, and all users who can authenticate against that server, into every RADIUS group.

Answer: A

NEW QUESTION 71

Which statement is correct regarding the security fabric?

- A. FortiManager is one of the required member devices.
- B. FortiGate devices must be operating in NAT mode.
- C. A minimum of two Fortinet devices is required.
- D. FortiGate Cloud cannot be used for logging purposes.

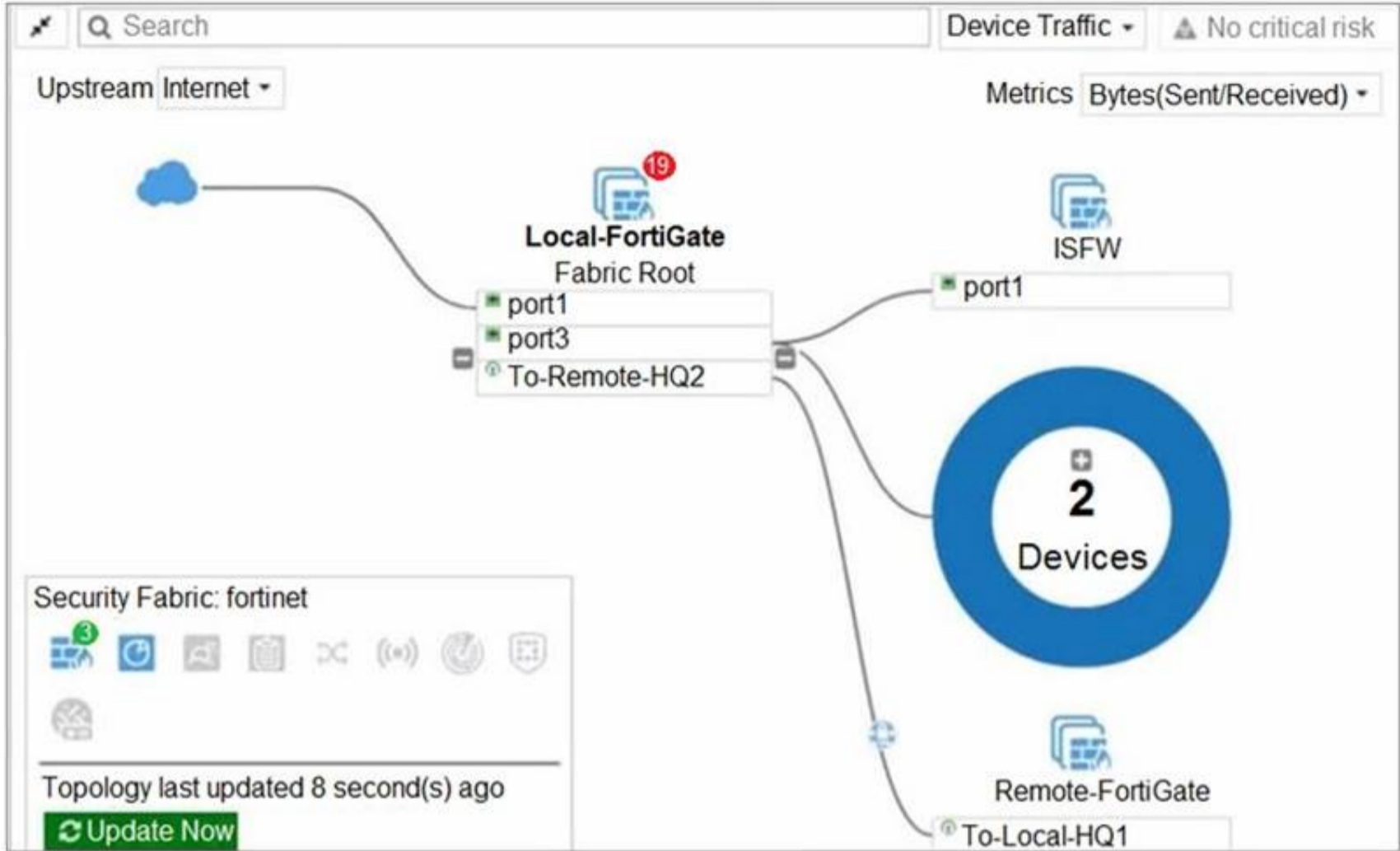
Answer: B

Explanation:

FortiGate Security 7.2 Study Guide (p.428): "You must have a minimum of two FortiGate devices at the core of the Security Fabric, plus one FortiAnalyzer or cloud logging solution. FortiAnalyzer Cloud or FortiGate Cloud can act as the cloud logging solution. The FortiGate devices must be running in NAT mode."

NEW QUESTION 76

Refer to the exhibit.



Given the security fabric topology shown in the exhibit, which two statements are true? (Choose two.)

- A. There are five devices that are part of the security fabric.
- B. Device detection is disabled on all FortiGate devices.
- C. This security fabric topology is a logical topology view.
- D. There are 19 security recommendations for the security fabric.

Answer: CD

Explanation:

References: <https://docs.fortinet.com/document/fortigate/5.6.0/cookbook/761085/results>
<https://docs.fortinet.com/document/fortimanager/6.2.0/new-features/736125/security-fabric-topology>

NEW QUESTION 81

Refer to the exhibit.



The form shows the configuration for the 'Administrator' account. The 'Type' dropdown is set to 'Local User'. The 'Comments' field is empty. The 'Administrator Profile' is set to 'prof_admin'. The 'Email Address' is 'admin@xyz.com'. There are four toggle switches at the bottom: 'SMS', 'Two-factor Authentication', 'Restrict login to trusted hosts', and 'Restrict admin to guest account provisioning only'. All are currently turned off. A 'Change Password' button is located at the top right.

The global settings on a FortiGate device must be changed to align with company security policies. What does the Administrator account need to access the FortiGate global settings?

- A. Change password
- B. Enable restrict access to trusted hosts

- C. Change Administrator profile
- D. Enable two-factor authentication

Answer: C

NEW QUESTION 83

Which certificate value can FortiGate use to determine the relationship between the issuer and the certificate?

- A. Subject Key Identifier value
- B. SMMIE Capabilities value
- C. Subject value
- D. Subject Alternative Name value

Answer: A

NEW QUESTION 87

What is the limitation of using a URL list and application control on the same firewall policy, in NGFW policy-based mode?

- A. It limits the scope of application control to the browser-based technology category only.
- B. It limits the scope of application control to scan application traffic based on application category only.
- C. It limits the scope of application control to scan application traffic using parent signatures only
- D. It limits the scope of application control to scan application traffic on DNS protocol only.

Answer: B

NEW QUESTION 92

Which statement about the IP authentication header (AH) used by IPsec is true?

- A. AH does not provide any data integrity or encryption.
- B. AH does not support perfect forward secrecy.
- C. AH provides data integrity but no encryption.
- D. AH provides strong data integrity but weak encryption.

Answer: C

NEW QUESTION 97

Which statement is correct regarding the inspection of some of the services available by web applications embedded in third-party websites?

- A. The security actions applied on the web applications will also be explicitly applied on the third-party websites.
- B. The application signature database inspects traffic only from the original web application server.
- C. FortiGuard maintains only one signature of each web application that is unique.
- D. FortiGate can inspect sub-application traffic regardless where it was originate

Answer: D

NEW QUESTION 98

Which three authentication timeout types are availability for selection on FortiGate? (Choose three.)

- A. hard-timeout
- B. auth-on-demand
- C. soft-timeout
- D. new-session
- E. Idle-timeout

Answer: ADE

Explanation:

<https://kb.fortinet.com/kb/documentLink.do?externalID=FD37221>

NEW QUESTION 99

.....

Thank You for Trying Our Product

We offer two products:

1st - We have Practice Tests Software with Actual Exam Questions

2nd - Questions and Answers in PDF Format

NSE4_FGT-7.2 Practice Exam Features:

- * NSE4_FGT-7.2 Questions and Answers Updated Frequently
- * NSE4_FGT-7.2 Practice Questions Verified by Expert Senior Certified Staff
- * NSE4_FGT-7.2 Most Realistic Questions that Guarantee you a Pass on Your FirstTry
- * NSE4_FGT-7.2 Practice Test Questions in Multiple Choice Formats and Updatesfor 1 Year

100% Actual & Verified — Instant Download, Please Click
[Order The NSE4_FGT-7.2 Practice Test Here](#)