



Cisco

Exam Questions 200-901

Developing Applications and Automating Workflows using Cisco Core Platforms (DEVASC)

About ExamBible

[Your Partner of IT Exam](#)

Found in 1998

ExamBible is a company specialized on providing high quality IT exam practice study materials, especially Cisco CCNA, CCDA, CCNP, CCIE, Checkpoint CCSE, CompTIA A+, Network+ certification practice exams and so on. We guarantee that the candidates will not only pass any IT exam at the first attempt but also get profound understanding about the certificates they have got. There are so many alike companies in this industry, however, ExamBible has its unique advantages that other companies could not achieve.

Our Advances

* 99.9% Uptime

All examinations will be up to date.

* 24/7 Quality Support

We will provide service round the clock.

* 100% Pass Rate

Our guarantee that you will pass the exam.

* Unique Gurantee

If you do not pass the exam at the first time, we will not only arrange FULL REFUND for you, but also provide you another exam of your claim, ABSOLUTELY FREE!

NEW QUESTION 1

- (Exam Topic 2)

Refer to the exhibit.

```
1  #!/bin/bash
2  apt install nginx
3  export AVAILABLE_SITES_DIR = '/etc/nginx/sites-available'
4  export ENABLED_SITES_DIR = '/etc/nginx/sites_enabled'
5  cd /opt/nginx
6  cat sites.txt | while read site;
7      do
8      cp template.conf "$AVAILABLE_SITES_DIR/$site";
9      ln -s "$AVAILABLE_SITES_DIR/$site" "$ENABLED_SITES_DIR";
10     chown www-data:www-data "$AVAILABLE_SITES_DIR/$site";
11 done
```

An engineer must configure a load balancer server. The engineer prepares a script to automate workflow by using Bash. The script install the nginx package, moves to the /opt/nginx directory, and reads the sites M We (or further processing Based on the script workflow, which process is being automated within the loop by using the information mi sites txt?

- A. creating a new Me Based on template .conf in the /etc/nginx/sites_enabled directory for each lie in the sites txt fil
- B. and then changing the file execution permission.
- C. creating a Me per each the in sites txt with the information in template con
- D. creating a link for the previously created fil
- E. and then changing the ownership of the created files
- F. using the content of the file to create the template conf fil
- G. creating a link from the created file to the/etc/nginx/files.enable
- H. and then changing the file execution permissions.
- I. using the information in the file to create a set of empty files in the /etchginx/sites_enabled directory and then assigning the owner of the file.

Answer: B

NEW QUESTION 2

- (Exam Topic 2)

Refer to the exhibit.

```
import requests
from requests.auth import HTTPBasicAuth
headers = {'Content-Type': 'application/json'}
base_url = 'https://10.1.2.3'
auth_url = '/dna/system/api/v1/auth/token'
devices_url = '/dna/intent/api/v1/network-device'

token = requests.post(
    base_url + auth_url, headers=headers,
    auth=HTTPBasicAuth(username="admin", password="DevNet123"))
data = token.json()

query_string_params = {'platformId': 'C9500-40X'}
response = requests.get(
    base_url + devices_url, headers=headers,
    params=query_string_params)
print(f'{response.code}')
```

A network engineer must manage the network devices. The engineer prepares a Python scripts to authenticate to the Cisco to DNA Center API and request a device list. The device request fails and returns errors code 401. Which action solves the problem?

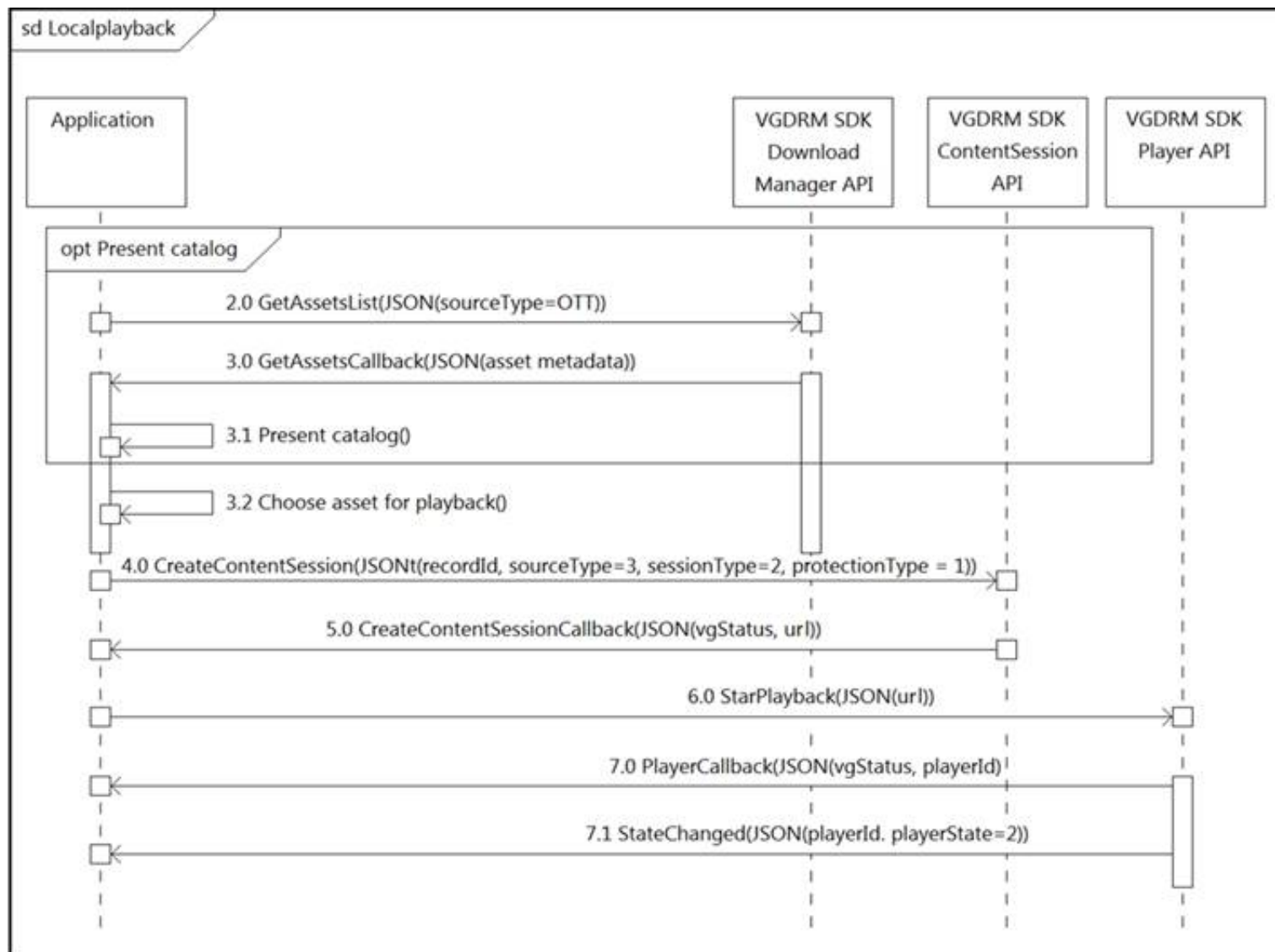
- A. Update the API UR
- B. which matched the API endpoint for device list.
- C. Send the request to another network in case there are reachability Issues.
- D. Send the Authentication header In the request with a valid configuration.
- E. Update the credentials that are already supplied and retry the request

Answer: D

NEW QUESTION 3

- (Exam Topic 2)

Refer to the exhibit.



What do all the calls shown in the sequence diagram have in common?

- A. All the calls are optional.
- B. All the calls are asynchronous.
- C. All the calls are synchronous.
- D. All the calls depend on the catalog.

Answer: D

NEW QUESTION 4

- (Exam Topic 2)

Devices

Get Device Count

Operation Id: `getDeviceCount`
Description: Returns the count of network devices based on the filter criteria by management IP address, mac address, hostname and location name

GET

/dna/intent/api/v1/network-device/count

Request Parameters

Responses

Status: 200
 The request was successful. The result is contained in the response body.

Schema Definition

Example Body

CountResult

response: integer

version: string

+ -

Refer to the exhibit. Drag and drop the code snippets from the bottom onto the blanks in the code to construct a request to find the Cisco DNA Center switch count. Not all options are used.

```
curl -L --request [url] \  
-- [network] https:///dna/intent/api/v1/network-device/ [count] \  
\ --header ' [Content-Type] : application/json' \  
--header 'Accept: application/json'
```

url	network	count
POST	GET	Content-Type

- A. Mastered
B. Not Mastered

Answer: A

Explanation:

```
curl -L --request GET \  
-- url https:///dna/intent/api/v1/network-device/ count \  
\ --header ' Content-Type : application/json' \  
--header 'Accept: application/json'
```

url	network	count
POST	GET	Content-Type

NEW QUESTION 5

- (Exam Topic 2)

A developer has created a new image to use in a Docker build and has added a tag for the image by using the command:

```
$ docker tag 84fe411926287 local/app:0.4
```

Which command must be executed next to build the Docker image using the tag?

- A. \$ docker build -p local/app:0.4
B. \$ docker run -t local/app:0.4
C. \$ docker run -p local/app:0.4
D. \$ docker build -t local/app:0.4

Answer: D

NEW QUESTION 6

- (Exam Topic 2)

Refer to the exhibit.


```

1  from requests import request
2  from requests.auth import HTTPBasicAuth
3  from sys import argv
4  url = "https://" + argv[1] + ":443/restconf/data/native/ip/route"
5  auth = HTTPBasicAuth('developer', 'Cisc012345')
6  payload = {
7      "Cisco-IOS-XE-native:route": {
8          "ip-route-interface-forwarding-list": [
9              {
10                 "prefix": argv[2],
11                 "mask": argv[3],
12                 "fwd-list": [
13                     {
14                         "fwd": "GigabitEthernet2",
15                         "interface-next-hop": [
16                             {
17                                 "ip-address": argv[4]
18                             }
19                         ]
20                     }
21                 ]
22             }
23         ]
24     }
25 }
26 headers = {
27     'Content-Type': 'application/yang-data+json',
28     'Accept': 'application/yang-data+json',
29 }
30 response = request("PATCH", url, auth=auth, headers=headers, json = payload,
31                     verify=False)

```

A network engineer must change the configuration on devices daily. The Python script must collect CLI arguments from the user, organize data according to the Cisco-IOS-XE-native YANG model, and utilize Cisco REST APIs to make the configuration. Which workflow is being automated by the Python script?

- A. updating an existing route on the device
- B. adding a new route to a device
- C. including a route on the device and overwriting the current routes
- D. deleting the route that is passed through the command-line variables

Answer: A

NEW QUESTION 7

- (Exam Topic 2)

Access to the management interface of devices must be restricted by using SSH and HTTPS. Which two ports must be included in the ACLs for the protocols to work? (Choose two.)

- A. 22
- B. 23
- C. 80
- D. 443
- E. 880

Answer: AD

NEW QUESTION 8

- (Exam Topic 2)

Refer to the exhibit.

Generating Client ID and API Key:

- Log in to your AMP for Endpoints Console.
- Go to Accounts > Business Settings.
- Click Configure API Credentials under Features to generate the Client ID and secure API Key.

Once you have the API client ID and API key, you can make the API calls as follows:

```
https://<your_client_id>:<your_api_key>@<api_endpoint>
```

Alternatively you can use Basic HTTP Authentication. Base 64 encode the string ":", and send that prefixed with the string "Basic" as the authorization header. For instance, if your client_id was 1234, and your api_key was "atest", then it would be base64 encoded to "MTIzNDphdGVzdA==", and your header would be:

```
Authorization: Basic MTIzNDphdGVzdA==
```

The documentation outlines how to use credentials for the AMP API Which script successfully performs an API call using basic authentication?

A)

```
import requests
amp_client_id = 'a1b2c3d4e5f6g7h8i9j0'
amp_login_password = 'l0g1n_p@ssw0rd'
url = 'https://api.amp.cisco.com/v1/version'
request = requests.get(url,
    auth=(amp_client_id, amp_login_password))
print(request.json())
```

B)

```
import requests
amp_client_id = 'a1b2c3d4e5f6g7h8i9j0'
amp_api_key = 'a1b2c3d4-e5f6-g7h8-i9j0-k1l2m3n4o5p6'
url = 'https://api.amp.cisco.com/v1/version'
request = requests.get(url)
print(request.json())
```

C)

```
import requests
amp_auth_token = 'a1b2c3d4e5f6g7h8i9j0 k1l2m3n4o5p6'
url = 'https://api.amp.cisco.com/v1/version'
request = requests.get(url,
    auth=(amp_auth_token))
print(request.json())
```

D)

```
import requests
amp_client_id = 'a1b2c3d4e5f6g7h8i9j0'
amp_api_key = 'a1b2c3d4-e5f6-g7h8-i9j0-k1l2m3n4o5p6'
url = 'https://api.amp.cisco.com/v1/version'
request = requests.get(url,
    auth=(amp_client_id, amp_api_key))
print(request.json())
```

- A. Option
- B. Option
- C. Option
- D. Option

Answer: D

NEW QUESTION 9

- (Exam Topic 2)

A company wants to accelerate the adoption of technologies that will simplify its operations. Staff have different skill levels and are looking for a single site to find easy-to-consume beginner, intermediate, and advanced multidomain use cases. Which site should be used?

- A. DevNet Ecosystem Exchange
- B. DevNet Automation Exchange
- C. DevNet Creations
- D. DevNet Support Forum

Answer: D

NEW QUESTION 10

- (Exam Topic 2)

Refer to the exhibit.

```
1 def enable_function(if_name, if_status, if_type):
2     headers = {'Accept': 'application/yang-data+json',
3               'Content-Type': 'application/yang-data+json'}
4     payload = {
5         "ietf-interfaces:interface": {
6             "name": if_name,
7             "enabled": if_status,
8             "type": if_type,
9         }
10    }
11    base_url = 'https://192.168.1.1:8443'
12    restconf_url = '/restconf/data/ietf-interfaces:interfaces/interface'
13
14    res = requests.put(f'{base_url}{restconf_url}={if_name}',
15                      headers=headers, json=payload,
16                      auth=('cisco', 'secret'), verify=False)
```

A network engineer wants to automate the port enable/disable process on specific Cisco switches. The engineer creates a script to send a request through RESTCONF and uses ietf as the YANG model and JSON as payload. Which command enables an interface named Loopback1?

- A. enable_function(Loopback1, true, 'iana-if-type:softwareLoopback')
- B. enable_function('iana-if-type:softwareLoopback', Loopback1, true,)
- C. def enable_function('iana-if-type:softwareLoopback', Loopback1, false,)
- D. def enable_function(Loopback1, true, 'iana-if-type:softwareLoopback')

Answer: D

NEW QUESTION 10

- (Exam Topic 2)

What are two properties of private IP addresses? (Choose two.)

- A. They can be used to access the Internet directly.
- B. They are more secure than public IP addresses.
- C. They are not globally unique.
- D. They can be repeated within the same local network.
- E. They are controlled globally by an IP address registry.

Answer: BD

NEW QUESTION 13

- (Exam Topic 2)

What is the purpose of a MAC address on a network device?

- A. unique network address that identifies the network interface of a device
- B. unique network interlace address that is provided by the DHCP server
- C. unique hardware address that identifies the network interface of a device
- D. unique hardware interface address that is provided by the central switch

Answer: C

NEW QUESTION 15

- (Exam Topic 2)

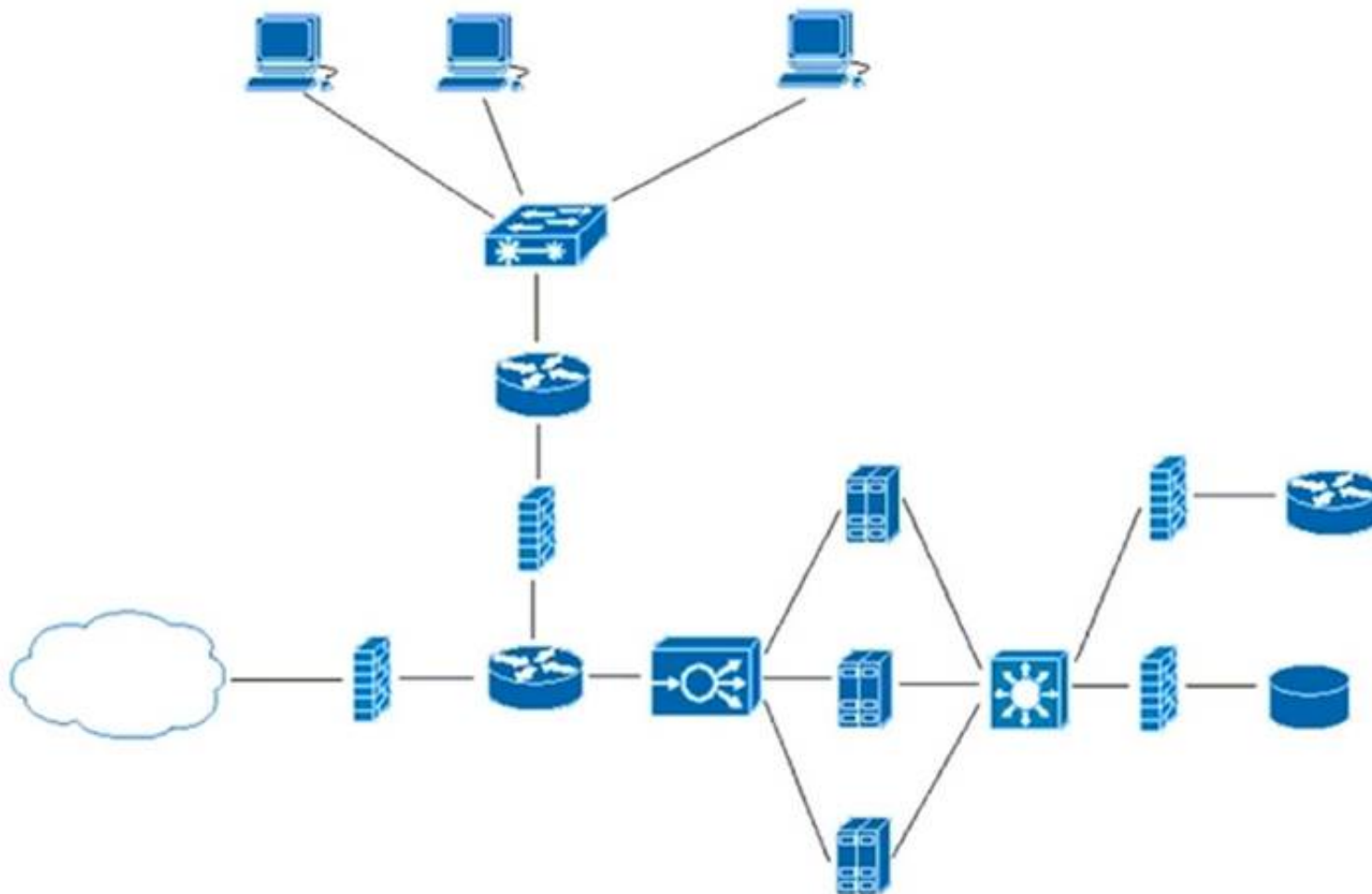
A new application is being developed with specific platform requirements. The platform and application deployment and the ongoing platform management must be fully automated. The application includes a large database component that has significant disk I/O requirements. Which application deployment type meets the requirements?

- A. Python virtual environment
- B. virtual machine
- C. bare metal
- D. container

Answer: B

NEW QUESTION 18

- (Exam Topic 2)



Refer to the exhibit. What does the load balancer enable in the network topology?

- A. hosted application to access Internet services
- B. external requests to be routed to the application servers
- C. workstations to access the Internet
- D. application to access the database server

Answer: C

NEW QUESTION 23

- (Exam Topic 2)

Refer to the exhibit.

```

1 #import dnac sdk
2 from dnacentersdk import DNACenterAPI
3 #connection to dnac
4
5 username = 'user1'
6 password = 'secret'
7 base_url = 'https://192.168.1.1'
8
9 dnac = DNACenterAPI(username=username, password=password, base_url=base_url,
10 # version='1.3.3', verify=False)
11 # Get list of ports on device using get all interfaces API call
12 port_list_1 = [item['portName'] for item in
13 # dnac.devices.get_all_interfaces()['response']
14 # if 'da4606c3-63ad-4ed4-8f35-6bfec7c2df04' in
15 # item['deviceId']]
16
17 # Sort list items
18 port_list_1.sort()
19 # Check the number of ports on the device
20 print(f'The list of interfaces contains {len(port_list_1)} items.')
21
22 # Output
23 # The list of interfaces contains 38 items.
24
25 # Get list of interfaces using the get interface info by device id api call
26 port_list_2 = [item['portName'] for item in
27 # dnac.devices.get_interface_info_by_id('da4606c3-63ad-4ed4-8f35-
28 # 6bfec7c2df04')['response']]
29
30 # Sort list items
31 port_list_2.sort()
32 # Check the number of ports on the device
33 print(f'The list of interfaces contains {len(port_list_2)} items.')
34
35 # Output
36 # The list of interfaces contains 54 items.
  
```

An engineer writes a Python script that uses two different API calls to query Cisco DNA Center for the number of interfaces on a device. The engineer notices that the two API calls produce different results. Why are fewer interfaces returned for the same device when the 'get_all_interfaces' API call is used?

- A. times out
- B. rate limit
- C. pagination
- D. invalid password

Answer: C

NEW QUESTION 26

- (Exam Topic 2)

What is the purpose of the first three pairs of digits in a MAC address?

- A. defines a routing identifier for the client
- B. indicates the IP address of the client in Hex
- C. defines packet forwarding priority sent or received by the adapter
- D. indicates vendor of the network card or adapter

Answer: D

NEW QUESTION 30

- (Exam Topic 2)

What is the function of IP address in networking?

- A. specifies the type of traffic that is allowed to roam on a network
- B. represents the unique ID that is assigned to one host on a network
- C. specifies resource's location and the mechanism to retrieve it
- D. represents a network connection on specific devices

Answer: B

NEW QUESTION 34

- (Exam Topic 2)

Refer to the exhibit.

```
# base image
FROM alpine

# Install python and pip
RUN apk add --update py2-pip

# Install python modules needed by the python app
COPY requirements.txt /usr/src/app/
RUN pip install --no-cache-dir -r /usr/src/app/requirements.txt

#copy local files for the app to run
COPY app.py /usr/src/app/
COPY templates/index.html /usr/src/app/templates/

EXPOSE 8080

#run the application
CMD ["python", "/usr/src/app/app.py"]
```

Which function does the EXPOSE line perform when building an image from this Dockerfile?

- A. Local port 8080 of the container that launched with this docker image is accessible from co-hosted containers and external clients.
- B. Local port 8080 is not reachable at all because no IP address is specified along with the EXPOSE command of the Dockerfile.
- C. Local port 8080 is accessible from other containers running on the same docker host as the container that launched with this docker image.
- D. Local port 8080 of the container that launched with this docker image is accessible to external clients.

Answer: C

Explanation:

By default, the EXPOSE instruction does not expose the container's ports to be accessible from the host. In other words, it only makes the stated ports available for inter-container interaction.

Whereas publishing a port using either -P or -p exposes it, exposing a port using EXPOSE or --expose does not publish it.

So, while exposed ports can only be accessed internally, published ports can be accessible by external containers and services.

<https://www.whitesourcesoftware.com/free-developer-tools/blog/docker-expose-port/>

NEW QUESTION 39

- (Exam Topic 2)

Drag and drop the code from the bottom onto the box where the code is missing in the Bash script to complete the missing assignment.

```
#!/bin/bash
```

```
 = `date +%b-%d-%y`
```

```
 = /home/usr/path/backup-$BACKUPTIME.tar.gz
```

```
 = /home/usr/path/data_folder
```

```
tar -cpzf $DESTINATION $SOURCEFOLDER
```

BACKUPTIME

SOURCEFOLDER

DESTINATION

- A. Mastered
B. Not Mastered

Answer: A

Explanation:

```
#!/bin/bash
```

```
BACKUPTIME = `date +%b-%d-%y`
```

```
DESTINATION = /home/usr/path/backup-$BACKUPTIME.tar.gz
```

```
SOURCEFOLDER = /home/usr/path/data_folder
```

```
tar -cpzf $DESTINATION $SOURCEFOLDER
```

BACKUPTIME

SOURCEFOLDER

DESTINATION

NEW QUESTION 43

- (Exam Topic 2)

Which tool is used to block all traffic to the domain by using a single API call?

- A. Cisco ISE
B. Cisco Firepower
C. Cisco AMP
D. Cisco Umbrella

Answer: B

NEW QUESTION 45

- (Exam Topic 2)

Drag and drop the code snippets from the bottom to the blanks in the code to complete the HTTP response. Not all options are used.

Request URL: http://www.example.com/

: GET

: 200 OK

Remote Address: [2606:2800:220:1:248:1893:25c8:1946]:80

Referrer Policy: strict-origin-when-cross-origin

Response Headersview source

Accept-Ranges: bytes

Age: 396561

Cache-Control: max-age=604800

: gzip

Content-Length: 648

: text/html; charset=UTF-8

Date: Sat, 20 Nov 2020 20:49:34 GMT

Etag: "3147526947+ident"

Expires: Sat, 21 Nov 2020 20:49:34 GMT

Last-Modified: Thu, 17 Oct 2019 07:18:26 GMT

Server: ECS (dna/63AA)

Vary: Accept-Encoding

X-Cache: HIT

Request Headersview source

Accept: text/html,application/xhtml+xml,application/xml;q=0.9,
image/avif,image/webp,image/apng,*/*;q=0.8,application/signed-exchange;v=b3;q=0.9

Accept-Encoding: gzip, deflate

Accept-Language: en-US,en;q=0.9

Request Type	Request Control
Status Code	Content-Type
Request Method	Content Code
Content-Encoding	

- A. Mastered
B. Not Mastered

Answer: A

Explanation:

Graphical user interface, text, application Description automatically generated

NEW QUESTION 50

- (Exam Topic 2)

How does a synchronous API request differ from an asynchronous API request?

- A. clients receive responses with a task id for further processing
B. clients subscribe to a webhook for operation results
C. clients are able to access the results immediately
D. clients poll for the status of the execution of operations

Answer: C

NEW QUESTION 55

- (Exam Topic 2)

`class Native.Interface.FastEthernet`

Bases: Entity

Class Hierarchy: Native Interface FastEthernet

This class represents configuration data.

FastEthernet IEEE 802.3

name(key)

type: str

pattern: ([0-9]/)([0-9]/)([1-3][0-9][4[0-8]]([0-9])\[0-9]+)?

description

Interface specific description

type: str

pattern: *

flowcontrol

Configure flow operation

type: Flowcontrol

isis

IS-IS commands

type: Isis

keepalive

Enable keepalive

type: bool

keepalive_settings

type: KeepaliveSettings

Refer to the exhibit. Drag and drop the code snippets from the bottom to the blanks in the code to enable keepalive for the FastEthernet 2/0 interface. Not all options are used.

```
from ydk.services import CRUDService
from ydk.providers import NetconfServiceProvider as nc
from ydk.models.cisco_ios_xe import Cisco_IOS_XE_native as model
ip = '10.10.20.48'
prtc1 = 'ssh'
user = 'developer'
psw = 'P@s$W0rD'
port = 830
provider = nc(address=ip, port=port, username=user, password=psw, protocol=prtc1)
crud = CRUDService()

interface.name = '2/0'

if interface data:
    print('Keepalive is enabled.')
else:
    print('Keepalive is not enabled.')
```

`interface_data = crud.update(provider, interface)`

`interface.keepalive = True`

`interface_data = crud.read(provider, interface)`

`interface = model.Native.Interface.FastEthernet()`

`interface.FastEthernet.keepalive_settings.keepalive = True`

`interface = model.Native.Interface()`

- A. Mastered
B. Not Mastered

Answer: A

Explanation:

```
from ydk.services import CRUDService
from ydk.providers import NetconfServiceProvider as nc
from ydk.models.cisco ios xe import Cisco IOS XE native as model
ip = '10.10.20.48'
prtc1 = 'ssh'
user = 'developer'
psw = 'P@s$W0rD'
port = 830
provider = nc(address=ip, port=port, username=user, password=psw, protocol=prtc1)
crud = CRUDService()

interface = model.Native.Interface.FastEthernet()

interface.name = '2/0'

interface.keepalive = True

interface_data = crud.read(provider, interface)

if interface_data:
    print('Keepalive is enabled.')
else:
    print('Keepalive is not enabled.')
```

```
interface_data = crud.update(provider, interface)

interface.FastEthernet.keepalive_settings.keepalive = True

interface = model.Native.Interface()
```

NEW QUESTION 57

- (Exam Topic 2)

What are two benefits of using VLANs? (Choose two.)

- A. limits the devices that can join the network
- B. segments the broadcast domain
- C. extends the broadcast domain
- D. allows all network devices to be accessible from any host on the network
- E. enables the logical grouping of devices that belong to different Layer 2 devices

Answer: BE

NEW QUESTION 60

- (Exam Topic 2)

Which platform is used to programmatically create a space and invite users for collaboration?

- A. Cisco Intersight
- B. Cisco Finesse
- C. Cisco Webex
- D. Cisco UCM

Answer: C

NEW QUESTION 64

- (Exam Topic 2)

Where is an IP packet routed if the packet does not match any routes in the routing table?

- A. firewall
- B. load balancer
- C. central switch
- D. default gateway

Answer: D

NEW QUESTION 69

- (Exam Topic 2)

Refer to the exhibit.

Returns the wireless lan controller info with given device ID:

```
{
  "response": {
    "adminEnabledPorts": [ 0 ],
    "apGroupName": "string",
    "deviceId": "string",
    "ethMacAddress": "string",
    "flexGroupName": "string",
    "id": "string",
    "instanceTenantId": "string",
    "instanceUuid": "string",
    "lagModeEnabled": true,
    "netconfEnabled": true,
    "wirelessLicenseInfo": "ADVANTAGE",
    "wirelessPackageInstalled": true
  },
  "version": "string"
}
```

Drag and drop the code from the bottom onto the blanks in the code to construct a cURL command using the Cisco DNA Center API. which will provide the details of a WLAN controller with Id af397748444. Not at options are used.

Answer Area

```
curl -L --request GET \
--url https://dna/intent/api/v1/ / / \
--header 'Content-Type: application/json' \
--header 'Accept:application/json'
```

network-device

id

wireless

wireless-info

controller

details

- A. Mastered
- B. Not Mastered

Answer: A

Explanation:

Diagram Description automatically generated

NEW QUESTION 73

- (Exam Topic 2)

Which advantage does the agile process offer compared to waterfall software development?

- A. to view the full scope of end-to-end work
- B. to have each phase end before the next begins
- C. to fix any issues at the end of the development cycle
- D. to add or update features with incremental delivery

Answer: D

NEW QUESTION 78

- (Exam Topic 2)

Refer to the exhibit.

```
FROM nginx

ARG DELAY="30"
ENV INITIAL_DELAY=${DELAY}

ENTRYPOINT ["/bin/sh"]

CMD ["-c", "/bin/sleep ${INITIAL_DELAY} && nginx -g 'daemon off;']
```

Which command, including arguments, is executed when the container starts?

- A. /bin/sh -c "/bin/sleep 30 && nginx -g 'daemon off;'"
- B. /bin/sh -c "/bin/sleep 10 && nginx -g 'daemon off;'"
- C. /bin/bash -c "/bin/sleep 30 && nginx -g 'daemon off;'"
- D. /bin/sh -c "/bin/sleep 30" && nginx -g 'daemon off;'

Answer: A

NEW QUESTION 81

- (Exam Topic 2)

Why is refactoring done during test-driven development?

- A. to enable larger objects and longer methods
- B. to improve maintainability and readability
- C. to ensure that the previous uses of the objects are explained
- D. to ensure the duplication of essential code

Answer: B

NEW QUESTION 83

- (Exam Topic 2)

An engineer must configure Cisco Nexus devices and wants to automate this workflow. The engineer enables the Cisco NX-OS REST API to configure the devices by using an Ansible playbook. Before running the code, which resource must be used to verify that the code works correctly?

- A. Cisco NX-OS SDK
- B. Cisco Learning Labs
- C. Cisco Code Exchange
- D. Cisco Modeling Labs

Answer: A

NEW QUESTION 87

- (Exam Topic 2)

Refer to the exhibit.



OWASP threat does this example demonstrate?

- A. Broken access control
- B. SQL injection
- C. Man-in-the-middle
- D. Cross-site-scripting

Answer: D

NEW QUESTION 88

- (Exam Topic 2)

Which HTTP code group is issued when a request is received successfully, understood, and processed?

- A. 2xx
- B. 3xx
- C. 4xx
- D. 5xx

Answer: A

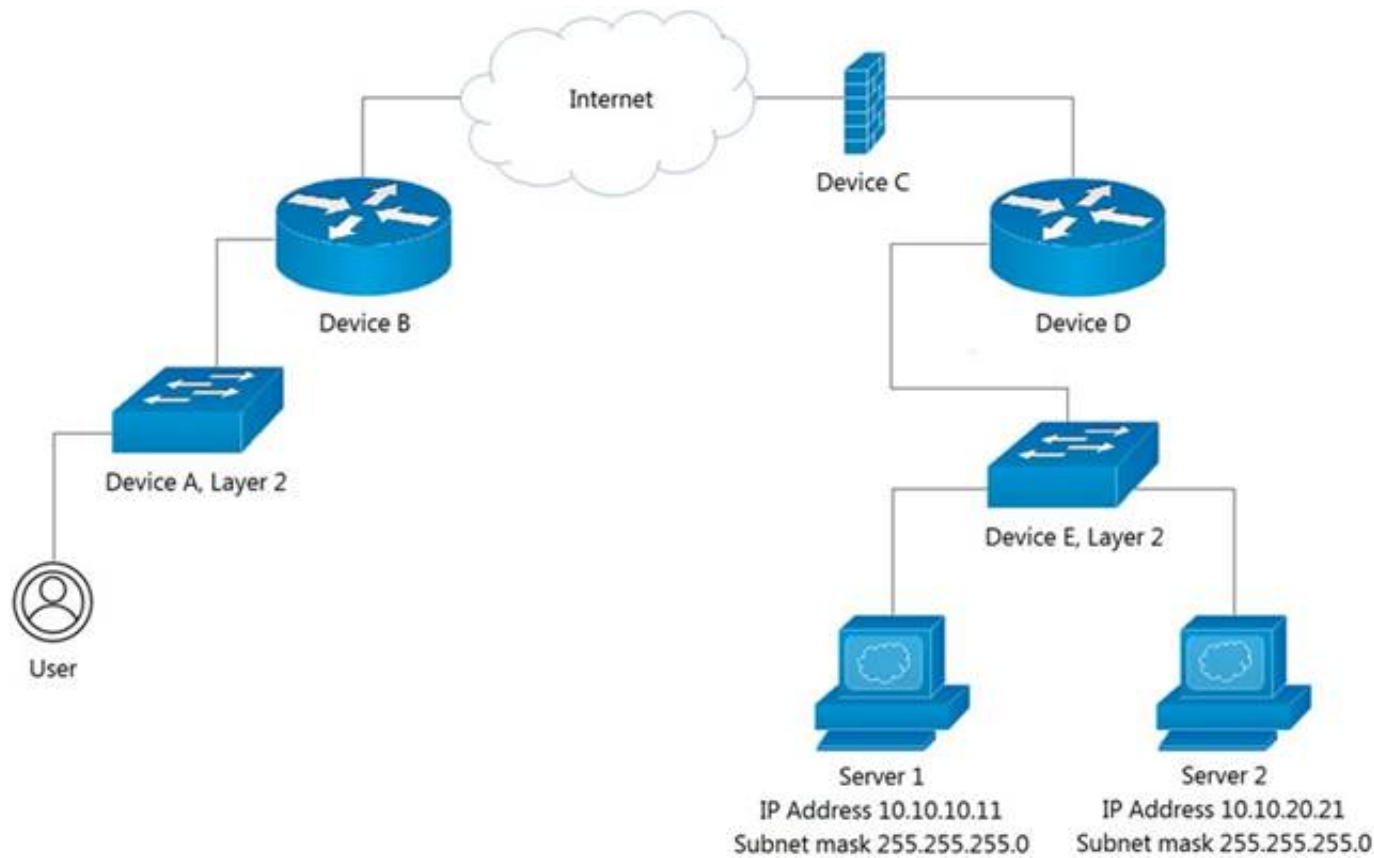
Explanation:

[https://www.w3.org/Protocols/rfc2616/rfc2616-sec10.html#:~:text=10.2%20Successful%20xx,received%2C%](https://www.w3.org/Protocols/rfc2616/rfc2616-sec10.html#:~:text=10.2%20Successful%20xx,received%2C%20)

NEW QUESTION 93

- (Exam Topic 2)

Refer to the exhibit.



Which device limits traffic between server 1 and server 2?

- A. Device B
- B. Device C
- C. Device D
- D. Device E

Answer: D

NEW QUESTION 96

- (Exam Topic 2)

Refer to the exhibit.

```

1  - hosts: servers
2    tasks:
3
4    - name: task1
5      apt:
6        name: apache2
7        state: absent
8
9    - name: task2
10     apt:
11       name: nginx
12       state: present
13
14    - name: task3
15     apt:
16       name: "*"
17       state: latest
  
```

A developer must check packages on web load balancers that use nginx packages. The developer updates the servers as required in Ansible inventory and prepares an Ansible playbook to automate this workflow on related servers. Which process is being automated by the Ansible playbook?

- A. verifying that nginx is installed only if apache2 is unavailable on the system, and then updating all the other packages
- B. verifying, without installing, that apache2 is unavailable and that nginx is installed, and then updating the repository to the latest version
- C. uninstalling the apache2 server, installing the nginx server, and then updating all the packages to the latest version
- D. installing nginx, uninstalling apache2, and then verifying that the package repository is at the latest version

Answer: B

NEW QUESTION 97

- (Exam Topic 2)

Refer to the exhibit.

```

1 #/bin/bash
2
3 curl https://cisco devnet.com/devnet-0.13.tar.gz -o /tmp/devnet.tar.gz
4 tar -zxvf /tmp/devnet.tar.gz
5 mkdir /tmp/devnet && pushd /tmp/devnet
6
7 ./configure && make && make install
8
9 systemctl enable devnet
10 systemctl start devnet

```

A network engineer works on a Cisco DevNet application that is available for download on the Cisco DevNet website. The engineer prepares a bash script to automate operations that relate to the application. Which workflow is being automated in the bash script?

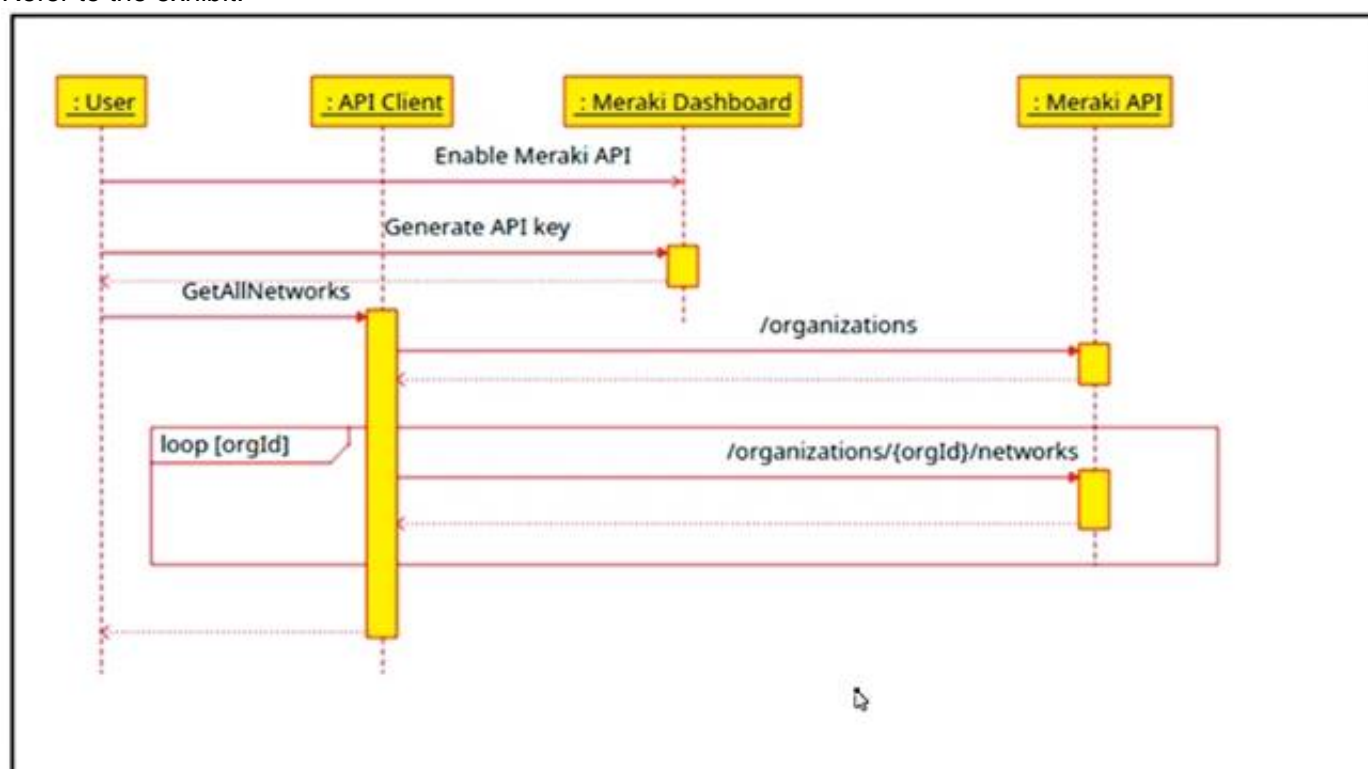
- A. compilation and configuration of the Cisco DevNet application so that it must be started manually
- B. compilation, installation, and configuration of the Cisco DevNet application so that it starts automatically
- C. compilation and installation of the Cisco DevNet application for an autonomous deployment model
- D. installation and configuration of the Cisco DevNet application so that it starts manually

Answer: B

NEW QUESTION 101

- (Exam Topic 2)

Refer to the exhibit.



The Cisco Meraki API manages two organizations. In each organization, two independent networks are defined. How many calls to the /organizations/{orgId}/networks endpoint will be run parallel by the GetAllNetwork function of the API client?

- A. 1
- B. 2
- C. 4

Answer: C

NEW QUESTION 104

- (Exam Topic 2)

Refer to the exhibit.

```

$ sh script.sh
Traceback (most recent call last):
  File "script.py", line 2, in <module>
    api = WebexTeamsAPI()
  File "/opt/.venv/pyvenv35/lib/python3.5/site-packages/webexteamssdk/api/__init__.py", line 112,
in __init__
    "You must provide a Webex Teams access token to interact with "
webexteamssdk.exceptions.AccessTokenError: You must provide a Webex Teams access token to interact
with the Webex Teams APIs, either via a WEBEX_TEAMS_ACCESS_TOKEN environment variable or via the
access_token argument.
$
$
$ cat script.sh
#!/bin/bash

python script.py
$

```

Which line must be included in the Bash script for the Python code to succeed?

- A. define WEBEX_TEAMS_ACCESS_TOKEN=your_access_token_here
- B. export WEBEX_TEAMS_ACCESS_TOKEN=your_access_token_here
- C. set WEBEX_TEAMS_ACCESS_TOKEN=your_access_token_here
- D. WEBEX_TEAMS_ACCESS_TOKEN=your_access_token_here

Answer: B

NEW QUESTION 105

- (Exam Topic 2)

Refer to the exhibit.

<pre> module ietf-ip { namespace "urn:ietf:params:xml:ns:yang:ietf-ip"; prefix ip; import ietf-interfaces { prefix if; } augment "/if:interfaces/if:interface" { container ipv4 { leaf enabled { type boolean; default true; } list address { key "ip"; leaf ip { type inet:ipv4-address-no-zone; } choice subnet { mandatory true; leaf prefix-length { type uint8 { range "0..32"; } } leaf netmask { type yang:dotted-quad; } } } } } } </pre>	<pre> module ietf-interfaces { namespace "urn:ietf:params:xml:ns:yang:ietf-interfaces"; prefix if; typedef interface-ref { type leafref { path "/if:interfaces/if:interface/if:name"; } } container interfaces { list interface { key "name"; leaf name { type string; } leaf description { type string; } leaf type { type identityref { base interface-type; } mandatory true; } leaf enabled { type boolean; default "true"; } } } } </pre>
---	--

Which JSON snippet configures a new interface according to YANG model?

A)

```

{"ietf-interfaces:interface": {
  "name": "Loopback100",
  "enabled": true,
  "ietf-ip:ipv4": {
    "address": [
      {
        "ip": "10.255.254.1",
        "netmask": "255.255.255.0"
      }
    ]
  }
}

```

B)

```

{"ietf-interfaces": {
  interface: {
    "name": "Loopback100",
    "enabled": true,
    "ietf-ip": {
      ipv4: {
        "address": [
          {
            "ip": "10.255.254.1",
            "netmask": "255.255.255.0"
          }
        ]
      }
    }
  }
}

```

C)

```

{
  "interface" {
    "name": "Loopback100",
    "enabled": true,
    "ipv4": {
      "address": [
        {
          "ip": "10.255.254.1",
          "netmask": "255.255.255.0"
        }
      ]
    }
  }
}

```

D)

```
"ietf-interfaces:interface": {  
  "name": "Loopback100",  
  "enabled": true,  
  "ietf-ip:ipv4:address": [  
    {  
      "ip": "10.255.254.1",  
      "netmask": "255.255.255.0"  
    } ]  
}
```

- A. Option A
- B. Option B
- C. Option C
- D. Option D

Answer: B

NEW QUESTION 106

- (Exam Topic 2)

Which tool allows changes to the configuration management toolset to be tested?

- A. Cisco VIRL
- B. NAPALM
- C. Ansible
- D. pyATS

Answer: D

NEW QUESTION 107

- (Exam Topic 2)

What is a functionality of the Waterfall method as compared to the Agile method for software development?

- A. Waterfall increases agility to implement faster while Agile promotes reliability.
- B. A phase begins after the previous phase has ended in Waterfall while Agile phases run in parallel.
- C. Customers get feedback during the process in Waterfall while they can see the result at the end in Agile.
- D. Requirements can be updated in Waterfall while in Agile it should be gathered in the beginning.

Answer: B

NEW QUESTION 112

- (Exam Topic 2)

Refer to the exhibit.

```
<rpc message-id="101" xmlns="urn:ietf:params:xml:ns:Netconf:base:1.0">  
  <get-conflg>  
    <source>  
      <running/>  
    </source>  
    <filter>  
      <interfaces xmlns=" urn:ietf:params:xml:ns:yang:ietf-interfaces">  
        <interface>  
          <name/>  
        </interface>  
      </interfaces>  
    </filter>  
  </get-config>  
</rpc>
```

A network engineer uses model-driven programmability to monitor and perform changes on the network. The network engineer decides to use the NETCONF RPC message to complete one of their tasks. What is accomplished by sending the RPC message?

- A. The running-config of the device is returned.
- B. The name of each interface is reset to a default name.
- C. All the YANG capabilities supported by the device are returned.
- D. A list of interface names is returned.

Answer: D

NEW QUESTION 114

- (Exam Topic 2)

What does a load balancer distribute in a network environment?

- A. outgoing connections to the network

- B. incoming traffic across multiple servers
- C. different TCP connections to the routers
- D. traffic in the network by leveraging the switch architecture

Answer: B

NEW QUESTION 117

- (Exam Topic 2)

What is a benefit of organizing into modules?

- A. improves collaboration of the development team
- B. makes it easier to deal with large and complex systems
- C. enables the code to be broken down into layers
- D. enables the inclusion of more programming languages in the code

Answer: B

Explanation:

From Wikipedia (https://en.wikipedia.org/wiki/Modular_programming) "Modular programming is closely related to structured programming and object-oriented programming, all having the same goal of facilitating the construction of large software programs and systems by decomposition into smaller pieces."

NEW QUESTION 120

- (Exam Topic 2)

Refer to the exhibit.

```
diff --git a/ciscoaxl/axl.py b/ciscoaxl/axl.py
index bc7727e..d66ef4d 100644
--- a/ciscoaxl/axl.py
+++ b/ciscoaxl/axl.py
@@ -99,7 +99,7 @@ class axl(object):
     :return: result dictionary
     """
     try:
-        return self.client.executeSQLUpdate(query)
+        return self.client.executeSQLUpdate(query) ['return']
     except Fault as e:
         return e

diff --git a/setup.py b/setup.py
index df79ef4..1470b05 100644
--- a/setup.py
+++ b/setup.py
@@ -5,7 +5,7 @@ with open("README.md", "r") as fh:

    setup(
        name="ciscoaxl",
-        version="0.14",
+        version="0.141",
        author="User 1",
        author_email="user1@example.com",
        description="Cisco CUCM AXL Library. Simple to use.",
```

Which two files are being edited in the unified diff? (Choose two.)

- A. README.md
- B. setup.py
- C. axl.py
- D. ciscoaxl.py
- E. index.py

Answer: BC

NEW QUESTION 123

- (Exam Topic 1)

Fill in the blanks to complete the Python script to update the Webex Teams membership of a room using the Python requests library import requests

```
import requests
url = "https://api.ciscospark.com/v1/memberships/Y2lzY29zcGFya29v371508156INISVAvOTJhM2RkOWEiNjc1ZC00YTQxLThjNDEtMmFiZGY4OWY0NGY0QjExNzJkNmYwLTJlY2MtMTFhOS1iOWI3LWNmMjg3MTJhYTgzNw"

payload = '{"isModerator": true}'
headers = {
    'Authorization': 'Bearer ',
    'Content-Type': 'application/json'
}

response = requests. ( "PATCH" url headers= , data = )
print(response.text.encode('utf8'))
```

- A. Mastered
- B. Not Mastered

Answer: A

Explanation:
request, headers , payload

NEW QUESTION 126
- (Exam Topic 1)
Refer to the exhibit.

List Messages

Lists all messages in a room. Each message will include content attachments if present.

The list sorts the messages in descending order by creation date.

Long result sets will be split into [pages](#).

GET /v1/messages

Query Parameters

roomId
string **Required**
List messages in a room, by ID.

mentionedPeople
array
List messages with these people mentioned, by ID. Use me as a shorthand for the current API user.

before
string
List messages sent before a date and time.

beforeMessage
string
List messages sent before a message, by ID.

max
number
Limit the maximum number of messages in the response.
Default: **50**

Try it

Example

GET

/v1/messages{?roomId,mentionedPeople,before,beforeMessage}

Header

Authorization

Use personal access token

Bearer

This limited-duration personal access token is hidden for your security.

Query Parameters

roomId

Required

e.g. Y2lzY29zcGFya29vL3VzL1JPT00vYmJj

mentionedPeople

e.g. Y2lzY29zcGFya29vL3VzL1BFT1BMRSc

before

e.g. 2016-04-2Tf:9:01:55:966Z

beforeMessage

e.g. Y2lzY29zcGFya29vL3VzL1FU1NBROL

max

e.g. 100

Run

Your Partner of IT Exam

visit - <https://www.exambible.com>

```
bash-3.2$ curl -H "Content-Type: application/json" -H "Authorization:
Fj2zzzykEa091ic9GK2j8LtE1HklH6oRHPQdw1Pat60i7ndtHHnWzL2b5pqMg14Kk_B9EI59isacLy7-
NarA02n9H-tGgt-SxQ39iDejgcs" -i -X POST -d "{ \"roomId\":
\\\"Y2geK53sjEknosrC7SwQ5ZGL99pHgiuScB7DfNvUstr8Xx4wDKLiPORcEkryAnM3QmK9LQZsP0G4\\\"
, \\\"text\\\": \\\"test2\\\" }" https://api.ciscospark.com/v1/messages

HTTP/1.1 401 Unauthorized
Via: 1.1 linkerd
TrackingID: ROUTER_5E0FDC8C-EB6F-01BB-00EF-806BF1BD00EF
Date: Sat, 04 Jan 2020 00:30:04 GMT
Server: Redacted
Content-Length: 267
Content-Type: application/json
Strict-Transport-Security: max-age=63072000; includeSubDomains; preload

{"message": "The request requires a valid access token set in the Authorization request
header.", "errors": [{"description": "The request requires a valid access token set in the
Authorization request
header."}], "trackingId": "ROUTER_5E0FDC8C-EB6F-01BB-00EF-806BF1BD00EF"}

bash-3.2$
```

A developer is troubleshooting an API with the given API with the given API documentation and cURL command. What is the cause of this problem?

- A. The user is not allowed to post messages from their account
- B. The request body is missing or incomplete
- C. The API token specified is expired
- D. The authorization header is missing or incomplete

Answer: C

NEW QUESTION 130

- (Exam Topic 1)

Which action resolves a 401 error in response to an HTTP GET that is issued to retrieve statement using RESTCONF on a CSR 1000V?

- A. Change the HTTP method to PUT.
- B. Change the transport protocol to HTTPS.
- C. Check the MIMF types in the HTTP headers.
- D. Check the authentication credentials.

Answer: D

NEW QUESTION 132

- (Exam Topic 1)

What are two advantages of version control software? (Choose two.)

- A. It supports tracking and comparison of changes in binary formate files.
- B. It allows old versions of packaged applications to be hosted on the Internet
- C. It provides wiki collaboration software for documentation.
- D. It supports comparisons between revisions of source code files.
- E. It allows new team members to access the current code and history.

Answer: DE

NEW QUESTION 136

- (Exam Topic 1)

Refer to the exhibit.

```
class ucsm sdk . ucshandle . Uc sHandle (ip, username, password, port=None, secure=None, proxy=None)
```

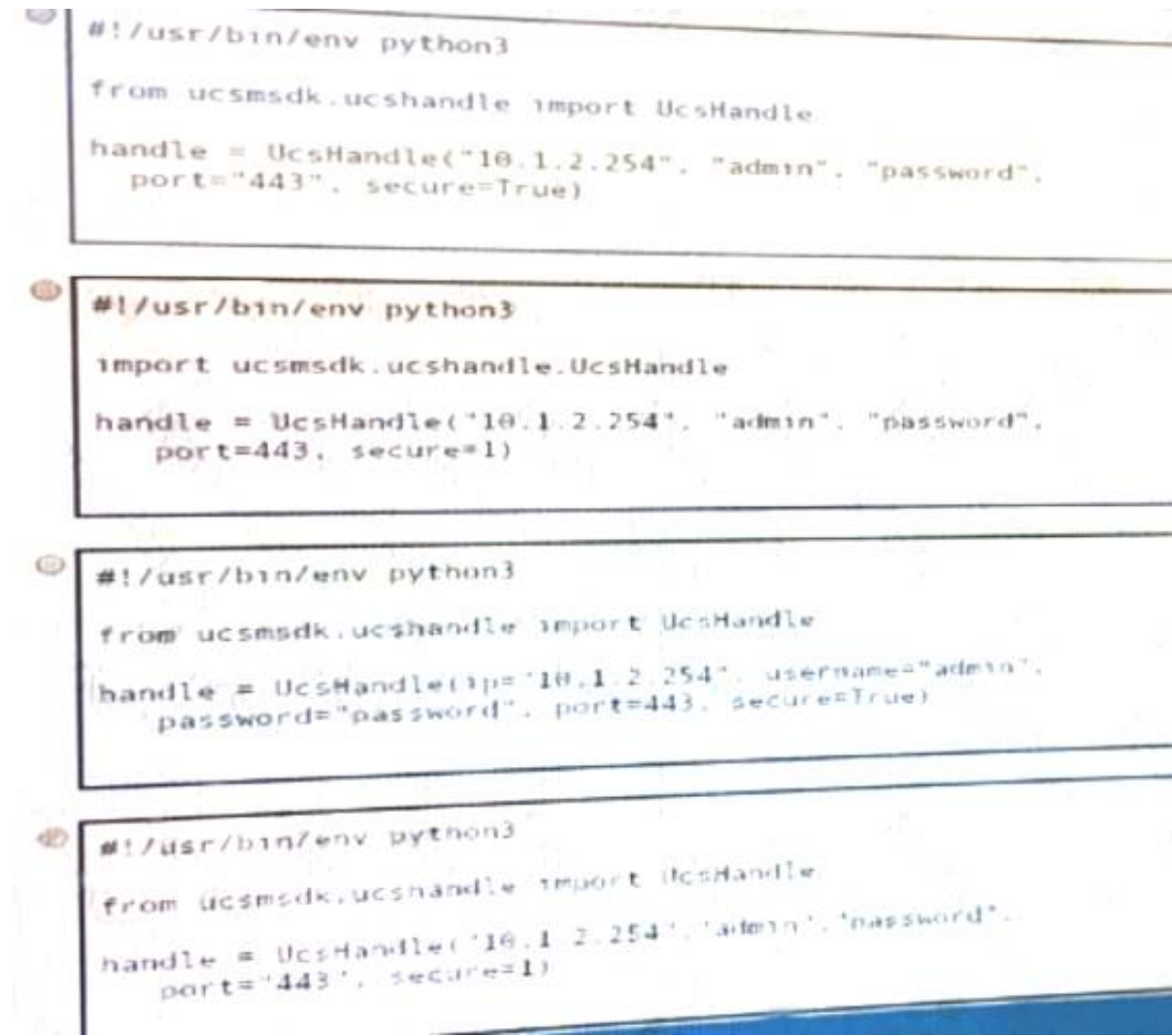
Bases: ucsm sdk . uc ssession . Uc sSession

[\[source\]](#)

Uc sHandle class is the user interface point for any Uc s related communication.

- Parameters:**
- **ip (str)** – The IP or Hostname of the UCS Server
 - **username (str)** – The username as configured on the UCS Server
 - **password (str)** – The password as configured on the UCS Server
 - **port (int or None)** – The port number to be used during connection
 - **secure (bool or None)** – True for secure connection, otherwise False
 - **proxy (str)** – The proxy object to be used to connect

Given the API documentation for the UCS SDK python class, Uc sHandle, which code snippet creates a handle instance?



- A. Option A
- B. Option B
- C. Option C
- D. Option D

Answer: C

NEW QUESTION 139

- (Exam Topic 1)

Drag and drop the characteristics from the left onto the corresponding software development methodologies on the right?

The focus is on advanced planning and outcome prediction.

Users receive functional software and can provide feedback after the product is available.

The timeline is followed and feedback is gathered before product completion.

Developers respond to requirement changes throughout the development process.

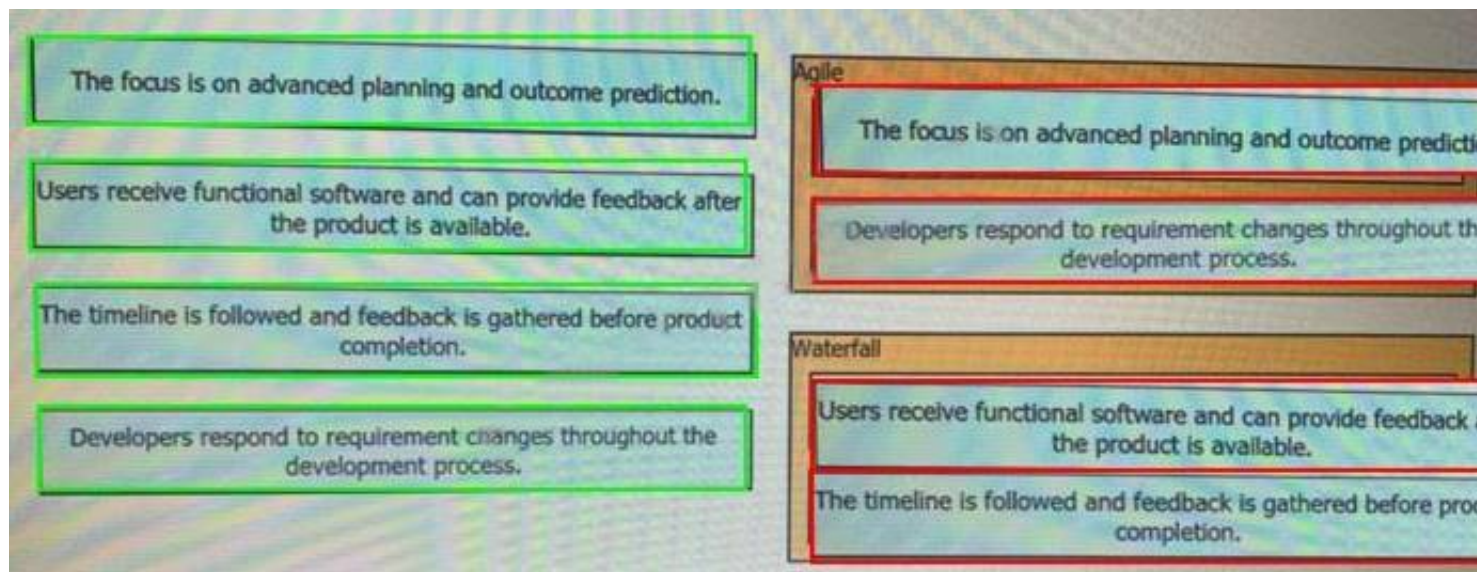
Agile

Waterfall

- A. Mastered
- B. Not Mastered

Answer: A

Explanation:



NEW QUESTION 140

- (Exam Topic 1)

Which HTTP status Code means that the server cannot or will not process the request because of perceived client error?

- A. 100
- B. 203
- C. 303
- D. 400

Answer: D

NEW QUESTION 143

- (Exam Topic 1)

Which API is used to obtain data voicemail ports?

- A. Finesse gadgets
- B. Cisco Unified Communications manager
- C. Webex devices
- D. Webex teams

Answer: B

Explanation:

Cisco Unified Communications Manager (CUCM) provides API access to data management, call management, and voicemail integration. Source: Cisco DevNet Fundamental Course: <https://developer.cisco.com/certification/fundamentals/>

NEW QUESTION 144

- (Exam Topic 1)

What is used in Layer 2 switches to direct packet transmission to the intended recipient?

- A. spanning tree
- B. IPv4 address
- C. IPv6 address
- D. MAC address

Answer: D

NEW QUESTION 145

- (Exam Topic 1)

What are two benefit of managing network configuration via APIs? (Choose two.)

- A. configuration on devices becomes less complex
- B. more security due to locking out manual device configuration
- C. increased scalability and consistency of network changes
- D. eliminates the need of legacy management protocols like SNMP
- E. reduction in network changes performed manually

Answer: CE

NEW QUESTION 150

- (Exam Topic 1)

Which device is a system that monitors and controls incoming and outgoing network traffic based on predetermined security rules?

- A. Switch
- B. Router
- C. Firewall
- D. Load balancer

Answer: C

NEW QUESTION 153

- (Exam Topic 1)

Refer to the exhibit.

```
1      ---
2  - hosts: {{ router }}
3    gather_facts: true
4    connection: local
5
6  tasks:
7    - ios_command
8      commands:
9        - show run
10       provider: "{{ router_credentials }}"
11       register: config
12
13  - copy:
14     content: "{{ config.stdout[0] }}"
15     dest: "etc/ansible/configs/command_{{ router_hostname }}.txt
16  ...
```

What is the effect of this Ansible playbook on an IOS router?

- A. A new running configuration is pushed to the IOS router.
- B. The current running configuration of the IOS router is backed up.
- C. The start-up configuration of the IOS router is copied to a local folder.
- D. A new start-up configuration is copied to the IOS router.

Answer: B

NEW QUESTION 154

- (Exam Topic 1)

A developer needs to prepare the file README.md in the working tree for the next commit operation using Git. Which command needs to be used to accomplish this?

- A. git add README.md staging
- B. git -a README.md
- C. git add README.md
- D. git commit README.md

Answer: C

Explanation:

Reference: <https://teamtreehouse.com/community/committing-the-readmemd-file-to-repository>

NEW QUESTION 158

- (Exam Topic 1)

Refer to the exhibit.

```
module ex-ethernet {
  namespace "http://example.com/Ethernet";
  prefix "eth";
  import ietf-interfaces {
    prefix if;
  }
  augment "/if:interfaces/if:interface" {
    when "if:type = 'ethernetCsmacd'";
    container ethernet {
      must "../if:location" {
        description
          "An Ethernet interface must specify the physical location of the ethernet hardware.";
      }
      choice transmission-params {
        case auto {
          leaf auto-negotiate {
            type empty;
          }
        }
        case manual {
          leaf duplex {
            type enumeration {
              enum "half";
              enum "full";
            }
          }
          leaf speed {
            type enumeration {
              enum "10Mb";
              enum "100Mb";
              enum "1Gb";
              enum "10Gb";
            }
          }
        }
      }
    }
  }
  // other ethernet specific params...
}
```

What is represented in this YANG module?

- A. interface management
- B. topology
- C. BGP
- D. OpenFlow

Answer: A

NEW QUESTION 161

- (Exam Topic 1)

Drag and drop the functionalities from the left onto correct networking devices on the right.

ports are different broadcast domain by default	Firewall
ports can be in the same broadcast domain	Load Balancer
uses traffic inspection to make routing decisions	Router
blocks networks traffic by default	Switch

- A. Mastered
- B. Not Mastered

Answer: A

Explanation:

1 – D, 2 – C, 3 – A, 4 – B

Reference: <https://geek-university.com/ccna/broadcast-domain-explained/>

NEW QUESTION 164

- (Exam Topic 1)

What are two characteristics of Bare Metal environments that are related to application deployment? (Choose two.)

- A. Provide the hypervisor to host virtual servers
- B. Specifically designed for container-based workloads.
- C. Provides workloads with access to hardware features

- D. Suitable for legacy application that do not support virtualization
- E. Not compatible with other cloud services such as PaaS or SaaS offerings.

Answer: CD

NEW QUESTION 169

- (Exam Topic 1)

When using the Bash shell, how is the output of the devnet command saved to a file named "output.txt"?

- A. devnet & output.txt
- B. devnet > output.txt
- C. devnet < output.txt
- D. devnet | output.txt

Answer: B

Explanation:

Reference: <https://askubuntu.com/questions/420981/how-do-i-save-terminal-output-to-a-file>

NEW QUESTION 173

- (Exam Topic 1)

Which service provides a directory lookup for IP addresses and host names?

- A. DNS
- B. DHCP
- C. SNMP
- D. NAT

Answer: A

NEW QUESTION 176

- (Exam Topic 1)

Fill in the blanks to complete the python script to retrieve a list of network devices using the Cisco DNA center API.

```
import requests
url = "https://myDNAserver/dna/intent/api/v1/network-device"
payload = {}
headers = {'x-auth-token': 'eyJ0eXAiOiJKV1QiLCJhbGciOiJIUzI1NiJ9.eyJzdWIiOiI1ZDE0OWZkMjhlZTY2MmQ3NGM5YzE5ZTIiLCJmYzMCiSlmV4cCI6MTU3MjM3ODE5MCwidXNlcm5hbWUiOiJraXN371274739.zhK5LPQd501ZUpZi0IH_qrgOXtItINbxSFFF7JOEtRIs'}
}
response = requests.request( , url,
headers = , data = )
print(response.text.encode('utf8'))
```

- A. Mastered
- B. Not Mastered

Answer: A

Explanation:

Solution as below.

```
import requests
url = "https://myDNAserver/dna/intent/api/v1/network-device"
payload = {}
headers = {'x-auth-token': 'eyJ0eXAiOiJKV1QiLCJhbGciOiJIUzI1NiJ9.eyJzdWIiOiI1ZDE0OWZkMjhlZTY2MmQ3NGM5YzE5ZTIiLCJmYzMCiSlmV4cCI6MTU3MjM3ODE5MCwidXNlcm5hbWUiOiJraXN371387657.zhK5LPQd501ZUpZi0IH_qrgOXtItINbxSFFF7JOEtRIs'}
}
response = requests.request("GET", url,
headers = headers, data = payload)
print(response.text.encode('utf8'))
```

NEW QUESTION 178

- (Exam Topic 1)

Drag and drop the element of the Finesse API on the left onto the description of its functionality on the right.

User	Represents a skill group in Unified CCE.
Dialog	Represents the current state of the system.
Media	Represents an agent, supervisor or administrator.
Queue	Represents a group of users.
Team	Represents a call and the participants if the media type is voice.
SystemInfo	Sends client-side logging to the Finesse Server.
ClientLogs	Represents a user's state in a non-voice Media Routing Domain.

- A. Mastered
B. Not Mastered

Answer: A

Explanation:

1 – D, 2 – F, 3 – A, 4 – E, 5 – B, 6 – G, 7 - C

NEW QUESTION 183

- (Exam Topic 1)

Drag and drop the HTTP methods from the left onto their generally accepted corresponding create, read, update, and delete operations on the right.

DELETE	Create
GET	Read
PATCH	Update
POST	Update
PUT	Delete

- A. Mastered
B. Not Mastered

Answer: A

Explanation:

1 – D, 2 – B, 3 – C, 4 – E, 5 – A

Reference:

<https://www.cisco.com/c/en/us/td/docs/cloud-systems-management/application-policy-infrastructure-controller-e>

OR

Answer : Post

Get Put Delete

NEW QUESTION 187

- (Exam Topic 1)

Refer to the exhibit.

```
docker run -p 3000:5000 f877cbf2ff33
```

A process on the host wants to access the service running inside this Docker container. Which port is used to make a connection?

- A. only outbound connections between 3000 and 5000 are possible
B. port 3000
C. any port between 3000 and 5000
D. port 5000

Answer: B

NEW QUESTION 192

- (Exam Topic 1)

Refer to Exhibit.

```
<books>
  <science>
    <biology>10.00</biology>
    <geology>9.00</geology>
    <chemistry>8.00</chemistry>
  </science>
  <math>
    <calculus>20.00</calculus>
    <algebra>12.00</algebra>
  </math>
</books>
```

Which JSON is equivalent to the XML-encoded data.

A)

```
{
  "books": {
    "science": {
      "biology": "10.00",
      "geology": "9.00",
      "chemistry": "8.00"
    },
    "math": {
      "calculus": "20.00",
      "algebra": "12.00"
    }
  }
}
```

B)

```
[ {
  "books": {
    "science": {
      "biology": "10.00",
      "geology": "9.00",
      "chemistry": "8.00"
    },
    "math": {
      "calculus": "20.00",
      "algebra": "12.00"
    }
  }
} ]
```

C)

```
{
  "books": [
    "science", {
      "biology": "10.00",
      "geology": "9.00",
      "chemistry": "8.00"
    },
    "math", {
      "calculus": "20.00",
      "algebra": "12.00"
    }
  ]
}
D)
{
  "books": [
    "science": {
      "biology": "10.00",
      "geology": "9.00",
      "chemistry": "8.00"
    },
    "math": {
      "calculus": "20.00",
      "algebra": "12.00"
    }
  ]
}
```

- A. Option A
- B. Option B
- C. Option C
- D. Option D

Answer: A

NEW QUESTION 196

- (Exam Topic 1)

How does requesting a synchronous API operation differ from requesting an asynchronous API operation?

- A. clients poll for the status of the execution of operations
- B. clients subscribe to a webhook for operation results
- C. clients can access the results immediately
- D. clients receive responses with a task id for further processing

Answer: C

NEW QUESTION 199

- (Exam Topic 1)

Which two query types does a client make to a DNS server? (Choose Two)

- A. AAAA
- B. ACK
- C. DISCOVER
- D. Inverse
- E. PTR

Answer: AE

NEW QUESTION 201

- (Exam Topic 1)

Refer to the exhibit.

```
#!/bin/bash
read ndir
while [ -d "$ndir" ]
do
cd $ndir
done
mkdir $ndir
```

What is the action of the Bash script that is shown?

- A. The script waits until input is entered
- B. If the directory exists, the script goes into it until there is no directory with the same name, then it creates a new directory.
- C. The script goes into the directory called "\$ndir" and makes a new directory called "\$ndir"
- D. The script waits until input is entered, then it goes into the directory entered and creates a new directory with the same name.
- E. For all directories in the current folder
- F. The script goes into directory and makes a new directory.

Answer: A

NEW QUESTION 202

- (Exam Topic 1)

Which two concepts describe test-driven development? (Choose two.)

- A. It enables code refactoring.
- B. Write a test before writing code.
- C. Implementation is driven by incremental testing of release candidates.
- D. User acceptance testers develop the test requirements.
- E. Tests are created when code is ready for release.

Answer: BC

Explanation:

https://www.tutorialspoint.com/software_testing_dictionary/release_candidate.htm

NEW QUESTION 205

- (Exam Topic 1)

Which type of HTTP method is used by the Meraki and Webex Teams APIs to send webhook notifications?

- A. HTTP GET
- B. HTTP PUT
- C. HTTP HEAD
- D. HTTP POST

Answer: D

Explanation:

Reference: <https://meraki.cisco.com/blog/tag/alerts/>

NEW QUESTION 206

- (Exam Topic 1)

Which two statements about JSON and XML are true? (Choose two.)

- A. JSON objects are a collection of key-value pairs.
- B. The syntax of JSON contains tags, elements, and attributes.
- C. JSON arrays are an unordered set of key-value pairs.
- D. The syntax of XML contains tags, elements, and attributes.
- E. XML objects are collections of key-value pairs.

Answer: AD

NEW QUESTION 207

- (Exam Topic 1)

Which two items are Cisco DevNet resources? (Choose two.)

- A. TAC support
- B. Bitbucket
- C. Sandbox
- D. Software research
- E. API Documentation

Answer: CE

Explanation:

Reference: <https://developer.cisco.com/>

NEW QUESTION 208

- (Exam Topic 1)

Refer to the exhibit.

```
List the networks in a Meraki organization:

GET https://api.meraki.com/api/v0/organizations/<org_id>/networks
Response code: 200
Response body: [ {
  "id": <network_id>,
  "name": "Test Network",
  "organization_id": <new_org_id>,
  "type": "wireless",
  "timeZone": "America/Los_Angeles",
  "tags": " test "
} ]
```

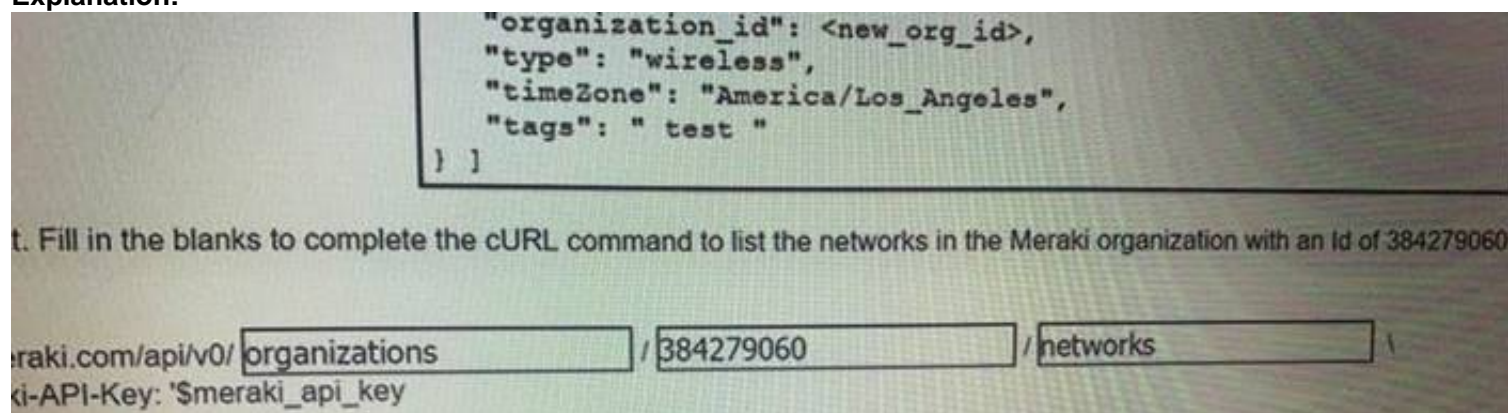
Fill in the blanks to complete the cURL command to the list of networks in the Meraki organization with an id of 384279060

```
curl -X GET -L \
--url https://api.meraki.com/api/v0/[ ]/[ ]/[ ] \
-H 'X-Cisco-Meraki-API-Key: $meraki_api_key'
```

- A. Mastered
- B. Not Mastered

Answer: A

Explanation:



The screenshot shows the question text and the correct cURL command. The command is: `curl -X GET -L \ --url https://api.meraki.com/api/v0/organizations/384279060/networks \ -H 'X-Cisco-Meraki-API-Key: $meraki_api_key'`. The correct values for the blanks are 'organizations', '384279060', and 'networks'.

NEW QUESTION 209

- (Exam Topic 1)

Which two statement describe the role of an artifact repository in a CI/CD pipeline? (Choose two.)

- A. An artifact repository allows to compare and merge changes in the source code of files involved in a build process.
- B. An artifact repository is needed only for CI/CD pipeline executed on a public cloud infrastructure.
- C. An artifact repository provides traceability, search, and management of binary files.
- D. An artifact repository is needed only for managing open source software.
- E. An artifact repository stores files needed and generated during the build process.

Answer: CE

NEW QUESTION 210

- (Exam Topic 1)

The project is migrated to a new codebase, the “old_project” directory must be deleted. The directory has multiple read-only files, and it must be deleted recursively without prompting for confirmation. Which bash command must be used?

- A. `rm -rf old_project`
- B. `rm -r old_project`
- C. `rmdir -p old_project`
- D. `rmdir old_project`

Answer: A

NEW QUESTION 212

- (Exam Topic 1)

what is an advantage of a version control system?

- A. forces the practice of trunk-based development
- B. prevents over-writing code or configuration files
- C. facilitates resolving conflicts when merging code
- D. ensures that unit tests are written

Answer: C

NEW QUESTION 215

- (Exam Topic 1)

Refer to the exhibit.

URL: https://<ASA_IP>/api/access/global/rules

Method: POST

Payload:

```
{
  "destinationAddress": {
    "kind": "IPv4Address",
    "value": "10.1.1.1"
  },
  "remarks": [ ],
  "active": true
  "permit": true,
  "sourceAddress": {
    "kind": "IPv4Address",
    "value": "192.168.1.1"
  }
}
```

Response Status Code: 400 Bad Request

```
{"messages":[{"level":"Error","code":"JSON-PARSE-ERROR","details":"
Unexpected character ('\'' (code 34)):"
```

What caused the error in this API request?

- A. The API resource does not support the POST operation
- B. The API resource does not support JSON format payloads.
- C. The submitted JSON payload includes a field that is not supported by the API resource.
- D. The submitted JSON payload has a formatting issue

Answer: D

NEW QUESTION 217

- (Exam Topic 1)

What is a tenet of test-driven development?

- A. write documentation for tests
- B. write tests after adding new blocks of code
- C. write and run tests before writing new code
- D. run tests after writing new code

Answer: C

NEW QUESTION 219

- (Exam Topic 1)

What are two advantages of YANG-based approaches for infrastructure automation? (Choose two.)

- A. directly maps to JavaScript
- B. multi-platform vendor abstraction
- C. designed to reflect networking concepts
- D. compiles to executables that run on network devices
- E. command line driven interface

Answer: BC

NEW QUESTION 220

- (Exam Topic 1)

Refer to the exhibit.

HTTP REQUEST

POST /organizations/ {organizationId}/networks

PARAMETERS

name

The name of the new network.

type

The type of the new network. Valid types are wireless, appliance, switch, systemsManager, camera, cellularGateway, or a space-separated list of those for a combined network.

tags

A space-separated list of tags to be applied to the network.

timeZone

The timezone of the network. For a list of allowed timezones, please see the 'TZ' column in the table in [this article](#).

copyFromNetworkId

The ID of the network to copy configuration from. Other provided parameters will override the copied configuration, except type which must match this network's type exactly.

disableMyMerakiCom

Disables the local device status pages ([my.meraki.com](#), [ap.meraki.com](#), [switch.meraki.com](#), [wired.meraki.com](#)). Optional (defaults to false).

disableRemoteStatusPage

Disables access to the device status page ([http://\[device's LAN IP\]](#)). Optional. Can only be set if disableMyMerakiCom is set to false.

```
base_url = https://api.meraki.com/api/v0
org_id = 123456789
api_key = 1098hadpfsiapsf8ahf8ohp
network_name = "New Network"
requests.<item 1> (
    <item 2> + "/" + org_id + "/" + <item 4>,
    headers = {
        "X-Cisco-Meraki-API-Key": "<item 5>",
        "Content-Type": "<item 6>"
    },
    <item 7>=json.dumps ({ "name": <item 8>,
                          "type": "wireless switch"
                          })
)
```

Drag and drop the code from the left onto the item numbers on the right to complete the Meraki python script shown in the exhibit.

base_url	<item 1>
network_name	<item 2>
data	<item 3>
post	<item 4>
application/json	<item 5>
networks	<item 6>
api_key	<item 7>
organizations	<item 8>

- A. Mastered
B. Not Mastered

Answer: A

Explanation:

1 – D, 2 – A, 3 – H, 4 – F, 5 – G, 6 – E, 7 – C, 8 – B

NEW QUESTION 222

- (Exam Topic 1)

Which two elements are foundational principles of DevOps? (Choose two.)

- A. designing applications as microservices
B. encouraging containers for the deployment of applications
C. organizing cross-functional teams over organizational silos
D. optimizing the cost of infrastructures
E. automating over documenting

Answer: CE

NEW QUESTION 224

- (Exam Topic 1)

An application calls a REST API and expects a result set of more than 550 records, but each time the call is made, only 25 are returned. Which feature limits the amount of data that is returned by the API?

- A. pagination
B. payload limit
C. rate limiting
D. service timeouts

Answer: A

NEW QUESTION 228

- (Exam Topic 1)

Which statement describes the benefit of using functions in programming?

- A. Functions allow problems to be split into simpler, smaller groups, and reduce code repetition, which makes the code easier to read.
B. Functions ensure that a developer understands the inner logic contained before using them as part of a script or application.
C. Functions create the implementation of secret and encrypted algorithms.
D. Functions store mutable values within a script or application.

Answer: A

NEW QUESTION 229

- (Exam Topic 1)

Which task is performed because the test-driven development approach is being used?

- A. testing existing software before developing new code
- B. refactoring code that is covered by existing tests
- C. writing code without committing any coding violations
- D. creating test scenarios based on continuous development

Answer: B

Explanation:

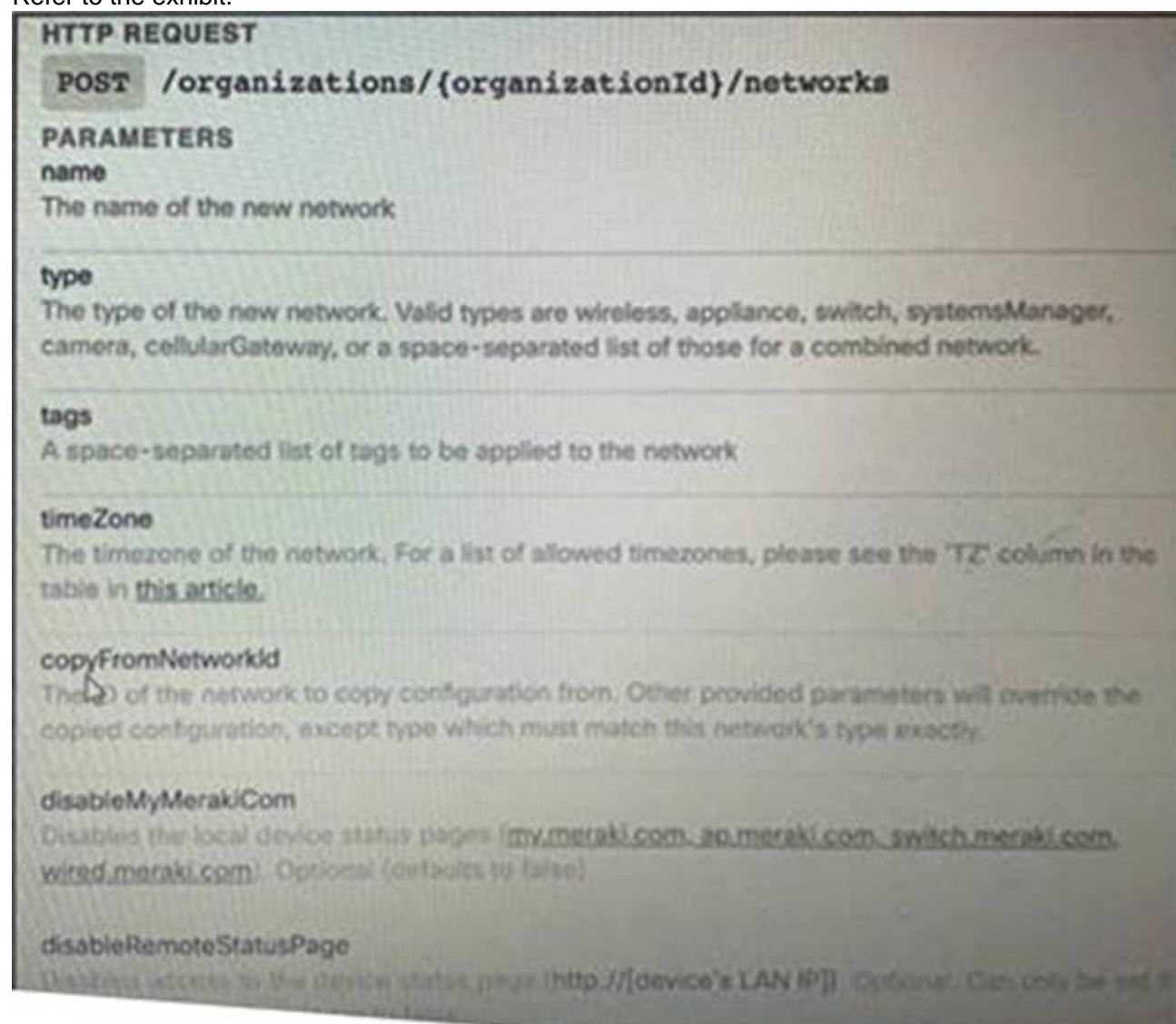
"The idea is that you build a test case first, before any software has been created or modified" but "testing existing software before developing new code" is the idea or goal, not the task five steps of TDD:

- Write a test
- Test fails
- Write some code
- Test passes
- Refactor

NEW QUESTION 233

- (Exam Topic 1)

Refer to the exhibit.



HTTP REQUEST

POST /organizations/{organizationId}/networks

PARAMETERS

name
The name of the new network

type
The type of the new network. Valid types are wireless, appliance, switch, systemsManager, camera, cellularGateway, or a space-separated list of those for a combined network.

tags
A space-separated list of tags to be applied to the network

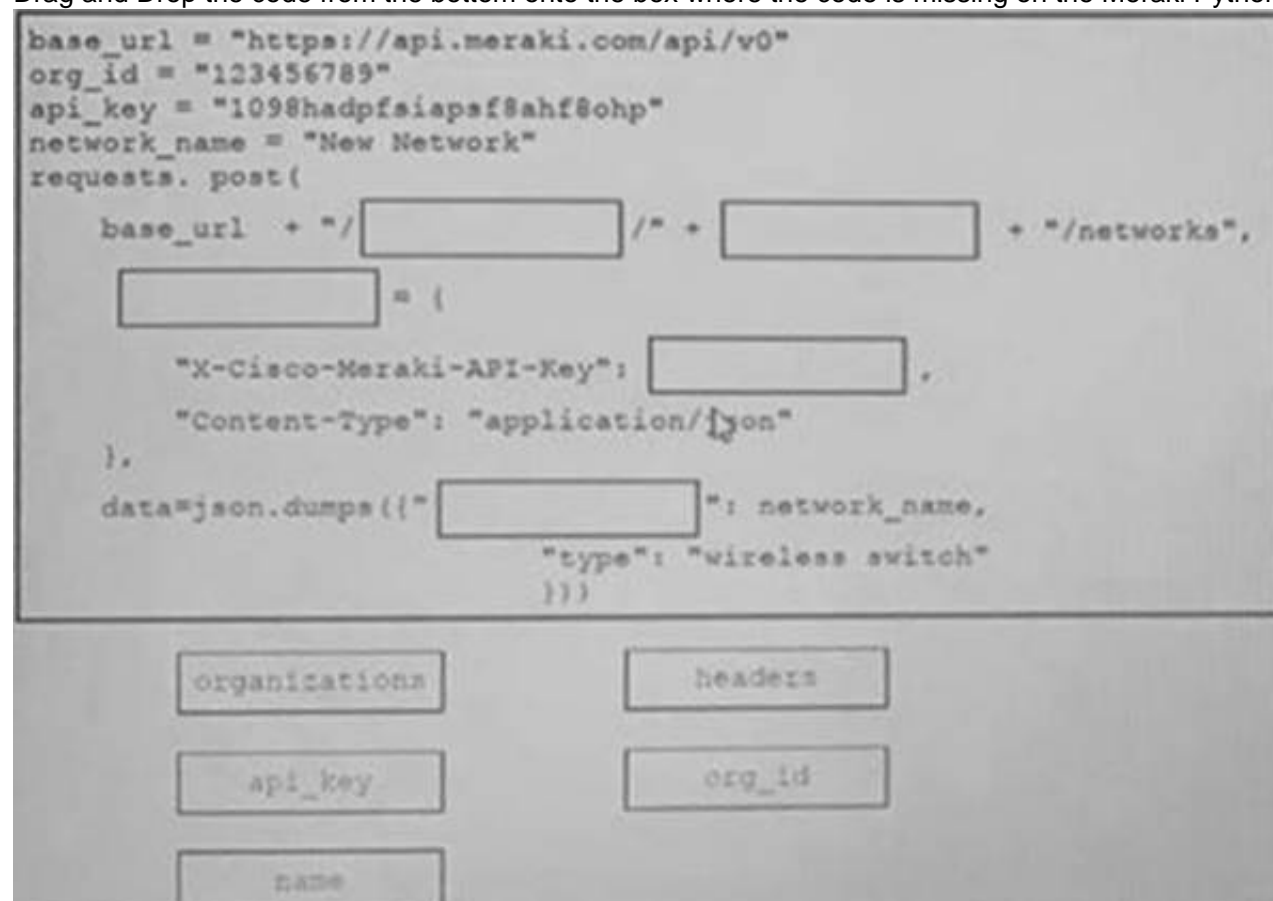
timeZone
The timezone of the network. For a list of allowed timezones, please see the "TZ" column in the table in [this article](#).

copyFromNetworkId
The ID of the network to copy configuration from. Other provided parameters will override the copied configuration, except type which must match this network's type exactly.

disableMyMerakiCom
Disables the local device status pages (my.meraki.com, ap.meraki.com, switch.meraki.com, wired.meraki.com). Optional (defaults to false)

disableRemoteStatusPage
Disables access to the device status page (http://[device's LAN IP]). Optional. Can only be set if

Drag and Drop the code from the bottom onto the box where the code is missing on the Meraki Python script to create a new network



```
base_url = "https://api.meraki.com/api/v0"
org_id = "123456789"
api_key = "1098hadpfsiapaf8ahf8ohp"
network_name = "New Network"
requests.post(
    base_url + "/" + [ ] + "/" + [ ] + "/networks",
    [ ] = {
        "X-Cisco-Meraki-API-Key": [ ],
        "Content-Type": "application/json"
    },
    data=json.dumps({ "[ ]": network_name,
                      "type": "wireless switch"
                    })
)
```

organizations headers

api_key org_id

name

- A. Mastered
- B. Not Mastered

Answer: A

Explanation:

```
base_url = "https://api.meraki.com/api/v0"
org_id = "123456789"
api_key = "1098hadpfsiapsf8ahf8ohp"
network_name = "New Network"
requests.post(
    base_url + "/" + organizations + "/" + org_id + "/networks",
    headers = {
        "X-Cisco-Meraki-API-Key": api_key,
        "Content-Type": "application/json"
    },
    data=json.dumps({
        "name": network_name,
        "type": "wireless switch"
    })
)
```

NEW QUESTION 236

- (Exam Topic 1)

Drag and drop the network automation interfaces from the left onto the transport protocols that they support on the right.

SSH

HTTP

HTTP/2

HTTPS

gRPC

NETCONF

RESTCONF

- A. Mastered
- B. Not Mastered

Answer: A

Explanation:

gRPC = C, NETCONF = A, RESTCONF = B, D OR

NEW QUESTION 239

- (Exam Topic 1)

Which two statements describe the advantages of using a version control system? (Choose two.)

- A. It allows for branching and merging so that different tasks are worked on in isolation before they are merged into a feature or master branch.
- B. It allows multiple engineers to work against the same code and configuration files and manage differences and conflicts.
- C. It provides tooling to automate application builds and infrastructure provisioning.
- D. It allows developers to write effective unit tests.
- E. It provides a system to track User Stories and allocate to backlogs.

Answer: AB

NEW QUESTION 241

- (Exam Topic 1)

Which type of threat occur when an attacker can send hostile data to an interpreter within an application?

- A. Cross-site scripting
- B. Sensitive data exposure
- C. Broken authentication
- D. Injection

Answer: D

Explanation:

Reference: https://owasp.org/www-project-top-ten/OWASP_Top_Ten_2017/Top_10-2017_A1-Injection

NEW QUESTION 244

- (Exam Topic 1)

Which two encoding formats do YANG interfaces support?

- A. JSON
- B. XML
- C. XHTML
- D. Plain text
- E. BER

Answer: AB

Explanation:

Reference:

https://www.cisco.com/c/en/us/td/docs/ios-xml/ios/prog/configuration/171/b_171_programmability_cg/model_d

NEW QUESTION 248

- (Exam Topic 1)

Drag and drop the HTTP status codes from the left onto the correct descriptions on the right.

400	Unauthorized
401	Not Found
403	Bad Request
404	Forbidden

- A. Mastered
- B. Not Mastered

Answer: A

Explanation:

1 – B, 2 – D, 3 – A, 4 – C

Reference:

<https://www.cisco.com/c/en/us/support/docs/security/web-security-appliance/118217-troubleshoot-wsa-00.html>

NEW QUESTION 250

- (Exam Topic 1)

Which product provides network controller-level management features?

- A. Cisco DNA Center
- B. Cisco NX-OS
- C. Cisco UCS Manager
- D. Cisco ISE

Answer: A

Explanation:

Reference: <https://www.cisco.com/c/en/us/products/cloud-systems-management/index.html>

NEW QUESTION 255

- (Exam Topic 1)

What is the Git command to delete a local branch named “experiment” without a warning?

- A. git branch –n experiment
- B. git branch –rm experiment
- C. git branch –f experiment
- D. git branch –D experiment

Answer: D

Explanation:

Reference: <https://www.atlassian.com/git/tutorials/using-branches>

NEW QUESTION 259

- (Exam Topic 1)

Fill in the blanks to complete the statement.

Cisco DNA provide the capability to send an HTTP _____ request to the API endpoint https://DNA-c_API_ADDRESS/api/vi/network-device/ and receive the network _____ list in _____ format.

- A. Mastered
- B. Not Mastered

Answer: A

Explanation:

Solution below as

Cisco DNA Center provides the capability to send an HTTP **GET** request to the API endpoint https://DNA-c_API_ADDRESS/api/v1/network-device/ and receive the network **device** list in **JSON** format

NEW QUESTION 264

- (Exam Topic 1)

Refer to the exhibit.

```
<books>
  <science>
    <biology>10.00</biology>
    <geology>9.00</geology>
    <chemistry>8.00</chemistry>
  </science>
  <math>
    <calculus>20.00</calculus>
    <algebra>12.00</algebra>
  </math>
</books>
```

Which JSON is equivalent to the XML –encoded data?

- A. [{
 "books": {
 "science": {
 "biology": "10.00",
 "geology": "9.00",
 "chemistry": "8.00"
 },
 "math": {
 "calculus": "20.00",
 "algebra": "12.00"
 }
 },
}]
- B. {
 "books": [
 "science": {
 "biology": "10.00",
 "geology": "9.00",
 "chemistry": "8.00"
 },
 "math": {
 "calculus": "20.00",
 "algebra": "12.00"
 }
],
}


```
C. {
    "books": [
        "science": {
            "biology": "10.00",
            "geology": "9.00",
            "chemistry": "8.00"
        },
        "math": {
            "calculus": "20.00",
            "algebra": "12.00"
        }
    ]
}

D. {
    "books": [
        "science", {
            "biology": "10.00",
            "geology": "9.00",
            "chemistry": "8.00"
        },
        "math", {
            "calculus": "20.00",
            "algebra": "12.00"
        }
    ]
}
```

- A. Option A
- B. Option B
- C. Option C
- D. Option D

Answer: A

NEW QUESTION 269

- (Exam Topic 1)

Which platform is run directly using a hypervisor?

- A. bare metal systems
- B. containers
- C. virtual machines
- D. applications

Answer: C

NEW QUESTION 272

- (Exam Topic 1)

Drag and Drop the Bash commands from the left onto the correct actions on the right.

cd~	list files in directory sorted by edited date descending
cd/	create directory
ls -l	copy file
ls -t	change directory to user \$HOME
cp	create environment variable
cp -r	change directory to file system root
mv	move file
touch	create file
mkdir	copy directory
export	list files in directory with details

A. Mastered
B. Not Mastered

Answer: A

Explanation:

1 - d, 2 - i, 3 - e, 4 - a, 5 - j, 6 - b, 7 - g, 8 - h, 9 - c, 10 - f

NEW QUESTION 277

- (Exam Topic 1)

Fill in the blanks to complete the cURL command that invokes a RESTful API to retrieve a resource in JSON format using OAuth.

```
curl -X [ ] -H " [ ]: application/json" \
-H " [ ]: Bearer AbCdEf123456" https://localhost/api/myresource
```

A. Mastered
B. Not Mastered

Answer: A

Explanation:

```
curl -X GET [ ] -H "Accept [ ]: application/json" \
-H "Authorization [ ]: Bearer AbCdEf123456" https://localhost/api/myresource
```

Reference: <https://webcache.googleusercontent.com/search?q=cache:Se6d2trvMsEJ:https://blogs.cisco.com/developer/secu>

NEW QUESTION 282

- (Exam Topic 1)

Refer to the exhibit.

```
{
  "items": [
    {
      "kind": "object#NetworkObj",
      "selfLink": "https://10.201.230.5/api/objects/networkobjects/db01",
      "name": "db01",
      "host": {
        "kind": "IPv4address",
        "value": "172.16.0.11"
      },
      "objectId": "db01"
    }
  ]
}
```

The JSON data in the exhibit has been parsed and stored in a variable, "data". What returns the value "172.16.0.11" ?

- A. data['items'][0]['host']['value']
- B. data['items'][1]['host']['value']
- C. data['items']['host'][1]
- D. data['items']['host']['value']

Answer: A

NEW QUESTION 287

- (Exam Topic 1)

Fill in the blanks to complete the python script to request a service ticket using the APIC-EM rest API for the user "devnetuser".

```
import requests
import json
controller = 'devnetapi.cisco.com/sandbox/apic_em'
url = "https://" + controller + "/api/va/ticket"
payload = { 'username': 'devnetuser', 'password': '371274738' }
header = { 'Content-type': 'application/json' }
response = requests.post(url, data=json.dumps(payload), \
headers=header, verify=False)
r_json = response.json()
print(r_json)
ticket = r_json["response"]["serviceTicket"]
print(ticket)
```

- A. Mastered
- B. Not Mastered

Answer: A

Explanation:

```
import requests
import json
controller = 'devnetapi.cisco.com/sandbox/apic_em'
url = "https://" + controller + "/api/va/ticket"
payload = { 'username': 'devnetuser', 'password': '371387657' }
header = { 'Content-type': 'application/json' }
response = requests.post(url, data=json.dumps(payload), \
headers=header, verify=False)
r_json = response.json()
print(r_json)
ticket = r_json["response"]["serviceTicket"]
print(ticket)
```

Reference: <https://developer.cisco.com/docs/apic-em/#!hello-world>

NEW QUESTION 288

- (Exam Topic 1)

A 401 HTTP response code is returned when calling a REST API. What is the error state identified by this response code?

- A. The server cannot process the request as it has detected an issue in the request syntax or body.
- B. The server accepted the request but the client is not authorized for this content.
- C. The request has not been accepted because it requires authentication.
- D. The server cannot find the requested resource because the path specified is incorrect.

Answer: C

Explanation:

Reference:

<https://blog.restcase.com/rest-api-error-codes-101/#:~:text=A%20401%20error%20response%20indicates,crede>

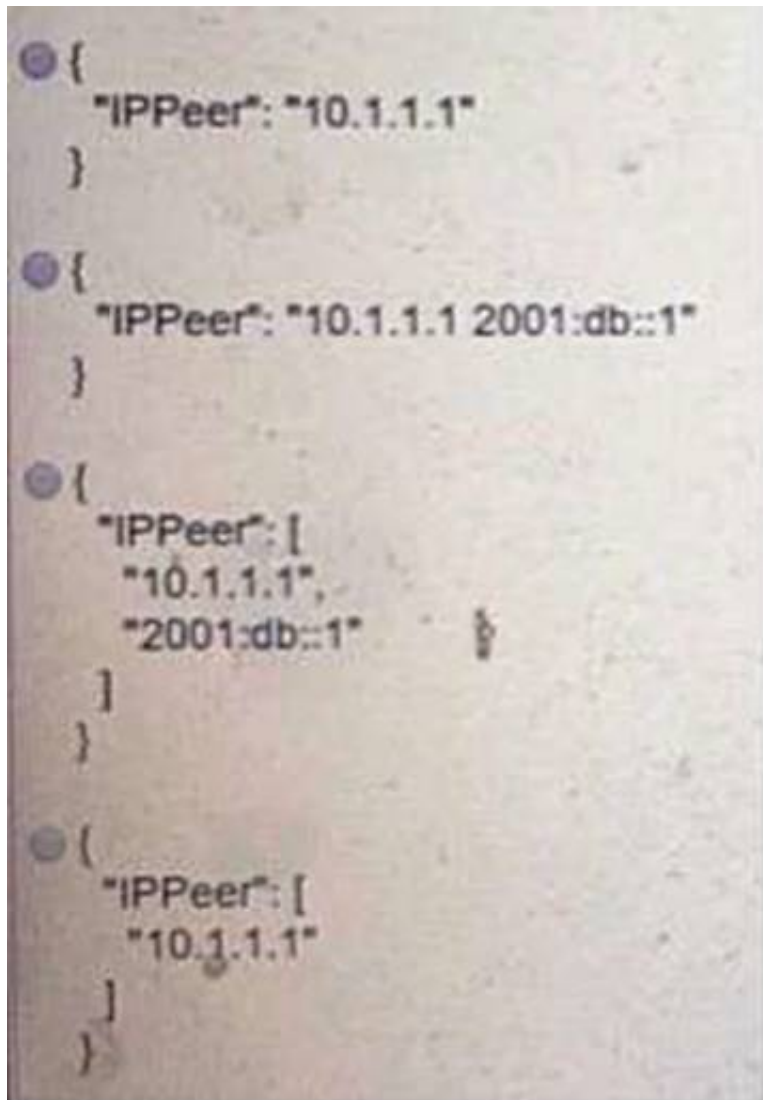
NEW QUESTION 289

- (Exam Topic 1)

Refer to the exhibit.

```
leaf IPPeer {
  type union {
    type inet:ipv4-address;
    type inet:ipv6-address;
  }
}
```

What is the value of the node defined by this YANG structure?



- A. Option A
- B. Option B
- C. Option C
- D. Option D

Answer: D

Explanation:

<https://tools.ietf.org/html/rfc7950#section-9.12>

NEW QUESTION 293

- (Exam Topic 1)

Which platform is run directly using a hypervisor?

- A. Virtual
- B. Bare metal systems
- C. Containers
- D. Applications

Answer: C

NEW QUESTION 294

- (Exam Topic 1)

What is the purpose of the Cisco VIRL software tool?

- A. To verify configurations against compliance standards
- B. To simulate and model networks
- C. To automate API workflows
- D. To test performance of an application

Answer: B

Explanation:

Reference: <https://www.speaknetworks.com/cisco-virl-better-gns3/>

NEW QUESTION 295

- (Exam Topic 1)

Package updates from a local server fail to download. However, the same updates work when a much slower external repository is used. Why are local updates failing?

- A. The update utility is trying to use a proxy to access the internal resource.
- B. The Internet connection is too slow.
- C. The Internet is down at the moment, which causes the local server to not be able to respond.
- D. The server is running out of disk space.

Answer: A

NEW QUESTION 299

- (Exam Topic 1)

Refer to the exhibit.

```
def get_result()

    url = "https://sandboxdnac.cisco.com/dna/system/api/v1/auth/token"

    resp = requests.post(url, auth=HTTPBasicAuth(DNAC_USER, DNAC_PASSWORD))

    result = resp.json()['Token']

    return result
```

What does the python function do?

- A. It returns DNAC user and password.
- B. It returns HTTP Basic Authentication.
- C. It returns an authorization token.
- D. It reads a token from a local JSON file and posts the token to the DNAC URL.

Answer: C

NEW QUESTION 302

- (Exam Topic 1)

Refer to the exhibit.

```
json_string = """
{
    "researcher": {
        "name": "Ford Perfect",
        "species": "Betelgeusian",
        "relatives": [
            {
                "name": "Zaphod Beeblebrox",
                "species": "Betelgeusian"
            }
        ]
    }
}
"""

my_json = json.loads(json_string)
```

Which python data structure does my_json contain?

- A. List
- B. Json
- C. Map
- D. Dict

Answer: D

Explanation:

Reference:

<https://stackoverflow.com/questions/34764979/loading-python-string-with-u-as-json?noredirect=1&lq=1>

NEW QUESTION 303

- (Exam Topic 1)

How is a branch called "my-bug-fix" started to develop a fix needed in a product?

- A. git branch -b my-bug-fix
- B. git checkout -b my-bug-fix
- C. git checkout my-bug-fix
- D. git branch my-bug-fix

Answer: B

NEW QUESTION 306

- (Exam Topic 1)

A REST API service requires authentication based on the username and password. The user "john" has the password "384279060" and the Base64 encoding of those credentials is "am9objowMTIzNDU2Nzg=". Which method completes an authentication request?

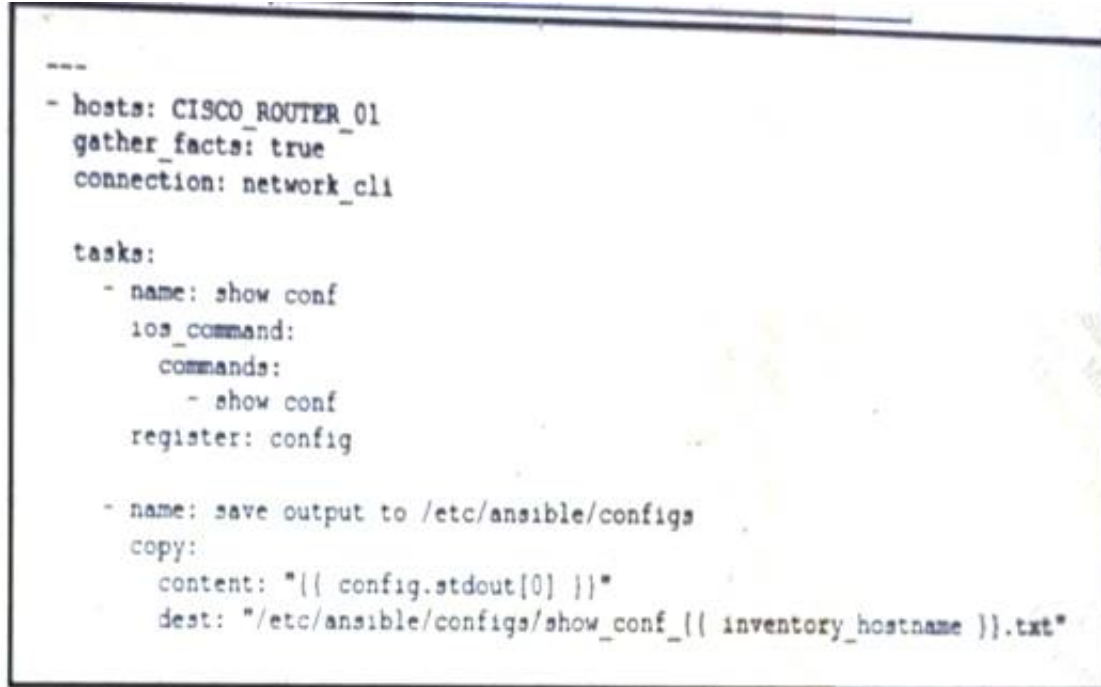
- A. The header must include: Authorization: Bearer am9objowMTIzNDU2Nzg=
- B. The payload must include: Authorization: Bearer am9objowMTIzNDU2Nzg=
- C. The payload must include: Authorization: Basic am9objowMTIzNDU2Nzg=
- D. The header must include: Authorization: Basic am9objowMTIzNDU2Nzg=

Answer: D

NEW QUESTION 307

- (Exam Topic 1)

Refer to the exhibit.



```
---
- hosts: CISCO_ROUTER_01
  gather_facts: true
  connection: network_cli

  tasks:
    - name: show conf
      ios_command:
        commands:
          - show conf
      register: config

    - name: save output to /etc/ansible/configs
      copy:
        content: "{{ config.stdout[0] }}"
        dest: "/etc/ansible/configs/show_conf_{{ inventory_hostname }}.txt"
```

What is the result of executing this Ansible playbook?

- A. The playbook copies a new start-up configuration to CISCO_ROUTER_01.
- B. The playbook backs up the running configuration of CISCO_ROUTER_01.
- C. The playbook backs up the start-up configuration of CISCO_ROUTER_01.
- D. The playbook copies a new running configuration to CISCO_ROUTER_01.

Answer: C

NEW QUESTION 311

- (Exam Topic 1)

Refer to the exhibit.

```
---
- hosts: switch2960cx
  gather_facts: no

  tasks:
    - ios_l2_interface:
      name: GigabitEthernet0/1
      state: unconfigured

    - ios_l2_interface:
      name: GigabitEthernet0/1
      mode: trunk
      native_vlan: 1
      trunk_allowed_vlans: 6-8
      state: present

    - ios_vlan:
      vlan_id: 6
      name: guest-vlan
      interfaces:
        - GigabitEthernet0/2
        - GigabitEthernet0/3

    - ios_vlan:
      vlan_id: 7
      name: corporate-vlan
      interfaces:
        - GigabitEthernet0/4

    - ios_vlan:
      vlan_id: 8
      name: iot-vlan
      interfaces:
        - GigabitEthernet0/5
```

Which two statements describe the configuration of the Ansible script if run? (Choose two.)

- A. Traffic on port 0/2 and 0/3 is connected to port 0/6.
- B. Traffic from ports 0/2 to 0/5 can flow on port 0/1 due to the trunk.
- C. Traffic can flow between ports 0/2 to 0/5 due to the trunk on port 0/1.
- D. GigabitEthernet0/2 and GigabitEthernet0/3 are access ports for VLAN 6.
- E. GigabitEthernet0/1 is left unconfigured.

Answer: BD

NEW QUESTION 316

- (Exam Topic 1)

What are the two principles of an infrastructure as code environment? (Choose two)

- A. Complete complex systems must be able to be built from reusable infrastructure definitions.
- B. Environments must be provisioned consistently using the same inputs.
- C. Redeployments cause varying environment definitions.
- D. Service overlap is encouraged to cater for unique environment needs.
- E. Components are coupled, and definitions must be deployed for the environment to function.

Answer: AB

NEW QUESTION 319

- (Exam Topic 1)

A company has written a script that creates a log bundle from the Cisco DNA Center every day. The script runs without error and the bundles are produced. However, when the script is run during business hours, report poor voice quality of phone calls. What explains this behavior?

- A. The application is running in the Voice VLAN and causes delays and jitter in the subnet.
- B. The speed and duplex settings in Cisco DNA Center are set incorrectly, which causes the transfer to be too slow.
- C. The script is written in a low-level programming language where there is no memory safety.
- D. This causes a buffer overflow and disruption on the network.
- E. Generating the logs causes the CPU on the network controller to spike, which causes delays in forwarding the voice IP packets.

Answer: D

NEW QUESTION 324

- (Exam Topic 3)

Drag and drop the code from the bottom onto the box where the code is missing to authenticate with the Cisco DNA Center REST API by using basic authentication. Then generate a token for later use. Not all options are used.

```
import requests
from requests.auth import HTTPBasicAuth

BASE_URL = 'https://sandboxdnac2.cisco.com'
AUTH_URL = '/dna/system/api/v1/'
USERNAME = 'admin'
PASSWORD = 'qwer1234!'

response = requests. (BASE_URL + AUTH_URL,
    auth=HTTPBasicAuth( , ))
token = response.json()['Token']
print(token)
```

auth/basic	/auth/token	post	get
USERNAME	Token	PASSWORD	

- A. Mastered
- B. Not Mastered

Answer: A

Explanation:

```
import requests
from requests.auth import HTTPBasicAuth

BASE_URL = 'https://sandboxdnac2.cisco.com'
AUTH_URL = '/dna/system/api/v1/'
USERNAME = 'admin'
PASSWORD = 'qwer1234!'

response = requests. (BASE_URL + AUTH_URL,
    auth=HTTPBasicAuth( , ))
token = response.json()['Token']
print(token)
```

auth/basic	/auth/token	post	get
USERNAME	Token	PASSWORD	

NEW QUESTION 327

- (Exam Topic 3)

When a Cisco IOS XE networking device is configured by using RESTCONF, what is the default data encoding method?

- A. application/yaml-data+json
- B. application/yang-data+json
- C. application/xml-data+json
- D. application/json-data+xml

Answer: D

NEW QUESTION 332

- (Exam Topic 3)
Which HTTP method is used by webhooks and notifies a listener about an event change?

- A. PUT
- B. POST
- C. PATCH
- D. GET

Answer: B

NEW QUESTION 337

- (Exam Topic 3)
A developer must test the performance and reliability of an application. After functional and load tests are run, the application crashes due to traffic spikes from users. Which type of API constraint must be implemented to maintain reliability?

- A. rate limiting
- B. pagination
- C. payload limits
- D. filtering

Answer: A

NEW QUESTION 339

- (Exam Topic 3)
What is a capability of Ansible playbooks?

- A. They execute scheduled tasks regularly.
- B. They define the state for a device configuration.
- C. They collect SNMP logs from networking devices.
- D. They utilize the target device agent to execute.

Answer: A

NEW QUESTION 344

- (Exam Topic 3)
What is a characteristic of RPC APIs compared to REST APIs?

- A. Authentication is done over provisions for the service caller and vice versa for RPC API, and REST API uses HTTP headers for authentication.
- B. All communications between the client and server must be stateless for RPC API, and REST API is stateful.
- C. The architecture model for RPC API is resource-focused, and REST API is procedure-focused.
- D. The data payload must be in JSON format for RPC API, and REST API allows JSON and XML formats.

Answer: A

NEW QUESTION 348

- (Exam Topic 3)
An engineer must make changes on a network device through the management platform API. The engineer prepares a script to send the request and analyze the response, check headers, and read the body according to information inside response headers. Drag and drop the HTTP header values from the left onto the elements of an HTTP response on the right.

16974	cache-control
no-store, must-revalidate	content-length
timeout=5, max=100	keep-alive
application/json; charset=UTF-8	content-type

- A. Mastered
- B. Not Mastered

Answer: A

Explanation:

16974	no-store, must-revalidate
no-store, must-revalidate	16974
timeout=5, max=100	timeout=5, max=100
application/json; charset=UTF-8	application/json; charset=UTF-8

NEW QUESTION 353

- (Exam Topic 3)

A file in a local Git repository has been updated and issued the git add . command. The git diff command has been run to compare the changes to the previous commit, but nothing shows. Which action identifies the problem?

- A. Run the git add . command again in the correct subdirectory to ensure changes added to the staging area.
- B. Run the git commit command before the differences are compared to receive the end state of the code.
- C. Run the git status command to see the differences between current and previous code review stages.
- D. Run the git diff --staged command to compare the code added to the staging area.

Answer: D

NEW QUESTION 358

- (Exam Topic 3)

```
user@host1:~/tmp$ cat Dockerfile
# Dockerfile to install traceroute
FROM ubuntu
MAINTAINER User One (userone@cisco.com)
RUN apt-get update && apt-get install traceroute
```

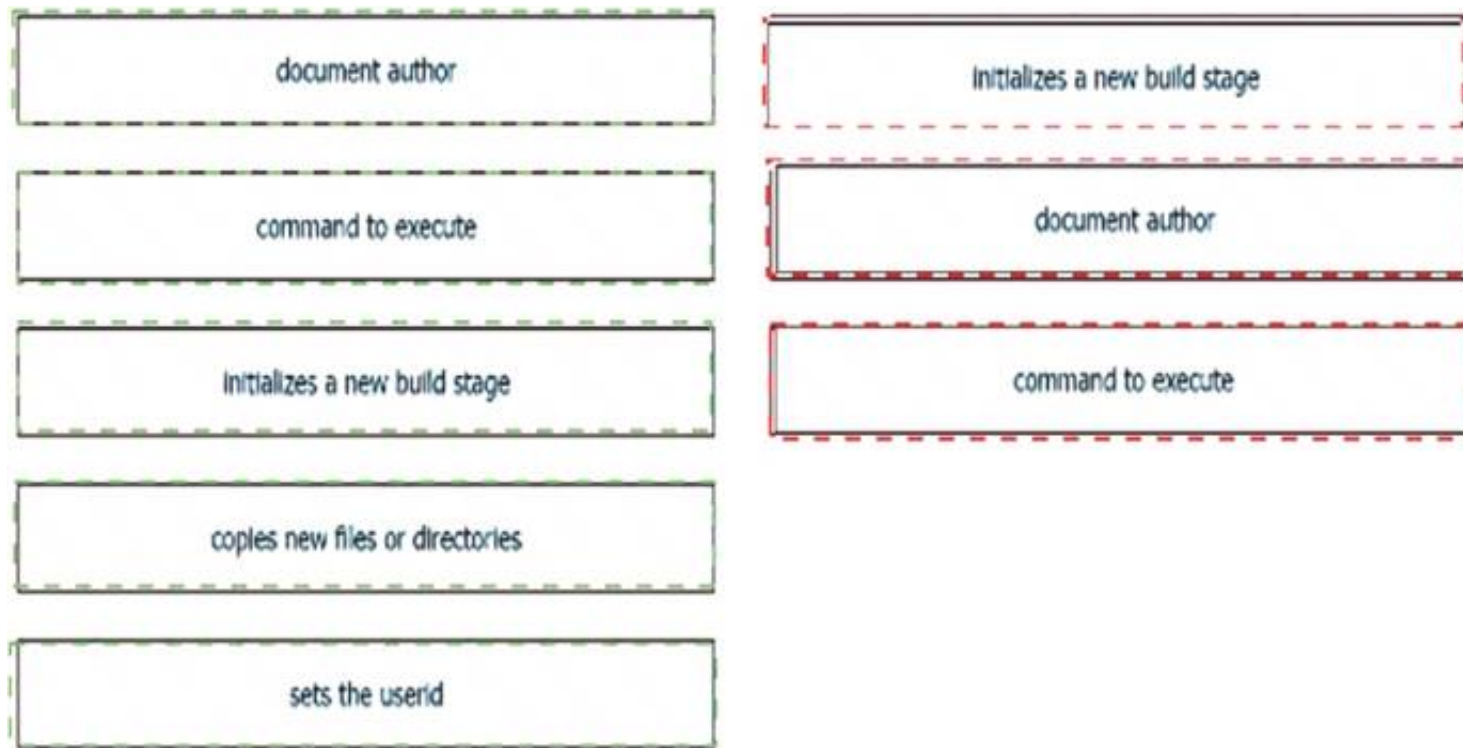
Refer to the exhibit. Drag and drop the Dockerfile contents from the left onto the functions on the right that create a container image to run traceroute to track network path to specific targets. Not all options are used.

document author	FROM ubuntu
command to execute	MAINTAINER User One (userone@cisco.com)
initializes a new build stage	RUN apt-get update && apt-get install traceroute
copies new files or directories	
sets the userid	

- A. Mastered
- B. Not Mastered

Answer: A

Explanation:



NEW QUESTION 362

- (Exam Topic 3)

What is a capability of the AXL API?

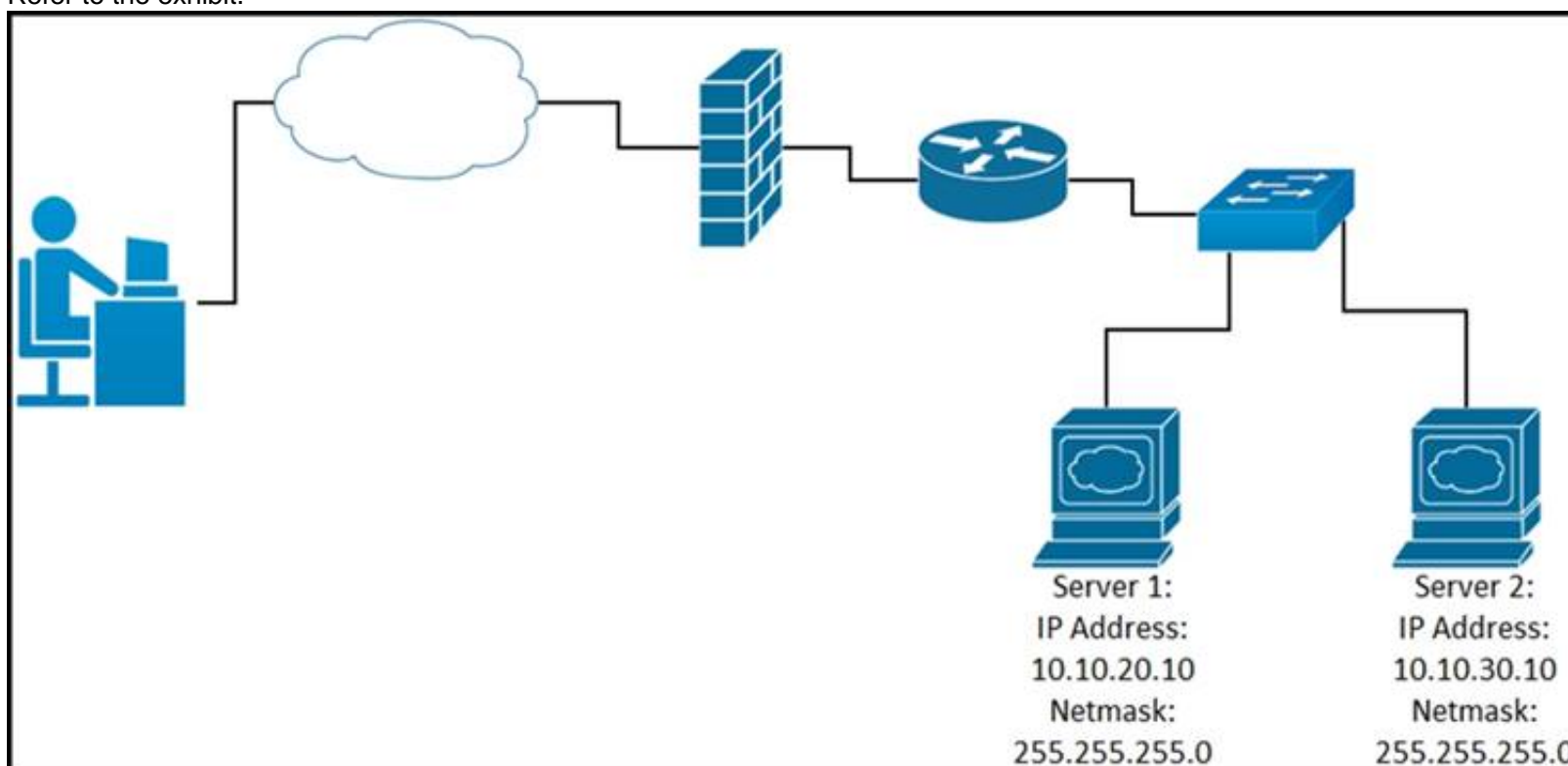
- A. It signs a user in to a phone that is configured for extension mobility.
- B. It pulls logs for the Cisco Tomcat service.
- C. It authenticates users who exist in Cisco Unified Communications Manager.
- D. It provides support for HTTP and HTTPS communications.

Answer: C

NEW QUESTION 365

- (Exam Topic 3)

Refer to the exhibit.



While developing a Cisco Webex bot, an application reaches the public IP address of the firewall, but traffic is forwarded to the IP address of server 1 instead of the IP address of server 2. What causes this issue?

- A. The proxy server that rewrites traffic is misconfigured.
- B. The router is sending the traffic to server 1 instead of server 2.
- C. The switch is forwarding IP traffic to the wrong VLAN.
- D. NAT is misconfigured on the firewall.

Answer: D

NEW QUESTION 370

- (Exam Topic 3)

A developer has experienced security issues with a previously developed application. The API offered by that application is open and without any constraints. During a recent attack, the application was overloaded with API requests. To address this issue, an API constraint is implemented to protect the application from future attacks or any sudden throttling. Which API constraint must the application developer implement in this situation?

- A. pagination
- B. rate limiting
- C. filtering

D. payload limiting

Answer: B

NEW QUESTION 375

- (Exam Topic 3)

Refer to the exhibit.

```
1 import requests
2
3 url = "https://api.meraki.com/api/v0/organizations/{{organizationId}}/insight/
* monitoredMediaServers"
4
5 payload = {
6     "name": "Sample VoIP Provider",
7     "address": "123.123.123.1"
8 }
9 headers = {
10     'Accept': '*/*',
11     'Content-Type': 'application/json'
12 }
13
14 response = requests.request("POST", url, headers=headers, data=payload)
15
16 print(response.text.encode('utf8'))
```

Which workflow does the script automate?

- A. retrieves a media server that is being monitored
- B. updates a media server that is being monitored
- C. adds a media server to be monitored
- D. deletes a media server that is being monitored

Answer: C

NEW QUESTION 380

- (Exam Topic 3)

Which technology is responsible for resolving a host name to an IP address?

- A. DNS
- B. SNMP
- C. DHCP
- D. NTP

Answer: A

NEW QUESTION 383

- (Exam Topic 3)

What is the purpose of running tests before writing code in test-driven development?

- A. to find unexpected failures in the tests
- B. to demonstrate that the tests fail for expected reasons
- C. to ensure that the tests pass
- D. to provide proof of the work carried out

Answer: D

NEW QUESTION 384

- (Exam Topic 3)

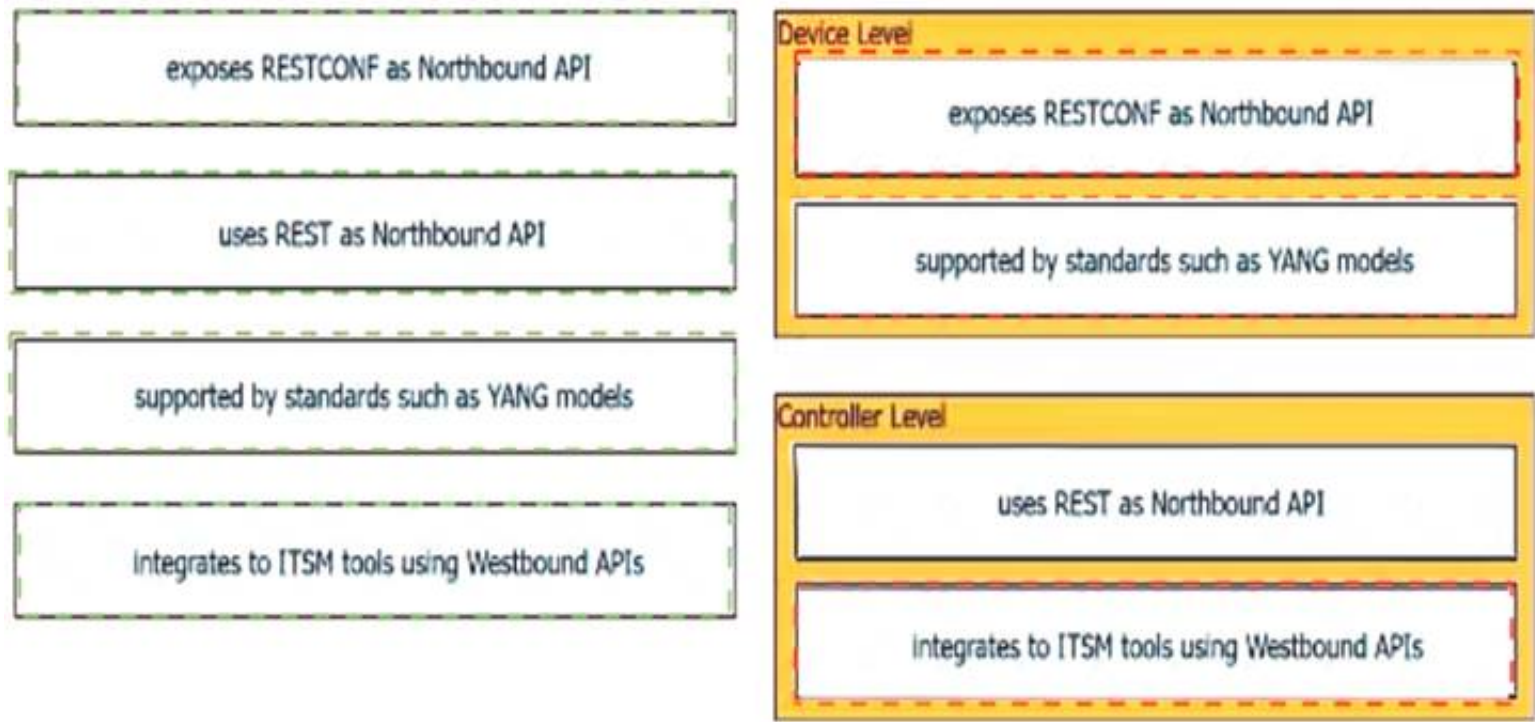
Drag and drop characteristics from the left onto the infrastructure management methodologies on the right.

exposes RESTCONF as Northbound API	Device Level <div></div> <div></div>
uses REST as Northbound API	
supported by standards such as YANG models	Controller Level <div></div> <div></div>
integrates to ITSM tools using Westbound APIs	

- A. Mastered
- B. Not Mastered

Answer: A

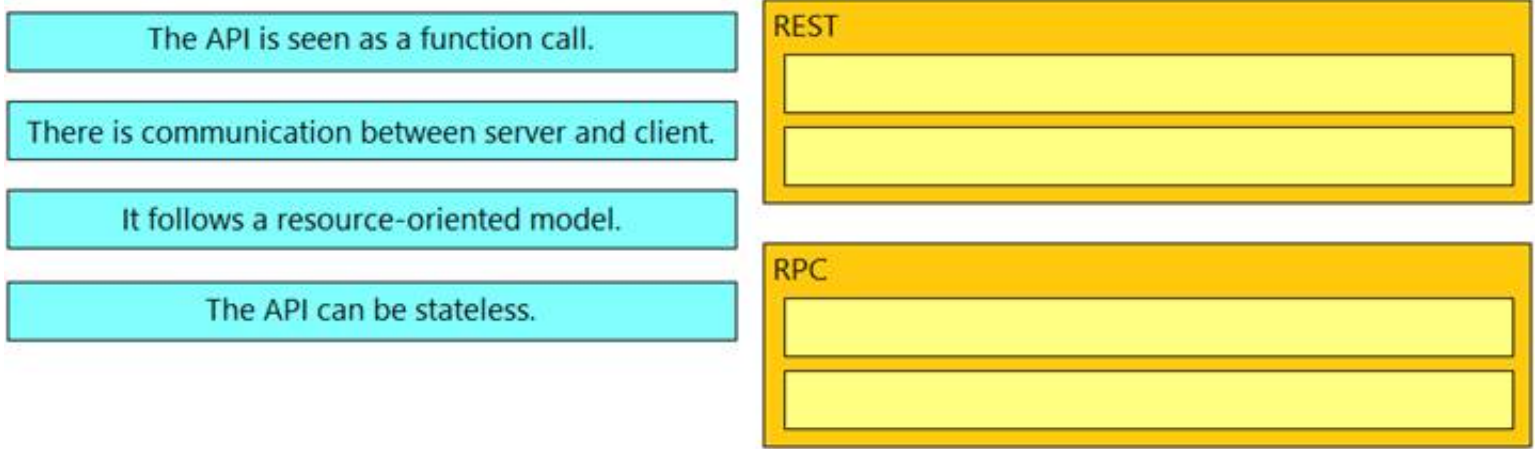
Explanation:



NEW QUESTION 386

- (Exam Topic 3)

Drag and drop the API characteristics from the left onto the categories on the right.



- A. Mastered
- B. Not Mastered

Answer: A

Explanation:

Graphical user interface, application Description automatically generated

NEW QUESTION 387

- (Exam Topic 3)

```
$ find /home/user/backup -mtime +30 -type f -print
$ find /home/user/backup -mtime +30 -type f -delete
```

Refer to the exhibit. An engineer is managing the network of an enterprise. The network is using a distributed deployment model. The enterprise uses database to store logs. The current policy requires logs to be stored if changes are made to the infrastructure in any of the devices on the data centers. Which workflow is being automated by the Bash script?

- A. returning backup files that are older than 30 days
- B. deleting backup files that are older than 30 days
- C. configuring the directory to delete files automatically
- D. automating deletion of all backup files every 30 days

Answer: B

NEW QUESTION 391

- (Exam Topic 3)

During which step of the CI/CD pipeline for infrastructure automation is code from multiple developers combined to compile and test different components?

- A. integration
- B. deployment
- C. development
- D. testing

Answer: A

NEW QUESTION 396

- (Exam Topic 3)

What is the function of an Ethernet switch in a networking environment?

- A. to switch a frame from one port to another port based on IP address
- B. to switch a frame from one port to another port based on MAC address
- C. to provide IP addressing to connected hosts
- D. to block unwanted traffic

Answer: B

NEW QUESTION 399

- (Exam Topic 3)

```
import requests, json
url = https://sandboxdnac.cisco.com:443/dna/intent/api/v1/3daa70bdcd5b
headers = {
    'x-auth-token': 'eyJhbGc ... yJbN8',
    'Content-Type': 'application/json',
}
payload = {
    "settings": {
        "dhcpServer": ["172.30.200.5"],
        "dnsServer": {
            "domainName": "devnet.local",
            "primaryIpAddress": "172.30.200.6",
            "secondaryIpAddress": "172.30.200.7"},
        "syslogServer": {"ipAddresses": ["10.255.0.1"], "configureDnacIP": True}
    }
}
response = requests.request('POST', url, headers=headers, data=payload)
print(response.status_code)
```

Refer to the exhibit. A developer writes a script to create a new network by using the Cisco DNA Center API. After running the script for the first time, the developer observes that HTTP code 404 is printed to the console. Which action resolves the problem?

- A. The x-auth-token value must be changed to a valid token.
- B. The API URL must be changed with a valid URL.
- C. The requested payload must be fixed to include missing parts.
- D. Internal errors on the code of API server must be fixed.

Answer: B

NEW QUESTION 402

- (Exam Topic 3)

A business needs to create a simulated environment that mimics a production infrastructure to make changes to the OSPF process and analyze the impact. What should be used?

- A. Cisco VIRT / Cisco CML
- B. Cisco DevNet Sandbox labs
- C. pyATS
- D. Puppet

Answer: A

Explanation:

<https://www.cisco.com/c/en/us/products/cloud-systems-management/modeling-labs/index.html>

NEW QUESTION 404

- (Exam Topic 3)

Which IP service synchronizes the time across devices?

- A. DNS
- B. NTP
- C. SNMP
- D. NAT

Answer: B

NEW QUESTION 406

- (Exam Topic 3)

Drag and drop the code from the bottom onto the box where the code is missing to complete the error path scenario. Not all options are used.

```
import pytest
class Player:
    def __init__(self, name):
        self.name = name
        [redacted]
    def set_rating(self, rating):
        if rating or rating is int(0):
            [redacted]:
                raise ValueError('rating is invalid', rating)
            else:
                [redacted]
                return True
        else:
            return False
@pytest.fixture
def player():
    player = Player('User One')
    yield player
    del player
@pytest.mark.usefixtures('player')
class TestErrorPathSetRating:
    def test_add_higher_rating(self, player):
        with pytest.raises(ValueError):
            player.set_rating(101)
    def test_add_invalid_rating(self, player):
        with pytest.raises(ValueError):
            [redacted]
    def test_add_lower_rating(self, player):
        with pytest.raises(ValueError):
            player.set_rating(-1)
```

player.set_rating(0)	if rating != 0:
player.set_rating(85)	if rating or rating is int(0):
if rating < 1 or rating > 100:	self.rating = rating
self.rating = None	

- A. Mastered
B. Not Mastered

Answer: A

Explanation:

```
import pytest
class Player:
    def __init__(self, name):
        self.name = name
        self.rating = None
    def set_rating(self, rating):
        if rating or rating is int(0):
            if rating < 1 or rating > 100:
                raise ValueError('rating is invalid', rating)
            else:
                if rating != 0:
                    return True
        else:
            return False
@pytest.fixture
def player():
    player = Player('User One')
    yield player
    del player
@pytest.mark.usefixtures('player')
class TestErrorPathSetRating:
    def test_add_higher_rating(self, player):
        with pytest.raises(ValueError):
            player.set_rating(101)
    def test_add_invalid_rating(self, player):
        with pytest.raises(ValueError):
            player.set_rating(0)
    def test_add_lower_rating(self, player):
        with pytest.raises(ValueError):
            player.set_rating(-1)
```

player.set_rating(0)	if rating != 0:
player.set_rating(85)	if rating or rating is int(0):
if rating < 1 or rating > 100:	self.rating = rating
self.rating = None	

NEW QUESTION 407

- (Exam Topic 3)


```
---
param0: Workflow1
param1:
  list:
    - name: VLAN_ID
      value: '198'
param2: 0
```

Refer to the exhibit. The YAML shown contains an object "param0" that is equal to "Workflow1", a second object "param1" that contains an object called "list" which contains an array of two objects, "name" (equal to "VLAN_ID") and "value" (equal to a text value "198"), and finally a third object "param2" that is equal to "0". What is the equivalent message in JSON data format?

A. [

```
  "param0"="Workflow1";
  "param1"=
    "list"=
      [ "name"="VLAN_ID";
        "value"="198" ]
  "param2"=0
]
```

B. {

```
  "param0": "Workflow1";
  "param1": {
    "list":
      [
        { "name": "VLAN_ID";
          "value": "198" }
      ]
  },
  "param2": 0
}
```

C. [

```
  "param0": "Workflow1",
  "param1": {
    "list":
      (
        [ "name": "VLAN_ID",
          "value": "198" ]
      )
  },
  "param2": 0
]
```

D. {

```
  "param0": "Workflow1",
  "param1": {
    "list":
      [
        { "name": "VLAN_ID",
          "value": "198" }
      ]
  },
  "param2": 0
}
```

Answer: D

NEW QUESTION 410

- (Exam Topic 3)

Users cannot access a webserver and after the traffic is captured, the capture tool shows an ICMP packet that reports "time exceeded in-transit". What is the cause of this webserver access issue?

- A. The large distance between the server and the users means that the packets require too much time to reach the destination.
- B. A router along the path is misrouting the packets in a wrong direction.
- C. A router along the path has the wrong time.
- D. The server is overloaded and the connection was not able to be processed in time.

Answer: B

NEW QUESTION 411

- (Exam Topic 3)

Which action do webhooks enable an application to perform?

- A. Increase the request rate limit.
- B. Populate the application with restricted data.
- C. Receive real-time data.
- D. Implement a push model.

Answer: D

Explanation:

Simplifying the wording: Webhook enables the app to (push or receive real time) . The clients should receive real time but the app pushes.

NEW QUESTION 416

- (Exam Topic 3)

CISCO SECURITY APIS

Introduction

API Workflow

1.) Find all events where Malwar...

2.) Find Endpoint Details for Rem...

3.) Nuke the Endpoint to Prevent...

4.) Find samples in Threat Grid

5.) Get all sample domains to an...

6.) Check all domains against Inv...

7.) For suspect domains get mor...

8.) Enforce on bad Domains in U...

9.) Research other Ransomware ...

Generate Authentication Token ...

10.) Add custom intelligence Fee...

NGFW

Generate Authentication Token

Access Policies

Access Rules

Access Rule Details

New Access Rule in Policy

New Bulk Access Rule in Policy

Cisco Security APIs

The main goal of this collection to help the developer understand the various API capabilities of Cisco NG Malware Protection, Threat Grid, , ISE and Umbrella. It will cover useful API features for each of the prod properly use them. Simple workflow is also included in the collection to *Collect* all the characteristics/sign the possible attack using AMP. *Validate* the collected intelligence with Threat Grid and Umbrella. *Deploy* to the NGFW, Umbrella and ISE to protect and contain the threat.

API Workflow

GET 1.) Find all events where Malware Executed

https://:@amp.dcloud.cisco.com/v1/events?connector_guid[]=&event_type[]=1107296272

Get a listing of all the events for a specific computer when the quarantine failed

PARAMS

Refer to the exhibit. Drag and drop the code from the bottom onto the box where the code is missing to construct a Python script that calls a REST API request. Not all options are used.

```
import requests

[ ] = "https://fmc-hostname/api/fmc_tid/v1/domain//tid/source"

payload = {
    "name": "Threat Grid Ransomware DNS",
    "delivery": "url",
    "uri": "https://panacea.threatgrid.com/api/v3/feeds"+
    "/ransomware-dns 2017-12-08.stix?api_key=",
    "refresh": 1440,
    "version": "1.0.0",
    "params": {
        "selfSignedServerCertificate": "true",
        "hostnameVerifier": "allow_all"
    },
    "property": {
        "ttl": 90,
        "publish": true,
        "action": "monitor"
    }
}

headers = {
    'X-auth-access-token': 'access_token', ' [ ] ': 'application/json'
}

response = requests. [ ] ("POST", url,
    headers=headers, data = [ ] )
print(response.text.encode('utf8'))
```

url	Encoding	base_url	Content-Type	post
request	payload			

- A. Mastered
B. Not Mastered

Answer: A

Explanation:

```
import requests

[ ] url = "https://fmc-hostname/api/fmc_tid/v1/domain//tid/source"

payload = {
    "name": "Threat Grid Ransomware DNS",
    "delivery": "url",
    "uri": "https://panacea.threatgrid.com/api/v3/feeds"+
    "/ransomware-dns 2017-12-08.stix?api_key=",
    "refresh": 1440,
    "version": "1.0.0",
    "params": {
        "selfSignedServerCertificate": "true",
        "hostnameVerifier": "allow_all"
    },
    "property": {
        "ttl": 90,
        "publish": true,
        "action": "monitor"
    }
}

headers = {
    'X-auth-access-token': 'access_token', ' [ ] Content-Type ': 'application/json'
}

response = requests. [ ] request ("POST", url,
    headers=headers, data = [ ] base_url )
print(response.text.encode('utf8'))
```

url	Encoding	base_url	Content-Type	post
request	payload			

NEW QUESTION 419

- (Exam Topic 3)

```

--- functions.py 2020-09-26 14:26:25.000000000 -0600
--- new.py 2020-09-26 14:26:10.000000000 -0600
@@ -21,7 +21,7 @@
def print_devices_info(devices):
    # Print id, hostname and management IP
    for item in devices:
-        print(item['id'], item['hostname'], item['managementIpAddress'])
-        print(item['id'], item['hostname'])

    # Get Authentication token
    def get_dnac_jwt_token():
@@ -66,9 +66,15 @@
    response = get_devices_list(headers, {})
    print_devices_info(response)

-    # print devices list filtered by hostname
-    print('\nPrinting device list filtered by hostname ...')
-    query_string_params = {'hostname': 'CSR1Kv-01.devnet.local'}
-    response = get_devices_list(headers, query_string_params)
-    print_devices_info(response)
-
-    # print devices list filtered by platform Id
-    print('\nPrinting device list filtered by platform id...')
-    query_string_params = {'platformId': 'C9500-40X'}
-    query_string_params = {'platformId': 'AIR-AP1141N-A-K9'}
    response = get_devices_list(headers, query_string_params)
    print_devices_info(response)

```

Refer to the exhibit. An engineer is comparing two files by using the unified diff format. Which code snippet belongs to the new.py file?

- A.

```
77 query_string_params = {'platformId':
'AIR-AP1141N-A-K9'}
```
- B.

```
21 print(item['id'], item['hostname'])
```
- C.

```
24 print(item['id'], item['hostname'],
item['managementIpAddress'])
```
- D.

```
66 # print devices list filtered by
hostname
67 print('\nPrinting device list
filtered by hostname ...')
68 query_string_params = {'hostname':
'CSR1Kv-01.devnet.local'}
69 response = get_devices_list
(headers, query_string_params)
70 print_devices_info(response)
```

Answer: A

NEW QUESTION 422

- (Exam Topic 3)

SDK Documentation:

OrganizationController:
 get_organizations()
 get_network_device(dict)

DevicesController:
 get_network_devices(id)

NetworksController:
 get_organization_networks(dict)

Refer to the exhibit. A script must output details of all the Cisco Meraki MS220-BP switches across all organizations and networks. Drag and drop the code snippets from the bottom onto the boxes in the code to complete the script. Not all options are used.


```
from meraki_sdk.meraki_sdk_client import MerakiSdkClient
from meraki_sdk.exceptions.api_exception import APIException

api_key = "API_KEY"
client = MerakiSdkClient(api_key)

for org in [ ]:
    try:
        options = {"organization id": org["id"]}
        networks = [ ]
        for network in networks:
            devices = [ ]
            for device in devices:
                if device["model"] == "MS220-8P":
                    options = {"network id": network["id"], "serial": device["serial"]}
                    output = [ ]
                    print(output)
            except APIException as e:
                pass
```

client.organizations.get_organizations() :

client.networks.get_organization_networks(api_key)

client.networks.get_organization_networks(options)

client.devices.get_network_devices(network ["id"])

client.devices.get_network_device(options=options)

client_devices.get_network_device(device ["model"])

- A. Mastered
B. Not Mastered

Answer: A

Explanation:

```
from meraki_sdk.meraki_sdk_client import MerakiSdkClient
from meraki_sdk.exceptions.api_exception import APIException

api_key = "API_KEY"
client = MerakiSdkClient(api_key)

for org in [ ]:
    try:
        options = {"organization id": org["id"]}
        networks = [ ]
        for network in networks:
            devices = [ ]
            for device in devices:
                if device["model"] == "MS220-8P":
                    options = {"network id": network["id"], "serial": device["serial"]}
                    output = [ ]
                    print(output)
            except APIException as e:
                pass
```

client.organizations.get_organizations() :

client.networks.get_organization_networks(api_key)

client.networks.get_organization_networks(options)

client.devices.get_network_devices(network ["id"])

client.devices.get_network_device(options=options)

client_devices.get_network_device(device ["model"])

NEW QUESTION 427

- (Exam Topic 3)

Which solution reduces costs from MPLS, improves application performance, and simplifies operations?

- A. Cisco NSO
B. Cisco SD-WAN
C. Cisco ACI
D. Cisco DNA Center

Answer: B

NEW QUESTION 432

- (Exam Topic 3)

Drag and drop the characteristics from the left onto the corresponding categories on the right to compare RESTful and RPC APIs.

Answer Area

stateless

session-based

must use HTTP

sometimes uses HTTP

RESTful

RPC

- A. Mastered
- B. Not Mastered

Answer: A

Explanation:

stateless

session-based

must use HTTP

sometimes uses HTTP

RESTful

stateless

sometimes uses HTTP

RPC

session-based

must use HTTP

NEW QUESTION 433

- (Exam Topic 3)

```
1- hosts: nxos_rtr
2- gather_facts: false
3- tasks:
4-   - nxos_hsrp:
5-       group: "{{ item.group }}"
6-       vip: "{{ item.vip }}"
7-       priority: 115
8-       interface: "{{ item.interface }}"
9-       preempt: enabled
10-      auth_type: md5
11-      auth_string: "s3cuR3"
12-      version: 2
13-      host: "{{ hostvars['rtr-1a']['ansible_ssh_host'] }}"
14-    with_items:
15-      - "{{ hsrp_groups }}"
16-    delegate_to: "{{ hostvars['srv-1a']['ansible_ssh_host'] }}"
```

Refer to the exhibit. An engineer runs a network that consists of Cisco Nexus devices. The network is distributed between data centers in different locations. The switches are configured using standalone connections and a single point of failure. Which process is being automated by the Ansible playbook?

- A. enabling HSRP on the nxos_rtr inventory host
- B. enabling HSRP on the rtr-1a inventory host
- C. executing HSRP configuration from the Ansible controller node
- D. executing HSRP configuration from the srv-1a inventory host

Answer: B

NEW QUESTION 438

- (Exam Topic 3)

```
1 URL: https://example.com/restconf/data/Cisco-IOS-XE-native:native/logging/monitor
2 Method: POST
3
4 Headers: {'Content-type': 'application/yang-data+json', 'Accept': 'application/yang-data+json,
* application/yang-data.errors+json'}
5
6 Body:
7
8 {
9   "severity": "alerts"
10 }
```

Refer to the exhibit. Which HTTP code is returned after the RESTCONF query is executed?

- A. 201
- B. 204
- C. 302
- D. 304

Answer: A

NEW QUESTION 439

- (Exam Topic 3)

A developer attempts to refactor and improve the application code. It is noticed that the code contains several pieces of key information that could be a security threat if this code is accessible by those who are not authorized to this data. Which approach addresses the security concerns noticed by the developer?

- A. Host the application code on a machine located in a secure data center.
- B. Utilize environment variables for username and password details.
- C. Rely on the security teams' goodwill to not give access to those who do not need it.
- D. Move the hardware that the application is deployed on to a secure location.

Answer: B

NEW QUESTION 441

- (Exam Topic 3)

Refer to the exhibit.

HTTP Request

```
curl http://hello-api.info -v
```

HTTP Response

```
* Trying hello-app.info...
* TCP_NODELAY set
* Connected to hello-app.info (hello-app.info) port 80 (#0)
> GET / HTTP/1.1
> Host:hello-app.info
> User-Agent: curl/7.64.1
> Accept: */*
>

< HTTP/1.1 502 Bad Gateway
< Server: nginx/1.14.0 (Ubuntu)
< Date: Sat, 21 Nov 2020 11:09:54 GMT
< Content-Type: text/html
< Content-Length: 182
< Connection: keep-alive
```

A developer cannot reach the web application behind an NGINX load balancer. The developer sends a request to an application FQDN with cURL but gets an HTTP 502 response. Which action solves the problem?

- A. Fix errors in the server configuration, which is behind the load balancer.
- B. Bring up the load balancer to the active state.
- C. Fix errors in the cURL request sent by the client.
- D. Change the default gateway on the load balancer to an active one.

Answer: A

Explanation:

The HyperText Transfer Protocol (HTTP) 502 Bad Gateway server error response code indicates that the server, while acting as a gateway or proxy, received an invalid response from the upstream server.

<https://developer.mozilla.org/en-US/docs/Web/HTTP/Status/502#:~:text=The%20HyperText%20Transfer%20P>

NEW QUESTION 445

- (Exam Topic 3)

What is a function of the default gateway in a network?

- A. to drop traffic that is destined to the default gateway
- B. to forward traffic to different subnets
- C. to forward traffic to the same subnet
- D. to drop traffic that is not destined to the default gateway

Answer: B

NEW QUESTION 450

- (Exam Topic 3)

A developer creates a new application, but the application must be tested before being released to a customer. When a mobile phone that uses 4G is used to access the application, the request fails. Why does the connection to the application fail?

- A. The application is hosted on premises and VPN connectivity is required
- B. The application must be added to the production server before testing.
- C. The application must be moved to the cloud before testing is possible.
- D. The application connectivity is limited to HTTPS protocol.

Answer: A

NEW QUESTION 454

- (Exam Topic 3)

Refer to the exhibit.

```
git clone git://git.kernel.org/.../git.git my.git
cd my.git
git branch -d -r origin/todo origin/html origin/man    (1)
git branch -D test                                     (2)
```

What does the command marked (2) do when it is run?

- A. It duplicates the test" branch.
- B. It deletes the "test" branch only if a new branch is created.
- C. It deletes the "test" branch.
- D. It does not delete the branch until it is merged.

Answer: C

NEW QUESTION 455

- (Exam Topic 3)

A development team is creating an application used for contactless payments. The application must: Be web-based Capture and process the credit card information for a purchase.

Which security action must the web application use to gather and process the private customer data?

- A. Enable RATs to monitor the web application remotely.
- B. Disable botnets to eliminate risks.
- C. Disable TLS to increase the connection speed.
- D. Enable the encryption of network traffic.

Answer: D

NEW QUESTION 459

- (Exam Topic 3)

```
import requests
def main():
    def getCreds():
        user = input('User: ')
        pwd = Getpass('Pass: ')
        return (user,pwd)

    def login(ipaddr,user,pwd):
        url = "https://{ipaddr}/api/aaaLogin.json".format(ipaddr=ipaddr)
        data = '{"aaaUser":{"attributes":{"name":"%(user)s","pwd":"%(pwd)s"}}}'
        + '{"pwd":pwd,"user":user}'
        response = requests.post(url,data=data,verify=False)
        cookie = response.headers['Set-Cookie']
        return cookie

    def getstuff(ipaddr,cookie):
        headers = {"Cookie":cookie}
        url = "https://{ipaddr}/api/node/class/fvTenant.json".format(ipaddr=ipaddr)
        response = requests.get(url,headers=headers,verify=False)
        grouplist = []
        for x in response.json()["imdata"]:
            grouplist.append(x["fvTenant"]["attributes"]["name"])
        return ','.join(grouplist)

    ipaddr = "192.168.255.2"
    user,pwd = getCreds()
    token = login(ipaddr,user,pwd)
    return getstuff(ipaddr,cookie)

if __name__ == '__main__':
    result = main()
    print(result)
```

Refer to the exhibit. Which action does the script perform?

- A. It queries user credentials from Cisco IOS XE devices.
- B. It retrieves device identification from Cisco DNA Center.
- C. It exports SSID information from Meraki dashboard.
- D. It collects group information from ACI.

Answer: D

NEW QUESTION 464

- (Exam Topic 3)

Which tool provides a testing environment to run tests on network devices and perform network automation scenarios?

- A. Visual Studio Code
- B. Cisco VIRL
- C. pyATS
- D. Cisco Packet Tracer

Answer: B

NEW QUESTION 469

- (Exam Topic 3)

What are two benefits of using classes over functions when writing applications? (Choose two.)

- A. improved readability
- B. increased compatibility
- C. variable reusability
- D. increased performance
- E. code organization

Answer: AC

NEW QUESTION 473

- (Exam Topic 3)

Object Lookup

Use the `MoDirectory.lookupByDn` to look up an object within the MIT object tree by its distinguished name (DN). This example looks for an object called 'uni':

```
uniMo = moDir.lookupByDn('uni')
```

A successful lookup operation returns a reference to the object that has the specified DN.

You can also look up an object by class. This example returns a list of all objects of the class 'polUni':

```
uniMo = moDir.lookupByClass('polUni')
```

You can add a filter to a lookup to find specific objects. This example returns an object of class 'fvTenant' whose name is 'Tenant1':

```
tenant1Mo = moDir.lookupByClass("fvTenant", propFilter='and(eq(fvTenant.name, "Tenant1"))')
```

Refer to the exhibit. Drag and drop the code from the bottom onto the box where the code is missing to add a subnet to each bridge domain in the Ten1 tenant. Not all options are used.

```
from cobra.model import fv
from cobra.mit.request import ClassQuery, DnQuery
import cobra.mit.access
import cobra.mit.session

tenname = "Ten1"
ls = cobra.mit.session.LoginSession(
    'https://10.100.1.200', "admin", "Lab123!3")

aci = cobra.mit.access.MoDirectory(ls)
aci.login()
c = cobra.mit.request.ConfigRequest()

qry1 =  (f'uni/tn-{tenname}')
fvTenant = aci.query(qry1)[0]

qry2 =  ("fvBD")
qry2.propFilter = f'and(wcard(fvBD.dn, "{fvTenant.dn}")'
fvBDs = aci.query(qry2)

i=0
for fvBD in fvBDs:
    fvsubnet = cobra.model.fv.Subnet(  , ip=f'10.114.{i}.1/24')
    c.addMo(fvBD)
    aci.  (c)
    i+=
```

fvBD

fvTenant

ClassQuery

bdname

DnQuery

ClassName

commit

- A. Mastered
- B. Not Mastered

Answer: A

Explanation:

```
from cobra.model import fv
from cobra.mit.request import ClassQuery, DnQuery
import cobra.mit.access
import cobra.mit.session

tenname = "Ten1"
ls = cobra.mit.session.LoginSession(
    'https://10.100.1.200', "admin", "Lab123!3")

aci = cobra.mit.access.MoDirectory(ls)
aci.login()
c = cobra.mit.request.ConfigRequest()

qry1 = DnQuery (f'uni/tn-{tenname}')
fvTenant = aci.query(qry1)[0]

qry2 = ClassQuery ("fvBD")
qry2.propFilter = f'and(wcard(fvBD.dn,"{fvTenant.dn}"))'
fvBDs = aci.query(qry2)

i=0
for fvBD in fvBDs:
    fvsubnet = cobra.model.fv.Subnet( fvBD , ip=f'10.114.{i}.1/24')
    c.addMo(fvBD)
    aci.commit (c)
    i+=1
```

fvBD

fvTenant

ClassQuery

bdname

DnQuery

ClassName

commit

NEW QUESTION 476

- (Exam Topic 3)

```
#!/bin/bash
apt-get update
apt-get -y install git
cd Code/Network_Config
mkdir PRODUCTION
cd PRODUCTION
touch state.yml
vi state.yml
```

Refer to the exhibit. A network engineer executes the bash script shown. Which two things are achieved by running the script? (Choose two.)

- A. A directory called PRODUCTION is created.
- B. The engineer changes to the parent directory.
- C. A YAML file is created.
- D. A YAML file is removed.
- E. A directory called state.yml is created.

Answer: AC

NEW QUESTION 477

- (Exam Topic 2)

Which Cisco product provides malware and content filtering through DNS?

- A. Cisco ASA Firepower module
- B. Cisco AMP
- C. Cisco ISE
- D. Cisco Umbrella

Answer: D

NEW QUESTION 482

- (Exam Topic 2)

What is a benefit of using functions in the code for the development process?

- A. better user experience in the end product
- B. improves code performance
- C. easier to compile the code
- D. faster code development

Answer: D

Explanation:

<https://www.techwalla.com/articles/the-advantages-disadvantages-of-using-functions-procedures-in-computer-p>

NEW QUESTION 487

- (Exam Topic 2)

What is the main purpose of a code review?

- A. To provide the technical lead visibility into all code
- B. To identify and review errors with the team
- C. To ensure that all code is checked in simultaneously
- D. To detect logical errors

Answer: B

NEW QUESTION 490

- (Exam Topic 2)

In test-driven development, what are two of the green bar patterns? (Choose two.)

- A. another test
- B. break
- C. triangulate
- D. starter test
- E. fake it

Answer: CE

Explanation:

<https://blog.baudson.de/blog/test-driven-development-green-bar-patterns>

NEW QUESTION 495

- (Exam Topic 2)

Refer to the exhibit.

```
API Documentation:

Integrations are how you request permission to invoke the Webex REST API on behalf of another Webex Teams user. To do this in a secure way the API supports the OAuth 2 standard which allows third-party integrations to get a temporary access token for authenticating API calls instead of asking users for their password

Script:
01 import requests
02
03 base_url = "https://webexapis.com/v1"
04 header = {"Key": "Value"}
05
06 url = "{}{}".format(base_url, "/teams")
07 print(requests.get(url, headers=header).status_code)
```

A developer creates a Python script that queries Cisco Webex. When the script is executed, a 401 code is returned. After troubleshooting, the developer discovers that the service is missing privileges. Which change to the header in line 4 of the script results in the code 200?

A)

```
header = {"Authentication": "Bearer YOUR_TOKEN"}
```

B)

```
header = {"Authentication Bearer" : "YOUR_TOKEN"}
```

C)

```
header = {"Authorization" : "Bearer YOUR_TOKEN"}
```

D)

```
header = {"Authorization Bearer" : "YOUR_TOKEN"}
```

- A. Option A
- B. Option B
- C. Option C
- D. Option D

Answer: C

NEW QUESTION 496

- (Exam Topic 2)

What is a benefit of using edge computing in an IoT implementation?

- A. low cost in network design
- B. low network design complexity
- C. high availability for network components
- D. high speed in data processing

Answer: D

NEW QUESTION 497

- (Exam Topic 2)

Drag and drop the code snippets from the bottom to the blanks in the code to test the API response through the Python unittest library. Not all options are used.

```
import unittest
import json
from apidogs import app

class TestsAPIDogs(unittest.TestCase):

    def setUp(self):
        self.app = app.test_client()

    # Check status response of API
    def test_status(self):
        resp =self.app.get('/dogs/all')
        status_code = response.
        self.assertEqual(status_code, )

    # Check for content type is in application/json
    def test_content_type(self):
        resp =self.app.get('/dogs/all')
        self.assertEqual(resp. , 'application/json')

    def test_item_not_exist(self):
        resp =self.app.get('/dogs?id= ')
        self.assertEqual(response.status code,404)
```

none	content	
status_code	200	content_type
403	status	

- A. Mastered
B. Not Mastered

Answer: A

Explanation:

Graphical user interface, text Description automatically generated

NEW QUESTION 500

- (Exam Topic 2)

What is a capability of an agentless configuration management system?

- A. It requires managed hosts to have an interpreter for a high-level language such as Python or Ruby.
B. It requires managed hosts to connect to a centralized host to receive updated configurations.
C. It uses compiled languages as the basis of the domain-specific language to interface with managed hosts.
D. It uses existing protocols to interface with the managed host.

Answer: D

NEW QUESTION 504

- (Exam Topic 3)

Developer is working on a new feature and made changes on a branch named 'branch-413667549a-new'. When merging the branch to production, conflicts occurred. Which Git command must the developer use to recreate the pre-merge state?

- A. git merge -no-edit
B. git merge -commit
C. git merge -revert
D. git merge -abort

Answer: D

Explanation:

<https://www.git-tower.com/learn/git/ebook/en/command-line/advanced-topics/merge-conflicts>

NEW QUESTION 509

- (Exam Topic 3)

Which IP service is used to monitor the performance of network devices?

- A. SNMP
B. DHCP
C. DNS

D. NTP

Answer: A

NEW QUESTION 512

- (Exam Topic 3)

What is a comparison of YAML and JSON?

- A. YAML has a more consistent approach to representing data compared to JSON.
- B. JSON does not support comments and YAML does.
- C. YAML is a more verbose data structure compared to JSON.
- D. JSON has more common usage in configuration management tools compared to YAML.

Answer: B

Explanation:

Reference: <https://stackoverflow.com/questions/244777/can-comments-be-used-in-json>

Can I use comments in JSON? No, JSON is a data-only format. Comments in the form `//`, `#`, or `/* */`, which are used in popular programming languages, are not allowed in JSON. You can add comments to JSON as custom JSON elements that will hold your comments, but these elements will still be data.

NEW QUESTION 514

- (Exam Topic 3)

Which Cisco platform is used to manage data center infrastructure through third-party tools and system integrations?

- A. Cisco DNA Center
- B. Cisco UCS Manager
- C. Cisco Intersight
- D. Cisco UCS Director

Answer: D

NEW QUESTION 517

- (Exam Topic 3)

A developer has addressed a bug that was found in the production code of an application. A separate file named 'bug427896191v_fix' has been created with the changes to the code. Which Git command must be used to incorporate the bug fix into the production code?

- A. git rebase
- B. git cat-file
- C. git merge-file
- D. git bisert

Answer: C

NEW QUESTION 518

- (Exam Topic 3)

Which two commands download and execute an Apache web server container in Docker with a port binding 8080 in the container to 80 on the host? (Choose two.)

- A. docker pull apache
- B. docker run -p 8080:80 httpd
- C. docker run -p 80:8080 httpd
- D. docker pull httpd
- E. docker pull https

Answer: CD

NEW QUESTION 519

- (Exam Topic 3)

A customer's cloud services must:

Migrate services to another data center on demand. Save the operational state of the machine on demand. Support Windows and Linux GUIs.

Maximize hardware utilization.

Which type of deployment meets these requirements?

- A. bare metal
- B. container
- C. virtual machine
- D. Kubernetes

Answer: C

NEW QUESTION 520

- (Exam Topic 3)

A developer is working on a new feature in a branch named 'newfeat123456789' and the current working primary branch is named 'prim987654321'. The developer requires a merge commit during a fast forward merge for record-keeping purposes. Which Git command must be used?

- A. git merge --no-ff newfeat123456789

- B. git commit --no-ff newfeat123456789
- C. git add --commit-ff newfeat123456789
- D. git reset --commit-ff newfeat123456789

Answer: A

NEW QUESTION 524

- (Exam Topic 3)

```
FROM myImage
VOLUME ["/data"]
ENTRYPOINT ["/bin/sh"]
```

Refer to the exhibit. Drag and drop the actions from the left that the contents of this Dockerfile accomplish onto the right. Not all options are used.

Inject the image myImage.	step 1
Pull the image myImage.	step 2
Execute the "data" script under "/bin/sh".	step 3
Establish a volume whose root is "/data".	
Put the user in a shell inside the container.	

- A. Mastered
- B. Not Mastered

Answer: A

Explanation:

Inject the image myImage.	Pull the image myImage.
Pull the image myImage.	Establish a volume whose root is "/data".
Execute the "data" script under "/bin/sh".	Put the user in a shell inside the container.
Establish a volume whose root is "/data".	
Put the user in a shell inside the container.	

NEW QUESTION 525

- (Exam Topic 3)

To which stage of development do Infrastructure as Code principles relate?

- A. manual configuration
- B. service provisioning
- C. physical deployment
- D. requirement collection

Answer: B

NEW QUESTION 527

- (Exam Topic 3)

A developer is developing a web application that uses username and password to authenticate to the next service. The user credentials must be available at any time in the application. The developer must choose and implement a secure method of storing the authentication credentials that are used in the automation code. Which password handling method must be used to minimize the security risk?

- A. Store the username and password in a separate configuration file.
- B. Store the username and password in a vault.

- C. Store the passwords in a dictionary.
- D. Store the username and password in code.

Answer: B

NEW QUESTION 529

- (Exam Topic 3)

Refer to the exhibit.

```
workstation:Network admin$ ls
PROD TEST
workstation:Network admin$ ls ./TEST
config.txt
workstation:Network admin$
```

A network engineer must copy the “config.txt” file from directory TEST to directory PROD. The copied file must also be renamed into “current.txt”. Which command must be used to accomplish these tasks?

- A. cp ./PROD/current.txt ./TEST/config.txt
- B. cp ./TESTi/current.txt ./PROD/config.txt
- C. cp ./PROD/config.txt ./TEST/current.txt
- D. cp ./TEST/config.txt ./PROD/current.txt

Answer: D

NEW QUESTION 533

- (Exam Topic 3)

What is a benefit of using a code review process in application development?

- A. accelerates the deployment of new features in an existing application
- B. provides version control during code development
- C. enables the quick deployment of new code
- D. eliminates common mistakes during development

Answer: D

NEW QUESTION 534

- (Exam Topic 3)

Which Python function is used to parse a string that contains JSON data into a Python dictionary?

- A. json.dumps()
- B. json.to_json()
- C. json.parse()
- D. json.loads()

Answer: D

Explanation:

loads() function is present in python built-in 'json' module. This function is used to parse the JSON string.

NEW QUESTION 535

- (Exam Topic 3)

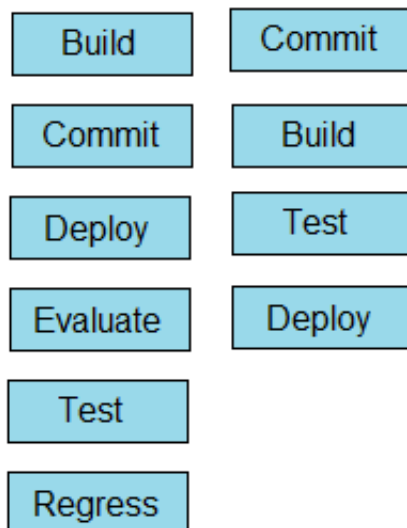
Drag and drop the steps from the left into order on the right to create a common CI/CD pipeline process. Not all options are used.

Build	step 1
Commit	step 2
Deploy	step 3
Evaluate	step 4
Test	
Regress	

- A. Mastered
- B. Not Mastered

Answer: A

Explanation:



NEW QUESTION 538

- (Exam Topic 3)

```

1 import requests
2 from requests.auth import HTTPBasicAuth
3 BASE_URL = 'https://<IP ADDRESS or FQDN>'
4 AUTH_URL = '/dna/system/api/v1/auth/token'
5 TOKEN = '<TOKEN>'
6
7 headers = {'X-Auth-Token': TOKEN, 'Content-Type': 'application/json'}
8
9 DEVICES_COUNT_URL = '/dna/intent/api/v1/network-device/count'
10 DEVICES_URL = '/dna/intent/api/v1/network-device'
11 DEVICES_BY_ID_URL = '/dna/intent/api/v1/network-device/'
12
13 def devices_func(headers):
14     response = requests.get(BASE_URL + DEVICES_COUNT_URL,
15                             headers = headers, verify=False)
16     return response.json()['response']
17
18 def devices_test(headers, query_string_params):
19     response = requests.get(BASE_URL + DEVICES_URL, headers = headers,
20                             params = query_string_params, verify=False)
21     return response.json()['response']
22
23 def devices_info(headers, device_id):
24     response = requests.get(BASE_URL + DEVICES_BY_ID_URL + device_id,
25                             headers = headers, verify=False)
26     return response.json()['response']
27
28 print(devices_func(headers))
29 print(devices_test(headers, {}))
30 print(devices_test(headers, {'hostname': 'CSR1Kv-01.devnet.local'}))
31 response = devices_test(headers, {'platformId': 'C9500-40X'})
32 print(devices_info(headers, response[0]['id']))

```

Refer to the exhibit. An engineer prepares a script to automate workflow by using Cisco DNA Center APIs to display:
total count of devices

list of the network devices

information of one device with a hostname filter

What is displayed in the final step after the Python script is executed?

- A. information about a device of type C9500-40x.
- B. filtered results by the hostname and the platformId C9500-40X
- C. information about the test devices
- D. list of devices with platformId C9500-40x

Answer: B

NEW QUESTION 541

- (Exam Topic 3)

A company wants to automate the orders processed on its website using API. The network device that supports the solution must:

- support XML encoding
- support distributed transactions
- support YANG data models
- be support software redundancy

Which requirement prevents the use of RESTCONF for the solution?

- A. software redundancy
- B. YANG data models
- C. distributed transactions
- D. XML encoding

Answer: C

NEW QUESTION 544

- (Exam Topic 3)

Which standard supported by Cisco IOS XE and Cisco NX-OS is used for automating the configuration of multiple devices across a network?

- A. SNMP – YANG
- B. SYSLOG – YANG
- C. CLI – YANG
- D. NETCONF – YANG

Answer: D

NEW QUESTION 549

- (Exam Topic 3)

What is a benefit of a CI/CD pipeline for infrastructure?

- A. removes manual errors
- B. enables manual steps
- C. removes the need for operations
- D. provides variety for deployments

Answer: A

NEW QUESTION 551

- (Exam Topic 3)

A developer plans to deploy a new application that will use an API to implement automated data collection from Webex with these requirements:

The application was created by using the request library. Requires HTTP basic authentication.

Provides data in JSON or XML formats.

Which Cisco DevNet resource helps the developer with how to use the API?

- A. DevNet sandbox
- B. API documentation
- C. forums
- D. DevNet code exchange

Answer: B

NEW QUESTION 556

- (Exam Topic 3)

Which protocol is used for clock synchronization between network devices?

- A. FTP
- B. NNTP
- C. BGP
- D. NTP

Answer: D

Explanation:

Network Time Protocol (NTP) is an internet protocol used to synchronize with computer clock time sources in a network. It belongs to and is one of the oldest parts of the TCP/IP suite. The term NTP applies to both the protocol and the client-server programs that run on computers.

NEW QUESTION 558

- (Exam Topic 3)

What is a feature of XML compared to other data formats?

- A. It uses tags to define the structure.
- B. It uses parenthesis for key-value pairs.
- C. It uses indentation to define the structure.
- D. It uses namespaces for list representation.

Answer: A

NEW QUESTION 563

- (Exam Topic 3)

Which traffic is handled on the control plane?

- A. BGP
- B. SMB
- C. NTP
- D. NETCONF

Answer: A

NEW QUESTION 567

- (Exam Topic 3)

An engineer must configure Cisco Nexus devices and wants to automate this workflow. The engineer will use an Ansible playbook to configure devices through Cisco NX REST API. Before the code is run, which resource must be used to verify that the REST API requests work as expected?

- A. Cisco Open NX-OS
- B. Cisco NX-OS SDK
- C. Cisco Learning Labs
- D. Cisco Code Exchange for Nexus

Answer: C

NEW QUESTION 572

- (Exam Topic 3)

Which OWASP threat occurs when untrusted data is supplied as input to an interpreter as part of a command or query?

- A. broken authentication
- B. data exposure
- C. injection
- D. cross-site scripting

Answer: C

NEW QUESTION 575

- (Exam Topic 3)

Which two details are captured from the subnet mask? (Choose two.)

- A. portion of an IP address that refers to the subnet
- B. default gateway of the host
- C. unique number ID assigned to the host
- D. part of an IP address that refers to the host
- E. network connection of a host or interface

Answer: AD

NEW QUESTION 577

- (Exam Topic 3)

An engineer needs to retrieve a list of locally available Firepower Threat Defense upgrade packages by using the Firepower Management Center REST API. The engineer uses a GET request with the URL:

/api/fmc_platform/v1/updates/upgradepackages/f413afeb-e6f6-75f4-9169-6d9bd49s625e

What does “f413afeb-e6f6-75f4-9169-6d9bd49s625e” represent?

- A. container UUID
- B. package UUID
- C. domain UUID
- D. object UUID

Answer: B

Explanation:

"GET upgradepackages Request Type: GET

Description: Retrieves a list of locally available Firepower Threat Defense upgrade packages, including major upgrades, maintenances release upgrades, and hotfixes.

URL: /api/fmc_platform/v1/updates/upgradepackages

URL for GET by ID: /api/fmc_platform/v1/updates/upgradepackages/{package_UUID}" Source:

https://www.cisco.com/c/en/us/td/docs/security/firepower/640/api/REST/Firepower_Management_Center_RES

NEW QUESTION 579

- (Exam Topic 3)

An engineer needs to collect information about 20,000 Bluetooth clients using the Cisco Meraki API. The API returns only 1,000 results. One of the HTTP response headers has the data:

Link: [https://api.meraki.com/info/api/v0/networks/ABC/bluetoothClients?perPage=1000&startingAfter=1000>;rel="n](https://api.meraki.com/info/api/v0/networks/ABC/bluetoothClients?perPage=1000&startingAfter=1000>;rel=)

Which RFC is implemented by the API to apply the restriction?

- A. RFC 5988 – Web Linking
- B. RFC 5890 – Response Constraints
- C. RFC 5005 – Feed Paging and Archiving
- D. RFC 5446 – Content Limits

Answer: C

NEW QUESTION 581

- (Exam Topic 3)

Which protocol runs over TCP port 830?

- A. NETCONF
- B. Telnet
- C. RESTCONF

D. HTTP

Answer: A

NEW QUESTION 584

- (Exam Topic 3)

Which HTTP error code series relates to redirection?

- A. 400
- B. 500
- C. 200
- D. 300

Answer: D

Explanation:

1xx - Informational: The server has received the request and is continuing the process

2xx - Successful: The request was successful and the browser has received the expected information 3xx (Redirection): You have been redirected and the completion of the request requires further action

4xx (Client Error): The website or the page could not be reached, either the page is unavailable or the request contains bad syntax

5xx (Server Error): While the request appears to be valid, the server could not complete the request

NEW QUESTION 587

- (Exam Topic 3)

What is the purpose of grouping devices in a VLAN?

- A. Devices communicate as if they are connected on the same wire.
- B. Multicast network traffic is limited to the VLAN connected devices.
- C. Unicast messages are limited to the clients connected on the same VLAN.
- D. Network traffic is load balanced between the devices connected to the VLAN.

Answer: B

NEW QUESTION 592

- (Exam Topic 3)

An engineer deploys a Cisco CSR 1000 V instance to a virtual machine. The engineer must output the device configuration in JSON format. Which protocol is used for this task?

- A. YANG
- B. NETCONF
- C. SNMP
- D. RESTCONF

Answer: D

NEW QUESTION 593

- (Exam Topic 3)

Refer to the exhibit. Drag and drop the code snippets from the bottom onto the blanks in the Python script to retrieve a list of network devices from Cisco DNA Center. Not all options are used.

```
import requests
import json
from urllib3.exceptions import InsecureRequestWarning

requests.packages.urllib3.disable_warnings()

dna_center_url = "My_DNA_Center_URL"
authentication = ("dnacenteruser", "dnacenter_password")

def get_token():
    url = "https:// " + dna_center_url + "/dna/system/api/v1/auth/token"
    response = requests.post(url, auth=authentication, verify=False)
    token = response.json()['Token']
    return token

def get_device_list():
    token = 
    url = "https:// " + dna_center_url + "dna/intent/api/v1/" + 
    header = {  : token, 'content-type' : 'application/json' }
    response = requests.get(url, headers=header)
    device_list = 
    print(json.dumps(device_list, indent=4))

if __name__ == "__main__":
    get_device_list()
```

get_token()

network-device

x-auth-token

response.json()

response.xml

Authorization

- A. Mastered
 B. Not Mastered

Answer: A

Explanation:

```
import requests
import json
from urllib3.exceptions import InsecureRequestWarning

requests.packages.urllib3.disable_warnings()

dna_center_url = "My_DNA_Center_URL"
authentication = ("dnacenteruser", "dnacenter_password")

def get_token():
    url = "https:// " + dna_center_url + "/dna/system/api/v1/auth/token"
    response = requests.post(url, auth=authentication, verify=False)
    token = response.json()['Token']
    return token

def get_device_list():
    token = get_token()
    url = "https:// " + dna_center_url + "dna/intent/api/v1/network-device"
    header = {'x-auth-token': token, 'content-type': 'application/json'}
    response = requests.get(url, headers=header)
    device_list = response.json()
    print(json.dumps(device_list, indent=4))

if __name__ == "__main__":
    get_device_list()
```

get_token()

network-device

x-auth-token

response.json()

response.xml

Authorization

NEW QUESTION 595

- (Exam Topic 3)

POST

/v1/meetings

Body Parameters

title

string Required

Meeting title. The title can be a maximum of 128 characters long.

agenda

string

Meeting agenda. The agenda can be a maximum of 2500 characters long.

password

string

Meeting password. Must conform to the site's password complexity settings. Read [password management](#) for details. If not specified, a random password conforming to the site's password rules will be generated automatically.

start

string Required

Date and time for the start of meeting in any [ISO 8601](#) compliant format. start cannot be before current date and time or after end. Duration between start and end cannot be shorter than 10 minutes or longer than 24 hours.

end

string Required

Date and time for the end of meeting in any [ISO 8601](#) compliant format. end cannot be before current date and time or before start. Duration between start and end cannot be shorter than 10 minutes or longer than 24 hours.

Refer to the exhibit. A bespoke meeting booking system must be integrated with Cisco Webex so that meetings are created automatically. Drag and drop the code from the bottom onto the box where the code is missing to create a sample meeting. Not all options

are used.

```
import requests, json

[ ] = 'eyJhbGc ... yJbN8'

headers = {
    'Authorization': f'Bearer {token}',
    'Content-Type': 'application/json'
}

payload = {
    "title": "DevNet Webex Discussion",
    "password": "AGrtgl234",
    "start": "2020-11-10T15:00:00Z",
    "end": "2020-11-10T17:00:00Z",
    "enabledAutoRecordMeeting": False,
    "allowAnyUserToBeCoHost": False
}

response = requests.request(" [ ] ", f'{BASE_URL}/ [ ] ',
    headers=headers, data=json.dumps( [ ] ))
print(response.text.encode('utf8'))
```

payload

PUT

token

vl/meeting

vl/meetings

POST

- A. Mastered
- B. Not Mastered

Answer: A

Explanation:

```
import requests, json

token = 'eyJhbGc ... yJbN8'

headers = {
    'Authorization': f'Bearer {token}',
    'Content-Type': 'application/json'
}

payload = {
    "title": "DevNet Webex Discussion",
    "password": "AGrtgl234",
    "start": "2020-11-10T15:00:00Z",
    "end": "2020-11-10T17:00:00Z",
    "enabledAutoRecordMeeting": False,
    "allowAnyUserToBeCoHost": False
}

response = requests.request(" POST ", f'{BASE_URL}/ vl/meetings ',
    headers=headers, data=json.dumps( payload ))
print(response.text.encode('utf8'))
```

payload

PUT

token

vl/meeting

vl/meetings

POST

NEW QUESTION 599

- (Exam Topic 3)

A company requires a new platform to store large volumes of log data that is generated in their assembly plant. The platform must be scalable, so the underlying technology must provide a path for fast deployment of new nodes for data and indexing? The data contains sensitive information, so specialist encryption tools must be used to secure the data. Which application deployment model meets the requirements?

- A. edge
- B. private cloud
- C. public cloud
- D. hybrid cloud

Answer: D

Explanation:

A hybrid cloud combines the benefits of both a private cloud, which offers the ability to store sensitive data in a secure, dedicated environment, and a public cloud, which offers the ability to scale quickly and easily by deploying new nodes as needed. With a hybrid cloud deployment, you could use specialist encryption tools to secure the sensitive data in the private cloud, and then take advantage of the scalability and flexibility of the public cloud to handle the large volumes of log data.

NEW QUESTION 601

.....

Relate Links

100% Pass Your 200-901 Exam with ExamBible Prep Materials

<https://www.exambible.com/200-901-exam/>

Contact us

We are proud of our high-quality customer service, which serves you around the clock 24/7.

Viste - <https://www.exambible.com/>