

Microsoft

Exam Questions AZ-800

Administering Windows Server Hybrid Core Infrastructure



NEW QUESTION 1

SIMULATION - (Topic 4)

Task 9

You plan to create group managed service accounts (gMSAs).

You need to configure the domain to support the creation of gMSAs.

- A. Mastered
- B. Not Mastered

Answer: A

Explanation:

To configure the domain to support the creation of gMSAs, you need to perform the following steps:

? On a domain controller or a computer that has the Remote Server Administration

Tools (RSAT) installed, open PowerShell as an administrator and run the following command to install the Active Directory module:

Install-WindowsFeature -Name RSAT-AD-PowerShell

? Run the following command to create a Key Distribution Service (KDS) root key, which is required for generating passwords for gMSAs. You only need to do this once per domain:

Add-KdsRootKey -EffectiveImmediately

? Wait for at least 10 hours for the KDS root key to replicate to all domain controllers in the domain. Alternatively, you can use the -EffectiveTime parameter to specify a past date and time for the KDS root key, but this is not recommended for security reasons. For more information, see Add-KdsRootKey.

? After the KDS root key is replicated, you can create and configure gMSAs using

the New-ADServiceAccount and Set-ADServiceAccount cmdlets. For more information, see Create a gMSA and Configure a gMSA.

NEW QUESTION 2

SIMULATION - (Topic 4)

Task2

You need to ensure that the Azure file share named share1 can sync to on-premises servers.

The required source files are located in a folder named \\dc1.contoso.com\install. You do NOT need to specify the on-premises servers at this time.

- A. Mastered
- B. Not Mastered

Answer: A

Explanation:

One possible solution to ensure that the Azure file share named share1 can sync to on-premises servers is to use Azure File Sync. Azure File Sync allows you to centralize your file shares in Azure Files without giving up the flexibility, performance, and compatibility of an on-premises file server. It does this by transforming your Windows Servers into a quick cache of your Azure file share. You can use any protocol available on Windows Server to access your data locally (including SMB, NFS, and FTPS) and you can have as many caches as you need across the world1.

Here are the steps to configure Azure File Sync for the Azure file share named share1 and the source files located in a folder named \\dc1.contoso.com\install:

? On the Azure portal, create a Storage Sync Service in the same region as your storage account that contains the Azure file share named share1. For more information on how to create a Storage Sync Service, see How to deploy Azure File Sync.

? On the on-premises server that hosts the folder named \\dc1.contoso.com\install, install the Azure File Sync agent. For more information on how to install the Azure File Sync agent, see Install the Azure File Sync agent.

? On the on-premises server, register the server with the Storage Sync Service that you created in the first step. For more information on how to register a server with a Storage Sync Service, see Register/unregister a server with Storage Sync Service.

? On the Azure portal, create a sync group that defines the sync topology for a set of files. In the sync group, select the Azure file share named share1 as the cloud endpoint and the folder named \\dc1.contoso.com\install as the server endpoint.

For more information on how to create a sync group, see Create a sync group and a cloud endpoint and Create a server endpoint.

? Wait for the initial sync to complete. You can monitor the sync progress on the Azure portal or on the on-premises server. For more information on how to monitor sync progress, see [Monitor sync progress].

Once the initial sync is complete, you can add more on-premises servers to the same sync group to sync and cache the content locally. You can also enable cloud tiering to optimize the storage space on the on-premises servers by tiering infrequently accessed or older files to Azure Files.

NEW QUESTION 3

SIMULATION - (Topic 4)

Task 12

You need to create a Group Policy Object (GPO) named GPO1 that only applies to a group named MemberServers.

- A. Mastered
- B. Not Mastered

Answer: A

Explanation:

To create a GPO named GPO1 that only applies to a group named MemberServers, you can follow these steps:

? On a domain controller or a computer that has the Remote Server Administration Tools (RSAT) installed, open Group Policy Management from the Administrative Tools menu or by typing gpmc.msc in the Run box.

? In the left pane, expand your domain and right-click on Group Policy Objects.

Select New to create a new GPO.

? In the New GPO dialog box, enter GPO1 as the Name of the new GPO and click OK. You can also optionally select a source GPO to copy the settings from.

? Right-click on the new GPO and select Edit to open the Group Policy Management Editor. Here, you can configure the settings that you want to apply to the group

under the Computer Configuration and User Configuration nodes. For more information on how to edit a GPO, see Edit a Group Policy Object.

? Close the Group Policy Management Editor and return to the Group Policy Management console. Right-click on the new GPO and select Scope. Here, you can specify the scope of management for the GPO, such as the links, security filtering, and WMI filtering.

? Under the Security Filtering section, click on Authenticated Users and then click on Remove. This will remove the default permission granted to all authenticated users and computers to apply the GPO.

? Click on Add and then type the name of the group that you want to apply the GPO to, such as MemberServers. Click OK to add the group to the security filter. You can also click on Advanced to browse the list of groups available in the domain.

? Optionally, you can also configure the WMI Filtering section to further filter the GPO based on the Windows Management Instrumentation (WMI) queries. For more information on how to use WMI filtering, see Filter the scope of a GPO by using WMI filters.

? To link the GPO to an organizational unit (OU) or a domain, right-click on the OU or the domain in the left pane and select Link an Existing GPO. Select the GPO that you created, such as GPO1, and click OK. You can also change the order of preference by using the Move Up and Move Down buttons.

? Wait for the changes to replicate to other domain controllers. You can also force the update of the GPO by using the gpupdate /force command on the domain controller or the client computers. For more information on how to update a GPO, see Update a Group Policy Object.

Now, you have created a GPO named GPO1 that only applies to a group named MemberServers. You can verify the GPO application by using the gpresult /r command on a member server and checking the Applied Group Policy Objects entry. You can also use the Group Policy Results wizard in the Group Policy Management console to generate a report of the GPO application for a specific computer or user. For more information on how to use the Group Policy Results wizard, see Use the Group Policy Results Wizard.

NEW QUESTION 4

SIMULATION - (Topic 4)

Task 10

You need to configure Hyper-V to ensure that running virtual machines can be moved between SRV1 and SRV2 without downtime.

You do NOT need to move any virtual machines at this time.

- A. Mastered
- B. Not Mastered

Answer: A

Explanation:

One possible solution to configure Hyper-V to ensure that running virtual machines can be moved between SRV1 and SRV2 without downtime is to use Live Migration. Live Migration is a feature of Hyper-V that allows you to move a running virtual machine from one host to another without any noticeable interruption of service. To set up Live Migration between SRV1 and SRV2, you need to perform the following steps:

? On both SRV1 and SRV2, open Hyper-V Manager from the Administrative

Tools menu or by typing virtmgmt.msc in the Run box.

? In the left pane, right-click on the name of the server and select Hyper-V Settings.

? In the Hyper-V Settings dialog box, select Live Migrations in the navigation pane.

? Check the box Enable incoming and outgoing live migrations.

? Under Authentication protocol, select the method that you want to use to authenticate the live migration traffic between the servers. You can choose either Kerberos or CredSSP. Kerberos does not require you to sign in to the source server before starting a live migration, but it requires you to configure constrained delegation on the domain controller. CredSSP does not require you to configure constrained delegation, but it requires you to sign in to the source server through a local console session, a Remote Desktop session, or a remote Windows PowerShell session. For more information on how to configure constrained delegation, see Configure constrained delegation.

? Under Performance options, select the option that best suits your network configuration and performance requirements. You can choose either TCP/IP or Compression or SMB. TCP/IP uses a single TCP connection for the live migration traffic. Compression uses multiple TCP connections and compresses the live migration traffic to reduce the migration time and network bandwidth usage. SMB uses the Server Message Block (SMB) 3.0 protocol and can leverage SMB features such as SMB Multichannel and SMB Direct. For more information on how to choose the best performance option, see Choose a live migration performance option.

? Under Advanced Features, you can optionally enable the Use any available network for live migration option, which allows Hyper-V to use any available network adapter on the source and destination servers for live migration. If you do not enable this option, you need to specify one or more network adapters to be used for live migration by clicking on the Add button and selecting the network adapter from the list. You can also change the order of preference by using the Move Up and Move Down buttons.

? Click OK to apply the settings.

Now, you have configured Hyper-V to enable live migration between SRV1 and SRV2. You can use Hyper-V Manager or Windows PowerShell to initiate a live migration of a running virtual machine from one server to another.

NEW QUESTION 5

SIMULATION - (Topic 4)

Task 3

You need to configure SRV1 as a DNS server. SRV1 must be able resolve names from the contoso.com domain by using DC1. All other names must be resolved by using the root hint servers.

- A. Mastered
- B. Not Mastered

Answer: A

Explanation:

One possible solution to configure SRV1 as a DNS server that can resolve names from the contoso.com domain by using DC1 and all other names by using the root hint servers is to use conditional forwarding. Conditional forwarding allows a DNS server to forward queries for a specific domain name to another DNS server, while using the normal forwarding or root hint servers for other queries. Here are the steps to configure conditional forwarding on SRV1:

? On SRV1, open DNS Manager from the Administrative Tools menu or by typing dnsmgmt.msc in the Run box.

? In the left pane, right-click on Conditional Forwarders and select New Conditional Forwarder.

? In the New Conditional Forwarder dialog box, enter contoso.com as the DNS Domain name.

? In the IP addresses of the master servers box, enter the IP address of DC1, which is the DNS server for the contoso.com domain. You can also click on Resolve to verify the name resolution of DC1.

? Optionally, you can check the box Store this conditional forwarder in Active Directory, and replicate it as follows if you want to store and replicate the conditional forwarder in AD DS. You can also select the replication scope from the drop-down list.

? Click OK to create the conditional forwarder.

Now, SRV1 will forward any queries for the contoso.com domain to DC1, and use the root hint servers for any other queries. You can test the name resolution by using

the nslookup command on SRV1 or another computer that uses SRV1 as its DNS server. For example, you can run the following commands:

nslookup www.contoso.com nslookup www.microsoft.com
 The first command should return the IP address of www.contoso.com from DC1, and the second command should return the IP address of www.microsoft.com from a root hint server.

NEW QUESTION 6
 SIMULATION - (Topic 4)
 Task 5

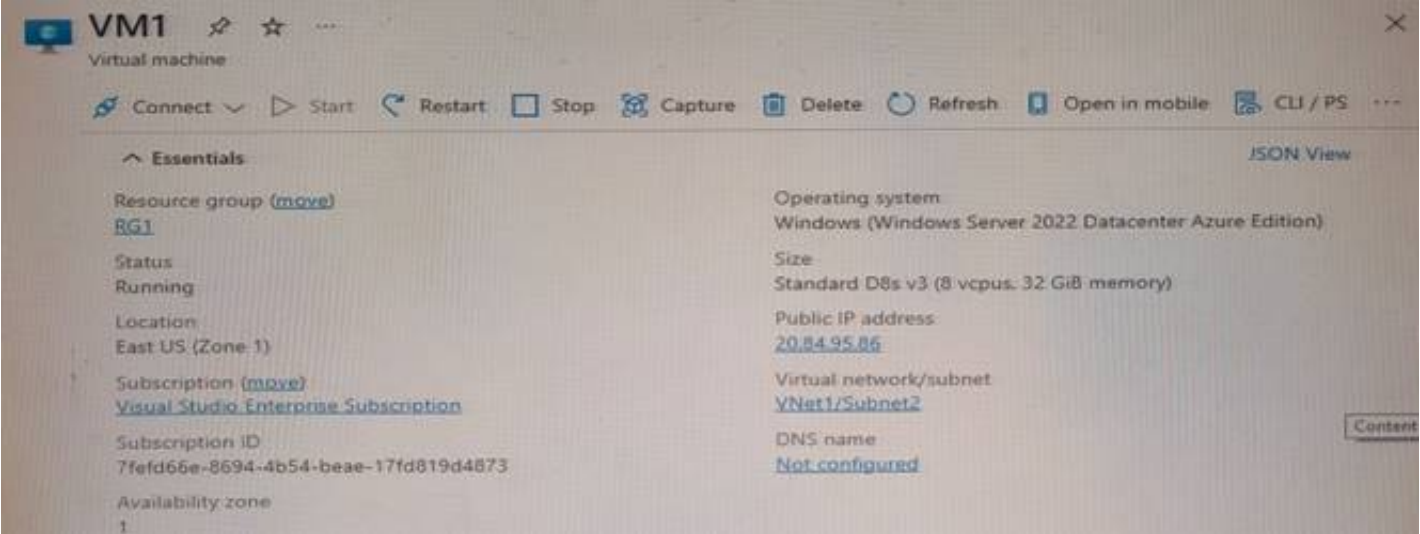
You need to ensure that a DHCP scope named scope1 on SRV1 can service client requests.

- A. Mastered
- B. Not Mastered

Answer: A

Explanation:
 One possible solution to ensure that a DHCP scope named scope1 on SRV1 can service client requests is to activate the scope on the DHCP server. A scope must be activated before it can assign IP addresses to DHCP clients. To activate a DHCP scope on SRV1, perform the following steps:
 ? On SRV1, open DNS Manager from the Administrative Tools menu or by typing dnsmgmt.msc in the Run box.
 ? In the left pane, expand your DHCP server and click on IPv4.
 ? In the right pane, right-click on the scope that you want to activate, such as scope1, and select Activate.
 ? Wait for the scope to be activated. You can verify the activation status by checking the icon next to the scope name. A green arrow indicates that the scope is active, while a red arrow indicates that the scope is inactive.
 Now, the DHCP scope named scope1 on SRV1 can service client requests and lease IP addresses to DHCP clients. You can test the DHCP service by using the ipconfig /renew command on a DHCP client computer that is connected to the same subnet as the scope.

NEW QUESTION 7
 - (Topic 3)
 You have an Azure subscription that contains a virtual machine named VM1 as shown in the following exhibit.



The subscription has the disks shown in the following table.

Name	Resource group	Location	Availability zone
Disk1	RG1	East US	None
Disk2	RG2	East US	1
Disk3	RG1	Central US	None
Disk4	RG1	Central US	1

Which disks can you attach as data disks to VM1?

- A. Disk2 only
- B. Disk4 only
- C. Disk1 and Disk2 only
- D. Disk2 and Disk4 only
- E. Disk1, Disk3, and Disk4 only
- F. Disk1, Disk2, Disk3. and Disk4

Answer: C

NEW QUESTION 8
 HOTSPOT - (Topic 3)
 Your on-premises network contains an Active Directory Domain Services (AD DS) domain.
 The domain contains the servers shown in the following table.
 The domain controllers do NOT have internet connectivity.
 You plan to implement Azure AD Password Protection for the domain.
 You need to deploy Azure AD Password Protection agents. The solution must meet the following requirements:

- All Azure AD Password Protection policies must be enforced.
 - Agent updates must be applied automatically.
 - Administrative effort must be minimized.
- What should you do? To answer select the appropriate options in the answer area. NOTE: Each correct selection is worth one point.

Answer Area

Install the Azure AD Password Protection agent on:

DC1 and DC2 only

DC1 only

DC1 and DC2 only

DC1, DC2, and RODC1

Install the Azure AD Password Protection Proxy on:

Server1

DC1

DC2

RODC1

Server1

Server2

- A. Mastered
- B. Not Mastered

Answer: A

Explanation:

Answer Area

Install the Azure AD Password Protection agent on:

DC1 and DC2 only

Install the Azure AD Password Protection Proxy on:

Server1

NEW QUESTION 9

- (Topic 3)
You have an Azure virtual machine named VM1 that has a private IP address only. You configure the Windows Admin Center extension on VM1. You have an on-premises computer that runs Windows 11. You use the computer for server management. You need to ensure that you can use Windows Admin Center from the Azure portal to manage VM1. What should you configure?

- A. an Azure Bastion host on the virtual network that contains VM1.
- B. a VPN connection to the virtual network that contains VM1.
- C. a network security group (NSG) rule that allows inbound traffic on port 443.
- D. a private endpoint on the virtual network that contains VM1.

Answer: B

Explanation:

Reference:
<https://docs.microsoft.com/en-us/windows-server/manage/windows-admin-center/azure/manage-vm>

NEW QUESTION 10

DRAG DROP - (Topic 3)
Your network contains a single domain Active Directory Domain Services (AD DS) forest named contoso.com. The forest contains a single Active Directory site. You plan to deploy a read only domain controller (RODC) to a new datacenter on a server named Server1. A user named User1 is a member of the local Administrators group on Server1. You need to recommend a deployment plan that meets the following requirements:
? Ensures that a user named User1 can perform the RODC installation on Server1
? Ensures that you can control the AD DS replication schedule to the Server1
? Ensures that Server1 is in a new site named RemoteSite1
? Uses the principle of least privilege
Which three actions should you recommend performing in sequence? To answer, move the appropriate actions from the list of actions to the answer area and arrange them in the correct order.

Actions

Instruct User1 to run the Active Directory Domain Services installation Wizard on Server1.

Create a site and a subnet.

Create a site link.

Pre-create an RODC account.

Add User1 to the Contoso\Administrators group.

Answer Area

>

<

- A. Mastered
- B. Not Mastered

Answer: A

Explanation:

Box 1.

We need to create a site and subnet for the remote site. The new site will be added to the Default IP Site Link so we don't need to create a new site link. You configure the replication schedule on the site link.

Box 2.

When we pre-create an RODC account, we can specify who is allowed to attach the server to the prestaged account. This means that the User1 does not need to be added to the Domain Admins group.

Box3.

User1 can connect the RODC to the prestaged account by running the AD DS installation wizard.

NEW QUESTION 10

- (Topic 3)

Your network contains an Active Directory Domain Services (AD DS) forest. The forest contains three Active Directory sites named Site1, Site2, and Site3. Each site contains two domain controllers. The sites are connected by using DEFAULTIPSITELINK.

You open a new branch office that contains only client computers.

You need to ensure that the client computers in the new office are primarily authenticated by the domain controllers in Site1.

Solution: You create a new subnet object that is associated to Site1. Does this meet the goal?

A. Yes

B. No

Answer: B

NEW QUESTION 11

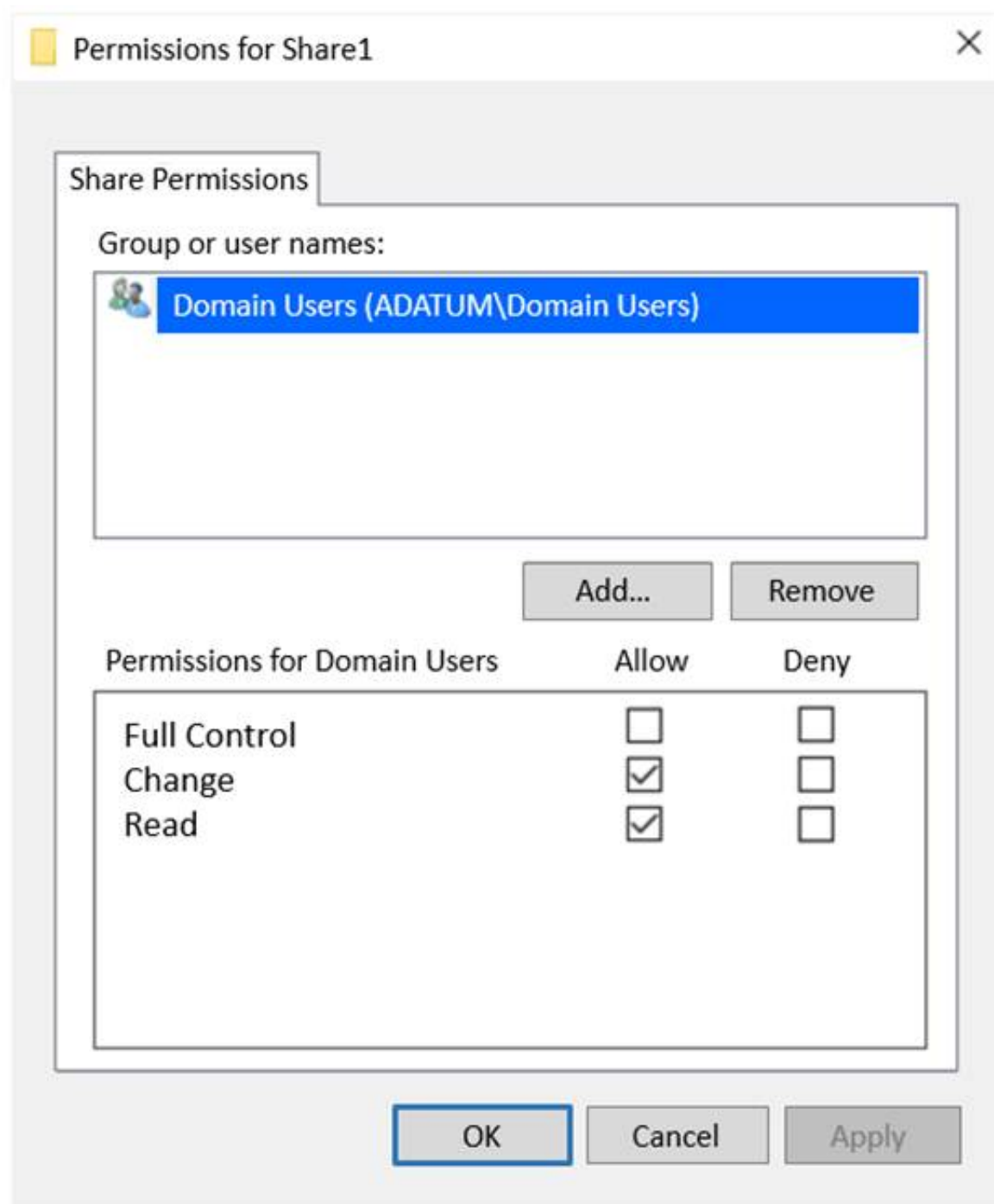
HOTSPOT - (Topic 3)

Your network contains an Active Directory Domain Services (AD DS) domain named adatum.com. The domain contains a file server named Server1 and three users named User1, User2, and User3.

Server1 contains a shared folder named Share1 that has the following configurations:

ShareState	:	Online
AvailabilityType	:	NonClustered
FolderEnumerationMode	:	AccessBased
CachingMode	:	Manual
LeasingMode	:	Full
SmbInstance	:	Default
CompressData	:	False
ContinuouslyAvailable	:	False
EncryptData	:	False
Name	:	Share1
Path	:	E:\Share1
ShadowCopy	:	False

The share permissions for Share1 are configured as shown in the Share Permissions exhibit.



Permissions for Share1

Share Permissions

Group or user names:

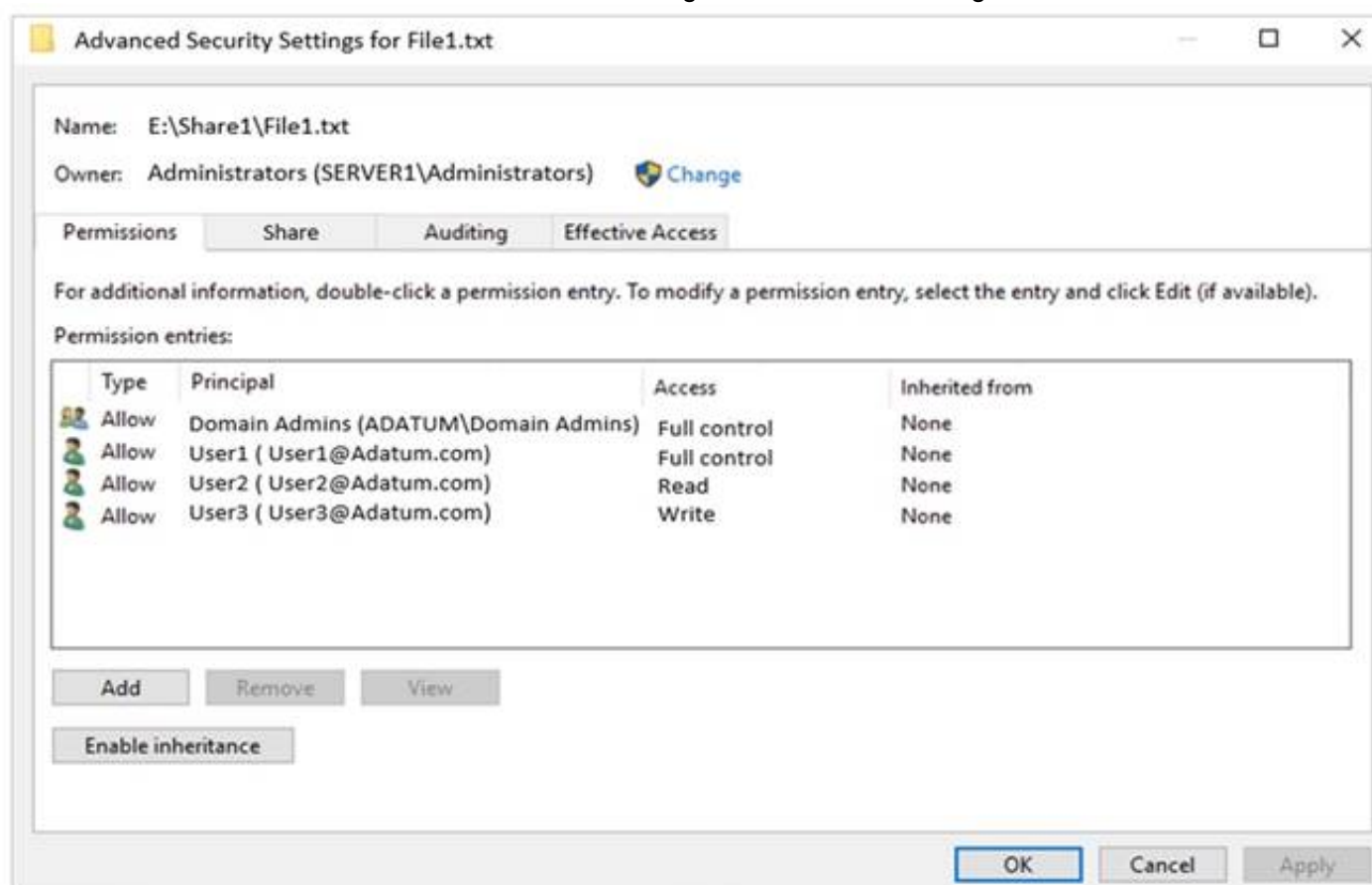
Domain Users (ADATUM\Domain Users)

Add... Remove

Permissions for Domain Users	Allow	Deny
Full Control	<input type="checkbox"/>	<input type="checkbox"/>
Change	<input checked="" type="checkbox"/>	<input type="checkbox"/>
Read	<input checked="" type="checkbox"/>	<input type="checkbox"/>

OK Cancel Apply

Share1 contains a file named File1.bxt. The share settings for File1.txt are configured as shown in the File Permissions exhibit.



Advanced Security Settings for File1.txt

Name: E:\Share1\File1.txt

Owner: Administrators (SERVER1\Administrators) [Change](#)

Permissions Share Auditing Effective Access

For additional information, double-click a permission entry. To modify a permission entry, select the entry and click Edit (if available).

Permission entries:

Type	Principal	Access	Inherited from
Allow	Domain Admins (ADATUM\Domain Admins)	Full control	None
Allow	User1 (User1@Adatum.com)	Full control	None
Allow	User2 (User2@Adatum.com)	Read	None
Allow	User3 (User3@Adatum.com)	Write	None

Add Remove View

Enable inheritance

OK Cancel Apply

For each of the following statements, select Yes if the statement is true. Otherwise, select No.
 NOTE: Each correct selection is worth one point.

Statements	Yes	No
When User1 connects to \\Server1.adatum.com\Share1, the user can take ownership of File1.txt.	<input type="radio"/>	<input type="radio"/>
When User2 connects to \\Server1.adatum.com\Share1, File1.txt is visible.	<input type="radio"/>	<input type="radio"/>
When User3 connects to \\Server1.adatum.com\Share1, File1.txt is visible.	<input type="radio"/>	<input type="radio"/>

- A. Mastered
- B. Not Mastered

Answer: A

Explanation:

Statements	Yes	No
When User1 connects to \\Server1.adatum.com\Share1\, the user can take ownership of File1.txt.	<input type="checkbox"/>	<input checked="" type="checkbox"/>
When User2 connects to \\Server1.adatum.com\Share1\, File1.txt is visible.	<input checked="" type="checkbox"/>	<input type="checkbox"/>
When User3 connects to \\Server1.adatum.com\Share1\, File1.txt is visible.	<input checked="" type="checkbox"/>	<input type="checkbox"/>

NEW QUESTION 14

HOTSPOT - (Topic 3)

Your company has offices in Boston and Montreal. The offices are connected by using a 10-Mbps WAN link that is often saturated The office in Boston contains the following:

- An Active Directory Domain Services (AD DS) domain controller named DC1.
- A server named Server1 that runs Windows Server and has the File Server role installed The office in Montreal contains 20 client computers that run Windows 10 Montreal does NOT have any servers.

The company plans to deploy a new line of business (LOB) application to all the client computers. The installation source files for the application are in \\Server\Apps.

Answer Area

On Server1:

Enable BranchCache in hosted cache mode.
Enable BranchCache in Distributed Cache mode.
Install the BranchCache for network files role service.

On the client computers:

Enable BranchCache in hosted cache mode.
Enable BranchCache in Distributed Cache mode.
Install the BranchCache for network files role service.

- A. Mastered
- B. Not Mastered

Answer: A

Explanation:

Answer Area

On Server1:

Enable BranchCache in hosted cache mode.
Enable BranchCache in Distributed Cache mode.
Install the BranchCache for network files role service.

On the client computers:

Enable BranchCache in hosted cache mode.
Enable BranchCache in Distributed Cache mode.
Install the BranchCache for network files role service.

NEW QUESTION 16

- (Topic 3)

Your network contains a single-domain Active Directory Domain Services (AD DS) forest named conto.com. The forest contains the servers shown in the following exhibit table.

Name	Description
DC1	Domain controller
Server1	Member server

You plan to install a line-of-business (LOB) application on Server1. The application will install a custom windows services. A new corporate security policy states that all custom Windows services must run under the context of a group managed service account (gMSA). You deploy a root key. You need to create, configure, and install the gMSA that will be used by the new application. Which two actions should you perform? Each correct answer presents part of the solution. NOTE: Each correct selection is worth one point.

- A. On Server1, run the install-ADServiceAccount cmdlet.
- B. On DC1, run the New-ADServiceAccount cmdlet.
- C. On DC1, run the Set_ADComputer cmdlet.

- D. ON DC1, run the Install-ADServiceAccount cmdlet.
- E. On Server1, run the Get-ADServiceAccount cmdlet.

Answer: AB

NEW QUESTION 19

DRAG DROP - (Topic 3)

You have a server named Server1 that has Windows Admin Center installed. The certificate used by Windows Admin Center was obtained from a certification authority (CA).

The certificate expires.

You need to replace the certificate.

Which three actions should you perform in sequence? To answer, move the appropriate actions from the list of actions to the answer area and arrange them in the correct order.

Actions

Copy the certificate thumbprint.

From Internet Information Services (IIS) Manager, bind a certificate.

Rerun **Windows Admin Center Setup** and select **Change**.

Rerun **Windows Admin Center Setup** and select **Repair**.

Rerun **Windows Admin Center Setup** and select **Remove**.

Answer Area

>

<

- A. Mastered
- B. Not Mastered

Answer: A

Explanation:

Actions

Copy the certificate thumbprint.

From Internet Information Services (IIS) Manager, bind a certificate.

Rerun **Windows Admin Center Setup** and select **Change**.

Rerun **Windows Admin Center Setup** and select **Repair**.

Rerun **Windows Admin Center Setup** and select **Remove**.

Answer Area

From Internet Information Services (IIS) Manager, bind a certificate.

Copy the certificate thumbprint.

Rerun **Windows Admin Center Setup** and select **Change**.

NEW QUESTION 21

HOTSPOT - (Topic 3)

You have an onpremises DNS server named Server1 that runs Windows Server. Server 1 hosts a DNS zone named fabrikam.com

You have an Azure subscription that contains the resources shown in the following table.

Name	Type	Description
Vnet1	Virtual network	Connects to the on-premises network by using a Site-to-Site VPN
VM1	Virtual machine	Runs Windows Server and has the DNS Server role installed
contoso.com	Private DNS zone	Linked to Vnet1
contoso.com	Public DNS zone	Contains the DNS records of all the platform as a service (PaaS) resources

Answer Area

On Vnet1:

Configure VM1 to forward requests for the contoso.com zone to the public DNS zone.
Configure Vnet1 to use a custom DNS server that is set to the Azure-provided DNS at 168.63.129.16.
Configure VM1 to forward requests for the contoso.com zone to the Azure-provided DNS at 168.63.129.16.

On the on-premises network:

Configure forwarding for the contoso.com zone to VM1.
Configure forwarding for the contoso.com zone to the public DNS zone.
Configure forwarding for the contoso.com zone to the Azure-provided DNS at 168.63.129.16.

- A. Mastered
B. Not Mastered

Answer: A

Explanation:

Answer Area

On Vnet1:

Configure VM1 to forward requests for the contoso.com zone to the public DNS zone.
Configure Vnet1 to use a custom DNS server that is set to the Azure-provided DNS at 168.63.129.16.
Configure VM1 to forward requests for the contoso.com zone to the Azure-provided DNS at 168.63.129.16.

On the on-premises network:

Configure forwarding for the contoso.com zone to VM1.
Configure forwarding for the contoso.com zone to the public DNS zone.
Configure forwarding for the contoso.com zone to the Azure-provided DNS at 168.63.129.16.

NEW QUESTION 24

- (Topic 3)

Your network contains an Active Directory Domain Services (AD DS) forest. The forest contains three domains. Each domain contains 10 domain controllers.

You plan to store a DNS zone in a custom Active Directory partition.

You need to create the Active Directory partition for the zone. The partition must replicate to only four of the domain controllers.

What should you use?

- A. DNS Manager
B. New-ADObject
C. dnscnd.exe
D. Windows Admin Center

Answer: D

NEW QUESTION 26

HOTSPOT - (Topic 3)

You plan to deploy an Azure virtual machine that will run Windows Server. The virtual machine will host an Active Directory Domain Services (AD DS) domain controller and a drive named f: on a new virtual disk.

You need to configure storage for the virtual machine. The solution must meet the following requirements

- Maximize resiliency for AD DS.
- Prevent accidental data loss.

How should you configure the storage? To answer, select the appropriate options in the answer area.

NOTE: Each correct selection is worth one point.

Answer Area

Volume for the AD DS database:

C
D
F

Caching configuration for the volume that hosts the database:

NONE
READ
READ/WRITE

Answer:

Answer Area

Volume for the AD DS database:

C
D
F

Caching configuration for the volume that hosts the database:

NONE
READ
READ/WRITE

- A. Mastered
- B. Not Mastered

Answer: A

NEW QUESTION 31

- (Topic 3)

You have a server named Host1 that has the Hyper-V server role installed. Host1 hosts a virtual machine named VM1. You have a management server named Server1 that runs Windows Server. You remotely manage Host1 from Server1 by using Hyper-V Manager. You need to ensure that you can access a USB hard drive connected to Server1 when you connect to VM1 by using Virtual Machine Connection. Which two actions should you perform? Each correct answer presents part of the solution. NOTE: Each correct selection is worth one point.

- A. From the Hyper-V Settings of Host1, select Allow enhanced session mode
- B. From Disk Management on Host1, attach a virtual hard disk.
- C. From Virtual Machine Connection, switch to a basic session.
- D. From Virtual Machine Connection select Show Options and then select the USB hard drive.
- E. From Disk Management on Host1, select Rescan Disks

Answer: AD

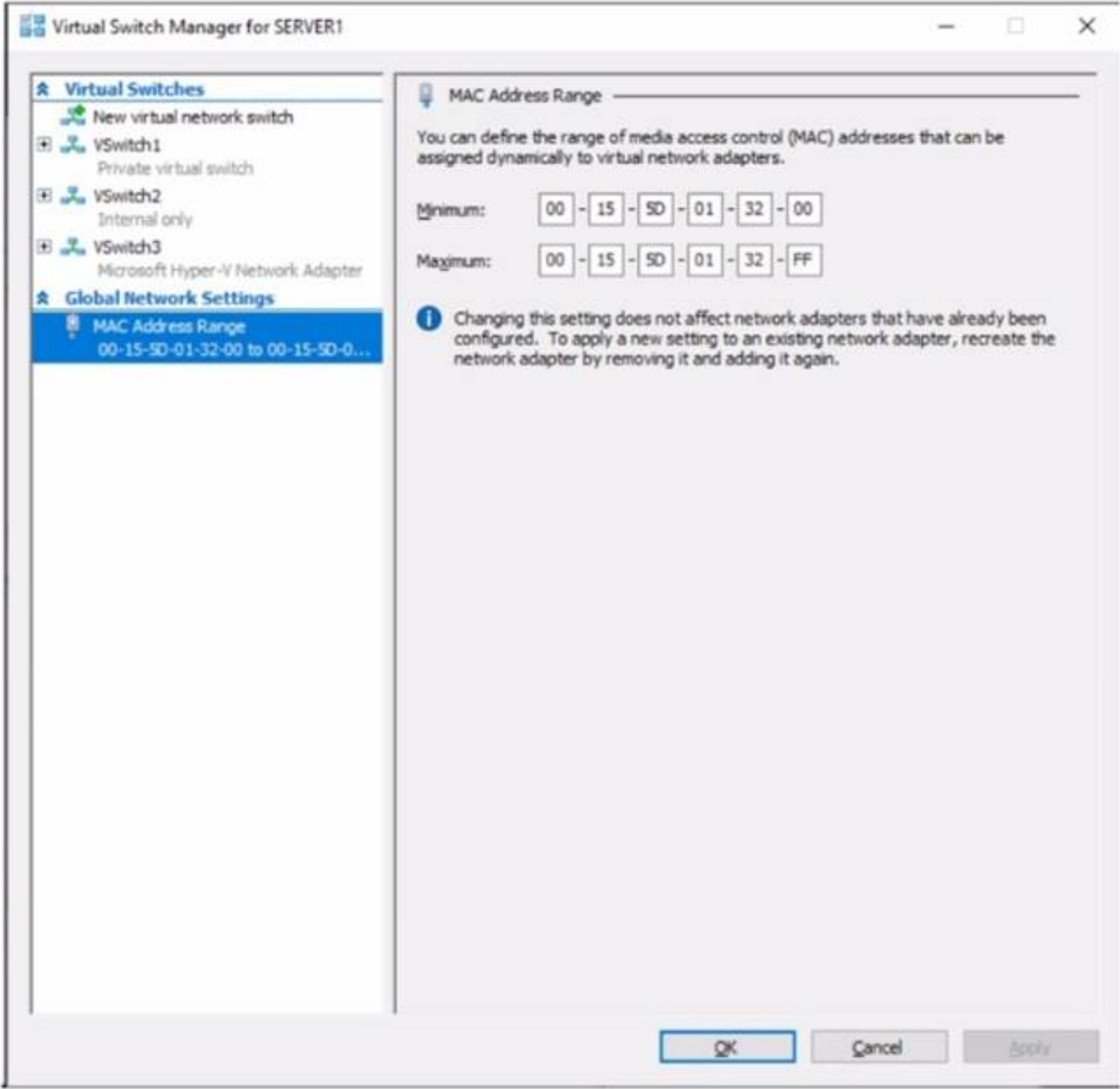
Explanation:

Reference:
<https://docs.microsoft.com/en-us/windows-server/virtualization/hyper-v/learn-more/use-local-resources-on-hyper-v-virtual-machine-with-vmconnect>

NEW QUESTION 36

HOTSPOT - (Topic 3)

You have a server named Server1 that runs Windows Server. Server1 has a single network interface and the Hyper-V virtual switches shown in the following exhibit.



Use the drop-down menus to select the answer choice that completes each statement based on the information presented in the graphic. NOTE: Each correct selection is worth one point.

Answer Area

On Server1, you can create additional [answer choice].

- private and internal virtual switches only
- internal virtual switches only
- private virtual switches only
- private and internal virtual switches only
- private, internal, and external virtual switches

Server1 can access network shares on virtual machines that are connected to [answer choice].

- VSwitch1, VSwitch2, or VSwitch3
- VSwitch2 only
- VSwitch3 only
- VSwitch1 or VSwitch2 only
- VSwitch2 or VSwitch3 only
- VSwitch1, VSwitch2, or VSwitch3

- A. Mastered
B. Not Mastered

Answer: A

Explanation:

Answer Area

On Server1, you can create additional [answer choice].

- private and internal virtual switches only
- internal virtual switches only
- private virtual switches only
- private and internal virtual switches only
- private, internal, and external virtual switches

Server1 can access network shares on virtual machines that are connected to [answer choice].

- VSwitch1, VSwitch2, or VSwitch3
- VSwitch2 only
- VSwitch3 only
- VSwitch1 or VSwitch2 only
- VSwitch2 or VSwitch3 only
- VSwitch1, VSwitch2, or VSwitch3

NEW QUESTION 40

HOTSPOT - (Topic 3)

You plan to deploy an Azure virtual machine that will run Windows Server.

You need to ensure that an Azure Active Directory (Azure AD) user named user1@contoso.com can connect to the virtual machine by using the Azure Serial Console.

What should you do? To answer, select the appropriate options in the answer area. NOTE: Each correct selection is worth one point.

Answer Area

Configure on the Azure virtual machine:

- Boot diagnostics with a custom storage account
- Operating system guest diagnostics
- A system-assigned managed identity

Assign the following role to User1:

- Virtual Machine Contributor
- Virtual Machine Administrator Login
- Virtual Machine User Login

- A. Mastered
B. Not Mastered

Answer: A

Explanation:

Answer Area

Configure on the Azure virtual machine:

- Boot diagnostics with a custom storage account
- Operating system guest diagnostics
- A system-assigned managed identity

Assign the following role to User1:

- Virtual Machine Contributor
- Virtual Machine Administrator Login
- Virtual Machine User Login

NEW QUESTION 44

- (Topic 3)

You have an on-premises server named Server 1 that runs Windows Server. You have an Azure subscription that contains a virtual network named VNet1. You need to connect Server 1 to VNet1 by using Azure Network Adapter. What should you use?

- A. the Azure portal
B. Azure AD Connect
C. Device Manager
D. Windows Admin Center

Answer: B

NEW QUESTION 48

HOTSPOT - (Topic 3)

Your network contains an Active Directory Domain Services (AD DS) domain. The domain contains the domain controllers shown in the following table.

Name	Description
DC1	Has the schema master, infrastructure master, and domain naming master roles
DC2	Has the PDC emulator and RID master roles and is a global catalog server
DC3	None

You need to configure DC3 to be the authoritative time server for the domain.
Which operations master role should you transfer to DC3, and which console should you use? To answer, select the appropriate options in the answer area.
NOTE: Each correct selection is worth one point.

Answer Area

Role:

PDC emulator

Domain naming master

Infrastructure master

PDC emulator

RID master

Schema master

Console:

Active Directory Users and Computers

Active Directory Admin

Active Directory Doma

Active Directory Sites (Active Directory Sites and Services)

Active Directory Users and Computers

- A. Mastered
- B. Not Mastered

Answer: A

Explanation:

Answer Area

Role:

PDC emulator

Domain naming master

Infrastructure master

PDC emulator

RID master

Schema master

Console:

Active Directory Users and Computers

Active Directory Admin

Active Directory Doma

Active Directory Sites (Active Directory Sites and Services)

Active Directory Users and Computers

NEW QUESTION 53

HOTSPOT - (Topic 3)

Your network contains an Active Directory Domain Services (AD DS) forest named contoso.com. The forest contains a child domain named east.contoso.com. In the contoso.com domain, you create two users named Admin1 and Admin2. You need to ensure that the users can perform the following tasks:

- Admin1 can create and manage Active Directory sites.
- Admin2 can deploy domain controller to the east.contoso.com domain. The solution must use the principle of least privilege.

To which group should you add each user? To answer, select the appropriate options in the answer area.

NOTE Each correct selection is worth one point.

Answer Area

Admin1:

Contoso\Administrators

Contoso\Domain Admins

Contoso\Enterprise Admins

East\Administrators

East\Domain Admins

Admin2:

Contoso\Administrators

Contoso\Domain Admins

Contoso\Enterprise Admins

East\Administrators

East\Domain Admins

- A. Mastered
- B. Not Mastered

Answer: A

Explanation:

Answer Area

Admin1: Contoso\Enterprise Admins

Admin2: East\Domain Admins

NEW QUESTION 55

- (Topic 3)
You have an Azure virtual machine named VM1 that runs Windows Server.
You need to ensure that administrators request access to VM1 before establishing a Remote Desktop connection.
What should you configure?

A. Azure Front Door
B. Microsoft Defender for Cloud
C. Azure AD Privileged Identity Management (PIM)
D. a network security group (NSG)

Answer: B

NEW QUESTION 58

- (Topic 3)
You have an Azure subscription that contains the following resources:

- An Azure Log Analytics workspace
- An Azure Automation account
- Azure Arc.

You have an on-premises server named Server1 that is onboarded to Azure Arc. You need to manage Microsoft updates on Server1 by using Azure Arc. Which two actions should you perform? Each correct answer presents part of the solution. NOTE: Each correct selection is worth one point.

A. Add Microsoft Sentinel to the Log Analytics workspace
B. On Server1, install the Azure Monitor agent
C. From the Automation account, enable Update Management for Server1.
D. From the Virtual machines data source of the Log Analytics workspace, connect Server1.

Answer: BC

Explanation:

Reference:
<https://docs.microsoft.com/en-us/azure/cloud-adoption-framework/manage/hybrid/server/best-practices/arc-update-management>

NEW QUESTION 60

DRAG DROP - (Topic 3)
You create a new Azure subscription.
You plan to deploy Azure Active Directory Domain Services (Azure AD DS) and Azure virtual machines. The virtual machines will be joined to Azure AD DS.
You need to deploy Active Directory Domain Services (AD DS) to ensure that the virtual machines can be deployed and joined to Azure AD DS.
Which three actions should you perform in sequence? To answer, move the appropriate actions from the list of actions to the answer area and arrange them in the correct order.

Actions

Modify the settings of the Azure virtual network.

Install the Active Directory Domain Services role.

Install Azure AD Connect.

Create an Azure virtual network.

Create an Azure AD DS instance.

Run the Active Directory Domain Service installation Wizard.

Answer Area

>

<

A. Mastered
B. Not Mastered

Answer: A

Explanation:

Actions

- Modify the settings of the Azure virtual network.
- Install the Active Directory Domain Services role.
- Install Azure AD Connect.
- Create an Azure virtual network.
- Create an Azure AD DS instance.
- Run the Active Directory Domain Service installation Wizard.

Answer Area

- Create an Azure virtual network.
- Create an Azure AD DS instance.
- Modify the settings of the Azure virtual network.

NEW QUESTION 63

- (Topic 3)

You have a server named Server1 that runs Windows Server.

You plan to host applications in Windows containers.

You need to configure Server1 to run containers. What should you install?

- A. Windows Admin Center
- B. the Windows Subsystem for Linux
- C. Docker
- D. Hyper-V

Answer: C

NEW QUESTION 68

HOTSPOT - (Topic 3)

You have a Windows Server container host named Server1 that has a single disk. On Server1, you plan to start the containers shown in the following table.

Name	Description
Container1	Container1 is a Windows container that contains a web app in development. The container must NOT share a kernel with other containers.
Container2	Container2 is a Linux container that runs a web app. The container requires two static IP addresses.
Container3	Container3 is a Windows container that runs a database. The container requires a static IP address.

Which isolation mode can you use for each container? To answer, select the appropriate options in the answer area.

NOTE: Each correct selection is worth one point.

Container1:

- Hyper-V isolation only
- Process isolation only
- Hyper-V isolation or process isolation

Container2:

- Hyper-V isolation only
- Process isolation only
- Hyper-V isolation or process isolation

Container3:

- Hyper-V isolation only
- Process isolation only
- Hyper-V isolation or process isolation

- A. Mastered
- B. Not Mastered

Answer: A

Explanation:

Container1:

Hyper-V isolation only

Process isolation only

Hyper-V isolation or process isolation

Container2:

Hyper-V isolation only

Process isolation only

Hyper-V isolation or process isolation

Container3:

Hyper-V isolation only

Process isolation only

Hyper-V isolation or process isolation

NEW QUESTION 71

HOTSPOT - (Topic 3)

Your network contains an Active Directory Domain Services (AD DS) domain named contoso.com.
The network contains the servers shown in the following table.

Name	Role	Domain/workgroup	Operating system
DC1	Active Directory Domain Services, DNS Server	contoso.com	Windows Server
Server1	DHCP Server	contoso.com	Windows Server
Server2	None	contoso.com	Windows Server Core
Server3	None	Workgroup1	Windows Server Core

You plan to implement IP Address Management (IPAM).
You need to use the Group Policy based provisioning method for managed servers. The solution must support server discovery.
What should you do? To answer, select the appropriate options in the answer area. NOTE: Each correct selection is worth one point.

Answer Area

Server on which to deploy the IPAM server role:

Server2

DC1

Server1

Server2

Server3

Servers that must be provisioned for IPAM:

DC1 and Server1

DC1 and Server1

DC1 and Server3

Server1 and Server2

Server2 and Server3

- A. Mastered
- B. Not Mastered

Answer: A

Explanation:

Answer Area

Server on which to deploy the IPAM server role:

Server2

Servers that must be provisioned for IPAM:

DC1 and Server1

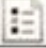
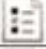
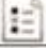
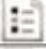
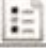
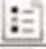
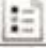
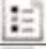

NEW QUESTION 74

HOTSPOT - (Topic 3)

Your company has a main office and 10 branch offices that are connected by using WAN links. The network contains an Active Directory domain.
All users have laptops and regularly travel between offices. You plan to implement BranchCache in the branch offices.
In each branch office, you install a server that runs Windows Server and the BranchCache feature. You register the servers in Active Directory.
You need to configure the laptops to use the local BranchCache server automatically. The solution must minimize administrative effort.

Which two Group Policy settings should you configure? To answer, select the settings in the answer area.
NOTE: Each correct selection is worth one point.

Answer Area

Setting	State
 Turn on BranchCache	Not configured
 Set BranchCache Distributed Cache mode	Not configured
 Set BranchCache Hosted Cache mode	Not configured
 Enable Automatic Hosted Cache Discovery by Service Connection...	Not configured
 Configure Hosted Cache Servers	Not configured
 Configure BranchCache for network files	Not configured
 Set percentage of disk space used for client computer cache	Not configured
 Set age for segments in the data cache	Not configured
 Configure Client BranchCache Version Support	Not configured

- A. Mastered
- B. Not Mastered

Answer: A

Explanation:

- > Turn on BranchCache
- > Enable Automatic Hosted Cache Discovery by Service Connection ...

NEW QUESTION 79

- (Topic 3)

Your network contains an Active Directory Domain Services (AD DS) domain. The domain contains a user named User1 and the servers shown in the following table.

Name	Server role	DHCP scope
Server1	DHCP Server	Scope1, Scope2
Server2	DHCP Server	Scope3, Scope4

You need to ensure that User1 can manage only Scope1 and Scope3. What should you do?

- A. Add User1 to the DHCP Administrators group on Server1 and Server2.
- B. Implement IP Address Management (IPAM).
- C. Add User1 to the DHCP Administrators domain local group.
- D. Implement Windows Admin Center and add connections to Server1 and Server2.

Answer: B

NEW QUESTION 82

HOTSPOT - (Topic 3)

Your on-premises network contains a single-domain Active Directory Domain Services (AD DS) forest. You have an Azure AD tenant named contoso.com. The AD DS forest syncs with the Azure AD tenant by using Azure AD Connect.

You need to ensure that users in the forest that have a custom attribute of NoSync are excluded from synchronization. How should you configure the Azure AD Connect cloudFiltered attribute, and which tool should you use? To answer, select the appropriate options in the answer area.
NOTE: Each correct selection is worth one point.

Answer Area

Attribute:

TrueFalseNullTrue

Tool:

Synchronization Rules EditorADSI EditSynchronization Rules EditorThe Microsoft Azure AD Connect wizard

Answer:

Answer Area

Attribute:

TrueFalseNullTrue

Tool:

Synchronization Rules EditorADSI EditSynchronization Rules EditorThe Microsoft Azure AD Connect wizard

- A. Mastered
- B. Not Mastered

Answer: A

NEW QUESTION 83

- (Topic 3)
You have an on-premises network that is connected to an Azure virtual network by using a Site-to-Site VPN. Each network contains a subnet that has the same IP address space. The on-premises subnet contains a virtual machine.
You plan to migrate the virtual machine to the Azure subnet.
You need to migrate the on premises virtual machine to Azure without modifying the IP address. The solution must minim administrative effort.
What should you implement before you perform the migration?

- A. Azure Extended Network
- B. Azure Virtual Network NAT
- C. Azure Application Gateway
- D. Azure virtual network peering

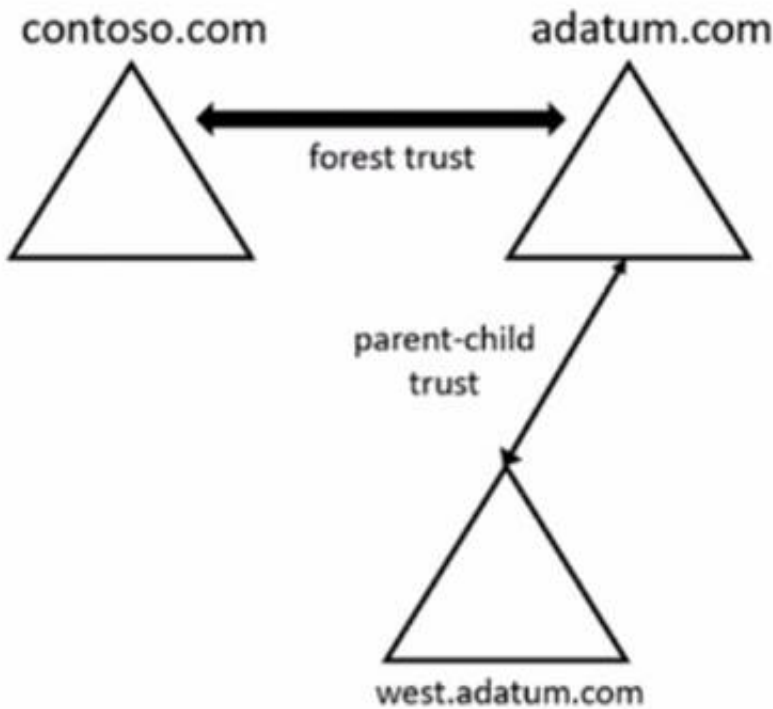
Answer: A

Explanation:

Reference:
<https://docs.microsoft.com/en-us/windows-server/manage/windows-admin-center/azure/azure-extended-network>

NEW QUESTION 88

HOTSPOT - (Topic 3)
Your network contains two Active Directory Domain Services (AD DS) forests as shown in the following exhibit.



The forests contain the domain controllers shown in the following table.

Name	Domain	Global catalog	Schema master
DC1	adatum.com	Yes	Yes
DC2	adatum.com	No	No
DC3	west.adatum.com	Yes	No
DC4	contoso.com	Yes	Yes

You perform the following actions on DO:

- Create a user named User1.
- Extend the schema with a new attribute named Attributed

To which domain controllers are User1 and Attribute1 replicated? To answer, select the appropriate options in the answer area.
NOTE: Each correct selection is worth one point.

Answer Area

User1:

DC2 only

DC2 only

DC3 only

DC2 and DC3 only

DC3 and DC4 only

DC2, DC3, and DC4

Attribute1:

DC2, DC3, and DC4

DC2 only

DC4 only

DC2 and DC3 only

DC2, DC3, and DC4

Answer:

Answer Area

User1:

DC2 only
DC2 only
DC3 only
DC2 and DC3 only
DC3 and DC4 only
DC2, DC3, and DC4

Attribute1:

DC2, DC3, and DC4
DC2 only
DC4 only
DC2 and DC3 only
DC2, DC3, and DC4

- A. Mastered
- B. Not Mastered

Answer: A

NEW QUESTION 90

DRAG DROP - (Topic 3)

You have a server named Server1.

You plan to use Storage Spaces to expand the storage available to Server1. You attach eight physical disks to Server1. Four disks are HDDs and four are SSDs. You need to create a volume on Server1 that will use the storage on all the new disks. The solution must provide the fastest read performance for frequently used files.

Which three actions should you perform in sequence? To answer, move the appropriate actions from the list of actions to the answer area and arrange them in the correct order.

Actions

Create a virtual disk.

Create a storage pool.

Create a spanned volume.

Convert each new disk into a GPT disk.

Create a simple volume

Answer Area

>

<

- A. Mastered
- B. Not Mastered

Answer: A

Explanation:

Actions

Create a virtual disk.

Convert each new disk into a dynamic disk.

Create a storage pool.

Create a spanned volume.

Convert each new disk into a GPT disk.

Create a simple volume

Answer Area

Create a storage pool.

Create a virtual disk.

Create a simple volume

NEW QUESTION 95

HOTSPOT - (Topic 3)

Your network contains two VLANs for client computers and one VLAN for a datacenter Each VLAN is assigned an IPv4 subnet Currently, all the client computers use static IP addresses.

You plan to deploy a DHCP server to the VLAN in the datacenter.

You need to use the DHCP server to provide IP configurations to all the client computers. What is the minimum number of scopes and DHCP relays you should create? To answer,

select the appropriate options in the answer area. NOTE: Each correct selection is worth one point.

Answer Area

DHCP scopes:

1

2

3

4

DHCP relays:

1

2

3

4

One selection for DHCP relays

- A. Mastered
- B. Not Mastered

Answer: A

Explanation:

Box 1: 3
You need a DHCP scope for each of the three subnets.
Box 2: 2
The two client VLANs need a DHCP Relay Agent to forward DHCP requests to the DHCP server. The datacenter VLAN that contains the DHCP server does not require a DHCP Relay Agent.

NEW QUESTION 99

- (Topic 3)
You have an on-premises Active Directory Domain Services (AD DS) domain that syncs with an Azure Active Directory (Azure AD) tenant
You have several Windows 10 devices that are Azure AD hybrid-joined.
You need to ensure that when users sign in to the devices, they can use Windows Hello for Business.
Which optional feature should you select in Azure AD Connect?

- A. Device writeback
- B. Group writeback
- C. Password writeback
- D. Directory extension attribute sync
- E. Azure AD app and attribute filtering

Answer: C

Explanation:

Reference:
<https://docs.microsoft.com/en-us/windows/security/identity-protection/hello-for-business/hello-hybrid-cert-trust-prereqs>

NEW QUESTION 100

DRAG DROP - (Topic 3)
You have two on-premises servers named Server1 and Servet2 that run Windows Server.
You have an Azure Storage account named storage1 that contains a file share named share'. Server1 syncs with share1 by using Azure File Sync
You need to configure Server2 to sync with share1.
Which three actions should you perform in sequence? To answer, move the appropriate actions from the list of actions to the answer area and arrange them in the correct order.

Actions

Register Server2 with the Storage Sync Service.

Add a Storage Sync Service to the Azure subscription.

On Server2, install the Azure File Sync agent.

Add a cloud endpoint to the sync group.

Add a server endpoint to the sync group.

Answer Area

- A. Mastered
- B. Not Mastered

Answer: A

Explanation:

Actions

Register Server2 with the Storage Sync Service.

Add a Storage Sync Service to the Azure subscription.

On Server2, install the Azure File Sync agent.

Add a cloud endpoint to the sync group.

Add a server endpoint to the sync group.

Answer Area

On Server2, install the Azure File Sync agent.

Register Server2 with the Storage Sync Service.

Add a server endpoint to the sync group.

NEW QUESTION 105

HOTSPOT - (Topic 3)
Your network contains a two-domain on-premises Active Directory Domain Services (AD DS) forest named Contoso.com. The forest contains the domain controllers shown in the following table.

Name	Description	Domain	Active Directory site
DC1	Forest-wide and domain-wide FSMO role holder	contoso.com	Hub
DC2	Domain-wide FSMO role holder	child.contoso.com	Site1
RODC3	Read-only domain controller (RODC)	contoso.com	Site2

You create an Active Directory site named Site3. Site1, Site2 and Site3 each has a dedicated site link to the Hub site.

In Site3, you install a new server named Server1.

You need to promote Server1 to an ROOC in child.contoso.com by using the install from Media (IFM) option. The solution must minimize network traffic.

What should you do? To answer select the appropriate options in the answer area. NOTE: Each correct selection is worth one point.

Answer Area

Server to use to create the IFM source:

Tool to use to create the IFM source:

- A. Mastered
- B. Not Mastered

Answer: A

Explanation:

Answer Area

Server to use to create the IFM source:

Tool to use to create the IFM source:

NEW QUESTION 108

- (Topic 3)

Note: This question is part of a series of questions that present the same scenario. Each question in the series contains a unique solution that might meet the stated goals. Some question sets might have more than one correct solution, while others might not have a correct solution. After you answer a question in this section, you will NOT be able to return to it. As a result, these questions will not appear in the review screen.

You are planning the deployment of DNS to a new network.

You have three internal DNS servers as shown in the following table.

Name	Location	IP address	Local DNS zone
Server1	Montreal	10.0.1.10	contoso.local
Server2	Toronto	10.0.2.10	east.contoso.local
Server3	Seattle	10.0.3.10	west.contoso.local

The contoso.local zone contains zone delegations for east.contoso.local and west.contoso.local. All the DNS servers use root hints.

You need to ensure that all the DNS servers can resolve the names of all the internal namespaces and internet hosts.

Solution: On Server2, you create a conditional forwarder for contoso.local and west.contoso.local. On Server3, you create a conditional forwarder for contoso.local and east.contoso.local.

Does this meet the goal?

- A. Yes
- B. No

Answer: B

NEW QUESTION 112

- (Topic 3)

Your network contains an Active Directory forest. The forest contains two domains named contoso.com and east.contoso.com and the servers shown in the following table.

Name	Domain	Configuration
DC1	contoso.com	Domain controller
Server1	contoso.com	Member server
DC2	east.contoso.com	Domain controller
Server2	east.contoso.com	Member server

Contoso.com contains a user named User1.

You add User1 to the built-in Backup Operators group in contoso.com. Which servers can User1 back up?

- A. DC1 only
- B. Server1 only
- C. DC1 and DC2 only
- D. DC1 and Server1 only
- E. DC1, DC2, Server1, and Server2

Answer: A

NEW QUESTION 117

- (Topic 3)

Your network contains an Active Directory Domain Services (AD DS) domain named contoso.com.

You need to identify which server is the PDC emulator for the domain.

Solution: From Active Directory Sites and Services, you right-click Default-First-Site-Name in the console tree, and then select Properties.

Does this meet the goal?

- A. Yes
- B. No

Answer: B

NEW QUESTION 122

- (Topic 3)

You have an Azure virtual machine named VM1 that runs Windows Server.

You need to configure the management of VM1 to meet the following requirements:

- Require administrators to request access to VM1 before establishing a Remote Desktop connection.
- Limit access to VM1 from specific source IP addresses.
- Limit access to VM1 to a specific management port. What should you configure?

- A. a network security group (NSG)
- B. Azure Active Directory (Azure AD) Privileged Identity Management (PIM)
- C. Azure Front Door
- D. Microsoft Defender for Cloud

Answer: D

Explanation:

Reference:

<https://docs.microsoft.com/en-us/azure/defender-for-cloud>

NEW QUESTION 127

HOTSPOT - (Topic 3)

You have a server named Server1 that runs Windows Server and has the Hyper-V server role installed.

You need to limit which Hyper-V module cmdlets helpdesk users can use when administering Server1 remotely.

You configure Just Enough Administration (JEA) and successfully build the role capabilities and session configuration files.

How should you complete the PowerShell command? To answer, select the appropriate options in the answer area.

NOTE: Each correct selection is worth one point.

Answer Area



- A. Mastered
- B. Not Mastered

Answer: A

Explanation:

Answer Area



NEW QUESTION 130

- (Topic 3)
 Your network contains an on-premises Active Directory Domain Services (AD DS) domain named contoso.com The domain contains three servers that run Windows Server and have the Hyper-V server role installed. Each server has a Switch Embedded Teaming (SET) team You need to verity that Remote Direct Memory Access (RDMA) and all the required Windows Server settings are configured properly on each server. What should you use?

- A. Server Manager
- B. the validate-DCB cmdtet
- C. the Get-NetAdaptor cmdlet
- D. Failover Cluster Manager

Answer: B

Explanation:

Reference: <https://github.com/Microsoft/Validate-DCB>

NEW QUESTION 131

- (Topic 3)
 Your network contains an Active Directory Domain Services (AD DS) domain. You plan to use Active Directory Administrative Center to create a new user named User1. Which two attributes are required to create User1? Each correct answer presents part of the solution.
 NOTE: Each correct selection is worth one point.

- A. Password
- B. Profile path
- C. User SamAccountName logon
- D. Full name
- E. First name
- F. User UPN logon

Answer: AC

NEW QUESTION 136

DRAG DROP - (Topic 3)
 You have an on-premises server named Server 1 that runs Windows Server. Server 1 contains a file share named Share 1. You have an Azure subscription. You perform the following actions:

- Deploy Azure File Sync
- Install the Azure File Sync agent on Server1.
- Register Server1 with Azure File Sync

You need to ensure that you can add Share1 as an Azure File Sync server endpoint. Which three actions should you perform in sequence? To answer, move the appropriate actions from the list of actions to the answer area and arrange them in the correct order.

Actions

- Deploy the Azure Connected Machine agent.
- Deploy an Azure VPN gateway.
- Create a private endpoint.
- Create an Azure Storage account.
- Create an Azure file share.
- Create a sync group.

Answer Area

- A. Mastered
- B. Not Mastered

Answer: A

Explanation:

Actions

- Deploy the Azure Connected Machine agent.
- Deploy an Azure VPN gateway.
- Create a private endpoint.
- Create an Azure Storage account.
- Create an Azure file share.
- Create a sync group.

Answer Area

NEW QUESTION 140
HOTSPOT - (Topic 3)

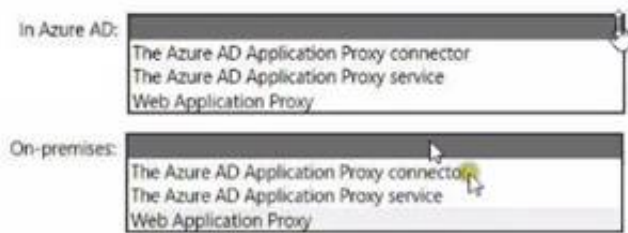
You have an on-premises Active Directory Domain Services (AD DS) domain that syncs with an Azure Active Directory (Azure AD) tenant.

You have an on-premises web app named WebApp1 that only supports Kerberos authentication.

You need to ensure that users can access WebApp1 by using their Azure AD account. The solution must minimize administrative effort.

What should you configure? To answer, select the appropriate options in the answer area. NOTE: Each correct selection is worth one point.

Answer Area

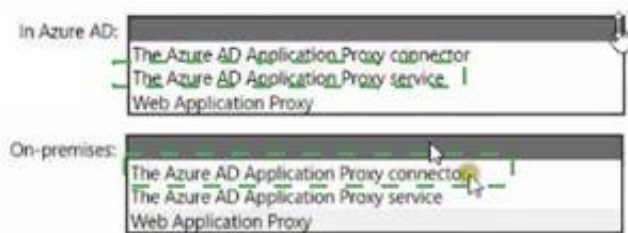


- A. Mastered
- B. Not Mastered

Answer: A

Explanation:

Answer Area



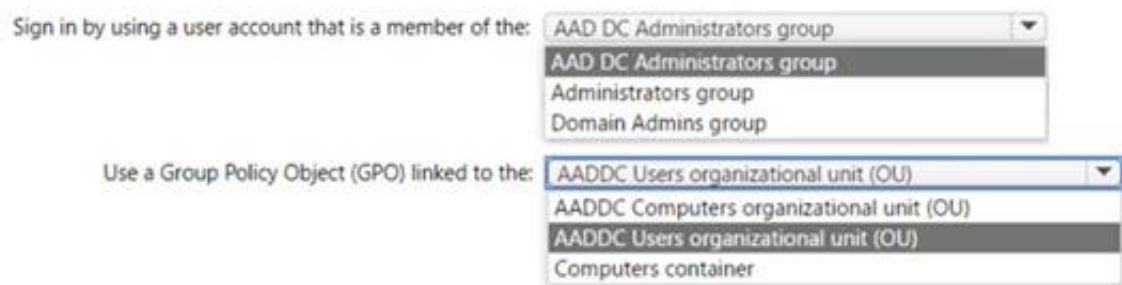
NEW QUESTION 141
HOTSPOT - (Topic 3)

Your network contains an Azure AD Domain Services domain named contoso.com.

You need to configure a password policy for the local user accounts on the Azure virtual machines joined to contoso.com.

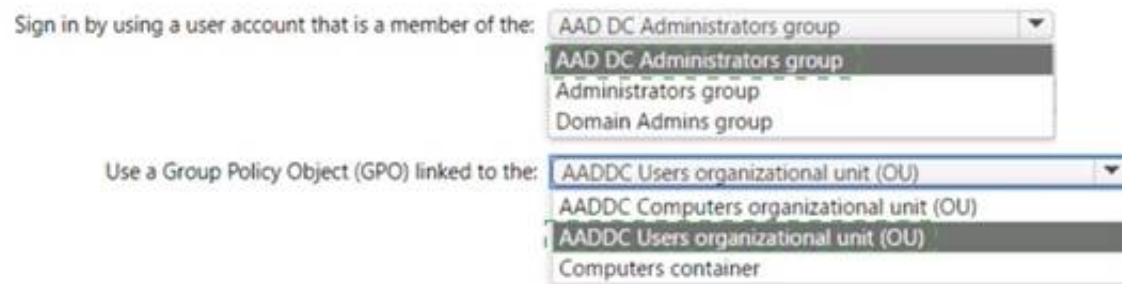
What should you do? To answer, select the appropriate options in the answer area. NOTE: Each correct selection is worth one point.

Answer Area



Answer:

Answer Area



- A. Mastered
- B. Not Mastered

Answer: A

NEW QUESTION 144
HOTSPOT - (Topic 3)

You have a Group Policy Object (GPO) named GPO1 that contains user settings only.

You plan to apply GPO1 to a global security group named Group1.

You link GP01 to the domain, and you remove all the permissions granted to the Authenticated Users group.

You need to configure permissions for GP01 to meet the following requirements.

- GPO1 must apply only to the users in Group 1.
- The solution must use the principle of least privilege

Answer Area

Group1:
Apply group policy and Read
Apply group policy only
Read only

Domain Computers:
Apply group policy and Read
Apply group policy only
Read only

- A. Mastered
- B. Not Mastered

Answer: A

Explanation:

Answer Area

Group1:
Apply group policy and Read
Apply group policy only
Read only

Domain Computers:
Apply group policy and Read
Apply group policy only
Read only

NEW QUESTION 148

- (Topic 3)

You have an on-premises Active Directory Domain Services (AD DS) domain that syncs with an Azure Active Directory (Azure AD) tenant. You plan deploy 100 new Azure virtual machines that will run Windows Server. You need to ensure that each new virtual machine is joined to the AD DS domain. What should you use?

- A. Azure AD Connect
- B. a Group Policy Object (GPO)
- C. an Azure Resource Manager (ARM) template
- D. an Azure management group

Answer: C

Explanation:

Reference:

<https://www.ludovicmedard.com/create-an-arm-template-of-a-virtual-machine-automatically-joined-to-a-domain/>

NEW QUESTION 150

DRAG DROP - (Topic 3)

You have a server named Server 1 that runs Windows Server and has the Hyper-V server role installed. Server1 hosts a virtual machine named VM1. Server1 has an NV Me storage device that is assigned to VM1 by using Discrete Device Assignment. You need to make the device available to the host. Which four actions should you perform in sequence? To answer, move the appropriate actions from the list of actions to the answer area and arrange them in the correct order.

Actions

From VM1, disable the device by using Device Manager.	
From Server1, stop VM1.	
From Server1, run the Remove-VMAssignableDevice cmdlet.	
From Server1, run the Mount-VMHostAssignableDevice cmdlet.	
From Server1, enable the device by using Device Manager.	

Answer Area

- A. Mastered
- B. Not Mastered

Answer: A

Explanation:

Actions

From VM1, disable the device by using Device Manager.	
From Server1, stop VM1.	
From Server1, run the Remove-VMAssignableDevice cmdlet.	
From Server1, run the Mount-VMHostAssignableDevice cmdlet.	
From Server1, enable the device by using Device Manager.	

Answer Area

NEW QUESTION 155

- (Topic 3)

Your network contains an Active Domain Services (AD DS) forest. The forest contains three domains. Each domain contains 10 domain controllers. You plan to store a DNS zone in a custom active Directory partition. You need to create the Active Directory partition for the zone. The partition replicate to only four of the domain controllers. What should you use?

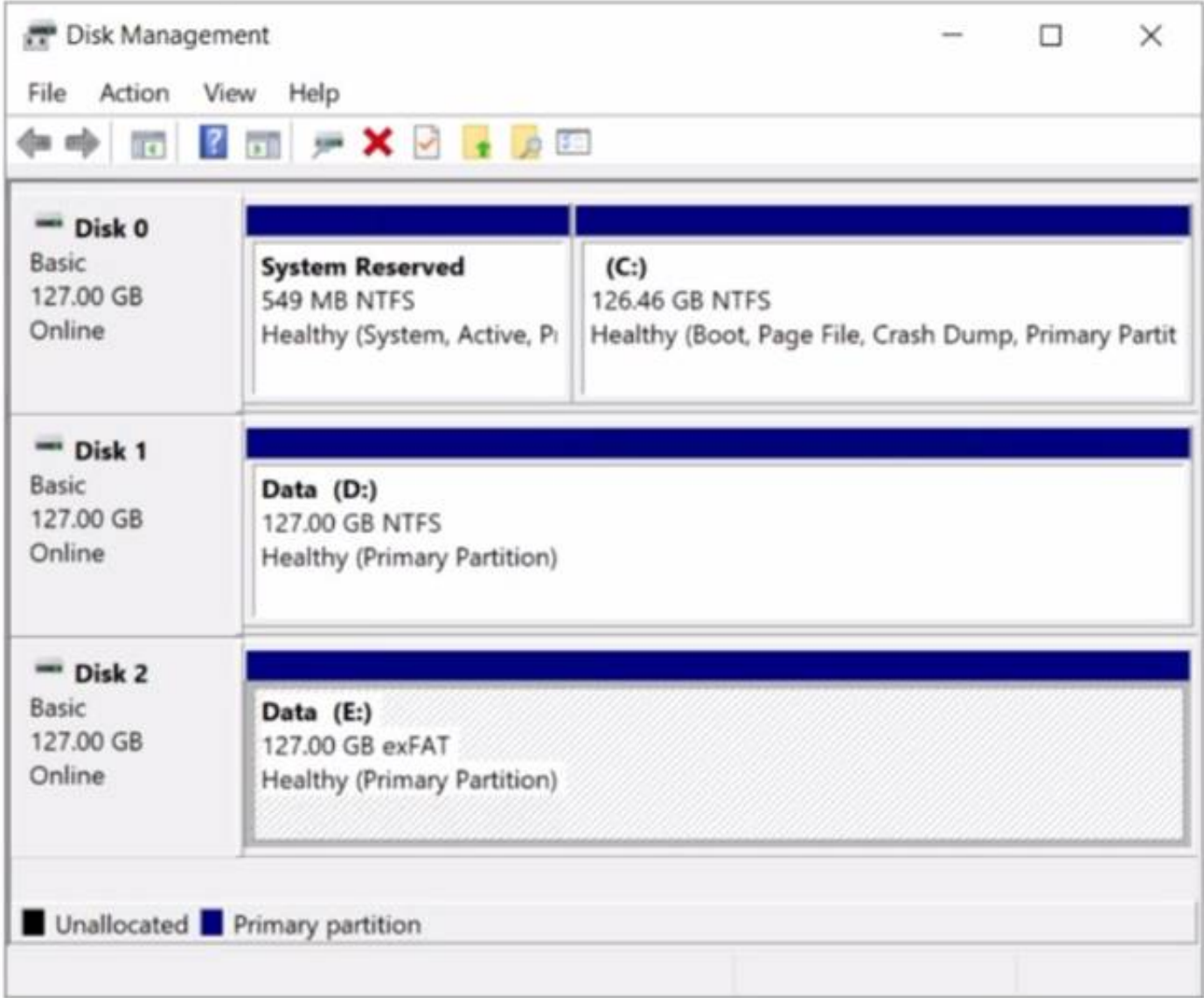
- A. Active Directory Sites and Services
- B. Active Directory Administrator Center
- C. dnscmd.exe
- D. DNS Manager

Answer: B

NEW QUESTION 157

- (Topic 3)

You have a server named Server1 that runs Windows Server. The disks on Server1 are configured as shown in the following exhibit.



You need to convert volume E to ReFS. The solution must meet the following requirements:

- Preserve the existing data on volume E.
- Minimize administrative effort. What should you do first?

- A. Take Disk 2 offline.
- B. Back up the data on volume E.
- C. Convert Disk 2 to a dynamic disk.
- D. Runconvert.exe.

Answer: B

NEW QUESTION 159

- (Topic 3)

You have an on-premises Active Directory Domain Services (AD DS) domain that syncs with an Azure Active Directory (Azure AD) tenant. The on-premises network is connected to Azure by using a Site-to-Site VPN. You have the DNS zones shown in the following table.

Name	Location	Description
contoso.com	A domain controller named DC1 on the on-premises network	Provides name resolution on-premises
fabrikam.com	An Azure private DNS zone	Provides name resolution for all Azure virtual networks

You need to ensure that names from aDiifcam.com can be resolved from the on-premises network. Which two actions should you perform? Each correct answer presents part of the solution. NOTE: Each correct selection is worth one point.

- A. Create a conditional forwarder for fabrikam.com on DC1.
- B. Create a stub zone for fabrikam.com on DC1.
- C. Create a secondary zone for fabrikam.com on DC1.
- D. Deploy an Azure virtual machine that runs Windows Server.
- E. Modify the DNS Servers settings for the virtual network.
- F. Deploy an Azure virtual machine that runs Windows Server.

G. Configure the virtual machine &s a DNS forwarder.

Answer: AE

Explanation:

Reference:

<https://docs.microsoft.com/en-us/azure/private-link/private-endpoint-dns#on-premises-workloads-using-a-dns-forwarder>

NEW QUESTION 161

- (Topic 3)

You have an on-premises server named Server1 that runs Windows Server. You have an Azure subscription that contains a virtual network named VNet1. You need to connect Server1 to VNet1 by using Azure Network Adapter. What should you use?

- A. Azure AD Connect
- B. Device Manager
- C. the Azure portal
- D. Windows Admin Center

Answer: D

NEW QUESTION 163

HOTSPOT - (Topic 3)

You have an Azure subscription that contains the storage accounts shown in the following table.

Name	Location	Kind	Container	File share
storage1	East US	StorageV2	cont1	share1
storage2	East US	BlockBlobStorage	cont2	<i>Not applicable</i>
storage3	East US	FileStorage	<i>Not applicable</i>	share3
storage4	Central US	StorageV2	cont4	share4

In the East US Azure region, you create a storage sync service named Synd. You need to create a sync group in Synd. Which storage accounts can you use, and what can you specify as the cloud endpoints? To answer, select the appropriate options in the answer area. NOTE: Each correct selection is worth one point.

Answer Area

Storage accounts: storage1 and storage3 only

- storage1 only
- storage1 and storage3 only**
- storage1 and storage4 only
- storage1, storage2, and storage3 only
- storage1, storage2, storage3, and storage4

Cloud endpoints: share1 and share3 only

- cont1 and cont2 only
- share1 and share3 only**
- cont1, cont2, and cont4 only
- share1, share3, and share4 only
- cont1, cont2, share1, and share3 only
- cont1, cont2, cont4, share1, share3, and share4

- A. Mastered
- B. Not Mastered

Answer: A

Explanation:

Answer Area

Storage accounts: storage1 and storage3 only

- storage1 only
- storage1 and storage3 only**
- storage1 and storage4 only
- storage1, storage2, and storage3 only
- storage1, storage2, storage3, and storage4

Cloud endpoints: share1 and share3 only

- cont1 and cont2 only
- share1 and share3 only**
- cont1, cont2, and cont4 only
- share1, share3, and share4 only
- cont1, cont2, share1, and share3 only
- cont1, cont2, cont4, share1, share3, and share4

NEW QUESTION 165

HOTSPOT - (Topic 3)

You have an on-premises server named Server1 that runs Windows Server and has internet connectivity.
You have an Azure subscription.
You need to monitor Server1 by using Azure Monitor.
Which resources should you create in the subscription, and what should you install on Server1? To answer, select the appropriate options in the answer area.
NOTE: Each correct selection is worth one point.

In the subscription, create:

An Azure Files storage account

A Log Analytics workspace

An Azure SQL database and a data collection rule

An Azure Blob Storage account and a data collection rule

On Server1, install:

The Azure Monitor agent

The Analytics gateway

The Device Health Attestation server role

- A. Mastered
- B. Not Mastered

Answer: A

Explanation:

NEW QUESTION 170

HOTSPOT - (Topic 3)

Your network contains two Active Directory Domain Services (AD DS) forests named contoso.com and fabrikam.com. A two-way forest trust exists between the forests. Each forest contains a single domain. The domains contain the servers shown in the following table.

Name	Domain	Description
Server1	contoso.com	Hosts a Windows Admin Center gateway
Server2	fabrikam.com	Hosts resources that will be managed remotely by using Windows Admin Center on Server1

You need to configure resources based constrained delegation so that the users In contoso.com can use Windows Admin Center on Server) to connect to Server?
How should you complete the command? To answer, select the appropriate options in the answer area.
NOTE: Each correct selection is worth one point.

Answer Area

Set-ADComputer -Identity

(Get-ADComputer server1.contoso.com)

(Get-ADComputer server2.fabrikam.com)

(Get-ADGroup 'Contoso\Domain Users')

(Get-ADGroup 'Fabrikam\Domain Users')

-PrincipalsAllowedToDelegateToAccount

(Get-ADComputer server1.contoso.com)

(Get-ADComputer server2.fabrikam.com)

(Get-ADGroup 'Contoso\Domain Users')

(Get-ADGroup 'Fabrikam\Domain Users')

- A. Mastered
- B. Not Mastered

Answer: A

Explanation:
Answer Area



NEW QUESTION 175
HOTSPOT - (Topic 3)

You have a server named Server1 that runs Windows Server and contains three volumes named C, D, and E. Files are stored on Server1 as shown in the following table.

Name	On volume	Size
File1	C	500 KB
File2	D	10 KB
File3	D	1 MB

For volume D, Data Deduplication is enabled and set to General purpose file server. You perform the following actions:

- Move File1 to volume D.
- Copy File2 to volume D and name the copy File4.
- Move File3 to volume E

For each of the following statements, select Yes if the statement is true. Otherwise, select No. NOTE: Each correct selection is worth one point.

Answer Area

Statements	Yes	No
File1 is deduplicated after the deduplication job runs.	<input type="radio"/>	<input type="radio"/>
File3 is deduplicated after the deduplication job runs.	<input type="radio"/>	<input type="radio"/>
File4 is deduplicated after the deduplication job runs.	<input type="radio"/>	<input type="radio"/>

- A. Mastered
B. Not Mastered

Answer: A

Explanation:

Answer Area

Statements	Yes	No
File1 is deduplicated after the deduplication job runs.	<input type="radio"/>	<input checked="" type="radio"/>
File3 is deduplicated after the deduplication job runs.	<input type="radio"/>	<input checked="" type="radio"/>
File4 is deduplicated after the deduplication job runs.	<input checked="" type="radio"/>	<input type="radio"/>

NEW QUESTION 180
- (Topic 2)

You need to configure the Group Policy settings to ensure that the Azure Virtual Desktop session hosts meet the security requirements. What should you configure?

- A. security filtering for the link of GP04
B. security filtering for the link of GPO1
C. loopback processing in GPO4
D. the Enforced property for the link of GP01
E. loopback processing in GPO1
F. the Enforced property for the link of GP04

Answer: C

NEW QUESTION 181
DRAG DROP - (Topic 2)

You need to meet the security requirements for passwords.

Where should you configure the components for Azure AD Password Protection? To answer, drag the appropriate components to the correct locations. Each component may be used once, more than once, or not at all. You may need to drag the split bar between panes or scroll to view content.

NOTE Each correct selection is worth one point.

Locations	Answer Area
DC1 only	The Azure AD Password Protection DC agent: <input type="text" value="Location"/>
All the domain controllers	The Azure AD Password Protection proxy service: <input type="text" value="Location"/>
VM1 and VM2	A custom banned password list: <input type="text" value="Location"/>
The Azure AD tenant	

- A. Mastered
- B. Not Mastered

Answer: A

Explanation:



NEW QUESTION 186

- (Topic 2)

What should you implement for the deployment of DC3?

- A. Azure Active Directory Domain Services (Azure AD DS)
- B. Azure AD Application Proxy
- C. an Azure virtual machine
- D. an Azure AD administrative unit

Answer: C

Explanation:

Create a domain controller named dc3.corp.fabrikam.com in Vnet1.

In a hybrid network, you can configure Azure virtual machines as domain controllers. The domain controllers in Azure communicate with the on-premises domain controllers in the same way that on-premises domain controllers communicate with each other.

NEW QUESTION 188

- (Topic 1)

You need to meet the technical requirements for VM2. What should you do?

- A. Implement shielded virtual machines.
- B. Enable the Guest services integration service.
- C. Implement Credential Guard.
- D. Enable enhanced session mode.

Answer: D

NEW QUESTION 192

- (Topic 1)

You need to meet the technical requirements for User1. The solution must use the principle of least privilege.

What should you do?

- A. Add Users1 to the Server Operators group in contoso.com.
- B. Create a delegation on contoso.com.
- C. Add Users1 to the Account Operators group in contoso.com.
- D. Create a delegation on OU3.

Answer: D

Explanation:

Reference:

<https://docs.microsoft.com/en-us/windows-server/identity/ad-ds/plan/delegating-administration-of-account-ous-and-resource-ous>

NEW QUESTION 195

- (Topic 1)

You need to meet the technical requirements for VM3 On which volumes can you enable Data Deduplication?

- A. D and E only
- B. C, D, E, and F
- C. D only
- D. C and D only
- E. D, E, and F only

Answer: A

Explanation:

Reference:

<https://docs.microsoft.com/en-us/windows-server/storage/data-deduplication/interop>

NEW QUESTION 198

HOTSPOT - (Topic 1)

Which groups can you add to Group3 and Groups? To answer, select the appropriate options in the answer area. NOTE Each correct selection is worth one point.

Answer Area

Group3:

Group6 only

Group1 and Group2 only

Group1 and Group4 only

Group1, Group2, Group4, and Group5 only

Group1, Group2, Group4, Group5, and Group6

Group5:

Group1 only

Group4 only

Group6 only

Group2 and Group4 only

Group4 and Group6 only

- A. Mastered
- B. Not Mastered

Answer: A

Explanation:
Answer Area

Group3:

Group6 only

Group1 and Group2 only

Group1 and Group4 only

Group1, Group2, Group4, and Group5 only

Group1, Group2, Group4, Group5, and Group6

Group5:

Group1 only

Group4 only

Group6 only

Group2 and Group4 only

Group4 and Group6 only

NEW QUESTION 201
.....

Thank You for Trying Our Product

We offer two products:

1st - We have Practice Tests Software with Actual Exam Questions

2nd - Questions and Answers in PDF Format

AZ-800 Practice Exam Features:

- * AZ-800 Questions and Answers Updated Frequently
- * AZ-800 Practice Questions Verified by Expert Senior Certified Staff
- * AZ-800 Most Realistic Questions that Guarantee you a Pass on Your FirstTry
- * AZ-800 Practice Test Questions in Multiple Choice Formats and Updatesfor 1 Year

100% Actual & Verified — Instant Download, Please Click
[Order The AZ-800 Practice Test Here](#)