

Cisco

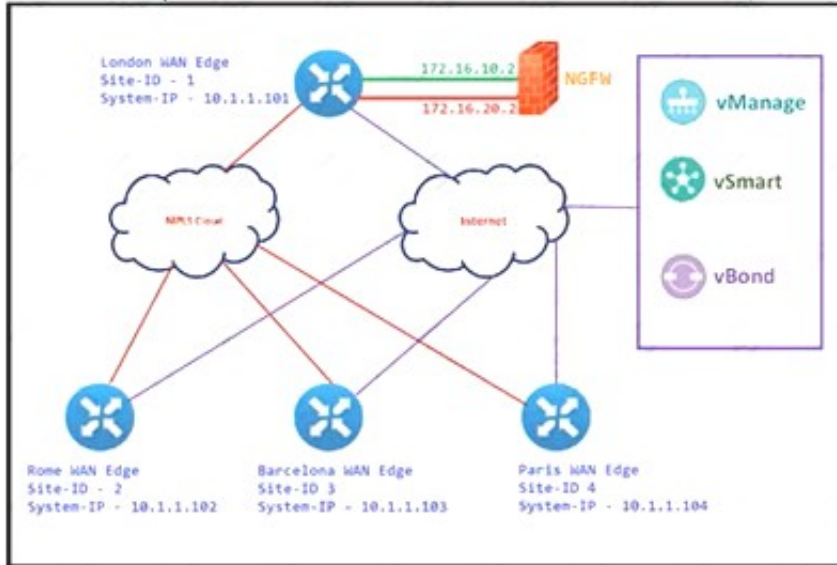
Exam Questions 300-415

Implementing Cisco SD-WAN Solutions (ENSDWI)



NEW QUESTION 1

Refer to the exhibit.



The Cisco SD-WAN is deployed using the default topology. The engineer wants to configure a service insertion policy such that all data traffic between Rome to Paris is forwarded through the NGFW located in London. Which configuration fulfills this requirement, assuming that the Service VPN ID is 1?

A)

```

London WAN Edge
vpn 1
 service netsvc1 address 172.16.10.2
 service netsvc2 address 172.16.20.2

vSmart Policy
policy
lists
 site-list ROME
 site-id 2
 site-list PARIS
 site-id 4
control-policy NGFW-SI
 sequence 1
  match route
   site-id ROME
  action accept
  set service netsvc1 vpn 1
 sequence 2
  match route
   site-id PARIS
  action accept
  set service netsvc2 vpn 1
 default-action accept
!
apply-policy
 site-list ROME
 control-policy NGFW-SI out
!
 site-list PARIS
 control-policy NGFW-SI out

```

B)

```

London WAN Edge
vpn 1
 service netsvc1 address 172.16.10.2
 service netsvc2 address 172.16.20.2

vSmart Policy
policy
lists
 site-list ROME
 site-id 2
 site-list PARIS
 site-id 4
control-policy NGFW-SI
 sequence 1
  match route
   site-id ROME
  action accept
 sequence 2
  match route
   site-id PARIS
  action accept
 default-action accept
!
apply-policy
 site-list ROME control-policy NGFW-SI out

```

C)

```

○ ROME WAN Edge
service FW address 10.1.1.101

PARIS WAN Edge
service FW address 10.1.1.101

vSmart Policy
policy
lists
site-list ROME
site-id 2
site-list PARIS
site-id 4
control-policy NGFW-SI
sequence 1
match route
site-id ROME
action accept
set service netsvc1 vpn 1
sequence 2
match route
site-id PARIS
action accept
set service netsvc2 vpn 1
default-action accept
!
apply-policy
site-list ROME
control-policy NGFW-SI out
!
site-list PARIS
control-policy NGFW-SI out

```

D)

```

○ ROME WAN Edge
service FW address 10.1.1.101

PARIS WAN Edge
service FW address 10.1.1.101

vSmart Policy
policy
lists
site-list ROME
site-id 2
site-list PARIS
site-id 4
control-policy NGFW-SI
sequence 1
match route
site-id ROME
action accept
sequence 2
match route
site-id PARIS
action accept
default-action accept
!
apply-policy
site-list ROME control-policy NGFW-SI out

```

- A. Option A
- B. Option B
- C. Option C
- D. Option D

Answer: A

NEW QUESTION 2

Refer to the exhibit.

```

vpn 0
interface ge0/0
ip address 10.1.15.15/24
tunnel-interface
color lte
allow-service dhcp
allow-service dns
allow-service icmp

no allow-service sshd
no allow-service ntp
no allow-service stun
!
no shutdown
shaping-rate

```

Which shaping-rate does the engineer use to shape traffic at 9 Mbps?

- A. 9
- B. 9000
- C. 90000
- D. 9000000

Answer: B

Explanation:

<https://www.cisco.com/c/en/us/td/docs/routers/sdwan/command/sdwan-cr-book/config-cmd.html#wp421715213>

NEW QUESTION 3

Which two platforms for the Cisco SD-WAN architecture are deployable in a hypervisor on-premises or in IAAS Cloud? (Choose two.)

- A. CSR 1000v
- B. vEdge 100c
- C. vEdge Cloud
- D. vEdge 2000
- E. ISR 4431

Answer: AC

NEW QUESTION 4

Refer to the exhibit, which configuration configures IPsec tunnels in active and standby?

```
from-vsmart data-policy_1_ServiceIserctionIPSec
direction from-service
vpn-list 1
  sequence 1
  match destination-ip 64.102.6.247/32
  action accept
  set
  service netsvc1
  service local
  default-action accept
```

- ☐ vpn 1
service netsvc1 interface ipsec1 ipsec2

vpn-list 1
count ServicePsec1_275676046
from-vsmart lists vpn-list 1
vpn 1
- ☐ vpn 0
service netsvc1 interface ipsec1 ipsec2

from-vsmart lists vpn-list 0
vpn 0
- ☐ vpn 1
service netsvc1 interface ipsec1 ipsec2

from-vsmart lists vpn-list 1
vpn 1
- ☐ vpn 0
service netsvc1 interface ipsec1 ipsec2

vpn-list 1
count ServicePsec1_275676046
from-vsmart lists vpn-list 0
vpn 0

- A. Option A
- B. Option B
- C. Option C
- D. Option D

Answer: C

NEW QUESTION 5

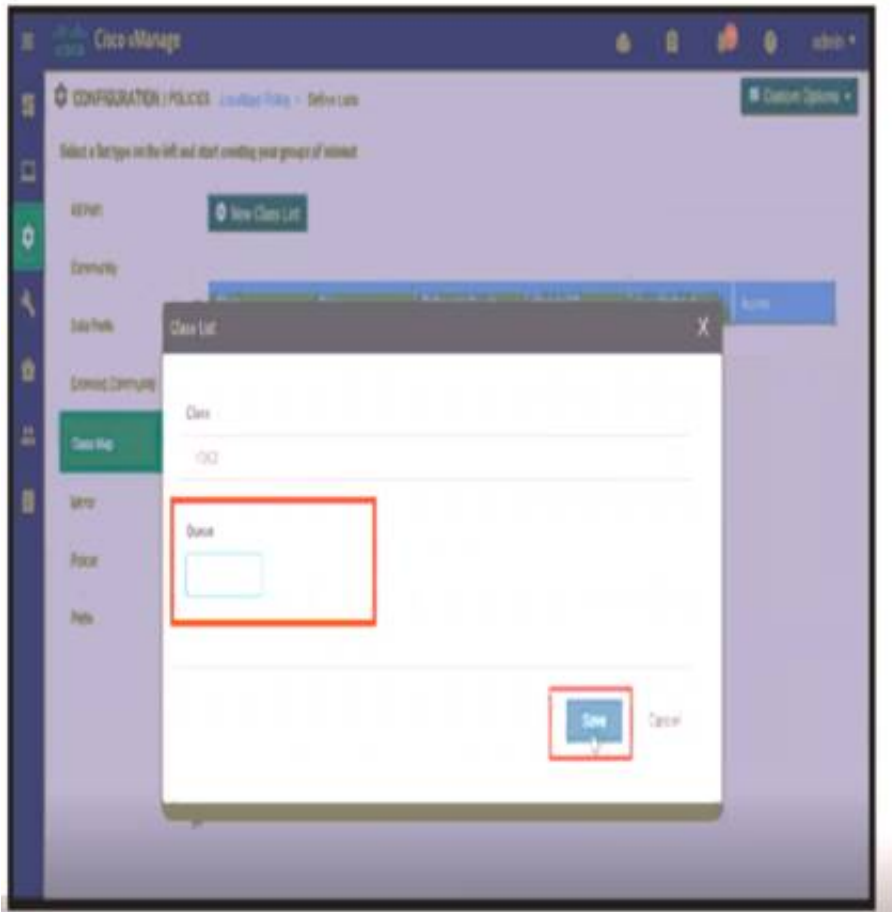
Which configuration component is used in a firewall security policy?

- A. numbered sequences of match-action pairs
- B. application match parameters
- C. URL filtering policy
- D. intrusion prevention policy

Answer: A

NEW QUESTION 6

Refer to the exhibit.



A network administrator is setting the queueing value for voice traffic for one of the WAN Edge routers using vManager GUI. Which queue value must be set to accomplish this task?

- A. 1
- B. 2
- C. 3

Answer: A

NEW QUESTION 7

On which device is a service FW address configured to Insert firewall service at the hub?

- A. vEdge at the branch
- B. vSmart at the hub
- C. vEdge at the hub
- D. vSmart at the branch

Answer: C

NEW QUESTION 8

What are the two protocols redistributed into OMP? (Choose two.)

- A. OSPF
- B. RIP
- C. LDP
- D. RSVP
- E. EIGRP

Answer: AE

Explanation:

Supported Protocols

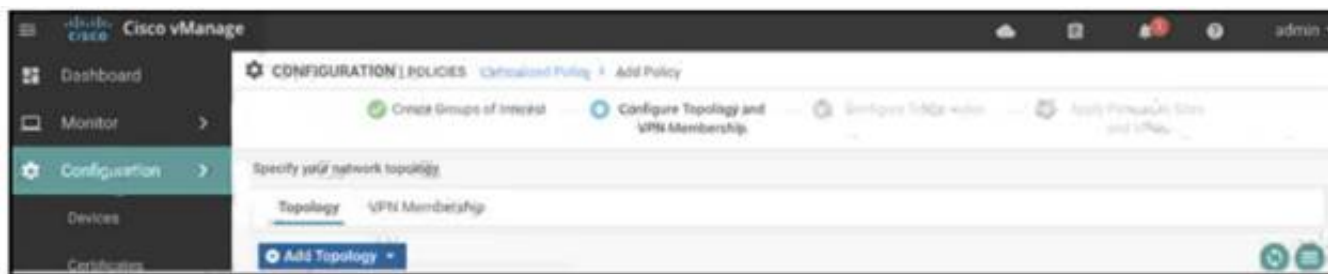
This section explains the protocols supported for unicast routing.

- OMP Routing Protocol
- BGP and OSPF Routing Protocols
- OSPFv3
- EIGRP

<https://www.cisco.com/c/en/us/td/docs/routers/sdwan/configuration/routing/ios-xe-17/routing-book-xe/m-unicas>

NEW QUESTION 9

Refer to the exhibit.



An administrator is configuring a policy in addition to an existing hub-and-spoke policy for two sites that should directly communicate with each other. How is this policy configured?

- A. hub-and-spoke
- B. mesh
- C. import existing topology
- D. custom control (route and TLOC)

Answer: D

Explanation:

<https://www.cisco.com/c/en/us/td/docs/routers/sdwan/configuration/policies/vedge/policies-book/controlpolicies>

NEW QUESTION 10

An engineer is configuring a data policy for IPv4 prefixes for a single WAN Edge device on a site with multiple WAN Edge devices. How is this policy added using the policy configuration wizard?

- A. In vManage NMS, select the configure policies screen, select the localized policy tab and click add policy
- B. In vSmart controller, select the configure policies screen, select the localized policy tab and click add policy
- C. In vManage NM, select the configure policies screen, select the centralized policy tab and click add policy
- D. In vManage NM, select the configure policies screen, select the localized policy tab and click add policy
- E. In vBond orchestrator, select the configure policies screen, select the localized policy tab and click add policy
- F. In vManage NMS, select the configure policies screen, select the centralized policy tab and click add policy
- G. In vSmart controller, select the configure policies screen, select the localized policy tab and click add policy
- H. In vManage NM, select the configure policies screen, select the localized policy tab and click add policy

Answer: A

NEW QUESTION 10

What is the minimum Red Hat Enterprise Linux operating system requirement for a Cisco SD-WAN controller deployment via KVM?

- A. RHEL7.5
- B. RHEL 6.5
- C. RHEL4.4
- D. RHEL 6.7

Answer: D

NEW QUESTION 15

An engineer is adding a tenant with location ID 399533345 in vManage. What is the maximum number of alphanumeric characters that is accepted in the tenant name field?

- A. 64
- B. 128
- C. 256
- D. 8

Answer: B

Explanation:

In the Add Tenant window:

- a. Enter a name for the tenant. It can be up to 128 characters and can contain only alphanumeric characters.

NEW QUESTION 20

Which policy configuration must be used to classify traffic as it enters the branch WAN Edge router to be put into the desired output queue?

A)

```
Policy
class-map
class p1 queue 2
```

B)

```
qos-map Q_Map
qos-scheduler p1
```

C)


```
Policy
qos-scheduler QoS
class p1
bandwidth-percent 20
buffer-percent 20
drops red-drop
```

D)

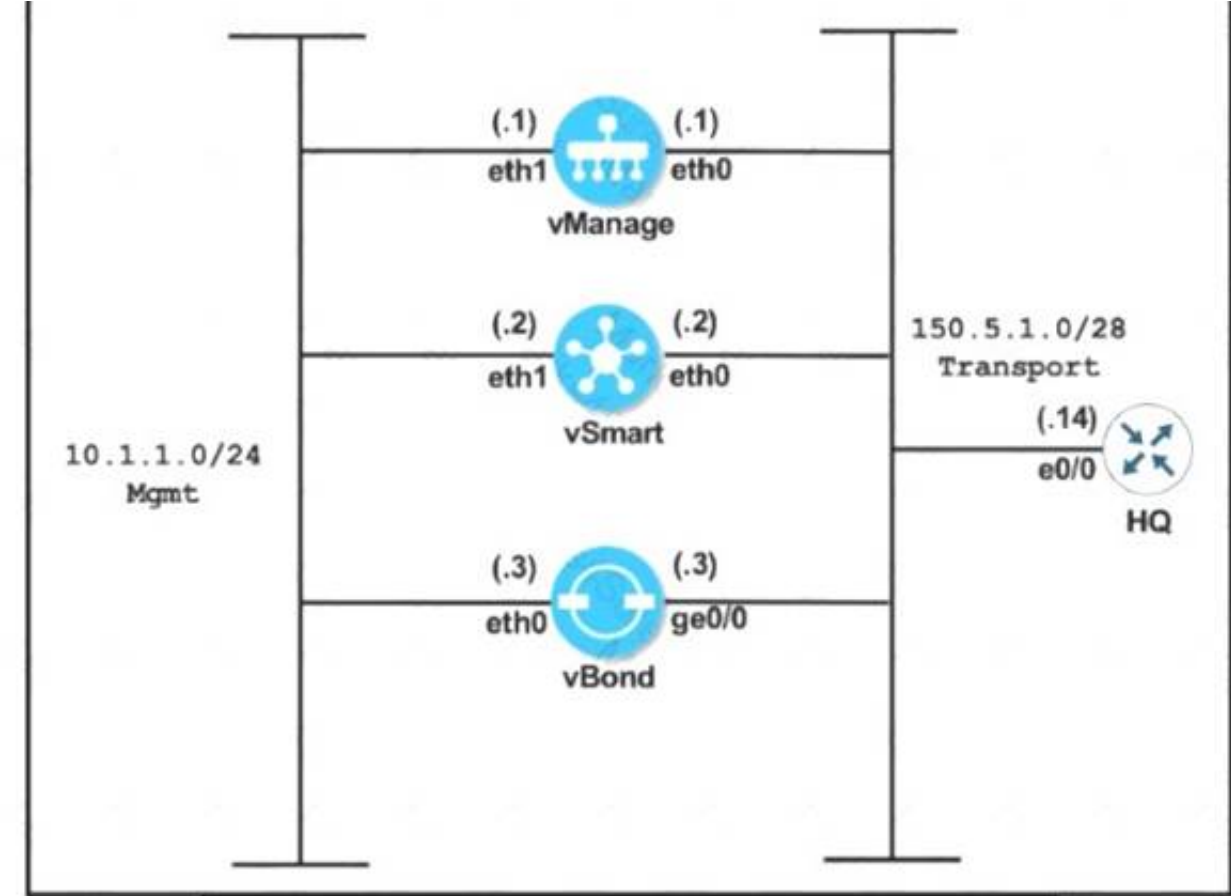
```
Policy
access-list QoS
sequence 1
match
destination-ip 10.0.0.0/8
!
action accept
class p1
```

- A. Option A
- B. Option B
- C. Option C
- D. Option D

Answer: D

NEW QUESTION 23

Refer to the exhibit.



```

vManage
system
 system-ip 10.10.10.101
 host-name vManage
 site-id 1
 clock timezone Europe/London
 vbond 150.5.1.3
 organization-name Cisco.com
!
vpn 0
 interface eth0
 ip address 150.5.1.1/28
 no shut
 tunnel-interface
 allow-service all
 ip route 0.0.0.0/0 150.5.1.14
!
commit

vSmart
system
 system-ip 10.10.10.102
 host-name vSmart
 site-id 1
 clock timezone Europe/London
 vbond 150.5.1.3
 organization-name Cisco.com
!
vpn 0
 interface eth0
 ip address 150.5.1.2/28
 no shut
 tunnel-interface
 allow-service all
 ip route 0.0.0.0/0 150.5.1.14
!
commit

vBond
system
 system-ip 10.10.10.103
 host-name vBond
 site-id 1
 clock timezone Europe/London
 vbond 150.5.1.3
 organization-name Cisco.com
!
vpn 0
 interface ge0/0
 ip address 150.5.1.3/28
 no shut
 tunnel-interface
 encapsulation ipsec
 allow-service all
 ip route 0.0.0.0/0 150.5.1.14
!
commit
  
```

An engineer is troubleshooting an issue where vManage and vSmart have a problem establishing a connection to vBond. Which action fixes the issue?

- A. Reconfigure the vBond command on the vBond as vBond 150.5.1.3 local
- B. Configure the tunnel interface on all three controllers with a color of transport
- C. Remove the encapsulation IPsec command under the tunnel interface of vBond.
- D. Configure encapsulation as IPsec under the tunnel interface of vManage and vSmart

Answer: A

Explanation:

Configure the IP address of Cisco vBond Orchestrator. Cisco vBond Orchestrator's IP address must be a public IP address, to allow all Cisco vEdge devices in the overlay network to reach Cisco vBond Orchestrator:

vBond(config-system) # **vbond ip-address local**

In Releases 16.3 and later, the address can be an IPv4 or an IPv6 address. In earlier releases, it must be an IPv4 address. A vBond orchestrator is effectively a vEdge router that performs only the orchestrator functions. **The local option designates the device to be Cisco vBond Orchestrator, not a vEdge router.** Cisco vBond Orchestrator must run on a standalone virtual machine (VM) or hardware router; it cannot coexist in the same device as a software or hardware vEdge router.

NEW QUESTION 24

An engineer must apply the configuration for certificate installation to vBond Orchestrator and vSmart Controller. Which configuration accomplishes this task?

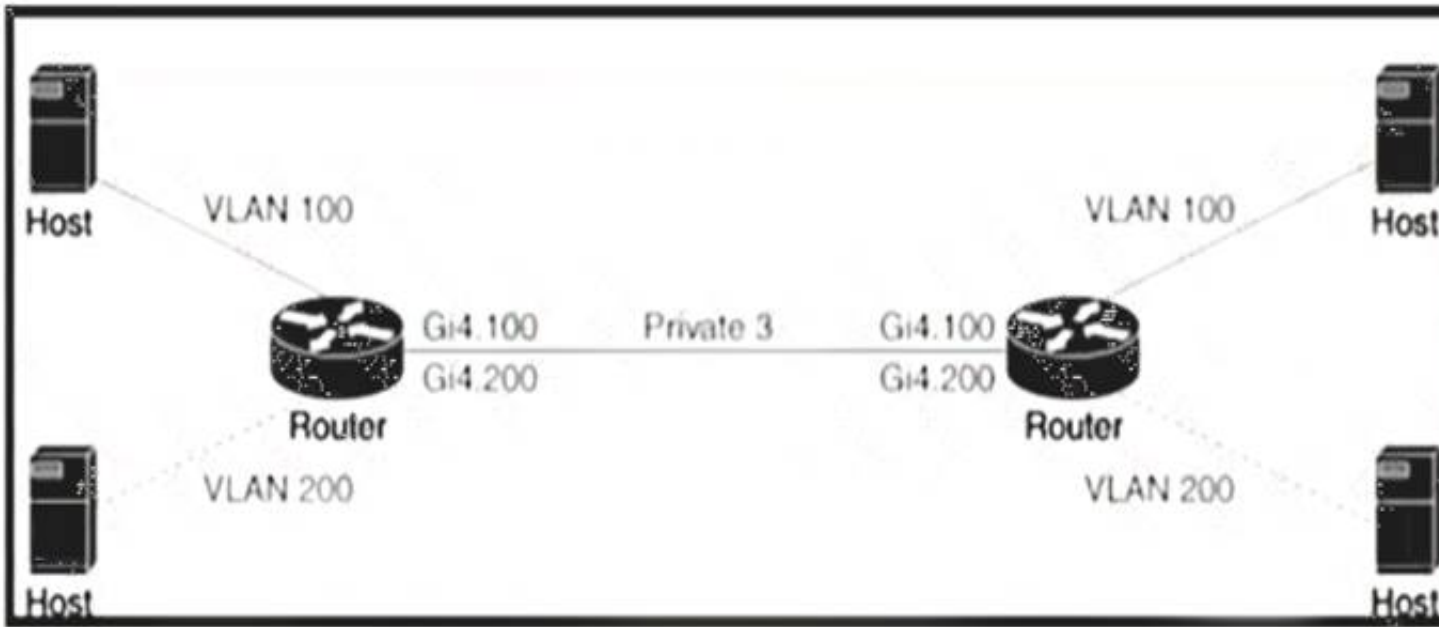
- ☐ vpn 512
 - interface eth1
 - ip address 199.1.1.1/28
 - tunnel-interface
 - allow-service netconf
 - no allow-service ntp
 - no allow-service stun
- ☐ vpn 0
 - interface eth1
 - ip address 199.1.1.1/28
 - tunnel-interface
 - allow-service sshd
 - allow-service ntp
- ☐ vpn 512
 - interface eth1
 - ip address 199.1.1.1/28
 - tunnel-interface
 - allow-service sshd
 - allow-service netconf
- ☐ vpn 0
 - interface eth1
 - ip address 199.1.1.1/28
 - tunnel-interface
 - allow-service sshd
 - allow-service netconf
 - no shutdown

- A. Option A
- B. Option B
- C. Option C
- D. Option D

Answer: D

NEW QUESTION 25

Refer to the exhibit



An engineer is configuring a QoS policy to shape traffic for VLAN 100 on a subinterface Which policy configuration accomplishes the task?

A)

```
policy-map shape_GigabitEthernet4.100
class class-default
service-policy xyz_QoS-model
shape average 100000000
!
interface GigabitEthernet4.100
encapsulation dot1Q 200
service-policy output shape_GigabitEthernet4.100
```

B)

```
policy-map shape_GigabitEthernet4.100
class class Queue0
service-policy xyz_QoS-model
shape average 100000000
!
interface GigabitEthernet4.100
encapsulation dot1Q 200
service-policy output shape_GigabitEthernet4.100
```

C)

```
policy-map shape_GigabitEthernet4.200
class class-default
service-policy xyz_QoS-model
shape average 100000000
!
interface GigabitEthernet4.100
encapsulation dot1Q 100
service-policy output shape_GigabitEthernet4.200
```

D)

```
policy-map shape_GigabitEthernet4.200
class class Queue0
service-policy xyz_QoS-model
shape average 100000000
!
interface GigabitEthernet4.100
encapsulation dot1Q 100
service-policy output shape_GigabitEthernet4.100
```

A. Option A

B. Option B

C. Option C

D. Option D

Answer: C

NEW QUESTION 27

An engineer configures an application-aware routing policy for a group of sites The locations depend on public and private transports The policy does not work as expected when one of the transports does not perform properly This policy is configured:

```

policy
sla-class BULK_DATA
loss 20
latency 300
jitter 100
!
sla-class TRANSACTIONAL_DATA
loss 15
latency 50
jitter 100
!
sla-class REALTIME
loss 20
latency 100
jitter 30
!
app-route-policy VPN-10_MPLS_AND_INET_SITES
vpn-list VPN-10
sequence 1
match
dscp 46
!
action
backup-sla-preferred-color biz-internet
sla-class REALTIME preferred-color private1
!
!
sequence 11
match
dscp 34
!
action
backup-sla-preferred-color biz-internet
sla-class TRANSACTIONAL_DATA preferred-color private1
!
!
!

```

which configuration completes the policy so that it works for all locations?

A)

```

sla-class TRANSACTIONAL_DATA
loss 5
latency 50
jitter 100
!
sla-class REALTIME
loss 2
latency 100
jitter 30
!

```

B)

```

sla-class TRANSACTIONAL_DATA
loss 2
latency 100
jitter 30
!
sla-class REALTIME
loss 15
latency 100
jitter 100
!

```

C)

```

sla-class BULK_DATA
loss 10
latency 300
jitter 100
!
sla-class REALTIME
loss 2
latency 100
jitter 30
!

```

D)

```

sla-class BULK_DATA
loss 15
latency 100
jitter 100
!
sla-class TRANSACTIONAL_DATA
loss 10
latency 300
jitter 100
!

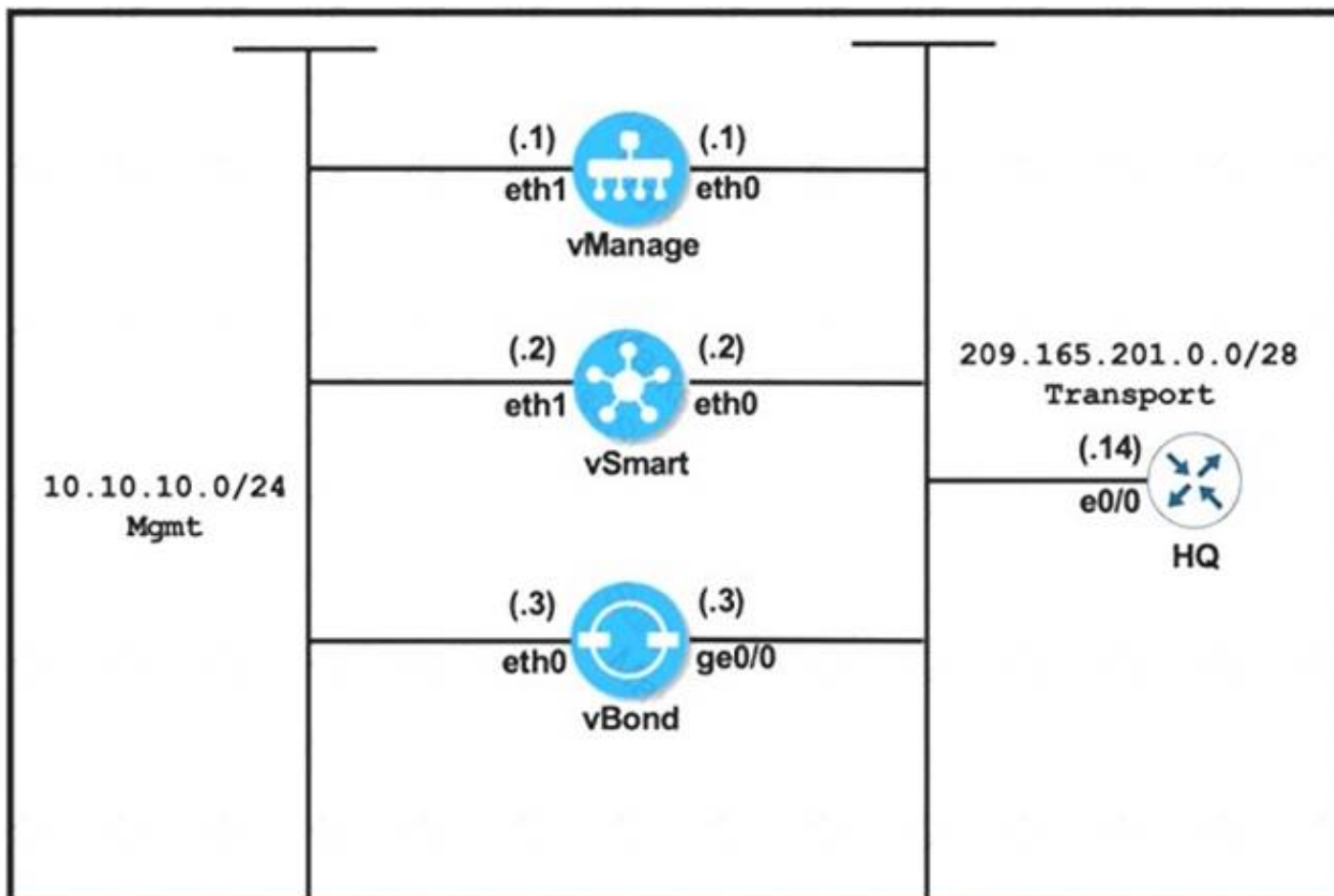
```

- A. Option A
- B. Option B
- C. Option C
- D. Option D

Answer: A

NEW QUESTION 31

Refer to the exhibit



vManage

```

system
system-ip 10.10.10.101
host-name vManage
site-id 1
clock timezone Europe/London
vbond 209.165.201.3
organization-name Cisco.com
!
vpn 0
interface eth0
ip address 209.165.201.1/28
no shut
tunnel-interface
allow-service all
ip route 0.0.0.0/0 209.165.201.14
!
commit

```

vBond

```

system
system-ip 10.10.10.103
host-name vBond
site-id 1
clock timezone Europe/London
vbond 209.165.201.3 local
organization-name viptela.com
!
vpn 0
interface ge0/0
ip address 209.165.201.3/28
no shut
tunnel-interface
encapsulation ipsec
allow-service all
ip route 0.0.0.0/0 209.165.201.14
!
commit

```

vManage and vBond have an issue establishing a connection with each other Which action resolves the issue?

- A. Reconfigure the system IPs to belong to the same subnet
- B. Change the organization name on both controllers to match vipteta.com.
- C. Remove the encapsulation ipsec command under the tunnel interface of vBond
- D. Configure the encapsulation ipsec command under the tunnel interface on vManage

Answer: B

Explanation:

<https://community.cisco.com/t5/sd-wan-and-cloud-networking/encapsulation-ipsec-on-vbond/td-p/4451149> "encapsulation" command under vBond tunnel-interface has no meaning and effect.

NEW QUESTION 36

An engineer wants to change the configuration of the certificate authorization mode from manual to automated. Which GUI selection will accomplish this?

- A. Maintenance > Security
- B. Configuration > Certificates
- C. Administration > Settings
- D. Tools > Operational Commands

Answer: C

Explanation:

Runbook to Request and Install Cisco PKI Certificates

1. Verify that you have satisfied the prerequisites and that you have added the Smart Account credentials.
2. Navigate to **Administration ► Settings ► Controller Certificate Authorization** and press Edit.
3. Select the **radio button Cisco Automated** (Recommended).

NEW QUESTION 41

Which secure connection should be used to access the REST APIs through the Cisco vManage web server?

- A. HTTP inspector interface
- B. authenticated HTTPS
- C. authenticated DTLS
- D. JSON Inspector interface

Answer: B

Explanation:

<https://documenter.getpostman.com/view/3224967/SVmpXhXd#ed9ccd34-cc5a-4258-bb6b-9b3848b7f650>

NEW QUESTION 44

Which component of the Cisco SD-WAN control plane architecture should be located in a public Internet address space and facilitates NAT-traversal?

- A. vBond
- B. WAN Edge
- C. vSmart
- D. vManage

Answer: A

NEW QUESTION 47

What are the two advantages of deploying cloud-based Cisco SD-WAN controllers? (Choose two.)

- A. centralized control and data plane
- B. distributed authentication policies
- C. management of SLA
- D. infrastructure as a service
- E. centralized raid storage of data

Answer: CD

NEW QUESTION 50

Which configuration step is taken on vManage after WAN Edge list is uploaded?

- A. Send the list to controllers
- B. Enable the ZTP process
- C. Verify the device certificate
- D. Set the device as valid

Answer: D

Explanation:

<https://www.cisco.com/c/dam/en/us/td/docs/solutions/CVD/SDWAN/sdwan-wan-edge-onboarding-deploy-guid>

device state must be moved from staging to valid. In vManage under **Configuration > Certificates > WAN Edge List**, select the WAN Edge device(s) and change the state to **valid** under the **Validity** column and click **Send to Controllers**.

NEW QUESTION 52

Which third-party Enterprise CA server must be used (or a cloud-based vSmart controller)?

- A. RootCert
- B. Microsoft
- C. RADIUS
- D. VeriSign

Answer: A

NEW QUESTION 53

When the VPN membership policy is being controlled at the vSmart controller, which policy disallows VPN 1 at sites 20 and 30?

A)

```
apply-policy
site-list 20-30
vpn-membership disallow-vpn 1
!
!
policy
lists
site-list 20-30
site-id 20
site-id 30
!
vpn-list VPN 1
vpn 10
vpn 20
!
!
vpn-membership disallow-vpn 1
sequence 10
match
vpn-list VPN 1
!
action reject
!
!
default-action accept
```

B)

```
policy
lists
site-list 20-30
site-id 20
site-id 30
!
prefix-list drop-list
ip-prefix 10.200.1.0/24
!
!
control-policy drop-unwanted-routes
sequence 10
match route
prefix-list drop-list
!
action reject
!
!
default-action accept
```

C)


```
apply-policy
  site-list 20-30
  vpn-membership disallow-vpn1
!
!
policy
  lists
  site-list 20-30
  site-id 20
  site-id 30
!
!
vpn-membership disallow-vpn1
  sequence 10
  match vpn-id 1
  action reject
!
!
default-action accept
```

D)

```
policy
  lists
  site-list BP-Sites
  site-id 10
  site-id 20
  vpn-list All-BPs
  vpn 100
  vpn 101
  vpn-list Enterprise-BP
  vpn 200
control-policy import-BPs-to-Enterprise
  sequence 10
  match route
  vpn-list All-BPs
!
  action accept
  export-to vpn-list Enterprise-BP
!
!
!
default-action accept
```

- A. Option A
- B. Option B
- C. Option C
- D. Option D

Answer: C

NEW QUESTION 56

Which routing protocol has the highest default administrative distance?

- A. OMP
- B. external EIGRP
- C. IS-IS
- D. IBGP

Answer: A

NEW QUESTION 58

Drag and drop the attributes from the left that make each transport location unique onto the right. Not all options are used.

IP address	target1
color	target2
encapsulation	target3
VPN	
service	

- A. Mastered
- B. Not Mastered

Answer: A

Explanation:

A TLOC, or Transport Location, is the attachment point where a WAN Edge router connects to the WAN transport network. A TLOC is uniquely identified and represented by a three-tuple, consisting of system IP address, link color, and encapsulation (Generic Routing Encapsulation [GRE] or IPsec).

NEW QUESTION 62

Which configuration allows users to reach YouTube from a local Internet breakout?

A)

VPN 10

```
ip route 0.0.0.0/0 vpn 0
```

B)

VPN 10

```
ip route 0.0.0.0/0 vpn 0
```

VPN 0

```
interface Gig1/1
```

```
nat
```

C)

```
policy
data-policy DPI
vpn-list vpn10
sequence 10
match
app-list YouTube
destination-port 80 443
!
action accept
count Youtube
!
default-action accept
!
lists
vpn-list vpn10
vpn 10
!
app-list YouTube
app youtube
app youtube_hd
!
site-list Remote
site-id 14
site-id 15
!
!
!
apply-policy
site-list Remote
data-policy DPI from-transport
```

D)

```
policy
data-policy DPI
vpn-list vpn10
sequence 10
match
app-list YouTube
!
action drop
count Youtube
!
default-action accept
!
lists
vpn-list vpn10
vpn 10
!
app-list YouTube
app youtube
app youtube_hd
!
site-list Remote
site-id 14
site-id 15
!
apply-policy
site-list Remote
data-policy DPI from-transport

vpn 10
ip route 0.0.0.0/0 vpn 0
```

- A. Option A
- B. Option B
- C. Option C
- D. Option D

Answer: B

Explanation:

As explained in figure 7, within the direct Internet model, segmentation is leveraged by deploying centralized data policies or a NAT DIA route to leak Internet traffic from the service-side VPN (VPNs 0 - 511,513 - 65530) into the Internet transport VPN (VPN 0), which allows traffic to exit directly to the Internet through the NAT-enabled interface in VPN 0.

<https://www.cisco.com/c/dam/en/us/td/docs/solutions/CVD/SDWAN/sdwan-dia-deploy-2020aug.pdf>

NEW QUESTION 63

A Cisco SD-WAN customer has a requirement to calculate the SHA value for files as they pass through the device to see the returned disposition and determine if the file is good, unknown or malicious. The customer also wants to perform real-time traffic analysis and generate alerts when threats are detected Which two Cisco SD-WAN solutions meet the requirements? (Choose two.)

- A. Cisco Trust Anchor Module
- B. Cisco Threat Grid
- C. Cisco Snort IPS
- D. Cisco AMP
- E. Cisco Secure Endpoint

Answer: CD

NEW QUESTION 64

When VPNs are grouped to create destination zone in Zone-Based Firewall, how many zones can a single VPN be part of?

- A. two
- B. four
- C. one
- D. three

Answer: C

NEW QUESTION 66

Refer to the exhibit



The network team must configure application-aware routing for the Service VPN 50.0.0.0/16

The SLA must prefer MPLS for video traffic but the remaining traffic must use a public network What must be defined other than applications before the application-aware policy is create?

- A. SLA Class, Site VP
- B. Prefix
- C. Data Prefix, Site VPN TLOC
- D. Application, SLA VP
- E. Prefix
- F. Color, SLA Class, Sue, VPN

Answer: A

NEW QUESTION 68

Which plane assists in the automatic onboarding of the SD-WAN routers into the SD-WAN overlay?

- A. Data
- B. Orchestration
- C. Management
- D. Control

Answer: B

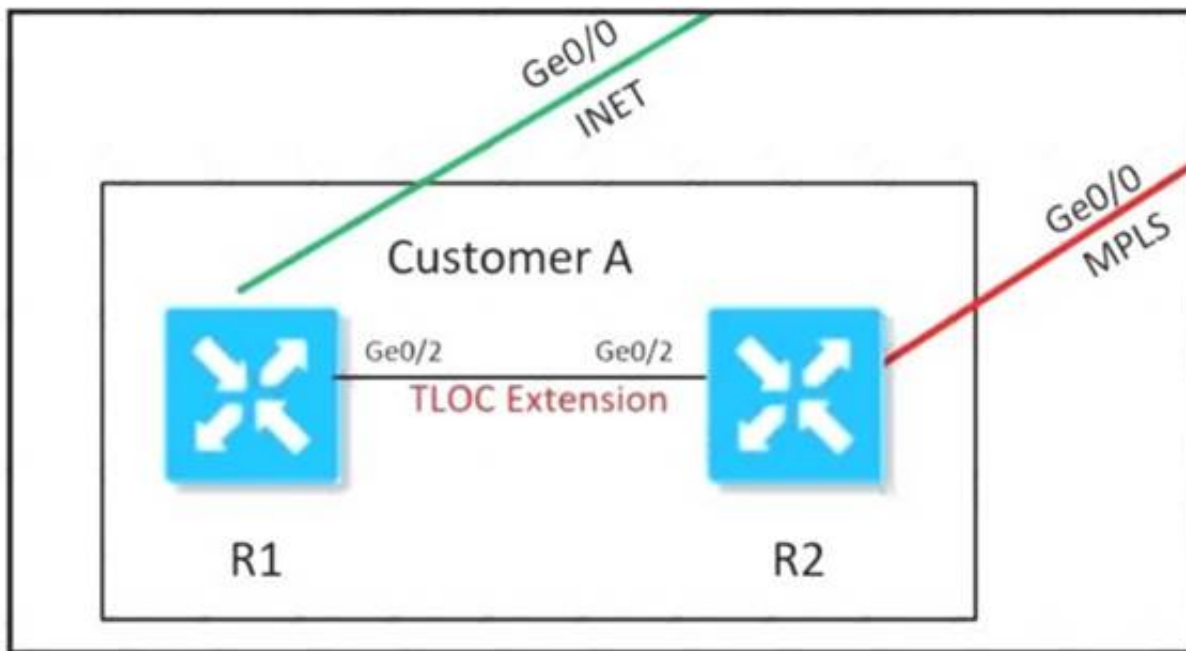
Explanation:

The Cisco SD-WAN solution is comprised of separate orchestration, management, control, and data planes.

- The orchestration plane assists in the automatic onboarding of the SD-WAN routers into the SD-WAN overlay.

NEW QUESTION 73

Refer to the exhibit.



An MPLS connection on R2 must extend to R1 Users behind R1 must have dual connectivity for data traffic Which configuration provides R1 control connectivity over the MPLS connection?

A)

```
R1
interface ge0/2
ip address 34.34.34.1/30
tloc-extension ge0/1
tunnel-interface
color mpls
```

```
R2
interface ge0/2
ip address 34.34.34.2/30
tloc-extension ge0/0
tunnel-interface
color public-internet
```

B)

```
R1
interface ge0/2
ip address 34.34.34.1/30
tloc-extension ge0/1
```

```
R2
interface ge0/0
ip address 34.34.34.2/30
tunnel-interface
color mpls
```

C)

```
vpn 0
router
ospf
 redistribute omp route-policy OSPF_Route_Policy
 area 0
 interface ge0/2
 exit
lists
 prefix-list W2_Loopback
 ip-prefix 10.10.10.5/32
!
 route-policy OSPF_Route_Policy
 sequence 1
 match
 address W2_Loopback
!
 action accept
 set
 metric 100
 metric-type type2
```

D)

```
vpn 10
name "" Service VPN 10 ""
router
ospf
 redistribute omp route-policy OSPF_Route_Policy
 area 0
 interface ge0/2
 exit
lists
 prefix-list W2_Loopback
 ip-prefix 10.10.10.5/32
!
 route-policy OSPF_Route_Policy
 sequence 1
 match
 address W2_Loopback
!
 action accept
```

- A. Option A
- B. Option B
- C. Option C
- D. Option D

Answer: D

NEW QUESTION 77

Which attributes are configured to uniquely Identify and represent a TLOC route?

- A. system IP address, link color, and encapsulation
- B. firewall, IPS, and application optimization
- C. site ID, tag, and VPN
- D. origin, originator, and preference

Answer: A

Explanation:

<https://www.cisco.com/c/dam/en/us/td/docs/solutions/CVD/SDWAN/CVD-SD-WAN-Design-2018OCT.pdf>

NEW QUESTION 81

How is multicast routing enabled on devices in the Cisco SD-WAN overlay network?

- A. The WAN Edge routers originate multicast service routes to the vSmart controller via OMP, which then forwards joins for requested multicast groups based on IGMP v1 or v2 toward the source or PIM-RP as specified in the original PIM join message.
- B. The vSmart controller originates multicast service routes to the WAN Edge routers via OMP, which then forwards joins for requested multicast groups based on IGMP v1 or v2 toward the source or PIM-RP as specified in the original PIM join message
- C. The vSmart controller originates multicast service routes to the WAN Edge routers via OMP, which then forwards joins (or requested multicast groups based on IGMP v2 or v3 toward the source or PIM-RP as specified in the original PIM join message
- D. The WAN Edge routers originate multicast service routes to the vSmart controller via OM
- E. which then forwards joins for requested multicast groups based on iGMP v2 or v3 toward the source or PIM-RP as specified in the original PIM join message

Answer: A

Explanation:

<https://www.cisco.com/c/en/us/td/docs/routers/sdwan/configuration/routing/ios-xe-17/routing-book-xe/m-multic>

NEW QUESTION 86

Refer to the exhibit

MONITOR | AUDIT LOG

Filter ▾ Module: vManage Root CA

1h 3h 6h 12h 24h 7days Custom ▾

🔍

Search Options ▾

Total Rows: 10

Timestamp	User	User IP	Message	Module	Feature	Device	Task ID	
18 Dec 2020 ...	system	10.1.1.1	Uploaded root ca uaid list file on vBond-d3aa12f...	vmanage-roo...	vmanage-root-ca	10.3.3.3	d3aa12f6-b024-4246-899a	...
18 Dec 2020 ...	system	10.1.1.1	Transferred root ca uaid list file to vBond-d3aa12...	vmanage-roo...	vmanage-root-ca	10.3.3.3	d3aa12f6-b024-4246-899a	...
18 Dec 2020 ...	system	10.1.1.1	Installed root cert chain on vBond-d3aa12f6-b02...	vmanage-roo...	vmanage-root-ca	10.3.3.3	d3aa12f6-b024-4246-899a	...
18 Dec 2020 ...	system	10.1.1.1	Transferred root cert chain file to vBond-d3aa12f...	vmanage-roo...	vmanage-root-ca	10.3.3.3	d3aa12f6-b024-4246-899a	...
18 Dec 2020 ...	system	10.1.1.1	Installed root cert chain on vSmart-5478ad3f-04...	vmanage-roo...	vmanage-root-ca	10.2.2.2	5478ad3f-04e0-4d0f-b654	...
18 Dec 2020 ...	system	10.1.1.1	Transferred root cert chain file to vSmart-5478ad...	vmanage-roo...	vmanage-root-ca	10.2.2.2	5478ad3f-04e0-4d0f-b654	...
18 Dec 2020 ...	system	10.1.1.1	Uploaded root ca uaid list file on vBond-d3aa12f...	vmanage-roo...	vmanage-root-ca	10.3.3.3	d3aa12f6-b024-4246-899a	...
18 Dec 2020 ...	system	10.1.1.1	Installed root cert chain on vManage-6842d5cf...	vmanage-roo...	vmanage-root-ca	10.1.1.1	6842d5cf-ce74-41a0-9ff5	...
18 Dec 2020 ...	system	10.1.1.1	Transferred root ca uaid list file to vBond-d3aa12...	vmanage-roo...	vmanage-root-ca	10.3.3.3	d3aa12f6-b024-4246-899a	...
18 Dec 2020 ...	system	10.1.1.1	Transferred root cert chain file to vManage-6842...	vmanage-roo...	vmanage-root-ca	10.1.1.1	6842d5cf-ce74-41a0-9ff5	...

```
vManage# show certificate installed
```

```
Server certificate
```

```
-----
```

```
Certificate:
```

```
Data:
```

```
Version: 1 (0x0)
```

```
Serial Number:
```

```
d0:d1:f0:e0:63:52:c9:3a
```

```
Signature Algorithm: sha256WithRSAEncryption
```

```
Issuer: C=UK, ST=ENG, L=London, O=ABC, CN=SDWAN.lab
```

```
Validity
```

```
Not Before: Jul 30 19:42:30 2020 GMT
```

```
Not After : Jul 30 19:42:30 2021 GMT
```

```
Subject: C=US, ST=California, L=San Jose, OU=ABC,  
O=vIPtela Inc, CN=vmanage-6842d5cf-ce74-41a0-9ff5-  
10e810f9ddab-0.vm
```

```
Subject Public Key Info:
```

Public Key Algorithm: rsaEncryption
 Public-Key: (2048 bit)

A small company was acquired by a large organization. As a result, the new organization decided to update information on their Enterprise RootCA and generated a new certificate using openssl. Which configuration updates the new certificate and issues an alert in vManage Monitor | Events Dashboard?

A)

```
Step1: Generate the RootCA Certificate

openssl x509 -req -in vmanage_csr \
    -CA ROOTCA.pem -CAkey ROOTCA.key -CAcreateserial \
    -out vmanage.crt -days 365 -sha256

Step2: Install the RootCA Certificate

vManage > Administration > Settings > Controller Certificate Authorization >
Enterprise Root Certificate
```

B)

```
Step1: Generate the RootCA Certificate

openssl x509 -req -in vmanage_csr \
    -CA ROOTCA.pem -CAkey ROOTCA.key -CAcreateserial \
    -out vmanage.crt -days 365 -sha256

Step2: Install the RootCA Certificate

vManage > Administration > Settings > Controller Certificate Authorization >
Symantec Automated (Recommended)
```

C)

```
Step1: Generate the RootCA Certificate

vManage:~$openssl req -x509 -new -nodes -key ROOTCA.key -
sha256 -days 2000 \
    -subj "/C=UK/ST=ENG/L=London/O=XYZ/CN= SDWAN.lab " \
    -out ROOTCA.pem

Step2: Install the RootCA Certificate

vManage > Administration > Settings > Controller Certificate Authorization >
Enterprise Root Certificate
```

D)

```
Step1: Generate the RootCA Certificate

vManage#openssl req -x509 -new -nodes -key ROOTCA.key -sha256
-days 2000 \
    -subj "/C=UK/ST=ENG/L=London/O=ABC/CN= SDWAN.lab " \
    -out ROOTCA.pem

Step2: Install the RootCA Certificate

vManage > Administration > Settings > Controller Certificate Authorization >
Symantec Automated (Recommended)
```

- A. Option A
- B. Option B
- C. Option C
- D. Option D

Answer: C

Explanation:

7. Generate Root CA certificate named **rootca.pem** and sign it with **rootca.key** that was generated on the previous step.

```
vmanage:~/web$ openssl req -x509 -new -nodes -key rootca.key -sha256 -days 4000 -out rootca.pem
```

NEW QUESTION 91

Refer to the exhibit.

Tunnel Endpoints	Protocol	State	Jitter (ms)	Loss (%)	FEC Loss
public-internet					
vEdge1:public-internet-vEdge2:public-internet	IPSEC	Up			
vEdge1:public-internet-vEdge3:public-internet	IPSEC	Up			
vEdge1:public-internet-vEdge4:public-internet	IPSEC	Up			
vEdge1:public-internet-vEdge5:public-internet	IPSEC	Up			

Which command-line configuration on a WAN Edge device achieves these results?

- A)
- ```
vpn 0
interface ge0/0
ip address 10.50.0.101/30
tunnel-interface
encapsulation gre
color public-internet
allow-service ntp

ip route 0.0.0.0/0 10.50.0.102
```
- B)
- ```
vpn 0
interface ge0/0
ip address 10.50.0.101/30
tunnel-interface
encapsulation ipsec
color public-internet restrict
allow-service all
allow-service netconf

ip route 0.0.0.0/0 10.50.0.102
```
- C)
- ```
vpn 0
interface ge0/0
ip address 10.50.0.101/30
tunnel-interface
encapsulation ipsec
allow-service none

ip route 0.0.0.0/0 10.50.0.102
```
- D)
- ```
vpn 1
interface ge0/0
ip address 10.50.0.101/30
tunnel-interface
encapsulation ipsec
color public-internet restrict
allow-service all
allow-service netconf

ip route 0.0.0.0/0 10.50.0.102
```

- A. Option A
 B. Option B
 C. Option C
 D. Option D

Answer: B

NEW QUESTION 94

An engineer is troubleshooting a certificate issue on vEdge. Which command is used to verify the validity of the certificates?

- A. show control local-properties
 B. show control summary
 C. show certificate installed
 D. show certificate status

Answer: A

NEW QUESTION 97

When redistribution is configured between OMP and BGP at two Data Center sites that have Direct Connection interlink, which step avoids learning the same

routes on WAN Edge routers of the DCs from LAN?

- A. Define different VRFs on both DCs
- B. Set same overlay AS on both DC WAN Edge routers
- C. Set down-bit on Edge routers on DC1
- D. Set OMP admin distance lower than BGP admin distance

Answer: B

Explanation:

Typically, there are more than one datacenters for HA/redundancy requirements. After successful migration of the first datacenter, migrate the second datacenter in a similar method as explained in this section. Note that a routing loop can occur if there is a backdoor link between the datacenter sites and route advertisement is configured between the two datacenters. To avoid the loop, any of the three methods explained below can be used:

1. Use the same Autonomous System Numbers (ASN) on edge routers of the two datacenters. Because of the same ASN, the AS-PATH attribute will avoid learning the same prefixes on the edge routers that are advertised by the other datacenter towards the LAN side.

2. Use overlay-AS to insert Overlay Management Protocol (OMP) AS number when redistributing the routes from OMP into LAN side towards DC LAN. Configure all DC SD-WAN edge routers with the same overlay-as. This allows the edges to filter the routes advertised by the other DCs edge devices towards the LAN side and prevents redistributing the same routes back into OMP.

3. Use tags or communities to mark the prefixes at one datacenter when redistributing to DC LAN and filter on the edge of the other datacenter when learning advertisements from the LAN side.

NEW QUESTION 100

What problem happens on a device with two serial numbers, a unique device identifier (UDI), and secure unique device identifier (SUDI) when an engineer provisions ISR 4000 by PnP using only a UDI?

- A. It encounters spanning tree issues
- B. It faces interface buffer overflow patterns
- C. It encounters redirection problems.
- D. It encounters memory overload problems

Answer: D

NEW QUESTION 101

How must the application-aware enterprise firewall policies be applied within the same WAN Edge router?

- A. within and between zones
- B. between two VPN tunnels
- C. within zone pair
- D. between two VRFs

Answer: C

NEW QUESTION 105

An engineer must configure two branch WAN Edge devices where an Internet connection is available and the controllers are in the headquarters. The requirement is to have IPsec VPN tunnels established between the same colors. Which configuration meets the requirement on both WAN Edge devices?

WAN Edge 1

```
vpn 0
interface ge0/0
ip address 10.0.0.1/24
ipv6 dhcp-client
tunnel-interface
color biz-internet restrict
encapsulation ipsec
```

WAN Edge 2

```
vpn 0
interface ge0/0
ip address 10.0.0.2/24
ipv6 dhcp-client
tunnel-interface
color default
encapsulation ipsec
```


WAN Edge 1

```
vpn 0
interface ge0/0
ip address 10.0.0.1/24
ipv6 dhcp-client
tunnel-interface
color default
encapsulation ipsec
```

WAN Edge 2

```
vpn 0
interface ge0/0
ip address 10.0.0.2/24
ipv6 dhcp-client
tunnel-interface
color default
encapsulation ipsec
```

WAN Edge 1

```
vpn 0
interface ge0/0
ip address 10.0.0.1/24
ipv6 dhcp-client
tunnel-interface
color public-internet restrict
encapsulation ipsec
```

WAN Edge 2

```
vpn 0
interface ge0/0
ip address 10.0.0.2/24
ipv6 dhcp-client
tunnel-interface
color gold restrict
encapsulation ipsec
```

WAN Edge 1

```
vpn 0
interface ge0/0
ip address 10.0.0.1/24
ipv6 dhcp-client
tunnel-interface
color gold restrict
encapsulation ipsec
```

WAN Edge 2

```
vpn 0
interface ge0/0
ip address 10.0.0.2/24
ipv6 dhcp-client
tunnel-interface
color gold restrict
encapsulation ipsec
```

- A. Option A
- B. Option B
- C. Option C
- D. Option D

Answer: D

NEW QUESTION 108

Which storage format is used when vManage is deployed as a virtual machine on a KVM hypervisor?

- A. .iso
- B. .qcow2
- C. .ova
- D. .tgz

Answer: B

NEW QUESTION 109

A network administrator is configuring an application-aware firewall between inside zones to an outside zone on a WAN edge router using vManage GUI. What kind of Inspection is performed when the "inspect" action is used?

- A. stateful inspection for TCP and UDP
- B. stateful inspection for TCP and stateless inspection of UDP
- C. IPS inspection for TCP and Layer 4 inspection for UDP
- D. Layer 7 inspection for TCP and Layer 4 inspection for UDP

A firewall policy is a type of localized security policy that allows **stateful inspection** of TCP, UDP, and ICMP data traffic flows.

What is a default protocol for control plane connection?

A. IPsec
B. HTTPS
C. TLS
D. DTLS

Answer: D

In a Cisco SD-WAN network, which component is responsible for distributing route and policy information via the OMP?

A. vManage
B. vSmart Controller
C. vBond Orchestrator
D. WAN Edge Router

Answer: B

The Cisco vSmart Controller maintains a centralized route table that stores the route information, called OMP routes, that it learns from the vEdge routers and from any other Cisco vSmart Controllers in the Cisco SD-WAN overlay network. Based on the configured policy, the Cisco vSmart Controller shares this route information with the Cisco vEdge network devices in the network so that they can communicate with each other.

Refer to the exhibit.

```

policy
lists
!
  tloc-list dc-preference-east
    tloc 100.100.100.100 color mpls
encap ipsec preference 200
    tloc 101.101.101.101 color mpls
encap ipsec preference 400
!
  site-list sites-region-west
    site-id 1-20
!
  site-list sites-region-east
    site-id 21-40
!
  site-list dc-sites
    site-id 100-101

control-policy adv-dc-preference-west
sequence 10
match route
  site-list dc-sites
!
action accept
set
  tloc-list dc-preference-east
!

!
default-action accept
!
control-policy adv-dc-preference-east
sequence 10
match route
  site-list dc-sites
!
action accept
set
  tloc-list dc-preference-east
!
!
default-action accept
!
!
apply-policy
  site-list sites-region-west
  control-policy adv-dc-preference-west
out
!
  site-list sites-region-east
  control-policy adv-dc-preference-east
out
!
!

```

A customer wants to implement primary and secondary Cisco SD-WAN overlay routing for prefixes that are advertised for both data centers. The east data center (TLOC 101.101.101.101) is primary for east sites, and the west data center (TLOC 100.100.100.100) is primary for west sites. Which configuration change

achieves this objective?

A.

```
lists
  tloc-list dc-preference-west
  tloc 100.100.100.100 color mpis encap ipsec preference 400
  tloc 101.101.101.101 color mpis encap ipsec preference 200

control-policy adv-dc-preference-west
sequence 10
match route
  site-list dc-sites
  !
action accept
set
  tloc-list dc-preference-west
  !
!
default-action accept
```

B.

```
lists
  tloc-list dc-preference-west
  tloc 100.100.100.100 color mpis encap ipsec preference 200
  tloc 101.101.101.101 color mpis encap ipsec preference 400

control-policy adv-dc-preference-west
sequence 10
match route
  site-list dc-sites
  !
action accept
set
  tloc-list dc-preference-west
  !
!
default-action accept
```

C.

```
tloc-list dc-preference-east
tloc 100.100.100.100 color mpis encap ipsec preference 400
tloc 101.101.101.101 color mpis encap ipsec preference 200
```

D.

```
control-policy adv-dc-preference-west
sequence 10
match route
  site-list dc-sites
  !
action accept
set
  tloc-list dc-preference-west
  !
!
default-action accept
```

- A. Option A
- B. Option B
- C. Option C
- D. Option D

Answer: A

NEW QUESTION 115

How many vCPUs and how much RAM are recommended to run the vSmart controller on the KVM server for 251 to 1000 devices in software version 20.4.x?

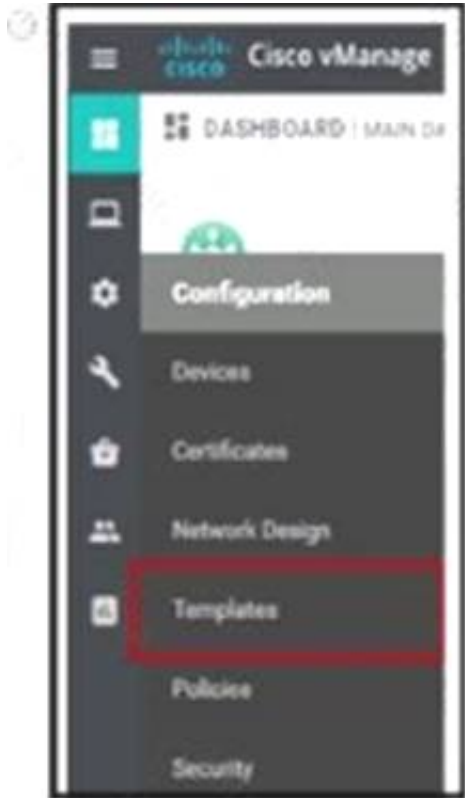
- A. 4vCPU
- B. 16 GB
- C. 4 vCPU
- D. 8 GB
- E. 8vCPU
- F. 16 GB
- G. 2vCPUs.4GB

Answer: B

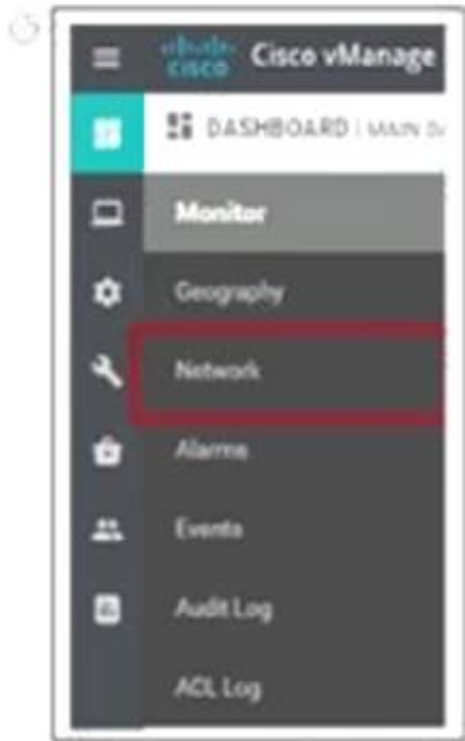
NEW QUESTION 118

Company ABC has decided to deploy the controllers using the On-Prem method. How does the administrator upload the WAN Edge list to the vManage?

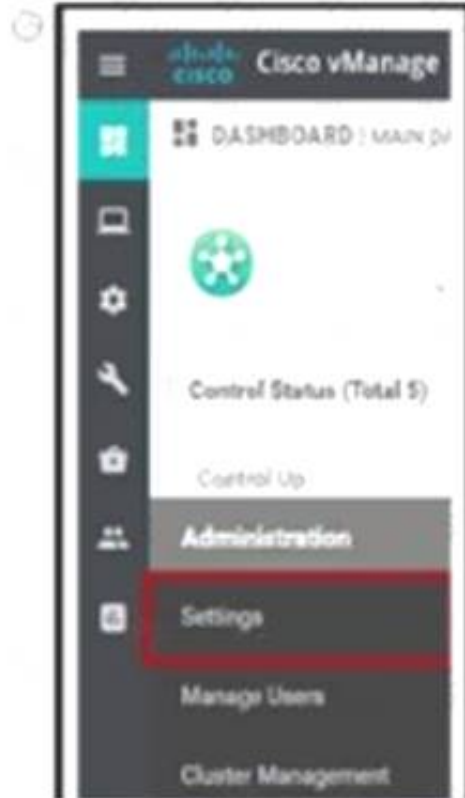
A)



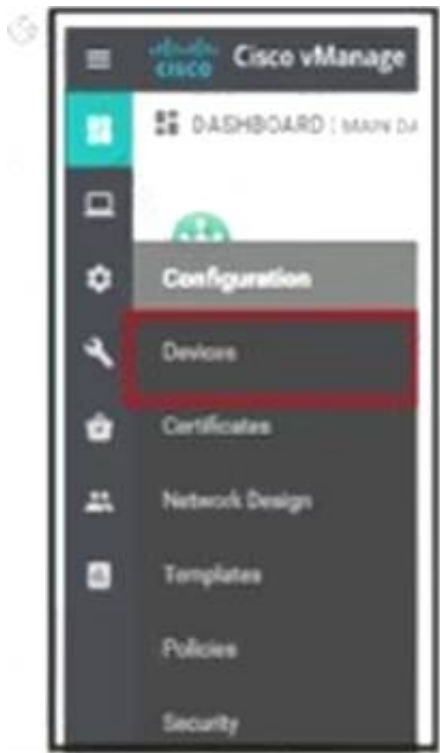
B)



C)



D)



- A. Option A
- B. Option B
- C. Option C
- D. Option D

Answer: D

Explanation:
https://sdwan-docs.cisco.com/Product_Documentation/vManage_Help/Release_18.3/Configuration/Devices

NEW QUESTION 123

Which controller is excluded from the process of checking against the authorized, allowed list?

- A. vBond
- B. PnP
- C. vSmart
- D. vManage

Answer: A

NEW QUESTION 124

Drag and drop the steps from the left Into the order on the right to delete a software image for a WAN Edge router starting with Maintenance > Software Upgrade > Device list on vManage.

Click delete available software.	step 1
Click the checkbox next to the WAN Edge device.	step 2
Click WAN Edge in the title bar.	step 3
Select the version to delete and click delete.	step 4

- A. Mastered
- B. Not Mastered

Answer: A

Explanation:

Click delete available software.	Click WAN Edge in the title bar.
Click the checkbox next to the WAN Edge device.	Click the checkbox next to the WAN Edge device.
Click WAN Edge in the title bar.	Click delete available software. 3
Select the version to delete and click delete.	Select the version to delete and click delete.

NEW QUESTION 128

What is the threshold to generate a warning alert about CPU or memory usage on a WAN Edge router?

- A. 70 to 85 percent
- B. 70 to 90 percent
- C. 75 to 85 percent
- D. 75 to 90 percent

Answer: C

NEW QUESTION 130

Which policy blocks TLOCs from remotes and allows TLOCs from the data center to form hub-and-spoke peering?

- A. localized control policy
- B. localized data policy
- C. centralized data policy
- D. centralized control policy

Answer: C

Explanation:

Centralized Policy

Centralized policy refers to policy provisioned on Cisco vSmart Controllers, which are the centralized controllers in the Cisco SD-WAN overlay network. Centralized policy comprises two components:

- Control policy, which affects the overlay network-wide routing of traffic
- Data policy, which affects the data traffic flow throughout the VPN segments in the network

NEW QUESTION 131

An engineer must apply the configuration for certificate installation to vBond Orchestrator and vSmart Controller. Which configuration accomplishes this task?

- A.

```
vpn 0
interface eth1
ip address 199.1.1.1/28
tunnel-interface
allow-service sshd
allow-service netconf
no shutdown
```
- B.

```
vpn 512
interface eth1
ip address 199.1.1.1/28
tunnel-interface
allow-service sshd
allow-service netconf
```
- C.

```
vpn 0
interface eth1
ip address 199.1.1.1/28
tunnel-interface
allow-service sshd
allow-service ntp
```
- D.

```
vpn 512
interface eth1
ip address 199.1.1.1/28
tunnel-interface
allow-service netconf
no allow-service ntp
no allow-service stun
```

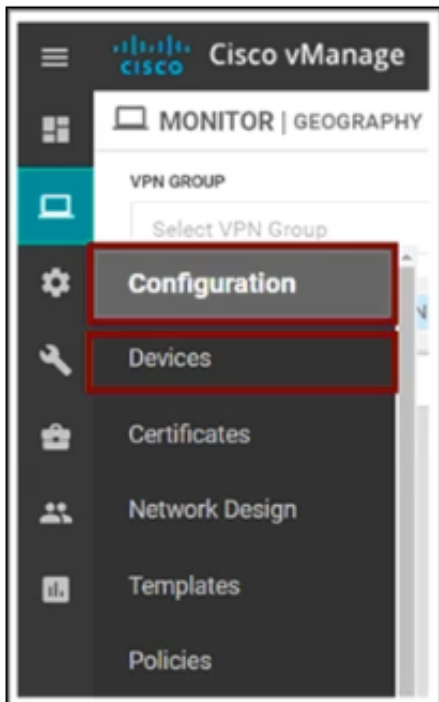
- A. Option A
- B. Option B
- C. Option C

D. Option D

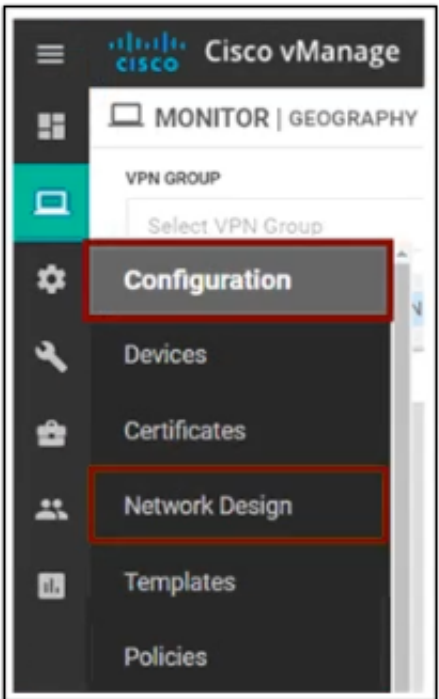
Answer: A

NEW QUESTION 132

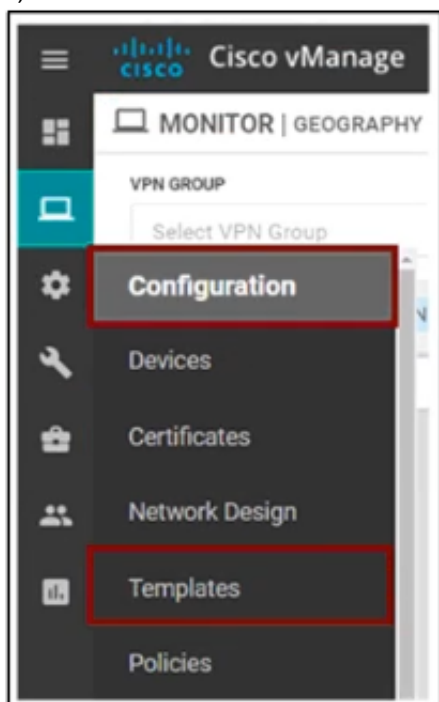
The Cisco SD-WAN engineer is configuring service chaining for a next-generation firewall located at the headquarters. Which configuration creates the service?
A)



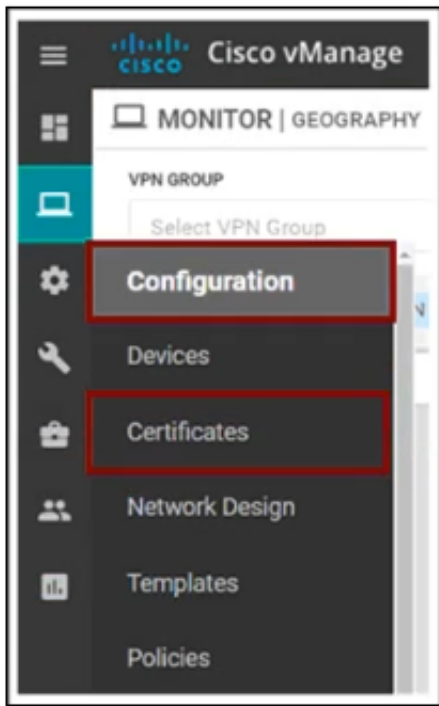
B)



C)



D)



- A. Option A
- B. Option B
- C. Option C
- D. Option D

Answer: C

NEW QUESTION 137

An engineer is troubleshooting a vEdge router and identifies a “DCONFFAIL – DTLS connection failure” message. What is the problem?

- A. certificate mismatch
- B. organization mismatch
- C. memory issue
- D. connectivity issue

Answer: D

Explanation:

<https://community.cisco.com/t5/networking-documents/sd-wan-routers-troubleshoot-control-connections/ta-p/38>

NEW QUESTION 138

A customer has MPLS and Internet as the TLOC colors. An engineer must configure controllers with the Internet and not with MPLS. Which configuration achieves this requirement on vManage?

A)

```
vpn 0
interface eth1
ip address 10.50.0.1/24
tunnel-interface
color mpls
```

B)

```
vpn 0
interface eth1
ip address 10.50.0.1/24
tunnel-interface
color public-internet
```

C)

```
vpn 0
interface eth1
ip address 10.50.0.1/24
tunnel-interface
color biz-internet
```

D)

```
vpn 0
interface eth1
ip address 10.50.0.1/24
tunnel-interface
color default
```

- A. Option A
- B. Option B
- C. Option C
- D. Option D

Answer: B

NEW QUESTION 140

Which two algorithms authenticate a user when configuring SNMPv3 monitoring on a WAN Edge router? (Choose two.)

- A. AES-256

- B. SHA-1
- C. AES-128
- D. MD5
- E. SHA-2

Answer: AB

Explanation:

Configure SNMPv3

Table 7. Feature History

Feature Name	Release Information	Description
Support for SNMPv3 AES-256 bit Authentication Protocol	Cisco SD-WAN Release 20.5.1	Support introduced for AES-256 bit Authentication Protocol called SHA-256

To configure SNMPv3, in SNMP Version, click **V3**. For SNMPv3, you can configure groups, users, and trap information. Configure groups and trap information as described above.

To configure SNMPv3 users, in the User section, click **Add New User** and enter the following parameters:

Table 8.

Parameter Name	Description
User	Enter a name of the SNMP user. It can be 1 to 32 alphanumeric characters.
Authentication Protocol	Select the authentication mechanism for the user: <ul style="list-style-type: none">SHA-1 message digestSHA-256 message digest <p>Note Starting from Cisco SD-WAN Release 20.5.1, SHA-256 authentication protocol was introduced. When you choose SHA-256 as the authentication protocol, you must set the security level as authPriv.</p> <p>Note MD5 authentication protocol is deprecated for Cisco SD-WAN Release 20.3.2 and later releases.</p>

<https://www.cisco.com/c/en/us/td/docs/routers/sdwan/configuration/snmp/snmp-book.html>

NEW QUESTION 143

How is TLOC defined?

- A. It is represented by a unique identifier to specify a site in as SD-WAN architecture.
- B. It specifies a Cisco SD-WAN overlay in a multitenant vSMART deployment.
- C. It is a unique collection of GRE or IPsec encapsulation, link color, and system IP address.
- D. It is represented by group of QoS policies applied to a WAN Edge router.

Answer: C

NEW QUESTION 147

Which table is used by the vSmart controller to maintain service routes of the WAN Edge routers in the hub and local branches?

- A. RIB
- B. FIB
- C. OMP
- D. TLOC

Answer: C

NEW QUESTION 150

Which feature builds transport redundancy by using the cross link between two redundant WAN Edge routers?

- A. OMP
- B. zero-touch provisioning
- C. quality of service
- D. TLOC extension

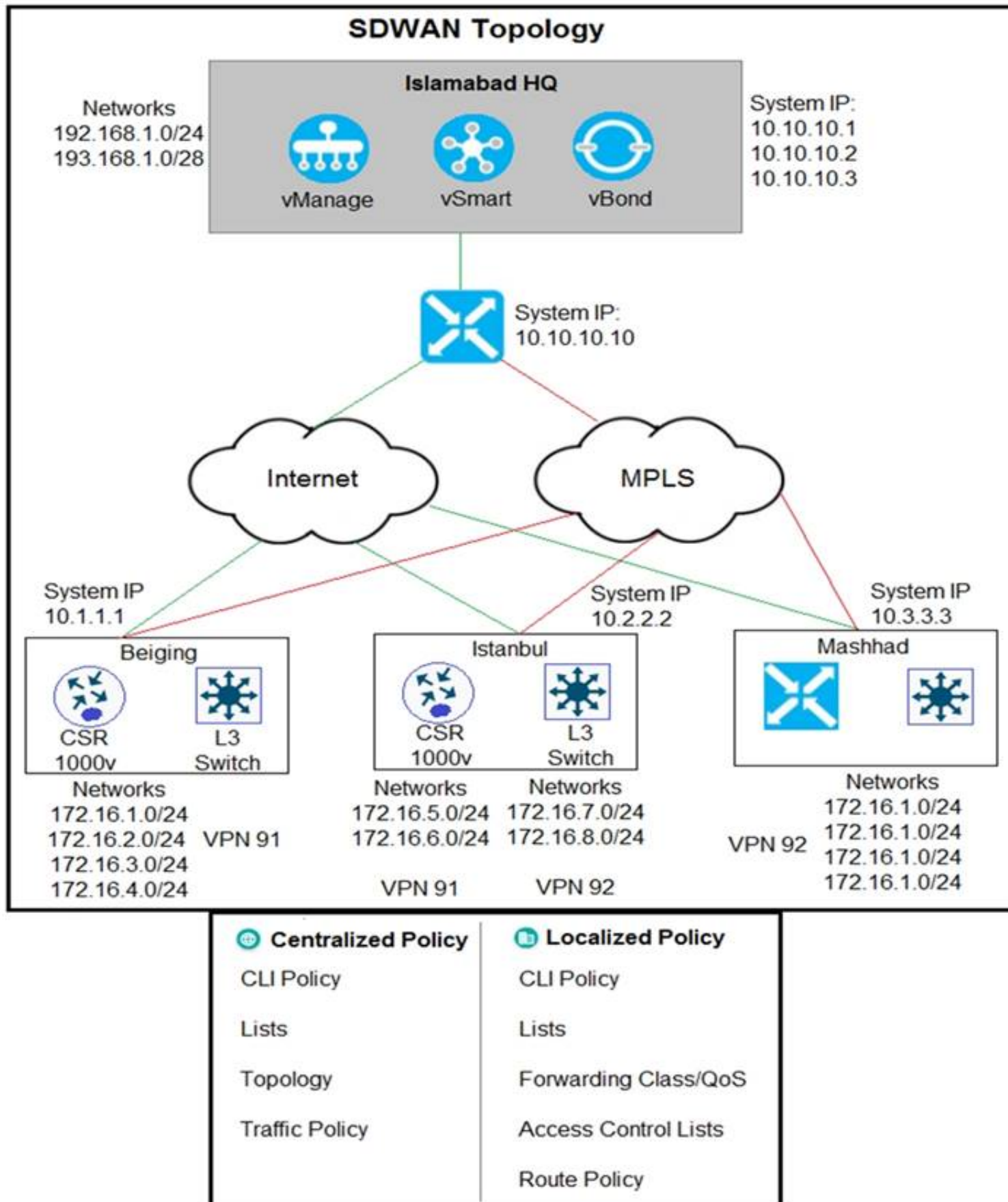
Answer: D

Explanation:

Features like TLOC extension help to build transport redundancy by using the cross link between two redundant WAN Edge routers. Network level redundancy is implemented by multiple geo-redundant data centers.

NEW QUESTION 152

Refer to the exhibit



The Cisco SD-WAN network is configured with a default full-mesh topology. Islamabad HQ and Islamabad WAN Edges must be used as the hub sites. Hub sites MPLS TLOC must be preferred when forwarding FTP traffic based on a configured SLA class list. Which policy configuration does the network engineer use to call the SLA class and set the preferred color to MPLS?

- A. Localized Policy, Route Policy
- B. Centralized Policy, Traffic Policy
- C. Localized Policy, Forwarding Class
- D. Centralized Policy Topology

Answer: B

NEW QUESTION 157

What is the default value for the Multiplier field of the BFD basic configuration in vManage?

- A. 3
- B. 4
- C. 5
- D. 6

Answer: D

NEW QUESTION 162

Which alarm setting is configured to monitor serious events that affect but do not shut down, the operation of a network function?

- A. Minor
- B. Major
- C. Medium
- D. Critical

Answer: B

NEW QUESTION 165

How should the IP addresses be assigned for all members of a Cisco vManage cluster located in the same data center?

- A. in the same subnet
- B. in overlapping IPs
- C. in each controller with a /32 subnet
- D. in different subnets

Answer: A

NEW QUESTION 170

An administrator wants to create a policy to add a traffic policer called "politer-ccnp" to police data traffic on the WAN Edge. Which configuration accomplishes this task in vSmart?

A.

vpn 1
interface ge 0/4
policer policer-ccnp in

B.

policy
data-policy policy-ccnp
vpn-list list-ccnp
sequence number
action accept
set policer policer-ccnp

C.

policy
access-list list-ccnp
sequence number
action accept
policer policer-ccnp

D.

vpn 1
interface ge 0/4
policer policer-ccnp out

- A. Option A
- B. Option B
- C. Option C
- D. Option D

Answer: B

NEW QUESTION 172

After deploying Cisco SD-WAN the company realized that by default, all sites built direct IPsec VPN tunnels to each other In their previous topology all spoke sites used the head office as their next hop for the LAN segment that belongs to network 40.0.0.0/16 The company wants to deploy its previous policy, which allows the 40.0.0.0/16 network that originates at the hub to advertise to the spokes. Which configuration meets the requirement'?

A)

Manage Preference and Prefix Lists

Choose hub preference and add prefix lists as desired.

☐ All hubs are equal (All Spokes Sites connect to all Hubs)

☒ Advertise Hub TLOCs

Hub_TLOCs x

Spoke Sites

Associated Hub Sites

Prefix Lists (Optional)

↑↓ Drag & drop to reorder

Hub

= Spokes

LAN_Segment x

B)

Manage Preference and Prefix Lists

Choose hub preference and add prefix lists as desired.

☒ All hubs are equal (All Spokes Sites connect to all Hubs) ☐ Advertise Hub TLOCs

Spoke Sites	Associated Hub Sites	Prefix Lists (Optional)
Spokes	Hub	LAN_Segment x

C)

Manage Preference and Prefix Lists

Choose hub preference and add prefix lists as desired.

☐ All hubs are equal (All Spokes Sites connect to all Hubs) ☒ Advertise Hub TLOCs

Spoke Sites	Associated Hub Sites	Prefix Lists (Optional)	Drag & drop to reorder
Spokes	Hub	LAN_Segment x	

D)

Choose hub preference and add prefix lists as desired.

☐ All hubs are equal (All Spokes Sites connect to all Hubs) ☒ Advertise Hub TLOCs

Spoke Sites	Associated Hub Sites	Prefix Lists (Optional)	Drag & drop to reorder
Spokes	Hub	Select one or more prefix lists	

- A. Option A
- B. Option B
- C. Option C
- D. Option D

Answer: D

NEW QUESTION 177

Which Cisco SD-WAN component facilitates the initial communication between WAN Edge devices to join the fabric?

- A. vSmart Controller
- B. WAN Edge Router
- C. vManage
- D. vBond Orchestrator

Answer: D

NEW QUESTION 179

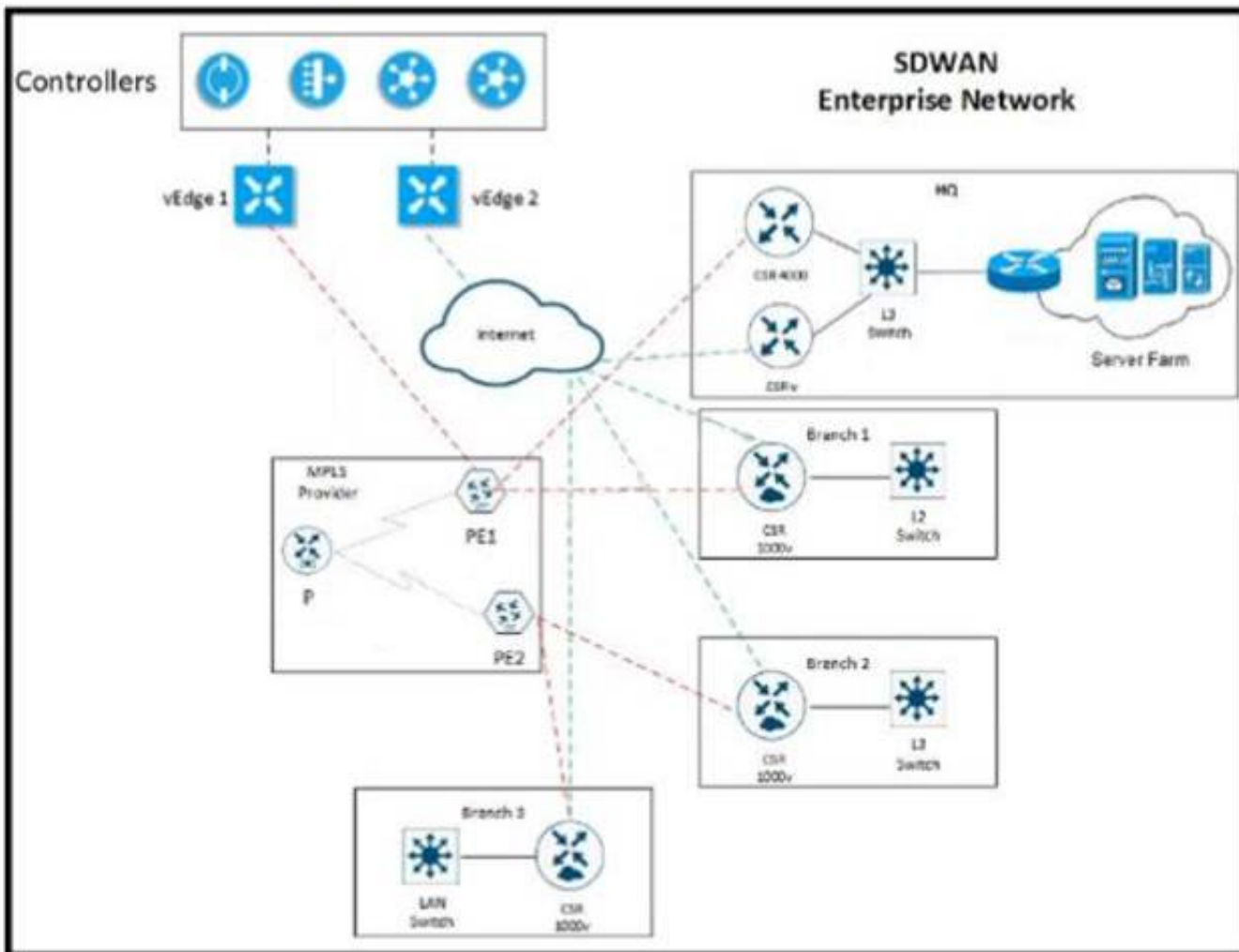
An engineer configured a data policy called ROME-POLICY. Which configuration allows traffic flow from the Rome internal network toward other sites?

- A. apply-policy site-list Rome data-policy ROME-POLICY from-tunnel
- B. apply-policy site-list Rome data-policy ROME-POLICY from-service
- C. site-list Rome control-policy ROME-POLICY in
- D. site-list Rome control-policy ROME-POLICY out

Answer: A

NEW QUESTION 180

Refer to the exhibit



The network team must configure EIGRP peering at HQ with devices in the service VPN connected to WAN Edge CSRv. CSRv is currently configured with

```
viptela-system:system
device-model vedge-cloud
host-nam CSRv
location CA
system-ip 10.4.4.4
domain-id 1
site-id 1
organization-name ABC
clock timezone US/Newyork
vbond 10.10.0.1 port 12346
```

```
omp
no shutdown
graceful-restart
```

Which configuration on the WAN Edge meets the requirement?

A)

```
vpn 0
interface ge0/0
description "Internet Circuit"
ip address 209.165.200.229/30
tunnel-interface
encapsulation ipsec
color public-internet
allow-service all

router
eigrp
address-family ipv4-unicast
maximum-path paths 4
network 10.0.0.0/28
redistribute omp

vpn 512
interface eth0
shutdown
```

B)

```
vpn 0
interface ge0/0
description "**** Internet Circuit ****"
ip address 209.165.200.229/30
tunnel-interface
encapsulation ipsec
color public-internet
allow-service all

router
eigrp
address-family ipv4-unicast
maximum-path paths 4
network 10.0.0.0/28
redistribute omp

vpn 512
interface eth0
shutdown
```

C)

```
vpn 0
interface ge0/0
description "**** Internet Circuit ****"
ip address 209.165.200.229/30
tunnel-interface
encapsulation ipsec
color public-internet
allow-service all

vpn 1
router
eigrp
address-family ipv4-unicast
maximum-path paths 4
network 10.0.0.0/28
redistribute omp

interface ge0/1
ip address 10.0.0.1/28

vpn 512
interface eth0
shutdown
```

D)

```
vpn 0
vpn 1
interface ge0/0
description "**** Internet Circuit ****"
ip address 209.165.200.229/30
tunnel-interface
encapsulation ipsec
color public-internet
allow-service all

router
eigrp
address-family ipv4-unicast
maximum-path paths 4
network 10.0.0.0/28
redistribute omp

interface ge0/1
ip address 10.0.0.1/28

vpn 512
interface eth0
shutdown
```

- A. Option A
- B. Option B
- C. Option C
- D. Option D

Answer: C

NEW QUESTION 181

A network administrator is configuring Qos on a vEdge 5000 router and needs to enable it on the transport side interface. Which policy setting must be selected to accomplish this goal?

- A. Cloud QoS Service side
- B. Cloud QoS
- C. NetFlow
- D. Application

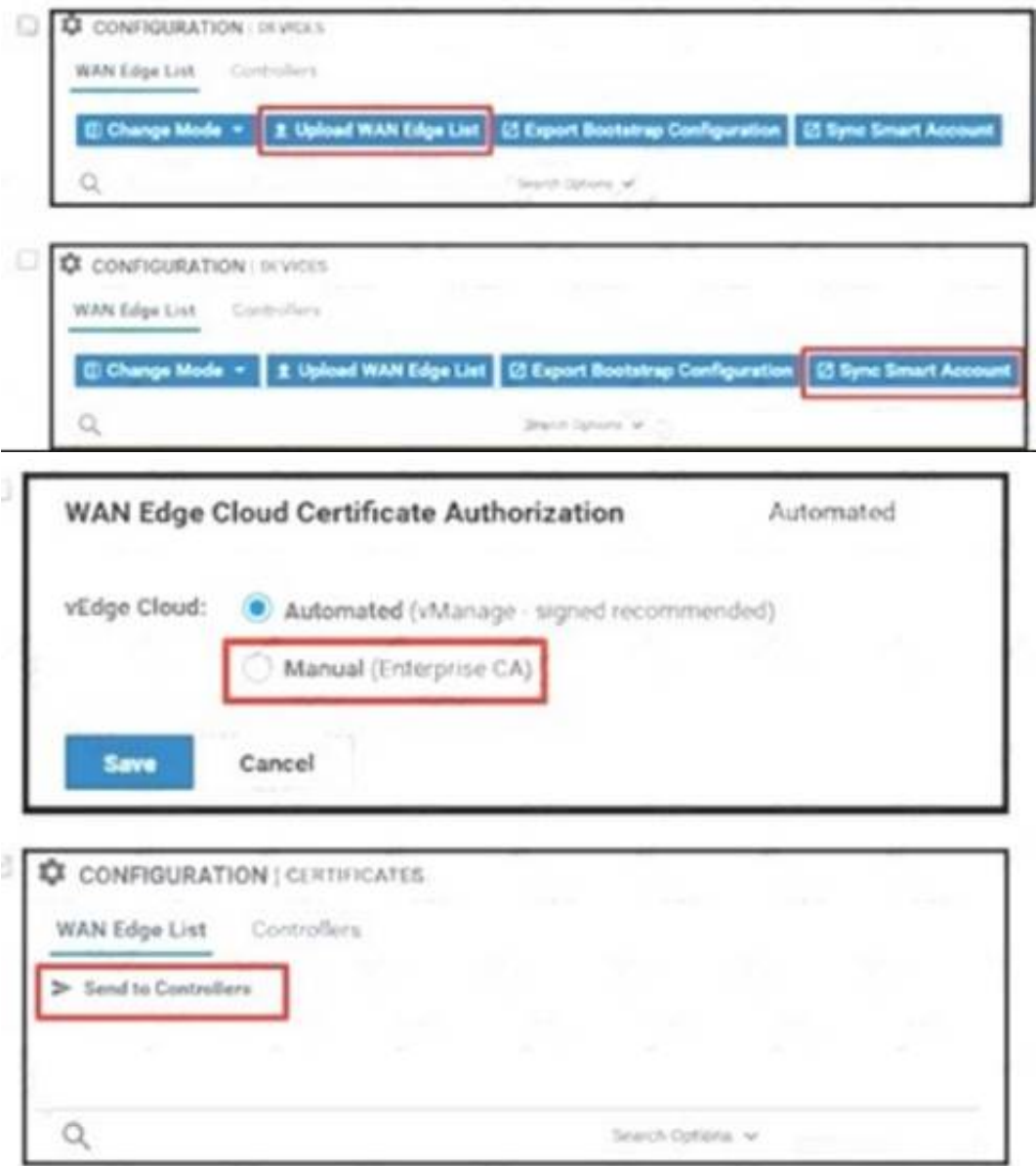
Answer: B

Explanation:

9. Since the DC routers are vEdge 5000s, select the **Cloud QoS** checkbox to enable QoS on the transport side.

NEW QUESTION 184

An administrator must deploy the controllers using the On-Prem method while vManage can access the PnP portal from inside How are the two WAN Edge authorized allowed lists to be made available to vManage? (Choose two)



- A. Option A
- B. Option B
- C. Option C
- D. Option D

Answer: AB

Explanation:
https://sdwan-docs.cisco.com/Product_Documentation/vManage_Help/Release_18.4/Configuration/Devices

NEW QUESTION 189

Drag and drop the security terminologies from the left onto the PCI-compliant network features and devices on the right.

transport security	IPS
perimeter security	zone-based firewall and VPNs
segmentation	IPsec VPN
attack prevention	firewall

- A. Mastered
- B. Not Mastered

Answer: A

Explanation:

Graphical user interface, application Description automatically generated

NEW QUESTION 192

What is an attribute of TLOC'?

- A. encryption
- B. local preference
- C. tag
- D. service

Answer: C

NEW QUESTION 194

Which type of policy must be applied on a WAN Edge application-aware firewall to control traffic between two or more VPNs?

- A. service-insertion policy
- B. data policy
- C. firewall policy
- D. control policy

Answer: C

NEW QUESTION 197

Refer to the exhibit.

```
vEdge-Cloud#
vEdge-Cloud#
vEdge-Cloud# vshell
vEdge-Cloud:~$ cd /var/log/
vEdge-Cloud:/var/log$
vEdge-Cloud:/var/log$ ls -l
total 28992
-rw-r--r-- 1 root root 1441700 Nov 22 15:13 auth.log
-rw-r--r-- 1 basic adm 0 Aug 7 15:29 cloud-init.log
drwxr-xr-x 2 root root 4096 Nov 22 14:49 confd
-rw-r--r-- 1 root root 1896486 Nov 22 14:57 kern.log
-rw-r--r-- 1 root root 292292 Aug 9 22:31 lastlog
-rw-r--r-- 1 root root 6197843 Nov 22 15:14 messages
-rw-r--r-- 1 root root 10512141 Aug 30 21:00 messages.1
drwxr-xr-x 2 root root 4096 Nov 22 14:48 pdb
drwxr-xr-x 2 quagga quagga 4096 Aug 7 15:29 quagga
-rw-r--r-- 1 root root 437 Nov 22 14:48 sw_script_active.log
-rw-r--r-- 1 root root 382 Nov 22 14:48 sw_script_previous.log
-rw-r--r-- 1 root root 2004 Nov 22 14:49 sw_script_synccdb.log
-rw-r--r-- 1 root root 64064 Nov 22 15:07 tallylog
drwxr-xr-x 2 root root 60 Nov 22 14:48 tmplog
-rw-r--r-- 1 root root 6841506 Nov 22 15:14 vconfd
-rw-r--r-- 1 root root 184602 Aug 7 15:29 vdebug
-rw-r--r-- 1 root root 2479511 Nov 22 15:14 vsyslog
-rwxr-xr-x 1 root utmp 49536 Nov 22 15:07 wtmp
vEdge-Cloud:/var/log$
vEdge-Cloud:/var/log$
```

Which configuration stops Netconf CLI logging on WAN Edge devices during migration?

- ☐ logs
 - audit-disable
 - netconf-disable
- ☐ logs
 - netconf-disable
- ☐ logging
 - disk netconf-disable
- ☒ logging
 - disk
 - audit-disable
 - netconf-disable

- A. Option A
- B. Option B
- C. Option C
- D. Option D

Answer: B

Explanation:

<https://www.cisco.com/c/en/us/td/docs/routers/sdwan/command/sdwan-cr-book/config-cmd.html#wp386725031>

Syslog messages related to AAA authentication and Netconf CLI access and usage are placed in the auth.log and messages files. Each time Cisco vManage logs in to a Cisco vEdge device to retrieve statistics and status information and to push files to the router, the router generates AAA and Netconf log messages. So, over time, these messages can fill the log files. To prevent these messages from filling the log files, you can disable the logging of AAA and Netconf syslog messages:

```
Device(config)# system aaa logsViptela(config-logs)# audit-disableViptela(config-logs)# netconf-disable
```

NEW QUESTION 199

Which value is verified in the certificates to confirm the identity of the physical WAN Edge device?

- A. Serial Number
- B. OTP
- C. System-IP
- D. Chassis-ID

Answer: A

Explanation:

<https://www.cisco.com/c/en/us/td/docs/routers/sdwan/configuration/sdwan-xe-gs-book/manage-certificates.html>

NEW QUESTION 200

An enterprise is continuously adding new sites to its Cisco SD-WAN network. It must configure any cached routes flushed when OMP peers have lost adjacency. Which configuration allows the cached OMP routes to be flushed after every 24 hours from its routing table?

A)

B)

C)

Basic Configuration	Timers	Advertise
Graceful Restart for OMP	<input checked="" type="radio"/> On	<input type="radio"/> Off
Overlay AS Number	24	
Graceful Restart Timer (seconds)	600000	
Number of Paths Advertised per Prefix	2	
ECMP Limit	2	
Shutdown	<input type="radio"/> Yes	<input checked="" type="radio"/> No

D)

Basic Configuration	Timers	Advertise
Graceful Restart for OMP	<input checked="" type="radio"/> On	<input type="radio"/> Off
Overlay AS Number	24	
Graceful Restart Timer (seconds)	43200	
Number of Paths Advertised per Prefix	2	
ECMP Limit	2	
Shutdown	<input type="radio"/> Yes	<input checked="" type="radio"/> No

- A. Option A
- B. Option B
- C. Option C
- D. Option D

Answer: B

NEW QUESTION 202

An enterprise needs DIA on some of its branches with a common location ID: A041:B70C: D78E::18 Which WAN Edge configuration meets the requirement?

A)

```
vpn 1
interface ge0/1
ip address 172.16.0.1/24
vpn 512
ip route 0.0.0.0/0 vpn 0
```

B)

```
vpn 1
ip route 0.0.0.0/0 vpn 1
interface ge0/0
ip address 172.16.0.1/24
nat
```

C)

```
vpn 0
interface ge0/0
ip address 172.16.0.1/24
nat
vpn 1
ip route 0.0.0.0/0 vpn 0
```

D)

```
vpn 0
ip route 0.0.0.0/0 vpn 0
vpn 1
interface ge0/1
ip address 172.16.0.1/24
nat
```

- A. Option A
- B. Option B
- C. Option C

D. Option D

Answer: C

NEW QUESTION 207

An enterprise deployed a Cisco SD-WAN solution with hub-and-spoke topology using MPLS as the preferred network over the Internet. A network engineer must implement an application-aware routing policy to allow ICMP traffic to be load-balanced over both the available links. Which configuration meets the requirement?

A)

```
app-route-policy _VPN_10_AAR
vpn-list VPN_50
sequence 21
match
app-list ICMP
source-ip 0.0.0.0/0
!
action
sla-class ICMP_SLA preferred-color public-internet
sla-class ICMP_SLA preferred-color mpls
```

B)

```
app-route-policy _VPN_10_AAR
vpn-list VPN_50
sequence 21
match
app-list ICMP
source-ip 0.0.0.0/0
!
action
sla-class ICMP_SLA
```

C)

```
app-route-policy _VPN_10_AAR
vpn-list VPN_50
sequence 21
match
app-list ICMP
source-ip 0.0.0.0/0
!
action
sla-class ICMP_SLA preferred-color mpls
backup-sla-preferred-color public-internet
```

D)

```
app-route-policy _VPN_10_AAR
vpn-list VPN_50
sequence 21
match
app-list ICMP
source-ip 0.0.0.0/0
!
action
sla-class ICMP_SLA preferred-color mpls public-internet
```

- A. Option A
- B. Option B
- C. Option C
- D. Option D

Answer: C

NEW QUESTION 209

At which layer does the application-aware firewall block applications on a WAN Edge?

- A. 3
- B. 7

- C. 5
- D. 2

Answer: B

NEW QUESTION 212

Refer to the exhibit

```
vpn 1
service netsvc1 interface ipsec1

from-vsmart data-policy _1_ServiceIsectionIPSec
direction from-service
vpn-list 1
sequence 1
match
destination-ip 1.1.1.1/32
action accept
set
service netsvc1
default-action accept
from-vsmart lists vpn-list 1
vpn 1
```

Which command allows traffic through the IPsec tunnel configured in VPN 0?

- A. service local
- B. service FW address 1.1.1.1
- C. service netsvc1 vpn 1
- D. service netsvc1 address 1.1.1.1

Answer: B

Explanation:

<https://www.cisco.com/c/en/us/td/docs/routers/sdwan/configuration/policies/vedge-20-x/policies-book/service-c>

NEW QUESTION 217

Which service VPN must be reachable from all WAN Edge devices and the controllers?

- A. VPN0
- B. VPN10
- C. VPN215
- D. VPN512

Answer: A

NEW QUESTION 219

Which protocol runs between the vSmart controllers and WAN Edge routers when the vSmart controller acts like a route reflector?

- A. OMP outside the DTLS/TLS control connection
- B. BGP inside the DTLS/TLS
- C. IPsec inside the DTLS/TLS control connection
- D. OMP inside the DTLS/TLS control connection

Answer: D

NEW QUESTION 223

Which protocol is used to propagate multicast join requests over the Cisco SD-WAN fabric?

- A. ARP
- B. Auto-RP
- C. OMP
- D. IGMP

Answer: D

NEW QUESTION 226

When a WAN Edge device joins the SD-WAN overlay, which Cisco SD-WAN components orchestrates the connection between the WAN Edge device and a vSmart controller?

- A. vManage
- B. vBond
- C. OMP
- D. APIC-EM

Answer: B

Explanation:

When a vEdge device comes up, how does it automatically discover Cisco vManage and Cisco vSmart Controller and establish connections with them? **It does so with help from Cisco vBond Orchestrator.**

NEW QUESTION 230

Which policy is configured to ensure that a voice packet is always sent on the link with less than a 50 msec delay?

- A. localized data policy
- B. localized control policy
- C. centralized data policy
- D. centralized control policy

Answer: C

NEW QUESTION 231

Which website allows access to visualize the geography screen from vManager using the internet?

- A. *.opcnstreetmaps.org
- B. *.fullstreetmaps.org
- C. *.callstreelmaps.org
- D. *.globaistreetmaps.org

Answer: A

NEW QUESTION 235

An engineer is applying QoS policy for the transport-side tunnel interfaces to enable scheduling and shaping for a WAN Edge cloud router Which command accomplishes the task?

- A. cloud-qos-service-side
- B. qos-scheduler QOS_0
- C. qos-map QOS
- D. rewrite-rule QOS-REWRITE

Answer: C

NEW QUESTION 239

A network administrator is creating an OMP feature template from the vManage GUI to be applied to WAN edge routers. Which configuration attribute will avoid the redistribution of the routes back into the OMP from the LAN side?

- A. configure "Number of Paths Advertised per Prefix"
- B. configure "Overlay AS Number"
- C. configure "Send Backup Paths"
- D. configure "ECMP limit"

Answer: B

Explanation:

If you configure the same **overlay AS number** on multiple vEdge routers in the overlay network, all these routers are considered to be part of the same AS, and as a result, they do not forward any routes that contain the overlay AS number. This mechanism is an additional technique for **preventing BGP routing loops** in the network.

NEW QUESTION 244

Drag and drop the REST API calls from the left onto the functions on the right.

PUT	Retrieve or read.
GET	Update an object.
POST	Create an object.
DELETE	Remove an object.

- A. Mastered
- B. Not Mastered

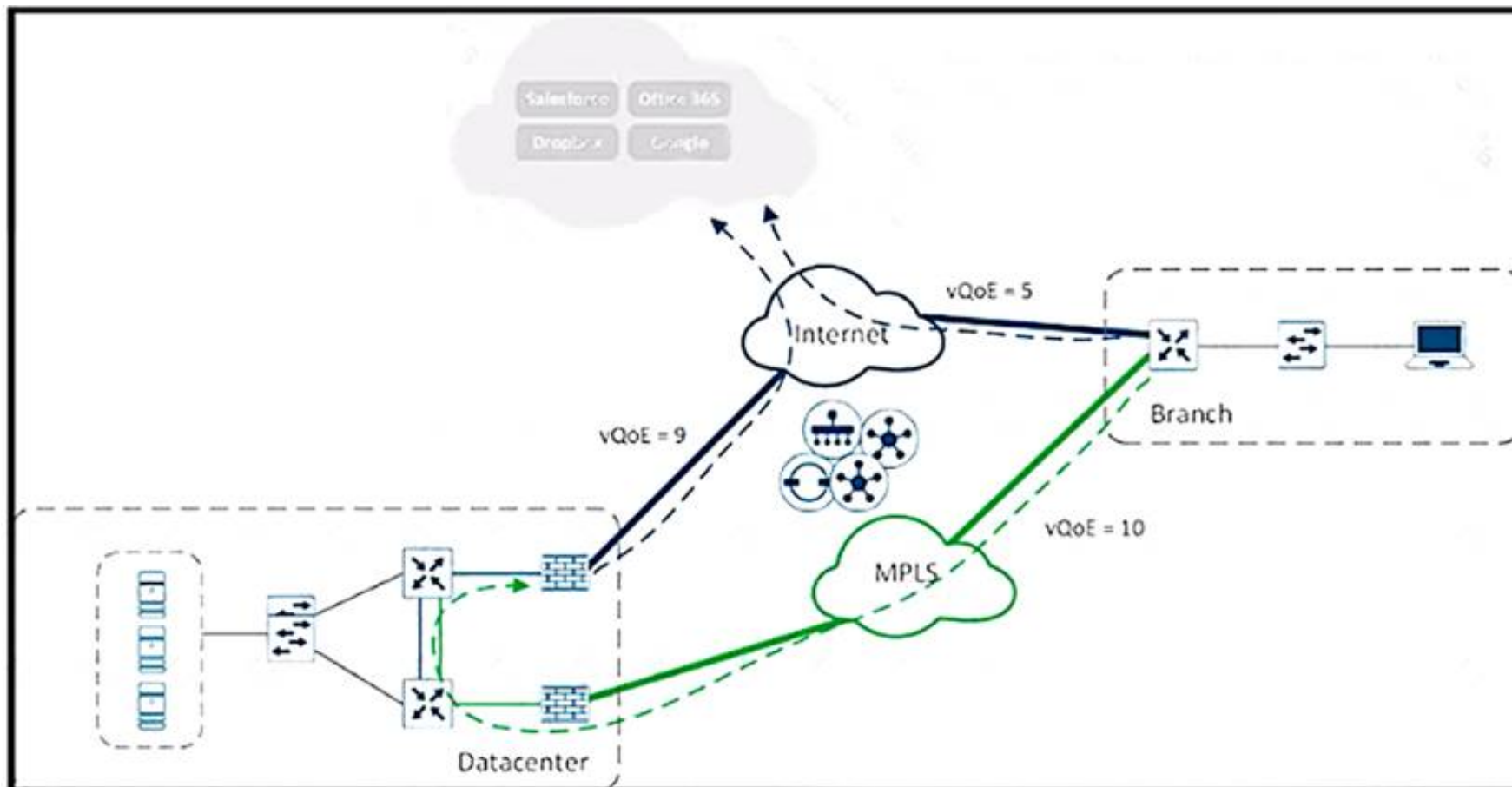
Answer: A

Explanation:

- **GET:** Get resource from the server.
- **POST:** Create resource to the server.
- **PATCH or PUT:** Update existing resource on the server.
- **DELETE:** Delete existing resource from the server.

NEW QUESTION 246

Refer to the exhibit.



A user in the branch is connecting to Office 365 for the first time. Over which path does the branch WAN Edge router traffic follow?

- A. routing table of the branch WAN Edge router
- B. DIA exit of the branch WAN Edge router
- C. forwarded to the gateway site
- D. dropped because the minimum vQoE score has not been met

Answer: B

NEW QUESTION 247

Which protocol is used to measure loss latency, jitter, and liveliness of the tunnel between WAN Edge router peers?

- A. OMP
- B. IP SLA
- C. NetFlow
- D. BFD

Answer: D

NEW QUESTION 251

For data plane resiliency, what does the Cisco SD-WAN software implement?

- A. BFD
- B. establishing affinity between vSmart controllers and WAN Edge routers
- C. multiple vBond orchestrators
- D. OMP

Answer: A

Explanation:

NEW QUESTION 253

WAN Edge routers are configured manually to use UDP port offset to use nondefault offset values when IPsec tunnels are created. What is the offset range?

- A. 1-19
- B. 0-18

- C. 0-19
- D. 1-18

Answer: C

NEW QUESTION 258

Which Cisco SD-WAN WAN Edge platform supports LTE and Wi-Fi?

- A. vEdge2000
- B. ASR1001
- C. CSR 1000v
- D. ISR 1101

Answer: D

NEW QUESTION 261

Drag and drop the vManage policy configuration procedures from the left onto the correct definitions on the right.

Create groups of interest	Create the network structure to which the policy applies
Configure traffic rules	Create lists that group together related items that an engineer can call in the match or action components of a policy
Configure topology	Associate a policy with sites and VPNs in the overlay network
Apply policies to sites and VPNs	Create the match and action conditions of a policy

- A. Mastered
- B. Not Mastered

Answer: A

Explanation:

Configure topology

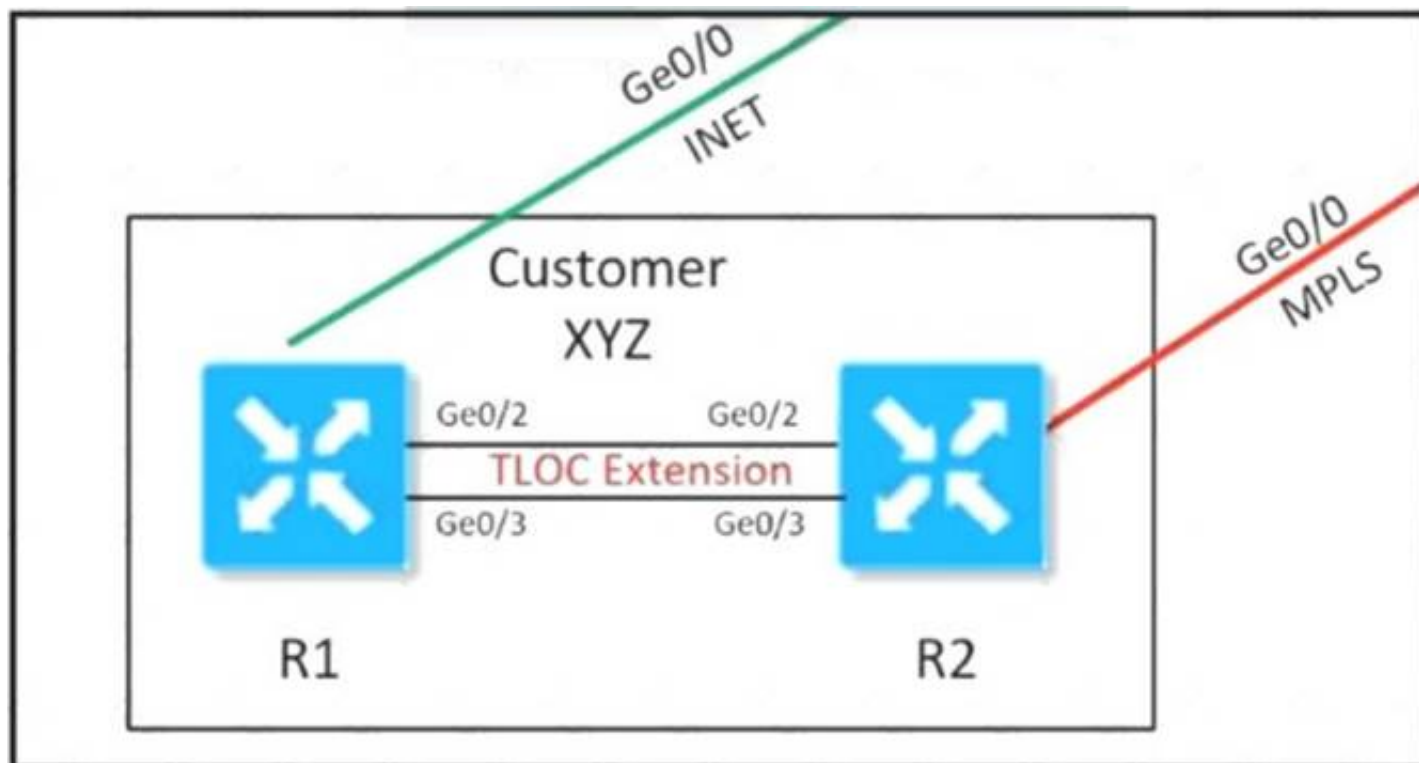
Create groups of interest

Apply policies to sites and VPNs

Configure traffic rules

NEW QUESTION 266

Refer to the exhibit.



Customer XYZ cannot provision dual connectivity on both of its routers due to budget constraints but wants to use both R1 and R2 interlaces for users behind them for load balancing toward the hub site. Which configuration achieves this objective?

- A.
- ```

R1
interface ge0/2
ip address 43.43.43.2/30
tloc-extension ge0/0

interface ge0/3
ip address 34.34.34.1/30
tunnel-interface
color mpls

R2
interface ge0/2
ip address 43.43.43.1/30
tunnel-interface
color public-internet

interface ge0/3
ip address 34.34.34.2/30
tloc-extension ge0/0

```
- B.
- ```

R1
interface ge0/2
ip address 43.43.43.2/30
tloc-extension ge0/0

interface ge0/3
ip address 34.34.34.2/30
tloc-extension ge0/0

R2
interface ge0/2
ip address 43.43.43.1/30
tunnel-interface
color public-internet

interface ge0/3
ip address 34.34.34.1/30
    
```
- C.
- ```

R1
interface ge0/2
ip address 43.43.43.2/30
tloc-extension ge0/0

interface ge0/3
ip address 34.34.34.2/30
tloc-extension ge0/0

R2
interface ge0/2
ip address 43.43.43.1/30

interface ge0/3
ip address 34.34.34.1/30

```
- D.
- ```

R1
interface ge0/2
ip address 43.43.43.2/30
tloc-extension ge0/0

interface ge0/3
ip address 34.34.34.1/30
tunnel-interface
color mpls

R2
interface ge0/2
ip address 43.43.43.1/30
tunnel-interface
color public-internet

interface ge0/3
ip address 34.34.34.2/30
tloc-extension ge0/2
    
```

A. Option A

- B. Option B
- C. Option C
- D. Option D

Answer: A

NEW QUESTION 268

A customer must upgrade the cisco SD-WAN devices and controllers from version 19.2 to version 20.3. The devices include WAN Edge cloud, vManage, vSmart, and vBond. Which types of image types of image files are needed for this upgrade?

- A. one file for vManage and one file for all other devices with extension tar.gz
- B. one file for vManage, one for vSmart and one for vBond + WAN Edge Cloud with extension .bin
- C. one file for vManaga, one for vSmart and one for vBond + WAN Edge Cloud with extension tar.gz
- D. one file for vManaga and one file for all other devices with extension .bin

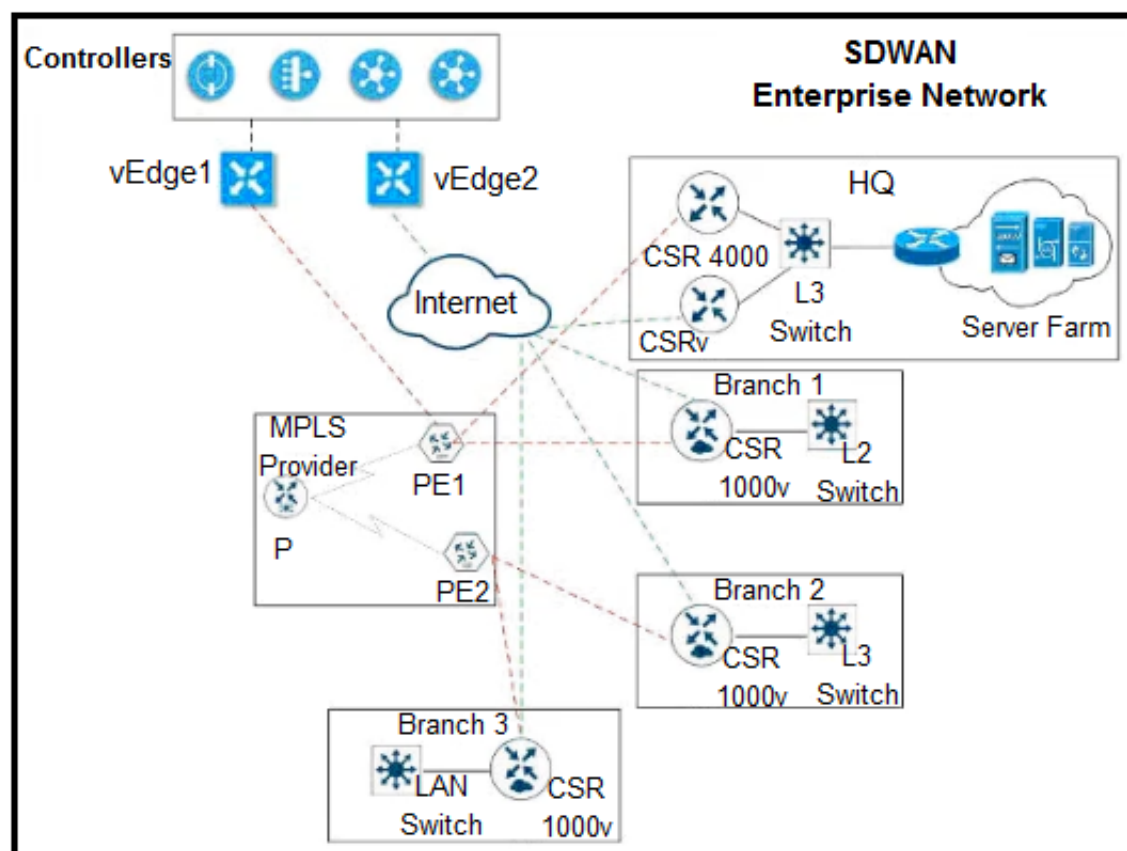
Answer: C

Explanation:

<https://software.cisco.com/download/home/286320995/type/286321394/release/20.3.3.1>

NEW QUESTION 272

Refer to the exhibit



The network team must configure EIGRP peering at HQ with devices in the service VPN connected to WAN Edge CSRv. CSRv is currently configured with

```
viptela-system:system
device-model vedge-cloud
host-nam CSRv
location CA
system-ip 10.4.4.4
domain-id 1
site-id 1
organization-name ABC
clock timezone US/Newyork
vbond 10.10.0.1 port 12346
```

```
omp
no shutdown
graceful-restart
```

Which configuration on the WAN Edge meets the requirement?

Which configuration on the WAN Edge meets the requiremnet

A)

☐ vpn 0
 router
 eigrp
 address-family ipv4-unicast
 maximum-path paths 4
 network 10.0.0.0/28
 redistribute omp

interface ge0/0
 description "Internet Circuit"
 ip address 209.165.200.229/30
 tunnel-interface
 encapsulation ipsec
 color public-internet
 allow-service all

vpn 512
 interface eth0
 shutdown

B)

☐ vpn 0
 vpn 1
 interface ge0/0
 description "Internet Circuit"
 ip address 209.165.200.229/30
 tunnel-interface
 encapsulation ipsec
 color public-internet
 allow-service all

router
 eigrp
 address-family ipv4-unicast
 maximum-path paths 4
 network 10.0.0.0/28
 redistribute omp

interface ge0/1
 ip address 10.0.0.1/28

vpn 512
 interface eth0
 shutdown

C)

☐ vpn 0
 interface ge0/0
 description "Internet Circuit"
 ip address 209.165.200.229/30
 tunnel-interface
 encapsulation ipsec
 color public-internet
 allow-service all

vpn 1
 router
 eigrp
 address-family ipv4-unicast
 maximum-path paths 4
 network 10.0.0.0/28
 redistribute omp

interface ge0/1
 ip address 10.0.0.1/28

vpn 512
 interface eth0
 shutdown

D)

```

○ vpn 0
  interface ge0/0
    description "Internet Circuit"
    ip address 209.165.200.229/30
    tunnel-interface
    encapsulation ipsec
    color public-internet
    allow-service all

  router
    eigrp
    address-family ipv4-unicast
    maximum-path paths 4
    network 10.0.0.0/28
    redistribute omp

vpn 512
  interface eth0
    shutdown
  
```

- A. Option A
- B. Option B
- C. Option C
- D. Option D

Answer: C

NEW QUESTION 275

A vEdge platform is sending VRRP advertisement messages every 10 seconds. Which value configures the router back to the default timer?

- A. 2 seconds
- B. 3 seconds
- C. 1 second
- D. 5 seconds

Answer: C

NEW QUESTION 278

Which protocol is used by the REST API to communicate with network services in the Cisco SO-WAN network?

- A. SSL
- B. HTTP
- C. IPsec
- D. SSM

Answer: B

NEW QUESTION 279

How are custom application ports monitored in Cisco SD-WAN controllers?

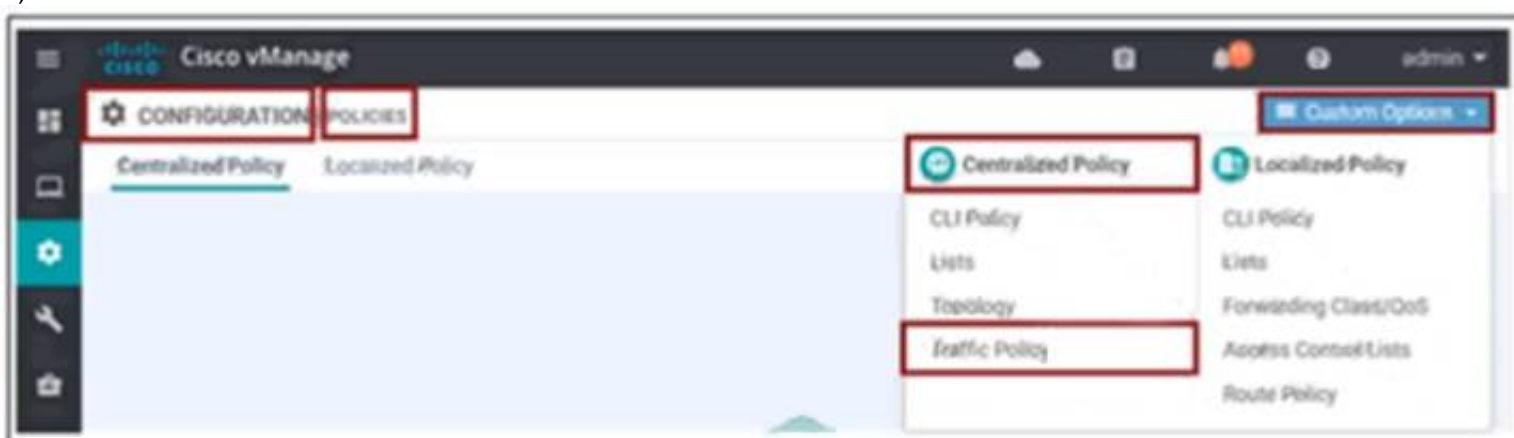
- A. Customers add custom application ports in vAnalytics and vManage.
- B. Customers add custom application ports in vAnalytics and vSmart.
- C. Cisco adds custom application ports in vAnalytics and vManage.
- D. Cisco adds custom application ports in vAnalytics and vSmart.

Answer: A

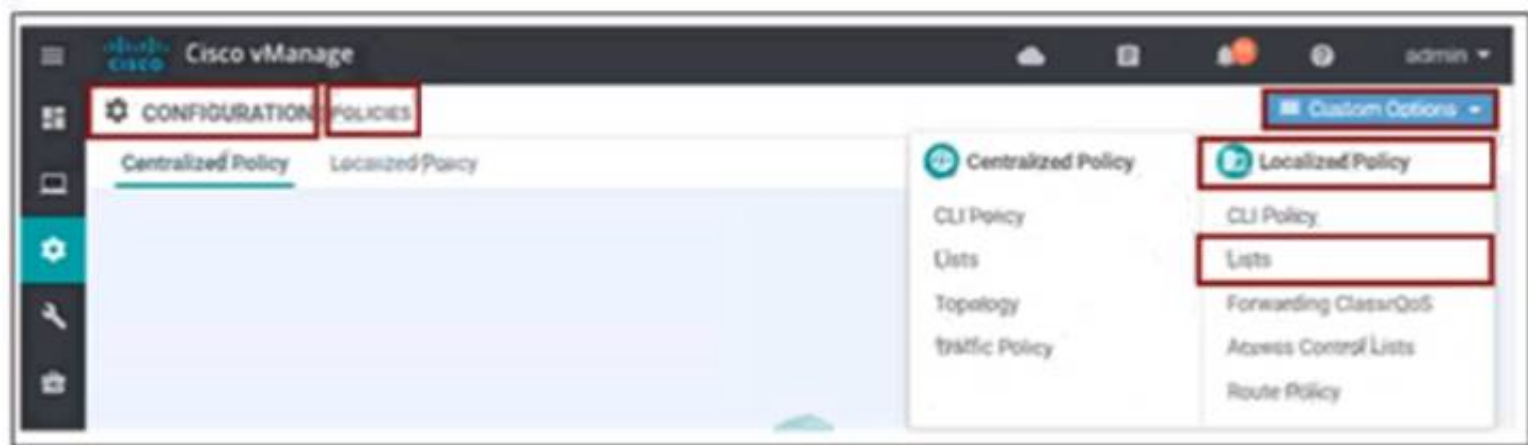
NEW QUESTION 283

An engineer must create a QoS policy by creating a class map and assigning it to the LLQ queue on a WAN Edge router. Which configuration accomplishes the task?

A)



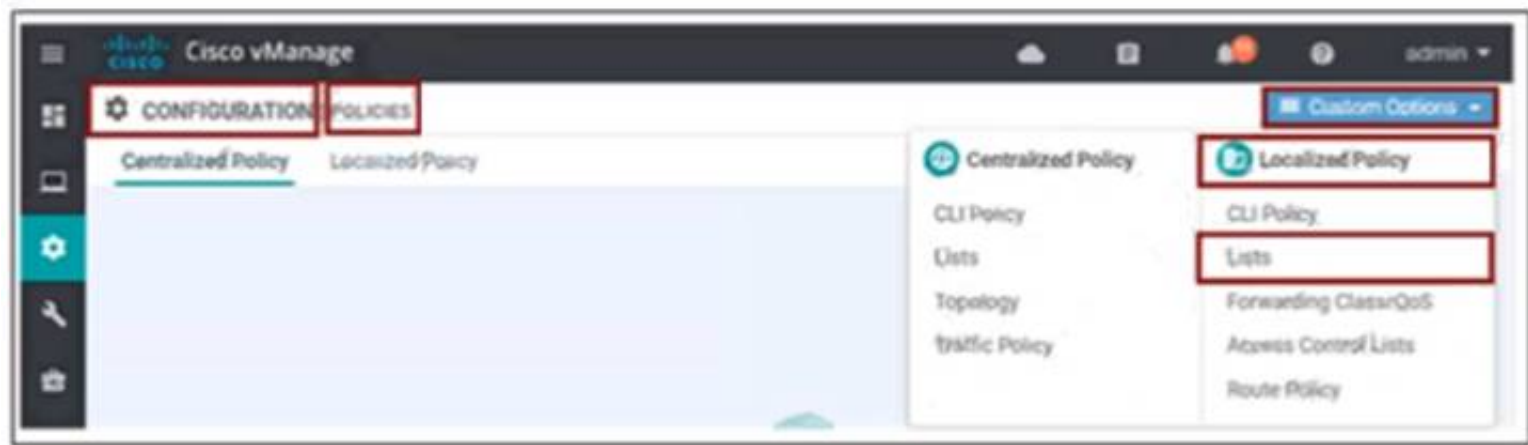
B)



C)



D)



- A. Option A
- B. Option B
- C. Option C
- D. Option D

Answer: D

NEW QUESTION 288

Refer to the exhibit.

Hostname	State	System IP	Reachability	Site ID	Device Model	BFD	Control
 BR1-VEGDE1		10.3.0.1	reachable	300	vEdge Cloud	8	5

What does the BFD value of 8 represent?

- A. number of BFD sessions
- B. hello timer of BFD session
- C. poll-interval of BFD session.
- D. dead timer of BFD session

Answer: A

NEW QUESTION 293

A policy is created to influence routing path in the network using a group of prefixes. What policy application will achieve this goal when applied to a site List?

- A. vpn-membership policy
- B. cflowd-template
- C. app-route policy
- D. control-policy

Answer: D

NEW QUESTION 294

Which VManage dashboard is used to monitor the next-hop reachability between two devices traversing through OMP for a service VPN?

- A. Troubleshooting > App Route Visualization
- B. Troubleshooting > Tunnel Health
- C. Troubleshooting > Simulate Flows
- D. Troubleshooting > Packet Capture

Answer: C

NEW QUESTION 297

An engineer is configuring a list that matches all IP prefixes with lengths from /1 to /16 in a centralized control policy. Which list accomplishes this task?

- A. 0.0.0.0/1 le 16
- B. 0.0.0.0/0 ge 1
- C. 0.0.0.0/0 le 16
- D. 0.0.0.0/16 ge 1

Answer: A

NEW QUESTION 301

Which secure tunnel type should be used to connect one WAN Edge router to other WAN Edge routers?

- A. TLS
- B. DTLS
- C. SSL VPN
- D. IPsec

Answer: D

NEW QUESTION 305

How does the replicator role function in cisco SD-WAN?

- A. WAN Edge devices advertise the rendezvous point to all the receivers through the underlay network.
- B. vSmart Controllers advertise the rendezvous point to all the receivers through the overlay network.
- C. WAN Edge devices advertise the rendezvous point to all receivers through the overlay network.
- D. vSmart Controllers advertise the rendezvous point to all the receivers through the underlay network.

Answer: B

Explanation:

Replicators

For efficient use of WAN bandwidth, strategic Cisco SD-WAN routers can be deployed and configured as replicators throughout the overlay network. Replicators mitigate the requirement for a Cisco SD-WAN router with local sources or the PIM-RP to replicate a multicast stream once for each receiver. As discussed above, replicators advertise themselves, using OMP multicast-autodiscover routes, to the Cisco vSmart Controllers in the overlay network. The controllers then forward the replicator location information to the PIM-enabled Cisco IOS XE SD-WAN routers that are in the same VPN as the replicator.

NEW QUESTION 307

Which two products that perform lifecycle management for virtual instances are supported by WAN Edge cloud routers? (Choose two.)

- A. OpenStack
- B. AWS
- C. VMware vCenter
- D. Azure
- E. IBM Cloud

Answer: AC

Explanation:

<https://www.cisco.com/c/en/us/solutions/collateral/enterprise-networks/sd-wan/nb-07-cloud-router-data-sheet-ct>

The following figure illustrates Cisco vEdge Cloud router solution elements.



NEW QUESTION 309

In which VPN is the NAT operation on an outgoing interface configured for direct Internet access?

- A. 1
- B. 10
- C. 512

Answer: D

NEW QUESTION 310

Which type of certificate is installed on vManage for a user to access vManage via a web browser?

- A. SD-AVC Certificate
- B. WAN Edge Certificate
- C. Controller Certificate
- D. Web Server Certificate

Answer: D

NEW QUESTION 311

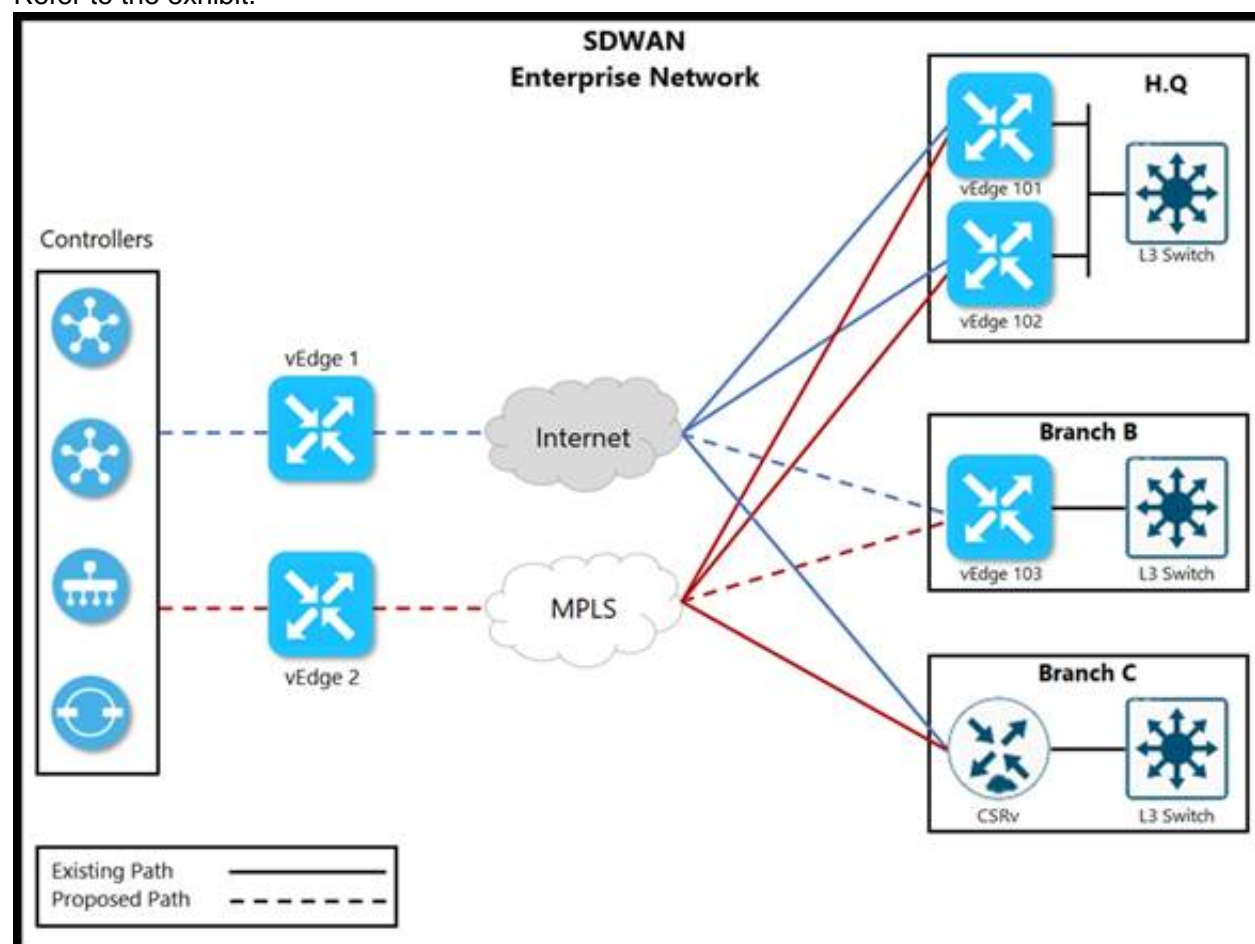
Which actions must be taken to allow certain departments to require firewall protection when interacting with data center network without including other departments? (Choose two.)

- A. Use classification policing and marking
- B. Apply data policies at vEdge.
- C. Deploy a service-chained firewall service per VPN
- D. The regional hub advertises the availability of the firewall service
- E. Advertise to vSmart controllers

Answer: CD

NEW QUESTION 313

Refer to the exhibit.



The network team must configure branch B WAN Edge device 103 to establish dynamic full-mesh IPsec tunnels between all colors with branches over MPLS and Internet circuits. The branch is configured with:

```
viptela-system:system
device-model vedge-cloud
host-name vEdge-Cloud
location CA
system-ip 10.4.4.4
domain-id 1
site-id 1
organization-name ABC
clock timezone US/Newyork
vbond 10.10.0.1 port 12346
```

```
omp
no shutdown
graceful-restart

vpn 512
interface eth0
ip address 10.0.0.1/24
no shutdown
```

Which configuration meets the requirement?

A)

```
vpn 0
interface ge0/0
description ***** Internet Circuit *****
ip address 209.165.200.225/30
tunnel-interface
encapsulation ipsec
color public-internet
allow-service all

interface ge0/1
description ***** MPLS *****
ip address 10.10.0.101/30
tunnel-interface
encapsulation ipsec
color mpls
allow-service all
```

B)

```
vpn 0
interface ge0/0
description ***** Internet Circuit *****
ip address 209.165.200.225/30
tunnel-interface
encapsulation ipsec
color public-internet restrict
allow-service all

interface ge0/1
description ***** MPLS *****
ip address 10.10.0.101/30
tunnel-interface
encapsulation ipsec
color mpls restrict
allow-service all
```

C)

```
vpn 0
interface ge0/0
description ***** Internet Circuit *****
ip address 209.165.200.225/30
tunnel-interface
encapsulation ipsec
color public-internet restrict
allow-service all

interface ge0/1
description ***** MPLS *****
ip address 10.10.0.101/30
tunnel-interface
encapsulation ipsec
color mpls restrict
allow-service all
```

D)

```
vpn 0
interface ge0/0
description ***** Internet Circuit *****
ip address 209.165.200.225/30
tunnel-interface
encapsulation ipsec
color public-internet
allow-service all

vpn 1
interface ge0/1
description ***** MPLS *****
ip address 10.10.0.101/30
tunnel-interface
encapsulation ipsec
color mpls
```

- A. Option A
- B. Option B
- C. Option C
- D. Option D

Answer: A

NEW QUESTION 316

Refer to the exhibit.

PEER TYPE	PEER PROTOCOL	PEER SYSTEM IP	SITE ID	DOMAIN ID	PEER PRIVATE IP	PEER PRIVATE PORT
vsmart	dtls	10.1.1.8	1	0	1.1.1.1	12447
vmanage	dtls	10.1.1.7	1	1	2.2.2.2	12647
vmanage	dtls	10.1.1.7	1	1	2.2.2.2	12867
LOCAL						
LOCAL COLOR	STATE	ERROR	ERROR	UNIT		
gold	up	LISFD	NOERR	45		
gold	up	LISFD	NOERR	70		
gold	up	LISFD	NOERR	69		

An engineer is troubleshooting a control connection issue on a WAN Edge device that shows socket errors. The packet capture shows some ICMP packets dropped between the two devices. Which action resolves the issue?

- A. Recover the vManage controller that is down m a high availability cluster
- B. Change the system IP or restart the VWN Edge 4 the system IP is changed
- C. Remove IP duplication in the network and configure a unique IP address
- D. Recover vBond or wart for the controller to reload which could be caused by a reset

Answer: C

NEW QUESTION 318

Refer to the exhibit

Address Family

On

Off

Address Family

ipv4-unicast

Maximum Number of Prefixes

Route Policy In

On

Off

Route Policy Out

On

Off

Policy Name

eBGP_Community_Policy

The engineering must assign tags to 3 Of its 74 server networks as soon as they are advertised to peers These server network must not be advertised AS which configuration fulfil the requirement?

A)

```
policy
route-policy eBGP_Community_Policy
sequence 1
match
address Community_Prefix
action accept
set
community 999:65000 no-advertise
default-action reject
lists
prefix-list Community_Prefix
ip-prefix 20.20.20.0/24
ip-prefix 21.21.21.0/24
ip-prefix 22.22.22.0/24
```

B)


```
policy
route-policy eBGP_Community_Policy
sequence 1
match
address Community_Prefix
action accept
set
community 999:65000 local-as
default-action reject
lists
prefix-list Community_Prefix
ip-prefix 20.20.20.0/24
ip-prefix 21.21.21.0/24
ip-prefix 22.22.22.0/24
```

C)

```
policy
route-policy eBGP_Community_Policy
sequence 1
match
address Community_Prefix
action accept
set
community 999:65000 no-export
default-action accept
lists
prefix-list Community_Prefix
ip-prefix 20.20.20.0/24
ip-prefix 21.21.21.0/24
ip-prefix 22.22.22.0/24
```

D)

```
policy
route-policy eBGP_Community_Policy
sequence 1
match
address Community_Prefix
action accept
set
community 999:65000 no-advertise
default-action accept
lists
prefix-list Community_Prefix
ip-prefix 20.20.20.0/24
ip-prefix 21.21.21.0/24
ip-prefix 22.22.22.0/24
```

- A. Option A
- B. Option B
- C. Option C
- D. Option D

Answer: D

NEW QUESTION 319

Drag and drop the steps from the left into the sequence on the right for a WAN Edge router after powering on for zero touch provisioning.

Router contacts a DNS service.	1
Router establishes a connection to vBond.	2
Router contacts a DHCP server.	3
Router connects to the ZTP server.	4

- A. Mastered
- B. Not Mastered

Answer: A

Explanation:



NEW QUESTION 321

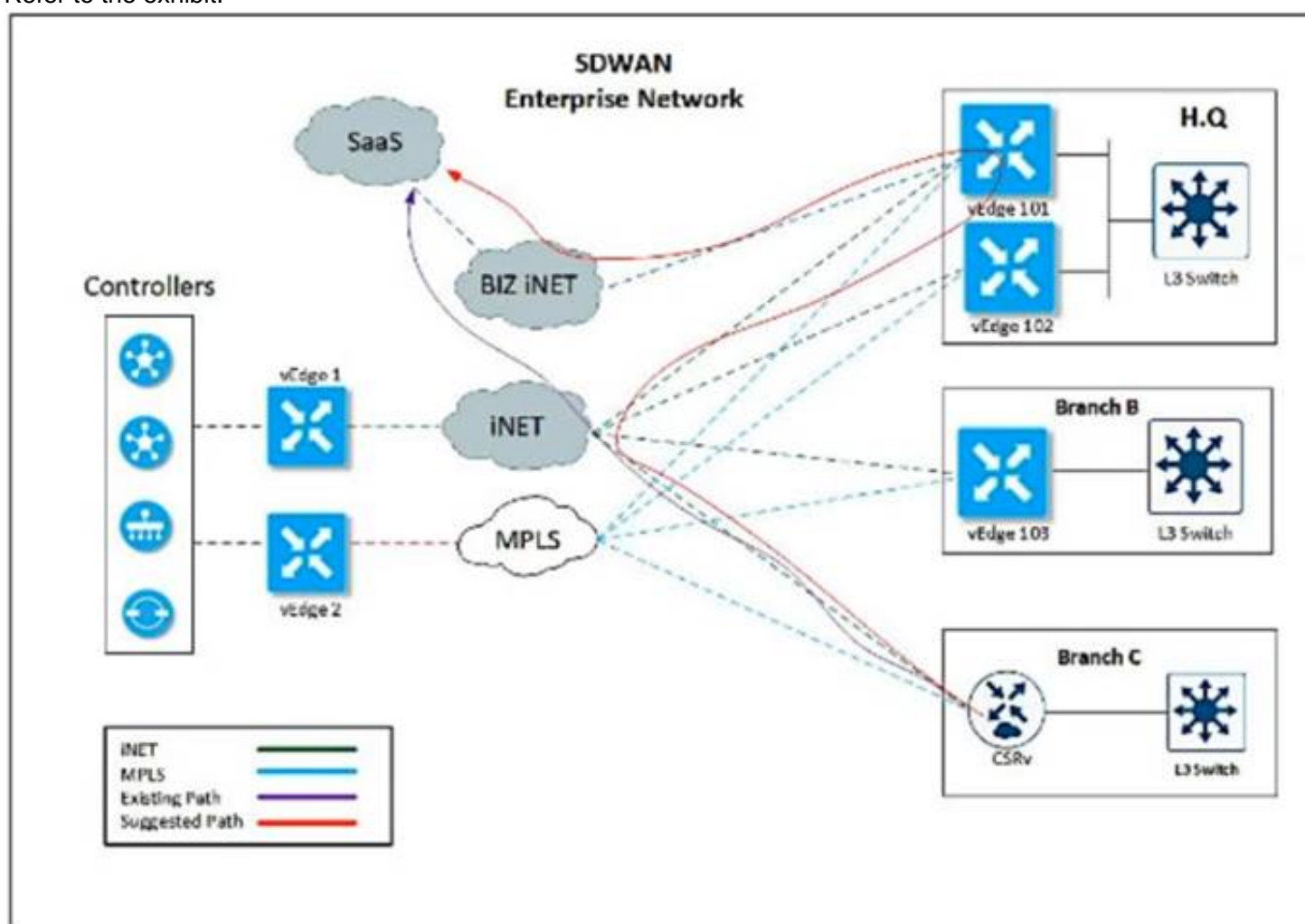
How is a TLOC uniquely identified from a WAN Edge router to the SD-WAN transport network?

- A. system IP address
- B. VPN ID
- C. OMP
- D. SD-WAN site ID

Answer: A

NEW QUESTION 325

Refer to the exhibit.



An enterprise decides to use the Cisco SD-WAN Cloud onRamp for SaaS feature and utilize H.Q site Biz iNET to reach SaaS Cloud for branch C. currently reaching SaaS Cloud directly. Which role must be assigned to devices at both sites in vManage Cloud Express for this solution to work?

- A. H.Q to be added as Gateway and Branch as DIA.
- B. Branch to be added as Client Sites and H.Q as DIA.
- C. Branch to be added as DIA and H.Q as Client Site.
- D. H.Q to be added as Gateway and Branch as Client Site.

Answer: B

NEW QUESTION 328

Drag and drop the Cisco SD-WAN components from the left onto their functions on the right.

vBond Orchestrator	IPsec key reflection and rekeying
vManage	first point of authentication
vSmart Controller	passes data plane traffic
WAN Edge Router	used to build configuration and policies

- A. Mastered
- B. Not Mastered

Answer: A

Explanation:

vBond Orchestrator	vSmart Controller
vManage	vBond Orchestrator
vSmart Controller	WAN Edge Router
WAN Edge Router	vManage

NEW QUESTION 333

An enterprise has these three WAN connections:

- > public Internet
- > business internet
- > MPLS

An engineer must configure two available links to route traffic via both links. Which configuration achieves this objective?

- ☐ omp
no shutdown
route-limit 2
- ☐ omp
no shutdown
send-path-limit 2
- ☐ omp
no shutdown
overlay-as 2
- ☐ omp
no shutdown
ecmp-limit 2

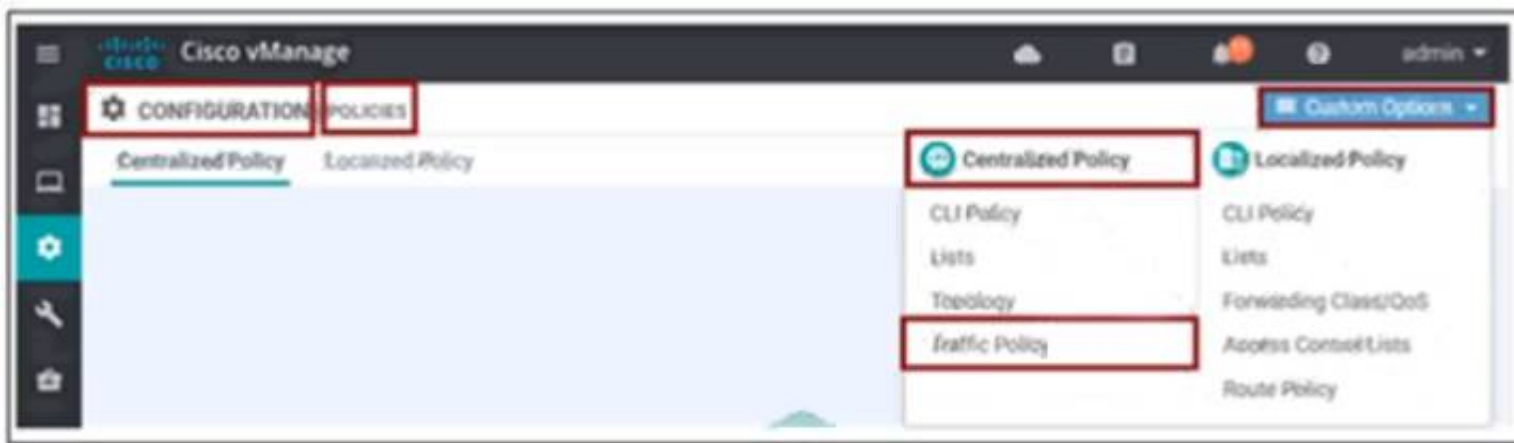
- A. Option A
- B. Option B
- C. Option C
- D. Option D

Answer: B

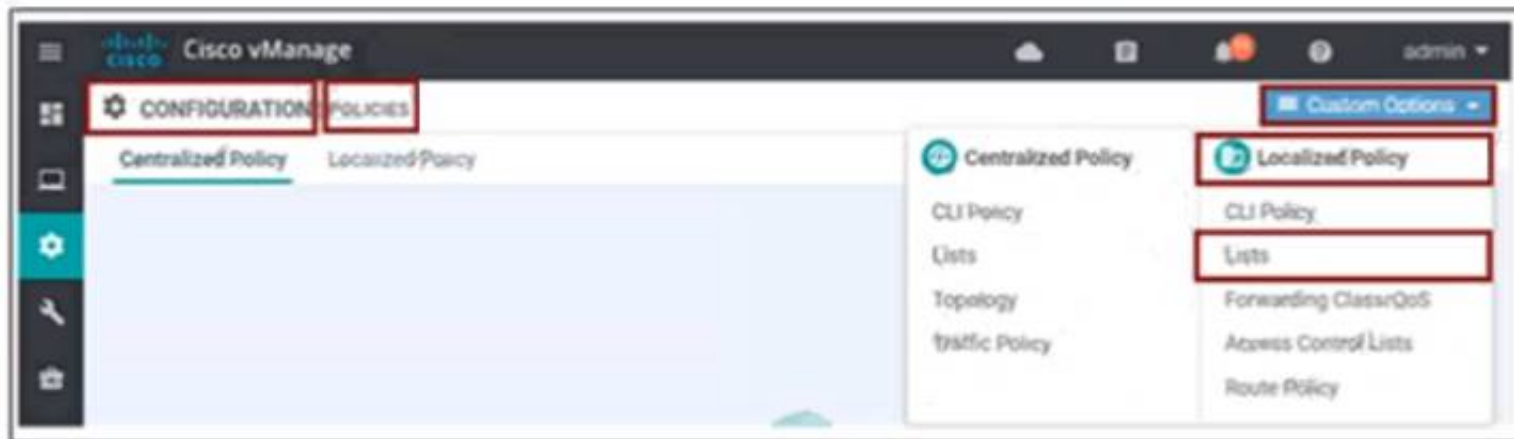
NEW QUESTION 338

An engineer must create a QoS policy by creating a class map and assigning it to the LLQ queue on a WAN Edge router Which configuration accomplishes the task?

- A)



B)



C)



D)



- A. Option A
- B. Option B
- C. Option C
- D. Option D

Answer: D

NEW QUESTION 343

Which scheduling method is configured by default for the eight queues in the cloud vEdge router1?

- A. low latency queue
- B. priority queue
- C. weighted random early detection
- D. weighted round robin

Answer: D

NEW QUESTION 345

Which template configures the out-of-band management VPN?

- A)

Section	Parameter	Type	Variable/value
Basic configuration	Shutdown	Global	No
	Interface Name	Global	loopback0
IPv4 configuration	IPv4 Address	Radio button	Static
	IPv4 Address	Device Specific	vpn1_lo0_int_ip_addr/maskbits

B)

Section	Parameter	Type	Variable/value
Basic configuration	Shutdown	Global	No
	Interface Name	Device Specific	vpn512_mgt_int_mgmt0_or_gex/x
	Description	Global	Management Interface
IPv4 configuration	IPv4 Address	Radio button	Static
	IPv4 Address	Device Specific	vpn512_mgt_int_ip_addr/maskbits

C)

Section	Parameter	Type	Variable/value
Basic configuration	VPN	Global	512
	Name	Global	Management VPN
IPv4 Route	Prefix	Global	0.0.0.0/0
	Gateway	Radio button	Next Hop
	Next Hop	Device Specific	vpn512_mgt_next_hop_ip_addr

D)

Section	Parameter	Type	Variable/value
Basic configuration	Shutdown	Device Specific	vpn1_lan_int2_shutdown
	Interface Name	Device Specific	vpn1_lan_int2_gex/x
IPv4 configuration	Description	Device Specific	vpn1_lan_int2_description
	IPv4 Address	Radio button	Static
	IPv4 Address	Device Specific	vpn1_lan_int2_ip_addr/maskbits

- A. Option A
- B. Option B
- C. Option C
- D. Option D

Answer: C

NEW QUESTION 348

Which two mechanisms are used by vManage to ensure that the certificate serial number of the WAN Edge router that is needed to authenticate is listed in the WAN Edge Authorized Serial Number Hst' (Choose two)

- A. Synchronize to the PnP
- B. Manually upload it to vManage
- C. The devices register to vManage directly as the devices come online
- D. The vManage is shipped with the list
- E. Synchronize to the Smart Account

Answer: BE

NEW QUESTION 349

Which command displays BFD session summary information per TLOC on vEdge routers?

- A. show bfd history
- B. show bfd summary
- C. show bfd sessions
- D. show bfd tloc-summary-list

Answer: D

NEW QUESTION 352

Drag and drop the route verification output from show omp tlocs from the left onto the correct explanations on the right.

shows if the route was chosen to enter the routing table or not

ENCAPSULATION

COLOR

TLOC IP

system ID

attribute of WAN link

type of tunnel being used

TLOC route status

- A. Mastered
- B. Not Mastered

Answer: A

Explanation:

shows if the route was chosen to enter the routing table or not

ENCAPSULATION

COLOR

TLOC IP

TLOC IP

COLOR

ENCAPSULATION

shows if the route was chosen to enter the routing table or not

NEW QUESTION 357

Refer to exhibit. An engineer is troubleshooting tear of control connection even though a valid CertificateSerialNumber is entered. Which two actions resolve Issue? (Choose two)

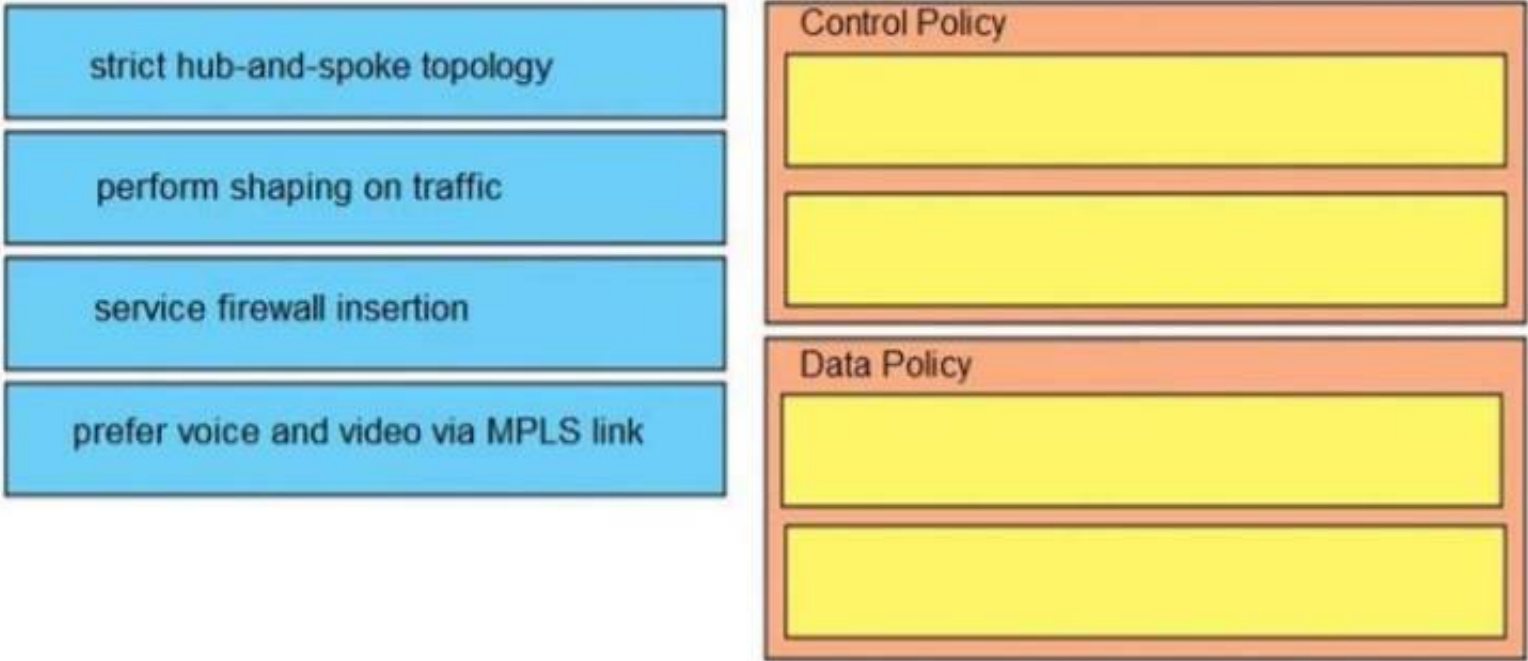
PEER PEER INSTANCE COLOR	PEER TYPE STATE	PEER PRIVATE PROTOCOL ERROR	SITE SYSTEM IP 9	DOMAIN PUBLIC ID COUNT	PRIVATE IP DOWNTIME	LOCAL PORT	REMOTE PUBLIC IP	REPEAT PORT REMOTE
0 tear_down	vbond	dtls CRTREJSER NOERR	0.0.0.0	0 2019-06-01T19:06:32+0200	192.168.0.231	12346	192.168.0.231	12346 default

- A. Restore network reachability on the controller.
- B. Enter a valid serial cumber on the controller for a given device
- C. Enter a valid product ID (mode) on the PNP portal.
- D. Match the serial number file between the controller
- E. Remove the duplicate IP in the network

Answer: BC

NEW QUESTION 358

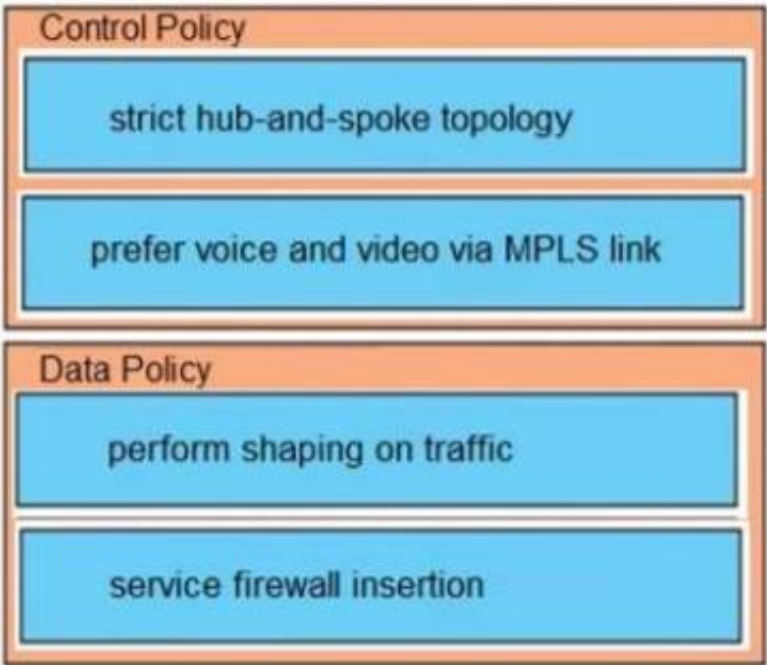
Drag and drop the policies from the left onto the correct policy types on the right.



- A. Mastered
- B. Not Mastered

Answer: A

Explanation:



NEW QUESTION 359

Which two features does the application firewall provide? (Choose two.)

- A. classification of 1400+ layer 7 applications
- B. blocks traffic by application or application-family
- C. numbered sequences of match-action pairs
- D. classification of 1000+ layer 4 applications
- E. application match parameters

Answer: AB

Explanation:

This application aware firewall feature provides the following benefits:

- Application visibility and granular control
- Classification of 1400+ layer 7 applications
- Allows or blocks traffic by application, category, application-family or application-group

NEW QUESTION 363

Which on-the-box security feature supported by the Cisco ISR 4451 SD-WAN device and not on vEdge?

- A. Cloud Express service
- B. Enterprise Firewall with Application Awareness
- C. reverse proxy
- D. IPsec/GRE cloud proxy

Answer: B

Explanation:

<https://www.cisco.com/c/en/us/products/collateral/software/one-wan-subscription/guide-c07-740642.html#Step2>

NEW QUESTION 367

Drag and drop the definitions from the left to the configuration on the right.

matching condition that allows traffic flow between two zones	destination zone
grouping of VPNs where the data traffic flows originate	firewall policy
container that associates forwarding and blocking decisions	source zone
grouping of VPNs where the data traffic flows terminate	zone pair

- A. Mastered
- B. Not Mastered

Answer: A

Explanation:

- **Source zone**—A grouping of VPNs where the data traffic flows originate.
- **Destination zone**—A grouping of VPNs where the data traffic flows terminate. A VPN can be part of only one zone
- **Zone-based firewall policy**—A data policy, similar to a localized data policy, that defines the conditions that the data traffic flow from the source zone must match to allow the flow to continue to the destination zone. Zone-based firewalls can match IP prefixes, IP ports, and protocols TCP, UDP, and ICMP. Matching flows can be accepted or dropped, and the packet headers can be logged. Nonmatching flows are dropped by default.
- **Zone pair**—A container that associates a source zone with a destination zone and that applies a zone-based firewall policy to the traffic that flows between zones.

Service Chaining

Traffic Flow Monitoring with Cflow

NEW QUESTION 369

Which device information is required on PNP/ZTP to support the zero-touch onboarding process?

- A. serial and chassis numbers
- B. interface IP address
- C. public DNS entry
- D. system IP address

Answer: A

Explanation:

<https://www.cisco.com/c/dam/en/us/td/docs/solutions/CVD/SDWAN/sd-wan-wan-edge-onboarding-deploy-guid>

NEW QUESTION 374

What is the OMP graceful restart default value on vSmart controllers and WAN Edge routers?

- A. 21,600 seconds
- B. 43,200 seconds
- C. 86,400 seconds
- D. 604,800 seconds

Answer: B

NEW QUESTION 377

What happens if the intelligent proxy is unreachable in the Cisco SD-WAN network?

- A. The grey-listed domains are unresolved
- B. The Cisco Umbrella Connector locally resolves the DNS request
- C. The block-listed domains are unresolved
- D. The Cisco Umbrella Connector temporarily redirects HTTPS traffic

Answer: A

NEW QUESTION 378

Which two mechanisms are used to guarantee the integrity of data packets in the Cisco SD-WAN architecture data plane? (Choose two)

- A. transport locations
- B. authentication headers
- C. certificates
- D. TPM chip
- E. encapsulation security payload

Answer: BE

Explanation:

https://sdwan-docs.cisco.com/Product_Documentation/Software_Features/Release_18.4/Security/01Security_Ov

NEW QUESTION 381

Which OMP route is selected for equal OMP route preference values on WAN Edge routers?

- A. route with higher TLOC preference value
- B. route with origin type of connected
- C. route with origin type of static
- D. route with lower TLOC preference value

Answer: A

NEW QUESTION 385

The network administrator is configuring a QoS scheduling policy on traffic received from transport side tunnels on WAN Edge 5000 routers at location 406141498. Which command must be configured on these devices?

- A. cloud-qos
- B. service qos
- C. cloud-mis qos
- D. mis qos

Answer: A

NEW QUESTION 386

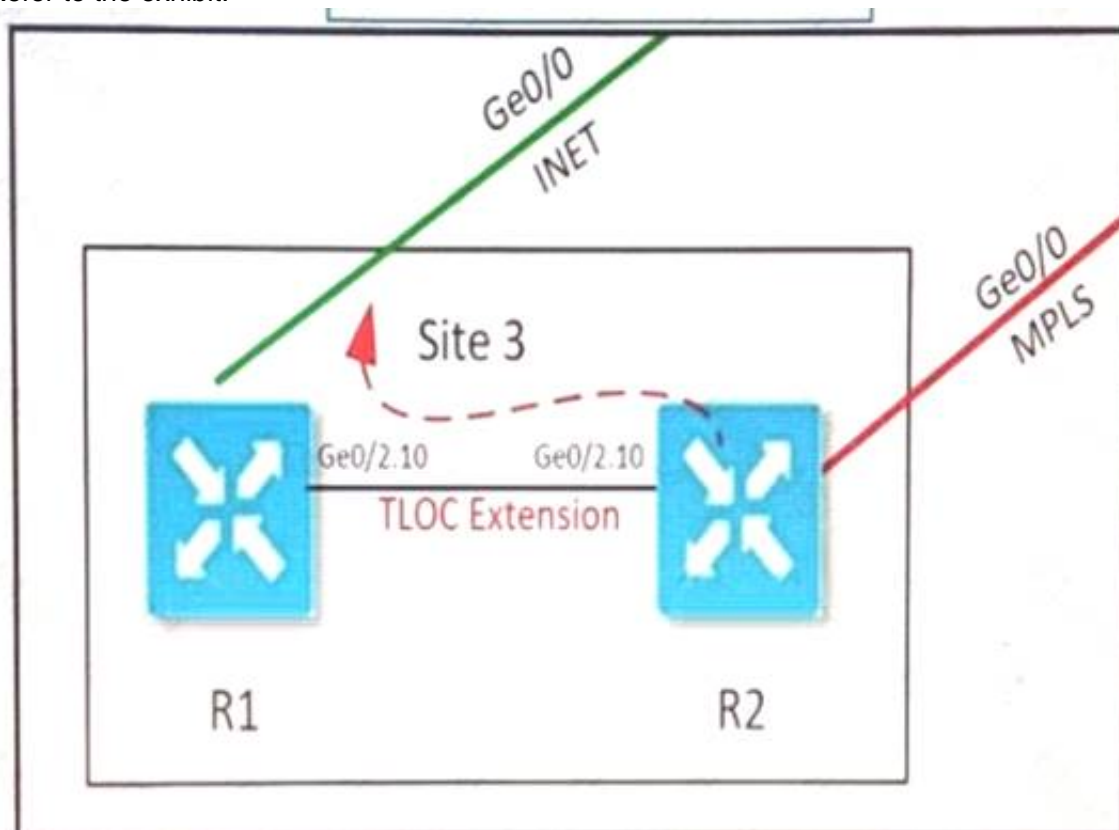
What is the procedure to upgrade all Cisco SD-WAN devices to a recent version?

- A. The upgrade is performed for a group of WAN Edge devices first to ensure data-plane availability when other controllers are updated.
- B. The upgrade is performed first on vManage, then on WAN Edge devices, then on vBond and finally on vSmart. The reboot must start from WAN Edge devices.
- C. Upgrade and reboot are performed first on vManage then on vBond then on vSmart and finally on the Cisco WAN Edge devices.
- D. and finally on the Cisco WAN Edge devices.
- E. Upgrade and reboot are performed first on vBond then on vSmart and finally on the Cisco WAN Edge devices.
- F. then on vSmart
- G. and finally on the Cisco WAN Edge devices.

Answer: C

NEW QUESTION 390

Refer to the exhibit.



Which configuration extends the INET interface on R1 to be used by R2 for control and data connections?

A)

```
R1
interface ge0/2
  no shutdown
interface ge0/2.10
  ip address 43.43.43 2/30
  tloc-extension ge0/0

R2
interface ge0/2
  no shutdown
interface ge0/2.10
  ip address 43.43.43 1/30
  tloc-extension ge0/0
```

B)

```
R1
interface ge0/2
interface ge0/2.10
  ip address 43.43.43 2/30
  tloc-extension ge0/0
  tunnel-interface
  color public-internet

R2
interface ge0/2
interface ge0/2.10
  ip address 43.43.43 1/30
  tunnel-interface
  color public-internet
```

C)

```
R1
interface ge0/2
  mtu 1504
  no shutdown
interface ge0/2.10
  ip address 43.43.43 2/30
  tloc-extension ge0/0

R2
interface ge0/2
  mtu 1504
  no shutdown
interface ge0/2.10
  ip address 43.43.43 1/30
  tunnel-interface
  color public-internet
```

- A. Option A
- B. Option B
- C. Option C

Answer: C

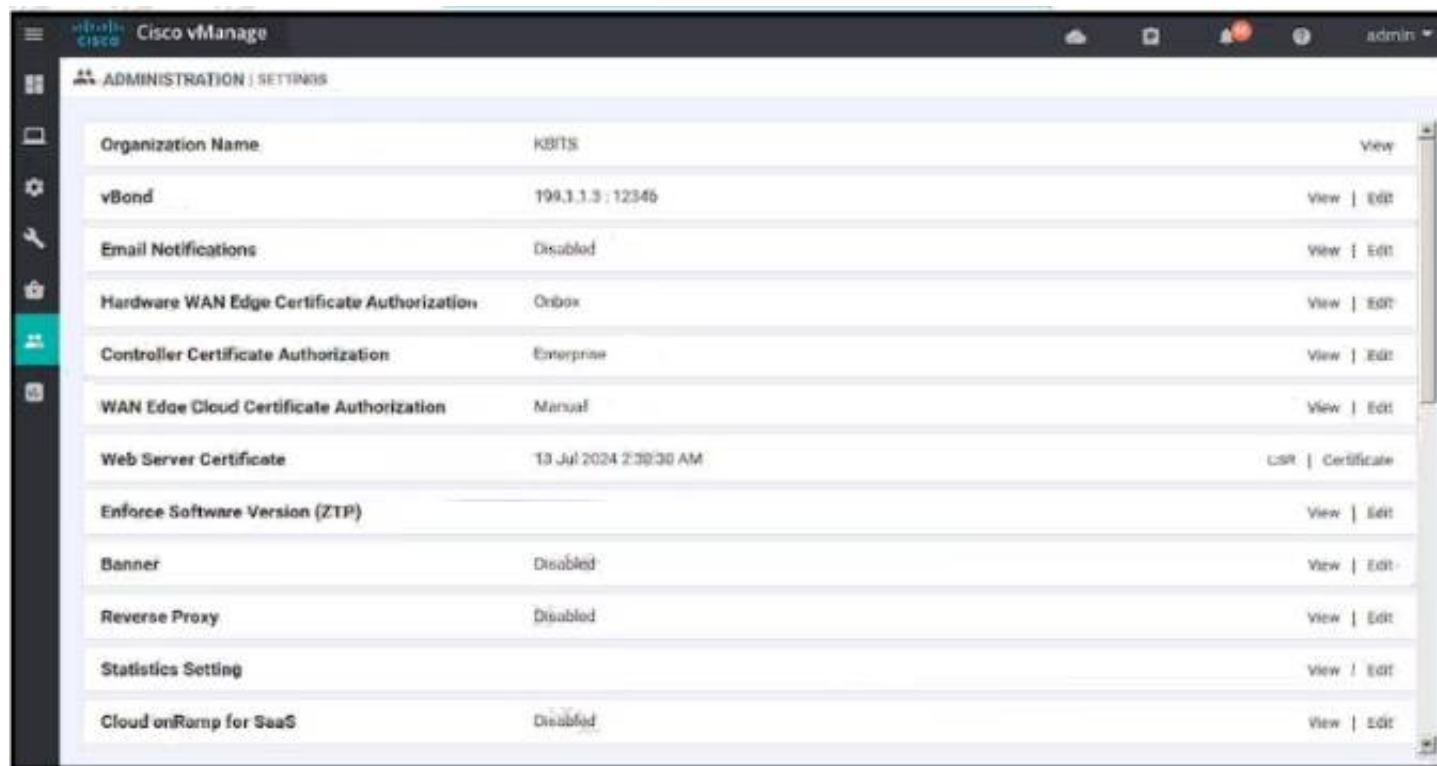
Explanation:

<https://www.ciscoplive.com/c/dam/r/ciscoplive/us/docs/2018/pdf/BRKRST-2091.pdf>

Subinterfaces require a physical, parent interface to be defined in VPN 0, and also require the subinterface MTU to be four bytes lower than the physical interface due to the 802.1q tag. It is recommended to configure the parent physical interface for an MTU of 1504 to take care of this requirement.

NEW QUESTION 394

Refer to the exhibit.



Which two configurations are needed to get the WAN Edges registered with the controllers when certificates are used? (Choose two)

- A. Generate a CSR manually within vManage server
- B. Generate a CSR manually on the WAN Edge
- C. Request a certificate manually from the Enterprise CA server
- D. Install the certificate received from the CA server manually on the WAN Edge
- E. Install the certificate received from the CA server manually on the vManage

Answer: AE

Explanation:

<https://www.cisco.com/c/dam/en/us/td/docs/solutions/CVD/SDWAN/cisco-sd-wan-certificates-deploy-2020aug>.

NEW QUESTION 397

A network administrator is configuring a tunnel interface on a branch Cisco IOS XE router to run TLOC extensions. Which configuration will extend a TLOC over a GRE tunnel to another router in the branch?

- ☒ `sdwan`
`interface g0/0`
`extended-interface`
`tloc-extension-gre-from 10.1.1.1`
- ☐ `sdwan`
`interface g0/0`
`gre-interface`
`tloc-extension-gre-to 10.1.1.1`
- ☐ `sdwan`
`interface g0/0`
`tunnel-interface`
`tloc-extension-gre-to 10.1.1.1`
- ☒ `sdwan`
`interface g0/0`
`tloc-interface`
`tloc-extension-gre-from 10.1.1.1`

- A. Option A
- B. Option B
- C. Option C
- D. Option D

Answer: C

Explanation:

Configure a tunnel interface over which to run TLOC extensions (on IOS XE routers only). TLOC extensions allow you to extend a TLOC, over a GRE tunnel, to another router in the branch.

Command Hierarchy

```
sdwan
  interface interface-name
    tunnel-interface
      tloc-extension-gre-to extended-interface-ip-address
```

NEW QUESTION 400

Which two products are used to deploy Cisco WAN Edge Router virtual platforms? (Choose two.)

- A. HP ProLiant DL360 Generation10 running HP-UX
- B. Cisco ENCS 5000 Series
- C. Sun SPARC Node running AIX
- D. Cisco UCS
- E. Sun Enterprise M4000 Server running Sun Solans

Answer: BD

Explanation:

<https://www.cisco.com/c/en/us/products/collateral/routers/5400-enterprise-network-compute-system/datasheet-c>

NEW QUESTION 405

An engineer must configure a centralized policy on a site in which all HTTP traffic should use the Public Internet circuit if the loss on this circuit is below 10%. otherwise MPLS should be used Which configuration wizard fulfils this requirement?

- A. Create Applications or Groups of Interest > Configure Traffic Rules > Apply Policies to Sites and VPNs
- B. Configure VPN Membership > Apply Policies to Sites and VPNs
- C. Create Applications or Groups of interest > Configure Traffic Data > Apply Policies to Sites and VPNs
- D. Configure Topology > Apply Policies to Sites and VPNs

Answer: A

NEW QUESTION 407

An engineer is tasked to improve throughput for connection-oriented traffic by decreasing round-trip latency. Which configuration will achieve this goal?

- A. turn on "Enable TCP Optimization"
- B. turn off "Enhance ECMP Keying"
- C. turn off "Enable TCP Optimization"
- D. turn on "Enhance ECMP Keying"

Answer: A

Explanation:

TCP optimization fine-tunes the processing of TCP data traffic to decrease round-trip latency and improve throughput.

<https://www.cisco.com/c/dam/en/us/td/docs/routers/sdwan/configuration/config-18-2.pdf#page=530>

NEW QUESTION 411

Which device should be configured with the service chain IP address to route intersite traffic through a firewall?

- A. vSmart
- B. firewall
- C. spoke WAN Edge
- D. hub WAREdge

Answer: A

NEW QUESTION 415

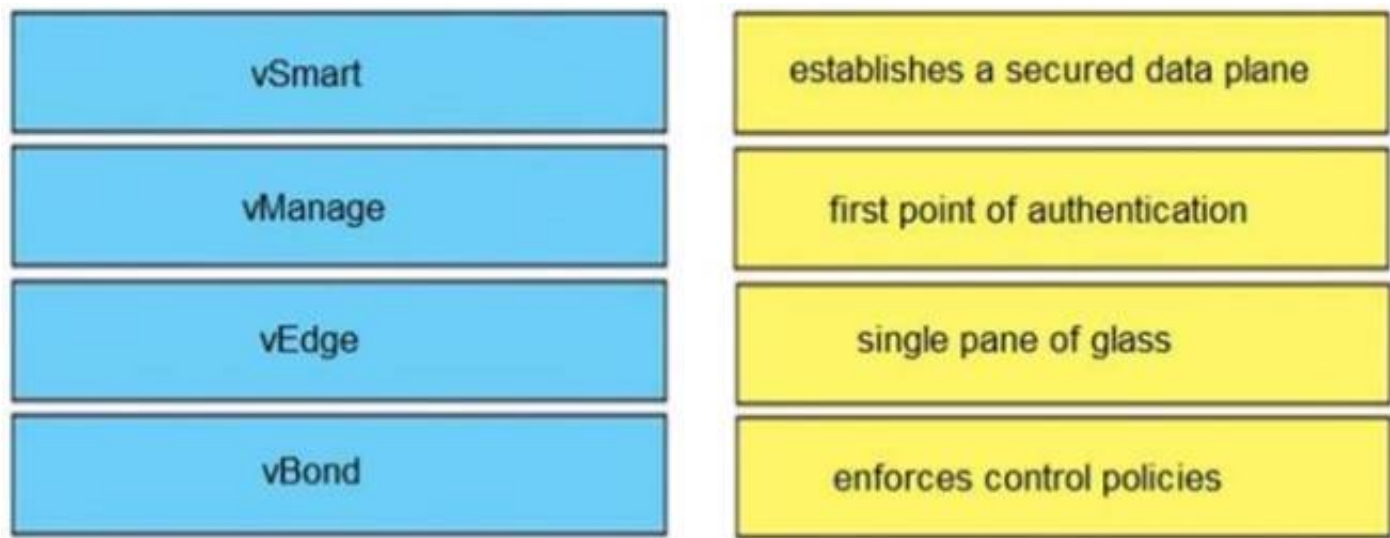
Which two protocols are supported for software image delivery when images are hosted on a remote server? (Choose two.)

- A. HTTPS
- B. SSL
- C. HTTP
- D. TFTP
- E. FTP

Answer: DE

NEW QUESTION 416

Drag and drop the devices from the left onto the correct functions on the right.



- A. Mastered
- B. Not Mastered

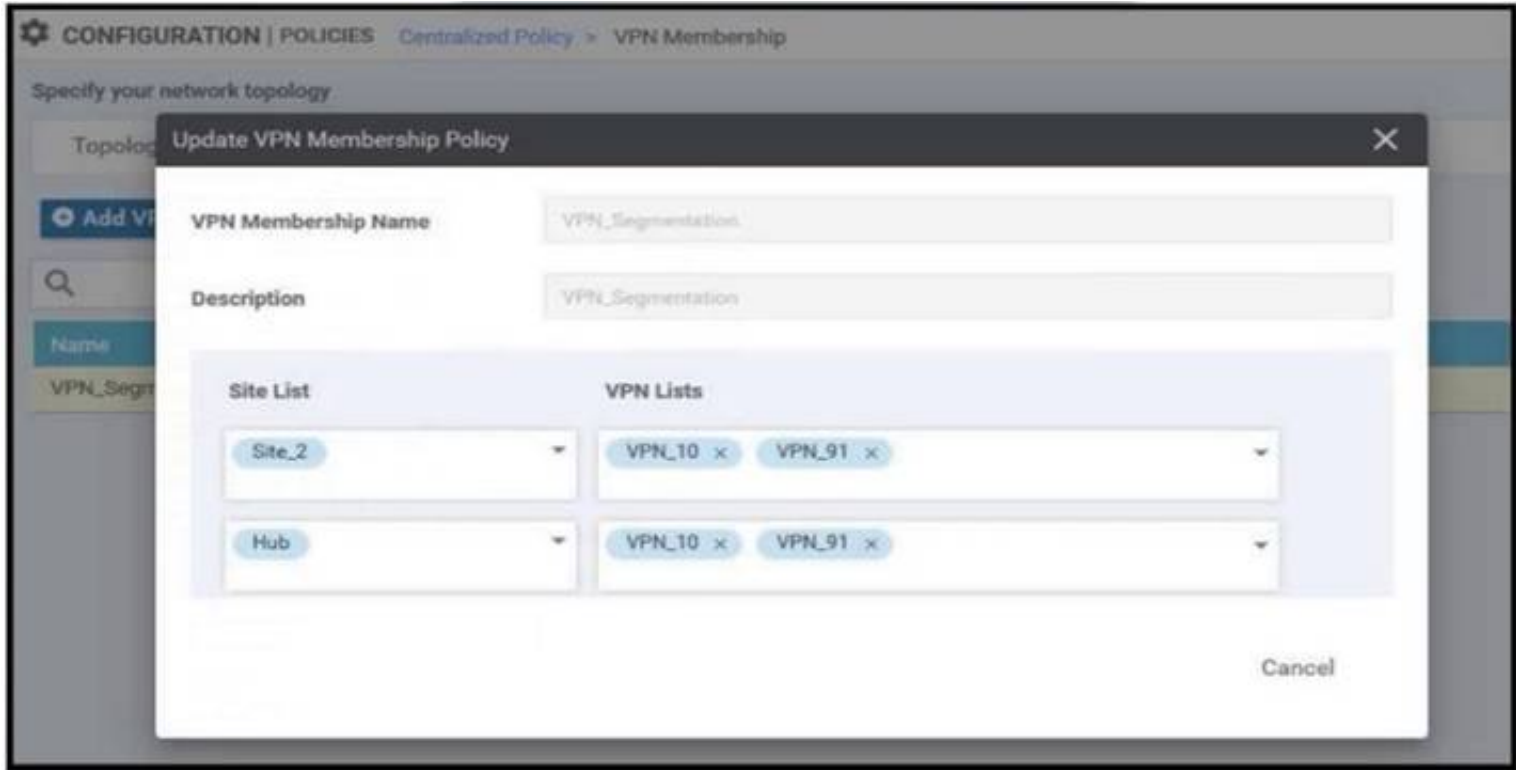
Answer: A

Explanation:



NEW QUESTION 420

Refer to the exhibit.



An enterprise has hub and spoke topology where it has several VPNs. An engineer must allow users in VPN91 to reach users in VPN92 and VPN10 to reach VPN91 and VPN92. Which configuration meets these requirements?
A)

Route

Sequence Rule Drag and drop to re-arrange rules

1

Match Conditions

VPN List: VPN_91

VPN Id

Actions

Accept

Export To: VPN_92

2

Match Condition

VPN List: VPN_92

VPN Id

Actions

Accept

Export To: VPN_91

3

Match Condition

VPN List: VPN_91_and_VPN_92

VPN Id

Actions

Accept

Export To: VPN_10

B)

Route

Sequence Rule Drag and drop to re-arrange rules

1

Match Conditions

VPN List: VPN_10

VPN Id

Actions

Accept

Export To: VPN_91_and_VPN_92

2

Match Conditions

VPN List: All_9X_VPNs

VPN Id

Actions

Accept

Export To: All_9X_VPNs

3

Match Conditions

VPN List: VPN_91_and_VPN_92

VPN Id

Actions

Accept

Export To: VPN_10

C)

Route

Sequence Rule Drag and drop to re-arrange rules

1

Match Conditions

VPN List: VPN_10

VPN Id

Actions

Accept

Export To: VPN_91_and_VPN_92

2

Match Conditions

VPN List: VPN_91_and_VPN_92

VPN Id

Actions

Accept

Export To: VPN_91_and_VPN_92

3

Match Conditions

VPN List: VPN_91_and_VPN_92

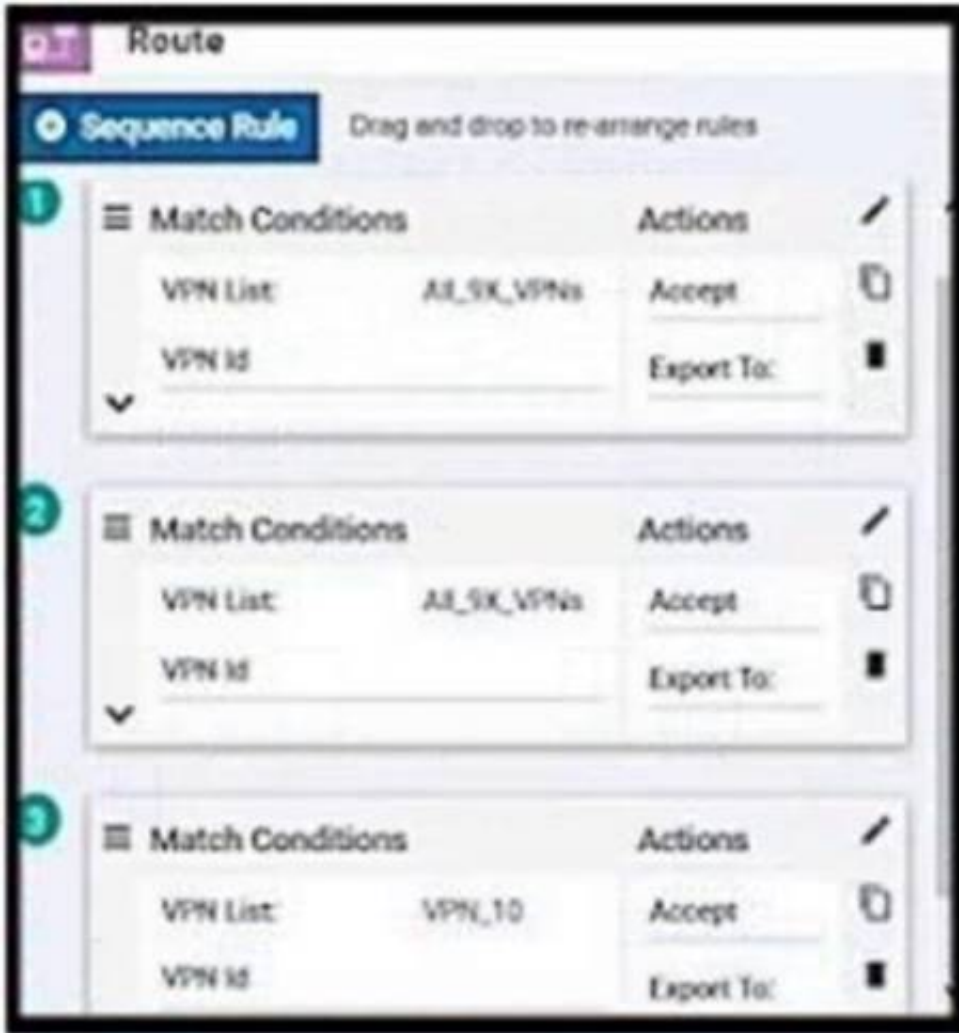
VPN Id

Actions

Accept

Export To: VPN_10

D)



- A. Option A
- B. Option B
- C. Option C
- D. Option D

Answer: C

NEW QUESTION 423

Which type of lists are used to group related items via an application-aware routing policy under the policy lists command hierarchy on vSmart controllers?

- A. data prefix, sh
- B. and VPN
- C. OSCP value, application, and VPN
- D. data prefix, application, and SLA class
- E. DSCP value, site, and VPN

Answer: C

NEW QUESTION 427

.....

Thank You for Trying Our Product

We offer two products:

1st - We have Practice Tests Software with Actual Exam Questions

2nd - Questions and Answers in PDF Format

300-415 Practice Exam Features:

- * 300-415 Questions and Answers Updated Frequently
- * 300-415 Practice Questions Verified by Expert Senior Certified Staff
- * 300-415 Most Realistic Questions that Guarantee you a Pass on Your First Try
- * 300-415 Practice Test Questions in Multiple Choice Formats and Updates for 1 Year

100% Actual & Verified — Instant Download, Please Click
[Order The 300-415 Practice Test Here](#)