

## 200-301 Dumps

### Cisco Certified Network Associate

<https://www.certleader.com/200-301-dumps.html>



**NEW QUESTION 1**

Which design element is a best practice when deploying an 802.11b wireless infrastructure?

- A. disabling TPC so that access points can negotiate signal levels with their attached wireless devices.
- B. setting the maximum data rate to 54 Mbps on the Cisco Wireless LAN Controller
- C. allocating nonoverlapping channels to access points that are in close physical proximity to one another
- D. configuring access points to provide clients with a maximum of 5 Mbps

**Answer:** C

**NEW QUESTION 2**

When configuring IPv6 on an interface, which two IPv6 multicast groups are joined? (Choose two)

- A. 2000::/3
- B. 2002::5
- C. FC00::/7
- D. FF02::1
- E. FF02::2

**Answer:** DE

**NEW QUESTION 3**

Which IPv6 address type provides communication between subnets and cannot route on the Internet?

- A. global unicast
- B. unique local
- C. link-local
- D. multicast

**Answer:** B

**NEW QUESTION 4**

What are two southbound APIs? (Choose two )

- A. OpenFlow
- B. NETCONF
- C. Thrift
- D. CORBA
- E. DSC

**Answer:** CD

**NEW QUESTION 5**

Which two capacities of Cisco DNA Center make it more extensible? (Choose two)

- A. adapters that support all families of Cisco IOS software
- B. SDKs that support interaction with third-party network equipment
- C. customized versions for small, medium, and large enterprises
- D. REST APIs that allow for external applications to interact natively with Cisco DNA Center
- E. modular design that is upgradable as needed

**Answer:** BD

**NEW QUESTION 6**

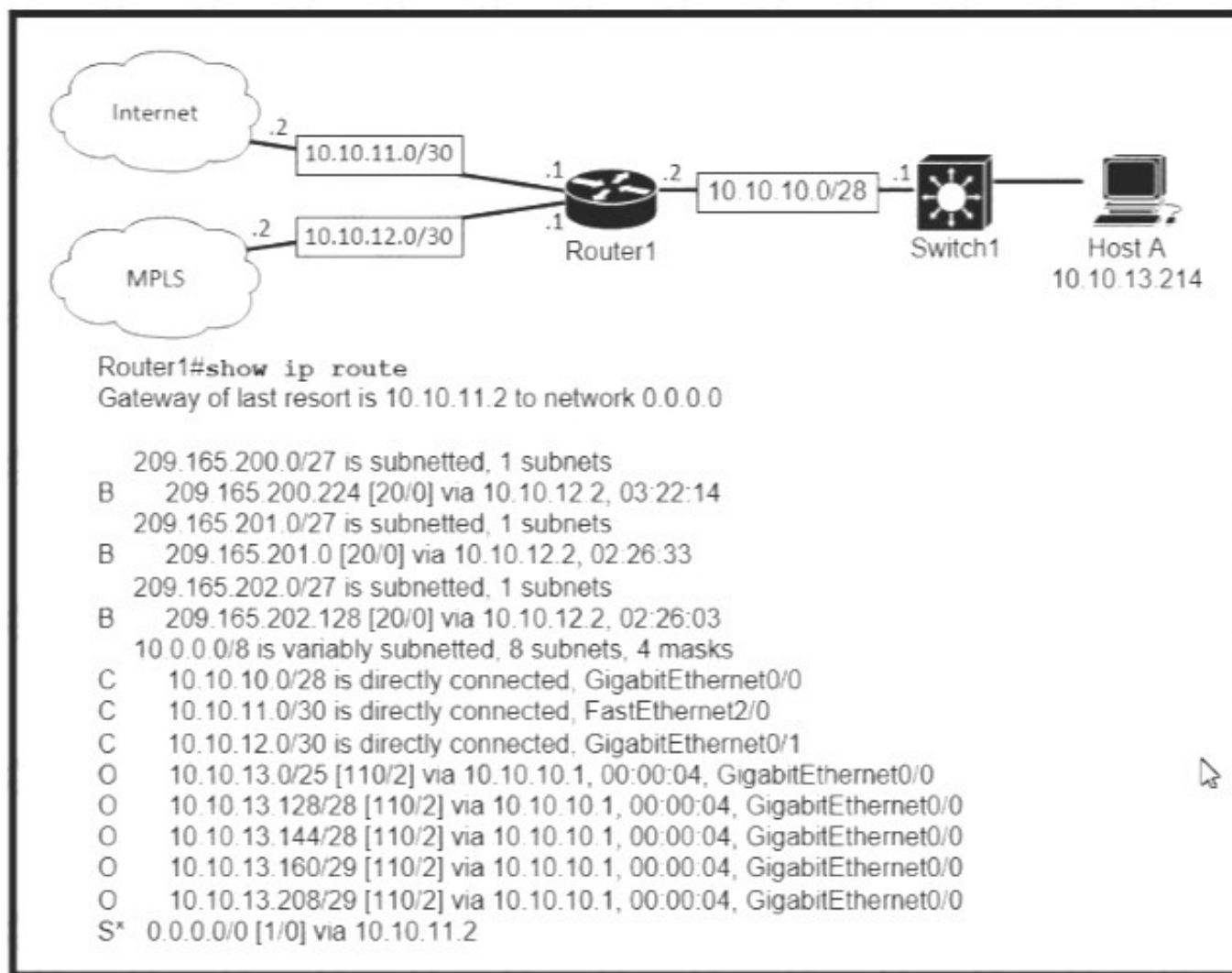
Which type of wireless encryption is used for WPA2 in preshared key mode?

- A. TKIP with RC4
- B. RC4
- C. AES-128
- D. AES-256

**Answer:** D

**NEW QUESTION 7**

Refer to the exhibit.



Which prefix does Router 1 use for traffic to Host A?

- A. 10.10.10.0/28
- B. 10.10.13.0/25
- C. 10.10.13.144/28
- D. 10.10.13.208/29

**Answer: C**

#### NEW QUESTION 8

How do TCP and UDP differ in the way that they establish a connection between two endpoints?

- A. TCP uses synchronization packets, and UDP uses acknowledgment packets.
- B. UDP uses SYN, SYN ACK and FIN bits in the frame header while TCP uses SYN, SYN ACK and ACK bits
- C. UDP provides reliable message transfer and TCP is a connectionless protocol
- D. TCP uses the three-way handshake and UDP does not guarantee message delivery

**Answer: D**

#### NEW QUESTION 9

Which configuration is needed to generate an RSA key for SSH on a router?

- A. Configure the version of SSH
- B. Configure VTY access.
- C. Create a user with a password.
- D. Assign a DNS domain name

**Answer: B**

#### NEW QUESTION 10

An engineer must configure a /30 subnet between two routers. Which usable IP address and subnet mask combination meets this criteria?

```

interface e0/0
description to HQ-A371:10975
ip address 172.16.1.4 255.255.255.248

interface e0/0
description to HQ-A371:10975
ip address 10.2.1.3 255.255.255.252

interface e0/0
description to HQ-A371:10975
ip address 192.168.1.1 255.255.255.248

interface e0/0
description to HQ-A371:10975
ip address 209.165.201.2 255.255.255.252
  
```

- A. Option A
- B. Option B

- C. Option C
- D. Option D

**Answer:** C

**NEW QUESTION 10**

What are two characteristics of a controller-based network? (Choose two)

- A. The administrator can make configuration updates from the CLI
- B. It uses northbound and southbound APIs to communicate between architectural layers
- C. It moves the control plane to a central point.
- D. It decentralizes the control plane, which allows each device to make its own forwarding decisions
- E. It uses Telnet to report system issues.

**Answer:** AC

**NEW QUESTION 15**

Which attribute does a router use to select the best path when two or more different routes to the same destination exist from two different routing protocols.

- A. dual algorithm
- B. metric
- C. administrative distance
- D. hop count

**Answer:** D

**NEW QUESTION 18**

Which two encoding methods are supported by REST APIs? (Choose two)

- A. YAML
- B. JSON
- C. EBCDIC
- D. SGML
- E. XML

**Answer:** AE

**NEW QUESTION 21**

Drag and drop the network protocols from the left onto the correct transport services on the right.

SMTP

SNMP

TFTP

VoIP

SSH

FTP

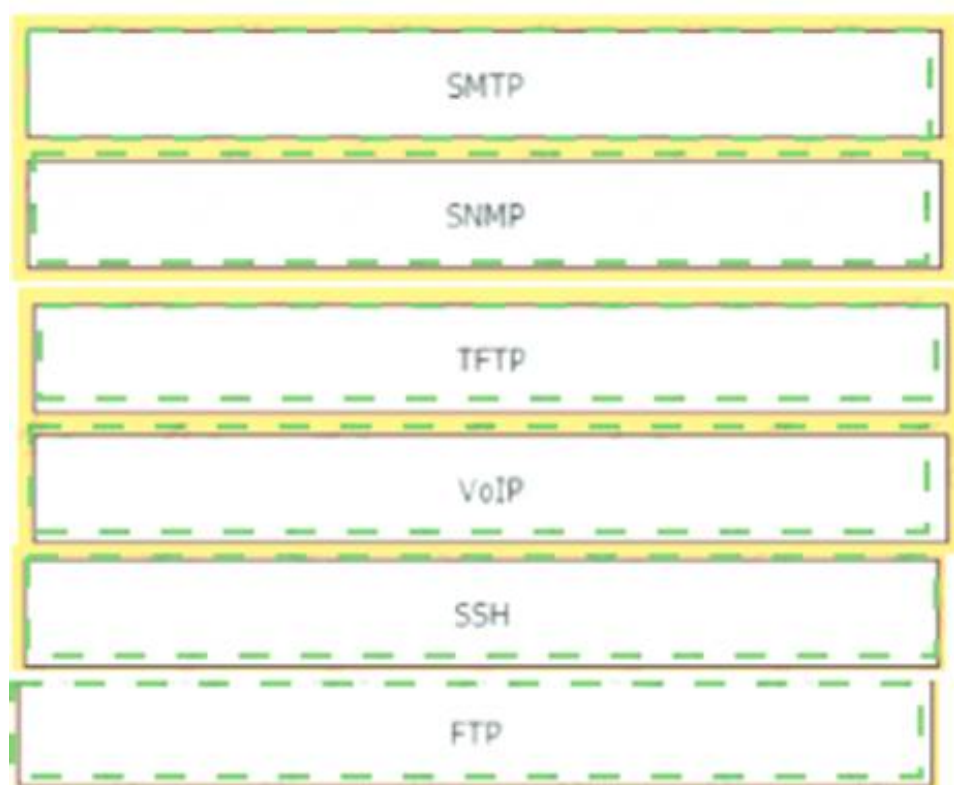
Connection Oriented

Connectionless

- A. Mastered
- B. Not Mastered

**Answer:** A

**Explanation:**



#### NEW QUESTION 26

What is the primary effect of the spanning-tree portfast command?

- A. it enables BPDU messages
- B. It minimizes spanning-tree convergence time
- C. It immediately puts the port into the forwarding state when the switch is reloaded
- D. It immediately enables the port in the listening state

**Answer:** A

#### NEW QUESTION 29

Refer to the exhibit.

```
R1# show ip route

D    192.168.16.0/26 [90/2679326] via 192.168.1.1
R    192.168.16.0/24 [120/3] via 192.168.1.2
O    192.168.16.0/21 [110/2] via 192.168.1.3
i L1 192.168.16.0/27 [115/30] via 192.168.1.4
```

Which route does R1 select for traffic that is destined to 192.168.16.2?

- A. A.-192.168.16.0/21
- B. 192.168.16.0/24
- C. 192.168.16.0/26
- D. 192.168.16.0/27

**Answer:** B

#### NEW QUESTION 30

Drag and drop the AAA functions from the left onto the correct AAA services on the right



records user activities

restricts the services that are available to a user

identifies the user

controls the actions that a user can perform

provides analytical information for the network administrator

verifies the password associated with a user

Authentication

Authorization

Accounting

- A. Mastered  
B. Not Mastered

**Answer:** A

**Explanation:**

records user activities

restricts the services that are available to a user

identifies the user

controls the actions that a user can perform

provides analytical information for the network administrator

verifies the password associated with a user

Authentication

identifies the user

controls the actions that a user can perform

Authorization

records user activities

restricts the services that are available to a user

Accounting

provides analytical information for the network administrator

verifies the password associated with a user

**NEW QUESTION 34**

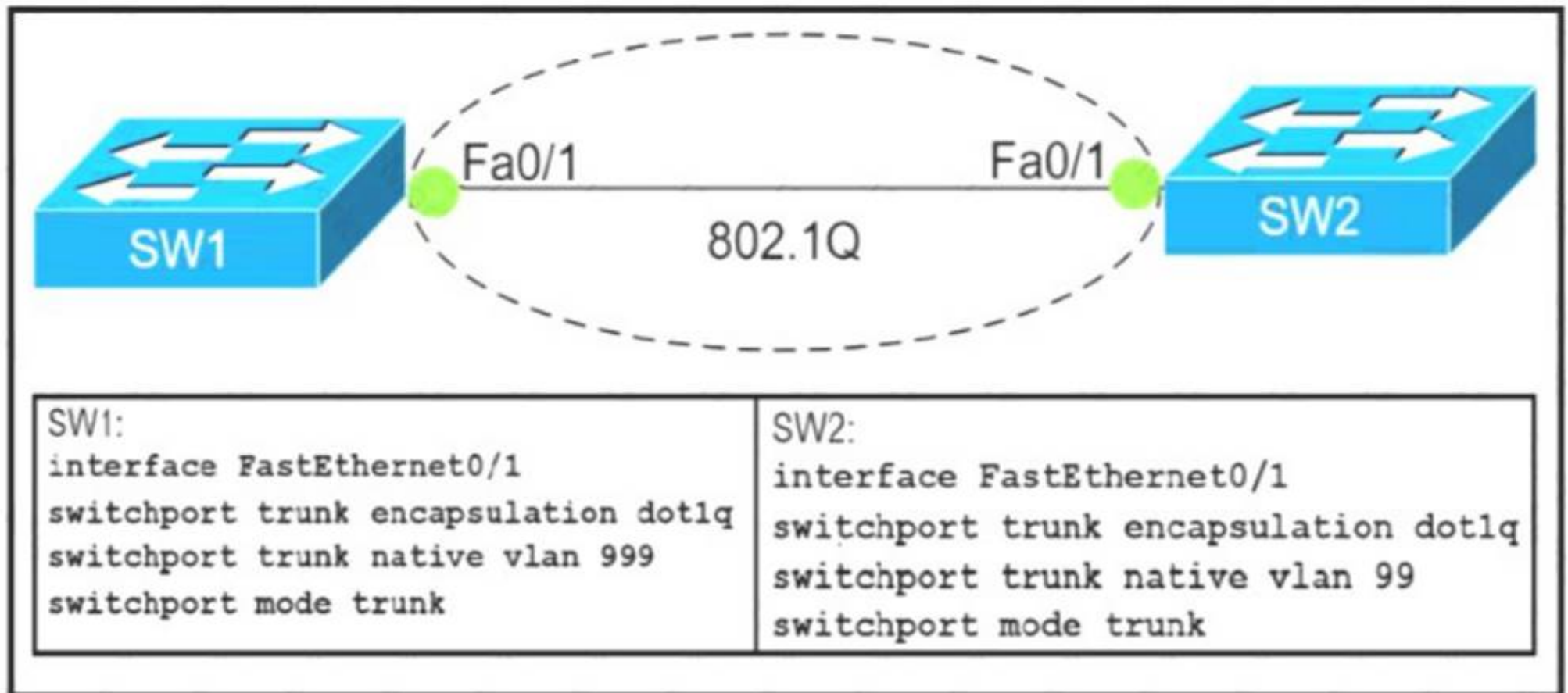
Which two actions influence the EIGRP route selection process? (Choose two)

- A. The router calculates the reported distance by multiplying the delay on the exiting Interface by 256.
- B. The router calculates the best backup path to the destination route and assigns it as the feasible successor.
- C. The router calculates the feasible distance of all paths to the destination route
- D. The advertised distance is calculated by a downstream neighbor to inform the local router of the bandwidth on the link
- E. The router must use the advertised distance as the metric for any given route

**Answer:** AD

#### NEW QUESTION 37

Refer to Exhibit.



Which action do the switches take on the trunk link?

- A. The trunk does not form and the ports go into an err-disabled status.
- B. The trunk forms but the mismatched native VLANs are merged into a single broadcast domain.
- C. The trunk does not form, but VLAN 99 and VLAN 999 are allowed to traverse the link.
- D. The trunk forms but VLAN 99 and VLAN 999 are in a shutdown state.

**Answer:** C

#### NEW QUESTION 39

Refer to the exhibit.

```
Designated Router (ID) 10.11.11.11, Interface address 10.10.10.1
Backup Designated router (ID) 10.3.3.3, Interface address 10.10.10.3
Timer intervals configured, Hello 10, Dead 40, Wait 40, Retransmit 5
oob-resync timeout 40
Hello due in 00:00:08
Supports Link-local Signaling (LLS)
Cisco NSF helper support enabled
IETF NSF helper support enabled
Index 1/1/1, flood queue length 0
Next 0x0(0)/0x0(0)/0x0(0)
Last flood scan length is 1, maximum is 6
Last flood scan time is 0 msec, maximum is 1 msec
Neighbor Count is 3, Adjacent neighbor count is 3
Adjacent with neighbor 10.1.1.4
Adjacent with neighbor 10.2.2.2
Adjacent with neighbor 10.3.3.3 (Backup Designated Router)
Suppress hello for 0 neighbor(s)
```

The show ip ospf interface command has been executed on R1. How is OSPF configured?

- A. The interface is not participating in OSPF
- B. A point-to-point network type is configured
- C. The default Hello and Dead timers are in use
- D. There are six OSPF neighbors on this interface

**Answer:** A

#### NEW QUESTION 42

An engineer is asked to protect unused ports that are configured in the default VLAN on a switch. Which two steps will fulfill the request? (Choose two)

- A. Configure the ports in an EtherChannel.
- B. Administratively shut down the ports
- C. Configure the port type as access and place in VLAN 99
- D. Configure the ports as trunk ports
- E. Enable the Cisco Discovery Protocol

**Answer:** AD

#### NEW QUESTION 45

Which QoS Profile is selected in the GUI when configuring a voice over WLAN deployment?

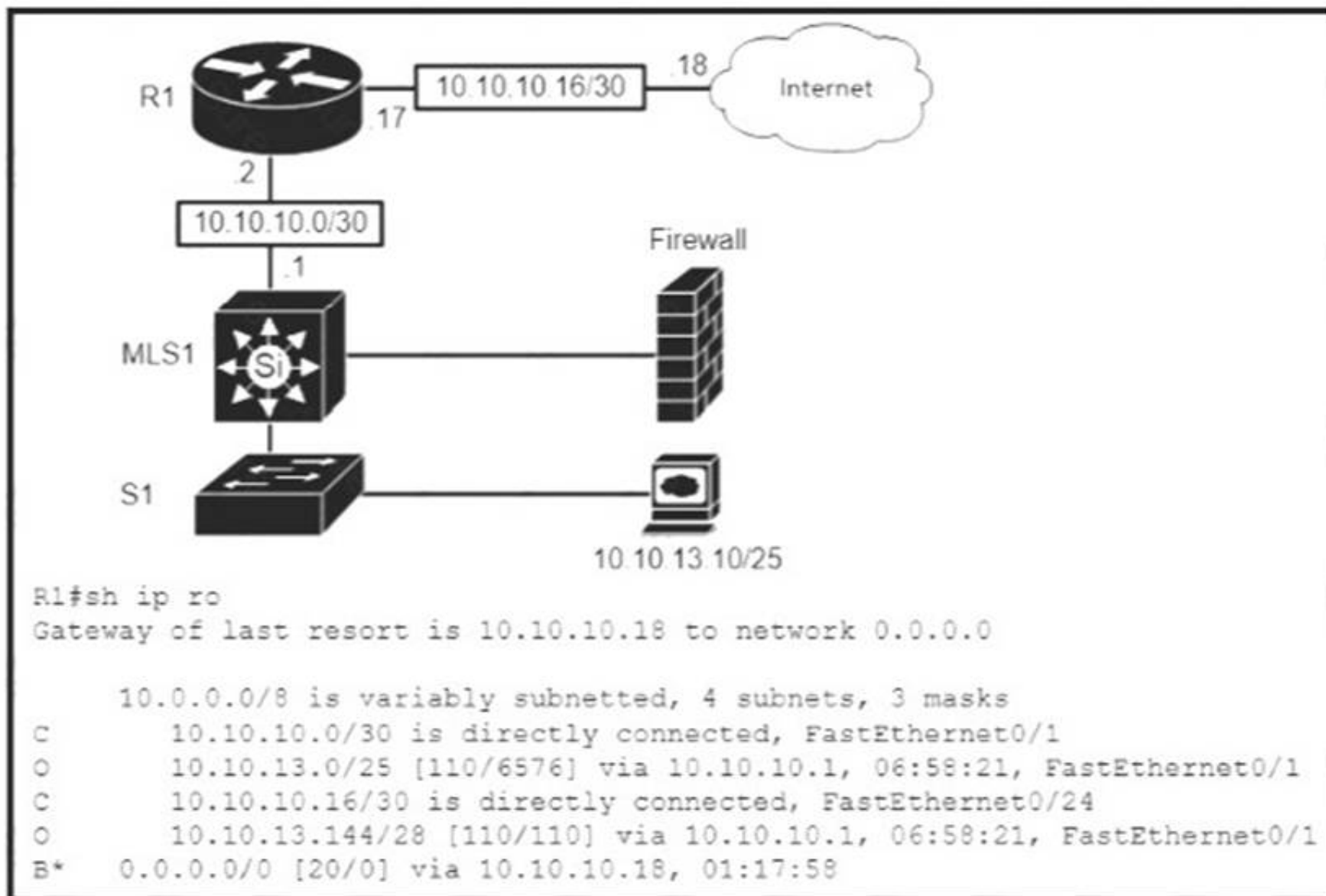
- A. Bronze
- B. Platinum
- C. Silver
- D. Gold

**Answer:** B

#### NEW QUESTION 46

Refer to the exhibit.





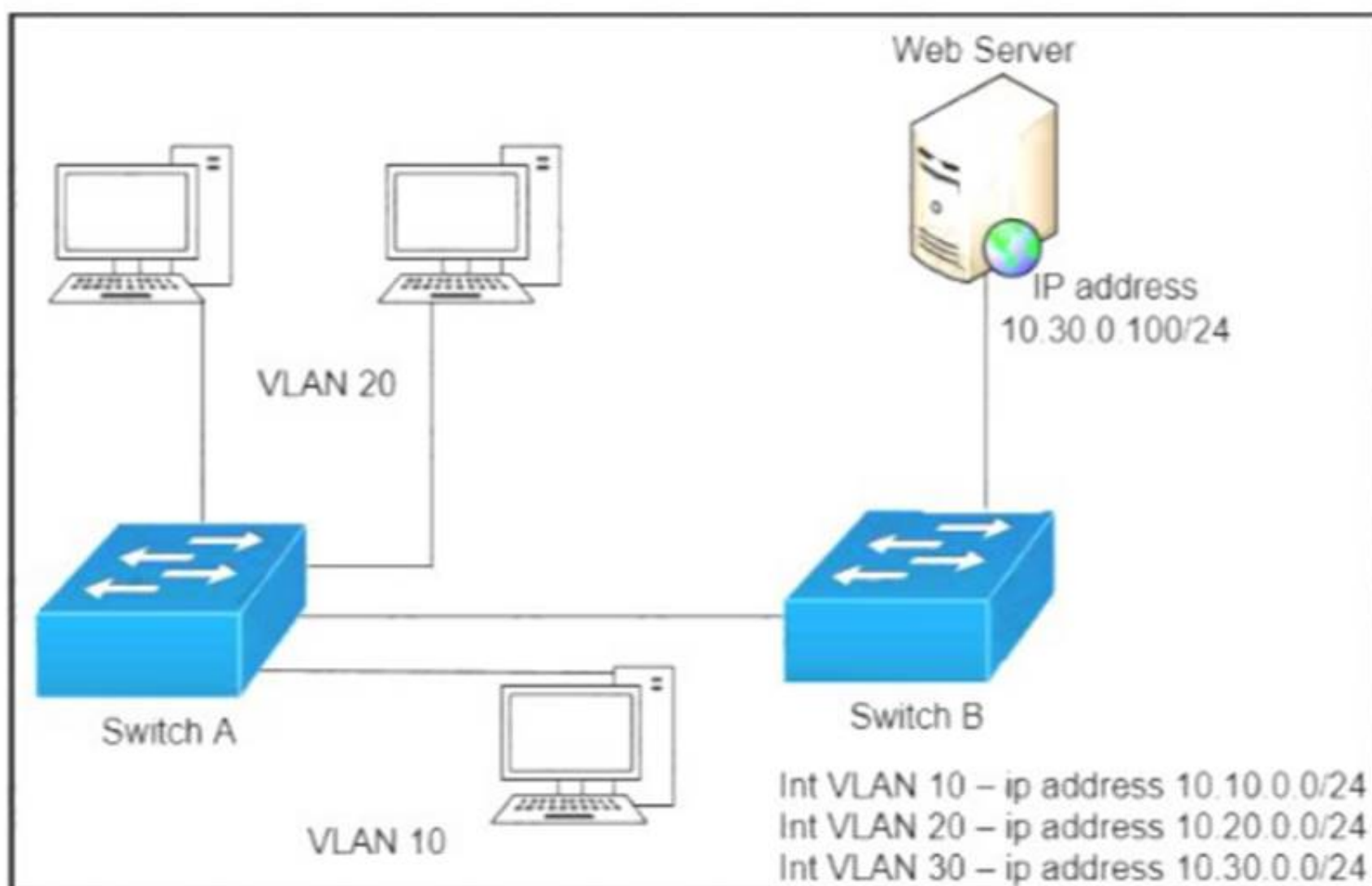
Which type of route does R1 use to reach host 10.10.13.10/32?

- A. floating static route
- B. host route
- C. default route
- D. network route

**Answer:** D

#### NEW QUESTION 48

Refer to the exhibit.



A network engineer must block access for all computers on VLAN 20 to the web server via HTTP. All other computers must be able to access the web server. Which configuration when applied to switch A accomplishes this task?

- ☐

```
config t
ip access-list extended wwwblock
deny tcp any host 10.30.0.100 eq 80
int vlan 10
ip access-group wwwblock in
```
- ☐

```
config t
ip access-list extended wwwblock
deny tcp any host 10.30.0.100 eq 80
permit ip any any
int vlan 20
ip access-group wwwblock in
```
- ☐

```
config t
ip access-list extended wwwblock
permit ip any any
deny tcp any host 10.30.0.100 eq 80
int vlan 30
ip access-group wwwblock in
```
- ☐

```
config t
ip access-list extended wwwblock
permit ip any any
deny tcp any host 10.30.0.100 eq 80
int vlan 20
ip access-group wwwblock in
```

- A. Option A  
B. Option B  
C. Option C  
D. Option D

**Answer:** B

#### NEW QUESTION 49

Which feature on the Cisco Wireless LAN Controller when enabled restricts management access from specific networks?

- A. CPUACL  
B. TACACS  
C. Flex ACL  
D. RADIUS

**Answer:** B

#### NEW QUESTION 54

A user configured OSPF in a single area between two routers A serial interface connecting R1 and R2 is running encapsulation PPP By default which OSPF network type is seen on this interface when the user types show ip ospf interface on R1 or R2?

- A. port-to-multipoint  
B. broadcast  
C. point-to-point  
D. nonbroadcast

**Answer:** C

#### NEW QUESTION 57

A user configured OSPF and advertised the Gigabit Ethernet interface in OSPF By default, which type of OSPF network does this interface belong to?

- A. point-to-multipoint  
B. point-to-point  
C. broadcast  
D. nonbroadcast

**Answer:** B

#### NEW QUESTION 59

Which mode allows access points to be managed by Cisco Wireless LAN Controllers?

- A. autonomous  
B. lightweight  
C. bridge  
D. mobility express

**Answer:** B

**NEW QUESTION 60**

Which command automatically generates an IPv6 address from a specified IPv6 prefix and MAC address of an interface?

- A. ipv6 address dhcp
- B. ipv6 address 2001:DB8:5:112::/64 eui-64
- C. ipv6 address autoconfig
- D. ipv6 address 2001:DB8:5:112::2/64 link-local

**Answer:** C

**NEW QUESTION 65**

Drag and drop the IPv4 network subnets from the left onto the correct usable host ranges on the right

172.28.228.144/18	172.28.228.1 - 172.28.229.254
172.28.228.144/21	172.28.224.1 - 172.28.231.254
172.28.228.144/23	172.28.228.129 - 172.28.228.254
172.28.228.144/25	172.28.228.145 - 172.28.228.150
172.28.228.144/29	172.28.192.1 - 172.28.255.254

- A. Mastered
- B. Not Mastered

**Answer:** A

**Explanation:**

172.28.228.144/18	172.28.228.144/21
172.28.228.144/21	172.28.228.144/29
172.28.228.144/23	172.28.228.144/23
172.28.228.144/25	172.28.228.144/25
172.28.228.144/29	172.28.228.144/18

**NEW QUESTION 70**

Which result occurs when PortFast is enabled on an interface that is connected to another switch?

- A. Spanning tree may fail to detect a switching loop in the network that causes broadcast storms
- B. VTP is allowed to propagate VLAN configuration information from switch to switch automatically.
- C. Root port choice and spanning tree recalculation are accelerated when a switch link goes down
- D. After spanning tree converges PortFast shuts down any port that receives BPDUs.

**Answer:** A

**NEW QUESTION 75**

What makes Cisco DNA Center different from traditional network management applications and their management of networks?

- A. It only supports auto-discovery of network elements in a greenfield deployment.
- B. Its modular design allows someone to implement different versions to meet the specific needs of an organization
- C. IT abstracts policy from the actual device configuration
- D. It does not support high availability of management functions when operating in cluster mode

**Answer:** A

#### NEW QUESTION 80

Drag and drop the descriptions of file-transfer protocols from the left onto the correct protocols on the right.

	FTP
provides reliability when loading an IOS image upon boot up	
does not require user authentication	
uses port 69	
uses ports 20 and 21	
uses TCP	
uses UDP	

TFTP

- A. Mastered
- B. Not Mastered

**Answer:** A

**Explanation:**

provides reliability when loading an IOS image upon boot up	provides reliability when loading an IOS image upon boot up
does not require user authentication	uses ports 20 and 21
uses port 69	uses TCP

uses ports 20 and 21	does not require user authentication
uses TCP	uses port 69
uses UDP	uses UDP

#### NEW QUESTION 85

Drag drop the descriptions from the left onto the correct configuration-management technologies on the right.



fundamental configuration elements are stored in a manifest

uses TCP port 10002 for configuration push jobs

uses Ruby for fundamental configuration elements

uses SSH for remote device communication

uses TCP 8140 for communication

uses YAML for fundamental configuration elements

Ansible

Chef

Puppet

- A. Mastered
- B. Not Mastered

**Answer: A**

**Explanation:**

fundamental configuration elements are stored in a manifest

uses TCP port 10002 for configuration push jobs

uses Ruby for fundamental configuration elements

uses SSH for remote device communication

uses TCP 8140 for communication

uses YAML for fundamental configuration elements

Ansible

uses TCP port 10002 for configuration push jobs

uses TCP 8140 for communication

Chef

uses Ruby for fundamental configuration elements

uses SSH for remote device communication

Puppet

uses YAML for fundamental configuration elements

fundamental configuration elements are stored in a manifest

#### NEW QUESTION 89

Which mode must be used to configure EtherChannel between two switches without using a negotiation protocol?

- A. on
- B. auto
- C. active
- D. desirable

**Answer: D**

#### NEW QUESTION 91

R1 has learned route 192.168.12.0/24 via IS-IS, OSPF, RIP, and Internal EIGRP Under normal operating conditions, which routing protocol is installed in the

routing table?

- A. IS-IS
- B. RIP
- C. Internal EIGRP
- D. OSPF

**Answer: C**

#### NEW QUESTION 93

If a notice-level messaging is sent to a syslog server, which event has occurred?

- A. A network device has restarted
- B. An ARP inspection has failed
- C. A routing instance has flapped
- D. A debug operation is running

**Answer: A**

#### NEW QUESTION 97

Refer to the exhibit.

```
R1# show ip route | begin gateway
Gateway of last resort is 209.165.200.246 to network 0.0.0.0
S* 0.0.0.0/0 [1/0] via 209.165.200.246, Serial0/1/0
   is directly connected, Serial0/1/0
   172.16.0.0/16 is variably subnetted, 3 subnets, 3 masks
S   172.16.0.0/24 [1/0] via 207.165.200.250, Serial0/0/0
O   172.16.0.128/25 [110/38443] via 207.165.200.254, 00:00:23, Serial0/0/1
D   172.16.0.192/29 [90/3184439] via 207.165.200.254, 00:00:25, Serial0/0/1
   209.165.200.0/24 is variably subnetted, 4 subnets, 2 masks
C   209.165.200.248/30 is directly connected, Serial0/0/0
L   209.165.200.249/32 is directly connected, Serial0/0/0
C   209.165.200.252/30 is directly connected, Serial0/0/1
L   209.165.200.253/32 is directly connected, Serial0/0/1
```

With which metric was the route to host 172.16.0.202 learned?

- A. 110
- B. 38443
- C. 3184439

**Answer: C**

#### NEW QUESTION 101

Refer to the exhibit.

```
Gateway of last resort is 10.12.0.1 to network 0.0.0.0

O*E2   0.0.0.0/0 [110/1] via 10.12.0.1, 00:00:01, GigabitEthernet0/0
       10.0.0.0/8 is variably subnetted, 2 subnets, 2 masks
C       10.0.0.0/24 is directly connected, GigabitEthernet0/0
L       10.0.0.2/32 is directly connected, GigabitEthernet0/0
C       10.13.0.0/24 is directly connected, GigabitEthernet0/1
L       10.13.0.2/32 is directly connected, GigabitEthernet0/1
```

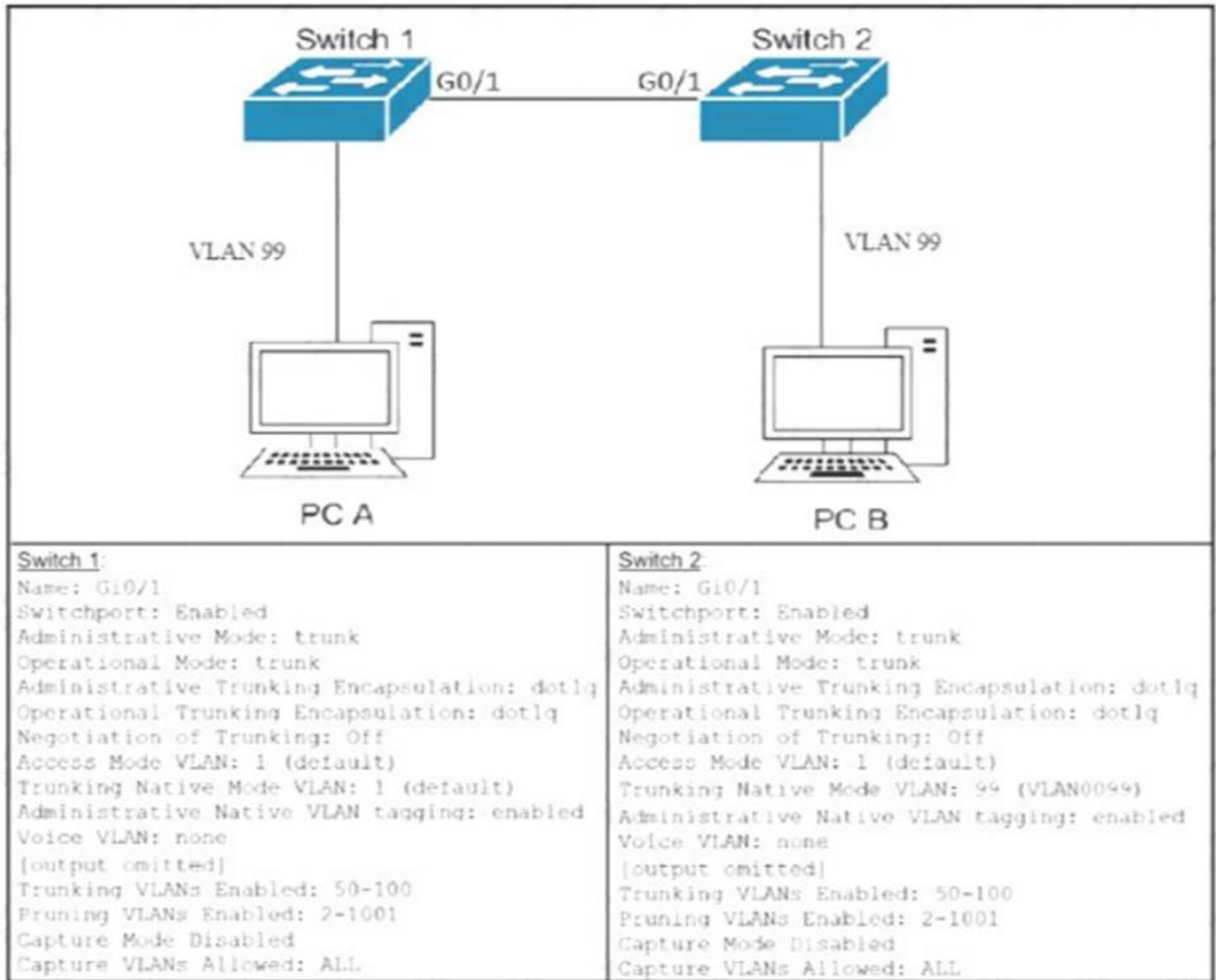
If configuring a static default route on the router with the ip route 0.0.0.0 0.0.0.0 10.13.0.1 120 command how does the router respond?

- A. It ignores the new static route until the existing OSPF default route is removed
- B. It immediately replaces the existing OSPF route in the routing table with the newly configured static route
- C. It starts load-balancing traffic between the two default routes
- D. It starts sending traffic without a specific matching entry in the routing table to GigabitEthernetO/1

**Answer: D**

#### NEW QUESTION 103

Refer to the Exhibit.



After the switch configuration the ping test fails between PC A and PC B Based on the output for switch 1. which error must be corrected?

- A. There is a native VLAN mismatch
- B. Access mode is configured on the switch ports.
- C. The PCs are in the incorrect VLAN
- D. All VLANs are not enabled on the trunk

**Answer:** A

#### NEW QUESTION 104

Which statement about Link Aggregation when implemented on a Cisco Wireless LAN Controller is true?

- A. To pass client traffic two or more ports must be configured.
- B. The EtherChannel must be configured in "mode active"
- C. When enabled the WLC bandwidth drops to 500 Mbps
- D. One functional physical port is needed to pass client traffic

**Answer:** C

#### NEW QUESTION 107

When configuring a WLAN with WPA2 PSK in the Cisco Wireless LAN Controller GUI, which two formats are available to select? (Choose two)

- A. ASCII
- B. base64
- C. binary
- D. decimal
- E. hexadecimal

**Answer:** AE

#### NEW QUESTION 111

.....

## Thank You for Trying Our Product

\* 100% Pass or Money Back

All our products come with a 90-day Money Back Guarantee.

\* One year free update

You can enjoy free update one year. 24x7 online support.

\* Trusted by Millions

We currently serve more than 30,000,000 customers.

\* Shop Securely

All transactions are protected by VeriSign!

**100% Pass Your 200-301 Exam with Our Prep Materials Via below:**

<https://www.certleader.com/200-301-dumps.html>