



**PMI**

## **Exam Questions CAPM**

Certified Associate in Project Management (PMI-100)

#### NEW QUESTION 1

- (Exam Topic 3)

A work package has been scheduled to cost \$1,000 to complete and was to be finished today. As of today, the actual expenditure is \$1,200 and approximately half of the work has been completed. What is the cost variance?

- A. -700
- B. -200
- C. 200
- D. 500

**Answer:** A

#### NEW QUESTION 2

- (Exam Topic 3)

Which schedule compression technique has phases or activities done in parallel that would normally have been done sequentially?

- A. Crashing
- B. Fast tracking
- C. Leads and lags adjustment
- D. Parallel task development

**Answer:** B

#### NEW QUESTION 3

- (Exam Topic 3)

When does Monitor and Control Risks occur?

- A. At project initiation
- B. During work performance analysis
- C. Throughout the life of the project
- D. At project milestones

**Answer:** C

#### NEW QUESTION 4

- (Exam Topic 3)

An input required in Define Scope is an organizational:

- A. structure.
- B. process asset.
- C. matrix.
- D. breakdown structure.

**Answer:** B

#### NEW QUESTION 5

- (Exam Topic 3)

An output of the Create WBS process is:

- A. Scope baseline.
- B. Project scope statement.
- C. Organizational process assets.
- D. Requirements traceability matrix.

**Answer:** A

#### NEW QUESTION 6

- (Exam Topic 3)

Which type of managers do composite organizations involve?

- A. Functional managers and manager of project managers
- B. Functional managers only
- C. Project managers only
- D. Technical managers and project managers

**Answer:** A

#### NEW QUESTION 7

- (Exam Topic 3)

An input to the Create WBS process is a:

- A. project charter.
- B. stakeholder register.
- C. project scope statement.
- D. requirements traceability matrix.

**Answer:** C

**NEW QUESTION 8**

- (Exam Topic 3)

Which type of contract is most commonly used by buying organizations because the price for goods is set at the outset and is not subject to change unless the scope of work changes?

- A. Fixed Price with Economic Price Adjustments Contract (FP-EPA)
- B. Cost-Reimbursable Contract (CR)
- C. Firm-Fixed -Price Contract (FFP)
- D. Fixed-Price-Incentive-Fee Contract (FPIF)

**Answer:** C

**NEW QUESTION 9**

- (Exam Topic 3)

Which estimating technique uses the actual costs of previous similar projects as a basis for estimating the costs of the current project?

- A. Analogous
- B. Parametric
- C. Bottom-up
- D. Top-down

**Answer:** A

**NEW QUESTION 10**

- (Exam Topic 3)

A procurement management plan is a subsidiary of which other type of plan?

- A. Resource plan
- B. Project management plan
- C. Cost control plan
- D. Expected monetary value plan

**Answer:** B

**NEW QUESTION 10**

- (Exam Topic 3)

An output of the Develop Project Team process is:

- A. change requests
- B. team performance assessments
- C. project staff assignments
- D. project documents updates

**Answer:** B

**NEW QUESTION 11**

- (Exam Topic 3)

Which document includes the project scope, major deliverables, assumptions, and constraints?

- A. Project charter
- B. Project scope statement
- C. Scope management plan
- D. Project document updates

**Answer:** B

**NEW QUESTION 14**

- (Exam Topic 3)

Identifying major deliverables, deciding if adequate cost estimates can be developed, and identifying tangible components of each deliverable are all part of which of the following?

- A. Work breakdown structure
- B. Organizational breakdown structure
- C. Resource breakdown structure
- D. Bill of materials

**Answer:** A

**NEW QUESTION 16**

- (Exam Topic 3)

When is a Salience Model used?

- A. In a work breakdown structure (WBS)

- B. During quality assurance
- C. In stakeholder analysis
- D. During quality control (QC)

**Answer:** C

#### NEW QUESTION 20

- (Exam Topic 3)

An input of the Plan Procurement Management process is:

- A. Make-or-buy decisions.
- B. Activity cost estimates.
- C. Seller proposals.
- D. Procurement documents.

**Answer:** B

#### NEW QUESTION 24

- (Exam Topic 3)

The scope management plan is a subsidiary of which project document?

- A. Schedule management plan
- B. Project management plan
- C. Quality management plan
- D. Resource management plan

**Answer:** B

#### NEW QUESTION 26

- (Exam Topic 3)

Which is the Define Scope technique used to generate different approaches to execute and perform the work of the project?

- A. Build v
- B. buy
- C. Expert judgment
- D. Alternatives identification
- E. Product analysis

**Answer:** C

#### NEW QUESTION 28

- (Exam Topic 3)

Which of the following tools or techniques is used for Estimate Activity Durations?

- A. Critical path method
- B. Rolling wave planning
- C. Precedence diagramming method
- D. Parametric estimating

**Answer:** D

#### NEW QUESTION 29

- (Exam Topic 3)

Conflict should be best addressed in which manner?

- A. Early, in private, using a direct, collaborative approach
- B. Early, in public, using an indirect, collaborative approach
- C. Early, in private, using an indirect, cooperative approach
- D. As late as possible, in public, using a direct, confrontational approach

**Answer:** A

#### NEW QUESTION 33

- (Exam Topic 3)

What is an objective of the Develop Project Team process?

- A. Feelings of trust and improved cohesiveness
- B. Ground rules for interaction
- C. Enhanced resource availability
- D. Functional managers becoming more involved

**Answer:** A

#### NEW QUESTION 37

- (Exam Topic 3)

Which process is included in the Project Integration Management Knowledge Area?

- A. Manage Project Team
- B. Collect Requirements
- C. Sequence Activities
- D. Direct and Manage Project Work

**Answer:** D

#### NEW QUESTION 42

- (Exam Topic 3)

Most experienced project managers know that:

- A. every project requires the use of all processes in the PMBOK® Guide.
- B. there is no single way to manage a project.
- C. project management techniques are risk free.
- D. there is only one way to manage projects successfully.

**Answer:** B

#### NEW QUESTION 43

- (Exam Topic 3)

While implementing an approved change, a critical defect was introduced. Removing the defect will delay the product delivery. What is the MOST appropriate approach to managing this situation?

- A. Utilize the change control process.
- B. Crash the schedule to fix the defect.
- C. Leave the defect in and work around it.
- D. Fast-track the remaining development.

**Answer:** A

#### NEW QUESTION 44

- (Exam Topic 3)

Cost baseline is an output of which of the following processes?

- A. Control Costs
- B. Determine Budget
- C. Estimate Costs
- D. Estimate Activity Resources

**Answer:** B

#### NEW QUESTION 47

- (Exam Topic 3)

Which of the seven basic quality tools is especially useful for gathering attributes data while performing inspections to identify defects?

- A. Histograms
- B. Scatter diagrams
- C. Flowcharts
- D. Checksheets

**Answer:** D

#### NEW QUESTION 49

- (Exam Topic 3)

Which of the following statements correctly characterizes pull communication?

- A. It includes letters, memos, reports, emails, and faxes.
- B. It requires recipients to access communication content at their own discretion.
- C. It is the most efficient way to ensure a common understanding among all participants.
- D. It is primarily used when the volume of information to be transferred is minimal.

**Answer:** B

#### NEW QUESTION 51

- (Exam Topic 3)

What are the formal and informal policies, procedures, and guidelines that could impact how the project's scope is managed?

- A. Organizational process assets
- B. Enterprise environmental factors
- C. Project management processes
- D. Project scope management plan

**Answer:** A

#### NEW QUESTION 53

- (Exam Topic 3)

A collection of projects managed as a group to achieve strategic objectives is referred to as a:

- A. plan
- B. process
- C. program
- D. portfolio

**Answer:** D

#### NEW QUESTION 54

- (Exam Topic 3)

Taking out insurance in relation to risk management is called what?

- A. Transference
- B. Avoidance
- C. Exploring
- D. Mitigation

**Answer:** A

#### NEW QUESTION 55

- (Exam Topic 3)

The project management processes presented in the PMBOK Guide® should:

- A. always be applied uniformly.
- B. be selected as appropriate by the sponsor.
- C. be selected as appropriate by the project team.
- D. be applied based on ISO guidelines.

**Answer:** C

#### NEW QUESTION 57

- (Exam Topic 3)

Projects are undertaken by an organization to support the:

- A. Product performance.
- B. Budget process.
- C. Collective capabilities.
- D. Organizational strategy.

**Answer:** D

#### NEW QUESTION 61

- (Exam Topic 3)

Which action should a project manager take to ensure that the project management plan is effective and current?

- A. Conduct periodic project performance reviews.
- B. Identify quality project standards.
- C. Follow ISO 9000 quality standards.
- D. Complete the quality control checklist.

**Answer:** A

#### NEW QUESTION 63

- (Exam Topic 3)

The most commonly used type of precedence relationship in the precedence diagramming method (PDM) is:

- A. start-to-start (SS)
- B. start-to-finish (SF)
- C. finish-to-start (FS)
- D. finish-to-finish (FF)

**Answer:** C

#### NEW QUESTION 68

- (Exam Topic 3)

Which process involves aggregating the estimated costs of the individual schedule activities or work packages?

- A. Estimate Costs
- B. Estimate Activity Resources
- C. Control Costs
- D. Determine Budget

**Answer:** D

#### NEW QUESTION 72

- (Exam Topic 3)

A measure of cost performance that is required to be achieved with the remaining resources in order to meet a specified management goal and is expressed as the ratio of the cost needed for finishing the outstanding work to the remaining budget is known as the:

- A. budget at completion (BAC)
- B. earned value management (EVM)
- C. to-complete performance index
- D. cost performance index

**Answer:** C

#### NEW QUESTION 75

- (Exam Topic 3)

Activity resource requirements and the resource breakdown structure (RBS) are outputs of which Project Time Management process?

- A. Control Schedule
- B. Define Activities
- C. Develop Schedule
- D. Estimate Activity Resources

**Answer:** D

#### NEW QUESTION 76

- (Exam Topic 3)

Which Develop Schedule tool and technique produces a theoretical early start date and late start date?

- A. Critical path method
- B. Variance analysis
- C. Schedule compression
- D. Schedule comparison bar charts

**Answer:** A

#### NEW QUESTION 81

- (Exam Topic 3)

Which illustrates the connection between work that needs to be done and its project team members?

- A. Work breakdown structure (WBS)
- B. Network diagrams
- C. Staffing management plan
- D. Responsibility assignment matrix (RAM)

**Answer:** D

#### NEW QUESTION 84

- (Exam Topic 3)

In an organization with a projectized organizational structure, who controls the project budget?

- A. Functional manager
- B. Project manager
- C. Program manager
- D. Project management office

**Answer:** B

#### NEW QUESTION 89

- (Exam Topic 3)

What type of project structure is a hierarchically organized depiction of the resources by type?

- A. Organizational breakdown structure (OBS)
- B. Resource breakdown structure (RBS)
- C. Work breakdown structure (WBS)
- D. Project breakdown structure (PBS)

**Answer:** B

#### NEW QUESTION 91

- (Exam Topic 3)

Which process documents the business needs of a project and the new product, service, or other result that is intended to satisfy those requirements?

- A. Develop Project Management Plan
- B. Develop Project Charter
- C. Direct and Manage Project Execution
- D. Collect Requirements



**Answer:** B

**NEW QUESTION 93**

- (Exam Topic 3)

Which process uses occurrence probability and impact on project objectives to assess the priority of identified risks?

- A. Identify Risks
- B. Perform Qualitative Risk Analysis
- C. Plan Risk Management
- D. Perform Quantitative Risk Analysis

**Answer:** B

**NEW QUESTION 94**

- (Exam Topic 3)

Which Project Management Process Group includes Collect Requirements, Define Activities, Sequence Activities, Perform Qualitative Risk Analysis, and Perform Quantitative Risk Analysis?

- A. Initiating
- B. Monitoring and Controlling
- C. Planning
- D. Closing

**Answer:** C

**NEW QUESTION 95**

- (Exam Topic 3)

What is one of the objectives of Project Risk Management?

- A. Decrease the probability and impact of an event on project objectives.
- B. Distinguish between a project risk and a project issue so that a risk mitigation plan can be put in place.
- C. Increase the probability and impact of positive events.
- D. Removal of project risk.

**Answer:** C

**NEW QUESTION 97**

- (Exam Topic 3)

The individual or group that provides resources and support for a project and is accountable for success is the:

- A. sponsor
- B. customer
- C. business partners
- D. functional managers

**Answer:** A

**NEW QUESTION 98**

- (Exam Topic 3)

Which is a tool or technique used in Define Scope?

- A. Templates, forms, and standards
- B. Change requests
- C. Product analysis
- D. Project assumptions

**Answer:** C

**NEW QUESTION 103**

- (Exam Topic 3)

To which process is work performance information an input?

- A. Administer Procurements
- B. Direct and Manage Project Execution
- C. Create WBS
- D. Perform Qualitative Risk Analysis

**Answer:** A

**NEW QUESTION 107**

- (Exam Topic 3)

What tool and technique is used to determine whether work and deliverables meet requirements and product acceptance criteria?

- A. Decomposition
- B. Benchmarking



- C. Inspection
- D. Checklist analysis

**Answer:** C

#### NEW QUESTION 109

- (Exam Topic 3)

Perform Quality Control is accomplished by:

- A. Identifying quality standards that are relevant to the project and determining how to satisfy them.
- B. Monitoring and recording the results of executing the quality activities to assess performance and recommend necessary changes.
- C. Ensuring that the entire project team has been adequately trained in quality assurance processes.
- D. Applying Monte Carlo, sampling, Pareto analysis, and benchmarking techniques to ensure conformance to quality standards.

**Answer:** B

#### NEW QUESTION 114

- (Exam Topic 3)

Which activity is an input to the Conduct Procurements process?

- A. Organizational process assets
- B. Resource availability
- C. Perform Integrated Change Control
- D. Team performance assessment

**Answer:** A

#### NEW QUESTION 115

- (Exam Topic 3)

Which Knowledge Area is concerned with the processes required to ensure timely and appropriate generation, collection, distribution, storage, retrieval, and ultimate disposition of project information?

- A. Project Integration Management
- B. Project Communications Management
- C. Project Information Management System (PIMS)
- D. Project Scope Management

**Answer:** B

#### NEW QUESTION 118

- (Exam Topic 3)

A project manager seeking insight on previous stakeholder management plans and their effectiveness should evaluate:

- A. Historical information and the lessons-learned database.
- B. Historical information and the stakeholder register.
- C. Organizational process assets and the lessons-learned database.
- D. Project documents and historical information.

**Answer:** A

#### NEW QUESTION 122

- (Exam Topic 3)

Which Process Group's purpose is to track, review, and regulate the progress and performance of the project; identify any areas in which changes to the plan are required; and initiate the corresponding changes?

- A. Monitoring and Controlling
- B. Initiating
- C. Planning
- D. Executing

**Answer:** A

#### NEW QUESTION 127

- (Exam Topic 3)

When is a project finished?

- A. After verbal acceptance of the customer or sponsor
- B. After lessons learned have been documented in contract closure
- C. When the project objectives have been met
- D. After resources have been released

**Answer:** C

#### NEW QUESTION 129

- (Exam Topic 3)

Which of the following risk response strategies involves allocating ownership of a positive risk to a third party?

- A. Mitigate
- B. Transfer
- C. Share
- D. Avoid

**Answer:** C

#### NEW QUESTION 132

- (Exam Topic 3)

The process of identifying and documenting the specific actions to be performed to produce the project deliverables is known as:

- A. Define Activities.
- B. Sequence Activities.
- C. Define Scope.
- D. Control Schedule.

**Answer:** A

#### NEW QUESTION 135

- (Exam Topic 3)

What type of planning is used where the work to be accomplished in the near term is planned in detail, while work in the future is planned at a higher level?

- A. Finish-to-start planning
- B. Rolling wave planning
- C. Short term planning
- D. Dependency determination

**Answer:** B

#### NEW QUESTION 136

- (Exam Topic 3)

The Verify Scope process is primarily concerned with:

- A. formalizing acceptance of the completed project deliverables.
- B. accuracy of the work deliverables.
- C. formalizing approval of the scope statement.
- D. accuracy of the work breakdown structure (WBS).

**Answer:** A

#### NEW QUESTION 139

- (Exam Topic 2)

Using parametric estimating, if an assigned resource is capable of producing 120 units per hour, how many hours are required to produce 12,000 units?

- A. 100
- B. 120
- C. 1,000
- D. 1,200

**Answer:** A

#### NEW QUESTION 142

- (Exam Topic 2)

An input to the Control Quality process is:

- A. Activity attributes
- B. Quality control measurements
- C. Enterprise environmental factors
- D. Deliverables

**Answer:** D

#### NEW QUESTION 146

- (Exam Topic 2)

A stakeholder expresses a need not known to the project manager. The project manager most likely missed a step in which stakeholder management process?

- A. Plan Stakeholder Management
- B. Identify Stakeholders
- C. Manage Stakeholder Engagement
- D. Control Stakeholder Engagement

**Answer:** A

#### NEW QUESTION 147

- (Exam Topic 2)

Which output is the approved version of the time-phased project budget?

- A. Resource calendar
- B. Scope baseline
- C. Trend analysis
- D. Cost baseline

**Answer:** D

#### NEW QUESTION 150

- (Exam Topic 2)

Retreating from an actual or potential conflict or postponing the issue to be better prepared or to be resolved by others describes which of the five general techniques for managing conflict?

- A. Smooth/accommodate
- B. Withdraw/avoid
- C. Compromise/reconcile
- D. Force/direct

**Answer:** B

#### NEW QUESTION 154

- (Exam Topic 2)

Projects that share common outcomes, collective capability, knowledge, or skills are often grouped into a:

- A. portfolio
- B. program
- C. selection
- D. sub portfolio

**Answer:** B

#### NEW QUESTION 155

- (Exam Topic 2)

High-level project risks are included in which document?

- A. Business case
- B. Risk breakdown structure
- C. Project charter
- D. Risk register

**Answer:** C

#### NEW QUESTION 156

- (Exam Topic 2)

A full-time project manager with low to moderate authority and part-time administrative staff is working in an organizational structure with which type of matrix?

- A. Strong
- B. Weak
- C. Managed
- D. Balanced

**Answer:** D

#### NEW QUESTION 158

- (Exam Topic 2)

Which key interpersonal skill of a project manager is defined as the strategy of sharing power and relying on interpersonal skills to convince others to cooperate toward common goals?

- A. Collaboration
- B. Negotiation
- C. Decision making
- D. Influencing

**Answer:** D

#### NEW QUESTION 163

- (Exam Topic 2)

A project requires a component with well-understood specifications. Performance targets are established at the outset, and the final contract price is determined after completion of all work based on the seller's performance. The most appropriate agreement with the supplier is:

- A. Cost Plus Incentive Fee (CPIF).
- B. Fixed Price Incentive Fee (FPIF).
- C. Cost Plus Award Fee (CPAF).
- D. Fixed Price with Economic Price Adjustment (FP-EPA).

**Answer:** B

**NEW QUESTION 166**

- (Exam Topic 2)

Grouping the stakeholders based on their level of authority and their level of concern regarding project outcomes describes which classification model for stakeholder analysis?

- A. Influence/impact grid
- B. Power/influence grid
- C. Power/interest grid
- D. Salience model

**Answer:** C

**NEW QUESTION 169**

- (Exam Topic 2)

Organizational process assets, a lessons-learned database, and historical information are all inputs to which process?

- A. Plan Cost Management
- B. Plan Scope Management
- C. Plan Stakeholder Management
- D. Plan Schedule Management

**Answer:** C

**NEW QUESTION 172**

- (Exam Topic 2)

Which term describes an assessment of correctness?

- A. Accuracy
- B. Precision
- C. Grade
- D. Quality

**Answer:** A

**NEW QUESTION 175**

- (Exam Topic 2)

Which Manage Communications tool or technique focuses on identifying and managing barriers?

- A. Communication methods
- B. Information technology
- C. Communication models
- D. Information management systems

**Answer:** C

**NEW QUESTION 178**

- (Exam Topic 2)

In a typical project, project managers spend most of their time:

- A. Estimating
- B. Scheduling
- C. Controlling
- D. Communicating

**Answer:** D

**NEW QUESTION 181**

- (Exam Topic 2)

When closing a project or phase, part of the process may require the use of which type of analysis?

- A. Reserve analysis
- B. Regression analysis
- C. Document analysis
- D. Product analysis

**Answer:** B

**NEW QUESTION 183**

- (Exam Topic 2)

Which items are components of a project management plan?

- A. Change management plan, process improvement plan, and scope management plan
- B. Agreements, procurement management plan, and work performance information

- C. Schedule management plan, project schedule, and resource calendars
- D. Scope baseline, project statement of work, and requirements traceability matrix

**Answer:** A

#### NEW QUESTION 186

- (Exam Topic 2)

In project management, a temporary project can be:

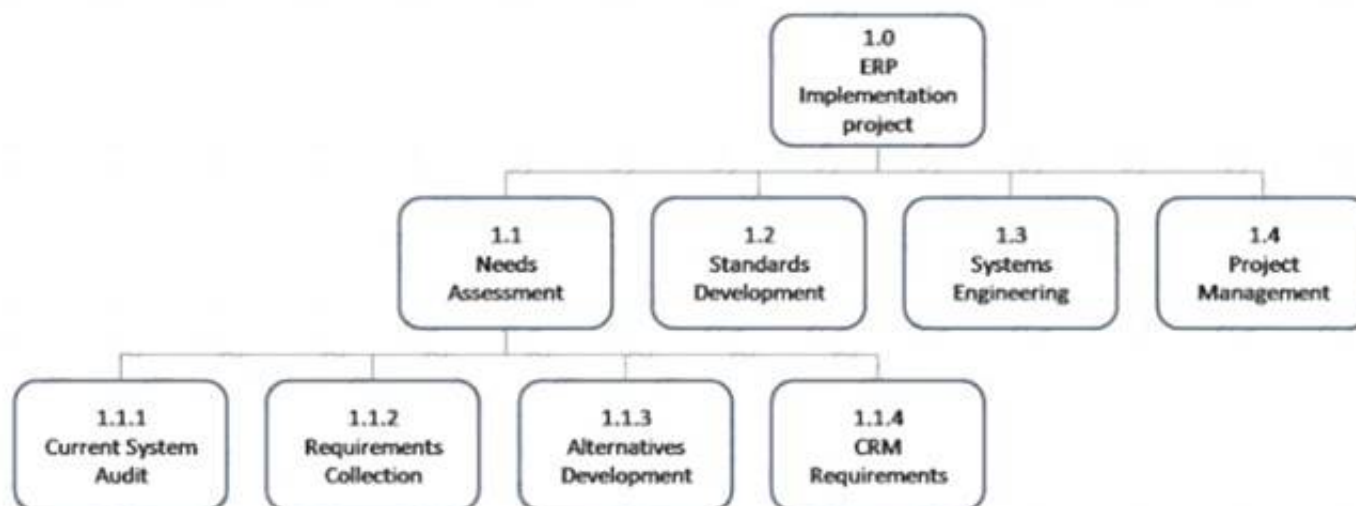
- A. Completed without planning
- B. A routine business process
- C. Long in duration
- D. Ongoing to produce goods

**Answer:** C

#### NEW QUESTION 187

- (Exam Topic 2)

Which type of graphic is displayed below?



- A. Work breakdown structure
- B. Context diagram
- C. Control chart
- D. Pareto diagram

**Answer:** A

#### NEW QUESTION 190

- (Exam Topic 2)

Which type of dependency used in the Sequence Activities process is sometimes referred to as preferred logic, preferential logic, or soft logic?

- A. Internal
- B. External
- C. Discretionary
- D. Mandatory

**Answer:** C

#### NEW QUESTION 192

- (Exam Topic 2)

A project manager should communicate to stakeholders about resolved project issues by updating the:

- A. project records
- B. project reports
- C. stakeholder notifications
- D. stakeholder register

**Answer:** C

#### NEW QUESTION 194

- (Exam Topic 2)

Which Project Time Management process includes bottom-up estimating as a tool or technique?

- A. Estimate Activity Resources
- B. Sequence Activities
- C. Estimate Activity Durations
- D. Develop Schedule

**Answer:** A

**NEW QUESTION 196**

- (Exam Topic 2)

Which Process Group includes the Manage Stakeholder Engagement process?

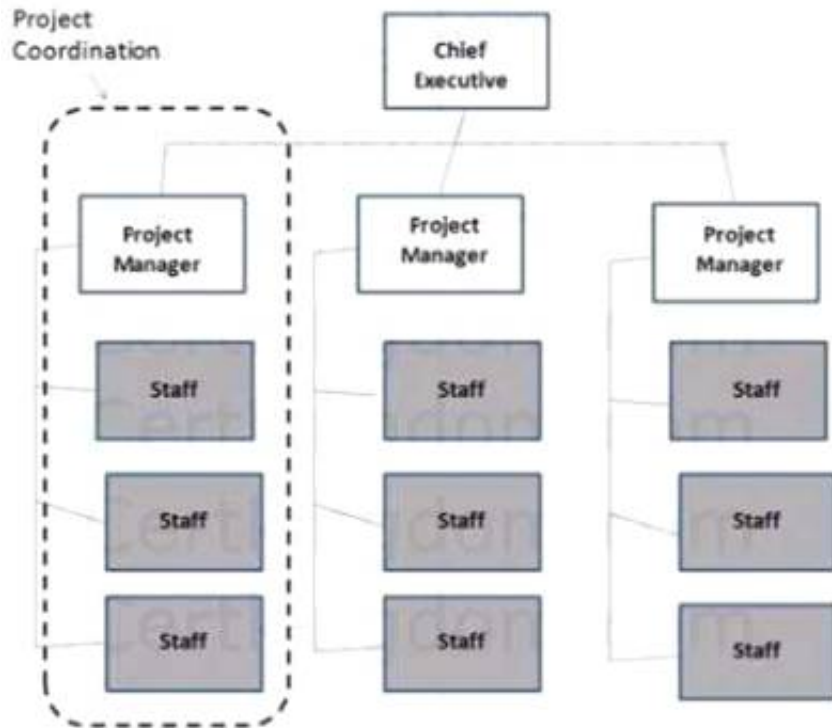
- A. Executing
- B. Planning
- C. Monitoring and Controlling
- D. Initiating

**Answer: A**

**NEW QUESTION 199**

- (Exam Topic 2)

Which type of organizational structure is displayed in the diagram provided?



- A. Balanced matrix
- B. Projectized
- C. Strong matrix
- D. Functional

**Answer: B**

**NEW QUESTION 200**

- (Exam Topic 2)

The following chart contains information about the tasks in a project.

Task	PV	AC	EV
1	10,000	10,000	10,000
2	10,000	8,000	10,000
3	10,000	8,000	8,000
4	9,000	12,000	10,000
5	10,000	12,000	12,000
6	10,000	10,000	12,000
7	12,000	12,000	10,000
8	10,000	8,000	9,000
9	12,000	10,000	11,000

Based on the chart, what is the cost variance (CV) for Task 6?

- A. -2,000
- B. 1,000
- C. 2,000

**Answer: D**

**NEW QUESTION 202**

- (Exam Topic 2)

Requirements documentation will typically contain at least:



- A. Stakeholder requirements, staffing requirements, and transition requirements.
- B. Business requirements, the stakeholder register, and functional requirements.
- C. Stakeholder impact, budget requirements, and communications requirements.
- D. Business objectives, stakeholder impact, and functional requirements.

**Answer:** D

#### NEW QUESTION 203

- (Exam Topic 2)

The purpose of developing a project scope management plan is to:

- A. Manage the timely completion of the project.
- B. Ensure that the project includes all of the work required.
- C. Make sure the project will satisfy the needs for which it was begun.
- D. Reduce the risk of negative events in the project.

**Answer:** B

#### NEW QUESTION 207

- (Exam Topic 2)

A project manager requesting industry groups and consultants to recommend project intervention is relying on:

- A. Communication models.
- B. Stakeholder participation.
- C. Expert judgment
- D. Enterprise environmental factors.

**Answer:** C

#### NEW QUESTION 212

- (Exam Topic 2)

Which of the Perform Quality Assurance tools and techniques may enhance the creation of the work breakdown structure (WBS) to give structure to the decomposition of the scope?

- A. Activity network diagrams
- B. Affinity diagrams
- C. Matrix diagrams
- D. Interrelationship digraphs

**Answer:** B

#### NEW QUESTION 213

- (Exam Topic 2)

The zero duration of milestones in project planning occurs because milestones:

- A. Are unpredictable and challenge the Plan Schedule Management process.
- B. Occur at random times in the project plans.
- C. Represent a moment in time such as a significant project point or event.
- D. Represent both significant and insignificant points in the project and are difficult to anticipate.

**Answer:** C

#### NEW QUESTION 215

- (Exam Topic 2)

An intentional activity to modify a nonconforming product or product component is called:

- A. defect repair
- B. work repair
- C. corrective action
- D. preventive action

**Answer:** A

#### NEW QUESTION 216

- (Exam Topic 2)

In the Plan Procurement Management process, which source selection criteria analyzes if the seller's proposed technical methodologies, techniques, solutions, and services meet the procurement documents requirements?

- A. Technical approach
- B. Technical capability
- C. Business size and type
- D. Production capacity and interest

**Answer:** A

#### NEW QUESTION 219



- (Exam Topic 2)

The Project Human Resource Management process that involves confirming human resource availability and obtaining the team necessary to complete project activities is:

- A. Acquire Project Team.
- B. Plan Human Resource Management.
- C. Manage Project Team.
- D. Develop Project Team.

**Answer:** A

#### NEW QUESTION 220

- (Exam Topic 2)

In complex projects/ initiating processes should be completed:

- A. Within a work package.
- B. In each phase of the project.
- C. To estimate schedule constraints.
- D. To estimate resource allocations.

**Answer:** B

#### NEW QUESTION 225

- (Exam Topic 2)

The degree of uncertainty an entity is willing to take on in anticipation of a reward is known as its risk:

- A. management
- B. response
- C. tolerance
- D. appetite

**Answer:** D

#### NEW QUESTION 226

- (Exam Topic 2)

For a stakeholder with low interest and high power, the project manager should:

- A. Monitor the stakeholder.
- B. Manage the stakeholder closely.
- C. Keep the stakeholder satisfied.
- D. Keep the stakeholder informed.

**Answer:** C

#### NEW QUESTION 229

- (Exam Topic 2)

An issue log is an input to which Project Human Resource Management process?

- A. Manage Project Team
- B. Acquire Project Team
- C. Plan Human Resource Management
- D. Develop Project Team

**Answer:** A

#### NEW QUESTION 231

- (Exam Topic 2)

When painting a bedroom, preparing the walls can be done while the paint is being chosen. This is an example of a:

- A. lead
- B. lag
- C. mandatory dependency
- D. internal dependency

**Answer:** A

#### NEW QUESTION 234

- (Exam Topic 2)

Which change request is an intentional activity that realigns the performance of the project work with the project management plan?

- A. Update
- B. Preventive action
- C. Defect repair
- D. Corrective action

**Answer:** D

#### NEW QUESTION 238

- (Exam Topic 2)

Project managers who lead by example and follow through on the commitments they make demonstrate the key interpersonal skill of:

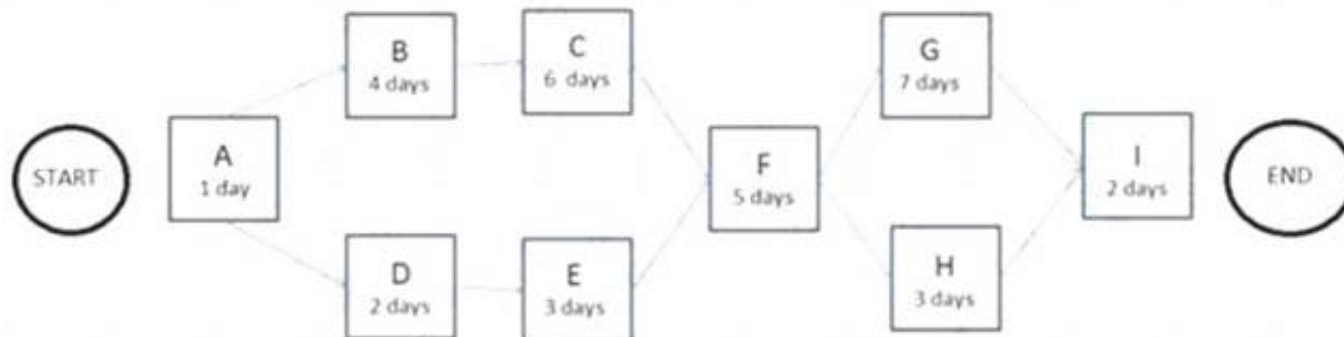
- A. influencing
- B. leadership
- C. motivation
- D. coaching

**Answer: A**

#### NEW QUESTION 239

- (Exam Topic 2)

The following is a network diagram for a project.



The free float for Activity E is how many days?

- A. 2
- B. 3
- C. 5
- D. 8

**Answer: C**

#### NEW QUESTION 243

- (Exam Topic 2)

The process of monitoring the status of the project and product scope as well as managing the changes to the scope baseline is known as:

- A. Validate Scope.
- B. Plan Scope Management.
- C. Control Scope.
- D. Define Scope.

**Answer: C**

#### NEW QUESTION 248

- (Exam Topic 2)

Which Perform Quality Assurance tool or technique is used to identify a problem, discover the underlying causes that lead to it, and develop preventative actions?

- A. Inspection
- B. Quality audits
- C. Design of experiments
- D. Root cause analysis

**Answer: D**

#### NEW QUESTION 251

- (Exam Topic 2)

Success is measured by benefits realization for a:

- A. strategic plan
- B. project
- C. portfolio
- D. program

**Answer: C**

#### NEW QUESTION 256

- (Exam Topic 2)

A risk that arises as a direct result of implementing a risk response is called a:

- A. contingent risk
- B. residual risk
- C. potential risk
- D. secondary risk

**Answer: D**

#### NEW QUESTION 261

- (Exam Topic 2)

Stakeholders can be identified in later stages of the project because the Identify Stakeholders process should be:

- A. Continuous
- B. Discrete
- C. Regulated
- D. Arbitrary

**Answer:** A

#### NEW QUESTION 262

- (Exam Topic 2)

An input to the Perform Integrated Change Control process is:

- A. expert judgment
- B. seller proposals
- C. the project charter
- D. the project management plan

**Answer:** D

#### NEW QUESTION 266

- (Exam Topic 2)

The component of the human resource management plan that includes ways in which team members can obtain certifications that support their ability to benefit the project is known as:

- A. recognition and rewards
- B. compliance
- C. staff acquisition
- D. training needs

**Answer:** D

#### NEW QUESTION 270

- (Exam Topic 2)

Which project document is updated in the Control Stakeholder Engagement process?

- A. Project reports
- B. Issue log
- C. Lessons learned documentation
- D. Work performance information

**Answer:** B

#### NEW QUESTION 271

- (Exam Topic 2)

The degree, amount, or volume of risk that an organization or individual will withstand is called risk:

- A. appetite
- B. tolerance
- C. threshold
- D. management

**Answer:** B

#### NEW QUESTION 274

- (Exam Topic 2)

A project manager who communicates to the project team through email is using which type of communication?

- A. Formal
- B. Informal
- C. Horizontal
- D. Unofficial

**Answer:** B

#### NEW QUESTION 278

- (Exam Topic 2)

The following chart contains information about the tasks in a project.

Task	PV	AC	EV
1	10,000	10,000	10,000
2	10,000	8,000	10,000
3	10,000	8,000	8,000
4	9,000	12,000	10,000
5	10,000	12,000	12,000
6	10,000	10,000	12,000
7	12,000	12,000	10,000
8	10,000	8,000	9,000
9	12,000	10,000	11,000

Based on the chart, what is the schedule performance index (SPI) for Task 4?

- A. 0.83
- B. 0.9
- C. 1.11
- D. 1.33

**Answer:** C

#### NEW QUESTION 279

- (Exam Topic 2)

Plan Communications Management develops an approach and plan for project communications based on stakeholders' needs and requirements and:

- A. Available organizational assets
- B. Project staff assignments
- C. Interpersonal skills
- D. Enterprise environmental factors

**Answer:** A

#### NEW QUESTION 284

- (Exam Topic 2)

Project management processes ensure the:

- A. alignment with organizational strategy
- B. efficient means to achieve the project objectives
- C. performance of the project team
- D. effective flow of the project throughout its life cycle

**Answer:** D

#### NEW QUESTION 289

- (Exam Topic 2)

The cost baseline and project funding requirements are outputs of which process in Project Cost Management?

- A. Estimate Costs
- B. Control Costs
- C. Plan Cost Management
- D. Determine Budget

**Answer:** D

#### NEW QUESTION 293

- (Exam Topic 2)

Which tool or technique is required in order to determine the project budget?

- A. Cost of quality
- B. Historical relationships
- C. Project management software
- D. Forecasting

**Answer:** B

#### NEW QUESTION 295

- (Exam Topic 2)

A benefit of using virtual teams in the Acquire Project Team process is the reduction of the:

- A. cultural differences of team members
- B. possibility of communication misunderstandings
- C. costs associated with travel
- D. costs associated with technology

**Answer:** C

#### NEW QUESTION 297

- (Exam Topic 2)

The primary benefit of the Plan Schedule Management process is that it:

- A. provides guidance to identify time or schedule challenges within the project.
- B. tightly links processes to create a seamless project schedule.
- C. guides how the project schedule will be managed throughout the project.
- D. creates an overview of all activities broken down into manageable subsections.

**Answer:** C

#### NEW QUESTION 298

- (Exam Topic 2)

The lowest level normally depicted in a work breakdown structure (WBS) is called a/an:

- A. work package
- B. deliverable
- C. milestone
- D. activity

**Answer:** A

#### NEW QUESTION 300

- (Exam Topic 2)

The following chart contains information about the tasks in a project.

Task	PV	AC	EV
1	10,000	10,000	10,000
2	10,000	8,000	10,000
3	10,000	8,000	8,000
4	9,000	12,000	10,000
5	10,000	12,000	12,000
6	10,000	10,000	12,000
7	12,000	12,000	10,000
8	10,000	8,000	9,000
9	12,000	10,000	11,000

Based on the chart, what is the cost performance index (CPI) for Task 2?

- A. 0.8
- B. 1
- C. 1.25
- D. 1.8

**Answer:** C

#### NEW QUESTION 304

- (Exam Topic 2)

Which basic quality tool explains a change in the dependent variable in relationship to a change observed in the corresponding independent variable?

- A. Cause-and-effect diagram
- B. Histogram
- C. Control chart
- D. Scatter diagram

**Answer:** D

#### NEW QUESTION 306

- (Exam Topic 2)

Which quality tool incorporates the upper and lower specification limits allowed within an agreement?

- A. Control chart
- B. Flowchart
- C. Checksheet
- D. Pareto diagram

**Answer:** A

#### NEW QUESTION 307

- (Exam Topic 2)

Which enterprise environmental factors may influence Plan Schedule Management?

- A. Cultural views regarding time schedules and professional and ethical behaviors
- B. Historical information and change control procedures
- C. Risk control procedures and the probability and impact matrix
- D. Resource availability and organizational culture and structure

**Answer:** D

#### NEW QUESTION 309

- (Exam Topic 2)

A special type of bar chart used in sensitivity analysis for comparing the relative importance of the variables is called a:

- A. triangular distribution
- B. tornado diagram
- C. beta distribution
- D. fishbone diagram

**Answer:** B

#### NEW QUESTION 311

- (Exam Topic 1)

A project charter is an output of which Process Group?

- A. Executing
- B. Planning
- C. Initiating
- D. Closing

**Answer:** C

#### NEW QUESTION 316

- (Exam Topic 1)

Which tool or technique is used in the Perform Integrated Change Control process?

- A. Decomposition
- B. Modeling techniques
- C. Resource optimization
- D. Meetings

**Answer:** D

#### NEW QUESTION 320

- (Exam Topic 1)

Which conflict resolution technique searches for solutions that bring some degree of satisfaction to all parties in order to temporarily or partially resolve the conflict?

- A. Force/direct
- B. Withdraw/avoid
- C. Compromise/reconcile
- D. Collaborate/problem solve

**Answer:** C

#### NEW QUESTION 324

- (Exam Topic 1)

The process of identifying and documenting project roles, responsibilities, required skills, and reporting relationships and creating a staffing management plan is known as:

- A. Develop Project Team.
- B. Manage Project Team.
- C. Acquire Project Team.
- D. Plan Human Resource Management.

**Answer:** D

#### NEW QUESTION 325

- (Exam Topic 1)

Which tool or technique is used in the Develop Project Management Plan process?

- A. Pareto diagram
- B. Performance reporting
- C. SWOT analysis
- D. Expert judgment

**Answer:** D

#### NEW QUESTION 329

- (Exam Topic 1)

What is the estimate at completion (EAC) if the budget at completion (BAC) is \$100, the actual cost (AC) is \$50, and the earned value (EV) is \$25?

- A. \$50
- B. \$100
- C. \$125
- D. \$175

**Answer:** C

#### NEW QUESTION 334

- (Exam Topic 1)

An input to the Plan Stakeholder Management process is:

- A. The project charter.
- B. The stakeholder analysis.
- C. A communication management plan.
- D. A stakeholder register.

**Answer:** D

#### NEW QUESTION 335

- (Exam Topic 1)

The Perform Quality Assurance process occurs in which Process Group?

- A. Executing
- B. Monitoring and Controlling
- C. Initiating
- D. Planning

**Answer:** A

#### NEW QUESTION 340

- (Exam Topic 1)

A key benefit of the Manage Communications process is that it enables:

- A. The best use of communication methods.
- B. An efficient and effective communication flow.
- C. Project costs to be reduced.
- D. The best use of communication technology.

**Answer:** B

#### NEW QUESTION 341

- (Exam Topic 1)

Which Control Quality tool is also known as an arrow diagram?

- A. Matrix diagram
- B. Affinity diagram
- C. Tree diagram
- D. Activity network diagram

**Answer:** D

#### NEW QUESTION 343

- (Exam Topic 1)

Status of deliverables, implementation status for change requests, and forecasted estimates to complete are examples of:

- A. Earned value management.
- B. Enterprise environmental factors.
- C. Organizational process assets.
- D. Work performance information.

**Answer:**



D

**NEW QUESTION 348**

- (Exam Topic 1)

The iterative and interactive nature of the Process Groups creates the need for the processes in which Knowledge Area?

- A. Project Communications Management
- B. Project Integration Management
- C. Project Risk Management
- D. Project Scope Management

**Answer:** B

**NEW QUESTION 349**

- (Exam Topic 1)

Units of measure, level of precision, level of accuracy, control thresholds, and rules of performance measurement are examples of items that are established in the:

- A. Cost management plan.
- B. Work performance information.
- C. Quality management plan.
- D. Work breakdown structure.

**Answer:** A

**NEW QUESTION 350**

- (Exam Topic 1)

Which tool or technique is used to manage change requests and the resulting decisions?

- A. Change control tools
- B. Expert judgment
- C. Delphi technique
- D. Change log

**Answer:** A

**NEW QUESTION 355**

- (Exam Topic 1)

Which item is a formal proposal to modify any document, deliverable, or baseline?

- A. Change request
- B. Requirements documentation
- C. Scope baseline
- D. Risk urgency assessment

**Answer:** A

**NEW QUESTION 360**

- (Exam Topic 1)

Which item is an example of personnel assessment?

- A. Resource calendar
- B. Tight matrix
- C. Team-building activity
- D. Focus group

**Answer:** D

**NEW QUESTION 362**

- (Exam Topic 1)

Identify Risks is part of which Process Group?

- A. Planning
- B. Executing
- C. Closing
- D. Initiating

**Answer:** A

**NEW QUESTION 363**

- (Exam Topic 1)

The definition of when and how often the risk management processes will be performed throughout the project life cycle is included in which risk management plan component?

- A. Timing
- B. Methodology

- C. Risk categories
- D. Budgeting

**Answer:** A

#### NEW QUESTION 366

- (Exam Topic 1)

An effective technique for resolving conflict that incorporates multiple viewpoints from differing perspectives to achieve consensus and commitment is:

- A. smooth/accommodate.
- B. force/direct,
- C. collaborate/problem solve,
- D. compromise/reconcile.

**Answer:** C

#### NEW QUESTION 367

- (Exam Topic 1)

A logical relationship in which a successor activity cannot start until a predecessor activity has finished is known as:

- A. Start-to-start (SS).
- B. Start-to-finish (SF).
- C. Finish-to-start (FS).
- D. Finish-to-finish (FF).

**Answer:** C

#### NEW QUESTION 372

- (Exam Topic 1)

Which Define Activities output extends the description of the activity by identifying the multiple components associated with each activity?

- A. Project document updates
- B. Activity list
- C. Activity attributes
- D. Project calendars

**Answer:** C

#### NEW QUESTION 373

- (Exam Topic 1)

Which item is an input to the Define Activities process?

- A. Schedule data
- B. Activity list
- C. Risk register
- D. Scope baseline

**Answer:** D

#### NEW QUESTION 375

- (Exam Topic 1)

Which Collect Requirements output links the product requirements to the deliverables that satisfy them?

- A. Requirements documentation
- B. Requirements traceability matrix
- C. Project management plan updates
- D. Project documents updates

**Answer:** B

#### NEW QUESTION 380

- (Exam Topic 1)

Organizational theory is a tool used in which Project Human Resource Management process?

- A. Manage Project Team
- B. Acquire Project Team
- C. Develop Project Team
- D. Plan Human Resource Management

**Answer:** D

#### NEW QUESTION 384

- (Exam Topic 1)

Market conditions and published commercial information are examples of which input to the Estimate Costs process?

- A. Scope baseline
- B. Organizational process assets
- C. Enterprise environmental factors
- D. Risk register

**Answer:** C

#### NEW QUESTION 389

- (Exam Topic 1)

In a project, total float measures the:

- A. Ability to shuffle schedule activities to lessen the duration of the project.
- B. Amount of time an activity can be extended or delayed without altering the project finish date.
- C. Cost expended to restore order to the project schedule after crashing the schedule.
- D. Estimate of the total resources needed for the project after performing a forward pass.

**Answer:** B

#### NEW QUESTION 394

- (Exam Topic 1)

Which input to the Identify Stakeholders process provides information about internal or external parties related to the project?

- A. Procurement documents
- B. Communications plan
- C. Project charter
- D. Stakeholder register

**Answer:** C

#### NEW QUESTION 395

- (Exam Topic 1)

In the Plan Stakeholder Management process, expert judgment is used to:

- A. Provide information needed to plan appropriate ways to engage project stakeholders.
- B. Ensure comprehensive identification and listing of new stakeholders.
- C. Analyze the information needed to develop the project scope statement.
- D. Decide the level of engagement of the stakeholders at each required stage.

**Answer:** D

#### NEW QUESTION 399

- (Exam Topic 1)

Reserve analysis is a tool and technique used in which process?

- A. Plan Risk Management
- B. Plan Risk Responses
- C. Identify Risks
- D. Control Risks

**Answer:** D

#### NEW QUESTION 402

- (Exam Topic 1)

Which Plan Schedule Management tool or technique may involve choosing strategic options to estimate and schedule the project?

- A. Facilitation techniques
- B. Expert judgment
- C. Analytical techniques
- D. Variance analysis

**Answer:** C

#### NEW QUESTION 407

- (Exam Topic 1)

Which earned value management (EVM) metric is a measure of the cost efficiency of budgeted resources expressed as a ratio of earned value (EV) to actual cost (AC) and is considered a critical EVM metric?

- A. Cost variance (CV)
- B. Cost performance index (CPI)
- C. Budget at completion (BAC)
- D. Variance at completion (VAC)

**Answer:** B

#### NEW QUESTION 412

- (Exam Topic 1)

The basis of identification for current or potential problems to support later claims or new procurements is provided by:

- A. A risk urgency assessment.
- B. The scope baseline.
- C. Work performance information.
- D. Procurement audits.

**Answer:** C

#### NEW QUESTION 415

- (Exam Topic 1)

In which Knowledge Area is the project charter developed?

- A. Project Cost Management
- B. Project Scope Management
- C. Project Time Management
- D. Project Integration Management

**Answer:** D

#### NEW QUESTION 417

- (Exam Topic 1)

Which process identifies whether the needs of a project can best be met by acquiring products, services, or results outside of the organization?

- A. Plan Procurement Management
- B. Control Procurements
- C. Collect Requirements
- D. Plan Cost Management

**Answer:** A

#### NEW QUESTION 419

- (Exam Topic 1)

Which process involves defining, preparing, and coordinating all subsidiary plans and integrating them into a comprehensive plan?

- A. Direct and Manage Project Work
- B. Develop Project Management Plan
- C. Plan Quality Management
- D. Monitor and Control Project Work

**Answer:** B

#### NEW QUESTION 422

- (Exam Topic 1)

Which group is formally chartered and responsible for reviewing, evaluating, approving, delaying, or rejecting changes to the project and for recording and communicating decisions?

- A. Project team
- B. Focus group
- C. Change control board
- D. Project stakeholders

**Answer:** C

#### NEW QUESTION 425

- (Exam Topic 1)

The only Process Group that comprises processes that typically occur from the beginning to the end of the project life cycle is:

- A. Planning.
- B. Executing,
- C. Monitoring and Controlling.
- D. Closing.

**Answer:** C

#### NEW QUESTION 427

- (Exam Topic 1)

The organization's perceived balance between risk taking and risk avoidance is reflected in the risk:

- A. Responses
- B. Appetite
- C. Tolerance
- D. Attitude

**Answer:** A

**NEW QUESTION 430**

- (Exam Topic 1)

Which process determines the risks that may affect the project and documents their characteristics?

- A. Control Risks
- B. Plan Risk Management
- C. Plan Risk Responses
- D. Identify Risks

**Answer:** D

**NEW QUESTION 435**

- (Exam Topic 1)

Which tool or technique is used in the Estimate Costs process?

- A. Acquisition
- B. Earned value management
- C. Vendor bid analysis
- D. Forecasting

**Answer:** C

**NEW QUESTION 436**

- (Exam Topic 1)

What are the Project Procurement Management processes?

- A. Conduct Procurements, Control Procurements, Integrate Procurements, and Close Procurements
- B. Estimate Procurements, Integrate Procurements, Control Procurements, and Validate Procurements
- C. Plan Procurement Management, Conduct Procurements, Control Procurements, and Close Procurements
- D. Plan Procurement Management, Perform Procurements, Control Procurements, and Validate Procurements

**Answer:** C

**NEW QUESTION 439**

- (Exam Topic 1)

Enterprise environmental factors are an input to which process?

- A. Control Scope
- B. Define Scope
- C. Plan Scope Management
- D. Collect Requirements

**Answer:** C

**NEW QUESTION 443**

- (Exam Topic 1)

Which tool or technique is effective in a project in which the deliverable is not a service or result?

- A. Inspection
- B. Variance analysis
- C. Decomposition
- D. Product analysis

**Answer:** D

**NEW QUESTION 444**

- (Exam Topic 1)

Which type of dependency is legally or contractually required or inherent in the nature of work and often involves physical limitations?

- A. Mandatory
- B. Discretionary
- C. Internal
- D. External

**Answer:** A

**NEW QUESTION 448**

- (Exam Topic 1)

Which input provides suppliers with a clear set of goals, requirements, and outcomes?

- A. Procurement statement of work
- B. Purchase order
- C. Source selection criteria
- D. Bidder conference

**Answer:** A

#### NEW QUESTION 453

- (Exam Topic 1)

A regression line is used to estimate:

- A. Whether or not a process is stable or has predictable performance.
- B. How a change to the independent variable influences the value of the dependent variable.
- C. The upper and lower specification limits on a control chart.
- D. The central tendency, dispersion, and shape of a statistical distribution.

**Answer:** B

#### NEW QUESTION 454

- (Exam Topic 1)

A large portion of a projects budget is typically expended on the processes in which Process Group?

- A. Executing
- B. Planning
- C. Monitoring and Controlling
- D. Closing

**Answer:** B

#### NEW QUESTION 458

- (Exam Topic 1)

Which input to Collect Requirements is used to identify stakeholders who can provide information on requirements?

- A. Stakeholder register
- B. Scope management plan
- C. Stakeholder management plan
- D. Project charter

**Answer:** A

#### NEW QUESTION 460

- (Exam Topic 1)

Which Knowledge Areas include processes from the Closing Process Group?

- A. Project Quality Management and Project Time Management
- B. Project Scope Management and Project Risk Management
- C. Project Stakeholder Management and Project Cost Management
- D. Project Integration Management and Project Procurement Management

**Answer:** D

#### NEW QUESTION 463

- (Exam Topic 1)

An input to the Identify Stakeholders process is:

- A. The project management plan.
- B. The stakeholder register.
- C. Procurement documents.
- D. Stakeholder analysis.

**Answer:** C

#### NEW QUESTION 468

- (Exam Topic 1)

A project in which the scope, time, and cost of delivery are determined as early as possible is following a life cycle that is:

- A. Adaptive
- B. Predictive
- C. Incremental
- D. Iterative

**Answer:** B

#### NEW QUESTION 469

- (Exam Topic 1)

A strengths, weaknesses, opportunities, and threats (SWOT) analysis is a tool or technique used in which process?

- A. Identify Risks
- B. Control Risks
- C. Perform Quantitative Risk Analysis
- D. Perform Qualitative Risk Analysis

**Answer:**

A

**NEW QUESTION 474**

- (Exam Topic 1)

Which type of project management office (PMO) supplies templates, best practices, and training to project teams?

- A. Supportive
- B. Directive
- C. Controlling
- D. Instructive

**Answer:** A

**NEW QUESTION 475**

- (Exam Topic 1)

Which stakeholder classification model groups stakeholders based on their level of authority and their active involvement in the project?

- A. Power/influence grid
- B. Power/interest grid
- C. Influence/impact grid
- D. Salience model

**Answer:** A

**NEW QUESTION 480**

- (Exam Topic 1)

Regression analysis, failure mode and effect analysis (FMEA), fault tree analysis (FTA), and trend analysis are examples of which tool or technique?

- A. Expert judgment
- B. Forecasting methods
- C. Earned value management
- D. Analytical techniques

**Answer:** D

**NEW QUESTION 485**

- (Exam Topic 1)

An input to the Plan Procurement Management process is:

- A. Source selection criteria.
- B. Market research.
- C. A stakeholder register.
- D. A records management system.

**Answer:** C

**NEW QUESTION 488**

- (Exam Topic 1)

A risk response strategy in which the project team shifts the impact of a threat, together with ownership of the response, to a third party is called:

- A. mitigate
- B. accept
- C. transfer
- D. avoid

**Answer:** C

**NEW QUESTION 489**

- (Exam Topic 1)

The review of a sellers progress toward achieving the goals of scope and quality within cost and schedule compared to the contract is known as:

- A. Work performance information.
- B. Inspections and audits.
- C. Payment systems.
- D. Procurement performance reviews.

**Answer:** D

**NEW QUESTION 492**

- (Exam Topic 1)

Typical outcomes of a project include:

- A. Products, services, and improvements.
- B. Products, programs, and services.
- C. Improvements, portfolios, and services.



D. Improvements, processes, and products.

**Answer:** A

**NEW QUESTION 494**

- (Exam Topic 1)

Plan Schedule Management is a process in which Knowledge Area?

- A. Project Scope Management
- B. Project Human Resource Management
- C. Project Integration Management
- D. Project Time Management

**Answer:** D

**NEW QUESTION 497**

- (Exam Topic 1)

An input to Develop Project Charter is a/an:

- A. Business case.
- B. Activity list.
- C. Project management plan.
- D. Cost forecast.

**Answer:** A

**NEW QUESTION 500**

- (Exam Topic 1)

A method of obtaining early feedback on requirements by providing a working model of the expected product before actually building is known as:

- A. Benchmarking.
- B. Context diagrams.
- C. Brainstorming.
- D. Prototyping.

**Answer:** D

**NEW QUESTION 505**

- (Exam Topic 1)

Payback period, return on investment, internal rate of return, discounted cash flow, and net present value are all examples of:

- A. Expert judgment.
- B. Analytical techniques.
- C. Earned value management.
- D. Group decision-making techniques.

**Answer:** B

**NEW QUESTION 510**

- (Exam Topic 1)

Updates to organizational process assets such as procurement files, deliverable acceptances, and lessons learned documentation are typical outputs of which process?

- A. Close Project or Phase
- B. Conduct Procurements
- C. Control Procurements
- D. Close Procurements

**Answer:** D

**NEW QUESTION 512**

- (Exam Topic 1)

Which changes occur in risk and uncertainty as well as the cost of changes as the life cycle of a typical project progresses?

- A. Risk and uncertainty increase; the cost of changes increases.
- B. Risk and uncertainty increase; the cost of changes decreases.
- C. Risk and uncertainty decrease; the cost of changes increases.
- D. Risk and uncertainty decrease; the cost of changes decreases.

**Answer:** C

**NEW QUESTION 517**

- (Exam Topic 1)

Which tools or techniques are used in the Plan Schedule Management process?

- A. Benchmarking, expert judgment, and analytical techniques
- B. Statistical sampling, benchmarking, and meetings
- C. Negotiations, pre-assignment, and multi-criteria decision analysis
- D. Expert judgment, analytical techniques, and meetings

**Answer:** D

#### NEW QUESTION 518

- (Exam Topic 1)

Which basic quality tool is most useful when gathering attributes data in an inspection to identify defects?

- A. Control charts
- B. Pareto diagrams
- C. Ishikavva diagrams
- D. Checksheets

**Answer:** D

#### NEW QUESTION 523

- (Exam Topic 1)

The business needs, assumptions, and constraints and the understanding of the customers needs and high-level requirements are documented in the:

- A. Project management plan.
- B. Project charter.
- C. Work breakdown structure.
- D. Stakeholder register.

**Answer:** B

#### NEW QUESTION 524

- (Exam Topic 1)

Sending letters, memos, reports, emails, and faxes to share information is an example of which type of communication?

- A. Direct
- B. Interactive
- C. Pull
- D. Push

**Answer:** D

#### NEW QUESTION 526

- (Exam Topic 1)

When a backward pass is calculated from a schedule constraint that is later than the early finish date that has been calculated during a forward pass calculation, this causes which type of total float?

- A. Negative
- B. Zero
- C. Positive
- D. Free

**Answer:** C

#### NEW QUESTION 527

- (Exam Topic 1)

An input to Close Project or Phase is:

- A. Accepted deliverables,
- B. Final products or services,
- C. Document updates,
- D. Work performance information.

**Answer:** A

#### NEW QUESTION 530

- (Exam Topic 1)

Sensitivity analysis is typically displayed as a/an:

- A. Decision tree diagram.
- B. Tornado diagram.
- C. Pareto diagram.
- D. Ishikawa diagram.

**Answer:** B

#### NEW QUESTION 532

- (Exam Topic 6)

The features and functions that characterize a result, product, or service can refer to:

- A. project scope
- B. product scope
- C. service scope
- D. product breakdown structure

**Answer:** B

#### NEW QUESTION 534

- (Exam Topic 6)

What type of change requires the submission of a change request?

- A. Changes in assigned resources
- B. Changes in a technical solution
- C. Changes in status reporting
- D. Changes in the project's scope

**Answer:** D

#### NEW QUESTION 538

- (Exam Topic 6)

What should a project manager use to determine how much money is needed to complete a project?

- A. Earned value management (EVM)
- B. Estimate at completion (EAC)
- C. Earned value analysis (EVA)
- D. Budget at completion (BAG)

**Answer:** B

#### NEW QUESTION 539

- (Exam Topic 6)

Which is an example of analogous estimating?

- A. Estimates are created by individuals or groups with specialized knowledge.
- B. Estimates are created by using information about resources of previous similar projects.
- C. Estimates are created by analyzing data.
- D. Estimates are created at the task level and aggregated upwards.

**Answer:** B

#### NEW QUESTION 540

- (Exam Topic 6)

Which of the following are processes associated with Project Cost Management?

- A. Develop Cost
- B. Estimate Costs, Determine Budget
- C. Control Costs
- D. Develop Budget, Determine Budget, Determine Risks, Control Costs
- E. Plan Cost Management, Estimate Cost
- F. Determine Budget
- G. Control Costs
- H. Plan Budget Management
- I. Determine Budget, Create Cost Account
- J. Control Costs

**Answer:** C

#### NEW QUESTION 541

- (Exam Topic 6)

Which contract type is least desirable to a vendor?

- A. Fixed price with economic price adjustment (FPEPA)
- B. Firm fixed price (FFP)
- C. Cost plus fixed fee (CPFF)
- D. Cost plus award fee (CPAF)

**Answer:** B

#### NEW QUESTION 542

- (Exam Topic 6)

A project manager is assigned to a strategic project. Senior management asks the project manager to give a presentation in order to request support that will ensure the success of the project.

Which entities will the project manager attempt to influence?

- A. The project and the organization
- B. The organization and the industry
- C. The subject matter experts and the project
- D. The change control board and the organization

**Answer:** D

**NEW QUESTION 546**

- (Exam Topic 5)

What are the identified risks for doing excessive decomposition in a WBS?

- A. Insufficient project funding and disqualification of sellers
- B. Insufficient project funding and ineffective use of resources
- C. Disqualification of sellers and non-productive management efforts
- D. Non-productive management effort and inefficient use of resources

**Answer:** D

**NEW QUESTION 550**

- (Exam Topic 5)

Which of the following are an enterprise environmental factor that can influence the Identify Risks process?

- A. Work performance reports
- B. Assumptions logs
- C. Network diagrams
- D. Academic studies

**Answer:** D

**NEW QUESTION 553**

- (Exam Topic 5)

Which of the following change requests can bring expected future performance of the project work in line with the project management plan?

- A. Corrective action
- B. Defect repair
- C. Preventative action
- D. Probable action

**Answer:** A

**NEW QUESTION 555**

- (Exam Topic 5)

Which of the following includes how requirements activities will be planned, tracked, and reported?

- A. Configuration management plan
- B. Scope baseline
- C. Requirements management plan
- D. Schedule baseline

**Answer:** C

**NEW QUESTION 558**

- (Exam Topic 5)

Which type of diagram includes groups of information and shows relationships between factors, causes, and objectives?

- A. Affinity
- B. Scatter
- C. Fishbone
- D. Matrix

**Answer:** D

**NEW QUESTION 561**

- (Exam Topic 5)

The process for performing variance analysis may vary, depending on:

- A. scenario building, technology forecasting, and forecast by analogy.
- B. working relationships among various stakeholders and team members.
- C. application area, the standard used, and the industry,
- D. work to be completed next.

**Answer:** C

**NEW QUESTION 566**

- (Exam Topic 5)

Which of the following is an output of Close Procurements?

- A. Accepted deliverables
- B. Organizational process assets updates
- C. Managing stakeholder expectations
- D. Performance reports

**Answer:** B

#### NEW QUESTION 571

- (Exam Topic 5)

Plan-do-check-act is also known as:

- A. prevention over inspection.
- B. statistical sampling.
- C. management responsibility,
- D. continuous improvement.

**Answer:** D

#### NEW QUESTION 576

- (Exam Topic 5)

During project selection, which factor is most important?

- A. Types of constraints
- B. Internal business needs
- C. Budget
- D. Schedule

**Answer:** B

#### NEW QUESTION 581

- (Exam Topic 5)

When a permitting agency takes longer than planned to issue a permit, this can be described as a risk:

- A. event.
- B. response,
- C. perception.
- D. impact.

**Answer:** A

#### NEW QUESTION 583

- (Exam Topic 5)

The processes required to establish the scope of the project, refine the objectives, and define the course of action required to attain the objectives that the project has been undertaken to achieve are grouped within which Process Group?

- A. Initiating
- B. Planning
- C. Executing
- D. Monitoring and Controlling

**Answer:** B

#### NEW QUESTION 586

- (Exam Topic 5)

Which of the following is a statistical concept that calculates the average outcome when the future includes scenarios that may or may not happen?

- A. Sensitivity analysis
- B. Three-point estimate
- C. Modeling and simulation
- D. Expected monetary value analysis

**Answer:** D

#### NEW QUESTION 587

- (Exam Topic 5)

Which of the following is a strategy to deal with positive risks or opportunities?

- A. Mitigate
- B. Transfer
- C. Exploit
- D. Avoid

**Answer:** C

#### NEW QUESTION 588

- (Exam Topic 5)

Which type of dependency is contractually required or inherent in the nature of the work?

- A. External
- B. Lead
- C. Discretionary
- D. Mandatory

**Answer:** D

#### NEW QUESTION 589

- (Exam Topic 5)

At which stage of team development do members begin to work together, adjust work habits, and trust each other?

- A. Forming
- B. Storming
- C. Norming
- D. Performing

**Answer:** C

#### NEW QUESTION 591

- (Exam Topic 5)

The project management processes are usually presented as discrete processes with defined interfaces, while in practice they:

- A. operate separately.
- B. move together in batches,
- C. overlap and interact.
- D. move in a sequence.

**Answer:** C

#### NEW QUESTION 593

- (Exam Topic 5)

An input to the Estimate Activity Resources process is:

- A. Activity resource requirements.
- B. Published estimating data.
- C. Resource calendars.
- D. Resource breakdown structure (RBS).

**Answer:** C

#### NEW QUESTION 596

- (Exam Topic 5)

The process of identifying specific actions to be performed to produce project deliverables is:

- A. Define Activities.
- B. Create WBS.
- C. Define Scope.
- D. Develop Schedule.

**Answer:** A

#### NEW QUESTION 600

- (Exam Topic 5)

A project manager has created an issue log to document issues communicated by project team members during weekly team meetings. This is an input of:

- A. Manage Stakeholder Expectations.
- B. Monitor and Control Risks.
- C. Plan Risk Management.
- D. Report Performance.

**Answer:** A

#### NEW QUESTION 601

- (Exam Topic 5)

The cost benefit analysis tool is used for creating:

- A. Pareto charts.
- B. quality metrics.
- C. change requests,
- D. Ishikawa diagrams.

**Answer:** B

#### NEW QUESTION 602

- (Exam Topic 5)

The application of knowledge, skills, tools, and techniques to project activities to meet project requirements describes management of which of the following?

- A. Project
- B. Scope
- C. Contract
- D. Program

**Answer:** A

#### NEW QUESTION 604

- (Exam Topic 5)

The group technique that enhances brainstorming with a voting process used to rank the most useful ideas for prioritization is called the:

- A. majority rule technique.
- B. nominal group technique.
- C. Delphi technique,
- D. idea/mind mapping technique.

**Answer:** B

#### NEW QUESTION 608

- (Exam Topic 5)

The project has a current cost performance index of 0.80. Assuming this performance will continue, the new estimate at completion is \$1000. What was the original budget at completion for the project?

- A. \$800
- B. \$1000
- C. \$1250
- D. \$1800

**Answer:** A

#### NEW QUESTION 611

- (Exam Topic 5)

Which type of contract is a hybrid of both a cost-reimbursable and a fixed-price contract?

- A. Cost Plus Award Fee Contract (CPAF)
- B. Firm-Fixed -Price Contract (FFP)
- C. Time and Material Contract (T&M)
- D. Cost Plus Incentive Fee Contract (CPIF)

**Answer:** C

#### NEW QUESTION 615

- (Exam Topic 5)

While preparing the project management plan on a weekly basis, the project manager indicates the intention to provide an issues report to the staff via e-mail. In which part of the plan will this type of information be included?

- A. Communications management plan
- B. Human resource plan
- C. Quality management plan
- D. Procurement management plan

**Answer:** A

#### NEW QUESTION 616

- (Exam Topic 5)

Who is responsible for initiating a project?

- A. Project sponsor
- B. Project manager
- C. Program manager
- D. Project management office (PMO)

**Answer:** A

#### NEW QUESTION 617

- (Exam Topic 5)

Which of the following is a tool or technique used in the Acquire Project Team process?

- A. Networking
- B. Training
- C. Negotiation
- D. Issue log



**Answer:** C

**NEW QUESTION 619**

- (Exam Topic 5)

Funding limit reconciliation is a tool and technique used in which process?

- A. Control Costs
- B. Determine Budget
- C. Estimate Costs
- D. Control Budget

**Answer:** B

**NEW QUESTION 620**

- (Exam Topic 5)

The initial development of a Project Scope Management plan uses which technique?

- A. Alternatives identification
- B. Scope decomposition
- C. Expert judgment
- D. Product analysis

**Answer:** C

**NEW QUESTION 624**

- (Exam Topic 5)

When cost variance is negative and schedule variance is positive, the project is:

- A. under budget and behind schedule.
- B. over budget and ahead of schedule.
- C. on schedule.
- D. complete; all planned values have been earned.

**Answer:** B

**NEW QUESTION 629**

- (Exam Topic 5)

Risk exists the moment that a project is:

- A. planned.
- B. conceived.
- C. chartered.
- D. executed.

**Answer:** B

**NEW QUESTION 632**

- (Exam Topic 5)

Resource calendars are included in the:

- A. staffing management plan.
- B. work breakdown structure (WBS).
- C. project communications plan.
- D. project charter.

**Answer:** A

**NEW QUESTION 635**

- (Exam Topic 5)

Fast tracking is a schedule compression technique used to shorten the project schedule without changing project scope. Which of the following can result from fast tracking?

- A. The risk of achieving the shortened project time is increased.
- B. The critical path will have positive total float.
- C. Contingency reserves are released for redeployment by the project manager.
- D. Duration buffers are added to maintain a focus on planned activity durations.

**Answer:** A

**NEW QUESTION 636**

- (Exam Topic 5)

The project budget is set at \$150,000. The project duration is planned to be one year. At the completion of Week 16 of the project, the following information is collected: Actual cost = \$50,000, Plan cost = \$45,000, Earned value = \$40,000. What is the cost performance index?

- A. 0.8

- B. 0.89
- C. 1.13
- D. 1.25

**Answer:** A

#### NEW QUESTION 640

- (Exam Topic 5)

Which statement correctly describes the value of a business case?

- A. It provides the necessary information to determine if a project is worth the required investment.
- B. It provides for alternative dispute resolution procedures in event of contract default.
- C. It offers one of several alternative scenarios which assist in performing qualitative risk analysis.
- D. It is used to help a project manager understand the scope of commercial advantages.

**Answer:** A

#### NEW QUESTION 644

- (Exam Topic 5)

Which of the following can be used as an input for Define Scope?

- A. Product analysis
- B. Project charter
- C. Scope baseline
- D. Project scope statement

**Answer:** B

#### NEW QUESTION 646

- (Exam Topic 5)

The three processes of Project Cost Management are:

- A. Estimate Costs, Control Schedule, and Control Costs.
- B. Estimate Costs, Determine Budget, and Estimate Activity Resources.
- C. Determine Budget, Control Schedule, and Estimate Activity Resources.
- D. Estimate Costs, Determine Budget, and Control Costs.

**Answer:** D

#### NEW QUESTION 647

- (Exam Topic 5)

The process improvement plan details the steps for analyzing processes to identify activities which enhance their:

- A. quality.
- B. value.
- C. technical performance.
- D. status.

**Answer:** B

#### NEW QUESTION 649

- (Exam Topic 4)

Which of the following helps to ensure that each requirement adds business value by linking it to the business and project objectives?

- A. Requirements traceability matrix
- B. Work breakdown structure (WBS) dictionary
- C. Requirements management plan
- D. Requirements documentation

**Answer:** A

#### NEW QUESTION 653

- (Exam Topic 4)

A given schedule activity is most likely to last four weeks. In a best-case scenario, the schedule activity is estimated to last two weeks. In a worst-case scenario, the schedule activity is estimated to last 12 weeks. Given these three estimates, what is the expected duration of the activity?

- A. Three weeks
- B. Four weeks
- C. Five weeks
- D. Six weeks

**Answer:** C

#### NEW QUESTION 655

- (Exam Topic 4)

What is the schedule performance index (SPI) using the following data? BAC = \$100,000 PV = \$50,000 AC = \$80,000 EV = \$40,000

- A. 1
- B. 0.4
- C. 0.5
- D. 0.8

**Answer:** D

#### NEW QUESTION 659

- (Exam Topic 4)

Quality metrics are an output of which process?

- A. Plan Quality
- B. Perform Quality Control
- C. Perform Quality Assurance
- D. Perform Qualitative Risk Analysis

**Answer:** A

#### NEW QUESTION 662

- (Exam Topic 4)

Which of the following is the primary output of the Identify Risks process?

- A. Risk management plan
- B. Risk register
- C. Change requests
- D. Risk response plan

**Answer:** B

#### NEW QUESTION 665

- (Exam Topic 4)

What does a CPI value greater than 1.0 indicate?

- A. Cost right at the estimated value
- B. Cost under the estimated value
- C. Cost right at the actual value
- D. Cost over the estimated value

**Answer:** B

#### NEW QUESTION 669

- (Exam Topic 4)

When sequencing activities, what does the common acronym FF stand for?

- A. Fixed Fee
- B. Free Float
- C. Fixed Finish
- D. Finish-to-Finish

**Answer:** D

#### NEW QUESTION 672

- (Exam Topic 4)

What is the most accurate rough order of magnitude (ROM)?

- A. In the Initiation phase, the estimate is in the range of +/- 50%.
- B. In the Planning phase, the estimate is in the range of +/- 50%.
- C. In the Monitoring and Controlling phase, the estimate is in the range of +/- 15%.
- D. In the Closing phase, the estimate is in the range of +/- 15%.

**Answer:** A

#### NEW QUESTION 677

- (Exam Topic 4)

Which activity involves ensuring that the composition of a projects configuration items is correct?

- A. Configuration Identification
- B. Configuration Status Accounting
- C. Configuration Verification and Audit
- D. Configuration Quality Assurance

**Answer:** C

#### NEW QUESTION 681

- (Exam Topic 4)

Which of the following is an input to the Perform Qualitative Risk Analysis process?

- A. Risk register
- B. Risk data quality assessment
- C. Risk categorization
- D. Risk urgency

**Answer:** A

#### NEW QUESTION 686

- (Exam Topic 4)

What is the primary benefit of meeting quality requirements?

- A. Quality metrics
- B. Less rework
- C. Quality control measurements
- D. Benchmarking

**Answer:** B

#### NEW QUESTION 690

- (Exam Topic 4)

Which of the following is an input to Control Scope?

- A. Project schedule
- B. Organizational process assets updates
- C. Project document updates
- D. Work performance information

**Answer:** D

#### NEW QUESTION 692

- (Exam Topic 4)

A tool or technique in Perform Quality Control that a project manager would use is:

- A. quality audits.
- B. process analysis.
- C. benchmarking.
- D. inspection.

**Answer:** D

#### NEW QUESTION 697

- (Exam Topic 4)

Who provides the inputs for the original estimates of activity durations for tasks on the project plan?

- A. Project sponsor
- B. Project manager
- C. Person responsible for project scheduling
- D. Person who is most familiar with the task

**Answer:** D

#### NEW QUESTION 702

- (Exam Topic 4)

In the Develop Project Team process, which of the following is identified as a critical factor for a project's success?

- A. Team meetings
- B. Subcontracting teams
- C. Virtual teams
- D. Teamwork

**Answer:** D

#### NEW QUESTION 704

- (Exam Topic 4)

Which of the following schedule network analysis techniques is applied when a critical path method calculation has been completed and resources availability is critical?

- A. Applying calendars
- B. Resource leveling
- C. Resource planning
- D. Resource conflict management

**Answer:** B

#### NEW QUESTION 708

- (Exam Topic 4)

An input to the Perform Quantitative Risk Analysis process is the:

- A. quality management plan.
- B. project management plan.
- C. communications management plan.
- D. schedule management plan.

**Answer:** D

#### NEW QUESTION 711

- (Exam Topic 4)

Which category of contracts are sellers legally obligated to complete, with possible financial damages if the project objectives are not met?

- A. Cost-reimbursable contracts
- B. Time and Material contracts (T&M)
- C. Fixed-price contracts
- D. Cost Plus Fixed Fee Contracts (CPFF)

**Answer:** C

#### NEW QUESTION 714

- (Exam Topic 4)

Which of the following Project Communication Management processes uses performance reports as an input?

- A. Manage Stakeholder Expectations
- B. Report Performance
- C. Distribute Information
- D. Plan Communications

**Answer:** C

#### NEW QUESTION 718

- (Exam Topic 4)

Project contracts generally fall into which of the following three broad categories?

- A. Fixed-price, cost reimbursable, time and materials
- B. Make-or-buy, margin analysis, fixed-price
- C. Time and materials, fixed-price, margin analysis
- D. Make-or-buy, lump-sum, cost-plus-incentive

**Answer:** A

#### NEW QUESTION 722

- (Exam Topic 4)

Which of the following documents allows the project manager to assess risks that may require near term action?

- A. Probability and impact matrix
- B. Contingency analysis report
- C. Risk urgency assessment
- D. Rolling wave plan

**Answer:** C

#### NEW QUESTION 727

- (Exam Topic 4)

Co-location is a tool and technique of:

- A. Develop Human Resource Plan.
- B. Manage Project Team.
- C. Develop Project Team.
- D. Acquire Project Team.

**Answer:** C

#### NEW QUESTION 732

- (Exam Topic 4)

Which of the following is an input to the Direct and Manage Project Execution process?

- A. Approved change requests
- B. Approved contract documentation
- C. Work performance information
- D. Rejected change requests

**Answer:** A

#### NEW QUESTION 733

- (Exam Topic 4)

What is a tool to improve team performance?

- A. Staffing plan
- B. External feedback
- C. Performance reports
- D. Co-location

**Answer:** D

#### NEW QUESTION 738

- (Exam Topic 4)

Which of the following tools and techniques is used in the Verify Scope process?

- A. Inspection
- B. Variance analysis
- C. Expert judgment
- D. Decomposition

**Answer:** A

#### NEW QUESTION 740

- (Exam Topic 4)

Which of the following is an output of the Distribute Information process?

- A. Project calendar
- B. Communications management plan
- C. Organizational process assets updates
- D. Project document updates

**Answer:** C

#### NEW QUESTION 742

- (Exam Topic 4)

Which provides the basic framework for managing a project?

- A. Project life cycle
- B. Work breakdown structure (WBS)
- C. Enterprise environmental factors
- D. Project initiation

**Answer:** A

#### NEW QUESTION 744

- (Exam Topic 4)

The process of aggregating the estimated costs of individual activities or work packages to establish an authorized cost baseline is:

- A. Determine Budget.
- B. Baseline Budget.
- C. Control Costs.
- D. Estimate Costs.

**Answer:** A

#### NEW QUESTION 747

- (Exam Topic 4)

The key benefit of the Monitoring and Controlling Process Group is the ability to:

- A. establish and manage project communication channels, both external and internal to the project team.
- B. influence the stakeholders that want to circumvent integrated change control so that their changes are implemented.
- C. monitor the ongoing project team against the team performance assessments and the project performance baseline.
- D. observe and measure project performance regularly and consistently to identify variances from the project management plan.

**Answer:** D

#### NEW QUESTION 748

- (Exam Topic 4)

When addressing roles and responsibilities, which item ensures that the staff has the skills required to complete project activities?

- A. Authority
- B. Role
- C. Competency
- D. Responsibility

**Answer:**

C

**NEW QUESTION 750**

- (Exam Topic 4)

Lessons learned documentation is gathered during which of the following Project Management Process Groups?

- A. Planning
- B. Executing
- C. Closing
- D. Initiating

**Answer: C**

**NEW QUESTION 754**

- (Exam Topic 4)

Which of the following is an output from Control Scope?

- A. Change requests
- B. Variance analysis
- C. Accepted deliverables
- D. Requirements documentation

**Answer: A**

**NEW QUESTION 755**

- (Exam Topic 4)

A method to manage stakeholder expectations in the scope statement is to clearly:

- A. state the guiding principles of the organization.
- B. identify alternatives to generate different approaches.
- C. state what is out of scope.
- D. outline the results of the Delphi technique.

**Answer: C**

**NEW QUESTION 759**

- (Exam Topic 4)

Changes to formally controlled documentation, plans, etc. to reflect modified or additional ideas or content are known as:

- A. updates.
- B. defect repairs.
- C. preventive actions.
- D. corrective actions.

**Answer: A**

**NEW QUESTION 764**

- (Exam Topic 4)

Control charts, flowcharting, histograms, Pareto charts, and scatter diagrams are tools and techniques of which process?

- A. Perform Quality Control
- B. Perform Quality Assurance
- C. Plan Quality
- D. Report Performance

**Answer: C**

**NEW QUESTION 765**

- (Exam Topic 4)

The definition of operations is a/an:

- A. organizational function performing the temporary execution of activities that produce the same product or provide repetitive service.
- B. temporary endeavor undertaken to create a unique product, service, or result.
- C. organization that provides oversight for an administrative area.
- D. organizational function performing the ongoing execution of activities that produce the same product or provide repetitive service.

**Answer: D**

**NEW QUESTION 768**

- (Exam Topic 4)

Which of the following outputs from the Control Schedule process aids in the communication of schedule variance (SV), schedule performance index (SPI), or any performance status to stakeholders?

- A. Performance organizations
- B. Schedule baselines
- C. Work performance measurements



D. Change requests

**Answer:** C

**NEW QUESTION 771**

- (Exam Topic 4)

Which of the following terms indicates a deliverable-oriented hierarchical decomposition of the project work?

- A. WBS directory
- B. Activity list
- C. WBS
- D. Project schedule

**Answer:** C

**NEW QUESTION 774**

- (Exam Topic 4)

Which characteristic do projects and operational work share in common?

- A. Performed by systems
- B. Constrained by limited resources
- C. Repetitiveness
- D. Uniqueness

**Answer:** B

**NEW QUESTION 779**

- (Exam Topic 4)

Which of the following is a tool and technique used in the Develop Schedule process?

- A. Three-point estimates
- B. Resource leveling
- C. Precedence diagramming method
- D. Bottom-up estimating

**Answer:** B

**NEW QUESTION 782**

- (Exam Topic 4)

Prioritizing risks for further analysis or action by assessing and combining their probability of occurrence and impact takes place in which process?

- A. Monitor and Control Risks
- B. Plan Risk Management
- C. Perform Qualitative Risk Analysis
- D. Perform Quantitative Risk Analysis

**Answer:** C

**NEW QUESTION 783**

- (Exam Topic 4)

Which type of chart is a graphic representation of a process showing the relationships among process steps?

- A. Control
- B. Bar
- C. Flow
- D. Pareto

**Answer:** C

**NEW QUESTION 784**

- (Exam Topic 4)

Which of the following is an output of the Perform Integrated Change Control process?

- A. Project document updates
- B. Organizational process assets updates
- C. Change requests
- D. Deliverables

**Answer:** A

**NEW QUESTION 788**

- (Exam Topic 4)

Which of the following are outputs of Develop Project Team?

- A. Human resources plan changes and project staff assignment updates

- B. Project management plan updates and enterprise environmental factor updates
- C. Resource calendars and project management plan updates
- D. Team performance assessments and enterprise environmental factor updates

**Answer:** D

#### NEW QUESTION 791

- (Exam Topic 4)

As the project progresses, which of the following is routinely collected from the project activities?

- A. Communication management activities
- B. Change requests
- C. Configuration verification and audit
- D. Work performance information

**Answer:** D

#### NEW QUESTION 792

- (Exam Topic 4)

The progressive detailing of the project management plan is called:

- A. expert judgment.
- B. rolling wave planning.
- C. work performance information.
- D. specification.

**Answer:** B

#### NEW QUESTION 795

- (Exam Topic 4)

The purpose of inspection in Perform Quality Control is to keep errors:

- A. in line with a measured degree of conformity.
- B. out of the hands of the customer.
- C. in a specified range of acceptable results.
- D. out of the process.

**Answer:** B

#### NEW QUESTION 798

- (Exam Topic 4)

Managing procurement relationships and monitoring contract performance are part of which process?

- A. Conduct Procurements
- B. Plan Procurements
- C. Administer Procurements
- D. Close Procurements

**Answer:** C

#### NEW QUESTION 802

- (Exam Topic 4)

Which tool and technique is used in Conduct Procurements?

- A. Teaming agreements
- B. Expert judgment
- C. Bidder conferences
- D. Contract types

**Answer:** C

#### NEW QUESTION 807

- (Exam Topic 4)

The project manager at an organization has just realized that some of the engineering staff has been allocated to project Y and will not be available to finish task X. The project manager has also discovered that at the current pace, it will not be possible to complete the project on time. Due to cost constraints, hiring more work force is not a viable option. Which tools are at the manager's disposal?

- A. Resource leveling and fast tracking
- B. Fast tracking and crashing
- C. Crashing and applying leads and lags
- D. Scheduling tools and applying leads and lags

**Answer:** A

#### NEW QUESTION 811

- (Exam Topic 4)

Which type of estimating is used to improve the accuracy of an activity's duration?

- A. Analogous
- B. Parametric
- C. Three-point
- D. What-if scenario analysis

**Answer:** C

#### NEW QUESTION 816

- (Exam Topic 4)

Which of the following strategic considerations often results in project authorization?

- A. Customer requests and/or issue resolution
- B. Stakeholder expectations and/or strategic opportunity (business need)
- C. Technological advancement and/or senior executive request
- D. Market demand and/or legal requirements

**Answer:** D

#### NEW QUESTION 817

- (Exam Topic 4)

Which of the following is developed from the project scope baseline and defines only that portion of the project scope that is to be included within a related contract?

- A. Product scope description
- B. Procurement statement of work
- C. Project schedule
- D. Work breakdown structure (WBS)

**Answer:** B

#### NEW QUESTION 819

- (Exam Topic 4)

The output that defines an approach to increase the support and minimize negative impacts of stakeholders is the:

- A. stakeholder management strategy.
- B. communications management plan,
- C. stakeholder register,
- D. performance report.

**Answer:** A

#### NEW QUESTION 822

- (Exam Topic 4)

Tools and techniques used for Plan Communications include the communication:

- A. requirements analysis, communication technology, communication models, and communication methods.
- B. methods, stakeholder register, communication technology, and communication models.
- C. requirements, communication technology, communication requirements analysis, and communication methods.
- D. management plan, communication technology, communication models, and communication requirements analysis.

**Answer:** A

#### NEW QUESTION 823

- (Exam Topic 4)

The PV is \$1000, EV is \$2000, and AC is \$1500. What is CPI?

- A. 1.33
- B. 2
- C. 0.75
- D. 0.5

**Answer:** A

#### NEW QUESTION 827

- (Exam Topic 4)

A purchase order for a specified item to be delivered by a specified date for a specified price is the simplest form of what type of contract?

- A. Cost-reimbursable
- B. Time and material
- C. Fixed price or lump-sum
- D. Cost-plus-fixed-fee

**Answer:** C

#### NEW QUESTION 832

- (Exam Topic 4)

Which technique helps to determine the risks that have the most potential impact on a project?

- A. Cost risk simulation analysis
- B. Expected monetary value analysis
- C. Modeling and simulation
- D. Sensitivity analysis

**Answer:** D

#### NEW QUESTION 834

- (Exam Topic 4)

The process of identifying the stakeholders' information needs is completed during:

- A. Plan Communications.
- B. Manage Stakeholder Expectations.
- C. Stakeholder Analysis.
- D. Identify Stakeholders.

**Answer:** A

#### NEW QUESTION 837

- (Exam Topic 4)

Which of the following is an example of the simplest fixed-price contract?

- A. Purchase requisition
- B. Purchase order
- C. Verbal agreement
- D. Request for quote

**Answer:** B

#### NEW QUESTION 838

- (Exam Topic 4)

In which type of organizational structure are staff members grouped by specialty?

- A. Functional
- B. Projectized
- C. Matrix
- D. Balanced

**Answer:** A

#### NEW QUESTION 842

- (Exam Topic 4)

Which type of agreement is legal, contractual, and between two or more entities to form a partnership, joint venture, or some other arrangement as defined by the parties?

- A. Teaming
- B. Collective bargaining
- C. Sharing
- D. Working

**Answer:** A

#### NEW QUESTION 845

- (Exam Topic 4)

Change request status updates are an output of which process?

- A. Perform Integrated Change Control
- B. Direct and Manage Project Execution
- C. Close Project or Phase
- D. Monitor and Control Project Work

**Answer:** A

#### NEW QUESTION 848

- (Exam Topic 4)

Which of the following factors is lowest at the start of the project?

- A. Cost of changes
- B. Stakeholder influences
- C. Risk
- D. Uncertainty

**Answer:**

A

**NEW QUESTION 849**

- (Exam Topic 4)

Which tool or technique is used in Close Procurements?

- A. Contract plan
- B. Procurement plan
- C. Closure process
- D. Procurement audits

**Answer: D**

**NEW QUESTION 854**

- (Exam Topic 4)

The project manager needs to review the templates in use. The templates are part of the:

- A. Enterprise environmental factors.
- B. Historical information,
- C. Organizational process assets.
- D. Corporate knowledge base.

**Answer: C**

**NEW QUESTION 857**

- (Exam Topic 4)

How many Project Management Process Groups are there?

- A. 3
- B. 4
- C. 5
- D. 6

**Answer: C**

**NEW QUESTION 861**

- (Exam Topic 6)

Which tool should a project manager consider to deal with multiple sources of risk?

- A. An updated risk register
- B. Risk breakdown structure
- C. Issue log
- D. Stakeholder register

**Answer: B**

**NEW QUESTION 866**

- (Exam Topic 6)

Which process is engaged when a project team member makes a change to project budget with the project manager's approval?

- A. Manage Cost Plan
- B. Estimate Costs
- C. Determine Budget
- D. Control Costs

**Answer: A**

**NEW QUESTION 867**

- (Exam Topic 6)

A project manager is preparing to meet with three crucial project stakeholders on a new project. Which tools and techniques can the project manager use to capture stakeholder interest?

- A. Review stakeholder register and meeting
- B. Data analysis and communication skills
- C. Data gathering and data analysis
- D. Communication skills and cultural awareness

**Answer: D**

**NEW QUESTION 872**

- (Exam Topic 6)

Which of the following must be included in the risk register when the project manager completes the Identify Risks process?

- A. List of identified risks, potential risk owners, list of potential risk response
- B. List of identified risks, list of causes, list of risk categories
- C. Short risk titles, list of potential risk owners, list of impacts on objectives

D. List of activities affected, list of potential risk responses, list of causes

**Answer:** A

#### NEW QUESTION 877

- (Exam Topic 6)

Which of the following is a category of organizational process assets?

- A. Government standards
- B. Organizational culture
- C. Employee capabilities
- D. Organizational knowledge bases

**Answer:** D

#### NEW QUESTION 881

- (Exam Topic 6)

The project management plan requires the acquisition of a special part available from a supplier located abroad. Which source selection method is being used?

- A. Least cost
- B. Qualifications only
- C. Sole source
- D. Fixed budget

**Answer:** B

#### NEW QUESTION 883

- (Exam Topic 6)

Responsible, accountable, consult and inform (RACI) is an example of which of the following?

- A. Text-oriented formal
- B. Resource management plan
- C. Organization chart
- D. Responsibility assignment matrix (RAM)

**Answer:** D

#### NEW QUESTION 885

- (Exam Topic 6)

Which project manager competency is displayed through the knowledge, skills, and behaviors related to specific domains of project, program, and portfolio management?

- A. Leadership management
- B. Technical project management
- C. Strategic management
- D. Business management

**Answer:** B

#### NEW QUESTION 888

- (Exam Topic 6)

Which of the following best correspond to the organizational process assets (OPAs) that affect the project?

- A. Policies and lessons learned from other projects
- B. Information technology software and employee capability
- C. Resource availability and employee capability
- D. Marketplace conditions and legal restrictions

**Answer:** A

#### NEW QUESTION 893

- (Exam Topic 6)

With regard to a project manager's sphere of influence in a project, which of the following does the project manager influence most directly?

- A. Suppliers
- B. Customers
- C. Governing bodies
- D. Project team

**Answer:** D

#### NEW QUESTION 896

- (Exam Topic 6)

A project manager is launching an information system to provide a lessons learned database. This action is necessary for recipients to access content at their own discretion. Which communication method is described?

- A. Push communication
- B. Pull communication
- C. Interactive communication
- D. Stakeholder communication

**Answer:** B

#### NEW QUESTION 900

- (Exam Topic 6)

In an adaptive or agile life cycle, how are the customer and sponsor involved in the project scope management activities?

- A. Involvement is needed only during project initiation.
- B. Minimal involvement of stakeholders is sufficient.
- C. They should be continuously engaged.
- D. They should be involved only during phase or deliverable reviews.

**Answer:** C

#### NEW QUESTION 903

- (Exam Topic 6)

Which of the following are outputs from the process of creating a work breakdown structure (WBS)?

- A. Project scope statement and accepted deliverables
- B. Scope baseline and project documents update
- C. Accepted deliverables and enterprise environmental factors
- D. Scope baseline and work performance information

**Answer:** B

#### NEW QUESTION 905

- (Exam Topic 6)

In which Project Cost Management process is work performance data included?

- A. Plan Cost Management
- B. Estimate Costs
- C. Determine Budget
- D. Control Costs

**Answer:** D

#### NEW QUESTION 910

- (Exam Topic 6)

The project manager is working in the processes of Project Resource Management. Which process is the project manager developing if they are using parametric estimation?

- A. Plan Resource Management
- B. Estimate Activity Resources
- C. Estimate Costs
- D. Acquire Resources

**Answer:** B

#### NEW QUESTION 914

- (Exam Topic 6)

Which of the following tasks focuses on decomposing work packages?

- A. Adjust duration estimates
- B. Define activities
- C. Complete rolling wave planning
- D. Develop milestone list

**Answer:** C

#### NEW QUESTION 915

- (Exam Topic 6)

What type of meeting is held to discuss prioritized product backlog items?

- A. Status
- B. Daily standup
- C. Iteration planning
- D. Release planning

**Answer:** C

#### NEW QUESTION 916



- (Exam Topic 6)

According to the PMI Talent Triangle, leadership skills relate to the ability to:

- A. understand the high-level overview of the organization
- B. tailor traditional and agile tools for the project
- C. work with stakeholders to develop an appropriate project delivery
- D. guide, motivate, and direct a team to reach project goals

**Answer:** D

#### NEW QUESTION 921

- (Exam Topic 6)

Tailoring considerations for project scope management may include:

- A. requirements management, stability of requirements, development approach, and validation and control.
- B. WBS guidelines, requirements templates, deliverable acceptance forms, and verified deliverables.
- C. business needs, product descriptions, project restrictions, and project management plan.
- D. issues defining and controlling what is included in the project, vended deliverables, and quality reports.

**Answer:** A

#### NEW QUESTION 922

- (Exam Topic 6)

What are the key tools for managing project knowledge?

- A. Expert judgment and data gathering
- B. Networking and storytelling
- C. Data analysis and decision making
- D. Prototypes and product analysis

**Answer:** A

#### NEW QUESTION 923

- (Exam Topic 6)

What can increase the complexity of the Manage Stakeholder Engagement process?

- A. The project must be of high quality.
- B. The stakeholders are from different countries.
- C. The project must comply with strict local government regulations.
- D. The project has a tight budget and timeline.

**Answer:** B

#### NEW QUESTION 924

- (Exam Topic 6)

Which role does the project manager resemble best?

- A. Orchestra conductor
- B. Facilities supervisor
- C. Functional manager
- D. School principal

**Answer:** A

#### NEW QUESTION 929

- (Exam Topic 6)

Which are inputs for the Plan Quality Management process?

- A. Quality metrics, project documents, and financial performance
- B. Quality management plan, project documents, and quality metrics
- C. Project management plan, project documents, and organizational process assets
- D. Project management plan, quality metric
- E. and project documents

**Answer:** C

#### NEW QUESTION 933

- (Exam Topic 6)

Which task will a project manager undertake while conducting Project Resource Management?

- A. Identity the different aspects of the team to manage and control physical resources efficiently.
- B. Procure equipment, materials, facilities, and infrastructure for the project.
- C. Train the team members in project skill sets.
- D. Define the roles and responsibilities of each team member.

**Answer:** A

#### NEW QUESTION 937

- (Exam Topic 6)

In which organizational structure would the project manager have most authority?

- A. Matrix-weak
- B. Matrix-balanced
- C. Matrix-strong
- D. Organic or simple

**Answer:** C

#### NEW QUESTION 941

- (Exam Topic 6)

What charts and (igures should project managers use during the Perform Quantitative Risk Analysis process?

- A. Tornado diagrams and influence diagrams
- B. Detectability bubble charts and probability and impact matrix
- C. Hierarchical charts and burndown charts
- D. Flow charts and responsible, accountable, consult, and inform (RACI) charts

**Answer:** A

#### NEW QUESTION 944

- (Exam Topic 6)

Which tasks should a project manager perform in order to manage the project schedule effectively?

- A. Plan Schedule Management, Define Activities, Sequence Activities, Estimate Activity Durations, Define Quality of Activitie
- B. Develop Schedule
- C. Plan Schedule Managemen
- D. Define Activities, Sequence Activities, Estimate Activity Durations, Develop Schedul
- E. Control Schedule
- F. Plan Schedule Managemen
- G. Define Activities, Sequence Activities, Estimate Activity Durations, Estimate Cost of Activitie
- H. Develop Schedule
- I. Define Activitie
- J. Sequence Activities, Estimate Activity Duration
- K. Define Quality of Activities.Estimate Cost of Activities, Develop Schedule

**Answer:** B

#### NEW QUESTION 949

- (Exam Topic 6)

The project manager is explaining to others the essential business aspects of the project. To which skill category does this ability belong?

- A. Technical project management skills
- B. Time management skills
- C. Strategic and business management skills
- D. Leadership skills

**Answer:** C

#### NEW QUESTION 953

- (Exam Topic 6)

Which are examples of processes that may be used once or at predefined points in the project life cycle?

- A. Develop Project Charter and Close Project or Phase
- B. Define Activities and Acquire Resources
- C. Control Schedule and Conduct Procurements
- D. Monitor Communications and Control Costs

**Answer:** A

#### NEW QUESTION 957

- (Exam Topic 6)

Which of the following is an example of an organizational system that is arranged based on the job being performed?

- A. Simple
- B. Multi-divisional
- C. Functional
- D. Project-oriented

**Answer:** C

#### NEW QUESTION 962

- (Exam Topic 6)

What is the difference between quality metrics and quality measurements?

- A. Quality metrics are product attributes and the measurement is the result of the Monitor and Control Project process
- B. Quality metrics are the result of the Monitor and Control Project process and the measurements are product attributes
- C. Quality metrics and measurements are the same concept
- D. Quality metrics is the general objective and the measurements are the specific objectives

**Answer:** A

#### NEW QUESTION 967

- (Exam Topic 6)

What conflict resolution technique involves delaying the issue or letting others resolve it?

- A. Smooth/accommodate
- B. Collaborate/problem solve
- C. Withdraw/avoid
- D. Force/direct

**Answer:** C

#### NEW QUESTION 970

- (Exam Topic 6)

What are the inputs of the Estimate Costs process?

- A. Project management plan, work performance data, enterprise environmental factors, and organizational process assets
- B. Project management plan, project documents, enterprise environmental factors, and organizational process assets
- C. Cost baseline, enterprise environmental factors, benefits management plan, and organizational process assets
- D. Project management plan, enterprise environmental factors, basis of estimates, and organizational process assets

**Answer:** C

#### NEW QUESTION 971

- (Exam Topic 6)

A project manager is identifying the risks of a project. Which technique should the project manager use?

- A. Representations of uncertainty
- B. Prompt lists
- C. Audits
- D. Risk categorization

**Answer:** B

#### NEW QUESTION 973

- (Exam Topic 6)

A project has an estimated duration of 10 months with a total budget of US\$220,000. At the end of the fifth month, it is estimated that at completion, the project will incur US\$250,000. If the actual cost (AC) calculated is US\$150,000, what is the earned value (EV) of the project?

- A. US\$30,000
- B. US\$120,000
- C. US\$370,000
- D. US\$400,000

**Answer:** D

#### NEW QUESTION 977

- (Exam Topic 6)

Which of the following are components of the technical project management skill?

- A. Ability to explain business aspects of the project, business strategy, goals and objectives, and business value.
- B. Ability to deal with people, to be collaborative, and to apply persuasion and negotiation.
- C. Ability to focus on relationships with people, inspire trust, and implement decisions and actions that support the business strategy.
- D. Ability to plan and prioritize, gather the right artifacts available for each project, and focus on critical success factors.

**Answer:** D

#### NEW QUESTION 980

- (Exam Topic 6)

The project manager is using co-location and providing training to the project team. On which of the following Project Resource Management processes is the project manager working?

- A. Acquire Resources
- B. Control Resources
- C. Manage Team
- D. Develop Team

**Answer:** D

#### NEW QUESTION 981

- (Exam Topic 6)

In a functional organization, the director of an important stakeholder business group expressed concern to a line manager about the progress of the project. What should the line manager do next?

- A. Hold a face-to-face meeting with the project manager and warn them.
- B. Point the director to a link where they can take a look at the reports.
- C. Invite stakeholders to attend monthly progress review meetings.
- D. Ask the project manager to update the monthly status report distribution list.

**Answer:** C

#### NEW QUESTION 984

- (Exam Topic 6)

What is the first step in the Stakeholder Management process?

- A. Plan Stakeholder Engagement
- B. Identify Stakeholders
- C. Manage Stakeholder Responsibility
- D. Monitor Stakeholder Activity

**Answer:** B

#### NEW QUESTION 987

- (Exam Topic 6)

When managing costs in an agile environment, what should a project manager consider?

- A. Lightweight estimation methods can be used as changes arise.
- B. Agile environments make cost aggregation more difficult.
- C. Agile environments make projects more costly and uncertain.
- D. Detailed cost calculations benefit from frequent changes.

**Answer:** A

#### NEW QUESTION 989

- (Exam Topic 6)

Which type of project life cycle uses an iteration plan?

- A. Agile
- B. Predictive
- C. Waterfall
- D. Product

**Answer:** A

#### NEW QUESTION 991

- (Exam Topic 6)

The project manager is dividing the project scope into smaller pieces, and repeating this process until no more subdivisions are required. At this point the project manager is able to estimate costs and activities for each element.

What are these elements called?

- A. Project activities
- B. Work packages
- C. Planning packages
- D. Project deliverables

**Answer:** B

#### NEW QUESTION 992

- (Exam Topic 6)

Which of the following technology platforms is most effective for sharing information when managing virtual project teams?

- A. Video conferencing
- B. Audio conferencing
- C. Shared portal
- D. Email/chat

**Answer:** D

#### NEW QUESTION 995

- (Exam Topic 6)

What purpose does the hierarchical locus of stakeholder communications serve?

- A. Maintains the focus on project and organizational stakeholders
- B. Preserves the focus on external stakeholders—such as customers and vendors—as well as on other projects
- C. Sustains the focus on general communication activities using email, social media, and websites
- D. Keeps the focus on the position of the stakeholder or group with respect to the project team

**Answer:** C

**NEW QUESTION 1000**

- (Exam Topic 6)

Project reporting is a tool that is most closely associated with which process?

- A. Communicate Plan
- B. Manage Communications
- C. Report Performance
- D. Control Communications

**Answer:** B

**NEW QUESTION 1004**

- (Exam Topic 6)

The primary purpose of the stakeholder register is to:

- A. Record stakeholder issues on the project
- B. Maintain lessons learned earlier in the project
- C. Maintain a list of all project stakeholders
- D. Document change requests and their status

**Answer:** C

**NEW QUESTION 1009**

- (Exam Topic 6)

Why is tailoring required in a project?

- A. Because a one-size-fits-all approach avoids complications and saves time.
- B. Because every project is unique and not every tool, technique, input, or output identified in the PMBOK Guide is required.
- C. Because tailoring allows us to identify the techniques, procedures, and system practices used by those in the project.
- D. Project managers should apply every process in the PMBOK Guide to the project, so tailoring is not required.

**Answer:** C

**NEW QUESTION 1012**

- (Exam Topic 6)

The project manager is working in an agile/adaptive environment. The project manager is considering different approaches for applying Project Integration Management in this environment. How can the project manager ensure that this will work for the project?

- A. Take control of all decisions and product planning.
- B. Build a team that can respond to changes within a collaborative, decision-making environment.
- C. Promote a team with a narrow specialization within a hierarchical environment.
- D. Delegate project decisions to the product owner and sponsor.

**Answer:** D

**NEW QUESTION 1016**

- (Exam Topic 6)

Due to today's competitive global market, organizations require more than technical project management skills. Which of the following skills can support long-range strategic objectives that contribute to the bottom line?

- A. Planning and risk management skills
- B. Communication and time management skills
- C. Business intelligence and leadership skills
- D. Strategic and business management skills

**Answer:** C

**NEW QUESTION 1019**

- (Exam Topic 6)

The project manager is working with some functional managers and stakeholders on the resource management plan Which elements may be included in this plan?

- A. Team values, team agreements, and conflict resolution process
- B. Conflict resolution process, communication guidelines, and meeting schedules
- C. Team roles and responsibilities, team management, and training plan
- D. Resource requirements, resource assignments, and team performance assessments

**Answer:** D

**NEW QUESTION 1021**

- (Exam Topic 6)

When developing the project schedule, a project manager uses decomposition and rolling wave planning techniques in this process.

- A. Develop Schedule
- B. Define Activities
- C. Define Scope
- D. Collect Requirements

**Answer:** B

#### NEW QUESTION 1026

- (Exam Topic 6)

In a large organization, with projects of different types and sizes, what kind of approach or method would be best to use?

- A. Predictive
- B. Adaptive
- C. A mix
- D. Agile

**Answer:** C

#### NEW QUESTION 1029

- (Exam Topic 6)

Which set of competencies should a project manager have?

- A. Leadership, strategic and business management, and technical project management
- B. Expertise in the Industry, leadership and business management, and bilingual skills
- C. Technical project management, expertise in every role, and PMP certification
- D. Expertise in every detail on project activities
- E. PMP certification, and leadership

**Answer:** A

#### NEW QUESTION 1031

- (Exam Topic 6)

At the beginning of an iteration, the team will work to determine how many of the highest-priority items on the backlog list can be delivered within the next iteration. Which of the following activities is done first?

- A. Create Work Breakdown Structure (WBS)
- B. Create Scope Baseline
- C. Collect Requirements
- D. Define Scope

**Answer:** D

#### NEW QUESTION 1036

- (Exam Topic 6)

A project team submits a weekly progress report to the project manager. The project manager consolidates the same report and sends a complete progress report to the stakeholders. What is this an example of?

- A. Informal communication
- B. Internal communication
- C. Formal communication
- D. Horizontal communication

**Answer:** C

#### NEW QUESTION 1041

- (Exam Topic 6)

During which process of Project Cost Management does a project manager produce the cost baseline?

- A. Estimate Costs
- B. Control Schedule
- C. Determine Budget
- D. Develop Project Charter

**Answer:** C

#### NEW QUESTION 1042

- (Exam Topic 6)

Which set of activities should a project manager use as part of the Develop Team process?

- A. Training and establishing ground rules
- B. Networking activities and estimating team resources
- C. Conflict management activities and tracking team performance
- D. Recruit new team members and training

**Answer:** A



**NEW QUESTION 1045**

- (Exam Topic 6)

Which of the following are outputs of the Define Scope process in Project Scope Management?

- A. Requirements documentation and requirements traceability matrix
- B. Scope management plan and requirements management plan
- C. Project scope statement and project documents updates
- D. Scope baseline and project documents updates

**Answer:** D

**NEW QUESTION 1046**

.....



## Thank You for Trying Our Product

### We offer two products:

1st - We have Practice Tests Software with Actual Exam Questions

2nd - Questons and Answers in PDF Format

### CAPM Practice Exam Features:

- \* CAPM Questions and Answers Updated Frequently
- \* CAPM Practice Questions Verified by Expert Senior Certified Staff
- \* CAPM Most Realistic Questions that Guarantee you a Pass on Your FirstTry
- \* CAPM Practice Test Questions in Multiple Choice Formats and Updatesfor 1 Year

**100% Actual & Verified — Instant Download, Please Click**  
**[Order The CAPM Practice Test Here](#)**