

Exam Questions AZ-800

Administering Windows Server Hybrid Core Infrastructure

<https://www.2passeasy.com/dumps/AZ-800/>



NEW QUESTION 1

- (Exam Topic 3)

You have 10 on-premises servers that run Windows Server.

You plan to use Azure Network Adapter to connect the servers to the resources in Azure.

Which prerequisites do you require on-premises and in Azure? To answer, select the appropriate options in the answer area.

NOTE: Each correct selection is worth one point.

To configure the on-premises servers, use:

Azure CLI
Routing and Remote Access
Server Manager
Windows Admin Center

To connect the Azure resources and Azure
Network Server Manager Adapter, use:

Azure Bastion
Azure Firewall
An Azure virtual network gateway
A private endpoint
A public Azure Load Balancer

- A. Mastered
- B. Not Mastered

Answer: A

Explanation:

Text, table Description automatically generated with medium confidence

Reference:

<https://docs.microsoft.com/en-us/windows-server/manage/windows-admin-center/azure/use-azure-network-adap>

NEW QUESTION 2

- (Exam Topic 3)

You have an on-premises server named Server1 that runs Windows Server. You have an Azure virtual network that contains an Azure virtual network gateway.

You need to connect only Server1 to the Azure virtual network. What should you use?

- A. Azure Network Adapter
- B. a Site-to-SiteVPN
- C. an ExpressRoute circuit
- D. Azure Extended Network

Answer: D

Explanation:

Reference:

<https://docs.microsoft.com/en-us/windows-server/manage/windows-admin-center/azure/use-azure-network-adap>

NEW QUESTION 3

- (Exam Topic 3)

You have an Azure virtual machine named Server1 that runs a network management application. Server1 has the following network configuration.

* Network interface.Nic1

* IP address 10.1.1.1/24

* Connected to: Vnet1/Subnet1

You need connect Server1 to an additional subnet named Vnet1/Subnet2. What should you do?

- A. Create a private endpoint on Subnet2
- B. Add a network interface to server1.
- C. Modify the IP configurations of Nic1.
- D. Add an IP configuration to Nic1.

Answer: A

NEW QUESTION 4

- (Exam Topic 3)

You create a new Azure subscription.

You plan to deploy Azure Active Directory Domain Services (Azure AD DS) and Azure virtual machines. You need to ensure that the virtual machines can join Azure AD DS.

Which three actions should perform in sequence? To answer, move the appropriate actions from the list of action of the answer area and arrange them in the correct order.

Actions

Run the Active Directory Domain Services Installation Wizard.

Create an Azure virtual network.

Install the Active Directory Domain Services role.

Install Azure AD Connect.

Modify the settings of the Azure virtual network.

Create an Azure AD DS instance.

>

<

Answer Area

^

v

- A. Mastered
- B. Not Mastered

Answer: A

Explanation:

Actions

Run the Active Directory Domain Services Installation Wizard.

Create an Azure virtual network.

Install the Active Directory Domain Services role.

Install Azure AD Connect.

Modify the settings of the Azure virtual network.

Create an Azure AD DS instance.

>

<

Answer Area

Create an Azure virtual network.

Create an Azure AD DS instance.

Modify the settings of the Azure virtual network.

^

v

NEW QUESTION 5

- (Exam Topic 3)

Your network contains a single-domain Active Directory Domain Services (AD DS) forest named conto.com. The forest contains the servers shown in the following exhibit table.

Name	Description
DC1	Domain controller
Server1	Member server

You plan to install a line-of-business (LOB) application on Server1. The application will install a custom windows services. A new corporate security policy states that all custom Windows services must run under the context of a group managed service account (gMSA). You deploy a root key. You need to create, configure, and install the gMSA that will be used by the new application. Which two actions should you perform? Each correct answer presents part of the solution. NOTE: Each correct selection is worth one point.

- A. On Server1, run the install-ADServiceAccount cmdlet.
- B. On DC1, run the New-ADServiceAccount cmdlet.
- C. On DC1, run the Set_ADComputer cmdlet.
- D. ON DC1, run the Install-ADServiceAccount cmdlet.
- E. On Server1, run the Get-ADServiceAccount cmdlet.

Answer: AB

NEW QUESTION 6

- (Exam Topic 3)

You have a server named Server1 that hosts Windows containers. You plan to deploy an application that will have multiple containers. Each container will be You need to create a Docker network that supports the deployment of the application. Which type of network should you create?

- A. transparent
- B. I2bridge
- C. NAT
- D. I2tunnel

Answer: A

Explanation:

Reference:
https://docs.microsoft.com/en-us/virtualization/windowscontainers/container-networking/network-drivers-topolo

NEW QUESTION 7

- (Exam Topic 3)

Your network contains an on-premises Active Directory Domain Services (AD DS) domain named contoso.com The domain contains three servers that run Windows Server and have the Hyper-V server role installed. Each server has a Switch Embedded Teaming (SET) team
You need to verify that Remote Direct Memory Access (RDMA) and all the required Windows Server settings are configured properly on each server.
What should you use?

- A. Server Manager
- B. the validate-DCB cmdtet
- C. the Get-NetAdaptor cmdlet
- D. Failover Cluster Manager

Answer: B

Explanation:

Reference: <https://github.com/Microsoft/Validate-DCB>

NEW QUESTION 8

- (Exam Topic 3)

Your company has offices in Boston and Montreal. The offices are connected by using a 10-Mbps WAN link that is often saturated The office in Boston contains the following:

- An Active Directory Domain Services (AD DS) domain controller named DC1.
- A server named Server1 that runs Windows Server and has the File Server role installed

The office in Montreal contains 20 client computers that run Windows 10 Montreal does NOT have any servers.

The company plans to deploy a new line of business (LOB) application to all the client computers. The installation source files for the application are in \\Server\Apps.

Answer Area

On Server1:

Enable BranchCache in hosted cache mode.
Enable BranchCache in Distributed Cache mode.
Install the BranchCache for network files role service.

On the client computers:

Enable BranchCache in hosted cache mode.
Enable BranchCache in Distributed Cache mode.
Install the BranchCache for network files role service.

- A. Mastered
- B. Not Mastered

Answer: A

Explanation:

Answer Area

On Server1:

Enable BranchCache in hosted cache mode.
Enable BranchCache in Distributed Cache mode.
Install the BranchCache for network files role service.

On the client computers:

Enable BranchCache in hosted cache mode.
Enable BranchCache in Distributed Cache mode.
Install the BranchCache for network files role service.

NEW QUESTION 9

- (Exam Topic 3)

You plan to deploy an Azure virtual machine that will run Windows Server.

You need to ensure that an Azure Active Directory (Azure AD) user nameduser1@contoso.com can connect 10 the virtual machine by using the Azure Serial Console.

What should you do? To answer, select the appropriate options in the answer area. NOTE: Each correct selection is worth one point.

Answer Area

Configure on the Azure virtual machine:

Boot diagnostics with a custom storage account
Operating system guest diagnostics
A system-assigned managed identity

Assign the following role to User1:

Virtual Machine Contributor
Virtual Machine Administrator Login
Virtual Machine User Login

- A. Mastered
- B. Not Mastered

Answer: A

Explanation:

Reference:
<https://docs.microsoft.com/en-us/troubleshoot/azure/virtual-machines/serial-console-overview>

NEW QUESTION 10

- (Exam Topic 3)
You deploy a new Active Directory Domain Services (AD DS) forest named contoso.com. The domain contains three domain controllers named DC1, DC2, and DC3.
You rename Default-First-Site-Name as Site1.
You plan to ship DC1, DC2, and DC3 to datacenters in different locations.
You need to configure replication between DC1, DC2, and DC3 to meet the following requirements:

- > Each domain controller must reside in its own Active Directory site.
- > The replication schedule between each site must be controlled independently.
- > Interruptions to replication must be minimized.

Which three actions should you perform in sequence in the Active Directory Sites and Services console? To answer, move the appropriate actions from the list of actions to the answer area and arrange them in the correct order.

Actions

Create a connection object between DC1 and DC2.

Create an additional site link that contains Site1 and Site2.

Create two additional sites named Site2 and Site3. Move DC2 to Site2 and DC3 to Site3.

Create a connection object between DC2 and DC3.

Remove Site2 from DEFAULTIPSITELINK.

Answer Area

- A. Mastered
- B. Not Mastered

Answer: A

Explanation:

Graphical user interface, text, application Description automatically generated

NEW QUESTION 10

- (Exam Topic 3)
Your network contains an Active Directory Domain Services (AD DS) forest. The forest contains three Active Directory sites named Site1, Site2, and Site3. Each site contains two domain controllers. The sites are connected by using DEFAULTIPSITELINK.
You open a new branch office that contains only client computers.
You need to ensure that the client computers in the new office are primarily authenticated by the domain controllers in Site1.
Solution: You configure the Try Next Closest Site Group Policy Object (GPO) setting in a GPO that is linked to Site1.
Does this meet the goal?

- A. Yes
- B. No

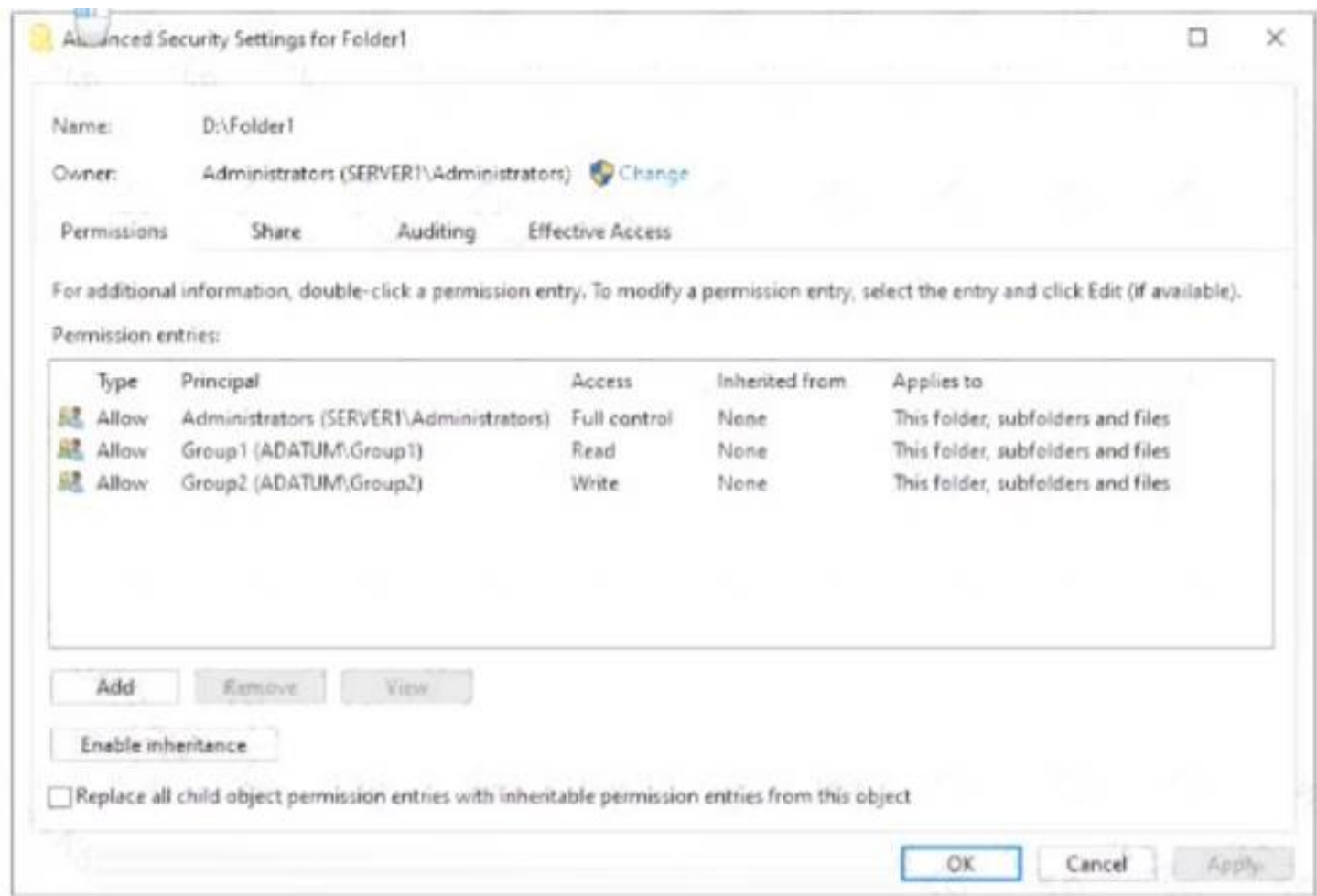
Answer: B

NEW QUESTION 13

- (Exam Topic 3)
Your network contains an Active Directory Domain Services (AD DS) domain named adatum.com The domain contains a server named Server1 and the users shown In the following table.

Name	Member of
User1	Group1
User2	Group2
User3	Group3

Server1 contains a folder named D:\Folder1. The advanced security settings for Folder 1 are configured as shown in the Permissions exhibit. (Click the Permissions tab.)



Folder1 is shared by using the following configurations

Group	Permission
Group1	Allow - Change
Group3	Allow - Full Control

Path : D:\Folder1
Name : Share1
ShareType : FileSystemDirectory
FolderEnumerationMode : Unrestricted

Answer Area

Statements	Yes	No
User1 can read the files in Share1.	<input type="radio"/>	<input type="radio"/>
User3 can delete files in Share1.	<input type="radio"/>	<input type="radio"/>
If User2 connects to \\Server1.adatum.com from File Explorer,	<input type="radio"/>	<input type="radio"/>

- A. Mastered
- B. Not Mastered

Answer: A

Explanation:

Answer Area

Statements	Yes	No
User1 can read the files in Share1.	<input checked="" type="radio"/>	<input type="radio"/>
User3 can delete files in Share1.	<input checked="" type="radio"/>	<input type="radio"/>
If User2 connects to \\Server1.adatum.com from File Explorer,	<input type="radio"/>	<input checked="" type="radio"/>

NEW QUESTION 17

- (Exam Topic 3)
You deploy a single-domain Active Directory Domain Services (AD DS) forest named contoso.com. You deploy five servers to the domain. You add the servers to a group named iTFarmHosts.
You plan to configure a Network Load Balancing (NLB) cluster named NLBCluster.contoso.com that will contain the five servers.
You need to ensure that the NLB service on the nodes of the cluster can use a group managed service account (gMSA) to authenticate.
Which three PowerShell cmdlets should you run in sequence? To answer, move the appropriate cmdlets from the list of cmdlets to the answer area and arrange them in the correct order.

Cmdlets

Add-KdsRootKey

Set-KdsConfiguration

Install-ADServiceAccount

Add-ADGroupMember

New-ADServiceAccount

Add-ADComputerServiceAccount

Answer Area

- A. Mastered
 B. Not Mastered

Answer: A

Explanation:

Text Description automatically generated

Reference:

<https://docs.microsoft.com/en-us/windows-server/security/group-managed-service-accounts/create-the-key-distr> <https://docs.microsoft.com/en-us/windows-server/security/group-managed-service-accounts/getting-started-with>

NEW QUESTION 22

- (Exam Topic 3)

You have a server named Server1 that runs Windows Server. You plan to host applications in Windows containers. You need to configure Server1 to run containers. What should you install?

- A. Windows Admin Center
 B. the Windows Subsystem for Linux
 C. Doctor
 D. Hyper-V

Answer: C

NEW QUESTION 23

- (Exam Topic 3)

Your network contains an Active Directory Domain Services (AD DS) domain named contoso.com. The domain contains two servers named Server1 and Server2. Server1 contains a disk named Disk2. Disk2 contains a folder named UserData. UserData is shared to the Domain Users group. Disk2 is configured for deduplication. Server1 is protected by using Azure Backup. Server1 fails.

You connect Disk2 to Server2.

You need to ensure that you can access all the files on Disk2 as quickly as possible. What should you do?

- A. Create a storage pool.
 B. Restore files from Azure Backup.
 C. Install the File Server Resource Manager server role.
 D. Install the Data Deduplication server role.

Answer: C

Explanation:

Reference:

<https://docs.microsoft.com/en-us/windows-server/storage/data-deduplication/overview>

NEW QUESTION 26

- (Exam Topic 3)

Note: This question is part of a series of questions that present the same scenario. Each question in the series contains a unique solution that might meet the stated goals. Some question sets might have more than one correct solution, while others might not have a correct solution.

After you answer a question in this section, you will NOT be able to return to it. As a result, these questions will not appear in the review screen.

You are planning the deployment of DNS to a new network.

You have three internal DNS servers as shown in the following table.

Name	Location	IP address	Local DNS zone
Server1	Montreal	10.0.1.10	contoso.local
Server2	Toronto	10.0.2.10	east.contoso.local
Server3	Seattle	10.0.3.10	west.contoso.local

The contoso.local zone contains zone delegations for east.contoso.local and west.contoso.local. All the DNS servers use root hints.

You need to ensure that all the DNS servers can resolve the names of all the internal namespaces and internet hosts.

Solution: You configure Server2 and Server3 to forward DNS requests to 10.0.1.10. Does this meet the goal?

- A. Yes
 B. No

Answer: B

NEW QUESTION 31

- (Exam Topic 3)

Your network contains an Active Directory Domain Services (AD DS) domain.

You have a Group Policy Object (GPO) named GPO1 that contains Group Policy preferences. You plan to link GPO1 to the domain.

You need to ensure that the preference in GPO1 apply only to domain member servers and NOT to domain controllers or client computers. All the other Group Policy settings in GPO1 must apply to all the computers. The solution must minimize administrative effort.

Which type of item level targeting should you use?

- A. Domain
- B. Operating System
- C. Security Group
- D. Environment Variable

Answer: B

Explanation:

Reference:

<https://docs.microsoft.com/en-us/previous-versions/windows/it-pro/windows-server-2012-r2-and-2012/dn78918>

NEW QUESTION 36

- (Exam Topic 3)

You have an Azure virtual machine named VM1 that runs Windows Server. You perform the following actions on VM1:

- Create a folder named Folder1 on volume C
- Create a folder named Folder2 on volume D.
- Add a new data disk to VM1 and create a new volume that is assigned drive letter E.
- Install an app named App1 on volume E. You plan to resize VM1.

Which objects will present after you resize VM1?

- A. Folder1 and Folder2 only
- B. Folder1, volume E, and App1 only
- C. Folder1 only
- D. Folder1 and App1 only
- E. Folder2, App1, and volume E

Answer: D

NEW QUESTION 41

- (Exam Topic 3)

Your network contains a two-domain on-premises Active Directory Domain Services (AD DS) forest named Contoso.com. The forest contains the domain controllers shown in the following table.

Name	Description	Domain	Active Directory site
DC1	Forest-wide and domain-wide FSMO role holder	contoso.com	Hub
DC2	Domain-wide FSMO role holder	child.contoso.com	Site1
RODC3	Read-only domain controller (RODC)	contoso.com	Site2

You create an Active Directory site named Site3. Site1, Site2 and Site3 each has a dedicated site link to the Hub site.

In Site3, you install a new server named Server1.

You need to promote Server1 to an ROOC in child.contoso.com by using the install from Media (IFM) option. The solution must minimize network traffic.

What should you do? To answer select the appropriate options in the answer area. NOTE: Each correct selection is worth one point.

Answer Area

Server to use to create the IFM source:

DC1
DC2
Server1
RODC3

Tool to use to create the IFM source:

Azure Backup
Dcdiag.exe
Ntdsutil.exe
Repadmin.exe
Windows Server Backup

- A. Mastered
- B. Not Mastered

Answer: A

Explanation:

Answer Area

Server to use to create the IFM source:

DC1
DC2
Server1
RODC3

Tool to use to create the IFM source:

Azure Backup
Dcdiag.exe
Ntdsutil.exe
Repadmin.exe
Windows Server Backup

NEW QUESTION 45

- (Exam Topic 3)

You have a server named Server1 that runs Windows Server. Server1 has the storage pools shown in the following table.

Name	Number of 7,200-RPM HDDs	Number of 10,000-RPM HDDs	Number of SSDs
Pool1	4	4	None
Pool2	None	2	2
Pool3	8	None	4

You plan to create a virtual disk named VDisk1 that will use storage tiers. Which pools can you use to create VDisk1 ?

- A. Pool2 and Pool3 only
- B. Pool 2only
- C. Pool only
- D. Pool, Pool2, and Pool3
- E. Pool1 and Pool2 only
- F. Pool1 and Pool3 only
- G. Pool3 only

Answer: A

Explanation:

Storage tiering requires both standard HDDs and SSDs. We cannot use Pool1 because it does not have any SSDs.

NEW QUESTION 50

- (Exam Topic 3)

You need to sync files from an on-premises server named Server1 to Azure by using Azure File Sync You have a cloud tiering policy that is configured for 30 percent free space and 70 days.

Volume f on Server1 is 500 GB.

A year ago, you configured E:\Oata on Server1 to sync by using Azure File Sync. The files that are visible in E:\Data are shown in the following table.

Name	Size	Last accessed
File1	200 GB	2 days ago
File2	100 GB	10 days ago
File3	200 GB	60 days ago
File4	50 GB	100 days ago

Volume E does NOT contain any other files.

Where are File1 and flle3 located? To answer, select the appropriate options In the answer area.

Answer Area

File1:

Server1 only
The Azure file share only
Server1 and the Azure file share

File3:

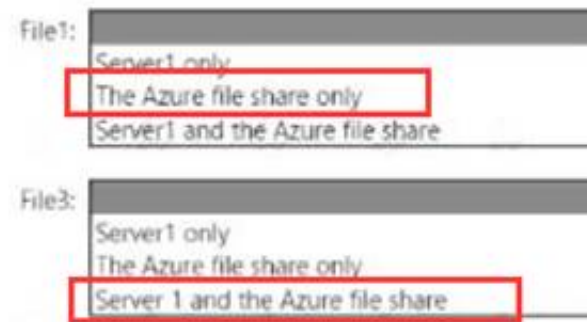
Server1 only
The Azure file share only
Server 1 and the Azure file share

- A. Mastered
- B. Not Mastered

Answer: A

Explanation:

Answer Area



NEW QUESTION 55

- (Exam Topic 3)

You have an on-premises Active Directory Domain Services (AD DS) domain that syncs with an Azure Active Directory (Azure AD) tenant.

You have several Windows 10 devices that are Azure AD hybrid-joined.

You need to ensure that when users sign in to the devices, they can use Windows Hello for Business.

Which optional feature should you select in Azure AD Connect?

- A. Device writeback
- B. Group writeback
- C. Password writeback
- D. Directory extension attribute sync
- E. Azure AD app and attribute filtering

Answer: C

Explanation:

Reference:

https://docs.microsoft.com/en-us/windows/security/identity-protection/hello-for-business/hello-hybrid-cert-trust

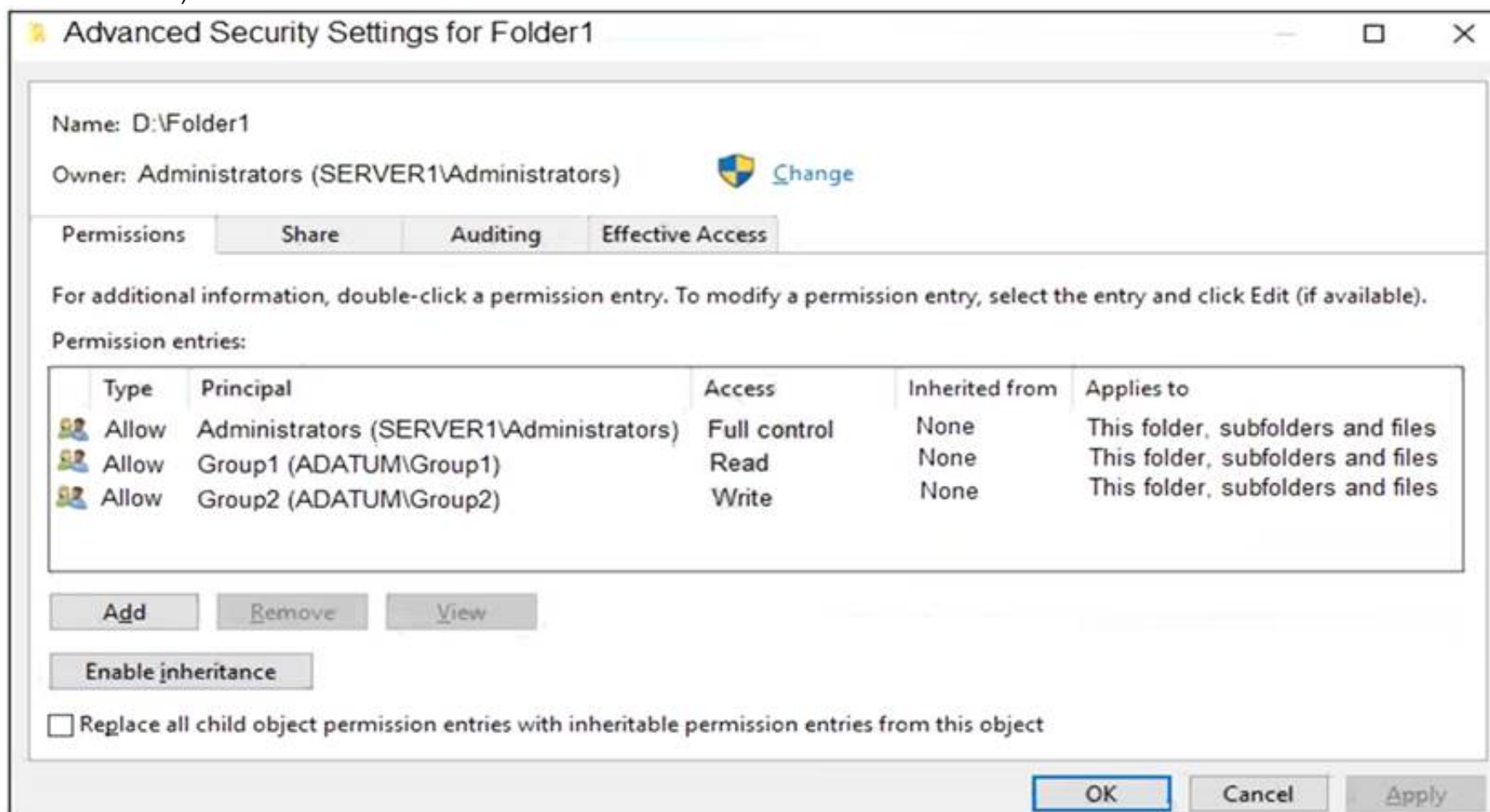
NEW QUESTION 60

- (Exam Topic 3)

Your network contains an Active Directory Domain Services (AD DS) domain named adatum.com. The domain contains a server named Server1 and the users shown in the following table.

Name	Member of
User1	Group1
User2	Group2
User3	Group3

Server1 contains a folder named D:\Folder1. The advanced security settings for Folder1 are configured as shown in the Permissions exhibit. (Click the Permissions tab.)



Folder1 is shared by using the following configurations:

```
Path           : D:\Folder1
Name           : Share1
ShareType      : FileSystemDirectory
FolderEnumerationMode : Unrestricted
```

The share permissions for Share1 are shown in the following table.

Group	Permission
Group1	Allow – Change
Group3	Allow – Full Control

For each of the following statements, select Yes if the statement is true. Otherwise, select No.

NOTE: Each correct selection is worth one point.

Statements	Yes	No
User1 can read the files in Share1.	<input type="radio"/>	<input type="radio"/>
User3 can delete files in Share1.	<input type="radio"/>	<input type="radio"/>
If User2 connects to \\Server1.adatum.com from File Explorer, Share1 will be listed.	<input type="radio"/>	<input type="radio"/>

- A. Mastered
- B. Not Mastered

Answer: A

Explanation:

To access files in a shared folder, you need to be granted permissions on the folder (NTFS permissions) AND permissions on the share. The most restrictive permission of the folder permissions and share permissions apply.

Box 1: Yes

Group1 has Read access to Folder1 and Change access to Share1. Therefore, User1 can read the files in Share1.

Box 2: No

Group3 has Full Control access to Share1. However, Group3 has no permissions configured Folder1. Therefore, User3 cannot access the files in Share1.

Box 3: Yes

Group2 has write permission to Folder1. However, Group2 has no permission on Share1. Therefore, users in Group2 cannot access files in the shared folder.

Access Based Enumeration when enabled hides files and folders that users do not have permission to access. However, Access Based Enumeration is not enabled on Share1. This is indicated by the FolderEnumerationMode – Unrestricted setting. Therefore, the share will be visible to User2 even though User2 cannot access the shared folder.

NEW QUESTION 65

- (Exam Topic 3)

You have two servers that have the Hyper-V server role installed. The servers are joined to a failover cluster both servers can connect to the same disk on an iSCSI storage device. You plan to use the iSCSI storage to store highly available Hyper-V virtual machines that will support live migration functionality. You need to configure a storage resource in the failover cluster to store the virtual machines.

What should you configure?

- A. a storage pool
- B. attributed File System (DFS) Replication
- C. a mirrored volume
- D. Cluster Shared volumes (CSV)

Answer: A

NEW QUESTION 66

- (Exam Topic 3)

You have an on-premises Active Directory Domain Services (AD DS) domain that syncs with an Azure Active Directory (Azure AD) tenant. You plan deploy 100 new Azure virtual machines that will run Windows Server. You need to ensure that each new virtual machine is joined to the AD DS domain. What should you use?

- A. Azure AD Connect
- B. a Group Policy Object (GPO)
- C. an Azure Resource Manager (ARM) template
- D. an Azure management group

Answer: C

Explanation:

Reference:

<https://www.ludovicmedard.com/create-an-arm-template-of-a-virtual-machine-automatically-joined-to-a-domain>

NEW QUESTION 69

- (Exam Topic 3)

You have an on premises Active Directory Domain Services (AD DS) domain that syncs with an Azure Active Directory (Azure AD) tenant.

You plan to implement self-service password reset (SSPR) in Azure AD.

You need to ensure that users that reset their passwords by using SSPR can use the new password resources in the AD DS domain.

What should you do?

- A. Deploy the Azure AD Password Protection proxy service to the on premises network.

- B. Run the Microsoft Azure Active Directory Connect wizard and select Password writeback.
C. Grant the Change password permission for the domain to the Azure AD Connect service account.
D. Grant the impersonate a client after authentication user right to the Azure AD Connect service account.

Answer: B

Explanation:

Reference:

<https://docs.microsoft.com/en-us/azure/active-directory/authentication/tutorial-enable-sspr-writeback>

NEW QUESTION 71

- (Exam Topic 3)

You have a server named Server1 that runs Windows Server Server1 has a just-a-bunch-of-disks (JBOD) enclosure attached.

You plan to create a storage pool on Server1 and a virtual disk that will use a mirror layout. You are considering whether to use a two-way or a three-way mirror layout.

What is the minimum number of disks required for each type of minor layout? To answer, select the appropriate options in the answer area.

NOTE: Each correct selection is worth one point.

Answer Area

Two-way mirror:

1

2

3

4

5

6

Three-way mirror:

1

2

3

4

5

6

- A. Mastered
B. Not Mastered

Answer: A

Explanation:

Answer Area

Two-way mirror:

1

2

3

4

5

6

Three-way mirror:

1

2

3

4

5

6

NEW QUESTION 74

- (Exam Topic 3)

Your network contains two Active Directory Domain Services (AD DS) forests named contoso.com and fabrikam.com. A two-way forest trust exists between the forests. Each forest contains a single domain. The domains contain the servers shown in the following table.

Name	Domain	Description
Server1	contoso.com	Hosts a Windows Admin Center gateway
Server2	fabrikam.com	Hosts resources that will be managed remotely by using Windows Admin Center on Server1

You need to configure resources based constrained delegation so that the users in contoso.com can use Windows Admin Center on Server1 to connect to Server2. How should you complete the command? To answer, select the appropriate options in the answer area. NOTE: Each correct selection is worth one point.

Answer Area



- A. Mastered
- B. Not Mastered

Answer: A

Explanation:

Text Description automatically generated

Reference:

<https://docs.microsoft.com/en-us/windows-server/security/kerberos/kerberos-constrained-delegation-overview> <https://docs.microsoft.com/en-us/powershell/module/activedirectory/set-adcomputer?view=windowsserver2022>

NEW QUESTION 75

- (Exam Topic 3)

Your network contains an Active Directory Domain Services (AD DS) domain named contoso.com. The domain contains a server named Server1 that has the DFS Namespaces role service installed. Server1 hosts a domain-based Distributed File System (DFS) Namespace named Files.

The domain contains a file server named Server2. Server2 contains a shared folder named Share1. Share1 contains a subfolder named Folder1.

In the Files namespace, you create a folder named Folder1 that has a target of

\\Server2.contoso.com\Share1\Folder1.

You need to configure a logon script that will map drive letter M to Folder1. The solution must use the path of the DFS Namespace.

How should you complete the command to map the drive letter? To answer, select the appropriate options in the answer area.

NOTE: Each correct selection is worth one point.

Answer Area



- A. Mastered
- B. Not Mastered

Answer: A

Explanation:

Text Description automatically generated with low confidence

NEW QUESTION 76

- (Exam Topic 3)

Your network contains an Active Directory Domain Services (AD DS) forest named contoso.com. The root domain contains the domain controllers shown in the following table.

Name	FSMO role
DC1	Domain naming master
DC2	RID master
DC3	PDC emulator
DC4	Schema master
DC5	Infrastructure master

A failure of which domain controller will prevent you from creating application partitions?

- A. DC1
- B. DC2
- C. DC3
- D. DC4
- E. DC5

Answer: A

Explanation:

Reference:

<https://docs.microsoft.com/en-us/troubleshoot/windows-server/identity/fsmo-roles>

NEW QUESTION 78

- (Exam Topic 3)

Your network contains a Active Directory Domain Service (AD DS) forest named contoso.com. The forest root domain contains a server named server1. contoso.com.

A two-way forest trust exists between the contoso.com forest and an AD DS forest named fabrikam.com. The fabrikam.com forest contains 10 child domains.

You need to ensure that only the members of a group named fabrikam\Group1 can authenticate to server1.contoso.com.

What should you do first?

- A. Change the trust to a one-way external trust.
- B. Add fabrikam\Group1 to the local Users group on server1.contoso.com.
- C. Enable SID filtering for the trust.
- D. Enable Selective authentication for the trust.

Answer: B

NEW QUESTION 83

- (Exam Topic 3)

Your network contains an Active Directory Domain Services (AD DS) domain named conioso.com. You need to identify which server is the PDC emulator for the domain.

Solution: from Active Directory Users and Computers, you right-click conioso.com in the console tree, and then select Operations Master

Does this meet the goal?

- A. Yes
- B. No

Answer: A

NEW QUESTION 85

- (Exam Topic 2)

You need to configure network communication between the Seattle and New York offices. The solution must meet the networking requirements.

What should you configure? To answer, select the appropriate options in the answer area. NOTE: Each correct selection is worth one point.

On a Virtual WAN hub:

<input type="checkbox"/> An ExpressRoute gateway
<input type="checkbox"/> A virtual network gateway
<input type="checkbox"/> An ExpressRoute circuit connection

In the offices:

<input type="checkbox"/> An ExpressRoute circuit connection
<input type="checkbox"/> A Site to-Site VPN
<input type="checkbox"/> An Azure application gateway
<input type="checkbox"/> An on premises data gateway

- A. Mastered
- B. Not Mastered

Answer: A

Explanation:

Table Description automatically generated with medium confidence

Reference:

<https://docs.microsoft.com/en-us/azure/virtual-wan/virtual-wan-expressroute-portal>

NEW QUESTION 88

- (Exam Topic 1)

You need to meet the technical requirements for the site links. Which users can perform the required tasks?

- A. Admin1 only
- B. Admin1 and Admin3 only
- C. Admin1 and Admin2 only
- D. Admin3 only
- E. Admin1, Adrrun2. and Admin3

Answer: C

Explanation:

Membership in the Enterprise Admins group or the Domain Admins group in the forest root domain is required.

NEW QUESTION 90

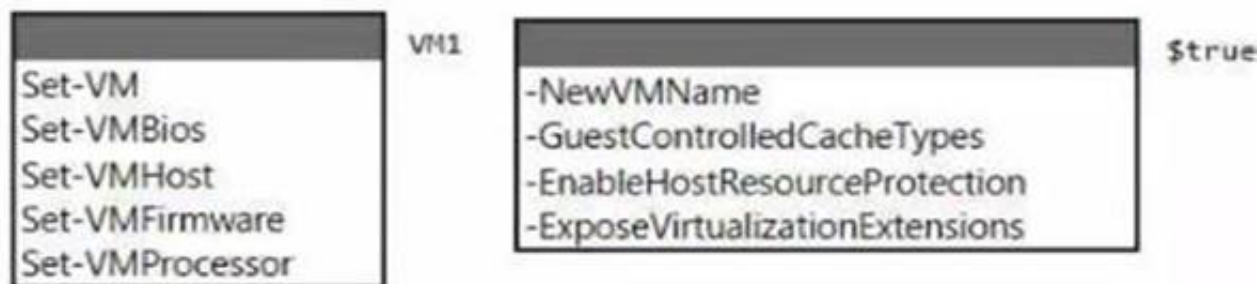
- (Exam Topic 1)

You need to meet the technical requirements for VM1.

Which cmdlet should you run first? To answer, select the appropriate options in the answer area.

NOTE: Each correct selection is worth one point.

Answer Area



- A. Mastered
- B. Not Mastered

Answer: A

Explanation:

Graphical user interface, text, application Description automatically generated

NEW QUESTION 95

- (Exam Topic 1)

You need to meet the technical requirements for Server1. Which users can currently perform the required tasks?

- A. Admin1 only
- B. Admin3 only
- C. Admin1 and Admin3 only
- D. Admin1 Admin2. and Admm3

Answer: C

NEW QUESTION 96

.....

THANKS FOR TRYING THE DEMO OF OUR PRODUCT

Visit Our Site to Purchase the Full Set of Actual AZ-800 Exam Questions With Answers.

We Also Provide Practice Exam Software That Simulates Real Exam Environment And Has Many Self-Assessment Features. Order the AZ-800 Product From:

<https://www.2passeasy.com/dumps/AZ-800/>

Money Back Guarantee

AZ-800 Practice Exam Features:

- * AZ-800 Questions and Answers Updated Frequently
- * AZ-800 Practice Questions Verified by Expert Senior Certified Staff
- * AZ-800 Most Realistic Questions that Guarantee you a Pass on Your FirstTry
- * AZ-800 Practice Test Questions in Multiple Choice Formats and Updatesfor 1 Year