

Fortinet

Exam Questions NSE5_FMG-7.2

Fortinet NSE 5 - FortiManager 7.2



NEW QUESTION 1

- (Topic 1)

When an installation is performed from FortiManager, what is the recovery logic used between FortiManager and FortiGate for an FGFM tunnel?

- A. After 15 minutes, FortiGate will unset all CLI commands that were part of the installation that caused the tunnel to go down.
- B. FortiManager will revert and install a previous configuration revision on the managed FortiGate.
- C. FortiGate will reject the CLI commands that will cause the tunnel to go down.
- D. FortiManager will not push the CLI commands as a part of the installation that will cause the tunnel to go down.

Answer: A

Explanation:

The configuration change will break the fgfm connection, causing the FortiGate unit to attempt to reconnect for 900 seconds. If the FortiGate cannot reconnect, it will rollback to its previous configuration.

NEW QUESTION 2

- (Topic 1)

In the event that the primary FortiManager fails, which of the following actions must be performed to return the FortiManager HA to a working state?

- A. Secondary device with highest priority will automatically be promoted to the primary role, and manually reconfigure all other secondary devices to point to the new primary device
- B. Reboot one of the secondary devices to promote it automatically to the primary role, and reconfigure all other secondary devices to point to the new primary device.
- C. Manually promote one of the secondary devices to the primary role, and reconfigure all other secondary devices to point to the new primary device.
- D. FortiManager HA state transition is transparent to administrators and does not require any reconfiguration.

Answer: C

Explanation:

FortiManager_6.4_Study_Guide-Online – page 346

FortiManager HA doesn't support IP takeover where an HA state transition is transparent to administrators. If a failure of the primary occurs, the administrator must take corrective action to resolve the problem that may include invoking the state transition. If the primary device fails, the administrator must do the following in order to return the FortiManager HA to a working state:

- * 1. Manually reconfigure one of the secondary devices to become the primary device
- * 2. Reconfigure all other secondary devices to point to the new primary device

NEW QUESTION 3

- (Topic 1)

Which two statements about the scheduled backup of FortiManager are true? (Choose two.)

- A. It does not back up firmware images saved on FortiManager.
- B. It can be configured using the CLI and GUI.
- C. It backs up all devices and the FortiGuard database.
- D. It supports FTP, SCP, and SFTP.

Answer: AD

Explanation:

Reference: https://docs.ansible.com/ansible/latest/collections/fortinet/fortimanager/fmgr_system_backup_allsettings_module.html

NEW QUESTION 4

- (Topic 1)

Which two conditions trigger FortiManager to create a new revision history? (Choose two.)

- A. When configuration revision is reverted to previous revision in the revision history
- B. When FortiManager installs device-level changes to a managed device
- C. When FortiManager is auto-updated with configuration changes made directly on a managed device
- D. When changes to device-level database is made on FortiManager

Answer: BC

Explanation:

Reference: https://help.fortinet.com/fmgr/50hlp/56/5-6-1/FortiManager_Admin_Guide/1000_Device%20Manager/1500_Manage_device_configs/0600_Manage%20config%20rev%20history.htm

NEW QUESTION 5

- (Topic 1)

What are two outcomes of ADOM revisions? (Choose two.)

- A. ADOM revisions can significantly increase the size of the configuration backups.
- B. ADOM revisions can save the current size of the whole ADOM
- C. ADOM revisions can create System Checkpoints for the FortiManager configuration
- D. ADOM revisions can save the current state of all policy packages and objects for an ADOM

Answer: AD

Explanation:

Reference:<https://docs2.fortinet.com/document/fortimanager/6.0.0/best-practices/101837/adom-revisions>

NEW QUESTION 6

- (Topic 1)

Which two settings must be configured for SD-WAN Central Management? (Choose two.)

- A. SD-WAN must be enabled on per-ADOM basis
- B. You can create multiple SD-WAN interfaces per VDOM
- C. When you configure an SD-WAN, you must specify at least two member interfaces.
- D. The first step in creating an SD-WAN using FortiManager is to create two SD-WAN firewall policies.

Answer: AC

NEW QUESTION 7

- (Topic 1)

What is the purpose of the Policy Check feature on FortiManager?

- A. To find and provide recommendation to combine multiple separate policy packages into one common policy package
- B. To find and merge duplicate policies in the policy package
- C. To find and provide recommendation for optimizing policies in a policy package
- D. To find and delete disabled firewall policies in the policy package

Answer: C

Explanation:

Reference:https://help.fortinet.com/fmgr/50hlp/56/5-6-2/FortiManager_Admin_Guide/1200_Policy%20and%20Objects/0800_Managing%20policy%20packages/2400_Perform%20a%20policy%20consistency%20check.htm

NEW QUESTION 8

- (Topic 1)

View the following exhibit:

```
#diagnose fmupdate view-serverlist fds
Fortiguard Server Comm: Enabled
Server Override Mode: Loose
FDS server list :
```

Index	Address	Port	Timezone	Distance	Source
*0	10.0.1.50	8890	-5	0	CLI
1	96.45.33.89	443	-5	0	FDNI
2	96.45.32.81	443	-5	0	FDNI
...					
38	fds1.fortinet.com	443	-5	0	DEFAULT

How will FortiManager try to get updates for antivirus and IPS?

- A. From the list of configured override servers with ability to fall back to public FDN servers
- B. From the configured override server list only
- C. From the default server `fds1.fortinet.com`
- D. From public FDNI server with highest index number only

Answer: A

Explanation:

Reference:<https://community.fortinet.com/t5/Fortinet-Forum/Clarification-of-FortiManager-s-quot-Server-Override-Mode-quot/td-p/89973>

NEW QUESTION 9

- (Topic 1)

What will happen if FortiAnalyzer features are enabled on FortiManager?

- A. FortiManager will reboot
- B. FortiManager will send the logging configuration to the managed devices so the managed devices will start sending logs to FortiManager
- C. FortiManager will enable ADOMs automatically to collect logs from non-FortiGate devices
- D. FortiManager can be used only as a logging device.

Answer: A

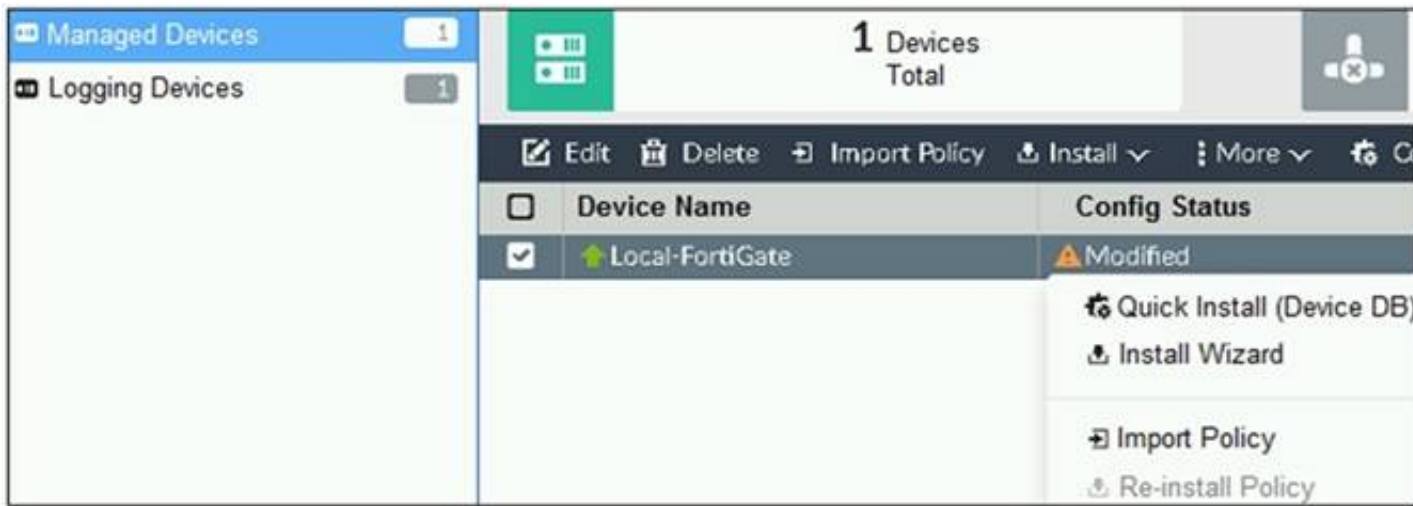
Explanation:

Reference:https://help.fortinet.com/fmgr/50hlp/56/5-6-1/FortiManager_Admin_Guide/1800_FAZ%20Features/0200_Enable%20FAZ%20Features.htm

NEW QUESTION 10

- (Topic 1)

Refer to the exhibit.



You are using the Quick Install option to install configuration changes on the managed FortiGate. Which two statements correctly describe the result? (Choose two.)

- A. It will not create a new revision in the revision history
- B. It installs device-level changes to FortiGate without launching the Install Wizard
- C. It cannot be canceled once initiated and changes will be installed on the managed device
- D. It provides the option to preview configuration changes prior to installing them

Answer: BC

Explanation:

FortiManager_6.4_Study_Guide-Online – page 164

The Install Config option allows you to perform a quick installation of device-level settings without launching the Install Wizard. When you use this option, you cannot preview the changes prior to committing. Administrator should be certain of the changes before using this install option, because the install can't be cancelled after the process is initiated.

NEW QUESTION 10

- (Topic 1)

View the following exhibit.

Starting Log (Run the device)

Start installing

Local-FortiGate \$ config user device

Local-FortiGate (device) \$ edit "mydevice"

new entry 'mydevice' added

Local-FortiGate (mydevice) \$ next

MAC address can not be 0

Node_check_object fail!for mac 00:00:00:00:00:00

Attribute 'mac' value '00:00:00:00:00:00' checking fail -33

Command fail. Return code 1

Local-FortiGate (device) \$ end

...

Local-FortiGate \$ config firewall policy

Local-FortiGate (policy) \$ edit 2

New entry '2' added

Local-FortiGate (2) \$ set name "Device_policy"

Local-FortiGate (2) \$ set uuid 64...

Local-FortiGate (2) \$ set srcintf "port3"

Local-FortiGate (2) \$ set dstintf "port1"

Local-FortiGate (2) \$ set srcaddr "all"

Local-FortiGate (2) \$ set dstaddr "all"

Local-FortiGate (2) \$ set action accept

Local-FortiGate (2) \$ set schedule "always"

Local-FortiGate (2) \$ set service "ALL"

Local-FortiGate (2) \$ set devices "mydevice"

Entry not found in datasource

Value parse error before 'mydevice'

Command fail. Return code -3

Local-FortiGate (2) \$ set nat enable

Local-FortiGate (2) \$ next

Local-FortiGate (policy) \$ end

...

Which statement is true regarding this failed installation log?

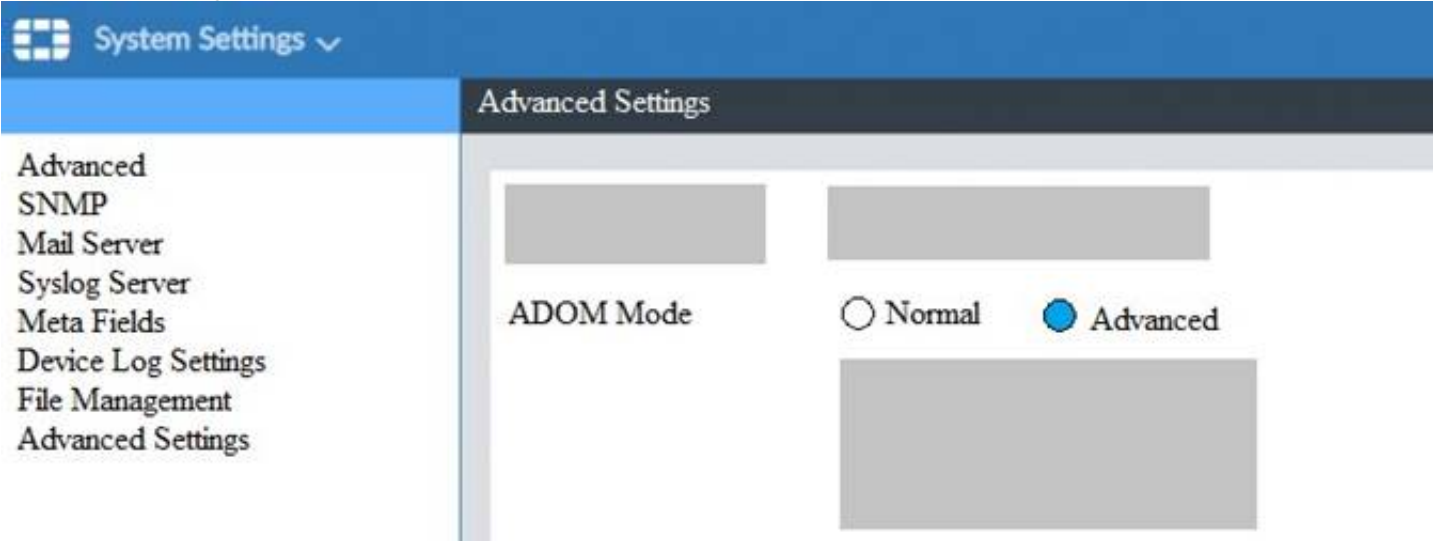
- A. Policy ID 2 is installed without a source address

- B. Policy ID 2 will not be installed
- C. Policy ID 2 is installed in disabled state
- D. Policy ID 2 is installed without a source device

Answer: B

NEW QUESTION 15

- (Topic 1)
View the following exhibit.



What is the purpose of setting ADOM Mode to Advanced?

- A. The setting allows automatic updates to the policy package configuration for a managed device
- B. The setting enables the ADOMs feature on FortiManager
- C. This setting allows you to assign different VDOMs from the same FortiGate to different ADOMs.
- D. The setting disables concurrent ADOM access and adds ADOM locking

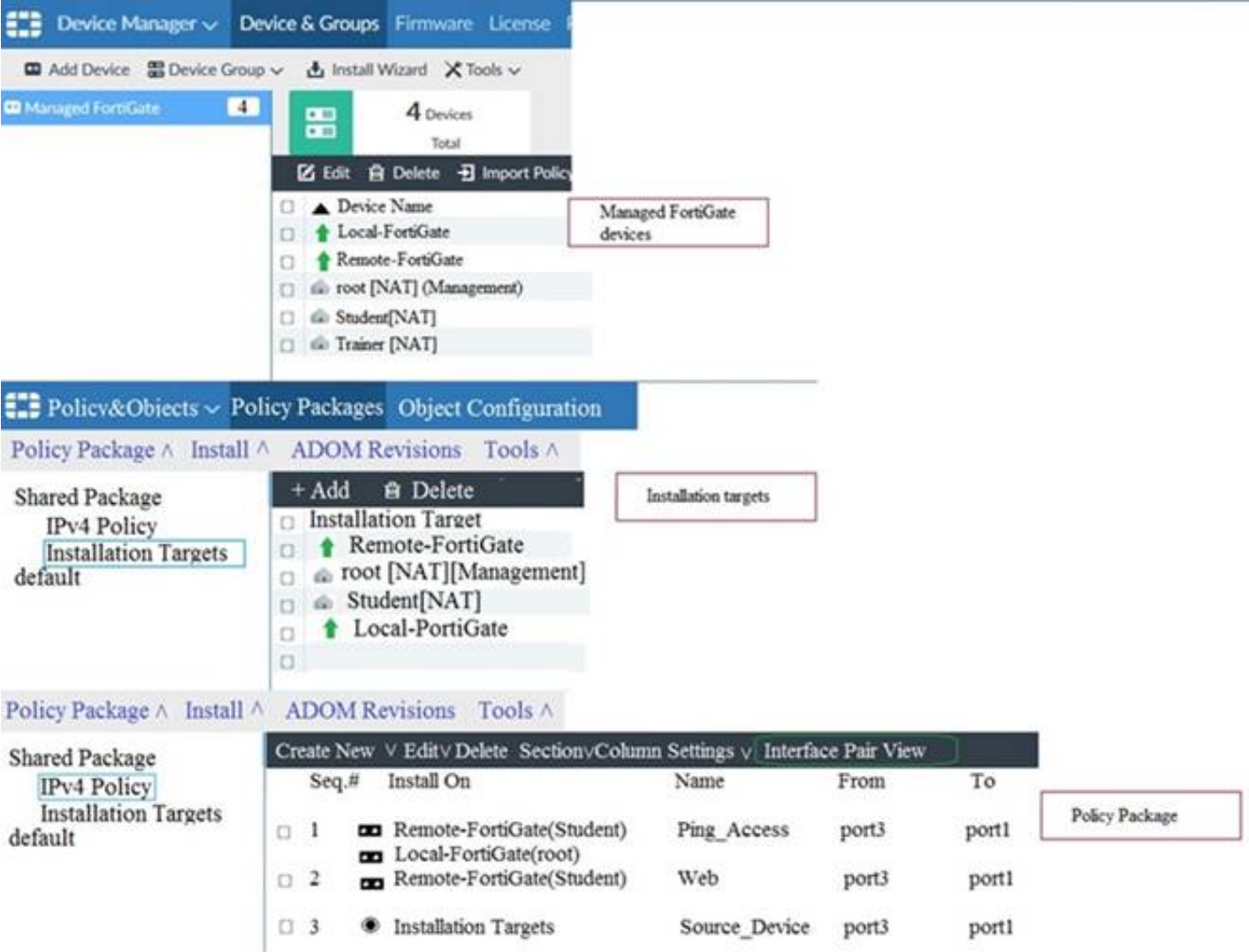
Answer: C

Explanation:

Reference: <https://docs.fortinet.com/document/fortianalyzer/7.0.0/administration-guide/66530/adom-device-modes>

NEW QUESTION 17

- (Topic 1)
View the following exhibit.



Given the configurations shown in the exhibit, what can you conclude from the installation targets in the Install On column?

- A. The Install On column value represents successful installation on the managed devices
- B. Policy seq#3 will be installed on all managed devices and VDOMs that are listed under Installation Targets
- C. Policy seq#3 will be installed on the Trainer[NAT] VDOM only
- D. Policy seq#3 will be not installed on any managed device

Answer: B

NEW QUESTION 22

- (Topic 1)
View the following exhibit.

Import Device - Local-FortiGate [root]

Create a new policy package for import.

Policy Package Name

Local-FortiGate

Folder

root

Policy Selection

☒ Import All(3)

☐ Select Policies and Profile Groups to Import

Object Selection

☐ Import only policy dependent objects

☒ Import all objects

An administrator is importing a new device to FortiManager and has selected the shown options. What will happen if the administrator makes the changes and installs the modified policy package on this managed FortiGate?

- A. The unused objects that are not tied to the firewall policies will be installed on FortiGate
- B. The unused objects that are not tied to the firewall policies will remain as read-only locally on FortiGate
- C. The unused objects that are not tied to the firewall policies locally on FortiGate will be deleted
- D. The unused objects that are not tied to the firewall policies in policy package will be deleted from theFortiManager database

Answer: C

Explanation:

Reference:<https://community.fortinet.com/t5/FortiManager/Import-all-objects-Versus-Import-only-policy-dependent-objects/ta-p/193259?externalID=FD40392>

NEW QUESTION 26

- (Topic 2)
Refer to the exhibit.

Edit Address

Address Name

LAN

Type

IP/Netmask

IP/Netmask

192.168.1.0/255.255.255.0

Interface

any

Static Route Configuration

OFF

Comments

Add to Groups

Click to add ...

Advanced Options >

Per-Device Mapping

ON

+ Add

Edit

Delete

	Name	VDOM	Details
<input type="checkbox"/>	Remote-FortiGate	root	IP/Netmask:10.200.1.0/255.255.255.0

An administrator has created a firewall address object,Trainingwhich is used in the Local- FortiGate policy package. When the installation operation is performed, which IP/Netmask will be installed on the Local-FortiGate, for theTrainingfirewall address object?

- A. 192.168.0.1/24
- B. 10.200.1.0/24
- C. It will create a firewall address group on Local-FortiGate with 192.168.0.1/24 and 10.0.1.0/24 object values.
- D. Local-FortiGate will automatically choose an IP/Netmask based on its network interface settings.

Answer: A

NEW QUESTION 30

- (Topic 2)

What will be the result of reverting to a previous revision version in the revision history?

- A. It will install configuration changes to managed device automatically
- B. It will tag the device settings status as Auto-Update
- C. It will generate a new version ID and remove all other revision history versions
- D. It will modify the device-level database

Answer: D

NEW QUESTION 33

- (Topic 2)

An administrator is replacing a device on FortiManager by running the following command: `execute device replace sn <devname> <serialnum>`.

What device name and serial number must the administrator use?

- A. Device name and serial number of the original device.
- B. Device name and serial number of the replacement device.
- C. Device name of the replacement device and serial number of the original device.
- D. Device name of the original device and serial number of the replacement device.

Answer: D

NEW QUESTION 34

- (Topic 2)

An administrator's PC crashes before the administrator can submit a workflow session for approval. After the PC is restarted, the administrator notices that the ADOM was locked from the session before the crash.

How can the administrator unlock the ADOM?

- A. Restore the configuration from a previous backup.
- B. Log in as Super_User in order to unlock the ADOM.
- C. Log in using the same administrator account to unlock the ADOM.
- D. Delete the previous admin session manually through the FortiManager GUI or CLI.

Answer: D

NEW QUESTION 39

- (Topic 2)

Refer to the exhibit.

Create New CLI Script

Script Name

Routing

[View Sample Script]

Comments

Write a comment

0/255

Type

CLI Script

Run script on

Device Database

Script details

```

config router prefix-list
edit public
config rule
edit 1
set prefix 0.0.0.0/0
set action permit
next
edit 2
set prefix 8.8.8.8/32
set action deny
end

```

Advanced Device Filters

>

OK

Cancel

Which two statements are true if the script is executed using the Device Database option? (Choose two.)

- A. You must install these changes using the Install Wizard to a managed device
- B. The successful execution of a script on the Device Database will create a new revision history

- C. The script history will show successful installation of the script on the remote FortiGate
- D. The Device Settings Status will be tagged as Modified

Answer: AD

NEW QUESTION 43

- (Topic 2)

An administrator has assigned a global policy package to custom ADOM1. Then the administrator creates a new policy package, Fortinet, in the custom ADOM1. Which statement about the global policy package assignment to the newly-created policy package Fortinet is true?

- A. When a new policy package is created, it automatically assigns the global policies to the new package.
- B. When a new policy package is created, you need to assign the global policy package from the global ADOM.
- C. When a new policy package is created, you need to reapply the global policy package to the ADOM.
- D. When a new policy package is created, you can select the option to assign the global policies to the new package.

Answer: A

Explanation:

Global Policy Package is applied at the ADOM level and you have the option to choose which ADOM policy packages you want to exclude (there is no option to choose Policy Packages to include).

NEW QUESTION 44

- (Topic 3)

What does a policy package status of Modified indicate?

- A. FortiManager is unable to determine the policy package status
- B. The policy package was never imported after a device was registered on FortiManager
- C. The Policy configuration has been changed on a managed device and changes have not yet been imported into FortiManager
- D. The Policy package configuration has been changed on FortiManager and changes have not yet been installed on the managed device.

Answer: B

Explanation:

Reference: http://help.fortinet.com/fmgr/50hlp/56/5-6-1/FortiManager_Admin_Guide/1200_Policy%20and%20Objects/0800_Managing%20policy%20packages/2200_Policy%20Package%20Installation%20targets.htm

NEW QUESTION 46

- (Topic 3)

Push updates are failing on a FortiGate device that is located behind a NAT device. Which two settings should the administrator check? (Choose two.)

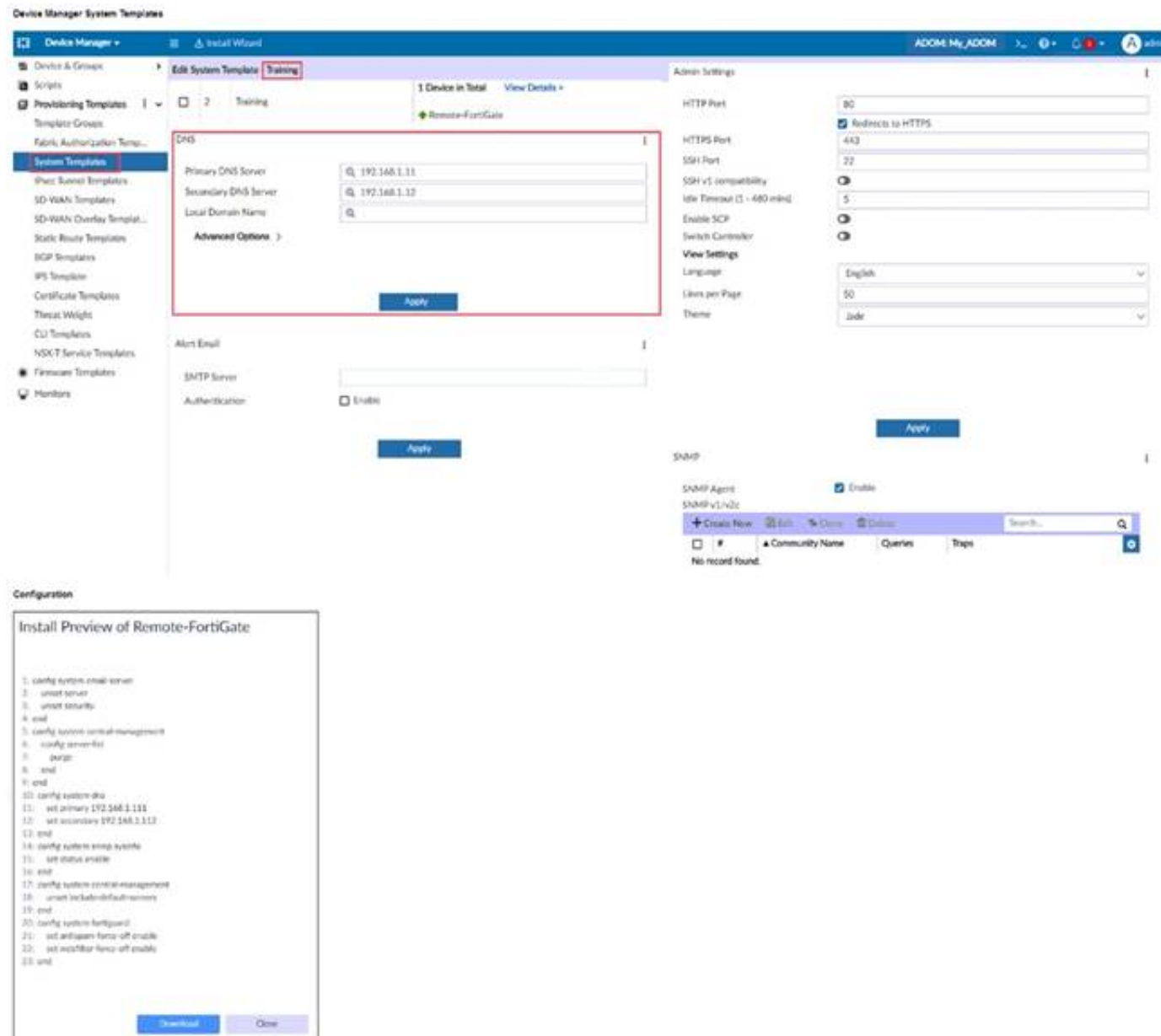
- A. That the virtual IP address and correct ports are set on the NAT device
- B. That the NAT device IP address and correct ports are configured on FortiManager
- C. That the external IP address on the NAT device is set to DHCP and configured with the virtual IP
- D. That the override server IP address is set on FortiManager and the NAT device

Answer: BC

NEW QUESTION 51

- (Topic 3)

Refer to the exhibit.



On FortiManager, an administrator created a new system template named Training with two new DNS addresses. During the installation preview stage, the administrator notices that central-management settings need to be purged. What can be the main reason for the central-management purge command?

- A. The Remote-FortiGate device does not have any DNS server-list configured in the central-management settings.
- B. The DNS addresses in the default system settings are the same as the Training system template.
- C. The ADOM is locked by another administrator.
- D. The Training system template has a default FortiGuard widget.

Answer: A

NEW QUESTION 53

- (Topic 3)

An administrator would like to create an SD-WAN using central management. What steps does the administrator need to perform to create an SD-WAN using central management?

- A. First create an SD-WAN firewall policy, add member interfaces to the SD-WAN template and create a static route
- B. You must specify a gateway address when you create a default static route
- C. Remove all the interface references such as routes or policies
- D. Enable SD-WAN central management in the ADOM, add member interfaces, create a static route and SDWAN firewall policies.

Answer: D

NEW QUESTION 56

- (Topic 3)

An administrator created a header and footer global policy package and assigned it to an ADOM. What are two outcomes from this action? (Choose two.)

- A. You must manually move the header and footer policies after the policy assignment.
- B. After you assign the global policy package to an ADOM, the policy package is hidden from the ADOM and cannot be viewed.
- C. If you assign an additional global policy package to the same ADOM, FortiManager removes previously assigned policies.
- D. You can edit or delete all the global objects in the global ADOM.

Answer: AD

NEW QUESTION 58

- (Topic 3)

In the event that one of the secondary FortiManager devices fails, which action must be performed to return the FortiManager HA manual mode to a working state?

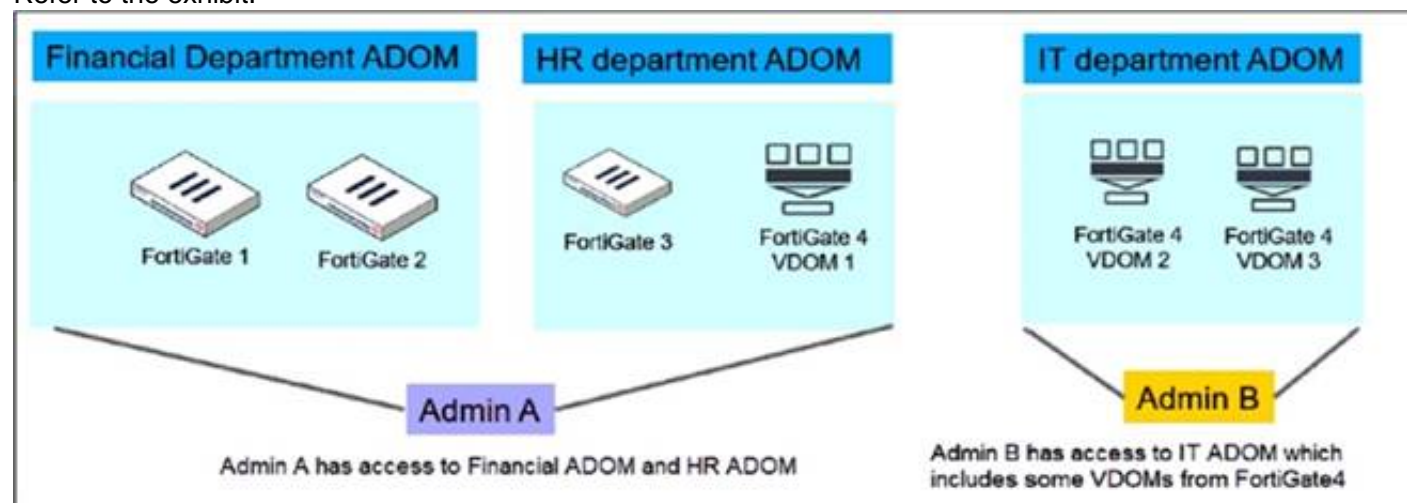
- A. The FortiManager HA state transition is transparent to administrators and does not require any reconfiguration.
- B. Manually promote one of the working secondary devices to the primary role, and reboot the old primary device to remove the peer IP of the failed device.
- C. Reconfigure the primary device to remove the peer IP of the failed device.
- D. Reboot the failed device to remove its IP from the primary device.

Answer: C

NEW QUESTION 61

- (Topic 3)

Refer to the exhibit.



An administrator would like to create three ADOMs on FortiManager with different access levels based on departments. What two conclusions can you draw from the design shown in the exhibit? (Choose two.)

- A. Admin A can access VDOM2 and VDOM3 with the super user profile.
- B. The FortiManager policies and objects database can be shared between the Financial and HR ADOMs.
- C. The administrator must set the FortiManager ADOM mode to Advanced.
- D. The administrator must configure FortiManager in workspace mode.

Answer: BC

NEW QUESTION 62

- (Topic 3)

In addition to the default ADOMs, an administrator has created a new ADOM named Training for FortiGate devices. The administrator authorized the FortiGate device on FortiManager using the Fortinet Security Fabric.

Given the administrator's actions, which statement correctly describes the expected result?

- A. The FortiManager administrator must add the authorized device to the Training ADOM using the Add Device wizard only.
- B. The authorized FortiGate will be automatically added to the Training ADOM.
- C. The authorized FortiGate will appear in the root ADOM.
- D. The authorized FortiGate can be added to the Training ADOM using FortiGate Fabric Connectors.

Answer: C

NEW QUESTION 66

- (Topic 3)

An administrator has assigned a global policy package to custom ADOM1. Then the administrator creates a new policy package Fortinet in the custom ADOM1. What will happen to the Fortinet policy package when it is created?

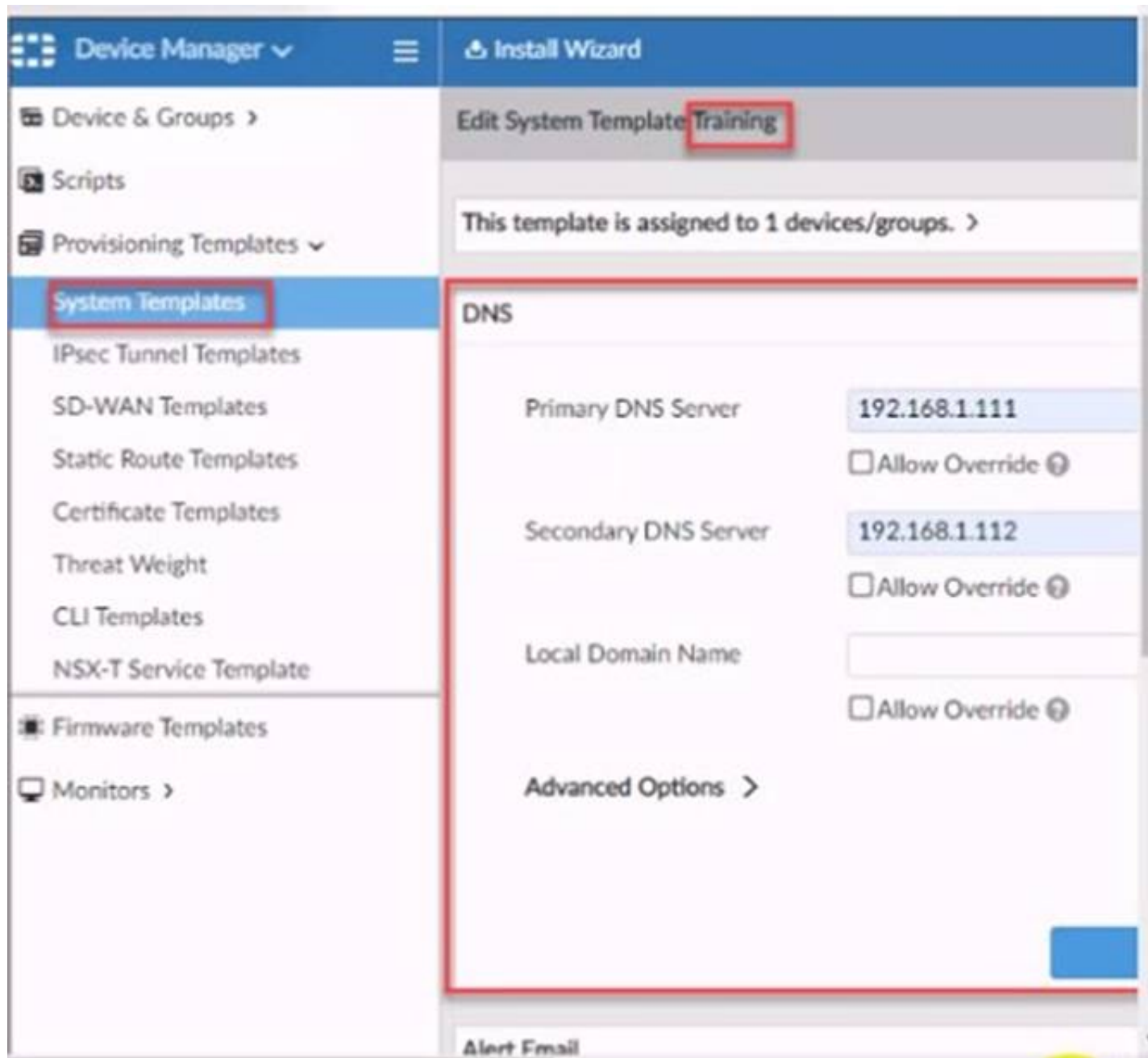
- A. You need to assign the global policy package from the global ADOM
- B. You need to reapply the global policy package to the ADOM
- C. it automatically assigns the global policies
- D. You can select the option to assign the global policies

Answer: C

NEW QUESTION 70

- (Topic 3)

Refer to the exhibit.



According to the error message why is FortiManager failing to add the FortiAnalyzer device?

- A. The administrator must turn off the Use Legacy Device login and add the FortiAnalyzer device to the same network as Forti-Manager
- B. The administrator must select the Forti-Manager administrative access checkbox on the FortiAnalyzer management interface
- C. The administrator must use the Add Model Device section and discover the FortiAnalyzer device
- D. The administrator must use the correct user name and password of the FortiAnalyzer device

Answer: A

NEW QUESTION 73

- (Topic 3)

View the following exhibit.

Edit Address

Address Name

Training

Type

IP/Netmask

IP/Network

192.168.1.0/255.255.255.255.0

Interface

any

Static Route Configuration

OFF

Comments

0/255

Add to Groups

Click to add

Advanced Options >

Per-Device Mapping

ON

+ Add Edit Delete

<input type="checkbox"/>	Name	VDOM	Details
<input type="checkbox"/>	Local-FortiGate	root	IP/Netmask10.0.10/255.255.255.0

An administrator has created a firewall address object, Training, which is used in the Local- FortiGate policy package. When the install operation is performed, which IP Netmask will be installed on the Local-FortiGate, for the Training firewall address object?

- A. 10.0.1.0/24
- B. It will create firewall address group on Local-FortiGate with 192.168.0.1/24 and 10.0.1.0/24 object values
- C. 192.168.0.1/24
- D. Local-FortiGate will automatically choose an IP Network based on its network interface settings.

Answer: A

NEW QUESTION 74

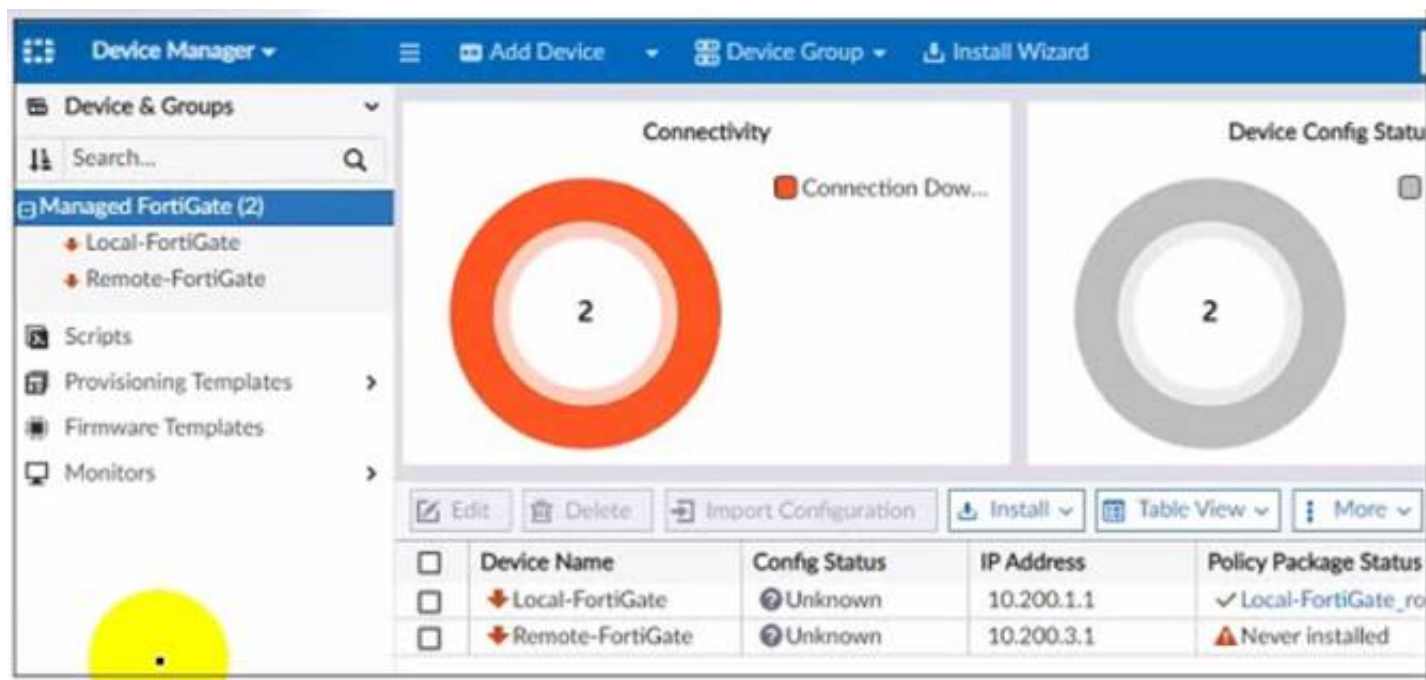
- (Topic 3)
Which of the following statements are true regarding schedule backup of FortiManager? (Choose two.)

- A. Backs up all devices and the FortiGuard database.
- B. Does not back up firmware images saved on FortiManager
- C. Supports FTP, SCP, and SFTP
- D. Can be configured from the CLI and GUI

Answer: BC

NEW QUESTION 79

- (Topic 3)
Refer to the exhibit.



A junior administrator is troubleshooting a FortiManager connectivity issue that is occurring with managed FortiGate devices. Given the FortiManager device manager settings shown in the exhibit, what can you conclude from the exhibit?

- A. The administrator had restored the FortiManager configuration file
- B. The administrator must refresh both devices to restore connectivity
- C. FortiManager test internet connectivity therefore, both devices appear to be down
- D. The administrator can reclaim the FGFM tunnel to get both devices online

Answer: C

NEW QUESTION 84

- (Topic 3)

An administrator would like to authorize a newly-installed AP using AP Manager. What steps does the administrator need to perform to authorize an AP?

- A. Authorize the new AP using AP Manager and wait until the change is updated on the FortiA
- B. Changes to the AP's state do not require installation.
- C. Changes to the AP's state must be performed directly on the managed FortiGate.
- D. Authorize the new AP using AP Manager and install the policy package changes on the managed FortiGate.
- E. Authorize the new AP using AP Manager and install the device level settings on the managed FortiGate.

Answer: D

NEW QUESTION 89

- (Topic 3)

What does the `diagnose dvm check-integrity` command do? (Choose two.)

- A. Internally upgrades existing ADOMs to the same ADOM version in order to clean up and correct the ADOM syntax
- B. Verifies and corrects unregistered, registered, and deleted device states
- C. Verifies and corrects database schemas in all object tables
- D. Verifies and corrects duplicate VDOM entries

Answer: BD

Explanation:

* 6.2 Study Guide page 305 verify and correct parts of the device manager databases, including:– inconsistent device-to-group and group-to-ADOM memberships– unregistered, registered, and deleted device states– device lock statuses– duplicate VDOM entries

NEW QUESTION 93

- (Topic 3)

Which configuration setting for FortiGate is part of an ADOM-level database on FortiManager?

- A. NSX-T Service Template
- B. Security profiles
- C. SNMP
- D. Routing

Answer: B

NEW QUESTION 97

.....

Thank You for Trying Our Product

We offer two products:

1st - We have Practice Tests Software with Actual Exam Questions

2nd - Questions and Answers in PDF Format

NSE5_FMG-7.2 Practice Exam Features:

- * NSE5_FMG-7.2 Questions and Answers Updated Frequently
- * NSE5_FMG-7.2 Practice Questions Verified by Expert Senior Certified Staff
- * NSE5_FMG-7.2 Most Realistic Questions that Guarantee you a Pass on Your First Try
- * NSE5_FMG-7.2 Practice Test Questions in Multiple Choice Formats and Updates for 1 Year

100% Actual & Verified — Instant Download, Please Click
[Order The NSE5_FMG-7.2 Practice Test Here](#)