



Cisco

Exam Questions 400-007

Cisco Certified Design Expert (CCDE v3.0) Written Exam

About ExamBible

[Your Partner of IT Exam](#)

Found in 1998

ExamBible is a company specialized on providing high quality IT exam practice study materials, especially Cisco CCNA, CCDA, CCNP, CCIE, Checkpoint CCSE, CompTIA A+, Network+ certification practice exams and so on. We guarantee that the candidates will not only pass any IT exam at the first attempt but also get profound understanding about the certificates they have got. There are so many alike companies in this industry, however, ExamBible has its unique advantages that other companies could not achieve.

Our Advances

* 99.9% Uptime

All examinations will be up to date.

* 24/7 Quality Support

We will provide service round the clock.

* 100% Pass Rate

Our guarantee that you will pass the exam.

* Unique Gurantee

If you do not pass the exam at the first time, we will not only arrange FULL REFUND for you, but also provide you another exam of your claim, ABSOLUTELY FREE!

NEW QUESTION 1

An enterprise network has two core routers that connect to 200 distribution routers and uses full-mesh IBGP peering between these routers as its routing method. The distribution routers are experiencing high CPU utilization due to the BGP process. Which design solution is the most cost effective?

- A. Implement route reflectors on the two core routers
- B. Increase the memory on the core routers
- C. Implement e BGP between the core and distribution routers
- D. Increase the memory on the distribution routers
- E. Increase bandwidth between the core routers

Answer: A

NEW QUESTION 2

Which two mechanisms avoid suboptimal routing in a network with dynamic mutual redistribution between multiple OSPFv2 and EIGRP boundaries? (Choose two.)

- A. AD manipulation
- B. matching OSPF external routes
- C. route tagging
- D. route tagging
- E. route filtering
- F. matching EIGRP process ID

Answer: DE

Explanation:

<https://www.cisco.com/c/en/us/support/docs/ip/enhanced-interior-gateway-routing-protocol-eigrp/8606-redist.ht>

NEW QUESTION 3

When consumers that leverage IaaS reach 100% resource capacity, what can be used to redirect the overflow of traffic to the public cloud so there is no disruption to service?

- A. cloud policing
- B. cloud spill
- C. cloud bursting
- D. cloud shaping

Answer: C

NEW QUESTION 4

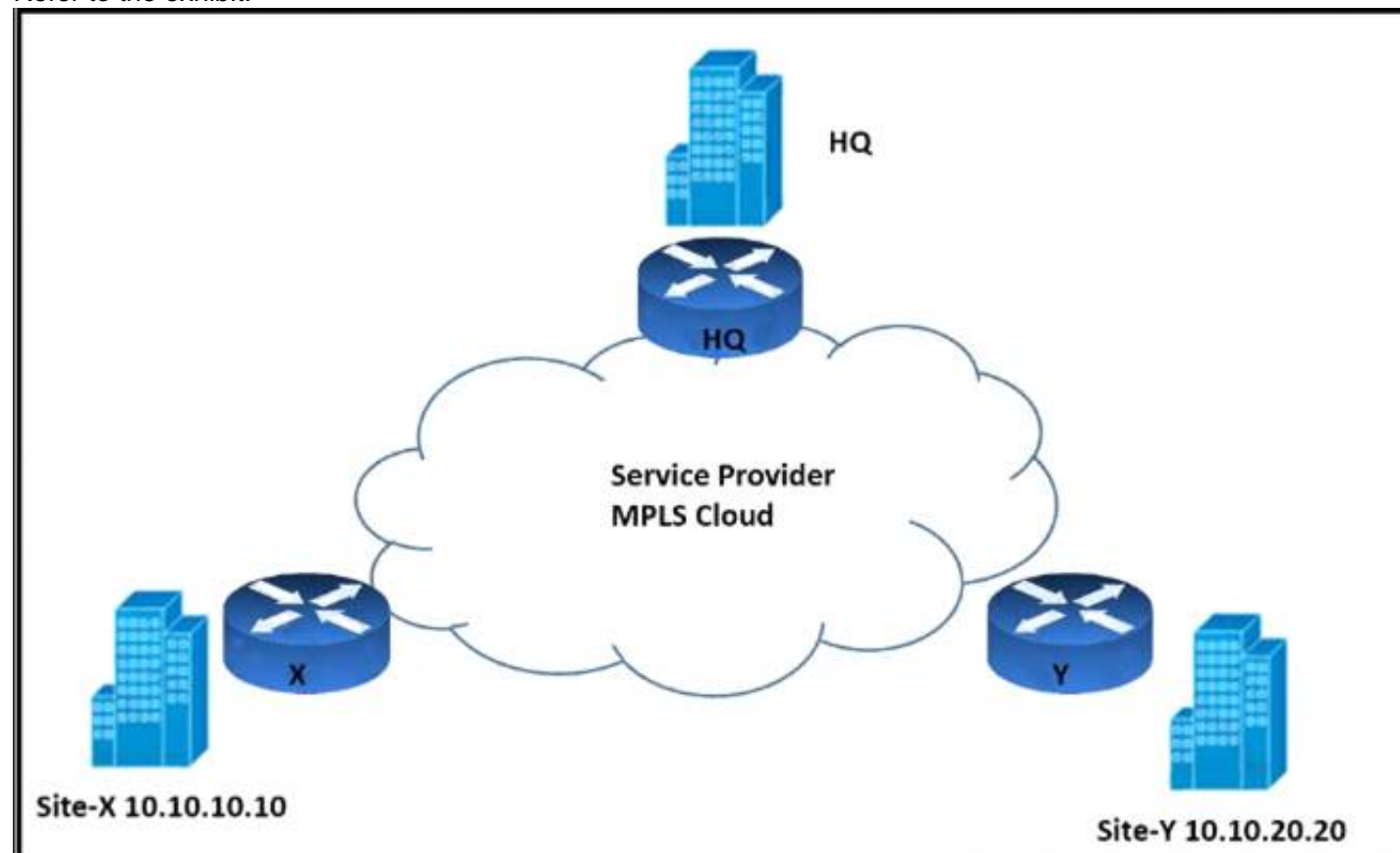
According to the CIA triad principles for network security design, which principle should be priority for a Zero Trust network?

- A. requirement for data-in-motion encryption and 2FA authentication
- B. requirement for data-at-rest encryption for user identification within the VPN termination hardware
- C. categorization of systems, data, and enterprise BYOD assets that are connected to network zones based on individual privacy needs
- D. ensuring that authorized users have high-availability system access from defined zones to defined systems or zones

Answer: A

NEW QUESTION 5

Refer to the exhibit.



An architect must design an enterprise WAN that connects the headquarters with 22 branch offices. The number of remote sites is expected to triple in the next three years. The final solution must comply with these requirements:

- Only the loopback address of each of the enterprise CE X and Y routers must be advertised to the interconnecting service provider cloud network.
- The transport layer must carry the VPNv4 label and VPN payload over the MP-BGP control plane.
- The transport layer must not be under service provider control.

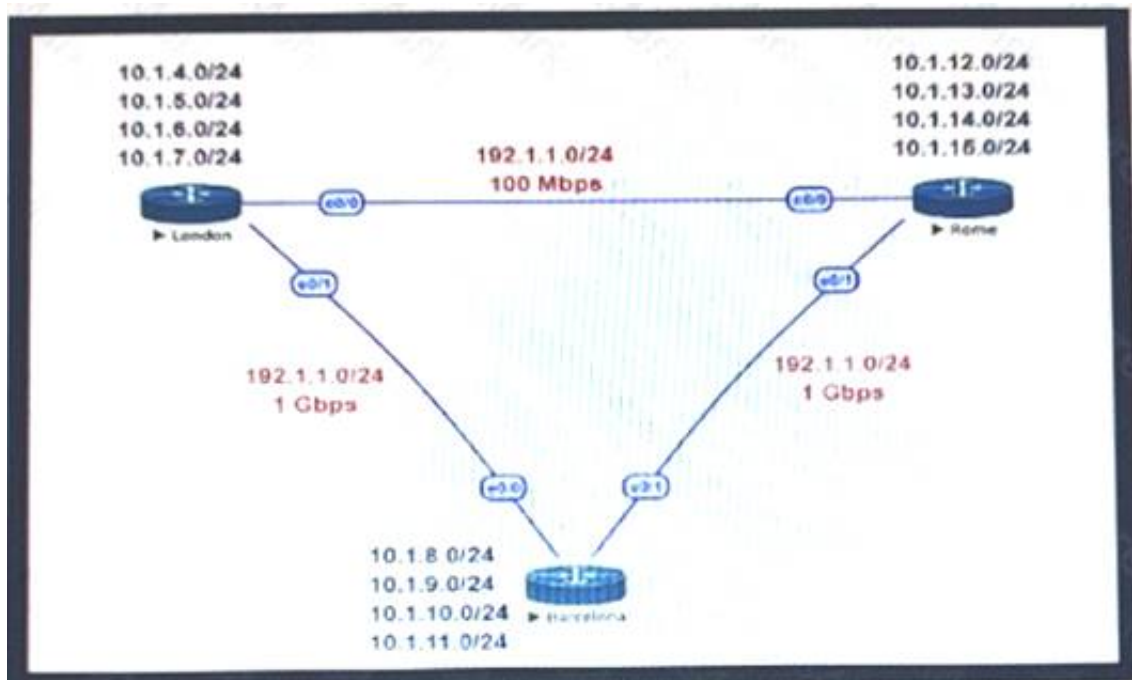
Which enterprise WAN transport virtualization technique meets the requirements?

- A. EIGRP Over the Top
- B. MPLS over BGP over multipoint GRE
- C. DMVPN per VRF
- D. point-to-point GRE per VRF

Answer: B

NEW QUESTION 6

Refer to the exhibit.



This network is running OSPF as the routing protocol. The internal networks are being advertised in OSPF. London and Rome are using the direct link to reach each other although the transfer rates are better via Barcelona. Which OSPF design change allows OSPF to calculate the proper costs?

- A. Change the OSPF reference bandwidth to accommodate faster links.
- B. Filter the routes on the link between London and Rome
- C. Change the interface bandwidth on all the links.
- D. Implement OSPF summarisation to fix the issue

Answer: A

NEW QUESTION 7

A healthcare customer requested that SNMP traps must be sent over the MPLS Layer 3 VPN service. Which protocol must be enabled?

- A. SNMPv3
- B. Syslog
- C. Syslog TLS
- D. SNMPv2
- E. SSH

Answer: A

NEW QUESTION 8

What statement describes the application layer as defined in the software-defined networking architecture?

- A. This layer is responsible for collecting the network status such as network usage and topology.
- B. This layer contains programs that communicate their desired network behavior to controllers.
- C. This layer is responsible for handling packets based on the rules provided by the controller.
- D. This layer processes the instructions and requirements sent by networking components.

Answer: B

NEW QUESTION 9

You have been asked to design a remote access VPN solution to support up to 2000 devices. You must ensure that only corporate assets are allowed to connect to the VPN, and users must authenticate to gain access of their based on their user role. Users must use a password that they are already using to access existing applications. A user may not always use the same device to access the VPN. Which two options combined meet the requirements? (Choose two)

- A. Use local usernames and passwords on the VPN device
- B. Deploy a central authentication directory that users can be authenticated and authorized against
- C. Deploy certificates that are unique to each user
- D. Deploy an IPsec VPN solution
- E. Deploy certificates that are unique to each device
- F. Deploy a SSL VPN solution

Answer: BF

NEW QUESTION 10

Refer to the exhibit.



Company XYZ BGP topology is as shown in the diagram. The interface on the LA router connected toward the 10.1.5.0/24 network is faulty and is going up and down, which affects the entire routing domain. Which routing technique can be used in the routing policy design so that the rest of the network is not affected by the flapping issue?

- A. Use route dampening on LA router for the 10.1.5.0/24 network so that it does not get propagated when it flaps up and down
- B. Use route filtering on Chicago router to block the 10.1.5.0/24 network from coming in from the LA router
- C. Use route filtering on LA router to block the 10.1.5.0/24 network from getting propagated toward Chicago and New York
- D. Use route aggregation on LA router to summarize the 10.1.4.0/24, 10.1.5.0/24, 10.1.6.0/24, and 10.1.7.0/24 networks toward Chicago

Answer: D

NEW QUESTION 10

Which architecture does not require an explicit multicast signaling protocol, such as PIM or P2MP, to signal the multicast state hop-by-hop, but instead uses a link state protocol to advertise the multicast forwarding state?

- A. Binary indexed explicit routing
- B. Binary intermediate enhanced routing
- C. Bit indexed explicit replication
- D. Bi-directional implicit replication

Answer: C

NEW QUESTION 11

Which technology supports antispoofing and does not have any impact on encryption performance regardless of packet size?

- A. MACsec
- B. IP source guard
- C. DHCP snooping with DAI
- D. IPsec

Answer: A

NEW QUESTION 14

An architect receives a business requirement from a CTO that states the RTO and RPO for a new system should be as close as possible to zero. Which replication method and data center technology should be used?

- A. asynchronous replication over dual data centers via DWDM
- B. synchronous replication over geographically dispersed dual data centers via MPLS
- C. synchronous replication over dual data centers via Metro Ethernet
- D. asynchronous replication over geographically dispersed dual data centers via CWDM

Answer: B

Explanation:

RTO and RPO are measures of how quickly and accurately a system can be recovered after a disaster or failure. RTO refers to the amount of time it takes to restore a system to its normal operation after a failure, while RPO refers to the amount of data that can be lost as a result of a failure. In synchronous replication, data is written to both the primary and secondary systems at the same time. This ensures that the data on the secondary system is always up-to-date and ready for use in the event of a disaster or failure. Geographically dispersed dual data centers refer to two data centers that are located in different geographical locations, which can help to reduce the risk of a disaster or failure impacting both data centers at the same time.

NEW QUESTION 18

A Service Provider is designing a solution for a managed CE service to a number of local customers using a single CE platform and wants to have logical separation on the CE platform using Virtual Routing and Forwarding (VRF) based on IP address ranges or packet length. Which is the most scalable solution to provide this type of VRF Selection process on the CE edge device?

- A. Static Routes for Route Leaking
- B. Policy Based Routing
- C. OSPF per VRF Instance
- D. Multi-Protocol BGP

Answer: B

NEW QUESTION 20

You were tasked to enhance the security of a network with these characteristics:

- A pool of servers is accessed by numerous data centers and remote sites
- The servers are accessed via a cluster of firewalls
- The firewalls are configured properly and are not dropping traffic
- The firewalls occasionally cause asymmetric routing of traffic within the server data center.

Which technology should you recommend to enhance security by limiting traffic that could originate from a hacker compromising a workstation and redirecting flows at the servers?

- A. Poison certain subnets by adding static routes to Null0 on the core switches connected to the pool of servers.
- B. Deploy uRPF strict mode.
- C. Limit sources of traffic that exit the server-facing interface of the firewall cluster with ACLs.
- D. Deploy uRPF loose mode

Answer: C

NEW QUESTION 22

Company ABC wants to minimize the risk of users plugging unauthorized switches and hubs into the network Which two features can be used on the LAN access ports to support this design requirement? (Choose two.)

- A. Loop Guard
- B. PortFast
- C. DTF
- D. Root Guard
- E. BPDU Guard

Answer: BE

NEW QUESTION 25

You are designing the routing design for two merging companies that have overlapping IP address space. Which of these must you consider when developing the routing and NAT design?

- A. Local to global NAT translation is done after routing
- B. Global to local NAT translation is done before routing.
- C. Local to global NAT translation is done before policy-based routing
- D. Global to local NAT translation is done after policy-based routing.

Answer: B

NEW QUESTION 28

Company XYZ needs advice in redesigning their legacy Layer 2 infrastructure. Which technology should be included in the design to minimize or avoid convergence delays due to STP or FHRP and provide a loop-free topology?

- A. Use switch clustering in the access layer.
- B. Use switch clustering in the core/distribution layer.
- C. Use spanning-tree PortFast.
- D. Use BFD.

Answer: B

NEW QUESTION 30

Which two statements describe the usage of the IS-IS overload bit technique? (Choose two)

- A. If overload-bit is set on a Level 2 intermediate system, the other Level 2 intermediate systems in the topology will stop using the overloaded IS to forward Level 2 traffic However, the intermediate system can still forward Level 1 traffic
- B. It can be set in intermediate systems (IS-IS routers) to prioritize control plane CSNP packets.
- C. It can be used to automatically synchronize the link-state database between Level 1 intermediate systems
- D. It can be set in intermediate systems (IS-IS routers) to avoid traffic black holes until routing protocols are fully converged after a reload operation.
- E. It can be set in intermediate systems (IS-IS routers) to attract transit traffic from other intermediate systems

Answer: AD

NEW QUESTION 35

Drag and drop the design characteristics from the left onto the correct network filter techniques on the right. Not all options are used.

- It is used to prevent spoofing attacks when there are alternate routes to a given IP address
- It is used to check the existence of a route without regard to the incoming interface
- It is a dynamic filter
- It requires manual configuration
- It is used as a filtering technique for Martian IP addresses

- Ingress Access Lists
 - target 1
- Strict Reverse Path Forwarding
 - target 2
- Feasible Path Reverse Path Forwarding
 - target 3
- Loose Reverse Path Forwarding
 - target 4

- A. Mastered
- B. Not Mastered

Answer: A

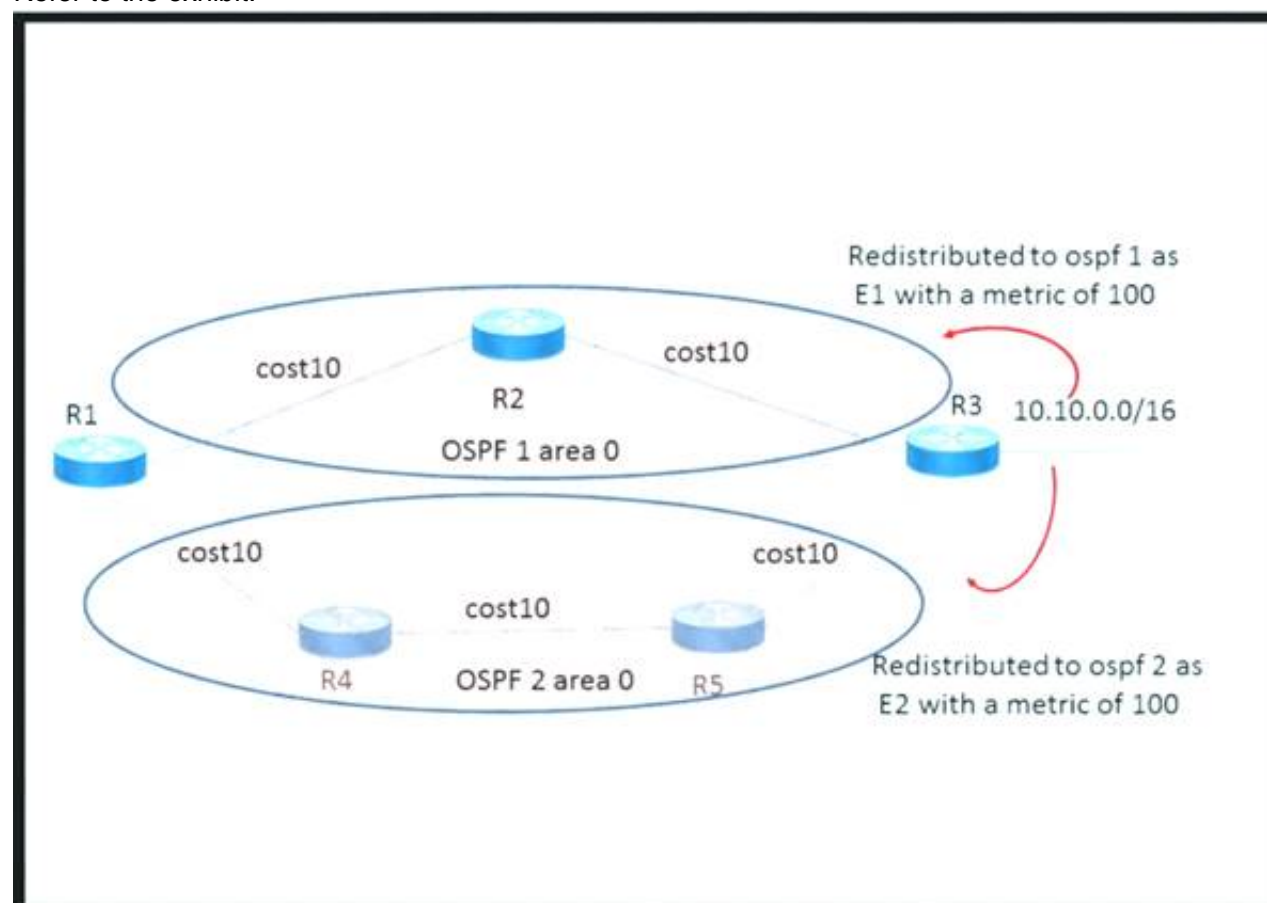
Explanation:

- It is used to prevent spoofing attacks when there are alternate routes to a given IP address
- It is used to check the existence of a route without regard to the incoming interface
- It is a dynamic filter
- It requires manual configuration
- It is used as a filtering technique for Martian IP addresses

- Ingress Access Lists
 - It requires manual configuration
- Strict Reverse Path Forwarding
 - It is a dynamic filter
- Feasible Path Reverse Path Forwarding
 - It is used to prevent spoofing attacks when there are alternate routes to a given IP address
- Loose Reverse Path Forwarding
 - It is used as a filtering technique for Martian IP addresses

NEW QUESTION 40

Refer to the exhibit.



The network 10.10.0.0/16 has been redistributed to OSPF processes and the best path to the destination from R1 has been chosen as R1-R2-R3. A failure occurred on the link between R2 and R3 and the path was changed to R1-R4-R5-R3. What happens when the link between R2 and R3 is restored?

- A. The path R1-R4-R5-R3 continues to be the best path because the metric is better
- B. The path reverts back to R1-R2-R3 because the route type is E1
- C. The path R1-R4-R5-R3 continues to be the best path because OSPF does not compare the metrics between two domains
- D. The path reverts to R1-R2-R3 because this was the previous best path

Answer: D

Explanation:

When the link between R2 and R3 is restored, the path reverts back to R1-R2-R3 because this was the previous best path. This is because OSPF uses the Dijkstra algorithm to calculate the shortest path tree (SPT) and the path with the lowest cost is chosen as the best path. In this case, the cost of the path R1-R2-R3 is lower than the cost of the path R1-R4-R5-R3, so the path R1-R2-R3 is chosen as the best path. OSPF also has a preference order for different types of routes, such as intra-area, inter-area, external type 1, external type 2, NSSA type 1, and NSSA type 2. However, this preference order only applies when OSPF has to choose between routes of different types to the same destination. In this scenario, both paths are external type 2 routes so the preference order does not affect the path selection.

NEW QUESTION 41

The network designer needs to use GLOP IP addresses in order to make them unique within their ASN. Which multicast address range should be used?

- A. 232.0.0.0 to 232.255.255.255
- B. 233.0.0.0 to 233.255.255.255
- C. 239.0.0.0 to 239.255.255.255
- D. 224.0.0.0 to 224.255.255.255

Answer: B

NEW QUESTION 43

Which two protocols are used by SDN controllers to communicate with switches and routers? (Choose two.)

- A. OpenFlash
- B. OpenFlow
- C. NetFlash
- D. Open vSwitch Database
- E. NetFlow

Answer: BD

NEW QUESTION 48

Company XYZ is designing the IS-IS deployment strategy for their multiarea IS-IS domain. They want IS-IS neighbour relationships to be minimized on each network segment and want to optimize the size of the IS-IS LSDB on each router. Which design can be used to meet these requirements?

- A. Design all routers as Level 2 routers
- B. Set the links between the routers as Level 1 with the area
- C. Design the network so that the routers connecting to other areas are Level 2 routers and internal routers are Level 1
- D. Design the network so that all routers are Level 1 routers
- E. Design the network so that the routers connecting to other areas are Level 1/Level 2 routers and internal routers are Level 1

Answer: D

NEW QUESTION 50

What is the most important operational driver when building a resilient and secure modular network design?

- A. Reduce the frequency of failures requiring human intervention
- B. Minimize app downtime
- C. Increase time spent on developing new features
- D. Dependencies on hardware or software that is difficult to scale

Answer: A

NEW QUESTION 52

Which parameter is the most important factor to consider when deciding service placement in a cloud solution?

- A. data replication cost
- B. application structure
- C. security framework implementation time
- D. data confidentiality rules

Answer: D

NEW QUESTION 57

Which two technologies enable multilayer segmentation? (Choose two.)

- A. policy-based routing
- B. segment routing
- C. data plane markings

- D. firewalls
- E. filter lists

Answer: AD

NEW QUESTION 61

Refer to the exhibit.

	Equipment Cost	ISP Cost	Licenses Cost
SD-WAN over L3VPN	\$\$	\$\$	\$\$\$
SD-WAN over L2VPN	\$\$	\$	\$\$\$
Managed SD-WAN	\$	\$\$\$	-
DMVPN over L3VPN	\$\$	\$\$	\$

The WAN network of the General Bank of Greece has experienced several outages. It takes too long to activate a new branch site. The networking department of the bank plans to upgrade the legacy end-of-life WAN network with a new flexible, manageable, and scalable in-house solution. The number of branches will increase exponentially in the next fiscal year. The CTO states that the bank's main goal is OPEX reduction. The network engineering team prepares a table to evaluate the available options. Which WAN technology can be used for the solution?

- A. DMVPN over L3VPN
- B. Managed SD-WAN
- C. SD-WAN over L3VPN
- D. SD-WAN over L2VPN

Answer: B

NEW QUESTION 63

A service provider recently migrated to an SD-WAN solution for delivering WAN connections to its customers. One of the main challenges with the SD-WAN deployment is that branch site volume increases every year, which causes management complexity. Which action resolves the issue?

- A. Implement a scalable network management system to manage all sites.
- B. Adopt a well-structured SD-WAN service management lifecycle model.
- C. Build a service orchestration platform on top of the network controller.
- D. Set up a dedicated team to monitor and provision new customers.

Answer: C

NEW QUESTION 67

Which actions are performed at the distribution layer of the three-layer hierarchical network design model? (Choose two)

- A. Fast transport
- B. Reliability
- C. QoS classification and marking boundary
- D. Fault isolation
- E. Redundancy and load balancing

Answer: DE

NEW QUESTION 72

Which design benefit of bridge assurance is true?

- A. It suppresses a spanning-tree topology change upon connecting and disconnecting a station on a port.
- B. It prevents switched traffic from traversing suboptimal paths on the network.
- C. It allows small, unmanaged switches to be plugged into ports of access switches without the risk of switch loops.
- D. It prevents switch loops caused by unidirectional point-to-point link condition on Rapid PVST+ and MST.

Answer: D

NEW QUESTION 76

Drag and drop the characteristics from the left onto the corresponding network management options on the right.

protocol based on HTTP for configuring data defined in YANG and supports operations such as GET, PUT, POST, PATCH, and DELETE	NETCONF
provides mechanisms to install, manipulate, and delete the configuration of network devices; uses XML for data encoding and the operation is realized as RPC	RESTCONF
application program interface that uses HTTP requests to GET, PUT, POST, and DELETE data	ANSIBLE
open-source software provisioning, configuration management, and application-deployment tool	YANG
data modeling language used to model configuration data, state data, remote procedure calls, and notifications for network management protocols	REST API

- A. Mastered
- B. Not Mastered

Answer: A

Explanation:
Text Description automatically generated

NEW QUESTION 81

Which two features describe controller-based networking solutions compared to traditional networking solutions? (Choose two.)

- A. inflate licensing costs
- B. reduce network configuration complexity
- C. provide centralization of primary IT functions
- D. allow for fewer network failures
- E. increase network bandwidth usage

Answer: BC

NEW QUESTION 85

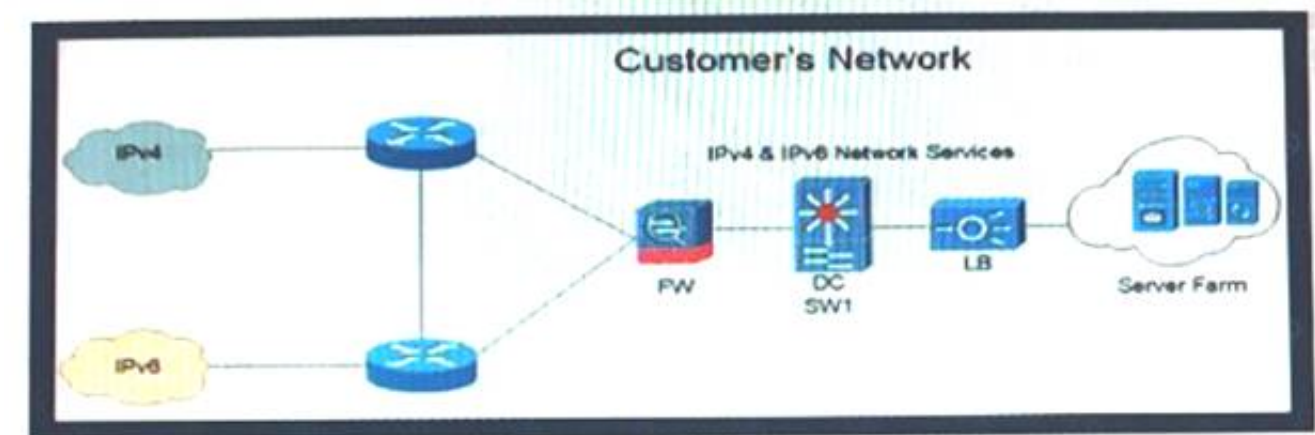
Company ABC uses IPv4-only. Recently they started deploying new endpoint devices. For operational reasons, IPv6 cannot be disabled on these new endpoint devices. Which security measure prevents the new endpoint from learning an IPv6 prefix from an attacker?

- A. Source Guard and Prefix Guard
- B. Router Advertisement Guard
- C. Prefix Guard
- D. Secure Neighbor Discovery

Answer: B

NEW QUESTION 87

Refer to the exhibit.



Company XYZ is currently running IPv4 but has decided to start the transition into IPv6. The initial objective is to allow communication based on IPv6 wherever possible, and there should still be support in place for devices that only support IPv4. These devices must be able to communicate to IPv6 devices as well. Which solution must be part of the design?

- A. address family translation
- B. dual stack
- C. host-to-host tunneling

D. 6rd tunneling

Answer: B

NEW QUESTION 91

Which two statements explain the operation of BFD asynchronous mode? (Choose two)

- A. BFD asynchronous mode with echo packets combines the control packets and echo packets into a single packet.
- B. BFD asynchronous mode without echo packets uses control packets, and BFD asynchronous mode with echo packets does not.
- C. BFD asynchronous mode with and without echo packets use control packets.
- D. BFD asynchronous without echo packets has control packets sent back to the originating router, which echoes the control packet to detect failures.
- E. BFD asynchronous mode with echo packets uses separate control packets and echo packets.

Answer: CE

NEW QUESTION 96

You are designing a large-scale DMVPN network with more than 500 spokes using EIGRP as the IGP protocol Which design option eliminates potential tunnel down events on the spoke routers due to the holding time expiration?

- A. Increase the hold queue on the physical interface of the hub router.
- B. Increase the hold queue on the tunnel interface of the spoke routers
- C. Increase the hold queue on the tunnel interface of the hub router
- D. Apply QoS for pak_priority class
- E. Increase the hold queue on the physical interface of the spoke routers.

Answer: C

NEW QUESTION 97

Software-defined networking architecture is used for cost-effective, adaptable, and easily manageable applications. In which two software-defined networks is SDN commonly used? (Choose two.)

- A. wide area network
- B. mobile network
- C. metro network
- D. application network
- E. control network

Answer: AE

NEW QUESTION 99

Which component of the SDN architecture automatically ensures that application traffic is routed according to policies established by network administrators?

- A. packet forwarding engine
- B. northbound API
- C. southbound API
- D. SDN controller

Answer: D

NEW QUESTION 103

Company XYZ wants to secure the data plane of their network. Which two technologies can be included in the security design? (Choose two)

- A. DAI
- B. IP Source Guard
- C. BEEP
- D. CPPr
- E. MPP

Answer: AB

NEW QUESTION 108

Which two possible drawbacks should you consider when introducing Network Functions Virtualization in a network design? (Choose two)

- A. Bandwidth utilization increases
- B. Traffic flows are suboptimal
- C. High-end routers are required to support NFV
- D. OpenFlow must be supported in the network
- E. An SDN orchestration layer is required to support NFV

Answer: CE

NEW QUESTION 112

A software-defined networking (SDN) controller teams network topology information by using BGP link-state sessions with the route reflectors of an MPLS-enabled network. The controller then uses the topology information to apply on-demand traffic policies to the network through a protocol that is supported from all Layer 3 routers Each policy is represented as a RIB entry in the control plane of the router Which SDN model has been implemented?

- A. SDN centralized
- B. SDN traffic engineering
- C. SD-WAN
- D. SDN hybrid

Answer: B

NEW QUESTION 114

Which two characteristics apply to firewall transparent mode operations in a firewall solution design? (Choose two.)

- A. Changes in the existing IP addressing and subnets are required
- B. The firewall can participate actively on spanning tree.
- C. Multicast traffic can traverse the firewall.
- D. OSPF adjacencies can be established through the firewall
- E. The firewall acts like a router hop in the network.

Answer: CD

NEW QUESTION 117

Which main IoT migration aspect should be reviewed for a manufacturing plant?

- A. Sensors
- B. Security
- C. Applications
- D. Wi-Fi Infrastructure
- E. Ethernet Switches

Answer: A

NEW QUESTION 119

Which three items do you recommend for control plane hardening of an infrastructure device? (Choose three.)

- A. routing protocol authentication
- B. SNMPv3
- C. Control Plane Policing
- D. redundant AAA servers
- E. warning banners
- F. to enable unused services

Answer: ABC

NEW QUESTION 122

What are two advantages of controller-based networks versus traditional networks? (Choose two.)

- A. the ability to have forwarding tables at each device
- B. more flexible configuration per device
- C. more consistent device configuration
- D. programmatic APIs that are available per device
- E. the ability to configure the features for the network rather than per device

Answer: CE

NEW QUESTION 124

The Agile Manifesto is a document that defines the key values and principles behind the Agile philosophy and helps development teams work more efficiently and sustainably Each of the four key values is split into two sections a left-hand side and a right-hand side In other words, though there is value in the items on the right we value the items on the left more What is one of the key values of the Agile Manifesto?

- A. comprehensive documentation over working software
- B. contract negotiation over customer collaboration
- C. individuals and interactions over processes and tools
- D. following a plan over responding to change

Answer: C

NEW QUESTION 127

An architect receives a functional requirement for a NAC system from a customer security policy stating that if a corporate Wi-Fi device does not meet current AV definitions, then it cannot access the corporate network until the definitions are updated. Which component should be built into the NAC design?

- A. posture assessment with remediation VLAN
- B. quarantine SGTs
- C. dACLs with SGTs
- D. quarantine VLAN

Answer: A

NEW QUESTION 128

Which two features are advantages of SD-WAN compared to MPLS-based connectivity? (Choose two.)

- A. uses FEC constructs for traffic forwarding, thereby improving efficiency
- B. separates infrastructure and policy
- C. uses policy-based forwarding of real-time traffic with less complexity
- D. unifies the WAN backbone
- E. manages failures through backup links

Answer: CD

NEW QUESTION 130

The SD-WAN architecture is composed of separate orchestration management, control, and data planes Which activity happens at the orchestration plane?

- A. automatic onboarding of the SD-WAN routers into the SD-WAN overlay
- B. decision-making process on where traffic flows
- C. packet forwarding
- D. central configuration and monitoring

Answer: D

NEW QUESTION 134

The Layer 3 control plane is the intelligence over the network that steers traffic toward its intended destination. Which two techniques can be used in service provider-style networks to offer a more dynamic, flexible, controlled, and secure control plane design? (Choose two.)

- A. access control lists
- B. firewalls
- C. QoS policy propagation with BGP
- D. remote black-holing trigger
- E. prefix lists

Answer: DE

NEW QUESTION 139

A network security team observes phishing attacks on a user machine from a remote location. The organization has a policy of saving confidential data on two different systems using different types of authentication. What is the next step to control such events after the security team verifies all users in Zero Trust modeling?

- A. Enforce risk-based and adaptive access policies.
- B. Assess real-time security health of devices.
- C. Apply a context-based network access control policy for users.
- D. Ensure trustworthiness of devices.

Answer: B

NEW QUESTION 144

Which aspect of BGP-LS makes it scalable in large network when multiarea topology information must be gathered?

- A. transmit flow control
- B. open-loop flow control
- C. hardware flow control
- D. TCP-based flow control

Answer: A

NEW QUESTION 147

Which two actions must be taken when assessing an existing wireless network implementation for its readiness to support voice traffic? (Choose two.)

- A. Check for high roaming delay.
- B. Check for uniform radio coverage across the floors.
- C. Check for high channel utilization.
- D. Check for latency over wireless.
- E. Identify frequent TX power changes.

Answer: AC

Explanation:

<https://community.cisco.com/t5/wireless/channel-utilization/td-p/2716667>

NEW QUESTION 148

The major business applications of an enterprise are largely monolithic and hard-coded As part of a major modernization and overhaul of the applications the goal is to move to a modular and containerized application architecture mode At the same time decoupling from the hardware is desired to move to an on-demand provisioning However the CyberOps team mandated that the final architecture must provide the same security levels as an air-gapped data center. Which cloud architecture meets these requirements?

- A. IaaS
- B. private cloud
- C. PaaS

- D. hybrid cloud
- E. public cloud

Answer: B

NEW QUESTION 150

A business requirement stating that failure of WAN access for dual circuits into an MPLS provider for a Data Centre cannot happen due to related service credits that would need to be paid has led to diversely routed circuits to different points of presence on the providers network? What should a network designer also consider as part of the requirement?

- A. Provision of an additional MPLS provider
- B. Out of band access to the MPLS routers
- C. Ensuring all related remote branches are dual homed to the MPLS network
- D. Dual PSUs & Supervisors on each MPLS router

Answer: A

NEW QUESTION 151

A consultant needs to evaluate project management methodologies for a new service deployment on the existing network of a customer. The customer wants to be involved in the end-to-end project progress and be provided with frequent updates. The customer also wants the ability to change the requirements if needed, as the project progresses. Which project management methodology should be used?

- A. three principles
- B. phased
- C. Agile
- D. Waterfall

Answer: C

NEW QUESTION 153

A network engineering team is in the process of designing a lab network for a customer demonstration. The design engineer wants to show that the resiliency of the MPLS traffic Engineering Fast Reroute solution has the same failover/failback times as a traditional SONET/SDH network (around 50MSEC). In order to address both link failure and node failure within the lab typology network, which type of the MPLS TE tunnels must be considered for this demonstration?

- A. TE backup tunnel
- B. Next-hop (NHop) tunnel
- C. FRR Backup tunnel
- D. next-next-hop (NNHop) tunnel

Answer: D

NEW QUESTION 158

Which function is performed at the access layer of the three-layer hierarchical network design model?

- A. fault isolation
- B. QoS classification and marking boundary
- C. reliability
- D. fast transport
- E. redundancy and load balancing

Answer: B

NEW QUESTION 160

While reviewing an existing network design, you are discussing the characteristics of different STP versions. Which protocol minimizes unicast flooding during a Topology Change Notification in a Layer 2 switched network with many VLANs?

- A. PVRSTP
- B. MST
- C. STP
- D. PVSTP+

Answer: A

NEW QUESTION 161

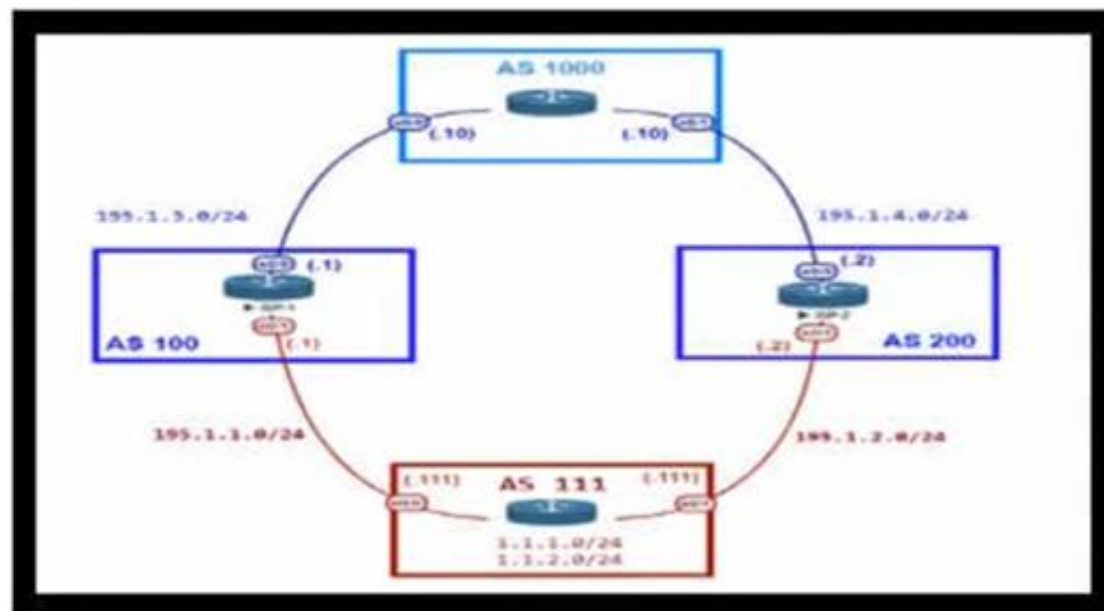
Which two advantages of using DWDM over traditional optical networks are true? (Choose two.)

- A. inherent topology flexibility and service protection provided without penalty through intelligent oversubscription of bandwidth reservation
- B. ability to expand bandwidth over existing optical Infrastructure
- C. inherent topology flexibility with built-in service protection
- D. inherent topology flexibility with intelligent chromatic dispersion
- E. inherent topology flexibility with a service protection provided through a direct integration with an upper layer protocol

Answer: BC

NEW QUESTION 163

Refer to the exhibit.



An engineer is designing the network for a multihomed customer running in AS 111 does not have any other ASs connected to it. Which technology is more comprehensive to use in the design to make sure that the AS is not being used as a transit AS?

- A. Configure the AS-set attribute to allow only routes from AS 111 to be propagated to the neighbor ASs.
- B. Use the local preference attribute to configure your AS as a non-transit" AS.
- C. include an AS path access list to send routes to the neighboring ASs that only have AS 111 in the AS path field.
- D. Include a prefix list to only receive routes from neighboring ASs.

Answer: C

NEW QUESTION 164

Company XYZ was not satisfied with the reconvergence time OSPF is taking. BFD was implemented to try to reduce the reconvergence time, but the network is still experiencing delays when having to reconverge. Which technology will improve the design?

- A. OSPF fast hellos
- B. BFD echo
- C. Change the protocol to BGP
- D. Change the OSPF hello and dead intervals

Answer: B

NEW QUESTION 169

A business customer deploys workloads in the public cloud. Now the customer network faces governance issues with the flow of IT traffic and must ensure the security of data and intellectual property. Which action helps to identify the issue for further resolution?

- A. Set up a secure tunnel from customer routers to ensure that traffic is protected as it travels to the cloud service providers.
- B. Send IPFIX telemetry data from customer routers to a centralized collector to identify traffic to cloud service providers
- C. Build a zone-based firewall policy on Internet edge firewalls that collects statistics on traffic sent to cloud service providers
- D. Apply workload policies that dictate the security requirements to the workloads that are placed in the cloud.

Answer: B

NEW QUESTION 172

An architect designs a multi-controller network architecture with these requirements:

- Achieve fast failover to control traffic when controllers fail.
- Reduce connectivity loss and enable smart recovery to improve the SDN survivability.
- Improve connectivity by adding path diversity and capacity awareness for controllers.

Which control plane component of the multi-controller must be built to meet the requirements?

- A. control node reliability
- B. controller state consistency
- C. control path reliability
- D. controller clustering

Answer: B

NEW QUESTION 177

Which three tools are used for ongoing monitoring and maintenance of a voice and video environment? (Choose three.)

- A. flow-based analysis to measure bandwidth mix of applications and their flows
- B. call management analysis to identify network convergence-related failures
- C. call management analysis to identify CAC failures and call quality issues
- D. active monitoring via synthetic probes to measure loss, latency, and jitter
- E. passive monitoring via synthetic probes to measure loss, latency, and jitter
- F. flow-based analysis with PTP time-stamping to measure loss, latency, and jitter

Answer: ACD

NEW QUESTION 179

An international media provider is an early adopter of Docker and micro services and is using an open-source homegrown container orchestration system. A few years ago, they migrated from on-premises data centers to the cloud. Now they are faced with challenges related to management of the deployed services with their current homegrown orchestration system.

Which platform is well-suited as a state-aware orchestration system?

- A. Puppet
- B. Kubernetes
- C. Ansible
- D. Terraform

Answer: B

NEW QUESTION 181

Agile and Waterfall are two popular methods for organizing projects. What describes any Agile network design development process?

- A. working design over comprehensive documentation
- B. contract negotiation over customer collaboration
- C. following a plan over responding to change
- D. processes and tools over individuals and interactions over time

Answer: A

NEW QUESTION 182

Which extensions to GRE tunneling provide session tracking and in-order packet delivery in exchange for additional state stored in tunnel endpoints?

- A. GRE Protocol Type and Checksum extension fields.
- B. GRE Version and Reserved0 extension fields.
- C. No extension fields are available in the GRE header to track session data and packet sequences.
- D. GRE Key and Sequence number extensions.

Answer: D

NEW QUESTION 187

Which optimal use of interface dampening on a fast convergence network design is true?

- A. When occasional flaps of long duration occur
- B. when numerous adjacent flaps of very short duration occur
- C. when the router hardware is slower than the carrier delay down detection
- D. when the switch hardware is faster than the debounce timer down detection

Answer: B

NEW QUESTION 188

Two routers R1 and R2 are directly connected through an Ethernet link. Both routers are running OSPF over the Ethernet link and OSPF has been registered with BFD. R1 has been set up to transmit BFD at a 50 ms interval, but R2 can receive only at a 100 ms rate due to platform limitations. What does this mean?

- A. After the initial timer exchange
- B. R2 sets its transmission rate to the R1 Desired Min TX interval
- C. After the initial timer exchange
- D. R1 sets its transmission rate to the R2 Required Min RX interval
- E. Timers renegotiate indefinitely, so the timer exchange phase never converges
- F. R2 sets the P-bit on all BFD control packets until R2 sends a packet with the F-bit set

Answer: B

NEW QUESTION 190

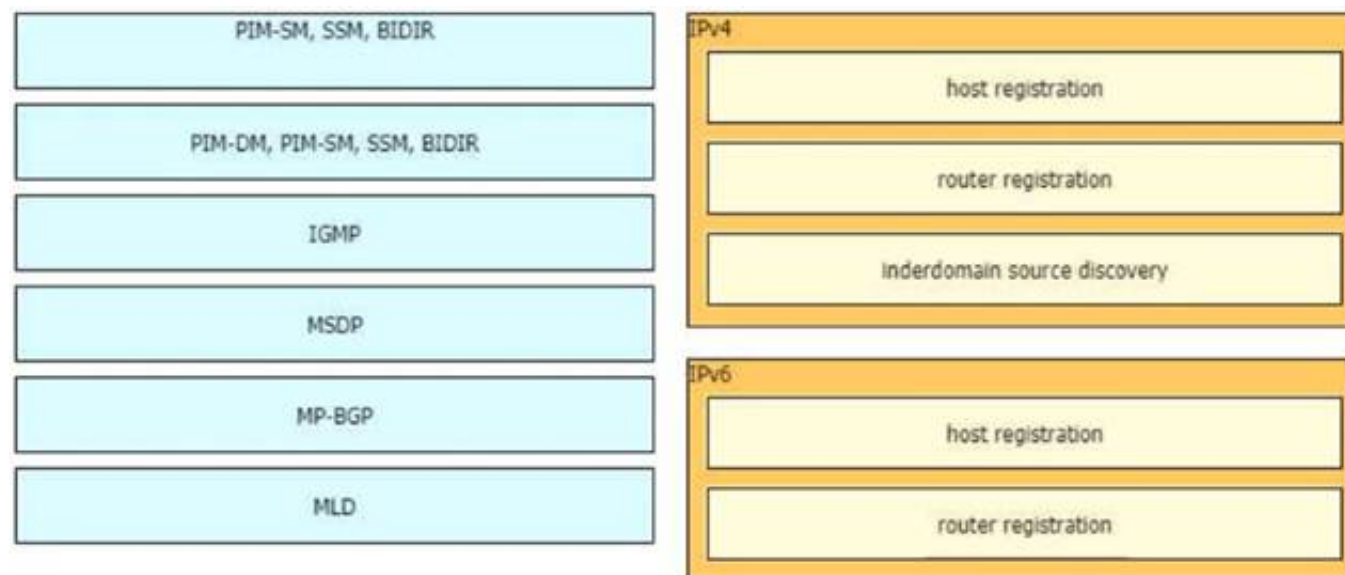
What is an architectural framework created by ETSI that defines standards to decouple network functions from proprietary hardware-based appliances and have them run in software on standard x86 servers?

- A. NPIV
- B. NFVIS
- C. NFV
- D. VNF

Answer: C

NEW QUESTION 192

Drag and drop the multicast protocols from the left onto the current design situation on the right.



- A. Mastered
B. Not Mastered

Answer: A

Explanation:

A picture containing table Description automatically generated

NEW QUESTION 193

Refer to the table.

CONNECTIVITY	CAPEX	OPEX ANNUAL	INSTALLATION FEE	TERM
DWDM over dark fiber	\$200,000	\$100,000	\$30,000	12 months
CWDM over dark fiber	\$150,000	\$100,000	\$25,000	18 months
MPLS wires only	\$50,000	\$180,000	\$5,000	12 months
Metro Ethernet	\$65,000	\$100,000	\$5,000	36 months

A customer investigates connectivity options for a DCI between two production data centers to aid a large-scale migration project. The migration is estimated to take 20 months to complete but might extend an additional 10 months if issues arise. All connectivity options meet the requirements to migrate workloads. Which transport technology provides the best ROI based on cost and flexibility?

- A. CWDM over dark fiber
B. MPLS
C. DWDM over dark fiber
D. Metro Ethernet

Answer: D

NEW QUESTION 198

Your company wants to deploy a new data center infrastructure Based on the requirements you have chosen VXLAN as encapsulation technology The customer is concerned about miss-configuration of Layer 2 devices and DC wide outages caused by Layer 2 loops What do you answer?

- A. VXLAN offers native loop avoidance mechanism
B. Storm Control should be enabled on all ports
C. VPC+ could prevent L2 loop on access ports
D. BPDU Guard should be enabled on all VTEP access ports

Answer: D

NEW QUESTION 200

Which effect of using ingress filtering to prevent spoofed addresses on a network design is true?

- A. It reduces the effectiveness of DDoS attacks when associated with DSCP remarking to Scavenger.
B. It protects the network Infrastructure against spoofed DDoS attacks.
C. It Classifies bogus traffic and remarks it with DSCP bulk.
D. It filters RFC 1918 IP addresses.

Answer: B

NEW QUESTION 202

Company XYZ has a new network based on IPv6. Some of the subnets that they are planning to use will be confidential and need an addressing scheme that confines them to the local campus network. Which type of IPv6 addresses can be used for these networks in the IPv6 addressing design?

- A. local addresses
B. private addresses
C. link-local addresses
D. unique local addresses

Answer: D

NEW QUESTION 203

You are designing an Out of Band Cisco Network Admission Control. Layer 3 Real-IP Gateway deployment for a customer Which VLAN must be trunked back to the Clean Access Server from the access switch?

- A. authentication VLAN
- B. user VLAN
- C. untrusted VLAN
- D. management VLAN

Answer: D

NEW QUESTION 206

Which two statements describe the functionality of OSPF packet-pacing timers? (Choose two) The group-pacing timer controls the interval that is used for group and individual LSA refreshment

- A. OSPF flood-pacing timers allow dynamic control of the OSPF transmission queue size
- B. OSPF retransmission-pacing timers allow control of interpacket spacing between consecutive link-state update packets in the OSPF retransmission queue.
- C. OSPF retransmission-pacing timers allow control of packet interleaving between nonconsecutive link-state update packets in the OSPF retransmission queue.
- D. OSPF flood-pacing timers allow control of interpacket spacing between consecutive link-state update packets in the OSPF transmission queue

Answer: BD

NEW QUESTION 209

Which solution component helps to achieve rapid migration to the cloud for SaaS and public cloud leveraging SD-WAN capabilities?

- A. service-oriented cloud architecture
- B. Cloud onramp
- C. cloud registry
- D. microservices in the cloud

Answer: B

NEW QUESTION 213

Which BGP feature provides fast convergence?

- A. BGP PIC |
- B. BGP-EVPN
- C. BGP FlowSpec
- D. BGP-LS

Answer: A

NEW QUESTION 216

Identity and access management between multiple users and multiple applications has become a mandatory requirement for Company XYZ to fight against ever increasing cybersecurity threats. To achieve this, federated identity services have been deployed in the Company XYZ network to provide single sign-on and Multi-Factor Authentication for the applications and services. Which protocol can be used by Company XYZ to provide authentication and authorization services?

- A. OAuth2
- B. OpenID Connect
- C. OpenID
- D. SAML2.0

Answer: D

NEW QUESTION 217

Company XYZ is in the process of identifying which transport mechanism(s) to use as their WAN technology. Their main two requirements are.

- a technology that could offer DPI, SLA, secure tunnels, privacy, QoS, scalability, reliability, and ease of management
- a technology that is cost-effective

Which WAN technology(ies) should be included in the design of company XYZ?

- A. Software-defined WAN should be the preferred choice because it complements both technologies, covers all the required features, and it is the most cost-effective solution.
- B. Internet should be the preferred option because it is cost effective and supports BFD, IP SL
- C. and IPsec for secure transport over the public Internet.
- D. Both technologies should be use
- E. Each should be used to back up the other one; where the primary links are MPLS, the internet should be used as a backup link with IPsec (and vice versa).
- F. MPLS meets all these requirements and it is more reliable than using the Internet
- G. It is widely used with defined best practices and an industry standard.

Answer: A

NEW QUESTION 218

Which feature must be part of the network design to wait a predetermined amount of time before notifying the routing protocol of a change in the path in the

network?

- A. Transmit delay
- B. Throttle timer
- C. SPF hold time
- D. Interface dampening

Answer: B

NEW QUESTION 222

SDN emerged as a technology trend that attracted many industries to move from traditional networks to SDN. Which challenge is solved by SDN for cloud service providers?

- A. need for intelligent traffic monitoring
- B. exponential growth of resource-intensive application
- C. complex and distributed management flow
- D. higher operating expense and capital expenditure

Answer: B

NEW QUESTION 225

Various teams in different organizations within an enterprise are preparing low-level design documents to capture network parameters using a Waterfall project model:

- hardware sizing and power consumption
- Layer 2 and layer 3 services parameters
- configuration of all control plane protocols

Input from relevant stakeholders was captured at the start of the project, and the project scope has been defined based on the parameters above. What impact will it have on documentation and project deliverables if the stakeholders ask to have changes carried out in the network before the information has been captured?

- A. This provides more opportunity to think outside the box.
- B. Rework is expected before the delivery.
- C. Significant effort and time are required.
- D. This provides a flexible approach to incorporate changes.

Answer: B

NEW QUESTION 227

Which development model is closely associated with traditional project management?

- A. static model
- B. Agile model
- C. evolutionary delivery model
- D. lifecycle model

Answer: D

NEW QUESTION 228

Company XYZ has 30 sites running a legacy private WAN architecture that connects to the Internet via multiple high-speed connections. The company is now redesigning their network and must comply with these design requirements:

- Use a private WAN strategy that allows the sites to connect to each other directly and caters for future expansion.
- Use the Internet as the underlay for the private WAN.
- Securely transfer the corporate data over the private WAN.

Which two technologies should be incorporated into the design of this network? (Choose two.)

- A. S-VTI
- B. IPsec
- C. DMVPN
- D. GET VPN
- E. PPTP

Answer: BC

NEW QUESTION 229

Refer to the table.

CONNECTIVITY	CAPEX	OPEX ANNUAL	INSTALLATION FEE	TERM
DWDM over dark fiber	\$250,000	\$100,000	\$30,000	60 months
CWDM over dark fiber	\$150,000	\$100,000	\$25,000	60 months
MPLS	\$50,000	\$150,000	\$75,000	12 months
Metro Ethernet	\$45,000	\$125,000	\$5,000	36 months

A customer investigates connectivity options for a DCI between two production data centers. The solution must provide dual 10G connections between locations with no single points of failure for Day 1 operations. It must also include an option to scale for up to 20 resilient connections in the second year to accommodate isolated SAN over IP and isolated, dedicated replication IP circuits. All connectivity methods are duplex 10 Gbps. Which transport technology costs the least over two years, in the scenario?

- A. Metro Ethernet
- B. DWDM
- C. CWDM
- D. MPLS

Answer: B

NEW QUESTION 233

A small organization of 20 employees is looking to deliver a network design service for modernizing customer networks to support advanced solutions.

- Project scope and weekly progress should be visualized by the management.
 - Always consider feedback and make changes accordingly during the project.
 - Should consider flexibility to change scope at the point of time.
- Which project methodology meets the requirements and have the least impact on the outcome?

- A. Scrum
- B. LEAN
- C. Kanban
- D. Six-Sigma

Answer: A

Explanation:

<https://firebrand.training/uk/blog/scrum-vs-six-sigma-which-one-is-right-for-you>

NEW QUESTION 234

SDN is still maturing Throughout the evolution of SDN which two things will play a key role in enabling a successful deployment and avoiding performance visibility gaps in the infrastructure? (Choose two.)

- A. rapid on-demand growth
- B. dynamic real-time change
- C. falling back to old behaviors
- D. peer-to-peer controller infrastructure
- E. integration of device context

Answer: BE

NEW QUESTION 239

Which two types of planning approaches are used to develop business-driven network designs and to facilitate the design decisions? (Choose two)

- A. cost optimization approach
- B. strategic planning approach
- C. modular approach
- D. tactical planning approach
- E. business optimization approach

Answer: BD

NEW QUESTION 241

Which network management framework can be used to develop a network architecture that contains business requirements analysis, gap analysis, and network diagrams as artifacts to be used for design and implementation later?

- A. TOG
- B. ITIL
- C. FCAPS
- D. Cobit

Answer: A

NEW QUESTION 242

The General Bank of Greece plans to upgrade its legacy end-of-life WAN network with a new flexible, manageable, and scalable solution. The main requirements are ZTP support, end-to-end encryption application awareness and segmentation. The CTO states that the main goal of the bank is CAPEX reduction. Which WAN technology should be used for the solution?

- A. SD-branch
- B. DMVPN with PfR
- C. managed SD-WAN
- D. SD-WAN

Answer: C

NEW QUESTION 245

.....

Relate Links

100% Pass Your 400-007 Exam with ExamBible Prep Materials

<https://www.exambible.com/400-007-exam/>

Contact us

We are proud of our high-quality customer service, which serves you around the clock 24/7.

Viste - <https://www.exambible.com/>