

# HP

## Exam Questions HPE6-A73

Aruba Certified Switching Professional Exam



### NEW QUESTION 1

A network engineer is using NetEdit to manage AOS-CX switches. The engineer notices that a lot of thirdparty VoIP phones are showing up in the NetEdit topology. The engineer deletes these, but they are automatically rediscovered by NetEdit and added back in. What should the administrator do to solve this problem?

- A. Change the VoIP phone SNMP community string to something unknown by NetEdit
- B. Disable LLDP globally on the AOS-CX switches where phones are connected
- C. Disable SSH access on all the VoIP phones
- D. Disable the RESTful API on all the VoIP phones

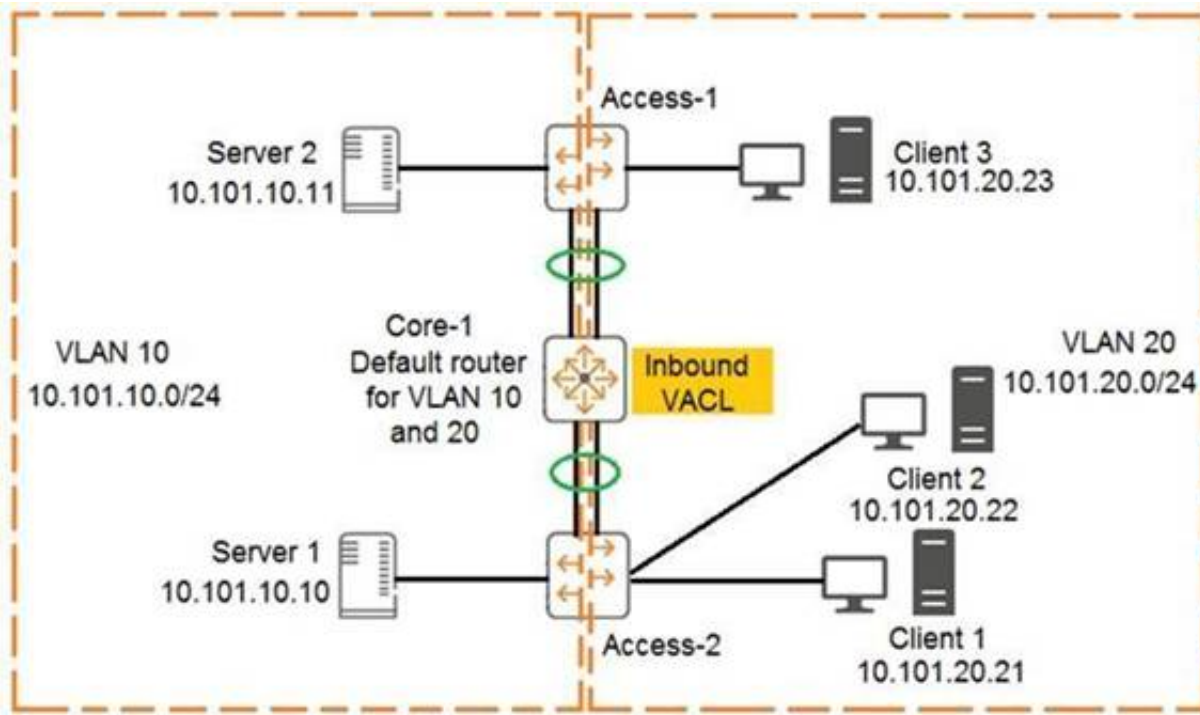
**Answer: A**

#### Explanation:

"NetEdit will now also discover and display third-party devices that are using the standard MIB's. Using SNMP with NetEdit, administrators can also enter SSH credentials for third-party devices.

### NEW QUESTION 2

Examine the network exhibit:



The ACL configuration defined on Core-1 is as follows:

```
Core-1(config)# access-list ip example
Core-1(config-acl-ip)# permit ip 10.101.20.21/32 any eq 23
Core-1(config-acl-ip)# permit ip 10.101.20.21/32 eq 23 any
Core-1(config-acl-ip)# exit
Core-1(config)# vlan 20
Core-1(config-if)# apply access-list example in
```

The ACL configuration defined on Core-1 is as follows:

If telnet was being used, which device connection would be permitted and functional in both directions? (Choose two.)

- A. Client 3 to Client 2
- B. Client 1 to Client 2
- C. Server 2 to Client 2
- D. Server 1 to Client 1
- E. Client 1 to Client 3

**Answer: BD**

#### Explanation:

CL3 - CL2 - drop on forward path by core1 cause match VLAN 20 and CL3 not CL1 as SRC IP CL1 - CL2 - pass - no ACL cause forwarded by Access2  
 SR2 - CL2 - pass on forward path by core1 cause match VLAN 10  
 Drop on return path by core1 cause match VLAN 20 and no CL1 as SRC IP SR1 - CL1 - pass on forward path by core1 cause match VLAN 10  
 pass on return path by core1 cause match VLAN 20 and CL1 as SRC IP  
 CL1 - CL3 - pass on forward path by core1 cause match VLAN 20 and CL1 as SRC IP drop on return path by core1 cause match VLAN 20 and not CL1 but CL3 as SRC IP

### NEW QUESTION 3

What must a network administrator implement in order to run an NAE script on an AOS-CX switch?

- A. Deployment
- B. Schedule
- C. Plan
- D. Agent

**Answer: D**

### NEW QUESTION 4

What is correct regarding rate limiting and egress queue shaping on AOS-CX switches?

- A. Only a traffic rate and burst size can be defined for a queue
- B. Limits can be defined only for broadcast and multicast traffic
- C. Rate limiting and egress queue shaping can be used to restrict inbound traffic
- D. Rate limiting and egress queue shaping can be applied globally

**Answer:** A

**Explanation:**

you could apply egress queue shaping to the high priority queues to prevent starvation of low priority queues. Egress queue shaping allows you to apply a maximum bandwidth to a priority queue, as well as a burst size. The port buffers excess traffic up to the burst size and sends the buffered traffic at the max rate, smoothing out bursts while also preventing the high priority queue from exceeding its maximum rate and starving out lower priority queues.

**NEW QUESTION 5**

A company requires access by all users, guests, and employees to be authenticated. Employees will be authenticated using 802.1X, whereas guests will be authenticated using captive portal. Which type of authentication must be configured on an AOS-CX switch ports where both guests and employees connect?

- A. Both 802.1X and captive portal
- B. 802.1X only
- C. Both 802.1X and MAC-Auth
- D. 802.1X, captive portal, and MAC-Auth

**Answer:** C

**Explanation:**

Employees use 802.1x  
The Aruba guest solution uses MAC-auth.  
The Portal is not configured on the switch port.

**NEW QUESTION 6**

A network administrator wants to centralize the management of AOS-CX switches by implementing NetEdit. How should the administrator purchase and/or install the NetEdit solution?

- A. Install as a hardware appliance
- B. Installed on a supported version of RedHat Enterprise Linux
- C. Installed in a virtualized solution by using the Aruba-supplied OVA file
- D. Installed on a supported version of Debian Linux

**Answer:** C

**NEW QUESTION 7**

What is a concept associated with PIM sparse mode (SM)?

- A. Reverts to forwarding when the pruning state times out.
- B. Requires periodic joins to maintain the shortest path tree (SPT).
- C. Recommended for use when high bandwidth connections exist.
- D. Implements a push content to forward traffic from the multicast source.

**Answer:** B

**Explanation:**

<https://www.youtube.com/watch?v=PhzMtUcS6UA>

**NEW QUESTION 8**

When an AOS-CX switch uses a temporary copy of the Configuration State database, what kind of analysis does NetEdit perform to ensure that the configuration is correct?

- A. Syntax validation
- B. Semantic validation
- C. Conformance validation
- D. Change validation

**Answer:** D

**Explanation:**

Validation processes  
+ Syntax validation  
– When: while typing  
– What: command syntax including in-line help  
+ Semantics validation  
– When: VALIDATE button (in multi-editor) or before DEPLOY  
– What: configuration consistency  
+ Conformance validation  
– When: while editing  
– What: compliance with conformance rules: corporate policies, minimum connectivity requirements, etc.  
+ Change validation

- When: during DEPLOY (before and after configuration deployment)
- What: compares device state before and after changes are applied (using show commands)

**NEW QUESTION 9**

Examine the following AOS-CX configuration:

```
Switch(config)# class ip IoT-traffic
Switch(config-class-ip)# match ip 192.168.0.0/16 any
Switch(config-class-ip)# exit
Switch(config)# pbr-action-list reroute
Switch(config-prb-action-list)# default-nexthop 10.100.1.2
Switch(config-prb-action-list)# exit
Switch(config)# policy IoT-policy
Switch(config-policy)# class ip IoT-traffic action pbr reroute
Switch(config-policy)# exit
Switch(config)# interface vlan 999
Switch(config-if)# apply policy IoT-policy routed-in
Switch(config-if)# exit
```

Based on this configuration, which statement is correct regarding IoT traffic?

- A. If 10.100.1.2 is not reachable, the IoT traffic will be automatically dropped by the switch
- B. If a specific route is not available in the routing table, the traffic will be routed to 10.100.1.2
- C. The next hop of 10.100.1.2 can be one or more hops away from the AOS-CX switch
- D. All routes are ignored in the routing table for IoT traffic, which is routed to 10.100.1.2

**Answer:** B

**NEW QUESTION 10**

An administrator wants to implement dynamic segmentation policies. The network consists of AOS-CX and Aruba gateways.

Which type of forwarding should the administrator implement for users that already connect via wireless, but will also be connecting on Ethernet switch ports?

- A. User-based tunneling (UBT)
- B. Port-based tunneling (PBT)
- C. Switch-to-switch tunneling (SST)
- D. Local switching

**Answer:** A

**NEW QUESTION 10**

What is correct regarding multicasting and AOS-CX switches?

- A. IGMP snooping is disabled, by default, on Layer-2 VLAN interfaces
- B. IGMP query functions are enabled, by default, on Layer-2 VLAN interfaces
- C. IGMP snooping is enabled, by default, on Layer-3 VLAN interfaces
- D. IGMP-enabled AOS-CX switches flood unknown multicast destinations

**Answer:** A

**NEW QUESTION 12**

What is correct regarding the configuration of ACLs on AOS-CX switches?

- A. Statements with the log keyword are always processed by the switch CPU.
- B. Standard ACLs are used to match on routes when performing route distribution.
- C. Wildcard masks are used to match on a range of IP addresses.
- D. Numbers 100 through 199 and 2000 through 2999 are used when creating extended ACLs.

**Answer:** C

**NEW QUESTION 14**

Which protocol should be configured to allow NetEdit to discover third-party devices?

- A. SNMP
- B. SSH
- C. HTTPS
- D. HTTP

**Answer:** A

**NEW QUESTION 16**

How should a network administrator add NAE scripts and implement NAE agents that will run on an AOS-CX switch?



- A. Use the web interface of the NetEdit server
- B. Use the web interface of the AOS-CX switch
- C. Use the web interface of Aruba Central
- D. Use the CLI of the AOS-CX switch

**Answer:** B

#### NEW QUESTION 17

How is voice traffic prioritized correctly on AOS-CX switches?

- A. By defining device profiles with QOS settings
- B. By placing it in the strict priority queue
- C. By implementing voice VLANs
- D. By implementing weighted fair queueing (WFQ)

**Answer:** B

#### NEW QUESTION 20

A switch will apply a device profile to a port based on which pieces of information? (Select two.)

- A. IP header
- B. MAC address
- C. LLDP
- D. User role
- E. 802.1Q

**Answer:** AB

#### NEW QUESTION 25

An administrator of a large campus network needs a solution that will provide root cause analytics to quickly identify problems so that they can quickly be fixed. Which AOS-CX switch feature should the administrator utilize to help with root cause analytics?

- A. NAE
- B. VoQ
- C. NetEdit
- D. VSX

**Answer:** A

#### NEW QUESTION 28

A customer has twenty AOS-CX switches that will be managed by NetEdit and would like support for NetEdit these switches will exist in the network for at least five years.

Which type of licensing should be used by this customer?

- A. 20 Aruba NetEdit permanent licenses
- B. 20 Aruba NetEdit single node subscription licenses
- C. 25 Aruba NetEdit permanent licenses
- D. 1 Aruba NetEdit SMB License

**Answer:** B

#### NEW QUESTION 33

Examine the following AOS-CX switch configuration:

```
Access(config)# access-list ip ext
Access(config-acl-ip)# permit ip any 10.0.11.0/255.0.255.0 count
Access(config-acl-ip)# permit ip any 10.0.12.0/255.0.255.0 log
Access(config-acl-ip)# exit
Access(config)# interface 1/1/3
Access(config-if)# apply access-list ip ext in
Access(config-if)# exit
```

Which statement correctly describes what is allowed for traffic entering interface 1/1/3?

- A. IP traffic from 10.1.11.0/24 is allowed to access 10.1.110.0/24
- B. IP traffic from 10.0.11.0/24 is allowed to access 10.1.12.0/24
- C. Traffic from 10.0.12.0/24 will generate a log record when accessing 10.0.11.0/24
- D. IP traffic from 10.1.12.0/24 is allowed to access 172.0.1.0/23

**Answer:** B

#### Explanation:

People seem to be confused by inverted mask/wildcard masks. They would be correct for Cisco switches, but AOS-CX does NOT use wildcard masks; "AOS-CX switches do not support wildcard masks - only prefixes or subnet masks - when created ACEs."

Cisco: 255.0.255.0 = xx.123.xx.123 AOS-CX: 255.0.255.0 = 123.xx.123.xx

#### NEW QUESTION 38

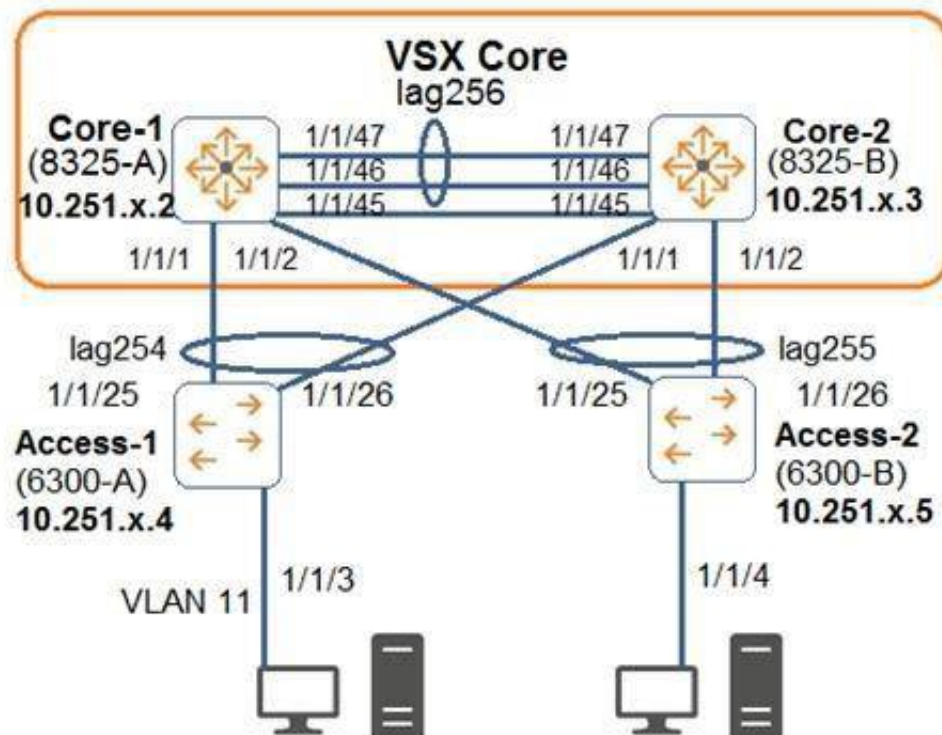
An administrator is concerned about the security of the control plane connection between an AOS-CX switch and an Aruba Mobility Controller (MC) when implementing user-based tunneling. How should the administrator protect this traffic?

- A. IPSec with a digital certificate
- B. GRE with a pre-shared key
- C. PAPI with an MD5 pre-shared key
- D. IPSec with a pre-shared key

**Answer: C**

#### NEW QUESTION 39

Examine the attached diagram.



The two PCs are located in VLAN 11 (10.1.11.0/24). Which example defines how to implement active gateway on the VSX core for VLAN 11?

- A. interface vlan 11 active-gateway ip 10.1.11.1 active-gateway mac 02:02:00:00:01:00
- B. interface lag 254 active-gateway vlan 11 ip 10.1.11.1 active-gateway vlan 11 mac 02:02:00:00:01:00
- C. interface lag 254 active-gateway ip 10.1.11.1 active-gateway mac 02:02:00:00:01:00
- D. vsxvrrp group 1

**Answer: A**

#### NEW QUESTION 40

An administrator will be deploying NetEdit to manage an Aruba solution. What does NetEdit support?

- A. Manages AOS-CX switches and Aruba gateways
- B. Support for Aruba-supplied security updates
- C. Tracks configuration and hardware information
- D. Can be purchased as a VM and/or hardware appliance

**Answer: A**

#### NEW QUESTION 44

A company has a third-party AAA server solution. The campus access layer was just upgraded to AOS-CX switches that perform access control with MAC-Auth and 802.1X. The company has an Aruba Mobility Controller (MC) solution for wireless, and they want to leverage the firewall policies on the controllers for the wired traffic.

What is correct about how the company should implement a security solution where the wired traffic is processed by the gateways?

- A. Implement downloadable user roles with a gateway role defined on the AOS-CX switches
- B. Implement local user roles with a gateway role defined on the AOS-CX switches
- C. Implement standards-based RADIUS VSAs to pass policy information directly to the AOS-CX switches and MCs
- D. Implement downloadable user roles with a device role defined on the AOS-CX switches and MCs

**Answer: B**

#### NEW QUESTION 48

An administrator wants to drop traffic from VLAN 6 (10.1.6.0/24) to VLAN 5 (10.1.5.0/24), but allow all other traffic. What is correct configuration to accomplish this?

- A.
- ```

class ip VLAN5
  10 match ip 10.1.6.0/24 10.1.5.0/24
  exit
policy VLAN5
  10 class ip VLAN5 action drop
  exit
interface vlan 5
  apply access-list ip VLAN5 in
  
```
- B.
- ```

access-list ip VLAN5
  10 permit ip 10.1.6.0/0.0.0.255 10.1.5.0/0.0.0.255
  20 permit ip any any
  exit
interface vlan 5
  apply access-list ip
  VLAN5 in
  exit
  
```
- C.
- ```

access-list ip VLAN5
  10 deny ip 10.1.6.0/24 10.1.5.0/24
  20 permit ip any any
  exit
interface vlan 5
  apply access-list ip VLAN5 in
  exit
  
```
- D.
- ```

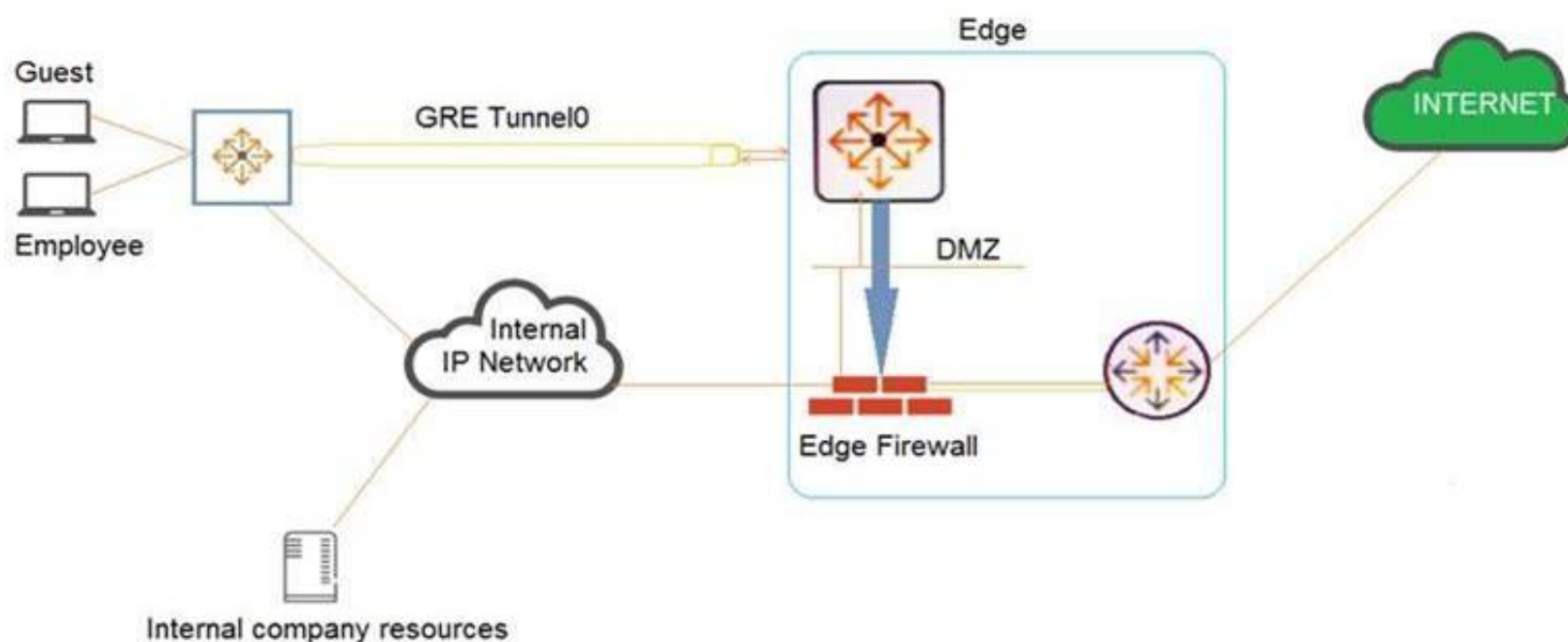
class ip VLAN5
  10 match ip 10.1.6.0/24 10.1.5.0/24
  exit
policy VLAN5
  10 class ip VLAN5 action drop
  exit
vlan 5
  apply policy VLAN5 in
  
```

- A. Option A  
 B. Option B  
 C. Option C  
 D. Option D

**Answer: C**

#### NEW QUESTION 50

Examine the network exhibit.



A company has a guest implementation for wireless and wired access. Wireless access is implemented through a third-party vendor. The company is concerned about wired guest traffic traversing the same network as the employee traffic. The network administrator has established a GRE tunnel between AOS-CX switches where guests are connected to a routing switch in the DMZ.

Which feature should the administrator implement to ensure that the guest traffic is tunneled to the DMZ while the employee traffic is forwarded using OSPF?

- A. OSPF route maps using the "set metric" command  
 B. Policy-based routing (PBR)

- C. User-based tunneling (UBT)
- D. Classifier policies

**Answer:** B

**Explanation:**

Guest traffic can be routed with PBR to use GRE tunnels that terminate in the DMZ.

**NEW QUESTION 55**

An administrator will be replacing a campus switching infrastructure with AOS-CX switches that support VSX capabilities. The campus involves a core, as well as multiple access layers. Which feature should the administrator implement to allow both VSX-capable core switches to process traffic sent to the default gateway in the campus VLANs?

- A. VRF
- B. VRRP
- C. IP helper
- D. Active gateway

**Answer:** D

**Explanation:**

Active gateway = both devices route/forward traffic VRRP = Active-standby, only active member routes/forwards traffic

Understand the Active Gateway principle In a VSX system, active gateway provides redundant default gateway functionality for the end-hosts. The default gateway of the end-host is automatically handled by both the VSX systems.

**NEW QUESTION 59**

An administrator has an aggregation layer of 8325CX switches configured as a VSX pair. The administrator is concerned that when OSPF network changes occur, the aggregation switches will respond to the changes slowly, and this will affect network connectivity, especially VoIP calls, in the connected access layer switches. What should the administrator do on the aggregation layer switches to alleviate this issue?

- A. Implement route aggregation
- B. Implement bidirectional forwarding detection (BFD)
- C. Reduce the hello and dead interval timers
- D. Implement graceful restart

**Answer:** A

**Explanation:**

"BFD tests the connectivity between two IP addresses in a BFD session. BFD reports when connectivity is lost. The router (or routing switch) can then use that information to take the appropriate actions, depending on the functions to which you have tied BFD"

**NEW QUESTION 61**

A network administrator is attempting to troubleshoot a connectivity issue between a group of users and a particular server. The administrator needs to examine the packets over a period of time from their desktop; however, the administrator is not directly connected to the AOS-CX switch involved with the traffic flow. What is correct regarding the ERSPAN session that needs to be established on an AOS-CX switch? (Choose two.)

- A. On the source AOS-CX switch, the destination specified is the switch to which the administrator's desktop is connected
- B. On the source AOS-CX switch, the destination specified is the administrator's desktop
- C. The encapsulation protocol used is GRE
- D. The encapsulation protocol used is VXLAN
- E. The encapsulation protocol is UDP

**Answer:** AC

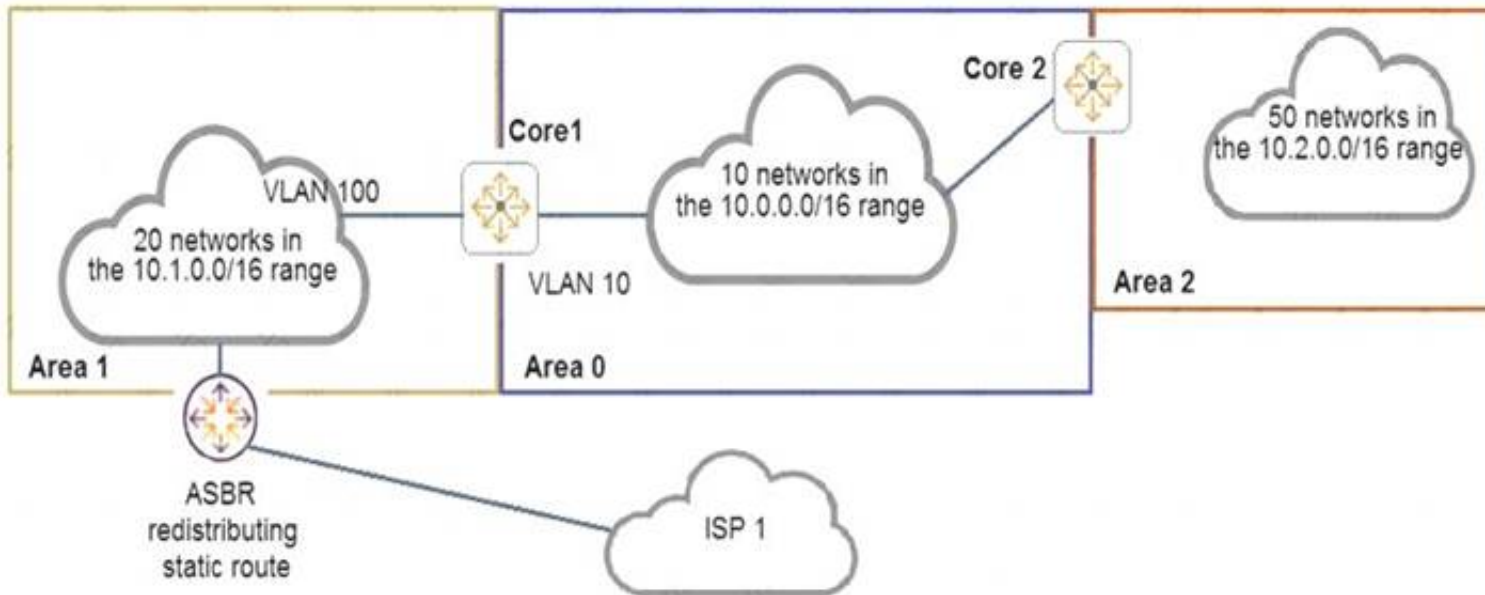
**Explanation:**

In AOS CX the remote mirroring is done using a tunnel interface, so the Mirror source and destination must be configured on each Switch. On the source Switch, the source interface (from where the traffic is mirrored) and destination interface (the tunnel interface to where the traffic is sent to). In the destination Switch, the source interface (which would be the tunnel interface (receiving the traffic from the source switch tunnel)) and the destination would be the client where Wireshark enabled client is connected.

**NEW QUESTION 65**

Examine the network topology.





\_ The network is configured for OSPF with the following attributes:

Core1 and Core2 and ABRs

- \_ Area 1 has 20 networks in the 10.1.0.0/16 range
- \_ Area 0 has 10 networks in the 10.0.0.0/16 range
- \_ Area 2 has 50 networks in the 10.2.0.0/16 range
- \_ The ASBR is importing a static route into Area 1
- \_ Core2 has a summary for Area 2: area 0.0.0.2 range 10.2.0.0/16 type inter-area

Here is the OSPF configuration performed on Core1:

```
router ospf 1
  router-id 10.0.0.1
  area 0.0.0.0
  area 0.0.0.1 stub
  area 0.0.0.1 range 10.1.0.0/16 type inter-area
  area 0.0.0.2
  area 0.0.0.0 range 10.1.0.0/16 type inter-area
  exit
interface vlan 10
  ip ospf 1 area 0
  exit
interface vlan 100
  ip ospf 1 area 1
  exit
```

Based on the above information, what is correct?

- A. ISP 1 is not reachable from any area.
- B. Core1 has received one type 5 LSA from the ASBR.
- C. Area 0 has 81 routes
- D. Area 1 has 23 routes

**Answer: C**

#### NEW QUESTION 69

A network engineer is having a problem adding a custom-written script to an AOS-CX switch's NAE GUI. The script was written in Python and was successfully added on other AOS-CX switches. The engineer examines the following items from the CLI of the switch:

```
switch# show capacities-status nae
```

System Capacities Status: Filter NAE

Capacity Status Name	Value	Maximum
Number of configured NAE agents currently active in the system	1	100
Number of configured NAE monitors currently active in the system	7	500
Number of configured NAE scripts currently active in the system	50	50

```
switch# show ntp status
```

NTP Status Information

NTP : Disabled

NTP Authentication : Disabled

NTP Server Connections : Using the default VRF

System time : Sat May 2 11:50:55 UTC 2020

NTP uptime : 0 minutes, 0 seconds

Not synchronized with an NTP server.

```
switch# show crypto pki certificate
```

Certificate Name	Cert Status	Associated Applications
local-cert	installed	captive-portal, hsc, https-server,
syslog-client		

```
switch# show crypto pki application
```

Associated Applications	Certificate Name	Cert Status
captive-portal		not configured, using local-cert
hsc		not configured, using local-cert
https-server		not configured, using local-cert
syslog-client		not configured, using local-cert

What should the engineer perform to fix this issue?

- A. Install the script's signature before installing the new script
- B. Ensure the engineer's desktop and the AOS-CX switch are synchronized to the same NTP server
- C. Enable trust settings for the AOS-CX switch's SSL certificate
- D. Remove a script that is no longer used before installing the new script

**Answer: D**

#### NEW QUESTION 70

When implementing deficit weighted round robin queuing, what importance does the weight value have?

- A. Prioritizing latency-sensitive traffic
- B. Queue priority in processing traffic
- C. Strict priority queue
- D. Percentage of interface bandwidth

**Answer: B**

#### NEW QUESTION 73

Examine the partial output of the BGP routing table of an AOS-CX switch:

```
Switch# show bgp
```

<-output omitted->

Network	Nexthop	Metric	LocPrf	Weight	Path
* e 1.0.0.0/8	192.168.1.5	0	100	0	100 ?
* e 1.0.0.0/8	192.168.2.5	0	100	0	200 100 i
* e 1.0.0.0/8	192.168.3.5	0	200	20	300 400 100 ?
* e 1.0.0.0/8	192.168.4.5	0	50	0	400 200 100 i

The switch is learning about four possible path to reach the 1.0.0.0/8 network. Based on this output, which next-hop route will the AOS-CX select to be placed in the IP routing table?

- A. 192.168.1.5
- B. 192.168.2.5
- C. 192.168.3.5
- D. 192 1684 5

**Answer:** C

**NEW QUESTION 78**

An administrator wants to track what configuration changes were made on a switch. What should the administrator implement to see the configuration changes on an AOS-CX switch?

- A. AAA authorization
- B. Network Analysis Engine (NAE)
- C. AAA authentication
- D. VSX synchronization logging

**Answer:** B

**NEW QUESTION 80**

An administrator is supporting a network with the access layer consisting of AOS-CX 6300 and 6400 switches. The administrator needs to quickly deploy Aruba IAPs and security cameras in the network, ensuring that the correct QoS and VLAN settings are dynamically applied to the switch ports. Currently, switches are not configured to do device authentication, and no authentication server exists in the network.

Which AOS-CX feature should the administrator use to dynamically assign the policy settings to the correct switch ports?

- A. Device profiles
- B. Change of authorization
- C. Dynamic segmentation
- D. Voice VLANs

**Answer:** A

**NEW QUESTION 85**

A network administrator is implementing a configuration plan in NetEdit. The administrator used NetEdit to push the configuration plan to the switch. Which option in the NetEdit planning section should the administrator select to save the configuration running on the switch to the startup-config?

- A. EDIT
- B. VALIDATE
- C. COMMIT
- D. DEPLOY

**Answer:** C

**NEW QUESTION 86**

Examine the output from an AOS-CX switch implementing a dynamic segmentation solution involving downloadable user roles:

Switch# show port-access role clearpass Role information:

Name : icxarubadur\_employee-3044-2 Type : clearpass

Status: failed, parsing\_failed Reauthentication Period : Authentication Mode : Session Timeout :

The downloadable user roles are not being downloaded to the AOS-CX switch. Based on the above output, what is the problem?

- A. The certificate that ClearPass uses is invalid
- B. The AOS-CX switch does not have the ClearPass certificate involved
- C. DNS fails to resolve the ClearPass server's FQDN
- D. There is a date/time issue between the ClearPass server and the switch

**Answer:** C

**Explanation:**

"The top-right example shows a parsing\_failed status, typically indicative of either a DNS or network connectivity issue."

**NEW QUESTION 87**

Examine the AOS-CS switch output:

```
Switch# show aaa authentication port-access interface 1/1/1 client-status
```

#### Port Access Client Status Details

```
Client 00:50:56:b1:7a:37, icx-employee
```

#### Session Details

```
Port      : 1/1/3
Session Time : 31273s
```

#### Authentication Details

```
Status      : dot1x Authenticated
Auth Precedence : dot1x - Authenticated, mac-auth - Not attempted
```

#### Authorization Details

```
Role       : aruba_contractor-3044-7
Status     : Applied
```

Based on this output, what is correct?

- A. 802.1X authentication was successful, but MAC authentication is yet to start
- B. 802.1X authentication occurred and downloadable user roles are deployed
- C. A local user role was deployed using a ClearPass solution
- D. Only 802.1X authentication is configured on the port

**Answer:** B

#### NEW QUESTION 91

A network engineer is setting up BGP on AOS-CX switches. The engineer is establishing two different eBGP peering's to two different service providers. The engineer has dozens of contiguous C-class public networks that need to be advertised to the two service providers. The engineer manually defines the networks to be advertised individually with the "network" command.

How can an administrator advertise only a summarized route to the two service providers?

- A. Create a summarized static route and redistribute this into OSPF
- B. Summarize the networks with the "aggregate-address" BGP command
- C. Enable auto-summarization in the IPv4 address family of the BGP configuration
- D. Create a summarized route in OSPF

**Answer:** B

#### NEW QUESTION 96

An administrator creates an ACL rule with both the "count" and "log" option enabled. What is correct about the action taken by an AOS-CX switch when there is a match on this rule?

- A. By default, a summarized log is created every minute with a count of the number of matches
- B. Logging will not include certificate and TLS events, but counting will
- C. The "count" and "log" options are processed by the AOS-CX switch's hardware ASIC
- D. The total in the "log" record and the count could contain different rule matching statistics

**Answer:** D

#### Explanation:

From the "AOS-CX 10.08 ACLs and Classifier Policies Guide" : "You may see a minor discrepancy between the ACL logging statistics and the hit counts statistics due to the time required to record the log message."

#### NEW QUESTION 99

A company has an existing wireless solution involving Aruba APs and Mobility controllers running 8.4 code. The solution leverages a third-party AAA solution. The company is replacing existing access switches with AOS-CX 6300 and 6400 switches. The company wants to leverage the same security and firewall policies for both wired and wireless traffic.

Which solution should the company implement?

- A. RADIUS dynamic authorization
- B. Downloadable user roles
- C. IPSec
- D. User-based tunneling

**Answer:** D

#### NEW QUESTION 102

An administrator is designing an access layer solution in a data center. A key requirement is to dual-home mission-critical server connections to two different switches, ensuring that the servers always have network access, even during switch software upgrades. This feature should support strictly-controlled provisioning. What would best meet the administrator's needs when deploying AOS-CX switches?

- A. VSF



- B. Dynamic segmentation
- C. VSX
- D. NAE

**Answer:** C

#### NEW QUESTION 106

A company is implementing AOS-CX switches at the access layer. The company wants to implement access control for employees and guests. Which security features will require a ClearPass server to be installed and used by the company?

- A. Downloadable user roles
- B. Dynamic segmentation
- C. User-based tunneling (UBT)
- D. Change of authorization (CoA)

**Answer:** A

#### NEW QUESTION 111

A company has a few servers in a secure, remote location storing highly-confidential documents connected to two AOS-CX 6400 switches configured in a VSX pair. The AOS-CX switches perform access control with 802.1X and will be implementing user-based tunneling (UBT) so that Aruba gateway application inspection and stateful firewall policies can be applied to the traffic. The gateways are running version 84 and implement the AP, PEF, and RFP licenses. Which licensing is needed for the two AOS-CX switches?

- A. 2 AP and 2 PEF licenses only
- B. 1 AP license only
- C. 2 AP, 2 PEF, and 2 RFP licenses only
- D. 1 AP, 1 PEF, and 1 RFP licenses only

**Answer:** D

#### NEW QUESTION 113

What is a best practice concerning voice traffic and dynamic segmentation on AOS-CX switches?

- A. Controller authentication and user-based tunneling of the voice traffic
- B. Switch authentication and user-based tunneling of the voice traffic
- C. Controller authentication and port-based tunneling of the voice traffic
- D. Switch authentication and local forwarding of the voice traffic

**Answer:** D

#### NEW QUESTION 114

Examine the commands entered on an AOS-CX switch:

What is true regarding this configuration for traffic received on interface 100?

- A. The default next-hop address supersedes the two preceding next-hop addresses
- B. The traffic is always dropped if the next-hop addresses are unreachable
- C. The traffic will be routed with the IP routing table entries if the next-hop addresses are unreachable
- D. The next-hop address of 1.1.1.1 is overwritten by the next-hop address of 2.2.2.2

**Answer:** C

#### Explanation:

"interface null: equivalent to the policy drop policing action. Any packets matching the class criteria for that policy entry will be dropped and not routed any further."  
<https://www.arubanetworks.com/techdocs/AOS-CX/10.05/HTML/5200-7300/index.html#GUID-DC7E5E47-8F>

More than one next hop can be assigned with an ACL and they work by priority (based on the sequence number: lower sequence number -> higher priority). So next-hop 2.2.2.2 will be used if 1.1.1.1 is not reachable. If both are unreachable, then the packet will be routed looking at the default routing table, if no specific entry will be found, then the packet will be routed to the default next hop defined in the ACL.

#### NEW QUESTION 118

Which AOS-CX switches support weighted fair queuing (WFQ)?

- A. Both 8320 and 8325
- B. Both 6300 and 6400
- C. 8400 only
- D. 6300 only

**Answer:** C

#### Explanation:

[https://www.arubanetworks.com/techdocs/AOS-CX/AOS-CX-CLI-Bank/cli\\_8400/Content/QoS\\_cmds/wfq-que-x](https://www.arubanetworks.com/techdocs/AOS-CX/AOS-CX-CLI-Bank/cli_8400/Content/QoS_cmds/wfq-que-x)

#### NEW QUESTION 121

A network administrator is installing NetEdit. In order for NetEdit to manage the AOS-CX switches in the network, what must be defined on the AOS-CX switches? (Choose two.)

- A. Enabling telnet

- B. Defining an admin user password
- C. Defining the https user-group
- D. Enabling the RESTful API for read and write access
- E. Enabling SFTP

**Answer:** BD

#### NEW QUESTION 123

An administrator is implementing a multicast solution in a multi-VLAN network. Which statement is true about the configuration of the switches in the network?

- A. IGMP snooping must be enabled on all interfaces on a switch to intelligently forward traffic
- B. IGMP requires join and leave messages to graft and prune multicast streams between switches
- C. IGMP must be enabled on all routed interfaces where multicast traffic will traverse
- D. IGMP must be enabled on all interfaces where multicast sources and receivers are connected

**Answer:** C

#### NEW QUESTION 127

What is correct regarding the operation of VSX and multicasting with PIM-SM routing configured?

- A. Each VSX peers runs PIM and builds its own group databas
- B. One of the VSX peers is elected as the designated router (DR) to forward multicast streams to a receiver VLAN
- C. Each VSX peers runs PIM and creates a shared group databas
- D. Both VSX peers can forward multicast streams to receivers in a VLAN, achieving load sharing
- E. Each VSX peers runs PIM and builds its own group databas
- F. Both VSX peers can forward multicast streams to receivers in a VLAN, achieving load sharing
- G. Each VSX peers runs PIM and creates a shared group databas
- H. One of the VSX peers is elected as the designated router (DR) to forward multicast streams to a receiver VLAN

**Answer:** A

#### Explanation:

"both VSX switches as a PIM Designate Router (DR). One node is the actual DR, the other node is the proxy DR." "Only the actual DR performs multicast routing and forward traffic destined to groups to its downstream VLANs in the data-path."

[https://www.arubanetworks.com/techdocs/AOS-CX/10.07/HTML/5200-7888/Content/Chp\\_Pre\\_tra\\_loss/ip-mul](https://www.arubanetworks.com/techdocs/AOS-CX/10.07/HTML/5200-7888/Content/Chp_Pre_tra_loss/ip-mul)

#### NEW QUESTION 132

A network administrator needs to replace an antiquated access layer solution with a modular solution involving AOS-CX switches. The administrator wants to leverage virtual switching technologies. The solution needs to support high-availability with dual-control planes. Which solution should the administrator implement?

- A. AOS-CX 8325
- B. AOS-CX 6300
- C. AOS-CX 6400
- D. AOS-CX 8400

**Answer:** C

#### NEW QUESTION 133

An administrator of a company has concerns about upgrading the access layer switches. The users rely heavily on wireless and VoIP telephony. Which is the best recommendation to ensure a short downtime for the users during upgrading the access layer switches?

- A. Install the in-service software upgrade (ISSU) feature with clustering enabled
- B. Install AOS-CX 6300 or 6400 switches with always-on POE
- C. Implement VSF on the AOS-CX access switches
- D. Implement VSX on the AOS-CX access switches

**Answer:** B

#### Explanation:

The key is to reduce the impact. VSF or not will have same impact when the switch reboots. But if the switch support always on poe then at least the POE clients will be ready before the switch finish booting up. If you dont have always on POE, then the poe clients will reboot AFTER the switch boots up.

#### NEW QUESTION 134

An administrator has configured the following on an AOS-CX switch:

```
object-group ip address web-servers
 10.1.12.2
 10.1.12.3
exit
object-group port web-ports
eq 80
eq 443
```

What is the correct ACL rule configuration that would allow traffic from anywhere to reach the web ports on the two specified servers?

- A. access-list ip server 10 permit tcp any web-servers group web-ports
- B. access-list ip server 10 permit tcp any object-group web-servers object-group web-ports
- C. access-list ip server 10 permit tcp any group web-servers group web-ports
- D. access-list ip server 10 permit tcp any web-servers web-ports

**Answer:** A

**Explanation:**

```
Switch1(config-acl-ip)# show run cur access-list ip server
10 permit tcp any web-servers group web-ports
```

**NEW QUESTION 136**

How does an administrator install a script and create an agent and actions for the Network Analysis Engine running on AOS-CX switches?

- A. Access the switches' command-line interface.
- B. Access the switches' web user interface
- C. Use Aruba Central's web user interface
- D. Use the NetEdit web user interface

**Answer:** B

**NEW QUESTION 139**

What is correct regarding rate limiting and egress queue shaping on AOS-CX switches?

- A. Rate limiting and egress queue shaping can be used to restrict inbound traffic
- B. Limits can be defined only for broadcast and multicast traffic
- C. Rate limiting and egress queue shaping can be applied globally
- D. Traffic rate limit is configured on queue level

**Answer:** D

**NEW QUESTION 142**

What is the correct way of associating a VRF instance to either a VLAN or an interface?

- A. Switch(config)# interface <interface-ID>Switch(config-if)# vlan access <VLAN-ID> vrf attach <vrf-name>
- B. Switch(config)# vlan <VLAN-ID> vrf attach < vrf-name >
- C. Switch(config)# vlan <VLAN-ID>Switch(config-vlan-<VLAN-ID># vrf attach < vrf-name >
- D. Switch(config)# vlan <VLAN-ID> vrf < vrf-name >

**Answer:** C

**NEW QUESTION 147**

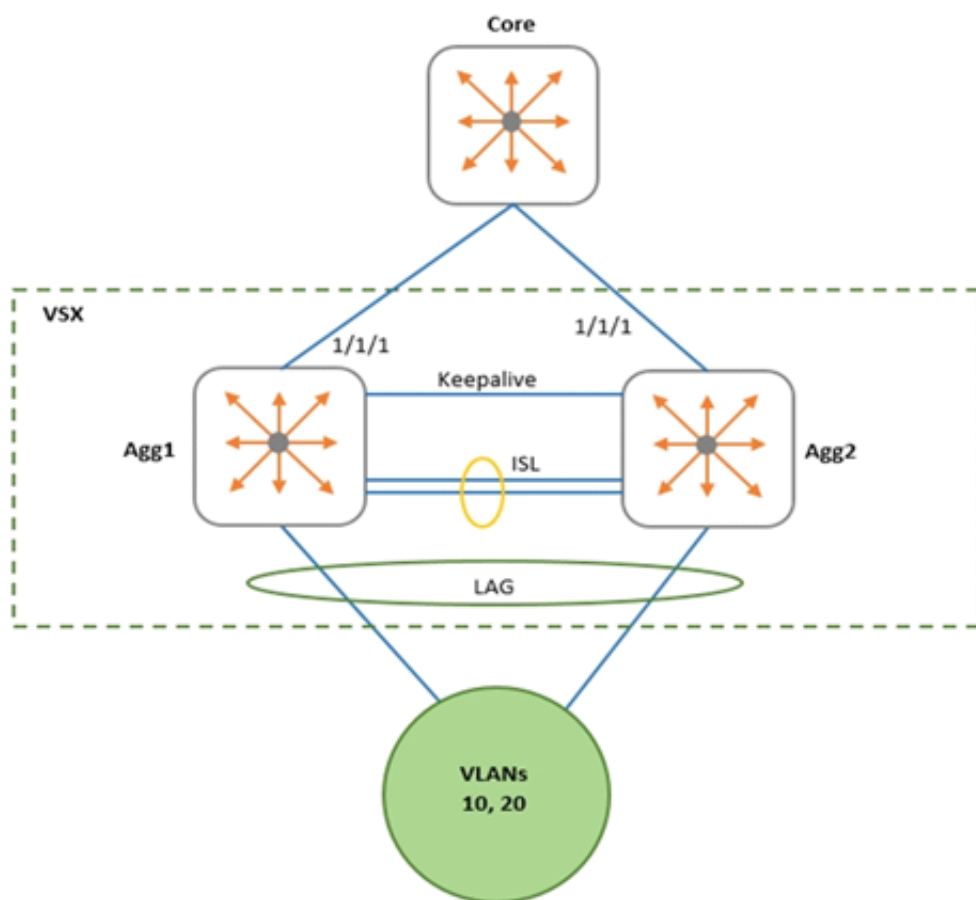
A network engineer for a company with 896 users across a multi-building campus wants to gather statistics on an important switch uplink and create actions based on issues that occur on the uplink. How often does an NAE agent gather information from the current state database in regard to the uplink interfaces?

- A. Once every 60 seconds
- B. Once every 1 second
- C. Once every 30 seconds
- D. Once every 5 seconds

**Answer:** D

**NEW QUESTION 151**

Examine the network exhibit.



A network administrator is implementing OSPF on a VSX pair of aggregation switches: Agg1 and Agg2. VLANs 10 and 20 are connected to layer-2 access switches. Agg-1 and Agg-2 are configured as the default gateway for VLANs 10 and 20, with active gateway enabled. What is the best practice for configuring OSPF on the aggregation switches and their connection to the Core switch?

- A. Define a layer-2 VSX LAG associated with a layer-3 VLAN interface
- B. Enable active gateway for the Layer-3 VLAN.
- C. Define separate layer-3 VLAN interfaces between the aggregation and core switch
- D. Enable active forwarding for the Layer-3 VLAN.
- E. Define separate layer-3 VLAN interfaces between the aggregation and core switch
- F. Enable active gateway for the Layer-3 VLAN.
- G. Define a layer-2 VSX LAG associated with a layer-3 VLAN interface
- H. Enable active forwarding for the Layer-3 VLAN.

**Answer: A**

#### NEW QUESTION 153

.....



## Thank You for Trying Our Product

### We offer two products:

1st - We have Practice Tests Software with Actual Exam Questions

2nd - Questions and Answers in PDF Format

### HPE6-A73 Practice Exam Features:

- \* HPE6-A73 Questions and Answers Updated Frequently
- \* HPE6-A73 Practice Questions Verified by Expert Senior Certified Staff
- \* HPE6-A73 Most Realistic Questions that Guarantee you a Pass on Your FirstTry
- \* HPE6-A73 Practice Test Questions in Multiple Choice Formats and Updatesfor 1 Year

**100% Actual & Verified — Instant Download, Please Click**  
**[Order The HPE6-A73 Practice Test Here](#)**