

Microsoft

Exam Questions MD-100

Windows 10



NEW QUESTION 1

- (Exam Topic 4)

You have a computer named Computer1 that runs Windows 11.

You receive a notification that Computer1 is running low on disk space. You need to remove the following files from Computer1:

- Unused apps
 - Unused Microsoft OneDrive content
 - Non-critical files for Microsoft Defender Antivirus
- The solution must minimize administrative effort.

Which tool should you use to remove each type of file? To answer, drag the appropriate tools to the correct file types. Each tool may be used once, more not at all. You may need to drag the split bar between panes or scroll to view content.

Tools

Cleanup recommendations

Disk Cleanup

Disk Management

Storage Sense

File types

Unused apps:

Tool

Unused OneDrive content:

Tool

Non-critical files for Microsoft Defender Antivirus:

Tool

- A. Mastered
B. Not Mastered

Answer: A

Explanation:

Tools

Cleanup recommendations

Disk Cleanup

Disk Management

Storage Sense

File types

Unused apps:

Disk Cleanup

Unused OneDrive content:

Disk Management

Non-critical files for Microsoft Defender Antivirus:

Cleanup recommendations

NEW QUESTION 2

- (Exam Topic 4)

Please wait while the virtual machine loads. Once loaded, you may proceed to the lab section. This may take a few minutes, and the wait time will not be deducted from your overall test time.

When the Next button is available, click it to access the lab section. In this section, you will perform a set of tasks in a live environment. While most functionality will be available to you as it would be in a live environment, some functionality (e.g., copy and paste, ability to navigate to external websites) will not be possible by design.

Scoring is based on the outcome of performing the tasks stated in the lab. In other words, it doesn't matter how you accomplish the task, if you successfully perform it, you will earn credit for that task.

Labs are not timed separately, and this exam may more than one lab that you must complete. You can use as much time as you would like to complete each lab.

But, you should manage your time appropriately to ensure that you are able to complete the lab(s) and all other sections of the exam in the time provided.

Please note that once you submit your work by clicking the Next button within a lab, you will NOT be able to return to the lab.

Username and password



Use the following login credentials as needed:

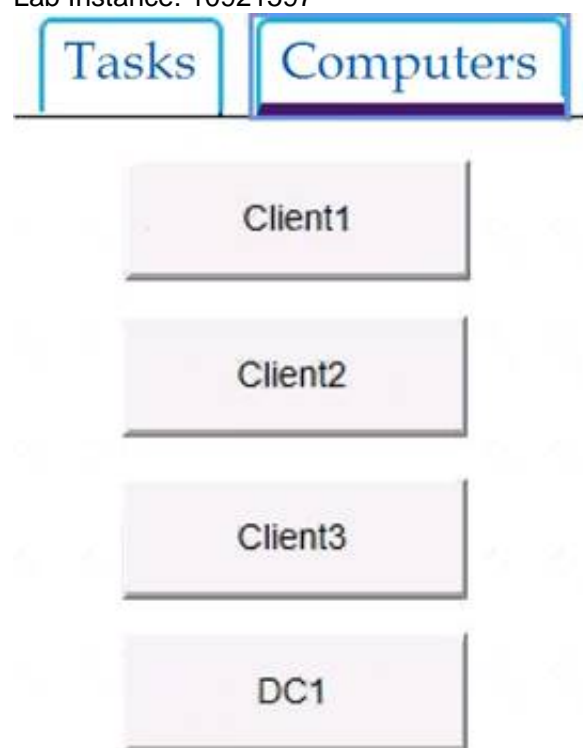
To enter your password, place your cursor in the Enter password box and click on the password below.

Username: Contoso/Administrator

Password: Passw0rd!

The following information is for technical support purposes only:

Lab Instance: 10921597



You need to create a file named Private.txt in a folder named Folder1 on the C drive of Client2.

You need to encrypt Private.txt and ensure that a user named User1 can view the contents of Private.txt.

To complete this task, sign in to the required computer or computers.

- A. Mastered
- B. Not Mastered

Answer: A

Explanation:

- > After creating Private.txt and saving it Folder1, right-click on the Private.txt, and select Properties from the context menu.
- > On the General tab, click Advanced. Next, check the box "Encrypt contents to secure data" and click OK.
- > A window will pop up asking you whether or not you want to encrypt the file and its parent folder. Select the "Encrypt the file only" and click OK.
- > Private.txt will now show its file name in green color.
- > Right-click Private.txt and then select Properties.
- > Click Advanced on the General tab.
- > Click Details on the Advanced Attributes tab to open the User Access dialog box.
- > Click Add to open the Encrypting File System dialog box and then select User1.
- > Click OK to add User1 to the list of users who have access to the file.
- > Click OK until you've exited out of the dialog boxes.

Reference:

<https://www.top-password.com/blog/password-protect-notepad-text-files-in-windows-10/> <https://sourcedaddy.com/windows-7/how-to-grant-users-access-to-an-encrypted-file.html>

NEW QUESTION 3

- (Exam Topic 4)

You have a computer named Computer1 that runs Windows 11.

You need to ensure that when Computer 1 is low on disk space, the computer automatically cleans up temporary files and empties the Recycle Bin. What should you use?

- A. Optimize Drives
- B. Disk Cleanup
- C. Storage Sense
- D. Storage Spaces

Answer: C

NEW QUESTION 4

- (Exam Topic 4)

You have a computer named Computer5 that runs Windows 10 that is used to share documents in a workgroup.

You create three users named User-a, User-b, User-c. The users plan to access Computer5 from the network only.

You have a folder named Data. The Advanced Security Settings for the Data folder are shown in the Security exhibit. (Click the Security Exhibit tab).

Advanced Security Settings for Data

Name: C:\Data

Owner: Administrators (DESKTOP-59Q8HS3\Administrators) [Change](#)

☐ Replace owner on subcontainers and objects

Permissions Share Auditing Effective Access

For additional information, double-click a permission entry. To modify a permission entry, select the entry and click Edit (if available).

Permission entries:

Type	Principal	Access	Inherited from	Applies to
Allow	User-a (DESKTOP-59Q8HS3\U..	Read & execute	None	This folder, subfolders and files
Allow	User-b (DESKTOP-59Q8HS3\U..	Modify	None	This folder, subfolders and files
Allow	Administrators (DESKTOP-59...	Full control	None	This folder, subfolders and files
Allow	SYSTEM	Full control	None	This folder, subfolders and files
Allow	Users (DESKTOP-59Q8HS3\Us.	Read & execute	None	This folder, subfolders and files

Add Remove View

Enable inheritance

☐ Replace all child object permission entries with inheritable permission entries from this object

OK Cancel Apply

You share the Data folder. The permission for User-a are shown in the User-a exhibit (Click the User-a tab.)

Permissions for Data

Share Permissions

Group or user names:

- User-a (DESKTOP-59Q8HS3\User-a)
- User-b (DESKTOP-59Q8HS3\User-b)
- User-c (DESKTOP-59Q8HS3\User-c)

Add... Remove

Permissions for User-a

	Allow	Deny
Full control	<input type="checkbox"/>	<input type="checkbox"/>
Change	<input type="checkbox"/>	<input type="checkbox"/>
Read	<input checked="" type="checkbox"/>	<input type="checkbox"/>

OK Cancel Apply

The permissions for user-b are shown in the User-b exhibit. (Click the User-b tab.)

Permissions for Data

Share Permissions

Group or user names:

User-a (DESKTOP-59Q8HS3\User-a)

User-b (DESKTOP-59Q8HS3\User-b)

User-c (DESKTOP-59Q8HS3\User-c)

Add...

Remove

Permissions for User-a

	Allow	Deny
Full control	<input type="checkbox"/>	<input type="checkbox"/>
Change	<input type="checkbox"/>	<input type="checkbox"/>
Read	<input checked="" type="checkbox"/>	<input type="checkbox"/>

OK

Cancel

Apply

The permissions for user-c are shown in the User-c exhibit. (Click the User-c tab.)

Permissions for Data

Share Permissions

Group or user names:

User-a (DESKTOP-59Q8HS3\User-a)

User-b (DESKTOP-59Q8HS3\User-b)

User-c (DESKTOP-59Q8HS3\User-c)

Add...

Remove

Permissions for User-a

	Allow	Deny
Full control	<input type="checkbox"/>	<input type="checkbox"/>
Change	<input checked="" type="checkbox"/>	<input type="checkbox"/>
Read	<input checked="" type="checkbox"/>	<input type="checkbox"/>

OK

Cancel

Apply

For each of the following statements, select Yes if the statements is true. Otherwise, select No.
NOTE: Reach correct selection is worth one point.

Statements	Yes	No
User-a can modify files in the Data share.	<input type="radio"/>	<input type="radio"/>
User-b can delete files in the Data share.	<input type="radio"/>	<input type="radio"/>
User-c can read files in the Data share.	<input type="radio"/>	<input type="radio"/>

- A. Mastered
- B. Not Mastered

Answer: A

Explanation:
No No Yes

NEW QUESTION 5

- (Exam Topic 4)
Your company purchases 20 laptops that use a new hardware platform. In a test environment, you deploy Windows 10 to the new laptops. Some laptops frequently generate stop errors.
You need to identify the cause of the issue. What should you use?

- A. Reliability Monitor
- B. Task Manager
- C. System Configuration
- D. Performance Monitor

Answer: A

Explanation:
References:
<https://lifehacker.com/how-to-troubleshoot-windows-10-with-reliability-monitor-1745624446>

NEW QUESTION 6

- (Exam Topic 4)
Your network contains an Active Directory domain. The domain contains two computers named Computer1 and Computer2 that run Windows 10.
You need to modify the registry of Computer1 by using Registry Editor from Computer2. Which two registry hives can you modify? Each correct answer presents part of the solution.
NOTE: Each correct selection is worth one point.

- A. HKEY_CURRENT_USER
- B. HKEY_LOCAL_MACHINE
- C. HKEY_USERS
- D. HKEY_CLASSES_ROOT
- E. HKEY_CURRENT_CONFIG

Answer: BC

NEW QUESTION 7

- (Exam Topic 4)
You have a computer named Computer1 that runs Windows 10. Computer1 has the local users shown in the following table.

Name	Member of
User1	Administrators
User2	Event Log readers
User3	Device Owners
User4	Power Users
User5	Users

Which users can analyze the event logs on Computer1? To answer, select the appropriate options in the answer area.
NOTE: Each correct selection is worth one point.

Users who can analyze security event logs:

User1 only
User1 and User2 only
User1 and User2, and User3 only
User1, User2, User3, and User4 only
User1, User2, User3, User4, and User5

Users who can analyze system event logs:

User1 only
User1 and User2 only
User1 and User2, and User3 only
User1, User2, User3, and User4 only
User1, User2, User3, User4, and User5

- A. Mastered
- B. Not Mastered

Answer: A

Explanation:

References:

<https://docs.microsoft.com/en-us/windows/security/identity-protection/access-control/local-accounts#sec-localsy>

NEW QUESTION 8

- (Exam Topic 4)

Please wait while the virtual machine loads. Once loaded, you may proceed to the lab section. This may take a few minutes, and the wait time will not be deducted from your overall test time.

When the Next button is available, click it to access the lab section. In this section, you will perform a set of tasks in a live environment. While most functionality will be available to you as it would be in a live environment, some functionality (e.g., copy and paste, ability to navigate to external websites) will not be possible by design.

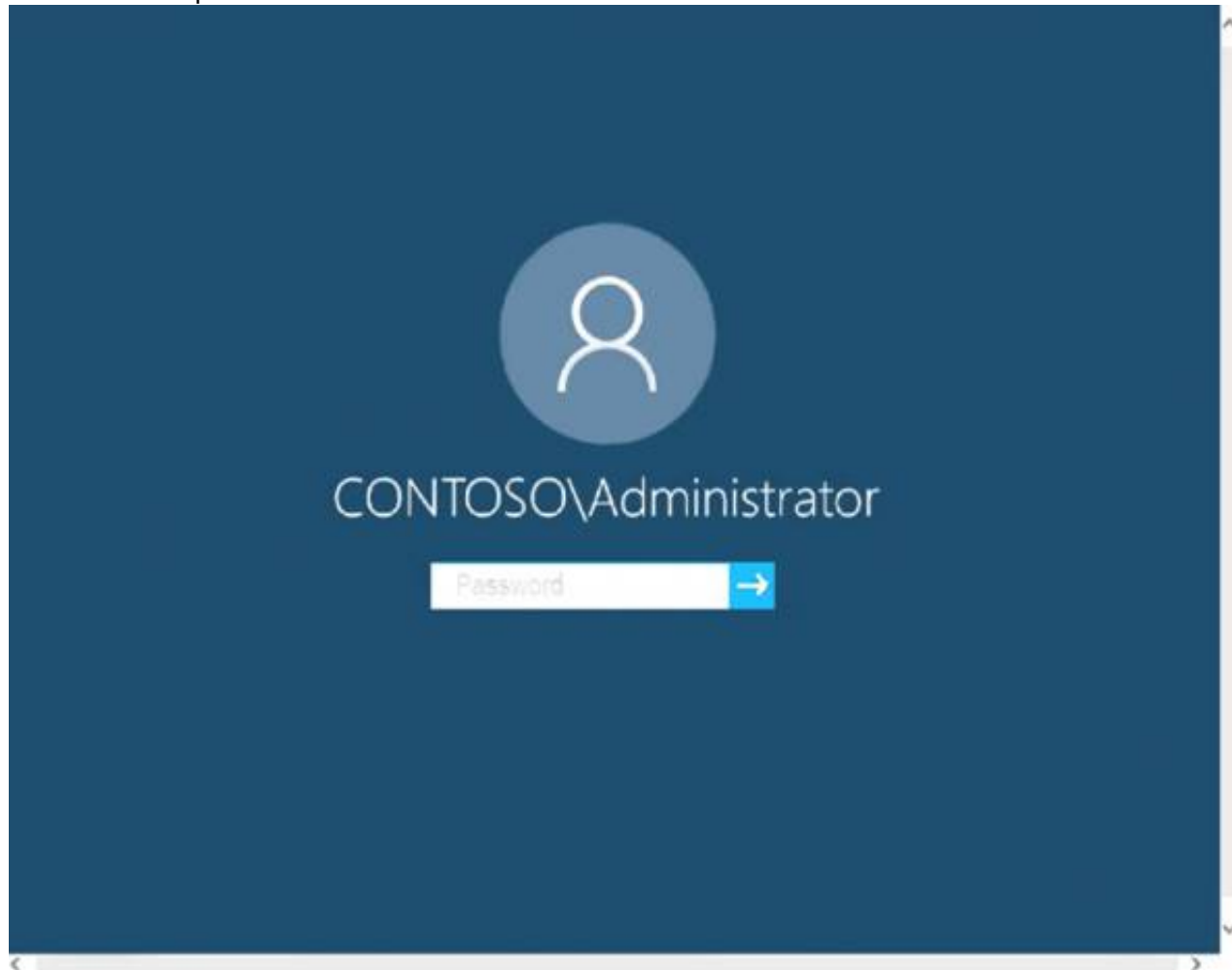
Scoring is based on the outcome of performing the tasks stated in the lab. In other words, it doesn't matter how you accomplish the task, if you successfully perform it, you will earn credit for that task.

Labs are not timed separately, and this exam may more than one lab that you must complete. You can use as much time as you would like to complete each lab.

But, you should manage your time appropriately to ensure that you are able to complete the lab(s) and all other sections of the exam in the time provided.

Please note that once you submit your work by clicking the Next button within a lab, you will NOT be able to return to the lab.

Username and password



Use the following login credentials as needed:

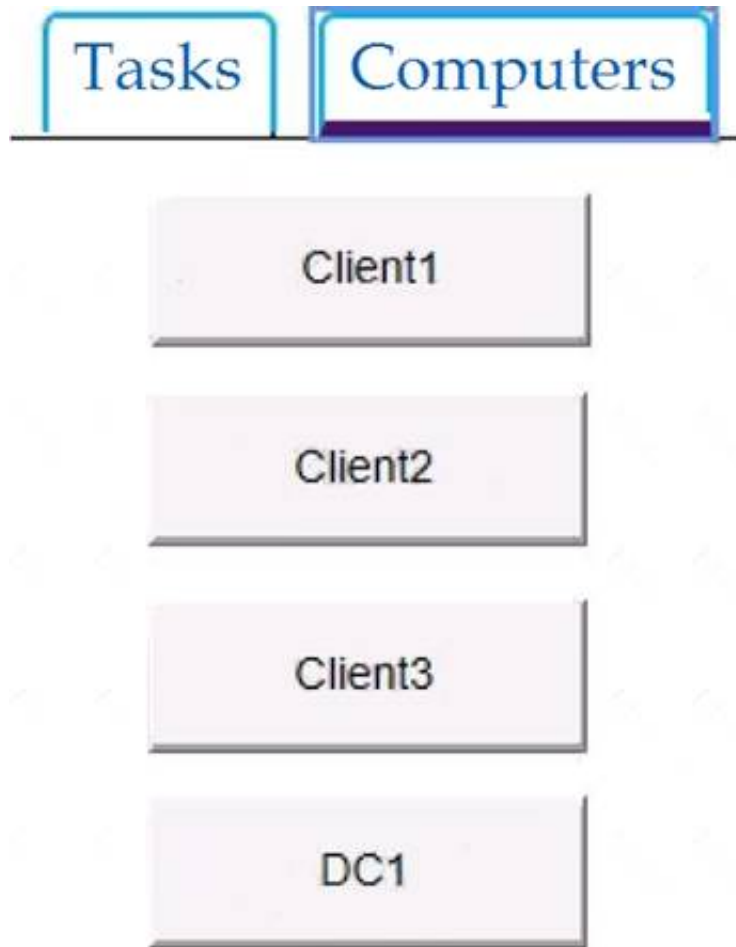
To enter your password, place your cursor in the Enter password box and click on the password below.

Username: Contoso/Administrator

Password: Passw0rd!

The following information is for technical support purposes only:

Lab Instance: 10921597



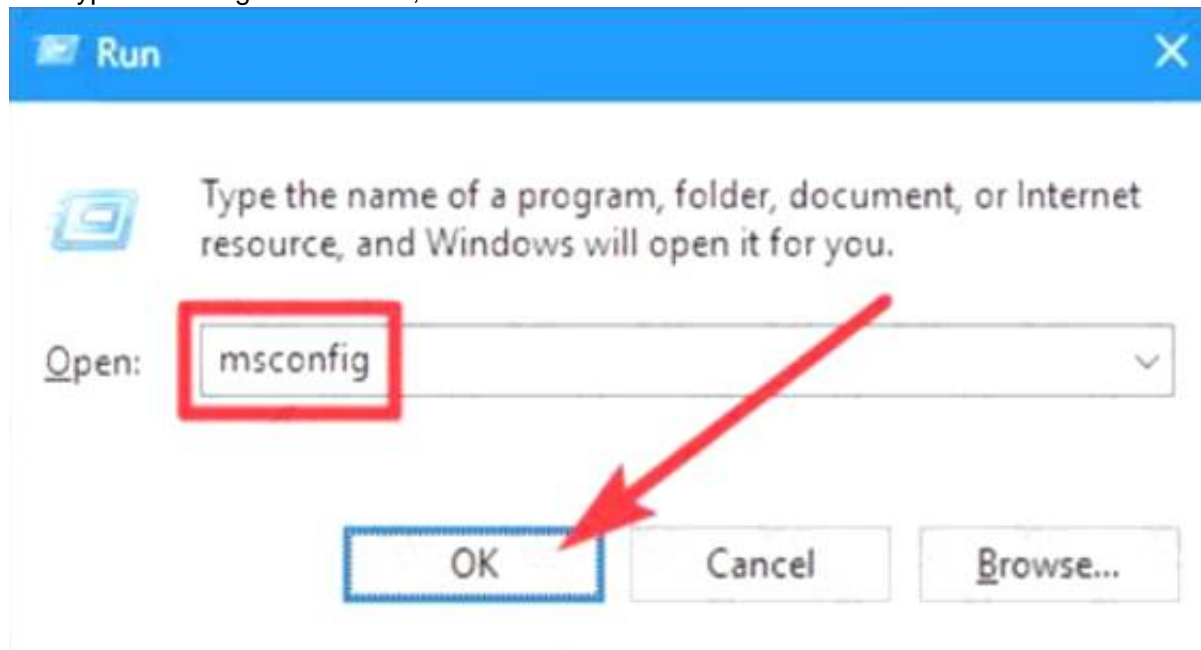
You need to ensure that Client3 starts in safe mode automatically the next time the computer restarts. After completing the task, you must NOT restart Client3. To complete this task, sign in to the required computer or computers.

- A. Mastered
- B. Not Mastered

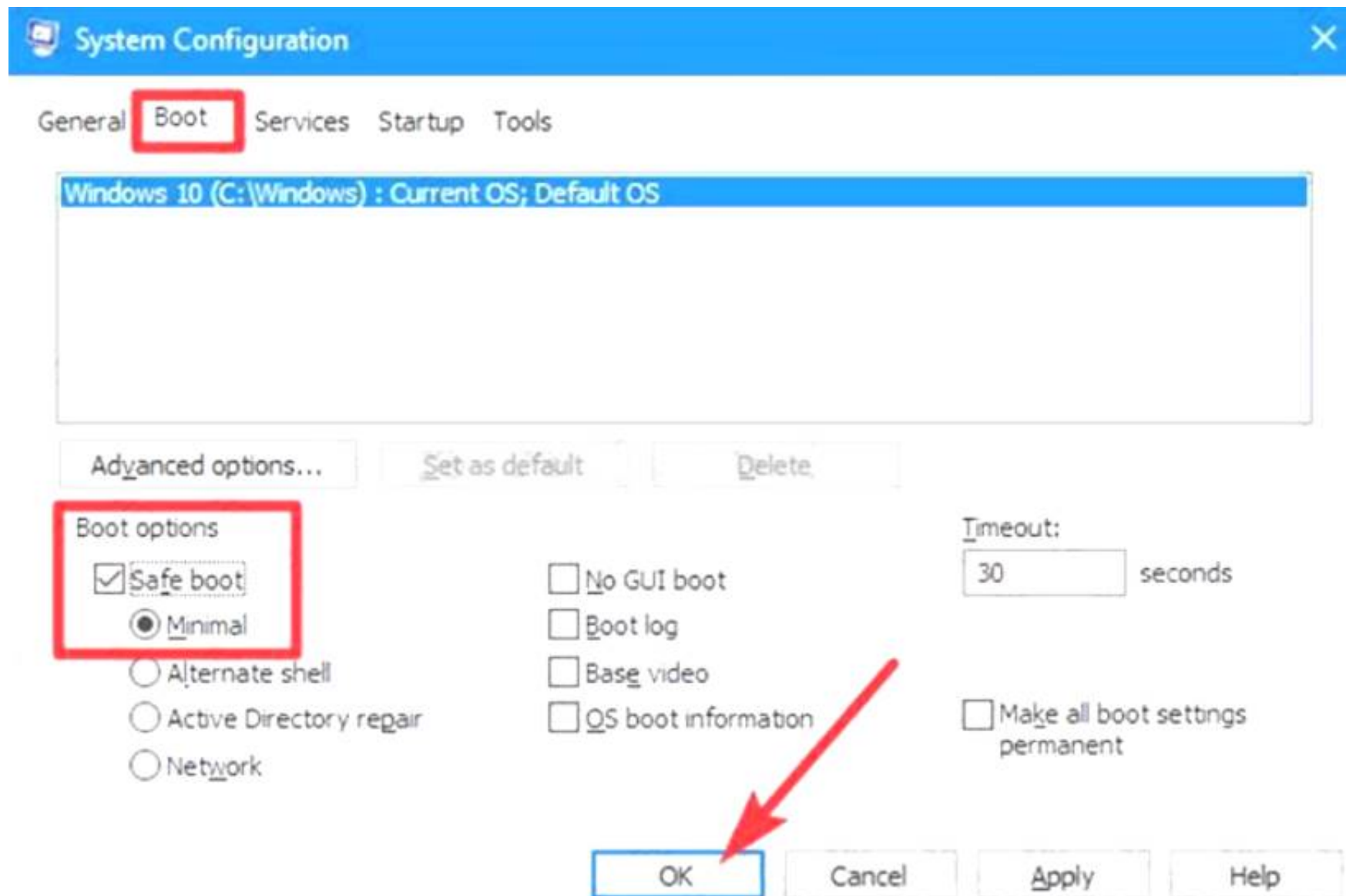
Answer: A

Explanation:

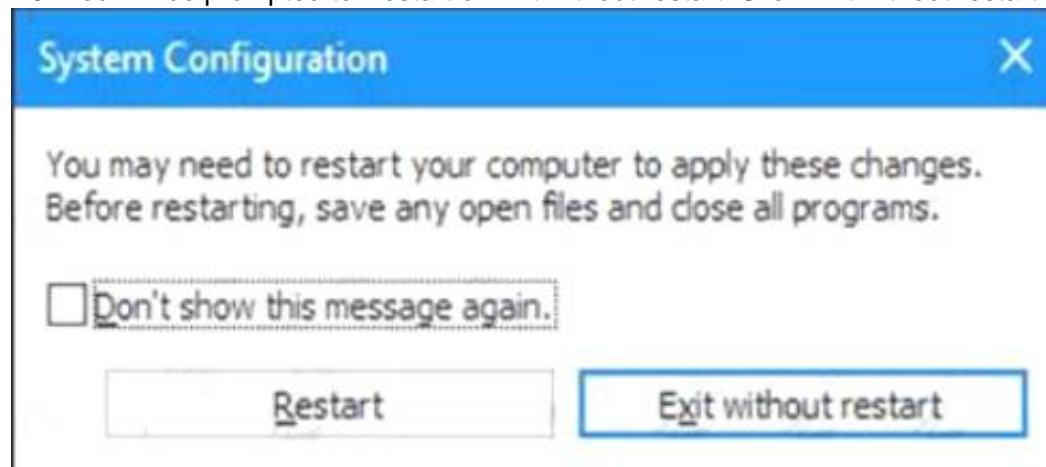
- * 1. From Client3, open the System Configuration utility by pressing the Windows & R keys simultaneously to display the Run box .
- * 2. Type "msconfig" into the box, and then click OK.



- * 3. In the "System Configuration" window, switch to the "Boot" tab.
- * 4. Enable the "Safe Boot" check box, and then make sure the "Minimal" option below that is selected. Click the "OK" button when you're done.



* 5. You will be prompted to Restart or Exit without restart. Click Exit without restart.



Reference:

<https://www.howtogeek.com/howto/windows-vista/force-windows-to-boot-into-safe-mode-without-using-the-f8>

NEW QUESTION 9

- (Exam Topic 4)

You have a Microsoft Azure Active Directory (Azure AD) tenant.

Some users sign in to their computer by using Windows Hello for Business.

A user named User1 purchases a new computer and joins the computer to Azure AD.

User1 attempts to configure the sign-in options and receives the error message shown in the exhibit.

Sign-in options

***Some settings are hidden or managed by your organization.**



Windows Hello

Sign in to Windows, apps and services by teaching Windows to recognize you.

Windows Hello isn't available on this device.

[See how it works and find compatible devices.](#)

You open Device Manager and confirm that all the hardware works correctly.

You need to ensure that User1 can use Windows Hello for Business facial recognition to sign in to the computer.

What should you do first?

- A. Purchase an infrared (IR) camera.
- B. Upgrade the computer to Windows 10 Enterprise.
- C. Enable UEFI Secure Boot.

D. Install a virtual TPM driver.

Answer: B

Explanation:

References:

<https://docs.microsoft.com/en-us/windows/security/identity-protection/hello-for-business/hello-planning-guide>

NEW QUESTION 10

- (Exam Topic 4)

Please wait while the virtual machine loads. Once loaded, you may proceed to the lab section. This may take a few minutes, and the wait time will not be deducted from your overall test time.

When the Next button is available, click it to access the lab section. In this section, you will perform a set of tasks in a live environment. While most functionality will be available to you as it would be in a live environment, some functionality (e.g., copy and paste, ability to navigate to external websites) will not be possible by design.

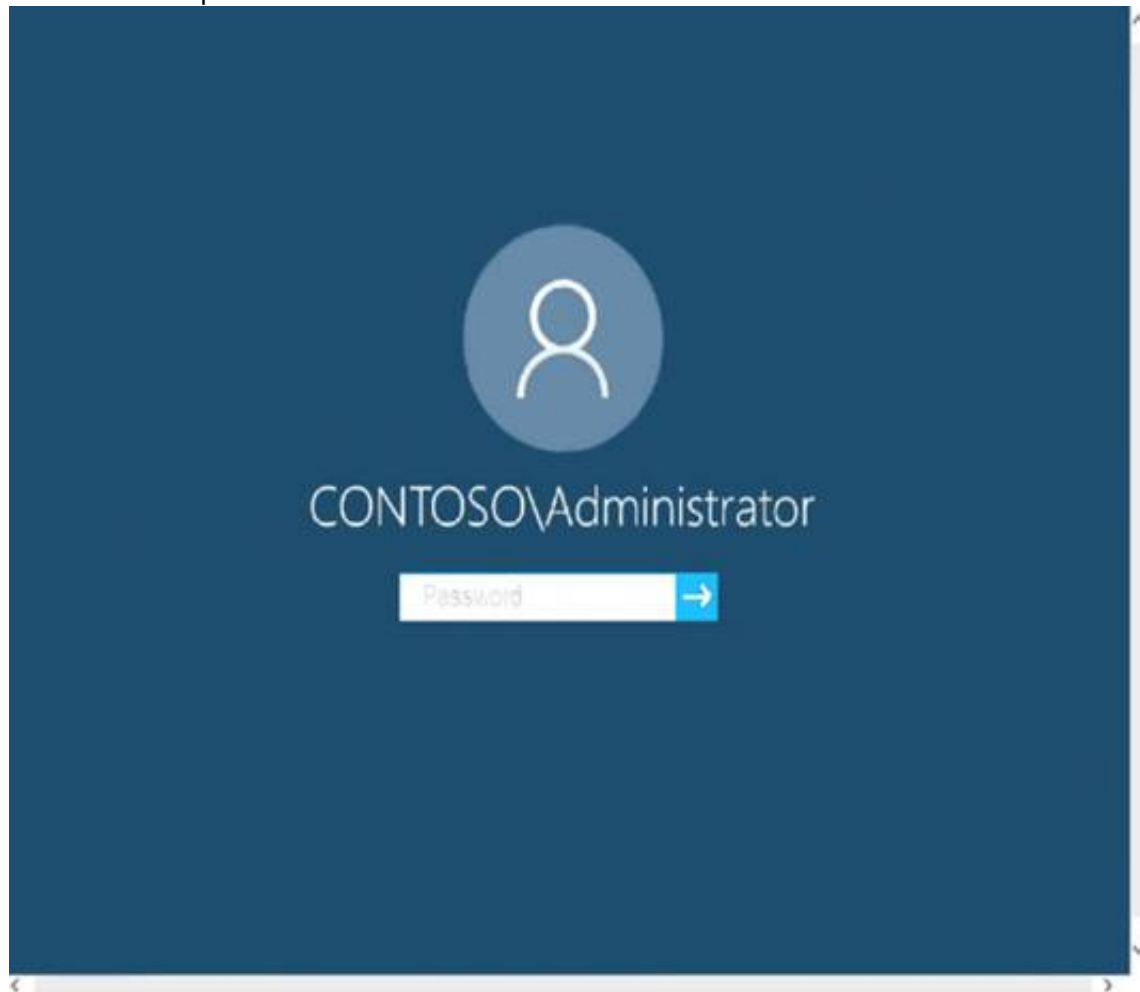
Scoring is based on the outcome of performing the tasks stated in the lab. In other words, it doesn't matter how you accomplish the task, if you successfully perform it, you will earn credit for that task.

Labs are not timed separately, and this exam may more than one lab that you must complete. You can use as much time as you would like to complete each lab.

But, you should manage your time appropriately to ensure that you are able to complete the lab(s) and all other sections of the exam in the time provided.

Please note that once you submit your work by clicking the Next button within a lab, you will NOT be able to return to the lab.

Username and password



Use the following login credentials as needed:

To enter your password, place your cursor in the Enter password box and click on the password below.

Username: Contoso/Administrator

Password: Passw0rd!

The following information is for technical support purposes only: Lab Instance: 11145882

WELCOME TO SERVER MANAGER

QUICK START

- 1 Configure this local server
- 2 Add roles and features
- 3 Add other servers to manage
- 4 Create a server group
- 5 Connect this server to cloud services

ROLES AND SERVER GROUPS

Roles: 3 | Server groups: 1 | Servers total: 1

Role	Server Groups	Features
AD DS	1	Manageability, Events, Services, Performance, BPA results
DNS	1	Manageability, Events, Services, Performance, BPA results
File and Storage Services	1	Manageability, Events, Services, Performance, BPA results
Local Server	1	Manageability, Events, Services, Performance, BPA results
All Servers	1	Manageability, Events, Services, Performance, BPA results

Tasks **Computers**



Users in the Finance group report that they cannot copy files to Client1\Finance. You need to resolve the issue. To complete this task, sign in to the required computer or computers.

- A. Mastered
- B. Not Mastered

Answer: A

Explanation:

- Open File Explorer.
- Browse and find the file or folder you want to have full access.
- Right-click it, and select Properties.
- Click the Security tab to access the NTFS permissions.
- Click the Advanced button.

- On the "Advanced Security Settings" page, you need to click the Change link, in the Owner's field.
- Click the Advanced button.
- On the "Select User or Group" page, click the Find Now button.
- From the search result, select your user account, and click OK.
- On the "Select User or Group" page, click OK.
- Click Apply.
- Click OK.
- Click OK again.
- Click OK one more time to complete this task.

It's important to note that if you're taking ownership of a folder, you can check the Replace ownership on subcontainers and object option in the Advanced Security Settings page to take control of the subfolders inside of the folder.

Now you'll need to grant full access control to your account, to do this use the following steps:

- Right-click the file or folder and select Properties.
- Click the Security tab to access the NTFS permissions.
- Click the Advanced button.
- Under the Permissions tab, click Add.
- Click Select a principal to add your user account.
- On the "Select User or Group" page, click the Find Now button.
- From the search result, select your user account, and click OK.
- On the "Select User or Group" page, click OK.
- On "Permission Entry", check the Full control option.
- Click OK.
- Click OK.
- Click Apply.
- Click OK.
- Click OK to close the file or folder properties to complete the task.

You can now assign the necessary permissions to the Finance group.

If you right-click on a file or folder, choose Properties and click on the Security tab, we can now try to edit some permissions. Go ahead and click the Edit button to get started.

At this point, there are a couple of things you can do. Firstly, you'll notice that the Allow column is probably greyed out and can't be edited. This is because of the inheritance I was talking about earlier. However, you can check items on the Deny column.

When you click the Add button, you have to type in the user name or group name into the box and then click on Check Names to make sure it's correct. If you don't remember the user or group name, click on the Advanced button and then just click Find Now. It will show you all the users and groups.

Click OK and the user or group will be added to the access control list. Now you can check the Allow column or Deny column.

Reference:

<https://www.windowscentral.com/how-take-ownership-files-and-folders-windows-10> <https://www.online-tech-tips.com/computer-tips/set-file-folder-permissions-windows/>

NEW QUESTION 10

- (Exam Topic 4)

You have a workgroup computer named Computer1 that runs Windows 10.

You need to configure Windows Hello for sign-in to Computer1 by using a physical security key. What should you use?

- A. a USB 3.0 device that supports BitLocker Drive Encryption (BitLocker)
- B. a USB device that supports FIDO2
- C. a USB 3.0 device that has a certificate from a trusted certification authority (CA)
- D. a USB device that supports RSA SecurID

Answer: B

Explanation:

Reference:

<https://docs.microsoft.com/en-us/azure/active-directory/user-help/security-info-setup-security-key>

NEW QUESTION 15

- (Exam Topic 4)

You have computers that run Windows 11 as shown in the following table.

Name	IP address	Joined to
Computer1	192.168.10.10	Active Directory
Computer2	192.168.10.15	Workgroup

You ping 192.168.10.15 from Computer1 and discover that the request timed out. You need to ensure that you can successfully ping 192.168.10.15 from Computer1. Solution: On Computer2, you enable PowerShell Remoting.

Does this meet the goal?

- A. Yes
- B. No

Answer: A

NEW QUESTION 19

- (Exam Topic 4)

Please wait while the virtual machine loads. Once loaded, you may proceed to the lab section. This may take a few minutes, and the wait time will not be deducted from your overall test time.

When the Next button is available, click it to access the lab section. In this section, you will perform a set of tasks in a live environment. While most functionality will be available to you as it would be in a live environment, some functionality (e.g., copy and paste, ability to navigate to external websites) will not be possible by design.

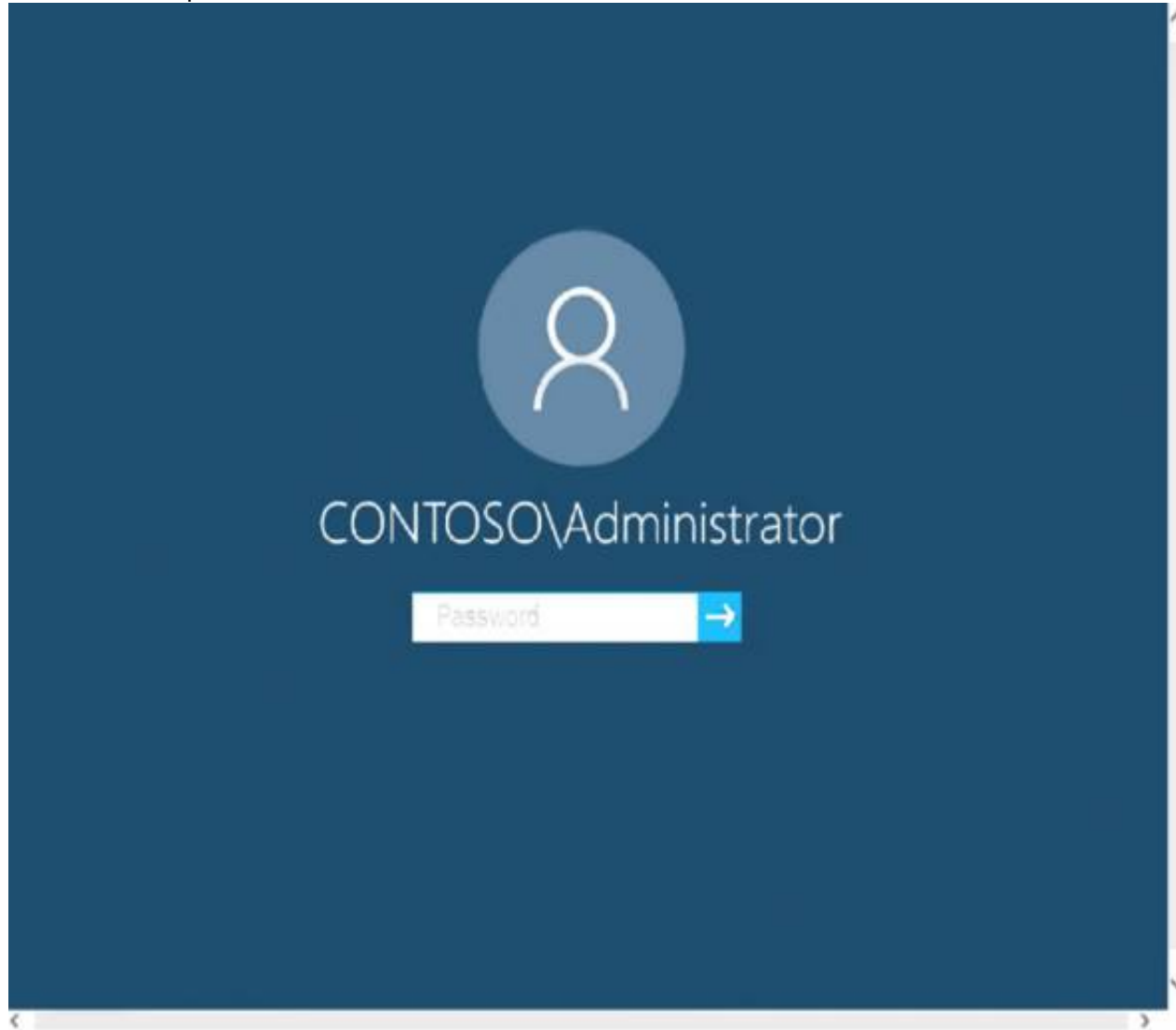
Scoring is based on the outcome of performing the tasks stated in the lab. In other words, it doesn't matter how you accomplish the task, if you successfully perform it, you will earn credit for that task.

Labs are not timed separately, and this exam may more than one lab that you must complete. You can use as much time as you would like to complete each lab.

But, you should manage your time appropriately to ensure that you are able to complete the lab(s) and all other sections of the exam in the time provided.

Please note that once you submit your work by clicking the Next button within a lab, you will NOT be able to return to the lab.

Username and password



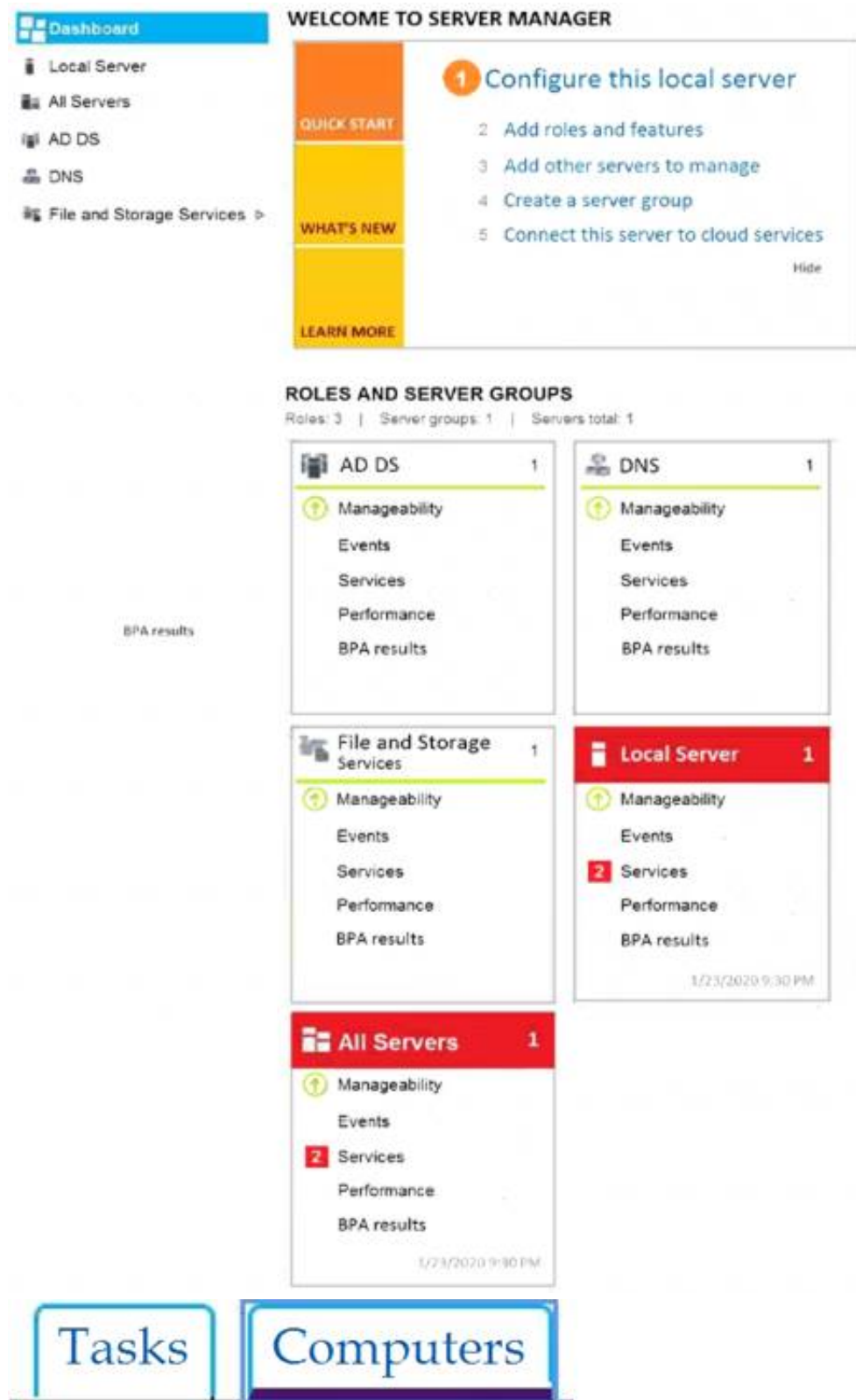
Use the following login credentials as needed:

To enter your password, place your cursor in the Enter password box and click on the password below.

Username: Contoso/Administrator

Password: Passw0rd!

The following information is for technical support purposes only: Lab Instance: 11145882



A web service installed on Client1 is used for testing.
 You discover that users cannot connect to the web service by using HTTP. You need to allow inbound HTTP connections to Client1.
 To complete this task, sign in to the required computer or computers.

- A. Mastered
- B. Not Mastered

Answer: A

Explanation:

To create an inbound port rule

- In the navigation pane, click Inbound Rules.
- Click Action, and then click New rule.
- On the Rule Type page of the New Inbound Rule Wizard, click Custom, and then click Next.
- On the Program page, click All programs, and then click Next.

- On the Protocol and Ports page, select the protocol type that you want to allow. To restrict the rule to a specified port number, you must select either TCP or UDP. Because this is an incoming rule, you typically configure only the local port number. TCP port 80. When you have configured the protocols and ports, click Next.
- On the Scope page, you can specify that the rule applies only to network traffic to or from the IP addresses entered on this page. Configure as appropriate for your design, and then click Next.
- On the Action page, select Allow the connection, and then click Next.
- On the Profile page, select the network location types to which this rule applies, and then click Next.
- On the Name page, type a name and description for your rule, and then click Finish.

Reference:
<https://docs.microsoft.com/en-us/windows/security/threat-protection/windows-firewall/create-an-inbound-port-r>
https://en.wikipedia.org/wiki/List_of_TCP_and_UDP_port_numbers

NEW QUESTION 23

- (Exam Topic 4)
 You have the computer shown in the following table.

Name	Windows 10 edition	Servicing channel
Computer1	Windows 10 Pro	Preview Build - Fast
Computer2	Windows 10 Pro	Semi-annual
Computer3	Windows 10 Enterprise	Long-term

You plan to configure deployment rings for Windows 10 quality and feature updates.
 What is the maximum number of days you can defer installing quality updates, and which computers support installing feature updates from Windows Update? To answer, select the appropriate options in the answer area.
 NOTE: Each correct selection is worth one point.

Maximum number of days you can defer installing quality updates:

7 days
 30 days
 180 days
 365 days

Computers that support installing feature updates from Windows Update:

Computer1 only
 Computer2 only
 Computer3 only
 Computer1 and Computer2 only
 Computer1, Computer2, and Computer3

- A. Mastered
- B. Not Mastered

Answer: A

Explanation:
 Graphical user interface, text, application, email Description automatically generated
 Reference:
<https://docs.microsoft.com/en-us/windows/deployment/update/waas-configure-wufb>

NEW QUESTION 26

- (Exam Topic 4)
 Note: This question is part of a series of questions that present the same scenario. Each question in the series contains a unique solution that might meet the stated goals. Some question sets might have more than one correct solution, while others might not have a correct solution.
 After you answer a question in this section, you will NOT be able to return to it. As a result, these questions will not appear in the review screen.
 You manage devices that run Windows 10.
 Ten sales users will travel to a location that has limited bandwidth that is expensive. The sales users will be at the location for three weeks.
 You need to prevent all Windows updates from downloading for the duration of the trip. The solution must not prevent access to email and the Internet.
 Solution: From Network & Internet in the Settings app, you set the network connections as metered connections.
 Does this meet the goal?

- A. Yes
- B. No

Answer: B

Explanation:
 References:
<https://www.makeuseof.com/tag/5-ways-temporarily-turn-off-windows-update-windows-10/>

NEW QUESTION 28

- (Exam Topic 4)

You have a computer that runs Windows 11 and has Windows Sandbox enabled. You need to create a custom Windows Sandbox configuration file. Which file extension should you use?

- A. .ps
- B. json
- C. .wsb
- D. .xml

Answer: C

NEW QUESTION 31

- (Exam Topic 4)

Please wait while the virtual machine loads. Once loaded, you may proceed to the lab section. This may take a few minutes, and the wait time will not be deducted from your overall test time.

When the Next button is available, click it to access the lab section. In this section, you will perform a set of tasks in a live environment. While most functionality will be available to you as it would be in a live environment, some functionality (e.g., copy and paste, ability to navigate to external websites) will not be possible by design.

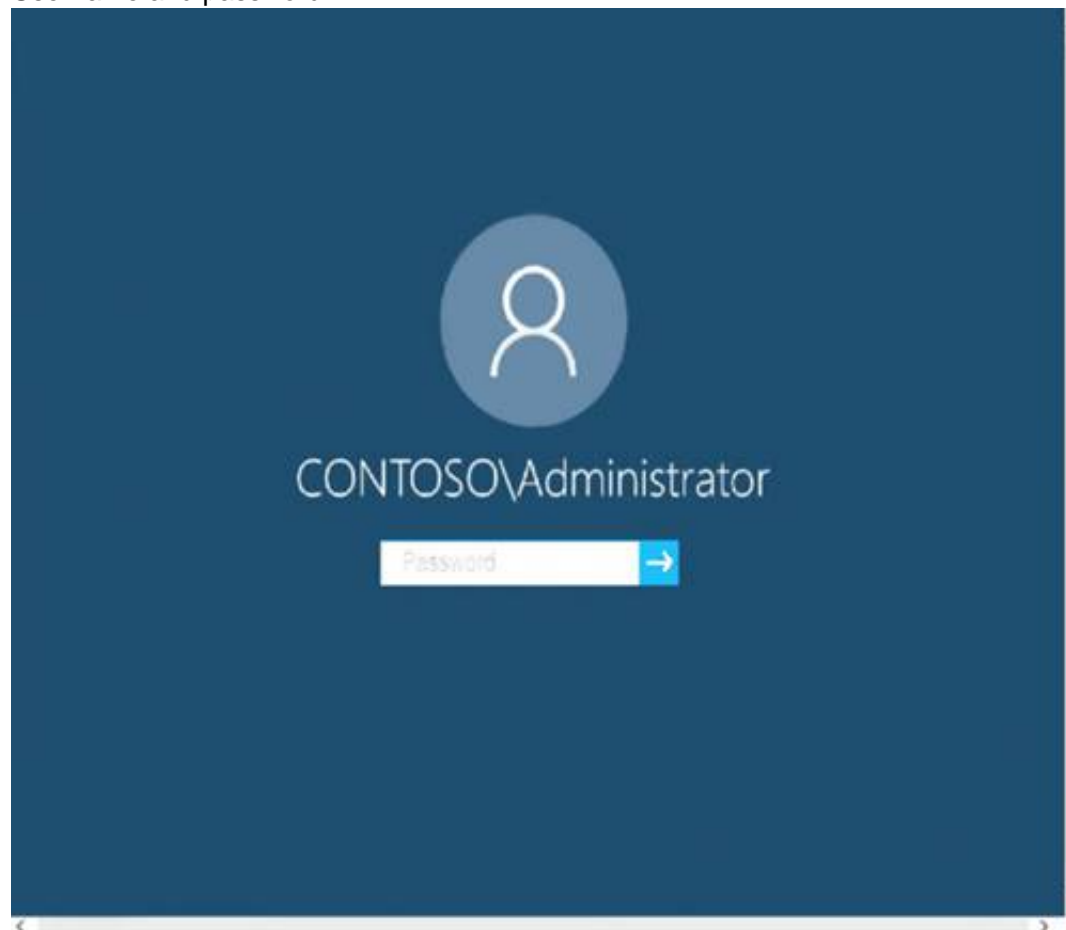
Scoring is based on the outcome of performing the tasks stated in the lab. In other words, it doesn't matter how you accomplish the task, if you successfully perform it, you will earn credit for that task.

Labs are not timed separately, and this exam may more than one lab that you must complete. You can use as much time as you would like to complete each lab.

But, you should manage your time appropriately to ensure that you are able to complete the lab(s) and all other sections of the exam in the time provided.

Please note that once you submit your work by clicking the Next button within a lab, you will NOT be able to return to the lab.

Username and password



Use the following login credentials as needed:

To enter your password, place your cursor in the Enter password box and click on the password below.

Username: Contoso/Administrator

Password: Passw0rd!

The following information is for technical support purposes only:

Lab Instance: 10921597



You need to create a group named Group2 on Client2. The members of Group2 must be able to change the system time. The solution must use the principle of least privilege.

To complete this task, sign in to the required computer or computers.

- A. Mastered
- B. Not Mastered

Answer: A

Explanation:

- On Client2, Press Windows+R
- Type lusrmgr.msc
- Right click Groups and click New Group.
- Type in the Group name and a description.
- Click Add to add members to this group. Specify the name of the user or group or computer to be added.
- Click Create and Close.
- Press the Win + R keys to open Run, type secpol.msc into Run, and click/tap on OK to open Local Security Policy.
- Expand open Local Policies in the left pane of Local Security Policy, click/tap on User Rights Assignment, and double click/tap on the Change the system time policy in the right pane.
- Click/tap on the Add User or Group button.
- Click/tap on the Object Types button.
- Check all the boxes for Object types, and click/tap on the OK.
- Click/tap on the Advanced button.
- Click/tap on the Find Now button, select the name of the user or group
- Click/tap on OK.
- Click/tap on OK.
- When finished, you can close Local Users and Groups.

Reference:

<https://www.windows-active-directory.com/local-user-management.html> <https://www.tenforums.com/tutorials/92910-allow-prevent-users-groups-change-time-windows-10-a.html#optio>

NEW QUESTION 35

- (Exam Topic 4)

Note: This question is part of a series of questions that present the same scenario. Each question in the series contains a unique solution that might meet the stated goals. Some question sets might have more than one correct solution, while others might not have a correct solution.

After you answer a question in this section, you will NOT be able to return to it. As a result, these questions will not appear in the review screen.

You have a computer named Computer1 that runs Windows 10.

You test Windows updates on Computer1 before you make the updates available to other users at your company.

You install a quality update that conflicts with a customer device driver. You need to remove the update from Computer1.

Solution: From System Restore, you revert the system state to a restore point that was created before the update was installed.

Does this meet the goal?

- A. Yes
- B. No

Answer: B

Explanation:

References:

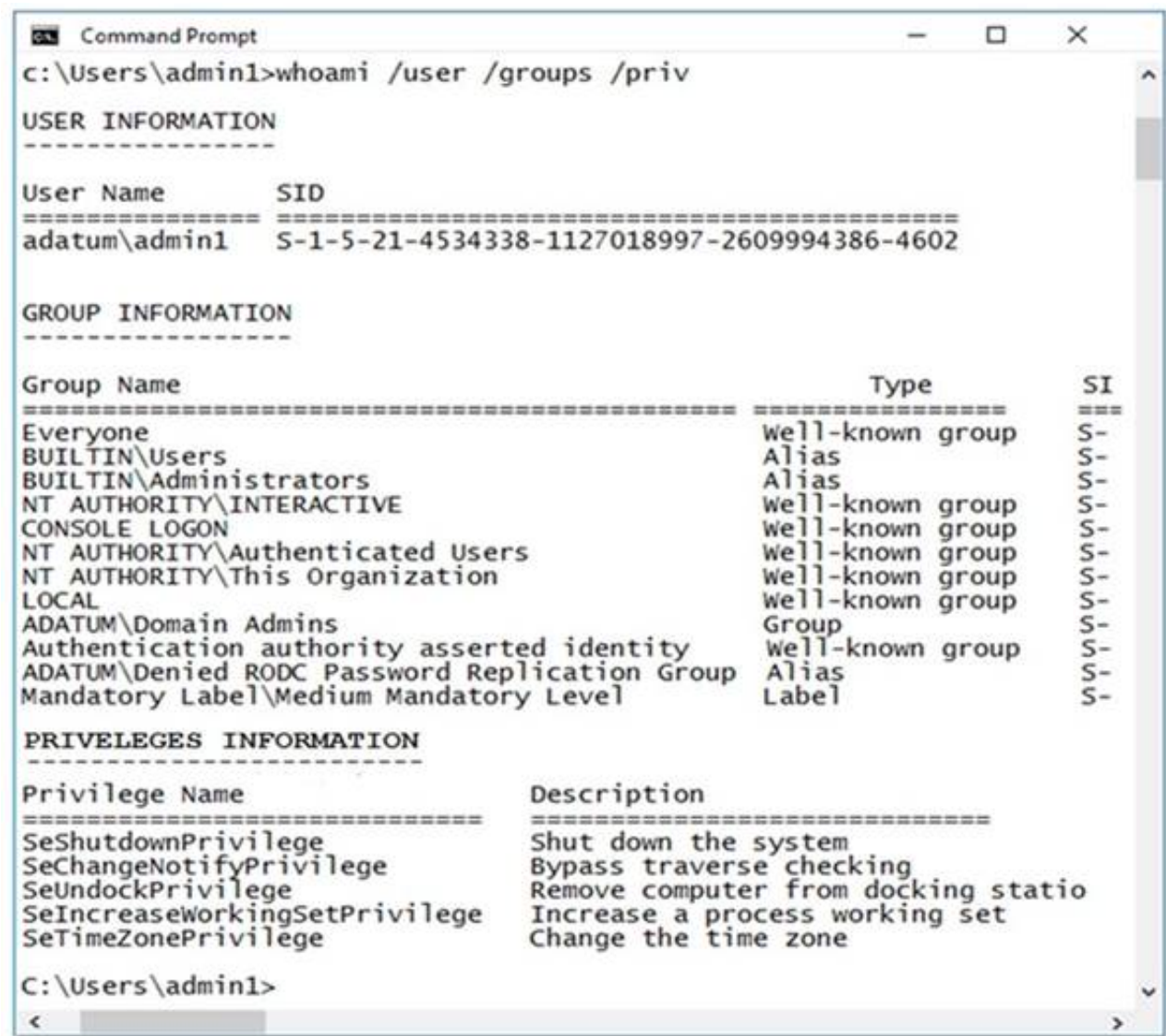
<https://support.microsoft.com/en-us/help/934307/description-of-the-windows-update-standalone-installer-in-win>

NEW QUESTION 38

- (Exam Topic 4)

You have a computer named Computer1 that runs Windows 10 and is joined to an Active Directory domain named adatum.com.

A user named Admin1 signs in to Computer1 and runs the whoami command as shown in the following exhibit.



Use the drop-down menus to select the answer choice that completes each statement based on the information presented in the graphic.
NOTE: Each correct selection is worth one point.

Answer Area

On Computer1, if Admin1 attempts to open Device Manager, [answer choice].

Admin1 will be prompted for credentials

Admin1 will be prompted for consent

Admin1 will be denied access

Device Manager will open without a prompt

On Computer1, if Admin1 attempts to run the command prompt as an administrator, [answer choice].

Admin1 will be prompted for credentials

Admin1 will be prompted for consent

Admin1 will be denied access

the command prompt will open without a prompt

- A. Mastered
- B. Not Mastered

Answer: A

Explanation:

On Computer1, if Admin attempts to open Device Manager, [answer choice].

Admin1 will be prompted for credentials

Admin1 will be prompted for consent

Admin1 will be denied access

Device Manager will open without a prompt

On Computer1, if Admin attempts to run the command prompt as an administrator, [answer choice].

Admin1 will be prompted for credentials

Admin1 will be prompted for consent

Admin1 will be denied access

Device Manager will open without a prompt

NEW QUESTION 40

- (Exam Topic 4)

Note: This question is part of a series of questions that present the same scenario. Each question in the series contains a unique solution that might meet the stated goals. Some question sets might have more than one correct solution, while others might not have a correct solution.
After you answer a question in this section, you will NOT be able to return to it. As a result, these questions will not appear in the review screen.
Your network contains an Active Directory domain named contoso.com. The domain contains the users shown in the following table.

Name	Member of
User2	Domain Users
User3	Domain Admins
User4	Server Operators

You have a computer named Computer1 that runs Windows 10 and is in a workgroup.
A local standard user on Computer1 named User1 joins the computer to the domain and uses the credentials of User2 when prompted.
You need to ensure that you can rename Computer1 as Computer33. Solution: You use the credentials of User3 on Computer1.
Does this meet the goal?

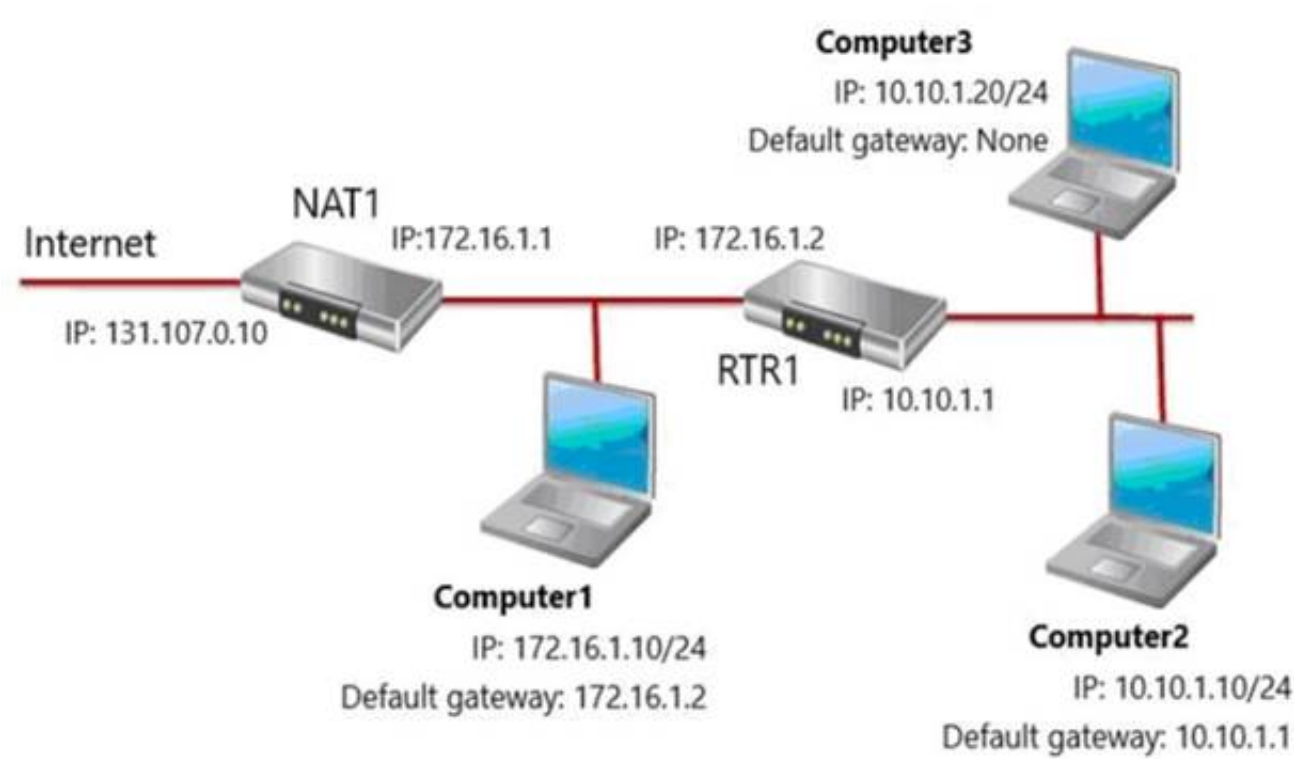
- A. Yes
- B. No

Answer: A

Explanation:
Renaming a domain-joined computer will also rename the computer account in the domain. To do this, you need domain administrator privileges.
User3 is a domain administrator. References:
<https://docs.microsoft.com/en-us/windows/security/identity-protection/access-control/active-directory-security-g>

NEW QUESTION 44

- (Exam Topic 4)
You have the network shown in the following exhibit.



Computer1. Computer2, and Computer3 run Windows 10. Windows Defender Firewall is configured to allow ICMP traffic. RTR1 is a router.
For each of the following statements, select Yes if the statement is true. Otherwise, select No. NOTE: Each correct selection is worth one point.

Answer Area

Statements	Yes	No
If Computer1 pings the IP address of Computer2, Computer1 will receive a reply.	<input type="radio"/>	<input type="radio"/>
If Computer1 pings the IP address of Computer3, Computer1 will receive a reply.	<input type="radio"/>	<input type="radio"/>
If Computer2 pings the IP address of Computer3, Computer2 will receive a reply.	<input type="radio"/>	<input type="radio"/>

- A. Mastered
- B. Not Mastered

Answer: A

Explanation:

Answer Area

Statements	Yes	No
If Computer1 pings the IP address of Computer2, Computer1 will receive a reply.	<input checked="" type="radio"/>	<input type="radio"/>
If Computer1 pings the IP address of Computer3, Computer1 will receive a reply.	<input checked="" type="radio"/>	<input type="radio"/>
If Computer2 pings the IP address of Computer3, Computer2 will receive a reply.	<input type="radio"/>	<input checked="" type="radio"/>

NEW QUESTION 48

- (Exam Topic 4)

Note: This question is part of a series of questions that present the same scenario. Each question in the series contains a unique solution that might meet the stated goals. Some question sets might have more than one correct solution, while others might not have a correct solution.

After you answer a question in this section, you will NOT be able to return to it. As a result, these questions will not appear in the review screen.

You have a computer named Computer1 that runs Windows 10. The computer contains a folder. The folder contains sensitive data.

You need to log which user reads the contents of the folder and modifies and deletes files in the folder. Solution: From the properties of the folder, you configure the Auditing settings and from Audit Policy in the

local Group Policy, you configure Audit object access.

Does this meet the goal?

- A. Yes
- B. No

Answer: A

Explanation:

References:

https://www.netwrix.com/how_to_detect_who_changed_file_or_folder_owner.html

NEW QUESTION 50

- (Exam Topic 4)

You have a computer named Computer1 that runs Windows 10. Computer1 is in a workgroup. Computer1 contains the local users shown in the following table.

Name	Member of
Administrator	Administrators, Users
User1	Users
User2	Users

Computer1 contains the folders shown in the following table.

Name	Path
Folder1	D:\Folder1
Folder2	D:\Folder2
Folder3	E:\Folder3

The Users group has Full control permissions to Folder1, Folder2, and Folder3. User1 encrypts two files named File1.docx and File2.docx in Folder1 by using EFS.

Which users can move each file? To answer, select the appropriate options in the answer area.

NOTE: Each correct selection is worth one point.

Answer Area

Users who can move File1.docx to Folder2:

User1 only

User1 and Administrator only

User1, User2, and Administrator

Users who can move File2.docx to Folder3:

User1 only

User1 and Administrator only

User1, User2, and Administrator

- A. Mastered
- B. Not Mastered

Answer: A

Explanation:

EFS works by encrypting a file with a bulk symmetric key. The symmetric key that is used to encrypt the file is then encrypted with a public key that is associated

with the user who encrypted the file. Because the encryption & decryption operations are performed at a layer below NTFS, it is transparent to the user and all their applications.

Box 1: User1, User2, and Administrator Box 2: User1, User2, and Administrator

All three are members of the Users group that has Full control permissions to Folder1, Folder2, and Folder3.

NEW QUESTION 54

- (Exam Topic 4)

Your network contains an Active Directory domain named contoso.com. The domain contains named Computer1 that runs Windows 10.

On Computer1, you create an NTFS folder and assign Full control permissions to Everyone.

You share the folder as Share1 and assign the permissions shown in the following table.

Name	Permission
User1	Full control
User2	Change

When accessing Share1, which two actions can be performed by User1 but not by User2? Each correct answer presents part of the solution.

NOTE: Each correct selection is worth one point.

- A. Delete a file created by another user.
- B. Set the permissions for a file.
- C. Rename a file created by another user.
- D. Take ownership of file.
- E. Copy a file created by another user to a subfolder.

Answer: BD

Explanation:

References:

<https://www.varonis.com/blog/ntfs-permissions-vs-share/>

NEW QUESTION 57

- (Exam Topic 4)

You are troubleshooting an issue that prevents you from installing Windows 10 updates. You discover that the issue relates to corrupt protected system files.

You need to restore the corrupt system files. Which command should you run?

- A. scanstate
- B. sfc
- C. chldslc
- D. chkntfs

Answer: B

Explanation:

References:

<https://support.microsoft.com/en-us/topic/use-the-system-file-checker-tool-to-repair-missing-or-corrupted-syste>

NEW QUESTION 62

- (Exam Topic 4)

You are troubleshooting Windows 10 updates that fail to install on a computer that runs Windows 10. You delete the contents of the SoftwareDistribution folder.

You need to delete the signatures of the Windows Update packages. Which folder should you delete?

- A. %systemroot%\system32\catroot2
- B. %systemdrive%\recovery
- C. %systemroot%\WinSxS
- D. %systemdrive%\System Volume Information

Answer: A

Explanation:

References:

<https://tipsmake.com/how-to-delete-pending-updates-on-windows-10>

NEW QUESTION 66

- (Exam Topic 4)

You have a computer named Computer1. Computer1 runs Windows 10 Pro.

You have a mobile device. You use Bluetooth to pair the mobile device to Computer1. You want to enable dynamic lock on Computer1.

What should you do?

To complete this task, sign in to the required computer or computers.

- A. Mastered
- B. Not Mastered

Answer: A

Explanation:

➤ On Computer1, select the Start button > Settings > Accounts > Sign-in options.

➤ Under Dynamic lock, select the Allow Windows to automatically lock your device when you're away check box.

Reference:

<https://support.microsoft.com/en-za/help/4028111/windows-lock-your-windows-10-pc-automatically-when-you>

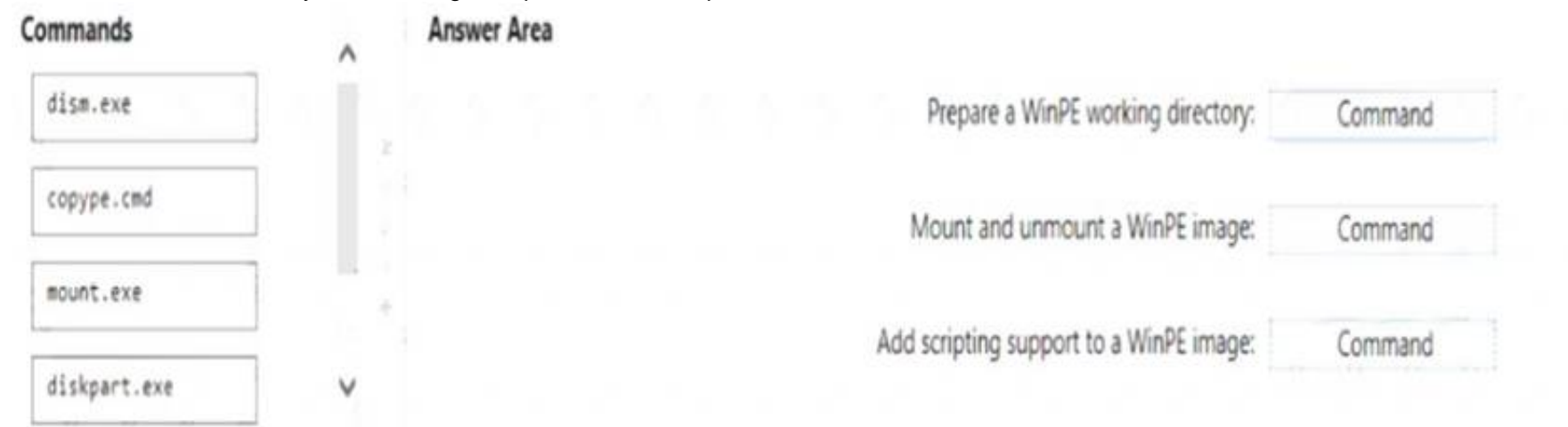
NEW QUESTION 71

- (Exam Topic 4)

You have a computer that runs Windows 10 and has the Windows Assessment and Deployment Kit (Windows ADK) installed. You need to perform the following tasks:

- Prepare a Windows PE (WinPE) working directory.
- Add scripting support to a WinPE image.
- Mount and unmount a WinPE image.

Which command should you use for each task? To answer, drag the appropriate commands to the correct tasks. Each command may be used once, more than once, or not at all. You may need to drag the split bar between panes or scroll to view content.



- A. Mastered
- B. Not Mastered

Answer: A

Explanation:

Copype.cmd Dism.exe Mount.exe

NEW QUESTION 76

- (Exam Topic 4)

You have a computer named Computer1 that runs Windows 10.

Several users have signed in to Computer1 and have a profile.

You create a taskbar modification file named LayoutModification.xml.

You need to ensure that LayoutModification.xml will apply to all users who sign in to Computer1. To which folder should you copy LayoutModification.xml?

- A. C:\Users\Public\Public Desktop
- B. C:\Windows\ShellExperiences
- C. C:\Users\Default\AppData\Local\Microsoft\Windows\Shell\
- D. C:\Windows\System32\Configuration

Answer: C

Explanation:

Reference:

<https://docs.microsoft.com/en-us/windows/configuration/start-layout-xml-desktop>

NEW QUESTION 78

- (Exam Topic 4)

You have two computers named Computer1 and Computer2 that run Windows 10. The computers are in a workgroup.

You perform the following configurations on Computer1:

- Create a user named User1.
- Add User1 to the Remote Desktop Users group. You perform the following configurations on Computer2:
- Create a user named User1 and specify the same user password as the one set on Computer1.
- Create a share named Share2 and grant User1 Full control access to Share2.
- Enable Remote Desktop.

What are the effects of the configurations? To answer, select the appropriate options in the answer area.

NOTE: Each correct selection is worth one point.

If User1 attempts to access Share2 from Computer1, the user will:

▼

Access Share2 without a prompt

Be prompted for credentials

Be denied access to Share2

If User1 attempts to sign in to Remote Desktop on Computer2 from Computer1, the user will:

▼

Sign in to Remote Desktop without a prompt

Be prompted for credentials and be able to sign in as User1.

Be prompted for credentials and be prevented from signing in as User1.

- A. Mastered
- B. Not Mastered

Answer: A

Explanation:

If User1 attempts to access Share2 from Computer1, the user will:

▼

Access Share2 without a prompt

Be prompted for credentials

Be denied access to Share2

If User1 attempts to sign in to Remote Desktop on Computer2 from Computer1, the user will:

▼

Sign in to Remote Desktop without a prompt

Be prompted for credentials and be able to sign in as User1.

Be prompted for credentials and be prevented from signing in as User1.

NEW QUESTION 81

- (Exam Topic 4)

You have a computer named Computer1 that runs Windows 7. Computer1 has a local user named User1 who has a customized profile. On Computer1, you perform a clean installation of Windows 10 without formatting the drives. You need to migrate the settings of User1 from Windows7 to Windows 10.

Which two actions should you perform? To answer, drag the appropriate actions to the correct targets. Each action may be used once, more than once, or not at all. You may need to drag the split bar between panes or scroll to view content.

NOTE: Each correct selection is worth one point.

Actions

Run scanstate.exe and specify the C:\Users subfolder.

Run loadstate.exe and specify the C:\Users subfolder.

Run scanstate.exe and specify the C:\Windows.old subfolder.

Run loadstate.exe and specify the C:\Windows.old subfolder.

Run usmutils.exe and specify the C:\Users subfolder.

Run usmutils.exe and specify the C:\Windows.old subfolder.

Answer Area

First action:

Action

Second action:

Action

- A. Mastered
- B. Not Mastered

Answer: A

Explanation:

References:
<https://docs.microsoft.com/en-us/windows/deployment/usmt/usmt-how-it-works>

NEW QUESTION 84

- (Exam Topic 4)

You have a computer that runs Windows 10 and contains the folders shown in the following table.

Name	Path
FolderA	C:\FolderA
FolderB	C:\FolderA\FolderB
FolderC	C:\FolderA\FolderB\FolderC

You create the groups shown in the following table.

Name	Members
Group1	User1, User2
Group2	User2, User3
Group3	User1, User3

On FolderA, you remove permission inheritance. To each folder, you assign the NTFS permissions shown in the following table.

Folder	Permission
FolderA	Modify to Group1 Read to Group2
FolderB	Write to Group2
FolderC	Read to Group3

For each of the following statements, select Yes if the statement is true. Otherwise, select No.
NOTE: Each correct selection is worth one point.

Statements	Yes	No
User1 can read and write all files in FolderC.	<input type="radio"/>	<input type="radio"/>
User2 can delete all files in FolderB.	<input type="radio"/>	<input type="radio"/>
User3 can delete all files in FolderC.	<input type="radio"/>	<input type="radio"/>

- A. Mastered
- B. Not Mastered

Answer: A

Explanation:
YES YES NO

NEW QUESTION 85

- (Exam Topic 4)
You have a computer named Client1 that runs Windows 11. Client1 hosts a Hyper-V virtual machine named VM1 that runs Windows 11 Pro. VM1 is in the running state.
You need to enable Windows Sandbox on VM1.
Which five actions should you perform in sequence? To answer, move the appropriate actions from the list of actions to the answer area and arrange them in the correct order.

Actions	Answer Area
From VM1, run the Enable-WindowOptionalFeature cmdlet.	
Stop VM1.	
From Client1, run the Set-VmProcessor cmdlet.	
From Client1, run the Enable-WindowOptionalFeature cmdlet.	
Sign in to VM1.	
Start VM1.	

- A. Mastered
- B. Not Mastered

Answer: A

Explanation:

Actions

From VM1, run the Enable-WindowsOptionalFeature cmdlet.

Stop VM1.

From Client1, run the Set-VmProcessor cmdlet.

From Client1, run the Enable-WindowsOptionalFeature cmdlet.

Sign in to VM1.

Start VM1.

Answer Area

Stop VM1.

From Client1, run the Set-VmProcessor cmdlet.

From Client1, run the Enable-WindowsOptionalFeature cmdlet.

Sign in to VM1.

Start VM1.

⬅

➡

⬅

➡

⬆

⬆

⬆

⬆

⬆

⬆

⬆

⬆

⬆

⬆

⬆

⬆

NEW QUESTION 90

- (Exam Topic 4)
You plan to deploy Windows 10 Enterprise to company-owned devices. You capture a Windows 10 image file from a reference device. You need to generate catalog files and answer files for the deployment. What should you use for each file? To answer, select the appropriate options in the answer area.
NOTE: Each correct selection is worth one point.

Catalog file:

Deployment Image Servicing and Management (DISM)

Windows Configuration Designer

Windows Deployment Services (WDS)

Windows System Image Manager (Windows SIM)

Answer file:

Deployment Image Servicing and Management (DISM)

Windows Configuration Designer

Windows Deployment Services (WDS)

Windows System Image Manager (Windows SIM)

- A. Mastered
- B. Not Mastered

Answer: A

Explanation:
Graphical user interface, text, application Description automatically generated
References:
<https://docs.microsoft.com/en-us/windows-hardware/customize/desktop/wsim/open-a-windows-image-or-catalog>

NEW QUESTION 93

- (Exam Topic 4)
You are a network administrator at your company. A user attempts to start a computer and receives the following error message: "Bootmgr is missing." You need to resolve the issue. You start the computer in recovery mode. Which command should you run next? To answer, select the appropriate options in the answer area.
NOTE: Each correct selection is worth one point.

▼

Bootrec

Diskpart

Sfc

▼

/FixMbr

/RebuildBcd

/ScanNow

/offbootdir

- A. Mastered
- B. Not Mastered

Answer: A

Explanation:
References: https://neosmart.net/wiki/bootrec/#Bootrec_in_Windows10

NEW QUESTION 96

- (Exam Topic 4)

You have a file named Reg1.reg that contains the following content.

Windows Registry Editor Version 5.00

```
[HKEY_CLASSES_ROOT\Directory\Background\shell\Notepad]
```

```
[HKEY_CLASSES_ROOT\Directory\Background\shell\Notepad\command]
```

```
@="notepad.exe"
```

What is the effect of importing the file?

- A. A key named command will be renamed as notepad.exe.
- B. In a key named Notepad, the command value will be set to @="notepad.exe".
- C. In a key named command, the default value will be set to notepad.exe.

Answer: C

NEW QUESTION 99

- (Exam Topic 4)

You have an Azure Active Directory (Azure AD) tenant named contoso.com. You have a workgroup computer named Computer1 that runs Windows 10. You need to add Computer1 to contoso.com.

What should you use?

- A. Computer Management
- B. dsregcmd.exe
- C. the Settings app
- D. netdom.exe

Answer: C

Explanation:

You join a computer to a domain, including an Azure AD domain in the Settings panel in Windows 10, under System->About

References: <https://aadguide.azurewebsites.net/aadjoin/>

NEW QUESTION 101

- (Exam Topic 4)

You install Windows 10 Enterprise on a new computer. You need to force activation on the computer.

Which command should you run?

- A. slmgr /upk
- B. Sec-RDLICENSEConfiguration -Force
- C. Sec-MsolLicense -AddLicense
- D. slmgr /ato

Answer: D

Explanation:

References:

<https://docs.microsoft.com/en-us/windows/deployment/volume-activation/activate-using-key-management-servi>

NEW QUESTION 105

- (Exam Topic 4)

Your network contains an Active Directory domain. The domain contains the users shown in the following table.

Name	Member of
User1	Group1
User2	Group1, Group2
User3	Group2

The domain contains a computer named Computer1 that runs Windows 10. Computer1 contains a folder named Folder1 that has the following permissions:

- > User2: Deny Write
- > Group1: Allow Read
- > Group2: Allow Modify

Folder1 is shared as Share1\$. Share1\$ has the following configurations:

- > Everyone: Allow Full control
- > Access-based enumeration: Enabled

For each of the following statements, select Yes if the statement is true. Otherwise, select No.

NOTE: Each correct selection is worth one point.

Statements

Yes No

User1 can list files in \\Computer1\Share1\$.

☐ ☐

User2 can list files in \\Computer1\Share1\$.

☐ ☐

If User3 connects to \\Computer1 from File Explorer, Share1\$ will be visible.

☐ ☐

- A. Mastered
B. Not Mastered

Answer: A

Explanation:

YES, YES, NO

References:

<https://www.varonis.com/blog/ntfs-permissions-vs-share/>

<http://www.ntfs.com/ntfs-permissions-file-advanced.htm>

<https://docs.microsoft.com/en-us/windows-server/storage/dfs-namespaces/enable-access-based-enumeration-on>

NEW QUESTION 110

- (Exam Topic 4)

Your network contains an Active Directory domain. The domain contains a computer named Computer1 that runs Windows 10. The domain contains the users shown in the following table.

Name	Member of
Admin1	Domain Admins, Group1
User1	Group1
User2	Group2

Computer1 has four printers as shown in the following table.

Name	Type	Added by	Permissions
Printer1	Local printer	Admin1	Print: Group1 Manage the printer: Group1
Printer2	Network printer	Admin1	Print: Domain Users Manage the printer: Domain Users
Printer3	Local printer	User1	Print: Group1 Manage the printer: Group1
Printer4	Local printer	User2	Print: Domain Users Manage the printer: Domain Users

Which printers will be available to User1 when the user signs in to Computer1?

- A. Printer3 only
B. Printed and Printer3 only
C. Printed, Printer2. and Printer3 only
D. Printed, Printer3, and Printer4 only
E. Printed, Printer2, Printer3, and Printer4

Answer: E

NEW QUESTION 115

- (Exam Topic 4)

Note: This question is part of series of questions that present the same scenario. Each question in the series contains a unique solution that might meet the stated goals Some question sets might have more than one correct solution, while others might not have a correct solution.

After you answer a question In this section, you will NOT be able to return to It. As a result these question will not appear In the review screen.

You have two computers named Computer1 and Computer2 that run Windows 10.

You have an Azure Active Directory (Azure AD) user account named admin@contoso.com that is m the local Administrators group on each computer.

You sign m to Compute1 by using admin@contoso.com.

You need to ensure that you can use Event Viewer on Computer1 to connect to the event logs on Computer?.

Solution: On Computer2, you create a Windows Defender Firewall rule that allows eventvwr.exe. Does this meet the goal?

- A. Yes
B. No

Answer: B

NEW QUESTION 116

- (Exam Topic 4)

Your network contains an Active Directory domain. The domain contains computers that run Windows 10. You must ensure that Windows BitLocker Drive Encryption is enabled on all client computers, even though a Trusted Platform Module (TPM) chip is installed in only some of them. You need to accomplish this goal by using one Group Policy object (GPO). What should you do?

- A. Enable the Allow enhanced PINs for startup policy setting, and select the Allow BitLocker without a compatible TPM check box
- B. Enable the Enable use of BitLocker authentication requiring preboot keyboard input on slates policy setting, and select the Allow BitLocker without a compatible TPM check box
- C. Enable the Require additional authentication at startup policy setting, and select the Allow BitLocker without a compatible TPM check box
- D. Enable the Control use of BitLocker on removable drives policy setting, and select the Allow BitLocker without a compatible TPM check box

Answer: C

Explanation:

We need to allow Windows BitLocker Drive Encryption on all client computers (including client computers that do not have Trusted Platform Module (TPM) chip). We can do this by enabling the option to allow BitLocker without a compatible TPM in the group policy. The "Allow BitLocker without a compatible TPM" option is a checkbox in the "Require additional authentication at startup" group policy setting. To access the "Allow BitLocker without a compatible TPM" checkbox, you need to first select Enabled on the "Require additional authentication at startup" policy setting.

Reference:

[https://docs.microsoft.com/en-us/windows/security/information-protection/bitlocker/bitlocker-group-policy-setti](https://docs.microsoft.com/en-us/windows/security/information-protection/bitlocker/bitlocker-group-policy-settings)

NEW QUESTION 118

- (Exam Topic 4)

Your company has a Remote Desktop Gateway (RD Gateway).

You have a server named Server1 that is accessible by using Remote Desktop Services (RDS) through the RD Gateway.

You need to configure a Remote Desktop connection to connect through the gateway. Which setting should you configure?

- A. Connection settings
- B. Server authentication
- C. Local devices and resources
- D. Connect from anywhere

Answer: D

NEW QUESTION 122

- (Exam Topic 4)

Your network contains an Active Directory domain. The domain contains a computer named Computer1 that runs Windows 10. Computer1 contains a folder named Folder1.

You plan to share Folder1. Everyone will have Read share permissions, and administrators will have Full control share permission.

You need to prevent the share from appearing when users browse the network. What should you do?

- A. Enable access-based enumeration.
- B. Deny the List NTFS permissions on Folder1.
- C. Add Folder1 to a domain-based DFS namespace.
- D. Name the share Folder1\$.

Answer: D

Explanation:

Appending a dollar sign to share name prevents a share from appearing when users browse the network.

NEW QUESTION 125

- (Exam Topic 4)

You have a computer named Client1 that runs Windows 11 Home. You need to ensure that you can create virtual machines on Client1.

Which four actions should you perform in sequence? To answer, move the appropriate actions from the list of actions to the answer area and arrange them in the correct order.

Actions

Answer Area

Restart the operating system

Enter a Windows 11 Pro product key

Enter a Windows 11 Enterprise product key

From Programs and Features, enable the Hyper-V Windows feature

From the Activation settings in the Settings app, select **Change product key**



- A. Mastered
- B. Not Mastered

Answer: A

Explanation:

Graphical user interface, application Description automatically generated

NEW QUESTION 128

- (Exam Topic 4)

You have a workgroup computer named Computer1 that runs Windows 10. Computer1 has the users accounts shown in the following table:

Name	Member of
User1	Administrators
User2	Users, Administrators
User3	Users

Computer1 has the local Group Policy shown in the following table.

Setting	Value
Startup script	ScriptA1
Shutdown script	ScriptA2
Logon script	ScriptA3
Logoff script	ScriptA4

You create the Local Computer\Administrators policy shown in the following table.

Setting	Value
Logon script	ScriptB1
Logoff script	ScriptB2

You create the Local Computer\Non-Administrators policy shown in the following table.

Setting	Value
Logon script	ScriptC1
Logoff script	ScriptC2

For each of the following statements, select Yes if the statement is true. Otherwise, select No.

Statements	Yes	No
If User1 shuts down Computer1, script ScriptA2 will run.	<input type="radio"/>	<input type="radio"/>
If User2 signs in to Computer1, scripts ScriptA3, ScriptB1, and ScriptC1 will run.	<input type="radio"/>	<input type="radio"/>
If User3 signs out of Computer1, scripts ScriptC2 and ScriptA4 will run.	<input type="radio"/>	<input type="radio"/>

- A. Mastered
- B. Not Mastered

Answer: A

Explanation:

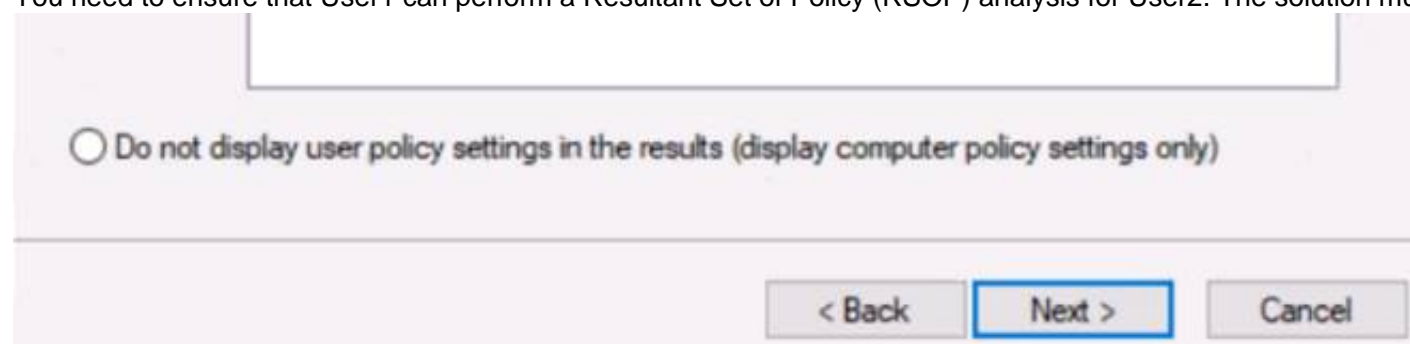
Reference:

[https://docs.microsoft.com/en-us/previous-versions/windows/it-pro/windows-vista/cc766291\(v=ws.10\)](https://docs.microsoft.com/en-us/previous-versions/windows/it-pro/windows-vista/cc766291(v=ws.10))

NEW QUESTION 130

- (Exam Topic 4)

You need to ensure that User1 can perform a Resultant Set of Policy (RSOP) analysis for User2. The solution must use the principle of least privilege.



What should you do first?

- A. Add User1 to the local Administrators group.
- B. Add User2 to the local Performance Monitor Users group.
- C. Run RSoP from an elevated-privilege account.
- D. Add User1 to the local Performance Monitor Users group.

Answer: D

NEW QUESTION 135

- (Exam Topic 4)

You have a computer that runs Windows 11 and hosts the Hyper-V virtual machines shown in the following table.

Name	Generation	Configuration version
VM1	1	9.0
VM2	1	10.0
VM3	2	8.0
VM4	2	10.0

You need to install Windows 11 on a virtual machine. On which virtual machine can you install Windows 11?

- A. VM2only
- B. VM4only
- C. VM3 and VM4 only
- D. VM2 and VM4 only
- E. VM1,VM2,VM3, andVM4

Answer: E

NEW QUESTION 139

- (Exam Topic 4)

Your network contains the segments shown in the following table.

Name	Domain controller connectivity	Internet connectivity
Segment1	Yes	Yes
Segment2	No	Yes

You have computers that run Windows 10 and are configured as shown in the following table.

Name	Shared folder	Share permission	Active Directory joined	Connected to
Computer1	Share1	Everyone: Full control	Yes	Segment1
Computer2	Share2	Everyone: Full control	Yes	Segment2
Computer3	Share3	Everyone: Full control	No	Segment1

Windows Defender Firewall has the File and Printer Sharing allowed apps rule shown in the following table.

Computer	Domain	Private	Public
Computer1	Allowed	Not allowed	Not allowed
Computer2	Allowed	Allowed	Not allowed
Computer3	<i>Not applicable</i>	Allowed	Allowed

For each of the following statements, select Yes if the statement is true. Otherwise, select No.

NOTE: Each correct selection is worth one point.

Statements	Yes	No
You can access Share1 from Computer3.	<input type="radio"/>	<input type="radio"/>
You can access Share2 from Computer3.	<input type="radio"/>	<input type="radio"/>
You can access Share3 from Computer1.	<input type="radio"/>	<input type="radio"/>

- A. Mastered
- B. Not Mastered

Answer: A

Explanation:

Statements	Yes	No
You can access Share1 from Computer3.	<input type="radio"/>	<input checked="" type="radio"/>
You can access Share2 from Computer3.	<input type="radio"/>	<input checked="" type="radio"/>
You can access Share3 from Computer1.	<input checked="" type="radio"/>	<input type="radio"/>

NEW QUESTION 143

- (Exam Topic 4)
Note: This question is part of a series of questions that present the same scenario. Each question in the series contains a unique solution that might meet the stated goals. Some question sets might have more than one correct solution, while others might not have a correct solution.
After you answer a question in this section, you will NOT be able to return to it. As a result, these questions will not appear in the review screen.
Your network contains an Active Directory domain named contoso.com. The domain contains the users shown in the following table.

Name	Member of
User2	Domain Users
User3	Domain Admins
User4	Server Operators

You have a computer named Computer1 that runs Windows 10 and is in a workgroup.
A local standard user on Computer1 named User1 joins the computer to the domain and uses the credentials of User2 when prompted.
You need to ensure that you can rename Computer1 as Computer33. Solution: You use the credentials of User2 on Computer1.
Does this meet the goal?

- A. Yes
- B. No

Answer: B

Explanation:
Renaming a domain-joined computer will also rename the computer account in the domain. To do this, you need domain administrator privileges.
User2 is a domain user, not an administrator. Use User3's credentials instead. References:
<https://docs.microsoft.com/en-us/windows/security/identity-protection/access-control/active-directory-security-g>

NEW QUESTION 144

- (Exam Topic 4)
You have a computer that runs Windows 11 and has Windows Sandbox enabled.
You need to configure a Windows Sandbox environment The solution must meet the following requirements:

- Support a virtual GPU.
- Mount the C:\Temp folder as read only.
- Prevent users from copying files to the sandbox by using the clipboard.

How should you complete the configuration file? To answer, drag the appropriate values to the correct targets. Each value may be used once, more than once, or not at all. You may need to drag the split bar between panes or scroll to view content.

Values

Default

Disable

Enable

False

True

Answer Area

<Configuration>

<VGpu>

</VGpu>

<Networking>Disable</Networking>

<MappedFolders>

<MappedFolder>

<HostFolder>C:\temp</HostFolder>

<ReadOnly>

</ReadOnly>

</MappedFolder>

</MappedFolders>

<LogonCommand>

<Command>C:\users\WDAGUtilityAccount\Desktop\Temp\startup.cmd</Command>

</LogonCommand>

<ProtectedClient>

</ProtectedClient>

<ClipboardRedirection>Default</ClipboardRedirection>

<MemoryInMB>6144</MemoryInMB>

</Configuration>

- A. Mastered
- B. Not Mastered

Answer: A

Explanation:

Answer Area

```
<Configuration>
  <VGpu>  </VGpu>
  <Networking>Disable</Networking>
  <MappedFolders>
    <MappedFolder>
      <HostFolder>C:\temp</HostFolder>
      <ReadOnly>  </ReadOnly>
    </MappedFolder>
  </MappedFolders>
  <LogonCommand>
    <Command>C:\users\WDAGUtilityAccount\Desktop\Temp\startup.cmd</Command>
  </LogonCommand>
  <ProtectedClient>  </ProtectedClient>
  <ClipboardRedirection>Default</ClipboardRedirection>
  <MemoryInMB>6144</MemoryInMB>
</Configuration>
```

NEW QUESTION 145

- (Exam Topic 4)

Note: This question is part of a series of questions that present the same scenario. Each question in the series contains a unique solution that might meet the stated goals. Some question sets might have more than one correct solution, while others might not have a correct solution. After you answer a question in this section, you will NOT be able to return to it. As a result, these questions will not appear in the review screen. Your network contains an Active Directory domain. The domain contains a computer named Computer1 that runs Windows 8.1. Computer1 has apps that are compatible with Windows 10. You need to perform a Windows 10 in-place upgrade on Computer1. Solution: You copy the Windows 10 installation media to a Microsoft Deployment Toolkit (MDT) deployment share. You create a task sequence, and then you run the MDT deployment wizard on Computer1. Does this meet the goal?

- A. Yes
- B. No

Answer: A

Explanation:

Reference:
https://docs.microsoft.com/en-us/windows/deployment/deploy-windows-mdt/upgrade-to-windows-10-with-the

NEW QUESTION 146

- (Exam Topic 4)

You have the source files shown in the following table.

Source	Location
Custom Windows 10 image	D:\Folder1\Image1.wim
Windows 10 language pack DVD	E:\

You mount an image from Image1.wim to a folder named C:\Mount. You need to add the French language pack to the mounted image. How should you complete the command? To answer, select the appropriate options in the answer area. NOTE: Each correct selection is worth one point.

Add-WindowsCapability

Add-WindowsFeature

Dism.exe

Setup.exe

/Image:

"C:\Mount"

"C:\Mount\Windows"

"C:\Windows"

"D:\Folder1\Image1.wim"

/Add-Package /PackagePath:"E:\x64\langpacks\Microsoft-Windows-Client-Language-Pack_x64_fr-fr.cab"

- A. Mastered
- B. Not Mastered

Answer: A

Explanation:

Note: The referenced document has the mount directory as C:\Mount\Windows. In this question, the mount directory is C:\Mount.

Reference:

<https://docs.microsoft.com/en-us/windows-hardware/manufacture/desktop/add-language-packs-to-windows>

NEW QUESTION 148

- (Exam Topic 4)

Please wait while the virtual machine loads. Once loaded, you may proceed to the lab section. This may take a few minutes, and the wait time will not be deducted from your overall test time.

When the Next button is available, click it to access the lab section. In this section, you will perform a set of tasks in a live environment. While most functionality will be available to you as it would be in a live environment, some functionality (e.g., copy and paste, ability to navigate to external websites) will not be possible by design.

Scoring is based on the outcome of performing the tasks stated in the lab. In other words, it doesn't matter how you accomplish the task, if you successfully perform it, you will earn credit for that task.

Labs are not timed separately, and this exam may more than one lab that you must complete. You can use as much time as you would like to complete each lab.

But, you should manage your time appropriately to ensure that you are able to complete the lab(s) and all other sections of the exam in the time provided.

Please note that once you submit your work by clicking the Next button within a lab, you will NOT be able to return to the lab.

Username and password



Use the following login credentials as needed:

To enter your password, place your cursor in the Enter password box and click on the password below.

Username: Contoso/Administrator

Password: Passw0rd!

The following information is for technical support purposes only: Lab Instance: 11145882

The screenshot shows the Windows Server Manager interface. On the left is a navigation pane with 'Dashboard' selected. The main area displays a 'WELCOME TO SERVER MANAGER' section with a 'Configure this local server' wizard (steps 1-5). Below this is a 'ROLES AND SERVER GROUPS' section showing a grid of roles: AD DS, DNS, File and Storage Services, Local Server, and All Servers. Each role card lists 'Manageability', 'Events', 'Services', 'Performance', and 'BPA results'. At the bottom are 'Tasks' and 'Computers' tabs.



Users who attempt to sign in to the domain from Client3 report that the sign-ins fail. You need to resolve the issue. To complete this task, sign in to the required computer or computers.

- A. Mastered
- B. Not Mastered

Answer: A

Explanation:

- Use a local administrator account to log on to the computer.
- Select Start, press and hold (or right-click) Computer > Properties.
- Select Change settings next to the computer name.
- On the Computer Name tab, select Change.
- Under the Member of heading, select Workgroup, type a workgroup name, and then select OK.

- > When you are prompted to restart the computer, select OK.
- > On the Computer Name tab, select Change again.
- > Under the Member of heading, select Domain, and then type the domain name.
- > Select OK, and then type the credentials of the user who has permissions in the domain.
- > When you are prompted to restart the computer, select OK.
- > Restart the computer.

Reference:

<https://support.microsoft.com/en-us/help/2771040/the-trust-relationship-between-this-workstation-and-the-prima>

NEW QUESTION 153

- (Exam Topic 4)

You have a computer that runs Windows 10. The computer contains a folder. The folder contains sensitive data.

You need to log which user reads the contents of the folder and modifies and deletes files in the folder. You need to log which user reads the contents of the folder and modifies and deletes files in the folder.

Solution: from the properties of the folder, you configure the Auditing settings and from the Audit Policy in the local Group Policy, you configure Audit system events.

Does this meet the goal?

- A. Yes
- B. No

Answer: B

Explanation:

Files and folders are objects and are audited through object access, not through system events. References:

https://www.netwrix.com/how_to_detect_who_changed_file_or_folder_owner.html

NEW QUESTION 157

- (Exam Topic 4)

You have a computer named Computer1 that runs Windows 10.

You are troubleshooting Group Policy objects (GPOs) on Computer1.

You run gpreport /user user1 /v and receive the output shown in the following exhibit.

```

USER SETTINGS
-----
Last time Group Policy was applied: 11/11/2018 at 8:20:07 AM
Group Policy was applied from: N/A
Group Policy slow link threshold: 500 kbps
Domain Name: COMPUTER1
Domain Type: <Local Computer>

Applied Group Policy Objects
-----
Local Group Policy/user1
Local Group Policy

The user is a part of the following security groups
-----
High Mandatory Level
Everyone
Local account and member of Administrators group
BUILTIN\Administrators
BUILTIN\Users
Performance Log Users
NT AUTHORITY\INTERACTIVE
CONSOLE LOGON
NT AUTHORITY\Authenticated Users
This Organization
Local account
LOCAL
Cloud Account Authentication
    
```

Use the drop-down menus to select the answer choice that completes each statement based on the information presented in the graphic.

NOTE: Each correct selection is worth one point.

[Answer choice] applied to User1

	▼
One local GPO is	
One domain GPO and one local GPO are	
Two local GPOs are	
Two domain GPOs are	

To configure GPO settings that affect only User1, you must first [answer choice]

	▼
open the Local Group Policy Editor console	
open the Group Policy Management console	
add the Group Policy Object Editor snap-in to a console	

- A. Mastered
- B. Not Mastered

Answer: A

Explanation:

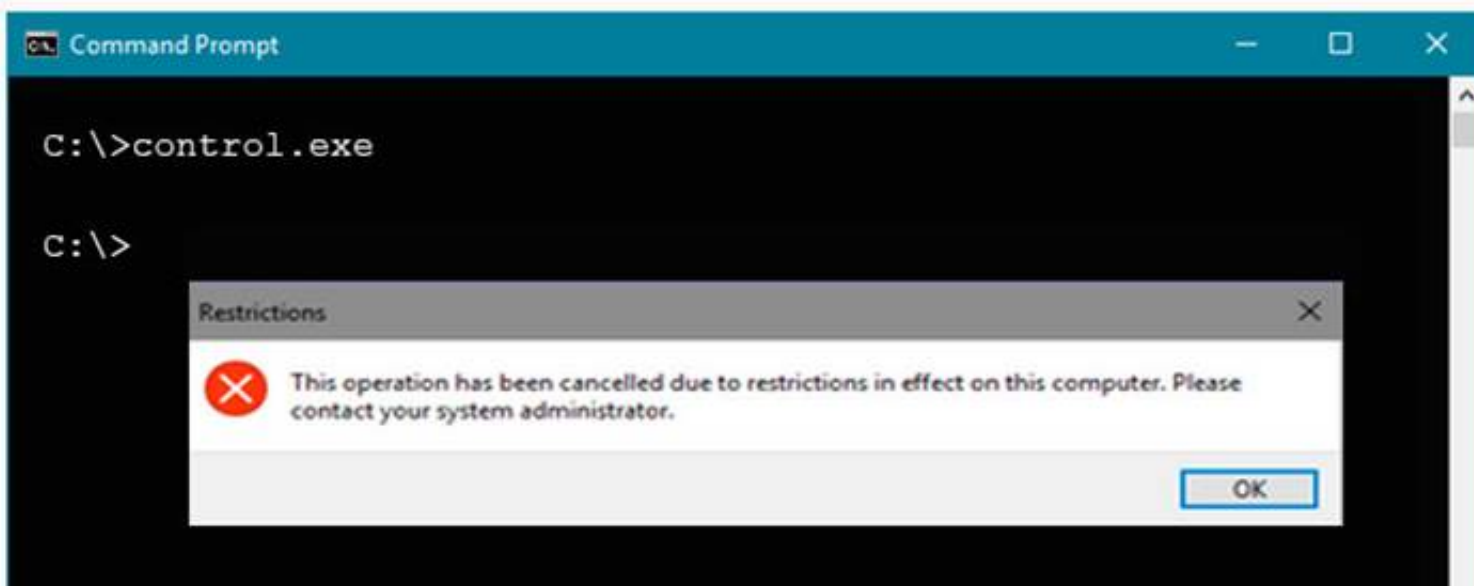
References:

<https://www.windowscentral.com/how-apply-local-group-policy-settings-specific-users-windows-10>

NEW QUESTION 158

- (Exam Topic 4)

You have a computer that runs Windows 10 and is joined to Azure Active Directory (Azure AD). You attempt to open Control Panel and receive the error message shown on the following exhibit.



You need to be able to access Control Panel. What should you modify?

- A. the PowerShell execution policy
- B. the Local Group Policy
- C. the Settings app
- D. a Group policy preference

Answer: B

Explanation:

References:

<https://windows10skill.com/this-operation-has-been-cancelled-due-to-restrictions-in-effect-on-this-pc/>

NEW QUESTION 161

- (Exam Topic 4)

You plan to install Windows 10 on a new computer by using an answer file. You need to create the answer file.

Which tool should you use to create the answer file, and which file is required by the tool? To answer, select the appropriate options in the answer area.

NOTE: Each correct selection is worth one point.

Tool to create the answer file:

Windows PE (WinPE)

Windows Configuration Designer

Microsoft Deployment Toolkit (MDT)

Windows System Image Manager (Windows SIM)

File required by the tool:

Boot.wim

Setup.exe

Install.wim

Autorun.inf

- A. Mastered
- B. Not Mastered

Answer: A

Explanation:
 Graphical user interface, text, application, email Description automatically generated

NEW QUESTION 165

- (Exam Topic 4)
 You have two workgroup computers named Computer1 and Computer2 that run Windows 10. The Guest account is enabled on both computers. The computers contain the users shown in the following table.

Computer name	User name	User password
Computer1	User1	P@ssword1
Computer1	User2	P@ssword2
Computer2	User1	P@ssword1
Computer2	User2	P@ssword2
Computer2	User3	P@ssword3

The computers contain the shared folders shown in the following table.

Computer name	Shared folder name	Permission
Computer1	Share1	Everyone – Read
Computer2	Share2	Everyone – Read

Computer1 has password-protected sharing turned on. Computer2 has password-protected sharing turned off. For each of the following statements, select Yes if the statement is true. Otherwise, select No.
 NOTE: Each correct selection is worth one point.

Statements	Yes	No
From Computer1, User1 can access Share2.	<input type="radio"/>	<input type="radio"/>
From Computer2, User2 can access Share1.	<input type="radio"/>	<input type="radio"/>
From Computer2, User3 can access Share1.	<input type="radio"/>	<input type="radio"/>

- A. Mastered
- B. Not Mastered

Answer: A

Explanation:
 When password protected sharing is turned on, only people who have a user account and password on your computer can access shared files.
 Box 1: Yes

Password protected sharing is turned off on Computer2 so User1 can access Share2 from Computer1.

Box 2: Yes

Password protected sharing is turned on on Computer1. User2 has an account on Computer1 so User2 can access Share1 from Computer2.

Box 3: Yes

The answer to this question depends on which version of Windows 10 is running on the computers. This isn't specified in the question so it's likely that the question will be updated in future.

Password protected sharing is turned on on Computer1. User3 does not have an account on Computer1 so User3 cannot access Share1 from Computer2.

However, the Guest account is enabled which could provide access depending on which version of Windows 10 is running. If it is Windows 10 Home or Pro, then the answer to this question is Yes. The Guest account does provide access. However, in later versions of Windows 10 Enterprise and Windows 10 Education (from build 1709 onwards), the Guest account does not enable access to the shared folder.

Reference:

<https://docs.microsoft.com/en-us/troubleshoot/windows-server/networking/guest-access-in-smb2-is-disabled-by>

NEW QUESTION 166

- (Exam Topic 4)

You have 100 computers that run Windows 10. The computers are in a workgroup. The computers have a low-bandwidth metered Internet connection.

You need to reduce the amount of Internet bandwidth consumed to download updates. What should you configure?

- A. BranchCache in hosted mode
- B. BranchCache in distributed cache mode
- C. Delivery Optimization
- D. Background intelligent Transfer Service (BITS)

Answer: C

Explanation:

References:

<https://support.microsoft.com/en-us/help/4468254/windows-update-delivery-optimization-faq>

NEW QUESTION 170

- (Exam Topic 4)

Note: This question is part of a series of questions that present the same scenario. Each question in the series contains a unique solution that might meet the stated goals. Some question sets might have more than one correct solution, while others might not have a correct solution.

After you answer a question in this section, you will NOT be able to return to it. As a result, these questions will not appear in the review screen.

You have a computer named Computer1 that runs Windows 10. The computer contains a folder. The folder contains sensitive data.

You need to log which user reads the contents of the folder and modifies and deletes files in the folder. Solution: From the properties of the folder, you configure

the Auditing settings and from the Audit Policy in

the local Group Policy, you configure Audit directory service access.

Does this meet the goal?

- A. Yes
- B. No

Answer: B

Explanation:

References:

https://www.netwrix.com/how_to_detect_who_changed_file_or_folder_owner.html

NEW QUESTION 172

- (Exam Topic 4)

Your company uses Microsoft Deployment Toolkit (MDT) to deploy Windows 10 to new computers. The company purchases 1,000 new computers.

You need to ensure that the Hyper-V feature is enabled on the computers during the deployment. What are two possible ways to achieve the goal? Each correct answer presents part of the solution. NOTE: Each correct selection is worth one point.

- A. Add a task sequence step that adds a provisioning package.
- B. In a Group Policy object (GPO), from Computer Configuration, configure Application Control Policies.
- C. Add a custom command to the Unattend.xml file.
- D. Add a configuration setting to Windows Deployment Services (WDS).
- E. Add a task sequence step that runs dism.exe.

Answer: AE

Explanation:

References:

Provisioning package works with Windows Configuration Designer to provision win10 features and runtime settings. WCD (provisioning Package) is GUI based while DISM is command line based and dose same function. Unattend.xml / answer files are used with installation media. It contains settings, definitions and values to use during Windows Setup. In an answer file, you specify various setup options. These options include how to partition disks, where to find the Windows image that will be installed, and which product key to apply.

<https://docs.microsoft.com/en-us/windows/deployment/deploy-windows-mdt/create-a-windows-10-reference-im>

NEW QUESTION 177

- (Exam Topic 4)

Note: This question is part of a series of questions that present the same scenario. Each question in the series contains a unique solution that might meet the stated goals. Some question sets might have more than one correct solution, while others might not have a correct solution.

After you answer a question in this section, you will NOT be able to return to it. As a result, these questions will not appear in the review screen.

You have a computer that runs Windows 10. The computer contains a folder named D:\Scripts. D:\Scripts

contains several PowerShell scripts.

You need to ensure that you can run the PowerShell scripts without specifying the full path to the scripts. The solution must persist between PowerShell sessions.

Solution: From PowerShell, you run \$env:Path += ";d:\scripts". Does this meet the goal?

- A. Yes
- B. No

Answer: A

Explanation:

References:

https://docs.microsoft.com/en-us/powershell/module/microsoft.powershell.core/about/about_environment_varia

NEW QUESTION 179

- (Exam Topic 4)

You sign in to a computer that runs Windows 10 Pro.

You need to ensure that after a restart, the computer starts automatically in Safe Mode with Networking. What should you use to configure the restart options?

- A. bootcfg
- B. BCDEdit
- C. Windows System Image Manager (Windows SIM)
- D. bootrec

Answer: B

Explanation:

Reference:

<https://www.lifewire.com/how-to-force-windows-to-restart-in-safe-mode-2625163>

NEW QUESTION 181

- (Exam Topic 4)

You have a computer named Computer1 that runs Windows 10. You are troubleshooting connectivity issues on Computer1.

You need to view the remote addresses to which Computer1 has active TCP connections. Which tool should you use?

- A. Performance Monitor
- B. Task Manager
- C. Resource Monitor
- D. Windows Defender Firewall with Advanced Security

Answer: C

NEW QUESTION 183

- (Exam Topic 4)

You have a Microsoft 365 tenant that contains 70 remote users. The remote users work from various locations.

Recently, each remote user purchased a personal computer that runs Windows 10 Home.

You need to configure the VPN settings on the computers automatically by using the least amount of administrative effort.

What should you use?

- A. an unattend answer file
- B. a Group Policy Object (GPO)
- C. Windows Autopilot
- D. a provisioning package

Answer: D

Explanation:

Reference:

<https://docs.microsoft.com/en-us/windows/configuration/provisioning-packages/provisioning-packages>

NEW QUESTION 185

- (Exam Topic 4)

You have a computer that runs Windows 10 and hosts four Hyper-V virtual machines that run Windows 10. You upgrade the computer to Windows 11.

You need to ensure that the virtual machines support hibernation. What should you do?

- A. Update the configuration version of the virtual machines.
- B. Enable integration services.
- C. Rebuild the virtual machines as generation 2 virtual machines.
- D. Delete any virtual machine checkpoints.

Answer: A

NEW QUESTION 186

- (Exam Topic 4)

You install Windows 10 Pro on a computer named CLIENT1.

You need to ensure that all per-user services are disabled on CLIENT1. The solution must minimize administrative effort.

What should you use?

- A. the sc command
- B. Task Manager
- C. Services

D. the sfc command

Answer: A

NEW QUESTION 188

- (Exam Topic 4)

You have 10 new Windows 10 devices.

You plan to deploy a provisioning package that will configure a wireless network profile.

You need to ensure that a support technician can install the provisioning package on the devices. The solution must use the principle of least privilege.

To which group should you add the support technician?

- A. Users
- B. Power Users
- C. Network Configuration Operators
- D. Administrators

Answer: D

Explanation:

Reference:

<https://docs.microsoft.com/en-us/windows/configuration/provisioning-packages/provisioning-apply-package>

NEW QUESTION 192

- (Exam Topic 3)

Which users can create a new group on Computer3?

- A. User31 only
- B. User1 and User32 only
- C. Admin1 and User31 only
- D. Admin1, User31, and User32 only

Answer: A

Explanation:

Reference:

https://ss64.com/nt/syntax-security_groups.html

NEW QUESTION 194

- (Exam Topic 4)

Your network contains an Active Directory domain. The domain contains a computer named Computer1 that runs Windows 10.

The domain contains the users shown in the following table.

Name	Member of
User1	Domain Users
User2	Domain Users, Guests
User3	Domain Users, Administrators

Computer1 has the local users shown in the following table.

Name	Member of
User4	Users
User5	Administrators

All users have Microsoft accounts.

Which two users can be configured to sign in by using their Microsoft account? Each correct answer presents part of the solution.

NOTE: Each correct selection is worth one point.

- A. User1
- B. User2
- C. User3
- D. User4
- E. User5

Answer: DE

NEW QUESTION 195

- (Exam Topic 3)

You need to ensure that you can manage Computer2 by using Windows Admin Center on Server1. What should you do on Computer2?

- A. Allow the Windows Remote Management (WinRM) feature through Windows Defender Firewall.
- B. Run the set - Location cmdlet
- C. Allow the Windows Device Management feature through Windows Defender Firewall.
- D. Run the winrm quickconfig command.

Answer: D

NEW QUESTION 196

- (Exam Topic 3)

Which users can sign in to Computer2 by using Remote Desktop?

- A. Admin1 only
- B. User 1 only
- C. Admin1 and User2 only
- D. Admin1, User1, User2, and User3
- E. User2 only

Answer: C

Explanation:

Reference:

<https://4sysops.com/archives/user-rights-assignment-in-windows-server-2016/>

NEW QUESTION 200

- (Exam Topic 3)

On Computer1, you need to configure the custom Visual Effects performance settings. Which user accounts can you use?

- A. Admm1,User11, and User13 only
- B. Admin1 only
- C. Admin1, User11, and User12 only
- D. Admin1, User11, User12, and User13
- E. Admin1 and User11 only

Answer: D

NEW QUESTION 202

- (Exam Topic 3)

You implement the planned changes for Computer1.

For each of the following statements, select Yes if the statement is true. Otherwise, select No.

NOTE: Each correct selection is worth one point.

Statements	Yes	No
User1 can write to D:\Folder1\Report.docx.	<input type="radio"/>	<input type="radio"/>
User2 can write to D:\Folder1\Report.docx.	<input type="radio"/>	<input type="radio"/>
User3 can write to D:\Folder1\Report.docx.	<input type="radio"/>	<input type="radio"/>

- A. Mastered
- B. Not Mastered

Answer: A

Explanation:

A screenshot of a computer Description automatically generated with low confidence

Box 1: Yes

User1 already has full control access through membership of Group1. Therefore, User1 can write to the file. Box 2: No

The planned changes will grant User2 full control access to the file. However, User2 is a member of Group2 which has Deny/Write access. The Deny permission will always take precedence. Therefore, User2 will not be able to write to the file.

Box 3: No

The planned changes will grant User3 full control access to the folder. That permission will be inherited by the file. However, User3 is a member of Group2 which has Deny/Write access. The Deny permission will always take precedence. Therefore, User3 will not be able to write to the file.

NEW QUESTION 207

- (Exam Topic 2)

You need to meet the quality update requirement for ComputerA. For how long should you defer the updates?

- A. 14 days
- B. 10 years
- C. 5 years
- D. 180 days
- E. 30 days

Answer: E

Explanation:

References:

<https://www.thewindowsclub.com/delay-defer-feature-updates-365-days-windows-10>

NEW QUESTION 211

- (Exam Topic 2)

You need to meet the technical requirement for the IT department users. What should you do first?

- A. Issue computer certificates
- B. Distribute USB keys to the IT department users.
- C. Enable screen saver and configure a timeout.
- D. Turn on Bluetooth.

Answer: D

Explanation:

References:

<https://support.microsoft.com/en-za/help/4028111/windows-lock-your-windows-10-pc-automatically-when-you>

NEW QUESTION 212

- (Exam Topic 2)

You need to meet the technical requirements for the San Diego office computers. Which Windows 10 deployment method should you use?

- A. wipe and load refresh
- B. Windows Autopilot
- C. provisioning Packages
- D. in-place upgrade

Answer: B

Explanation:

References:

<https://docs.microsoft.com/en-us/windows/deployment/windows-autopilot/windows-autopilot>

NEW QUESTION 214

- (Exam Topic 1)

You need to take remote control of an employee's computer to troubleshoot an issue. What should you send to the employee to initiate a remote session?

- A. a numeric security code
- B. a connection file
- C. an Easy Connect request
- D. a password

Answer: A

Explanation:

References:

<https://support.microsoft.com/en-us/help/4027243/windows-10-solve-pc-problems-with-quick-assist>

NEW QUESTION 215

- (Exam Topic 1)

You need to recommend a solution to monitor update deployments. What should you include in the recommendation?

- A. Windows Server Update (WSUS)
- B. the Update Management solution in Azure Automation
- C. the Update Compliance solution in Azure Log Analytics
- D. the Azure Security Center

Answer: C

Explanation:

References:

<https://docs.microsoft.com/en-us/windows/deployment/update/update-compliance-monitor>

NEW QUESTION 220

- (Exam Topic 4)

You have a computer named Computer1. Computer1 runs Windows 10 Pro. Computer1 is experiencing connectivity issues.

You need to view the IP addresses of any remote computer that Computer1 has an active TCP connection to. Should you do?

- A. In Windows Administrative Tools, open Performance Monitor
- B. In the Control Panel, open Network and Internet Then select Network and Sharing Center
- C. In Windows Administrative Tools, open Resource Monitor
- D. In the Setting ap
- E. open Update and Security Then open Windows Security and select Firewall and Network protection

Answer: C

NEW QUESTION 225

- (Exam Topic 4)

You have a computer named Computer1 that runs Windows 10.

On Computer1, you create the local users shown in the following table.

Name	Member of
User1	Users
User2	Users, Guests
User3	Power Users, Guest
User4	Guests, Users, Administrators
User5	Users, Distributed COM Users

Which three user profiles will persist after each user signs out? Each correct answer presents part of the solution.

NOTE: Each correct selection is worth one point.

- A. User1
- B. User2
- C. User3
- D. User4
- E. User5

Answer: ADE

NEW QUESTION 226

- (Exam Topic 4)

You enable controlled folder access in audit mode for several computers that run Windows 10. You need to review the events audited by controlled folder access.

Which Event Viewer log should you view?

- A. Applications and Services\Microsoft\Windows\Windows Defender\Operational
- B. Applications and Services\Microsoft\Windows\Known Folders\Operational
- C. Windows\Security

Answer: A

Explanation:

<https://docs.microsoft.com/en-us/microsoft-365/security/defender-endpoint/evaluate-controlled-folder-access>

NEW QUESTION 231

- (Exam Topic 4)

You have computers that run Windows 10 as shown in the following table.

Name	IP address
CLIENT1	192.168.0.10
CLIENT2	192.168.1.10
CLIENT3	192.168.0.250
CLIENT4	192.168.0.240

CLIENT1 has the following IP configuration.

```
Connection-specific DNS Suffix  . : 
IPv4 Address. . . . . : 192.168.0.10
Subnet Mask . . . . . : 255.255.255.0
Default Gateway . . . . . : 192.168.0.1
```

From CLIENT1, you ping CLIENT2 and CLIENT3 successfully, but when you ping CLIENT4, you get a Request timed out response. From CUENT3. you ping CLIENT4 successfully. Which computer and setting are misconfigured? To answer, select the appropriate options in the answer area.

NOTE: Each correct selection is worth one point.

Answer Area

Misconfigured computer:	
	CLIENT2
	CLIENT3
	CLIENT4

Misconfigured setting:	
	Default gateway
	IP address
	Subnet mask

- A. Mastered
- B. Not Mastered

Answer: A

Explanation:

Answer Area

Misconfigured computer:	
	CLIENT2
	CLIENT3
	CLIENT4

Misconfigured setting:	
	Default gateway
	IP address
	Subnet mask

NEW QUESTION 232

- (Exam Topic 4)

Your network contains an Active Directory domain. The domain contains 1,000 computers that run Windows 10. You configure Microsoft Edge settings by using domain and local Group Policy Objects (GPOs). You need to generate a report that contains all the Microsoft Edge policy settings applied to a computer. What should you do?

- A. From PowerShell
- B. run the Gec-GPO cmdlet.
- C. From PowerShell
- D. run the Gec-GPOReporc cmdlet.
- E. From Microsoft Edge, open edge://policy.
- F. From Microsoft Edge, open edge://settings.

Answer: C

Explanation:

The Get-GPOReport cmdlet would generate a report for all domain group policy objects. However, this would not display the settings that are applied by local group policy objects. To display the settings applied by both domain and local GPOs, you would have to open Microsoft Edge and enter edge://policy in the address bar.

NEW QUESTION 233

- (Exam Topic 4)

A user named User1 has a computer named Computer1 that runs Windows 10. User1 connects to a Microsoft Azure virtual machine named VM1 by using Remote Desktop. User1 creates a VPN connection to a partner organization. When the VPN connection is established, User1 cannot connect to VM1. When User1 disconnects from the VPN, the user can connect to VM1.

You need to ensure that User1 can connect to VM1 while connected to the VPN. What should you do?

- A. From the proxy settings, add the IP address of VM1 to the bypass list to bypass the proxy.
- B. From the properties of VPN1, clear the Use default gateway on remote network check box.
- C. From the properties of the Remote Desktop connection to VM1, specify a Remote Desktop Gateway (RDGateway).
- D. From the properties of VPN1, configure a static default gateway address.

Answer: B

Explanation:

References:

<https://www.stevejenkins.com/blog/2010/01/using-the-local-default-gateway-with-a-windows-vpn-connection/>

NEW QUESTION 236

- (Exam Topic 4)

You have a computer that runs Windows 11 and hosts a Hyper-V virtual machine named VMI. You create the disks shown in the following table.

Name	Format	Type	Parent
Base1	VHD	Fixed size	<i>Not applicable</i>
Base2	VHDX	Fixed size	<i>Not applicable</i>
Disk1	VHD	Dynamically expanding	<i>Not applicable</i>
Disk2	VHD	Differencing	Base1.vhd
Disk3	VHDX	Dynamically expanding	<i>Not applicable</i>
Disk4	VHDX	Differencing	Base2.vhdx

You add Disk1, Disk2, Disk3, and Disk4 to a SCSI controller attached to VMI. You need to identify the following:
 Which disks will increase in size automatically when files are copied to the disks. Which disks can be manually increased in size while VMI is running.
 What should you identify? To answer, select the appropriate options in the answer area.

Disks that will increase in size automatically:

Base1 and Disk2 only
 Base2 and Disk4 only
Disk1 and Disk3 only
 Disk3 and Disk4 only
 Base2, Disk3, and Disk4 only
 Disk1, Disk2, Disk3, and Disk4

Disks that can be manually increased in size while VM1 is running:

Base1 and Disk2 only
 Base2 and Disk4 only
 Disk1 and Disk3 only
 Disk3 and Disk4 only
 Base2, Disk3, and Disk4 only
Disk1, Disk2, Disk3, and Disk4

- A. Mastered
- B. Not Mastered

Answer: A

Explanation:

Graphical user interface, text, application, Word, website Description automatically generated

NEW QUESTION 239

- (Exam Topic 4)

Your network contains an Active Directory domain that contains the objects shown in the following table.

Name	Type	Member of
User1	User	Group1
User2	User	Group2
Group1	Global group	<i>None</i>
Group2	Domain local group	<i>None</i>
Computer1	Computer	Group1
Computer2	Computer	Group1

Computer1 contains the shared folders shown in the following table.

Name	NTFS permission	Share permission	Folder enumeration mode
Share1	Group1: Write	Group1: Full control	Access-based
Share2\$	Group2: Full control	Group2: Read	Unrestricted

The computers have the network configurations shown in the following table.

Name	Network Discovery	Windows Defender Firewall
Computer1	On	Incoming connections: Block all connections to apps that are not on the list of allowed apps
Computer2	Off	Incoming connections: Block all connections to apps that are not on the list of allowed apps

For each of the following statements, select Yes if the statement is true. Otherwise, select No.
NOTE: Each correct selection is worth one point.

Statements	Yes	No
Share1 is listed if User1 connects to \\Computer1 from Computer2.	<input type="radio"/>	<input type="radio"/>
Share1 is listed if User2 connects to \\Computer1 from Computer2.	<input type="radio"/>	<input type="radio"/>
Share2\$ is listed if User2 connects to \\Computer1 from Computer2.	<input type="radio"/>	<input type="radio"/>

- A. Mastered
- B. Not Mastered

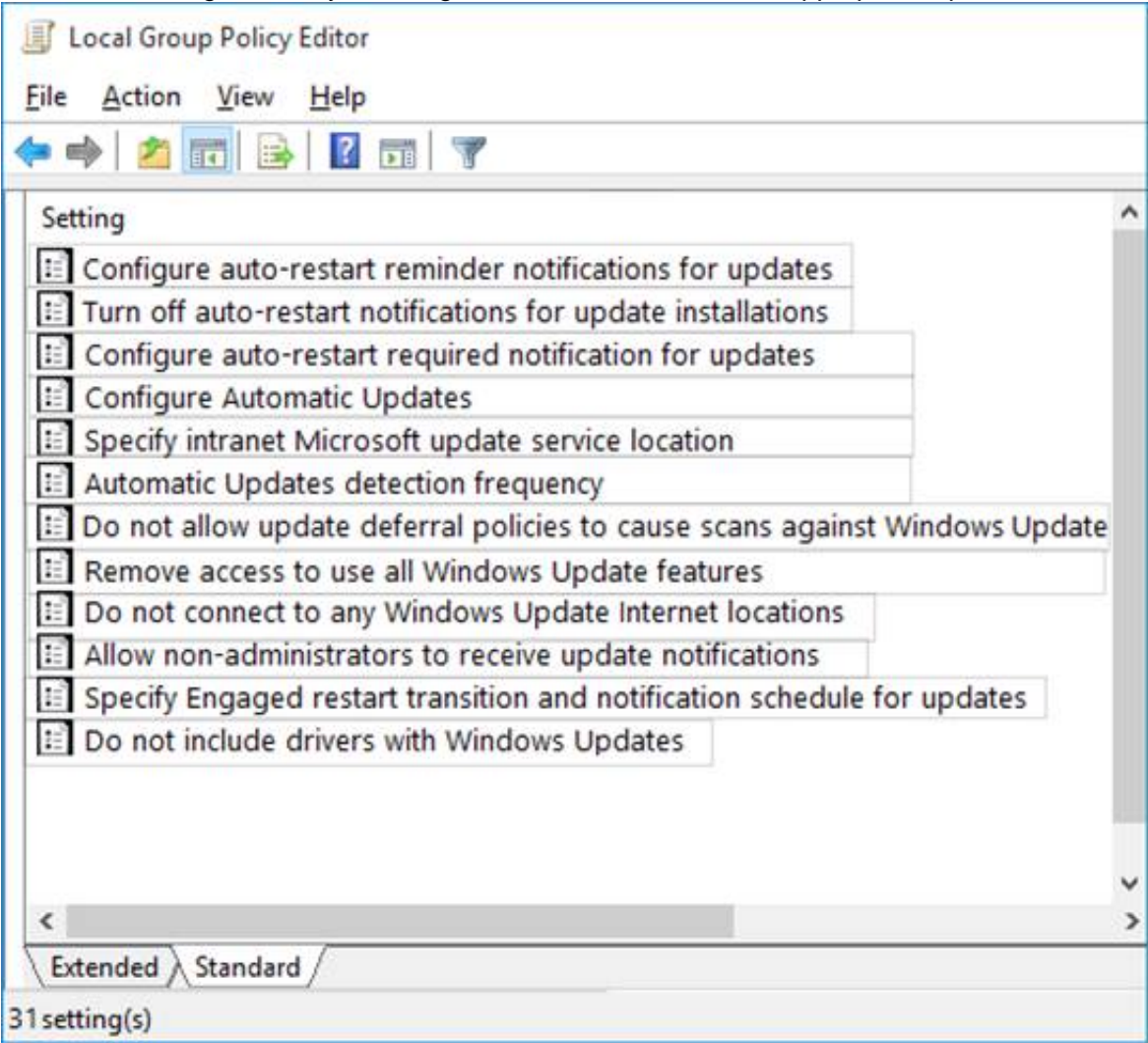
Answer: A

Explanation:

Box 1: Yes
User1 is in Group1 which has permission to access the share so the share will be visible. Box 2: No
User2 is in Group2 which does not have permission to access Share1. Access-based enumeration is enabled so Share1 will not be listed as User2 does not have permission to access it.
Box 3: No
Share2\$ is a hidden share (dollar sign appended) so the share will never be listed.

NEW QUESTION 241

- (Exam Topic 4)
You have 10 computers that run Windows 10.
You have a Windows Server Update Services (WSUS) server.
You need to configure the computers to install updates from WSUS.
Which two settings should you configure? To answer, select the appropriate options in the answer area. NOTE: Each correct selection is worth one point.



- A. Mastered
- B. Not Mastered

Answer: A

Explanation:

References:
<https://docs.microsoft.com/en-us/windows/deployment/update/waas-manage-updates-wsus#configure-automatic>

NEW QUESTION 244

- (Exam Topic 4)

You manage devices that run Windows 10.

Ten sales users will travel to a location that has limited bandwidth that is expensive. The sales users will be at the location for three weeks.

You need to prevent all Windows updates from downloading for the duration of the trip. The solution must not prevent access to email and the Internet.

What should you do?

- A. From Network & Internet in the Settings app, set a data limit.
- B. From Accounts in the Settings app, turn off Sync settings.
- C. From Network & Internet in the Settings app, set the network connections as metered connections.
- D. From Update & Security in the Settings app, pause updates.

Answer: D

NEW QUESTION 247

- (Exam Topic 4)

Your company has a computer named Computer1 that runs Windows 10. Computer1 is used to provide guests with access to the Internet. Computer1 is a member of a workgroup.

You want to configure Computer1 to use a user account sign in automatically when the computer is started. The user must not be prompted for a user name and password.

What should you do?

- A. Configure Group Policy preferences.
- B. Run the BCDBoot command.
- C. Edit the Registry.
- D. Run the MSConfig command.

Answer: C

Explanation:

In the registry, add a default user name and a default password in the HKEY_LOCAL_MACHINE\SOFTWARE\Microsoft\Windows NT\CurrentVersion\Winlogon\DefaultUserName and HKEY_LOCAL_MACHINE\SOFTWARE\Microsoft\Windows NT\CurrentVersion\Winlogon\DefaultPassword.

Reference:

<https://support.microsoft.com/en-us/help/324737/how-to-turn-on-automatic-logon-in-windows>

NEW QUESTION 252

- (Exam Topic 4)

Your company has an on-premises network that contains an Active Directory domain. The domain is synced to Microsoft Azure Active Directory (Azure AD). All computers in the domain run Windows 10 Enterprise. You have a computer named Computer1 that has a folder named Folder1.

You must provide users in group named Group1 with the ability to view the list of files in Folder1. Your solution must ensure that the principle of least privilege is maintained.

What should you do?

- A. Assign the Full control permissions for the Folder1 folder to Group1.
- B. Assign the Read permissions for the Folder1 folder to Group1.
- C. Assign the List folder permissions for the Folder1 folder to Group1.
- D. Assign the Take ownership permissions for the Folder1 folder to Group1.

Answer: C

Explanation:

Reference:

<https://www.online-tech-tips.com/computer-tips/set-file-folder-permissions-windows/>

NEW QUESTION 257

- (Exam Topic 4)

You have computers that run Windows 11 as shown in the following table.

Name	IP address	Joined to
Computer1	192.168.10.10	Active Directory
Computer2	192.168.10.15	Workgroup

You ping 192.168.10.15 from Computer1 and discover that the request timed out. You need to ensure that you can successfully ping 192.168.10.15 from Computer1. Solution: On Computer1, you turn off Windows Defender Firewall-Does this meet the goal?

- A. Yes
- B. No

Answer: B

NEW QUESTION 261

- (Exam Topic 4)

Your network contains an Active Directory domain. The domain contains a computer named Computer1 that runs Windows 10.

The domain contains the users shown in the following table.

Name	Member of
User1	Domain Users
User2	Domain Users, Guests
User3	Domain Users, Administrators

Computer has the local users shown in the following table.

Name	Member of
User4	Users
User5	Administrators

All users have Microsoft accounts.

Which two user can be configured to sign in by using their Microsoft account? Each correct answer presents part of the solution.

NOTE: Each correct selection is worth one point.

- A. User 1
- B. User 2
- C. User 3
- D. User 4
- E. User 5

Answer: CE

NEW QUESTION 264

- (Exam Topic 4)

Note: This question is part of a series of questions that present the same scenario. Each question in the series contains a unique solution that might meet the stated goals. Some question sets might have more than one correct solution, while others might not have a correct solution.

After you answer a question in this section, you will NOT be able to return to it. As a result, these questions will not appear in the review screen.

You have two computers named Computer1 and Computer2 that run Windows 10.

You have an Azure Active Directory (Azure AD) user account named admin@contoso.com that is in the local Administrators group on each computer.

You sign in to Computer1 by using admin@contoso.com.

You need to ensure that you can use Event Viewer on Computer1 to connect to the event logs on Computer2. Solution: On Computer2, you enable the Remote Event Log Management inbound rule from Windows

Defender Firewall.

Does this meet the goal?

- A. Yes
- B. No

Answer: A

Explanation:

Reference:

<https://docs.microsoft.com/en-us/previous-versions/windows/it-pro/windows-server-2008-R2-and-2008/cc76643>

NEW QUESTION 266

- (Exam Topic 4)

Note: This question is part of a series of questions that present the same scenario. Each question in the series contains a unique solution that might meet the stated goals. Some question sets might have more than one correct solution, while others might not have a correct solution.

After you answer a question in this section, you will NOT be able to return to it. As a result, these questions will not appear in the review screen.

You deploy Windows 10 to a computer named Computer1.

Computer1 contains a folder named C:\Folder1. Folder1 contains multiple documents.

You need to ensure that you can recover the files in Folder1 by using the Previous Versions tab. Solution: You enable File History and add Folder1 to File History.

Does this meet the goal?

- A. Yes
- B. No

Answer: A

Explanation:

adding c:\Folder1 to File History WILL allow you to use the Previous Versions on that folder. Assuming you are able to turn File History on in the first place.

Reference:

<https://support.microsoft.com/en-za/help/17128/windows-8-file-history>

NEW QUESTION 270

- (Exam Topic 4)

You have a computer that runs Windows 10 Home.

You need to upgrade the computer to Windows 10 Enterprise as quickly as possible. The solution must retain the user settings.

What should you do first?

- A. Run the scansca command.
- B. Perform an in-place upgrade to Windows Pro.
- C. Install the latest feature updates.
- D. Run the sysprep command.

Answer: B

Explanation:

References:

<https://docs.microsoft.com/en-us/windows/deployment/upgrade/windows-10-upgrade-paths>

NEW QUESTION 275

- (Exam Topic 4)

Note: This question is part of a series of questions that present the same scenario. Each question in the series contains a unique solution that might meet the stated goals. Some question sets might have more than one correct solution, while others might not have a correct solution.

After you answer a question in this section, you will NOT be able to return to it. As a result, these questions will not appear in the review screen.

You have a computer named Computer1 that runs Windows 10.

You test Windows updates on Computer1 before you make the updates available to other users at your company.

You install a quality update that conflicts with a customer device driver. You need to remove the update from Computer1.

Solution: From an elevated command prompt, you run the wusa.exe command and specify the /uninstall parameter.

Does this meet the goal?

A. Yes

B. No

Answer: A

Explanation:

References:

<https://support.microsoft.com/en-us/help/934307/description-of-the-windows-update-standalone-installer-in-win>

NEW QUESTION 279

- (Exam Topic 4)

You have a computer that runs Windows 10. You need to configure a picture password.

What should you do? D18912E1457D5D1DDCBD40AB3BF70D5D

A. From Control Panel, configure the User Accounts settings.

B. From the Settings app, configure the Sign-in options.

C. From the Local Group Policy Editor, configure the Account Policies settings.

D. From Windows PowerShell, run the Set-LocalUser cmdlet and specify the InputObject parameter.

Answer: B

NEW QUESTION 280

- (Exam Topic 4)

Note: This question is part of a series of questions that present the same scenario. Each question in the series contains a unique solution that might meet the stated goals. Some question sets might have more than one correct solution, while others might not have a correct solution.

After you answer a question in this section, you will NOT be able to return to it. As a result, these questions will not appear in the review screen.

Your network contains an Active Directory domain named contoso.com. The domain contains the users shown in the following table.

Name	Member of
User2	Domain Users
User3	Domain Admins
User4	Server Operators

You have a computer named Computer1 that runs Windows 10 and is in a workgroup.

A local standard user on Computer1 named User1 joins the computer to the domain and uses the credentials of User2 when prompted.

You need to ensure that you can rename Computer1 as Computer33. Solution: You use the credentials of User1 on Computer1.

Does this meet the goal?

A. Yes

B. No

Answer: B

Explanation:

Renaming a domain-joined computer will also rename the computer account in the domain. To do this, you need domain administrator privileges.

User4 is a server operator, not an administrator. Members of the Server Operators group can sign in to a server interactively, create and delete network shared resources, start and stop services, back up and restore files, format the hard disk drive of the computer, and shut down the computer.

Use User3's credentials instead. References:

<https://docs.microsoft.com/en-us/windows/security/identity-protection/access-control/active-directory-security-g>

NEW QUESTION 281

- (Exam Topic 4)

Your network contains an Active Directory domain named contoso.com. The domain contains two computers named Computer1 and Computer2 that run Windows 10 and are joined to the domain.

On Computer1, you create an event subscription named Subscription1 for Computer2 as shown in the Subscription1 exhibit. (Click the Subscription1 tab.)

Query Filter

Filter XML

Logged: Any time

Event level: ☐ Critical ☒ Warning ☐ Verbose
☐ Error ☒ Information

☒ By log Event logs: Application, Security, Setup

☐ By source Event sources:

Includes/Excludes Event IDs: Enter ID numbers and/or ID ranges separated by commas. To exclude criteria, type a minus sign first. For example 1,3,5-99,-76

<All Event IDs>

Task category:

Keywords:

User: <All Users>

Computer(s): <All Computers>

Clear

OK Cancel

Subscription1 is configured to use forwarded events as the destination log.
 On Computer1, you create a custom view named View1 as shown in the View1 exhibit. (Click the View1 tab.)

Create Custom View

Filter XML

Logged: Any time

Event level: ☒ Critical ☒ Warning ☐ Verbose
☒ Error ☐ Information

☒ By log Event logs: Application, System, Forwarded Events

☐ By source Event sources:

Includes/Excludes Event IDs: Enter ID numbers and/or ID ranges separated by commas. To exclude criteria, type a minus sign first. For example 1,3,5-99,-76

<All Event IDs>

Task category:

Keywords:

User: <All Users>

Computer(s): <All Computers>

Clear

OK Cancel

For each of the following statements, select Yes if the statement is true. Otherwise, select No.
 NOTE: Each correct selection is worth one point.

Statements	Yes	No
If a critical event is added to the system log on Computer2, the event will be visible in View1.	<input type="radio"/>	<input type="radio"/>
If a warning event is added to the setup log on Computer1, the event will be visible in View1.	<input type="radio"/>	<input type="radio"/>
If an information event is added to the application log on Computer2, the event will be forwarded to Computer1	<input type="radio"/>	<input type="radio"/>

- A. Mastered
- B. Not Mastered

Answer: A

Explanation:

Statements	Yes	No
If a critical event is added to the system log on Computer2, the event will be visible in View1.	<input type="radio"/>	<input checked="" type="radio"/>
If a warning event is added to the setup log on Computer1, the event will be visible in View1.	<input type="radio"/>	<input checked="" type="radio"/>
If an information event is added to the application log on Computer2, the event will be forwarded to Computer1	<input checked="" type="radio"/>	<input type="radio"/>

NEW QUESTION 285

- (Exam Topic 4)
You have a workgroup computer that runs Windows 10.
You need to set the minimum password length to 12 characters. What should you use?

- A. Local Group Policy Editor
- B. User Accounts in Control Panel
- C. System Protection in System Properties
- D. Sign-in options in the Settings app

Answer: A

NEW QUESTION 286

- (Exam Topic 4)
Note: This question is part of a series of questions that present the same scenario. Each question in the series contains a unique solution that might meet the stated goals. Some question sets might have more than one correct solution, while others might not have a correct solution.
After you answer a question in this section, you will NOT be able to return to it. As a result, these questions will not appear in the review screen.
Your network contains an Active Directory domain. The domain contains a computer named Computer1 that runs Windows 8.1.
Computer1 has apps that are compatible with Windows 10.
You need to perform a Windows 10 in-place upgrade on Computer1.
Solution: You copy the Windows 10 installation media to a network share. From Windows 8.1 on Computer1, you run setup.exe from the network share.
Does this meet the goal?

- A. Yes
- B. No

Answer: B

NEW QUESTION 287

- (Exam Topic 4)
You have several computers that run Windows 10. The computers are in a workgroup. You need to prevent users from using Microsoft Store apps on their computer.
What are two possible ways to achieve the goal? Each correct answer presents part of the solution.
NOTE: Each correct selection is worth one point.

- A. From Security Settings in the local Group Policy, configure Security Options.
- B. From Administrative Templates in the local Group Policy, configure the Store settings.
- C. From Security Settings in the local Group Policy, configure Software Restriction Policies.
- D. From Security Settings in the local Group Policy, configure Application Control Policies.

Answer: BD

Explanation:
References:

<https://www.techrepublic.com/article/how-to-manage-your-organizations-microsoft-store-group-policy/>

NEW QUESTION 292

- (Exam Topic 4)

Please wait while the virtual machine loads. Once loaded, you may proceed to the lab section. This may take a few minutes, and the wait time will not be deducted from your overall test time.

When the Next button is available, click it to access the lab section. In this section, you will perform a set of tasks in a live environment. While most functionality will be available to you as it would be in a live environment, some functionality (e.g., copy and paste, ability to navigate to external websites) will not be possible by design.

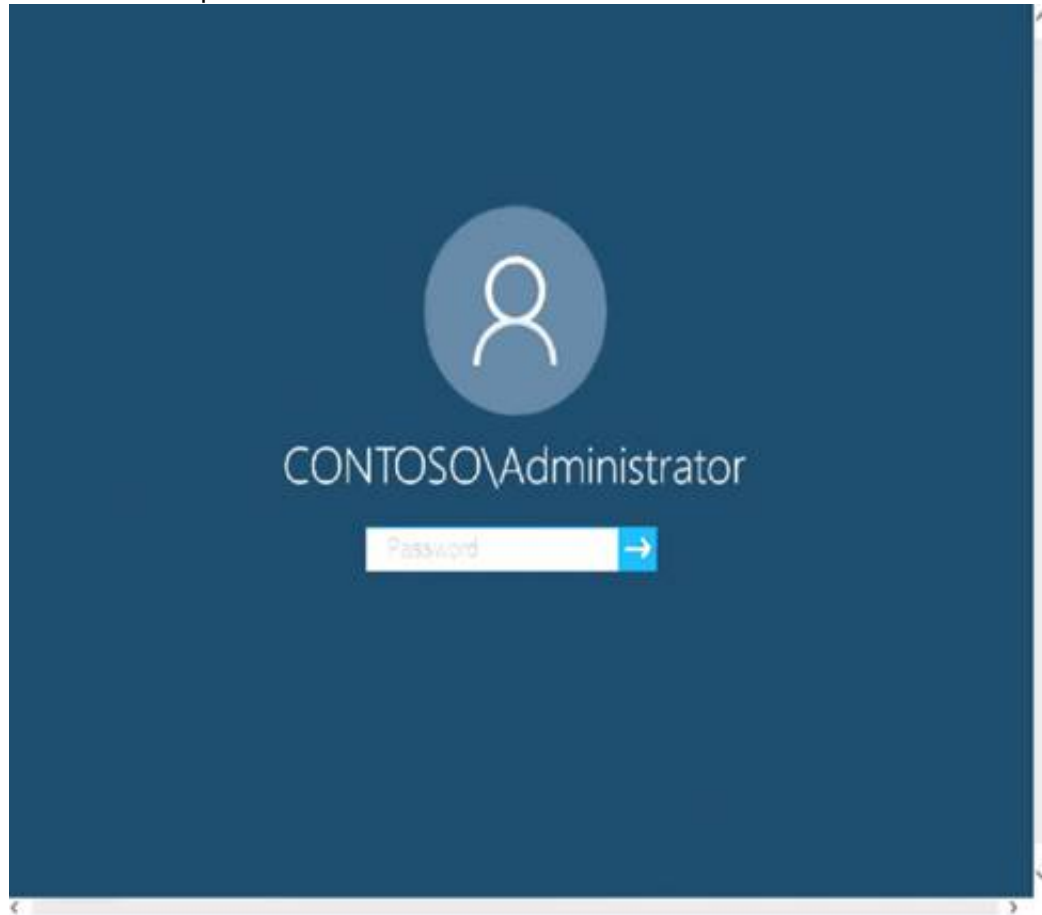
Scoring is based on the outcome of performing the tasks stated in the lab. In other words, it doesn't matter how you accomplish the task, if you successfully perform it, you will earn credit for that task.

Labs are not timed separately, and this exam may more than one lab that you must complete. You can use as much time as you would like to complete each lab.

But, you should manage your time appropriately to ensure that you are able to complete the lab(s) and all other sections of the exam in the time provided.

Please note that once you submit your work by clicking the Next button within a lab, you will NOT be able to return to the lab.

Username and password



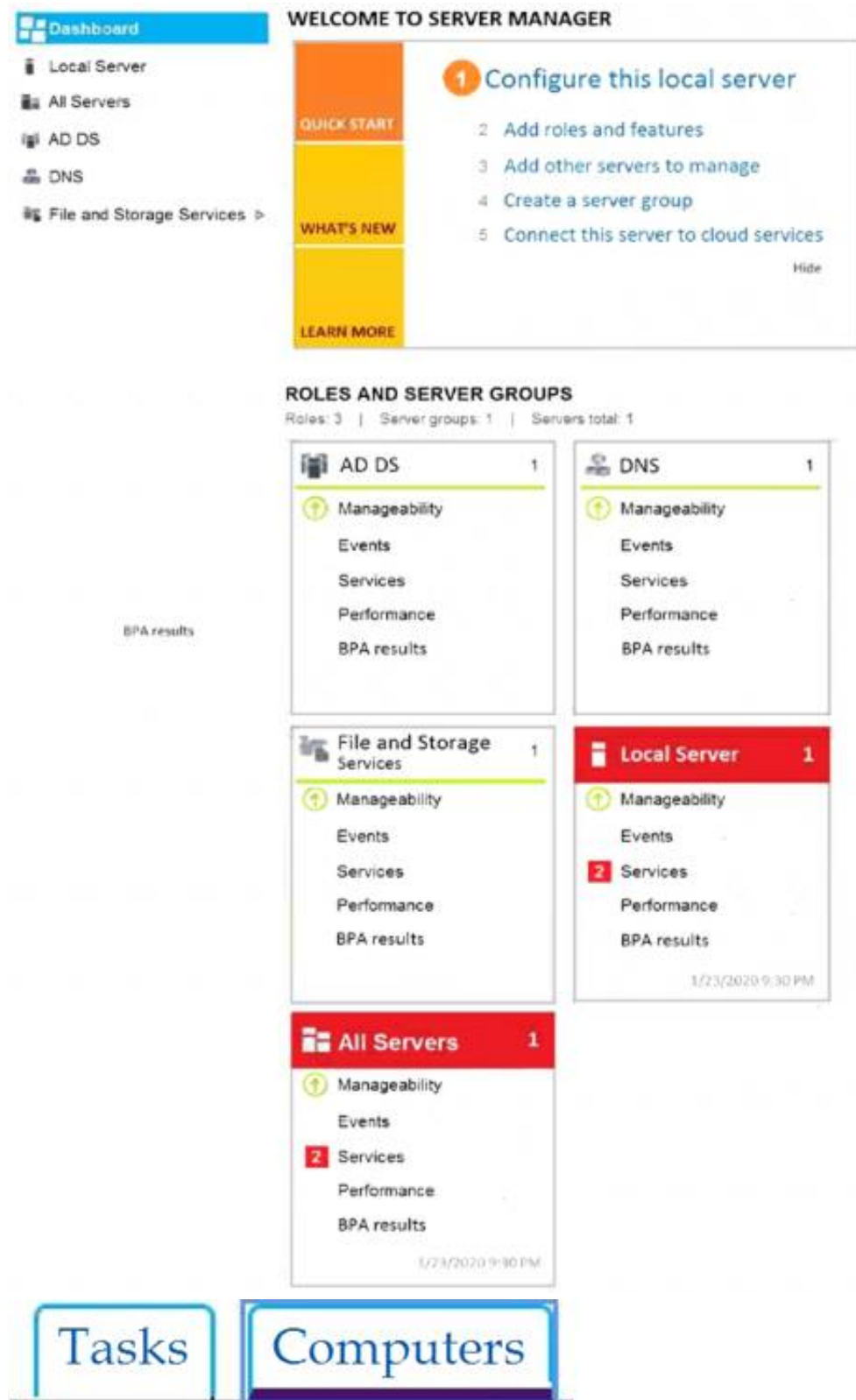
Use the following login credentials as needed:

To enter your password, place your cursor in the Enter password box and click on the password below.

Username: Contoso/Administrator

Password: Passw0rd!

The following information is for technical support purposes only: Lab Instance: 11145882



You have already prepared Client1 for remote management.
 You need to forward all events from the Application event log on Client1 to DC1.
 To complete this task, sign in to the required computer or computers.

- A. Mastered
- B. Not Mastered

Answer: A

Explanation:

Configuring the event source computer

* 1. Run the following command from an elevated privilege command prompt on the Windows Server domain controller to configure Windows Remote Management:

winrm qc -q

* 2. Start group policy by running the following command:

%SYSTEMROOT%\System32\gpedit.msc

- * 3. Under the Computer Configuration node, expand the Administrative Templates node, then expand the Windows Components node, then select the Event Forwarding node.
- * 4. Right-click the SubscriptionManager setting, and select Properties. Enable the SubscriptionManager setting, and click the Show button to add a server address to the setting. Add at least one setting that specifies the event collector computer. The SubscriptionManager Properties window contains an Explain tab that describes the syntax for the setting.
- * 5. After the SubscriptionManager setting has been added, run the following command to ensure the policy is applied:
gpupdate /force
Configuring the event collector computer
- * 1. Run the following command from an elevated privilege command prompt on the Windows Server domain controller to configure Windows Remote Management:
winrm qc -q
- * 2. Run the following command to configure the Event Collector service:
wecutil qc /q
- * 3. Create a source initiated subscription. This can either be done programmatically, by using the Event Viewer, or by using Wecutil.exe. If you use Wecutil.exe, you must create an event subscription XML file and use the following command:
wecutil cs configurationFile.xml
Reference:
<https://docs.microsoft.com/en-us/windows/win32/wec/setting-up-a-source-initiated-subscription#forwarding-the>

NEW QUESTION 297

- (Exam Topic 4)

Your network contains an Active Directory forest. The forest contains a root domain named contoso.com and a child domain named corp.contoso.com.

You have a computer named Computer1 that runs Windows 10. Computer1 is joined to the corp.contoso.com domain.

Computer1 contains a folder named Folder1. In the Security settings of Folder1, Everyone is assigned the Full control permissions.

On Computer1, you share Folder1 as Share1 and assign the Read permissions for Share1 to the Users group. For each of the following statements, select Yes if the statement is true. Otherwise, select No.

NOTE: Each correct selection is worth one point.

Statements	Yes	No
All the local users on Computer1 have Read access to \\Computer1\Share1.	<input type="radio"/>	<input type="radio"/>
All the users in the corp.contoso.com domain have Read access to \\Computer1\Share1.	<input type="radio"/>	<input type="radio"/>
All the users in the contoso.com domain have Read access to \\Computer1\Share1.	<input type="radio"/>	<input type="radio"/>

- A. Mastered
- B. Not Mastered

Answer: A

Explanation:

References:

<https://www.techrepublic.com/article/learn-the-basic-differences-between-share-and-ntfs-permissions/>

NEW QUESTION 298

- (Exam Topic 4)

Your network contains an Active Directory domain. The domain contains 1,000 computers that run Windows 10.

You discover that when users are on their lock screen, they see a different background image every day, along with tips for using different features in Windows 10.

You need to disable the tips and the daily background image for all the Windows 10 computers. Which Group Policy settings should you modify?

- A. Turn off the Windows Welcome Experience
- B. Turn off Windows Spotlight on Settings
- C. Do not suggest third-party content in Windows spotlight
- D. Turn off all Windows spotlight features

Answer: D

Explanation:

References:

<https://docs.microsoft.com/en-us/windows/configuration/windows-spotlight>

NEW QUESTION 301

- (Exam Topic 4)

Your network contains an Active Directory domain. The domain contains computers that run Windows 10. The computers are configured as shown in the following table.

Name	Version	Organizational unit (OU)
Computer1	1909	Devices/OU1
Computer2	1909	Devices/OU2
Computer3	20H2	Devices/OU2

You have a Group Policy Object (GPO) named GPO1 that has the settings shown in the following exhibit.

Select the target Feature Update version

Select the target Feature Update version

Previous SettingNext Setting

Not Configured

Enabled

Disabled

Comment:

Supported on:

At least Windows Server 2016 or Windows 10

Options:

Help:

OK

Cancel

Apply

A domain administrator links GPO1 to OU2.
For each of the following statements, select Yes if the statement is true. Otherwise, select No.
NOTE: Each correct selection is worth one point.

Answer Area

Statements	Yes	No
Computer1 will install Windows 10, version 2004.	<input type="radio"/>	<input type="radio"/>
Computer2 will install Windows 10, version 2004.	<input type="radio"/>	<input type="radio"/>
Computer3 will install Windows 10, version 2004.	<input type="radio"/>	<input type="radio"/>

- A. Mastered
- B. Not Mastered

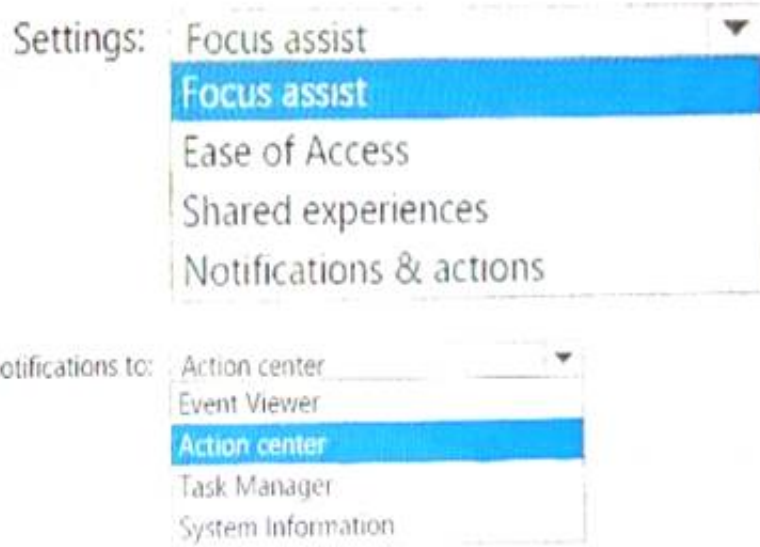
Answer: A

Explanation:
Text Description automatically generated
Reference:
<https://support.microsoft.com/en-us/topic/feature-update-through-windows-10-version-20h2-enablement-packag>

NEW QUESTION 302

- (Exam Topic 4)
You have a Windows 10 device.
You need to ensure that only priority notifications are displayed during business hours.
Which settings in the Settings app should you configure, and where will standard notifications be sent during business hours? To answer, select the appropriate options in the answer area.
NOTE: Each correct selection is worth one point.

Answer Area

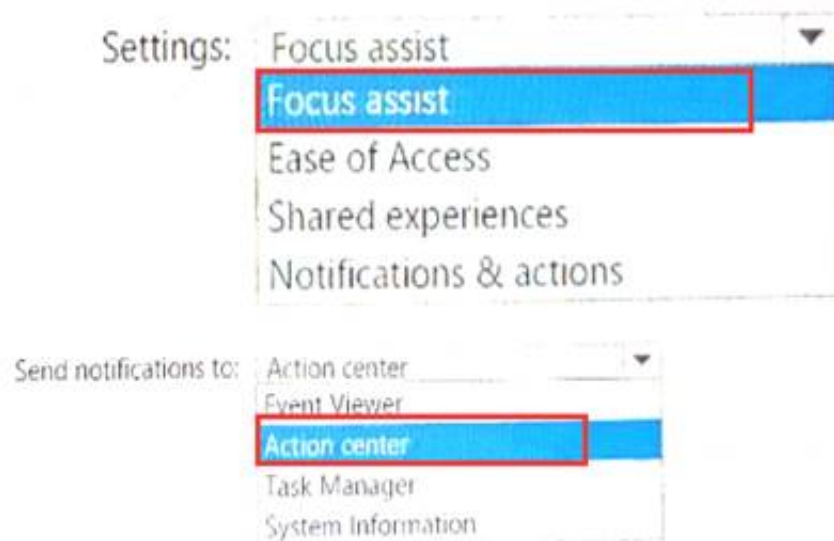


- A. Mastered
- B. Not Mastered

Answer: A

Explanation:

Answer Area



NEW QUESTION 306

- (Exam Topic 4)

Your network contains an Active Directory domain that is synced to a Microsoft Azure Active Directory (Azure AD) tenant. All users have been issued with laptop computers as well as desktop computers that run Windows 10 Enterprise. All users have Microsoft 365 E3 licenses.

A user named Mia Hamm informs you that she must perform a BitLocker recovery on her laptop but she does not have her BitLocker recovery key.

You need to ensure that Mia Hamm can perform a BitLocker recovery on her laptop. What should you do?

- A. Instruct Mia Hamm to log on to her desktop computer and run the repair-bde.exe command.
- B. Instruct Mia Hamm to use the BitLocker Recovery Password Viewer to view the computer object of the laptop.
- C. Instruct Mia Hamm to log on to her desktop computer and go to <https://account.activedirectory.windowsazure.com> and view the user account profile.
- D. Instruct Mia Hamm to run the Enable-BitLocker cmdlet on her laptop.

Answer: C

Explanation:

The BitLocker recovery key is stored in Azure Active Directory. Reference:

<https://cedonpartners.com/blog/storing-recovering-bitlocker-keys-azure-active-directory/>

NEW QUESTION 307

- (Exam Topic 4)

Please wait while the virtual machine loads. Once loaded, you may proceed to the lab section. This may take a few minutes, and the wait time will not be deducted from your overall test time.

When the Next button is available, click it to access the lab section. In this section, you will perform a set of tasks in a live environment. While most functionality will be available to you as it would be in a live

environment, some functionality (e.g., copy and paste, ability to navigate to external websites) will not be possible by design.

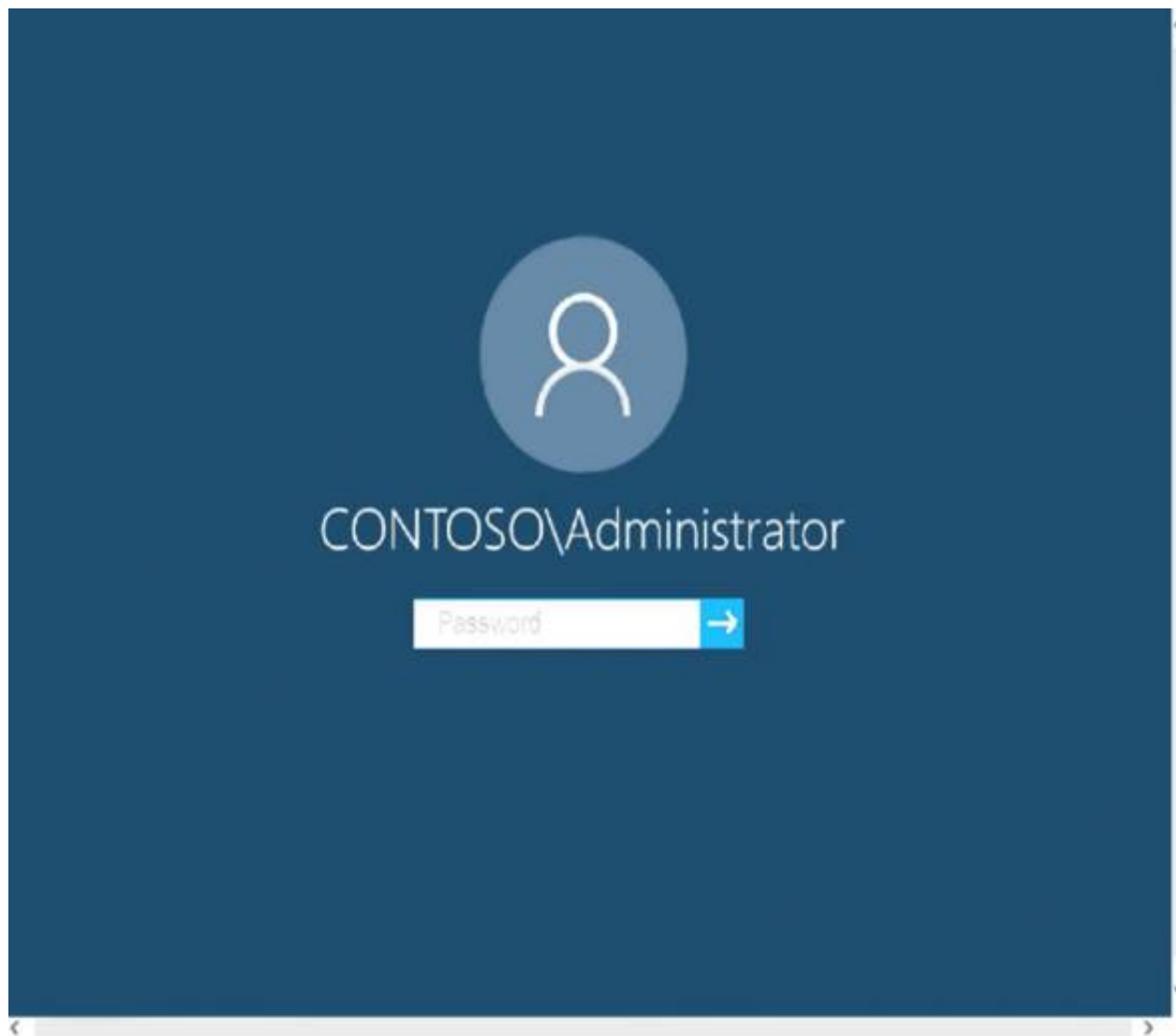
Scoring is based on the outcome of performing the tasks stated in the lab. In other words, it doesn't matter how you accomplish the task, if you successfully perform it, you will earn credit for that task.

Labs are not timed separately, and this exam may more than one lab that you must complete. You can use as much time as you would like to complete each lab.

But, you should manage your time appropriately to ensure that you are able to complete the lab(s) and all other sections of the exam in the time provided.

Please note that once you submit your work by clicking the Next button within a lab, you will NOT be able to return to the lab.

Username and password



Use the following login credentials as needed:

To enter your password, place your cursor in the Enter password box and click on the password below.

Username: Contoso/Administrator

Password: Passw0rd!

The following information is for technical support purposes only: Lab Instance: 11145882

Dashboard
Local Server
All Servers
AD DS
DNS
File and Storage Services >

WELCOME TO SERVER MANAGER

QUICK START

WHAT'S NEW

LEARN MORE

1 Configure this local server
2 Add roles and features
3 Add other servers to manage
4 Create a server group
5 Connect this server to cloud services

ROLES AND SERVER GROUPS
Roles: 3 | Server groups: 1 | Servers total: 1

AD DS 1
Manageability
Events
Services
Performance
BPA results

DNS 1
Manageability
Events
Services
Performance
BPA results

File and Storage Services 1
Manageability
Events
Services
Performance
BPA results

Local Server 1
Manageability
2 Services
Events
Performance
BPA results
1/23/2020 9:30 PM

All Servers 1
Manageability
2 Services
Events
Performance
BPA results
1/23/2020 9:30 PM

Tasks Computers



You need to prevent user names and passwords from being filled in on forms automatically when a user browses to websites from Client2. To complete this task, sign in to the required computer or computers.

- A. Mastered
- B. Not Mastered

Answer: A

Explanation:

- Open the Local Group Policy Editor.
- In the left pane of Local Group Policy Editor, navigate to Computer Configuration\Administrative Templates\Windows Components\Microsoft Edge
- In the right pane of Microsoft Edge in Local Group Policy Editor, double click/tap on the Configure Autofill policy to edit it.
- Select Disabled, click/tap on OK.
- In the right pane of Microsoft Edge in Local Group Policy Editor, double click/tap on the
- Configure Password Manager policy to edit it.
- Select Disabled, click/tap on OK.
- You can now close the Local Group Policy Editor.

Reference:

<https://docs.microsoft.com/en-us/microsoft-edge/deploy/available-policies> <https://www.tenforums.com/tutorials/115069-enable-disable-autofill-microsoft-edge-windows-10-a.html>

NEW QUESTION 310

- (Exam Topic 4)

You have a computer named Computer1 that runs Windows 10. Computer1 has a folder named C:\Folder1.

You need to meet the following requirements:

- Provide a user named Jon Ross with the ability to modify the permissions of C:\Folder1.
- Ensure that the principle of least privilege is maintained.

What should you do?

To complete this task, sign in to the required computer or computers.

- A. Mastered
- B. Not Mastered

Answer: A

Explanation:

- In Windows Explorer, right-click the C:\Folder1 folder, and then click Properties.
- Click on the Security tab, and then click Edit.
- In the Permissions dialog box, add Jon Ross.
- Specify the Allow Modify permissions for the Jon Ross.
- Click OK twice to close the Security dialog box.
- Click OK twice to close the Properties dialog box.

Reference:

<https://docs.microsoft.com/en-us/iis/web-hosting/configuring-servers-in-the-windows-web-platform/configuring>

NEW QUESTION 313

- (Exam Topic 4)

You need to configure Device1 to meet the following requirements:

- Deny User1 the right to sign in locally.
- Ensure that a logon script runs only when User2 signs in to Device1.

• Ensure that no login scripts run when User1 or Admin! sign in to Device1.
Which two policies should you modify? Each correct answer presents part of the solution. NOTE: Each correct selection is worth one point.

- A. Local Computer\Admin1 Policy
- B. Local Computer\Administrators Policy
- C. Local Computer\Non-Administrators Policy IS
- D. Local Computer\User1 Policy
- E. Local Computer\User2 Policy
- F. Local Computer Policy

Answer: DE

NEW QUESTION 318

- (Exam Topic 4)
You have a workgroup computer that runs Windows 10. You create a local user named User1.
User1 needs to be able to share and manage folders located in a folder named C:\Share by using the Shared Folders snap-in. The solution must use the principle of least privilege.
To which group should you add User1?

- A. Device Owners
- B. Users
- C. Power Users
- D. Administrators

Answer: D

NEW QUESTION 323

- (Exam Topic 4)
You have computers that run Windows 10 Enterprise as shown in the following table.

Name	Servicing channel
Computer1	Semi-Annual Channel (SAC)
Computer2	Long-Term Servicing Channel (LTSC) 2016

Both computers have applications installed and contain user data.
You plan to configure both computers to run Windows 10 Enterprise LTSC 2019 and to retain all the existing applications and data.
You need to recommend a method to deploy Windows 10 Enterprise LTSC 2019 to the computers. The solution must minimize effort to install and configure the applications.
What should you include in the recommendation for each computer? To answer, select the appropriate options in the answer area.
NOTE: Each correct selection is worth one point.

Computer1:

Perform a clean installation.

Perform an in-place upgrade.

Update the product key.

Computer2:

Perform a clean installation.

Perform an in-place upgrade.

Update the product key.

- A. Mastered
- B. Not Mastered

Answer: A

Explanation:
Graphical user interface, text, application, chat or text message Description automatically generated
References:
<https://docs.microsoft.com/en-us/windows/deployment/upgrade/windows-10-upgrade-paths>

NEW QUESTION 325

.....

Thank You for Trying Our Product

We offer two products:

1st - We have Practice Tests Software with Actual Exam Questions

2nd - Questions and Answers in PDF Format

MD-100 Practice Exam Features:

- * MD-100 Questions and Answers Updated Frequently
- * MD-100 Practice Questions Verified by Expert Senior Certified Staff
- * MD-100 Most Realistic Questions that Guarantee you a Pass on Your First Try
- * MD-100 Practice Test Questions in Multiple Choice Formats and Updates for 1 Year

100% Actual & Verified — Instant Download, Please Click
[Order The MD-100 Practice Test Here](#)