

# Microsoft

## Exam Questions AZ-801

Configuring Windows Server Hybrid Advanced Services



**NEW QUESTION 1**

- (Exam Topic 3)

You have five Azure virtual machines.

You need to collect performance data and Windows Event logs from the virtual machines. The data collected must be sent to an Azure Storage account.

What should you install on the virtual machines?

- A. the Azure Connected Machine agent
- B. the Azure Monitor agent
- C. the Dependency agent
- D. the Telegraf agent
- E. the Azure Diagnostics extension

**Answer:** E

**Explanation:**

Reference:

<https://docs.microsoft.com/en-us/azure/azure-monitor/agents/diagnostics-extension-overview>

**NEW QUESTION 2**

- (Exam Topic 3)

Your network contains an Active Directory Domain Services (AD DS) domain that has the Active Directory Recycle Bin enabled. The domain contains two domain controllers named DC1 and DC2. The system state of the domain controllers is backed up daily at 23:00 by using Windows Server Backup.

You have an organizational unit (OU) named ParisUsers that contains 1,000 users.

At 08:00, DC1 shuts down for hardware maintenance. The maintenance completes, but DC1 remains shut down.

At 09:00, an administrative error causes the manager attribute of each user in ParisUsers to be deleted. You need to recover the user account details as quickly as possible. The solution must minimize data loss.

Which three actions should you perform in sequence? To answer, move the appropriate actions from the list of actions to the answer area and arrange them in the correct order.

**Actions**

Start DC1 normally.

Perform an authoritative restore on DC1.

Recover all the user objects in the Active Directory Recycle Bin.

Start DC1 by using the Last Known Good Configuration.

Start DC1 in Directory Services Restore Mode.

Perform a system state restore on DC1.

**Answer Area**

- A. Mastered
- B. Not Mastered

**Answer:** A

**Explanation:**

Text, table Description automatically generated with medium confidence

**NEW QUESTION 3**

- (Exam Topic 3)

You have a failover cluster named Cluster1 that has the following configurations:

- > Number of nodes: 6
- > Quorum: Dynamic quorum
- > Witness: File share, Dynamic witness

What is the maximum number of nodes that can fail simultaneously while maintaining quorum?

- A. 1
- B. 2
- C. 3
- D. 4
- E. 5

**Answer:** C

**Explanation:**

Note this question is asking about nodes failing ‘simultaneously’, not nodes failing one after the other.

With six nodes and one witness, there are seven votes. To maintain quorum there needs to be four votes available (four votes is the majority of seven). This

means that a minimum of three nodes plus the witness need to remain online for the cluster to function. Therefore, the maximum number of simultaneous failures is three.

Reference:

<https://docs.microsoft.com/en-us/windows-server/storage/storage-spaces/understand-quorum>

## NEW QUESTION 4

- (Exam Topic 3)

You have an Azure virtual machine named VM1 that runs Windows Server.

When you attempt to install the Azure Performance Diagnostics extension on VM I, the installation fails. You need to identify the cause of the installation failure.

What are two possible ways to achieve the goal? Each correct answer presents a complete solution. NOTE: Each correct selection is worth one point.

- Sign in to VM1 and verify the WaAppAgentlog file.
- From the Azure portal, view the alerts for VM1.
- From the Azure portal, view the activity log for VM1.
- Sign into VM1 and verify the MonitoringAgentlog file.

**Answer: AB**

### NEW QUESTION 5

- (Exam Topic 3)

You have an on-premises server named Served that runs Windows Server. You have an Azure subscription. You plan to back up the files and folders on Server1 to Azure by using Azure Backup. You need to define how long the backups will be retained. What should you use to configure the retention?

- A. Backup center  
B. Windows Server Backup  
C. the Microsoft Azure Recovery Services (MARS) agent  
D. a Recovery Services vault

**Answer: B**

**NEW QUESTION 6**

- (Exam Topic 3)

You have a server named Server1 that runs Windows Server and has the Web Server (IIS) server role installed. Server1 hosts an ASP.NET Core web app named WebApp1 and the app's source files.

You install Docker on Server1.

You need to ensure that you can deploy WebApp1 to an Azure App Service web app from the Azure Container Registry.

Which three actions should you perform in sequence? To answer, move the appropriate actions from the list of actions to the answer area and arrange them in the correct order.

Actions	Answer Area
Run the <code>docker push</code> command.	
Run the <code>docker run</code> command.	
Run the <code>docker build</code> command.	
Create a Dockerfile.	
Create an Azure Resource Manager (ARM) template.	
Run the <code>docker pull</code> command.	

- A. Mastered  
B. Not Mastered

**Answer: A**

**Explanation:**

Step 1: Create a Dockerfile. This file contains instructions for the build process. Step 2: Run the docker build command to create a container image.

Step 3: Run the docker push command to upload the image to Azure Container Registry.

**NEW QUESTION 7**

- (Exam Topic 3)

You have three Azure virtual machines named VM1, VM2, and VM3 that host a multitier application. You plan to implement Azure Site Recovery.

You need to ensure that VM1, VM2, and VM3 fail over as a group. What should you configure?

- A. an availability zone
- B. a recovery plan
- C. an availability set

**Answer:** B

**Explanation:**

Reference:

<https://docs.microsoft.com/en-us/azure/site-recovery/site-recovery-overview>

**NEW QUESTION 8**

- (Exam Topic 3)

You have two physical servers named AppSrv1 and AppSrv2 and an unconfigured server named Server1. All the servers run Windows Server. Only Server1 can access the internet.

You plan to use Azure Site Recovery to replicate AppSrv1 and AppSrv2 to Azure. You need to deploy the required components to AppSrv1, AppSrv2, and Server1.

Which components should you deploy? To answer, drag the appropriate components to the correct servers. Each component may be used once, more than once, or not at all. You may need to drag the split bar between panes or scroll to view content.

NOTE: Each correct selection is worth one point.

Components	Answer Area
The Azure Connected Machine agent	To AppSrv1 and AppSrv2: <input type="text"/>
An Azure Site Recovery configuration server	
The Azure Site Recovery Mobility Service	To Server1: <input type="text"/>
The Microsoft Azure Recovery Services (MARS) agent	

A. Mastered

B. Not Mastered

**Answer:** A

**Explanation:**

Graphical user interface, text, application Description automatically generated

Reference:

<https://docs.microsoft.com/en-us/azure/site-recovery/physical-azure-architecture> <https://docs.microsoft.com/en-us/azure/site-recovery/physical-azure-set-up-source>

**NEW QUESTION 9**

- (Exam Topic 3)

Your company uses Storage Spaces Direct.

You need to view the available storage in a Storage Space Direct storage pool. What should you use?

A. System Configuration

B. File Server Resource Manager (FSRM)

C. the Get-ScorageFileServer cmdlet

D. Failover Cluster Manager

**Answer:** D

**Explanation:**

If Failover Cluster Manager, select the Storage Space Direct storage pool. The information displayed in the main window includes the free space and used space.

**NEW QUESTION 10**

- (Exam Topic 3)

You deploy Azure Migrate to an on-premises network.

You have an on-premises physical server named Server1 that runs Windows Server and has the following configuration.

Operating system disk 600 GB

Data disc 3 TB

NIC Teaming: Enabled Mobility service: installed Windows Firewall: Enabled

Microsoft Defender Antivirus: Enabled

You need to ensure that you can use Azure Migrate to migrate Server1. Solution: You disable Microsoft Defender Antivirus on Server1.

Does this meet the goal?

A. Yes

B. No

**Answer:** B

**NEW QUESTION 10**

- (Exam Topic 3)

Your network contains a single-domain Active Directory Domain Services (AD DS) forest named contoso.com. The functional level of the forest is Windows Server 2012 R2. All domain controllers run Windows Server 2012 R2.

Sysvol replicates by using the File Replication Service (FRS).

You plan to replace the existing domain controllers with new domain controllers that will run Windows Server 2022.

You need to ensure that you can add the first domain controller that runs Windows Server 2022. Solution; You raise the domain and forest functional levels. Does this meet the goal?

- A. Yes
- B. No

**Answer: B**

### NEW QUESTION 13

- (Exam Topic 3)

You have a server named Server1 that runs the Remote Desktop Session Host role service. Server1 has five custom applications installed.

Users who sign in to Server1 report that the server is slow. Task Manager shows that the average CPU usage on Server1 is above 90 percent. You suspect that a custom application on Server1 is consuming excessive processor capacity.

You plan to create a Data Collector Set in Performance Monitor to gather performance statistics from Server1. You need to view the resources used by each of the five applications.

Which object should you add to the Data Collector Set?

- A. Processor information
- B. Processor
- C. Process
- D. Processor performance

**Answer: C**

### NEW QUESTION 14

- (Exam Topic 3)

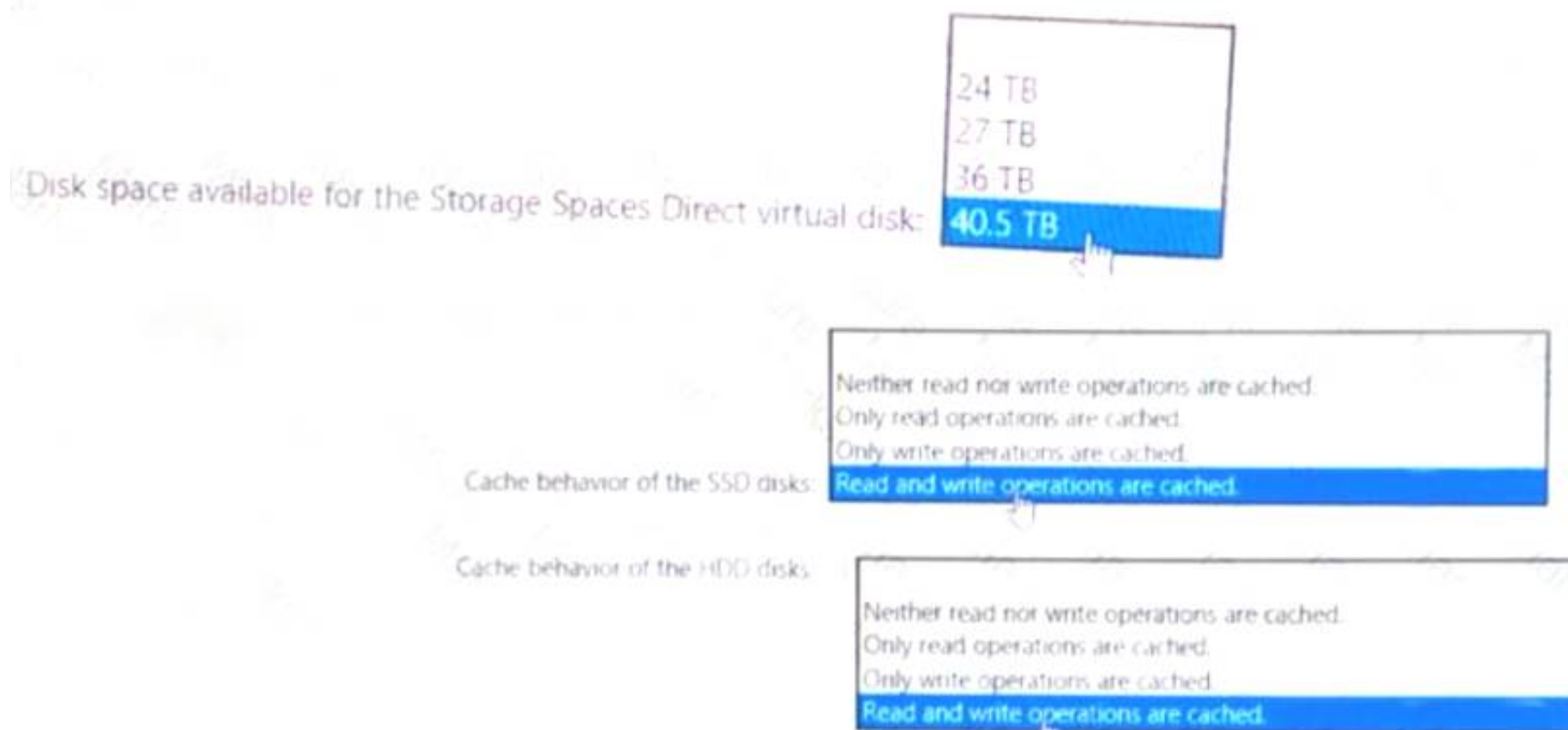
You have a failover cluster named Cluster1 that contains three Windows Server nodes named Node 1, Node2. and Node3.

You need to deploy a Storage Spaces Direct virtual disk to Cluster1. You add the following disks to each node:

- Three 512-GB NVMe disks
- Three 3-TB diskS
- Three 1-TB SSD disks

On Cluster1. you enable Storage Spaces Direct and add the new disks.

What is the total amount of disk space available for the Storage Spaces Direct virtual disk, and which operations are cached for the SSD and HDD disks? To answer, select the appropriate options in the answer area.



Disk space available for the Storage Spaces Direct virtual disk:

- 24 TB
- 27 TB
- 36 TB
- 40.5 TB

Cache behavior of the SSD disks:

- Neither read nor write operations are cached.
- Only read operations are cached.
- Only write operations are cached.
- Read and write operations are cached.

Cache behavior of the HDD disks:

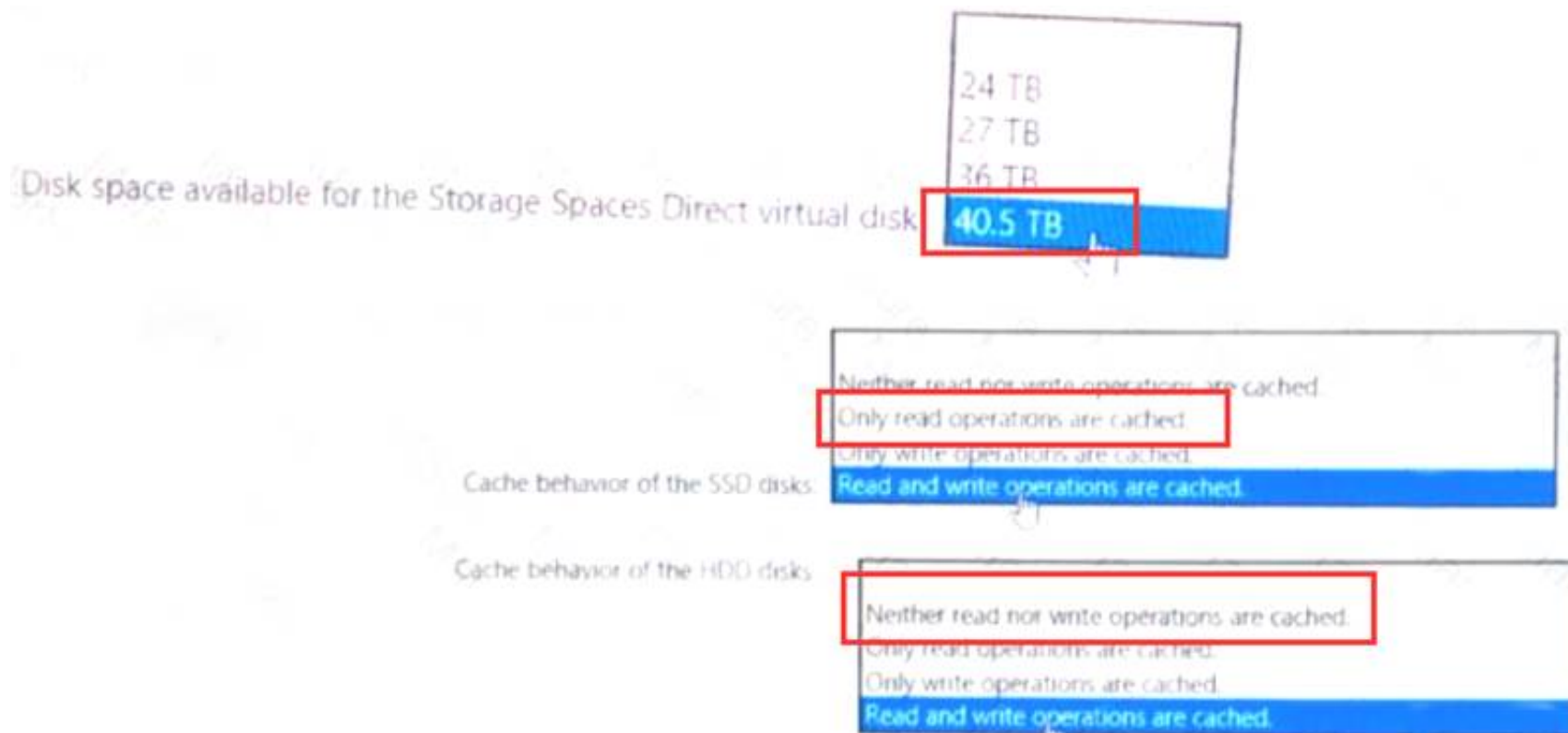
- Neither read nor write operations are cached.
- Only read operations are cached.
- Only write operations are cached.
- Read and write operations are cached.

- A. Mastered
- B. Not Mastered

**Answer: A**

**Explanation:**





#### NEW QUESTION 16

- (Exam Topic 2)

Which domain controller should be online to meet the technical requirements for DC4?

- A. DC1
- B. DC2
- C. DC3

**Answer: B**

#### NEW QUESTION 18

- (Exam Topic 3)

You have an Azure subscription. The subscription contains a virtual machine named VM1 that runs Windows Server. The subscription contains the storage accounts shown in the following table.

Name	Performance	Premium account type	Redundancy
storage1	Standard	Not applicable	Geo-redundant storage (GRS)
storage2	Standard	Not applicable	Zone-redundant storage (ZRS)
storage3	Premium	Block blobs	Locally-redundant storage (LRS)
storage4	Premium	File shares	Locally-redundant storage (LRS)

You plan to enable boot diagnostics for VM1.

You need to configure storage for the boot diagnostics logs and snapshots. Which storage account should you use?

- A. storage1
- B. storage2
- C. storage3

**Answer: C**

#### NEW QUESTION 19

- (Exam Topic 3)

You have a Site-to-Site VPN between an on-premises network and an Azure VPN gateway. BGP is disabled for the Site-to-Site VPN.

You have an Azure virtual network named Vnet1 that contains a subnet named Subnet1. Subnet1 contains a virtual machine named Server1.

You can connect to Server1 from the on-premises network.

You extend the address space of Vnet1. You add a subnet named Subnet2 to Vnet1. Subnet2 uses the extended address space. You deploy an Azure virtual machine named Server2 to Subnet2.

You cannot connect to Server2 from the on-premises network. Server1 can connect to Server2. You need to ensure that you can connect to Subnet2 from the on-premises network.

What should you do?

- A. Add an additional Site-to-Site VPN between the on-premises network and Vnet1.
- B. Add a private endpoint to Subnet2.
- C. To Subnet2, add a route table that contains a user-defined route.
- D. Update the routing information on the on-premises routers.

**Answer: D**

#### NEW QUESTION 21

- (Exam Topic 3)

You have an Azure virtual machine named VM1 that runs Windows Server. VM1 has boot diagnostics configured to use a managed storage account.

You are troubleshooting connectivity issue on VM1.

You need to run a PowerShell cmdlet on VM1 by using the Azure Serial Console.  
Which four actions should you perform in sequence? To answer, move the appropriate actions from the list of actions to the answer area and arrange them in the correct order.

Actions

From the Azure portal, configure the Boot diagnostics settings for VM1 to use a custom storage account.

From the Azure portal, open the Run command blade.

From the Azure portal, open the Serial console blade of VM1.

From the Azure portal, enable just in time (JIT) VM access to VM1.

From the Serial console, run `ch -si 1` and sign in by using a local account.

From the Serial console, run `cmd`.

Answer Area

- A. Mastered
- B. Not Mastered

Answer: A

**Explanation:**  
Graphical user interface, text, application, email Description automatically generated  
Reference:  
<https://docs.microsoft.com/en-us/troubleshoot/azure/virtual-machines/serial-console-overview> <https://docs.microsoft.com/en-us/troubleshoot/azure/virtual-machines/serial-console-windows>

NEW QUESTION 24

- (Exam Topic 3)  
Your network contains an Active Directory Domain Services (AD DS) domain. The domain contains servers that run Windows Server as shown in the following table.

Name	IP address
Server1	172.16.10.10
Server2	172.16.20.50
Server3	172.16.30.80

Server1 has the connection security rules shown in the following table.

Answer Area

Statements	Yes	No
Server1 can communicate with Server2 successfully.	<input type="radio"/>	<input type="radio"/>
Server2 can communicate with Server3 successfully.	<input type="radio"/>	<input type="radio"/>
Server3 can communicate with Server2 successfully.	<input type="radio"/>	<input type="radio"/>

- A. Mastered
- B. Not Mastered

Answer: A

**Explanation:**

Answer Area

Statements	Yes	No
Server1 can communicate with Server2 successfully.	<input checked="" type="radio"/>	<input type="radio"/>
Server2 can communicate with Server3 successfully.	<input type="radio"/>	<input checked="" type="radio"/>
Server3 can communicate with Server2 successfully.	<input checked="" type="radio"/>	<input type="radio"/>

**NEW QUESTION 26**

- (Exam Topic 3)  
You have a Hyper-V failover cluster named Cluster1 at a main datacenter. Cluster1 contains two nodes that have the Hyper-V server role installed. Cluster1 hosts 10 highly available virtual machines.  
You have a cluster named Cluster2 in a disaster recovery site. Cluster2 contains two nodes that have the Hyper-V server role installed.  
You plan to use Hyper-V Replica to replicate the virtual machines from Cluster1 to Cluster2. What should you do? To answer, select the appropriate options in the answer area.  
NOTE: Each correct selection is worth one point.

**Answer Area**

Cluster role to create on Cluster2:

Distributed Transaction Coordinator (DTC)

Generic Script

Hyper-V Replica Broker

Virtual machine

Replication target name to specify:

Cluster2

The name of a node on Cluster2

The name of each virtual machine

The name of the Hyper-V Replica Broker

- A. Mastered
- B. Not Mastered

**Answer:** A

**Explanation:**  
Graphical user interface, text, application Description automatically generated  
Reference:  
<https://docs.microsoft.com/en-us/virtualization/community/team-blog/2012/20120327-why-is-the-hyper-v-replic>

**NEW QUESTION 30**

- (Exam Topic 3)  
You have an on-premises server named Server1 that runs Windows Server. You need to perform an on-demand backup of the files on Server 1 by using Azure Backup.  
Which five actions should you perform in sequence? To answer, move the appropriate actions actions from the list of actions to the answer are and arrange them in the correct order.

From the Azure portal, create a Recovery Services vault.

On Server1, run the Microsoft Azure Recovery Services Agent Setup Wizard.

From the Azure portal, download the Microsoft Azure Recovery Services (MARS) agent and the vault credentials.

From the Azure portal, create a Backup vault.

On Server1, run the Schedule Backup Wizard.

- A. Mastered
- B. Not Mastered

**Answer:** A

**Explanation:**  
A picture containing text Description automatically generated

**NEW QUESTION 31**

- (Exam Topic 3)  
You have a Hyper-V failover cluster named Cluster1 that uses a cloud witness. Cluster1 hosts a virtual machine named VM1 that runs Windows Server.  
You need to fail over VM1 automatically to a different node when a service named Service1 on VM1 fails. What should you do on Cluster1 and VM1? To answer, select the appropriate options in the answer area. NOTE: Each correct selection is worth one point.



Cluster1: 

▼

Modify the settings of the VM1 cluster role.

Configure monitoring of the VM1 cluster role.

Change the startup priority of the VM1 cluster role.

VM1: 

▼

Configure the Startup Type of Service1.

Configure the Recovery settings of Service1.

Configure the Startup and Recovery settings.

Install and configure the Azure Monitor agent.

- A. Mastered
- B. Not Mastered

Answer: A

Explanation:  
Text, table Description automatically generated

NEW QUESTION 34

- (Exam Topic 3)  
You have three servers named Server1. Server1 and Server3 that run Windows Server and have the hyper V server rote installed. Server 1 hosts an Azure Migrate appliance named Migrate1.  
You plan to migrate virtual machines to Azure.  
You need to ensure that any new virtual machines created on Server 1. Server2 and Server3 are available in Azure Migrate  
What should you do?

- A. On Migrate1, add a discovery source.
- B. On the DNS server used by Migrate 1, create a GlobalName zone.
- C. On Migrate1, set the Startup Type of the Computer Browser service to Automatic
- D. On the network that has Migrate1 deployed, deploy a WINS server.

Answer: A

NEW QUESTION 37

- (Exam Topic 3)  
You have two Azure virtual machines named VM1 and VM2. VM1 is backed up to an Azure Recovery Services vault daily and retains backups for 30 days.  
You need to restore an individual file named C:\Data\Important.docx from VM1 to VM2. The solution must minimize administrative effort.  
Which four actions should you perform in sequence? To answer, move the appropriate actions from the list of actions to the answer area and arrange them in the correct order.

Actions

Unmount the disks.

Download the file recovery script for VM1.

Copy the file by using Azure Storage Explorer.

Copy the file by using File Explorer.

Restore the file by using Windows Server Backup.

Run the file recovery script on VM2.

Answer Area

- A. Mastered
- B. Not Mastered

Answer: A

Explanation:  
Text Description automatically generated  
Reference:  
<https://docs.microsoft.com/en-us/azure/backup/backup-azure-restore-files-from-vm>

NEW QUESTION 42

- (Exam Topic 3)  
Note: This question is part of a series of questions that present the same scenario. Each question in the series contains a unique solution that might meet the stated goals. Some question sets might have more than one correct solution, while others might not have a correct solution.  
After you answer a question in this section, you will NOT be able to return to it. As a result, these questions will not appear in the review screen.

Your network contains a single-domain Active Directory Domain Services (AD DS) forest named contoso.com. The functional level of the forest is Windows Server 2012 R2. All domain controllers run Windows Server 2012 R2. Sysvol replicates by using the File Replication Service (FRS). You plan to replace the existing domain controllers with new domain controllers that will run Windows Server 2022. You need to ensure that you can add the first domain controller that runs Windows Server 2022. Solution: You upgrade the PDC emulator. Does this meet the goal?

- A. Yes
- B. No

**Answer: B**

#### NEW QUESTION 43

- (Exam Topic 3)

You have an on-premises server that runs Windows Server and has the Web Server (IIS) server role installed. The server hosts a web app that connects to an on-premises Microsoft SQL Server database.

You plan to migrate the web app to an Azure App Services web app. The database will remain on-premises. You need to ensure that the migrated web app can access the database.

What should you configure in Azure?

- A. an Azure SQL managed instance
- B. an on-premises data gateway
- C. Azure Extended Network
- D. a Hybrid Connection

**Answer: D**

#### Explanation:

Reference:

<https://docs.microsoft.com/en-us/azure/app-service/app-service-hybrid-connections>

#### NEW QUESTION 44

- (Exam Topic 3)

You have an on-premises server that runs Windows Server and contains a folder named Folder1. Folder1 contains 50 GB of files.

You have an Azure subscription that contains an Azure Files share named share1. You need to migrate the data in Folder1 to share1.

What should you do? To answer, select the appropriate options in the answer area.

NOTE: Each correct selection is worth one point.

#### Answer Area

Deploy to Azure:

- An Azure Storage account
- ArcBox
- An Azure Migrate project
- An on-premises data gateway
- An Azure Storage account**
- A Storage Sync Service instance

Install on Server1:

- The Azure File Sync agent
- The Azure Connected Machine agent
- The Azure File Sync agent**
- Storage Migration Service
- Storage Replica

- A. Mastered
- B. Not Mastered

**Answer: A**

#### Explanation:

#### Answer Area

Deploy to Azure:

- An Azure Storage account
- ArcBox
- An Azure Migrate project
- An on-premises data gateway
- An Azure Storage account**
- A Storage Sync Service instance

Install on Server1:

- The Azure File Sync agent
- The Azure Connected Machine agent
- The Azure File Sync agent**
- Storage Migration Service
- Storage Replica

**NEW QUESTION 46**

- (Exam Topic 3)  
You have an Azure virtual machine named VM1.  
You enable Microsoft Defender SmartScreen on VM1.  
You need to ensure that the SmartScreen messages displayed to users are logged. What should you do?

- A. From a command prompt, run WinRM quickconfig.
- B. From the local Group Policy, modify the Advanced Audit Policy Configuration settings.
- C. From Event Viewer, enable the Debug log.
- D. From the Windows Security app, configure the Windows Defender settings.
- E. configure the Virus & threat protection settings.

**Answer:** C

**Explanation:**

Reference:  
<https://docs.microsoft.com/en-us/windows/security/threat-protection/microsoft-defender-smartscreen/microsoft>

**NEW QUESTION 50**

- (Exam Topic 3)  
Your on-premises network contains two subnets. The subnets contain servers that run Windows Server as shown in the following table.

Name	IP address
Server1	192.168.1.10
Server2	192.168.0.250
Server3	192.168.0.240
Server4	192.168.0.10

Server4 has the following IP configurations: Ethernet adapter Ethernet:  
Connection-specific DNS Suffix . . . :  
IPv4 Address . . . . . : 192.168.0.10  
Subnet Mask . . . . . : 255.255.255.0  
Default Gateway . . . . . : 192.168.0.1  
From Server4, you can ping Server1 and Server2 successfully. When you ping Server3, you get a Request timed out response.  
From Server2, you can ping Server1 and Server3 successfully.  
The misconfiguration of which component on Server3 can cause the Request timed out response?

- A. default gateway
- B. IP address
- C. subnet mask
- D. DNS server

**Answer:** C

**NEW QUESTION 52**

- (Exam Topic 3)  
Your network contains an Active Directory Domain Services (AD DS) domain. The domain contains a print server named Server1. All printers are deployed to users by using a Group Policy Object (GPO) named GPO1.  
You deploy a new server named Server2.  
You need to decommission Server1. The solution must meet the following requirements:

- Migrate the shared printers to Server2 by using the Printer Migration Wizard.
- Ensure that the users use the printers on Server2.
- Minimize downtime for the users.

Which four actions should you perform in sequence? To answer, move the appropriate actions from the list of actions to the answer area and arrange them in the correct order.

**Actions**

Decommission Server1.

Import the printers on Server2.

Deploy Windows Server Hybrid Cloud Print.

Export the printers on Server1.

Update the service principal name (SPN) of each printer.

Modify GPO1.

**Answer Area**

- A. Mastered
- B. Not Mastered

**Answer:** A

**Explanation:**

Graphical user interface, text, application, email Description automatically generated  
Reference:

**NEW QUESTION 57**

You need to minimize how long it will take to migrate the data to Azure. What should you use?

- A. Storage Migration Service  
B. Azure Storage Explorer  
C. Azure Data Box  
D. Azure File Sync

**Answer: C**

**NEW QUESTION 59**

**Solution:** You download and reinstall the VPN client configuration. Does this meet the goal?

- A. Yes  
B. No

**Answer: A**

## NEW QUESTION 63

Solution: From the General settings, you increase the priority of Server2 in the Preferred Owners list. Does this meet the goal?

- A. Yes  
B. NO

**Answer: B**

## NEW QUESTION 68

You have a failover cluster named Cluster1 that contains the nodes shown in the following table.

Name	Server role
Node1	File Server
Node2	File Server
Node3	File Server

A File Server for general use cluster role named HAFS is configured as shown in the General exhibit (Click the General tab.)

**Answer Area**

- If you select **Move**, and then **Best Possible Node**, HAFS will move to Node3. ☐ ☐
- If you stop and start Cluster1, HAFS will come online on Node1. ☐ ☐
- If you select **Move**, **Select Node**, and then **Node2**, HAFS will move to Node2. ☐ ☐

- A. Mastered  
B. Not Mastered

**Answer: A**

**Explanation:**

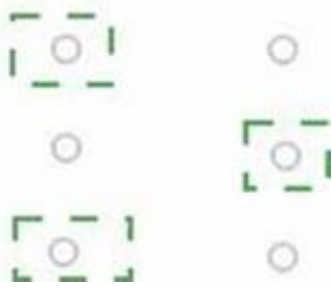


Answer Area

If you select **Move**, and then **Best Possible Node**, HAFS will move to Node3.

If you stop and start Cluster1, HAFS will come online on Node1.

If you select **Move**, **Select Node**, and then **Node2**, HAFS will move to Node2.



NEW QUESTION 69

- (Exam Topic 3)

You have an on-premises Active Directory Domain Services (AD DS) domain that syncs with an Azure Active Directory (Azure AD) tenant by using password hash synchronization.

You have a Microsoft 365 subscription. All devices are hybrid Azure AD-joined.

Users report that they must enter their password manually when accessing Microsoft 365 applications.

You need to reduce the number of times the users are prompted for their password when they access Microsoft 365 and Azure services.

What should you do?

- A. In Azure A
- B. configure a Conditional Access policy for the Microsoft Office 365 applications.
- C. In the DNS zone of the AD DS domain, create an autodiscover record.
- D. From Azure AD Connect, enable single sign-on (SSO).
- E. From Azure AD Connect, configure pass-through authentication.

Answer: C

Explanation:

Reference:  
<https://docs.microsoft.com/en-us/azure/active-directory/hybrid/how-to-connect-sso-quick-start>

NEW QUESTION 74

- (Exam Topic 3)

Your network contains an Active Directory Domain Services (AD DS) forest. The forest contains the domains shown in the following table.

Name	Domain controller	Configuration
fabrikam.com	DC1	PDC emulator
	DC2	Infrastructure master
	DC3	Read-only domain controller (RODC)
eu.fabrikam.com	DC4	PDC emulator
	DC5	Infrastructure master
	DC6	Read-only domain controller (RODC)

You are implementing Microsoft Defender for Identity sensors.

You need to install the sensors on the minimum number of domain controllers. The solution must ensure that Defender for Identity will detect all the security risks in both the domains.

What should you identify? To answer, select the appropriate options in the answer area. NOTE: Each correct selection is worth one point.

Domain controllers that require the sensors:

DC1 and DC4 only

DC2 and DC5 only

DC1, DC2, DC4, and DC5 only

All the domain controllers in the forest

Authentication information that must be provided during the sensor installation:

An AD DS group managed service account (gMSA)

A cloud-only user from Azure Active Directory (Azure AD)

The access key generated by the Microsoft Defender for Identity portal

- A. Mastered
- B. Not Mastered

Answer: A

Explanation:

Text, table Description automatically generated

Reference:



<https://docs.microsoft.com/en-us/defender-for-identity/technical-faq#deployment> <https://docs.microsoft.com/en-us/defender-for-identity/install-step4>

**NEW QUESTION 76**

- (Exam Topic 3)

You have an on-premises IIS web server that hosts a web app named Appl. You plan to migrate App1 to a container and run the container in Azure. You need to perform the following tasks:

- Export App1 to a ZIP file.
- Create a container image based on Appl.

The solution must minimize administrative effort.

Azure Migrate

The Azure portal

Web Deploy

Windows Admin Center

Windows Server Migration Tools

Answer Area

Export App1 to a ZIP file:

Tool

Create a container image with App1:

Tool

- A. Mastered  
B. Not Mastered

**Answer:** A

**Explanation:**

Azure Migrate Web deploy

**NEW QUESTION 77**

- (Exam Topic 3)

Note: This question is part of a series of questions that present the same scenario. Each question in the series contains a unique solution that might meet the stated goals. Some question sets might have more than one correct solution, while others might not have a correct solution.

After you answer a question in this section, you will NOT be able to return to it. As a result, these questions will not appear in the review screen.

Your network contains a single-domain Active Directory Domain Services (AD DS) forest named contoso.com. The functional level of the forest is Windows Server 2012 R2. All domain controllers run Windows Server 2012 R2.

Sysvol replicates by using the File Replication Service (FRS).

You plan to replace the existing domain controllers with new domain controllers that will run Windows Server 2022.

You need to ensure that you can add the first domain controller that runs Windows Server 2022. Solution: You run the Active Directory Migration Tool (ADMT).

Does this meet the goal?

- A. Yes  
B. No

**Answer:** B

**NEW QUESTION 80**

- (Exam Topic 3)

Note: This question is part of a series of questions that present the same scenario. Each question in the series contains a unique solution that might meet the stated goals. Some question sets might have more than one correct solution, while others might not have a correct solution.

After you answer a question in this section, you will NOT be able to return to it. As a result, these questions will not appear in the review screen.

You have a server named Server1 that runs Windows Server.

You need to ensure that only specific applications can modify the data in protected folders on Server1. Solution: From Virus & threat protection, you configure Controlled folder access.

Does this meet the goal?

- A. Yes  
B. No

**Answer:** A

**Explanation:**

Reference:

<https://docs.microsoft.com/en-us/microsoft-365/security/defender-endpoint/customize-controlled-folders?view=>

**NEW QUESTION 82**

- (Exam Topic 3)

Your network contains an Active Directory Domain Services (AD DS) domain named contoso.com. The functional level of the forest and the domain is Windows Server 2012 R2. The domain contains the domain controllers shown in the following table.

Name	Operating system	FMSO role
DC1	Windows Server 2012 R2	All
DC2	Windows Server 2022	None
DC3	Windows Server 2019	None

You need to raise the forest functional level to Windows Server 2016. The solution must meet the following requirements:

- Ensure that there are three domain controllers after you raises the level.
- Minimize how long the FSMO roles are unavailable.

Which three actions should you perform in sequence? To answer, move the appropriate actions from the list of actions to the answer area and arrange them in the correct order.

Actions

Install the Active Directory Migration Tool (ADMT).

Deploy an additional domain controller.

Raise the domain and forest functional level.

Upgrade DC3.

Migrate computer accounts by using the Active Directory Migration Tool (ADMT).

Upgrade DC1.

Create a custom AD DS partition.

Move the FSMO roles to DC2.

Answer Area

- A. Mastered
- B. Not Mastered

Answer: A

Explanation:  
Graphical user interface, text, application, email Description automatically generated

NEW QUESTION 83

- (Exam Topic 3)  
You have 200 Azure virtual machines.  
You create a recovery plan in Azure Site Recovery to fail over all the virtual machines to an Azure region. The plan has three manual actions.  
You need to replace one of the manual actions with an automated process. What should you use?

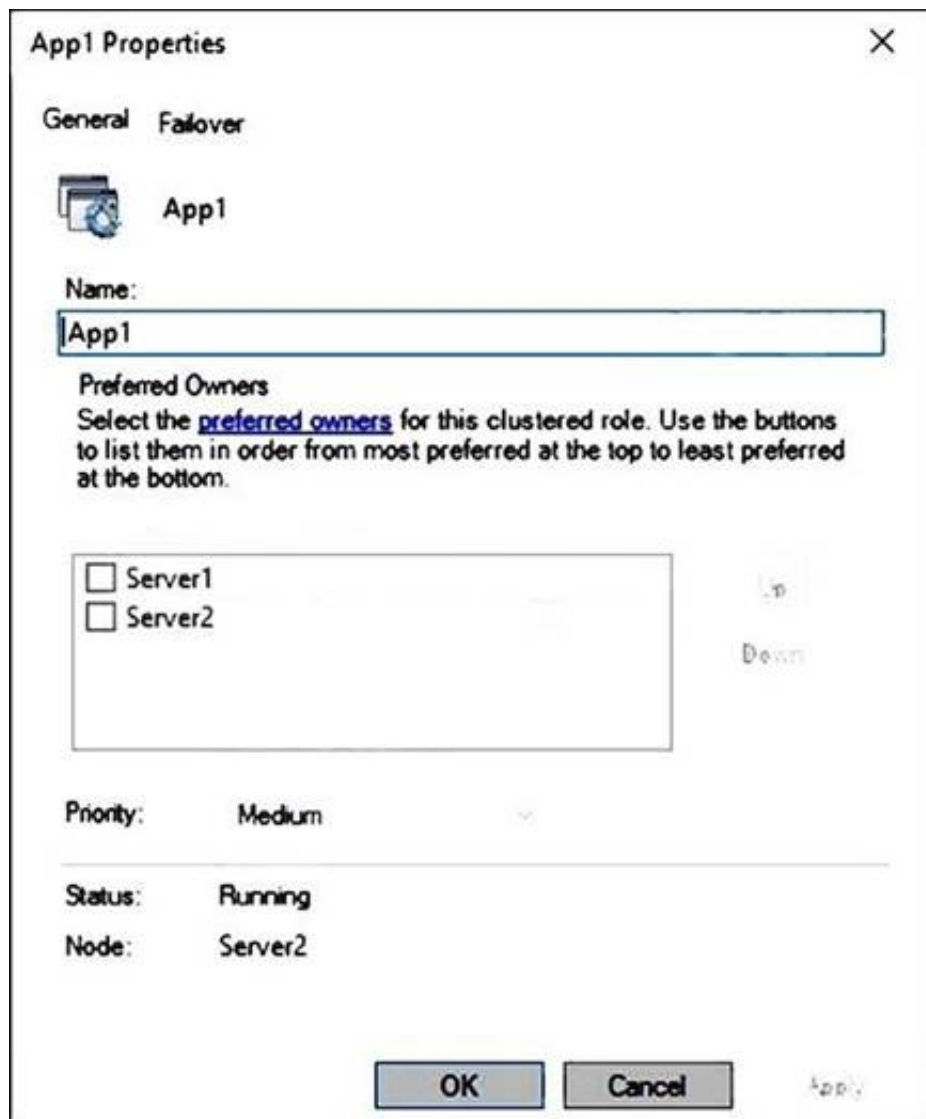
- A. an Azure Desired State Configuration (DSC) virtual machine extension
- B. an Azure Automation runbook
- C. an Azure PowerShell function
- D. a Custom Script Extension on the virtual machines

Answer: B

Explanation:  
Reference:  
<https://docs.microsoft.com/en-us/azure/site-recovery/recovery-plan-overview>

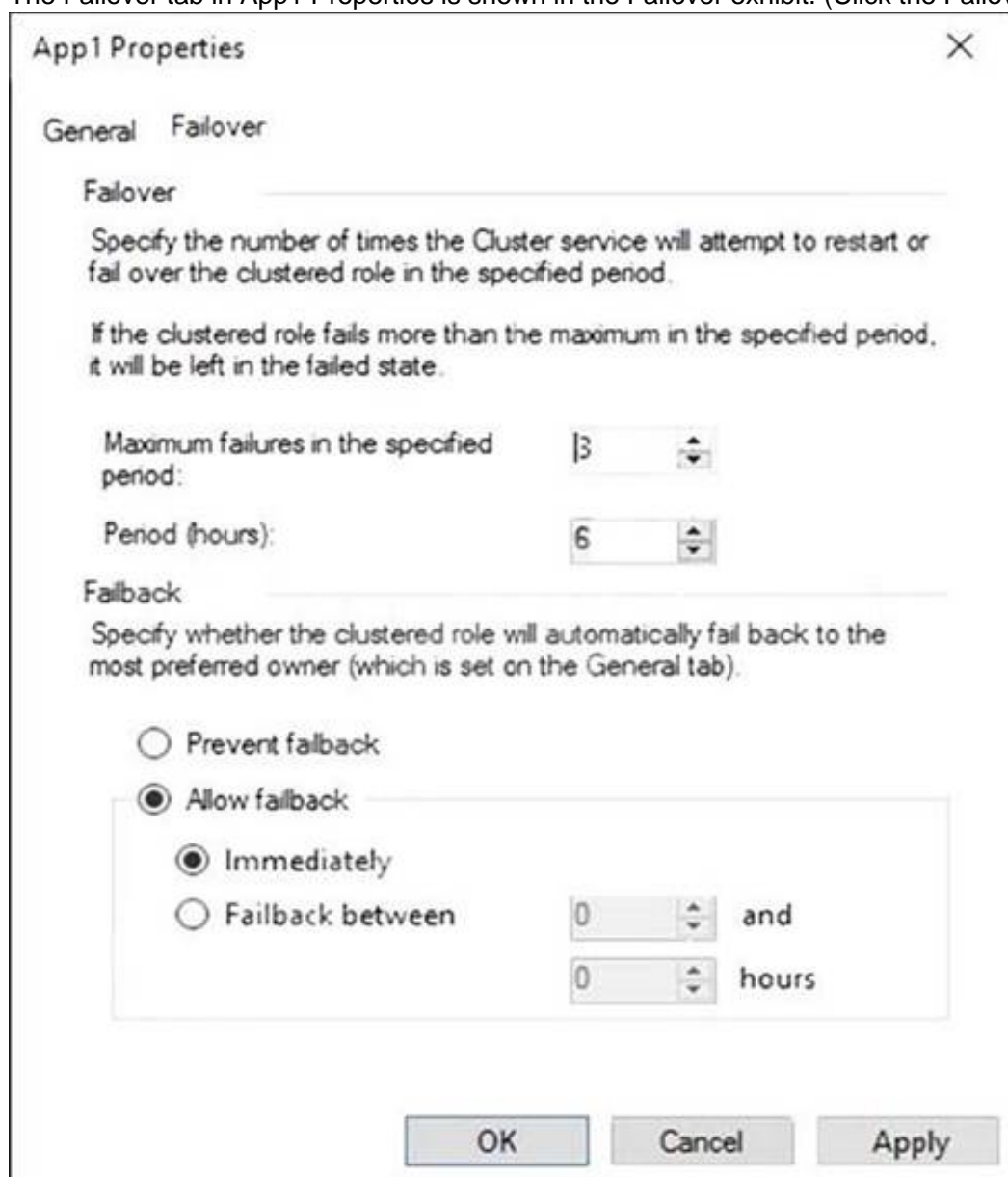
NEW QUESTION 86

- (Exam Topic 3)  
Note: This question is part of a series of questions that present the same scenario. Each question in the series contains a unique solution that might meet the stated goals. Some question sets might have more than one correct solution, while others might not have a correct solution.  
After you answer a question in this section, you will NOT be able to return to it. As a result, these questions will not appear in the review screen.  
You have a failover cluster named Cluster1 that hosts an application named App1.  
The General tab in App1 Properties is shown in the General exhibit. (Click the General tab.)



The image shows the 'App1 Properties' dialog box with the 'Failover' tab selected. The 'General' tab is also visible. The 'Name' field contains 'App1'. Under 'Preferred Owners', there are two checkboxes: 'Server1' and 'Server2', both of which are unchecked. To the right of the list are 'Up' and 'Down' buttons. Below the list, the 'Priority' is set to 'Medium'. The 'Status' is 'Running' and the 'Node' is 'Server2'. At the bottom are 'OK', 'Cancel', and 'Apply' buttons.

The Failover tab in App1 Properties is shown in the Failover exhibit. (Click the Failover tab.)



The image shows the 'App1 Properties' dialog box with the 'Failover' tab selected. The 'General' tab is also visible. The 'Failover' section has a description: 'Specify the number of times the Cluster service will attempt to restart or fail over the clustered role in the specified period. If the clustered role fails more than the maximum in the specified period, it will be left in the failed state.' Below this, 'Maximum failures in the specified period' is set to 3, and 'Period (hours)' is set to 6. The 'Failback' section has a description: 'Specify whether the clustered role will automatically fail back to the most preferred owner (which is set on the General tab).' There are two radio buttons: 'Prevent failback' and 'Allow failback'. 'Allow failback' is selected. Below it, there are two radio buttons: 'Immediately' and 'Failback between'. 'Immediately' is selected. Below 'Failback between', there are two spinners, both set to 0, followed by the text 'and' and 'hours'.

Server1 shuts down unexpectedly.

You need to ensure that when you start Server1, App1 continues to run on Server2. Solution: From the General settings, you move Server2 up. Does this meet the goal?

- A. Yes
- B. No

**Answer: B**

**Explanation:**

Server1 and Server2 are both unticked so the order they are listed in has no effect on whether the cluster will fail back.

**NEW QUESTION 87**

- (Exam Topic 3)  
You have three servers named Host1, Host2, and VM1 that run Windows Server. Host1 and Host2 have the Hyper-V server role installed. VM1 is a virtual machine hosted on Host1.  
You configure VM1 to replicate to Host2 by using Hyper-V Replica.  
Which types of failovers can you perform on VM1 on each host? To answer, select the appropriate options in the answer area.  
NOTE: Each correct selection is worth one point.

VM1 on Host1:

Failover only

Test Failover only

Planned Failover only

Failover and Planned Failover only

Test Failover and Failover only

VM1 on Host2:

Failover only

Test Failover only

Planned Failover only

Failover and Planned Failover only

Test Failover and Failover only

- A. Mastered
- B. Not Mastered

Answer: A

Explanation:  
Graphical user interface, text, application, chat or text message Description automatically generated

NEW QUESTION 89

- (Exam Topic 3)  
You have two Azure virtual networks named Vnet1 and Vnet2.  
You have a Windows 10 device named Client1 that connects to Vnet1 by using a Point-to-Site (P2S) IKEv2 VPN.  
You implement virtual network peering between Vnet1 and Vnet2. Vnet1 allows gateway transit Vnet2 can use the remote gateway.  
You discover that Client1 cannot communicate with Vnet2. You need to ensure that Client1 can communicate with Vnet2. Solution: You resize the gateway of Vnet1 to a larger SKU. Does this meet the goal?

- A. Yes
- B. No

Answer: B

NEW QUESTION 90

- (Exam Topic 3)  
You have two servers that have the Web Server (IIS) server role installed. The servers are configured as shown in the following table.

Name	Operating system
Server1	Windows Server 2016
Server2	Windows Server 2022

Both servers are configured to enable website deployment by using the Web Deployment Tool. Server1 hosts a website named Site1 that has Web Deploy Publishing configured.  
You plan to migrate Site1 to Server2.  
You need to perform a pull synchronization of Site1 by using the Web Deployment Agent Service. How should you complete the command? To answer, select the appropriate options in the answer area. NOTE: Each correct selection is worth one point.

msdeploy -verb:sync -source:

apphostconfig="Site1"

apphostconfig="Site1",computername=Server1

apphostconfig="Site1",computername=Server2

package=c:\site1.zip

-dest:

apphostconfig="Site1"

apphostconfig="Site1",computername=Server1

apphostconfig="Site1",computername=Server2

package=c:\site1.zip

- A. Mastered
- B. Not Mastered

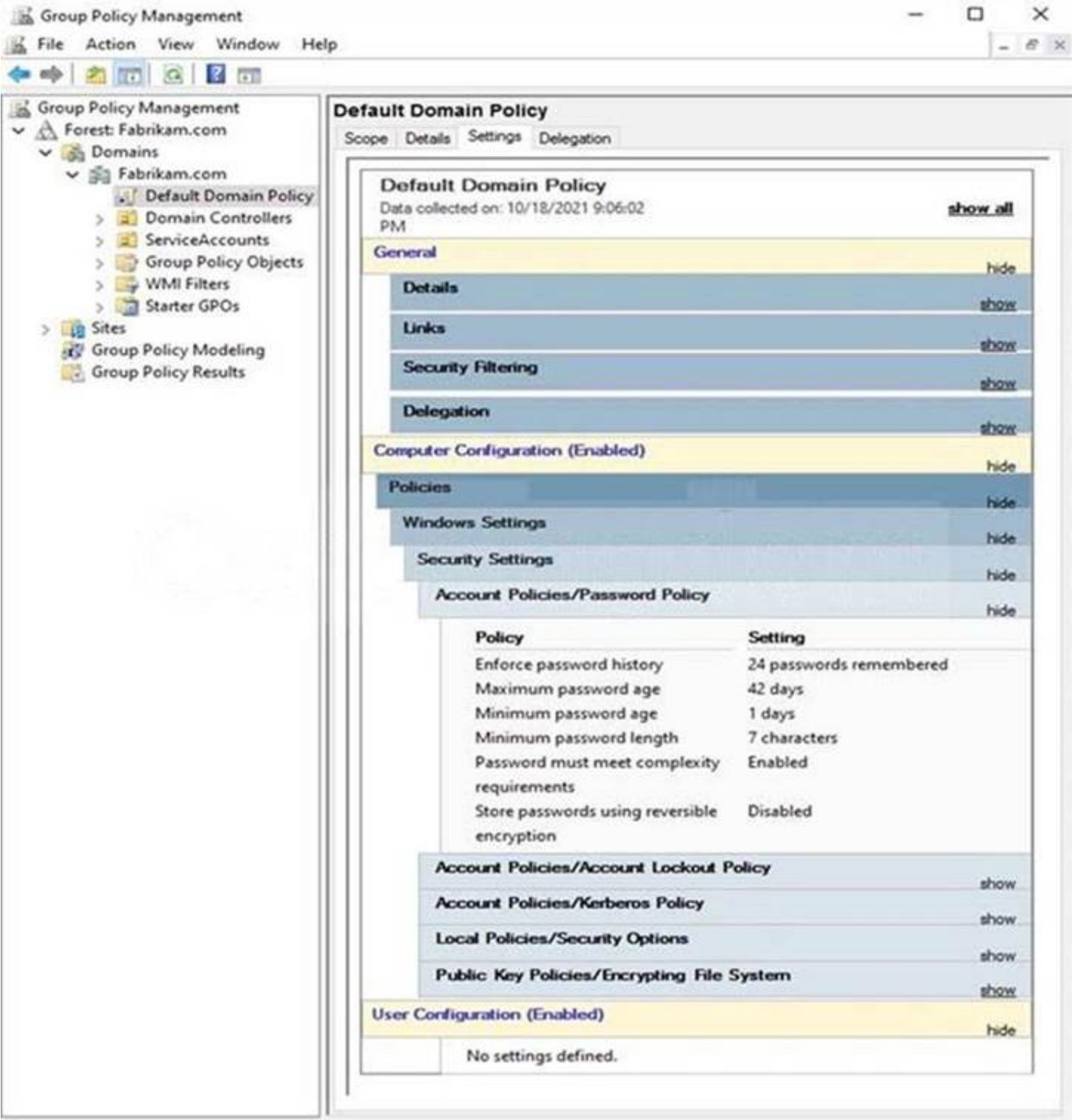
Answer: A



**Explanation:**  
Reference:  
<https://docs.microsoft.com/en-us/iis/publish/using-web-deploy/synchronize-iis>

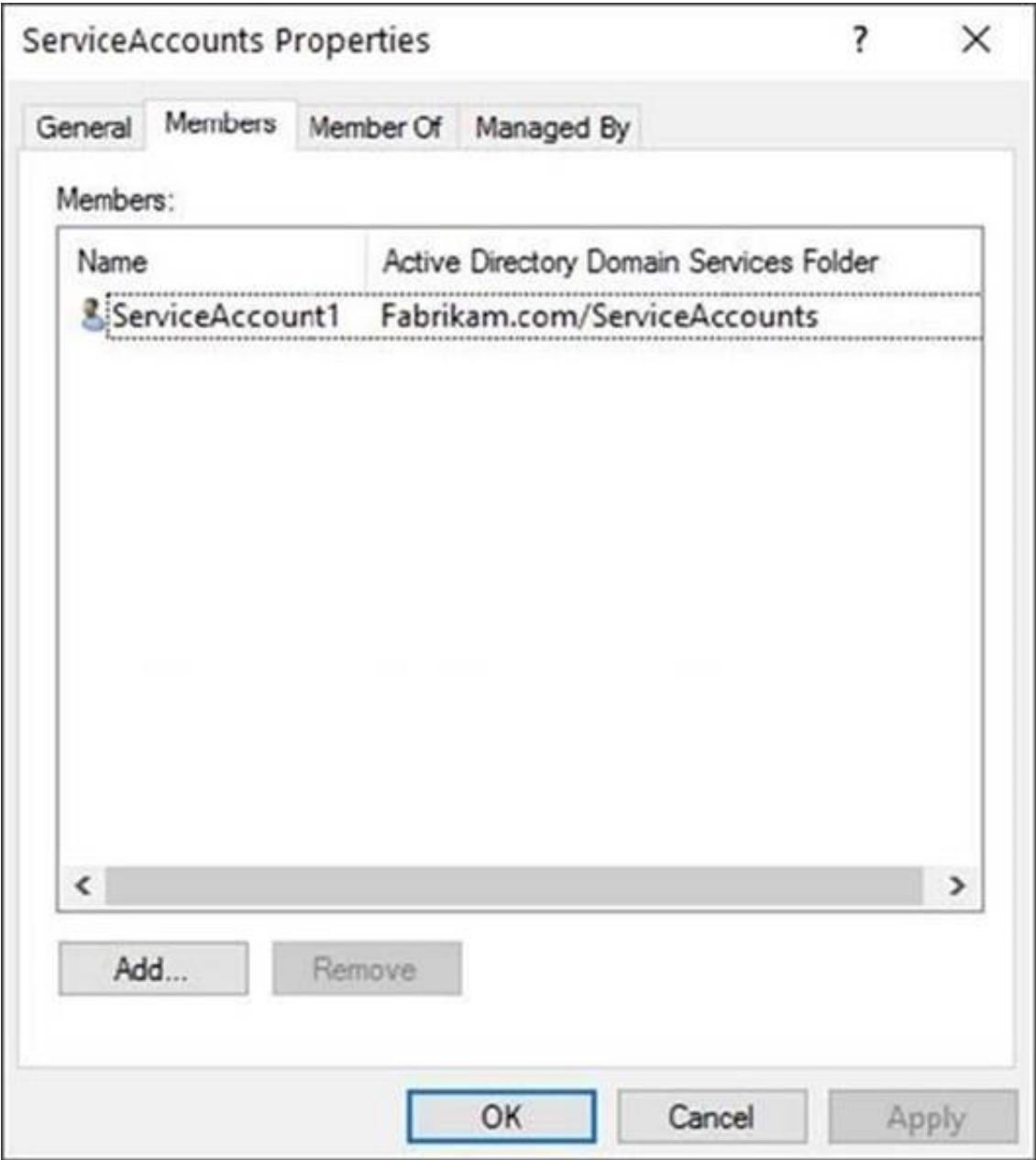
NEW QUESTION 92

- (Exam Topic 3)  
The Default Domain Policy Group Policy Object (GPO) is shown in the GPO exhibit. (Click the GPO tab.)

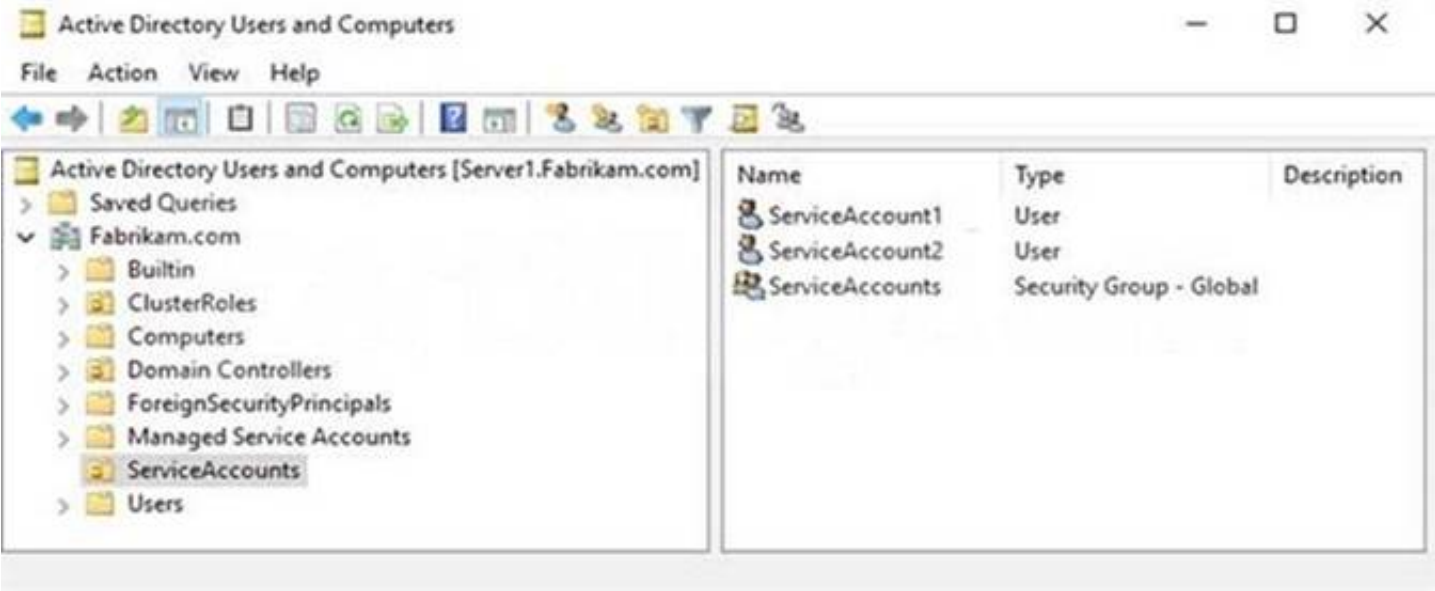


The members of a group named Service Accounts are shown in the Group exhibit. (Click the Group tab.)





An organizational unit (OU) named ServiceAccounts is shown in the OU exhibit. (Click the OU tab.)



You create a Password Settings Object (PSO) as shown in the PSO exhibit. (Click the PSO tab.)

Service Accounts Policy

TASKS

SECTIONS

Password Settings

Directly Applies To

Extensions

Name: Service Accounts Policy

Precedence: 10

☒ Enforce minimum password length

Minimum password length (characte... 16

☒ Enforce password history

Number of passwords remembered: 12

☒ Password must meet complexity requirements

☐ Store password using reversible encryption

☒ Protect from accidental deletion

Description:

Password age options:

☒ Enforce minimum password age

User cannot change the password... 1

☒ Enforce maximum password age

User must change the password af... 30

☒ Enforce account lockout policy:

Number of failed logon attempts allo... 5

Reset failed logon attempts count aft... 30

Account will be locked out

☒ For a duration of (mins): 60

☐ Until an administrator manually unlocks the a...

Directly Applies To

Name

Mail

ServiceAccounts

Add...

Remove

Extensions

More Information

OK

Cancel

For each of the following statements, select Yes if the statement is true. Otherwise, select No. NOTE: Each correct selection is worth one point.

Statements	Yes	No
The password of ServiceAccount1 must be at least 16 characters long.	<input type="radio"/>	<input type="radio"/>
The password of ServiceAccount2 must be at least 16 characters long.	<input type="radio"/>	<input type="radio"/>
Accounts that have the Service Accounts Policy applied can change their password to P@\$w0rd1.	<input type="radio"/>	<input type="radio"/>

- A. Mastered
- B. Not Mastered

**Answer:** A

**Explanation:**

A screenshot of a computer Description automatically generated with medium confidence

Reference:

<https://docs.microsoft.com/en-us/windows-server/identity/ad-ds/get-started/adac/introduction-to-active-directory>

**NEW QUESTION 95**

- (Exam Topic 2)

You need to meet technical requirements for Share1. What should you use?

- A. Storage Migration Service
- B. File Server Resource Manager (FSRM)
- C. Server Manager
- D. Storage Replica

**Answer:** A

**Explanation:**

Reference:

<https://docs.microsoft.com/en-us/windows-server/storage/storage-migration-service/overview>

**NEW QUESTION 99**

- (Exam Topic 2)

You need to meet the technical requirements for User1. To which group in contoso.com should you add User1?

Passing Certification Exams Made Easy

visit - <https://www.surepassexam.com>

- A. Domain Admins
- B. Account Operators
- C. Schema Admins
- D. Backup Operators

Answer: A

NEW QUESTION 104

- (Exam Topic 2)  
For each of the following statements, select Yes if the statement is true. Otherwise, select No.  
NOTE: Each correct selection is worth one point.

Statements	Yes	No
User1 can sign in to Server4 by using Remote Desktop.	<input type="radio"/>	<input type="radio"/>
User2 can sign in to Server4 by using Remote Desktop.	<input type="radio"/>	<input type="radio"/>
User3 can sign in to Server4 by using Remote Desktop.	<input type="radio"/>	<input type="radio"/>

- A. Mastered
- B. Not Mastered

Answer: A

Explanation:  
Text Description automatically generated

NEW QUESTION 106

- (Exam Topic 1)  
You are remediating the firewall security risks to meet the security requirements. What should you configure to reduce the risks?

- A. a Group Policy Object (GPO)
- B. adaptive network hardening in Microsoft Defender for Cloud
- C. a network security group (NSG) in Sub1
- D. an Azure Firewall policy

Answer: A

Explanation:  
Firewall rules configured in a Group Policy Object cannot be modified by local server administrators. Reference:  
<https://docs.microsoft.com/en-us/windows/security/threat-protection/windows-firewall/create-an-inbound-port-r>

NEW QUESTION 107

- (Exam Topic 1)  
You are planning the migration of Archive1 to support the on-premises migration plan.  
What is the minimum number of IP addresses required for the node and cluster roles on Cluster3?


- A. 2
- B. 3
- C. 4
- D. 5

Answer: B

Explanation:  
One IP for each of the two nodes in the cluster and one IP for the cluster virtual IP (VIP).

NEW QUESTION 108

- (Exam Topic 1)  
You are planning the implementation of Cluster2 to support the on-premises migration plan. You need to ensure that the disks on Cluster2 meet the security requirements.  
In which order should you perform the actions? To answer, move all actions from the list of actions to the answer area and arrange them in the correct order.

Actions	Answer Area
Add a disk resource to the cluster.	
Enable BitLocker on the volume.	
Update the BitLockerProtectorInfo property of the volume.	
Create a Cluster Shared Volume (CSV).	
Put the disk in maintenance mode.	

- A. Mastered
- B. Not Mastered

**Answer:** A

**Explanation:**  
Graphical user interface, text, application, table Description automatically generated  
Reference:  
<https://docs.microsoft.com/en-us/windows-server/failover-clustering/bitlocker-on-csv-in-ws-2022>

**NEW QUESTION 109**  
.....

## Thank You for Trying Our Product

### We offer two products:

1st - We have Practice Tests Software with Actual Exam Questions

2nd - Questions and Answers in PDF Format

### AZ-801 Practice Exam Features:

- \* AZ-801 Questions and Answers Updated Frequently
- \* AZ-801 Practice Questions Verified by Expert Senior Certified Staff
- \* AZ-801 Most Realistic Questions that Guarantee you a Pass on Your FirstTry
- \* AZ-801 Practice Test Questions in Multiple Choice Formats and Updatesfor 1 Year

**100% Actual & Verified — Instant Download, Please Click**  
**[Order The AZ-801 Practice Test Here](#)**