

Microsoft

Exam Questions MS-102

Microsoft 365 Administrator Exam



NEW QUESTION 1

HOTSPOT - (Topic 6)

You have a Microsoft 365 tenant that contains the compliance policies shown in the following table.

Name	Require BitLocker	Require the device to be at or under the machine risk score
Policy1	Required	High
Policy2	Not configured	Medium
Policy3	Required	Low

The tenant contains the devices shown in the following table.

Name	BitLocker Drive Encryption (BitLocker)	Microsoft Defender for Endpoint risk status	Policies applied
Device1	Configured	High	Policy1, Policy3
Device2	Not configured	Medium	Policy2, Policy3
Device3	Not configured	Low	Policy1, Policy2

For each of the following statements, select Yes if the statement is true. Otherwise, select No.

Statements	Yes	No
Device1 is marked as compliant.	<input type="radio"/>	<input type="radio"/>
Device2 is marked as compliant.	<input type="radio"/>	<input type="radio"/>
Device3 is marked as compliant.	<input type="radio"/>	<input type="radio"/>

- A. Mastered
- B. Not Mastered

Answer: A

Explanation:

Statements	Yes	No
Device1 is marked as compliant.	<input checked="" type="radio"/>	<input type="radio"/>
Device2 is marked as compliant.	<input checked="" type="radio"/>	<input type="radio"/>
Device3 is marked as compliant.	<input type="radio"/>	<input checked="" type="radio"/>

NEW QUESTION 2

- (Topic 6)

You have a Microsoft 365 tenant that uses Microsoft Endpoint Manager for device management. You need to add the phone number of the help desk to the Company Portal app. What should you do?

- A. From Customization in the Microsoft Endpoint Manager admin center, modify the support information for the tenant.
- B. From the Microsoft Endpoint Manager admin center, create an app configuration policy.
- C. From the Microsoft 365 admin center, modify Organization information.
- D. From the Microsoft 365 admin center, modify Help desk information.

Answer: A

Explanation:

Reference:
<https://systemcenterdudes.com/intune-company-portal-customization/>

NEW QUESTION 3

- (Topic 6)

You have a Microsoft 365 tenant.

You plan to implement device configuration profiles in Microsoft Intune. Which platform can you manage by using the profiles?

- A. Ubuntu Linux
- B. macOS
- C. Android Enterprise
- D. Windows 8.1

Answer: D

NEW QUESTION 4

- (Topic 6)
Note: This question is part of a series of questions that present the same scenario. Each question in the series contains a unique solution that might meet the stated goals. Some question sets might have more than one correct solution, while others might not have a correct solution.
After you answer a question in this section, you will NOT be able to return to it. As a result, these questions will not appear in the review screen.
You have a Microsoft 365 E5 subscription.
You create an account for a new security administrator named SecAdmin1.
You need to ensure that SecAdmin1 can manage Microsoft Defender for Office 365 settings and policies for Microsoft Teams, SharePoint, and OneDrive.
Solution: From the Microsoft 365 admin center, you assign SecAdmin1 the Exchange admin role.
Does this meet the goal?

- A. Yes
- B. No

Answer: B

Explanation:
You need to assign the Security Administrator role. Reference:
<https://docs.microsoft.com/en-us/microsoft-365/security/office-365-security/office-365-atp?view=o365-worldwide>

NEW QUESTION 5

- (Topic 6)
You have a Microsoft 365 E5 tenant.
You plan to deploy 1.000 new iOS devices to users. The devices will be shipped directly from the supplier to the users.
You need to recommend a Microsoft Intune enrollment option that meets the following requirements:

- Minimizes user interaction
- Minimizes administrative effort
- Automatically installs corporate apps

What should you recommend?

- A. Automated Device Enrollment (ADE)
- B. bring your own device (BYOD) user and device enrollment
- C. Apple Configurator enrollment

Answer: A

Explanation:
Reference:
<https://docs.microsoft.com/en-us/mem/intune/enrollment/ios-enroll>

NEW QUESTION 6

- (Topic 6)
You have a Microsoft 365 E5 tenant that contains the resources shown in the following table.

Name	Type
Mailbox1	Microsoft Exchange Online mailbox
Account1	Microsoft OneDrive account
Site1	Microsoft SharePoint Online site
Channel	Microsoft Teams channel

To which resources can you apply a sensitivity label by using an auto-labeling policy?

- A. Mailbox1 and Site1 only
- B. Mailbox1, Account1, and Site1 only
- C. Account1 and Site1 only
- D. Mailbox1, Account1, Site1, and Channel1
- E. Account1, Site1, and Channel1 only

Answer: E

Explanation:
Reference:
<https://docs.microsoft.com/en-us/microsoft-365/compliance/sensitivity-labels?view=o365-worldwide>

NEW QUESTION 7
HOTSPOT - (Topic 6)

You have a Microsoft 365 E5 subscription.
 You need to configure a group naming policy.
 Which portal should you use, and to which types of groups will the policy apply? To answer, select the appropriate options in the answer area.
 NOTE: Each correct selection is worth one point.

Answer Area

Portal:

Group types:

Group types:

- A. Mastered
- B. Not Mastered

Answer: A

Explanation:

Answer Area

Portal:

Group types:

Group types:

NEW QUESTION 8

- (Topic 6)

You have a Microsoft 365 tenant that contains 500 Windows 10 devices and a Microsoft Endpoint Manager device compliance policy.
 You need to ensure that only devices marked as compliant can access Microsoft Office 365 apps.
 Which policy type should you configure?

- A. conditional access
- B. account protection
- C. attack surface reduction (ASR)
- D. Endpoint detection and response

Answer: A

Explanation:

Reference:

<https://docs.microsoft.com/en-us/mem/intune/protect/device-compliance-get-started>

NEW QUESTION 9

- (Topic 6)

Note: This question is part of a series of questions that present the same scenario. Each question in the series contains a unique solution that might meet the stated goals. Some question sets might have more than one correct solution, while others might not have a correct solution.

After you answer a question in this section, you will NOT be able to return to it. As a result, these questions will not appear in the review screen.

Your network contains an Active Directory domain. You deploy an Azure AD tenant.

Another administrator configures the domain to synchronize to Azure AD.

You discover that 10 user accounts in an organizational unit (OU) are NOT synchronized to Azure AD. All the other user accounts synchronized successfully.

You review Azure AD Connect Health and discover that all the user account synchronizations completed successfully.

You need to ensure that the 10 user accounts are synchronized to Azure AD. Solution: From Azure AD Connect, you modify the Azure AD credentials.

Does this meet the goal?

- A. Yes
- B. No

Answer: B

Explanation:

The question states that "all the user account synchronizations completed successfully". Therefore, the Azure AD credentials are configured correctly in Azure AD Connect. It is likely that the 10 user accounts are being excluded from the synchronization cycle by a filtering rule.

Reference:
<https://docs.microsoft.com/en-us/azure/active-directory/hybrid/how-to-connect-sync-configure-filtering>

NEW QUESTION 10

HOTSPOT - (Topic 6)

HOTSPOT

You have a Microsoft 365 subscription that contains the users in the following table.

Name	Member of
User1	Group1
User2	Group1, Group2
User3	Group3

In Microsoft Endpoint Manager, you create two device type restrictions that have the settings shown in the following table.

Priority	Name	Allowed platform	Assigned to
1	TypeRest1	Android, Windows (MDM)	Group1
2	TypeRest2	iOS	Group2

In Microsoft Endpoint Manager, you create three device limit restrictions that have the settings shown in the following table.

Priority	Name	Device limit	Assigned to
1	LimitRest1	7	Group2
2	LimitRest2	10	Group1
3	LimitRest3	5	Group3

For each of the following statements, select Yes if the statement is true. Otherwise, select No.

NOTE: Each correct selection is worth one point.

Statements	Yes	No
User1 can enroll up to 10 Windows 10 devices in Microsoft Endpoint Manager.	<input type="radio"/>	<input type="radio"/>
User2 can enroll up to 10 iOS devices in Microsoft Endpoint Manager.	<input type="radio"/>	<input type="radio"/>
User3 can enroll up to five Android devices in Microsoft Endpoint Manager.	<input type="radio"/>	<input type="radio"/>

- A. Mastered
- B. Not Mastered

Answer: A

Explanation:

Statements	Yes	No
User1 can enroll up to 10 Windows 10 devices in Microsoft Endpoint Manager.	<input checked="" type="radio"/>	<input type="radio"/>
User2 can enroll up to 10 iOS devices in Microsoft Endpoint Manager.	<input type="radio"/>	<input checked="" type="radio"/>
User3 can enroll up to five Android devices in Microsoft Endpoint Manager.	<input type="radio"/>	<input checked="" type="radio"/>

NEW QUESTION 10

- (Topic 6)

You have a Microsoft 365 E5 subscription.

You need to compare the current Safe Links configuration to the Microsoft recommended configurations.

What should you use?

- A. Microsoft Purview
- B. Azure AD Identity Protection
- C. Microsoft Secure Score
- D. the configuration analyzer

Answer: C

NEW QUESTION 15

- (Topic 6)

Your network contains an on-premises Active Directory domain. The domain contains 2,000 computers that run Windows 10.

You purchase a Microsoft 365 subscription.

You implement password hash synchronization and Azure AD Seamless Single Sign-On (Seamless SSO).

You need to ensure that users can use Seamless SSO from the Windows 10 computers. What should you do?

- A. Join the computers to Azure AD.
- B. Create a conditional access policy in Azure AD.
- C. Modify the Intranet zone settings by using Group Policy.
- D. Deploy an Azure AD Connect staging server.

Answer: A

NEW QUESTION 17

- (Topic 6)

You have a Microsoft 365 subscription.

You plan to use Adoption Score and need to ensure that it can obtain device and software metrics.

What should you do?

- A. Enable Endpoint analytics.
- B. Run the Microsoft 365 network connectivity test on each device.
- C. Enable privileged access.
- D. Configure Support integration.

Answer: A

NEW QUESTION 22

- (Topic 6)

Your company has multiple offices.

You have a Microsoft 365 E5 tenant that uses Microsoft Intune for device management. Each office has a local administrator.

You need to ensure that the local administrators can manage only the devices in their respective office.

What should you use?

- A. scope tags
- B. configuration profiles
- C. device categories
- D. conditional access policies

Answer: A

Explanation:

Reference:

<https://docs.microsoft.com/en-us/mem/intune/fundamentals/scope-tags>

NEW QUESTION 25

- (Topic 6)

You have a Microsoft 365 E5 subscription that contains the resources shown in the following table.

Name	Type
Group1	Microsoft 365 group
Group2	Distribution group
Site1	Microsoft SharePoint site

You create a sensitivity label named Label1. To which resource can you apply Label1?

- A. Group1 only
- B. Group2 only
- C. Site1 only
- D. Group1 and Group2 only
- E. Group1, Group2, and Site1

Answer: E

Explanation:

Assign sensitivity labels to Microsoft 365 groups in Azure Active Directory

Azure Active Directory (Azure AD), part of Microsoft Entra, supports applying sensitivity labels published by the Microsoft Purview compliance portal to Microsoft 365 groups.

In addition to using sensitivity labels to protect documents and emails, you can also use sensitivity labels to protect content in the following containers: Microsoft Teams sites, Microsoft 365 groups (formerly Office 365 groups), and SharePoint sites.

When you configure a label policy, you can:

Choose which users and groups see the labels. Labels can be published to any specific user or email-enabled security group, distribution group, or Microsoft 365 group (which can have dynamic membership) in Azure AD.

Reference:

<https://learn.microsoft.com/en-us/microsoft-365/compliance/sensitivity-labels-teams-groups-sites>
<https://learn.microsoft.com/en-us/microsoft-365/compliance/sensitivity-labels?view=o365-worldwide>

NEW QUESTION 28

HOTSPOT - (Topic 6)

Your company has a Microsoft 365 subscription that contains the users shown in the following table.

Name	Role
User1	Global Administrator
User2	Security Administrator, Guest Inviter
User3	None
User4	Password Administrator

External collaboration settings have default configuration.
You need to identify which users can perform the following administrative tasks:

- Modify the password protection policy.
- Create guest user accounts.

Which users should you identify for each task? To answer, select the appropriate options in the answer area.

NOTE: Each correct selection is worth one point.

Answer Area

Modify the password protection policy:

User1 only

User1 only

User1 and User2 only

User1, User2, and User4 only

User1, User2, User3, and User4

Create new guest users in Azure AD:

User1 and User2 only

User1 only

User1 and User2 only

User1, User2, and User4 only

User1, User2, User3, and User4

- A. Mastered
- B. Not Mastered

Answer: A

Explanation:

Answer Area

Modify the password protection policy:

User1 only

User1 only

User1 and User2 only

User1, User2, and User4 only

User1, User2, User3, and User4

Create new guest users in Azure AD:

User1 and User2 only

User1 only

User1 and User2 only

User1, User2, and User4 only

User1, User2, User3, and User4

NEW QUESTION 32

HOTSPOT - (Topic 6)

HOTSPOT

You have a Microsoft 365 E5 subscription.

From Azure AD Privileged Identity Management (PIM), you configure Role settings for the Global Administrator role as shown in the following exhibit.

Activation

Setting	State
Activation maximum duration (hours)	8 hour(s)
On activation, require	Azure MFA
Require justification on activation	Yes
Require ticket information on activation	No
Require approval to activate	No
Approvers	None

Assignment

Setting	State
Allow permanent eligible assignment	No
Expire eligible assignments after	3 month(s)
Allow permanent active assignment	No
Expire active assignments after	15 day(s)
Require Azure Multi-Factor Authentication on active assignment	Yes
Require justification on active assignment	Yes

Use the drop-down menus to select the answer choice that completes each statement based on the information presented in the graphic.
 NOTE: Each correct selection is worth one point.

Answer Area

A user that is assigned the Global Administrator role as active [answer choice].

will lose the role after eight hours

can reactivate the role every eight hours

can reactivate the role every 15 days

will lose the role after 15 days

You can make the Global Administrator role available to activation requests [answer choice].

for up to eight hours

for up to three months

for up to 15 days

until the requests are revoked manually

- A. Mastered
- B. Not Mastered

Answer: A

Explanation:

Box 1: will lose the role after eight hours
 From exhibit: Activation, Activation maximum duration (hours): 8 hour(s)
 Box 2: for up to three months
 We see from exhibit: Assignment, Expire eligible assignment after: 3 month(s)

NEW QUESTION 34

- (Topic 6)
 You have a Microsoft 365 subscription that contains the alerts shown in the following table.

Name	Severity	Status	Comment	Category
Alert1	Medium	Active	Comment1	Threat management
Alert2	Low	Resolved	Comment2	Other

Which properties of the alerts can you modify?

- A. Status only
- B. Status and Comment only
- C. Status and Severity only
- D. Status, Severity, and Comment only
- E. Status, Severity, Comment and Category

Answer: B

Explanation:

Reference:
<https://docs.microsoft.com/en-us/microsoft-365/security/defender-endpoint/update-alert?view=o365-worldwide#limitations>

NEW QUESTION 35

HOTSPOT - (Topic 6)
 You have a Microsoft 365 E5 subscription that contains the groups shown in the following table.

Name	Type	Role
Group1	Security	Helpdesk Administrator
Group2	Security	None
Group3	Microsoft 365	User Administrator

The subscription contains the users shown in the following table.

Name	Member of
User1	Group1
User2	Group2
User3	Group3

In Azure AD, you configure the External collaboration settings as shown in the following exhibit.

Guest user access

Guest user access restrictions ⓘ

[Learn more](#)

☐ Guest users have the same access as members (most inclusive)
 ☒ Guest users have limited access to properties and memberships of directory objects
 ☐ Guest user access is restricted to properties and memberships of their own directory objects (most restrictive)

Guest invite settings

Guest invite restrictions ⓘ

[Learn more](#)

☐ Anyone in the organization can invite guest users including guests and non-admins (most inclusive)
 ☐ Member users and users assigned to specific admin roles can invite guest users including guests with member permissions
 ☒ Only users assigned to specific admin roles can invite guest users
 ☐ No one in the organization can invite guest users including admins (most restrictive)

Enable guest self-service sign up via user flows ⓘ

[Learn more](#)

External user leave settings

Allow external users to remove themselves from your organization (recommended) ⓘ

[Learn more](#)

Collaboration restrictions

☒ Allow invitations to be sent to any domain (most inclusive)
 ☐ Deny invitations to the specified domains
 ☐ Allow invitations only to the specified domains (most restrictive)

For each of the following statements, select Yes if the statement is true. Otherwise, select No.

NOTE: Each correct selection is worth one point.

For each of the following statements, select Yes if the statement is true. Otherwise, select No.

NOTE: Each correct selection is worth one point.

Statements	Yes	No
User1 can invite guest users.	<input type="radio"/>	<input type="radio"/>
User2 can invite guest users.	<input type="radio"/>	<input type="radio"/>
User3 can invite guest users.	<input type="radio"/>	<input type="radio"/>

- A. Mastered
- B. Not Mastered

Answer: A

Explanation:

Answer Area

Statements	Yes	No
User1 can invite guest users.	<input type="radio"/>	<input checked="" type="radio"/>
User2 can invite guest users.	<input type="radio"/>	<input checked="" type="radio"/>
User3 can invite guest users.	<input checked="" type="radio"/>	<input type="radio"/>

NEW QUESTION 38

- (Topic 6)

You have a Microsoft Azure Active Directory (Azure AD) tenant named Contoso.com. You create a Microsoft Defender for identity instance Contoso. The tenant contains the users shown in the following table.

Name	Member of group	Azure AD role
User1	Defender for Identity Contoso Administrators	None
User2	Defender for Identity Contoso Users	None
User3	None	Security administrator
User4	Defender for Identity Contoso Users	Global administrator

You need to modify the configuration of the Defender for identify sensors.
Solutions: You instruct User1 to modify the Defender for identity sensor configuration. Does this meet the goal?

- A. Yes
- B. No

Answer: A

NEW QUESTION 43

- (Topic 6)

Your network contains an Active Directory forest named Contoso. Local. You have a Microsoft 365 subscription. You plan to implement a directory synchronization solution that will use password hash synchronization. From the Microsoft 365 admin center, you successfully verify the contoso.com domain name. You need to prepare the environment for the planned directory synchronization solution. What should you do first?

- A. From Active Directory Domains and Trusts, add contoso.com as a UPN suffix.
- B. From the Microsoft 365 admin center verify the Contos
- C. Local domain name.
- D. From the public DNS zone of contoso.com, add a new mail exchanger (MX) record.
- E. From Active Directory Users and Computers, modify the UPN suffix for all users.

Answer: A

NEW QUESTION 44

HOTSPOT - (Topic 6)

HOTSPOT

You have a Microsoft 365 E5 tenant that contains the users shown in the following table.

Name	Microsoft 365 role
User1	Cloud application administrator
User2	Application administrator
User3	Application developer
User4	None

Users are assigned Microsoft Store for Business roles as shown in the following table.

User	Role
User1	None
User2	Basic Purchaser
User3	Purchaser
User4	Device Guard signer

Which users can add apps to the private store in Microsoft Store for Business, and which users can install apps from the private store? To answer, select the appropriate options in the answer area.
NOTE: Each correct selection is worth one point.

Add apps to the private store:

User3 only
User2 and User3 only
User1 and User3 only
User1, User2 and User3 only
User1, User2, User3, and User4

Install apps from the private store:

User3 only
User2 and User3 only
User1 and User3 only
User2, User3 and User4 only
User1, User2, User3, and User4

- A. Mastered
- B. Not Mastered

Answer: A

Explanation:

Add apps to the private store:

User3 only
User2 and User3 only
User1 and User3 only
User1, User2 and User3 only
User1, User2, User3, and User4

Install apps from the private store:

User3 only
User2 and User3 only
User1 and User3 only
User2, User3 and User4 only
User1, User2, User3, and User4

NEW QUESTION 47

- (Topic 6)
You have a Microsoft 365 subscription.
You view the Service health Overview as shown in the following exhibit.

Service health

October 18, 2022 4:20 PM

Overview Issue history Reported issues

View the issues and health status of all services that are available with your current subscriptions. [Learn more about Service Health](#)

 Report an issue  Customize

Active issues

Issue title Affected service Issue type

> Microsoft service health (6)

Issues in your environment that require action (0)

Microsoft service health

Shows the current health status of your Microsoft services, and updates when we fix issues.

Service	Status
Exchange Online	3 advisories
Microsoft 365 suite	2 advisories
Microsoft Teams	1 advisory
OneDrive for Business	1 advisory
SharePoint Online	2 advisories

You need to ensure that a user named User1 can view the advisories to investigate service health issues. Which role should you assign to User1?

- A. Message Center Reader
- B. Reports Reader
- C. Service Support Administrator
- D. Compliance Administrator

Answer: B

Explanation:

Service Support admin

Assign the Service Support admin role as an additional role to admins or users who need to do the following in addition to their usual admin role:

- Open and manage service requests
- View and share message center posts
- Monitor service health

Incorrect:

* Message center reader

Assign the Message center reader role to users who need to do the following:

- Monitor message center notifications
- Get weekly email digests of message center posts and updates
- Share message center posts
- Have read-only access to Azure AD services, such as users and groups

* Reports reader

Assign the Reports reader role to users who need to do the following:

- View usage data and the activity reports in the Microsoft 365 admin center
- Get access to the Power BI adoption content pack
- Get access to sign-in reports and activity in Azure AD
- View data returned by Microsoft Graph reporting API

Reference:

<https://learn.microsoft.com/en-us/microsoft-365/admin/add-users/about-admin-roles?view=o365-worldwide>

NEW QUESTION 49

- (Topic 6)

You have a Microsoft 365 subscription.

You need to create a data loss prevention (DLP) policy that is configured to use the Set headers action.

To which location can the policy be applied?

- A. OneDrive accounts
- B. Exchange email
- C. Teams chat and channel messages
- D. SharePoint sites

Answer: B

NEW QUESTION 51

- (Topic 6)

You have a Microsoft 365 E5 subscription that uses Microsoft Defender for Endpoint. From Microsoft Defender for Endpoint you turn on the Allow or block file advanced feature. You need to block users from downloading a file named File1.exe. What should you use?

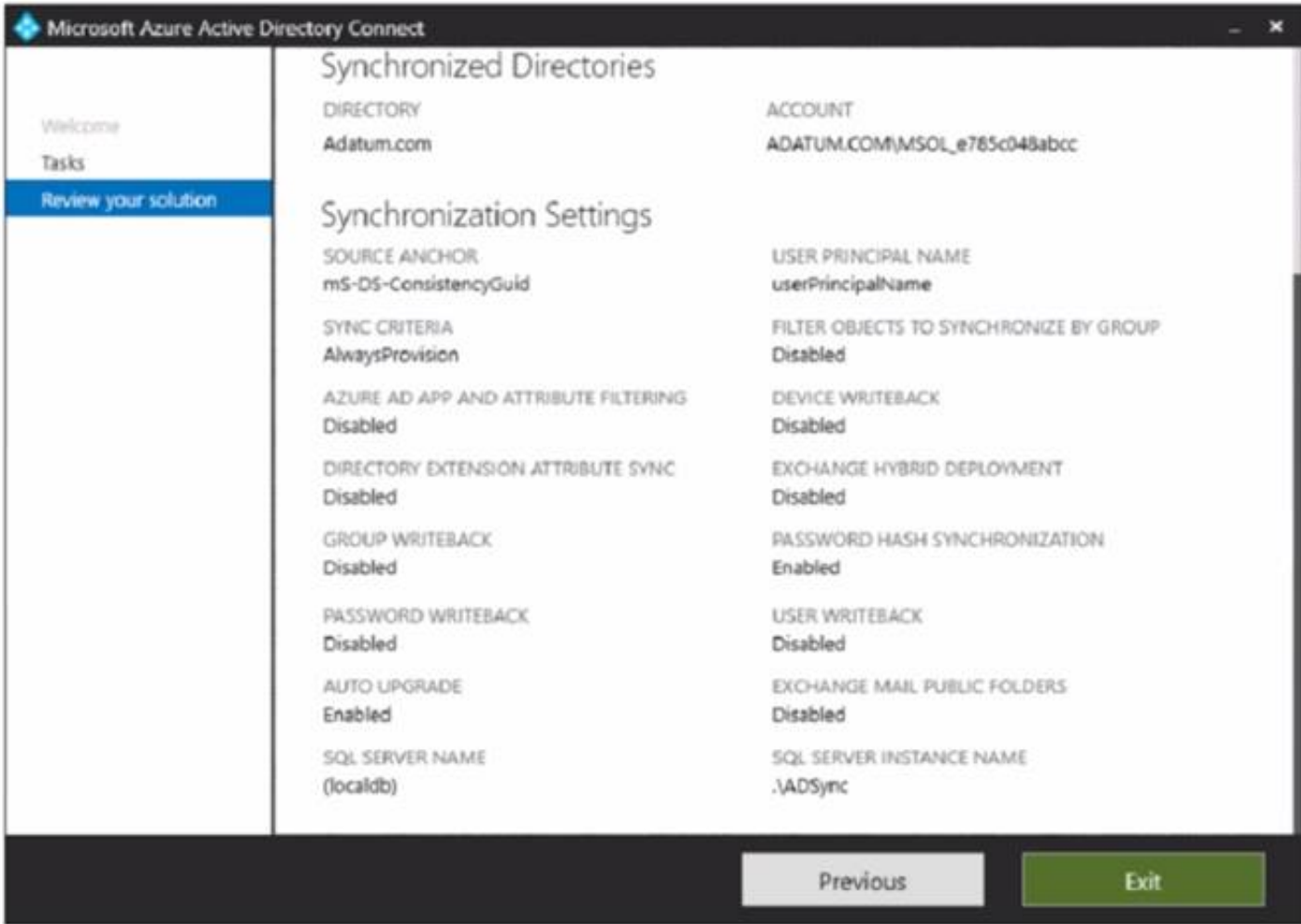
- A. an indicator
- B. a suppression rule
- C. a device configuration profile

Answer: A

NEW QUESTION 54

HOTSPOT - (Topic 6)

Your network contains an on-premises Active Directory domain that is synced to Azure AD as shown in the following exhibit.



An on-premises Active Directory user account named Allan You is synchronized to Azure AD. You view Allan's account from Microsoft 365 and notice that his username is set to Allan @>ddatum.onmicrosoft.com.

For each of the following statements, select Yes if the statement is true. Otherwise, select No.

NOTE Each correct selection is worth one point.

Answer Area			
Statements		Yes	No
From the Azure portal, you can reset the password of Allan Yoo.		<input type="radio"/>	<input type="radio"/>
From the Azure portal, you can configure the job title of Allan Yoo.		<input type="radio"/>	<input type="radio"/>
From the Azure portal, you can configure the usage location of Allan Yoo.		<input type="radio"/>	<input type="radio"/>

- A. Mastered
- B. Not Mastered

Answer: A

Explanation:

Answer Area

Statements	Yes	No
From the Azure portal, you can reset the password of Allan Yoo.	<input type="radio"/>	<input checked="" type="radio"/>
From the Azure portal, you can configure the job title of Allan Yoo.	<input type="radio"/>	<input checked="" type="radio"/>
From the Azure portal, you can configure the usage location of Allan Yoo.	<input type="radio"/>	<input checked="" type="radio"/>

NEW QUESTION 56

- (Topic 6)

Your network contains three Active Directory forests. There are forests trust relationships between the forests.

You create an Azure AD tenant.

You plan to sync the on-premises Active Directory to Azure AD.

You need to recommend a synchronization solution. The solution must ensure that the synchronization can complete successfully and as quickly as possible if a single server fails.

What should you include in the recommendation?

- A. one Azure AD Connect sync server and one Azure AD Connect sync server in staging mode
- B. three Azure AD Connect sync servers and one Azure AD Connect sync server in staging mode
- C. six Azure AD Connect sync servers and three Azure AD Connect sync servers in staging mode
- D. three Azure AD Connect sync servers and three Azure AD Connect sync servers in staging mode

Answer: A

Explanation:

Azure AD Connect can be active on only one server. You can install Azure AD Connect on another server for redundancy but the additional installation would need to be in Staging mode. An Azure AD connect installation in Staging mode is configured and ready to go but it needs to be manually switched to Active to perform directory synchronization.

Reference:

<https://docs.microsoft.com/en-us/azure/active-directory/hybrid/how-to-connect-install-custom>

NEW QUESTION 57

- (Topic 6)

You have a Microsoft 365 E5 subscription that contains the users shown in the following table.

Name	Role
User1	Reports Reader
User2	Exchange Administrator
User3	User Experience Success Manager

Which users can review the Adoption Score in the Microsoft 365 admin center?

- A. User1 only
- B. User2 only
- C. User1 and User2 only
- D. User1 and User3 only
- E. User1, User2, and User3

Answer: E

NEW QUESTION 58

- (Topic 6)

You have a Microsoft 365 E5 tenant that contains the devices shown in the following table.

Name	Platform
Device1	Windows 10 Enterprise
Device2	iOS
Device3	Android
Device4	Windows 10 Pro

The devices are managed by using Microsoft Intune.

You plan to use a configuration profile to assign the Delivery Optimization settings. Which devices will support the settings?

- A. Device1 only
- B. Device1 and Device4
- C. Device1, Device3, and Device4

D. Device1, Device2, Device3, and Device4

Answer: A

NEW QUESTION 62

HOTSPOT - (Topic 6)

You have several devices enrolled in Microsoft Endpoint Manager

You have a Microsoft Azure Active Directory (Azure AD) tenant that includes the users shown In the following table.

Name	Role	Member of
User1	Cloud device administrator	GroupA
User2	Intune administrator	GroupB
User3	None	None

The device limit restrictions in Endpoint manager are configured as shown in the following table.

Priority	Name	Device limit	Assigned to
1	Policy1	15	GroupB
2	Policy2	10	GroupA
Default	All users	5	All users

You add user as a device enrollment manager in Endpoint manager

For each of the following statements, select Yes if the statement is true. Otherwise, select No

Statements	Yes	No
User1 can enroll a maximum of 10 devices in Endpoint Manager.	<input type="radio"/>	<input type="radio"/>
User2 can enroll a maximum of 10 devices in Endpoint Manager.	<input type="radio"/>	<input type="radio"/>
User3 can enroll an unlimited number of devices in Endpoint Manager.	<input type="radio"/>	<input type="radio"/>

A. Mastered

B. Not Mastered

Answer: A

Explanation:

Statements	Yes	No
User1 can enroll a maximum of 10 devices in Endpoint Manager.	<input checked="" type="radio"/>	<input type="radio"/>
User2 can enroll a maximum of 10 devices in Endpoint Manager.	<input type="radio"/>	<input checked="" type="radio"/>
User3 can enroll an unlimited number of devices in Endpoint Manager.	<input checked="" type="radio"/>	<input type="radio"/>

NEW QUESTION 65

HOTSPOT - (Topic 6)

HOTSPOT

Your network contains an Active Directory domain named fabrikam.com. The domain contains the objects shown in the following table.

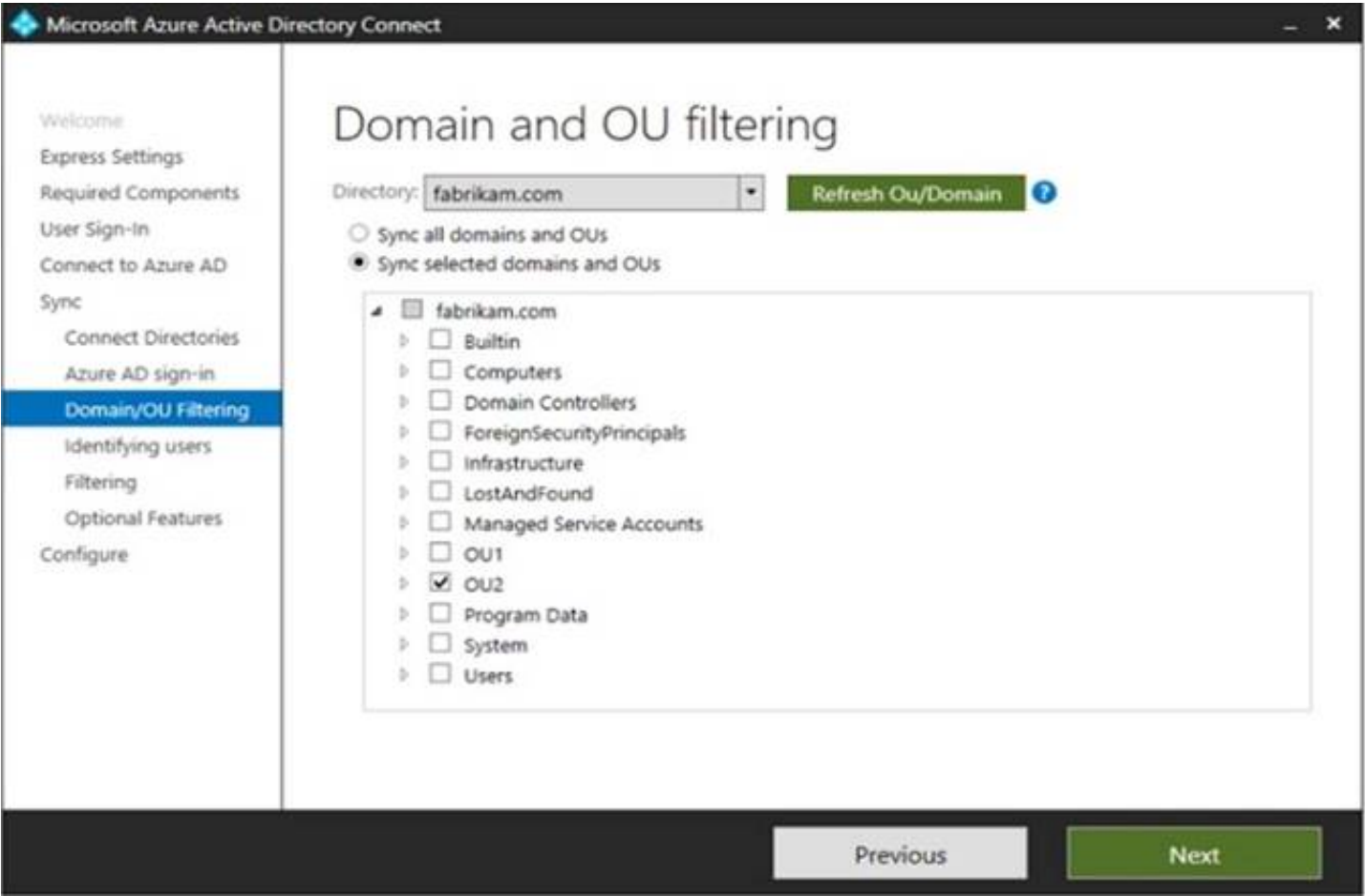
Name	Type	In organizational unit (OU)
User1	User	OU1
User2	User	OU1
Group1	Security Group - Global	OU1
User3	User	OU2
Group2	Security Group - Global	OU2

The groups have the members shown in the following table.

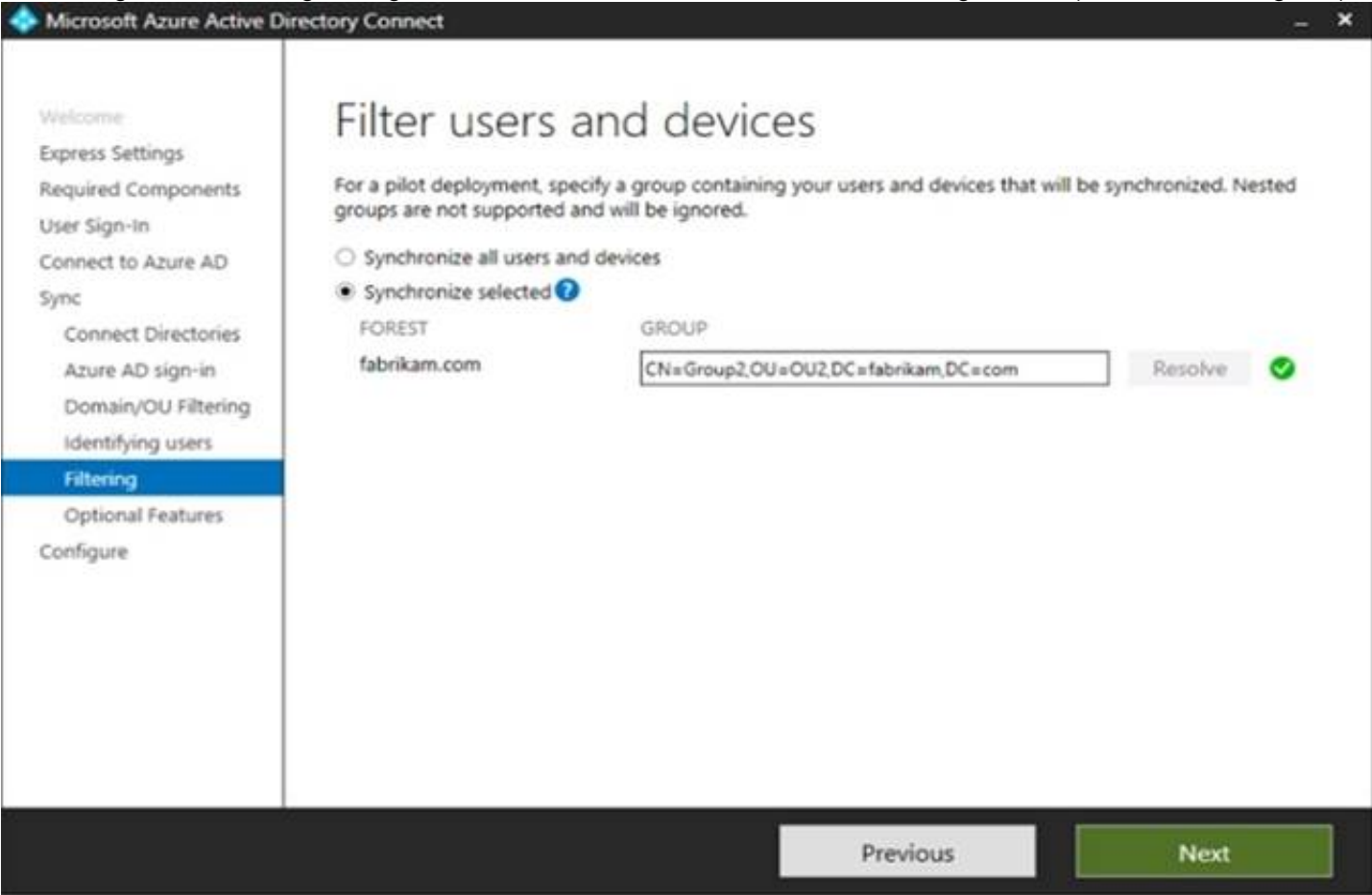
Group	Members
Group1	User1
Group2	User2, User3, Group1

You are configuring synchronization between fabrikam.com and an Azure AD tenant.

You configure the Domain/OU Filtering settings in Azure AD Connect as shown in the Domain/OU Filtering exhibit (Click the Domain/OU Filtering tab.)



You configure the Filtering settings in Azure AD Connect as shown in the Filtering exhibit. (Click the Filtering tab.)



For each of the following statements, select Yes if the statement is true. Otherwise, select No.
NOTE: Each correct selection is worth one point.

Answer Area	
Statements	Yes No
User2 will synchronize to Azure AD.	<input checked="" type="checkbox"/> <input type="checkbox"/>
Group2 will synchronize to Azure AD.	<input type="checkbox"/> <input type="checkbox"/>
User3 will synchronize to Azure AD.	<input type="checkbox"/> <input type="checkbox"/>

- A. Mastered
- B. Not Mastered

Answer: A

Explanation:

Box 1: No
The filtering is configured to synchronize Group2 and OU2 only. The effect of this is that only members of Group2 who are in OU2 will be synchronized.

User2 is in Group2. However, the User2 account object is in OU1 so User2 will not synchronize to Azure AD.

Box 2: Yes

Group2 is in OU2 so Group2 will synchronize to Azure AD. However, only members of the group who are in OU2 will synchronize. Members of Group2 who are in OU1 will not synchronize.

Box 3: Yes

User3 is in Group2 and in OU2. Therefore, User3 will synchronize to Azure AD.

NEW QUESTION 68

- (Topic 6)

Note: This question is part of a series of questions that present the same scenario. Each question in the series contains a unique solution that might meet the stated goals. Some question sets might have more than one correct solution, while others might not have a correct solution.

After you answer a question in this section, you will NOT be able to return to it as a result these questions will not appear in the review screen.

Your network contains an Active Directory forest. You deploy Microsoft 365.

You plan to implement directory synchronization.

You need to recommend a security solution for the synchronized identities. The solution must meet the following requirements:

- Users must be able to authenticate successfully to Microsoft 365 services if Active Directory becomes unavailable.
- User passwords must be 10 characters or more.

Solution: implement password hash synchronization and modify the password settings from the Default Domain Policy in Active Directory. Does this meet the goal?

A. Yes

B. No

Answer: A

NEW QUESTION 73

- (Topic 6)

Your company has on-premises servers and an Azure AD tenant.

Several months ago, the Azure AD Connect Health agent was installed on all the servers. You review the health status of all the servers regularly.

Recently, you attempted to view the health status of a server named Server1 and discovered that the server is NOT listed on the Azure AD Connect Servers list.

You suspect that another administrator removed Server1 from the list. You need to ensure that you can view the health status of Server1.

What are two possible ways to achieve the goal? Each correct answer presents a complete solution.

NOTE: Each correct selection is worth one point.

A. From Azure Cloud shell, run the Connect-Azure AD cmdlet.

B. From Server1, change the Azure AD Connect Health Services Startup type to Automatic (Delayed Start)

C. From Server1, change the Azure AD Connect Health Services Startup type to Automatic

D. From Windows PowerShell, run the Register-AzureADConnectHealthsyncAgent cmdlet.

E. From Server1, reinstall the Azure AD Connect Health agent

Answer: DE

NEW QUESTION 77

HOTSPOT - (Topic 6)

You have a Microsoft 365 E5 subscription that contains the users shown in the following table.

Name	Member of	Role
User1	Group1	User Administrator
User2	Group1	None
User3	Group2	None
User4	None	Global Administrator

You enable self-service password reset (SSPR) for Group1. You configure security questions as the only authentication method for SSPR.

Which users can use SSPR, and which users must answer security questions to reset their password? To answer, select the appropriate options in the answer area.

NOTE: Each correct selection is worth one point.

Answer Area

Users that can use SSPR:

User1, User2, and User4 only

User1 and User2 only

User1, User2, and User3 only

User1, User2, and User4 only

User1, User2, User3, and User4

Users that must answer security questions to reset their password:

User1 and User2 only

User1 only

User2 only

User1 and User2 only

User1, User2, and User3 only

User1, User2, and User4 only

User1, User2, User3, and User4

A. Mastered

B. Not Mastered

Answer: A

Explanation:

Answer Area

Users that can use SSPR:

User1, User2, and User4 only

User1 and User2 only

User1, User2, and User3 only

User1, User2, and User4 only

User1, User2, User3, and User4

Users that must answer security questions to reset their password:

User1 and User2 only

User1 only

User2 only

User1 and User2 only

User1, User2, and User3 only

User1, User2, and User4 only

User1, User2, User3, and User4

NEW QUESTION 81

HOTSPOT - (Topic 6)

You have an Azure subscription and an on-premises Active Directory domain. The domain contains 50 computers that run Windows 10.

You need to centrally monitor System log events from the computers.

What should you do? To answer, select the appropriate options in the answer area.

NOTE: Each correct selection is worth one point.

In Azure:

Add and configure the Diagnostics settings for the Azure Activity Log.

Add and configure an Azure Log Analytics workspace.

Add an Azure Storage account and Azure Cognitive Search

Add an Azure Storage account and a file share.

On the computers:

Create an event subscription.

Modify the membership of the Event Log Readers group.

Enroll in Microsoft Endpoint Manager.

Install the Microsoft Monitoring Agent.

A. Mastered

B. Not Mastered

Answer: A

Explanation:

In Azure:

Add and configure the Diagnostics settings for the Azure Activity Log.

Add and configure an Azure Log Analytics workspace.

Add an Azure Storage account and Azure Cognitive Search

Add an Azure Storage account and a file share.

On the computers:

Create an event subscription.

Modify the membership of the Event Log Readers group.

Enroll in Microsoft Endpoint Manager.

Install the Microsoft Monitoring Agent.

NEW QUESTION 83

- (Topic 6)

You have a Microsoft 365 subscription that uses an Azure AD tenant named contoso.com. The tenant contains the users shown in the following table.

Name	Role
User1	Exchange Administrator
User2	User Administrator
User3	Global Administrator
User4	None

You add another user named User5 to the User Administrator role. You need to identify which two management tasks User5 can perform. Which two tasks should you identify? Each correct answer presents a complete solution.
 NOTE: Each correct selection is worth one point.

- A. Delete User2 and User4 only.
- B. Reset the password of User4 only
- C. Reset the password of any user in Azure AD.
- D. Delete User1, User2, and User4 only.
- E. Reset the password of User2 and User4 only.
- F. Delete any user in Azure AD.

Answer: AE

Explanation:

Users with the User Administrator role can create users and manage all aspects of users with some restrictions (see below). Only on users who are non-admins or in any of the following limited admin roles:

- Directory Readers
- Guest Inviter
- Helpdesk Administrator
- Message Center Reader
- Reports Reader
- User Administrator Reference:

<https://docs.microsoft.com/en-us/azure/active-directory/users-groups-roles/directory-assign-admin-roles#available-roles>

NEW QUESTION 84

HOTSPOT - (Topic 6)

Your company has a Microsoft 365 tenant

You plan to allow users that are members of a group named Engineering to enroll their mobile device in mobile device management (MDM)

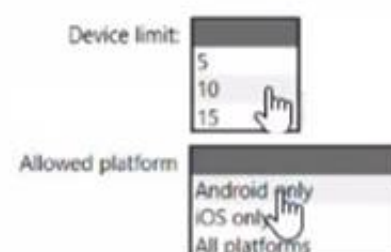
The device type restriction are configured as shown in the following table.

Priority	Name	Allowed platform	Assigned to
1	iOS	iOS	Marketing
2	Android	Android	Engineering
Default	All users	All platforms	All users

The device limit restriction are configured as shown in the following table.

Priority	Name	Device limit	Assigned to
1	Engineering	15	Engineering
2	West Region	5	Engineering
Default	All users	10	All users

Answer Area



- A. Mastered
- B. Not Mastered

Answer: A

Explanation:

<https://docs.microsoft.com/en-us/mem/intune/enrollment/enrollment-restrictions-set#change-enrollment-restriction-priority>

NEW QUESTION 86

HOTSPOT - (Topic 6)

You have a Microsoft 365 E5 tenant that contains the users shown in the following table.

Name	Azure Active Directory (Azure AD) role	Microsoft Store for Business role	Member of
User1	Application administrator	Basic Purchaser	Group1
User2	None	Purchaser	Group2
User3	None	Basic Purchaser	Group3

You perform the following actions:
? Provision the private store in Microsoft Store for Business.
? Add an app named App1 to the private store.
? Set Private store availability for App1 to Specific groups, and then select Group3.
For each of the following statements, select Yes if the statement is true. Otherwise, select No.
NOTE: Each correct selection is worth one point.

Statements	Yes	No
User1 can install App1 from the private store.	<input type="radio"/>	<input type="radio"/>
User2 can install App1 from the private store.	<input type="radio"/>	<input type="radio"/>
User3 can install App1 from the private store.	<input type="radio"/>	<input type="radio"/>

- A. Mastered
- B. Not Mastered

Answer: A

Explanation:

Statements	Yes	No
User1 can install App1 from the private store.	<input type="radio"/>	<input checked="" type="radio"/>
User2 can install App1 from the private store.	<input type="radio"/>	<input checked="" type="radio"/>
User3 can install App1 from the private store.	<input checked="" type="radio"/>	<input type="radio"/>

NEW QUESTION 91

HOTSPOT - (Topic 6)
HOTSPOT

You have a Microsoft 365 subscription.
You deploy the anti-phishing policy shown in the following exhibit.
Use the drop-down menus to select the answer choice that completes each statement based on the information presented in the graphic.
NOTE: Each correct selection is worth one point.

Answer Area

To ensure that malicious email impersonating the CEO of a partner company is blocked, you must modify the [answer choice] setting.

Add trusted senders and domains

Enable domains to protect

Enable users to protect

Phishing email threshold

To minimize disrupting users that frequently exchange legitimate email with the CEO of a partner company, you must configure the [answer choice] setting.

Add trusted senders and domains

Enable intelligence for impersonation protection

Enable spoof intelligence

- A. Mastered
- B. Not Mastered

Answer: A

Explanation:

Box 1: Enable users to protect
Anti-phishing policies in Defender for Office 365 also have impersonation settings where you can specify individual sender email addresses or sender domains that will receive impersonation protection.
User impersonation protection
User impersonation protection prevents specific internal or external email addresses from being impersonated as message senders. For example, you receive an email message from the Vice President of your company asking you to send her some internal company information. Would you do it? Many people would send the reply without thinking.
You can use protected users to add internal and external sender email addresses to protect from impersonation. This list of senders that are protected from user impersonation is different from the list of recipients that the policy applies to (all recipients for the default policy; specific recipients as configured in the Users, groups, and domains setting in the Common policy settings section).
When you add internal or external email addresses to the Users to protect list, messages from those senders are subject to impersonation protection checks. The message is checked for impersonation if the message is sent to a recipient that the policy applies to (all recipients for the default policy; Users, groups, and domains recipients in custom policies). If impersonation is detected in the sender's email address, the action for impersonated users is applied to the message.
Box 2: Add trusted senders and domains
Trusted senders and domains

Trusted senders and domain are exceptions to the impersonation protection settings. Messages from the specified senders and sender domains are never classified as impersonation-based attacks by the policy. In other words, the action for protected senders, protected domains, or mailbox intelligence protection aren't applied to these trusted senders or sender domains. The maximum limit for these lists is 1024 entries.

NEW QUESTION 92

HOTSPOT - (Topic 6)

Your company uses Microsoft Defender for Endpoint. Microsoft Defender for Endpoint contains the device groups shown in the following table.

Rank	Device group	Member
1	Group1	Name starts with Comp
2	Group2	Name starts with Comp And OS In Windows 10
3	Group3	OS In Windows Server 2016
Last	Ungrouped devices (default)	Not applicable

You onboard computers to Microsoft Defender for Endpoint as shown in the following table.

Name	Operating system
Computer1	Windows 10
Computer2	Windows Server 2016

Of which groups are Computer1 and Computer2 members? To answer, select the appropriate options in The answer area.

NOTE: Each correct selection is worth one point.

Answer Area

Computer1:

Group1 only

Group1 only

Group2 only

Group1 and Group2

Ungrouped devices

Computer2:

Group1 only

Group1 only

Group3 only

Group1 and Group3

- A. Mastered
- B. Not Mastered

Answer: A

Explanation:

Answer Area

Computer1:

Group1 only

Group1 only

Group2 only

Group1 and Group2

Ungrouped devices

Computer2:

Group1 only

Group1 only

Group3 only

Group1 and Group3

NEW QUESTION 95

- (Topic 6)

You have a Microsoft 365 subscription.

You plan to implement Microsoft Purview Privileged Access Management. Which Microsoft Office 365 workloads support privileged access?

- A. Microsoft Exchange Online only
- B. Microsoft Teams only
- C. Microsoft Exchange Online and SharePoint Online only
- D. Microsoft Teams and SharePoint Online only
- E. Microsoft Teams, Exchange Online, and SharePoint Online

Answer: A

Explanation:

Privileged access management

Having standing access by some users to sensitive information or critical network configuration settings in Microsoft Exchange Online is a potential pathway for compromised accounts or internal threat activities. Microsoft Purview Privileged Access Management helps protect your organization from breaches and helps to meet compliance best practices by limiting standing access to sensitive data or access to critical configuration settings. Instead of administrators having constant access, just-in-time access rules are implemented for tasks that need elevated permissions. Enabling privileged access management for Exchange Online in Microsoft 365 allows your organization to operate with zero standing privileges and provide a layer of defense against standing administrative access vulnerabilities.

Note: When will privileged access support Office 365 workloads beyond Exchange? Privileged access management will be available in other Office 365 workloads soon.

Reference:

<https://learn.microsoft.com/en-us/microsoft-365/compliance/privileged-access-management-solution-overview>

<https://learn.microsoft.com/en-us/microsoft-365/compliance/privileged-access-management>

NEW QUESTION 96

- (Topic 6)

You have a Microsoft 365 E5 subscription. You need to create a mail-enabled contact. Which portal should you use?

- A. the Microsoft 365 admin center
- B. the SharePoint admin center
- C. the Microsoft Entra admin center
- D. the Microsoft Purview compliance portal

Answer: A

NEW QUESTION 100

- (Topic 6)

You have a Microsoft 365 subscription.

You need to add additional onmicrosoft.com domains to the subscription. The additional domains must be assignable as email addresses for users.

What is the maximum number of onmicrosoft.com domains the subscription can contain?

- A. 1
- B. 2
- C. 5
- D. 10

Answer: C

Explanation:

You are limited to five onmicrosoft.com domains in your Microsoft 365 environment, so make sure to check for spelling and to assess your need if you choose to create a new one.

Reference:

<https://learn.microsoft.com/en-us/microsoft-365/admin/setup/domains-faq>

NEW QUESTION 102

HOTSPOT - (Topic 6)

You have a Microsoft 365 E5 subscription that contains the users shown in the following table.

Name	Role
Admin1	Global Administrator
Admin2	Security Administrator
Admin3	Security Operator
Admin4	Security Reader
Admin5	Application Administrator

You are implementing Microsoft Defender for Endpoint

You need to enable role-based access control (RBAC) to restrict access to the Microsoft 365 Defender portal.

Which users can enable RBAC, and which users will no longer have access to the Microsoft 365 Defender portal after RBAC is enabled? To answer, select the appropriate options in the answer area.

NOTE Each correct selection is worth one point.

Answer Area

Users that can enable RBAC:

Admin1 and Admin2 only

Admin1 only

Admin1 and Admin2 only

Admin1, Admin2, and Admin5 only

Admin1, Admin2, Admin3, and Admin5 only

Users that will no longer have access to the Microsoft 365 Defender portal:

Admin3, Admin4, and Admin5 only

Admin5 only

Admin3 and Admin4 only

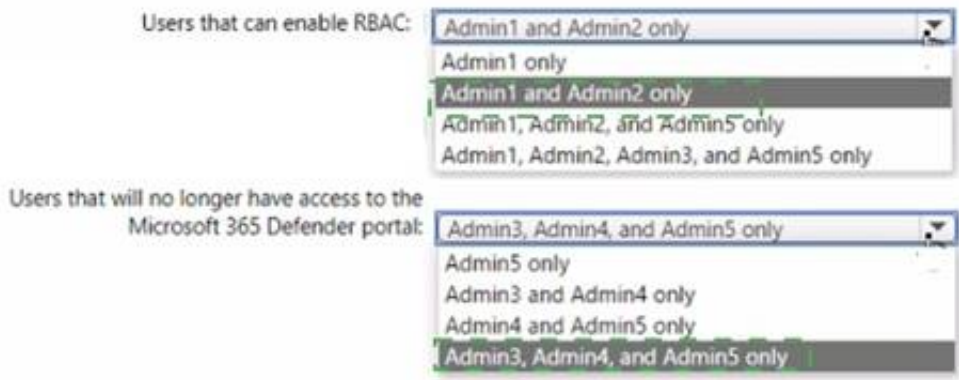
Admin4 and Admin5 only

Admin3, Admin4, and Admin5 only

- A. Mastered
- B. Not Mastered

Answer: A

Explanation:
Answer Area

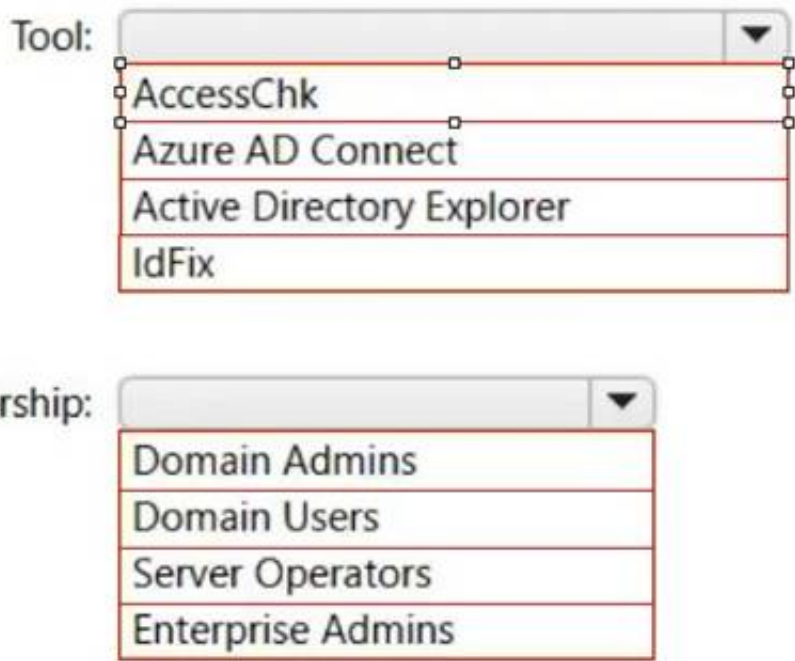


NEW QUESTION 104

HOTSPOT - (Topic 6)
HOTSPOT

Your network contains an on-premises Active Directory domain. You have a Microsoft 365 E5 subscription. You plan to implement directory synchronization. You need to identify potential synchronization issues for the domain. The solution must use the principle of least privilege. What should you use? To answer, select the appropriate options in the answer area. NOTE: Each correct selection is worth one point.

Answer Area



- A. Mastered
- B. Not Mastered

Answer: A

Explanation:

Box 1: IdFix
Query and fix invalid object attributes with the IdFix tool
Microsoft is working to reduce the time required to remediate identity issues when onboarding to Microsoft 365. A portion of this effort is intended to address the time involved in remediating the Windows Server Active Directory (Windows Server AD) errors reported by the directory synchronization tools such as Azure AD Connect and Azure AD Connect cloud sync. The focus of IdFix is to enable you to accomplish this task in a simple, expedient fashion. The IdFix tool provides you the ability to query, identify, and remediate the majority of object synchronization errors in your Windows Server AD forests in preparation for deployment to Microsoft 365. The utility does not fix all errors, but it does find and fix the majority. This remediation will then allow you to successfully synchronize users, contacts, and groups from on-premises Active Directory into Microsoft 365. Note: IdFix might identify errors beyond those that emerge during synchronization. The most common example is compliance with rfc 2822 for smtp addresses. Although invalid attribute values can be synchronized to the cloud, the product group recommends that these errors be corrected.
Incorrect:
* AccessChk
Box 2: Enterprise Admins
IdFix permissions requirements
The user account that you use to run IdFix must have read and write access to the AD DS domain. If you aren't sure if your user account meets these requirements, and you're not sure how to check, you can still download and run IdFix. If your user account doesn't have the right permissions, IdFix will simply display an error when you try to run it.
* Enterprise Admins
The Enterprise Admins group exists only in the root domain of an Active Directory forest of domains. The group is a Universal group if the domain is in native mode. The group is a Global group if the domain is in mixed mode. Members of this group are authorized to make forest-wide changes in Active Directory, like adding child domains.
Incorrect:
* Domain Admins

Members of the Domain Admins security group are authorized to administer the domain. By default, the Domain Admins group is a member of the Administrators group on all computers that have joined a domain, including the domain controllers. The Domain Admins group is the default owner of any object that's created in Active Directory for the domain by any member of the group. If members of the group create other objects, such as files, the default owner is the Administrators group.

* Server Operator

Server Operators can log on to a server interactively; create and delete network shares; start and stop services; back up and restore files; format the hard disk of the computer; and shut down the computer. Any service that accesses the system has the Service identity.

* Domain Users - too few permissions

The Domain Users group includes all user accounts in a domain. When you create a user account in a domain, it's automatically added to this group.

NEW QUESTION 107

- (Topic 6)

You have a Microsoft 365 tenant that contains a Windows 10 device. The device is onboarded to Microsoft Defender for Endpoint.

From Microsoft Defender Security Center, you perform a security investigation. You need to run a PowerShell script on the device to collect forensic information.

Which action should you select on the device page?

- A. Initiate Live Response Session
- B. Initiate Automated Investigation
- C. Collect investigation package
- D. Go hunt

Answer: A

Explanation:

Reference:

<https://docs.microsoft.com/en-us/microsoft-365/security/defender-endpoint/live-response?view=o365-worldwide>

NEW QUESTION 108

- (Topic 6)

You have a Microsoft 365 subscription that contains an Azure AD tenant named contoso.com. The tenant includes a user named User1.

You enable Azure AD Identity Protection.

You need to ensure that User1 can review the list in Azure AD Identity Protection of users flagged for risk. The solution must use the principle of least privilege.

To which role should you add User1?

- A. Security Reader
- B. Global Administrator
- C. Owner
- D. User Administrator

Answer: A

NEW QUESTION 112

HOTSPOT - (Topic 6)

HOTSPOT

You have a Microsoft 365 E5 subscription that contains a Microsoft SharePoint Online site named Site1 and the users shown in the following table.

Name	Member of	Device
User1	Group1	Device1
User2	Group1	Device2, Device3

The devices are configured as shown in the following table.

Name	Platform	Azure AD join type
Device1	Windows 11	None
Device2	Windows 10	Joined
Device3	Android	Registered

You have a Conditional Access policy named CAPolicy1 that has the following settings: 1.Assignments

? Users or workload identities: Group1

? Cloud apps or actions: Office 365 SharePoint Online

? Conditions

- Filter for devices: Exclude filtered devices from the policy

- Rule syntax: device.displayName -startsWith "Device" 2.Access controls

? Grant

- Grant: Block access

? Session: 0 controls selected 3.Enable policy: On

For each of the following statements, select Yes if the statement is true. Otherwise, select No.

NOTE: Each correct selection is worth one point.

Answer Area

Statements

User1 can access Site1 from Device1.

Yes

☐

No

☐

User2 can access Site1 from Device2.

☐☐

User2 can access Site1 from Device3.

☐☐

- A. Mastered
B. Not Mastered

Answer: A

Explanation:

Box 1: No

User1 is member of Group1 and has Device1.

Device1 is not Azure AD joined.

Note: Requiring a hybrid Azure AD joined device is dependent on your devices already being hybrid Azure AD joined.

Box 2: Yes

User2 is member of Group1 and has devices Device2 and Device3. Device2 is Azure AD joined.

Device2 is excluded from CAPolicy1 (which would block access to Site1). Box 3: Yes

User2 is member of Group1 and has devices Device2 and Device3.

Device3 is Android and is Azure AD registered.

Device3 is excluded from CAPolicy1 (which would block access to Site1).

Note: On Windows 7, iOS, Android, macOS, and some third-party web browsers, Azure AD identifies the device using a client certificate that is provisioned when the device is registered with Azure AD. When a user first signs in through the browser the user is prompted to select the certificate. The end user must select this certificate before they can continue to use the browser.

NEW QUESTION 113

HOTSPOT - (Topic 6)

You have a Microsoft 365 E5 subscription that contains a Microsoft SharePoint site named Site1. Site1 contains the files shown in the following table.

Name	Number of IP addresses in the file
File1	2
File2	3

You have a data loss prevention (DLP) policy named DLP1 that has the advanced DLP rules shown in the following table.

Name	Content contains	Policy tip	If there is a match, stop processing	Priority
Rule1	3 or more IP addresses	Tip1	No	0
Rule2	1 or more IP addresses	Tip2	Yes	1
Rule3	2 or more IP addresses	Tip3	No	2

You apply DLP1 to Site1.

Which policy tip is displayed for each file? To answer, select the appropriate options in the answer area.

NOTE: Each correct selection is worth one point.

Answer Area

File1:

File2:

- A. Mastered
B. Not Mastered

Answer: A

Explanation:
Answer Area

File1:

Tip2 only
Tip2 only
Tip3 only
Tip2 and Tip3

File2:

Tip1 and Tip2 only
Tip1 only
Tip3 only
Tip1 and Tip2 only
Tip1, Tip2, and Tip3

NEW QUESTION 114

- (Topic 6)
You have a Microsoft 365 E5 subscription that contains a user named User1. You create a retention label named Retention1 that is published to all locations. You need to ensure that User1 can label email messages by using Retention1 as soon as possible. Which cmdlet should you run in Microsoft Exchange Online PowerShell?

- A. Start-MpScan
- B. Start-Process
- C. Start-ManagedFolderAssistant
- D. Start-AppBackgroundTask

Answer: C

NEW QUESTION 117

HOTSPOT - (Topic 6)
You have a Microsoft 365 subscription.
Your network uses an IP address space of 51.40.15.0/24.
An Exchange Online administrator recently created a role named Role1 from a computer on the network. You need to identify the name of the administrator by using an audit log search. For which activities should you search and by which field should you filter in the audit log search? To answer, select the appropriate options in the answer area. NOTE: Each correct selection is worth one point.

Activities to search for:

Exchange mailbox activities
Site administration activities
Show results for all activities
Role administration activities

Field to filter by:

Item
User
Detail
IP address

- A. Mastered
- B. Not Mastered

Answer: A

Explanation:

Activities to search for:

▼

Exchange mailbox activities

Site administration activities

Show results for all activities

Role administration activities

Field to filter by:

▼

Item

User

Detail

IP address

NEW QUESTION 119

- (Topic 6)

You have a Microsoft 365 subscription.

You have an Azure AD tenant that contains the users shown in the following table.

Name	Role
User1	Security Administrator
User2	Global Administrator
User3	Service Support Administrator

You configure Tenant properties as shown in the following exhibit.

Technical contact

User1@contoso.com ✓

Global privacy contact

✓

Privacy statement URL

http://contoso.com/privacy ✓

Which users will be contacted by Microsoft if the tenant experiences a data breach?

- A. Used only
- B. User2 only
- C. User3 only
- D. Used and User2 only
- E. User2 and User3 only

Answer: B

Explanation:

Microsoft 365 is committed to notifying customers within 72 hours of breach declaration.

The customer's tenant administrator will be notified.

Reference:

<https://learn.microsoft.com/en-us/compliance/regulatory/gdpr-breach-office365>

NEW QUESTION 123

HOTSPOT - (Topic 6)

You have a Microsoft 365 E5 subscription and an Azure AD tenant named contoso.com.

All users have computers that run Windows 11, are joined to contoso.com, and are protected by using BitLocker Drive Encryption (BitLocker).

You plan to create a user named Admin1 that will perform following tasks:

- View BitLocker recovery keys.
- Configure the usage location for the users in contoso.com.

You need to assign roles to Admin1 to meet the requirements. The solution must use the principle of least privilege. Which two roles should you assign? To answer, select the appropriate roles in the answer area.

NOTE: Each correct selection is worth one point

Answer Area

Devices

- ☐ Cloud Device Administrator ⓘ
- ☐ Desktop Analytics Administrator ⓘ
- ☐ Intune Administrator ⓘ
- ☐ Printer Administrator ⓘ
- ☐ Printer Technician ⓘ
- ☐ Windows 365 Administrator ⓘ

Global

- ☐ Global Administrator ⓘ

Identity

- ☐ Application Administrator ⓘ
- ☐ Application Developer ⓘ
- ☐ Authentication Administrator ⓘ
- ☐ Cloud Application Administrator ⓘ
- ☐ Conditional Access Administrator ⓘ
- ☐ Domain Name Administrator ⓘ
- ☐ External Identity Provider Administrator ⓘ
- ☐ Guest Inviter ⓘ
- ☐ Helpdesk Administrator ⓘ
- ☐ Hybrid Identity Administrator ⓘ
- ☐ License Administrator ⓘ
- ☐ Password Administrator ⓘ

- A. Mastered
- B. Not Mastered

Answer: A

Explanation:

Answer Area

Devices

☐ Cloud Device Administrator ⓘ

☐ Desktop Analytics Administrator ⓘ

☐ Intune Administrator ⓘ

☐ Printer Administrator ⓘ

☐ Printer Technician ⓘ

☐ Windows 365 Administrator ⓘ

Global

☐ Global Administrator ⓘ

Identity

☐ Application Administrator ⓘ

☐ Application Developer ⓘ

☐ Authentication Administrator ⓘ

☐ Cloud Application Administrator ⓘ

☐ Conditional Access Administrator ⓘ

☐ Domain Name Administrator ⓘ

☐ External Identity Provider Administrator ⓘ

☐ Guest Inviter ⓘ

☐ Helpdesk Administrator ⓘ

☐ Hybrid Identity Administrator ⓘ

☐ License Administrator ⓘ

☐ Password Administrator ⓘ

NEW QUESTION 124
 DRAG DROP - (Topic 6)
 You have a Microsoft 365 subscription that contains the devices shown in the following table.

Name	Operating system	Microsoft Intune
Device1	Windows 11 Enterprise	Enrolled
Device2	iOS	Enrolled
Device3	Android	Not enrolled

You install Microsoft Word on all the devices.
 You plan to configure policies to meet the following requirements:

- Word files created by using Windows devices must be encrypted automatically.
- If an Android device becomes jailbroken, access to corporate data must be blocked from Word.
- For iOS devices, users must be prevented from using native or third-party mail clients to connect to Microsoft 365.

Which type of polio/ should you configure for each device? To answer, drag the appropriate policy types to the correct devices. Each policy type may be used once, more than once, or not at all. You may need to drag the split bar between panes or scroll to view content.
 NOTE: Each correct selection is worth one point.

Policy Types

App configuration policy

App protection policy

Compliance policy

Conditional Access policy

Answer Area

Device1:

Device2:

Device3:

- A. Mastered
- B. Not Mastered

Answer: A

Explanation:

Policy Types

App configuration policy

App protection policy

Compliance policy

Conditional Access policy

Answer Area

Device1: App protection policy

Device2: Conditional Access policy

Device3: Compliance policy

NEW QUESTION 126

- (Topic 6)
You have Windows 10 devices that are managed by using Microsoft Endpoint Manager. You need to configure the security settings in Microsoft Edge. What should you create in Microsoft Endpoint Manager?

- A. an app configuration policy
- B. an app
- C. a device configuration profile
- D. a device compliance policy

Answer: C

Explanation:

Reference:
<https://docs.microsoft.com/en-us/deployedge/configure-edge-with-intune>

NEW QUESTION 129

- (Topic 6)
You have a Microsoft 365 subscription that uses Security & Compliance retention policies. You implement a preservation lock on a retention policy that is assigned to all executive users. Which two actions can you perform on the retention policy? Each correct answer presents a complete solution. NOTE: Each correct selection is worth one point?

- A. Add locations to the policy
- B. Reduce the duration of policy
- C. Remove locations from the policy
- D. Extend the duration of the policy
- E. Disable the policy

Answer: AB

NEW QUESTION 134

DRAG DROP - (Topic 6)
Your company purchases a cloud app named App1. You need to ensure that you can use Microsoft Cloud App Security to block downloads in App1. App1 supports session controls. Which three actions should you perform in sequence? To answer, move the appropriate actions from the list of actions to the answer area and arrange them in the correct order.

Actions

Deploy Azure Active Directory (Azure AD) Application Proxy.

From the Cloud App Security admin center, add an app connector.

Sign in to App1.

Create a conditional access policy.

From the Azure Active Directory admin center, configure the Diagnostic settings.

From the Azure Active Directory admin center, add an app registration for App1.

Answer Area

⏪

⏩

⏴

⏵

- A. Mastered

B. Not Mastered

Answer: A

Explanation:

Actions

Deploy Azure Active Directory (Azure AD) Application Proxy.

From the Cloud App Security admin center, add an app connector.

Sign in to App1.

Create a conditional access policy.

From the Azure Active Directory admin center, configure the Diagnostic settings.

From the Azure Active Directory admin center, add an app registration for App1.

Answer Area

From the Cloud App Security admin center, add an app connector.

Create a conditional access policy.

Sign in to App1.

NEW QUESTION 135

HOTSPOT - (Topic 6)

HOTSPOT

You have a Microsoft 365 E5 subscription that contains the users shown in the following table.

Name	Member of
Admin1	Group1
Admin2	Group2
Admin3	Group1, Group2

You add the following assignment for the User Administrator role:

- ? Scope type: Directory
- ? Selected members: Group1
- ? Assignment type: Active
- ? Assignment starts: Mar 15, 2023
- ? Assignment ends: Aug 15, 2023

You add the following assignment for the Exchange Administrator role:

- ? Scope type: Directory
- ? Selected members: Group2
- ? Assignment type: Eligible
- ? Assignment starts: Jun 15, 2023
- ? Assignment ends: Oct 15, 2023

For each of the following statements, select Yes if the statement is true. Otherwise, select No.

NOTE: Each correct selection is worth one point.

Answer Area

Statements

On July 15, 2023, Admin1 can reset the password of a user.

On June 20, 2023, Admin2 can manage Microsoft Exchange Online.

On May 1, 2023, Admin3 can reset the password of a user.

Yes

No

A. Mastered
B. Not Mastered

Answer: A

Explanation:

Box 1: Yes
Admin1 is member of Group1.
The User Administrator role assignment has Group1 as a member. The assignment type: Active
July 15, 2023 is with the assignment period.
A User Administrator can manage all aspects of users and groups, including resetting passwords for limited admins.

Box 2: No
Admin2 is member of Group2.
The Exchange Administrator role assignment has Group2 as a member. The assignment type: Eligible
June 20, 2023 is with the assignment period. The assignment must be approved.
Note: Eligible assignment requires member or owner to perform an activation to use the role. Activations may also require providing a multi-factor authentication (MFA), providing a business justification, or requesting approval from designated approvers.
Box 3: Yes
Admin3 is member of Gropu1 and Group2.
The User Administrator role assignment has Group1 as a member. The assignment type: Active
May 1, 2023 is with the assignment period.

NEW QUESTION 138

- (Topic 6)
You have a Microsoft 365 E5 tenant that contains 100 Windows 10 devices.
You plan to deploy a Windows 10 Security Baseline profile that will protect secrets stored in memory.
What should you configure in the profile?

- A. Microsoft Defender Credential Guard
- B. BitLocker Drive Encryption (BitLocker)
- C. Microsoft Defender
- D. Microsoft Defender Exploit Guard

Answer: A

NEW QUESTION 141

HOTSPOT - (Topic 6)
HOTSPOT
You have a Microsoft 365 E5 subscription that contains a Microsoft SharePoint site named Site1 and a data loss prevention (DLP) policy named DLP1. DLP1 contains the rules shown in the following table.

Name	Priority	Action
Rule1	0	Notify users by using email and policy tips. Customize the policy tip as Rule1 tip. Disable user overrides.
Rule2	1	Notify users by using email and policy tips. Customize the policy tip as Rule2 tip. Restrict access to the content. Disable user overrides.
Rule3	2	Notify users by using email and policy tips. Customize the policy tip as Rule3 tip. Restrict access to the content. Enable user overrides.
Rule4	3	Notify users by using email and policy tips. Customize the policy tip as Rule4 tip. Restrict access to the content. Disable user overrides.

Site1 contains the files shown in the following table.

Name	Matched DLP rule
File1.docx	Rule1, Rule2, Rule3
File2.docx	Rule1, Rule3, Rule4

Which policy tips are shown for each file? To answer, select the appropriate options in the answer area.
NOTE: Each correct selection is worth one point.

Answer Area

File1.docx:

Rule1 tip only

Rule2 tip only

Rule3 tip only

Rule1 tip and Rule2 tip only

Rule1 tip, Rule2 tip, and Rule3 tip

File2.docx:

Rule1 tip only

Rule3 tip only

Rule4 tip only

Rule1 tip and Rule4 tip only

Rule1 tip, Rule3 tip, and Rule4 tip

- A. Mastered
- B. Not Mastered

Answer: A

Explanation:

Box 1: Rule1 tip only
File1 matches Rule1, Rule2, and Rule3. Rule1 has the highest priority.
Note: The Priority parameter specifies a priority value for the policy that determines the order of policy processing. A lower integer value indicates a higher priority, the value 0 is the highest priority, and policies can't have the same priority value.
Box 2: Rule1 tip only
Note: User Override support
The option to override is per rule, and it overrides all of the actions in the rule (except sending a notification, which can't be overridden).
It's possible for content to match several rules in a DLP policy or several different DLP policies, but only the policy tip from the most restrictive, highest-priority rule will be shown (including policies in Test mode). For example, a policy tip from a rule that blocks access to content will be shown over a policy tip from a rule that simply sends a notification. This prevents people from seeing a cascade of policy tips.
If the policy tips in the most restrictive rule allow people to override the rule, then overriding this rule also overrides any other rules that the content matched.

NEW QUESTION 143

- (Topic 6)
You have a Microsoft 365 E5 subscription that uses Endpoint security.
You need to create a group and assign the Endpoint Security Manager role to the group. Which type of group can you use?

- A. Microsoft 365 only
- B. security only
- C. mail-enabled security and security only
- D. mail-enabled security, Microsoft 365, and security only
- E. distribution, mail-enabled security, Microsoft 365, and security

Answer: D

NEW QUESTION 145

- (Topic 6)
You have a Microsoft 365 subscription.
You need to receive a notification each time a user in the service desk department grants Full Access permissions for a user mailbox.
What should you configure?

- A. a data loss prevention (DLP) policy
- B. an alert policy
- C. an audit search
- D. an insider risk management policy

Answer: B

NEW QUESTION 148

HOTSPOT - (Topic 6)
Your company uses Microsoft Defender for Endpoint.
The devices onboarded to Microsoft Defender for Endpoint are shown in the following table.

Name	Device group
Device1	ATP1
Device2	ATP1
Device3	ATP2

The alerts visible in the Microsoft Defender for Endpoint alerts queue are shown in the following table.

Name	Device
Alert1	Device1
Alert2	Device2
Alert3	Device3

You create a suppression rule that has the following settings:

- Triggering IOC: Any IOC
- Action: Hide alert
- Suppression scope: Alerts on ATP1 device group

For each of the following statements, select Yes if the statement is true. Otherwise, select No. NOTE: Each correct selection is worth one point

Answer Area

Statements	Yes	No
After you create the suppression rule, Alert1 is visible in the alerts queue.	<input type="radio"/>	<input type="radio"/>
After you create the suppression rule, Alert3 is visible in the alerts queue.	<input type="radio"/>	<input type="radio"/>
After you create the suppression rule, a new alert triggered on Device2 is visible in the alerts queue.	<input type="radio"/>	<input type="radio"/>

- A. Mastered
B. Not Mastered

Answer: A

Explanation:

Answer Area

Statements	Yes	No
After you create the suppression rule, Alert1 is visible in the alerts queue.	<input checked="" type="radio"/>	<input type="radio"/>
After you create the suppression rule, Alert3 is visible in the alerts queue.	<input checked="" type="radio"/>	<input type="radio"/>
After you create the suppression rule, a new alert triggered on Device2 is visible in the alerts queue.	<input type="radio"/>	<input checked="" type="radio"/>

NEW QUESTION 152

- (Topic 6)

You have a Microsoft 365 E5 subscription.

Users access Microsoft 365 from both their laptop and a corporate Virtual Desktop Infrastructure (VDI) solution.

From Azure AD Identity Protection, you enable a sign-in risk policy.

Users report that when they use the VDI solution, they are regularly blocked when they attempt to access Microsoft 365.

What should you configure?

- A. the Tenant restrictions settings in Azure AD
B. a trusted location
C. a Conditional Access policy exclusion
D. the Microsoft 365 network connectivity settings

Answer: B

Explanation:

There are two types of risk policies in Azure Active Directory (Azure AD) Conditional Access you can set up to automate the response to risks and allow users to self-remediate when risk is detected:

Sign-in risk policy User risk policy

Configured trusted network locations are used by Identity Protection in some risk detections to reduce false positives.

Reference:

<https://learn.microsoft.com/en-us/azure/active-directory/identity-protection/howto-identity-protection-configure-risk-policies>

<https://learn.microsoft.com/en-us/azure/active-directory/conditional-access/location-condition>

NEW QUESTION 156

FILL IN THE BLANK - (Topic 6)

You have a Microsoft 365 tenant.

You need to retain Azure Active Directory (Azure AD) audit logs for two years. Administrators must be able to query the audit log information by using the Azure Active Directory admin center.

What should you do? To answer, select the appropriate options in the answer area. NOTE: Each correct selection is worth one point.

Answer Area

Save the audit logs to:

Azure Active Directory admin center blade to use to view the saved audit logs:

- A. Mastered
- B. Not Mastered

Answer: A

Explanation:

Answer Area

Save the audit logs to:

Azure Log Analytics

Azure Active Directory admin center blade to use to view the saved audit logs:

Audit logs

NEW QUESTION 158

- (Topic 6)
You have a Microsoft 365 E5 tenant.
You need to ensure that when a document containing a credit card number is added to the tenant, the document is encrypted.
Which policy should you use?

- A. a retention policy
- B. a retention label policy
- C. an auto-labeling policy
- D. an insider risk policy

Answer: C

Explanation:

Reference:
<https://docs.microsoft.com/en-us/microsoft-365/compliance/apply-sensitivity-label-automatically?view=o365-worldwide>

NEW QUESTION 162

- (Topic 6)
Note: This question is part of a series of questions that present the same scenario. Each question in the series contains a unique solution that might meet the stated goals. Some question sets might have more than one correct solution, while others might not have a correct solution.
After you answer a question in this section, you will NOT be able to return to it. As a result, these questions will not appear in the review screen.
Your network contains an on-premises Active Directory domain named contoso.com. The domain contains the users shown in the following table.

Name	UPN suffix
User1	Contoso.com
User2	Fabrikam.com

The domain syncs to an Azure AD tenant named contoso.com as shown in the exhibit. (Click the Exhibit tab.)

PROVISION FROM ACTIVE DIRECTORY



Azure AD Connect cloud provisioning

This feature allows you to manage provisioning from the cloud.

[Manage provisioning \(Preview\)](#)

Azure AD Connect sync

Sync Status	Enabled
Last Sync	Less than 1 hour ago
Password Hash Sync	Enabled

USER SIGN-IN



Federation	Disabled	0 domains
Seamless single sign-on	Enabled	1 domain
Pass-through authentication	Enabled	2 agents

User2 fails to authenticate to Azure AD when signing in as user2@fabrikam.com. You need to ensure that User2 can access the resources in Azure AD. Solution: From the Microsoft Entra admin center, you assign User2 the Security Reader role. You instruct User2 to sign in as user2@contoso.com. Does this meet the goal?

- A. Yes
- B. No

Answer: B

Explanation:

This is not a permissions issue so you do not need to assign the Security Reader role. The on-premises Active Directory domain is named contoso.com. User2 could sign on as user2@contoso.com but you would first need to change the UPN of User2 to user2@contoso.com.

NEW QUESTION 164

HOTSPOT - (Topic 6)
HOTSPOT

You have a Microsoft 365 E5 subscription.
From Azure AD Identity Protection on August 1, you configure a Multifactor authentication registration policy that has the following settings:
? Assignments: All users
? Controls: Require Azure AD multifactor authentication registration
? Enforce Policy: On
? On August 3, you create two users named User1 and User2.
Users authenticate by using Azure Multi-Factor Authentication (MFA) for the first time on the dates shown in the following table.

User	Date
User1	August 5
User2	August 7

By which dates will User1 and User2 be forced to complete their Azure MFA registration? To answer, select the appropriate options in the answer area.
NOTE: Each correct selection is worth one point.

User1:

▼

August 6

August 17

August 19

September 3

September 5

User2:

▼

August 8

August 17

August 19

August 21

September 7

- A. Mastered
- B. Not Mastered

Answer: A

Explanation:

Box 1: August 19

Note: Security defaults will trigger a 14 day grace period for registration after a user's first login and security defaults being enabled. After 14 days users will be required to register for MFA and will not be able to skip.


Conditional Access by itself without Azure Identity Protection does not allow for the 14 day grace period. Identity Protection includes the registration policy that allows registration on its own with no apps assigned to the policy. If a Conditional Access policy requires Multi- Factor Authentication, then the user must be able to pass that MFA request.

Box 2: August 21

NEW QUESTION 167


HOTSPOT - (Topic 6)

You have a Microsoft 365 subscription that contains a Microsoft 365 group named Group1. Group1 is configured as shown in the following exhibit.



Group1

Private group • 1 owner • 1 member



General Members **Settings** Microsoft Teams

General settings

☐ Allow external senders to email this group

☒ Send copies of group conversations and events to group members

☐ Hide from my organization's global address list

Privacy

☒ Private

☐ Public

An external user named User1 has an email address of user1@outlook.com. You need to add User1 to Group1.

What should you do first, and which portal should you use? To answer, select the appropriate options in the answer area.
 NOTE: Each correct selection is worth one point.

Answer Area

Action:

- Add User1 to the subscription as an active user.
- For Group1, change the Privacy setting to Public.
- For Group1, select Allow external senders to email this group.
- Invite User1 to collaborate with your organization as a guest.

Portal:

- The Microsoft Entra admin center
- The Exchange admin center
- The Microsoft 365 admin center
- The Microsoft Purview compliance portal

- A. Mastered
 B. Not Mastered

Answer: A

Explanation:

Box 1: Invite User1 to collaborate with your organization as a guest.

To manage guest users of a Microsoft 365 tenant via the Admin Center portal, go through the following steps.

Navigate with your Web browser to <https://admin.microsoft.com>. On the left pane, click on "Users", then click "Guest Users".

On the "Guest Users" page, to create a new guest user, click on either the "Add a guest user" link on the top of the page or click on "Go to Azure Active Directory to add guest users" link at the bottom of the page. Both of these links will take you to the Azure Active Directory portal, which is located at <https://aad.portal.azure.com>.

On the "New user" page in the Microsoft Azure portal, you must choose to either "Create user" or "Invite user". If you choose the "Create user" option, this will create a new user in your organization, which will have a login address with format username@tenantdomain.dot.com. If you choose the "Invite user" option, this will invite a new guest user to collaborate with your organization. The user will be emailed an email invitation which they can accept in order to begin collaborating. For the purpose of creating a guest user, you must choose the "Invite user" option.

Box 2: The Microsoft Entra admin center

Microsoft Entra admin center unites Azure AD with family of identity and access products

Microsoft Entra admin center gives customers an entire toolset to secure access for everyone and everything in multicloud and multiplatform environments. The entire Microsoft Entra product family is available at this new admin center, including Azure Active Directory (Azure AD) and Microsoft Entra Permissions Management, formerly known as CloudKnox.

Starting this month, waves of customers will begin to be automatically directed to entra.microsoft.com from Microsoft 365 in place of the Azure AD admin center (aad.portal.azure.com).

NEW QUESTION 172

- (Topic 6)

Note: This question is part of a series of questions that present the same scenario. Each question in the series contains a unique solution that might meet the stated goals. Some question sets might have more than one correct solution, while others might not have a correct solution.

After you answer a question in this section, you will NOT be able to return to it. As a result, these questions will not appear in the review screen.

Your network contains an Active Directory domain. You deploy an Azure AD tenant.

Another administrator configures the domain to synchronize to Azure AD.

You discover that 10 user accounts in an organizational unit (OU) are NOT synchronized to Azure AD. All the other user accounts synchronized successfully.

You review Azure AD Connect Health and discover that all the user account synchronizations completed successfully.

You need to ensure that the 10 user accounts are synchronized to Azure AD. Solution: From the Synchronization Rules Editor, you create a new outbound synchronization rule.

Does this meet the goal?

- A. Yes
 B. No

Answer: B

Explanation:

The question states that "all the user account synchronizations completed successfully". Therefore, the synchronization rule is configured correctly. It is likely that the 10 user accounts are being excluded from the synchronization cycle by a filtering rule.

Reference:

<https://docs.microsoft.com/en-us/azure/active-directory/hybrid/how-to-connect-sync-configure-filtering>

NEW QUESTION 177

- (Topic 6)

You have a Microsoft 365 E5 subscription that uses Azure Advanced Threat Protection (ATP).

You need to create a detection exclusion in Azure ATP. Which tool should you use?

- A. the Security & Compliance admin center
 B. Microsoft Defender Security Center
 C. the Microsoft 365 admin center
 D. the Azure Advanced Threat Protection portal

E. the Cloud App Security portal

Answer: D

Explanation:

Reference:

<https://docs.microsoft.com/en-us/defender-for-identity/what-is> <https://docs.microsoft.com/en-us/defender-for-identity/excluding-entities-from-detections>

NEW QUESTION 182

- (Topic 6)

You have a Microsoft 365 E5 subscription that uses Microsoft Intune. You need to access service health alerts from a mobile phone.

What should you use?

- A. the Microsoft Authenticator app
- B. the Microsoft 365 Admin mobile app
- C. Intune Company Portal
- D. the Intune app

Answer: B

NEW QUESTION 185

- (Topic 6)

You have a Microsoft 365 E5 subscription.

You plan to implement Microsoft Purview policies to meet the following requirements: Identify documents that are stored in Microsoft Teams and SharePoint that contain

Personally Identifiable Information (PII). Report on shared documents that contain PII. What should you create?

- A. a data loss prevention (DLP) policy
- B. a retention policy
- C. an alert policy
- D. a Microsoft Defender for Cloud Apps policy

Answer: A

Explanation:

Demonstrate data protection

Protection of personal information in Microsoft 365 includes using data loss prevention (DLP) capabilities. With DLP policies, you can automatically protect sensitive information across Microsoft 365.

There are multiple ways you can apply the protection. Educating and raising awareness to where EU resident data is stored in your environment and how your employees are permitted to handle it represents one level of information protection using Office 365 DLP.

In this phase, you create a new DLP policy and demonstrate how it gets applied to the IBANs.docx file you stored in SharePoint Online in Phase 2 and when you attempt to send an email containing IBANs.

? From the Security & Compliance tab of your browser, click Home.

? Click Data loss prevention > Policy.

? Click + Create a policy.

? In Start with a template or create a custom policy, click Custom > Custom policy > Next.

? In Name your policy, provide the following details and then click Next: a. Name: EU Citizen PII Policy b. Description: Protect the personally identifiable information of European citizens

? Etc.

Reference:

<https://learn.microsoft.com/en-us/compliance/regulatory/gdpr-discovery-protection-reporting-in-office365-dev-test-environment>

NEW QUESTION 188

HOTSPOT - (Topic 6)

You have a Microsoft 365 E5 subscription that contains the security groups shown in the following table.

Name	Membership type	Membership rule
Group1	Assigned	<i>Not applicable</i>
Group2	Dynamic	(user.department -eq "Finance")
Group3	Dynamic	(user.department -eq "R&D")

The subscription contains the users shown in the following table.

Name	Department	Assigned group membership
User1	Finance	Group1
User2	Technical	<i>None</i>
User3	R&D	Group1

You have a Conditional Access policy that has the following settings:

- Assignments o Users

Include: Group1

Exclude: Group2. Group3 o Target resources
Cloud apps App1
Access controls Grant
Block access
For each of the following statements, select Yes if the statement is true. Otherwise, select No.
NOTE: Each correct selection is worth one point.

Answer Area

Statements	Yes	No
User1 can sign in to App1.	<input type="radio"/>	<input type="radio"/>
User2 can sign in to App1.	<input type="radio"/>	<input type="radio"/>
User3 can sign in to App1.	<input type="radio"/>	<input type="radio"/>

- A. Mastered
- B. Not Mastered

Answer: A

Explanation:

Answer Area

Statements	Yes	No
User1 can sign in to App1.	<input checked="" type="radio"/>	<input type="radio"/>
User2 can sign in to App1.	<input type="radio"/>	<input checked="" type="radio"/>
User3 can sign in to App1.	<input type="radio"/>	<input checked="" type="radio"/>

NEW QUESTION 193

- (Topic 6)
Your company has three main offices and one branch office. The branch office is used for research.
The company plans to implement a Microsoft 365 tenant and to deploy multi-factor authentication.
You need to recommend a Microsoft 365 solution to ensure that multi-factor authentication is enforced only for users in the branch office.
What should you include in the recommendation?

- A. Azure AD password protection
- B. a Microsoft Intune device configuration profile
- C. a Microsoft Intune device compliance policy
- D. Azure AD conditional access

Answer: D

NEW QUESTION 196

- (Topic 6)
You have a Microsoft 365 tenant that contains 1,000 Windows 10 devices. The devices are enrolled in Microsoft Intune.
Company policy requires that the devices have the following configurations:
? Require complex passwords.
? Require the encryption of removable data storage devices.
? Have Microsoft Defender Antivirus real-time protection enabled.
You need to configure the devices to meet the requirements.
What should you use?

- A. an app configuration policy
- B. a compliance policyC a security baseline profile D a conditional access policy

Answer: B


Explanation:

Reference:
<https://docs.microsoft.com/en-us/mem/intune/protect/device-compliance-get-started>

NEW QUESTION 200

HOTSPOT - (Topic 6)
Your network contains an on-premises Active Directory domain named adatum.com that syncs to Azure AD by using the Azure AD Connect Express Settings.
Password write back is disabled.
You create a user named User1 and enter Pass in the Password field as shown in the following exhibit.

New Object - User



Create in: Adatum.com/

Password:

Confirm password:

☐ User must change password at next logon

☐ User cannot change password

☐ Password never expires

☐ Account is disabled

< Back

Next >

Cancel

The Azure AD password policy is configured as shown in the following exhibit. Password policy Set the password policy for all users in your organization. Days before passwords expire 90 Days before a user is notified about 14 expiration You confirm that User1 is synced to Azure AD. For each of the following statements, select Yes if the statement is true. Otherwise, select No. NOTE: Each correct selection is worth one point.

Statements	Yes	No
User1 can sign in to Azure AD.	<input type="radio"/>	<input type="radio"/>
User1 can change the password immediately by using the My Apps portal.	<input type="radio"/>	<input type="radio"/>
From Azure AD, User1 must change the password every 90 days.	<input type="radio"/>	<input type="radio"/>

- A. Mastered
- B. Not Mastered

Answer: A

Explanation:

Statements	Yes	No
User1 can sign in to Azure AD.	<input checked="" type="radio"/>	<input type="radio"/>
User1 can change the password immediately by using the My Apps portal.	<input type="radio"/>	<input checked="" type="radio"/>
From Azure AD, User1 must change the password every 90 days.	<input checked="" type="radio"/>	<input type="radio"/>

NEW QUESTION 204

HOTSPOT - (Topic 6)

You work at a company named Contoso, Ltd. Contoso has a Microsoft 365 subscription that is configured to use the DNS domains shown in the following table. Contoso purchases a company named Fabrikam, Inc. Contoso plans to add the following domains to the Microsoft 365 subscription:

- fabrikam.com
- east.fabrikam.com
- west.contoso.com

You need to ensure that the devices in the new domains can register by using Autodiscover. How many domains should you verify, and what is the minimum number of enterprise registration DNS records you should add? To answer, select the appropriate options in the answer area. NOTE: Each correct selection is worth one point.

Answer Area



- A. Mastered
- B. Not Mastered

Answer: A

Explanation:

Answer Area



NEW QUESTION 209

- (Topic 6)
You purchase a new computer that has Windows 10, version 21H1 preinstalled.
You need to ensure that the computer is up-to-date. The solution must minimize the number of updates installed.
What should you do on the computer?

- A. Install all the feature updates released since version 21H1 and the latest quality update only.
- B. Install the latest feature update and all the quality updates released since version 21H1.
- C. Install the latest feature update and the latest quality update only.
- D. Install all the feature updates released since version 21H1 and all the quality updates released since version 21H1 only.

Answer: C

NEW QUESTION 211

HOTSPOT - (Topic 6)
HOTSPOT
You have a Microsoft 365 tenant.
You plan to create a retention policy as shown in the following exhibit.

Information governance > Create retention policy

✓ Name

✓ Locations

✓ Retention settings

● Finish

Review and finish

It might take up to one day to apply this policy to the locations you selected.

Policy name
contoso
[Edit](#)

Description
[Edit](#)

Locations to apply the policy
Exchange email (All Recipients)
SharePoint sites (All Sites)
OneDrive accounts (All Accounts)
Microsoft 365 Groups (All Groups)
[Edit](#)

Retention settings
Delete items at end of retention period
Delete items that are older than 7 years based on when they were created
[Edit](#)

⚠ Items that are currently older than 7 years will be deleted after you turn on this policy. This is especially important to note for locations scoped to 'All sources' (for example, 'All Teams chats') because all matching items in those locations across your organization will be permanently deleted.

Back

Submit

Cancel

Use the drop-down menus to select the answer choice that completes each statement based on the information presented in the graphic.
NOTE: Each correct selection is worth one point.

Answer Area

Microsoft SharePoint files that are affected by the policy will be [answer choice].

Once the policy is created, [answer choice].

- A. Mastered
- B. Not Mastered

Answer: A

Explanation:

Box 1: Deleted seven years after they were created. From the exhibit:

The retention policy applies to SharePoint sites.

Delete items that are older than 7 years based on when they were created.

Box 2: data will retained for a minimum of seven years

The longest retention period wins. If content is subject to multiple retention settings that retain content for different periods of time, the content will be retained until the end of the longest retention period for the item.

Note: Use a retention policy to assign the same retention settings for content at a site or mailbox level, and use a retention label to assign retention settings at an item level (folder, document, email).

For example, if all documents in a SharePoint site should be retained for 5 years, it's more efficient to do this with a retention policy than apply the same retention label to all documents in that site. However, if some documents in that site should be retained for 5

years and others retained for 10 years, a retention policy wouldn't be able to do this. When you need to specify retention settings at the item level, use retention labels.

NEW QUESTION 212

- (Topic 6)

Your company has a Microsoft 365 E5 subscription.

Users in the research department work with sensitive data.

You need to prevent the research department users from accessing potentially unsafe websites by using hyperlinks embedded in email messages and documents.

Users in other departments must not be restricted.

What should you do?

- A. Create a data loss prevention (DLP) policy that has a Content is shared condition.
- B. Modify the safe links policy Global settings.
- C. Create a data loss prevention (DLP) policy that has a Content contains condition.
- D. Create a new safe links policy.

Answer: D

Explanation:

Use the Microsoft 365 Defender portal to create Safe Links policies

In the Microsoft 365 Defender portal at <https://security.microsoft.com>, go to Email & Collaboration > Policies & Rules > Threat policies > Safe Links in the Policies section. Or, to go directly to the Safe Links page, use <https://security.microsoft.com/safelinksv2>.

* 1. On the Safe Links page, select Create to start the new Safe Links policy wizard.

* 2. On the Name your policy page, configure the following settings: Name: Enter a unique, descriptive name for the policy.

Description: Enter an optional description for the policy.

* 3. When you're finished on the Name your policy page, select Next.

* 4. On the Users and domains page, identify the internal recipients that the policy applies to (recipient conditions):

Users: The specified mailboxes, mail users, or mail contacts.

*-> Groups:

Members of the specified distribution groups (including non-mail-enabled security groups within distribution groups) or mail-enabled security groups (dynamic distribution groups aren't supported).

The specified Microsoft 365 Groups.

Domains: All recipients in the specified accepted domains in your organization. Etc.

Reference:

<https://learn.microsoft.com/en-us/microsoft-365/security/office-365-security/safe-links-policies-configure>

NEW QUESTION 213

HOTSPOT - (Topic 6)

You have a Microsoft 365 E5 tenant that connects to Microsoft Defender for Endpoint. You have devices enrolled in Microsoft Intune as shown in the following table.

Name	Platform
Device1	Windows 10
Device2	Windows 8.1
Device3	iOS
Device4	Android

You plan to use risk levels in Microsoft Defender for Endpoint to identify whether a device is compliant. Noncompliant devices must be blocked from accessing corporate resources.

You need to identify which devices can be onboarded to Microsoft Defender for Endpoint, and which Endpoint security policies must be configured.

What should you identify? To answer, select the appropriate options in the answer area.

NOTE: Each correct selection is worth one point.

Devices that can onboarded to Microsoft Defender for Endpoint:

▼

Device 1 only
Device 1 and Device 2 only
Device 1 and Device 3 only
Device 1 and Device 4 only
Device 1, Device 2, and Device 4 only
Device 1, Device 2, Device 3, and Device 4

Endpoint security policies that must be configured:

▼

A conditional access policy only
A device compliance policy only
A device configuration profile only
A device configuration profile and a conditional access policy only
Device configuration profile, device compliance policy, and conditional access policy

- A. Mastered
- B. Not Mastered

Answer: A

Explanation:

Text, table Description automatically generated with medium confidence

NEW QUESTION 216

- (Topic 6)

Your on-premises network contains an Active Directory domain named Contoso.com and 500 devices that run either macOS, Windows 8.1, Windows 10, or Windows 11. All the devices are managed by using Microsoft Endpoint Configuration Manager. The domain syncs with Azure Active Directory (Azure AD).

You plan to implement a Microsoft 365 E5 subscription and enable co-management. Which devices can be co-managed after the implementation?

- A. Windows 11 and Windows 10 only
- B. Windows 11, Windows 10-Windows8.1.andmacOS
- C. Windows 11 and macOS only
- D. Windows 11 only
- E. Windows 11. Windows 10, and Windows8.1 only

Answer: C

NEW QUESTION 219

- (Topic 6)

You have a Microsoft 365 E5 subscription that contains the following user:

? Name: User1

? UPN: user1@contoso.com

? Email address: user1@marketing.contoso.com

? MFA enrollment status: Disabled

When User1 attempts to sign in to Outlook on the web by using the user1@marketing.contoso.com email address, the user cannot sign in.

You need to ensure that User1 can sign in to Outlook on the web by using user1@marketing.contoso.com.

What should you do?

- A. Assign an MFA registration policy to User1.
- B. Reset the password of User1.
- C. Add an alternate email address for User1.
- D. Modify the UPN of User1.

Answer: D

Explanation:

Microsoft's recommended best practices are to match UPN to primary SMTP address. This article addresses the small percentage of customers that cannot remediate UPN's to match.

Note: A UPN is an Internet-style login name for a user based on the Internet standard RFC 822. The UPN is shorter than a distinguished name and easier to

remember. By convention, this should map to the user's email name. The point of the UPN is to consolidate the email and logon namespaces so that the user only needs to remember a single name.

Configure the Azure AD multifactor authentication registration policy

Azure Active Directory (Azure AD) Identity Protection helps you manage the roll-out of Azure AD multifactor authentication (MFA) registration by configuring a Conditional Access policy to require MFA registration no matter what modern authentication app you're signing in to.

Reference:

<https://docs.microsoft.com/en-us/windows/win32/ad/naming-properties#userprincipalname>

NEW QUESTION 220

- (Topic 6)

You have a Microsoft 365 E5 subscription.

You need to identify which users accessed Microsoft Office 365 from anonymous IP addresses during the last seven days.

What should you do?

- A. From the Cloud App Security admin center, select Users and accounts.
- B. From the Microsoft 365 security center, view the Threat tracker.
- C. From the Microsoft 365 admin center, view the Security & compliance report.
- D. From the Azure Active Directory admin center, view the Risky sign-ins report.

Answer: A

NEW QUESTION 225

HOTSPOT - (Topic 6)

You have a Microsoft 365 E5 tenant.

You have a sensitivity label configured as shown in the Sensitivity label exhibit. (Click the Sensitivity label tab.)

Review your settings and finish

Name

Sensitivity1

Display name

Sensitivity1

Description for users

Sensitivity1

Scope

File.Email

Encryption

Content marking

Watermark: Watermark
Header: Header

Auto-labeling

Group settings

Site settings

Auto-labeling for database columns

None

You have an auto-labeling policy as shown in the Auto-labeling policy exhibit. (Click the Auto-labeling policy tab.)

Auto-labeling policy

Edit Policy

Delete Policy

Policy name
Auto-labeling policy

Description

Label in simulation
Sensitivity1

Info to label
IP Address

Apply to content in these locations
Exchange email All

Rules for auto-applying this label
Exchange email 1 rule

Mode
On

Comment

A user sends an email that contains the components shown in the following table.

Type	File	Includes IP address
Mail body	Not applicable	No
Attachment	File1.docx	Yes
Attachment	File2.xml	Yes

For each of the following statements, select Yes if the statement is true. Otherwise, select No.
NOTE: Each correct selection is worth one point.

Statements	Yes	No
Sensitivity1 is applied to the email.	<input type="radio"/>	<input type="radio"/>
A watermark is added to File1.docx.	<input type="radio"/>	<input type="radio"/>
A header is added to File2.xml.	<input type="radio"/>	<input type="radio"/>

- A. Mastered
- B. Not Mastered

Answer: A

Explanation:

Statements	Yes	No
Sensitivity1 is applied to the email.	<input checked="" type="radio"/>	<input type="radio"/>
A watermark is added to File1.docx.	<input type="radio"/>	<input checked="" type="radio"/>
A header is added to File2.xml.	<input type="radio"/>	<input checked="" type="radio"/>

NEW QUESTION 226

HOTSPOT - (Topic 6)

You have a Microsoft 365 E5 tenant that contains a Microsoft SharePoint Online site named Site1. Site1 contains the files shown in the following table.

Name	Number of IP addresses in the file
File1.docx	1
File2.txt	2
File3.xlsx	5

You create a sensitivity label named Sensitivity1 and an auto-label policy that has the following configurations:
? Name: AutoLabel1
? Label to auto-apply: Sensitivity1
? Rules for SharePoint Online sites: Rule1-SPO
? Choose locations where you want to apply the label: Site1
Rule1-SPO is configured as shown in the following exhibit.

Edit rule

Name *

Rule1-SPO

Description

Rule1 description

^ Conditions

We'll apply this policy to content that matches these conditions.

^ Content contains sensitive info types

Default

All of these

Sensitive info types

IP Address

Accuracy

85

to

100

Instance count

2

to

Any

Add

Create group

+ Add condition

Save

Cancel

For each of the following statements, select Yes if the statement is true. Otherwise, select No.
NOTE: Each correct selection is worth one point.

Statements	Yes	No
Sensitivity1 is applied to File1.docx.	<input type="radio"/>	<input type="radio"/>
Sensitivity1 is applied to File2.txt.	<input type="radio"/>	<input type="radio"/>
Sensitivity1 is applied to File3.xlsx.	<input type="radio"/>	<input type="radio"/>

- A. Mastered
- B. Not Mastered

Answer: A

Explanation:

Passing Certification Exams Made Easy

visit - <https://www.surepassexam.com>

Statements	Yes	No
Sensitivity1 is applied to File1.docx.	<input type="radio"/>	<input type="radio"/>
Sensitivity1 is applied to File2.txt.	<input type="radio"/>	<input type="radio"/>
Sensitivity1 is applied to File3.xlsx.	<input type="radio"/>	<input type="radio"/>

NEW QUESTION 231

- (Topic 5)

You need to configure Azure AD Connect to support the planned changes for the Montreal Users and Seattle Users OUs. What should you do?

- A. From the Microsoft Azure AD Connect wizard, select Customize synchronization options.
- B. From PowerShell, run the Add-ADSyncConnectorAttributeInclusion cmdlet.
- C. From PowerShell, run the start-ADSyncSyncCycle cmdlet.
- D. From the Microsoft Azure AD Connect wizard, select Manage federation.

Answer: A

NEW QUESTION 235

- (Topic 4)

Which role should you assign to User1?

Available Choices (select all choices that are correct)

- A. Hygiene Management
- B. Security Reader
- C. Security Administrator
- D. Records Management

Answer: C

Explanation:

A user named User1 must be able to view all DLP reports from the Microsoft 365 admin center.

Users with the Security Reader role have global read-only access on security-related features, including all information in Microsoft 365 security center, Azure Active Directory, Identity Protection, Privileged Identity Management, as well as the ability to read Azure Active Directory sign-in reports and audit logs, and in Office 365 Security & Compliance Center.

Reference:

<https://docs.microsoft.com/en-us/azure/active-directory/users-groups-roles/directory-assign-admin-roles>

NEW QUESTION 237

- (Topic 4)

You need to ensure that all the sales department users can authenticate successfully during Project1 and Project2.

Which authentication strategy should you implement for the pilot projects?

- A. pass-through authentication
- B. pass-through authentication and seamless SSO
- C. password hash synchronization and seamless SSO
- D. password hash synchronization

Answer: C

Explanation:

Project1: During Project1, the mailboxes of 100 users in the sales department will be moved to Microsoft 365.

Project2: After the successful completion of Project1, Microsoft Teams & Skype for Business will be enabled in Microsoft 365 for the sales department users.

After the planned migration to Microsoft 365, all users must be signed in to on-premises and cloud-based applications automatically.

Fabrikam does NOT plan to implement identity federation.

After the planned migration to Microsoft 365, all users must continue to authenticate to their mailbox and to SharePoint sites by using their UPN.

You need to enable password hash synchronization to enable the users to continue to authenticate to their mailbox and to SharePoint sites by using their UPN.

You need to enable SSO to enable all users to be signed in to on-premises and cloud-based applications automatically.

Reference:

<https://docs.microsoft.com/en-us/azure/active-directory/hybrid/choose-ad-authn>

NEW QUESTION 239

- (Topic 3)

You need to configure Office on the web to meet the technical requirements. What should you do?

- A. Assign the Global reader role to User1.
- B. Enable sensitivity labels for Office files in SharePoint Online and OneDrive.
- C. Configure an auto-labeling policy to apply the sensitivity labels.

D. Assign the Office apps admin role to User1.

Answer: B

Explanation:

Reference:

<https://docs.microsoft.com/en-us/microsoft-365/compliance/sensitivity-labels-sharepoint-onedrive-files?view=o365-worldwide>

NEW QUESTION 244

HOTSPOT - (Topic 3)

You need to configure automatic enrollment in Intune. The solution must meet the technical requirements.

What should you configure, and to which group should you assign the configurations? To answer, select the appropriate options in the answer area.

NOTE: Each correct selection is worth one point.

Configure: ▼

Device configuration profiles	Enrollment restrictions
The mobile device management (MDM) user scope	
The mobile application management (MAM) user scope	

Group: ▼

UserGroup1
UserGroup2
DeviceGroup1
DeviceGroup2

- A. Mastered
- B. Not Mastered

Answer: A

Explanation:

Configure: ▼

Device configuration profiles	Enrollment restrictions
The mobile device management (MDM) user scope	
The mobile application management (MAM) user scope	

Group: ▼

UserGroup1
UserGroup2
DeviceGroup1
DeviceGroup2

NEW QUESTION 246

- (Topic 3)

You need to create the DLP policy to meet the technical requirements. What should you configure first?

- A. sensitive info types
- B. the Insider risk management settings
- C. the event types
- D. the sensitivity labels

Answer: A

Explanation:

Reference:

<https://docs.microsoft.com/en-us/microsoft-365/compliance/create-test-tune-dlp-policy?view=o365-worldwide>

NEW QUESTION 248

- (Topic 2)

You need to meet the technical requirement for the EU PII data. What should you create?

- A. a retention policy from the Security & Compliance admin center.
- B. a retention policy from the Exchange admin center
- C. a data loss prevention (DLP) policy from the Exchange admin center
- D. a data loss prevention (DLP) policy from the Security & Compliance admin center

Answer: A

Explanation:

References:

<https://docs.microsoft.com/en-us/office365/securitycompliance/retention-policies>
EU PII wants both documents and email message to be preserved so S&C Admin Center for Retention. If this was for Email only, this probably could have been done in EAC.

NEW QUESTION 249

- (Topic 2)
You need to recommend a solution for the security administrator. The solution must meet the technical requirements.
What should you include in the recommendation?

- A. Microsoft Azure Active Directory (Azure AD) Privileged Identity Management
- B. Microsoft Azure Active Directory (Azure AD) Identity Protection
- C. Microsoft Azure Active Directory (Azure AD) conditional access policies
- D. Microsoft Azure Active Directory (Azure AD) authentication methods

Answer: B

Explanation:

References:
<https://docs.microsoft.com/en-us/azure/active-directory/conditional-access/concept-conditional-access-conditions#sign-in-risk> states clearly that Sign-in risk

NEW QUESTION 252

DRAG DROP - (Topic 2)
You need to meet the requirement for the legal department.
Which three actions should you perform in sequence from the Security & Compliance admin center? To answer, move the appropriate actions from the list of actions to the answer area and arrange them in the correct order.

Actions	Answer Area
Create a data loss prevention (DLP) policy.	
Create an eDiscovery case.	
Create a label.	
Run a content search.	
Create a label policy.	
Create a hold.	
Assign eDiscovery permissions.	
Publish a label.	

- A. Mastered
- B. Not Mastered

Answer: A

Explanation:

References: <https://www.sherweb.com/blog/ediscovery-office-365/>

NEW QUESTION 254

- (Topic 1)
On which server should you use the Defender for identity sensor?

- A. Server1
- B. Server2
- C. Server3
- D. Server4
- E. Servers5

Answer: A

Explanation:

However, if the case study had required that the DCs can't have any s/w installed, then the answer would have been a standalone sensor on Server2. In this scenario, the given answer is correct. BTW, ATP now known as Defender for Identity.

NEW QUESTION 258

- (Topic 2)
You need to protect the U.S. PII data to meet the technical requirements. What should you create?

- A. a data loss prevention (DLP) policy that contains a domain exception
- B. a Security & Compliance retention policy that detects content containing sensitive data
- C. a Security & Compliance alert policy that contains an activity
- D. a data loss prevention (DLP) policy that contains a user override

Answer: A

NEW QUESTION 260

HOTSPOT - (Topic 1)

As of March, how long will the computers in each office remain supported by Microsoft? To answer, select the appropriate options in the answer area.

NOTE: Each correct selection is worth one point.

Seattle:

6 months
18 months
24 months
30 months
5 years

New York:

6 months
18 months
24 months
30 months
5 years

- A. Mastered
- B. Not Mastered

Answer: A

Explanation:

<https://support.microsoft.com/en-gb/help/13853/windows-lifecycle-fact-sheet> March Feature Updates: Serviced for 18 months from release date September Feature Updates: Serviced for 30 months from release date

References:

<https://www.windowscentral.com/whats-difference-between-quality-updates-and-feature-updates-windows-10>

NEW QUESTION 262

HOTSPOT - (Topic 1)

You need to meet the Intune requirements for the Windows 10 devices.

What should you do? To answer, select the appropriate options in the answer area.

NOTE: Each correct selection is worth one point.

Settings to configure in Azure AD:

Device settings
Mobility (MDM and MAM)
Organizational relationships
User settings

Settings to configure in Intune:

Device compliance
Device configuration
Device enrollment
Mobile Device Management Authority

- A. Mastered
- B. Not Mastered

Answer: A

Explanation:

References:

<https://docs.microsoft.com/en-us/intune/windows-enroll>

NEW QUESTION 263

HOTSPOT - (Topic 6)

You have a Microsoft 365 E5 tenant.

You configure a device compliance policy as shown in the following exhibit.

Compliance settings [Edit](#)

Microsoft Defender ATP

Require the device to be at or under the machine risk score:

Low

Device Health

Rooted devices

Require the device to be at or under the Device Threat Level

Block

System Security

Require a password to unlock mobile devices

Required password type

Encryption of data storage on device.

Block apps from unknown sources

Require

Device default

Require

Block

Actions for noncompliance [Edit](#)

Action

Schedule

Mark device noncompliant

Immediately

Retire the noncompliant device

Immediately

Use the drop-down menus to select the answer choice that completes each statement based on the information presented in the graphic.

NOTE: Each correct selection is worth one point.

When a device reports a medium threat level, the device will

▼

be locked remotely

display a notification

marked as compliant

marked as noncompliant

removed from the database

Rooted devices will be

▼

allowed to access company resources

marked as compliant

prevented from accessing company resources

reported with a low device threat

- A. Mastered
B. Not Mastered

Answer: A

Explanation:

When a device reports a medium threat level, the device will

▼

be locked remotely

display a notification

marked as compliant

marked as noncompliant

removed from the database

Rooted devices will be

▼

allowed to access company resources

marked as compliant

prevented from accessing company resources

reported with a low device threat

NEW QUESTION 265

- (Topic 6)

You have a Microsoft 365 E5 subscription that uses Microsoft Defender for Office 365 and contains a user named User1.

User1 emails a product catalog in the PDF format to 300 vendors. Only 200 vendors receive the email message, and User1 is blocked from sending email until the next day.

You need to prevent this issue from reoccurring. What should you configure?

- A. anti-spam policies
- B. Safe Attachments policies
- C. anti-phishing policies
- D. anti-malware policies

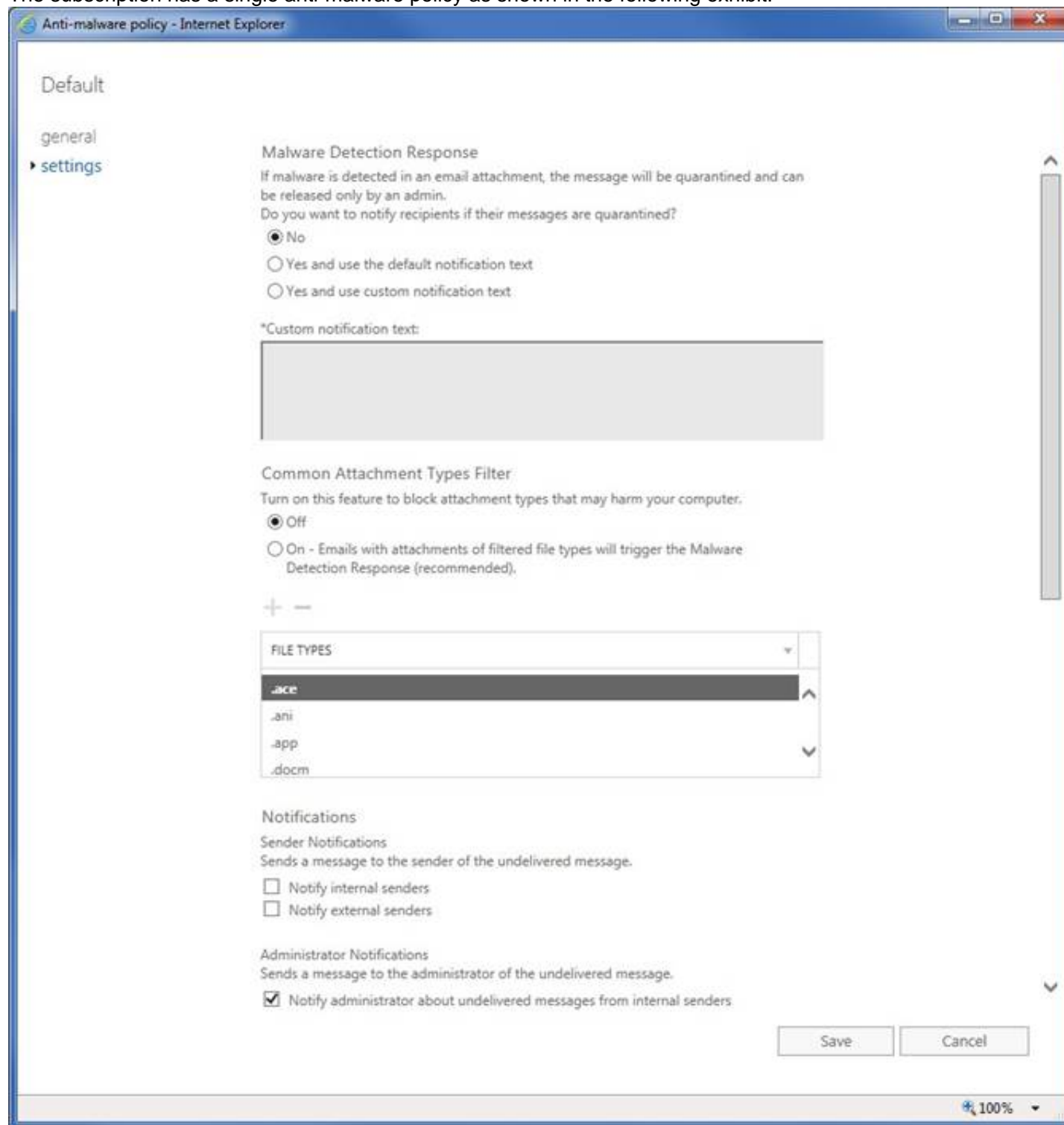
Answer: A

NEW QUESTION 268

- (Topic 6)

You have a Microsoft 365 E5 subscription that contains a user named User1.

The subscription has a single anti-malware policy as shown in the following exhibit.



An email message that contains text and two attachments is sent to User1. One attachment is infected with malware. How will the email message and the attachments be processed?

- A. Both attachments will be remove
- B. The email message will be quarantined, and Used will receive an email message without any attachments and an email message that includes the following text: 'Malware was removed.'
- C. The email message will be quarantined, and the message will remain undelivered.
- D. Both attachments will be remove
- E. The email message will be quarantined, and User1 will receive a copy of the message containing the original text and a new attachment that includes the following text: 'Malware was removed.'
- F. The malware-infected attachment will be remove
- G. The email message will be quarantined, and User1 will receive a copy of the message containing only the uninfected attachment.

Answer: C

Explanation:

Reference:

<https://docs.microsoft.com/en-us/microsoft-365/security/office-365-security/anti-malware-protection?view=o365-worldwide#anti-malware-policies>

NEW QUESTION 270

- (Topic 6)

You have a Microsoft 365 tenant.

You plan to manage incidents in the tenant by using the Microsoft 365 security center. Which Microsoft service source will appear on the Incidents page of the Microsoft 365 security center?

- A. Microsoft Defender for CloudUse the
- B. Microsoft Purview
- C. Azure Arc
- D. Microsoft Defender for Identity

Answer: D

Explanation:

Reference:

<https://docs.microsoft.com/en-us/microsoft-365/security/defender/investigate-alerts?view=o365-worldwide>

NEW QUESTION 274

- (Topic 6)

You have a Microsoft 365 E5 tenant.

You plan to create a custom Compliance Manager assessment template based on the ISO 27001:2013 template.

You need to export the existing template.

Which file format should you use for the exported template?

- A. CSV
- B. XLSX
- C. JSON
- D. XML

Answer: B

Explanation:

Reference:

<https://docs.microsoft.com/en-us/microsoft-365/compliance/compliance-manager-templates?view=o365-worldwide#export-a-template>

NEW QUESTION 277

HOTSPOT - (Topic 6)

You have a Microsoft 365 subscription.

From the Microsoft 365 admin center, you open the Microsoft 365 Apps usage report as shown in the following exhibit.

Username ⓘ	Last activation date (UTC)	Last activity date (UTC)	⌵ Choose columns
431B8D0D1D05D877FDC4416			
2F2747649D4150B686307383			
659213C0E1D99EA1A4AD56D		Wednesday, August 3, 2022	
FE185622F642B0381DB633EC			
988D39ED225FC80FF2A5684			

You need ensure that the report meets the following requirements:

- The Username column must display the actual name of each user.
- Usage of the Microsoft Teams mobile app must be displayed.

What should you modify for each requirement? To answer, select the appropriate options in the answer area. NOTE: Each correct selection is worth one point.

Answer Area

The Username column must display the actual name of each user:

Reports in Org settings

▼

Privacy profile in Org settings

Reports in Org settings

The membership of the Reports Reader role

Usage of the Teams mobile app must be displayed:

Microsoft Teams in Org settings

▼

Microsoft Teams in Org settings

The columns in the report

The Teams license assignment

- A. Mastered
- B. Not Mastered

Answer: A

Explanation:

Answer Area

The Username column must display the actual name of each user:

Reports in Org settings ▼

Privacy profile in Org settings

Reports in Org settings

The membership of the Reports Reader role

Usage of the Teams mobile app must be displayed:

Microsoft Teams in Org settings ▼

Microsoft Teams in Org settings

The columns in the report

The Teams license assignment

NEW QUESTION 278

- (Topic 6)

You have a Microsoft 365 subscription that uses Microsoft Defender for Office 365.

You need to ensure that users are prevented from opening or downloading malicious files from Microsoft Teams, OneDrive, or SharePoint Online.

What should you do?

- A. Create a new Anti-malware policy
- B. Configure the Safe Links global settings.
- C. Create a new Anti-phishing policy
- D. Configure the Safe Attachments global settings.

Answer: D

Explanation:

Safe Attachments for SharePoint, OneDrive, and Microsoft Teams

In organizations with Microsoft Defender for Office 365, Safe Attachments for SharePoint, OneDrive, and Microsoft Teams provides an additional layer of protection against malware. After files are asynchronously scanned by the common virus detection engine in Microsoft 365, Safe Attachments opens files in a virtual environment to see what happens (a process known as detonation). Safe Attachments for SharePoint, OneDrive, and Microsoft Teams also helps detect and block existing files that are identified as malicious in team sites and document libraries.

Reference:

<https://learn.microsoft.com/en-us/microsoft-365/security/office-365-security/safe-attachments-for-spo-odfb-teams-about>

NEW QUESTION 281

- (Topic 6)

You have a Microsoft 365 E5 tenant.

You need to evaluate compliance with European Union privacy regulations for customer data.

What should you do in the Microsoft 365 compliance center?

- A. Create a Data Subject Request (DSR)
- B. Create a data loss prevention (DLP) policy for General Data Protection Regulation (GDPR) data
- C. Create an assessment based on the EU GDPR assessment template
- D. Create an assessment based on the Data Protection Baseline assessment template

Answer: C

Explanation:

Reference:

<https://docs.microsoft.com/en-us/compliance/regulatory/gdpr-action-plan>

NEW QUESTION 284

- (Topic 6)

Your company has an Azure AD tenant named contoso.com that includes the users shown in the following table.

Name	Usage location	Membership
User1	United States	Group1, Group2
User2	Not set	Group2
User3	Not set	Group1
User4	Canada	Group1

Group2 is a member of Group1.

You assign an Office 365 Enterprise E3 license to Group1. How many Office 365 E3 licenses are assigned?

- A. 1
- B. 2
- C. 3
- D. 4

Answer: C

NEW QUESTION 289

HOTSPOT - (Topic 6)

HOTSPOT

You have an Azure AD tenant that contains the administrative units shown in the following table.

Name	Members
AU1	User1, User2
AU2	User3

You have the following users:

- ? A user named User1 that is assigned the Password Administrator for AU1 and AU2.
- ? A user named User2 that is assigned the User Administrator for AU1.
- ? A user named User3 that is assigned the User Administrator for the tenant.

For each of the following statements, select Yes if the statement is true. Otherwise, select No.

NOTE: Each correct selection is worth one point.

Answer Area

Statements	Yes	No
User1 can reset the password of User3.	<input checked="" type="checkbox"/>	<input type="checkbox"/>
User2 can update the display name of User1.	<input type="checkbox"/>	<input type="checkbox"/>
User1 can reset the password of User2.	<input type="checkbox"/>	<input type="checkbox"/>

- A. Mastered
- B. Not Mastered

Answer: A

Explanation:

Box 1: No

User1 is assigned the Password Administrator for AU1 and AU2. User3 is in AU2. User3 is User Adminstrator. Password administrators cannot reset User Administrators passwords.

Note: Password Administrator

Users with this role have limited ability to manage passwords. This role does not grant the ability to manage service requests or monitor service health. Whether a Password Administrator can reset a user's password depends on the role the user is assigned.

Role that password can be reset	Password Admin	Helpdesk Admin	Auth Admin	User Admin	Privileged Auth Admin	Global Admin
User Admin	<input type="checkbox"/>			✓	✓	✓
Usage Summary Reports Reader		✓	✓	✓	✓	✓

Box 2: Yes

Box 3: No

User1 is assigned the Password Administrator for AU1 and AU2. User2 is in AU1. User2 is User Adminstrator. Password administrators cannot reset User Administrators passwords.

Note: User Administrator

Can manage all aspects of users and groups, including resetting passwords for limited admins.

NEW QUESTION 290

- (Topic 6)

You have a Microsoft 365 E5 subscription.

Your company s Microsoft Secure Score recommends the actions shown in the following exhibit.

Microsoft Secure Score

Overview Recommended actions History Metrics & trends

Export

Rank	Recommended action	Score impact	Points achieved	Status
<input type="checkbox"/> 1	Require multifactor authentication for administrative roles	+4.15%	0/10	<input type="radio"/> To address
<input type="checkbox"/> 2	Ensure all users can complete multifactor authentication	+3.73%	0/9	<input type="radio"/> To address
<input type="checkbox"/> 3	Create Safe Links policies for email messages	+3.73%	0/9	<input type="radio"/> To address
<input type="checkbox"/> 4	Enable policy to block legacy authentication	+3.32%	0/8	<input type="radio"/> To address
<input type="checkbox"/> 5	Turn on Safe Attachments in block mode	+3.32%	0/8	<input type="radio"/> To address
<input type="checkbox"/> 6	Ensure that intelligence for impersonation protection is enabled	+3.32%	0/8	<input type="radio"/> To address
<input type="checkbox"/> 7	Move messages that are detected as impersonated users by mailbox intelligence	+3.32%	0/8	<input type="radio"/> To address
<input type="checkbox"/> 8	Enable impersonated domain protection	+3.32%	0/8	<input type="radio"/> To address

You select Create Safe Links policies for email messages and change Status to Risk accepted in the Status & action plan settings. How does the change affect the Secure Score?

- A. remains the same
- B. increases by 1 point
- C. increases by 9 points
- D. decreases by 1 point
- E. decreases by 9 points

Answer: A

NEW QUESTION 294

HOTSPOT - (Topic 6)

You have a hybrid deployment of Azure AD that contains the users shown in the following table.

Name	Description
User1	Azure AD Connect sync account
User2	Contributor for Azure AD Connect Health
User3	Application administrator in Azure AD

You need to identify which users can perform the following tasks:

- View sync errors in Azure AD Connect Health.
- Configure Azure AD Connect Health settings.

Which user should you identify for each task? To answer, select the appropriate options in the answer area.

NOTE: Each correct selection is worth one point.

Answer Area

View sync errors in Azure AD Connect Health:

User2

User1

User2

User3

Configure Azure AD Connect Health settings:

User1

User1

User2

User3

- A. Mastered
- B. Not Mastered

Answer: A

Explanation:

Answer Area

View sync errors in Azure AD Connect Health:

User2
User1
User2
User3

Configure Azure AD Connect Health settings:

User1
User1
User2
User3

NEW QUESTION 295

- (Topic 6)
You have a Microsoft 365 E5 tenant that uses Microsoft Intune.
You need to ensure that users can select a department when they enroll their device in Intune.
What should you create?

- A. scope tags
- B. device configuration profiles
- C. device categories
- D. device compliance policies

Answer: C

Explanation:

Reference:
<https://docs.microsoft.com/en-us/mem/intune/enrollment/device-group-mapping>

NEW QUESTION 298

- (Topic 6)
You are reviewing alerts in the Microsoft 365 Defender portal. How long are the alerts retained in the portal?

- A. 30 days
- B. 60 days
- C. 3 months
- D. 6 months
- E. 12 months

Answer: C

Explanation:

Data retention information for Microsoft Defender for Office 365
By default, data across different features is retained for a maximum of 30 days. However, for some of the features, you can specify the retention period based on policy. See the following table for the different retention periods for each feature.
Defender for Office 365 Plan 1
* Alert metadata details (Microsoft Defender for Office alerts) 90 days.
Note: By default, the alerts queue in the Microsoft 365 Defender portal displays the new and in progress alerts from the last 30 days. The most recent alert is at the top of the list so you can see it first.

Alerts									
<div>Export 30 Days Manage alerts</div> <div>Filters: Status: New +1</div>									
Alert name	Tags	Severity	Investigation state	Status	Category	Detection source	Impacted assets	First activity	
Email reported by ...		Informational		In progress	Others	MDO	Jenny Sivalingam	Apr 14, 2021	
Admin action sub...		Informational	Remediated	New	Suspicious activity	Automated investigation		Apr 14, 2021	
Custom detection ...		Medium		New	Execution	Custom detection	madr@profk1p1 on...	Apr 14, 2021	
"> 3		High	No threats found	New	Exploit	Custom detection	coro-danemarks	Apr 14, 2021	
"> 2		High	No threats found	New	Exploit	Custom detection	com-mikebarden	Apr 7, 2021	
Unfamiliar sign-in ...		Low		New	Initial access	AAD Identity Protection	bboecadmin	Apr 14, 2021	
Admin action sub...		Informational	Remediated	New	Suspicious activity	Automated investigation		Apr 14, 2021	
Test email custom ...		Medium		New	Execution	Custom detection	Clare Love	Apr 14, 2021	

Reference:
<https://learn.microsoft.com/en-us/microsoft-365/security/office-365-security/mdo-data-retention>

NEW QUESTION 302

HOTSPOT - (Topic 6)
HOTSPOT
You have a Microsoft 365 E5 subscription that contains the users shown in the following table.

Name	Member of	Multi-factor authentication (MFA) method registered
User1	Group1	Microsoft Authenticator app (push notification)
User2	Group2	Microsoft Authenticator app (push notification)
User3	Group1	None

You configure the Microsoft Authenticator authentication method policy to enable passwordless authentication as shown in the following exhibit.

Enable and Target

Configure

Enable

Include

Exclude

Target

All users

Select groups

Add groups

Name	Type	Registration	Authentication mode
Group1	Group	Optional	Any

Both User1 and User2 report that they are NOT prompted for passwordless sign-in in the Microsoft Authenticator app. For each of the following statements, select Yes if the statement is true. Otherwise, select No.
 NOTE: Each correct selection is worth one point.

Answer Area

Statements

Yes

No

User1 will be prompted for passwordless authentication once User1 sets up phone sign-in in the Microsoft Authenticator app.

User2 will be prompted for passwordless authentication once User2 sets up phone sign-in in the Microsoft Authenticator app.

User3 can use passwordless authentication without further action.

- A. Mastered
- B. Not Mastered

Answer: A

Explanation:

Box 1: Yes
 User1 is member of Group1.
 User1 has MFA registered method of Microsoft Authenticater app (push notification) The Microsoft Authenticator authentication method policy is configured for Group1, registration is optional, authentication method is any.
 Note: Microsoft Authenticator can be used to sign in to any Azure AD account without using a password. Microsoft Authenticator uses key-based authentication to enable a user credential that is tied to a device, where the device uses a PIN or biometric. Windows Hello for Business uses a similar technology. This authentication technology can be used on any device platform, including mobile. This technology can also be used with any app or website that integrates with Microsoft Authentication Libraries.

Box 2: No
 User2 is member of Group2.
 The Microsoft Authenticator authentication method policy is configured for Group1, not for Group2.

Box 3: No
 User3 is member of Group1.
 User3 has no MFA method registered.
 User3 must choose an authentication method.
 Note: Enable passwordless phone sign-in authentication methods
 Azure AD lets you choose which authentication methods can be used during the sign-in process. Users then register for the methods they'd like to use.

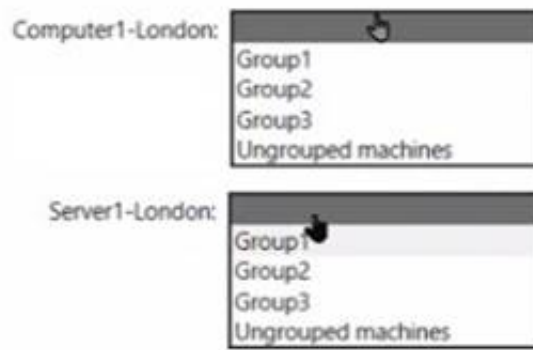
NEW QUESTION 304

HOTSPOT - (Topic 6)
 You use Microsoft Defender for Endpoint.
 You have the Microsoft Defender for Endpoint device groups shown in the following table

Name	Rank	Members
Group1	1	Operating system in Windows 10
Group2	2	Name ends with London
Group3	3	Operating system in Windows Server 2016
Ungrouped machines (default)	Last	Not applicable

You plan to onboard computers to Microsoft Defender for Endpoint as shown in the following table.

Answer Area

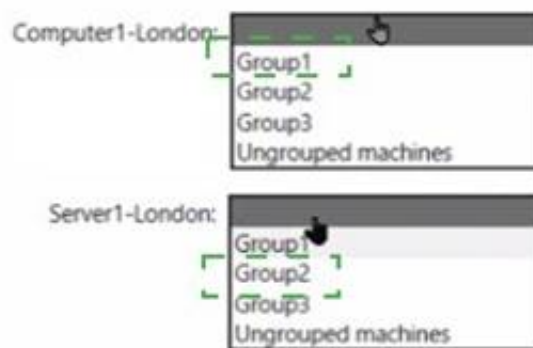


- A. Mastered
- B. Not Mastered

Answer: A

Explanation:

Answer Area



NEW QUESTION 308

- (Topic 6)

You have a Microsoft 365 E5 subscription that is linked to a Microsoft Entra tenant named contoso.com.

You purchase 100 Microsoft 365 Business Voice add-on licenses.

You need to ensure that the members of a group named Voice are assigned a Microsoft 365 Business Voice add-on license automatically.

What should you do?

- A. From the Microsoft 365 admin center, modify the settings of the Voice group.
- B. From the Licenses page of the Microsoft 365 admin center, assign the licenses.
- C. From the Microsoft Entra admin center, modify the settings of the Voice group.

Answer: C

NEW QUESTION 312

- (Topic 6)

You have a Microsoft 365 subscription that contains an Azure AD tenant named contoso.com.

Corporate policy states that user passwords must not include the word Contoso. What should you do to implement the corporate policy?

- A. From Azure AD Identity Protection, configure a sign-in risk policy.
- B. From the Microsoft Entra admin center, create a conditional access policy.
- C. From the Microsoft 365 admin center, configure the Password policy settings.
- D. From the Microsoft Entra admin center, configure the Password protection settings.

Answer: D

NEW QUESTION 314

- (Topic 6)

Your company has a Microsoft 365 subscription.

You need to identify all the users in the subscription who are licensed for Office 365 through a group membership. The solution must include the name of the group used to assign the license.

What should you use?

- A. Active users in the Microsoft 365 admin center
- B. Reports in Microsoft Purview compliance portal
- C. the Licenses blade in the Microsoft Entra admin center
- D. Reports in the Microsoft 365 admin center

Answer: D

Explanation:

Microsoft 365 Reports in the admin center

You can easily see how people in your business are using Microsoft 365 services. For example, you can identify who is using a service a lot and reaching quotas, or who may not need a Microsoft 365 license at all.

Which activity reports are available in the admin center

Depending on your subscription, here are the available reports in all environments.

Report	Public	GCC	GCC-High	DoD	Office 365 operated by 21Vianet
Microsoft browser usage	Yes	No ¹	No ¹	No ¹	No ¹
Email activity	Yes	Yes	Yes	Yes	Yes
Email apps usage	Yes	Yes	Yes	Yes	Yes
Mailbox usage	Yes	Yes	Yes	Yes	Yes
Office activations	Yes	Yes	Yes	Yes	Yes

Reference:
<https://learn.microsoft.com/en-us/microsoft-365/admin/activity-reports/activity-reports>

NEW QUESTION 315

HOTSPOT - (Topic 6)

You have a Microsoft 365 subscription.

You need to create two groups named Group1 and Group2. The solution must meet the following requirements:

- Group1 must be mail-enabled and have an associated Microsoft SharePoint Online site.
- Group2 must support dynamic membership and role assignments but must NOT be mail-enabled.

Which types of groups should you create? To answer, select the appropriate options in the answer area. NOTE: Each correct selection is worth one point.

Answer Area

Group1:

Microsoft 365

Distribution

Dynamic distribution

Microsoft 365

Security

Group2:

Security

Distribution

Dynamic distribution

Microsoft 365

Security

- A. Mastered
 B. Not Mastered

Answer: A

Explanation:

Answer Area

Group1:

Microsoft 365

Distribution

Dynamic distribution

Microsoft 365

Security

Group2:

Security

Distribution

Dynamic distribution

Microsoft 365

Security

NEW QUESTION 316

- (Topic 6)

You have a hybrid Azure Active Directory (Azure AD) tenant and a Microsoft Endpoint Configuration Manager deployment.

You have the devices shown in the following table.

Name	Platform	Configuration
Device1	Windows 10	Hybrid joined to on-premises Active Directory and Azure AD only
Device2	Windows 10	Joined to Azure AD and enrolled in Configuration Manager only
Device3	Windows 10	Enrolled in Microsoft Endpoint Manager and has the Configuration Manager agent installed only

You plan to enable co-management.
You need to identify which devices support co-management without requiring the installation of additional software.
Which devices should you identify?

- A. Device1 only
- B. Device2 only
- C. Device3 only
- D. Device2 and Device3 only
- E. Device1, Device2, and Device3

Answer: D

NEW QUESTION 318

HOTSPOT - (Topic 6)

HOTSPOT

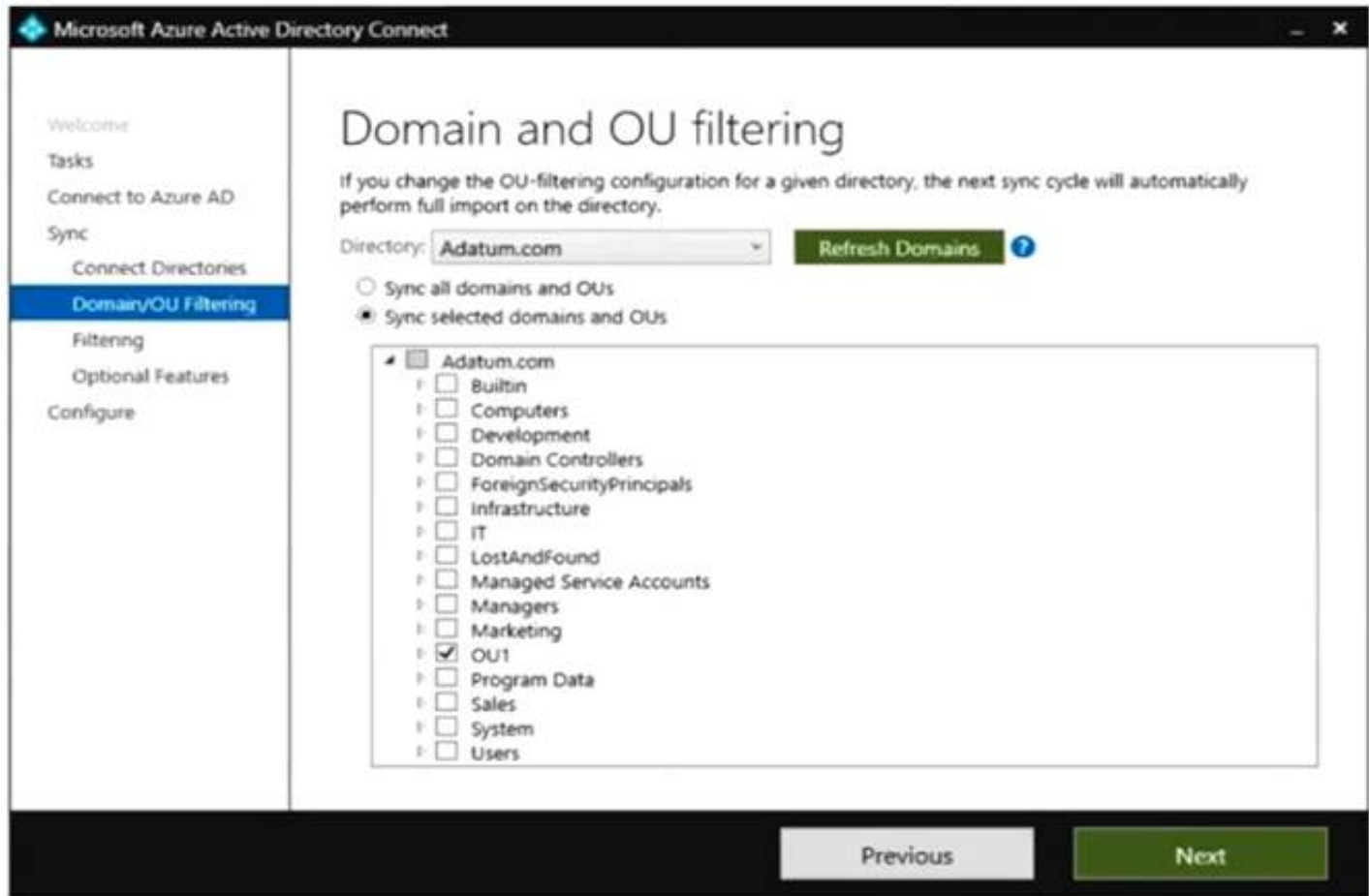
Your network contains an on-premises Active Directory domain and a Microsoft 365 subscription.
The domain contains the users shown in the following table.

Name	Member of	In organizational unit (OU)
User1	Group1	OU1
User2	Group2	OU1

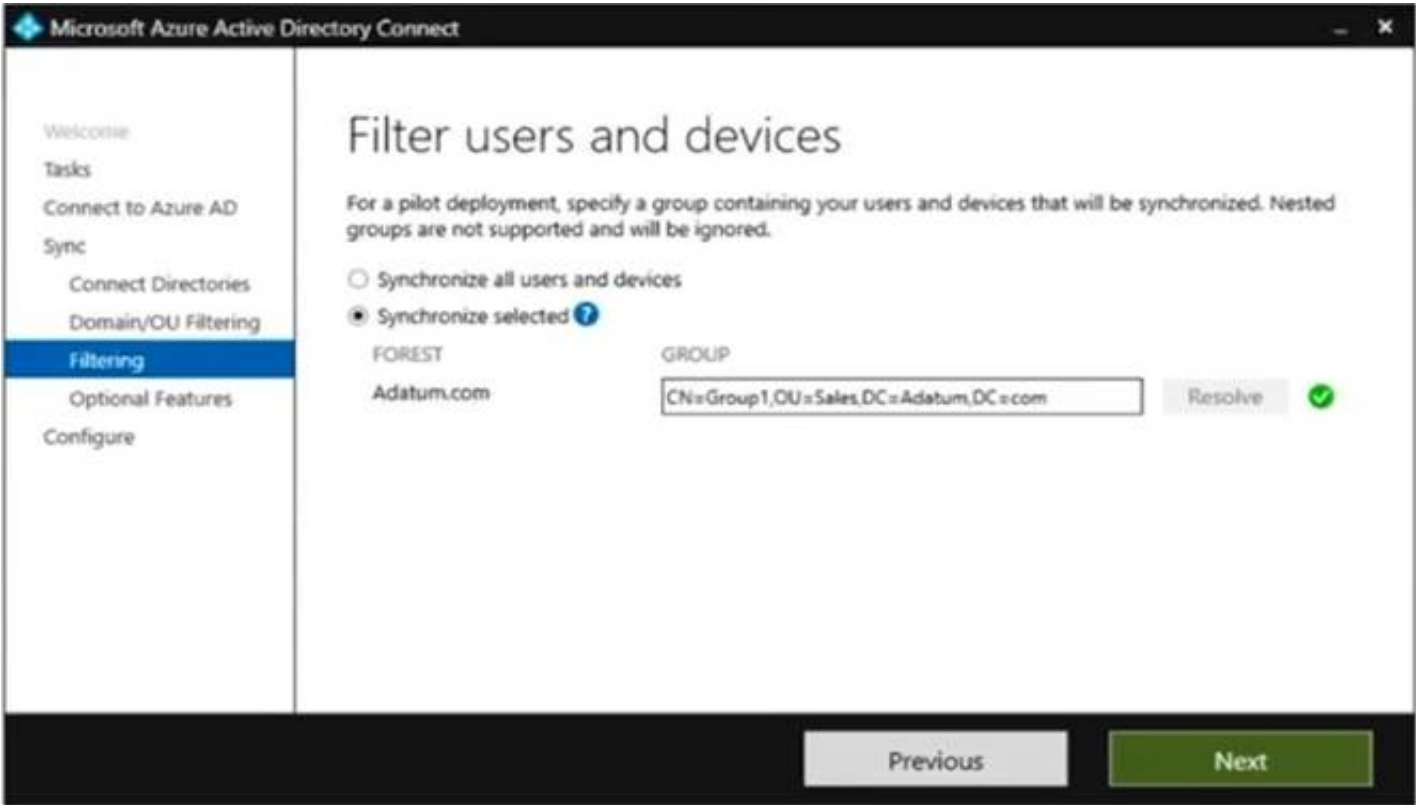
The domain contains the groups shown in the following table.

Name	Member of	In OU
Group1	None	Sales
Group2	Group1	OU1

You are deploying Azure AD Connect.
You configure Domain and OU filtering as shown in the following exhibit.



You configure Filter users and devices as shown in the following exhibit.



For each of the following statements, select Yes if the statement is true. Otherwise, select No.
NOTE: Each correct selection is worth one point.

Answer Area

Statements	Yes	No
User1 syncs to Azure AD.	<input checked="" type="checkbox"/>	<input type="checkbox"/>
User2 syncs to Azure AD.	<input type="checkbox"/>	<input type="checkbox"/>
Group2 syncs to Azure AD.	<input type="checkbox"/>	<input type="checkbox"/>

- A. Mastered
- B. Not Mastered

Answer: A

Explanation:

Answer Area

Statements	Yes	No
User1 syncs to Azure AD.	<input checked="" type="checkbox"/>	<input checked="" type="checkbox"/>
User2 syncs to Azure AD.	<input type="checkbox"/>	<input checked="" type="checkbox"/>
Group2 syncs to Azure AD.	<input type="checkbox"/>	<input checked="" type="checkbox"/>

NEW QUESTION 320

- (Topic 6)
You have a Microsoft 365 E5 subscription.
You plan to implement records management and enable users to designate documents as regulatory records.
You need to ensure that the option to mark content as a regulatory record is visible when you create retention labels.
What should you do first?

- A. Configure custom detection rules.
- B. Create an Exact Data Match (EDM) schema.
- C. Run the Sec-RegulacoryComplianceUI cmdlet.
- D. Run the Sec-LabelPolicy cmdlet.

Answer: C

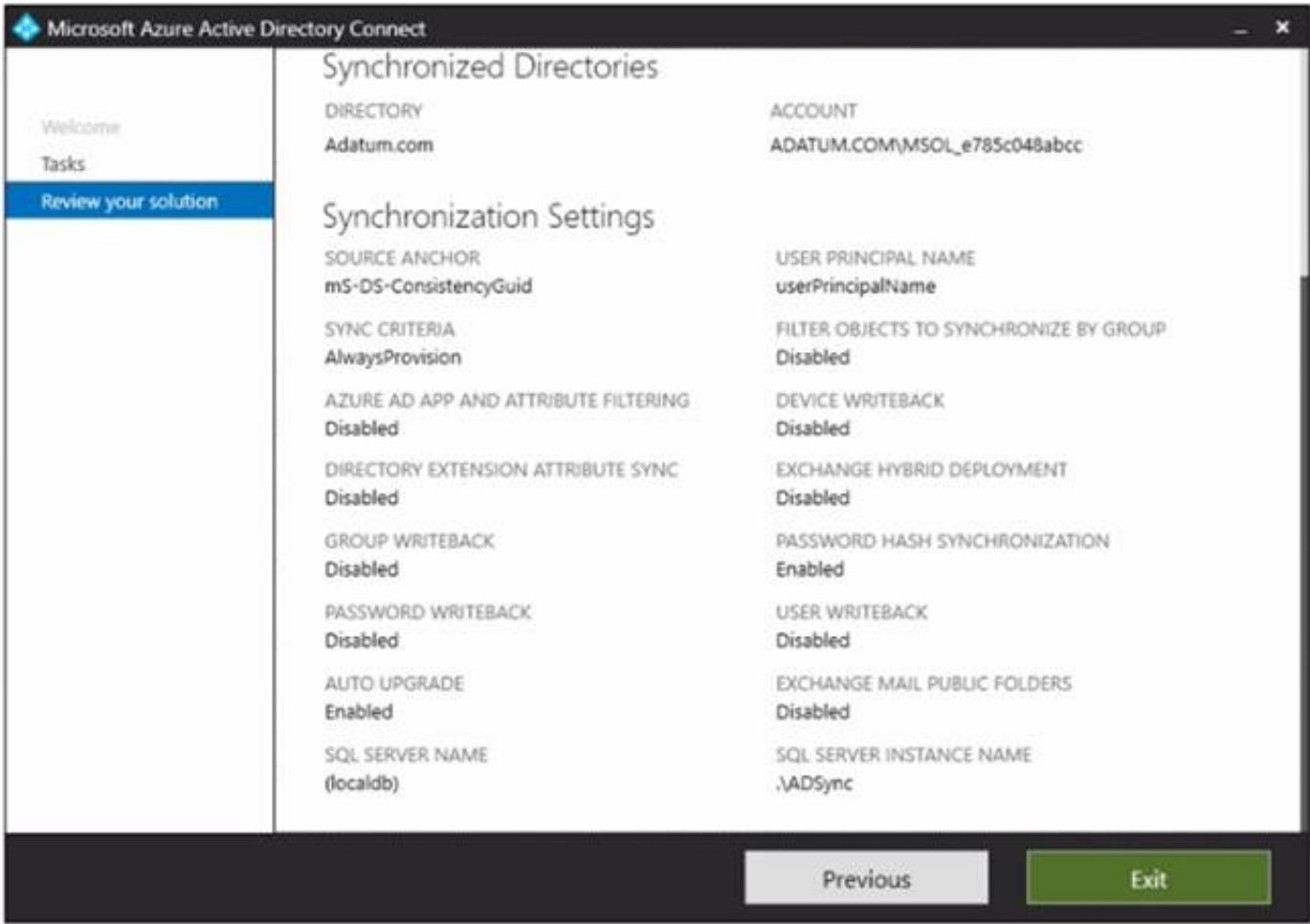
Explanation:

Reference:
<https://docs.microsoft.com/en-us/microsoft-365/compliance/declare-records?view=o365-worldwide>

NEW QUESTION 323

HOTSPOT - (Topic 6)

Your company has a hybrid deployment of Microsoft 365. An on-premises user named User1 is synced to Azure AD. Azure AD Connect is configured as shown in the following exhibit



Use the drop-down menus to select the answer choice that completes each statement based on the information presented in the graphic.
NOTE: Each correct selection is worth one point.

Answer Area

User1 [answer choice].

If the password for User1 is changed in Active Directory, [answer choice].

- A. Mastered
- B. Not Mastered

Answer: A

Explanation:

Answer Area

User1 [answer choice].

If the password for User1 is changed in Active Directory, [answer choice].

NEW QUESTION 325

.....

Thank You for Trying Our Product

We offer two products:

1st - We have Practice Tests Software with Actual Exam Questions

2nd - Questions and Answers in PDF Format

MS-102 Practice Exam Features:

- * MS-102 Questions and Answers Updated Frequently
- * MS-102 Practice Questions Verified by Expert Senior Certified Staff
- * MS-102 Most Realistic Questions that Guarantee you a Pass on Your FirstTry
- * MS-102 Practice Test Questions in Multiple Choice Formats and Updatesfor 1 Year

100% Actual & Verified — Instant Download, Please Click
[Order The MS-102 Practice Test Here](#)