

Exam Questions MD-102

Endpoint Administrator

<https://www.2passeasy.com/dumps/MD-102/>



NEW QUESTION 1

- (Exam Topic 4)

You have an Azure subscription.

You have an on-premises Windows 11 device named Device 1. You plan to monitor Device1 by using Azure Monitor.

You create a data collection rule (DCR) named DCR1 in the subscription. To what should you associate DCR1 ?

- A. Azure Network Watcher
- B. Device1
- C. a Log Analytics workspace
- D. a Monitored Object

Answer: B

Explanation:

To monitor Device1 by using Azure Monitor, you should associate DCR1 with Device1. A data collection rule (DCR) defines the data collection process in Azure Monitor, such as what data to collect, how to transform it, and where to send it. A DCR can be associated with multiple virtual machines and specify different data sources, such as Azure Monitor Agent, custom logs, or Azure Event Hubs1. To associate a DCR with a virtual machine, you need to install the Azure Monitor Agent on the machine and then select the DCR from the list of available rules2. You can also use Azure Policy to automatically install the agent and associate a DCR with any virtual machines or virtual machine scale sets as they are created in your subscription3.

The other options are not correct for this scenario because:

➤ Azure Network Watcher is a service that provides network performance monitoring and diagnostics for Azure resources. It is not related to data collection rules or Azure Monitor4.

➤ A Log Analytics workspace is a destination where you can send the data collected by a data collection rule. It is not an entity that you can associate a DCR with5.

➤ A Monitored Object is not a valid term in the context of Azure Monitor or data collection rules. References: Data collection rules in Azure Monitor, Configure data collection for Azure Monitor Agent, U

Azure Policy to install Azure Monitor Agent and associate with a DCR, What is Azure Network Watcher?, Log Analytics workspaces in Azure Monitor

NEW QUESTION 2

- (Exam Topic 4)

You have a Microsoft 365 subscription that uses Microsoft Intune Suite. You use Microsoft Intune to manage Windows 11 devices.

You need to implement passwordless authentication that requires users to use number matching Which authentication method should you use?

- A. Microsoft Authenticator
- B. voice calls
- C. FIDO2 security keys
- D. text messages

Answer: A

NEW QUESTION 3

- (Exam Topic 4)

You have a Microsoft 365 subscription that contains 100 devices enrolled in Microsoft Intune. You need to review the startup processes and how often each device restarts.

What should you use?

- A. Endpoint analytics
- B. Intune Data Warehouse
- C. Azure Monitor
- D. Device Management

Answer: B

NEW QUESTION 4

- (Exam Topic 4)

You have computers that run Windows 11 Pro. The computers are joined to Azure AD and enrolled in Microsoft Intune. You need to upgrade the computers to Windows 11 Enterprise. What should you configure in Intune?

- A. a device compliance policy
- B. a device cleanup rule
- C. a device enrollment policy
- D. a device configuration profile

Answer: D

NEW QUESTION 5

- (Exam Topic 4)

You have 100 computers that run Windows 10. You have no servers. All the computers are joined to Microsoft Azure Active Directory (Azure AD).

The computers have different update settings, and some computers are configured for manual updates. You need to configure Windows Update. The solution must meet the following requirements:

➤ The configuration must be managed from a central location.

➤ Internet traffic must be minimized.

➤ Costs must be minimized.

How should you configure Windows Update? To answer, select the appropriate options in the answer area.

NOTE: Each correct selection is worth one point.

Windows Update technology to use:

Windows Server Update Services (WSUS)
Microsoft Endpoint Configuration Manager
Windows Update for Business

Manage the configuration by using:

A Group Policy object (GPO)
Microsoft Endpoint Configuration Manager
Microsoft Intune

Manage the traffic by using:

Delivery Optimization
BranchCache
Peer cache

- A. Mastered
- B. Not Mastered

Answer: A

Explanation:

Box 1: Windows Server Update Services (WSUS)

Windows Server Update Services (WSUS) enables information technology administrators to deploy the latest Microsoft product updates. You can use WSUS to fully manage the distribution of updates that are released through Microsoft Update to computers on your network.

Windows Server Update Services is a built-in server role that includes the following enhancements: Can be added and removed by using the Server Manager Includes Windows PowerShell cmdlets to manage the most important administrative tasks in WSUS Etc.

Box 2: A Group Policy object

In an Active Directory environment, you can use Group Policy to define how computers and users can interact with Windows Update to obtain automatic updates from Windows Server Update Services (WSUS).

Box 3: BranchCache

BranchCache is a bandwidth-optimization feature that has been available since the Windows Server 2008 R2 and Windows 7 operating systems. Each client has a cache and acts as an alternate source for content that devices on its own network request. Windows Server Update Services (WSUS) and Microsoft Endpoint Manager can use BranchCache to optimize network bandwidth during update deployment, and it's easy to configure for either of them. BranchCache has two operating modes: Distributed Cache mode and Hosted Cache mode.

Reference: <https://docs.microsoft.com/en-us/windows/deployment/update/waas-branchcache> <https://docs.microsoft.com/en-us/windows-server/administration/windows-server-update-services/deploy/4-conf>

NEW QUESTION 6

- (Exam Topic 4)

You have an Azure AD tenant that contains the users shown in the following table.

Name	Multi-factor authentication (MFA) status
User1	Disabled
User2	Enabled

You have the devices shown in the following table.

Name	Platform
Device1	Android
Device2	iOS

You have a Conditional Access policy named CAPolicy1 that has the following settings:

- Assignments
 - o Users or workload identities: User 1. User1
 - o Cloud apps or actions: Office 365 Exchange Online
 - o Conditions: Device platforms: Windows, iOS
- Access controls
 - o Grant Require multi-factor authentication

You have a Conditional Access policy named CAPolicy2 that has the following settings:

- Assignments
 - o Users or workload identities: User2
 - o Cloud apps or actions: Office 365 Exchange Online
 - o Conditions

Device platforms: Android, iOS Filter for devices

Device matching the rule: Exclude filtered devices from policy Rule syntax: device.displayName- contains "1"

Access controls Grant Block access

For each of the following statements, select Yes if the statement is true. Otherwise, select No.

Answer Area

Statements	Yes	No
If User1 connects to Microsoft Exchange Online from Device1, the user is prompted for MFA.	<input type="radio"/>	<input type="radio"/>
If User2 connects to Microsoft Exchange Online from Device1, the user is prompted for MFA.	<input type="radio"/>	<input type="radio"/>
User2 can access Microsoft Exchange Online from Device2.	<input type="radio"/>	<input type="radio"/>

- A. Mastered
B. Not Mastered

Answer: A

Explanation:

A screen shot of a computer Description automatically generated with low confidence

NEW QUESTION 7

- (Exam Topic 4)

You have a Windows 11 capable device named Device1 that runs the 64-bit version of Windows 10 Enterprise and has Microsoft Office 2019 installed. You have the Windows 11 Enterprise images shown in the following table.

Name	Platform	Description
Image1	x64	Custom Windows 11 image that has Office 2021 installed
Image2	x64	Default Windows 11 image created by Microsoft

Which images can be used to perform an in-place upgrade of Device1?

- A. image1 only
B. Image2only
C. Image1 and Image2

Answer: B

NEW QUESTION 8

- (Exam Topic 4)

You have a Microsoft Intune subscription that is configured to use a PFX certificate connector to an on-premises Enterprise certification authority (CA).

You need to use Intune to configure autoenrollment for Android devices by using public key pair (PKCS) certificates.

Which three actions should you perform in sequence? To answer, move the appropriate actions from the list of actions to the answer area and arrange them in the correct order.

Actions	Answer Area
Obtain the root certificate.	
From the Microsoft Endpoint Manager admin center, create a trusted certificate configuration profile.	
From the Enterprise CA, configure certificate managers.	<div><div>⬅</div><div>➡</div></div> <div><div>⬆</div><div>⬇</div></div>
From the Microsoft Endpoint Manager admin center, configure enrollment restrictions.	
From the Microsoft Endpoint Manager admin center, create a PKCS certificate configuration profile.	

- A. Mastered
B. Not Mastered

Answer: A

Explanation:

Graphical user interface, text, application, email Description automatically generated

Reference:

<https://docs.microsoft.com/en-us/mem/intune/protect/certificates-pfx-configure>

NEW QUESTION 9

- (Exam Topic 4)

Your network contains an on-premises Active Directory Domain Services (AD DS) domain that syncs with an Azure AD tenant by using Azure AD Connect.

You use Microsoft Intune and Configuration Manager to manage devices.

You need to recommend a deployment plan for new Windows 11 devices. The solution must meet the following requirements:

- Devices for the marketing department must be joined to the AD DS domain only. The IT department will install complex applications on the devices at build time, before giving the devices to the marketing department users.
- Devices for The sales department must be Azure AD joined. The devices will be shipped directly from the manufacturer to The homes of the sales department users.
- Administrative effort must be minimized.

Which deployment method should you recommend for each department? To answer, select the appropriate options in the answer area. NOTE: Each correct selection is worth one point.

Answer Area

Sales: Windows Autopilot with automatic registration
 Configuration Manager
 Windows Autopilot with automatic registration
 Windows Autopilot with manual registration
 Windows Autopilot with OEM registration

Marketing: Configuration Manager
 Configuration Manager
 Windows Autopilot with automatic registration
 Windows Autopilot with manual registration
 Windows Autopilot with OEM registration

- A. Mastered
 B. Not Mastered

Answer: A

Explanation:

Answer Area

Sales: Windows Autopilot with automatic registration
 Configuration Manager
 Windows Autopilot with automatic registration
 Windows Autopilot with manual registration
 Windows Autopilot with OEM registration

Marketing: Configuration Manager
 Configuration Manager
 Windows Autopilot with automatic registration
 Windows Autopilot with manual registration
 Windows Autopilot with OEM registration

NEW QUESTION 10

- (Exam Topic 4)

You have a Microsoft 365 E5 subscription that uses Microsoft Intune. You have the Windows 11 devices shown in the following table.

Name	Member of	BitLocker Drive Encryption (BitLocker)
Device1	Group1	Enabled
Device2	Group1, Group3	Disabled
Device3	Group1, Group2	Enabled

You deploy the device compliance policy shown in the exhibit. (Click the Exhibit tab.)

Basics [Edit](#)

Name	Policy1
Description	--
Platform	Windows 10 and later
Profile type	Windows 10/11 compliance policy

Compliance settings [Edit](#)

Device Health

Require BitLocker	Require
-------------------	---------

Actions for noncompliance [Edit](#)

Action	Schedule	Message template	Additional recipients (via email)
Mark device noncompliant	Immediately		

Scope tags [Edit](#)

Default

Assignments [Edit](#)

Included groups

Group
Group1
Group3

Excluded groups

Group
Group2

For each of the following statements, select Yes if the statement is true. Otherwise, select No.
NOTE: Each correct selection is worth one point.

Answer Area

Statements	Yes	No
Device1 will have Policy1 assigned and will be marked as compliant.	<input type="radio"/>	<input type="radio"/>
Device2 will have Policy1 assigned and will be marked as compliant.	<input type="radio"/>	<input type="radio"/>
Device3 will have Policy1 assigned and will be marked as compliant.	<input type="radio"/>	<input type="radio"/>

- A. Mastered
- B. Not Mastered

Answer: A

Explanation:

Answer Area

Statements	Yes	No
Device1 will have Policy1 assigned and will be marked as compliant.	<input checked="" type="radio"/>	<input type="radio"/>
Device2 will have Policy1 assigned and will be marked as compliant.	<input type="radio"/>	<input checked="" type="radio"/>
Device3 will have Policy1 assigned and will be marked as compliant.	<input type="radio"/>	<input checked="" type="radio"/>

NEW QUESTION 10

- (Exam Topic 4)

You have a Microsoft 365 subscription.

All users have Microsoft 365 apps deployed.

You need to configure Microsoft 365 apps to meet the following requirements:

- Enable the automatic installation of WebView2 Runtime.
- Prevent users from submitting feedback.

Which two settings should you configure in the Microsoft 365 Apps admin center? To answer, select the appropriate settings in the answer area.

NOTE: Each correct selection is worth one point.

Answer Area

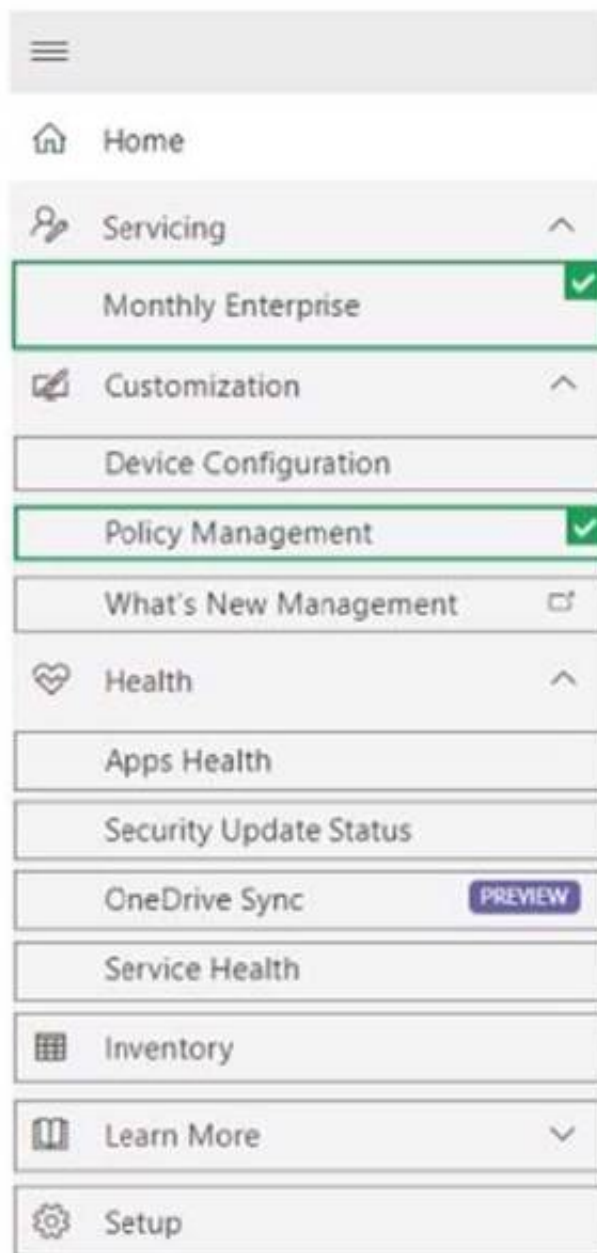


- A. Mastered
- B. Not Mastered

Answer: A

Explanation:

Answer Area



NEW QUESTION 15

- (Exam Topic 4)

You have a Microsoft 365 subscription that contains the devices shown in the following table.

Name	Platform
Device1	Windows 10
Device2	iOS

You plan to enroll the devices in Microsoft Intune.

How often will the compliance policy check-ins run after each device is enrolled in Intune? To answer, select the appropriate options in the answer area.

NOTE: Each correct selection is worth one point.

Device1:

Every 15 minutes for one hour, and then every eight hours
Every five minutes for 15 minutes, then every 15 minutes for two hours, and then every eight hours
Every three minutes for 15 minutes, then every 15 minutes for two hours, and then every eight hours

Device2:

Every 15 minutes for one hour, and then every eight hours
Every five minutes for 15 minutes, then every 15 minutes for two hours, and then every eight hours
Every three minutes for 15 minutes, then every 15 minutes for two hours, and then every eight hours

- A. Mastered
- B. Not Mastered

Answer: A

Explanation:

Box 1: Every three minutes for 15 minutes, then every 15 minutes for two hours, and then around every eight hours

If devices recently enroll, then the compliance, non-compliance, and configuration check-in runs more frequently. The check-ins are estimated at:

Windows 10: Every 3 minutes for 15 minutes, then every 15 minutes for 2 hours, and then around every 8 hours

Graphical user interface, text, application, email Description automatically generated

Platform	Frequency
iOS/iPadOS	Every 15 minutes for 1 hour, and then around every 8 hours
macOS	Every 15 minutes for 1 hour, and then around every 8 hours
Android	Every 3 minutes for 15 minutes, then every 15 minutes for 2 hours, and then around every 8 hours
Windows 10/11 PCs enrolled as devices	Every 3 minutes for 15 minutes, then every 15 minutes for 2 hours, and then around every 8 hours
Windows 8.1	Every 5 minutes for 15 minutes, then every 15 minutes for 2 hours, and then around every 8 hours

Box 2: Every 15 minutes for one hour, and then every eight hours iOS/iPadOS: Every 15 minutes for 1 hour, and then around every 8 hours
Reference: <https://docs.microsoft.com/en-us/mem/intune/configuration/device-profile-troubleshoot>

NEW QUESTION 20

- (Exam Topic 4)

You have an Azure AD group named Group1. Group1 contains two Windows 10 Enterprise devices named Device1 and Device2. You create a device configuration profile named Profile1. You assign Profile1 to Group1. You need to ensure that Profile1 applies to Device1 only. What should you modify in Profile1?

- A. Assignments
- B. Settings
- C. Scope (Tags)
- D. Applicability Rules

Answer: D

Explanation:

To ensure that Profile1 applies to Device1 only, you need to modify the Applicability Rules in Profile1. You can use applicability rules to filter which devices receive a profile based on criteria such as device model, manufacturer, or operating system version. You can create an applicability rule that matches Device1's properties and excludes Device2's properties. References:

<https://docs.microsoft.com/en-us/mem/intune/configuration/device-profile-assign#applicability-rules>

NEW QUESTION 23

- (Exam Topic 4)

Your company has an Azure AD tenant named contoso.com that contains several Windows 10 devices. When you join new Windows 10 devices to contoso.com, users are prompted to set up a four-digit pin. You need to ensure that the users are prompted to set up a six-digit pin when they join the Windows 10 devices to contoso.com.

Solution: From the Microsoft Entra admin center, you configure automatic mobile device management (MDM) enrollment. From the Microsoft Intune admin center, you configure the Windows Hello for Business enrollment options.

Does this meet the goal?

- A. Yes
- B. No

Answer: B

NEW QUESTION 26

- (Exam Topic 4)

You have a Microsoft 365 subscription. All devices run Windows 10.

You need to prevent users from enrolling the devices in the Windows Insider Program.

What two configurations should you perform from the Microsoft Intune admin center? Each correct answer is a complete solution.

NOTE: Each correct selection is worth one point.

- A. a device restrictions device configuration profile
- B. an app configuration policy
- C. a Windows 10 and later security baseline
- D. a custom device configuration profile
- E. a Windows 10 and later update ring

Answer: AE

NEW QUESTION 28

- (Exam Topic 4)

You manage 1,000 devices by using Microsoft Intune. You review the Device compliance trends report. For how long will the report display trend data?

- A. 30 days
- B. 60 days
- C. 90 days
- D. 365 days

Answer: B

Explanation:

The Device compliance trends report shows the number of devices that are compliant, noncompliant, and not evaluated over time. The report displays trend data for the last 60 days by default, but you can change the time range to view data for the last 7, 14, or 30 days as well. The report does not show data for more than 60 days. References: [Device compliance trends report]

NEW QUESTION 29

- (Exam Topic 4)

You have a computer that runs Windows 10 and contains two local users named User1 and User2. You need to ensure that the users can perform the following actions:

- User 1 must be able to adjust the date and time.
- User2 must be able to clear Windows logs.

The solution must use the principle of least privilege.

To which group should you add each user? To answer, drag the appropriate groups to the correct users. Each group may be used once, more than once, or not at all. You may need to drag the split bar between panes or scroll to view content.

NOTE: Each correct selection is worth one point.

Groups

Administrators

Event Log Readers

Performance Log Users

Power Users

System Managed Accounts Group

Answer Area

User1:

User2:

- A. Mastered
B. Not Mastered

Answer: A

Explanation:

Groups

Administrators

Event Log Readers

Performance Log Users

Power Users

System Managed Accounts Group

Answer Area

User1: Administrators

User2: Event Log Readers

NEW QUESTION 32

- (Exam Topic 4)

You have a Microsoft 365 ES subscription that uses Microsoft Intune. Devices are enrolled in Intune as shown in the following table.

Name	Platform	Enrolled by using
Device1	iOS	Apple Automated Device Enrollment (ADE)
Device2	iPadOS	Apple Automated Device Enrollment (ADE)
Device3	iPadOS	The Company Portal app

The devices are the members of groups as shown in the following table.

Name	Members
Group1	Device1, Device2, Device3
Group2	Device2

You create an JOS/iPadOS update profile as shown in the following exhibit.

Create profile

iOS/iPadOS

✓ Basics

✓ Update policy settings

✓ Assignments

Review + create

Summary

Basics

Name

Profile1

Description

--

Update policy settings

Update to install

Install iOS/iPadOS Latest update

Schedule type

Update outside of scheduled time

Time zone

UTC±00

Time window

Start day	Start time	End day	End time
Monday	1 AM	Wednesday	1 PM
Friday	1 AM	Saturday	11 PM

Assignments

Included groups

Group

Group Members

Group1

3 devices, 0 users

Excluded groups

Group

Group Members

Group2

1 devices, 0 users

For each of the following statements, select Yes if the statement is true. Otherwise, select No. NOTE: Each correct selection is worth one point.

Answer Area

Statements	Yes	No
If an iOS update becomes available on Tuesday at 5 AM, the update is installed on Device1 automatically on Wednesday.	<input type="radio"/>	<input type="radio"/>
If an iPadOS update becomes available on Thursday at 2 AM, the update is installed on Device2 automatically on Thursday.	<input type="radio"/>	<input type="radio"/>
If an iPadOS update becomes available on Friday at 10 PM, the update is installed on Device3 automatically on Sunday.	<input type="radio"/>	<input type="radio"/>

- A. Mastered
- B. Not Mastered

Answer: A

Explanation:

Answer Area

Statements	Yes	No
If an iOS update becomes available on Tuesday at 5 AM, the update is installed on Device1 automatically on Wednesday.	<input type="radio"/>	<input checked="" type="radio"/>
If an iPadOS update becomes available on Thursday at 2 AM, the update is installed on Device2 automatically on Thursday.	<input type="radio"/>	<input checked="" type="radio"/>
If an iPadOS update becomes available on Friday at 10 PM, the update is installed on Device3 automatically on Sunday.	<input type="radio"/>	<input checked="" type="radio"/>

You have a Microsoft 365 E5 subscription that contains the devices shown in the following table. All devices have Microsoft Edge installed. From the Microsoft Intune admin center, you create a Microsoft You need to apply Edge1 to all the supported devices. To which devices should you apply Edge1?

- A. Device1 only
- B. Device1 and Device2 only
- C. Device1, Device2, and Device3 only
- D. Device1, Device2, and Device4 only
- E. Device1, Device2, Device3, and Device4

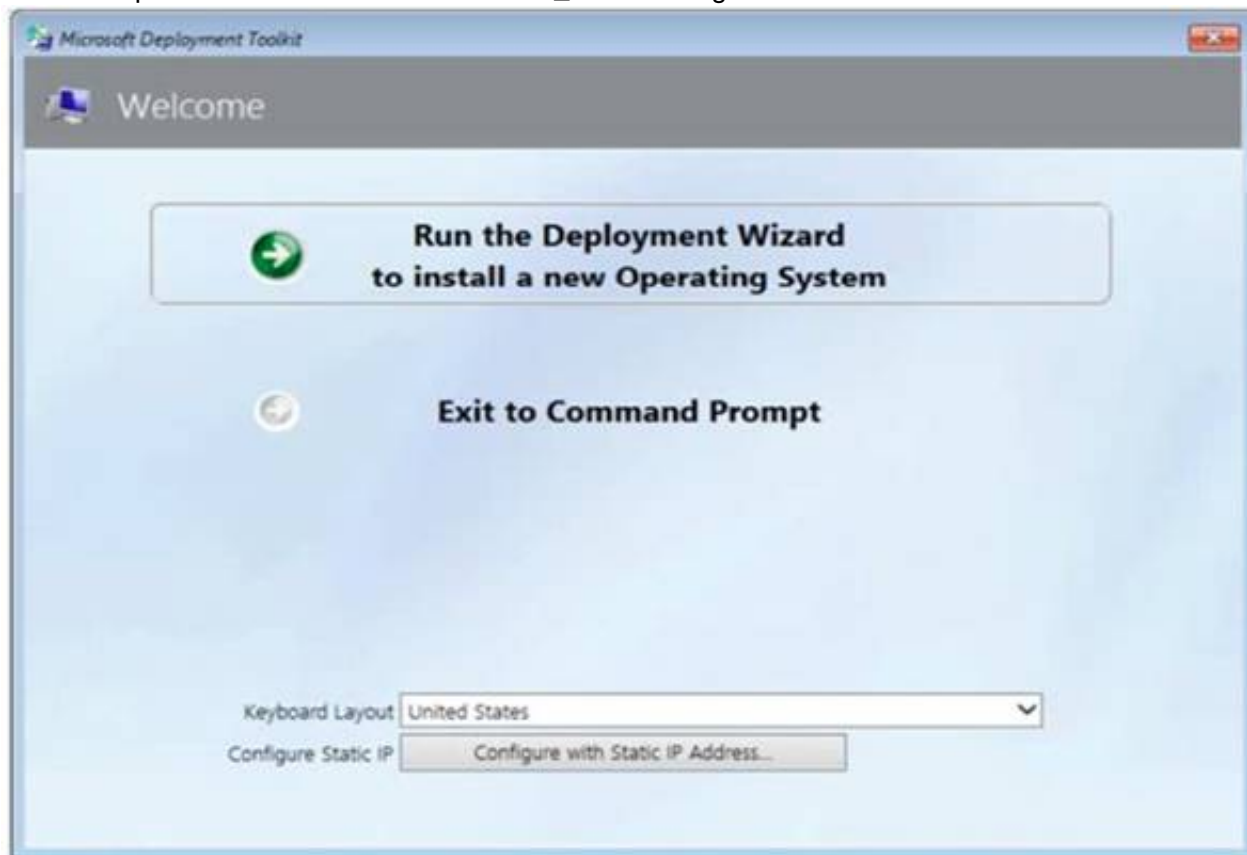
Answer: E

NEW QUESTION 37

- (Exam Topic 4)

You have a Microsoft Deployment Toolkit (MDT) server named MDT1.

When computers start from the LiteTouchPE_x64.iso image and connect to MDT1. the welcome screen appears as shown In the following exhibit.



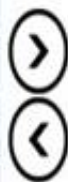
You need to prevent the welcome screen from appearing when the computers connect to MDT1.

Which three actions should you perform in sequence? To answer move the appropriate actions from the list of actions to the answer area and arrange them in the correct order.

Actions

- Modify the CustomSettings.ini file.
- Update the deployment share.
- Modify the Bootstrap.ini file.
- Replace the ISO image.
- Modify the task sequence.

Answer Area



- A. Mastered
- B. Not Mastered

Answer: A

Explanation:

Box 1: Modify the Bootstrap.ini file.

Add this to your bootstrap.ini file and then update the deployment share and use the new boot media created in that process:

SkipBDDWelcome=YES

Box 2: Modify the CustomSettings.ini file. SkipBDDWelcome

Indicates whether the Welcome to Windows Deployment wizard page is skipped.

For this property to function properly it must be configured in both CustomSettings.ini and BootStrap.ini. BootStrap.ini is processed before a deployment share (which contains CustomSettings.ini) has been selected.

Box 3: Update the deployment share. Reference:

<https://docs.microsoft.com/en-us/mem/configmgr/mdt/toolkit-reference#table-6-deployment-wizard-pages>

NEW QUESTION 39

- (Exam Topic 4)

You have a Microsoft 365 subscription that contains 1,000 Windows 11 devices enrolled in Microsoft Intune. You plan to create and monitor the results of a compliance policy used to validate the BIOS version of the devices.

Which four actions should you perform in sequence? To answer, move the appropriate actions from the list of actions to the answer area and arrange them in the correct order.

Actions	Answer Area
Review the compliance dashboard for results.	1
Create and assign a compliance policy that has System Security settings configured.	2
Review the Conditional Access Insights and Reporting workbook for results.	3
Create a PowerShell discovery script and a JSON file.	4
Upload the PowerShell script to Intune.	
Upload the JSON file to Azure AD.	
Create and assign a custom compliance policy.	

- A. Mastered
B. Not Mastered

Answer: A

Explanation:

Actions	Answer Area
Review the compliance dashboard for results.	Create a PowerShell discovery script and a JSON file.
Create and assign a compliance policy that has System Security settings configured.	Upload the PowerShell script to Intune.
Review the Conditional Access Insights and Reporting workbook for results.	Upload the JSON file to Azure AD.
Create a PowerShell discovery script and a JSON file.	Create and assign a custom compliance policy.
Upload the PowerShell script to Intune.	
Upload the JSON file to Azure AD.	
Create and assign a custom compliance policy.	

NEW QUESTION 43

- (Exam Topic 4)

You have a Microsoft 365 E5 subscription.

You need to download a report that lists all the devices that are NOT enrolled in Microsoft Intune and are assigned an app protection policy.

What should you select in the Microsoft Endpoint Manager admin center?

- A. App
B. and then App protection policies
C. App
D. and then Monitor
E. Devices, and then Monitor
F. Reports, and the Device compliance

Answer: A

Explanation:

App report: You can search by platform and app, and then this report will provide two different app protection statuses that you can select before generating the report. The statuses can be Protected or Unprotected.

Reference:

<https://docs.microsoft.com/en-us/mem/intune/apps/app-protection-policies-monitor>

NEW QUESTION 44

- (Exam Topic 4)

You have the on-premises servers shown in the following table.

Name	Description
DC1	Domain controller that runs Windows Server 2022
Server1	Standalone server that runs Windows Server 2022
Server2	Member server that runs Windows Server 2022 and has the Remote Access role installed
Server3	Member server that runs Windows Server 2019
Server4	Red Hat Enterprise Linux (RHEL) 8.4 server

You have a Microsoft 365 E5 subscription that contains Android and iOS devices. All the devices are managed by using Microsoft Intune.

You need to implement Microsoft Tunnel for Intune. The solution must minimize the number of open firewall ports.

To which server can you deploy a Tunnel Gateway server, and which inbound ports should be allowed on the server to support Microsoft Tunnel connections? To answer, select the appropriate options in the answer area.

NOTE: Each correct selection is worth one point.

Server:

Ports:

- A. Mastered
- B. Not Mastered

Answer: A

Explanation:

Box 1: Server4

Microsoft Tunnel is a VPN gateway solution for Microsoft Intune that runs in a container on Linux and allows access to on-premises resources from iOS/iPadOS and Android Enterprise devices using modern authentication and Conditional Access.

Box 2: TCP 443 and UDP 443 only

Some traffic goes to your public facing IP address for the Tunnel. The VPN channel will use TCP, TLS, UDP, and DTLS over port 443.

By default, port 443 is used for both TCP and UDP, but this can be customized via the Intune Saerver Configuration – Server port setting. If changing the default port (443) ensure your inbound firewall rules are adjusted to the custom port.

Incorrect:

TCP 1723 is not used.

Reference: <https://docs.microsoft.com/en-us/mem/intune/protect/microsoft-tunnel-overview>

NEW QUESTION 48

- (Exam Topic 4)

You have an Azure AD tenant named contoso.com that contains the devices shown in the following table.

Name	Deployed by using Windows Autopilot	Azure AD status	Enrolled in Microsoft Intune
Device1	No	Joined	No
Device2	No	Joined	Yes
Device3	Yes	Joined	Yes

The tenant contains the Azure AD groups shown in the following table.

Name	Member
Group1	Device1, Device2, Device3
Group2	Device2

You add an Autopilot deployment profile as shown in the following exhibit.

Create profile

Windows PC

☒ Basics
 ☒ Out-of-box experience (OOBE)
 ☒ Assignments
 ☒ Review

Summary

Basics

Name	Profile1
Description	--
Convert all targeted devices to Autopilot	Yes
Device type	Windows PC

Out-of-box experience (OOBE)

Deployment mode	Self-Deploying (preview)
Join to Azure AD as	Azure AD joined
Skip AD connectivity check (preview)	No

Language (Region)

Operating system default	
--------------------------	--

Automatically configure keyboard

No

Microsoft Software License Terms

Hide

Privacy settings

Hide

Hide change account options

Hide

User account type

Standard

Allow pre-provisioned deployment

No

Apply device name template

No

Assignments

Included groups	Group1
Excluded groups	Group2

For each of the following statements, select Yes if the statement is true. Otherwise, select No.

You have an Azure AD tenant named contoso.com that contains the devices shown in the following table.

Name	Deployed by using Windows Autopilot	Azure AD status	Enrolled in Microsoft Intune
Device1	No	Joined	No
Device2	No	Joined	Yes
Device3	Yes	Joined	Yes

The tenant contains the Azure AD groups shown in the following table.

Answer Area

Statements	Yes	No
If you reset Device1, the device will be deployed by using Autopilot.	<input type="radio"/>	<input checked="" type="radio"/>
If you reset Device2, the device will be deployed by using Autopilot.	<input type="radio"/>	<input checked="" type="radio"/>
If you restart Device3, the device will be deployed by using Autopilot.	<input checked="" type="radio"/>	<input type="radio"/>

- A. Mastered
B. Not Mastered

Answer: A

Explanation:

Answer Area

Statements	Yes	No
If you reset Device1, the device will be deployed by using Autopilot.	<input type="radio"/>	<input checked="" type="radio"/>
If you reset Device2, the device will be deployed by using Autopilot.	<input type="radio"/>	<input checked="" type="radio"/>
If you restart Device3, the device will be deployed by using Autopilot.	<input checked="" type="radio"/>	<input type="radio"/>

NEW QUESTION 50

- (Exam Topic 4)

You have a Microsoft Deployment Toolkit (MDT) deployment share named Share 1. You add Windows 10 images to Share 1 as shown in the following table.

Name	In WIM file	Description
Image1	Install1.wim	Default Windows 10 Pro image from the Windows 10 installation media
Image2	Install1.wim	Default Windows 10 Enterprise image from the Windows 10 installation media
Image3	Install2.wim	Default Windows 10 Pro for Workstations image from the Windows 10 installation media
Image4	Custom1.wim	Custom Windows 10 Enterprise image without any additional applications
Image5	Custom2.wim	Custom Windows 10 Enterprise image that includes custom applications

Which images can be used in the Standard Client Task Sequence, and which images can be used in the Standard Client Upgrade Task Sequence?

NOTE: Each correct selection is worth one point.

Answer Area

Standard Client Task Sequence:

Image3 only
Image3, Image4, and Image5 only
Image1, Image2, and Image3 only
Image1, Image2, Image3, and Image4 only
Image1, Image2, Image3, Image4, and Image5

Standard Client Upgrade Task Sequence:

Image3 only
Image3, Image4, and Image5 only
Image1, Image2, and Image3 only
Image1, Image2, Image3, and Image4 only
Image1, Image2, Image3, Image4, and Image5

- A. Mastered
- B. Not Mastered

Answer: A

Explanation:

Answer Area

Standard Client Task Sequence:

Image3 only
Image3, Image4, and Image5 only
Image1, Image2, and Image3 only
Image1, Image2, Image3, and Image4 only
Image1, Image2, Image3, Image4, and Image5

Standard Client Upgrade Task Sequence:

Image3 only
Image3, Image4, and Image5 only
Image1, Image2, and Image3 only
Image1, Image2, Image3, and Image4 only
Image1, Image2, Image3, Image4, and Image5

NEW QUESTION 52

- (Exam Topic 4)

Your company has devices enrolled in Microsoft Intune as shown in the following table.

Name	Platform
Device1	Windows 10
Device2	Android device administrator
Device3	iOS

In Microsoft Endpoint Manager, you define the company's network as a location named Location1. Which devices can use network location-based compliance policies?

- A. Device2 and Device3 only
- B. Device2 only
- C. Device1 and Device2 only
- D. Device1 only
- E. Device1, Device2, and Device3

Answer: E

Explanation:

Intune supported operating systems

Intune supports devices running the following operating systems (OS): iOS

Android Windows macOS

Note: View the device compliance settings for the different device platforms: Android device administrator

Android Enterprise iOS

macOS

Windows Holographic for Business Windows 8.1 and later

Windows 10/11

Reference: <https://docs.microsoft.com/en-us/mem/intune/fundamentals/supported-devices-browsers> <https://docs.microsoft.com/en-us/mem/intune/protect/device-compliance-get-started>

NEW QUESTION 54

- (Exam Topic 4)

You have a Microsoft 365 subscription that contains two users named User1 and User2. You need to ensure that the users can perform the following tasks:

- User1 must be able to create groups and manage users.
- User2 must be able to reset passwords for no administrative users. The solution must use the principle of least privilege.

Which role should you assign to each user? To answer, drag the appropriate roles to the correct users. Each role may be used once, more than once, or not at all.

You may need to drag the split bar between panes or scroll to view content.

NOTE: Each correct selection is worth one point.

Roles

Global Administrator

Helpdesk Administrator

Security Administrator

User Administrator

Answer Area

User1:

Role

User2:

Role

- A. Mastered
- B. Not Mastered

Answer: A

Explanation:

Microsoft 365 or Office 365 subscription comes with a set of admin roles that you can assign to users in your organization using the Microsoft 365 admin center.

Each admin role maps to common business functions and gives people in your organization permissions to do specific tasks in the admin centers1.

To ensure that User1 can create groups and manage users, you should assign the User Administrator role to User1. This role allows User1 to create and manage all aspects of users and groups, including resetting passwords for non-administrative users1.

To ensure that User2 can reset passwords for non-administrative users, you should assign the Helpdesk Administrator role to User2. This role allows User2 to reset passwords, manage service requests, and monitor service health for non-administrative users1.

NEW QUESTION 55

- (Exam Topic 4)

You have 200 computers that run Windows 10. The computers are joined to Microsoft Azure Active Directory (Azure AD) and enrolled in Microsoft Intune.

You need to configure an Intune device configuration profile to meet the following requirements:

- Prevent Microsoft Office applications from launching child processes.
- Block users from transferring files over FTP.

Which two settings should you configure in Endpoint protection? To answer, select the appropriate settings in the answer area.
 NOTE: Each correct selection is worth one point.

Answer Area

Create Profile

*Name

MD101

Description

Enter a description

*Platform

Windows 10 and later

*Profile type

Endpoint protection

Settings

Configure

Scope (Tags)

0 scope(s) selected

Endpoint protection

Windows 10 and later

Select a category to configure settings

Windows Defender Application Gu...

11 settings available

Windows Defender Firewall

40 settings available

Windows Defender SmartScreen

2 settings available

Windows Encryption

37 settings available

Windows Defender Exploit Guard

20 settings available

Windows Defender Application Co...

2 settings available

Windows Defender Application Gua...

1 setting available

Windows Defender Security Center

14 settings available

Local device security options

46 settings available

Xbox services

5 settings available

OK

- A. Mastered
 B. Not Mastered

Answer: A

Explanation:

A screenshot of a computer Description automatically generated

References:

<https://docs.microsoft.com/en-us/intune/endpoint-protection-windows-10>

NEW QUESTION 58

- (Exam Topic 4)

You have a Microsoft 365 subscription.

You plan to enroll devices in Microsoft Endpoint Manager that have the platforms and versions shown in the following table.

Platform	Version
Android	8, 9
iOS	11, 12

You need to configure device enrollment to meet the following requirements:

- Ensure that only devices that have approved platforms and versions can enroll in Endpoint Manager.
- Ensure that devices are added to Microsoft Azure Active Directory (Azure AD) groups based on a selection made by users during the enrollment.

Which device enrollment setting should you configure for each requirement? To answer, select the appropriate options in the answer area.

NOTE: Each correct selection is worth one point.

Answer Area

Ensure that only devices that have approved platforms and versions can enroll in Endpoint Manager:

	▼
Android enrollment	
Apple enrollment	
Corporate device identifiers	
Device categories	
Enrollment restrictions	
Windows enrollment	

Ensure that devices are added to Azure AD groups based on a selection made by users during enrollment:

	▼
Android enrollment	
Apple enrollment	
Corporate device identifiers	
Device categories	
Enrollment restrictions	
Windows enrollment	

- A. Mastered
- B. Not Mastered

Answer: A

Explanation:

A screenshot of a computer Description automatically generated

Reference:

<https://docs.microsoft.com/en-us/mem/intune/enrollment/enrollment-restrictions-set> <https://docs.microsoft.com/en-us/mem/intune/enrollment/device-group-mapping>

NEW QUESTION 60

- (Exam Topic 4)

You have the MDM Security Baseline profile shown in the MDM exhibit. (Click the MDM tab.) You have the ASR Endpoint Security profile shown in the ASR exhibit. (Click the ASR tab.)

[Home](#) > [Endpoint security](#) > [MDM Security Baseline](#) >

Create profile

Block Office applications from injecting code into other processes ⓘ

Disable

Block Office applications from creating executable content ⓘ

Audit mode

Block all Office applications from creating child processes ⓘ

Audit mode

Block Win32 API calls from Office macro ⓘ

Disable

Block execution of potentially obfuscated scripts (js/vbs/ps) ⓘ

Disable

Edit profile

Attack Surface Reduction Rules

Block credential stealing from the Windows local security authority subsystem (lsass.exe) ⓘ	Audit mode
Block Adobe Reader from creating child processes ⓘ	Audit mode
Block Office applications from injecting code into other processes ⓘ	Audit mode
Block Office applications from creating executable content ⓘ	Audit mode
Block all Office applications from creating child processes ⓘ	Audit mode
Block Win32 API calls from Office macro ⓘ	Audit mode

You plan to deploy both profiles to devices enrolled in Microsoft Intune. You need to identify how the following settings will be configured on the devices:

- Block Office applications from creating executable content
- Block Win32 API calls from Office macro

Currently, the settings are disabled locally on each device.

What are the effective settings on the devices? To answer, select the appropriate options in the answer area. NOTE: Each correct selection is worth one point.

Answer Area

Block Office applications from creating executable content:	<div>Audit mode</div> <div>Block</div> <div>Disable</div> <div>Warn</div>
Block Win32 API calls from Office macro:	<div>Audit mode</div> <div>Block</div> <div>Disable</div> <div>Warn</div>

- A. Mastered
- B. Not Mastered

Answer: A

Explanation:

Answer Area

Block Office applications from creating executable content:	<div>Audit mode</div> <div>Block</div> <div>Disable</div> <div>Warn</div>
Block Win32 API calls from Office macro:	<div>Audit mode</div> <div>Block</div> <div>Disable</div> <div>Warn</div>

NEW QUESTION 63

- (Exam Topic 4)

You have a Microsoft 365 subscription that uses Microsoft Intune.
 You need to ensure that you can deploy apps to Android Enterprise devices. What should you do first?

- A. Create a configuration profile.
- B. Add a certificate connector.
- C. Configure the Partner device management settings.
- D. Link your managed Google Play account to Intune.

Answer: D

NEW QUESTION 64

- (Exam Topic 4)

Your network contains an Active Directory domain. The domain contains a user named Admin1. All computers run Windows 10.
 You enable Windows PowerShell remoting on the computers.
 You need to ensure that Admin1 can establish remote PowerShell connections to the computers. The solution must use the principle of least privilege.
 To which group should you add Admin1?

- A. Access Control Assistance Operators
- B. Remote Desktop Users
- C. Power Users
- D. Remote Management Users

Answer: B

NEW QUESTION 68

- (Exam Topic 4)

Note: This question is part of a series of questions that present the same scenario. Each question in the series contains a unique solution that might meet the stated goals. Some question sets might have more than one correct solution, while others might not have a correct solution.
 After you answer a question in this section, you will NOT be able to return to it. As a result, these questions will not appear in the review screen.
 Your network contains an Active Directory domain. The domain contains a computer named Computer1 that runs Windows 8.1.
 Computer1 has apps that are compatible with Windows 10.
 You need to perform a Windows 10 in-place upgrade on Computer1.
 Solution: You copy the Windows 10 installation media to a Microsoft Deployment Toolkit (MDT) deployment share. You create a task sequence, and then you run the MDT deployment wizard on Computer1. Does this meet the goal?

- A. Yes
- B. No

Answer: B

NEW QUESTION 70

- (Exam Topic 4)

You have a Microsoft 365 subscription.
 You plan to enable Microsoft Intune enrollment for the following types of devices:
 • Existing Windows 11 devices managed by using Configuration Manager
 • Personal iOS devices
 The solution must minimize user disruption.
 Which enrollment method should you use for each device type? To answer, select the appropriate options in the answer area.
 NOTE: Each correct selection is worth one point.

Answer Area

Windows 11 devices managed by using Configuration Manager:	<div style="border: 1px solid #ccc; padding: 2px;"> <div style="background-color: #f0f0f0; padding: 2px;">Windows Autopilot ▼</div> <div style="padding: 2px;">Co-management</div> <div style="padding: 2px;">User enrollment</div> <div style="background-color: #0070c0; color: white; padding: 2px;">Windows Autopilot</div> </div>
Personal iOS devices:	<div style="border: 1px solid #ccc; padding: 2px;"> <div style="background-color: #f0f0f0; padding: 2px;">Automated Device Enrollment (ADE) ▼</div> <div style="padding: 2px;">Apple Configurator</div> <div style="background-color: #0070c0; color: white; padding: 2px;">Automated Device Enrollment (ADE)</div> <div style="padding: 2px;">User enrollment</div> </div>

- A. Mastered
- B. Not Mastered

Answer: A

Explanation:

Answer Area

Windows 11 devices managed by using Configuration Manager:

Windows Autopilot

Co-management

User enrollment

Windows Autopilot

Personal iOS devices:

Automated Device Enrollment (ADE)

Apple Configurator

Automated Device Enrollment (ADE)

User enrollment

NEW QUESTION 72

- (Exam Topic 4)
You have devices enrolled in Microsoft Intune as shown in the following table.

Name	Platform
Device1	Windows 10
Device2	Windows 11
Device3	Android
Device4	iOS

On which devices can you apply app configuration policies?

- A. Device2 only
- B. Device1 and Device2 only
- C. Device3 and Device4 only
- D. Device2, Device3, and Device4 only
- E. Device1, Device2, Device B, and Device4

Answer: D

Explanation:

The correct answer is D because app configuration policies can be applied to managed devices and managed apps1. Managed devices are enrolled and managed by Intune, while managed apps are integrated with Intune App SDK or wrapped using the Intune Wrapping Tool1. Device2, Device3, and Device4 are either enrolled in Intune or have managed apps installed, so they can receive app configuration policies2. Device1 is not enrolled in any MDM solution and does not have any managed apps installed, so it cannot receive app configuration policies2. References: 1: App configuration policies for Microsoft Intune | Microsoft Learn <https://learn.microsoft.com/en-us/mem/intune/apps/app-configuration-policies-overview> 2: Policy sets - Microsoft Intune | Microsoft Learn <https://learn.microsoft.com/en-us/mem/intune/fundamentals/policy-sets>

NEW QUESTION 74

- (Exam Topic 4)
You have a Microsoft 365 subscription that contains the devices shown in the following table.

Name	Type
Device1	Windows 10
Device2	iOS
Device3	Android Enterprise

You need to ensure that only devices running trusted firmware or operating system build can access network resources. Which compliance policy setting should you configure for each device? To answer, drag the appropriate settings to the correct devices. Each setting may be used once, more than once, or not at all. You may need to drag the split bar between panes or scroll to view content. NOTE: Each correct selection is worth one point.

Settings

Require BitLocker.

Prevent jailbroken devices from having corporate access.

Prevent rooted devices from having corporate access.

Require Secure Boot to be enabled on the device.

Answer Area

Device1:

Device2:

Device3:

- A. Mastered
- B. Not Mastered

Answer: A

Explanation:



NEW QUESTION 77

- (Exam Topic 4)

Your network contains an Active Directory domain. The domain contains a computer named Computer1 that runs Windows 8.1.

Computer1 has apps that are compatible with Windows 10.

You need to perform a Windows 10 in-place upgrade on Computer1.

Solution: You copy the Windows 10 installation media to a network share. You start Computer1 from Windows PE (WinPE), and then you run setup.exe from the network share.

Does this meet the goal?

- A. Yes
- B. No

Answer: B

NEW QUESTION 82

- (Exam Topic 4)

Your company uses Microsoft Intune to manage devices.

You need to ensure that only Android devices that use Android work profiles can enroll in Intune. Which two configurations should you perform in the device enrollment restrictions? Each correct answer presents part of the solution.

NOTE Each correct selection is worth one point.

- A. From Platform Settings, set Android device administrator Personally Owned to Block.
- B. From Platform Settings, set Android Enterprise (work profile) to Allow.
- C. From Platform Settings, set Android device administrator Personally Owned to Allow
- D. From Platform Settings, set Android device administrator to Block.

Answer: AB

Explanation:

To ensure that only Android devices that use Android work profiles can enroll in Intune, you need to perform two configurations in the device enrollment restrictions. First, you need to set Android device administrator Personally Owned to Block. This prevents users from enrolling personal Android devices that use device administrator mode. Second, you need to set Android Enterprise (work profile) to Allow. This allows users to enroll corporate-owned or personal Android devices that use work profiles. References: <https://docs.microsoft.com/en-us/mem/intune/enrollment/enrollment-restrictions-set>

NEW QUESTION 86

- (Exam Topic 4)

You have a Microsoft 365 subscription that uses Microsoft Intune Suite. You use Microsoft Intune to manage devices.

You plan to deploy two apps named App1 and App2 to all Windows devices. App1 must be installed before App2.

From the Intune admin center, you create and deploy two Windows app (Win32) apps. You need to ensure that App1 is installed before App2 on every device. What should you configure?

- A. the App1 deployment configurations
- B. a dynamic device group
- C. a detection rule
- D. the App2 deployment configurations

Answer: C

Explanation:

The correct answer is D because you can configure the dependencies for a Win32 app in the deployment configurations1. Dependencies are other Win32 apps that must be installed before your Win32 app can be installed1. You can add Win32 app dependencies only after your Win32 app has been added and uploaded to Intune2. In this case, you need to configure the App2 deployment configurations to add App1 as a dependency 2. References: 1: Microsoft Intune Win32 App Dependencies - MSEndpointMgr <https://msendpointmgr.com/2019/06/03/new-intune-feature-win32-app-dependencies/> 2: Add and assign Win32 apps to Microsoft Intune | Microsoft Learn <https://learn.microsoft.com/en-us/mem/intune/apps/apps-win32-add>

NEW QUESTION 91

- (Exam Topic 4)

You have a Microsoft 365 subscription.

You plan to use Windows Autopilot to provision 25 Windows 11 devices. You need to configure the Out-of-box experience (OOBE) settings.

What should you create in the Microsoft Intune admin center?

- A. an enrollment status page (ESP)
- B. a deployment profile
- C. a compliance policy
- D. a PowerShell script

E. a configuration profile

Answer: B

NEW QUESTION 93

- (Exam Topic 4)

You have a Microsoft Intune subscription.

You have devices enrolled in Intune as shown in the following table.

Name	Operating system
Device1	Android 8.1.0
Device2	Android 9
Device3	iOS 11.4.1
Device4	iOS 12.3.1
Device5	iOS 12.3.2

An app named App1 is installed on each device.

What is the minimum number of app configuration policies required to manage App1?

- A. 1
- B. 2
- C. 3
- D. 4
- E. 5

Answer: B

Explanation:

The correct answer is B because you need to create two app configuration policies for managed devices, one for iOS/iPadOS devices and one for Android devices¹. App configuration policies let you customize the settings of apps for iOS/iPadOS or Android devices¹. The settings are assigned to user groups and applied when the app runs¹. The app developer or supplier provides the configuration settings (keys and values) that are exposed to Intune¹. You can't use a single app configuration policy for both iOS/iPadOS and Android devices because they have different configuration settings². References: 1: App configuration policies for Microsoft Intune | Microsoft Learn

<https://learn.microsoft.com/en-us/mem/intune/apps/app-configuration-policies-overview> 2: Add app configuration policies for managed iOS/iPadOS devices | Microsoft Learn <https://learn.microsoft.com/en-us/mem/intune/apps/app-configuration-policies-use-ios>

NEW QUESTION 96

- (Exam Topic 3)

You need to prepare for the deployment of the Phoenix office computers. What should you do first?

- A. Generalize the computers and configure the Mobility (MDM and MAM) settings from the Azure Active Directory admin center.
- B. Extract the hardware ID information of each computer to a CSV file and upload the file from the Microsoft Intune blade in the Azure portal.
- C. Extract the hardware ID information of each computer to an XML file and upload the file from the Devices settings in Microsoft Store for Business.
- D. Extract the serial number information of each computer to a CSV file and upload the file from the Microsoft Intune blade in the Azure portal.

Answer: A

Explanation:

Reference:

<https://docs.microsoft.com/en-us/windows/deployment/windows-autopilot/existing-devices>

NEW QUESTION 100

- (Exam Topic 3)

You need to meet the requirements for the MKG department users. What should you do?

- A. Assign the MKG department users the Purchaser role in Microsoft Store for Business
- B. Download the APPX file for App1 from Microsoft Store for Business
- C. Add App1 to the private store
- D. Assign the MKG department users the Basic Purchaser role in Microsoft Store for Business
- E. Acquire App1 from Microsoft Store for Business

Answer: E

Explanation:

References:

<https://docs.microsoft.com/en-us/microsoft-store/distribute-apps-from-your-private-store> Enable the users in the MKG department to use App1.

The private store is a feature in Microsoft Store for Business and Education that organizations receive during the signup process. When admins add apps to the private store, all employees in the organization can view and download the apps. Your private store is available as a tab in Microsoft Store app, and is usually named for your company or organization. Only apps with online licenses can be added to the private store.

Reference:

<https://docs.microsoft.com/en-us/microsoft-store/distribute-apps-from-your-private-store>

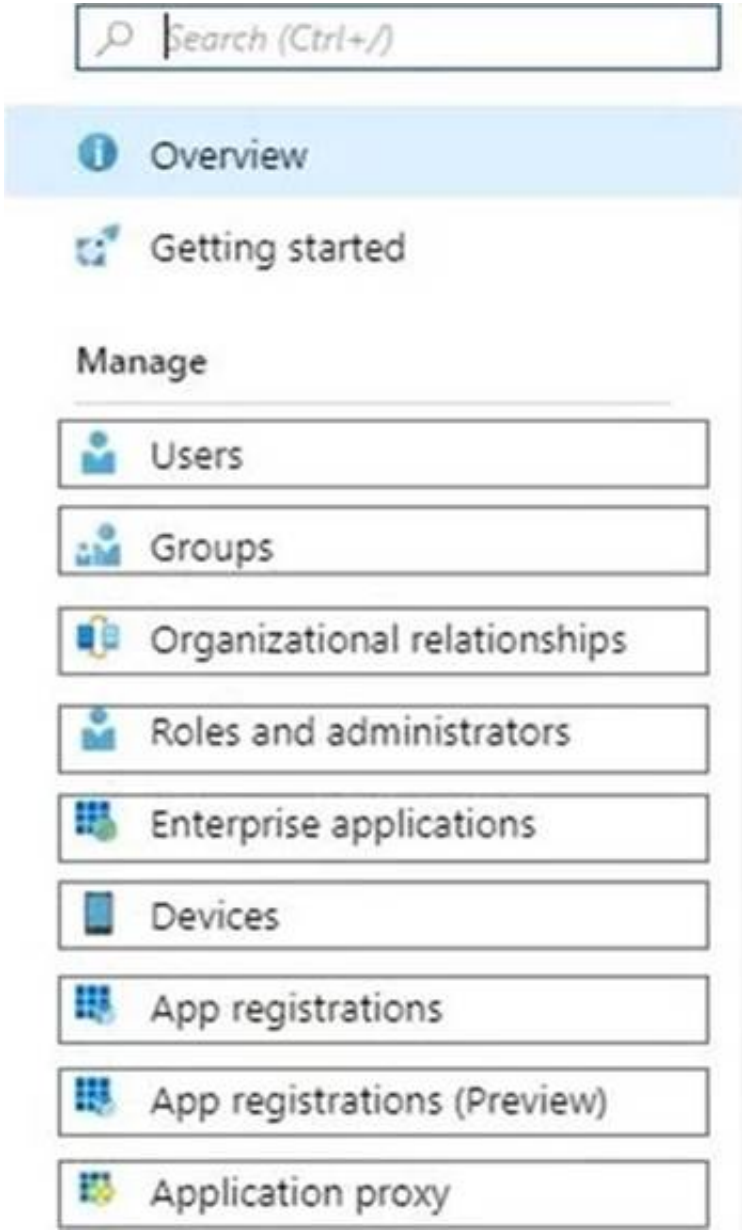
NEW QUESTION 104

- (Exam Topic 2)

You need to meet the technical requirements for Windows AutoPilot.

Which two settings should you configure from the Azure Active Directory blade? To answer, select the appropriate settings in the answer area.

NOTE: Each correct selection is worth one point.



- A. Mastered
- B. Not Mastered

Answer: A

Explanation:

References:
<https://docs.microsoft.com/en-us/windows/deployment/windows-autopilot/windows-autopilot-reset>

NEW QUESTION 109

- (Exam Topic 1)
Which user can enroll Device6 in Intune?

- A. User4 and User2 only
- B. User4 and User 1 only
- C. User1, User2, User3, and User4
- D. User4. User Land User2 only

Answer: B

NEW QUESTION 114

- (Exam Topic 1)
User1 and User2 plan to use Sync your settings.
On which devices can the users use Sync your settings? To answer, select the appropriate options in the answer area.
NOTE: Each correct selection is worth one point.

Answer Area

User1:

No devices
Device4 and Device5 only
Device1, Device2 and Device3 only
Device1, Device2, Device3, Device4, and Device5

User2:

No devices
Device4 and Device5 only
Device1, Device2 and Device3 only
Device1, Device2, Device3, Device4, and Device5

- A. Mastered
- B. Not Mastered

Answer: A

Explanation:

Graphical user interface, text, application, email Description automatically generated
Reference:
<https://www.jeffgilb.com/managing-local-administrators-with-azure-ad-and-intune/>

NEW QUESTION 115

- (Exam Topic 1)
For each of the following statements, select Yes if the statement is true. Otherwise, select No.
NOTE: Each correct selection is worth one point.

Statements	Yes	No
User1 can create a file named D:\Folder1\file1.txt on Device4 by using Notepad.	<input type="radio"/>	<input type="radio"/>
User2 can remove D:\Folder1 from the list of protected folders on Device2.	<input type="radio"/>	<input type="radio"/>
User3 can create a file named C:\Users\User3\Desktop\file1.txt on Device2 by running a custom Windows PowerShell script.	<input type="radio"/>	<input type="radio"/>

- A. Mastered
- B. Not Mastered

Answer: A

Explanation:

A screenshot of a computer Description automatically generated with medium confidence

NEW QUESTION 118

- (Exam Topic 1)
Which devices are registered by using the Windows Autopilot deployment service?

- A. Device1 only
- B. Device3 only
- C. Device1 and Device3 only
- D. Device1, Device2, and Device3

Answer: C

Explanation:

Scenario: Windows Autopilot Configuration Assignments
Included groups: Group1
Excluded groups: Group2 Device1 is member of Group1.
Device2 is member of Group1 and member of Group2. Device3 is member of Group1.
Group1 and Group2 have a Membership type of Assigned.
Exclusion takes precedence over inclusion in the following same group type scenarios. Reference: <https://learn.microsoft.com/en-us/mem/intune/apps/apps-inc-exl-assignments>

NEW QUESTION 123

- (Exam Topic 1)
You implement the planned changes for Connection1 and Connection2
How many VPN connections will there be for User1 when the user signs in to Device 1 and Devke2? To answer select the appropriate options in the answer area.
NOTE; Each correct selection is worth one point.

Answer Area

Device1:

1

2

3

4

5

Device2:

1

2

3

4

5

- A. Mastered
- B. Not Mastered

Answer: A

Explanation:

Answer Area

Device1:

12345

Device2:

3

Device2:

12345

NEW QUESTION 126

- (Exam Topic 1)
For each of the following statements, select Yes if the statement is true. Otherwise, select No.
NOTE: Each correct selection is worth one point.

Statements	Yes	No
Device1 is marked as compliant.	<input type="radio"/>	<input type="radio"/>
Device4 is marked as compliant.	<input type="radio"/>	<input type="radio"/>
Device5 is marked as compliant.	<input type="radio"/>	<input type="radio"/>

- A. Mastered
- B. Not Mastered

Answer: A

Explanation:

Text Description automatically generated

NEW QUESTION 131

- (Exam Topic 1)
Which users can purchase and assign App1?

- A. User3 only
- B. User1 and User3 only
- C. User1, User2, User3, and User4
- D. User1, User3, and User4 only
- E. User3 and User4 only

Answer: B

Explanation:

Reference:
<https://docs.microsoft.com/en-us/microsoft-store/acquire-apps-microsoft-store-for-business> <https://docs.microsoft.com/en-us/microsoft-store/assign-apps-to-employees>

NEW QUESTION 133

- (Exam Topic 1)
You need to ensure that computer objects can be created as part of the Windows Autopilot deployment. The solution must meet the technical requirements.
To what should you grant the right to create the computer objects?

- A. Server2
- B. Server1
- C. GroupA
- D. DC1

Answer: C

Explanation:

Reference:
<https://blog.matrixpost.net/set-up-windows-autopilot-production-environment-part-2/>

NEW QUESTION 134

- (Exam Topic 4)

Your company has an Azure AD tenant named contoso.com that contains several Windows 10 devices. When you join new Windows 10 devices to contoso.com, users are prompted to set up a four-digit pin. You need to ensure that the users are prompted to set up a six-digit pin when they join the Windows 10 devices to contoso.com.

Solution: From the Microsoft Entra admin center, you configure automatic mobile device management (MDM) enrollment. From the Microsoft Intune admin center, you create and assign a device restrictions profile.

Does this meet the goal?

- A. Yes
- B. No

Answer: B

NEW QUESTION 136

- (Exam Topic 4)

You have an Azure AD tenant that contains the devices shown in the following table. You purchase Windows 11 Enterprise E5 licenses. Which devices can use Subscription Activation to upgrade to Windows 11 Enterprise?

- A. Device1 only
- B. Device1 and Device2 only
- C. Device1 and Device3 only
- D. Device1, Device2, Device3, and Device4

Answer: B

NEW QUESTION 140

- (Exam Topic 4)

You have a Microsoft 365 subscription that uses Microsoft Intune Suite. You use Microsoft Intune to manage devices.

You have a Windows 11 device named Device1 that is enrolled in Intune. Device1 has been offline for 30 days.

You need to remove Device1 from Intune immediately. The solution must ensure that if the device checks in again, any apps and data provisioned by Intune are removed. User-installed apps, personal data, and OEM-installed apps must be retained.

What should you use?

- A. a Delete action
- B. a Retire action
- C. a Fresh Start action
- D. an Autopilot Reset action

Answer: B

Explanation:

A retire action removes a device from Intune management and removes any apps and data provisioned by Intune. User-installed apps, personal data, and OEM-installed apps are retained. A retire action can be performed on devices that are offline for more than 30 days. References:

<https://docs.microsoft.com/en-us/mem/intune/remote-actions/devices-wipe>

NEW QUESTION 141

- (Exam Topic 4)

You have a Microsoft 365 E5 subscription.

You create an app protection policy for Android devices named Policy1 as shown in the following exhibit.

Home > Apps >

Create policy



- ✓ Basics
- 2 Apps
- ① Data protection
- ④ Access requirements
- ...

Choose how you want to apply this policy to apps on different devices. Then add at least one app.

Target to apps on all device types ⓘ

Yes

No

Device types * ⓘ

Unmanaged



Target policy to

All Apps



ℹ We'll continue to add managed apps to your policy as they become available in Intune. [View a list of apps that will be targeted](#)

Use the drop-down menus to select the answer choice that completes each statement based on the information presented in the graphic.

NOTE: Each correct selection is worth one point.

To apply Policy1 to an Android device, you must [answer choice].

install the Company Portal app on the device
install the Microsoft Authenticator app on the device
onboard the device to Microsoft Defender for Endpoint
onboard the device to the Microsoft 365 compliance center

When Policy1 is assigned, the policy will apply to [answer choice].

users only
devices only
users and devices

- A. Mastered
- B. Not Mastered

Answer: A

Explanation:

Box 1: Install the Intune Company Portal app on the device

On Android, Android devices will prompt to install the Intune Company Portal app regardless of which Device type is chosen.

Box 2: Devices only

For Android devices, unmanaged devices are devices where Intune MDM management has not been detected. This includes devices managed by third-party MDM vendors.

Reference:

<https://docs.microsoft.com/en-us/mem/intune/apps/app-protection-policies#app-protection-policies-for-iosipado>

NEW QUESTION 146

- (Exam Topic 4)

You have a Microsoft 365 tenant that uses Microsoft Intune.

You use the Company Portal app to access and install published apps to enrolled devices. From the Microsoft Intune admin center, you add a Microsoft Store app.

Which two App information types are visible in the Company Portal? NOTE: Each correct selection is worth one point.

- A. Privacy URL
- B. Information URL
- C. Developer
- D. Owner

Answer: AC

NEW QUESTION 149

- (Exam Topic 4)

You have a Microsoft 365 subscription.

You have 10 computers that run Windows 10 and are enrolled in mobile device management (MDM). You need to deploy the Microsoft 36S Apps for enterprise suite to all the computers.

What should you do?

- A. From the Microsoft Intune admin center, create a Windows 10 device profile.
- B. From Azure AD, add an app registration.
- C. From Azure A
- D. add an enterprise application.
- E. From the Microsoft Intune admin center, add an app.

Answer: D

Explanation:

To deploy Microsoft 365 Apps for enterprise to Windows 10 devices that are enrolled in Intune, you need to add an app of type "Windows 10 app (Win32)" in the Microsoft Intune admin center and configure the app settings. You can then assign the app to groups of users or devices. References:

<https://docs.microsoft.com/en-us/mem/intune/apps/apps-win32-app-management>

NEW QUESTION 152

- (Exam Topic 4)

You have a Microsoft 365 subscription that uses Microsoft Intune Suite. You use Microsoft Intune to manage devices. Azure AD joined Windows devices enroll automatically in Intune. You have the devices shown in the following table.

Name	Operating system	Azure AD joined	Line-of-business (LOB) apps installed
Device1	64-bit version of Windows 10 Pro	Yes	No
Device2	32-bit version of Windows 10 Pro	No	Yes
Device3	64-bit version of Windows 10 Pro	No	Yes

You are preparing to upgrade the devices to Windows 11. All the devices are compatible with Windows 11. You need to evaluate Windows Autopilot and in-place upgrade as deployment methods to implement Windows 11 Pro on the devices, while retaining all user settings and applications. Which devices can be upgraded by using each method? To answer, select the appropriate options in the answer area. NOTE: Each correct selection is worth one point.

Answer Area

Windows Autopilot: Device1 and Device3 only
None of the devices
Device1 only
Device1 and Device3 only
Device1, Device2, and Device3

In-place upgrade: Device1 and Device3 only
None of the devices
Device1 only
Device1 and Device3 only
Device1, Device2, and Device3

- A. Mastered
B. Not Mastered

Answer: A

Explanation:

Answer Area

Windows Autopilot: Device1 and Device3 only
None of the devices
Device1 only
Device1 and Device3 only
Device1, Device2, and Device3

In-place upgrade: Device1 and Device3 only
None of the devices
Device1 only
Device1 and Device3 only
Device1, Device2, and Device3

NEW QUESTION 156

- (Exam Topic 4)

You have 1,000 computers that run Windows 10 and are members of an Active Directory domain. You need to capture the event logs from the computers to Azure.

What should you do? To answer, select the appropriate options in the answer area. NOTE: Each correct selection is worth one point.

Answer Area

Azure service to provision:

<input checked="" type="checkbox"/>
An Azure Storage account
Azure Cosmos DB
Azure SQL Database
Log Analytics

Action to perform on the computers:

<input checked="" type="checkbox"/>
Create a collector-initiated subscription
Install the Microsoft Monitoring Agent
Enroll in Microsoft Intune
Register to Azure Active Directory (Azure AD)

- A. Mastered
B. Not Mastered

Answer: A

Explanation:

Answer Area

Azure service to provision:

<input checked="" type="checkbox"/>
An Azure Storage account
Azure Cosmos DB
Azure SQL Database
Log Analytics

Action to perform on the computers:

<input checked="" type="checkbox"/>
Create a collector-initiated subscription
Install the Microsoft Monitoring Agent
Enroll in Microsoft Intune
Register to Azure Active Directory (Azure AD)

NEW QUESTION 161

- (Exam Topic 4)

You have a Microsoft 365 subscription that contains a user named User1. The subscription contains devices enrolled in Microsoft Intune as shown in the following table.

Name	Platform	Member of	Description
Device1	Windows 11	Group1	Disk encryption is not configured.
Device2	Windows 10	Group2	Disk encryption is configured.
Device3	Android	Group3	Device local storage is not encrypted.

Microsoft Edge is available on all the devices.

Intune has the device compliance policies shown in the following table.

Name	Platform	Setting	Applied to
Compliance1	Windows 10 and later	Require encryption of data storage on device	Group2
Compliance2	Android Enterprise	Require encryption of data storage on device	Group3

The Compliance policy settings are configured as shown in the exhibit. (Click the Exhibit tab.) You create the following Conditional Access policy:

Compliance policies | Compliance policy settings ... X

Save X Discard

These settings configure the way the compliance service treats devices. Each device evaluates these as a "Built-in Device Compliance Policy", which is reflected in device monitoring.

Mark devices with no compliance policy assigned as ☒ Compliant

Enhanced jailbreak detection ☐ Disabled

Compliance status validity period (days)

- Name: Policy1
- Assignments
 - o Users and groups: User1
 - o Cloud apps or actions: Office 365 SharePoint Online
- Access controls
 - o Grant Require device to be marked as compliant
- Enable policy: On

For each of the following statements, select Yes if the statement is true. Otherwise, select No. NOTE: Each correct selection is worth one point.

Answer Area

Statements	Yes	No
User1 can access Microsoft SharePoint Online from Device1 by using Microsoft Edge.	<input type="radio"/>	<input type="radio"/>
User1 can access Microsoft SharePoint Online from Device2 by using Microsoft Edge.	<input type="radio"/>	<input type="radio"/>
User1 can access Microsoft SharePoint Online from Device3 by using Microsoft Edge.	<input type="radio"/>	<input type="radio"/>

- A. Mastered
 B. Not Mastered

Answer: A

Explanation:

Answer Area

Statements	Yes	No
User1 can access Microsoft SharePoint Online from Device1 by using Microsoft Edge.	<input type="radio"/>	<input checked="" type="radio"/>
User1 can access Microsoft SharePoint Online from Device2 by using Microsoft Edge.	<input checked="" type="radio"/>	<input type="radio"/>
User1 can access Microsoft SharePoint Online from Device3 by using Microsoft Edge.	<input type="radio"/>	<input checked="" type="radio"/>

NEW QUESTION 164

- (Exam Topic 4)

You have groups that use the Dynamic Device membership type as shown in the following table.

Name	Syntax
Group1	(device.deviceOwnership -eq "Company")
Group2	(device.deviceOwnership -eq "Personal")

You are deploying Microsoft 365 apps.

You have devices enrolled in Microsoft Intune as shown in the following table.

Name	Ownership	Platform
LT1	Company	Windows 10 Enterprise x64
LT2	Personal	Windows 10 Enterprise x64
LT3	Company	MacOS Big Sur

In the Microsoft Endpoint Manager admin center, you create a Microsoft 365 Apps app as shown in the exhibit. (Click the Exhibit tab.)

App Information [Edit](#)

Name	Microsoft 365 Apps for Windows 10
Description	Microsoft 365 Apps for Windows 10
Publisher	Microsoft
Category	Productivity
Show this as a featured app in the Company Portal	No
Information URL	https://products.office.com/en-us/explore-office-for-home
Privacy URL	https://privacy.microsoft.com/en-US/privacystatement
Developer	Microsoft
Owner	Microsoft
Notes	...
Logo	
Architecture	Teams, Word
Update channel	64-bit
Remove other versions	Current Channel
Version to install	Yes
Use shared computer activation	Latest
Accept the Microsoft Software License	No
Teams on behalf of users	No
Install background service for Microsoft Search in Bing	No
Apps to be installed as part of the suite	1 language(s) selected

Assignments [Edit](#)

Group mode	Group
<input type="checkbox"/> Required	
<input checked="" type="checkbox"/> Included	Group1
Available for enrolled devices	

For each of the following statements, select Yes if the statement is true. Otherwise, select No.
 NOTE: Each correct selection is worth one point.

Statements	Yes	No
LT1 will have Microsoft Office 365 installed	<input type="radio"/>	<input type="radio"/>
LT2 will have Microsoft Office 365 installed	<input type="radio"/>	<input type="radio"/>
LT3 will have Microsoft Office 365 installed	<input type="radio"/>	<input type="radio"/>

- A. Mastered
- B. Not Mastered

Answer: A

Explanation:

Graphical user interface, text, application Description automatically generated

Reference:

<https://docs.microsoft.com/en-us/mem/intune/apps/apps-add-office365>

<https://docs.microsoft.com/en-us/mem/intune/apps/apps-deploy> <https://docs.microsoft.com/en-us/mem/intune/apps/apps-add>

NEW QUESTION 166

- (Exam Topic 4)

You have a Microsoft 365 tenant.

You have devices enrolled in Microsoft Intune.

You assign a conditional access policy named Policy1 to a group named Group1. Policy1 restricts devices marked as noncompliant from accessing Microsoft OneDrive for Business.

You need to identify which noncompliant devices attempt to access OneDrive for Business. What should you do?

- A. From the Microsoft Entra admin center, review the Conditional Access Insights and Reporting workbook.
- B. From the Microsoft Intune admin center, review Device compliance report.
- C. From the Microsoft Intune admin center, review the Noncompliant devices report.
- D. From the Microsoft Intune admin center, review the Setting compliance report.

Answer: C

NEW QUESTION 171

- (Exam Topic 4)

You have an Azure AD tenant named contoso.com.

You plan to use Windows Autopilot to configure the Windows 10 devices shown in the following table.

Name	Memory	TPM
Device1	16 GB	None
Device2	8 GB	Version 1.2
Device3	4 GB	Version 2.0

Which devices can be configured by using Windows Autopilot self-deploying mode?

- A. Device2 only
- B. Device3 only
- C. Device2 and Device3 only
- D. Device 1, Device2, and Device3

Answer: C

Explanation:

Windows Autopilot self-deploying mode requires devices that have a firmware-embedded activation key for Windows 10 Pro or Windows 11 Pro. This feature allows devices to automatically activate Windows Enterprise edition using the subscription license assigned to the user. Device1 does not have a firmware-embedded activation key, so it cannot use self-deploying mode. Device2 and Device3 have firmware-embedded activation keys for Windows 10 Pro, so they can use self-deploying mode. References: Windows Autopilot self-deploying mode (Public Preview), Deploy Windows Enterprise licenses

NEW QUESTION 174

- (Exam Topic 4)

You have a Microsoft 365 subscription that uses Microsoft Intune Suite. You use Microsoft Intune to manage devices.

You need to review the startup times and restart frequencies of the devices. What should you use?

- A. Azure Monitor
- B. Intune Data Warehouse
- C. Microsoft Defender for Endpoint
- D. Endpoint analytics

Answer: D

Explanation:

Endpoint analytics is a feature of Microsoft Intune that provides insights into the performance and health of devices. You can use endpoint analytics to review the startup times and restart frequencies of the devices, as well as other metrics such as sign-in times, battery life, app reliability, and software inventory. References: https://docs.microsoft.com/en-us/mem/analytics/overview

NEW QUESTION 179

- (Exam Topic 4)

In Microsoft Intune, you have the device compliance policies shown in the following table.

Name	Type	Encryption	Windows Defender antimalware	Mark device as not compliant	Assigned to
Policy1	Windows 8.1 and later	Require	Not applicable	5 days	Group1
Policy2	Windows 10 and later	Not configured	Require	7 days	Group2
Policy3	Windows 10 and later	Require	Require	10 days	Group2

The Intune compliance policy settings are configured as shown in the following exhibit.

Save Discard

These settings configure the way the compliance service treats devices. Each device evaluates these as a "Built-in Device Compliance Policy", which is reflected in device monitoring.

Mark devices with no compliance policy assigned as ⓘ

Compliant

Not Compliant

Enhanced jailbreak detection ⓘ

Enabled

Disabled

Compliance status validity period (days) ⓘ

30



On June 1, you enroll Windows 10 devices in Intune as shown in the following table.

Name	Use BitLocker Drive Encryption (BitLocker)	Windows Defender	Member of
Device1	No	Enabled	Group1
Device2	No	Enabled	Group2

For each of the following statements, select Yes if the statement is true. Otherwise, select No. NOTE: Each correct selection is worth one point.

Answer Area

Statements	Yes	No
On June 4, Device1 is marked as compliant.	<input type="radio"/>	<input type="radio"/>
On June 6, Device1 is marked as compliant.	<input type="radio"/>	<input type="radio"/>
On June 9, Device2 is marked as compliant.	<input type="radio"/>	<input type="radio"/>

- A. Mastered
 B. Not Mastered

Answer: A

Explanation:

Device 1 is Windows 10 - and policy 1 is for Windows 8. Default compliance for devices without a policy is not compliant so first 2 questions are NO. Then the third device has 2 policies, the first one is compliant and the second policy is not compliant but the device is not marked as non-compliant due to the fact that mark device as non-compliant is set to 10 days. This means that the machine will be compliant until june 10th.

Source:

Mark device non-compliant: By default, this action is set for each compliance policy and has a schedule of zero (0) days, marking devices as noncompliant immediately.

When you change the default schedule, you provide a grace period in which a user can remediate issues or become compliant without being marked as non-compliant.

This action is supported on all platforms supported by Intune. <https://docs.microsoft.com/en-us/mem/intune/protect/actions-for-noncompliance>

NEW QUESTION 181

- (Exam Topic 4)

You have an Azure AD tenant named contoso.com that contains the devices shown in the following table.

Name	Operating system
Device1	Windows 10
Device2	Android 8.0
Device3	Android 9
Device4	iOS 11.0
Device5	iOS 11.4.1

AH devices contain an app named App1 and are enrolled in Microsoft Intune.

You need to prevent users from copying data from App1 and pasting the data into other apps.

Which type of policy and how many policies should you create in Intune? To answer, select the appropriate options in the answer area.

NOTE: Each correct selection is worth one point.

Answer Area

Policy type:

Minimum number of policies:

- A. Mastered
 B. Not Mastered

Answer: A

Explanation:

of Corre Answer Only: The correct answer is app protection policy because it allows you to customize the settings of apps for iOS/iPadOS or Android devices¹. One of the settings you can configure is Restrict cut, copy, and paste between other apps, which lets you prevent users from copying data from App1 and pasting the data into other apps². You only need one policy to apply this setting to all devices that have App1 installed.

References: 1: App configuration policies for Microsoft Intune | Microsoft Learn <https://learn.microsoft.com/en-us/mem/intune/apps/app-configuration-policies-overview> 2: Troubleshoot restricting cut, copy, and paste between applications - Intune | Microsoft Learn <https://learn.microsoft.com/en-us/troubleshoot/mem/intune/app-protection-policies/troubleshoot-cut-copy-paste>

NEW QUESTION 184

- (Exam Topic 4)

You have a Microsoft 365 subscription that uses Microsoft Intune and contains 100 Windows 10 devices. You need to create Intune configuration profiles to perform the following actions on the devices:

- Deploy a custom Start layout.
- Rename the local Administrator account.

Which profile type template should you use for each action? To answer, select the appropriate options in the answer area. NOTE: Each correct selection is worth one point.

Answer Area

Deploy a custom Start layout:

Rename the local Administrator account:

- A. Mastered
B. Not Mastered

Answer: A

Explanation:

Answer Area

Deploy a custom Start layout:

Rename the local Administrator account:

NEW QUESTION 186

- (Exam Topic 4)

You have a Microsoft 365 subscription that uses Microsoft Intune Suite. You use Microsoft Intune to manage devices.

Auto-enrollment in Intune is configured.

You have 100 Windows 11 devices in a workgroup.

You need to connect the devices to the corporate wireless network and enroll 100 new Windows devices in Intune.

What should you use?

- A. a provisioning package
B. a Group Policy Object (GPO)
C. mobile device management (MDM) automatic enrollment
D. a device configuration policy

Answer: C

NEW QUESTION 190

- (Exam Topic 4)

You have an Azure Active Directory (Azure AD) tenant named contoso.com that contains the devices shown in the following table.

Name	Operating system	Azure AD status	Mobile device management (MDM)
Device1	Windows 8.1	Registered	None
Device2	Windows 10	Joined	None
Device3	Windows 10	Joined	Microsoft Intune

Contoso.com contains the Azure Active Directory groups shown in the following table.

Name	Members
Group1	Group2, Device1, Device3
Group2	Device2

You add a Windows Autopilot deployment profile. The profile is configured as shown in the following exhibit.

Create profile

Windows PC

☒ Basics
 ☒ Out-of-box experience (OOBE)
 ☒ Assignments
 ☒ Review + create

Summary

Basics

Name: Profile1
 Description: --
 Convert all targeted devices to Autopilot: Yes
 Device type: Windows PC

Out-of-box experience (OOBE)

Deployment mode: Self-Deploying (preview)
 Join to Azure AD as: Azure AD joined
 Skip AD connectivity check (preview): No
 Language (Region): Operating system default
 Automatically configure keyboard: Yes
 Microsoft Software License Terms: Hide
 Privacy settings: Hide
 Hide change account options: Hide
 User account type: Standard
 Allow White Glove OOBE: No
 Apply device name template: No

Assignments

Included groups: Group1
 Excluded groups: --

For each of the following statements, select Yes if the statement is true. Otherwise, select No.
 NOTE: Each correct selection is worth one point.

Statements	Yes	No
If Device1 starts in Out of Box Experience (OOBE) mode, the device will be deployed by using Autopilot.	<input type="radio"/>	<input type="radio"/>
If Device2 starts in Out of Box Experience (OOBE) mode, the device will be deployed by using Autopilot.	<input type="radio"/>	<input type="radio"/>
If Device3 starts in Out of Box Experience (OOBE) mode, the device will be deployed by using Autopilot.	<input type="radio"/>	<input type="radio"/>

- A. Mastered
B. Not Mastered

Answer: A

Explanation:

Box 1: No

Device1 has no Mobile device Management (MDM) configured.

Note: Device1 is running Windows 8.1, and is registered, but not joined. Device1 is in Group1.

Profile1 is assigned to Group1. Box 2: No

Device2 has no Mobile device Management (MDM) configured. Note: Device2 is running Windows 10, and is joined.

Device2 is in Group2. Group2 is in Group1.

Profile1 is assigned to Group1. Box 3: Yes

Device3 has Mobile device Management (MDM) configured. Device3 is running Windows 10, and is joined

Device1 is in Group1.

Profile1 is assigned to Group1.

Mobile device management (MDM) enrollment: Once your Windows 10 device joins Azure AD, Autopilot ensures your device is automatically enrolled with MDMs such as Microsoft Intune. This program can automatically push configurations, policies and settings to the device, and install Office 365 and other business apps without you having to get IT admins to manually sort the device. Intune can also apply the latest updates from Windows Update for Business.

Reference: <https://xo.xello.com.au/blog/windows-autopilot>

NEW QUESTION 194

- (Exam Topic 4)

You have a Microsoft 365 E5 subscription.

You create a new update rings policy named Policy1 as shown in the following exhibit.

Update ring settings Edit

Update settings

Microsoft product updates	Allow
Windows drivers	Allow
Quality update deferral period (days)	0
Feature update deferral period (days)	30
Upgrade Windows 10 devices to Latest Windows 11 release	No

Set feature update uninstall period (2 - 60 days) 10

Servicing channel General Availability channel

User experience settings

Automatic update behavior	Auto install at maintenance time
Active hours start	8 AM
Active hours end	5 PM
Restart checks	Allow
Option to pause Windows updates	Enable
Option to check for Windows updates	Enable
Change notification update level	Use the default Windows Update notifications
Use deadline settings	Allow
Deadline for feature updates	30
Deadline for quality updates	0
Grace period	0
Auto reboot before deadline	No

Use the drop-down menus to select the answer choice that completes each statement based on the information presented in the graphic.
NOTE: Each correct selection is worth one point,

Answer Area

Updates that contain fixes and improvements to existing Windows functionality [answer choice].

can be deferred for 30 days

can be deferred indefinitely

can be deferred for 30 days

will be installed immediately

Updates that contain new Windows functionality will be installed within [answer choice] of release.

1 day

1 day

30 days

60 days

- A. Mastered
- B. Not Mastered

Answer: A

Explanation:

*Updates that contain fixes and improvements to existing Windows functionality can be deferred for 30 days. This is because the update rings policy named Policy1 has the “Quality updates deferral period (days)” setting set to 30. This means that quality updates, which include fixes and improvements to existing Windows functionality, can be deferred for up to 30 days from the date they are released by Microsoft. After 30 days, the devices will automatically install the quality updates. References:

https://docs.microsoft.com/en-us/mem/intune/protect/windows-update-for-business-configure

*Updates that contain new Windows functionality will be installed within 60 days of release.

This is because the update rings policy named Policy1 has the “Feature updates deferral period (days)” setting set to 60. This means that feature updates, which include new Windows functionality, can be deferred for up to 60 days from the date they are released by Microsoft. After 60 days, the devices will automatically install the feature updates. References:

https://docs.microsoft.com/en-us/mem/intune/protect/windows-update-for-business-configure

NEW QUESTION 196

- (Exam Topic 4)

Your company implements Azure AD, Microsoft 365, Microsoft Intune, and Azure Information Protection. The company's security policy states the following:

- Personal devices do not need to be enrolled in Intune.
- Users must authenticate by using a PIN before they can access corporate email data.

- Users can use their personal iOS and Android devices to access corporate cloud services.
 - Users must be prevented from copying corporate email data to a cloud storage service other than Microsoft OneDrive for Business.
- You need to configure a solution to enforce the security policy. What should you create?

- A. a device configuration profile from the Microsoft Intune admin center
- B. a data loss prevention (DIP) policy from the Microsoft Purview compliance portal
- C. an insider risk management policy from the Microsoft Purview compliance portal
- D. an app protection policy from the Microsoft Intune admin center

Answer: B

NEW QUESTION 198

- (Exam Topic 4)

You have a Microsoft 365 subscription that contains 1.000 Windows 11 devices enrolled in Microsoft Intune. You plan to use Intune to deploy an application named App1 that contains multiple installation files.

What should you do first?

- A. Prepare the contents of App1 by using the Microsoft Win32 Content Prep Tool.
- B. Create an Android application package (APK).
- C. Upload the contents of App1 to Intune.
- D. Install the Microsoft Deployment Toolkit (MDT).

Answer: A

NEW QUESTION 201

- (Exam Topic 4)

You have a Microsoft 365 E5 subscription that uses Microsoft Intune. The subscription contains the users shown in the following table.

Name	Member of
User1	Group1, Group2
User2	Group2
User3	Group3

Group2 and Group3 are members of Group1. All the users use Microsoft Excel.

From the Microsoft Endpoint Manager admin center, you create the policies shown in the following table.

Name	Type	Priority	Assigned to	Default file format for Excel
Policy1	Policies for Office apps	0	Group1	OpenDocument Spreadsheet (*.ods)
Policy2	Policies for Office apps	1	Group2	Excel Binary Workbook (*.xlsb)

For each of the following statements, select Yes if the statement is true. Otherwise, select No.

NOTE: Each correct selection is worth one point.

Answer Area

Statements	Yes	No
When User1 saves a new spreadsheet, the .ods format is used.	<input type="radio"/>	<input type="radio"/>
When User2 saves a new spreadsheet, the .xlsb format is used.	<input type="radio"/>	<input type="radio"/>
When User3 saves a new spreadsheet, the .xlsx format is used.	<input type="radio"/>	<input type="radio"/>

- A. Mastered
- B. Not Mastered

Answer: A

Explanation:

Box 1: No

User1 is member of Group1 and Group2.

Policy1 with priority 0 is assigned to Group1: default file format for Excel is.ods. Policy2 with priority 1 is assigned to Group2: default file format for Excel is.xlsb.

Note: Key points to remember about policy order

Policies are assigned an order of priority. Devices receive the first applied policy only.

You can change the order of priority for policies. Default policies are given the lowest order of priority. Box 2: Yes

User2 is member of Group2.
 Group2 and Group3 are members of Group1. Box 3: No
 User3 is member of Group3.
 Group2 and Group3 are members of Group1.
 Reference: <https://learn.microsoft.com/en-us/microsoft-365/security/defender-business/mdb-policy-order>

NEW QUESTION 203

- (Exam Topic 4)

Your company has computers that run Windows 10 and are Microsoft Azure Active Directory (Azure AD)-joined.

The company purchases an Azure subscription.

You need to collect Windows events from the Windows 10 computers in Azure. The solution must enable you to create alerts based on the collected events.

What should you create in Azure and what should you configure on the computers? To answer, select the appropriate options in the answer area.

NOTE: Each correct selection is worth one point.

Answer Area

Resource to create in Azure:

	▼
An Azure event hub	
An Azure Log Analytics workspace	
An Azure SQL database	
An Azure Storage account	

Configuration to perform on the computers:

	▼
Configure the Event Collector service	
Create an event subscription	
Install the Microsoft Monitoring Agent	

- A. Mastered
- B. Not Mastered

Answer: A

Explanation:

A screenshot of a computer Description automatically generated

Reference:

<https://docs.microsoft.com/en-us/azure/azure-monitor/platform/log-analytics-agent>

NEW QUESTION 205

- (Exam Topic 4)

You have computers that run Windows 10 and are configured by using Windows AutoPilot. A user performs the following tasks on a computer named Computer1:

- > Creates a VPN connection to the corporate network
- > Installs a Microsoft Store app named App1
- > Connects to a Wi-Fi network

You perform a Windows AutoPilot Reset on Computer1.

What will be the state of the computer when the user signs in? To answer, select the appropriate options in the answer area.

NOTE: Each correct selection is worth one point.

The Wi-Fi connection will be:

	☑
Removed	
Retained and the passphrase will be retained	
Retained but the passphrase will be reset	

App1 will be:

	☑
Reinstalled at sign-in	
Removed	
Retained	

The VPN connection will be:

	☑
Removed	
Retained and the credentials will be cached	
Retained but the credentials will be reset	

- A. Mastered
- B. Not Mastered

Answer: A

Explanation:

Reference:

<https://docs.microsoft.com/en-us/windows/deployment/windows-autopilot/windows-autopilot-reset>

NEW QUESTION 209

- (Exam Topic 4)

You have a Microsoft 365 subscription that contains 1,000 Android devices enrolled in Microsoft Intune. You create an app configuration policy that contains the following settings:

- Device enrollment type: Managed devices
- Profile Type: All Profile Types
- Platform: Android Enterprise

Which two types of apps can be associated with the policy? Each correct answer presents a complete solution. NOTE: Each correct selection is worth one point.

- A. Built-in Android app
- B. Managed Google Play store app
- C. Web link
- D. Android Enterprise system app
- E. Android store app

Answer: BD

NEW QUESTION 214

- (Exam Topic 4)

You have a Microsoft 365 tenant that contains the objects shown in the following table. You are creating a compliance policy named Compliance1.

Which objects can you specify in Compliance1 as additional recipients of noncompliance notifications?

- A. Group3 and Group4 only
- B. Group3, Group4, and Admin1 only
- C. Group1, Group2, and Group3 only
- D. Group1, Group2, Group3, and Group4 only
- E. Group1, Group2, Group3, Group4, and Admin1

Answer: C

Explanation:

Reference:

<https://www.ravenswoodtechnology.com/microsoft-intune-compliance-notifications/> <https://docs.microsoft.com/en-us/microsoft-365/admin/create-groups/compare-groups?view=o365-worldwide>

NEW QUESTION 215

- (Exam Topic 4)

You have a Microsoft 365 subscription.

You have devices enrolled in Microsoft Intune as shown in the following table. To which devices can you deploy apps by using Intune?

- A. Device1 only
- B. Device1 and Device2 only
- C. Device1 and Device3 only
- D. Device1, Device2, and Device3 only
- E. Device1, Device2, Device3, and Device4

Answer: E

NEW QUESTION 219

- (Exam Topic 4)

You have a Microsoft 365 tenant that contains the objects shown in the following table.

Name	Type
Admin1	User
Group1	Microsoft 365 group
Group2	Distribution group
Group3	Mail-enabled security group
Group4	Security group

In the Microsoft Intune admin center, you are creating a Microsoft 365 Apps app named App1. To which objects can you assign App1?

- A. Group3 and Group4 only
- B. Admin1, Group3, and Group4 only
- C. Group1, Group3, and Group4 only
- D. Group1, Group2, Group3, and Group4 only
- E. Admin1, Group1, Group2, Group3, and Group4

Answer: C

Explanation:

In the Microsoft Intune admin center, you can assign apps to users or devices. Users can be assigned to apps by using user groups or individual user accounts.

Devices can be assigned to apps by using device groups. In this scenario, the objects shown in the table are as follows:

- Admin1 is an individual user account that belongs to the Global administrators
- Group1 is a user group that contains 100 users.
- Group2 is a device group that contains 50 devices.
- Group3 is a user group that contains 200 users.
- Group4 is a device group that contains 150 devices.

role group.

Since App1 is a Microsoft 365 Apps app, it can only be assigned to users, not devices. Therefore, Group2 and Group4 are not valid objects for app assignment. Admin1 is also not a valid object for app assignment, because individual user accounts can only be used for testing purposes, not for production deployment. Therefore, the only valid objects for app assignment are Group1 and Group3, which are user groups.

NEW QUESTION 220

- (Exam Topic 4)

You have a Microsoft 365 E5 subscription that uses Microsoft Intune.

You add apps to Intune as shown in the following table.

Name	App type
App1	Android store app
App2	Android line-of-business app
App3	Managed Google Play app

You need to create an app configuration policy named Policy1 for the Android Enterprise platform. Which apps can you manage by using Policy1?

- A. App2 only
- B. App3 only
- C. App1 and App3 only
- D. App2 and App3 only
- E. App1, App2, and App3

Answer: D

NEW QUESTION 225

- (Exam Topic 4)

Your network contains an on-premises Active Directory domain named contoso.com that syncs to Azure AD. A user named User1 uses the domain-joined devices shown in the following table.

Name	Operating system
Device1	Windows 10 Pro
Device2	Windows 11 Pro

In the Microsoft Entra admin center, you assign a Windows 11 Enterprise E5 license to User1. You need to identify what will occur when User1 next signs in to the devices.

What should you identify for each device? To answer, select the appropriate options in the answer area. NOTE: Each correct selection is worth one point.

Answer Area

Device1: Will activate as Windows 11 Enterprise
Will activate as Windows 11 Enterprise
 Will not upgrade to Windows 11 Enterprise
 Will perform a clean installation of Windows 11 Enterprise
 Will perform an in-place upgrade to Windows 11 Enterprise

Device2: Will not upgrade to Windows 11 Enterprise
 Will activate as Windows 11 Enterprise
Will not upgrade to Windows 11 Enterprise
 Will perform a clean installation of Windows 11 Enterprise
 Will perform an in-place upgrade to Windows 11 Enterprise

- A. Mastered
- B. Not Mastered

Answer: A

Explanation:

Device 1:

- Will activate as Windows 11 Enterprise. According to Deploy Windows Enterprise licenses, Windows 11 Enterprise E5 license is a subscription license that can be assigned to users who have a supported and licensed version of Windows 10 Pro or Windows 11 Pro. Device 1 has Windows 11 Pro, so it meets the requirement. When User1 signs in to Device 1 with their Azure AD account, the device will automatically activate as Windows 11 Enterprise without changing the edition.
- Will not activate as Windows 11 Enterprise. According to Deploy Windows Enterprise licenses, Windows 11 Enterprise E5 license is a subscription license that can be assigned to users who have a supported and licensed version of Windows 10 Pro or Windows 11 Pro. Device 2 has Windows 10 Home, so it does not meet the requirement. When User1 signs in to Device 2 with their Azure AD account, the device will not activate as Windows 11 Enterprise by subscription.

NEW QUESTION 230

- (Exam Topic 4)

You have an Azure Active Directory Premium Plan 2 subscription that contains the users shown in the following table.

Name	Member of	Assigned license
User1	Group1	Enterprise Mobility + Security E5
User2	Group2	Enterprise Mobility + Security E5

You purchase the devices shown in the following table.

Name	Type
Device1	Windows 10
Device2	Android

You configure automatic mobile device management (MDM) and mobile application management (MAM) enrollment by using the following settings:

➤ MDM user scope: Group1

➤ MAM user scope: Group2

For each of the following statements, select Yes if the statement is true. Otherwise, select No.

NOTE: Each correct selection is worth one point.

Answer Area

Statements	Yes	No
If User1 registers Device1 in contoso.com, Device1 is enrolled automatically in Microsoft Intune.	<input type="radio"/>	<input type="radio"/>
If User1 joins Device1 to contoso.com, Device2 is enrolled automatically in Microsoft Intune.	<input type="radio"/>	<input type="radio"/>
If User2 registers Device3 in contoso.com, Device3 is enrolled automatically in Microsoft Intune.	<input type="radio"/>	<input type="radio"/>

A. Mastered

B. Not Mastered

Answer: A

Explanation:

Reference: <https://docs.microsoft.com/en-us/mem/intune/enrollment/android-enroll> <https://powerautomate.microsoft.com/fr-fr/blog/mam-flow-mobile/>

NEW QUESTION 233

- (Exam Topic 4)

Your company has a computer named Computer1 that runs Windows 10. Computer1 was used by a user who left the company.

You plan to repurpose Computer1 and assign the computer to a new user. You need to redeploy Computer1 by using Windows Autopilot.

Which three actions should you perform in sequence? To answer, move the appropriate actions from the list of actions to the answer area and arrange them in the correct order.

Actions

Upload the file by using Microsoft Intune.

Generate a CSV file that contains the computer information.

Reset the computer.

Generate a JSON file that contains the computer information.

Upload the file by running azcopy.exe.

>

<

Answer Area

>

<

A. Mastered

B. Not Mastered

Answer: A

Explanation:

To redeploy Computer1 by using Windows Autopilot, you need to perform the following three actions in sequence:

➤ Generate a JSON file that contains the computer information. This file specifies the Autopilot profile to be applied during the deployment. You can use the Get-AutopilotProfilesForExistingDevices PowerShell script to generate this file1.

➤ Reset the computer. You can use the Windows Automatic Redeployment feature to trigger a reset from the login screen by pressing Ctrl + R and providing an administrator account2. Alternatively, you can use the Windows Autopilot Reset feature to remotely reset the device from Intune1.

➤ Upload the file by running azcopy.exe. This step copies the JSON file to a blob storage account in Azure, where it can be accessed by the device during the deployment. You need to specify the storage account name, access key, and container name as parameters for azcopy.exe1.

NEW QUESTION 237

- (Exam Topic 4)

You have a Microsoft 365 E5 subscription that contains a user named User1. You need to perform the following tasks for User1:

- > Set the Usage location to Canada.
 - > Configure the Phone and Email authentication contact info for self-service password reset (SSPR). Which two settings should you configure in the Azure Active Directory admin center? To answer, select the appropriate settings in the answer area.
- NOTE: Each correct selection is worth one point.

Manage

 Profile

 Custom security attributes
(Preview)

 Assigned roles

 Administrative units

 Groups

 Applications

 Licenses

 Devices

 Azure role assignments

 Authentication methods

- A. Mastered
- B. Not Mastered

Answer: A

Explanation:

Graphical user interface, application Description automatically generated

NEW QUESTION 240

- (Exam Topic 4)

Your network contains an on-premises Active Directory domain and an Azure AD tenant.

The Default Domain Policy Group Policy Object (GPO) contains the settings shown in the following table.

Name	GPO value
LockoutBadCount	0
MaximumPasswordAge	42
MinimumPasswordAge	1
MinimumPasswordLength	7
PasswordComplexity	True
PasswordHistorySize	24

Which device configuration profile type template should you use?

- A. Administrative Templates
- B. Endpoint protection
- C. Device restrictions
- D. Custom

Answer: A

Explanation:

To configure the settings shown in the table, you need to use the Administrative Templates device configuration profile type template. This template allows you to configure hundreds of settings that are also available in Group Policy. You can use this template to configure settings such as password policies, account lockout policies, and audit policies. References:

<https://docs.microsoft.com/en-us/mem/intune/configuration/administrative-templates-windows>

NEW QUESTION 242

- (Exam Topic 4)

You have a Microsoft 365 E5 subscription that contains the groups shown in the following table.

Name	Description
Group1	Azure AD group that contains a user named User1
Group2	Azure AD group that contains iOS devices

You create a Conditional Access policy named CAPolicy1 that will block access to Microsoft Exchange Online from iOS devices. You assign CAPolicy1 to Group1. You discover that User1 can still connect to Exchange Online from an iOS device. You need to ensure that CAPolicy1 is enforced. What should you do?

- A. Configure a new terms of use (TOU).
- B. Assign CAPolicy1 to Group2.
- C. Enable CAPolicy1
- D. Add a condition in CAPolicy1 to filter for devices.

Answer: B

Explanation:

Common signals that Conditional Access can take in to account when making a policy decision include the following signals:

* User or group membership

Policies can be targeted to specific users and groups giving administrators fine-grained control over access.

* Device

Users with devices of specific platforms or marked with a specific state can be used when enforcing Conditional Access policies.

Use filters for devices to target policies to specific devices like privileged access workstations.

* Etc.

Reference: <https://learn.microsoft.com/en-us/azure/active-directory/conditional-access/overview>

NEW QUESTION 245

- (Exam Topic 4)

You have a Microsoft 365 subscription that contains 500 Android Enterprise devices. All the devices are enrolled in Microsoft Intune.

You need to deliver bookmarks to the Chrome browser on the devices. What should you create?

- A. a compliance policy
- B. a configuration profile
- C. an app protection policy
- D. an app configuration policy

Answer: D

NEW QUESTION 249

- (Exam Topic 4)

You have 200 computers that run Windows 10. The computers are joined to Azure AD and enrolled in Microsoft Intune. You need to set a custom image as the wallpaper and sign-in screen.

Which two settings should you configure in the Device restrictions configuration profile? To answer, select the appropriate settings in the answer area.

NOTE: Each correct selection is worth one point.

Answer Area

Device restrictions

Windows 10 and later

✓ Basics 2 Configuration settings 3 Assignments 4 Applicability Rules 5 Review + create

✓ App Store

✓ Cellular and connectivity

✓ Cloud and Storage

✓ Cloud Printer

✓ Control Panel and Settings

✓ Display

✓ General

✓ Locked Screen Experience ✓

✓ Messaging

✓ Microsoft Edge Browser

✓ Network proxy

✓ Password

✓ Per-app privacy exceptions

✓ Personalization ✓

✓ Printer

✓ Privacy

✓ Projection

Previous Next

- A. Mastered
- B. Not Mastered

Answer: A

Explanation:

Answer Area

Device restrictions

Windows 10 and later

✓ Basics **2 Configuration settings** 3 Assignments 4 Applicability Rules 5 Review + create

☐ App Store
☐ Cellular and connectivity
☐ Cloud and Storage
☐ Cloud Printer
☐ Control Panel and Settings
☐ Display
☐ General
☒ Locked Screen Experience
☐ Messaging
☐ Microsoft Edge Browser
☐ Network proxy
☐ Password
☐ Per-app privacy exceptions
☒ Personalization
☐ Printer
☐ Privacy
☐ Projection

Previous **Next**

NEW QUESTION 253

- (Exam Topic 4)

You have an Azure AD tenant named contoso.com. You have the devices shown in the following table.

Name	Platform
Device1	Windows 11
Device2	Windows 10
Device3	iOS
Device4	Ubuntu Linux

Which devices can be Azure AD joined, and which devices can be registered in contoso.com? To answer, select the appropriate options in the answer area.

NOTE: Each correct selection is worth one point.

Answer Area

Azure AD joined:

Registered in contoso.com:

- A. Mastered
B. Not Mastered

Answer: A

Explanation:

Answer Area

Azure AD joined:

Device1 and Device2 only

Device1 only

Device1 and Device2 only

Device1 and Device3 only

Device1, Device2, and Device3 only

Device1, Device2, Device3, and Device4

Registered in contoso.com:

Device1 and Device2 only

Device1 and Device2 only

Device2 and Device3 only

Device3 and Device4 only

Device2, Device3, and Device4 only

Device1, Device2, Device3, and Device4

NEW QUESTION 257

- (Exam Topic 4)
You have 100 computers that run Windows 10.
You plan to deploy Windows 11 to the computers by performing a wipe and load installation. You need to recommend a method to retain the user settings and the user data.
Which three actions should you recommend be performed in sequence? To answer, move the appropriate actions from the list of actions to the answer area and arrange them in the correct order.

Actions

Configure known folder redirection in Microsoft OneDrive.

Run scanstate.exe.

Run loadstate.exe.

Enable Enterprise State Roaming.

Create a system image backup.

Deploy Windows 11.

Restore a system image backup.

Answer Area

- A. Mastered
- B. Not Mastered

Answer: A

Explanation:

Actions

Configure known folder redirection in Microsoft OneDrive.

Run scanstate.exe.

Run loadstate.exe.

Enable Enterprise State Roaming.

Create a system image backup.

Deploy Windows 11.

Restore a system image backup.

Answer Area

Create a system image backup.

Deploy Windows 11.

Restore a system image backup.

NEW QUESTION 259

- (Exam Topic 4)
Your network contains an Active Directory domain. The domain contains a computer named Computer1 that runs Windows 11. You need to enable the Windows Remote Management (WinRM) service on Computer1 and perform the following configurations:
• For the WinRM service, set Startup type to Automatic.
• Create a listener that accepts requests from any IP address.
• Enable a firewall exception for WS-Management communications. Which PowerShell cmdlet should you use?

- A. Connect-WSMan
- B. Enable-PSRemoting
- C. Invoke-WSManAction
- D. Enable-PSSessionConfiguration

Answer: B

NEW QUESTION 261

- (Exam Topic 4)
You have a Microsoft 365 subscription.
All computers are enrolled in Microsoft Intune.

Passing Certification Exams Made Easy

visit - https://www.2PassEasy.com

You have business requirements for securing your Windows 11 environment as shown in the following table.

Requirement	Detail
Requirement1	Ensure that Microsoft Exchange Online can be accessed from known locations only.
Requirement2	Lock a device that has a high Microsoft Defender for Endpoint risk score.

What should you implement to meet each requirement? To answer, select the appropriate options in the answer area. NOTE: Each correct selection is worth one point.

Answer Area

Requirement1:

Requirement2:

- A. Mastered
- B. Not Mastered

Answer: A

Explanation:

Answer Area

Requirement1:

Requirement2:

NEW QUESTION 266

- (Exam Topic 4)

You have the device configuration profile shown in the following exhibit.

Kiosk

Windows 10 and later

✓ Basics

2 Configuration settings

3 Assignments

Configure your devices to run in kiosk mode. Before you select a kiosk mode, review your app assignments in the Mobile Apps blade. Apps that you want to run in kiosk mode should be assigned to a Windows device. [Learn more about Windows kiosk mode.](#)

Select a kiosk mode *

Single app, full-screen kiosk

User login type *

Auto login (Windows 10, version 1803+)

Application type *

Add Microsoft Edge browser

This kiosk profile requires Microsoft Edge version 87 and later with Windows 10 version 1909 and later. [Learn more about Microsoft Edge kiosk mode.](#)

Edge Kiosk URL *

https://contoso.com

Microsoft Edge kiosk mode type

Public Browsing (InPrivate)

Refresh browser after idle time

5

Specify Maintenance Window for App Restarts *

Require

Not configured

Maintenance Window Start Time

MM/DD/YYYY

h:mm:ss A

Maintenance Window Recurrence

Daily (recommended)

Use the drop-down menus to select the answer choice that completes each statement based on the information presented in the graphic. NOTE: Each correct selection is worth one point.

Answer Area

Users

can access any URL.

cannot view the address bar in Microsoft Edge.

can only access URLs that include contoso.com.

can only access URLs that start with https://contoso.com/ .

Windows 10 devices can have

a single Microsoft Edge instance that has a single tab.

a single Microsoft Edge instance that has multiple tabs.

multiple Microsoft Edge instances that have multiple tabs.

multiple Microsoft Edge instances that each has a single tab.

- A. Mastered
B. Not Mastered

Answer: A

Explanation:

Users can only access URLs that start with https://contoso.com/ Windows 10 and later devices can have multiple Microsoft Edge instances that each has a single tab

he device configuration profile shown in the exhibit is a kiosk browser profile that configures Microsoft Edge to run in kiosk mode. The profile has the following settings:

- Kiosk mode: Enabled

- > Kiosk type: Multi-app
- > Allowed URLs: https://contoso.com/*
- > Address bar: Disabled

These settings mean that users can only access URLs that start with https://contoso.com/ and cannot view the address bar in Microsoft Edge. The kiosk type of Multi-app allows users to open multiple instances of Microsoft Edge, but each instance can only have a single tab. Therefore, users cannot access any URL, cannot view the address bar in Microsoft Edge, and can have multiple Microsoft Edge instances that each has a single tab. References: <https://docs.microsoft.com/en-us/mem/intune/configuration/kiosk-settings#kiosk-browser-settings>

NEW QUESTION 267

- (Exam Topic 4)

You have computers that run Windows 10 and are managed by using Microsoft Intune. Users store their files in a folder named D:\Folder1.

You need to ensure that only a trusted list of applications is granted write access to D:\Folder1. What should you configure in the device configuration profile?

- A. Microsoft Defender Exploit Guard
- B. Microsoft Defender Application Guard
- C. Microsoft Defender SmartScreen
- D. Microsoft Defender Application Control

Answer: A

NEW QUESTION 271

- (Exam Topic 4)

You have a Microsoft 365 subscription that includes Microsoft Intune. You have computers that run Windows 11 as shown in the following table.

Name	Azure AD status	Intune	BitLocker Drive Encryption (BitLocker)	Firewall
Computer1	Joined	Enrolled	Disabled	Enabled
Computer2	Registered	Enrolled	Enabled	Enabled
Computer3	Registered	Not enrolled	Enabled	Disabled

You have the groups shown in the following table.

Name	Members
Group1	Computer1, Computer2
Group2	Computer3

You create and assign the compliance policies shown in the following table.

Name	Configuration	Action for noncompliance	Assignment
Policy1	Require BitLocker to be enabled on the device.	Mark device as noncompliant after 10 days.	Group1
Policy2	Require firewall to be on and monitoring.	Mark device as noncompliant immediately.	Group2

The next day, you review the compliance status of the computers.

For each of the following statements, select Yes if the statement is true. Otherwise, select No. NOTE: Each correct selection is worth one point.

Answer Area

Statements	Yes	No
The compliance status of Computer1 is In grace period.	<input type="checkbox"/>	<input type="checkbox"/>
The compliance status of Computer2 is Compliant.	<input type="checkbox"/>	<input type="checkbox"/>
The compliance status of Computer3 is Not compliant.	<input type="checkbox"/>	<input type="checkbox"/>

- A. Mastered
- B. Not Mastered

Answer: A

Explanation:

Answer Area

Statements	Yes	No
The compliance status of Computer1 is In grace period.	<input checked="" type="checkbox"/>	<input type="checkbox"/>
The compliance status of Computer2 is Compliant.	<input type="checkbox"/>	<input checked="" type="checkbox"/>
The compliance status of Computer3 is Not compliant.	<input type="checkbox"/>	<input checked="" type="checkbox"/>

NEW QUESTION 275

- (Exam Topic 4)

You use Microsoft Defender for Endpoint to protect computers that run Windows 10.

You need to assess the differences between the configuration of Microsoft Defender for Endpoint and the Microsoft-recommended configuration baseline. Which tool should you use?

- A. Microsoft Defender for Endpoint Power 81 app
- B. Microsoft Secure Score
- C. Endpoint Analytics
- D. Microsoft 365 Defender portal

Answer: B

NEW QUESTION 280

- (Exam Topic 4)

You have a Microsoft Deployment Toolkit (MDT) deployment share named DS1. You import a Windows 11 image to DS1.

You have an executable installer for an application named App1.

You need to ensure that App1 will be installed for all the task sequences that deploy the image.

Which three actions should you perform in sequence? To answer, move the appropriate actions from the list of actions to the answer area and arrange them in the correct order.

Actions

- Modify a Windows 11 operating system setting.
- Modify a selection profile.
- Add App1 to DS1.
- Identify the GUID of App1.
- Modify CustomSettings.ini.

>

<

Answer Area

- 1 Add App1 to DS1.
- 2 Identify the GUID of App1.
- 3 Modify CustomSettings.ini.

- A. Mastered
- B. Not Mastered

Answer: A

Explanation:

MDT is a tool that allows you to automate the deployment of Windows operating systems and applications. To install an application for all the task sequences that deploy a Windows 11 image, you need to perform the following three actions in sequence:

> Add App1 to DS1. You can use the Deployment Workbench to import the executable installer of App1 to a folder in your deployment share. This will create an application entry with a unique GUID that identifies App1.

> Identify the GUID of App1. You can find the GUID of App1 by opening the application properties in the Deployment Workbench and looking at the Application GUID field1. You can copy the GUID to use it later.

> Modify CustomSettings.ini. You can edit the CustomSettings.ini file in your deployment share to specify which applications to install for each task sequence.

You can use the Applications property to list the GUIDs of the applications you want to install, separated by commas1. For example, if you want to install App1 and another application with GUID {1234-5678-90AB-CDEF}, you can use this line:

Applications={GUID of App1},{1234-5678-90AB-CDEF}

These are the three actions you need to perform to ensure that App1 will be installed for all the task sequences that deploy the Windows 11 image from DS1. I hope this helps you.

If you want to learn more about MDT and how to deploy applications with it, you can check out these resources:

> How to deploy applications with the Microsoft Deployment Toolkit

NEW QUESTION 283

- (Exam Topic 4)

You have a Microsoft 365 subscription that uses Microsoft Intune Suite. You use Microsoft Intune to manage devices.

You have the devices shown in the following table.

Name	Operating system	Activation type
Device1	Windows 10 Pro for Workstation	Key
Device2	Windows 11 Pro	Key
Device3	Windows 11 Pro	Subscription

Which devices can be changed to Windows 11 Enterprise by using subscription activation?

- A. Device3 only
- B. Device2 and Device3 only
- C. Device 1 and Device2 only
- D. Device1, Device2, and Device3

Answer: A

NEW QUESTION 285

- (Exam Topic 4)

You have 25 computers that run Windows 10 Pro.

You have a Microsoft 365 E5 subscription that uses Microsoft Intune.

You need to upgrade the computers to Windows 11 Enterprise by using an in-place upgrade. The solution must minimize administrative effort. What should you use?

- A. Microsoft Deployment Toolkit (MDT) and a default image of Windows 11 Enterprise
- B. Microsoft Configuration Manager and a custom image of Windows 11 Enterprise
- C. Windows Autopilot
- D. Subscription Activation

Answer: C

NEW QUESTION 288

- (Exam Topic 4)

You use Microsoft Endpoint Manager to manage Windows 10 devices.

You are designing a reporting solution that will provide reports on the following:

- > Compliance policy trends
- > Trends in device and user enrolment
- > App and operating system version breakdowns of mobile devices

You need to recommend a data source and a data visualization tool for the design.

What should you recommend? To answer, select the appropriate options in the answer area. NOTE: Each correct selection is worth one point.

Answer Area

Data source:	<div><div></div><div>Audit logs in Azure Active Directory (Azure AD)</div><div>Audit logs in Microsoft Intune</div><div>Azure Synapse Analytics</div><div>The Microsoft Intune Data Warehouse</div></div>
Data visualization tool:	<div><div></div><div>Azure Data Studio</div><div>Microsoft Power BI</div><div>The Azure portal</div></div>

- A. Mastered
- B. Not Mastered

Answer: A

Explanation:

A screenshot of a computer Description automatically generated

Reference:

<https://docs.microsoft.com/en-us/mem/intune/developer/reports-nav-create-intune-reports> <https://docs.microsoft.com/en-us/mem/intune/developer/reports-proc-get-a-link-powerbi>

NEW QUESTION 293

- (Exam Topic 4)

You have a Microsoft 365 subscription.

Users have iOS devices that are not enrolled in Microsoft 365 Device Management.

You create an app protection policy for the Microsoft Outlook app as shown in the exhibit. (Click the Exhibit tab.)

Dashboard > Client apps - App protection policies > Create policy > Settings

Create policy

Name

Policy1

Description

Platform

iOS

Target to all app types

Yes No

App types

Apps on unmanaged devices

Apps

1 app selected

Settings

Default settings configured

Settings

Data protection

Default settings configured

Access requirements

Default settings configured

Conditional launch

Default settings configured

Scope (Tags)

0 scope(s) selected

You need to configure the policy to meet the following requirements:

- > Prevent the users from using the Outlook app if the operating system version is less than 12.0.0.
- > Require the users to use an alphanumeric passcode to access the Outlook app.

What should you configure in an app protection policy for each requirement? To answer, select the appropriate options in the answer area.

NOTE: Each correct selection is worth one point.

Answer Area

Prevent the users from using Outlook if the operating system version is less than 12.0.0:

▼

Access requirements
Conditional launch
Data protection
Scope

Require the users to use an alphanumeric passcode to access Outlook:

▼

Access requirements
Conditional launch
Data protection
Scope

- A. Mastered
- B. Not Mastered

Answer: A

Explanation:

References:

<https://docs.microsoft.com/en-us/intune/app-protection-policy-settings-ios>

NEW QUESTION 294

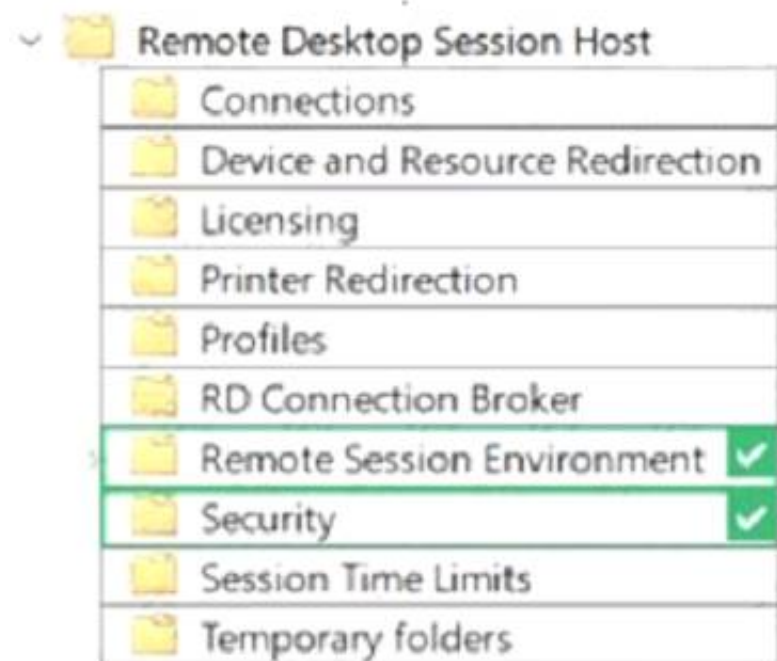
- (Exam Topic 4)

Your network contains an Active Directory domain. The domain contains 1.000 computers that run Windows 11.

You need to configure the Remote Desktop settings of all the computers. The solution must meet the following requirements:

- Prevent the sharing of clipboard contents.
- Ensure that users authenticate by using Network Level Authentication (NLA).

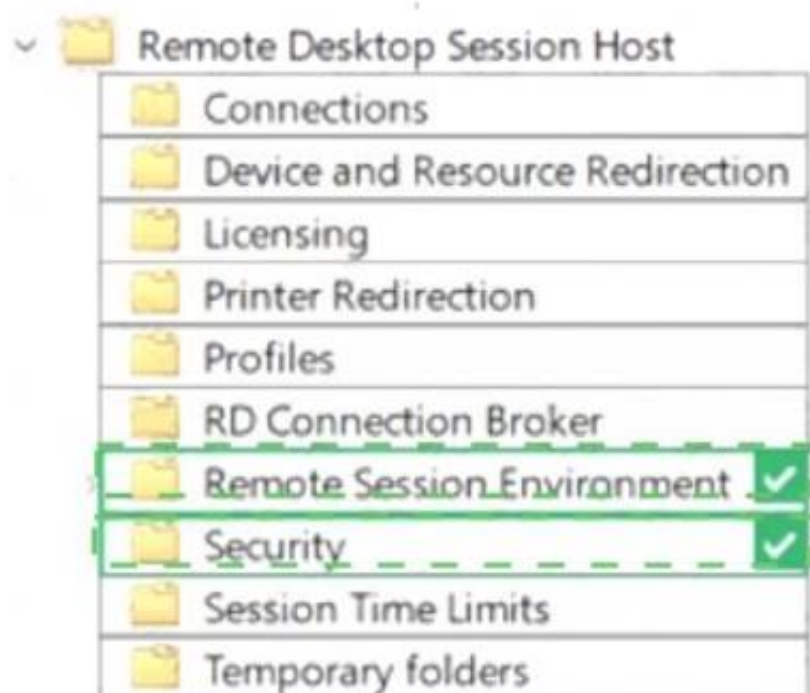
Which two nodes of the Group Policy Management Editor should you use? To answer, select the appropriate nodes in the answer area. NOTE: Each correct selection is worth one point.



- A. Mastered
- B. Not Mastered

Answer: A

Explanation:



NEW QUESTION 296

- (Exam Topic 4)

You have a Microsoft 365 subscription that contains a user named User1. User1 is assigned a Windows 10/11 Enterprise E3 license. You use Microsoft Intune Suite to manage devices. User1 activates the following devices:

- Device1: Windows 11 Enterprise
- Device2: Windows 10 Enterprise
- Device3: Windows 11 Enterprise

How many more devices can User1 activate?

- A. 2
- B. 3
- C. 7
- D. 8

Answer: A

NEW QUESTION 300

- (Exam Topic 4)

You have a Microsoft 365 subscription.

You need provide a user the ability to disable Security defaults and principle of least privilege. Which role should you assign to the user?

- A. Global Administrator
- B. Conditional Access Administrator
- C. Security Administrator
- D. Intune Administrator

Answer: B

Explanation:

To enable or disable security defaults in your directory, sign in to the Azure portal as a security administrator, Conditional Access administrator, or global

administrator.

Note: Conditional Access Administrator

Users with this role have the ability to manage Azure Active Directory Conditional Access settings.

Reference:

<https://docs.microsoft.com/en-us/azure/active-directory/fundamentals/concept-fundamentals-security-defaults>

NEW QUESTION 301

- (Exam Topic 4)

Your network contains an Active Directory domain named contoso.com. The domain contains a computer named Computer1 that runs Windows 10. You have the groups shown in the following table.

Name	Type	Location
Group1	Universal distribution group	Contoso.com
Group2	Global security group	Contoso.com
Group3	Group	Computer1
Group4	Group	Computer1

Which groups can you add to Group4?

- A. Group2only
- B. Group1 and Group2 only
- C. Group2 and Group3 only
- D. Group1, Group2, and Group3

Answer: C

NEW QUESTION 302

.....

THANKS FOR TRYING THE DEMO OF OUR PRODUCT

Visit Our Site to Purchase the Full Set of Actual MD-102 Exam Questions With Answers.

We Also Provide Practice Exam Software That Simulates Real Exam Environment And Has Many Self-Assessment Features. Order the MD-102 Product From:

<https://www.2passeasy.com/dumps/MD-102/>

Money Back Guarantee

MD-102 Practice Exam Features:

- * MD-102 Questions and Answers Updated Frequently
- * MD-102 Practice Questions Verified by Expert Senior Certified Staff
- * MD-102 Most Realistic Questions that Guarantee you a Pass on Your FirstTry
- * MD-102 Practice Test Questions in Multiple Choice Formats and Updatesfor 1 Year