



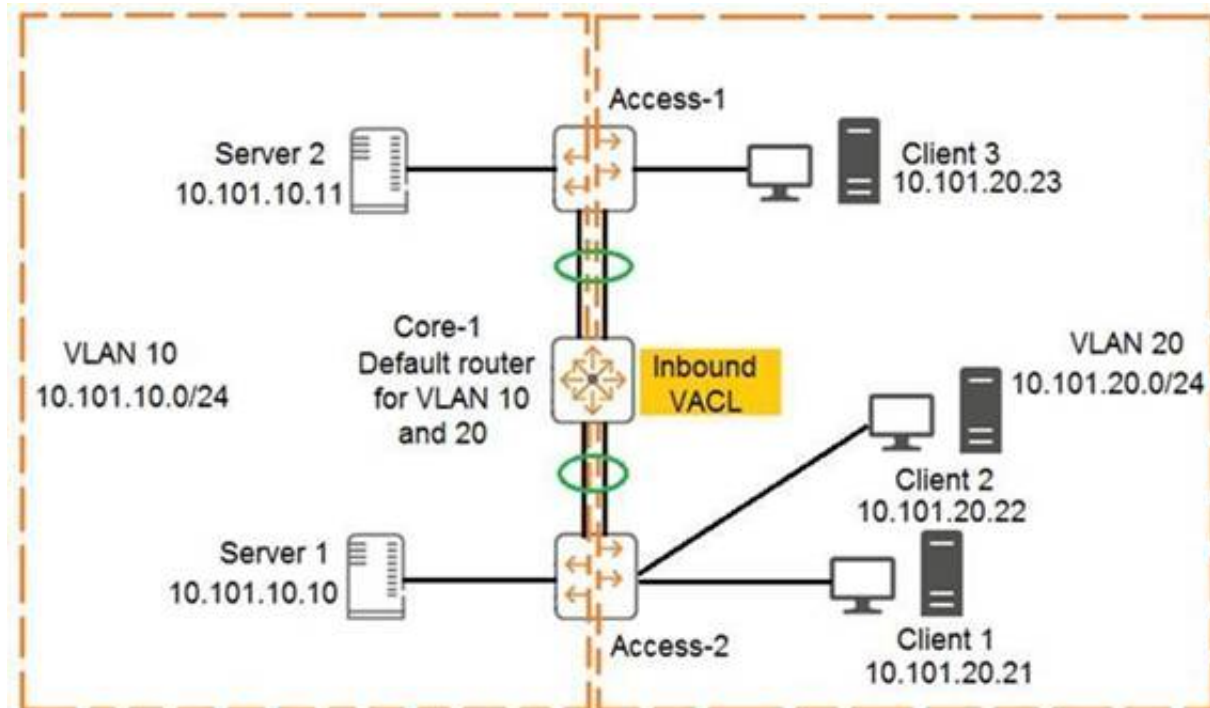
HP

Exam Questions HPE6-A73

Aruba Certified Switching Professional Exam

NEW QUESTION 1

Examine the network exhibit:



The ACL configuration defined on Core-1 is as follows:

```
Core-1(config)# access-list ip example
Core-1(config-acl-ip)# permit ip 10.101.20.21/32 any eq 23
Core-1(config-acl-ip)# permit ip 10.101.20.21/32 eq 23 any
Core-1(config-acl-ip)# exit
Core-1(config)# vlan 20
Core-1(config-if)# apply access-list example in
```

The ACL configuration defined on Core-1 is as follows:

If telnet was being used, which device connection would be permitted and functional in both directions? (Choose two.)

- A. Client 3 to Client 2
- B. Client 1 to Client 2
- C. Server 2 to Client 2
- D. Server 1 to Client 1
- E. Client 1 to Client 3

Answer: BD

Explanation:

CL3 - CL2 - drop on forward path by core1 cause match VLAN 20 and CL3 not CL1 as SRC IP CL1 - CL2 - pass - no ACL cause forwarded by Access2
 SR2 - CL2 - pass on forward path by core1 cause match VLAN 10

Drop on return path by core1 cause match VLAN 20 and no CL1 as SRC IP SR1 - CL1 - pass on forward path by core1 cause match VLAN 10
 pass on return path by core1 cause match VLAN 20 and CL1 as SRC IP

CL1 - CL3 - pass on forward path by core1 cause match VLAN 20 and CL1 as SRC IP drop on return path by core1 cause match VLAN 20 and not CL1 but CL3 as SRC IP

NEW QUESTION 2

An administrator wants to leverage always-on PoE on AOS-CX switches. Which statement is correct regarding this feature?

- A. Provides up to 60W of power per port
- B. Supports all AOS-CX switches
- C. Provides surge protection for PoE and non-PoE ports
- D. Requires NetEdit to implement

Answer: A

NEW QUESTION 3

An administrator is managing a VSX pair of AOS-CX switches. An administrator configures the following on the primary AOS-CX switch:

```
switch(config)# vlan 100
switch(config-vlan-100)# vsx-sync
```

- A. The primary switch will erase VLAN 200 from the VSX pair
- B. The VLAN is only created on the secondary switch.
- C. The operation is not allowed by the switch and a CLI error is displayed
- D. The VLAN is created on both the primary and secondary switches

Answer: D

NEW QUESTION 4

What is a concept associated with PIM sparse mode (SM)?

- A. Reverts to forwarding when the pruning state times out.
- B. Requires periodic joins to maintain the shortest path tree (SPT).
- C. Recommended for use when high bandwidth connections exist.
- D. Implements a push content to forward traffic from the multicast source.

Answer: B

Explanation:

<https://www.youtube.com/watch?v=PhzMtUcS6UA>

NEW QUESTION 5

An administrator wants to implement a virtual switching technology that implements a single control-plane solution. Which S-CX switches would meet these criteria?

- A. All AOS-CX switching platforms
- B. AOS-CX 6300 and 6400 switches
- C. AOS-CX 6300, 6400, and 83xx switches
- D. AOS-CX 6300 switches

Answer: C

NEW QUESTION 6

Examine the following AOS-CX configuration:

```
Switch(config)# class ip IoT-traffic
Switch(config-class-ip)# match ip 192.168.0.0/16 any
Switch(config-class-ip)# exit
Switch(config)# pbr-action-list reroute
Switch(config-prb-action-list)# default-next-hop 10.100.1.2
Switch(config-prb-action-list)# exit
Switch(config)# policy IoT-policy
Switch(config-policy)# class ip IoT-traffic action pbr reroute
Switch(config-policy)# exit
Switch(config)# interface vlan 999
Switch(config-if)# apply policy IoT-policy routed-in
Switch(config-if)# exit
```

Based on this configuration, which statement is correct regarding IoT traffic?

- A. If 10.100.1.2 is not reachable, the IoT traffic will be automatically dropped by the switch
- B. If a specific route is not available in the routing table, the traffic will be routed to 10.100.1.2
- C. The next hop of 10.100.1.2 can be one or more hops away from the AOS-CX switch
- D. All routes are ignored in the routing table for IoT traffic, which is routed to 10.100.1.2

Answer: B

NEW QUESTION 7

An administrator implements interim accounting for guest users so that ClearPass can track the amount of bandwidth that guests upload and download. Guests that abuse bandwidth consumption should be disconnected from the network. The administrator configures the following on the AOS-CX access switches:

```
Access1(config)# ip dns host cppm.arubatraining.com 10.254.1.23 vrf mgmt
Access1(config)# radius-server host cppm.arubatraining.com key plaintext aruba123 vrf mgmt
Access1(config)# aaa group server radius cppm
Access1(config-sg)# server cppm.arubatraining.com vrf mgmt
Access1(config-sg)# exit
Access1(config)# aaa accounting port-access start-stop interim 5 group cppm
Access1(config)# radius dyn-authorization client cppm.arubatraining.com secret-key plaintext aruba123 vrf mgmt replay-
protection disable
```

After performing this configuration, the administrator notices that guest users that have exceeded the guest bandwidth limit are not being disconnected. Upon further investigation, Access Tracker in ClearPass indicates a disconnect CoA message is being sent to the AOS-CX switch. What is causing this issue?

- A. RADIUS change of authorization is not enabled on the AOS-CX switch.
- B. Bandwidth consumption of the guests is not being reported by the AOS-CX switch.
- C. NTP is not configured on the AOS-CX switch.
- D. There is a time discrepancy between the AOS-CX switch and ClearPass.

Answer: A

NEW QUESTION 8

An administrator wants to implement dynamic segmentation policies. The network consists of AOS-CX and Aruba gateways.

Which type of forwarding should the administrator implement for users that already connect via wireless, but will also be connecting on Ethernet switch ports?

- A. User-based tunneling (UBT)
- B. Port-based tunneling (PBT)
- C. Switch-to-switch tunneling (SST)
- D. Local switching

Answer: A

NEW QUESTION 9

What is correct regarding policy-based routing?

- A. Policies can only be applied to routed interfaces.
- B. Policies can be applied inbound and outbound.
- C. Monitoring of policy interfaces occurs every 60 seconds.
- D. Policy actions include routing permitting or dropping traffic.

Answer: A

NEW QUESTION 10

An administrator will be implementing tunneling between AOS-CX switches and Aruba gateways. Which list of protocols must minimally be allowed by an intermediate firewall between two sets of devices?

- A. IP protocol 50 and UDP 8209
- B. UDP 4500 and IP protocol 47
- C. UDP 8211 and IP protocol 47
- D. UDP 4500 and UDP 8209

Answer: C

Explanation:

ACSP Study Guide Page 788 - Allow the following protocols/ports

- PAPI: UDP 8211
- GRE: Protocol 47

NEW QUESTION 10

Which protocol should be configured to allow NetEdit to discover third-party devices?

- A. SNMP
- B. SSH
- C. HTTPS
- D. HTTP

Answer: A

NEW QUESTION 13

An AOS-CX switch is configured to implement downloadable user roles. Examine the AOS-CX switch output:

```
Access1(config)# show aaa authentication port-access interface all client-status
```

```
Port Access Client Status Details
```

```
Client 00:50:56:b1:7a:37
```

```
=====
```

```
Session Details
```

```
-----
```

```
Port : 1/1/3
```

```
Session Time : 1887s
```

```
Authentication Details
```

```
-----
```

```
Status : mac-auth Authenticated
```

```
Auth Precedence : dot1x - Not attempted, mac-auth - Authenticated
```

```
Authorization Details
```

```
-----
```

```
Role :
```

```
Status : Not ready
```

Based on this output, what is the state of the user's access?

- A. No downloadable user role exists
- B. MAC authentication has passed, but 802.1X authentication is in progress
- C. The RADIUS request timed out to the AAA server
- D. The port should be configured for 802.1X

Answer: A

Explanation:

User role "Authenticated" was passed down but does not exist

NEW QUESTION 16

Examine the following AOS-CX switch configuration:

```
Access(config)# access-list ip ext
Access(config-acl-ip)# permit ip any 10.0.11.0/255.0.255.0 count
Access(config-acl-ip)# permit ip any 10.0.12.0/255.0.255.0 log
Access(config-acl-ip)# exit
Access(config)# interface 1/1/3
Access(config-if)# apply access-list ip ext in
Access(config-if)# exit
```

Which statement correctly describes what is allowed for traffic entering interface 1/1/3?

- A. IP traffic from 10.1.11.0/24 is allowed to access 10.1.110.0/24
- B. IP traffic from 10.0.11.0/24 is allowed to access 10.1.12.0/24
- C. Traffic from 10.0.12.0/24 will generate a log record when accessing 10.0.11.0/24
- D. IP traffic from 10.1.12.0/24 is allowed to access 172.0.1.0/23

Answer: B

Explanation:

People seem to be confused by inverted mask/wildcard masks. They would be correct for Cisco switches, but AOS-CX does NOT use wildcard masks; "AOS-CX switches do not support wildcard masks - only prefixes or subnet masks - when created ACEs."

Cisco: 255.0.255.0 = xx.123.xx.123 AOS-CX: 255.0.255.0 = 123.xx.123.xx

NEW QUESTION 21

An administrator will be replacing a campus switching infrastructure with AOS-CX switches that support VSX capabilities. The campus involves a core, as well as multiple access layers. Which feature should the administrator implement to allow both VSX-capable core switches to process traffic sent to the default gateway in the campus VLANs?

- A. VRF
- B. VRRP
- C. IP helper
- D. Active gateway

Answer: D

Explanation:

Active gateway = both devices route/forward traffic VRRP = Active-standby, only active member routes/forwards traffic

Understand the Active Gateway principle In a VSX system, active gateway provides redundant default gateway functionality for the end-hosts. The default gateway of the end-host is automatically handled by both the VSX systems.

NEW QUESTION 22

When implementing deficit weighted round robin queuing, what importance does the weight value have?

- A. Prioritizing latency-sensitive traffic
- B. Queue priority in processing traffic
- C. Strict priority queue
- D. Percentage of interface bandwidth

Answer: B

NEW QUESTION 26

Examine the partial output of the BGP routing table of an AOS-CX switch:

```
Switch# show bgp
```

```
<-output omitted->
```

Network	Nexthop	Metric	LocPrf	Weight	Path
* e 1.0.0.0/8	192.168.1.5	0	100	0	100 ?
* e 1.0.0.0/8	192.168.2.5	0	100	0	200 100 i
* e 1.0.0.0/8	192.168.3.5	0	200	20	300 400 100 ?
* e 1.0.0.0/8	192.168.4.5	0	50	0	400 200 100 i

The switch is learning about four possible path to reach the 1.0.0.0/8 network. Based on this output, which next-hop route will the AOS-CX select to be placed in the IP routing table?

- A. 192.168.1.5
- B. 192.168.2.5

- C. 192.168.3.5
- D. 192 1684 5

Answer: C

NEW QUESTION 28

An administrator creates an ACL rule with both the “count” and “log” option enabled. What is correct about the action taken by an AOS-CX switch when there is a match on this rule?

- A. By default, a summarized log is created every minute with a count of the number of matches
- B. Logging will not include certificate and TLS events, but counting will
- C. The “count” and “log” options are processed by the AOS-CX switch’s hardware ASIC
- D. The total in the “log” record and the count could contain different rule matching statistics

Answer: D

Explanation:

From the "AOS-CX 10.08 ACLs and Classifier Policies Guide" : "You may see a minor discrepancy between the ACL logging statistics and the hit counts statistics due to the time required to record the log message."

NEW QUESTION 33

A company is implementing AOS-CX switches at the access layer. The company wants to implement access control for employees and guests. Which security features will require a ClearPass server to be installed and used by the company?

- A. Downloadable user roles
- B. Dynamic segmentation
- C. User-based tunneling (UBT)
- D. Change of authorization (CoA)

Answer: A

NEW QUESTION 35

A company is implementing a new wireless design and needs it to support high availability, even during times of switch system upgrades. The solution will involve Aruba Mobility Controller (MC) and Aruba AP connections requiring POE. Which campus AOS-CX switch solution and virtual switching should the company implement at the campus access layer?

- A. AOS-CX 6400 and VSX
- B. AOS-CX 6300 and VSF
- C. AOS-CX 8325 and VSF
- D. AOS-CX 8400 and VSX

Answer: A

Explanation:

only 6400 support highly available during upgrades

NEW QUESTION 39

What is a best practice concerning voice traffic and dynamic segmentation on AOS-CX switches?

- A. Controller authentication and user-based tunneling of the voice traffic
- B. Switch authentication and user-based tunneling of the voice traffic
- C. Controller authentication and port-based tunneling of the voice traffic
- D. Switch authentication and local forwarding of the voice traffic

Answer: D

NEW QUESTION 40

The company has just upgraded their access layer switches with AOS-CX switches and implemented an AAA solution with ClearPass. The company has become concerned about what actually connects to the user ports on the access layer switch, Therefore, the company is implementing 802.1X authentication on the AOS-CX switches. An administrator has globally enabled 802.1X, and has enabled it on all the access ports connected to user devices, including VoIP phones, security cameras, and wireless Aruba IAPs. Wireless users are complaining that they successfully authenticate to the IAPs; however, they do not have access to network resources. Previously, this worked before 802.1X was implemented on the AOS-CX switches.

What should the company do to solve this problem?

- A. Implement device-based mode on the IAP-connected AOS-CX switch ports.
- B. Implement local user roles and local forwarding on the AOS-CX switches.
- C. Implement downloadable user roles and user-based tunneling (UBT) on the AOS-CX switches.
- D. Implement AAA RADIUS change of authorization on the AOS-CX switches.

Answer: C

NEW QUESTION 45

Which AOS-CX switches support weighted fair queuing (WFQ)?

- A. Both 8320 and 8325
- B. Both 6300 and 6400

- C. 8400 only
- D. 6300 only

Answer: C

Explanation:

https://www.arubanetworks.com/techdocs/AOS-CX/AOSCX-CLI-Bank/cli_8400/Content/QoS_cmds/wfq-que-x

NEW QUESTION 48

A network administrator is implementing OSPF, where there are two exit points. Each exit point has a stateful, application inspection firewall to implement company policies.

What would the best practice be to ensure that one firewall will see both directions of the traffic, preventing asynchronous connections in the network?

- A. Both ASBRs should define External Type 1 routes for the
- B. Both ASBRs should define External Type 1 routes for the
- C. Both ASBRs should define External Type 2 routes for the
- D. Both ASBRs should define External Type 2 routes for the

Answer: A

NEW QUESTION 51

Which concept is implemented using Aruba's dynamic segmentation?

- A. Root of trust
- B. Device fingerprinting
- C. Zero Touch Provisioning
- D. Colorless port

Answer: D

NEW QUESTION 52

A network administrator is installing NetEdit. In order for NetEdit to manage the AOS-CX switches in the network, what must be defined on the AOS-CX switches? (Choose two.)

- A. Enabling telnet
- B. Defining an admin user password
- C. Defining the https user-group
- D. Enabling the RESTful API for read and write access
- E. Enabling SFTP

Answer: BD

NEW QUESTION 53

A company has recently purchased a ClearPass AAA solution. Their network consists of AOS-CX switches at the access layer. The company is implementing a rollout of IoT devices for smart building management to control the lighting and HVAC systems. The network administrator is concerned about allowing secure access to these devices since they only support MAC-Auth.

Which ClearPass feature should the administrator leverage to help determine that MAC address spoofing is not occurring for this group of devices?

- A. User-based tunneling
- B. Device fingerprinting
- C. RADIUS change of authorization
- D. Downloadable user roles

Answer: B

NEW QUESTION 54

An administrator of a company has concerns about upgrading the access layer switches. The users rely heavily on wireless and VoIP telephony. Which is the best recommendation to ensure a short downtime for the users during upgrading the access layer switches?

- A. Install the in-service software upgrade (ISSU) feature with clustering enabled
- B. Install AOS-CX 6300 or 6400 switches with always-on POE
- C. Implement VSF on the AOS-CX access switches
- D. Implement VSX on the AOS-CX access switches

Answer: B

Explanation:

The key is to reduce the impact. VSF or not will have same impact when the switch reboots. But if the switch support always on poe then at least the POE clients will be ready before the switch finish booting up. If you dont have always on POE, then the poe clients will reboot AFTER the switch boots up.

NEW QUESTION 55

What is required when implementing captive portal an AOS-CX switches?

- A. Certificate installed on the switch
- B. Web server running on the switch
- C. Device fingerprinting

D. AAA server

Answer: D

NEW QUESTION 60

A company has just purchased AOS-CX switches. The company has a free and open-source AAA solution. The company wants to implement access control on the Ethernet ports of the AOS-CX switches.

Which security features can the company implement given the equipment that they are using?

- A. Port-based tunneling
- B. Device fingerprinting
- C. Local user roles
- D. Downloadable user roles

Answer: C

NEW QUESTION 64

.....

Thank You for Trying Our Product

We offer two products:

1st - We have Practice Tests Software with Actual Exam Questions

2nd - Questions and Answers in PDF Format

HPE6-A73 Practice Exam Features:

- * HPE6-A73 Questions and Answers Updated Frequently
- * HPE6-A73 Practice Questions Verified by Expert Senior Certified Staff
- * HPE6-A73 Most Realistic Questions that Guarantee you a Pass on Your FirstTry
- * HPE6-A73 Practice Test Questions in Multiple Choice Formats and Updatesfor 1 Year

100% Actual & Verified — Instant Download, Please Click
[Order The HPE6-A73 Practice Test Here](#)