

SC-200 Dumps

Microsoft Security Operations Analyst

<https://www.certleader.com/SC-200-dumps.html>



NEW QUESTION 1

HOTSPOT - (Topic 1)

You need to recommend remediation actions for the Azure Defender alerts for Fabrikam.

What should you recommend for each threat? To answer, select the appropriate options in the answer area.

NOTE: Each correct selection is worth one point.

Answer Area

Internal threat:	<div><div></div><div>Add resource locks to the key vault.</div><div>Modify the access policy settings for the key vault.</div><div>Modify the role-based access control (RBAC) settings for the key vault.</div></div>
External threat:	<div><div></div><div>Implement Azure Firewall.</div><div>Modify the Key Vault firewall settings.</div><div>Modify the network security groups (NSGs).</div></div>

- A. Mastered
- B. Not Mastered

Answer: A

Explanation:

Answer Area

Internal threat:	<div><div></div><div>Add resource locks to the key vault.</div><div>Modify the access policy settings for the key vault.</div><div>Modify the role-based access control (RBAC) settings for the key vault.</div></div>
External threat:	<div><div></div><div>Implement Azure Firewall.</div><div>Modify the Key Vault firewall settings.</div><div>Modify the network security groups (NSGs).</div></div>

NEW QUESTION 2

- (Topic 1)

You need to remediate active attacks to meet the technical requirements. What should you include in the solution?

- A. Azure Automation runbooks
- B. Azure Logic Apps
- C. Azure FunctionsD Azure Sentinel livestreams

Answer: B

Explanation:

Reference:

<https://docs.microsoft.com/en-us/azure/sentinel/automate-responses-with-playbooks>

NEW QUESTION 3

DRAG DROP - (Topic 2)

You need to add notes to the events to meet the Azure Sentinel requirements.

Which three actions should you perform in sequence? To answer, move the appropriate actions from the list of action to the answer area and arrange them in the correct order.

Actions	Answer Area
Add a bookmark and map an entity.	
From Azure Monitor, run a Log Analytics query.	
Add the query to favorites.	⬅️ ⬆️
Select a query result.	
From the Azure Sentinel workspace, run a Log Analytics query.	

- A. Mastered
- B. Not Mastered

Answer: A

Explanation:

Actions	Answer Area
Add a bookmark and map an entity.	From the Azure Sentinel workspace, run a Log Analytics query.
From Azure Monitor, run a Log Analytics query.	
Add the query to favorites.	Select a query result.
Select a query result.	Add a bookmark and map an entity.
From the Azure Sentinel workspace, run a Log Analytics query.	

NEW QUESTION 4

- (Topic 2)
Which rule setting should you configure to meet the Microsoft Sentinel requirements?

- A. From Set rule logic, turn off suppression.
- B. From Analytic rule details, configure the tactics.
- C. From Set rule logic, map the entities.
- D. From Analytic rule details, configure the severity.

Answer: C

NEW QUESTION 5

- (Topic 3)
You need to configure event monitoring for Server1. The solution must meet the Microsoft Sentinel requirements. What should you create first?

- A. a Microsoft Sentinel automation rule
- B. a Microsoft Sentinel scheduled query rule
- C. a Data Collection Rule (DCR)
- D. an Azure Event Grid topic

Answer: C

NEW QUESTION 6

- (Topic 3)
You need to implement the scheduled rule for incident generation based on rulequery1. What should you configure first?

- A. entity mapping
- B. custom details
- C. event grouping
- D. alert details

Answer: D

NEW QUESTION 7

- (Topic 3)

You need to ensure that the configuration of HuntingQuery1 meets the Microsoft Sentinel requirements.

What should you do?

- A. Add HuntingQuery1 to a livestream.
- B. Create a watch list.
- C. Create an Azure Automation rule.
- D. Add HuntingQuery1 to favorites.

Answer: D

NEW QUESTION 8

- (Topic 4)

Your company uses Azure Sentinel.

A new security analyst reports that she cannot assign and dismiss incidents in Azure Sentinel. You need to resolve the issue for the analyst. The solution must use the principle of least privilege. Which role should you assign to the analyst?

- A. Azure Sentinel Responder
- B. Logic App Contributor
- C. Azure Sentinel Contributor
- D. Azure Sentinel Reader

Answer: A

Explanation:

Reference:

<https://docs.microsoft.com/en-us/azure/sentinel/roles>

NEW QUESTION 9

- (Topic 4)

Your company uses Azure Security Center and Azure Defender.

The security operations team at the company informs you that it does NOT receive email notifications for security alerts.

What should you configure in Security Center to enable the email notifications?

- A. Security solutions
- B. Security policy
- C. Pricing & settings
- D. Security alerts
- E. Azure Defender

Answer: C

Explanation:

Reference:

<https://docs.microsoft.com/en-us/azure/security-center/security-center-provide-security-contact-details>

NEW QUESTION 10

- (Topic 4)

You recently deployed Azure Sentinel.

You discover that the default Fusion rule does not generate any alerts. You verify that the rule is enabled.

You need to ensure that the Fusion rule can generate alerts. What should you do?

- A. Disable, and then enable the rule.
- B. Add data connectors
- C. Create a new machine learning analytics rule.
- D. Add a hunting bookmark.

Answer: B

Explanation:

Reference:

<https://docs.microsoft.com/en-us/azure/sentinel/connect-data-sources>

NEW QUESTION 10

HOTSPOT - (Topic 4)

You have an Azure subscription that has Azure Defender enabled for all supported resource types.

You create an Azure logic app named LA1.

You plan to use LA1 to automatically remediate security risks detected in Azure Security Center.

View the window

You need to test LA1 in Security Center.

What should you do? To answer, select the appropriate options in the answer area. NOTE: Each correct selection is worth one point.

Answer Area

Set the LA1 trigger to:

When an Azure Security Center Recommendation is created or triggered
When an Azure Security Center Alert is created or triggered
When a response to an Azure Security Center alert is triggered

Trigger the execution of LA1 from:

Recommendations
Workflow automation

- A. Mastered
- B. Not Mastered

Answer: A

Explanation:

Answer Area

Set the LA1 trigger to:

When an Azure Security Center Recommendation is created or triggered
When an Azure Security Center Alert is created or triggered
When a response to an Azure Security Center alert is triggered

Trigger the execution of LA1 from:

Recommendations
Workflow automation

NEW QUESTION 12

- (Topic 4)

You have an Azure subscription that uses Microsoft Defender for Cloud. You have a GitHub account named Account1 that contains 10 repositories. You need to ensure that Defender for Cloud can assess the repositories in Account1. What should you do first in the Microsoft Defender for Cloud portal?

- A. Add an environment.
- B. Enable security policies.
- C. Enable integrations.
- D. Enable a plan.

Answer: A

NEW QUESTION 16

- (Topic 4)

You have a Microsoft Sentinel workspace.

You need to prevent a built-in Advance Security information Model (ASIM) parse from being updated automatically.

What are two ways to achieve this goal? Each correct answer presents a complete solution.

NOTE: Each correct selection is worth one point.

- A. Redeploy the built-in parse and specify a CallerContext parameter of any and a SourceSpecificParse parameter of any.
- B. Create a hunting query that references the built-in parse.
- C. Redeploy the built-in parse and specify a CallerContext parameter of built-in.
- D. Build a custom unify parse and include the build- parse version
- E. Create an analytics rule that includes the built-in parse

Answer: AD

NEW QUESTION 20

- (Topic 4)

You have an Azure subscription that uses Microsoft Defender for Cloud and contains a resource group named RG1. RG1. You need to configure just in time (JIT) VM access for the virtual machines in RG1. The solution must meet the following

- Limit the maximum request time to two hours.
- Limit protocol access to Remote Desktop Protocol (RDP) only.
- Minimize administrative effort. What should you use?

- A. Azure AD Privileged Identity Management (PIM)
- B. Azure Policy
- C. Azure Front Door
- D. Azure Bastion

Answer: A

NEW QUESTION 21

- (Topic 4)

You create a hunting query in Azure Sentinel.

You need to receive a notification in the Azure portal as soon as the hunting query detects a match on the query. The solution must minimize effort. What should you use?

- A. a playbook
- B. a notebook
- C. a livestream
- D. a bookmark

Answer: C

Explanation:

Use livestream to run a specific query constantly, presenting results as they come in.

Reference:

<https://docs.microsoft.com/en-us/azure/sentinel/hunting>

NEW QUESTION 25

- (Topic 4)

You are investigating an incident in Azure Sentinel that contains more than 127 alerts. You discover eight alerts in the incident that require further investigation. You need to escalate the alerts to another Azure Sentinel administrator. What should you do to provide the alerts to the administrator?

- A. Create a Microsoft incident creation rule
- B. Share the incident URL
- C. Create a scheduled query rule
- D. Assign the incident

Answer: D

Explanation:

Reference:

<https://docs.microsoft.com/en-us/azure/sentinel/investigate-cases>

NEW QUESTION 29

- (Topic 4)

You need to correlate data from the SecurityEvent Log Anarytks table to meet the Microsoft Sentinel requirements for using UEBA. Which Log Analytics table should you use?

- A. SentwIAuoNt
- B. AADRiskyUsers
- C. IdentityOirectoryEvents
- D. Identityinfo

Answer: C

NEW QUESTION 30

HOTSPOT - (Topic 4)

You have an Azure subscription that is linked to a hybrid Azure AD tenant and contains a Microsoft Sentinel workspace named Sentinel1.

You need to enable User and Entity Behavior Analytics (UEBA) for Sentinel 1 and configure UEBA to use data collected from Active Directory Domain Services (AD OS).

What should you do? To answer, select the appropriate options in the answer area. NOTE: Each correct selection is worth one point.

Answer Area

To the AD DS domain controllers, deploy:

The Azure Connected Machine agent	▼
Microsoft Defender for Identity sensors	
The Azure Connected Machine agent	
The Azure Monitor agent	

For Sentinel1, configure:

The Audit Logs data source	▼
The Audit Logs data source	
The Security Events data source	
The Signin Logs data source	

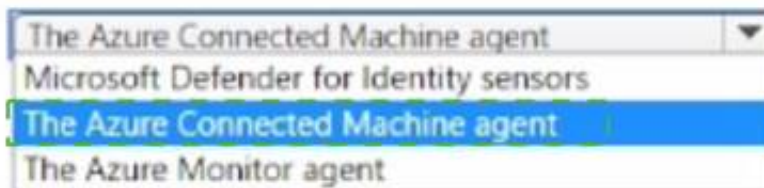
- A. Mastered
- B. Not Mastered

Answer: A

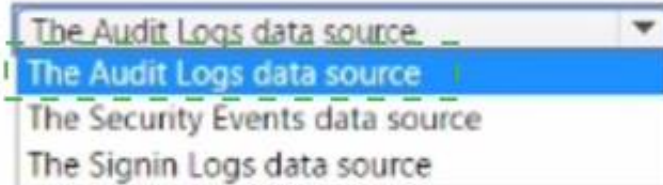
Explanation:

Answer Area

To the AD DS domain controllers, deploy:



For Sentinel1, configure:



NEW QUESTION 35

- (Topic 4)

Note: This question is part of a series of questions that present the same scenario. Each question in the series contains a unique solution that might meet the stated goals. Some question sets might have more than one correct solution, while others might not have a correct solution.

After you answer a question in this section, you will NOT be able to return to it. As a result, these questions will not appear in the review screen.

You are configuring Azure Sentinel.

You need to create an incident in Azure Sentinel when a sign-in to an Azure virtual machine from a malicious IP address is detected.

Solution: You create a Microsoft incident creation rule for a data connector. Does this meet the goal?

- A. Yes
- B. No

Answer: A

Explanation:

Reference:

<https://docs.microsoft.com/en-us/azure/sentinel/connect-azure-security-center>

NEW QUESTION 37

- (Topic 4)

You are responsible for responding to Azure Defender for Key Vault alerts.

During an investigation of an alert, you discover unauthorized attempts to access a key vault from a Tor exit node.

What should you configure to mitigate the threat?

- A. Key Vault firewalls and virtual networks
- B. Azure Active Directory (Azure AD) permissions
- C. role-based access control (RBAC) for the key vault
- D. the access policy settings of the key vault

Answer: A

Explanation:

Reference:

<https://docs.microsoft.com/en-us/azure/key-vault/general/network-security>

NEW QUESTION 40

- (Topic 4)

Your company uses line-of-business apps that contain Microsoft Office VBA macros.

You plan to enable protection against downloading and running additional payloads from the Office VBA macros as additional child processes.

You need to identify which Office VBA macros might be affected.

Which two commands can you run to achieve the goal? Each correct answer presents a complete solution.

NOTE: Each correct selection is worth one point.

- A. `Add-MpPreference -AttackSurfaceReductionRules_Ids D4F940AB -401B -4EFC -AADC -AD5F3C50688A -AttackSurfaceReductionRules_Actions Enabled`
- B. `Set-MpPreference -AttackSurfaceReductionRules_Ids D4F940AB -401B -4EFC -AADC -AD5F3C50688A -AttackSurfaceReductionRules_Actions AuditMode`
- C. `Add-MpPreference -AttackSurfaceReductionRules_Ids D4F940AB -401B -4EFC -AADC -AD5F3C50688A -AttackSurfaceReductionRules_Actions AuditMode`
- D. `Set-MpPreference -AttackSurfaceReductionRules_Ids D4F940AB -401B -4EFC -AADC -AD5F3C50688A -AttackSurfaceReductionRules_Actions Enabled`

- A. Option A
- B. Option B
- C. Option C
- D. Option D

Answer: BC

Explanation:

Reference:
<https://docs.microsoft.com/en-us/windows/security/threat-protection/microsoft-defender-atp/attack-surface-reduction>

NEW QUESTION 45

- (Topic 4)
You have an Azure Sentinel deployment in the East US Azure region.
You create a Log Analytics workspace named LogsWest in the West US Azure region. You need to ensure that you can use scheduled analytics rules in the existing Azure Sentinel deployment to generate alerts based on queries to LogsWest. What should you do first?

- A. Deploy Azure Data Catalog to the West US Azure region.
- B. Modify the workspace settings of the existing Azure Sentinel deployment
- C. Add Microsoft Sentinel to a workspace.
- D. Create a data connector in Azure Sentinel.

Answer: C

Explanation:
Reference:
<https://docs.microsoft.com/en-us/azure/sentinel/extend-sentinel-across-workspaces-tenants>

NEW QUESTION 48

DRAG DROP - (Topic 4)
You have an Azure Sentinel deployment.
You need to query for all suspicious credential access activities.
Which three actions should you perform in sequence? To answer, move the appropriate actions from the list of actions to the answer area and arrange them in the correct order.

Actions

From Azure Sentinel, select **Hunting**.

Select **Run All Queries**.

Select **New Query**.

Filter by tactics.

From Azure Sentinel, select **Notebooks**.

Answer Area

- A. Mastered
- B. Not Mastered

Answer: A

Actions

From Azure Sentinel, select **Hunting**.

Select **Run All Queries**.

Select **New Query**.

Filter by tactics.

From Azure Sentinel, select **Notebooks**.

Answer Area

NEW QUESTION 51

DRAG DROP - (Topic 4)
You have resources in Azure and Google cloud.
You need to ingest Google Cloud Platform (GCP) data into Azure Defender.
In which order should you perform the actions? To answer, move all actions from the list of actions to the answer area and arrange them in the correct order.

Actions

Answer Area

Enable Security Health Analytics.

From Azure Security Center, add cloud connectors.

Configure the GCP Security Command Center.

Create a dedicated service account and a private key.

Enable the GCP Security Command Center API.



- A. Mastered
B. Not Mastered

Answer: A

Explanation:

Actions

Answer Area

Enable Security Health Analytics.

From Azure Security Center, add cloud connectors.

Configure the GCP Security Command Center.

Create a dedicated service account and a private key.

Enable the GCP Security Command Center API.

Configure the GCP Security Command Center.

Enable Security Health Analytics.

Enable the GCP Security Command Center API.

Create a dedicated service account and a private key.

From Azure Security Center, add cloud connectors.



NEW QUESTION 52

- (Topic 4)

You use Azure Sentinel.

You need to use a built-in role to provide a security analyst with the ability to edit the queries of custom Azure Sentinel workbooks. The solution must use the principle of least privilege.

Which role should you assign to the analyst?

- A. Azure Sentinel Contributor
B. Security Administrator
C. Azure Sentinel Responder
D. Logic App Contributor

Answer: C

Explanation:

Azure Sentinel Contributor can create and edit workbooks, analytics rules, and other Azure Sentinel resources.

Reference:

<https://docs.microsoft.com/en-us/azure/sentinel/roles>

NEW QUESTION 56

- (Topic 4)

You have a Microsoft Sentinel workspace.

You receive multiple alerts for failed sign in attempts to an account. You identify that the alerts are false positives.

You need to prevent additional failed sign-in alerts from being generated for the account. The solution must meet the following requirements.

- Ensure that failed sign-in alerts are generated for other accounts.
- Minimize administrative effort What should do?

- A. Create an automation rule.
- B. Create a watchlist.
- C. Modify the analytics rule.
- D. Add an activity template to the entity behavior.

Answer: A

Explanation:

An automation rule will allow you to specify which alerts should be suppressed, ensuring that failed sign-in alerts are generated for other accounts while minimizing administrative effort. To create an automation rule, navigate to the Automation Rules page in the Microsoft Sentinel workspace and configure the rule parameters to suppress the false positive alerts.

NEW QUESTION 58

- (Topic 4)

Note: This question is part of a series of questions that present the same scenario. Each question in the series contains a unique solution that might meet the stated goals. Some question sets might have more than one correct solution, while others might not have a correct solution.

After you answer a question in this section, you will NOT be able to return to it. As a result, these questions will not appear in the review screen.

You are configuring Microsoft Defender for Identity integration with Active Directory.

From the Microsoft Defender for identity portal, you need to configure several accounts for attackers to exploit.

Solution: You add each account as a Sensitive account. Does this meet the goal?

- A. Yes
- B. No

Answer: B

Explanation:

Reference:

<https://docs.microsoft.com/en-us/defender-for-identity/manage-sensitive-honeytoken-accounts>

NEW QUESTION 59

- (Topic 4)

You have an Azure subscription that uses Microsoft Sentinel.

You need to minimize the administrative effort required to respond to the incidents and remediate the security threats detected by Microsoft Sentinel.

Which two features should you use? Each correct answer presents part of the solution.

NOTE: Each correct selection is worth one point.

- A. Microsoft Sentinel bookmarks
- B. Azure Automation runbooks
- C. Microsoft Sentinel automation rules
- D. Microsoft Sentinel playbooks
- E. Azure Functions apps

Answer: CE

Explanation:

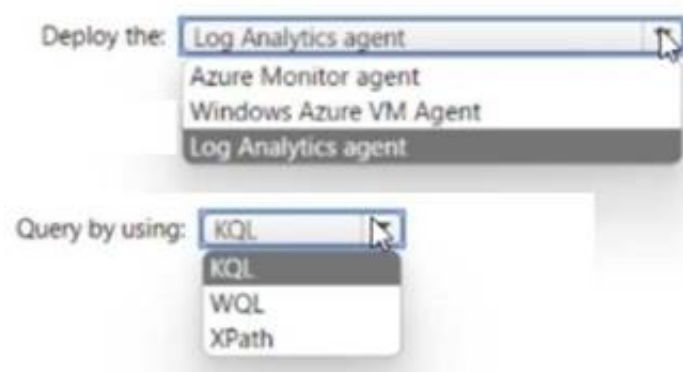
Reference: <https://docs.microsoft.com/en-us/azure/sentinel/tutorial-respond-threats-playbook?tabs=LAC>

NEW QUESTION 60

HOTSPOT - (Topic 4)

You need to meet the Microsoft Sentinel requirements for collecting Windows Security event logs. What should you do? To answer, select the appropriate options in the answer area. NOTE Each correct selection is worth one point.

Answer Area

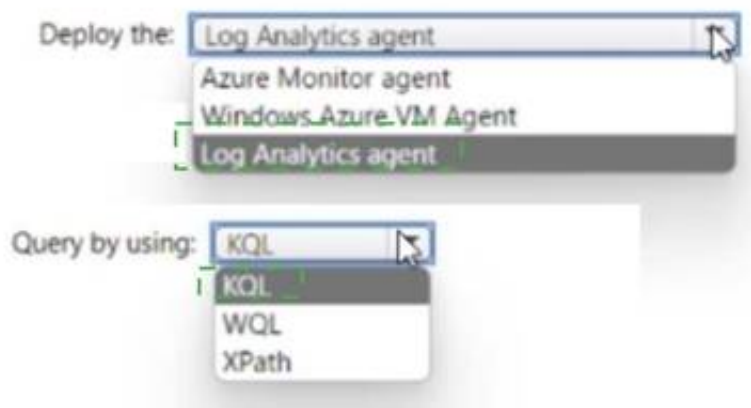


- A. Mastered
- B. Not Mastered

Answer: A

Explanation:

Answer Area



NEW QUESTION 64

- (Topic 4)
You have an existing Azure logic app that is used to block Azure Active Directory (Azure AD) users. The logic app is triggered manually. You deploy Azure Sentinel. You need to use the existing logic app as a playbook in Azure Sentinel. What should you do first?

- A. Add a new scheduled query rule.
- B. Add a data connector to Azure Sentinel.
- C. Configure a custom Threat Intelligence connector in Azure Sentinel.
- D. Modify the trigger in the logic app.

Answer: D

Explanation:
<https://docs.microsoft.com/en-us/azure/sentinel/playbook-triggers-actions> <https://docs.microsoft.com/en-us/azure/sentinel/tutorial-respond-threats-playbook>

NEW QUESTION 69

DRAG DROP - (Topic 4)
You have the resources shown in the following table.

Name	Description
SW1	An Azure Sentinel workspace
CEF1	A Linux sever configured to forward Common Event Format (CEF) logs to SW1
Server1	A Linux server configured to send Common Event Format (CEF) logs to CEF1
Server2	A Linux server configured to send Syslog logs to CEF1

You need to prevent duplicate events from occurring in SW1. What should you use for each action? To answer, drag the appropriate resources to the correct actions. Each resource may be used once, more than once, or not at all. You may need to drag the split bar between panes or scroll to view content. NOTE: Each correct selection is worth one point.

Resources

Answer Area

SW1

CEF1

Server1

Server2

From the Syslog configuration, remove the facilities that send CEF messages.

From the Log Analytics agent, disable Syslog synchronization.

- A. Mastered
- B. Not Mastered

Answer: A

Explanation:

Resources

Answer Area

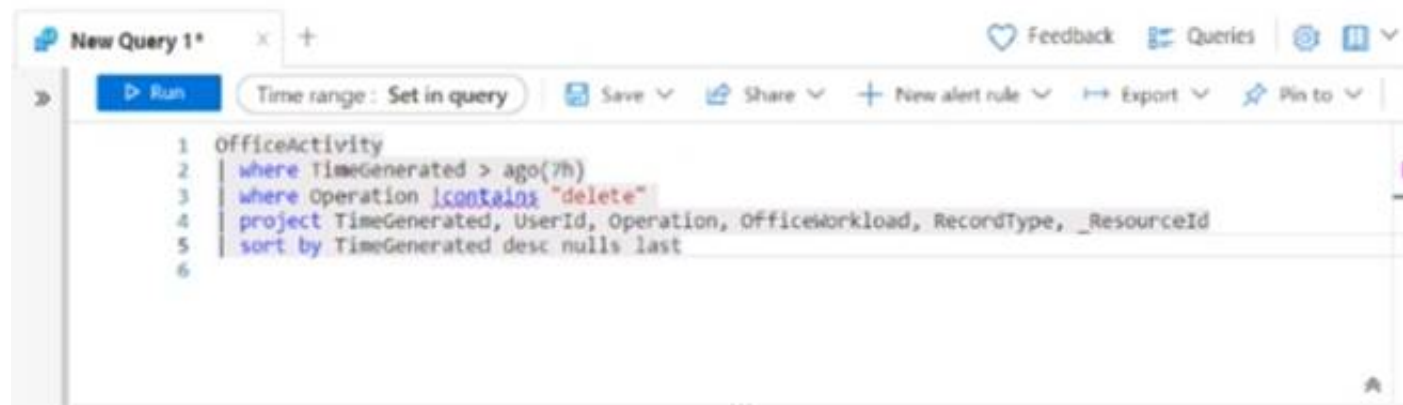
SW1	From the Syslog configuration, remove the facilities that send CEF messages.	Server1
CEF1		
Server1	From the Log Analytics agent, disable Syslog synchronization.	CEF1
Server2		

NEW QUESTION 70

- (Topic 4)

You have a Microsoft Sentinel workspace.

You have a query named Query1 as shown in the following exhibit.



You plan to create a custom parser named Parser 1. You need to use Query1 in Parser1. What should you do first?

- A. Remove line 2.
- B. In line 4, remove the TimeGenerated predicate.
- C. Remove line 5.
- D. In line 3, replace the 'contains operator with the !has operator.

Answer: A

Explanation:

This can be confirmed by referring to the official Microsoft documentation on creating custom log queries in Azure Sentinel, which states that the “has” operator should not be used in the query, and that it is unnecessary.

Reference: <https://docs.microsoft.com/en-us/azure/sentinel/query-custom-logs>

NEW QUESTION 73

- (Topic 4)

Note: This question is part of a series of questions that present the same scenario. Each question in the series contains a unique solution that might meet the stated goals. Some question sets might have more than one correct solution, while others might not have a correct solution.

After you answer a question in this section, you will NOT be able to return to it. As a result, these questions will not appear in the review screen.

You use Azure Security Center.

You receive a security alert in Security Center.

You need to view recommendations to resolve the alert in Security Center.

Solution: From Security alerts, you select the alert, select Take Action, and then expand the Mitigate the threat section.

Does this meet the goal?

- A. Yes
- B. No

Answer: A

Explanation:

Reference:

<https://docs.microsoft.com/en-us/azure/security-center/security-center-managing-and-responding-alerts>

NEW QUESTION 74

HOTSPOT - (Topic 4)

You need to meet the Microsoft Defender for Cloud Apps requirements

What should you do? To answer, select the appropriate options in the answer area. NOTE: Each correct selection is worth one point.

Answer Area



- A. Mastered
- B. Not Mastered

Answer: A

Explanation:

Answer Area



NEW QUESTION 75

- (Topic 4)

You need to configure Microsoft Cloud App Security to generate alerts and trigger remediation actions in response to external sharing of confidential files. Which two actions should you perform in the Cloud App Security portal? Each correct answer presents part of the solution.

NOTE: Each correct selection is worth one point.

- A. From Settings, select Information Protection, select Azure Information Protection, and then select Only scan files for Azure Information Protection classification labels and content inspection warnings from this tenant
- B. Select Investigate files, and then filter App to Office 365.
- C. Select Investigate files, and then select New policy from search
- D. From Settings, select Information Protection, select Azure Information Protection, and then select Automatically scan new files for Azure Information Protection classification labels and content inspection warnings
- E. From Settings, select Information Protection, select Files, and then enable file monitoring.
- F. Select Investigate files, and then filter File Type to Document.

Answer: DE

Explanation:

Reference:

<https://docs.microsoft.com/en-us/cloud-app-security/tutorial-dlp> <https://docs.microsoft.com/en-us/cloud-app-security/azip-integration>

NEW QUESTION 79

HOTSPOT - (Topic 4)

You have a Microsoft Sentinel workspace named sws1.

You need to create a query that will detect when a user creates an unusually large numbers of Azure AD user accounts.

How should you complete the query? To answer, select the appropriate options in the answer area.

NOTE: Each correct selection is worth one point.

Answer Area

AzureActivity

AuditLogs

AzureActivity

BehaviorAnalytics

SecurityEvent

| where ActionType == "Add user"

| where ActivityInsights has "True"

| join(

BehaviorAnalytics

AuditLogs

AzureActivity

BehaviorAnalytics

SecurityEvent

= \$right._ItemId

covering(UsersInsights.AccountDisplayName),

| sort by TimeGenerated desc

| project TimeGenerated, Username, UserPrincipalName, UsersInsights,

ActivityType, ActionType

- A. Mastered
- B. Not Mastered

Answer: A

Explanation:

Answer Area

AzureActivity

AuditLogs

AzureActivity

BehaviorAnalytics

SecurityEvent

| where ActionType == "Add user"

| where ActivityInsights has "True"

| join(

BehaviorAnalytics

AuditLogs

AzureActivity

BehaviorAnalytics

SecurityEvent

= \$right._ItemId

covering(UsersInsights.AccountDisplayName),

| sort by TimeGenerated desc

| project TimeGenerated, Username, UserPrincipalName, UsersInsights,

ActivityType, ActionType

NEW QUESTION 82

DRAG DROP - (Topic 4)

A company wants to analyze by using Microsoft 365 Apps.

You need to describe the connected experiences the company can use.

Which connected experiences should you describe? To answer, drag the appropriate connected experiences to the correct description. Each connected experience may be used once, more than once, or not at all. You may need to drag the split between panes or scroll to view content.

NOTE: Each correct selection is worth one point.

Connected experiences

Editor

Tap

Similarity checker

Friendly links

Answer Area

Description

Provides advanced grammar and style refinements such as clarity, conciseness, formality, and vocabulary suggestions.

Allows you to use and repurpose existing content from relevant files most often used by coworkers.

Identifies how much content in a document is original and inserts citations when necessary.

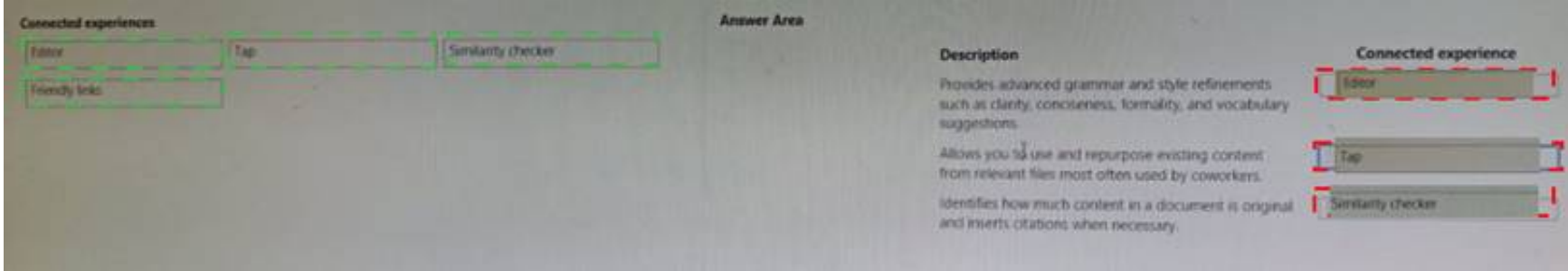
Connected experience

- A. Mastered

B. Not Mastered

Answer: A

Explanation:



NEW QUESTION 83

HOTSPOT - (Topic 4)

You need to assign role-based access control (RBAQ roles to Group1 and Group2 to meet The Microsoft Defender for Cloud requirements and the business requirements Which role should you assign to each group? To answer, select the appropriate options in the answer area NOTE Each correct selection is worth one point.



A. Mastered
B. Not Mastered

Answer: A

Explanation:



NEW QUESTION 84

- (Topic 4)

You provision a Linux virtual machine in a new Azure subscription.
You enable Azure Defender and onboard the virtual machine to Azure Defender.
You need to verify that an attack on the virtual machine triggers an alert in Azure Defender. Which two Bash commands should you run on the virtual machine?
Each correct answer presents part of the solution.
NOTE: Each correct selection is worth one point.

- A. `cp /bin/echo ./asc_alerttest_662jfi039n`
- B. `./alerttest testing eicar pipe`
- C. `cp /bin/echo ./alerttest`
- D. `./asc_alerttest_662jfi039n testing eicar pipe`

Answer: AD

Explanation:

Reference:
<https://docs.microsoft.com/en-us/azure/security-center/security-center-alert-validation#simulate-alerts-on-your-azure-vms-linux>

NEW QUESTION 86

- (Topic 4)

You have five on-premises Linux servers.
You have an Azure subscription that uses Microsoft Defender for Cloud. You need to use Defender for Cloud to protect the Linux servers.
What should you install on the servers first?

- A. the Dependency agent
- B. the Log Analytics agent
- C. the Azure Connected Machine agent
- D. the Guest Configuration extension

Answer: B

Explanation:

Defender for Cloud depends on the Log Analytics agent. Use the Log Analytics agent if you need to:

- * Collect logs and performance data from Azure virtual machines or hybrid machines hosted outside of Azure
- * Etc.

Reference:

<https://docs.microsoft.com/en-us/azure/defender-for-cloud/os-coverage> <https://docs.microsoft.com/en-us/azure/azure-monitor/agents/agents-overview#log-analytics-agent>

NEW QUESTION 91

DRAG DROP - (Topic 4)

You have an Azure subscription linked to an Azure Active Directory (Azure AD) tenant. The tenant contains two users named User1 and User2.

You plan to deploy Azure Defender.

You need to enable User1 and User2 to perform tasks at the subscription level as shown in the following table.

User	Task
User1	<ul style="list-style-type: none"> Assign initiatives Edit security policies Enable automatic provisioning
User2	<ul style="list-style-type: none"> View alerts and recommendations Apply security recommendations Dismiss alerts

The solution must use the principle of least privilege.

Which role should you assign to each user? To answer, drag the appropriate roles to the correct users. Each role may be used once, more than once, or not at all.

You may need to drag the split bar between panes or scroll to view content.

Roles

Contributor

Owner

Security administrator

Security reader

Answer Area

User1:

User2:

- A. Mastered
- B. Not Mastered

Answer: A

Explanation:

Box 1: Owner

Only the Owner can assign initiatives.

Box 2: Contributor

Only the Contributor or the Owner can apply security recommendations.

NEW QUESTION 92

- (Topic 4)

You have a suppression rule in Azure Security Center for 10 virtual machines that are used for testing. The virtual machines run Windows Server.

You are troubleshooting an issue on the virtual machines.

In Security Center, you need to view the alerts generated by the virtual machines during the last five days.

What should you do?

- A. Change the rule expiration date of the suppression rule.

- B. Change the state of the suppression rule to Disabled.
- C. Modify the filter for the Security alerts page.
- D. View the Windows event logs on the virtual machines.

Answer: B

Explanation:

Reference:

<https://docs.microsoft.com/en-us/azure/security-center/alerts-suppression-rules>

NEW QUESTION 94

- (Topic 4)

Your company stores the data for every project in a different Azure subscription. All the subscriptions use the same Azure Active Directory (Azure AD) tenant. Every project consists of multiple Azure virtual machines that run Windows Server. The Windows events of the virtual machines are stored in a Log Analytics workspace in each machine's respective subscription.

You deploy Azure Sentinel to a new Azure subscription.

You need to perform hunting queries in Azure Sentinel to search across all the Log Analytics workspaces of all the subscriptions.

Which two actions should you perform? Each correct answer presents part of the solution. NOTE: Each correct selection is worth one point.

- A. Add the Security Events connector to the Azure Sentinel workspace.
- B. Create a query that uses the workspace expression and the union operator.
- C. Use the alias statement.
- D. Create a query that uses the resource expression and the alias operator.
- E. Add the Azure Sentinel solution to each workspace.

Answer: BE

Explanation:

Reference:

<https://docs.microsoft.com/en-us/azure/sentinel/extend-sentinel-across-workspaces-tenants>

NEW QUESTION 98

DRAG DROP - (Topic 4)

You are informed of a new common vulnerabilities and exposures (CVE) vulnerability that affects your environment.

You need to use Microsoft Defender Security Center to request remediation from the team responsible for the affected systems if there is a documented active exploit available.

Which three actions should you perform in sequence? To answer, move the appropriate actions from the list of actions to the answer area and arrange them in the correct order.

Actions

Answer Area

From Device Inventory, search for the CVE.

Open the Threat Protection report.

From Threat & Vulnerability Management, select **Weaknesses**, and search for the CVE.

From Advanced hunting, search for `CveId` in the `DeviceTvmSoftwareInventoryVulnerabilitites` table.

Create the remediation request.

Select **Security recommendations**.



- A. Mastered
- B. Not Mastered

Answer: A

Explanation:

Actions

From Device Inventory, search for the CVE.

Open the Threat Protection report.

From Threat & Vulnerability Management, select **Weaknesses**, and search for the CVE.

From Advanced hunting, search for cveId in the DeviceTvmSoftwareInventoryVulnerabilitites table.

Create the remediation request.

Select **Security recommendations**.

Answer Area

From Threat & Vulnerability Management, select **Weaknesses**, and search for the CVE.

Select **Security recommendations**.

Create the remediation request.

NEW QUESTION 101

- (Topic 4)

You have a Microsoft 365 subscription that uses Microsoft Purview. Your company has a project named Project1.

You need to identify all the email messages that have the word Project1 in the subject line. The solution must search only the mailboxes of users that worked on Project1.

What should you do?

- A. Create a records management disposition.
- B. Perform a user data search.
- C. Perform an audit search.
- D. Perform a content search.

Answer: D

NEW QUESTION 105

HOTSPOT - (Topic 4)

You have an Azure subscription that uses Microsoft Defender for Cloud. You create a Google Cloud Platform (GCP) organization named GCP1.

You need to onboard GCP1 to Defender for Cloud by using the native cloud connector. The solution must ensure that all future GCP projects are onboarded automatically.

What should you include in the solution? To answer, select the appropriate options in the answer area.

NOTE: Each correct selection is worth one point.

Answer Area

Create:

- A management project and a custom role
- A management group and an Azure AD service principal
- A management project and a custom role**
- An Azure AD administrative unit and a managed identity

By:

- Running a script in GCP Cloud Shell
- Deploying a Bicep template
- Running a script in Azure Cloud Shell
- Running a script in GCP Cloud Shell**

- A. Mastered
- B. Not Mastered

Answer: A

Explanation:

Answer Area

Create:

- A management project and a custom role
- A management group and an Azure AD service principal
- A management project and a custom role**
- An Azure AD administrative unit and a managed identity

By:

- Running a script in GCP Cloud Shell
- Deploying a Bicep template
- Running a script in Azure Cloud Shell
- Running a script in GCP Cloud Shell**

NEW QUESTION 106

- (Topic 4)

You create a custom analytics rule to detect threats in Azure Sentinel. You discover that the rule fails intermittently. What are two possible causes of the failures? Each correct answer presents part of the solution.

NOTE: Each correct selection is worth one point.

- A. The rule query takes too long to run and times out.
- B. The target workspace was deleted.
- C. Permissions to the data sources of the rule query were modified.
- D. There are connectivity issues between the data sources and Log Analytics

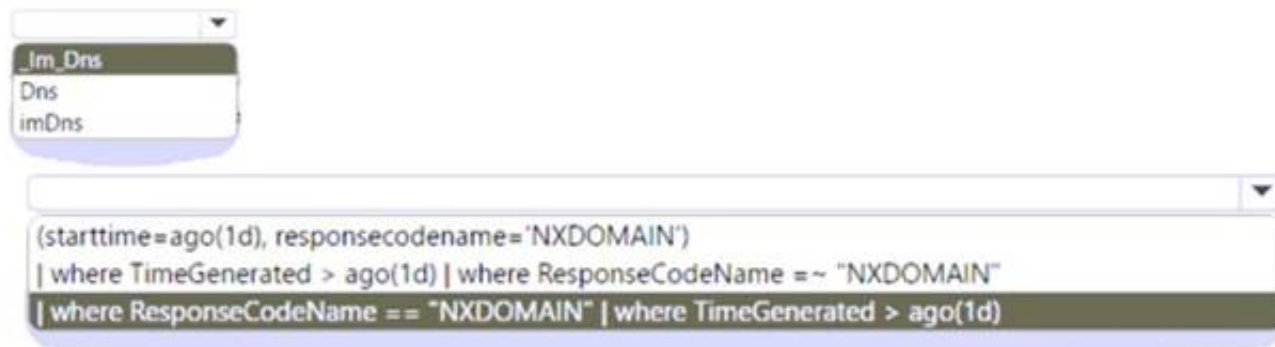
Answer: AD

NEW QUESTION 110

HOTSPOT - (Topic 4)

You have a Microsoft Sentinel workspace named Workspaces. You configure Workspace1 to collect DNS events and deploy the Advanced Security information Model (ASIM) unifying parser for the DNS schema. You need to query the ASIM DNS schema to list all the DNS events from the last 24 hours that have a response code of 'NXDOMAIN' and were aggregated by the source IP address in 15-minute intervals. The solution must maximize query performance. How should you complete the query? To answer, select the appropriate options in the answer area.

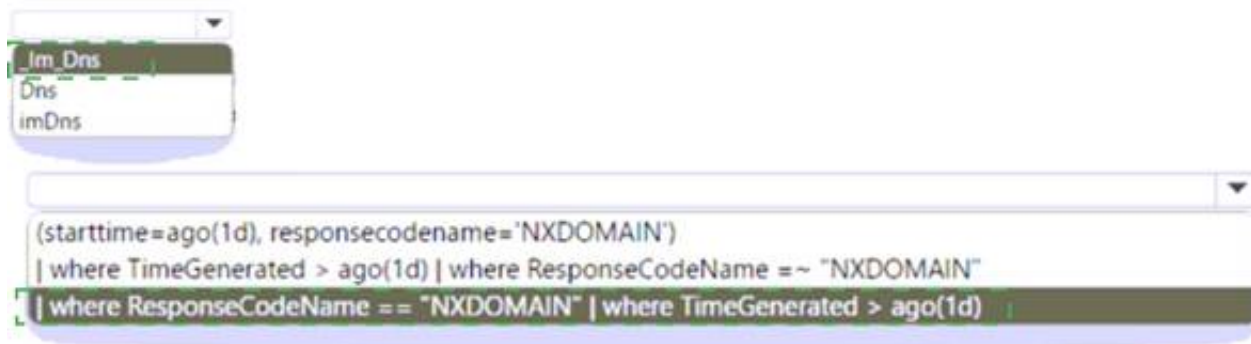
NOTE: Each correct selection is worth one point.



- A. Mastered
- B. Not Mastered

Answer: A

Explanation:

**NEW QUESTION 113**

- (Topic 4)

You are configuring Azure Sentinel.

You need to send a Microsoft Teams message to a channel whenever an incident representing a sign-in risk event is activated in Azure Sentinel.

Which two actions should you perform in Azure Sentinel? Each correct answer presents part of the solution.

NOTE: Each correct selection is worth one point.

- A. Enable Entity behavior analytics.
- B. Associate a playbook to the analytics rule that triggered the incident.
- C. Enable the Fusion rule.
- D. Add a playbook.
- E. Create a workbook.

Answer: AB

Explanation:

Reference:

<https://docs.microsoft.com/en-us/azure/sentinel/enable-entity-behavior-analytics> <https://docs.microsoft.com/en-us/azure/sentinel/automate-responses-with-playbooks>

NEW QUESTION 115

- (Topic 4)

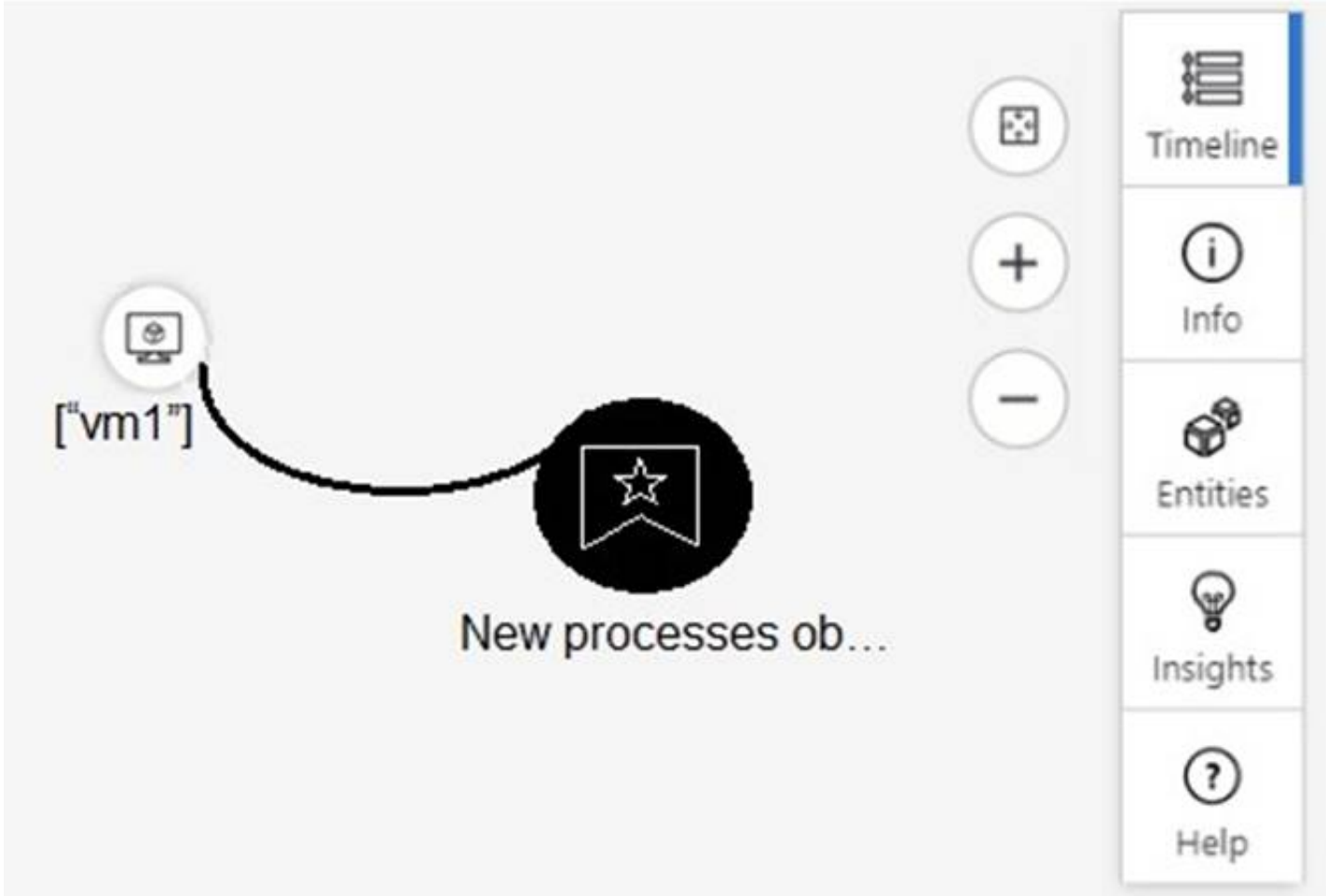
Note: This question is part of a series of questions that present the same scenario. Each question in the series contains a unique solution that might meet the stated goals. Some question sets might have more than one correct solution, while others might not have a correct solution.
After you answer a question in this section, you will NOT be able to return to it. As a result, these questions will not appear in the review screen.
You are configuring Microsoft Defender for Identity integration with Active Directory.
From the Microsoft Defender for identity portal, you need to configure several accounts for attackers to exploit.
Solution: You add the accounts to an Active Directory group and add the group as a Sensitive group.
Does this meet the goal?

- A. Yes
- B. No

Answer: B

Explanation:
Reference:
<https://docs.microsoft.com/en-us/defender-for-identity/manage-sensitive-honeytoken-accounts>

NEW QUESTION 117
HOTSPOT - (Topic 4)
From Azure Sentinel, you open the Investigation pane for a high-severity incident as shown in the following exhibit.



Use the drop-down menus to select the answer choice that completes each statement based on the information presented in the graphic.
NOTE: Each correct selection is worth one point.

If you hover over the virtual machine named vm1, you can view [answer choice].

the inbound network security group (NSG) rules

the last five Windows security log events

the open ports on the host

the running processes

If you select [answer choice], you can navigate to the bookmarks related to the incident.

Entities

Info

Insights

Timeline

- A. Mastered
- B. Not Mastered

Answer: A

Explanation:

If you hover over the virtual machine named vm1, you can view [answer choice].

	▼
the inbound network security group (NSG) rules	
the last five Windows security log events	
the open ports on the host	
the running processes	

If you select [answer choice], you can navigate to the bookmarks related to the incident.

	▼
Entities	
Info	
Insights	
Timeline	

NEW QUESTION 122

- (Topic 4)

You have a Microsoft Sentinel workspace named workspace1 that contains custom Kusto queries.

You need to create a Python-based Jupyter notebook that will create visuals. The visuals will display the results of the queries and be pinned to a dashboard. The solution must minimize development effort.

What should you use to create the visuals?

- A. plotly
- B. TensorFlow
- C. msticpy
- D. matplotlib

Answer: C

Explanation:

msticpy is a library for InfoSec investigation and hunting in Jupyter Notebooks. It includes functionality to: query log data from multiple sources. enrich the data with Threat Intelligence, geolocations and Azure resource data. extract Indicators of Activity (IoA) from logs and unpack encoded data.

MSTICPy reduces the amount of code that customers need to write for Microsoft Sentinel, and provides:

Data query capabilities, against Microsoft Sentinel tables, Microsoft Defender for Endpoint, Splunk, and other data sources.

Threat intelligence lookups with TI providers, such as VirusTotal and AlienVault OTX. Enrichment functions like geolocation of IP addresses, Indicator of Compromise (IoC) extraction, and Whois lookups.

Visualization tools using event timelines, process trees, and geo mapping.

Advanced analyses, such as time series decomposition, anomaly detection, and clustering.

Reference:

<https://docs.microsoft.com/en-us/azure/sentinel/notebook-get-started> <https://msticpy.readthedocs.io/en/latest/>

NEW QUESTION 123

- (Topic 4)

You use Azure Defender.

You have an Azure Storage account that contains sensitive information.

You need to run a PowerShell script if someone accesses the storage account from a suspicious IP address.

Which two actions should you perform? Each correct answer presents part of the solution.

NOTE: Each correct selection is worth one point.

- A. From Azure Security Center, enable workflow automation.
- B. Create an Azure logic app that has a manual trigger
- C. Create an Azure logic app that has an Azure Security Center alert trigger.
- D. Create an Azure logic app that has an HTTP trigger.
- E. From Azure Active Directory (Azure AD), add an app registration.

Answer: AC

Explanation:

Reference:

<https://docs.microsoft.com/en-us/azure/storage/common/azure-defender-storage-configure?tabs=azure-security-center>

<https://docs.microsoft.com/en-us/azure/security-center/workflow-automation>

NEW QUESTION 124

HOTSPOT - (Topic 4)

You have a Microsoft Sentinel workspace.

You need to configure a report visual for a custom workbook. The solution must meet the following requirements:

- The count and usage trend of AppDisplayName must be included
- The TrendList column must be useable in a sparkline visual,

How should you complete the KQL query? To answer, select the appropriate options in the answer area.

NOTE: Each correct selection is worth one point.

● ● ● ● ●

Answer Area

```

SigninLogs
| where ResultType == 0 and AppDisplayName != ""
| summarize count() by AppDisplayName
| join
  (
    SigninLogs
    | let
    | lookup TrendList = count() on TimeGenerated in range({TimeRange:start}, {TimeRange:end}, 4h) by AppDisplayName
    | mv-expand
  )
| top 10 by count_desc
SigninLogs
| make-series TrendList = count() on TimeGenerated in range({TimeRange:start}, {TimeRange:end}, 4h) by AppDisplayName
  (
    make_bag()
    make-series
    mv-expand
    render
  ) on AppDisplayName
| top 10 by count_desc
  
```

- A. Mastered
- B. Not Mastered

Answer: A

Explanation:

● ● ● ● ●

Answer Area

```

SigninLogs
| where ResultType == 0 and AppDisplayName != ""
| summarize count() by AppDisplayName
| join
  (
    SigninLogs
    | let
    | lookup TrendList = count() on TimeGenerated in range({TimeRange:start}, {TimeRange:end}, 4h) by AppDisplayName
    | mv-expand
  )
| top 10 by count_desc
SigninLogs
| make-series TrendList = count() on TimeGenerated in range({TimeRange:start}, {TimeRange:end}, 4h) by AppDisplayName
  (
    make_bag()
    make-series
    mv-expand
    render
  ) on AppDisplayName
| top 10 by count_desc
  
```

NEW QUESTION 129

- (Topic 4)

You have a Microsoft Sentinel playbook that is triggered by using the Azure Activity connector.

You need to create a new near-real-time (NRT) analytics rule that will use the playbook. What should you configure for the rule?

- A. the Incident automation settings
- B. entity mapping
- C. the query rule
- D. the Alert automation settings

Answer: B

NEW QUESTION 133

- (Topic 4)

You have a Microsoft 365 subscription that uses Microsoft Defender for Office 365.

You have Microsoft SharePoint Online sites that contain sensitive documents. The documents contain customer account numbers that each consists of 32 alphanumeric characters.

You need to create a data loss prevention (DLP) policy to protect the sensitive documents. What should you use to detect which documents are sensitive?

- A. SharePoint search
- B. a hunting query in Microsoft 365 Defender
- C. Azure Information Protection
- D. RegEx pattern matching

Answer: C

Explanation:

Reference:

<https://docs.microsoft.com/en-us/azure/information-protection/what-is-information-protection>

NEW QUESTION 136

HOTSPOT - (Topic 4)

You have an Azure subscription that uses Microsoft Sentinel and contains a user named User1.

You need to ensure that User1 can enable User and Entity Behavior Analytics (UEBA) for entity behavior in Azure AD. The solution must use the principle of least privilege.

Which roles should you assign to User1? To answer, select the appropriate options in the answer area.

NOTE: Each correct selection is worth one point.

Answer Area

Azure AD role:

Azure role:

- A. Mastered
- B. Not Mastered

Answer: A

Explanation:

Answer Area

Azure AD role:

Azure role:

NEW QUESTION 140

- (Topic 4)

A company uses Azure Sentinel.

You need to create an automated threat response. What should you use?

- A. a data connector
- B. a playbook
- C. a workbook
- D. a Microsoft incident creation rule

Answer: B

Explanation:

Reference:

<https://docs.microsoft.com/en-us/azure/sentinel/tutorial-respond-threats-playbook>

NEW QUESTION 145

- (Topic 4)

You use Azure Security Center.

You receive a security alert in Security Center.

You need to view recommendations to resolve the alert in Security Center. What should you do?

- A. From Security alerts, select the alert, select Take Action, and then expand the Prevent future attacks section.
- B. From Security alerts, select Take Action, and then expand the Mitigate the threat section.
- C. From Regulatory compliance, download the report.
- D. From Recommendations, download the CSV report.

Answer: B

Explanation:

Reference:

<https://docs.microsoft.com/en-us/azure/security-center/security-center-managing-and-responding-alerts>

NEW QUESTION 147

DRAG DROP - (Topic 4)

You have a Microsoft 365 E5 subscription that uses Microsoft Exchange Online. You need to identify phishing email messages.

Which three cmdlets should you run in sequence? To answer, move the appropriate cmdlets from the list of cmdlets to the answer area and arrange them in the correct order.

Cmdlets		Answer Area
Connect-IPSSession		
Start-ComplianceSearch		
New-ComplianceSearch	➤	⬆
Connect-ExchangeOnline	⬅	⬇
Search-UnifiedAuditLog		

- A. Mastered
- B. Not Mastered

Answer: A

Explanation:

Cmdlets		Answer Area
Connect-IPSSession		
Start-ComplianceSearch		
New-ComplianceSearch	➤	New-ComplianceSearch
Connect-ExchangeOnline	⬅	Connect-ExchangeOnline
Search-UnifiedAuditLog	⬅	Search-UnifiedAuditLog

NEW QUESTION 151

HOTSPOT - (Topic 4)

You are informed of an increase in malicious email being received by users.

You need to create an advanced hunting query in Microsoft 365 Defender to identify whether the accounts of the email recipients were compromised. The query must return the most recent 20 sign-ins performed by the recipients within an hour of receiving the known malicious email.

How should you complete the query? To answer, select the appropriate options in the answer area.

NOTE: Each correct selection is worth one point.

```
let MaliciousEmails =
```

	▼
EmailAttachementInfo	
EmailEvents	
IdentityLogonEvents	

```
| where MalwareFilterVerdict == "Malware"
| project TimeEmail = Timestamp, Subject, SenderFromAddress, AccountName =
tostring(split (RecipientEmailAddress, "@") [0]);

MaliciousEmails
| join (
```

	▼
EmailAttachementInfo	
EmailEvents	
IdentityLogonEvents	

```
| project LogonTime = Timestamp, AccountName, DeviceName
) on AccountName
| where (LogonTime - TimeEmail) between (0min.. 60min)
|
```

	▼
select 20	
take 20	
top 20	

- A. Mastered
- B. Not Mastered

Answer: A

Explanation:


```
let MaliciousEmails =
| where MalwareFilterVerdict == "Malware"
| project TimeEmail = Timestamp, Subject, SenderFromAddress, AccountName =
tostring(split (RecipientEmailAddress, "@") [0]);

MaliciousEmails
| join (
| project LogonTime = Timestamp, AccountName, DeviceName
) on AccountName
| where (LogonTime - TimeEmail) between (0min.. 60min)
|
select 20
take 20
top 20
```

NEW QUESTION 153

.....

Thank You for Trying Our Product

* 100% Pass or Money Back

All our products come with a 90-day Money Back Guarantee.

* One year free update

You can enjoy free update one year. 24x7 online support.

* Trusted by Millions

We currently serve more than 30,000,000 customers.

* Shop Securely

All transactions are protected by VeriSign!

100% Pass Your SC-200 Exam with Our Prep Materials Via below:

<https://www.certleader.com/SC-200-dumps.html>