

Exam Questions MD-101

Managing Modern Desktops (beta)

<https://www.2passeasy.com/dumps/MD-101/>



NEW QUESTION 1

- (Exam Topic 1)

What should you upgrade before you can configure the environment to support co-management?

- A. the domain functional level
- B. Configuration Manager
- C. the domain controllers
- D. Windows Server Update Services (WSUS)

Answer: B

Explanation:

References:

<https://docs.microsoft.com/en-us/sccm/comanage/tutorial-co-manage-clients>

NEW QUESTION 2

- (Exam Topic 1)

What should you configure to meet the technical requirements for the Azure AD-joined computers?

- A. Windows Hello for Business from the Microsoft Intune blade in the Azure portal.
- B. The Accounts options in an endpoint protection profile.
- C. The Password Policy settings in a Group Policy object (GPO).
- D. A password policy from the Microsoft Office 365 portal.

Answer: A

Explanation:

References:

<https://docs.microsoft.com/en-us/windows/security/identity-protection/hello-for-business/hello-manage-inorgani>

NEW QUESTION 3

- (Exam Topic 1)

You need to recommend a solution to meet the device management requirements.

What should you include in the recommendation? To answer, select the appropriate options in the answer area. NOTE: Each correct selection is worth one point.

For the Research department employees:

<input checked="" type="checkbox"/>
An app configuration policy
An app protection policy
Azure information Protection
iOS app provisioning profiles

For the Sales department employees:

<input checked="" type="checkbox"/>
An app configuration policy
An app protection policy
Azure information Protection
iOS app provisioning profiles

- A. Mastered
- B. Not Mastered

Answer: A

Explanation:

Reference:

<https://github.com/MicrosoftDocs/IntuneDocs/blob/master/intune/app-protection-policy.md> <https://docs.microsoft.com/en-us/azure/information-protection/configure-usage-rights#do-not-forward-option-fo>

NEW QUESTION 4

- (Exam Topic 1)

What should you use to meet the technical requirements for Azure DevOps?

- A. An app protection policy
- B. Windows Information Protection (WIP)
- C. Conditional access
- D. A device configuration profile

Answer: C

Explanation:

References:

<https://docs.microsoft.com/en-us/azure/devops/organizations/accounts/manage-conditional-access?view=azure-devops>

NEW QUESTION 5

- (Exam Topic 1)

You need to capture the required information for the sales department computers to meet the technical requirements. Which Windows PowerShell command should you run first?

- A. Install-Module WindowsAutoPilotIntune
- B. Install-Script Get-WindowsAutoPilotInfo
- C. Import-AutoPilotCSV
- D. Get-WindowsAutoPilotInfo

Answer: B

Explanation:

References:

<https://docs.microsoft.com/en-us/windows/deployment/windows-autopilot/existing-devices>

"This topic describes how to convert Windows 7 or Windows 8.1 domain-joined computers to Windows 10 devices joined to either Azure Active Directory or Active Directory (Hybrid Azure AD Join) by using Windows Autopilot"

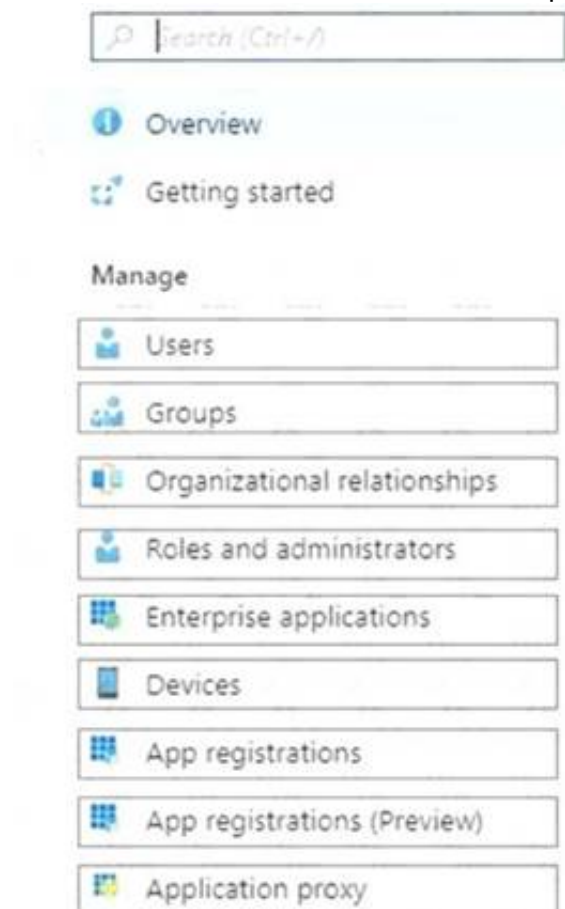
NEW QUESTION 6

- (Exam Topic 1)

You need to meet the technical requirements for Windows AutoPilot.

Which two settings should you configure from the Azure Active Directory blade? To answer, select the appropriate settings in the answer area.

NOTE: Each correct selection is worth one point.



- A. Mastered
- B. Not Mastered

Answer: A

Explanation:

References:

<https://docs.microsoft.com/en-us/windows/deployment/windows-autopilot/windows-autopilot-reset>

NEW QUESTION 7

- (Exam Topic 2)

You need to meet the requirements for the MKG department users. What should you do?

- A. Assign the MKG department users the Purchaser role in Microsoft Store for Business
- B. Download the APPX file for App1 from Microsoft Store for Business
- C. Add App1 to the private store
- D. Assign the MKG department users the Basic Purchaser role in Microsoft Store for Business
- E. Acquire App1 from Microsoft Store for Business

Answer: E

Explanation:

References:

<https://docs.microsoft.com/en-us/microsoft-store/distribute-apps-from-your-private-store>

Enable the users in the MKG department to use App1.
The private store is a feature in Microsoft Store for Business and Education that organizations receive during the signup process. When admins add apps to the private store, all employees in the organization can view and download the apps. Your private store is available as a tab in Microsoft Store app, and is usually named for your company or organization. Only apps with online licenses can be added to the private store.
Reference:
<https://docs.microsoft.com/en-us/microsoft-store/distribute-apps-from-your-private-store>

NEW QUESTION 8

- (Exam Topic 2)
You need to meet the technical requirements for the LEG department computers.
Which three actions should you perform in sequence? To answer, move the appropriate actions from the list of actions to the answer area and arrange them in the correct order.

Actions

Configure the commercial ID on the LEG department computers.

Create an Azure Machine Learning service workspace.

Create an Azure Log Analytics workspace.

Install the Microsoft Monitoring Agent on the LEG department computers.

Add a solution to a workspace.

Answer Area

- A. Mastered
- B. Not Mastered

Answer: A

Explanation:
Reference:
<https://docs.microsoft.com/en-us/windows/deployment/update/windows-analytics-azure-portal>

NEW QUESTION 9

- (Exam Topic 2)
You need to meet the technical requirements for the IT department. What should you do first?

- A. From the Azure Active Directory blade in the Azure portal, enable Seamless single sign-on.
- B. From the Configuration Manager console, add an Intune subscription.
- C. From the Azure Active Directory blade in the Azure portal, configure the Mobility (MDM and MAM) settings.
- D. From the Microsoft Intune blade in the Azure portal, configure the Windows enrollment settings.

Answer: C

Explanation:
Reference:
<https://docs.microsoft.com/en-us/sccm/comanage/tutorial-co-manage-clients>

NEW QUESTION 10

- (Exam Topic 2)
What is the maximum number of devices that User1 and User2 can enroll in Intune? To answer, select the appropriate options in the answer area.
NOTE: Each correct selection is worth one point.

User1 can enroll a maximum of:

5 devices
10 devices
15 devices
1,000 devices
An unlimited number of devices

User2 can enroll a maximum of:

5 devices
10 devices
15 devices
1,000 devices
An unlimited number of devices

- A. Mastered
- B. Not Mastered

Answer: A

Explanation:

User1 can enroll a maximum of:

5 devices
10 devices
15 devices
1,000 devices
An unlimited number of devices

User2 can enroll a maximum of:

5 devices
10 devices
15 devices
1,000 devices
An unlimited number of devices

NEW QUESTION 10

- (Exam Topic 2)

To which devices do Policy1 and Policy2 apply? To answer, select the appropriate options in the answer area. NOTE: Each correct selection is worth one point.

Policy1:

Device1 only
Device2 only
Device3 only
Device4 only
Device2 and Device3 only
Device1 and Device3 only
Device1, Device2, and Device 3

Policy2:

Device1 only
Device2 only
Device3 only
Device4 only
Device2 and Device3 only
Device1 and Device3 only
Device1, Device2, and Device 3

- A. Mastered
- B. Not Mastered

Answer: A

Explanation:

Reference:

<https://docs.microsoft.com/en-us/intune/device-profile-assign>

NEW QUESTION 15

- (Exam Topic 2)

You need to meet the technical requirements for the new HR department computers.

How should you configure the provisioning package? To answer, select the appropriate options in the answer area.

NOTE: Each correct selection is worth one point.

Specify ComputerName as:

<input type="checkbox"/>
"HR" + RAND(4)
"HumanResources-" + RAND(????)
HR-%RAND:4%
HR-????
HumanResources-%RAND:4%

Specify AccountOU as:

<input type="checkbox"/>
CN=Computers, CN=HR, DC=Contoso, DC=com
Computers/HumanResources/Contoso.com
Contoso.com/HR/Computers
OU=Computers, OU=HR, DC=Contoso, DC=com

- A. Mastered
- B. Not Mastered

Answer: A

Explanation:

Reference:

https://docs.microsoft.com/en-us/windows/configuration/wcd/wcd-accounts

NEW QUESTION 20

- (Exam Topic 2)

You need a new conditional access policy that has an assignment for Office 365 Exchange Online. You need to configure the policy to meet the technical requirements for Group4.

Which two settings should you configure in the policy? To answer, select the appropriate settings in the answer area.

NOTE: Each correct selection is worth one point.

- A. Mastered
- B. Not Mastered

Answer: A

Explanation:

The policy needs to be applied to Group4 so we need to configure Users and Groups. The Access controls are set to Block access

We therefore need to exclude compliant devices. From the scenario:

➤ Ensure that the users in a group named Group4 can only access Microsoft Exchange Online from devices that are enrolled in Intune.

Note: When a device enrolls in Intune, the device information is updated in Azure AD to include the device compliance status. This compliance status is used by conditional access policies to block or allow access to e-mail and other organization resources.

References:

https://docs.microsoft.com/en-us/azure/active-directory/conditional-access/overview https://docs.microsoft.com/en-us/azure/active-directory/conditional-access/conditions https://docs.microsoft.com/en-us/intune/device-compliance-get-started

NEW QUESTION 25

- (Exam Topic 3)

You need to ensure that computer objects can be created as part of the Windows Autopilot deployment. The solution must meet the technical requirements.

To what should you grant the right to create the computer objects?

- A. Server2
- B. Server1
- C. GroupA
- D. DC1

Answer: B

Explanation:

Reference:

<https://blog.matrixpost.net/set-up-windows-autopilot-production-environment-part-2/>

NEW QUESTION 27

- (Exam Topic 3)

Which devices are registered by using the Windows Autopilot deployment service?

- A. Device1 only
- B. Device3 only
- C. Device1 and Device3 only
- D. Device1, Device2, and Device3

Answer: C

Explanation:

Scenario: Windows Autopilot Configuration Assignments

Included groups: Group1 Excluded groups: Group2 Device1 is member of Group1.

Device2 is member of Group1 and member of Group2. Device3 is member of Group1.

Group1 and Group2 have a Membership type of Assigned.

Exclusion takes precedence over inclusion in the following same group type scenarios. Reference: <https://learn.microsoft.com/en-us/mem/intune/apps/apps-inc-exl-assignments>

NEW QUESTION 29

- (Exam Topic 3)

For each of the following statements, select Yes if the statement is true. Otherwise, select No. NOTE: Each correct selection is worth one point.

Answer Area

Statements	Yes	No
If User1 adds a shortcut to the desktop of Device1, when User1 signs in to Device3, the same shortcut will appear on the desktop.	<input type="radio"/>	<input type="radio"/>
If User1 sets the desktop background to blue on Device2, when User1 signs in to Device4, the desktop background will be blue.	<input type="radio"/>	<input type="radio"/>
If User2 increases the size of the font in the command prompt of Device2, when User2 signs in to Device3, the command prompt will show the increased font size.	<input type="radio"/>	<input type="radio"/>

- A. Mastered
- B. Not Mastered

Answer: A

Explanation:

Text, letter Description automatically generated

NEW QUESTION 33

- (Exam Topic 3)

You implement Boundary1 based on the planned changes.

Which devices have a network boundary of 192.168.1.0/24 applied?

- A. Device2 only
- B. Device3 only
- C. Device 1. Device2. and Device5 only
- D. Device 1, Device2, Device3, and Device4 only

Answer: D

Explanation:

Reference:

<https://docs.microsoft.com/en-us/mem/intune/configuration/network-boundary-windows>

NEW QUESTION 38

- (Exam Topic 3)

You implement the planned changes for Connection1 and Connection2

How many VPN connections will there be for User1 when the user signs in to Device 1 and Devke2? To answer select the appropriate options in the answer area.

NOTE; Each correct selection is worth one point.

Answer Area



- A. Mastered
- B. Not Mastered

Answer: A

Explanation:
Graphical user interface, table Description automatically generated

NEW QUESTION 39

- (Exam Topic 4)
You have computers that run Windows 10 and are joined to Azure Active Directory (Azure AD). All users sign in to the computers by using their Azure AD account. Enterprise State Roaming is enabled. From the Settings app, a user named User1 adds a Microsoft account. Which account will be used for the Synchronizing Windows setting?

- A. the work account only
- B. the Microsoft account only
- C. both the Microsoft account and the work account

Answer: A

Explanation:
Reference:
<https://docs.microsoft.com/en-us/azure/active-directory/devices/enterprise-state-roaming-enable>

NEW QUESTION 40

- (Exam Topic 4)
You have computers that run Windows 10 as shown in the following table.

Name	Configuration
Computer1	Active Directory domain-joined
Computer2	Microsoft Azure Active Directory (Azure AD) –joined
Computer3	Hybrid Microsoft Azure Active Directory (Azure AD)-joined

Computer2 and Computer3 are enrolled in Microsoft Intune.
In a Group Policy object (GPO) linked to the domain, you enable the Computer Configuration/Administrative Templates/Windows Components/Search/Allow Cortana setting.
In an Intune device configuration profile, you configure the following:

- > Device/Vendor/MSFT/Policy/Config/ControlPolicyConflict/MDMWinsOverGP to a value of 1
- > Experience/AllowCortana to a value of 0.

Each of the following statement, select Yes if the statement is true. Otherwise, select No. NOTE: Each correct selection is worth one point.

Statements	Yes	No
Computer1 can use Cortana for each.	<input type="radio"/>	<input type="radio"/>
Computer2 can use Cortana for search.	<input type="radio"/>	<input type="radio"/>
Computer3 can use Cortana for search.	<input type="radio"/>	<input type="radio"/>

- A. Mastered

B. Not Mastered

Answer: A

Explanation:

Reference:

<https://blogs.technet.microsoft.com/cbernier/2018/04/02/windows-10-group-policy-vs-intune-mdm-policy-who>

NEW QUESTION 45

- (Exam Topic 4)

You have 10 computers that run Windows 7 and have the following configurations:

- > A single MBR disk
- > A disabled TPM chip
- > Disabled hardware virtualization
- > UEFI firmware running in BIOS mode
- > Enabled Data Execution Prevention (DEP) You plan to upgrade the computers to Windows 10.

You need to ensure that the computers can use Secure Boot.

Which two actions should you perform? Each correct answer presents part of the solution.

NOTE: Each correct selection is worth one point.

- A. Convert the MBR disk to a GPT disk
- B. Enable the TPM chip.
- C. Disable DEP
- D. Enable hardware virtualization
- E. Convert the firmware from BIOS to UEFI.

Answer: AE

Explanation:

Reference:

<https://docs.microsoft.com/en-us/windows-hardware/manufacture/desktop/boot-to-uefi-mode-or-legacy-biosmod>

NEW QUESTION 50

- (Exam Topic 4)

You have an Azure Active Directory (Azure AD) tenant named contoso.com that contains the users shown in the following table.

Name	Member of
User1	Group1
User2	Group2

Contoso.com contains the devices shown in the following table.

Name	Platform	Member of	Microsoft Intune managed
Device1	Windows 10	GroupA	Yes
Device2	Windows 10	GroupB	No

In Intune, you create the app protection policies shown in the following table.

Name	Platform	Enrollment state	Assigned to
Policy1	Windows 10	With enrollment	Group1
Policy2	Windows 10	Without enrollment	Group2
Policy3	Windows 10	With enrollment	GroupA
Policy4	Windows 10	Without enrollment	GroupB

For each of the following statements, select Yes if the statement is true. Otherwise, select No.

NOTE: Each correct selection is worth one point.

Statements	Yes	No
When User1 signs in to Device1, Policy1 applies.	<input type="radio"/>	<input type="radio"/>
When User2 signs in to Device1, Policy2 applies.	<input type="radio"/>	<input type="radio"/>
When User2 signs in to Device2, Policy2 applies.	<input type="radio"/>	<input type="radio"/>

- A. Mastered
- B. Not Mastered

Answer: A

Explanation:

Reference:

<https://docs.microsoft.com/en-us/mem/intune/apps/app-protection-policy>

NEW QUESTION 55

- (Exam Topic 4)

Note: This question is part of a series of questions that present the same scenario. Each question in the series contains a unique solution that might meet the stated goals. Some question sets might have more than one correct solution, while others might not have a correct solution.

After you answer a question in this section, you will NOT be able to return to it. As a result, these questions will not appear in the review screen.

Your company uses Windows Update for Business.

The research department has several computers that have specialized hardware and software installed.

You need to prevent the video drivers from being updated automatically by using Windows Update. Solution: From the Settings app, you clear the Give me updates for other Microsoft products when I update Windows check box.

Does this meet the goal?

- A. Yes
- B. No

Answer: B

Explanation:

References:

https://www.stigviewer.com/stig/microsoft_windows_server_2012_member_server/2013-07-25/finding/WN12

NEW QUESTION 57

- (Exam Topic 4)

Note: This question is part of a series of questions that present the same scenario. Each question in the series contains a unique solution that might meet the stated goals. Some question sets might have more than one correct solution, while others might not have a correct solution.

After you answer a question in this section, you will NOT be able to return to it. As a result, these questions will not appear in the review screen.

You need to ensure that feature and quality updates install automatically during a maintenance window. Solution: From the Windows Update settings, you enable Configure Automatic Updates, select 3 – Auto download and notify for Install, and then enter a time.

Does this meet the goal?

- A. Yes
- B. No

Answer: B

Explanation:

References:

<https://docs.microsoft.com/en-us/sccm/sum/deploy-use/automatically-deploy-software-updates>

NEW QUESTION 59

- (Exam Topic 4)

Your company uses Microsoft Intune.

More than 500 Android and iOS devices are enrolled in the Intune tenant.

You plan to deploy new Intune policies. Different policies will apply depending on the version of Android or iOS installed on the device.

You need to ensure that the policies can target the devices based on their version of Android or iOS. What should you configure first?

- A. Corporate device identifiers in Intune
- B. Device settings in Microsoft Azure Active Directory (Azure AD)
- C. Device categories in Intune
- D. Groups that have dynamic membership rules in Microsoft Azure Active Directory (Azure AD)

Answer: D

Explanation:

<https://blogs.technet.microsoft.com/pauljones/2017/08/29/dynamic-group-membership-in-azure-active-directory>

NEW QUESTION 63

- (Exam Topic 4)

Your company has a Microsoft Azure Active Directory (Azure AD) tenant.

The company has a Volume Licensing Agreement and uses a product key to activate Windows 10.

You plan to deploy Windows 10 Pro to 200 new computers by using the Microsoft Deployment Toolkit (MDT) and Windows Deployment Services (WDS).

You need to ensure that the new computers will be configured to have the correct product key during the installation.

What should you configure?

- A. a WDS boot image
- B. an MDT task sequence
- C. the Device settings in Azure AD
- D. a Windows AutoPilot deployment profile

Answer: A

Explanation:

References:

<https://docs.microsoft.com/en-us/windows/deployment/deploy-windows-mdt/deploy-a-windows-10-imageusing>

NEW QUESTION 67

- (Exam Topic 4)

Your company purchases new computers that run Windows 10. The computers have cameras that support Windows Hello for Business. You configure the Windows Hello for Business Group Policy settings as shown in the following exhibit.

Setting	State	Comment
Phone Sign-in		
Allow enumeration of emulated smart card for all users	Not configured	No
Turn off smart card emulation	Not configured	No
Use PIN Recovery	Not configured	No
Use a hardware security device	Not configured	No
Use biometrics	Enabled	No
Configure device unlock factors	Not configured	No
Configure dynamic lock factors	Enabled	No
Use Windows Hello for Business	Enabled	No
Use certificate on-premises authentication	Not configured	No

What are two valid methods a user can use to sign in? Each correct answer presents part of the solution. NOTE: Each correct selection is worth one point.

- A. Facial recognition
- B. A smartwatch that is Bluetooth-enabled
- C. A PIN
- D. A USB key

Answer: AC

Explanation:

Reference:

<https://community.windows.com/en-us/stories/windows-sign-in-options> <https://fossbytes.com/how-to-unlock-windows-10/>

NEW QUESTION 71

- (Exam Topic 4)

You have a Windows 10 device named Device1 that is joined to Active Directory and enrolled in Microsoft Intune. Device 1 is managed by using Group Policy and Intune.

You need to ensure that the Intune settings override the Group Policy settings. What should you configure?

- A. a device configuration profile
- B. an MDM Security Baseline profile
- C. a device compliance policy
- D. a Group Policy Object (GPO)

Answer: A

Explanation:

Reference:

<https://uem4all.com/2018/04/02/windows-10-group-policy-vs-intune-mdm-policy-who-wins/>

NEW QUESTION 72

- (Exam Topic 4)

You have a Microsoft 365 subscription that contains devices enrolled in Microsoft Intune. You need to create Endpoint security policies to enforce the following requirements:

- > Computers that run macOS must have FileVault enabled.
- > Computers that run Windows 10 must have Microsoft Defender Credential Guard enabled.
- > Computers that run Windows 10 must have Microsoft Defender Application Control enabled.

Which Endpoint security feature should you use for each requirement? To answer, drag the appropriate features to the correct requirements. Each feature may be used once, more than once, or not at all. You may need to drag the split bar between panes or scroll to view content.

NOTE: Each correct selection is worth one point.

Features

Account protection

Attack surface reduction (ASR)

Disk encryption

Endpoint detection and response (EDR)

Answer Area

Computers that run macOS must have FileVault enabled:

Computers that run Windows 10 must have Microsoft Defender Application Control enabled:

Computers that run Windows 10 must have Microsoft Defender Credential Guard enabled:

- A. Mastered
- B. Not Mastered

Answer: A

Explanation:

Box 1: Disk encryption

Computers that run macOS must have FileVault enabled.

Intune supports macOS FileVault disk encryption. FileVault is a whole-disk encryption program that is included with macOS. You can use Intune to configure FileVault on devices that run macOS 10.13 or later.

Box 2: Attack surface reduction (ASR)

Computers that run Windows 10 must have Microsoft Defender Application Control enabled. Attack surface reduction profiles include:

* Application control - Application control settings can help mitigate security threats by restricting the applications that users can run and the code that runs in the System Core (kernel). Manage settings that can block unsigned scripts and MSIs, and restrict Windows PowerShell to run in Constrained Language Mode.

Note: Attack surface reduction rules target certain software behaviors, such as: Launching executable files and scripts that attempt to download or run files

Running obfuscated or otherwise suspicious scripts

Performing behaviors that apps don't usually initiate during normal day-to-day work

Box 3: Account protection

Computers that run Windows 10 must have Microsoft Defender Credential Guard enabled.

The account protection policy is focused on settings for Windows Hello and Credential Guard, which is part of Windows identity and access management.

Note: Microsoft Defender Credential Guard protects against credential theft attacks. It isolates secrets so that only privileged system software can access them.

Reference: <https://learn.microsoft.com/en-us/mem/intune/protect/encrypt-devices-filevault> <https://learn.microsoft.com/en-us/mem/intune/protect/endpoint-security-account-protection-policy> <https://learn.microsoft.com/en-us/mem/intune/protect/endpoint-security-asr-policy>

NEW QUESTION 75

- (Exam Topic 4)

You have a Microsoft 365 E5 tenant that connects to Microsoft Defender for Endpoint. You have devices enrolled in Microsoft Intune as shown in the following table.

Name	Platform
Device1	Windows 10
Device2	Windows 8.1
Device3	iOS
Device4	Android

You plan to use risk levels in Microsoft Defender for Endpoint to identify whether a device is compliant.

Noncompliant devices must be blocked from accessing corporate resources.

You need to identify which devices can be onboarded to Microsoft Defender for Endpoint, and which Endpoint security policies must be configured.

What should you identify? To answer, select the appropriate options in the answer area.

NOTE: Each correct selection is worth one point.

Devices that can onboarded to Microsoft Defender for Endpoint:

Device 1 only
Device 1 and Device 2 only
Device 1 and Device 3 only
Device 1 and Device 4 only
Device 1, Device 2, and Device 4 only
Device 1, Device 2, Device 3, and Device 4

Endpoint security policies that must be configured:

A conditional access policy only
A device compliance policy only
A device configuration profile only
A device configuration profile and a conditional access policy only
Device configuration profile, device compliance policy, and conditional access policy

- A. Mastered
- B. Not Mastered

Answer: A

Explanation:

Box 1: Device 1, Device2, Device 3, and Device 4

Supported Windows versions include Windows 8.1 and Windows 10 Other supported operating systems

Android iOS Linux macOS

Box 2: Device configuration profile, device compliance policy, and conditional access policy We need all three policies.

Establish a service-to-service connection between Intune and Microsoft Defender for Endpoint. This connection lets Microsoft Defender for Endpoint collect data about machine risk from supported devices you manage with Intune.

Use a device configuration profile to onboard devices with Microsoft Defender for Endpoint. You onboard devices to configure them to communicate with Microsoft Defender for Endpoint and to provide data that helps assess their risk level.

Use a device compliance policy to set the level of risk you want to allow. Risk levels are reported by Microsoft Defender for Endpoint. Devices that exceed the allowed risk level are identified as noncompliant.

Use a conditional access policy to block users from accessing corporate resources from devices that are noncompliant.

Reference:

<https://docs.microsoft.com/en-us/microsoft-365/security/defender-endpoint/minimum-requirements> <https://docs.microsoft.com/en-us/mem/intune/protect/advanced-threat-protection#onboard-devices-by-using-a-c>

NEW QUESTION 78

- (Exam Topic 4)

You use Microsoft Intune to manage Windows updates.

You have computers that run Windows 10. The computers are in a workgroup and are enrolled in Intune. The computers are configured as shown in the following table.

Name	Tag	Member of
Computer1	None	Group1
Computer2	Tag2	Group2
Computer3	Tag3	Group3

On each computer, the Select when Quality Updates are received Group Policy setting is configured as shown in the following table.

Name	State	Configuration
Computer1	Not configured	<i>Not applicable</i>
Computer2	Enabled	Deferral period of 5 days
Computer3	Disabled	<i>Not applicable</i>

You have Windows 10 update rings in Intune as shown in the following table.

Name	Quality update deferral period (days)	Scope (Tags)	Assignment
Ring1	2	Tag1	Group1
Ring2	7	Tag2	Group2
Ring3	14	Tag2	Group3

For each of the following statements, select Yes if the statement is true. Otherwise, select No.

NOTE: Each correct selection is worth one point.

Answer Area

Statements	Yes	No
On Computer1, quality updates will be deferred for two days.	<input type="radio"/>	<input type="radio"/>
On Computer2, quality updates will be deferred for seven days.	<input type="radio"/>	<input type="radio"/>
On Computer3, quality updates will be deferred for 14 days.	<input type="radio"/>	<input type="radio"/>

- A. Mastered
- B. Not Mastered

Answer: A

Explanation:

Answer Area

Statements	Yes	No
On Computer1, quality updates will be deferred for two days.	<input type="radio"/>	<input checked="" type="radio"/>
On Computer2, quality updates will be deferred for seven days.	<input checked="" type="radio"/>	<input type="radio"/>
On Computer3, quality updates will be deferred for 14 days.	<input type="radio"/>	<input checked="" type="radio"/>

NEW QUESTION 79

- (Exam Topic 4)

Note: This question is part of a series of questions that present the same scenario. Each question in the series contains a unique solution that might meet the stated goals. Some question sets might have more than one correct solution, while others might not have a correct solution.

After you answer a question in this section, you will NOT be able to return to it. As a result, these questions will not appear in the review screen.

Your company has an Azure Active Directory (Azure AD) tenant named contoso.com and a Microsoft Intune subscription.

Contoso.com contains a user named user1@contoso.com.

You have a computer named Computer1 that runs Windows 8.1.

You need to perform an in-place upgrade of Computer1 to Windows 10.

Solution: You assign an Enterprise Mobility + Security license to User1. You instruct User1 to sign in to Computer1.

Does this meet the goal?

- A. Yes
- B. No

Answer: B

NEW QUESTION 83

- (Exam Topic 4)

You have a Microsoft 365 subscription.

You have 10 computers that run Windows 10 and are enrolled in mobile device management (MDM) You need to deploy the Microsoft Office 365 ProPlus suite to all the computers. What should you do?

- A. From Microsoft Azure Active Directory (Azure AD), add an app registration.
- B. From the Device Management admin center, add an app.
- C. From the Device Management admin center, create a Windows 10 device profile.
- D. From Microsoft Azure Active Directory (Azure AD), add an enterprise application

Answer: B

Explanation:

Reference:

<https://docs.microsoft.com/en-us/windows/client-management/mdm/enterprise-app-management#application-ma>

NEW QUESTION 84

- (Exam Topic 4)

You have 200 computers that run Windows 10. The computers are joined to Microsoft Azure Active Directory (AD) and enrolled in Microsoft Intune.

You need to enable self-service password reset on the sign-in screen.

Which settings should you configure from the Microsoft Intune blade?

- A. Device configuration
- B. Device compliance
- C. Device enrollment
- D. Conditional access

Answer: A

Explanation:

References:

<https://docs.microsoft.com/en-us/azure/active-directory/authentication/tutorial-sspr-windows>

NEW QUESTION 86

- (Exam Topic 4)

Note: This question is part of a series of questions that present the same scenario. Each question in the series contains a unique solution that might meet the stated goals. Some question sets might have more than one correct solution, while others might not have a correct solution.

After you answer a question in this section, you will NOT be able to return to it. As a result, these

questions will not appear in the review screen.

Your company uses Windows Autopilot to configure the computer settings of computers issued to users. A user named User1 has a computer named Computer1 that runs Windows 10.

User1 leaves the company.

You plan to transfer the computer to a user named User2.

You need to ensure that when User2 first starts the computer, User2 is prompted to select the language setting and to agree to the license agreement.

Solution: You perform a local Windows Autopilot Reset. Does this meet the goal?

- A. Yes
- B. No

Answer: B

Explanation:

Reference:

<https://docs.microsoft.com/en-us/windows/deployment/windows-autopilot/windows-autopilot-reset>

NEW QUESTION 91

- (Exam Topic 4)

You have a hybrid deployment of Azure Active Directory (Azure AD) that contains 50 Windows 10 devices.

All the devices are enrolled in Microsoft Endpoint Manager.

You discover that Group Policy settings override the settings configured in Microsoft Endpoint Manager policies.

You need to ensure that the settings configured in Microsoft Endpoint Manager override the Group Policy settings.

What should you do?

- A. From the Microsoft Endpoint Manager admin center, create an Administrative Templates device profile
- B. From Group Policy Management Editor, configure the Computer Configuration settings in the Default Domain Policy
- C. From the Microsoft Endpoint Manager admin center, create a custom device profile
- D. From Group Policy Management Editor, configure the User Configuration settings in the Default DomainPolicy

Answer: C

Explanation:

Reference:

<https://uem4all.com/2018/04/02/windows-10-group-policy-vs-intune-mdm-policy-who-wins/>

NEW QUESTION 96

- (Exam Topic 4)

Note: This question is part of a series of questions that present the same scenario. Each question in the series contains a unique solution that might meet the

stated goals. Some question sets might have more than one correct solution, while others might not have a correct solution. After you answer a question in this section, you will NOT be able to return to it. As a result, these questions will not appear in the review screen. You need to ensure that feature and quality updates install automatically during a maintenance window. Solution: From the Windows Update settings, you enable Configure Automatic Updates, select 4-Auto download and schedule the install, and then enter a time. Does this meet the goal?

- A. Yes
- B. No

Answer: B

Explanation:

Reference:

<https://docs.microsoft.com/en-us/sccm/sum/deploy-use/automatically-deploy-software-updates>

NEW QUESTION 101

- (Exam Topic 4)

Your company standardizes on Windows 10 Enterprise for all users.

Some users purchase their own computer from a retail store. The computers run Windows 10 Pro.

You need to recommend a solution to upgrade the computers to Windows 10 Enterprise, join the computers to Microsoft Azure Active Directory (Azure AD), and install several Microsoft Store apps. The solution must meet the following requirements:

- Ensure that any applications installed by the users are retained.
- Minimize user intervention.

What is the best recommendation to achieve the goal? More than one answer choice may achieve the goal. Select the BEST answer.

- A. Microsoft Deployment ToolKit (MDT)
- B. Windows Deployment Services (WDS)
- C. a Windows Configuration Designer provisioning package
- D. Windows AutoPilot

Answer: C

Explanation:

You use Windows Configuration Designer to create a provisioning package (.ppkg) that contains customization settings. You can apply the provisioning package to a device running Windows 10.

NEW QUESTION 105

- (Exam Topic 4)

You have 200 computers that run Windows 10.

You need to create a provisioning package to configure the following tasks:

- Remove the Microsoft News and the Xbox Microsoft Store apps.
- Add a VPN connection to the corporate network.

Which two customizations should you configure? To answer, select the appropriate customizations in the answer area.

NOTE: Each correct selection is worth one point.

Available customizations

View: **All settings**

Search

Cellular

Certificates

CleanPC

Connections

ConnectivityProfiles

CountryAndRegion

DataMarketplace

DesktopBackgroundAndColors

DeviceFormFactor

DeviceManagement

DMClient

EditionUpgrade

Folders

HotSpot

Licensing

Maps

OOBE

Personalization

Policies

ProvisioningCommands

SharedPC

SMISettings

- A. Mastered
- B. Not Mastered

Answer: A

Explanation:

Connectivityprofiles Policies

References:

<https://docs.microsoft.com/en-us/windows/configuration/wcd/wcd-connectivityprofiles> <https://docs.microsoft.com/en-us/windows/client-management/mdm/policy-configuration-service-provider#appl> <https://docs.microsoft.com/en-us/windows/configuration/wcd/wcd-policies>

NEW QUESTION 106

- (Exam Topic 4)

You have a Microsoft 365 tenant that uses Microsoft Intune to manage the devices shown in the following table.

Name	Platform
Device1	Windows 10
Device2	Android device administrator
Device3	Android Enterprise
Device4	iOS
Device5	iPadOS

You need to deploy a compliance solution that meets the following requirements:

- > Marks the devices as Not Compliant if they do not meet compliance policies
- > Remotely locks noncompliant devices

What is the minimum number of compliance policies required, and which devices support the remote lock action? To answer, select the appropriate options in the answer area.

NOTE: Each correct selection is worth one point.

Minimum number of compliance policies required:

1
2
3
4
5

Devices that support the remote lock action:

Device1 only
Device2 and Device3 only
Device4 and Device5 only
Device2, Device3, Device4, and Device5
Device1, Device2, Device3, Device4, and Device5

- A. Mastered
 B. Not Mastered

Answer: A

Explanation:

Graphical user interface, application, table Description automatically generated

Reference:

<https://docs.microsoft.com/en-us/mem/intune/protect/device-compliance-get-started> <https://docs.microsoft.com/en-us/mem/intune/protect/actions-for-noncompliance>

NEW QUESTION 107

- (Exam Topic 4)

Your network contains an Active Directory forest. The forest contains a single domain and three sites named Site1, Site2, and Site3. Each site is associated to two subnets. Site1 contains two subnets named SubnetA and SubnetB.

All the client computers in the forest run Windows 10. Delivery Optimization is enabled. You have a computer named Computer1 that is in SubnetA.

From which hosts will Computer1 download updates?

- A. the computers in Site1 only
 B. any computer in the domain
 C. the computers in SubnetA only
 D. any computer on the network

Answer: C

Explanation:

Delivery Optimization allows updates from other clients that connect to the Internet using the same public IP as the target client (NAT).

References:

<https://docs.microsoft.com/en-us/windows/deployment/update/waas-delivery-optimization>

NEW QUESTION 110

- (Exam Topic 4)

You use the Microsoft Deployment Toolkit (MDT) to deploy Windows 10. You need to modify the deployment share to meet the following requirements:

➤ Define a rule for how to name computers during the deployment.

The solution must NOT replace the existing WinPE image.

Which file should you modify for each requirement? To answer, select the appropriate options in the answer area.

NOTE: Each correct selection is worth one point.

Administrator password:

Bootstrap.ini
CustomSettings.in
Settings.ini
System.ini

Computer names:

Bootstrap.ini
CustomSettings.in
Settings.ini
System.ini

- A. Mastered
 B. Not Mastered

Answer: A

Explanation:

Graphical user interface, text, application Description automatically generated

Reference:

<https://docs.microsoft.com/en-us/windows/deployment/deploy-windows-mdt/deploy-a-windows-10-image-using>

NEW QUESTION 112

- (Exam Topic 4)

Your network contains an Active Directory domain that is synced to Microsoft Azure Active Directory (Azure AD).

You have a Microsoft 365 subscription.

You create a conditional access policy for Microsoft Exchange Online.

You need to configure the policy to prevent access to Exchange Online unless is connecting from a device that is hybrid Azure AD-joined.

Which settings should you configure?

- A. Locations
- B. Device platforms
- C. Sign-in risk
- D. Device state

Answer: D

Explanation:

Reference:

<https://docs.microsoft.com/en-us/azure/active-directory/conditional-access/conditions#device-state>

NEW QUESTION 116

- (Exam Topic 4)

You have the device configuration profile shown in the following exhibit.

Kiosk ...

Windows 10 and later

✓ Basics **Configuration settings** ...

Configure your devices to run in kiosk mode. Before you select a kiosk mode, review your app assignments in the Mobile Apps blade. Apps that you want to run in kiosk mode should be assigned to a Windows device. [Learn more about Windows kiosk mode.](#)

Select a kiosk mode *

User logon type *

Application type *

This kiosk profile requires Microsoft Edge version 87 and later with Windows 10 version 1909 and later. [Learn more about Microsoft Edge kiosk mode.](#)

Edge Kiosk URL *

Microsoft Edge kiosk mode type

Refresh browser after idle time

Specify Maintenance Window for App Restarts *

Maintenance Window Start Time

Maintenance Window Recurrence

Use the drop-down menus to select the answer choice that completes each statement based on the information presented in the graphic NOTE: Each correct selection is worth one point.

Answer Area

Users

- ☐ can access any URL.
- ☐ cannot view the address bar in Microsoft Edge.
- ☐ can only access URLs that include contoso.com.
- ☐ can only access URLs that start with https://contoso.com/.

Windows 10 devices can have

- ☐ a single Microsoft Edge instance that has a single tab.
- ☐ a single Microsoft Edge instance that has multiple tabs.
- ☐ multiple Microsoft Edge instances that have multiple tabs.
- ☐ multiple Microsoft Edge instances that each has a single tab.

- A. Mastered
- B. Not Mastered

Answer: A

Explanation:

Box 1: can access any URL.

Public Browsing (InPrivate): Runs a limited multi-tab version of Microsoft Edge. Users can browse publicly, or end their browsing session.

Box 2: a single Microsoft Edge instance that has multiple tabs

Single app, full-screen kiosk runs only one app on the device, such as a web browser or Store app. Reference: <https://docs.microsoft.com/en-us/mem/intune/configuration/kiosk-settings-windows>

NEW QUESTION 119

- (Exam Topic 4)

Your company has a System Center Configuration Manager deployment that uses hybrid mobile device management (MDM). All Windows 10 devices are Active Directory domain-joined.

You plan to migrate from hybrid MDM to Microsoft Intune standalone. You successfully run the Intune Data Importer tool.

You need to complete the migration.

Which two actions should you perform? Each correct answer presents part of the solution.

NOTE: Each correct selection is worth one point.

A. In Intune, add a device enrollment manager (DEM).

B. Change the tenant MDM authority to Intune.

C. Assign all users Intune licenses.

D. Create a new Intune tenant.

Answer: BC

Explanation:

References:

<https://docs.microsoft.com/en-us/sccm/mdm/deploy-use/migrate-hybridmdm-to-intunesa> <https://docs.microsoft.com/en-us/sccm/mdm/deploy-use/migrate-prepare-intune> <https://docs.microsoft.com/en-us/sccm/mdm/deploy-use/change-mdm-authority>

NEW QUESTION 120

- (Exam Topic 4)

You have a Microsoft Intune subscription that has the following device compliance policy settings: Mark devices with no compliance policy assigned as: Compliant
 Compliance status validity period (days): 14

On January 1, you enroll Windows 10 devices in Intune as shown in the following table.

Name	BitLocker Drive Encryption (BitLocker)	Firewall	Scope (Tags)	Member of
Device1	Enabled	Off	Tag1	Group1
Device2	Disabled	On	Tag2	Group2

On January 4, you create the following two device compliance policies:

- > Name: Policy1
- > Platform: Windows 10 and later
- > Require BitLocker: Require
- > Mark device noncompliant: 5 days after noncompliance
- > Scope (Tags): Tag1
- > Name: Policy2
- > Platform: Windows 10 and later
- > Firewall: Require
- > Mark device noncompliant: Immediately
- > Scope (Tags): Tag2

On January 5, you assign Policy1 and Policy2 to Group1.

For each of the following statements, select Yes if the statement is true. Otherwise, select No.

NOTE: Each correct selection is worth one point.

Statements	Yes	No
On January 7, Device1 is marked as compliant.	<input type="radio"/>	<input type="radio"/>
On January 8, Device1 is marked as compliant.	<input type="radio"/>	<input type="radio"/>
On January 8, Device2 is marked as compliant.	<input type="radio"/>	<input type="radio"/>

A. Mastered

B. Not Mastered

Answer: A

Explanation:

Box 1: No.

Policy1 and Policy2 apply to Group1 which Device1 is a member of. Device1 does not meet the firewall requirement in Policy2 so the device will immediately be marked as non-compliant.

Box 2: No

For the same reason as Box1.

Box 3: Yes

Policy1 and Policy2 apply to Group1. Device2 is not a member of Group1 so the policies don't apply.

The Scope (tags) have nothing to do with whether the policy is applied or not. The tags are used in RBAC.

NEW QUESTION 123

- (Exam Topic 4)

Note: This question is part of a series of questions that present the same scenario. Each question in the series contains a unique solution that might meet the stated goals. Some question sets might have more than one correct solution, while others might not have a correct solution.

After you answer a question in this section, you will NOT be able to return to it. As a result, these questions will not appear in the review screen.

You have a Microsoft 365 subscription.

You have 20 computers that run Windows 10 and are joined to Microsoft Azure Active Directory (Azure AD). You plan to replace the computers with new computers that run Windows 10. The new computers will be joined to Azure AD.

You need to ensure that the desktop background, the favorites, and the browsing history are available on the new computers.

Solution: You configure roaming user profiles. Does this meet the goal?

A. Yes

B. No

Answer: B

Explanation:

References:

<https://docs.microsoft.com/en-us/windows-server/storage/folder-redirection/deploy-roaming-user-profiles>

NEW QUESTION 128

- (Exam Topic 4)

You have a Microsoft 365 tenant that uses Microsoft Intune for mobile device management (MDM). You associate a Microsoft Store for Business account with Intune.

You purchase an app named Appl from the Microsoft Store for Business. You need to ensure that Appl can be deployed by using Intune.

What should you do?

A. Sync purchased apps from the Microsoft Store for Business.

B. Integrate the Windows Autopilot Deployment Program into the Microsoft Store for Business.

C. Create an app category in Intune.

D. Create an app protection policy in Intune.

Answer: A

Explanation:

Reference:

<https://docs.microsoft.com/en-us/mem/intune/apps/windows-store-for-business>

NEW QUESTION 130

- (Exam Topic 4)

Your network contains an Active Directory domain named contoso.com. The domain contains 500 computers that run Windows 7. Some of the computers are used by multiple users.

You plan to refresh the operating system of the computers to Windows 10.

You need to retain the personalization settings to applications before you refresh the computers. The solution must minimize network bandwidth and network storage space.

Which command should you run on the computer? To answer, select the appropriate options in the answer area.

NOTE: Each correct selection is worth one point.

<input type="checkbox"/>	<input type="checkbox"/>
<div> <div>▼</div> <div>/i MigApp.xml</div> </div> <div> <div>dism.exe</div> <div>scandisk.exe</div> <div>scanstate.exe</div> <div>usmtutils.exe</div> </div>	<div> <div>▼</div> <div>/nocompress /ui :Contoso*</div> </div> <div> <div>/encrypt</div> <div>/genconfig.file1.xml</div> <div>/hardlink</div> <div>/localonly</div> </div>

A. Mastered

B. Not Mastered

Answer: A

Explanation:

References:

<https://docs.microsoft.com/en-us/windows/deployment/usmt/usmt-scanstate-syntax#how-to-use-ui-and-ue>

NEW QUESTION 134

- (Exam Topic 4)

You have a Microsoft 365 subscription.

You need to deploy Microsoft Office 365 ProPlus applications to Windows 10 devices. What should you do first?

- A. From Microsoft Azure Active Directory (Azure AD), create an app registration.
- B. From the Device Management admin center, create an app.
- C. From the Device Management admin center, create an app configuration policy.
- D. From the Device Management admin center, enable Microsoft Store for Business synchronization

Answer: B

Explanation:

Reference:

<https://docs.microsoft.com/en-us/mem/intune/apps/apps-add-office365>

NEW QUESTION 139

- (Exam Topic 4)

You have an Azure Active Directory (Azure AD) tenant that syncs to an on-premises Active Directory domain.

The tenant contains computers that run Windows 10. The computers are hybrid Azure AD joined and enrolled in Microsoft Intune. The Microsoft Office settings on the computers are configured by using a Group Policy Object (GPO).

You need to migrate the GPO to Intune.

Which three actions should you perform in sequence? To answer, move the appropriate actions from the list of actions to the answer area and arrange them in the correct order.

Actions

Import an ADMX file.

Assign the policy.

Create a configuration profile.

Assign the profile.

Configure the Administrative Templates settings.

Set a scope tag to the policy.

Create a compliance policy.

Answer Area

➤

➤

⬅

⬅

- A. Mastered
- B. Not Mastered

Answer: A

Explanation:

Reference:

<https://docs.microsoft.com/en-us/mem/intune/configuration/administrative-templates-windows>

NEW QUESTION 140

- (Exam Topic 4)

Your network contains an on-premises Active Directory domain named contoso.com that syncs to Azure Active Directory (Azure AD).

You have the Windows 10 devices shown in the following table.

Name	Active Directory	Endpoint Configuration Manager agent	Microsoft Intune	Azure AD
Device1	Joined	Not installed	Enrolled	Registered
Device2	Not joined	Installed	Enrolled	Registered
Device3	Not joined	Not installed	Enrolled	Joined
Device4	Joined	Installed	Not enrolled	Registered
Device5	Not joined	Installed	Not enrolled	Joined
Device6	Joined	Installed	Enrolled	Joined

You need to ensure that you can use co-management to manage all the Windows 10 devices. Which two actions should you perform? Each correct answer presents part of the solution. NOTE: Each correct selection is worth one point.

- A. Join Device 1, Device2, and Device4 to Azure AD.
- B. Unjoin Device3, Device5, and Device6 from Azure AD, and then register the devices in Azure AD.
- C. Enroll Device4 and Device5 in Intune.
- D. Join Device2, Device3, and Device5 to the domain.
- E. Install the Endpoint Configuration Manager agent on Device1 and Device3.

Answer: CE

Explanation:

Co-management enables you to concurrently manage Windows 10 devices by using both Configuration Manager and Microsoft Intune.

Co-management requires Configuration Manager version 1710 or later and enrollment in Microsoft Intune. Windows 10 devices must be hybrid Azure AD joined.

Reference:

<https://docs.microsoft.com/en-us/mem/configmgr/comanage/overview>

NEW QUESTION 142

- (Exam Topic 4)

You have a Microsoft 365 E5 subscription that contains 1,000 Windows 11 devices. All the devices are enrolled in Microsoft Intune.

You plan to integrate Intune with Microsoft Defender for Endpoint.

You need to establish a service-to-service connection between Intune and Defender for Endpoint. Which settings should you configure in the Microsoft Endpoint Manager admin center?

- A. Connectors and tokens
- B. Premium add-ons
- C. Microsoft Tunnel Gateway
- D. Tenant enrollment

Answer: A

Explanation:

Microsoft Defender for Endpoint – Important Service and Endpoint Settings You Should Configure Right Now.

As a prerequisite, however, head to tenant administration > connectors and tokens > Microsoft Defender for Endpoint and confirm the connection is enabled. You previously set this up in the advanced settings of Microsoft 365 Defender.

Reference: <https://petri.com/microsoft-defender-for-endpoint-which-settings-configure-right-now/>

NEW QUESTION 145

- (Exam Topic 4)

You have 200 computers that run Windows 10. The computers are joined to Microsoft Azure Active Directory (Azure AD) and enrolled in Microsoft Intune.

You need to ensure that only applications that you explicitly allow can run on the computers. What should you use?

- A. Windows Defender Credential Guard
- B. Windows Defender Exploit Guard
- C. Windows Defender Application Guard
- D. Windows Defender Antivirus.

Answer: C

Explanation:

Reference:

<https://docs.microsoft.com/en-us/windows/security/threat-protection/device-guard/introduction-to-device-guardv based-security-and-windows-defender-application-control>

NEW QUESTION 146

- (Exam Topic 4)

You have a Microsoft 365 E5 subscription that contains a group named Group1.

You create a Conditional Access policy named CAPolicy1 and assign CAPolicy1 to Group1.

You need to configure CAPolicy1 to require the members of Group1 to reauthenticate every eight hours when they connect to Microsoft Exchange Online.

What should you configure?

- A. Session access controls
- B. an assignment that uses a User risk condition
- C. an assignment that uses a Sign-in risk condition
- D. Grant access controls

Answer: A

Explanation:

User sign-in frequency

Sign-in frequency defines the time period before a user is asked to sign in again when attempting to access a resource.

The Azure Active Directory (Azure AD) default configuration for user sign-in frequency is a rolling window of 90 days.

Sign-in frequency control

- Sign in to the Azure portal as a global administrator, security administrator, or Conditional Access administrator.
- Browse to Azure Active Directory > Security > Conditional Access.
- Select New policy.
- Give your policy a name. We recommend that organizations create a meaningful standard for the names of their policies.
- Choose all required conditions for customer's environment, including the target cloud apps.
- Under Access controls > Session.

Select Sign-in frequency.

Choose Periodic reauthentication and enter a value of hours or days or select Every time.

- Save your policy. Reference:

<https://docs.microsoft.com/en-us/azure/active-directory/conditional-access/howto-conditional-access-session-life>

NEW QUESTION 149

- (Exam Topic 4)

You have 200 computers that run Windows 10. The computers are joined to Microsoft Azure Active Directory (Azure AD) and enrolled in Microsoft Intune.

You need to set a custom image as the wallpaper and sign-in screen.

Which two settings should you configure in Device restrictions? To answer, select the appropriate settings in the answer area.

NOTE: Each correct selection is worth one point.

Create profile

* Name

MD_101

Description

Enter a description...

* Platform

Windows 10 and later

* Profile type

Device restrictions

Settings

Configure

Scope (Tags)

0 scope(s) selected

Device restrictions

Windows 10 and later

Select a category to configure settings.

App Store ⓘ

13 settings available

Cellular and connectivity ⓘ

15 settings available

Cloud and Storage ⓘ

4 settings available

Cloud Printer ⓘ

6 settings available

Control Panel and Settings ⓘ

16 settings available

Display ⓘ

2 settings available

General ⓘ

24 settings available

Locked Screen Experience ⓘ

6 settings available

Messaging ⓘ

3 settings available

Microsoft Edge Browser ⓘ

28 settings available

Network proxy ⓘ

8 settings available

Password ⓘ

13 settings available

Per-app privacy exceptions ⓘ

1 setting available

Personalization ⓘ

1 setting available

- A. Mastered
 B. Not Mastered

Answer: A

Explanation:

Sign-in screen, or Locked screen, image is set under Locked screen experience Wallpaper image, or Desktop background picture, URL is set under Personalization. References:
<https://docs.microsoft.com/en-us/intune/device-restrictions-windows-10>

NEW QUESTION 151

- (Exam Topic 4)

Note: This question is part of a series of questions that present the same scenario. Each question in the series contains a unique solution that might meet the stated goals. Some question sets might have more than one correct solution, while others might not have a correct solution.

After you answer a question in this section, you will NOT be able to return to it. As a result, these questions will not appear in the review screen.

You need to ensure that feature and quality updates install automatically during a maintenance window.

Solution: In Group policy, from the Maintenance Scheduler settings, you configure Automatic Maintenance Activation Boundary.

Does this meet the goal?

- A. Yes
 B. No

Answer: A

Explanation:

<https://learn.microsoft.com/en-us/windows-server/administration/windows-server-update-services/deploy/4-conf>

NEW QUESTION 154

- (Exam Topic 4)

You have a Microsoft 365 tenant that contains the users shown in the following table.

Name	UPN	Member of
User1	User1@contoso.com	Group1
User2	User2@contoso.com	None

You have Windows 10 devices enrolled in Microsoft Intune as shown in the following table.

Name	Ownership	Enrolled by UPN	Active hours
Device1	Personal	User1@contoso.com	10 AM to 6 PM
Device2	Corporate	User2@contoso.com	9 AM to 5 PM
Device3	Corporate	User1@contoso.com	10 AM to 6 PM

You create a Windows 10 update ring that has the following settings:

> Basics:

- Name: Ring1

> Update ring settings:

- Active hours start: 8 AM

- Active hours end: 8 PM

> Assignments:

- Included Groups: All devices

- Excluded Groups: Group1

For each of the following statements, select Yes if the statement is true. Otherwise, select No.

NOTE: Each correct selection is worth one point.

Statements	Yes	No
The active hours of Device1 are from 8 AM to 8 PM	<input type="radio"/>	<input type="radio"/>
The active hours of Device2 are from 8 AM to 8 PM	<input type="radio"/>	<input type="radio"/>
The active hours of Device3 are from 8 AM to 8 PM	<input type="radio"/>	<input type="radio"/>

A. Mastered

B. Not Mastered

Answer: A

Explanation:

Graphical user interface, text Description automatically generated

Reference:

<https://docs.microsoft.com/en-us/mem/intune/protect/windows-10-update-rings>

NEW QUESTION 155

- (Exam Topic 4)

Your network contains an on-premises Active Directory domain and an Azure Active Directory (Azure AD) tenant. The Default Domain Policy Group Policy Object (GPO) contains the settings shown in the following table.

Name	GPO value
LockoutBadCount	0
MaximumPasswordAge	42
MinimumPasswordAge	1
MinimumPasswordLength	7
PasswordComplexity	True
PasswordHistorySize	24

You need to migrate the existing Default Domain Policy GPO settings to a device configuration profile. Which type of device configuration profile should you create?

A. Administrative Templates

B. Endpoint protection

C. Custom

D. Device restrictions

Answer: C

Explanation:

Reference:

<https://danielchronlund.com/2018/11/27/how-to-replace-your-old-gpos-with-intune-configuration-profiles/>

NEW QUESTION 157

- (Exam Topic 4)

You have 100 computers that run Windows 10. The computers are joined to Microsoft Azure Active Directory (Azure AD) and enrolled in Microsoft Intune.

You need to configure the following device restrictions:

- Block users from browsing to suspicious websites.
- Scan all scripts loaded into Microsoft Edge.

Which two settings should you configure in Device restrictions? To answer, select the appropriate settings in the answer area.

NOTE: Each correct selection is worth one point.

Answer Area

Create Profile

*Name

MD_101

Description

Enter a description

*Platform

Windows 10 and later

*Profile type

Device restrictions

Settings

Configure

Scope (Tags)

0 scope(s) selected

Device restrictions

Windows 10 and later

Microsoft Edge Browser	28 settings available	>
Network proxy	8 settings available	>
Password	13 settings available	>
Per-app privacy exceptions	1 setting available	>
Personalization	1 setting available	>
Printer	3 settings available	>
Privacy	22 settings available	>
Projection	3 settings available	>
Reporting and Telemetry	2 settings available	>
Search	9 settings available	>
Start	28 settings available	>
Windows Defender SmartScreen	3 settings available	>
Windows Spotlight	9 settings available	>
Windows Defender Antivirus	34 settings available	>

OK

- A. Mastered
- B. Not Mastered

Answer: A

Explanation:

Reference:

<https://docs.microsoft.com/en-us/windows/security/threat-protection/windows-defender-smartscreen/windows-d>

NEW QUESTION 162

- (Exam Topic 4)

Your company has 200 computers that run Windows 10. The computers are managed by using Microsoft Intune.

Currently, Windows updates are downloaded without using Delivery Optimization. You need to configure the computers to use Delivery Optimization.

What should you create in Intune?

- A. a device configuration profile
- B. a device compliance policy
- C. an app protection policy
- D. a Windows 10 update ring

Answer: A

Explanation:

References:

<https://docs.microsoft.com/en-us/intune/delivery-optimization-windows>

NEW QUESTION 166

- (Exam Topic 4)

You are creating a device configuration profile in Microsoft Intune. You need to configure specific OMA-URI settings in the profile. Which profile type should you use?

- A. Identity protection
- B. Custom
- C. Device restrictions (Windows 10 Team)
- D. Device restrictions

Answer: B

Explanation:

Reference:
<https://docs.microsoft.com/en-us/mem/intune/configuration/custom-settings-windows-10>

NEW QUESTION 169

- (Exam Topic 4)

You have a Microsoft 365 subscription that contains 100 devices enrolled in Microsoft Intune. You need to review the startup processes and how often each device restarts.

What should you use?

- A. Endpoint analytics
- B. Intune Data Warehouse
- C. Azure Monitor
- D. Device Management

Answer: B

NEW QUESTION 174

- (Exam Topic 4)

Note: This question is part of a series of questions that present the same scenario. Each question in the series contains a unique solution that might meet the stated goals. Some question sets might have more than one correct solution, while others might not have a correct solution.

After you answer a question in this section, you will NOT be able to return to it. As a result, these questions will not appear in the review screen.

You have a computer named Computer1 that runs Windows 10.

You save a provisioning package named Package1 to a folder named C:\Folder1. You need to apply Package1 to Computer1.

Solution: From the Settings app, you select Access work or school, and then you select Add or remove a provisioning package.

Does this meet the goal?

- A. Yes
- B. No

Answer: A

Explanation:

To install a provisioning package, navigate to Settings > Accounts > Access work or school > Add or remove a provisioning package > Add a package, and select the package to install.

Reference:

<https://docs.microsoft.com/en-us/windows/configuration/provisioning-packages/provisioning-apply-package>

NEW QUESTION 176

- (Exam Topic 4)

You have 200 computers that run Windows 10. The computers are joined to Microsoft Azure Active Directory (Azure AD) and enrolled in Microsoft Intune.

You need to configure an Intune device configuration profile to meet the following requirements:

- Prevent Microsoft Office applications from launching child processes.
- Block users from transferring files over FTP.

Which two settings should you configure in Endpoint protection? To answer, select the appropriate settings in the answer area.

NOTE: Each correct selection is worth one point.

Answer Area

Create Profile

*Name

MD101

Description

Enter a description

*Platform

Windows 10 and later

*Profile type

Endpoint protection

Settings

Configure

Scope (Tags)

0 scope(s) selected

Endpoint protection

Windows 10 and later

Select a category to configure settings

Windows Defender Application Gu...
11 settings available

Windows Defender Firewall
40 settings available

Windows Defender SmartScreen
2 settings available

Windows Encryption
37 settings available

Windows Defender Exploit Guard
20 settings available

Windows Defender Application Co...
2 settings available

Windows Defender Application Gua...
1 setting available

Windows Defender Security Center
14 settings available

Local device security options
46 settings available

Xbox services
5 settings available

OK

- A. Mastered
- B. Not Mastered

Answer: A

Explanation:

References:

<https://docs.microsoft.com/en-us/intune/endpoint-protection-windows-10>

NEW QUESTION 179

- (Exam Topic 4)

Note: This question is part of a series of questions that present the same scenario. Each question in the series contains a unique solution that might meet the stated goals. Some question sets might have more than one correct solution, while others might not have a correct solution.

After you answer a question in this section, you will NOT be able to return to it. As a result, these questions will not appear in the review screen.

Your company has an Azure Active Directory (Azure AD) tenant named contoso.com that contains several Windows 10 devices.

When you join new Windows 10 devices to contoso.com, users are prompted to set up a four-digit pin. You need to ensure that the users are prompted to set up a six-digit pin when they join the Windows 10

devices to contoso.com.

Solution: From the Azure Active Directory admin center, you configure automatic mobile device management (MDM) enrollment. From the Device Management admin center, you configure the Windows Hello for Business enrollment options.

Does this meet the goal?

A. Yes

B. No

Answer: A

Explanation:

Hello for Business is an alternative sign-in method that uses Active Directory or an Azure Active Directory account to replace a password, smart card, or a virtual smart card. It lets you use a user gesture to sign in, instead of a password. A user gesture might be a PIN, biometric authentication such as Windows Hello, or an external device such as a fingerprint reader.

Intune integrates with Hello for Business in two ways:

An Intune policy can be created under Device enrollment. This policy targets the entire organization

(tenant-wide). It supports the Windows AutoPilot out-of-box-experience (OOBE) and is applied when a device enrolls.

An identity protection profile can be created under Device configuration. This profile targets assigned users and devices, and is applied during check-in.

References:

<https://docs.microsoft.com/en-us/intune/protect/windows-hello>

NEW QUESTION 182

- (Exam Topic 4)

Note: This question is part of a series of questions that present the same scenario. Each question in the series contains a unique solution that might meet the stated goals. Some question sets might have more than one correct solution, while others might not have a correct solution.

After you answer a question in this section, you will NOT be able to return to it. As a result, these questions will not appear in the review screen.

Your network contains an Active Directory domain. The domain contains member computers that run Windows 8.1 and are enrolled in Microsoft Intune.

You need to identify which computers can be upgraded to Windows 10.

Solution: You install the Microsoft Assessment and Planning Toolkit. From the Microsoft Assessment and Planning Toolkit, you collect inventory data and run the Windows 8.1 Readiness scenario.

Does this meet the goal?

A. Yes

B. No

Answer: B

NEW QUESTION 183

- (Exam Topic 4)

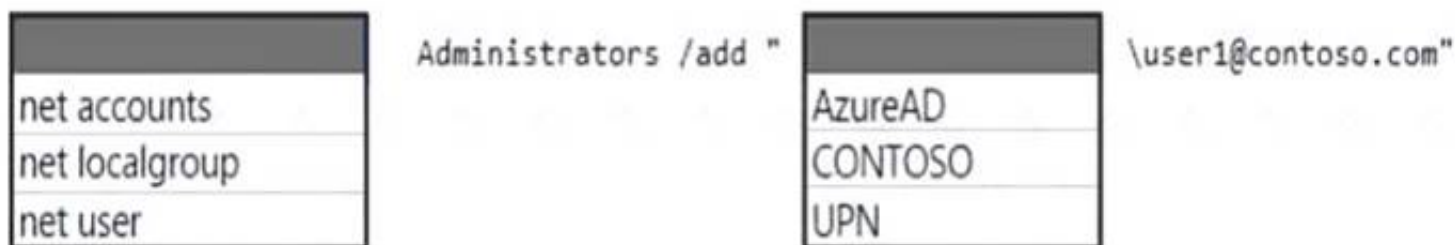
You have an Azure Active Directory (Azure AD) tenant named contoso.com that contains a user named User1. User1 has a user principal name (UPN) of user1@contoso.com.

You join a Windows 10 device named Client1 to contoso.com.

You need to add User1 to the local Administrators group of Client1.

How should you complete the command? To answer, select the appropriate options in the answer area.

NOTE: Each correct selection is worth one point.



A. Mastered

B. Not Mastered

Answer: A

Explanation:

Box 1: net localgroup

Add user to group from command line (CMD)

Windows provides command line utilities to manage user groups. In this post, learn how to use the command net localgroup to add user to a group from command prompt

For example to add a user 'John' to administrators group, we can run the below command. net localgroup administrators John /add

Box 2: Contoso

The domain of the user is Contoso.

Reference: <https://www.windows-commandline.com/add-user-to-group-from-command-line/>

NEW QUESTION 184

- (Exam Topic 4)

Your company has a Microsoft 365 tenant.

Users sign in to Windows 10 devices by using their Microsoft 365 account.

On a computer, you open Sync your settings as shown in the exhibit. (Click the Exhibit tab.)

- A. Enable User Experience Virtualization (UE-V).
- B. Enable Windows Mobility Center.
- C. Disable Windows Hello for Business.
- D. Enable Enterprise State Roaming.

Answer: D

Explanation:

Reference:

<https://docs.microsoft.com/en-us/azure/active-directory/devices/enterprise-state-roaming-enable>

NEW QUESTION 186

- (Exam Topic 4)

You manage a Microsoft Deployment Toolkit (MDT) deployment share named DS1. OS! contains an

Out-of-Box Drivers folder named Windows 10 x64 that has subfolders in the format of (make name)\ (model name).

You need to modify a deployment task sequence to ensure that all the drivers in the folder that match the make and model of the computers are installed without using PnP detection or selection profiles.

What should you do? To answer, select the appropriate options in the answer area. NOTE: Each correct selection is worth one point.

Answer Area

Phase that you must modify in the deployment task sequence:

- Preinstall
- Install
- Preinstall
- Validation

Task that you must use to specify which folder contains the drivers:

- Inject Drivers
- Gather
- Inject Drivers
- Set Task Sequence Variable
- Validate

- A. Mastered
- B. Not Mastered

Answer: A

Explanation:

Box 1: Preinstall PREINSTALL

Completes any tasks that need to be done (such as creating new partitions) before the target operating system is deployed.

Box 2: Inject Drivers Inject Drivers

This task sequence step injects drivers that have been configured for deployment to the target computer.

The unique properties and settings for the Inject Drivers task sequence step type are:

* Property: TypeSet this read-only type to Inject Drivers.

* Settings

Install only matching drivers: Injects only the drivers that the target computer requires and that match what is available in Out-of-Box Drivers

Install all drivers: Installs all drivers

Selection profile: Installs all drivers in the selected profile

Reference: <https://docs.microsoft.com/en-us/mem/configmgr/mdt/toolkit-reference>

NEW QUESTION 188

- (Exam Topic 4)

Note: This question is part of a series of questions that present the same scenario. Each question in the series contains a unique solution that might meet the stated goals. Some question sets might have more than one correct solution, while others might not have a correct solution.

After you answer a question in this section, you will NOT be able to return to it. As a result, these questions will not appear in the review screen.

Your company uses Windows Update for Business.

The research department has several computers that have specialized hardware and software installed. You need to prevent the video drivers from being updated automatically by using Windows Update.

Solution: From the Device Installation and Restrictions settings in a Group Policy object (GPO), you enable Prevent installation of devices using drivers that match these device setup classes, and then you enter the device GUID.

Does this meet the goal?

- A. Yes
- B. No

Answer: B

Explanation:

References:

https://www.stigviewer.com/stig/microsoft_windows_server_2012_member_server/2013-07-25/finding/WN12

NEW QUESTION 190

- (Exam Topic 4)

Note: This question is part of a series of questions that present the same scenario. Each question in the series contains a unique solution that might meet the stated goals. Some question sets might have more than one correct solution, while others might not have a correct solution.

After you answer a question in this section, you will NOT be able to return to it. As a result, these questions will not appear in the review screen.

Your network contains an Active Directory domain. The domain contains a computer named Computer1 that runs Windows 8.1.

Computer1 has apps that are compatible with Windows 10.

You need to perform a Windows 10 in-place upgrade on Computer1.

Solution: You add Windows 10 startup and install images to a Windows Deployment Services (WDS) server. You start Computer1 by using WDS and PXE, and then you initiate the Windows 10 installation.

Does this meet the goal?

A. Yes

B. No

Answer: A

Explanation:

Reference: <https://docs.microsoft.com/en-us/windows/deployment/windows-deployment-scenarios-and-tools>

NEW QUESTION 193

- (Exam Topic 4)

You have an Azure Active Directory (Azure AD) tenant named adatum.com The tenant contains Windows 10 devices that are enrolled in Microsoft Intune.

You create an Azure Log Analytics workspace and add the Device Health solution to the workspace.

You need to create a custom device configuration profile that will enroll the Windows 10 devices in Device Health.

Which OMA-URI should you add to the profile?

A. ./Vendor/MSFT/DMClient/Provider/MS DM Server/Push

B. ./Vendor/MSFT/DMClient/Provider/MS DM Server/Push/ChannelURI

C. ./Vendor/MSFT/DMClient/Provider/MS DM Server/CommercialID

D. ./Vendor/MSFT/DMClient/Provider/MS DM Server/ManagementServerAddressList

Answer: C

Explanation:

References:

<https://allthingscloud.blog/monitor-windows-10-updates-for-intune-mdm-enrolled-devices/>

NEW QUESTION 194

- (Exam Topic 4)

Your company has devices enrolled in Microsoft Intune as shown in the following table.

Name	Platform
Device1	Windows 10
Device2	Android device administrator
Device3	iOS

In Microsoft Endpoint Manager, you define the company's network as a location named Location1. Which devices can use network location-based compliance policies?

A. Device2 and Device3 only

B. Device2 only

C. Device1 and Device2 only

D. Device1 only

E. Device1, Device2, and Device3

Answer: E

Explanation:

Intune supported operating systems

Intune supports devices running the following operating systems (OS): iOS

Android Windows macOS

Note: View the device compliance settings for the different device platforms: Android device administrator

Android Enterprise iOS

macOS

Windows Holographic for Business

Windows 8.1 and later Windows 10/11

Reference: <https://docs.microsoft.com/en-us/mem/intune/fundamentals/supported-devices-browsers> <https://docs.microsoft.com/en-us/mem/intune/protect/device-compliance-get-started>

NEW QUESTION 197

- (Exam Topic 4)

Your company has several Windows 10 devices that are enrolled in Microsoft Intune.
You deploy a new computer named Computer1 that runs Windows 10 and is in a workgroup. You need to enroll Computer1 in Intune.
Solution: From Computer1, you sign in to <https://portal.manage.microsoft.com> and use the Devices tab. Does this meet the goal?

- A. Yes
- B. No

Answer: B

Explanation:

Use MDM enrollment.

MDM only enrollment lets users enroll an existing Workgroup, Active Directory, or Azure Active directory joined PC into Intune. Users enroll from Settings on the existing Windows PC.

Reference:

<https://docs.microsoft.com/en-us/mem/intune/enrollment/windows-enrollment-methods>

NEW QUESTION 199

- (Exam Topic 4)

You have a server that runs the Microsoft Deployment Toolkit (MDT). You have computers that run Windows 8.1 or Windows 10.

You have a Microsoft 365 tenant. Microsoft 365 Enterprise E5 licenses are assigned to all users.

You need to recommend a strategy to install Windows 10 on the Windows 8.1 computers. The installation must retain the user files, settings, and supported applications. What should you recommend?

- A. Refresh the Windows 8.1 computers by using Windows 10 and use the User State Migration Tool (USMT).
- B. Perform an in-place upgrade of Windows 8.1 to Windows 10.
- C. Refresh the Windows 8.1 computers by using Windows 10 and use Windows Autopilot white glove service to finalize the installation.
- D. Refresh the Windows 8.1 computers by using Windows 10 and use Windows Autopilot user-driven mode.

Answer: B

Explanation:

Reference:

<https://docs.microsoft.com/en-us/windows/deployment/deploy-m365>

<https://docs.microsoft.com/en-us/windows/deployment/upgrade/windows-10-upgrade-paths>

NEW QUESTION 202

- (Exam Topic 4)

You have a computer named Computer1 that runs Windows 10. Computer is used by a user named User1. You need to ensure that when User1 opens websites from untrusted locations by using Microsoft Edge,

Microsoft Edge runs in isolated container.

What should you do first?

- A. From Windows Features, turn on Windows Defender Application Guard.
- B. From Windows Security, configure the Device security settings.
- C. From Windows Security, configure the Virus & threat protection settings.
- D. From Windows Features, turn on Hyper-V Platform.

Answer: A

Explanation:

Reference:

<https://docs.microsoft.com/en-us/windows/security/threat-protection/windows-defender-application-guard/wd-a> <https://docs.microsoft.com/en-us/windows/security/threat-protection/windows-defender-application-guard/install>

NEW QUESTION 205

- (Exam Topic 4)

Your network contains an Active Directory domain that is synced to Microsoft Azure Active Directory (Azure AD). The domain contains 500 laptops that run Windows 8.1 Professional. The users of the laptops work from home.

Your company uses Microsoft Intune, the Microsoft Deployment Toolkit (MDT), and Windows Configuration Designer to manage client computers.

The company purchases 500 licenses for Windows 10 Enterprise.

You verify that the hardware and applications on the laptops are compatible with Windows 10.

The users will bring their laptop to the office, where the IT department will deploy Windows 10 to the laptops while the users wait.

You need to recommend a deployment method for the laptops that will retain their installed applications. The solution must minimize how long it takes to perform the deployment.

What should you include in the recommendation?

- A. an in-place upgrade
- B. a clean installation by using a Windows Configuration Designer provisioning package
- C. Windows AutoPilot
- D. a clean installation and the User State Migration Tool (USMT)

Answer: A

Explanation:

References:

<https://docs.microsoft.com/en-us/windows/deployment/windows-10-deployment-scenarios#in-place-upgrade>

NEW QUESTION 210

- (Exam Topic 4)

You use Windows Defender Advanced Threat Protection (Windows Defender ATP) to protect computers that run Windows 10. You need to assess the differences between the configuration of Windows Defender ATP and the Microsoft recommended configuration baseline. Which tool should you use?

- A. Windows Defender Security Center
- B. Windows Analytics
- C. Windows Defender ATP Power BI app
- D. Microsoft Secure Score

Answer: D

Explanation:

References:

<https://docs.microsoft.com/en-us/windows/security/threat-protection/microsoft-defender-atp/overview-securesco>

NEW QUESTION 213

- (Exam Topic 4)

Your network contains an on-premises Active Directory forest named contoso.com that syncs to Azure Active Directory (Azure AD). Azure AD contains the users shown in the following table.

Name	Source	Member of
User1	Azure AD	Group1
User2	Windows Active Directory	Group2

You assign Windows 10 Enterprise E5 licenses to Group1 and User2. You add computers to the network as shown in the following table.

Name	Operating system	Joined to
Computer1	Windows 10 Pro	Azure AD
Computer2	Windows 10 Pro	Active Directory
Computer3	Windows 8.1	Active Directory

For each of the following statements, select Yes if the statement is true. Otherwise, select No.

NOTE: Each correct selection is worth one point.

Statements	Yes	No
If User1 signs in to Computer1, Computer1 will be upgraded to Windows 10 Enterprise E5 automatically.	<input type="radio"/>	<input type="radio"/>
If User2 signs in to Computer2, Computer2 will be upgraded to Windows 10 Enterprise E5 automatically.	<input type="radio"/>	<input type="radio"/>
If User2 signs in to Computer3, Computer3 will be upgraded to Windows 10 Enterprise E5 automatically.	<input type="radio"/>	<input type="radio"/>

- A. Mastered
- B. Not Mastered

Answer: A

Explanation:

Reference:

<https://docs.microsoft.com/en-us/windows/deployment/windows-10-subscription-activation>

NEW QUESTION 215

- (Exam Topic 4)

You have a Microsoft 365 tenant that contains the devices shown in the following table.

Name	Platform	(Azure Active Directory) Azure AD join type	Managed by using Microsoft Intune
Device1	Windows 10	Joined	Yes
Device2	Android	Registered	Yes
Device3	iOS	None	Yes
Device4	Windows 10	None	No
Device5	iPadOS	Registered	No

You need to assign app protection settings to the devices.

What is the minimum number of app protection policies required?

- A. 1
- B. 2
- C. 3
- D. 4
- E. 5

Answer: B

Explanation:

Reference:

<https://docs.microsoft.com/en-us/mem/intune/apps/app-protection-policies>

NEW QUESTION 218

- (Exam Topic 4)

Your network contains an Active Directory domain named contoso.com. The domain contains computers that run Windows 10 and are joined to the domain.

The domain is synced to Microsoft Azure Active Directory (Azure AD).

You create an Azure Log Analytics workspace and deploy the Device Health solution. You need to enroll the computers in Windows Analytics.

Which Group Policy setting should you configure?

- A. Specify intranet Microsoft update service location
- B. Allow Telemetry
- C. Configure the Commercial ID
- D. Connected User Experiences and Telemetry

Answer: C

Explanation:

Microsoft uses a unique commercial ID to map information from user computers to your Azure workspace. Copy your commercial ID key from any of the Windows Analytics solutions you have added to your Windows Portal, and then deploy it to user computers.

References:

<https://docs.microsoft.com/en-us/windows/deployment/update/windows-analytics-get-started>

NEW QUESTION 219

- (Exam Topic 4)

You have a server named Server1 and computers that run Windows 8.1. Server1 has the Microsoft Deployment Toolkit (MDT) installed.

You plan to upgrade the Windows 8.1 computers to Windows 10 by using the MDT deployment wizard. You need to create a deployment share on Server1.

What should you do on Server1, and what are the minimum components you should add to the MDT deployment share? To answer, select the appropriate options in the answer area.

NOTE: Each correct selection is worth one point.

On Server1:

Import the Deployment Image Servicing and Management (DISM) PowerShell module.
Import the WindowsAutopilotIntune Windows PowerShell module.
Install the Windows Assessment and Deployment Kit (Windows ADK).
Install the Windows Deployment Services server role.

Add to the MDT deployment share:

Windows 10 image and package only
Windows 10 image and task sequence only
Windows 10 image only
Windows 10 image, task sequence, and package

- A. Mastered
- B. Not Mastered

Answer: A

Explanation:

Box 1: Install the Windows Deployment Services role. Install and initialize Windows Deployment Services (WDS) On the server:

Open an elevated Windows PowerShell prompt and enter the following command: `Install-WindowsFeature -Name WDS -IncludeManagementTools WDSUTIL /Verbose /Progress /Initialize-Server /Server:MDT01 /RemInst:"D:\RemoteInstall" WDSUTIL /Set-Server /AnswerClients:All`

Box 2: Windows 10 image and task sequence only Create the reference image task sequence

In order to build and capture your Windows 10 reference image for deployment using MDT, you will create a task sequence.

Reference:

<https://docs.microsoft.com/en-us/windows/deployment/deploy-windows-mdt/prepare-for-windows-deployment>

<https://docs.microsoft.com/en-us/windows/deployment/deploy-windows-mdt/create-a-windows-10-reference-im>

NEW QUESTION 223

- (Exam Topic 4)

You manage a Microsoft 365 environment that has co-management enabled.

All computers run Windows 10 and are deployed by using the Microsoft Deployment Toolkit (MDT). You need to recommend a solution to deploy Microsoft Office 365 ProPlus to new computers. The latest

version must always be installed. The solution must minimize administrative effort.

What is the best tool to use for the deployment? More than one answer choice may achieve the goal. Select the BEST answer.

- A. Microsoft Intune
- B. Microsoft Deployment Toolkit
- C. Office Deployment Toolkit (ODT)
- D. a Group Policy object (GPO)
- E. Microsoft System Center Configuration Manager

Answer: C

Explanation:

References:

<https://docs.microsoft.com/en-us/deployoffice/overview-of-the-office-2016-deployment-tool>

NEW QUESTION 225

- (Exam Topic 4)

You have a Microsoft 365 E5 subscription that contains the users shown in the following table.

Name	Member of	Multi-factor authentication (MFA) status
User1	Group1	Disabled
User2	Group1, Group2	Enforced

You have the devices shown in the following table.

Name	Platform
Device1	Windows 11
Device2	Android

You have a Conditional Access policy named CAPolicy1 that has the following settings:

- > Assignments
 - Users or workload identities: Group1
 - _ Cloud apps or actions: All cloud apps Conditions
 - Device platforms: include: Windows, Android
 - Grant access controls: Require multi-factor authentication

You have a Conditional Access named CAPolicy2 that has the following settings:

- > Assignments
 - Users or workload identities: Group2
 - _ Cloud apps or actions: All cloud apps Conditions
 - Device platforms: Android
 - Access controls: Block access

For each of the following statements, select Yes if the statement is true. Otherwise, select No.

NOTE: Each correct selection is worth one point.

Statements	Yes	No
User1 can access Microsoft Exchange Online from Device2.	<input type="radio"/>	<input type="radio"/>
User2 can access Microsoft Exchange Online from Device1.	<input type="radio"/>	<input type="radio"/>
User2 can access Microsoft Exchange Online from Device2.	<input type="radio"/>	<input type="radio"/>

- A. Mastered
- B. Not Mastered

Answer: A

Explanation:

A screenshot of a computer Description automatically generated with medium confidence

NEW QUESTION 226

- (Exam Topic 4)

You have a Microsoft 365 subscription.

You need to configure access to Microsoft Office 365 for unmanaged devices. The solution must meet the following requirements:

- > Allow only the Microsoft Intune Managed Browser to access Office 365 web interfaces.
- > Ensure that when users use the Intune Managed Browser to access Office 365 web interfaces, they can only copy data to applications that are managed by the company.

Which two settings should you configure from the Microsoft Intune blade? To answer, select the appropriate settings in the answer area.

NOTE: Each correct selection is worth one point.



- A. Mastered
- B. Not Mastered

Answer: A

Explanation:

References:

<https://docs.microsoft.com/en-us/intune/app-configuration-managed-browser#application-protection-policies-for>

NEW QUESTION 230

- (Exam Topic 4)

You have a Microsoft 365 subscription.

You have 20 computers that run Windows 10 and are joined to Microsoft Azure Active Directory (Azure AD)

You plan to replace the computers with new computers that run Windows 10. The new computers will be joined to Azure AD.

You need to ensure that the desktop background, the favorites, and the browsing history are available on the new computer.

What should you use?

- A. Roaming user profiles
- B. Folder Redirection
- C. The Microsoft SharePoint Migration Tool
- D. Enterprise State Roaming

Answer: D

Explanation:

Reference:

<https://docs.microsoft.com/en-us/azure/active-directory/devices/enterprise-state-roaming-faqs>

NEW QUESTION 232

- (Exam Topic 4)

Your network contains an Active Directory domain named contoso.com.

You create a provisioning package named Package1 as shown in the following exhibit.

Steps

Set up device

Set up network

Account management

Add applications

Add certificates

Finish

Summary

Set up device

Enter device name

Share devices

Remove pre-installed software

Comp%RAND:1%

No

No

Network settings

Network

Wired

Account management

Domain name

Domain user name

Domain user password

Contoso.com

contoso\administrator

Add applications

Add certificates

Protect your package

Protect the content of your package by specifying a password.

The password length must be 8-16 characters.

No

What is the maximum number of devices on which you can run Package1 successfully?

- A. 1
- B. 10
- C. 25
- D. unlimited

Answer: D

NEW QUESTION 235

- (Exam Topic 4)

You have a Microsoft 365 subscription.

You plan to enroll devices in Microsoft Endpoint Manager that have the platforms and versions shown in the following table.

Platform	Version
Android	8, 9
iOS	11, 12

You need to configure device enrollment to meet the following requirements:

- Ensure that only devices that have approved platforms and versions can enroll in Endpoint Manager.
- Ensure that devices are added to Microsoft Azure Active Directory (Azure AD) groups based on a selection made by users during the enrollment.

Which device enrollment setting should you configure for each requirement? To answer, select the appropriate options in the answer area.

NOTE: Each correct selection is worth one point.

Ensure that only devices that have approved platforms and versions can enroll in Endpoint Manager:

Android enrollment

Apple enrollment

Corporate device identifiers

Device categories

Enrollment restrictions

Windows enrollment

Ensure that devices are added to Azure AD groups based on a selection made by users during enrollment:

Android enrollment

Apple enrollment

Corporate device identifiers

Device categories

Enrollment restrictions

Windows enrollment

- A. Mastered
- B. Not Mastered

Answer: A

Explanation:

Reference:

https://docs.microsoft.com/en-us/mem/intune/enrollment/enrollment-restrictions-set https://docs.microsoft.com/en-us/mem/intune/enrollment/device-group-mapping

NEW QUESTION 236

- (Exam Topic 4)

You have 100 computers that run Windows 8.1.

You need to identify which computers can be upgraded to Windows 10. What should you use?

- A. Microsoft Deployment Toolkit (MDT)
- B. Update Compliance Azure
- C. Windows Assessment Toolkit
- D. Microsoft Assessment and Planning (MAP) Toolkit.

Answer: D

Explanation:

Reference:

<https://www.techielass.com/using-maps-azure-readiness/>

NEW QUESTION 238

- (Exam Topic 4)

Your network contains an Active Directory domain. Active Directory is synced with Microsoft Azure Active Directory (Azure AD).

There are 500 Active Directory domain-joined computers that run Windows 10 and are enrolled in Microsoft Intune.

You plan to implement Microsoft Defender Exploit Guard.

You need to create a custom Microsoft Defender Exploit Guard policy, and then distribute the policy to all the computers.

What should you do? To answer, select the appropriate options in the answer area.

NOTE: Each correct selection is worth one point.

Tool to use to configure the settings:

▼

Security & Compliance in Microsoft 365

Windows Security app

Microsoft Endpoint Manager admin center

Distribution method:

▼

An Azure policy

An Endpoint Protection configuration profile

An Intune device compliance policy

A device restrictions configuration profile

- A. Mastered
- B. Not Mastered

Answer: A

Explanation:

Reference:

<https://docs.microsoft.com/en-us/windows/security/threat-protection/microsoft-defender-atp/import-export-expl> <https://docs.microsoft.com/en-us/intune/endpoint-protection-windows-10>

<https://docs.microsoft.com/en-us/windows/security/threat-protection/microsoft-defender-atp/enable-exploit-prot>

NEW QUESTION 243

- (Exam Topic 4)

You have devices enrolled in Microsoft Intune as shown in the following table.

Name	Platform	Group
Device1	Windows 10	Group1, Group2
Device2	Android	Group2
Device3	iOS	Group2, Group3

You create device configuration profiles in Intune as shown in the following table.

Name	Platform	Minimum password length
Profile1	Windows 10 and later	4
Profile2	Android	5
Profile3	iOS	6
Profile4	Android	7
Profile5	iOS	8

You assign the device configuration profiles to groups as shown in the following table.

Group	Profile
Group1	Profile3
Group2	Profile1, Profile2, Profile4
Group3	Profile3, Profile5

For each of the following statements, select Yes if the statement is true. Otherwise, select No.

NOTE: Each correct selection is worth one point.

Statements	Yes	No
Device1 must have a minimum password length of seven characters.	<input type="radio"/>	<input type="radio"/>
Device2 must have a minimum password length of seven characters.	<input type="radio"/>	<input type="radio"/>
Device3 must have a minimum password length of six characters.	<input type="radio"/>	<input type="radio"/>

- A. Mastered
 B. Not Mastered

Answer: A

Explanation:

If a compliance policy evaluates against the same setting in another compliance policy, then the most restrictive compliance policy setting applies.

Reference:

<https://docs.microsoft.com/en-us/mem/intune/configuration/device-profile-troubleshoot>

NEW QUESTION 247

- (Exam Topic 4)

Your company has a Microsoft Azure Active Directory (Azure AD) tenant named contoso.com. All users have computers that run Windows 10. The computers are joined to Azure AD and managed by using Microsoft Intune.

You need to ensure that you can centrally monitor the computers by using Windows Analytics. What should you create in Intune?

- A. a device configuration profile
 B. a conditional access policy
 C. a device compliance policy
 D. an update policy

Answer: A

Explanation:

References:

<https://www.sccconfigmgr.com/2019/03/27/windows-analytics-onboarding-with-intune/>

NEW QUESTION 250

- (Exam Topic 4)

Your network contains an Active Directory Domain Services (AD DS) domain named contoso.com. The domain contains Windows 10 devices that are managed by using Microsoft Endpoint Configuration Manager.

You plan to deploy Microsoft 365 Apps for enterprise to the devices by using Configuration Manager. You create a Configuration.xml file as shown in the following exhibit.

```
<Configuration ID="67e*0d4f-814a-4466-9e3c-1388d66a527c">
  <Add OfficeClientEdition="64" Channel="Current" OfficeMgmtCOM="TRUE">>
    <Product ID="0365ProPlusRetail">
      <Language ID="MatchOS" />
      <ExcludeApp ID="Access" />
      <ExcludeApp ID="Groove" />
      <ExcludeApp ID="Lync" />
      <ExcludeApp ID="Publisher" />
    </Product>
  </Add>
  <Property Name="SharedComputerLicensing" Value="0"/>
  <Property Name="PinIconsToTaskbar" Value="TRUE"/>
  <Property Name="SCLCacheOverride" Value="0" />
  <Property Name="AUTOACTIVATE" Value="0" />
  <Property Name="FORCEAPPSHUTDOWN" Value="TRUE"/>
  <Property Name="DeviceBasedLicensing" Value="1" />
  <RemoveMSI />
  <AppSettings>
    <Setup Name="Company" Value="Contoso.com" />
  </AppSettings>
  <Display Level="None" AcceptEULA="TRUE" />
  <Logging Level="Standard" Path="\\Server1\Office" />
</Configuration>
```

Use the drop-down menus to select the answer choice that completes each statement based on the information presented in the graphic.

NOTE: Each correct selection is worth one point.

Microsoft 365 Apps for enterprise will be installed from [answer choice]

\\Server1\Office
a Configuration Manager distribution point
the Office 365 Content Delivery Network (CDN)

New Microsoft Office feature updates will be available to devices [answer choice]

twice a year in January and July
once a month, on the second Tuesday of the month
as soon as the update is ready, but on no set schedule

- A. Mastered
- B. Not Mastered

Answer: A

Explanation:

Reference:

<https://docs.microsoft.com/en-us/deployoffice/office-deployment-tool-configuration-options> <https://docs.microsoft.com/en-us/deployoffice/overview-update-channels#semi-annual-enterprise-channel-overv>

NEW QUESTION 254

- (Exam Topic 4)

You have 100 computers that run Windows 10. You have no servers. All the computers are joined to Microsoft Azure Active Directory (Azure AD).

The computers have different update settings, and some computers are configured for manual updates. You need to configure Windows Update. The solution must meet the following requirements:

- > The configuration must be managed from a central location.
- > Internet traffic must be minimized.
- > Costs must be minimized.

How should you configure Windows Update? To answer, select the appropriate options in the answer area.

NOTE: Each correct selection is worth one point.

Windows Update technology to use:

Windows Server Update Services (WSUS)
Microsoft Endpoint Configuration Manager
Windows Update for Business

Manage the configuration by using:

A Group Policy object (GPO)
Microsoft Endpoint Configuration Manager
Microsoft Intune

Manage the traffic by using:

Delivery Optimization
BranchCache
Peer cache

- A. Mastered
- B. Not Mastered

Answer: A

Explanation:

Box 1: Windows Server Update Services (WSUS)

Windows Server Update Services (WSUS) enables information technology administrators to deploy the latest Microsoft product updates. You can use WSUS to fully manage the distribution of updates that are released through Microsoft Update to computers on your network.

Windows Server Update Services is a built-in server role that includes the following enhancements: Can be added and removed by using the Server Manager Includes Windows PowerShell cmdlets to manage the most important administrative tasks in WSUS Etc.

Box 2: A Group Policy object

In an Active Directory environment, you can use Group Policy to define how computers and users can interact with Windows Update to obtain automatic updates from Windows Server Update Services (WSUS).

Box 3: BranchCache

BranchCache is a bandwidth-optimization feature that has been available since the Windows Server 2008 R2 and Windows 7 operating systems. Each client has a cache and acts as an alternate source for content that devices on its own network request. Windows Server Update Services (WSUS) and Microsoft Endpoint Manager can use BranchCache to optimize network bandwidth during update deployment, and it's easy to configure for either of them. BranchCache has two operating modes: Distributed Cache mode and Hosted Cache mode.

Reference: <https://docs.microsoft.com/en-us/windows/deployment/update/waas-branchcache> <https://docs.microsoft.com/en-us/windows-server/administration/windows-server-update-services/deploy/4-conf>

NEW QUESTION 257

- (Exam Topic 4)

You have a Microsoft 365 subscription.

A remote user purchases a laptop from a retail store. The laptop is intended for company use and has Windows 10 Pro edition installed. You need to configure the laptop to meet the following requirements:

- Modify the layout of the Start menu
- Upgrade Windows 10 to Windows 10 Enterprise
- Join the laptop to a Microsoft Azure Active Directory (Azure AD) domain named contoso.com

What should you do?

- A. Create a custom Windows image (.wim) file that contains an image of Windows 10 Enterprise and upload the file to a Microsoft
- B. Create a provisioning package (.ppkg) file and email the file to the user
- C. Create a Windows To Go workspace and ship the workspace to the user
- D. Create a Sysprep Unattend (.xml) file and email the file to the user

Answer: B

Explanation:

Reference:

<https://docs.microsoft.com/en-us/windows/configuration/provisioning-packages/provisioning-packages>

NEW QUESTION 262

- (Exam Topic 4)

You have the 64-bit computers shown in the following table.

Name	Operating system	Memory	BitLocker Drive Encryption (BitLocker)
Computer1	32-bit version of Windows 7 Service Pack 1 (SP1)	1 GB	Enabled
Computer2	64-bit version of Windows 7 Service Pack 1 (SP1)	4 GB	Enabled
Computer3	32-bit version of Windows 8.1	2 GB	Enabled
Computer4	64-bit version of Windows 8.1	4 GB	Disabled

You plan to perform an in-place upgrade to the 64-bit version of Windows 10.

Which computers can you upgrade to the 64-bit version of Windows 10 in their current state?

- A. Computer2 and Computer4 only
- B. Computer4 only
- C. Computer3 and Computer4 only
- D. Computer1, Computer2, Computer3 and Computer4
- E. Computer2, Computer3, and Computer4 only

Answer: A

Explanation:

References:

<https://docs.microsoft.com/en-us/windows/deployment/windows-10-deployment-scenarios>

NEW QUESTION 263

- (Exam Topic 4)

Your network contains an Active Directory domain. The domain contains 100 computers that run Windows 10.

You need to prevent users and apps from accessing dangerous websites. What should you configure?

- A. Microsoft Defender Application Control
- B. Microsoft Defender Exploit Guard
- C. Microsoft Defender Application Guard
- D. Microsoft Defender Firewall

Answer: B

Explanation:

Reference:

<https://docs.microsoft.com/en-us/microsoft-365/security/defender-endpoint/enable-network-protection?view=o365-worldwide>

NEW QUESTION 268

- (Exam Topic 4)

You have an on-premises server named Server1 that hosts a Microsoft Deployment Toolkit (MDT) deployment share named MDT1.

You need to ensure that MDT1 supports multicast deployments. What should you install on Server1?

- A. Windows Server Update Services (VVSUS)
- B. Multipath I/O (MPIO)
- C. Windows Deployment Services (WDS)
- D. Multipoint Connector

Answer: C

NEW QUESTION 273

- (Exam Topic 4)

Your network contains an Active Directory domain. The domain contains computers that run Windows 10. All users use Roaming User Profiles.

You have a user named Public1 that is used to sign-in to a public computer.

You need to prevent changes to the user settings of Public1 from being saved to the user profile. What should you do?

- A. Rename the Roaming User Profile folder to Public1.man
- B. Rename Ntuser.dat to Ntuser.v6
- C. Rename Ntuser.dat to Ntuser.man
- D. Rename the Roaming User Profile folder to Public1.v1

Answer: C

Explanation:

Reference:

<https://docs.microsoft.com/en-us/answers/questions/168551/set-roaming-profile-download-from-server-to-pcbut> <https://docs.microsoft.com/en-us/windows/client-management/mandatory-user-profile>

NEW QUESTION 275

- (Exam Topic 4)

You have 500 Windows 10 devices enrolled in Microsoft Intune.

You plan to use Exploit protection in Microsoft Endpoint Manager to enable the following system settings on the devices:

- Data Execution Prevention (DEP)
- Force randomization for images (Mandatory ASLR)

You need to configure a Windows 10 device that will be used to create a template file.

Which protection areas on the device should you configure in the Windows Security app before you create the template file? To answer, drag the appropriate protection areas to the correct settings. Each protection area may be used once, more than once, or not at all. You may need to drag the split bar between panes or scroll to view content.

NOTE: Each correct selection is worth one point.



The screenshot shows the Windows Security app interface. On the left, under 'Protection areas', there are three buttons: 'Account protection', 'App & browser control', and 'Device security'. On the right, under 'Answer Area', there are two input fields: 'DEP:' and 'Mandatory ASLR:'. The 'DEP:' field has a dropdown menu with 'On' selected. The 'Mandatory ASLR:' field has a dropdown menu with 'On' selected.

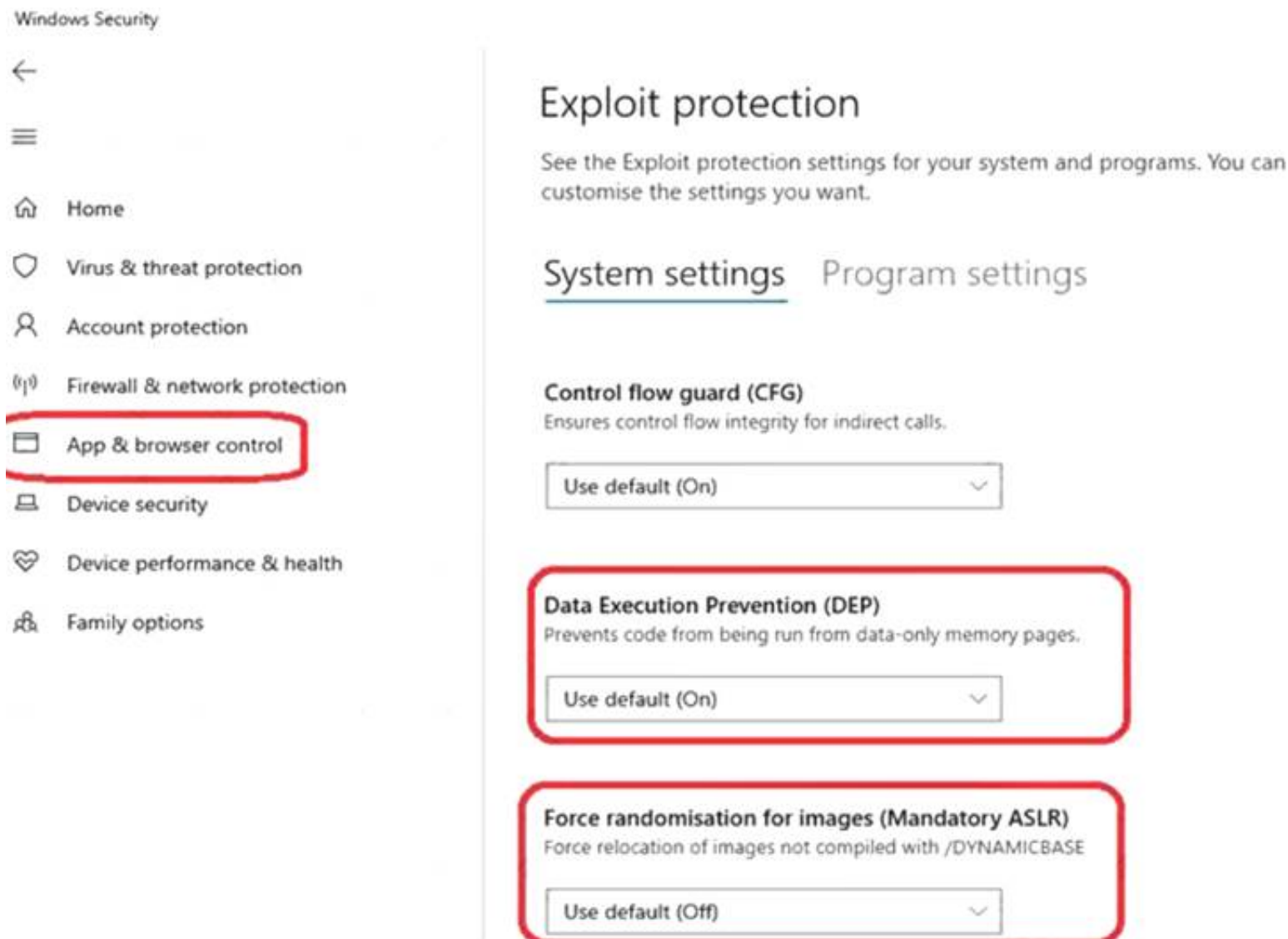
- A. Mastered
- B. Not Mastered

Answer: A

Explanation:

Box 1: App & browser control

Graphical user interface, text, application Description automatically generated



Note: Data Execution Prevention (DEP): This mitigation prevents code from being run from data-only memory pages.

Box 2: App & browser control

Force randomization for images (Mandatory ASLR). This mitigation forcibly relocates images not compiled with /DYNAMICBASE.

Reference:

<https://support.microsoft.com/en-us/windows/app-browser-control-in-windows-security-8f68fb65-ebb4-3cfb-4b>

NEW QUESTION 280

- (Exam Topic 4)

Note: This question is part of a series of questions that present the same scenario. Each question in the series contains a unique solution that might meet the stated goals. Some question sets might have more than one correct solution, while others might not have a correct solution.

After you answer a question in this section, you will NOT be able to return to it. As a result, these questions will not appear in the review screen.

Your company has an Azure Active Directory (Azure AD) tenant named contoso.com and a Microsoft Intune subscription.

Contoso.com contains a user named user1@contoso.com.

You have a computer named Computer1 that runs Windows 8.1.

You need to perform an in-place upgrade of Computer1 to Windows 10.

Solution: You start Computer1 from the Windows 10 installation media and use the Install option. Does this meet the goal?

A. Yes

B. No

Answer: B

NEW QUESTION 283

- (Exam Topic 4)

You use Microsoft Endpoint Manager to manage Windows 10 devices.

You are designing a reporting solution that will provide reports on the following:

- > Compliance policy trends
- > Trends in device and user enrolment
- > App and operating system version breakdowns of mobile devices

You need to recommend a data source and a data visualization tool for the design.

What should you recommend? To answer, select the appropriate options in the answer area. NOTE: Each correct selection is worth one point.

Data source:

Data visualization tool:

A. Mastered

B. Not Mastered

Answer: A

Explanation:

Reference:

<https://docs.microsoft.com/en-us/mem/intune/developer/reports-nav-create-intune-reports> <https://docs.microsoft.com/en-us/mem/intune/developer/reports-proc-get-a-link-powerbi>

NEW QUESTION 284

- (Exam Topic 4)

You have a Microsoft 365 tenant that contains the objects shown in the following table.

Name	Type
Admin1	User
Group1	Microsoft 365 group
Group2	Distribution group
Group3	Mail-enabled security group
Group4	Security group

You are creating a compliance policy named Compliance1.

Which objects can you specify in Compliance1 as additional recipients of noncompliance notifications?

- A. Group1, Group2, Group3, Group4, and Admin1
- B. Group1, Group2, Group3, and Group4 only
- C. Group3, Group4, and Admin1 only
- D. Group1, Group2, and Group3 only
- E. Group3 and Group4 only

Answer: D

Explanation:

Reference:

<https://www.ravenswoodtechnology.com/microsoft-intune-compliance-notifications/> <https://docs.microsoft.com/en-us/microsoft-365/admin/create-groups/compare-groups?view=o365-worldwide>

NEW QUESTION 287

- (Exam Topic 4)

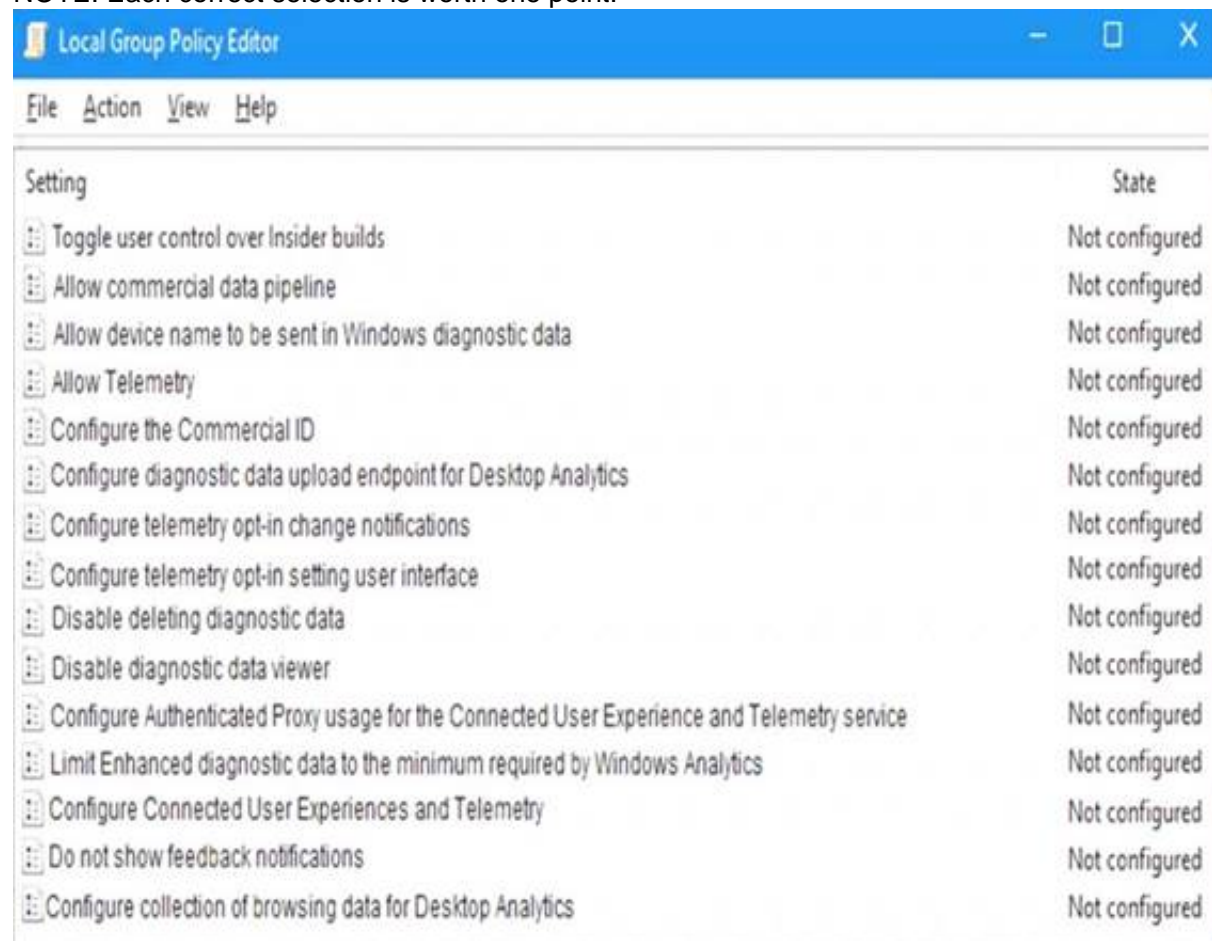
Your company has computers that run Windows 10. The employees at the company use the computers. You plan to monitor the computers by using the Update Compliance solution.

You create the required resources in Azure.

You need to configure the computers to send enhanced Update Compliance data.

Which two Group Policy settings should you configure? To answer, select the appropriate settings in the answer area.

NOTE: Each correct selection is worth one point.



- A. Mastered
- B. Not Mastered

Answer: A

Explanation:

Reference:

<https://docs.microsoft.com/en-us/windows/deployment/update/update-compliance-configuration-manual>

NEW QUESTION 291

- (Exam Topic 4)

You have a workgroup computer named Computer1 that runs Windows 10 and has the users shown in the following table.

Name	Member of
User1	Group1
User2	Group2
User3	Group3

Group1 is a member of Group3.

You are creating a file named Kiosk.xml that specifies a lockdown profile for a multi-app kiosk. Kiosk.xml contains the following section.

```
<Configs>
  <Config>
    <UserGroup Type="LocalGroup" Name="Group3" />
    <DefaultProfile Id="{9A2A490F-10F6-4764-974A-43B19E722C23}"/>
  </Config>
</Configs>
```

You apply Kiosk.xml to Computer1.

For each of the following statements, select Yes if the statement is true. Otherwise, select No.

NOTE: Each correct selection is worth one point.

Statements	Yes	No
The lockdown profile applies to User1.	<input type="radio"/>	<input type="radio"/>
The lockdown profile applies to User2.	<input type="radio"/>	<input type="radio"/>
The lockdown profile applies to User3.	<input type="radio"/>	<input type="radio"/>

- A. Mastered
- B. Not Mastered

Answer: A

Explanation:

Reference:

<https://docs.microsoft.com/en-us/windows/configuration/lock-down-windows-10-to-specific-apps#config-for-gr>

NEW QUESTION 295

- (Exam Topic 4)

You have a Microsoft Deployment Toolkit (MDT) solution that is used to manage Windows 10 deployment tasks.

MDT contains the operating system images shown in the following table.

Name	Description
Image1.wim	Custom-built Windows 10 image that has preinstalled custom apps
Image2.wim	Custom-built Windows 10 image without apps
Install.wim	Default Windows 10 image

You need to perform a Windows 10 in-place upgrade on several computers that run Windows 8.1. From the Deployment Workbench, you open the New Task Sequence Wizard.

You need to identify which task sequence template and which operating system image to use for the task sequence. The solution must minimize administrative effort.

What should you identify? To answer, select the appropriate options in the answer area.

NOTE: Each correct selection is worth one point.

Task sequence template:

Standard Client Task Sequence
Standard Client Replace Task Sequence
Standard Client Upgrade Task Sequence

Operating system image:

Image1.wim
Image2.wim
Install.wim

- A. Mastered
- B. Not Mastered

Answer: A

Explanation:

Box 1: Standard Client Upgrade Task Sequence

Use Template: Standard Client Upgrade Task Sequence

In-place upgrade is the preferred method to use when migrating from Windows 10 to a later release of Windows 10, and is also a preferred method for upgrading from Windows 7 or 8.1 if you do not plan to significantly change the device's configuration or applications. MDT includes an in-place upgrade task sequence template that makes the process really simple.

Box 2: Install.wim

In-place upgrade differs from computer refresh in that you cannot use a custom image to perform the in-place upgrade. I

Reference:

<https://docs.microsoft.com/en-us/windows/deployment/deploy-windows-mdt/upgrade-to-windows-10-with-the>

NEW QUESTION 297

- (Exam Topic 4)

You have an Azure Active Directory group named Group1. Group1 contains two Windows 10 Enterprise devices named Device1 and Device2.

You create a device configuration profile named Profile1. You assign Profile1 to Group1. You need to ensure that Profile1 applies to Device1 only. What should you modify in Policy1?

- A. Assignments
- B. Applicability Rules
- C. Settings
- D. Scope (Tags)

Answer: A

Explanation:

Reference:

<https://docs.microsoft.com/en-us/mem/intune/configuration/device-profile-assign>

NEW QUESTION 299

- (Exam Topic 4)

You are creating a device configuration profile in Microsoft Intune.

You need to implement an ADMX-backed policy. Which profile type should you use?

- A. Identity protection
- B. Custom
- C. Device restrictions
- D. Device restrictions (Windows 10 Team)

Answer: B

Explanation:

Reference:

<https://blogs.technet.microsoft.com/senthilkumar/2018/05/21/intune-deploying-admx-backed-policies-usingmicr>

NEW QUESTION 302

- (Exam Topic 4)

Your network contains an Active Directory forest named contoso.com that is synced to Microsoft Azure Active Directory (Azure AD).

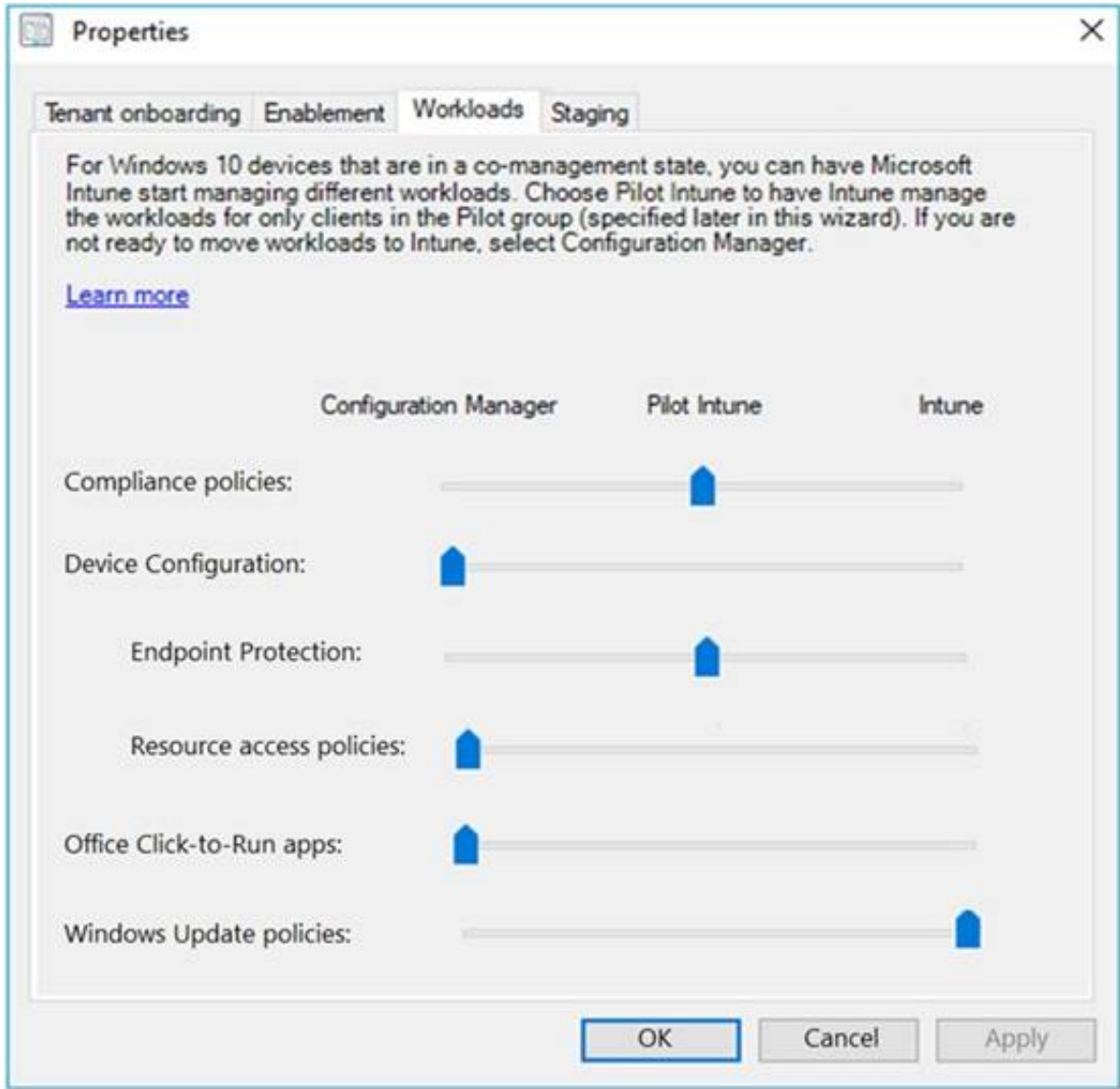
You use Microsoft Endpoint Configuration Manager for device management. You have the Windows 10 devices shown in the following table.

Name	Collection
Device1	Collection1
Device2	Collection2

You configure Endpoint Configuration Manager co-management as follows:

- Automatic enrollment in Intune: Pilot
- Pilot collection for all workloads: Collection2

You configure co-management workloads as shown in the following exhibit.



For each of the following statements, select Yes if the statement is true. Otherwise, select No.
NOTE: Each correct selection is worth one point.

Statements	Yes	No
Microsoft Intune manages the compliance policies for Device1.	<input type="radio"/>	<input type="radio"/>
Configuration Manager manages the Windows Update policies for Device1.	<input type="radio"/>	<input type="radio"/>
Microsoft Intune manages Endpoint Protection for Device2.	<input type="radio"/>	<input type="radio"/>

- A. Mastered
- B. Not Mastered

Answer: A

Explanation:

Box 1: No
The Pilot Group does not include Device1. Box 2: Yes
Box 3: Yes
The Pilot Group includes Device3. Reference:
https://docs.microsoft.com/en-us/mem/configmgr/comanage/how-to-enable

NEW QUESTION 306

- (Exam Topic 4)
You have an Azure Active Directory (Azure AD) tenant named adatum.com that contains two computers named Computer1 and Computer2. The computers run Windows 10 and are members of a group named GroupA.
The tenant contains a user named User1 that is a member of a group named Group1.
You need to ensure that if User1 changes the desktop background on Computer1, the new desktop background will appear when User1 signs in to Computer2.
What should you do?

- A. Create a device configuration profile for Windows 10 and configure the Shared multi-user device setting
- B. Assign the profile to GroupA.
- C. From the Azure Active Directory admin center, enable Enterprise State Roaming for Group1.
- D. From the Azure Active Directory admin center, enable Enterprise State Roaming for GroupA.
- E. Create a device configuration profile for Windows 10 and configure the Shared multi-user device setting
- F. Assign the profile to Group1.

Answer: D

Explanation:

Reference:
https://docs.microsoft.com/en-us/mem/intune/configuration/shared-user-device-settings-windows https://docs.microsoft.com/en-us/mem/intune/configuration/shared-user-device-settings-windows https://docs.microsoft.com/en-us/mem/intune/configuration/device-profile-assign

NEW QUESTION 309

- (Exam Topic 4)

Your network contains an Active Directory named contoso.com. The domain contains two computers named Computer1 and Computer2 that run Windows 10. Folder Redirection is configured for a domain user named User1. The AppData\Roaming folder and the Desktop folder are redirected to a network share. User1 signs in to Computer1 and performs the following tasks:

- Configures screen saver to start after five minutes of inactivity
- Modifies the default save location for Microsoft Word
- Creates a file named File1.docx on the desktop
- Modifies the desktop background

You need to identify what will be retained when User1 signs in to Computer2. What should you identify?

- A. File1.docx and the desktop background only
- B. File1.docx, the screen saver settings, the desktop background, and the default save location for Word
- C. File1.docx only
- D. File1.docx, the desktop background, and the default save location for Word only

Answer: B

Explanation:

Reference:

<https://docs.microsoft.com/en-us/windows-server/storage/folder-redirection/folder-redirection-rup-overview>

NEW QUESTION 313

- (Exam Topic 4)

You have a computer named Computer1 that runs Windows 10.

The Wi-Fi network profile for Computer1 is configured as shown in the following exhibit.

Connect automatically when in range



Network profile

☒ Public

Your PC is hidden from other devices on the network and can't be used for printer and file sharing.

☐ Private

For a network you trust, such as at home or work. Your PC is discoverable and can be used for printer and file sharing if you set it up.

[Configure firewall and security settings](#)

The Delivery Optimization options for Computer1 are configured as shown in the following exhibit.

Allow downloads from other PCs



☐ PC's on my local network

☒ PCs on my local network, and PCs on the Internet

From which computers will Computer1 will receive updates and to which computers will Computer1 provide updates? To answer, select the appropriate options in the answer area.

NOTE: Each correct selection is worth one point.

Receive updates from:

	▼
Local computers only	
Computers on the internet only	
Local computers and computers on the internet	

Provide updates to:

	▼
Local computers only	
Computers on the internet only	
Local computers and computers on the internet	

- A. Mastered
- B. Not Mastered

Answer: A

Explanation:

Graphical user interface, text, application Description automatically generated

NEW QUESTION 316

- (Exam Topic 4)

Your company has a Microsoft 365 subscription.

A new user named Admin1 is responsible for deploying Windows 10 to computers and joining the computers to Microsoft Azure Active Directory (Azure AD).

Admin1 successfully joins computers to Azure AD.

Several days later, Admin1 receives the following error message: "This user is not authorized to enroll. You can try to do this again or contact your system administrator with the error code (0x801c0003)."

You need to ensure that Admin1 can join computers to Azure AD and follow the principle of least privilege.

- A. Assign the Global administrator role to Admin1.
- B. Modify the Device settings in Azure AD.
- C. Assign the Cloud device administrator role to Admin1.
- D. Modify the User settings in Azure AD.

Answer: B

Explanation:

References:

<https://docs.microsoft.com/en-us/azure/active-directory/devices/device-management-azure-portal>

NEW QUESTION 319

- (Exam Topic 4)

You have unrooted devices enrolled in Microsoft Intune as shown in the following table.

Name	Platform	IP address
Device1	Windows	192.168.10.35
Device2	Android	10.10.10.40
Device3	Android	192.168.10.10

The devices are members of a group named Group1.

In Intune, you create a device compliance location that has the following configurations:

- Name: Network1
- IPv4 range: 192.168.0.0/16

In Intune, you create a device compliance policy for the Android platform. The policy has following configurations:

- Name: Policy1
- Device health: Rooted devices: Block
- Locations: Location: Network1
- Mark device noncompliant: Immediately
- Assigned: Group1

In Intune device compliance policy has the following configurations:

- Mark devices with no compliance policy assigned as: Compliant
- Enhanced jailbreak detection: Enabled
- Compliance status validity period (days): 20

For each of the following statements, select Yes if the statement is true. Otherwise, select No.

NOTE: Each correct selection is worth one point.

Statements	Yes	No
Device1 is marked as compliant.	<input type="radio"/>	<input type="radio"/>
Device2 is marked as compliant.	<input type="radio"/>	<input type="radio"/>
Device3 is marked as compliant.	<input type="radio"/>	<input type="radio"/>

- A. Mastered
- B. Not Mastered

Answer: A

Explanation:

Reference:

<https://docs.microsoft.com/en-us/intune/device-compliance-get-started>

NEW QUESTION 323

- (Exam Topic 4)

Your network contains an on-premises Active Directory domain that contains the locations shown in the following table.

Name	Internal IP address	Public Network Address Translation (NAT) IP address	Active Directory site
Location1	10.10.0.0/16	131.107.15.0/24	Site1
Location2	10.20.0.0/16	131.107.16.0/24	Site1
Location3	172.16.0.0/16	131.107.196.0/24	Site2

In Microsoft Intune, you enroll the Windows 10 devices shown in the following table.

Name	IP address
Device1	10.10.0.50
Device2	10.20.1.150
Device3	10.10.1.155
Device4	172.16.0.30

You have a Delivery Optimization device configuration profile applied to all the devices. The profile is configured as shown in the following exhibit.

Delivery Optimization

Windows 10 and later

Basics Configuration settings Assignments

If you already configured and deployed Delivery Optimization download mode in Windows 10 update rings, before you begin, go to Software updates – Windows 10 update rings and migrate your existing settings.

[Learn more](#)

Download mode ⓘ HTTP blended with peering across private group (2) ▼

Restrict Peer Selection ⓘ Subnet mask ▼

Group ID source ⓘ AD site ▼

Previous Next

From which devices can Device1 and Device2 get updates? To answer, select the appropriate options in the answer area.

NOTE: Each correct selection is worth one point.

Device1:

▼

Can get updates from Device3 only.

Cannot get updates from any device.

Can get updates from Device2 and Device3 only.

Can get updates from Device2, Device3, and Device4.

Device2:

▼

Can get updates from Device3 only.

Cannot get updates from any device.

Can get updates from Device1 and Device3 only.

Can get updates from Device1, Device3, and Device4.

- A. Mastered
- B. Not Mastered

Answer: A

Explanation:

Table Description automatically generated

Reference:

<https://docs.microsoft.com/en-us/mem/intune/configuration/delivery-optimization-settings> <https://docs.microsoft.com/en-us/windows/deployment/update/waas-delivery-optimization-reference#select-the>

NEW QUESTION 328

- (Exam Topic 4)

Note: This question is part of a series of questions that present the same scenario. Each question in the series contains a unique solution that might meet the stated goals. Some question sets might have more than one correct solution, while others might not have a correct solution.

After you answer a question in this section, you will NOT be able to return to it. As a result, these questions will not appear in the review screen.

You have a Microsoft 365 subscription.

You have 20 computers that run Windows 10 and are joined to Microsoft Azure Active Directory (Azure AD). You plan to replace the computers with new computers that run Windows 10. The new computers will be joined to Azure AD.

You need to ensure that the desktop background, the favorites, and the browsing history are available on the new computers.

Solution: You configure Enterprise State Roaming. Does this meet the goal?

A. Yes

B. No

Answer: A

Explanation:

References:

<https://docs.microsoft.com/en-us/azure/active-directory/devices/enterprise-state-roaming-windows-settingsrefere>

NEW QUESTION 329

- (Exam Topic 4)

Note: This question is part of a series of questions that present the same scenario. Each question in the series contains a unique solution that might meet the stated goals. Some question sets might have more than one correct solution, while others might not have a correct solution.

After you answer a question in this section, you will NOT be able to return to it. As a result, these questions will not appear in the review screen.

Your company has an Azure Active Directory (Azure AD) tenant named contoso.com that contains several Windows 10 devices.

When you join new Windows 10 devices to contoso.com, users are prompted to set up a four-digit pin. You need to ensure that the users are prompted to set up a six-digit pin when they join the Windows 10 devices to contoso.com.

Solution: From the Azure Active Directory admin center, you configure the Authentication methods. Does this meet the goal?

A. Yes

B. No

Answer: B

Explanation:

Instead, from the Azure Active Directory admin center, you configure automatic mobile device management (MDM) enrollment. From the Device Management admin center, you configure the Windows Hello for Business enrollment options.

References:

<https://docs.microsoft.com/en-us/intune/protect/windows-hello>

NEW QUESTION 330

- (Exam Topic 4)

You have a Microsoft 365 tenant that contains the Windows 10 devices shown in the following table.

Name	Used by	Azure Active Directory (Azure AD) join type	Managed by using Microsoft Intune
Device1	User1	Joined	Yes
Device2	User1	Registered	Yes
Device3	User1	Joined	No

You enable Enterprise State Roaming

You need to ensure that User1 can sync Windows settings across the devices. What should you do?

A. Join Device2 to Azure AD.

B. Add a Microsoft account to each device.

C. Remove Device1 and Device2 from Intune.

D. Enroll Device3 in intune.

Answer: D

NEW QUESTION 335

- (Exam Topic 4)

You have a Microsoft 365 subscription that contains 1,000 Android devices enrolled in Microsoft intune. You create an app configuration policy that contains the following settings:

- Device enrollment type: Managed devices
- Profile Type: All Profile Types
- Platform: Android Enterprise

Which two types of apps can be associated with the policy? Each correct answer presents a complete solution. NOTE: Each correct selection is worth one point.

A. Android Enterprise system app

B. Android store app

C. Web link

D. Managed Google Play store app

E. Built-in Android app

Answer: AD

NEW QUESTION 338

- (Exam Topic 4)

You have computers that run Windows 8.1 or Windows 10. All the computers are enrolled in Microsoft Intune, Endpoint Configuration Manager, and Desktop Analytics. Co-management is enabled for your environment.

You plan to upgrade the Windows 8.1 computers to Windows 10.

You need to identify which Windows 8.1 computers do NOT have supported Windows 10 drivers.

What should you use?

- A. the General Hardware Inventory report in Configuration Manager
- B. the List of devices in a specific device category report in Configuration Manager
- C. Deployment plans in Desktop Analytics
- D. the Device compliance report in Intune

Answer: C

Explanation:

Reference:

<https://docs.microsoft.com/en-us/mem/configmgr/desktop-analytics/about-deployment-plans>

NEW QUESTION 343

- (Exam Topic 4)

You have Windows 10 devices that are managed by using Microsoft Intune. Intune and the Microsoft Store for Business are integrated.

You need to deploy the Remote Desktop modern app as an automatic install to the Windows 10 devices without user interaction.

Which three actions should you perform? Each correct answer presents part of the solution.

NOTE: Each correct selection is worth one point.

- A. Create an Azure Active Directory group that contains all users.
- B. From the Intune portal, create a Microsoft Store app for the Remote Desktop modern app.
- C. From the Intune portal assign the app to the Azure Active Directory group.
- D. Create an Azure Active Directory group that contains the Windows 10 devices.
- E. From the Microsoft Store for Business portal, assign a license for the app to all the users in the Azure Active Directory group.
- F. For your organization, make the app available in the Microsoft Store for Business.

Answer: BCD

Explanation:

Reference:

<https://docs.microsoft.com/en-us/mem/intune/apps/apps-add> <https://docs.microsoft.com/en-us/mem/intune/apps/apps-deploy> <https://docs.microsoft.com/en-us/mem/intune/apps/windows-store-for-business>

NEW QUESTION 344

- (Exam Topic 4)

You have a Microsoft 365 Business Standard subscription and 100 Windows 10 Pro devices. You purchase a Microsoft 365 E5 subscription.

You need to upgrade the Windows 10 Pro devices to Windows 10 Enterprise. The solution must minimize administrative effort.

Which upgrade method should you use?

- A. Subscription Activation
- B. an in-place upgrade by using Windows installation media
- C. a Microsoft Deployment Toolkit (MDT) lite-touch deployment
- D. Windows Autopilot

Answer: A

Explanation:

Windows 10/11 Subscription Activation

Windows 10 Pro supports the Subscription Activation feature, enabling users to “step-up” from Windows 10 Pro or Windows 11 Pro to Windows 10 Enterprise or Windows 11 Enterprise, respectively, if they are subscribed to Windows 10/11 Enterprise E3 or E5.

Reference: <https://docs.microsoft.com/en-us/windows/deployment/windows-10-subscription-activation>

NEW QUESTION 349

.....

THANKS FOR TRYING THE DEMO OF OUR PRODUCT

Visit Our Site to Purchase the Full Set of Actual MD-101 Exam Questions With Answers.

We Also Provide Practice Exam Software That Simulates Real Exam Environment And Has Many Self-Assessment Features. Order the MD-101 Product From:

<https://www.2passeasy.com/dumps/MD-101/>

Money Back Guarantee

MD-101 Practice Exam Features:

- * MD-101 Questions and Answers Updated Frequently
- * MD-101 Practice Questions Verified by Expert Senior Certified Staff
- * MD-101 Most Realistic Questions that Guarantee you a Pass on Your FirstTry
- * MD-101 Practice Test Questions in Multiple Choice Formats and Updatesfor 1 Year