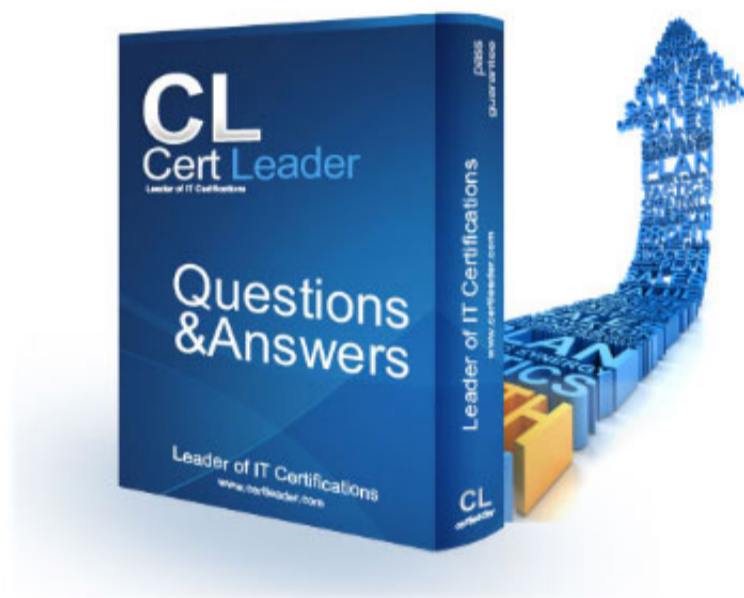


AZ-140 Dumps

Configuring and Operating Windows Virtual Desktop on Microsoft Azure

<https://www.certleader.com/AZ-140-dumps.html>



NEW QUESTION 1

HOTSPOT

You have a Windows Virtual Desktop deployment.

Many users have iOS devices that have the Remote Desktop Mobile app installed.

You need to ensure that the users can connect to the feed URL by using email discovery instead of entering the feed URL manually. How should you configure the _msradc DNS record? To answer, select the appropriate options in the answer area.

NOTE: Each correct selection is worth one point.

Answer Area

Record type:

A
CNAME
SRV
TXT

Record value:

https://rdweb.wvd.microsoft.com/api/arm/feeddiscovery
https://rdweb.wvd.microsoft.com/api/feeddiscovery
https://rdweb.wvd.microsoft.com/Feed/webfeed.aspx
webfeeddiscovery.aspx

- A. Mastered
- B. Not Mastered

Answer: A

Explanation:

Answer Area

Record type:

A
CNAME
SRV
TXT

Record value:

https://rdweb.wvd.microsoft.com/api/arm/feeddiscovery
https://rdweb.wvd.microsoft.com/api/feeddiscovery
https://rdweb.wvd.microsoft.com/Feed/webfeed.aspx
webfeeddiscovery.aspx

NEW QUESTION 2

You have an Azure Active Directory (Azure AD) tenant named contoso.com and an Azure virtual network named VNET1.

To VNET1, you deploy an Azure Active Directory Domain Services (Azure AD DS) managed domain named litwareinc.com. To VNET1, you plan to deploy a Windows Virtual Desktop host pool named Pool1.

You need to ensure that you can deploy Windows 10 Enterprise host pools to Pool1. What should you do first?

- A. Modify the settings of the litwareinc.com DNS zone.
- B. Modify the DNS settings of VNET1.
- C. Add a custom domain name to contoso.com.
- D. Implement Azure AD Connect cloud sync.

Answer: B

NEW QUESTION 3

HOTSPOT

You plan to deploy Windows Virtual Desktop.

Users have the devices shown in the following table.

Type	Platform
Tablet	Windows 10 Pro
Phone	Android
Laptop	macOS

From which device types can the users connect to Windows Virtual Desktop resources by using the Remote Desktop client app and the Remote Desktop web client? To answer, select the appropriate options in the answer area.

NOTE: Each correct selection is worth one point.

Answer Area

Remote Desktop client app:

▼
Tablet only
Tablet and phone only
Tablet and laptop only
Tablet, phone, and laptop

Remote Desktop web client:

▼
Tablet only
Tablet and phone only
Tablet and laptop only
Tablet, phone, and laptop

- A. Mastered
B. Not Mastered

Answer: A

Explanation:

Answer Area

Remote Desktop client app:

▼
Tablet only
Tablet and phone only
Tablet and laptop only
Tablet, phone, and laptop

Remote Desktop web client:

▼
Tablet only
Tablet and phone only
Tablet and laptop only
Tablet, phone, and laptop

NEW QUESTION 4

HOTSPOT

You have a Windows Virtual Desktop deployment.

You plan to create the host pools shown in the following table.

Name	Requirement
Pool1	<ul style="list-style-type: none"> Will be directly assigned to users in the graphics department at your company Will run heavy graphic rendering and compute-intensive applications Must support premium storage
Pool2	<ul style="list-style-type: none"> Pooled virtual machines for approximately 10 users Will run Microsoft Office 365 apps Will require calling and meeting features in Microsoft Teams Must support premium storage

You need to recommend the virtual machine size for each host pool. The solution must minimize costs.

Which size should you recommend for each pool? To answer, select the appropriate options in the answer area.

NOTE: Each correct selection is worth one point.

Hot Area:

Answer Area

Pool1:

Pool2:

- A. Mastered
- B. Not Mastered

Answer: A

Explanation:

Answer Area

Pool1:

Pool2:

NEW QUESTION 5

You plan to deploy Windows Virtual Desktop to meet the department requirements shown in the following table

Department	Required Windows Virtual Desktop resource	Number of users	GPU required
Research	Single-session desktop	10	No
Engineering	Multi-session desktop	50	Yes
IT	Multi-session desktop	50	No
Finance	RemoteApp	10	No

You plan to use Windows Virtual Desktop host pools with load balancing and autoscaling. You need to recommend a host pool design that meets the requirements. The solution must minimize costs. What is the minimum number of host pools you should recommend?

- A. 1
- B. 2
- C. 3
- D. 4

Answer: C

NEW QUESTION 6

You plan to deploy Windows Virtual Desktop. The deployment will use existing virtual machines. You create a Windows Virtual Desktop host pool. You need to ensure that you can add the virtual machines to the host pool. What should you do first?

- A. Register the Microsoft.DesktopVirtualization provider.
- B. Generate a registration key.
- C. Run the Invoke-AzVMRunCommand cmdlet.
- D. Create a role assignment.

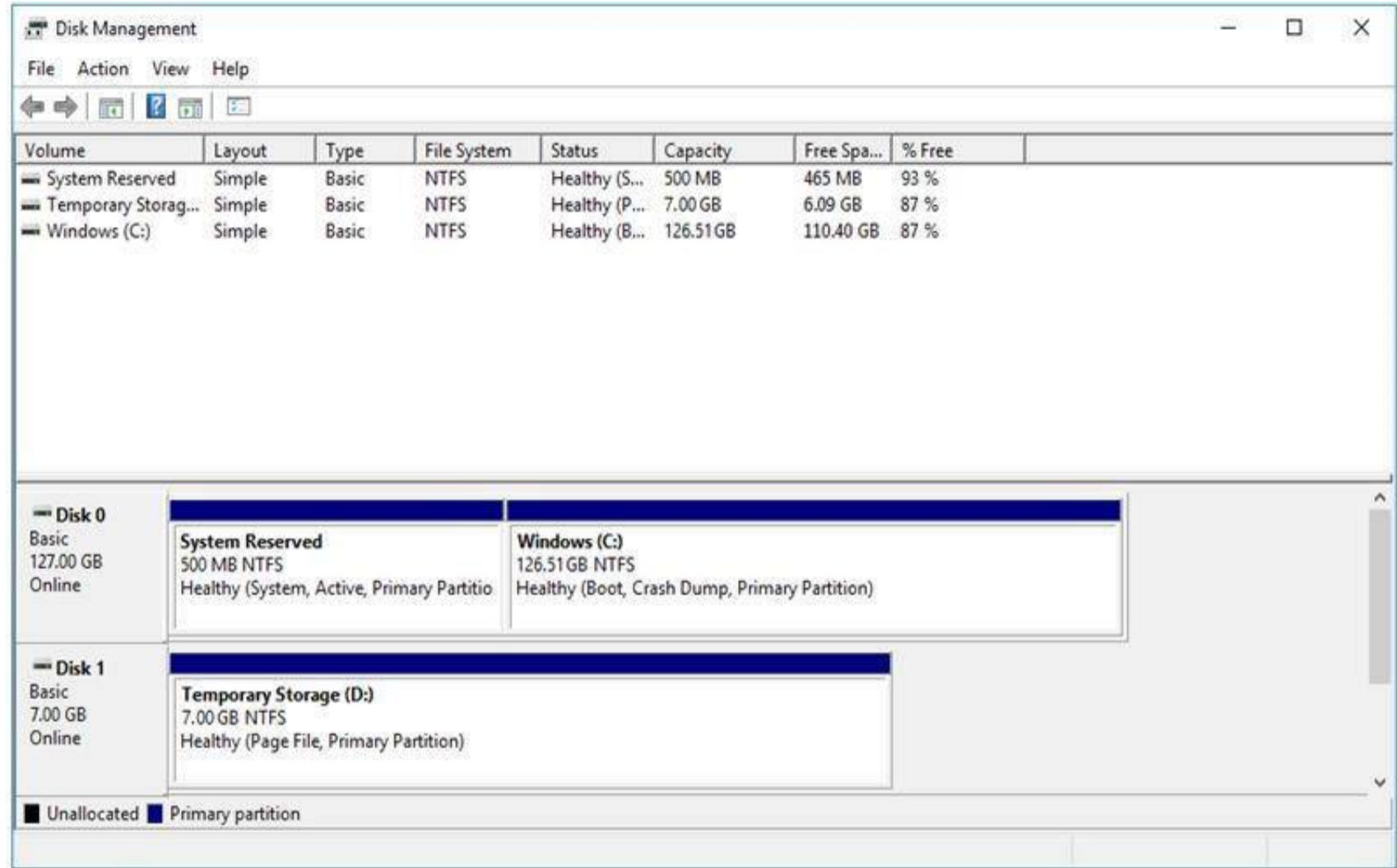
Answer: A

NEW QUESTION 7

DRAG DROP

You have a Windows Virtual Desktop deployment.

You have a session host named Host1 that has the disk layout shown in the exhibit. (Click the Exhibit tab.)



You plan to deploy an app that must be installed on D. The app requires 500 GB of disk space.

You need to add a new data disk that will be assigned the drive letter D. The solution must maintain the current performance of Host1.

Which four actions should you perform in sequence? To answer, move the appropriate actions from the list of actions to the answer area and arrange them in the correct order.

Actions

Move the page file to drive C.

Move the page file to Temporary Storage.

Change the drive letter of Temporary Storage (D:).

Mark Temporary Storage (D:) as **Active**.

Add the new disk and assign drive D.

Move the page file to System Reserved.

Answer Area

⏪

⏩

⏴

⏵

- A. Mastered
- B. Not Mastered

Answer: A

Explanation:

Actions

Move the page file to drive C.

Move the page file to Temporary Storage.

Change the drive letter of Temporary Storage (D:).

Mark Temporary Storage (D:) as **Active**.

Add the new disk and assign drive D.

Move the page file to System Reserved.

Answer Area

Move the page file to drive C.

Change the drive letter of Temporary Storage (D:).



Add the new disk and assign drive D.



Move the page file to Temporary Storage.



NEW QUESTION 8

Note: This question is part of a series of questions that present the same scenario. Each question in the series contains a unique solution that might meet the stated goals. Some question sets might have more than one correct solution, while others might not have a correct solution.

After you answer a question in this section, you will NOT be able to return to it. As a result, these questions will not appear in the review screen.

You have a Windows Virtual Desktop host pool that contains five session hosts. The session hosts run Windows 10 Enterprise multi-session.

You need to prevent users from accessing the internet from Windows Virtual Desktop sessions. The session hosts must be allowed to access all the required Microsoft services. Solution: You configure rules in the network security group (NSG) linked to the subnet of the session hosts.

Does that meet the goal?

A. Yes

B. No

Answer: A

NEW QUESTION 9

Note: This question is part of a series of questions that present the same scenario. Each question in the series contains a unique solution that might meet the stated goals. Some question sets might have more than one correct solution, while others might not have a correct solution.

After you answer a question in this section, you will NOT be able to return to it. As a result, these questions will not appear in the review screen.

You have a Windows Virtual Desktop host pool that contains five session hosts. The session hosts run Windows 10 Enterprise multi-session.

You need to prevent users from accessing the internet from Windows Virtual Desktop sessions. The session hosts must be allowed to access all the required Microsoft services.

Solution: You modify the IP configuration of each session host. Does that meet the goal?

A. Yes

B. No

Answer: B

NEW QUESTION 10

HOTSPOT

You have a Windows Virtual Desktop deployment.


You need to ensure that all the connections to the managed resources in the host pool require multi-factor authentication (MFA). Which two settings should you modify in a conditional access policy? To answer, select the appropriate options in the answer area. NOTE: Each correct selection is worth one point.

New

Conditional access policy

Control user access based on conditional access policy to bring signals together, to make decisions, and enforce organizational policies. [Learn more](#)

Name *

Conditional Access Policy 

Assignments

Users and groups ⓘ

All users

>

Cloud apps or actions ⓘ

No cloud apps or actions selected

>

Conditions ⓘ

0 conditions selected

>

Access controls

Grant ⓘ

0 conditions selected

>

Session ⓘ

0 conditions selected

>

- A. Mastered
- B. Not Mastered

Answer: A

Explanation:

New

Conditional access policy

Control user access based on conditional access policy to bring signals together, to make decisions, and enforce organizational policies. [Learn more](#)

Name *

 ✓

Assignments

Users and groups ⓘ
>

All users

Cloud apps or actions ⓘ
>

No cloud apps or actions selected

Conditions ⓘ
>

0 conditions selected

Access controls

Grant ⓘ
>

0 conditions selected

Session ⓘ
>

0 conditions selected

NEW QUESTION 10

HOTSPOT

Your company has the offices shown in the following table.

Location	Internal network IP address space	Public IP address space
Boston	10.10.0.0/16	13.83.131.0/24
Seattle	172.16.0.0/16	92.15.10.0/24

The company has an Azure Active Directory (Azure AD) tenant named contoso.com that contains a user named User1.

Users connect to a Windows Virtual Desktop deployment named WVD1. WVD1 contains session hosts that have public IP addresses from the 52.166.253.0/24 subnet.

Contoso.com has a conditional access policy that has the following settings:

- Name: Policy1
- Assignments:
 - Users and groups: User1
 - Cloud apps or actions: Windows Virtual Desktop
 - Access controls:
 - Grant: Grant access, Require multi-factor authentication
 - Enable policy: On

For each of the following statements, select Yes if the statement is true. Otherwise, select No.

NOTE: Each correct selection is worth one point.

Hot Area:

Answer Area

Statements	Yes	No
If User1 connects to Windows Virtual Desktop from the office in Boston, User1 is prompted for multi-factor authentication (MFA).	<input type="radio"/>	<input type="radio"/>
If User1 connects to Windows Virtual Desktop from home, User1 is prompted for multi-factor authentication (MFA).	<input type="radio"/>	<input type="radio"/>
If User1 connects to Microsoft Exchange Online from a Windows Virtual Desktop session, User1 is prompted for multi-factor authentication (MFA).	<input type="radio"/>	<input type="radio"/>

- A. Mastered
B. Not Mastered

Answer: A

Explanation:

Answer Area

Statements	Yes	No
If User1 connects to Windows Virtual Desktop from the office in Boston, User1 is prompted for multi-factor authentication (MFA).	<input checked="" type="radio"/>	<input type="radio"/>
If User1 connects to Windows Virtual Desktop from home, User1 is prompted for multi-factor authentication (MFA).	<input checked="" type="radio"/>	<input type="radio"/>
If User1 connects to Microsoft Exchange Online from a Windows Virtual Desktop session, User1 is prompted for multi-factor authentication (MFA).	<input checked="" type="radio"/>	<input type="radio"/>

NEW QUESTION 11

Note: This question is part of a series of questions that present the same scenario. Each question in the series contains a unique solution that might meet the stated goals. Some question sets might have more than one correct solution, while others might not have a correct solution.

After you answer a question in this section, you will NOT be able to return to it. As a result, these questions will not appear in the review screen.

You have a Windows Virtual Desktop host pool named Pool1 that is integrated with an Azure Active Directory Domain Services (Azure AD DS) managed domain. You need to configure idle session timeout settings for users that connect to the session hosts in Pool1. Solution: From an Azure AD DS-joined computer, you modify the AADDC Users GPO settings.

Does that meet the goal?

- A. Yes
B. No

Answer: B

NEW QUESTION 14

Note: This question is part of a series of questions that present the same scenario. Each question in the series contains a unique solution that might meet the stated goals. Some question sets might have more than one correct solution, while others might not have a correct solution.

After you answer a question in this section, you will NOT be able to return to it. As a result, these questions will not appear in the review screen.

You have a Windows Virtual Desktop host pool named Pool1 that is integrated with an Azure Active Directory Domain Services (Azure AD DS) managed domain. You need to configure idle session timeout settings for users that connect to the session hosts in Pool1.

Solution: From an Azure AD DS-joined computer, you modify the AADDC Computers GPO settings.

Does that meet the goal?

- A. Yes
B. No

Answer: A

NEW QUESTION 18

You have a Windows Virtual Desktop deployment. You publish a RemoteApp named AppVersion1.

You need AppVersion1 to appear in the Remote Desktop client as Sales Contact Application. Which PowerShell cmdlet should you use?

- A. New-AzADApplication
B. Update-AzWvdApplicationGroup
C. Register-AzWvdApplicationGroup
D. Update-AzWvdApplication

Answer: D

NEW QUESTION 21

You have a Windows Virtual Desktop deployment that contains the following:

A host pool named Pool1

Two session hosts named Host1 and Host2

An application group named RemoteAppGroup1 that contains a RemoteApp named App1 You need to prevent users from copying and pasting between App1 and their local device. What should you do?

- A. Create an AppLocker policy.
- B. Modify the locks of RemoteAppGroup1.
- C. Modify the locks of RemoteAppGroup1.
- D. Modify the RDP Properties of Pool1.

Answer: D

NEW QUESTION 22

You have a Windows Virtual Desktop host pool named Pool1 that runs Windows 10 Enterprise multi-session hosts.

You need to use Performance Monitor to troubleshoot a low frame quality issue that is affecting a current use session to Pool1. What should you run to retrieve the user session ID?

- A. Get-ComputerInfo
- B. qwinsta
- C. whoami
- D. Get-LocalUser

Answer: B

NEW QUESTION 27

DRAG DROP

You have a Windows Virtual Desktop host pool named Pool1. Pool1 contains session hosts that use FSLogix profile containers hosted in Azure NetApp Files volumes. You need to back up profile files by using snapshots.

Which three actions should you perform in sequence? To answer, move the appropriate actions from the list of actions to the answer area and arrange them in the correct order.

Actions

Create an Azure NetApp account.

Register the NetApp Resource Provider.

Register the Azure NetApp snapshot policy feature.

Create a snapshot policy.

Apply a snapshot policy to a volume.

Answer Area



- A. Mastered
- B. Not Mastered

Answer: A

Explanation:

Actions

Create an Azure NetApp account.

Register the NetApp Resource Provider.

Register the Azure NetApp snapshot policy feature.

Create a snapshot policy.

Apply a snapshot policy to a volume.

Answer Area

Register the Azure NetApp snapshot policy feature.



Create a snapshot policy.

Apply a snapshot policy to a volume.



Case study

This is a case study. Case studies are not timed separately. You can use as much exam time as you would like to complete each case. However, there may be additional case studies and sections on this exam. You must manage your time to ensure that you are able to complete all questions included on this exam in the time provided.

To answer the questions included in a case study, you will need to reference information that is provided in the case study. Case studies might contain exhibits and other resources that provide more information about the scenario that is described in the case study. Each question is independent of the other questions in this case study.

At the end of this case study, a review screen will appear. This screen allows you to review your answers and to make changes before you move to the next

section of the exam. After you begin a new section, you cannot return to this section.

To start the case study

To display the first question in this case study, click the Next button. Use the buttons in the left pane to explore the content of the case study before you answer the questions. Clicking these buttons displays information such as business requirements, existing environment, and problem statements. If the case study has an All Information tab, note that the information displayed is identical to the information displayed on the subsequent tabs. When you are ready to answer a question, click the Question button to return to the question. Overview

Contoso, Ltd. is a law firm that has a main office in Montreal and branch offices in Paris and Seattle. The Seattle branch office opened recently.

Contoso has an Azure subscription and uses Microsoft 365.

Existing Infrastructure. Active Directory

The network contains an on-premises Active Directory domain named contoso.com and an Azure Active Directory (Azure AD) tenant. One of the domain controllers runs as an Azure virtual machine and connects to a virtual network named VNET1. All internal name resolution is provided by DNS server that run on the domain controllers.

The on-premises Active Directory domain contains the organizational units (OUs) shown in the following table.

Name	Description
MontrealUsers	An OU for all the users in the Montreal office: The OU syncs to Azure AD by using Azure AD Connect.
ParisUsers	An OU for all the users in the Paris office: The OU syncs to Azure AD by using Azure AD Connect.
SeattleUsers	An OU for all the users in the Seattle office: The OU does NOT sync to Azure AD.

The on-premises Active Directory domain contains the users shown in the following table.

Name	Container	Member of
Operator1	Users	Domain Admins
Operator2	MontrealUsers	Users
Operator3	SeattleUsers	Server Operators

The Azure AD tenant contains the cloud-only users shown in the following table.

Name	Role
Admin1	Virtual Machine Contributor
Admin2	Desktop Virtualization Contributor
Admin3	Desktop Virtualization Session Host Operator
Admin4	Desktop Virtualization Host Pool Contributor

Existing Infrastructure. Network Infrastructure

All the Azure virtual networks are peered. The on-premises network connects to the virtual networks.

All servers run Windows Server 2019. All laptops and desktop computers run Windows 10 Enterprise.

Since users often work on confidential documents, all the users use their computer as a client for connecting to Remote Desktop Services (RDS).

In the West US Azure region, you have the storage accounts shown in the following table.

Name	Account kind	Performance
storage1	StorageV2	Standard
storage2	StorageV2	Premium
storage3	BlobStorage	Standard
storage4	StorageV1	Premium

Existing Infrastructure. Remote Desktop Infrastructure

Contoso has a Remote Desktop infrastructure shown in the following table.

Office	Description
Montreal	A Windows Virtual Desktop deployment that runs Windows 10 Enterprise multi-session hosts. The deployment contains the following: <ul style="list-style-type: none"> A host pool named Pool1 An application group named Group1 A workspace named Workspace1 Virtual machines that have a prefix of Pool1
Seattle	An on-premises virtual machine-based RDS deployment that has personal desktops. The personal desktop virtual machines have a prefix of Pool2.
Paris	An on-premises virtual machine-based RDS deployment that has pooled desktops. The pooled desktop virtual machines have a prefix of Pool3. User profile disks are used to preserve the user state.

Requirements. Planned Changes

Contoso plans to implement the following changes:

Implement FSLogix profile containers for the Paris offices.

Deploy a Windows Virtual Desktop host pool named Pool4.

Migrate the RDS deployment in the Seattle office to Windows Virtual Desktop in the West US Azure region.

Requirements. Pool4 Configuration

Pool4 will have the following settings:

Host pool type: Pooled
Max session limit: 7
Load balancing algorithm: Depth-first
Images: Windows 10 Enterprise multi-session
Virtual machine size: Standard D2s v3
Name prefix: Pool4
Number of VMs: 5
Virtual network: VNET4
Requirements. Technical Requirements
Contoso identifies the following technical requirements:
Before migrating the RDS deployment in the Seattle office, obtain the recommended deployment configuration based on the current RDS utilization.
For the Windows Virtual Desktop deployment in the Montreal office, disable audio output in the device redirection settings.
For the Windows Virtual Desktop deployment in the Seattle office, store the FSLogix profile containers in Azure Storage.
Enable Operator2 to modify the RDP Properties of the Windows Virtual Desktop deployment in the Montreal office.
From a server named Server1, convert the user profile clicks to the FSLogix profile containers.
Ensure that the Pool1 virtual machines only run during business hours. Use the principle of least privilege.

NEW QUESTION 30

DRAG DROP

You need to evaluate the RDS deployment in the Seattle office. The solution must meet the technical requirements.
Which three actions should you perform in sequence? To answer, move the appropriate actions from the list of actions to the answer area and arrange them in the correct order.

Actions

Create a project in Azure Migrate.

Register the Lakeside tool with Azure Migrate.

Add the Azure Advisor recommendation digest.

Install agents on the virtual machines that have the Pool3 prefix.

Install agents on the virtual machines that have the Pool2 prefix.

Create a Recovery Service vault.

Answer Area

<

>

↑

↓

- A. Mastered
- B. Not Mastered

Answer: A

Explanation:

Actions

Create a project in Azure Migrate.

Register the Lakeside tool with Azure Migrate.

Add the Azure Advisor recommendation digest.

Install agents on the virtual machines that have the Pool3 prefix.

Install agents on the virtual machines that have the Pool2 prefix.

Create a Recovery Service vault.

Answer Area

Create a project in Azure Migrate.

Register the Lakeside tool with Azure Migrate.

Install agents on the virtual machines that have the Pool2 prefix.

<

>

↑

↓

Case study
This is a case study. Case studies are not timed separately. You can use as much exam time as you would like to complete each case. However, there may be additional case studies and sections on this exam. You must manage your time to ensure that you are able to complete all questions included on this exam in the time provided.
To answer the questions included in a case study, you will need to reference information that is provided in the case study. Case studies might contain exhibits and other resources that provide more information about the scenario that is described in the case study. Each question is independent of the other questions in this case study.
At the end of this case study, a review screen will appear. This screen allows you to review your answers and to make changes before you move to the next section of the exam. After you begin a new section, you cannot return to this section.

To start the case study

To display the first question in this case study, click the Next button. Use the buttons in the left pane to explore the content of the case study before you answer the questions. Clicking these buttons displays information such as business requirements, existing environment, and problem statements. If the case study has an All Information tab, note that the information displayed is identical to the information displayed on the subsequent tabs. When you are ready to answer a question, click the Question button to return to the question. Overview

Contoso, Ltd. is a law firm that has a main office in Montreal and branch offices in Paris and Seattle. The Seattle branch office opened recently.

Contoso has an Azure subscription and uses Microsoft 365.

Existing Infrastructure. Active Directory

The network contains an on-premises Active Directory domain named contoso.com and an Azure Active Directory (Azure AD) tenant. One of the domain controllers runs as an Azure virtual machine and connects to a virtual network named VNET1. All internal name resolution is provided by DNS server that run on the domain controllers.

The on-premises Active Directory domain contains the organizational units (OUs) shown in the following table.

Name	Description
MontrealUsers	An OU for all the users in the Montreal office: The OU syncs to Azure AD by using Azure AD Connect.
ParisUsers	An OU for all the users in the Paris office: The OU syncs to Azure AD by using Azure AD Connect.
SeattleUsers	An OU for all the users in the Seattle office: The OU does NOT sync to Azure AD.

The on-premises Active Directory domain contains the users shown in the following table.

Name	Container	Member of
Operator1	Users	Domain Admins
Operator2	MontrealUsers	Users
Operator3	SeattleUsers	Server Operators

The Azure AD tenant contains the cloud-only users shown in the following table.

Name	Role
Admin1	Virtual Machine Contributor
Admin2	Desktop Virtualization Contributor
Admin3	Desktop Virtualization Session Host Operator
Admin4	Desktop Virtualization Host Pool Contributor

Existing Infrastructure. Network Infrastructure

All the Azure virtual networks are peered. The on-premises network connects to the virtual networks.

All servers run Windows Server 2019. All laptops and desktop computers run Windows 10 Enterprise.

Since users often work on confidential documents, all the users use their computer as a client for connecting to Remote Desktop Services (RDS).

In the West US Azure region, you have the storage accounts shown in the following table.

Name	Account kind	Performance
storage1	StorageV2	Standard
storage2	StorageV2	Premium
storage3	BlobStorage	Standard
storage4	StorageV1	Premium

Existing Infrastructure. Remote Desktop Infrastructure

Contoso has a Remote Desktop infrastructure shown in the following table.

Office	Description
Montreal	A Windows Virtual Desktop deployment that runs Windows 10 Enterprise multi-session hosts. The deployment contains the following: <ul style="list-style-type: none">• A host pool named Pool1• An application group named Group1• A workspace named Workspace1• Virtual machines that have a prefix of Pool1
Seattle	An on-premises virtual machine-based RDS deployment that has personal desktops. The personal desktop virtual machines have a prefix of Pool2.
Paris	An on-premises virtual machine-based RDS deployment that has pooled desktops. The pooled desktop virtual machines have a prefix of Pool3. User profile disks are used to preserve the user state.

Requirements. Planned Changes

Contoso plans to implement the following changes:

Implement FSLogix profile containers for the Paris offices.

Deploy a Windows Virtual Desktop host pool named Pool4.

Migrate the RDS deployment in the Seattle office to Windows Virtual Desktop in the West US Azure region.

Requirements. Pool4 Configuration

Pool4 will have the following settings:

Host pool type: Pooled

Max session limit: 7
Load balancing algorithm: Depth-first
Images: Windows 10 Enterprise multi-session
Virtual machine size: Standard D2s v3
Name prefix: Pool4
Number of VMs: 5
Virtual network: VNET4
Requirements. Technical Requirements
Contoso identifies the following technical requirements:
Before migrating the RDS deployment in the Seattle office, obtain the recommended deployment configuration based on the current RDS utilization.
For the Windows Virtual Desktop deployment in the Montreal office, disable audio output in the device redirection settings.
For the Windows Virtual Desktop deployment in the Seattle office, store the FSLogix profile containers in Azure Storage.
Enable Operator2 to modify the RDP Properties of the Windows Virtual Desktop deployment in the Montreal office.
From a server named Server1, convert the user profile clicks to the FSLogix profile containers. Ensure that the Pool1 virtual machines only run during business hours. Use the principle of least privilege.

NEW QUESTION 34

You plan to implement the FSLogix profile containers for the Seattle office.
Which storage account should you use?

- A. storage2
- B. storage4
- C. storage3
- D. storage1

Answer: A

Explanation:

Case study

This is a case study. Case studies are not timed separately. You can use as much exam time as you would like to complete each case. However, there may be additional case studies and sections on this exam. You must manage your time to ensure that you are able to complete all questions included on this exam in the time provided.

To answer the questions included in a case study, you will need to reference information that is provided in the case study. Case studies might contain exhibits and other resources that provide more information about the scenario that is described in the case study. Each question is independent of the other questions in this case study.

At the end of this case study, a review screen will appear. This screen allows you to review your answers and to make changes before you move to the next section of the exam. After you begin a new section, you cannot return to this section.

To start the case study

To display the first question in this case study, click the Next button. Use the buttons in the left pane to explore the content of the case study before you answer the questions. Clicking these buttons displays information such as business requirements, existing environment, and problem statements. If the case study has an All Information tab, note that the information displayed is identical to the information displayed on the subsequent tabs. When you are ready to answer a question, click the Question button to return to the question. Overview

Contoso, Ltd. is a law firm that has a main office in Montreal and branch offices in Paris and Seattle. The Seattle branch office opened recently.

Contoso has an Azure subscription and uses Microsoft 365.

Existing Infrastructure. Active Directory

The network contains an on-premises Active Directory domain named contoso.com and an Azure Active Directory (Azure AD) tenant. One of the domain controllers runs as an Azure virtual machine and connects to a virtual network named VNET1. All internal name resolution is provided by DNS server that run on the domain controllers.

The on-premises Active Directory domain contains the organizational units (OUs) shown in the following table.

Name	Description
MontrealUsers	An OU for all the users in the Montreal office: The OU syncs to Azure AD by using Azure AD Connect.
ParisUsers	An OU for all the users in the Paris office: The OU syncs to Azure AD by using Azure AD Connect.
SeattleUsers	An OU for all the users in the Seattle office: The OU does NOT sync to Azure AD.

The on-premises Active Directory domain contains the users shown in the following table.

Name	Container	Member of
Operator1	Users	Domain Admins
Operator2	MontrealUsers	Users
Operator3	SeattleUsers	Server Operators

The Azure AD tenant contains the cloud-only users shown in the following table.

Name	Role
Admin1	Virtual Machine Contributor
Admin2	Desktop Virtualization Contributor
Admin3	Desktop Virtualization Session Host Operator
Admin4	Desktop Virtualization Host Pool Contributor

Existing Infrastructure. Network Infrastructure

All the Azure virtual networks are peered. The on-premises network connects to the virtual networks.

All servers run Windows Server 2019. All laptops and desktop computers run Windows 10 Enterprise.

Since users often work on confidential documents, all the users use their computer as a client for connecting to Remote Desktop Services (RDS).

In the West US Azure region, you have the storage accounts shown in the following table.

Name	Account kind	Performance
storage1	StorageV2	Standard
storage2	StorageV2	Premium
storage3	BlobStorage	Standard
storage4	StorageV1	Premium

Existing Infrastructure. Remote Desktop Infrastructure

Contoso has a Remote Desktop infrastructure shown in the following table.

Office	Description
Montreal	A Windows Virtual Desktop deployment that runs Windows 10 Enterprise multi-session hosts. The deployment contains the following: <ul style="list-style-type: none"> • A host pool named Pool1 • An application group named Group1 • A workspace named Workspace1 • Virtual machines that have a prefix of Pool1
Seattle	An on-premises virtual machine-based RDS deployment that has personal desktops. The personal desktop virtual machines have a prefix of Pool2.
Paris	An on-premises virtual machine-based RDS deployment that has pooled desktops. The pooled desktop virtual machines have a prefix of Pool3. User profile disks are used to preserve the user state.

Requirements. Planned Changes

Contoso plans to implement the following changes:

Implement FSLogix profile containers for the Paris offices.

Deploy a Windows Virtual Desktop host pool named Pool4.

Migrate the RDS deployment in the Seattle office to Windows Virtual Desktop in the West US Azure region.

Requirements. Pool4 Configuration

Pool4 will have the following settings:

Host pool type: Pooled

Max session limit: 7

Load balancing algorithm: Depth-first

Images: Windows 10 Enterprise multi-session

Virtual machine size: Standard D2s v3

Name prefix: Pool4

Number of VMs: 5

Virtual network: VNET4

Requirements. Technical Requirements

Contoso identifies the following technical requirements:

Before migrating the RDS deployment in the Seattle office, obtain the recommended deployment configuration based on the current RDS utilization.

For the Windows Virtual Desktop deployment in the Montreal office, disable audio output in the device redirection settings.

For the Windows Virtual Desktop deployment in the Seattle office, store the FSLogix profile containers in Azure Storage.

Enable Operator2 to modify the RDP Properties of the Windows Virtual Desktop deployment in the Montreal office.

From a server named Server1, convert the user profile clicks to the FSLogix profile containers.

Ensure that the Pool1 virtual machines only run during business hours. Use the principle of least privilege.

NEW QUESTION 36

You need to recommend an authentication solution that meets the performance requirements.

Which two actions should you include in the recommendation? Each correct answer presents part of the solution.

NOTE: Each correct selection is worth one point.

A. Join all the session hosts to Azure AD.

B. In each Azure region that will contain the Windows Virtual Desktop session hosts, create an Azure Active Directory Domain Service (Azure AD DS) managed domain.

C. Deploy domain controllers for the on-premises Active Directory domain on Azure virtual machines.

D. Deploy read-only domain controllers (RODCs) on Azure virtual machines.

E. In each Azure region that will contain the Windows Virtual Desktop session hosts, create an Active Directory site.

Answer: AC

NEW QUESTION 39

DRAG DROP

You need to ensure that you can implement user profile shares for the Boston office users. The solution must meet the user profile requirements.

Which four actions should you perform in sequence? To answer, move the appropriate actions from the list of actions to the answer area and arrange them in the correct order.

Actions

Create a file share and configure share permissions.

Sign in to VM1 as Admin1.

Run the Join-AzStorageAccountForAuth cmdlet.

Sign in to VM1 as CloudAdmin1.

Install the AzFilesHybrid PowerShell module.

Answer Area

Sign in to VM1 as Admin1.

Run the Join-AzStorageAccountForAuth cmdlet.

Sign in to VM1 as CloudAdmin1.

Install the AzFilesHybrid PowerShell module.

- A. Mastered
B. Not Mastered

Answer: A

Explanation:

Actions

Create a file share and configure share permissions.

Sign in to VM1 as Admin1.

Run the Join-AzStorageAccountForAuth cmdlet.

Sign in to VM1 as CloudAdmin1.

Install the AzFilesHybrid PowerShell module.

Answer Area

Sign in to VM1 as CloudAdmin1.

Create a file share and configure share permissions.

Install the AzFilesHybrid PowerShell module.

Run the Join-AzStorageAccountForAuth cmdlet.

NEW QUESTION 41

You need to configure the device redirection settings. The solution must meet the technical requirements. Where should you configure the settings?

- A. Workspace1
B. MontrealUsers
C. Group1
D. Pool1

Answer: D

Explanation:

Case study

This is a case study. Case studies are not timed separately. You can use as much exam time as you would like to complete each case. However, there may be additional case studies and sections on this exam. You must manage your time to ensure that you are able to complete all questions included on this exam in the time provided.

To answer the questions included in a case study, you will need to reference information that is provided in the case study. Case studies might contain exhibits and other resources that provide more information about the scenario that is described in the case study. Each question is independent of the other questions in this case study.

At the end of this case study, a review screen will appear. This screen allows you to review your answers and to make changes before you move to the next section of the exam. After you begin a new section, you cannot return to this section.

To start the case study

To display the first question in this case study, click the Next button. Use the buttons in the left pane to explore the content of the case study before you answer the questions. Clicking these buttons displays information such as business requirements, existing environment, and problem statements. If the case study has an All Information tab, note that the information displayed is identical to the information displayed on the subsequent tabs. When you are ready to answer a question, click the Question button to return to the question. Overview

Litware, Inc. is a pharmaceutical company that has a main office in Boston, United States, and a remote office in Chennai, India.

Existing Environment. Identity Environment

The network contains an on-premises Active Directory domain named litware.com that syncs to an Azure Active Directory (Azure AD) tenant named litware.com.

The Azure AD tenant contains the users shown in the following table.

Name	Description
Admin1	A directory-synced user that is a local administrator on all the computers joined to the on-premises Active Directory domain.
CloudAdmin1	A cloud-only user that is assigned the Global administrator role.

All users are registered for Azure Multi-Factor Authentication (MFA). Existing Environment. Cloud Services

Litware has a Microsoft 365 E5 subscription associated to the Azure AD tenant. All users are assigned Microsoft 365 Enterprise E5 licenses.

Litware has an Azure subscription associated to the Azure AD tenant. The subscription contains the resources shown in the following table.

Name	Type	Location	Configuration
storage1	Storage account	East US	Storage (general purpose v1), Locally-redundant storage (LRS).
VM1	Virtual machine	East US	Joined to the on-premises Active Directory domain.

Litware uses custom virtual machine images and custom scripts to automatically provision Azure virtual machines and join the virtual machines to the on-premises Active Directory domain. Network and DNS

The offices connect to each other by using a WAN link. Each office connects directly to the internet.

All DNS queries for internet hosts are resolved by using DNS servers in the Boston office, which point to root servers on the internet. The Chennai office has caching-only DNS servers that forward queries to the DNS servers in the Boston office.

Requirements. Planned Changes

Litware plans to implement the following changes:

Deploy Windows Virtual Desktop environments to the East US Azure region for the users in the Boston office and to the South India Azure region for the users in the Chennai office.

Implement FSLogix profile containers.

Optimize the custom virtual machine images for the Windows Virtual Desktop session hosts.

Use PowerShell to automate the addition of virtual machines to the Windows Virtual Desktop host pools.

Requirements. Performance Requirements

Litware identifies the following performance requirements:

Minimize network latency of the Windows Virtual Desktop connections from the Boston and Chennai offices.

Minimize latency of the Windows Virtual Desktop host authentication in each Azure region. Minimize how long it takes to sign in to the Windows Virtual Desktop session hosts.

Requirements. Authentication Requirements

Litware identifies the following authentication requirements:

Enforce Azure MFA when accessing Windows Virtual Desktop apps.

Force users to reauthenticate if their Windows Virtual Desktop session lasts more than eight hours.

Requirements. Security Requirements

Litware identifies the following security requirements:

Explicitly allow traffic between the Windows Virtual Desktop session hosts and Microsoft 365.

Explicitly allow traffic between the Windows Virtual Desktop session hosts and the Windows Virtual Desktop infrastructure.

Use built-in groups for delegation.

Delegate the management of app groups to CloudAdmin1, including the ability to publish app groups to users and user groups.

Grant Admin1 permissions to manage workspaces, including listing which apps are assigned to the app groups.

Minimize administrative effort to manage network security. Use the principle of least privilege.

Requirements. Deployment Requirements

Litware identifies the following deployment requirements:

Use PowerShell to generate the token used to add the virtual machines as session hosts to a Windows Virtual Desktop host pool.

Minimize how long it takes to provision the Windows Virtual Desktop session hosts based on the custom virtual machine images. Whenever possible, preinstall agents and apps in the custom virtual machine images.

NEW QUESTION 42

You need to configure the user settings of Admin1 to meet the user profile requirements.

What should you do?

- A. Modify the membership of the FSLogix ODFC Exclude List group.
- B. Modify the membership of the FSLogix Profile Exclude List group.
- C. Modify the HKLM\SOFTWARE\FSLogix\Profiles registry settings.
- D. Modify the HKLM\SOFTWARE\FSLogix\ODFC registry settings.

Answer: A

NEW QUESTION 44

You need to ensure the resiliency of the user profiles for the Boston office users. The solution must meet the user performance requirements. What should you do?

- A. Modify the Account kind setting of storage1.
- B. Modify the replication settings of storage1.
- C. Implement Azure Site Recovery.
- D. Configure Cloud Cache.

Answer: D

Explanation:

Case study

This is a case study. Case studies are not timed separately. You can use as much exam time as you would like to complete each case. However, there may be additional case studies and sections on this exam. You must manage your time to ensure that you are able to complete all questions included on this exam in the time provided.

To answer the questions included in a case study, you will need to reference information that is provided in the case study. Case studies might contain exhibits and other resources that provide more information about the scenario that is described in the case study. Each question is independent of the other questions in this case study.

At the end of this case study, a review screen will appear. This screen allows you to review your answers and to make changes before you move to the next section of the exam. After you begin a new section, you cannot return to this section.

To start the case study

To display the first question in this case study, click the Next button. Use the buttons in the left pane to explore the content of the case study before you answer the questions. Clicking these buttons displays information such as business requirements, existing environment, and problem statements. If the case study has an All Information tab, note that the information displayed is identical to the information displayed on the subsequent tabs. When you are ready to answer a question, click the Question button to return to the question. Overview

Contoso, Ltd. is a law firm that has a main office in Montreal and branch offices in Paris and Seattle. The Seattle branch office opened recently.

Contoso has an Azure subscription and uses Microsoft 365.

Existing Infrastructure. Active Directory

The network contains an on-premises Active Directory domain named contoso.com and an Azure Active Directory (Azure AD) tenant. One of the domain controllers runs as an Azure virtual machine and connects to a virtual network named VNET1. All internal name resolution is provided by DNS server that run on the domain controllers.

The on-premises Active Directory domain contains the organizational units (OUs) shown in the following table.

Name	Description
MontrealUsers	An OU for all the users in the Montreal office: The OU syncs to Azure AD by using Azure AD Connect.
ParisUsers	An OU for all the users in the Paris office: The OU syncs to Azure AD by using Azure AD Connect.
SeattleUsers	An OU for all the users in the Seattle office: The OU does NOT sync to Azure AD.

The on-premises Active Directory domain contains the users shown in the following table.

Name	Container	Member of
Operator1	Users	Domain Admins
Operator2	MontrealUsers	Users
Operator3	SeattleUsers	Server Operators

The Azure AD tenant contains the cloud-only users shown in the following table.

Name	Role
Admin1	Virtual Machine Contributor
Admin2	Desktop Virtualization Contributor
Admin3	Desktop Virtualization Session Host Operator
Admin4	Desktop Virtualization Host Pool Contributor

Existing Infrastructure. Network Infrastructure

All the Azure virtual networks are peered. The on-premises network connects to the virtual networks.

All servers run Windows Server 2019. All laptops and desktop computers run Windows 10 Enterprise.

Since users often work on confidential documents, all the users use their computer as a client for connecting to Remote Desktop Services (RDS).

In the West US Azure region, you have the storage accounts shown in the following table.

Name	Account kind	Performance
storage1	StorageV2	Standard
storage2	StorageV2	Premium
storage3	BlobStorage	Standard
storage4	StorageV1	Premium

Existing Infrastructure. Remote Desktop Infrastructure

Contoso has a Remote Desktop infrastructure shown in the following table.

Office	Description
Montreal	A Windows Virtual Desktop deployment that runs Windows 10 Enterprise multi-session hosts. The deployment contains the following: <ul style="list-style-type: none"> • A host pool named Pool1 • An application group named Group1 • A workspace named Workspace1 • Virtual machines that have a prefix of Pool1
Seattle	An on-premises virtual machine-based RDS deployment that has personal desktops. The personal desktop virtual machines have a prefix of Pool2.
Paris	An on-premises virtual machine-based RDS deployment that has pooled desktops. The pooled desktop virtual machines have a prefix of Pool3. User profile disks are used to preserve the user state.

Requirements. Planned Changes

Contoso plans to implement the following changes:

Implement FSLogix profile containers for the Paris offices.

Deploy a Windows Virtual Desktop host pool named Pool4.

Migrate the RDS deployment in the Seattle office to Windows Virtual Desktop in the West US Azure region.

Requirements. Pool4 Configuration

Pool4 will have the following settings:

Host pool type: Pooled

Max session limit: 7

Load balancing algorithm: Depth-first

Images: Windows 10 Enterprise multi-session

Virtual machine size: Standard D2s v3

Name prefix: Pool4

Number of VMs: 5

Virtual network: VNET4

Requirements. Technical Requirements

Contoso identifies the following technical requirements:

Before migrating the RDS deployment in the Seattle office, obtain the recommended deployment configuration based on the current RDS utilization.

For the Windows Virtual Desktop deployment in the Montreal office, disable audio output in the device redirection settings.

For the Windows Virtual Desktop deployment in the Seattle office, store the FSLogix profile containers in Azure Storage.

Enable Operator2 to modify the RDP Properties of the Windows Virtual Desktop deployment in the Montreal office.

From a server named Server1, convert the user profile clicks to the FSLogix profile containers.

Ensure that the Pool1 virtual machines only run during business hours. Use the principle of least privilege.

NEW QUESTION 47

.....

Thank You for Trying Our Product

* 100% Pass or Money Back

All our products come with a 90-day Money Back Guarantee.

* One year free update

You can enjoy free update one year. 24x7 online support.

* Trusted by Millions

We currently serve more than 30,000,000 customers.

* Shop Securely

All transactions are protected by VeriSign!

100% Pass Your AZ-140 Exam with Our Prep Materials Via below:

<https://www.certleader.com/AZ-140-dumps.html>