

## Exam Questions 300-425

Designing Cisco Enterprise Wireless Networks (ENWLSD)

<https://www.2passeasy.com/dumps/300-425/>



#### NEW QUESTION 1

A customer asks an engineer to explain the concept of mobility domains and mobility groups. Which statement does the engineer respond with?

- A. A mobility group does not constrain the distribution of security context of a client and also does not constrain AP fail-over between controllers when the WLC are in the same mobility domain.
- B. If WLCs are in the same mobility domain, they communicate with each other but, if an anchor WLC is present it must be in the same mobility domain for communication to be possible.
- C. If WLCs are in the same mobility domain, they communicate with each other.
- D. Mobility groups constrain the distribution of security context of a client and also constrain AP fail-over between controllers.
- E. WLCs do not need to be in the same mobility domain to communicate with each other.
- F. Mobility groups constrain the distribution of security context of a client and also constrain AP fail-over between controllers.

**Answer: C**

#### NEW QUESTION 2

An engineer must ensure that the new wireless LAN deployment can support seamless roaming between access points using a standard based on an amendment to the 802.11 protocol. Which protocol must the engineer select?

- A. 802.11i
- B. 802.11ac
- C. 802.11r
- D. 802.11e

**Answer: C**

#### NEW QUESTION 3

A network engineer is preparing for an office site survey with a height of 2.5 meters. Which three components are recommended to complete the survey? (Choose three.)

- A. Use a battery pack to power APs
- B. Use a drawing of the office space to draw AP and client placements.
- C. Use DoS attack on APs while measuring the throughput.
- D. Use APs with directional antennas.
- E. Use APs with external antennas.
- F. Use APs with built-in antennas.

**Answer: ABF**

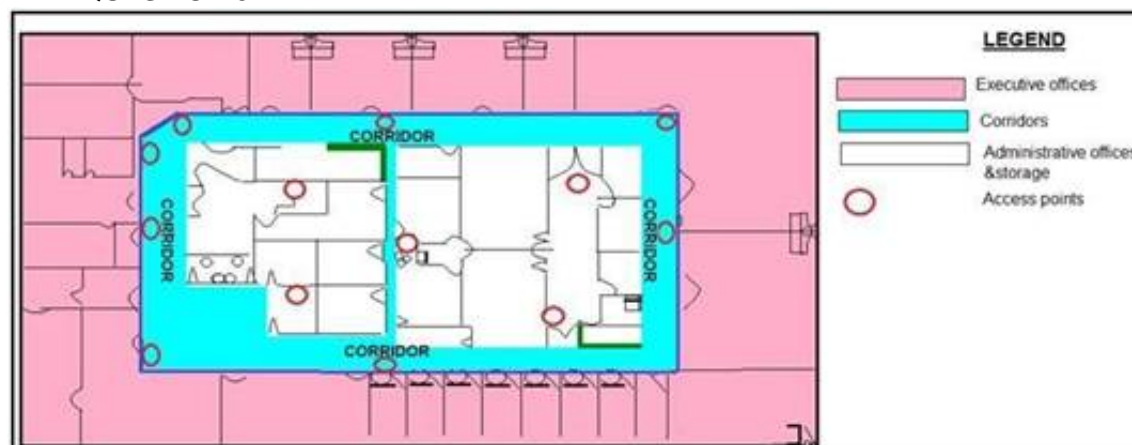
#### NEW QUESTION 4

A wireless engineer must optimize RF performance for multiple buildings with multiple types of construction and user density. Which two actions must be taken? (Choose two.)

- A. Configure FlexConnect groups for each building.
- B. Configure WMM profiles for each building.
- C. Configure AP groups for each area type.
- D. Configure RF profiles for each area type.
- E. Enable DTPC on the network.

**Answer: CD**

#### NEW QUESTION 5



Refer to the exhibit. What is the main reason why the Wi-Fi design engineer took a different approach than installing the APs in the offices, even though that installation provides better coverage?

- A. aesthetics
- B. transmit power considerations
- C. antenna gain
- D. power supply considerations

**Answer: B**

#### NEW QUESTION 6

A rapidly expanding company has tasked their network engineer with wirelessly connecting a new cubicle area with Cisco workgroup bridges until the wired network is complete. Each of 42 new users has a computer and VoIP phone. How many APs for workgroup bridging must be ordered to keep cost at a minimum while connecting all devices?

- A. 4
- B. 5
- C. 6
- D. 7

**Answer:** A

#### NEW QUESTION 7

Which two considerations must a network engineer have when planning for voice over wireless roaming? (Choose two.)

- A. Full reauthentication introduces gaps in a voice conversation.
- B. Roaming time increases when using 802.1x + Cisco Centralized Key Management.
- C. Roaming occurs when the phone has seen at least four APs.
- D. Roaming occurs when the phone has reached -80 dBs or below.
- E. Roaming with only 802.1x authentication requires full reauthentication.

**Answer:** AE

#### NEW QUESTION 8

An engineer has performed a predictive site survey for high-speed data and voice in an indoor office. What is the recommended data rate with -67 dBm signal level for optimal VoWLAN design?

- A. 6 Mbps on 802.11 bgn
- B. 24 Mbps on 802.11 bgn
- C. 12 Mbps on 802.11 an
- D. 24 Mbps on 802.11 an

**Answer:** B

#### NEW QUESTION 9

A wireless network consultant must assess an existing wireless LAN controller. Which section must the consultant check before replacing the old APs with APs that are IEEE 802.11ac-capable?

- A. number of AP licenses
- B. controller PSU
- C. throughput capacity
- D. software version

**Answer:** A

#### NEW QUESTION 10

A customer is concerned about mesh backhaul link security. Which level of encryption does the backhaul link use?

- A. hash
- B. AES
- C. WEP
- D. 3DES

**Answer:** B

#### NEW QUESTION 10

An engineer must speed up the reauthentication delays that are being experienced on the wireless infrastructure by deploying a key-caching mechanism. Which mechanism must be configured?

- A. PEAP
- B. FT
- C. PMF
- D. GTK-randomization

**Answer:** B

#### NEW QUESTION 14

A customer is running a guest WLAN with a foreign/export-anchor setup. There is one anchor WLC in the US and two in Europe. Anchor WLC priorities are used to prefer local anchors. During a routine network audit, it is discovered that a large number of guest client sessions in the US are anchored to the WLCs in Europe. Which reason explains this behavior?

- A. The foreign WLC failed and recovered.
- B. The US anchor WLC failed and recovered.
- C. The US anchor WLC is anchored to itself with a priority value of zero.
- D. The anchor WLC is in the same mobility group.

**Answer:** B

#### NEW QUESTION 15

Which three pieces of equipment are needed to conduct a fully measured wireless survey? (Choose three.)

- A. PoE battery
- B. spirit level
- C. access point
- D. tall tripod
- E. goggles
- F. ladder

**Answer:** ACD

#### NEW QUESTION 17

Which CLI command does an engineer use to validate that the redundancy peer of a Stateful Switchover pair of controllers is up and connected?

- A. rping
- B. ping
- C. eping
- D. mping

**Answer:** B

#### NEW QUESTION 22

A wireless engineer is utilizing the voice readiness tool in Cisco Prime for a customer that wants to deploy Cisco IP phones. Which dBm range is the network inspected against?

- A. -78 to -65 dBm B.-72 to -67 dBm
- B. 85 to -65 dBm
- C. -85 to -67 dBm

**Answer:** D

#### NEW QUESTION 23

A customer has determined that aesthetics is a primary concern for their upcoming guest deployment. Which design consideration can be leveraged to address this concern?

- A. Paint the access point to cover the LED from being noticeable.
- B. Use enclosures to hide the wireless infrastructure in the surrounding environment.
- C. Use AIR-AP-BRACKET-1 to allow for greater mounting locations
- D. Deploy environmentally friendly cabling components to blend into the environment.

**Answer:** D

#### NEW QUESTION 24

A wireless deployment in a high-density environment is being used by vendors to process credit card payment transactions via handheld mobile scanners. The scanners are having problems roaming between access points in the environment. Which feature on the wireless controller should have been incorporated in the design?

- A. RX SOP
- B. 802.11w
- C. AP Heartbeat Timeout
- D. Application Visibility Control

**Answer:** A

#### NEW QUESTION 29

What causes the most signal attenuation, based on the wireless design tools?

- A. cinder block wall
- B. metal door
- C. glass wall
- D. office window

**Answer:** B

#### NEW QUESTION 30

During a client roaming event, which device is responsible for communicating the new Layer 2 EID mapping of a wireless supplicant to the fabric domain?

- A. WLC
- B. BN
- C. CP2
- D. CP1

**Answer:** A

NEW QUESTION 35

.....

## THANKS FOR TRYING THE DEMO OF OUR PRODUCT

Visit Our Site to Purchase the Full Set of Actual 300-425 Exam Questions With Answers.

We Also Provide Practice Exam Software That Simulates Real Exam Environment And Has Many Self-Assessment Features. Order the 300-425 Product From:

<https://www.2passeasy.com/dumps/300-425/>

## Money Back Guarantee

### 300-425 Practice Exam Features:

- \* 300-425 Questions and Answers Updated Frequently
- \* 300-425 Practice Questions Verified by Expert Senior Certified Staff
- \* 300-425 Most Realistic Questions that Guarantee you a Pass on Your FirstTry
- \* 300-425 Practice Test Questions in Multiple Choice Formats and Updatesfor 1 Year