

CheckPoint

Exam Questions 156-215.81

Check Point Certified Security Administrator R81



NEW QUESTION 1

Name the file that is an electronically signed file used by Check Point to translate the features in the license into a code?

- A. Both License (.lic) and Contract (.xml) files
- B. cp.macro
- C. Contract file (.xml)
- D. license File (.lie)

Answer: B

Explanation:

https://supportcenter.checkpoint.com/supportcenter/portal?eventSubmit_doGoviewsolutiondetails=&solutionid=

NEW QUESTION 2

Which of the following are types of VPN communities?

- A. Pentagon, star, and combination
- B. Star, octagon, and combination
- C. Combined and star
- D. Meshed, star, and combination

Answer: D

NEW QUESTION 3

What is the purpose of the Stealth Rule?

- A. To prevent users from directly connecting to a Security Gateway.
- B. To reduce the number of rules in the database.
- C. To reduce the amount of logs for performance issues.
- D. To hide the gateway from the Internet.

Answer: A

NEW QUESTION 4

What are the two types of NAT supported by the Security Gateway?

- A. Destination and Hide
- B. Hide and Static
- C. Static and Source
- D. Source and Destination

Answer: B

Explanation:

A Security Gateway can use these procedures to translate IP addresses in your network:

NEW QUESTION 5







What is the best sync method in the ClusterXL deployment?

- A. Use 1 cluster + 1st sync
- B. Use 1 dedicated sync interface
- C. Use 3 clusters + 1st sync + 2nd sync + 3rd sync
- D. Use 2 clusters + 1st sync + 2nd sync

Answer: B

NEW QUESTION 6

What does it mean if Deyra sees the gateway status:

Status	Name	IP	Versi...	Active Bla...
	A-GW	10.1.1.1	R80	
	SMS	10.1.1.101	R80	  

Choose the BEST answer.

- A. SmartCenter Server cannot reach this Security Gateway
- B. There is a blade reporting a problem
- C. VPN software blade is reporting a malfunction
- D. Security Gateway's MGNT NIC card is disconnected.

Answer: B

Explanation:

X

fw-mini-ced

IP Address: **10.90.0.253**
Version: **R77.30**
OS: **Gaia Kernel Version: 2.6**
Up Time: **3 days and 4 hours**
[System Information](#), [Network Activity](#), [Licenses](#)

✓	Firewall	Security Policy: Standard_1 Installed On: Fri Dec 16 15:21:03 2016	More...
✓	ClusterXL	Working mode: High Availability (Active Up) Member state: active	More...
✓	IPSec VPN	Gateway to Gateway Tunnels: 0 Remote User Tunnels: 0	More...
!	Identity Awareness	Error: At least one DC is currently disconnected	More...
✓	Mobile Access	Number of active sessions: 2	
✓	Anti-Bot & Anti-Virus	Anti-Bot subscription Status: Valid Anti-Bot subscription Expiration: Thu Jun 22 01:00:00 2017 Anti-Virus subscription Status: Valid Anti-Virus subscription Expiration: Thu Jun 22 01:00:00 2017	More...
✓	URL Filtering	Subscription Status: Valid Subscription Expiration: Thu Jun 22 01:00:00 2017	More...
✓	Application Control	Subscription Status: Valid Subscription Expiration: Thu Jun 22 01:00:00 2017	More...
X	Anti-Spam		More...

NEW QUESTION 7

The default shell of the Gaia CLI is cli.sh. How do you change from the cli.sh shell to the advanced shell to run Linux commands?

- A. Execute the command 'enable' in the cli.sh shell
- B. Execute the 'conf t' command in the cli.sh shell
- C. Execute the command 'expert' in the cli.sh shell
- D. Execute the 'exit' command in the cli.sh shell

Answer: C

NEW QUESTION 8

In a Distributed deployment, the Security Gateway and the Security Management software are installed on what platforms?

- A. Different computers or appliances.
- B. The same computer or appliance.
- C. Both on virtual machines or both on appliances but not mixed.
- D. In Azure and AWS cloud environments.

Answer: A

Explanation:

"The Security Management ServerClosed (1) and the Security GatewayClosed (3) are installed on different computers, with a network connection (2)."
https://sc1.checkpoint.com/documents/R81/WebAdminGuides/EN/CP_R81_Installation_and_Upgrade_Guide/T

NEW QUESTION 9

Which of the following is NOT a component of a Distinguished Name?

- A. Common Name
- B. Country
- C. User container
- D. Organizational Unit

Answer: C

NEW QUESTION 10

Which statement is NOT TRUE about Delta synchronization?

- A. Using UDP Multicast or Broadcast on port 8161
- B. Using UDP Multicast or Broadcast on port 8116
- C. Quicker than Full sync
- D. Transfers changes in the Kernel tables between cluster members

Answer: A

NEW QUESTION 10

Which of the following is NOT a component of Check Point Capsule?

- A. Capsule Docs
- B. Capsule Cloud
- C. Capsule Enterprise
- D. Capsule Workspace

Answer: C

NEW QUESTION 14

Administrator Dave logs into R80 Management Server to review and makes some rule changes. He notices that there is a padlock sign next to the DNS rule in the Rule Base.

No.	Name	Source	Destination	VPN	Services & Applications	Action	Track	Install On
1	NetBIOS Noise	* Any	* Any	* Any	NBT	Drop	- None	Policy Targets
2	Management	Net_10.28.0.0	GW-R7730	* Any	https ssh	Accept	Log	Policy Targets
3	Stealth	* Any	GW-R7730	* Any	* Any	Drop	Log	Policy Targets
4	 DNS	Net_10.28.0.0	* Any	* Any	* Any	Accept	Log	Policy Targets
5	Web	Net_10.28.0.0	* Any	* Any	nntp https	Accept	Log	Policy Targets
6	DMZ Access	Net_10.28.0.0	DMZ_Net_192.0.2.0	* Any	ftp	Accept	Log	Policy Targets
7	Cleanup rule	* Any	* Any	* Any	* Any	Drop	Log	Policy Targets

What is the possible explanation for this?

- A. DNS Rule is using one of the new feature of R80 where an administrator can mark a rule with the padlock icon to let other administrators know it is important.
- B. Another administrator is logged into the Management and currently editing the DNS Rule.
- C. DNS Rule is a placeholder rule for a rule that existed in the past but was deleted.
- D. This is normal behavior in R80 when there are duplicate rules in the Rule Base.

Answer: B

NEW QUESTION 15

You are the Check Point administrator for Alpha Corp. You received a call that one of the users is unable to browse the Internet on their new tablet which is connected to the company wireless, which goes through a Check Point Gateway. How would you review the logs to see what is blocking this traffic?

- A. Open SmartLog and connect remotely to the wireless controller
- B. Open SmartEvent to see why they are being blocked
- C. Open SmartDashboard and review the logs tab
- D. From SmartConsole, go to the Log & Monitor and filter for the IP address of the tablet.

Answer: D

NEW QUESTION 18

Which tool allows you to monitor the top bandwidth on smart console?

- A. Logs & Monitoring
- B. Smart Event
- C. Gateways & Servers Tab
- D. SmartView Monitor

Answer: D

Explanation:

https://sc1.checkpoint.com/documents/R81/WebAdminGuides/EN/CP_R81_LoggingAndMonitoring_AdminGu

NEW QUESTION 23

Which of the following is an authentication method used for Identity Awareness?

- A. SSL
- B. Captive Portal
- C. PKI
- D. RSA

Answer: B

NEW QUESTION 26

From the Gaia web interface, which of the following operations CANNOT be performed on a Security Management Server?

- A. Verify a Security Policy
- B. Open a terminal shell
- C. Add a static route
- D. View Security Management GUI Clients

Answer: B

NEW QUESTION 30

Which of the following is NOT a tracking log option in R80.x?

- A. Log
- B. Full Log
- C. Detailed Log
- D. Extended Log

Answer: C

NEW QUESTION 31

John is the administrator of a R80 Security Management server managing r R77.30 Check Point Security Gateway. John is currently updating the network objects and amending the rules using SmartConsole. To make John's changes available to other administrators, and to save the database before installing a policy, what must John do?

- A. Logout of the session
- B. File > Save
- C. Install database
- D. Publish the session

Answer: D

Explanation:

Installing and Publishing

It is important to understand the differences between publishing and installing. You must do this:

After you did this: Publish

Opened a session in SmartConsole and made changes.

The Publish operation sends all SmartConsole modifications to other administrators, and makes the changes you made in a private session public.

Install the database

Modified network objects, such as servers, users, services, or IPS profiles, but not the Rule Base. Updates are installed on management servers and log servers.

Install a policy Changed the Rule Base.

The Security Management Server installs the updated policy and the entire database on Security Gateways (even if you did not modify any network objects).

NEW QUESTION 33

Which is NOT an encryption algorithm that can be used in an IPSEC Security Association (Phase 2)?

- A. AES-GCM-256
- B. AES-CBC-256
- C. AES-GCM-128

Answer: B

NEW QUESTION 38

Which single Security Blade can be turned on to block both malicious files from being downloaded as well as block websites known to host malware?

- A. Anti-Bot
- B. None - both Anti-Virus and Anti-Bot are required for this
- C. Anti-Virus
- D. None - both URL Filtering and Anti-Virus are required for this.

Answer: C

Explanation:

Prevent Access to Malicious Websites

The Antivirus Software Blade scans outbound URL requests and ensures users do not visit websites that are known to distribute malware.

Stop Incoming Malicious Files

Check Point Antivirus Software Blade prevents and stops threats such as malware, viruses, and Trojans from entering and infecting a network.

<https://www.checkpoint.com/downloads/products/antivirus-datasheet.pdf>

NEW QUESTION 42

Which of the following is NOT a tracking option? (Select three)

- A. Partial log
- B. Log
- C. Network log
- D. Full log

Answer: ACD

NEW QUESTION 46

What are the advantages of a “shared policy” in R80?

- A. Allows the administrator to share a policy between all the users identified by the Security Gateway
- B. Allows the administrator to share a policy between all the administrators managing the Security Management Server
- C. Allows the administrator to share a policy so that it is available to use in another Policy Package
- D. Allows the administrator to install a policy on one Security Gateway and it gets installed on another managed Security Gateway

Answer: C

Explanation:

Ref: https://sc1.checkpoint.com/documents/R81/WebAdminGuides/EN/CP_R81_SecurityManagement_AdminGuide

NEW QUESTION 49

Fill in the blank: _____ is the Gaia command that turns the server off.

- A. sysdown
- B. exit
- C. halt
- D. shut-down

Answer: C

NEW QUESTION 53

Which two Identity Awareness daemons are used to support identity sharing?

- A. Policy Activation Point (PAP) and Policy Decision Point (PDP)
- B. Policy Manipulation Point (PMP) and Policy Activation Point (PAP)
- C. Policy Enforcement Point (PEP) and Policy Manipulation Point (PMP)
- D. Policy Decision Point (PDP) and Policy Enforcement Point (PEP)

Answer: D

Explanation:

https://supportcenter.checkpoint.com/supportcenter/portal?eventSubmit_doGoviewsolutiondetails=&solutionid=

NEW QUESTION 57

The Gateway Status view in SmartConsole shows the overall status of Security Gateways and Software Blades. What does the Status Attention mean?

- A. Cannot reach the Security Gateway.
- B. The gateway and all its Software Blades are working properly.
- C. At least one Software Blade has a minor issue, but the gateway works.
- D. Cannot make SIC between the Security Management Server and the Security Gateway

Answer: C

Explanation:

https://sc1.checkpoint.com/documents/R81/WebAdminGuides/EN/CP_R81_LoggingAndMonitoring_AdminGu

NEW QUESTION 60

In order to see real-time and historical graph views of Security Gateway statistics in SmartView Monitor, what feature needs to be enabled on the Security Gateway?

- A. Logging & Monitoring
- B. None - the data is available by default
- C. Monitoring Blade
- D. SNMP

Answer: C

Explanation:

https://sc1.checkpoint.com/documents/R81/WebAdminGuides/EN/CP_R81_NextGenSecurityGateway_Guide/T

NEW QUESTION 62

A network administrator has informed you that they have identified a malicious host on the network, and instructed you to block it. Corporate policy dictates that firewall policy changes cannot be made at this time. What tool can you use to block this traffic?

- A. Anti-Bot protection
- B. Anti-Malware protection
- C. Policy-based routing
- D. Suspicious Activity Monitoring (SAM) rules

Answer: D

Explanation:

https://sc1.checkpoint.com/documents/R81/WebAdminGuides/EN/CP_R81_LoggingAndMonitoring_AdminGu

NEW QUESTION 64

What is the default shell for the command line interface?

- A. Clish
- B. Admin
- C. Normal
- D. Expert

Answer: A

Explanation:

https://sc1.checkpoint.com/documents/R81/WebAdminGuides/EN/CP_R81_Gaia_AdminGuide/Topics-GAG/G

NEW QUESTION 68

SmartEvent does NOT use which of the following procedures to identity events:

- A. Matching a log against each event definition
- B. Create an event candidate
- C. Matching a log against local exclusions
- D. Matching a log against global exclusions

Answer: C

NEW QUESTION 72

Which is a suitable command to check whether Drop Templates are activated or not?

- A. fw ctl get int activate_drop_templates
- B. fwaccel stat
- C. fwaccel stats
- D. fw ctl templates -d

Answer: B

NEW QUESTION 74

What data MUST be supplied to the SmartConsole System Restore window to restore a backup?

- A. Server, Username, Password, Path, Version
- B. Username, Password, Path, Version
- C. Server, Protocol, Username, Password, Destination Path
- D. Server, Protocol, Username, Password, Path

Answer: D

Explanation:

References:

NEW QUESTION 75

You noticed that CPU cores on the Security Gateway are usually 100% utilized and many packets were dropped. You don't have a budget to perform a hardware upgrade at this time. To optimize drops you decide to use Priority Queues and fully enable Dynamic Dispatcher. How can you enable them?

- A. fw ctl multik dynamic_dispatching on
- B. fw ctl multik dynamic_dispatching set_mode 9
- C. fw ctl multik set_mode 9
- D. fw ctl multik pq enable

Answer: C

NEW QUESTION 78

Which SmartConsole application shows correlated logs and aggregated data to provide an overview of potential threats and attack patterns?

- A. SmartEvent
- B. SmartView Tracker
- C. SmartLog
- D. SmartView Monitor

Answer: A

Explanation:

<https://www.checkpoint.com/downloads/products/smartevent-datasheet.pdf>

NEW QUESTION 83

You have discovered suspicious activity in your network. What is the BEST immediate action to take?

- A. Create a policy rule to block the traffic.
- B. Create a suspicious action rule to block that traffic.
- C. Wait until traffic has been identified before making any changes.

D. Contact ISP to block the traffic.

Answer: B

NEW QUESTION 86

Where is the “Hit Count” feature enabled or disabled in SmartConsole?

- A. On the Policy Package
- B. On each Security Gateway
- C. On the Policy layer
- D. In Global Properties for the Security Management Server

Answer: B

Explanation:

References:

NEW QUESTION 89

What is the purpose of Captive Portal?

- A. It manages user permission in SmartConsole
- B. It provides remote access to SmartConsole
- C. It authenticates users, allowing them access to the Internet and corporate resources
- D. It authenticates users, allowing them access to the Gaia OS

Answer: C

Explanation:

Captive Portal is a simple method that authenticates users with a web interface. When users try to access a protected web resource, they enter authentication information in a form that shows in their web browser.

https://sc1.checkpoint.com/documents/R80.30/WebAdminGuides/EN/CP_R80.30_IdentityAwareness_AdminG

NEW QUESTION 91

The SmartEvent R80 Web application for real-time event monitoring is called:

- A. SmartView Monitor
- B. SmartEventWeb
- C. There is no Web application for SmartEvent
- D. SmartView

Answer: B

NEW QUESTION 93

Which of the following is NOT a valid deployment option for R80?

- A. All-in-one (stand-alone)
- B. CloudGuard
- C. Distributed
- D. Bridge Mode

Answer: B

NEW QUESTION 96

What is the purpose of a Clean-up Rule?

- A. Clean-up Rules do not server any purpose.
- B. Provide a metric for determining unnecessary rules.
- C. To drop any traffic that is not explicitly allowed.
- D. Used to better optimize a policy.

Answer: C

Explanation:

These are basic access control rules we recommend for all Rule Bases:

There is also an implied rule that drops all traffic, but you can use the Cleanup rule to log the traffic.

NEW QUESTION 98

When configuring LDAP User Directory integration, Changes applied to a User Directory template are:

- A. Reflected immediately for all users who are using template.
- B. Not reflected for any users unless the local user template is changed.
- C. Reflected for all users who are using that template and if the local user template is changed as well.
- D. Not reflected for any users who are using that template.

Answer: A

Explanation:

The users and user groups are arranged on the Account Unit in the tree structure of the LDAP server. User management in User Directory is external, not local. You can change the User Directory templates. Users associated with this template get the changes immediately. You can change user definitions manually in SmartDashboard, and the changes are immediate on the server.

NEW QUESTION 99

In which scenario is it a valid option to transfer a license from one hardware device to another?

- A. From a 4400 Appliance to a 2200 Appliance
- B. From a 4400 Appliance to an HP Open Server
- C. From an IBM Open Server to an HP Open Server
- D. From an IBM Open Server to a 2200 Appliance

Answer: A

Explanation:

https://supportcenter.checkpoint.com/supportcenter/portal?eventSubmit_doGoviewsolutiondetails=&solutionid=

NEW QUESTION 101

Fill in the blank: The position of an implied rule is manipulated in the _____ window.

- A. NAT
- B. Firewall
- C. Global Properties
- D. Object Explorer

Answer: C

Explanation:

"Note - In addition, users can access the Implied Rules configurations through Global Properties and use the implied policy view below Configuration."

https://supportcenter.checkpoint.com/supportcenter/portal?eventSubmit_doGoviewsolutiondetails=&solutionid=

NEW QUESTION 102

The "Hit count" feature allows tracking the number of connections that each rule matches. Will the Hit count feature work independently from logging and Track the hits even if the Track option is set to "None"?

- A. No, it will not work independentl
- B. Hit Count will be shown only for rules with Track options set as Log or alert
- C. Yes, it will work independently as long as "analyze all rules" tick box is enabled on the Security Gateway
- D. No, it will not work independently because hit count requires all rules to be logged
- E. Yes, it will work independently because when you enable Hit Count, the SMS collects the data from supported Security Gateways

Answer: D

NEW QUESTION 107

Which back up method uses the command line to create an image of the OS?

- A. System backup
- B. Save Configuration
- C. Migrate
- D. snapshot

Answer: D

NEW QUESTION 111

Which of the following commands is used to verify license installation?

- A. Cplic verify license
- B. Cplic print
- C. Cplic show
- D. Cplic license

Answer: B

NEW QUESTION 114

Which of the following is considered a "Subscription Blade", requiring renewal every 1-3 years?

- A. IPS blade
- B. IPSEC VPN Blade
- C. Identity Awareness Blade
- D. Firewall Blade

Answer: A

NEW QUESTION 119

Which part of SmartConsole allows administrators to add, edit delete, and clone objects?

- A. Object Browser
- B. Object Editor
- C. Object Navigator
- D. Object Explorer

Answer: D

NEW QUESTION 121

Which of the following is considered to be the more secure and preferred VPN authentication method?

- A. Password
- B. Certificate
- C. MD5
- D. Pre-shared secret

Answer: B

Explanation:

References:

NEW QUESTION 124

A stateful inspection firewall works by registering connection data and compiling this information. Where is the information stored?

- A. In the system SMEM memory pool.
- B. In State tables.
- C. In the Sessions table.
- D. In a CSV file on the firewall hard drive located in \$FWDIR/conf/.

Answer: B

Explanation:

The information stored in the state tables provides cumulative data that can be used to evaluate future connections.....

<https://www.checkpoint.com/cyber-hub/network-security/what-is-firewall/what-is-a-stateful-firewall/>

NEW QUESTION 129

Fill in the blank: Authentication rules are defined for _____.

- A. User groups
- B. Users using UserCheck
- C. Individual users
- D. All users in the database

Answer: A

NEW QUESTION 132

How can the changes made by an administrator before publishing the session be seen by a superuser administrator?

- A. By impersonating the administrator with the 'Login as...' option
- B. They cannot be seen
- C. From the SmartView Tracker audit log
- D. From Manage and Settings > Sessions, right click on the session and click 'View Changes...'

Answer: D

Explanation:

From the Smartconsole, you can possibly view the changes via Manage & setting, Sessions

NEW QUESTION 133

What is the BEST command to view configuration details of all interfaces in Gaia CLISH?

- A. ifconfig -a
- B. show interfaces
- C. show interfaces detail
- D. show configuration interface

Answer: D

NEW QUESTION 135

Which one of the following is a way that the objects can be manipulated using the new API integration in R80 Management?

- A. Microsoft Publisher
- B. JSON
- C. Microsoft Word
- D. RC4 Encryption

Answer: B

NEW QUESTION 136

In SmartConsole, on which tab are Permissions and Administrators defined?

- A. Manage and Settings
- B. Logs and Monitor
- C. Security Policies
- D. Gateways and Servers

Answer: A

NEW QUESTION 140

When dealing with rule base layers, what two layer types can be utilized?

- A. Ordered Layers and Inline Layers
- B. Inbound Layers and Outbound Layers
- C. R81.10 does not support Layers
- D. Structured Layers and Overlap Layers

Answer: A

Explanation:

https://sc1.checkpoint.com/documents/R81/WebAdminGuides/EN/CP_R81_SecurityManagement_AdminGuide

NEW QUESTION 142

Fill in the blank: An LDAP server holds one or more _____.

- A. Server Units
- B. Administrator Units
- C. Account Units
- D. Account Servers

Answer: C

NEW QUESTION 147

Which of the following describes how Threat Extraction functions?

- A. Detect threats and provides a detailed report of discovered threats
- B. Proactively detects threats
- C. Delivers file with original content
- D. Delivers PDF versions of original files with active content removed

Answer: B

NEW QUESTION 149

To ensure that VMAC mode is enabled, which CLI command you should run on all cluster members? Choose the best answer.

- A. fw ctl set int fwha vmac global param enabled
- B. fw ctl get int fwha vmac global param enabled; result of command should return value 1
- C. cphaprob -a if
- D. fw ctl get int fwha_vmac_global_param_enabled; result of command should return value 1

Answer: B

NEW QUESTION 150

When configuring LDAP with User Directory integration, changes applied to a User Directory template are:

- A. Not reflected for any users unless the local user template is changed.
- B. Not reflected for any users who are using that template.
- C. Reflected for all users who are using that template and if the local user template is changed as well.
- D. Reflected immediately for all users who are using that template.

Answer: D

Explanation:

You can change the User Directory templates. Users associated with this template get the changes immediately. If you change user definitions manually in SmartConsole, the changes are immediate on the server.

https://sc1.checkpoint.com/documents/R81/WebAdminGuides/EN/CP_R81_SecurityManagement_AdminGuide

NEW QUESTION 151

When configuring Spoof Tracking, which tracking actions can an administrator select to be done when spoofed packets are detected?

- A. Log, send snmp trap, email
- B. Drop packet, alert, none

- C. Log, alert, none
- D. Log, allow packets, email

Answer: C

Explanation:

Configure Spoof Tracking - select the tracking action that is done when spoofed packets are detected:

NEW QUESTION 152

What are the three components for Check Point Capsule?

- A. Capsule Docs, Capsule Cloud, Capsule Connect
- B. Capsule Workspace, Capsule Cloud, Capsule Connect
- C. Capsule Workspace, Capsule Docs, Capsule Connect
- D. Capsule Workspace, Capsule Docs, Capsule Cloud

Answer: D

NEW QUESTION 154

Which of the following commands is used to monitor cluster members in CLI?

- A. show cluster state
- B. show active cluster
- C. show clusters
- D. show running cluster

Answer: A

NEW QUESTION 158

What kind of NAT enables Source Port Address Translation by default?

- A. Automatic Static NAT
- B. Manual Hide NAT
- C. Automatic Hide NAT
- D. Manual Static NAT

Answer: C

Explanation:

https://sc1.checkpoint.com/documents/R81/WebAdminGuides/EN/CP_R81_SecurityManagement_AdminGuide

NEW QUESTION 159

Which tool is used to enable ClusterXL?

- A. SmartUpdate
- B. cpconfig
- C. SmartConsole
- D. sysconfig

Answer: B

NEW QUESTION 164

Which product correlates logs and detects security threats, providing a centralized display of potential attack patterns from all network devices?

- A. SmartDashboard
- B. SmartEvent
- C. SmartView Monitor
- D. SmartUpdate

Answer: B

Explanation:

SmartEvent correlates logs from all Check Point enforcement points, including end-points, to identify suspicious activity from the clutter. Rapid data analysis and custom event logs immediately alert administrators to anomalous behavior such as someone attempting to use the same credential in multiple geographies simultaneously. Ref: <https://www.checkpoint.com/products/smartevent/>

NEW QUESTION 168

Fill in the blanks: The Application Layer Firewalls inspect traffic through _____ the layer(s) of the TCP/IP model and up to and including the _____ layer.

- A. Upper; Application
- B. First two; Internet
- C. Lower; Application
- D. First two; Transport

Answer: C

Explanation:

application firewalls, or application layer firewalls, use a series of configured policies to determine whether to block or allow communications to or from an app.

NEW QUESTION 171

You are going to perform a major upgrade. Which back up solution should you use to ensure your database can be restored on that device?

- A. backup
- B. logswitch
- C. Database Revision
- D. snapshot

Answer: D

Explanation:

The snapshot creates a binary image of the entire root (lv_current) disk partition. This includes Check Point products, configuration, and operating system. Starting in R77.10, exporting an image from one machine and importing that image on another machine of the same type is supported. The log partition is not included in the snapshot. Therefore, any locally stored FireWall logs will not be save

NEW QUESTION 175

Which icon in the WebUI indicates that read/write access is enabled?

- A. Pencil
- B. Padlock
- C. Book
- D. Eyeglasses

Answer: A

NEW QUESTION 176

Which key is created during Phase 2 of a site-to-site VPN?

- A. Pre-shared secret
- B. Diffie-Hellman Public Key
- C. Symmetrical IPSec key
- D. Diffie-Hellman Private Key

Answer: C

NEW QUESTION 179

To quickly review when Threat Prevention signatures were last updated, which Threat Tool would an administrator use?

- A. Protections
- B. IPS Protections
- C. Profiles
- D. ThreatWiki

Answer: B

NEW QUESTION 183

The competition between stateful inspection and proxies was based on performance, protocol support, and security. Considering stateful Inspections and Proxies, which statement is correct?

- A. Stateful Inspection is limited to Layer 3 visibility, with no Layer 4 to Layer 7 visibility capabilities.
- B. When it comes to performance, proxies were significantly faster than stateful inspection firewalls.
- C. Proxies offer far more security because of being able to give visibility of the payload (the data).
- D. When it comes to performance, stateful inspection was significantly faster than proxies.

Answer: C

NEW QUESTION 188

When changes are made to a Rule base, it is important to _____ to enforce changes.

- A. Publish database
- B. Activate policy
- C. Install policy
- D. Save changes

Answer: C

NEW QUESTION 190

DLP and Geo Policy are examples of what type of Policy?

- A. Inspection Policies
- B. Shared Policies
- C. Unified Policies

D. Standard Policies

Answer: B

Explanation:

https://sc1.checkpoint.com/documents/R80.30/WebAdminGuides/EN/CP_R80.30_NextGenSecurityGateway_G

NEW QUESTION 193

There are four policy types available for each policy package. What are those policy types?

- A. Access Control, Threat Prevention, Mobile Access and HTTPS Inspection
- B. Access Control, Custom Threat Prevention, Autonomous Threat Prevention and HTTPS Inspection
- C. There are only three policy types: Access Control, Threat Prevention and NAT.
- D. Access Control, Threat Prevention, NAT and HTTPS Inspection

Answer: D

Explanation:

https://sc1.checkpoint.com/documents/R81/WebAdminGuides/EN/CP_R81_SecurityManagement_AdminGuide

NEW QUESTION 195

A security zone is a group of one or more network interfaces from different centrally managed gateways. What is considered part of the zone?

- A. The zone is based on the network topology and determined according to where the interface leads to.
- B. Security Zones are not supported by Check Point firewalls.
- C. The firewall rule can be configured to include one or more subnets in a zone.
- D. The local directly connected subnet defined by the subnet IP and subnet mask.

Answer: A

Explanation:

The Interface window opens. The Topology area of the General pane shows the Security Zone to which the interface is already bound. By default, the Security Zone is calculated according to where the interface Leads To.

https://sc1.checkpoint.com/documents/R81/WebAdminGuides/EN/CP_R81_SecurityManagement_AdminGuide

NEW QUESTION 199

Which of the following technologies extracts detailed information from packets and stores that information in state tables?

- A. INSPECT Engine
- B. Next-Generation Firewall
- C. Packet Filtering
- D. Application Layer Firewall

Answer: A

Explanation:

Check Point FireWall-1's Stateful Inspection overcomes the limitations of the previous two approaches by providing full application-layer awareness without breaking the client/server model. With Stateful Inspection, the packet is intercepted at the network layer, but then the INSPECT Engine takes over. It extracts state-related information required for the security decision from all application layers and maintains this information in dynamic state tables for evaluating subsequent connection attempts. This provides a solution which is highly secure and offers maximum performance, scalability, and extensibility.

NEW QUESTION 200

Which of the following is NOT supported by Bridge Mode on the Check Point Security Gateway?

- A. Data Loss Prevention
- B. Antivirus
- C. Application Control
- D. NAT

Answer: D

Explanation:

NAT rules (specifically, Firewall kernel in logs shows the traffic as accepted, but Security Gateway does not actually forward it). For more information, see sk106146. https://sc1.checkpoint.com/documents/R81/WebAdminGuides/EN/CP_R81_Installation_and_Upgrade_Guide/T

NEW QUESTION 202

When using Automatic Hide NAT, what is enabled by default?

- A. Source Port Address Translation (PAT)
- B. Static NAT
- C. Static Route
- D. HTTPS Inspection

Answer: A

Explanation:

Hiding multiple IP addresses behind one, gateway, IP address requires PAT to differentiate between traffic.

NEW QUESTION 203

Which tool provides a list of trusted files to the administrator so they can specify to the Threat Prevention blade that these files do not need to be scanned or analyzed?

- A. ThreatWiki
- B. Whitelist Files
- C. AppWiki
- D. IPS Protections

Answer: A

NEW QUESTION 204

Which GUI tool can be used to view and apply Check Point licenses?

- A. cpconfig
- B. Management Command Line
- C. SmartConsole
- D. SmartUpdate

Answer: D

Explanation:

SmartUpdate GUI is the recommended way of managing licenses.

NEW QUESTION 209

What object type would you use to grant network access to an LDAP user group?

- A. Access Role
- B. User Group
- C. SmartDirectory Group
- D. Group Template

Answer: B

NEW QUESTION 213

Which of the following Windows Security Events will NOT map a username to an IP address in Identity Awareness?

- A. Kerberos Ticket Renewed
- B. Kerberos Ticket Requested
- C. Account Logon
- D. Kerberos Ticket Timed Out

Answer: D

NEW QUESTION 216

Fill in the blank: When tunnel test packets no longer invoke a response, SmartView Monitor displays _____ for the given VPN tunnel.

- A. Down
- B. No Response
- C. Inactive
- D. Failed

Answer: A

NEW QUESTION 219

Which method below is NOT one of the ways to communicate using the Management API's?

- A. Typing API commands using the "mgmt_cli" command
- B. Typing API commands from a dialog box inside the SmartConsole GUI application
- C. Typing API commands using Gaia's secure shell (clash)19+
- D. Sending API commands over an http connection using web-services

Answer: D

NEW QUESTION 224

Which default Gaia user has full read/write access?

- A. admin
- B. superuser
- C. monitor
- D. altuser

Answer: A

Explanation:

Has full read/write capabilities for all Gaia features, from the Gaia Portal and the Gaia Clish. This user has a User ID of 0, and therefore has all of the privileges of a root user. monitor Has read-only capabilities for all features in the Gaia Portal and the Gaia Clish, and can change its own password. You must give a password for this user before the account can be used.

NEW QUESTION 228

What key is used to save the current CPView page in a filename format cpview_“cpview process ID”. cap”number of captures”?

- A. S
- B. W
- C. C
- D. Space bar

Answer: C

NEW QUESTION 232

Which application is used for the central management and deployment of licenses and packages?

- A. SmartProvisioning
- B. SmartLicense
- C. SmartUpdate
- D. Deployment Agent

Answer: C

NEW QUESTION 234

An administrator is creating an IPsec site-to-site VPN between his corporate office and branch office. Both offices are protected by Check Point Security Gateway managed by the same Security Management Server (SMS). While configuring the VPN community to specify the pre-shared secret, the administrator did not find a box to input the pre-shared secret. Why does it not allow him to specify the pre-shared secret?

- A. The Gateway is an SMB device
- B. The checkbox “Use only Shared Secret for all external members” is not checked
- C. Certificate based Authentication is the only authentication method available between two Security Gateway managed by the same SMS
- D. Pre-shared secret is already configured in Global Properties

Answer: C

NEW QUESTION 236

True or False: In a Distributed Environment, a Central License can be installed via CLI on a Security Gateway

- A. True, CLI is the prefer method for Licensing
- B. False, Central License are handled via Security Management Server
- C. False, Central License are installed via Gaia on Security Gateways
- D. True, Central License can be installed with CPLIC command on a Security Gateway

Answer: D

NEW QUESTION 239

Sticky Decision Function (SDF) is required to prevent which of the following? Assume you set up an Active-Active cluster.

- A. Symmetric routing
- B. Failovers
- C. Asymmetric routing
- D. Anti-Spoofing

Answer: B

NEW QUESTION 243

Fill in the blank: It is Best Practice to have a _____ rule at the end of each policy layer.

- A. Explicit Drop
- B. Implied Drop
- C. Explicit CleanUp
- D. Implicit Drop

Answer: C

NEW QUESTION 245

Fill in the blank: An identity server uses a _____ for user authentication.

- A. Shared secret
- B. Certificate
- C. One-time password
- D. Token

Answer: A

NEW QUESTION 246

When defining group-based access in an LDAP environment with Identity Awareness, what is the BEST object type to represent an LDAP group in a Security Policy?

- A. Access Role
- B. User Group
- C. SmartDirectory Group
- D. Group Template

Answer: A

NEW QUESTION 250

Which of the following cannot be configured in an Access Role Object?

- A. Networks
- B. Users
- C. Time
- D. Machines

Answer: C

Explanation:

Access Role objects includes one or more of these objects: Networks.

Users and user groups. Computers and computer groups. Remote Access Clients.

https://sc1.checkpoint.com/documents/R81/WebAdminGuides/EN/CP_R81_IdentityAwareness_AdminGuide/T

NEW QUESTION 253

In which deployment is the security management server and Security Gateway installed on the same appliance?

- A. Standalone
- B. Remote
- C. Distributed
- D. Bridge Mode

Answer: A

Explanation:

<https://www.youtube.com/watch?v=BFNnBKQz5HA>

NEW QUESTION 254

Fill in the blank: In order to install a license, it must first be added to the _____.

- A. User Center
- B. Package repository
- C. Download Center Web site
- D. License and Contract repository

Answer: B

NEW QUESTION 255

Fill in the blanks: In _____ NAT, Only the _____ is translated.

- A. Static; source
- B. Simple; source
- C. Hide; destination
- D. Hide; source

Answer: D

Explanation:

https://supportcenter.checkpoint.com/supportcenter/portal?eventSubmit_doGoviewsolutiondetails=&solutionid=

NEW QUESTION 260

Which of the following is NOT an identity source used for Identity Awareness?

- A. Remote Access
- B. UserCheck
- C. AD Query
- D. RADIUS

Answer: B

NEW QUESTION 263

How many users can have read/write access in Gaia Operating System at one time?

- A. One
- B. Three
- C. Two
- D. Infinite

Answer: A

Explanation:

if another user has r/w access, you need to use "lock database override" or "unlock database" to claim r/w access. Ref:
https://sc1.checkpoint.com/documents/R80.20_GA/WebAdminGuides/EN/CP_R80.20_Gaia_AdminGuide/html

NEW QUESTION 265

Which software blade enables Access Control policies to accept, drop, or limit web site access based on user, group, and/or machine?

- A. Application Control
- B. Data Awareness
- C. Identity Awareness
- D. Threat Emulation

Answer: A

NEW QUESTION 268

Which of the following log queries would show only dropped packets with source address of 192.168.1.1 and destination address of 172.26.1.1?

- A. src:192.168.1.1 OR dst:172.26.1.1 AND action:Drop
- B. src:192.168.1.1 AND dst:172.26.1.1 AND action:Drop
- C. 192.168.1.1 AND 172.26.1.1 AND drop
- D. 192.168.1.1 OR 172.26.1.1 AND action:Drop

Answer: B

NEW QUESTION 272

Which one of these features is NOT associated with the Check Point URL Filtering and Application Control Blade?

- A. Detects and blocks malware by correlating multiple detection engines before users are affected.
- B. Configure rules to limit the available network bandwidth for specified users or groups.
- C. Use UserCheck to help users understand that certain websites are against the company's security policy.
- D. Make rules to allow or block applications and Internet sites for individual applications, categories, and risk levels.

Answer: A

NEW QUESTION 273

Which of the following is NOT an advantage to using multiple LDAP servers?

- A. You achieve a faster access time by placing LDAP servers containing the database at remote sites
- B. You achieve compartmentalization by allowing a large number of users to be distributed across several servers
- C. Information on a user is hidden, yet distributed across several servers.
- D. You gain High Availability by replicating the same information on several servers

Answer: C

NEW QUESTION 278

Most Check Point deployments use Gaia but which product deployment utilizes special Check Point code (with unification in R81.10)?

- A. Enterprise Network Security Appliances
- B. Rugged Appliances
- C. Scalable Platforms
- D. Small Business and Branch Office Appliances

Answer: A

NEW QUESTION 280

Which Check Point software blade prevents malicious files from entering a network using virus signatures and anomaly-based protections from ThreatCloud?

- A. Firewall
- B. Application Control
- C. Anti-spam and Email Security
- D. Anti-Virus

Answer: D

Explanation:

https://sc1.checkpoint.com/documents/R81/WebAdminGuides/EN/CP_R81_ThreatPrevention_AdminGuide/To

NEW QUESTION 284

When connected to the Check Point R80 Management Server using the SmartConsole the first administrator to connect has a lock on:

- A. Only the objects being modified in the Management Database and other administrators can connect to make changes using a special session as long as they all connect from the same LAN network.
- B. The entire Management Database and other administrators can connect to make changes only if the first administrator switches to Read-only.
- C. The entire Management Database and all sessions and other administrators can connect only as Read-only.
- D. Only the objects being modified in his session of the Management Database and other administrators can connect to make changes using different sessions.

Answer: D

NEW QUESTION 287

Security Zones do no work with what type of defined rule?

- A. Application Control rule
- B. Manual NAT rule
- C. IPS bypass rule
- D. Firewall rule

Answer: B

Explanation:

<https://community.checkpoint.com/t5/Management/Workaround-for-manual-NAT-when-security-zones-are-use>

NEW QUESTION 288

Fill in the blanks: A _____ license requires an administrator to designate a gateway for attachment whereas a _____ license is automatically attached to a Security Gateway.

- A. Formal; corporate
- B. Local; formal
- C. Local; central
- D. Central; local

Answer: D

NEW QUESTION 291

Fill in the blank: An Endpoint identity agent uses a _____ for user authentication.

- A. Shared secret
- B. Token
- C. Username/password or Kerberos Ticket
- D. Certificate

Answer: C

Explanation:

Two ways of auth: Username/Password in Captive Portal or Transparent Kerberos Auth through Kerberos Ticket.

https://sc1.checkpoint.com/documents/R81/WebAdminGuides/EN/CP_R81_IdentityAwareness_AdminGuide/T

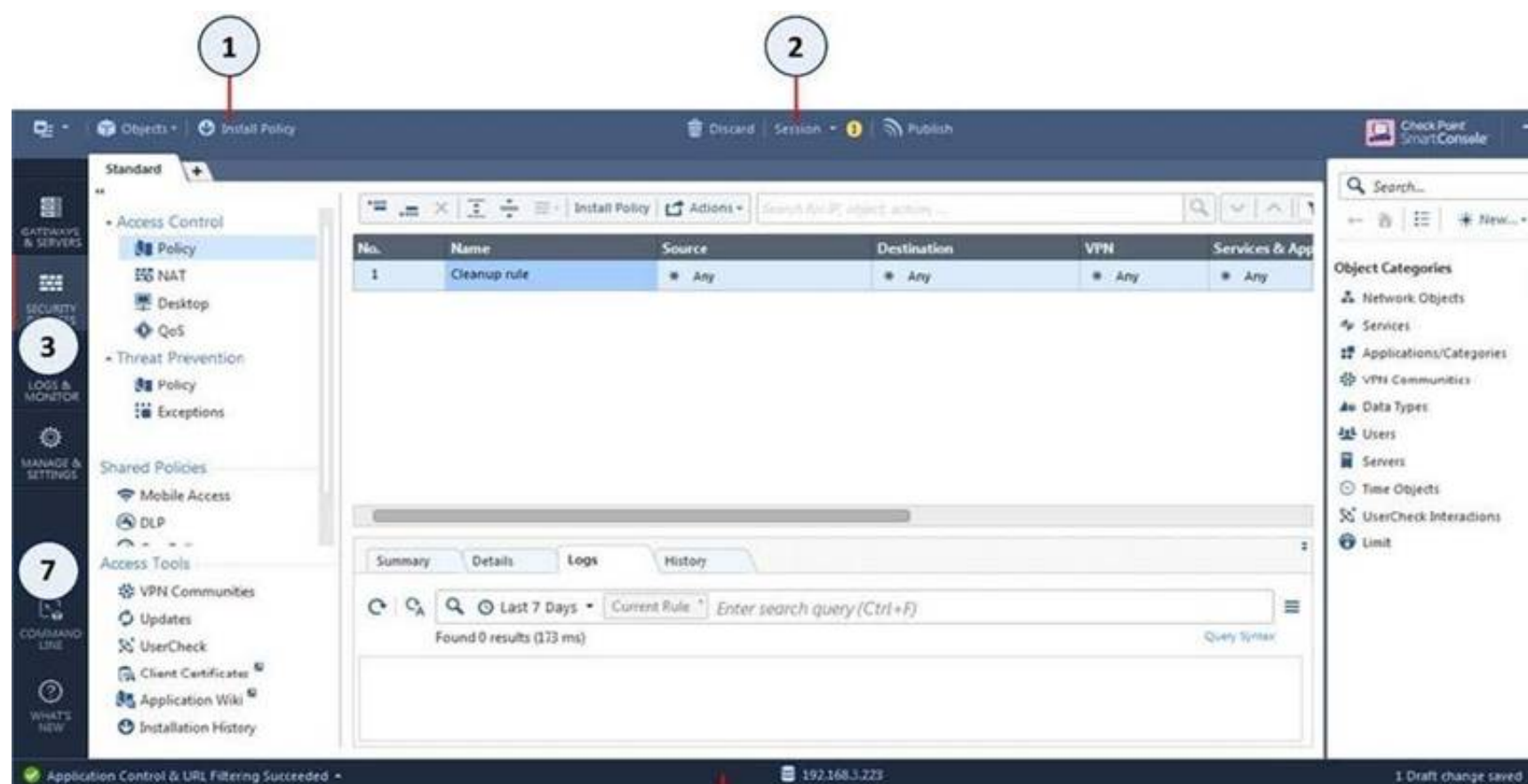
NEW QUESTION 296

Which of the following is NOT a valid application navigation tab in the R80 SmartConsole?

- A. Manage and Command Line
- B. Logs and Monitor
- C. Security Policies
- D. Gateway and Servers

Answer: A

Explanation:



Item	Description
1	Global Toolbar
2	Session Management Toolbar
3	Navigation Toolbar
4	System Information Area

Item	Description
5	Objects Bar (F11)
6	Validations pane
7	Command line interface button

NEW QUESTION 298

Which type of Check Point license is tied to the IP address of a specific Security Gateway and cannot be transferred to a gateway that has a different IP address?

- A. Formal
- B. Central
- C. Corporate
- D. Local

Answer: D

Explanation:

Local licensing is associated with the IP address of the Security Gateway, to which the license will be applied. Each time the IP address of the Security Gateway changes, a new license must be generated and installed.
https://supportcenter.checkpoint.com/supportcenter/portal?eventSubmit_doGoviewsolutiondetails=&solutionid=

NEW QUESTION 302

Which SmartConsole tab is used to monitor network and security performance?

- A. Manage & Settings
- B. Security Policies
- C. Gateway & Servers
- D. Logs & Monitor

Answer: D

NEW QUESTION 306

When configuring Anti-Spoofing, which tracking options can an Administrator select?

- A. Log, Alert, None
- B. Log, Allow Packets, Email
- C. Drop Packet, Alert, None
- D. Log, Send SNMP Trap, Email

Answer: A

Explanation:

Configure Spoof Tracking - select the tracking action that is done when spoofed packets are detected: Log - Create a log entry (default)

Alert - Show an alert None - Do not log or alert

https://sc1.checkpoint.com/documents/R81/WebAdminGuides/EN/CP_R81_SecurityManagement_AdminGuide

NEW QUESTION 311

Log query results can be exported to what file format?

- A. Word Document (docx)
- B. Comma Separated Value (csv)
- C. Portable Document Format (pdf)
- D. Text (txt)

Answer: B

NEW QUESTION 315

In SmartEvent, a correlation unit (CU) is used to do what?

- A. Collect security gateway logs, Index the logs and then compress the logs.
- B. Receive firewall and other software blade logs in a region and forward them to the primary log server.
- C. Analyze log entries and identify events.
- D. Send SAM block rules to the firewalls during a DOS attack.

Answer: C

Explanation:

https://sc1.checkpoint.com/documents/R80.40/WebAdminGuides/EN/CP_R80.40_LoggingAndMonitoring_Ad

NEW QUESTION 317

Fill in the blank: To create policy for traffic to or from a particular location, use the _____ .

- A. DLP shared policy
- B. Geo policy shared policy
- C. Mobile Access software blade
- D. HTTPS inspection

Answer: B

Explanation:

Shared Policies

The Shared Policies section in the Security Policies shows the policies that are not in a Policy package. They are shared between all Policy packages.

Shared policies are installed with the Access Control Policy. Software Blade

Description Mobile Access

Launch Mobile Access policy in a SmartConsole. Configure how your remote users access internal resources, such as their email accounts, when they are mobile.

DLP

Launch Data Loss Prevention policy in a SmartConsole. Configure advanced tools to automatically identify data that must not go outside the network, to block the leak, and to educate users.

Geo Policy

Create a policy for traffic to or from specific geographical or political locations.

NEW QUESTION 322

What is a role of Publishing?

- A. The Publish operation sends the modifications made via SmartConsole in the private session and makes them public
- B. The Security Management Server installs the updated policy and the entire database on Security Gateways
- C. The Security Management Server installs the updated session and the entire Rule Base on Security Gateways
- D. Modifies network objects, such as servers, users, services, or IPS profiles, but not the Rule Base

Answer: A

NEW QUESTION 326

Which option, when applied to a rule, allows traffic to VPN gateways in specific VPN communities?

- A. All Connections (Clear or Encrypted)
- B. Accept all encrypted traffic
- C. Specific VPN Communities
- D. All Site-to-Site VPN Communities

Answer: B

Explanation:

The first rule is the automatic rule for the Accept All Encrypted Traffic feature. The Firewalls for the Security Gateways in the BranchOffices and LondonOffices VPN communities allow all VPN traffic from hosts in clients in these communities. Traffic to the Security Gateways is dropped. This rule is installed on all Security Gateways in these communities.

* 2. Site to site VPN - Connections between hosts in the VPN domains of all Site to Site VPN communities are allowed. These are the only protocols that are allowed: FTP, HTTP, HTTPS and SMTP.

* 3. Remote access - Connections between hosts in the VPN domains of RemoteAccess VPN community are allowed. These are the only protocols that are allowed: HTTP, HTTPS, and IMAP.

NEW QUESTION 330

Which of the following is NOT an option to calculate the traffic direction?

- A. Incoming
- B. Internal
- C. External
- D. Outgoing

Answer: D

NEW QUESTION 334

CPU-level of your Security gateway is peaking to 100% causing problems with traffic. You suspect that the problem might be the Threat Prevention settings. The following Threat Prevention Profile has been created.

How could you tune the profile in order to lower the CPU load still maintaining security at good level? Select the BEST answer.

- A. Set High Confidence to Low and Low Confidence to Inactive.
- B. Set the Performance Impact to Medium or lower.
- C. The problem is not with the Threat Prevention Profil
- D. Consider adding more memory to the appliance.
- E. Set the Performance Impact to Very Low Confidence to Prevent.

Answer: B

NEW QUESTION 336

The purpose of the Communication Initialization process is to establish a trust between the Security Management Server and the Check Point gateways. Which statement best describes this Secure Internal Communication (SIC)?

- A. After successful initialization, the gateway can communicate with any Check Point node that possesses a SIC certificate signed by the same ICA.
- B. Secure Internal Communications authenticates the security gateway to the SMS before http communications are allowed.
- C. A SIC certificate is automatically generated on the gateway because the gateway hosts a subordinate CA to the SMS ICA.
- D. New firewalls can easily establish the trust by using the expert password defined on the SMS and the SMS IP address.

Answer: A

Explanation:

https://sc1.checkpoint.com/documents/R81/WebAdminGuides/EN/CP_R81_SecurityManagement_AdminGuide

NEW QUESTION 341

Which of the following is NOT a valid configuration screen of an Access Role Object?

- A. Users
- B. Networks
- C. Time
- D. Machines

Answer: C

NEW QUESTION 344

When using Monitored circuit VRRP, what is a priority delta?

- A. When an interface fails the priority changes to the priority delta
- B. When an interface fails the delta claims the priority
- C. When an interface fails the priority delta is subtracted from the priority
- D. When an interface fails the priority delta decides if the other interfaces takes over

Answer: C

NEW QUESTION 349

What is the difference between SSL VPN and IPSec VPN?

- A. IPSec VPN does not require installation of a resident VPN client
- B. SSL VPN requires installation of a resident VPN client
- C. SSL VPN and IPSec VPN are the same
- D. IPSec VPN requires installation of a resident VPN client and SSL VPN requires only an installed Browser

Answer: D

NEW QUESTION 353

Which repositories are installed on the Security Management Server by SmartUpdate?

- A. License and Update
- B. Package Repository and Licenses
- C. Update and License & Contract
- D. License & Contract and Package Repository

Answer: D

Explanation:

References:

NEW QUESTION 358

True or False: More than one administrator can log into the Security Management Server with SmartConsole with write permission at the same time.

- A. True, every administrator works on a different database that is independent of the other administrators
- B. False, this feature has to be enabled in the Global Properties.
- C. True, every administrator works in a session that is independent of the other administrators
- D. False, only one administrator can login with write permission

Answer: C

Explanation:

Multiple R/W admins can log into SmartConsole and edit rules but they can't edit a rule that is being worked on by another admin.

NEW QUESTION 361

The CDT utility supports which of the following?

- A. Major version upgrades to R77.30
- B. Only Jumbo HFA's and hotfixes
- C. Only major version upgrades to R80.10
- D. All upgrades

Answer: D

NEW QUESTION 365

You have enabled "Extended Log" as a tracking option to a security rule. However, you are still not seeing any data type information. What is the MOST likely reason?

- A. Identity Awareness is not enabled.
- B. Log Trimming is enabled.
- C. Logging has disk space issues
- D. Content Awareness is not enabled.

Answer: D

NEW QUESTION 369

Phase 1 of the two-phase negotiation process conducted by IKE operates in _____ mode.

- A. Main
- B. Authentication
- C. Quick
- D. High Alert

Answer: A

Explanation:

Phase I modes

Between Security Gateways, there are two modes for IKE phase I. These modes only apply to IKEv1:

NEW QUESTION 373

Can you use the same layer in multiple policies or rulebases?

- A. Yes - a layer can be shared with multiple policies and rules.
- B. No - each layer must be unique.
- C. No - layers cannot be shared or reused, but an identical one can be created.
- D. Yes - but it must be copied and pasted with a different name.

Answer: A

Explanation:

<https://community.checkpoint.com/t5/Management/Sharing-a-layer-across-different-policies/td-p/1660>

NEW QUESTION 377

Name the authentication method that requires token authenticator.

- A. SecureID
- B. Radius
- C. DynamicID
- D. TACACS

Answer: A

Explanation:

https://sc1.checkpoint.com/documents/R81/WebAdminGuides/EN/CP_R81_SecurityManagement_AdminGuide

NEW QUESTION 382

What is UserCheck?

- A. Messaging tool user to verify a user's credentials
- B. Communication tool used to inform a user about a website or application they are trying to access
- C. Administrator tool used to monitor users on their network
- D. Communication tool used to notify an administrator when a new user is created

Answer: B

Explanation:

https://sc1.checkpoint.com/documents/R81/WebAdminGuides/EN/CP_R81_NextGenSecurityGateway_Guide/T

NEW QUESTION 384

.....

Thank You for Trying Our Product

We offer two products:

1st - We have Practice Tests Software with Actual Exam Questions

2nd - Questions and Answers in PDF Format

156-215.81 Practice Exam Features:

- * 156-215.81 Questions and Answers Updated Frequently
- * 156-215.81 Practice Questions Verified by Expert Senior Certified Staff
- * 156-215.81 Most Realistic Questions that Guarantee you a Pass on Your FirstTry
- * 156-215.81 Practice Test Questions in Multiple Choice Formats and Updatesfor 1 Year

100% Actual & Verified — Instant Download, Please Click
[Order The 156-215.81 Practice Test Here](#)