



Microsoft

Exam Questions MS-600

Building Applications and Solutions with Microsoft 365 Core Services

About ExamBible

Your Partner of IT Exam

Found in 1998

ExamBible is a company specialized on providing high quality IT exam practice study materials, especially Cisco CCNA, CCDA, CCNP, CCIE, Checkpoint CCSE, CompTIA A+, Network+ certification practice exams and so on. We guarantee that the candidates will not only pass any IT exam at the first attempt but also get profound understanding about the certificates they have got. There are so many alike companies in this industry, however, ExamBible has its unique advantages that other companies could not achieve.

Our Advances

* 99.9% Uptime

All examinations will be up to date.

* 24/7 Quality Support

We will provide service round the clock.

* 100% Pass Rate

Our guarantee that you will pass the exam.

* Unique Gurantee

If you do not pass the exam at the first time, we will not only arrange FULL REFUND for you, but also provide you another exam of your claim, ABSOLUTELY FREE!

NEW QUESTION 1

- (Exam Topic 2)

You need to develop an add-in for Microsoft Excel that can be used from the Windows, Mac, and web versions of Excel.

What are two ways to develop the add-in? Each correct answer presents a complete solution?

NOTE: Each correct selection is worth one point.

- A. From Microsoft Teams, install App Studio
- B. From Microsoft Visual Studio that has the Microsoft Office/SharePoint development workload installed, create a new project that uses a Web Add-in template
- C. From the Microsoft Office 365 portal, use Microsoft PowerApps
- D. Use the Yeoman generator for Microsoft Office Add-ins to create the project, and then open the project in Microsoft Visual Studio Code
- E. From Microsoft Visual Studio that has the Microsoft Office/SharePoint development workload installed, create a new project that uses a Visual Studio Tools for Office (VSTO) template

Answer: DE

Explanation:

D: Run the following command to create an add-in project using the Yeoman generator: yo office

Visual Studio Code is a great tool to help you develop your custom Office Add-ins regardless if they are for Outlook, Word, Excel, PowerPoint and run in the web clients, Windows clients, iOS clients or on macOS.

Open the project in Visual Studio Code by entering the following on the command line from within the same folder where you ran the generator: code.

E: You can create VSTO Add-ins for Excel.

To create a new Excel VSTO Add-in project in Visual Studio

- Start Visual Studio.
- On the File menu, point to New, and then click Project.
- In the templates pane, expand Visual C# or Visual Basic, and then expand Office/SharePoint.
- Under the expanded Office/SharePoint node, select the Office Add-ins node.
- In the list of project templates, select Excel 2010 Add-in or Excel 2013 Add-in.
- In the Name box, type FirstExcelAddIn.
- Click OK.

Visual Studio creates the FirstExcelAddIn project and opens the ThisAddIn code file in the editor. References: <https://docs.microsoft.com/en-us/office/dev/add-ins/tutorials/excel-tutorial> https://code.visualstudio.com/docs/other/office#_use-visual-studio-code-to-develop-your-office-addin <https://docs.microsoft.com/en-us/visualstudio/vsto/walkthrough-creating-your-first-vsto-add-in-for-excel>

NEW QUESTION 2

- (Exam Topic 2)

This question requires that you evaluate the underlined BOLD text to determine if it is correct.

You develop a Microsoft Teams application that uses a messaging extension. Users can invoke the messaging extension from the Teams sidebar menu.

Instructions: Review the underlined text. If it makes the statement correct, select “No change is needed”. If the statement is incorrect, select the answer choice that makes the statement correct.

- A. No change is needed
- B. from the compose box of a Teams chat
- C. by using the Manage teams option for a team
- D. by using the Add a tab option in the Teams channel

Answer: B

Explanation:

In the app manifest for your Microsoft Teams app you'll define a single messaging extension with up to ten different commands. Each command defines a type (action or search), and the locations in the client it can be invoked from (compose message area, command bar, and/or message).

Reference:

<https://docs.microsoft.com/en-us/microsoftteams/platform/messaging-extensions/what-are-messaging-extension>

NEW QUESTION 3

- (Exam Topic 2)

You are developing a Microsoft Office Add-in for Microsoft Word. Which Office UI element can contain commands from the add-in?

- A. dialog boxes
- B. the Quick Access Toolbar (QAT)
- C. context menus
- D. task panes

Answer: A

NEW QUESTION 4

- (Exam Topic 2)

You are building a single-page application (SPA) that will have the following parameters:

- App Id: DBA22F72-64PA4C44-AA2C-FAA0DA5A471B
- Tenant Id: DC045C4D-5881-43C7-97AB-3C5A1ADB8DBC
- AppName: Contoso.Spa

You have a line-of-business API for invoicing that is secured by using the Microsoft identity platform. The API has the following parameters:

- * App Id: 8/9A43D7-1794-47A0-AB2B-440B63FEC248
- * Tenant Id: DC04SC4D S881-43C7-97AB 3C5A1ADB8DBC
- * AppName: Contoso.Invoicing

Contoso.Invoicing declares the following custom scopes:

- * Invoices-Read
- * Invoices. Read Write

Contoso.Spa needs to call Contoso.Invoicing to create new invoices.

Which code should you use in Contoso.Spa to obtain an access token for Contoso.Invoicing? To answer, select the appropriate options in the answer area.

NOTE: Each correct select is worth one point.

Answer Area

```
const app = new UserAgentApplication({
  auth: {
    clientId: 'DBA22F72-642A-4C44-AA2C-FAA0DA5A471B',
    clientId: '879A43D7-1794-47A0-AB2B-440B63FEC248',
    clientId: 'DC045C4D-5881-43C7-97AB-3C5A1ADB8DBC',
    authority: 'https://login.microsoftonline.com/DBA22F72-642A-4C44-AA2C-FAA0DA5A471B/',
    authority: 'https://login.microsoftonline.com/879A43D7-1794-47A0-AB2B-440B63FEC248/',
    authority: 'https://login.microsoftonline.com/DC045C4D-5881-43C7-97AB-3C5A1ADB8DBC/',
  },
  system: {
    logger: new Logger(this.logger)
  },
  cache: {cacheLocation: "localStorage"}
});

const response = await app.acquireTokenSilent({
  scopes: ['api://879A43D7-1794-47A0-AB2B-440B63FEC248/Invoices.Read'],
  scopes: ['api://879A43D7-1794-47A0-AB2B-440B63FEC248/Invoices.ReadWrite'],
  scopes: ['api://DBA22F72-642A-4C44-AA2C-FAA0DA5A471B/Invoices.ReadWrite'],
  scopes: ['api://DC045C4D-5881-43C7-97AB-3C5A1ADB8DBC/Invoices.Read'],
  scopes: ['Invoices.Read'],
  scopes: ['Invoices.ReadWrite']
});
```

- A. Mastered
- B. Not Mastered

Answer: A

Explanation:

Answer Area

```
const app = new UserAgentApplication({
  auth: {
    clientId: 'DBA22F72-642A-4C44-AA2C-FAA0DA5A471B',
    clientId: '879A43D7-1794-47A0-AB2B-440B63FEC248',
    clientId: 'DC045C4D-5881-43C7-97AB-3C5A1ADB8DBC',
    authority: 'https://login.microsoftonline.com/DBA22F72-642A-4C44-AA2C-FAA0DA5A471B/',
    authority: 'https://login.microsoftonline.com/879A43D7-1794-47A0-AB2B-440B63FEC248/',
    authority: 'https://login.microsoftonline.com/DC045C4D-5881-43C7-97AB-3C5A1ADB8DBC/',
  },
  system: {
    logger: new Logger(this.logger)
  },
  cache: {cacheLocation: "localStorage"}
});

const response = await app.acquireTokenSilent({
  scopes: ['api://879A43D7-1794-47A0-AB2B-440B63FEC248/Invoices.Read'],
  scopes: ['api://879A43D7-1794-47A0-AB2B-440B63FEC248/Invoices.ReadWrite'],
  scopes: ['api://DBA22F72-642A-4C44-AA2C-FAA0DA5A471B/Invoices.ReadWrite'],
  scopes: ['api://DC045C4D-5881-43C7-97AB-3C5A1ADB8DBC/Invoices.Read'],
  scopes: ['Invoices.Read'],
  scopes: ['Invoices.ReadWrite']
});
```

NEW QUESTION 5

- (Exam Topic 2)

You have an API that is secured by using Azure Active Directory (Azure AD). You are designing a SharePoint Framework (SPFx) solution.

Which object should you use to connect to the API from the solution?

- A. SPHttpClient

- B. HttpClient
C. AadHttpClient

Answer: C

Explanation:

By using the AadHttpClient, you can easily connect to APIs secured by using Azure AD without having to implement the OAuth flow yourself.
Reference: <https://docs.microsoft.com/en-us/sharepoint/dev/spfx/use-aadhttpclient>

NEW QUESTION 6

- (Exam Topic 2)

You are developing an application that will run as an overnight background service on a server. The service will access web-hosted resources by using the application's identity and the OAuth 2.0 client credentials grant flow.

You register the application and grant permissions. The tenant administrator grants admin consent to the application.

You need to get the access token from Azure Active Directory (Azure AD).

Which URI should you use for the POST request? To answer, select the appropriate options in the answer area.

NOTE: Each correct selection is worth one point.

https://login.microsoftonline.com/<TenantId>/oauth2/v2.0/

?client_id=<ClientID>

&client_secret=<ClientSecret>

&scope=https://graph.microsoft.com/.default

&grant_type=

authorization_code

client_credentials

on_behalf_of

refresh_token

urn:ietf:params:oauth:grant-type:jwt-bearer

authorize

code

keys

token

- A. Mastered
B. Not Mastered

Answer: A

Explanation:

OAuth2 client_id client_secret

The authorization code flow begins with the client directing the user to the /authorize endpoint. Box 1: token

Use the authorization code to request an access token.

Now that you've acquired an authorization code and have been granted permission by the user, you can redeem the code for an access token to the desired resource, by sending a POST request to the /token endpoint:

Box 2: authorization_code

Use the authorization code to request an access token. Example:

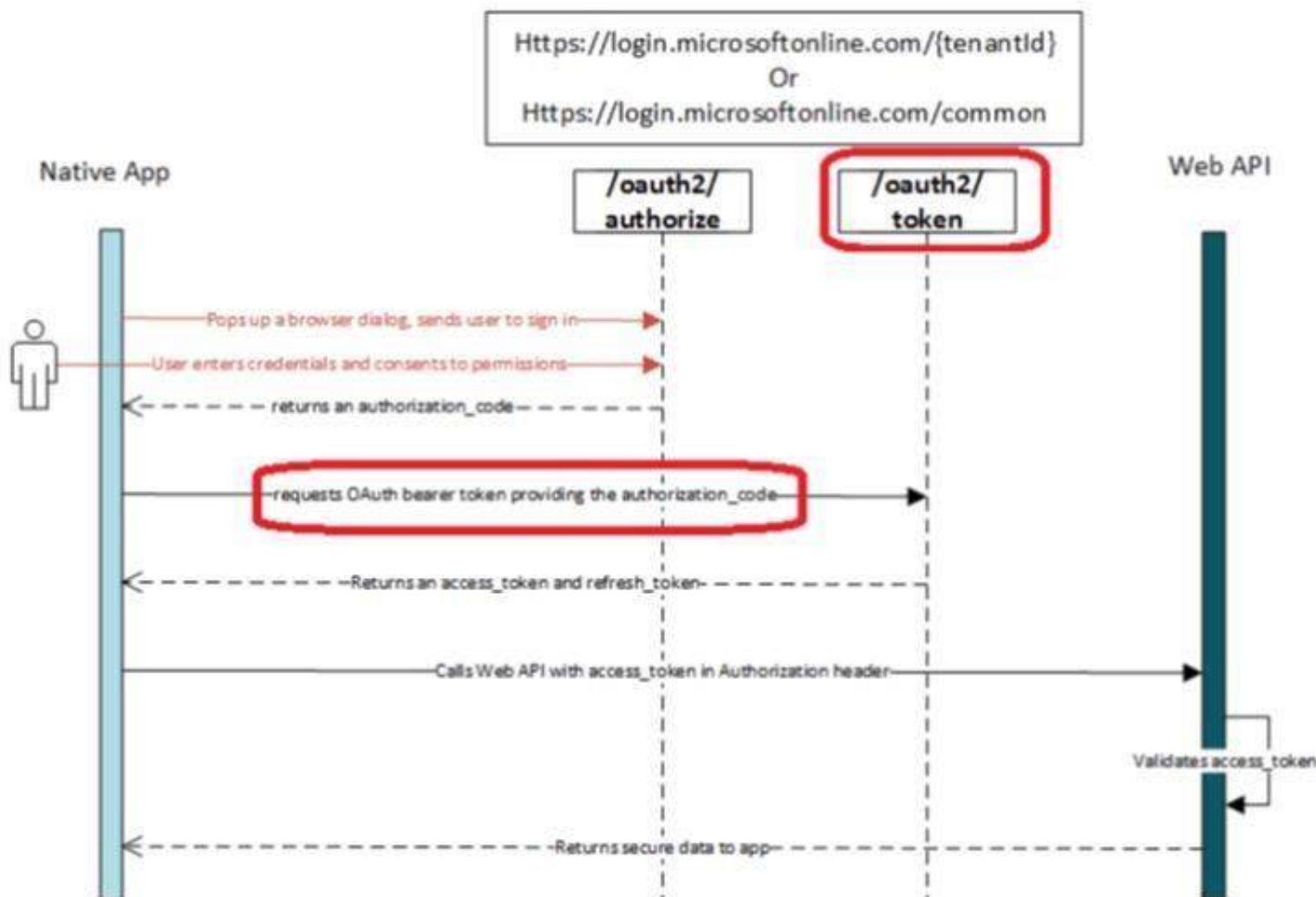
// Line breaks for legibility only

POST /{tenant}/oauth2/token HTTP/1.1 Host: https://login.microsoftonline.com

Content-Type: application/x-www-form-urlencoded grant_type=authorization_code

etc.

Note: At a high level, the entire authorization flow for an application looks a bit like this:



Reference: <https://docs.microsoft.com/en-us/azure/active-directory/develop/v1-protocols-oauth-code>

NEW QUESTION 7

- (Exam Topic 2)

You have an application that uses the Microsoft graph API.

When users open the application during peak hours, they occasionally receive an HTTP 429 Too Many requests response status code.

What should you to mitigate the errors?

- A. Adjust the request rate based on the Rate-Limit-Reset Header.
- B. Wait 100 milliseconds between requests.
- C. Adjust the request rate based on the Retry-After header.

Answer: C

NEW QUESTION 8

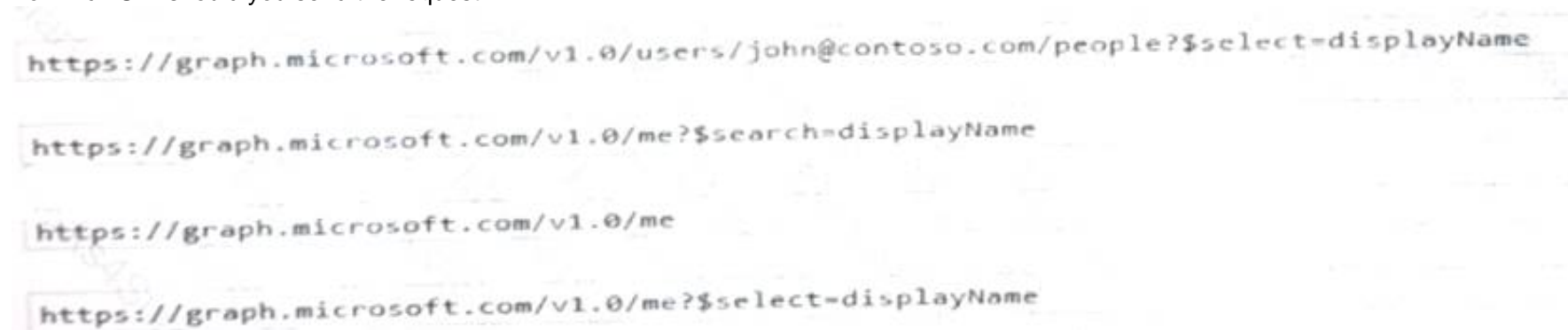
- (Exam Topic 2)

You are developing a front end web app.

You want to display the current username as part of the user interface.

You need to retrieve the current username from Microsoft Graph by using a REST request. The solution must minimize the amount of information returned.

To which URI should you send the request?



- A. Option A
- B. Option B
- C. Option C
- D. Option D

Answer: A

NEW QUESTION 9

- (Exam Topic 2)

You have an application that uses the Microsoft Graph API.

You need to configure the application to retrieve the groups to which the current signed-in user belongs. The results must contain the extended priorities of the groups.

Which URI should you use?

- A. <https://graph.microsoft.com/v1.0/me/getMemberObjects>
- B. <https://graph.microsoft.com/v1.0/me/getMemberGroups>
- C. <https://graph.microsoft.com/v1.0/me/memberOf>

D. <https://graph.microsoft.com/v1.0/me/checkMemberGroups>

Answer: B

Explanation:

Get member groups returns all the groups that the specified user, group, or directory object is a member of. This function is transitive.

Reference: <https://docs.microsoft.com/en-us/graph/api/directoryobject-getmembergroups>

NEW QUESTION 10

- (Exam Topic 2)

This question requires that you evaluate the underlined BOLD text to determine if it is correct.

You can use App Studio for Microsoft Teams to develop all the components of a bot application.

Instructions: Review the underlined text. If it makes the statement correct, select “No change is needed”. If the statement is incorrect, select the answer choice that makes the statement correct.

- A. No change is needed
- B. configure a Teams tab in an application
- C. develop a SharePoint Framework (SPFx) web part
- D. provision a bot by using the Bot Framework

Answer: B

Explanation:

Tabs provide a place for you to display for rich interactive web content. You can define both personal and team tabs.

There can be only 1 team tab per app, but up to 16 personal tabs per app.

Reference: <https://blog.thoughtstuff.co.uk/2019/04/what-is-app-studio-in-microsoft-teams-and-why-do-i-care/>

NEW QUESTION 10

- (Exam Topic 2)

You have a SharePoint Framework (SPFx) 1.5 solution.

You need to ensure that the solution can be used as a tab in Microsoft Teams. What should you do first?

- A. Convert the solution to use the Bot Framework
- B. Deploy the solution to a developer site collection
- C. Deploy the solution to the Microsoft AppSource store
- D. Upgrade the solution to the latest version of SPFx

Answer: D

Explanation:

Starting with the SharePoint Framework v1.8, you can implement your Microsoft Teams tabs using SharePoint Framework.

Reference:

<https://docs.microsoft.com/en-us/sharepoint/dev/spfx/web-parts/get-started/using-web-part-as-msteams-tab>

NEW QUESTION 14

- (Exam Topic 2)

You have a SharePoint Framework (SPFx) web part that displays the weather. Users can set the city within the web part. Which component is invoked to provide the users with the ability to configure the settings for the web part?

- A. a custom control
- B. the property pane
- C. the Application Customizer
- D. a library component

Answer: B

NEW QUESTION 15

- (Exam Topic 2)

You are developing a mobile application that will display the current signed-in user's display name and the application settings. The application settings are stored as Microsoft graph extension of the user profile.

Users of the application have intermittent network connectivity.

You need to retrieve the least amount of data by using a single REST request. The solution must minimize network traffic.

Which URI Should you use to retrieve the data?

[https://graph.microsoft.com/v1.0/me?\\$select=displayName,userType&\\$expand=extensions](https://graph.microsoft.com/v1.0/me?$select=displayName,userType&$expand=extensions)

[https://graph.microsoft.com/v1.0/me?\\$select=displayName,id&\\$expand=extensions](https://graph.microsoft.com/v1.0/me?$select=displayName,id&$expand=extensions)

<https://graph.microsoft.com/v1.0/me>

[https://graph.microsoft.com/v1.0/me?\\$expand=extensions](https://graph.microsoft.com/v1.0/me?$expand=extensions)

- A. Option A
- B. Option B
- C. Option C
- D. Option D

Answer: C

NEW QUESTION 17

- (Exam Topic 2)

Note: This question is part of a series of questions that present the same scenario. Each question in the series contains a unique solution that might meet the stated goals. Some question sets have more than one correct solution, while others might not have a correct solution.

After you answer a question in this section, you will NOT be able to return to it. As a result, these questions will not appear in the review screen.

You are developing a new application named App1 that uses the Microsoft identity platform to authenticate to Azure Active Directory (Azure AD).

Currently, App1 can read user profile information. You need to allow App1 to read the user's calendar.

Solution: From the Azure portal, add the Microsoft Graph API and the Calendar.Read permission by using the API permission list of App1. Grant tenant admin consent.

Does this meet the goal?

- A. Yes
- B. No

Answer: A

Explanation:

Microsoft Graph Calendars.Read allows the app to read events in user calendars.

For your app to access data in Microsoft Graph, the user or administrator must grant it the correct permissions via a consent process.

Application permissions are used by apps that run without a signed-in user present; for example, apps that run as background services or daemons. Application permissions can only be consented by an administrator.

References: <https://docs.microsoft.com/en-us/azure/active-directory/develop/v2-permissions-and-consent> <https://docs.microsoft.com/en-us/graph/permissions-reference>

NEW QUESTION 20

- (Exam Topic 2)

You plan to create a Microsoft Teams application that uses action-based messaging extensions. For each of the following statements, select Yes if the statement is true. Otherwise, select No. NOTE: Each correct selection is worth one point.

Answer Area	Statements	Yes	No
	A Teams application can have multiple action-based messaging extensions.	<input type="radio"/>	<input type="radio"/>
	Action-based messaging extensions can contain unlimited commands.	<input type="radio"/>	<input type="radio"/>
	Action-based messaging extensions can use the Bot Framework to collect information from users.	<input type="radio"/>	<input type="radio"/>

- A. Mastered
- B. Not Mastered

Answer: A

Explanation:

Answer Area	Statements	Yes	No
	A Teams application can have multiple action-based messaging extensions.	<input type="radio"/>	<input checked="" type="radio"/>
	Action-based messaging extensions can contain unlimited commands.	<input type="radio"/>	<input checked="" type="radio"/>
	Action-based messaging extensions can use the Bot Framework to collect information from users.	<input checked="" type="radio"/>	<input type="radio"/>

NEW QUESTION 25

- (Exam Topic 2)

You are developing a human resources application that will show users where they are in their company's organization chart.

You are adding a new feature that will display the name of a user's manager inside the application.

You need to create a REST query to retrieve the information. The solution must minimize the amount of data retrieved.

Which query should you use?

- A. GET [https://graph.microsoft.com/v1.0/users/{UserPrincipalName}/manager?\\$select=displayName](https://graph.microsoft.com/v1.0/users/{UserPrincipalName}/manager?$select=displayName)
- B. GET [https://graph.microsoft.com/v1.0/users/{UserPrincipalName}/people?\\$filter=jobTitle eq 'manager'&\\$select=displayName](https://graph.microsoft.com/v1.0/users/{UserPrincipalName}/people?$filter=jobTitle eq 'manager'&$select=displayName)
- C. GET [https://graph.microsoft.com/v1.0/users/{UserPrincipalName}/contacts?\\$filter=jobTitle eq 'manager'](https://graph.microsoft.com/v1.0/users/{UserPrincipalName}/contacts?$filter=jobTitle eq 'manager')
- D. GET <https://graph.microsoft.com/v1.0/users/{UserPrincipalName}/manager>

Answer: A

Explanation:

Get user's manager. Returns the user or organizational contact assigned as the user's manager. Syntax:

GET /me/manager

GET /users/{id | userPrincipalName}/manager

Only the name of the user's manager should be displayed so we use ?select=displayname

To specify a different set of properties to return than the default set provided by the Graph, use the \$select query option. The \$select option allows for choosing a subset or superset of the default set returned.

References: <https://docs.microsoft.com/en-us/graph/api/user-list-manager> https://developer.microsoft.com/en-us/graph/docs/overview/query_parameters

NEW QUESTION 30

- (Exam Topic 2)

You are developing an Azure function to provision a team in Microsoft Teams.

You need to create a group named Project A, add a classification of Private to the group, and then convert Project A to a team group.

How should you complete the REST requests? To answer, select the appropriate options in the answer area. NOTE: Each correct selection is worth one point.

Request 1:

	▼ https://graph.microsoft.com/v1.0/groups
GET	
PATCH	
POST	
PUT	

```
{
  "description": "",
  "displayName": "Project A",
  "groupTypes": ["Unified"],
  "mailEnabled": true,
  "mailNickname": "projecta",
  "securityEnabled": "projecta",
  "securityEnabled": false
}
```

Request 2:

	▼ https://graph.microsoft.com/v1.0/groups/{GroupID}
GET	
PATCH	
POST	
PUT	

```
{
  "classification": "Private"
}
```

Request 3:

	▼ https://graph.microsoft.com/v1.0/groups/{GroupID}/team
GET	
PATCH	
POST	
PUT	

```
{
  "memberSettings": {
    "allowCreateUpdateChannels": true
  }
}
```

- A. Mastered
- B. Not Mastered

Answer: A

Explanation:

Box 1: post

You need to create a group named Project A.

The following example creates an Office 365 group. POST <https://graph.microsoft.com/v1.0/groups> Content-type: application/json

Content-length: 244

```
{
  "description": "Self help community for library", "displayName": "Library Assist",
  "groupTypes": [ "Unified"
}
```

```
},  
"mailEnabled": true, "mailNickname": "library", "securityEnabled": false  
}
```

Box 2: PATCH

Add a classification of Private to the group.

You can set the classification property in a PATCH request for the group, if do not set it in the initial POST request that creates the group.

Box 3: put

Then convert Project A to a team group. Syntax: PUT /groups/{id}/team

References: <https://docs.microsoft.com/en-us/graph/api/group-post-groups> <https://docs.microsoft.com/en-us/graph/api/resources/group>

<https://docs.microsoft.com/en-us/graph/api/team-put-teams>

NEW QUESTION 34

- (Exam Topic 2)

You are developing an application that will upload files that are larger than 50 MB to Microsoft OneDrive.

You need to recommend an upload solution to ensure that the file upload process can resume if a network error occurs during the upload.

Which four actions should you perform in sequence? To answer, move the actions from the list of actions to the answer area and arrange them in the correct order.

Actions

Send the final byte sequence.

Create a temporary upload folder in OneDrive.

Create an upload session that gets the `uploadUrl` value.

Upload the first sequence of bytes.

Use the `nextExpectedRanges` field to continue the upload process.

➤

➡

Answer Area

⬆

⬇

- A. Mastered
B. Not Mastered

Answer: A

Explanation:

Actions

Send the final byte sequence.

Create a temporary upload folder in OneDrive.

Create an upload session that gets the `uploadUrl` value.

Upload the first sequence of bytes.

Use the `nextExpectedRanges` field to continue the upload process.

➤

➡

Answer Area

➡

⬆

Upload the first sequence of bytes.

Create a temporary upload folder in OneDrive.

Use the `nextExpectedRanges` field to continue the upload process.

Send the final byte sequence.

⬆

⬇

NEW QUESTION 36

- (Exam Topic 2)

You are building a Microsoft teams application by using an outgoing webhook.

For each of the following statements, select Yes if the statement is true. Otherwise, select No. NOTE: Each correct selection is worth one point.

Answer Area

Statements	Yes	No
If you have an outgoing webhook named hook1, you can invoke the webhook by using the @hook1 mention.	<input type="radio"/>	<input type="radio"/>
An outgoing webhook must be authenticated by using Azure Active Directory (Azure AD).	<input type="radio"/>	<input type="radio"/>
The security token for an outgoing webhook expires after one year.	<input type="radio"/>	<input type="radio"/>

- A. Mastered

B. Not Mastered

Answer: A

Explanation:

Answer Area

Statements	Yes	No
If you have an outgoing webhook named hook1, you can invoke the webhook by using the @hook1 mention.	<input checked="" type="radio"/>	<input type="radio"/>
An outgoing webhook must be authenticated by using Azure Active Directory (Azure AD).	<input type="radio"/>	<input checked="" type="radio"/>
The security token for an outgoing webhook expires after one year.	<input checked="" type="radio"/>	<input type="radio"/>

NEW QUESTION 38

- (Exam Topic 2)

You are designing a custom SharePoint Framework (SPFx) web part that will be deployed to modern Microsoft SharePoint sites. You need to ensure that all the web part fields and controls adopt the theme of the site when you deploy the web part. What should you use to develop the web part?

- A. Material-UI
- B. Office UI Fabric React
- C. HTML 5.0 and CSS
- D. Fluid Framework

Answer: B

Explanation:

Office UI Fabric is Microsoft’s official front end framework for building User Interface experiences for Office and Office 365. In simple terms it gives you the look and feel for your component. Moreover, they are open source, mobile responsive and reusable, no need to create from scratch just refer them in your code and start utilizing them.

Microsoft modern SharePoint out of the box webparts are made up these Office UI Fabric framework, so to maintain consistency look and feel as like Office it's better to use these components in our custom SPFx webparts.

Reference:

<http://www.sharepointsamples.com/sharepoint-framework-webpart-with-office-ui-fabric-react-component/>

NEW QUESTION 43

- (Exam Topic 2)

You are developing a single-page application (SPA).

You plan to access user data from Microsoft Graph by using an AJAX call.

You need to obtain an access token by the Microsoft Authentication Library (MSAL). The solution must minimize authentication prompts.

How should you complete the code segment? To answer, select the appropriate options in the answer area. NOTE: Each correct selection is worth one point.


```

var msalApp = new Msal.UserAgentApplication(msalConfig);
...
var loginRequest = {scopes: appConfig.scopes};
msalApp.  (loginRequest).then(function(loginResponse) {
    

acquireTokenPopup
        acquireTokenSilent
        loginPopup
        loginRedirect


    var tokenRequest = {scopes: appConfig.scopes};
    msalApp.  (tokenRequest).then(function(tokenResponse) {
        

acquireTokenByAuthorizationCode
            acquireTokenPopup
            acquireTokenRedirect
            acquireTokenSilent


        updateApplicationUI(tokenResponse);
    }).catch(function (error) {
        msalApp.  (tokenRequest).then(function(tokenResponse) {
            

acquireTokenByAuthorizationCode
                acquireTokenPopup
                acquireTokenRedirect
                acquireTokenSilent


            updateApplicationUI(tokenResponse);
        });
    });
}

```

- A. Mastered
 B. Not Mastered

Answer: A

Explanation:

Box 1: loginPopup

Box 2: acquireTokenSilent

The pattern for acquiring tokens for APIs with MSAL.js is to first attempt a silent token request by using the `acquireTokenSilent` method. When this method is called, the library first checks the cache in browser storage to see if a valid token exists and returns it. When no valid token is in the cache, it sends a silent token request to Azure Active Directory (Azure AD) from a hidden iframe. This method also allows the library to renew tokens.

Box 3: acquireTokenPopup

//AcquireToken Failure, send an interactive request. Example:

```
userAgentApplication.loginPopup(applicationConfig.graphScopes).then(function (idToken) {
```

```
//Login Success
```

```
userAgentApplication.acquireTokenSilent(applicationConfig.graphScopes).then(function (accessToken) {
```

```
//AcquireToken Success updateUI();
```

```
}, function (error) {
```

```
//AcquireToken Failure, send an interactive request. userAgentApplication.acquireTokenPopup(applicationConfig.graphScopes).then(function (accessToken) {
```

```
updateUI();
```

```
}, function (error) { console.log(error);
```

```
});
```

```
})
```

```
}, function (error) { console.log(error);
```

```
});
```

Reference: <https://github.com/AzureAD/microsoft-authentication-library-for-js/issues/339>

NEW QUESTION 47

- (Exam Topic 2)

When developing a tab in Microsoft teams, personal, group, and shared tabs can all be implemented as configurable tabs.

Instructions: Review the underlined BOLD text, if it makes the statement correct, select " No change is needed if the statement is incorrect select the answer choice that makes the statement correct.

- A. No change is needed.
 B. Share the same code
 C. Be used in a conversation
 D. Have a configuration panel

Answer: A

NEW QUESTION 52

- (Exam Topic 2)

You are building a new tab as part of a new Microsoft Teams application. Users will experience the tab privately.
How should you complete the application manifest? To answer, select the appropriate options in the answer area.

NOTE: Each correct selection is worth one point.

Answer Area

Object key to declare the tab:

Scope of the tab:

- A. Mastered
- B. Not Mastered

Answer: A

Explanation:

Answer Area

Object key to declare the tab:

Scope of the tab:

NEW QUESTION 54

- (Exam Topic 2)

This question requires that you evaluate the underlined text to determine if it is correct.

In Microsoft Word on Windows, before you can sideload a Microsoft Office Add-in, you must first upload the manifest to Microsoft_pnePrivc.

Instructions: Review the underlined text. If it makes the statement correct, select "No change is needed." If the statement is incorrect, select the answer choice that makes the statement correct.

- A. No change is needed.
- B. deploy the manifest to an Azure website
- C. publish the manifest to a trusted network location
- D. set Microsoft Edge to Developer Mode

Answer: A

NEW QUESTION 59

- (Exam Topic 2)

You have an application that employees use to schedule vacations. The application sets an automatic reply and an out-of-office event in the employees' Microsoft 365 calendar.

Employees who access the application from a mobile device report that the application is slow to make changes.

You need to replace the application calls to use batched request. Automatic reply must be set only if an out-of-office event is set successfully.

How should you complete the batch request? To answer, select the appropriate options in the answer area.

Answer Area

DELETE
GET
HEAD
PATCH
POST
PUT

https://graph.microsoft.com/v1.0/\$batch

These are the selections for the first missing value:
application/json

```
"requests": [
  {
    "id": "1",
    "method": "DELETE",
    "url": "/me/event",
    "body": {
      "subject": "Vacation",
      "showAs": "off",
      "start": {
        "dateTime": "2019-08-27T14:49:06.595Z",
        "timeZone": "UTC"
      },
      "headers": {
        "Content-Type": "application/json"
      }
    },
  },
  {
    "id": "2",
    "dependsOn": [
      "1",
      "2"
    ],
    "url": "/me/mail",
    "method": "POST",
    "body": {
      "automaticRepliesSetting": {
        "status": "Scheduled",
        "scheduledStartTime": {
          "dateTime": "2020-03-20T18:00:00.0000000",
          "timeZone": "UTC"
        },
        "scheduledEndTime": {
          "dateTime": "2020-03-26T18:00:00.0000000",
          "timeZone": "UTC"
        }
      },
      "headers": {
        "Content-Type": "application/json"
      }
    },
  },
]
```

- A. Mastered
- B. Not Mastered

Answer: A

Explanation:

Answer Area

DELETE

GET

HEAD

PATCH

POST

PUT

https://graph.microsoft.com/v1.0/\$batch

There are the selections for the first missing value.
application/json

```
"requests": [
  {
    "id": "1",
    "method": "DELETE",
    "url": "/me/event",
    "body": {
      "subject": "on vacation",
      "showAs": "off",
      "start": {
        "dateTime": "2019-08-27T14:49:06.5952",
        "timeZone": "UTC"
      },
      "headers": {
        "Content-Type": "application/json"
      }
    },
    {
      "id": "2",
      "dependsOn": [1],
      "url": "/me/mailFolders",
      "method": ["1", "2"],
      "body": {
        "automaticRepliesSetting": {
          "status": "Scheduled",
          "scheduledStartDateTime": {
            "dateTime": "2020-03-20T18:00:00.0000000",
            "timeZone": "UTC"
          },
          "scheduledEndDateTime": {
            "dateTime": "2020-03-28T18:00:00.0000000",
            "timeZone": "UTC"
          }
        },
        "headers": {
          "Content-Type": "application/json"
        }
      }
    }
  ]
}
```

NEW QUESTION 62

- (Exam Topic 2)
You are building a Microsoft Outlook add-in.
Which object should you use to save a user's preferences between sessions and devices?

- A. localStorage
- B. RoamingSettings
- C. CustomXMLParts
- D. CustomProperties

Answer: D

NEW QUESTION 65

- (Exam Topic 2)
For each of the following statements, select Yes if the statement is true. Otherwise, select NO. NOTE: Each correct selection is worth one point.

Answer Area			
	Statements	Yes	No
	Search-based messaging extensions can query a third-party service and show the information on a card.	<input type="radio"/>	<input type="radio"/>
	Search-based messaging extensions can use the Bot Framework to interact with third-party applications.	<input type="radio"/>	<input type="radio"/>
	Search-based messaging extensions can be used to display information on a tab.	<input type="radio"/>	<input type="radio"/>

- A. Mastered
- B. Not Mastered

Answer: A

Explanation:

Statements	Yes	No
Search-based messaging extensions can query a third-party service and show the information on a card.	<input type="radio"/>	<input checked="" type="radio"/>
Search-based messaging extensions can use the Bot Framework to interact with third-party applications.	<input type="radio"/>	<input checked="" type="radio"/>
Search-based messaging extensions can be used to display information on a tab.	<input checked="" type="radio"/>	<input type="radio"/>

NEW QUESTION 68

- (Exam Topic 2)
You are developing a SharePoint Framework (SPFx) web part. The web part will call a backed API that is secured by using Azure Active Directory (Azure AD). The web part will be on a page that has many other web parts.
Which type of web part should you use ensure that access to the exclusive to the web part?

- A. Provider-hosted
- B. SharePoint-hosted
- C. Domain isolated
- D. Connected

Answer: A

NEW QUESTION 70

- (Exam Topic 2)
You are developing a Microsoft Teams solution to host an existing webpage as a Teams tab. Which requirement must the page meet?

- A. The page must adhere to HTML 5.0 standards
- B. The page must adhere to WCAG 2.0 accessibility guidelines
- C. The page must be hosted on a domain that is on the validDomains list of the manifest
- D. The page must use CSS3 stylesheets

Answer: C

Explanation:

Make sure that all domains used in your tab pages are listed in the manifest.json validDomains array. Reference: <https://docs.microsoft.com/en-us/microsoftteams/platform/tabs/how-to/create-tab-pages/configuration-page>

NEW QUESTION 75

- (Exam Topic 2)
For each of the following statements, select Yes if the statement is true. Otherwise, select No. NOTE: Each correct select is worth one point.

Statements	Yes	No
A Microsoft Office Web Add-in can be scaffolded by using a Yeoman generator.	<input type="radio"/>	<input type="radio"/>
Microsoft Office Web Add-ins can be developed by using C#.	<input type="radio"/>	<input type="radio"/>
The code for a Microsoft Office Web Add-in has access to the local file system of a device.	<input type="radio"/>	<input type="radio"/>

- A. Mastered
- B. Not Mastered

Answer: A

Explanation:

Statements	Yes	No
A Microsoft Office Web Add-in can be scaffolded by using a Yeoman generator.	<input checked="" type="radio"/>	<input type="radio"/>
Microsoft Office Web Add-ins can be developed by using C#.	<input checked="" type="radio"/>	<input type="radio"/>
The code for a Microsoft Office Web Add-in has access to the local file system of a device.	<input checked="" type="radio"/>	<input type="radio"/>

NEW QUESTION 79

- (Exam Topic 2)

You plan to integrate a web-based support ticketing system and Microsoft Teams.

You need to recommend a solution that will prompt users for specific information before a ticket is created. The solution must minimize development effort. What should you include in the recommendation?

- A. outgoing webhooks
- B. incoming webhooks
- C. a notification-only bot
- D. a conversational bot

Answer: A

Explanation:

Webhooks are a great way for Teams to integrate with external apps. A webhook is essentially a POST request sent to a callback URL. In Teams, outgoing webhooks provide a simple way to allow users to send messages to your web service without having to go through the full process of creating bots via the Microsoft Bot Framework. Outgoing webhooks post data from Teams to any chosen service capable of accepting a JSON payload. Once an outgoing webhook is added to a team, it acts like bot, listening in channels for messages using @mention, sending notifications to external web services, and responding with rich messages that can include cards and images.

Reference:

<https://docs.microsoft.com/en-us/microsoftteams/platform/webhooks-and-connectors/how-to/add-outgoing-web>

NEW QUESTION 84

- (Exam Topic 2)

You have a single-page application (SPA) named TodoListSPA and a server-based web app named TodoListService.

The permissions for the TodoList SPA API are configured as shown in the TodoList SPA exhibit. (Click the TodoListSPA tab.)

API/PERMISSIONS NAME	TYPE	DESCRIPTION	ADMIN CONSENT REQUIRED
▼ TodoListService-OBO-sample-v2 (1)			
user_impersonation	Delegated	Access TodoListService-OBO-sample-v2	

The permissions for the TodoListService API are configured as shown in the TodoListService exhibit. (Click the TodoListService tab.)

API/PERMISSIONS NAME	TYPE	DESCRIPTION
▼ Microsoft Graph (1)		
UserRead	Delegated	Sign in and read user profile

You need to ensure that TodoListService can access a Microsoft OneDrive file of the signed-in user. The solution must use the principle of least privilege. Which permission should to grant?

- A. the Sites.Read.All delegated permission for TodoListService
- B. the Sites.Read.All delegated permission for TodoListSpa
- C. the Sites.Read.All application permission for TodoListSPA
- D. the Sites.Read.All application permission for TodoListService

Answer: A

Explanation:

A client application gains access to a resource server by declaring permission requests. Two types are available:

"Delegated" permissions, which specify scope-based access using delegated authorization from the signed-in resource owner, are presented to the resource at run-time as "scp" claims in the client's access token.

"Application" permissions, which specify role-based access using the client application's credentials/identity, are presented to the resource at run-time as "roles" claims in the client's access token.

Reference: <https://docs.microsoft.com/en-us/azure/active-directory/develop/developer-glossary#permissions>

NEW QUESTION 87

.....

Relate Links

100% Pass Your MS-600 Exam with ExamBible Prep Materials

<https://www.exambible.com/MS-600-exam/>

Contact us

We are proud of our high-quality customer service, which serves you around the clock 24/7.

Viste - <https://www.exambible.com/>