

## 300-810 Dumps

# Implementing Cisco Collaboration Applications (CLICA)

<https://www.certleader.com/300-810-dumps.html>



**NEW QUESTION 1**

Which authentication method allows a user to log in to an SSO-enabled Cisco Unified Communications application by utilizing a Microsoft Windows login, thereby not requiring any credentials to be entered?

- A. Smart Card
- B. OAuth
- C. form-based
- D. Kerberos

**Answer: B**

**Explanation:**

Reference: <https://developer.cisco.com/docs/cisco-unified-communications-single-sign-on-tutorial/#!cisco-unified-communications-single-sign-on-tutorial/learning-more-about-ssso>

**NEW QUESTION 2**

When Cisco IM and Presence is configured to use automatic fallback, how long does the Server Recovery Manager service wait for a failed service/server to remain active before an automatic fallback is initiated?

- A. 10 minutes
- B. 20 minutes
- C. 30 minutes
- D. 1 hour

**Answer: C**

**Explanation:**

Reference: <https://www.cisco.com/c/en/us/support/docs/unified-communications/unified-communications-manager-im-presence-service/200958-IM-and-Presence-Server-High-Availability.html>

**NEW QUESTION 3**

Which entity is a standard component used for authentication by SAML 2.0?

- A. identity provider
- B. session broker
- C. Internet service provider
- D. client access server

**Answer: A**

**NEW QUESTION 4**

Which two command line arguments can you specify when installing Cisco Jabber for windows? (Choose two.)

- A. CISCO\_UDS\_DOMAIN
- B. TFTP\_ADDRESS
- C. VOICEMAIL\_SERVER\_ADDRESS
- D. SERVICES\_DOMAIN
- E. TFTP

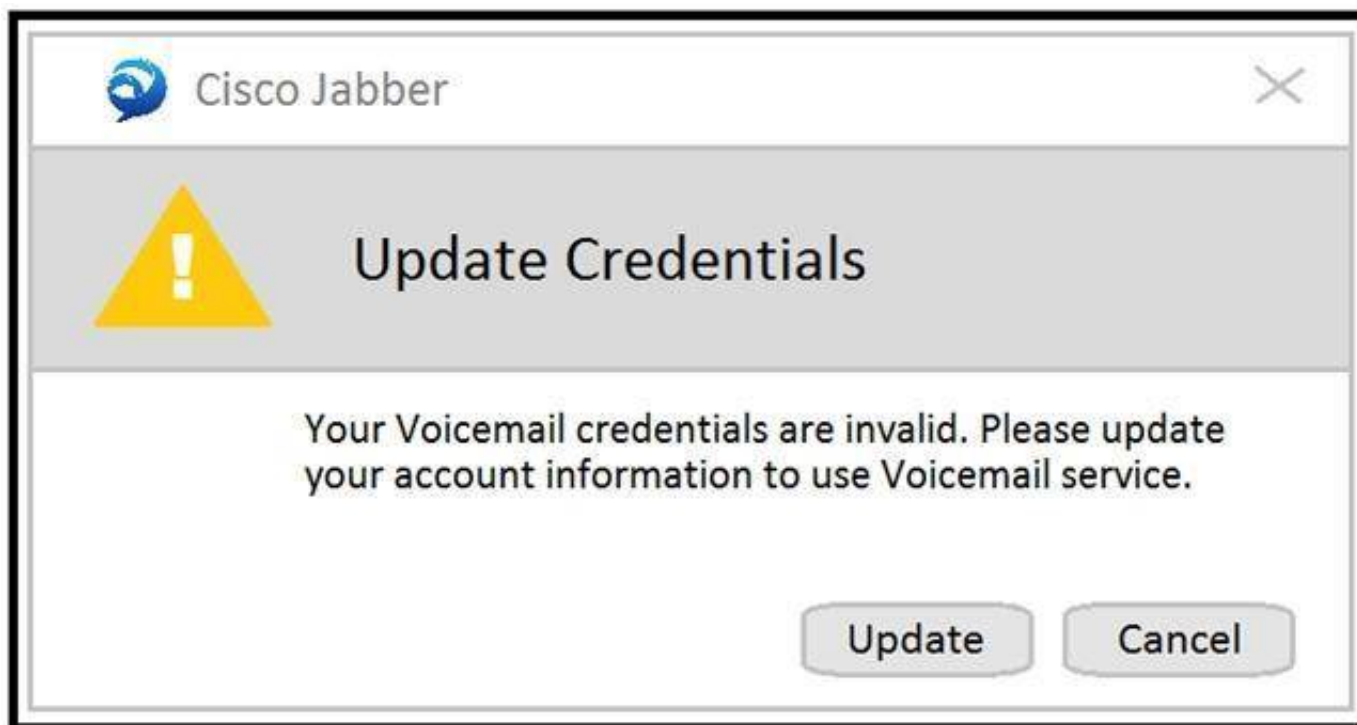
**Answer: DE**

**Explanation:**

Reference: [https://www.cisco.com/c/en/us/td/docs/voice\\_ip\\_comm/jabber/11\\_0/CJAB\\_BK\\_D657A25F\\_00\\_deployment-installation-guide-jabber-110/CJAB\\_BK\\_D657A25F\\_00\\_deployment-installation-guide-jabber-110\\_chapter\\_01100.html#JABW\\_RF\\_CE43EF4C\\_00](https://www.cisco.com/c/en/us/td/docs/voice_ip_comm/jabber/11_0/CJAB_BK_D657A25F_00_deployment-installation-guide-jabber-110/CJAB_BK_D657A25F_00_deployment-installation-guide-jabber-110_chapter_01100.html#JABW_RF_CE43EF4C_00)

**NEW QUESTION 5**

Refer to the exhibit.



Which action allows a remote Cisco Jabber user utilizing Mobile and Remote Access to automatically log in to a Cisco Unity Connection voicemail box via OAuth?

- A. Add CUCM under System Settings > Authz Servers in Cisco Expressway-E.
- B. Add CUCM under System Settings > Authz Servers in Cisco Expressway-C.
- C. Add CUCM under System Settings > Authz Servers in Cisco Unity.
- D. Add CUCM under System Settings > Authz Servers in Cisco Unity Connection.

**Answer:** D

**Explanation:**

Reference: <https://community.cisco.com/t5/unified-communications/jabber-mra-unity-voice-mail-integration-issue/td-p/3195653>

**NEW QUESTION 6**

Refer to the exhibit.

```
Response:
HTTP/1.1 400 Bad Request
Strict-Transport-Security: max-age=31536000
X-Frame-Options: DENY
X-Content-Type-Options: nosniff
Set-Cookie: JSESSIONID=1233ADC137E591GE144792F38123AB09; Patch=/idb/; Secure; HttpOnly
TrackingID: FOS_d0ac0d7b-f4e4-4d83-ba27-d4252e310b88
Cache-Control: no-store
Date: Mon, 06 Jan 2018 10:30:00 GMT
Accept-Ranges: bytes
Server:
Vary: Accept-Charset, Accept-Encoding, Accept-Language, Accept
Access-Control-Allow-Credentials: true
Access-Control-Allow-Headers: Accept, Authorization, Content-Type, TrackingID
Access-Control-Allow-Methods: POST, PUT, PATCH, HEAD, GET, TRACE, CONNECT, OPTIONS, DELETE
Pragma: no-cache
Content-Type: application/json; charset=UTF-8
Connection: close
Content-Length: 176

{"error_description": "The refresh token provided is expired, revoked, malformed, or invalid.", "error": "invalid_request", "trackingID": "FOS_a12b123c-d123-e123-a127-b420be310188"}
```

Apple Push Notification integration is configured in a Cisco Unified IM and Presence deployment and has been working properly. Administrators now report the error “Push notification settings cannot be configured. 400 Bad Request.” in the GUI, and HTTP logs are displaying the errors that are shown in the exhibit. Which action solves this issue?

- A. Fix the network connectivity to Apple iCloud.
- B. Reboot the IM&P cluster.
- C. Change the HTTP proxy settings to remove errors in request syntax.
- D. Update Refresh Token Manually.

**Answer:** D

**Explanation:**

Reference: [https://www.cisco.com/c/en/us/td/docs/voice\\_ip\\_comm/cucm/push\\_notifications/cucm\\_b\\_push-notifications-deployment-guide.pdf](https://www.cisco.com/c/en/us/td/docs/voice_ip_comm/cucm/push_notifications/cucm_b_push-notifications-deployment-guide.pdf)

**NEW QUESTION 7**

Which CLI command is used to collect traces from the Cisco Presence engine for seven days?

- A. file build log cisco\_presence\_engine 7
- B. file build log cisco\_presence 168
- C. file build log presence\_engine 7
- D. file build log presence\_engine 168

**Answer:** A

**Explanation:**

Reference: [https://www.cisco.com/c/en/us/td/docs/voice\\_ip\\_comm/cucm/im\\_presence/configAdminGuide/12\\_0\\_1/cup0\\_b\\_config-admin-guide-imp-1201/cup0\\_b\\_config-admin-guide-imp-1201\\_chapter\\_010101.html](https://www.cisco.com/c/en/us/td/docs/voice_ip_comm/cucm/im_presence/configAdminGuide/12_0_1/cup0_b_config-admin-guide-imp-1201/cup0_b_config-admin-guide-imp-1201_chapter_010101.html)

**NEW QUESTION 8**

Which Cisco Unified Connections Manager service is required for users to control their desk phones using Cisco Jabber?

- A. Cisco CTIManager
- B. Cisco CTL Provider
- C. Cisco Presence Engine
- D. Cisco Serviceability Reporter

**Answer: A**

**Explanation:**

Reference: [https://www.cisco.com/c/en/us/td/docs/voice\\_ip\\_comm/jabber/11\\_5/CJAB\\_BK\\_D00D8CBD\\_00\\_deployment-installation-guide-cisco-jabber115/CJAB\\_BK\\_D00D8CBD\\_00\\_deployment-installation-guide-ciscojabber115\\_chapter\\_0111.html](https://www.cisco.com/c/en/us/td/docs/voice_ip_comm/jabber/11_5/CJAB_BK_D00D8CBD_00_deployment-installation-guide-cisco-jabber115/CJAB_BK_D00D8CBD_00_deployment-installation-guide-ciscojabber115_chapter_0111.html)

**NEW QUESTION 9**

Refer to the exhibit.

```
[csf.cert.] [csf::cert::BaseCertVerifier:doVerifyCertificate] - About to verify the certificate.
[csf.cert.win32] [csf::cert::Win32CertVerifier:loadCertificateChain] - Certificate Chain status 0x20
[csf.cert.win32] [csf::cert::Win32CertVerifier:verifySslPolicy] - Ignoring errors due to Invalid CN
[csf.cert.win32] [csf::cert::Win32CertVerifier:verifyPolicies] - SSL Policy status 0x2148204809
[csf.cert.win32] [csf::cert::win32CertVerifier:verifyPolicies] - Basic Constraints Policy status 0x0
[csf.cert.win32] [csf::cert::win32CertVerifier:verifyCertificate] - Certificate validation response is 'invalid'
[csf.cert.] [csf::cert::BaseCertVerifier:doVerifyCertificate] - Result of platform cert verification: [UNTRUSTED_ROOT]
[csf.cert.] [csf::cert::BaseCertVerifier:checkIdentity] - About to check for an Identity Match.
[csf.cert.xmpp] [csf::cert::XmppCertVerifier:checkIdentifier] - Verifying XMPP Identity 'example.com'
[csf.cert.utils] [csf::cert::AltNameParserImpl:verifyXmpp] - Xmp match was not found for: 'example.com'
[csf.cert.utils] [csf::cert::AltNameParserImpl:verify] - Match for 'example.com' found in dnsNames index: 1
[csf.cert.] [csf::cert::BaseCertVerifier::checkIdentifiers] - Verification of identity succeeded. Matched identifier : 'example.com'
[csf.diagnostics] [CSFDiagnostics::DiagnosticsImpl::AddRecord] - Add record task enqueued: example.com
[csf.common.PolicySet] [csf::common:PolicySet::getPolicy] - Successfully found Policy with nature IGNORE_INVALID_CERT_CONDITION
[IGNORE_REVOCATION_INFO_UNAVAILABLE_ERRORS]
[csf.cert.] [csf::cert::BaseCertVerifier::applyIgnoreInvalidCertConditionPolicy] - About to enforce ignore invalid cert condition policy.
[csf.cert] [csf::cert::IgnoreInvalidCertConditionPolicy::removeIgnoredStatuses] - No statuses have been removed from the verification status.
[csf.cert] [csf::cert::IgnoreInvalidCertConditionPolicy::enforce] - Policy enforced
[csf.cert.] [csf::cert::BaseCertVerifier::verifyCertificateAsync] - Certificate initially verified, result: FAILURE
[csf.cert] [csf::cert::CertificateDataImpl::parseSubjectCNField] - size of Subject CN field : 16
[csf.cert] [csf::cert::CertificateDataImpl::parseSubjectCNField] - Sybject CN field : impa.example.com
[csf.common.PolicySet] [csf::common:PolicySet::getPolicy] - Successfully found Policy with nature INVALID_CERT_MANAGEMENT [PROMPT_USER]
```

Users report that they are prompted to accept server certificates when they initially run Cisco Jabber. An engineer removes these prompts to prevent confusion. Which statement about this scenario is true?

- A. Presentation of the certificates can be disabled by setting up Cisco IM&P servers into nonsecure mode.
- B. Nothing can be done to resolve this issue because certificates must be accepted by each Jabber user, per Cisco policy.
- C. These certificates are self-signed certificates, so they must be added manually to the user OS certificate stores.
- D. The behavior is a security breach because certificates are considered untrusted and as not coming from Cisco Collaboration servers.

**Answer: C**

**Explanation:**

Reference: <https://www.cisco.com/c/en/us/support/docs/unified-communications/jabber-windows/116637-trouble-jabber-00.html>

**NEW QUESTION 10**

Which service must be activated on Cisco Unity Connection to utilize LDAP synchronization?

- A. Cisco Tomcat
- B. Cisco Sync Agent
- C. Cisco DirSync
- D. Cisco RIS Data Collector

**Answer: C**

**Explanation:**

Reference: [https://www.cisco.com/c/en/us/td/docs/voice\\_ip\\_comm/connection/10x/administration/guide/10xcucsagx/10xcucsag120.html](https://www.cisco.com/c/en/us/td/docs/voice_ip_comm/connection/10x/administration/guide/10xcucsagx/10xcucsag120.html)

**NEW QUESTION 10**

Refer to the exhibit.



### Users with Duplicate User IDs

User ID : user3

Node Name

cucm-imp-1

cucm-imp-2

Which two steps resolve the “Users with Duplicate User IDs” message? (Choose two.)

- A. Rename the directory URI value for one of the users to ensure that there is no duplication.
- B. Rename the User ID value for one user if different users on different clusters have the same User ID assigned.
- C. Unassign a user from one of the clusters when the same user is assigned to two different clusters.
- D. Assign the duplicate user to the secondary Cisco IM and Presence node.
- E. Delete the user ID for the duplicate user ID.

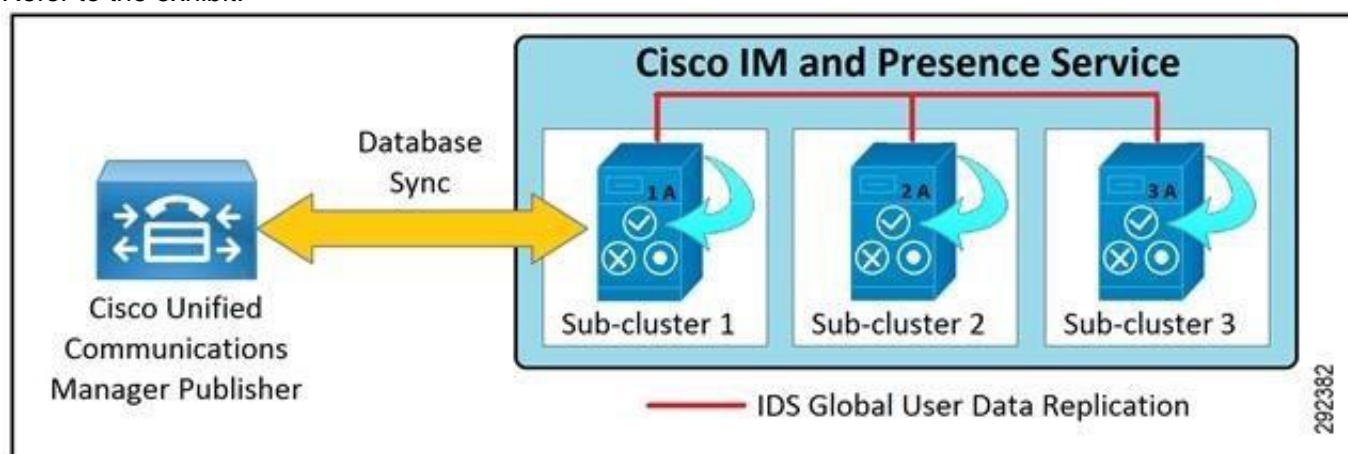
**Answer: BC**

#### Explanation:

Reference: [https://www.cisco.com/c/en/us/td/docs/voice\\_ip\\_comm/cucm/im\\_presence/configAdminGuide/10\\_0\\_1/CUP0\\_BK\\_C318987B\\_00\\_config-admin-guide-imp-100/CUP0\\_BK\\_C318987B\\_00\\_config-admin-guide-imp100\\_chapter\\_010101.html](https://www.cisco.com/c/en/us/td/docs/voice_ip_comm/cucm/im_presence/configAdminGuide/10_0_1/CUP0_BK_C318987B_00_config-admin-guide-imp-100/CUP0_BK_C318987B_00_config-admin-guide-imp100_chapter_010101.html)

#### NEW QUESTION 11

Refer to the exhibit.



Which statement is true?

- A. If the IM&P node in sub-cluster-1 goes down, then users assigned to it are randomly split between the two remaining subclusters.
- B. The administrator must add one node to each subcluster for high availability.
- C. IM&P nodes in each subcluster must be configured from the same OVA template.
- D. Each Cisco IM&P subcluster must have the same number of nodes.

**Answer: B**

#### NEW QUESTION 13

Which SIP request type is used by Cisco Unity Connection to inform Cisco Unified Communications manager that the Message Waiting Indicator must be turned on or off for a specific line?

- A. NOTIFY
- B. UPDATE
- C. SUBSCRIBE
- D. PUBLISH

**Answer: A**

#### NEW QUESTION 14

Which Cisco Unified Communications Manager menu path is used to configure Cisco IM and Presence Server High Availability?

- A. System > LDAP > LDAP Directory
- B. System > Geolocation Configuration
- C. System > Presence Redundancy Groups
- D. System > Server

**Answer: C**

#### Explanation:

Reference: <https://www.cisco.com/c/en/us/support/docs/unified-communications/unified-communications-manager-im-presence-service/200958-IM-and-Presence-Server-High-Availability.html#anc4>

#### NEW QUESTION 18

Which SAML component specifies the mapping of SAML assertion protocol message exchanges with standard messaging formats or communication protocols such as SOAP exchanges?

- A. SAML binding
- B. SAML assertion
- C. SAML profiles
- D. SAML protocol

**Answer:** A

**Explanation:**

Reference: [https://en.wikipedia.org/wiki/Security\\_Assertion\\_Markup\\_Language](https://en.wikipedia.org/wiki/Security_Assertion_Markup_Language)

**NEW QUESTION 23**

When trying to send a call out of Cisco Unity Connection, what happens when enabling the transfer to an alternate contact number, located under caller input?

- A. The restriction table is checked when an administrator changes the extension number via the Cisco Unity Connection admin page.
- B. The restriction table is not checked when an administrator changes the extension number via the Cisco Unity Connection admin page.
- C. The restriction table is not checked when a user changes the extension number via a TUI conversation.
- D. The restriction table is not checked when a user changes extension number via the Cisco Unity Connection Cisco PCA page.

**Answer:** B

**Explanation:**

Reference: <https://www.cisco.com/c/en/us/support/docs/unified-communications/unity-connection/117559-probsol-transferfailure-00.html>

**NEW QUESTION 27**

Users report issues while logging in to their voicemail using the Voicemail tab in their Cisco Jabber clients. The issue occurs after users provide valid Cisco Unified Communications credentials, but they receive a failure message. What is the cause of this issue?

- A. A proper service profile is not configured on Cisco Unified Communications Manager.
- B. The voicemail users are not configured in the Cisco Unity Connection server.
- C. The web application voicemail password is set "User Must Change at Next Sign-in".
- D. The voicemail password is not set for all users.

**Answer:** A

**NEW QUESTION 28**

Secure XMPP communication is required for XMPP federation with external domains and the Cisco IM and Presence. Which certificate is used for XMPP interdomain federation when connecting to an externally federated domain?

- A. cup
- B. cup-xmpp
- C. cup-xmpp-s2s
- D. Tomcat

**Answer:** C

**Explanation:**

Reference: [https://www.cisco.com/c/dam/en/us/td/docs/telepresence/infrastructure/vcs/config\\_guide/X8-2/XMPP-Federation-with-Cisco-VCS-and-IM-and-Presence-Service.pdf](https://www.cisco.com/c/dam/en/us/td/docs/telepresence/infrastructure/vcs/config_guide/X8-2/XMPP-Federation-with-Cisco-VCS-and-IM-and-Presence-Service.pdf)

**NEW QUESTION 33**

To redirect calls from the phone extension for user A to the voicemail greeting, which call routing rule should be used in Cisco Unity Connection?

- A. Attempt Forward forwarded routing rule
- B. Opening Greeting direct routing rule
- C. Attempt Sign-In direct routing rule
- D. Opening Greeting forwarded routing rule

**Answer:** A

**Explanation:**

Reference: <https://community.cisco.com/t5/collaboration-voice-and-video/unity-connection-call-routing-logic/ta-p/3162560>

**NEW QUESTION 37**

After integrating Cisco Unity Express with Cisco Unified Communications Manager Express, users report that the system does not respond to their digit presses. Which two configuration snippets resolve this issue? (Choose two.)

- A. dial-peer voice 6800 voip destination-pattern 5... session protocol sipv2 session target ipv4:10.3.6.127 dtmf-relay sip-kpml codec g729r8
- B. dial-peer voice 6800 voip destination-pattern 5... session protocol sipv2 session target ipv4:10.3.6.127 dtmf-relay sip-notify codec g711ulaw
- C. dial-peer voice 6800 voip destination-pattern 5... session protocol sipv2 session target ipv4:10.3.6.127 dtmf-relay rtp-nte codec g711ulaw
- D. dial-peer voice 6800 voip destination-pattern 5...session protocol sipv2 session target ipv4:10.3.6.127 dtmf-relay sip-kpml codec g711ulaw
- E. dial-peer voice 6800 voip destination-pattern 5... session protocol sipv2 session target ipv4:10.3.6.127 dtmf-relay sip-notify codec g729r8

**Answer:** BC

**NEW QUESTION 39**

What prevents toll fraud on voicemail ports?

- A. IP address trusted list on the PSTN gateway
- B. CSS
- C. Block OffNet to OffNet Transfer service parameter
- D. FAC

**Answer:** B

**Explanation:**

Reference: <https://www.cisco.com/c/en/us/support/docs/unified-communications/unity-connection/119337-technote-cuc-00.html>

**NEW QUESTION 43**

Which statement describes a role of AXL communications in the BLF Plug-in Service of the Cisco Unified Attendant Console?

- A. The AXL communications allow registered attendants to log in to Cisco Unified Communications Manager and receive calls.
- B. The AXL communications enable Device Resolution Manager to resolve the device statuses of operator and system devices.
- C. The AXL communications is required after installation to verify that the specified CTI manager or managers and Cisco Unified Attendant Console versions match.
- D. The AXL communications is required after installation to verify that the specified CTI manager or managers and Cisco Unified CM versions.

**Answer:** D

**Explanation:**

Reference: [https://www.cisco.com/c/dam/en/us/td/docs/voice\\_ip\\_comm/cucmac/cuaca/12\\_0\\_4/design\\_guides/CUACA\\_DG\\_120401.pdf](https://www.cisco.com/c/dam/en/us/td/docs/voice_ip_comm/cucmac/cuaca/12_0_4/design_guides/CUACA_DG_120401.pdf)

**NEW QUESTION 46**

Refer to the exhibit.

```
---Log snippet---

2018-12-27 11:02:05, 430 INFO [0x0000015c]
[re\dnsutils\win32\win32DnsUtils.cpp(343)] [csf.dns]
[csf::dns::DnsUtils::executeSRVRecordQuery] - About to make DNS SRV record query
'_cisco-uds._tcp.example.com.'
2018-12-27 11:02:05, 430 WARN [0x0000015c]
[src\dnsutils\win32\win32DnsUtils.cpp(52)] [csf.dns]
[csf::dns::mapFromWindowsDNSResult] - *-----* DNS query _cisco-
uds._tcp.example.com. has failed: DNS name does not exist.
(9003).
2018-12-27 11:02:05, 430 INFO [0x0000015c]
[rc\dnsutils\win32\win32DnsUtils.cpp(343)] [csf.dns]
[csf::dns::DnsUtils::executeSRVRecordQuery] - About to make DNS SRV record query
'_cuplogin._tcp.example.com.'
2018-12-27 11:02:05, 435 WARN [0x0000015c]
[src\dnsutils\win32\win32DnsUtils.cpp(52)] [csf.dns]
[csf::dns::mapFromWindowsDNSResult] - *-----* DNS query
_cuplogin._tcp.example.com. has failed: DNS name does not exist.
(9003).
```

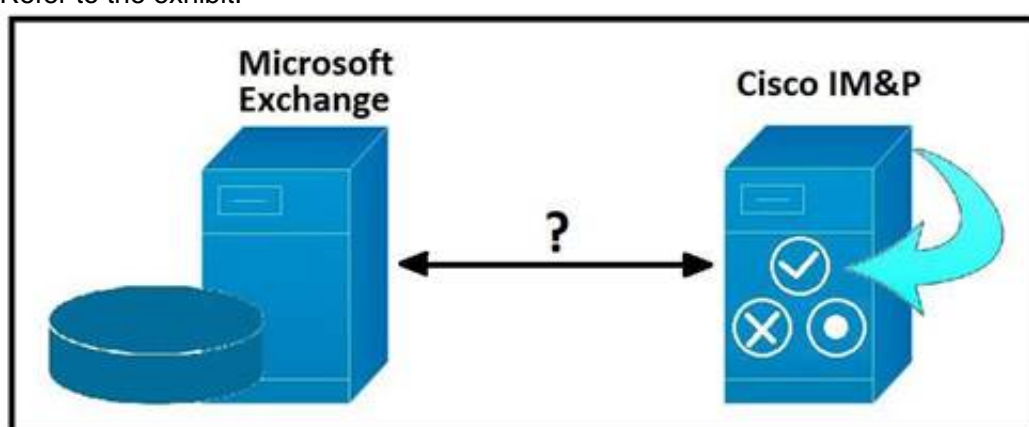
Troubleshooting an internal Jabber login issue and you see this logging snippet from the Jabber PRT file. You already checked that the Jabber client has a connection to the correct DNS server. Which DNS record is missing for service discovery of Cisco Unified Communications Manager for the login process to proceed further?

- A. A record for the Cisco Unified Communications Manager
- B. SRV record \_cisco-uds.\_tcp.example.com
- C. A record \_cuplogin.\_tcp.example.com
- D. SRV record \_cuplogin.\_tcp.example.com

**Answer:** D

**NEW QUESTION 48**

Refer to the exhibit.



Which protocol is used for communication between Cisco IM and Presence and Microsoft Exchange Server?

- A. POP3
- B. IMAP
- C. EWS
- D. XMPP

**Answer:** C

**Explanation:**

Reference: [https://www.cisco.com/c/en/us/td/docs/voice\\_ip\\_comm/cucm/srnd/collab11/collab11/presence.html](https://www.cisco.com/c/en/us/td/docs/voice_ip_comm/cucm/srnd/collab11/collab11/presence.html)

#### NEW QUESTION 51

What are two Cisco Jabber 12.6 on-premises deployment types that can be run on a Windows-enabled PC? (Choose two.)

- A. Contact Center Agent
- B. IM-only
- C. multicloud-based
- D. Full UC
- E. cloud-based

**Answer:** BD

**Explanation:**

Reference: [https://www.cisco.com/c/en/us/td/docs/voice\\_ip\\_comm/jabber/12\\_6/cjab\\_b\\_on-prem-deployment-cisco-jabber\\_12-6.pdf](https://www.cisco.com/c/en/us/td/docs/voice_ip_comm/jabber/12_6/cjab_b_on-prem-deployment-cisco-jabber_12-6.pdf)

#### NEW QUESTION 53

Which step is the first for web-based single sign-on login?

- A. Authenticate.
- B. Redirect to IdP to get authenticated.
- C. Present authentication assertion.
- D. Request access to protected service.

**Answer:** D

#### NEW QUESTION 54

Refer to the exhibit.

High Availability			
<input checked="" type="checkbox"/> Enable High Availability			
Monitored Server	Assigned Users	Active Users	Server State
IMPPub.CiscoLiveUS.net	4	0	Failed Over
IMPSub.CiscoLiveUS.net	0	0	Running in Backup Mode

A customer reports that after a network failure, all of the Cisco Jabber clients are not switched back to their home nodes. An engineer determines that the primary Cisco IM&P server is in Failed Over state. Which two actions should be performed to bring the system back to operational state and to prevent future occurrences? (Choose two.)

- A. Advise all users to re-login to their Jabber clients.
- B. Confirm that both IM&P servers are configured in the Presence Redundancy Group configuration pane.
- C. Perform a restart of the IM&P primary server to force fallback.
- D. Click the Fallback button in the Server Action pane.
- E. Set the Automatic Failover parameter in the Server Recovery Manager Service Parameters to the value True.

**Answer:** BD

#### NEW QUESTION 56

.....



## Thank You for Trying Our Product

\* 100% Pass or Money Back

All our products come with a 90-day Money Back Guarantee.

\* One year free update

You can enjoy free update one year. 24x7 online support.

\* Trusted by Millions

We currently serve more than 30,000,000 customers.

\* Shop Securely

All transactions are protected by VeriSign!

**100% Pass Your 300-810 Exam with Our Prep Materials Via below:**

<https://www.certleader.com/300-810-dumps.html>