

Exam Questions 220-1001

CompTIA A+ Certification Exam: Core 1

<https://www.2passeasy.com/dumps/220-1001/>



NEW QUESTION 1

A client needs to upgrade the hard drive on a laptop and would like one that is fast and has drop protection. Which of the following is the BEST option for the client?

- A. 5400rpm HDD
- B. 7200rpm HDD
- C. NVMe SSD
- D. Hybrid HDD/SSD

Answer: C

NEW QUESTION 2

Which of the following channels would commonly be used on an 802.11 wireless network?

- A. 6
- B. 17
- C. 802
- D. 8080

Answer: A

NEW QUESTION 3

Several company users are frequently forgetting passwords for their mobile devices and applications. Which of the following should the systems administrator do to reduce the number of help desk tickets submitted?

- A. Implement single sign-on.
- B. Enable multifactor authentication.
- C. Configure biometric authentication.
- D. Remove complex password requirements.

Answer: A

NEW QUESTION 4

The feature that allows users to store files in cloud-based when necessary, but can removed when space is freed up, is known as:

- A. on-demand
- B. resource pool
- C. synchronization application
- D. shared resources

Answer: A

NEW QUESTION 5

A user logs on a PC and receives a message stating there is a duplicate IP address on the network. After a system restart, the user notices the same error. Which of the following is the MOST probable cause of the error?

- A. The user is still logged into another device.
- B. The user has set a static IP address.
- C. The user has moved to a different office.
- D. The user has wireless and wired connections.

Answer: B

NEW QUESTION 6

The graphics has an issue with printing certain files. The printer does not print the complete image on larger files. A technician verifies the network speed of the printer is set to 1GB and that regular text files print without issue. Which of the following is the MOST likely cause of this problem?

- A. The printer needs more RAM
- B. The print server is timing out
- C. The users are not printing in post-script mode
- D. The printer network connection is set to half duplex

Answer: A

NEW QUESTION 7

A laptop is connected to a conference room projector in extended display mode. The desktop icons appear normal on the laptop, but are disproportionate and illegible on the projector screen. Which of the following should the technician check?

- A. Video resolution
- B. HDMI connection
- C. Keystone
- D. Focus

Answer:

A

NEW QUESTION 8

Which of the following requires less current to provide the same amount of power to devices inside a PC?

- A. 5.5V
- B. 12V
- C. 120V
- D. 220V

Answer: D

NEW QUESTION 9

A user is unable to access websites and has reported connectivity issues with pop-ups on the screen. A technician removes malware, and then is able to ping the router and access the websites.

Which of the following NEXT steps should the technician perform in troubleshooting this issue? (Choose two.)

- A. Documents findings, actions, and outcomes.
- B. Reboot the device to verify the fix.
- C. Reconnect the device to the network.
- D. Verify the settings in IPConfig.
- E. Research the problem based on symptoms.
- F. Run a virus scan.

Answer: AF

NEW QUESTION 10

A user reports being unable to print to a network-based all-in-one printer. The issue consistently appears after power outages Which of the following should a technician perform to resolve the issue?

- A. Run Windows Update on the user's machine.
- B. Disable the firewall on the user's machine.
- C. Set a static IP address on the printer
- D. Reinstall the printer with vendor-provided drivers

Answer: C

NEW QUESTION 10

An administrator has configured a server to host virtualizes instances. The requirements of each VM must be able to scale automatically depending on peak and off-peak usage. Which of the following terms BEST describes this type of cloud concept?

- A. Over provisioning
- B. Measured pooling
- C. Resources pooling
- D. Rapid elasticity

Answer: A

NEW QUESTION 13

Some users are unable to access the Internet form their workstations. A technician runs the ipconfig command on one of the workstations and sees the following:

```
IPv4 address 192.168.1.27
Subnet mask 255.255.255.0
Default gateway 192.168.1.1
```

The technician pings 8.8.8.8 and gets no response. Next, the technician pings 192.168.1.1 and gets no response. The technician is able to successfully ping an adjacent workstation but cannot ping the print server on the floor below. Which of the following is the MOST likely cause of the Internet connectivity issue in the office?

- A. There is a problem with a router in the office
- B. There is a problem with a DNS server in the office
- C. The users are not getting correct IP addresses from the DHCP server
- D. The wireless access point in the area is down

Answer: A

NEW QUESTION 16

A user's laptop is shutting down unexpectedly. The technician discovers the shutdowns only happen when the laptop is moved from one room to another. The technician reseated the hard drive, memory, battery, and LCD cable, but the laptop continues to shut down.

Which of the following is the MOST probable cause of the issue?

- A. Residual energy on the motherboard
- B. System overheating
- C. Distended capacitors
- D. Loose battery connection
- E. CMOS battery failure

Answer: D

NEW QUESTION 21

Which of the following resources is the MOST critical when using cloud file-storage synchronization applications?

- A. Disk speed
- B. I/O bandwidth
- C. RAM utilization
- D. CPU utilization

Answer: B

NEW QUESTION 23

A customer accidentally drops a laptop while it is charging. The next day, the customer notices the laptop will not turn on and calls a technician to investigate. The technician confirms the laptop will not turn on and calls a technician to investigate. The technician confirms the laptop will not turn on even though it is connected to the power adapter.

Which of the following components is the MOST likely cause of this behavior?

- A. Power adapter
- B. Battery
- C. DC jack
- D. Hard drive

Answer: C

NEW QUESTION 25

A user is experiencing issues synchronizing a smartphone. The user is able to connect to individual services, but each requires a different password. Which of the following needs to be configured to allow the user to access web services securely with a unique password?

- A. SIM
- B. SMB
- C. SSL
- D. SSO

Answer: D

NEW QUESTION 26

Which of the following adapters may suffer signal degradation or data loss due to conversion?

- A. DVI to HDMI
- B. HDMI to DisplayPort
- C. USB to Ethernet
- D. DVI-D to VGA

Answer: D

NEW QUESTION 31

A technician wants to block remote logins to a server. Which of the following ports should be blocked?

- A. 21
- B. 23
- C. 80
- D. 443

Answer: B

NEW QUESTION 32

A user is having a problem with printing a specific document type.

The network printer OCP shows that the printer is online with no errors. Other users are not having the same issue. The user sends the document to another printer and the document prints.

Which of the following should a technician do FIRST in troubleshooting the problem?

- A. Stop and restart the PC print spooler service.
- B. Verify the user is sending the document to the correct printer queue.
- C. Have each user send the same document to the correct printer queue.
- D. Stop and restart the print server queues, and then have the user resend the document.

Answer: B

NEW QUESTION 37

You need to configure your mobile device to send and receive electronic messages from your company. You must use the company's WLAN as all e-mail services are on default non-secure ports.

The company's WLAN is broadcasting across the company for easier access. Both incoming and outgoing servers require login credentials.

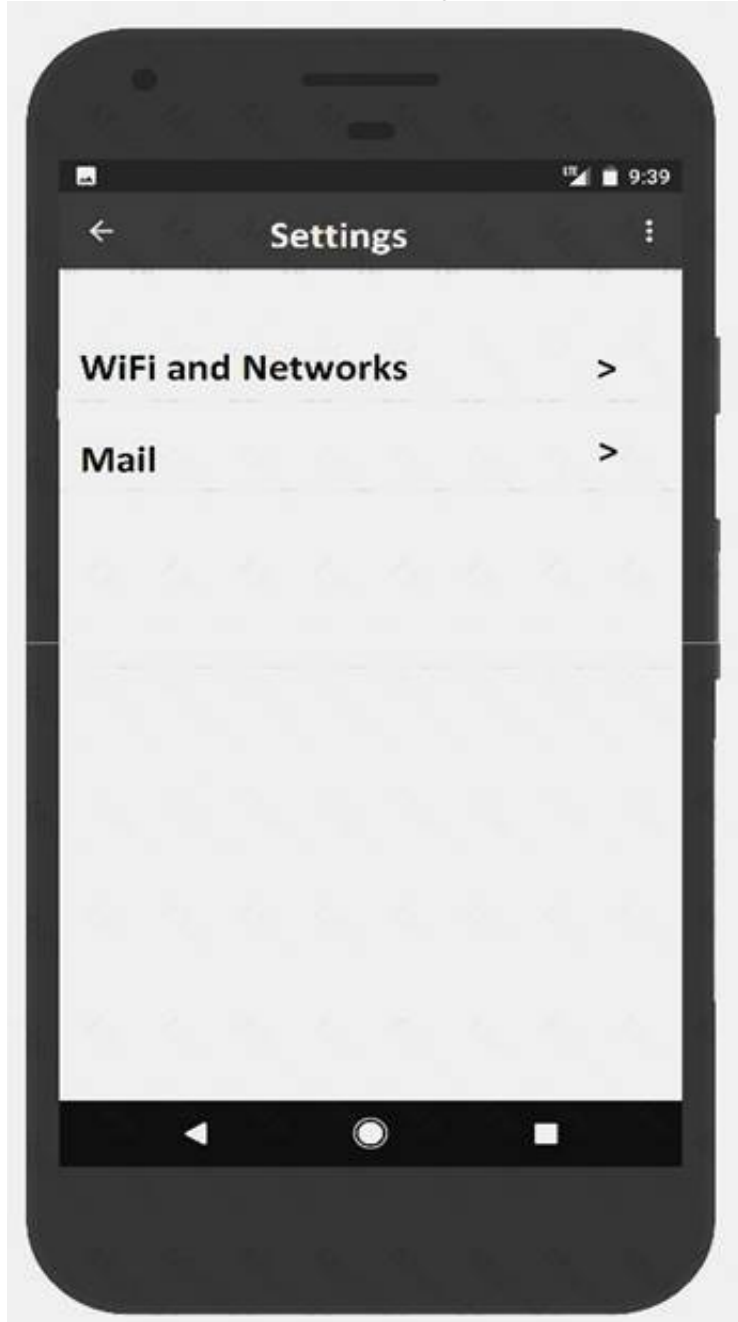
Use the following parameters:

- Email address tech@techies.com

- Password P@SSwOrd
- Pop techies com Port 110 Security. None
- IMAP techies com Port 993 Security SSL
- smtp.techies.com Port 465 Security: TLS
- Company SSID Techies
- Security WPA2
- Passphrase P@SSwOrd
- SSID is not broadcasted INSTRUCTIONS:

Update the mobile device's parameters to fit the criteria.

If at any time you would like to bring back the initial state of the simulation, please click the Reset All button.

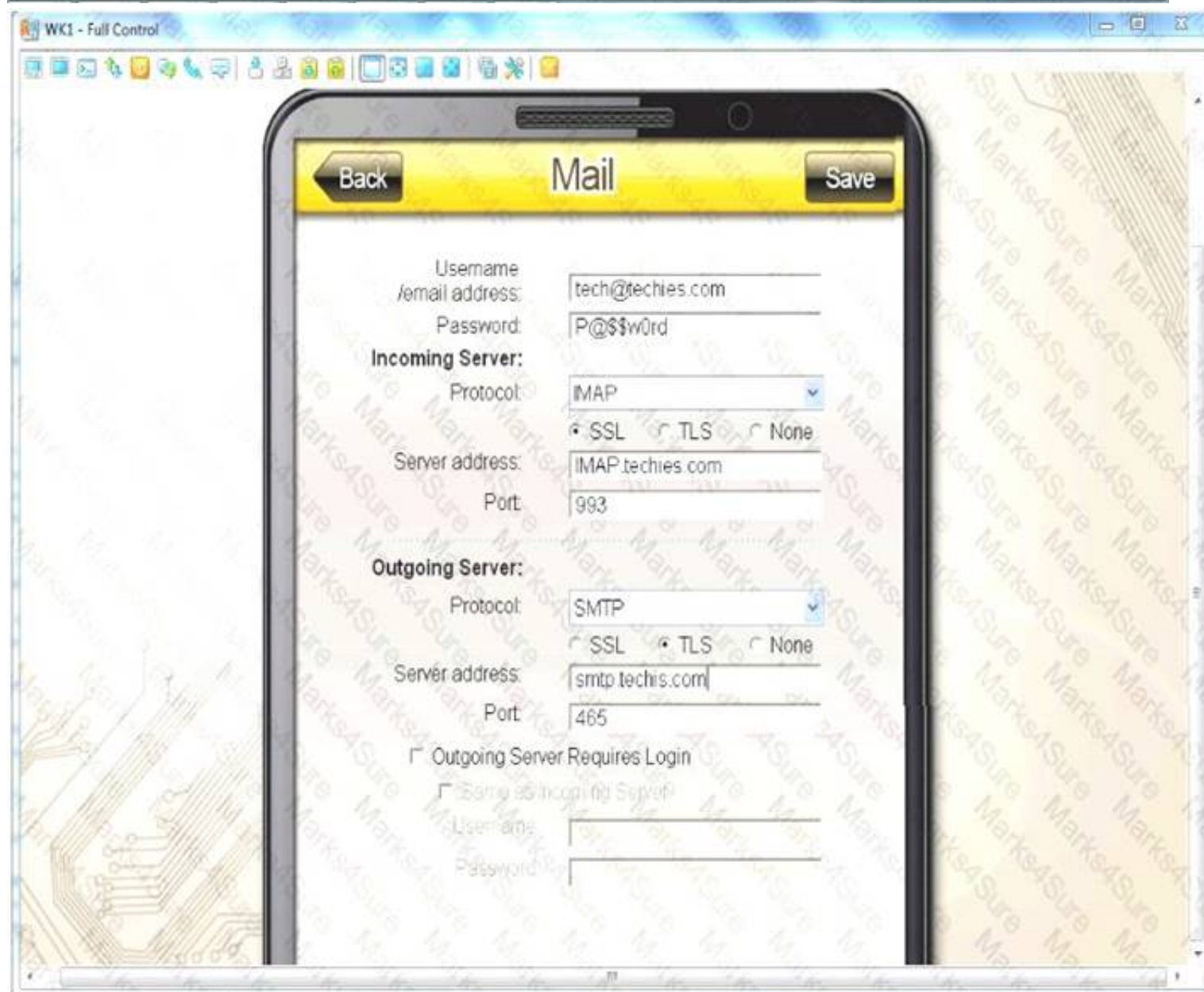
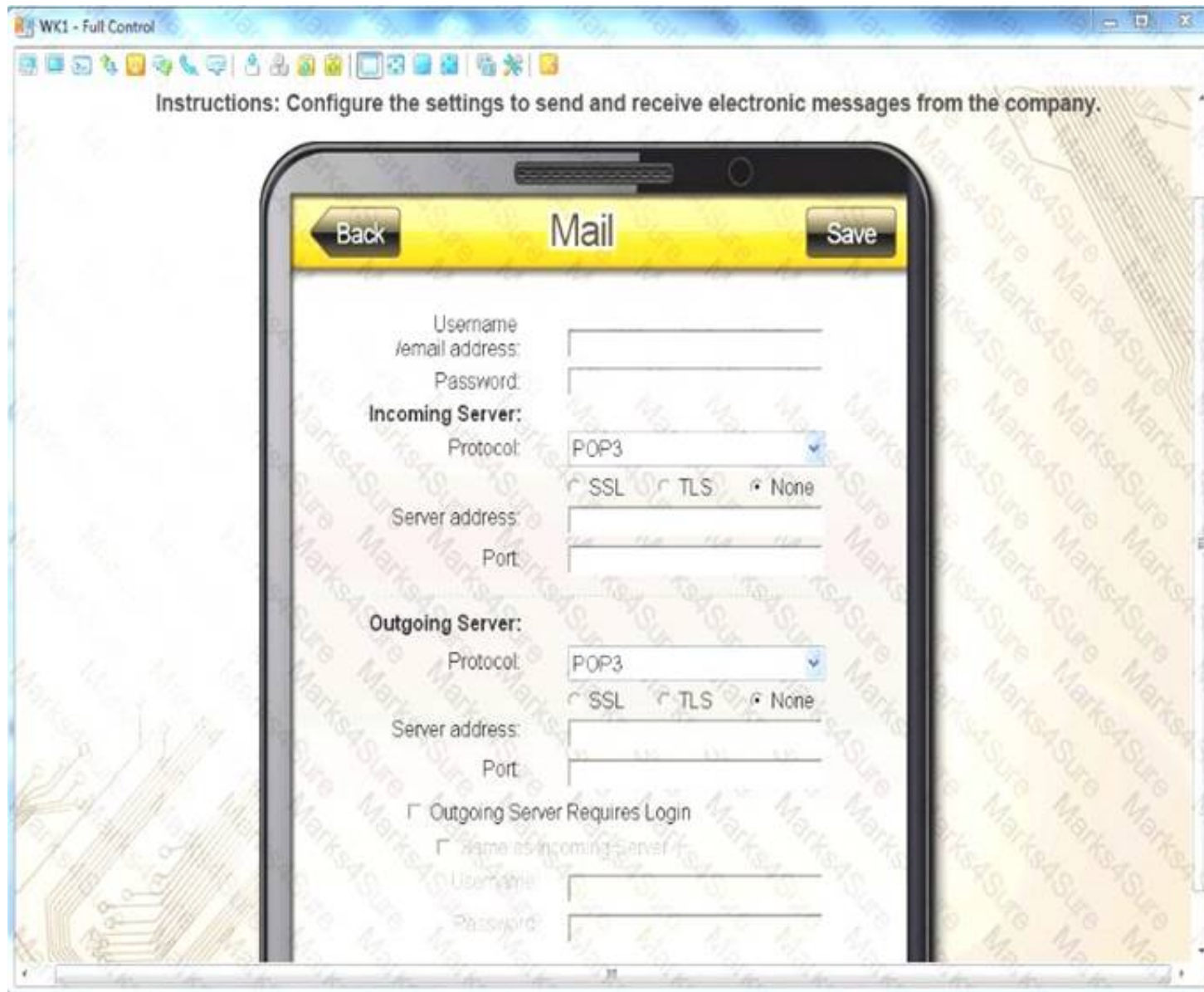


- A. Mastered
- B. Not Mastered

Answer: A

Explanation:

See explanation below



NEW QUESTION 40

A technician wants the number of virtual machines hosting a web application in the public cloud environment to scale based on real-time traffic on the website. Which of the following should the technician configure?

- A. Resource pooling
- B. Rapid elasticity
- C. Measured service
- D. High availability

Answer: B

NEW QUESTION 41

A technician is upgrading a user's smartphone and wants to move all of the applications and contact information quickly to the new device. Which of the following connection types would work BEST to do this?

- A. NFC
- B. IR
- C. OTG
- D. Bluetooth

Answer: A

NEW QUESTION 43

The ability for new computers to be automatically connected to the network is provided by the:

- A. DHCP server
- B. DNS server
- C. proxy server
- D. TACACS server

Answer: A

NEW QUESTION 46

Which of the following devices would enable a VLAN user to communicate with a user in another VLAN?

- A. Router
- B. Access point
- C. Repeater
- D. Bridge

Answer: A

NEW QUESTION 47

A systems administrator wants to take advantage of the benefits of the major cloud providers while retaining some data and services in the local datacenter. Which of the following types of cloud model should the administrator consider?

- A. Public
- B. Private
- C. Hybrid
- D. Community

Answer: C

NEW QUESTION 52

Which of the following cloud computing concepts allows scalable services to be provided to the client?

- A. On-demand
- B. Metered
- C. Rapid elasticity
- D. Resource pooling

Answer: C

NEW QUESTION 57

A technician replaced a broken LED screen on a mobile computer. The operating system can be seen perfectly on screen, but the touch screen is non-responsive. Which of the following are the MOST probable root causes for the given failure? (Choose three.)

- A. The hardware replacement used is a non-touch-screen.
- B. The touch screen must be calibrated after a replacement.
- C. The digitizer cable is not seated properly on the motherboard.
- D. The new touch-screen drivers must be installed.
- E. The replacement part is dead-on-arrival.
- F. The LCD panel firmware must be updated.
- G. The grounding screws are not securely attached.

Answer: ACD

NEW QUESTION 59

A user reports being unable to browse the internet. A technician believes the cause of the issue is related to DNS. Which of the following should the technician perform NEXT?

- A. Test the theory attempting to browse to a website known IP address.
- B. Implement preventive measures by manually assigning a DNS server to the PC.
- C. Identify the problem by running the command `ipconfig / flushdns`.

D. Document the finding in the organization local knowledge base.

Answer: C

NEW QUESTION 63

Which of the following would provide power to an access point?

- A. POE injector
- B. Switch
- C. Repeater
- D. Modern

Answer: A

NEW QUESTION 68

Which of the following connects a PC to its default gateway?

- A. NIC
- B. Switch
- C. Router
- D. Cable modem

Answer: B

NEW QUESTION 73

A technician is setting up a printer for a small office that does not have an RJ-45 jack. The users' computers are all in the same workgroup and are connected physically to the same network switch. The technician needs to make sure all users can print to the new printer through the switch. Which of the following should the technician configure?

- A. Shared printer
- B. Print server
- C. Bluetooth printing
- D. Cloud printing

Answer: A

NEW QUESTION 74

Which of the following BEST describes the purpose of an IPv4 subnet mask?

- A. It defines where network and host bits exist
- B. It is used to find the default gateway on a LAN
- C. It gives users the ability to send and receive data.
- D. It allows the ability, when needed, to bridge subnets.

Answer: A

NEW QUESTION 77

Which of the following networking protocols would be BEST track packages through a sorting facility?

- A. RFID
- B. NFC
- C. Bluetooth
- D. Zigbee

Answer: D

NEW QUESTION 82

An end user is unable to connect to the network, and a technician has visually verified the lights on the back of the PC are active and there is no physical damage to the Ethernet jack. Which of the following tools should the technician use to continue troubleshooting the connection?

- A. Punchdown tool
- B. Tone generator and probe
- C. Cable tester
- D. Crimper

Answer: C

NEW QUESTION 83

A SOHO user wants a multifunction device to be set up for the office printer. Additionally, scanning and fax capability must be set up for office employees only. Guest WiFi access will open.

Which of the following configuration changes will BEST meet the user's request? (Choose two.)

- A. Enable user authentication.
- B. Disable remote printing.
- C. Configure the print server.

- D. Enable cloud settings.
- E. Disable the wireless network.
- F. Connect to a wired network.

Answer: AC

NEW QUESTION 88

A technician is dispatched to troubleshoot a slow performance issue on a PC. Upon arrival, the technician immediately opens Task Manager and sees that CPU and RAM performance are within normal ranges. The technician then checks and verifies the speed and duplex settings and performance on the network card. The technician then temporarily disables the antivirus to see if performance is affected, and it is not. After re-enabling the antivirus, which of the following is the NEXT best stop for the technician to take?

- A. Check to see if insufficient hard drive space is causing the issue
- B. Update the operating system, drivers, and firmware on the PC
- C. Log into the PC with another user profile and test performance
- D. Shut down the PC, unplug the power for 30 seconds, and then boot the PC

Answer: A

NEW QUESTION 89

A technician is building a CAD workstation for a user who will be saving files remotely.

Which of the following components are MOST important to include when configuring the system? (Choose two.)

- A. Gigabit NIC
- B. Graphics card
- C. Liquid cooling unit
- D. HDD size
- E. RAM

Answer: BE

NEW QUESTION 94

An end user reports a printer error that states "Replace filament". With which of the following types of printer is the end user MOST likely having problems?

- A. ink jet
- B. Laser
- C. 3-D
- D. Thermal

Answer: C

NEW QUESTION 95

A technician is ordering a new motherboard and processors for a company email server. When reviewing the vendor licensing agreement, the technician sees that there is a flat per-socket licensing fee.

Which of the following motherboard/processor combinations should the technician order get the BEST performance while minimizing licensing fees?

- A. A dual-processor motherboard with six hyper threaded cores each.
- B. A single-processor motherboard with hyper threaded eight cores.
- C. A dual-processor motherboard with eight overclocked cores each.
- D. A single-processor motherboard with ten overclocked cores.

Answer: D

NEW QUESTION 100

Joe a technician is dispatched to troubleshoot a server that will not boot. The server console states no boot device can be found Joe reboots the server with the same result. He then attempts to repair the master boot record and boot sector with no results. Joe realizes the server is set up in a RAID 0 configuration and is certain there is a bad hard drive. Which of the following should Joe do to get the server to boot right away?

- A. Unplug the defective hard-drive cable and reboot the server
- B. Change the RAID controller configuration from RAID 0 to RAID 5.
- C. Break the mirror and set the good hard drive as the default boot drive
- D. Replace the faulty hard drive and restore from server data from backup

Answer: D

NEW QUESTION 102

A technician is replacing an older video card with a new high-end video card in a workstation. The installation was successful, the new card seated properly, and power is connected. However, upon booting, the computer now emits several beeps and will not boot, but shows no error messages. Which of the following is MOST likely the cause of this issue?

- A. The BIOS is out-of-date
- B. The is not enough PSU output
- C. There is an onboard RAM mismatch
- D. GPU is overclocked
- E. The firmware is out-of-date

Answer: B

NEW QUESTION 107

A user is no longer able to browse the Internet after returning from vacation. The user is able to log in and navigate to the local intranet, but not to any outside sites. A technician pings a well-known website by name but gets no reply. The technician then pings its IP address and gets a reply. Which of the following commands will MOST likely resolve the issue?

- A. ipconfig /all
- B. ipconfig /flushdns
- C. ipconfig /release
- D. ipconfig /setclassid

Answer: B

NEW QUESTION 110

An engineer is working at a remote site that does not have Internet access. Which of the following features should the engineer use to connect a laptop to the Internet if hotspot functionality is unavailable?

- A. Tethering
- B. Near field communication
- C. Wireless LAN
- D. Virtual private network

Answer: A

NEW QUESTION 113

Following a recent malware infection, a user is unable to access network shares from the local server. A technician verifies the device is able to connect to the Internet and the hosted email provider off-site. The technician also confirms the local server is online. Additionally, a malware scan reports the user's computer is clean. Which of the following is the best NEXT step to troubleshoot the issue?

- A. Verify the DNS servers are configured properly on the device.
- B. Assign a static IP address on the wired network connection
- C. Run a speed test on the network to check for slow transfer speeds
- D. Confirm the network connection is not using a link-local address
- E. Replace the Ethernet cable as it is causing limited connectivity

Answer: C

NEW QUESTION 118

A user printed several documents to a shared network copier and noticed that they have very faint color density. A technician investigates the issue and verifies that the printer had a maintenance kit installed recently. Which of the following next steps will MOST likely resolve the issue? (Select two.)

- A. Replace the toner cartridges
- B. Replace the fuser module
- C. Clean the paper tray rollers
- D. Adjust the printer settings
- E. Replace the developer
- F. Empty the waste toner bottles

Answer: AC

NEW QUESTION 123

Joe, a user, recently purchased a new multifunction printer and attempted to install it himself. He informed a technician that the printer is on his list of printers, but he is unable to print. The technician sees that the printer is listed as a generic printer under Devices and Printers. Which of the following should the technician do NEXT?

- A. Reboot the computer into safe mode and try to print a test page
- B. Download the correct drivers from the manufacturer's website and install them
- C. Unplug the USB cable from the printer and try another USB slot on the PC
- D. Set the printer as the default within the device properties

Answer: B

NEW QUESTION 128

A user receives the following error message when powering on a computer:
Hard drive cannot be found.

A technician restarts the computer, and it boots the OS normally. Several days later, the user reports another problem, but rebooting the computer does not resolve the issue. The technician replaces the motherboard, keeping the same CPU, battery, RAM, and hard drive. The user cannot authenticate at the login screen. Which of the following would BEST explain the causes of the problem? (Select TWO)

- A. POST error code beeps indicate RAM failure.
- B. The system time is not set correctly in the BIOS
- C. The voltage on the coin cell is drained completely
- D. UEFI firmware has the Secure Boot setting enabled
- E. Capacitors on the motherboard are distended
- F. Incorrect settings are booting the wrong device
- G. A BSOD error indicates the system is crashing

Answer: CE

NEW QUESTION 132

A projector's image begins to flicker during a presentation. The laptop display does not produce this issue. When a technician changes the resolution on the laptop, the issue persists. Which of the following is the NEXT step the technician should take?

- A. Check the connectivity of the VGA cable.
- B. Check the connectivity of the power cable.
- C. Change the aspect ratio on the laptop.
- D. Change the settings of the projector.

Answer: A

NEW QUESTION 135

A user reports that a laptop is not connecting to the corporate wireless network. A technician confirms a with a smartphone that the corporate wireless network is available and can be accessed. the technician observes that the Ethernet connection to the corporate network is working. The technician disconnects the Ethernet cable.

Which of the following should the technician do NEXT to troubleshoot this problem?

- A. Confirm that the laptop wireless card is turned on.
- B. Confirm that the laptop is in range for the access point.
- C. Confirm that the correct wireless network is selected.
- D. Confirm the user's network login ID and password.

Answer: A

NEW QUESTION 140

Which of the following server types caches previously visited web pages for faster access in the future?

- A. Proxy server
- B. Web hosting server
- C. DNS server
- D. Branch cache server

Answer: D

NEW QUESTION 141

The touch-screen feature on a Windows device has stopped working. Which of the following should the technician check FIRST?

- A. Device Manager
- B. Performance Monitor
- C. System configuration
- D. Digitizer settings

Answer: D

NEW QUESTION 144

A network administrator is attempting to access the firewall while inside the datacenter. Which of the following peripherals must be connected to do so?

- A. KVM
- B. Touchpad
- C. Mouse
- D. Keyboard

Answer: A

NEW QUESTION 149

An associate is seeking advice on which device to purchase for a friend who is a business owner. The friend needs the ability to chat activity while keeping in contact with the home office.

Which of the following would be the BEST recommendation?

- A. Smart watch
- B. Fitness monitor
- C. Global positioning sensor
- D. Portable hotspot

Answer: A

NEW QUESTION 154

Which of the following technologies can be used for wireless payments?

- A. NFC
- B. Bluetooth
- C. IR
- D. LTE

Answer: A

NEW QUESTION 158

An ISP has notified a SOHO user of a usage increase on the user's network. The user is concerned the WiFi network is being utilized by unauthorized users. Which of the following would minimize the unauthorized use of the WiFi network?

- A. Implement MAC filtering
- B. Enable NAT
- C. Create a network DMZ
- D. Upgrade the encryption standards

Answer: A

NEW QUESTION 163

A corporation maintains an active social media presence by constantly uploading audio and video. The corporation also regularly hosts video conferences, but attendees are reporting buffering during their telecast.

Which of the following should the IT department do to improve the ability to attend video conferences without interruption?

- A. Enable QoS on network traffic, prioritizing telecast traffic over uploads.
- B. Upgrade video conference room equipment.
- C. Create a VLAN for all employees updating social media.
- D. Adjust the network intrusion device to allow video to flow without filtering.

Answer: A

NEW QUESTION 167

A user wants to build a computer with a high-end CPU, plenty of RAM, and a high-end graphics card for online gaming. The user wants to verify that the graphics card is compatible with the motherboard. Which of the following connection types would the user MOST likely utilize to connect the video card to the motherboard?

- A. PCIe
- B. ISA
- C. AGP
- D. USB

Answer: A

NEW QUESTION 169

A technician is hired to install network cable in a crawl space running the length of a hallway. To do so without a fire code violation, which of the following types of cable should the technician run?

- A. Plenum
- B. Fiber
- C. Shielded
- D. Coaxial

Answer: A

NEW QUESTION 170

A technician is replacing the LCD panel in a laptop. Which of the following components is MOST likely to be damaged accidentally during the repair?

- A. Bezel
- B. Hinge
- C. Motherboard
- D. Digitizer

Answer: D

NEW QUESTION 173

Joe, a user, sets up an IMAP connection on his smartphone to connect to webmail. Joe is able to view email, but he receives an error message when trying to send a message. When viewing the mail client's configuration, Joe sees a valid SMTP server and port. Which of the following should Joe check NEXT to resolve the issue?

- A. Configure the email account as a POP3 connection
- B. Ensure the SSL/TLS option is being used
- C. Check that the account password is still valid
- D. Make sure the smartphone is not in airplane mode

Answer: A

NEW QUESTION 177

After upgrading a smartphone's OS, Joe, a user, reports the smartphone no longer connects to his automobile automatically when near it, Joe, restarts the smartphone, but the problem persists. Which of the following should a technician do NEXT to restore the previous functionality?

- A. Connect the smartphone to the automobile via USB
- B. Reenable the smartphone's Bluetooth radio
- C. Perform a rollback of the smartphone's OS
- D. Pair the smartphone with the automobile

Answer: B

NEW QUESTION 182

A user brings in a smartphone for repair. The device is unable to send/receive calls or connect to WiFi. All applications on the device are working unless they require connectivity.

Which of the following is MOST likely causing the problem?

- A. Airplane mode
- B. Tethering
- C. Disabled hotspot
- D. VPN

Answer: A

NEW QUESTION 187

A workstation was just moved to a new work location without a surge protector. It was working the day before, but now the PC will not power on, the fans will not spin, and there are no signs of activity. Which of the following should the technician do FIRST?

- A. Check the power cable connection
- B. Check the voltage of the PSU with a tester
- C. Test for distended capacitors
- D. Check the voltage switch

Answer: A

NEW QUESTION 188

A technician is setting up RAID 5 on a server that needs to be highly available. Which of the following is the BEST option to use for the array?

- A. Hot spare drives
- B. Large capacity drives
- C. Hot swappable drives
- D. Solid state drives

Answer: D

NEW QUESTION 193

Company management wants to give users the ability to work from home during periods of bad weather. Which of the following would enable the workforce to do this?

- A. NAT
- B. VLAN
- C. VPN
- D. HIPS

Answer: C

NEW QUESTION 198

A customer has two 8GB sticks of 2400-speed DDR4 installed in slots 1 and 2 of a computer and wants to add more RAM. The customer purchases two additional 4GB sticks of 3200-speed DDR4 and installs them in slots 3 and 4. While installing the RAM into the board, the user notices the board has “quad channel” etched near the RAM slots.

Which of the following can be said about the user’s channel configuration after upgrading the RAM?

- A. The computer is utilizing one channel.
- B. The computer is utilizing two channels.
- C. The computer is utilizing three channels.
- D. The computer is utilizing four channels.

Answer: D

NEW QUESTION 203

A technician needs to call a user’s cellular provider to troubleshoot a network speed issue with the user’s mobile device. Which of the following technologies is the technician troubleshooting?

- A. Long-term evolution
- B. Near-field communication
- C. Radio frequency ID
- D. Z-wave

Answer: A

NEW QUESTION 207

Users report they have to select the output tray at the printer, even though the correct tray is selected in the print dialog. Which of the following should a technician perform FIRST to attempt to solve the problem?

- A. Check the user’s account for the correct printing privileges.

- B. Reinstall the driver on the print server.
- C. Update the firmware on the commercial office printer.
- D. Run Windows Update on the affected computers.

Answer: B

NEW QUESTION 208

Joe, a user, has purchased a new mobile device that uses a different OS than his previous one. Joe wants to copy his contacts and appointments from his corporate account without entering them manually.
Which of the following would be the BEST way for a technician to assist Joe?

- A. Log into the same email provider on the new device, and restore the contacts and dates.
- B. Create a Bluetooth connection between Joe's devices, and copy his contacts and calendar.
- C. Back up the old mobile device to a PC, and import the contacts and schedule from the PC.
- D. Use NFC to transfer all compatible data from one device to the other.

Answer: A

NEW QUESTION 209

An administrator connects to the company's cloud account and builds a server that is hosted in the cloud. The server will be used as a confidential database server for one of the company's core applications. The administrator is responsible for patching and updating the server OS. Which of the following cloud models is this an example of?

- A. IaaS
- B. SaaS
- C. PaaS
- D. Public

Answer: A

NEW QUESTION 214

A technician configures a new printer to be accessible via a print server. After setting up the printer on a Windows client machine, the printer prints normally. However, after setting up the printer on a macOS client machine, the printer only prints garbled text. Which of the following should the technician do to resolve this issue?

- A. Add a macOS-compatible print driver to the printer object on the print server.
- B. Configure the Windows client to share the printer with the macOS client.
- C. Set the printer on the macOS client to connect to the print server via IPv6.
- D. Ensure the network time of the macOS client matches that of the print server.

Answer: A

NEW QUESTION 217

A server needs a RAM upgrade, and a technician has been tasked with retrieving the RAM from storage and then installing it. Which of the following is the BEST RAM type for the technician to retrieve?

- A. SoDIMM
- B. DDR4
- C. Single channel
- D. ECC

Answer: B

NEW QUESTION 219

A customer asks a technician to help set up a specialized computing system for video editing. Which of the following should the technician install on the workstation to BEST meet the customer's specifications? (Choose two.)

- A. SSD
- B. Dual monitors
- C. Gigabit NIC
- D. Hypervisor
- E. Docking station
- F. NAS

Answer: AB

NEW QUESTION 223

A user reports being unable to browse the Internet. A technician believes the cause of the issue is related to DNS. Which of the following should the technician perform NEXT?

- A. Test the theory by attempting to browse to a website's known IP address.
- B. Implement preventive measures by manually assigning a DNS server to the PC.
- C. Identify the problem by running the command `ipconfig /flushdns`.
- D. Document the findings in the organization's local knowledge base.

Answer: A

NEW QUESTION 225

A technician is troubleshooting a WiFi issues with a laptop user in a corporate office. The user can connect to web pages without trouble; however, the user cannot connect to the email server or print a locally stored document to the network printer. The technician cannot ping the mail server or the network printer. No other users are experiencing this issue. Which of the following is MOST likely causing the issue?

- A. The laptop has an APIPA address
- B. The laptop is configured to the wrong default gateway
- C. The laptop is connected to the guest WiFi
- D. The laptop is configured with a static IP

Answer: C

NEW QUESTION 229

Ann, an accountant, reports that after turning on her new laptop, she received a message stating her IP address is already in use on the system. She tried going back to her old desktop, which she now only uses for email, but received the same message. The technician checks the account and sees a comment that Ann requires a special network setup to connect to the banking software. Which of the following should the technician do to resolve the issue?

- A. Remove the static IP configuration from the desktop.
- B. Set the laptop configuration to DHCP to prevent conflicts.
- C. Replace the network card in the laptop, as it may be defective.
- D. Bridge the LAN connection between the laptop and the desktop.

Answer: B

NEW QUESTION 232

A customer is using a cloud storage program that maintains a copy of local file on the cloud storage servers. The WF network is not very fast, and the customer users bandwidth intensive video streaming all day. Which of the following parameters should be adjust to keep the cloud storage program from using too much bandwidth?

- A. Synchronization settings
- B. Wireless settings
- C. Video streaming settings
- D. QoS settings

Answer: D

NEW QUESTION 236

A technician is setting up a new SOHO router for a home user. The user has a media server to be accessible from the Internet while the user is traveling. Which of the following should the technician configure to allow access to the server from the Internet?

- A. Port forwarding
- B. NAT
- C. MAC filtering
- D. QoS

Answer: A

NEW QUESTION 239

A user calls the help desk stating a laptop is performing slowly and the hard drive activity lights are blinking continuously. A technician checks for enough hard drive space, disables antivirus and indexing services, and runs a full-system diagnostics check, which returns no failure. Which of the following should the technician do NEXT?

- A. Install a new hard drive
- B. Check for hard-drive firmware updates
- C. Replace the hard drive with a solid state drive
- D. Configure the laptop in high-performance mode
- E. Change the boot order in the system BIOS

Answer: B

NEW QUESTION 240

Which of the following features will save the battery life of a laptop significantly if they are disabled? (Choose two.)

- A. Touchpad
- B. Volume
- C. Screen orientation
- D. Cellular
- E. Bluetooth
- F. Fingerprint reader

Answer: DE

NEW QUESTION 244

A network administrator has discovered an amber indicator light on one of the redundant PSUs of a production server that went offline. Which of the following is the FIRST step in troubleshooting this issue?

- A. Check the connectivity of the power cable.
- B. Check the battery backup system
- C. Check the power settings of the server.
- D. Check the fans of the server

Answer: B

NEW QUESTION 249

A technician is setting up a new wireless network at a branch office that previously had only wired connectivity with statically assigned IP addresses. After setting up the network, the technician configures a server to provide IP addresses to wireless clients. During testing, the technician is unable to access the Internet or named network resources. The technician receives a valid IP address from the DHCP server and can ping the default gateway. Which of the following should be technician check NEXT to resolve this issue?

- A. Ensure the options are configured to provide a DNS server.
- B. Verify the Windows Firewall is turned off.
- C. Configure the wireless network's SSID to be hidden.
- D. Enable file and printer sharing in the OS.

Answer: A

NEW QUESTION 253

A network administrator must install a device that will proactively stop outside attacks from reaching the LAN. Which of the following devices would BEST meet the organization's needs?

- A. IPS
- B. IDS.
- C. Proxy server
- D. Authentication server.

Answer: A

NEW QUESTION 257

A technician needs to give users the ability to transfer files between mobile devices. The technician teaches the staff how to use a file transfer method in which the devices need to be in close proximity with line-of-sight access to each other. Which of the following technologies is the technician teaching to the staff?

- A. IR
- B. Bluetooth
- C. Tethering
- D. NFC

Answer: A

NEW QUESTION 262

Which of the following is considered a connection-oriented protocol?

- A. UDP
- B. TCP
- C. SSH
- D. HTTP

Answer: B

NEW QUESTION 264

.....

THANKS FOR TRYING THE DEMO OF OUR PRODUCT

Visit Our Site to Purchase the Full Set of Actual 220-1001 Exam Questions With Answers.

We Also Provide Practice Exam Software That Simulates Real Exam Environment And Has Many Self-Assessment Features. Order the 220-1001 Product From:

<https://www.2passeasy.com/dumps/220-1001/>

Money Back Guarantee

220-1001 Practice Exam Features:

- * 220-1001 Questions and Answers Updated Frequently
- * 220-1001 Practice Questions Verified by Expert Senior Certified Staff
- * 220-1001 Most Realistic Questions that Guarantee you a Pass on Your FirstTry
- * 220-1001 Practice Test Questions in Multiple Choice Formats and Updatesfor 1 Year