

Exam Questions PL-500

Microsoft Power Automate RPA Developer

<https://www.2passeasy.com/dumps/PL-500/>



NEW QUESTION 1

- (Exam Topic 1)

You need to ensure that the solution uses the correct accounts payable mailbox. Which three actions should you perform? Each correct answer part of the solution, NOTE: Each correct selection is worth one point.

- A. Set the current value for the accounts payable mailbox in the environment.
- B. Set the default value for the accounts payable mailbox in the environment.
- C. Turn off and then turn on the cloud flows.
- D. Use separate environment variables for the cloud flow and the canvas app.
- E. Use one environment variable for both the cloud flows and the canvas app.

Answer: ACD

NEW QUESTION 2

- (Exam Topic 1)

You need to resolve the fulfillment status flow issue.

Which three actions should you perform? Each correct answer presents part of the solution. NOTE: Each correct selection is worth one point.

- A. Ensure that the flow instance does not remain in the queue for more than three hours.
- B. Ensure that the flow is not using elevated privileges.
- C. Ensure that all users are signed out from the target machine.
- D. Use different local Windows accounts for all machines.
- E. Trigger the flow by using an on-premises data gateway.

Answer: BDE

NEW QUESTION 3

- (Exam Topic 1)

You need to configure the solution.

What should you use? To answer, select the appropriate options in the answer area. NOTE: Each correct selection is worth one point.

Answer Area

Requirement	Option
Automate the SMSApp data entry process.	<div>ActionWorkflowDesktop flowMobile task flow</div>
Handle invoices sent to the Accounts payable mailbox.	<div>When a folder is createdWhen an item is createdWhen a new email arrivesWhen a new email arrives in a shared mailbox</div>
Implement the order process.	<div>WorkflowsInstant flowsBusiness rulesBusiness process flows</div>

- A. Mastered
- B. Not Mastered

Answer: A

Explanation:

Answer Area

Requirement	Option
Automate the SMSApp data entry process.	<div>ActionWorkflowDesktop flowMobile task flow</div>
Handle invoices sent to the Accounts payable mailbox.	<div>When a folder is createdWhen an item is createdWhen a new email arrivesWhen a new email arrives in a shared mailbox</div>
Implement the order process.	<div>WorkflowsInstant flowsBusiness rulesBusiness process flows</div>

NEW QUESTION 4

- (Exam Topic 1)

You need to configure the flow for processing invoices that arrive in the AP mailbox. Which three elements should you use? Each correct answer presents part of the solution. NOTE: Each correct selection is worth one point.

- A. Document type
- B. Location
- C. Pages
- D. AI model
- E. Form type
- F. Form

Answer: BCE

NEW QUESTION 5

- (Exam Topic 1)
You need to identify the cause for the SMSApp data entry issue. What is the root cause?

- A. The DLP policy that contains the desktop flow connector was deleted.
- B. The default policy group is set to Blocked.
- C. The desktop flow was not shared with the finance clerk.
- D. The scope of the DLP policy was changed to exclude the development environment
- E. The Power Automate Management connector is assigned to the Business category.

Answer: C

NEW QUESTION 6

- (Exam Topic 2)
You need to address the issue with the capacity planning flow. What should you do?

- A. Increase the CPU and memory of the machine on which the gateway is hosted.
- B. Create a gateway cluster.
- C. Configure the system to send alerts when the gateway fails.
- D. Create a machine group and add machines to the group to handle requests.

Answer: D

NEW QUESTION 7

- (Exam Topic 2)
You need to configure the desktop action for the MaintenanceScheduler cloud flow. Which two actions should you perform? Each correct answer presents part of the solution. NOTE: Each correct selection is worth one point.

- A. Select machine settings in Power Automate for desktop.
- B. Select the Timeout property and update the duration to PT20M.
- C. Select the Timeout property and update the duration to P20M.
- D. Launch Power Automate for desktop.
- E. Navigate to Desktop flow action settings in the cloud flow.

Answer: AD

NEW QUESTION 8

- (Exam Topic 2)
You need to resolve the issue with the DataCollector flow.
What are two possible ways to achieve the goal? Each correct answer presents a complete solution. NOTE: Each correct selection is worth one point

- A. Add an If web page contains action to determine whether a field exists and write data only when true.
- B. Configure the Populate text field on a web page actions to continue running the flow in case of error.
- C. Replace the Populate text field on a web page action with the Send keys action to write data.
- D. Remove the Focus text field on a web page actions that precede actions which write data to text fields.
- E. Modify selectors to ensure that field attributes are mapped correctly.

Answer: BCE

NEW QUESTION 9

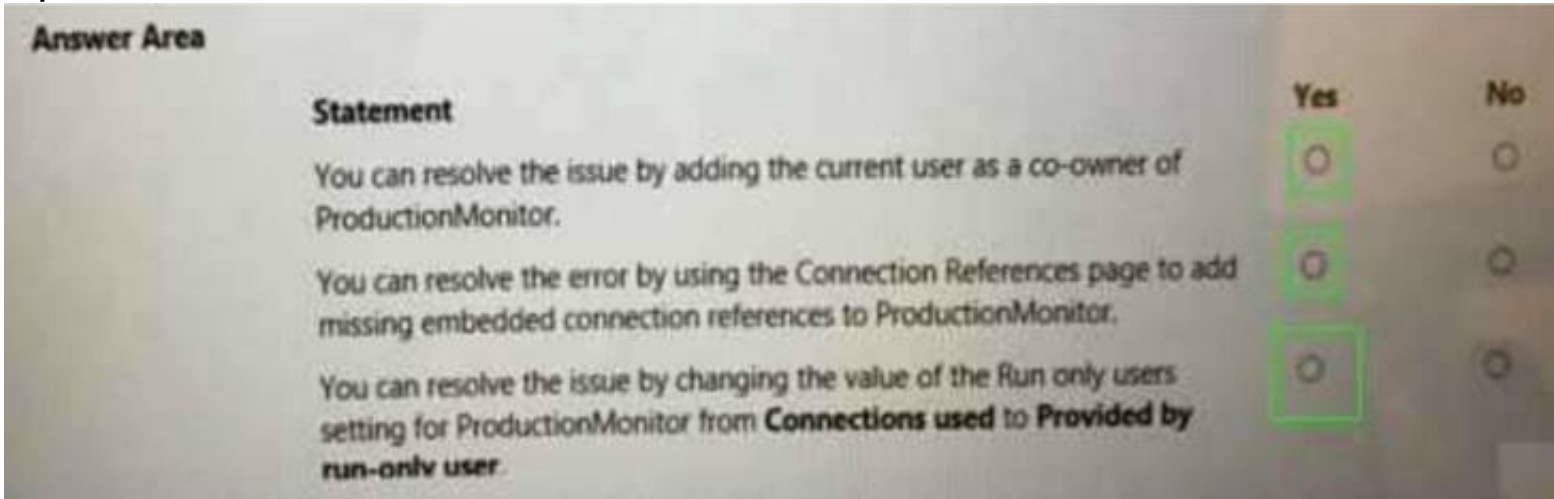
- (Exam Topic 2)
You need to troubleshoot the issue saving ProdManager.
For each of the following statements, select Yes if the statement is true. Otherwise, select No. NOTE: Each correct selection is worth one point.

Answer Area			
Statement		Yes	No
You can resolve the issue by adding the current user as a co-owner of ProductionMonitor.		<input type="radio"/>	<input type="radio"/>
You can resolve the error by using the Connection References page to add missing embedded connection references to ProductionMonitor.		<input type="radio"/>	<input type="radio"/>
You can resolve the issue by changing the value of the Run only users setting for ProductionMonitor from Connections used to Provided by run-only user .		<input type="radio"/>	<input type="radio"/>

- A. Mastered
- B. Not Mastered

Answer: A

Explanation:

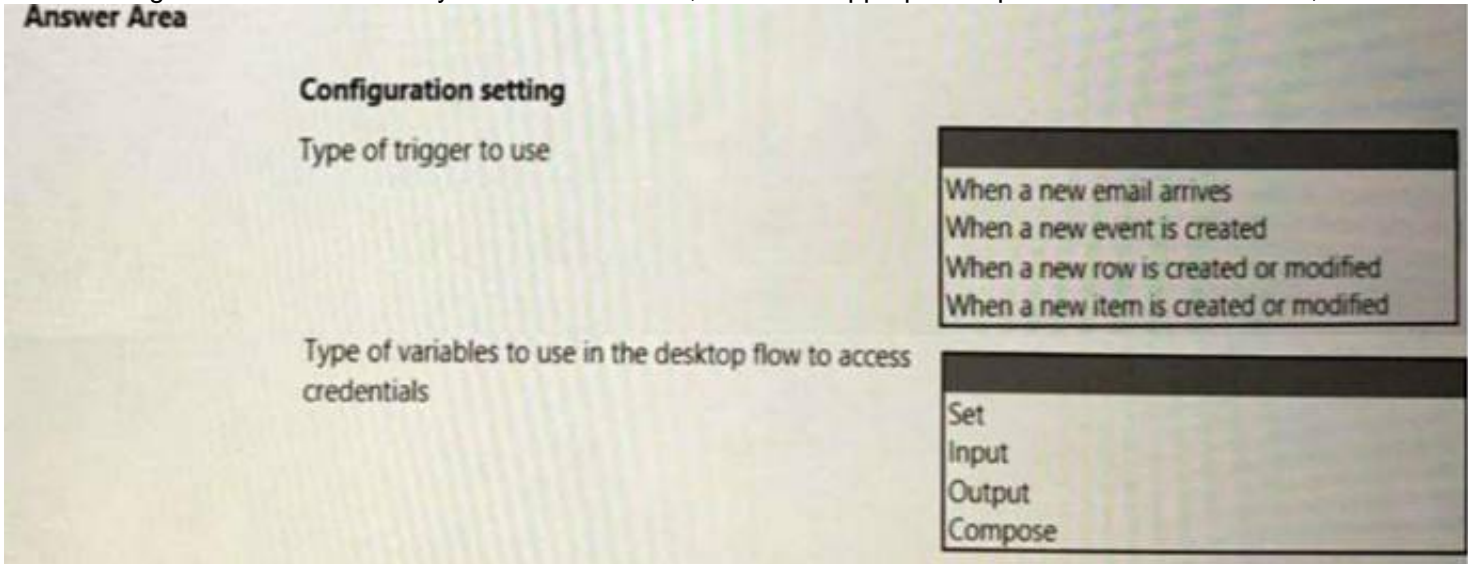


NEW QUESTION 10

- (Exam Topic 2)

You need to configure the solution for the ERPDataOperations flow.

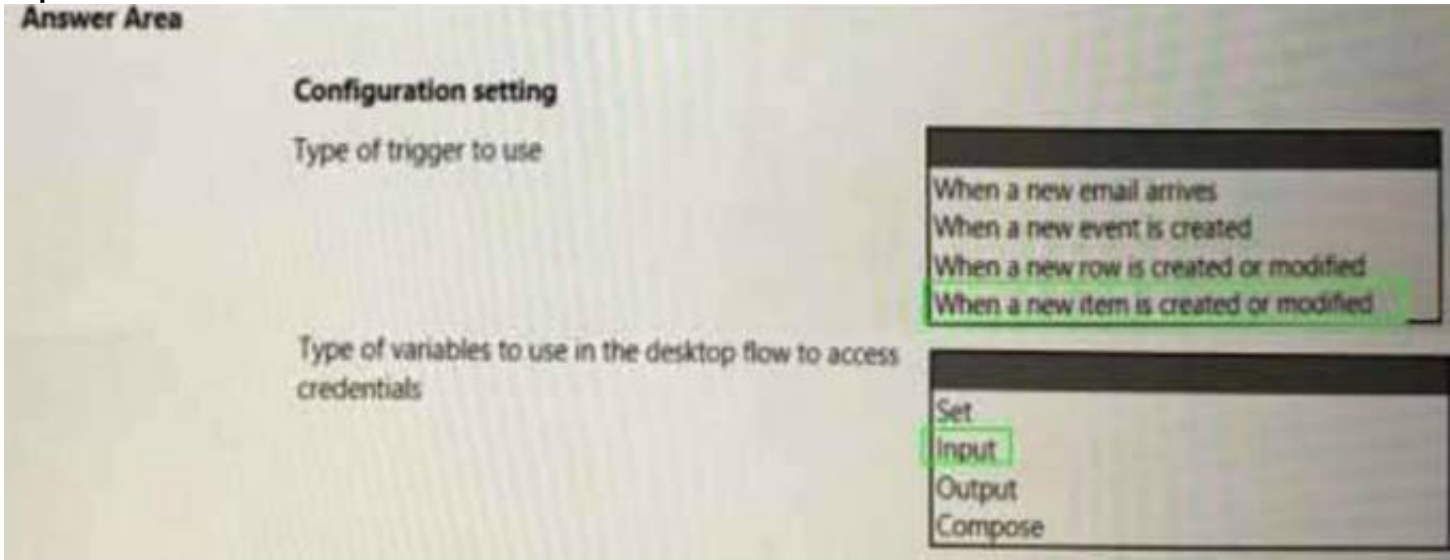
Which configuration values should you use? To answer, select the appropriate options in the answer area, NOTE: Each correct selection is worth one point.



- A. Mastered
- B. Not Mastered

Answer: A

Explanation:



NEW QUESTION 10

- (Exam Topic 2)

You need to resolve the issue reported with the RailStatusUpdater flow.

What are two possible ways to achieve the goal? Each correct answer presents a complete solution.

NOTE:Each correct selection is worth one point.

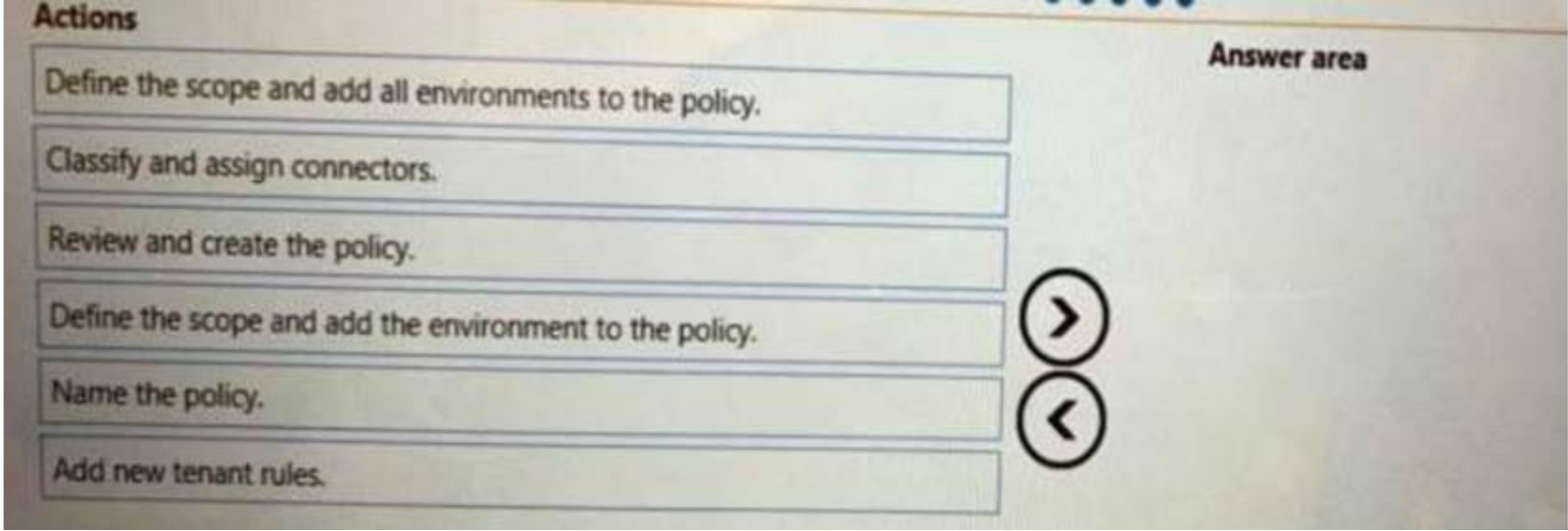
- A. Put the desktop flow action into a Do until loop
- B. Run until the desktop flow is successful.
- C. Call a separate child cloud flow to perform the desktop flow a second time.
- D. Create a duplicate action for the desktop flow and configure the duplicate action to run if the first desktop flow action fails.
- E. Create a duplicate action for the desktop flow to run after the first desktop flow.

Answer: A

NEW QUESTION 11

- (Exam Topic 3)

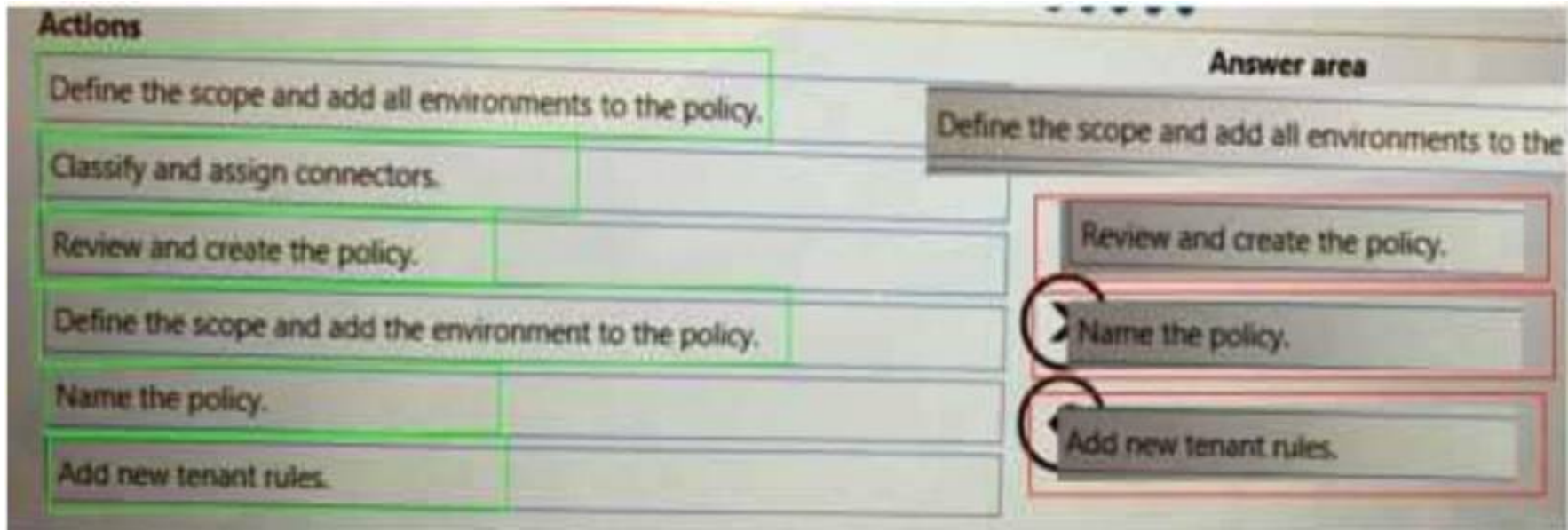
You plan to implement a data loss prevention (DLP) policy for a production environment. You need to define the policy. Which four actions should you perform in sequence? To answer, move the appropriate actions from the list of actions to the answer area and arrange them in the correct order.



- A. Mastered
- B. Not Mastered

Answer: A

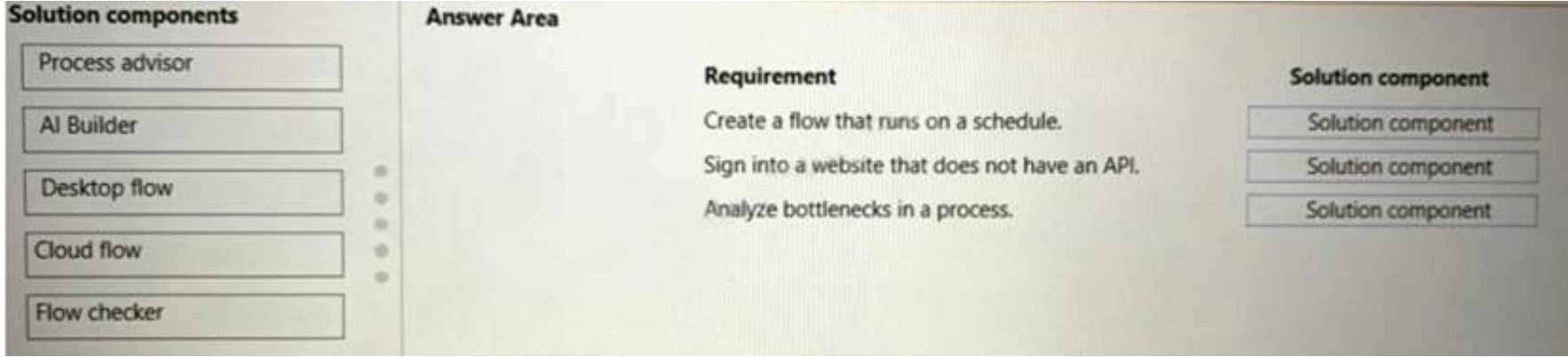
Explanation:



NEW QUESTION 12

- (Exam Topic 3)

You are developing automation solutions. You need to select solution components for each scenario. Which solution components should you use? To answer, drag the appropriate solution components to the correct requirements. Each solution component may be used once, more than once, or not at all. You may need to drag the split bar between panes or scroll to view content. NOTE: Each correct selection is worth one point.



- A. Mastered
- B. Not Mastered

Answer: A

Explanation:

Solution components	Requirement	Solution component
Process advisor	Create a flow that runs on a schedule.	Process advisor
AI Builder	Sign into a website that does not have an API.	Cloud flow
Desktop flow	Analyze bottlenecks in a process.	Flow checker
Cloud flow		
Flow checker		

NEW QUESTION 16

- (Exam Topic 3)

You are developing automation solutions for a company. You need to use an environment variable in a cloud flow. Which three actions should you perform in sequence? To answer, move the appropriate actions from the list of actions to the order.

Actions	Answer Area
Add an environment variable to a solution.	
Create a cloud flow in a solution.	
Navigate to https://flow.microsoft.com.	
Navigate to https://admin.powerplatform.com.	
Select the desired environment variable.	

- A. Mastered
- B. Not Mastered

Answer: A

Explanation:

Actions	Answer Area
Add an environment variable to a solution.	Create a cloud flow in a solution.
Create a cloud flow in a solution.	Navigate to https://admin.powerplatform.com.
Navigate to https://flow.microsoft.com.	Add an environment variable to a solution.
Navigate to https://admin.powerplatform.com.	
Select the desired environment variable.	

NEW QUESTION 20

- (Exam Topic 3)

You are developing automation solutions for a company. You need to use an environment variable in a cloud flow. Which three actions should you perform in sequence? To answer, move the appropriate actions from the list of actions to the answer area and arrange them in the correct order.

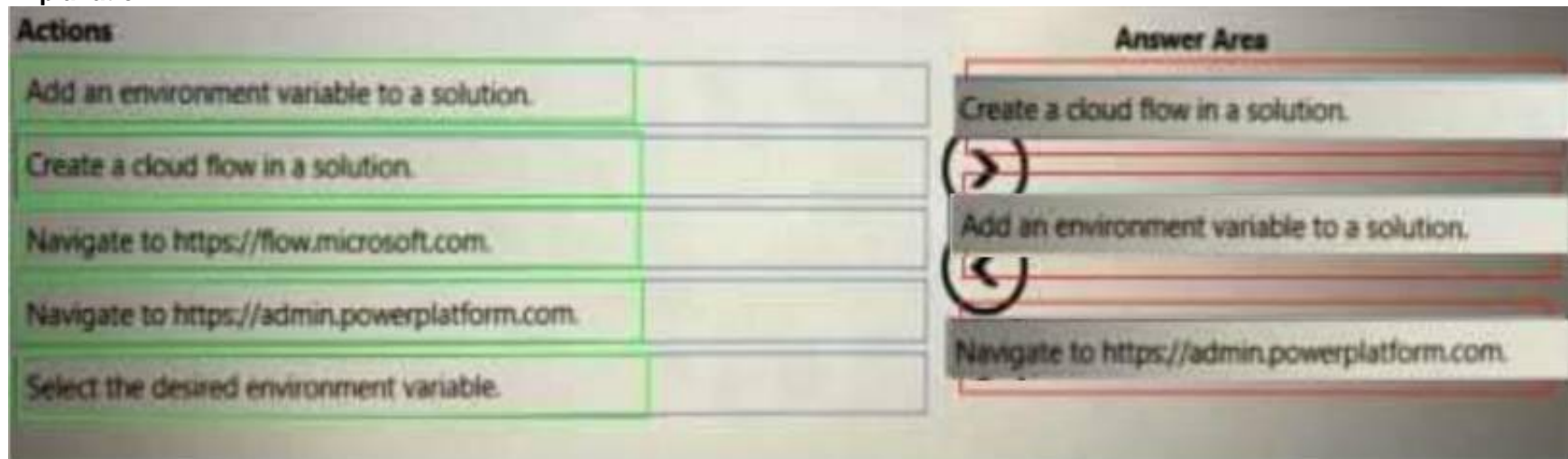
Actions	Answer Area
Add an environment variable to a solution.	
Create a cloud flow in a solution.	
Navigate to https://flow.microsoft.com.	
Navigate to https://admin.powerplatform.com.	
Select the desired environment variable.	

- A. Mastered

B. Not Mastered

Answer: A

Explanation:



NEW QUESTION 23

- (Exam Topic 3)

You are developing automation solutions that process sensitive employee data for a company. You plan to implement the sensitive variables feature in Power Automate for desktop.

What are three characteristics of the sensitive variables feature? Each correct answer presents a complete solution.

NOTE: Each correct selection is worth one point.

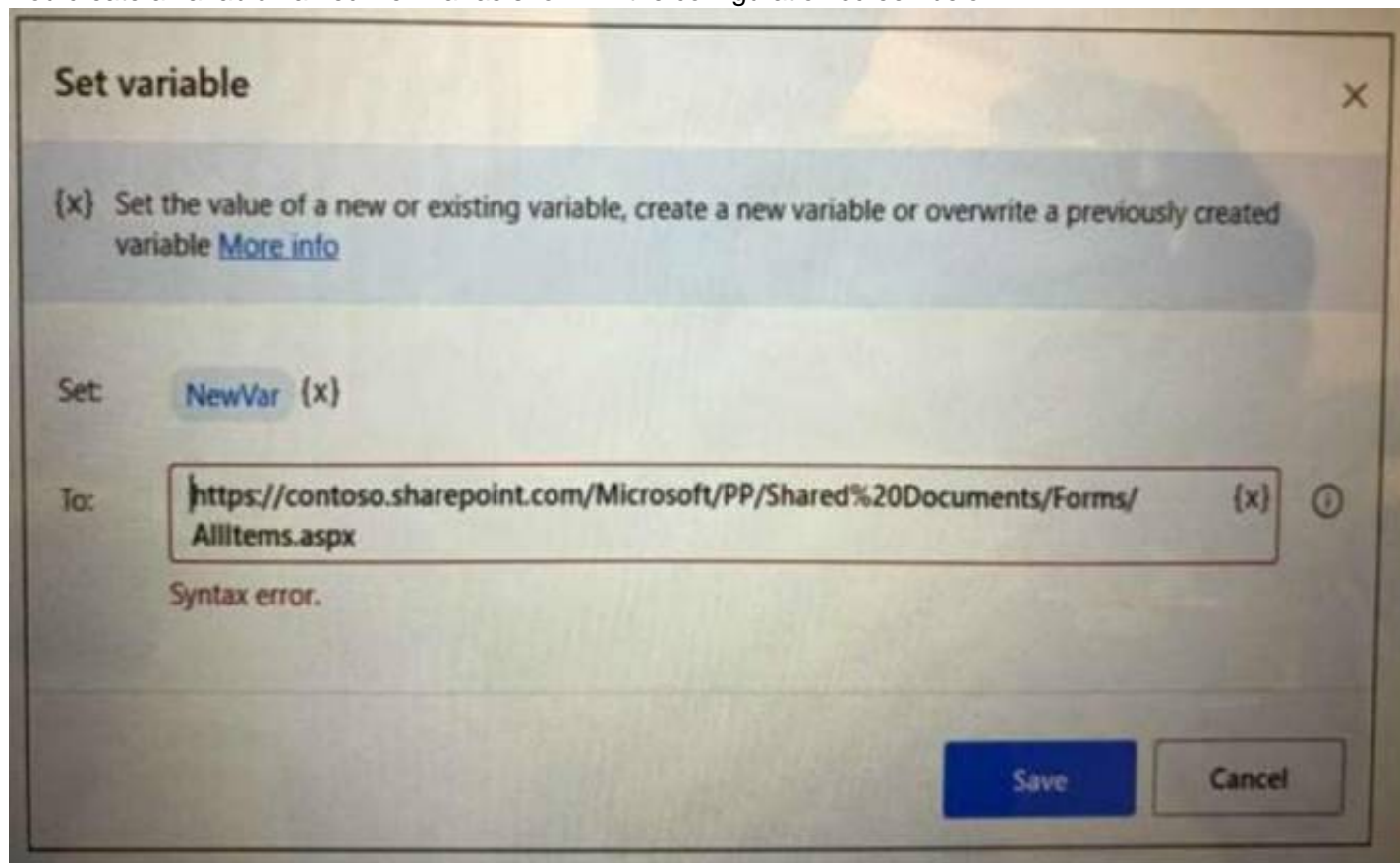
- A. Only variables that are passwords can be marked as sensitive.
- B. You can view the values of variables marked as sensitive within desktop flow logs by using the Microsoft Power Platform admin center.
- C. Sensitive variables are not visible within desktop flow logs in the Power Automate portal.
- D. You can mark any variable as sensitive.
- E. You can reference and manipulate variables that are marked as sensitive from within desktop flows.

Answer: ACD

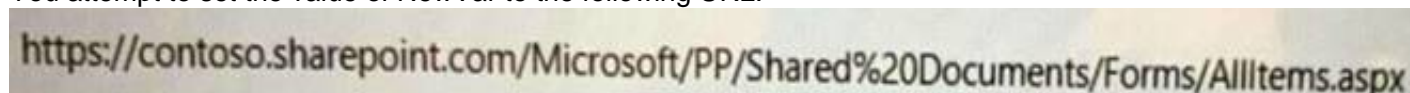
NEW QUESTION 28

- (Exam Topic 3)

You create a variable named NewVar as shown in the configuration screen below.



You attempt to set the value of NewVar to the following URL:



The Set variable page alerts you that there is a syntax error. You need to resolve the issue. What should you do?

- A. Escape the percent sign (%) with a back slash (\%).
- B. Replace the percent sign (%) with two percent signs (%%).
- C. Replace the forward slash characters (/) with two forward slash characters (/).
- D. Escape the forward slash characters (/) with a back slash (\).

Answer: D

NEW QUESTION 33

- (Exam Topic 3)

You develop automation solutions for a company. You need to package the solutions.
What should you use? To answer, select the appropriate options in the answer area. NOTE: Each correct selection is worth one point.

Requirement	Solution type
Share the solution with a colleague who uses a personal development environment.	<div>managed</div> <div>unmanaged</div>
Deploy the final solution to a production environment and prevent further development.	<div>managed</div> <div>unmanaged</div>

- A. Mastered
- B. Not Mastered

Answer: A

Explanation:

Requirement	Solution type
Share the solution with a colleague who uses a personal development environment.	<div>managed</div> <div>unmanaged</div>
Deploy the final solution to a production environment and prevent further development.	<div>managed</div> <div>unmanaged</div>

NEW QUESTION 34

- (Exam Topic 3)
You are preparing to share a desktop flow. You need to share the flow with another user. Which two methods can you use? Each correct answer presents a complete solution.
NOTE: Each correct selection is worth one point.

- A. Share the desktop flow by using the Microsoft Power Platform admin center.
- B. Share the desktop flow by using the Power Automate porta
- C. Grant the user permissions to access the flow.
- D. Export a solution that contains the desktop flow and provide the solution to the user.
- E. Create a managed solution that contains the desktop flow and share the solution with another user.

Answer: CD

NEW QUESTION 36

- (Exam Topic 3)
You are developing a custom connector.
You need to create the definition for the connector.
Which features should you use? To answer, select the appropriate options in the answer area. NOTE: Each correct selection is worth one point.

Scenario	Feature
Define operations that users can perform.	<div>Code</div> <div>Action</div> <div>Policy</div> <div>Trigger</div>
Define actions that will be invoked by events.	<div>Code</div> <div>Action</div> <div>Policy</div> <div>Trigger</div>
Change the host URL for specific actions.	<div>Code</div> <div>Action</div> <div>Policy</div> <div>Trigger</div>
Extract data from responses by using regex expressions.	<div>Code</div> <div>Action</div> <div>Policy</div> <div>Trigger</div>

- A. Mastered

B. Not Mastered

Answer: A

Explanation:

Answer Area

Scenario	Feature
Define operations that users can perform.	<div>Code</div> <div>Action</div> <div>Policy</div> <div>Trigger</div>
Define actions that will be invoked by events.	<div>Code</div> <div>Action</div> <div>Policy</div> <div>Trigger</div>
Change the host URL for specific actions.	<div>Code</div> <div>Action</div> <div>Policy</div> <div>Trigger</div>
Extract data from responses by using regex expressions.	<div>Code</div> <div>Action</div> <div>Policy</div> <div>Trigger</div>

NEW QUESTION 38

- (Exam Topic 3)

You create the following flow:

{x}

Initialize variable

?

...

* Name

success

* Type

Boolean

▼

Value

f

false x

↓

⌂

Do until

...

(x)

success x

is equal to

▼

f

true x

Edit in advanced mode

Change limits

^

Count

3

Timeout

PT15M

For each of the following statements, select Yes if the statement is true. Otherwise, select No. NOTE: Each correct selection is worth one point.

Answer Area

Questions	Response
What does the value 3 in the Count property represent?	<div>The do until action will retry up to three times if there are any failures.</div> <div>The do until actions must succeed three times before moving on to the next action.</div>
What does the value PT15M in the Timeout property represent?	<div>The do until must run for a minimum of 15 minutes.</div> <div>The flow cannot exceed 15 minutes of total run time.</div> <div>The do until will time out when it reaches 15 minutes.</div>

- A. Mastered
- B. Not Mastered

Answer: A

Explanation:

Questions	Response
What does the value 3 in the Count property represent?	<div>The do until action will retry up to three times if there are any failures.</div> <div>The do until actions must succeed three times before moving on to the next action.</div>
What does the value PT15M in the Timeout property represent?	<div>The do until must run for a minimum of 15 minutes.</div> <div>The flow cannot exceed 15 minutes of total run time.</div> <div>The do until will time out when it reaches 15 minutes.</div>

NEW QUESTION 39

- (Exam Topic 3)

You are trying to record the process that a hospitality facility uses to check in patients. You need to identify bottlenecks and variations in the process. What should you use?

- A. Process Advisor
- B. Flow checker
- C. AI Builder
- D. Solution checker

Answer: D

NEW QUESTION 41

- (Exam Topic 3)

A developer creates a desktop flow. You need to debug the flows.

Which debugging tools should you use? To answer, select the appropriate options in the answer area. NOTE: Each correct selection is worth one point.

Answer Area

Scenario	Debugging tool
Run each action and then pause the flow after the action completes. Open the variables pane to check a value before continuing the flow.	<div>Run delay</div> <div>Find in code</div> <div>Run from here</div> <div>Run next action</div>
Automatically stop the flow at a specific action.	<div>Pause</div> <div>Run delay</div> <div>Stop flow</div> <div>Breakpoint</div>
Define the time that the flow pauses after running each action.	<div>Run delay</div> <div>Run from here</div> <div>Run next action</div> <div>Wait for process</div>

- A. Mastered
- B. Not Mastered

Answer: A

Explanation:

Answer Area

Scenario	Debugging tool
Run each action and then pause the flow after the action completes. Open the variables pane to check a value before continuing the flow.	Run delay Find in code Run from here Run next action
Automatically stop the flow at a specific action.	Pause Run delay Stop flow Breakpoint
Define the time that the flow pauses after running each action.	Run delay Run from here Run next action Wait for process

NEW QUESTION 45

- (Exam Topic 3)

A company uses Microsoft 365 apps. You are building a flow that is triggered when a new email arrives. If an email message contains a Microsoft Excel workbook attachment the solution must post the Excel data to an external customer relationship management (CRM) system that runs on a user's workstation. The CRM system is not accessible by using an API. You need to design the solution. Which three actions should you perform? Each correct answer presents part of the solution. NOTE: Each correct selection is worth one point.

- A. Implement the Create file action from the OneDrive connector in a cloud flow.
- B. Create a desktop flow.
- C. Implement the When a new email arrives trigger in a cloud flow.
- D. Implement the Retrieve email messages action from a desktop flow.
- E. Create a desktop flow and define an input variable of type file.

Answer: ACE

NEW QUESTION 49

- (Exam Topic 3)

You are developing automation solutions for a company. You plan to use Process advisor to gain a better understanding of business processes. You need to select the process types to use to meet the company's requirements. Which process types should you use? To answer, drag the appropriate process types to the correct requirements. Each process type may be used once, more than once, or not at all. You may need to drag the split bar between panes or scroll to view content. NOTE: Each correct selection is worth one point.

Process types	Requirement	Process type
Process mining	Identify and eliminate unnecessary process tasks.	Process type
Task mining	Reduce total process time.	Process type
	Automate tasks that will accelerate processes and reduce human error.	Process type

- A. Mastered
- B. Not Mastered

Answer: A

Explanation:

Process types	Requirement	Process type
Process mining	Identify and eliminate unnecessary process tasks.	Task mining
Task mining	Reduce total process time.	Task mining
	Automate tasks that will accelerate processes and reduce human error.	Process mining

NEW QUESTION 53

- (Exam Topic 3)

You are developing a cloud flow.

The flow must be able to query several Azure endpoints and must use standard actions where possible. You need to configure the flow.

Which actions should you use? To answer, select the appropriate options in the answer area. NOTE: Each correct selection is worth one point.

Requirement	Action
Issue POST requests to the Microsoft Graph API by using application permissions.	<input type="checkbox"/> HTTP <input type="checkbox"/> HTTP with Azure AD <input type="checkbox"/> Send an HTTP request to SharePoint <input type="checkbox"/> Office 365 groups send an HTTP request
Issue GET requests to the Microsoft Graph API by using delegated permissions.	<input type="checkbox"/> HTTP <input type="checkbox"/> HTTP with Azure AD <input type="checkbox"/> Send an HTTP request to SharePoint <input type="checkbox"/> Office 365 groups send an HTTP request
Issue GET requests to the SharePoint REST API by using delegated permissions.	<input type="checkbox"/> HTTP <input type="checkbox"/> HTTP with Azure AD <input type="checkbox"/> Send an HTTP request to SharePoint <input type="checkbox"/> Office 365 groups send an HTTP request
Issue GET requests to the SharePoint REST API by using delegated permissions.	<input type="checkbox"/> HTTP <input type="checkbox"/> HTTP with Azure AD <input type="checkbox"/> Send an HTTP request to SharePoint <input type="checkbox"/> Office 365 groups send an HTTP request
Issue POST requests to SharePoint REST API by using application permissions.	<input type="checkbox"/> HTTP <input type="checkbox"/> HTTP with Azure AD <input type="checkbox"/> Send an HTTP request to SharePoint <input type="checkbox"/> Office 365 groups send an HTTP request

- A. Mastered
 B. Not Mastered

Answer: A

Explanation:

Requirement	Action
Issue POST requests to the Microsoft Graph API by using application permissions.	<input type="checkbox"/> HTTP <input checked="" type="checkbox"/> HTTP with Azure AD <input type="checkbox"/> Send an HTTP request to SharePoint <input type="checkbox"/> Office 365 groups send an HTTP request
Issue GET requests to the Microsoft Graph API by using delegated permissions.	<input checked="" type="checkbox"/> HTTP <input type="checkbox"/> HTTP with Azure AD <input type="checkbox"/> Send an HTTP request to SharePoint <input type="checkbox"/> Office 365 groups send an HTTP request
Issue GET requests to the SharePoint REST API by using delegated permissions.	<input type="checkbox"/> HTTP <input checked="" type="checkbox"/> HTTP with Azure AD <input type="checkbox"/> Send an HTTP request to SharePoint <input type="checkbox"/> Office 365 groups send an HTTP request
Issue GET requests to the SharePoint REST API by using delegated permissions.	<input type="checkbox"/> HTTP <input checked="" type="checkbox"/> HTTP with Azure AD <input type="checkbox"/> Send an HTTP request to SharePoint <input type="checkbox"/> Office 365 groups send an HTTP request
Issue POST requests to SharePoint REST API by using application permissions.	<input type="checkbox"/> HTTP <input checked="" type="checkbox"/> HTTP with Azure AD <input type="checkbox"/> Send an HTTP request to SharePoint <input type="checkbox"/> Office 365 groups send an HTTP request

NEW QUESTION 57

- (Exam Topic 3)

You create the following flows:

1

Get current date and time

Retrieve the current datetime and store it into `CurrentDateTime`

2

Launch new Microsoft Edge

Launch Microsoft Edge, navigate to `'https://www.google.ca/?gws_rd=ssl'` and store the instance info `Browser`

3

Launch Excel

Launch Excel with a blank document using an existing excel process

4

Get active Excel worksheet

Get the name and index of the active worksheet of the Excel document in instance `ExcelInstance`

5

Launch Excel

Launch Excel with a blank document using an existing excel process

6

Focus window

Focus window with title `"Microsoft Edge"`

7

Set window state

Set the state of window with title `"Microsoft Edge"` to `Maximized`

8

Get active Excel worksheet

Get the name and index of the active worksheet of the Excel document in instance `ExcelInstance2`

9

Send keys

Send the following keystrokes: `"Control+X"` to the foreground window

Questions	Response
Which line contains a breakpoint?	<div><div>1</div><div>2</div><div>3</div><div>4</div><div>5</div></div>
To which window does the action at step 9 send keystrokes?	<div><div>the Edge window launched in step 2</div><div>the Excel instance launched in step 3</div><div>the Excel instance launched in step 4</div></div>

- A. Mastered
- B. Not Mastered

Answer: A

Explanation:

Questions	Response
Which line contains a breakpoint?	<div><div>1</div><div>2</div><div>3</div><div>4</div><div>5</div></div>
To which window does the action at step 9 send keystrokes?	<div><div>the Edge window launched in step 2</div><div>the Excel instance launched in step 3</div><div>the Excel instance launched in step 4</div></div>

NEW QUESTION 62

- (Exam Topic 3)

You are developing automation solutions for a company.

You need to select the appropriate error handling action for the following scenarios. Which actions should you use? To answer, select the appropriate options in the answer area. NOTE: Each correct selection is worth one point.

Answer Area

Scenario

A desktop flow with multiple actions tries to launch Microsoft Excel with a blank workbook. The process fails.

A desktop flow with multiple actions tries to sign into a website by using the Chrome browser. The process occasionally fails.

A cloud flow must update a Boolean variable when a specific action fails.

Configure run after only.
Handle the error within the action only.
Handle the error within the On block error only.
Handle the error within the On block error or within the action.

Configure run after only.
Handle the error within the action only.
Handle the error within the On block error only.
Handle the error within the On block error or within the action.

On block error
Configure run after
Action-level error handling

- A. Mastered
- B. Not Mastered

Answer: A

Explanation:

Answer Area

Scenario

A desktop flow with multiple actions tries to launch Microsoft Excel with a blank workbook. The process fails.

A desktop flow with multiple actions tries to sign into a website by using the Chrome browser. The process occasionally fails.

A cloud flow must update a Boolean variable when a specific action fails.

Configure run after only.
Handle the error within the action only.
Handle the error within the On block error only.
Handle the error within the On block error or within the action.

Configure run after only.
Handle the error within the action only.
Handle the error within the On block error only.
Handle the error within the On block error or within the action.

On block error
Configure run after
Action-level error handling

NEW QUESTION 66

- (Exam Topic 3)

You develop automation solutions for a company.

You need to implement actions to meet the company's requirements.

What should you do? To answer, select the appropriate options in the answer area. NOTE: Each correct selection is worth one point.

Answer Area

Scenario	Requirement	Action
You have a desktop flow that is currently in queue.	You must ensure that the flow is the next flow to run.	<div>Move to the top Change the priority Cancel and resubmit the flow</div>
You have a business-critical desktop flow that runs on a virtual machine. The virtual machine also handles multiple ad-hoc desktop flows.	You must ensure that the business-critical flow runs when it is needed.	<div>Change the priority Move to the top Created a scheduled trigger</div>

- A. Mastered
- B. Not Mastered

Answer: A

Explanation:

Scenario	Requirement	Action
You have a desktop flow that is currently in queue.	You must ensure that the flow is the next flow to run.	<div>Move to the top</div> <div>Change the priority</div> <div>Cancel and resubmit the flow</div>
You have a business-critical desktop flow that runs on a virtual machine. The virtual machine also handles multiple ad-hoc desktop flows.	You must ensure that the business-critical flow runs when it is needed.	<div>Change the priority</div> <div>Move to the top</div> <div>Create a scheduled trigger</div>

NEW QUESTION 70

- (Exam Topic 3)

You are creating a cloud flow that will use two Update Row actions to interact with Microsoft Dataverse. Neither of these actions are dependent on each other. You must minimize the amount of processing time required to complete the flow. You need to implement the actions in the cloud flow.

Solution: Create a do until loop. Does the solution meet the goal?

- A. Yes
- B. No

Answer: A

NEW QUESTION 73

- (Exam Topic 3)

A company has an unattended cloud flow solution. The solution includes a desktop flow that runs on a virtual machine.

The company reports that the cloud flow processes more transactions per day than the planned capacity.

You need to scale the solution to keep up with demand.

Which four actions should you perform in sequence? To answer, move the appropriate actions from the list of actions to the answer area and arrange them in the correct order.

Actions

Provision virtual machines.

Register the machines to the correct environment by using flow.microsoft.com.

Add the machines to a machine group.

Register the machines to the correct environment by using the machine runtime application.

Update the machine connections to target the machine group in the cloud flow.

Update the machine connections to target the machine group in the desktop flow.

Answer Area

- A. Mastered
- B. Not Mastered

Answer: A

Explanation:

Actions

Provision virtual machines.

Register the machines to the correct environment by using flow.microsoft.com.

Add the machines to a machine group.

Register the machines to the correct environment by using the machine runtime application.

Update the machine connections to target the machine group in the cloud flow.

Update the machine connections to target the machine group in the desktop flow.

Answer Area

Update the machine connections to target the machine group in the cloud flow.

Provision virtual machines.

Add the machines to a machine group.

Update the machine connections to target the machine group in the desktop flow.

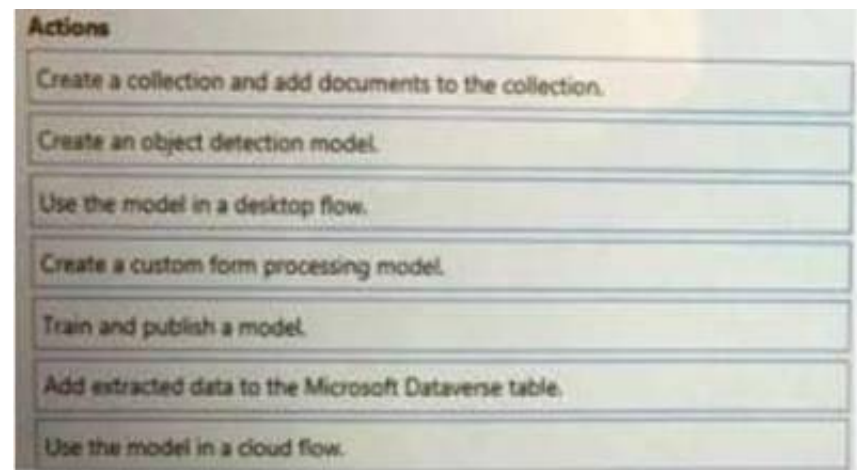
NEW QUESTION 77

- (Exam Topic 3)

You are designing an automation that processes information from documents attached to emails.

You need to extract data from the attachments and insert the data into a custom Microsoft Dataverse table. Which five actions should you perform in sequence?

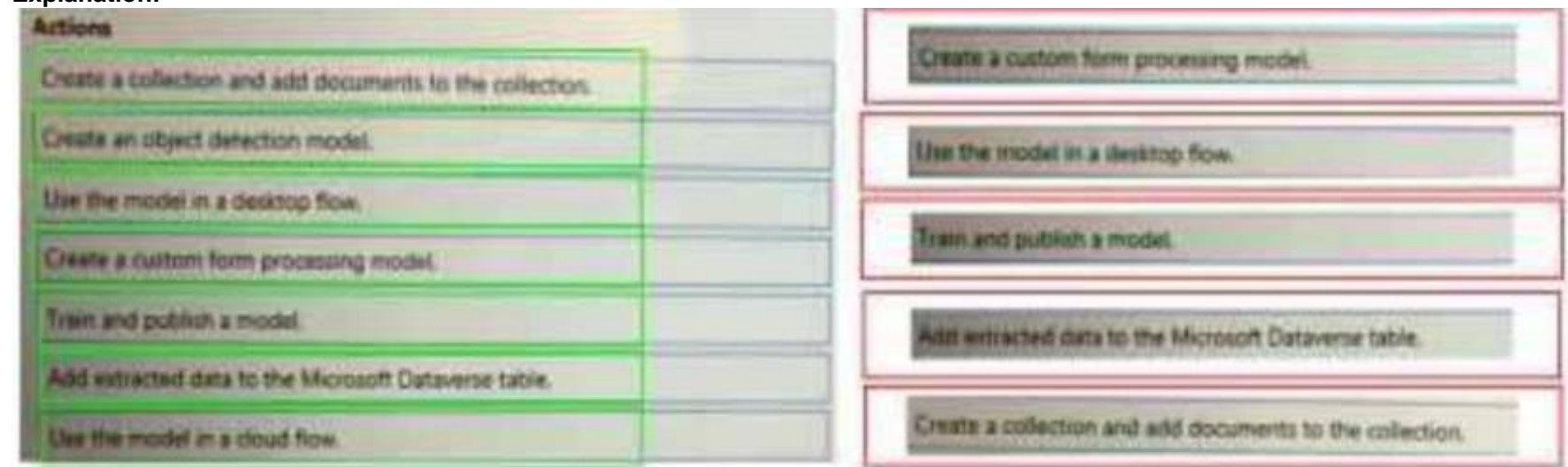
To answer, move the appropriate actions from the list of actions to the answer



- A. Mastered
B. Not Mastered

Answer: A

Explanation:



NEW QUESTION 78

- (Exam Topic 3)

You must create new flows within a solution and import existing flows into the solution. You need to configure the solution. Which three actions can you perform? Each correct answer presents a complete solution. NOTE: Each correct selection is worth one point.

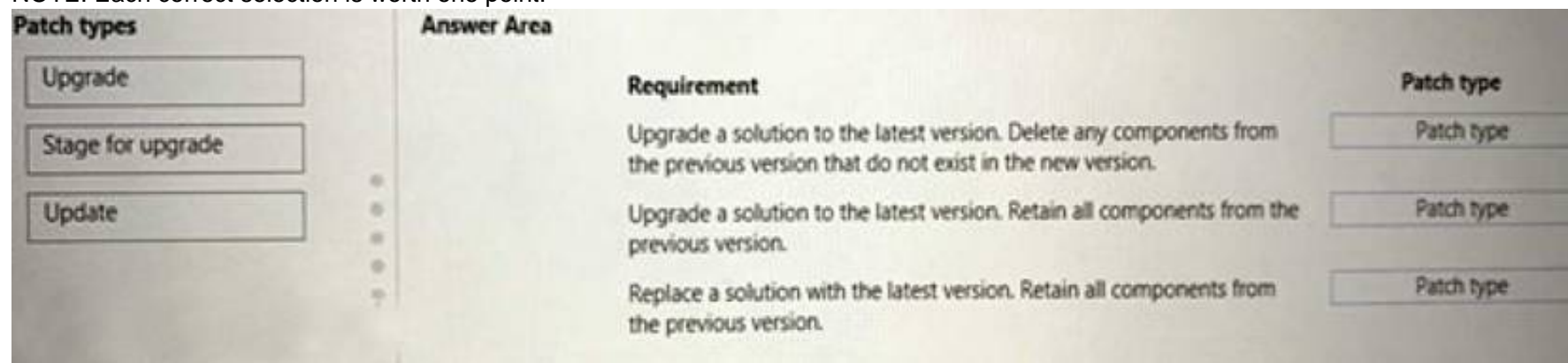
- A. Create the flows within the solution to automatically create connection references.
B. Add credential information to each connection reference.
C. Modify each trigger and action when you add a flow into the solution to use connection references
D. Select connections for connection references when you import solutions into an environment
E. Add an existing connection reference into the solution in the same environment.

Answer: ADE

NEW QUESTION 82

- (Exam Topic 3)

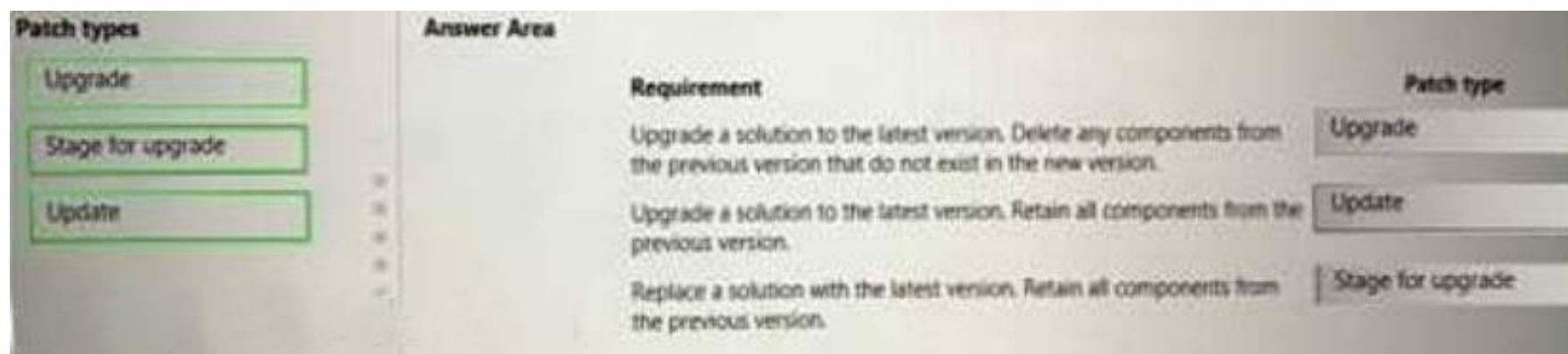
You manage automation solutions for a company. You need to select the appropriate patch type for each scenario. Which patch types should you use? To answer, drag the appropriate patch types to the correct requirements. Each patch type may be used once, more than once, or not at all. You may need to drag the bar between panes or scroll to view content. NOTE: Each correct selection is worth one point.



- A. Mastered
B. Not Mastered

Answer: A

Explanation:



NEW QUESTION 87

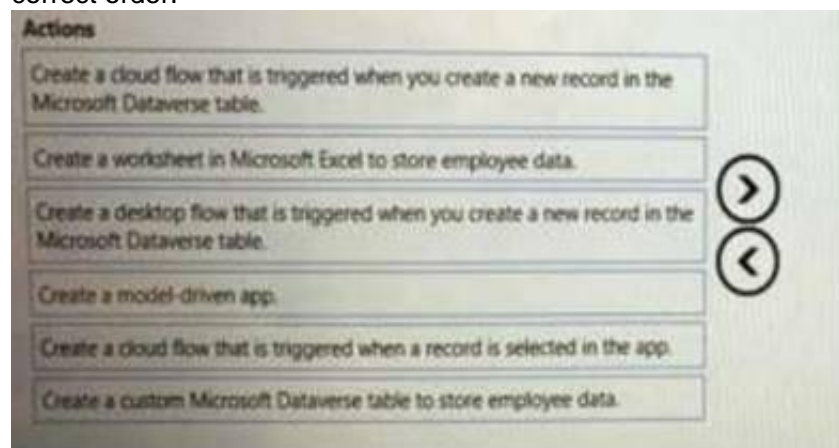
- (Exam Topic 3)

A company hires you to develop a solution that helps the company manage new hires. Users will enter information about the new employee into an app and the app will save the information to a database.

The app must be simple to use and must rely on a data model. You must implement a workflow that automatically notifies the IT department when new employee records are created in the database.

You need to create the solution.

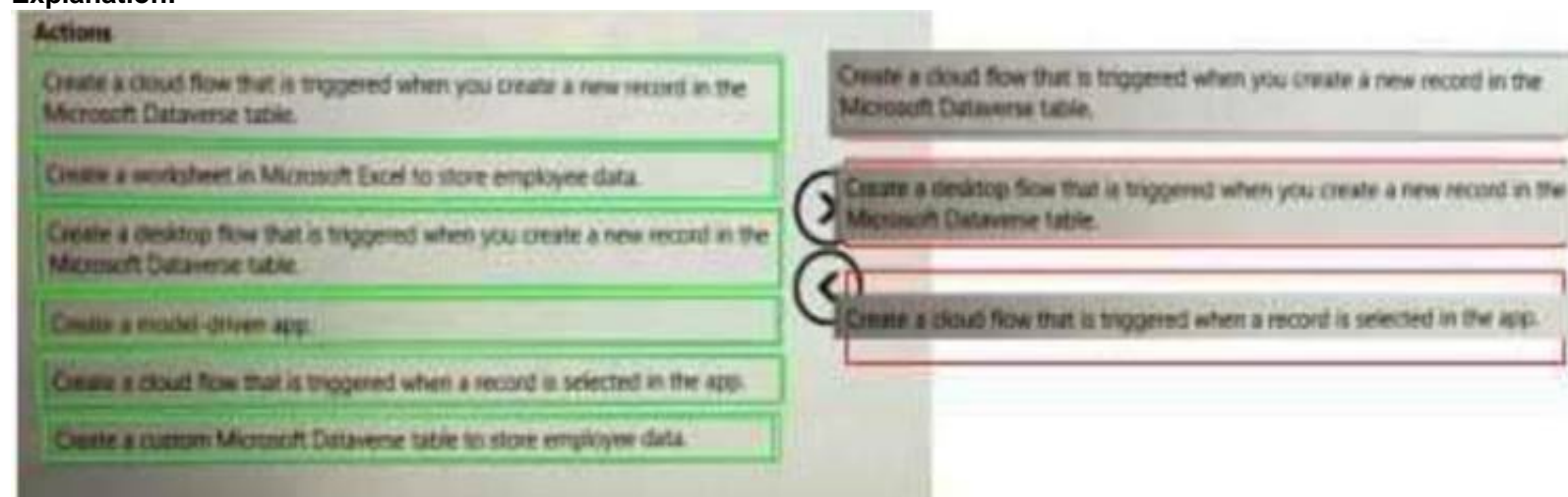
Which three actions should you perform in sequence? To answer, move the appropriate actions from the list of actions to the answer area and arrange them in the correct order.



- A. Mastered
- B. Not Mastered

Answer: A

Explanation:



NEW QUESTION 90

- (Exam Topic 3)

You have a Microsoft Dataverse table in a solution. You delete fields from the table.

You need to automatically delete the fields from the Microsoft Dataverse table when you import the updated solution into a target environment

Which import option should you use?

- A. Stage for upgrade
- B. Update
- C. Upgrade

Answer: C

NEW QUESTION 92

- (Exam Topic 3)

You develop automation solutions for a company.

When a new record is added to a Microsoft Dataverse table, the solution must add the contents of the record to a Microsoft Word Online (Business) template The solution must convert the template to a PDF document and email the PDF document to a stakeholder.

You need to design the solution.

Which three actions should you perform? Each correct answer presents part of the solution. NOTE: Each correct selection is worth one point.

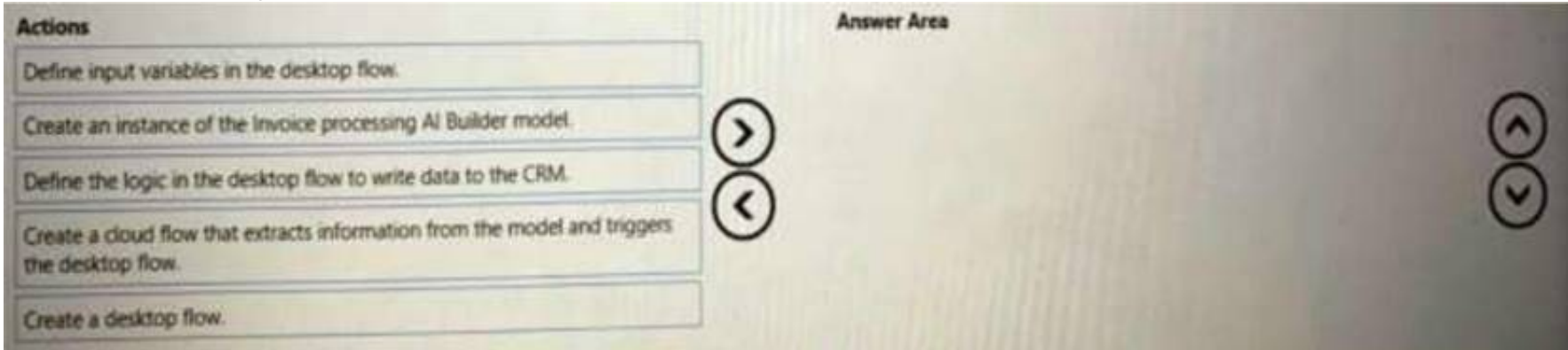
- A. Use the Populate a Microsoft Word Online (Business) template action in a desktop flow.
- B. Create a cloud flow that uses the When a row is added or modified trigger in Microsoft Dataverse.
- C. Use the Populate a Microsoft Word Online (Business) template action in a cloud flow.
- D. Use the Convert Word Document to PDF and Send an email actions in a cloud flow.
- E. Use the Convert Word Document to PDF and Send an email actions in a desktop flow.

Answer: ABE

NEW QUESTION 96

- (Exam Topic 3)

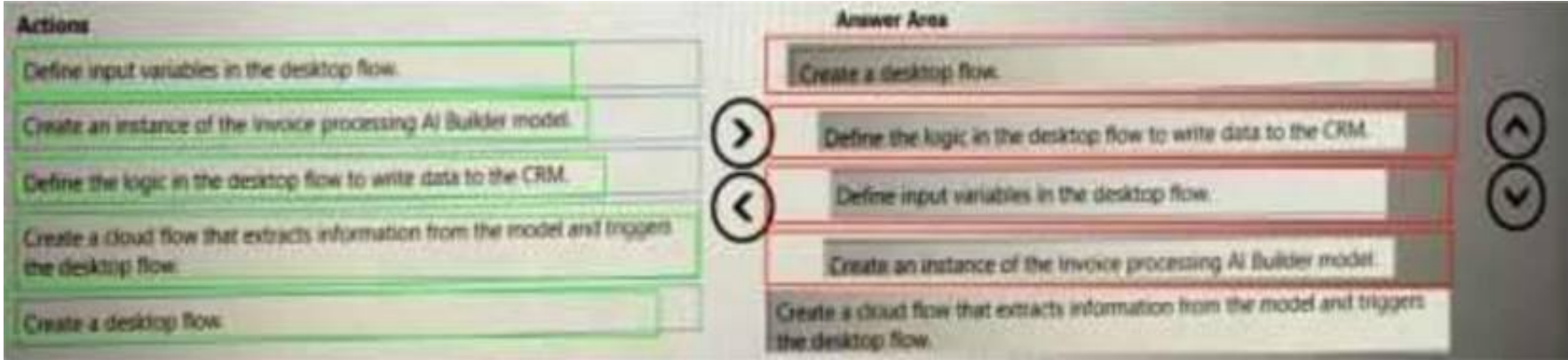
A company has a customer relationship management (CRM) application that runs on a virtual machine (VM) in Azure. The solution must automatically extract common invoice data from documents sent as email attachments and save the data to the company's CRM application. You need to design the solution. In which order should you perform the actions? To answer, move all actions from the list of actions to the answer area and arrange them in the correct order.



- A. Mastered
- B. Not Mastered

Answer: A

Explanation:



NEW QUESTION 99

- (Exam Topic 3)

You are automating a form on a website. The website uses the following HI ML markup to define each field on the form:

```
<div _ngcontent-c1="" class="col s6 m6 l6">
  <div class="ng-invalid ng-dirty ng-touched">
    <label>Field1</label><input ng-reflect-name="labelField1" class="ng-pristine ng-invalid ng-touched">
  </div>
</div>
```

The label for each field is unique in the form. You need to write data to the form. For each of the following statements, select Yes if the statement is true. Otherwise, select No. NOTE: Each correct selection is worth one point.

Answer Area		
Statement	Yes	No
You configure the following selector: input[ng-reflect-name="labelField1"] The automation will add data to the form.	<input type="radio"/>	<input type="radio"/>
You configure the following selector: div:has(label:contains("Field1")) > input The automation will add data to the form.	<input type="radio"/>	<input type="radio"/>
You add the Run JavaScript function on web page action to the flow: <pre>function ExecuteScript() { \$("div:contains('Field1') > input") .val("Field's 1 value") }</pre> The action adds data to the form.	<input type="radio"/>	<input type="radio"/>

- A. Mastered
- B. Not Mastered

Answer: A

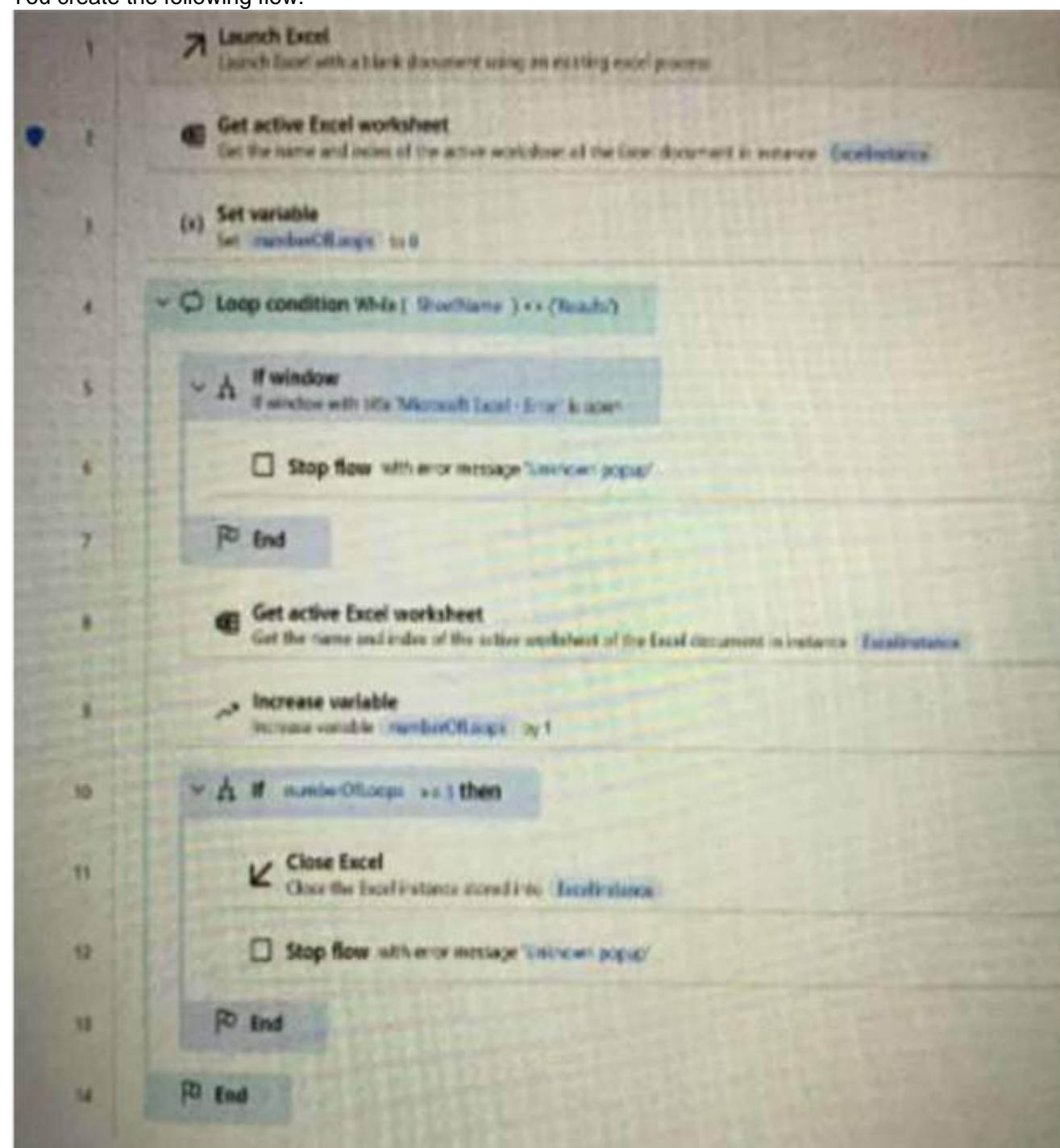
Explanation:

Statement	Yes	No
You configure the following selector: <code>input[ng-reflect-name="labelField1"]</code> The automation will add data to the form.	<input checked="" type="radio"/>	<input type="radio"/>
You configure the following selector: <code>div:has(label:contains("Field1")) > input</code> The automation will add data to the form.	<input checked="" type="radio"/>	<input type="radio"/>
You add the Run JavaScript function on web page action to the flow: <pre>function ExecuteScript() { \$("div:contains('Field1') > input") .val("Field's 1 value") }</pre>	<input type="radio"/>	<input checked="" type="radio"/>
The action adds data to the form.		

NEW QUESTION 101

- (Exam Topic 3)

You create the following flow:



Questions	Response
What does the icon to the left of line 2 represent?	<div>There is a breakpoint in the code.</div> <div>The action processes sensitive data.</div> <div>The action includes action-level error handling.</div>
When will the loop condition at line 4 initialize?	<div>When the name of the active Excel worksheet is Results.</div> <div>When the name of the active Excel worksheet is anything other than Results.</div>
At which point will the flow stop?	<div>A user opens another Excel window on their desktop.</div> <div>The number of iterations through the loop equals or exceeds five.</div>

- A. Mastered
- B. Not Mastered

Answer: A

Explanation:

Questions	Response
What does the icon to the left of line 2 represent?	<div>There is a breakpoint in the code.</div> <div>The action processes sensitive data.</div> <div>The action includes action-level error handling.</div>
When will the loop condition at line 4 initialize?	<div>When the name of the active Excel worksheet is Results.</div> <div>When the name of the active Excel worksheet is anything other than Results.</div>
At which point will the flow stop?	<div>A user opens another Excel window on their desktop.</div> <div>The number of iterations through the loop equals or exceeds five.</div>

NEW QUESTION 105

- (Exam Topic 3)

A company plans to implement AI models to perform business processes. You need to determine whether to use prebuilt or custom AI models. Which type of model should you use for each scenario? To answer, drag the appropriate model types to the correct scenarios. Each model may be used once, more than once, or not at all. You may need to drag the split bar between panes or scroll to view content.
NOTE: Each correct selection is worth one point.

Model types	Answer Area										
<div>Prebuilt</div> <div>Custom</div>	<table><tr><th>Scenario</th><th>Model type</th></tr><tr><td>Extract information from a receipt.</td><td>Model type</td></tr><tr><td>Detect spam emails.</td><td>Model type</td></tr><tr><td>Identify the language used in a text document.</td><td>Model type</td></tr><tr><td>Extract information from tax documents.</td><td>Model type</td></tr></table>	Scenario	Model type	Extract information from a receipt.	Model type	Detect spam emails.	Model type	Identify the language used in a text document.	Model type	Extract information from tax documents.	Model type
Scenario	Model type										
Extract information from a receipt.	Model type										
Detect spam emails.	Model type										
Identify the language used in a text document.	Model type										
Extract information from tax documents.	Model type										

- A. Mastered
- B. Not Mastered

Answer: A

Explanation:

Model types	Answer Area										
<div>Prebuilt</div> <div>Custom</div>	<table><tr><th>Scenario</th><th>Model type</th></tr><tr><td>Extract information from a receipt.</td><td>Custom</td></tr><tr><td>Detect spam emails.</td><td>Custom</td></tr><tr><td>Identify the language used in a text document.</td><td>Prebuilt</td></tr><tr><td>Extract information from tax documents.</td><td>Custom</td></tr></table>	Scenario	Model type	Extract information from a receipt.	Custom	Detect spam emails.	Custom	Identify the language used in a text document.	Prebuilt	Extract information from tax documents.	Custom
Scenario	Model type										
Extract information from a receipt.	Custom										
Detect spam emails.	Custom										
Identify the language used in a text document.	Prebuilt										
Extract information from tax documents.	Custom										

NEW QUESTION 108

- (Exam Topic 3)

You create an unattended Office 365 automation. The automation stops running. You suspect that the runtime identity used by the automation caused the automation to stop running. Which two issues can the runtime identity cause in this

scenario? Each correct answer presents a complete solution. NOTE: Each correct selection is worth one point.

- A. The automation is attempting to open files that cannot be opened or edited based on per-user access permissions
- B. The automation is not set up to handle an additional sign-in UI element.
- C. The unattended automation process suppressed an alert that was generated.
- D. The location of a specific user interface element has changed.

Answer: BD

NEW QUESTION 113

- (Exam Topic 3)

You are developing a solution for a medical practice. The solution must use an artificial intelligence (AI) model to evaluate medical X-ray images and detect broken bones.

You need to create the AI model for the solution. Solution: Use Azure machine learning to create the model. Does the solution meet the goal?

- A. Yes
- B. No

Answer: B

NEW QUESTION 116

- (Exam Topic 3)

You are designing automation processes for a company.

You need to select the appropriate action for each automation scenario.

Which actions should you perform? To answer, select the appropriate options in the answer area. NOTE: Each correct selection is worth one point.

Answer Area

Requirement	Action
Automate keyboard input and mouse movements for a product ordering website that does not have an API.	<div>Add an HTTP trigger. Create a custom connector. Create a desktop flow.</div>
Automate a process for a desktop application that provides an API with authenticated access.	<div>Create and run a dataflow. Create a custom connector. Create and run a Dataverse view. Create a desktop flow.</div>
Automate keyboard input and mouse movements for a desktop application.	<div>Create a custom connector. Create a cloud flow. Create a desktop flow.</div>

- A. Mastered
- B. Not Mastered

Answer: A

Explanation:

Answer Area

Requirement	Action
Automate keyboard input and mouse movements for a product ordering website that does not have an API.	<div>Add an HTTP trigger. Create a custom connector. Create a desktop flow.</div>
Automate a process for a desktop application that provides an API with authenticated access.	<div>Create and run a dataflow. Create a custom connector. Create and run a Dataverse view. Create a desktop flow.</div>
Automate keyboard input and mouse movements for a desktop application.	<div>Create a custom connector. Create a cloud flow. Create a desktop flow.</div>

NEW QUESTION 121

.....

THANKS FOR TRYING THE DEMO OF OUR PRODUCT

Visit Our Site to Purchase the Full Set of Actual PL-500 Exam Questions With Answers.

We Also Provide Practice Exam Software That Simulates Real Exam Environment And Has Many Self-Assessment Features. Order the PL-500 Product From:

<https://www.2passeasy.com/dumps/PL-500/>

Money Back Guarantee

PL-500 Practice Exam Features:

- * PL-500 Questions and Answers Updated Frequently
- * PL-500 Practice Questions Verified by Expert Senior Certified Staff
- * PL-500 Most Realistic Questions that Guarantee you a Pass on Your FirstTry
- * PL-500 Practice Test Questions in Multiple Choice Formats and Updatesfor 1 Year