

## Exam Questions DA-100

Analyzing Data with Microsoft Power BI

<https://www.2passeasy.com/dumps/DA-100/>



### NEW QUESTION 1

- (Exam Topic 4)

You have sales data in a star schema that contains four tables named Sales, Customer, Date, and Product. The Sales table contains purchase and ship dates. Most often, you will use the purchase date to analyze the data, but you will analyze the data by both dates independently and together. You need to design an imported dataset to support the analysis. The solution must minimize the model size and the number of queries against the data source. Which data modeling design should you use?

- A. Use the Auto Date/Time functionality in Microsoft Power BI and do NOT import the Date table.
- B. Duplicate the Date query in Power Query and create active relationships between Sales and both Date tables in the modeling view.
- C. On the Date table, use a reference query in Power Query and create active relationships between Sales and both Date tables in the modeling view.
- D. Import the Date table twice in Power Query and create active relationships between Sales and both Date tables in the modeling view.

**Answer:** D

#### Explanation:

Microsoft recommends defining active relationships whenever possible. They widen the scope and potential of how your model can be used by report authors, and users working with Q&A.

Refactoring methodology (example): Here's a methodology to refactor a model from a single role-playing dimension-type table, to a design with one table per role.

- Remove any inactive relationships.
- Consider renaming the role-playing dimension-type table to better describe its role. In the example, the Airport table is related to the ArrivalAirport column of the Flight table, so it's renamed as Arrival Airport.
- Create a copy of the role-playing table, providing it with a name that reflects its role. If it's an Import table, we recommend defining a calculated table. If it's a DirectQuery table, you can duplicate the Power Query query.

Only one relationship can be active.

Note: If you query two or more tables at the same time, when the data is loaded, Power BI Desktop attempts to find and create relationships for you. The relationship options Cardinality, Cross filter direction, and Make this relationship active are automatically set.

Reference:

<https://docs.microsoft.com/en-us/power-bi/transform-model/desktop-create-and-manage-relationships> <https://docs.microsoft.com/en-us/power-bi/guidance/relationships-active-inactive>

### NEW QUESTION 2

- (Exam Topic 4)

You have a CSV file that contains user complaints. The file contains a column named Logged. Logged contains the date and time each complaint occurred. The data in Logged is in the following format:

at 08:59.

You need to be able to analyze the complaints by the logged date and use a built-in date hierarchy. D18912E1457D5D1DDCBD40AB3BF70D5D

What should you do?

- A. Change the data type of the Logged column to Date.
- B. Apply a transform to extract the last 11 characters of the Logged column and set the data type of the new column to Date.
- C. Create a column by example that starts with 2018-12-31 and set the data type of the new column to Date.
- D. Apply a transform to extract the first 11 characters of the Logged column.

**Answer:** C

### NEW QUESTION 3

- (Exam Topic 4)

Note: This question is part of a series of questions that present the same scenario. Each question in the series contains a unique solution that might meet the stated goals. Some question sets might have more than one correct solution, while others might not have a correct solution.

After you answer a question in this section, you will NOT be able to return to it. As a result, these questions will not appear in the review screen.

You create a parameter named DataSourceExcel that holds the file name and location of a Microsoft Excel data source.

You need to update the query to reference the parameter instead of multiple hard-coded copies of the location within each query definition.

Solution: You create a new query that references DataSourceExcel. Does this meet the goal?

- A. Yes
- B. No

**Answer:** B

#### Explanation:

Instead modify the source step of the queries to use DataSourceExcel as the file path.

Note: Parameterising a Data Source could be used in many different use cases. From connecting to different data sources defined in Query Parameters to load different combinations of columns.

Reference:

<https://www.biinsight.com/power-bi-desktop-query-parameters-part-1/>

### NEW QUESTION 4

- (Exam Topic 4)

Note: This question is part of a series of questions that present the same scenario. Each question in the series contains a unique solution that might meet the stated goals. Some question sets might have more than one correct solution, while others might not have a correct solution.

After you answer a question in this scenario, you will NOT be able to return to it. As a result, these questions will not appear in the review screen.

You have several reports and dashboards in a workspace.

You need to grant all organizational users read access to a dashboard and several reports. Solution: You enable included in app for all assets.

Does this meet the goal?

- A. Yes
- B. No

Answer: B

NEW QUESTION 5

- (Exam Topic 2)

You need to create a DAX measure in the data model that only allows users to see projections at the appropriate levels of granularity. How should you complete the measure? To answer, drag the appropriate values to the correct targets. Each value may be used once, more than once, or not at all. You may need to drag the split bar between panes or scroll to view content.  
NOTE: Each correct selection is worth one point.

Values

AND

IF

ISFILTERED

KEEPFILTERS

SUM

SUMX

Answer Area

Total Projected Revenue =

Value (

NOT ( Value ( 'Date'[Date] ) ),

Value ( Projection[Revenue Projection] )

)

- A. Mastered
- B. Not Mastered

Answer: A

Explanation:

Scenario: Revenue projections are set at the monthly level and summed to show projections for the quarter. Box 1: IF  
Box 2: ISFILTERED  
ISFILTERED returns TRUE when columnName is being filtered directly. If there is no filter on the column or if the filtering happens because a different column in the same table or in a related table is being filtered then the function returns FALSE.  
Box 3: SUM  
Reference:  
<https://docs.microsoft.com/en-us/dax/isfiltered-function-dax>

NEW QUESTION 6

- (Exam Topic 2)

Once the profit and loss dataset is created, which four actions should you perform in sequence to ensure that the business unit analysts see the appropriate profit and loss data? To answer, move the appropriate actions from the list of actions to the answer area and arrange them in the correct order.

Actions

From powerbi.com, assign the analysts the Contributor role to the workspace.

From powerbi.com, add role members to the roles.

From Power BI Desktop, add a Table Filter DAX Expression to the roles.

From Power BI Desktop, create four roles.

From Power BI Desktop, publish the dataset to powerbi.com.

Answer Area

- A. Mastered
- B. Not Mastered

Answer: A

Explanation:



<https://docs.microsoft.com/en-us/power-bi/admin/service-admin-rls> <https://docs.microsoft.com/en-us/power-bi/connect-data/service-datasets-build-permissions>

### NEW QUESTION 7

- (Exam Topic 1)

You need to create relationships to meet the reporting requirements of the customer service department. What should you create?

- A. an additional date table named ShipDate, a one-to-many relationship from Sales[sales\_date\_id] to Date[date\_id], and a one-to-many relationship from Sales[sales\_ship\_date\_id] to ShipDate[date\_id]
- B. an additional date table named ShipDate, a many-to-many relationship from Sales[sales\_date\_id] to Date[date\_id], and a many-to-many relationship from Sales[sales\_ship\_date\_id] to ShipDate[date\_id]
- C. a one-to-many relationship from Date[date\_id] to Sales[sales\_date\_id] and another one-to-many relationship from Date[date\_id] to Weekly\_Returns[week\_id]
- D. a one-to-many relationship from Sales[sales\_date\_id] to Date[date\_id] and a one-to-many relationship from Sales[sales\_ship\_date\_id] to Date[date\_id]
- E. a one-to-many relationship from Date[date\_id] to Sales[sales\_date\_id] and another one-to-many relationship from Date[date\_id] to Sales[sales\_ship\_date\_id]

**Answer:** A

#### Explanation:

Scenario: The customer service department requires a visual that can be filtered by both sales month and ship month independently.

Reference:

<https://docs.microsoft.com/en-us/power-bi/transform-model/desktop-relationships-understand>

### NEW QUESTION 8

- (Exam Topic 1)

You need to provide a solution to provide the sales managers with the required access. What should you include in the solution?

- A. Create a security role that has a table filter on the Sales\_Manager table where username = UserName()
- B. Create a security role that has a table filter on the Region\_Manager table where sales\_manager\_id = UserPrincipalName().
- C. Create a security role that has a table filter on the Sales\_Manager table where name = UserName().
- D. Create a security role that has a table filter on the Sales\_Manager table where username = sales\_manager\_id.

**Answer:** A

#### Explanation:

<https://powerbi.microsoft.com/en-us/blog/using-username-in-dax-with-row-level-security/>

### NEW QUESTION 9

- (Exam Topic 1)

You need to address the data concerns before creating the data model. What should you do in Power Query Editor?

- A. Select Column distribution.
- B. Select the sales\_amount column and apply a number filter.
- C. Select Column profile, and then select the sales\_amount column.
- D. Transform the sales\_amount column to replace negative values with 0.

**Answer:** C

### NEW QUESTION 10

- (Exam Topic 4)

You have the following three versions of an Azure SQL database:

- > Test
- > Production
- > Development

You have a dataset that uses the development database as a data source.

You need to configure the dataset so that you can easily change the data source between the development, test, and production database servers from



powerbi.com. Which should you do?

- A. Create a JSON file that contains the database server name
- B. Import the JSON file to the dataset.
- C. Create a parameter and update the queries to use the parameter.
- D. Create a query for each database server and hide the development tables.
- E. Set the data source privacy level to Organizational and use the ReplaceValue Power Query M function.

**Answer: B**

**Explanation:**

<https://docs.microsoft.com/en-us/learn/modules/create-manage-workspaces-power-bi/4-development-lifecycle-s>

**NEW QUESTION 10**

- (Exam Topic 4)

You are configuring a Microsoft Power BI data model to enable users to ask natural language questions by using Q&A. You have a table named Customer that has the following measure.

Customer Count = DISTINCTCOUNT(Customer[CustomerID])

Users frequently refer to customers as subscribers.

You need to ensure that the users can get a useful result for "subscriber count" by using Q&A. The solution must minimize the size of the model.

What should you do?

- A. Add a description of "subscriber count" to the Customer Count measure.
- B. Set Summarize By to None for the CustomerID column.
- C. Add a description of "Subscriber" to the Customer table.
- D. Add a synonym of "subscriber" to the Customer table.

**Answer: B**

**Explanation:**

You can add synonyms to tables and columns.

Note: This step applies specifically to Q&A (and not to Power BI reports in general). Users often have a variety of terms they use to refer to the same thing, such as total sales, net sales, total net sales. You can add these synonyms to tables and columns in the Power BI model.

This step applies specifically to Q&A (and not to Power BI reports in general). Users often have a variety of terms they use to refer to the same thing, such as total sales, net sales, total net sales. You can add these synonyms to tables and columns in the Power BI model.

Reference:

<https://docs.microsoft.com/en-us/power-bi/natural-language/q-and-a-best-practices>

**NEW QUESTION 14**

- (Exam Topic 4)

You have a line chart that shows the number of employees in a department over time. You need to see the total salary costs of the employees when you hover over a data point. What is possible way to achieve this goal?

- A. Add a salary to the tooltips.
- B. Add a salary to the visual filters.
- C. Add salary to the drillthrough fields.

**Answer: A**

**Explanation:**

<https://docs.microsoft.com/en-us/power-bi/create-reports/desktop-custom-tooltips> <https://technovids.com/power-bi-filters/>

**NEW QUESTION 17**

- (Exam Topic 4)

You have a Microsoft Power BI data model that contains three tables named Orders, Date, and City. There is a one-to-many relationship between Date and Orders and between City and Orders.

The model contains two row-level security (RLS) roles named Role1 and Role2. Role1 contains the following filter.

City[State Province] = "Kentucky" Role2 contains the following filter. Date[Calendar Year] = 2020

If a user is a member of both Role1 and Role2, what data will they see in a report that uses the model?

- A. The user will see data for which the State Province value is Kentucky and the Calendar Year is 2020.
- B. The user will see data for which the State Province value is Kentucky or the Calendar Year is 2020.
- C. The user will see only data for which the State Province value is Kentucky.
- D. The user will receive an error and will not be able to see the data in the report.

**Answer: B**

**Explanation:**

When a report user is assigned to multiple roles, RLS filters become additive. It means report users can see table rows that represent the union of those filters.

Reference:

<https://docs.microsoft.com/en-us/power-bi/guidance/rls-guidance>

**NEW QUESTION 21**

- (Exam Topic 4)

You have a Microsoft Power BI report. The size of PBIX file is 550 MB. The report is accessed by using an App workspace in shared capacity of powerbi.com.

The report uses an imported dataset that contains one fact table. The fact table contains 12 million rows. The dataset is scheduled to refresh twice a day at 08:00 and 17:00.

The report is a single page that contains 15 custom visuals and 10 default visuals.

Users say that the report is slow to load the visuals when they access and interact with the report You need to recommend a solution to improve the performance

of the report.  
What should you recommend?

- A. Split the visuals onto multiple pages.
- B. Implement row-level security (RLS).
- C. Replace the default visuals with custom visuals.
- D. Increase the number of times that the dataset is refreshed.

Answer: A

NEW QUESTION 24

- (Exam Topic 4)  
You are modeling data in table named SalesDetail by using Microsoft Power BI.  
You need to provide end users with access to the summary statistics about the SalesDetail data. The users require insights on the completeness of the data and the value distributions.  
Which three actions should you perform in sequence? To answer, move the appropriate actions from the list of actions to the answer area and arrange them in the correct order.

Actions

Specify the following query, then close and apply.  
-Table.Distinct("#SalesDetail")

Create a visual for the query table.

Create a parameter that uses a query for the suggested values.

Create a query that uses Common Data Service as a data source.

Specify the following query, then close and apply.  
-Table.Profile("#SalesDetail")

Create a blank query as a data source.

Answer Area

<

>

↑

↓

- A. Mastered
- B. Not Mastered

Answer: A

Explanation:

Actions

Specify the following query, then close and apply.  
-Table.Distinct("#SalesDetail")

Create a visual for the query table.

Create a parameter that uses a query for the suggested values.

Create a query that uses Common Data Service as a data source.

Specify the following query, then close and apply.  
-Table.Profile("#SalesDetail")

Create a blank query as a data source.

Answer Area

Create a blank query as a data source.

Specify the following query, then close and apply.  
-Table.Profile("#SalesDetail")

Create a visual for the query table.

NEW QUESTION 26

- (Exam Topic 4)  
Your company plans to completely separate development and production assets such as datasets, reports, and dashboards in Microsoft Power BI.  
You need to recommend an application lifecycle strategy. The solution must minimize access to production assets and prevent end users from viewing the development assets.  
What should you recommend?

- A. Create production reports in a separate workspace that uses a shared dataset from the development workspace
- B. Grant the end users access to the production workspace.

- C. Create one workspace for development
- D. From the new workspace, publish an app for production.
- E. Create a workspace for development and a workspace for production
- F. From the production workspace, publish an app.
- G. In one workspace, create separate copies of the assets and append DEV to the names of the copied asset
- H. Grant the end users access to the workspace.

**Answer:** C

**Explanation:**

Use different work stages (Development, Test, and Production). Deploy from the Development workspace.

Reference:

<https://visualbi.com/blogs/microsoft/powerbi/application-lifecycle-management-power-bi/>

**NEW QUESTION 27**

- (Exam Topic 4)

You have a report that contains a bar chart and a column chart. The bar chart shows customer count by customer segment. The column chart shows sales by month.

You need to ensure that when a segment is selected in the bar chart, you see which portion of the total sales for the month belongs to the customer segment.

How should the visual interactions be set on the column chart when the bar chart is selected?

- A. no impact
- B. highlight
- C. filter

**Answer:** B

**Explanation:**

HIGHLIGHT as the question required us to "you see which portion of the total sales for the month belongs to the customer segment" -- in order to see WHICH portion, you need to still see the whole visual, highlight is most appropriate. If the requirement stated to ONLY SEE THE PORTION IT RELATES TO then filter would be appropriate.

**NEW QUESTION 30**

- (Exam Topic 4)

You have five sales regions. Each region is assigned a single salesperson.

You have an imported dataset that has a dynamic row-level security (RLS) role named Sales. The Sales role filters sales transaction data by salesperson.

Salespeople must see only the data from their region.

You publish the dataset to powerbi.com, set RLS role membership, and distribute the dataset and related reports to the salespeople.

A salesperson reports that she believes she should see more data. You need to verify what data the salesperson currently sees. What should you do?

- A. Use the Test as role option to view data as the salesperson's user account.
- B. Use the Test as role option to view data as the Sales role.
- C. Instruct the salesperson to open the report in Microsoft Power BI Desktop.
- D. Filter the data in the reports to match the intended logic in the filter on the sales transaction table.

**Answer:** B

**Explanation:**

Validate the roles within Power BI Desktop

➤ After you've created your roles, test the results of the roles within Power BI Desktop. From the Modeling tab, select View as.

A picture containing application Description automatically generatedThe View as roles window appears, where you see the roles you've created. Graphical user interface, text, application Description automatically generated

➤ Select a role you created, and then select OK to apply that role. The report renders the data relevant for that role.

➤ You can also select Other user and supply a given user. Graphical user interface, application Description automatically generated

➤ Select OK. The report renders based on what that user can see.

Reference:

<https://docs.microsoft.com/en-us/power-bi/admin/service-admin-rls>

**NEW QUESTION 31**

- (Exam Topic 4)

You are creating an analytics report that will consume data from the tables shown in the following table.

Table name	Column name	Data type
Sales	sales_id	Integer
	sales_date	Datetime
	Customer_id	Integer
	sales_amount	Floating
	employee_id	Integer
	sales_ship_date	Datetime
	store_id	Varchar(100)
Employee	employee_id	Integer
	first_name	Varchar(100)
	last_name	Varchar(100)
	employee_photo	Binary

There is a relationship between the tables.

There are no reporting requirements on employeejd and employee\_photo. You need to optimize the data model

What should you configure for employeejd and employee.photo? To answer, select the appropriate options in the answer area.

#### Answer Area

Employee\_id:

Change Type  
Delete  
Hide  
Sort

Employee\_photo:

Change Type  
Delete  
Hide  
Sort

- A. Mastered
- B. Not Mastered

**Answer:** A

#### Explanation:

Table Description automatically generated

Box 1: Hide

Optimize data by hiding fields and sorting visualization data

Box 2: Delete

The fastest way to optimize your Power BI report is to limit the number of columns to only the ones you need in your data model. Go through your tables in Power Query and determine what fields are being used. Delete these columns if they are not being used in any of your reports or calculations.

Reference:

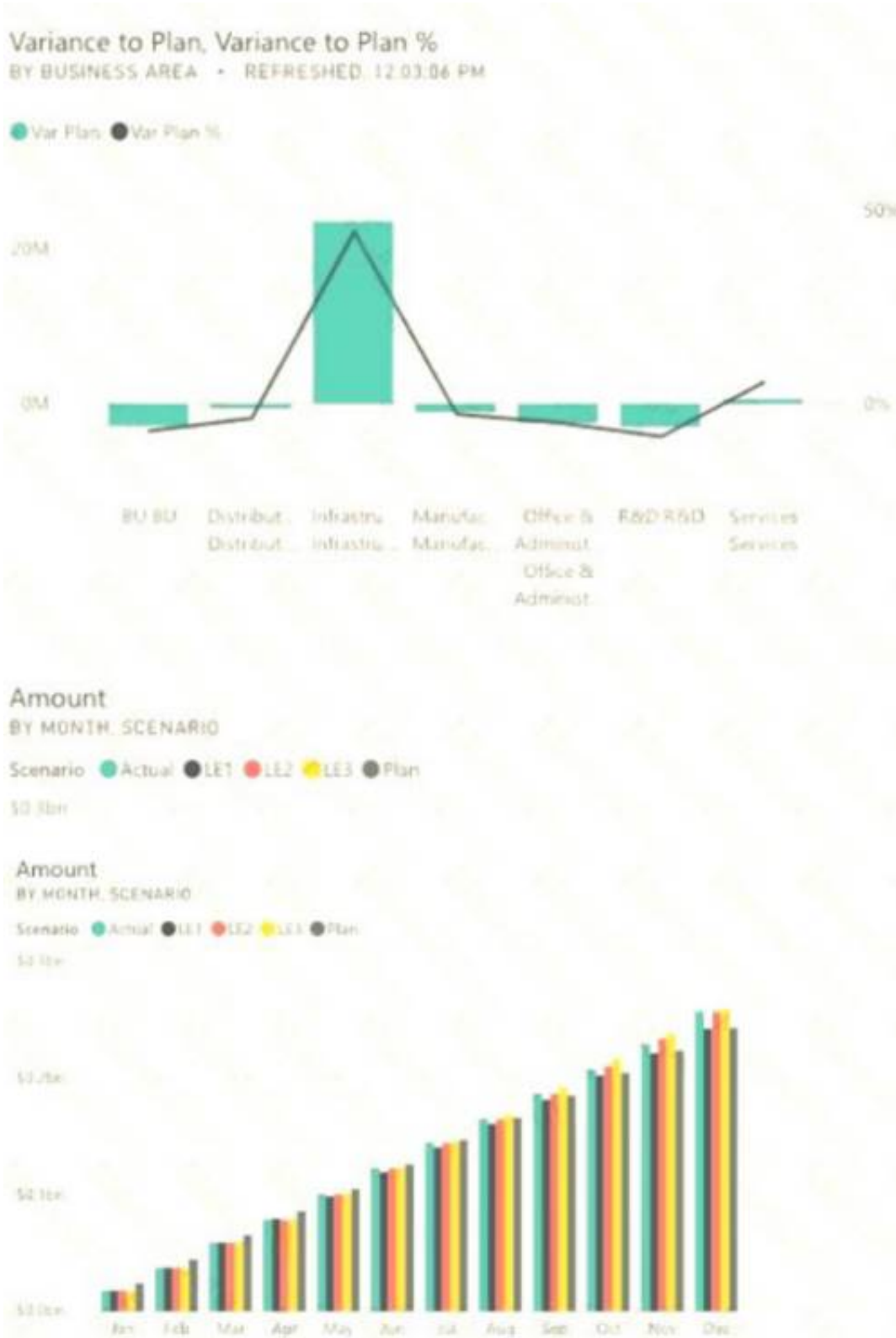
<https://tessellationtech.io/optimizing-power-bi-reports/>

#### NEW QUESTION 34

- (Exam Topic 4)

You have a Microsoft Power BI dashboard. The report used to create the dashboard uses an imported dataset from a Microsoft SQL Server data source. The dashboard is shown in the exhibit. (Click the Exhibit tab.)





What occurred at 12:03:06 PM?

- A. A user pressed F5
- B. A new transaction was added to the data source.
- C. A user added a comment to a tile.
- D. The dashboard tile cache refreshed.

Answer: D

Explanation:

Reference:

<https://docs.microsoft.com/en-us/power-bi/connect-data/refresh-data>

NEW QUESTION 39

- (Exam Topic 4)

Note: This question is part of a series of questions that present the same scenario. Each question in the series contains a unique solution that might meet the stated goals. Some question sets might have more than one correct solution, while others might not have a correct solution.

After you answer a question in this scenario, you will NOT be able to return to it. As a result, these questions will not appear in the review screen.

You have a clustered bar chart that contains a measure named Salary as the value and a field named Employee as the axis. Salary is present in the data as numerical amount representing US dollars.

You need to create a reference line to show which employees are above the median salary. Solution: You create an average line by using the Salary measure. Does this meet the goal?

- A. Yes
- B. No

Answer: B

Explanation:

Instead create a percentile line by using the Salary measure and set the percentile to 50%.

Note: The 50th percentile is also known as the median or middle value where 50 percent of observations fall below.

Reference:

[https://dash-intel.com/powerbi/statistical\\_functions\\_percentile.php](https://dash-intel.com/powerbi/statistical_functions_percentile.php)

NEW QUESTION 42

- (Exam Topic 4)

Your company has affiliates who help the company acquire customers.

You build a report for the affiliate managers at the company to assist them in understanding affiliate performance.

The managers request a visual showing the total sales value of the latest 50 transactions for each affiliate. You have a data model that contains the following tables.

Table name	Column name
Transactions	TransactionDate
	ItemsOrdered
	Amount
	AffiliateID
	TransactionID
Affiliate	AffiliateID
	Name

You need to develop a measure to support the visual.

How should you complete the DAX expression? To answer, select the appropriate options in the answer area. NOTE: Each correct selection is worth one point.

### Answer Area

Revenue Last 50 Transactions =

▼

(

CALCULATE

CONCATENATEX

SUM

SUMX

TOPN

▼

(Transactions[Amount]),

CALCULATE

CONCATENATEX

SUM

SUMX

TOPN

▼

(50, Transactions, Transactions

CALCULATE

CONCATENATEX

SUM

SUMX

TOPN

▼

TransactionID]

[Amount],

[ItemsOrdered],

[TransactionDate],

DESC)

)

A. Mastered

B. Not Mastered

Answer: A

### Explanation:

Box 1: CALCULATE

Start with CALCULATE and use a SUMX.

CALCULATE evaluates an expression in a modified filter context.

Box 2: SUM

Box 3: TOPN

TOPN returns the top N rows of the specified table.

Box 4: [TransactionDate]

TOPN Syntax: TOPN(<n\_value>, <table>, <orderBy\_expression>, [<order>[, <orderBy\_expression>, [<order>]]...])

The orderBy\_expression: Any DAX expression where the result value is used to sort the table and it is evaluated for each row of table.

Reference:

<https://docs.microsoft.com/en-us/dax/topn-function-dax>

### NEW QUESTION 47

- (Exam Topic 4)

You need to create a visual as shown in the following exhibit.

MonthName	Total Sales	Sales Last Year	% Growth to Last Year
January	£559,263.79	£144,365.51	74.19%
February	£583,915.29	£215,923.28	63.02%
March	£684,091.92	£211,347.46	69.11%
April	£957,686.49	£350,270.97	63.43%
May	£841,473.26	£310,708.65	63.08%
June	£876,911.71	£298,356.83	65.98%
July	£922,410.09	£348,435.28	62.23%
August	£1,002,219.24	£388,213.68	61.26%
September	£1,152,976.22	£407,595.76	64.65%
October	£1,262,647.67	£465,583.06	63.13%
November	£555,548.44	£555,548.44	0.00%
December	£553,615.45	£553,615.45	0.00%
Total	£9,952,759.56	£4,249,964.36	57.30%

The indicator color for Total Sales will be based on % Growth to Last Year. The solution must use the existing calculations only.

How should you configure the visual? To answer, select the appropriate options in the answer area. NOTE: Each correct selection is worth one point.

### Answer Area

Conditional formatting:

Background color

Data bars

Font color

Icons

Web URL

Format by:

Color scale

Field value

Rules

- A. Mastered
- B. Not Mastered

Answer: A

#### Explanation:

Box 1: Background color

To format the Color column based on its field values, select Conditional formatting for the Color field, and then select Background color or Font color.

In the Background color or Font color dialog box, select Field value from the Format by drop-down field. Box 2: Field value

With conditional formatting for tables in Power BI Desktop, you can specify customized cell colors, including color gradients, based on field values.

Reference:

<https://docs.microsoft.com/en-us/power-bi/create-reports/desktop-conditional-table-formatting>

#### NEW QUESTION 52

- (Exam Topic 4)

Note: This question is part of a series of questions that present the same scenario. Each question in the series contains a unique solution that might meet the stated goals. Some question sets might have more than one correct solution, while others might not have a correct solution.

After you answer a question in this section, you will NOT be able to return to it. As a result, these questions will not appear in the review screen.

You are modeling data by using Microsoft Power BI. Part of the data model is a large Microsoft SQL Server table named Order that has more than 100 million records.

During the development process, you need to import a sample of the data from the Order table. Solution: You add a report-level filter that filters based on the order date.

Does this meet the goal?

- A. Yes
- B. No

Answer: B

#### Explanation:

The filter is applied after the data is imported. Instead add a WHERE clause to the SQL statement. Reference:

<https://docs.microsoft.com/en-us/power-bi/connect-data/service-gateway-sql-tutorial>

#### NEW QUESTION 56

- (Exam Topic 4)

You have a Power BI report.

You need to create a calculated table to return the 100 highest spending customers.  
How should you complete the DAX expression? To answer, select the appropriate options in the answer area.  
NOTE: Each correct selection is worth one point.

Answer Area

Top 100 Customers =

100,

ASC

DESC

FILTER

SUMMARIZE

TOPN

(FactTransaction,

FactTransaction[Customer ID],

"Sales",

SUM(FactTransaction[Sales])),

[Sales],

ASC

DESC

FILTER

SUMMARIZE

TOPN

- A. Mastered
- B. Not Mastered

Answer: A

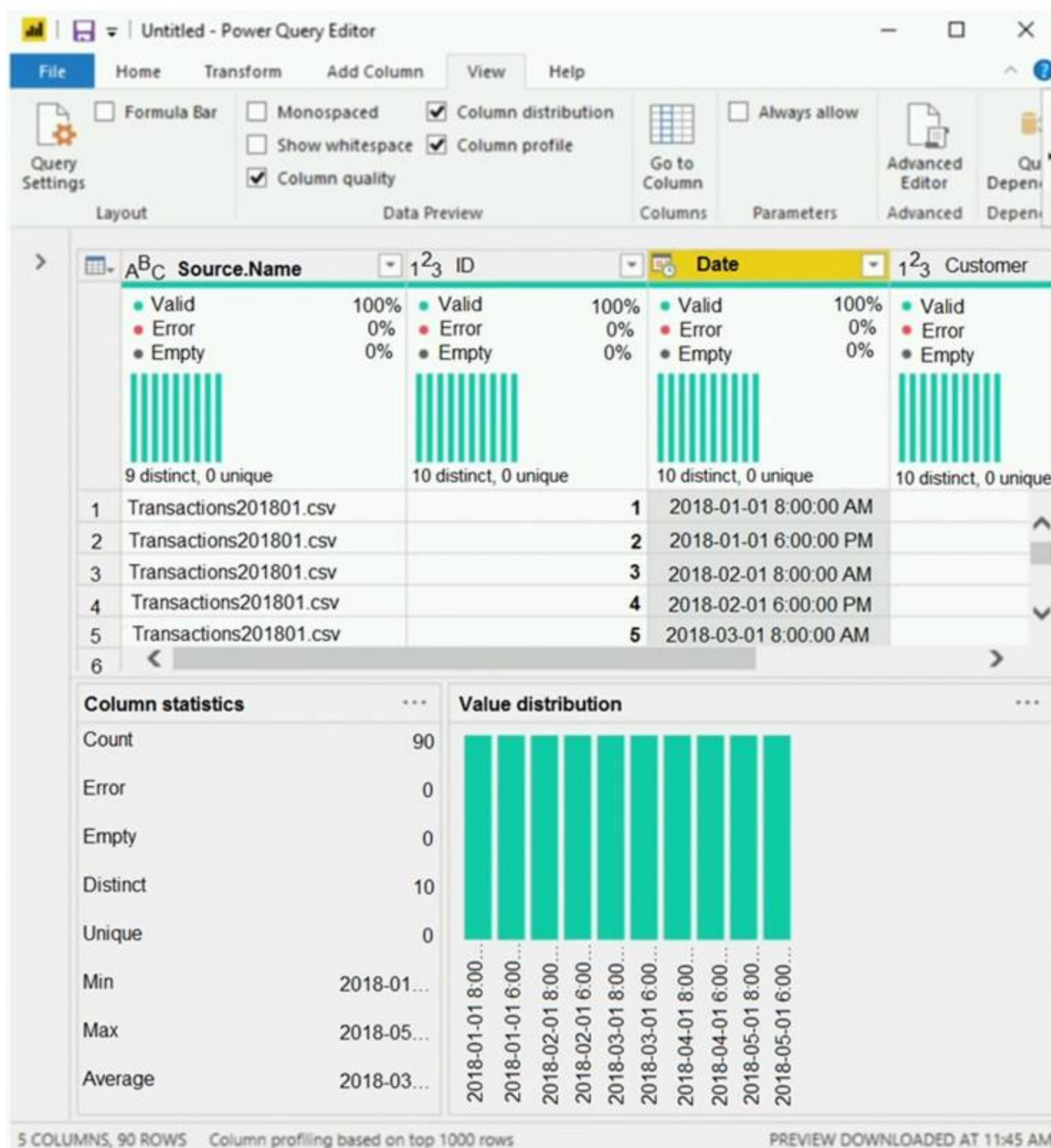
Explanation:

Box 1: TOPN  
TOPN returns the top N rows of the specified table. Box 2: SUMMARIZE  
SUMMARIZE returns a summary table for the requested totals over a set of groups. Box 3: DESC  
Sort in descending order.  
It is last in the TOPN command. TOPN syntax:  
TOPN(<n\_value>, <table>, <orderBy\_expression>, [<order>[, <orderBy\_expression>, [<order>]]...]) Reference:  
<https://docs.microsoft.com/en-us/dax/topn-function-dax> <https://docs.microsoft.com/en-us/dax/summarize-function-dax>

NEW QUESTION 58

- (Exam Topic 4)  
You view a query named Transactions as shown in the following exhibit.





The query gets CSV files from a folder.

Use the drop-down menus to select the answer choice that completes each statement based on the information presented in the graphic.

NOTE: Each correct selection is worth one point.

## Answer Area

There are [answer choice] CSV files:

▼

9

10

25

90

1,000

Removing duplicates based on the Date column will reduce the dataset to [answer choice] rows:

▼

9

10

25

90

1,000

- A. Mastered  
B. Not Mastered

Answer: A

Explanation:

Box 1: 9  
9 distinct CSV files.  
Box 2: 10  
10 distinct dates.  
<https://pediaa.com/what-is-the-difference-between-unique-and-distinct-in-sql/#:~:text=Unique%20and%20Disti>

#### NEW QUESTION 60

- (Exam Topic 4)

You have an Azure SQL database that contains sales transactions. The database is updated frequently.

You need to generate reports from the data to detect fraudulent transactions. The data must be visible within five minutes of an update.

How should you configure the data connection?

- A. Add a SQL statement.
- B. Set Data Connectivity mode to DirectQuery.
- C. Set the Command timeout in minutes setting.
- D. Set Data Connectivity mode to Import.

**Answer:** B

#### Explanation:

With Power BI Desktop, when you connect to your data source, it's always possible to import a copy of the data into the Power BI Desktop. For some data sources, an alternative approach is available: connect directly to the data source using DirectQuery.

DirectQuery: No data is imported or copied into Power BI Desktop. For relational sources, the selected tables and columns appear in the Fields list. For multi-dimensional sources like SAP Business Warehouse, the dimensions and measures of the selected cube appear in the Fields list. As you create or interact with a visualization, Power BI Desktop queries the underlying data source, so you're always viewing current data.

Reference:

<https://docs.microsoft.com/en-us/power-bi/connect-data/desktop-use-directquery>

#### NEW QUESTION 62

- (Exam Topic 4)

You have a Microsoft Power BI data model that contains three tables named Sales, Product, and Date. The Sales table has an existing measure named [Total Sales] that sums the total sales from the Sales table.

You need to write a calculation that returns the percentage of total sales that a selected ProductCategoryName value represents. The calculation must respect any slicers on ProductCategoryName and must show the percentage of visible total sales. For example, if there are four ProductCategoryName values, and a user filters one out, a table showing ProductCategoryName and the calculation must sum up to 100 percent.

How should you complete the calculation? To answer, drag the appropriate values to the correct targets. Each value may be used once, more than once, or not at all. You may need to drag the split bar between panes or scroll to view content.

NOTE: Each correct selection is worth one point.

#### Values

#### Answer Area

ALL

ALLSELECTED

CALCULATE

CALCULATETABLE

CURRENTGROUP

DIVIDE

SUMMARIZE

TOPN

Product Category % of Total 2 =

[[Total Sales],

( [Total Sales] ,

(

Product[ProductCategoryName] ) ) )

- A. Mastered
- B. Not Mastered

**Answer:** A

#### Explanation:

Divide, Calculate, AllSelected. Reference:

<https://docs.microsoft.com/en-us/dax/allselected-function-dax>

#### NEW QUESTION 63

- (Exam Topic 4)

You have a prospective customer list that contains 1,500 rows of data. The list contains the following fields: ➤ First name

- Last name
- Email address
- State/Region
- Phone number

You import the list into Power Query Editor.

You need to ensure that the list contains records for each State/Region to which you want to target a marketing campaign.

Which two actions should you perform? Each correct answer presents part of the solution. NOTE: Each correct selection is worth one point.

- A. Open the Advanced Editor.
- B. Select Column quality.
- C. Enable Column profiling based on entire dataset.
- D. Select Column distribution.
- E. Select Column profile.

**Answer:** CE

**Explanation:**

In Power query, the load preview by default is 1000 row. By default, the column quality also only looks at the first 1000 row. You can verify this by the status bar at the bottom of the Power query window. To change the profiling so it analyses the entire column of data, select the profiling status in the status bar. Then select Column profiling based on the entire data set.

<https://theexcelclub.com/data-profiling-views-in-power-query-excel-and-power-bi/>

**NEW QUESTION 65**

- (Exam Topic 4)

You have a power BI tenant that hosts the datasets shown in the following table.

Name	Contents	Used to generate
Sales	Sales targets Sales data Employee salary data	Daily performance reports Quarterly reports used to calculate bonuses
Operations	Environmental sensor data	Reports that show average sensor readings over time
Finance	Financial transaction data	Budget planning reports Monthly board reports

You have the following requirements:

- The export of reports that contain Personally Identifiable Information (PII) must be prevented.
- Data used for financial decisions must be reviewed and approved before use.

For each of the following statements, select Yes if the statement is true. Otherwise select No. NOTE: Each correct selection is worth one point

**Answer Area**

Statements	Yes	No
The Sales dataset requires a sensitivity label.	<input type="radio"/>	<input type="radio"/>
The Operations dataset requires a sensitivity label and must be certified.	<input type="radio"/>	<input type="radio"/>
The Finance dataset requires a sensitivity label and must be certified.	<input type="radio"/>	<input type="radio"/>

- A. Mastered
- B. Not Mastered

**Answer:** A

**Explanation:**

**Answer Area**

Statements	Yes	No
The Sales dataset requires a sensitivity label.	<input checked="" type="radio"/>	<input type="radio"/>
The Operations dataset requires a sensitivity label and must be certified.	<input type="radio"/>	<input checked="" type="radio"/>
The Finance dataset requires a sensitivity label and must be certified.	<input checked="" type="radio"/>	<input type="radio"/>

**NEW QUESTION 67**

- (Exam Topic 4)

You have an API that returns more than 100 columns. The following is a sample of column names.

- > client\_notified\_timestamp
- > client\_notified\_source
- > client\_notified\_sourceid
- > client\_notified\_value
- > client\_responded\_timestamp
- > client\_responded\_source
- > client\_responded\_sourceid



> client\_responded\_value

You plan to include only a subset of the returned columns.

You need to remove any columns that have a suffix of sourceid.

How should you complete the Power Query M code? To answer, select the appropriate options in the answer area.

NOTE: Each correct selection is worth one point.

## Answer Area

```
let
    Source = ...,
    rawData = Source{[tableId= "clientData"]}[Data],
    removeSources = 
        Table.CombineColumn
        Table.FindText
        Table.FromList
        Table.RemoveColumns
        (rawData,
        Table.ColumnNames(rawData),
        List.Contains
        List.Select
        Table.FindText
        Table.FromList
        each
            Text.Contains
            Text.EndsWith
            Text.From
            Text.StartsWith
            (_, "sourceid")))
in
    removeSources
```

- A. Mastered
- B. Not Mastered

Answer: A

### Explanation:

Box 1: Table.RemoveColumns

When you do "Remove Columns" Power Query uses the Table.RemoveColumns function

Box 2: List.Select

Get a list of columns.

Box 3: Text.EndsWith

## NEW QUESTION 72

- (Exam Topic 4)

Note: This question is part of a series of questions that present the same scenario. Each question in the series contains a unique solution that might meet the stated goals. Some question sets might have more than one correct solution, while others might not have a correct solution.

After you answer a question in this scenario, you will NOT be able to return to it. As a result, these questions will not appear in the review screen.

You have a clustered bar chart that contains a measure named Salary as the value and a field named Employee as the axis. Salary is present in the data as numerical amount representing US dollars.

You need to create a reference line to show which employees are above the median salary. Solution: You create a constant line and set the value to .5.

Does this meet the goal?

- A. Yes
- B. No

Answer: B

### Explanation:

Instead create a percentile line by using the Salary measure and set the percentile to 50%.

Note: The 50th percentile is also known as the median or middle value where 50 percent of observations fall below.

ference:

[https://dash-intel.com/powerbi/statistical\\_functions\\_percentile.php](https://dash-intel.com/powerbi/statistical_functions_percentile.php)

## NEW QUESTION 76

- (Exam Topic 4)

You have a Microsoft SharePoint Online site that contains several document libraries. One of the document libraries contains manufacturing reports saved as Microsoft Excel files. All the manufacturing reports have the same data structure.

You need to load only the manufacturing reports to a table for analysis. What should you do in Microsoft Power BI Desktop?

- A. Get data from a SharePoint Online folder, enter the site URL, and then select Combine & Load.
- B. Get data from a SharePoint Online list and enter the site UR
- C. Edit the query and filter by the path to the manufacturing reports library.



- D. Get data from a SharePoint Online folder and enter the site UR
- E. Edit the query and filter by the path to the manufacturing reports library.
- F. Get data from a SharePoint Online list, enter the site URL, and then select Combine & Load.

**Answer:** C

**Explanation:**

Example:

My SharePoint site root url is <https://powerbipanama.sharepoint.com/>, but all of my files are actually in another site that starts with <https://powerbipanama.sharepoint.com/sites/externalsales/> URL.

In order to use the correct URL, we need to be in the folder of the data that we're trying to get and check the url that our browser shows. If it has the if it starts with the format of <https://<site address>/sites/<sitename>/> then we need to use that url, otherwise we use the much simpler <https://<site address>>

In my own case, I'll be using the <https://powerbipanama.sharepoint.com/sites/externalsales> url in order to connect to my site.

Reference:

<https://powerbi.microsoft.com/sv-se/blog/combining-excel-files-hosted-on-a-sharepoint-folder/>

**NEW QUESTION 80**

- (Exam Topic 4)

Note: This question is part of a series of questions that present the same scenario. Each question in the series contains a unique solution that might meet the stated goals. Some question sets might have more than one correct solution, while others might not have a correct solution.

After you answer a question in this scenario, you will NOT be able to return to it. As a result, these questions will not appear in the review screen.

You have a clustered bar chart that contains a measure named Salary as the value and a field named Employee as the axis. Salary is present in the data as numerical amount representing US dollars.

You need to create a reference line to show which employees are above the median salary. Solution: You create a percentile line by using the Salary measure and set the percentile to 50%. Does this meet the goal?

- A. Yes
- B. No

**Answer:** A

**Explanation:**

The 50th percentile is also known as the median or middle value where 50 percent of observations fall below. Reference:

[https://dash-intel.com/powerbi/statistical\\_functions\\_percentile.php](https://dash-intel.com/powerbi/statistical_functions_percentile.php)

**NEW QUESTION 82**

- (Exam Topic 4)

You have a report that contains three pages. One of the pages contains a KPI visualization. You need to filter all the visualizations in the report except for the KPI visualization. Which two actions should you perform? Each correct answer presents part of the solution. NOTE: Each correct selection is worth one point.

- A. Add the same slicer to each page and configure Sync slicers.
- B. Edit the interactions of the KPI visualization.
- C. Configure a page-level filter.
- D. Edit the interactions of the slicer that is on the same page as the KPI visualization.
- E. Configure a report-level filter.

**Answer:** AD

**Explanation:**

Slicers are another way of filtering. They narrow the portion of the dataset that is shown in the other report visualizations.

By default, slicers on report pages affect all the other visualizations on that page, including each other. Use visual interactions to exclude some page visualizations from being affected by others.

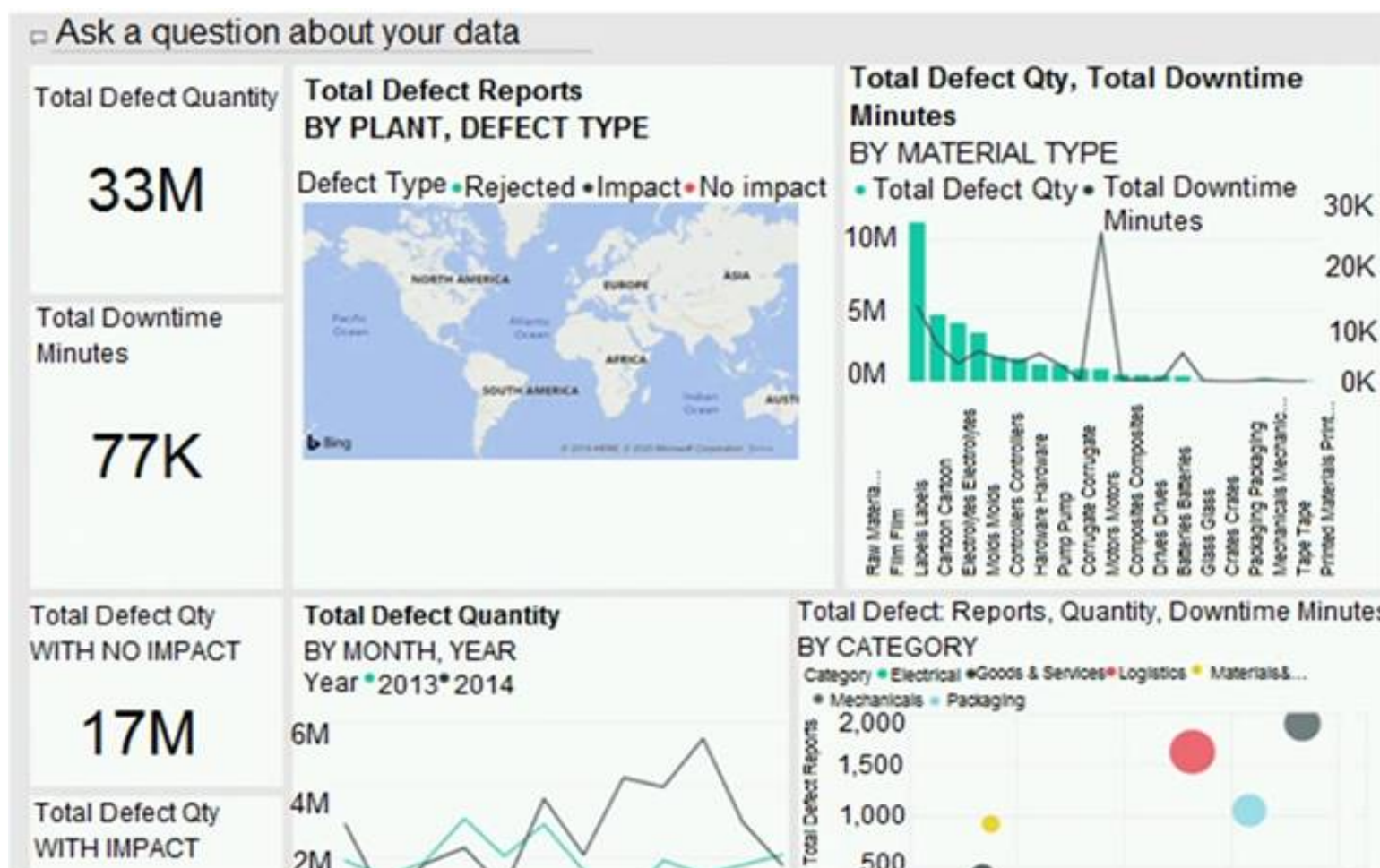
Reference:

<https://docs.microsoft.com/en-us/power-bi/visuals/power-bi-visualization-slicers>

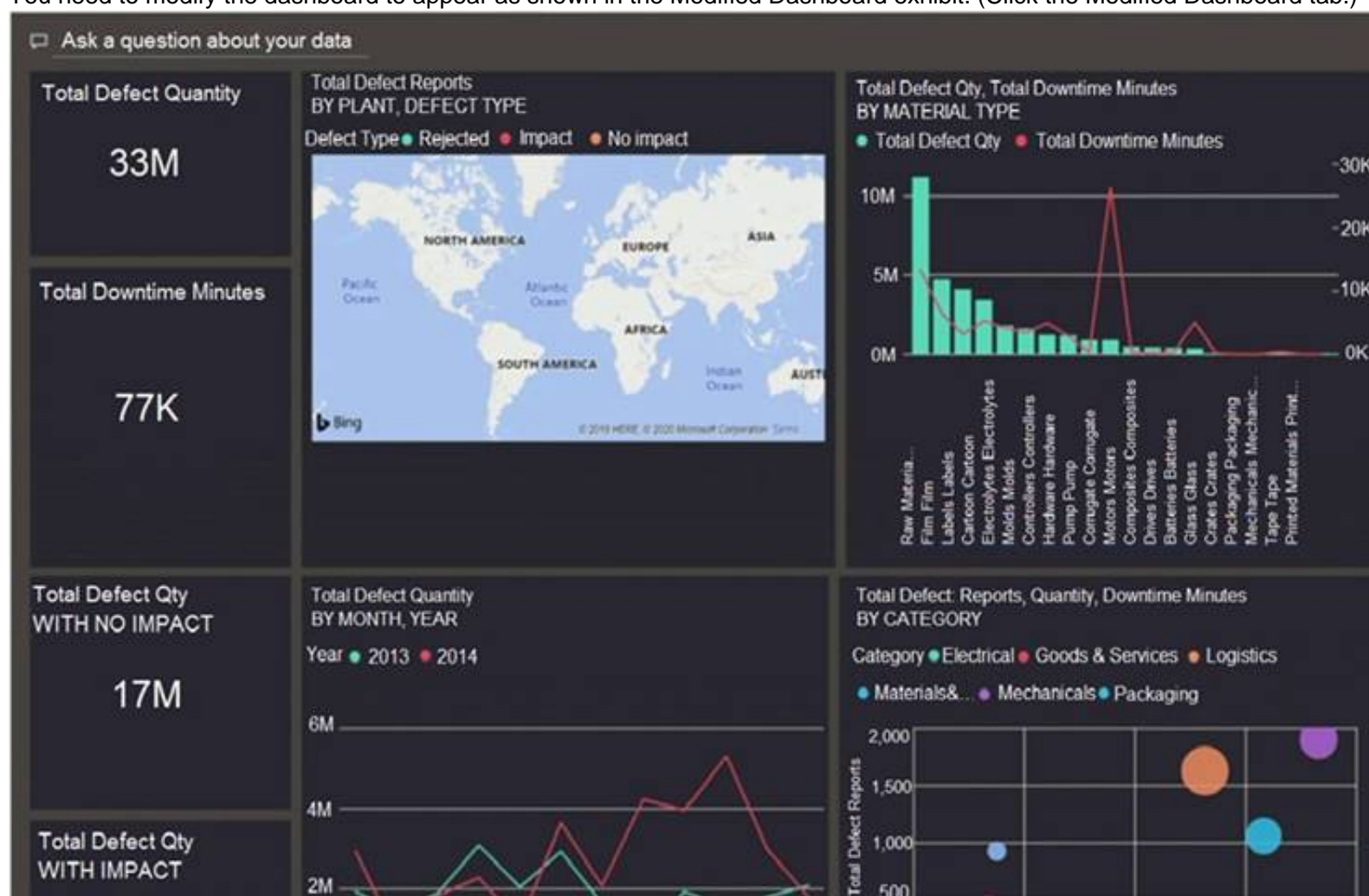
**NEW QUESTION 85**

- (Exam Topic 4)

You have a dashboard that contains tiles pinned from a single report as shown in the Original Dashboard exhibit. (Click the Original Dashboard tab.)



You need to modify the dashboard to appear as shown in the Modified Dashboard exhibit. (Click the Modified Dashboard tab.)



What should you do?

- A. Edit the details of each tile.
- B. Change the report theme.
- C. Change the dashboard theme.
- D. Create a custom CSS file.

**Answer: C**

**Explanation:**

<https://docs.microsoft.com/en-us/power-bi/create-reports/service-dashboard-themes#how-dashboard-themes-wo>

#### NEW QUESTION 90

- (Exam Topic 4)

You have a Microsoft Power BI report. The size of PBIX file is 550 MB. The report is accessed by using an App workspace in shared capacity of powerbi.com. The report uses an imported dataset that contains one fact table. The fact table contains 12 million rows. The dataset is scheduled to refresh twice a day at 08:00 and 17:00.

The report is a single page that contains 15 AppSource visuals and 10 default visuals.

Users say that the report is slow to load the visuals when they access and interact with the report. You need to recommend a solution to improve the performance of the report.

What should you recommend?

- A. Change any DAX measures to use iterator functions.

- B. Replace the default visuals with AppSource visuals.
- C. Change the imported dataset to DirectQuery.
- D. Remove unused columns from tables in the data model.

Answer: C

Explanation:

DirectQuery: No data is imported or copied into Power BI Desktop.  
Import: The selected tables and columns are imported into Power BI Desktop. As you create or interact with a visualization, Power BI Desktop uses the imported data.  
Benefits of using DirectQuery  
There are a few benefits to using DirectQuery:  
➤ DirectQuery lets you build visualizations over very large datasets, where it would otherwise be unfeasible to first import all the data with pre-aggregation.  
➤ Underlying data changes can require a refresh of data. For some reports, the need to display current data can require large data transfers, making reimporting data unfeasible. By contrast, DirectQuery reports always use current data.  
The 1-GB dataset limitation doesn't apply to DirectQuery. Reference:  
<https://docs.microsoft.com/en-us/power-bi/connect-data/desktop-use-directquery>

NEW QUESTION 95

- (Exam Topic 4)  
You are creating a column chart visualization.  
You configure groups as shown in the Groups exhibit. {Click the Groups tab.)

Groups

Name	Sepal.Width (bins)	Field	Sepal.Width
Group type	Bin	Min value	2
Bin Type	Number of bins	Max value	4.4

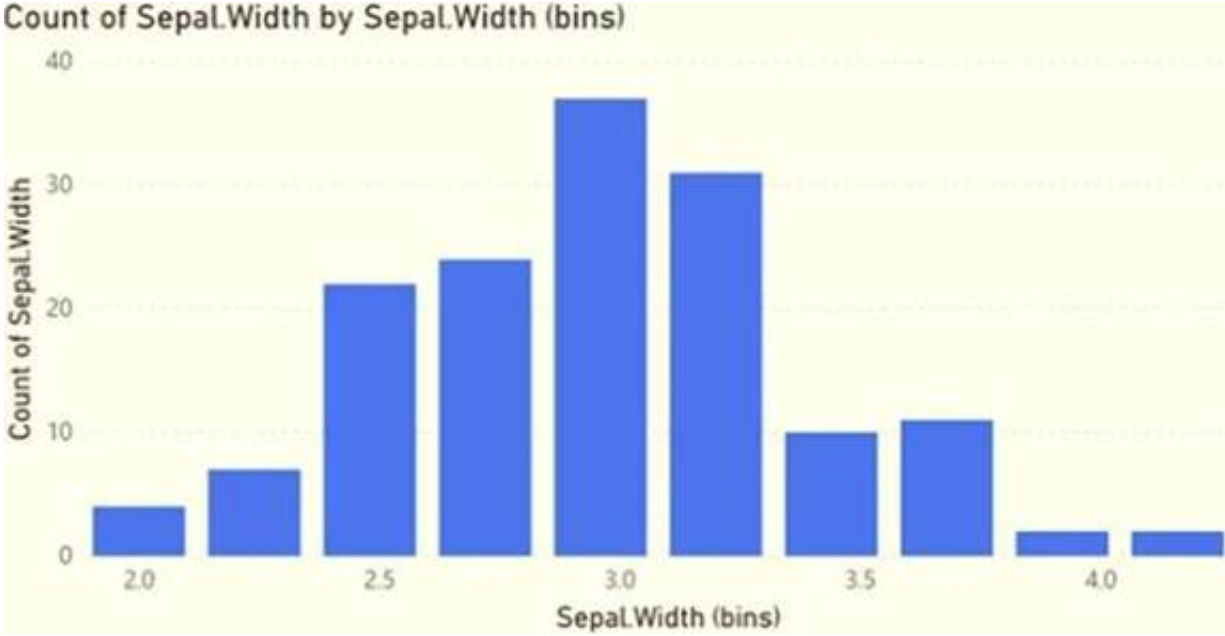
Binning splits numeric or date/time data by an amount you specify. The default bin count is calculated based on your data.

Bin count	10	Bin size	0.24000000000000005
-----------	----	----------	---------------------

Reset to default

OK Cancel

The visualization appears as shown in the Chart exhibit. (Click the Chart tab.)



For each of the following statements, select Yes if the statement is true. Otherwise, select No. NOTE: Each correct selection is worth one point.

Answer Area

Statements	Yes	No
The data is segmented into 10 groups.	<input type="radio"/>	<input type="radio"/>
The data was split into deciles.	<input type="radio"/>	<input type="radio"/>
To increase the bin size, you must decrease the bin count.	<input type="radio"/>	<input type="radio"/>

- A. Mastered
- B. Not Mastered

Answer: A

Explanation:



Answer Area

Statements

Yes No

The data is segmented into 10 groups.

☒ ☐

The data was split into deciles.

☒ ☐

To increase the bin size, you must decrease the bin count.

☐ ☒

NEW QUESTION 100

- (Exam Topic 4)

You have the dataset shown in the following exhibit.

City	Sales Profit
Abbottsburg	\$173,947
Absecon	\$129,358
Accomac	\$157,768
Aceitunas	\$119,283
Airport Drive	\$162,500
Akhiok	\$259,554
Alcester	\$127,040
Alden Bridge	\$152,138
Alstead	\$106,147
Amado	\$136,718
Amanda Park	\$117,444
Andrix	\$130,710
Annamoriah	\$139,499
Antares	\$147,562
Antonio	\$113,056
<b>Total</b>	<b>\$85,729,181</b>

You need to ensure that the visual shows only the 10 cities that have the highest sales profit. What should you do?

- A. Add a Top N filter to the visual.
- B. Configure the Sales Profit measure to use the RANKX function.
- C. Add a calculated column to the table that uses the TOPN function.
- D. In the visual, replace Sales Profit with the calculated column.
- E. Add a calculated column to the table that returns the city name if the city is in the top 10, otherwise the calculated column will return "Not in Top 10". In the visual, replace Sales Profit with the calculated column.

Answer: A

Explanation:

Power BI Top N Filters are useful to display the top performing records, and Bottom N filters are helpful to display the least performing records. For example, we can display top or bottom 10 products by orders or sales.

Note:

- > Select the Column you want to display the Top Sales Profit
- > Then change the Filter Type of that Column to Top N
- > Fill in Top / Bottom number field
- > And lastly drag to the By Value field your Sales Profit Reference:

<https://www.tutorialgateway.org/power-bi-top-10-filters/>

NEW QUESTION 105

- (Exam Topic 4)

You have a report that contains four pages. Each page contains slicers for the same four fields. Users report that when they select values on a slicer on one page, the visuals are not updated on all the pages. You need to recommend a solution to ensure that users can select a value once to filter the results on all the pages. What are two possible recommendations to achieve this goal? Each correct answer presents a complete solution. NOTE: Each correct selection is worth one point.

- A. Sync the slicers across the pages.
- B. Replace the slicers with page-level filters.
- C. Replace the slicers with visual-level filters.
- D. Create a bookmark for each slicer value.
- E. Replace the slicers with report-level filters.



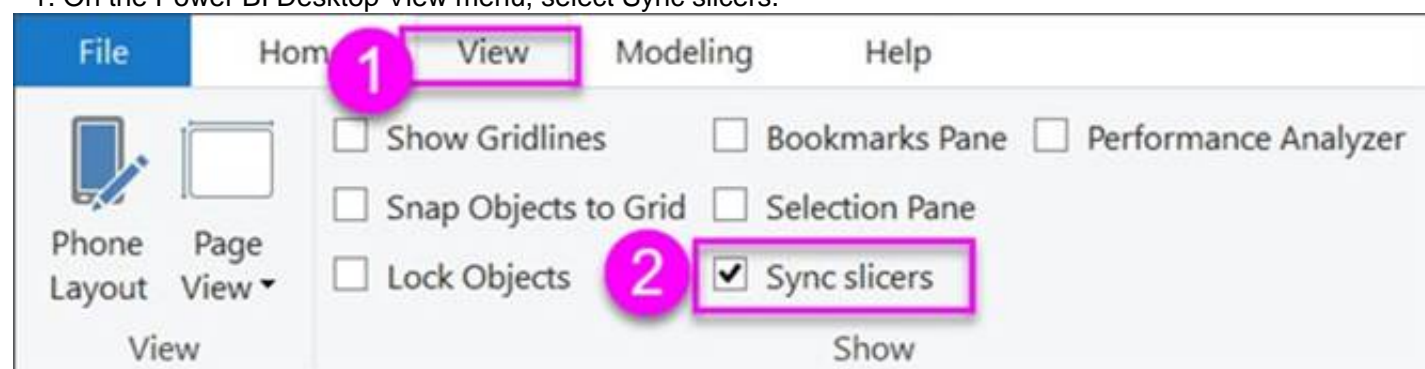
Answer: AE

**Explanation:**

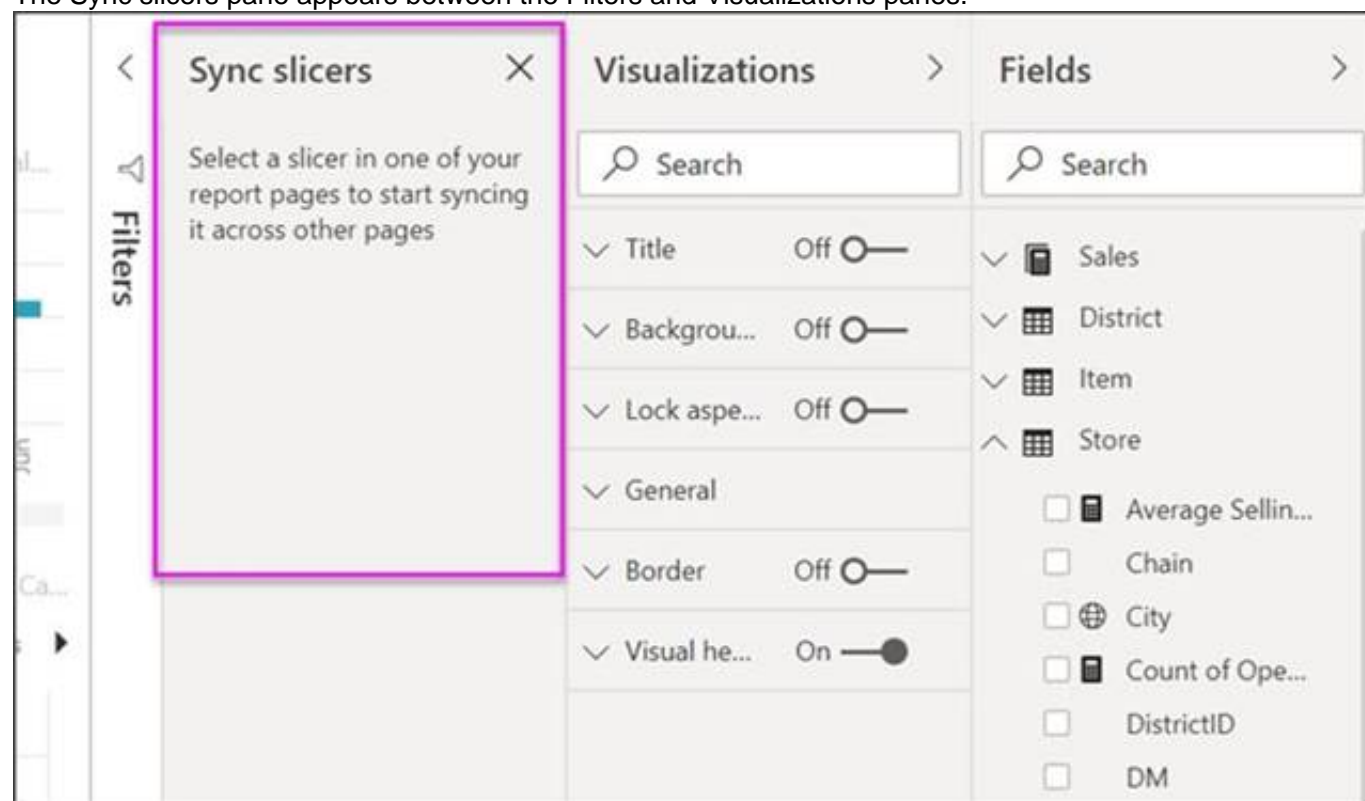
Add a report-level filter to filter an entire report.

The visuals on the active page, and on all pages in the report, change to reflect the new filter. You can sync a slicer and use it on any or all pages in a report.

\* 1. On the Power BI Desktop View menu, select Sync slicers.



The Sync slicers pane appears between the Filters and Visualizations panes.



Reference:

<https://docs.microsoft.com/en-us/power-bi/create-reports/power-bi-report-add-filter> <https://docs.microsoft.com/en-us/power-bi/visuals/power-bi-visualization-slicers>

**NEW QUESTION 106**

.....

## THANKS FOR TRYING THE DEMO OF OUR PRODUCT

Visit Our Site to Purchase the Full Set of Actual DA-100 Exam Questions With Answers.

We Also Provide Practice Exam Software That Simulates Real Exam Environment And Has Many Self-Assessment Features. Order the DA-100 Product From:

<https://www.2passeasy.com/dumps/DA-100/>

## Money Back Guarantee

### DA-100 Practice Exam Features:

- \* DA-100 Questions and Answers Updated Frequently
- \* DA-100 Practice Questions Verified by Expert Senior Certified Staff
- \* DA-100 Most Realistic Questions that Guarantee you a Pass on Your FirstTry
- \* DA-100 Practice Test Questions in Multiple Choice Formats and Updatesfor 1 Year