

Exam Questions DA-100

Analyzing Data with Microsoft Power BI

<https://www.2passeasy.com/dumps/DA-100/>



NEW QUESTION 1

- (Exam Topic 4)

You have four sales regions. Each region has multiple sales managers.

You implement row-level security (RLS) in a data model. You assign the relevant distribution lists to each role.

You have sales reports that enable analysis by region. The sales managers can view the sales records of their region. The sales managers are prevented from viewing records from other regions.

A sales manager changes to a different region.

You need to ensure that the sales manager can see the correct sales data. What should you do?

- A. From Microsoft Power BI Desktop, edit the Row-Level Security setting for the reports.
- B. Change the Microsoft Power BI license type of the sales manager.
- C. Manage the permissions of the underlying dataset
- D. Request that the sales manager be added to the correct Azure Active Directory group.

Answer: D

Explanation:

Using AD Security Groups, you no longer need to maintain a long list of users.

All that you will need to do is to put in the AD Security group with the required permissions and Power BI will do the REST! This means a small and simple security file with the permissions and AD Security group.

Note: Configure role mappings

Once published to Power BI, you must map members to dataset roles.

Members can be user accounts or security groups. Whenever possible, we recommend you map security groups to dataset roles. It involves managing security group memberships in Azure Active Directory. Possibly, it delegates the task to your network administrators.

Reference:

<https://www.fourmoo.com/2018/02/20/dynamic-row-level-security-is-easy-with-active-directory-security-group>

<https://docs.microsoft.com/en-us/power-bi/guidance/rls-guidance>

NEW QUESTION 2

- (Exam Topic 4)

You have sales data in a star schema that contains four tables named Sales, Customer, Date, and Product. The Sales table contains purchase and ship dates.

Most often, you will use the purchase date to analyze the data, but you will analyze the data by both dates independently and together.

You need to design an imported dataset to support the analysis. The solution must minimize the model size and the number of queries against the data source.

Which data modeling design should you use?

- A. Use the Auto Date/Time functionality in Microsoft Power BI and do NOT import the Date table.
- B. Duplicate the Date query in Power Query and create active relationships between Sales and both Date tables in the modeling view.
- C. On the Date table, use a reference query in Power Query and create active relationships between Sales and both Date tables in the modeling view.
- D. Import the Date table twice in Power Query and create active relationships between Sales and both Date tables in the modeling view.

Answer: D

Explanation:

Microsoft recommends defining active relationships whenever possible. They widen the scope and potential of how your model can be used by report authors, and users working with Q&A.

Refactoring methodology (example): Here's a methodology to refactor a model from a single role-playing dimension-type table, to a design with one table per role.

➤ Remove any inactive relationships.

➤ Consider renaming the role-playing dimension-type table to better describe its role. In the example, the Airport table is related to the ArrivalAirport column of the Flight table, so it's renamed as Arrival Airport.

➤ Create a copy of the role-playing table, providing it with a name that reflects its role. If it's an Import table, we recommend defining a calculated table. If it's a DirectQuery table, you can duplicate the Power Query query.

Only one relationship can be active.

Note: If you query two or more tables at the same time, when the data is loaded, Power BI Desktop attempts to find and create relationships for you. The relationship options Cardinality, Cross filter direction, and Make this relationship active are automatically set.

Reference:

<https://docs.microsoft.com/en-us/power-bi/transform-model/desktop-create-and-manage-relationships> <https://docs.microsoft.com/en-us/power-bi/guidance/relationships-active-inactive>

NEW QUESTION 3

- (Exam Topic 4)

You have a CSV file that contains user complaints. The file contains a column named Logged. Logged contains the date and time each complaint occurred. The data in Logged is in the following format:

at 08:59.

You need to be able to analyze the complaints by the logged date and use a built-in date hierarchy. D18912E1457D5D1DDCBD40AB3BF70D5D

What should you do?

- A. Change the data type of the Logged column to Date.
- B. Apply a transform to extract the last 11 characters of the Logged column and set the data type of the new column to Date.
- C. Create a column by example that starts with 2018-12-31 and set the data type of the new column to Date.
- D. Apply a transform to extract the first 11 characters of the Logged column.

Answer: C

NEW QUESTION 4

- (Exam Topic 4)

Note: This question is part of a series of questions that present the same scenario. Each question in the series contains a unique solution that might meet the stated goals. Some question sets might have more than one correct solution, while others might not have a correct solution.

After you answer a question in this section, you will NOT be able to return to it. As a result, these questions will not appear in the review screen.
 You create a parameter named DataSourceExcel that holds the file name and location of a Microsoft Excel data source.
 You need to update the query to reference the parameter instead of multiple hard-coded copies of the location within each query definition.
 Solution: You create a new query that references DataSourceExcel. Does this meet the goal?

- A. Yes
- B. No

Answer: B

Explanation:

Instead modify the source step of the queries to use DataSourceExcel as the file path.

Note: Parameterising a Data Source could be used in many different use cases. From connecting to different data sources defined in Query Parameters to load different combinations of columns.

Reference:

<https://www.biinsight.com/power-bi-desktop-query-parameters-part-1/>

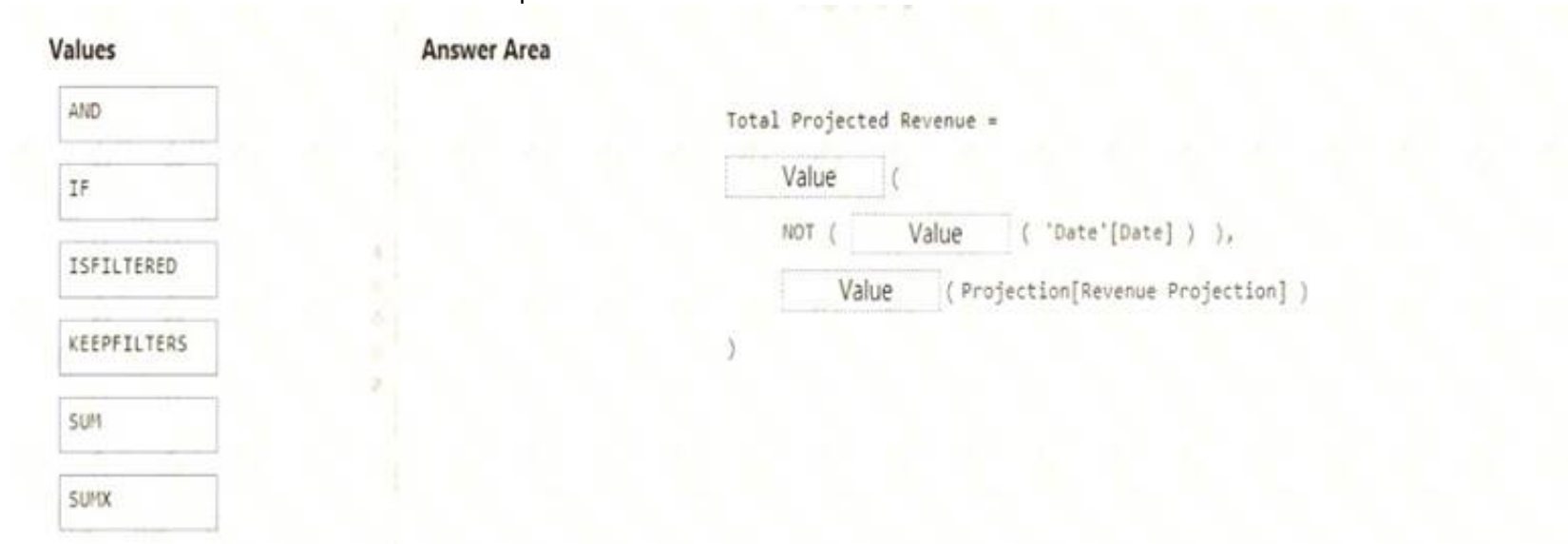
NEW QUESTION 5

- (Exam Topic 2)

You need to create a DAX measure in the data model that only allows users to see projections at the appropriate levels of granularity.

How should you complete the measure? To answer, drag the appropriate values to the correct targets. Each value may be used once, more than once, or not at all. You may need to drag the split bar between panes or scroll to view content.

NOTE: Each correct selection is worth one point.



- A. Mastered
- B. Not Mastered

Answer: A

Explanation:

Scenario: Revenue projections are set at the monthly level and summed to show projections for the quarter. Box 1: IF

Box 2: ISFILTERED

ISFILTERED returns TRUE when columnName is being filtered directly. If there is no filter on the column or if the filtering happens because a different column in the same table or in a related table is being filtered then the function returns FALSE.

Box 3: SUM

Reference:

<https://docs.microsoft.com/en-us/dax/isfiltered-function-dax>

NEW QUESTION 6

- (Exam Topic 2)

Which DAX expression should you use to get the ending balances in the balance sheet reports?

- A. CALCULATE (SUM(BalanceSheet [BalanceAmount]), DATESQTD('Date'[Date]))
- B. CALCULATE (SUM(BalanceSheet [BalanceAmount]), LASTDATE('Date'[Date]))
- C. FIRSTNONBLANK ('Date' [Date]SUM(BalanceSheet[BalanceAmount]))
- D. CALCULATE (MAX(BalanceSheet[BalanceAmount]), LASTDATE('Date' [Date]))

Answer: A

Explanation:

Scenario: At least one of the balance sheet reports in the quarterly reporting package must show the ending balances for the quarter, as well as for the previous quarter.

DATESQTD returns a table that contains a column of the dates for the quarter to date, in the current context. Reference:

<https://docs.microsoft.com/en-us/dax/datesqtd-function-dax>

NEW QUESTION 7

- (Exam Topic 2)

You need to grant access to the business unit analysts.

What should you configure? To answer, select the appropriate options in the answer area. NOTE: Each correct selection is worth one point.

Answer Area

Permissions required in powerbi.com:

Access permissions to an app
 The Member role to the workspace
 The Viewer role to the workspace

Permissions for the profit and loss dataset:

Build
 Delete
 Reshare

- A. Mastered
- B. Not Mastered

Answer: A

Explanation:

Box 1: The Viewer role to the workspace

The Viewer role gives a read-only experience to its users. They can view dashboards, reports, or workbooks in the workspace, but can't browse the datasets or dataflows. Use the Viewer role wherever you would previously use a classic workspace set to "Members can only view Power BI content".

| Capability | Admin | Member | Contributor | Viewer |
|--|-------|--------|-------------|----------------|
| Update and delete the workspace. | X | | | |
| Add/remove people, including other admins. | X | | | |
| Add members or others with lower permissions. | X | X | | |
| Publish and update an app. | X | X | | |
| Share an item or share an app. | X | X | | |
| Allow others to reshare items. | X | X | | |
| Create, edit, and delete content in the workspace. | X | X | X | |
| Publish reports to the workspace, delete content. | X | X | X | |
| View an item. | X | X | X | X |
| Create a report in another workspace based on a dataset in this workspace. | X | X | X | X ¹ |
| Copy a report. | X | X | X | X ¹ |

Box 2: Build

The analysts must be able to build new reports from the dataset that contains the profit and loss data. Scenario: The reports must be made available to the board from powerbi.com.

The analysts responsible for each business unit must see all the data the board sees, except the profit and loss data, which must be restricted to only their business unit's data. The analysts must be able to build new reports from the dataset that contains the profit and loss data, but any reports that the analysts build must not be included in the quarterly reports for the board. The analysts must not be able to share the quarterly reports with anyone.

Reference:

<https://www.nickyvv.com/2019/08/the-new-power-bi-workspace-viewer-role-explained.html>

NEW QUESTION 8

- (Exam Topic 2)

What is the minimum number of datasets and storage modes required to support the reports?

- A. two imported datasets
- B. a single DirectQuery dataset
- C. two DirectQuery datasets
- D. a single imported dataset

Answer: D

Explanation:

"The analysts responsible for each business unit must see all the data the board sees, except the profit and loss data, which must be restricted to only their business unit's data. The analysts must be able to build new reports from the dataset that contains the profit and loss data" => one dataset and two separate workspaces Reason: All data can be imported into one dataset also if these are two logical models. Shared dimensions can be reconsumed in both models. Reports and additional materials can be shared to the board with an app. The "profit and loss" data model needs RLS for the analysts and the analysts must have just read access to the original workspace. In a separate workspace with contributor (or more rights) they can create new reports (with live connection to the dataset). It is also stated that the new reports mustn't be shared so therefore no need to include them into the app. Import vs. DirectQuery: Due to RLS requirements an imported dataset is needed. It is not possible with file sources and Sharepoint lists.

NEW QUESTION 9

- (Exam Topic 1)

You need to create a calculated column to display the month based on the reporting requirements. Which DAX expression should you use?

- A. `FORMAT('Date'[date], "MMM YYYY")`
- B. `FORMAT('Date' [date], "M YY")`
- C. `FORMAT('Date'[date_id], "MMM") & "" & FORMAT('Date'[year], "#")`
- D. `FORMAT('Date' [date_id], "MMM YYYY")`

Answer: A

NEW QUESTION 10

- (Exam Topic 1)

You need to create a relationship between the Weekly_Returns table and the Date table to meet the reporting requirements of the regional managers. What should you do?

- A. In the Weekly_Returns table, create a new calculated column named date-id in a format of yyyyymmdd and use the calculated column to create a relationship to the Date table.
- B. Add the Weekly_Returns data to the Sales table by using related DAX functions.
- C. Create a new table based on the Date table where date-id is unique, and then create a many-to-many relationship to Weekly_Return.

Answer: A

Explanation:

Scenario: Region managers require a visual to analyze weekly sales and returns. To relate the two tables we need a common column.

NEW QUESTION 10

- (Exam Topic 1)

You need to provide a solution to provide the sales managers with the required access. What should you include in the solution?

- A. Create a security role that has a table filter on the Sales_Manager table where `username = Username()`
- B. Create a security role that has a table filter on the Region_Manager table where `sales_manager_id = UserPrincipalName()`.
- C. Create a security role that has a table filter on the Sales_Manager table where `name = Username()`.
- D. Create a security role that has a table filter on the Sales_Manager table where `username = sales_manager_id`.

Answer: A

Explanation:

<https://powerbi.microsoft.com/en-us/blog/using-username-in-dax-with-row-level-security/>

NEW QUESTION 14

- (Exam Topic 4)

Note: This question is part of a series of questions that present the same scenario. Each question in the series contains a unique solution that might meet the stated goals. Some question sets might have more than one correct solution, while others might not have a correct solution.

After you answer a question in this section, you will NOT be able to return to it. As a result, these questions will not appear in the review screen.

You are modeling data by using Microsoft Power BI. Part of the data model is a large Microsoft SQL Server table named Order that has more than 100 million records.

During the development process, you need to import a sample of the data from the Order table. Solution: You add a WHERE clause to the SQL statement.

Does this meet the goal?

- A. Yes
- B. No

Answer: A

Explanation:

The WHERE clause has its effects before the data is imported. Reference:

<https://docs.microsoft.com/en-us/power-bi/connect-data/service-gateway-sql-tutorial>

NEW QUESTION 16

- (Exam Topic 4)

You are using existing reports to build a dashboard that will be viewed frequently in portrait mode on mobile phones.

You need to build the dashboard.

Which four actions should you perform in sequence? To answer, move the appropriate actions from the list of actions to the answer area and arrange them in the correct order.

Actions

Pin items from the reports to the dashboard.

Rearrange, resize, or remove items from the phone view.

Change the dashboard view to **Phone view**.

Open the dashboard.

Create a phone layout for the existing reports.

Answer Area



- A. Mastered
- B. Not Mastered

Answer: A

Explanation:

Actions

Pin items from the reports to the dashboard.

Rearrange, resize, or remove items from the phone view.

Change the dashboard view to **Phone view**.

Open the dashboard.

Create a phone layout for the existing reports.

Answer Area

Pin items from the reports to the dashboard.

Open the dashboard.

Change the dashboard view to **Phone view**.

Rearrange, resize, or remove items from the phone view.



NEW QUESTION 19

- (Exam Topic 4)

You have a line chart that shows the number of employees in a department over time. You need to see the total salary costs of the employees when you hover over a data point. What is possible way to achieve this goal?

- A. Add a salary to the tooltips.
- B. Add a salary to the visual filters.
- C. Add salary to the drillthrough fields.

Answer: A

Explanation:

<https://docs.microsoft.com/en-us/power-bi/create-reports/desktop-custom-tooltips> <https://technovids.com/power-bi-filters/>

NEW QUESTION 21

- (Exam Topic 4)

You have a Microsoft Power BI data model that contains three tables named Orders, Date, and City. There is a one-to-many relationship between Date and Orders and between City and Orders.

The model contains two row-level security (RLS) roles named Role1 and Role2. Role1 contains the following filter.

City[State Province] = "Kentucky" Role2 contains the following filter. Date[Calendar Year] = 2020

If a user is a member of both Role1 and Role2, what data will they see in a report that uses the model?

- A. The user will see data for which the State Province value is Kentucky and the Calendar Year is 2020.
- B. The user will see data for which the State Province value is Kentucky or the Calendar Year is 2020.
- C. The user will see only data for which the State Province value is Kentucky.
- D. The user will receive an error and will not be able to see the data in the report.

Answer: B

Explanation:

When a report user is assigned to multiple roles, RLS filters become additive. It means report users can see table rows that represent the union of those filters.

Reference:

<https://docs.microsoft.com/en-us/power-bi/guidance/rls-guidance>

NEW QUESTION 25

- (Exam Topic 4)

You have multiple dashboards.

You need to ensure that when users browse the available dashboards from powerbi.com. they can see which dashboards contain Personally Identifiable Information (PII). The solution must minimize configuration effort and impact on the dashboard design.

What should you use?

- A. Active Directory groups
- B. tiles
- C. data classifications
- D. comments

Answer: A

NEW QUESTION 30

- (Exam Topic 4)

Your company plans to completely separate development and production assets such as datasets, reports, and dashboards in Microsoft Power BI.

You need to recommend an application lifecycle strategy. The solution must minimize access to production assets and prevent end users from viewing the development assets.

What should you recommend?

- A. Create production reports in a separate workspace that uses a shared dataset from the development workspac
- B. Grant the end users access to the production workspace.
- C. Create one workspace for developmen
- D. From the new workspace, publish an app for production.
- E. Create a workspace for development and a workspace for productio
- F. From the production workspace, publish an app.
- G. In one workspace, create separate copies of the assets and append DEV to the names of the copied asset
- H. Grant the end users access to the workspace.

Answer: C

Explanation:

Use different work stages (Development, Test, and Production). Deploy from the Development workspace.

Reference:

<https://visualbi.com/blogs/microsoft/powerbi/application-lifecycle-management-power-bi/>

NEW QUESTION 32

- (Exam Topic 4)

You have a collection of reports for the HR department of your company.

You need to create a visualization for the HR department that shows a historic employee counts and predicts trends during the next six months.

Which type of visualization should you use?

- A. scatter chart
- B. ribbon chart
- C. line chart
- D. key influences

Answer: C

Explanation:

The best data for forecasting is time series data or uniformly increasing whole numbers. The line chart has to have only one line.

Try forecasting: Try the new forecasting capabilities of Power View today on your own data or with the sample report available as part of the Power BI report samples. To view your own data, upload a workbook with a Power View time series line chart to Power BI for Office 365.

Reference:

<https://powerbi.microsoft.com/en-us/blog/introducing-new-forecasting-capabilities-in-power-view-for-office-36>

NEW QUESTION 34

- (Exam Topic 4)

In Power BI Desktop, you are creating visualizations in a report based on an imported dataset

You need to allow Power BI users to export the summarized data used to create the visualizations but prevent the users from exporting the underlying data

What should you do?

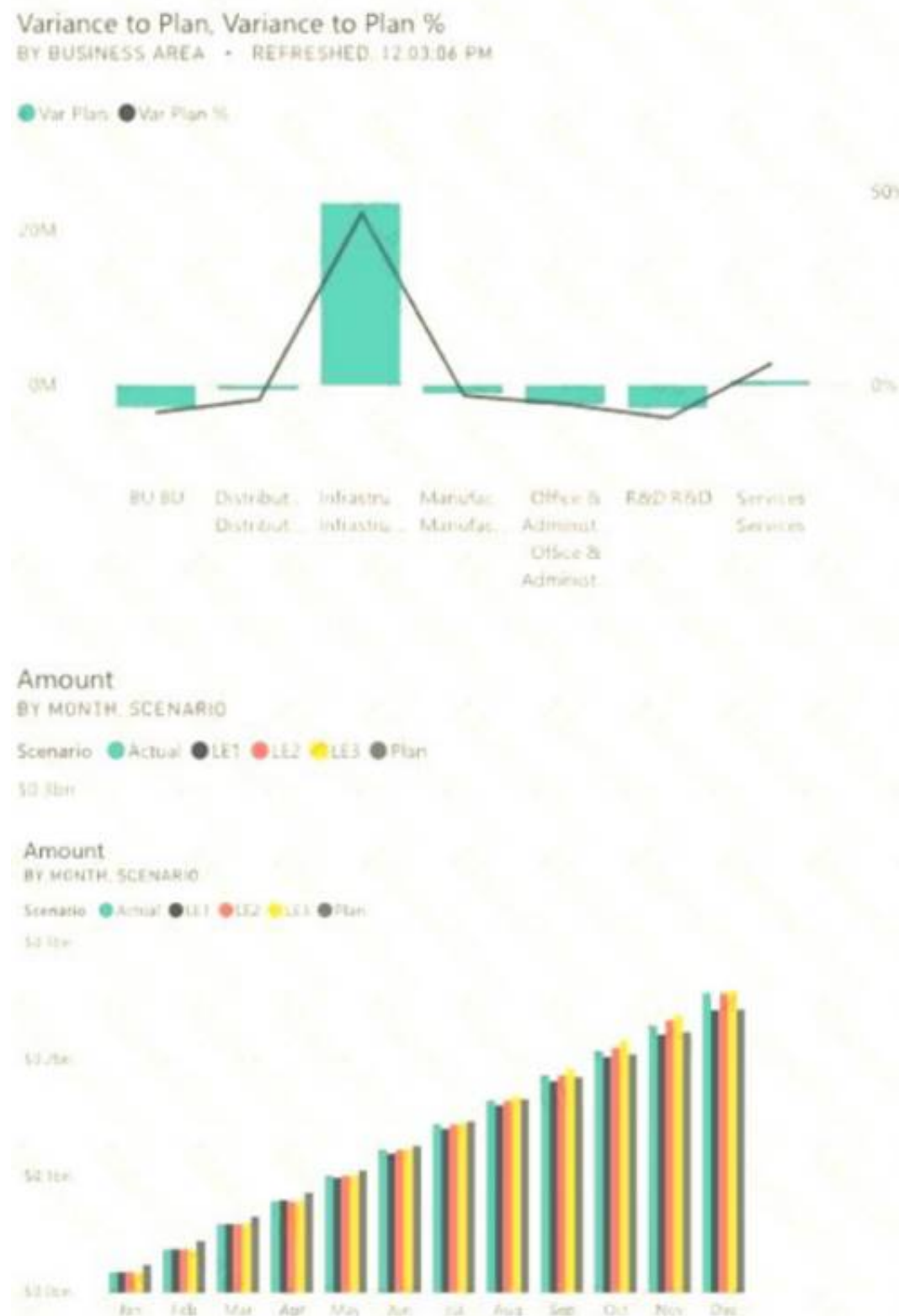
- A. From Power BI Desktop, configure the Data Load settings for the current file.
- B. From the Power BI service, configure the dataset permissions.
- C. From Power BI Desktop, configure the Report settings for the current file.
- D. From Power BI Desktop, modify the data source permissions.

Answer: B

NEW QUESTION 39

- (Exam Topic 4)

You have a Microsoft Power BI dashboard. The report used to create the dashboard uses an imported dataset from a Microsoft SQL Server data source. The dashboard is shown in the exhibit. (Click the Exhibit tab.)



What occurred at 12:03:06 PM?

- A. A user pressed F5
- B. A new transaction was added to the data source.
- C. A user added a comment to a tile.
- D. The dashboard tile cache refreshed.

Answer: D

Explanation:

Reference:

<https://docs.microsoft.com/en-us/power-bi/connect-data/refresh-data>

NEW QUESTION 41

- (Exam Topic 4)

You use an R visual to produce a map of 500,000 customers. You include the values of CustomerID, Latitude, and Longitude in the fields sent to the visual. Each customer ID is unique.

In powerbi.com, when users load the visual, they only see some of the customers. What is the cause of the issue?

- A. The visual was built by using a different version of R.
- B. The data comes from a Microsoft SQL Server source.
- C. The data is deduplicated.
- D. Too many records were sent to the visual.

Answer: D

Explanation:

R visuals in the Power BI service have a few limitations including:

- Data size limitations – data used by the R visual for plotting is limited to 150,000 rows. If more than 150,000 rows are selected, only the top 150,000 rows are used and a message is displayed on the image. Additionally, the input data has a limit of 250 MB.

Reference:

<https://docs.microsoft.com/en-us/power-bi/visuals/service-r-visuals>

NEW QUESTION 44

- (Exam Topic 4)

Note: This question is part of a series of questions that present the same scenario. Each question in the series contains a unique solution that might meet the stated goals. Some question sets might have more than one correct solution, while others might not have a correct solution.

After you answer a question in this scenario, you will NOT be able to return to it. As a result, these questions will not appear in the review screen.

You have a clustered bar chart that contains a measure named Salary as the value and a field named Employee as the axis. Salary is present in the data as numerical amount representing US dollars.

You need to create a reference line to show which employees are above the median salary. Solution: You create an average line by using the Salary measure. Does this meet the goal?

- A. Yes
- B. No

Answer: B

Explanation:

Instead create a percentile line by using the Salary measure and set the percentile to 50%.

Note: The 50th percentile is also known as the median or middle value where 50 percent of observations fall below.

Reference:

https://dash-intel.com/powerbi/statistical_functions_percentile.php

NEW QUESTION 48

- (Exam Topic 4)

You are creating a Microsoft Power BI imported data model to perform basket analysis. The goal of the analysis is to identify which products are usually bought together in the same transaction across and within sales territories.

You import a fact table named Sales as shown in the exhibit. (Click the Exhibit tab.)

| Column name | Data type | Description |
|----------------------|-----------|--|
| SalesRowID | Integer | ID of the row from the source system, which represents a unique combination of SalesOrderNumber and SalesOrderLineNumber |
| ProductKey | Integer | Surrogate key that relates to the product dimension |
| OrderDateKey | Integer | Surrogate key that relates to the date dimension and is in the YYYYMMDD format |
| OrderDate | Datetime | Date and time an order was processed |
| CustomerKey | Integer | Surrogate key that relates to the customer dimension |
| SalesTerritoryKey | Integer | Surrogate key that relates to the sales territory dimension |
| SalesOrderNumber | Integer | Unique identifier of an order |
| SalesOrderLineNumber | Integer | Unique identifier of a line within an order |
| OrderQuantity | Integer | Quantity of the product ordered |
| LineTotal | Decimal | Total sales amount of a line before tax |
| TaxAmt | Decimal | Amount of tax charged for the items on a specified line within an order |
| Freight | Decimal | Amount of freight charged for the items on a specified line within an order |
| LastModified | Datetime | The date and time that a row was last modified in the source system |
| AuditID | Integer | The ID of the data load process that last updated a row |

The related dimension tables are imported into the model.

For each of the following statements, select Yes if the statement is true. Otherwise, select No.

NOTE: Each correct selection is worth one point.

Answer Area

| Statements | Yes | No |
|---|-----------------------|-----------------------|
| The SalesRowID and AuditID columns can be removed from the model without impeding the analysis goals. | <input type="radio"/> | <input type="radio"/> |
| Both the OrderDateKey and OrderDate columns are necessary to perform the basket analysis. | <input type="radio"/> | <input type="radio"/> |
| The TaxAmt column must retain the current number of decimal places to perform the basket analysis. | <input type="radio"/> | <input type="radio"/> |

- A. Mastered
- B. Not Mastered

Answer: A

Explanation:

Reference:
<https://finance-bi.com/power-bi-basket-analysis/>

NEW QUESTION 51

- (Exam Topic 4)
Your company has affiliates who help the company acquire customers.
You build a report for the affiliate managers at the company to assist them in understanding affiliate performance.
The managers request a visual showing the total sales value of the latest 50 transactions for each affiliate. You have a data model that contains the following tables.

| Table name | Column name |
|--------------|-----------------|
| Transactions | TransactionDate |
| | ItemsOrdered |
| | Amount |
| | AffiliateID |
| | TransactionID |
| Affiliate | AffiliateID |
| | Name |

You need to develop a measure to support the visual.
How should you complete the DAX expression? To answer, select the appropriate options in the answer area. NOTE: Each correct selection is worth one point.

Answer Area

Revenue Last 50 Transactions =

CALCULATE

CONCATENATEX

SUM

SUMX

TOPN

(Transactions[Amount]),

CALCULATE

CONCATENATEX

SUM

SUMX

TOPN

(50, Transactions, Transactions

TransactionID]

[Amount],

[ItemsOrdered],

[TransactionDate],

DESC)

)

- A. Mastered
- B. Not Mastered

Answer: A

Explanation:

Box 1: CALCULATE
Start with CALCULATE and use a SUMX.
CALCULATE evaluates an expression in a modified filter context.
Box 2: SUM
Box 3: TOPN
TOPN returns the top N rows of the specified table.
Box 4: [TransactionDate]
TOPN Syntax: TOPN(<n_value>, <table>, <orderBy_expression>, [<order>[, <orderBy_expression>, [<order>]]...])
The orderBy_expression: Any DAX expression where the result value is used to sort the table and it is evaluated for each row of table.
Reference:
<https://docs.microsoft.com/en-us/dax/topn-function-dax>

NEW QUESTION 55

- (Exam Topic 4)
You have a Microsoft Power BI workspace.
You need to grant the user capabilities shown in the following table.

Passing Certification Exams Made Easy

visit - <https://www.2PassEasy.com>

| User name | Task |
|-----------|--|
| User1 | Create and publish apps. |
| User2 | Publish reports to the workspace and delete dashboards |

The solution must use the principle of least privilege.
Which user role should you assign to each user? To answer, drag the appropriate roles to the correct users. Each role may be used once, more than once, or not at all. You may need to drag the split bar between panes or scroll to view content.
NOTE: Each correct selection is worth one point.

Roles

Answer Area

Admin

Contributor

Member

Viewer

User1:

User2:

- A. Mastered
- B. Not Mastered

Answer: A

Explanation:
User 1 = Member
User 2 = Contributor
<https://docs.microsoft.com/en-us/power-bi/collaborate-share/service-new-workspaces>

NEW QUESTION 57

- (Exam Topic 4)
Your company has employees in 10 states.
The company recently decided to associate each state to one of the following three regions: East, West, and North.
You have a data model that contains employee information by state. The model does NOT include region information.
You have a report that shows the employees by state.
You need to view the employees by region as quickly as possible. What should you do?

- A. Create a new aggregation that summarizes by employee.
- B. Create a new group on the state column and set the Group type to List.
- C. Create a new group on the state column and set the Group type to Bin.
- D. Create a new aggregation that summarizes by state.

Answer: B

Explanation:
<https://www.mssqltips.com/sqlservertip/4720/binning-and-grouping-data-with-power-bi/>

NEW QUESTION 61

- (Exam Topic 4)
You are building a dataset from a JSON file that contains an array of documents.
You need to import attributes as columns from all the documents in the JSON file. The solution must ensure that date attributes can be used as date hierarchies in Microsoft Power BI reports.
Which three actions should you perform in sequence? To answer, move the appropriate actions from the list of actions to the answer area and arrange them in the correct order.

Actions

Answer Area

Expand the columns.

Expand the records.

Add columns that use data type conversions.

Set the data types.

Convert the list to a table.

<

>

^

v

- A. Mastered
- B. Not Mastered

Answer: A

Explanation:

Here is an example: <https://youtu.be/B4kzyxnhQfl> The definition of the function which expand columns:
<https://docs.microsoft.com/en-us/powerquery-m/table-expandrecordcolumn>

NEW QUESTION 65

- (Exam Topic 4)

You need to design the data model to meet the report requirements. What should you do in Power BI Desktop?

- A. From Power Query, add columns to the Orders table to calculate the calendar quarter and the calendar month of the OrderDate column.
- B. From Power BI Desktop, use the Auto date/time option when creating the reports.
- C. From Power Query, add a date table
- D. Create an active relationship to the OrderDate column in the Orders table and an inactive relationship to the ShippedDate column in the Orders table.
- E. From Power Query, use a DAX expression to add columns to the Orders table to calculate the calendar quarter of the OrderDate column, the calendar month of the OrderDate column, the calendar quarter of the ShippedDate column, and the calendar month of the ShippedDate column

Answer: D

NEW QUESTION 70

- (Exam Topic 4)

Your company has training videos that are published to Microsoft Stream. You need to surface the videos directly in a Microsoft Power BI dashboard. Which type of tile should you add?

- A. video
- B. custom streaming data
- C. text box
- D. web content

Answer: D

Explanation:

<https://docs.microsoft.com/en-us/stream/portal-embed-video>
<https://docs.microsoft.com/en-us/power-bi/create-reports/service-dashboard-add-widget#add-web-content>

NEW QUESTION 73

- (Exam Topic 4)

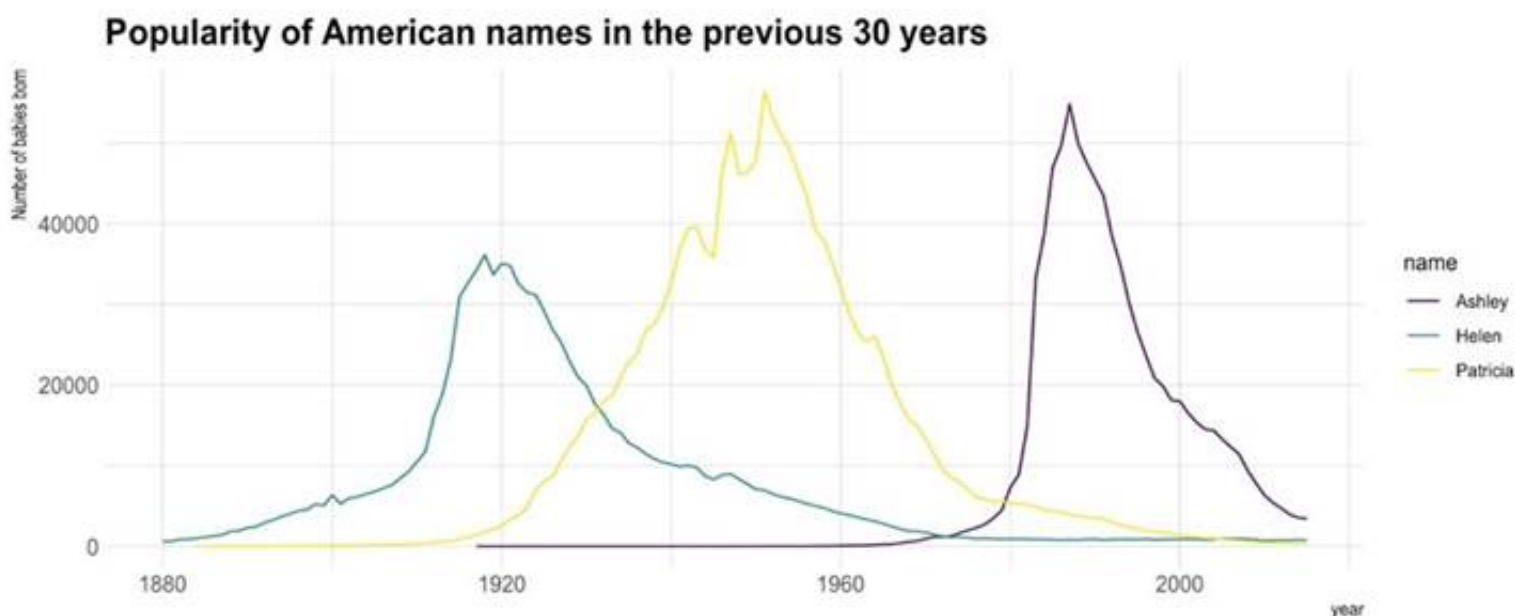
You need to create a visualization that compares revenue and cost over time. Which type of visualization should you use?

- A. stacked area chart
- B. donut chart
- C. line chart
- D. waterfall chart

Answer: C

Explanation:

A line chart or line graph displays the evolution of one or several numeric variables. Data points are connected by straight line segments. A line chart is often used to visualize a trend in data over intervals of time – a time series – thus the line is often drawn chronologically.
 Example:



Reference:

<https://www.data-to-viz.com/graph/line.html>

NEW QUESTION 76

- (Exam Topic 4)

You need to create the Top Customers report.

Which type of filter should you use, and at which level should you apply the filter? To answer, select the appropriate options in the answer area.

NOTE: Each correct selection is worth one point.

Answer Area

Filter type: Top N

Level: Report

- A. Mastered
- B. Not Mastered

Answer: A

Explanation:

A picture containing background pattern
 Description automatically generated

NEW QUESTION 78

- (Exam Topic 4)

You have the visual shown in the Original exhibit. (Click the Original tab.)



You need to configure the visual as shown in the Modified exhibit. (Click the Modified tab.)



What should you add to the visual?

- A. a measure
- B. a trendline
- C. a forecast
- D. an Average line

Answer: C

Explanation:

Explore forecast results by adjusting the desired confidence interval or by adjusting outlier data to see how they affect results.

Timeline Description automatically generated with low confidence

Reference:

<https://powerbi.microsoft.com/fr-fr/blog/introducing-new-forecasting-capabilities-in-power-view-for-office-365>

NEW QUESTION 83

- (Exam Topic 4)

You have a data model that contains many complex DAX expressions. The expressions contain frequent references to the RELATED and RELATEDTABLE functions.

You need to recommend a solution to minimize the use of the RELATED and RELATEDTABLE functions. What should you recommend?

- A. Merge tables by using Power Query.
- B. Hide unused columns in the model.
- C. Split the model into multiple models.
- D. Transpose.

Answer: A

Explanation:

Combining data means connecting to two or more data sources, shaping them as needed, then consolidating them into a useful query.

When you have one or more columns that you'd like to add to another query, you merge the queries. Note: The RELATEDTABLE function is a shortcut for CALCULATETABLE function with no logical expression.

CALCULATETABLE evaluates a table expression in a modified filter context and returns A table of values. Reference:

<https://docs.microsoft.com/en-us/power-bi/connect-data/desktop-shape-and-combine-data>

NEW QUESTION 87

- (Exam Topic 4)

You have a Microsoft Power BI dashboard.

You need to ensure that consumers of the dashboard can give you feedback that will be visible to the other consumers of the dashboard.

What should you use?

- A. Feedback
- B. Subscribe
- C. Comments
- D. Mark as favorite

Answer: C

Explanation:

<https://docs.microsoft.com/en-us/power-bi/consumer/end-user-comment>

NEW QUESTION 90

- (Exam Topic 4)

Note: This question is part of a series of questions that present the same scenario. Each question in the series contains a unique solution that might meet the stated goals. Some question sets might have more than one correct solution, while others might not have a correct solution.

After you answer a question in this scenario, you will NOT be able to return to it. As a result, these questions will not appear in the review screen.

You have several reports and dashboards in a workspace.

You need to grant all organizational users read access to a dashboard and several reports. Solution: You assign all the users the Viewer role to the workspace.

Does this meet the goal?

- A. Yes
- B. No

Answer: A

Explanation:

The Viewer role gives a read-only experience to its users. They can view dashboards, reports, or workbooks in the workspace, but can't browse the datasets or dataflows. Use the Viewer role wherever you would previously use a classic workspace set to "Members can only view Power BI content".

Reference:

<https://powerbi.microsoft.com/en-us/blog/announcing-the-new-viewer-role-for-power-bi-workspaces/>

NEW QUESTION 92

- (Exam Topic 4)

You build a report about warehouse inventory data. The dataset has more than 10 million product records from 200 warehouses worldwide. You have a table named Products that contains the columns shown in the following table.

| Name | Sample data |
|----------------------|--|
| ProductDescription | Bikes > Adventure Works > Mountain Bikes > Super Carbon Bike > 26in wheels 42in frame |
| ProductCategory | Bikes |
| Manufacturer | Adventure Works |
| ProductSubcategory | Mountain Bikes |
| ProductSpecification | 26in wheels 42in frame |

Warehouse managers report that it is difficult to use the report because the report uses only the product name in tables and visuals. The product name is contained within the ProductDescription column and is always the fourth value.

You need to modify the report to support the warehouse managers requirement to explore inventory levels at different levels of the product hierarchy. The solution must minimize the model size.

Which three actions should you perform in sequence? To answer, move the appropriate actions from the list of actions to the answer area and arrange them in the correct order.

| Actions | Answer Area |
|--|-------------|
| Create a product hierarchy of Manufacturer, ProductSpecifications, ProductName, ProductSubcategory, and ProductCategory. | |
| Replace the use of ProductDescription in the report with the product hierarchy. | |
| Transform the ProductDescription column to contain only the text between the first and fourth > symbol. | |
| Add the product hierarchy as an extra field in visuals where ProductDescription is used. | |
| Add a column named ProductName that contains only the text between the third and fourth > symbol in the ProductDescription column. | |
| Add a column named ProductName that contains all the text after the third > symbol in the ProductDescription column. | |
| Create a product hierarchy of ProductCategory, ProductSubcategory, Manufacturer, ProductName, and ProductSpecifications. | |

- A. Mastered
 B. Not Mastered

Answer: A

Explanation:

| Actions |
|--|
| Create a product hierarchy of Manufacturer, ProductSpecifications, ProductName, ProductSubcategory, and ProductCategory. |
| 3 Replace the use of ProductDescription in the report with the product hierarchy. |
| Transform the ProductDescription column to contain only the text between the first and fourth > symbol. |
| Add the product hierarchy as an extra field in visuals where ProductDescription is used. |
| 1 Add a column named ProductName that contains only the text between the third and fourth > symbol in the ProductDescription column. |
| Add a column named ProductName that contains all the text after the third > symbol in the ProductDescription column. |
| 2 Create a product hierarchy of ProductCategory, ProductSubcategory, Manufacturer, ProductName, and ProductSpecifications. |

NEW QUESTION 94

- (Exam Topic 4)

You have the tables shown in the following table.

| Table name | Column name |
|-------------|-----------------|
| Campaigns | Campaign_ID |
| | Name |
| Ads | Ad_id |
| | Name |
| | Campaign_id |
| Impressions | Impression_id |
| | Ad_id |
| | Site_name |
| | Impression_time |
| | Impression_date |

The Impressions table contains approximately 30 million records per month. You need to create an ad analytics system to meet the following requirements:

- Present ad impression counts for the day, campaign, and Site_name. The analytics for the last year are required.
- Minimize the data model size.

Which two actions should you perform? Each correct answer presents part of the solution. NOTE: Each correct selection is worth one point.

- A. Group the impressions by Ad_id, Site_name, and Impression_date. Aggregate by using the CountRows function.
 B. Create one-to-many relationships between the tables.
 C. Create a calculated measure that aggregates by using the COUNTROWS function.
 D. Create a calculated table that contains Ad_id, Site_name, and Impression_date.

Answer: BC

NEW QUESTION 97

- (Exam Topic 4)

You have a prospective customer list that contains 1,500 rows of data. The list contains the following fields: ➤ First name

- Last name

- > Email address
- > State/Region
- > Phone number

You import the list into Power Query Editor.

You need to ensure that the list contains records for each State/Region to which you want to target a marketing campaign.

Which two actions should you perform? Each correct answer presents part of the solution. NOTE: Each correct selection is worth one point.

- A. Open the Advanced Editor.
- B. Select Column quality.
- C. Enable Column profiling based on entire dataset.
- D. Select Column distribution.
- E. Select Column profile.

Answer: CE

Explanation:

In Power query, the load preview by default is 1000 row. By default, the column quality also only looks at the first 1000 row. You can verify this by the status bar at the bottom of the Power query window. To change the profiling so it analyses the entire column of data, select the profiling status in the status bar. Then select Column profiling based on the entire data set.

https://theexcelclub.com/data-profiling-views-in-power-query-excel-and-power-bi/

NEW QUESTION 98

- (Exam Topic 4)

You receive revenue data that must be included in Microsoft Power BI reports.

You perform an initial load of the data from a Microsoft Excel source as shown in the following exhibit.

| | Column1 | Column2 | Column3 | Column4 | Column5 | Column6 |
|---|------------------------------------|------------------------------------|------------------------------------|------------------------------------|------------------------------------|------------------------------------|
| | Valid 100% Error 0% Empty 0% | Valid 100% Error 0% Empty 0% | Valid 100% Error 0% Empty 0% | Valid 100% Error 0% Empty 0% | Valid 100% Error 0% Empty 0% | Valid 100% Error 0% Empty 0% |
| 1 | Department | Product | 2016 | 2017 | 2018 | 2019 |
| 2 | Bikes | Carbon mountainbike | 1002815 | 1006682 | 1007814 | 1007239 |
| 3 | Bikes | Aluminium road bike | 1007094 | 1009454 | 1005842 | 1007105 |
| 4 | Bikes | Touring bike | 1003676 | 1005171 | 1001669 | 1003244 |
| 5 | Accessories | Bell | 76713 | 10247 | 60590 | 25927 |
| 6 | Accessories | Bottle holder | 26690 | 29613 | 67955 | 71466 |
| 7 | Accessories | Satnav | 83189 | 40113 | 71684 | 24697 |
| 8 | Accessories | Mobilephone holder | 68641 | 80336 | 58099 | 45706 |

You plan to create several visuals from the data, including a visual that shows revenue split by year and product.

You need to transform the data to ensure that you can build the visuals. The solution must ensure that the columns are named appropriately for the data that they contain.

Which three actions should you perform in sequence? To answer, move the appropriate actions from the list of actions to the answer area and arrange them in the correct order.

Actions

Select Use Headers as First Row.

Select Department and Product and Unpivot Other Columns.

Select Use First Rows as Headers.

Rename the third column as Year and the fourth column as Revenue.

Select Department and Product and Unpivot Columns.

Rename the third column as Revenue and the fourth column as Year.

Answer Area

- A. Mastered
- B. Not Mastered

Answer: A

Explanation:

Text Description automatically generated with medium confidence

Step 1: Select Use Header as First Row.

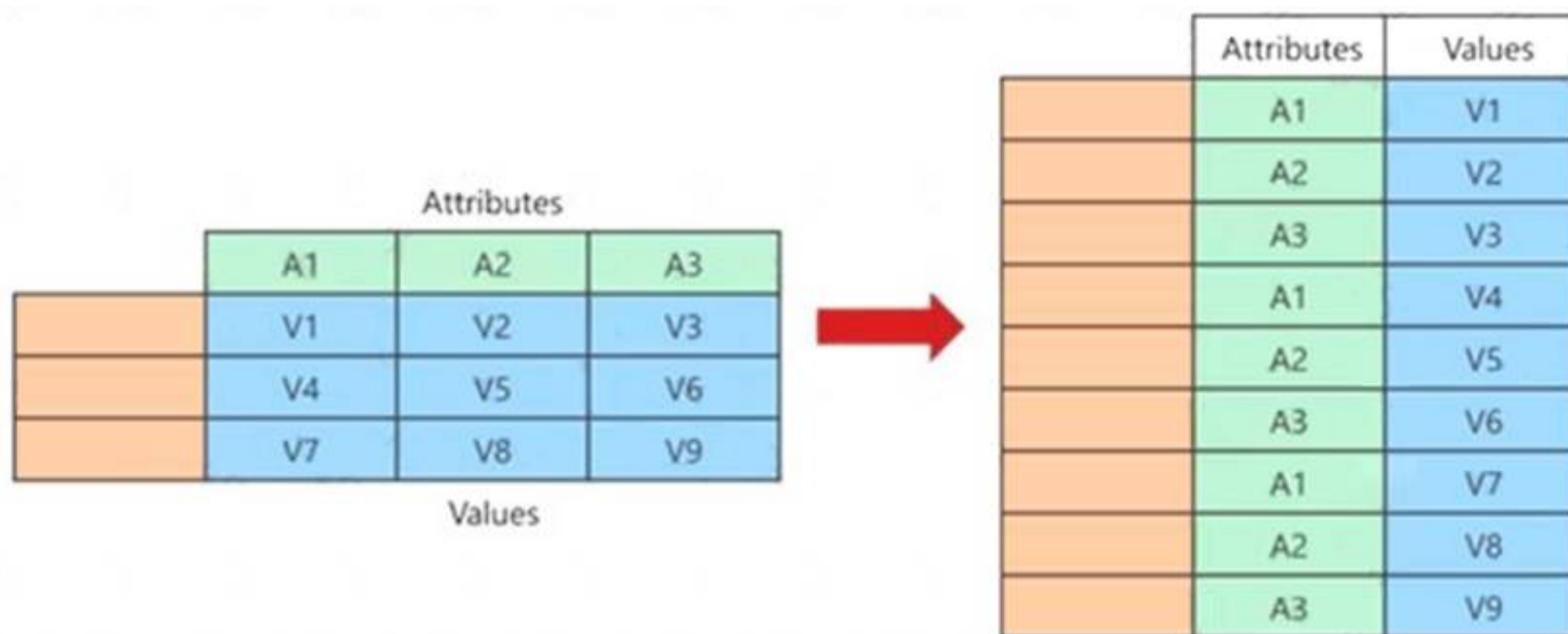
Step 2: Select Department and Product and Unpivot Other Columns

Unpivot Other Columns: This command unpivots unselected columns. Use this command in a query when not all columns are known. New columns added during a refresh operation are also unpivoted.

Step 3: Rename the Attribute column to Year and the Value column to Revenue.

You might want to unpivot data, sometimes called flattening the data, to put it in a matrix format so that all similar values are in one column. This is necessary, for example, to create a chart or a report.

Chart Description automatically generated with medium confidence



When you unpivot, you unpack the attribute-value pairs that represent an intersection point of the new columns and re-orient them into flattened columns: Values (in blue on the left) are unpivoted into a new column (in blue on the right). Attributes (in green on the left) are unpivoted into a new column (in green on the right) and duplicates are correspondingly mapped to the new Values column. Reference: <https://support.microsoft.com/en-us/office/unpivot-columns-power-query-0f7bad4b-9ea1-49c1-9d95-f588221c7>

NEW QUESTION 103

- (Exam Topic 4)

You have a Microsoft SharePoint Online site that contains several document libraries. One of the document libraries contains manufacturing reports saved as Microsoft Excel files. All the manufacturing reports have the same data structure.

You need to load only the manufacturing reports to a table for analysis. What should you do in Microsoft Power BI Desktop?

- A. Get data from a SharePoint Online folder, enter the site URL, and then select Combine & Load.
- B. Get data from a SharePoint Online list and enter the site UR
- C. Edit the query and filter by the path to the manufacturing reports library.
- D. Get data from a SharePoint Online folder and enter the site UR
- E. Edit the query and filter by the path to the manufacturing reports library.
- F. Get data from a SharePoint Online list, enter the site URL, and then select Combine & Load.

Answer: C

Explanation:

Example:

My SharePoint site root url is <https://powerbipanama.sharepoint.com/>, but all of my files are actually in another site that starts with <https://powerbipanama.sharepoint.com/sites/externalsales/> URL.

In order to use the correct URL, we need to be in the folder of the data that we're trying to get and check the url that our browser shows. If it has the if it starts with the format of <https://<site address>/sites/<sitename>/> then we need to use that url, otherwise we use the much simpler <https://<site address>>

In my own case, I'll be using the <https://powerbipanama.sharepoint.com/sites/externalsales> url in order to connect to my site.

Reference:

<https://powerbi.microsoft.com/sv-se/blog/combining-excel-files-hosted-on-a-sharepoint-folder/>

NEW QUESTION 107

- (Exam Topic 4)

You are building a financial report by using Power BI.

You have a table named financials that contains a column named Date and a column named Sales.

You need to create a measure that calculates the relative change in sales as compared to the previous quarter. How should you complete the measure? To answer, select the appropriate options in the answer area. NOTE: Each correct selection is worth one point.

Answer Area

Sales QoQ% =

```
IF (
    ISFILTERED('financials' [Date]),
    ERROR("Uh oh."),
    VAR PREV_QUARTER =
        CALCULATE(
            SUM('financials' [Sales]),
            DATEADD('financials' [Date].[Date], -1, QUARTER)
        )
    RETURN
        (SUM('financials' [Sales]) - PREV_QUARTER, PREV_QUARTER)
)
```

- A. Mastered
- B. Not Mastered

Answer: A

Explanation:

Graphical user interface, text, application Description automatically generated

Box 1: CALCULATE

Box 2: DATEADD

Box 3: DIVIDE

Example: NET_SALES QoQ% = IF(

ISFILTERED('Calendar'[Date]),

ERROR("Time intelligence quick measures can only be grouped or filtered by the Power BI-provided date hierarchy or primary date column."),

VAR PREV_QUARTER =

CALCULATE(

SUM('research ra_qtr_template'[NET_SALES]), DATEADD('Calendar'[Date].[Date], -1, QUARTER)

) RETURN DIVIDE(

SUM('research ra_qtr_template'[NET_SALES]) - PREV_QUARTER,

PREV_QUARTER

)

)

Reference:

<https://community.powerbi.com/t5/Desktop/Error-calculating-QOQ-using-quick-measure/m-p/547054>

NEW QUESTION 112

- (Exam Topic 4)

You have sales data in a star schema that contains four tables named Sales, Customer, Date, and Product. The Sales table contains purchase and ship dates. Most often, you will use the purchase date to analyze the data, but you will analyze the data by both dates independently and together.

You need to design an imported dataset to support the analysis. The solution must minimize the model size and the number of queries against the data source. Which data modeling design should you use?

- A. Use the Auto Date/Time functionality in Microsoft Power BI and do NOT import the Date table.
- B. Duplicate the Date query in Power Query and use active relationships between both Date tables.
- C. On the Date table, use a reference query in Power Query and create active relationships between Sales and both Date tables in the modeling view.
- D. Create an active relationship between Sales and Date for the purchase date and an inactive relationship for the ship date.

Answer: D

Explanation:

Only one relationship can be active.

Note: If you query two or more tables at the same time, when the data is loaded, Power BI Desktop attempts to find and create relationships for you. The relationship options Cardinality, Cross filter direction, and Make this relationship active are automatically set.

Reference:

<https://docs.microsoft.com/en-us/power-bi/transform-model/desktop-create-and-manage-relationships>

NEW QUESTION 115

- (Exam Topic 4)

Note: This question is part of a series of questions that present the same scenario. Each question in the series contains a unique solution that might meet the stated goals. Some question sets might have more than one correct solution, while others might not have a correct solution.

After you answer a question in this scenario, you will NOT be able to return to it. As a result, these questions will not appear in the review screen.

You have a clustered bar chart that contains a measure named Salary as the value and a field named Employee as the axis. Salary is present in the data as numerical amount representing US dollars.

You need to create a reference line to show which employees are above the median salary. Solution: You create a percentile line by using the Salary measure and set the percentile to 50%. Does this meet the goal?

- A. Yes
- B. No

Answer: A

Explanation:

The 50th percentile is also known as the median or middle value where 50 percent of observations fall below. Reference:
https://dash-intel.com/powerbi/statistical_functions_percentile.php

NEW QUESTION 120

- (Exam Topic 4)

You create the following step by using Power Query Editor.

= Table.ReplaceValue(SalesLT_Address,"1318","1319",Replacer.ReplaceText,{"AddressLine1"})

A row has a value of 21318 Lasalle Street in the AddressLine1 column. What will the value be when the step is applied?

- A. 1318
- B. 1319
- C. 21318 Lasalle Street
- D. 21319 Lasalle Street

Answer: D

Explanation:

Example:

Replace the text "ur" with the text "or" in the table.

```
Table.ReplaceValue(
    Table.FromRecords({
        [a = 1, b = "hello"],
        [a = 3, b = "world"]
    }),
    "ur",
    "or",
    Replacer.ReplaceText,
    {"b"}
)
```

| a | b |
|---|-------|
| 1 | hello |
| 3 | world |

Reference:

<https://docs.microsoft.com/en-us/powerquery-m/table-replacevalue>

NEW QUESTION 121

- (Exam Topic 4)

You have a query that returns the data shown in the following exhibit.

| student | classes |
|-------------|--------------------|
| 1. Mike A. | Math, English, Art |
| 2. Sam B. | Physics |
| 3. Kathy S. | English, Math |

You need to configure the query to display the data as shown in the following exhibit.

| | A ^B _C student | A ^B _C classes |
|---|-------------------------------------|-------------------------------------|
| 1 | Mike A | Math |
| 2 | Mike A | English |
| 3 | Mike A | Art |
| 4 | Sam B | Physics |
| 5 | Kathy S | English |
| 6 | Kathy S | Math |

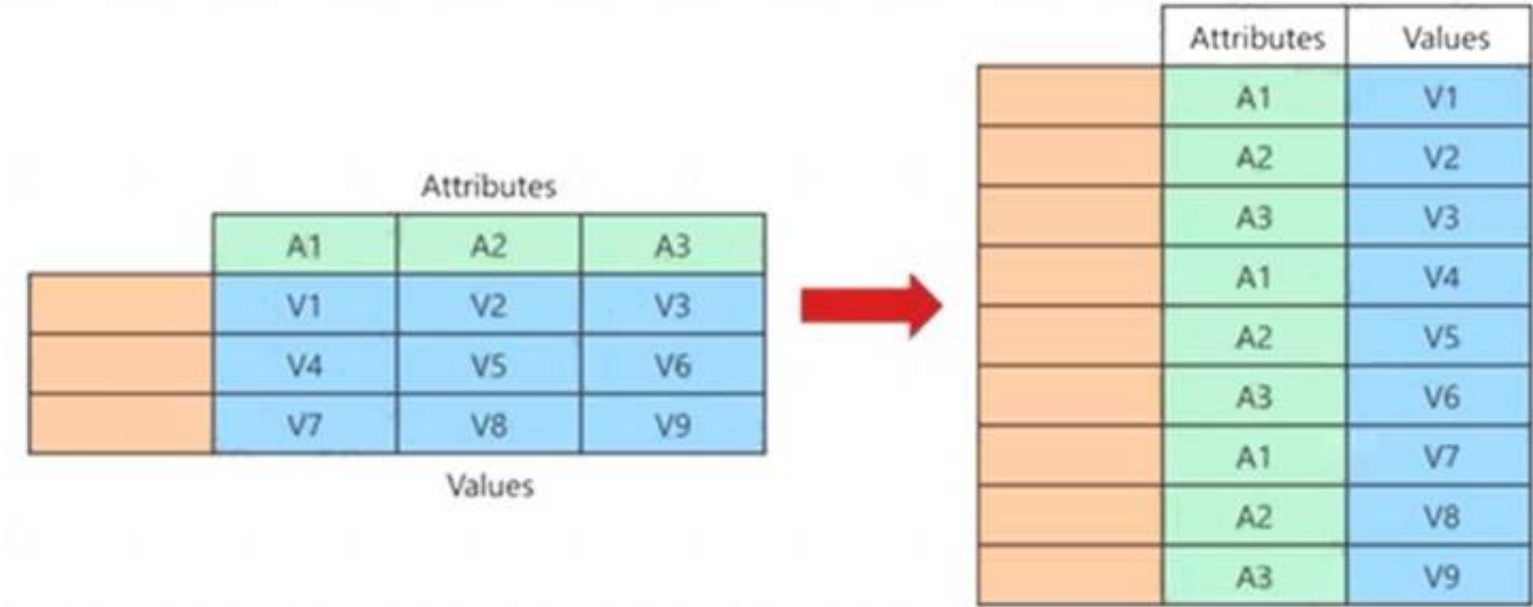
Which step should you use in the query?

- A. =Table.ExpandListColumn(Table.TransformColumnNames(Source, {"classes".Splitter.SplitTextByDelimiter(",", QuoteStyle.None), let itemType = (type nullable text) meta [Serialized.Text = true] in type {itemType}}), "classes")
- B. = Table.Unpivot(Source, {"classes"}, "Attribute", "Value")
- C. = Table.SplitColumn(Source, "classes". Splitter.SplitTextByDelimiter(",", QuoteStyle.None),{"classes.1"})
- D. = Table.SplitColumn(Source, "classes". Splitter.SplitTextByPositions({10}), {"classes.1"})

Answer: B

Explanation:

Power Query Unpivot columns: You might want to unpivot data, sometimes called flattening the data, to put it in a matrix format so that all similar values are in one column. This is necessary, for example, to create a chart or a report.
Chart Description automatically generated

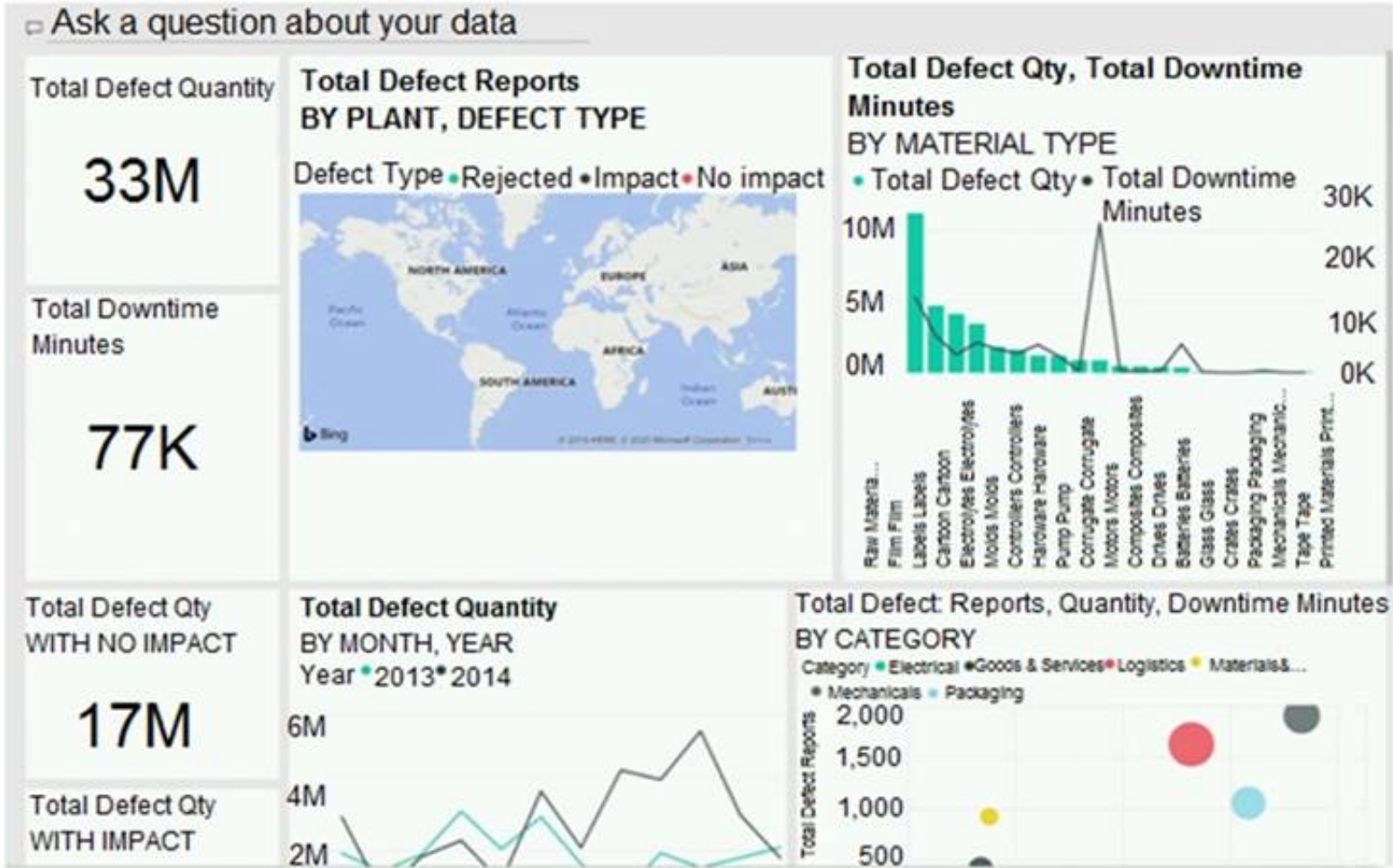


Note:
Syntax: Table.Unpivot(table as table, pivotColumns as list, attributeColumn as text, valueColumn as text) as table
Table.Unpivot translates a set of columns in a table into attribute-value pairs, combined with the rest of the values in each row.
Reference:
<https://docs.microsoft.com/en-us/power-query/unpivot-column> <https://docs.microsoft.com/en-us/powerquery-m/table-unpivot>

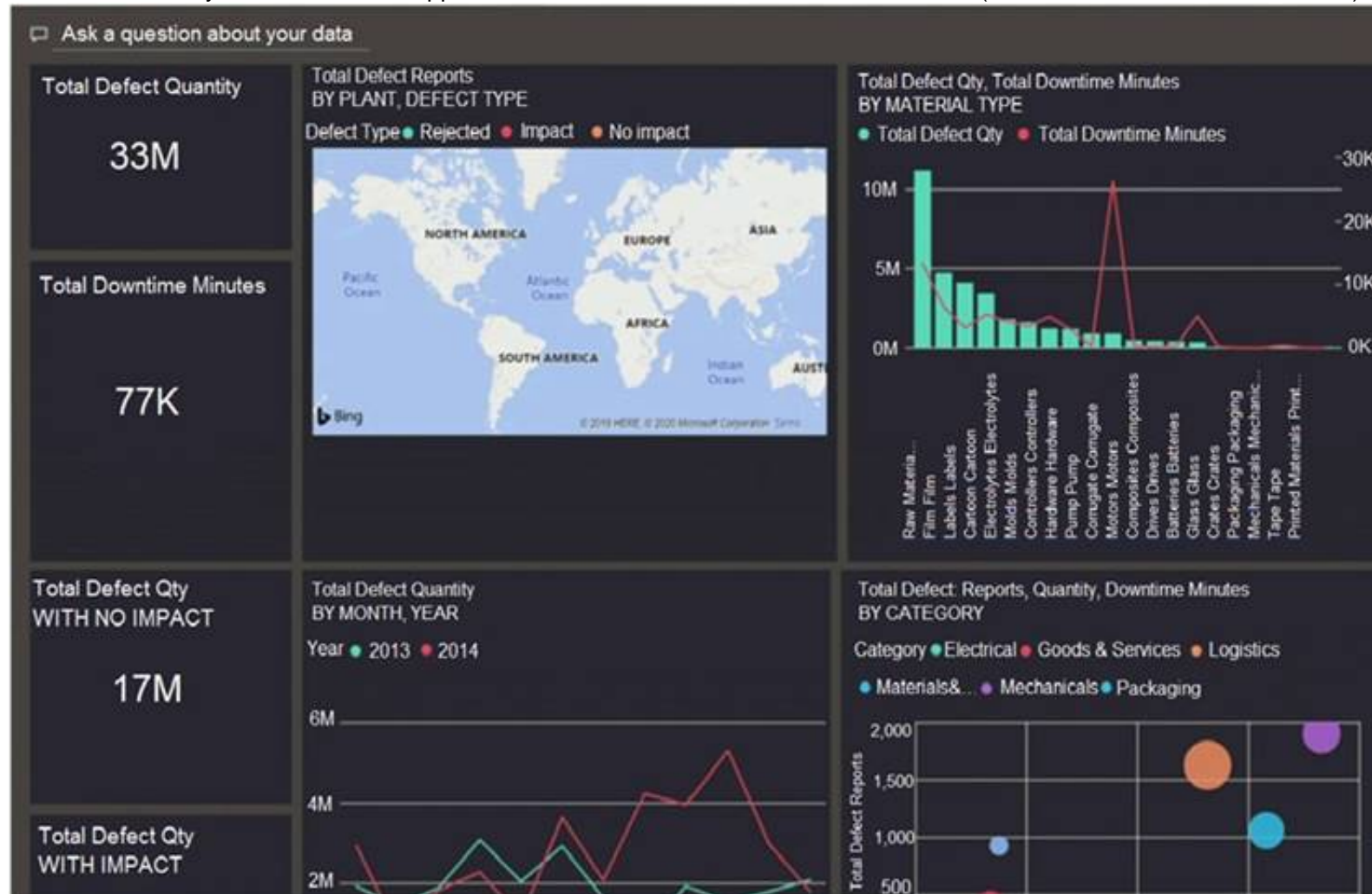
NEW QUESTION 126

- (Exam Topic 4)

You have a dashboard that contains tiles pinned from a single report as shown in the Original Dashboard exhibit. (Click the Original Dashboard tab.)



You need to modify the dashboard to appear as shown in the Modified Dashboard exhibit. (Click the Modified Dashboard tab.)



What should you do?

- A. Edit the details of each tile.
- B. Change the report theme.
- C. Change the dashboard theme.
- D. Create a custom CSS file.

Answer: C

Explanation:

<https://docs.microsoft.com/en-us/power-bi/create-reports/service-dashboard-themes#how-dashboard-themes-work>

NEW QUESTION 129

- (Exam Topic 4)

Note: This question is part of a series of questions that present the same scenario. Each question in the series contains a unique solution that might meet the stated goals. Some question sets might have more than one correct solution, while others might not have a correct solution.

After you answer a question in this scenario, you will NOT be able to return to it. As a result, these questions will not appear in the review screen.

You have a clustered bar chart that contains a measure named Salary as the value and a field named Employee as the axis. Salary is present in the data as numerical amount representing US dollars.

You need to create a reference line to show which employees are above the median salary. Solution: You create a median line by using the Salary measure. Does this meet the goal?

- A. Yes
- B. No

Answer: A

Explanation:

The 50th percentile is also known as the median or middle value where 50 percent of observations fall below. Reference:

https://dash-intel.com/powerbi/statistical_functions_median.php

NEW QUESTION 133

- (Exam Topic 4)

You have a dataset named Pens that contains the following columns:

- > Unit Price
- > Quantity Ordered

You need to create a visualization that shows the relationship between Unit Price and Quantity Ordered. The solution must highlight orders that have a similar unit price and ordered quantity.

Which type of visualization and which feature should you use? To answer, select the appropriate options in the answer area.

NOTE: Each correct selection is worth one point.

Answer Area

Visualization: ▼

- A column chart of Quantity Ordered and Unit Price by year
- A line chart of Quantity Ordered and Unit Price by item
- A scatter plot of Quantity Ordered and Unit Price by item

Feature: ▼

- Automatically find clusters
- Explain the decrease
- Find where the distribution is different

- A. Mastered
 B. Not Mastered

Answer: A

Explanation:

Box 1: A scatter plot...

A scatter chart always has two value axes to show: one set of numerical data along a horizontal axis and another set of numerical values along a vertical axis. The chart displays points at the intersection of an x and y numerical value, combining these values into single data points. Power BI may distribute these data points evenly or unevenly across the horizontal axis. It depends on the data the chart represents.

Box 2: Automatically find clusters

Scatter charts are a great choice to show patterns in large sets of data, for example by showing linear or non-linear trends, clusters, and outliers.

Reference:

<https://docs.microsoft.com/en-us/power-bi/visuals/power-bi-visualization-scatter>

NEW QUESTION 135

- (Exam Topic 4)

You have the dataset shown in the following exhibit.

| City | Sales Profit |
|---------------|---------------------|
| Abbottsburg | \$173,947 |
| Absecon | \$129,358 |
| Accomac | \$157,768 |
| Aceitunas | \$119,283 |
| Airport Drive | \$162,500 |
| Akhiok | \$259,554 |
| Alcester | \$127,040 |
| Alden Bridge | \$152,138 |
| Alstead | \$106,147 |
| Amado | \$136,718 |
| Amanda Park | \$117,444 |
| Andrix | \$130,710 |
| Annamoriah | \$139,499 |
| Antares | \$147,562 |
| Antonio | \$113,056 |
| Total | \$85,729,181 |

You need to ensure that the visual shows only the 10 cities that have the highest sales profit. What should you do?

- A. Add a Top N filter to the visual.
 B. Configure the Sales Profit measure to use the RANKX function.
 C. Add a calculated column to the table that uses the TOPN function.
 D. In the visual, replace Sales Profit with the calculated column.
 E. Add a calculated column to the table that returns the city name if the city is in the top 10, otherwise the calculated column will return "Not in Top 10". In the visual, replace Sales Profit with the calculated column.

Answer: A

Explanation:

Power BI Top N Filters are useful to display the top performing records, and Bottom N filters are helpful to display the least performing records. For example, we can display top or bottom 10 products by orders or sales.

Note:

- Select the Column you want to display the Top Sales Profit
 - Then change the Filter Type of that Column to Top N
 - Fill in Top / Bottom number field
 - And lastly drag to the By Value field your Sales Profit Reference:
- <https://www.tutorialgateway.org/power-bi-top-10-filters/>

NEW QUESTION 137

- (Exam Topic 4)

You have a report that contains four pages. Each page contains slicers for the same four fields. Users report that when they select values on a slicer on one page, the visuals are not updated on all the pages. You need to recommend a solution to ensure that users can select a value once to filter the results on all the pages. What are two possible recommendations to achieve this goal? Each correct answer presents a complete solution. NOTE: Each correct selection is worth one point.

- A. Sync the slicers across the pages.
- B. Replace the slicers with page-level filters.
- C. Replace the slicers with visual-level filters.
- D. Create a bookmark for each slicer value.
- E. Replace the slicers with report-level filters.

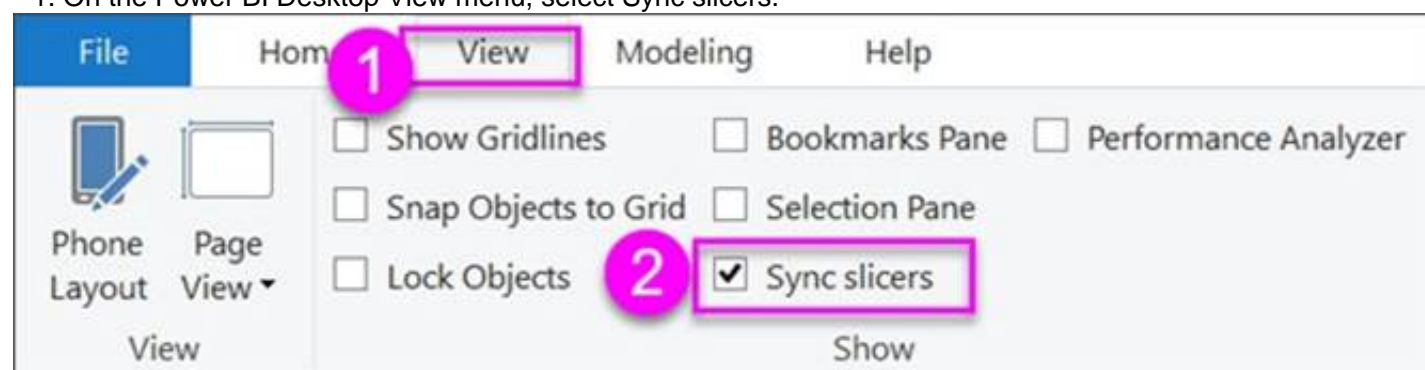
Answer: AE

Explanation:

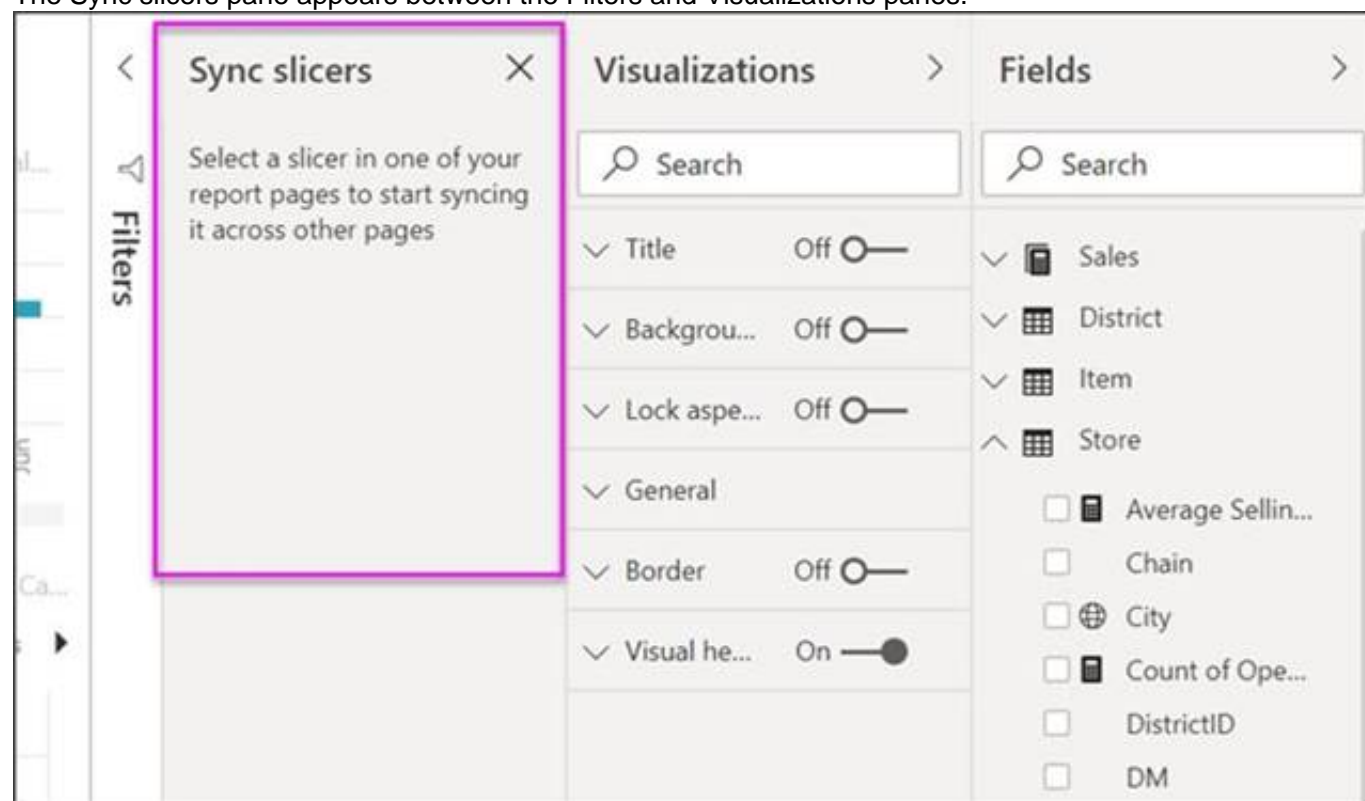
Add a report-level filter to filter an entire report.

The visuals on the active page, and on all pages in the report, change to reflect the new filter. You can sync a slicer and use it on any or all pages in a report.

* 1. On the Power BI Desktop View menu, select Sync slicers.



The Sync slicers pane appears between the Filters and Visualizations panes.



Reference:

<https://docs.microsoft.com/en-us/power-bi/create-reports/power-bi-report-add-filter> <https://docs.microsoft.com/en-us/power-bi/visuals/power-bi-visualization-slicers>

NEW QUESTION 139

- (Exam Topic 4)

You have two Azure SQL databases that contain the same tables and columns.

For each database, you create a query that retrieves data from a table named Customers.

You need to combine the Customer tables into a single table. The solution must minimize the size of the data model and support scheduled refresh in powerbi.com.

What should you do? To answer, select the appropriate options in the answer area. NOTE: Each correct selection is worth one point.

Answer Area

Option to use to combine the Customer tables:

Append Queries
Append Queries as New
Merge Queries
Merge Queries as New

Action to perform on the original two SQL database queries:

Delete the queries.
Disable including the query in report refresh.
Disable loading the query to the data model.
Duplicate the queries.

- A. Mastered
- B. Not Mastered

Answer: A

Explanation:

Graphical user interface, text Description automatically generated with medium confidence

Box 1: Append Queries as New.

There are two primary ways of combining queries: merging and appending.

- When you have one or more columns that you'd like to add to another query, you merge the queries.
- When you have additional rows of data that you'd like to add to an existing query, you append the query.

Box 2: Disable loading the query to the data model

For every query that loads into model memory will be consumed. and Memory is our asset in the Model, less memory consumption leads to better performance in most of the cases. The best approach is to disable loading.

Reference:

<https://docs.microsoft.com/en-us/power-query/append-queries>

NEW QUESTION 144

- (Exam Topic 4)

Note: This question is part of a series of questions that present the same scenario. Each question in the series contains a unique solution that might meet the stated goals. Some question sets might have more than one correct solution, while others might not have a correct solution.

After you answer a question in this scenario, you will NOT be able to return to it. As a result, these questions will not appear in the review screen.

You have several reports and dashboards in a workspace.

You need to grant all organizational users read access to a dashboard and several reports.

Solution: You create an Azure Active Directory group that contains all the users. You share each report and dashboard to the group.

Does this meet the goal?

- A. Yes
- B. No

Answer: A

Explanation:

Statements and questions are tricky and confusing. When the access is granted for the group (all users) for ALL (each) dashboards and ALL (each) reports in the workspace, then the will have read access to the specific (A, one) Dashboard and several reports, because they are part of all dashboards and reports. There is no statement, that for the other dashboards (except the one) and the other reports (except the several) that access must be prevented. They are also accessible (maybe it is not desired but not stated here).

NEW QUESTION 145

- (Exam Topic 4)

You have a custom connector that returns ID, From, To, Subject, Body, and Has Attachments for every email sent during the past year. More than 10 million records are returned.

You build a report analyzing the internal networks of employees based on whom they send emails to.

You need to prevent report recipients from reading the analyzed emails. The solution must minimize the model size.

What should you do?

- A. Implement row-level security (RLS) so that the report recipients can only see results based on the emails they sent.
- B. Remove the Subject and Body columns during the import.
- C. From Model view, set the Subject and Body columns to Hidden.

Answer: B

NEW QUESTION 147

.....

THANKS FOR TRYING THE DEMO OF OUR PRODUCT

Visit Our Site to Purchase the Full Set of Actual DA-100 Exam Questions With Answers.

We Also Provide Practice Exam Software That Simulates Real Exam Environment And Has Many Self-Assessment Features. Order the DA-100 Product From:

<https://www.2passeasy.com/dumps/DA-100/>

Money Back Guarantee

DA-100 Practice Exam Features:

- * DA-100 Questions and Answers Updated Frequently
- * DA-100 Practice Questions Verified by Expert Senior Certified Staff
- * DA-100 Most Realistic Questions that Guarantee you a Pass on Your FirstTry
- * DA-100 Practice Test Questions in Multiple Choice Formats and Updatesfor 1 Year