

Cisco

Exam Questions 300-460

Implementing and Troubleshooting the Cisco Cloud Infrastructure (CLDINF)



NEW QUESTION 1

Which option describes a function of a target in Storage Area Networking?

- A. starts a connection over the fabric to one or more ports
- B. delivers storage volumes to the initiators from the storage system
- C. provides a storage network consisting of one or more Fibre Channel switches
- D. consumes storage volumes using a host bus adapter

Answer: B

NEW QUESTION 2

A virtualization engineer is preparing to install a hypervisor to a Cisco UCS B-series Server. How must the mgmt NIC be selected so that initial network connectivity can be established to the host?

- A. Match the ESXi mgmt NIC to the virtual MAC address of the Cisco UCS fabric interconnect.
- B. Match the ESXi mgmt NIC to the Cisco UCS vNIC carrying the mgmt VLAN.
- C. Assign the mgmt NIC to the first port on the bus.
- D. Assign the mgmt NIC to the last port on the bus.

Answer: B

NEW QUESTION 3

A Cisco USC Director administrator is configuring his pod on the Physical > Compute Tab. Which three tabs are available under this menu? (Choose three.)

- A. UCS Chassis
- B. Datastore Capacity Report
- C. CloudSense
- D. Chargeback
- E. Compute Servers
- F. Compute Accounts

Answer: AEF

NEW QUESTION 4

Which option describes the function of an initiator in Storage Area Networking?

- A. stats a connection over the fabric to one or more ports
- B. provides a network infrastructure consisting of one or more Fibre Channel switches
- C. creates a connection over the fabric to one or more initiator ports
- D. an endpoint that receives data in the SAN infrastructure

Answer: D

NEW QUESTION 5

A private cloud engineer is adding a production FlexPod into a new Cisco UCS Director deployment. Which two operational domains contain Cisco components within this data center pod? (Choose two.)

- A. storage
- B. compute
- C. virtual
- D. network
- E. service delivery

Answer: BD

NEW QUESTION 6

An engineer needs to install Windows Server 2012 R2 on a Cisco UCS B-Series Blade Server from an operating system image in Cisco UCS Director using PXE boot. Which agent must the engineer use?

- A. Cisco UCS Director Bare Metal Agent
- B. Cisco ISO Agent
- C. Windows Boot Agent
- D. Cisco UCS Boot Agent

Answer: A

Explanation:

Reference: https://www.cisco.com/c/en/us/td/docs/unified_computing/ucs/ucs-director/bma-install-config/5-2/b_ucsd_bma_install_config_guide_5_2/b_ucsd_bma_install_config_guide_5_2_appendix_01000.pdf

NEW QUESTION 7

An engineer needs to install a hypervisor on a Cisco UCS B-Series Blade Server. The operating system must remain local to the server and must be resilient. Which two hardware components are required to accomplish this? (Choose two.)

- A. onboard flash memory
- B. SD card
- C. external USB
- D. internal USB
- E. Local disk

Answer: AE

NEW QUESTION 8

Which two statements about context workflow mapping in Cisco UCS Director are true? (Choose two.)

- A. Workflows cannot be mapped in the form of an action, nor can they be executed in the context of a component
- B. You can execute a workflow that contains a set of tasks from within a context of a component.
- C. Workflows cannot be executed at the component level
- D. You have to browse for a required workflow in the workflow list to execute it
- E. You can map a workflow in the form of an action and execute it in the context of the component
- F. Context workflow mapping consists of two stages: Stage 1 – Create the workflow to the content mapper list by giving in an action label Stage 2 – Add a context mapper task to the workflow that must be mapped as an action

Answer: BE

Explanation:

Reference: http://www.cisco.com/c/en/us/td/docs/unified_computing/ucs/ucs-director/orchestration-guide/5-0/b_UCS_Director_Orchestration_Guide_5_0/b_UCS_Director_Orchestration_Guide_5_0_chapter_0101.html#concept_3BA2EDAD4724218802E5CE3184B27A0

NEW QUESTION 9

Which option is the best way to provide templates to end users in Cisco UCS Director?

- A. Give access to the template.
- B. Assign the template to the standard catalog.
- C. Assign the template to the advance catalog.
- D. Deploy a copied template.

Answer: B

NEW QUESTION 10

Which port-channel type is the best when deploying a Cisco Nexus 1000V with Cisco UCS B-Series Blades?

- A. channel-group mode on sub-group cdp
- B. channel-group auto mode on mac-pinning
- C. channel-group auto mode active
- D. channel-group mode on mac-pinning

Answer: B

Explanation:

Reference: http://www.cisco.com/c/en/us/products/collateral/switches/nexus-1000v-switch-vmware-vsphere/white_paper_c11-558242.html

NEW QUESTION 10

A Cisco UCSM administrator is tasked with modifying the boot order in a service profile. Which option lists the steps required to accomplish this task?

- A. In the Navigation pane, click the Servers tab. On the Servers tab, expand Servers > Service Profiles. Click the service profile for which you want to change boot order
- B. Click Boot Order Wizard to change the existing boot policy.
- C. In the Navigation pane, click the Servers tab. On the Servers tab, expand Servers > Service Profiles. Click the service profile for which you want to change boot order
- D. Click Boot Security. Click Modify Boot Policy to change the existing policy.
- E. In the Navigation pane, click the Servers tab. On the Servers tab, expand Servers > Service Profiles. Click the service profile for which you want to change boot order
- F. Click Modify Boot Policy to change the existing boot policy.
- G. In the Navigation pane, click the Servers tab. On the Servers tab, expand Servers > Service Profiles. Click the service profile for which you want to change boot order
- H. Click Boot Order and the Modify Boot Policy wizard display
- I. Change the existing boot policy.

Answer: D

NEW QUESTION 12

A Cisco UCS Director administrator is configuring vHBA. Which four fields are needed to configure vHBA? (Choose four.)

- A. vHBA Name
- B. Adapter Policy
- C. Template Type
- D. Organizations
- E. Description
- F. Fabric ID

G. UCS Organization Name
H. UCS Account Name

Answer: ACEF

Explanation:

Reference: http://www.cisco.com/c/en/us/td/docs/unified_computing/ucs/ucs-director/ucs-mgmt-guide/4-0/b_Cisco_UCS_Director_UCS_Management_Guide_40/b_Cisco_UCS_Director_UCS_Management_Guide_40_chapter_0101.html#concept_930C11B6473846DDA5F7F25E88EC8_F33

NEW QUESTION 16

Which three options does the Cisco UCS Manager boot policy determine? (Choose three.)

- A. initiator port range
- B. selection of the boot device
- C. location from which the server boots
- D. initiator and target ports
- E. global boot device priority
- F. order in which boot devices are invoked

Answer: BCF

NEW QUESTION 17

An administrator is installing a hypervisor and has provisioned a dedicated LAN connectivity, set the boot order, and is now rebooting the server to start installation. Which method is the administrator using to install the hypervisor?

- A. host image mapping
- B. KVM console
- C. PXE installation
- D. virtual boot

Answer: C

NEW QUESTION 19

An architect must choose a VXLAN architecture that utilizes hardware-based VXLAN adapters. Which type of architecture must be selected?

- A. Layer 3
- B. NSX
- C. ACI
- D. Layer 2

Answer: C

NEW QUESTION 22

An engineer must ensure that all VXLAN and VTEP processes are kept on purpose-built hardware to ensure that all overlay functions are as fast as possible. In which solution is all VXLAN and VTEP decision making moved to the hardware, versus potentially slower software control?

- A. Layer 3
- B. ACI
- C. NSX
- D. Layer 2

Answer: A

NEW QUESTION 25

Which three statements about server pools are true? (Choose three.)

- A. Cisco USC Director Displays only the managed servers in a server pool, but the size of the pool includes all servers.
- B. Servers pools cannot be assigned to a Cisco USC Director group.
- C. A given server can belong only to a specific server pool.
- D. A server pool contains a set of servers that share the same attributes such as server type, amount of memory, local storage, type of CPU, or local drive configuration.
- E. A server pool only includes servers from a specific chassis in the system.
- F. If your system implements multitenancy through organizations, you can designate one or more server pools to be used by a specific organization.

Answer: ADF

Explanation:

Reference: http://www.cisco.com/c/en/us/td/docs/unified_computing/ucs/ucs-director/ucs-mgmt-guide/4-0/b_Cisco_UCS_Director_UCS_Management_Guide_40/b_Cisco_UCS_Director_UCS_Management_Guide_40_chapter_0110.html

NEW QUESTION 28

A Cisco UCS Director administrator is installing a Bare Metal Agent and is in the process of adding an NFS mount point. Which Administration menu option does the administrator choose to add an NFS mount point?

- A. Compute Accounts

- B. Storage Accounts
- C. Physical Accounts
- D. Bare Metal Accounts

Answer: C

NEW QUESTION 30

An engineer opens a KVM to a Cisco UCS B-Series Blade Server and boots off a Windows Server ISO with a virtual mapped drive. The server is not attempting to boot from the ISO. What must the engineer modify first?

- A. boot policy to KVM CD
- B. BIOS policy to CD
- C. boot policy to CD
- D. local disk policy to CD

Answer: A

Explanation:

Reference: https://www.cisco.com/c/en/us/td/docs/unified_computing/ucs/sw/ucs_diagnostics/b_UCS_Blade_Server_Diagnostics_User_Guide/getting_started_with_cisco_ucs_blade_server_diagnostics.pdf

NEW QUESTION 35

A Cisco UCSM administrator has been tasked with deploying a new data center. Which two recommendations aid in the ability to associate a service with a server? (Choose two.)

- A. The host control setting for a QoS policy applies to vNICs only
- B. It has no effect on a vHBA.
- C. You can assign only a QoS policy to a vHBA if the priority setting for that policy is set to fc, which represents the Fibre Channel system class.
- D. The host control setting for a QoS policy applies to vHBAs only.
- E. Power capping is supported for rack server
- F. If you include a power control policy in a service profile that is associated with a rack-mount server, the policy is implemented.

Answer: BD

NEW QUESTION 39

A Cisco UCS Director administrator is attempting to resolve a workflow validation issue. Which option lists the steps that accomplish this task?

- A. On the menu bar, choose Policies > Catalog
- B. Click the Activities tab. Choose the workflow that failed validation
- C. Click Validate Workflow. In the Workflow Validation dialog box, double click the description under Resolution. In the Validation Errors dialog box, view the summary for the issue detected and complete the wizard to resolve the validation error.
- D. On the menu bar, choose Policies > Orchestration
- E. Click the Activities tab. Choose the workflow that failed validation
- F. Click Validate Workflow. In the Workflow Validation dialog box, double click the description under Resolution. In the Validation Errors dialog box, view the summary for the issue detected and complete the wizard to resolve the validation error.
- G. On the menu bar, choose Policies > Orchestration
- H. Click the Workflows tab. Choose the workflow that failed validation
- I. Click Validate Workflow. In the Workflow Validation dialog box, double click the description under Resolution. In the Validation Errors dialog box, view the summary for the issue detected and complete the wizard to resolve the validation error.
- J. On the menu bar, choose Policies > Catalog
- K. Click the Workflows tab. Choose the workflow that failed validation
- L. Click Validate Workflow. In the Workflow Validation dialog box, double click the description under Resolution. In the Validation Errors dialog box, view the summary for the issue detected and complete the wizard to resolve the validation error.

Answer: C

NEW QUESTION 41

A Cisco USCM administrator is creating a boot policy. Which option lists the steps needed to accomplish this task?

- A. In the Navigation pane, click the Servers tab
- B. On the Servers tab, expand Servers > Policies. Right-click Boot Policies and select Create Boot Policy.
- C. In the Navigation pane, click the Equipment tab. Expand Equipment > Rack-Mounts > Servers > Boot Policies
- D. Right-click Boot Orders and select Create Boot Policy.
- E. In the Navigation pane, click the Servers tab
- F. On the Servers tab, expand Servers > Policies. Click Boot Order and the Modify Boot Policy wizard displays
- G. Click Modify Boot Policy.
- H. In the Navigation pane, click the Servers tab
- I. On the Servers tab, expand Servers > Policies
- J. Click Boot Security. Click Modify Boot Policy.

Answer: A

NEW QUESTION 44

A Cisco UCS Director administrator is creating a VSAN. Which two types of VSANs are available? (Choose two.)

- A. storage cloud
- B. storage hybrid
- C. SAN cloud

D. SAN

Answer: CD

NEW QUESTION 49

A company wants to adhere to Cisco UCS best practices for booting Cisco UCS B-Series Blade Servers and also maintain the highest level of availability. Which boot policy must the company use?

- A. SAN boot
- B. mirrored boot
- C. RAID 5 boot
- D. PXE boot

Answer: A

Explanation:

Reference: https://www.cisco.com/c/en/us/products/collateral/servers-unified-computing/ucs-manager/whitepaper_c11-697337.html

NEW QUESTION 51

A network engineer is optimizing spanning tree in the data center. Which feature must the engineer implement on a physical switch port that is connected to a Cisco Nexus 1000V Series Switch virtual switch?

- A. BPDU guard
- B. PortFast trunk
- C. port security
- D. Dynamic ARP Inspection

Answer: A

NEW QUESTION 54

Cisco USB Director provides many tools to help diagnose and resolve common problems. Which option describes the purpose of the Cisco UCS Director Shell tool?

- A. to execute JavaScript functions and to define variables and functions, when using cloupia scripts
- B. to troubleshoot problems related to service request workflow execution
- C. to view product support information
- D. to troubleshoot problems related to various administrative tasks such as connectivity, configuration, and status

Answer: D

Explanation:

Reference: https://www.cisco.com/c/en/us/td/docs/unified_computing/ucs/ucs-director/shell-guide/6-5/ciscoucs-director-shell-guide-65/cisco-ucs-director-shell-guide-65_chapter_011.html

NEW QUESTION 59

An engineer enters the command switchport port-security in configuration mode on a switch. The command fails and displays the output Command rejected: GigabitEthernet0/1 is a dynamic port. Which reason for this error is most likely true?

- A. The port is in Layer 3 mode.
- B. Port security is not enabled globally.
- C. Sticky MAC addresses are disabled on the port.
- D. The port is not configured as an access port.
- E. The port is part of an existing port channel.

Answer: D

NEW QUESTION 61

A Cisco UCS Director administrator is viewing the status of his pod on the Virtual > Compute tab. Which three tabs are available under this menu? (Choose three.)

- A. VMs
- B. VM Chargeback
- C. Service Requests
- D. VM Reservations
- E. Resource Pools
- F. vDCs

Answer: AEF

NEW QUESTION 66

Which three statements about context workflow mapping in Cisco UCS Director are true? (Choose three.)

- A. You can execute a workflow that contains a set of tasks from within a context of a component.
- B. Workflows cannot be mapped in the form of an action, nor can they be executed in the context of a component.
- C. You have to browse for a required workflow in the workflow list to execute it
- D. Context workflow mapping consists of two stages: Stage 1 – Create a context mapper task and add it to the workflow that must be mapped as an action Stage 2 – Add the workflow to the content mapper list by giving in an action label

- E. Context workflow mapping consists of two stages: Stage 1 – Create the workflow to the content mapper list by giving in an action label Stage 2 – Add a context mapper task to the workflow that must be mapped as an action
- F. You can map a workflow in the form of an action and execute it in the context of the component
- G. Workflows cannot be executed at the component level

Answer: ADF

Explanation:

Reference: http://www.cisco.com/c/en/us/td/docs/unified_computing/ucs/ucs-director/orchestration-guide/5-0/b_UCS_Director_Orchestration_Guide_5_0/b_UCS_Director_Orchestration_Guide_5_0_chapter_0101.html#concept_3BA2EDADF4724218802E5CE3184B27A0

NEW QUESTION 71

An engineer wants to verify the VXLAN configuration on a Cisco Nexus 1000V Series Switch. Which NX-OS command provides the following partial output?
 Segment ID: 5000 (manual/Active) Group IP: 239.1.1.1
 NR – 1 seg_bd

- A. show port-profile usage
- B. show interface switchport
- C. show bridge-domain
- D. show feature | begin Segment

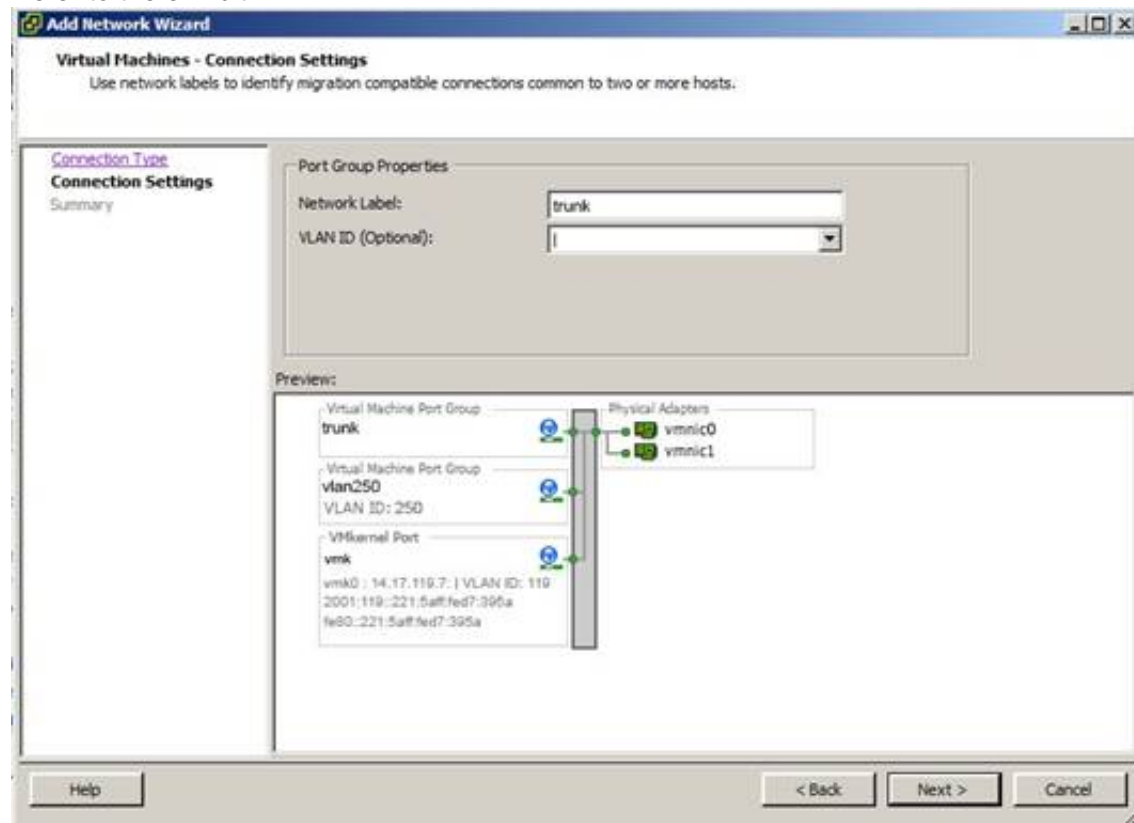
Answer: C

Explanation:

Reference:
https://www.cisco.com/c/en/us/td/docs/switches/datacenter/nexus1000/sw/4_2_1_s_v_1_5_1/vxlan/configuration/guide/n1000v_vxlan/n1000v_vxlan_basic.html

NEW QUESTION 73

Refer to the exhibit.



You have been asked to create a trunking (802.1 q) port group on a VMware vSwitch. Which number must be assigned as the VLAN ID to trunk all VLANs?

- A. 4095
- B. 1
- C. 1-4095

Answer: C

NEW QUESTION 74

Which mechanism is used to find latent failure in memory modules?

- A. sniffing
- B. swapping
- C. paging
- D. scrubbing

Answer: D

Explanation:

Reference: <http://www.cisco.com/c/dam/en/us/products/collateral/servers-unified-computing/ucs-manager/whitepaper-c11-736116.pdf>

NEW QUESTION 77

An engineer has designed a new Cisco UCS Director workflow to create a new Fibre Channel LUN and present it to ESXi hosts. After execution of the workflow, the LUN is not visible to the ESXi hosts. Which two actions must be taken to begin to troubleshoot the failed workflow? (Choose two.)

- A. Look for information within vCenter Server under the Events tab for vCenter Server.

- B. Look at the information that is produced in the rollback script that is associated with the failed workflow.
- C. Look for information within vCenter Server under the Events tab for the applicable ESXi server.
- D. Look for information within Cisco UCS Director under the Log tab of the Service Request Details window.
- E. Look for information within Cisco UCS Director under the Input/Output tab of the Service Request Details window.

Answer: AD

NEW QUESTION 81

An engineer needs to ensure that Windows virtual machines can be automatically provisioned from a template with a customized IP address and hostname. Which two components can enable this at the operating system level? (Choose two.)

- A. IP address management system
- B. DNS server
- C. configuration management agents
- D. System Preparation tool
- E. DHCP server

Answer: AB

NEW QUESTION 82

An engineer has configured a VXLAN tunnel between remote data centers, but the VXLAN tunnel is not established. Which reason for this tunnel failure is most likely true?

- A. The transport network does not support Bidirectional PIM.
- B. Multiprotocol BGP is missing a route reflector.
- C. Multipoint GRE tunnels are not configured between data centers.
- D. An ACL exists on the physical network between the data centers that block UDP port 4789.

Answer: B

NEW QUESTION 85

Which three operations can a cloud administrator perform when using the vSphere Client configuration tab? (Choose three.)

- A. View the processor and memory configuration of the ESX host
- B. Configure the host as NTP client
- C. Configure datastore backups
- D. Configure zoning
- E. View target initiators and zones
- F. Configure the primary/secondary DNS server
- G. configure masking

Answer: ABF

NEW QUESTION 88

Which two fields are needed for a Cisco UCS Director administrator to configure a WWN block? (Choose two.)

- A. the first WWNN or WWPN address in the block
- B. the WWN for the initiator
- C. a unique name for the initiator
- D. a unique name for the block
- E. the number of WWN or WWPN addresses in the block

Answer: AE

NEW QUESTION 90

Refer to the exhibit.

Port	Speed	Duplex	Mode	Type	Status	Description
1	10	Full	Auto	10/100/1000	Up	
2	10	Full	Auto	10/100/1000	Up	
3	10	Full	Auto	10/100/1000	Up	
4	10	Full	Auto	10/100/1000	Up	
5	10	Full	Auto	10/100/1000	Up	
6	10	Full	Auto	10/100/1000	Up	
7	10	Full	Auto	10/100/1000	Up	
8	10	Full	Auto	10/100/1000	Up	

Which set of commands results in this output?

- A. show service-profile circuit detail
- B. connect nxos show system internal port-map
- C. connect nxos b show system internal woodside sts
- D. connect iom 1 show platform software woodside sts

Answer: D

NEW QUESTION 94

An engineer needs to deploy a VMFS datastore. Which two LUNs must the engineer use? (Choose two.)

- A. Fibre Channel
- B. NTFS
- C. NFS
- D. iSCSI
- E. CIFS

Answer: AD

NEW QUESTION 98

An administrator is troubleshooting basic connectivity between two Fibre Channel points that include node hops and latency data. Which tool is the best for troubleshooting this scenario?

- A. ping
- B. fctraceroute
- C. traceroute
- D. fcping

Answer: B

Explanation:

Reference: Ping and traceroute are two of the most useful tools for troubleshooting TCP/IP networking problems. The ping utility generates a series of echopackets to a destination across a TCP/IP internetwork.

When the echo packets arrive at the destination, they are rerouted and sent back to the source. Using ping, you can verify connectivity and latency to a particular destination across an IP routed network.

The traceroute utility operates in a similar fashion, but can also determine the specific path that a frame takes to its destination on a hop-by-hop basis.

NEW QUESTION 100

Which two statements describe Ethernet and vEthernet port profiles? (Choose two.)

- A. Ethernet port profiles may only be assigned to Cisco UCS unified ports when configured as type uplink.
- B. Ethernet port profiles are assigned to physical interfaces such as vmnic
- C. vEthernet port profiles are assigned to virtual interfaces such as vNIC, vmk, or VTEP.
- D. An MTU change is required on the Ethernet port profiles to support jumbo frames.
- E. vEthernet port profiles are assigned to physical interfaces such as vmnic
- F. Ethernet port profiles are assigned to virtual interfaces such as vNIC, vmk, or VTEP.
- G. Ethernet port profiles may only be assigned to Cisco UCS unified ports when configured as type virtual uplink.

Answer: BC

NEW QUESTION 105

An FCoE frame has just arrived on a Cisco Nexus 5000 Series Switch and must be switched toward a directlyattached FCoE storage array. Which two actions must be done to the frame to accomplish this task? (Choose two.)

- A. The frame is switched out of a physical Fibre Channel interface.
- B. The frame is switched out of a physical Ethernet interface.
- C. The frame is switched out of a logical Ethernet interface.
- D. The frame is switched out of a logical Fibre Channel interface.
- E. The frame encapsulates a UDP/IP packet.
- F. The frame encapsulates a TCP/IP packet.

Answer: BF

NEW QUESTION 109

During which process are Cisco UCS UUID, MAC, and WWPN identifiers allocated from the pool?

- A. service profile instantiation
- B. server boot time
- C. service profile assignment to a server
- D. service profile template creation

Answer: C

NEW QUESTION 111

A cloud engineer is implementing a new cloud infrastructure with the following equipment: One Cisco UCS 5108 AC2 B-Series Chassis
Two Cisco Nexus 5000 Series Switches Two Cisco UCS 6248 Fabric Interconnects One Cisco UCS 2208XP Fabric Extender Eight Cisco B200 M4 half-width blades

Which option describes the most likely problem with this deployment?

- A. The half-width blades are not compatible with the chassis.
- B. One additional fabric interconnect is needed, because the chassis can handle only six half-width blades.
- C. Two additional fabric interconnects are needed to handle all four blade servers.
- D. An additional fabric extender is needed.

Answer: D

NEW QUESTION 113

With which two types of zoning can a Cisco UCS domain be configured? (Choose two.)

- A. hybrid-based Fibre Channel zoning
- B. switch-based Fibre Channel zoning
- C. Manager-based Fibre Channel zoning
- D. cloud-based Fibre Channel zoning
- E. no zoning

Answer: BC

NEW QUESTION 115

A Cisco UCS Director administrator is charging the boot . Which option lists the steps that accomplish this task?

- A. On the menu bar, choose Physical > Storage.In the left pane, expand the pod and then click the Cisco UCS Manager account In the right pane, click the Organizations tabClick the organization in which you want to modify a policy and then click View details Click the Manage Boot Order tab.Choose the boot policy that you want to clone and click Manage Boot Order
- B. On the menu bar, choose Physical > Compute.In the left pane, expand the pod and then click the Cisco UCS Manager account In the right pane, click the Organizations tabClick the organization in which you want to modify a policy and then click View detailsClick the Manage Boot Order tab.Choose the boot policy that you want to clone and click Manage Boot Order
- C. On the menu bar, choose Physical > Storage.In the left pane, expand the pod and then click the Cisco UCS Manager account In the right pane, click the Organizations tabClick the organization in which you want to modify a policy and then click View details Click the Boot Policies tab.Choose the boot policy that you want to clone and click Manage Boot Devices Order
- D. On the menu bar, choose Physical > Compute.In the left pane, expand the pod and then click the Cisco UCS Manager account In the right pane, click the Organizations tabClick the organization in which you want to modify a policy and then click View details Click the Boot Policies tab.Choose the boot policy that you want to clone and click Manage Boot Devices Order

Answer: D

Explanation:

Reference: http://www.cisco.com/c/en/us/td/docs/unified_computing/ucs/ucs-director/ucs-central-mgmtguide/4-1/b_Cisco_UCS_Director_UCSCentral_Mgmt_Guide_41/b_Cisco_UCS_Director_UCSCentral_Mgmt_Guide_41_chapter_0111.html#concept_2313A9F59CD94237819D14A3CA608D_FD

NEW QUESTION 117

Which two statements about virtual networks in a Cisco-powered private cloud are true? (Choose two.)

- A. After the last VM is shutdown, the associated virtual network is gone for garbage collection.
- B. The last vNIC can be deleted issuing the command no interface virtual.
- C. Virtual networks are abstractions whose state is stored in the orchestration layer.
- D. N1KV supports dynamic routing on virtual networks.
- E. Issue the show module command in virtual supervisor module to view virtual network mapping with VM.

Answer: DE

NEW QUESTION 118

An engineer needs to make changes to a service profile that is bound to a service profile template. The service profile is associated to a production server that is online. Which statement describes what occurs when the engineer clicks the “unbind” option?

- A. The service profile unbinds from the template, and the server shuts down automatically.
- B. Cisco UCS Manager requests the server to shut down so that the service profile can unbind.
- C. Cisco UCS Manager requests the service profile to be disassociated from the server so that the service profile can unbind.
- D. The service profile unbinds from the template, and the server remains online.

Answer: D

Explanation:

Reference: <https://supportforums.cisco.com/t5/unified-computing-system/disassociate-service-profile-fromserver/td-p/2785270>

NEW QUESTION 119

In which topology should Cisco UCS vNIC Fabric Failover be enabled?

- A. on every vNIC on every service profile
- B. only on vNICs assigned to hypervisors
- C. only on vNICs assigned to bare metal operating systems
- D. only on vNICs when an operating system level teaming driver is unavailable

Answer: D

NEW QUESTION 120

Where does performance tuning of high CPU utilization take place in Cisco UCS?

- A. high performance policy
- B. energy performance mode policy
- C. compute policy
- D. BIOS policy

Answer:

D

NEW QUESTION 123

The Cisco UCS usNIC feature improves performance of software applications by bypassing the kernel network stack. Which option lists the steps to configure usNIC capable vNIC in the correct order?

- A. Create a usNIC connection policy, create a vNIC, set vNIC connection policy to usNIC, and install the usNIC RPM driver
- B. Modify the vNIC network control policy to usNIC, modify usNIC Ethernet adapter policy, and install the usNIC RPM driver
- C. Create a usNIC connection policy, create a vNIC, set vNIC adapter policy to Linux, and install the usNIC RPM driver
- D. Create a vNIC, modify usNIC Ethernet adapter policy, set vNIC connection policy to usNIC, and install the usNIC RPM driver

Answer: D

Explanation:

Reference: http://www.cisco.com/c/en/us/td/docs/unified_computing/ucs/sw/gui/config/guide/2-2/b_UCSM_GUI_Configuration_Guide_2_2/configuring_network_related_policies.pdf

NEW QUESTION 125

An architect must use legacy Cisco NX-OS 7000 and 2000 Series Switches in a data center to implement VXLAN and VTEP on a VMware ESXi infrastructure. Which solution allows using VXLAN with VTEP without upgrading legacy routing and switching infrastructure?

- A. VMware NSX
- B. OpenStack Neutron
- C. Cisco ACI
- D. Microsoft Hyper-V

Answer: A

NEW QUESTION 130

.....

Thank You for Trying Our Product

We offer two products:

1st - We have Practice Tests Software with Actual Exam Questions

2nd - Questions and Answers in PDF Format

300-460 Practice Exam Features:

- * 300-460 Questions and Answers Updated Frequently
- * 300-460 Practice Questions Verified by Expert Senior Certified Staff
- * 300-460 Most Realistic Questions that Guarantee you a Pass on Your First Try
- * 300-460 Practice Test Questions in Multiple Choice Formats and Updates for 1 Year

100% Actual & Verified — Instant Download, Please Click
[Order The 300-460 Practice Test Here](#)