

Exam Questions CAPM

Certified Associate in Project Management (PMI-100)

<https://www.2passeasy.com/dumps/CAPM/>



NEW QUESTION 1

- (Exam Topic 3)

Change requests are an output from which Project Integration Management process?

- A. Direct and Manage Project Execution
- B. Develop Project Management Plan
- C. Close Project
- D. Develop Project Charter

Answer: A

NEW QUESTION 2

- (Exam Topic 3)

Portfolio Management is management of:

- A. a project by dividing the project into more manageable sub-projects.
- B. a project by utilizing a portfolio of general management skills such as planning, organizing, staffing, executing, and controlling.
- C. all projects undertaken by a company.
- D. a collection of projects that are grouped together to facilitate effective management and meet strategic business objectives.

Answer: D

NEW QUESTION 3

- (Exam Topic 3)

Which type of analysis would be used for the Plan Quality process?

- A. Schedule
- B. Checklist
- C. Assumption
- D. Cost-Benefit

Answer: D

NEW QUESTION 4

- (Exam Topic 3)

Which schedule compression technique has phases or activities done in parallel that would normally have been done sequentially?

- A. Crashing
- B. Fast tracking
- C. Leads and lags adjustment
- D. Parallel task development

Answer: B

NEW QUESTION 5

- (Exam Topic 3)

Which of the following involves making information available to project stakeholders in a timely manner?

- A. Plan Communications
- B. Performance reporting
- C. Project status reports
- D. Distribute Information

Answer: D

NEW QUESTION 6

- (Exam Topic 3)

Project or phase closure guidelines or requirements, historical information, and the lessons learned knowledge base are examples of which input to the Close Project or Phase process?

- A. Organizational process assets
- B. A work breakdown structure
- C. The project management plan
- D. Enterprise environmental factors

Answer: A

NEW QUESTION 7

- (Exam Topic 3)

Which of the following consists of the detailed project scope statement and its associated WBS and WBS dictionary?

- A. Scope plan
- B. Product scope
- C. Scope management plan
- D. Scope baseline

Answer: D

NEW QUESTION 8

- (Exam Topic 3)

Which type of managers do composite organizations involve?

- A. Functional managers and manager of project managers
- B. Functional managers only
- C. Project managers only
- D. Technical managers and project managers

Answer: A

NEW QUESTION 9

- (Exam Topic 3)

An input to the Create WBS process is a:

- A. project charter.
- B. stakeholder register.
- C. project scope statement.
- D. requirements traceability matrix.

Answer: C

NEW QUESTION 10

- (Exam Topic 3)

Which type of analysis systemically gathers and analyzes qualitative and quantitative information to determine which interests should be taken into account throughout the project?

- A. Product
- B. Cost-benefit
- C. Stakeholder
- D. Research

Answer: C

NEW QUESTION 10

- (Exam Topic 3)

A procurement management plan is a subsidiary of which other type of plan?

- A. Resource plan
- B. Project management plan
- C. Cost control plan
- D. Expected monetary value plan

Answer: B

NEW QUESTION 14

- (Exam Topic 3)

Managing ongoing production of goods and services to ensure business continues efficiently describes which type of management?

- A. Portfolio
- B. Project
- C. Program
- D. Operations

Answer: D

NEW QUESTION 16

- (Exam Topic 3)

When is a Salience Model used?

- A. In a work breakdown structure (WBS)
- B. During quality assurance
- C. In stakeholder analysis
- D. During quality control (QC)

Answer: C

NEW QUESTION 19

- (Exam Topic 3)

Organizational planning impacts projects by means of project prioritization based on risk, funding, and an organizations:

- A. Budget plan

- B. Resource plan
- C. Scope plan
- D. Strategic plan

Answer: D

NEW QUESTION 20

- (Exam Topic 3)

Which Process Group typically consumes the bulk of a project's budget?

- A. Monitoring and Controlling
- B. Executing
- C. Planning
- D. Initiating

Answer: B

NEW QUESTION 21

- (Exam Topic 3)

If the most likely duration of an activity is five weeks, the best-case duration is two weeks, and the worst-case duration is 14 weeks, how many weeks is the expected duration of the activity?

- A. One
- B. Five
- C. Six
- D. Seven

Answer: C

NEW QUESTION 23

- (Exam Topic 3)

The approaches, tools, and data sources that will be used to perform risk management on a project are determined by the:

- A. Methodology
- B. Risk category
- C. Risk attitude
- D. Assumption analysis

Answer: A

NEW QUESTION 25

- (Exam Topic 3)

What is the term assigned to products or services having the same functional use but different technical characteristics?

- A. Scope
- B. Quality
- C. Specification
- D. Grade

Answer: D

NEW QUESTION 29

- (Exam Topic 3)

During which process group is the quality policy determined?

- A. Initiating
- B. Executing
- C. Planning
- D. Controlling

Answer: C

NEW QUESTION 34

- (Exam Topic 3)

Which of the following is an enterprise environmental factor that can influence the Develop Project Charter process?

- A. Organizational standard processes
- B. Marketplace conditions
- C. Historical information
- D. Templates

Answer: B

NEW QUESTION 38

- (Exam Topic 3)

Conflict should be best addressed in which manner?

- A. Early, in private, using a direct, collaborative approach
- B. Early, in public, using an indirect, collaborative approach
- C. Early, in private, using an indirect, cooperative approach
- D. As late as possible, in public, using a direct, confrontational approach

Answer: A

NEW QUESTION 41

- (Exam Topic 3)

What name(s) is (are) associated with the Plan-Do-Check-Act cycle?

- A. Pareto
- B. Ishikawa
- C. Shewhart-Deming
- D. Delphi

Answer: C

NEW QUESTION 45

- (Exam Topic 3)

Which schedule network analysis technique modifies the project schedule to account for limited resources?

- A. Human resource planning
- B. Fast tracking
- C. Critical chain method
- D. Rolling wave planning

Answer: C

NEW QUESTION 46

- (Exam Topic 3)

The product scope description is used to:

- A. Gain stakeholders' support for the project.
- B. Progressively elaborate the characteristics of the product, service, or result.
- C. Describe the project in great detail.
- D. Define the process and criteria for accepting a completed product, service, or result.

Answer: B

NEW QUESTION 51

- (Exam Topic 3)

Which of the following is a narrative description of products, services, or results to be delivered by a project?

- A. Project statement of work
- B. Business case
- C. Accepted deliverable
- D. Work performance information

Answer: A

NEW QUESTION 53

- (Exam Topic 3)

Work performance information and cost forecasts are outputs of which Project Cost Management process?

- A. Estimate Costs
- B. Plan Cost Management
- C. Determine Budget
- D. Control Costs

Answer: D

NEW QUESTION 55

- (Exam Topic 3)

The project manager notes that stakeholders are aware of the project and potential impacts and are actively engaged in ensuring that the project is a success. The engagement level of the stakeholders should be classified as:

- A. Supportive
- B. Leading
- C. Neutral
- D. Resistant

Answer: B

NEW QUESTION 59

- (Exam Topic 3)

What are the formal and informal policies, procedures, and guidelines that could impact how the project's scope is managed?

- A. Organizational process assets
- B. Enterprise environmental factors
- C. Project management processes
- D. Project scope management plan

Answer: A

NEW QUESTION 61

- (Exam Topic 3)

As part of a mid-project evaluation, the project sponsor has asked for a forecast of the total project cost. What should be used to calculate the forecast?

- A. BAC
- B. EAC
- C. ETC
- D. WBS

Answer: B

NEW QUESTION 66

- (Exam Topic 3)

Definitions of probability and impact, revised stakeholder tolerances, and tracking are components of which subsidiary plan?

- A. Cost management plan
- B. Quality management plan
- C. Communications management plan
- D. Risk management plan

Answer: D

NEW QUESTION 67

- (Exam Topic 3)

What is the number of stakeholders, if the project has 28 potential communication channels?

- A. 7
- B. 8
- C. 14
- D. 16

Answer: B

NEW QUESTION 68

- (Exam Topic 3)

The project management processes presented in the PMBOK Guide® should:

- A. always be applied uniformly.
- B. be selected as appropriate by the sponsor.
- C. be selected as appropriate by the project team.
- D. be applied based on ISO guidelines.

Answer: C

NEW QUESTION 71

- (Exam Topic 3)

Which of the following is an output of the Monitor and Control Project Work process?

- A. Change requests
- B. Performance reports
- C. Organizational process assets
- D. Project management plan

Answer: A

NEW QUESTION 73

- (Exam Topic 3)

Which Develop Schedule tool and technique produces a theoretical early start date and late start date?

- A. Critical path method
- B. Variance analysis
- C. Schedule compression
- D. Schedule comparison bar charts

Answer: A

NEW QUESTION 75

- (Exam Topic 3)

Assigned risk ratings are based upon:

- A. Root cause analysis.
- B. Risk probability and impact assessment.
- C. Expert judgment.
- D. Revised stakeholders' tolerances.

Answer: B

NEW QUESTION 78

- (Exam Topic 3)

Which of the following is a tool and technique for Estimate Activity Durations?

- A. Parametric estimating
- B. Monte Carlo analysis
- C. Alternatives analysis
- D. Bottom-up estimating

Answer: A

NEW QUESTION 81

- (Exam Topic 3)

Which process uses occurrence probability and impact on project objectives to assess the priority of identified risks?

- A. Identify Risks
- B. Perform Qualitative Risk Analysis
- C. Plan Risk Management
- D. Perform Quantitative Risk Analysis

Answer: B

NEW QUESTION 86

- (Exam Topic 3)

What is the total float of the critical path?

- A. Can be any number
- B. Zero or positive
- C. Zero or negative
- D. Depends on the calendar

Answer: C

NEW QUESTION 91

- (Exam Topic 3)

What is the name of the statistical method that helps identify which factors may influence specific variables of a product or process under development or in production?

- A. Failure modes and effects analysis
- B. Design of experiments
- C. Quality checklist
- D. Risk analysis

Answer: B

NEW QUESTION 92

- (Exam Topic 3)

When can pre-assignment of project team members occur?

- A. When the project uses capital expenditures
- B. When the required staff can be acquired from outside sources
- C. When the project would be ignored due to travel expenses
- D. When the project is the result of specific people being promised as part of a competitive proposal

Answer: D

NEW QUESTION 96

- (Exam Topic 3)

Sharing good practices introduced or implemented in similar projects in the organization and/or industry is an example of:

- A. quality audits
- B. process analysis
- C. statistical sampling
- D. benchmarking

Answer: A

NEW QUESTION 101

- (Exam Topic 3)

The CPI is .92, and the EV is US\$172,500. What is the actual cost of the project?

- A. US\$158,700
- B. US\$172,500
- C. US\$187,500
- D. US\$245,600

Answer: C

NEW QUESTION 104

- (Exam Topic 3)

Plan Risk Management is the process of defining how to:

- A. Communicate identified risks to the project stakeholders.
- B. Conduct risk management activities for a project.
- C. Analyze the impact a specific risk may have on the project.
- D. Address unexpected risks that may occur during a project.

Answer: B

NEW QUESTION 105

- (Exam Topic 3)

Who, along with the project manager, is supposed to direct the performance of the planned project activities and manage the various technical and organizational interfaces that exist within the project?

- A. The customer and functional managers
- B. The risk owners and stakeholders
- C. The sponsors and stakeholders
- D. The project management team

Answer: D

NEW QUESTION 110

- (Exam Topic 3)

Which technique should a project manager use in a situation in which a collaborative approach to conflict management is not possible?

- A. Coaching
- B. Avoidance
- C. Consensus
- D. Influencing

Answer: B

NEW QUESTION 113

- (Exam Topic 3)

Which group creativity technique asks a selected group of experts to answer questionnaires and provide feedback regarding the responses from each round of requirements gathering?

- A. The Delphi technique
- B. Nominal group technique
- C. Affinity diagram
- D. Brainstorming

Answer: A

NEW QUESTION 116

- (Exam Topic 3)

The integrative nature of project management requires which Process Group to interact with the other Process Groups?

- A. Planning
- B. Executing
- C. Monitoring and Controlling
- D. Project Management

Answer: C

NEW QUESTION 117

- (Exam Topic 3)

Perform Quality Control is accomplished by:

- A. Identifying quality standards that are relevant to the project and determining how to satisfy them.

- B. Monitoring and recording the results of executing the quality activities to assess performance and recommend necessary changes.
- C. Ensuring that the entire project team has been adequately trained in quality assurance processes.
- D. Applying Monte Carlo, sampling, Pareto analysis, and benchmarking techniques to ensure conformance to quality standards.

Answer: B

NEW QUESTION 122

- (Exam Topic 3)

Which process includes prioritizing risks for subsequent further analysis or action by assessing and combining their probability of occurrence and impact?

- A. Perform Qualitative Risk Analysis
- B. Perform Quantitative Risk Analysis
- C. Plan Risk Management
- D. Plan Risk Responses

Answer: A

NEW QUESTION 124

- (Exam Topic 3)

The links between the processes in the Process Groups are often:

- A. Intuitive
- B. Iterative
- C. Measured
- D. Monitored

Answer: B

NEW QUESTION 127

- (Exam Topic 3)

When is a project finished?

- A. After verbal acceptance of the customer or sponsor
- B. After lessons learned have been documented in contract closure
- C. When the project objectives have been met
- D. After resources have been released

Answer: C

NEW QUESTION 129

- (Exam Topic 3)

What is the definition of Direct and Manage Project Execution?

- A. Integrating all planned activities
- B. Performing the activities included in the plan
- C. Developing and maintaining the plan
- D. Execution of deliverables

Answer: B

NEW QUESTION 133

- (Exam Topic 3)

Information collected on the status of project activities being performed to accomplish the project work is known as what?

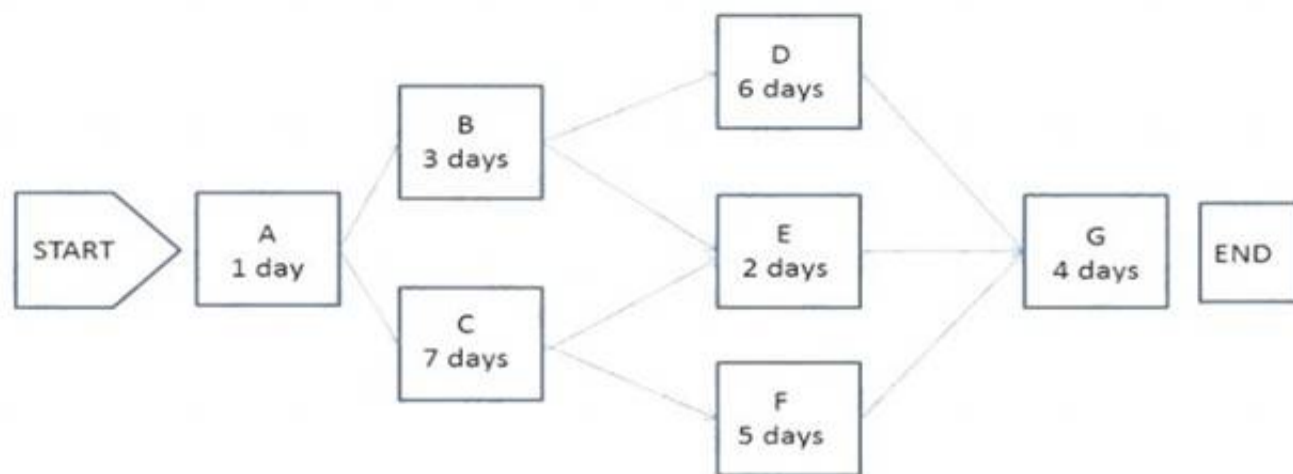
- A. Project management information system
- B. Work performance information
- C. Work breakdown structure
- D. Variance analysis

Answer: B

NEW QUESTION 136

- (Exam Topic 2)

The following is a network diagram for a project.



The total float for the project is how many days?

- A. 3
- B. 5
- C. 7
- D. 9

Answer: A

NEW QUESTION 140

- (Exam Topic 2)

Using parametric estimating, if an assigned resource is capable of producing 120 units per hour, how many hours are required to produce 12,000 units?

- A. 100
- B. 120
- C. 1,000
- D. 1,200

Answer: A

NEW QUESTION 142

- (Exam Topic 2)

An example of a group decision-making technique is:

- A. nominal group technique
- B. majority
- C. affinity diagram
- D. multi-criteria decision analysis

Answer: B

NEW QUESTION 144

- (Exam Topic 2)

The scope management plan and scope baseline are contained in:

- A. organizational process assets
- B. a requirements traceability matrix
- C. the project charter
- D. the project management plan

Answer: D

NEW QUESTION 145

- (Exam Topic 2)

At the completion of a project, a report is prepared that details the outcome of the research conducted on a global trend during the project. Which item did this project create?

- A. Result
- B. Product
- C. Service
- D. Improvement

Answer: A

NEW QUESTION 148

- (Exam Topic 2)

A stakeholder expresses a need not known to the project manager. The project manager most likely missed a step in which stakeholder management process?

- A. Plan Stakeholder Management
- B. Identify Stakeholders
- C. Manage Stakeholder Engagement
- D. Control Stakeholder Engagement

Answer: A

NEW QUESTION 151

- (Exam Topic 2)

The degree, amount, or volume of risk that an organization or individual will withstand is known as its risk:

- A. Analysis
- B. Appetite
- C. Tolerance
- D. Response

Answer: C

NEW QUESTION 152

- (Exam Topic 2)

A project requires a component with well-understood specifications. Performance targets are established at the outset, and the final contract price is determined after completion of all work based on the seller's performance. The most appropriate agreement with the supplier is:

- A. Cost Plus Incentive Fee (CPIF).
- B. Fixed Price Incentive Fee (FPIF).
- C. Cost Plus Award Fee (CPAF).
- D. Fixed Price with Economic Price Adjustment (FP-EPA).

Answer: B

NEW QUESTION 156

- (Exam Topic 2)

Grouping the stakeholders based on their level of authority and their level of concern regarding project outcomes describes which classification model for stakeholder analysis?

- A. Influence/impact grid
- B. Power/influence grid
- C. Power/interest grid
- D. Salience model

Answer: C

NEW QUESTION 159

- (Exam Topic 2)

Which term describes an assessment of correctness?

- A. Accuracy
- B. Precision
- C. Grade
- D. Quality

Answer: A

NEW QUESTION 164

- (Exam Topic 2)

Which Manage Communications tool or technique focuses on identifying and managing barriers?

- A. Communication methods
- B. Information technology
- C. Communication models
- D. Information management systems

Answer: C

NEW QUESTION 167

- (Exam Topic 2)

A project's purpose or justification, measurable project objectives and related success criteria, a summary milestone schedule, and a summary budget are all components of which document?

- A. Work breakdown structure
- B. Requirements document
- C. Project charter
- D. Project management plan

Answer: C

NEW QUESTION 169

- (Exam Topic 2)

When closing a project or phase, part of the process may require the use of which type of analysis?

- A. Reserve analysis
- B. Regression analysis
- C. Document analysis
- D. Product analysis

Answer: B

NEW QUESTION 174

- (Exam Topic 2)

Which action is included in the Control Costs process?

- A. Identify how the project costs will be planned, structured, and controlled
- B. Determine policies, objectives, and responsibilities to satisfy stakeholder needs
- C. Develop an approximation of the monetary resources needed to complete project activities
- D. Monitor cost performance to isolate and understand variances from the approved cost baseline

Answer: D

NEW QUESTION 179

- (Exam Topic 2)

An element of the modern quality management approach used to achieve compatibility with the International Organization for Standardization (ISO) is known as:

- A. Forecasting,
- B. Brainstorming.
- C. Historical databases.
- D. Cost of quality.

Answer: D

NEW QUESTION 180

- (Exam Topic 2)

A graphic display of project team members and their reporting relationships is known as a:

- A. Resource calendar.
- B. Project organization chart.
- C. Resource breakdown structure (RBS).
- D. Responsibility assignment matrix (RAM).

Answer: B

NEW QUESTION 184

- (Exam Topic 2)

Which items are components of a project management plan?

- A. Change management plan, process improvement plan, and scope management plan
- B. Agreements, procurement management plan, and work performance information
- C. Schedule management plan, project schedule, and resource calendars
- D. Scope baseline, project statement of work, and requirements traceability matrix

Answer: A

NEW QUESTION 185

- (Exam Topic 2)

In project management, a temporary project can be:

- A. Completed without planning
- B. A routine business process
- C. Long in duration
- D. Ongoing to produce goods

Answer: C

NEW QUESTION 190

- (Exam Topic 2)

Which type of dependency used in the Sequence Activities process is sometimes referred to as preferred logic, preferential logic, or soft logic?

- A. Internal
- B. External
- C. Discretionary
- D. Mandatory

Answer: C

NEW QUESTION 194

- (Exam Topic 2)

A project manager should communicate to stakeholders about resolved project issues by updating the:

- A. project records
- B. project reports
- C. stakeholder notifications
- D. stakeholder register

Answer: C

NEW QUESTION 195

- (Exam Topic 2)

Which Project Time Management process includes bottom-up estimating as a tool or technique?

- A. Estimate Activity Resources
- B. Sequence Activities
- C. Estimate Activity Durations
- D. Develop Schedule

Answer: A

NEW QUESTION 198

- (Exam Topic 2)

Variance and trend analysis is a tool and technique used in which process?

- A. Perform Qualitative Risk Analysis
- B. Perform Quantitative Risk Analysis
- C. Control Risks
- D. Plan Risk Responses

Answer: C

NEW QUESTION 200

- (Exam Topic 2)

While processes in the Planning Process Group seek to collect feedback and define project documents to guide project work, organizational procedures dictate when the project planning:

- A. ends.
- B. begins.
- C. delays.
- D. deviates.

Answer: A

NEW QUESTION 205

- (Exam Topic 2)

Which quality tool may prove useful in understanding and estimating the cost of quality in a process?

- A. Checksheets
- B. Histograms
- C. Flowcharts
- D. Control charts

Answer: C

NEW QUESTION 209

- (Exam Topic 2)

A project team member agrees to change a project deliverable after a conversation with an external stakeholder. It is later discovered that the change has had an adverse effect on another deliverable. This could have been avoided if the project team had implemented:

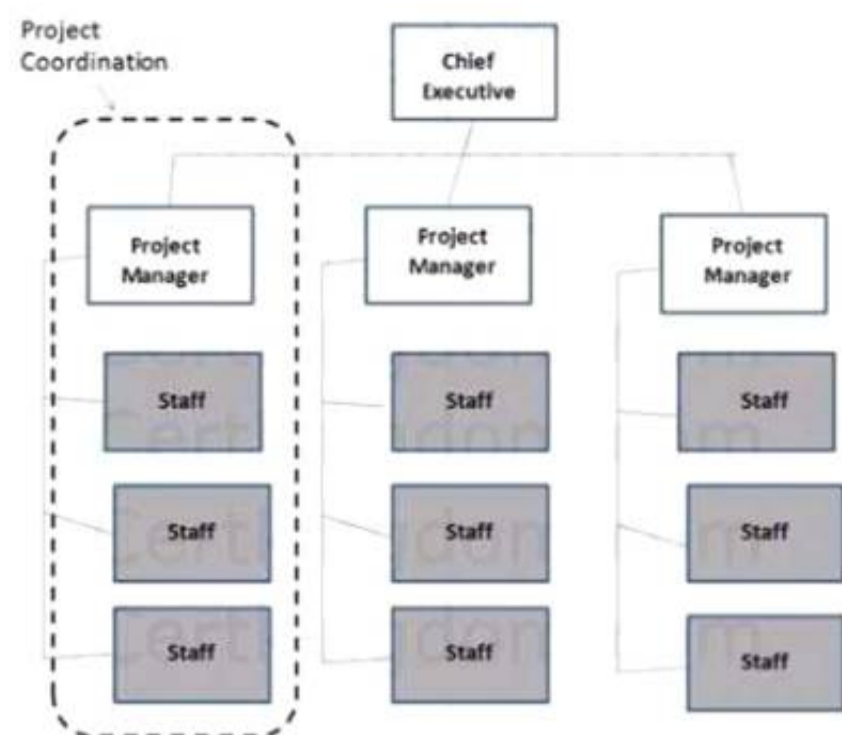
- A. Quality assurance.
- B. A stakeholder management plan.
- C. Project team building.
- D. Integrated change control.

Answer: D

NEW QUESTION 214

- (Exam Topic 2)

Which type of organizational structure is displayed in the diagram provided?



- A. Balanced matrix
- B. Projectized
- C. Strong matrix
- D. Functional

Answer: B

NEW QUESTION 216

- (Exam Topic 2)

The following chart contains information about the tasks in a project.

Task	PV	AC	EV
1	10,000	10,000	10,000
2	10,000	8,000	10,000
3	10,000	8,000	8,000
4	9,000	12,000	10,000
5	10,000	12,000	12,000
6	10,000	10,000	12,000
7	12,000	12,000	10,000
8	10,000	8,000	9,000
9	12,000	10,000	11,000

Based on the chart, what is the cost variance (CV) for Task 6?

- A. -2,000
- B. 1,000
- C. 2,000

Answer: D

NEW QUESTION 219

- (Exam Topic 2)

The following chart contains information about the tasks in a project.

Task	PV	AC	EV
1	10,000	10,000	10,000
2	10,000	8,000	10,000
3	10,000	8,000	8,000
4	9,000	12,000	10,000
5	10,000	12,000	12,000
6	10,000	10,000	12,000
7	12,000	12,000	10,000
8	10,000	8,000	9,000
9	12,000	10,000	11,000

Based on the chart, what is the schedule variance (SV) for Task 8?

A. A.--2,000B.-1,000C.1,000D.2,000

Answer: B

NEW QUESTION 224

- (Exam Topic 2)

The chart below is an example of a:

ID	Requirements Description	Project Objectives	WBS Deliverables	Product Design	Product Development	Test Cases
001						
002						
003						

- A. Responsibility assignment matrix (RAM)
- B. Work breakdown structure (WBS)
- C. RACI chart
- D. Requirements traceability matrix

Answer: D

NEW QUESTION 228

- (Exam Topic 2)

Which is an enterprise environmental factor?

- A. Marketplace conditions
- B. Policies and procedures
- C. Project files from previous projects
- D. Lessons learned from previous projects

Answer: A

NEW QUESTION 231

- (Exam Topic 2)

A project manager requesting industry groups and consultants to recommend project intervention is relying on:

- A. Communication models.
- B. Stakeholder participation.
- C. Expert judgment
- D. Enterprise environmental factors.

Answer: C

NEW QUESTION 235

- (Exam Topic 2)

Which of the Perform Quality Assurance tools and techniques may enhance the creation of the work breakdown structure (VVBS) to give structure to the decomposition of the scope?

- A. Activity network diagrams
- B. Affinity diagrams
- C. Matrix diagrams

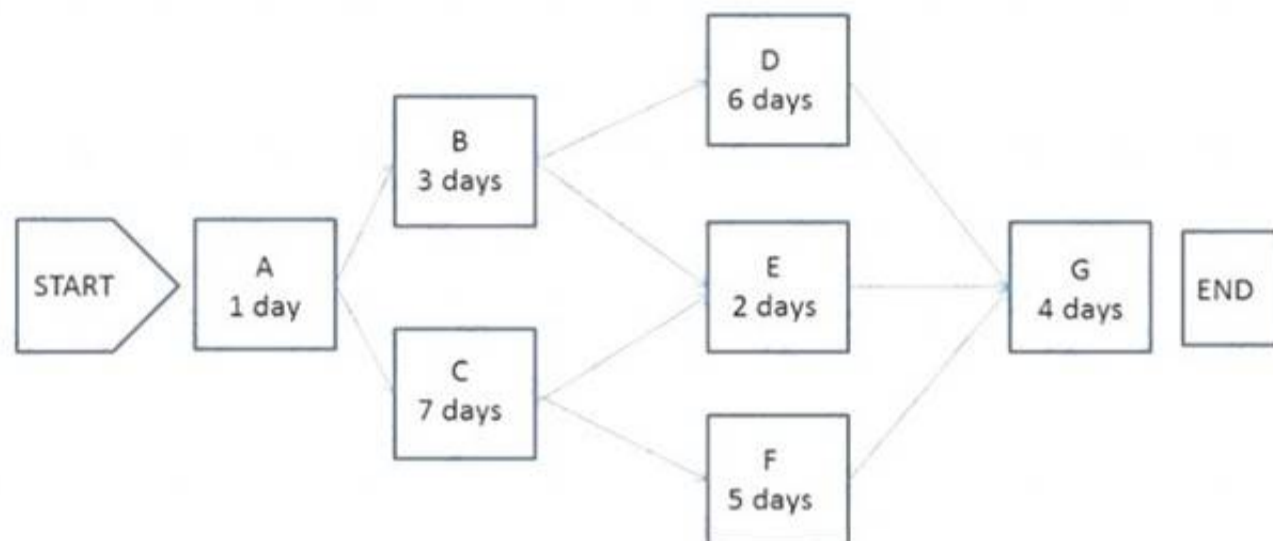
D. Interrelationship digraphs

Answer: B

NEW QUESTION 236

- (Exam Topic 2)

The following is a network diagram for a project.



The critical path for the project is how many days in duration?

- A. 10
- B. 12
- C. 14
- D. 17

Answer: D

NEW QUESTION 238

- (Exam Topic 2)

Through whom do project managers accomplish work?

- A. Consultants and stakeholders
- B. Stakeholders and functional managers
- C. Project team members and consultants
- D. Project team members and stakeholders

Answer: D

NEW QUESTION 239

- (Exam Topic 2)

The component of the risk management plan that documents how risk activities will be recorded is called:

- A. tracking
- B. scoping
- C. timing
- D. defining

Answer: A

NEW QUESTION 244

- (Exam Topic 2)

At the start of a typical project life cycle, costs are:

- A. low, peak as work is carried out, and drop as the project nears the end.
- B. low, become steady as work is carried out, and increase as the project nears the end.
- C. high, drop as work is carried out, and increase as the project nears the end.
- D. high, become low as work is carried out, and drop as the project nears the end.

Answer: A

NEW QUESTION 245

- (Exam Topic 2)

The methodology that combines scope, schedule, and resource measurements to assess project performance and progress is known as:

- A. Earned value management.
- B. Forecasting.
- C. Critical chain methodology.
- D. Critical path methodology.

Answer: A

NEW QUESTION 249

- (Exam Topic 2)

The degree of uncertainty an entity is willing to take on in anticipation of a reward is known as its risk:

- A. management
- B. response
- C. tolerance
- D. appetite

Answer: D

NEW QUESTION 252

- (Exam Topic 2)

An issue log is an input to which Project Human Resource Management process?

- A. Manage Project Team
- B. Acquire Project Team
- C. Plan Human Resource Management
- D. Develop Project Team

Answer: A

NEW QUESTION 256

- (Exam Topic 2)

When painting a bedroom, preparing the walls can be done while the paint is being chosen. This is an example of a:

- A. lead
- B. lag
- C. mandatory dependency
- D. internal dependency

Answer: A

NEW QUESTION 258

- (Exam Topic 2)

The process of defining how the project scope will be validated and controlled is known as:

- A. Define Scope.
- B. Develop Project Management Plan.
- C. Plan Scope Management.
- D. Plan Quality Management.

Answer: C

NEW QUESTION 263

- (Exam Topic 2)

Project managers who lead by example and follow through on the commitments they make demonstrate the key interpersonal skill of:

- A. influencing
- B. leadership
- C. motivation
- D. coaching

Answer: A

NEW QUESTION 265

- (Exam Topic 2)

Which type of analysis is used to determine the cause and degree of difference between the baseline and actual performance?

- A. Schedule network analysis
- B. Reserve analysis
- C. Alternative analysis
- D. Variance analysis

Answer: D

NEW QUESTION 268

- (Exam Topic 2)

One of the key benefits of the Plan Human Resource Management process is that it:

- A. outlines team selection guidelines and team member responsibilities.
- B. establishes project roles and responsibilities.
- C. improves teamwork, interpersonal skills, and competencies.
- D. provides an accurate appraisal of team member performance.

Answer: B

NEW QUESTION 273

- (Exam Topic 2)

The scope management plan and scope baseline are contained in:

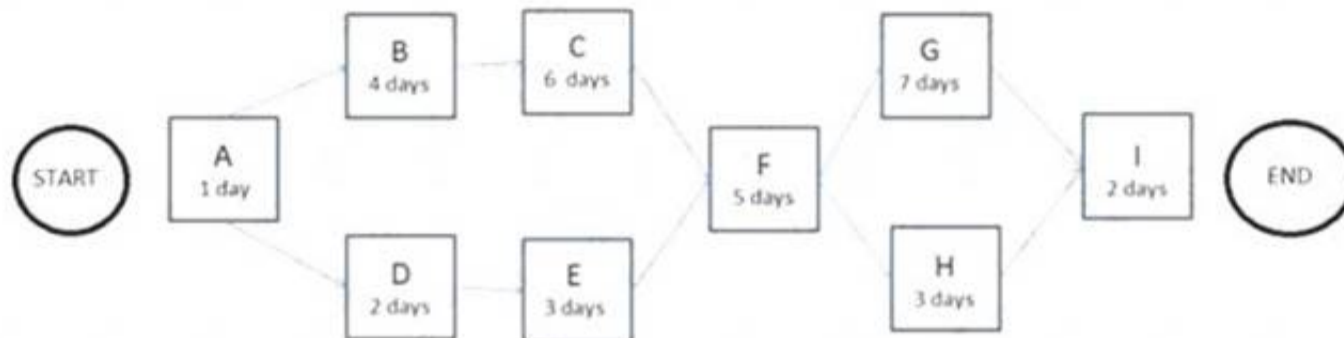
- A. organizational process assets
- B. a requirements traceability matrix
- C. the project charter
- D. the project management plan

Answer: D

NEW QUESTION 275

- (Exam Topic 2)

The following is a network diagram for a project.



The free float for Activity E is how many days?

- A. 2
- B. 3
- C. 5
- D. 8

Answer: C

NEW QUESTION 278

- (Exam Topic 2)

What is the risk rating if the probability of occurrence is 0.30 and the impact if it does occur is moderate (0.20)?

- A. 0.03
- B. 0.06
- C. 0.10
- D. 0.50

Answer: B

NEW QUESTION 282

- (Exam Topic 2)

Success is measured by benefits realization for a:

- A. strategic plan
- B. project
- C. portfolio
- D. program

Answer: C

NEW QUESTION 287

- (Exam Topic 2)

Which tool or technique used in the Control Procurements process can be conducted during the execution of the project to verify compliance with deliverables?

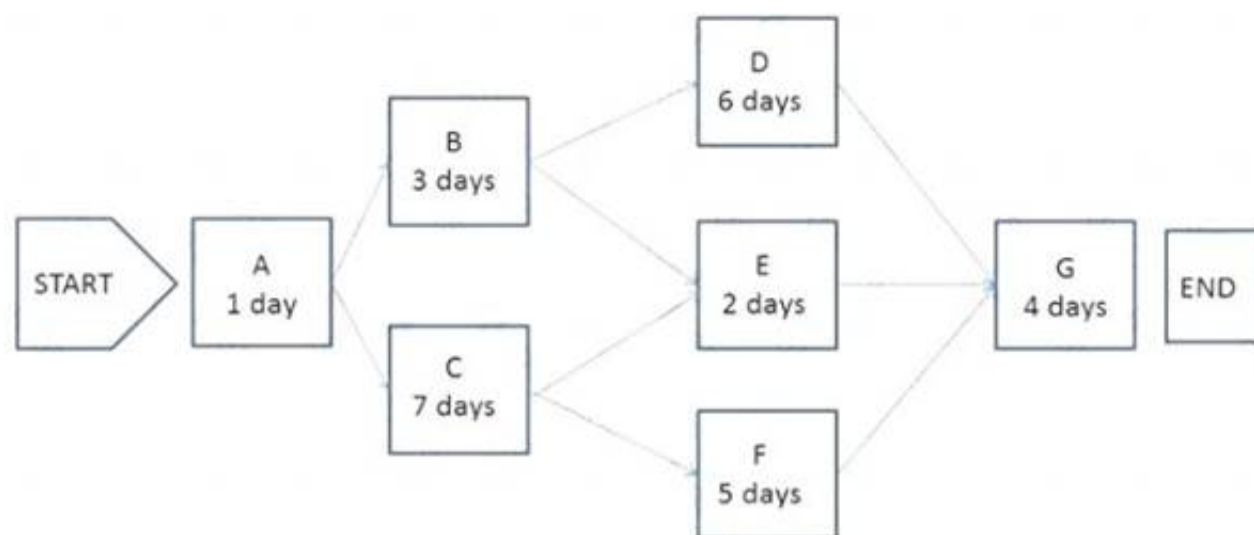
- A. Procurement documents
- B. Inspection and audits
- C. Estimate budget
- D. Risk register

Answer: B

NEW QUESTION 288

- (Exam Topic 2)

The following is a network diagram for a project.



What is the critical path for the project?

- A. A-B-D-G
- B. A-B-E-G
- C. A-C-F-G
- D. A-C-E-G

Answer: C

NEW QUESTION 291

- (Exam Topic 2)

In the Define Activities process, the schedule management plan is used to:

- A. Capture the lessons learned from other projects for comparison.
- B. Contain the standard activity list.
- C. Document and support the project change requests.
- D. Prescribe the level of detail needed to manage the work.

Answer: D

NEW QUESTION 294

- (Exam Topic 2)

Stakeholders can be identified in later stages of the project because the Identify Stakeholders process should be:

- A. Continuous
- B. Discrete
- C. Regulated
- D. Arbitrary

Answer: A

NEW QUESTION 299

- (Exam Topic 2)

An input to the Perform Integrated Change Control process is:

- A. expert judgment
- B. seller proposals
- C. the project charter
- D. the project management plan

Answer: D

NEW QUESTION 302

- (Exam Topic 2)

The component of the human resource management plan that includes ways in which team members can obtain certifications that support their ability to benefit the project is known as:

- A. recognition and rewards
- B. compliance
- C. staff acquisition
- D. training needs

Answer: D

NEW QUESTION 305

- (Exam Topic 2)

Specification of both the deliverables and the processes is the focus of:

- A. Change control
- B. Configuration control
- C. Project monitoring and control
- D. Issue control

Answer: B

NEW QUESTION 310

- (Exam Topic 2)

A project manager who communicates to the project team through email is using which type of communication?

- A. Formal
- B. Informal
- C. Horizontal
- D. Unofficial

Answer: B

NEW QUESTION 311

- (Exam Topic 2)

The following chart contains information about the tasks in a project.

Task	PV	AC	EV
1	10,000	10,000	10,000
2	10,000	8,000	10,000
3	10,000	8,000	8,000
4	9,000	12,000	10,000
5	10,000	12,000	12,000
6	10,000	10,000	12,000
7	12,000	12,000	10,000
8	10,000	8,000	9,000
9	12,000	10,000	11,000

Based on the chart, what is the schedule performance index (SPI) for Task 4?

- A. 0.83
- B. 0.9
- C. 1.11
- D. 1.33

Answer: C

NEW QUESTION 314

- (Exam Topic 2)

In which phase of team building activities do team members begin to work together and adjust their work habits and behavior to support the team?

- A. Performing
- B. Storming
- C. Norming
- D. Forming

Answer: C

NEW QUESTION 319

- (Exam Topic 2)

Plan Communications Management develops an approach and plan for project communications based on stakeholders' needs and requirements and:

- A. Available organizational assets
- B. Project staff assignments
- C. Interpersonal skills
- D. Enterprise environmental factors

Answer: A

NEW QUESTION 321

- (Exam Topic 2)

The cost baseline and project funding requirements are outputs of which process in Project Cost Management?

- A. Estimate Costs
- B. Control Costs
- C. Plan Cost Management
- D. Determine Budget

Answer: D

NEW QUESTION 323

- (Exam Topic 2)

Which schedule method allows the project team to place buffers on the project schedule path to account for limited resources and project uncertainties?

- A. Critical path method
- B. Critical chain method
- C. Resource leveling
- D. Schedule network analysis

Answer: B

NEW QUESTION 328

- (Exam Topic 2)

A tool and technique used in the Develop Project Charter process is:

- A. change control tools
- B. expert judgment
- C. meetings
- D. analytical techniques

Answer: B

NEW QUESTION 329

- (Exam Topic 2)

Which tool or technique is required in order to determine the project budget?

- A. Cost of quality
- B. Historical relationships
- C. Project management software
- D. Forecasting

Answer: B

NEW QUESTION 332

- (Exam Topic 2)

A benefit of using virtual teams in the Acquire Project Team process is the reduction of the:

- A. cultural differences of team members
- B. possibility of communication misunderstandings
- C. costs associated with travel
- D. costs associated with technology

Answer: C

NEW QUESTION 335

- (Exam Topic 2)

Which tools or techniques are used during the Close Project or Phase process?

- A. Reserve analysis and expert judgment
- B. Facilitation techniques and meetings
- C. Expert judgment and analytical techniques
- D. Performance reviews and meetings

Answer: C

NEW QUESTION 340

- (Exam Topic 2)

The lowest level normally depicted in a work breakdown structure (WBS) is called a/an:

- A. work package
- B. deliverable
- C. milestone
- D. activity

Answer: A

NEW QUESTION 344

- (Exam Topic 2)

Which stakeholder approves a project's result?

- A. Customer
- B. Sponsor
- C. Seller

D. Functional manager

Answer: A

NEW QUESTION 345

- (Exam Topic 2)

Which quality tool incorporates the upper and lower specification limits allowed within an agreement?

- A. Control chart
- B. Flowchart
- C. Checksheet
- D. Pareto diagram

Answer: A

NEW QUESTION 346

- (Exam Topic 2)

Which enterprise environmental factors may influence Plan Schedule Management?

- A. Cultural views regarding time schedules and professional and ethical behaviors
- B. Historical information and change control procedures
- C. Risk control procedures and the probability and impact matrix
- D. Resource availability and organizational culture and structure

Answer: D

NEW QUESTION 348

- (Exam Topic 2)

A special type of bar chart used in sensitivity analysis for comparing the relative importance of the variables is called a:

- A. triangular distribution
- B. tornado diagram
- C. beta distribution
- D. fishbone diagram

Answer: B

NEW QUESTION 351

- (Exam Topic 1)

The Monitoring and Controlling Process Group includes processes that:

- A. Establish the scope, objectives, and course of action of a project,
- B. Define a new project or a new phase of an existing project.
- C. Track, review, and regulate the progress and performance of a project.
- D. Complete the work defined in the project management plan.

Answer: C

NEW QUESTION 356

- (Exam Topic 1)

What is the schedule performance index (SPI) if the planned value (PV) is \$100, the actual cost (AC) is \$150, and the earned value (EV) is \$50?

- A. 0.50
- B. 0.67
- C. 1.50
- D. 2.00

Answer: A

NEW QUESTION 358

- (Exam Topic 1)

Which input to the Manage Stakeholder Engagement process is used to document changes that occur during the project?

- A. Issue log
- B. Change log
- C. Expert judgment
- D. Change requests

Answer: B

NEW QUESTION 363

- (Exam Topic 1)

An input to the Plan Stakeholder Management process is:

- A. The project charter.

- B. The stakeholder analysis.
- C. A communication management plan.
- D. A stakeholder register.

Answer: D

NEW QUESTION 366

- (Exam Topic 1)

Which tool or technique is used to manage change requests and the resulting decisions?

- A. Change control tools
- B. Expert judgment
- C. Delphi technique
- D. Change log

Answer: A

NEW QUESTION 371

- (Exam Topic 1)

Which item is a formal proposal to modify any document, deliverable, or baseline?

- A. Change request
- B. Requirements documentation
- C. Scope baseline
- D. Risk urgency assessment

Answer: A

NEW QUESTION 374

- (Exam Topic 1)

Identify Risks is part of which Process Group?

- A. Planning
- B. Executing
- C. Closing
- D. Initiating

Answer: A

NEW QUESTION 378

- (Exam Topic 1)

A project manager managing a cross-cultural virtual project team across several time zones should be concerned about the impacts of which communication technology factor?

- A. Urgent information need
- B. Sensitivity of information
- C. Project environment
- D. Ease of use

Answer: C

NEW QUESTION 383

- (Exam Topic 1)

Which tool or technique of the Define Activities process allows for work to exist at various levels of detail depending on where it is in the project life cycle?

- A. Historical relationships
- B. Dependency determination
- C. Bottom-up estimating
- D. Rolling wave planning

Answer: D

NEW QUESTION 388

- (Exam Topic 1)

An element of the project scope statement is:

- A. Acceptance criteria.
- B. A stakeholder list.
- C. A summary budget,
- D. High-level risks.

Answer: A

NEW QUESTION 392

- (Exam Topic 1)

Which input to the Identify Stakeholders process provides information about internal or external parties related to the project?

- A. Procurement documents
- B. Communications plan
- C. Project charter
- D. Stakeholder register

Answer: C

NEW QUESTION 396

- (Exam Topic 1)

During which process does a project manager review all prior information to ensure that all project work is completed and that the project has met its objectives?

- A. Monitor and Control Project Work
- B. Perform Quality Assurance
- C. Close Project or Phase
- D. Control Scope

Answer: C

NEW QUESTION 397

- (Exam Topic 1)

An input to Conduct Procurements is:

- A. Independent estimates.
- B. Selected sellers.
- C. Seller proposals.
- D. Resource calendars.

Answer: C

NEW QUESTION 400

- (Exam Topic 1)

A project manager builds consensus and overcomes obstacles by employing which communication technique?

- A. Listening
- B. Facilitation
- C. Meeting management
- D. Presentation

Answer: B

NEW QUESTION 402

- (Exam Topic 1)

Which process identifies whether the needs of a project can best be met by acquiring products, services, or results outside of the organization?

- A. Plan Procurement Management
- B. Control Procurements
- C. Collect Requirements
- D. Plan Cost Management

Answer: A

NEW QUESTION 405

- (Exam Topic 1)

Lessons learned are created and project resources are released in which Process Group?

- A. Planning
- B. Executing
- C. Closing
- D. Initiating

Answer: C

NEW QUESTION 410

- (Exam Topic 1)

Which process involves defining, preparing, and coordinating all subsidiary plans and integrating them into a comprehensive plan?

- A. Direct and Manage Project Work
- B. Develop Project Management Plan
- C. Plan Quality Management
- D. Monitor and Control Project Work

Answer: B

NEW QUESTION 411

- (Exam Topic 1)

A project manager is appointed full-time to a project and is given full-time administrative staff and full-time project team members. This situation describes which type of organizational structure?

- A. Projectized
- B. Weak matrix
- C. Functional
- D. Balanced matrix

Answer: A

NEW QUESTION 415

- (Exam Topic 1)

Which group is formally chartered and responsible for reviewing, evaluating, approving, delaying, or rejecting changes to the project and for recording and communicating decisions?

- A. Project team
- B. Focus group
- C. Change control board
- D. Project stakeholders

Answer: C

NEW QUESTION 417

- (Exam Topic 1)

Which document describes the necessary information to determine if a project is worth the required investment?

- A. Cost baseline
- B. Service level agreement
- C. Memorandum of understanding
- D. Business case

Answer: D

NEW QUESTION 418

- (Exam Topic 1)

The organization's perceived balance between risk taking and risk avoidance is reflected in the risk:

- A. Responses
- B. Appetite
- C. Tolerance
- D. Attitude

Answer: A

NEW QUESTION 420

- (Exam Topic 1)

The iterative process of increasing the level of detail in a project management plan as greater amounts of information become available is known as:

- A. Continuous improvement.
- B. Predictive planning.
- C. Progressive elaboration.
- D. Quality assurance.

Answer: C

NEW QUESTION 423

- (Exam Topic 1)

Which tool or technique is used in the Estimate Costs process?

- A. Acquisition
- B. Earned value management
- C. Vendor bid analysis
- D. Forecasting

Answer: C

NEW QUESTION 425

- (Exam Topic 1)

Change requests are processed for review and disposition according to which process?

- A. Control Quality
- B. Control Scope
- C. Monitor and Control Project Work
- D. Perform Integrated Change Control

Answer: D

NEW QUESTION 428

- (Exam Topic 1)

Which tool or technique is effective in a project in which the deliverable is not a service or result?

- A. Inspection
- B. Variance analysis
- C. Decomposition
- D. Product analysis

Answer: D

NEW QUESTION 430

- (Exam Topic 1)

Which input provides suppliers with a clear set of goals, requirements, and outcomes?

- A. Procurement statement of work
- B. Purchase order
- C. Source selection criteria
- D. Bidder conference

Answer: A

NEW QUESTION 431

- (Exam Topic 1)

The process of prioritizing risks for further analysis or action is known as:

- A. Plan Risk Management.
- B. Plan Risk Responses.
- C. Perform Qualitative Risk Analysis.
- D. Perform Quantitative Risk Analysis.

Answer: C

NEW QUESTION 432

- (Exam Topic 1)

The Plan Stakeholder Management process belongs to which Process Group?

- A. Executing
- B. Initiating
- C. Planning
- D. Monitoring and Controlling

Answer: C

NEW QUESTION 434

- (Exam Topic 1)

The ways in which the roles and responsibilities, reporting relationships, and staffing management will be addressed and structured within a project is described in the:

- A. Human resource management plan.
- B. Activity resource requirements.
- C. Personnel assessment tools,
- D. Multi-criteria decision analysis.

Answer: A

NEW QUESTION 439

- (Exam Topic 1)

A project in which the scope, time, and cost of delivery are determined as early as possible is following a life cycle that is:

- A. Adaptive
- B. Predictive
- C. Incremental
- D. Iterative

Answer: B

NEW QUESTION 443

- (Exam Topic 1)

A temporary endeavor that creates a unique product or service is called a:

- A. Project
- B. Plan
- C. Program
- D. Portfolio

Answer: A

NEW QUESTION 447

- (Exam Topic 1)

Which process involves monitoring the status of the project to update the project costs and managing changes to the cost baseline?

- A. Estimate Costs
- B. Control Costs
- C. Determine Budget
- D. Plan Cost Management

Answer: B

NEW QUESTION 449

- (Exam Topic 1)

A strengths, weaknesses, opportunities, and threats (SWOT) analysis is a tool or technique used in which process?

- A. Identify Risks
- B. Control Risks
- C. Perform Quantitative Risk Analysis
- D. Perform Qualitative Risk Analysis

Answer: A

NEW QUESTION 454

- (Exam Topic 1)

Configuration identification, configuration status accounting, and configuration verification and audit are all activities in which process?

- A. Perform Quality Assurance
- B. Direct and Manage Project Work
- C. Monitor and Control Project Work
- D. Perform Integrated Change Control

Answer: D

NEW QUESTION 458

- (Exam Topic 1)

Which type of project management office (PMO) supplies templates, best practices, and training to project teams?

- A. Supportive
- B. Directive
- C. Controlling
- D. Instructive

Answer: A

NEW QUESTION 460

- (Exam Topic 1)

An input to the Plan Cost Management process is:

- A. Cost estimates.
- B. Resource calendars,
- C. The project charter,
- D. The risk register.

Answer: C

NEW QUESTION 465

- (Exam Topic 1)

Which stakeholder classification model groups stakeholders based on their level of authority and their active involvement in the project?

- A. Power/influence grid
- B. Power/interest grid
- C. Influence/impact grid
- D. Salience model

Answer: A

NEW QUESTION 469

- (Exam Topic 1)

An output of the Validate Scope process is:

- A. A requirements traceability matrix.
- B. The scope management plan.

- C. Work performance reports.
- D. Change requests.

Answer: D

NEW QUESTION 474

- (Exam Topic 1)

Which type of contract gives both the seller and the buyer flexibility to deviate from performance with financial incentives?

- A. Cost Plus Incentive Fee (CPIF)
- B. Fixed Price Incentive Fee (FPIF)
- C. Cost Plus Award Re (CPAF)
- D. Time and Material (T&M)

Answer: B

NEW QUESTION 476

- (Exam Topic 1)

Which cost is associated with nonconformance?

- A. Liabilities
- B. Inspections
- C. Training
- D. Equipment

Answer: A

NEW QUESTION 479

- (Exam Topic 1)

Which process involves subdividing project deliverables and project work into smaller, more manageable portions?

- A. Develop Schedule
- B. Create WBS
- C. Estimate Activity Resources
- D. Define Scope

Answer: B

NEW QUESTION 480

- (Exam Topic 1)

An output of the Manage Stakeholder Engagement process is:

- A. change requests
- B. enterprise environmental factors
- C. the stakeholder management plan
- D. the change log

Answer: A

NEW QUESTION 481

- (Exam Topic 1)

Which tool or technique allows a large number of ideas to be classified into groups for review and analysis?

- A. Nominal group technique
- B. Idea/mind mapping
- C. Affinity diagram
- D. Brainstorming

Answer: C

NEW QUESTION 486

- (Exam Topic 1)

Payback period, return on investment, internal rate of return, discounted cash flow, and net present value are all examples of:

- A. Expert judgment.
- B. Analytical techniques.
- C. Earned value management.
- D. Group decision-making techniques.

Answer: B

NEW QUESTION 487

- (Exam Topic 1)

Which process numerically analyzes the effect of identified risks on overall project objectives?

- A. Plan Risk Management
- B. Plan Risk Responses
- C. Perform Quantitative Risk Analysis
- D. Perform Qualitative Risk Analysis

Answer: C

NEW QUESTION 491

- (Exam Topic 1)

A reward can only be effective if it is:

- A. Given immediately after the project is completed.
- B. Something that is tangible.
- C. Formally given during project performance appraisals.
- D. Satisfying a need valued by the individual.

Answer: D

NEW QUESTION 493

- (Exam Topic 1)

Which basic quality tool is most useful when gathering attributes data in an inspection to identify defects?

- A. Control charts
- B. Pareto diagrams
- C. Ishikavva diagrams
- D. Checksheets

Answer: D

NEW QUESTION 497

- (Exam Topic 1)

An output of the Direct and Manage Project Work process is:

- A. Deliverables.
- B. Activity lists.
- C. A work breakdown structure.
- D. A scope statement.

Answer: A

NEW QUESTION 502

- (Exam Topic 1)

Sending letters, memos, reports, emails, and faxes to share information is an example of which type of communication?

- A. Direct
- B. Interactive
- C. Pull
- D. Push

Answer: D

NEW QUESTION 505

- (Exam Topic 1)

When a backward pass is calculated from a schedule constraint that is later than the early finish date that has been calculated during a forward pass calculation, this causes which type of total float?

- A. Negative
- B. Zero
- C. Positive
- D. Free

Answer: C

NEW QUESTION 506

- (Exam Topic 1)

An input to Close Project or Phase is:

- A. Accepted deliverables,
- B. Final products or services,
- C. Document updates,
- D. Work performance information.

Answer: A

NEW QUESTION 509

- (Exam Topic 1)

Sensitivity analysis is typically displayed as a/an:

- A. Decision tree diagram.
- B. Tornado diagram.
- C. Pareto diagram.
- D. Ishikawa diagram.

Answer: B

NEW QUESTION 512

- (Exam Topic 1)

The process of establishing the policies, procedures, and documentation for planning, developing, managing, executing, and controlling the project schedule is known as:

- A. Plan Schedule Management.
- B. Develop Project Charter.
- C. Develop Schedule.
- D. Plan Scope Management.

Answer: A

NEW QUESTION 516

- (Exam Topic 1)

Processes in the Planning Process Group are typically carried out during which part of the project life cycle?

- A. Only once, at the beginning
- B. At the beginning and the end
- C. Once during each phase
- D. Repeatedly

Answer: D

NEW QUESTION 517

- (Exam Topic 6)

Which format can a network diagram take?

- A. Flow chart
- B. Control chart
- C. Affinity diagram
- D. Cause-and-effect diagram

Answer: A

NEW QUESTION 519

- (Exam Topic 6)

How can a project manager maintain the engagement of stakeholders in a project with a high degree of change?

- A. Monitor project stakeholder relationships using engaging strategies and plans
- B. Send all project documents to stakeholders each time they are modified
- C. Schedule monthly meetings with the stakeholders, including team members
- D. Engage only with the project sponsors

Answer: C

NEW QUESTION 522

- (Exam Topic 6)

Creating the project scope statement is part of which process?

- A. Manage Scope
- B. Collect Requirements
- C. Define Scope
- D. Validate Scope

Answer: C

NEW QUESTION 524

- (Exam Topic 6)

Which tasks should a project manager accomplish in order to manage project scope correctly?

- A. Defin
- B. Validate, and Control Scop
- C. Control Schedule; Control Costs and Manage Stakeholder Engagement
- D. Collect Requirement
- E. Define Scop
- F. Create WB
- G. Develop Schedule, and Manage Stakeholder Engagement

- H. Plan Scope Management; Collect Requirements; Defin
- I. Validate, and Control Scope; and Create WBS
- J. Defin
- K. Validate, and Control Scop
- L. Control Cost
- M. Manage Stakeholder Engagement, and keep budget under control

Answer: C

NEW QUESTION 526

- (Exam Topic 6)

Which is an example of analogous estimating?

- A. Estimates are created by individuals or groups with specialized knowledge.
- B. Estimates are created by using information about resources of previous similar projects.
- C. Estimates are created by analyzing data.
- D. Estimates are created at the task level and aggregated upwards.

Answer: B

NEW QUESTION 527

- (Exam Topic 6)

Which term refers to the work performed to deliver results with specified features and functions?

- A. Project scope
- B. Product scope
- C. Change request
- D. Acceptance criteria

Answer: A

NEW QUESTION 532

- (Exam Topic 6)

Which of the following set of elements is part of an effective communications management plan?

- A. Escalation processes, person responsible for communicating the information, glossary of common terminology, methods or technologies used to convey the information
- B. Phone book directory, stakeholder communication requirements, project charter, glossary of common terminology
- C. Organizational chart, escalation processes, person responsible for communicating the information, project management plan, glossary of common terminology
- D. Glossary of common terminology, constraints derved from specific legislation and regulation, person responsible for communicating information, project management plan, resource management plan

Answer: A

NEW QUESTION 536

- (Exam Topic 6)

Which contract type is least desirable to a vendor?

- A. Fixed price with economic price adjustment (FPEPA)
- B. Firm fixed price (FFP)
- C. Cost plus fixed fee (CPFF>
- D. Cost plus award fee (CPAF>

Answer: B

NEW QUESTION 540

- (Exam Topic 6)

What is the best tool to calculate the critical path on a project?

- A. Critical chain method
- B. Graphical evaluation and review technique (GERT) diagram
- C. Gantt chart
- D. Project network diagram

Answer: C

NEW QUESTION 542

- (Exam Topic 6)

Which conflict resolution technique produces the most lasting results?

- A. Withdraw/avoid
- B. Smooth/accommodate
- C. Compromise/reconcile
- D. Collaborate/problem solve

Answer: C

NEW QUESTION 544

- (Exam Topic 5)

The correct equation for schedule variance (SV) is earned value:

- A. minus planned value [EV - PV].
- B. minus actual cost [EV - AC].
- C. divided by planned value [EV/PV],
- D. divided by actual cost [EV/AC].

Answer: A

NEW QUESTION 549

- (Exam Topic 5)

Using the three-point estimating technique, if the most likely duration is four months, the optimistic duration is two months, and the pessimistic duration is one year, how many months is the expected activity duration?

- A. Two
- B. Four
- C. Five
- D. Twelve

Answer: C

NEW QUESTION 554

- (Exam Topic 5)

Which of the following includes how requirements activities will be planned, tracked, and reported?

- A. Configuration management plan
- B. Scope baseline
- C. Requirements management plan
- D. Schedule baseline

Answer: C

NEW QUESTION 559

- (Exam Topic 5)

Which process requires implementation of approved changes?

- A. Direct and Manage Project Execution
- B. Monitor and Control Project Work
- C. Perform Integrated Change Control
- D. Close Project or Phase

Answer: A

NEW QUESTION 563

- (Exam Topic 5)

In Plan Risk Management, which of the management plans determines who will be available to share information on various risks and responses at different times and locations?

- A. Schedule
- B. Quality
- C. Communications
- D. Cost

Answer: C

NEW QUESTION 565

- (Exam Topic 5)

Which of the following is an input to Direct and Manage Project Execution?

- A. Performance reports
- B. Project charter
- C. Outputs from planning processes
- D. Enterprise environmental factors

Answer: D

NEW QUESTION 566

- (Exam Topic 5)

Exhibit A is an example of which of the following types of Sequence Activities?

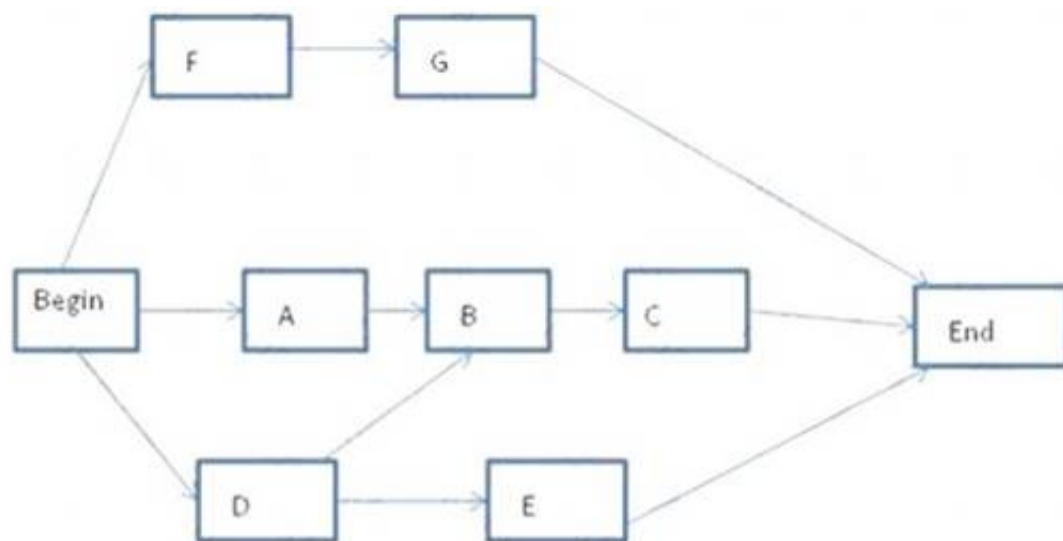


Exhibit A

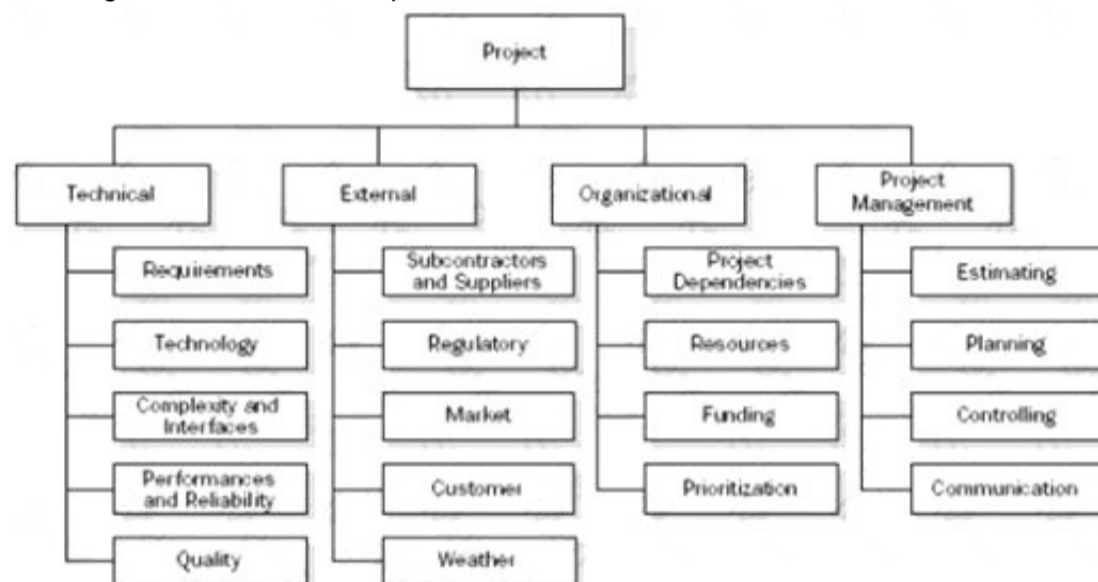
- A. Activity-on-arrow diagramming
- B. Precedence diagramming
- C. Project schedule network diagramming
- D. Mathematical analysis diagramming

Answer: B

NEW QUESTION 569

- (Exam Topic 5)

The diagram below is an example of a:



- A. Risk breakdown structure (RBS).
- B. Project team.
- C. SWOT Analysis.
- D. Work breakdown structure (WBS).

Answer: A

NEW QUESTION 574

- (Exam Topic 5)

Which input will be used when tasked with developing the human resource plan?

- A. Project management plan
- B. Activity resource requirements
- C. Resource calendar
- D. Project staff assignments

Answer: B

NEW QUESTION 577

- (Exam Topic 5)

Which of the following is an output of the Conduct Procurements process?

- A. Project statement of work
- B. Selected sellers
- C. Risk register updates
- D. Teaming agreements

Answer: B

NEW QUESTION 581

- (Exam Topic 5)

The process to ensure that appropriate quality standards and operational definitions are used is:

- A. Plan Quality.
- B. Perform Quality Assurance.
- C. Perform Quality Control.
- D. Total Quality Management.

Answer: B

NEW QUESTION 585

- (Exam Topic 5)

A tool and technique used during the Collect Requirements process is:

- A. prototypes.
- B. expert judgment.
- C. alternatives identification.
- D. product analysis.

Answer: A

NEW QUESTION 588

- (Exam Topic 5)

Which of the following is an output of Close Procurements?

- A. Accepted deliverables
- B. Organizational process assets updates
- C. Managing stakeholder expectations
- D. Performance reports

Answer: B

NEW QUESTION 591

- (Exam Topic 5)

The staffing management plan is part of the:

- A. organizational process assets.
- B. resource calendar.
- C. human resource plan.
- D. Develop Project Team process.

Answer: C

NEW QUESTION 593

- (Exam Topic 5)

The processes required to establish the scope of the project, refine the objectives, and define the course of action required to attain the objectives that the project has been undertaken to achieve are grouped within which Process Group?

- A. Initiating
- B. Planning
- C. Executing
- D. Monitoring and Controlling

Answer: B

NEW QUESTION 595

- (Exam Topic 5)

Which of the following is an estimating technique that uses the values of parameters from previous similar projects for estimating the same parameter or measure for a current project?

- A. Reserve analysis
- B. Three-point estimating
- C. Parametric estimating
- D. Analogous estimating

Answer: D

NEW QUESTION 597

- (Exam Topic 5)

Which characteristics do effective project managers possess?

- A. Project management knowledge, performance skills, and personal effectiveness
- B. Preparedness, project management knowledge, and personality characteristics
- C. General management, preparedness, and project management knowledge
- D. Assertiveness, collaboration, and performance skills

Answer: A

NEW QUESTION 598

- (Exam Topic 5)

Which Process Group contains the processes performed to complete the work defined in the project management plan to satisfy the project specifications?

- A. Initiating
- B. Planning
- C. Executing
- D. Closing

Answer: C

NEW QUESTION 602

- (Exam Topic 5)

Which of the following is a statistical concept that calculates the average outcome when the future includes scenarios that may or may not happen?

- A. Sensitivity analysis
- B. Three-point estimate
- C. Modeling and simulation
- D. Expected monetary value analysis

Answer: D

NEW QUESTION 606

- (Exam Topic 5)

Administer Procurements is part of which Process Group?

- A. Planning
- B. Executing
- C. Monitoring and Controlling
- D. Closing

Answer: C

NEW QUESTION 608

- (Exam Topic 5)

A project lifecycle is defined as:

- A. a collection of generally sequential and sometimes overlapping project phases.
- B. a process required to ensure that the project includes all the work required, and only the work required, to complete the project successfully.
- C. a recognized standard for the project management profession.
- D. the application of knowledge, skills, tools, and techniques to project activities to meet the project requirements.

Answer: A

NEW QUESTION 610

- (Exam Topic 5)

Which baselines make up the performance measurement baseline?

- A. Scope baseline, cost baseline, and schedule baseline
- B. Scope baseline, project management baseline, and quality baseline
- C. Cost baseline, schedule baseline, and risk baseline
- D. Cost baseline, project management baseline, and schedule baseline

Answer: A

NEW QUESTION 615

- (Exam Topic 5)

The item that provides more detailed descriptions of the components in the work breakdown structure (WBS) is called a WBS:

- A. dictionary.
- B. chart.
- C. report.
- D. register.

Answer: A

NEW QUESTION 616

- (Exam Topic 5)

A project manager has created an issue log to document issues communicated by project team members during weekly team meetings. This is an input of:

- A. Manage Stakeholder Expectations.
- B. Monitor and Control Risks.
- C. Plan Risk Management.
- D. Report Performance.

Answer:

A

NEW QUESTION 617

- (Exam Topic 5)

The application of knowledge, skills, tools, and techniques to project activities to meet project requirements describes management of which of the following?

- A. Project
- B. Scope
- C. Contract
- D. Program

Answer: A

NEW QUESTION 619

- (Exam Topic 5)

The probability and impact matrix is primarily used to:

- A. Quantify risk issues for trends during a quality audit.
- B. Develop a risk register for risk planning.
- C. Evaluate each risk's importance and priority during Perform Qualitative Risk Analysis.
- D. Define risk and compare impacts during Perform Quantitative Risk Analysis.

Answer: C

NEW QUESTION 624

- (Exam Topic 5)

The contract in which the seller is reimbursed for all allowable costs for performing the contract work and then receives a fee based upon achieving certain performance objectives is called a:

- A. Cost Plus Incentive Fee Contract (CPIF).
- B. Cost Plus Fixed Fee Contract (CPFF).
- C. Fixed Price Incentive Fee Contract (FPIF).
- D. Time and Material Contract (T&M).

Answer: A

NEW QUESTION 629

- (Exam Topic 5)

What is project management?

- A. A logical grouping of project management inputs, outputs, tools, and techniques
- B. Applying knowledge, skills, tools, and techniques to project activities to meet the project requirements
- C. Launching a process that can result in the authorization of a new project
- D. A formal, approved document that defines how the project is executed, monitored, and controlled

Answer: B

NEW QUESTION 630

- (Exam Topic 5)

Which of the following is a tool or technique used in the Acquire Project Team process?

- A. Networking
- B. Training
- C. Negotiation
- D. Issue log

Answer: C

NEW QUESTION 634

- (Exam Topic 5)

Which is one of the determining factors used to calculate CPI?

- A. EV
- B. SPI
- C. PV
- D. ETC

Answer: A

NEW QUESTION 635

- (Exam Topic 5)

When cost variance is negative and schedule variance is positive, the project is:

- A. under budget and behind schedule.
- B. over budget and ahead of schedule.
- C. on schedule.

D. complete; all planned values have been earned.

Answer: B

NEW QUESTION 639

- (Exam Topic 5)

Risk exists the moment that a project is:

- A. planned.
- B. conceived.
- C. chartered.
- D. executed.

Answer: B

NEW QUESTION 644

- (Exam Topic 5)

The project budget is set at \$150,000. The project duration is planned to be one year. At the completion of Week 16 of the project, the following information is collected: Actual cost = \$50,000, Plan cost = \$45,000, Earned value = \$40,000. What is the cost performance index?

- A. 0.8
- B. 0.89
- C. 1.13
- D. 1.25

Answer: A

NEW QUESTION 649

- (Exam Topic 5)

Which statement correctly describes the value of a business case?

- A. It provides the necessary information to determine if a project is worth the required investment.
- B. It provides for alternative dispute resolution procedures in event of contract default.
- C. It offers one of several alternative scenarios which assist in performing qualitative risk analysis.
- D. It is used to help a project manager understand the scope of commercial advantages.

Answer: A

NEW QUESTION 651

- (Exam Topic 5)

Which quality control technique illustrates the 80/20 principle?

- A. Ishikawa diagram
- B. Control chart
- C. Run chart
- D. Pareto chart

Answer: D

NEW QUESTION 653

- (Exam Topic 5)

How should a stakeholder who is classified as high power and low interest be grouped in a power/interest grid during stakeholder analysis?

- A. Keep satisfied
- B. Keep informed
- C. Manage closely
- D. Monitor

Answer: A

NEW QUESTION 657

- (Exam Topic 5)

Which of the following is a tool or technique used in the Determine Budget process?

- A. Variance analysis
- B. Three-point estimating
- C. Bottom-up estimating
- D. Historical relationships

Answer: D

NEW QUESTION 661

- (Exam Topic 4)

Which of the following helps to ensure that each requirement adds business value by linking it to the business and project objectives?

- A. Requirements traceability matrix
- B. Work breakdown structure (WBS) dictionary
- C. Requirements management plan
- D. Requirements documentation

Answer: A

NEW QUESTION 662

- (Exam Topic 4)

Which of the following correctly explains the term "progressive elaboration"?

- A. Changing project specifications continuously
- B. Elaborate tracking of the project progress
- C. Elaborate tracking of the project specifications with a change control system
- D. Project specifications becoming more explicit and detailed as the project progresses

Answer: D

NEW QUESTION 667

- (Exam Topic 5)

Activity cost estimates are quantitative assessments of the probable costs required to:

- A. Create WBS.
- B. complete project work.
- C. calculate costs.
- D. Develop Project Management Plan.

Answer: B

NEW QUESTION 671

- (Exam Topic 4)

In a construction project schedule, what is the logical relationship between the delivery of the concrete materials and the pouring of concrete?

- A. Start-to-start (SS)
- B. Start-to-finish (SF)
- C. Finish-to-finish (FF)
- D. Finish-to-start (FS)

Answer: D

NEW QUESTION 673

- (Exam Topic 4)

Which of the following is the primary output of the Identify Risks process?

- A. Risk management plan
- B. Risk register
- C. Change requests
- D. Risk response plan

Answer: B

NEW QUESTION 674

- (Exam Topic 4)

What is the most accurate rough order of magnitude (ROM)?

- A. In the Initiation phase, the estimate is in the range of +/- 50%.
- B. In the Planning phase, the estimate is in the range of +/- 50%.
- C. In the Monitoring and Controlling phase, the estimate is in the range of +/- 15%.
- D. In the Closing phase, the estimate is in the range of +/- 15%.

Answer: A

NEW QUESTION 679

- (Exam Topic 4)

Which activity involves ensuring that the composition of a project's configuration items is correct?

- A. Configuration Identification
- B. Configuration Status Accounting
- C. Configuration Verification and Audit
- D. Configuration Quality Assurance

Answer: C

NEW QUESTION 682

- (Exam Topic 4)

In which process might a project manager use risk reassessment as a tool and technique?

- A. Perform Qualitative Risk Analysis
- B. Monitor and Control Risk
- C. Monitor and Control Project Work
- D. Plan Risk Responses

Answer: B

NEW QUESTION 685

- (Exam Topic 4)

Which of the following is an input to the Perform Qualitative Risk Analysis process?

- A. Risk register
- B. Risk data quality assessment
- C. Risk categorization
- D. Risk urgency

Answer: A

NEW QUESTION 690

- (Exam Topic 4)

What is the primary benefit of meeting quality requirements?

- A. Quality metrics
- B. Less rework
- C. Quality control measurements
- D. Benchmarking

Answer: B

NEW QUESTION 693

- (Exam Topic 4)

Which standard has interrelationships to other project management disciplines such as program management and portfolio management?

- A. Program Management Body of Knowledge Guide
- B. The Standard for Program Management
- C. Organizational Project Management Maturity Model (OPM3\$)
- D. Guide to the Project Management Body of Knowledge (PMBOK®)

Answer: D

NEW QUESTION 694

- (Exam Topic 4)

In which Project Management Process Group is the project charter developed?

- A. Monitoring and Controlling
- B. Executing
- C. Initiating
- D. Planning

Answer: C

NEW QUESTION 695

- (Exam Topic 4)

Which type of management focuses on ensuring that projects and programs are reviewed to prioritize resource allocation?

- A. Project
- B. Functional
- C. Program
- D. Portfolio

Answer: D

NEW QUESTION 697

- (Exam Topic 4)

Which of the following schedule network analysis techniques is applied when a critical path method calculation has been completed and resources availability is critical?

- A. Applying calendars
- B. Resource leveling
- C. Resource planning
- D. Resource conflict management

Answer: B

NEW QUESTION 698

- (Exam Topic 4)

An input to the Perform Quantitative Risk Analysis process is the:

- A. quality management plan.
- B. project management plan.
- C. communications management plan.
- D. schedule management plan.

Answer: D

NEW QUESTION 699

- (Exam Topic 4)

The project scope statement and resource calendars are inputs to which Project Time Management process?

- A. Sequence Activities
- B. Estimate Activity Resources
- C. Develop Schedule
- D. Control Schedule

Answer: C

NEW QUESTION 701

- (Exam Topic 4)

Which category of contracts are sellers legally obligated to complete, with possible financial damages if the project objectives are not met?

- A. Cost-reimbursable contracts
- B. Time and Material contracts (T&M)
- C. Fixed-price contracts
- D. Cost Plus Fixed Fee Contracts (CPFF)

Answer: C

NEW QUESTION 706

- (Exam Topic 4)

Which of the following Project Communication Management processes uses performance reports as an input?

- A. Manage Stakeholder Expectations
- B. Report Performance
- C. Distribute Information
- D. Plan Communications

Answer: C

NEW QUESTION 709

- (Exam Topic 4)

Project contracts generally fall into which of the following three broad categories?

- A. Fixed-price, cost reimbursable, time and materials
- B. Make-or-buy, margin analysis, fixed-price
- C. Time and materials, fixed-price, margin analysis
- D. Make-or-buy, lump-sum, cost-plus-incentive

Answer: A

NEW QUESTION 711

- (Exam Topic 4)

Which of the following is an input to the Direct and Manage Project Execution process?

- A. Approved change requests
- B. Approved contract documentation
- C. Work performance information
- D. Rejected change requests

Answer: A

NEW QUESTION 714

- (Exam Topic 4)

In Project Cost Management, which input is exclusive to the Determine Budget process?

- A. Scope baseline
- B. Organizational process assets
- C. Project schedule
- D. Resource calendars

Answer: D

NEW QUESTION 718

- (Exam Topic 4)

Labor, materials, equipment, and supplies are examples of:

- A. Resource attributes.
- B. Resource types.
- C. Resource categories.
- D. Resource breakdown structures (RBS).

Answer: C

NEW QUESTION 719

- (Exam Topic 4)

The process of aggregating the estimated costs of individual activities or work packages to establish an authorized cost baseline is:

- A. Determine Budget.
- B. Baseline Budget.
- C. Control Costs.
- D. Estimate Costs.

Answer: A

NEW QUESTION 722

- (Exam Topic 4)

Which of the following Process Groups covers all nine Project Management Knowledge Areas?

- A. Executing
- B. Monitoring and Controlling
- C. Planning
- D. Initiating

Answer: C

NEW QUESTION 727

- (Exam Topic 4)

When calculating the cost of quality (COQ) for a product or service, money spent for cost of conformance would include the areas of:

- A. training, testing, and warranty work.
- B. equipment, rework, and scrap.
- C. training, document processes, and inspections.
- D. inspections, rework, and warranty work.

Answer: C

NEW QUESTION 730

- (Exam Topic 4)

When large or complex projects are separated into distinct phases or subprojects, all of the Process Groups would normally be:

- A. divided among each of the phases or subprojects.
- B. repeated for each of the phases or subprojects.
- C. linked to specific phases or subprojects.
- D. integrated for specific phases or subprojects.

Answer: B

NEW QUESTION 734

- (Exam Topic 4)

The key benefit of the Monitoring and Controlling Process Group is the ability to:

- A. establish and manage project communication channels, both external and internal to the project team.
- B. influence the stakeholders that want to circumvent integrated change control so that their changes are implemented.
- C. monitor the ongoing project team against the team performance assessments and the project performance baseline.
- D. observe and measure project performance regularly and consistently to identify variances from the project management plan.

Answer: D

NEW QUESTION 736

- (Exam Topic 4)

Which is an output from Distribute Information?

- A. Earned value analysis
- B. Trend analysis
- C. Project records
- D. Performance reviews

Answer:

C

NEW QUESTION 739

- (Exam Topic 4)

The precedence diagramming method (PDM) is also known as:

- A. Arrow Diagram.
- B. Critical Path Methodology (CPM).
- C. Activity-On-Node (AON).
- D. schedule network diagram.

Answer: C

NEW QUESTION 743

- (Exam Topic 4)

Lessons learned documentation is gathered during which of the following Project Management Process Groups?

- A. Planning
- B. Executing
- C. Closing
- D. Initiating

Answer: C

NEW QUESTION 745

- (Exam Topic 4)

Which type of risk diagram is useful for showing time ordering of events?

- A. Ishikawa
- B. Milestone
- C. Influence
- D. Decision tree

Answer: C

NEW QUESTION 747

- (Exam Topic 4)

Which of the following is an output from Control Scope?

- A. Change requests
- B. Variance analysis
- C. Accepted deliverables
- D. Requirements documentation

Answer: A

NEW QUESTION 751

- (Exam Topic 4)

Which of the following is an output of Direct and Manage Project Execution?

- A. Project management plan
- B. Change request status updates
- C. Organizational process assets updates
- D. Work performance information

Answer: D

NEW QUESTION 754

- (Exam Topic 4)

Changes to formally controlled documentation, plans, etc. to reflect modified or additional ideas or content are known as:

- A. updates.
- B. defect repairs.
- C. preventive actions.
- D. corrective actions.

Answer: A

NEW QUESTION 757

- (Exam Topic 4)

Control charts, flowcharting, histograms, Pareto charts, and scatter diagrams are tools and techniques of which process?

- A. Perform Quality Control
- B. Perform Quality Assurance
- C. Plan Quality
- D. Report Performance

Answer: C

NEW QUESTION 761

- (Exam Topic 4)

Which process occurs within the Monitoring and Controlling Process Group?

- A. Control Costs
- B. Plan Quality
- C. Perform Quantitative Risk Analysis
- D. Determine Budget

Answer: A

NEW QUESTION 765

- (Exam Topic 4)

Which characteristic do projects and operational work share in common?

- A. Performed by systems
- B. Constrained by limited resources
- C. Repetitiveness
- D. Uniqueness

Answer: B

NEW QUESTION 770

- (Exam Topic 4)

One of the tools and techniques of the Manage Project Team process is:

- A. organization charts.
- B. ground rules.
- C. organizational theory,
- D. conflict management.

Answer: D

NEW QUESTION 774

- (Exam Topic 4)

Which of the following is a tool and technique used in the Develop Schedule process?

- A. Three-point estimates
- B. Resource leveling
- C. Precedence diagramming method
- D. Bottom-up estimating

Answer: B

NEW QUESTION 776

- (Exam Topic 4)

In which Process Group are lessons learned documented?

- A. Planning
- B. Closing
- C. Executing
- D. Initiating

Answer: B

NEW QUESTION 777

- (Exam Topic 4)

Which type of chart is a graphic representation of a process showing the relationships among process steps?

- A. Control
- B. Bar
- C. Flow
- D. Pareto

Answer: C

NEW QUESTION 778

- (Exam Topic 4)

Which of the following is an output of the Perform Integrated Change Control process?

- A. Project document updates
- B. Organizational process assets updates
- C. Change requests

D. Deliverables

Answer: A

NEW QUESTION 783

- (Exam Topic 4)

Which of the following are outputs of Develop Project Team?

- A. Human resources plan changes and project staff assignment updates
- B. Project management plan updates and enterprise environmental factor updates
- C. Resource calendars and project management plan updates
- D. Team performance assessments and enterprise environmental factor updates

Answer: D

NEW QUESTION 785

- (Exam Topic 4)

Which is the correct formula for calculating expected activity cost for three-point estimating?

- A. $C_e = (C_0 + 6C_m + C_p)/4$
- B. $C_e = (6C_0 + C_m + C_p)/4$
- C. $C_e = (C_0 + 4C_m + C_p)/6$
- D. $C_e = (C_0 + C_{,,,} + 4C_p) / 6$

Answer: C

NEW QUESTION 789

- (Exam Topic 4)

The project manager at an organization has just realized that some of the engineering staff has been allocated to project Y and will not be available to finish task X. The project manager has also discovered that at the current pace, it will not be possible to complete the project on time. Due to cost constraints, hiring more work force is not a viable option. Which tools are at the manager's disposal?

- A. Resource leveling and fast tracking
- B. Fast tracking and crashing
- C. Crashing and applying leads and lags
- D. Scheduling tools and applying leads and lags

Answer: A

NEW QUESTION 791

- (Exam Topic 4)

Which cost estimate technique includes contingencies to account for cost uncertainty?

- A. Vendor bid analysis
- B. Three-point estimates
- C. Parametric estimating
- D. Reserve analysis

Answer: D

NEW QUESTION 794

- (Exam Topic 4)

Which type of elaboration allows a project management team to manage at a greater level of detail as the project evolves?

- A. Cyclic
- B. Progressive
- C. Repetitive
- D. Iterative

Answer: B

NEW QUESTION 795

- (Exam Topic 4)

A project has a current cost performance index (CPI) of 1.25. To date, US\$10,000 have been spent on performing the project work. What is the earned value of the work completed to date?

- A. US\$5000
- B. US\$9500
- C. US\$10,000
- D. US\$12,500

Answer: D

NEW QUESTION 798

- (Exam Topic 4)

What is the responsibility of the project manager and the functional manager respectively?

- A. Oversight for an administrative area; a facet of the core business
- B. Achieving the project objectives; providing management oversight for an administrative area
- C. A facet of the core business; achieving the project objectives
- D. Both are responsible for achieving the project objectives.

Answer: B

NEW QUESTION 799

- (Exam Topic 4)

Tools and techniques used for Plan Communications include the communication:

- A. requirements analysis, communication technology, communication models, and communication methods.
- B. methods, stakeholder register, communication technology, and communication models.
- C. requirements, communication technology, communication requirements analysis, and communication methods.
- D. management plan, communication technology, communication models, and communication requirements analysis.

Answer: A

NEW QUESTION 803

- (Exam Topic 4)

Which technique is commonly used for the Perform Quantitative Risk Analysis process?

- A. Brainstorming
- B. Strategies for opportunities
- C. Decision tree analysis
- D. Risk data quality assessment

Answer: C

NEW QUESTION 804

- (Exam Topic 4)

Another name for an Ishikawa diagram is:

- A. cause and effect diagram.
- B. control chart.
- C. flowchart.
- D. histogram.

Answer: A

NEW QUESTION 807

- (Exam Topic 4)

Which of the following is a tool or technique of the Define Activities process?

- A. Rolling wave planning
- B. Precedence diagramming method (PDM)
- C. Alternatives analysis
- D. Parametric estimating

Answer: A

NEW QUESTION 811

- (Exam Topic 4)

A project has an EV of 100 workdays, an AC of 120 workdays, and a PV of 80 workdays. What should be the concern?

- A. There is a cost underrun.
- B. There is a cost overrun.
- C. The project may not meet the deadline.
- D. The project is 20 days behind schedule.

Answer: B

NEW QUESTION 814

- (Exam Topic 4)

The PV is \$1000, EV is \$2000, and AC is \$1500. What is CPI?

- A. 1.33
- B. 2
- C. 0.75
- D. 0.5

Answer: A

NEW QUESTION 819

- (Exam Topic 4)

Which technique helps to determine the risks that have the most potential impact on a project?

- A. Cost risk simulation analysis
- B. Expected monetary value analysis
- C. Modeling and simulation
- D. Sensitivity analysis

Answer: D

NEW QUESTION 824

- (Exam Topic 4)

The process of identifying the stakeholders' information needs is completed during:

- A. Plan Communications.
- B. Manage Stakeholder Expectations.
- C. Stakeholder Analysis.
- D. Identify Stakeholders.

Answer: A

NEW QUESTION 826

- (Exam Topic 4)

Which of the following reduces the probability of potential consequences of project risk events?

- A. Preventive action
- B. Risk management
- C. Corrective action
- D. Defect repair

Answer: A

NEW QUESTION 827

- (Exam Topic 4)

Testing falls into which of the following categories of cost of quality?

- A. Internal failure costs
- B. Prevention costs
- C. Appraisal costs
- D. External failure costs

Answer: C

NEW QUESTION 832

- (Exam Topic 4)

What is a deliverable-oriented, hierarchical decomposition of the work to be executed to accomplish the project objectives and create the required deliverables?

- A. Organizational breakdown structure (OBS)
- B. Work performance information
- C. Work package
- D. Work breakdown structure (WBS)

Answer: D

NEW QUESTION 834

- (Exam Topic 4)

In which type of organizational structure are staff members grouped by specialty?

- A. Functional
- B. Projectized
- C. Matrix
- D. Balanced

Answer: A

NEW QUESTION 838

- (Exam Topic 4)

Which of the following statements is true regarding project and product lifecycles?

- A. A single product lifecycle may consist of multiple project lifecycles.
- B. A product lifecycle is always shorter than the project lifecycle.
- C. A single product lifecycle can only have one project lifecycle.
- D. A single project lifecycle may consist of multiple product lifecycles.

Answer: A

NEW QUESTION 841

- (Exam Topic 4)

Which of the following events would result in a baseline update?

- A. A project is behind schedule and the project manager wants the baseline to reflect estimated actual completion.
- B. A customer has approved a change request broadening the project scope and increasing the budget.
- C. One of the risks identified in the risk management plan occurs, resulting in a schedule delay.
- D. One of the key project team resources has left the team and no replacement is available.

Answer: B

NEW QUESTION 846

- (Exam Topic 4)

How many Project Management Process Groups are there?

- A. 3
- B. 4
- C. 5
- D. 6

Answer: C

NEW QUESTION 850

- (Exam Topic 4)

Define Activities and Estimate Activity Resources are processes in which project management Knowledge Area?

- A. Project Time Management
- B. Project Cost Management
- C. Project Scope Management
- D. Project Human Resource Management

Answer: A

NEW QUESTION 851

- (Exam Topic 6)

A project manager has just completed several brainstorming sessions and has gathered the data to show commonality and differences in one single place. What technique was followed?

- A. Collective decision making
- B. Multicriteria decision analysis
- C. Mind mapping
- D. Affinity diagram

Answer: C

NEW QUESTION 852

- (Exam Topic 6)

Which are the main objectives of Project Risk Management?

- A. Increase the probability of positive risks and decrease the probability of negative risks
- B. Avoid all kind of risks
- C. Increase the probability of positive risks and eliminate all negative risks
- D. Identify positive and negative risks

Answer: A

NEW QUESTION 857

- (Exam Topic 6)

Which of the following is used as an input to prepare a cost management plan?

- A. Expert judgment
- B. Lessons learned
- C. Cost estimates
- D. Project management plan

Answer: D

NEW QUESTION 859

- (Exam Topic 6)

How should a project manager plan communications for a project which has uncertain requirements?

- A. Include stakeholders in project meetings and reviews, use frequent checkpoints, and co-locate team members only.
- B. Invite customers to sprint planning and retrospective meetings, update the team quickly and on a daily basis, and use official communication channels.
- C. Adopt social networking to engage stakeholders, issue frequent and short messages, and use informal communication channels.
- D. Adopt a strong change control board process, establish focal points for main subjects, and promote formal and transparent communication.

Answer:

B

NEW QUESTION 862

- (Exam Topic 6)

Which of the following is a category of organizational process assets?

- A. Government standards
- B. Organizational culture
- C. Employee capabilities
- D. Organizational knowledge bases

Answer: D

NEW QUESTION 867

- (Exam Topic 6)

The project management plan requires the acquisition of a special part available from a supplier located abroad. Which source selection method is being used?

- A. Least cost
- B. Qualifications only
- C. Sole source
- D. Fixed budget

Answer: B

NEW QUESTION 871

- (Exam Topic 6)

What is one of the main purposes of the project charter?

- A. Formal authorization of the existence of the project
- B. Formal acceptance of the project management plan
- C. Formal approval of the detailed project budget
- D. Formal definition of stakeholder roles and responsibilities

Answer: A

NEW QUESTION 876

- (Exam Topic 6)

If you established a contingency reserve including time, money, and resources, how are you handling risk?

- A. Accepting
- B. Transferring
- C. Avoiding
- D. Mitigating

Answer: A

NEW QUESTION 879

- (Exam Topic 6)

Which of the following best correspond to the organizational process assets (OPAs) that affect the project?

- A. Policies and lessons learned from other projects
- B. Information technology software and employee capability
- C. Resource availability and employee capability
- D. Marketplace conditions and legal restrictions

Answer: A

NEW QUESTION 881

- (Exam Topic 6)

With regard to a project manager's sphere of influence in a project, which of the following does the project manager influence most directly?

- A. Suppliers
- B. Customers
- C. Governing bodies
- D. Project team

Answer: D

NEW QUESTION 884

- (Exam Topic 6)

Company A has just been notified about a new legal requirement for its business operations. What is the classification of this item?

- A. Internal enterprise environmental factor
- B. Risk register database
- C. External enterprise environmental factor
- D. Organizational process asset

Answer: C

NEW QUESTION 885

- (Exam Topic 6)

A new project has been set. Four main stakeholders besides the project manager and four other team members have been identified. How many communication channels are available?

- A. 8
- B. 18
- C. 36
- D. 40

Answer: C

NEW QUESTION 889

- (Exam Topic 6)

A project manager is in the process of working with stakeholders to meet their needs and expectations, and identifying and fostering communication and involvement. Which process does this typically represent?

- A. Monitor Stakeholder Engagement
- B. Monitor Communications
- C. Manage Communications
- D. Manage Stakeholder Engagement

Answer: D

NEW QUESTION 894

- (Exam Topic 6)

What is the discipline that focuses on the interdependences between projects to determine the optimal approach for managing them?

- A. Project Management
- B. Program Management
- C. Portfolio Management
- D. Operations Management

Answer: A

NEW QUESTION 899

- (Exam Topic 6)

A project manager is formalizing acceptance of the completed project deliverables. What is an input to this process?

- A. Verified deliverables
- B. Validated deliverables
- C. Accepted deliverables
- D. Completed change requests

Answer: A

NEW QUESTION 903

- (Exam Topic 6)

A project manager is analyzing a few network diagrams in order to determine the minimum duration of a project. Which diagram should the project manager reference?

- A. A diagram in which resource optimization has been applied.
- B. A diagram in which the critical path method has been applied.
- C. A diagram in which a predefined series of activities has been organized.
- D. A diagram which shows a combination of resource and time optimization.

Answer: B

NEW QUESTION 906

- (Exam Topic 6)

Deciding the phases of a project life cycle would be considered a part of which of these knowledge areas?

- A. Project Schedule Management
- B. Project Scope Management
- C. Project Resource Management
- D. Project Integration Management

Answer: D

NEW QUESTION 909

- (Exam Topic 6)

What type of meeting is held to discuss prioritized product backlog items?

- A. Status
- B. Daily standup
- C. Iteration planning
- D. Release planning

Answer: C

NEW QUESTION 913

- (Exam Topic 6)

What important leadership quality/qualities should project managers possess?

- A. Skills and behaviors related to specific domains of project management
- B. Skills and behaviors needed to guide a team and help an organization reach its goals
- C. Industry expertise that helps to better deliver business outcomes
- D. Industry and organizational expertise that enhances performance

Answer: C

NEW QUESTION 915

- (Exam Topic 6) Given the following information. Activity A takes one week.

Activity B takes three weeks. Activity C takes two weeks. Activity D takes five weeks.

Activity A starts at the same time as Activity B. Activity C follows Activity B and Activity A. Activity D follows Activity C.

How long will it take to complete the project?

- A. Eleven weeks
- B. Nine weeks
- C. Eight weeks
- D. Ten weeks

Answer: D

NEW QUESTION 917

- (Exam Topic 6)

Which is a list of organizational systems that may have an impact on a project?

- A. Internal policies, company procedures, and organizational resources
- B. Company culture, purchasing system, and project management information system
- C. Organizational structure, governance framework, and management elements
- D. Organizational process assets, enterprise environmental factors, and corporate knowledge

Answer: D

NEW QUESTION 921

- (Exam Topic 6)

In which organizational structure would the project manager have most authority?

- A. Matrix-weak
- B. Matrix-balanced
- C. Matrix-strong
- D. Organic or simple

Answer: C

NEW QUESTION 926

- (Exam Topic 6)

Which of the following lists represents the outputs of the Monitor Communications process?

- A. Project communications, project management plan updates, project documents updates, and organizational process assets updates
- B. Work performance information, change requests, project management plan updates, and project documents updates
- C. Communications management plan, project management plan updates, work performance report, and project documents update
- D. Stakeholder engagement plan, change requests, project management plan updates, and project documents updates

Answer: B

NEW QUESTION 931

- (Exam Topic 6)

A project manager needs to demonstrate that the project meets quality standards and success criteria. For that reason, the project manager is defining the quality objectives of the project, the quality tools that will be used, and quality metrics for the project deliverables.

Which process is the project manager executing?

- A. Manage Quality
- B. Plan Quality Management
- C. Control Quality
- D. Plan Scope Management

Answer: B

NEW QUESTION 933

- (Exam Topic 6)

A project is in progress and about to move to a different phase, according to the plan. This will be a good opportunity for the project manager to:

- A. create the project management plan.
- B. identify the project objectives.
- C. review and update stakeholder engagement.
- D. create the schedule baseline.

Answer: C

NEW QUESTION 935

- (Exam Topic 6)

Which of the following is an example of an internal factor that influences the outcome of the project?

- A. Legal restrictions
- B. Financial considerations
- C. Commercial database
- D. Geographic distribution of facilities

Answer: D

Explanation:

(Geographic distribution of facilities and resources) EEFs internal to the organization pg 76 of 6th Edition. All other options are listed under the EEFs External to the organization

NEW QUESTION 936

- (Exam Topic 6)

The project manager is creating the communications management plan Which group of inputs Is required to begin?

- A. Work performance reports, change requests, and risk register
- B. Work performance data, project documents, and stakeholder engagement plan
- C. Project charter, project management plan, and project documents
- D. Work performance data, stakeholder register, and team management plan

Answer: C

NEW QUESTION 940

- (Exam Topic 6)

What is a tailoring consideration in Project Integration Management?

- A. Validation and control
- B. Benefits
- C. Technology support
- D. Physical location

Answer: A

NEW QUESTION 945

- (Exam Topic 6)

What conflict resolution technique involves delaying the issue or letting others resolve it?

- A. Smooth/accommodate
- B. Collaborate/problem solve
- C. Withdraw/avoid
- D. Force/direct

Answer: C

NEW QUESTION 949

- (Exam Topic 6)

A project manager needs to tailor the Project Cost Management process. Which considerations should the project manager apply?

- A. Diversity background
- B. Stakeholder's relationships
- C. Technical expertise
- D. Knowledge management

Answer: D

NEW QUESTION 950

- (Exam Topic 6)

If you are using an Ishikawa diagram to determine the root cause of problems, which process are you engaged in?

- A. Plan Quality Management
- B. Control Quality

- C. Risk Management
- D. Plan Scope Management

Answer: B

NEW QUESTION 955

- (Exam Topic 6)

Which of the following are components of the technical project management skill?

- A. Ability to explain business aspects of the project, business strategy, goals and objectives, and business value.
- B. Ability to deal with people, to be collaborative, and to apply persuasion and negotiation.
- C. Ability to focus on relationships with people, inspire trust, and implement decisions and actions that support the business strategy.
- D. Ability to plan and prioritize, gather the right artifacts available for each project, and focus on critical success factors.

Answer: D

NEW QUESTION 959

- (Exam Topic 6)

Which components of the project management plan are inputs used when creating the stakeholder engagement plan?

- A. Risk, resource, and communications management plans
- B. Scope, quality, and resource management plans
- C. Procurement, integration, and risk management plans
- D. Communications, schedule, and cost management plans

Answer: A

NEW QUESTION 960

- (Exam Topic 6)

Under which circumstances should multiple projects be grouped in a program?

- A. When they are needed to accomplish a set of goals and objectives for an organization
- B. When they have the same project manager and the same organizational unit
- C. When they have the same scope, budget, and schedule
- D. When they are from the same unit of the organization

Answer: A

NEW QUESTION 961

- (Exam Topic 6)

Which statement summarizes the role of the change control board?

- A. The change control board is responsible for presenting the change for approval.
- B. The change control board will analyze the change impact in terms of cost and schedule.
- C. The change control board is responsible for managing the change management and configuration management systems.
- D. The change control board is responsible for reviewing and approving changes to the project.

Answer: D

NEW QUESTION 965

- (Exam Topic 6)

Which type of project life cycle uses an iteration plan?

- A. Agile
- B. Predictive
- C. Waterfall
- D. Product

Answer: A

NEW QUESTION 967

- (Exam Topic 6)

The project manager is dividing the project scope into smaller pieces, and repeating this process until no more subdivisions are required. At this point the project manager is able to estimate costs and activities for each element. What are these elements called?

- A. Project activities
- B. Work packages
- C. Planning packages
- D. Project deliverables

Answer: B

NEW QUESTION 968

- (Exam Topic 6)

Which of the following technology platforms is most effective for sharing information when managing virtual project teams?

- A. Video conferencing
- B. Audio conferencing
- C. Shared portal
- D. Email/chat

Answer: D

NEW QUESTION 972

- (Exam Topic 6)

A project team conducts regular standup meetings to keep everyone updated on what each one of them is working on. What type of communication is this?

- A. Informal
- B. Unofficial
- C. Formal
- D. Hierarchical

Answer: A

NEW QUESTION 974

- (Exam Topic 6)

A company must implement sales software because it is opening a new branch in a foreign market. Although this software is used in every domestic branch, multiple changes are expected during the implementation because It is a foreign location.

Which type of life cycle would the project manager use in this case?

- A. Predictive life cycle
- B. Waterfall life cycle
- C. Hybrid life cycle
- D. Product life cycle

Answer: C

NEW QUESTION 978

- (Exam Topic 6)

In which of the Risk Management processes is the project charter used as an input?

- A. Plan Risk Responses
- B. Implement Risk Responses
- C. Plan Risk Management
- D. Perform Quantitative Risk Responses

Answer: C

NEW QUESTION 981

- (Exam Topic 6)

Match each dimension of the communications management plan to its corresponding focus.

Dimension		Focus
Formal		Project stakeholders
Internal		Customers and vendors
Informal		Reports, meeting agendas, and minutes
External		General communications activities using email

- A. Mastered
- B. Not Mastered

Answer: A

Explanation:

Dimension		Focus
Formal	Internal	Project stakeholders
Internal	External	Customers and vendors
Informal	Formal	Reports, meeting agendas, and minutes
External	Informal	General communications activities using email

NEW QUESTION 982

- (Exam Topic 6)

In a project using agile methodology, who may perform the quality control activities?

- A. A group of quality experts at specific times during the project
- B. The project manager only
- C. All team members throughout the project life cycle
- D. Selected stakeholders at specific times during the project

Answer: C

NEW QUESTION 985

- (Exam Topic 6)

The project manager is working with some functional managers and stakeholders on the resource management plan Which elements may be included in this plan?

- A. Team values, team agreements, and conflict resolution process
- B. Conflict resolution process, communication guidelines, and meeting schedules
- C. Team roles and responsibilities, team management, and training plan
- D. Resource requirements, resource assignments, and team performance assessments

Answer: D

NEW QUESTION 988

- (Exam Topic 6)

Which two processes should be used to influence costs in the early stages of a project?

- A. Estimate Costs and Determine Budget
- B. Plan Cost Management and Estimate Activity Durations
- C. Control Quality and Control Costs
- D. Plan Stakeholder Engagement and Plan Communications Management

Answer: A

NEW QUESTION 990

- (Exam Topic 6)

What is a tool or technique used in the Control Quality process?

- A. Attribute sampling
- B. Parametric estimating
- C. Statistical sampling
- D. Expert judgment

Answer: A

NEW QUESTION 991

- (Exam Topic 6)

When developing the project schedule, a project manager uses decomposition and rolling wave planning techniques in this process.

- A. Develop Schedule
- B. Define Activities
- C. Define Scope
- D. Collect Requirements

Answer: B

NEW QUESTION 996

- (Exam Topic 6)

In a large organization, with projects of different types and sizes, what kind of approach or method would be best to use?

- A. Predictive
- B. Adaptive
- C. A mix
- D. Agile

Answer: C

NEW QUESTION 998

- (Exam Topic 6)

Which set of competencies should a project manager have?

- A. Leadership, strategic and business management, and technical project management
- B. Expertise in the Industry, leadership and business management, and bilingual skills
- C. Technical project management, expertise in every role, and PMP certification
- D. Expertise in every detail on project activities
- E. PMP certification, and leadership

Answer: A

NEW QUESTION 1000

- (Exam Topic 6)

At the beginning of an iteration, the team will work to determine how many of the highest-priority items on the backlog list can be delivered within the next iteration. Which of the following activities is done first?

- A. Create Work Breakdown Structure (WBS)
- B. Create Scope Baseline
- C. Collect Requirements
- D. Define Scope

Answer: D

NEW QUESTION 1002

- (Exam Topic 6)

What process is included in Project Schedule Management?

- A. Estimate Activity Durations
- B. Create Work Breakdown Structure (WBS)
- C. Direct and Manage Project Work
- D. Estimate Activity Resources

Answer: A

NEW QUESTION 1006

- (Exam Topic 6)

During which process of Project Cost Management does a project manager produce the cost baseline?

- A. Estimate Costs
- B. Control Schedule
- C. Determine Budget
- D. Develop Project Charter

Answer: C

NEW QUESTION 1010

- (Exam Topic 6)

What does an S-curve from a Monte Carlo analysis show?

- A. Cumulative probability distribution representing probability of achieving a particular outcome
- B. Individual project risks or uncertainties that have the most potential impact on outcome
- C. Best alternative out of the possible solutions, incorporating associated risks and opportunities
- D. Diagram for all project uncertainties and their influence over a period of time

Answer: A

NEW QUESTION 1014

- (Exam Topic 6)

Which set of activities should a project manager use as part of the Develop Team process?

- A. Training and establishing ground rules
- B. Networking activities and estimating team resources
- C. Conflict management activities and tracking team performance
- D. Recruit new team members and training

Answer: A

NEW QUESTION 1015

- (Exam Topic 6)

How is the Project Scope Management process different in agile and adaptive projects then In traditional projects?

- A. Less time spent on defining scope early on
- B. More time spent on defining scope early on
- C. Less time spent on scope management process
- D. Project scope management is the same in all projects

Answer: A

NEW QUESTION 1016

- (Exam Topic 6)

What does expert judgment provide as an input to the resource management plan?

- A. Geographic distribution of facilities and resources
- B. Physical resource management policies and procedures
- C. Estimated lead times based on lessons learned
- D. Templates for the resource management plan

Answer:

A

NEW QUESTION 1018

- (Exam Topic 6)

In order to detect quality Issues earlier in the project life cycle, the project manager is using an agile/adaptive environment. What is the main difference between waterfall and agile/adaptive development approaches for Project Quality Management?

- A. The frequency of the quality and review steps
- B. The number of deliverables
- C. The duration of each of the quality and review steps
- D. The tools used in the quality and review steps

Answer: A

NEW QUESTION 1020

- (Exam Topic 6)

A new project manager wishes to recommend creating a project management office to senior management. Which statement would the project manager use to describe the Importance of creating the project management office?

- A. It will give the project manager Independence to make decisions without other departmental input.
- B. It Integrates organizational data and information to ensure that strategic objectives are fulfilled.
- C. The project management office can execute administrative tasks.
- D. The project management office can coordinate projects.

Answer: B

NEW QUESTION 1024

.....

THANKS FOR TRYING THE DEMO OF OUR PRODUCT

Visit Our Site to Purchase the Full Set of Actual CAPM Exam Questions With Answers.

We Also Provide Practice Exam Software That Simulates Real Exam Environment And Has Many Self-Assessment Features. Order the CAPM Product From:

<https://www.2passeasy.com/dumps/CAPM/>

Money Back Guarantee

CAPM Practice Exam Features:

- * CAPM Questions and Answers Updated Frequently
- * CAPM Practice Questions Verified by Expert Senior Certified Staff
- * CAPM Most Realistic Questions that Guarantee you a Pass on Your FirstTry
- * CAPM Practice Test Questions in Multiple Choice Formats and Updatesfor 1 Year