

Microsoft

Exam Questions AZ-800

Administering Windows Server Hybrid Core Infrastructure



NEW QUESTION 1

SIMULATION - (Topic 4)

Task2

You need to ensure that the Azure file share named share1 can sync to on-premises servers.

The required source files are located in a folder named \\dc1.contoso.com\install. You do NOT need to specify the on-premises servers at this time.

- A. Mastered
- B. Not Mastered

Answer: A**Explanation:**

One possible solution to ensure that the Azure file share named share1 can sync to on-premises servers is to use Azure File Sync. Azure File Sync allows you to centralize your file shares in Azure Files without giving up the flexibility, performance, and compatibility of an on-premises file server. It does this by transforming your Windows Servers into a quick cache of your Azure file share. You can use any protocol available on Windows Server to access your data locally (including SMB, NFS, and FTPS) and you can have as many caches as you need across the world1.

Here are the steps to configure Azure File Sync for the Azure file share named share1 and the source files located in a folder named \\dc1.contoso.com\install:

? On the Azure portal, create a Storage Sync Service in the same region as your storage account that contains the Azure file share named share1. For more information on how to create a Storage Sync Service, see [How to deploy Azure File Sync](#).

? On the on-premises server that hosts the folder named \\dc1.contoso.com\install, install the Azure File Sync agent. For more information on how to install the Azure File Sync agent, see [Install the Azure File Sync agent](#).

? On the on-premises server, register the server with the Storage Sync Service that you created in the first step. For more information on how to register a server with a Storage Sync Service, see [Register/unregister a server with Storage Sync Service](#).

? On the Azure portal, create a sync group that defines the sync topology for a set of files. In the sync group, select the Azure file share named share1 as the cloud endpoint and the folder named \\dc1.contoso.com\install as the server endpoint.

For more information on how to create a sync group, see [Create a sync group and monitor sync progress](#). Wait for the initial sync to complete. You can monitor the sync progress on the Azure portal or on the on-premises server. For more information on how to monitor sync progress, see [\[Monitor sync progress\]](#).

Once the initial sync is complete, you can add more on-premises servers to the same sync group to sync and cache the content locally. You can also enable cloud tiering to optimize the storage space on the on-premises servers by tiering infrequently accessed or older files to Azure Files.

NEW QUESTION 2

SIMULATION - (Topic 4)

Task 1

You need to prevent domain users from saving executable files in a share named

\\SRV\Data. The users must be able to save other files to the share.

- A. Mastered
- B. Not Mastered

Answer: A**Explanation:**

One possible solution to prevent domain users from saving executable files in a share named \\SRV\Data is to use file screening on the file server. File screening allows you to block certain files from being saved based on their file name extension. Here are the steps to configure file screening:

? On the file server, open File Server Resource Manager from the Administrative Tools menu.

? In the left pane, expand File Screening Management and click on File Groups.

? Right-click on File Groups and select Create File Group.

? In the File Group Properties dialog box, enter a name for the file group, such as Executable Files.

? In the Files to include box, enter the file name extensions that you want to block, such as .exe, .bat, .cmd, .com, .msi, .scr. You can use wildcards to specify multiple extensions, such as *.exe.

? Click OK to create the file group.

? In the left pane, click on File Screen Templates.

? Right-click on File Screen Templates and select Create File Screen Template.

? In the File Screen Template Properties dialog box, enter a name for the template, such as Block Executable Files.

? On the Settings tab, select the option Active screening. Do not allow users to save unauthorized files.

? On the File Groups tab, check the box next to the file group that you created, such as Executable Files.

? On the Notification tab, you can configure how to notify users and administrators when a file screening event occurs, such as sending an email, logging an event, or running a command or script. You can also customize the message that users see when they try to save a blocked file.

? Click OK to create the file screen template.

? In the left pane, click on File Screens.

? Right-click on File Screens and select Create File Screen.

? In the Create File Screen dialog box, enter the path of the folder that you want to apply the file screening to, such as \\SRV\Data.

? Select the option Derive properties from this file screen template (recommended) and choose the template that you created, such as Block Executable Files.

? Click Create to create the file screen.

Now, domain users will not be able to save executable files in the share named

\\SRV\Data. They will be able to save other files to the share.

NEW QUESTION 3

SIMULATION - (Topic 4)

Task 8

You need to create an Active Directory Domain Services (AD DS) site named Site2 that is associated to an IP address range of 192.168.2.0 to 192.168.2.255.

- A. Mastered
- B. Not Mastered

Answer: A**Explanation:**

To create an AD DS site named Site2 that is associated to an IP address range of 192.168.2.0 to 192.168.2.255, you can follow these steps:

? On a domain controller or a computer that has the Remote Server Administration

Tools (RSAT) installed, open Active Directory Sites and Services from the Administrative Tools menu or by typing dssite.msc in the Run box.

? In the left pane, right-click on Sites and select New Site.

? In the New Object - Site dialog box, enter Site2 as the Name of the new site.

Select a site link to associate the new site with, such as DEFAULTIPSITELINK, and click OK. You can also create a new site link if you want to customize the replication frequency and schedule between the sites. For more information on how to create a site link, see Create a Site Link.

? In the left pane, right-click on Subnets and select New Subnet.

? In the New Object - Subnet dialog box, enter 192.168.2.0/24 as the Prefix of the subnet. This notation represents the IP address range of 192.168.2.0 to 192.168.2.255 with a subnet mask of 255.255.255.0. Select Site2 as the Site object to associate the subnet with, and click OK.

? Wait for the changes to replicate to other domain controllers. You can verify the

site and subnet creation by checking the Sites and Subnets containers in Active Directory Sites and Services.

Now, you have created an AD DS site named Site2 that is associated to an IP address range of 192.168.2.0 to 192.168.2.255. You can add domain controllers to the new site and configure the site links and site link bridges to optimize the replication topology.

NEW QUESTION 4

SIMULATION - (Topic 4)

Task 4

You need to register SRV1 to sync Azure file shares The registration must use the 34646045 Storage Sync Service.

The required source files are located in a folder named \\dc1.contoso.com\install.

You do NOT need to configure file share synchronization at this time and you do NOT need to update the agent.

A. Mastered

B. Not Mastered

Answer: A

Explanation:

One possible solution to register SRV1 to sync Azure file shares using the 34646045 Storage Sync Service is to use the Register-AzStorageSyncServer cmdlet from the Az.StorageSync module. This cmdlet establishes a trust relationship between the server

and the Storage Sync Service, which is required for creating server endpoints and syncing files. Here are the steps to register SRV1 using the cmdlet:

? On SRV1, open PowerShell as an administrator and run the following command to

install the Az.StorageSync module if it is not already installed: Install-Module -Name Az.StorageSync

? Run the following command to import the Az.StorageSync module:

Import-Module -Name Az.StorageSync

? Run the following command to sign in to your Azure account and select the subscription that contains the 34646045 Storage Sync Service:

Connect-AzAccount

Select-AzSubscription -SubscriptionId <your-subscription-id>

? Run the following command to register SRV1 with the 34646045 Storage Sync Service. You need to specify the resource group name and the Storage Sync Service name as parameters:

Register-AzStorageSyncServer -ResourceGroupName <your-resource-group-name> -StorageSyncServiceName 34646045

? Wait for the registration to complete. You can verify the registration status by

checking the Registered servers tab on the Azure portal or by running the following command:

Get-AzStorageSyncServer -ResourceGroupName <your-resource-group-name> -StorageSyncServiceName 34646045

Now, SRV1 is registered with the 34646045 Storage Sync Service and ready to sync Azure file shares. You can create server endpoints on SRV1 and cloud endpoints on the Azure file shares to define the sync topology.

NEW QUESTION 5

HOTSPOT - (Topic 3)

Your on-premises network contains an Active Directory Domain Services (AD DS) domain.

The domain contains the servers shown in the following table.

The domain controllers do NOT have internet connectivity.

You plan to implement Azure AD Password Protection for the domain.

You need to deploy Azure AD Password Protection agents. The solution must meet the following requirements:

- All Azure AD Password Protection policies must be enforced.
- Agent updates must be applied automatically.
- Administrative effort must be minimized.

What should you do? To answer select the appropriate options in the answer area. NOTE: Each correct selection is worth one point.

Answer Area

Install the Azure AD Password Protection agent on:

DC1 and DC2 only
DC1 only
DC1 and DC2 only
DC1, DC2, and RODC1

Install the Azure AD Password Protection Proxy on:

Server1
DC1
DC2
RODC1
Server1
Server2

A. Mastered

B. Not Mastered

Answer: A

Explanation:

Answer AreaInstall the Azure AD Password Protection agent on: Install the Azure AD Password Protection Proxy on: **NEW QUESTION 6**

- (Topic 3)

Your network contains an Active Directory Domain Services (AD DS) domain named contoso.com. The domain contains two servers named Server1 and Server2. Server1 contains a disk named Disk2. Disk2 contains a folder named UserData. UserData is shared to the Domain Users group. Disk2 is configured for deduplication. Server1 is protected by using Azure Backup.

Server1 fails.

You connect Disk2 to Server2.

You need to ensure that you can access all the files on Disk2 as quickly as possible. What should you do?

- A. Create a storage pool.
- B. Restore files from Azure Backup.
- C. Install the File Server Resource Manager server role.
- D. Install the Data Deduplication server role.

Answer: C**Explanation:**

Reference:

<https://docs.microsoft.com/en-us/windows-server/storage/data-deduplication/overview>**NEW QUESTION 7**

- (Topic 3)

Note: This question is part of a series of questions that present the same scenario. Each question in the series contains a unique solution that might meet the stated goals. Some question sets might have more than one correct solution, while others might not have a correct solution.

After you answer a question in this section, you will NOT be able to return to it. As a result, these questions will not appear in the review screen.

Your network contains an Active Directory Domain Services (AD DS) forest. The forest contains three Active Directory sites named Site1, Site2, and Site3. Each site contains two domain controllers. The sites are connected by using DEFAULTIPSITELINK.

You open a new branch office that contains only client computers.

You need to ensure that the client computers in the new office are primarily authenticated by the domain controllers in Site1.

Solution: You create an organization unit (OU) that contains the client computers in the branch office. You configure the Try Next Closest Site Group Policy Object (GPO) setting in a GPO that is linked to the new OU.

Does this meet the goal?

- A. Yes
- B. No

Answer: B**NEW QUESTION 8**

- (Topic 3)

You have a server that runs Windows Server and contains a shared folder named UserData.

You need to limit the amount of storage space that each user can consume in UserData. What should you use?

- A. Storage Spaces
- B. Work Folders
- C. Distributed File System (DFS) Namespaces
- D. File Server Resource Manager (FSRM)

Answer: D**Explanation:**

Reference:

<https://docs.microsoft.com/en-us/windows-server/storage/fsrm/fsrm-overview>**NEW QUESTION 9**

- (Topic 3)

Your network contains an Active Directory Domain Services (AD DS) domain- The domain contains 10 servers that run Windows Server. The servers have static IP addresses.

You plan to use DHCP to assign IP addresses to the servers.

You need to ensure that each server always receives the same IP address.

Which type of identifier should you use to create a DHCP reservation for each server?

- A. universally unique identifier (UUID)
- B. fully qualified domain name (FQDN)
- C. NetBIOS name
- D. MAC address

Answer: D**Explanation:**

Reference:

<https://docs.microsoft.com/en-us/powershell/module/dhcpserver/add-dhcpserverv4reservation?view=windowsserver2022-ps>

NEW QUESTION 10

- (Topic 3)
 You have a Windows Server container host named Server 1 and a container image named Image1.
 You need to start a container from image1. The solution must run the container on a Hyper- V virtual machine.
 Which parameter should you specify when you run the docker run command?

- A. --expose
- B. --privileged
- C. --runtime
- D. --entrypoint
- E. --isolation

Answer: D

Explanation:
 Reference:
<https://docs.microsoft.com/en-us/virtualization/windowscontainers/manage-containers/hyperv-container>

NEW QUESTION 10

HOTSPOT - (Topic 3)
 Your company has offices in Boston and Montreal. The offices are connected by using a 10-Mbps WAN link that is often saturated The office in Boston contains the following:
 • An Active Directory Domain Services (AD DS) domain controller named DC1.
 • A server named Server1 that runs Windows Server and has the File Server role installed The office in Montreal contains 20 client computers that run Windows 10 Montreal does NOT have any servers.
 The company plans to deploy a new line of business (LOB) application to all the client computers. The installation source files for the application are in \\Server\Apps.

Answer Area

On Server1:

Enable BranchCache in hosted cache mode.

Enable BranchCache in Distributed Cache mode.

Install the BranchCache for network files role service.

On the client computers:

Enable BranchCache in hosted cache mode.

Enable BranchCache in Distributed Cache mode.

Install the BranchCache for network files role service.

- A. Mastered
- B. Not Mastered

Answer: A

Explanation:

Answer Area

On Server1:

Enable BranchCache in hosted cache mode.

Enable BranchCache in Distributed Cache mode.

Install the BranchCache for network files role service.

On the client computers:

Enable BranchCache in hosted cache mode.

Enable BranchCache in Distributed Cache mode.

Install the BranchCache for network files role service.

NEW QUESTION 12

DRAG DROP - (Topic 3)
 You have a server named Server1 that has Windows Admin Center installed. The certificate used by Windows Admin Center was obtained from a certification authority (CA).
 The certificate expires.
 You need to replace the certificate.
 Which three actions should you perform in sequence? To answer, move the appropriate actions from the list of actions to the answer area and arrange them in the correct order.

Actions

Copy the certificate thumbprint.

From Internet Information Services (IIS) Manager, bind a certificate.

Rerun **Windows Admin Center Setup** and select **Change**.

Rerun **Windows Admin Center Setup** and select **Repair**.

Rerun **Windows Admin Center Setup** and select **Remove**.

Answer Area

>

<

- A. Mastered
- B. Not Mastered

Answer: A

Explanation:
Actions

Actions

Copy the certificate thumbprint.

From Internet Information Services (IIS) Manager, bind a certificate.

Rerun **Windows Admin Center Setup** and select **Change**.

Rerun **Windows Admin Center Setup** and select **Repair**.

Rerun **Windows Admin Center Setup** and select **Remove**.

Answer Area

From Internet Information Services (IIS) Manager, bind a certificate.

Copy the certificate thumbprint.

Rerun **Windows Admin Center Setup** and select **Change**.

NEW QUESTION 16

HOTSPOT - (Topic 3)

You have an onpremises DNS server named Server1 that runs Windows Server. Server 1 hosts a DNS zone named fabrikam.com
You have an Azure subscription that contains the resources shown in the following table.

Name	Type	Description
Vnet1	Virtual network	Connects to the on-premises network by using a Site-to-Site VPN
VM1	Virtual machine	Runs Windows Server and has the DNS Server role installed
contoso.com	Private DNS zone	Linked to Vnet1
contoso.com	Public DNS zone	Contains the DNS records of all the platform as a service (PaaS) resources

Answer Area

On Vnet1:

Configure VM1 to forward requests for the contoso.com zone to the public DNS zone.
Configure Vnet1 to use a custom DNS server that is set to the Azure-provided DNS at 168.63.129.16.
Configure VM1 to forward requests for the contoso.com zone to the Azure-provided DNS at 168.63.129.16.

On the on-premises network:

Configure forwarding for the contoso.com zone to VM1.
Configure forwarding for the contoso.com zone to the public DNS zone.
Configure forwarding for the contoso.com zone to the Azure-provided DNS at 168.63.129.16.

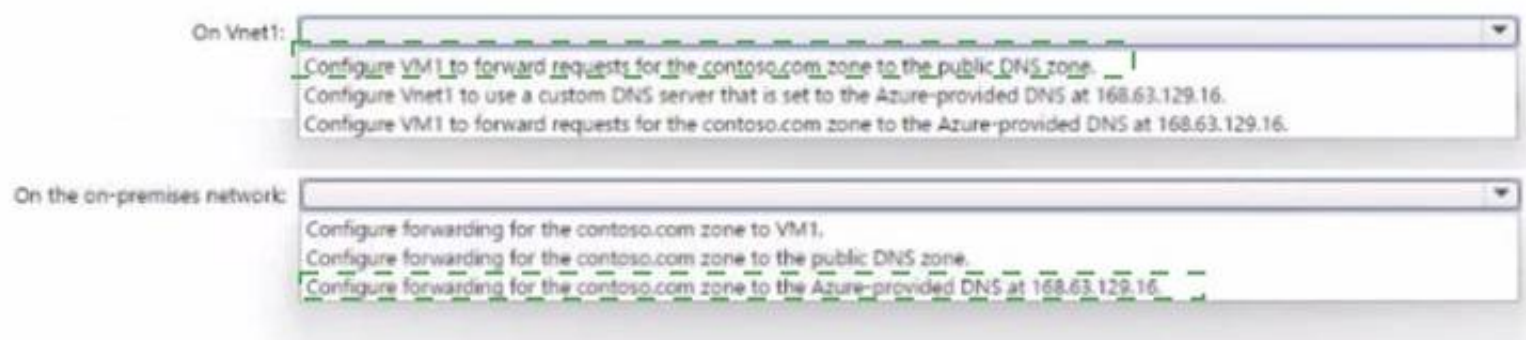
- A. Mastered

B. Not Mastered

Answer: A

Explanation:

Answer Area



NEW QUESTION 19

- (Topic 3)

You have an on-premises Active Directory Domain Services (AD DS) domain named contoso.com that syncs with Azure AD by using A2ure AD Connect.

You enable password protection for contoso.com.

You need to prevent users from including the word Contoso as part of their password. What should you use?

- A. the Azure Active Directory admin center
- B. Active Directory Users and Computers
- C. Synchronization Service Manager
- D. Windows Admin Center

Answer: D

NEW QUESTION 22

- (Topic 3)

You have an Azure subscription. The subscription contains a virtual machine named VM1 that runs Windows Server.

You build an app named App1.

You need to configure continuous integration and continuous deployment (CI/CD) of App1 to VM1.

What should you create first?

- A. a managed identity
- B. an App Service Environment
- C. an Azure Automation account
- D. an Azure DevOps organization

Answer: D

NEW QUESTION 23

- (Topic 3)

You have a server named Host1 that has the Hyper-V server role installed. Host1 hosts a virtual machine named VM1.

You have a management server named Server1 that runs Windows Server. You remotely manage Host1 from Server1 by using Hyper-V Manager.

You need to ensure that you can access a USB hard drive connected to Server1 when you connect to VM1 by using Virtual Machine Connection.

Which two actions should you perform? Each correct answer presents part of the solution. NOTE: Each correct selection is worth one point.

- A. From the Hyper-V Settings of Host1, select Allow enhanced session mode
- B. From Disk Management on Host1, attach a virtual hard disk.
- C. From Virtual Machine Connection, switch to a basic session.
- D. From Virtual Machine Connection select Show Options and then select the USB hard drive.
- E. From Disk Management on Host1, select Rescan Disks

Answer: AD

Explanation:

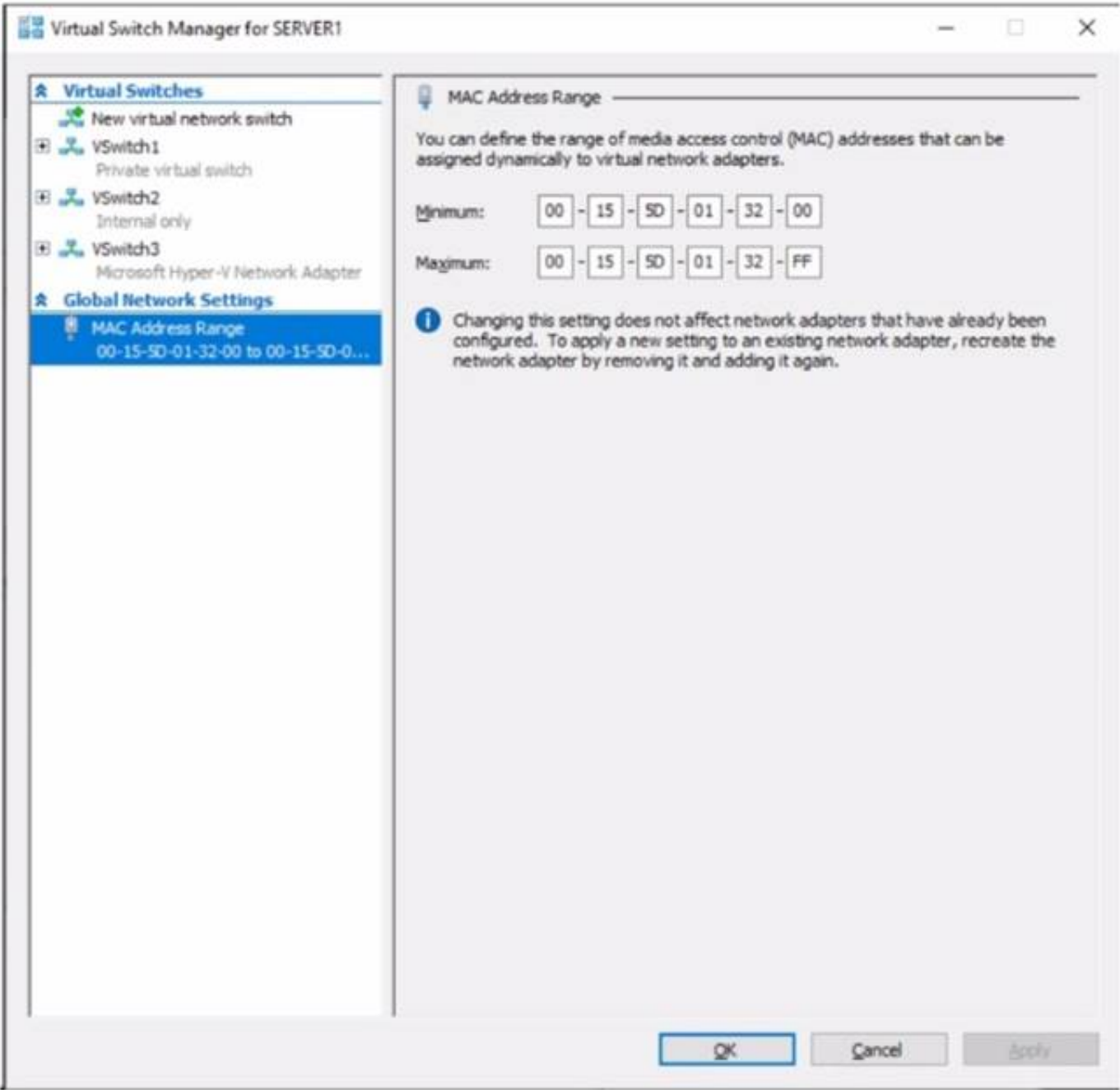
Reference:

<https://docs.microsoft.com/en-us/windows-server/virtualization/hyper-v/learn-more/use-local-resources-on-hyper-v-virtual-machine-with-vmconnect>

NEW QUESTION 28

HOTSPOT - (Topic 3)

You have a server named Server1 that runs Windows Server. Server1 has a single network interface and the Hyper-V virtual switches shown in the following exhibit.



Use the drop-down menus to select the answer choice that completes each statement based on the information presented in the graphic.
NOTE: Each correct selection is worth one point.

Answer Area

On Server1, you can create additional [answer choice].

private and internal virtual switches only

internal virtual switches only

private virtual switches only

private and internal virtual switches only

private, internal, and external virtual switches

Server1 can access network shares on virtual machines that are connected to [answer choice].

VSwitch1, VSwitch2, or VSwitch3

VSwitch2 only

VSwitch3 only

VSwitch1 or VSwitch2 only

VSwitch2 or VSwitch3 only

VSwitch1, VSwitch2, or VSwitch3

- A. Mastered
- B. Not Mastered

Answer: A

Explanation:

Answer Area

On Server1, you can create additional [answer choice].

private and internal virtual switches only

internal virtual switches only

private virtual switches only

private and internal virtual switches only

private, internal, and external virtual switches

Server1 can access network shares on virtual machines that are connected to [answer choice].

VSwitch1, VSwitch2, or VSwitch3

VSwitch2 only

VSwitch3 only

VSwitch1 or VSwitch2 only

VSwitch2 or VSwitch3 only

VSwitch1, VSwitch2, or VSwitch3

NEW QUESTION 32
- (Topic 3)

Note: This question is part of a series of questions that present the same scenario. Each question in the series contains a unique solution that might meet the stated goals. Some question sets might have more than one correct solution, while others might not have a correct solution.
After you answer a question in this section, you will NOT be able to return to it. As a result, these questions will not appear in the review screen.
Your network contains an Active Directory Domain Services (AD DS) forest. The forest contains three Active Directory sites named Site1, Site2, and Site3. Each

site contains two domain controllers. The sites are connected by using DEFAULTIPSITELINK.
You open a new branch office that contains only client computers.
You need to ensure that the client computers in the new office are primarily authenticated by the domain controllers in Site1.
Solution: You create a new site named Site4 and associate Site4 to DEFAULTSITELINK. Does this meet the goal?

- A. Yes
- B. No

Answer: B

NEW QUESTION 36

HOTSPOT - (Topic 3)

Your network contains an Active Directory Domain Services (AD DS) forest named contoso.com. The forest contains a child domain named east.contoso.com. in the contoso.com domain, you create two users named Admin1 and Admin2. You need to ensure that the users can perform the following tasks:

- Admin1 can create and manage Active Directory sites.
- Admin2 can deploy domain controller to the east.contoso.com domain. The solution must use the principle of least privilege.

To which group should you add each user? To answer, select the appropriate options in the answer area.

NOTE Each correct selection is worth one point.

Answer Area

Admin1:

Contoso\Administrators
Contoso\Domain Admins
Contoso\Enterprise Admins
East\Administrators
East\Domain Admins

Admin2:

Contoso\Administrators
Contoso\Domain Admins
Contoso\Enterprise Admins
East\Administrators
East\Domain Admins

- A. Mastered
- B. Not Mastered

Answer: A

Explanation:

Answer Area

Admin1: Contoso\Enterprise Admins

Admin2: East\Domain Admins

NEW QUESTION 41

DRAG DROP - (Topic 3)

Your network contains an Active Directory domain named contoso.com. The domain contains group managed service accounts (gMSAs). You have a server named Server1 that runs Windows Server and is in a workgroup. Server1 hosts Windows containers.

You need to ensure that the Windows containers can authenticate to contoso.com. Which three actions should you perform in sequence? To answer, move the appropriate

actions from the list of actions to the answer area and arrange them in the correct order.

Actions

On Server1, install and run ccg.exe.

On Server1, run New-CredentialSpec.

In contoso.com, generate a Key Distribution Service (KDS) root key.

In contoso.com, create a gMSA and a standard user account.

From a domain-joined computer, create a credential spec file and copy the file to Server1.

Answer Area

>

<

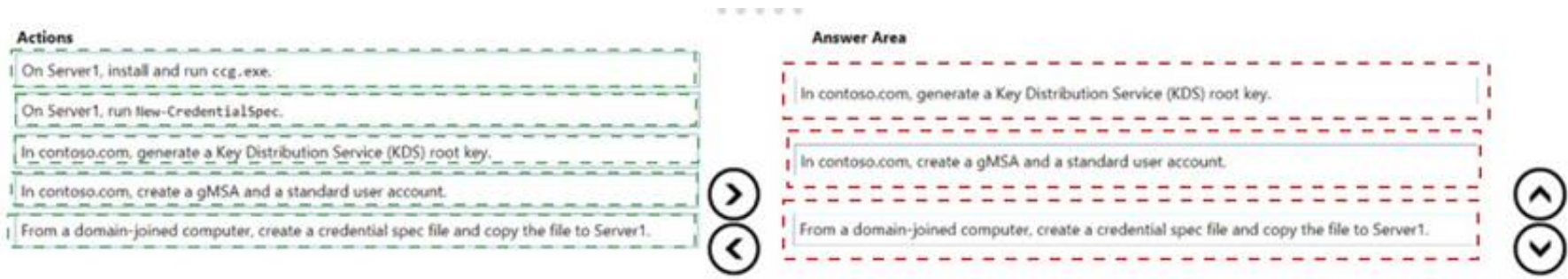
<

>

- A. Mastered
- B. Not Mastered

Answer: A

Explanation:



NEW QUESTION 43

HOTSPOT - (Topic 3)

You have a Windows Server container host named Server1 and an Azure subscription. You deploy an Azure container registry named Registry1 to the subscription.

On Server1, you create a container image named image1. You need to store imager in Registry1.

Which command should you run on Server1 ? To answer, select the appropriate options in the answer area.

NOTE: Each correct selection is worth one point.

Answer Area



- A. Mastered
- B. Not Mastered

Answer: A

Explanation:

Answer Area



NEW QUESTION 47

- (Topic 3)

You have a server that runs Windows Server and has the DHCP Server role installed. The server has a scope named Scope1 that has the following configurations:

- Address range: 192.168.0.2 to 192.168.1.254 . Mask 255.255.254.0
- Router: 192.168.0.1
- Lease duration: 3 days
- DNS server 172.16.0.254

You have 50 Microsoft Teams Phone devices from the same vendor. All the devices have MAC addresses within the same range.

You need to ensure that all the Teams Phone devices that receive a lease from Scope1 have IP addresses in the range of 192.168.1.100 to 192.168.1.200. The solution must NOT affect other DHCP clients that receive IP configurations from Scope1.

What should you create?

- A. a policy
- B. a scope
- C. a fitter
- D. scope options

Answer: A

Explanation:

Reference:

[https://docs.microsoft.com/en-us/previous-versions/windows/it-pro/windows-server-2012-R2-and-2012/dn425040\(v=ws.11\)](https://docs.microsoft.com/en-us/previous-versions/windows/it-pro/windows-server-2012-R2-and-2012/dn425040(v=ws.11))

NEW QUESTION 52

- (Topic 3)

Your network contains an Active Directory Domain Services (AD DS) domain named conioso.com.

You need to identify which server is the PDC emulator for the domain.

Solution: from Active Directory Users and Computers, you right-click contoso.com in the console tree, and then select Operations Master

Does this meet the goal?

- A. Yes
- B. No

Answer: A

NEW QUESTION 56

DRAG DROP - (Topic 3)

You create a new Azure subscription.

You plan to deploy Azure Active Directory Domain Services (Azure AD DS) and Azure virtual machines. The virtual machines will be joined to Azure AD DS.

You need to deploy Active Directory Domain Services (AD DS) to ensure that the virtual machines can be deployed and joined to Azure AD DS.

Which three actions should you perform in sequence? To answer, move the appropriate actions from the list of actions to the answer area and arrange them in the correct order.

Actions

Modify the settings of the Azure virtual network.

Install the Active Directory Domain Services role.

Install Azure AD Connect.

Create an Azure virtual network.

Create an Azure AD DS instance.

Run the Active Directory Domain Service installation Wizard.

Answer Area

>

<

- A. Mastered
- B. Not Mastered

Answer: A

Explanation:

Actions

Modify the settings of the Azure virtual network.

Install the Active Directory Domain Services role.

Install Azure AD Connect.

Create an Azure virtual network.

Create an Azure AD DS instance.

Run the Active Directory Domain Service installation Wizard.

Answer Area

Create an Azure virtual network.

Create an Azure AD DS instance.

> Modify the settings of the Azure virtual network.

<

NEW QUESTION 57

- (Topic 3)

You have a server named Server1 that runs Windows Server.

You plan to host applications in Windows containers.

You need to configure Server1 to run containers. What should you install?

- A. Windows Admin Center
- B. the Windows Subsystem for Linux
- C. Doctor
- D. Hyper-V

Answer: C

NEW QUESTION 61

- (Topic 3)

Your network contains an Active Directory Domain Services (AD DS) domain. The domain contains a user named User1 and the servers shown in the following table.

Name	Server role	DHCP scope
Server1	DHCP Server	Scope1, Scope2
Server2	DHCP Server	Scope3, Scope4

You need to ensure that User1 can manage only Scope1 and Scope3. What should you do?

- A. Add User1 to the DHCP Administrators group on Server1 and Server2.
- B. Implement IP Address Management (IPAM).

- C. Add User1 to the DHCP Administrators domain local group.
- D. Implement Windows Admin Center and add connections to Server1 and Server2.

Answer: B

NEW QUESTION 63

HOTSPOT - (Topic 3)

Your on-premises network contains a single-domain Active Directory Domain Services (AD DS) forest. You have an Azure AD tenant named contoso.com. The AD DS forest syncs with the Azure AD tenant by using Azure AD Connect.

You need to ensure that users in the forest that have a custom attribute of NoSync are excluded from synchronization.

How should you configure the Azure AD Connect cloudFiltered attribute, and which tool should you use? To answer, select the appropriate options in the answer area.

NOTE: Each correct selection is worth one point.

Answer Area

Attribute:

Tool:

Answer:

Answer Area

Attribute:

Tool:

- A. Mastered
- B. Not Mastered

Answer: A

NEW QUESTION 64

- (Topic 3)

Your network contains an Active Directory Domain Services (AD DS) domain.

You have a Group Policy Object (GPO) named GPO1 that contains Group Policy preferences.

You plan to link GPO1 to the domain.

You need to ensure that the preference in GPO1 apply only to domain member servers and NOT to domain controllers or client computers. All the other Group Policy settings in GPO1 must apply to all the computers. The solution must minimize administrative effort.

Which type of item level targeting should you use?

- A. Domain
- B. Operating System
- C. Security Group
- D. Environment Variable

Answer: B

Explanation:

Reference:

[https://docs.microsoft.com/en-us/previous-versions/windows/it-pro/windows-server-2012-r2-and-2012/dn789189\(v=ws.11\)#operating-system-targeting](https://docs.microsoft.com/en-us/previous-versions/windows/it-pro/windows-server-2012-r2-and-2012/dn789189(v=ws.11)#operating-system-targeting)

NEW QUESTION 66

- (Topic 3)

You have an on premises Active Directory Domain Services (AD DS) domain that syncs with an Azure Active Directory (Azure AD) tenant.

You plan to implement self-service password reset (SSPR) in Azure AD.

You need to ensure that users that reset their passwords by using SSPR can use the new password resources in the AD DS domain.

What should you do?

- A. Deploy the Azure AD Password Protection proxy service to the on premises network.
- B. Run the Microsoft Azure Active Directory Connect wizard and select Password writeback.
- C. Grant the Change password permission for the domain to the Azure AD Connect service account.
- D. Grant the impersonate a client after authentication user right to the Azure AD Connect service account.

Answer: B

Explanation:

Reference:

<https://docs.microsoft.com/en-us/azure/active-directory/authentication/tutorial-enable-sspr- writeback>

NEW QUESTION 69
HOTSPOT - (Topic 3)

You need to sync files from an on-premises server named Server1 to Azure by using Azure File Sync. You have a cloud tiering policy that is configured for 30 percent free space and 70 days. Volume f on Server1 is 500 GB. A year ago, you configured E:\Oata on Server1 to sync by using Azure File Sync. The files that are visible in E:\Data are shown in the following table.

Name	Size	Last accessed
File1	200 GB	2 days ago
File2	100 GB	10 days ago
File3	200 GB	60 days ago
File4	50 GB	100 days ago

Volume E does NOT contain any other files. Where are File1 and flle3 located? To answer, select the appropriate options In the answer area.

Answer Area

File1:

Server1 only

The Azure file share only

Server1 and the Azure file share

File3:

Server1 only

The Azure file share only

Server 1 and the Azure file share

- A. Mastered
- B. Not Mastered

Answer: A

Explanation:

Answer Area

File1:

Server1 only

The Azure file share only

Server1 and the Azure file share

File3:

Server1 only

The Azure file share only

Server 1 and the Azure file share

NEW QUESTION 73
DRAG DROP - (Topic 3)

You have two on-premises servers named Server1 and Servet2 that run Windows Server. You have an Azure Storage account named storage1 that contains a file share named share'. Server1 syncs with share1 by using Azure File Sync. You need to configure Server2 to sync with share1. Which three actions should you perform in sequence? To answer, move the appropriate actions from the list of actions to the answer area and arrange them in the correct order.

Actions

Register Server2 with the Storage Sync Service.

Add a Storage Sync Service to the Azure subscription.

On Server2, install the Azure File Sync agent.

Add a cloud endpoint to the sync group.

Add a server endpoint to the sync group.

Answer Area

- A. Mastered
- B. Not Mastered

Answer: A

Explanation:

Actions

Register Server2 with the Storage Sync Service.

Add a Storage Sync Service to the Azure subscription.

On Server2, install the Azure File Sync agent.

Add a cloud endpoint to the sync group.

Add a server endpoint to the sync group.

Answer Area

On Server2, install the Azure File Sync agent.

Register Server2 with the Storage Sync Service.

Add a server endpoint to the sync group.

NEW QUESTION 74
HOTSPOT - (Topic 3)

Your network contains a two-domain on-premises Active Directory Domain Services (AD DS) forest named Contoso.com. The forest contains the domain controllers shown in the following table.

Passing Certification Exams Made Easy

visit - <https://www.surepassexam.com>

Name	Description	Domain	Active Directory site
DC1	Forest-wide and domain-wide FSMO role holder	contoso.com	Hub
DC2	Domain-wide FSMO role holder	child.contoso.com	Site1
RODC3	Read-only domain controller (RODC)	contoso.com	Site2

You create an Active Directory site named Site3. Site1, Site2 and Site3 each has a dedicated site link to the Hub site. In Site3, you install a new server named Server1. You need to promote Server1 to an ROOC in child.contoso.com by using the install from Media (IFM) option. The solution must minimize network traffic. What should you do? To answer select the appropriate options in the answer area. NOTE: Each correct selection is worth one point.

Answer Area

Server to use to create the IFM source:

DC1

DC2

Server1

RODC3

Tool to use to create the IFM source:

Azure Backup

Dcdiag.exe

Ntdsutil.exe

Repadmin.exe

Windows Server Backup

- A. Mastered
- B. Not Mastered

Answer: A

Explanation:

Answer Area

Server to use to create the IFM source:

DC1

DC2

Server1

RODC3

Tool to use to create the IFM source:

Azure Backup

Dcdiag.exe

Ntdsutil.exe

Repadmin.exe

Windows Server Backup

NEW QUESTION 77

DRAG DROP - (Topic 3)
You deploy a single-domain Active Directory Domain Services (AD DS) forest named contoso.com. You deploy five servers to the domain. You add the servers to a group named iTFarmHosts. You plan to configure a Network Load Balancing (NLB) cluster named NLBCluster.contoso.com that will contain the five servers. You need to ensure that the NLB service on the nodes of the cluster can use a group managed service account (gMSA) to authenticate. Which three PowerShell cmdlets should you run in sequence? To answer, move the appropriate cmdlets from the list of cmdlets to the answer area and arrange them in the correct order.

Cmdlets

Add-KdsRootKey

Set-KdsConfiguration

Install-ADServiceAccount

Add-ADGroupMember

New-ADServiceAccount

Add-ADComputerServiceAccount

Answer Area

>

<

- A. Mastered
- B. Not Mastered

Answer: A

Explanation:

Cmdlets

Add-KdsRootKey

Set-KdsConfiguration

Install-ADServiceAccount

Add-ADGroupMember

New-ADServiceAccount

Add-ADComputerServiceAccount

Answer Area

Add-KdsRootKey

New-ADServiceAccount

Install-ADServiceAccount

NEW QUESTION 78

HOTSPOT - (Topic 3)

Your network contains an Azure AD Domain Services domain named contoso.com.
You need to configure a password policy for the local user accounts on the Azure virtual machines joined to contoso.com.
What should you do? To answer, select the appropriate options in the answer area. NOTE: Each correct selection is worth one point.

Answer Area

Sign in by using a user account that is a member of the:

AAD DC Administrators group

AAD DC Administrators group

Administrators group

Domain Admins group

Use a Group Policy Object (GPO) linked to the:

AADDC Users organizational unit (OU)

AADDC Computers organizational unit (OU)

AADDC Users organizational unit (OU)

Computers container

Answer:

Answer Area

Sign in by using a user account that is a member of the:

AAD DC Administrators group

AAD DC Administrators group

Administrators group

Domain Admins group

Use a Group Policy Object (GPO) linked to the:

AADDC Users organizational unit (OU)

AADDC Computers organizational unit (OU)

AADDC Users organizational unit (OU)

Computers container

- A. Mastered
- B. Not Mastered

Answer: A

NEW QUESTION 81

DRAG DROP - (Topic 3)

You have a server named Server 1 that runs Windows Server and has the Hyper-V server role installed.
Server1 hosts a virtual machine named VM1. Server1 has an NV Me storage device that is assigned to VM1 by using Discrete Device Assignment.
You need to make the device available to the host.
Which four actions should you perform in sequence? To answer, move the appropriate actions from the list of actions to the answer area and arrange them in the correct order.

Actions

From VM1, disable the device by using Device Manager.

From Server1, stop VM1.

From Server1, run the Remove-VMAssignableDevice cmdlet.

From Server1, run the Mount-VMHostAssignableDevice cmdlet.

From Server1, enable the device by using Device Manager.

Answer Area

- A. Mastered
- B. Not Mastered

Answer: A

Explanation:

Actions

From VM1, disable the device by using Device Manager.

From Server1, stop VM1.

From Server1, run the Remove-VMAssignableDevice cmdlet.

From Server1, run the Mount-VMHostAssignableDevice cmdlet.

From Server1, enable the device by using Device Manager.

Answer Area

From Server1, stop VM1.

From Server1, run the Remove-VMAssignableDevice cmdlet.

From Server1, run the Mount-VMHostAssignableDevice cmdlet.

From Server1, enable the device by using Device Manager.

NEW QUESTION 85

Passing Certification Exams Made Easy

visit - <https://www.surepassexam.com>

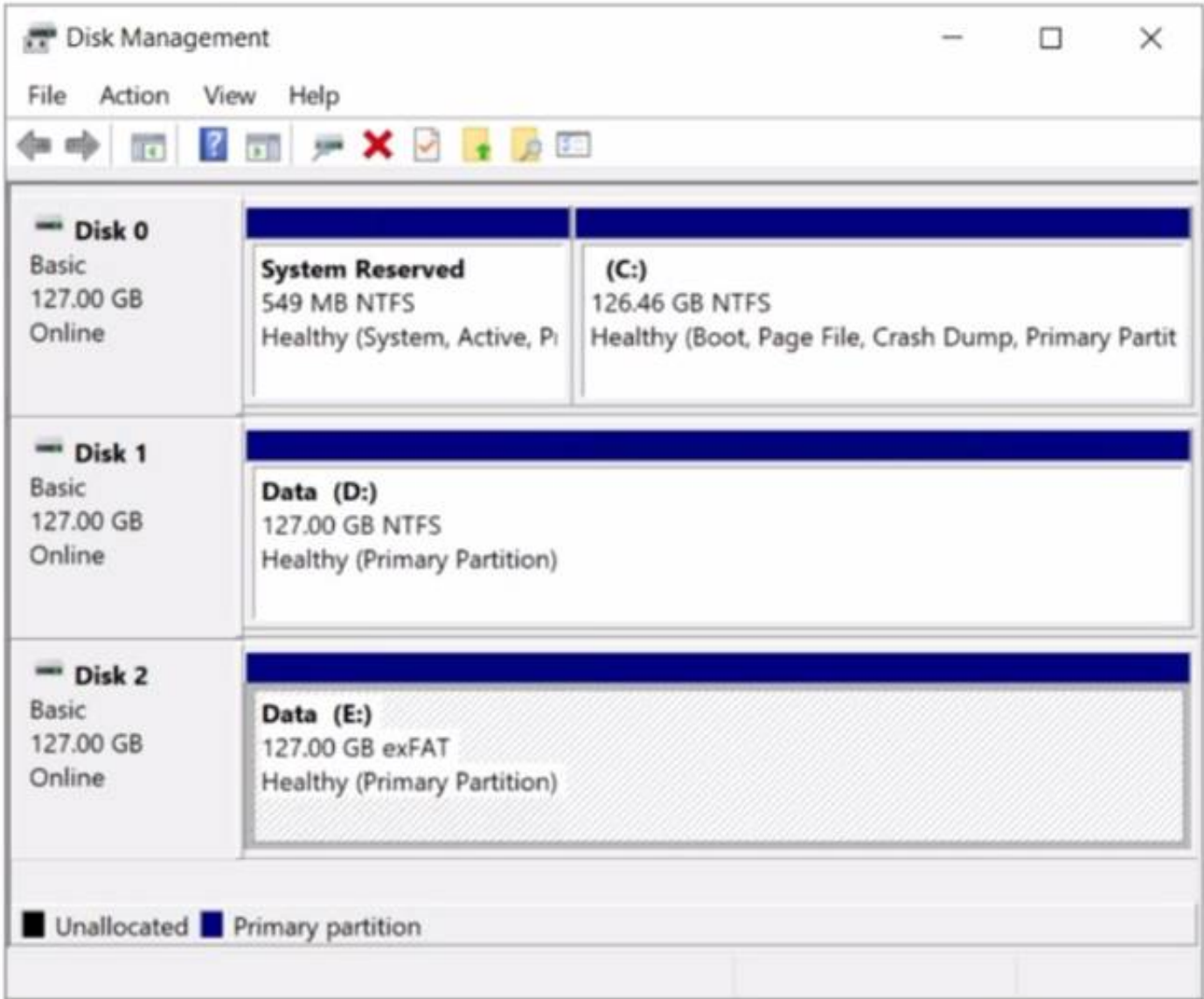
- (Topic 3)
Your network contains an Active Domain Services (AD DS) forest. The forest contains three domains. Each domain contains 10 domain controllers.
You plan to store a DNS zone in a custom active Directory partition.
You need to create the Active Directory partition for the zone. The partition replicate to only four of the domain controllers.
What should you use?

- A. Active Directory Sites and Services
- B. Active Directory Administrator Center
- C. dnscmd.exe
- D. DNS Manager

Answer: B

NEW QUESTION 90

- (Topic 3)
You have a server named Server1 that runs Windows Server. The disks on Server1 are configured as shown in the following exhibit.



You need to convert volume E to ReFS. The solution must meet the following requirements:

- Preserve the existing data on volume E.
- Minimize administrative effort. What should you do first?

- A. Take Disk 2 offline.
- B. Back up the data on volume E.
- C. Convert Disk 2 to a dynamic disk.
- D. Runconvert.exe.

Answer: B

NEW QUESTION 93

DRAG DROP - (Topic 3)
Your network contains an Active Directory domain, a web app named App1, and a perimeter network. The perimeter network contains a server named Server1 that runs Windows Server.
You plan to provide external access to App1.
You need to implement the Web Application Proxy role service on Server1.
Which role should you add to Server1, and which role should you add to the network? To answer, drag the appropriate roles to the correct targets. Each role may be used once, more than once, or not at all. You may need to drag the split bar between panes or scroll to view content.

Roles

- Active Directory Certificate Services
- Active Directory Federation Services
- Network Policy and Access Services
- Remote Access

Answer Area

Role on Server1:

Role on the network:

- A. Mastered
- B. Not Mastered

Answer: A

Explanation:

Roles

Active Directory Certificate Services

Active Directory Federation Services

Network Policy and Access Services

Remote Access

Answer Area

Role on Server1: Remote Access

Role on the network: Network Policy and Access Services

NEW QUESTION 96

- (Topic 3)

Note: This question is part of a series of questions that present the same scenario. Each question in the series contains a unique solution that might meet the stated goals. Some question sets might have more than one correct solution, while others might not have a correct solution. After you answer a question in this section, you will NOT be able to return to it. As a result, these questions will not appear in the review screen. You are planning the deployment of DNS to a new network. You have three internal DNS servers as shown in the following table.

Name	Location	IP address	Local DNS zone
Server1	Montreal	10.0.1.10	contoso.local
Server2	Toronto	10.0.2.10	east.contoso.local
Server3	Seattle	10.0.3.10	west.contoso.local

The contoso.local zone contains zone delegations for east.contoso.local and west.contoso.local. All the DNS servers use root hints. You need to ensure that all the DNS servers can resolve the names of all the internal namespaces and internet hosts. Solution: You configure Server2 and Server3 to forward DNS requests to 10.0.1.10. Does this meet the goal?

- A. Yes
- B.

No

Answer: B

NEW QUESTION 100

DRAG DROP - (Topic 3)

You deploy a new Active Directory Domain Services (AD DS) forest named contoso.com. The domain contains three domain controllers named DC1, DC2, and DC3. You rename Default-First-Site-Name as Site1. You plan to ship DC1, DC2, and DC3 to datacenters in different locations. You need to configure replication between DC1, DC2, and DC3 to meet the following requirements: ? Each domain controller must reside in its own Active Directory site. ? The replication schedule between each site must be controlled independently. ? Interruptions to replication must be minimized. Which three actions should you perform in sequence in the Active Directory Sites and Services console? To answer, move the appropriate actions from the list of actions to the answer area and arrange them in the correct order.

Actions

Create a connection object between DC1 and DC2.

Create an additional site link that contains Site1 and Site2.

Create two additional sites named Site2 and Site3. Move DC2 to Site2 and DC3 to Site3.

Create a connection object between DC2 and DC3.

Remove Site2 from DEFAULTIPSITELINK.

Answer Area

>

<

- A. Mastered
- B. Not Mastered

Answer: A

Explanation:

Actions

Create a connection object between DC1 and DC2.

Create an additional site link that contains Site1 and Site2.

Create two additional sites named Site2 and Site3. Move DC2 to Site2 and DC3 to Site3.

Create a connection object between DC2 and DC3.

Remove Site2 from DEFAULTIPSITELINK.

Answer Area

Create two additional sites named Site2 and Site3. Move DC2 to Site2 and DC3 to Site3.

Create a connection object between DC1 and DC2.

Create a connection object between DC2 and DC3.

NEW QUESTION 101

- (Topic 3)

Your network contains an Active Directory Domain Services (AD DS) forest. The forest contains three Active Directory sites named Site1, Site2, and Site3. Each site contains two domain controllers. The sites are connected by using DEFAULTIPSITELINK.

You open a new branch office that contains only client computers.

You need to ensure that the client computers in the new office are primarily authenticated by the domain controllers in Site1.

Solution: You configure the Try Next Closest Site Group Policy Object (GPO) setting in a GPO that is linked to Site1.

Does this meet the goal?

- A. Yes
- B. No

Answer: B

NEW QUESTION 102

HOTSPOT - (Topic 3)

You have an Azure subscription that contains the storage accounts shown in the following table.

Name	Location	Kind	Container	File share
storage1	East US	StorageV2	cont1	share1
storage2	East US	BlockBlobStorage	cont2	Not applicable
storage3	East US	FileStorage	Not applicable	share3
storage4	Central US	StorageV2	cont4	share4

In the East US Azure region, you create a storage sync service named Synd. You need to create a sync group in Synd.

Which storage accounts can you use, and what can you specify as the cloud endpoints? To answer, select the appropriate options in the answer area. NOTE: Each correct selection is worth one point.

Answer Area

Storage accounts:

storage1 and storage3 only

storage1 only

storage1 and storage3 only

storage1 and storage4 only

storage1, storage2, and storage3 only

storage1, storage2, storage3, and storage4

Cloud endpoints:

share1 and share3 only

cont1 and cont2 only

share1 and share3 only

cont1, cont2, and cont4 only

share1, share3, and share4 only

cont1, cont2, share1, and share3 only

cont1, cont2, cont4, share1, share3, and share4

- A. Mastered
- B. Not Mastered

Answer: A

Explanation:
Answer Area

Storage accounts:

storage1 and storage3 only

storage1 only

storage1 and storage3 only

storage1 and storage4 only

storage1, storage2, and storage3 only

storage1, storage2, storage3, and storage4

Cloud endpoints:

share1 and share3 only

cont1 and cont2 only

share1 and share3 only

cont1, cont2, and cont4 only

share1, share3, and share4 only

cont1, cont2, share1, and share3 only

cont1, cont2, cont4, share1, share3, and share4

NEW QUESTION 105

- (Topic 3)

You have servers that have the DNS Server role installed. The servers are configured as shown in the following table.

Name	Office	Local DNS zone	IP address
Server1	Paris	contoso.com	10.1.1.1
Server2	New York	None	10.2.2.2

All the client computers in the New York office use Server2 as the DNS server. You need to configure name resolution in the New York office to meet the following requirements:

- ? Ensure that the client computers in New York can resolve names from contoso.com.
- ? Ensure that Server2 forwards all DNS queries for internet hosts to 131.107.100.200.

The solution must NOT require modifications to Server1. Each correct answer presents part of the solution. NOTE: Each correct selection is worth one point.

- A. a forwarder
- B. a conditional forwarder
- C. a delegation
- D. a secondary zone
- E. a reverse lookup zone

Answer: AB

Explanation:

A conditional forwarder is required for contoso.com. A forwarder is required for all other domains. When you have a conditional forwarder and a forwarder configured, the conditional forwarder will be used for the specified domain. You could use a secondary zone for contoso.com but that would require a configuration change on Server1.

NEW QUESTION 106

HOTSPOT - (Topic 3)

You have a server named Server1 that runs Windows Server and contains three volumes named C, D, and E. Files are stored on Server1 as shown in the following table.

Name	On volume	Size
File1	C	500 KB
File2	D	10 KB
File3	D	1 MB

For volume D, Data Deduplication is enabled and set to General purpose file server. You perform the following actions:

- Move File1 to volume D.
- Copy File2 to volume D and name the copy File4.
- Move File3 to volume E

For each of the following statements, select Yes if the statement is true. Otherwise, select No. NOTE: Each correct selection is worth one point.

Answer Area

Statements	Yes	No
File1 is deduplicated after the deduplication job runs.	<input type="radio"/>	<input type="radio"/>
File3 is deduplicated after the deduplication job runs.	<input type="radio"/>	<input type="radio"/>
File4 is deduplicated after the deduplication job runs.	<input type="radio"/>	<input type="radio"/>

- A. Mastered
B. Not Mastered

Answer: A

Explanation:

Answer Area

Statements	Yes	No
File1 is deduplicated after the deduplication job runs.	<input type="radio"/>	<input checked="" type="radio"/>
File3 is deduplicated after the deduplication job runs.	<input type="radio"/>	<input checked="" type="radio"/>
File4 is deduplicated after the deduplication job runs.	<input checked="" type="radio"/>	<input type="radio"/>

NEW QUESTION 107

HOTSPOT - (Topic 2)

You need to configure network communication between the Seattle and New York offices. The solution must meet the networking requirements. What should you configure? To answer, select the appropriate options in the answer area. NOTE: Each correct selection is worth one point.

On a Virtual WAN hub:

<input type="checkbox"/> An ExpressRoute gateway
<input type="checkbox"/> A virtual network gateway
<input type="checkbox"/> An ExpressRoute circuit connection

In the offices:

<input type="checkbox"/> An ExpressRoute circuit connection
<input type="checkbox"/> A Site to-Site VPN
<input type="checkbox"/> An Azure application gateway
<input type="checkbox"/> An on premises data gateway

- A. Mastered
B. Not Mastered

Answer: A

Explanation:

On a Virtual WAN hub:

An ExpressRoute gateway
A virtual network gateway
An ExpressRoute circuit connection

In the offices:

An ExpressRoute circuit connection
A Site-to-Site VPN
An Azure application gateway
An on-premises data gateway

NEW QUESTION 111

- (Topic 1)

You need to meet the technical requirements for VM2. What should you do?

- A. Implement shielded virtual machines.
- B. Enable the Guest services integration service.
- C. Implement Credential Guard.
- D. Enable enhanced session mode.

Answer: D

NEW QUESTION 115

- (Topic 1)

You need to meet the technical requirements for Server1. Which users can currently perform the required tasks?

- A. Admin1 only
- B. Admin3 only
- C. Admin1 and Admin3 only
- D. Admin1 Admin2. and Admm3

Answer: C

NEW QUESTION 117

HOTSPOT - (Topic 1)

You need to meet the technical requirements for Server4.

Which cmdlets should you run on Server1 and Server4? To answer, select the appropriate options in the answer area.

NOTE: Each correct selection is worth one point.

Server1:

Enable-PSRemoting
Enable-ServerManagerStandardUserRemoting
Set-Item
Start-Service

Server4:

Enable-PSRemoting
Enable-ServerManagerStandardUserRemoting
Set-Item
Start-Service

- A. Mastered
- B. Not Mastered

Answer: A

Explanation:

Server1:

Enable-PSRemoting
Enable-ServerManagerStandardUserRemoting
Set-Item
Start-Service

Server4:

Enable-PSRemoting
Enable-ServerManagerStandardUserRemoting
Set-Item
Start-Service

NEW QUESTION 119

HOTSPOT - (Topic 1)
You need to meet the technical requirements for VM1.
Which cmdlet should you run first? To answer, select the appropriate options in the answer area.
NOTE: Each correct selection is worth one point.

Answer Area

VM1

Set-VM

Set-VMBios

Set-VMHost

Set-VMFirmware

Set-VMProcessor

\$true

-NewVMName

-GuestControlledCacheTypes

-EnableHostResourceProtection

-ExposeVirtualizationExtensions

- A. Mastered
- B. Not Mastered

Answer: A

Explanation:
Graphical user interface, text, application Description automatically generated

NEW QUESTION 123

- (Topic 1)
You need to meet the technical requirements for the site links. Which users can perform the required tasks?

- A. Admin1 only
- B. Admin1 and Admin3 only
- C. Admin1 and Admin2 only
- D. Admin3 only
- E. Admin1, Adrrun2. and Admin3

Answer: C

Explanation:
Membership in the Enterprise Admins group or the Domain Admins group in the forest root domain is required.

NEW QUESTION 126

.....

Thank You for Trying Our Product

We offer two products:

1st - We have Practice Tests Software with Actual Exam Questions

2nd - Questons and Answers in PDF Format

AZ-800 Practice Exam Features:

- * AZ-800 Questions and Answers Updated Frequently
- * AZ-800 Practice Questions Verified by Expert Senior Certified Staff
- * AZ-800 Most Realistic Questions that Guarantee you a Pass on Your FirstTry
- * AZ-800 Practice Test Questions in Multiple Choice Formats and Updatesfor 1 Year

100% Actual & Verified — Instant Download, Please Click
[Order The AZ-800 Practice Test Here](#)