

# Fortinet

## Exam Questions NSE7\_SDW-7.2

Fortinet NSE 7 - SD-WAN 7.2



### NEW QUESTION 1

Refer to the exhibits.

Exhibit A

```
branch1_fgt (3) # show
config service
  edit 3
    set name "Corp"
    set mode sla
    set dst "Corp-net"
    set src "LAN-net"
    config sla
      edit "VPN_PING"
        set id 1
      next
      edit "VPN_HTTP"
        set id 1
      next
    end
    set priority-members 3 4 5
    set gateway enable
  next
end
```

Exhibit B -

```
branch1_fgt # diagnose sys sdwan service 3

Service(3): Address Mode(IPV4) flags=0x200 use-shortcut-sla
Gen(1), TOS(0x0/0x0), Protocol(0: 1->65535), Mode(sla), sla-compare-order
Members(2):
  1: Seq_num(5 T_MPLS_0), alive, sla(0x3), gid(0), cfg_order(2), cost(0), selected
  2: Seq_num(4 T_INET_1_0), alive, sla(0x1), gid(0), cfg_order(1), cost(0), selected
  3: Seq_num(3 T_INET_0_0), alive, sla(0x0), gid(0), cfg_order(0), cost(0), selected
Src address(1):
  10.0.1.0-10.0.1.255

Dst address(1):
  10.0.0.0-10.255.255.255

branch1_fgt # get router info routing-table all | grep T_
S      10.0.0.0/8 [1/0] via T_INET_0_0 tunnel 100.64.1.1
        [1/0] via T_INET_1_0 tunnel 100.64.1.9
S      10.201.1.254/32 [15/0] via T_INET_0_0 tunnel 100.64.1.1
S      10.202.1.254/32 [15/0] via T_INET_1_0 tunnel 100.64.1.9
S      10.203.1.254/32 [15/0] via T_MPLS_0 tunnel 172.16.1.5

branch1_fgt # diagnose sys sdwan member | grep T_
Member(3): interface: T_INET_0_0, flags=0x4 , gateway: 100.64.1.1, peer: 10.201.1.254,
priority: 0 1024, weight: 0
Member(4): interface: T_INET_1_0, flags=0x4 , gateway: 100.64.1.9, peer: 10.202.1.254,
priority: 0 1024, weight: 0
Member(5): interface: T_MPLS_0, flags=0x4 , gateway: 172.16.1.5, peer: 10.203.1.254,
priority: 0 1024, weight: 0
```

Exhibit A shows the configuration for an SD-WAN rule and exhibit B shows the respective rule status, the routing table, and the member status.

The administrator wants to understand the expected behavior for traffic matching the SD- WAN rule.

Based on the exhibits, what can the administrator expect for traffic matching the SD-WAN rule?

- A. The traffic will be load balanced across all three overlays.
- B. The traffic will be routed over T\_INET\_0\_0.
- C. The traffic will be routed over T\_MPLS\_0.
- D. The traffic will be routed over T\_INET\_1\_0.

**Answer: C**

### NEW QUESTION 2

Which are two benefits of using CLI templates in FortiManager? (Choose two.)

- A. You can reference meta fields.
- B. You can configure interfaces as SD-WAN members without having to remove references first.
- C. You can configure FortiManager to sync local configuration changes made on the managed device, to the CLI template.
- D. You can configure advanced CLI settings.

**Answer: AD**

### NEW QUESTION 3

Refer to the exhibits.

Exhibit A

```
branch1_fgt # diagnose sys sdwan service

Service(1): Address Mode(IPV4) flags=0x200 use-shortcut-sla
Gen(8), TOS(0x0/0x0), Protocol(0: 1->65535), Mode(manual)
Members(2):
  1: Seq_num(1 port1), alive, selected
  2: Seq_num(2 port2), alive, selected
Internet Service(3): GoToMeeting(4294836966,0,0,0 16354)
Microsoft.Office.365.Portal(4294837474,0,0,0 41468) Salesforce(4294837976,0,0,0 16920)
Src address(1):
  10.0.1.0-10.0.1.255

Service(2): Address Mode(IPV4) flags=0x200 use-shortcut-sla
Gen(7), TOS(0x0/0x0), Protocol(0: 1->65535), Mode(manual)
Members(1):
  1: Seq_num(2 port2), alive, selected
Internet Service(2): Facebook(4294836806,0,0,0 15832) Twitter(4294838278,0,0,0 16001)
Src address(1):
  10.0.1.0-10.0.1.255

branch1_fgt # diagnose sys sdwan internet-service-app-ctrl-list

Facebook(15832 4294836806): 157.240.229.35 6 443 Tue Mar  8 12:24:04 2022
GoToMeeting(16354 4294836966): 23.205.106.86 6 443 Tue Mar  8 12:24:04 2022
GoToMeeting(16354 4294836966): 23.212.249.144 6 443 Tue Mar  8 12:24:39 2022
Salesforce(16920 4294837976): 23.212.249.11 6 443 Tue Mar  8 12:24:04 2022

branch1_fgt # get router info routing-table all
...
S*      0.0.0.0/0 [1/0] via 192.2.0.2, port1
        [1/0] via 192.2.0.10, port2
...
```

Exhibit B

Destination IP	Service	Application	Security Event Unit	SD-WAN Rule Name	Destination Interface
23.212.248.205	HTTPS	GoToMeeting	sec:1		port2
23.205.106.86	HTTPS	GoToMeeting	sec:2	Critical-DIA	port1
23.205.106.86	HTTPS	GoToMeeting	sec:2	Critical-DIA	port1
23.205.106.86	HTTPS	GoToMeeting	sec:2	Critical-DIA	port1
23.212.249.144	HTTPS	GoToMeeting	sec:2	Critical-DIA	port1
23.212.249.144	HTTPS	GoToMeeting	sec:2		port1
23.212.249.144	HTTPS	GoToMeeting	sec:2		port2
23.205.106.86	HTTPS	GoToMeeting	sec:2		port2

Security	APP Count	0
Level	Level	notice
General	Log ID	0000000013
	Session ID	769
	Tran Display	nat
	Virtual Domain	nat
Source	Country	Reserved
	Device ID	FDVH017H42000077
	Device Name	branch1_fgt
	IP	10.0.1.103
	Interface	port3
	Interface Role	undrflow
	NAT IP	192.2.0.9
	NAT Port	55043
	Port	55042
	Source	10.0.1.103
	UEBA Endpoint ID	1025
	UEBA User ID	3
Destination	Country	United States
	End User ID	3
	Endpoint ID	155
	Host Name	www.gotomeeting.com
	IP	23.212.248.205
	Interface	port2

An administrator is testing application steering in SD-WAN. Before generating test traffic, the administrator collected the information shown in exhibit A. After generating GoToMeeting test traffic, the administrator examined the respective traffic log on FortiAnalyzer, which is shown in exhibit B. The administrator noticed that the traffic matched the implicit SD-WAN rule, but they expected the traffic to match rule ID 1. Which two reasons explain why the traffic matched the implicit SD-WAN rule? (Choose two.)

- A. FortiGate did not refresh the routing information on the session after the application was detected.
- B. Port1 and port2 do not have a valid route to the destination.
- C. Full SSL inspection is not enabled on the matching firewall policy.
- D. The session 3-tuple did not match any of the existing entries in the ISDB application cache.

**Answer: BC**

**Explanation:**

Study guide 7.2 Page 191

#### NEW QUESTION 4

Which two statements are true about using SD-WAN to steer local-out traffic? (Choose two.)

- A. FortiGate does not consider the source address of the packet when matching an SD- WAN rule for local-out traffic.
- B. By default, local-out traffic does not use SD-WAN.
- C. By default, FortiGate does not check if the selected member has a valid route to the destination.
- D. You must configure each local-out feature individually, to use SD-WAN.

**Answer: BD**

#### NEW QUESTION 5

Refer to the exhibit.

```
branch1_fgt # diagnose sys sdwan service 3

Service(3): Address Mode(IPV4) flags=0x200 use-shortcut-sla
Gen(2), TOS(0x0/0x0), Protocol(0: 1->65535), Mode(priority), link-cost-factor(packet-
loss), link-cost-threshold(0), health-check(VPN_PING)
Members(3):
  1: Seq_num(3 T_INET_0_0), alive, packet loss: 2.000%, selected
  2: Seq_num(4 T_MPLS_0), alive, packet loss: 4.000%, selected
  3: Seq_num(5 T_INET_1_0), alive, packet loss: 12.000%, selected
Src address(1):
  10.0.1.0-10.0.1.255

Dst address(1):
  10.0.0.0-10.255.255.255

branch1_fgt (3) # show
config service
edit 3
  set name "Corp"
  set mode priority
  set dst "Corp-net"
  set src "LAN-net"
  set health-check "VPN_PING"
  set link-cost-factor packet-loss
  set link-cost-threshold 0
  set priority-members 5 3 4
next
end
```

The exhibit shows the SD-WAN rule status and configuration.

Based on the exhibit, which change in the measured packet loss will make T\_INET\_1\_0 the new preferred member?

- A. When all three members have the same packet loss.
- B. When T\_INET\_0\_0 has 4% packet loss.
- C. When T\_INET\_0\_0 has 12% packet loss.
- D. When T\_INET\_1\_0 has 4% packet loss.

**Answer: D**

#### NEW QUESTION 6

Refer to the exhibit.

```
config system sdwan
  set status enable
  set load-balance source-dest-ip-based
  config zone
    edit "virtual-wan-link"
    next
    edit "SASE"
    next
    edit "underlay"
    next
  end
  config members
    edit 1
      set interface "port1"
      set zone "underlay"
      set gateway 192.2.0.2
    next
    edit 2
      set interface "port2"
      set zone "underlay"
      set gateway 192.2.0.10
    next
  end
  ...
end
```

Which algorithm does SD-WAN use to distribute traffic that does not match any of the SD- WAN rules?

- A. All traffic from a source IP to a destination IP is sent to the same interface.
- B. All traffic from a source IP is sent to the same interface.
- C. All traffic from a source IP is sent to the most used interface.
- D. All traffic from a source IP to a destination IP is sent to the least used interface.

**Answer: A**

#### Explanation:

Study Guide 7.2, page 176.

#### NEW QUESTION 7

Refer to the Exhibits:

Exhibit A

Exhibit B

Link Status

Check interval

500

ms

Failures before inactive

3

Restore link after

2

check(s)

Actions when Inactive

Update static route

Exhibit A

Exhibit B

```

NGFW-1 # diagnose sys sdwan health-check
Health Check (Ping):
Seq (1 port1): state (alive), packet-loss (0.000%) latency
(6.196), jitter (0.079) sla_map=0x0
Seq (2 port2): state (dead), packet-loss (6.000%) sla_map=0x0
        
```

Exhibit A, which shows the SD-WAN performance SLA and exhibit B shows the health of the participating SD-WAN members. Based on the exhibits, which statement is correct?

- A. The dead member interface stays unavailable until an administrator manually brings the interface back.
- B. Port2 needs to wait 500 milliseconds to change the status from alive to dead.
- C. Static routes using port2 are active in the routing table.
- D. FortiGate has not received three consecutive requests from the SLA server configured for port2.

**Answer:** C

#### NEW QUESTION 8

Which diagnostic command can you use to show the member utilization statistics measured by performance SLAs for the last 10 minutes?

- A. diagnose sys sdwan sla-log
- B. diagnose ays sdwan health-check
- C. diagnose sys sdwan intf-sla-log
- D. diagnose sys sdwan log

**Answer:** A

#### NEW QUESTION 9

Refer to the exhibit.

```

config system interface
  edit "port2"
    set vdom "root"
    set ip 192.2.0.9 255.255.255.248
    set allowaccess ping
    set type physical
    set role wan
    set snmp-index 2
    set preserve-session-route enable
  next
end
        
```

Based on the exhibit, which two actions does FortiGate perform on traffic passing through port2? (Choose two.)

- A. FortiGate does not change the routing information on existing sessions that use a valid gateway, after a route change.
- B. FortiGate performs routing lookups for new sessions only, after a route change.
- C. FortiGate always blocks all traffic, after a route change.
- D. FortiGate flushes all routing information from the session table, after a route change.

**Answer:** AB

#### NEW QUESTION 10

Refer to the exhibit.

```

config firewall policy
  edit 1
    set anti-replay disable
  next
end
        
```

In a dual-hub hub-and-spoke SD-WAN deployment, which is a benefit of disabling the anti- replay setting on the hubs?

- A. It instructs the hub to disable the reordering of TCP packets on behalf of the receiver, to improve performance.

- B. It instructs the hub to disable TCP sequence number check, which is required for TCP sessions originated from spokes to fail over back and forth between the hubs.
- C. It instructs the hub to not check the ESP sequence numbers on IPsec traffic, to improve performance.
- D. It instructs the hub to skip content inspection on TCP traffic, to improve performance.

**Answer:** B

#### NEW QUESTION 10

Which two statements about SLA targets and SD-WAN rules are true? (Choose two.)

- A. SD-WAN rules use SLA targets to check if the preferred members meet the SLA requirements
- B. Member metrics are measured only if an SLA target is configured
- C. When configuring an SD-WAN rule you can select multiple SLA targets of the same performance SLA
- D. SLA targets are used only by SD-WAN rules that are configured with Lowest Cost (SLA) or Maximize Bandwidth (SLA) as strategy

**Answer:** AD

#### NEW QUESTION 14

Which two conclusions for traffic that matches the traffic shaper are true? (Choose two.)

```
# diagnose firewall shaper traffic-shaper list name VoIP_Shaper
name VoIP_Shaper
maximum-bandwidth 6250 KB/sec
guaranteed-bandwidth 2500 KB/sec
current-bandwidth 93 KB/sec
priority 2
overhead 0
tos ff
packets dropped 0
bytes dropped 0
```

- A. The traffic shaper drops packets if the bandwidth is less than 2500 KBps.
- B. The measured bandwidth is less than 100 KBps.
- C. The traffic shaper drops packets if the bandwidth exceeds 6250 KBps.
- D. The traffic shaper limits the bandwidth of each source IP to a maximum of 6250 KBps.

**Answer:** BC

#### NEW QUESTION 17

What are two common use cases for remote internet access (RIA)? (Choose two.)

- A. Provide direct internet access on spokes
- B. Provide internet access through the hub
- C. Centralize security inspection on the hub
- D. Provide thorough inspection on spokes

**Answer:** BC

#### Explanation:

\* B. Provide internet access through the hub: This involves routing branch or remote office internet traffic through a central hub, ensuring consistent security policies and possibly better management of network resources.

\* C. Centralize security inspection on the hub: With this approach, all internet-bound traffic from various spokes is inspected at the hub, leveraging centralized security mechanisms for thorough inspection and policy enforcement.

#### NEW QUESTION 22

Refer to the exhibits. Exhibit A -

### Edit Traffic Shaping Policy

IP Version: **IPv4** | IPv6

Name: Limit\_YouTube

Status: **Enable** | Disable

Comments:   
 0/255

**If Traffic Matches:**

Source Internet Service: ☐

Source Address: LAN-net

Source User: +

Source User Group: +

Destination Internet Service: ☐

Destination Address: all

Schedule: +

Service: ALL

Application: YouTube

Application Category: +

Application Group: +

URL Category: +

Type Of Service: 0x00

Type Of Service Mask: 0x00

**Then:**

Action: **Apply Shaper** | Assign Group

Outgoing Interface: underlay

Shared Shaper: low-priority

Reverse Shaper: low-priority

Per-IP Shaper: +

Differentiated Services: ☐

Differentiated Services Reverse: ☐

Exhibit B -

### Edit Firewall Policy

ID: 1

Name: DIA

ZTNA: **Disable** | Full ZTNA | IP/MAC filtering

Incoming Interface: LAN

Outgoing Interface: underlay

Source Internet Service: ☐

IPv4 Source Address: LAN-net

IPv6 Source Address: +

Source User: +

Source User Group: +

FSSO Groups: +

Destination Internet Service: ☐

IPv4 Destination Address: all

IPv6 Destination Address: +

Service: ALL

Schedule: always

Action: **Deny** | Accept | IPSEC

Inspection Mode: **Flow-based** | Proxy-based

**Firewall/Network Options**

NAT: ☒ NAT | NAT46 | NAT64

IP Pool Configuration: **Use Outgoing Interface Address** | Use Dynamic IP Pool

Preserve Source Port: ☐

Protocol Options: default

**Disclaimer Options**

Display Disclaimer: ☐

Security Profiles: ☐

SSL/SSH Inspection: **deep-inspection**

Decrypted Traffic Mirror: +

**Traffic Shaping Options**

Shared Shaper: +

Reverse Shaper: +

Per-IP Shaper: +

**Logging Options**

Log Allowed Traffic: ☐ No Log | ☐ Log Security Events | **Log All Sessions**

☐ Capture Packets

☐ Generate Logs when Session Starts

Exhibit A shows the traffic shaping policy and exhibit B shows the firewall policy.

The administrator wants FortiGate to limit the bandwidth used by YouTube. When testing, the administrator determines that FortiGate does not apply traffic shaping on YouTube traffic.

Based on the policies shown in the exhibits, what configuration change must be made so FortiGate performs traffic shaping on YouTube traffic?

- A. Destination internet service must be enabled on the traffic shaping policy.
- B. Application control must be enabled on the firewall policy.
- C. Web filtering must be enabled on the firewall policy.
- D. Individual SD-WAN members must be selected as the outgoing interface on the traffic shaping policy.

**Answer: C**

#### NEW QUESTION 27

What are two advantages of using an IPsec recommended template to configure an IPsec tunnel in an hub-and-spoke topology? (Choose two.)

- A. It ensures consistent settings between phase1 and phase2.
- B. It guides the administrator to use Fortinet recommended settings.
- C. It automatically install IPsec tunnels to every spoke when they are added to the FortiManager ADOM.
- D. The VPN monitor tool provides additional statistics for tunnels defined with an IPsec recommended template.

**Answer:** AB

**Explanation:**

The use of an IPsec recommended template offers the advantage of ensuring consistent settings between phase1 and phase2 (A), which is essential for the stability and security of the IPsec tunnel. Additionally, it guides the administrator to use Fortinet's recommended settings (B), which are designed to optimize performance and security based on Fortinet's best practices. References: The benefits of using IPsec recommended templates are outlined in Fortinet's SD-WAN documentation, which emphasizes the importance of consistency and adherence to recommended configurations.

**NEW QUESTION 32**

Refer to the exhibit.

```
config system virtual-wan-link
  set status enable
  set load-balance-mode source-ip-based
  config members
    edit 1
      set interface "port1"
      set gateway 100.64.1.254
      set source 100.64.1.1
      set cost 15
    next
    edit 2
      set interface "port2"
      set gateway 100.64.2.254
      set priority 10
    next
  end
end
```

Based on the output shown in the exhibit, which two criteria on the SD-WAN member configuration can be used to select an outgoing interface in an SD-WAN rule? (Choose two.)

- A. Set priority 10.
- B. Set cost 15.
- C. Set load-balance-mode source-ip-ip-based.
- D. Set source 100.64.1.1.

**Answer:** AB

**NEW QUESTION 35**

Which components make up the secure SD-WAN solution?

- A. Application, antivirus, and URL, and SSL inspection
- B. Datacenter, branch offices, and public cloud
- C. FortiGate, FortiManager, FortiAnalyzer, and FortiDeploy
- D. Telephone, ISDN, and telecom network.

**Answer:** C

**NEW QUESTION 40**

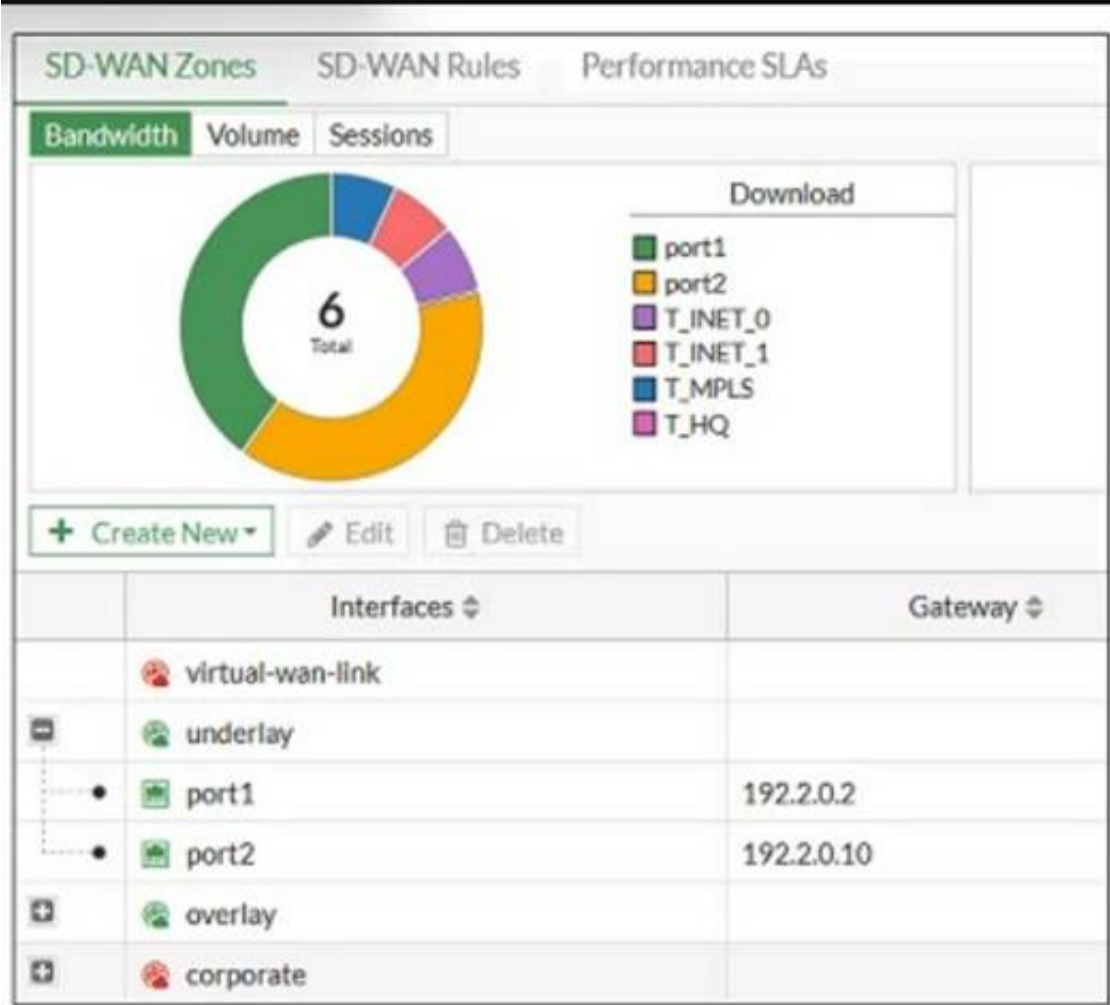
Which two protocols in the IPsec suite are most used for authentication and encryption? (Choose two.)

- A. Encapsulating Security Payload (ESP)
- B. Secure Shell (SSH)
- C. Internet Key Exchange (IKE)
- D. Security Association (SA)

**Answer:** AC

**NEW QUESTION 42**

Refer to the exhibit, which shows an SD-WAN zone configuration on the FortiGate GUI.



Based on the exhibit, which statement is true?

- A. You can delete the virtual-wan-link zone because it contains no member.
- B. The corporate zone contains no member.
- C. You can move port1 from the underlay zone to the overlay zone.
- D. The overlay zone contains four members.

Answer: B

Explanation:

Based on the exhibit, the "corporate" zone contains no member (B). In the FortiGate GUI, zones without members do not display any interfaces listed under them, which is the case for the corporate zone in the exhibit. References: This conclusion is based on standard Fortinet GUI interpretation and the operational logic of SD-WAN zones as per Fortinet's guidelines and user interface standards.

NEW QUESTION 45

In a hub-and-spoke topology, what are two advantages of enabling ADVPN on the IPsec overlays? (Choose two.)

- A. It provides the benefits of a full-mesh topology in a hub-and-spoke network.
- B. It provides direct connectivity between spokes by creating shortcuts.
- C. It enables spokes to bypass the hub during shortcut negotiation.
- D. It enables spokes to establish shortcuts to third-party gateways.

Answer: AB

NEW QUESTION 46

Refer to the exhibit.

```
config vpn ipsec phase1-interface
  edit "T_INET_0_0"
    set type dynamic
    set interface "port1"
    set keylife 28800
    set peertype any
    set net-device disable
    set proposal aes128-sha256
    set add-route enable
    set psksecret ENC
2v9n4Urfk0W4jj8vWI+KywxBG42DT7jWHRd8YaL8j4+pRpYox/N7mSgc7VL0BW22HQUXWJ6zvFxNKKtiPYNtA8aP
i6ly7gDx2lP/OfKexTQQJzgcGRYzLM8eFTonK7K6AuX0bFDCpBBhEIdf+03CYBMLwkFZmdU6RsT+qvybblVX+Ioy
HK5EXakpmz5RiltELg29Gg==
  next
end
```

Which configuration change is required if the responder FortiGate uses a dynamic routing protocol to exchange routes over IPsec?

- A. type must be set to static.
- B. mode-cfg must be enabled.
- C. exchange-interface-ip must be enabled.
- D. add-route must be disabled.

Answer: D

NEW QUESTION 48

In the default SD-WAN minimum configuration, which two statements are correct when traffic matches the default implicit SD-WAN rule? (Choose two )

- A. Traffic has matched none of the FortiGate policy routes.
- B. Matched traffic failed RPF and was caught by the rule.

- C. The FIB lookup resolved interface was the SD-WAN interface.
- D. An absolute SD-WAN rule was defined and matched traffic.

**Answer:** AC

#### NEW QUESTION 51

Which two statements about SD-WAN central management are true? (Choose two.)

- A. The objects are saved in the ADOM common object database.
- B. It does not support meta fields.
- C. It uses templates to configure SD-WAN on managed devices.
- D. It supports normalized interfaces for SD-WAN member configuration.

**Answer:** AC

#### Explanation:

Normalized interfaces are not supported for SD-WAN templates. You can create multiple SD-WAN zones and add interface members to the SD-WAN zones. You must bind the interface members by name to physical interfaces or VPN interfaces. <https://docs.fortinet.com/document/fortigate/7.0.0/sd-wan-new-features/794804/new-sd-wan-template-fmg>

#### NEW QUESTION 56

Refer to the exhibit.

```
config system sdwan
  set fail-detect enable
  set fail-alert-interfaces "port5"
  config health-check
    edit "Level3_DNS"
      set update-cascade-interface enable
      set members 1 2
    next
    edit "HQ"
      set update-cascade-interface enable
      set members 3
    next
  end
end
```

Based on the exhibit, which action does FortiGate take?

- A. FortiGate bounces port5 after it detects all SD-WAN members as dead.
- B. FortiGate fails over to the secondary device after it detects all SD-WAN members as dead.
- C. FortiGate brings up port5 after it detects all SD-WAN members as alive.
- D. FortiGate brings down port5 after it detects all SD-WAN members as dead.

**Answer:** A

#### NEW QUESTION 61

The SD-WAN overlay template helps to prepare SD-WAN deployments. To complete the tasks performed by the SD-WAN overlay template, the administrator must perform some post-run tasks. What are three mandatory post-run tasks that must be performed? (Choose three.)

- A. Create policy packages for branch devices.
- B. Assign an sdwan\_id metadata variable to each device (branch and hub).
- C. Configure routing through overlay tunnels created by the SD-WAN overlay template.
- D. Assign a branch\_id metadata variable to each branch device.
- E. Configure SD-WAN rules.

**Answer:** ABC

#### NEW QUESTION 64

Which two statements describe how IPsec phase 1 main mode is different from aggressive mode when performing IKE negotiation? (Choose two.)

- A. A peer ID is included in the first packet from the initiator, along with suggested security policies.
- B. XAuth is enabled as an additional level of authentication, which requires a username and password.
- C. Three packets are exchanged between an initiator and a responder instead of six packets.
- D. The use of Diffie Hellman keys is limited by the responder and needs initiator acceptance.

**Answer:** AC

#### NEW QUESTION 67

Refer to the exhibit.

```
config router bgp
  set as 65000
  set router-id 10.1.0.1
  set ibgp-multipath enable
  set additional-path enable
  set additional-path-select 3
  config neighbor-group
    edit "Branches_INET_0"
      set interface "T_INET_0_0"
      set remote-as 65000
      set update-source "T_INET_0_0"
    next
    edit "Branches_INET_1"
      set interface "T_INET_1_0"
      set remote-as 65000
      set update-source "T_INET_1_0"
    next
    edit "Branches_MPLS"
      set interface "T_MPLS_0"
      set remote-as 65000
      set update-source "T_MPLS_0"
    next
  end
  config neighbor-range
    edit 1
      set prefix 10.201.1.0 255.255.255.0
      set neighbor-group "Branches_INET_0"
    next
    edit 2
      set prefix 10.202.1.0 255.255.255.0
      set neighbor-group "Branches_INET_1"
    next
    edit 3
      set prefix 10.203.1.0 255.255.255.0
      set neighbor-group "Branches_MPLS"
    next
  end
  ...
end
```

The exhibit shows the BGP configuration on the hub in a hub-and-spoke topology. The administrator wants BGP to advertise prefixes from spokes to other spokes over the IPsec overlays, including additional paths. However, when looking at the spoke routing table, the administrator does not see the prefixes from other spokes and the additional paths.

Based on the exhibit, which three settings must the administrator configure inside each BGP neighbor group so spokes can learn other spokes prefixes and their additional paths? (Choose three.)

- A. Set additional-path to send
- B. Enable route-reflector-client
- C. Set advertisement-interval to the number of additional paths to advertise
- D. Set adv-additional-path to the number of additional paths to advertise
- E. Enable soft-reconfiguration

**Answer:** ABD

#### NEW QUESTION 68

What are two benefits of choosing packet duplication over FEC for data loss correction on noisy links? (Choose two.)

- A. Packet duplication can leverage multiple IPsec overlays for sending additional data.
- B. Packet duplication does not require a route to the destination.
- C. Packet duplication supports hardware offloading.
- D. Packet duplication uses smaller parity packets which results in less bandwidth consumption.

**Answer:** AC

#### NEW QUESTION 69

Which two interfaces are considered overlay links? (Choose two.)

- A. LAG
- B. IPsec
- C. Physical
- D. GRE

**Answer:** BD

#### NEW QUESTION 72

Which statement is correct about SD-WAN and ADVPN?

- A. Routes for ADVPN shortcuts must be manually configured.
- B. SD-WAN can steer traffic to ADVPN shortcuts, established over IPsec overlays, configured as SD-WAN members.
- C. SD-WAN does not monitor the health and performance of ADVPN shortcuts.
- D. You must use IKEv2 on IPsec tunnels.

**Answer: B**

#### NEW QUESTION 74

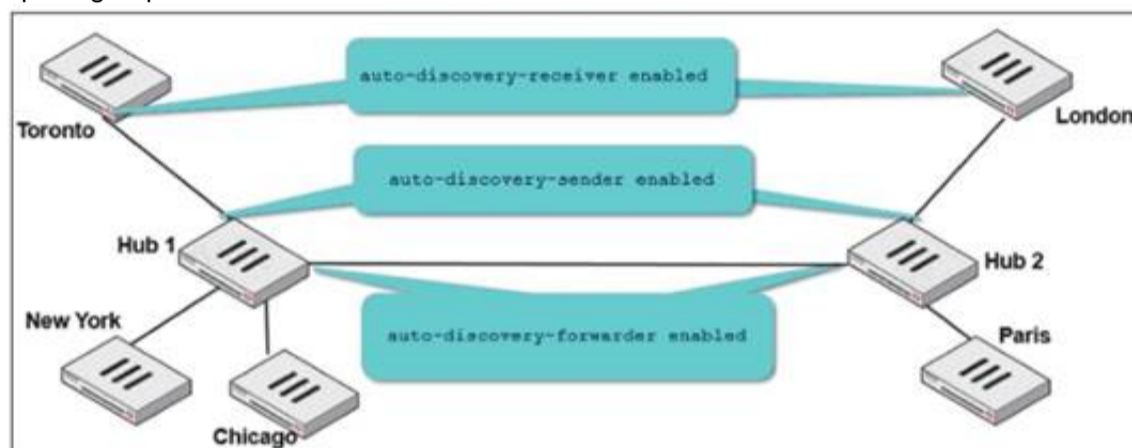
Which statement about using BGP routes in SD-WAN is true?

- A. Learned routes can be used as dynamic destinations in SD-WAN rules.
- B. You must use BGP to route traffic for both overlay and underlay links.
- C. You must configure AS path prepending.
- D. You must use external BGP.

**Answer: A**

#### NEW QUESTION 76

Two hub-and-spoke groups are connected through a site-to-site IPsec VPN between Hub 1 and Hub 2. The administrator configured ADVPN on both hub-and-spoke groups.



Which two outcomes are expected if a user in Toronto sends traffic to London? (Choose two.)

- A. London generates an IKE information message that contains the Toronto public IP address.
- B. Traffic from Toronto to London triggers the dynamic negotiation of a direct site-to-site VPN.
- C. Toronto needs to establish a site-to-site tunnel with Hub 2 to bypass Hub 1.
- D. The first packets from Toronto to London are routed through Hub 1 then to Hub 2.

**Answer: BD**

#### NEW QUESTION 77

Refer to the exhibit.

```
# diagnose firewall shaper per-ip-shaper list
name FTP_5M
maximum-bandwidth 625 KB/sec
maximum-concurrent-session 5
tos ff/ff
packets dropped 65
bytes dropped 81040
    addr=10.1.0.1 status: bps=0 ses=1
    addr=10.1.0.100 status: bps=0 ses=1
    addr=10.1.10.1 status: bps=1656 ses=3
```

Which are two expected behaviors of the traffic that matches the traffic shaper? (Choose two.)

- A. The number of simultaneous connections among all source IP addresses cannot exceed five connections.
- B. The traffic shaper limits the combined bandwidth of all connections to a maximum of 5 MB/sec.
- C. The number of simultaneous connections allowed for each source IP address cannot exceed five connections.
- D. The traffic shaper limits the bandwidth of each source IP address to a maximum of 625 KB/sec.

**Answer: CD**

#### NEW QUESTION 80

Which two statements reflect the benefits of implementing the ADVPN solution to replace conventional VPN topologies? (Choose two.)

- A. It creates redundant tunnels between hub-and-spokes, in case failure takes place on the primary links.
- B. It dynamically assigns cost and weight between the hub and the spokes, based on the physical distance.
- C. It ensures that spoke-to-spoke traffic no longer needs to flow through the tunnels through the hub.
- D. It provides direct connectivity between all sites by creating on-demand tunnels between spokes.

**Answer: CD**

**NEW QUESTION 81**

.....

## Thank You for Trying Our Product

### We offer two products:

1st - We have Practice Tests Software with Actual Exam Questions

2nd - Questions and Answers in PDF Format

### NSE7\_SDW-7.2 Practice Exam Features:

- \* NSE7\_SDW-7.2 Questions and Answers Updated Frequently
- \* NSE7\_SDW-7.2 Practice Questions Verified by Expert Senior Certified Staff
- \* NSE7\_SDW-7.2 Most Realistic Questions that Guarantee you a Pass on Your FirstTry
- \* NSE7\_SDW-7.2 Practice Test Questions in Multiple Choice Formats and Updatesfor 1 Year

**100% Actual & Verified — Instant Download, Please Click**  
**[Order The NSE7\\_SDW-7.2 Practice Test Here](#)**