

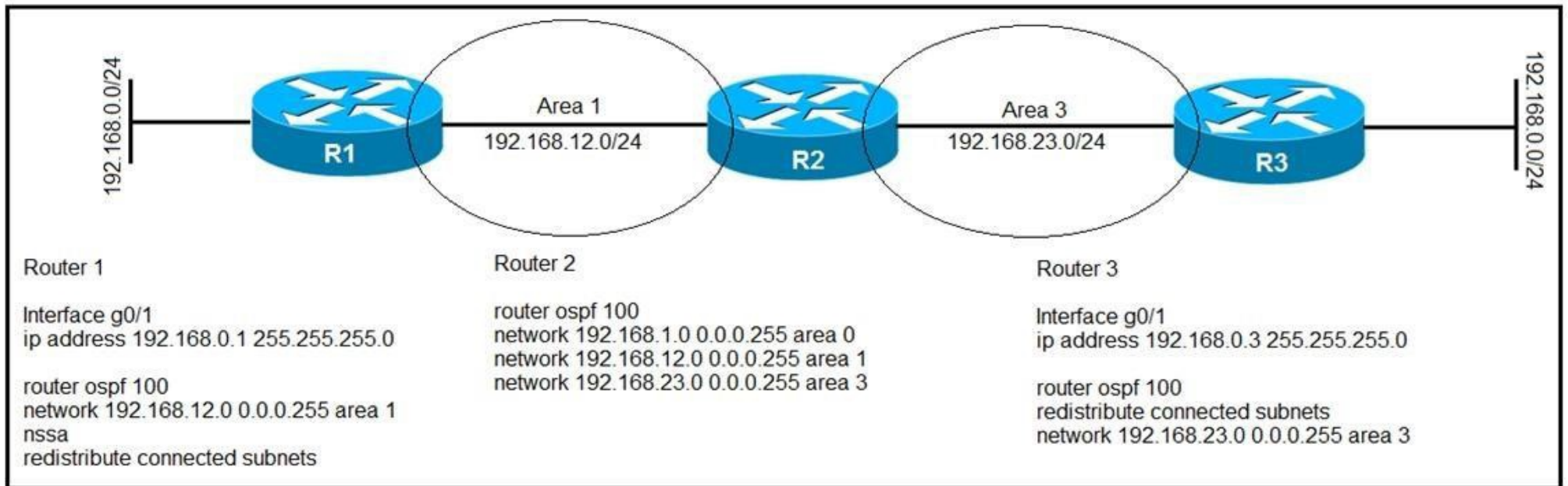
Cisco

Exam Questions 300-510

Implementing Cisco Service Provider Advanced Routing Solutions (SPRI)



NEW QUESTION 1



Refer to the exhibit. After troubleshooting an OSPF adjacency issue, routers 1, 2, and 3 have formed OSPF neighbor relationships. Which statement about the configuration is true?

- A. Router 2 receives a Type 5 LSAs from router 1 for its connected subnets
- B. Router 2 uses router 3 as the next hop for 192.168.0.0/24
- C. Router 2 uses router 1 as the next hop for 192.168.0.0/24
- D. Router 2 receives a Type 7 LSAs from router 3 for its connected subnets

Answer: A

NEW QUESTION 2

Which task is performed when troubleshooting LDP?

- A. Execute the ping utility to generate information about the MAC addresses used along the path
- B. Verify that MPLS is disabled globally and enabled on the necessary interfaces in a per-interface basis
- C. Execute the traceroute utility to generate information about the labels used along the path
- D. Verify that Cisco Express Forwarding has been disabled on the network

Answer: C

NEW QUESTION 3

```

Router 1:

interface TenGigE0/1
point-to-point
address-family ipv4 unicast
fast-reroute per-prefix
Fast-reroute per-prefix ti-lfa

R1#show isis fast-reroute 172.16.200.9/32

L2 172.16.200.9/32 [30/115]
via 192.168.20.1, TenGigE0/1, R2, SRGB Base: 16000, Weight: 0
FRR backup via 192.168.30.1, TenGigE0/2, R3, SRGB Base: 16000,
Weight: 0, Metric 40
  
```

Refer to the exhibit. Router 1 is connected to router 2 on interface TenGigE0/1. Which interface provides the alternate path to 172.16.200.9/32 when the link between router 1 and router 2 goes down?

- A. TenGigE0/1 interface provides the alternate path
- B. A backup path must be statically installed
- C. TenGigE0/2 interface provides the alternate path
- D. A primary path must be manually installed

Answer: C

NEW QUESTION 4

An engineer is troubleshooting a connectivity issue across the MPLS network and is verifying the forwarding behavior of packets. Which table does the engineer look at to verify the forwarding behavior of an IP packet as it enters the MPLS network at the ingress LSR?

- A. LFIB
- B. LIB
- C. RIB

D. FIB

Answer: A

NEW QUESTION 5

You have configured MSDP peering between two autonomous systems that pass traffic between two sites, but the peering has failed to come up. Which task do you perform to begin troubleshooting the problem?

- A. Verify that multicast has been disabled globally
- B. Verify that PIM-DM is configured on the source interface
- C. Verify that both source interfaces are reachable from both peers
- D. Verify that the two MSDP peers allow asymmetric routing

Answer: C

NEW QUESTION 6

Which two statements about route reflectors are true? (Choose two.)

- A. Routes received from nonclient peers are reflected to route reflector clients as well as nonclient peers.
- B. Routes received from nonclient peers are reflected to route reflector cluster as well as OSPF peers.
- C. If a router received an iBGP route with the originator-ID attribute set to its own router ID, the route is discarded.
- D. Routes received from a route reflector client is reflected to other clients and nonclient peers.
- E. If a route reflector receives a route with a cluster-list attribute containing a different cluster ID, the route is discarded.

Answer: CD

NEW QUESTION 7

Which two statements about mapping multicast IP addresses to MAC addresses are true? (Choose two.)

- A. All mapped multicast MAC addresses begin with 0x0100.5E
- B. The router performs the mapping before it hands the packet off to a switch
- C. All multicast MAC addresses end with 0x0100.5E
- D. The mapping process may generate overlapping addresses, which can cause receivers to receive unwanted packets
- E. All destination MAC addresses begin with an octet of binary 1s

Answer: AD

NEW QUESTION 8

Which cost is the default when redistributing routes from BGP to OSPF?

- A. 20
- B. 1
- C. infinite
- D. automatic

Answer: B

NEW QUESTION 9

Refer to the exhibit. A network operator must inject a Level 1 route from XR2 (10.16.16.0/24) into the ISIS topology. Which configuration allows the injection in a way that XR3 and XR1 have a valid and working route for 10.16.16.0/24?

A. A.

```
#XR3
route-policy ISIS_PROPO
  if destination in(10.0.0.0/8 ge 8 le 22) then
    pass
  endif
end-policy
!
router isis 1
  net 49.1921.6800.0003.00
  address-family ipv4 unicast
  !
  propagate level 1 into level 2 route-policy ISIS_PROPO
```

B.

```
#XR2
route-policy ISIS_PROPO
  if destination in(10.0.0.0/8 ge 8 le 32) then
    pass
  endif
end-policy
!
router isis 1
  net 49.1921.6800.0003.00
  address-family ipv4 unicast
!
propagate level 2 into level 1 route-policy ISIS_PROPO
```

- C. #XR2
- ```
route-policy ISIS_PROPO
 if destination in(10.0.0.0/8 ge 8 le 32) then
 pass
 endif
end-policy
!
router isis 1
 net 49.1921.6800.0003.00
 address-family ipv4 unicast
!
propagate level 1 into level 2 route-policy ISIS_PROPO
```
- B. #XR3
- ```
route-policy ISIS_PROPO
  if destination in(10.0.0.0/8 ge 8 le 32) then
    pass
  endif
end-policy
!
router isis 1
  net 49.1921.6800.0003.00
  address-family ipv4 unicast
!
propagate level 2 into level 1 route-policy ISIS_PROPO
```

Answer: C

NEW QUESTION 10


```
RP/0/0/CPU/0:P1#
!
key chain BGP
key 1
accept-lifetime 13:14:06 february 14 1993 infinitive
send-lifetime 13:14:06 february 14 1993 infinitive
key-string password cisco123
cryptographic-algorithm MD5
!
!
router bgp 1
address-family ipv4 unicast
!
neighbor 192.168.13.3
remote-as 1
keychain BGP
address-family ipv4 unicast

RP/0/0/CPU/0:PE3#
!
key chain BGP
key 1
accept-lifetime 13:14:06 february 14 1993 infinitive
send-lifetime 13:14:06 february 14 1993 infinitive
key-string password cisco123
cryptographic-algorithm MD5
!
!
router bgp 1
address-family ipv4 unicast
!
neighbor 192.168.13.1
remote-as 1
keychain BGP
address-family ipv4 unicast
```

Refer to the exhibit. P1 and PE3 Cisco IOS XR routers are directly connected and have this configuration applied. The BGP session is not coming up. Assume that there is no IP reachability problem and both routers can open tcp port 179 to each other. Which two actions fix the issue? (Choose two.)

- A. Change MD5 to HMAC-SHA1-12
- B. Change MD5 to HMAC-ESP
- C. Change MD5 to SHA-1
- D. Change MD5 to HMAC-MD5
- E. Remove the send and accept lifetime under key 1

Answer: AD

NEW QUESTION 10

A network engineer is troubleshooting OSPF multiarea. Which Cisco IOS XR feature should the engineer use in order to streamline OSPF issue?

- A. hierarchical CLI
- B. DR support for topology management
- C. routing process enabled by default on all interfaces
- D. show ip ospf topology command

Answer: A

NEW QUESTION 11

Which two characteristics unique to SSM when compared to ASM are true? (Choose two.)

- A. It uses SPT switchover
- B. It uses (*,G) exclusively
- C. It uses IGMPv3
- D. It uses RP
- E. It uses (S,G) exclusively

Answer: CE

NEW QUESTION 12

RP/0/0/CPU/0:P1# ! key chain BGP key 1 key-string password cisco123 cryptographic-algorithm HMAC-MD5 ! router bgp 1 address-family ipv4 unicast ! neighbor 192.168.13.3 remote-as 1 keychain BGP address-family ipv4 unicast	RP/0/0/CPU/0:PE3# ! key chain BGP key 1 key-string password cisco123 cryptographic-algorithm HMAC-MD5 ! router bgp 1 address-family ipv4 unicast ! neighbor 192.168.13.1 remote-as 1 keychain BGP address-family ipv4 unicast
---	--

Refer to the exhibit. P1 and PE3 Cisco IOS XR routers are directly connected and have this configuration applied. The BGP session is not coming up. Assume that there is no IP reachability problem and both routers can open tcp port 179 to each other. Which action fixes the issue?

- A. Change HMAC-MD5 to HMAC-SHA1-20
- B. Configure the send and accept lifetime under key 1
- C. Change HMAC-MD5 to MD5
- D. Change HMAC-MD5 to HMAC-SHA1-12

Answer: B

NEW QUESTION 17

Refer to the exhibit. An engineer has successfully fixed BGP peering issue. R1 has an established eBGP peering with R2 and R3. Which mechanism should the engineer apply in order to steer the traffic correctly?

- A. The MED attribute can be applied on R2 to influence R1 to use it as the primary path.
- B. The local preference attribute can be applied on R3 to influence AS 65513 to use AS 65515 as the secondary path.
- C. The weight attribute can be applied on R2 to influence AS 65513 to use AS 65515 as the primary path.
- D. The IGP metric can be manipulated on R1 to allow traffic to be load balanced between R2 and R3.

Answer: D

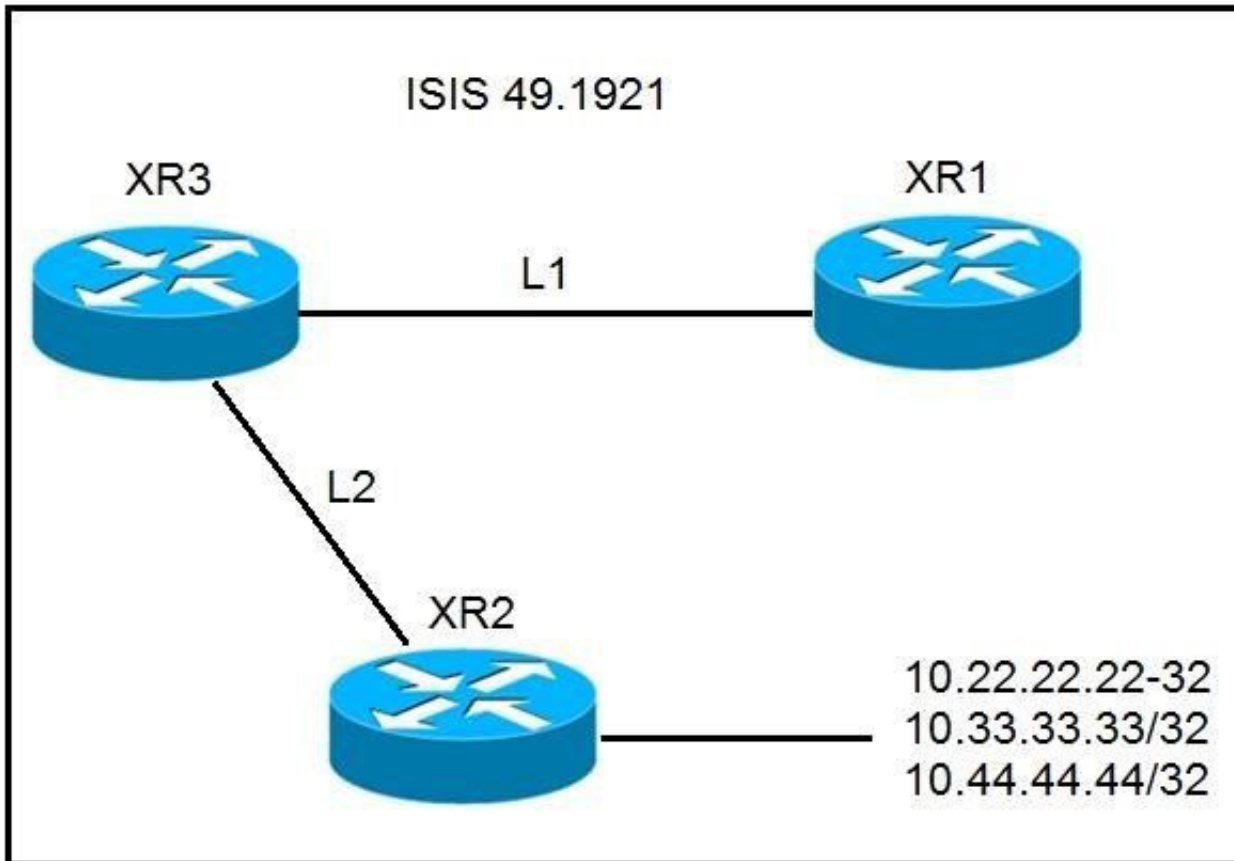
NEW QUESTION 18

Refer to the exhibit. Which attribute can router 1 alter so that only other iBGP peers prefer to use 192.168.4.2 as the next hop for route 192.168.3.0/24?

- A. MED
- B. local preference
- C. origin
- D. weight

Answer: A

NEW QUESTION 19



Refer to the exhibit. A network operator must stop 10.33.33.33/32 from being redistributed into Level 1 router XR1. Which configuration meets this need?

- A. #XR2
- ```
prefix-set NO_33
 10.33.33.33/32
end-set
!
route-policy ISIS_NO_33
 if destination in NO_33 then
 drop
 else
 pass
 endif
end-policy
!
router isis 1
 address-family ipv4 unicast
 propagate level 2 into level 1 route-policy ISIS_NO_33
```
- B. #XR3
- ```
prefix-set NO_33
 10.33.33.33/32
end-set
!
route-policy ISIS_NO_33
 if destination in NO_33 then
  drop
 endif
end-policy
!
router isis 1
 address-family ipv4 unicast
  propagate level 2 into level 1 route-policy ISIS_NO_33
```
- C.

```
#XR3
prefix-set NO_33
 10.33.33.33/32
end-set
!
route-policy ISIS_NO_33
 if destination in NO_33 then
  drop
 else
  pass
 endif
end-policy
!
router isis 1
 address-family ipv4 unicast
 propagate level 2 into level 1 route-policy ISIS_NO_33
```

D. #XR3

```
prefix-set NO_33
 10.33.33.33/23
end-set
!
route-policy ISIS_NO_33
 if destination in NO_33 then
  drop
 else
  pass
 endif
end-policy
!
router isis 1
 address-family ipv4 unicast
 propagate level 2 into level 1 route-policy ISIS_NO_33
```

Answer: C

NEW QUESTION 22

.....

Thank You for Trying Our Product

We offer two products:

1st - We have Practice Tests Software with Actual Exam Questions

2nd - Questions and Answers in PDF Format

300-510 Practice Exam Features:

- * 300-510 Questions and Answers Updated Frequently
- * 300-510 Practice Questions Verified by Expert Senior Certified Staff
- * 300-510 Most Realistic Questions that Guarantee you a Pass on Your First Try
- * 300-510 Practice Test Questions in Multiple Choice Formats and Updates for 1 Year

100% Actual & Verified — Instant Download, Please Click
[Order The 300-510 Practice Test Here](#)